

82

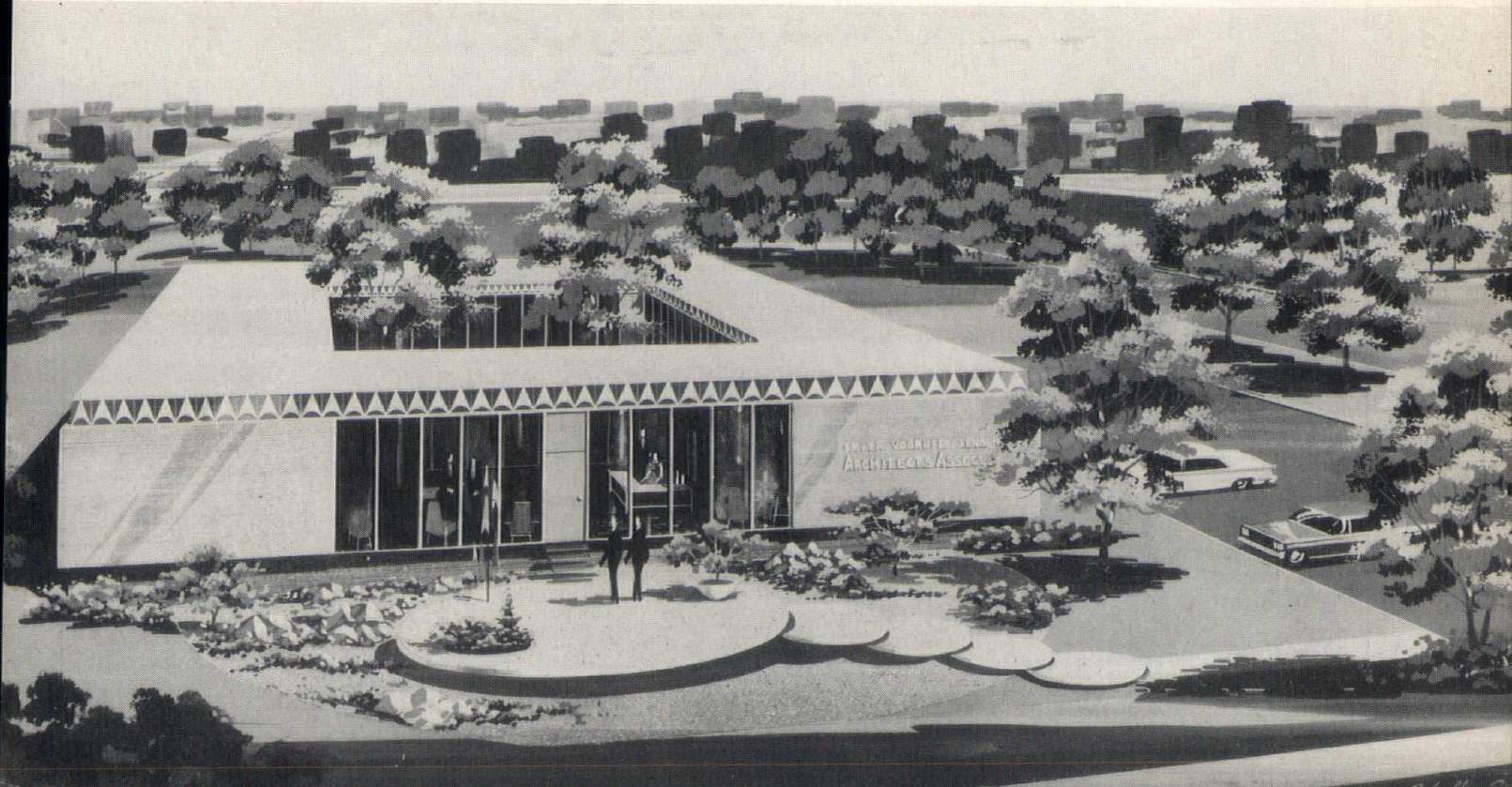
IOWA ARCHITECT

Official publication of
IOWA CHAPTER
AMERICAN INSTITUTE OF ARCHITECTS



AMERICAN INSTITUTE
OF
ARCHITECTS
JUN 21 1963
LIBRARY

COMMERCIAL BUILDINGS 1963 VOL. X NO. 2



Research and Product Development *Highlights 1962*

ORLEANS ANTIQUE FACE BRICK

DES MOINES CLAY COMPANY

This rough wirecut brick is sprayed with a white coating and then edge-set. The coating is torn in some places so that a pleasing rough, antique appearance results. The coloring is a ceramic base which is tightly bonded to the body and will not wash off or wear away with aging.

CINNAMON PINKS

DES MOINES CLAY COMPANY

This new brick gained instant popularity. This is especially popular where large wall areas become a problem and an architect is looking for a brick which will create great interest in the wall. This new face brick is basically a light Cinnamon Brown with a unique pastel pink overtone. The texture captures the Early American Sand Mold appearance.

CAMEO MATTES

OSKALOOSA CLAY PRODUCTS COMPANY

This new brick is a blend with the lightest shade being the Oskaloosa Ivory. The color is then changed so it drops down to three additional shades which include sand, beige, and champagne. This is a light range mix and is soft and subtle but has enough variation to make a pleasing wall but one that blends.

VAN DYCK BROWN

DES MOINES CLAY COMPANY

This new wirecut brick is a rich brown and can best be described as a Van Dyck Brown which is the color of the brown pigment used by the Flemish painter Antonius Van Dyck. This color is basically burnt umber. The range will vary so the mix is both lighter and darker than this particular hue.

PARTITION TILE NO. 412-6 CELL SOUND RESISTANT LOAD BEARING

MASON CITY BRICK AND TILE COMPANY

This new tile unit, with the two cells in the thickness through the wall, produces a partition with a high resistance to sound transmission.

WIDE CENTER TILE FLOOR

ONE AND TWO WAY TILE FLOOR SYSTEMS

MASON CITY BRICK AND TILE COMPANY

The new 16" wide tile for floor systems has been produced and made a production item. Thus, additional economy in design of tile floors accomplished.

NORMAN SIZED GLAZED PROVINCIALS

DES MOINES CLAY COMPANY

Glazed Provincial normans are now available in all colors on special order because many architects have requested limited quantities of normans to work into their designs where regular Glazed Provincials are used and in the norman size for use on norman jobs.

GLAZED PROVINCIALS-NEW COLORS

DES MOINES CLAY COMPANY

Two new colors have been added to the Glazed Provincial Line:

1. ROYAL BLUE—A deep but brilliant blue.
2. FOREST GREEN—A dark green with great depth and value.

NEW SOLAR SCREEN UNIT

DES MOINES CLAY COMPANY

The new "Iron Cross" design—a single cell unit which produces circles and curves. Also available glazed with Provincial colors.

TILE UNITS AVAILABLE IN GLAZED PROVINCIAL COLORS

Tile units in the 5" x 12" face and 8" x 8" face are now available in Glazed Provincial colors on special order. They are excellent for decorative inserts into tile walls or for areas where an architect wishes to obtain the charm and color which can only be secured by using the Glazed Provincial Colors.



MANUFACTURING DIVISIONS
DES MOINES CLAY COMPANY
MASON CITY BRICK AND TILE COMPANY
OSKALOOSA CLAY PRODUCTS COMPANY
OTTUMWA BRICK AND TILE COMPANY
REDFIELD BRICK AND TILE COMPANY

**614 CENTRAL
NATIONAL BLDG**
DES MOINES, IOWA

Each product applied as specified . . .

WE CERTIFY IT!



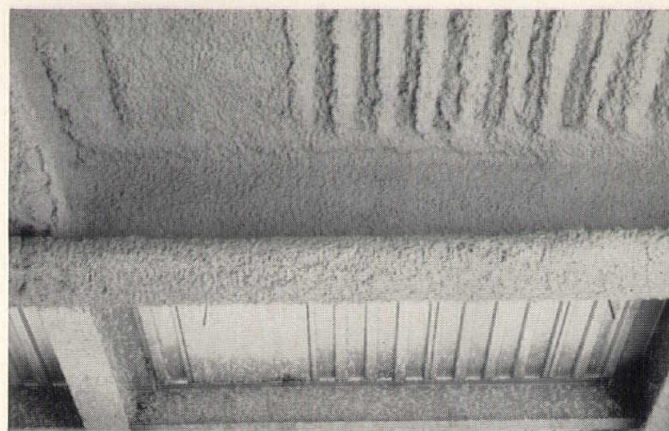
Here's protection for you and your clients. And it demonstrates our concern for our own reputation and that of our approved plastering contractors. When

you specify certification, we inspect the job and certify it in writing. It's your assurance your client gets all the benefits claimed for these materials.



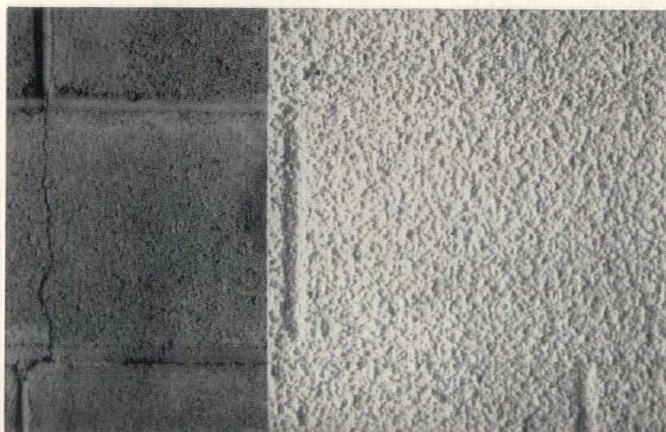
FOR A RICH, TEXTURED MONOLITHIC SURFACE

HI-SORB® ACOUSTICAL PLASTER: Enhances the beauty of wood and fabrics. A firm damage-resisting surface, yet good sound absorption. Full thickness can be applied in one day. A great aid in speeding up construction schedules. Ten exciting colors available.



ONLY 7/8 INCH GIVES A 3-HOUR RATING

Zonolite MONO-KOTE® FIREPROOFING: Applied directly to floors and beams, Mono-Kote takes a fast, firm set. Following floor contours, only 7/8 inch gives a 3-hour rating—1 1/4 inches on beams gives 4 hours. Full thickness can be applied to large areas in only one day.



FOR FASTEST, EASIEST TO OBTAIN TEXTURE FINISH

Zonolite PLASTERTEX® interior and exterior FINISHES: A durable finish. One that masks minor surface blemishes and joinings in plasterboard, block and concrete. Excellent finish for pre-cast concrete, poured concrete canopies, etc. Can be spray-applied to most exterior or interior materials. Choice of three textures.



ANSWER FOR PROBLEM-TYPE INSULATING APPLICATIONS

Zonolite SPRA-INSULATION®: Ideal low cost way to insulate concrete ceilings, floors above unheated areas, and perimeter beams. Widely used to control condensation problems. Bonds permanently to steel. Easy and extremely fast to apply—keeps your project right on schedule.

For complete information write...

Western Mineral
Products Company



4725 OLSON HIGHWAY • MINNEAPOLIS 22, MINNESOTA

The best ideas are more exciting
in **concrete**



University of Illinois Assembly Hall, Urbana, Illinois. Architects: Harrison & Abramovitz, New York. Structural Engineers: Ammann & Whitney, New York. Mechanical-Electrical Engineers: Syska & Hennessy, Inc., New York. University Architect: Ernest L. Stouffer. General Contractor: Felmley-Dickerson, Urbana, Illinois.

“Floating saucer” of folded concrete roofs 3 acres

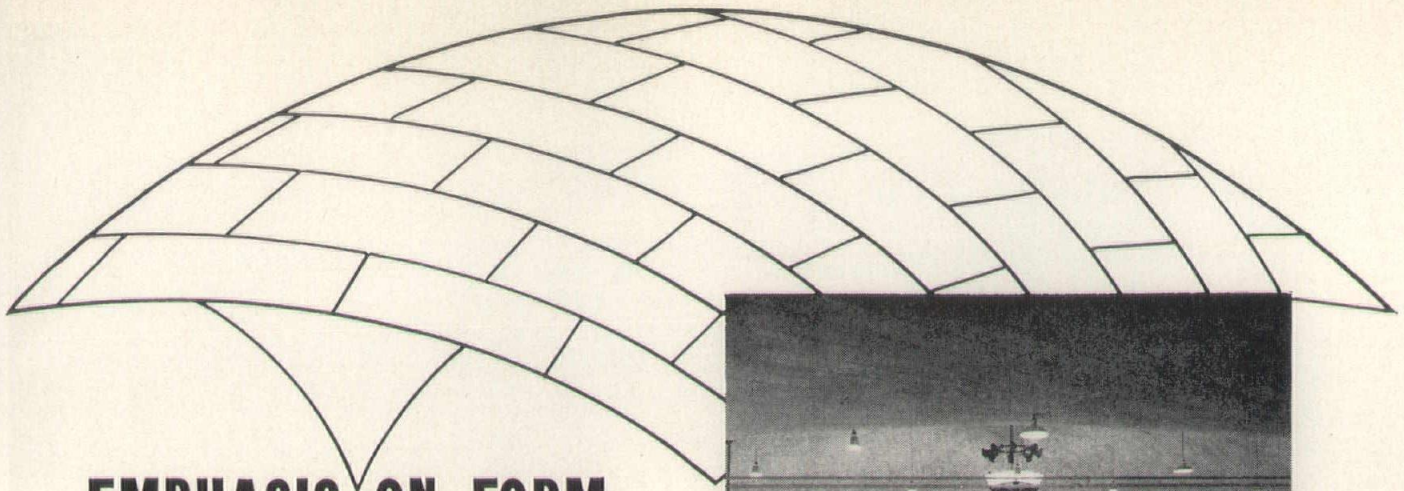
Free of supporting columns, the roof of the new University of Illinois Assembly Hall will seem to “float” over the spectators. This is the world’s largest concrete dome, 400 feet across and weighing 5,000 tons. It is borne entirely by a peripheral ring of prestressed concrete resting on 48 concrete buttresses.

There’s an unobstructed view from every seat in the house for sports events. Seating arrangements and staging are readily adaptable for theatricals and concerts. For insulation and acoustical control, the underside of the roof will be lined with cement-wood fiber panels.

The use of concrete to effect such architectural and engineering achievements is seen more and more today. Everywhere architects are turning to versatile concrete to create designs of outstanding beauty and functionality.

PORTLAND CEMENT ASSOCIATION
A national organization to improve and extend the uses of concrete

408 Hubbell Bldg., Des Moines 9, Iowa



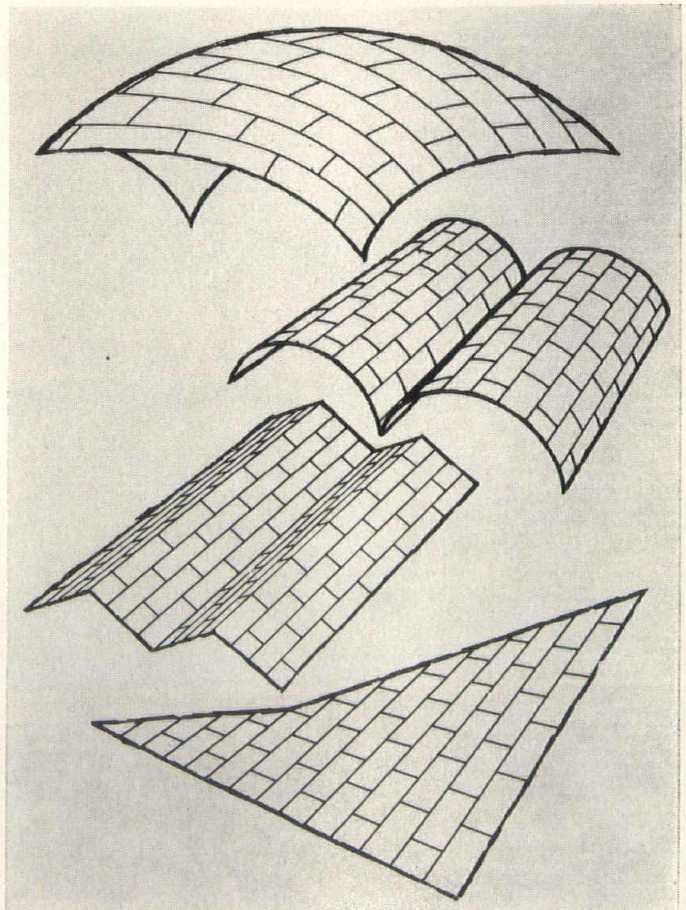
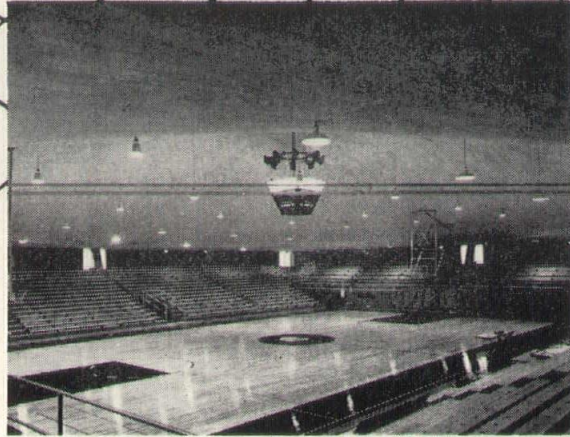
EMPHASIS ON FORM with fundamentals for economical construction

American campuses reflect many expressions of contemporary design. New architectural forms — distinct breaks with the past — are a fitting tribute to a new generation and a new way of life.

Contemporary building products, like Tectum, match the trend with the qualities and the versatility of application so necessary to economical construction. Tectum is tough, structural, ideal for roof decks, wall and ceiling applications. As a form plank for new light weight concrete forms, such as those illustrated, it offers the functional benefits of a structural material to form these new shapes; the built-in plus values of insulation, sound absorption and resistance to combustion with a delightful textured appearance to complement any interior decor.

Built-In **PLUS** Values for Educational Buildings

Tectum®

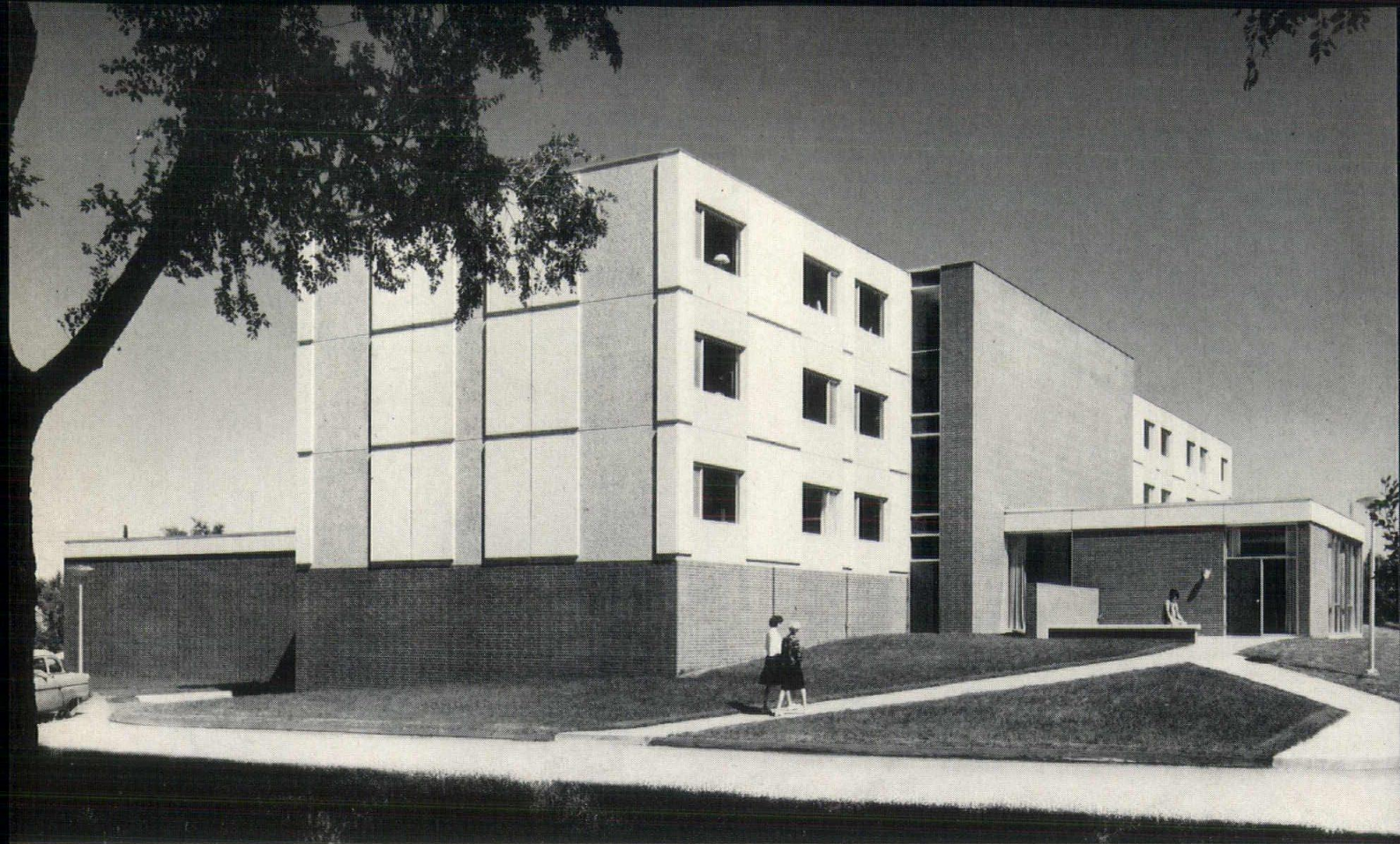


TECTUM IS DISTRIBUTED BY

SWANSON GENTLEMAN, INC.

3213 Forest Ave., Des Moines, Iowa Telephone CRestwood 9-9793

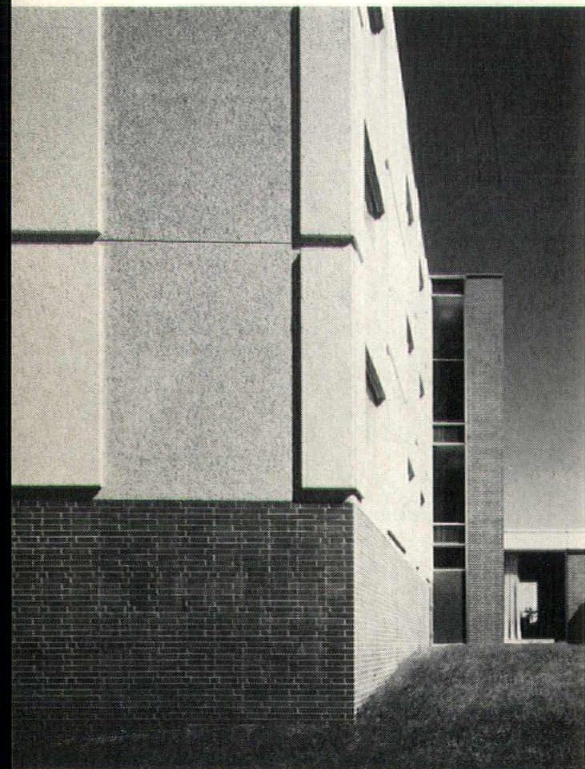




BRYAN SCHOOL OF NURSING
LINCOLN, NEBRASKA

ARCHITECTS: Davis and Wilson, Architects, Lincoln, Nebraska

CONTRACTOR: Kingery Construction Co., Lincoln, Nebraska



MIDWEST CONCRETE INDUSTRIES
WEST DES MOINES, IOWA

Iowa Agents: Swanson-Gentleman Inc., Des Moines.

IOWA ARCHITECT

Iowa Chapter, American Institute of Architects

OFFICERS

G. Doug Robison
Davenport
President

W. David Frevert
Des Moines
Vice-President

James A. Lynch
Des Moines
Secretary

Willis Schellberg
Forest City
Treasurer

PUBLICATIONS COMMITTEE

Rich Goewey
Chairman
Russell Parks
John G. Shelledy
Carl Ver Steeg

EDITOR

Carl Ver Steeg
1200 Grand
West Des Moines

DISTRICT EDITORS

James M. Duffy
Robert C. Broshar
Gerald H. Miller
Norman H. Rudi
Howard Heemstra

MANAGING EDITOR

Robert F. Bonomi
422 Securities Bldg.
Des Moines 9, Iowa
ATlantic 2-4309

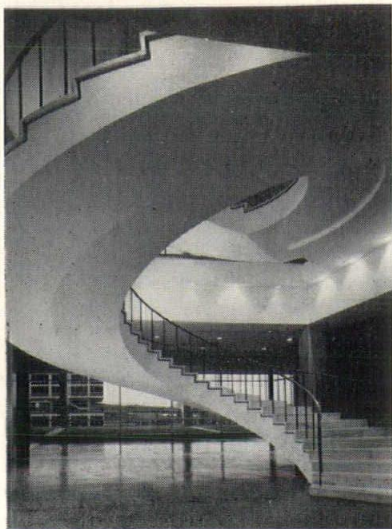
C O N T E N T S

Unfinished business.....	8
Honors at Ames.....	9
Personal observations by the editor.....	9
William Beuttler, A.I.A.....	10
Special Issues, 1963.....	11
Student Photo Contest.....	11
New Registrations.....	11
DESIGN BY IOWA ARCHITECTS: COMMERCIAL BUILDINGS.....	14
<i>Wells Federal Savings & Loan Association, Wells, Minnesota</i>	
<i>Federal Land Bank Association, Cedar Rapids</i>	
<i>Iowa Securities Company Offices, Waterloo</i>	
<i>Fidelity Savings Bank, Marshalltown</i>	
<i>Iowa Southern Utilities Company Office Building, Centerville</i>	
<i>Morningside Telephone Equipment Building, Sioux City</i>	
<i>Merle Hay Mart, Des Moines</i>	
<i>Greater Des Moines Chamber of Commerce Building</i>	
<i>Des Moines Savings and Loan Association modernization</i>	
<i>Mason City Globe-Gazette Publishing Co.</i>	
<i>First National Bank, Mason City, drive-in facility</i>	
<i>Sac Farmers Mutual Insurance Building, Sac City</i>	
<i>Waterloo Savings Bank, drive-in facility</i>	
<i>Professional Building, Cedar Rapids</i>	
<i>Allied Construction Services Building, Des Moines</i>	
<i>Blair Medical Clinic, Cherokee</i>	
<i>Iowa-Des Moines National Motor Bank, Des Moines</i>	
Personal & Professional.....	24

THE COVER

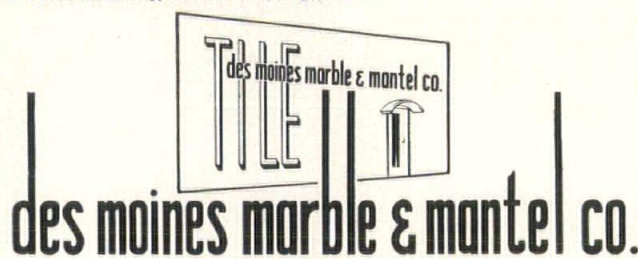
Office Building for Smith-Voorhees-Jensen, Architects Associated, in urban renewal area in Des Moines. Summer bid date. See page 14.

The "Iowa Architect" is published bi-monthly for the Iowa Chapter, American Institute of Architects, and mailed without charge. Appearance of names and pictures of products or services in editorial or advertising copy does not constitute endorsement of either the A.I.A. or this chapter.



Helical Marble Stairway - Cadet Library, U.S.
Air Force Academy, Colorado Springs, Colo.

The ARRESTING BEAUTY OF MARBLE



des moines marble & mantel co.
SINCE 1885
HARRIS M. GOLDEN, President • 938 SIXTH AVENUE • CHerry 4-8327
A member of the Producer's Council and leading national
Terrazzo and Mosaic Associations.

DEVOE PAINT

First in Quality Since 1754

TRUSCON LABORATORIES
INDUSTRIAL MAINTENANCE

Complete Stocks Serving All Iowa

SERVICE BY LOCAL ARCHITECTURAL
REPRESENTATIVES

G. M. MELTON MELVIN E. WILLS
GEORGE R. CARR

DEVOE & RAYNOLDS CO., INC.

108 JEFFERSON DES MOINES, IOWA PHONE CH 4-5261

unfinished business

IOWA'S GENERAL ASSEMBLY of 1963 adjourned in May without completing action on the measure proposed by the Iowa Chapter, A.I.A., which would have converted the present Iowa architectural "name" law into a practice act. Such a change is a difficult task.

The measure died in the Senate Sifting Committee although many attempts were made to have it brought to the floor of the Senate for passage in the same form which the House approved by a vote of 79 to 26. The House-approved bill was in fact only an improvement on the present "name" law, in that it would have prohibited anyone from calling himself an architect in Iowa unless qualified and registered with the Iowa Board of Architectural Examiners. The House-approved bill did contain definitions of the practice of architecture, and stated that the practice of architecture does affect the safety of life, health or property.

Many exemptions were written into the measure, with the principal original exclusions permitting professional engineers to be exempt from the provisions of the chapter (as they already are under the law relating to professional engineers) and also excluding the customary duties of superintendents, inspectors, foremen and building trades craftsmen. Exclusions were also written into the bill in the House to permit non-registered design of all residential construction and of warehouse, light industrial and commercial buildings not more than two stories in height. Agricultural buildings and non-structural alterations to existing buildings were excluded in the bill originally submitted.

The House eliminated the portion of the bill which would have made it a "practice act" and applicable to anyone providing architectural services. Acting after the Speaker permitted the re-submission of an amendment previously withdrawn by unanimous consent, the House cut from the bill the portion which would have repealed section 118.7 of the present law. This is the section which permits the provision for himself, or others, of all architectural services by a non-registered person who does not identify himself as an architect.

As approved by the house, the bill would have provided Iowa with a better law than the present because the definition of the practice of architect was included.

The Senate Committee on Manufacturing, Commerce and Trade received the measure after it was passed by the House, and proposed one amendment. This would have affected the section 118.7 by permitting the non-registered person to provide architectural service only for himself on buildings for which a registered professional otherwise would have been required. This amendment would have removed only the words "or others" from the present section 118.7. As the legislature neared adjournment, a strong attempt was made to have the Senate Sifting Committee bring out the bill for

Continued on page 10

honors at Ames

THIRTEEN STUDENTS stepped forward to receive awards at the 1963 Architecture Awards Banquet of the Student Chapter A.I.A. at Iowa State University on April 17, and architects or owners of seven building projects received plaques in recognition of honors announced at the 1963 Convention of the Iowa Chapter A.I.A.

O. H. Thorson, Central States Regional Director for the A.I.A., took the rostrum briefly to announce the selection of two I.S.U. students to receive major scholarship awards from the Institute. The awards, of \$400 and \$300 respectively, were made to James Lammers of Rockford, Ill., and to Charles Tichey of LaCrosse, Wis.

Lammers also received the Leonard Wolf Memorial award and Tichey was presented the Durrant and Bergquist Award. The recipient of the Wolf award is selected by the faculty for special recognition. The Durrant and Bergquist award is presented to a fourth year student who has demonstrated the highest level of attainment in his work.

Other recipients, and the basis for awards, were: James Dwinnell, Bedford, the A.I.A. School Medal, for outstanding scholarship, personality and promise of professional success.

Stanford Griffith, Ft. Dodge, the Henry Adams book award, for outstanding scholarship, personality and promise of successful professional practice.

Mark Engelbrecht, Waverly, selected by a jury of Iowa Chapter A.I.A. members to receive the award for the outstanding Senior Architectural Exhibit, and also given the Alpha Rho Chi medal, for ability in leadership, service to school and department, and attitude and personality promising professional merit.

Donald E. Wheeler, Lax, Wis., the Leo A. Daly award, for academic achievement, competence in theory and enthusiasm for the practice of building design.

William C. Roe, Garner, the Karl Keffer award, given in recognition of academic work, promise of professional performance and enthusiasm for the profession.

Conrad A. McWilliams, Davenport, the C. F. Bowers award, given to a fifth year student who has attained the highest level in his professional studies.

James R. Moeller, Denison, the Faculty Sophomore prize, for highest scholastic record in academic studies.

Dane P. Shelton, Glen Ellyn, Ill., the Faculty Freshman prize.

Jack Gethmann, Gladbrook, was chosen from among the senior architectural engineering students for having the outstanding senior exhibit in architectural engineering.



HONORED STUDENTS at the 1963 Architectural Awards Banquet of the ISU Student Chapter, AIA, were: (top picture, left to right) Mark Engelbrecht, Waverly; James Moeller, Denison; Jack Gethmann, Gladbrook; Conrad McWilliams, Davenport; James Dwinnell, Bedford; and Stanford Griffith, Ft. Dodge. (Lower picture, left to right) James Lammers, Rockford, Ill.; William Roe, Garner; Donald E. Wheeler, Lax, Wis.; Dane P. Shelton, Glen Ellyn, Ill.; and Charles R. Tichey, LaCrosse, Wis.



PERSONAL OBSERVATIONS

BY THE EDITOR

There is no doubt in my mind that people possessed of a sense of humor are among the most valuable members of the race. This is not meant to sound terribly profound—there must already be several terribly profound quotations to this effect.

In any case, a quotation of Shakespearian proportions would be required to describe the funny bone of Harold T. Spitznagel, F.A.I.A., speaker at the recent Student Chapter A.I.A. banquet at Ames. Architect Spitznagel would be well advised to check the structural integrity of the next place his slide lecture is to be given; he almost brought down the house at Ames. Spitznagel demolished a cynical opinion of mine concerning the universal dullness of slide showings. His quips concerning the slides and the laughter that followed can be only compared to lightning followed by thunder.

"Is there a volunteer to run the projector?" Spitznagel asked, wrestling a chest microphone. "If not, I hope you have enjoyed the presentation tonight."

The volunteer needed instruction and the projector needed the usual adjustment. Moving from the lectern

Continued on page 12



CONVENTION VISITORS. Among Iowans at the 1963 AIA Convention in Miami were Mr. and Mrs. W. D. Frevert of Des Moines, Mr. and Mrs. Doug Robison and Mr. and Mrs. Jim Bentley of Davenport. With Vice-President Frevert and his wife, left above, are: Mrs. Jim Bentley, Mr. and Mrs. William F. Bernbrock of Moline, Ill.; and Mrs. Robison. Dave explained that the photographer came by at a moment while President Doug and Bentley were absent. A report on the convention is planned for a future issue of the Iowa Architect.

to the projector, Spitznagel removed the chest microphone, announcing "You can't swear into these things," and muttered the machine into submission.

Thus having flattened the resistance, Spitznagel formally introduced himself, explaining that he had graduated with Architect Louis Kahn from the University of Pennsylvania in 1925. He then wryly noted that Kahn had been recently commissioned to "redesign Pakistan" or something similar, while he, Spitznagel, had recently been commissioned to design a monkey house for a zoo.

However that may be, Kahn would probably be hard put to match the hilarious monkeying around that is a trademark talent of accomplished architect Spitznagel. If "Spitz" ever decides to hang up his T-square, he can still pick up a microphone and be a roaring success.

The slides shown by Spitznagel were taken by him in Europe and were interesting in themselves as good photography; the remarks accompanying them however, were the bonus.

Spitznagel's comment on the rough concrete of LeCorbusier's Le Tourette monastery: "I've clubbed contractors to death for concrete like this."

The monastery's unique skylights were "mortar launchers" and the Ronchamp Chapel was "Corbu's job."

A shot of a beach with distant figures brought forth: "This was as close as my wife let me get to a bikini" and a slide of Mont St. Michel rising castle-like from sea and shore evoked: "If Disney didn't design this, he traced it."

Spitznagel can take a joke as well as make one, for when he returned from the European visit on which he made the slides, he found his office apparently remodeled into a service station, complete with gas pumps, tire racks, pennants and a "Grand Opening" sign that had people coming in to register for prizes. His office force, relishing a good joke as well as he does, had arranged it all with equipment borrowed for the occasion. The climax to the act came when, facing a mountain of accumulated paper work, he summoned his secretary for dictation and was shocked to observe that she was in maternity clothing. It turned out that the gas pumps etc. were temporary and that the secretary had made use of a strategically placed pillow.

A description of Spitznagel's talent is hardly equal to a hearing and enjoying of the original, so if you get a chance to see Spitznagel present his slides, don't pass up the opportunity—unless, of course, it hurts when you laugh.

CARL VER STEEG

William Beuttler, A.I.A.

WILLIAM BEUTTLE, 79, whose connection with the profession of architecture spanned half a century, and who had been a member of the American Institute of Architects for more than 40 years, died at his home in Sioux City April 30. He had been in declining health.

Mr. Beuttler, who received his architectural training at Washington University and completed his studies in 1910, was a partner with his son, William Lee Beuttler.

Mr. Beuttler moved to Sioux City in 1911 and was a founder of the firm of Beuttler and Arnold in 1941. The firm name was changed to *William Beuttler & Son* in 1958.

He had been a member of the American Institute of Architects since 1921. He was a member of Trinity Lutheran Church, the Eastern Star, the Sioux City Consistory, Abu Bekr Shrine, YMCA, Sioux City Boat Club, Rotary Club and the Sioux City Chamber of Commerce.

Survivors include his widow, Vernie; a son, William Lee; two daughters; six grandchildren and one great-grandchild.

unfinished business

Continued from page 8

passage in the same form that it had been approved by the House. Members of the Senate Manufacturing Committee agreed to the withdrawal of the amendment. This action was taken in an attempt to save the work which already had been done on this bill, and to reduce the effort which then might have been necessary in a future legislative session. Results: Negative.

Caustic comments about members of the legislature are not in order. For a first appearance before the Iowa legislature, the Iowa Chapter A.I.A. made a respectable showing. The accomplishments of the General Assembly were many, and the true measure of legislation is not in how easily it passes, but how well it is refined in the heat of legislative action. Many questions involving the operation of state government were before the legislators, and rightfully were given precedence. The heat of the action also brought several major issues to ashes.

R.F.B.

special issues, 1963

This is the first issue of the IOWA ARCHITECT to devote a section to commercial buildings designed by members of the Iowa Chapter A.I.A.

Since the magazine was enlarged to its present size, five years ago, a Directory issue and a Schools issue have become traditional.

The 1963 publications committee, of which Rich Goewey, *Brooks-Borg*, is chairman, decided to publish in addition issues presenting commercial buildings, public buildings, industrial buildings and residences.

First assignment of the new district editors named by Goewey and Editor Carl Ver Steeg was to collect data on commercial buildings, either current projects or those completed within the past few years. The 10-page design section included in this magazine reflects their efforts. Featured projects were selected by the publications committee.

student photo contest

Eugene C. O'Neil, chairman of the Education Committee of the Iowa Chapter A.I.A. has announced the chapter is again sponsoring a color slide competition for students of architecture or architectural engineering at Iowa State University.

Prizes totalling \$210 are being offered in two classes: buildings constructed before 1945, and those constructed since that date.

First prizes in each class may be given for either an interior or exterior photograph. Duplicate second and third prizes are offered for exterior and interior pictures.

Two first prizes will amount to \$50 each, four second prizes, \$20 each, and six third prizes, \$5 each.

Sheets detailing the contest have been distributed to Iowa State University students.

new registrations

O. H. Thorson, Waterloo, chairman of the Iowa Board of Architectural Examiners, has announced the following six candidates successfully completed the Iowa examinations conducted during the month of April.

Robert S. Brierly, *Porter-Brierly Associates*, Des Moines.

Ralph Carpino, *Amos Emery and Carl Hunter*, Des Moines.

H. Karl Enzmann, *Smith-Voorhees-Jensen, Architects Associated*, Des Moines.

John H. Lind, *Richard Hansen and Associates*, Iowa City.

Max D. Selzer, *Louis D. Kingscott & Associates*, Davenport.

Carl Ver Steeg, *Savage & Ver Ploeg*, West Des Moines.

Our knowledge and experience of over 25 years in the Floor and Wall Covering Field is at your service. Call on us for solution of your problem jobs.

- Laytex Underlayments
- Asphalt Underlayments
- Vinyl Asbestos & Asphalt
- Homogeneous Vinyl
- Rubber and Cork Tiles
- Bolta-Wall Vinyl Wall Coverings
- Rubber Wall Coverings

RALPH N. SMITH, Inc.

Des Moines, Iowa

1339 2nd Ave.

AT 8-6741

BONDED APPLICATORS OF

DESCO WALL COATINGS

VITRO GLAZE — ARMITE
NYOCON — GLAZETITE — STARTEX
VINYL — ARMTEX

INTERIOR AND EXTERIOR FINISHES

Applied to ANY Dry or
Grease-Free Surface

DESCO COATINGS OF IOWA, INC.

Subsidiary of

SIOUX CITY MOSAIC CO. INC.

W. 1st & REBECCA STS.

PHONE 5-5653

Members of:
DESCO International of America

honors at Ames

Continued from page 9

Recognition also went to two other groups: the members of the student body who had attained a high scholarship standing during the year, and the wives of the graduating seniors.

Chapter President Doug Robison presented plaques for First Honor awards from the Iowa Chapter to *Crites and McConnell*, Cedar Rapids, for the Shive Residence, Lake McBride, and for the McFarland Clinic, Ames.

Honorable Mention plaques went to:

Germanson-Foss & Co., Sioux City, for the Union Story Trust & Savings Bank, Ames, with A. W. Lucht, president, and Alden Harrison, vice president, accepting a plaque for the owners.

Crites and McConnell, Cedar Rapids, for the Wall Residence, Boone.

Howard Heemstra of Gjelten and Schellberg, Forest City, for Jacob Tanner Hall at Waldorf College, Forest City. The Rev. Sigvaulk Fauske, president of Waldorf College, accepted a plaque for the college.

Merit Citations were presented to:

Brown, Healey and Bock, Cedar Rapids, and to the Rev. Dr. Francis W. Prichard, for the rebuilding of the First Presbyterian Church, Cedar Rapids.

Brooks-Borg of Des Moines and Don Taylor and George Williams, Marshalltown, for the Totem Bowl, a Marshalltown bowling alley.

James Bragonier handled the duties of master of

ceremonies, and Prof. Clair Watson represented the University in the presentation of awards to students, with the assistance of representatives of the firms which established the awards.

A crowd of more than 220 persons was on hand for the banquet and award presentation, then stayed to hear an enlightening and entertaining discussion of European architecture by Harold T. Spitznagel, F.A.I.A., of Sioux Falls, South Dakota.

* * *

A revision of the By-laws of the Iowa Chapter was voted by members attending the chapter meeting during the afternoon of April 17 at Ames. The revisions provide for the election next January of a Second Vice President, and further provide that the three directors will, in future years, each serve three-year terms. Another revision provides that the standing committees named for the chapter shall follow the vertical committee structure of the Institute.

Changes in the elective officials were made to provide a continuity of chapter program, and to spread upon other persons some of the duties which have grown upon the office of Chapter president.

A resolution of condolence was unanimously adopted for transmission to Mrs. Ray Bergquist.

Initial plans were made for holding the 1963 summer meeting at Cedar Rapids (instead of at Waterloo as previously announced). Arrangements are being completed for the Summer Meeting to be July 19, 20, and 21 at the Town House Motel in Cedar Rapids, where the 1961 summer meeting was held.

ACRYNOL-VINYL-ACRYLIC COATING

"ACRYNOL" is the trademark for a vinyl (styrene-modified) acrylic, which gives a fast air-drying or low-temperature baking finish with outstanding characteristics on almost any type of surface.

"ACRYNOL" was designed to form a continuous membrane coating by ordinary application methods, allowing the construction of buildings which are practically maintenance-free over an extended period of time, even under extreme conditions.

✓ APPLICATION . . . Easy to brush, spray or roller-coat.

✓ WATER RESISTANT

✓ EXCELLENT ADHESION

✓ ABRASION RESISTANT

✓ FLEXIBLE

✓ TEMPERATURE RANGE
Minus 40° to 150° F.

✓ FIRE RESISTANT

✓ STAIN RESISTANT

✓ COLOR-RETENTION

Better color-retention than any other type of coating, even under severe conditions.

✓ WEATHERING — Film-integrity is maintained almost indefinitely.

✓ BRIDGING — Will bridge over cracks and joints when applied at full body.

✓ MOLD RESISTANT

✓ ODOR AND TASTE . . . None when cured.

✓ COVERAGE . . . 200-300 square feet per gallon, depending on the porosity of surface.

✓ DRYING-TIME . . . Dries to touch in 30 minutes at 77° F. Tack free 1 hr. at 77° F. Complete cure will take place in 5 to 7 days.

USES . . . For exterior and interior use, above and below grade, on masonry, metal, wood and composition board.

"QUALITY AND SERVICE ARE OUR MOST IMPORTANT PRODUCTS"

IOWA CONCRETE BLOCK & MATERIAL CO.

820 S.W. NINTH ST.

DIAL 288-5751

DES MOINES



Blumcraft

ADJUSTABLE ANCHORING SYSTEMS

SOLVES PROBLEMS OF SECURING RAILINGS TO CONCRETE BY BECOMING AN INTEGRAL PART OF THE STAIR STRUCTURE

- INSURES EXTREME RIGIDITY
- REDUCES COSTLY FIELD LABOR
- ELIMINATES BREAKAGE IN MASONRY
- ADJUSTABLE FOR POST ALIGNMENT



Blumcraft

OF PITTSBURGH

GENERAL CATALOG OF COMPLETE BLUMCRAFT LINE AVAILABLE ON REQUEST
COPYRIGHT 1962 BY BLUMCRAFT OF PITTSBURGH • 460 MELWOOD STREET, PITTSBURGH 13, PENNSYLVANIA

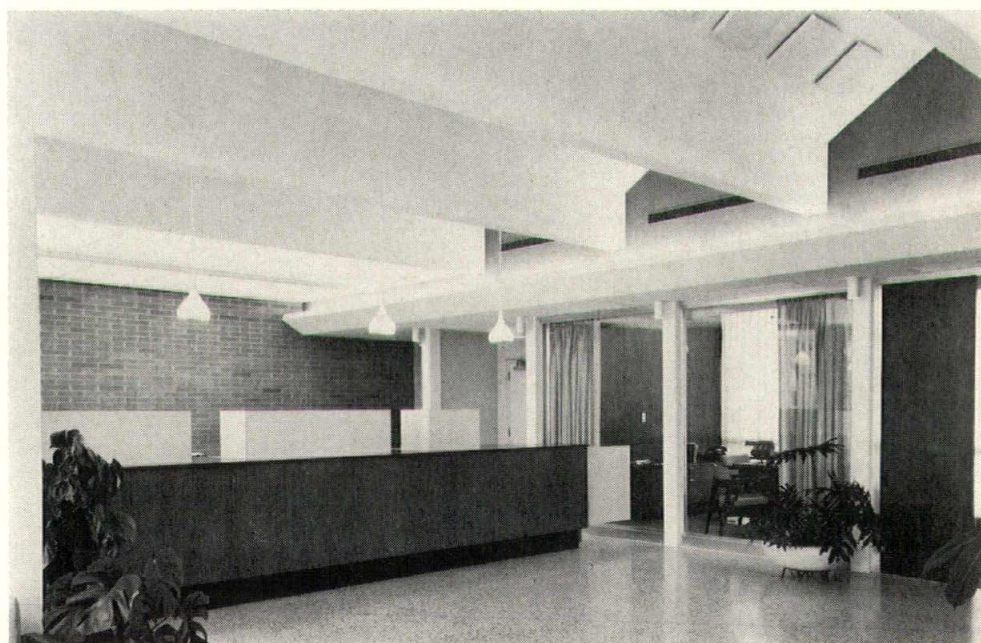


WELLS FEDERAL SAVINGS & LOAN ASSOCIATION, WELLS, MINNESOTA. GJELTEN & SCHELLBERG, FOREST CITY, IOWA

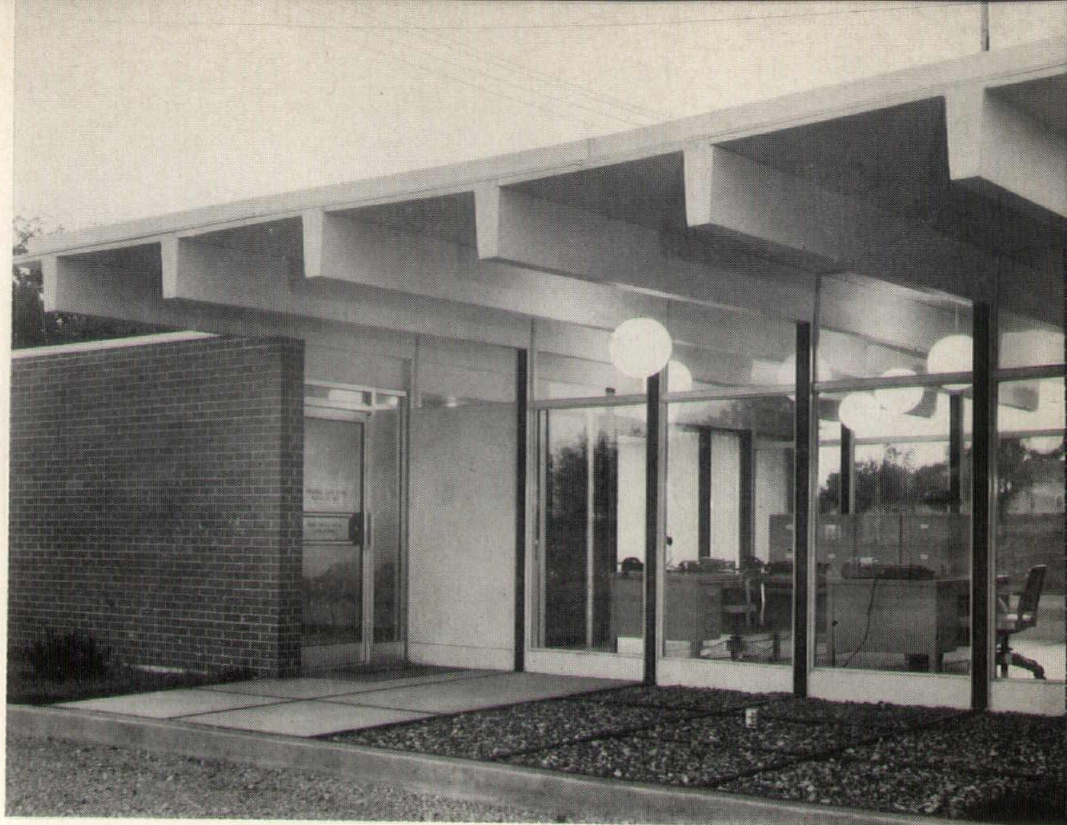
DESIGN BY IOWA ARCHITECTS

ON THE COVER of this issue which is focused on recent or current commercial buildings is the new office building for Smith-Voorhees-Jensen, Architects Associated, Des Moines. Bids will be taken this summer. One of the first buildings to be located in Des Moines' first Urban Renewal area, it will have a view of the river valley, loop, and freeway, and will be in an area of professional and medical buildings. One story with partial basement, the building will have concrete floor structure, steel roof structure, and an exterior of face brick, glass and precast concrete. Interior landscaped court is visible in the drawing on the cover. 7450 sq. ft.

AT WELLS, MINN., folded plate roof of the Wells Federal Savings & Loan building creates ceiling interest on the interior. Construction is exposed precast concrete. 4,584 sq. ft.; \$83,035 total contracts. Bosshart Construction, Truman, Minn.; Opdahl Plumbing & Heating and Gordon Electric, Albert Lea, Minn.



CEDAR RAPIDS



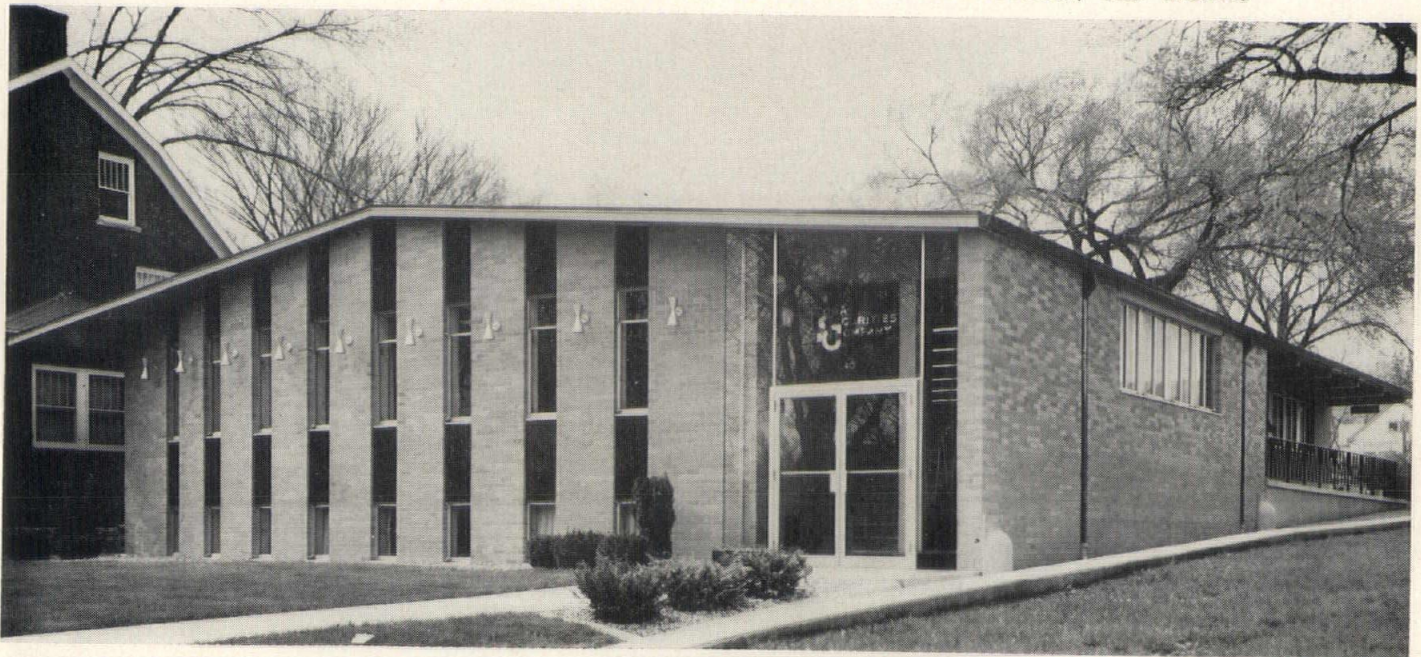
FEDERAL LAND BANK ASSOCIATION, LEO C. PFEIFFER AND ASSOCIATES

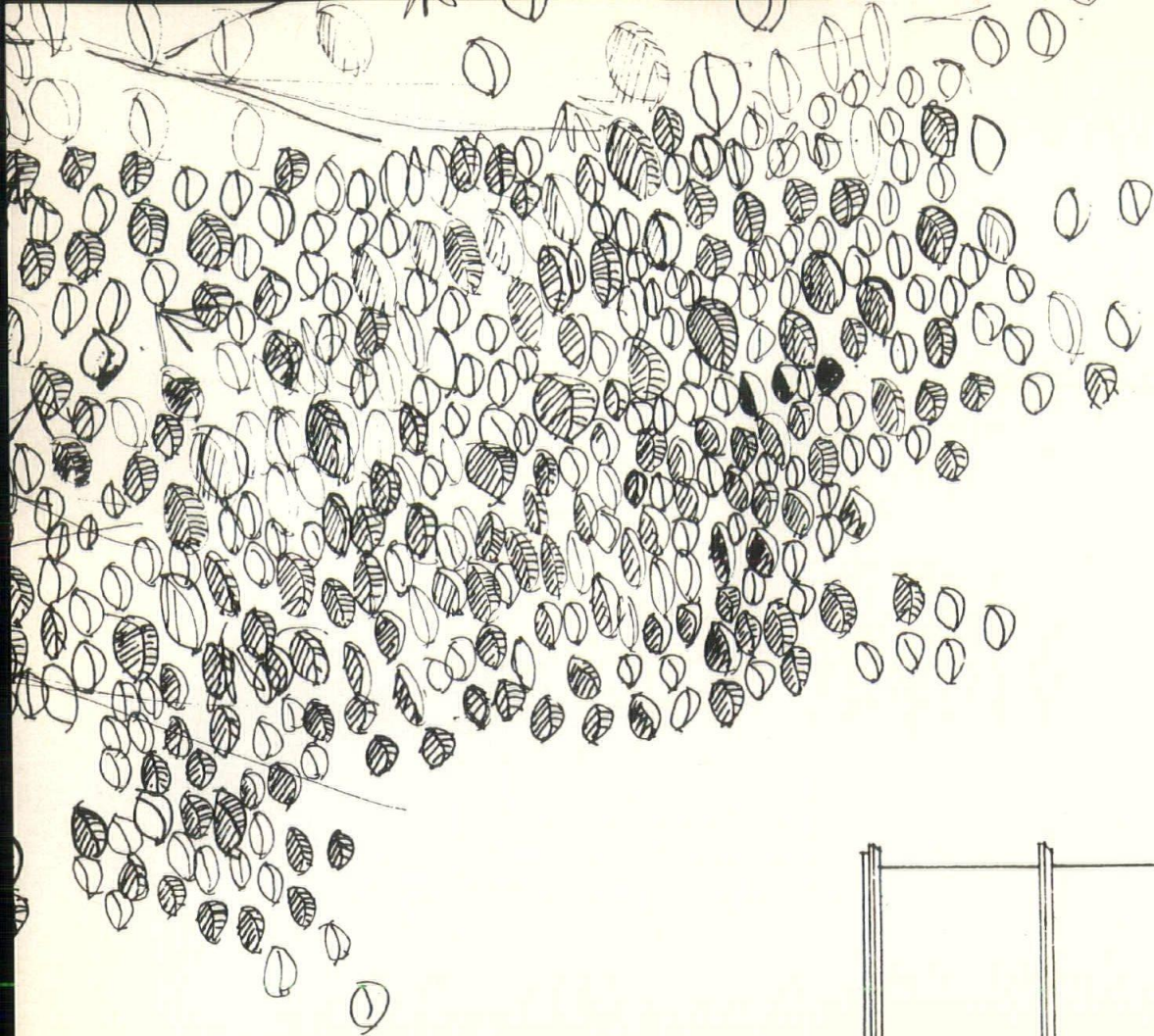
DARK BROWN FACE BRICK of interior and exterior walls contrasts with white concrete finish on exterior of building for farm loan corporation at 29 50th Street NE, Cedar Rapids. In center section, pre-cast pre-stressed white concrete roof system is exposed. Woodwork is walnut-stained ash. Glass areas are insulating glass; building is air-conditioned and fire-proof. Acoustic ceilings; ceramic and vinyl tile floors. \$29,150; on A.I.A. method, \$19.76 per square foot. Building faces south, on off-street parking court. Washed river gravel areas separate building from court. Entry and lounge are at left in photo; offices at left and right of central clerical area.

WATERLOO

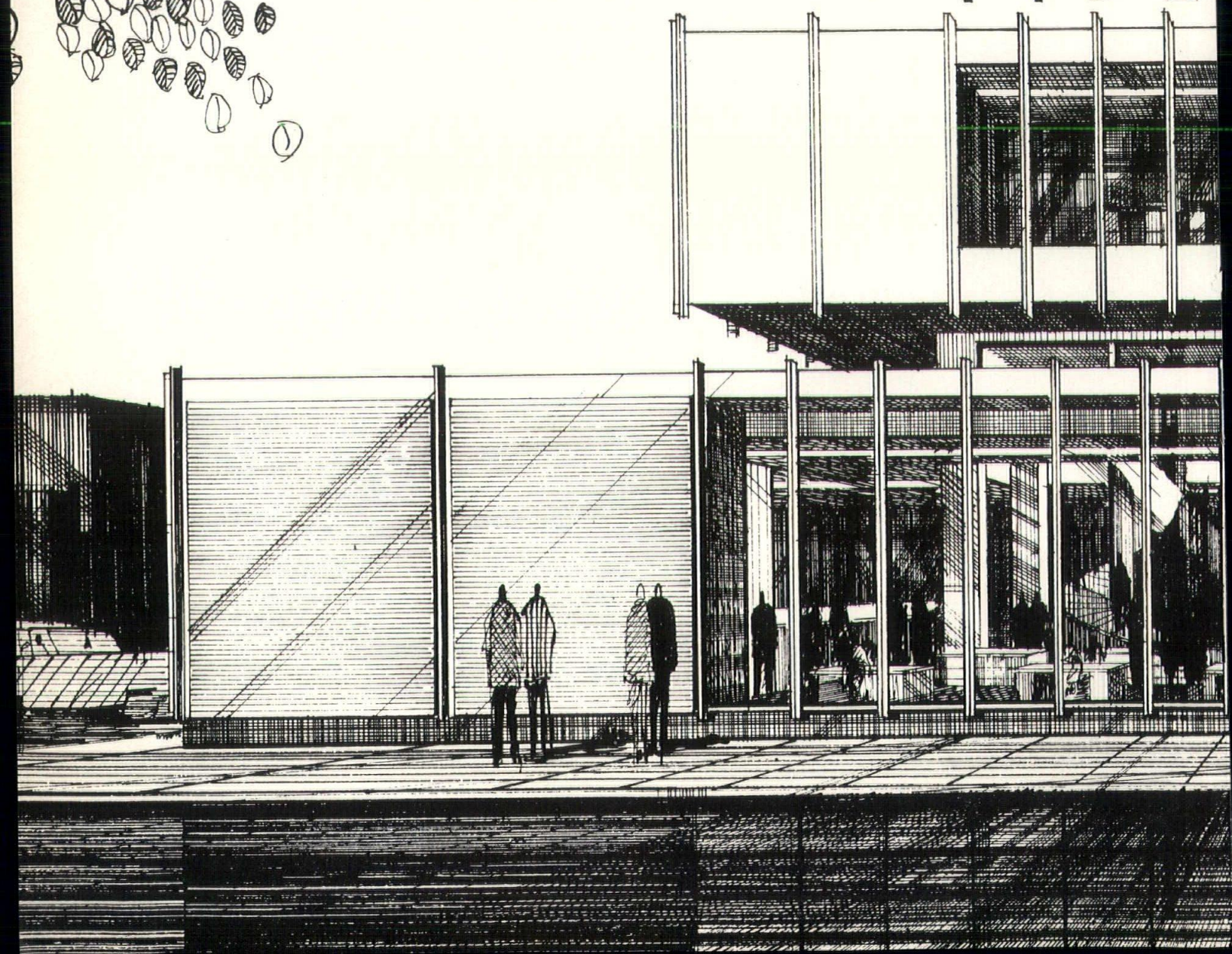
WOOD BEAMS span the 52-foot width of Iowa Securities building, to provide column-free work space on first floor. Laminated beams and wood deck are exposed. Exterior is gray brick with black granite spandrels. Windows are aluminum casement. First floor has public space, general work space and executive offices. Lower floor accommodates tabulating and mechanical equipment and employee facilities, as well as general work space.

IOWA SECURITIES COMPANY OFFICE BUILDING, WATERLOO. WETHERELL-HARRISON-WAGNER, DES MOINES



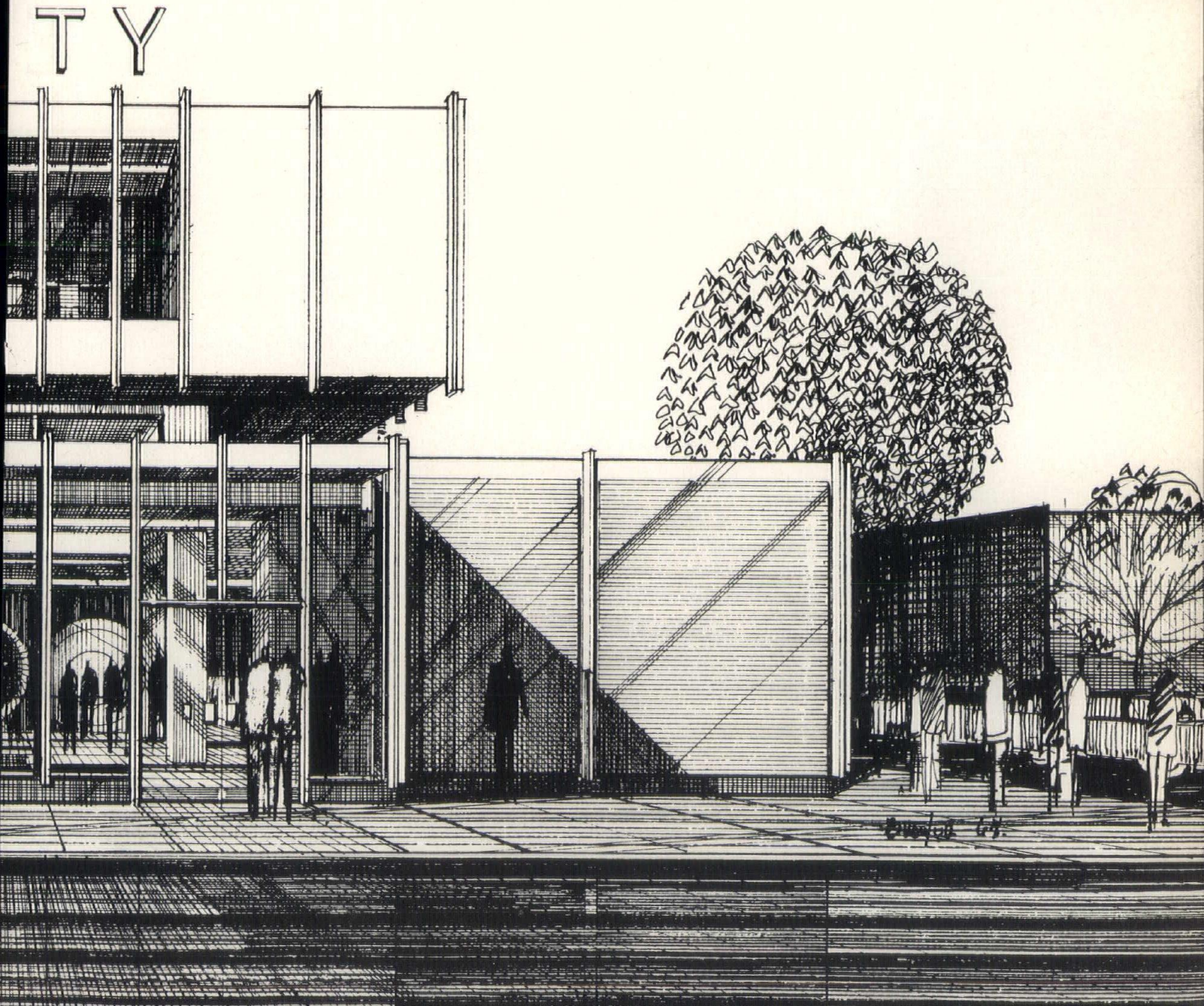


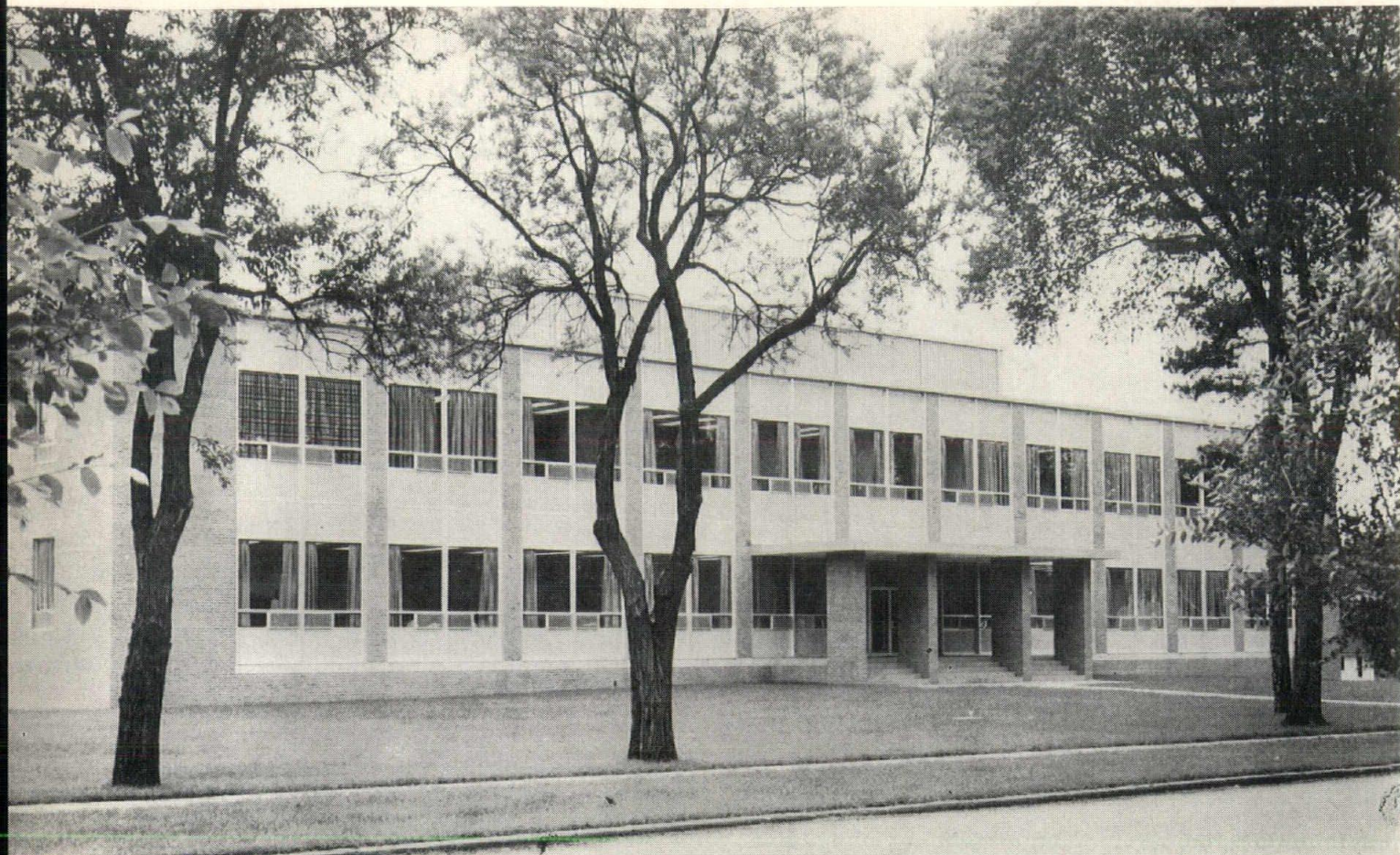
FIDE



FIDELITY SAVINGS BANK, Marshalltown, locates board room and lounges in cantilevered penthouse served by circular stair utilizing structural aluminum tube and laminated walnut treads. Stairway encloses the flue. Construction is reinforced concrete, with bearing walls. Main floor and lower level, 7,110 sq. ft. each; penthouse, 2,500 sq. ft. Contracts total \$325,00.

THORSON-BROM-BROSHAR, WATERLOO.
Mueller Construction, Inc., Mel Hartwig Plumbing and Heating, Air Conditioning, Inc., all of Marshalltown; Diebold, Inc., bank equipment, Des Moines.





IOWA SOUTHERN UTILITIES OFFICE BUILDING, CENTERVILLE.

TINSLEY, HIGGINS, LIGHTER & LYON, DES MOINES.

COMPLETED in 1959, the Iowa Southern Utilities Company office building in Centerville is constructed with steel frame and masonry curtain wall. \$845,877; 46,860 sq. ft.; 614,000 cu. ft. Daniel B. Stevenson, Jr., Des Moines, consulting engineer. Contractors: James Thompson & Sons, Ames, general; Sacco Plumbing & Heating; Fandel Electric, Westinghouse (elevator).

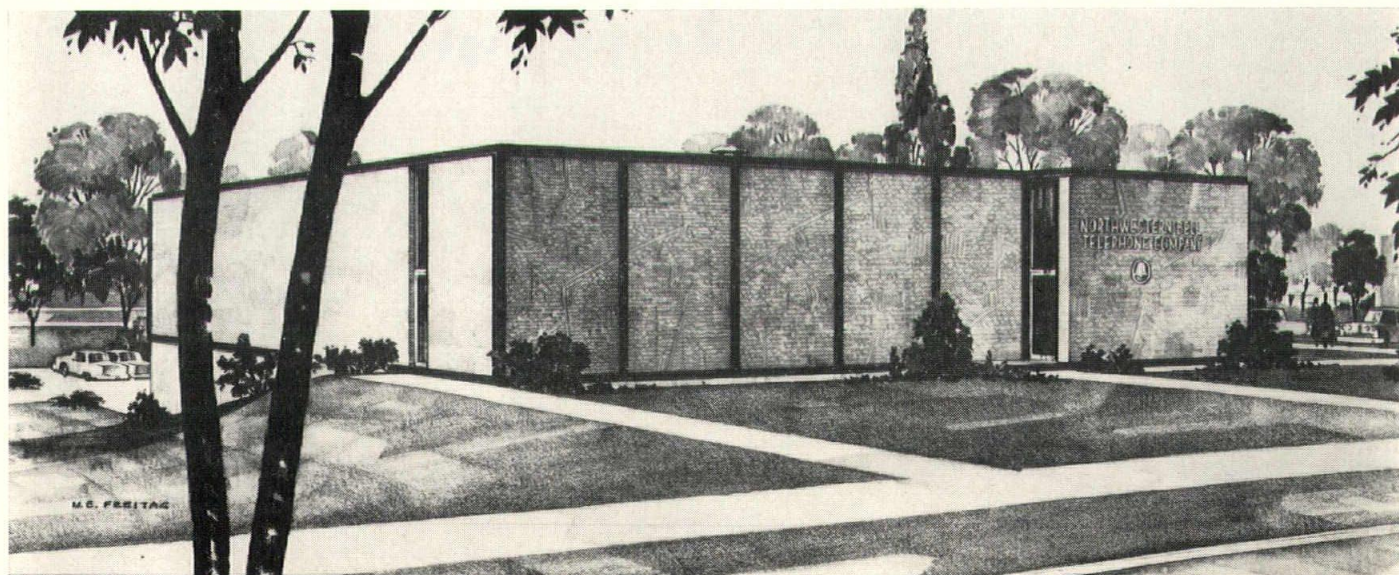
CENTERVILLE

UNDER CONSTRUCTION at Sioux City is the Morningside equipment building for Northwestern Bell Telephone Co. Construction is precast concrete columns, beams and double tees, with lightweight block and brick facing between columns and concrete footings and foundations. 12,582 sq. ft. Contracts: General, Chris Hansen Construction Co., \$104,573; Budden Plumbing and Heating, \$22,521; Thompson Electric Co., \$7,695. All firms in Sioux City.

SIOUX CITY

NORTHWESTERN BELL TELEPHONE CO., SIOUX CITY

SMITH-VOORHEES-JENSEN ARCHITECTS ASSOCIATED, SIOUX CITY.





MERLE HAY MART, DES MOINES.

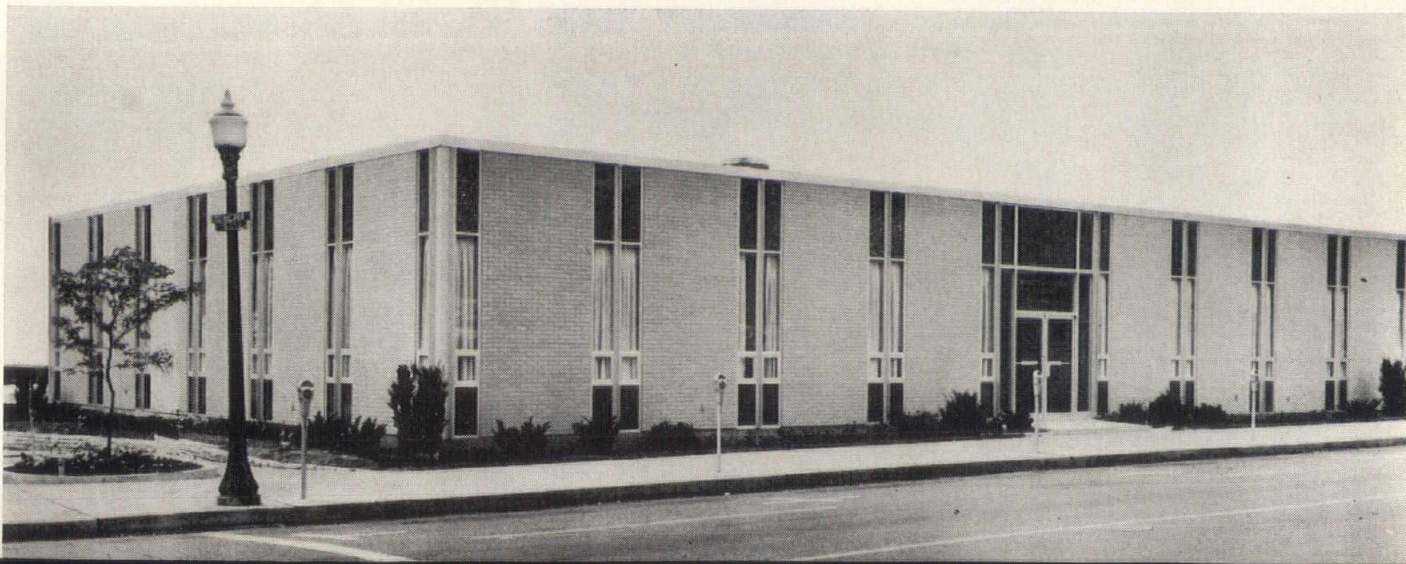
DOUGHER-FREVERT-RAMSEY, DES MOINES

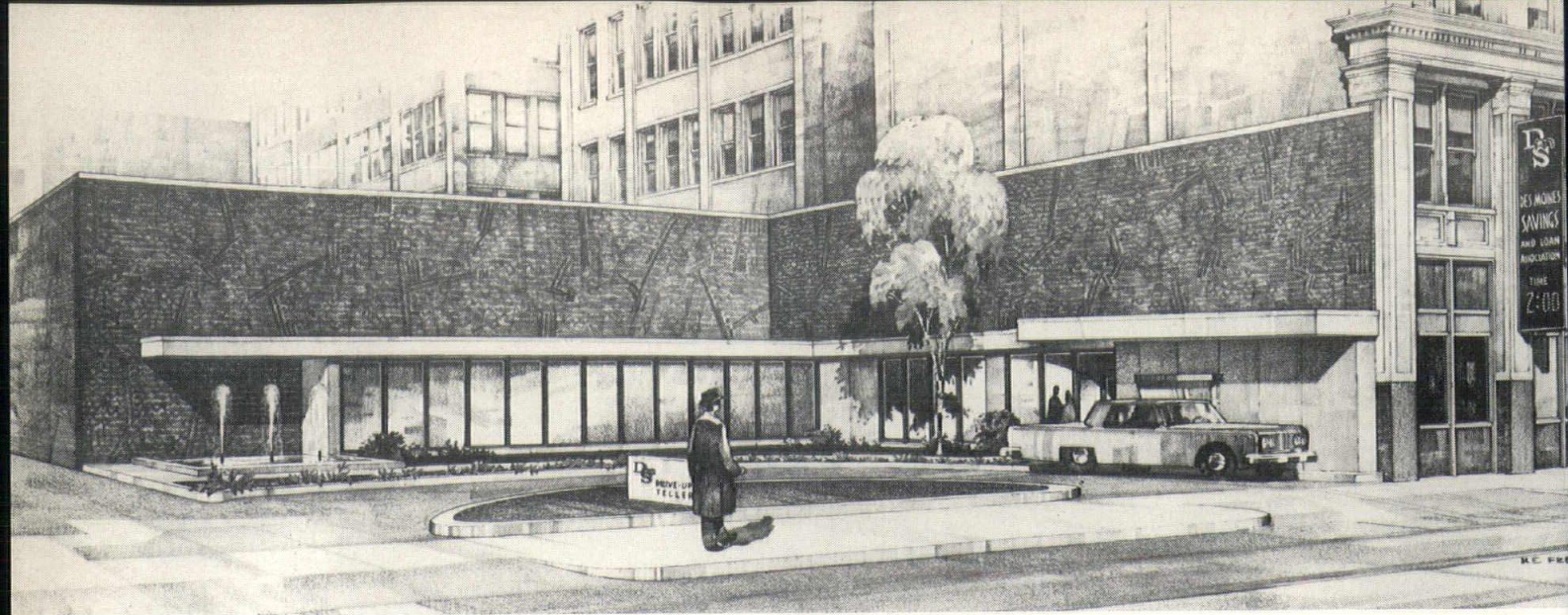
ACROSS MERLE HAY ROAD from the Plaza shopping center on the northwest edge of Des Moines, Merle Hay Mart provides 46,000 square feet for retail stores and offices. Two stories, elevator, air-conditioned. Built 1962; grand opening May, 1963. Arthur H. Neumann and Brothers, general contractor.

DOWNTOWN at Eighth and High, the Chamber of Commerce building houses all divisions and affiliates in 5940 sq. ft. on the first floor. Basement contains a lounge, storage room and space for expansion. Exterior is light buff brick, with landscaped setback on Eighth Street side. Construction is masonry bearing walls, bar joist roof on interior steel framing, concrete joist first floor structure. \$181,500, excluding land, landscaping and fees. Brieholz Construction Co.; Dwyer Plumbing, Johnson Electric, all of Des Moines.

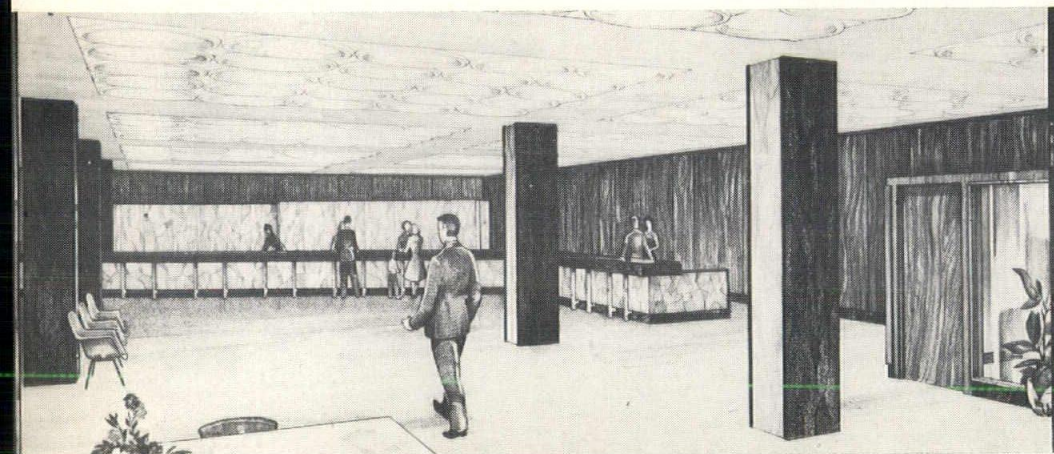
GREATER DES MOINES CHAMBER OF COMMERCE BUILDING, DES MOINES.

AMOS EMERY & ASSOCIATES, DES MOINES.





DES MOINES

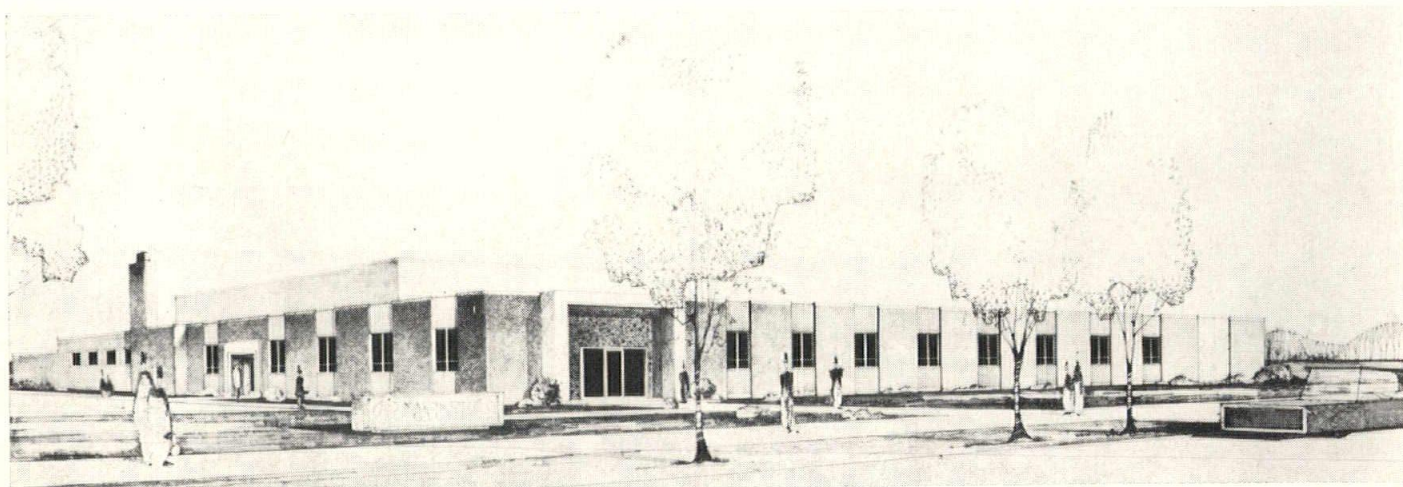


\$500,000 MODERNIZATION project at Des Moines Savings and Loan includes conversion of part of parking lot for drive-up teller, and extensive work in ground floor (sketch) and basement. Drive-up side (off Mulberry street) has new brick facing, tinted plate glass windows. Granite is used for pool, sidewalks and around tellers. On ground floor, seen from Sixth avenue entry, Italian travertine and domestic black marble is used for teller counters and to face columns. Floor is entirely carpeted; integrated ceiling supplies lighting, air flow and acoustic control. Project includes renovation or replacement of all utilities for the two floors, installation of closed-circuit television between tellers and IBM records in basement, new maintenance shops, locker rooms, recreation facilities. RUSSELL & LYNCH, DES MOINES.

UNDER CONSTRUCTION in Mason City is this 33,000 sq. ft. building for the Globe-Gazette. Construction is reinforced concrete frame, floors and roof, with exterior masonry bearing walls. \$530,000, excluding fees, site and equipment. Henkel Construction Co., Payne Plumbing and Heating, Ray E. Pauley Co. (air-conditioning), H. C. Determan, electric.

MASON CITY

MASON CITY GLOBE-GAZETTE PUBLISHING CO., MASON CITY, IOWA. WAGGONER & WAGGONER, MASON CITY.





FIRST NATIONAL BANK, MASON CITY, IOWA, DRIVE-IN FACILITY.

BERGLAND & BIANCO, MASON CITY.

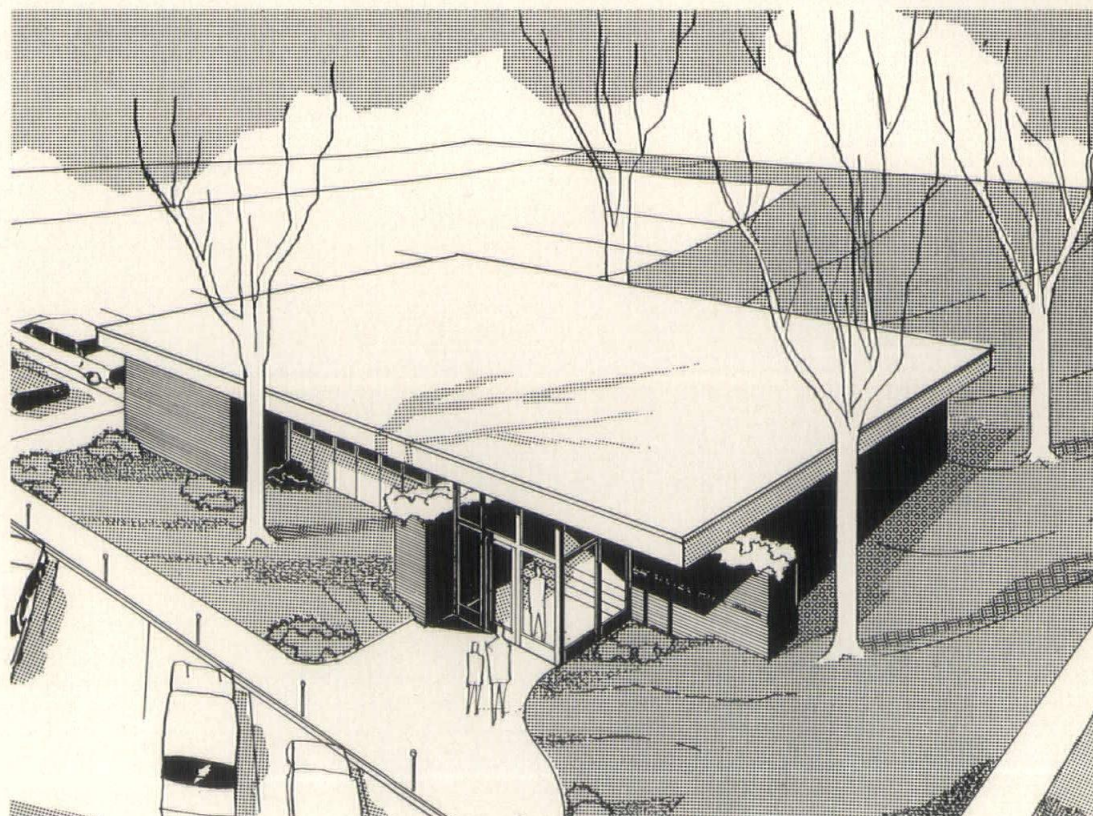
MASON CITY

DRIVE-IN facilities of the First National Bank in Mason City dramatize the numerical symbol used for identification. Construction is marble stone face masonry. Structure was erected in 1959.

IN SAC CITY, the Sac Farmers Mutual Insurance Building was completed in May, 1963. Exterior is brick and stone; interior walls are brick and lightweight concrete block with walnut panelling. Steel joist roof framing, metal deck, built-up roof. Floors are terrazzo and vinyl asbestos. Forced warm air heating and air conditioning. Intercom and FM radio background music system. One-hour fire-resistant acoustic tile ceilings. Concrete walks, drive and parking areas. 2400 sq. ft.; \$54,000. McCorkle Construction Co., Youll Plumbing and Heating, Town & Country Services (electric), all of Sac City.

SAC FARMERS MUTUAL INSURANCE BUILDING, SAC CITY.

LINDGREN & TAYLOR, DES MOINES



SAC CITY



WATERLOO SAVINGS BANK DRIVE-IN.

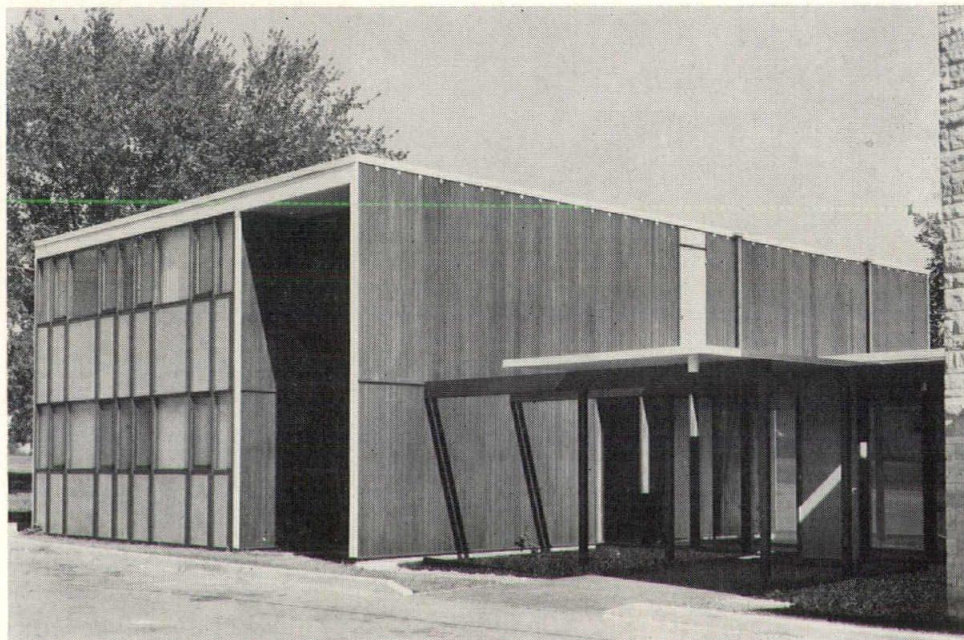
THORSON-BROM-BROSHAR, WATERLOO.

WATERLOO

COLORED GLASS embedded in fiberglass makes up the skylights of the Waterloo Savings Bank drive-in facilities. Design repeats triangle motif. Main walk-up unit and three drive-in tellers. \$100,000. Under construction. M. J. Reichert Construction Co., Waterloo. Hub Electric, Union Plumbing & Heating, Waterloo; Universal Hoist, ADFA (skylight), Cedar Falls; Diebold, Inc., bank equipment, Des Moines.

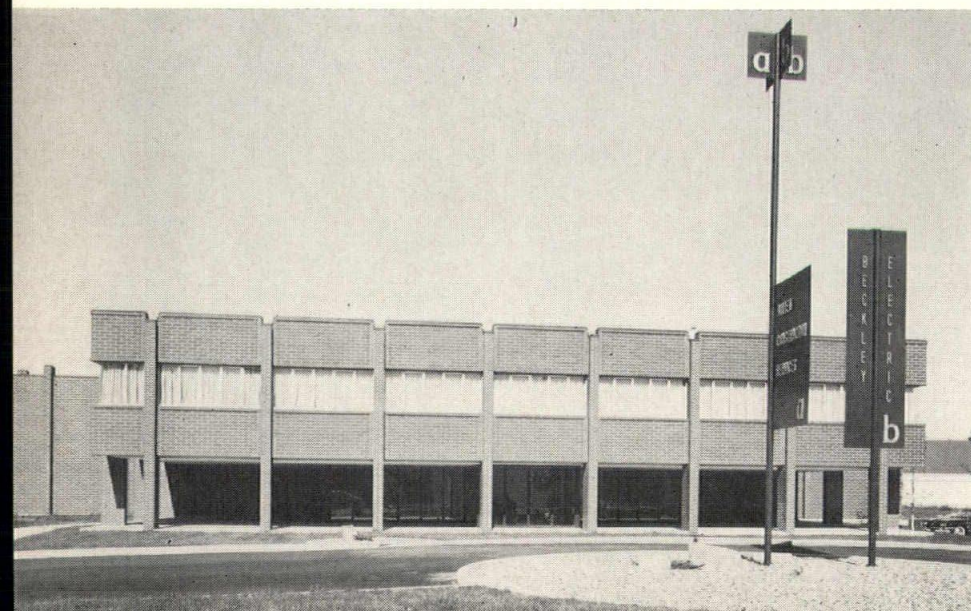
CEDAR RAPIDS

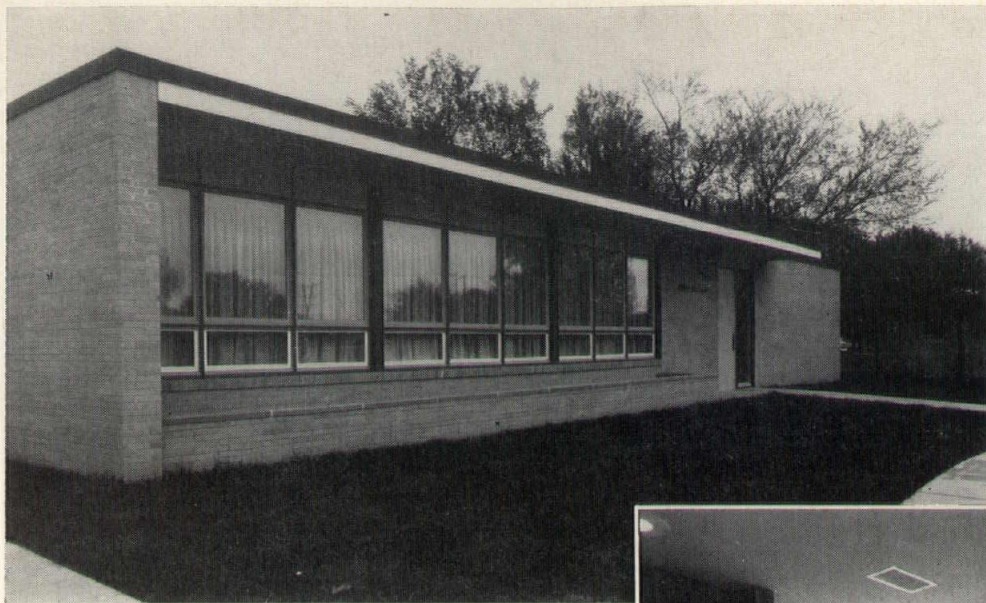
PROFESSIONAL building at 3330 Mt. Vernon Road SE has five office suites in left section with recessed two-story window wall in open stairwell. Architect's second-floor suite faces window wall. Corridor, with entry, leads to existing pharmacy. Other entrances from front and rear off-street parking. Wood frame, redwood siding, modular wood window wall, insulating windows, overlaid plywood sheathing under windows. Interior finish redwood, dry wall and translucent glass. Each suite has two air-conditioning zones. \$57,667; 4100 sq. ft.; \$14.06 sq. ft. AIA method. LEO PEIFFER, ARCHITECT, AND ASSOCIATES, CEDAR RAPIDS.



DES MOINES

ALLIED CONSTRUCTION SERVICES warehouse and office building, Fleur Drive, contains 34,760 sq. ft. structural slab, masonry walls, steel framing, metal roof deck. Air-conditioned; integrated ceilings in office area. Two-story reception area with skylight; offices on second floor. Landscaped, paved and curbed drives. \$225,000. KARL KEFFER ASSOCIATES, Des Moines.





BLAIR MEDICAL CLINIC at Cherokee required a compact design for a limited site. Construction is slab on grade with bearing walls, lightweight concrete block and brick face. Roof structure is bar joists with metal deck and insulation. Wood windows, vinyl and quarry tile floors, vinyl wall covering. 64x27, \$40,490 excluding fees and site, \$23.30 sq. ft. SMITH-VOORHEES-JENSEN ARCHITECTS ASSOCIATED, Sioux City. Grundman-Hicks Construction Co., Cherokee.

C H E R O K E E



D E S M O I N E S

THIN-SHELL hyperbolic paraboloids form roofs of five motor windows and walk-up window at Iowa-Des Moines National Motor Bank, Sixth and Mulberry, Des Moines. Italian glass mosaic tile faces the units. Construction is reinforced concrete. Robinson-Parnham were consulting landscape architects; Arthur Neumann & Brothers, general contractor. BROOKS-BORG, Des Moines.



PERSONAL & PROFESSIONAL

BILL DIKIS TO WORK FOR ENGLISH FIRM

Bill Dikis of Des Moines has been named as a participant in an architectural student-exchange program which is actively promoted by Prof. Karol Kocinski of Iowa State University's Department of Architecture and Architectural Engineering.

Dikis will work for 10 weeks in England and then will have a two-

week tour of the continent.

While Dikis is in England and Europe, Brooks-Borg of Des Moines will have an English architectural student in the office for 10 weeks. He then will tour the U.S. for two weeks.

Dikis has been employed in the Brooks-Borg office during the past two summers.

BLACK HAWK COUNCIL BEGINS CITY SCHEME

Hovey Brom, Waterloo, president of the Black Hawk County Architectural Council, reports that the council has begun development of a new plan for downtown Waterloo, working in conjunction with Waterloo Plan Director Hugh Copeland and the Plan Commission.

The organization also has met with the general and mechanical contractors in relation to the single-contract system and other problems of the industry.

The group meets weekly for lunch.

NEW FILM

Because architects may wish to use film to explain the profession, or groups may wish film for use in their meetings, the following newly available film is listed:

"An Architect at Work", 16 mm. sound, color, 28½ minute running time. Produced by Pittsburgh Plate Glass Co., available on free loan from Association Films, 561 Hillgrove Ave., LaGrange, Ill. Film follows the construction of a skyscraper from drawing board through construction.



C. D. WILLCOX AND COMPANY
S.W. 6th & Murphy Des Moines 9, Iowa
Phone CHerry 4-5191

Member Iowa Chapter, Producers Council Inc.

HOPE'S
WINDOWS, Inc.

Everly
Metal Products Co.
Ramset
Simmons Dormitory
Furniture

PermaCushion Gym
Floors

"Twin-Beam" Church
Windows

IOWA ARCHITECTS SEE FIBERGLAS SHOW

Owens-Corning Fiberglas was host—with its Des Moines representatives—for a bus trip to Kansas City for a group of 30 Iowans, including 14 architectural firm representatives.

Departing Des Moines shortly after lunch, the party arrived in Kansas City for the combination live and motion picture presentation of "The Stage is Set," featuring the architectural products of O-C.

Ray Lowry, Des Moines, representative of Owens-Corning, was joined by co-hosts Bob Maddox, John Hall and Jim Beckley of Allied Construction Services, Larry Vandell of Acoustical Specialties, Les Thompson, Chuck Irvine and Lee Kool of L & L Insulation.

Guests on the trip included: Robert Ramsey, Thomas C. Porter, Rich Goewey, William Woodburn, William Meehan, John McKlveen, James Wilkins, John Locke, Walt Hotchkiss, George Russell, William Nielsen, Sr., Harold Bullington, Jerry Larson and Wayne Lyon.

PRECAST AND PRESTRESSED CONCRETE PRODUCTS

- MO-SAI EXPOSED AGGREGATE
- FLOORS
- ROOFS
- BEAMS
- COLUMNS
- PILING

SPECIFY CONCRETE FOR PERMANENCE AND ECONOMY

WILSON CONCRETE CO.

"Since 1905"

OMAHA—GRAND ISLAND
RED OAK—SO. SIOUX CITY


light-forms
by Prescolite

Glowing geometric shapes combine the beauty of soft satin handblown glass with all-aluminum construction to provide an unusual combination of decorative effects limited only by the imagination of the designer. Designed for wall use only light-forms may be used on either interiors or exteriors. Available with or without black trim plates.

Write for complete catalog.

PRESCOLITE MANUFACTURING CORP.
1251 Doolittle Drive
San Leandro, California

FACTORIES:
San Leandro, Cal. • Warrington, Pa. • El Dorado, Ark.



Another Haydite job!

The new Intercity Viaduct joining the two Kansas Cities

Lightweight Haydite helps reduce deadload for this trafficway

Significant deadload weight reduction was achieved in major portions of the 1¼-mile-long new westbound span connecting the two Kansas Cities with Haydite Concrete*.

In addition, Haydite gives this new link in the Interstate System a high resistance to extreme weather damage—particularly from the ravages of repeated cycles of freezing and thawing.

**Carter-Waters furnished 8,743 cu. yds. of Haydite aggregate to Fordyce Concrete Company who supplied lightweight ready-mixed Haydite concrete to two of the contractors—L. G. Barcus & Sons, Inc., and List & Weatherly Construction Company.*

Other Haydite uses include refractory concrete, insulating concrete, Guniting, insulating fills, roofing granules and filtering mediums.

Haydite aggregate is produced in plants at Centerville, Iowa, and New Market, Mo. For specification information, contact your local ready-mix plant, or:

CONSTRUCTION THE MATERIALS
CARTER-WATERS
KANSAS CITY CORP. 8 MISSOURI
2440 Pennway GRand 1-2570

PERSONAL & PROFESSIONAL

WAGNER, NASR JOIN IOWA CHAPTER

Kenneth A. Wagner, Jr., employed by William Stuhr, Rock Island, Ill., was accepted as an associate of the Iowa Chapter A.I.A. by the Executive Committee in meeting April 17 at Ames. Wagner resides at 1608

Alcoa Avenue, Bettendorf, Ia. Graduated from the University of Illinois in 1959, he is registered in Iowa and in Illinois.

A. A. (Raymond) Nasr, a specification writer for Griffith-Kendall, Des Moines, has been accepted for Junior Associateship in the Iowa

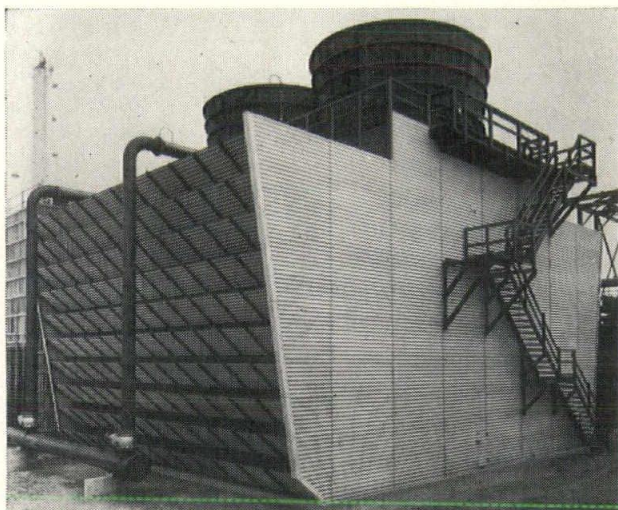
Chapter A.I.A. Nasr, a citizen of Egypt, received an M.A. in Economics in June 1962 at Drake and had received a B.A. in Engineering in 1942 at the American University of Beirut, Lebanon. He previously was employed by Brooks-Borg.

CHARLES HANSEN OPENS PLANNING PRACTICE

Charles Hansen has announced the opening of a practice in planning, consulting and urban design at 304 Key Building, Des Moines.

Hansen has been Des Moines representative for Harland Bartholomew and Associates, St. Louis, and previously was employed by William B. Ittner, Inc., Walter B. Kromm, and Murphy and Mackey, architectural firms of St. Louis, and Cupples Products Corp. of St. Louis.

Hansen will offer his services in development work, and in site design. He has worked on studies in Des Moines, St. Louis, Mo., and Birmingham, Ala.



Engineered for engineers...

MARLEY COOLING TOWERS

The professional engineer is quick to recognize products that are themselves engineered by professionals—a fact that accounts for his overwhelming preference for Marley cooling towers. Leadership in design, superiority of performance, skill of manufacture, ease of installation, simplicity of operation—these are the marks of Marley towers that set them apart from those of other makes.

For example, the new Marley Class 600 Double-Flow represents technological advances of major importance to everyone in industry—a tower so different in concept, appearance, and performance that it can be classed with no other industrial tower.

Represented in
Iowa by . . .

**R. S. STOVER
COMPANY**

203 W. Main St.
Marshalltown, Iowa

120 N. 69th St.
Omaha, Neb.

DIRECTORY OF ADVERTISERS

Advertisers may secure information on rates, deadlines and copy requirements by writing the chapter office, 422 Securities Building, Des Moines 9, Iowa.

ADEL CLAY PRODUCTS CO.	27
BLUMCRAFT OF PITTSBURGH	13
CARTER-WATERS	25
DES MOINES MARBLE AND MANTEL CO.	8
DEVOE & RAYNOLDS CO., INC.	8
GOODWIN COMPANIES	2
IOWA CONCRETE BLOCK AND MATERIAL CO.	12
IOWA PAINT MANUFACTURING CO.	29
MARQUART CONCRETE BLOCK CO.	27
MIDWEST CONCRETE INDUSTRIES	6
W. E. NEAL SLATE CO.	30
PORTLAND CEMENT ASSOCIATION	4
PRESCOLITE MANUFACTURING CO.	24
SHEFFIELD BRICK & TILE CO.	31
SIOUX CITY MOSAIC CO. INC.	11
RALPH N. SMITH, INC.	11
R. S. STOVER CO.	26
STRUCTURAL CLAY PRODUCTS INSTITUTE	32
SWANSON-GENTLEMAN, INC.	5
L. J. SWEENEY	30
VINCENT CLAY PRODUCTS	28
WESTERN MINERAL PRODUCTS	3
C. D. WILLCOX AND COMPANY	24
WILSON CONCRETE CO.	24

ADEL CLAY PRODUCTS CO.

Specify Adel
ACOUSTILE
for your next building job

- Withstands compression
- Solves wall cracking problems
- Tensile strength about 3 times that of light-weight concrete block
- Makes an ideal surface to paint

Adel Clay Products Co.

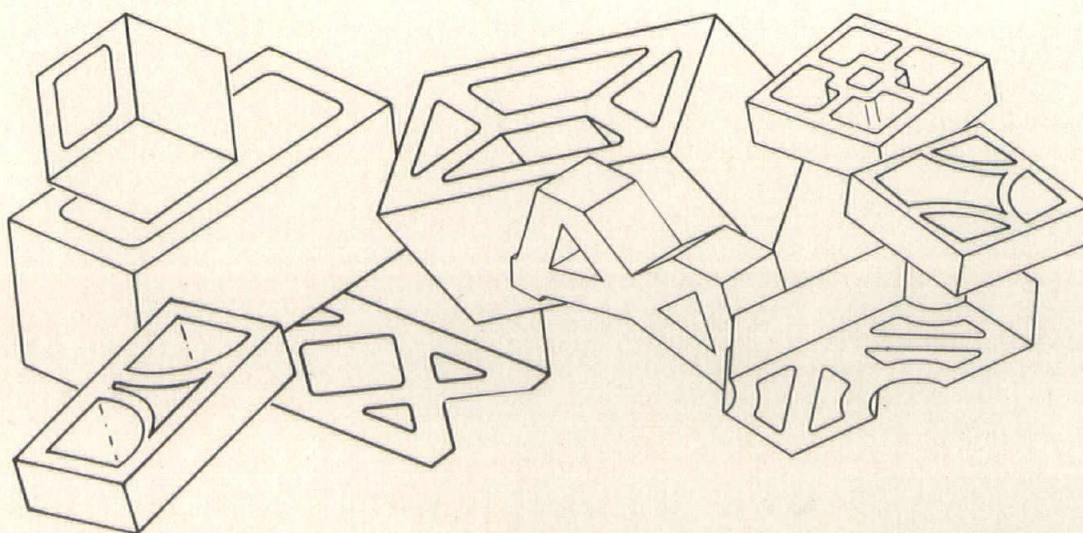
STIPPLE-MATT FACE TILE AND BRICK
AND OTHER VITRIFIED CLAY PRODUCTS

IOWA SALES OFFICE AND WAREHOUSE
101 ASHWORTH ROAD • WEST DES MOINES, IOWA
FACTORIES IN REDFIELD AND CENTERVILLE, IOWA

Phone CRestwood 9-9721

architectural block

beautiful new pierced designs - NOW



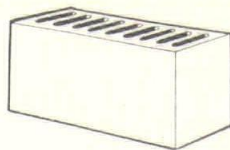
All of the Nine Patterns Available in 4" and 8" Wall Widths
MARQUART CONCRETE BLOCK COMPANY

110 Dunham Place

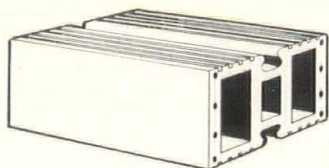
Waterloo, Iowa

VINCENT OFFERS The **Complete** Line of **BRICK and TILE**

Yes, any needed type of clay product is available from Vincent.



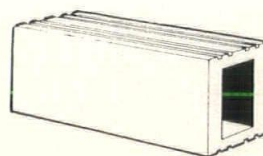
CERAMIC GLAZED TILE



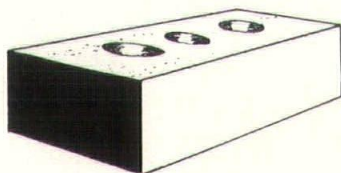
BUILDING TILE

In addition, Vincent is the exclusive distributor of several nationally known lines of specialty brick.

Vincent manufacturers a complete line of face brick, glazed tile, and building tile of extra quality.



SALT GLAZED TILE



FACE BRICK

Fast and efficient service plus a **complete** line of materials makes Vincent a most reliable supplier for the architectural profession.



EXCLUSIVE DISTRIBUTOR FOR
ELGIN-BUTLER BRICK COMPANY, AUSTIN, TEXAS
RELANCE BRICK COMPANY, DALLAS, TEXAS

and
NATCO CERAMIC GLAZED TILE CORPORATION
Ask for complete literature or sample panels showing both glazed and unglazed brick of the highest quality.

VINCENT
CLAY PRODUCTS

FORT DODGE, IOWA

Manufacturers of Superior Face Brick, Glazed Tile, Building Tile, and Drain Tile.

OFFICE 2930 Fifth Ave. South • **PHONE** 573-8126 • **FACTORY** 2½ Miles South of Fort Dodge

MIDWEST CONCRETE BRINGS ARCHITECT VISITORS

Midwest Concrete Industries and their Minnesota agent, Pella Products, were hosts to 23 architects from the Minneapolis-St. Paul area April 25. The group was flown from Minneapolis to Des Moines for a tour of the MCI plant in West Des Moines.

John Downing, General Manager of MCI said purpose of the flight was to inform the guests of the capabilities of the plant, and to introduce them to the many possible uses of precast concrete.

Curtis W. Johnson, president of Pella Products, Minneapolis, was host for his company and the sales and production staff of MCI were on hand to welcome the visitors in Des Moines. The group travelled in a North Central Airlines chartered plane.

Visitors included these architects, many of whom are known to ISU graduates:

John Anderson, Wilder King, Newton Griffith, Wilber Clark, Jr., Willard C. Parrish Jr., Jene T. Sigvertsen, John K. Weaver, Norman E. Madson, Clinton L. Sathrum, Charles D. Wahlberg, Fritz Rohkol, M.D. Hutchison, Everett A. Holes, Robert L. Dunn, Ambrose Manion, William Gonzales, Donald Branscom, Brian Morgan, Martin Grady, John Lackens, Burton Flick, and Gordon A. Schlichting.

F. C. VIERK HEADS NEBRASKA CHAPTER

Fritz C. Vierk of 305 Continental Bldg., Lincoln, is the 1963 president of the Nebraska Chapter, A.I.A. Other officers are:

R. Bruce Widstrom, Omaha, vice president; John R. McClurg Jr., Omaha, secretary; and R. O. Freeman, Lincoln, treasurer. William L. Steele, Omaha, is the past president.

ROOF RECOMMENDATIONS

The National Roofing Contractors Association has called attention to two new recommendations of the industry, both available from the NCRA, 300 West Washington St., Chicago 6.

The new recommendations cover: "Venting Lightweight Insulating Concrete Roof Fills."

"Temporary Roof Deck Coverings."



She couldn't dream... A WALL could be so serviceable !

A Tabor CS-17 wheel with a 1000 gram load won't wear through a 4½ mil film of it in 750 cycles. Hydrochloric, phosphoric, acetic and sulphuric acid solutions do not blister, soften or wrinkle it.

Applied to a rigid substrate, it has more shock and impact resistance than glazed tile. Try to stain it with oils, greases, animal fats, urine, gasoline or food—you can't! Scrub it repeatedly with muriatic acid, alkalies or severe detergents—it doesn't dull or fade. Temperatures of -40°F to 800°F or extremely humid conditions do not affect it.

Decorate with it in scores of colors—with the added options of flecking, veiling or texturing—in a gloss or satin finish.

For a custom analysis of how this amazing new architectural coating can assist you—call 283-1501, Des Moines, collect.

P. S. Thrustgard sells for about ¼ the cost of glazed tile!



IOWA PAINT

MANUFACTURING CO., INC.

Des Moines, Iowa Decatur, Georgia

R. UTTERBACK TALKS ON CHURCH DESIGN

Richard Utterback, A.I.A., of *Wetherell-Harrison-Wagner*, talked on the historical development of church design before a class of 30 adults at the First Methodist Church, Des Moines, on May 5.

The talk covered the elements which are included in churches through tradition of the various groups, and those which are necessary because of the size of the gatherings.

SUMMER MEETING

E. H. Healey, Cedar Rapids, reports that preliminary arrangements are complete at the Town House, Cedar Rapids, for the Iowa Chapter Summer Meeting there, July 19, 20 and 21.

"Details of our program are not yet complete, but we are looking forward to a good crowd, and a fine time. We want to show off some Cedar Rapids architecture and will promote a good program."

Chapter members are urged to make reservations early at the Town House, 4747 First Avenue SE, Cedar Rapids.

CHURCH EXHIBIT FOR PRESBYTERIAN MEETING

Church designs by Iowa architects were on exhibit for more than a week of the National Assembly of Presbyterian Churches in Des Moines in May.

All the church exhibit panels from the 1962 and 1963 Honor Awards Competitions of the Iowa Chapter, A.I.A. were hung in the area of

"Buck" Sweeney

Parker Mirrors & Bathroom Accessories

Halsey Taylor Coolers & Fountains

Lawler Thermostatic Valves

Church Seats

Sloan Flush Valves

Just Stainless Steel Sinks

313 49th STREET, DES MOINES, IOWA



church art in the basement of Memorial Auditorium. The exhibit was mounted on the chapter display frames, some of which also were used for the display of other church art during the week-long meeting.

The architectural exhibit was near the route travelled by the churchmen as they went to and from the dining area.

DeKOVIC ATTENDS CRANBROOK SESSION

Appointment of Charles DeKovic, Assistant Professor in the Department of Architecture and Architectural Engineering, to represent Iowa State University at the R-17 session at Cranbrook Academy June 8 - 20, 1963, has been announced by Prof. Clair Watson.

Norman Rudi, AIA, was the 1962 ISU representative at the annual Teacher's Seminar which is sponsored by the American Institute of Architects.

The Iowa Chapter, A.I.A., joins the Alumni Achievement fund of ISU in providing funds for the department representative at the seminar.

W. E. NEAL RETIRES

Retirement of W. E. Neal from the presidency of the W. E. Neal Slate Co., Minneapolis, and the election of Neil T. Sorensen as his successor is announced by the company.

Neal founded the firm 40 years ago as a distributor of natural slate for blackboards, roofing, flooring and other uses. His successor joined the firm in 1948 and became vice-president in 1955.

Wallace Neal, who has been with the firm 11 years, was named vice president.

The firm serves five states, specializing in sale and installation of chalkboards, cork tackboards and aluminum trim.

SON TO SCHELLBERGS

Mr. and Mrs. Willis Schellberg of Forest City are the parents of a son born May 10. The new arrival, James Nathan, is the fourth child for the Schellbergs. Willis Schellberg is treasurer of the Iowa Chapter, A.I.A.

EUROPE TOUR DRAWS THREE ARCHITECTS

Three members of the Iowa Chapter A.I.A. participated in a flight to Amsterdam sponsored by the Des Moines Art Center.

Aboard when the plane lifted off from Des Moines were: Mr. and Mrs. G. I. Griffith and John Rice of Des Moines, and Mr. and Mrs. Stan Ver Ploeg of West Des Moines.

Some of the persons aboard participated in a package tour of Europe, others planned to rent autos and establish their own itinerary. The group returned to Iowa May 19.

- ✓ 38 years of service to Iowa schools
- ✓ chalkboard specialists
- ✓ state-wide installation service
- ✓ natural slate
- ✓ Johns-Manville "Colorlith"
- ✓ "Wensco" washable cork tackboard
- ✓ Gotham aluminum trim and chalkboards
- ✓ display cases
- ✓ the only COMPLETE chalkboard line

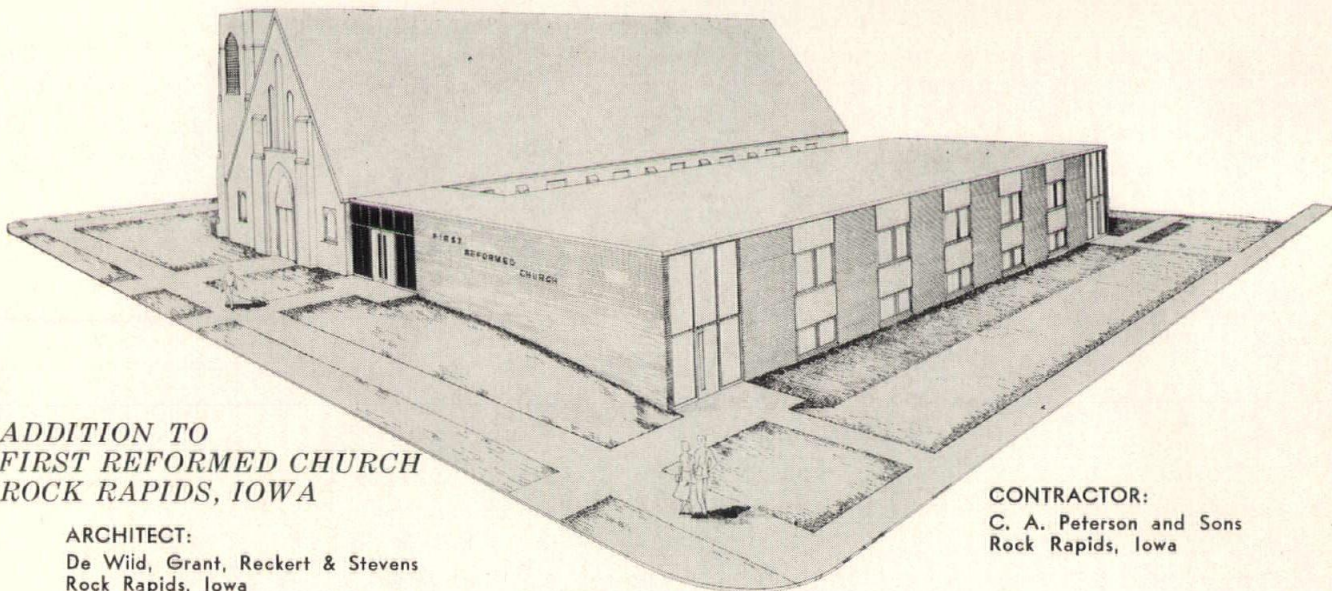
w. e. neal slate co.

1215 Second Avenue, North
Minneapolis 5, Minn.

FR 7-8100

- SPECIFICATION:**
- *Minimum Floor Depth*
 - *Minimum Sound Transmission*
 - *Maximum Economy of Church Funds*

SPECIFIED: *SHEFFIELD CLAY TILE BEAM FLOOR SYSTEM*



*ADDITION TO
FIRST REFORMED CHURCH
ROCK RAPIDS, IOWA*

ARCHITECT:
De Wild, Grant, Reckert & Stevens
Rock Rapids, Iowa

CONTRACTOR:
C. A. Peterson and Sons
Rock Rapids, Iowa

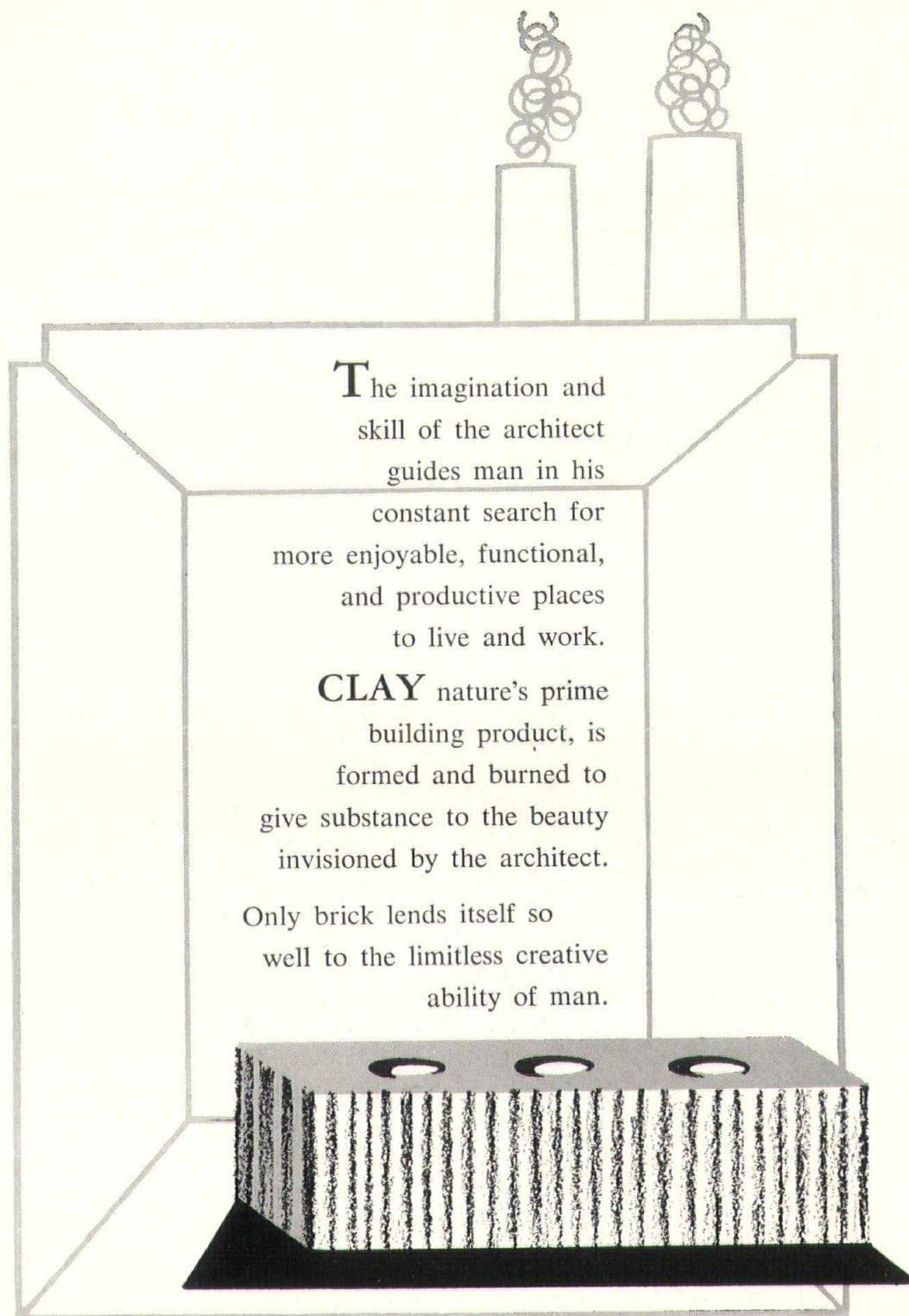
Minimum depth of floor structure, to permit required ceiling height . . . minimum transmission of sound from basement to ground floor . . . minimum cost, thus economizing on church funds . . . all these requirements led to the choice of Sheffield Clay Tile Beams for the floor structure of this fine new church addition. (Further, the tile-beam structure provided a temporary floor for contractor workmen to use before the concrete floor was poured.) All these factors helped keep the cost of the new construction down to \$10.93 per square foot of floor area.



Here, again, the skillful integration of Sheffield Clay Tile Beams into new construction has resulted in savings of time and money; flexibility of design; together with inherent strength, durability and fire-resistance.

SHEFFIELD BRICK & TILE COMPANY

SHEFFIELD, IOWA



The imagination and
skill of the architect
guides man in his
constant search for
more enjoyable, functional,
and productive places
to live and work.

CLAY nature's prime
building product, is
formed and burned to
give substance to the beauty
invisioned by the architect.

Only brick lends itself so
well to the limitless creative
ability of man.



CLAY PRODUCTS INSTITUTE

REGION 6 — 1201½ WELCH AVENUE — AMES, IOWA — 232-6623

FIRMS DISPLAYING
THIS EMBLEM



ARE MEMBERS OF THE
STRUCTURAL CLAY PRODUCTS
RESEARCH FOUNDATION