

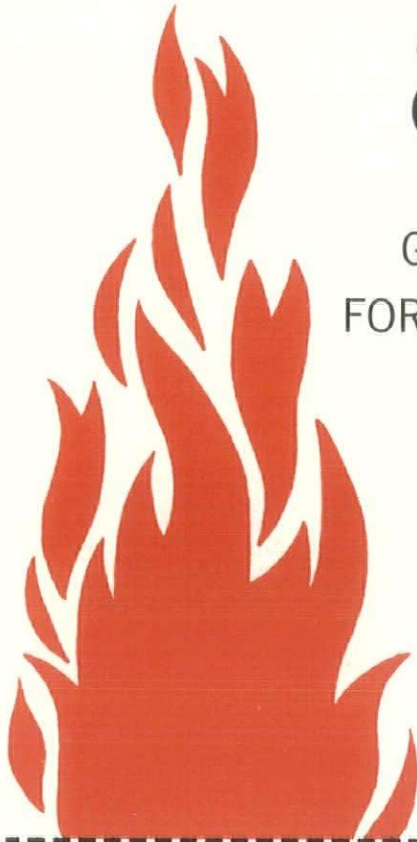
IA-1977-SPRING



IOWA ARCHITECT 1977 DESIGN AWARDS

Spring 1977

Free to Iowa architects.



GET THE FIRE PROTECTION CLASSIFICATION
FOR ANY IOWA CITY OR TOWN IN WHICH YOUR
CLIENT IS PLANNING TO BUILD.

THEN YOU CAN PROVE THE SUBSTANTIAL
FIRE INSURANCE PREMIUM SAVINGS WITH
CONCRETE MASONRY CONSTRUCTION.

IN MANY CASES, SIMILAR SAVINGS ARE
REALIZED ON RATES FOR CONTENTS.

SIMPLY RETURN THIS COUPON AND THE INFORMATION WILL BE YOURS WITHIN FIVE DAYS.

IOWA CONCRETE MASONRY ASSOCIATION

BOX 695 • DES MOINES, IOWA 50303

Please send us your free compilation of fire protection classifications for Iowa cities and towns, together with your description of savings realized with masonry construction.

FIRM NAME _____

STREET OR
BOX NUMBER _____

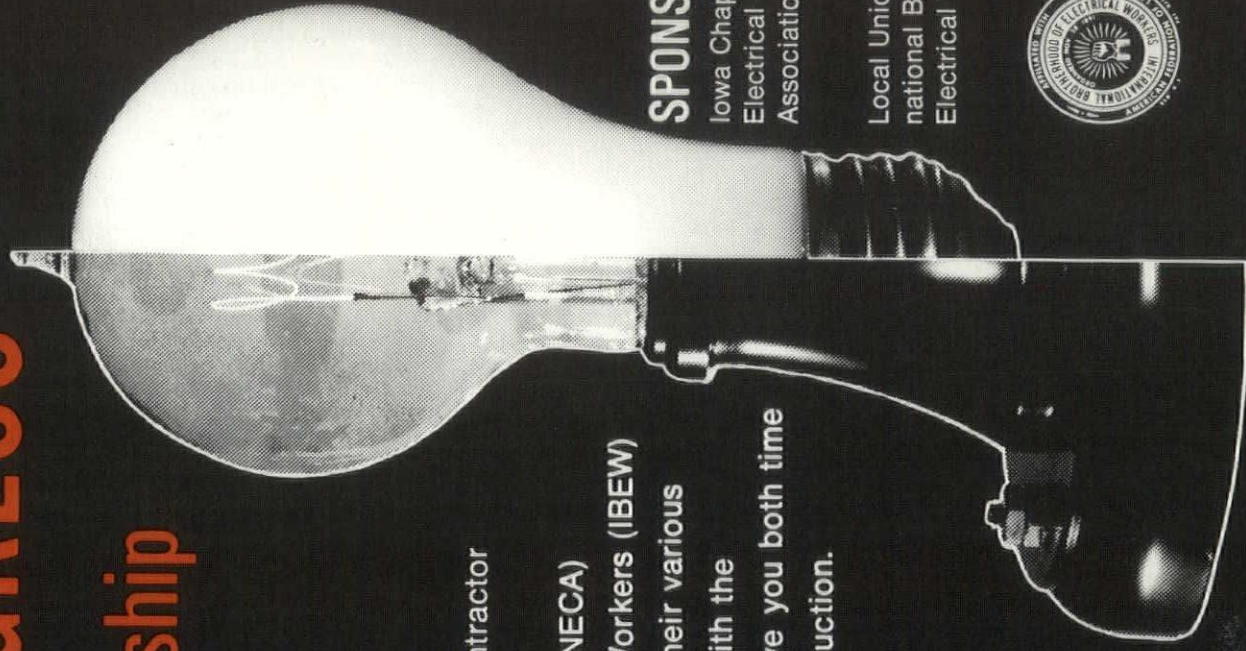
TOWN _____ STATE _____ ZIP _____

ELECTRICAL PROGRESS

Through Joint Apprenticeship And Training

When you design, remodel or rewire, use an electrical contractor that's qualified for the job. Use a member of the Iowa Chapter-National Electrical Contractors Association (NECA) employing skilled International Brotherhood of Electrical Workers (IBEW) journeyman wiremen and trained electrical apprentices. Their various Joint Apprenticeship and Training Programs provide them with the advanced management and technical skills necessary to save you both time and money on residential and commercial electrical construction.

For more information call: (515) 278-2445.



SPONSORED BY:

Iowa Chapter - National
Electrical Contractors
Association

and

Local Unions of The Inter-
national Brotherhood of
Electrical Workers

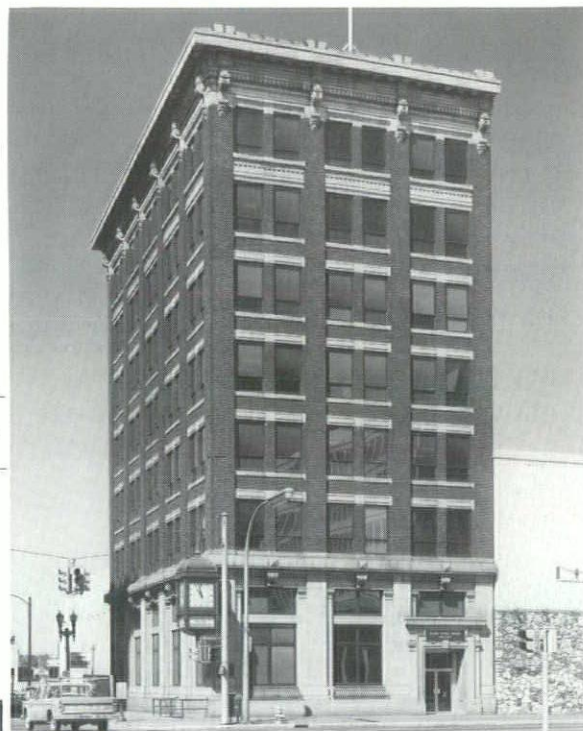




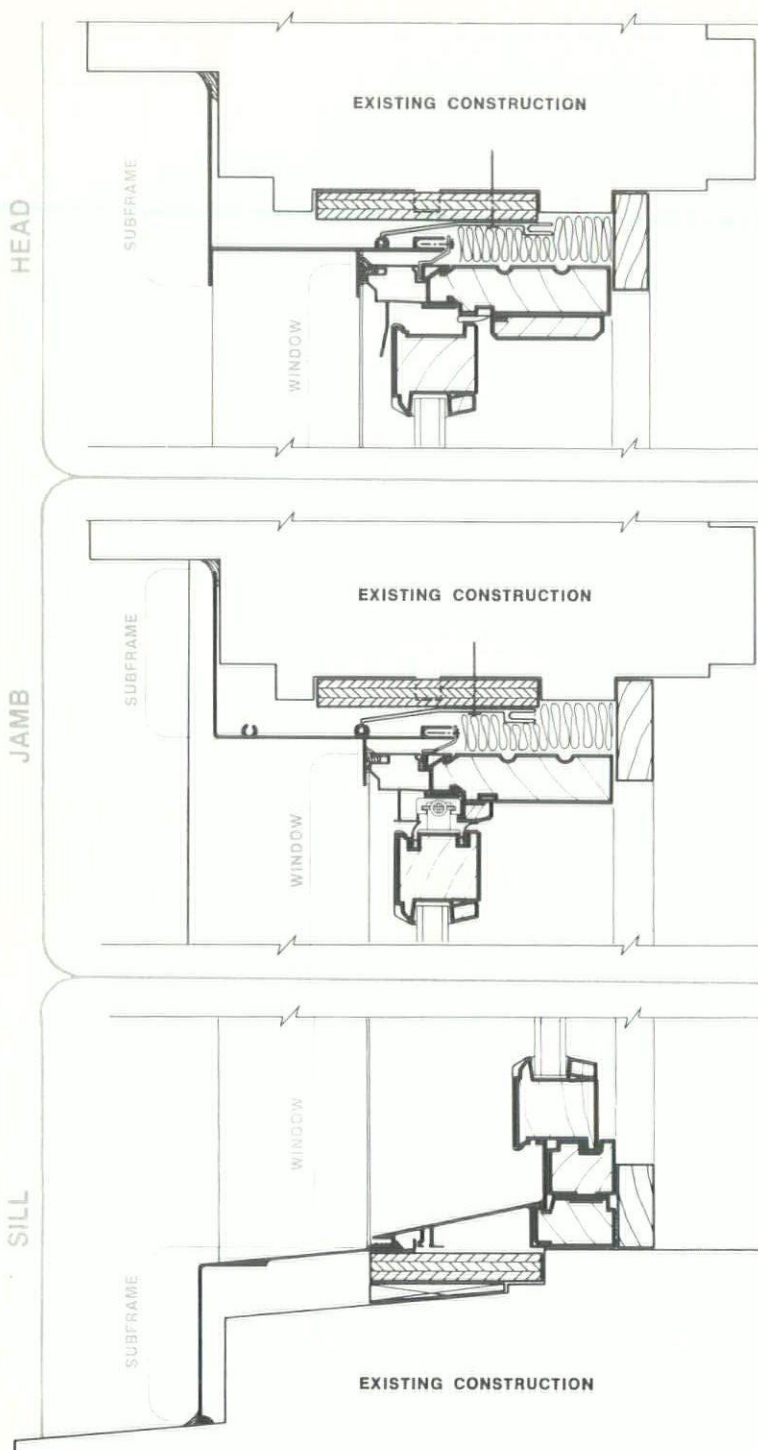
Clad Windows

IN RENOVATION

Pella is the right window choice for commercial and institutional renovation projects where user comfort and convenience and long-term economy are important considerations. And a complete package of accessories tailors Pella Windows to the job and makes installation rapid and economical. Consult your Pella distributor for complete information on Pella in replacement applications.



Detailed at left is a typical installation in existing construction. The window opening has been fitted with a Pella extruded aluminum subframe. Then a Pivot Contemporary Window has been placed into the subframe to complete the installation...on time and at low cost.



PELLA CO.
120 S.W. Sixth Ave.
Des Moines, IA. 50309
Phone (515) 243-1363

PELLA PRODUCTS CO.
201 First Avenue North
Fort Dodge, IA. 50501
Phone (515) 576-2631

PELLA WINDOW CO., INC.
513 - 31st Avenue
Rock Island, IL. 61201
Phone (309) 788-7489

PELLA PRODUCTS
3600 North Court Road
P. O. Box 246
Ottumwa, IA. 52501
Phone (515) 684-5284

WILSEY COMPANY
2500 Dace Avenue
P. O. Box 924
Sioux City, IA. 51102
Phone (712) 258-4567

PELLA PRODUCTS CO.
840 Cleveland
Waterloo, IA. 50701
Phone (319) 233-9731

PELLA PRODUCTS OF OMAHA
8921 "J" Street
Omaha, NE. 68127
Phone (402) 331-9225





IOWA ARCHITECT

Volume 24 Number 1
Spring 1977

The IOWA ARCHITECT is the official publication of the Iowa Chapter, The American Institute of Architects, and is published quarterly.

Editor:
Bryan Shiffler, AIA

Managing Editor:
Julian Serrill

Publisher:
Midwest Advertising Ser.,
Des Moines

Editorial Staff:
Edward Soenke, AIA
H. Ronald Walker, AIA
Joseph Kobes, AIA
Roy Pederson

Art Director:
Kep Sharp

Iowa Chapter American
Institute of Architects
President:
Norman E. Wirkler, AIA,
Dubuque

1st Vice President and
President Elect:
Wayne J. Snyder, AIA
Waterloo

2nd Vice President:
William D. Lee, AIA
Ames

Secretary:
John Ratcliffe, AIA
Des Moines

Treasurer:
James I. Dwinell, AIA
Des Moines

Directors:
Bernard L. Jones, AIA
Sioux City,
Thomas R. Clause, AIA
Des Moines,
William J. Laffan, AIA
Davenport

Ex Officio:
H. Kenneth Bussard, AIA
Des Moines

Student Director:
Joe Powelka
Ames

Des Moines Council of
Architects President:
David A. Dumstra, AIA
Des Moines

Eastern Iowa Section
President:
Daniel Pullen, AIA
Davenport

Northwest Iowa Architects
Council President:
Kenneth P. Wictor, AIA
Sioux City

Cedar Rapids/Iowa City
Architects Council:
Richard McConnell, AIA
Cedar Rapids

7

9

10

16

President's Message:
Norman E. Wirkler, the
State Chapter's new
president, sets his goals
for the coming year.

Jury:
Bruce Abrahamson, FAIA,
John Rauma, FAIA, and
James Stageberg, AIA,
give their views on the
1977 State Design Award
Entrants.

1977 Awards:
The 1977 Award winners
are presented.

"Outside Architecture":
A report on this year's
convention by Cal Lewis.

WE HAVE THE SOLUTION!

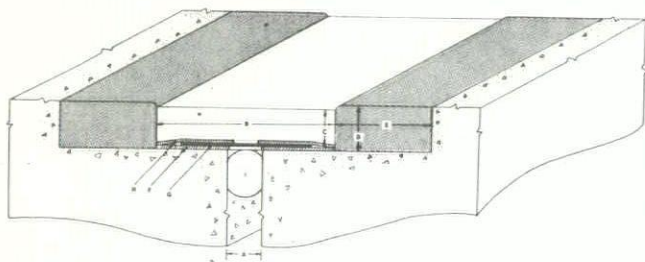


In following our policy of offering the very best in paints and coatings now offer

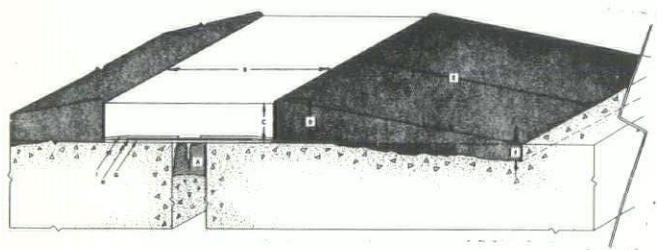
Sealants by Pecora Corporation Elastomeric Expansion Joint System

...a total system for expansion joints subjected to the demands of foot and vehicular traffic. . . Pecora TJ-200 Non-Sag or Self Leveling Sealant and Pecora EP-400 Epoxy Edging Compound. . .

Advanced Planning System



Restoration System



Complete descriptive literature and Installation Procedures are available upon request for both systems.

Iowa Paint

Manufacturing Company, Incorporated
P.O. Box 1417 Des Moines, Iowa 50305
Phone 515-283-1501

When the Request is Impossible,

Think of Concrete Block from Marquart

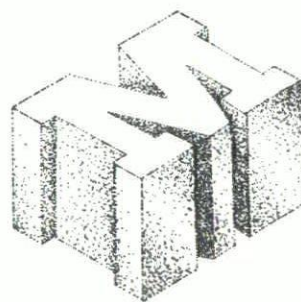
You've just received the impossible assignment — to design a building low in cost, yet distinctive in appearance.

Before you toss the T-square in disgust, call Marquart Concrete Block Company. Marquart makes scores of distinctive, adaptable and cost efficient blocks for the building industry — with the same concern for quality we've had since our founding in 1902 as the Concrete Stone Company.

Whether your prime objective is visual beauty, structural strength, energy conservation or functional efficiency, Marquart can supply the proper building materials — at a proper price.

Find out how Marquart Concrete Block stacks up against other building materials. Call or write today.

We Build a Better Block



MARQUART

CONCRETE BLOCK COMPANY

110 Dunham Place, P.O. Box 990
Waterloo, Iowa 50704
(319) 233-8421

The President's Message

The profession of ARCHITECTURE in the third century of the United States will be practiced much differently than it was from 1876 to 1976. The A.I.A. is analyzing and discussing that role now and may take steps to realign our official policy and direction in San Diego early this summer. Regardless of the official policy established by A.I.A. the impact of today's society and the public demand has changed our role and will continue to change our role more dramatically in the near future. If we are to maintain a professional image in the face of these changes, we must collectively strengthen our numbers and establish a cooperative effort of survival.

The pressure of change is coming from many diverse points. The age of consumerism is rapidly increasing our vulnerability to legal action and requiring continuing education.

The energy crisis is dramatically changing the cost of operation of buildings, and the very real and rapid depletion of fossil fuels indicates our current methods and concepts of design of new structures must be changed at once. The popularity of architectural education seems to run counter to the trend of pre-engineered industrial buildings, mobile homes, package design-build professional and commercial buildings and all of the other design-construction techniques which seem to reduce the architect's share of the market. Where will all of these new graduates find a role in the design and construction market?

Individually, none of us can successfully face this change without the entire profession losing its identity. Collectively, we stand an excellent chance of not only succeeding but improving our role in the third century U.S. society.

We must set our Iowa A.I.A. goals for 1977 and beyond to acquire the collective strength we need. The specific goals for 1977 are listed below. It will take a determined and unified effort to accomplish them.

Membership must be increased significantly to include as many of the registered architects and the architectural employees in the state as possible. The A.I.A. sections must be strengthened to help improve the cooperation and area support of the membership.

Legislative action must continue. Our primary goal is to get a Statute of Limitation bill passed. Additional efforts must be applied toward getting an improved practice act. It is in the public interest to omit many of the current exemptions in the present

law. We must also work toward the adoption of a continuing education bill that will meet the public demand for continuing education requirements without unnecessary red tape. The requirements must be consistent between all the states.

Education must be realigned to develop the expertise needed to meet the change in the profession. Many of the current architectural students must be re-oriented toward related and allied professions that can satisfy their desire to participate in the field of design for the human environment but also assure them of employment upon graduation.

Professional development is extremely important for maintaining our ability to keep the public confidence and increase the architect's share of the design market. We must all continually improve technical and professional abilities. Continuing education goals must include loss prevention seminars, energy conscious design, new design and construction methodology awareness, i.e. construction management and design build, and marketing methods directed toward expanding our market of design services rather than competing with each other. Consider the volume of housing, commercial and industrial construction, that most architects generally are ignoring.

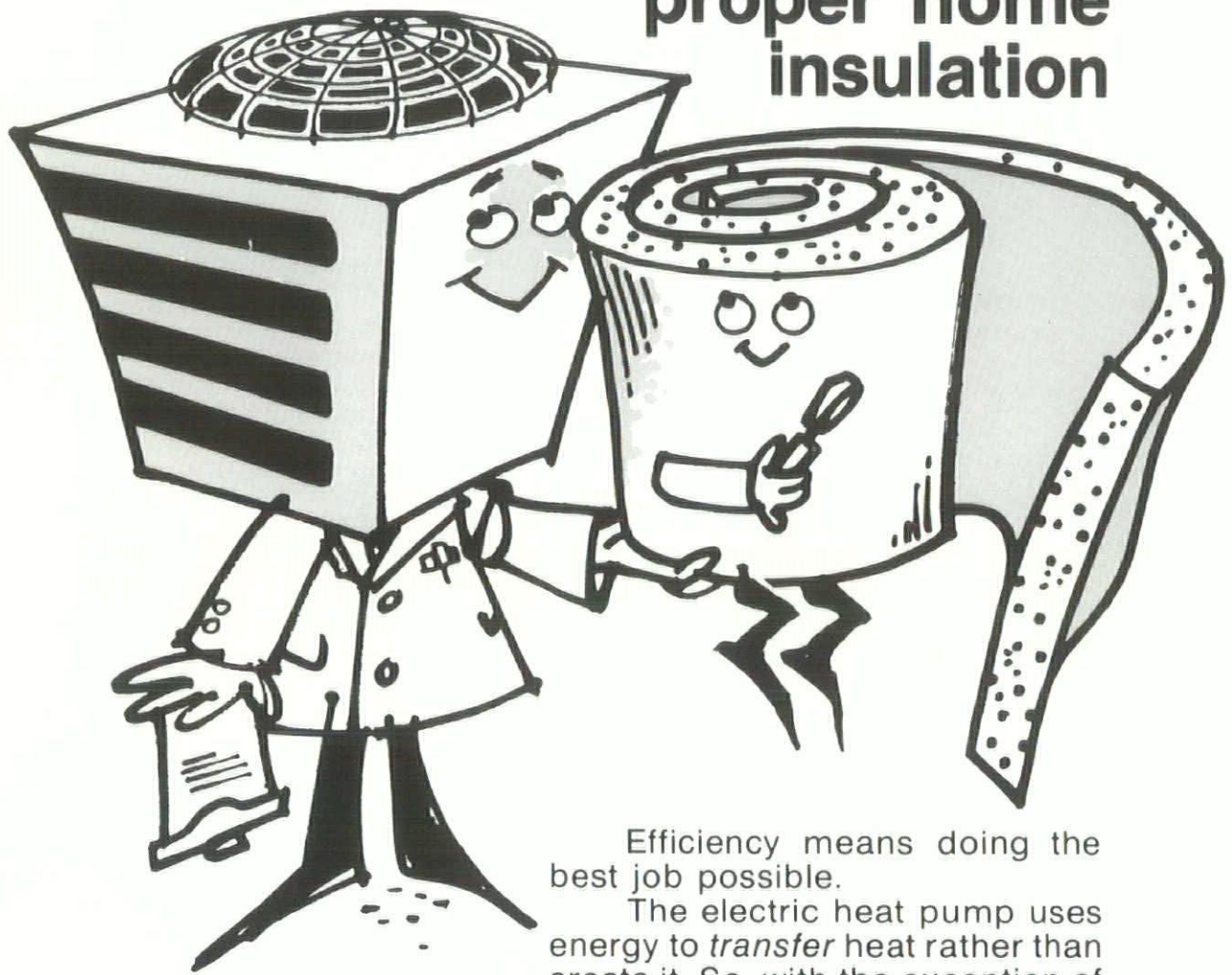
To carry out these efforts, the need for cooperation is important. Many members of the profession have served us well in the past and after their turn as Officer, Board Member, or President of the Iowa Chapter A.I.A., they have not been given the opportunity to continue to contribute. To draw on this valuable resource of talent a Past President's Council will be established. We can all benefit from the advice and experience of this group, and if we request that their efforts be directed toward certain specific goals, we will certainly improve the strength of the unified effort of Iowa Chapter A.I.A.

I believe we can meet the challenge, we can strengthen our efforts, and we will accomplish the necessary goals to maintain our professional image in society. I ask you all to cooperate and contribute to the needed effort during 1977 and into the future to assure our needed significant impact on improving the human environment.

Norman Wirkler, A.I.A.
President, Iowa Chapter A.I.A.

Efficiency Experts

The electric heat pump and proper home insulation



Efficiency means doing the best job possible.

The electric heat pump uses energy to *transfer* heat rather than create it. So, with the exception of a few of the coldest winter days, the heat pump actually provides more energy in the form of heat than it uses in the form of electricity. And the same machine does two jobs: it warms in the winter, and cools in the summer. Now that's efficiency!

If you combine the energy efficiency of the electric heat pump with the energy-saving qualities of proper insulation in a well-designed structure, you can assure yourself of year-round comfort . . . and help fight today's higher costs of energy.



1977

DESIGN AWARDS

JURY COMMENTS

The Iowa Chapter of the American Institute of Architects 1977 Honor Awards submission presented an interesting challenge to the Jury which was impressed with the generally good quality of the work. There were a number of impressive projects which, though not selected for award, might well be selected by other juries of different composition and circumstance. The fact that the Jury had difficulty narrowing down the selection to the final group of 9 projects attests to the level quality of the projects submitted.

The Jury procedure consisted of viewing slides for all the submissions in sequence to make tentative selections, and, by repetition and comparative evaluation, reducing the projects to the number finally selected for award.

The Jury tried as much as possible to be consistent in its evaluation, and considered the submissions from the standpoint for appropriateness to use, fitness to context, integrity of technique, and the quality of each contribution aesthetically, in the human dimension, in the urban context and as metaphor.

In many instances, the Jury decided to give projects the benefit of doubt regarding use of arbitrary or fashionable form idioms in the framework of ambiguous site or program contexts, which, if more fully elaborated graphically, might have given the solutions greater justification. In general, the Jury would have appreciated having more extensive information regarding project site contexts, particularly where urban design issues were dominant, and where the architecture was resolved in extravagant form manipulation.

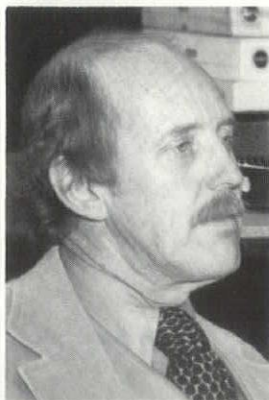
Although no projects were submitted which might illuminate new leadership, or new approaches to vital current concerns, the Jury believes the selected projects demonstrate a high standard of performance which would stand up well in a national context.

THE JURY



James Edgar Stageberg, AIA

Bachelor of Arts and Bachelor of Architecture, University of Minnesota/Master in Architecture, Harvard University/Professor Architecture, University of Minnesota/Partner, the Hodne/Stageberg Partners, Inc./Registered Architect, States of Minnesota, New York, Wisconsin and South Dakota; North Dakota, Idaho, Wyoming and Montana/Certified by National Council of Architectural Registration Boards/Member, American Institute of Architects/Associate of Danforth Foundation/Rotch Traveling Scholar.



Bruce Abrahamson, FAIA

Bachelor of Architecture, University of Minnesota/Master of Architecture, Harvard Graduate School of Design, Harvard University/Winner, Rotch Traveling Scholarship, Study in Europe 1951-52/Project Designer, Skidmore, Owings & Merrill, Architects and Engineers Chicago, Illinois/Executive Vice President and Partner, Hammel, Green and Abrahamson, Inc. Architects and engineers, Saint Paul/Associate Professor, School of Architecture, University of Minnesota/Member, State Board of Registration for Architects and Engineers/Member, Advisory Committee on Architecture, States Arts Council/Past President, Minnesota Society of Architects.



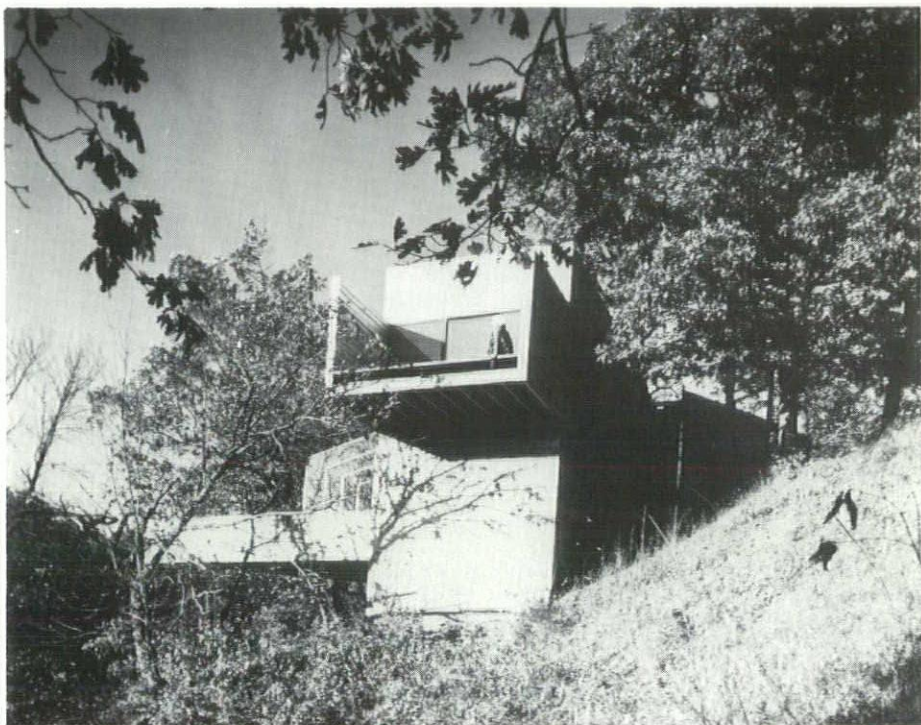
John Rauma, FAIA

Bachelor of Science, Marquette University/Bachelor of Architecture, With High Distinction, University of Minnesota/Master of Architecture, M.I.T./A.I.A. Medal, University of Minnesota/Gargoyle Prize, University of Minnesota/Grunsfeld Travelling Scholarship, M.I.T./Chamberlain Prize, M.I.T./Vice-President, Griswold and Rauma, Architects, Inc./Professor, School of Architecture and Landscape Architecture, University of Minnesota/Visiting Committee, M.I.T./Past President, Minneapolis Chapter, American Institute of Architects.

HONOR AWARD

Crites Residence/Huxley

Ray D. Crites, F.A.I.A. and The Ames Design Collaborative



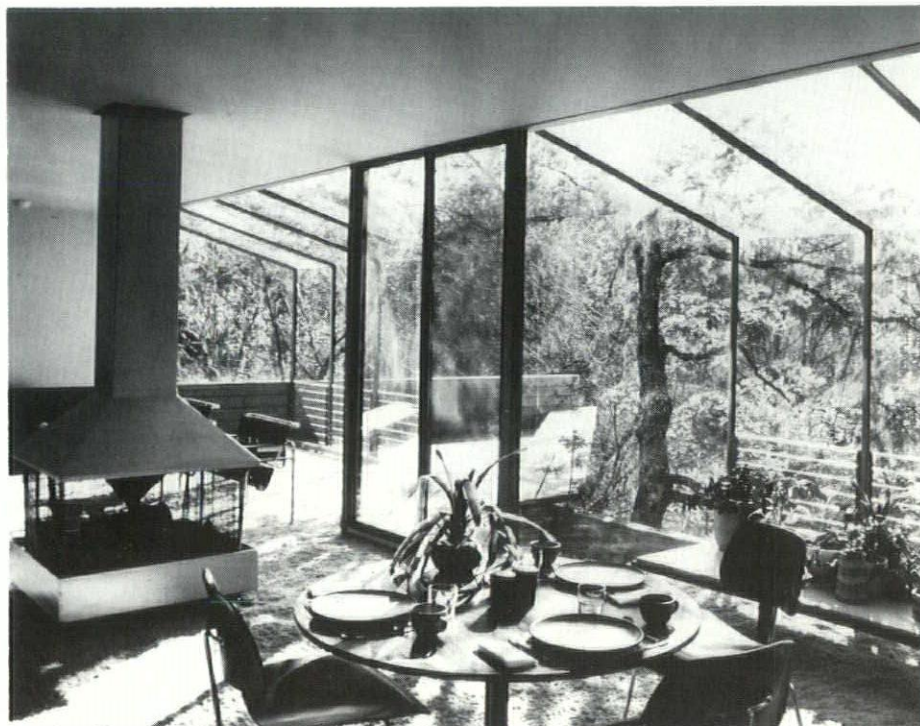
OWNER: Mr. and Mrs. Ray D. Crites

CONTRACTOR: Buck Construction Co.,
Ames, Iowa

PHOTOGRAPHER: Julius Shulman

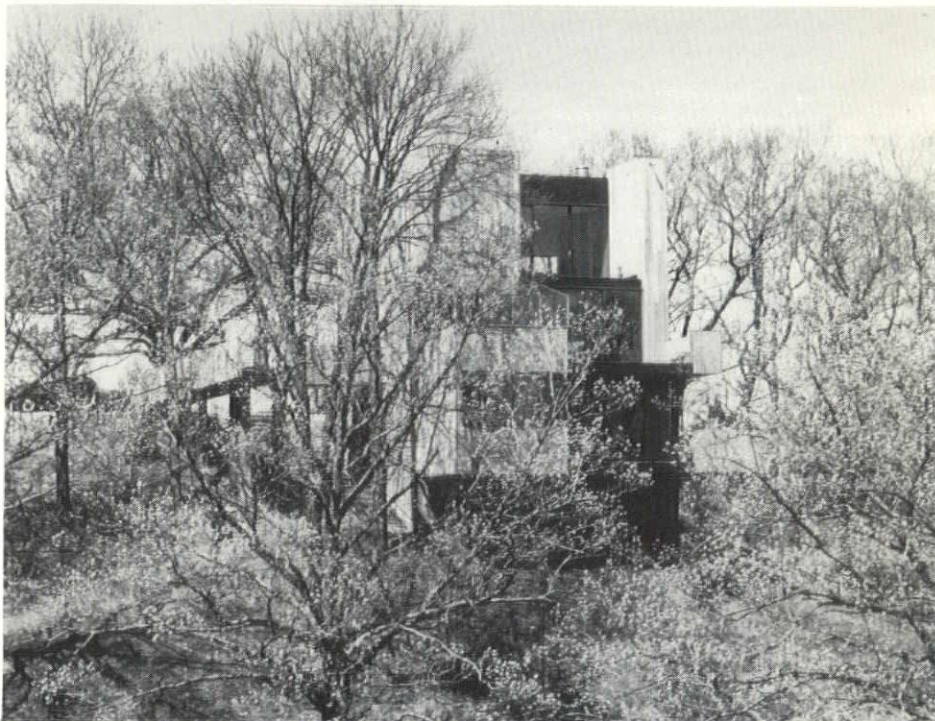
JURY COMMENTS:

This house is a very happy combination of formal and spacial considerations and practical planning considerations. It is dramatically sited and has great sculptural impact. The transitions from exterior to interior space are exquisite. The Jury had doubts about single glazing and the efficacy of the hydronic electric cum solar heating system.



HONOR AWARD

Bellizzi Residence/Huxley
Ray D. Crites, F.A.I.A. and The Ames Design Collaborative



OWNER: Mr. and Mrs. Angelo M. Bellizzi
Huxley

CONSULTANTS: Design Structures,
Des Moines

CONTRACTOR: Buck Construction Co.,
Ames

PHOTOGRAPHERS: Julius Shulman
Ron Batrick

JURY COMMENTS:

Organized in response to practical planning and efficiency considerations, this house makes an impression of sensibility, while achieving very memorable sculptural impact. Its vertical organization is well suited to utilizing its immediate site. Its construction and envelope are consistent and make a no-nonsense architectural statement.

HONOR AWARD

Conway Civic Center/Waterloo

Thorson-Brom-Broshar-Snyder, Architects Inc./Waterloo

OWNER: City of Waterloo

CONSULTING ARCHITECT: APR - Architecture Planning Research/Associates/Washington, D.C.

CONTRACTOR: O-M Construction Company/Waterloo

PHOTOGRAPHER: Julius Shulman,
Thorson-Brom-Broshar-Snyder,
Architects Inc.

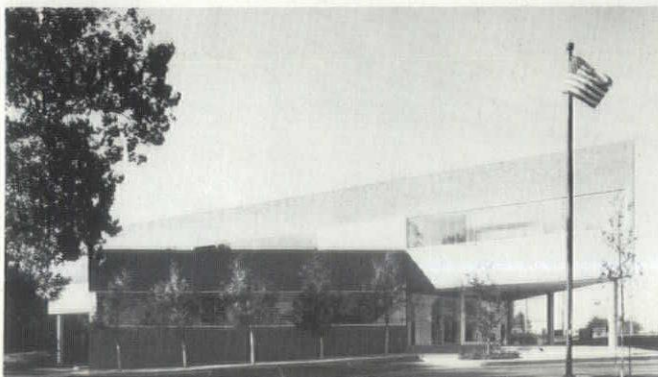
JURY COMMENTS:

This convention facility makes a very positive urban design contribution to its immediate urban environment. Its siting, orientation, and approach spaces are sensibly resolved. It has excellent character as a public building. The interior spaces and graphics are appropriate and accommodating. The Jury expressed doubt regarding the clarity of the structure, and the arbitrariness of some of the interior details.



HONOR AWARD

American Federal Savings and Loan Association
Merle Hay Office/Des Moines
Charles Herbert and Associates, Inc./Des Moines



OWNER: American Federal Savings and Loan Association

CONSULTANTS: James W. Wilson -
Structural Engineer
Frank Pulley Associates
- Mechanical/Electrical Engineer

CONTRACTOR: Vawter and Walter, Inc.

PHOTOGRAPHER: Charles Herbert and Associates, Inc.

JURY COMMENTS:

Among the numerous banks submitted in this submission, this project achieved a vivid, sensitive and memorable expression. Although the fashionable 45° cut plan seemed perhaps as arbitrary as many others, the integration of these forms and spaces in an articulate consistent architectural vocabulary was notable.

MERIT AWARD

Brenton Financial Center/Cedar Rapids Charles Herbert and Associates, Inc./Des Moines

OWNER: Brenton Banks, Inc., Des Moines

CONSULTANTS: VanderLinden and Associates, Inc. -
Structural Engineer
Kimmel-Jensen-
Wegerer-Wray -
Mechanical/Electrical Engineer

CONTRACTORS: Abell-Howe Company -
General Charipar
Plumbing, Inc. -
Mechanical Justice
Electric - Electrical

PHOTOGRAPHER: Charles Herbert and Associates, Inc.

JURY COMMENTS:

The Jury admired particularly the consistency in the handling of the exterior envelope, and the interior spaces. Although the plan pattern appeared to be formed into the 45° triangle which reoccurred frequently in this submission, the rectilinear site characteristic was retained and reinforced by retaining four perimeter corners. The Jury felt the justification of the plan organization to be ambiguous.



Ottumwa Clinic/Ottumwa Durrant-Deininger-Dommer-Kramer-Gordon, P.C./Dubuque

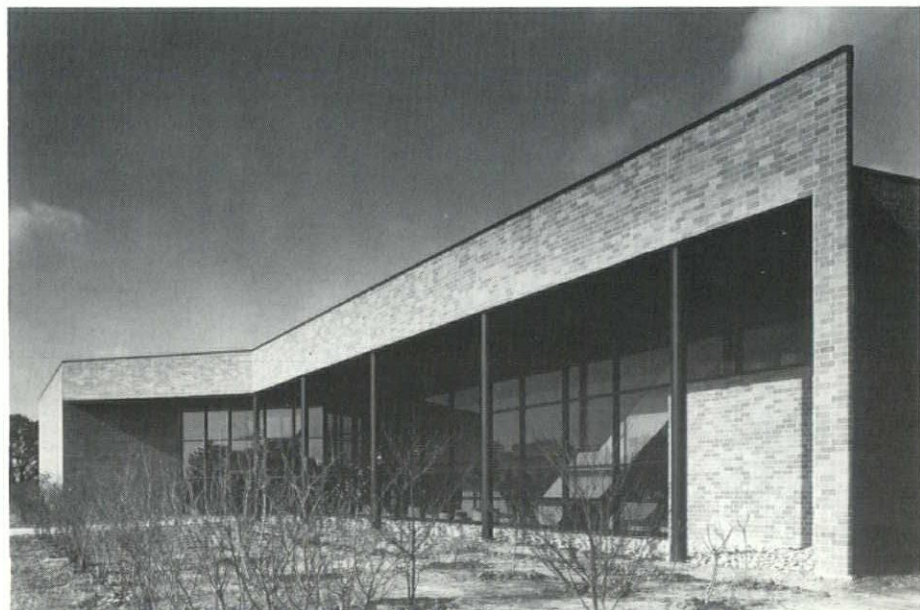
OWNER: Ottumwa Medical Clinic, Inc.
LANDSCAPE ARCHITECT: The Design Collaborative
at Ames

CONTRACTORS: General Construction
Walter A. Zlogar, Inc.
Ottumwa
Mechanical Construction
People's Plumbing & Heating
Ottumwa
Electrical Construction
Robertson Electric
Ottumwa

PHOTOGRAPHERS: Joel Strasser
Bill Bicksler

JURY COMMENTS:

The linear organization of this medical clinic is very convincing. Specialty clinics are located off a linear two-level concourse to provide legibility and accessibility to the public. Expandability is inherent. The Jury was troubled by a degree of visual clutter in the interior spaces off the spine which would tend to confuse and obliterate the legibility of the directional graphics for each of the clinics.



MERIT AWARD

Elwick Vacation House/ Bequia, St. Vincent, West Indies
McConnell.Steveley.Anderson
Architects & Planners, P.C./Cedar Rapids

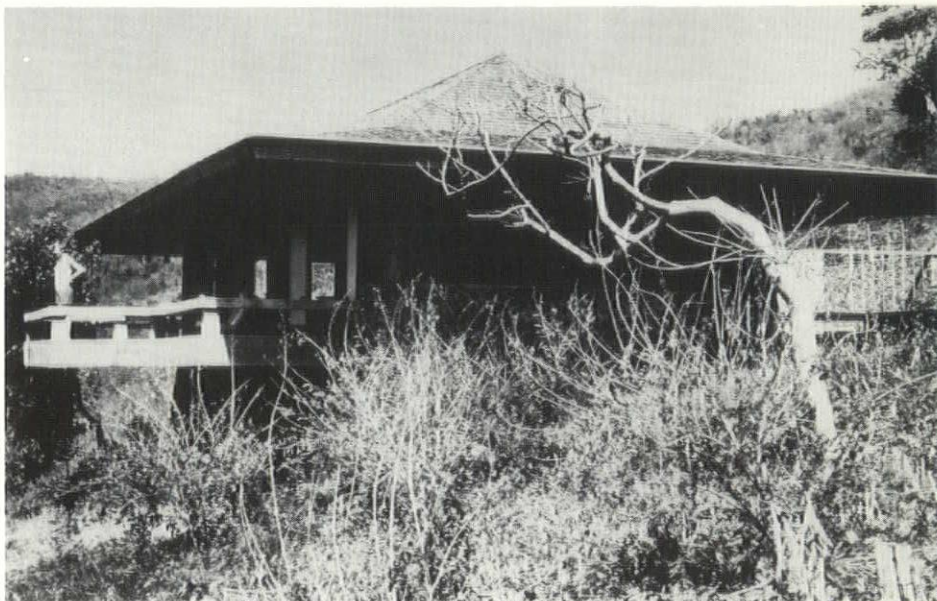
OWNER: Mr. and Mrs. Keith Elwick

CONTRACTOR: Julian McIntosh
Bequia, St. Vincent
West Indies

PHOTOGRAPHER: McConnell.Steveley.
Anderson, P.C.

JURY COMMENTS:

This small vacation house in the Caribbean was admired for its indigenous qualities. The form, space, structure, and materials all echo and reflect appropriateness to local context. The Jury was disturbed by the character of the furnishings, and tried to make its assessment of the project discounting their impact.



Administration/Operations Center
Muscatine Power & Water/Muscatine
Hansen Lind Meyer/Iowa City

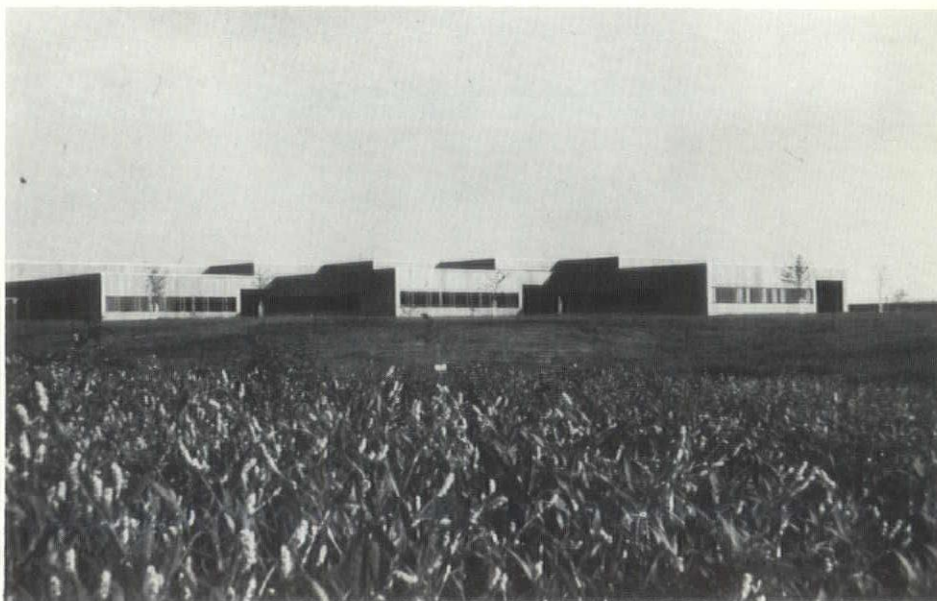
OWNER: Muscatine Power & Water

CONTRACTOR: Adolfson & Peterson,
Inc.

PHOTOGRAPHER: Edward A. Stewart

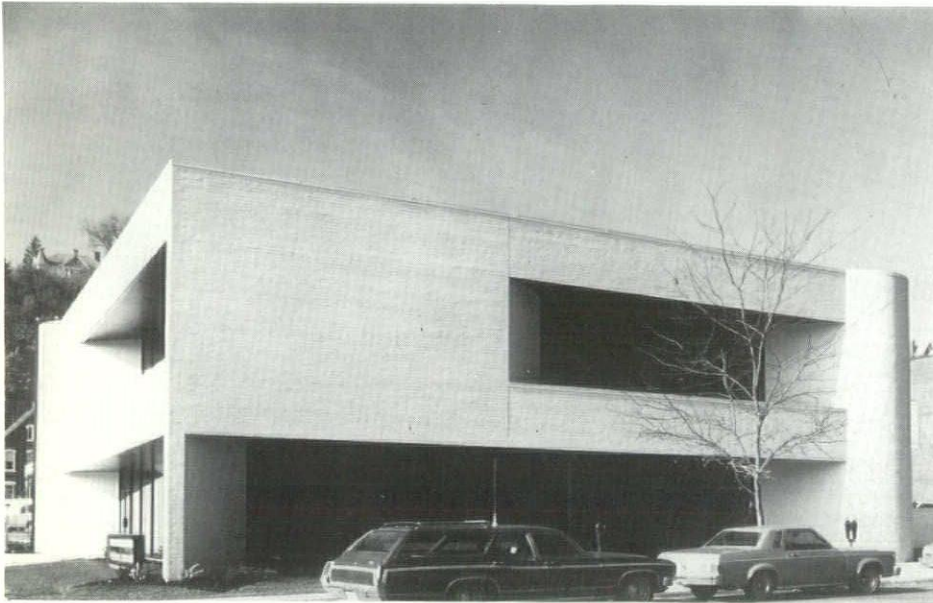
JURY COMMENTS:

The care and consistency in handling this office-warehouse facility elevates it well above the marketplace standard which characterizes so much of this building type. The principle public lobby space is clear and memorable. The consistency of form and expression for both office and warehouse functions is admirable.



MERIT AWARD

Clinton Federal Savings & Loan, Dubuque Office/Dubuque
Durrant-Deiningner-Dommer-Kramer-Gordon, P.C./Dubuque



OWNER: Clinton Federal Savings & Loan Association

CONSTRUCTION MANAGER: Durra-Built, Inc. Dubuque

PHOTOGRAPHERS: Joel Strasser
Durrant-Deiningner-Dommer-Kramer-Gordon, P.C.
Bill Bicksler

JURY COMMENTS:

The visual impact which is achieved through the simplicity of this small bank is memorable. The interiors are elegant and give an impression of amenity and simplicity. This project was selected in contrast to the great many bank proposals which gas an impression of being overly complex and contrived.

“Outside Architecture”



The 1977 Iowa Chapter American Institute of Architects annual convention was planned to be something a little different: a new convention center, a new hotel, an early morning start, more exhibitors, lower prices, more profits, a wife's tour, surprise awards, a feast, a band, a bus, and a program with a base of interest beyond the profession alone. The response exceeded expectations. Preregistrations totaled nearly 190 not including wives, students, guests, or exhibitors. This was almost a 50% increase over last year.

Unfortunately, Des Moines' largest snowfall of the year occurred Thursday, January 27 as everyone was traveling to the convention. This caused many hardships including the loss of speaker Stuart Dawson of Sasaki Associates who spent the convention in a Chicago airport, but the turnout was still amazing.

Early Friday morning conventioners boarded a bus at Webster Inn and at 8:30 a.m. Don Tompkins and Jerry Campbell of SWA Group played their visual odyssey to a capacity crowd of approximately 280 people in the theatre at Drake University, Olmsted Center. Following a short break Iowa State University architecture department head Sanford Greenfield introduced his friend and feature speaker Paul Spreiregen who packed an education in planning history into his speech about the establishment of "Mayo Clinics" on design and planning.

The program paused while Producers Council sponsored a free lunch for all the architects, who were then encouraged to visit the



all makes is helping designers and architects
thrust the business environment into tomorrow.

Sometimes it's hard to imagine the great number of offices today that still look and work like they did 40 years ago. But they're out there. You know. You see them every day. Changing this represents a challenge---ours and yours. We're responding with new, innovative additions to our office in-

teriors systems. But we don't stop there. We're equipped to equip any office down to the last pencil.

all makes is meeting the challenge of the future business environment head on. Consult us the next time you're planning an office. We'll help you do it esthetically and efficiently.

all makes office equipment co.

DES MOINES---401 GRAND AVE. (282-2166)

- fine office furniture
- office machines
- office equipment

30 exhibitors displaying their products. Meanwhile, the wives were lunching at the Des Moines Club on the top of the Ruan Center overlooking Des Moines, prior to their guided tour of the Art Center.

The morning program had given philosophies of the best from both coasts; the afternoon speaker brought it home to Iowa. If you didn't have an appreciation or concern for the place you live, you would have after Damon Ohlerking of Eagle Grove finished his plea. Emotions were still high as the day's speakers gathered for dialogue with the overflow crowd.

The outstanding awards jury of John Rauma, James Stageberg, and Bruce Abrahamson from Minneapolis concluded the day's program with a candid review of 19 projects selected for a traveling photographic display. Of the record 60 entries, 9 were given awards. The winners were kept secret and announced during the evening cocktail party sponsored by National Electrical Contractors Association and Mechanical Contractors Association of Iowa.

Finally, the smorgasbord was unveiled and after thorough instructions on how to casually approach the table, everyone attacked; the only thing left was the ice fish. The band played, the balloons filled the air, the banners came down, and it was a credit to anyone who made it to the business meeting on Saturday morning.

If the convention was anything, it was full. Perhaps too full to allow sufficient circulation to the exhibitors who are supporting a good portion of the convention. The convention may have to expand to accommodate everything properly.

Planning something different is a complex and time consuming process; "thank you" to all who helped. The efforts are made worthwhile only when they can be shared and appreciated by others. The fantastic response by employers, employees and related professionals expanded the attendance and base of interest at the convention; if everyone took something home from the program, then it was a success.

The Committee.

Contractors Steel Corporation

"Products For Concrete"

welded wire fabric
structural steel
reinforcing steel
paving accessories
forming products
bar supports
curing and sealing compounds
joint sealants
nails and wire
polyethylene film
fiber forms
expansion joint fillers
grouts and hardeners
admixtures
bonding agents
epoxy coatings
waterproofing materials —
membrane and coatings

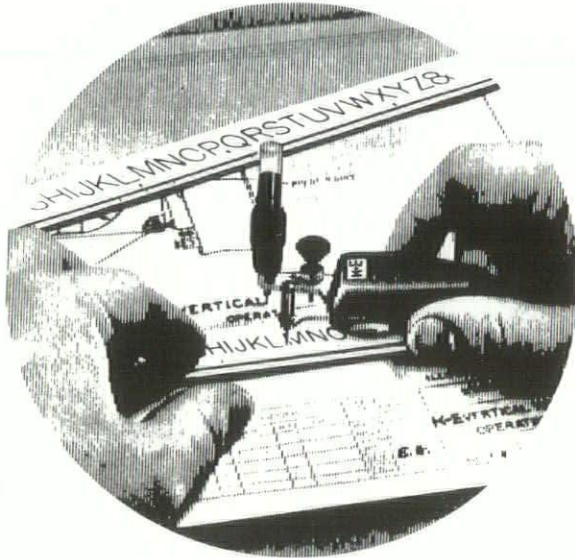
■ ENGINEERING AND TECHNICAL SERVICES PROVIDED ■

contractors steel corporation

1901 Easton Blvd.
P.O. Box 1696
Des Moines, Iowa 50306
(515) 265-6123



TELEDYNE POST



K+E Keuffel & Esser Company

Complete Photographic
Service

Including:

Reduced Negatives
And
Projection Positives

SERVICE PHOTOPRINT

707 Locust Street

Des Moines, Iowa 50309

Phone 515/288-1927

St Charles /

the one source for kitchens
for builders of multi-unit housing

An important influencing factor when leasing or buying multi-unit housing is often the quality and convenience features of the kitchen.

A number of factors will be considered: the beauty and styling, the practical side, the helpful extra features and the quality level of the engineering and workmanship. Of great importance will be the size and convenience of the storage facilities. A kitchen with these distinctive features can therefore, be the prospect's deciding factor in leasing or buying.

CONVENIENCE

Special purpose storage units, accessories and functional convenience features make every area of the kitchen more enjoyable and totally workable.

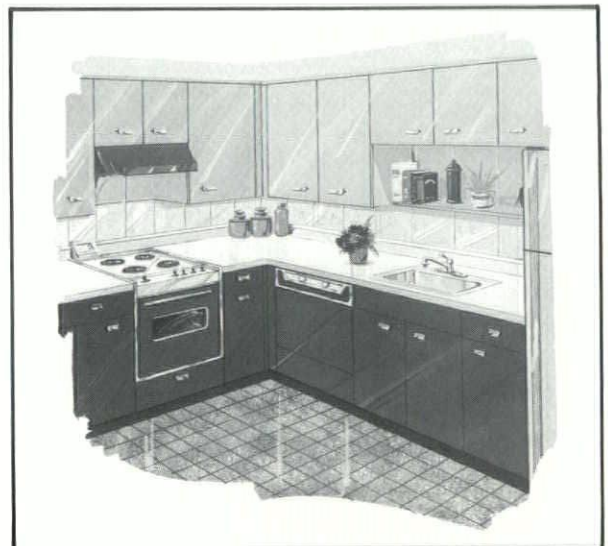
APPEARANCE

A wide variety of styles, materials and finishes are available.

DURABILITY AND STRENGTH

Furniture steel construction and expert engineering and craftsmanship assure trouble-free performance through a lifetime of use.

Also distributors for **Dwyer Kitchens** in lifetime porcelain and **Rutt All Wood Kitchens**.



Design and installation available
on all of our products.

St Charles

FASHION KITCHENS

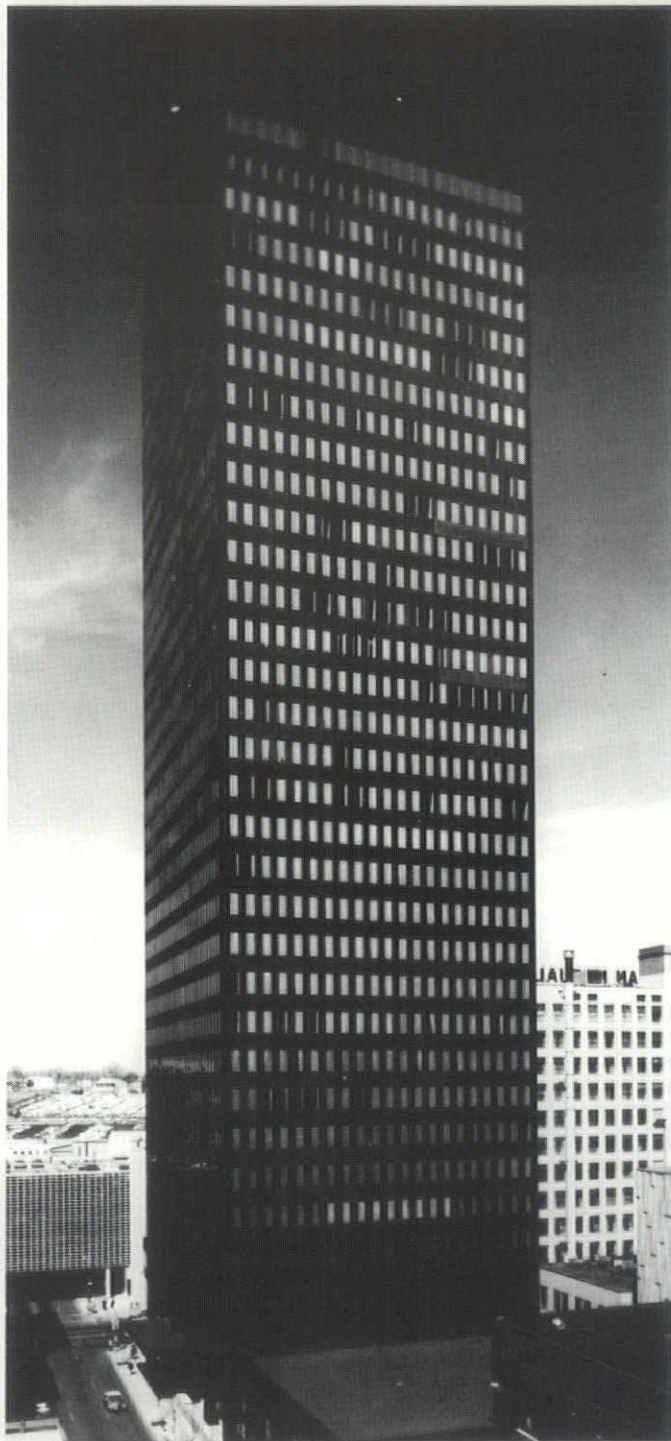
NDS Company

Negley Design & Sales Company

3829 Merle Hay Road
Des Moines

HAYDITE

"THE ORIGINAL LIGHTWEIGHT AGGREGATE"



ANOTHER EXAMPLE OF WEIGHT-REDUCING, COST - CUTTING LIGHTWEIGHT HAYDITE CONCRETE.

Ruan Center, Des Moines, Iowa, offers impressive testimony to the ever-increasing use of lightweight Haydite concrete to reduce dead-loads and consequently, costs.

In the Ruan Center this was accomplished by using 7,500 cubic yards of 4,000 psi, 110 lb. per cu. ft. lightweight* Haydite concrete in the floors and 150,000 Haydite blocks in the elevator shaft walls.

With solid savings through weight reduction, Haydite also offers improved fire rating, insulation and acoustics . . . all without sacrificing strength or appearance. For specific information, contact your local supplier or call direct.

*Some natural sand included.

CARTER

WATERS

CONSTRUCTION MATERIALS

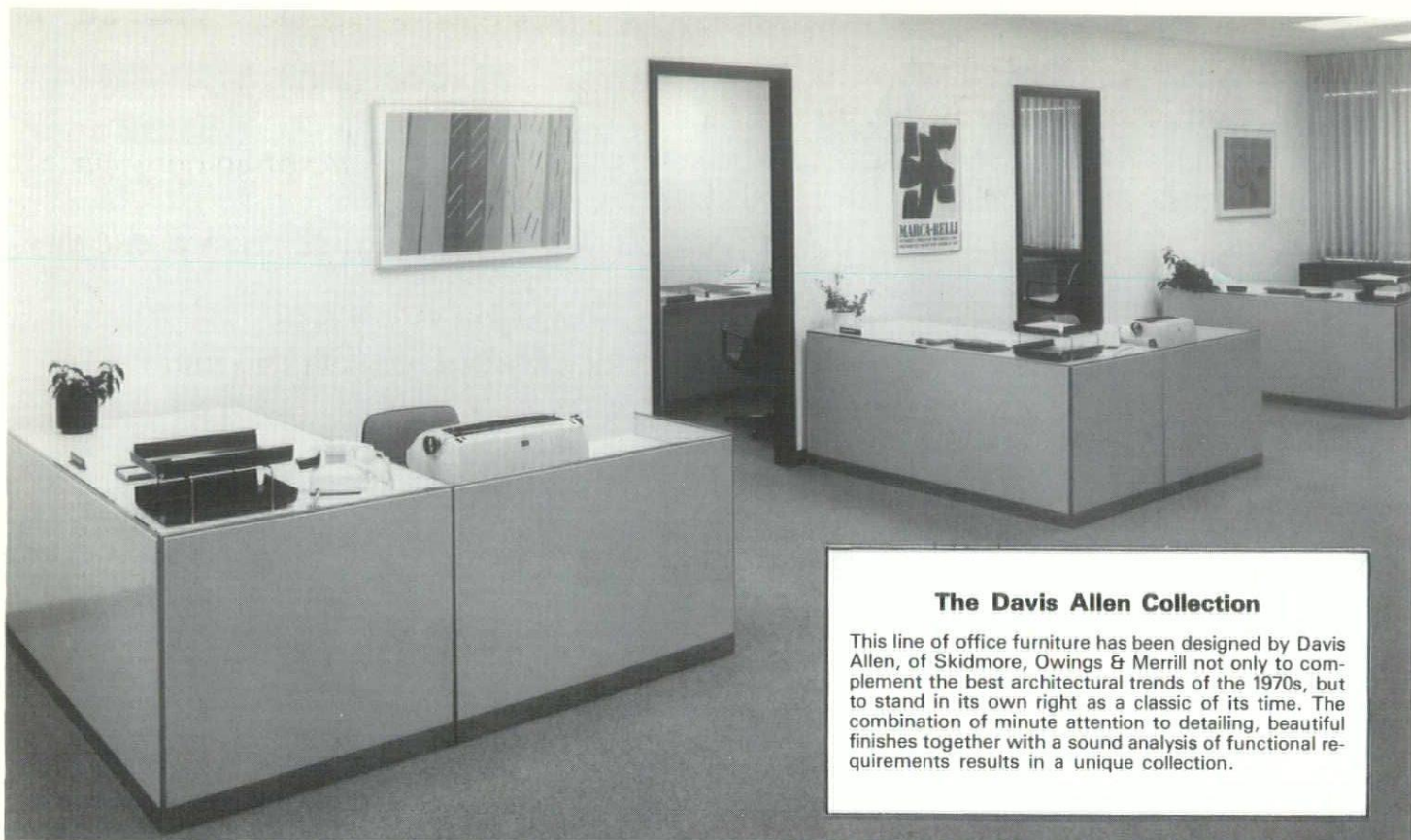
Producers of lightweight Haydite aggregate at
New Market, Missouri and Centerville, Iowa.

2440 WEST PENNWAY
POST OFFICE BOX 19676
KANSAS CITY, MO. 64141
PHONE: 816 - 471 - 2570

ARCHITECT
KENDALL GRIFFITH RUSSELL ARTIAGA
ARCHITECTS ENGINEERS PLANNERS, INC.
DES MOINES, IOWA

ENGINEER
VANDERLINDEN & DENNIS, INC.
DES MOINES, IOWA
RITTWEGER & TOKAY, INC.
PARK RIDGE, ILLINOIS

CONTRACTOR
NEUMANN BROTHERS, INC.
DES MOINES, IOWA
READY MIX
WHITE CENTRAL CONCRETE CO.
DES MOINES, IOWA
BLOCKS
DEMCO, INC.
DES MOINES, IOWA



The Davis Allen Collection

This line of office furniture has been designed by Davis Allen, of Skidmore, Owings & Merrill not only to complement the best architectural trends of the 1970s, but to stand in its own right as a classic of its time. The combination of minute attention to detailing, beautiful finishes together with a sound analysis of functional requirements results in a unique collection.



KOCH BROTHERS 325 Grand Des Moines, Iowa 50308 (515)283-2451

CAN ★ TEX
INDUSTRIES
BRICK & TILE
DIVISION

FACE BRICK
FLOOR BRICK
GLAZED
BRICK

101 ASHWORTH ROAD
WEST DES MOINES, IOWA 50265

A DIVISION OF **Harsco** CORPORATION

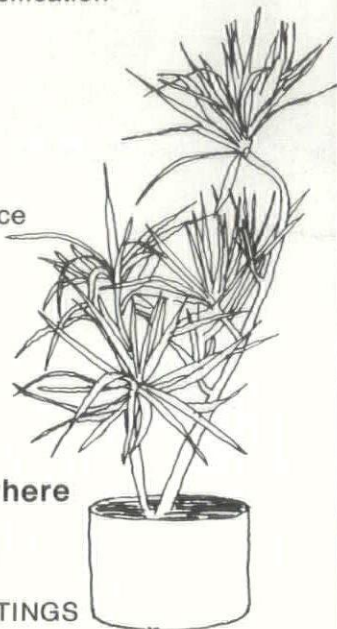
WE HAVE
QUALITY
PRODUCTS,
EXPERIENCED
PERSONNEL,
FULL SERVICE &
LOCAL
DISTRIBUTORS

CALL OUR SALES OFFICE
515/274-9174

HAWKINS INTERIOR PLANTINGS "Complete Plant Service"

- Design-Selection-Specification
- Installation
- Maintenance

- Acclimatized
- Healthy Specimens
- Professional,
Educated Experience



You see our work everywhere
"It Thrives"

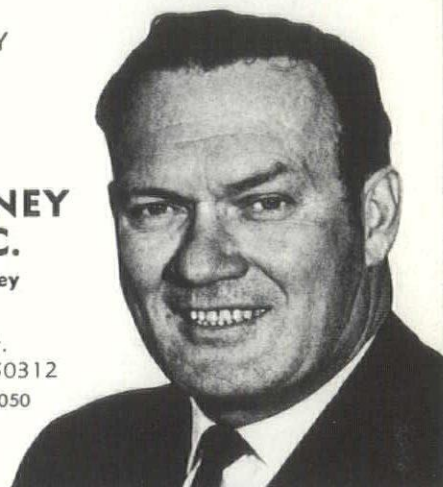
DICK VOLKAMER A.A.F.
HAWKINS INTERIOR PLANTINGS
HAWKINS GREENHOUSE
4270 6TH AVE • DES MOINES, IOWA 50313
515-288-4831

- PARKER MIRRORS AND WASHROOM EQUIPMENT
- HALSEY TAYLOR ELECTRIC COOLERS AND FOUNTAINS
- SNYDER FIBERGLASS TUB AND SHOWER COMBINATIONS
- SLOAN FLUSH VALVES
- ALUMINUM PLUMBING FIXTURES
- SYMMONS SHOWER VALVES
- DAVIS EFFICIENCY KITCHENS

L. J. SWEENEY & ASSOC.

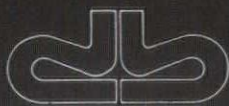
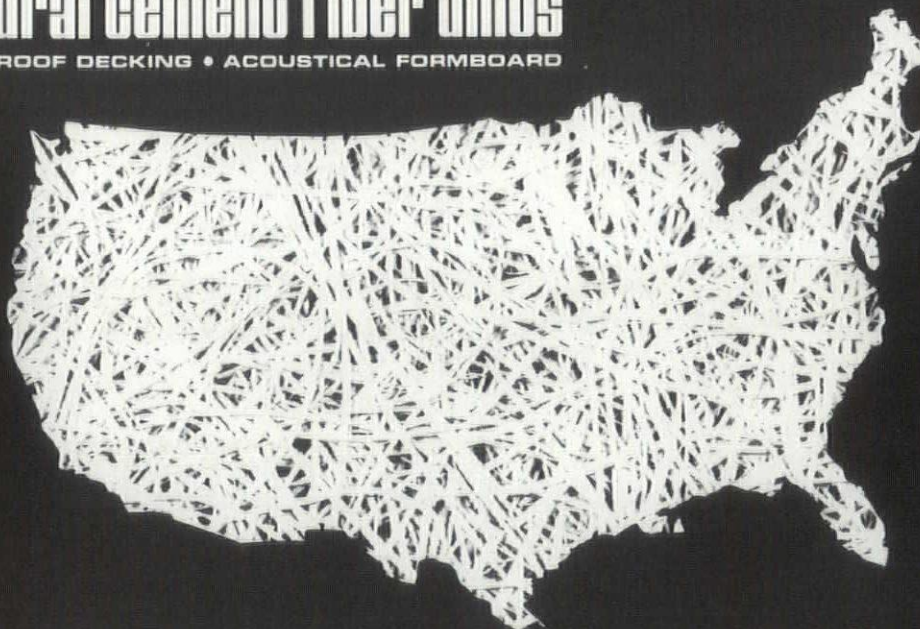
"Buck" Sweeney

518 - 35th St.
Des Moines, Iowa 50312
Phone: 515/274-2050



PetriCal® structural cement fiber units

ACOUSTICAL ROOF DECKING • ACOUSTICAL FORMBOARD



david bear inc.
construction components

DES MOINES, IOWA
PHONE 515/278-1621


PDOQ

Power Demands Quality . . . the kind of quality you'll find in Caterpillar industrial engines from Gibbs/Cook. Caterpillar offers reliable, economical engines to supply independent power for almost any industrial or commercial need. And Caterpillar performance is backed up by Gibbs/Cook Total Product Support. Gibbs/Cook offers you PDQ service and parts supply from four Iowa locations — Des Moines, Fort Dodge, Mason City and Postville. Caterpillar and Gibbs/Cook . . . a powerful combination.



GIBBS/COOK

YOUR **CATERPILLAR** DEALER

Caterpillar, Cat and  are Trademarks of Caterpillar Tractor Co.



Steel Case 9000 Series
Easy To Plan-Easy To Change



STOREY - KENWORTHY COMPANY

309 LOCUST STREET - DES MOINES, IOWA 50309 - (515) 288-3243



THE TIME TESTED TILE



Monray Roof Tile is the product of 30 years of manufacturing expertise and has been tested in every climatic condition around the world.

That's why Monray successfully meets the challenge of weather extremes, and stays beautiful, strong, and weather-tight year after year after year.

If you want the economy of quality, a long-lasting, incombustible roof, in a choice of beautiful colors — Red, Adobe, Terracotta, Gray, Blue, White or Charcoal — you'll choose time-tested Monray Tile.

FOR MORE INFORMATION CALL:

CONCRETE PRODUCTS INC.

2222 E. THIRD ST. SIOUX CITY, IOWA PH. (712) 252-4251

AMERICAN INSTITUTE OF
ARCHITECTS LIBRARY
1735 NEW YORK AVENUE N. W.
WASHINGTON, D. C. 20006

Distributors Of Quality **SPECIFIED BUILDING** Products

Divisions 3 thru 13

- | | |
|------------------------------------|------------------------|
| ✓ Concrete | ✓ Doors & Windows |
| ✓ Masonry | ✓ Finishes |
| ✓ Metals | ✓ Specialties |
| ✓ Wood & Plastics | ✓ Equipment |
| ✓ Thermal & Moisture
Protection | ✓ Special Construction |

Rock Island, Illinois
309-788-8412
619-11th Street

Des Moines, Iowa
515-243-6286
510 S.W. 9th St.

STETSON BUILDING PRODUCTS

SBP