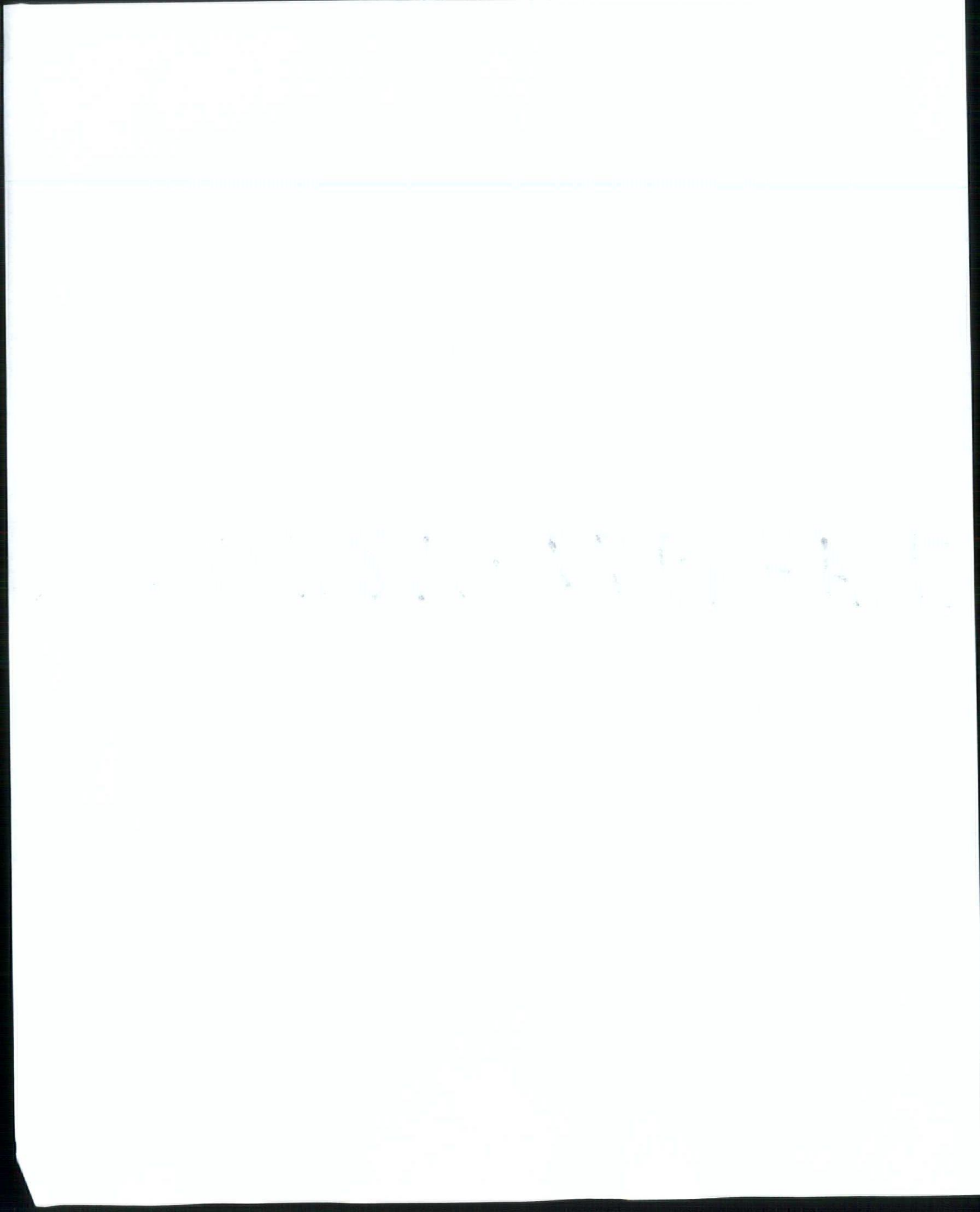


IA-1979-NOV./DEC.



IOWA ARCHITECT

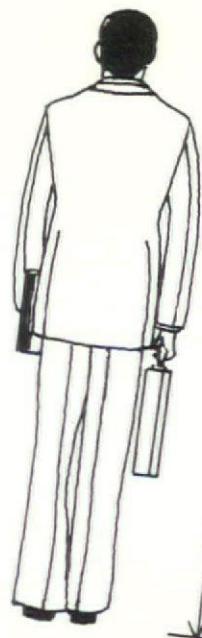
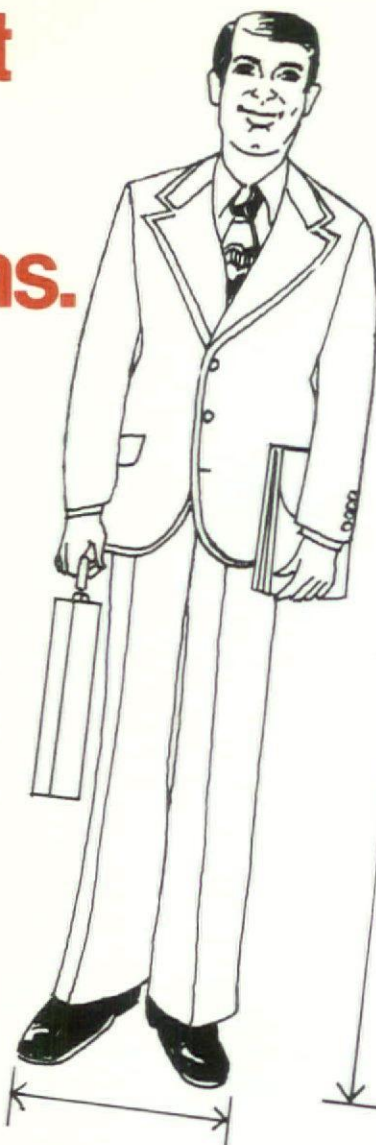
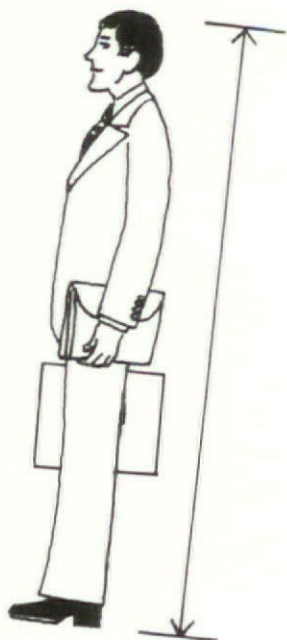
NOVEMBER/DECEMBER

The American Institute of Architects
Library
1735 New York Avenue, NW
Washington, DC 20006

ALIA
ROBERT E. KOELLER, EDITOR

1979 DESIGN AWARDS ISSUE

This expert belongs in your plans.



NORTHWESTERN BELL BUILDING INDUSTRY CONSULTANT	
ELEVATION	TOP LEVEL
PLAN VIEW	UNLIMITED

A Northwestern Bell Building Industry Consultant will help you pre plan your communication facilities.

Northwestern Bell Building Industry Consultants are specialists who talk your language. They know construction procedures and they know communications techniques and procedures that will simplify your jobs -- and help keep your clients happy.

Modern buildings call for modern communications: telephone, data, teletypewriter, video. If these are planned for early -- well before the blueprint stage -- expensive alterations can often be avoided later on when the occupants'

communications needs of today may be obsolete before it's finished.

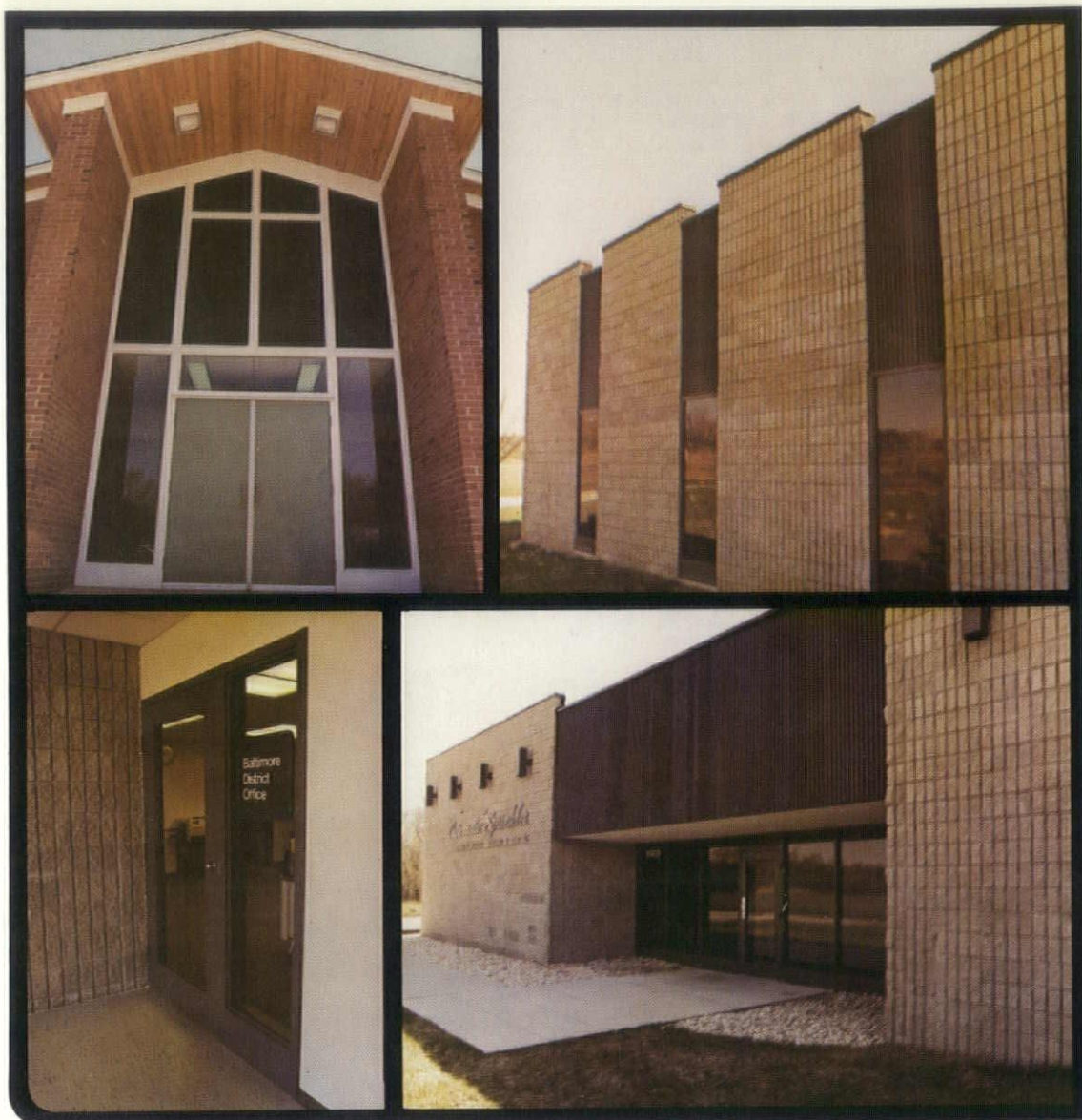
No matter what kind of building you're planning - talk to a Northwestern Bell Building Industry Consultant first - the number in your telephone book.

Best news of all: there's no extra charge for this service.



Northwestern Bell

AMWELD



Strength, Beauty and Quiet Operation make them America's Favorite Steel Door

We Specialize in Quality Metal Doors and Frames

Our company believes that Life Cycle Costing is the most important way in planning construction to insure maximum value for your dollars. A well weatherstripped opening assembly with an insulated door guarantees energy conservation. We provide the architect information to help expedite the construction and to insure minimum heat/cooling losses.

We Also Furnish and Service These Fine Commercial Products

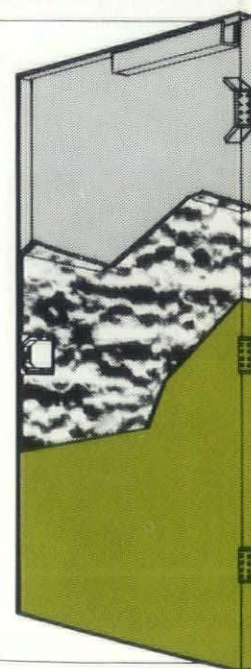
- Midwestern Steel Joists • J. G. Wilson Rolling Doors • Peelle Pass Windows
- Russwin Architectural Doorware • Dur-Red Roof Accessories

Metal Doors & Frames Co.

1407 21ST STREET • DES MOINES, IA. 50311



Call
515/280-8793
515/280-9034



AMWELD Doors are all projection-welded throughout, a truly rigid structure with a smooth, handsome exterior. The core is Polystyrene, quiet...mildew and rot resistant.

We Specialize in
**CONTRACT
 CARPETING**

WITH THE MOST
**Complete Selection
 From Best Known
 Commercial Carpet
 Mill Sources**



★ WE HAVE EXPERIENCE AND
 "KNOW HOW" — YOU CAN COUNT
 ON GETTING A GOOD JOB

NEGOTIATED BIDS—OUR SPECIALTY • UNION MEN USED ON UNION CONTRACTS
 NO JOB TOO BIG • NO JOB TOO SMALL



VISIT OUR SHOWROOMS

Home carpet

2453 S.W. 9th Street • Des Moines, Iowa 50315 • Phone 515/243-2161

ia

IOWA ARCHITECT

Volume 26 Number 6
November/December
1979

The IOWA ARCHITECT is the official publication of the Iowa Chapter, American Institute of Architects. It is published bi-monthly for the Iowa Chapter by Midwest Advertising Service, 2607 Douglas Avenue, Des Moines, Ia. 50310. Application to mail at controlled circulation rates is pending at Des Moines, Ia.

Send all address changes (Form 3579) to: Ia. Chap. A.I.A., 621 Des Moines Savings Building, Des Moines, Ia. 50309

Editor:
Ryan Shiffler, AIA

Managing Editor:
Julian Serrill

Publisher:
Midwest Advertising Ser.,
Des Moines

Editorial Staff:
Edward Soenke, AIA
H. Ronald Walker, AIA
Joseph Kobes, AIA
Mark Schmidt, AIA
David L. Andersen, AIA

Iowa Chapter American
Institute of Architects
President:
Tom Clause, AIA
Des Moines

1st Vice President and
President Elect:
Kenneth Steffen, AIA
Dttumwa

2nd Vice President:
James Wilkins, AIA
Des Moines

Secretary:
Kirk Colvig, AIA
Des Moines

Cover Credit:
Roy J. Carver Pavilion
University of Iowa Hospitals and Clinics
Iowa City, Iowa
Hansen Lind Meyer, P.C.

Treasurer:
James I. Dwinell, AIA
Des Moines

Directors:
John Ratcliffe, AIA
Des Moines
William D. Lee, AIA
Ames
Richard Kruse, AIA
Iowa City

Ex Officio:
Wayne J. Snyder, AIA
Waterloo

Des Moines Architects
Council President:
Howard Pals, AIA

Cedar Rapids/Iowa City
Architects Council:
Edward Sauter, AIA
Cedar Rapids
Eastern Iowa Section
President
John Gere, AIA
Davenport

N. W. Iowa Section
Kenneth Keith AIA
Sioux City

9

The Jury

10

Award Winners

22

Additional Entries

25

News

The Best Insulation For Residential Construction

RESINATE™ CPR® 888

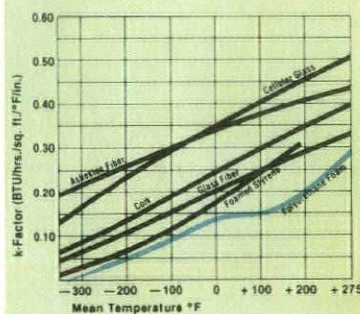
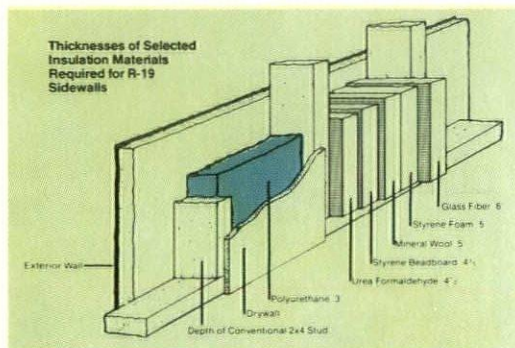
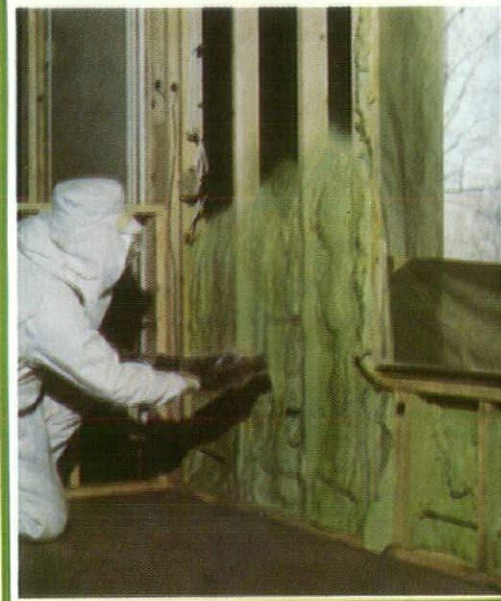


BY
Upjohn

Resinate CPR 888 insulation is a PAPI® based, fluorocarbon blown, low density rigid polyurethane insulation material specifically designed to be spray-applied in new residential construction. Properly installed by a qualified applicator, it conforms to basic building codes and can meet federal energy requirements as well as those of most state and local authorities.

The purpose of Resinate CPR 888 insulation is to combine with other building materials to provide a sealed environment for the homeowner that is safe, comfortable, and that conserves energy.

- **Controls Air Infiltration**... seals the exterior walls and fills the gaps, stopping the entrance of energy-consuming air.
- **Reduces Convection Currents Within the Wall**... a warmer/cooler inner surface to the living areas reduces the temperature difference and minimizes heating or cooling of outside air.
- **Minimizes Infestation**... many insects and pests will not penetrate this inert material. Sealing discourages access.
- **Controls Condensation**... there is a lower potential for condensation because of the warmer surfaces within the wall cavity.
- **Insulates Better**... the highest R-value of all residential insulation. Provides more thermal resistance per inch than other types of insulation material.



THERMAL PROPERTIES

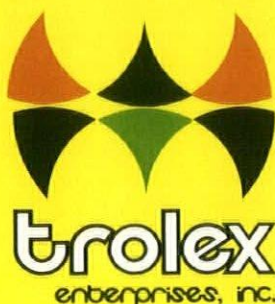
Design R-value per inch equals 1/k
ASTM C 177-76
@ 75°F (24°C) R = 6.25 (aged)
Design R @ 1" = 6.25*
Design R @ 2" = 12.50*
Design R @ 3.5" = 21.88*
(Full Stud Hugger)

*Values for foam thickness only.
k, C, and R value vary with age.

WE HAVE RESINATE CPR 888 IN OUR WAREHOUSE FOR APPLICATION ON YOUR SITE

We are also Qualified Applicators for:

Gates Engineering Chemetics, Inc. Neogard Witco Chemical Foam Systems
Carpenter Chemical Anchor Coatings Era Corporation



*Our Personnel are trained to get the Job
done quickly and professionally*

**URETHANE INSULATION & ROOFING
ELASTOMERIC COATINGS**

322 E. Court

Des Moines, IA 50309

515/282-0581

*Our Roof
System is
Capable of
Returning
your
Investment
in 5 Years!*

ELKAY...the name that means quality in

- Stainless Steel Sinks
- Faucets
- Water Coolers and Fountains
- Waste Food Disposers



LR-3322 SINK shown
with LK-2201 FAUCET



LK-2406 FAUCET

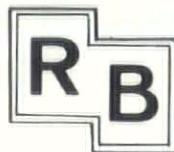


EWCA-SERIES
WALL COMPACT WATER COOLER



The POWERFUL Ones
WASTE FOOD DISPOSERS

**Represented In Iowa Exclusively By*



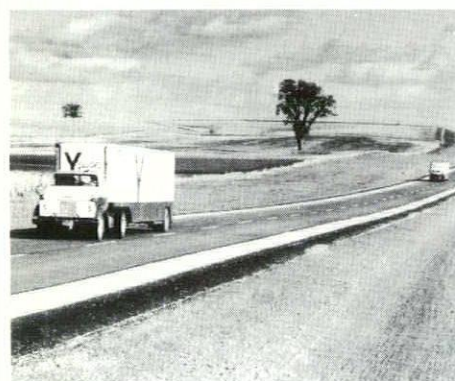
associates, inc.

MANUFACTURERS' REPRESENTATIVES

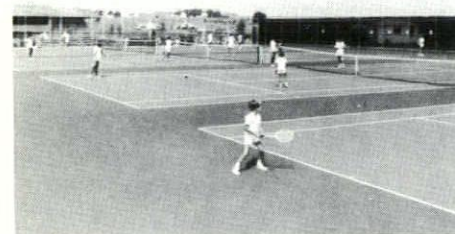
523 NORTHWESTERN • BOX 688 • 515/232-3338 • AMES, IOWA 50010



100% recyclable.



Asphalt Paving!



APAI and Quality Paving

The ultimate quality of your asphalt paving project is directly related to the experience, skill and equipment of the contractor doing the work. That's why the Asphalt Paving Association of Iowa urges you to contact an APAI member in your area about your project. All APAI members are experienced and reliable. Check your Yellow Pages under Asphalt & Asphalt Products.

Full-depth asphalt pavement is the quality product that can be used over and over again — to save you money. Because asphalt is 100% recyclable. Old pavement can be ground up, reheated, remixed and reshaped to stretch **commercial or tax** dollars spent on materials.

In one Iowa county, it was estimated that asphalt recycling saved \$20,000 per mile on a secondary road improvement project!

So when you decide to use strong, dependable full-depth asphalt pavement on your city streets, parking lots, tennis courts and other surfaces — remember that it's more than just a good quality building material. It's an investment. And it'll pay off in big dividends when it comes time to renew it after a long, useful life.

Quality asphalt pavement. Pave with it now. Reuse it years later. Save money.



Asphalt Paving Association of Iowa

541 - 31st Street
Des Moines, Iowa 50312 • 515 244-3127

DESIGN AWARDS 1979

THE JURY



Helmut Jahn

was born in Nuremberg, Germany. He studied at the Technische Hochschule in Munich and the Illinois Institute of Technology. Mr. Jahn worked with P. C. von Seidlein from 1965 to 1966 and began work with C. F. Murphy Associates in Chicago, Illinois in 1967. In 1973 he became a partner and director in charge of planning and design. He has worked on many well publicized buildings, which include the Kemper Arena, Kansas City, Missouri; the Michigan City Library, Michigan City, Indiana; St. Mary's Athletic Facility, South Bend, Indiana; and the Rust-Oleum Corporation Headquarters, Vernon Hills, Illinois. Helmut Jahn has been published frequently and has lectured across the world.



James Nagle

was born in Iowa City and studied at Stanford University, the Massachusetts Institute of Technology and the Harvard Graduate School of Design. He received a Fulbright Scholarship to the Netherlands in 1964. Mr. Nagle has served on numerous National AIA committees and has been a visiting lecturer and critic at the University of Illinois, Chicago Circle Campus, Washington University, University of Manitoba and the University of Nebraska. He is currently a partner with Booth Nagle & Hartray/Ltd. Architects and Planners.

Thomas Beeby

received his education at Cornell University and Yale University. He was an associate with C. F. Murphy before joining James Hammond, FAIA to create Hammond Beeby and Associates. Mr. Beeby is an associate professor at the Illinois Institute of Technology and a partner in the firm Hammond Beeby Babka, Inc. He has worked on many notable buildings, including: The First National Bank of Ripon, Ripon, Wisconsin; the Champaign Public Library, Champaign, Illinois; the Hewitt Associates General Offices, Lincolnshire, Illinois; and the Doane Observatory, Chicago, Illinois.

HONOR AWARD

Barbican
Des Moines, Iowa
Engelbrecht/Rice/Griffin Architects

DEVELOPER: 3920 Developers, Inc.

STRUCTURAL ENGINEER:

James W. Wilson, P.E.

GENERAL CONTRACTOR:

Ringland - Johnson - Crowley

PHOTOGRAPHERS: Julius Shulman

Jeff Ambrose

Ray Greco

SOLUTION: Forty-two condominiums are contained in this five acre site in a fashionable part of a small city. The form springs from the programmatic need for sixty interior garages, common space, and units to be positioned in such a way as to cause minimal disruption of the site. Additionally, the architects wished to produce an environment that reflected the unique nature of the site, with its urban and rural face, and to produce dwellings that offered a degree of internal character, even to the point of some modest eccentricity. Three trees were taken for construction.



HONOR AWARD

Northwestern Bell Data Center
Des Moines, Iowa
Charles Herbert & Associates, Inc.

OWNER: Northwestern Bell

CONTRACTOR: The Weitz Company, Inc.

PHOTOGRAPHER:

Paul Kivett

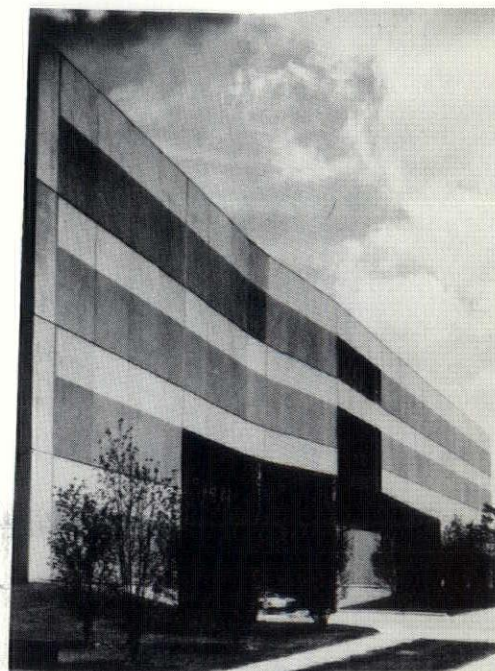
Charles Herbert & Associates

PROGRAM: The owner requested the maximum development of an inner-city urban renewal area site for the construction of a Data Center. It was stipulated that night shift personnel have a well-lit, secure area for their use.

Programming defined needs for two larger floors to house present and projected computer technology and two levels for accounting functions plus dining, medical and building service facilities. A partial level for storage and a mechanical penthouse completed the description.

SOLUTION: The form of the building is generated by the construction area between the parallel north and south property lines and the curving streets on each side. Pedestrian entrance is gained through a sky-lit lobby on the uphill portion of the site. Vehicles proceed to under-building parking.

Placement of the two largest floors containing computer hardware at the top of the building affords security and reduces vertical travel. Higher population glazed levels below are shaded by the windowless construction above.



HONOR AWARD

College Block Building
Bushnell's Turtle Restaurant/Apartments
Iowa City, Iowa
Hansen Lind Meyer, P.C.

OWNER: College Block Partners

CONTRACTORS:

Streb Construction Company

PHOTOGRAPHER:

Hansen Lind Meyer, P.C.

PROGRAM: To restore the exterior facade of this building to its original appearance, meeting the requirements for a building on the National Register of Historic Places.

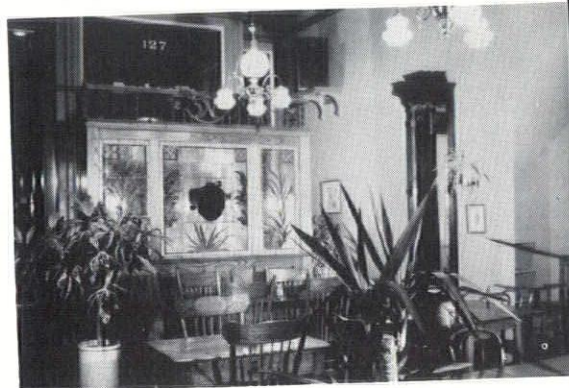
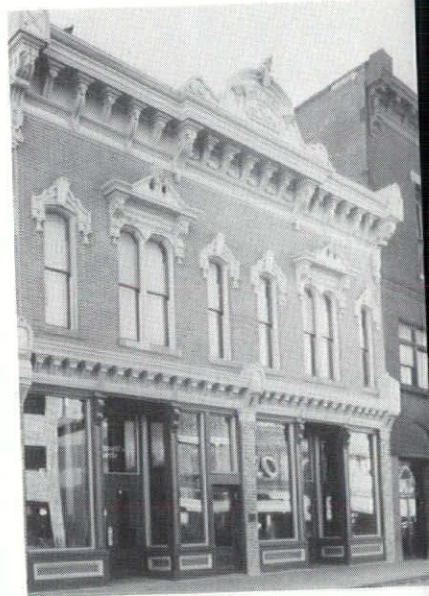
To design a restaurant facility consistent with the restored exterior of the building using owner-furnished antiques of the period.

To provide modern apartments on the second floor without disturbing the antique qualities of the building facade.

SOLUTION: The building is an excellent example of late 19th century Victorian architecture. Originally designed by architect Chauncey Lovelace, who had his offices on the 2nd floor, the building's facade provides an interesting display of ornamental pressed tin and heavy bracketed cornice.

Restoration was in harmony with the stringent requirements for buildings on the National Register of Historic Places. The only record of the original street facade was an 1880's photograph with little detail. The exterior design resulted from research on other buildings of the period and assistance from historical preservationists. Construction included repair, cleaning and reattaching metalwork. Painted masonry was scraped clean by hand and tuck pointed. Rotted window frames and sashes were duplicated and replaced.

After gutting the interior, a central brick bearing wall which divided the building into two equal parts was restructured to integrate the two sections of the restaurant. A period bar and back bar separate the public zone of the restaurant from the service and administrative areas. Great care was taken to place antique stained glass and furnishings in proper relationships to the spaces. New wood paneling was made to match owner-furnished antique paneling. Lighting fixtures and floor materials were provided consistent with decorative characteristics of the late 19th century.

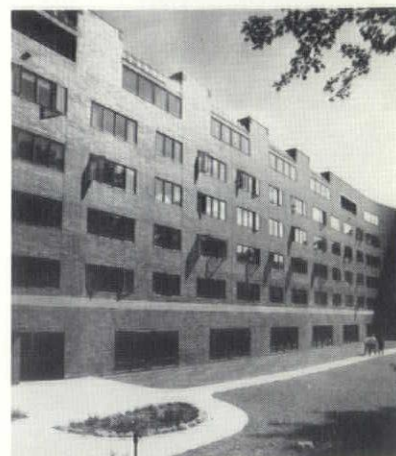
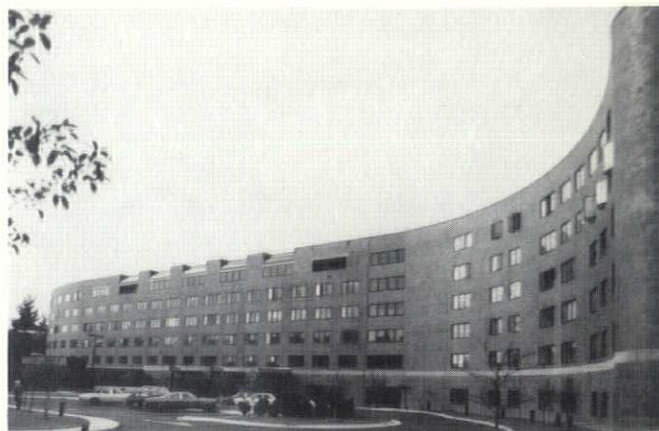


HONOR AWARD

Whitney Center
Hamden, Conn.
Engelbrecht/Rice/Griffin Architects

OWNER: Whitney Center
DEVELOPER: Life Care Services, Inc.
GENERAL CONTRACTOR:
H. Wales Lines Company
CONSTRUCTION MANAGER:
The Weitz Company, Inc.
PHOTOGRAPHER: Julius Shulman

SOLUTION: A retirement community incorporating two hundred dwelling units, a sixty bed nursing unit, and a large array of common spaces is the main program for this project and its ten acre site. Of course, the geometry of the property took its inevitable toll on the building form, but the six levels are used to gain access to a fine distant view via the roof garden, which contains half of the common area. A "street front - garden side" theme runs through the planning of the first floor of the building.



HONOR AWARD

Architect's Office Engelbrecht/Rice/Griffin
Des Moines, Iowa
Engelbrecht/Rice/Griffin Architects

OWNER & ARCHITECT:

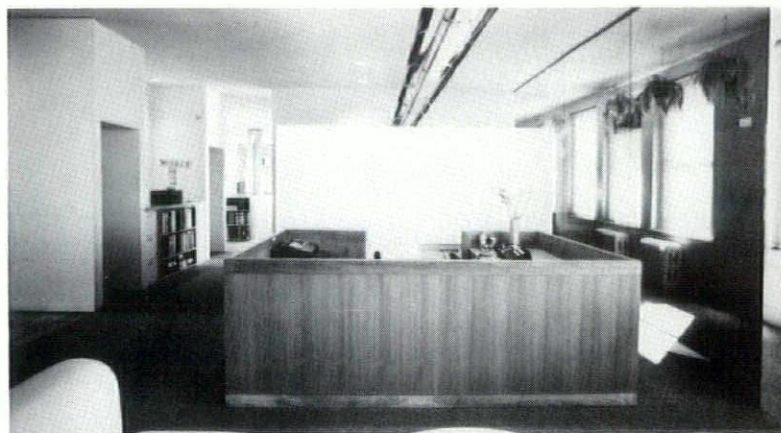
Engelbrecht/Rice/Griffin Architects, P.C.

CONTRACTOR:

Elview Construction Company

PHOTOGRAPHER: Julius Shulman

PROGRAM: The second level of an old building was selected for the context of a new office for architects because of the interesting views and light the shell provided. The design discipline, therefore, included the requirement to make these amenities available to the entire staff while expressing the hierarchical nature of the organization and its work habits.



HONOR AWARD

Remodeling of a Private Residence
Des Moines, Iowa
Cal Lewis
Charles Herbert & Associates, Inc.

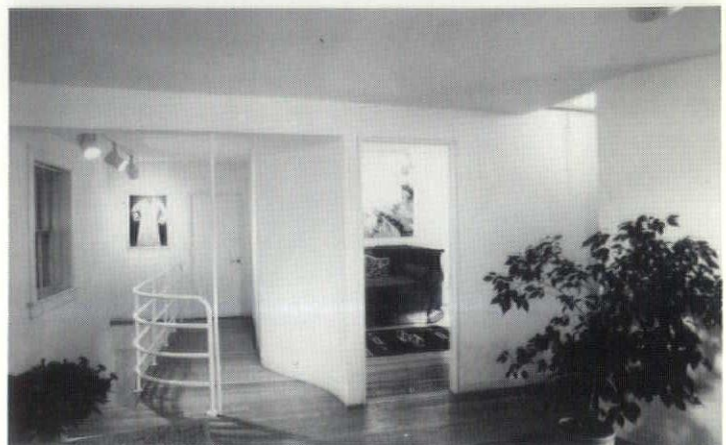
GENERAL CONTRACTOR:

Miller Construction Company

PHOTOGRAPHER: Cal Lewis

PROGRAM: Provide a place of residence for a young single woman who had bought a deteriorating 100 year old house in an inner-city neighborhood that was just being rediscovered.

SOLUTION: Although the house had been modified and "decorated" innumerable times, the dynamic shape and pleasant scale were obvious. The complexity was accentuated by incorporating other strong forms while retaining the existing small-pane fenestration for its scale. The sculptural, but neutral, character became the background for her possessions. The first floor room configuration with its open character was retained, but the second floor was opened up to create a flow of living space for entertaining. The unfinished attic was claimed by adding a spiral stair and opening the roof with a north skylight toward the long view. The bedrooms and attic allow flexible use but house guests can maintain privacy.



HONOR AWARD

Valley National Bank Building Des Moines, Iowa Charles Herbert & Associates, Inc.

OWNER: Valley National Bank

CONSULTANTS:

Construction Management —

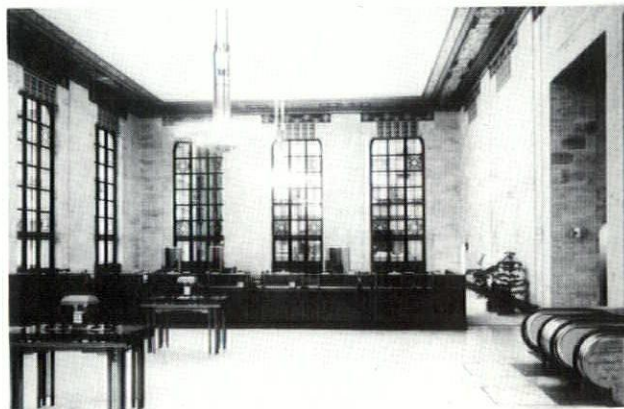
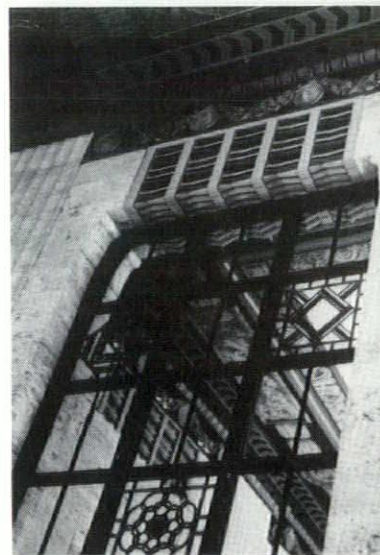
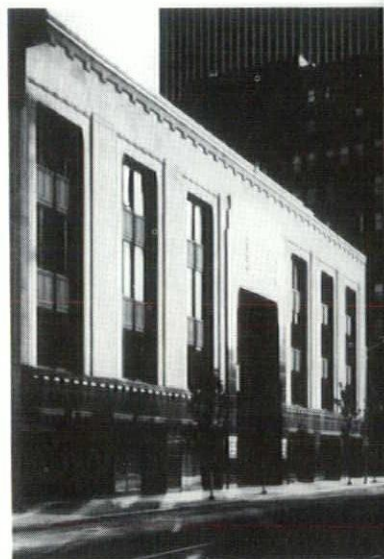
The Weitz Company

PHOTOGRAPHER: Paul Kivett

PROGRAM: This Art Deco bank building was completed in 1931. The structure had not been well maintained and had deteriorated rapidly during the five years it was unoccupied.

Following purchase by another bank, design goals were established, calling for the housing of modern banking methods in the old structure, improvement of climate control systems and consideration of energy consumption. All of these goals were to be accomplished within the context of what had been implied in the original architecture.

SOLUTION: Externally, the building was restored and modified in the appropriate character. Limestone work was repointed and waterproofed. Granite was cleaned. Storefronts were reconstructed with recessed glazing set in decorative frames reproduced from original castings. Bronze work was bright polished or oxidized, then lacquered. Fixed gray double glazing was installed in existing upper floor window frames after removal of deteriorated vent sash. Bank lobby glazing was changed to reflective to improve solar gain problems and permit removal of interior drapes. Sidewalks were re-poured and tree wells provided. Extension of one of the original stairways to all floors permitted removal of two unsightly fire escapes.



HONOR AWARD

Macomb Savings and Loan
Macomb, Illinois
Charles Herbert & Associates, Inc.

OWNER: Macomb Savings and Loan

STRUCTURAL CONSULTANT:

James W. Wilson

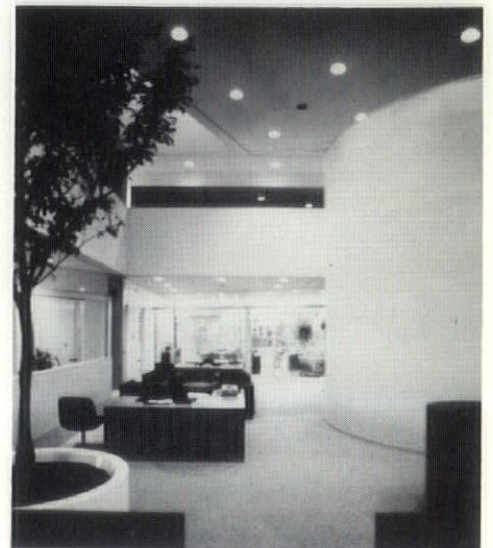
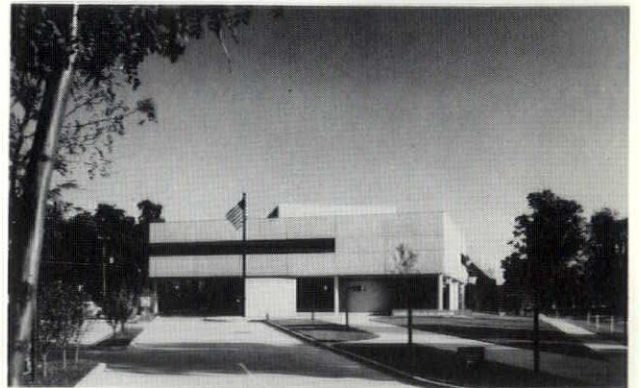
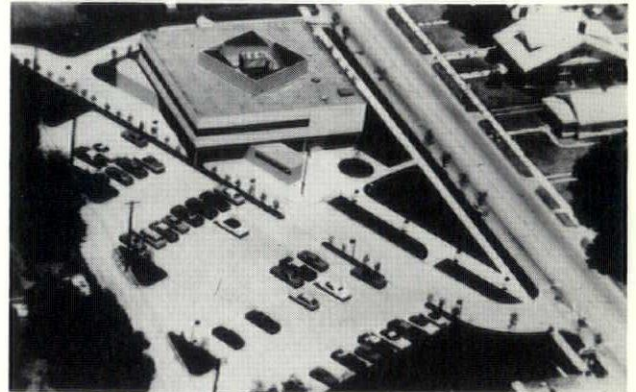
MECHANICAL CONSULTANT:

Kimmel/Jensen/Wegerer/Wray

PHOTOGRAPHER:

Charles Herbert & Associates

PROGRAM AND SOLUTION: The site, adjacent to a non-descript street serving as a state highway in an older residential neighborhood, was assembled by combining several deteriorating properties. A zoning variance from residential use was obtained, conditioned on improving the experience of entering the town square and commercial area to the south while maintaining sensitivity for and compatibility with adjacent neighbors. Site development responds to these objectives. The street grid and a rotated grid are superimposed to provide a larger green space on which to locate the building, to create a strong emphasis on entrance from the business district for pedestrians and vehicles and to allow landscaped areas to visually screen parking from all directions. Internal elements also reflect the two grids. A skylit central space functions as a window to upper floor interior spaces and utilizes natural light to accentuate the hub of the banking activities on the entrance level.



HONOR AWARD

Gartner Residence Attic Remodeling Des Moines, Iowa

Cal Lewis

Charles Herbert & Associates, Inc.

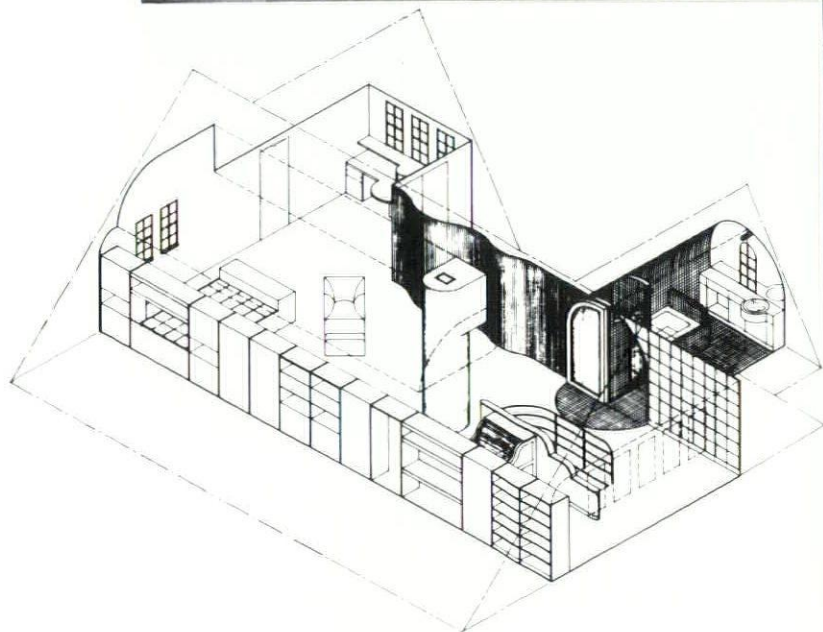
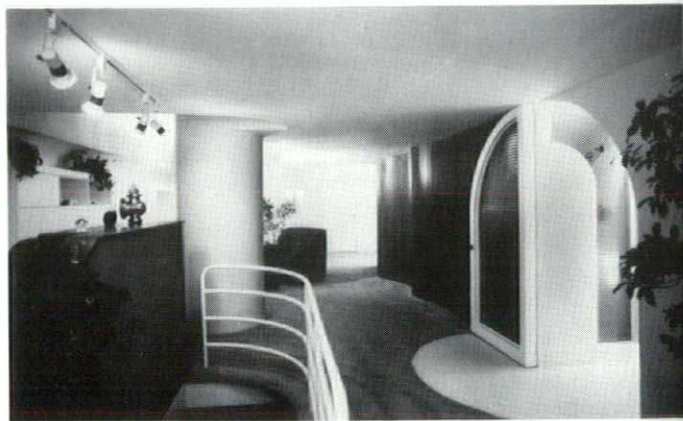
OWNER: Mr. & Mrs. Michael Gartner

CONTRACTOR: Willett Construction Co.

PHOTOGRAPHER: Cal Lewis

PROGRAM: The husband and wife of a small family wished to convert the attic of their large 55 year old Tudor residence into a bedroom/sitting room. They both needed storage for their large book collection and a quiet place to read. They asked for a "New York apartment" where they could escape at the end of each day.

SOLUTION: The unheated existing attic with plaster walls and flat plaster ceilings provided a firm base for development. Each gable from the main space became a special function. Dressing filled the windowless east gable. The adjacent gable doubled as the wife's laundry and study area, taking advantage of the southern exposure during the day. The arched bathroom developed from the long narrow gable with the sloped sidewalls. The large glass door which is typically open completes the room arch, and the mirrored end wall accentuates the unique room proportion.



COMING

Jan/Feb 1980

Historic Preservation

Issue

Deadline for copy: Dec. 15, 1979

Mar/Apr 1980

Membership Directory

Issue

Deadline for copy: Feb. 15, 1980

Get Started Now Developing Your Share Of This Great Market

SIKA Develops 'SIKA-TOP' THE "NATURAL-LOOK" EPOXIES

*...because you mix them with
cement, aggregate and water!*

...Produce items such as:

- On Grade Toppings
- Cement Stucco Plaster Coats
- And Even Setting Cap Stones

...The Look, Performance
and Endurance You Desire

Call or write us today to find out how you can combine the look of concrete with the strength of epoxies.

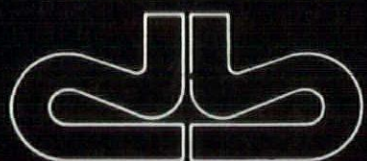
contractors steel corporation

1901 Easton Blvd. • P.O. Box 1696

Des Moines, Iowa 50306

Phone 515/265-6123

P.S. From our 1000 and 1 product line we also might have an answer for some other situation or problem.



david bear inc.

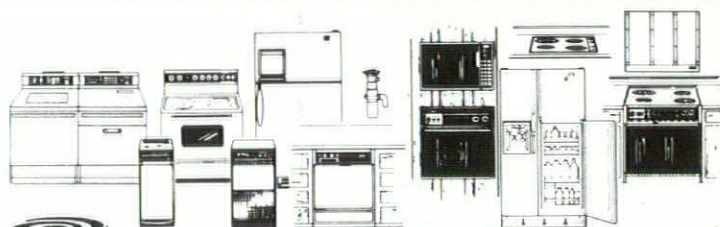
construction components means

Structural Steel
Steel Joist & Girder Systems
Metal Roof Deck
Wood Fiber Roof Deck
Wood Roof Deck
Metal Sidewalls
Retractable Partitions
Light Gauge Metal Framing
Laminated Wood

Hollow Metal Doors & Frames
Lockers & Wardrobes
Windows
Skylights
Louvers & Vents
Fascia Systems
Expansion Joints
Elastomeric Waterproofing
Solar Collectors

DES MOINES, IOWA 515/262-8251
IOWA WATTS 800/362-2786

**VISIT OUR SHOWROOM
FEATURING**



Whirlpool Builder Products



Yorktowne KITCHEN/BATH CABINETS



Gragg KITCHEN & BATH CABINETS



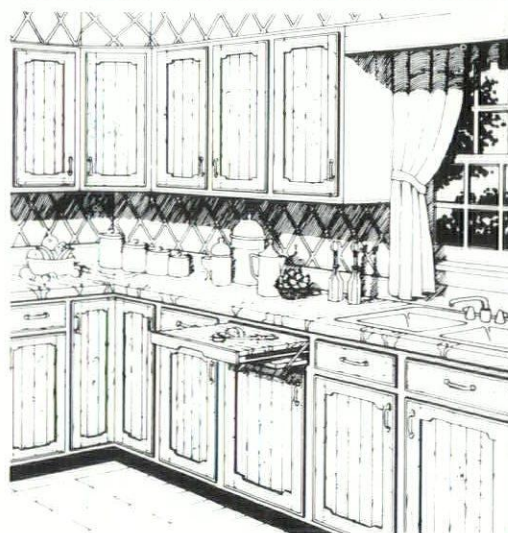
SDC WATER HEATERS — GAS & ELECTRIC

Sidles DISTRIBUTING CO.

GENERAL OFFICES: P. O. BOX 1534
2205 BELL AVE.
DES MOINES, IOWA 50306

Phone 280-1722

Country Oak cabinets by Yorktowne. The look of an earlier time without the inconvenience.



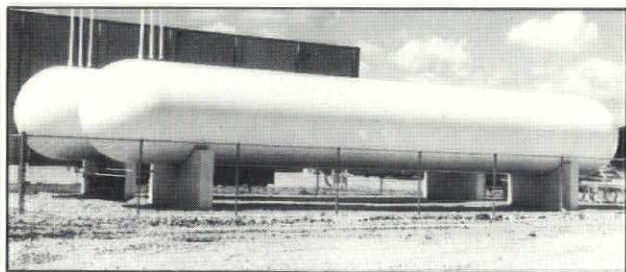
ENERGY SHORTAGE? THERE'S LOW COST FUEL A PLenty--BY DESIGN!

That low cost fuel is Thermogas LP-gas — abundant in the face of other fuel shortages, and actually holding its own in price while other fuel costs are soaring.

Good reasons for any wise architect to design LP-gas as a primary system for heating, air conditioning, water heating, drying and other commercial uses.

Thermogas also serves as an alternate fuel when other fuel sources allocate. Or even pinch off entirely.

We have the flexibility to consult, design, on-site supervise, subcontract, or contract the installation of any LP-gas project. Let us solve your fuel planning from the word, "Go!"



Thermogas Co

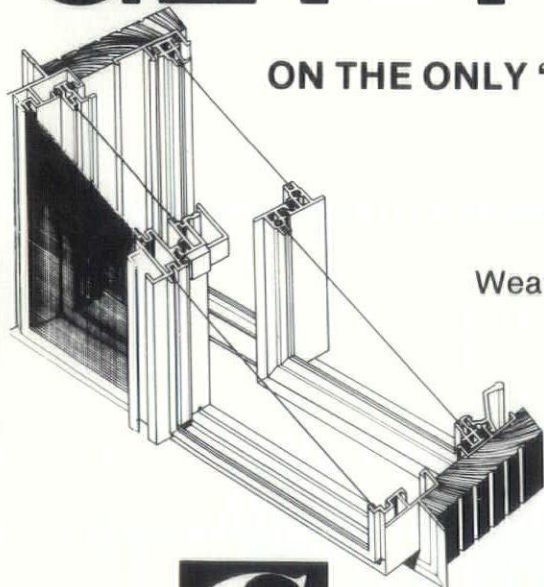


Thermogas Industrial Dept.

4509 E. 14th St. Des Moines, Iowa 50313 Phone: (515) 265-3431

GET THE FACTS

**ON THE ONLY "THERMAL" REPLACEMENT WINDOW
BUILT TO PERFORM!**



Weatherliner thermal windows have been a preferred prime window for nearly 15 years. Now it's available in a commercial replacement window. Easy-to-install panning system means you get more window per dollar!

Complete design & spec data is available on request. When you need a replacement window that PERFORMS... specify Weatherliner.

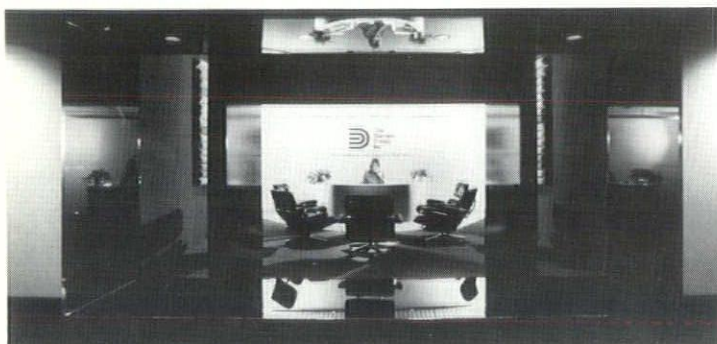


THE GERKIN COMPANY

1501 Zenith Drive • Sioux City, Iowa 51103 • Phone 712-255-5061

ADDITIONAL ENTRIES

Due to the fact that there was a record number of entries in this year's Design Awards Program, we are giving you a glimpse of a few of the other projects entered. The editorial staff of **The Iowa Architect** feels that the sixty-three projects exhibited make up one of the best awards programs the chapter has ever held. We wish to thank all the member firms that made it possible.



The Durrant Group Office
Dubuque, Iowa
The Durrant Group, Inc.



Communication-Arts Complex
University of Northern Iowa
Cedar Falls, Iowa
Brown Healy Bock, Architects



Tennis Pro Shop Hyperion
Johnston, Iowa
H. Ronald Walker Architects, P.C.



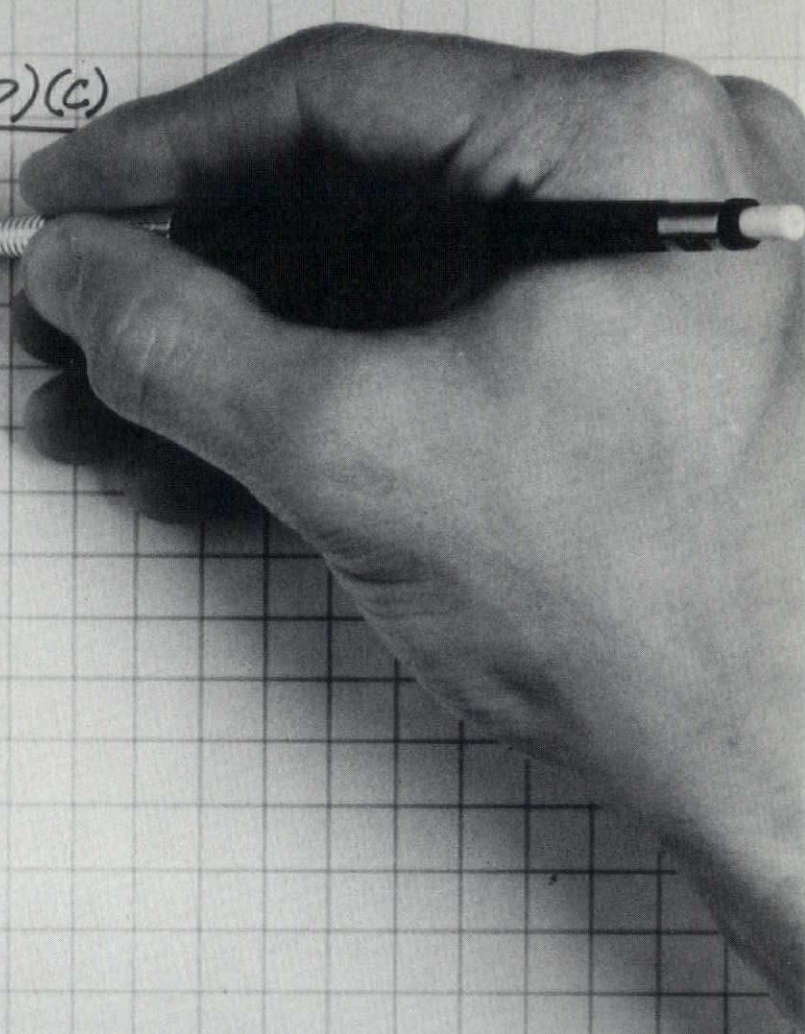
Langdon Residence
Minburn, Iowa
The Ames Design Collaborative



Raccoon Valley State Bank
Adel, Iowa
Brooks Borg & Skiles, Architects & Engineers



The Mane Event
Ames, Iowa
David Block, AIA


$$KWHR = \frac{(HL)(DD)(C)}{DTD}$$

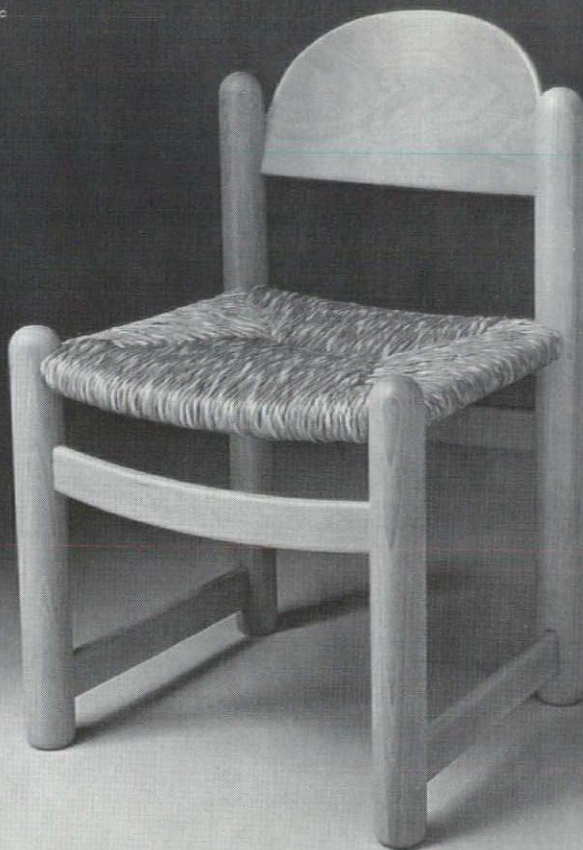
A few lines for Energy Conservation

And you're the one who can provide them. The structures you help to design and build today can help save energy for decades to come. By incorporating energy efficiency into your designs, your specifications and, most of all, your thinking, you'll achieve more economy and lower overall costs. What's more, you'll be making a permanent contribution to conservation . . . one far beyond the reach of most individuals.

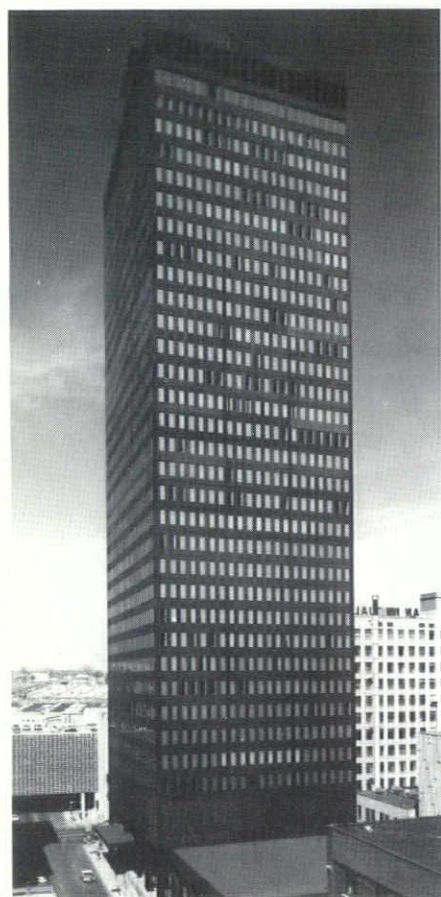


Working For
An Energy Future
We Can All Live With

M. A. Knutsen, Inc.
PO Box 97
214 5th
West Des Moines
Iowa 50265
515-279-9075
Contemporary Furniture
Residential/Contract



Loewenstein



HAYDITE

"THE ORIGINAL LIGHTWEIGHT AGGREGATE"

ANOTHER EXAMPLE OF WEIGHT-REDUCING, COST-CUTTING LIGHTWEIGHT HAYDITE CONCRETE.

Ruan Center, Des Moines, Iowa, offers impressive testimony to the ever-increasing use of lightweight Haydite concrete to reduce dead-loads and consequently, costs.

In the Ruan Center this was accomplished by using 7,500 cubic yards of 4,000 psi, 110 lb. per cu. ft. lightweight* Haydite con-

*Some natural sand included.

crete in the floors and 150,000 Haydite blocks in the elevator shaft walls.

With solid savings through weight reduction, Haydite also offers improved fire rating, insulation and acoustics . . . all without sacrificing strength or appearance. For specific information, contact your local supplier or call direct.

ARCHITECT
KENDALL GRIFFITH RUSSELL ARTIAGA
ARCHITECTS ENGINEERS PLANNERS, INC.
DES MOINES, IOWA

ENGINEER
VANDERLINDEN & DENNIS, INC.
DES MOINES, IOWA
PITTSBURGH & TOKAY, INC.
PARK RIDGE, ILLINOIS

CONTRACTOR
NEUMANN BROTHERS, INC.
DES MOINES, IOWA
READY MIX
WHITE CENTRAL CONCRETE CO.
DES MOINES, IOWA
BLOCKS
DEMCO, INC.
DES MOINES, IOWA

CARTER

WATERS

CONSTRUCTION MATERIALS

Producers of lightweight Haydite aggregate at
New Market, Missouri and Centerville, Iowa.

CARTER-WATERS CORP.
2440 WEST PENNWAY
POST OFFICE BOX 19676
KANSAS CITY, MO. 64108
PHONE: 816-471-2570

THE DEPARTMENT OF ARCHITECTURE ANNOUNCES ITS 1979-1980 LECTURE SERIES.

Location and Times will vary.

Please Call the I.S.U. Architecture Department for further information. (515-294-4717)

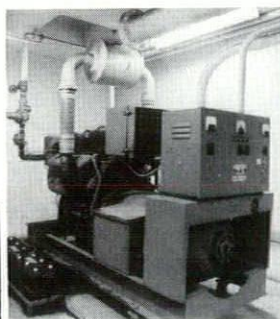
Peter Waldman	Assistant Professor, Princeton University "Doors & Windows, Attics & Basements"	Monday, October 29
Ted Seligson	Principle of Seligson & Associates, Kansas City, Missouri Will lecture on his work	Thursday, November 8
Sir Desmond Guinness	Founder and President of the Irish Georgian Society of County Kildare Irish Houses & Castles	Thursday, December 7 (subject to change)
Margot Vellecco	Energy & Design Consultant, Design Arts Program National Endowment for the Arts "Architectural Research"	Wednesday, December 12
Ralph Knowles	Professor, Architecture University of South Carolina "The Ethical Implication of Sunlight on Design"	Thursday, December 13
Lars Lerup	Assistant Dean, College of Environmental Design University of California, Berkeley His ideas and work	Monday, December 17
John Zeisel	Former Assistant Professor, Harvard University "Social Aspects of Architecture"	Thursday, January 10
John Eberhard	President Architectural Research Washington, D.C. Research for Architectural Design	Tuesday, January 15
Stephen Kiernan	Visiting Lecture University of Pennsylvania From the office of Venturi & Ranch "Imitation In Architecture" (morning) The work of Brown & Venturi's office (evening)	Monday, January 28
Charles Moore	Professor, University of California, Los Angeles The work of Charles Moore	Monday, February 4
Bruno Pfister	Assistant Professor of Architecture, Washington at St. Louis The work of Bruno Pfister	Wednesday, February 13
Mikal Sorkin	Architecture Critic of Village Voice "The Well Dressed Building"	Thursday, February 14
William Jordi	Professor Historical College of Art, Brown University "Early Aspects and Current Problems of TVA"	Monday, March 10
Christian Otto	Associate Professor, Cornell University Architectural History	Monday, March 17

HICKLIN

GENERATOR INSTALLED
in THE RUAN CENTER, DES MOINES, IOWA



EMERGENCY
POWER



Call us for your next project. Complete design & installation service. All equipment assembled at our Ankeny Manufacturing & Distribution Center.

HICKLIN POWER COMPANY • 515-286-4826
P.O. Box 4026 • Des Moines, IA. 50333

gallery
JANS

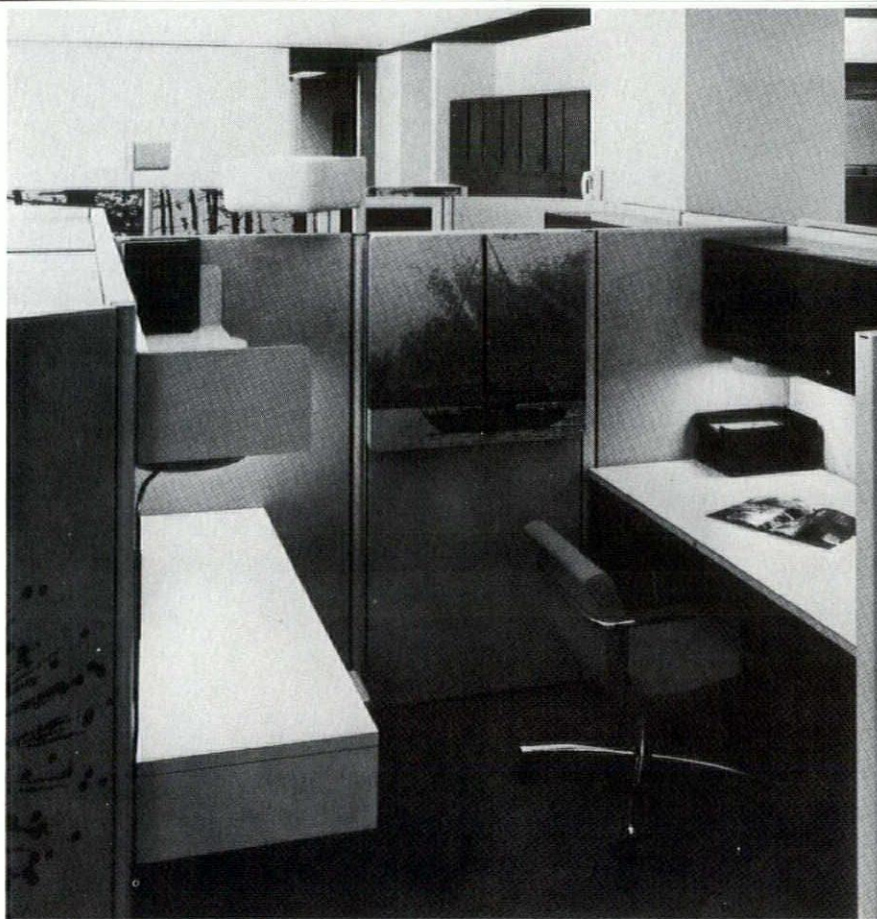
203 5TH STREET
WEST DES MOINES
IOWA 50265
277-6734

ART DEALERS AND CONSULTANTS
FOR RESIDENTIAL
AND COMMERCIAL SITES

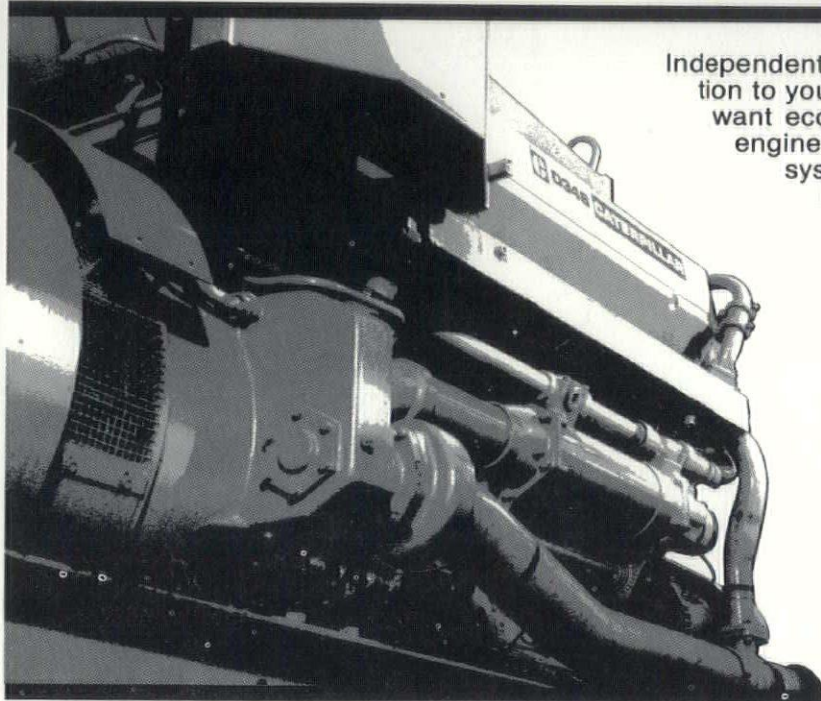
**Office
Furniture
Systems**
GF Business Equipment

 **KOCH BROTHERS**

325 Grand Avenue
Des Moines, Iowa 50308
(515) 283-2451




Caterpillar Power Systems Check Out The Economics



Independent, on-site power can be the economical solution to your industrial or commercial needs. And if you want economy *plus* reliability, check out Caterpillar engines and power systems from Gibbs/Cook. Cat systems are backed by Total Product Support, including design, installation, inspection and maintenance. Features like 24-hour parts availability. And the most modern in-shop service and testing facilities in the Midwest.

Economy. Reliability. Service. You get all three with Caterpillar Power Systems from Gibbs/Cook. Sales and service facilities in Des Moines, Mason City, Fort Dodge and Postville.

YOUR CATERPILLAR DEALER
GIBBS/COOK
...for more than the expected

104th and Hickman Road, Des Moines, 50322 Phone (515) 270-2800
Caterpillar, Cat and  are Trademarks of Caterpillar Tractor Co.

Design with

Concrete Masonry

Burlington
Block Co.

319/752/5667

Clinton
Block Co.

319/242-4051

Cedar Rapids
Block Co.

319/363-0233

Coralville
Block Co.

319/354-1003

Service Photoprint

Complete Photographic
Service

Including:

Reduced Negatives
And
Projection Positives

 **TELEDYNE POST**

 **Keuffel & Esser Company**

SERVICE PHOTOPRINT

924 Grand Avenue
Des Moines, Iowa 50309

Phone 515/288-1927

What do - Ballet, Skiing and a Trophy Room have in Common?

They are new Cantex Face Brick Brochure
sheets for

- Dark Ironspot Heights
- Cordovan Bronze
- Fort Collins



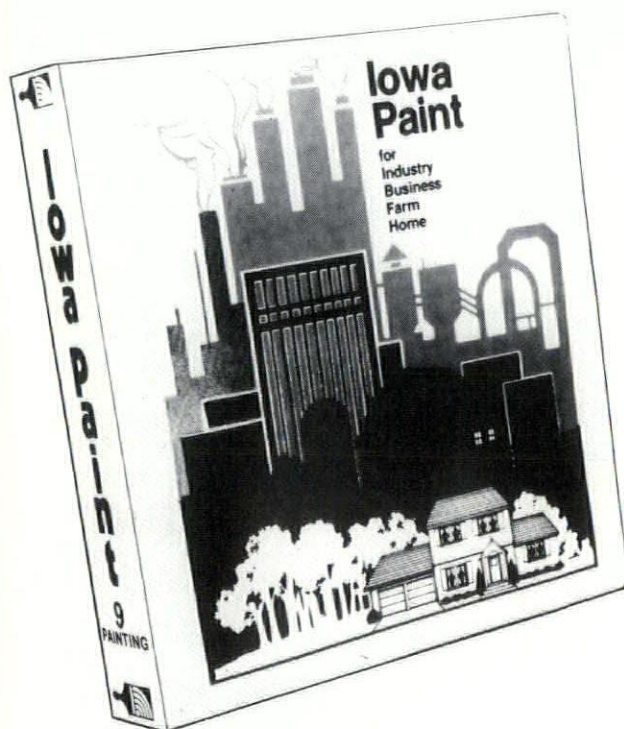
A DIVISION OF **harsco** CORPORATION

*Use brick, it is better and in most cases cost less. Visit
with your brick salesman or supplier of Cantex Face
Brick. It's the best!*

phone 515/223-1450

101 Ashworth Rd. • West Des Moines, Iowa 50265

NEW AND IMPROVED



Our Architects' Specification
Manual has been completely re-
vised and updated.

Our new format will make it
easy to find the specification for
the surface you want to paint, plus
much more product information.

Your copy will be delivered soon
by an Iowa Paint representative.



Iowa Paint

Manufacturing Company, Incorporated
P.O. Box 1417 Des Moines, Iowa 50305

Sweeney & Assoc.

400 5th St. • West Des Moines, Ia. 50265

- **PARKER** Mirrors & Washroom Equipment
- **HALSEY TAYLOR** Water Coolers & Modular Wall Systems
- **SLOAN** Flush Valves
- **STERN WILLIAMS** Terrazo Mop Sinks Shower Receptors Drinking Fountains



"Buck" Sweeney

- **SYMMONS** Non-Scald Pressure Balanced Shower Equipment
- **A. O. SMITH** National Commercial & Institutional Gas, Oil Fired or Electric Water Heating Equipment
- **DAVIS** Efficiency Kitchen Units



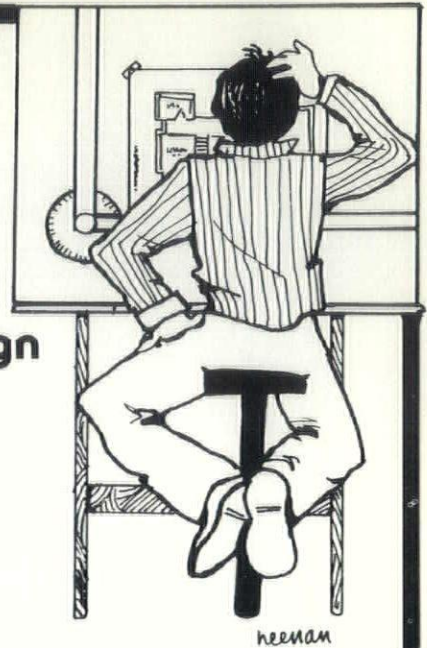
Mike Sweeney

phone 515/274-2050

ADVERTISERS' INDEX

- | | |
|-------------------------------|---------------------------|
| Asphalt Paving Assoc. of Ia. | Johnson Specialty Sales |
| Carter Waters | Koch Brothers |
| Cantex | M. A. Knutsen, Inc. |
| Cedar Rapids Block Co. | Marquart Concrete Block |
| Contractors Steel Corp. | Medusa Cement Co. |
| D. C. Taylor Co. | Metal Doors and Frames |
| David Bear Inc. | Negley Design & Sales Co. |
| Elliott Beechcraft | Northwestern Bell |
| Flower City | R. B. Associates, Inc. |
| Gerkin Window Co. | ruthL Kitchens |
| Gibbs/Cook | Service Photoprint |
| Hicklin Power Company | Sidles Distributing Co. |
| Home Carpet | Simplex |
| Ia. Architectural Prod., Inc. | Stetson Building Products |
| Iowa Paint | Sweeney & Assoc. |
| Iowa Power | Trolex |
| Jack Beavers & Associates | Vawter & Walter, Inc. |
| Jan's Gallery | Weitz Construction Co. |

Why design with a Sarnafil® Polymeric Sheet Roofing System?



What makes a Sarnafil Roof unique? Dimensional Stability!

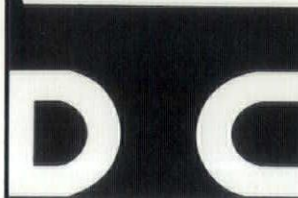
Sarnafil materials are manufactured with a unique ability to maintain dimensional stability and prevent deterioration from ultra-violet exposure. The highest quality raw materials are utilized in a manufacturing process which impregnates and fuses a non-woven glass reinforcement with weather-resistant plasticized polyvinyl chloride paste into continuous rolls of polymeric sheeting.

Sarnafil's unique fiberglass reinforcement eliminates the need for perimeter fastening on all types of roofs. Because no residual stress remains after the manufacturing process, there is no shrinkage during or after installation.

Also, the co-efficient of expansion and contraction is very nearly that of steel and concrete. The flexibility and co-efficient of expansion and contraction of this product allows it to move as the roof moves through temperature changes thus eliminating splitting and torn flashings.

This dimensional stability and ultra-violet resistance are two reasons we can give you a written guarantee — if your Sarnafil Roof leaks under normal use, it will be repaired free ... for ten years!

Your Taylor Specialist can fill in facts, answer questions. Call or write:



D. C. TAYLOR CO.

Home offices:

Suite 16, American Building
Cedar Rapids, IA 52401
319/363-2073



Elegance & Simplicity

ruthL

KITCHENS

personalized design service

110 51st Street • Des Moines, Iowa 50312
phone 274-1934

Celestra LCD direct read indicating clocks

Available: internal rechargeable batteries
1-12 or 0-23 hour displays.



For use in AIRPORTS, HOSPITALS, BANKS, HOTELS, GOVERNMENT and INDUSTRIAL FACILITIES, RADIO and TV STATIONS.

Attractive beige & brown color combination. 2" display-gray blue background, white numerals-50 foot readability.

Optional timer control enables these clocks to be used as a time display and/or a count-up/count-down timer.

Can be synchronized by Simplex electronic or sync-wired master clocks or digitally slaved to other Celestra clocks.

Case design for surface or semi-flush mounting. Surface mounting can utilize a single gang outlet box or a 4" square box. CELESTRA clocks can also be ceiling or wall mounted for bi-directional viewing.

reply to:

Simplex Time Recorder Co.

1832 Fuller Rd. - P.O. Box 207

W. Des Moines, Iowa 50265

Telephone: (515) 225-6182

Simplex Time Recorder Co.

Gardner, Massachusetts 01440 U.S.A.

Telephone: 617-632-2500

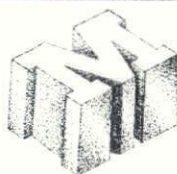
Cable Address: SIMRECO

MARQUART INTRODUCES WAFFLE BLOCK

Marquart Concrete Block Company introduces Waffle Block ... a bold, decorative concrete masonry unit.

Waffle Block adapts beautifully to panelized, banded, bordered, and monolithic treatments. This exciting new product greatly enhances all types of construction.

Call or visit Marquart Concrete Block Company and see Waffle Block today.



We build a better block.

MARQUART
CONCRETE BLOCK COMPANY

110 Dunham Place
P.O. Box 990
Waterloo, IA 50704
(319) 233-8421

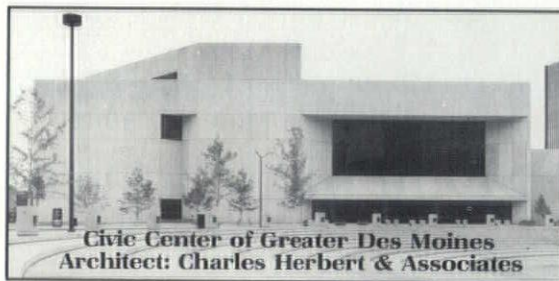
WEITZ IS YOUR TICKET TO PROFESSIONAL PERFORMANCE.

If you appreciate first-rate performers, you're sure to applaud Weitz for two important reasons:

First, Weitz delivers on time. Second, within budget.

Weitz is a general building contractor whose clients range from private businessmen

to some of the nation's leading names. And, each gets our best. Weitz teams up with the architect, owner, and suppliers for complete coordination of all phases of the job.



Civic Center of Greater Des Moines
Architect: Charles Herbert & Associates

And Weitz can meet the challenges of complex, tightly scheduled projects, increasing bureaucratic controls, and rapidly changing technological and economic conditions.

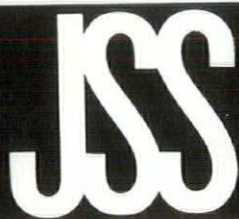
Whether your next project calls for a single-tenant office building ... or a

multi-million dollar development ... get the performance you demand. From The Weitz Company, Inc., 800 Second Avenue, Des Moines, Iowa 50309. Telephone 515-245-7600.

Commercial
Industrial
Institutional
Educational
Warehouse
Residential



Architectural Signage



Johnson Specialty Sales
P.O. Box 2691
Des Moines, Iowa 50315
Phone [515] 285-2483

Distributors of exterior and interior signage systems of all types and sizes



Need windows?

We can supply and install the windows you need. Our staff of specialists custom design replacement window and entrance systems to fit your structure. Call one of our sales representatives collect today. 319-364-7000 Cedar Rapids, 515-276-4421 Des Moines

IOWA ARCHITECTURAL
PRODUCTS, INC.

801 33rd Ave. S.W., Cedar Rapids, Iowa 52404
Commercial windows and entrance systems Free estimates and design planning

Not Quite Ready To Own a Beechcraft?

Charter with the..... Beechcraft Executive Flight Plan

- Custom planned, personalized air travel
- Flights almost anywhere, anytime
- Professional flight crews
- Fast comfortable well-maintained Beechcrafts
- Confidential quality business travel
- Business travel analysis



Call Dick Flesher
285-6551

LOCATED ON NORTH SIDE OF DES MOINES MUNICIPAL AIRPORT



"SERVING GENERAL AVIATION SINCE 1936"

Originals in Custom Storage

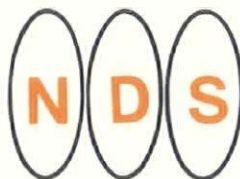
BY

St Charles

FASHION KITCHENS



Our storage systems can be used for many innovations... in offices, work areas, banks...in commercial and professional innerspaces everywhere. Our design interpretations derive the utmost efficiency from every work and storage area, combining functional beauty with St. Charles quality. *Variations are limitless...executives, lawyers, doctors... technicians, artists...whoever your clients may be, they will enjoy this new dimension in comfort and efficiency. *All are available in the familiar textured furniture steel, or the very new plastic laminate easework.



Also Distributors for
Dwyer Compact Kitchens

Company

Phone
515/276-5500

Negley Design & Sales Company

3839 MERLE HAY ROAD • DES MOINES, IOWA



Vawter & Walter, Inc.

GENERAL CONTRACTORS • COMMERCIAL-INDUSTRIAL
BUILDING AND REMODELING
45 YEARS OF MAJOR COMMERCIAL AND INDUSTRIAL
CONSTRUCTION IN IOWA

*Professional Contractors Building Only Buildings
Designed by Professional Architects & Engineers*

1322 GRAND AVENUE • WEST DES MOINES, IOWA 50265

515/225-8515

Need Cement Flexibility?

MEDUSA

Has The Products.

There's a Medusa Cement to meet all of your cement requirements . . . Gray and White Portland, BrikseT Gray and Stoneset White Masonry Cements and a complete line of Color Masonry Cements. All are manufactured to high quality standards — with the Color Masonry Cements mill-mixed

for color stability and application ease. Flexibility in quality cements to meet all aesthetic and structural needs. Medusa backs its quality products with knowledgeable sales representatives. They'll provide the answer to your cement application questions.

For more information Write or Call:



MEDUSA CEMENT COMPANY

P.O. Box 5668

Cleveland, Ohio 44101

(216) 371-4000

FLOWER CITY

4347 Merle Hay Road
Des Moines, Iowa
515/276-1011

YOUR HEADQUARTERS
FOR
COMMERCIAL — OFFICE
AND HOME DECORATING

Mon. Thru Fri. 9-9 Sat. 9-6, Sun. 11-6

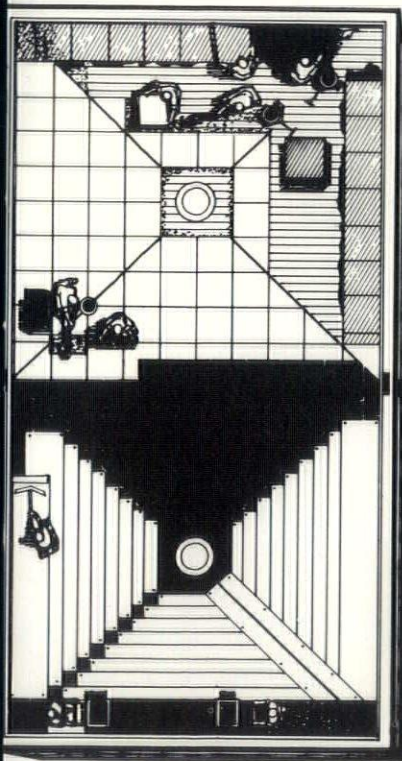


we've got you covered...

from concept
consideration•

We'll suit our system to your situation... Regardless of whether your project requires tapering of a dead level deck, or tapering to scuppers, we can suit the Taper-Lite System to your situation. Our personnel are always available to help you determine the most efficient, economical layout possible.

to finished
installation•



STAGE I: FILLER AND TAPE-LITE BLOCK INSTALLATION

Because Taper-Lite blocks are fabricated and tapered at the factory job site modification is not necessary.

STAGE II: RIGID TOP LAYER INSTALLATION

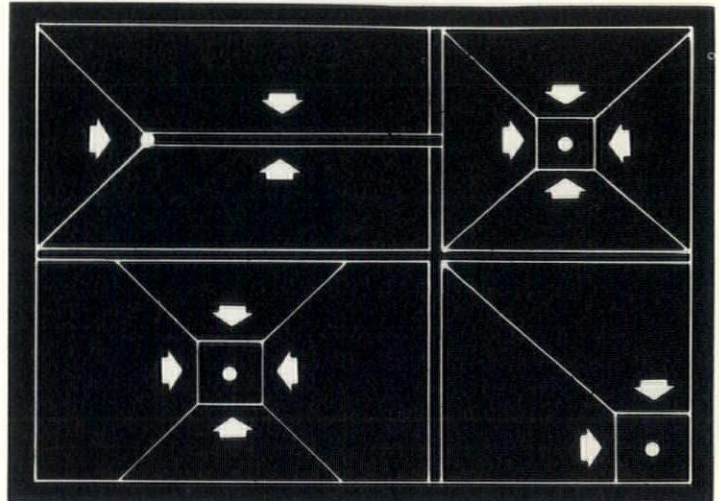
To add dimensional stability, a tightly butted top layer of rigid board is put down, joints staggered with Taper-Lite blocks below.

STAGE III: FINISHED MEMBRANE ROOFING

Roof membrane is applied directly over rigid insulation top layer.

With the taper-lite system of
Tapered Roof Insulation

to design applications•



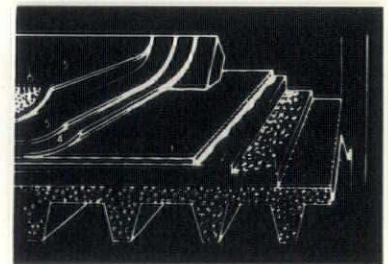
TAPERING OF DEAD LEVEL DECK (An Example)

With this type of structure, all "valleys" are laid out at 90° to each other as shown, drain plugging and ice build-up are prevented by leaving enough level area around drains to allow a certain amount of heat loss.

The Taper-Lite System is the lightest tapered roof insulation system on the market, permitting the use of much less (and lighter) structural steel.

PRECAST OR POURED IN PLACE CONCRETE DECK

1. Foam Filler Block
2. Taper-Lite Block
3. Top Layer
4. Base Sheet
5. Felts
6. Gravel



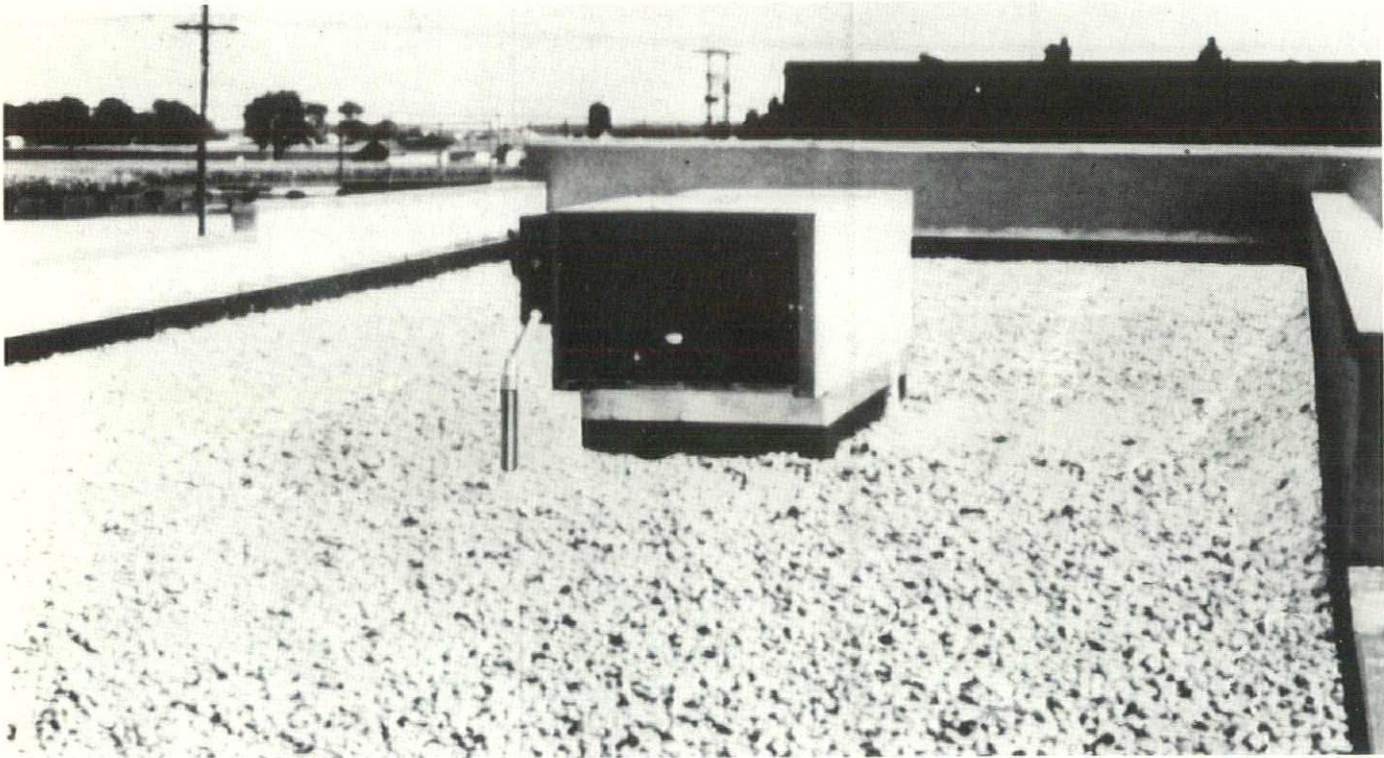
the
taper-lite
SYSTEM
Tapered Roof Insulation



**Jack E. Beavers
& Associates Inc.**

DIVISION 7 REPRESENTATIVES
541 5TH STREET
W. DES MOINES, IOWA 50265
(515)274-4068

Will Carlisle roofs laid sixteen years ago last another sixteen years?



We wouldn't be surprised



**STETSON
BUILDING
PRODUCTS**

"Over 150 applications in Iowa"

Rock Island, Illinois
309/788-8412
619 11th Street

Des Moines, Iowa
515/243-6286
510 S.W. 9th Street

They could last a lot longer than that. The earliest Carlisle Sure-Seal installations are already 30 years old and still going strong.

Re-Roofing right now over the old roof. No Disruptions. No Displacement. No Delay. No Problems. 10 year watertight warranty, when installed by Carlisle approved applicator.

Carlisle Universal Roofing Systems. Watertight elastomeric membrane coverings for almost any kind of roof with the advantages of: One source responsibility, low maintenance, durability, stability, clean application and readily available.