

IA-1981-MARCH/APRIL





IOWA ARCHITECT

March/April, 1981

# AMERICAN INSTITUTE OF ARCHITECTS



Library  
1705 New York Avenue, NW  
Washington, DC 20006

MEMBERSHIP DIRECTORY





**MEREDITH CORPORATION**  
DES MOINES, IOWA

**CHARLES HERBERT & ASSOCIATES**  
ARCHITECTS

**NEUMANN BROS., INC.**  
GENERAL CONTRACTOR

Drywall and Thin Coat Plaster Were Used To  
Achieve The Dramatic New Interior Surfaces

**Allied Was Also The Contractor For:**

- ARMSTRONG "SILOK"  
OPEN OFFICE ACOUSTICAL CEILINGS
- METAL PAN ACOUSTICAL CEILINGS
- RESILIENT FLOORING
- POLISHED STAINLESS STEEL  
ACOUSTICAL CEILINGS
- VAUGHAN WALLS DEMOUNTABLE  
PARTITION SYSTEM



**CONSTRUCTION SERVICES, INC.**

**DES MOINES  
DAVENPORT  
PEORIA**



# All single ply roofs are not created equal.



Aerial view of the Carlisle roof on the new Milton, Pennsylvania Distribution Center

## The roof that's got the future covered.

You probably already know about the many benefits of single ply roofs over traditional built-up roofs. Benefits that are making "single ply" the new industry standard. But you should also know that all single ply roofs are not the same. Carlisle offers you all these major exclusives:

**Carlisle** produces and applies Sure-Seal® elastomeric membrane—the single ply sheet we pioneered more than 23 years ago.

**Carlisle** has single ply roof applications successfully in place for over 20 years now. Roofs that stubbornly refuse to crack or leak after two decades of punishment by the sun, rain, wind, hail and snow.

**Carlisle** produces factory-fabricated single ply sheets in super huge dimensions. In fact, we offer single sheets as big as 45 feet by 150 feet, which minimizes field seaming.

**Carlisle** provides one-source reliability. Everything you need—membrane, sealant, flashing and accessories—comes from one reliable American source.

**Carlisle** operates an ongoing and mandatory two-day training school for single ply applicators, to assure top quality workmanship in every Sure-Seal roof.

**Carlisle** single ply roofs receive a five-year "watertight warranty" that can be extended for an additional five years!

**Carlisle** single ply roofs are backed by nationally respected Carlisle Tire & Rubber Company—leader in the research, engineering and manufacture of waterproofing materials for almost three decades.

These are some of the features that have made the Carlisle Sure-Seal roof *the single best, single ply system*. You owe it to yourself to find out more. Call or write today!

*"Over 250 applications in Iowa"*



## STETSON BUILDING PRODUCTS

Rock Island, Illinois

619 11th Street • Phone 309/788-8412

Des Moines, Iowa

610 S. W. 9th • Phone 515/243-6286





# **SWANSON GENTLEMAN**

## **The Wall People**

**WEST RIDGE II  
SAVAGE and VER PLOEG, INC.  
WEITZ COMPANY**

**WEST DES MOINES, IOWA  
ARCHITECTS, DES MOINES, IOWA  
GEN. CONTRACTORS, DES MOINES, IA.**

**A Single Responsibility Contract  
To Furnish and Erect Architectural Precast, Aluminum Thermal Break Windows, Glass and Glazing**



# ia

IOWA ARCHITECT

USPS 463-010

**Volume 28 Number 2**  
**March/April**  
**1981**

The IOWA ARCHITECT is the official publication of the Iowa Chapter, American Institute of Architects. It is published bi-monthly for the Iowa Chapter by Midwest Advertising Service, Inc., 3501 Skyline Drive, Des Moines, Ia. 50310. Controlled circulation paid at Des Moines, Ia. Single copy price \$2.00. (Membership Directory issues are \$10.00.) Copyright 1981. Reproduction of this material by any means without the permission of the publisher is strictly prohibited.

**Send all address changes**  
(Form 3579) to: Ia. Chap.  
A.I.A., 512 Walnut Street,  
Des Moines, Ia. 50309

**Editor:**  
Kirk V. Blunck, AIA Assoc.

**Managing Editor:**  
Mick Enabnit

**Publisher:**  
Midwest Advertising Service,  
Inc., Des Moines

**Editorial Staff:**  
Edward Soenke, AIA  
H. Ronald Walker, AIA  
Mark Schmidt, AIA  
Bryan Shiffler, AIA  
Gary Moriarty, AIA  
Dave Sanders, AIA Assoc.

Iowa Chapter American  
Institute of Architects

**Executive Director:**  
Claudia Cackler

**President:**  
William Dikis, AIA  
Des Moines

**1st Vice President and  
President Elect:**  
James Wilkins, AIA  
Des Moines

**2nd Vice President:**  
Gordon Mills  
Dubuque

**Secretary:**  
Tom Waggoner, AIA  
Mason City

**Treasurer:**  
Kirk Colvig, AIA  
Des Moines

**Directors:**  
Glen Huntington, AIA  
Storm Lake  
Howard Pals, AIA  
Des Moines  
Richard Kruse, AIA  
Iowa City

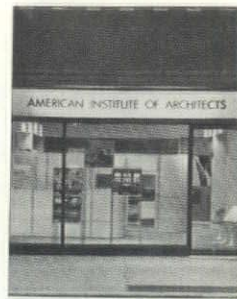
**Ex Officio:**  
Kenneth J. Steffen, AIA  
Des Moines

**Des Moines Architects  
Council President:**  
Doug Sires, AIA  
Des Moines

**Cedar Rapids/Iowa City  
Architects Council:**  
Jerry Kneeland, AIA  
Mt. Vernon

**Eastern Iowa Section  
President:**  
Greg Larrison, AIA  
Bettendorf

**N.W. Iowa Section**  
Davey L. Blanton, AIA  
Sioux City



**On The Cover:**  
Remodeled AIA office,  
Valley National Bank  
Building, Des Moines, Ia.

*Seperations courtesy of:*  
Construction Products  
Manufacturers Council -  
Des Moines Chapter

7

**Works In Progress**

9

**A Conversation With  
Robert Broshar**  
A review of the issues for the  
coming year.

15

**Guide to Architectural  
Firms in Iowa 1981**

32

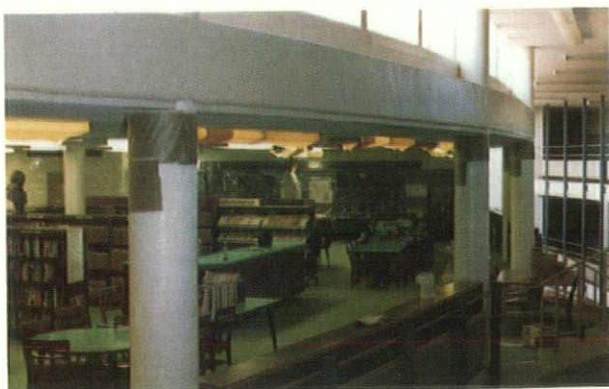
**Membership Directory**  
Iowa Chapter of the American  
Institute of Architects.

49

**News**

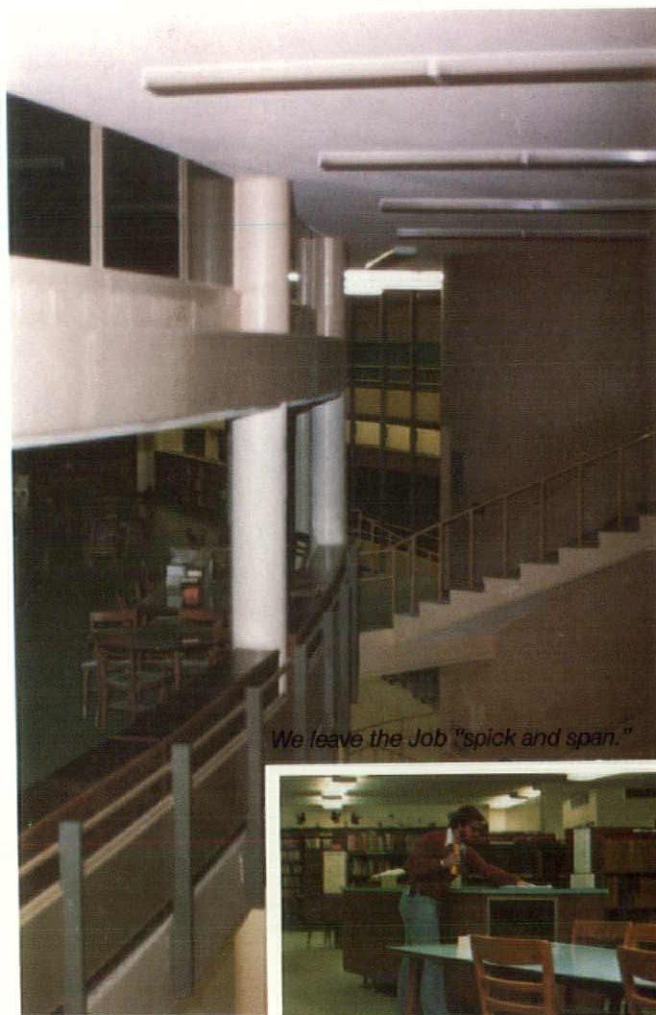
# Upgrading Your Facility?

Whatever Your Needs, We Have The Package For Them



Designing and Renovation can add or upgrade existing space with new finishes from floor to ceiling

- SPACE PLANNING AND DESIGN CONTRACTS
- FULL SERVICE FROM STRUCTURE TO APPOINTMENTS
- DESIGN-PURCHASING-INSTALLATION IN ONE SOURCE
- SCHEDULING FLEXIBILITY-WE CAN REMODEL YOUR AREA BY NIGHT...WHILE YOU USE IT DURING THE DAY
- TURNKEY CONSTRUCTION SERVICES FROM PLANNING TO FINISH
- BUDGET AND STRUCTURAL MAINTENANCE PROGRAM ASSISTANCE



Asbestos Control in Schools & Offices. The above project involved sealing the existing Asbestos fiber ceilings.



New Construction	Kitchen Planning	Carpeting & Flooring
Additions	Food Service Equipment	Wall Coverings & Draperies
Remodeling	Specialty Goods	Office Equipment
Planning Design	Complete Painting	Case Goods

*"Innovative Building Specialists"*

## Willis Decorating and Remodeling, Inc.

2220 N.W. 108TH STREET

•

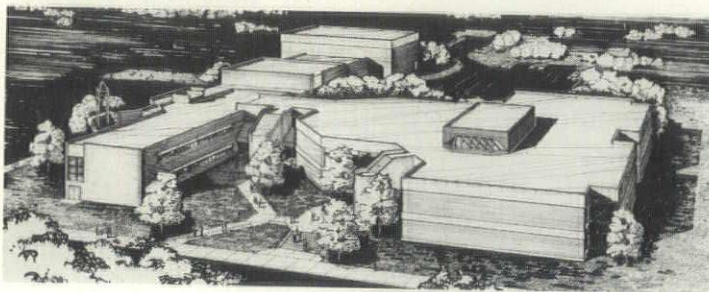
DES MOINES, IOWA 50322

•

PHONE: 515/270-2525



# WORKS IN PROGRESS



## Winterset Elementary School

Currently under construction in Winterset, Iowa, are two major additions to the Winterset Elementary School. The additions were designed by Bussard/Dikis Associates, Ltd. of Des Moines, and will include a new classroom addition, which is comprised of 28 large classrooms surrounding a two-story media center, and a multi-purpose wing which includes a gym/lunch room space, kitchen and locker room facilities. Also included is extensive remodeling of the existing 1957 classroom building to smaller special classrooms and conversion to administration facilities. An elevator, ramps and other facilities will provide access for the physically handicapped. Low bid for the project, which was awarded to Story Construction of Ames, was \$2.82 million. The project is scheduled for completion in the spring of 1982 and will serve approximately 650 students.

The new air-conditioned, two-story classroom addition has three rather unique "pie-shaped" classroom arrangements on each floor. The compact arrangement maximizes the sizes of the triangular classroom spaces while minimizing corridor circulation space, thus reducing overall square footage and costs. Located in the center is a skylit two-story open media center which will serve as the focus of student activities.

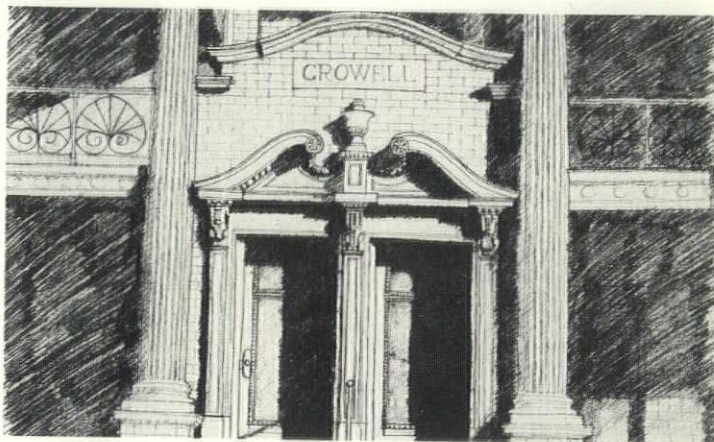
## Knoxville Area Hospital

Construction of the 79,000 square foot Knoxville Area Community Hospital and Clinic is nearing completion in Knoxville, Iowa.

Designed by Thorson-Brom-Broshar-Snyder, Architects, the project sought to develop a central spine (core) consisting of separated public and staff circulation systems with combined shared areas (Lobby, Administration, Medical Records, Locker Rooms, etc.) running the total length of the building. Patient, medical treatment, physical plant, and clinic elements are plugged into the spine at appropriate locations to fulfill the functional requirements. The three patient wings are designed in a U-shape, forming a court area permitting possible future expansion to an H form. The circulation system is further refined so that public, clinic, and outpatient traffic is generated from one end of the core and service functions, such as maintenance, housekeeping,

dietary and material distribution feed from the opposite end. The exterior of the building is designed to express the internal function. The spine is sheathed in reflective glass with the plugged-in elements faced in white metal panels. At the juncture of the elements to the spine, deep ribbed panels express the physical connections.

The Hospital and Clinic are sited on an ample 17.3 acre site in Knoxville. Earthen berms conceal parking areas from the adjacent residential area and berms have been used to minimize exterior wall exposure. The reflective glass with red porcelain panel trim and white metal panel exterior were selected to contrast with the natural surroundings. Window areas on both the Clinic and Hospital are recessed on the south, east and west with end fill panels between of a dark brown color to heighten the linear lines of each building.

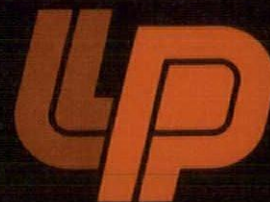


## Sherman Hill Attachment

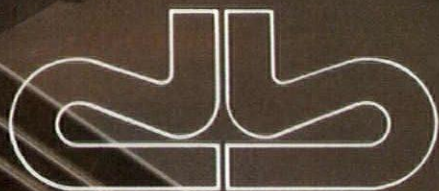
Sherman Hill is one of Des Moines' oldest residential areas; an inner city neighborhood overlooking the central business district. The area from earliest development has been a neighborhood open to many incomes — as reflected in the variety of its building stock. Today, Sherman Hill contains the city's highest concentration of late 19th century and early 20th century domestic architecture in a dramatic setting.

The Sherman Hill Association was established in May, 1977, to facilitate general improvement of the neighborhood while stressing historic preservation. Development of a Comprehensive Plan for the district by Wehner, Nowysz, Pattschull & Pfiffner Architects has focused on two priorities - the survey, analysis, and inventory of all physical elements of present-day Sherman Hill and policy planning for appropriate rehabilitation and future growth. Recommendations include enlargement of the Historic District boundaries to include Woodland Cemetery. Design criteria have been formulated to evaluate existing structures and ensure the compatibility of new construction. The ultimate goal of the plan is not to create museum restorations, but to provide for orderly growth in the ongoing life of the district. Sherman Hill residents don't want to live in a "design exercise", but in a friendly functional, vital neighborhood with strong links to the past.





**Institutional  
Window  
Systems**



**david bear inc.**  
construction components

515/262-8251 • 319/364-3307  
IN IOWA 800/362-2786

**FIII SCALE PERFORMANCE**



# A Conversation With Robert Broshar

*Robert Broshar, FAIA, is Vice President of the American Institute of Architects and as such, is Iowa's most active member on a national level. He is the chairman for the 1981 National Convention to be held in Minnesota, and is now also running for President-Elect of the Institute. Aside from his AIA activities, Bob prides himself on being a practicing architect in the fifteen-member firm of Thorson-Brom-Broshar-Snyder Architects in Waterloo, Iowa. It is with Bob's varied capacities in mind, that Claudia Cackler, Executive Director of the Iowa Chapter AIA, conducted the following interview.*

**Cackler:** With your year as vice president, what concerns and priorities have you developed?

**Broshar:** Well, our number one priority as an institute is to both have the architects become aware of their potential in responding to the energy crisis and also to make the public aware of the architect's response. We're putting a lot of effort and a lot of money into helping the architects who are educating the public and helping architects become aware of their basic abilities as well as developing the new skills which are necessary to do that. That's the Institute's thrust.

My personal concerns really haven't changed very much as a vice president and my number one concern is that we still need to do a better job of communicating with our members and directly meeting their needs. I see examples constantly of how we're not getting enough input. I think we're trying to listen but we aren't always getting the input and people don't think we're listening well enough.

**Cackler:** What have come to the surface as the main problems that haven't been solved?

**Broshar:** I don't think it's so much a matter of problems not being solved as it is a matter of recognizing what's being done and how we can most effectively do it. For example, we have a lot of components that are providing programs that are every bit as strong as things that are being done at a national level and we tend to duplicate some of those programs at the national level. I'd prefer seeing us recognize and use those programs that are developed at a grassroots level on a national basis rather than creating new programs.

**Cackler:** What are the major challenges facing the architects in the next few years, aside from the energy issues?

**Broshar:** One of the major problems is increasing regulation. I think that there is going to be some effort made to reduce that, at least that's what sounds like is coming out of Washington. But, the increasing regulation on our practice makes it very difficult to practice architecture. At the same time we are being held up to a higher level of responsibility. The two things may seem consistent, but when you put them together with the fact that the architects are involved in way too small a portion of the design of the built environment, it really doesn't make sense. If in fact we were responsible for 90 or 95% of the designed environment, it would be fine, but the regulation doesn't make sense when you apply it to such a small percentage. I think one of the goals is to try to make ar-





chitects more competent, and at the same time try to make it simpler, easier for them to practice without so much over-regulation. Another thing is that we really need to build public awareness of the value of good design so that architects are participating in a much broader part of the design of the built environment.

We are doing quite a bit in the way of public education, but we are just beginning to scratch the surface. It should start in the schools. The Architects in the Schools program has had some success. It could work more effectively maybe even on a less formal basis. But, I think its a good start. Many components have developed a speakers bureau. Architects have had a tendency in the past to hold back a little bit in talking about what they do and what their concerns are and the development of speakers bureaus are a big step in that direction. It's just a matter of education and understanding.

Another public education need is in the area of architect selection. In essence I think the public generally doesn't understand the disadvantages of fee bidding for selecting architects. We need to educate the public as to the reasons why we're selling a quality service and that a cut rate service in architecture is the kind of thing where the bills don't stop coming in for many, many years. It's a very shortsighted way to select. I think the Brooks Bill system where architects are selected based on their qualifications and their experience and then negotiate a fair fee is a very reasonable approach.

*Cackler:* As a midwestern architect and a member of a fairly small firm, would you have something unique to offer as president of the Institute?

*Broshar:* Number one, the AIA is an organization of individuals, representing small businesses. The average firm size in the AIA is 8 or 9 people. Our firm is about twice that size, but we're still in the small business category. I am a practicing architect. I have a pretty good understanding, because I practice architecture every day, of what the needs of the bulk of our membership are. Our

membership, however, covers a much broader aspect than just the practice of architecture. Because we involve architectural educators, architects who work in government, who represent client groups, and architects who work in industry. I think my experience and viewpoint probably represent the average. That's not to say we should be dealing for the average. We have to be concerned with the needs of all architects in our membership.

What can I bring to the position? I think I can bring a couple of things. One of my strongest personal traits — and this has come to me through working with the national group for the last 5 years, maybe it has something to do with coming from the middle of the country, maybe it has something to do with having all these diverse views around us, is an affinity for working with people, being sensitive to what their needs and problems are and being able to get them to work together. And that's a great deal of what the presidency is about. My experience on the AIA Board and my interest areas are fairly broad. I think I can bring quite a bit of balance to the position.

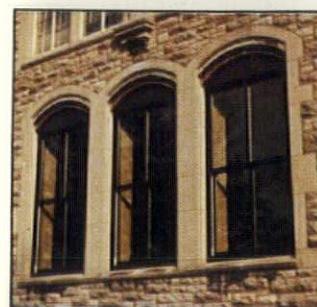
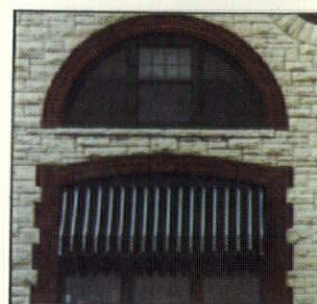
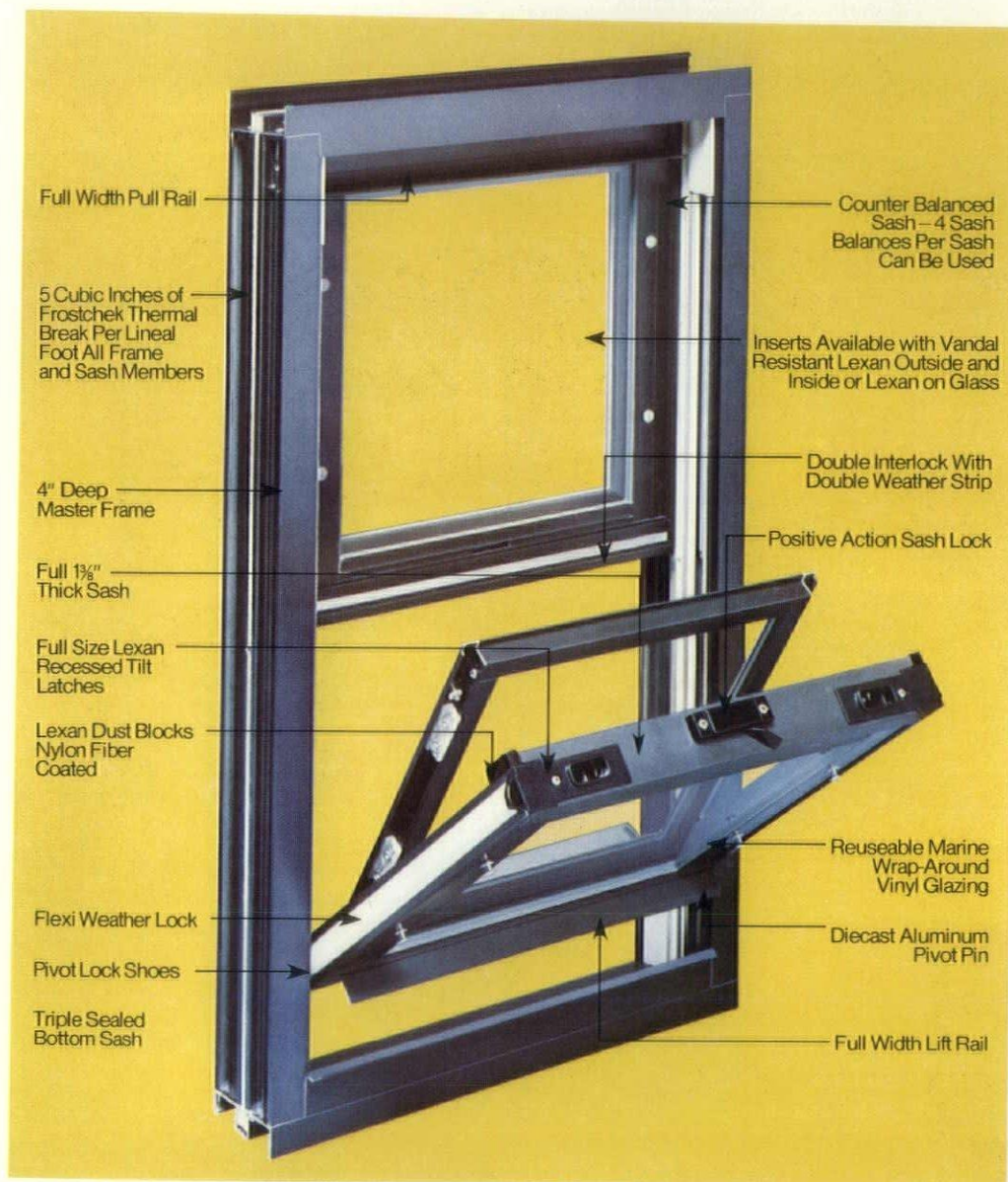
*Cackler:* What are your interest areas?

*Broshar:* The number one area I'm concerned with is architecture and I think that starts with the design consideration. That has to be the first aspect. I'm interested in improved practice capabilities and that's not just efficiency. It's a better means of practicing our skill. I'm also concerned with the well-being of the architect. That has to be one of our number one concerns. I worked for two years on the architect's liability committee at a time when it was really in trouble. We did get communications moving. I think, obviously, economic and legal conditions changed some aspects of professional liability insurance, but at least we were able to communicate with the members and to continue that so that now, instead of having one high-priced program available, we have several, and they are competitive, and some of those rates have come down. At present we have 5 or 6 companies that are providing this sort of insurance and we are communicating about it. Our members are aware of it and I



# Specify the Best

## The New VRW 610 Thermal Replacement Window



### The Advantages:

- Unique "Frostcheck®" thermal protection
- Outstanding structural integrity
- Appealing aesthetic design
- PLUS...Tough vandal-resistant poly-carbonate glazing

*We have hundreds of installations of the nature shown above in the Iowa area as well as a diverse selection of quality replacement window and entrance systems to suit your needs & budget*

**IOWA ARCHITECTURAL**  
PRODUCTS, INC.

• 801 33rd Ave. SW, Cedar Rapids, Ia. • 800/332-5235

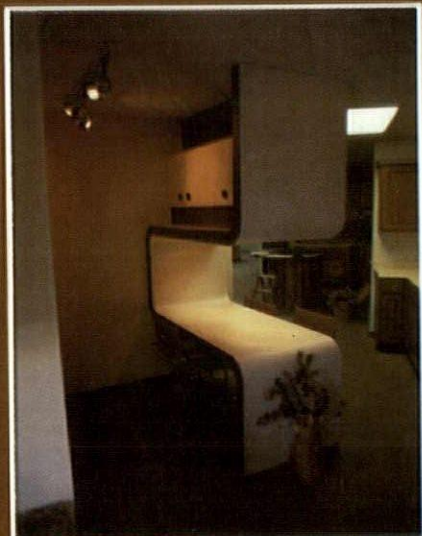




# S & E *Cabinet Originals*



Cherry wood kitchen designed for Clarence & Dorothy Sierens - Contractor: Bob Reinert, North English



Example of contemporary kitchen design.

Unique Environments  
Designed Especially For You

## S & E Custom Cabinets

107 2ND AVENUE P.O. BOX 5581  
CORALVILLE, IOWA 52241 • PH. 319/351-1487

SPECIALISTS IN CUSTOM CASE WORK: RESIDENTIAL, COMMERCIAL, AND INDUSTRIAL WOOD PRODUCTS



think our members have a better knowledge about the services that the institute provides as a result.

*Cackler:* Besides your responsibilities as Vice President, you are also the chairman for the 1981 National Convention. Doesn't this take an incredible amount of time and work?

*Broshar:* Actually, the committee has been functioning a little over a year now, but the local people have been working for some time prior to that in the organization of their basic ideas and the aspects of the cities that they wanted to be able to show the architectural profession. They had a lot of plans well in hand long before we ever started functioning as a national committee.

*Cackler:* What's going to be special about the Minnesota convention?

*Broshar:* We have a number of unique programs for this year's convention, but if I were to say what I feel is the most outstanding thing, it is the fact that we're having a convention that deals with excellence in design, excellence in architecture, in a two city area which has really notable architecture and so many of the functions take place in architecturally significant places. This makes it a very special convention.

The host chapter party is focused in an award winning mall development, the Nicollet Mall, which is a central spine in downtown Minneapolis. The highlight of the evening will be the Minnesota Orchestra Pops Concert which will be in Orchestra Hall, which is again an award winning piece of architecture. The Dodge Party which is a highlight of every National AIA convention is going to be located in the downtown Minneapolis Hennepin County Building which is a very exciting architectural space by John Carl Warnecke, also an honor award winning structure. We have a president's reception and then later the Gold Medal dinner and reception which are going to be located in the Crystal Court of the IDS Center. Again, this is a national award winner. We've got two outstanding examples of historic preservation structures, one in Minneapolis and one in St. Paul that are also going to be featured as a part of the convention. It's just a very exciting architectural experience.

*Cackler:* What are some of the other highlights?

*Broshar:* We're having an experiment this year by having the National Committees meet at the Convention. They have been invited, and have responded very favorably. They will be meeting the Saturday and Sunday prior to

the Convention. This allows members who would be interested in those committees to go a little early to sit in the meetings to get a feel for the AIA National Committee system. It's an extremely important function of AIA, and this is a great opportunity for members to take part in that at very little cost because they are already there. It is an experiment, but I feel very positive about the response we've had and I think we have about 16 committees that will be meeting in Minneapolis.

That's one thing that will be different. Then we also have our Professional Development program. It's been about four years since the serious Professional Development programs were an integral part of the National Convention. We have four three-hour sessions scheduled with a fairly broad selection of courses that all focus on the design and energy theme. This is the beginning for a major three year AIA program, starting in 1981, which is the Energy Professional Development Program. It's a series of educational opportunities that are being put together at quite a bit of expense by the Institute, and the kick off for this, the first two sessions, will be offered as a part of the Professional Development in Minneapolis.

*Cackler:* Which architects are speaking?

*Broshar:* The final designer panel is Sym Van Der Ryn, the former state architect from California who is the leader in solar and energy design and Bill Caudill, of Houston, Harrison Fraker from Princeton who is a solar designer, Robert Stern, from New York, and Fred Dubin, an architect and engineer who has been a leader in the engineering aspects of energy efficient design.

Finally, it is always a special convention when there is a gold medalist. Josep Lluís Sert is the gold medalist and fortunately has agreed to be a part of several of our programs. We will have a gold medal presentation for all of our members and the public will also be invited. The gold medal dinner afterwards is, of course, a formal sort of thing which because of its expense is somewhat limited in participation, but Sert will also be a part of Thursday's panel. So, we're really pleased that he's taking an active part in the convention.

The Iowa Chapter will be sponsoring a Hospitality Suite at the Minneapolis/St. Paul Convention to support Bob's candidacy for President-Elect. All those who will be at the Convention are encouraged to attend.





# “We'll outservice any wallcovering supplier in the 5-state area.”

—Jeff Lien, Hirshfield's Contract Sales

Next commercial wallcovering job that comes up, give us a call at Hirshfield's Contract Sales.

(612) 370-2626.

We'll show you what Hirshfield's means when we say, “We'll outservice any wallcovering supplier in the 5-state area.”

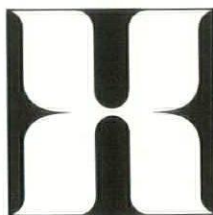
We're out to win you over by out-supplying, outservicing, and just plain out-hustling the competition.

Our services include:

- **A Free Architect/Designer Reference File** of the latest commercial and specialty wallcoverings, looseleaf bound so it can be continuously updated.

- **Layout Assistance** in the coordinating of wallcoverings with fabric, carpeting, draperies, etc.

- **A Contract Sales Showroom** at Hirshfield's downtown Minneapolis store, 824 Hennepin. Plus 8 other showrooms in the metro area.



**HIRSHFIELD'S**  
CONTRACT SALES

- **Complete sampling program** for all commercial wallcovering lines.

- **Measurement of rollage requirements** for jobs.

- **Consulting** on paints and sun-dries.

Call us for your next commercial wallcovering project.

Hirshfield's . . . the Twin Cities' largest and most complete decorating products supplier . . . since 1894.

**Contract Showroom: 824 Hennepin Ave., Mpls. (612) 370-2626.**  
**Designer Showroom: Suite 304, Harmon Court Design Center, 1128 Harmon Place, Mpls. (612) 370-2695.**

Distributors of: Stauffer Commercial Vinyls, Spectra Royale Vinyls and Architectural Reference File, Environmental Graphics, Eurotex, Geometrics for Designers, Fred Cole Foils, Hasi Hester of California, S. M. Hexter Woods and Linens, Manuscreens, Executive Wood, Laue Suedes, Mirror-Flex, Naturescapes, Vinyl Weaves and Textures & Stripes by J. Josephson, Edinburgh and Balmoral by Sidlaw of Scotland, Textured Vinyls by Moss, Imperial Wallcoverings, United Wallcoverings, Vescom of Holland, Vin-L-Fab Commercial Vinyls and Let's Talk Textures by Laminating Services, Fuller-O'Brien Paints, Olympic Wood Finishes. Representatives for: Jack Denst Designs, Winfield Designs, Albert Van Luit.



# Guide To Architectural Firms in Iowa 1981

## A

### A5, ALLERS & ASSOCIATES, INC.

1913 North 7th St., RR #2  
Fort Dodge, IA 50501  
515/573-2377  
Established 1979



Terry L. Allers AIA, CSI

Gross Construction Volume of Projects  
1979 \$210,000  
1980 \$867,000

Firm Personnel by Discipline  
Architectural 1

Work %

Small Scale Office Buildings 5  
Shopping Centers/Retail 10  
Industrial 5  
Educational 10  
Banks/Financial 5  
Solar and/or Earth Sheltered 10  
Architect Designed Homes 24  
Apartments/Condominiums 6  
Municipal Buildings 5  
Restoration/Renovation 10  
Churches/Worship 5  
Energy Audits 5

Iowa 100%

Opportunity Center for the Handicapped, Humboldt; Classroom Addition, Fort Dodge; Credit Union Addition, Fort Dodge; Municipal Swimming Pool Bathhouse, Belle Plaine; Passive Solar Residence, Fort Dodge

Manufacturers contact: Terry L. Allers  
Clients contact: Terry L. Allers

### P. DAVID ANNEBERG, ARCHITECT

8527 University - Suite 8  
Des Moines, IA 50311  
515/225-7533  
Established 1972



P. David Anneberg AIA

Firm Personnel by Discipline  
Architectural 1  
Administrative 1

Work %

Small Scale Office Buildings 10  
Shopping Centers/Retail 5  
Restaurants 5  
Industrial 5  
Banks/Financial 30  
Medicine/Health Care 10  
Architect Designed Homes 5  
Restoration/Renovation 25  
Churches/Worship 5

Iowa 100%

Shelby County State Bank, Harlan; Manilla State Bank, Manilla; Altoona State Bank, Al-

toona; Oral Surgery Clinic, Des Moines; Internal Medicine & Chest Assoc. Offices, West Des Moines; 1776 Office Bldg., West Des Moines; Camelot Cleaners, Ankeny; 1922 Office Building Renovation, Des Moines

Manufacturers contact: P. David Anneberg  
Clients contact: P. David Anneberg

### ARCHITECTURAL DESIGN GROUP, INC.

205 South Clark Street  
Forest City, IA 50436  
515/582-2771  
Established 1918

Gordon O. Gjelten, President AIA  
Willis E. Schellberg, Ex. Vice President AIA  
Robert L. Johnson, Vice President AIA  
Brock A. Walden, Secretary AIA  
Steven Sorensen, Treasurer AIA  
Byron D. Stadsvold, Vice President AIA

Gross Construction Volume of Projects  
1979 12 million  
1980 15 million  
1981 12 million

Firm Personnel by Discipline

Architectural 16  
Engineering 2  
Interior Design 2  
Administrative 7

Work %

Small Scale Office Buildings 12  
Restaurants 2  
Industrial 5  
Educational 8  
Banks/Financial 18  
Medicine/Health Care 20  
Interior Design 3  
Solar and/or Earth Sheltered 10  
Architect Designed Homes 1  
Townhouses 2  
Apartments/Condominiums 3  
Municipal Buildings 3  
Restoration/Renovation 8  
Churches/Worship 5

Upper Midwest 98% Other U.S. 2%

Ironwood Square Condominium Office Building, Rochester; Holy Trinity Lutheran Church, New Prague, MN; Okabena Towers Housing, Worthington, MN; Senior Citizen's Center, Rochester; Office & Terminal Buildings for International Transport, Inc., Rochester; Community Recreation Center, Rochester; Bethany Samaritan Nursing Home, Rochester; Addition to Madonna Towers, Rochester; Addition to Queen of Peace Hospital, New Prague; Addition to Clarion Community Hospital, Clarion, IA

Manufacturers contact: James Springborg, Forest City office or Chris Johnson, Rochester office  
Clients contact: Bob Johnson, Forest City office; Gordon Gjelten, Willis Schellberg, Byron Stadsvold at Rochester office

## B

### BERGLAND AND BIANCO

11 1/2 South Federal Avenue  
Mason City, IA 50401  
515/423-7513

### BEUTTLER OLSON LEE, P.C. ARCHITECTS

14th & Nebraska Sts.  
Sioux City, IA 51105  
712/255-1683  
Established 1912



E. A. (Gene) Olson AIA  
R. M. (Bob) Lee AIA

Gross Construction Volume of Projects  
1979 \$9,347,333  
1980 \$10,015,383

Firm Personnel by Discipline

Architectural 6  
Engineering 2  
Interior Design 1  
Administrative 2  
Other General 2

Work %

Small Scale Office Buildings 10  
Industrial 5  
Educational 10  
Banks/Financial 15  
Medicine/Health Care 30  
Interior Design 5  
Municipal Buildings 10  
Restoration/Renovation 5  
Churches/Worship 10

Iowa 75% Midwest 25%

N.W. Bell Telephone ESS Bldg., Sioux City, IA; Municipal Hospital, Orange City, IA; Medical Arts Bldg., Spencer, IA; East High School, Sioux City, IA; St. Mary's Catholic Church, Albia, IA; Farmer's State Bank, Schleswig, IA; Farm Credit Center, Sioux City, IA

Manufacturers contact: Bob Lee, Gene Olson, Henry Fachman  
Clients contact: Gene Olson, Pres.

### DAVID A. BLOCK, ARCHITECT

4618 Westbend Drive  
Ames, IA 50010  
515/294-8292  
Established 1975

David A. Block AIA

Gross Construction Volume of Projects  
1979 \$500,000  
1980 \$600,000  
1981 \$1,000,000

Firm Personnel by Discipline

Architectural 1  
Work %  
Restaurants 5  
Medicine/Health Care 5  
Solar and/or Earth Sheltered 50  
Architect Designed Homes 35  
Churches/Worship 5

Iowa 100%

Manufacturers contact: David A. Block  
Clients contact: David A. Block

### BLOODGOOD ARCHITECTS, P.C.

3001 Grand Avenue  
Des Moines, IA 50312  
515/283-0404  
Established 1965

John D. Bloodgood AIA  
Howard G. Pals AIA  
Gary L. Weaver AIA

Firm Personnel by Discipline

Architectural 10  
Interior Design 1  
Administrative 3

Work %

Small Scale Office Buildings 5  
Solar and/or Earth Sheltered 8  
Architect Designed Homes 3  
Townhouses 12



Apartments/Condominiums	30
Municipal Buildings	30
Planning	12
Residential Plan Service	addl.

Iowa 20% Midwest 20% Other U.S. 60%

Linden Park Townhouses, Des Moines; Indian Creek Townhouses, Denver; Stadium Wood Townhouses, Fort Dodge, IA; Bucksbaum Residence, Des Moines; Hotel Savery Renovation, Des Moines; The Gables Condominiums, Newton, MA; Herndon Hall Renovation (Meredith Corporation), Des Moines; Fairway Villa Condominiums, Grand Island, NE; Luther Forest Townhouses, Albany, NY; Belin-Harris Law Firm alterations and interiors, Des Moines

Manufacturers contact: Gary L. Weaver, Terry Leonard  
Clients contact: John D. Bloodgood, Howard G. Pals

#### CARL BLUM

800 F and M Bldg.  
Burlington, IA 52601  
319/754-7811

#### BROOKS BORG AND SKILES

700 Hubbell Building  
Des Moines, IA 50309  
515/244-7167  
Established 1932

J. Woolson Brooks	AIA
J. E. Borg	
Paul S. Skiles	AIA
John R. Ratcliffe	AIA
Robert J. Mathieu	AIA
Thomas J. Van Hon	
Rodney R. Nelson	AIA
Richard E. South	

Gross Construction Volume of Projects	
1979	\$17,000,000
1980	\$21,000,000

Firm Personnel by Discipline	
Architectural	16
Engineering	13
Interior Design	2
Administrative	3

	Work %
Small Scale Office Buildings	10
Large Scale Office Buildings	40
Industrial	15
Educational	5
Banks/Financial	5
Medicine/Health Care	5
Interior Design	5
Solar and/or Earth Sheltered	2
Municipal Buildings	6
Restoration/Renovation	5
Churches/Worship	2

Iowa 100%

Continental Western Life Insurance Company, Home Office Building; Bankers Life Company, Century Center Office Building; USDA, Biologics Research Laboratory; City of Des Moines, Skywalks System

#### DAVID L. BROST, ARCHITECTS & PLANNERS

1906 Mt. Vernon Rd. S.E., P.O. Box 1109  
Cedar Rapids, IA 52406  
319/366-8531  
Established 1968

David L. Brost	AIA
Gross Construction Volume of Projects	
1979	\$6 million
1980	\$8 million

1981	\$10 million
Firm Personnel by Discipline	
Architectural	3
Administrative	1
Work %	
Small Scale Office Buildings	12
Shopping Centers/Retail	20
Restaurants	4
Industrial	5
Educational	2
Solar and/or Earth Sheltered	4
Architect Designed Homes	4
Townhouses	4
Apartments/Condominiums	10
Municipal Buildings	5
Restoration/Renovation	10
Planning	10
Churches/Worship	10

Iowa 99% Midwest 1%

Home Office, Life Investors, Inc., Cedar Rapids; renovation, Linn County Courthouse & Administrative Office Building, Cedar Rapids; Indian Creek Country Club, Marion; Armar Plaza Shopping Center, Marion; Westdale Mall Retail Shops, Cedar Rapids; National Distribution Center, Klein Tools, Inc., Cedar Rapids; Hillside Wesleyan Church, Cedar Rapids

Manufacturers contact: David F. Martin  
Clients contact: David L. Brost or David F. Martin

#### BROWN HEALEY BOCK, ARCHITECTS ENGINEERS PLANNERS

1035 3rd Ave. S.E.  
Cedar Rapids, IA 52403  
319/365-9426  
Established 1910

Edward H. Healey	FAIA
Carl V. Bock	PE
Edward G. Sauer	AIA
Herbert M. Stone	AIA

Gross Construction Volume of Projects	
1979	\$5.9 million
1980	\$7.9 million
1981	\$9 million

Firm Personnel by Discipline	
Architectural	11
Engineering	1
Administrative	3
Other General	1

	Work %
Small Scale Office Buildings	2
Large Scale Office Buildings	8
Shopping Centers/Retail	2
Restaurants	4
Industrial	9
Educational	15
Banks/Financial	5
Medicine/Health Care	5
Solar and/or Earth Sheltered	5
Townhouses	2
Apartments/Condominiums	8
Municipal Buildings	8
Restoration/Renovation	10
Planning	8
Churches/Worship	2
Landscape Architecture	2
Airport Terminal Facilities	5

Iowa 95% Midwest 5%

State Historical Museum, Des Moines; Cedar Rapids Ground Transportation Center Complex, Cedar Rapids; Cedar Rapids Public Library, Cedar Rapids; Waterloo Public Library, Waterloo; Amana Refrigeration Corp.

Office Bldg., Amana, IA; Communication Arts Center, UNI, Cedar Falls, IA, Kirkwood Community College, Cedar Rapids

Manufacturers contact: Gerry Kneeland or Carl Bock  
Clients contact: Edward Healey or Lowell Sisson

#### ROBERT H. BURGIN AND ASSOCIATES, INC. P.C.

Suite 305  
First Federal Savings and Loan Bldg.  
Council Bluffs, IA 51501  
712/328-2003  
Established 1967

Robert H. Burgin, President

Gross Construction Volume of Projects	
1979	\$900,000
1980	\$2,375,000
1981	\$1 million

Firm Personnel by Discipline	
Architectural	3
Other Technical	2
Administrative	1

	Work %
Small Scale Office Buildings	13
Shopping Centers/Retail	5
Restaurants	1
Industrial	12
Educational	10
Banks/Financial	4
Medicine/Health Care	14
Interior Design	3
Architect Designed Homes	3
Municipal Buildings	15
Restoration/Renovation	6
Planning	1
Churches/Worship	12
Landscape Architecture	1

Iowa 95% Midwest 5%

Taylor County Care Facility, Lenox; Fremont County Care Facility, Sidney; Pottawattamie County Courthouse Annex Remodel; City-County Law Enforcement Center, Denison; Fire Station-Community Building, Essex; Public Safety Vehicle Maintenance Facility; HUD Modernization of Housing For Elderly at Council Bluffs, Onawa, Missouri Valley, Malvern, Ottumwa, and Centerville; Eaton Corp. Manufacturing Plant, Shenandoah; New Franklin Elementary School, Rose Kennedy Special Education School, additions at Madison, Pussey, Thomas Jefferson H.S. and Abraham Lincoln H.S.; Addition to First Federal Savings & Loan; Cogley Clinic Phase II; Clarinda Iowa Municipal Hospital Addition; Holy Family Church, Mondamin; Holy Rosary Church, Glenwood

Manufacturers contact: Robert H. Burgin  
Clients contact: Robert H. Burgin

#### ROBERT BURNS & ASSOCIATES

Hwy. 218 N.  
Riverside, IA 52327  
319/648-3413  
Established 1976

Robert P. Burns	AIA
David B. Hayes	

Gross Construction Volume of Projects	
1979	\$1,625,000
1980	\$1,965,000
1981	\$2,835,000

Firm Personnel by Discipline	
Architectural	3



	Work %
Small Scale Office Buildings	10
Industrial	40
Apartments/Condominiums	50
Iowa 100%	
Manufacturers contact: Robert Burns or David Hayes	
Clients contact: Robert Burns or David Hayes	

#### BUSSARD/DIKIS ASSOCIATES, LTD.

414 Sixty-First St.  
Des Moines, IA 50312  
515/274-4074  
Established 1966



H. Kennard Bussard	AIA
William M. Dikis	AIA
Arnie E. Fischer	AIA
David Duimstra	AIA
Douglas R. Sires	AIA
Rod Kruse	AIA
Alan Oberlander	AIA

Gross Construction Volume of Projects  
1980 \$24 million

Firm Personnel by Discipline	
Architectural	13
Interior Design	1
Administrative	4

	Work %
Small Scale Office Buildings	5
Large Scale Office Buildings	5
Shopping Centers/Retail	5
Educational	35
Medicine/Health Care	25
Interior Design	5
Municipal Buildings	10
Restoration/Renovation	10

#### Iowa 100%

Crossroads Elementary School, West Des Moines (AASA/AIA National Award 1980); Seed Laboratory, Iowa State University; Des Moines Area Community College, Ankeny Campus; IMT Insurance Corporate Headquarters, Des Moines; Veterans Admin. Medical Center, Ambulatory Care Addition and Renovation; Gateway Hotel and Convention Center, Ames; Polk County Courthouse Renovation, Des Moines; Lucas State Office Building Remodeling/Renovation Des Moines Area Community College, Urban Campus, Des Moines; YMCA, Des Moines; Blood Center of Central Iowa, Des Moines

Manufacturers contact: A. Fischer, D. Duimstra, D. Sires  
Clients contact: H. Kennard Bussard

## C

#### CANTOR ARCH. & INTER. DESIGN

1715 Pierce Street  
Sioux City, IA 51105  
712/277-1469

#### I. T. CARRITHERS, ARCHITECT

201 Bennett Avenue  
Council Bluffs, IA 51501  
712/328-3121  
Established 1954

I. T. Carrithers	AIA
Firm Personnel by Discipline	
Architectural	1
Administrative	1

	Work %
Small Scale Office Buildings	3
Large Scale Office Buildings	2

Shopping Centers/Retail	1
Restaurants	2
Educational	50
Banks/Financial	3
Medicine/Health Care	3
Interior Design	1
Solar and/or Earth Sheltered	5
Municipal Buildings	2
Restoration/Renovation	1
Planning	1
Churches/Worship	24

#### Iowa 95% Midwest 5%

Manufacturers contact: I. T. Carrithers  
Clients contact: I. T. Carrithers

#### CERVETTI, WEBER, MIKKELSEN, POLLARD, INC.

16½ West Main Street  
Marshalltown, IA 50158  
515/752-3930

#### CHANGE - SOLAR & ENVIRONMENTAL DESIGN

1433 Wildwood Dr. N.E.  
Cedar Rapids, IA 52402  
319/365-6103  
Established 1977

Roger D. Hadley	AIA
-----------------	-----

Firm Personnel by Discipline	
Architectural	2

	Work %
Small Scale Office Buildings	2.5
Interior Design	2.5
Solar and/or Earth Sheltered	95

#### Iowa 100%

Cedar Rapids Cable Communications Building, Cedar Rapids; Shebk-Hoyt Jewelers, Westdale Mall, Cedar Rapids; Peoples Bank & Trust, Westdale Mall; Alfalfa's Deli, Lindale Mall, Cedar Rapids; Travel & Transport Travel Agency, Lindale Mall; Passive Solar Residences In Cedar Rapids and Winthrop, IA

Manufacturers contact: Roger D. Hadley  
Clients contact: Roger D. Hadley

#### CRITES, GARRETT, DULANEY

208 5th Street  
Ames, IA 50010  
515/232-3395

## D

#### DESIGN COLLECTIVE

P.O. Box 204  
Mt. Vernon, IA 52314  
319/895-6454

#### THE DESIGN PARTNERSHIP, ARCHITECTS

1637 Thornwood Road  
West Des Moines, IA 50265  
515/225-9527  
Established 1973



Edward L. Soenke, CCS, AEA	AIA
----------------------------	-----

Gross Construction Volume of Projects	
1979	\$2,400,000
1980	\$2,750,000
1981	\$2,900,000

Firm Personnel by Discipline	
Architectural	1
Administrative	1

	Work %
Small Scale Office Buildings	10
Restaurants	15
Industrial	5

Educational	15
Banks/Financial	10
Medicine/Health Care	10
Interior Design	5
Solar and/or Earth Sheltered	10
Apartments/Condominiums	5
Municipal Buildings	5
Restoration/Renovation	5
Churches/Worship	5

#### Midwest 100%

Numerous Energy Retrofits; Hyatt Des Moines; Bondurant Schools Addition; Rural Rental Housing in Wellsburg, Ackley, Appleton, Bristow, Allison, Lorimor; Northeast Schools Alterations; Maple Manor Nursing Home; New Life Center

Manufacturers contact: Edward L. Soenke  
Clients contact: Edward L. Soenke

#### ROBERT C. DEVOE ARCHITECTS, INC.

311-B Main Parkade  
Cedar Falls, IA 50613  
319/266-1977  
Established 1955



Robert C. Devoe	AIA, NCARB
-----------------	------------

Gross Construction Volume of Projects	
1979	\$1,214,175
1980	\$1,894,850
1981	2,500,000 est.

Firm Personnel by Discipline	
Architectural	2
Administrative	1

	Work %
Small Scale Office Buildings	5
Educational	10
Banks/Financial	20
Medicine/Health Care	5
Apartments/Condominiums	20
Municipal Buildings	10
Restoration/Renovation	5
Churches/Worship	25

#### Iowa 100%

Manufacturers contact: Chris Browning, Robert Devoe  
Clients contact: Robert Devoe

#### DeWILD, GRANT, RECKERT & ASSOC.

600 S.C. Federal Plaza Bldg.  
Sioux City, IA 51101  
712/277-3049

#### TIM W. DOWNING, ARCHITECT

2415 Eighteenth Street  
Bettendorf, IA 52722  
319/355-1856  
Established 1952



Tim W. Downing	AIA
----------------	-----

Firm Personnel by Discipline	
Architectural	2
Administrative	1

	Work %
Small Scale Office Buildings	2
Large Scale Office Buildings	3
Shopping Centers/Retail	26
Industrial	6
Educational	5
Banks/Financial	1
Interior Design	1
Solar and/or Earth Sheltered	3
Architect Designed Homes	1
Municipal Buildings	17
Restoration/Renovation	2
Planning	4
Churches/Worship	27



Airport Terminal Facilities	2
Iowa 70% Midwest 30%	

Boy's Residential Treatment Center, Hillcrest Family Services, Dubuque, IA; Our Savior Lutheran Church, Bettendorf IA; Kennedy Square Shopping Center, East Moline, IL; City Line Plaza Shopping Center, Moline, IL; Bettendorf City Hall, Police & Fire Department Additions & Remodelings; Mississippi Bend Area Education Agency Offices, Bettendorf; Jewel-Osco Retail Store, Clinton, IA; Redeemer Lutheran Church, Bettendorf; Pleasant View Baptist Church, Bettendorf

Manufacturers contact: Tim W. Downing  
Clients contact: Tim W. Downing

#### DUFFY, MANNES & BRYGGER, ARCHITECTS & ENGINEERS

507 7th Street, Suite 540  
Sioux City, IA 51101  
712/255-3531  
Established 1963



James M. Duffy	AIA, PE
Glenn H. Mannes	AIA
James A. Brygger Jr.	AIA
James E. Ruble	AIA
Owen M. Mamura	AIA

Gross Construction Volume of Projects	
1979	\$7 million
1980	\$8 million
1981	\$10 million

Firm Personnel by Discipline	
Architectural	9
Engineering	2
Interior Design	1
Other Technical	1
Administrative	2

	Work %
Small Scale Office Buildings	13
Large Scale Office Buildings	10
Industrial	5
Educational	10
Banks/Financial	10
Medicine/Health Care	5
Interior Design	5
Apartments/Condominiums	5
Municipal Buildings	10
Restoration/Renovation	15
Churches/Worship	10
Airport Terminal Facilities	2

#### Midwest 100%

First Federal Savings, Sioux City; Plaza Professional Center, Sioux City; Farm Credit Center, Yankton; Blue Cross/Blue Shield, Sioux City; St. Michael's Church, Sioux City; Elementary School, Spirit Lake; Safety Center, Yankton

Manufacturers contact: James Brygger  
Clients contact: James Duffy

#### DULANEY & ASSOC.

208 5th Street  
Ames, IA 50010  
515/232-1178

#### THE DURRANT GROUP, INC.

One Dubuque Plaza  
Dubuque, IA 52001  
319/583-9131  
Established 1933



Jerold W. Dommer, President	AIA
Robert F. Mattox, V.P./Gen. Mgr.	AIA
George E. Deininger, Secretary/Treas.	AIA
William F. Batterman, Vice President	PE

Albert W. Boehme	PE
Brian P. Guthertz	ALSA
Donovan D. Kramer	AIA
Charles M. Kurt	AIA
Charles R. Marsden	PE
Gordon E. Mills	AIA
Dale A. Nederhoff	AIA, PE
Max N. Schmidt	AIA
Hansford B. Warner III	PE
James W. Whiteside	PE
Norman E. Wirkler	AIA
Vernon L. Worrell	AIA

Gross Construction Volume of Projects	
1979	\$112 million
1980	\$142 million
1981	\$140 million

Firm Personnel by Discipline	
Architectural	32
Engineering	34
Interior Design	3
Other Technical	11
Administrative	17
Other General	5
Landscape Architects	4

	Services %
Architecture	60
Engineering	27
Energy	6
Interiors	5
Environmental Planning	2

	Work %
Health Care	30
Education	27
Justice/Detention/Safety/Municipal	15
Offices/Banks/Industrial/Retail	13
Housing	5
Planning	10

#### Iowa 45% Midwest 45% Other U.S. 10%

Northeast Iowa Technical Institute, Peosta, IA; Whiteside County Law Enf. Ctr., Morrison, IL; State of Iowa Agriculture Building, Des Moines; Cardiovascular Research Center, Iowa City; Wisconsin State Fair Park, Milwaukee; School of Veterinary Medicine, U/Wis., Madison; 1300 University Ave. Complex, Center for Health Sciences, U/Wis.; Ottumwa Hospital, Ottumwa, IA; Carnegie-Stout Library Expansion, Dubuque; Mercy Health Center Renovation, Dubuque; Banco Mortgage Servicing Center, Waterloo, IA; DeLaval Corporate Offices & Distribution Center, Kansas City, MO

Manufacturers contact: Robert F. Mattox, AIA, General Manager  
Clients contact: Norman E. Wirkler, AIA, Vice President

## E

#### ENGBRECHT AND GRIFFIN

525 6th Avenue  
Des Moines, IA 50309  
515/243-1800

#### ENVIRONMENTAL DESIGN GROUP

3000 30th Street  
Des Moines, IA 50310  
515/274-4056

## F

#### FLINN SAITO ANDERSON, ARCHITECTS

604 Mulberry  
Waterloo, IA 50703  
319/233-1163  
Established 1947



Daryl E. Anderson	AIA
William Richtsmeier	AIA

Gross Construction Volume of Projects	
1979	\$3 million
1980	\$4 million
1981	\$4 million

Firm Personnel by Discipline	
Architectural	5
Interior Design	1
Administrative	1

	Work %
Small Scale Office Buildings	15
Large Scale Office Buildings	5
Shopping Centers/Retail	10
Educational	5
Banks/Financial	15
Interior Design	5
Solar and/or Earth Sheltered	10
Architect Designed Homes	10
Municipal Buildings	10
Restoration/Renovation	10
Planning	5
Airport Terminal Facilities	5

#### Iowa 90% Midwest 10%

Waterloo Public Library; Waterloo Courier Renovations; Peoples Mutual S&L Branch & Rental Office Park, Waterloo; KWWL/KFMW Forward Broadcasting Radio Stations, Waterloo; KTW Television Studios, Sioux City; Waterloo Parking Ramp, Retail, etc.; National Bank of Waterloo, Logan Plaza Branch

Manufacturers contact: Daryl Anderson or William Richtsmeier  
Clients contact: Daryl Anderson

#### FEH ASSOCIATES, INC.

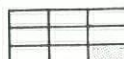
406 Home Federal Bldg.  
Sioux City, Iowa 51102  
712/252-3889

#### FREDREGILL ARCHITECTS

913-C 9th Street  
West Des Moines, IA 50265  
515/223-8032

#### FREVERT-RAMSEY-DREY-KOBES, ARCHITECTS-ENGINEERS, INC.

3737 Woodland Ave., Suite 414  
West Des Moines, IA 50265  
515/223-5100  
Established 1957



W. David Frevert	AIA, CSI, CCS
W. Robert Ramsey	AIA, ULI, PE
John E. Drey	AIA
Joe H. Kobes	AIA, CSI

Gross Construction Volume of Projects	
1980	\$8 million

Firm Personnel by Discipline	
Architectural & Engineering (regis.)	10
Other Technical	1
Administrative	1

Project Experience:  
Small Scale Office Buildings  
Large Scale Office Buildings  
Shopping Centers/Retail  
Restaurants  
Industrial, (Light)  
Educational, (University, Secondary, Primary)  
Banks/Financial  
Medicine/Health Care  
Interior Design  
Solar and/or Earth Sheltered  
Townhouses



Apartments/Condominiums  
Governmental Buildings  
Restoration/Renovation  
Planning  
Churches/Worship

Iowa and Midwest 88% Other U.S. 12%

Hoover High School, Des Moines; North-western Bell Training Center, Urbandale; Quadrangle Remodeling, ISU, Ames; Meats Laboratory, ISU, Ames; West Towers Office Building, W. Des Moines; Colony Park Office Bldg., W. Des Moines; Plaza State Bank, Des Moines; Ramada Plaza, Dubuque; Airport Hilton Inn, Des Moines; Adventureland Inn, Altoona; Starlite Inn, Ames; Gibbs-Cook Equipment, Urbandale

Manufacturers contact: W.D. Frevert, W. Robert Ramsey, J.E. Drey, or J.H. Kobes  
Clients contact: W.D. Frevert, W. Robert Ramsey, J.E. Drey, or J.H. Kobes

## G

### THE GRIFFITH COMPANY

P.O. Box 917  
South Kenyon Road  
Fort Dodge, IA 50501  
515/576-3129

## H

### HANSEN LIND MEYER, P.C.

Drawer 310, Plaza Centre One  
Iowa City, IA 52244  
319/354-4700  
Established 1962



Richard F. Hansen	AIA
John H. Lind	AIA
John Douglas Benz	AIA
Jerry L. Quebe	
John E. Carlson	AIA
Martin J. Meisel	AIA
Thomas J. Kopecky	AIA

Gross Construction Volume of Projects	
1979	\$40 million
1980	\$72 million
1981	\$107 million

#### Firm Personnel by Discipline

Architectural	44
Engineering	26
Interior Design	3
Administrative	21
Landscape Architects	4
Graphic Designer	3
Construction Inspectors	6
Estimator/Specifications	3

#### Work %

Small Scale Office Buildings	3
Large Scale Office Buildings	6
Shopping Centers/Retail	2
Industrial	7
Educational	5
Banks/Financial	2
Medicine/Health Care	50
Interior Design	4
Townhouses	3
Apartments/Condominiums	5
Municipal Buildings	2
Restoration/Renovation	3
Planning	4
Landscape Architecture	4

Iowa 40% Midwest 40% Other U.S. 20%

Rockwell International, Cedar Rapids; Mercy Hospital, Cedar Rapids; Ia. State Highway Patrol Hdqtrs., Cedar Rapids; Iowa Lutheran

Hospital, Des Moines; U.S. Courthouse Remodel., Des Moines; College Block Building, Iowa City; Univ. of Iowa Hospitals & Clinics, Iowa City; Burge Residence Hall Remodeling, U of I, Iowa City; Friendship Village of Dublin, Columbus, OH; Old Capitol Mall, Iowa City

Manufacturers contact: Douglas A. Larson  
Clients contact: John Douglas Benz

### ROBERT HECKER, ARCHITECT

620 Frances Building  
Sioux City, IA 51101  
712/252-4394  
Established 1952

Robert Hecker AIA

#### Firm Personnel by Discipline

Architectural	1
Administrative	1

#### Work %

Small Scale Office Buildings	10
Shopping Centers/Retail	25
Industrial	20
Educational	5
Apartments/Condominiums	15
Restoration/Renovation	15
Churches/Worship	10

Iowa 80% Midwest 20%

Manufacturers contact: Robert Hecker  
Clients contact: Robert Hecker

### HARVEY W. HENRY & ASSOCIATES

P.O. Box 5162 417 10th Ave.  
Coralville, IA 52241  
319/351-4666  
Established 1960



Harvey W. Henry AIA

Gross Construction Volume of Projects	
1979	\$1 million
1980	\$800,000

#### Firm Personnel by Discipline

Architectural	2
---------------	---

#### Work %

Small Scale Office Buildings	10
Industrial	5
Educational	25
Medicine/Health Care	10
Solar and/or Earth Sheltered (Specializing)	5
Architect Designed Homes	10
Apartments/Condominiums	15
Municipal Buildings	10
Restoration/Renovation	10

Iowa 100%

285 units FmHA housing; Durant Library; Coralville City Hall; Johnson Co. Garage; Jasper Co. Garage; Truck Maintenance Bldg. & Office Bldg., Cellulose Plant at Mt. Pleasant; Dunlap's Motor Sales; Hayden Fry Office, U of I; Construction Management Consultant for Old Capitol Restoration; Shimek Elem. School; Hills Elem. School; Ainsworth Elem. School

Manufacturers contact: Beverly A. Robalino  
Clients contact: Harvey W. Henry or Beverly A. Robalino

### CHARLES HERBERT & ASSOCIATES

Suite 202 Fleming Bldg.  
Des Moines, IA 50309  
515/288-9536

### HIGGINS SHIRK & COLVIG, P.C.

204 Liberty Building

Des Moines, IA 50309  
515/244-2205  
Established 1923

Keith E. Shirk Dm C of C, BBB, CSI  
ASCE, AIA, NSPE  
Kirk Colvig AIA, NCARB

Gross Construction Volume of Projects	
1979	\$1,573,651
1980	\$4,302,897
1981	\$4 million

#### Firm Personnel by Discipline

Architectural	6
Engineering	1
Administrative	1

#### Work %

Small Scale Office Buildings	10
Large Scale Office Buildings	40
Shopping Centers/Retail	2
Restaurants	5
Industrial	10
Educational	10
Banks/Financial	15
Interior Design	5
Architect Designed Homes	1
Churches/Worship	2

Iowa 100%

Bankers Life Addition #2; Northwestern Bell Telephone Co., Addition #2, Ninth Street Building; Central National Bank, South Des Moines Branch; Liberty Building Window Replacement & Misc. Remodeling; Bankers Life Company, Interior Remodeling; Des Moines Schools, Reroofing and Window Replacement; Central National Bank, Interior Remodeling; Northwestern Bell Telephone Co., Remodeling Projects

Manufacturers contact: Kirk Colvig & Keith Shirk  
Clients contact: Keith Shirk & Kirk Colvig

### HOLLIS & MILLER, ARCHITECTS AND ENGINEERS

218 CBSB Building  
Council Bluffs, IA 51501  
712/323-8398  
Established 1950



James L. (Jim) Amend AIA

Gross Construction Volume of Projects	
1979	\$15 million
1980	\$18 million
1981	\$15 million

#### Firm Personnel by Discipline

Architectural	7
Engineering	6
Other Technical	3
Administrative	4
Other General	1

#### Work %

Small Scale Office Buildings	2
Restaurants	2
Industrial	10
Educational	50
Banks/Financial	2
Medicine/Health Care	10
Solar and/or Earth Sheltered	2
Municipal Buildings	15
Restoration/Renovation	2
Churches/Worship	5

Midwest 100%

Central Fire Station and Community Bldg., Council Bluffs, IA; Pottawattamie Cnty. Courthouse/City-County Law Enf. Center, Council Bluffs; Frontier Airlines Bldg., Denver;



Lutheran Home for the Aged, Muscatine, IA;  
Computer Bldg., Univ. of Kansas; Still  
Memorial Hospital, Jefferson City, MO;  
Masonic Lodge, Papillion, NE; Northwestern  
Bell Garage and Work Ctr., Council Bluffs;  
Mark Plaza Bank, Overland Park, KS;  
Schools, Churches and Earth-Sheltered Structures throughout Midwest

Manufacturers contact: Jim Amend  
Clients contact: Jim Amend

#### ERVIN C. HUNEKE, ARCHITECT & ENGINEER

First National Bank Building  
Fairfield, IA 52556  
515/472-2169  
Established 1951

Ervin C. Huneke AIA, PE

Gross Construction Volume of Projects	
1979	\$430,000
1980	\$500,000

Washington and Lincoln Elementary Schools, Fairfield; High School Industrial and Fine Arts Addition, Keosauqua, IA; Fire Station and Law Enforcement Center, Fairfield; First National Bank Building, Fairfield; Federal Land Bank and Production Credit Office Building, Mt. Pleasant, IA

Manufacturers contact: Ervin C. Huneke  
Clients contact: Ervin C. Huneke

#### HUNTINGTON ARCHITECTS, P.C.

800 Oneida Street, Suite B  
P.O. Box 976  
Storm Lake, IA 50588  
712/732-6578  
Established 1976

Glen D. Huntington AIA

Gross Construction Volume of Projects	
1979	\$3.5 million
1980	\$5 million
1981	\$5.5 million

Firm Personnel by Discipline	
Architectural	3
Administrative	1

	Work %
Large Scale Office Buildings	10
Banks/Financial	75
Medicine/Health Care	1
Interior Design	1
Solar and/or Earth Sheltered	1
Architect Designed Homes	4
Apartments/Condominiums	4
Churches/Worship	4

Iowa 85% Midwest 15%

State Bank and Trust, Council Bluffs; West Liberty State Bank, West Liberty; Alta United Methodist Church, Alta; First State Bank Remodeling, Chariton; Paradise Park Elderly Housing, Storm Lake; First Federal Savings & Loan, Manson; First Federal Savings & Loan, Webster City; National Bank of Earlville, Earlville, IL; Farmers Savings Bank Remodeling, Kalona; Iowa State Savings Bank, Creston; Federal Land Bank, Production Credit Association, Perry

Manufacturers contact: Ron Ewing  
Clients contact: Glen Huntington

## J

#### ROBERT JAMERSON, ARCH.

1428 Laurel Circle  
Cedar Falls, IA 50613  
319/266-1717

**R. L. M. JOHNSON & ASSOC.**  
709 5th Avenue South  
Clinton, IA. 52732  
319/243-3620

## K

#### KARL KEFFER AND ASSOCIATES

202 Masonic Temple Bldg.  
Des Moines, IA 50309  
515/288-4821

#### KENDALL, GRIFFITH, RUSSELL, ARTIAGA

3030 Ruan Center  
Des Moines, IA 50309  
515/282-2112

#### KENINGER, GALVIN & ASSOCIATES, P.C.

P.O. Box 467 (410 Grand Ave.)  
Spencer, IA 51301  
712/262-4492  
Established 1946

Bernard Keninger  
John C. Galvin

Gross Construction Volume of Projects	
1979	\$1,794,000
1980	\$3,465,000

Firm Personnel by Discipline	
Architectural	4
Engineering	1
Administrative	1

	Work %
Small Scale Office Buildings	5
Educational	30
Banks/Financial	5
Medicine/Health Care	10
Solar and/or Earth Sheltered	15
Townhouses	3
Apartments/Condominiums	10
Municipal Buildings	5
Churches/Worship	15
Airport Terminal Facilities	2

Iowa 98% Midwest 2%

Spencer Community Schools; Sacred Heart School, Spencer; Milford Community Schools; Gym Addition, Gehlan High School, LeMars; Courthouse Remodelings, Palo, Sac, Pocahontas, Dickenson Counties; Sunset Retirement Homes, Spencer; Airport Terminal, Spencer; Loring Medical Clinic, Sac City

Manufacturers contact: John C. Galvin  
Clients contact: John C. Galvin

#### PIERCE KING, ARCHITECT & ASSOC.

131 E. Burlington St.  
Iowa City, IA 52240  
319/351-9103  
1200 Park Avenue  
Muscatine, IA 52761  
319/263-0264  
Established 1965

Pierce King AIA  
Waverly C. Ormond AIA

Firm Personnel by Discipline	
Architectural	5
Engineering	1
Interior Design	1
Administrative	3
Graphic Designer	1

	Work %
Small Scale Office Buildings	10
Large Scale Office Buildings	5



Shopping Centers/Retail	2
Restaurants	2
Industrial	10
Educational	2
Banks/Financial	10
Medicine/Health Care	10
Interior Design	2
Solar and/or Earth Sheltered	1
Architect Designed Homes	1
Townhouses	5
Apartments/Condominiums	10
Municipal Buildings	10
Restoration/Renovation	10
Churches/Worship	5
Landscape Architecture	3
Airport Terminal Facilities	2

Iowa 70% Midwest 30%

Carver Pump Office Bldg, Muscatine; John Deere Dealership, Aledo, IL; Calvin Hall Remodeling, Phase 1, Iowa City

Manufacturers contact: Pierce King or Waverly C. Ormond  
Clients contact: Pierce King or Waverly C. Ormond

#### EDWARD H. KYKER, ARCHITECT

4158 Welker Avenue  
Des Moines, IA 50312  
515/255-8850

## L

#### JAMES LYNCH AND ASSOCIATES

621 Savings and Loan Bldg.  
Des Moines, IA 50309  
515/282-6144

## M

#### MAIWURM ASSOCIATES

Warden Bldg.  
Fort Dodge, IA 50501  
515/576-7221

#### McCONNELL, STEVELEY, ANDERSON

860 17th Street, S.E.  
Cedar Rapids, IA 52403  
319/363-2695

#### McKLVEEN AND CARNEY ARCHITECTS

500 Hubbell Building  
Des Moines, IA 50309  
515/288-0241  
Established 1970

John H. McKlveen AIA  
Leo A. Carney AIA

Firm Personnel by Discipline	
Architectural	2

	Work %
Small Scale Office Buildings	4
Shopping Centers/Retail	2
Restaurants	2
Educational	15
Banks/Financial	2
Medicine/Health Care	15
Townhouses	5
Apartments/Condominiums	15
Municipal Buildings	20
Restoration/Renovation	5
Churches/Worship	10
Airport Terminal Facilities	5

Iowa 100%

Five Fire Stations, Des Moines; Scottish Rite Park Retirement Apartments; Scottish Rite Park Health Care Center; Wesley Acres Health Care Center; Headquarters Fire Sta-



tion, Ames; Northwestern Bell Equipment Buildings; Crash Rescue Station, Des Moines Airport; Methodist Church, Perry; Restoration Des Moines City Hall

Manufacturers contact: Leo A. Carney or John H. McKlveen  
Clients contact: Leo A. Carney or John H. McKlveen

#### WM. R. MEEHAN, ARCHITECT

555 29th Street  
Des Moines, IA 50312  
515/244-4136  
Established 1959

William R. Meehan AIA

Gross Construction Volume of Projects	
1979	\$2.5 million
1980	\$1.75 million
1981	\$300,000 +

Firm Personnel by Discipline	
Architectural	1

	Work %
Small Scale Office Buildings	10
Shopping Centers/Retail	10
Industrial	10
Medicine/Health Care	40
Architect Designed Homes	10
Apartments/Condominiums	10
Churches/Worship	10

Iowa 90% Midwest 10%

Sands Center, Mental Health Facility; Radiology Addition, Broadlawns Medical Center; Psychiatric Addition, Broadlawns Medical Center; St. Marks Episcopal Church; St. Pius X Catholic Church; 36th & Grand Apartment Building; 15th & Linden Office Building; Leon & Lamoni Community Centers; Villisca Public Housing; Gordon Wholesale Office/Warehouse

Manufacturers contact: William R. Meehan  
Clients contact: William R. Meehan

#### MIDLAND ARCHITECTS, INC.

314 North Fourth Street  
Burlington, IA 52601  
319/754-5701  
Established 1970



James E. Grisolan, President AIA  
D. Gordon Hunt, Vice President AIA  
Charles E. Poland, Treasurer  
Garry J. Tee, Secretary

Gross Construction Volume of Projects	
1979	\$7 million
1980	\$7.5 million
1981	\$9 million

Firm Personnel by Discipline	
Architectural	6
Engineering	1
Other Technical	2
Administrative	2

	Work %
Small Scale Office Buildings	5
Educational	15
Banks/Financial	25
Medicine/Health Care	40
Municipal Buildings	10
Churches/Worship	5

Iowa 70% Midwest 30%

Burlington Medical Center, Burlington; Illinois Valley Community Hospital, Peru, IL; Burlington Area YMCA-YWCA, Burlington; Midwest Federal Savings & Loan, Burlington; Hawkeye Bank & Trust, Burlington; Mercer County Hospital, Aledo, IL; Burlington Com-

munity Schools Swimming Pool, Burlington; YMCA of Warren County, Monmouth, IL; Hoerner Y and Civic Center, Keokuk

Manufacturers contact: D. Gordon Hunt  
Clients contact: James E. Grisolan

#### BEN K. MIEHE, ARCHITECT

1833 North Main Street  
Dubuque, IA 52001  
319/566-8020

## N

#### R. NEUMANN ASSOCIATES

1056 1/2 William Street  
Iowa City, IA 52240  
319/338-7878  
Established 1977



Roy Covert Neumann AIA  
Kevin Monson AIA  
Richard Caruth

Gross Construction Volume of Projects	
1979	4 million
1980	5 million
1981	7.5 million

Firm Personnel by Discipline	
Architectural	6
Interior Design	1
Administrative	2
Landscape Architects	1

	Work %
Office Buildings	5
Shopping Centers/Retail	2
Restaurants	5
Industrial	7
Educational	17
Banks/Financial	5
Medicine/Health Care	14
Interior Design	2
Solar and/or Earth Sheltered	5
Architect Designed Homes	5
Apartments/Condominiums	10
Municipal Buildings	5
Restoration/Renovation	12
Planning	2
Churches/Worship	2
Landscape Architecture	2

Iowa 95% Midwest 3% Other U.S. 2%

Iowa River Power Company Restaurant, Iowa City; Education Facilities, Waco, Cardinal, Central Lee, North Mahaska, Albia; Medical Facility, Corning, IA; Hospital School, University of Iowa Hospital and Clinics, Iowa City; Courthouse Renovation, Franklin County, Marion County, Shelby County plus 12 others; 50 unit Housing, Muscatine, Waterloo

Manufacturers contact: Kevin Monson  
Clients contact: Roy Covert Neumann

## O

#### OLSON, POPA, NOVAK

790 11th Street  
Marion, IA 52302  
319/377-8268

#### WAVERLY C. ORMOND, ARCHITECT

Highway 6 West  
Oxford, IA 52322  
319/628-4344

#### OTTO AND CULVER ENGINEERING

1711 North Lake Avenue  
Storm Lake, IA 50588  
712/732-6001

## P

#### JAMES PAXTON, ARCHITECT

5711 Waterbury Circle  
Des Moines, IA 50312  
515/243-8468

#### PAYNE, CHAMPION, BERNABE

314 Savings and Loan Bldg.  
Des Moines, IA 50309  
515/283-2479

#### DANIEL C. PULLEN, ARCHITECT

R.R. 2  
Sac City, IA 50583

## R

#### RICHARD RARICK, ARCHITECT

101 W. 6th Street  
Spencer, IA 51301  
712/262-6272

#### JOHN STEPHENS RICE, ARCHITECT

4519 Grand Avenue  
Des Moines, IA 50312  
515/284-5243  
General Architectural Consultant

#### CHARLES RICHARDSON & ASSOC., INC.

2515 West Central Park Avenue  
Davenport, IA 52804  
319/386-7580  
Established 1961



Charles V. Richardson AIA  
Robert B. Stone CSI  
Donald H. Luethje AIA

Gross Construction Volume of Projects	
1979	\$3.4 million
1980	\$4 million
1981	\$5 million

Firm Personnel by Discipline	
Architectural	3
Engineering	1
Administrative	1

	Work %
Small Scale Office Buildings	2
Large Scale Office Buildings	10
Shopping Centers/Retail	10
Restaurants	1
Industrial	8
Educational	20
Banks/Financial	15
Medicine/Health Care	10
Interior Design	2
Apartments/Condominiums	3
Municipal Buildings	15
Restoration/Renovation	2
Planning	1
Churches/Worship	1

Iowa 95% Midwest 5%

Citizens Federal Savings & Loan Association, Davenport; Bettendorf Public Library, Bettendorf; The Heritage, Elderly Housing High Rise, Davenport; Office Addition to John Deere Parts Distribution Warehouse, Milan, IL; Transportation Center, Eastern Iowa Community College, Riverdale; Blackhawk Hotel Renovation, Davenport; Petersen Harned Von Maur Department Store, Northpark Mall, Davenport; Physicians Office Building, St. Luke's Hospital, Davenport

Manufacturers contact: Charles V. Richardson  
Clients contact: Charles V. Richardson



**ARCHITECTS RUDI/LEE/DREYER & ASSOC.**

315 Sixth Street  
Ames, IA 50010  
515/232-5600  
Established 1966

Norman H. Rudi	AIA
William D. Lee	AIA
William H. Dreyer	AIA

Gross Construction Volume of Projects	
1979	\$6 million
1980	\$10.3 million

Firm Personnel by Discipline	
Architectural	7
Administrative	1

	Work %
Small Scale Office Buildings	5
Large Scale Office Buildings	4
Shopping Centers/Retail	8
Restaurants	4
Industrial	6
Educational	18
Banks/Financial	1
Medicine/Health Care	2
Interior Design	1
Architect Designed Homes	9
Townhouses	9
Apartments/Condominiums	14
Municipal Buildings	2
Restoration/Renovation	1
Planning	9
Churches/Worship	5
Recreational	2

**Iowa 100%**

Meadows, Housings for the Elderly, Nevada; Special Education School, Ames; Sundstrand Hydro-Transmission Master Plan, Ames; Mimm's Restaurant, Cedar Rapids; Hawkeye Savings & Loan, Story City; Armed Forces Training Center, Ames; Huxley Methodist Church, Ames; Iversen Dental Clinic, Ames; Ames Electric Utility Office, Ames; Harms Medical Building, Ames; Northridge Land Plan & Subdivision, Ames; Engineering Annex Renovation, I.S.U., Ames

Manufacturers contact: William D. Lee,  
William H. Dreyer  
Clients contact: Norman H. Rudi

**S****SAM SAMPLE AND ASSOC., INC.**

P.O. Box 866  
Marshalltown, IA 50158  
515/753-3555

**JAMES SANDERCOCK, ARCHITECT**

800 F & M Building  
Burlington, IA 52601

**SAVAGE & VER PLOEG, INC.**

2929 Westown Parkway/Suite 100  
West Des Moines, IA 50265  
515/223-1635  
Established 1953



Robert E. Savage	AIA, CSI
Stanley C. Ver Ploeg	AIA

Gross Construction Volume of Projects	
1979	\$10 million
1980	\$12 million
1981	\$15 million

Firm Personnel by Discipline	
Architectural	5
Engineering	1
Interior Design	1
Administrative	2

	Work %
Small Scale Office Buildings	7
Large Scale Office Buildings	25
Shopping Centers/Retail	8
Industrial	20
Educational	5
Banks/Financial	8
Interior Design	15
Apartments/Condominiums	5
Restoration/Renovation	2
Planning	3
Churches/Worship	2

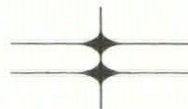
**Iowa 90% Other U.S. 10%**

Westridge Office Park; Iowa Power Service Centers; National Pork Producers Council National Headquarters; Iowa-Des Moines Branch Banks (Douglas, Urbandale, Army Post); Equitable Life Assurance Society of the United States, West Central Service Center, Colorado Springs, CO; Park Avenue Industrial Park

Manufacturers contact: Robert Savage or  
Stan Ver Ploeg  
Clients contact: Robert Savage or  
Stan Ver Ploeg

**THE SCHEMMER ASSOCIATES, INC.**

509 Northwest Tower  
100 E. Kimberly Rd.  
Davenport, IA 52806  
319/391-0885  
Established 1958



Dale E. Christensen	PE
Greg Larrison	AIA
Scott Bengfort	
Eric Smith	

Firm Personnel by Discipline	
Architectural	3
Engineering	6
Other Technical	2
Other General	1

Northwest Bank, Davenport, Bettendorf;  
Davenport Police Facility; Ridgecrest Retirement Home

Manufacturers contact: Greg Larrison  
Clients contact: Greg Larrison

**SCHOLTZ, KUEHN AND ASSOC.**

325 Perry Street  
Davenport, IA 52801  
319/326-2555

**SMITH, VOORHEES, JENSEN**

1040 5th Street  
Des Moines, IA 50314  
515/288-6765

**SOENKE & WAYLAND, ARCHITECTS**

601 Brady Street  
Davenport, IA 52801  
319/326-4511  
Established 1962



Louis G. Soenke	AIA
Lloyd E. Wayland	AIA

Gross Construction Volume of Projects	
1978	\$3.5 million
1979	\$2.4 million
1980	\$1.2 million

Firm Personnel by Discipline	
Architectural	3
Engineering	1
Other General	1
Graphic Designer	5

	Work %
Small Scale Office Buildings	5

Large Scale Office Buildings	5
Shopping Centers/Retail	5
Industrial	15
Educational	15
Banks/Financial	10
Medicine/Health Care	15
Municipal Buildings	10
Restoration/Renovation	10
Churches/Worship	10

**Iowa 90% Midwest 10%**

Office & Health Care Buildings, Scott County, Davenport; Schools, Davenport Community School District; Detention Buildings, Scott County, Davenport; Fire Stations, Davenport; Swimming Pool, Davenport; Davenport Osteopathic Hospital; Manufacturing Buildings, Kartridg Pak, French & Hecht, McLaughlin Body, Bendix Mfg., Davenport; National Mfg. Co., Sterling, IL; Russell, Burdall & Ward, Rock Falls, IL; First Christian Church, Davenport, Muscatine; Christian Reformed Church, Davenport

Manufacturers contact: Louis G. Soenke or  
Lloyd E. Wayland  
Clients contact: Louis G. Soenke or Lloyd E. Wayland

**DENNIS W. STACY, ARCHITECT**

12½ North Walnut  
Glenwood, IA 51534  
712/527-9453  
Established 1978



Dennis W. Stacy	AIA
-----------------	-----

Gross Construction Volume of Projects	
1979	\$400,000
1980	\$875,000
1981	\$7.5 million

Firm Personnel by Discipline	
Architectural	3
Administrative	1

	Work %
Small Scale Office Buildings	12
Shopping Centers/Retail	15
Educational	20
Medicine/Health Care	3
Interior Design	5
Architect Designed Homes	4
Apartments/Condominiums	3
Municipal Buildings	17
Restoration/Renovation	18
Planning	3

**Iowa 84% Midwest 14% Other U.S. 2%**

Davies Amphitheater, Glenwood, IA; Law Office, Tabor, IA; Law Office, Medical Office, and Insurance Office, Glenwood; School Addition, Farragut, IA; Residence, Bath, ME; HUD Projects, Humboldt and Nebraska City, NE; Junior High School and Public Library Addition, Glenwood; Park Plaza Bldg. Renovation, Council Bluffs

Manufacturers contact: Dennis W. Stacy  
Clients contact: Dennis W. Stacy

**STANLEY CONSULTANTS**

Stanley Bldg.  
Muscatine, IA 52761  
319/264-6600

**STEFFEN-STOLTZ-NELSON, ARCHITECTS**

125½ E. Second Street  
Ottumwa, IA 52501  
515/684-4629  
Established 1959



Kenneth J. Steffen	AIA
Stephen M. Stoltz	AIA



William D. Nelson AIA

Gross Construction Volume of Projects	
1979	\$3.33 million
1980	\$2.65 million

Firm Personnel by Discipline	
Architectural	6
Administrative	1
Other General	1

	Work %
Small Scale Office Buildings	10
Shopping Centers/Retail	2
Industrial	5
Educational	20
Banks/Financial	15
Medicine/Health Care	2
Interior Design	5
Solar and/or Earth Sheltered	5
Architect Designed Homes	10
Apartments/Condominiums	15
Municipal Buildings	3
Restoration/Renovation	5
Churches/Worship	3

Iowa 95% Midwest 5%

Career Center, Albia Community Schools; Physical Education Facilities, Ottumwa Community Schools; Trades & Industry Building, Indian Hills Community College; Union Bank and Trust, 1st National Bank and South Ottumwa Bank Additions and Renovations, Ottumwa; Solar Office Building, United Federal Savings and Loan; Offices, Midland Financial, Ottumwa; Rexnord Manufacturing Building; Iowa-Illinois Office and Service Center Buildings; Wapello County Extended Care Facilities

Manufacturers contact: Stephen Stoltz or William Nelson  
Clients contact: Ken Steffen

#### STENSON-WARM-GRIMES-PORT/ARCHITECTS, INC.

3404 Midway Drive  
Waterloo, IA 50701  
319/234-1515  
Established 1934



Marvin L. Stenson	AIA, PE
Ivan V. Warm	AIA, PE
Geoffrey C. Grimes	AIA
Dale R. Port	AIA

Gross Construction Volume of Projects	
1979	\$8 million
1980	\$10 million
1981	\$25 million

Firm Personnel by Discipline	
Architectural	12
Engineering	2
Other Technical—Energy	1
Administrative	5

	Work %
Small Scale Office Buildings	4
Industrial	7
Educational	54
Banks/Financial	10
Architect Designed Homes	1
Apartments/Condominiums	8
Municipal Buildings	5
Restoration/Renovation	5
Churches/Worship	6

Iowa 99% Midwest 1%

Hawkeye Center, Waterloo; Industrial Technology Center, UNI, Cedar Falls; Newton High School Addition and Remodeling, Newton; YMCA Facility, Waterloo; Perpetual Savings and Loan Association, Waterloo;

Hampton High School, Hampton; Washington Elementary School, Keokuk

Manufacturers contact: Ivan V. Warm  
Clients contact: Marvin L. Stenson

#### STEWART AND ASSOCIATES

121 Priester Bldg.  
601 Brady Street  
Davenport, IA 52801  
319/326-2505

#### STRAKA-MILLER ARCHITECTS

3210 St. Joseph Drive  
Dubuque, IA 52001  
319/556-8877



James L. Straka AIA  
Robert D. Miller AIA

Firm Personnel by Discipline	
Architectural	2
Administrative	1

	Work %
Small Scale Office Buildings	10
Interior Design	5
Solar and/or Earth Sheltered	50
Architect Designed Homes	20
Restoration/Renovation	10
Landscape Architecture	5

Midwest 100%

Rowold Insurance Office; Walus Passive Solar Residence; Zeimet Earth Sheltered Residence; Adali Stevenson Greenhouse Addition

Manufacturers contact: James Straka or Robert Miller  
Clients contact: James Straka or Robert Miller

#### BYRL SWANSON ARCHITECT PC

TGT Building, Rm. 250  
15th & Brady Streets  
Davenport, IA 52803  
319/324-4341  
Established 1978

Byrl Swanson AIA, CSI

Firm Personnel by Discipline	
Architectural	2
Administrative	1

	Work %
Small Scale Office Buildings	10
Shopping Centers/Retail	5
Industrial	20
Educational	15
Banks/Financial	20
Medicine/Health Care	10
Apartments/Condominiums	5
Churches/Worship	15

Iowa/Illinois 100%

Service Operations Building, Central Scott Telephone Company, Eldridge, IA; Osteopathic Clinic, Davenport; Interior Remodeling, First Trust & Savings Bank, Davenport; Northgate Drive-In Bank, Davenport; New Church Building, World Thrust Christian Center, Orion, IL

Manufacturers contact: Byrl Swanson  
Clients contact: Byrl Swanson

#### T

#### WILLIAM TAYLOR, ARCHITECT

6311 Hickman Road  
Des Moines, IA 50322  
515/276-7762

#### THORSON-BROM-BROSHAR-SNYDER, ARCHITECTS, INC.

900 Waterloo Building  
Waterloo, IA 50701  
319/233-8419  
Established 1945

R. Hovey Brom AIA  
Robert Broshar FAIA  
Wayne J. Snyder AIA

Gross Construction Volume of Projects	
1979	\$7.5 million
1980	\$7.5 million
1981	\$6 million

Firm Personnel by Discipline	
Architectural	10
Administrative	2

	Work %
Small Scale Office Buildings	5
Large Scale Office Buildings	10
Educational	10
Banks/Financial	15
Medicine/Health Care	40
Interior Design	2
Municipal Buildings	5
Planning	3
Churches/Worship	10

Iowa 95% Midwest 5%

Scotitz Memorial Hospital; St. Francis Hospital Renovation; Allen Memorial Hospital; Nazareth Lutheran Church; Home Savings and Loan Association; First Federal Savings and Loan Association; Dallas County Hospital; Collin Memorial Hospital; Waterloo Savings Bank; Conway Civic Center

Manufacturers contact: R. H. Brom, Robert Broshar or Wayne J. Snyder  
Clients contact: R. H. Brom, Robert Broshar or Wayne J. Snyder

#### U

#### RICHARD UTTERBACK, ARCH.

5215 Ingersoll Avenue  
Des Moines, IA 50312  
515/255-7858

#### V

#### JEFFREY W. VOORHEES & CO., P.C. ARCHITECTS-ENGINEERS-PLANNERS

2829 Westown Parkway, Ste. 220  
West Des Moines, IA 50265  
515/225-3469  
Established 1974



Jeffrey W. Voorhees AIA  
Neil C. Kersten AIA

Gross Construction Volume of Projects	
1979	\$12 million
1980	\$14 million
1981	\$15 million

Firm Personnel by Discipline	
Architectural	8
Engineering	3
Administrative	3

	Work %
Small Scale Office Buildings	2
Large Scale Office Buildings	10
Industrial	2
Educational	10
Banks/Financial	3
Medicine/Health Care	5
Solar and/or Earth Sheltered	2
Townhouses	5
Apartments/Condominiums	34
Municipal Buildings	10



Restoration/Renovation	5
Planning	2
Churches/Worship	10

Iowa 90% Midwest 10%

Des Moines Botanical Center; Grand View College Fine Arts Center, Des Moines; Grinnell Junior High, Grinnell; McCann Village, Newton; Logan Park Apartments (Centre-Metro), Des Moines; Fleur Drive Bridge over the Racoon River, Des Moines

Manufacturers contact: W. Kenneth Wallerstedt

Clients contact: Jeffrey W. Voorhees, Neil C. Kersten, W. Kenneth Wallerstedt

## W

### WAGGONER MAHAFFEY AND BOWMAN, ARCHITECTS AND ENGINEERS

15 South Federal Avenue  
Mason City, IA 50401  
515/423-4165  
Established 1925

Thomas M. Waggoner AIA  
Ralph R. Mahaffey AIA  
O. Keith Bowman, P.E. AIA

Firm Personnel by Discipline	
Architectural	2
Engineering	1
Other Technical	1

	Work %
Small Scale Office Buildings	9
Large Scale Office Buildings	4
Shopping Centers/Retail	10
Restaurants	5
Industrial	5
Educational	25
Banks/Financial	15
Interior Design	2
Solar and/or Earth Sheltered	2
Architect Designed Homes	5
Townhouses	2
Apartments/Condominiums	4
Municipal Buildings	2
Churches/Worship	10

Iowa 95% Midwest 5%

Manufacturers contact: Any of the Principals  
Clients contact: Any of the Principals

### WAGNER-MARQUART-WETHERELL-ERICSSON, ARCHITECTS

1106 High Street  
Des Moines, IA 50309  
515/283-2315  
Established 1970

William J. Wagner FAIA  
Gail E. Marquart AIA, CSI  
John H. Wetherell AIA  
Lawrence L. Ericsson AIA

Firm Personnel by Discipline	
Architectural	4
Other Technical	1
Administrative	1

	Work %
Small Scale Office Buildings	10
Large Scale Office Buildings	5
Shopping Centers/Retail	5
Law Enforcement/Detention	5
Industrial	2
Educational	10
Banks/Financial	5
Medicine/Health Care	3
Interior Design	8
Solar and/or Earth Sheltered	3
Architect Designed Homes	10

Judicial Facilities	8
Apartments/Condominiums	2
Municipal Buildings	20
Restoration/Renovation	55
Planning	2
Churches/Worship	5
Landscape Architecture	2
Other	15

Iowa 95% Midwest 5%

Iowa Supreme Court, Iowa Appellate Court, Judicial Offices; Governor's Residence; Various Renovation Projects, Terrace Hill; Renovation Marshall County Courthouse; Renovation Municipal Office Building, Creston, IA

Manufacturers contact: Gail E. Marquart  
Clients contact: John H. Wetherell

### H. RONALD WALKER, ARCHITECTS

3706 Ingersoll Avenue  
Des Moines, IA 50312  
515/279-8818

### WEHNER, NOWYSZ, PATTSCHULL AND PFIFFNER, P.C. ARCHITECTS

201 Dey Building  
Iowa City, IA 52240  
319/338-9715  
Established 1965

Roland C. Wehner AIA  
William Nowysz AIA  
Richard W. Pattschull AIA  
John F. Pfiffner AIA, CSI

Firm Personnel by Discipline	
Architectural	9
Interior Design	2
Administrative	2.5
Landscape Architects	1

	Work %
Small Scale Office Buildings	2
Shopping Centers/Retail	1
Industrial	2
Educational	10
Banks/Financial	2
Medicine/Health Care	6
Interior Design	2
Solar and/or Earth Sheltered	1
Architect Designed Homes	6
Apartments/Condominiums	35
Municipal Buildings	16
Restoration/Renovation	11
Planning	2
Churches/Worship	2
Landscape Architecture	2

Iowa 98% Midwest 1% Other U.S. 1%

Ecumenical Housing for the Elderly, Iowa City; Iowa City Senior Center; Atrium Apartments, Hills, IA; Tama County Care Facility, Toledo, IA; Davis County Courthouse Restoration, Bloomfield, IA; Brookridge Apartments, Atlantic, IA; Polk County Courthouse Master Plan, Des Moines; Group Homes for the Handicapped, Iowa City; Comprehensive Development Plan, Woodlawn Plantation, Mt. Vernon, VA; Handicapped Activity Center, Monticello, IA

Manufacturers contact: Any of the Principals  
Clients contact: John F. Pfiffner

### JAMES W. WILKINS ARCHITECT AND PLANNER

3101 Ingersoll Avenue  
Des Moines, IA 50312  
515/274-1521

### WINKLER-COOK ARCHITECTS & PLANNERS, INC.

216 Davidson Building  
304 1/2 Eighth Street  
Des Moines, IA 50309  
515/244-0319  
Established 1965



James S. Cook AIA

Gross Construction Volume of Projects	
1979	\$1,354,000
1980	\$2,024,000
1981	\$2 million

Firm Personnel by Discipline	
Architectural	2
Administrative	1

	Work %
Small Scale Office Buildings	25
Shopping Centers/Retail	5
Medicine/Health Care	5
Architect Designed Homes	5
Townhouses	10
Apartments/Condominiums	10
Municipal Buildings	15
Restoration/Renovation	25

Iowa 100%

Des Moines Center of Science and Industry; Armstrong Rubber Co. Plant and Office Building, Des Moines; Municipal Center, Adel; Community Building and Fire Station, Redfield; Fire Station, Winterset; Fire Station, Saylor Township, Polk County; Addition to Hubbell School, Des Moines; Law Offices in Adel; Carroll and Dennison; Supper Club, Ankeny; City-County Building, Newton; Professional Building and Condominiums, Des Moines; Library Addition, Adel

Manufacturers contact: Rick Larson  
Clients contact: James S. Cook

### WOODBURN AND O'NEIL ARCHITECTS, INC.

1501 W. 42nd Street, Ste. 440  
West Des Moines, IA 50265  
515/225-2992  
Established 1954



Eugene C. O'Neil AIA  
Richard Harmeyer AIA  
Paul Klein AIA

Gross Construction Volume of Projects	
1981	Est. \$6-7 million

Firm Personnel by Discipline	
Architectural	9
Administrative	2

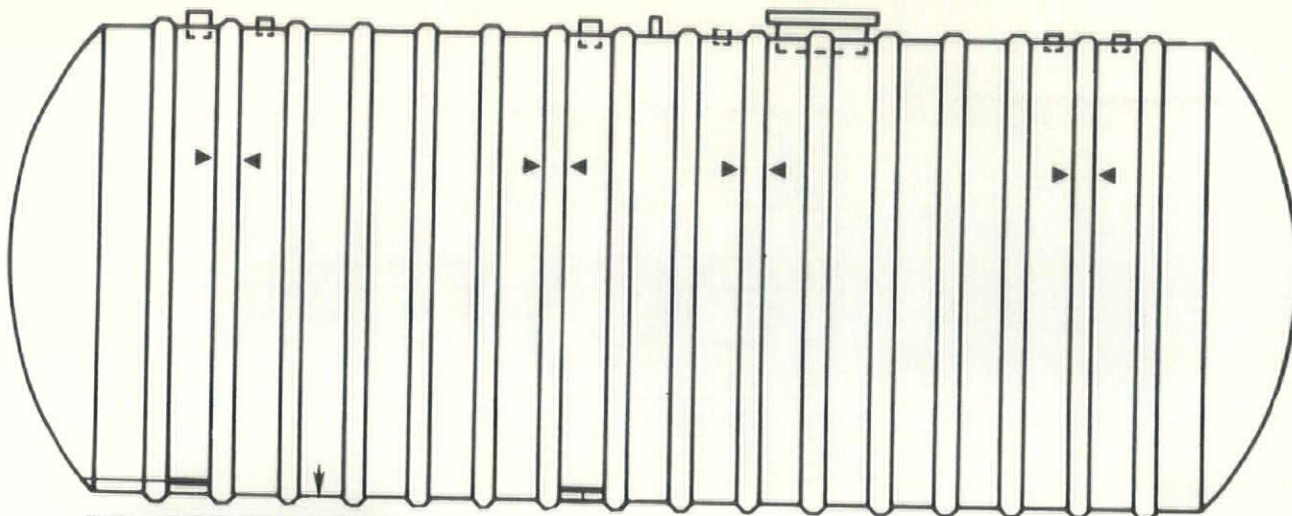
	Work %
Small Scale Office Buildings	5
Industrial	20
Educational	15
Medicine/Health Care	20
Apartments/Condominiums	10
Restoration/Renovation	20
Churches/Worship	10

Iowa 80% Midwest 20%

Ankeny High School; West Des Moines Indian Hills Junior High School; Polk County Administration Building; Calvin Manor; Addition to Plymouth Church; Open Bible Standard National Headquarters, First Church of the Open Bible; Donaldson Manufacturing Company; General Telephone Company Midwest Headquarters; Roto-Rooter National Office and Plant; Dormitory Renovation Program, Grinnell College

Manufacturers contact: George Peterson or Paul Klein (interiors)  
Clients contact: Eugene C. O'Neil or Ray L. Hueholt





**OWENS/CORNING**  
**FIBERGLAS**  
TRADEMARK ©

## Lowest Life Cycle Cost Fuel Storage Tanks

Fiberglass fuel storage tanks mean lower total cost and greater dependability over the life of your storage system. Without maintenance.

There's one basic difference between Owens-Corning Fiberglass underground tanks and tanks made from steel. Fiberglass tanks won't corrode.

A Fiberglass underground tank will last the life of most facilities without corrosion-caused leaks or failures.

Corrosion-caused replacement costs are eliminated, as are periodic corrosion testing procedures, and the additional expense and concern over environmental problems due to leakage.

**CALL FOR A VALUE ANALYSIS BEFORE YOU SPECIFY THAT NEXT TANK AND PIPING.**

*WE ALSO SPECIALIZE IN*

**Fuel Storage & Dispensing Systems   Motor Fuel Management Systems  
Automotive Service Equipment Including:**

Bus & Truck Lifts • Passenger Car Lifts • Carbon Monoxide Systems  
Lot Lighting • Lubrication Systems

### Manufacturers' Agents For

**Graco** — Lubrication Equipment

**Petro-Vend** — Fuel Management  
Systems — Card and Key Lock

**Globe** — Bus, Truck & Passenger  
Car Lifts

**Lighting Systems, Inc.** —  
Area Lighting

**Duro** — Fuel, Welding, Air Hose Reels

**Owens Corning Fiberglass** —  
Fuel Storage Tanks

**Garage Products** — Carbon  
Monoxide Systems

**Benwil Ind.** — Above Ground Lifts

**Morgan** — Steel Island Forms & Fascia

**Oil King** — Bulk Oil Dispensers

**Ciba-Geigy** — Fiberglass UL Pipe & Fittings

Quality  
& Service



*Bob Blatzheim Assoc.*

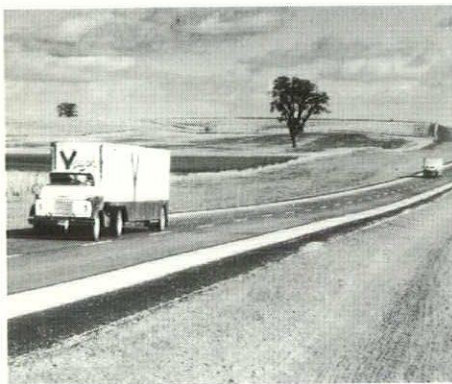
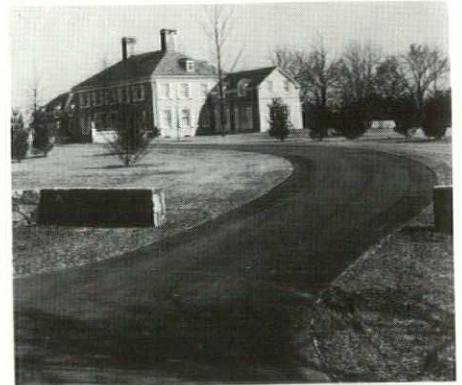
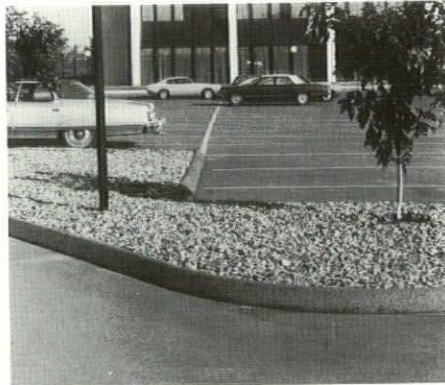
8801 Boston, Des Moines, Iowa Phone 515/276-7577  
Residence Phone 515/276-7538

MEMBER  
**PEI**  
PETROLEUM EQUIPMENT INSTITUTE

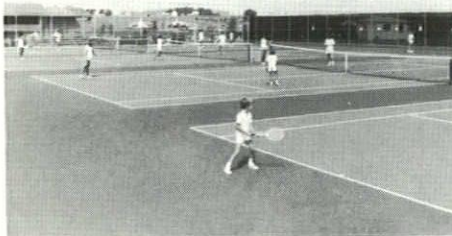




# 100% recyclable.



# Asphalt Paving!



## APAI and Quality Paving

The ultimate quality of your asphalt paving project is directly related to the experience, skill and equipment of the contractor doing the work. That's why the Asphalt Paving Association of Iowa urges you to contact an APAI member in your area about your project. All APAI members are experienced and reliable. Check your Yellow Pages under Asphalt & Asphalt Products.

Full-depth asphalt pavement is the quality product that can be used over and over again — to save you money. Because asphalt is 100% recyclable. Old pavement can be ground up, reheated, remixed and reshaped to stretch **commercial or tax** dollars spent on materials.

In one Iowa county, it was estimated that asphalt recycling saved \$20,000 per mile on a secondary road improvement project!

So when you decide to use strong, dependable full-depth asphalt pavement on your city streets, parking lots, tennis courts and other surfaces — remember that it's more than just a good quality building material. It's an investment. And it'll pay off in big dividends when it comes time to renew it after a long, useful life.

**Quality asphalt pavement. Pave with it now. Reuse it years later. Save money.**



## Asphalt Paving Association of Iowa

541 - 31st Street  
Des Moines, Iowa 50312 • 515 244-3127



When Meredith Corporation  
needed someone to  
supply and coordinate the  
planning and installation  
of furniture systems for their  
new open office facility . . .

## Pigott got the job!

**M**eredith, of course, is a rather large example of Pigott Incorporated's professional capabilities . . . capabilities, by the way, that encompass considerably more than open office design. In fact, we've quietly evolved into the midwest's largest planner and contractor of systems for working environments. So, most likely you'll find the particular professional resource suited to your next interior systems project within one of our five operating divisions:

**Interior Systems Division:** planning, design, specification and installation of open plan office systems.

**Health/Science Division:** planning, design, specification and installation of hospital/laboratory systems.

**Contract Division:** specializing in casework and mobile storage systems.

**Industrial Systems Division:** solutions for increasing storage capacities in industrial facilities.

**Planning/Design Division:** a complete interior systems planning and design resource available on a contract basis.

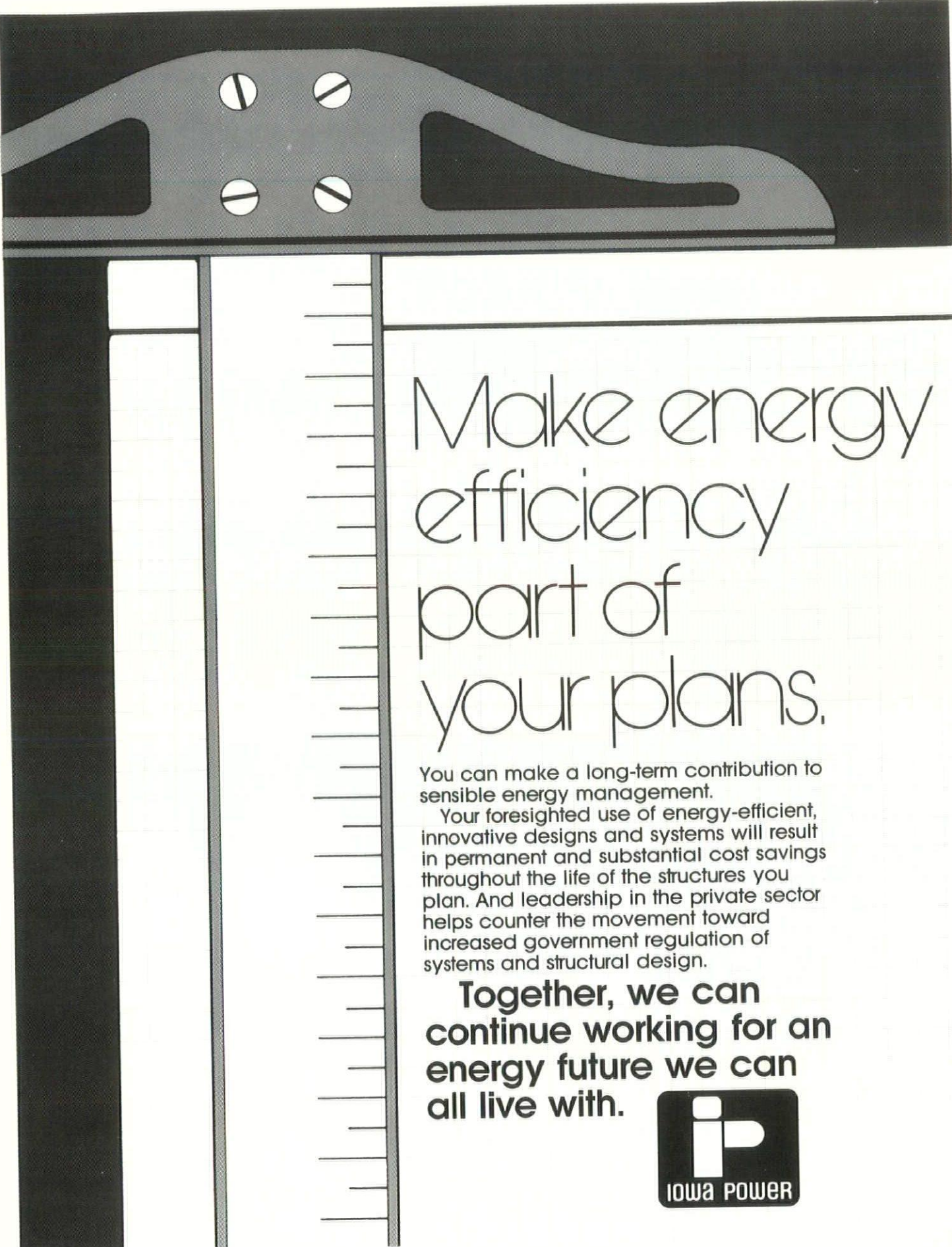
So for experience, quality and dependability turn to the same people who helped solve Meredith's interior systems problems. **Pigott: your single-source resource.**



**Pigott, Inc.**

SYSTEMS FOR WORKING ENVIRONMENTS  
3815 Ingersoll Avenue, Des Moines, IA 50312  
(515) 279-8879





# Make energy efficiency part of your plans.

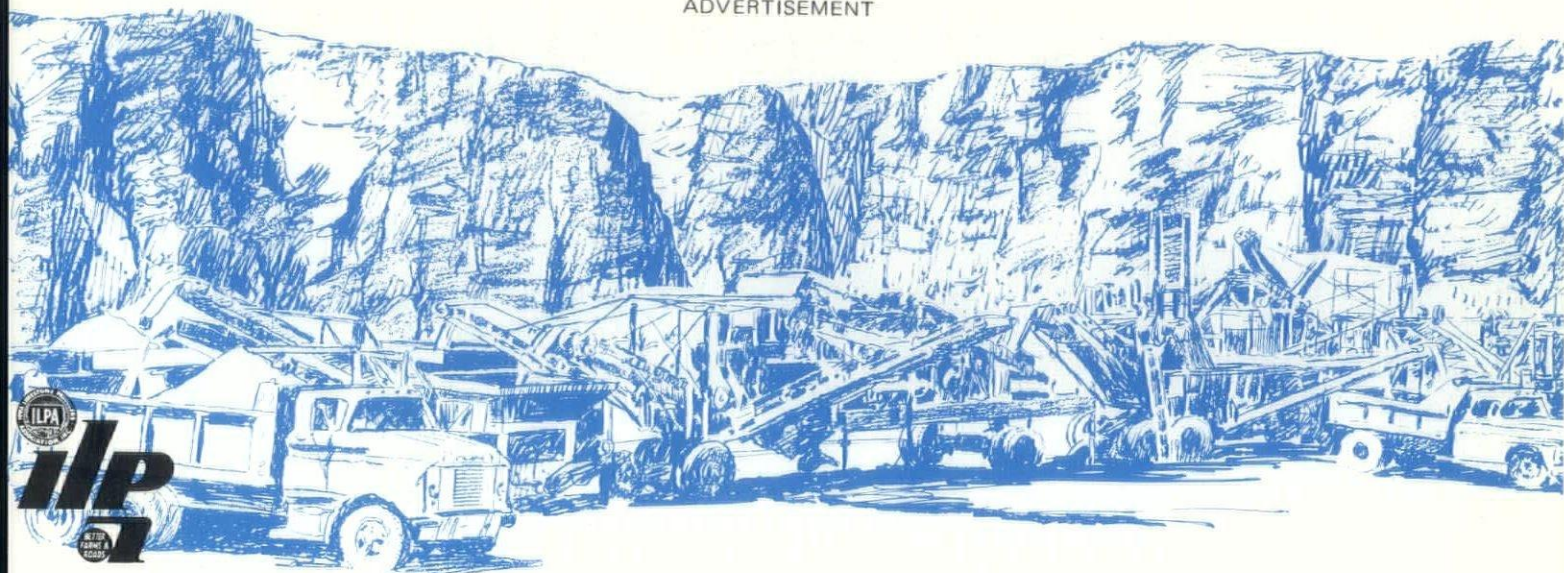
You can make a long-term contribution to sensible energy management.

Your foresighted use of energy-efficient, innovative designs and systems will result in permanent and substantial cost savings throughout the life of the structures you plan. And leadership in the private sector helps counter the movement toward increased government regulation of systems and structural design.

**Together, we can  
continue working for an  
energy future we can  
all live with.**







# IOWA LIMESTONE REPORTER

## MACADAM



### JACKSON COUNTY ROAD E 17

This recently completed six mile Macadam project is part of over 200 miles of Macadam constructed in Iowa since 1974.

A seal coat has been applied, leaving the cover aggregate loose. The road will likely be painted later in the fall or early spring.



Limestone for this project was produced by B. L. Anderson, Inc. of Cedar Rapids. The contractor was Tschiggfrie Excavating Co., of Dubuque.

Picture at right shows the base stone produced to meet I.D.O.T. Spec. 4122.02; which allows a nominal maximum size of 4 inches screened over a 1" screen.



Base material being spread by a Jersey Spreader approximately nine inches deep, which will compact to a finished base of six inches of open graded Macadam.



Large vibrating roller is used to compact the stone, the same roller is used to compact the choke stone, without the vibration.

Note that during Macadam Construction, the road is always open to local traffic.







Open graded Macadam base after compaction, it is obvious any moisture seeping into this material from the surface or sub-grade will immediately find its way to the ditch.



A neat innovation by Tschiggfrie Excavating which facilitates travel on open graded Macadam base is shown here.

Simply tailgating a light layer of choke stone down the center of the road provides a lane for traffic, avoiding ravelling of the large stone and tire damage.



The Macadam road is completed, the minus 1" material which was screened from the large base stone is used for the choke stone, applied 3" deep, shoulder to shoulder.

The road is now ready to receive a higher type surface course.



**IOWA****LIMESTONE PRODUCERS**

**Akron Lime Company**, Akron  
**Alpha Crushed Stone**, Marion  
**B.L. Anderson, Inc.**, Cedar Rapids  
**Beecher Quarry, Ltd.**, Dubuque  
**Bresnahan Const. Co.**, Waukon  
**Bruening Rock Products**, Decorah  
**Cooney Const Company**, Waukon  
**Coots Materials**, Mt. Auburn  
**Lee Crawford Quarry**, Cedar Rapids  
**Douds Stone, Inc.**, Ottumwa  
**Dubuque Sand & Gravel**, Dubuque  
**Dubuque Stone Products**, Dubuque  
**Dyersville Ready Mix**, Dyersville  
**L.R. Const. Company**, St. Ansgar  
**Farmers Stone-Trager**, Utica, Mo.  
**Fort Calhoun Stone**, Blair, Neb.  
**Gendler Stone Prod.**, Des Moines  
**Greene Limestone Co.**, Greene  
**Hallett Const. Company**, Boone  
**Harold Hartman**, Strawberry Point  
**C.D. Hess & Son**, Lacona  
**Hewitt Bros. Inc.**, Fredericksburg  
**Hopper Quarries**, Weeping Water, Neb.  
**Industrial Management**, Marion  
**Iowa Limestone Co.**, Des Moines  
**Kaser Corporation**, Des Moines  
**Kuhlman Const. Company**, Colesburg  
**L & W Const. Company**, Centerville  
**LeClaire Quarries**, LeClaire  
**Linwood Stone Prod.**, Davenport  
**Malcom Stone Company**, Malcom  
**Martin Marietta Agg.**, Cedar Rapids  
**Midwest Limestone Co.**, Gilmore City  
**Paul Niemann Const Co.**, Sumner  
**Northwest Limestone**, Fort Dodge  
**Emil Olson, Inc.**, Albert Lea, Mn.  
**P & M Stone Company**, Humboldt  
**River Products Co.**, Iowa City  
**Roverud Const. Co.**, Decorah  
**E.I. Sargent Quarries**, Des Moines  
**Schemmer Limestone Quarry**, Logan  
**Schildberg Const. Co.**, Greenfield  
**Wakonda Lime, Inc.**, Irene, S. Dak.  
**Weaver Const. Company**, Iowa Falls  
**Weber Stone Company**, Anamosa  
**WECC Corporation**, Marion  
**Welp & McCarten**, Fort Dodge  
**Wendling Quarries**, Marion

**ADVANTAGES OF MACADAM****LESS EXPENSIVE**

Limestone is more economical than other paving materials. A Macadam road can be completed in less working days. During construction, a Macadam road can remain open to traffic. Macadam is the ideal beginning of stage construction, allowing the road to be paid for as it is used.

**SAVES ENERGY**

Utilizing locally available natural resources, Macadam saves energy two ways:

- (1) Requires less energy to produce and construct
- (2) Allows asphalt to be distilled into fuel products.

**DURABLE**

Durable, dust-free Macadam roads provide opportunities for applying higher-type surface courses in subsequent construction seasons — always remaining free-draining membranes for longer life and added safety.

**Iowa Limestone Producers Assn., Inc.**  
 P. O. Box 6006  
 Des Moines, Iowa 50309  
 Phone 515 244-4239





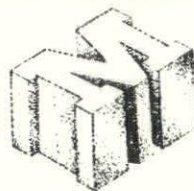
# When Strayer-Wood Has Standing Room Only... Marquart Provides the Room to Stand.



Strayer-Wood Theatre, University of Northern Iowa, Cedar Falls, Ia.

Both the exterior and interior walls of the beautiful Strayer-Wood Theatre are made of Marquart splyt-face block. Marquart Concrete Block Company provides durable building materials of the highest quality. So, when the house comes down at Strayer-Wood, Marquart block will be keeping it up.

***We Build a Better Block***



**MARQUART**  
CONCRETE BLOCK COMPANY

110 Dunham Place, P. O. Box 990  
Waterloo, IA 50704  
(319) 233-8421

## *Excellence and Performance*



The Beechcraft Baron is an outstanding example of excellence in design, strength, reliability and beautiful styling. It is also a veritable work horse, disguised as a plush jewel of a flying machine.

*Inquire about our  
"Gentle Rental" plan*

**Make the first easy move NOW.  
Ask for a demonstration**

**Write on your letterhead for our kit:  
"Company Airplanes, Who Flies Them?"**

**ELLIOTT BEECHCRAFT**  
Dept. DFH-1A

P.O. Box 100 • Moline, Ill. 61265

Without question, it is one of the most versatile airplanes ever built. It can function as an impressively appointed executive transport, or convert into a durable cargo carrier. Simply remove the four aft seats, and 47 cubic feet of cargo space becomes available with up to 720 lbs. capacity easily accessible through the large double doors. Or...load six adults and 180 lbs. of luggage into the all-weather Baron, and you still carry enough fuel to cover 500 miles, including full IFR reserves.

Perhaps the most impressive of all, though, is that at cruise power setting, this airplane gets gas mileage comparable to a full-size automobile. At nearly four times the legal highway speed limit, fuel flow is approx. 28 gph.

Does this excellence mean practical, hard-working, and bred for economy?...You bet!

**ELLIOTT BEECHCRAFT**  
DES MOINES: (515) 285-6551  
MOLINE: (309) 799-3183  
MINNEAPOLIS: (612) 944-1200





HOTEL SAVERY/Civic Center Lounge  
JOHN BLOODGOOD Architects  
THAYER COGGIN Modular Seating



**M.A. Knutsen**

P.O. Box 65095  
West Des Moines  
Iowa 50265

515-279-9075

Contemporary Furniture  
Residential/Contract



## INTERIOR PLANTINGS

### Big Trees Foliage Ground Cover

for

Interior Spaces  
Shopping Malls  
Atriums  
Office Plantscape  
Open Office Planning

ask for

**DICK VOLKAMER**

**A.A.F.**



- Design
- Installation
- Rental
- Guarantee
- Maintenance

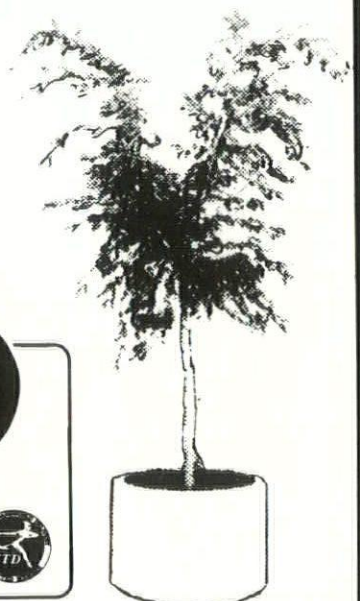


4270 NORTH SIXTH AVE.  
DES MOINES, IOWA 50313

(515) 288-4831

HORTICULTURE SPECIALIST SINCE 1916

FLORAL DISPLAY . FLOWER SHOP . GREENHOUSES . FOLIAGE SYSTEMS  
MAINTENANCE . COMMERCIAL DECORATING . CUSTOM DESIGNS



Charter member National Interior Plantscape Association



# WOOD-MODE<sup>®</sup>

America's best-selling  
custom-built cabinetry  
introduces...

## alpha

Innovative design, traditional craftsmanship. Wood-Mode's new Alpha is a beautiful, subtly European expression of contemporary style. And it embodies the very qualities that keep Wood-Mode *number one* in custom-built cabinetry.

It's innovative...with a special concealed hinge never before seen in America. Yet, it's traditional...with genuine separate-board, tongue-and-groove door construction.

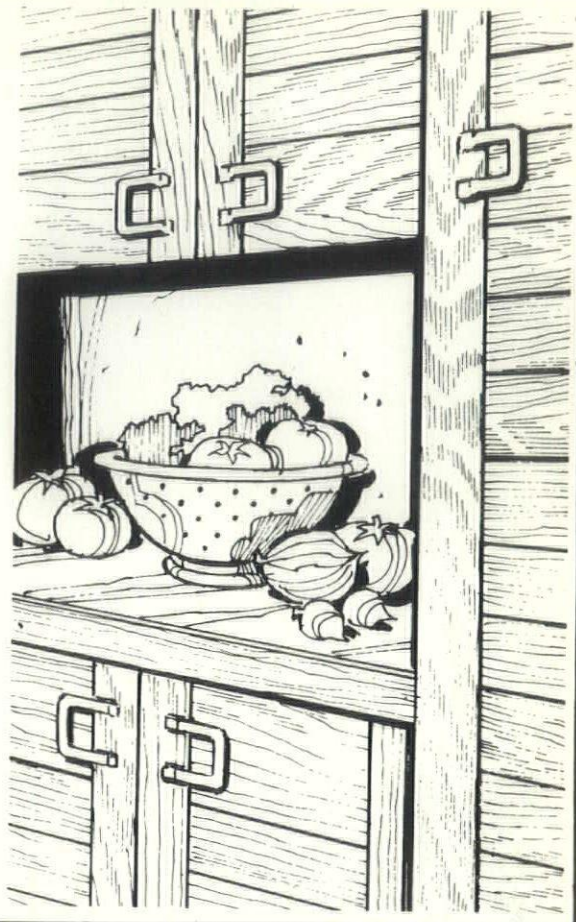
Visit our showroom so that we can show you how Alpha's modern beauty and old-fashioned quality can be integrated into virtually any decor. Including yours.

*For Information on Local Dealers in Midwest Contact  
Representative's Office*

**Swanco Enterprises, Inc.**

BOX 1030 • MARSHALLTOWN, IOWA • 50158

PHONE 515/752-1072



## Architectural Signage

# JSS

Johnson Specialty Sales

P.O. Box 2691

Des Moines, Iowa 50315

Phone [515] 285-2483

Distributors of exterior and interior signage systems of all types and sizes





## IOWA CHAPTER OF THE AMERICAN INSTITUTE OF ARCHITECTS 1981-1982 MEMBERSHIP

### MEMBERSHIP CODE

E	Emeritus
FAIA	Fellow
M	MEMBER
PA	Chapter Prof. Affiliate
A	AIA Asso. Membership

**Allers, Ben E. -M**  
Box 183  
Johnston, Iowa 50131  
Green Meadows Ltd.

**Allers, Terry L. -M**  
R. R. 2  
Fort Dodge, Iowa 50501  
A5 Allers and Assoc., Inc.

**Ambrose, Jeffrey -A**  
1429 45th Street  
Des Moines, Iowa 50311  
Bloodgood Architects PC

**Amend, James L. -M**  
718 Co. Bl. Sav. Bank Bldg.  
Council Bluffs, Iowa 51501  
Hollis and Miller

**Andersen, Daryl E. -M**  
604 Mulberry Street  
Waterloo, Iowa 50703  
Flinn, Saito, Andersen

**Anderson, Bruce -M**  
Drawer 310 Plaza Centre One  
Iowa City, Iowa 52240  
Hansen, Lind, Meyer PC

**Anderson, Craig A. -M**  
860 17th Street S.E.  
Cedar Rapids, Iowa 52403  
McConnell, Steveley, Anderson

**Anderson, Robert J. -M**  
4526 Perry Way  
Sioux City, Iowa 51104  
FEH Associates

**Anderson, William L. -M**  
414 61st Street  
Des Moines, Iowa 50312  
Bussard/Dikis Associates, Ltd.

**Anneberg, P. David -M**  
8527 University Suite 8  
Des Moines, Iowa 50311  
P. David Anneberg, Architect

**Artiaga, J.M. -M**  
5825 Chaimberlain Drive  
Des Moines, Iowa 50312  
Kendall, Griffith, Russell, Artiaga

**Atherton, Thomas J. -M**  
202 Masonic Temple Building  
Des Moines, Iowa 50309  
Karl Keffer Associates

**Baldwin, Thomas A. -M**  
Suite 202 Fleming Bldg.  
Des Moines, Iowa 50309  
Charles Herbert & Associates

**Barnes, Michael L. -A**  
1106 High Street  
Des Moines, Iowa 50309  
Wagner, Marquart, Wetherell,  
Ericsson

**Behm, Carmen R. -A**  
P.O. Box 917  
Fort Dodge, Iowa 50501  
The Griffith Company

**Benz, John D. -M**  
Drawer 310 Plaza Centre One  
Iowa City, Iowa 52240  
Hansen, Lind, Meyer

**Bergland, Robert B. -M**  
11½ S. Federal Avenue  
Mason City, Iowa 50401  
Bergland and Bianco

**Bergman, Charles R. -A**  
314 Savings and Loan Building  
Des Moines, Iowa 50309  
Payne, Champion, Bernabe

**Bernabe, Richard O. -M**  
314 Savings and Loan Building  
Des Moines, Iowa 50309  
Payne, Champion, Bernabe

**Bianco, Harold F. -M**  
11½ S. Federal Avenue  
Mason City, Iowa 50401  
Bergland and Bianco

**Bishop, Barney A. -M**  
1845 Carter Road  
Dubuque, Iowa 52001  
The Durrant Group

**Block, David A. -M**  
4618 West Bend Drive  
Ames, Iowa 50010  
David A. Block, Architect

**Bloodgood, John D. -M**  
3001 Grand Avenue  
Des Moines, Iowa 50312  
Bloodgood Architects, PC

**Blunck, Kirk V. -A**  
1612 31st Street  
Des Moines, Iowa 50311  
Brooks, Borg, Skiles

**Bock, Carl V. -A**  
1035 3rd Avenue S.E.  
Cedar Rapids, Iowa 52403  
Brown, Healey, Bock

**Bouse, Jack L. -PA**  
1110 3rd Street S.E.  
Cedar Rapids, Iowa 52403  
Engineering Associates

**Bowman, Alan W. -M**  
3000 30th Street  
Des Moines, Iowa 50310  
Environmental Design Group

**Bowman, O. Keith -PA**  
15 South Federal Avenue  
Mason City, Iowa 50401  
Waggoner, Mahaffey, Bowman

**Breuer, Steven R. -A**  
1486 20th Avenue N. Apt D-2  
Fort Dodge, Iowa 50501  
Associated Engineers

**Brom, Richard H. -M**  
900 Waterloo Building  
Waterloo, Iowa 50701  
Thorson, Brom, Broshar, Snyder

**Brooks, J. Woolson -FAIA**  
7th Floor Hubbel Building  
Des Moines, Iowa 50309  
Brooks, Borg, Skiles

**Broshar, Robert C. -FAIA**  
900 Waterloo Building  
Waterloo, Iowa 50701  
Thorson, Brom, Broshar, Snyder



**Brost, David L. -M**

1906 Mt. Vernon Road S.E.  
P.O. Box 1109  
Cedar Rapids, Iowa 52406  
David L. Brost, Architect

**Brown, Douglas L. -A**

4211 Lincoln Swing No. 33  
Ames, Iowa 50010  
Frevort, Ramsey, Drey, Kobes

**Browning, Christopher -M**

311-B Main Street  
Cedar Falls, Iowa 50613  
Robert C. DeVoe, Architect

**Brygger, James A. Jr. -M**

507 7th Street Suite 540  
Sioux City, Iowa 51101  
Duffy, Mannes, Brygger

**Bullington, Harold J. -A**

202 Masonic Temple Building  
Des Moines, Iowa 50309  
Karl Keffer Associates

**Bullis, Craig D. -A**

3030 Ruan Center  
Des Moines, Iowa 50309  
Kendall, Griffith, Russell, Artiaga

**Burgin, Robert H. -M**

Suite 405  
1st Fed. Savings & Loan Bldg.  
Council Bluffs, Iowa 51501  
Robert H. Burgin & Associates

**Burnham, Jeffrey W. -A**

3002 30th Street  
Des Moines, Iowa 50310

**Burns, Robert P. -M**

Highway 218 North  
Riverside, Iowa 52327  
Robert P. Burns, Architect

**Bussard, H. Kennard -M**

414 61st Street  
Des Moines, Iowa 50312  
Bussard/Dikis, Assoc. Ltd.

**Cable, Edward L. -M**

600 S.C. Fed. Plaza Bldg.  
Sioux City, Iowa 51101  
DeWild, Grant, Reckert

**Cantor, Marshall S. -M**

1715 Pierce Street  
Sioux City, Iowa 51105  
Cantor Arch. & Interior Design

**Carlson, John E. -M**

Drawer 310 Plaza Centre One  
Iowa City, Iowa 52240  
Hansen, Lind, Meyer

**Carney, Leo A. -M**

500 Hubbell Bldg.  
Des Moines, Iowa 50309  
McKlveen and Carney

**Carpino, Ralph -M**

3118 S.W. 22nd Street  
Des Moines, Iowa 50321  
Brooks, Borg, Skiles

**Carrithers, I. Tom -M**

201 Bennett Avenue  
Council Bluffs, Iowa 51501  
I. T. Carrithers, Arch.

**Chait, Benjamin P. -M**

918 East Washington  
Iowa City, Iowa 52240  
Benjamin Chait, Architect

**Champion, James D. -M**

406 Home Federal Building  
Sioux City, Iowa 51102  
FEH Associates

**Christiansen, Alan -A**

1917 46th Street  
Des Moines, Iowa 50310  
H. Ronald Walker, Architects

**Clark, Henry -M**

MIU  
Fairfield, Iowa 52556

**Clause, Thomas R. -M**

Suite 202 Fleming Bldg.  
Des Moines, Iowa 50309  
Charles Herbert & Assoc.

**Clubb, Gregory P. -A**

125½ E. Second Street  
Ottumwa, Iowa  
Steffen, Stoltz & Nelson

**Colvig, Kirk -M**

204 Liberty Bldg.  
Des Moines, Iowa 50309  
Higgins, Shirk, Colvig

**Cook, James S. -M**

216 Davidson Bldg.  
304½ 8th Street  
Des Moines, Iowa 50309  
Winkler/Cook, Arch.

**Cox, G.B. -M**

816 Lee Street  
Marshalltown, Iowa 50158

**Cram, Randall S. -A**

Oakwood Park  
Clear Lake, Iowa 50428  
Bergland and Bianco

**Day, H. Summerfield -M**

1617 Northwestern Avenue  
Ames, Iowa 50010  
ISU Planning Division

**Dean, Waldo J. -E**

1704 45th Street  
Des Moines, Iowa 50312

**Deininger, George -M**

One Dubuque Plaza  
Dubuque, Iowa 52001  
The Durrant Group

**Den Hartog, Eugene E. -M**

4005 42nd Street  
Des Moines, Iowa 50310  
Farmers Home Administration

**DeVoe, Robert C. -M**

311-B Main Street  
Cedar Falls, Iowa 50613  
Robert C. DeVoe, Architect

**Dikis, William M. -M**

414 61st Street  
Des Moines, Iowa 50312  
Bussard/Dikis, Assoc. Ltd.

**Dilts, David A. -A**

621 Savings and Loan Bldg.  
Des Moines, Iowa 50309  
James Lynch and Associates

**Dinges, Mark -A**

811 16th Street  
Des Moines, Iowa 50314  
Higgins, Shirk and Colvig

**Dobberstein, Dwight -A**

326 North Linn  
Iowa City, Iowa 52240  
Hansen, Lind, Meyer

**Dodge, Jeffrey N. -A**

Suite 202 Fleming Bldg.  
Des Moines, Iowa 50309  
Charles Herbert & Assoc.

**Downing, Timothy W. -M**

2415 18th Street  
Bettendorf, Iowa 52727  
Tim W. Downing, Architect

**Drey, John E. -M**

1905 75th Street  
Des Moines, Iowa 50322  
Frevort, Ramsey, Drey, Kobes

**Dreyer, William -M**

315 Sixth Street  
Ames, Iowa 50010  
Arch. Rudil/Lee/Dreyer

**Duffy, James M. -M**

507 7th Street Suite 540  
Sioux City, Iowa 51101  
Duffy, Mannes, Brygger

**Duimstra, David A. -M**

5512 Westwood Drive  
Des Moines, Iowa 50312  
Bussard/Dikis, Assoc. Ltd.

**Dulaney, David J. -M**

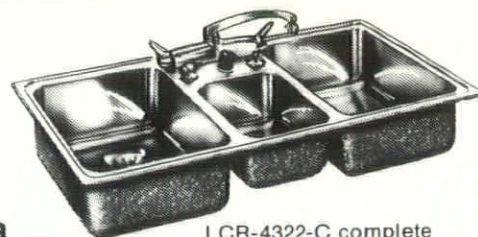
208 5th Street  
Ames, Iowa 50010  
Dulaney and Associates



# ELKAY® means quality in Stainless Steel Sinks and Water Coolers

Four grades of Elkay stainless steel sinks provide the widest possible model selection to meet any installation requirement. Elkay sinks are also available with matching quality Elkay faucets.

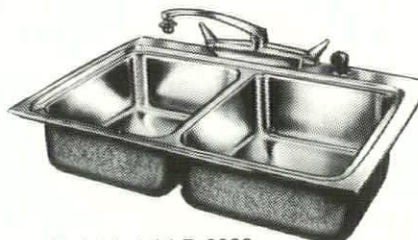
Elkay water coolers follow the quality tradition. One piece stainless steel basins with anti-splash design and easy to clean surfaces. Choice of cabinet colors. Ease of installation features.



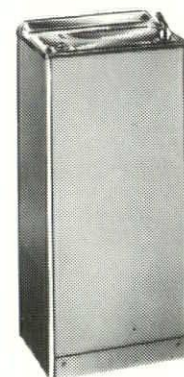
LCR-4322-C complete with faucet and accessories



LRA-250-C complete with faucet and spray



Sink Model LR-3322 with LK-2201 faucet



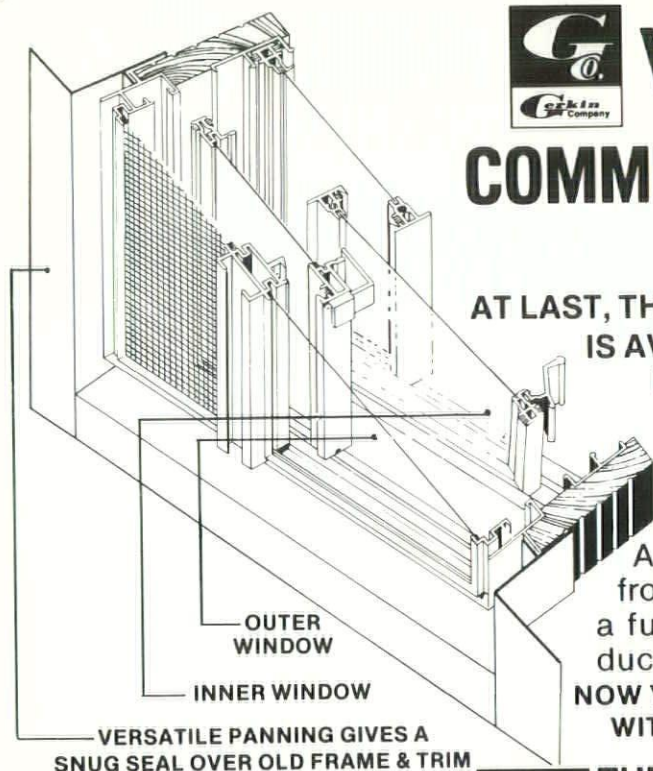
EFA-Series Floor, Water Coolers



Simulated Semi-Recessed Water Cooler. ESW-Series

Represented in Iowa  
Exclusively By

**R B associates, inc.**  
MANUFACTURERS' REPRESENTATIVES  
523 NORTHWESTERN • BOX 688 • 515/232-3338 • AMES, IOWA 50010



## Weatherliner®... COMMERCIAL REPLACEMENT WINDOW

**AT LAST, THE MIDWEST'S PREFERRED PRIME WINDOW  
IS AVAILABLE FOR COMMERCIAL REPLACEMENT  
PROJECTS!**

A top rated prime window... matched to a quick-to-install pan system. It adds up to the most energy-efficient replacement window on the Market!

And that's only the beginning... you can choose from several ventilating styles... 'fixed' styles... a fully-insulated spandrel panel... all with a conductive "U" value of .43 and better!

**NOW YOU CAN DO MORE THAN REPLACE AN OLD WINDOW  
WITH A NEW ONE... "THERMALIZE" YOUR PROJECTS  
WITH WEATHERLINER!**

COMPLETE DATA & LITERATURE  
AVAILABLE ON REQUEST



**THE  
GERKIN COMPANY**

1501 Zenith Drive • Sioux City, Iowa 51103  
Phone 712-255-5061



**Dwinell, James I. -M**  
Suite 202 Fleming Bldg.  
Des Moines, Iowa 50309  
Charles Herbert & Assoc.

**Ellsworth, Walter F. Jr. -A**  
930 School #74  
Des Moines, Iowa 50309  
Brooks, Borg, Skiles

**Engelbrecht, Mark C. -M**  
525 6th Avenue  
Des Moines, Iowa 50309  
Engelbrecht & Griffin

**Enzmann, Herbert K. -M**  
2015 Grand Avenue  
Des Moines, Iowa 50312  
Cost, Planning & Management  
International, Inc.

**Ericsson, Lawrence -M**  
1106 High Street  
Des Moines, Iowa 50309  
Wagner, Marquart, Wetherell,  
Ericsson

**Ertle, Herbert -A**  
317½ 7th Street  
West Des Moines, Iowa 50265  
Cost Planning & Management  
International, Inc.

**Ewing, Ronald -A**  
804 Oneida Suite A  
P. O. Box 976  
Storm Lake, Iowa 50588  
Huntington Architects, PC

**Fink, Jeri C. -A**  
612 Western Street Apt. 2  
Waterloo, Iowa 50701  
Thorson, Brom, Broshar, Snyder

**Fischer, Arnold E. -M**  
1840 N.W. 70th Street Place  
Ankeny, Iowa 50021  
Bussard/Dikis, Assoc. Ltd.

**Fisher, Mark L. -A**  
Suite 202 Fleming Bldg.  
Des Moines, Iowa 50309  
Charles Herbert & Assoc.

**Forshee, Gary L. -A**  
1112 Garfield Avenue  
Ames, Iowa 50010  
Abild Construction

**Fowles, Dorothy L. -PA**  
609 Granada Court  
Iowa City, Iowa 52242

**Fredregill, William R. -M**  
913-C 9th Street  
West Des Moines, Iowa 50265  
Fredregill Architects

**Freitag, Maurice E. -A**  
1433 44th Street  
Des Moines, Iowa 50311  
Woodburn and O'Neil

**Frevert, W. David -M**  
3737 Woodland Avenue  
414 Colony Park  
West Des Moines, Iowa 50265  
Frevert, Ramsey, Drey, Kobes

**Frey, Bradford -A**  
One Dubuque Plaza  
Dubuque, Iowa 52001  
The Durrant Group

**Frey, Douglas A. -M**  
154 34th Street  
Des Moines, Iowa 50312  
Charles Herbert & Assoc.

**Galvin, John C. -M**  
410 Grand Ave. Box 467  
Spencer, Iowa 51301  
Keninger and Galvin

**Gantz, Kenneth W. -A**  
3737 Woodland  
414 Colony Park  
W. Des Moines, Iowa 50265  
Frevert, Ramsey, Drey, Kobes

**Gardner, John K. -A**  
5305 Twana Drive  
Apt. #12  
Des Moines, Iowa 50312  
E.P.C.M. Corp.

**Gardner, Thomas J. -A**  
R.R. 4  
Cedar Falls, Iowa 50613  
Flinn, Saito, Andersen

**Gauslow, William N. -A**  
3616 Nebraska Street  
Sioux City, Iowa 51140

**Gayer, Leland -M**  
406 Home Federal Building  
Sioux City, Iowa 51101  
FEH Associates

**Gerdes, Lawrence D. -M**  
219 East Ninth Street  
Ames, Iowa 50010  
Arch. Rudi/Lee/Dreyer

**Gere, John E. -M**  
2515 W. Central Park Avenue  
Davenport, Iowa 52804  
Charles Richardson & Assoc.

**Gessner, Gene -PA**  
300 Research Bldg.  
321 East Market Street  
Iowa City, Iowa 52240

**Gleason, Lawrence J. -M**  
2015 Grand Avenue  
Des Moines, Iowa 50312  
Cost Planning & Management  
International, Inc.

**Gordon, Gene P. -M**  
1160 Arrowhead Drive  
Dubuque, Iowa 52001

**Grant, William W. -M**  
3001 Grand Avenue  
Des Moines, Iowa 50312  
Bloodgood Architects, PC

**Graves, Larry D. -A**  
1711 North Lake Street  
Storm Lake, Iowa 50588  
Otto and Culver Engineering

**Gray, Steven E. -M**  
2929 Westown Parkway  
Suite 100  
West Des Moines, Iowa 50265  
Savage and Ver Ploeg

**Green, Martha -A**  
815 18th Street  
Des Moines, Iowa 50314

**Griffey, J. Richard -M**  
1728 Central Avenue  
Fort Dodge, Iowa 50501  
Associated Engineers

**Griffin, Charles O. -M**  
525 6th Avenue  
Des Moines, Iowa 50309  
Engelbrecht & Griffin

**Griffith, Gerald I. -M**  
3030 Ruan Center  
Des Moines, Iowa 50309  
Kendall, Griffith, Russell, Artiaga

**Griffith, Stanford F. -M**  
709 Kenyon Road Box 917  
Fort Dodge, Iowa 50501  
The Griffith Company

**Griffith, Stanford W. -M**  
709 Kenyon Road Box 917  
Fort Dodge, Iowa 50501  
The Griffith Company

**Grimes, Geoffrey C. -M**  
3404 Midway Drive  
Waterloo, Iowa 50701  
Stenson, Warm, Grimes, Port

**Grisolano, James E. -M**  
Rt. 1, Summer Street Road  
Burlington, Iowa 52601  
Midland Architects

**Gritton, Roger P. -A**  
1331 S. Maple  
Sioux City, Iowa 51106  
FEH Associates

**Gunsolley, Francis L. -A**  
Diagonal, Iowa 50843



**Hadley, Roger D. -M**  
1433 Wildwood Drive N.E.  
Cedar Rapids, Iowa 52402  
Change

**Hansen, Richard F. -M**  
Drawer 310 Plaza Centre One  
Iowa City, Iowa 52240  
Hansen, Lind, Meyer

**Harmeyer, Richard J. -M**  
Suite 440 Corporate Place  
1501 42nd Street  
West Des Moines, Iowa 50265  
Woodburn and O'Neil

**Harmsen, Bradley J. -M**  
P.O. Box 976  
Storm Lake, Iowa 50588  
Huntington Architects

**Harper, Doyle R. -A**  
1257 Ravenwood Road Apt. #3  
Waterloo, Iowa 50702  
Thorson, Brom, Broshar, Snyder

**Haskell, Thomas M. -A**  
201 Dey Building  
Iowa City, Iowa 52240  
Wehner, Nowysz, Pattschull, Pfiffner

**Hatfield, Scott A. -A**  
1001 6th Street  
West Des Moines, Iowa 50265  
Green Meadows Ltd.

**Hausafus, John F. -A**  
3700 Rollins Avenue  
Des Moines, Iowa 50312  
Frevert, Ramsey, Drey, Kobes

**Healey, Edward H. -FAIA**  
1035 3rd Avenue S.E.  
Cedar Rapids, Iowa 52403  
Brown, Healey, Bock

**Hecker, Robert D. -M**  
620 Frances Bldg.  
Sioux City, Iowa 51101  
Robert D. Hecker, Arch.

**Heemstra, Howard -M**  
Associate Professor  
Iowa State University  
Ames, Iowa 50011

**Heil, Howard R. -M**  
406 Home Federal Building  
Sioux City, Iowa 51102  
FEH Associates

**Heitzman, Wesley -M**  
P.O. Box 270  
Waterloo, Iowa 50704

**Henry, Harvey W. -M**  
P. O. Box 5162  
417 10th Avenue  
Coralville, Iowa 52241  
Harvey Henry, Architect

**Herbert, Charles -FAIA**  
4906 S.W. 18th Street  
Des Moines, Iowa 50315  
Charles Herbert & Assoc.

**Hermann, Steven R. -A**  
414 Colony Park  
3737 Woodland Avenue  
West Des Moines, Iowa 50265  
Frevert, Ramsey, Drey, Kobes

**Herrick, Richard J. -M**  
Stanley Building  
Muscatine, Iowa 52761  
Stanley Consultants

**Higgins, Thomas -M**  
4817 Pleasant  
Des Moines, Iowa 50312  
Higgins, Shirk, Colvig

**Howard, Lyle P. -E**  
140 East Maple Street  
Apt. #5 Oak Building  
Ottumwa, Iowa 52501

**Hueholt, Raymond L. -M**  
Suite 440 Corporate Place  
1401 42nd  
West Des Moines, Iowa 50265  
Woodburn and O'Neil

**Huneke, Ervin C. -M**  
First National Bank Bldg.  
Fairfield, Iowa 52556  
Ervin C. Huneke, Arch.

**Hunt, D. Gordon -M**  
314 North 4th Street  
Burlington, Iowa 52601  
Midland Architects

**Huntington, Glen D. -M**  
804 Oneida Suite A  
P. O. Box 976  
Storm Lake, Iowa 50588  
Huntington Architects

**Hurd, Thomas R. -A**  
15 South Federal Avenue  
Mason City, Iowa 50401  
Waggoner, Mahaffey & Bowman

**Iber, Howard -M**  
928 No. Clark Avenue  
Ames, Iowa 50010  
Iowa State University

**Ibsen, Dean -M**  
One Dubuque Plaza  
Dubuque, Iowa 52001  
The Durrant Group

**Jackson, Ronald L. -PA**  
1452 29th Street  
Suite 115  
West Des Moines, Iowa 50265

**Jamerson, Robert -M**  
1428 Laurel Circle  
Cedar Falls, Iowa 50613  
Robert Jamerson, Architect

**Janson, Charles E. -A**  
704 8th Street  
West Des Moines, Iowa 50265  
General Growth

**Janssen, Richard H. -A**  
802 Crystal Drive  
Ames, Iowa 50010  
General Growth

**Johnson, Donald A. -A**  
3708 37th Street  
Des Moines, Iowa 50310

**Johnson, Robert L. -M**  
205 East "A" Street  
Forest City, Iowa 50436  
Architectural Design Group

**Johnson, Robert L. M. -M**  
709 5th Avenue South  
Clinton, Iowa 52732  
R.L.M. Johnson and Associates

**Johnson, Thomas L. -A**  
600 S. C. Federal Plaza  
Sioux City, Iowa 51101  
DeWild, Grant, Reckert & Assoc.

**Johnston, Charles B. -A**  
900 South 12th Street  
P. O. Box 866  
Marshalltown, Iowa 50158  
Sam Sample and Associates

**Jones, Bernard I. -M**  
406 Home Federal Building  
Sioux City, Iowa 51102  
FEH Associates

**Jones, Timothy K. -A**  
2201 South Clinton  
Sioux City, Iowa 51106

**Jordison, Richard R. -M**  
2410 Friendship  
Iowa City, Iowa 52240  
University of Iowa

**Jorgensen, Robert C. -A**  
201 Dey Building  
Iowa City, Iowa 52240  
Wehner, Nowysz, Pattschull, Pfiffner

**Kainlauri, Eino -M**  
290 College of Design  
Iowa State University  
Ames, Iowa 50011

**Keith, Kenneth L. -M**  
3129 Locust Court  
Sioux City, Iowa 51106  
FEH Associates



SPACE and its productive utilization — that's what the GF Open Plan System handles so effectively . . . with minimum cost and installation expense — maximum flexibility.



**KOCH BROTHERS** 325 Grand Des Moines, Iowa 50308 (515)283-2451

## We Specialize in **CONTRACT CARPETING**

WITH THE MOST

**Complete Selection  
From Best Known  
Commercial Carpet  
Mill Sources**

NEGOTIATED BIDS—OUR SPECIALTY • UNION MEN USED ON UNION CONTRACTS  
NO JOB TOO BIG • NO JOB TOO SMALL

**HE home carpet**

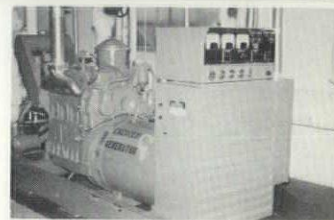
2453 S.W. 9th Street • Des Moines, Iowa 50315 • Phone 515/243-2161

## **HICKLIN**

**GENERATORS INSTALLED  
in JOHN McDONALD HOSPITAL, MONTICELLO, IOWA**



### **EMERGENCY POWER**



Call us for your next project. Complete design, engineering, & installation service. All equipment assembled at our Ankeny Manufacturing & Distribution Center.

**HICKLIN POWER COMPANY • 515-286-4826**  
P.O. Box 4026 • Des Moines, IA. 50333



**Kendall, R. Kenneth -M**  
3030 Ruan Center  
Des Moines, Iowa 50309  
Kendall, Griffith, Russell, Artiaga

**Keninger, Bernard J. -M**  
410 Grand Avenue  
P.O. Box 467  
Spencer, Iowa 51301  
Keninger and Galvin

**Kersten, Neil**  
2829 Westown Parkway  
Suite 220  
West Des Moines, Iowa 50265  
Jeffrey W. Voorhees & Co., PC

**Kiesel, Paul E. -M**  
1955 Admiral Avenue  
Dubuque, Iowa 52001  
The Durrant Group

**King, Pierce F. -M**  
1200 Park Avenue  
P. O. Box 596  
Muscatine, Iowa 52761  
Pierce King, Architect

**Klein, Paul -M**  
Suite 440, 1501 42nd Street  
West Des Moines, Iowa 50265  
Woodburn & O'Neil

**Kobes, Joe H. -M**  
3737 Woodland  
414 Colony Park  
West Des Moines, Iowa 50265  
Frevert, Ramsey, Drey, Kobes

**Kocinski, Karol J. -M**  
Dept. of Architecture  
Iowa State University  
Ames, Iowa 50011

**Koffron, Arthur L. -M**  
Drawer 310 Plaza Centre One  
Iowa City, Iowa 52240  
Hansen, Lind, Meyer

**Kopecky, Thomas J. -M**  
1025 30th Street Dr. S.E.  
Cedar Rapids, Iowa 52403  
Hansen, Lind, Meyer

**Kruse, Richard H. -M**  
Drawer 310 Plaza Centre One  
Iowa City, Iowa 52240  
Hansen, Lind, Meyer

**Kruse, Rodney -M**  
414 61st Street  
Des Moines, Iowa 50312  
Bussard/Dikis, Assoc. Ltd.

**Kuehn, Arthur C. -M**  
325 Perry Street  
Davenport, Iowa 52801  
Scholtz, Kuehn & Assoc.

**Kujac, John C. -M**  
R. R. 2 Box 294  
Madrid, Iowa 50156  
Central Life Assurance Corp.

**Kurt, Charles M. -M**  
One Dubuque Plaza  
Dubuque, Iowa 52001  
The Durrant Group

**Kyker, Edward H. -M**  
4158 Welker Avenue  
Des Moines, Iowa 50312  
Englebrecht & Griffin Architects

**Langholz, John D. -M**  
206 S. 4th Street  
Marshalltown, Iowa 50158  
Cervetti, Weber, Mikkelsen, Pollard, Inc.

**Larsen, Terrie C. -A**  
1151 65th Street  
Des Moines, Iowa 50311  
Bussard/Dikis, Assoc. Ltd.

**Larson, Rick -A**  
1108 West Street  
Des Moines, Iowa 50315  
Winkler-Cook Architects

**Larson, Ronald A. -M**  
One Dubuque Plaza  
Dubuque, Iowa 52001  
The Durrant Group

**Lebeck, Robert C. -M**  
521 Kimberly Lane  
Ankeny, Iowa 50021  
General Growth

**Lee, Robert M. -M**  
14th and Nebraska Streets  
Sioux City, Iowa 51105  
Beuttler, Olson, Lee

**Lee, William D. -M**  
315 Sixth Street  
Ames, Iowa 50010  
Arch. Rudi/Lee/Dreyer

**Leonard, Terry J. -A**  
3001 Grand Avenue  
Des Moines, Iowa 50312  
Bloodgood Architects, PC

**Lewis, Calvin F. -M**  
Suite 202 Fleming Building  
Des Moines, Iowa 50309  
Charles Herbert & Associates

**Lighter, Clyde -E**  
2909 Woodland #302  
Des Moines, Iowa 50312

**Lind, John H. -M**  
Drawer 310 Plaza Centre One  
Iowa City, Iowa 52240  
Hansen, Lind, Meyer

**Locke, John P. -M**  
1440 Watrous  
Des Moines, Iowa 50315  
Charles Herbert & Assoc.

**Ludwig, William J. -M**  
3000 30th Street  
Des Moines, Iowa 50310  
Environmental Design Group

**Luethje, Donald H. -M**  
2515 W. Central Park Avenue  
Davenport, Iowa 52804  
Charles Richardson & Assoc.

**Lukin, John D. III -A**  
314 Savings & Loan Building  
Des Moines, Iowa 50309  
Payne, Champion, Bernabe

**Lynch, James A. -M**  
621 Savings and Loan Building  
Des Moines, Iowa 50309  
James Lynch and Associates

**McClure, Judith A. -M**  
3706 Ingersoll Avenue  
Des Moines, Iowa 50312  
H. Ronald Walker Architects

**McConnell, Richard D. -M**  
860 17th Street S. E.  
Cedar Rapids, Iowa 52403  
McConnell, Stevely, Anderson

**McKeown, Donald I. -M**  
3721 Woodland  
Ames, Iowa 50010  
Iowa State University

**McKinney, Dale H. -A**  
600 Sioux City Federal Plaza Bldg.  
Sioux City, Iowa 51101  
DeWild, Grant, Reckert

**McKlveen, John H. -M**  
500 Hubbell Bldg.  
Des Moines, Iowa 50309  
McKlveen and Carney

**Mahaffey, Ralph -M**  
15 S. Federal Street  
Mason City, Iowa 50401  
Waggoner, Mahaffey, Bowman

**Maiwurm, Donald J. -M**  
Warden Building  
Fort Dodge, Iowa 50501  
Maiwurm Associates

**Mamura, Owen M. -M**  
507 7th Street Suite 540  
Sioux City, Iowa 51101  
Duffy, Mannes & Brygger

**Marquart, Gail E. -M**  
1106 High Street  
Des Moines, Iowa 50309  
Wagner, Marquart, Wetherell, Ericsson



**Marr, Richard A.** -PA  
Stanley Bldg.  
Muscatine, Iowa 52761  
Stanley Consultants

**Mathiasmeier, David J.** -M  
2121 Franklin Avenue  
Cedar Falls, Iowa 50613  
Thorson, Brom, Broshar, Snyder

**Mathieu, Robert J.** -M  
7th Floor Hubbell Building  
Des Moines, Iowa 50309  
Brooks, Borg, Skiles

**Mattox, Robert R.** -M  
One Dubuque Plaza  
Dubuque, Iowa 52001  
The Durrant Group

**Maves, John H.** -A  
Dept. of Architecture  
Iowa State University  
Ames, Iowa 50011

**Maxwell, James W.** -A  
129 Winter Ridge Road  
Waterloo, Iowa 50701

**Meehan, William R.** -M  
555 29th Street  
Des Moines, Iowa 50312  
William Meehan, Architect

**Meisel, Martin** -M  
Drawer 310 Plaza Centre One  
Iowa City, Iowa 52240  
Hansen, Lind, Meyer

**Metzger, Daryl** -A  
3125 Douglas Avenue  
Des Moines, Iowa 50313  
Cityscape Design

**Middaugh, Roy M.** -A  
14th and Nebraska  
Sioux City, Iowa 51105  
Beuttler, Olson, Lee

**Miehe, Ben K.** -M  
1833 North Main Street  
Dubuque, Iowa 52001  
Ben K. Miehe, Architect

**Mikkelsen, Morris E.** -M  
16½ West Main Street  
Marshalltown, Iowa 50158  
Cervetti, Weber, Mikkelsen, Pollard, Inc.

**Miller, Alfred H.** -M  
127 Tonawanda Drive  
Des Moines, Iowa 50312  
Iowa State University

**Miller, Jack** -PA  
422 2nd Avenue, S.E.  
Cedar Rapids, Iowa 50401

**Miller, Robert D.** -M  
R. R. 3  
Dubuque, Iowa 52001  
Straka-Miller Architects

**Mills, Gordon E.** -M  
One Dubuque Plaza  
Dubuque, Iowa 52001  
The Durrant Group

**Monson, Kevin W.** -M  
1056½ William  
Iowa City, Iowa 52240  
R. Neumann Associates

**Moore, Dennis** -A  
217 Westlawn  
Ankeny, Iowa 50021  
General Growth

**Moore, Larry R.** -A  
800 1st Avenue N.E.  
Cedar Rapids, Iowa 52402

**Moore, Larry W.** -A  
913 C 9th Street  
West Des Moines, Iowa 50265  
Fredregill Architects

**Morgan, Paul E.** -A  
661 34th Street  
Des Moines, Iowa 50312  
Anderson Consultants

**Moriarty, Gary S.** -M  
201 Dey Building  
Iowa City, Iowa 52240  
Wehner, Nowysz, Pattschull, Pfiffner

**Morton, Arthur D.** -M  
414 Colony Park  
3737 Woodland Avenue  
West Des Moines, Iowa 50265  
Frevort, Ramsey, Drey, Kobes

**Mozingo, Todd R.** -A  
201 Dey Bldg.  
Iowa City, Iowa 52240  
Wehner, Nowysz, Pattschull,  
Pfiffner

**Mukerjee, Rabindra N.** -A  
Dept. of Architecture  
Iowa State University  
Ames, Iowa 50011

**Munzenmaier, Edward** -A  
1201 Oak Park Avenue  
Des Moines, Iowa 50313  
Payne, Champion, Bernabe

**Nederhoff, Dale A.** -M  
One Dubuque Plaza  
Dubuque, Iowa 52001  
The Durrant Group

**Nelson, Craig** -A  
8200 Greenbelt Drive  
Des Moines, Iowa 50322  
Fredregill Architects

**Nelson, Rick** -M  
2829 Westown Parkway  
Suite 220  
West Des Moines, Iowa 50265  
Jeffrey W. Voorhees & Co., PC

**Nelson, Rodney R.** -M  
7th Floor Hubbell Building  
Des Moines, Iowa 50309  
Brooks, Borg, Skiles

**Nelson, William D.** -M  
125½ East 2nd Street  
Ottumwa, Iowa 52501  
Steffen, Stoltz, Nelson

**Neumann, Roy C.** -M  
2014 Burnside Drive  
Muscatine, Iowa 52761  
R. Neumann Associates

**Nichols, Larry D.** -M  
Stanley Building  
Muscatine, Iowa 52761  
Stanley Consultants

**Normile, John** -E  
3663 Grand Avenue Apt. 203  
Des Moines, Iowa 50312

**Novak, James A.** -M  
500 34th Street S.E.  
Cedar Rapids, Iowa 52403  
Olson, Popa, Novak

**Nowysz, William** -M  
201 Dey Bldg.  
Iowa City, Iowa 52240  
Wehner, Nowysz, Pattschull,  
Pfiffner

**Oberlander, R. Allan** -M  
414 61st Street  
Des Moines, Iowa 50312  
Bussard/Dikis Assoc. Ltd.

**Olson, Eugene A.** -M  
14th and Nebraska Streets  
Sioux City, Iowa 51105  
Beuttler, Olsen, Lee

**Olson, Jeffrey** -M  
Box #7  
Oxford, Iowa 52322  
Hansen, Lind, Meyer

**Olson, Scott** -M  
790 11th Street  
Marion, Iowa 52302  
Olson, Popa, Novak

**O'Mara, Thomas J.** -A  
201 Dey Bldg.  
Iowa City, Iowa 52240  
Wehner, Nowysz, Pattschull,  
Pfiffner

**O'Neil, Eugene C.** -M  
Suite 440, Corporate Place  
1501 42nd Street  
West Des Moines, Iowa 50265  
Woodburn and O'Neil



# Ironspot Brick

*Is it a Tone?  
Is it a Color?*

No, it is a feature that enhances an earthy value and is built-in as part of the brick for permanence.



A DIVISION OF **harsco** CORPORATION

**CERAMIC DIVISION**

101 Ashworth Road

West Des Moines, Iowa 50265

## **Cantex Manufactures Three:**

- OXFORD IRONSPOT
- CAMBRIDGE IRONSPOT
- DARK IRONSPOT HEIGHTS  
IN BOTH SQUARE AND ROUND EDGE

*Ask our Sales Reps or Dealers for samples or*

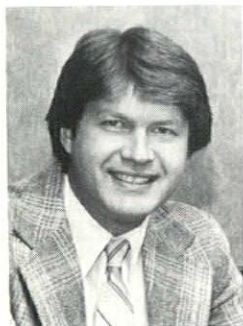
**CALL: 515/223-1450**



**515/265-9801**

*Iowa's Most Complete Commercial Carpet Line*

BACKED UP BY PROFESSIONAL CARPET MEN  
TO ASSIST YOU IN YOUR CARPET NEEDS



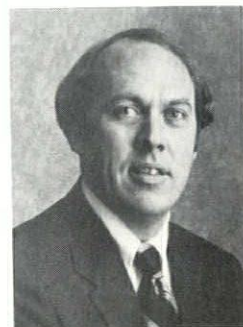
Sam Douds



*Division of*



4650 N.E. 17th Court  
Des Moines, Iowa 50313



Larry Mithelman



**Ormond, Waverly C. -M**  
131 E. Burlington Street  
Iowa City, Iowa 52240  
Pierce King Architects

**Pace, Robert E. -A**  
14th and Nebraska Streets  
Sioux City, Iowa 51105  
Beuttler, Olson, Lee

**Pals, Howard G. -M**  
300I Grand Avenue  
Des Moines, Iowa 50312  
Bloodgood Architects, PC

**Parti, Surindra N. -M**  
Stanley Building  
Muscatine, Iowa 52761  
Stanley Consultants

**Pash, Phillip L. -M**  
3917 Melanie Court  
Urbandale, Iowa 50322  
General Growth

**Patten, Lawton M. -E**  
2022 Friley Road  
Ames, Iowa 50010

**Pattinson, John E. -M**  
P.O. Box 310  
Plaza Centre One  
Iowa City, Iowa 52402  
Hansen, Lind, Meyer

**Pattschull, Richard W. -M**  
201 Dey Bldg.  
Iowa City, Iowa 52240  
Wehner, Nowysz, Pattschull,  
Pfiffner

**Paxton, James A. -M**  
5711 Waterbury Circle  
Des Moines, Iowa 50312  
James A. Paxton, Architect

**Payne, Harold L. -M**  
314 Savings and Loan Bldg.  
Des Moines, Iowa 50309  
Payne, Champion, Bernabe

**Peterson, Carlyle W. -PA**  
5617 Hickman Road  
Des Moines, Iowa 50310

**Peterson, David A. -M**  
315 6th Street  
Ames, Iowa 50010  
Architects Rudi/Lee/Dryer

**Peterson, Rick E. -A**  
Drawer 310 Plaza Centre One  
Iowa City, Iowa 52240  
Hansen, Lind, Meyer

**Pfiffner, John F. -M**  
201 Dey Bldg.  
Iowa City, Iowa 52240  
Wehner, Nowysz, Pattschull,  
Pfiffner

**Phillips, Raymond E. -M**  
703 S.W. McKinley  
Des Moines, Iowa 50315  
Raymond E. Phillips, Architect

**Pollard, John R. -M**  
16½ West Main Street  
Marshalltown, Iowa 50158  
Cervetti, Weber, Mikkelsen,  
Pollard, Inc.

**Popa, Thomas A. -M**  
790 11th Street  
Marion, Iowa 52302  
Olson, Popa, Novak

**Port, Dale R. -M**  
3404 Midway Drive  
Waterloo, Iowa 50701  
Stenson, Warm, Grimes, Port

**Porter, Jack D. -A**  
815 18th Street  
Des Moines, Iowa 50314

**Powelka, Joseph L. -A**  
Highway 64 West  
Maquoketa, Iowa 52060  
The Durrant Group

**Prall, Clifford N. -M**  
Rt. 1  
Central City, Iowa 52214  
Woodburn and O'Neil

**Prendergast, Thomas F. -M**  
Highway 18 East  
Mason City, Iowa 50401

**Prosperi, Robert -A**  
1201 19th Street  
West Des Moines, Iowa 50265

**Pulley, Frank L. -PA**  
6567 University Avenue  
Des Moines, Iowa 50311

**Raley, Thomas M. -A**  
2332-2 Patterson  
Eugene, Oregon 97405

**Ramsey, W. Robert -M**  
3737 Woodland  
414 Colony Park  
West Des Moines, Iowa 50265  
Frevert, Ramsey, Drey, Kobes

**Ratcliffe, John R. -M**  
7th Floor Hubbell Building  
Des Moines, Iowa 50309  
Brooks, Borg, Skiles

**Rath, Richard -M**  
408 Bayard  
Waterloo, Iowa 50702

**Ray, Robert -M**  
Alpine Centre North  
2435 Kimberly Road  
Bettendorf, Iowa 52722

**Repstien, Roger A. -A**  
Drawer 310 Plaza Centre One  
Iowa City, Iowa 52240  
Hansen, Lind, Meyer

**Restrepo, Francisco -M**  
417 Parham  
Muscatine, Iowa 52761  
Stanley Consultants

**Rice, John S. -M**  
4519 Grand No. 6  
Des Moines, Iowa 50312

**Richardson, Charles V. -M**  
2515 W. Central Park Avenue  
Davenport, Iowa 52804  
Charles Richardson & Assoc.

**Richtsmeier, William L. -M**  
1210 Madison Street  
Cedar Falls, Iowa 50613  
Flinn, Saito, Andersen

**Ritts, Charles L. -E**  
2323 48th Street  
Des Moines, Iowa 50310

**Robalino, Walter F. -A**  
201 Dey Bldg.  
Iowa City, Iowa 52240  
Wehner, Nowysz, Pattschull,  
Pfiffner

**Robinson, Sidney K. -M**  
1107 Kellogg  
Ames, Iowa 50010  
Iowa State University

**Rohrbach, Steven A. -A**  
201 Dey Bldg.  
Iowa City, Iowa 52240  
Wehner, Nowysz, Pattschull,  
Pfiffner

**Romigh, Jack -A**  
125½ E. Second St.  
Ottumwa, Iowa 52501  
Steffen, Stoltz, Nelson

**Roseland, Richard J. -M**  
Suite 202 Fleming Bldg.  
Des Moines, Iowa 50309  
Charles Herbert & Assoc.

**Ruble, James E. -M**  
507 7th Street Suite 540  
Sioux City, Iowa 51101  
Duffy, Mannes & Brygger

**Rudi, Norman H. -M**  
315 Sixth Street  
Ames, Iowa 50010  
Arch. Rudi/Lee/Dreyer

**Rusher, Lynn L. A**  
R. R. 3 Scenic Valley  
Fort Dodge, Iowa 50501  
Associated Engineers, Inc.



Caterpillar Standby Power

# The Ready Reserve

A Caterpillar Standby Power system could be the only thing standing between you and severe economic loss. For hospitals, computer centers or any operation that depends on an uninterrupted supply of electricity, a ready power reserve is a must. And your Cat Standby Power system is ready, willing and able when you need it most. You can also plug it in to meet peak demands or provide economical supplementary power.

Cat Standby Power has its own back-up system in the form of Total Product Support from Gibbs/Cook. We handle the design and installation of your system and provide any maintenance needed to keep it in top condition.

The Ready Reserve . . . from Gibbs/Cook. Sales and service facilities in Des Moines, Ft. Dodge, Mason City and Postville.

YOUR CATERPILLAR DEALER  
**GIBBS/COOK**

... for more than the expected

104th and Hickman Road, Des Moines, 50322 Phone (515) 270-2800  
Caterpillar, Cat and  are Trademarks of Caterpillar Tractor Co.

## You can specify our products with confidence.

Burlington  
Block Co.

319/752/5667

Clinton  
Block Co.

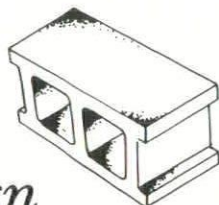
319/242-4051

Cedar Rapids  
Block Co.

319/363-0233

Coralville  
Block Co.

319/354-1003



*Design  
with*

**Concrete Masonry**





**Ryan, James P. -A**  
713 Washington  
Polk City, Iowa 50226  
Jeffrey W. Voorhees & Co., PC

**Saccopoulos, Christos -M**  
Department of Architecture  
Iowa State University  
Ames, Iowa 50011

**Salisbury, Allen B. -M**  
924 28th Street  
West Des Moines, Iowa 50265

**Sample, Sam S. -M**  
900 South 12th Avenue  
P.O. Box 866  
Marshalltown, Iowa 50158  
Sam Sample and Associates

**Samuels, Ben -M**  
3121 Norman Drive  
Sioux City, Iowa 51104

**Sandercock, James -M**  
800 F & M Bank Building  
Burlington, Iowa 52601  
James Sandercock, Architect

**Sanders, Davis Gene -A**  
414 61st Street  
Des Moines, Iowa 50312  
Bussard/Dikis Associates, Ltd.

**Sankey, H. Scott -A**  
204 Liberty Building  
Des Moines, Iowa 50309  
Higgins, Shirk & Colvig

**Sauer, Edward G. -M**  
1035 3rd Avenue S.E.  
Cedar Rapids, Iowa 52403  
Brown, Healey, Bock

**Saul, Charles E., Jr. -M**  
P.O. Box 4945  
Des Moines, Iowa 50306  
Structural Consultants, PC

**Sauter, J. Edward -M**  
P.O. Box 204  
Mt. Vernon, Iowa 52314  
Design Collective

**Savage, Robert E. -M**  
2929 Westown Parkway Suite 100  
West Des Moines, Iowa 50265  
Savage and Ver Ploeg, Inc.

**Schardein, Max L. -PA**  
2415 18th Street  
Suite 201  
Bettendorf, Iowa 52722

**Schilling, Ralph R. -PA**  
808 Insurance Exchange Building  
Des Moines, Iowa 50309

**Schlepphorst, Larry J. -A**  
1085 28th Street  
Des Moines, Iowa 50311

**Schmidt, J. Mark -M**  
Suite 202 Fleming Bldg.  
Des Moines, Iowa 50309  
Charles Herbert & Assoc.

**Schmidt, Max N. -M**  
1488 Oeth Court  
Dubuque, Iowa 52001  
The Durrant Group

**Schmitt, Walter J. -M**  
P. O. Box 1467  
Mason City, Iowa 50401  
Wallace, Holland, Kastler, Schmitz

**Schoenfelder, James -M**  
415 5th Street  
Coralville, Iowa 52241  
Central States Energy  
Research Corp.

**Scholtz, Roman -M**  
325 Perry Street  
Davenport, Iowa 52801  
Scholtz and Kuehn

**Schultze, David D. -A**  
P.O. Box 917  
Fort Dodge, Iowa 50501  
The Griffith Co., Arch.

**Schuster, William C. -A**  
1035 3rd Avenue S.E.  
Cedar Rapids, Iowa 52403  
Brown, Healey, Bock

**Semancik, Donald J. -M**  
703 Colonial Circle  
Storm Lake, Iowa 50588  
Otto and Culver, Engineering

**Sharp, Douglas R. -A**  
3001 Grand Avenue  
Des Moines, Iowa 50312  
Bloodgood Architects, PC

**Shiffler, D. Bryan -M**  
Suite 202 Fleming Bldg.  
Des Moines, Iowa 50309  
Charles Herbert and Assoc.

**Shirk, Keith E. -A**  
6201 Dagle Drive  
Des Moines, Iowa 50311  
Higgins, Shirk, Colvig

**Sinclair, Lonnie -A**  
9513 Monroe Court  
Des Moines, Iowa 50322

**Sipe, Ronald D. -M**  
Drawer 310 Plaza Centre One  
Iowa City, Iowa 52240  
Hansen, Lind, Meyer

**Sires, Douglas R. -M**  
3125 40th Place  
Des Moines, Iowa 50310  
Bussard/Dikis Associates, Ltd.

**Skiles, Paul S. -M**  
7th Floor, Hubbell Building  
Des Moines, Iowa 50309  
Brooks, Borg, Skiles

**Skinner, Sam L. -M**  
1734 18th Street  
Bettendorf, Iowa 52722  
Stewart and Associates

**Slater, Bernard J. -M**  
601 Hayward  
Ames, Iowa 50010  
Iowa State University

**Smith, Dighton H. -E**  
2131 Willowmere Drive  
Des Moines, Iowa 50310

**Smith, Robert A. II -A**  
Suite 202 Fleming Bldg.  
Des Moines, Iowa 50309  
Charles Herbert and Assoc.

**Snedden, Donald E. -A**  
Rt. 1  
Grand Junction, Iowa 50157  
Savage and Ver Ploeg

**Sneddon, Michael J. -A**  
604 Mulberry  
Waterloo, Iowa 50703  
Flinn, Saito, Andersen

**Snider, Gary -A**  
3001 Grand Avenue  
Des Moines, Iowa 50312  
Bloodgood Architects, PC

**Snyder, Wayne J. -M**  
1629 Grandview Court  
Cedar Falls, Iowa 50613  
Thorson, Brom, Broshar, Snyder

**Soenke, Edward L. -M**  
1637 Thornwood Drive  
West Des Moines, Iowa 50265  
The Design Partnership

**Soenke, Louis G. -M**  
601 Brady Avenue  
Davenport, Iowa 52801  
Soenke and Wayland

**Stacy, Dennis W. -M**  
708 North Locust  
Glenwood, Iowa 51534  
Dennis Stacy, Architect

**Stalcup, Robert E. -A**  
600 S.C. Federal Plaza Bldg.  
Sioux City, Iowa 51101  
DeWild, Grant, Reckert



**Standerwick, Raymond E. Jr. -A**  
1722 Spencer Street  
Grinnell, Iowa 50112  
The Durrant Group

**Steffen, Kenneth J. -M**  
125½ East 2nd Street  
Ottumwa, Iowa 52501  
Steffen, Stoltz & Nelson

**Stenson, Marvin L. -M**  
3404 Midway  
Waterloo, Iowa 50701  
Stenson, Warm, Grimes, Port

**Stephensen, Paul A. -PA**  
526½ East Grand  
Des Moines, Iowa 50309

**Steveley, K.R. -M**  
860 17th Street S.E.  
Cedar Rapids, Iowa 52403  
McConnell, Steveley, Anderson

**Stevens, Rod -A**  
1604 46th Street  
Des Moines, Iowa 50310  
Green Meadows, Ltd.

**Stevenson, Daniel B. -PA**  
808 Insurance Exchange Building  
Des Moines, Iowa 50309

**Stewart, Harold J. M**  
4210 Rodeo Road  
Davenport, Iowa 52806  
Stewart and Associates

**Stimmel, Stephen J. -M**  
314 North 4th Street  
Burlington, Iowa 52601  
Midland Architects, Inc.

**Stoltz, Stephen -M**  
125½ East 2nd Street  
Ottumwa, Iowa 52501  
Steffen, Stoltz & Nelson

**Stone, Herbert M. -M**  
3730 Terrace Hill Drive  
Cedar Rapids, Iowa 52404  
Brown, Healey, Bock

**Stone, Robert B. -A**  
2010 Parkway Drive  
Bettendorf, Iowa 52722  
Charles Richardson and Assoc.

**Stone, Vernon F. -M**  
1511 Carroll Avenue  
Ames, Iowa 50010  
Iowa State University

**Storm, Edward W. -A**  
2205 S. Patterson  
Sioux City, Iowa 51106  
FEH Associates

**Stouffer, Scott -M**  
Suite 202 Fleming Building  
Des Moines, Iowa 50309

**Straka, James L. -M**  
R. R. 3  
Dubuque, Iowa 52001  
Straka-Miller Architects

**Swagert, Everett D. -M**  
University Architect  
Planning Division  
210 Beardsheer Hall  
Ames, Iowa 50011

**Swanson, Byrl E. -M**  
TGT Building, Room 250  
15th and Brady  
Davenport, Iowa 52803  
Byrl Swanson, Architect

**Taylor, William A. -M**  
6311 Hickman Road  
Des Moines, Iowa 50322  
William Taylor, Architect

**Tomy, Gail R. -M**  
One Dubuque Plaza  
Dubuque, Iowa 52001  
The Durrant Group

**Tomy, Michael D. -M**  
One Dubuque Plaza  
Dubuque, Iowa 52001  
The Durrant Group

**Utterback, Richard A. -M**  
5215 Ingersoll  
Des Moines, Iowa 50312  
Woodburn and O'Neil

**VanderLinden, Charles Jr. -PA**  
2300 Harding Road  
Des Moines, Iowa 50314

**Vande Venter, Robert L. -M**  
2015 Grand Avenue  
Des Moines, Iowa 50312  
Cost, Planning, Management,  
International, Inc.

**Ver Ploeg, Stanley C. -M**  
2929 Westown Parkway Suite 100  
West Des Moines, Iowa 50265  
Savage and Ver Ploeg, Inc.

**Ver Steeg, Carl -M**  
4517 Kingman Blvd.  
Des Moines, Iowa 50311  
Kendall, Griffith, Russell, Artiaga

**Vogt, Thomas R. -A**  
P.O. Box 917  
Fort Dodge, Iowa 50501  
The Griffith Co., PC

**Vondra, Glenn D. -M**  
500 Calista Coast  
Grimes, Iowa 50111  
Savage and Ver Ploeg

**Voorhees, Jeffrey -M**  
2829 Westown Parkway  
Suite 220  
West Des Moines, Iowa 50265  
Jeffrey W. Voorhees & Co., PC

**Waggoner, Thomas M. -M**  
15 South Federal Avenue  
Mason City, Iowa 50401  
Waggoner, Mahaffey, Bowman

**Wagner, William J. -FAIA**  
1106 High Street  
Des Moines, Iowa 50309  
Wagner, Marquart, Wetherell,  
Ericsson

**Walden, Brock A. -M**  
536 West "M" Street  
Forest City, Iowa 50436  
Architectural Design Group

**Walker, H. Ronald -M**  
3706 Ingersoll Avenue  
Des Moines, Iowa 50312  
H. Ronald Walker, Architects

**Wallerstedt, W. Kenneth -M**  
1040 5th Street  
Des Moines, Iowa 50314  
Jeffrey W. Voorhees & Co., PC

**Warm, Ivan V. -M**  
3404 Midway Drive  
Waterloo, Iowa 50701  
Stenson, Warm, Grimes, Port

**Wayland, Lloyd E. -M**  
1720 Harmony Court  
Bettendorf, Iowa 52722  
Soenke and Wayland

**Weaver, Gary L. -M**  
3001 Grand Avenue  
Des Moines, Iowa 50312  
Bloodgood Architects, PC

**Weber, Delano B. -M**  
16½ West Main Street  
Marshalltown, Iowa 50158  
Cervetti, Weber, Mikkelsen,  
Pollard, Inc.

**Wehner, Ronald C. -M**  
201 Dey Bldg.  
Iowa City, Iowa 52240  
Wehner, Nowysz, Pattschull,  
Pfiffner

**Weidner, Rick -A**  
609 S. Rustin, Apt. 1  
Sioux City, Iowa 51106  
Beuttler, Olson, Lee

**Welander, Barbara T. -M**  
Rt. 4 Box 66  
Mt. Pleasant, Iowa 52641





# Landscaping Makes The Difference

**Hoskins**     *Landscaping  
and Nursery*

LAWN MAINTENANCE • SPRINKLER SYSTEMS • UNUSUAL PLANTS • SHRUBS  
*Super Selection* LARGE SHADE TREES AND EVERGREENS - ALL VARIETIES

2401 HARDING ROAD • DES MOINES, IOWA 50310 • CALL 515/277-6242



**Wells, Douglas A. -M**  
Suite 202 Fleming Bldg.  
Des Moines, Iowa 50309  
Charles Herbert & Assoc.

**Werner, Marvin E. -M**  
2010 Circle Drive  
Muscatine, Iowa 52761  
Stanley Consultants

**Wetherell, John -M**  
1106 High Street  
Des Moines, Iowa 50309  
Wagner, Marquart, Wetherell,  
Ericsson

**Whitehill, Gerald L. -A**  
3706 Ingersoll  
Des Moines, Iowa 50312  
H. Ronald Walker Architects, PC

**Whitmer, Wayne M. -A**  
1826 8th Avenue S.W.  
Cedar Rapids, Iowa 52404  
Hansen, Lind, Meyer

**Wictor, Kenneth P. -M**  
410 Buckwalter Drive  
Sioux City, Iowa 51104  
FEH Associates

**Wiegert, Neil -A**  
3244 Pierce  
Sioux City, Iowa 51104  
FEH Associates

**Wilkins, James -M**  
3101 Ingersoll Avenue  
Des Moines, Iowa 50312  
James Wilkins, Architect

**Wilson, Marion D. -A**  
5816 Pleasant Drive  
Des Moines, Iowa 50312  
Brooks, Borg, Skiles

**Wilterding, Mark C. -M**  
2015 Grand Avenue  
Des Moines, Iowa 50312  
Cost, Planning, Management,  
International, Inc.

**Wirkler, Norman E. -M**  
One Dubuque Plaza  
Dubuque, Iowa 52001  
The Durrant Group

**Yelick, Robert L. -A**  
925 High Street  
Des Moines, Iowa 50309  
Northwestern Bell Telephone

**Young, Edmund R. III -M**  
Department of Architecture  
Ames, Iowa 50011  
Iowa State University

*Coming...*

**May/June**

Urban Design  
New Iowa Downtown  
Directions

**Deadline:** April 15

**July/August**

Architectural Innovations  
Building Occupant  
Evaluations

**Deadline:** June 15

**...We've Got You Covered**

**Border to Border**

**...And Then Some**

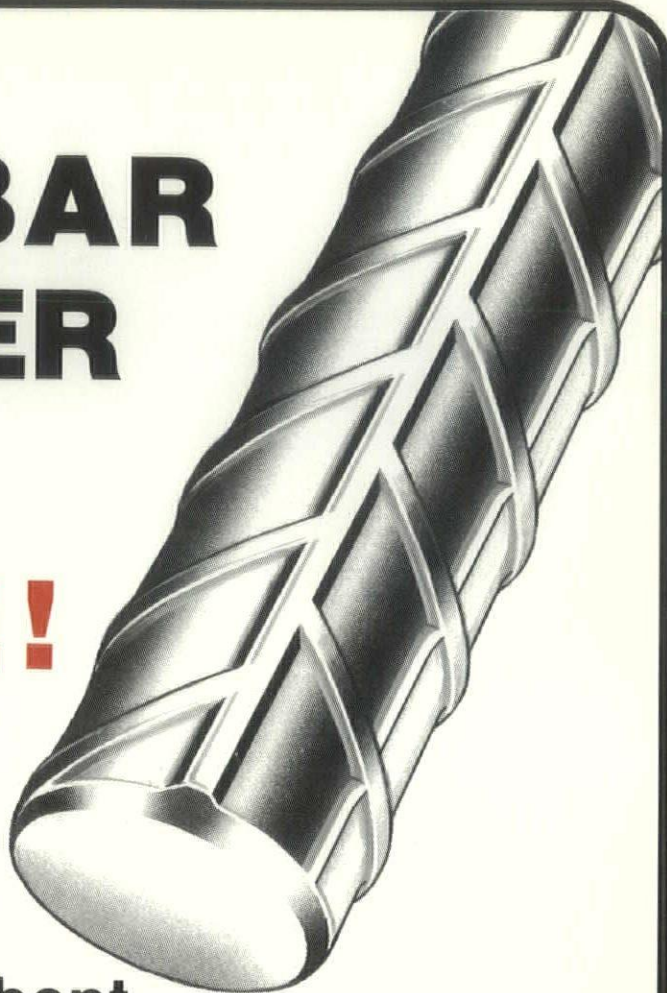
**Call Us  
COLLECT**

**Sioux City  
Brick  
& Tile**  
712-258-6571

**United  
Brick  
& Tile  
of Iowa**  
515-244-3264



# OUR REBAR IS BETTER WHY? **SERVICE!**



- Large inventory  
certified grades
- Precision cut and bent
- Buildings, culverts, bridges, elevators,  
waste-water treatment plants

CALL US TODAY FOR COMPETITIVE  
BIDS ON YOUR NEXT PROJECTS.

***Sioux City Foundry Co.***

P.O. Box 3067, Sioux City, IA 51102

Ph. 712-252-4181

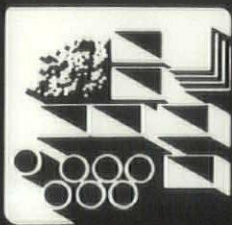
Telex 480145

Call toll free in Iowa 800-352-4986.

Outside of Iowa, call 800-831-0874.



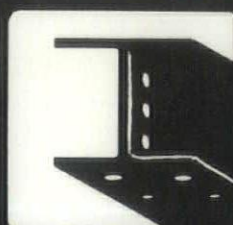
FOUNDRY DIVISION



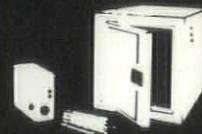
WAREHOUSE DIVISION



REINFORCING STEEL DIVISION



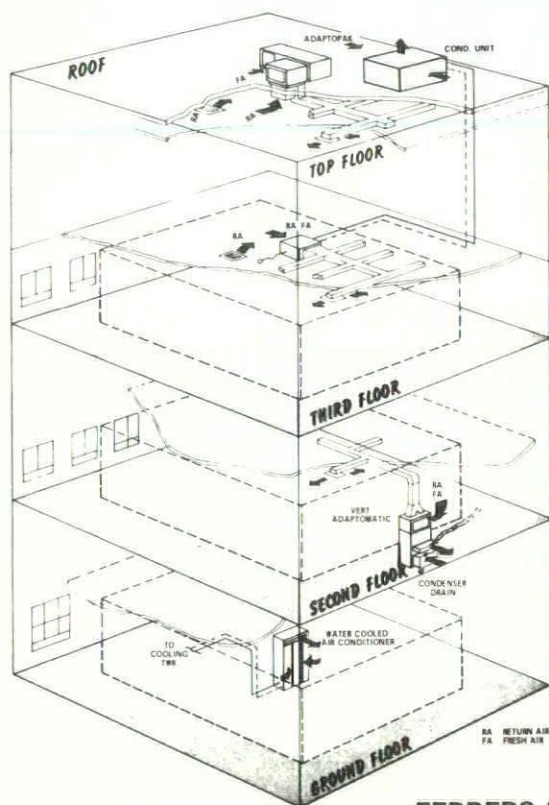
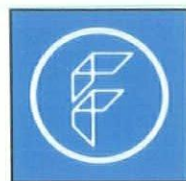
FABRICATED STEEL DIVISION



CONTRACT MFG. DIVISION



# FEDDERS Answers Commercial Needs Better



**ROOFTOP UNIT** 3-50 tons  
(TOP FLOOR)

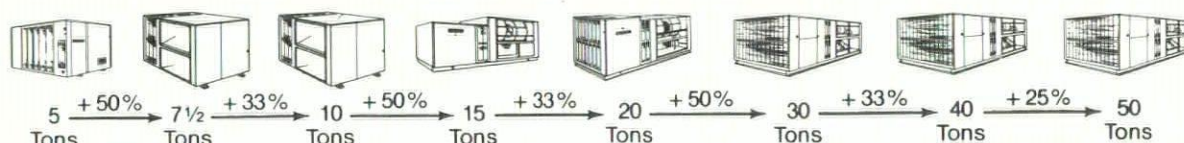
**SPLIT SYSTEM** 4-80 tons  
(THIRD FLOOR)

**PACKAGED AIR COOLED  
AIR CONDITIONER** 8-15 tons  
(SECOND FLOOR)

**PACKAGED WATER COOLED  
AIR CONDITIONER** 3-10 tons  
(GROUND FLOOR)

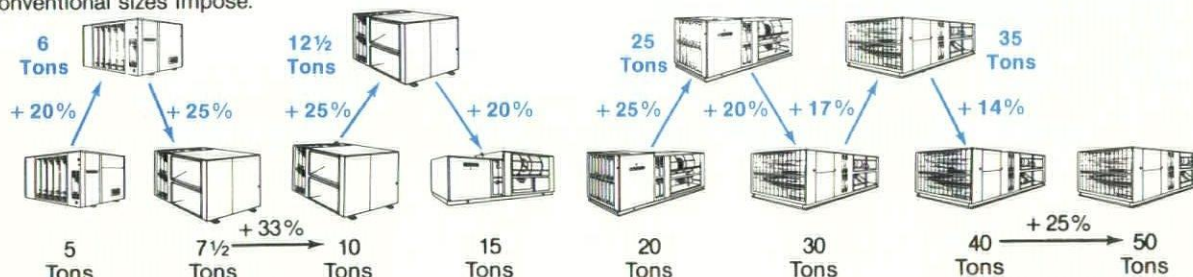
**FEDDERS "IN-BETWEEN" MODELS GUARANTEE A PRODUCT  
CLOSELY MATCHED TO YOUR PARTICULAR CAPACITY REQUIREMENTS**

Mechanical contractors and engineers often are faced with the common problem of what rooftop unit to specify when the building cooling load is just in excess of a typical capacity unit but smaller than the next larger size. With most rooftop manufacturers, this would require the selection of the next larger size...with as much as a 50% increase in capacity.



TYPICAL CAPACITIES—showing percentages of increase between sizes.

Fedders has effectively solved that dilemma with the addition of unique "in-between" sizes of 6, 12½, 25, and 35 tons to the "every-day" capacities. Now specifiers can select the capacity they need without the wast of unneeded oversized cooling capacity that conventional sizes impose.



THE FEDDERS ROOFTOP LINE—showing "in-between" models and percentages of increase between sizes.

This same design flexibility is true of Fedders Split Systems. In addition to all the standard sizes from 4 to 80 tons, Fedders offers 9 and 13 ton in-between sizes for applications not requiring full 10 and 15 ton capacities.



Distributors for Complete  
**FEDDERS**

RESIDENTIAL AND COMMERCIAL LINE

*City Supply Corporation*

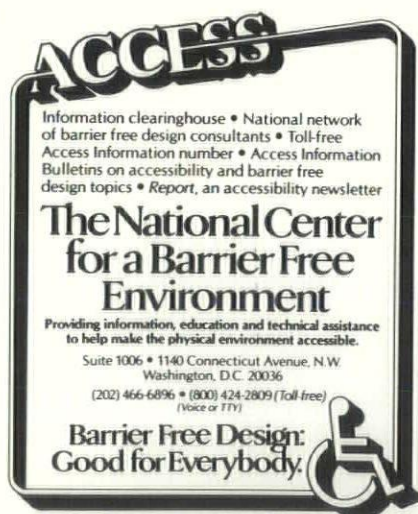
100 Indiana • Des Moines, Iowa 50314 • 515/288-3211



## Clearinghouse Offers Information and Services on Accessibility

The National Center for a Barrier Free Environment, through funding from the U.S. Department of Education and the Community Services Administration, has undertaken a major expansion of its information and technical assistance services. Founded in 1974, the National Center is a private, non-profit organization which provides programs designed to promote and assist in the creation of physical facilities that are accessible to persons with disabilities.

The newly expanded effort will allow the National Center to improve existing services and provide assistance to those who design the built environment and attempt to ensure full use of facilities by all persons. Among the National Center's services are an information clearinghouse with a toll-free Access Information number, a nationwide network of barrier free design consultants, a series of information bulletins and other publications addressing specific accessibility issues, a bi-monthly newsletter devoted exclusively to accessibility topics, and a reference file of state building codes and standards relating to barrier free design.



The National Center's information clearinghouse is central to its efforts. A new, toll-free information number, (800) 424-2809, enables persons calling from anywhere in the country to obtain information and assistance on questions relating to accessibility. For researching answers to questions, the National Center has one of the nation's largest collections of information on accessibility. The collection includes a wide variety of publications and documents relating to barrier free design, including model accessibility projects, laws, and codes and standards.

A national technical assistance network is being formed to allow the National Center to provide referrals to persons within specific geographical areas who have had experience in making facilities accessible. Included in the network will be architects and designers, disabled persons with experience in accessibility matters, code officials, service providing organizations, contractors and manufacturers.

The National Center's publications bring together a wide spectrum of information about accessibility. *REPORT*, an internationally-circulated accessibility newsletter, has an outstanding reputation for concise, up-to-date reports on national and international developments relating to accessibility.

For further information about the National Center's services, or for assistance with a specific concern relating to physical access, write to the National Center for a Barrier Free Environment, Suite 1006, 1140 Connecticut Avenue, N.W., Washington, D.C. 20036, or call, toll-free, (800) 424-2809.

## "Iowa Architecture" Program

A program to acquaint Iowans with their architectural heritage will be presented in many Iowa cities during the winter and spring of 1981. Both the merits of modern architecture and the importance of preserving older structures will be addressed. The project — called "Iowa Architecture" — is sponsored by the Iowa State Historical Department, Division of Historic Preservation, and the Iowa Humanities Board, a state program of the National Endowment for the Humanities.

The Iowa architecture presentations are being tailored for art centers and similar organizations. An expert on Iowa architecture and historic preservation will speak on "Iowa Architecture" at each program. Three 30-minute slide-cassette shows have been produced especially for this project, and one or more will be presented with the lecturer.

The director of the program is Gerald Mansheim, an architectural photographer originally from Ft. Madison, Iowa. He now lives on a farm near West Branch, Iowa. He has had a long interest in the architecture of Iowa. His photographs have appeared in *The Iowan* and *The Palimpsest*. He recently finished a slide-talk show on Iowa City architecture, funded by a grant from the Iowa City-Johnson County Arts Council. Mansheim has been photographing the work of Louis Sullivan, Frank Lloyd Wright, and the Prairie School for nearly twenty years. His shows on architecture have been purchased by major universities in the United States and Europe.

The slide-cassette shows are collections of strong visuals chosen not only for their architectural and historical value, but also on their aesthetic merit. These productions include both current photographs and copies of historic photographs and maps, some of them quite rare.

Copies of the slide-cassette shows are being donated to the State Historical Department and will be available



for loan to the public through the office of the Division of Historic Preservation, 26 East Market Street, Iowa City, Iowa. The shows will also be available for purchase through the Audiovisual Center of the University of Iowa, Iowa City.

Some of the most distinguished buildings in Iowa are included in the shows. They include the Woodbury County Courthouse; the bank by Louis Sullivan in Grinnell; the Blythe and Melson houses in Mason City; the Langworthy octagon house, Dubuque; Old Dubuque County Jail, Valley National Bank of Des Moines; Episcopal Church, Davenport; the Walter house, Quasqueton; Creston Depot; the Grotto of the Redemption, West Bend; the Onawa Public Library; Old Capital, Iowa City; and the Eagle Point Park complex, Dubuque.

The three slide-cassette show prepared for the program deal with different approaches to Iowa architecture. The first show depicts Iowa architecture in a historical context — including early settlement, the post-Civil-War boom, the prosperity of the 1950's and some of the buildings of the 1960's and '70's.

The second show deals with architectural types, styles, and materials. Included are types, such as schools; styles, such as Greek Revival, Gothic Revival, Richardsonian, Prairie School, and Meislian; and materials, from logs and limestone to glass and steel.

The third show concerns itself with historic preservation in Iowa. It deals with buildings that have been saved, buildings that have been lost, and buildings that are threatened. Both individual buildings that have been restored and downtown commercial district restorations have been included.

## Schedule of Presentations "Iowa Architecture" Program

**Marshalltown** -- March 9 (Monday), 7:30 p.m., in the Fisher Community Center Auditorium, 709 South Center Street. Sponsored by the Central Iowa Art Association. Speaker: William Wilkie, Department of History, Loras College, Dubuque.

**Decorah** -- March 16 (Monday), 8:00 p.m., in the Recital Hall of the New Center for Faith and Life. Sponsored by the AAUW and the Luther College History Department. Speaker: Marlys Svendsen-Roesler, Historical Planner, Community Development Department, Davenport.

**Mason City** -- March 26 (Thursday), 7:30 p.m., at the Charles H. MacNider Museum, 303 2nd Street, S.E. Speaker: Loren Horton, Head of Field Services and Associate Director, State Historical Society of Iowa, Iowa City.

**Cedar Rapids** -- April 23 (Thursday), 12:00 noon, at the Cedar Rapids Art Center, 324 Third Street, S.E. Speaker: John Lawrence, Department of Philosophy, Morningside College, Sioux City.

**Davenport** -- May 1 (Friday), 7:30 p.m., at the Putnam Museum, 1717 W. 12th Street. Speaker: Robert Alexander, Department of Art and Art History, University of Iowa, Iowa City.

**Des Moines** -- May 6 (Wednesday), 12:00 noon and 1:00 p.m., at the Des Moines Public Library, 100 Locust Street. Speaker: Elaine Estes, Director of the Des Moines Public Library.

**Sioux City** -- May 13 (Wednesday), 7:30 p.m., in the Lobby of the Woodbury County Courthouse. Sponsored by the Sioux City Art Center. Speaker: William Silag, Editor of *The Palimpsest*, a magazine published by the State Historical Society of Iowa, Iowa City.

## Call for Papers

The American Concrete Institute committee on evaluation of results of tests used to determine the strength of concrete, is soliciting prospective papers for its special session during the ACI 1981 fall convention scheduled September 20-25, in Quebec City, Quebec, Canada.

The papers should be related to the "Development of Statistical Based Specifications for Incentive/Penalty Clauses in Contract Documents," and should have the aim of exchanging information with other research workers and with practicing engineers.

Title and abstract (about 300 words) should be sent no later than April 1, 1981. Authors of selected abstracts will be notified by April 30, 1981. Title and abstract should be sent to: Professor Joseph Hode Keyser, Chairman of 214 Symposium Subcommittee, Department of Civil Engineering, Ecole Polytechnique, Montreal, Quebec, Canada H3C 3A7.

## Iowa Builder Forms Arizona Division

Formation of a separate Phoenix division to provide building construction services in Central Arizona has been announced by The Weitz Company, Inc. of Des Moines.

Fred W. Weitz, president of the 126-year-old builder firm and a great-grandson of the man who founded the organization in Des Moines in 1855, announced the opening of divisional offices at 851 South Hohokam in Tempe, Arizona. The firm is believed to be the oldest construction company west of the Mississippi.

Weitz is the general contractor on two current jobs in the Phoenix area, including a 525-unit retirement and nursing care facility in Tempe, and a 252-room motel in Phoenix. They first opened a field office there early in 1979.

Jerry Gosselink, formerly vice president in charge of construction for the company's retirement home division, has been named vice president and general manager for Weitz/Phoenix. Ed Parker is the division marketing manager. Key personnel have been relocated in the Phoenix area.

The Weitz Company has special expertise in office and commercial, industrial and warehousing, and institutional buildings, and has been involved in projects in most of the nation's 50 states.



**MII  
Announces**

## *The Appointment of* **Bruce Paterson** *as it's*

### *First Executive Director*

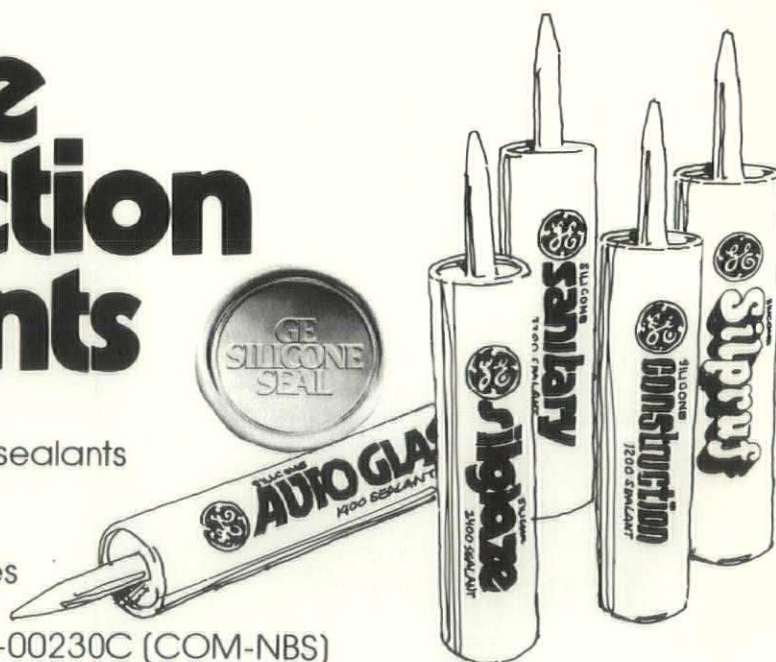
He comes to the Masonry Institute of Iowa with 32 years of experience in the brick industry with special emphasis on sales and promotion. His office will be in Des Moines but responsibilities will be state wide.

## **Masonry Wall Cost Book**

*If you have not received a copy of the current Masonry Wall Cost Book published by the MII, call a member Masonry Contractor or material supplier in your area now.*

# **Silicone Construction Sealants**

- Outstanding glazing, caulking, weatherproofing & automotive sealants
- No mixing, ready to use
- Long life reliability
- Easy gunning at all temperatures
- Meet Federal specifications  
TT-S-001543A (COM-NBS) & TT-S-00230C (COM-NBS)



## **STETSON BUILDING PRODUCTS**

**Rock Island, Illinois**  
619 11th Street • Phone 800/447-1240

**Des Moines, Iowa**  
610 S. W. 9th • Phone 800/362-2181

Authorized Distributor

**GENERAL  ELECTRIC**  
Silicone Construction Sealants



## Another landmark for a growing Des Moines



Left to right: Des Moines Marriott Hotel, Ruan Center, Carriers Insurance Building (under construction).

There's a new landmark rising here. It's the \$12 million, 14-story Carriers Insurance Building, just east of the Ruan Center. When completed, this handsome structure will house Carriers Insurance, a growing member of the Ruan corporate family, plus a dozen other business and professional firms.

Bankers Trust will expand our main office facilities into the new building, providing clear evidence of our commitment to serve our customers' total banking needs.

Let's get together soon to discuss ways we can help you grow. Working together, the possibilities are limitless.

## Bankers Come Grow With Us Trust

Des Moines, Iowa 50304  
Member FDIC  
Des Moines' largest  
locally owned, independent bank

## Sweeney Associates

"Manufactures Representatives"

400 5th St. • West Des Moines, Ia. 50265  
515/274-2050

- **PARKER** Mirrors & Washroom Equipment
- **HALSEY TAYLOR** Water Coolers & Modular Wall Systems
- **SLOAN** Flush Valves
- **STERN WILLIAMS** Terrazo Mop Sinks, Shower Receptors
- **SYMMONS** Non-Scald Pressure Balanced Shower Equipment



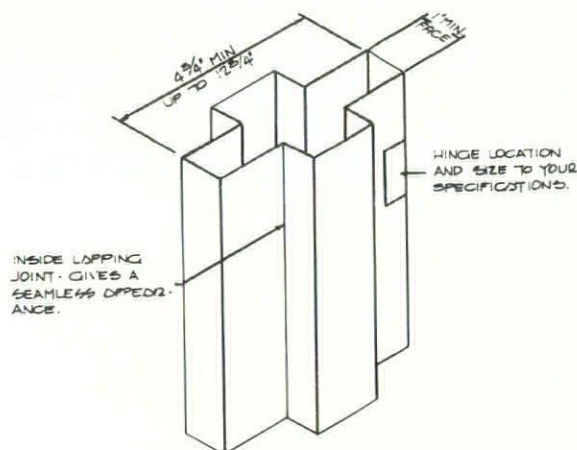
"Buck" Sweeney



Frank Hupperts  
319-377-6607

- **JUST** Stainless Steel Sinks
- **RAR** Washroom Vanities & Accessories
- **BOCK** Commercial Water Heaters
- **HUMID-AIRE** Humidifiers
- **HYDR-O-MATIC** Sump Pumps & Sewage Ejector Systems
- **DAVIS** Efficiency Kitchen Units

## For The Hard To Fit Project Opening Specify Custom Hollow Metal Frames By Contractors Steel Corp.



DETAIL NO. 1 - NARROW FACE MULLION  
AVAILABLE IN 14 OR 16 GAUGE

## CONTRACTORS STEEL CORP.

Box 1696 • Des Moines, Iowa 50306  
515-263-2000

THE MATERIAL FABRICATOR AND SUPPLIER  
OF 100 DIFFERENT ITEMS



# HAYDITE

and CITY CENTER SQUARE

... naturally ...

1. Pumpability—with vacuum saturated Haydite.
2. Significant deadload weight reduction.
3. Greater fire resistance.
4. Improved insulation rating.
5. Total overall project savings.

**CITY CENTER SQUARE**—another example of how light-weight concrete made with Haydite can make a big difference in your project. For more details, contact your local supplier, or call us direct.

ARCHITECTS & ENGINEERS:  
Skidmore, Owings & Merrill  
DEVELOPER:  
McCloskey Development Co.  
READY MIX:  
Stewart Sand & Material Co.

**CARTER  
WATERS**  
CONSTRUCTION MATERIALS

2440 WEST PENNWAY  
POST OFFICE BOX 19676  
KANSAS CITY, MO. 64141  
PHONE: 816-471-2570

## ADVERTISERS' INDEX

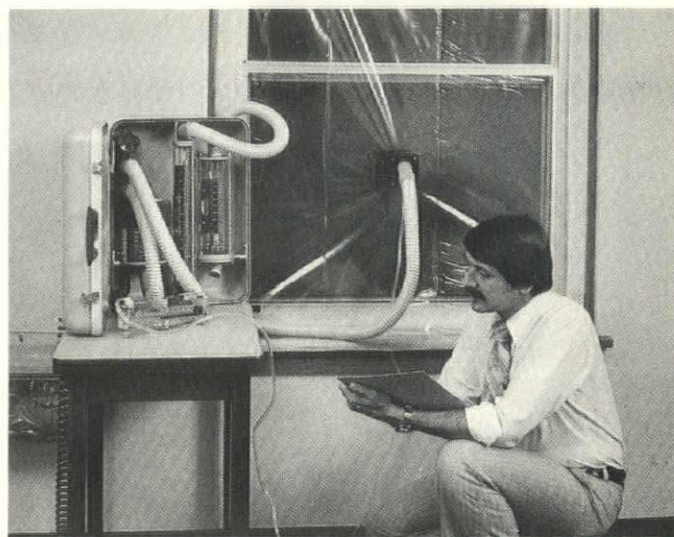
- |   |                                  |
|---|----------------------------------|
| 2 Allied Const. Services                  | 55 Jack Beavers & Assoc.         |
| 52 Bankers Trust Co.                      | 31 Johnson Specialty Sales       |
| 8 David Bear                              | 30 M.A. Knutsen                  |
| 25 Bob Blatzheim Associates               | 37 Koch Bros. Office Supply      |
| 40 Cantex Industries                      | 29 Marquardt Concrete Block      |
| 53 Carter-Waters Corp.                    | 51 Masonry Institute of Iowa     |
| 42 Cedar Rapids Block                     | BC NDS Company                   |
| 48 City Supply Corp.                      | 40 G. W. Onthank Co.             |
| 52 Contractors Steel Corp.                | 54 Pella Dealers of Iowa         |
| 29 Elliot Beechcraft                      | 27 Pigott, Inc.                  |
| 34 Gerkin Window Company                  | 34 RB Associates, Inc.           |
| 42 Gibbs-Cook                             | 12 S & E Custom Cabinets         |
| 30 Hawkins Greenhouse                     | 47 Sioux City Foundry            |
| 37 Hicklin GM Power                       | 3 Stetson Bldg. Products         |
| 14 Hirschfield's                          | 51 Stetson Bldg. Products        |
| 37 Home Carpet                            | 31 Swanco Enterprises            |
| 45 Hoskins Landscape Nursery              | 4 Swanson Gentleman              |
| 11 Iowa Arch. Products                    | 52 Sweeney & Assoc.              |
| 26 Iowa Asphalt Paving Assn.              | 46 United Brick & Tile Co.       |
| ins. Iowa Limestone Producers Association | 6 Willis Decorating & Remodeling |
| 28 Iowa Power                             | 53 Zephyr Aluminum Products      |



# Replacement windows

## HIGH PERFORMANCE PROVEN

• BEFORE • DURING • AFTER INSTALLATION



**Performance testing** of installed windows has become more important throughout the country. Architects, consultants, government agencies and window industry representatives see the need to go beyond conventional laboratory product tests for:

Energy audits, establishing the heating/cooling losses of existing windows for estimating annual savings potential and life-cycle-cost of window improvements. Establishing conformance of installed sample (seen above) to performance specifications before bid award. This enables the architect or owner to verify performance and choose the best value.

Random testing of windows during installation and before final acceptance assures the continuance of quality work.

For added information on DeVAC windows call:

Des Moines Area — 515/832-6353  
Dubuque — 319/588-2036  
Quad Cities — 309/762-0005

*Expertise-Experience, Expected from*

**ZEPHYR**

**ALUMINUM  
PRODUCTS  
INCORPORATED**

1 MAIN ST. • DUBUQUE, IA 52001 • PH. 319-588-2036



# When it comes to replacement windows, bet you didn't even know you had a choice.

With Pella wood windows, you can choose style, size and color... not to mention lots of special features to make home improvement simply lovely. Pella wood windows are a wise investment that saves bother, saves energy, saves maintenance. Call now for a free appointment to discuss your replacement project. Absolutely no obligation.



**Only Pella offers it all.**

**PELLA CO.**  
2163 NW 111th Ct.  
Des Moines, IA 50322  
Phone (515) 278-8781

**PELLA WINDOW CO., INC.**  
513 - 31st Avenue  
Rock Island, IL. 61201  
Phone (309) 788-7489

**WILSEY COMPANY**  
3225 Highway 75 North  
P.O. Box 924  
Sioux City, IA. 51102  
Phone (712) 258-4567

**PELLA PRODUCTS  
OF OMAHA**  
8921 "J" Street  
Omaha, NE. 68127  
Phone (402) 331-9225

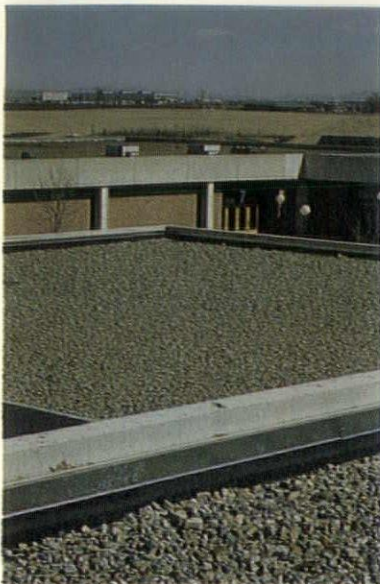
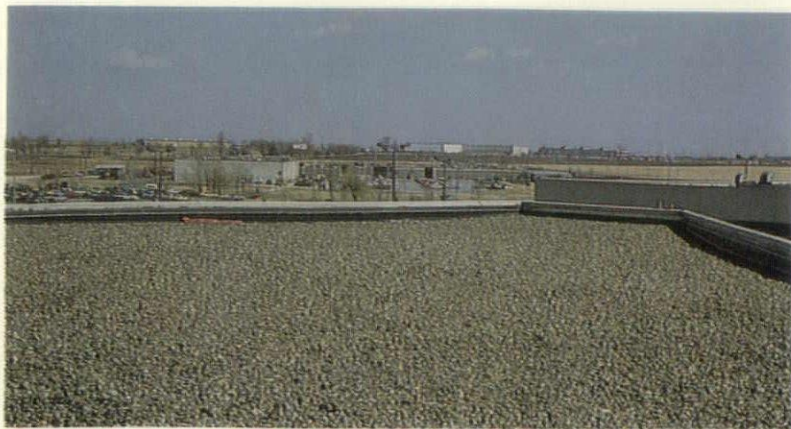
**PELLA WINDOWS  
& DOORS, CORP.**  
201 First Avenue North  
Fort Dodge, IA. 50501  
Phone (515) 955-7080

**PELLA PRODUCTS**  
3600 North Court Road  
P. O. Box 246  
Ottumwa, IA. 52501  
Phone (515) 684-5284

**PELLA PRODUCTS CO.**  
2920 Janet Drive  
Waterloo, IA. 50701  
Phone (319) 233-9731







**DES MOINES AREA  
COMMUNITY COLLEGE**  
Building Number 1

**BUSSARD/DIKIS ASSOC. LTD.**  
Architect and Planners  
**FT. DODGE ROOFING COMPANY**  
Roofing Contractors

**Plyroof**  
ROOFING MEMBRANE SYSTEMS

a Plymouth Rubber Company

# Plyroof... a good name to work with.

**Single-ply roofing is here to stay.  
And so are we.**

**We may have the first single-ply roof  
in the U.S.**

Plyroof™ membrane roofing systems may sound new, but it's from a well-established company—the Plymouth Rubber Company. In the rubber and plastic fabrication business since 1896, one of our materials—neoprene—has been at work on a single-ply roof for more than 15 years—very successfully. It could be the first. That's one of the reasons we support up to a 10-year warranty.

**Our range of materials is the most complete.**

Plyroof materials have a wide range up to the sophisticated elastomeric membranes which include our Plyseal™ EPDM systems and Plyshield™ Neoprene. That translates into a Plyroof system for virtually any structural design you will ever encounter. They are all readily available from our Massachusetts operations, and our new Nashville, Tennessee facility with capacity to meet the growing demands of the single-ply roofing industry.

**Our field support is the most up-to-date.**

We have recently completed expansion of our Technical Service Program and are in the process of doubling our district sales management force conveniently located throughout the United States. The result is one of most comprehensive combinations of field technical assistance and localized sales management you will find anywhere for the single-ply roofing industry.

**See for yourself.**

*For complete details write or call:*

**Ther-mo-co Products  
Company**

*A Division of*

**Jack Beavers & Associates, Inc.**  
1848 Fuller Rd. W. Des Moines, Ia. 50265  
515/225-9211

TM - Registered trademarks of Plymouth Rubber Co., Inc.

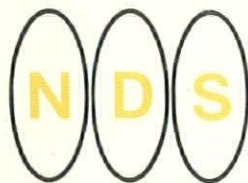


*St Charles*  
FASHION KITCHENS

AMERICAN INSTITUTE OF  
ARCHITECTS LIBRARY  
1735 NEW YORK AVENUE N. W.  
WASHINGTON, D. C. 20006

To the architect of discriminating taste, a St. Charles fashion kitchen is synonymous with excellence. Each one-of-a-kind creation is an investment of enduring value and timeless appeal, whether in period traditional or the contemporary Continental look.

Our selection of genuine furniture woods, decorative laminates and exclusive textured steels is nearly limitless. The choice is yours.



**Company**

**Negley Design & Sales Company**

3839 MERLE HAY ROAD • DES MOINES, IOWA

Phone  
515/276-5500

Also Distributors for  
Dwyer Compact Kitchens