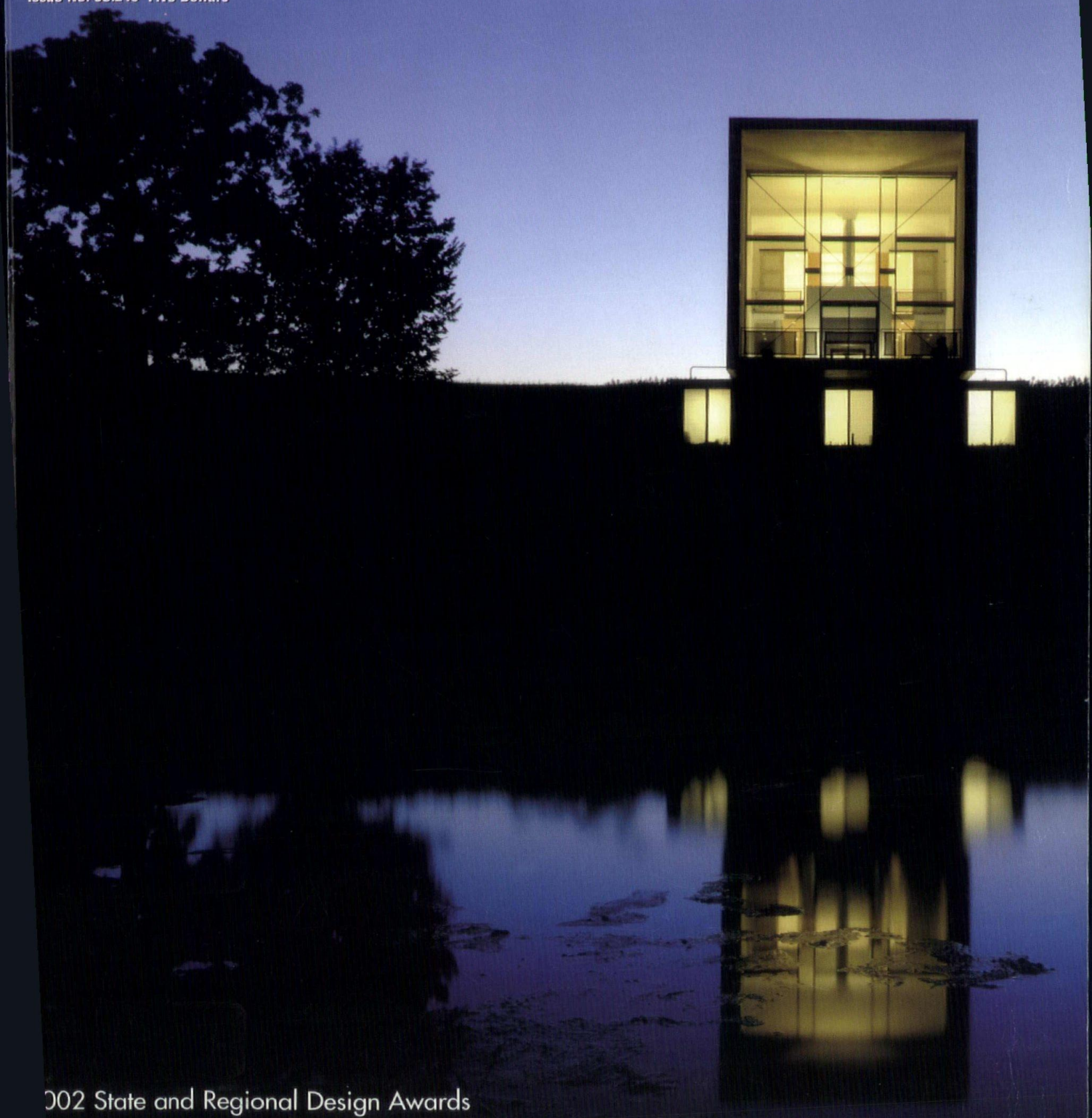


IOWA

Architect

Issue No. 03:243 Five Dollars



2002 State and Regional Design Awards

Design Teams Nationwide Choose Great Brick

900 Nicollet Mall Minneapolis, Minnesota



Opperman Hall & Law Library School of Law
Drake University Des Moines, Iowa

Private Residence Toledo, Ohio



The Capitol
New York City, NY



We Make Great Brick.

The Brick Professionals www.siouxcitybrick.com

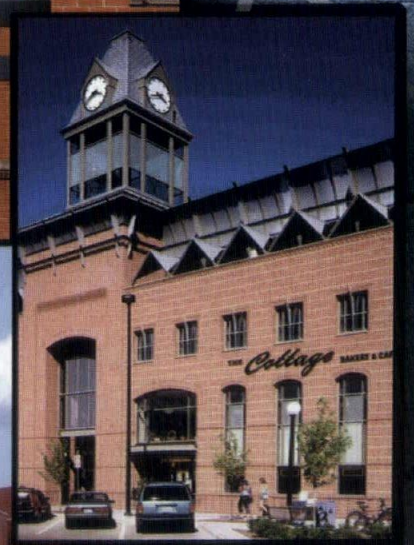
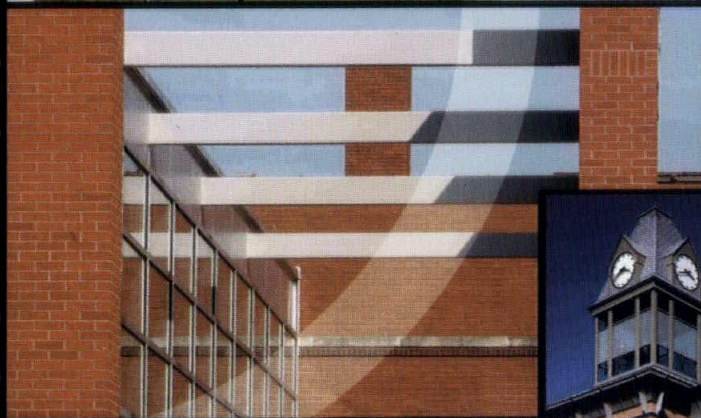


United Brick & Tile
515-254-0196



Sioux City Brick
712-258-6571

Ingenuity
STRENGTH, BEAUTY, CHARACTER



MASONRY
BUILT FOR LIFE

MASONRY
INSTITUTE
OF IOWA

www.masonryinstituteofiowa.org



TEL: 515.274.5907
FAX: 515.327.1001
www.innerflora.com

Let there be *life*

Inner Flora has been exceeding their clients' expectations and successfully managing interiorscapes through responsible budget forecasting for over a decade.

Take a good look at your interiorscape design and maintenance budget. Get the best value for your dollar and contact Inner Flora today.



"We knew our atrium architecture called for a unique interiorscape. Inner Flora understood our building design requirements and the diverse community we serve."

- Norton J. Hatlie, Vice President, Finance & Operations, United Way of Central Iowa

United Way Human Services Campus, 1111 Ninth St., Des Moines, Iowa
Project Architect: William Ludwig, Environmental Design Group

Transform Your Client's Home Into A Showplace!

Satisfy your desire for elegance.

PC GlassBlock® products offer the radiance and beauty of glass...the strength and security of thick, break-resistant glass block.

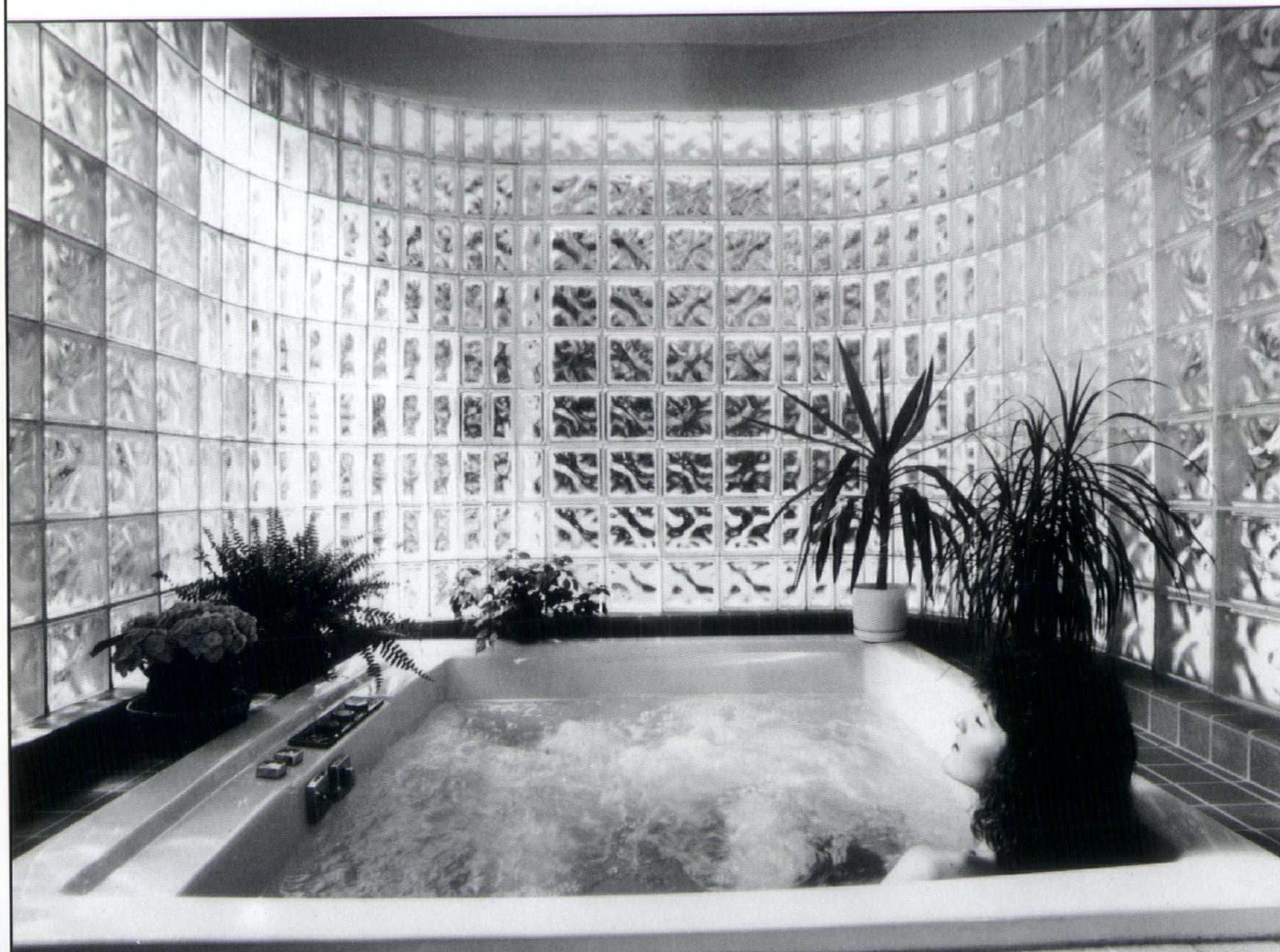
This beautiful, versatile building material inspires imaginative designs that can trans-

form your home into an elegant showplace! And it's available in a choice of patterns to provide the amount of light transmission and privacy you desire.

Enhance and enliven your entryway, kitchen, bath, bedroom, gameroom, stairwell...PC GlassBlock® windows, walls and

partitions add dazzle to any part of your home...both inside and outside!

Ask us how American-made PC GlassBlock® can turn your home into a showplace.



CONCRETE PRODUCTS CO.
Your Construction Supply Center
SIoux CITY

2222 East Third Street • Sioux City, Iowa 51101
Telephone: (800) 352-4644 • FAX: 1-712-252-2262



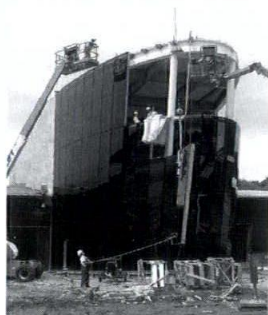
DMACC West

Des Moines, Iowa



Excellence in Craft

pushing *the* envelope



As the envelope contractor, AWS furnished and installed the building skin including unitized 4-sided structural glazed curtain wall, "Open Joint Rain Screen" composite wall panels and entrances.

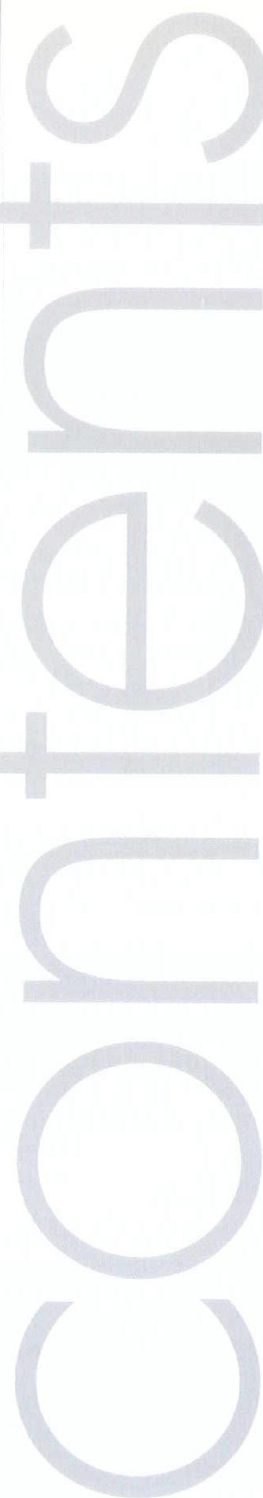
Owner Des Moines Area Community College

Architect RDG Bussard Dikis

General Contractor Taylor Ball, L.C.

**ARCHITECTURAL
WALL
SYSTEM**

3000 30th street, Des Moines, Iowa
tel. 515.255.1556 • fax. 515.255.1510 • www.archwall.com



Iowa Architect

Issue No. 03:243

Editor

Steven Strassburg, AIA

Associate Editors

Cameron Campbell
Gregory Palermo, FAIA
Channing Swanson, AIA

Editorial Board

Sherwood Adams, AIA
Mike Bechtel
Dan Hunt, AIA
Ann Sobiech Munson
Matt Niebuhr
Wes Reynolds
Brad Rippey
Brent Schipper, AIA
Debra Smith, AIA

American Institute of Architects, Iowa Chapter, Executive Vice President

Suzanne Schwengels, Hon. AIA, CAE
Director of Chapter Services

Kerry Tillotson Allen

President

Gregory Palermo, FAIA
President-Elect/First Vice President

Geoffrey Grimes, AIA

Second Vice President

Steve Kneirim, AIA

Secretary

Jeff Mills, AIA

Treasurer

Kevin Eipperle, AIA

Directors

Kevin Godwin, AIA
Greg Harrison, AIA
LaDan Omidvar, AIA
Rick Seely, AIA
Debra Smith, AIA

Associate Director

Andy O'Hare, AIA

Allied Director

Mike Van Gorp

Past President

Randy Cram, AIA

ISU Representative

Cal Lewis, FAIA

President, American Institute of Architecture Students

Natalie Terrill

Central Iowa Architects President

Kent Lutz, AIA

Cedar Rapids/Iowa City Architects President

VWill Downing, AIA

Eastern Iowa Architects President

John Mahon, AIA

Northwest Iowa Architects President

Ed Storm, AIA

Southwest Iowa Architects President

Mike Mayne, AIA

Subscription Rates

\$25/year, \$45/two years; \$5/single issue. Note to subscribers: when changing address, please send address label from recent issue and your new address. Allow six weeks for change of address.

Advertising

For advertising information contact Jane Nieland at 515/243-6010.

Iowa Architect is the official quarterly publication of The American Institute of Architects, Iowa Chapter, 1000 Walnut Street, Suite 101, Des Moines, IA 50309. 515/244-7502, Fax 515/244-5347.

Design

Mauck+Associates
516 3rd Street, Suite 200
Des Moines, IA 50309
515/243-6010

2002 STATE AND REGIONAL DESIGN AWARDS

Introduction	7
Corum Residence	10
West Campus—DMAC	11
Kenyon Building	12
Variety Club ChildServe Center	13
Wheeler Consolidated	14
Coppola Enterprises	15
Higdon Administration Building Rehabilitation	16
Ola Babcock Miller Building Restoration	17
Architects' Office and Studio	18
Liberty Memorial Restoration	18
American Bank Drive-in and Café/Courtyard	19
ImageNet	19
Will Rogers World Airport Snow Barn	20
Durham Western Heritage Museum	20
Herndon Hall Renovation	21
Renaissance Granite, Marble, & Tile	21
Jeannette Robbins Meeting Place	22
[re] Constructed Landscape	22
Consolidated Fire District No. 2, North East Johnson County	23
Bear Properties	23
the Molengracht	24
Regional and State Juror Profiles	24
ISU Architecture Awards	26

DEPARTMENTS

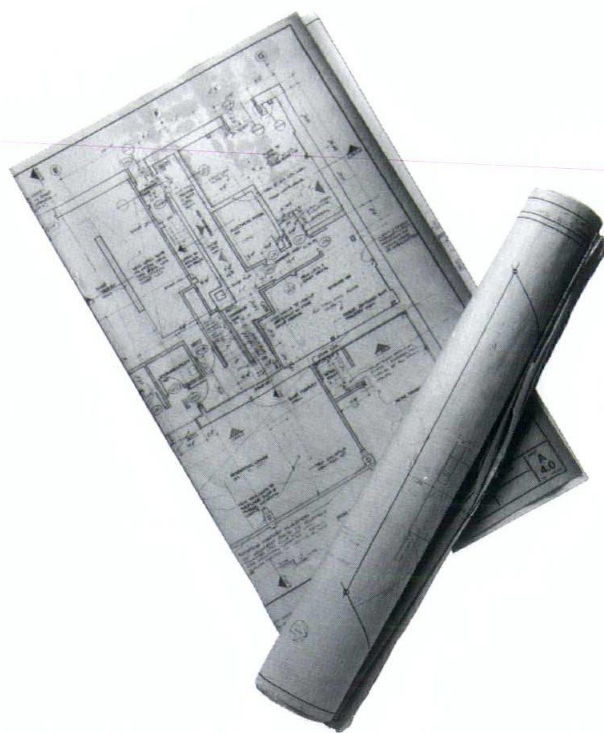
Different by Design	8
Portfolio	9
Architectural Education	30
Journal	31
Resources	32
Advertisers Directory	35

Cover

Corum Residence

Firm: Herbert Lewis Kruse
Blunck Architecture

Photo by: Shimer @ Hedrich
Blessing



OUR BLUEPRINT WAS DESIGNED TO KEEP YOU **IN THE BLACK.**

Want to save money on up-front design costs? MidAmerican Energy's Commercial New Construction Program offers budget-saving rewards for energy-efficient design, construction and equipment installation in Iowa. To find out if your next project qualifies for these incentives, call MidAmerican Energy from anywhere in Iowa at **1-800-292-6448** or from outside Iowa at **1-563-333-8841** or visit our Web site at www.midamericanenergy.com. Click on *Energy for Your Business*, where you'll find information about our energy efficiency programs.



What is the difference between an award-winning project and all of the other projects? Is it definitive, or is it a question answered on an emotional level? Does it defy definition? Any given problem has a potentially meaningful and creative solution that goes beyond the conventional answer. Is this what separates these projects? The laws of physics only provide the foundation for good architectural design, but do they provide the creativity? No, it's the architect who provides the creativity to expand the solution into invention.

Tangible evidence of this combination of technical skill and creativity is obvious on an individual basis even though it can't be generalized. When we see an extraordinary project that embodies this creativity and technical execution, we know that it is an award winner. Because of this, the myriad of projects selected for awards is as boundless as our capacity for creativity. We must ask ourselves at the beginning of every project "what is the essence of the problem to be solved?" Are there things within the context of the site, the client, building type, or are there other examples that have only explored it to a certain solution but have left other opportunities to find new invention?

We are once again at a junction in architecture where current technology allows for the realization of more creativity and invention than at any former time in the history of mankind.

02 awards

We are once again at a junction in architecture where current technology allows for the realization of more creativity and invention than at any former time in the history of mankind. With these additional opportunities, architects should feel obligated to do more.

This year's award-winners offer a diverse portfolio of possibilities, touching many different facets of people's lives. Our goal should be to contribute to the functional and aesthetic quality of every project and to do it with creativity, energy and enthusiasm that continue to create value in what we do with the public. No other art touches as many people as architecture and the recognition of excellence in this endeavor is worthy of celebration. Congratulations to this year's winners.

Wil Worthington
Awards Chairperson

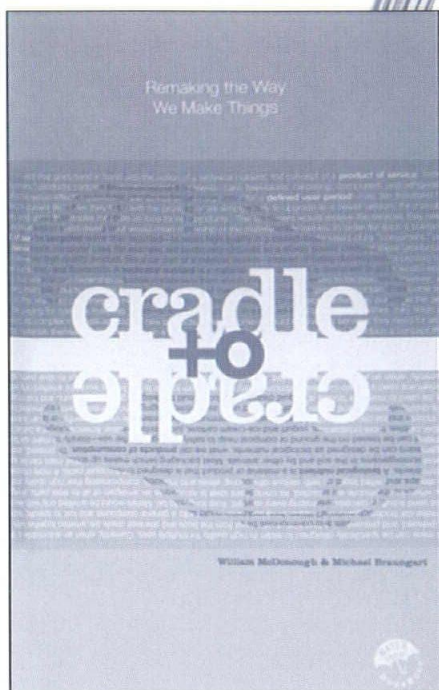
IOWA Architect

Different by design

By ANN SOBIECH MUNSON

Books in the Bathtub

A New Design Paradigm



book buyers were identical, so he invented a system of "synthetic binding to secure synthetic papers into a waterproof book."² An industry review describes the process:

"The paper contains no wood pulp nor cotton fiber.

Instead, it consists of

"This Book is Not a Tree." So begins *Cradle to Cradle: Remaking the Way We Make Things*, by William McDonough and Michael Braungart (New York: North Point Press, 2002). In the book, McDonough and Braungart outline a new paradigm for thinking about the way we design.

Their discussion begins with the very vehicle for the dissemination of their ideas. The materiality of the book itself exemplifies their notion of Cradle to Cradle Design. The book is *not* a tree. Instead, the book is comprised of a polymer printing surface and water-resistant binding, a patent-pending system from Melcher Media called "DuraBook."¹

Charles Melcher initially developed the technology in order to create a waterproof book. He realized that the demographics of bathers and

plastic extruded and stretched into fibers, with plastic resins and inorganic fillers added to create a smooth surface. This smooth surface, treated with special chemicals, will take ink beautifully, as the inorganic fibers won't soak up ink..."³

Because standard glue would not work with the plastic pages, Melcher then developed a "secret-formula glue that would bond chemically to the plastic pages."⁴

The first DuraBook debuted in 2000 in the form of *Aqua Erotica*, an anthology of stories intended to be read in the bath.⁵ Since then, the durable, waterproof system has been used in small soap-sized books for the bath, road atlases, and a book of model boats. In 2002, McDonough and Braungart used it for *Cradle to Cradle*.

In the early nineties, architect McDonough and chemist

Braungart began their collaboration. In addition to maintaining individual practices, they co-founded the design collaborative McDonough Braungart Design Chemistry (MBDC).⁶ In the May 2002 feature article on MBDC's website, Joseph Rinkevich describes *Cradle to Cradle* as "a signal of intention for the future of printed matter – an example of what it might look and feel like."⁷

In *Cradle to Cradle*, the authors imagine the future book in detail. Such a book "...celebrates materials rather than apologizing for them. Books become books become books over and over again, each incarnation a sparkling new vehicle for fresh images and ideas. Form follows not just function but the evolution of the medium itself, in the endlessly propagating spirit of the printed word."⁸ The book of the future participates in a closed-loop system of reuse, in which recycling is not "down-cycling," or a process in which materials are re-used in increasingly lower quality capacities. Instead, synthetic materials may be re-used infinitely with consistent value. The book becomes what McDonough and Braungart call "technical nutrient."

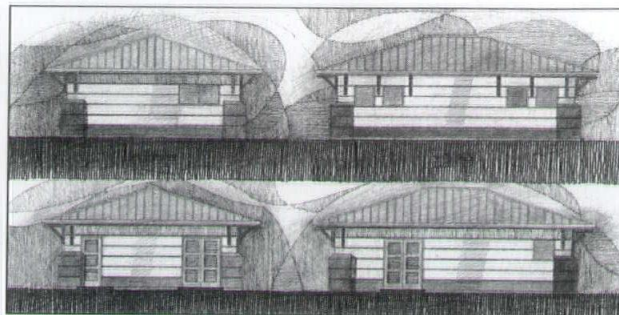
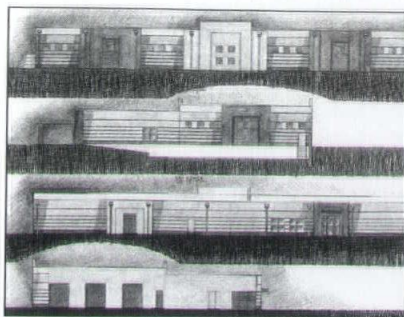
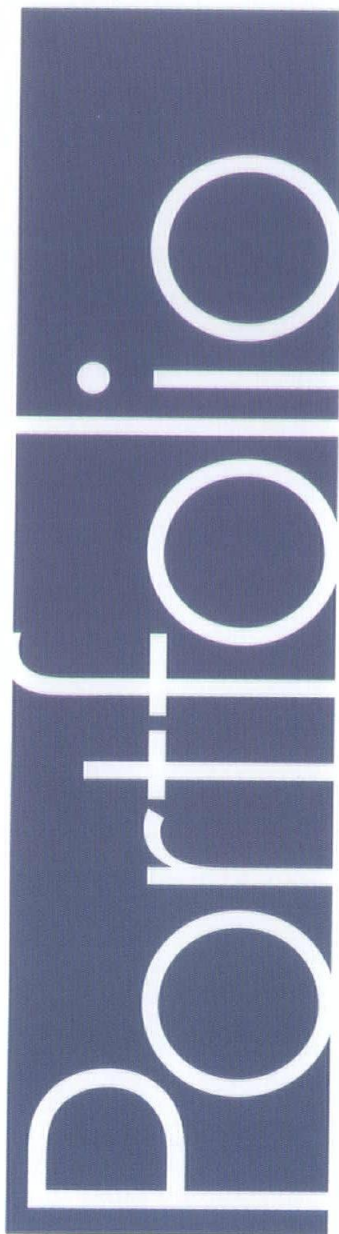
Technical nutrients and biological nutrients are two vital components of "eco-effectiveness," a new perspective on environmentally friendly design. Eco-effectiveness considers "the short-term usefulness, convenience, and aesthetic pleasure of the product together with the ongoing life of its materials."⁹ It abandons the old (current?) product-and-waste model for a model in which "waste is food."

While the DuraBook still off-gasses like a conventional book, its material composition offers the potential of

eco-effectiveness. It offers hope. Rather than trying to be "less bad" using conventional book technologies, the DuraBook looked outside convention and created innovation. Such innovation is what McDonough and Braungart applaud and engage. While they did not design DuraBook, they have worked with clients like Ford Motor Company, Nike and Herman Miller to re-think product design in terms of eco-effectiveness.

"The world will not evolve past its current state of crisis by using the same thinking that created it." This quote from Albert Einstein is reprinted as an epigraph to *Cradle to Cradle*. As architects, we must acknowledge the crisis and begin to think in new ways to address it. *Cradle to Cradle* – both the book-object and the book-ideas—is a good place to start. ■

- 1 Joseph Rinkevich, "This book is NOT a tree." MBDC Feature Article, May 2002 (<http://www.mbdc.com>).
- 2 As quoted by Jeanette Clinkunbroomer, "Build a Better Book and the World Just May Beat a Path to Your Door." Printing News Online (<http://www.printingnews.com/>), 28 August 2000.
- 3 Paul Hiltz, "Splish, Splash, 'Take a Book to the Bath.'" Publishers Weekly on-line (<http://publishersweekly.reviewsnews.com>), 23 October 2000.
- 4 Hiltz, op. cit.
- 5 *Aqua Erotica: 18 Stories for a Steamy Bath*. Ed. Mary Anne Mohanraj. Three Rivers Press, 2000.
- 6 *Cradle to Cradle*, p. 15.
- 7 Rinkevich, op. cit.
- 8 *Cradle to Cradle*, p. 71.
- 9 *Cradle to Cradle*, p. 71.



The Mason City Water Treatment Plant, Mason City, IA

Mason City, a northern Iowa city with a rich architectural heritage including such noteworthy Prairie School architects such as Frank Lloyd Wright, and Walter Burley Griffin, has put design back into public utility buildings.

The Mason City Water Treatment Plant and a remote

pump house with an adjacent wellhouse, designed by Stanley Consultants, Inc, were developed with the same design vocabulary and materials, utilizing economies of scale and creating a "water treatment" identity within the city. "Same but different" designs for each facility honor the city's Prairie

School architecture and offer a present day twist. Building materials include brick and metal standing seam roof detailed with aluminum brackets and wide overhangs to evoke the Prairie School theme. Construction will be completed the spring of 2004. ■



Walnut Hills United Methodist Church, Urbandale, IA

Construction is currently underway on a 2,600 SF addition to the Walnut Hills United Methodist Church in Urbandale. Designed by Mosaic Design Group the educational wing addition provides new space for expanded administrative functions on the upper level and new classroom space on the lower level for high school youth activities. Additional interior reconfiguration and remodeling is also included in the project. ■

UNI Human Performance Center, Cedar Falls, IA

Herbert Lewis Kruse Blunck Architecture is currently documenting the new McLeod Center and Human Performance Center at the University of Northern Iowa. The 161,000 square foot project includes a 6,000-seat arena for basketball and volleyball and a state-of-the-art strength training and athletic training education facility.

The project is part of UNI's "Student's First" campaign and is intended to showcase the University's strong dedication

to community. The design connects the new building to the existing facilities on the site (a student Wellness/Recreation building and the UNI-Dome sports arena) to produce a unified complex of athletics and education. By connecting all the buildings together, student athletes, teachers, administrators, and members of the Cedar Valley community will all be able to interact together and experience a diversity of facilities and events simultaneously. ■



AWARDS

AIA IOWA HONOR AWARD
FOR EXCELLENCE IN ARCHITECTURE

CENTRAL STATES REGION
HONOR AWARD

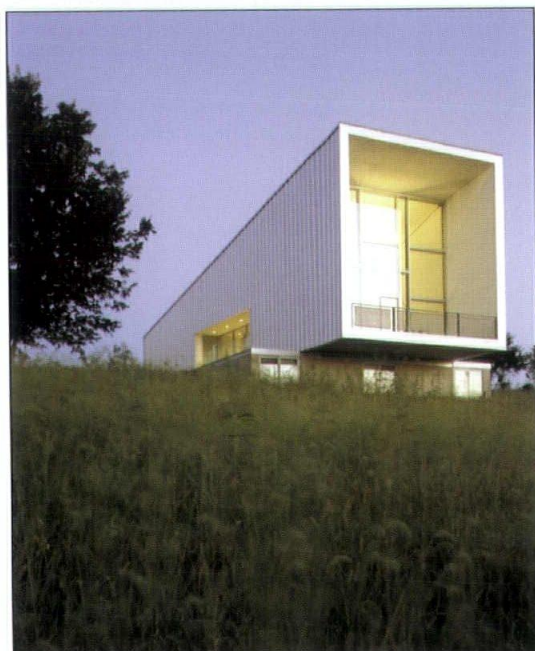
Corum Residence



Jury Comments:

STATE

Great piece of modern vernacular architecture. It's an astronomical aperture or floating apparatus. Simple roof slope seems appropriate for Iowa landscape. In a class of its own.



Project: Corum Residence

Location: Pella, IA

Architect: Herbert Lewis Kruse
Blunck Architecture

General Contractor: Legacy
Builders

Structural Consultant: Charles
Saul Engineering

Landscape Architect: Herbert
Lewis Kruse Blunck

Interior Designer: Herbert Lewis
Kruse Blunck

Photographer: Shimer @ Hedrich
Blessing

AWARDS

AIA IOWA HONOR AWARD
FOR EXCELLENCE IN ARCHITECTURE

AIA IOWA HONOR AWARD
FOR EXCELLENCE IN CRAFT

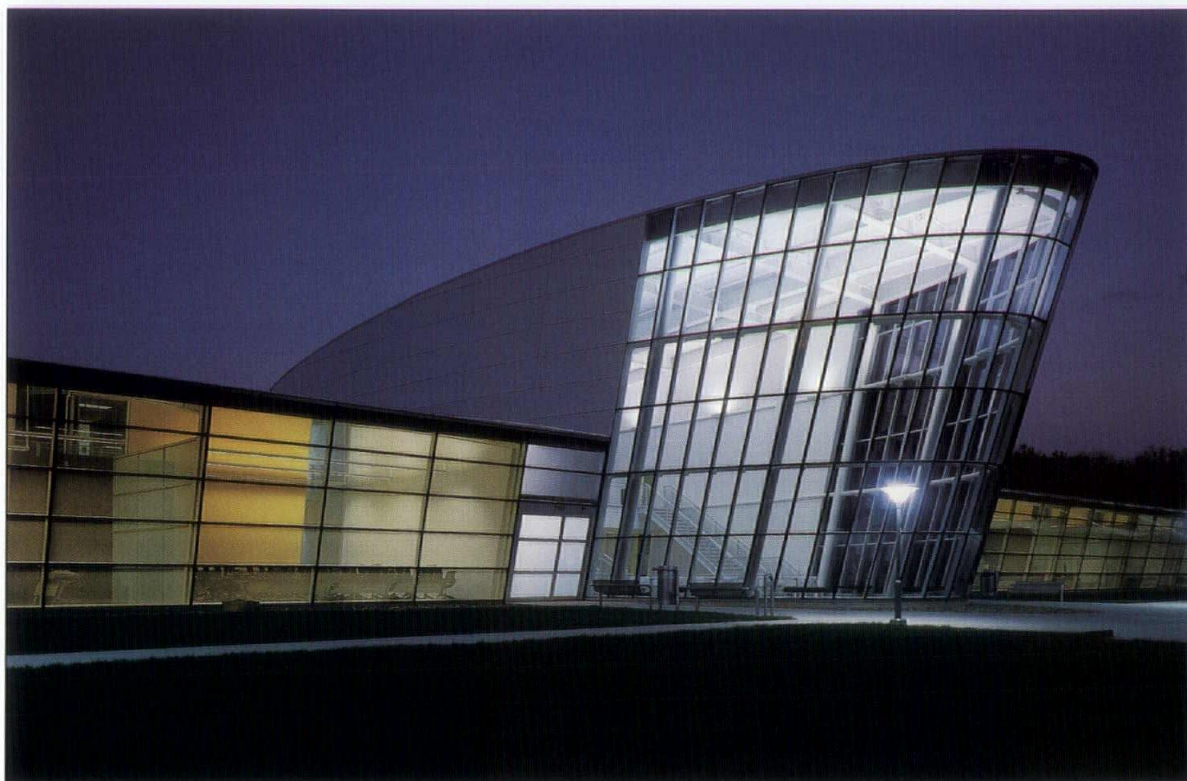
West Campus—DMAACC



Jury Comments:

STATE

Should award the client, too. They spent the money where it counted. They got a lot out of the angular geometry. Sensitive design all the way through. Very good natural daylighting solution. Exterior is even better at night.



FARSHID ASSASSI, HON. AIA IOWA, ASSASSI PRODUCTIONS ©

Project: West Campus—Des Moines Area Community College

Location: West Des Moines, IA

Architect: RDG

General Contractor: Taylor Ball

Electrical Contractor: DeVries Electric

Mechanical Contractor: L.A. Fulton

Electrical Engineer: KJWW Engineering

Mechanical Engineer: KJWW Engineering

Structural Engineer: Dennis &

Magnani Structural Consultants
Landscape Architect: RDG Crose
Gardner Shukert

Interior Designer: RDG Bussard
Dikis

Energy Design Consultant:
The Weidt Group

Photographer: Farshid Assassi/
Assassi Productions



AWARD

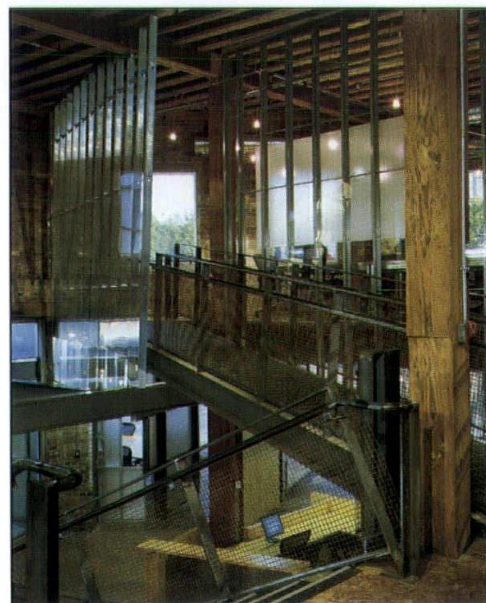
AIA IOWA HONOR AWARD
FOR EXCELLENCE IN ARCHITECTURE

Kenyon Building

Jury Comments:

STATE

The scale looks right for being right in the city. It has a very complex interior stair. It's really complete interior and exterior. Innovative use of metal studs. Nicely detailed. It's fairly 3D.



Project: Kenyon Building
Location: Des Moines, IA
Architect: RDG
General Contractor: Graham Construction Company
Electrical Contractor: Wolin & Associates
Mechanical Contractor: Wolin Electric, L.C.
Structural Engineer: Charles Saul Engineering
Interior Designer: RDG Bussard Dikis
Photographer: Farshid Assassi/Assassi Productions

FARSHID ASSASSI, HON. AIA IOWA, ASSASSI PRODUCTIONS ©

AWARDS

AIA IOWA MERIT AWARD
FOR EXCELLENCE IN ARCHITECTURE

CENTRAL STATES REGION
MERIT AWARD

Variety Club ChildServe Center

Jury Comments:

STATE

Pretty brave building for this type of project. All the investment should be on the inside. Interesting lighting solution.



TIMOTHY HURSLEY

Project: Variety Club ChildServe Center

Location: Ames, IA

Architect: Architects Wells
Kastner Schipper

General Contractor:

Story Construction

Electrical Contractor: Nikkel &
Associates

Mechanical Contractor:

Procter Mechanical

Civil Engineer: Milles Surveying, Inc.

Electrical Engineer: Nikkel &
Associates

Mechanical Engineer: Graver
Consulting PC

Structural Engineer: James W.
Wilson, P.E.

Photographer: Timothy Hursley



AWARD

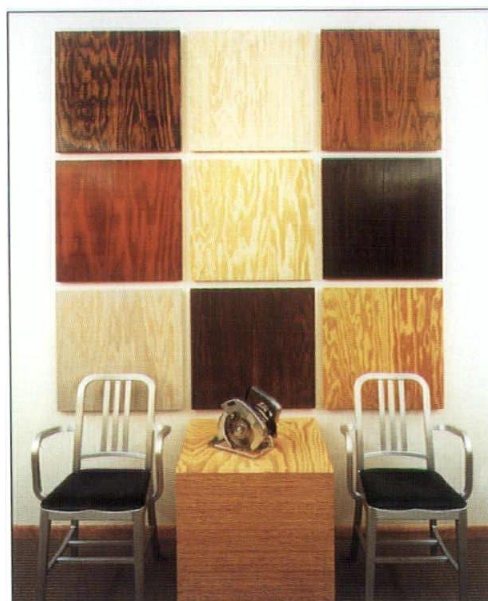
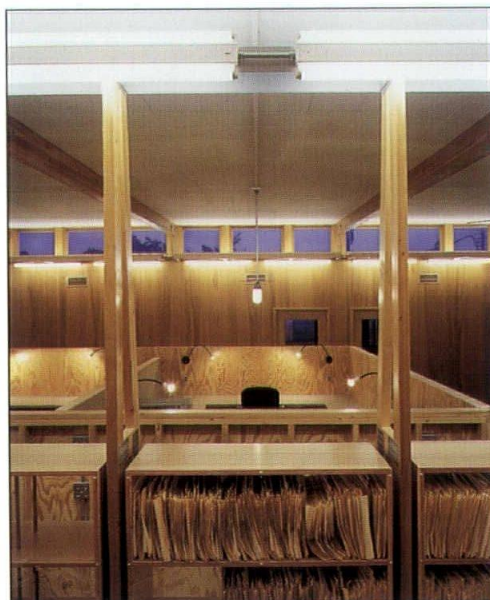
AIA IOWA MERIT AWARD
FOR EXCELLENCE IN ARCHITECTURE

Wheeler Consolidated

Jury Comments:

STATE

I like how the trusses are used. An architect's dream of a kit of parts. You've got to give this project an award. Amazing for \$24 per square foot.



Project: Wheeler Consolidated
Office Remodel

Location: West Des Moines, IA

Architect: Herbert Lewis Kruse
Blunck Architecture

General Contractor: Dean Paulsen
& Sons

Interior Designer: Herbert Lewis
Kruse Blunck Architecture

Photographer: Cameron
Campbell

AWARD

AIA IOWA MERIT AWARD
FOR EXCELLENCE IN ARCHITECTURE

Coppola Enterprises

Jury Comments:

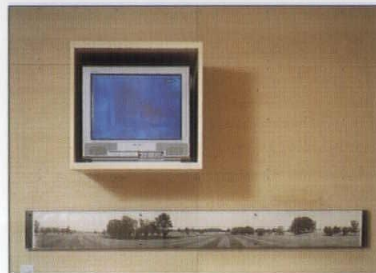
STATE

I like that it's located in a strip mall. Brave about the investment. Let's give it the good taste award.

Project: Coppola Enterprises Office Remodel
Location: Des Moines, IA
Architect: Herbert Lewis Kruse Blunck Architecture
General Contractor: The Hansen Company
Electrical Contractor: Tri-City Electric Company
Mechanical Contractor: Wykoff Heating and Cooling
Landscape Architect: Herbert Lewis Kruse Blunck Architecture
Interior Designer: Herbert Lewis Kruse Blunck Architecture
Photographer: Shimer@Hedrich Blessing
Millwork: Lisac Millwork
Glass Panels: Two Rivers Glass and Door, Inc.
Custom Doors: Walsh Doors



SHIMER@HEDRICH BLESSING



AWARD

AIA IOWA PRESERVATION AWARD

Higdon Administration Building Rehabilitation



FARSHID ASSASSI, HON. AIA IOWA, ASSASSI PRODUCTIONS ©

Project: Higdon Administration Building Rehabilitation

Location: Des Moines, IA

Architect: RDG

General Contractor: Graceland University

Electrical Contractor: Norwood Electric

Mechanical Contractor: L.A. Fulton & Sons

Electrical Engineer: Alvine and Associates

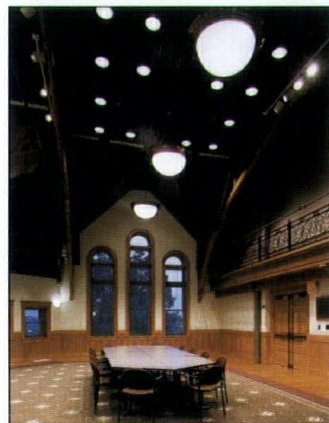
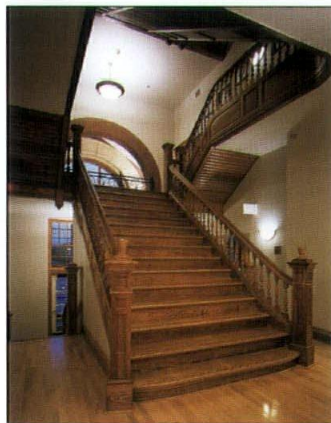
Mechanical Engineer: Alvine and Associates

Structural Engineer: Shuck Britson

Landscape Architect: RDG Crose Gardner Shukert

Interior Designer: RDG Bussard Dikis

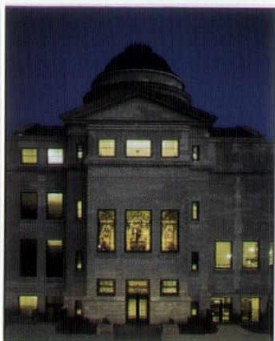
Photographer: Farshid Assassi/Assassi Productions



AWARD

AIA IOWA PRESERVATION AWARD

Ola Babcock Miller Building Restoration



FARSHID ASSASSI, HON. AIA IOWA, ASSASSI PRODUCTIONS ©

Project: Ola Babcock Miller Building Restoration, Des Moines, IA

Architect: Herbert Lewis Kruse Blunck Architecture

General Contractor: Neumann Brothers and Taylor Ball

Electrical Contractor: Brown Brothers

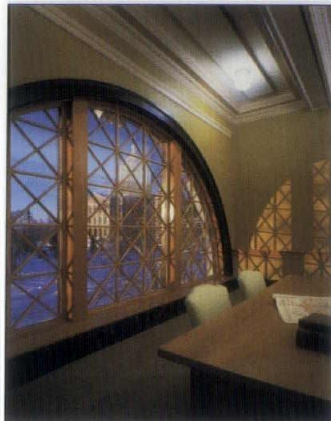
Electrical Engineer: Alvine and Associates

Mechanical Engineer: Alvine and Associates

Structural Engineer: Charles Saul Engineering

Landscape Architect: Herbert Lewis Kruse Blunck

Photographer: Farshid Assassi/Assassi Productions



AWARD

CENTRAL STATES REGION
HONORABLE MENTION

Architects' Office and Studio

Project: A-WKS Office and Studio
Location: West Des Moines, IA
Architects: Architects Wells Kastner Schipper
Electrical Contractor: ABC Electric, Inc.
Mechanical Contractor: Wolin & Associates
Electrical Engineer: Pulley & Associates
Mechanical Engineer: Pulley & Associates
Structural Engineer: Charles Saul Engineering
Interior Designer: Architects Wells Kastner Schipper
Photographer: Timothy Hursley



TIMOTHY HURSELEY



AWARD

CENTRAL STATES REGION
HONOR AWARD

Liberty Memorial Restoration

Project: Liberty Memorial Restoration
Location: Kansas City, MO
Architect: ASAI Architecture
General Contractor: J. E. Dunn Construction Co.
Electrical Contractor: Broadway Electrical Construction Inc.
Stone Restoration Contractor: Mid-Co Contractors
Civil Engineer: SK Design Group
Electrical Engineer: W. L. Cassell & Associates
Mechanical Engineer: W. L. Cassell & Associates
Structural Engineer: Bob D. Campbell & Company
Lighting Consultant: Yarnell Associates
Photographer: Paul Kivett and Michael Spillers



PAUL KIVETT AND MICHAEL SPILLERS

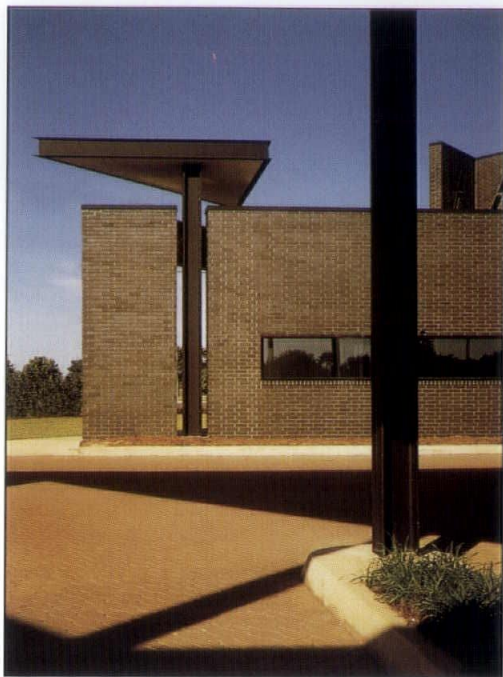


AWARD

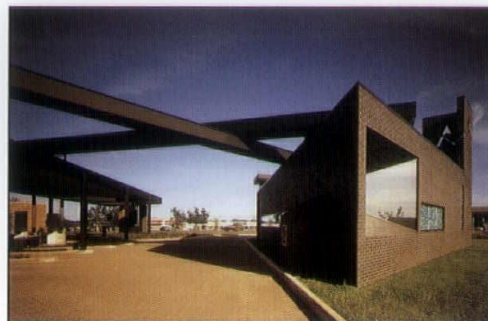
CENTRAL STATES REGION
MERIT AWARD

American Bank Drive-In and Café/Courtyard

Project: American Bank Drive-in and Café/Courtyard
Location: Edmond, OK
Architect: Elliott + Associates
General Contractor: Smith & Pickel Construction
Civil Engineer: Allen Consulting, Inc.
Mechanical Engineer: Allen Consulting, Inc.
Structural Engineer: Eudaley Engineers
Landscape Architect: Brian Dougherty
Interior Designer: Elliott + Associates
Photographer: Robert Shimer, Hedrich Blessing



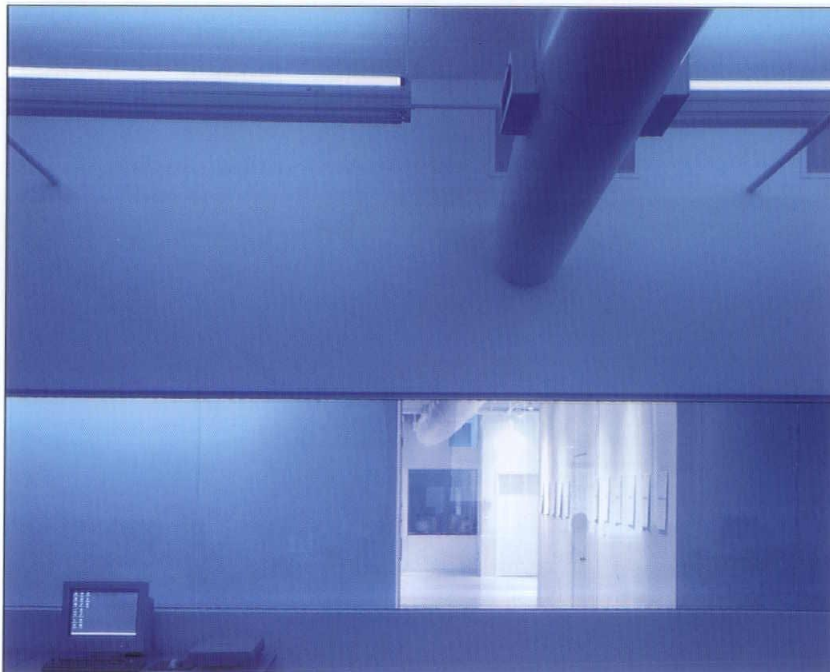
ROBERT SHIMER, HEDRICH BLESSING

**AWARD**

CENTRAL STATES REGION
MERIT AWARD

ImageNet

Project: ImageNet
Location: Oklahoma City, OK
Architect: Elliott + Associates Architects
General Contractor: Lingo Construction Services
Electrical Engineer: Jamars & Long
Mechanical Engineer: Jamars & Long
Structural Engineer: Lingo Construction Services
Interior Designer: Elliott + Associates
Photographer: Robert Shimer, Hedrich Blessing



ROBERT SHIMER, HEDRICH BLESSING



AWARD

CENTRAL STATES REGION
HONOR AWARD

Will Rogers World Airport Snow Barn

Project: Will Rogers World
Airport Snow Barn
Location: Oklahoma City, OK
Architect: Elliott + Associates
Architects
General Contractor:
Westfahl Construction Co.
Mechanical Engineer:
Allen Consulting, Inc.
Structural Engineer:
Grossman & Keith
Landscape Architect:
Elliott + Associates
Interior Designer:
Elliott + Associates
Photographer:
Robert Shimer, Hedrich Blessing



ROBERT SHIMER, HEDRICH BLESSING



AWARD

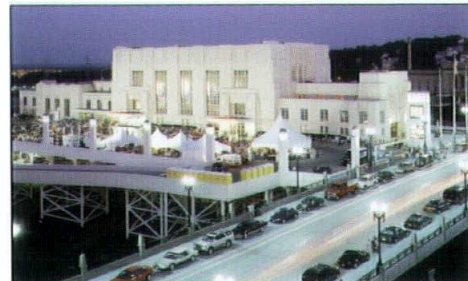
CENTRAL STATES REGION
MERIT AWARD

Durham Western Heritage Museum

Project:
Durham Western Heritage Museum
Location:
Omaha, NE
Architect:
HDR Architecture, Inc.
General Contractor:
Kiewit Construction Company
Electrical Engineer:
Electric Company of Omaha
Mechanical Engineer:
HDR Architecture
Structural Engineer:
HDR Architecture
Landscape Architect:
HDR Architecture
Interior Designer:
HDR Architecture
Photographer: Tom Kessler
Photography



TOM KESSLER PHOTOGRAPHY



AWARD

CENTRAL STATES REGION
MERIT AWARD

Herdon Hall Renovation

Project: Herndon Hall Renovation

Location: Des Moines, IA

Architect, Landscape Architect

and Interior Designer: Herbert

Lewis Kruse Blunck Architecture

General Contractor: Pacesetter

Co., Inc.

Electrical Contractor: Tesdell Electric

Mechanical Contractor: Wykoff

Industries

Structural Engineer: Charles Saul

Engineering

Photographer: Peter Aaron/

Esto Photographics

Millwork: Lisac Millwork

Hardwood Floors: Glascock

Hardwood Floor Service

Masonry: Caligiuri Construction

Granite/Slab Installation: Dennis

Morgan Stoneworks

Stained Glass Restoration: The

Stained Glass Store



PETER AARON/ESTO PHOTOGRAPHICS



AWARD

CENTRAL STATES REGION
MERIT AWARD

Renaissance Granite, Marble & Tile

Project: Renaissance Granite, Marble, & Tile

Location: Urbandale, IA

Architect: Herbert Lewis Kruse

Blunck Architecture

General Contractor:

Venter Spooner

Civil Engineer: Bishop

Engineering

Structural Engineer:

Korpela Engineering

Landscape Architect: Herbert

Lewis Kruse Blunck

Interior Designer: Herber Lewis

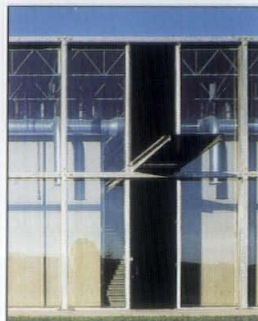
Kruse Blunck

Photographer: Farshid Assassi/

Assassi Productions



FARSHID ASSASSI, HON. AIA IOWA, ASSASSI PRODUCTIONS ©



AWARD

CENTRAL STATES REGION
MERIT AWARD

Jeannette Robbins Meeting Place

Project:

Jeannette Robbins Meeting Place

Location:

Parkville, MO

Architect:

Kelly S. Batcheller

General Contractor:

Kelly S. Batcheller

Photographer:

Neil Angrisano/Kelly S. Batcheller

Concrete Contractor:

Downing Construction Co.

Carpenter:

Bob Mason



NEIL ANGRISANO/KELLY S. BATCHELLER



AWARD

CENTRAL STATES REGION
MERIT AWARD

[re] Constructed Landscape

Project: [re]constructed landscape

Location: Omaha, NE

Architect: Randy Brown Architects

General Contractor: Design-Build
Workshop

Landscape Architect: Randy
Brown Architects

Design-Build: Design-Build
Workshop

Photographer: Randy Brown



RANDY BROWN

AWARD

CENTRAL STATES REGION
MERIT AWARD

Consolidated Fire District No. 2 North East Johnson County

Project: Consolidated Fire District No. 2, Station No. 2 and Headquarters
Location: Kansas City, MO
Architect: Shaughnessy Fickel and Scott Architects Inc.
General Contractor: Excel Constructors Inc.
Electrical Contractor: Schultz Brothers
Civil Engineer: Walter P. Moore
Electrical Engineer: Turner Consultants
Mechanical Engineer: Turner Consultants
Structural Engineer: Walter P. Moore
Landscape Architect: Shaughnessy Fickel and Scott Architects
Photographer: Douglas Kahn



DOUGLAS KAHN

AWARD

CENTRAL STATES REGION
MERIT AWARD

Bear Properties



Project: Bear Properties
Location: Omaha, NE
Architect: Tom Allisma Productions
General Contractor: G & S inc
Interior Designer: Tom Allisma Productions

AWARD

AIA IOWA HONOR AWARD
FOR EXCELLENCE IN CRAFT

the Molengracht

Project: the Molengracht
Location: Pella, IA
Architect: Architects Smith Metzger
General Contractor: The Hansen Co.
Electrical Contractor: DeVries Electric
Civil Engineer: Garden and Assoc.
Mechanical Engineer: Kent Mosheu
Structural Engineer: Charles Saul Engineering
Landscape Architect: RDG Crose
Gardner Shukert
Design/Build: The Hansen Company
Photographer: Farshid Assassi/
Assassi Productions
Masonry: SMI



FARSHID ASSASSI, HON. AIA IOWA, ASSASSI PRODUCTIONS ©

Regional Juror Profiles



Brian Healy

Brian Healy was educated at the Pennsylvania State University (1978) and the Yale School of Architecture (1981) where he was Editor of *Perspecta 19: the Yale Architectural Journal*. He worked in the offices of Cesar Pelli and Richard Meier prior to establishing his practice in Boston in 1986. He is currently President-elect of the Boston Society of Architects.

He currently teaches architectural design at the Yale School of Architecture.

He is the recipient of fellowships for residency at the American Academy in Rome and the MacDowell Art Colony in Peterborough, New Hampshire.



Brad Cloepfil

Brad received his Bachelors degree in architecture from the University of Oregon and went on to earn his Masters of Architecture at Columbia University. After his studies, he worked in New York, Los Angeles and Switzerland for ten years before establishing Allied Works Architecture in Portland, Oregon. Brad occasionally participates in invited symposia, lectures and critiques for clients, universities and other significant arts and architectural organizations.



Joel Sanders

Joel Sanders received a M.Arch. from Columbia University School of Architecture and a B.A. in Art History from Columbia College. Before establishing his own firm in 1987, Sanders was a designer at Kohn Pedersen Fox Associates (1984-1986) and Skidmore, Owings and Merrill (1983-1984), both in New York City. Since 2002 he has been an Adjunct Professor of Architecture at Yale University. Previously, Sanders was the Director of the Graduate Program at Parsons School of Design from 1996-2002. Prior to joining Parsons, he was an Assistant Professor of Architecture at Princeton University from 1986-96. He is registered in the states of New York and New Jersey.

State Juror Profiles



David Hertz, AIA

David Hertz is the founder and president of Synthesis Inc., a multi-disciplinary architecture, design and manufacturing firm with a specialty in sustainable strategies. Synthesis is noted for its development of Syndecrete®, an innovative precast lightweight concrete architectural surfacing material which incorporates recycled

aggregates.

Serving as an apprentice to artists and working in construction trades gave David a tacit knowledge of construction and fabrication. Before graduating with a Bachelor of Architecture from SCI-Arc in 1983, David worked in the office of Architect, John Lautner. After travel and study in Europe, David returned to serve an internship in the office of Frank O. Gehry and Associates FAIA before opening his own firm in 1984.

David serves on the faculties of the SCI-Arc Professional Development Program and UCLA's Extension Program teaching sustainable design courses.



Mary-Ann Ray, FAAR

Mary-Ann Ray received her Masters of Architecture degree with honors from Princeton University in 1987, and the prestigious Rome Prize of 1987-1988. Ms. Ray's professional experience includes work with Michael Graves, Architect, and Richard Meier and Partners where she assisted with the design, modeling, and construction documents for the new J. Paul Getty Center and Museum in Los Angeles, CA. Since 1987, she has served as a Principal of STUDIO WORKS in Los Angeles where she has acted as Principal-in-Charge and Project Manager for numerous building projects.

Ms. Ray has lectured widely, has taught at Rice University (Wortham Chair) and Yale University (Saarinen Chair), and University of Michigan (Saarinen Chair) as visiting faculty, and continues as a graduate design studio and seminar faculty member at the Southern California Institute of Architecture in Los Angeles. Ms. Ray also served as Chair of the Environmental Arts Department at Otis College of Art and Design in Los Angeles during the late 1990's.



Michael Palladino, AIA

As a Principal Designer of Richard Meier & Partners since 1979, Mr. Palladino has worked closely with Richard Meier on many award-winning projects located throughout the world, including The Getty Center; the Des Moines Art Center; the Decorative Arts Museum in Frankfurt, Germany; and the High Museum in Atlanta.

Michael Palladino earned a Bachelor of Architecture degree from Virginia Polytechnic Institute in 1977 and a Masters in Architecture from Harvard University Graduate School of Design in 1979. He is a Registered Architect in California and New York. Mr. Palladino is a frequent guest lecturer, having spoken at USC, UCLA, the Louisiana Museum of Art, the Los Angeles County Museum of Art, and has served as a guest critic at architectural schools in the U.S. He is a recipient of the prestigious Rome Prize for the year 2000-2001.



Lawrence Scarpa, AIA

Lawrence Scarpa is the principal-in-charge of the award winning architecture firm – PUGH + SCARPA. He received his formal education from the University of Florida and worked in the office of Gene Leedy, Paul Rudolph in New York and Holt Hinshaw Pfau Jones before

starting his own practice with Gwynne Pugh in 1992. He has taught and lectured at the university level at numerous schools including UCLA, University of Florida, Mississippi State University, SCI-Arc, University of New Mexico, Woodbury University, University of Oregon, Pratt Institute and Otis College.

In 1998 the Academy of Architecture Arts and Sciences named him as one of the top seven architects worldwide under age thirty-nine. He has published a number of articles on architecture and his work has been the subject of many exhibitions. He has received over ten National, State and Local AIA Honor Awards, including consecutive national AIA awards for Interior Architecture. He was the recipient of the Westside Prize for Urban Design and he received the Project of the Year Award from Interiors Magazine.

He is a member of the American Institute of Architects, the Society of Architectural Historians and The Southern California Association for Non Profit Housing. He serves on the editorial board for LA Architect magazine and is a co-founder of Livable Places.



Mark Mack

Mark Mack attended Polytechnicum in Graz, and the Academy of Fine Arts in Vienna. After graduating from the Academy in 1973, he came to America to work with Hausrucker and Emilio Ambasz, Inc. in New York until 1976. He later moved to San Francisco, where he worked as an architect and freelance

renderer, and founded Western Addition, an organization devoted to Fine architecture, and was founder and editor of Archetype Magazine. In 1978, he joined with Andrew Batey to form Batey and Mack, and in 1984, established his own firm, MACK Architect(s) in San Francisco. In 1993, Mark moved his practice to Venice, California.

He was Professor of Architecture at the University of California, Berkeley from 1987 to 1993, and since 1993, has been a Professor of Architecture at the School of Arts and Architecture at the University of California, Los Angeles. Additionally, he has been a member of the visiting design faculty at Harvard University, Rice University, University of Chicago, and the Southern California Institute of Architecture (SCI-Arc). Mark Mack has built projects in America, Austria, Switzerland, Holland, Germany, and Japan that range in scale and vary from residential to commercial to institutional.

ISU Architecture Awards

IOWA STATE UNIVERSITY, DEPARTMENT OF ARCHITECTURE



The Department of Architecture is pleased to be included in this annual awards issue of the *Iowa Architect*. This year we are supplementing the traditional student recognition with the acknowledgement of special faculty awards. Professor Tom Leslie received one of the three National ACSA/AIAS New Faculty Teaching Awards which is the highest recognition for beginning faculty. Professor Karen Bermann received the Best Design Article Award in the *Journal of Architectural Education*, the feature publication of the academy. Catherine Hille received the RDG Bussard Dikis Design Award for the top undergraduate diploma project.

The diploma project allows students to focus on an area of personal architectural interest. Catherine's passionate and compassionate pursuit of architectural research exhibits the broad potential of architectural studies. These extraordinary accomplishments are indicative of the high quality faculty and students who are currently working together and challenging each other to make a difference both in and beyond the classroom.

—Cal Lewis FAIA Chair, Department of Architecture
Iowa State University

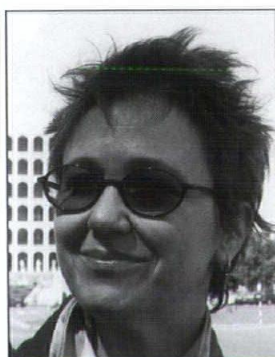
AWARD

JOURNAL OF ARCHITECTURAL EDUCATION
2003 BEST DESIGN ARTICLE AWARD

Above: Pattern by Wade
Zipperstein

Far right: Pattern drawing by
Brian Lee

Bottom: Reassembled pattern
by Brian Lee

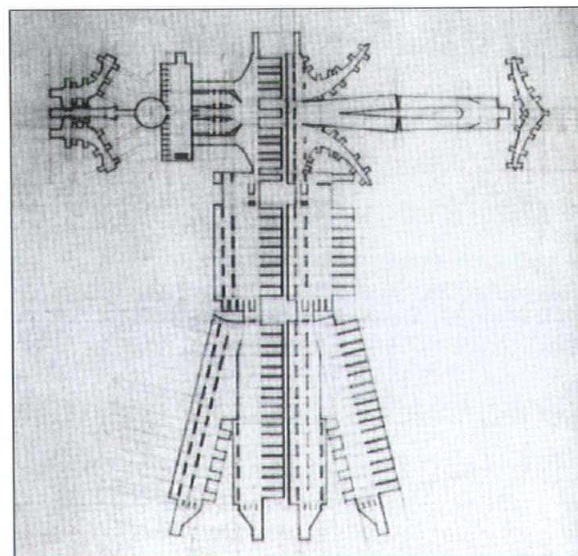


Pre-Architecture Studio: The Pattern Project, JAE 55:4, pp. 268-271

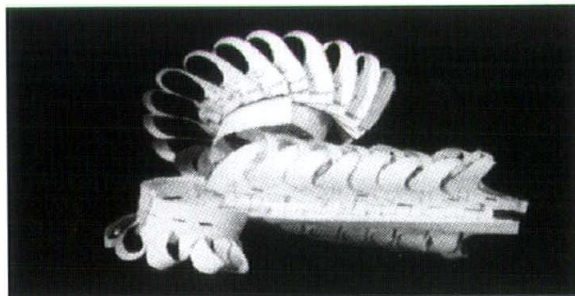
This design article perfectly illuminates the JAE's quest for design submittals which demonstrate excellence in critical pedagogy. The studio work discussed occurs at the foundational level of the curriculum at Iowa State. The project moves through five phases,

which introduce five critical aspects of architectural activity: descriptive writing, documentary drawing, volumetric construction, analytical writing and the synthetic registration of process. The transitions between the phases require conceptual ownership of the project on the part of the students; each phase relentlessly unites the development of skills and 'programmatic' intentions. Along the way, the students conduct an intensive material investigation which is resolved at the level of detail and the joint.

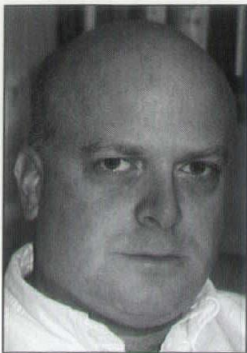
The project is distinguished by the clarity of the steps which are undertaken, the depth at which it asks first-term students to consciously engage the premises



and mechanisms of architectural invention and the quality of the work. The extraordinary depth of the engagement with a material is rooted in Bauhaus material exercises. The project extends its sources to become critical, using a topological model to reframe conventional first year languages of point, line and plane. Karen Bermann has crafted the assignments in ways that have brought the work far beyond the level one might expect from first-term students. At the same time, she has structured them so that the superlative work is embedded in the conscious intentions of those making it. 'Making strange' is an implicit part of all first-year studios; here, tactic is made visible, discussed and becomes fundamental to the process of design. Bermann's studio demonstrates the roots of invention by highlighting the role of intentions and interpretation in analysis.



KAREN BERMANN



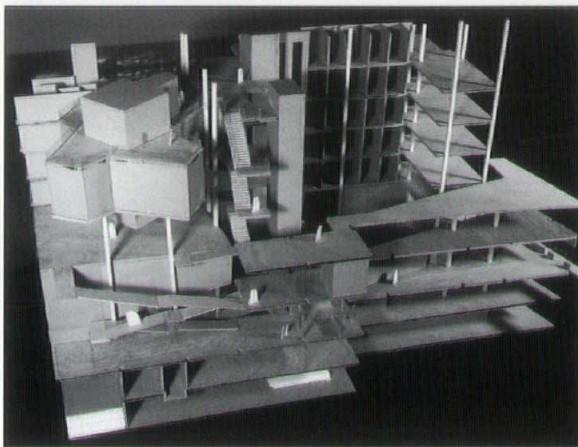
Comprehensive Design Studio

Asst. Professor Thomas Leslie, AIA, was awarded one of three New Faculty Teaching Awards at the 2003 Annual Meeting of the Association of Collegiate Schools of Architecture in Louisville, KY. The awards, co-sponsored by the AIAS, are given annually to recognize 'demonstrated excellence in teaching performance during the formative years of an architectural teaching career.'

"Architecture is a unique meeting ground for the Two Cultures of art and science. Our students generally experience these modes of thought in separate settings—technology in the lecture hall, design in the studio. While this is symptomatic of the field as a whole, I maintain that the architecture we regard as truly great is that which connects these two realms in our experience.

My teaching at Iowa State has been a direct outgrowth of my training. My education (at Illinois and Columbia) was steeped in architectural history and theory. My experience with Norman Foster and Partners in London immersed me in an intensive design environment, and on site for Foster's at Stanford University I worked daily with engineers, contractors, and fabricators. As a result of this broad background, my conception of architecture is holistic, and I believe that the 'how' of building can be intensely, meaningfully connected to the 'why'.

I have attempted to bring a sense of both breadth and depth to the studio and classroom. My design coursework, particularly our developing Comprehensive Design Studio (co-ordinated with Prof. Matt Fisher), focuses on the fluent integration of technical and objective requirements, while maintaining critical attitudes toward site, context, typology and space.



AWARD

ACSA/AIAS NEW FACULTY TEACHING AWARD

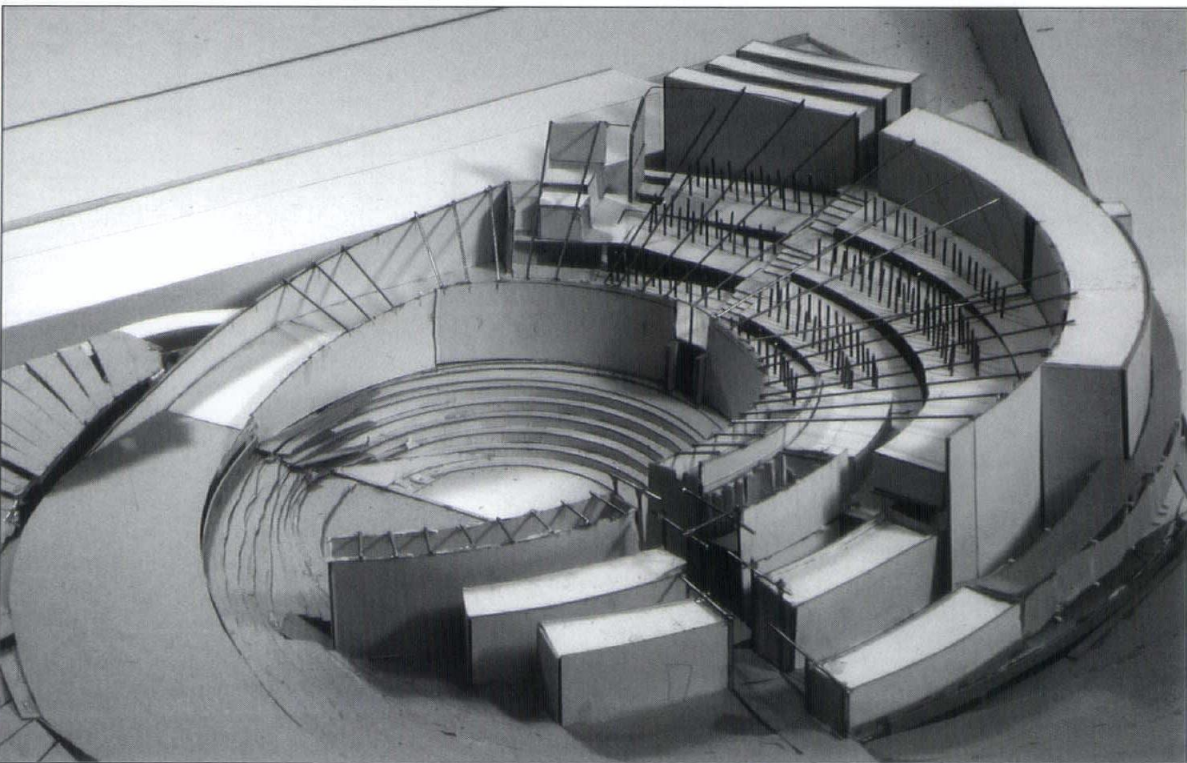
**Left: Digital Media Lab,
University of Quebec,
Montreal — Eryn Mitchell
and Jason Dietzenbach**

Parallel to this, our Integrated Design Workshop (taught with Profs. Fisher and Bassler) provides an overall framework for pursuing technical development of studio projects, again emphasizing the connection between these elements and students' design concepts. My seminar course, "Physics and Form" seeks this integration from a historical perspective, looking at the past 250 years of architecture through a technological lens, seeking work that balances and expresses vectors of aesthetics, performance, and construction.

The ultimate success of this approach lies not only in the work itself. Rather, the primary test of these classes has been the enjoyment and enthusiasm students have discovered in the critical framing of objective, pragmatic aspects of architecture that they might previously have dismissed as mundane or irrelevant.

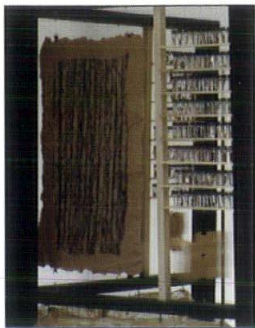
God may or may not be in the details, but joy, discovery, art and craft certainly are."

—Thomas Leslie, Submittal Statement, 2003 ACSA Awards Program



**Left: Little Tokyo Branch,
Los Angeles Public Library —
Nora Wendl and Jon Wollak**

THOMAS LESLIE



AWARD

RDG BUSSARD DIKIS AWARD 2003

Above: Each wall of the display reveals an alphanumeric list that hints to the observer how they might begin to pull all the pieces together to imagine the house & its materials.

Far right: 800 vials delicately come together to exhibit samples of intimate unique details from the house ranging in scope from wallpaper & window glass, to soil & animal remnants. These vials combine with tracings & mementos of the houses past to complete the collection.

Right: Every time I left the house I took away a part of her, but I left a part of myself; an exchange that enabled us to both benefit from our meeting. I listened, and in turn, she allowed me to take parts of her life to show others; a collection of her and her life, to allow others to see her creation, her architecture... her soul.

Things forgotten seem to begin a new life once they are abandoned. No longer wanted or needed they thrive on the freedoms of having no restrictions on their ability to let nature sculpt them. Farmhouses built in the past sit silently in the landscape and show signs of more life than when their lives began. As the years pass,

and as these houses slowly disappear into the landscape, many of us will never have the chance to see them living for themselves before they return to the ground from which they came. They are truly a living architectural wonder."

—Catherine Renae Hille | December 15, 2002

1-0000100.x.0-x-00101

When does conception bring together the life of a building and when does death infiltrate until a final end? From the time in which I found this farmhouse it was well on its way to what many people might define as a final end. A building whose good days have passed and whose worthless heap is considered a liability and lesion upon the ground it sits to the eyes of those that cross it. Families die, farms die, and pieces of time are left empty and alone with themselves, lifeless for many it seems; conceived, born, raised, and rejected. From birth, the house has been within the confinements of not only its predestined foundation, but within the confinements of obeying those who live there, its masters. Obeying the laws of good housekeeping and order, the house learns of its life and its purpose. What then happens when the masters are gone, the restrictions are lifted, and now only boundaries lie waiting to be crossed?

The masters are gone the home is empty. Alone. It is a rejection of time and a rejection of life. The house sits quietly but only long enough to come to the realization that times' cruel definition of rejection is in fact the gift of rejuvenation. The boundaries that once lay before it as intentions of order and constriction are now only memories of what once held true. With no boundaries and no constrictions, the house is able to live for itself. The house and the land can now interact, for boundaries

do not exist and time moves backwards. The land around the house outstretches its welcome surrounds and swallows it as a cocoon. Now the land tends and takes care of its keeper who is reinventing itself and the architecture that was assigned to it. For the farmhouse will reinvent the architecture of her walls and tell us the yearning of her soul.

This house has taken me into her care to study and to listen. The pieces of her that lie before you are a conversation between her and myself. A conversation in which she allows me to tell her story to others; that abandonment has set buildings like herself free and they silently define, for those who listen, their own architecture.

Special Thanks

Joann & Russell Root: Owners of the abandoned Iowa farmhouse

Cameron Campbell: Photos





Architectural education

DEPARTMENT OF ARCHITECTURE
IOWA STATE UNIVERSITY

2002 Student Awards

Department of Architecture
Iowa State University

AIA Foundation Scholarships
Alyssa Bents \$1,250

AIA Iowa Scholarship
Jessie Bowman \$500

Alumni Scholarship
Adam Jonas \$1,000

BWBR Prize
Katherine Michaud \$2,000
Jeffrey Stafford \$200
Jacob Lester \$200
Jim Trower \$200
Christopher Osore \$200

Robert and Elizabeth Carlson Scholarship
Jorge Encarnacion \$1,000

Durrant Foundation Scholarship
Christopher Osore \$1,000

Michael J. Greenlee Architecture Scholarship
Jennifer Smith \$1,000

HLM Design Scholarship
Ryan Bakke \$1,000

**Henningson, Durham & Richardson
Architecture Award**
Michael Shald \$1,000

Masonry Institute of Iowa Awards
Justin Bishop \$500
Ted Kisner \$200

**Raymond W. & Evelyn J. McIlvain
Architecture Scholarship**
Lindsay Bresser \$1,000

OPN Architecture Scholarship
Katie Harms \$1,000

Pella Architectural Award
Katherine Michaud \$500
Noelle Mook \$500
Eryn Mitchell \$500
Jim Trower \$500

Jeffrey Pilling Architecture Scholarship
Seamus Kelly \$500

Rohrbach Carlson PC Scholarship
Martha Kelch \$1,000

Shirey Design Award
Jill Bills \$500

South Dakota AIA Scholarship
Justin Fries \$500

Spiros Mentzelopoulos Award
Claudia Rodriguez Book

St. Louis AIA Scholarship
Jamie Hempel \$1,500

**James H. and M. Suanne Stange
Architecture Award**
Joshua Davison \$1,000

Leonard Wolf Leadership Award
Jessie Bowman \$250

Book Awards

Technology
Shawn Coyle (undergraduate)
Kiyoul Lee (graduate)

Studies in Architecture & Culture
Peter Correll (undergraduate)
Zhe Hu (graduate)

Design Media
Peter Correll (undergraduate)
Jon Oosterhuis (graduate)

Practice
Michael Morman (undergraduate)

Alpha Rho Chi Medal
Jennifer Seivert

Allen Kimball Book Award
Rolando Selles

RDG Bussard Dikis Design Award
Catherine Hille

ARCC/KING Student Medal
Jennifer Walters

College Awards (previously
presented)

AIA Medal
Tami Schultz (undergraduate)
Michael Young (graduate)

AIA Certificate
Keith Thompson (undergraduate)
Victor Kolesnichenko (graduate)

Academic Advising Award
Howard Heemstra

Staff Award for Extraordinary Performance
Deb Hearn

Faculty Award for Extraordinary Performance
Jeff Balmer

Dean's Award for Extraordinary Performance
Michael Fries
Simon Kalweo
James Leach
Kristin Nelson
Aaron Persen



Une Exemplar Par Excellence

The American Institute of Architects (AIA) has selected five outstanding architects from across the nation to receive the 2003 Young Architects Award for demonstrative leadership in design and service to the profession of architecture in the early stages of their architectural careers. Iowa is fortunate to have one of them making his contributions within its borders. Paul Mankins, AIA, an associate principal with Herbert Lewis Kruse Blunck Architecture, (recipient of the AIA 2001 Firm Award) is most noted for having served as past president of AIA Iowa, past editor of Iowa Architect magazine, is also currently serving the role of adjunct professor of architectural design at Iowa State University. Mankins work has



Paul Mankins, AIA

been widely published in national and international design publications and has received 19 Honor or Merit Awards from various AIA components including a 2002 National Honor Award for Architecture for the Meredith Corporate Expansion and Interiors in Des Moines. Mr. Mankins currently leads the local effort in developing the design for the new Central Library for Des Moines in conjunction with David Chipperfield Architects of London, England. ■

Une Exemplar Par Excellence

The American Institute of Architects Iowa Chapter has selected Bill Dikis FAIA as the recipient of the Component Excellence Award in Government Affairs for Outstanding Individual Contribution. For over 20 years Dikis has been a prolific contributor and leader in governmental affairs for the AIA. Early in his career, Mr. Dikis was instrumental in rewriting the Iowa Architectural Practice Act and in developing scrutiny and opposition to the poorly conceived contracts proposed by the National Association of Attorney Generals. Most recently, Dikis' advocacy for the

Good Design IS Good Business

It is often stated, "good design means good business." Three Iowa projects set out to prove this notion. The second annual Iowa Commerce / AIA Iowa Awards, sponsored jointly by the American Institute of Architects, Iowa Chapter and the Iowa Commerce magazine (the Iowa Association of Business and Industry membership publication), honored notable collaborations between clients and architects that improve the bottom line. Projects



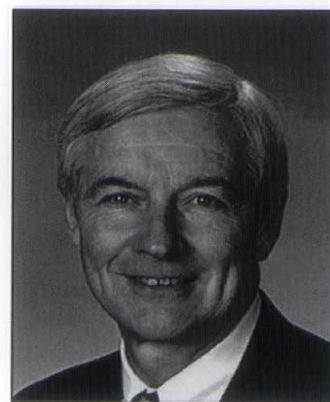
were chosen based on how market forces or business goals shaped the facility; the collaborative process and the relationship shared by the architect and their client during the design process; and the degree of success the design of the new facility contributed to achieving the desired business objectives.

This year's Honor Award recipient was Marakon Associates new office building in San Francisco by Herbert Lewis Kruse Blunck Architecture for a cost effective yet masterly creation of a workspace meant to attract and retain top employees for a fast growing management-consulting firm. The jury was impressed with the vibrant, attractive and innovative embodiment of a "community" and its carefully crafted work environment featuring spectacular views of the Bay area.

Receiving a Merit Award was the training and office complex for the Iowa Municipal Utilities Association in Ankeny, Iowa by RDG Bussard Dikis. This already widely acclaimed state-of-the-art facility maximizes light, energy and water efficiency while protecting the prairie grassland and wildlife in the adjoining marsh preserve.

A Merit Award was also given to the Flynn Ready-Mix Plant in Dubuque, Iowa designed by The Durrant Group, Inc. The new facility incorporates concrete and galvanized metal in a creative and refined manner for a building type not often recognized for outstanding design. The new plant minimizes its environmental impact yet offers a more comfortable and efficient work setting for its employees all while projecting a positive and affable image to the neighboring community. ■

architecture profession continues with the State's Department of General Services attempts to adopt a new Agreement for Architectural Services which include sections troublesome to liability insurers and conventional relationships with consultants. Mr. Dikis dedication and vigilance is widely appreciated due to the reduction of countless hours and accumulating fees that would have been spent on needless negotiations associated with misguided legal and governmental documents. ■



Bill Dikis, FAIA

Iowa

A LIST OF CONTRACTORS AND MANUFACTURERS FOR MAJOR
BUILDING ELEMENTS IN FEATURED PROJECTS.

Selected Projects

Ola Babcock Miller Building Restoration

General Contractor: Neumann Brothers and Taylor Ball;
Electrical Contractor: Brown Brothers; **Electrical Engineer:** Alvine and Associates; **Mechanical Engineer:** Alvine and Associates; **Structural Engineer:** Charles Saul Engineering; **Landscape Architect:** Herbert Lewis Kruse Blunck; **Photographer:** Farshid Assasi/Assasi Productions; **Masonry (Limestone):** Becker and Becker Stone Company; **Masonry Contractor:** Forrest & Associates; **Historic Lighting Fixtures:** Michael's Lighting; **Windows:** Marvin Windows

Jeannette Robbins Meeting Place

General Contractor: Kelly S. Batcheller; **Photographer:** Neil Angiszno/Kelly S. Batcheller; **Concrete Contractor:** Downing Construction Co.; **Carpenter:** Bob Mason; **Custom Steel Supports:** Bratton Steel Co.; **Lumber:** Berverly Lumber Co.; **Asphalt Shingles:** Heritage 30

Liberty Memorial Restoration

General Contractor: J. E. Dunn Construction Co.; **Electrical Contractor:** Broadway Electrical Construction Inc.; **Stone Restoration Contractor:** Mid-Co Contractors; **Civil Engineer:** SK Design Group; **Electrical Engineer:** W. L. Cassell & Associates; **Mechanical Engineer:** Bob D. Campbell & Company; **Lighting Consultant:** Yarnell Associates; **Photographer:** Paul Kivett and Michael Spillers; **Exterior Cladding:** Evans Limestone; **Deck Pavers:** Evans Limestone and Wausau Tile; **Floor Coverings:** Armstrong and Forbo; **HVAC:** Temtrol, McQuay, Marley; **Lights:** Xenotech/Strong, Kim Lighting, Serner; **Light Fixture Restoration:** St. Louis Antique Lighting; **Doors:** Steelcraft, Algoma, Ellison Bronze; **Glazing:** Kokomo Opalescent Glass; **Windows:** Crittal

ImageNet

General Contractor: Lingo Construction Services; **Electrical Engineer:** Jamars & Long; **Mechanical Engineer:** Jamars & Long; **Structural Engineer:** Lingo Construction Services; **Interior Designer:** Elliott + Associates; **Photographer:** Robert Shimer, Hedrich Blessing; **Floorcovering (carpet):** Atlas; **Floorcovering (Hard/resilient):** Armstrong; **Wallcovering (Paint):** Sherwin Williams; **Windows/Glass:** Kawneer; **Lighting Fixtures:** Canlet, Lithonia; **Signage:** Design: Elliott + Associates; **Signage:** Fabrication: J & B Graphics

Will Rogers World Airport Snow Barn

General Contractor: Westfahl Construction Co.; **Mechanical Engineer:** Allen Consulting, Inc.; **Structural Engineer:** Grossman & Keith; **Landscape Architect:** Elliott + Associates; **Interior Designer:** Elliott + Associates; **Photographer:** Robert Shimer, Hedrich Blessing

Durham Western Heritage Museum

General Contractor: Kiewit Construction Company; **Electrical Engineer:** Electric Company of Omaha; **Mechanical Engineer:** HDR Architecture; **Structural Engineer:** HDR Architecture; **Landscape Architect:** HDR Architecture; **Interior Designer:** HDR Architecture; **Photographer:** Tom Kessler Photography; **Lighting:** Halo; **Carpet:** Lees; **Custom Display Cases:** Heartland Scenic; **Glass:** Husker Glass; **Hardware:** Johnson Hardware; **Paint:** Sherwin Williams; **AV Systems:** CP Media/Midwest Sound & Lighting; **Sculpture:** John Lajba

American Bank Drive-in and Café/Courtyard

General Contractor: Smith & Pickel Construction; **Civil Engineer:** Allen Consulting, Inc.; **Mechanical Engineer:** Allen Consulting, Inc.; **Structural Engineer:** Eudaley Engineers; **Landscape Architect:** Brian Dougherty; **Interior Designer:** Elliott + Associates; **Photographer:** Robert Shimer, Hedrich Blessing

Corum Residence

General Contractor: Legacy Builders; **Structural Consultant:** Charles Saul Engineering; **Landscape Architect:** Herbert Lewis Kruse Blunck; **Interior Designer:** Herbert Lewis Kruse Blunck; **Photographer:** Shimer @ Hedrich Blessing; **Plumbing Fixtures:** Kohler, Delta; **Lighting Fixtures:** Flos, Lightolier; **Appliances:** GE, Bosch; **Translucent Panes:** Lumasite; **Metal Siding:** Galvalume

Renaissance Granite, Marble, & Tile

General Contractor: Venter Spooner; **Civil Engineer:** Bishop Engineering; **Structural Engineer:** Korpela Engineering; **Landscape Architect:** Herbert Lewis Kruse Blunck; **Interior Designer:** Herbert Lewis Kruse Blunck; **Photographer:** Farshid Assasi/Assasi Productions; **Interior and Exterior Glazing:** Two Rivers Glass and Door; **Steel Fabrication:** Parker Welding & Fabrication; **Interior Finishes:** Olympic Wall Systems; **Steel and Pre-Cast Erection:** Northwest Steel and Erection; **Granite:** Renaissance Marble, Granite, & Tile; **Door Hardware:** Walsh Door and Hardware

Herndon Hall Renovation

General Contractor: Pacesetter Co., Inc.; **Electrical Contractor:** Tesdell Electric; **Mechanical Contractor:** Wykoff Industries; **Structural Engineer:** Charles Saul Engineering; **Landscape Architect:** Herbert Lewis Kruse Blunck Architecture; **Interior Designer:** Herbert Lewis Kruse Blunck Architecture; **Photographer:** Peter Aaron/Esto Photographics; **Millwork:** Lisac Millwork; **Hardwood Floors:** Glascock Hardwood Floor Service; **Masonry:** Caligiuri Construction; **Granite/Slab Installation:** Dennis Morgan Stoneworks; **Stained Glass Restoration:** The Stained Glass Store; **Windows:** Marvin Windows/Moehl Millwork; **Fixtures and Fittings:** Harrington Brass/City Design; **Historic Lighting:** David Meshek Antique Lighting

Coppola Enterprises Office Remodel

General Contractor: The Hansen Company; Electrical Contractor: Tri-City Electric Company; Mechanical Contractor: Wykoff Heating and Cooling; Landscape Architect: Herbert Lewis Kruse Blunck Architecture; Interior Designer: Herbert Lewis Kruse Blunck Architecture; Photographer: Shimer@Hedrich Blessing; Millwork: Lisac Millwork; Glass Panels: Two Rivers Glass and Door, Inc.; Custom Doors: Walsh Doors

Wheeler Consolidated Office Remodel

General Contractor: Dean Paulsen & Sons; Interior Designer: Herbert Lewis Kruse Blunck Architecture; Photographer: Cameron Campbell; Please call Jon Sloan at Herbert Lewis Kruse Blunck Architecture for more information.

Bear Properties

General Contractor: G & S inc; Interior Designer: Tom Allisma Productions

Variety Club ChildServe Center

General Contractor: Story Construction; Electrical Contractor: Nikkel & Associates; Mechanical Contractor: Procter Mechanical; Civil Engineer: Milles Surveying, Inc.; Electrical Engineer: Nikkel & Associates; Mechanical Engineer: Grauer Consulting PC; Structural Engineer: James W. Wilson, P.E.; Photographer: Timothy Hursley; Pre-Engineered Metal Building: Butler Manufacturing; HVAC: Armstrong Air; Membrane Roof: Firestone; Storefront: Vista Wall; Windows: Eagle; Doors: Curries; Light Fixtures: Shaper; Hardware: Sergeant

A-WKS Office & Studio

General Contractor: Venter Spooner Construction; Electrical Contractor: ABC Electric, Inc.; Mechanical Contractor: Wolin & Associates; Electrical Engineer: Pulley & Associates; Mechanical Engineer: Pulley & Associates; Structural Engineer: Charles Saul Engineering; Interior Designer: Architects Wells Kastner Schipper; Photographer: Timothy Hursley; Millwork: Tony Lisac; Storefront: EFCO; Furniture: Steelcase, Herman Miller, Knoll, Richard Schultz; Glass and Glazing: Two Rivers Glass; Custom Metals: The Iron Works; Electrical Fixtures: Fine Lien and Flos

the Molengracht

General Contractor: The Hansen Co.; Electrical Contractor: DeVries Electric; Civil Engineer: Garden and Assoc.; Mechanical Engineer: Kent Mosheu; Structural Engineer: Charles Saul Engineering; Landscape Architect: RDG Crose Gardner Shukert; Design/Build: The Hansen Company; Photographer: Farshid Assassi/Assassi Productions; Masonry: SMI

West Campus-Des Moines Area Community College

General Contractor: Taylor Ball; Electrical Contractor: DeVries Electric; Mechanical Contractor: L.A. Fulton; Electrical Engineer: KJWW Engineering; Mechanical Engineer: KJWW Engineering; Structural Engineer: Dennis & Magnani Structural Consultants; Landscape Architect: RDG Crose Gardner Shukert; Interior Designer: RDG Bussard Dikis; Energy Design Consultant: The Weidt Group; Photographer: Farshid Assassi/Assassi Productions; Glass: AFGD; Curtain Wall System: SOTA Glazing Inc.; Metal Roof: Berridge; Metal Skin: Sobotec Limited; Floor Tile: Mannington

Commercial; Carpet: Interface, Inc.; Folding Partitions (Coiling Door): McKeon (Folding Partitions): Wilson Doors Co.; Doors: CECO; Paint: Iowa Paint; Heat Pumps: Bell and Gosset (ITT Industries); Other Major HVAC: AHU: York; Controls: Siemens; Lighting Fixtures: Corelite, Metalux, Portfolio, SPI, Halo, Phoenix, Surelite, Kim, Louis Paulsen; Lighting Control: Lutron

Kenyon Building

General Contractor: Graham Construction Company; Electrical Contractor: Wolin & Associates; Mechanical Contractor: Wolin Electric, L.C.; Structural Engineer: Charles Saul Engineering; Interior Designer: RDG Bussard Dikis; Photographer: Farshid Assassi/Assassi Productions; Exterior Cladding: Exterior Sheet Metal, Inc.; Windows: PITTCO; Storefront: PITTCO; Skylights: WASCO Products, Inc.; Metal Fabrications: MAJONA; Roofing: Stevens EP Roofing System; Lighting: TECH, DAC, LIGHTOLIER

Higdon Administration Building Rehabilitation

General Contractor: Graceland University; Electrical Contractor: Norwood Electric; Mechanical Contractor: L.A. Fulton & Sons; Electrical Engineer: Alvine and Associates; Mechanical Engineer: Alvine and Associates; Structural Engineer: Shuck Britson; Landscape Architect: RDG Crose Gardner Shukert; Interior Designer: RDG Bussard Dikis; Photographer: Farshid Assassi/Assassi Productions; Windows: Marvin Windows; Repointing: Forrest & Associates; Slate: VIS Limited; Doors: Doors Inc.; Millwork: RCS Millwork, Inc.; Elevators: Schindler Elevator Corporation

Liberty Memorial Restoration

General Contractor: J. E. Dunn Construction Co.; Electrical Contractor: Broadway Electrical Construction Inc.; Stone Restoration Contractor: Mid-Co Contractors; Civil Engineer: SK Design Group; Electrical Engineer: W.L. Cassell & Associates; Mechanical Engineer: W.L. Cassell & Associates; Structural Engineer: Bob D. Campbell & Company; Lighting Consultant: Yarnell Associates; Photographer: Paul Kivett and Michael Spillers; Exterior Cladding: Evans Limestone; Deck Pavers: Evans Limestone and Wausau Tile; Floor Coverings: Armstrong and Forbo; HVAC: Temtrol, McQuay, Marley; Lights: Xenotech/Strong, Kim Lighting, Sterner; Light Fixture Restoration: St. Louis Antique Lighting; Doors: Steelcraft, Algoma, Ellison Bronze; Glazing: Kokomo Opalescent Glass; Windows: Crittal

Consolidated Fire District No. 2, Station No. 2 and Headquarters

General Contractor: Excel Constructors Inc.; Electrical Contractor: Schultz Brothers; Civil Engineer: Walter P. Moore; Electrical Engineer: Turner Consultants; Mechanical Engineer: Turner Consultants; Structural Engineer: Walter P. Moore; Landscape Architect: Shaughnessy Fickel and Scott Architects; Photographer: Douglas Kahn; Masonry: Endicott Clay Products Co.; Cast Stone: Art Stone; Metal Roof: Berridge



Superior service... practical solutions



Des Moines 515 270-6542
www.gslnetwork.com

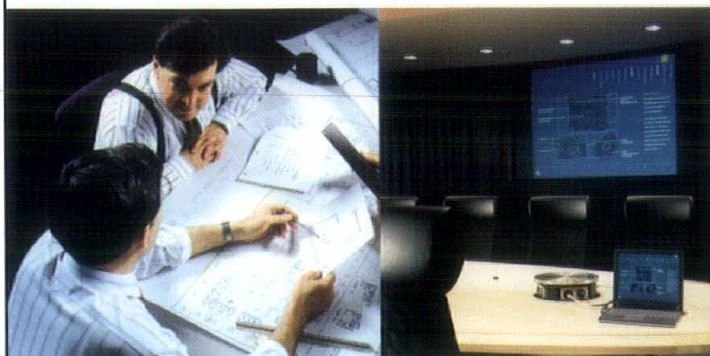


**Innovative
graphic
design
solutions...
corporate
identity
signage
environmental
graphics
website
design**

<http://www.mauck.com>
email kmauck@mauck.com

MAUCK + ASSOCIATES

**LET'S WORK TOGETHER
TO DESIGN THE MOST
EFFICIENT USE OF SPACE.**



To design the most perfect audiovisual environments, it's important to understand everything from lighting to wall coverings to which way to face the chairs.

At AVI Systems we've designed some of the most perfect boardrooms, conference centers, training rooms, classrooms, council chambers and public assembly areas command and control centers and auditoriums since 1974.

To preview some of our work, please visit our Web site at www.avisystems.com

To arrange to meet with a member of our Design Team, please call us at 515-254-9850.

**Register to win a
DVD Player**

**VISIT OUR
WEB SITE**

www.avisystems.com



Focused on Your Success

2867 104th St., Urbandale, IA 50322
PH: (515) 254-9850 FAX: (515) 254-9981



AVI Systems is a registered
AIA Continuing Education Provider

MINNEAPOLIS / OMAHA / DES MOINES / KANSAS CITY / BISMARCK
CONSULTATION / DESIGN / FABRICATION / INSTALLATION / CONTINUING SERVICE

RDG Bussard Dikis

Congratulations on your Honor Award for the
Kenyon Building. Together we are...

Building what's important.™



Advertiser

Page

Allender Butzke Engineers Inc.	36
Architectural Wall Systems Co.	4
AVI Systems	34
Charles Saul Engineering.....	36
Cobb Strecker Dunphy & Zimmermann, Inc.....	C3
Concrete Products Co. of Sioux City	3
Encore Properties	36
Geotechnical Services, Inc.	34
Graham Construction	35
Inner Flora	2
Iowa Prestressed Concrete	C4
Masonry Institute of Iowa	1
Mauck+Associates	34
MidAmerican Energy.....	6
RCS Systems/Radio Communications	35
Terracon Environmental Inc.....	35
United Brick & Tile	C2
Wells Concrete Products Company	C3

INTEGRATE

To make into a whole --To unite --To join with something else

RCSystems/Radio Communications

specializes in communication integration.
We make a business run as a whole entity.
We connect all the parts.

- Installation of efficient phone systems
- Quick & Secure Access Control
- CCTV Perimeter/Interior Video Surveillance
- Alarm Systems for added protection and safety
- Programmable electronics information signage
- Networking (wire & wireless)

**We connect it all...we've been doing it for
32 years. That's our business.
We're the Integration Experts.**

Bids. Specs. Quotes. Call us. Today.



RCSYSTEMS
Radio Communications
Company

Cedar Rapids
(800) 833-3550

Waterloo
(800) 728-2929

Terracon

Delivering Success for Clients and Employees

Consulting Engineers and Scientists Providing:

- Geotechnical Engineering
- Environmental Services
- Wetlands Consulting
- Asbestos Services
- Industrial Hygiene Services
- Construction Materials Engineering
- Facilities Management
- Pavement and Asset Management

Proud member of the Iowa Engineering Community
since 1965 with offices in Des Moines, Cedar Rapids,
Cedar Falls, Iowa City, Mason City, Bettendorf,
Storm Lake and Omaha.

www.terracon.com

Imagine your
ideal office space.

...a perfect blend of
turn-of-the-century
character and modern
convenience.

...2,800 square feet
on two floors with a
mezzanine open to
both levels.

...hardwood floors on
the upper level, skylights,
and a great view
of the state capitol.

...parking spaces
just outside the
rear entrance.

...situated at 510 Third Street,
one block from the
Des Moines Civic Center
and Nollen Plaza, two blocks
from the Iowa Events Center,
and one block from the
Principal River Walk.

We're looking for people who share our appreciation for great old buildings and our passion for innovative renovation. We will renovate this building to suit the needs of your business. If you want space that is far from ordinary, or want to see other Encore Properties renovation projects, contact Kent Mauck at 515 243-6010.

encore!

Solid Relationships. Solid Solutions.



**ALLENDER BUTZKE
ENGINEERS INC.**

Geotechnical • Environmental • Construction Q.C.

3660 109th Street • Urbandale, Iowa 50322 • (515) 252-1885 • Fax (515) 252-1888

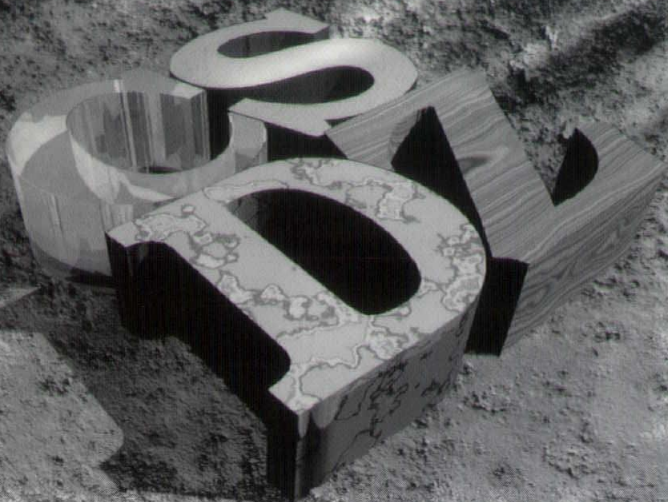
CHARLES SAUL ENGINEERING

STRUCTURAL ENGINEERS
with your needs in mind

4308 University Avenue
Des Moines, IA 50311
P-515-279-3900
F-515-279-5233
www.csengr.com

BECAUSE SUBSTANCE MATTERS

PROFESSIONAL LIABILITY INSURANCE



For over 30 years, professional liability insurance through CSDZ has sheltered the design and construction communities from the risk of loss.

With knowledge, foresight, staff expertise and programs backed by CNA and Victor O. Schinnerer & Company, Inc., you can put your mind at ease. We go beyond simply selling policies. We provide comprehensive blueprints and materials to help you manage your risk.

Let CSDZ design a coverage plan, with substance, for your firm.

CNA programs are underwritten by one or more of the CNA companies. CNA is a registered service mark and trade name of CNA Financial Corporation.



www.csdz.com

Cobb Strecker Dunphy & Zimmermann, Inc.
150 South Fifth Street, Suite 2000
Minneapolis, MN 55402
(612) 349-2400 • Toll Free (800) 488-8641

4726 East Towne Boulevard, Suite 230
Madison, WI 53704
(608) 242-2550 • Toll Free (800) 996-2550

5 Triad Center, Suite 340
Salt Lake City, UT 84180
(801) 537-7467

P.O. Box 4
Freeport, IL 61032
(815) 235-4997 • Toll Free (877) 235-4997

Victor O.
Schinnerer
& Company, Inc.

CNA PRO

WELLS CONCRETE PRODUCTS

precast | prestressed concrete

*forming
your future*



Building your structure may be short term, but the relationships we construct last forever. At Wells Concrete, we partner with our clients from the beginning of the design process through the final construction details to ensure every project's success.

Give us a call today to learn how precast prestressed concrete can form your future.

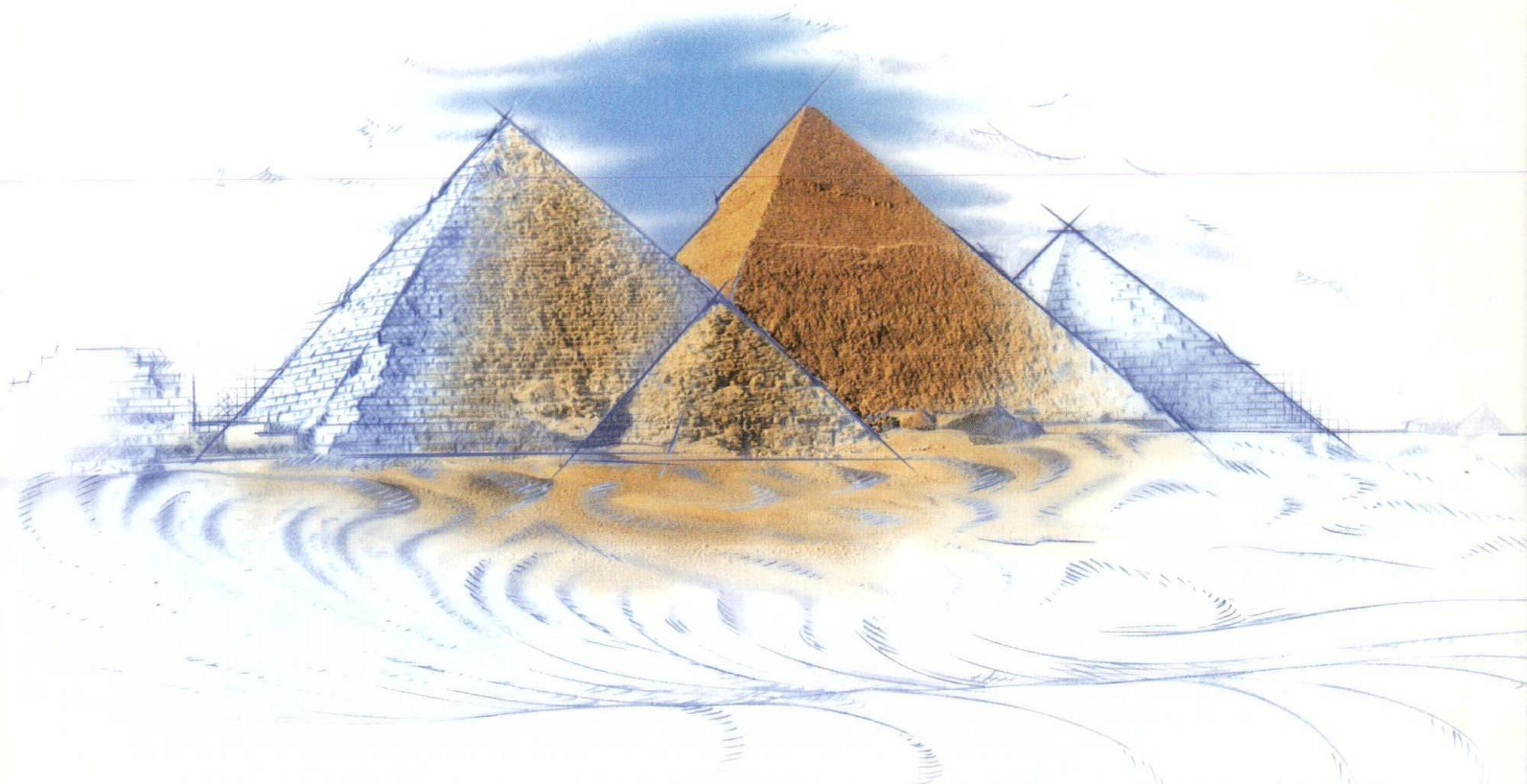
WCP
Wells Concrete Products

Wells, MN

800.658.7049

www.wellsconcrete.com

PROOF THAT WHEN PEOPLE WORK TOGETHER,
ANYTHING IS POSSIBLE.



It may be an ancient philosophy, but it is just as relevant in today's precast/prestressed concrete structures. The more resources that are behind your project, the greater the possibilities. Which is why we put the entire **Cretex family of companies** behind your project. We give you more resources and more value than any other precast/prestressed concrete company in the Midwest. With the strength of four of the Midwest's premier companies, plus the speed, durability and versatility of precast/prestressed concrete, anything is possible. **EXPAND YOUR POSSIBILITIES.**

A FAMILY OF CRETEX COMPANIES

IPC

DES MOINES, IA
IOWACONCRETE.COM
800.826.0464

JWPETERS
and sons

BURLINGTON, WI
JWPETERS.COM
800.877.9040

RAIDER

WEST BURLINGTON, IA
RAIDERPRECAST.COM
800.826.8159

PBM

ROCHELLE, IL
PBMCONCRETE.COM
800.798.0908



The American Institute of Architects
Iowa Chapter
1000 Walnut Street, Suite 101
Des Moines, IA 50309

CHANGE SERVICE REQUESTED

*****AUTOMIXED ADC 500
X 0110 71
218

THE AMER INST ARCH LIBRARY
1735 NEW YORK AVE NW
WASHINGTON DC 20006-5209



PRST STD
U.S. POSTAGE
PAID
Permit No. 762
Des Moines, IA