

AIA INDIANAPOLIS 2003 YEAR IN REVIEW

DEAR READER,

The Indianapolis chapter of the American Institute of Architects is pleased to present the fourth issue of Year in Review. This publication illustrates the chapter's activities, programs, and achievements over the past year and strives to improve the public's awareness of the profession of architecture. Our membership is comprised of architects and affiliates from the central, nine-county region of Indiana. We have gained momentum this year with membership growth, increased member involvement, quality programs, and continued corporate underwriting.

This year's programs developed the theme "Complimentary Contradictions" — explorations of the complex nature of contrasting issues that coalesce into a unified work of architecture. This investigation allowed members and sponsors the opportunity to learn from architects within our own community as well as from architectural speakers from Vancouver, Atlanta, and Chicago. Several program events benefited from joint presentations with Ball State University, the Indianapolis chapter of CSI, and the Builders Association of Greater Indianapolis.

The chapter's board continued to build upon the foundation laid by previous boards, including advancement of the 2002 Communications Plan, which focuses on the need to deliver information about our chapter to the public and to the membership. The chapter website (www.aiaindy.org) and media outreach efforts initiated by Hetrick Communications are accomplishing our goals. The board also continued its community involvement through programs such as the High School Design Competition and scholarships to architecture students.

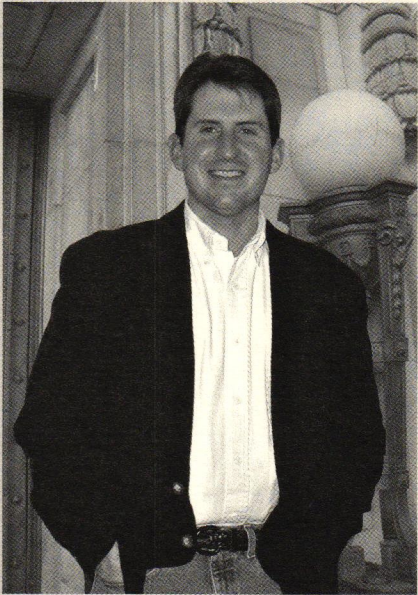
The year ended with an exceptional Excellence in Architecture awards program. The jury, which was comprised of three recognized architects from Atlanta, Georgia, selected nine projects for recognition. The awards ceremony took place at the Indiana Roof Ballroom, with introductory remarks from the Honorable Mayor Bart Peterson.

Finally, I would like to thank all chapter members for the opportunity to serve as president for 2003. I would also like to acknowledge the time and energy sacrificed by the members of our board. Without their hard work, the success of this year's programs and events would not have been possible. I would also be remiss if I did not mention the board's appreciation of this year's sponsors, whose support of the chapter's endeavors allowed us to truly celebrate the spirit of architecture.

Sincerely,

JACKSON FABER, AIA

Jackson Richard Faber, AIA
President, AIA Indianapolis,
A chapter of the American Institute of Architects



THE AMERICAN INSTITUTE OF ARCHITECTS IS THE VOICE OF THE ARCHITECTURAL PROFESSION DEDICATED TO:

- SERVING ITS MEMBERS
- ADVANCING THEIR VALUE
- IMPROVING THE QUALITY OF THE BUILT ENVIRONMENT.



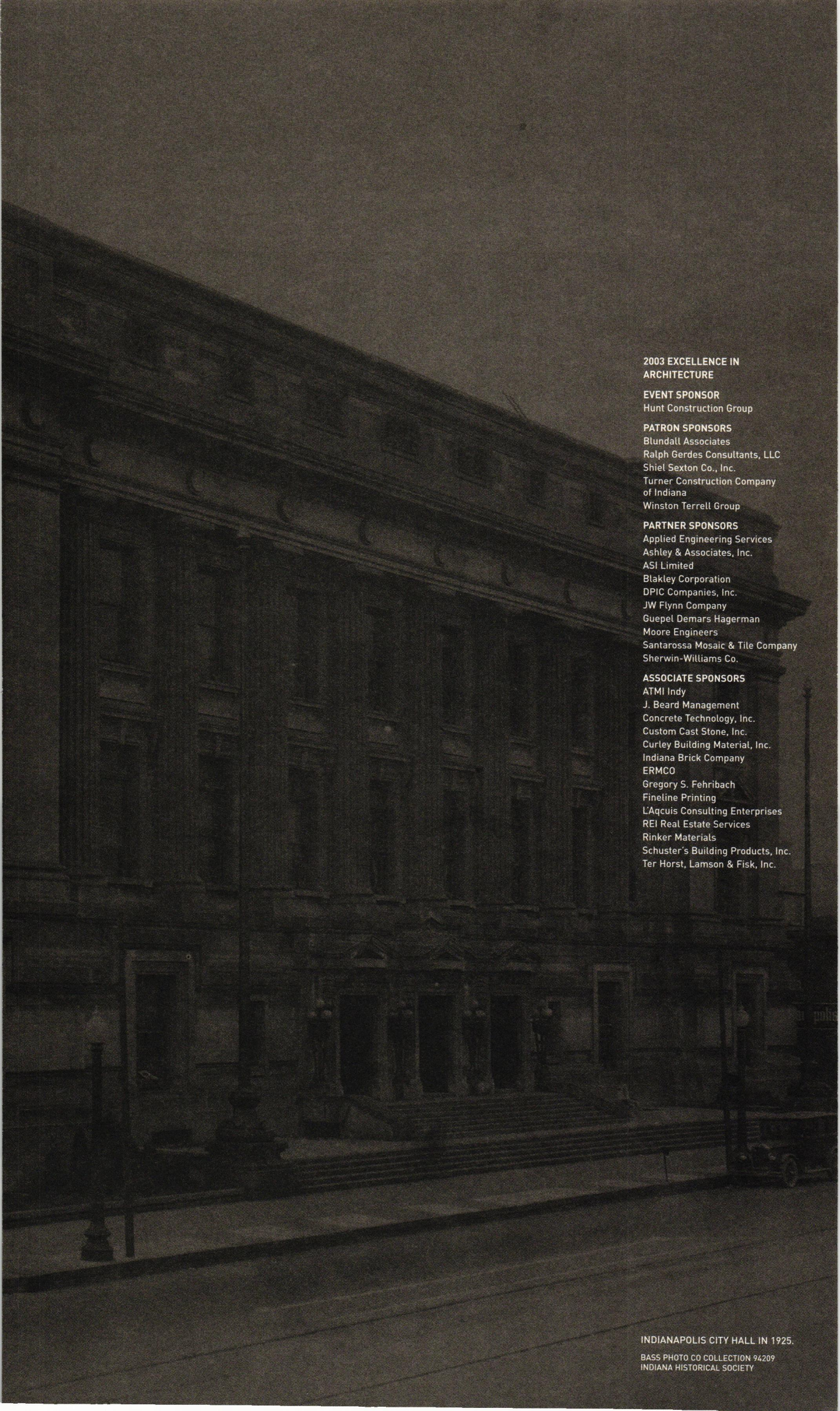
2003 EXCELLENCE IN ARCHITECTURE AWARDS

THE BIENNIAL PROGRAM "EXCELLENCE IN ARCHITECTURE" has been recognizing outstanding architectural design by local architects since 1981. For the 2003 awards, projects completed between January 1, 2000 and October 10, 2003—located anywhere in the world—were eligible for consideration. Buildings are judged on national standards by a jury of architects who have been recognized for their contributions to the field. This year's selection process took place in late October in Atlanta, Georgia. Jury members were: Merrill Elam, AIA, principal with Mack Scogin Merrill Elam Architects; Thomas Ventulett, FAIA, chairman of the board of TVS International (winner of the 2002 AIA Firm of the Year Award); and W. Jude LeBlanc, AIA, an educator at Georgia Institute of Technology. After seven hours of deliberation, the jury selected 10 projects worthy of recognition from among the 44 projects entered in the competition.

R. Randall Schumacher, AIA, chair of this year's Excellence in Architecture, organized a gala evening to celebrate the design awards. On November 20, 160 people gathered at the Indiana Roof Ballroom to enjoy live music by Cathy Morris, an excellent dinner, and a program delivered by former NBC newscaster Phil Bremen. Mayor Bart Peterson delivered the keynote address and remarked that architects are a courageous lot, knowing their works stand in the public light for a very long time. Special thanks go to the event sponsor, the Hunt Construction Group, and the large committee of volunteers working behind the scenes.

THE 2003 PATRON AWARD, which recognizes individuals who have made a significant contribution to architecture in Central Indiana, was awarded to John J. Kish, a person who has held many instrumental roles in the development of Indianapolis. He was commissioner of the state's department of administration during construction of the Indiana Government Center and the executive director of the White River State Park Development Commission from 1994 to 1997. Representative of a true patron of architecture, Kish has successfully balanced competing requirements of regulatory agencies, funding sources, and design aspirations to keep teams focused on what is best for the project and the community while ensuring excellence in design. Kish is currently project director for the new Midfield Terminal at Indianapolis International Airport.

THE SILVER AWARD recognizes buildings 25 years of age or older that have made a significant contribution to the architectural scene in Central Indiana. The 2003 award was given to Indianapolis' first city hall, a monument of civic pride completed in December 1910. Designed by the prominent architectural firm Rubush and Hunter, the building is a fine example of the Neoclassical style, popular for public structures of the early 20th century. After city offices moved to the City/County Building in the early 1960s, the Indiana State Museum found a home in this building from 1966 until 2002. Currently the downtown branch of the public library is temporarily located here, scheduled to return to Central Library when its expansion is completed in 2006. While the fate of the old city hall remains uncertain, AIA Indianapolis hopes that the building will find another important function and will remain a key city landmark.



**2003 EXCELLENCE IN
ARCHITECTURE**

EVENT SPONSOR

Hunt Construction Group

PATRON SPONSORS

Blundall Associates
Ralph Gerdes Consultants, LLC
Shiel Sexton Co., Inc.
Turner Construction Company
of Indiana
Winston Terrell Group

PARTNER SPONSORS

Applied Engineering Services
Ashley & Associates, Inc.
ASI Limited
Blakley Corporation
DPIC Companies, Inc.
JW Flynn Company
Guepel Demars Hagerman
Moore Engineers
Santarossa Mosaic & Tile Company
Sherwin-Williams Co.

ASSOCIATE SPONSORS

ATMI Indy
J. Beard Management
Concrete Technology, Inc.
Custom Cast Stone, Inc.
Curley Building Material, Inc.
Indiana Brick Company
ERMCO
Gregory S. Fehribach
Fineline Printing
L'Acquis Consulting Enterprises
REI Real Estate Services
Rinker Materials
Schuster's Building Products, Inc.
Ter Horst, Lamson & Fisk, Inc.

INDIANAPOLIS CITY HALL IN 1925.

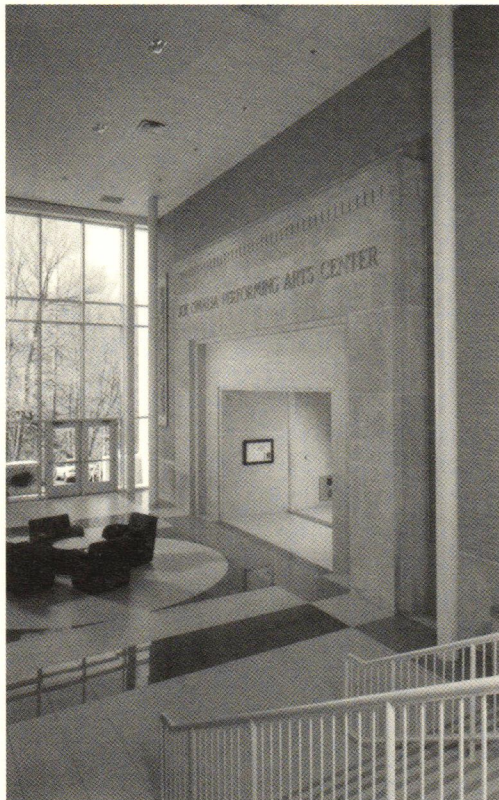
BASS PHOTO CO COLLECTION 94209
INDIANA HISTORICAL SOCIETY

CATHEDRAL HIGH SCHOOL STUDENT LIFE CENTER

5225 E. 56TH STREET, INDIANAPOLIS

CSO, INC.

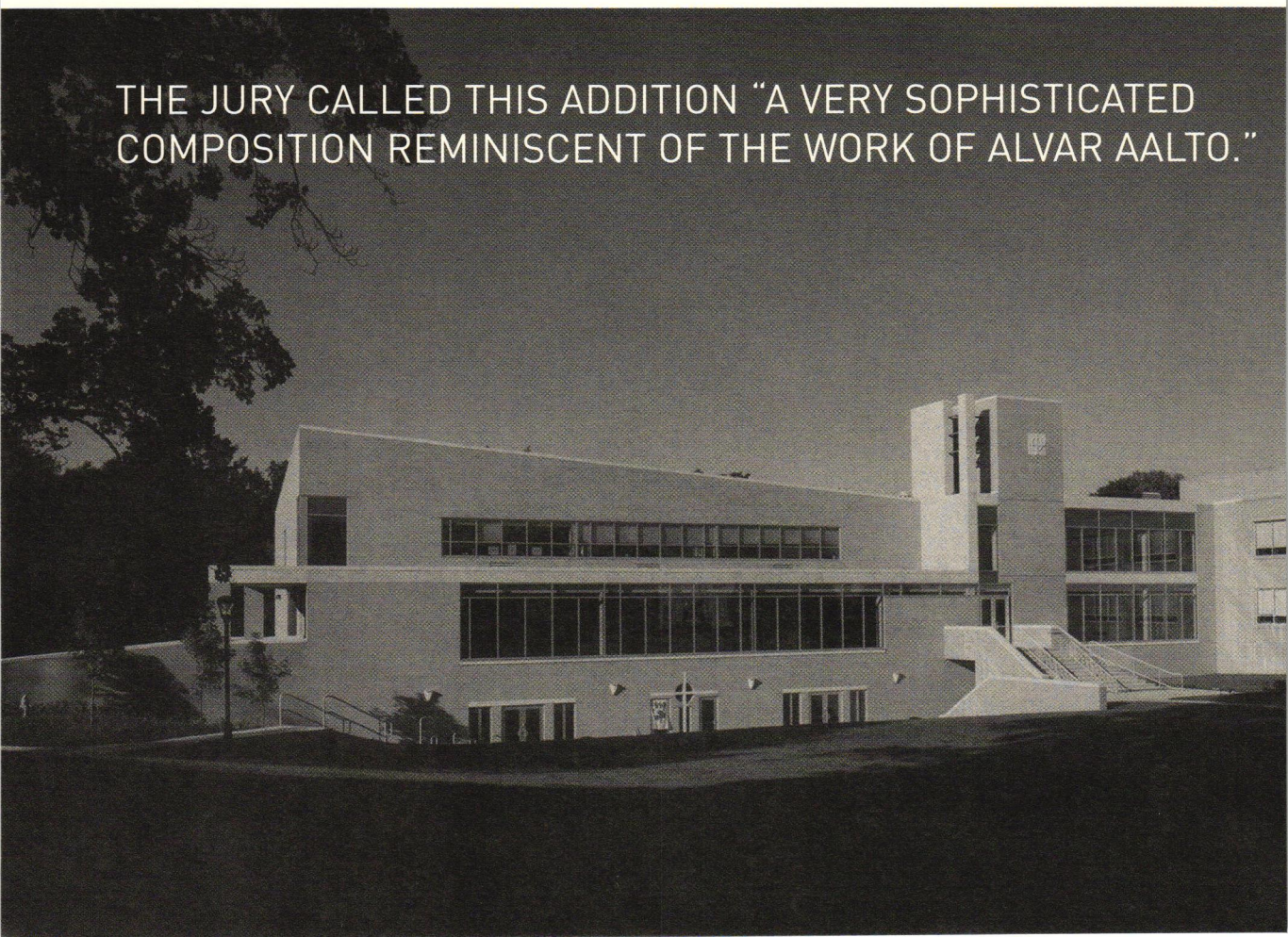
This addition to Cathedral High School created nine specialized classrooms, a large media center, and a commons area for students to congregate. Located at the south end of the school's campus and attached to O'Malia Auditorium, the new building's siting between Kelly Hall on the west and Loretta Hall on the east enabled the development of a quadrangle.



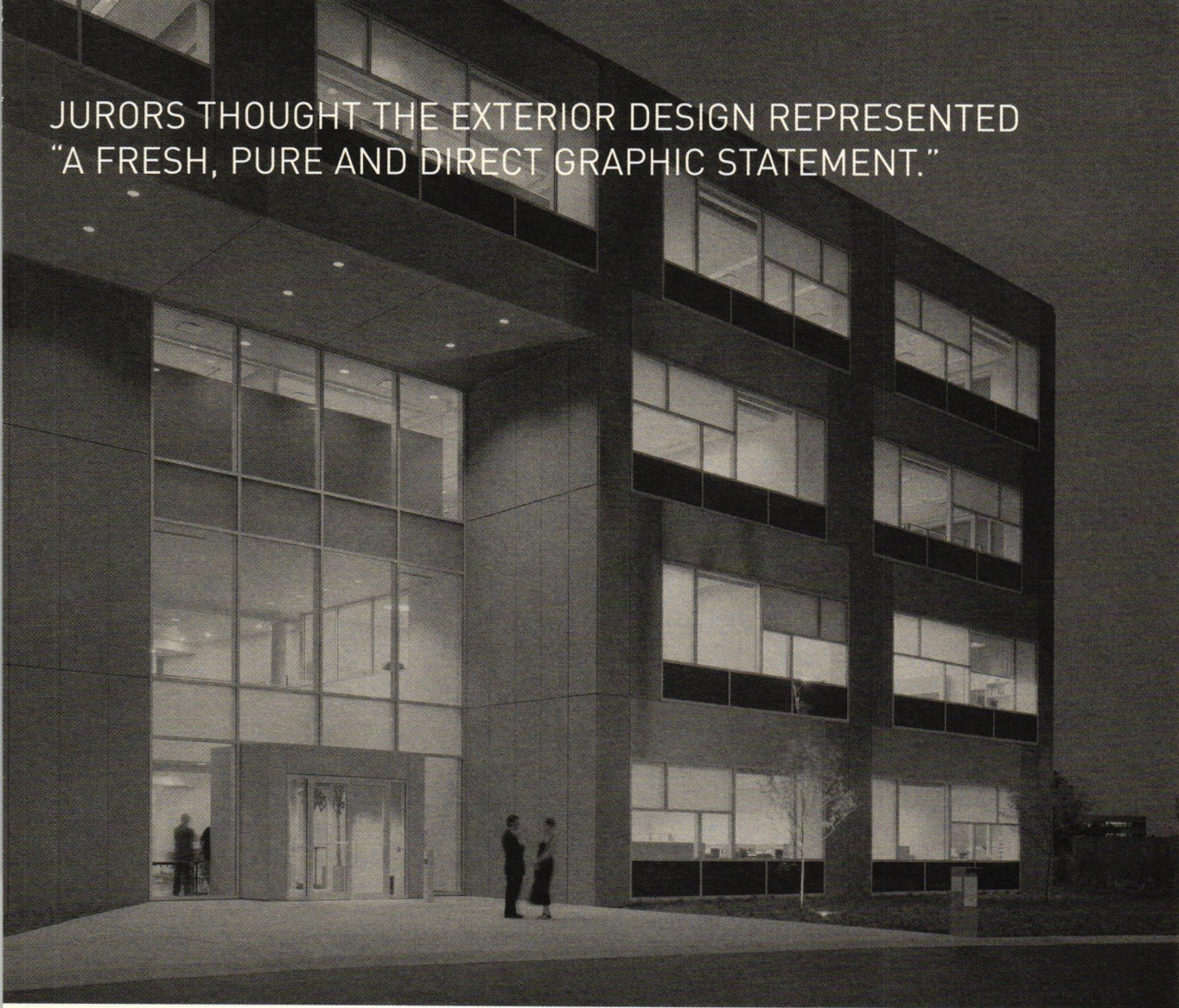
The exterior materials and colors of the new addition closely match those of the original high school, built in 1962 of yellow brick with limestone trim. The elegant bell tower and the monumental stairway to the main entrance are the focal points of the main (north) façade. To the west of the bell tower, a glass curtain wall was used to create a visual transparency at the new gathering area and entrance to O'Malia Auditorium. To the east of the tower, the academic portion of the addition is stepped back at its upper level, which soars on a diagonal line to the west façade.

One measure of the success of the student life center is the extensive use of the commons, located at the lower level. The architects designed a terraced area as an outdoor extension, allowing students to study, relax, or gather outside after school on the brick terrace or the grassy levels that rise from it.

THE JURY CALLED THIS ADDITION "A VERY SOPHISTICATED COMPOSITION REMINISCENT OF THE WORK OF ALVAR AALTO."



JURORS THOUGHT THE EXTERIOR DESIGN REPRESENTED
"A FRESH, PURE AND DIRECT GRAPHIC STATEMENT."



IRWIN MORTGAGE CORPORATE HEADQUARTERS

NEAR I-69 AND IO6TH STREET, FISHERS

CARLOS JIMENEZ STUDIO WITH CSO, INC.

In the world of corporate office parks sited near interstate highways, this four-story office building stands out for its unique exterior treatment. Varying from the usual expression of the underlying structural grid, the exterior's bays appear to be staggered at each floor level. The pattern of windows and apron panels alternates between bays, creating further interest. Jurors thought the exterior design represented "a fresh, pure and direct graphic statement." CSO teamed with architect Carlos Jimenez of Houston, Texas, for this project.

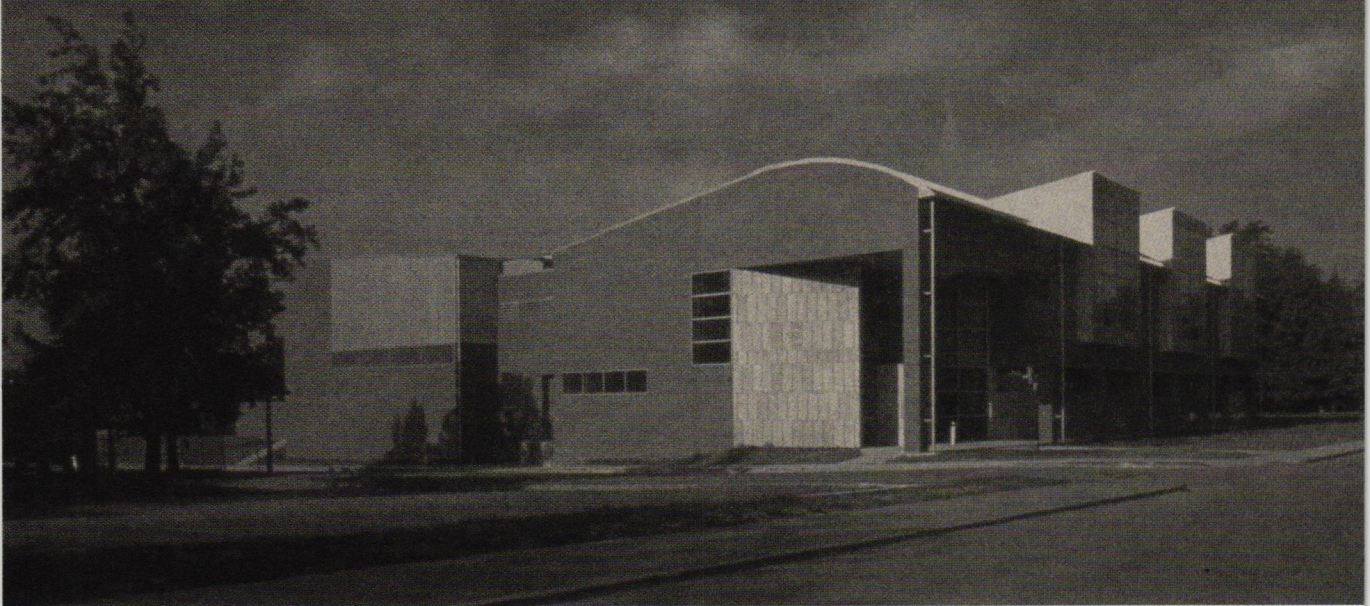
With the building sited in the middle of its eight-acre property to create dual parking zones, there are two focal entrances to the main lobby. Both entries are located within a three-story recessed area, trapezoidal in plan, which leads to the central core.

Like most buildings of its type, an open plan layout allows for an interchangeable placement of workstations along the perimeter of each floor. The abundant natural light expands the limits of a tightly organized open office system. A variety of textures and colors and architect-designed furniture by Charles Eames and Mies van der Rohe helps animate and differentiate neutral volumes. Jurors complimented the "out-standing attention to detail on the interior."



H
HONOR

"THE THIN, TAUT SKIN OF THIS BUILDING IS SIMPLE IN ITS
EXPRESSION AND QUITE DELICATE IN ITS DETAILING."



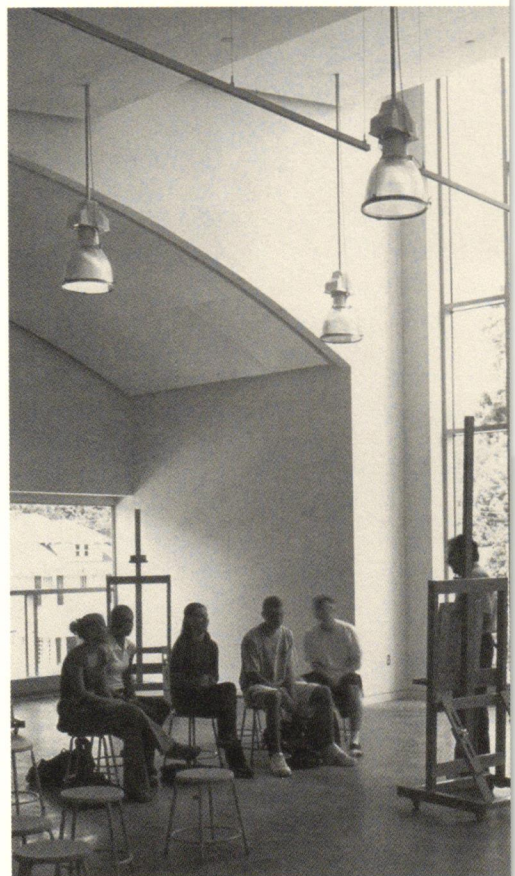
PEELER ART CENTER

DEPAUW UNIVERSITY, GREENCASTLE
CARLOS JIMENEZ STUDIO WITH CSO, INC.

As part of an expansion program at DePauw University, the Peeler Art Center demarcates a future new entry to the campus along its western edge. The building contains a variety of art-related spaces: studios, workshops, and exhibition galleries. CSO again teamed with Carlos Jimenez, who has gained acclaim designing collegiate art buildings.

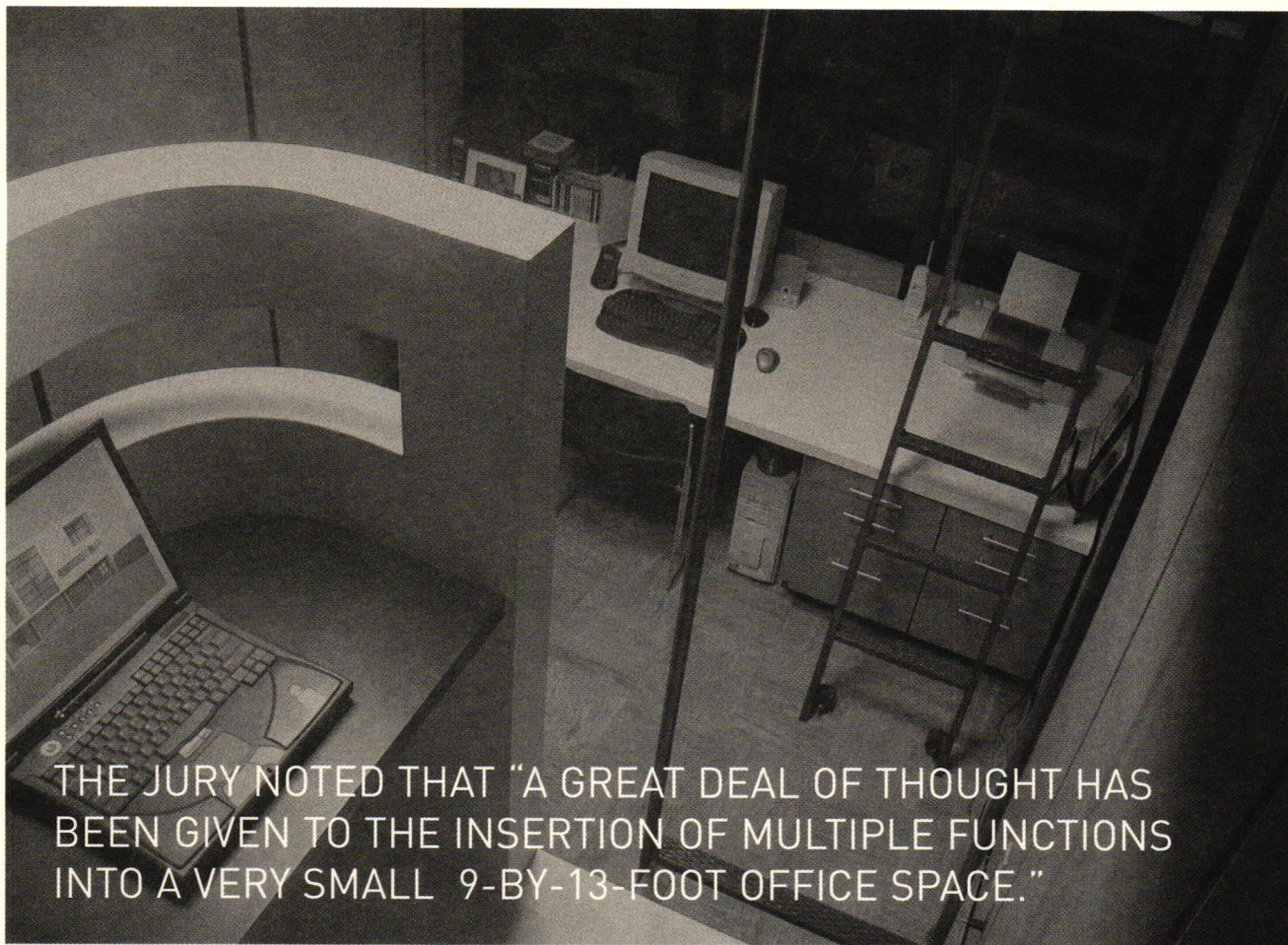
Three prominent light monitors for painting and drawing studios, as well as the building's main entrance, are located on the north elevation along Hanna Street, a major campus thoroughfare. Parallel to Hanna, a covered passageway for students walking between the east and west parts of the campus was integrated into the building, inviting pedestrians to catch a glimpse of art works on display. The first floor contains all of the main public spaces—the lobby, exhibition galleries and a small auditorium—plus administrative offices and the largest studios for ceramics and sculpture. On the second floor, faculty offices wrap around a south-facing courtyard light well.

The building's materials borrow from the existing palette of Indiana limestone and brick used throughout the campus, allowing the art center to fit within its context of predominately Neo-Georgian buildings. Jurors considered the art center "a very calm building that contains some thoughtfully conceived spaces to create art, learn and work."



H

HONOR



THE JURY NOTED THAT "A GREAT DEAL OF THOUGHT HAS BEEN GIVEN TO THE INSERTION OF MULTIPLE FUNCTIONS INTO A VERY SMALL 9-BY-13-FOOT OFFICE SPACE."

ATELIER INSTALLATION

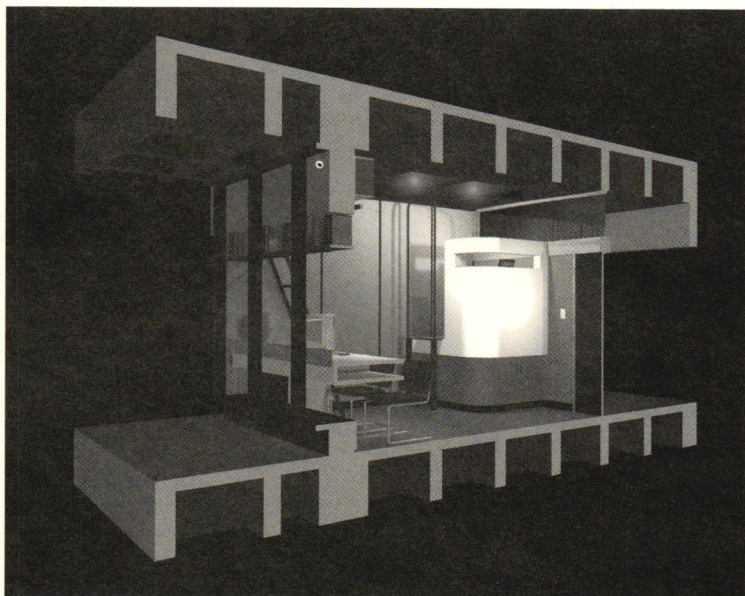
BALL STATE UNIVERSITY, MUNCIE

FABER DESIGN

A fellowship from the Arts Council of Indianapolis allowed the architect to explore a design for his 117-square-foot office space in the Architecture Building at Ball State University. The program called for a private space for reflection, public space for interaction with students, and storage elements for professional work and books.

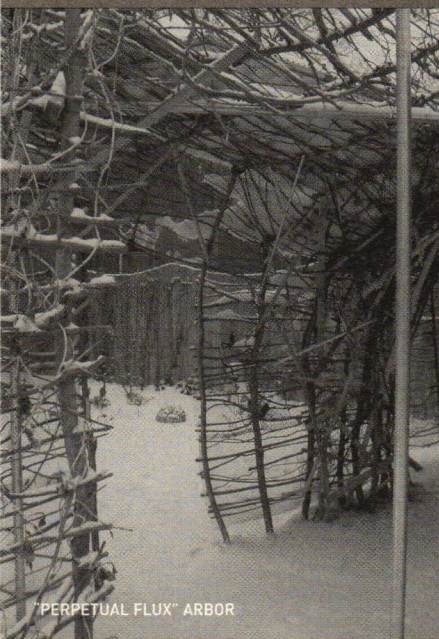
After an academic study of precedents including a studio in Le Corbusier's Maison Ozenfant of 1922, the architect decided to locate a small, elevated private space in the most secluded area of the room, allowing for storage below. The installation was designed three-dimensionally through the use of computer modeling programs. This information was then directly digitally entered into a computer-aided router for the initial fabrication of the furniture. All of the structural elements were cut from simple three-quarter-inch plywood, which was then laminated with a plastic skin.

The jury characterized this project as "very clever," noting that "a great deal of thought has been given to the insertion of multiple functions into a very small 9-by-13-foot office space."



C

CITATION



"PERPETUAL FLUX" ARBOR

PHOTO: WES JENZ

PHOTO: INDIANAPOLIS METROPOLITAN DESIGN



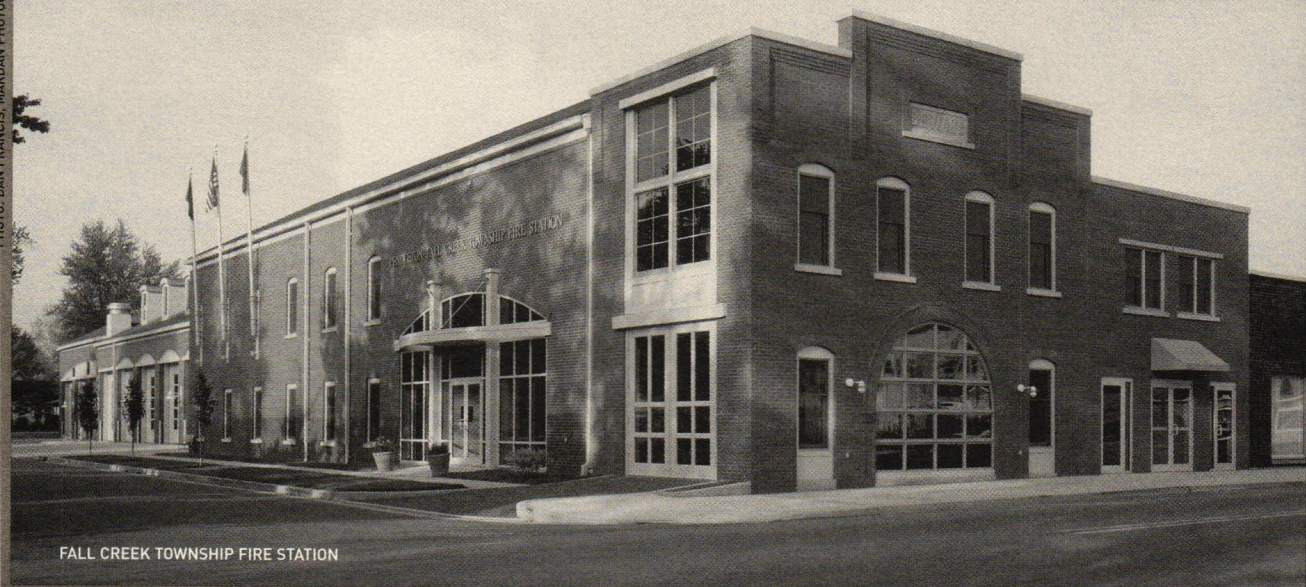
BURKHARDT RESIDENCE

BEV LEWIS CENTER FOR WOMEN'S ATHLETICS



PHOTO: NATHAN KIRKMAN

PHOTO: DAN FRANCIS, MARDAN PHOTOGRAPHY



FALL CREEK TOWNSHIP FIRE STATION

PHOTO: MICHAEL SORENSEN



FALL CREEK PLACE MODEL HOMES

PHOTO: DAN FRANCIS, MARDAN PHOTOGRAPHY



ELECTRICAL APPRENTICE TRAINING CENTER

BURKHARDT RESIDENCE

FLETCHER PLACE HISTORIC DISTRICT, INDIANAPOLIS

DOMAIN ARCHITECTURE

The design of this new house followed the traditional scale and form of the surrounding houses of the historic district, yet the non-traditional exterior materials—particularly the contrasting bands of textured concrete block—create a fresh, contemporary appeal. Connecting the house and its garage is a trellised walkway within an intimate garden courtyard enclosed by the two buildings.

“PERPETUAL FLUX” ARBOR

MERIDIAN-KESSLER AREA, INDIANAPOLIS

26.26.26.25

In the category of small project, this backyard arbor is made primarily of no-cost materials: hundreds of tree saplings, downed branches, and other found objects on a frame of galvanized steel. Because it is in need of constant attention, it provides a therapeutic, creative outlet to its architect/owner. One juror commented that “it exemplifies the healing quality of environments and their ability to keep life sane.”

BEV LEWIS CENTER FOR WOMEN’S ATHLETICS

UNIVERSITY OF ARKANSAS, FAYETTEVILLE

BROWNING DAY MULLINS DIERDORF ARCHITECTS

A practice area for the newly created women’s gymnastics program is the largest space of this new building, which also includes all the standard functions of a fitness center. The lightness and transparency observed by the jurors helps to showcase the dynamics of the athletic activities. The building design responded to primary views from all directions, including from above, generating a sculpted roof form.

ELECTRICAL APPRENTICESHIP TRAINING CENTER

1751 S. LAWNGDALE AVENUE, INDIANAPOLIS

CSO, INC.

In renovating a modest, concrete-block structure in a highly visible location near I-465 and the airport, there were two goals: to create a new, modern facility to train electrical apprentices, and to establish a striking new identity. The exterior was efficiently reclad in deeply ribbed metal wall panels, which contrast with bold yellow bulkheads reminiscent of 1950s roadside architecture, creating an energetic new environment for learning.

FALL CREEK PLACE MODEL HOMES

2400 BLOCK OF N. PENNSYLVANIA STREET, INDIANAPOLIS

ROTTMANN ARCHITECTS

Fall Creek Place is a revitalized, older neighborhood that will eventually include more than 400 new and rehabilitated homes. Five prototype houses serve to illustrate the design guidelines established to steer consistent development. They all incorporate similar materials, window sizes, roof pitches, and setbacks while varying height, massing, roof orientation, and ornamental details such as porch railings.

FALL CREEK TOWNSHIP FIRE STATION

PENDLETON, INDIANA

RATIO ARCHITECTS

The challenge in redeveloping an older building, located within a historic district on the main street of Pendleton, was to provide for a sense of scale and massing consistent with the town while adding 10 bays with street access for fire-fighting and emergency vehicles. The station was divided into four distinct segments, providing for architectural variety and interest in the long new façade.

ADDITIONAL ENTRIES, 2003 EXCELLENCE IN ARCHITECTURE

BIOTECHNOLOGY RESEARCH &
TRAINING CENTER
INDIANA UNIVERSITY, INDIANAPOLIS
BSA LIFESTRUCTURES

CENTRAL INDIANA ORTHOPEDICS
ANDERSON, INDIANA
BSA LIFESTRUCTURES

CHRISTEL HOUSE ACADEMY
INDIANAPOLIS
ODLE MCGUIRE AND SHOOK

CLARIAN HEALTH PEOPLE MOVER
INDIANAPOLIS
RATIO ARCHITECTS

CORINTHIAN MISSIONARY
BAPTIST CHURCH
INDIANAPOLIS
HCO

DONEY PENTHOUSE
INDIANAPOLIS
AXIS ARCHITECTURE

GOSHEN COLLEGE MUSIC CENTER
GOSHEN, INDIANA
SCHMIDT ASSOCIATES

HAUGHVILLE BRANCH LIBRARY
INDIANAPOLIS
DOMAIN ARCHITECTURE

HENDRICKS REGIONAL MEDICAL CENTER
PLAINFIELD, INDIANA
BSA LIFESTRUCTURES

HOLIDAY INN SELECT, CITY CENTER
LAFAYETTE, INDIANA
DEA

INDIANA BUSINESS COLLEGE
INDIANAPOLIS
ROWLAND DESIGN

INDIANA STATE LIBRARY AND
HISTORICAL BUILDING
INDIANAPOLIS
BROWNING DAY MULLINS DIERDORF
ARCHITECTS

THE INDIANA STATE MUSEUM
INDIANAPOLIS
RATIO ARCHITECTS

IRMSDC BUSINESS CENTER
INDIANAPOLIS
DOMAIN ARCHITECTURE

JULIAN SCIENCE AND
MATHEMATICS CENTER
INDIANAPOLIS
CSO ARCHITECTS

LILLY HALL EXPANSION
BUTLER UNIVERSITY, INDIANAPOLIS
BROWNING DAY MULLINS DIERDORF
ARCHITECTS

JOHNSON CENTER FOR FINE ARTS
FRANKLIN, INDIANA
SCHMIDT ASSOCIATES

JOHNSON MEMORIAL HOSPITAL
PROFESSIONAL BUILDING
FRANKLIN, INDIANA
BSA LIFESTRUCTURES

LANDSBAUM CENTER FOR HEALTH
EDUCATION
TERRE HAUTE
BSA LIFESTRUCTURES

LOGIE RESIDENCE
INDIANAPOLIS
ROTTMAN ARCHITECTS

NEWS LINK INDIANA
MUNCIE, INDIANA
FABER DESIGN

RICHARD M. FAIRBANKS CENTER FOR
COMMUNICATION & TECHNOLOGY
BUTLER UNIVERSITY, INDIANAPOLIS
BROWNING DAY MULLINS DIERDORF
ARCHITECTS

SALIN BANK AND TRUST
COMPANY FACILITY
FORT WAYNE
MSKTD & ASSOCIATES

ST. VINCENT ONCOLOGY CENTER
INDIANAPOLIS
BROWNING DAY MULLINS DIERDORF
ARCHITECTS

ST. VINCENT RANDOLPH HOSPITAL
INDIANAPOLIS
BSA LIFESTRUCTURES

SEVEN PARKWOOD
INDIANAPOLIS
CSO ARCHITECTS

SOMMER BARNARD ACKERSON
CORPORATE OFFICE
INDIANAPOLIS
CSO ARCHITECTS

TRI-WEST MIDDLE SCHOOL
LIZTON, INDIANA
SCHMIDT ASSOCIATES

UNION PLANTERS SOUTHPORT BRANCH
INDIANAPOLIS
BRENNER DESIGN

VIRGIL AND ELIZABETH HUNT HALL
INDIANA UNIVERSITY, KOKOMO
BSA LIFESTRUCTURES

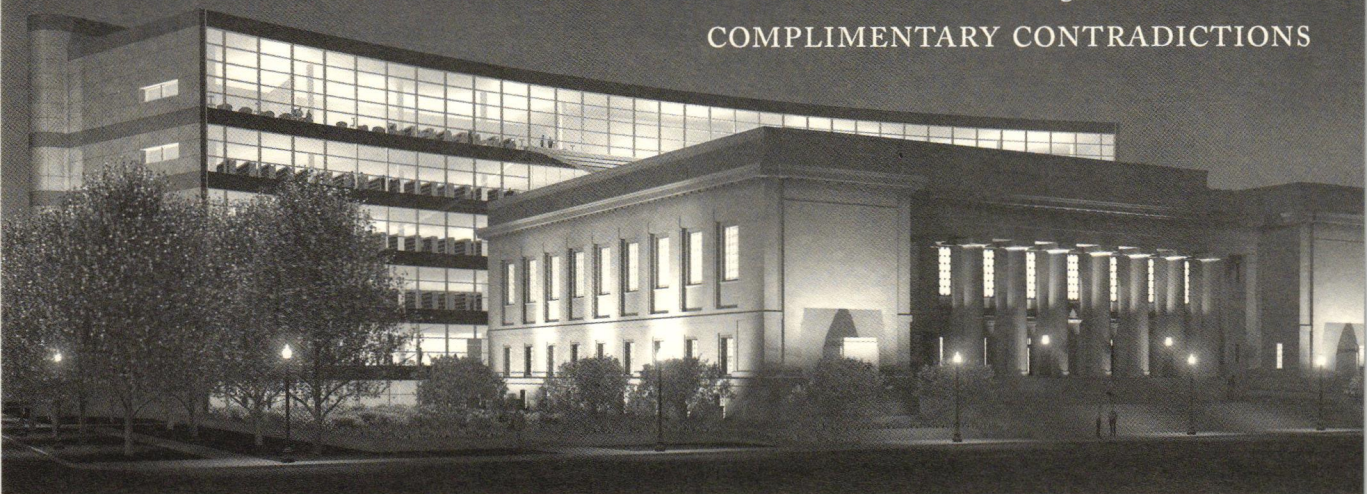
WARREN EDUCATION AND
COMMUNITY CENTER
INDIANAPOLIS
CSO ARCHITECTS

WARREN TOWNSHIP EARLY
CHILDHOOD CENTER
INDIANAPOLIS
CSO ARCHITECTS

WHITE RIVER STATE PARK
VISITOR'S CENTER
INDIANAPOLIS
AXIS ARCHITECTURE

CHAPTER PROGRAMS FOR THE YEAR 2003:

COMPLIMENTARY CONTRADICTIONS



THE WORK OF PATKAU ARCHITECTS

LEARNING UNITS: 2.0

At the first of two programs held jointly with Ball State University, John Patkau highlighted the design work of his firm, Patkau Architects of Vancouver, British Columbia. In a presentation titled "Dancing Lessons," he discussed the schools, libraries, museums, and distinctive private residences that have earned his firm numerous Canadian and international architectural awards. Patkau's work has been widely published in over 100 articles in books and professional journals.

RECENT WORK OF MACK SCOGIN, MERRILL ELAM ARCHITECTS

LEARNING UNITS: 2.0

SPONSOR
College of Architecture & Planning,
Ball State University

Merrill Elam, AIA, of the firm Mack Scogin, Merrill Elam Architects lectured on her firm's recent work, including award-winning branch libraries, the new School of Architecture on the Ohio State University campus, and the home she and her husband Mack Scogin designed near downtown Atlanta. This second of two programs held jointly with Ball State University took place on campus in the auditorium of the Architecture Building.

TOWARD SUSTAINABILITY IN ARCHITECTURE

LEARNING UNITS: 1.0

SPONSOR
Interface Flooring Systems, Inc.

As part of the program of Green Expo, Ray Anderson of Interface expressed his concern about architecture's role in exhausting finite, non-renewable resources. As a manufacturer of carpets, textiles, and architectural products with more than a billion dollars in sales a year, Anderson changed his company's policies by championing a war on waste and using recycled or innovative materials toward the goal of greater sustainability.

PRESENTATION ON CENTRAL LIBRARY

LEARNING UNITS: 2.0

SPONSOR
The Library Delivery Team—
Trotter Construction
Turner
Shiel Sexton

In a joint program with the local chapter of the Construction Specification Institute, Lynn Molzan, FAIA, and Kevin Huse, AIA, of Woollen, Molzan and Partners gave a presentation on the design of Central Library's expansion and renovation. A four-story glass-enclosed atrium, which will be the heart of the new library, will connect the original 1917 building to a new six-story addition of nearly 300,000 square feet.

LEARNING FROM THE YAMAMOTO RESIDENCE

LEARNING UNITS: 2.0

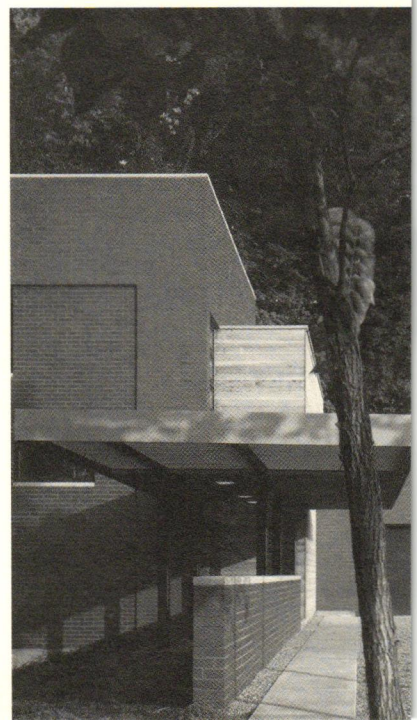
Homeowners Tom and Nancy Yamamoto, architect Brad Lynch of Brininstool + Lynch of Chicago, contractor John Lerchen of Lerchen Residential Builders, and developer Rob Bussell participated in a panel discussion on the difficulties of building a unique, modern residence in a traditional subdivision. In his design for the Yamamoto house, located near Geist Reservoir, Lynch intended "a calm juxtaposition—not a radical statement."

INDIANAPOLIS MIDFIELD TERMINAL

LEARNING UNITS: 2.0

SPONSOR
Hunt Construction Group
Pittsburgh Corning Glass Block

Robert Chicas, AIA, and Ripley Rasmus, AIA, of HOK Aviation presented the design process and final approved design of Indianapolis Midfield Terminal, explaining its effect on the existing airport's configuration. The new \$974-million terminal, being built between the two main existing runways, is currently one of the most significant public works projects in central Indiana.



GOLF OUTING

The annual golf outing took place on September 25 at the Golf Club of Indiana in Lebanon. The 72 golfers had a great day on the course and enjoyed lunch, dinner, and beverages at hospitality holes. This year marked the third time the field was sold out. Awards during the dinner program were given to the winning foursome from REI Construction Services. There was an outstanding array of door prizes, great golf hats for all participants, and a new convertible as the hole-in-one prize. Lee Borthwick, Linda Kantner, Carla Hill, Scott Hunt, and chairman Jim Kiefer deserve credit for their efforts in organizing the 2003 golf outing. Proceeds from this very successful event are devoted to community programs, scholarships, and chapter programs.

PROFESSIONAL PROGRAMS

WOMEN IN ARCHITECTURE

In April AIA's Women in Architecture (WIA) Committee sponsored its first annual series highlighting the careers of its members. Susan Allen, FAIA, Diana Brenner, AIA, IIDA, and Sheila Snider, FAIA, participated in a panel discussion, responding to moderator Dr. Susan Street-Beavers' questions, followed by those of the audience. On a bi-monthly basis, WIA and local product representatives sponsor informal get-togethers after work for members, affording them the opportunity to view new products, network, and share concerns unique to women in the architectural profession. In September members visited Santiago Calatrava's Milwaukee Museum of Art on the annual out-of-town architectural tour.



CONTINUING EDUCATION DAY

On October 17 AIA's Education Committee held an afternoon conference called Indianapolis By Design, dedicated to continuing professional education. The chapter teamed with the Indianapolis Center of Ball State University's College of Architecture and Planning, the American Society of Landscape Architects, and the American Planning Association to offer six presentations on topics varying from architectural photography to planning urban retail developments. Architects who participated in all sessions had the opportunity to gain 4.75 learning units of the 18 required of AIA members annually. Approximately 100 people benefited from this year's education day.

GREEN EXPO

This year the AIA's Committee on the Environment (COTE) added an educational component to its biannual Green Products Expo, held for the first time in conjunction with the Indiana Recycling Coalition's 14th annual conference in May. The Indiana Department of Commerce hosted a workshop titled "Buy Recycled," and the Department of Administration's "Greening the Government" program and the State Architect's Office presented a program about the state's "green" construction success stories, including the Richmond State Hospital and the lighting upgrade for the Indiana War Memorial. The Indiana chapter of the U.S. Green Building Council sponsored an intermediate level LEED training workshop on energy and environmental design. As always the vendor booths that have been the focus of the expo drew crowds again.

GOLF OUTING SPONSORS

EVENT SPONSOR
ReproGraphics

BEVERAGE CART SPONSORS
Mid States Engineering

HOSPITALITY HOLES
Meyer Najem
Singer Wallcoverings
Steelcase/ BFC
Technology Dynamics

HOLE SPONSORS
Browning Day Mullins Dierdorf
Brandt Construction
Business Furniture / Steelcase
CE Solutions
Charles C. Brandt
Carter Lee
Civil & Environmental
Conner & Company
Dan Binford & Co.
Design Media Connections
D.L. Couch
Dupont Corian
Edgewood Building Supplies
ERMCO
Fink Roberts & Petrie
Harry Kloeppel
Indiana Brick Corp.
Lynch Harrison & Brumleve
Meyer & Najem
John Oberlies Consulting Engineers
R. E. Dimond & Associates
RJE Interiors
RTM Consultants
Eric Schleef
Shaffner Heaney
Singer Wallcoverings
Somerset: Accountants & Advisors
Summit Construction
Technology Dynamics

GIFTS AND DOOR PRIZES

BOMA
Business Furniture / Steelcase
Dan Binford & Associates
J.W. Flynn
Pauly Jail Building Co.
Pepper Construction
Rollins Construction
Sign Systems Inc.
Wurster Construction

WOMEN IN ARCHITECTURE SPONSORS

Mod Pod Home Things
Santarossa Mosaic & Tile Company
Continental Office Environments
D.L. Couch

GREEN EXPO SPONSORS

Cantlon Associates
Office Furniture USA
Interface Flooring Systems, Inc.
Knoll/RJE Business Interiors
Mayer Fabrics
Reprographics

ALLIANCE MEMBERS

CSI
IFMA
IIDA
Indiana Department of Administration
Indiana Department of Commerce
Indiana State Architects Office
Indiana Recycling Coalition

COMMUNITY PROGRAMS

SPONSORS

AIA Indianapolis Chapter
AIA Central/Southern Chapter
AIA Fort Wayne Chapter
AIA Northern Chapter
Arts Council of Indianapolis
A3 Design
Mansur Real Estate Services, Inc.
Schmidt Associates

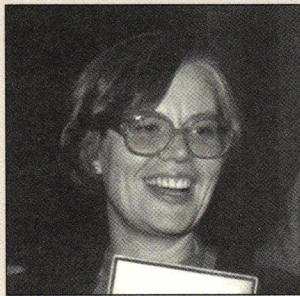
HIGH SCHOOL DESIGN COMPETITION

For more than 30 years, aspiring young architects from across Indiana have been submitting their entries to the annual design competition. This year 100 students representing 17 schools directed their talents towards designing a new architectural center bookstore. The judging and awards ceremony were held April 24 at the Arts Garden in Circle Centre Mall, where all entries had been on display the previous week. Phil Haywood of Roncalli High School won first prize. Sahm Nicholas, also of Roncalli, earned second place, while Ami Hittle of Greenwood High School, winner of a judge's award in 2002, took home third place. Following the ceremony, students enthusiastically discussed their work and their prospects for careers in architecture. Entries for next year's competition will be due April 22, 2004. Information about the 2004 competition can be found at the chapter's website, www.aiaindy.org/competition. Special thanks go to committee chair Matt Woodruff, who has organized the competition for the past five years.

MONUMENTAL AWARDS

The 26TH annual award program for excellence in design, development, construction, and neighborhood beautification was held on October 16. AIA Indianapolis—one of the 10 sponsoring organizations under the auspices of the program's sponsor, Keep Indianapolis Beautiful—judges the awards in the category of architecture. The Honor Award for the year 2003 was bestowed on the Christel House Academy for its design achievement. The two Merit Award winners were the St. Vincent Oncology Center and the Clarian Health People Mover. Achievement awards were given to the Indiana Business College, the Indiana Heart Hospital, and the Fairbanks Center for Communication and Technology at Butler University. Representatives of the chapter also make nominations to the jury that selects the Monumental Award, representing the most significant visual and physical enhancement in Marion County. This year's Monumental Award went to the Clarian People Mover.

AWARDS, SCHOLARSHIPS AND HONORS



AWARD BY JULIET PEDDLE COMMITTEE

At the AIA Indiana state convention in October, the Juliet Peddle Committee presented a special award posthumously to Valentina Williamson, AIA, for her founding role in creating the award. Juliet Peddle was the first woman licensed to practice architecture in Indiana. On the 100TH anniversary of her birth in 1999, the first award was granted. Williamson, who served in many volunteer roles in AIA committees and on the board of the Indiana Architectural Foundation, represented the spirit and talent of the award.

INDIANA ARCHITECTURAL FOUNDATION SCHOLARSHIP

Each year AIA Indianapolis supports a scholarship awarded by the Indiana Architectural Foundation to an Indiana student enrolled in an accredited program leading to an architectural degree. Ryan Miller of Indianapolis, currently a fourth-year student at Ball State University, was selected to receive the \$1,000 scholarship sponsored by the chapter.

THOMAS JEFFERSON AWARD

At the AIA national convention in San Diego in May, Susan Williams received the organization's Thomas Jefferson Award for Public Architecture. This award recognizes excellence in architectural advocacy and achievement by public officials or other individuals who advocate for design excellence. As the executive director of the Indiana State Office Building Commission, Williams shaped efforts to build the Indiana State Museum and is currently leading efforts to develop three state hospitals. From 1986 to 1999, she served on the Indianapolis City-County Council, where she was involved in issues of community development, neighborhood revitalization, historic preservation, and affordable housing.

AIA INDIANAPOLIS CALENDAR 2004

PROGRAM THEME: WORKS IN PROGRESS, ARCHITECTS’ ROLE IN SHAPING INDY’S FUTURE

AIA CONTINUING EDUCATION AND ABC JOINT MEETING

CASE STUDY ON THE NEW HEART HOSPITAL
FEBRUARY 12, 2004

CHAPTER MEETING ONE: ARTIST’S CONCEPTION

PARTNERING PUBLIC ART AND ARCHITECTURE
WITH A LUNCH & LEARN SESSION AT THE CAP:IC
FEBRUARY 17, 2004

DANIEL LIBESKIND LECTURE

PRESENTED BY THE IU JEWISH STUDIES
PROGRAM
BLOOMINGTON, IN
MARCH 1, 2004

AIA NATIONAL GRASSROOTS CONFERENCE WASHINGTON, D.C. MARCH 5, 2004

CHAPTER MEETING TWO: A NEW SCHEME-ATIC

RE-URBANISM, MIXED-USE ARCHITECTURE IN
DOWNTOWN INDY WITH A LUNCH & LEARN
SESSION AT THE CAP:IC
APRIL 6, 2004

LA PREMIÈRE

WOMEN IN ARCHITECTURE AT BALL STATE CAP
APRIL 8, 2004

INDIANA HIGH SCHOOL DESIGN COMPETITION INDIANAPOLIS ARTSGARDEN APRIL 22, 2004

CHAPTER MEETING THREE: ORIGINAL DESIGNS

HONORING HISTORIC MODERN ARCHITECTURE
WITH A LUNCH & LEARN SESSION AT THE CAP:IC
MAY 4, 2004

CONTINUING EDUCATION DAY URBAN DESIGN GUIDELINES MAY 14, 2004

BIRD HOUSE COMPETITION

AIA INDIANAPOLIS, IIDA & INASLA
PROCEEDS BENEFIT CROSSROADS
REHABILITATION CENTER
MAY 14, 2004

NATIONAL AIA CONVENTION CHICAGO JUNE 9-12, 2004

CHAPTER MEETING FOUR: MOVING CONCEPTS

THE FUTURE OF INDIANAPOLIS TRANSPORTATION
JULY 15, 2004

CHAPTER MEETING FIVE: FRESH DRAFT SUBURBAN SPRAWL AND THE CITYSCAPE WITH A LUNCH & LEARN SESSION AT THE CAP:IC AUGUST 3, 2004

ANNUAL AIA GOLF OUTING SEPTEMBER, DATE TO BE ANNOUNCED

USGBC AND LEED THREE-DAY WORKSHOP COMMITTEE ON THE ENVIRONMENT SEPTEMBER 7, 23 & 24, 2004

CONTINUING EDUCATION LUNCH PROGRAM AIA INDIANAPOLIS AND CEDIA SEPTEMBER 10, 2004

THIRD BIENNIAL ARCHITECTS’ HOME TOUR PROCEEDS BENEFITING THE JULIAN CENTER SEPTEMBER 25-26, 2004

AIA INDIANA STATE CONVENTION MERRILLVILLE, IN OCTOBER 7-9, 2004

TOUR OF CONTEMPORARY ARTS CENTER WOMEN IN ARCHITECTURE CINCINNATI, OH OCTOBER, DATE TO BE ANNOUNCED

CHAPTER MEETING SIX: FINAL WALK-THROUGH THE INDIANAPOLIS MUSEUM OF ART EXPANSION OCTOBER 12, 2004

CONTINUING EDUCATION DAY CULTIVATING DESIGN OCTOBER 22, 2004

CHAPTER MEETING 7: BRAINSTORMING LOOKING FORWARD FOR INDIANAPOLIS NOVEMBER 16, 2004

PLEASE NOTE: ALL CHAPTER PROGRAM
MEETINGS ARE OPEN TO THE PUBLIC.
MEETING TIMES AND LOCATIONS ARE SUBJECT
TO CHANGE. PLEASE CALL THE AIA
INDIANAPOLIS CHAPTER OFFICE, 822-9299, OR
VISIT OUR WEBSITE AT WWW.AIAINDY.ORG
FOR TIMES, LOCATIONS AND RESERVATIONS.



AIA INDIANAPOLIS

A CHAPTER OF THE AMERICAN INSTITUTE OF ARCHITECTS

151 NORTH DELAWARE STREET, SUITE 125, INDIANAPOLIS, INDIANA 46204-2507

317.822.9299 OR WWW.AIAINDY.ORG

CHAPTER BOARD MEMBERS AND COMMITTEE CHAIRS

OFFICERS

PRESIDENT

Jackson R. Faber, AIA

VICE PRESIDENT

Mark Demerly, AIA

SECRETARY

R. Randall Schumacher, AIA

TREASURER

Debra Kunce, AIA

EX-OFFICIO

Dandridge Drew White, AIA

EXECUTIVE DIRECTOR

Lee Borthwick

DIRECTORS

PUBLIC RELATIONS

Alex White, AIA

Beth Wood, AIA

PROGRAMS

Stephen Bignal, AIA and
Antonia Stahl, Associate AIA

EDUCATION

Chris Short, AIA

GOVERNMENTAL AFFAIRS

Troy Thompson, AIA

MEMBERSHIP

Gregory McMullen, AIA

DELEGATES

Michael Bivens, AIA

Brett Thrasher, AIA

Tad Lupton, AIA

AIA INDIANA, EXECUTIVE DIRECTOR

Ken Englund

COMMITTEE CHAIRS

YOUNG ARCHITECTS FORUM

Christopher Short, AIA

WOMEN IN ARCHITECTURE

Mary Dominguez, Associate AIA

HIGH SCHOOL DESIGN COMPETITION

Matthew Woodruff, AIA

COMMITTEE ON THE ENVIRONMENT

Kevin Russell, Associate AIA

GOLF OUTING

Jim Kiefer, AIA

YEAR IN REVIEW CREDITS

PROJECT COORDINATOR

Mark Demerly, AIA

EDITOR

Mary Ellen Gadski

GRAPHIC DESIGN

Commercial Artisan