

JUL 30 REC'D



*Library*

# Indiana Architect

JULY, 1962

Return Requested

THE INDIANA ARCHITECT  
P. O. Box 55594  
Indianapolis 5, Indiana

E. B. Morris, Jr.  
American Institute of Architects  
1735 New York Ave., N.W.  
Washington, D. C.

Indianapolis, Ind.  
Permit No. 1497

**PAID**  
Bulk Rate  
U. S. POSTAGE



The best ideas are more exciting  
in **Concrete**



*Stanford University Medical Center, Palo Alto, Calif. Architect: Edward D. Stone, New York. Structural Engineers: Pregnoff & Matheu, San Francisco, Calif.*

## Decorative patterns in concrete give unity and beauty to new medical center!

Hospital, clinic, school, research laboratory—the many activities of the new Stanford Medical Center require 7 separate buildings. To bring this complex into one harmonious whole, ingenious use has been made of modern concrete. Precast grilles provide a strong light-and-shadow pattern over large areas. They also set a design theme which is repeated in bold relief on other concrete surfaces throughout the Center. The elegant beauty achieved gives dramatic evidence of concrete's esthetic versatility and its structural advantages. Today, more than one architect is acquiring a reputation through the creative uses of modern concrete.



## REPRODUCTIONS

- Blue Prints
- White Prints
- Autopositives
- Film Reproductions
- Photo Copies

*Exclusive*

*Eugene Dietzgen Dealer*

*Local Pick-Up &  
Delivery Service*

## SUPPLIES

- Slide Rules
- Surveying Inst.
- TwoWay Radios
- Drafting Furniture
- Graph Papers

ME 5-2355

**THE H. LIEBER CO., INC.**  
INDIANAPOLIS

ME 5-4373



***Specify* TROUBLE-FREE COMFORT!**

***Specify* LOW-COST OPERATION!**

***Specify* GAS AIR CONDITIONING!**

In addition to a wide choice of equipment (3 to 1000 ton sizes), GAS Air Conditioning offers other important advantages.

### Flexibility of Location

Minimum vibration and low noise level of Gas equipment permits installation from basement to roof top.

### Structural Savings

Dead loading can be used with Gas equipment as opposed to live loadings required by large, high speed equipment.

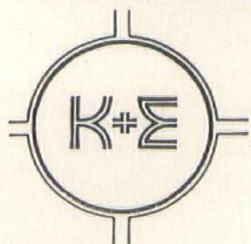
### Year-Round Use of Boiler

Using Gas-fired heating boiler to supply steam or high temperature hot water to summer air conditioning equipment improves annual load factor of boiler.

For specific information regarding types and sizes of equipment, gas rates, and engineering data, call or write

AIR CONDITIONING DIVISION

**INDIANA GAS & WATER CO., INC.** 1630 N. MERIDIAN STREET  
INDIANAPOLIS 2, INDIANA



*Exclusive*

**K+Σ DEALER**

DRAFTING  
SURVEYING  
REPRODUCTION

**SUPPLIES**

- Blue Prints • White Prints • Photo Copies
- Offset Printing

**MARBAUGH Engineering Supply Co.**

INDIANAPOLIS, IND.

MAIN OFFICE — 140 E. Wabash St.

NORTHSIDE BRANCH — 4145 N. Keystone Ave.

MEIrose 7-3468

Liberty 6-4875



GLOBE-WERNICKE

*Echelon*



*Burbord's*

OFFICE INTERIORS

603 E. Washington St. MEIrose 5-7301



- Roof Decks—Gypsum, Insulock Light weight Concrete and Steel
- Fiberglass Acoustical Systems and Acousti-Flo Air Difusers
- USG Acoustical Systems and Airson Air Distribution Systems
- Burgess-Manning Ceilings
- Hansson Acoustical Systems
- Kemp Soundlock Panels
- Pittsburgh Corning Geocoustic
- Industrial Sound Absorbers
- Arvinyl Wall Panels
- Folding Doors
- Movable Partitions

**SOUND CONTROL**  
is a Job for Experts



*Proven Products of*

**ANNING-JOHNSON Company**  
INCORPORATED

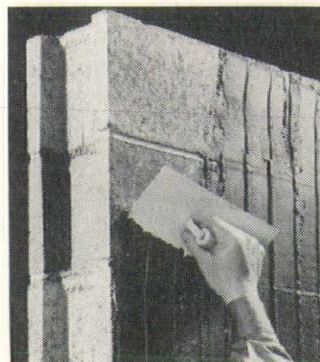
1720 ALVORD STREET

INDIANAPOLIS 2, INDIANA

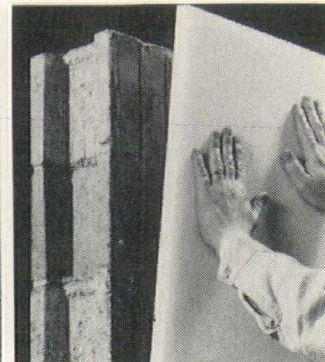
WAlnut 3-2461

Branch Office: 1272 Maxwell Ave. EVANSVILLE HA 3-4469

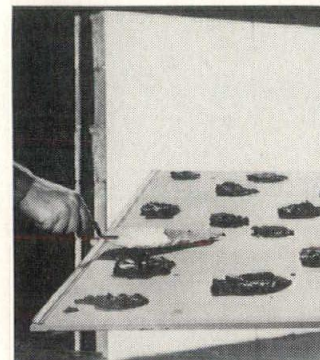
Directions for new method of **insulating masonry structures** when you specify quality, simplicity, longevity and economy



**1.** Apply Styrotac™ bonding cement.



**2.** Press Styrofoam® into place.



**3.** Apply Styrotac bonding cement.



**4.** Press wallboard into place.

This new method — developed by the Dow Chemical Company — gives you the quality of double-laminate walls with just a single thickness of wallboard; the excellent insulating values of Styrofoam brand insulation board without furring strips or other time-consuming preparations. It's so simple. No more unsightly "nail pops" or nail holes to fill, because there are no nails. No more insulation "hollows." No more wallboard warping or bowing.

All this at a savings in time and money!

This type of construction is being used in electrical heat of schools, motels, offices and apartments.

**Seward Sales Corporation**

INDIANAPOLIS, INDIANA

1101 East 40th Street

ELKHART, INDIANA

740 South Main Street

CINCINNATI, OHIO

3660 Michigan Street



# Indiana Architect

Official Journal, Indiana Society of Architects  
and the Northern Indiana Chapter, both  
Chapters of The American Institute of Architects

Vol. VI

JULY, 1962

No. 3

The Indiana Architect is the sole property of the Indiana Society of Architects, AIA, and is edited and published monthly in Indianapolis by Don E. Gibson & Associates, 3637 N. Meridian Street, P. O. Box 55594, Indianapolis 5, Indiana.

Current average monthly circulation, 3,400, including all resident Indiana architects, school officials, churches and hospitals, libraries, selected public officials, and members of the Indiana construction industry. Further information available on request.

## Member, Publishers Architectural Components

16 Affiliated Official Publications of Components of The American Institute of Architects, in 26 key states. Advertising and Listing in Standard Rate and Data Serv-



ice, Headquarters, 120 Madison Ave., Detroit 26, Michigan, Woodward 1-6700. Eastern Office, 18 E. 56th Street, New York 22, N.Y., Plaza 5-3180.

## Editor and Publisher

Don E. Gibson, Hon. ISA Assoc.

## Director of Advertising

William E. Stineburg

## Officers and Directors, Indiana Society of Architects

President  
WALTER SCHOLER, JR., AIA  
Lafayette

Vice-President  
ALFRED J. PORTEOUS, AIA  
Indianapolis

Secretary  
CHARLES J. BETTS, AIA  
Indianapolis

Treasurer  
IVAN RAY DAHLGREN, AIA  
Fort Wayne

Directors  
EDWIN C. BERENDES, AIA  
Evansville

ALFRED J. PORTEOUS, AIA  
Indianapolis

ROBERT O. RITZ, AIA  
New Albany

CARL L. BRADLEY, AIA  
Fort Wayne

HARRY E. HUNTER, AIA  
Indianapolis

RALPH ROBERT KNAPP, AIA  
Evansville

RAYMOND W. OGLE, AIA  
Indianapolis

WALTER SCHOLER, JR., AIA  
Lafayette

MURRAY P. YEAGER, AIA  
Terre Haute

Executive Secretary  
DON E. GIBSON, Hon. ISA Assoc.  
Indianapolis

## Officers and Directors, Northern Indiana Chapter

President  
PAUL FRANK JERNEGAN, AIA  
Mishawaka

Vice-President  
COURTNEY E. ROBINSON, AIA  
Fort Wayne

Secretary  
VITO A. GIRONE, AIA  
South Bend

Treasurer  
LLOYD W. MASS, AIA  
South Bend

Directors  
WILLIAM G. RAMMELL, AIA  
Fort Wayne

RICHARD L. WILDERMUTH, AIA  
Gary

ROBERT J. SCHULTZ, AIA  
Mishawaka

# THE TREND IS TO ELECTRIC HEATING

FOR

- **Schools**
- **Motels**
- **Factories**
- **Offices**
- **Stores**
- **Apartments**

Because of its flexibility that permits a wide range of installations, *Electric Heating* offers a new, but proved advance in structure design.

Costs on equipment, installation and operation are available on actual installations in the Indianapolis area.

FOR FULL INFORMATION CALL  
ARCHITECT and ENGINEERING  
REPRESENTATIVE

MEIrose 1-1411—Extension 264

■  
**INDIANAPOLIS**  
*Power & Light*  
**COMPANY**





*Blumcraft*

## ADJUSTABLE ANCHORING SYSTEMS

SOLVES PROBLEMS OF SECURING RAILINGS TO CONCRETE BY BECOMING AN INTEGRAL PART OF THE STAIR STRUCTURE

- INSURES EXTREME RIGIDITY
- REDUCES COSTLY FIELD LABOR
- ELIMINATES BREAKAGE IN MASONRY
- ADJUSTABLE FOR POST ALIGNMENT



*Blumcraft*

OF PITTSBURGH

GENERAL CATALOG OF COMPLETE BLUMCRAFT LINE AVAILABLE ON REQUEST  
COPYRIGHT 1962 BY BLUMCRAFT OF PITTSBURGH • 460 MELWOOD STREET, PITTSBURGH 13, PENNSYLVANIA



# Architecture in the News

Applications from three prospective Corporate members and from three prospective Associate members were approved by the ISA Board of Directors at their June 29th meeting in Indianapolis. Corporate applications approved and forwarded to Washington were from Mr. William Lindsey and Mr. Vern Kimmel, both of Vincennes, and Mr. Rene' C. Aybar of Terre Haute.

Associate applications receiving final approval were for Mr. Charles S. Shoemaker, Mr. Kenneth W. Goodrich, and Mr. John R. Trueblood, all of Indianapolis.

In other action, the Board approved a proposed budget for the new fiscal year and discussed several problems facing the profession. The next meeting of the Board will be on August 10th, at Lafayette.

\* \* \*

Many things have been happening over at the offices of Fleck, Quebe & Reid Associates, Indianapolis architects and engineers. While celebrating their eighth anniversary, the officers of the firm announced a reorganization program which subdivides the parent firm into three divisions, architectural, engineering and planning.

The architectural division will be known as Fleck, Burkart, Shropshire & Associates, and will operate under the direction of John C. Fleck, AIA, vice-president of Fleck, Quebe & Reid. The other principals are James Burkart and C. C. Shropshire.

The engineering division, known as Quebe, Allison, Wilcox & Associates, will be headed up by William F. Quebe, also a vice-president of the parent firm, with principals John B. Allison, Jr., and Arthur T. Wilcox.

The third division, the new planning division, will be under the direction of Robert T. Reid, firm president; services offered will include development of commercial and apartment buildings, industrial real estate, and specialized projects.

The firm has also moved its offices from 1637 N. Illinois to the Capitol Avenue Professional Building, located at 1815 N. Capitol Avenue, Indianapolis. Their offices will occupy the entire sixth floor of the building, which was designed by Fleck, Quebe & Reid Associates.

\* \* \*

Donald E. Clark, AIA, a former director and secretary of the Indiana Society, has been elected president of the 1963 Indianapolis Home Show, succeeding Carl F. Spickelmier. Mr. Clark is with the firm of McGuire & Shook, Comp-ton, Richey and Associates, of Indianapolis, and has rep-

resented the Indianapolis District of the ISA on the Home Show Board of Directors for several years.

Other officers elected at the annual meeting included W. L. Johns, first vice-president; Robert L. Dawson, second vice-president, Thomas B. Laycock, secretary, and Mr. Spickelmier, treasurer.

\* \* \*

Norman H. Jeffries and Forrest R. Camplin have been elected Associates in the Indianapolis architectural firm of James Associates, Inc. Mr. Camplin is a registered architect and has been with the James organization since 1951, and Mr. Jeffries, a registered architect since 1958, has been with the firm for more than twelve years.

Other principals include Edward D. James, FAIA, Thomas C. Dorste, AIA, H. Roll McLaughlin, AIA, David O. Meeker, Jr., AIA, David F. Snyder, AIA, Raymond S. Thompson, AIA, Howard L. White, AIA, Marion A. Williams, AIA, James D. Woods, AIA, and Stephen E. James, ISA Associate.

\* \* \*

Keith L. Guthrie, district structural engineer for the Portland Cement Association's Indianapolis office, has been elected president of the Indianapolis Chapter of Producers' Council, Inc., succeeding Hal E. Peters of Owens-Corning Fiberglas Corp. Other officers selected include G. T. Carlino of Hugh J. Baker & Co., vice-president; Byron Jaqua of Scott-Jaqua Co., Inc., treasurer; and Dick Light, American Block Company, secretary.

The Producers' Council is a national organization of manufacturers of quality building materials and equipment; it has grown from a manufacturers' committee formed by the American Institute of Architects to its present status of a national trade association comprised of nearly 200 manufacturers and 30 product trade associations. The Indianapolis chapter is composed of forty companies with seventy-six representatives.

\* \* \*

Miss Emma Lou Sweet, receptionist-secretary at the ISA Executive Office, became Mrs. Michael McClurg on Sunday, June 17th, and is now back at work following their honeymoon to Colorado. The groom is a 1962 Indiana University graduate.

In a few weeks, the couple will move to New York City where Mr. McClurg will be working.

(Continued on next page)



# Architecture in the News (continued)

J. Roy Carroll, Jr., FAIA, partner in the firm of Carroll, Grisdale & Van Alen, Philadelphia, Pa., won out over James M. Hunter, FAIA, James M. Hunter & Associates, Boulder, Colo., in the spirited contest for the office of first vice president of the American Institute of Architects.

Henry L. Wright, FAIA, Los Angeles, ran uncontested for the office of president.

In the two other contests this year, Arthur Gould Odell, Jr., FAIA, Arthur G. Odell, Jr. & Associates, Charlotte, N.C., was elected second vice president, and Clinton Gamble, FAIA, partner in the firm of Gamble, Pownall & Gilroy, Fort Lauderdale, Fla., won the post of secretary.

Odell defeated Albert S. Golemon, FAIA, partner in Goleman & Rolfe, Houston, Tex., and Gamble defeated Robert W. Cutler, FAIA, partner in Skidmore, Owings & Merrill, New York.

There was no contest on the position of treasurer with Raymond S. Kastendieck, FAIA, Gary, Ind., incumbent, the lone candidate.

The election of new officers, carried on during the convention, evoked a great deal of interest this year because of the contest for three offices. Announcement of the results was withheld from delegates until the last minute of the last session Friday morning.

Activity in the corridors around the meeting hall and in hotel rooms was brisk as support was lined up for this or that candidate. This feverish pace of electioneering lasted all week — until the polls closed Thursday night. The ballot box was opened for voting on Wednesday, morning, affording two days of actual voting.

\* \* \*

A Concrete Curtain Wall Seminar was held in Indianapolis this month under the sponsorship of the Portland Cement Association.

Mr. Edward van Amerongen, Staff Architect for PCA, was the main speaker for the Seminar, discussing various types, design applications, and construction techniques of concrete curtain walls.

The meeting was held at the Marott Hotel on Tuesday, June 5th.

The Lathing & Plastering Bureau of Indianapolis, Inc., announces that it now has a new business manager, Mr. Walter J. Strough, of 130 Winona Drive, Carmel, who will serve as liaison between architects, engineers, general contractors and the lathing and plastering industry.

Mr. Strough, age 36, is a World War II Navy veteran, and has had more than fifteen years' experience as a lather apprentice and journeyman. He and his wife, Norma, have two daughters, Dianna and Sharon, ages 8 and 5.

Any questions concerning lath and plaster should be referred to Mr. Strough, at Victor 6-5394.

\* \* \*

Blumcraft of Pittsburgh has received their third award in the annual product literature competitions conducted jointly by the American Institute of Architects and the Producers' Council, Inc. Blumcraft's Aluminum Railings Catalogue M-62 was cited as: "An example of the type of reference material architects find most helpful. Technical, informative, complete."

\* \* \*

More than 140 architects, engineers, contractors and other members of the construction industry attended a recent steel specification conference sponsored by central and southern Indiana structural steel fabricators in conjunction with the American Institute of Steel Construction. The conference was one of a series being held across the country to acquaint steel specifiers with the new AISC Specification for the Design, Fabrication and Erection of Structural Steel for Buildings.

Speakers for the conference included Mr. George Trainor, Bethlehem Steel Co.; Dr. John Scalzi, United States Steel Corp.; and Dr. Edwin H. Gaylord, Jr., University of Illinois.

\* \* \*

An interesting new movable partition system has been introduced in Indianapolis recently, utilizing solid, laminated gypsum wall panels which can be moved and reused as often as necessary to accommodate changing space requirements. The tongue and groove panels fit into floor and ceiling tracks, and eliminate any need for posts, clips, closure plates, etc. Doors or windows can be located anywhere in the wall, by merely sawing the opening and applying the necessary trim and hardware.

The new system is offered locally by Frank W. Hanson, 645 N. Davidson Street, Indianapolis.



*it pays to specify* **SARGENT® PAINTS**

See for yourself . . . how Sargent paint products more than fill the bill for consistent quality . . . for commercial or private application.

60 years of paint making experience makes you sure

*the Sargent-Gerke Co.*  
323 W. 15th ST., INDIANAPOLIS, INDIANA



# INDIANA SOCIETY OF ARCHITECTS

A Chapter of The American Institute of Architects

Membership Roster (As of July 1, 1962)

## CORPORATE MEMBERS

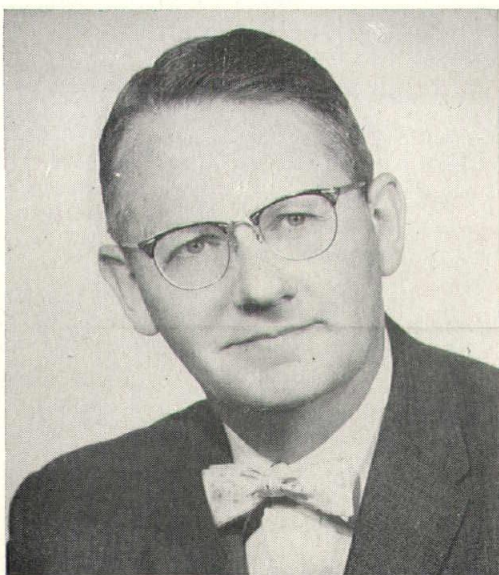
- ALLEN, J. Lloyd, 435 Architects and Builders Bldg.,  
Indianapolis
- ALBRIGHT, David Joseph, 204 E. Smith Ave.,  
Bloomington
- APPLEGATE, Robert Lee, 218 Elsby Bldg.,  
New Albany
- BEESON, Carroll O., 201 Ben Hur Bldg.,  
Crawfordsville
- BEIHL, George Phillip, 615 Owen.  
Lafayette
- BERENDES, Edwin C., 208 Northwest Third St.,  
Evansville
- BEST, Rose Mary, Miss, 512 I.S.T.A. Center,  
Indianapolis 4
- BETTS, Charles J., 110 South Downey Avenue,  
Indianapolis 7
- BISHOP, Richard E., 5940 N. Sherman Dr.,  
Indianapolis
- BOGGY, Horace E., 4428 East 34th Street,  
Indianapolis 18
- BOHLEN, August C., 1308 N. Meridian,  
Indianapolis 2
- BRADLEY, Carl LeRoy, 1115 S. Clinton,  
Fort Wayne
- BRENNER, Elliott Herbert, 1001 South Street  
Lafayette
- BROWN, Charles M., 501 Chamber of Commerce Bldg.,  
Indianapolis 4
- BROWN, Eugene C., 5444 Glencoe Street,  
Indianapolis 26
- BROWN, Eugene L., 901 Illinois Building,  
Indianapolis 4
- BURNS, Arthur L., 2025 East 69th Street,  
Indianapolis 20
- BURNS, David V., 1308 N. Meridian,  
Indianapolis 2
- CAMPBELL, Robert E., 3509 Forest Manor Ave.,  
Indianapolis 18
- CLARK, Donald E., Room #512, ISTA Center,  
Indianapolis 4
- CLARK, Edward J., 3445 Winthrop Avenue,  
Indianapolis 5
- COMPTON, Donald E., Room #512, ISTA Center  
Indianapolis 4
- COOLER, Harry E., Jr., 4845 North College Avenue,  
Indianapolis 5
- COOPER, E. Crawley, 546 East 60th,  
Indianapolis 20
- CRABBS, Everett H., 1607 E. Northwood Dr.,  
Indianapolis
- CRAMER, Marion L., 5916 Broadway,  
Indianapolis 20
- CURRY, John A., 709½ Wabash Ave.,  
Terre Haute
- DAGGETT, Robert F., Jr., 567 West Westfield Blvd.,  
Indianapolis 8
- DAHLGREN, Ivan Raymond, Landmark Bldg., Spy Run &  
Tennessee, Fort Wayne
- DAVIS, William E., Box 61,  
Rockville
- DICK, Donald D., 3934 E. Tenth St.,  
Indianapolis
- DORSTE, Thomas C., 122 E. Michigan,  
Indianapolis 4
- EBY, Robert Wilbur, 218 Elsby Bldg.,  
New Albany
- ERIKSON, Oscar W., 4741 East Washington,  
Indianapolis 1
- FALLON, Joseph R., Sr., 32 S. Ninth Street,  
Richmond
- FISHER, Don B., 4845 N. College Ave.,  
Indianapolis
- FLECK, John C., 1815 N. Capitol,  
Indianapolis 2
- FORD, Wilson L., 3949 Meadows Drive,  
Indianapolis 5
- GARNS, Howard Scott, 826 Indiana Pythian Bldg.,  
Indianapolis
- GIBBS, Gordon, 401 E. Hanna Ave.,  
Indianapolis 27
- GIBSON, Edwin A., 600 Strauss Bldg.,  
Fort Wayne
- GIVEN, Wallace Wayne, 7233 Newburgh Rd.,  
Evansville
- GLOYESKE, Robert K., 1114 State St.,  
Lafayette
- GRAHAM, Frederick H., 506 N. Main,  
Muncie
- GREEN, Lot, 4552 Crooked Creek Ridge,  
Indianapolis
- GUYER, John P., 114 South Main St.,  
New Castle
- HAMILTON, Charles E., 506 N. Main,  
Muncie
- HANSON, W. Erb, 302 Heineman Bldg.,  
Connersville
- HARRISON, Merritt, FAIA, 1001 Architects & Builders Bldg.,  
Indianapolis 4
- HEITGER, Robert H., 1702 "N" Street,  
Bedford
- HENNING, Arthur B., 514 Anderson Bank Bldg.,  
Anderson
- HILL, David B., 111 Lynwood Drive,  
Whiteland
- HILL, Norman H., R.R. 3, Box 847 M,  
Indianapolis
- HINSHAW, Donald A., 107 East Main,  
Westfield
- HIRONIMUS, John, 506 North Main St.,  
Evansville
- HUBER, G. A., 632 St. James Blvd.,  
Evansville
- HULFELD, Joseph J., 3520 Kirkwood Circle,  
Fort Wayne
- HUNTER, Harry E., 1018 Architects & Builders Bldg.,  
Indianapolis 4
- HUTCHINSON, Robert Franklin, P.O. Box 287,  
Lebanon
- JACOBS, Gilbert K., 3640 North Park Avenue,  
Indianapolis 5

(Continued on Next Page)



JAMES, Edward D., 122 East Michigan Street,  
Indianapolis 4  
JELLIFFE, John H., 4701 Boulevard Place,  
Indianapolis  
JOBUSCH, Wallace E., 720 Chelsea Rd.,  
West Lafayette  
JOHNSON, James O., 227 West 11th St.,  
Anderson  
KENNEDY, Robert N., 4167 N. College Ave.,  
Indianapolis 5  
KINKEL, Jack Russell, 320 Northwest 7th St.,  
Evansville  
KNAPP, Ralph Robert, 506 N. Main St.,  
Evansville  
LAKIN, Robert E., 4235 Springwood Trail,  
Indianapolis 8  
LENNOX, Richard C., 3949 Meadows Drive,  
Indianapolis 5  
LEWIS, James O., 3925 N. College Ave.,  
Indianapolis  
LOWE, Charles C., Jr., 19 W. 38th,  
Indianapolis 8  
McKINLEY, Henry, 3210 Highwoods Drive,  
Indianapolis 22  
McLAUGHLIN, Harry Roll, R. R. #2, Box 410-A,  
Carmel  
McMAHON, Ogden Walter, 1405 S. 5th St.,  
Lafayette  
MADIGAN, Richard P., 3150 Arundal Lane,  
Indianapolis  
MARTIN, Wesley P., 5350 Cheviot Place,  
Indianapolis  
MARTINDALE, John D., Landmark Bldg., Spy Run &  
Tennessee, Fort Wayne  
MATKIN, Paul V., 5878 Ralston Dr.,  
Indianapolis  
MEDLAND, Thomas G., 417 North St.,  
Logansport  
MEEKER, David O., Jr., 122 E. Michigan,  
Indianapolis 4  
MEIER, Henry George, 5636 Marilyn Road,  
Indianapolis 26  
MERANDA, Alden C., 301 Board of Trade Building,  
Indianapolis 4  
MILLER, Ewing H., II, 604 Tribune Bldg.,  
Terre Haute

MILLER, Warren D., FAIA, 604 Tribune Bldg.,  
Terre Haute  
MONTGOMERY, Kenneth R., 514 Anderson Bank Bldg.,  
Anderson  
MOSER, Lloyd V., 1114 State Street,  
Lafayette  
MOSHER, Rollin V., 110 South Downey Avenue,  
Indianapolis 7  
MYERS, Clarence T., 19 East 34th Street,  
Indianapolis 5  
NAEGELE, F. Harold, 567 West Westfield Blvd.,  
Indianapolis 8  
OAKES, Robert T., 218 Elsby Bldg.,  
New Albany  
OGLE, Raymond W., 5008 N. Pennsylvania,  
Indianapolis 5  
PALMER, Charles L., 4733 Jennys Road,  
Indianapolis 8  
PARRISH, John P., 5945 Primrose Avenue,  
Indianapolis 20  
PECSOK, John G., 149 South Ninth Street,  
Noblesville  
PEDDLE, Juliet Alice (Miss), 531 Tribune Bldg.,  
Terre Haute  
PENNISTON, Louis, 4249 Springwood Court,  
Indianapolis 8  
POOL, Oscar James, 6851 Dean Road,  
Indianapolis 20  
PORTEOUS, Alfred J., 19 West 38th,  
Indianapolis 8  
RICHEY, Gilbert T., Room #512, ISTA Center,  
Indianapolis 4  
RITZ, Robert L., 218 Elsby Bldg.,  
New Albany  
ROUTT, Lester W., Citizens Trust Bldg.,  
Vincennes  
RUSSELL, Leroy M., 3840 North Washington Blvd.,  
Indianapolis 5  
SALETTA, Charles A., 122 Locust St.,  
Evansville  
SANNER, Albert E., 4706 Highwood Dr.,  
Fort Wayne  
SAUER, David A., 123 West Wayne St.,  
Fort Wayne  
SCHAIBLE, Ernest L., Jr., 1114 State St.,  
Lafayette



WALTER SCHOLER, JR., AIA  
ISA President



ALFRED J. PORTEOUS, AIA  
ISA Vice-President



SCHOLER, Walter, Sr., FAIA, 1114 State St.,  
Lafayette  
SCHOLER, Walter, Jr., 1114 State St.,  
Lafayette  
SCHOLL, Lloyd W., 501 Lemcke Building,  
Indianapolis 4  
SCHROEDER, Fran E., 8000 Sargent Road,  
Indianapolis 26  
SCHUBERT, William Carl, 4241 Springwood Court,  
Indianapolis 8  
SHIMER, Thomas S., Jr., 3117 Richardt Ave.,  
Indianapolis  
SHROPSHIRE, Clyde, 3125 Richardt, (North)  
Indianapolis 26  
SIMMONS, Edward E., 140 Meridian Hills Blvd.,  
Indianapolis  
SMITH, Robert C., R. R. #6, Box 879-E,  
Indianapolis 27  
SNYDER, David F., 122 E. Michigan St.,  
Indianapolis  
SOHN, John G. C., 724 Banker's Trust Building,  
Indianapolis 4  
STEELE, Theodore L., 1001 West 58th St.,  
Indianapolis  
STRAIN, William J., 1002 Maxwell Lane,  
Bloomington  
SUTTON, Michael C., 3425 Eller Dr.,  
Indianapolis  
TAYLOR, Alfred D., 2301 California St.,  
Columbus  
TERWILLIGER, Richard H., 1—South 12th St.,  
Richmond  
THOMPSON, Raymond S., R. R. #2, Box 294-A,  
Carmel  
TOTTEN, Charles A., Jr., 4022 29th Street,  
Columbus  
TRUE, Joseph D., Jr., 15½ Brown St.,  
Columbus  
WALKER, James L., Jr., 218 Elsby Bldg.,  
New Albany  
WARWEG, Earl O., 2509 Washington Ave.,  
Evansville  
WEBER, Wayne M., 709½ Wabash Ave.,  
Terre Haute  
WESLEY, E. Jack, 10 Chestnut St.,  
Evansville

WEST, George R., 4415 North Forrest Manor,  
Indianapolis 18  
WHITE, Howard L., 751 East Main Street,  
Carmel  
WILLIAMS, Kenneth W., 211 W. Mulberry St.,  
Kokomo  
WILLIAMS, Marion A., 5004 Radnor Road,  
Indianapolis 26  
WILLIAMSON, Orval E., 2432 East Kessler Blvd., E. Drive,  
Indianapolis 5  
WILSON, Carlton C., 100 S. 12th St.,  
Richmond  
WOLNER, Howard Henry, 3465 College Avenue,  
Indianapolis 5  
WOODS, James D., 350 East 60th Street,  
Indianapolis 20  
WOOLLEN, Evans, III., 604 Fort Wayne Avenue,  
Indianapolis 4  
WRIGHT, William Caleb, 19 West 38th Street,  
Indianapolis 8  
WUPPER, Arthur, 3952 Washington Blvd.,  
Indianapolis  
YEAGER, Murray Philip, 822 Ohio St.,  
Terre Haute  
YEAGER, Ralph O., Jr., 822 Ohio St.,  
Terre Haute  
ZIMMERLY, Richard K., R. R. #17, Box 556,  
Indianapolis 23  
ZIMMERMAN, William J., 1000 McArthur Circle,  
Evansville

#### CORPORATE MEMBERS EMERITUS

TISLOW, Oswald A., 1018 Architects Bldg.,  
Indianapolis  
PIERRE, Edward D., FAIA, 909 Architects Bldg.,  
Indianapolis  
WEISENBURGH, Philip A., 1034 Architects Bldg.,  
Indianapolis  
WICKES, A. Frank, 40 Johnson Ave.,  
Indianapolis  
WRIGHT, George Caleb, FAIA, 19 West 38th St.,  
Indianapolis  
MONAGHAN, John Raymond, 8815 Michaux Lane,  
Richmond, Virginia

(Continued on Page 13)



CHARLES J. BETTS, AIA  
ISA Secretary



IVAN RAY DAHLGREN, AIA  
ISA Treasurer



THERE IS NO SUBSTITUTE  
FOR GENUINE

# LATH<sup>and</sup> plaster



INVESTIGATE ITS FIRE SAFETY  
SPECIFY ITS ECONOMY  
DEMAND ITS DURABILITY  
GET A BONUS OF VERSATILITY

*Lathing & Plastering Bureau of Indianapolis, Inc.*

BUSINESS MANAGER: Walter J. Strough, 130 Winona Dr., Carmel, Ind., Victor 6-5394

Good Lumber    Imported & Domestic Hardwoods  
Fine Custom Millwork    Pre-assembled Components

**BURNET-BINFORD LUMBER CO.**

1401 West 30th St.    8502 Westfield Blvd., Nora, Ind.    Wa. 6-3315

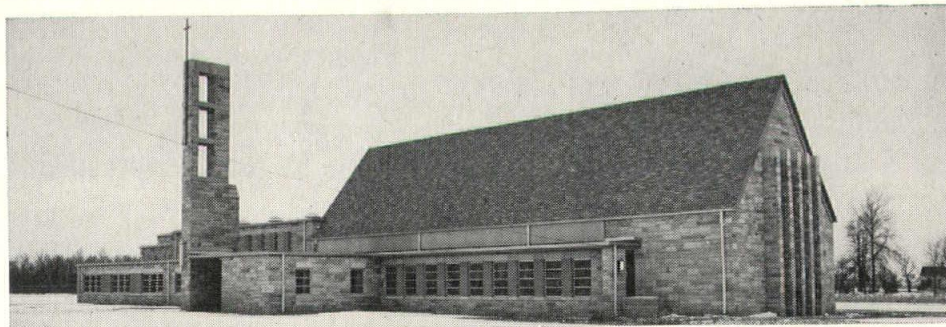
## Again, Architects Specify *Flameless* ELECTRIC HEATING

Here is another example. Architects are specifying safer, cleaner, more dependable electric heating in modern schools, churches, hospitals and

commercial buildings. Flameless electric heating is practical for home use, too. See us today for complete details!

Church of the Brethren,  
Kokomo, Indiana. Architect  
& Engineer: Kenneth Wil-  
liams, Kokomo.

Initial savings in construction costs, lower maintenance and better zone control of temperature make this and other churches ideal for electric heating. Results here have been most satisfactory.



**PUBLIC SERVICE COMPANY OF INDIANA, INC.**



## HONORARY ASSOCIATE MEMBERS

(Including Dues-Exempt Associate Members)

CANNON, Fermor, 5907 Gladden Dr.,  
Indianapolis  
CUTSHALL, R. W., 603 N. Meridian St.,  
Brazil  
FLECK, Arthur W., 235 W. 44th St.,  
Indianapolis  
FRITZ, John T., 50 "A" St., N.E.,  
Linton  
GIBSON, Donald E., 3637 N. Meridian St.,  
Indianapolis  
OBERWARTH, C. Julian, 301 Second Street,  
Frankfort, Kentucky  
PEAT, Wilbur D., 110 E. Sixteenth St.,  
Indianapolis

## ASSOCIATE MEMBERS

BAILEY, Robert H., 4029 North Arlington Avenue,  
Indianapolis 26  
BEARD, William C., Jr., 3616 Carrollton Ave.,  
Indianapolis 5  
BLOMBERG, Herman W., 928 East 38th Street,  
Indianapolis 5  
BYFIELD, Charles H., II, 854 Meadowbrook Court,  
Indianapolis  
CRADICK, Raymond V., 3527 North Wallace,  
Indianapolis 18  
EHLERT, Julius F., 945 North Downey Avenue,  
Indianapolis 19  
ELLIOTT, Francis Edward, 610 S. Tenth St.,  
Lafayette  
FINCH, Basil M., Jr., 4138 Edgemere Court, A-2,  
Indianapolis  
FOSTER, Glenn William, 4741 East Washington,  
Indianapolis 1  
FREY, E. Roger, 110 South Downey Avenue,  
Indianapolis 7  
GOODRICH, Kenneth W., 42 E. 32nd St.,  
Indianapolis  
HILL, Robert S., 6897 West 13th St.,  
Indianapolis  
HODGE, Philip L., 1001 N. Tillotson,  
Muncie  
JAMES, Stephen E., 122 East Michigan Street,  
Indianapolis 4  
KAIN, Robert E., 4210 S. Anthony,  
Fort Wayne  
KERBERG, Clarence B., R. R. #1, State Road 334 East,  
Zionsville  
LaRUE, Robert L., 4078 Byram Ave.,  
Indianapolis 8  
McCARTHY, Jerry R., 1120 Elm Street,  
Shelbyville  
McGUIRE, Joseph J., 3747 North Oxford Street,  
Indianapolis 18  
MILLER, William Lowell, 901 Illinois Bldg.,  
Indianapolis  
PEIRCE, Richard G., 701 East 81st Street,  
Indianapolis 20  
RALL, Herman G., 762 DeQuincy Street,  
Indianapolis 1  
RANDALL, J. Parke, 5350 Cheviot Place,  
Indianapolis 26  
READY, Urban Lynn, 3847 N. Graham,  
Indianapolis  
REYNOLDS, Harry I., 6126 Compton St., Apt. 18,  
Indianapolis

RICE, Clyde O., 2230 Graham,  
Indianapolis 18  
RICE, Larry T., 1320 N. Delaware, 406,  
Indianapolis  
RICHARDSON, David L., 6642 Brook Haven Drive,  
Indianapolis  
ROETTGER, Richard E., 522 Powell Pl.,  
Indianapolis  
ROSEN, Michael L., 3511 E. 39th St.,  
Indianapolis  
SHAW, Joseph Henry, 1641 Hoefgen St.,  
Indianapolis  
SHOAFF, T. Richard, 922 West Berry,  
Fort Wayne  
SMITH, M. Carlton, 477 W. 93rd St.,  
Indianapolis  
SNYDER, Bernard A., 2321 E. 52nd Street, Apt. #48,  
Indianapolis 8  
TRAUB, Norman F., 3940 Wallace Avenue,  
Indianapolis 18  
WAMSLEY, Charles F., 6813 Hague Road,  
Indianapolis 26  
WATT, David H., 4741 East Washington Street,  
Indianapolis 1  
WICKHAM, R. O., 11562 Newport Dr.,  
Indianapolis  
WINDHORST, Edith (Miss), R.R. 1, Box 119,  
Greenfield  
WOOD, Donald, P.O. Box 248,  
Columbus  
WOOD, Kenneth S., 336 N. Graham,  
Indianapolis

## JUNIOR ASSOCIATE MEMBERS

BONNET, Donald L., 342 1/2 N. Jefferson,  
Indianapolis  
CAMPBELL, Robert G., 137 North Pasadena,  
Indianapolis 19  
CARMACK, John, R. R. #2, Box 409,  
Carmel  
GEISENDORFF, Mauri, 4025 Redbird Drive,  
Indianapolis 24  
HARDY, Walter B., Sr., 512 ISTA Center,  
Indianapolis  
HAYNES, William B., 1207 N. Forest,  
Bloomington  
JEFFRIES, Norman H., 1746 Minturn Lane,  
Indianapolis 8  
KELLEY, Harold G., 1405 N. Audubon Rd.,  
Indianapolis  
McMAHON, Ogden Walter, 1405 S. 5th St.,  
Lafayette  
MARTIN, Richard E., 2852 North Delaware Street,  
Indianapolis 5  
NICE, David S., 102 N. Wallace,  
Indianapolis  
OKEY, Phillip Michael, 1020 North Huber,  
Indianapolis 19  
PERRY, Don B., 4126 Edgemere Court,  
Indianapolis  
PHILLIPS, Wendell W., Jr., 7203 North Lesley,  
Indianapolis 20  
PLUMLEY, Robert L., 814 N. Layman,  
Indianapolis  
PORTISH, H. Joseph, 1204 W. Hanna Ave.,  
Indianapolis  
SENNEFELD, Dudley J., 3525 McArthur Lane,  
Indianapolis  
STRANDJORD, Ronald, 3033 Westleigh Drive,  
Indianapolis 8



## PERSONNEL NOTICES

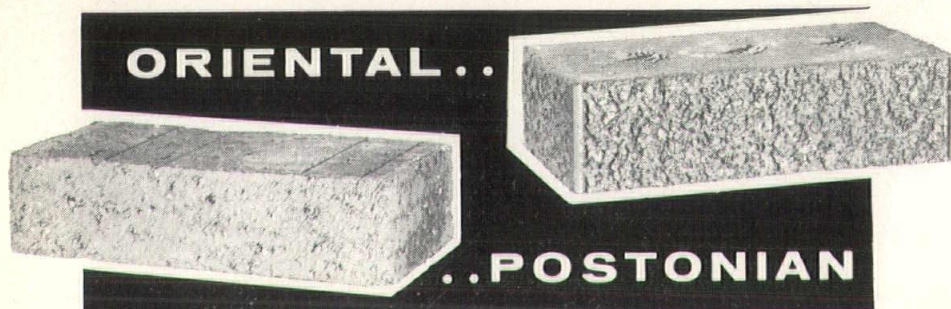
**WANTED:** Experienced and fully-qualified architectural draftsmen and other technical employees. Two years experience essential, preferably with some hospital drafting experience.

Contact John C. Fleck, Fleck, Quebe & Reid Associates, 1815 N. Illinois St., Indianapolis.

**WANTED:** Architect or man with architectural experience to take charge of contract sales division of central Indiana firm; duties include designing and making equipment layouts, liaison between factory and consumer, promotion of special equipment, and working with field representatives. Some travel required; those with management abilities given preferential consideration.

For information, contact Box 790, INDIANA ARCHITECT, 3637 N. Meridian St., Indianapolis.

# EXCLUSIVE PERSONALITIES in fine FACE BRICK for your most exacting demands



Your design ingenuity finds new dimensions when you call on the "exclusive personalities" of Postonian and Oriental Face Brick. Here is something different in modern clay masonry attractiveness . . . distinctive brick to add a touch of distinction that will please your most discriminating clients.

**POSTONIANS** . . . are "solid brick," exclusively textured on both faces and both ends. In addition, the "top and bottom" are finished for use. Rich red to black color tones add still further to unmatched versatility.

**ORIENTALS** . . . exclusive Poston-Herron texture and colors in standard size 3-core brick. Finish and color range enable you to create exteriors and exposed interiors that are as different in appearance as they are practical in performance.

Wouldn't you like to see samples . . . and see for yourself how you can add extra personality and individuality to your wall designs with Poston-Herron distinctive Face Brick? Contact your nearest dealer or the plant.

**POSTON-HERRON BRICK CO., INC.**  
ATTICA, INDIANA

## For Sale

Wood horizontal plan files, drawers  
2" deep, 29" x 39½" x 83" high  
stack, 29" x 39½" x 63" high  
stack

also

Two vertical plan files, one wood  
and one metal

Surplus Items Now In  
Storage

FOR SALE BY ARCHITECT

Write: Box 11A, Indiana  
Architect, 3637 N. Meridian,  
Indianapolis

ONLY in the

## INDIANA ARCHITECT CAN YOU REACH

- ALL 702 Architects Registered by the State of Indiana
- ALSO
- Registered Engineers
- State, County and Local Government Officials
- School Officials
- Bank Officials
- Hospital Administrators
- The Building Industry

For Advertising Rates:

**INDIANA ARCHITECT**

P. O. BOX 55594  
Indianapolis 5, Ind.

OR CONSULT:  
STANDARD, RATE & DATA,  
BUSINESS PUBLICATIONS



# INDIANA SOCIETY OF ARCHITECTS

## 1962-63 Committees

### STANDING COMMITTEES

#### Membership

Charles J. Betts, ch., Murray P. Yeager, Robert L. Ritz, Raymond P. Ogle, E. H. Brenner, Ray Dahlgren.

#### Practice of Architecture

Harry Hunter, ch., Edwin C. Berendes, Don Clark, E. L. Schaible, Eugene L. Brown, Art Broecker.

#### Relations with Construction Industry

Wayne M. Weber, ch., Robert Knapp, Ralph Yeager, Alfred J. Porteous, John Guyer, Don Compton, Bill Davis, Lee Russell.

#### Public Relations and Publicity

Dick Madigan, ch., Robert Knapp, John Martindale, Arthur L. Burns, David A. Sauer, David S. Nice, Robert L. Ritz, Robert Gloyeske, J. Parke Randall, Ray Ogle.

#### Civic Planning

Kenneth S. Wood, ch., George C. Wright, Murry P. Yeager, E. Crawley Cooper, Don Bryon Perry, Larry T. Rice, W. E. Jobusch, Ray Thompson, Gordon Gibbs, Michael C. Sutton.

#### Education and Registration (incl. School of Architecture)

C. Eugene Hamilton, ch., Alfred J. Porteous, Kenneth S. Wood, E. H. Brenner, David A. Sauer, David S. Nice, E. Crawley Cooper, Walter Scholer, Sr., Warren Miller.

#### Chapter Affairs

Alfred J. Porteous, ch., Charles J. Betts, Carl L. Bradley.

#### Collaboration with Design Professions

Robert L. Ritz, ch., Larry T. Rice, Lloyd V. Moser.

#### Preservation of Historic Buildings

H. Roll McLaughlin, ch., E. Roger Frey, Horace E. Boggy, Kenneth S. Wood, A. Dean Taylor, Joseph R. Fallon, Sr., David B. Hill, Oscar J. Pool, Edward D. James, Juliet Peddle, Dave Burns, Wes Martin, Julius Ehlert, Harry Hunter.

### SPECIAL COMMITTEES

#### Scholarship

Administrators: Alfred J. Porteous, ch., Harry E. Hunter, C. Eugene Hamilton, Ewing Miller; Robert Applegate, Robert Gloyeske, John Hironimus, Philip Okey, Mrs. Marion Williams.

#### Legislation

John Fleck, ch., Wayne M. Weber, Carroll O. Beeson, Ivan R. Dahlgren, Murray P. Yeager, Jim Walker, Don Fisher, Gene Hamilton, Wally Givens, Gilbert Richey, Richard Lennox.

#### ISA-PC Liason

Ray Ogle, ch., Fran Schroeder, Don Clark.

#### Awards and Exhibits

Roger Frey, ch., Evans Woollen, Harry Hunter.

#### Fellowship

Wayne Weber, ch., George C. Wright, Edward D. Pierre, Merritt Harrison, Walter Scholer, Sr., Edward D. James, Warren D. Miller.

#### ISA-ISPE-NIC Joint Committee

Edwin C. Berendes, ch., Thomas G. Medland, W. E. Jobusch, Howard White, Richard Lennox.

#### Sesquicentennial 1966

Edward D. Pierre, ch.

#### Housing the Aged

Ewing Miller, ch.

#### Codefication of Common School Law

Gilbert Richey, ch.

## SCHOLARSHIP REPORT

By ALFRED J. PORTEOUS, AIA  
Chairman, Scholarship Committee

The big deadline is over as of June 30th.

Of the 65 high school seniors who applied for the first I.S.A. Scholarship, there were 22 (mostly seventeen year old boys), who completed the requirements.

One of the requirements was the essay. These are well-worded statements on "WHY I WANT TO BE AN ARCHITECT," and vary in length from 137 words up to the 1500 maximum allowed.

The 22 applicants held a total of 47 interviews with architects, receiving encouragement and information about our work. There were five other students who had a total of 12 interviews but didn't complete all requirements.

These boys indicate their architectural training will be at the following schools, as noted.

University of Cincinnati	13 students
University of Illinois	6
Miami University, Oxford, Ohio	1
University of Michigan	1
Montana State College	1

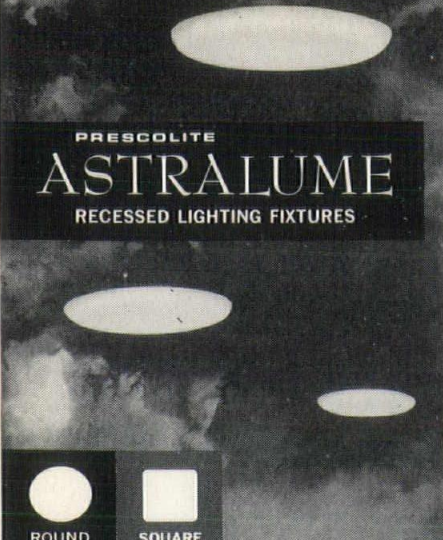
Those applicants, along with their parents and girl friends, now awaiting the Jury's report are:

David L. Blanton, 1127 S. Pershing Ave., Indianapolis  
Charles F. Brenner, R.R. 3, Box 153-H, Walkerton  
Gary William Brockman, 6514 Newburgh Rd., Evansville  
James Williams Coons, Jr., 1512 S. Elm St., Crawfordsville  
Michael L. Fox, 2446 Pearl St., Anderson  
Lawrance Edward Fraser, 219 Hendricks St., Mishawaka  
Donald L. Jewell, Jr., 534½ S. 5th St., Terre Haute

(Continued on Page 18)



**PRESCOLITE**  
**ASTRALUME**  
 RECESSED LIGHTING FIXTURES




**ROUND**      **SQUARE**

- Beautiful shallow silhouette. Round or square hand blown Thermopal glass. 100-300 Watts.
- No frames, latches or visible means of glass support (U. S. Pat. No. 2,826,684). NEW hinging principle.
- Prewired recessed housings.
- Vertical lamping.

*Write for further information.*  
**PRESCOLITE MFG. CORP.**  
 1251 Doolittle Drive  
 San Leandro, California

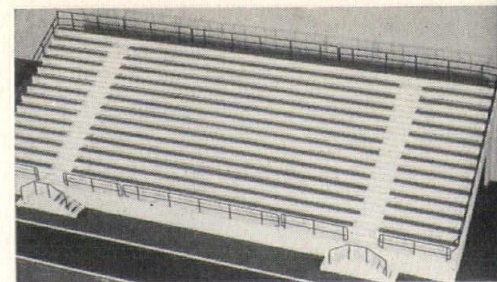
**FACTORIES:**  
 San Leandro, Cal. • Warrington, Pa. • El Dorado, Ark.



**MEMORIALS**  
**PORTRAIT TABLETS**  
**HONOR ROLLS**  
**NAME PLATES**  
**MARKERS**

and other Bronze Tablets are custom made and hand finished. Tell us your requirements.  
*Send for Free Catalog*

**MEIERJOHAN-WENGLER**  
 1102 W. NINTH ST. — CINCINNATI 3, OHIO



**STADIUM**  
 of prestressed concrete

**HIGH QUALITY**

**LOW PRICE**

SPACE FOR LOCKER ROOMS,  
 TICKET BOOTHS, & STORAGE

A section 90 ft. long seats 814 Prestressed concrete, the architect's choice, offers design flexibility, low maintenance costs, durability and early completion dates.

*Write, or call 2-4086*

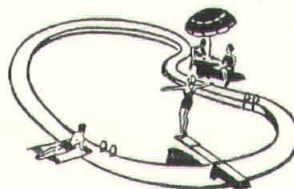
**SHUTE CONCRETE PRODUCTS, INC.**  
 Richmond, Indiana

**QUALITY**  
**FLUORESCENT LIGHTING**  
**FIXTURES**  
**FOR**  
**SCHOOLS**  
**OFFICES**  
**STORES**  
**FACTORIES**

**LOUISVILLE**  
**LAMP CO., INC.**  
 LOUISVILLE 3, KENTUCKY  
 FOR QUICK SERVICE  
 CALL JU 7-6094

INDIANA REPRESENTATIVE  
**THE H. H. HOMAN CO.**  
 JOHN G. LEWE  
 H. H. (SANDY) HOMAN  
 COLUMBIA WOOSTER BLDG.  
 ROOM 107  
 CINCINNATI 17, OHIO

**Residential and**  
**Commercial**  
**SWIMMING POOLS**



**Compare Quality and Price!**

We will show you all sizes and shapes to fit your requirements.

*Oldest and Largest Pool Builders in Indiana*

Quality Pools by

**JAMES Construction Co.**

Charter Member of the National Swimming Pool Institute

LI berty 5-0990

2321 N. Emerson Indianapolis

**F. E. GATES**  
**MARBLE & TILE CO.**  
**&**  
**INDIANA DESCO INC.**

*Contractors In*

**Marble, Ceramic Tile,**  
**Slate and Desco Vitro**  
**Glaze Wall and Floor**  
**Finishes**

LOUIS M. BARCH, General Manager

CLifford 5-2434

5345 Winthrop Ave.  
 Indianapolis 20, Indiana



# NORTHERN INDIANA CHAPTER

Of The American Institute of Architects

Membership Roster (As of July 1, 1962)

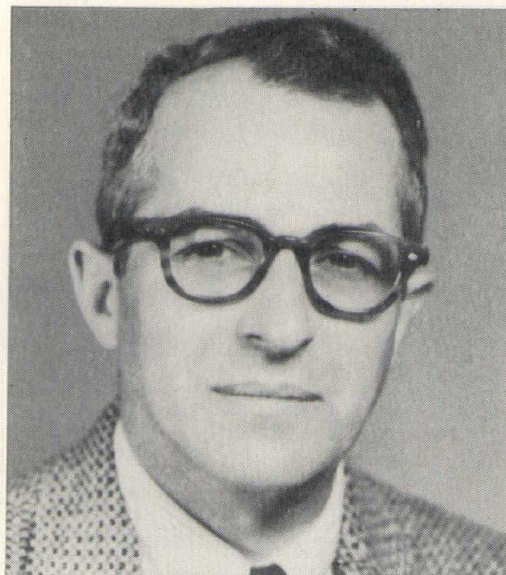
## CORPORATE MEMBERS

BERNARD, L. Cosby, Jr., 2044—164th Place,  
Hammond  
BERTRAM, Joseph H., 5116 Hohman Ave.,  
Hammond  
BRUBAKER, Gerald C., 360 Goshen Ave.,  
Elkhart  
BURLAGE, James E., 520 Clermont Dr.,  
Fort Wayne  
CARRAS, Nathan A., 649 Cherry Street,  
Hammond  
CHRISTENSON, Trace, Jr., 230 W. Washington St.,  
South Bend  
DRIGGS, Harry S., 312 Lafayette Bldg.,  
South Bend  
EMMERT, Lorenzo Stanley, 2112 Aurora St.,  
Elkhart  
FARMER, William Douglas, 54509 Burdette,  
South Bend  
GIRONE, Vito A., 1902 Kessler Blvd.,  
South Bend  
GODOLLEI, Paul B., 1910 Ribourde Dr.,  
South Bend  
HAGERSTROM, Charles T., 275 Taft Place,  
Gary  
HALL, George Naylor, 607 Broadway,  
Gary  
HUBBARD, John D., 2649 Wabash Ave.,  
Gary  
HUMBRECHT, Harry J., 2701 Broadway,  
Fort Wayne  
JERNEGAN, Paul F., 223 Lincolnway East,  
Mishawaka  
JEWELL, Everett A., 113 E. Tasher Ave.,  
South Bend  
KASTENDIECK, Raymond S., FAIA, 128 Glen Park Ave.,  
Gary  
KATZ, David J., 1735 West Fifth Ave.,  
Gary

KEENE, Thomas R., 4015 Shorelane Rd.,  
Elkhart  
KERVICK, Francis W., University of Notre Dame,  
Notre Dame  
KRUYER, Joseph, 18785 Arapaho Lane,  
South Bend  
LAWRENCE, J. Douglas, 402 W. Washington St.,  
Fort Wayne  
LIEBERENZ, Robert LeVerne, 515 Massachusetts Ave.,  
Elkhart  
LOGAN, Frank, Box 62,  
Pierceton  
McCARRON, James, 515 S. Calhoun St.,  
Fort Wayne  
McCLEARY, William J., 410 Argonne Rd.,  
Warsaw  
McCOMB, Harry, 6708 Jackson Ave.,  
Hammond  
MALO, Edward Joseph, 54380 N. 31st St.,  
South Bend  
MALOTT, Charles, 262 Central Bldg.,  
Fort Wayne  
MASS, Lloyd, 109 North Taylor St.,  
South Bend  
MATHEWS, Joseph L., 812 East Jefferson,  
South Bend  
MILLER, Richard P., 1218 Meadow Bank Lane,  
Elkhart  
MONTANA, Frank, 708 S. Main St.,  
Mishawaka  
OGDEN, Oliver, 1035 Riverside Dr.,  
South Bend  
O'KEEFE, Alves D., 223 W. Jefferson St.,  
Plymouth  
PANZICA, Anthony J., 1242 Mishawaka Ave.,  
South Bend  
POHLMAYER, Martin W., 262 Central Bldg.,  
Fort Wayne



LLOYD W. MASS, AIA  
NIC Treasurer



VITO A. GIRONE, AIA  
NIC Secretary



# NIC Membership Roster

## CORPORATE MEMBERS (Continued)

PREMIL, Robert, 5001 Clevealand,  
Gary  
PRICE, Charles Keller, Jr., 836 Manchester Dr.,  
South Bend  
PURUCKER, Ervin F., 1129 Belmont Ave.,  
South Bend  
RAMMEL, William G., 124 W. Wayne St.,  
Fort Wayne  
ROBINSON, Courtney Eugene, 1924 St. Joe Blvd.,  
Fort Wayne  
SCHAAF, Norert J., 321 Warren Bldg.,  
Michigan City  
SCHENKEL, James J., 1815 E. State St.,  
Fort Wayne  
SCHULTZ, Robert J., 708 S. Main St.,  
Mishawaka  
SEELER, Otto F., 1820 Ribourde Dr.,  
South Bend  
SHANNON, Richard II., 1212 S. Randolph St.,  
Garrett  
SKARET, Alf O., 3600 E. Jefferson,  
South Bend  
SMITH, Donald H., 109 N. Taylor St.,  
South Bend  
SOFRANKO, Michael F., 445 Monroe,  
Gary  
SOSENHEIMER, John, 252 Central Bldg.,  
Fort Wayne  
STRAUSS, Herman S., 600 Strauss Bldg.,  
Fort Wayne  
TANCK, Paul O., 406 Lincolnway,  
Valparaiso  
THIER, Stanley, 205 W. Cripe St.,  
South Bend  
TOTH, Andrew A., 2158 Portage Ave.,  
South Bend  
TOTH, Andrew M., 1218 Black Oak Dr.,  
South Bend



COURTNEY E. ROBINSON, AIA  
NIC Vice-President

TURNER, James McClure, 5945 Hohman Ave.,  
Hammond  
VAN RYN, Edwin, 1114 White Oak Dr.,  
South Bend  
VAUGHN, Kenneth R., 6714 Madison Ave.,  
Hammond  
WEST, Forrest R., 230 W. Washington St.,  
South Bend  
WILDERMUTH, Richard Lee, 527 Broadway,  
Gary  
WILEY, Charles F., 1218 Meadowbank Lane,  
Elkhart  
WORDEN, Roy A., 222 S. William,  
South Bend

## ASSOCIATE MEMBERS

ADDISON, Edwin, III, 615 Studebaker St.,  
Mishawaka  
BOONSTRA, Samuel P., 501 E. 8th St.,  
Michigan City  
BROCKWAY, Lee, 3033 Salem,  
South Bend  
FEATHERSTONE, Ken, University of Notre Dame,  
Notre Dame  
FRAGOMENI, Joseph S., 131 S. Ironwood Dr.,  
South Bend  
HUFF, Robert L., 5231 Hohman Ave.,  
South Bend  
HUTTON, William S., 5231 Hohman Ave.,  
Hammond  
KAIN, Robert E., 1012 Lake Ave.,  
Fort Wayne  
LATTA, Milton M., 1245 Wilson Ave.,  
Goshen  
SHAMBLEAU, Roy N., 624 J.M.S. Bldg.,  
South Bend  
TURNER, Albert E., 116 N. East St.,  
Crown Point

## JUNIOR ASSOCIATE MEMBERS

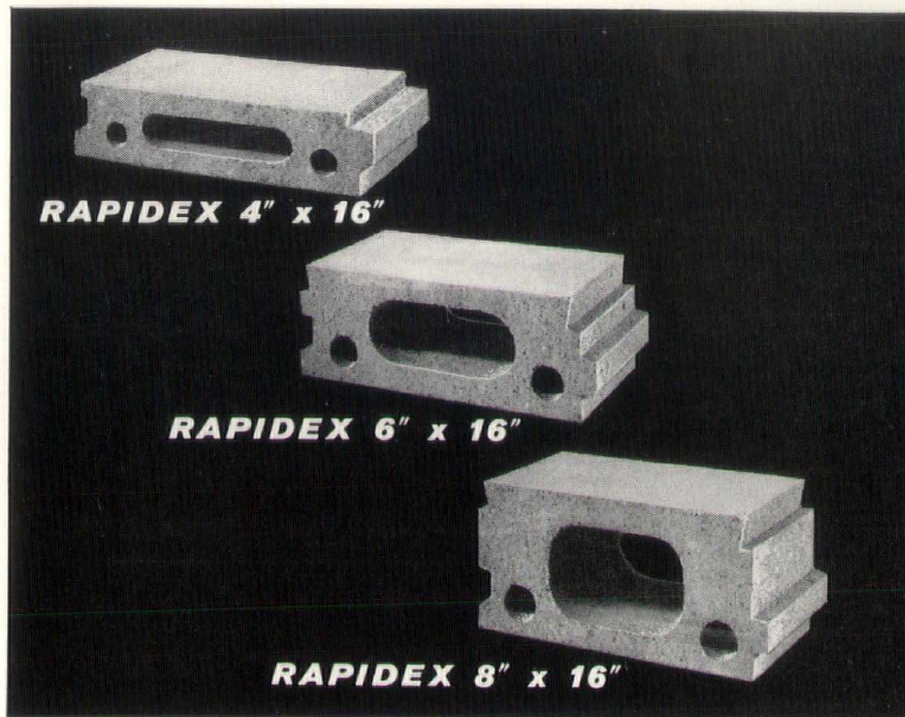
CHAPMAN, James F., Jr., 1512 South Park Dr.,  
New Haven  
THRAPSIMIS, Angelos Gus, 616 W. Third St.,  
Marion  
VAN NAMEE, Albert E., R.R. 1,  
Bristol

## Scholarship Report

(Continued from Page 15)

Kenneth W. Jones, C.M.R. #9, Crawfordsville  
Thomas Baker Kress, 399 N.E. 8th St., Linton  
Daniel C. Lee, 800 Park Ave., Attica  
John Webb Leeger, 336 Taney St., Gary  
Richard H. Mellott, 106 S. Market St., Yorktown  
James A. Ragsdale, 5539 Julian Ave., Indianapolis  
Larry Wayne Richards, Box 87, Matthews  
David M. Schele, 2131 Wawonaissa Trail, Fort Wayne  
Richard Lee Scherman, 408 N. Grant Ave., Indianapolis  
Richard A. Schlatter, 2714 East Drive, Fort Wayne  
Kenneth A. Schuette, Jr., 1607 North Grant, West Lafayette  
Joseph O. Snearly, 1840 Grant St., Elkhart  
David Calvin Sweet, 379 Durbin St., Gary  
James J. Walters, 452 Village Lane, Elkhart





## **RAPIDEX<sup>®</sup> ANNOUNCES NEW 4\"/>**

4\"/>

4\"/>

attractive ceiling.

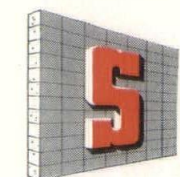
As a result of lower weight per square foot, 4\"/>

4\"/>

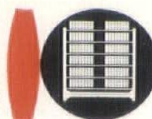
### **CONSTRUCTION DATA**

	Weight of Section per sq. ft.	Load Carrying Characteristics	
		Floor Spans	Roof Spans
4\"/>	22 lbs.	Up to 14'	Up to 14'
6\"/>	30 lbs.	Up to 20'	Up to 22'
8\"/>	42 lbs.	Up to 29'*	Up to 29'

\* topping included in L/D of 40 A.C.I. 711-58.



**AUTOCLAVED**



*"Over 50 Years of Service to the Building Industry"*

**Spicklemier Industries, Inc.**

1100 East 52nd Street • Indianapolis • CLifford 5-2421

**WHY**

***RAPIDEX<sup>®</sup>***

**means**

**BETTER BUILDINGS  
at Lower Cost**

- No erection delays due to weather.
- Can be installed at the rate of 3,500 sq. ft. per day.
- Eliminates forming and shoring needed in monolithic slab construction.
- High resistance to heat loss. Can save a full inch of costly insulation.
- Lower insurance rates due to fire rating.
- Balance sound control—Rapidex's N.R.C. of .55 is the ideal compromise between noise reduction and reverberation.
- Rapidex is unaffected by water, humidity or high temperatures.
- Lower maintenance costs.
- Textured Rapidex eliminates the need for a suspended ceiling.



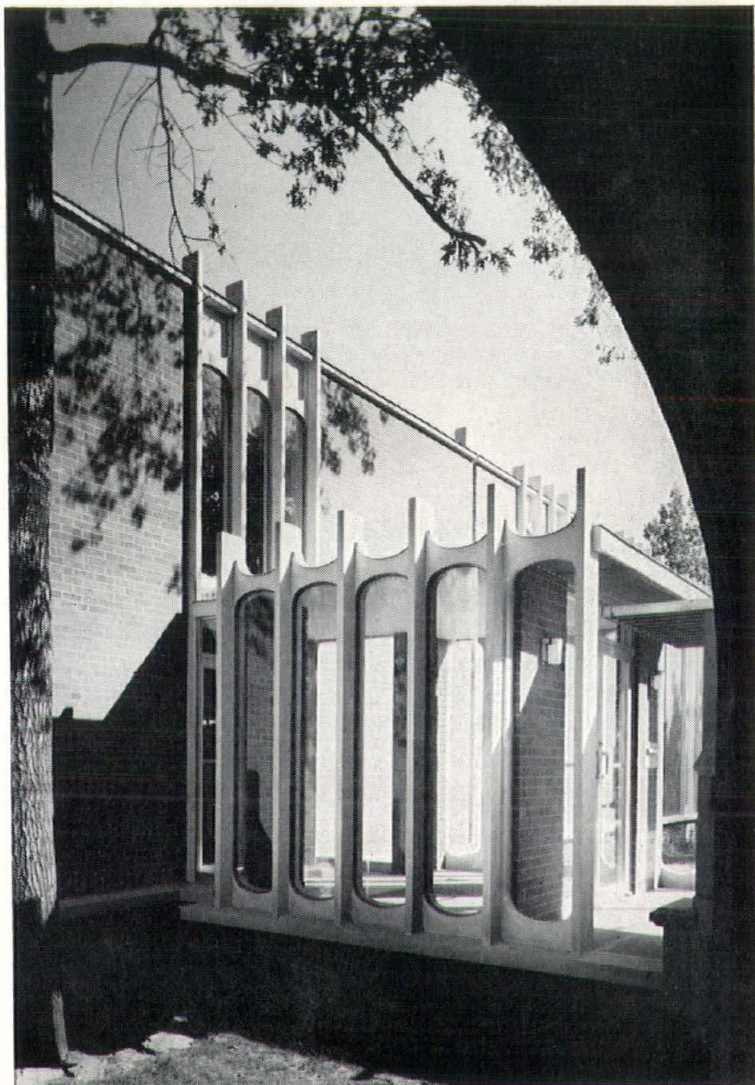
***RAPIDEX<sup>®</sup>***  
*the functional  
concrete system  
for floors and  
roofs that helps  
you build faster,  
better and at  
lower costs!*



*new ideas  
in  
Indiana  
Limestone*

# Accentuate the Entrance!

Indiana Limestone provides the architect with an excellent permanent material for sensitive, delicate treatments. Genuine limestone affords a choice of textures and finishes ranging from very smooth surfaces to rustic, informal applications. Indiana Limestone blends handsomely with other building materials. A wide choice of fabrication techniques is available to the interpretive architect. Architects are invited to write the Institute for the newly published Handbook on Limestone, a comprehensive text on limestone applications.



Music Library, Washington University, St. Louis, Missouri  
Architects: Smith and Entzeroth  
Clayton, Missouri

**INDIANA LIMESTONE INSTITUTE**

BOX 757

BLOOMINGTON INDIANA

