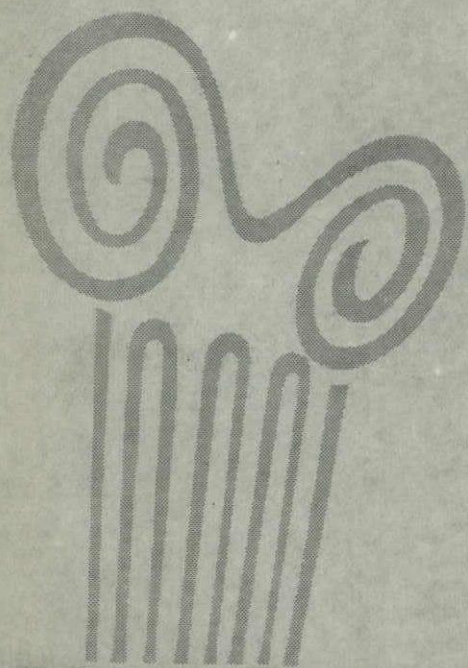
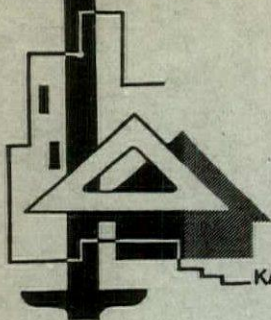


Skylines



Kansas city missouri 1-53





KANSAS CITY CHAPTER

AMERICAN INSTITUTE OF ARCHITECTS

OFFICERS

President

I. L. Roark, Jr.
5420 Johnson Drive
Mission, Kansas

Vice-President

Frank R. Slezak
18 East 11th Street

Treasurer

William H. Simon
25 East 12th Street

Secretary

Ralph E. Myers
1016 Baltimore

DIRECTORS

John T. Murphy

15 West 10th Street

Joseph B. Shaughnessy

3527 Broadway

Albert B. Fuller

Temple Building



SKYLINES is published monthly by the Kansas City Chapter of the American Institute of Architects and mailed without charge. Editor, Frank Grimaldi, 402 Congress Building, Kansas City 2, Missouri. Appearance of names and pictures of products or services in editorial copy or advertising does not constitute an endorsement of either by the A.I.A. or this chapter.

Skylines

Volume 3
Number 1
January 1953

JANUARY CHAPTER MEETING
at the wishbone restaurant
4455 Main Street
Tuesday evening
January 20

Committee assignments for 1953
will be announced.

Octagonal name badges
will be put into use.

The Chapter group plan of
health and accident insurance which
has been in effect for about two years
will be reviewed, and a representative of
the local agency will describe the
function of the plan to date and famil-
arize the membership with recent changes
in the plan and its availability to those
not now enrolled.

Business Meeting	5:30
Cocktails	6:15
Dinner (\$2.25)	6:45
Program	7:30

Further details on the program will be given in the regular meeting notice.

PHONE RESERVATIONS TO
the office of the secretary, Victor 8110.

Mark Your Calendar

JANUARY 1953

SUN	MON	TUE	WED	THU	FRI	SAT
.	.	.	.	1	2	3
4	5	6	7	8	9	10
11	12	13	14	15	16	17
18	19	20	21	22	23	24
25	26	27	28	29	30	31

FEBRUARY 1953

SUN	MON	TUE	WED	THU	FRI	SAT
1	2	3	4	5	6	7
8	9	10	11	12	13	14
15	16	17	18	19	20	21
22	23	24	25	26	27	28
.

CHAPTER MEETINGS

- on * third tuesdays
at * the wishbone restaurant
* 5:30 p. m.

MARCH 1953

SUN	MON	TUE	WED	THU	FRI	SAT
1	2	3	4	5	6	7
8	9	10	11	12	13	14
15	16	17	18	19	20	21
22	23	24	25	26	27	28
29	30	31

BEGINNING WEDNESDAY FEBRUARY 4TH

university of kansas extension presents two courses of great interest to all architects. . . meetings at 7 p. m. each wednesday:

TILT-UP CONSTRUCTION . . . Four Meetings
39th & Rainbow, Kansas
City, Kansas

THE HOUSE FOR YOU . . . Six meetings
The KC Art Institute

Our chapter is co-sponsoring the "house" course together with the K.U. extension and the Art Institute. Five AIA men are giving much valuable time and effort as participants in the program itself, and many others are contributing to this public relations effort as members of the committee in making arrangements, in publicity work, etc.

Chapter-wide support of this program is needed to assure a large attendance, the true measure of success of such an idea. This is the third year we have undertaken this lecture series, which has proved a thing of merit, and we expect to surpass the enrollment of both previous years.

The "tilt-up" course should attract many men of the chapter. Enrollment fee for four meetings is five dollars.
Coordinator is E. J. Mueller.
Co-Sponsor is the Portland Cement Association.
Meeting place is Third Floor Auditorium of the K.U. Medical Center, 39th and Rainbow, Kansas City, Kansas.
Enroll now, by mail. Remittance must accompany enrollment.
Phone KE 1538 for further details.

The Kansas City Chapter of the
AMERICAN INSTITUTE OF ARCHITECTS

THE UNIVERSITY OF KANSAS EXTENSION
and
KANSAS CITY ART INSTITUTE AND
SCHOOL OF DESIGN

PRESENT

A Series of 6 Lectures

THE HOUSE FOR YOU

Buying or building your own home is one of the most important undertakings of a lifetime. The care taken in the selection of the right house today will be reflected in many years of satisfaction and pleasure. Therefore, consider well the important fundamentals of planning which are so closely related to your desires, your needs and your budget. Whether you are planning to build your own home or buy one, you will want to know the answers to a few basic questions.

- | | | |
|---------------|---|--|
| February 4 - | Where shall you live?
Covering the problems of neighborhood and site selection, home orientation and good land use. | Louis H. Geis, AIA |
| February 11 - | What do you do about the financing?
Latest information on loans, Government restrictions and FHA financing. | Francis Clark
Watt Webb
Missouri Bank &
Trust Co. |
| February 18 - | What plan is best for you?
Discussing the Dos and Don'ts of sound planning principles. | William F. Fullerton,
AIA |
| February 25 - | What will your house look like?
Covering the correct use of materials to create a house with a personality. | Donald R. Hollis,
AIA |
| March 4- | What will be the materials and construction?
Your insurance in getting sound construction and the best use of materials. | Frank R. Slezak, AIA |
| March 11 - | Round Table Discussion.
Summarizing the entire program and the answering of written questions from the audience. | Monroe, presiding
Geis, Clark, Fullerton,
Webb, Hollis, Slezak |

Six Meetings for \$5.00 single \$7.00 Man and Wife

EPPERSON HALL
KANSAS CITY ART
INSTITUTE
7 to 9:30 p. m.
JOHN C. MONROE, Jr.
Moderator

.... in the news

REGISTRATION EXAMINATION RESULTS increased the number of KC Chapter men now registered in Missouri by seven. Ed Lawhon became registered on oral examination. Those passing their finals in the written exam were: Arthur Pearson, Herman Scharhag, Bill Linscott, Bill Cory, John C. Monroe and Ralph Kiene.

A NEW ROSTER is being mailed with this issue of SKYLINES. This is in keeping with a policy of publishing the roster at least once a year. Secretary Ralph Myers prepared the list of names and ye ed saw to publication details. Breakdown of the membership is as follows:

- 4 - Members Emeritus
- 87 - Corporate Members
- 22 - Associate Members
- 53 - Junior Associate Members
- 166 - Total

JOSEPH B. SHAUGHNESSY had an article on the work of his national committee on regional councils published in the December issue of the Journal which goes out to some 9,000 AIA men throughout the country. He shared recognition on the cover with such notables in the profession as Eero Saarinen and George Bain Cummings.

GENTRY & VOSKAMP get belated credit for the design of the proposed Truman Library building in a recent issue of Memo, the Octagon's newsletter. Magazines such as Time and Quick and newspapers all over the country reproduced a rendering without crediting the architects. Memo called the White House to get the information.

RESULTS OF THE ELECTION at the December chapter meeting are carried on the inside front cover of this issue. All winning candidates won by large majorities. A very interesting film concerning the re-use of old railroad track was presented on the program. At this meeting President Roark made a presentation on behalf of the executive committee to ye editor of SKYLINES for his work on the chapter monthly during the past two years. This consisted of three beautiful volumes on "The History of Modern Painting," truly exceptional books, published by Albert Skira in Switzerland. A total of 280 color plates, masterfully reproducing the work of great artists from 1850 to present days, are contained in the three volumes. The inscription of appreciation was done by Mr. Keene.

ANOTHER NATIONAL COMMITTEEMAN in the AIA hierarchy has been named from K C Chapter. Frank Slezak recently joined the ranks of the committee on membership. His contact with this important committee should be of great benefit to this chapter in the matter of taking in new members.

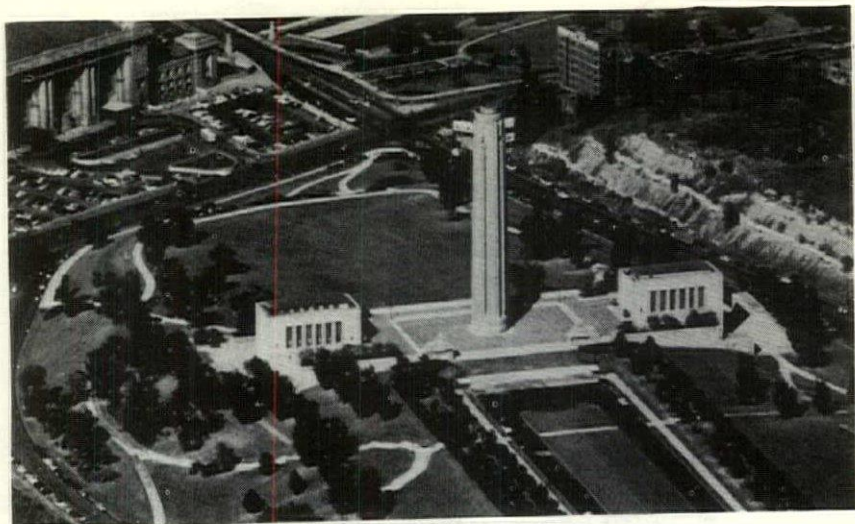


PRESIDENT ROARK RECEIVES "TOP BANANA" AWARD FROM E. M. NICOL FOR BEING "THE ARCHITECT CONTRIBUTING MOST TO BETTER RELATIONS BETWEEN ARCHITECTS AND THE PRODUCERS' COUNCIL."

OUR FIRST LADY MEMBER, Betty Brooker, junior associate with Voskamp and Slezak, deserves much credit for a big part of recent issues of this magazine. She has been transcribing the tape recordings of talks given at the Central States Conference which we have made use of in reporting the various seminars in these columns. In future issues we will cover the territory of Charles Eames and the seminars on painting, sculpture and stained glass.

A ZONING CHART of Kansas City Missouri, has recently been completed by the City Plan Commission and is available free of charge at the City Plan office on the 15th floor of the City Hall. Also available is a printed map showing areas included in the various zoning districts. The zoning chart interprets the requirements of the various districts and contains an alphabetical list of uses, together with the zoning district in which each use may be located. The Commission suggests that borderline cases be referred to the ordinance itself and to the large official maps in their offices. G. G. McCaustland is the Zoning and Land Planning Engineer at the commission.

LOOKING AHEAD to the next national convention, neighboring districts of the AIA are going on record for their preference in the coming elections. The Gulf States Region at a recent conference voted to support their director, Howard Eichenbaum, for 2nd Vice-President. The nine chapters of the Texas Society of Architects, AIA, are going on record as supporting Kenneth E. Wischmeyer of St. Louis for president and Maurice J. Sullivan for treasurer. Looks like the bandwagons are rolling already.



Mr. Jackson, Mr. Brooks and Mr. Brostrom

At the Central States Conference AIA held here last October, J. Woolson Brooks, F.A.I.A., dwelt a while on the word "Tension" during his talk on the Esthetic qualities in architecture. It was invented, he said, to describe whatever relationship existed between two or more masses in a painting. "It may be unity or it may be contrast," said Mr. Brooks, "but to call it tension makes it more real. The General Assembly building may be said to set up a tension with the Secretariat at the United Nations complex. Tension might be described as what holds the Kansas City War Memorial group together; the two little temples and the smoke stack."

Our favorite columnist in the Kansas City Star, Mr. James S. Jackson, considered this a not too complimentary reference to the memorial and stated: "... But also there is commendation, and from high sources. Twenty-four years ago Lee Lawrie, the sculptor, said he knew of but three great works that were American creations, Medary's Singing Tower at Lake Wales, Fla., Goodhue's Nebraska capitol and Magonigle's Liberty Memorial."

"All around us," Lawrie commented, "is architecture that had its origin in Greece, in Rome, or in Medieval Europe; so of course it must be an extraordinary artist who can conceive a work that has no obvious derivation."

Two days after Mr. Brooks had made his remark, Mr. Ernest O. Brostrom, speaking at the conclusion of the final seminar of the conference, stated: "From this platform, there is a comment made, not particularly complimentary, on our Memorial. The utterer of that comment is an eminent artist. Perhaps he forgot, or didn't think of the fact that the Memorial was a monument to peace, not to war. When he spoke of it as a stack, maybe he hadn't thought of the fact that it is representative of a power plant. Here in Western Missouri, bordering on Kansas, Iowa and Nebraska above us, Arkansas and Oklahoma below, we're all building into that power plant. Let it be a chimney if it will, but let it be a power representative of that ideal that Mr. Magonigle shows as a theme for that Memorial, when he lifted the altar high into the sky and used the Hebrew verses, a pillar of cloud by day and a pillar of flame by night."

52 report

Executive Committee

The first sentence of this report must include a word of sincere thanks from the Executive committee to all committees and men thruout the Chapter for the excellent cooperation given during 1952. The year was an important one for our Chapter and we can all look back and see some great strides forward. The membership is the largest ever enjoyed by this Chapter but more important is the fact that a larger percentage of the members are active in the affairs concerning the profession. All of the Committees will make detailed reports of their activities and the contents of these will be condensed and carried in the "Skylines". This report then will be confined to - highlights of the year - present state of affairs--and suggestion of future actions.

The outstanding achievement of the year was the Central States Regional Conference. Much credit must go to Frank Slezak who was the very able Conference Chairman, his was the job of general organization and coordination. John Murphy must be remembered for a truly outstanding piece of work on the programming. Without trying to single out all of the many others who contributed so much the important thing is that the Kansas City Chapter in a manner of speaking "came of age". Faced with challenge of being the Host Chapter and following two regional Conferences one of which had broken even financially and another that had sustained a substantial loss, the Kansas City Chapter proceeded to put on the most outstanding conference ever held in this region. The significant thing is that in doing this we created news not only at the local and regional but also at the national level. We are still receiving letters of thanks and congratulations from all elements of the conference, guests, speakers, exhibitors, National Officers, and press alike.

The "Skylines" is now completeing the second year of existence. Frank Grimaldi our Editor has caused quite a stir in the architectural publication field, his fine work has received many words of praise. The publication has given our activities a tremendous boost and has been a real factor in public relations.

The year 1952 saw the reorganization of the Missouri State Association incorporated under the laws of Missouri. Members of our Chapter have been prominent in this work. Several are officers and board members, these include Joe Shaughnessy V-Pres., W'm Bovard Treas., Bob Everitt 4 year member of the board and Luther Willis also a Board member. They are off to an energetic start and the organization should prove invaluable to the profession in the State of Missouri.

Our Chapter area grew during the year due to the ratification by the Octagon of Johnson County, Kansas to the Kansas City jurisdiction.

A Chapter sign Competition resulted in the adoption of a standard sign noting the relation of Member firms to the Institute and is now being used by quite a number of firms.

The continuation of our Lecture project sponsored thru the University of Kansas this year "the House for you" and the vocational guidance talks to secondary schools has proven to be an excellent service to the public and increases in popularity each year.

Our members should be alert to the opportunities to talk to the young people in the schools of their districts.

The Medal Awards program has grown in size thru participation and with the increased interest shown should create an interesting cross section of Mid-western Architecture. We can well look forward to the day that we can present an excellent showing at the Gallery.

During this year the continued effects of our Chapter work on the School program in Kansas City is heartening indeed. The Board of Education has welcomed our help and many of our officers are now engaged in this fine program. Another evidence of our position in the affairs of our City was the recent United Fund drive in which we are now a recognized part. The Chapter increased by 50% the funds raised over the previous year.

Early in November our Chapter was visited by Mr. Glen Stanton the National President of the A. I. A. This is the first time in quite a number of years that we have been so honored. Mr. Stanton was very impressed with our Chapter work and the general feeling is that in the near future we will be called on more often for national committee members. We now have two--Joe Shaughnessy as Chairman of the Committee on Regional Councils and now Frank Slezak who is a newly appointed member of the national membership committee.

The Executive Committee is mindfull of the fine relations we have with the local Chapter of the Producers Council. They not only have co-operated 100% with us on programming but have been quick to support many of our activities. These many fine firms deserve your consideration wherever they can serve.

The year was saddened by the passing of two Corporate Members, Mr. Frank Lang of Kansas City, and Mr. Robert Deering of Columbia, Missouri. Both men were active members of the Chapter and their passing will be felt in the life of the Chapter.

Our present state of affairs is well exemplified by the Membership and Treasurers reports (which will not be reviewed here). The Year 1953 will mark the first time in the history of the Chapter that funds are available in a quantity that can expand our work in several fields. This has been due of course to the increase in the Dues structure and the insistence that many of our activities are self supporting. The value of obtaining outstanding speakers as was done at the conference has been well shown. Some of these speakers can be obtained at very little cost on others the cost can be shared with nearby units such as the St. Louis Chapter and the Schools. The Program Committee for the year 1953 should have a substantially increased budget to assure top level speakers when possible.

What of the future--first of all, internally, much consideration must be given to the reassignment of certain Chapter duties. The increased demands of the office of Secretary is not readily realized by the Membership.

As the National Organization heads into the vital public relations program voted at the national convention in New York and as we are recognized as an alert Chapter the detail of correspondence to the Octagon has greatly increased. The office of Treasurer has become quite diversi-

fied and is indeed a burden as our membership and chapter activities have grown. The answer to these problems undoubtedly lies in reorganizing the function of certain Chapter Committees. Attendance has increased but much can be done to improve this. The Executive Committee at the December meeting has authorized the purchase of membership identification Badges for use at meetings. We are now being asked by national to give some indication of attendance and the Committee feels that from now on some record be kept.

Much needs to be done in the field of public relations. We now have a number of members who are elected public officials, others who are serving on civic boards in the field of planning and zoning. Much real assistance to our community can be accomplished in this field and the entire membership should be alert to the opportunity to serve. Closer cooperation with the proper committee of the Chamber of Commerce to acquaint them with the abilities of the design profession in their City should be a continuing job. Seminars on the subject of Professional Practice should be held to clarify those matters in our own minds and a real attempt to educate Public officials on what to expect.

Your new Executive Committee will shortly be setting up committee assignments for the new year, when you are called on to serve please give them all of the support you can. Each year as the organization has increased the work that is being done it becomes ever more evident that everyone must give generously of their time.

respectfully submitted,

The Executive Committee
I. L. Roark, Jr., President

Public Relations Committee

This Committee has had a fairly active year with much of its effort coordinated very closely to the promotion of the Central States Conference.

The personnel of this Committee was tied in quite closely with that of the Program Committee and of the Publicity Committee of the Conference so that much of the work done was of a somewhat combined nature - of both Chapter and Conference activities.

We all know of the fine work which Clarence Kivett did as Chairman of the Publicity Committee for the Conference and much of this work could well be attributed to the Public Relations and Public Information activities of this Committee of which he was a member.

We sponsored for the second year, in conjunction with the University of Kansas Extension Service and the Kansas City Art Institute, a series of six public lectures on residential design and construction. These lectures have been very well received and plans are almost completed for a third series in 1953.

This Committee proposed and saw placed before the Mayor the nomination of Mr. Albert Fuller to a vacancy on the Kansas City Park Board. Unfortunately, Mr. Fuller was not appointed.

We were called upon to provide speakers on Vocational Guidance programs at Southeast High School and at Shawnee Mission High School during the past year. Our program at Shawnee Mission attracted about 150 students.

This Committee cooperated with others in the promotion and sponsorship of the Chapter Architects' Identification sign. Unfortunately, the press of other work seems to have left this project somewhat neglected. This business

should be reactivated as we think it has good potential benefits.

This Committee sponsored, in conjunction with a small group of interested members, certain amendments to the Kansas City Building Code regarding School Class Room requirements. This amendment was placed before the City Council and the Code amended as we recommended.

John T. Murphy, Chairman

Fees Committee

Our committee has met and discussed in considerable detail fee schedules and other matters pertinent thereon. We feel that the recommended schedule of minimum fees published by the Missouri Association of Architects and the American Institute of Architects has been of great benefit to the profession, and that the rates established should be constantly reviewed and evaluated by a fee committee in conjunction with the Chapter as a whole.

It is felt by the fee committee that a lot of study and analysis should be given to the matter of changes in fee rates as the dollar value of construction work on larger projects increases. It is our understanding that the A.S.C.E. has done a very useful and valuable job for their own profession in developing a curve from which the proper fee on most types of work is readily established by relating the construction cost to such a curve in order to determine proper fees. We feel that this would be of great value to the profession and would be extremely useful visually in determining fees on larger work with the clients and it is the recommendation of this committee the fee committee for 1953 proceed with such a project.

It has only recently come to the attention of the committee that there is possibly confusion in the minds of the profession as to the proper standard form of contract to use as published by the Institute. There are several forms now available, some of which provide for additional compensation as to mechanical services and we think it would be to the benefit of the profession to determine the type most useful for our local use and thereby secure uniformity in contract presentation to clients. Mr. Everitt, a member of the committee has had printed a card size reproduction of the fee schedule, which are being distributed with the "Skylines" to the membership, since these are of an extremely convenient size to be carried. It is also the recommendation of the fees committee that at one of the regular Chapter meetings, an evening be devoted to a general round table discussion by the members regarding their experiences in the application of the fee schedules and use of the contract documents.

Clarence Kivett, Chairman

Associates & Jr. Associates Committee

John C. Monroe, Jr., Chairman, served as moderator of the "House For You" lecture series sponsored by the Chapter in conjunction with the University of Kansas Extension Service and the Kansas City Art Institute.

By action of the Committee in January, it was decided that our group would sponsor three main activities during the year. First, the Annual "Chuck Wagon Party"; second, a program of entertainment for the "Regional Conference"; and third, the program of one regular meeting.

The "Chuck Wagon" party, held at the Saddle and Sirloin Club, proved to be a very successful event. Evans Folger served as Chairman of this Committee and did an excellent job of organizing.

In cooperation with the Convention Committee, we were given the honor of providing the entertainment for the first night for those attending the Regional Convention. It was decided that our entertainment would be a Chuck Wagon Party at the Advertising and Sales Executives Club. This took the form of a buffet dinner followed by a skit presented by Associate and Junior Associate members of the Chapter. Following this, there was dancing until midnight with a seven piece orchestra.

The purpose of this evening was to break down formalities and give visitors from various parts of the Region a chance to get acquainted.

The skit was written by Edward Hartronft with the assistance of Betty Brooker and John Monroe. Great effort went into the production of this masterpiece. Judging from the amount of favorable comment and laughter, the work was well received.

The third effort proved to be more of an educational program for Associate and Junior Associate members than a program for Corporate members. At the November meeting, four Corporate members made short talks on different portions of the profession and then entered into a discussion and answer period. We would like to thank Mr. Lloyd Roark, Mr. L. B. Simpson, Mr. Homer F. Neville, and Mr. Clarence Kivett for taking part in this program.

Throughout the year members of this group have served in numerous capacities helping the officers of the Chapter. All of these items help to keep our chapter active and interesting.

Early in the Spring the Chapter voted \$100.00 to help defray the expenses of sending an Associate member to the National A.I.A. Convention. Mr. Edward Hartronft was the recipient of this stipend.

We of this group feel that this was very generous of the Chapter and that this is the type of thing that pays dividends in added interest and activity of our group. We thank the Chapter for this display of appreciation of our efforts.

By increasing the activity of this group, we feel that we are training our Associate and Junior Associate members to become better Architects of the future. Only by a strong encompassing program, working from the bottom up, can we hope to strengthen and improve the standing of our Profession in the future.

As Chairman of this Committee, I would like to thank the members for their splendid cooperation throughout the year. Also, we would like to voice our hearty appreciation to the Executive Committee of the Chapter, under the excellent leadership of President Roark, for the fine way they have guided the Chapter forward during their term of office.

Respectfully submitted,

John E. Monroe, Jr. Chairman

Skylines Committee

The record of the activities of the SKYLINES committee is embodied in the twelve magazines published this year, plus the roster published in May and the program for the Central States Conference in October.

The purpose of SKYLINES continues to be the stimulation of chapter committee activity by publicizing their activities. Particular success in this

respect was achieved this year by close cooperation with the Central States Conference committee chairmen. The September issue, mailed to more than 900 A. I. A. men in this region, was a big factor in attracting the record attendance at the conference.

In regard to editorial content, we suggest a study be made of the following areas of coverage, which might be added or expanded:

1. Collegiate activity
2. Technical Information
3. Allied arts and allied professions
4. Articles about the profession itself
 - a) The services of the architect
 - b) News of other chapters
5. Construction News
 - a) Building of the Month
 - b) Architect of the Month

In regard to circulation, we suggest the addition of the following groups to our mailing list:

1. County judges
2. School Superintendents
3. Chambers of Commerce
4. Selected big business officials
5. Consulting engineers
6. Investment bankers

Other Committees

Mark Sharp's committee on By-Laws held two meetings during the year which resulted in a lot of discussion and the retyping and re-editing of the by-laws. Territory covered included: 1) Medal Awards structure, 2) election of officers, 3) definitions of all categories of membership, 4) entrance fees, and 5) the waiving of dues of certain officers. The complete revision of the by-laws still poses a big problem to this chapter.

Homer Neville's Medal Awards committee did a thorough job this year. In all, five Medal Awards were given, and nine Mention awards. Complete details were carried in the June issue of SKYLINES with pictures of the winning designs.

Luther Willis' committee on the Producers' Council participated in the very successful competition on building products literature in February.

No report was received from the city and regional plan committee, Edward M. Fuller, chairman.

A running account of the generally excellent work of the program was carried each month in this publication. Bob Everitt served as chairman.

Joe Shaughnessy's committee on membership processed several applications during the year and four men were accepted for corporate membership, all of them having been associate members. A large number of junior associate members were accepted during the year. These men and women are all included in the new roster being mailed to each member this month.

No report was received from the committee on practice of architecture and relationship with construction, Albert Fuller, chairman.

Financial Statement

BALANCE SHEET

AS AT DECEMBER 8, 1952

ASSETS

CASH:

Commerce Trust Company	\$3,096.04	
Linwood State Bank	<u>351.43</u>	\$3,447.37

ACCOUNTS RECEIVABLE:

Unpaid Dues	\$ 73.00	
Ad in Conference Program	25.00	
Unbilled Skylines Ads	<u>266.65</u>	\$ 364.65

FURNITURE & FIXTURES (Typewriter)

50.00

\$3,862.12

LIABILITIES & CAPITAL

ACCOUNTS PAYABLE

NONE

CAPITAL

\$3,862.12

\$3,862.12

STATEMENT OF PROFIT & LOSS

for the

YEAR 1952 AS AT DECEMBER 8, 1952

INCOME:

Membership Dues	\$ 2,949.00
"Skylines" Advertising	2,483.28
Central States Conference	9,203.00
Miscellaneous	<u>1,595.40</u>

Total Income \$16,230.68

OPERATING EXPENSES:

Printing, Stationery, Stamps and Stenographic Services	\$ 308.13
Dinners for Guests	90.81
Flowers for Deceased	20.70
National Convention Expense	600.00
Speakers Expense	68.86
Public Relations	303.17
"Journal" & "Bulletin" Subscriptions	176.50
"Skylines" Expense	2,083.41
Technical Society Dues	80.00
Regional Conference Expense	9,053.06
Miscellaneous	<u>793.75</u>

Total Expense \$13,578.39

NET INCOME \$ 2,652.29

**FOR THE
ARCHITECT!**

NEW

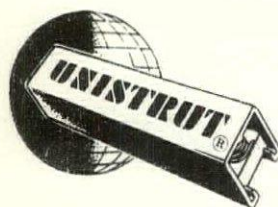
**FREE
78-Page**

UNISTRUT® CONSTRUCTION CATALOG

**78 Illustrated Pages on How to
Frame, Hang, Support and Mount
many kinds of Mechanical and
Electrical Equipment with
UNISTRUT All-Purpose Metal Framing**

**Simple and Complete . . . Easy to Use . . .
Loaded with Pictures, Data and
Complete Information . . . Shows Details
of Product and Applications . . .
How to Order**

**Get Acquainted with UNISTRUT Today! Write for
New Free 78-page Construction Catalog 700**



**The World's Most Flexible
All-Purpose Metal Framing**

B-D-R ENGINEERING CORPORATION
14th and Howell Street, North Kansas City, Mo.

Telephone: NOrclay 3608

- SINCE 1893 -

CHAMBERLIN'S

Complete Service Covers

- METAL WEATHER STRIPS
- CAULKING
- METAL SCREENS
- COMBINATION STORM SASH
- STEEL SASH REPAIR
- TUCK POINTING
- BUILDING CLEANING
- WATER PROOFING
- PSYCHOPATHIC SCREENS
- CEMENT GUN WORK

PROPER INSTALLATION
IS HALF THE JOB

Chamberlin

DOES IT RIGHT

ADVICE ON UNUSUAL PROBLEMS
OR ESTIMATE OF COSTS MAY BE
HAD BY CALLING

CHAMBERLIN

CHAMBERLIN COMPANY OF AMERICA

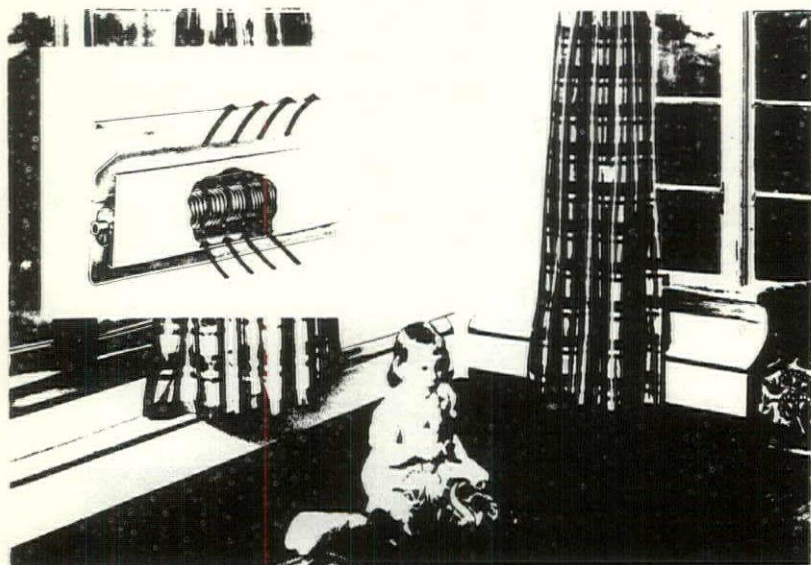
Vi. 4185

704 TROOST AVE. KANSAS CITY, 6, MISSOURI

NATIONAL ART BASEBOARD

CLEAN, HEALTHFUL, EVEN HEAT

Most modern and effective method
of radiant heat distribution



*It's
NEW*

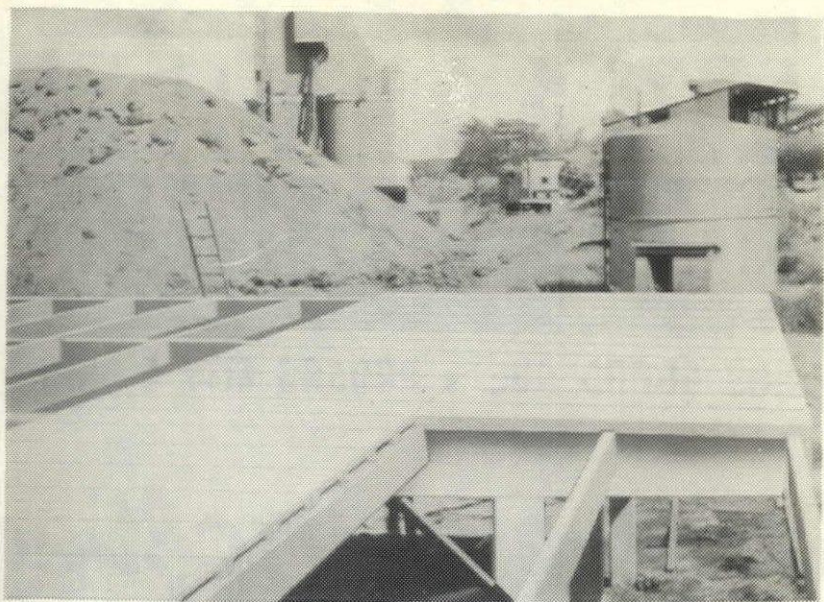
- Provides a gentle blanket of warmth—keeps your home clean
- Protects your children playing on the floor
- Prevents drafts and cold spots
- Takes up no room space—replaces ordinary wooden baseboard
- Paint it to match your walls—makes heating distribution inconspicuous
- Adds living space—arrange your furniture as you wish

S. C. McCANN COMPANY

210 W. 10th.

Phone VI 3505

Kansas City, Mo.



CONCRETE

in JANUARY?

COLUMNS, BEAMS, JOISTS and ROOF SLABS on the building shown above were all PRECAST from lightweight HAYDITE concrete at our plant, and trucked to the job for fast, economical erection, regardless of weather. Standard or custom built units to meet your specifications.

Ask your
CARTER-WATERS —
Man

CONSTRUCTION  MATERIALS
CARTER-WATERS
KANSAS CITY  8. MISSOURI

2440 PENNWAY

PHONE GRAND 2570

WESTERN BLUEPRINT CO

909 GRAND AVE. • KANSAS CITY 6, MO.

Artist and Drafting Materials

WE REPRESENT AMERICA'S LEADING
PRODUCERS OF ENGINEERING SUPPLIES



DIETZGEN

Hamilton

DRAFTING ROOM EQUIPMENT

COMPLETE REPRODUCTION SERVICE

Your Membership in
Kansas City Chapter
The American Institute of Architects
SAVES YOU MONEY WHEN YOU BUY
Sickness and Accident Insurance in the
APPROVED
"Loyalty Group"
Special Disability Insurance Plan
BECAUSE

YOU GET MORE FOR YOUR DOLLAR in Broad Coverage, Liberal Benefits, Prompt Claims Service, than you can buy individually at this low rate, made possible through the group purchasing power of your membership.

This plan is widely endorsed by many Professional Organizations and is approved and made available as a valued service to the members of K. C. Chapter A. I. A.

—AGENTS—

Altman-Singleton & Company
VICTOR 6292
15 West Tenth Street
Kansas City, Missouri

Complete details about this plan will be included in a brochure which you will receive by direct mail in about a month. WATCH for it.

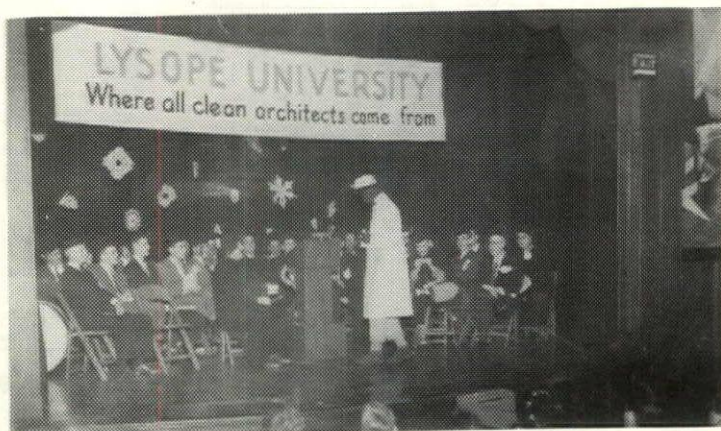
D
R
I
N
K



F
O
O
D



E
N
T
E
R
T
A
I
N
M
E
N
T



AT THE ANNUAL PRODUCERS' COUNCIL
CHRISTMAS PARTY.

