

cpel ~~ATA~~

SKYLINES



JANUARY 1955

KANSAS CITY CHAPTER AIA

PRESIDENT	William H. Simon 25 East 12th Street
VICE-PRESIDENT	Frank R. Slezak 18 East 11th Street
TREASURER	John C. Monroe, Jr. 818 Grand Avenue
SECRETARY	Donald R. Hollis 9423 West 80th Street Overland Park, Kansas
DIRECTORS	Edmund L. Bower (1957) 3543 Broadway I. L. Roark, Jr. (1956) 7133 West 80th Street Overland Park, Kansas John T. Murphy (1955) 15 West 10th Street
CHAPTER OFFICE	818 Grand Avenue Four Two Nine Scarritt Bldg. VI 9737 Betty J. Martin, Secretary

SKYLINES

Published monthly by the Kansas City
Chapter of The American Institute of
Architects.

EDITOR	Frank V. Grimaldi 3543 Broadway Kansas City, Missouri
---------------	--

Skylines

Volume Five, Number One

January, 1955

First meeting of 1955 will be held Tuesday, January 18, at the Ad Club, 913 Baltimore.

Several business items of broad interest concerning proposed chapter interest during the new year will be taken up at the 5:30 session. Please be prompt. Social hour will follow; then dinner at 7:00.

Emphasis is again placed on the importance of making reservations for dinner. Previous arrangements must be made with the caterer. More on this in the regular announcement.

THE PROGRAM

following dinner will feature local talent on the topic of our foreign neighbor—

MEXICO

—a color slide presentation compiled and edited from Kodachrome collections of Ralph Myers, Jack Morley, Joe Shaughnessy, Ed Bower and John Murphy.

At last count, more than a dozen chapter members had visited Mexico and fascination in the place is widespread, especially the University at Mexico City.

Further details in the meeting notice.

modern art in

Just days after our December chapter meeting at which Architect Joseph D. Murphy and Artist Robert Harmon gave intimate descriptions of their work in the Resurrection Church, national magazines arrived in town giving the church a great play.

The December **Architectural Forum** publishes a full color photo of the rich dramatic mural by Harmon on the curved wall behind the altar, and devotes four pages in all to its presentation of this project. Decorations in this church in addition to Harmon's striking Apostles' Creed mural include Stations of the Cross along its rose brick walls by William Schickel, and clerestory stained glass windows by Robert and Emil Frei depicting the public life of Christ in graphic line symbols. Says **Forum** of this church:

"As was the custom in cathedrals and churches of old, this modern Catholic congregation has united its architecture with the work of noted artists of the day. The traditional symbols are all there, but cleanly and colorfully stated in contemporary art, not in ornate relics borrowed out of habit from the past. Since the parish is in one of the more liberal dioceses in the country, Architect Murphy was able to work freely with a handful of artists, integrating building and decoration into an articulate whole."

Forum's reference to "one of the more liberal dioceses" is born out by an article in the current issue of the Catholic quarterly, **Liturgical Arts**, written by the Most Reverend Joseph E. Ritter, Archbishop of St. Louis. Under the title "Toward a Living Climate in Religious Art", Archbishop Ritter states:

"Contemporary art and architecture will without question bear the imprint of our time. While the principles of our Faith are immutable, changes in the forms, conditioned by ever-changing times, carry

MODERN CHURCH

in st. louis

their own challenge for the Church to lead in our times as in past ages. Creative thought today, as in the past, implies a deep understanding of and sympathy with the problem at hand; an inquiring, receptive and imaginative mind; artistic skill and technical knowledge; and humility. These qualities in a climate or atmosphere of encouragement and inspiration will, we feel confident, produce distinguished architecture, painting and sculpture, music and literature, devoted to the service of the Church and the worship of God."

Photographs and the plan of Resurrection Church are also published in this issue of **Liturgical Arts**.

The December **Forum** also features a fascinating story on New York's huge Cathedral of St. John the Divine. A special article by James M. Fitch of Columbia University has this concluding statement:

"Nowhere is the contemporary architect so strongly confronted with the necessity for making his peace with tradition as in the field of ecclesiastical art. For here the past cannot be ignored. The church comes out of the past, has deep roots in the past; its iconography and liturgy can be neither ignored nor greatly modified. Both have been molded by centuries, so that their symbols are inextricably a part of the faith itself. The new art must interpret these symbols and do it convincingly and intelligently.

"There are limitations, no doubt about it. But limitations never prevented artistic accomplishment; on the contrary they often seem a necessary pre-condition. Undoubtedly Europeans are more adept at this sort of thing than we are, since they have had more experience at it. But as the relics of our past accumulate around us, we shall see more rather than less of this sort of thing."

SUMMATION

report of the activities of

CHAPTER COMMITTEES

for the year 1954

given at the annual meeting

BY DON HOLLIS

secretary, kansas city chapter aia

This report contains only the main items of interest and activities carried on and a brief outline of future plans and recommendations to next year's committee chairmen.

PUBLIC RELATIONS COMMITTEE—Clarence Kivett, Chairman

The public relations committee has carried on a very intensive program this past year and have some very definite plans already laid out for next year. One of their main activities was the handling of three 13-week TV programs in which the architects participated. These were put on at no cost to the Chapter. This committee has also promoted better newspaper coverage and has continued working on the speakers' bureau. Their recommended activities for next year consist of developing a sales package for a TV program that can be sold to a sponsor. This program is to be completely under the control of the Chapter with an interest to more than just residential architecture. This, of course, can only be done if money is available to carry on this activity. They would definitely like to put in operation the speakers' bureau this coming year and hope that more members will offer their services. They have outlined speeches already prepared on various subjects if members would care to use them. Next year they also hope to schedule an architectural exhibit at the Nelson Art Gallery.

MEMBERSHIP COMMITTEE—John Murphy, Chairman

The membership of the Kansas City Chapter this past year has increased by eight Corporate Members, three Associate Members, and six Junior Associate Members. As of the present time the total membership now stands at one Fellow, 91 Corporate Members, 26 Associate Members, and 51 Junior Associate Members. The membership committee thinks that the higher requirements on applications as set forth in our new By-Laws is very good and that future membership committees will now have more information to use in approving or disapproving applications.

BY-LAWS COMMITTEE—Mark Sharp, Chairman

The work of this committee, of course, is well known to all members of the Chapter. We now have a completely new set of By-Laws which have been approved by the Chapter and are at present in Washington to be approved by the Octagon. This past year the Chapter has also become incorporated as recommended by the Octagon.

ARCHITECTURAL PRACTICE—Ray Voskamp, Chairman

The principal work of the committee has been cooperation with Mr. Leon B. Center who is national chairman of architectural practice. The main problem was the perusal by the committee and final approval of the Chapter on obligation of good practice and the mandatory rules of the Institute. On May 21 the committee transmitted to Mr. Center a questionnaire which consisted of an inquiry attempting to learn the type of work the average offices in the Kansas City area were doing. That is, percentage of commercial work, hospitals, schools, etc. The chairman has been consulted from time to time by various individual members to discuss the ethics of individuals in their practice. No real urgency required a meeting of the committee in this regard, nor a report for unethical practice. On May 21 there came to the attention of the chairman that there was an irregularity in the selection of an architect by the Kansas City Club in conjunction with a roof garden development and this chairman addressed a letter to the chairman of that committee attempting to set straight the ethical manner in which an architect should be selected.

URBAN DESIGN & HOUSING—Luther Willis, Chairman

This committee has started some investigation of various activities which they should pursue and are making some very definite recommendations for the 1955 committee to continue on. Some of the items they are working on are as follows: 1. The problems connected with urban development as it concerns public utilities such as power, gas, water, sewers, etc. 2. The education of service clubs and businesses in regard to the problems of urban plan and need for their cooperation if any planning is to be done. 3. Investigation into the small housing situation in Kansas City with recommendations that something should be done by the Chapter such as the Small House Service Bureau. This project could be worked along with the cooperation of lumber companies and possibly could be handled by Associate and Junior Associate members. 4. Meetings between the A.I.A. Chapter and public health officials in the five county area of Kansas City in regard to sewage disposal plants, more hospital facilities and other health measures. 5. For the Chapter to work with city officials and city departments in regard to off the street parking, traffic control, and other similar traffic problems which have a very definite bearing on urban plan and urban development.

CHAPTER AFFAIRS—Dwight Brown, Chairman

No report.

**ASSOCIATE-JR. ASSOCIATE—Bob Baker, Past Chairman;
Evan Folger, Present Chairman**

The annual summer party which is organized and put on by the Associate and Jr. Associate members had a total of 132 in attendance and realized a profit for the Chapter of approximately \$80.00. The bar also has been re-established since the moving of the meetings to the Ad Club and for the past seven meetings has shown a net profit of approximately \$200.00. New dinner ticket forms were introduced which now provide a record of attendance, a reference for introducing guests and a source of information for Chapter Officers. Identification buttons have been brought up to date and taken care of at each meeting. These buttons, however, have not been used properly and the committee feels that thorough investigation should be made on this and that something be done to improve their use or else it be dropped. The committee also recommends that a percentage of the income from the bar be kept in a separate account for the Associate and Jr. Associates in order to underwrite future summer parties and also to be able to send an Associate or Jr. Associate to the convention each year.

PROGRAM COMMITTEE—Ralph Myers, Chairman

I was unable to contact Ralph since he is out of town in regard to this committee. I feel, however, that the programs this fall speak for themselves.

HONOR AWARDS COMMITTEE—Dave Mackie, Chairman

We had on the Medal Awards Jury the following men: Dane David Morgan, of Burlington, Iowa; Robert Elkington, St. Louis, Mo., and Linus Burr Smith, Lincoln, Nebraska. They came to Kansas City and during May 1 and 2 looked over the entries for the medal awards and completed their assignment on May 3 with the results that two buildings were chosen to be recommended to our Chapter for medal awards, Meadow Lane School, Donald R. Hollis, Architect, and East Morland School in Joplin, E. L. Peterson and H. A. Scharhag, Arch. They also recommended for special awards the chancel of the Trinity Lutheran Church of Springfield, Mo., Richard P. Stahl, Architect, and the living room and terrace detail of the home of David B. Runnels, Architect, of Kansas City, Missouri. This committee has two recommendations to make for next year's committee. First, that a definite program be set up in regard to the submission next year so that all are mounted and presented in a like manner with information concerning the site, the problem to be solved, and the method in which the problem was solved. Second, that working in conjunction with the public relations committee all previous medal awards be put on as an architectural exhibit in the Nelson Art Gallery. This to be scheduled for approximately the same time as the next year's medal award presentations.

EDUCATION—Angus McCallum, Chairman

I was unable to contact Angus since he was out of town, but do know some of the activities of this committee. We have entertained the graduate

members of the student chapter of K. U. at one of our chapter meetings. Some of our members have given talks at student chapter meetings at K. U. and also attended their meeting where they presented the A.I.A. Student Award. I believe also that talks were given at local high schools to graduating classes. In cooperation with the Kansas Chapter and the University of Kansas at Lawrence they put on a seminar in the spring on Elementary School Design. This Seminar was very successful and plans are already made for a similar one next year.

RESEARCH—Ralph Myers, Chairman

No report.

A.I.A., P.C., A.G.C., etc.—Frank Slezak, Chairman

The committee has enjoyed its usual fine cooperation with the Producers Council. The majority of the work this year has been the establishment of the office of the Executive Secretary. The committee feels that some phases of the operation should be re-evaluated, however, that the operation as a whole has been successful and should be continued. This committee inaugurated a series of meetings with the A.G.C. this year in order to discuss matters of mutual interest to both groups. The committee believes that at long last we have established a relationship that is on a high level and should promote excellent relationship in the future. None of the participants approached the conference table with a chip on their shoulder which in the past has often been the case. Ground rules prevented the discussion from becoming too personal. During the year the joint committee issued several joint statements which were published in "Skylines" and need not be reviewed here. 1. The approval of materials on the "or equal" clause. 2. Issued a statement on the strike. The committee would recommend that the future committees pursue this operation to the utmost.

COLLABORATION WITH DESIGN PROFESSION COMMITTEE—

Bob Everitt, Chairman

They worked on three main things this year. 1. To establish honorary memberships for men of allied professions such as city and land planners, sculpturers, painters, interior decorators, mechanical engineers, structural engineers. 2. That the fee schedule which was previously issued be republished in both card and leaflet form. 3. That we also publish a facsimile of the standard form of agreement between owner and architect to use in conjunction with this fee schedule.

SKYLINES—Frank Grimaldi, Chairman

Frank will make a complete report to the Board of Directors on the operation of the "Skylines." He stated, however, that an issue was sent out each month and the total operation is in the black.



a beautiful way to soak up sound!

new
Fiberglas*

ACOUSTICAL TILE

- **Efficient**
- **Beautiful**
- **Fire-safe**

Write or call for sample and design data.

KANSAS CITY BRANCH SALES OFFICE

2610 Power and Light Building

Telephone: Grand 7725

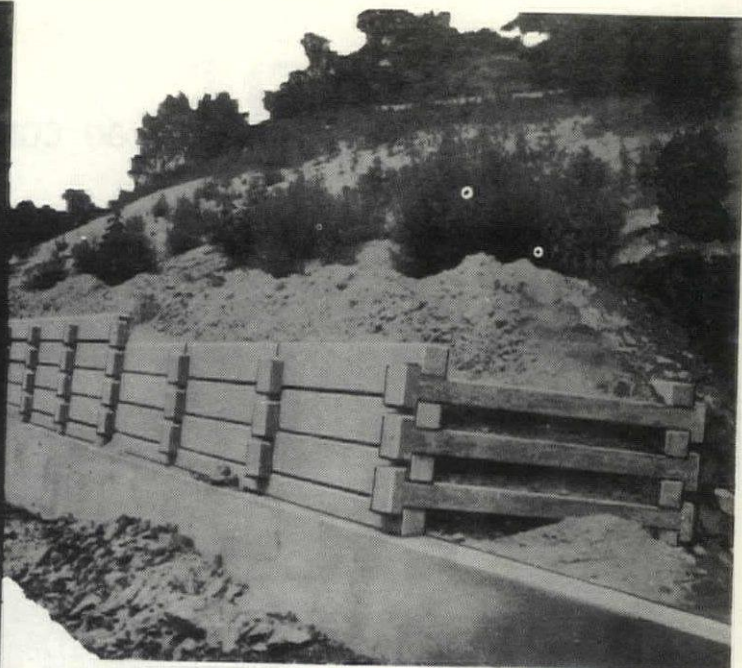


OWENS-CORNING

FIBERGLAS

*T.M. Reg. Owens-Corning Fiberglas Corp.

**C
R
I
B
B
I
N
G**



Precast
HAYDITE CONCRETE
to Save Time & Cost...

No concrete work needed... Sections interlock and are anchored by the fill to resist displacement. Available in 6'0" face stretchers and 6'4" headers. Call or write for complete details.



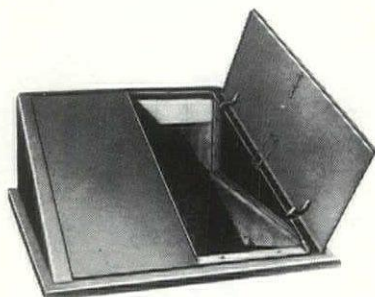
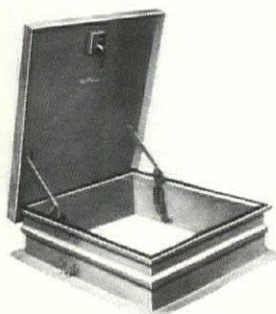
2440 PENNWAY

PHONE GRAND 2570

3 DOORS you can specify with confidence . . .

BILCO CELLADORS

are all-metal, weatherproof,
economical and practical.

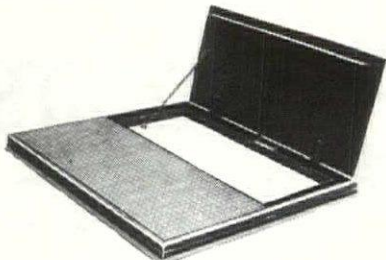


BILCO ROOF SCUTTLES

have full welded corners
and reverse action lifting levers.

BILCO WATERPROOF SIDEWALK DOORS

have concealed lifting
springs to give easy,
one hand operation.



Bilco®

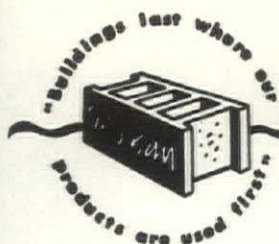


B-D-R ENGINEERING CORPORATION

HEADQUARTERS FOR QUALITY MATERIALS

4243 Pennsylvania
Kansas City, Missouri

Telephone
Jefferson 8366



1200 W

Room 1207 Commerce Trust Building
Telephone BA. 4655

A Statement on Quality Standards of Concrete Blocks

- PRECISION IN MANUFACTURE TO PRODUCE TRUE SIZES AND EDGES
- DIMENSIONS TO COMPLY WITH MODULAR DESIGN REQUIREMENTS
- 28 DAY CURING UNDER GENERALLY APPROVED INDUSTRY PRACTICES
- ADEQUATE STOCKS AND SHAPES FOR METROPOLITAN MARKET NEEDS
- REGULAR SAMPLING AND TESTING OF YARD STOCKS BY RECOGNIZED TESTING LABORATORIES

Blocks Guaranteed to meet Federal and A. S. T. M. Specifications. Testing Reports supplied on request by any member.

Asner Blocks & Building Materials, Inc.
Builders Block Company
The Carter-Waters Corporation
Cinder Concrete Products, Inc.

City Block & Products Company
Concrete Building Units Company
Eternacrete Products, Inc.
Kansas City Concrete Pipe Co.

Slaton's Concrete Products, Inc.

The Trend is To Concrete MASONRY—GOOD REASON, TOO!

**WESTERN
BLUEPRINT CO**
APPRECIATES EVERY ORDER

**K.&E., DIETZGEN & POST SUPPLIES
HAMILTON DRAFTING FURNITURE
ALL THE BEST PHOTO PROCESSES
SUPER MICROFILM
909 GRAND
VICTOR 7881**

Concrete Building Units Company

Manufacturers of

VIBRACRETE

CONCRETE JOISTS

During the past thirty years of service to the construction industry in Kansas City we have seen many methods of floor installations.

After careful investigation of these varying types, we are convinced that the most economical and versatile method is still the reinforced pre-cast concrete joist. This method develops a T-beam structure capable of carrying great loads. Before designing your next concrete floor we will consider it a privilege to serve you by calling at your office or meeting with you to discuss this type of floor construction.

Call VA. 5300
for details

Specify

VIBRACRETE CONCRETE BLOCKS

Natural and Light weight Aggregate



"Serving Kansas City Over Quarter of a Century"

VIBRACRETE

CONCRETE BUILDING UNITS COMPANY
3405 Terrace • Kansas City, Missouri

PATIO SLABS • CONCRETE JOISTS • AREAWAYS • SPLASH BLOCKS • ALUMINUM & STEEL SASH

Report

OPERATION—HOMEBUILDING

By John C. Monroe, Jr.

Under the direction of Mr. Clarence Kivett, Public Relations Chairman, our Chapter has completed another year of presenting "Operation—Homebuilding," a six-lecture series on Homes. This series is jointly sponsored by the Kansas City Chapter of the A.I.A., Greater Kansas City Home Builders' Association, and the University of Kansas Extension Service.

Lectures were held this year for the first time at Battenfeld Hall at the University of Kansas Medical Center. In the previous four years we presented this series at the Kansas City Art Institute. Enrollment was down slightly this year to 140 persons. Of this total of 140 enrolled, 109 qualified for a Certificate by being present at five of the six lectures.

The Committee anticipated an enrollment of over three hundred, however, in order to obtain such an enrollment we would have been required to advertise more extensively through the use of display advertising in the Kansas City Star. Since the University cannot underwrite such advertising costs, it would have been necessary for our Chapter and the Home Builders' Association to underwrite this program. The Chapter's Executive Committee did not feel that we could under our present budget underwrite our share, which would have been \$250.00. The Home Builders' Association agreed to underwrite their share. Of course, if the enrollment reached 300 persons, enrollment fees would have covered advertising costs and neither Chapter would have expended any funds.

Since this series was initiated in 1950, our Chapter has not been required to spend any money toward this program. Chapter members have participated and given a great amount of personal time toward its success, however!

This year our panel of speakers included not only outstanding local persons, but people of great import in the Homes picture nationally.

Local people to whom the course owes much of its success are:

Phillip E. Geissal—Chief Planning Engineer, Kansas City, Mo.
Dorr H. Carroll, Jr.—H.B.A.—Vice-President, Sweet Mortgage Co.
C. P. French—Home Builders' Assn.
Earl Horttor—Home Builders' Assn.
John C. Morley—A.I.A.
I. Lloyd Roark—A.I.A.
Angus McCallum—A.I.A.
E. C. Morgan—Home Builders' Assn.

These men did an excellent job of presenting interesting lectures on all facets of Homes Design and Construction.

Much interest was evoked by our guest speakers who traveled many miles at their own expense to help our cause. They were:

Edith Brazwell Evans—Editor-in-Chief of "Living for Young Homemakers"—New York, N. Y.
B. C. Emerson—Vice-Pres., Briggs, Mfg. Co.—Detroit, Mich.
Ned A. Cole—Designer "Trade Secrets House"—Austin, Texas
Jack Sargent—Home Builder—Topeka, Kansas

The success of the course was due in large part to the excellent cooperation and initiative provided by Mr. Larry Winn, Jr., President of the Greater K. C. Home Builders' Association, who also acted as Co-Moderator with John Monroe. Mr. Edward Avison, University of Kansas Extension Representative, as usual provided endless assistance and invaluable guidance in all of our work.

During and after the course we received many nice compliments and expressions of thanks from those enrolled. It is the feeling of the Committee that this course has proven an excellent public relations vehicle.

1955

SEVENTH ANNUAL PROGRAM OF NATIONAL HONOR AWARDS

THE AMERICAN INSTITUTE OF ARCHITECTS

THE AMERICAN INSTITUTE OF ARCHITECTS, DESIRING TO ENCOURAGE THE APPRECIATION OF EXCELLENCE IN ARCHITECTURE AND TO AFFORD RECOGNITION OF EXCEPTIONAL MERIT IN RECENTLY COMPLETED BUILDINGS, CONTINUES ITS ANNUAL NATIONWIDE PROGRAM OF HONOR AWARDS FOR CURRENT WORK.

All entries shall be buildings designed by registered architects practicing professionally in the United States. The buildings shall have been erected anywhere in the United States or abroad and must have been completed since January 1, 1950.

All entries shall be submitted in the manner herein specified and prior to the specified date.

The Program is open to buildings of all classifications; separation into general building types to aid in judging will be done by the Committee and it is not necessary that the entrant designate his entry by category. In the judgment equal emphasis will be given to all classifications. An entry may be one building or a related group of buildings forming a single project.

Method of Submitting Entry

In the preliminary submission for judgment all material shall be contained in an 8½" x 11" Ful-Vu Economy Binder, Type CB-10, containing 10 transparent Mika-film window sleeves for displaying 20 inserts, back to back, and supplemental sheets to which may be secured the supplemental information. On receipt by the Committee of entry slip and fee each entrant will be mailed one binder for each project entered and paid for.

Only those entries which receive awards will be subsequently mounted on meter square hard board for exhibition at the Convention.

All entries in the preliminary submission as detailed above must be received by the Committee at The Octagon, 1735 New York Avenue, N.W., Washington 6, D. C., not later than April 1, 1955, to be eligible for an award.

A registration fee of \$10.00 for each building or group of buildings submitted must be paid by the entrant at the time entry slips are forwarded. The entry slip and fee must be received by the Committee on or prior to February 15, 1955.

Checks or money orders shall be payable to the Honor Awards Committee, A.I.A.

The Jury will be appointed by the Executive Committee of the Board of Directors of The American Institute of Architects, who will name the Chairman. The Jury, when in session, shall consist of five architects—corporate members of The A.I.A. representing various regions of the country, one of whom must be an architectural educator.

Judgment will be made at The Octagon, April 4-5, 1955.

The entrant should bear in mind that his project will not be judged in competition with other entries, but on the basis of his solution of the problem presented him and its worthiness for an award for excellence in architecture. Insofar as the quality of the entries shall warrant, the National Jury shall select one or more First Honor Awards for Distinguished Accomplishment in Architecture.

In addition, the Jury shall select for Awards of Merit in Architecture as many exhibits as they deem deserving.

Suitable certificates will be presented to the Architects and Owners of all buildings receiving either First Honor Awards or Awards of Merit.

Entrants whose exhibits have been selected for award will be so notified by the Committee immediately following the judgment and their brochures will be retained by The Institute for publicity and record.

1955 HONOR AWARDS PROGRAM ENTRY SLIP

The American Institute of Architects

(To be submitted with fee prior to February 15, 1955)

Committee on Honor Awards
The American Institute of Architects
1735 New York Avenue, N.W.
Washington 6, D. C.

We will submit _____ exhibits in the Seventh
Annual Honor Awards Program of The American
Institute of Architects.

Enclosed is check or money order for \$ _____
covering the \$10.00 registration fee for each exhibit.

Signed _____

Address _____

Minutes of the regular monthly meeting of the Kansas City Chapter of the A.I.A., held in the University Club, December 14, 1954:

The meeting was called to order by President Simon at 5:50 P.M.

Minutes of the previous meeting were read and approved, with one correction.

President Simon gave a report on the steps being taken in regard to the dormitory buildings at Missouri University. It was decided that this should be a joint venture with the St. Louis Chapter, and he has written to Bob Elkington stating our position and asking that they join us in preparing a plan of action.

Ray Voskamp asked about a letter which he had received from the Chamber of Commerce in regard to any changes in the Building Code. He asked if any other members had received such a letter and to date he has been the only one. Mr. Tanner, of that committee in the Chamber of Commerce, gave the history of this letter and said that all architects will be receiving it. It was moved by Mr. Monroe and seconded by Mr. Folger, that our answer be in the form of a Chapter action and that the president assign this to the proper committee within the Chapter. Motion carried.

President Simon then asked the Secretary to read the annual Secretary's report outlining the activities of the Chapter and its committees for the year 1954. It was moved by Mr. Voskamp and seconded by Mr. Pennington that the Secretary's report be accepted. Motion carried.

President Simon then led a discussion in regard to the 1955 plan of action, budget, and suggested dues as outlined in the December issue of the Skylines. It was moved by Mr. Sharp and seconded by Mr. Voskamp that the budget be accepted as published. Motion carried.

It was moved by Mr. Simpson and seconded by Mr. Voskamp that the suggested dues for 1955 be accepted. They are—Corporate member, \$30.00; Associate member, \$30.00, and Junior Associate, \$20.00. Motion carried.

Election of officers was then held.

Results of elections is given on the inside front cover of this issue of SKYLINES.

Meeting adjourned at 8:00 P.M.

The program for the evening was an interesting discussion and showing of slides by Mr. Joe Murphy, Architect from St. Louis, and Mr. Bob Harmon, of St. Louis, of the Resurrection Church recently completed in St. Louis.

Respectfully submitted,

Donald R. Hollis, Secretary

.....In The News

PROFESSOR GEORGE M. BEAL of Kansas University, well known and liked by a great many members of our chapter, has a very interesting article published in the January '55 JOURNAL of the A.I.A. The title is "United Front and Semantics." His article is paired with one by Foster Rhodes Jackson. Both deal with the great brotherhood of architecture and the universality of the profession.

ON FEBRUARY 1 the firm of Shaughnessy and Bower moves to a new address on Broadway, 3543. SKYLINE Editor Frank Grimaldi, being with the firm, will have the same new business address.

WELCOME NEW ADVERTISER to the pages of SKYLINE: Owens-Corning Fiberglas. Their message concerning the new acoustical tile "stria" appears on page 8. Future ads concerning ceiling board, rigid roof insulation and acoustical form board for poured gypsum decks will be published in future issues. The Kansas City branch sales office is in the Power & Light building, GR 7725.

NEW CORPORATE MEMBERS:

Gene E. Lefebvre, 818 Grand Avenue. Born in Ringo, Kansas; graduate of East High School, Kansas City. B.S. Architectural Engineering, KU, 1950. Worked for Jones-Hettlesater Co. and Mackie & Roark before establishing office March, 1954.

Ray E. Meyn, 602 Minnesota Avenue. Native of Kansas City, Kansas; graduate of Wyandotte High School. B.S. in Architecture, KU, 1935. Worked for Joseph W. Radotinsky, 1935 to 1953, except three years with Army Engineers, 1941-45. Own practice since 1953.

AFTER CONSIDERABLE ORGANIZATIONAL difficulties, the annual Producers' Council Christmas Party came off in its usual glorious fashion. Winner of the 1954 "Top Banana" award for the architect contributing most to better relations between architects and the Producers' Council was John C. Monroe, Jr.



**YOU'VE GOT
TO SEE IT
TO BELIEVE IT**

● **The original multi-color finish with the
ultimate in wearability and washability**

Job

Winn Rau Highland Crest Project
Menorah Hospital
Trinity Lutheran Hospital
St. Joseph's Hospital
St. Francis Hotel (St. Joseph, Mo.)
Robideaux Hotel (St. Joseph, Mo.)
Municipal Arena (Hutchinson, Kas.)
Monark Egg Co.
Turnbull-Novak, Inc.
A & B Restaurant
Professional Building
Roanoke Apartments
Home for Jewish Aged
Frangkiser & Tewksbury office
Grandview Bank
Gormans
Sidney Restaurant executive offices
Kay Builders (Belton, Mo.)
Brownhardt Apartment Hotel
Plaza Hotel Rail Restaurant
Santa Fe Hills Project

Contractor

Raymond Schmidt Painting Co.
Hospital maintenance
Hospital maintenance
A. T. Switzer Painting Co.
G. A. Thompson Painting Co.
G. A. Thompson Painting Co.
Foy Construction
Plant maintenance
A. T. Switzer Painting Co.
H. B. Daffer Painting Co.
H. V. Jones maintenance
Curry maintenance
Theo. Lawrence Painting Co.
Jerome & Associates
A. T. Switzer Painting Co.
Theo. Lawrence Painting Co.
Jerome & Associates
King Decorators
Theo. Lawrence Painting Co.
Royster Bros.
A. T. Switzer Painting Co.

There is only one ZOLATONE PROCESS

● **Accept no substitution** ●

● **STERLING RONAI
General Manager**

DEVOE

of kansas city, inc.

PHONE VI. 5672

● 200 SOUTHWEST BOULEVARD
KANSAS CITY 8, MISSOURI

EXCLUSIVE ZOLATONE AGENT FOR THIS REGION

