

Skylines

February 1956

KANSAS CITY CHAPTER
AMERICAN INSTITUTE OF ARCHITECTS

KANSAS CITY CHAPTER AIA

Frank R. Slezak **PRESIDENT**
18 East 11th Street

Donald R. Hollis **VICE-PRESIDENT**
9423 West 80th Street
Overland Park, Kansas

Frank Grimaldi **SECRETARY**
3543 Broadway

Henry D. Krug, Jr. **TREASURER**
310 Ward Parkway

William H. Simon (1958) **DIRECTORS**
25 East 12th Street

Edmund L. Bower (1957)
3543 Broadway

I. L. Roark, Jr. (1956)
7133 West 80th Street
Overland Park, Kansas

Published monthly by the Kansas City
Chapter of The American Institute of
Architects.

Betty Mae Brooker **EDITOR**
18 East Eleventh Street
Kansas City 6, Missouri

James R. Baker **ADVERTISING**
95th and Troost

John E. Jameson **ART**
18 East Eleventh Street

Ethel Sklar **CIRCULATION**
4127 Locust



Skylines

Volume Six, Number Two

February 1956

Circle these dates on your calendar!

February 21

March 7 & 8

On February 21, back to the Advertising and Sales Executives Club we go for the February Chapter Meeting.

Dean David Strout, of the Kansas City Art Institute and School of Design, has agreed to come by and tell us about some of the design problems of '55. He will, also, show some of the work that was done in the school last year.

March 7 and 8 are the dates of the Third Annual Architects' Conference at KU. This is one you will not want to miss, so plan now to attend and get your reservation in early.

Program

Third Annual Architects' Conference

Subject This Year – Office Practice

March 7 & 8, 1956

Wednesday March 7

- 9:00-10:00 REGISTRATION—Jayhawk Room, Student Union Building
- 10:00 WELCOME AND INTRODUCTIONS: George Beal, A.I.A.
"Wrangle Session—Overall Problems of the Office"
Everybody Talks—George Beal, A.I.A., Discussion Leader
Don Hollis, A.I.A., Discussion Leader
- 11:30- 1:30 Lunch On Your Own
- 1:30 Opening Session: Frank R. Slezak, A.I.A., Chairman
Speaker: Bernard Tomson, Lawyer, author of Law articles, "Progressive Architecture," New York
Subject: **Legal Aspects of Office Practice**
- 2:45 Coffee Break
- 3:00 Robert E. Mann, A.I.A., Chairman
Speaker: Speed Warner, Speed Warner, Inc., Kansas City, Missouri
Subject: **Bonds and Insurance Procedures Relating To An Architectural Office**
Discussion: Speed Warner, Chairman: Panel members, P. H. Hawes, Speed Warner, Inc., Kansas City, Missouri and Frank H. Tormoen, Thomas McGee & Son, Kansas City, Missouri
- 6:00 Banquet: Angus McCallum, A.I.A., Chairman
Summarization, Angus McCallum, A.I.A.
Film

Thursday March 8

- 9:00 John W. Hines, A.I.A., Chairman
Speaker: David C. Baer, National Committee Chairman of A.I.A. on the revision of the handbook, "Architectural Practice". Houston, Texas.
Subject: **Special Problems of the Office**
- 10:15 Coffee Break
- 10:30 Robert S. Everitt, A.I.A., Chairman
Speaker: David C. Baer, A.I.A., Houston, Texas
Subject: **Procedures That Achieve Results**
- 12:00 Luncheon: Kenneth G. Miller, A.I.A., Chairman
Speaker: Bernard Tomson, Lawyer, New York
Subject: **"Arbitration"**
Summarization: Ken Miller, A.I.A.

Planning Committee Members

Mr. Robert Everitt
107 E. Southside Blvd.
Independence, Missouri

Mr. D. R. Hollis
7642 Hemlock
Overland Park, Kansas

Mr. Kenneth Miller
Hutchinson State Bank Bldg.
Hutchinson, Kansas

Mr. William Simon
25 E. 12th St.
Kansas City, Missouri

Mr. E. A. McFarland
University of Kansas
Lawrence, Kansas

Mr. John Hines
1747 Harvard
Wichita, Kansas

Mr. Robert E. Mann
201 E. 1st Street
Hutchinson, Kansas

Mr. I. L. Roark
6717 W. 77th Terrace
Overland Park, Kansas

Professor George Beal
University of Kansas
Lawrence, Kansas

Mr. Marvin Criqui
University of Kansas
Lawrence, Kansas

Sponsored by

KANSAS CITY CHAPTER, AIA

KANSAS CHAPTER, AIA

DEPARTMENT OF ARCHITECTURE

UNIVERSITY EXTENSION

Note: As soon as you know you are going to attend the Conference, please get your reservations made. The committee will need to know as early as possible how many will be attending the conference so that they may arrange for adequate space for all the meetings.

Concrete Building Units Company

Manufacturers of

VIBRACRETE

CONCRETE JOISTS

During the past thirty years of service to the construction industry in Kansas City we have seen many methods of floor installations.

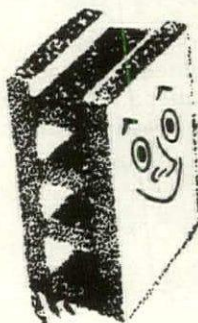
After careful investigation of these varying types, we are convinced that the most economical and versatile method is still the reinforced pre-cast concrete joist. This method develops a T-beam structure capable of carrying great loads. Before designing your next concrete floor we will consider it a privilege to serve you by calling at your office or meeting with you to discuss this type of floor construction.

VA 1-5300

Specify

VIBRACRETE CONCRETE BLOCKS

Natural and Light weight Aggregate



"Serving Kansas City Over Quarter of a Century"

VIBRACRETE

CONCRETE BUILDING UNITS COMPANY

3405 Terrace

Kansas City, Missouri

PATIO SLABS • CONCRETE JOISTS • AREAWAYS • SPLASH BLOCKS • ALUMINUM & STEEL SA

SUMMARY OF COMMITTEE ACTIVITY, 1955 KANSAS CITY CHAPTER, AIA

Compiled by Frank Grimaldi, Secretary

During 1955 the level of committee activity in our chapter reached a new high and the Executive Committee is gratified by the upswing and look forward to a continuation of this trend.

With many thanks to the Committee Chairmen (herein identified) for their leadership in this work, this report is respectfully submitted. In the main, this summary is basically the words of these chairmen, edited primarily to conserve space.

BY-LAWS

Herbert C. Anset, Chairman

This committee held several meetings during the year preparing the revised by-laws for submission to the national organization for approval. After the item concerning restrictions on requirements for Corporate Membership was clarified, the by-laws were mimeographed and submitted to the Executive Committee on January 4, 1956. These by-laws are now ready for printing and distribution to the membership.

ASSOCIATES & JUNIOR ASSOCIATES

Arthur E. Pearson, Jr., Chairman

This committee was thorough and consistent in its operations during the year. The realm of its activities are indicated by the following recommendations for year 1956:

1. Stimulate interest among the Associate and Junior Associate members who have belonged to the Chapter for a number of years. To some degree this may be accomplished by having these members placed in committees where they can take an active part.
2. Many potential Junior Associate members are presently employed by larger organizations. These people could learn of the advantages of belonging to the Chapter through their employers and if it could be arranged they could be given invitations to attend Chapter meetings designed to stimulate their interest.
3. The operation of the bar should be discontinued for reasons obvious to many members. Principally these reasons are: Operating a bar restricts meetings to a very few places, the proceeds from the bar are not enough to warrant continuing its operation and operation of the bar seems to be carried on year after year by the same few members.
4. That one meeting each year be devoted to the interest of younger members, in which they can participate. This meeting to be of an informative character dealing directly with problems of office procedure, management and the general practice of architecture.
5. That the annual summer party be continued following the procedures adopted by the Chapter this past year. It is this Committee's opinion that the operation of a bar at this function be continued as it has in the past to help defray expenses.
6. That the name Badge System, if it is to remain in operation, must be revised. The case could be reworked so that the badges would be put in numbered slots corresponding to numbers marked on the back of the badges.

ZONOLITE ROOF DECK

When permanence, insulation and insurance savings are factors check this construction. You'll be surprised at its low cost!!

Approved Applicator
John Rohrer Contracting
Company, 1913 West 43rd,
Kansas City, Kansas



- Zonolite concrete is used as an insulating fill.
- It is poured on:
 1. Paper-backed wire lath.
 2. Hi rib lath.
 3. Corrugated metal.
 4. Asbestos form board.
 5. Gypsum form board.
- One-inch insulating form board. "U" values as low as .12 may be obtained on an overall thickness of only three inches.

ZONOLITE
TRADE MARK REGISTERED

ZONOLITE COMPANY VI 0503 515 MADISON

OFFICE PRACTICE

Raymond L. Voskamp, Chairman

The most important work of the committee has been the special assignment of studying the schedule of fees. This committee has, at various meetings, compiled information and had sent to practicing offices a form for the purpose of determining opinions concerning fees. The response was very good, and the committee established fees in various categories—as their best judgment determined—and this was, then, compared with the average of the information returned by the practicing offices.

Further, this committee has been in contact, personally and otherwise, with Mr. Schwarz, President of the St. Louis Chapter, A.I.A., and has drawn a comparative analysis of the fee structure. The St. Louis Chapter has, in conjunction with this committee, prepared a format of a pamphlet which is acceptable to us and has prepared a fee schedule, which, too, has been reviewed and is acceptable. This information will, at an early date, be submitted to the Chapter for its discussion and general acceptance.

RELATIONS WITH CONSTRUCTION INDUSTRY

Edgar B. Voskamp, Chairman

During the several conferences held with representatives of the A.G.C., the main subject for discussion fell under the general heading of "The Contractor's Responsibility to the Project." The subject, as stated, embraces many facets of a problem commonplace to the Architects and the Contractors as compared to the times.

As the building industry of this nation is one of the largest and one of vital importance to the economy of this country, and since the Architects and Contractors are principals engaged in it, we can readily understand why our co-operative efforts are to be considered important factors. It is hoped through the continued efforts on the part of this Committee, we can realize certain conclusions and perhaps resolve in better practices which will benefit our mutual interests and those of the owner or the investing capital.

PRESERVATION OF HISTORIC BUILDINGS

Ernest O. Brostrom, Chairman

In April this committee joined with others by resolution and by letters to our senators and others in support of Bill S-1335 introduced by Senator Frank Carlson in that Huron Cemetery, Kansas City, Kansas, ancient burying ground of the Wyandotte Indians, is worthy of and should be preserved as a sacred and historic area.

A request issued in October and still standing is extended to all architects to send in their memorandum of structures in our section that are good architecture and worthy of preservation as historic structures.

The attempt to preserve the Fry P. McGee home, oldest house standing in Kansas City, was given up when it was discovered that the structure had been damaged to the extent that it seemed impracticable to save it. The plan, furthered by the Native Sons of Kansas City, was to move the house some 300 feet out of the path of a proposed traffic-way. In January of this year the following item was put on the agenda of this committee: Flintlock Baptist Church (a Primitive Baptist), oldest log church in the Middlewest, organized 1840, originally built 1848, Platte County Historical Society.

COMMUNITY DEVELOPMENT

Alonzo H. Gentry, Chairman

The Committee feels that considerable publicity has been brought out at one time or another as to the possibility of the removal of the streetcars as a means of public convenience. If such a condition does come about, it will then permit the proper development of some of our major streets such as Grand Avenue, where every attempt should be made to remove all overhead power lines and other objectionable installations and to provide a medial strip with plants and trees in order to start the beautification of our downtown section.

The example set by Herbert Wilson of Emery, Bird, Thayer in painting the exterior of this half century old building is most commendable.

Also, the Committee feels that with a wide clientele enjoyed by the members of the Institute of most businessmen in the downtown section, that further efforts should be made to paint old buildings and lift the tone of the downtown section which now is on a parity with many cities of much less standing.

The Committee feels that every effort should be made on the part of the Institute to co-operate with committees on sanitation in our suburban areas. This is definitely a serious situation and the Committee feels that the County Judges, the County Planning Commission and others will welcome any assistance in the form of suggestions or criticism that may be forthcoming.

HONOR AWARDS

Joseph B. Shaughnessy, Chairman

Twelve firms submitted twenty-three buildings on 30" x 40" mounts, which were judged by Harold Spitznagel, Sioux Falls, S. D., John M. Rowlett, Oklahoma City, and F. O. Wolfenbarger, Manhattan, Kansas. Two medal awards and two special awards were made. The jury recommended that: (a) a plan accompany each entry; (b) square and cubic data and cost figures accompany each entry; (c) presentation of drawings conform with requirements of national A.I.A. honor awards program.

The committee made the following recommendations:

1. The Publicity Committee and the Program Committee work closely with the Medal Awards Committee in the coming year so that the "Medal Awards Banquet" will be the outstanding event of the year for the Chapter. Perhaps this could be a formal function.
2. That City officials, contractors, lending agencies, school board officials, newspapermen be invited to attend.
3. Omit the Guest Speaker and emphasize the Medal Awards. Call on the receivers of awards for talks. This has been extremely interesting in the past and was not done this year.
4. All members be urged to make submissions, so that instead of twelve firms making submissions there would be twice or three times as many.
5. The Committee for Year 1954 advised that Laurence Sickman, Director of the Gallery, has consented to putting on a show at the Nelson Gallery, consisting of photographs of all Medal Awards since its beginning in Kansas City.

EXPANDED SHALE
concrete

No. 8

CHARTER



MEMBER

**GREATER KANSAS CITY
MASONRY PRODUCERS**

ETERNACRETE PRODUCTS
Fairfax Road and Quindaro Blvd.
Kansas City, Kansas
Finley 2-5151

BUILDERS BLOCK COMPANY
1815 Prospect
Kansas City, Missouri
Chestnut 1-5197

CINDER CONCRETE PRODUCTS, INC.
208 West 43rd
Kansas City, Missouri
WEstport 1-0048

CITY BLOCK and PRODUCTS CO.
2212 West Hi-way 24
Independence, Missouri
Clifton 2-8760

facts

ECONOMY—initial *and* long term

- reduced heat loss
- lower maintenance costs
- reduced loading design requirements
- delays eliminated . . . readily available

all of these practical "pocket book"
features are yours . . . with BUILD-
EX concrete masonry



BUILDDEX, INC.
Phone 240
OTTAWA, KANSAS



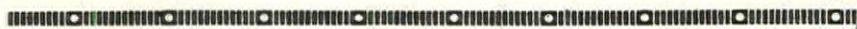
PUBLIC RELATIONS

Robert E. Earnheart, Chairman

The prime objective of the Public Relations Committee the past year has been to study and explore all possibilities of developing a TV show with a suitable format that can be sold to a sponsor. The Committee worked with Miss Sue Bowen, who was retained to study the problem and has come up with a tentative outline for a type of show for 13 weeks, half hour series.

Another project by the Committee was the publication of a series of house plans, one each Sunday in the Real Estate section of the Kansas City Star. Each plan was by a different member of the Chapter in order to show a cross section of Architects' ideas that would stimulate the public's taste and increase their appreciation of Architects' abilities and services.

Besides bringing to a conclusion the plans for a TV series, the Committee hopes to put in operation the Speakers Bureau during the coming year.



HOSPITAL EXHIBIT

MIDWEST HOSPITAL ASSOCIATION CONVENTION

The Hospital & Health Committee is planning an exhibit by members of the A.I.A. at the Midwest Hospital Association Convention to be held at the Kansas City Municipal Auditorium April 25, 26 and 27, 1956.

The Midwest Hospital Association has agreed to set aside, without charge, one 10 x 10 booth for this purpose. All exhibitors must prepare their own exhibits. Any costs involved in setting up the exhibits will be equally divided by the individual exhibitors. If there are more exhibitors than can be accommodated properly in a 10 x 10 booth, it may be necessary to pay rental for additional space. These costs would also be divided among all exhibitors.

Any architectural firm desiring to exhibit hospital plans or renderings contact John M. Hewitt, A.I.A., Chairman, Hospital & Health Committee, c/o Hewitt & Royer, 3619 Broadway, Kansas City, Missouri, before March 1, 1956.

a beautiful way to soak up sound!

new
Fiberglas*

ACOUSTICAL TILE

- **Efficient** • **Beautiful**
- **Fire-safe**

Write or call for sample and design data.

KANSAS CITY BRANCH SALES OFFICE

2610 Power and Light Building

Telephone: Grand 7725



**T.M. Reg. Owens-Corning Fiberglas Corp.*

House & Home

presents this

*1956 Award of Merit
in Residential Design and Construction*

to

LINSCOTT, KIENE & HAYLETT, ARCHITECTS

for Services Rendered to

JED GILES

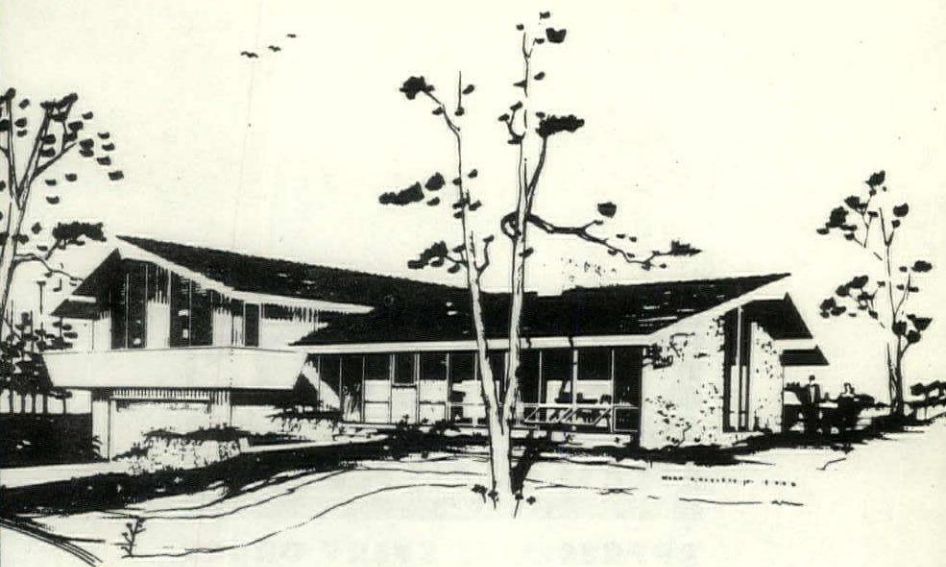
*in Recognition of an Outstanding Contribution to
Housing Progress in 1956*



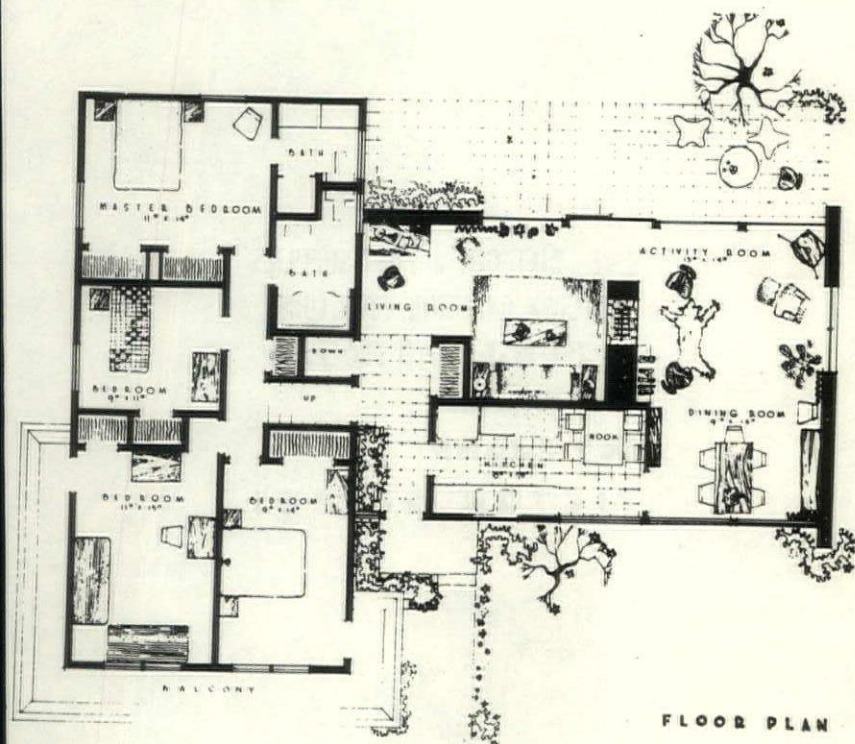
Perry Treutle
EDITOR AND PUBLISHER

Award to Local Firm . . .

At the annual convention of the National Association of Home Builders on January 24, Linscott, Kiene & Haylett received from HOUSE & HOME MAGAZINE an Award of Merit in recognition of an outstanding contribution to housing progress in 1956. Ward Haylett attended the the convention in Chicago and received the award for the firm. The design for which the award was given was part of the display at the National Housing Center in Washington when the center was opened recently. Only one other award was made to a Midwestern Architect.



LINSCOTT KIERN & HAYLETT ARCHITECTS



FLOOR PLAN

LINSCOTT KIERN & HAYLETT ARCHITECTS

**WESTERN
BLUEPRINT CO**

APPRECIATES EVERY ORDER

**K.&E., DIETZGEN & POST SUPPLIES
HAMILTON DRAFTING FURNITURE
ALL THE BEST PHOTO PROCESSES
SUPER MICROFILM
909 GRAND
VICTOR 2-7881**

The Regional Council Meets . . .

The Central States District Regional Council met in Kansas City on February 2 and 3. Regional Director McNett and representatives from all chapters in the district were present for the two-day business session. The following is a brief summary of some of the items discussed and actions taken.

General discussion, actions of National Board at their Fall meeting.

Adoption of amendments to Regional Council By-Laws. These included a change in the voting procedure, methods of financing Council operations, status of carry-over members, etc.

Clarification of vertical committee structure. Requests to certain chapters to bring their chapter committee structure in line with national.

Recommended to the National Board the appointment of Arthur Schwarz to be Regional Chairman of Committee for Advancement of the Profession and John Murphy to be Regional Chairman of the Public Relations Committee. These appointments still require the approval of the National Board.

Received reports from chairmen of regional committees. This included an extensive report from Lloyd Roark, Regional Chairman of Chapter Affairs Committee, with particular reference to membership and the recent Student Forum in Washington.

Discussed program for Central States District participation in the Centennial Observance in 1957.

Discussed and advised Regional Director in regard to national public relations problems.

Prepared a strong statement concerning the views on the national public relations program. Directed the Regional Director to present this statement at the next National Board Meeting.

Discussed report of National Committee on Membership and, also, issued a strong statement on this matter to be relayed to the National Board.

Received report from St. Louis Chapter concerning their very successful chapter activities during 1955.

Discussed support of candidates for national offices for 1956.

Received report from Nebraska Chapter concerning plans for the 1956 Regional Conference.

The Council at Work . . .



Roark Reports.

l. to r. Brown, Oklahoma; Roark; Regional Director McNett; Miller, Kansas.



Following the agenda.

l. to r. Hines, Kansas; Grimaldi; Slezak; Becker, St. Louis; Layton, St. Louis.



Serious discussion.

l. to r. Latenser and Enerson, Nebraska; Miller and Hines, Kansas.



One Director, five Presidents and one Ex.
l. to r. Becker, St. Louis; Latenser, Nebraska; Slezak, K. C.; Director McNett; Miller, Kansas; Ex-president Brown, Oklahoma; Griffith, Iowa.



Past Presidents Anonymous, Inc.
l. to r. Brown, Oklahoma; Simon, K. C.; Schwarz, St. Louis.

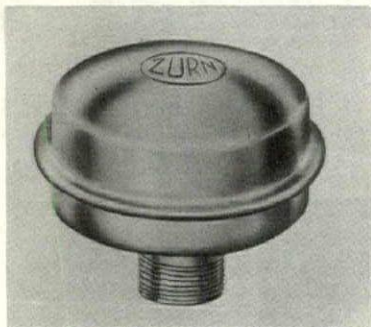


Nebraska and Oklahoma discussing football.
l. to r. Griffith, Iowa; Enerson, Nebraska; Hines, Kansas; Brown, Oklahoma; Latenser, Nebraska; Simon, K. C.

Now! ALL NEW ZURN ENGINEERED PRODUCTS HELP IMPROVE YOUR BUILDING SPECIFICATIONS!

NEWEST DEVELOPMENT IN
WATER HAMMER ARRESTMENT
THE ZURN

SHOKTROL

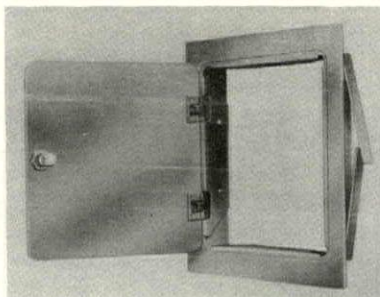


For elimination of destructive shock pressure and disturbing noises in plumbing systems with quick-closing valves—

- ... All stainless steel construction.
- ... Small, compact and lightweight.
- ... Pre-charged with air pressure.

ULTRA-MODERN APPROACH TO
CONTROL CONCEALMENT
THE ZURN

ACCESS DOOR



For full, unhindered entrance to control equipment concealed in walls and ceilings—

- ... Fits any type of wall.
- ... High-quality lustrous finish.
- ... Protective cylinder lock.
- ... Snug door on concealed hinges.

U.S. PATENTS AND PATENTS PENDING



ZURN MIDWEST SERVICES, INC.

Represented by

JAMES V. IRVIN CO.

557 Westport Road Kansas City 11, Missouri
Phone: Jefferson 1-5452

A COMPLETE LINE OF PLUMBING DRAINAGE PRODUCTS

- ZURN SYSTEMS for supporting wall type plumbing fixtures
- NON-FREEZING HYDRANTS
- SUPREMO CLEANOUTS
- SWIMMING POOL FITTINGS
- ROOF DRAINS
- FLOOR DRAINS
- INTERCEPTORS

PRESIDENT SLEZAK ADDRESSES THE CHAPTER

January 17, 1956

During the past 10 years, I sincerely believe this Chapter has come a long way. I, personally, have had only a very minor part in helping achieve these results; but others, like Herb Pennington, Luther Willis, Lloyd Roark, Joe Shaughnessy, Bill Simon, Frank Grimaldi and many more, have worked long and hard. They have brought us to the place where we are a respected group in the community, one of the leaders in the Central States Region and recognized nationally as a live-wire chapter.

All this is very fine, but we can not afford to stop. We must do more to improve our profession and raise our standing in the eyes of the public. Statistics tell us we only design about five per cent of all the buildings. Not much to brag about, is it? Why can't we shoot for ten per cent, a 100 per cent increase? The logical way to achieve these things is through The Institute.

During the coming year, I would like to see us step up some of our present activities and embark on some new ones we have not touched as yet. Most of these we will just get started this year, and it will take more years before we see concrete results. The "long pull" activity is the one that excites me rather than the "flash-in-the-pan" shot that is soon forgotten.

First of all, we must attempt to establish our **business office**. At our annual meeting, the Chapter gave us the green light on this, but there are many tough details to be solved, and it will not take place overnight. We, nevertheless, need an office badly in order to make our public relations and other programs effective.

And speaking of **public relations**, I can only say that the small taste we have had, has only pointed up how pitifully little we have done and how much there is still ahead. Public relations activities must be increased many fold.

Next, I would like to have our new **Chapter Affairs Committee** poll the Chapter for their opinions on all our chapter activities in order that they can be evaluated accurately. This evaluation will help the Executive Committee to steer the Chapter on the course most desired by the majority of the membership.

Our membership should be increased. I do not suggest a membership drive, but I do believe there are a few reputable architects in the area that are not members and that we should go after. But the greatest source we have for Corporate Membership is right here among us. refer to the Associates and Junior Associates. These are men we know, and they should be advanced to Corporate Membership much faster.

We should improve our programs at Chapter meetings. Perhaps programs of more technical nature. I still hold that a professional organization without technical discussion is not worth its salt.

We should expand our SKYLINES publications. More technical discussion here, too. More editorial matter would allow us to take on more advertisers and in turn increase our circulation for public relations purposes.

The **Regional Council** is here to stay. The National Organization will give it more and more to do. We should realize this and get in with both feet so we can realize some return here, too.

Also, you know we are now obligated to sponsor a Regional Conference every seven years. I think we should start setting aside a hundred dollars or so every year as a sinking fund to prevent the treasury from being wrecked, if we ever should come out on the short end.

While on the subject of setting money aside, I think we should be allocating perhaps two hundreds dollars a year to a **Scholarship Fund**. We should have done this years ago. This money should be regularly invested, and after several years, when it reaches a respectable amount, should be reinvested in the education of the Architects of the future.

We should make sure that we give greater co-operation to the **Producers' Council** in their very fine work.

We should establish an active joint committee with the **Home Builders** similar to the successful one we now enjoy with the A.G.C. I still hold that we need these Home Builders and that they need us. The problem is to find the common ground.

I would hope our Honor Awards Committee could explore the possibility of awards for outstanding examples of work in the allied arts. And perhaps more important than this, would be awards to craftsmen, the mechanics in the field.

Now all these things I have talked about, I do not intend to be all we will do. We will still do all we did before and try hard to embark on these new undertakings—if you think they are worth the effort.



IMPOSSIBLE?

**COLUMNS, BEAMS, PURLINS & SLABS
bought and erected for \$1.17 per sq. ft.!**

You may think it's impossible but it can be done!

Carter-Waters' Precast HAYDITE Concrete columns, beams, purlins and slabs for a commercial building typical of many in this area can be bought and erected for as little as \$1.17 per sq. ft. This figure is based on a specific design with 30,000 sq. ft. floor area and 20 ft. ceiling. Bays are 25' x 25'.

We Would Like To Show You How It Can Be Done!

Why not call Glen Roderique, your Carter-Waters Product Engineer? He will be happy to explain all the details of this system.

TODAY, Write for your FREE copy of the booklet, "Precast HAYDITE Concrete."



2440 Pennway

Phone GRand 1-2570



President Slezak outlines the goals for 1956.



Ex-President Simon received his "thank-you" plaque from Lloyd Roark, who wishes he had one, too.



After being sworn in, Vice-President Hollis received congratulations.

M-FLOORS

... Cel-Beam Structural Sub-Floors Provide Electrical Availability in Every Square Foot of Floor Space

When you plan new buildings, you will want to design into them all the cost-saving advantages and year-after-year convenience of modern, light-weight, M-Floor construction. Your clients will appreciate it, and they will appreciate it more and more each time office arrangements have to be changed and electrical and communication service outlets added or relocated to meet new demands. M-Floors provide the built-in raceway capacity which insures a building against electrical obsolescence in the years to come.

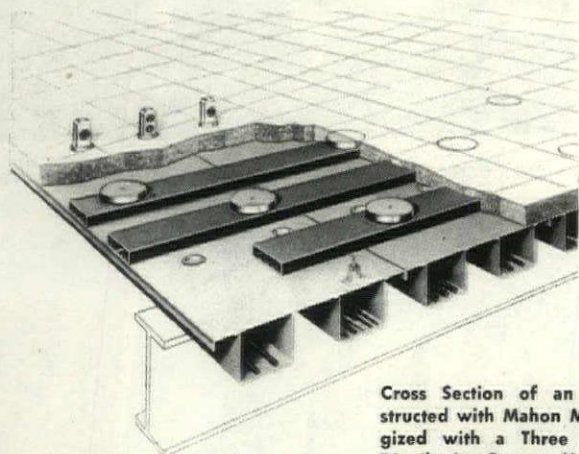
*See Sweet's Files for complete information or write
for Catalog M-56*

THE R. C. MAHON CO. • Detroit 34, Michigan

Authorized Sales Representative

Claude Cooke Co., 301 N. 7th St., K. C., Kan.

ATwater 1-6180



Cross Section of an Electrified Floor Constructed with Mahon M-Floor Section M2 energized with a Three Header Duct Electrical Distribution System. M-Floor Sections are available in a wide range of metal gauges with either Two or Three Cel-Beams in 24" width, or with One Cel-Beam in 12" width.

MAHON



A.G.C. President, Wells Haren, exchanged views with Bower and Roark.



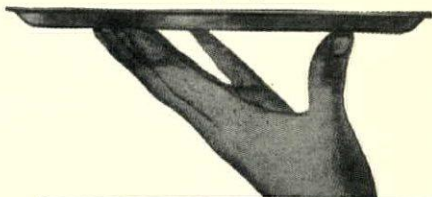
The Secretary and the Treasurer and their wives got together before dinner.



Messrs. Simon, Tanner and Murphy entertained Speaker Mackey.

*OFFERING
THE
FINEST*

original
Zolatone®
process
proven



there can be no finer painting system.



the high standard by which all others are measured.



manufactured far longer than all competitive coatings.



kept out front by unsurpassed research in chemistry.



widely imitated but never equalled.

- ★ 32 stock colors
- ★ 6000 custom colors

*REMEMBER: only Zolatone
over its specified foundation
coat is the Zolatone Process.*

There is only one ZOLATONE PROCESS

- Accept no substitution •

- STERLING RONAI
General Manager

DEVOE

of kansas city, inc.

PHONE VI. 5672

• 200 SOUTHWEST BOULEVARD
KANSAS CITY 8, MISSOURI

EXCLUSIVE ZOLATONE AGENT FOR THIS REGION

