



AMERICAN INSTITUTE
OF
ARCHITECTS

SEP 24 1956

LIBRARY

Skyline

SEPTEMBER 1956

**KANSAS CITY CHAPTER
AMERICAN INSTITUTE OF ARCHITECTS**

KANSAS CITY CHAPTER AIA

Frank R. Slezak
18 East 11th Street

PRESIDENT

Donald R. Hollis
9423 West 80th Street
Overland Park, Kansas

VICE-PRESIDENT

Frank Grimaldi
3543 Broadway

SECRETARY

Henry D. Krug, Jr.
310 Ward Parkway

TREASURER

William H. Simon
25 East 12th Street

(1958)

DIRECTORS

Edmund L. Bower
3543 Broadway

(1957)

I. L. Roark, Jr.
7133 West 80th Street
Overland Park, Kansas

(1956)

Published monthly by the Kansas City
Chapter of The American Institute of
Architects.

Betty Mae Brooker
18 East Eleventh Street
Kansas City 6, Missouri

EDITOR

James R. Baker
95th and Troost

ADVERTISING

John E. Jameson
18 East Eleventh Street

ART

Ethel Sklar
4127 Locust

CIRCULATION



Skylines

Volume Six, Number Nine

September, 1956

September 13, 14 & 15

Eleventh Annual Central States District Conference, Omaha and Lincoln, Nebraska

September 16 thru 23

Home Builders Association's Parade of Homes

September 18

September Chapter Meeting at the Golden Ox

September 24

Enrollment for Business and Professional Men's Art Class, Kansas City Art Institute and School of Design

Though September is a busy month with schools reopening, bowling leagues getting underway and Saturdays being devoted to football, plan to make time to enjoy some of the September events listed here. Be sure to attend the Chapter Meeting and start the 1956-57 season off right.

And, you Fighting Irish, start planning now. Frank Montana, of Notre Dame University, will be here for our October Chapter Meeting.

Now! ALL NEW ZURN ENGINEERED PRODUCTS HELP IMPROVE YOUR BUILDING SPECIFICATIONS!

NEWEST DEVELOPMENT IN
WATER HAMMER ARRESTMENT
THE ZURN

SHOKTROL

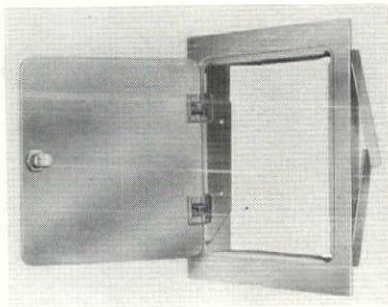


For elimination of destructive shock pressure and disturbing noises in plumbing systems with quick-closing valves—

- ... All stainless steel construction.
- ... Small, compact and lightweight.
- ... Pre-charged with air pressure.

ULTRA-MODERN APPROACH TO
CONTROL CONCEALMENT
THE ZURN

ACCESS DOOR



For full, unhindered entrance to control equipment concealed in walls and ceilings—

- ... Fits any type of wall.
- ... High-quality lustrous finish.
- ... Protective cylinder lock.
- ... Snug door on concealed hinges.

U.S. PATENTS AND PATENTS PENDING



ZURN MIDWEST SERVICES, INC.

Represented by

JAMES V. IRVIN CO.

557 Westport Road Kansas City 11, Missouri

Phone: Jefferson 1-5452

A COMPLETE LINE OF PLUMBING DRAINAGE PRODUCTS

- ZURN SYSTEMS for supporting wall type plumbing fixtures
- NON-FREEZING HYDRANTS
- SUPREMO CLEANOUTS
- SWIMMING POOL FITTINGS
- ROOF DRAINS
- FLOOR DRAINS
- INTERCEPTORS

September Chapter Meeting

Tuesday, September 18,

our first chapter meeting of the fall will be held at

The Golden Ox.

5:30 p.m. (sharp) the business meeting will start.

6:30 p.m.—Cocktail Hour

7:15 p.m.—Dinner

8:15 p.m.—Program, which will be

Robert Mitchell, of St. Joseph, Michigan.

After Mr. Mitchell graduated from the University of Michigan College of Architecture and Design, he went to Europe with the Army. While he was in the army, he made architectural models for the 8th Air Force and the Royal Air Force. While still in Europe he worked with John Thorpe, who is a distinguished model maker in England.

Since World War II, he has been actively engaged in building architectural models. Some of his most recent models are of the U. S. Air Force Academy, The Hotel Statler in Los Angeles and the Detroit River Front Development.

Mr. Mitchell is bringing along a number of slides showing models he has made for various projects throughout the country.

EDWARD BUEHLER DELK

Edward Buehler Delk was born in Schoharie, New York, September 22, 1885 the son of S. Edwin Heyl Delk, D.D., and Ella Buehler Delk, and was a descendant of Roger Delk, of Virginia.

In 1903 Mr. Delk was graduated from Merserburg (Pennsylvania) Academy; in 1907 he was graduated from the University of Pennsylvania with a B.S. degree; in 1909 he, and a party of nine young men, toured Greece and Italy for four months with Lorado Taft. Measured drawings and sketches were made of many Greek and Roman Temples and public buildings during this tour. In 1919 he enrolled in Graduate studies at the University of London to further his already prolific knowledge of Architecture.

Mr. Delk started the practice of Architecture in Philadelphia in 1913. In 1920 he moved to Kansas City, Missouri, at the invitation of Mr. John Taylor and became Consulting Architect to the J. C. Nichols Investment Company. He assisted in the design and planning of the Country Club Plaza District.

In 1924 Mr. Delk, while still acting as consultant to the Nichols Company, entered into private practice. Through the ensuing years he designed many fine residences and buildings in Kansas City, in Oklahoma, in Kansas and in New Mexico.

Previous to Mr. Delk's arrival in Kansas City, he served in World War I, 1917-19 as first lieutenant in the air service.

In 1936 Jane Willis Townsend became the wife of Edward Buehler Delk. The home is at 5320 Belleview in Kansas City, Missouri.

Among the many outstanding works of Mr. Delk are the Tulsa Museum of Fine Arts, which was the former resi-

dence of Waite Phillips; the Theodore Gary residence at Macon, Missouri; Villa Philmonte, Cimarron, New Mexico, which is now the summer camp of the Boy Scouts, Bartlesville (Okla.) Country Club; co-architect of the Philtower Office Building, Tulsa, Oklahoma; residences of Frank Phillips and Vernon Foster, Bartlesville and of the William Allen White Memorial, Emporia, Kansas, with Jo Davidson, Sculptor.

In 1950-51 Mr. Delk designed the "Starlight Theatre" in Swope Park. Later he collaborated with the late Dr. Carl Milles and Mr. Herbert S. Hare in the design and coordination of the sculpture, reflecting pools and landscaping of plans for the William Volker Memorial Fountain, which is still uncompleted.

Mr. Delk was an active member of the Kansas City Chapter of the American Institute of Architects, particularly during the year of 1920-1940. He served on many committees and devoted much time to various other activities. On three occasions he won the Chapter Medal Award due to the excellent work designed and built under his ever watchful eye.

He was President of the Kansas City Chapter 1925-26 and held other offices preceding and after his tenure as President. Mr. Delk has been active over a long span of years, not only in Chapter affairs, but in civic and business life, and for the past eight years has been Consulting Architect for the Park Board of Kansas City.

To those who have known Ned Delk through the years he has endeared himself in many ways; his kindnesses to and helpfulness with the younger members; his unflagging interest in architecture and the allied arts and his high standards of practice all bespeak the high esteem in which he is held throughout this area. Kansas City and the Kansas City Chapter, A.I.A. have lost a great and true friend.

Luther Orville Willis

● ● in the news

There is now pending before the Missouri State Board of Registration for Architects and Professional Engineers, some 265 applications for registration on oral examination. Of this number, 25 are for architects, the remainder are for professional engineers, according to a statement released today for publication by the Secretary of the Board.

More than 200 applications for registration on oral examination were made on tentative forms as a result of joint efforts of the Registration Board, the Missouri Society of Professional Engineers and the Missouri State Association of Registered Architects.

Both written and oral examinations for professional engineers will be held at Jefferson City, Missouri, on October 1-2, 1956. Applications for registration on written examination are expected to run close to 200. More than 150 such applications have already been filed by the Secretary of the Board. Total number of applications for registration on examination, oral and written in the engineering side are expected to be near the 400 mark.

Of course it will be some time yet before the oral examinations can possibly be completed.

Bill Elder, of U. S. Plywood Corporation, has been appointed as Sales Engineer for the Southwest Division of U. S. Plywood. This means that Bill will no longer be able to take an active part in A.I.A.-Producers' Council activities, and the Joint Committee is losing a good chairman. U. S. Plywood's new Architectural Representative in this area will be **Lee Dalglish**. He will, also, be their representative on the Producers' Council.

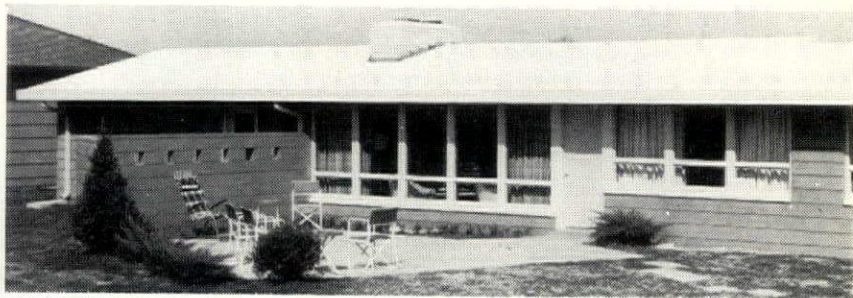
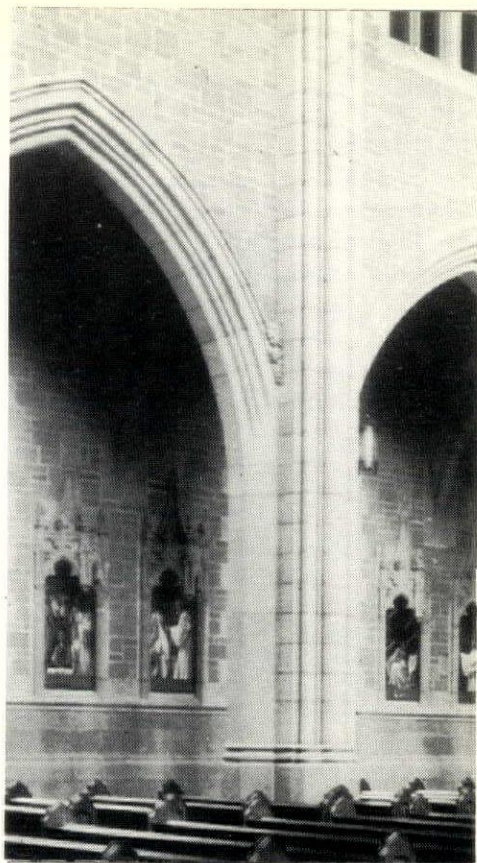
Have you been reading the messages from our advertisers lately?

PATTERNS
UNLIMITED

HAYDITE CONCRETE BLOCKS

Only haydite concrete blocks offer the uniformity of size and shape and fine, even texture that permit unlimited design patterns. Scores of interesting effects are possible — from the extremely formal to the free feeling of informal arrangement.

In specifying Carter-Waters haydite concrete blocks, you are recommending structural strength in a form that is quick and easy to place. And you get the advantage of incorporating your ideas for design so effectively.



Specify Carter-Waters
haydite concrete blocks
for the jobs you are
designing now!

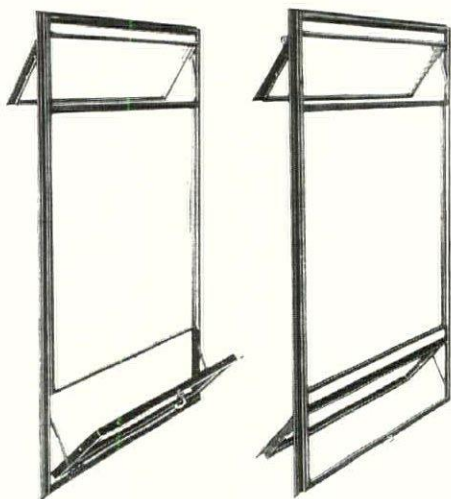
Manufactured and sold by
CONSTRUCTION THE MATERIALS
CARTER-WATERS
KANSAS CITY, MO. 8 MISSOURI
2440 Pennway, GRand 1-2570



Mesker
DEEP SECTION
STEEL WINDOWS

**AUTO - VENT
WINDOW WALLS**

Mesker
DEEP SECTION
ALUMINUM WINDOWS



Mesker Intermediate Auto-vent windows feature simultaneous and automatic opening and closing of the upper ventilator in unison with the lower vent, when the lower vent is actuated by hand. As illustrated, the top vent always opens out, while the sill vent can be made to open in or out.

Mesker Auto-vent windows are limited to 2 ventilators per window unit, with neither vent exceeding 15 square feet in area, and a maximum window width of 5'-0-7/8" and 16'-0" in height.

CLAUDE COOKE CO., INC.

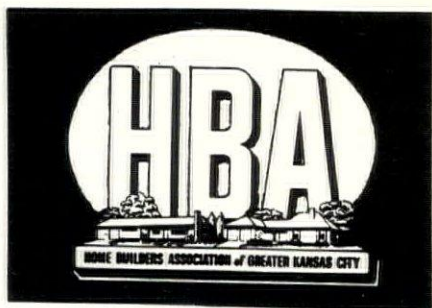
301 NORTH SEVENTH STREET P. O. BOX 962

OFFICE ATWATER 1-6180-6181-6182

KANSAS CITY, KANSAS

Parade of Homes Week

SEPTEMBER
16TH THRU 23RD



The Home Builders Association of Greater Kansas City is again sponsoring the Parade of Homes.

This year's program will have 89 builders taking an active part. They will display 135 homes in 6 counties; of these, 53 will be furnished.

This is one of the outstanding annual events on the Kansas City scene, and one you will not want to miss. Last year The Parade was so successful that the program was extended an additional week, and we wish them a duplication of last year's success.

New Corporate Members

Recently, The Institute announced that seven new corporate members had been assigned to the Kansas City Chapter. All seven have been associated with the Chapter for several years, and are to be congratulated on being accepted to membership by The Institute.



William Merrill Conrad was a Junior Associate from 1952 until the spring of 1955 when he was advanced to Associate. He received his degree in Architecture from the University of Kansas in 1950. Before the formation of his present firm, Northern & Conrad in 1955, he was employed in the offices of Kivett & Myers and Donald R. Hollis.

John Lawrence Daw received his architectural education at Iowa State College and Notre Dame. After graduating in 1952, he was employed by the firm of Shaughnessy, Bower & Grimaldi until the past summer when he opened his own office. He became a Junior Associate Member of the Chapter in 1952 and advanced to Associate a year later.

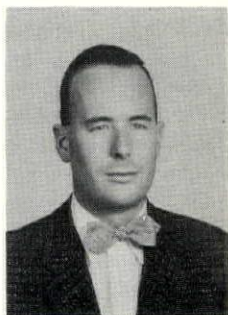




Evans Folger joined the Kansas City Chapter as a Junior Associate in 1949 and in 1950 became an Associate. He attended the University of Kansas, then transferred to the University of Illinois and received his degree in Architecture in 1948. He came to Kansas City in 1948 and was employed by Voskamp & Slezak until he and Arthur Pearson formed their partnership early in 1955.

George Peter Keleti has been a principal in the firm of Everitt & Keleti since July, 1955. Before then, he was employed in the offices of Everitt & Bleistein, Louis H. Geis, Wilson & Earnheart and Harris Armstrong, of St. Louis. He was a Junior Associate from 1951 to 1953, when he was advanced to Associate. He received his early architectural education at the Hungarian Technical Institute and his Master's Degree in Architecture from M.I.T. in 1948.

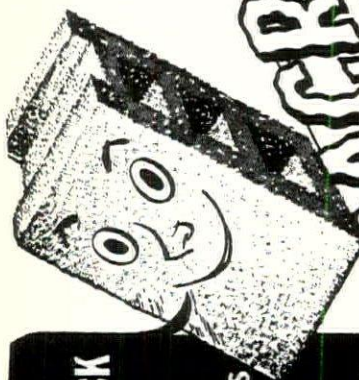
William M. Linscott has been associated with the Kansas City Chapter since 1951. He received his Bachelor's Degree in Architecture from the University of Kansas in 1949. Prior to becoming a partner in the firm of Linscott, Kiene & Haylett in 1953, he was an Associate of M. H. Linscott, Architect.



**YES, CONCRETE BLOCK
FOUNDATIONS**

did stand up better during
the recent DRY, HOT YEARS
because of

**LESS WEIGHT and
LESS CONDENSATION**



USE VIBRACRETE PRODUCTS

**CHANNEL SLABS
BEAMS**

New Economy in Construction!

Eliminate Posts!

**Roof and Floor Spans
up to 50' and over**

*Call us for information. Our Sales Representatives and
Engineers are anxious to give you detailed information.*

**MORE THAN 30 YEARS
EXPERIENCE**

CONCRETE BUILDING UNITS CO.

3405 Terrace St. • Kansas City, Mo.
Phone VA1-5300

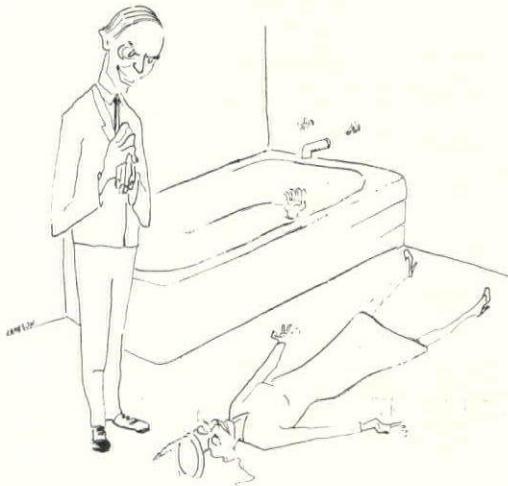
CONCRETE BUILDING PRODUCTS CO.

R.R. 1 Harrisonville, Mo.
Phone 118



James E. Northern has been a member of the firm of Northern & Conrad since early in 1955. Before then, and after receiving his degree in Architecture from Kansas University in 1950, he was employed in the offices of Andrews & Hutchens, Marshall & Brown and Neville, Sharp & Simon. He became a Junior Associate Member of the Chapter in 1953 and advanced to Associate in 1954.

Arthur E. Pearson, Jr., was a Junior Associate of the Chapter from 1949 until 1950 when he advanced to Associate. In February, 1955, he became a principal in the firm of Folger & Pearson. Before that time he had been employed by Smith, Hinchman & Grylls and Voskamp & Slezak. He received his architectural education at Findlay Engineering College.



DON'T BE ALARMED MISS, THAT'S ONLY OUR NEW,
EASY TO HOLD ONTO, PLUG.



Missouri State Highway Department Office Building
Jefferson City, Missouri

Architect Marcel Boulicault
St. Louis, Missouri

When you build, prepare for the future by choosing Carthage Exterior Marble. It's recognized as one of the soundest and hardest of all American marbles. Not just a common limestone, it's actually a Class A marble capable of taking a high polish, with "uniform and favorable working qualities," as well as the compact texture essential for fine architectural work. Despite these superior characteristics, Carthage Exterior Marble costs little more than ordinary building stones! When you build, choose a material to withstand wear and weather. Choose hard and rugged Carthage Exterior Marble.

In order to serve you better, we have recently purchased Kansas City Marble and Tile Company, 3030 Wyoming Street. Our Kansas City offices are now located at that address.

CARTHAGE MARBLE CORPORATION

Carthage,
Missouri

3030 Wyoming St.
Kansas City, Mo.

OUR INSURANCE PROGRAM

One of our organization's programs with which we fear many of our members are not fully conversant is our Accident and Health Insurance Plan. Just a brief history and explanation is timely now since some broadened features have recently been added to present policies (without charge) and longer length of time for disability payments has just been made available.

Since Architecture is a very personal profession, most of us must depend completely on our own efforts, with only a very few of our number so fixed as to be assured an income for an indefinite period if disabled by either accident or illness. Prudent people in this position buy some form of disability income protection to pay a stipulated income during such periods of disability, thus filling what otherwise might be a very large gap in their insurance program.

An individual starting out to buy this kind of insurance is often confronted by an untrained or "high pressure" salesman and confused into buying a policy with objectionable insuring clauses, of which he is unaware until he has to file claim. Then, too late, he may learn his coverage requires that he be "house-confined" or that he had the "pre-existing" condition or that they will pay this claim but will not renew the policy because it was "cancellable." In the 1930's professional associations recognizing this as bad for their membership as a whole sought to provide uniform insuring provisions for their members; and to assure that none of these objections would be used, they pooled their purchasing power and selected a single company to carry their "Approved Plan." In the insurance business, this became known as a "Franchise Group," and today almost all professional societies and organizations participate in some such program for their members, which is proof of the wide acceptance of the coverage and satisfactory claim payments performance by the insurance companies.

In 1950, the Board of Directors of our chapter sought such a program and carefully considered several plans at the time. When they selected the Metropolitan Casualty Insurance Company of New York to be our carrying company, it was only after analysis of all important things to be considered. It was significant then, as it is now, that the Loyalty

Group of Insurance Companies, one of which is Metropolitan Casualty, was the early pioneer in this insurance, had the longest experience, were then, and still are, insuring every other major professional association in the state of Missouri.

Another important point was that Metropolitan Casualty had consistently maintained that such coverage needed local supervision and attention to claims and had designated a well-known Kansas City firm, Altman-Singleton & Company, as their representative in western Missouri. So, we are dealing with hometown people with whom we rub shoulders on our streets and who take personal pride in their own reputation, and not with an unknown agent in some other city.

In retrospect, we find the original confidence justified. As economic conditions have changed, so have the benefits available under our insurance program. Coverage is now available up to \$100.00 a week, and twice since the inception we have been able to extend the length of time these benefits may be received until we can now apply for coverage for lifetime disabilities, if accidentally injured, and eight years for any illness. In addition, the original policyholders have received broadened coverage on at least two occasions which was granted voluntarily by the company and without charge. Thus, our carrier indicated a desire to pass benefits back to their policyholders when sound underwriting and conservative business practices permitted them to do so. Payment of claims has been equally satisfactory, or word of unhappiness would surely have permeated a group as close as ours.

A check with Altman-Singleton shows that more than thirty of our members are enrolled in the program at present, and that since the start of the program in 1950, they have paid from two to seven claims each year. They also pointed out that this program is open to all classes of our membership.

Our Franchise Group Plan has, therefore, stood the test of time, and through it our members will find Accident and Health Insurance with better coverage and at lower cost than they could buy individually. We urge our membership to acquaint themselves with the program. Call Altman-Singleton & Company, VI 2-6292, for your own personal information, as to the plan best suited to you. They will try to be helpful and will not bother you unnecessarily.

WESTERN BLUE PRINT CO

**909 GRAND • KANSAS CITY, MO.
SOUTH SIDE PLANT 4241 PENN.**

Authorized  *Distributor*

VICTOR 2-7881
for 2-way radio pickup service

KANSAS CITY NATURAL SLATE CO.

3109 SOUTHWEST BLVD.

PHONE WE 6984

KANSAS CITY, MISSOURI

CONTRACTORS FOR:

FLOOR COVERINGS

Asphalt Tile

Rubber Tile

Vinyl Tile

Cork Tile

Linoleum

Wood Block Flooring

WALL COVERINGS

Kalistron

Flexwood

Metal Wall Tile

Plastic Wall Tile

Linowall

Texolite

ACOUSTICAL CEILINGS

Owens-Corning-Fiberglas

Armstrong Cork Co.

Asbestospray

original
Zolatone[®]
process
proven

THE NAME
THAT MEANS
MULTI-COLOR

ACCLAIMED
THROUGHOUT
THE WORLD

EXTERIOR
EXPOSURES
IN THEIR
SEVENTH YEAR

FULL PAINTING
SYSTEMS
FOR ALL
SURFACES

FIELD
INSPECTION &
APPLICATION
SUPERVISION

32 Stock Colors
6000 Custom Colors

- only the Zolatone Process can deliver the qualities that have made it world famous.

- only Zolatone properly applied over its specified foundation coat is the Zolatone Process.

There is only one ZOLATONE PROCESS

- Accept no substitution •

STERLING RONAI
• General Manager

DEVOE

of kansas city, inc.

PHONE VI. 5672

200 SOUTHWEST BOULEVARD
KANSAS CITY 8, MISSOURI

EXCLUSIVE ZOLATONE AGENT FOR THIS REGION

