

# SKYLINES

KANSAS CITY  
CHAPTER OF THE  
AMERICAN INSTITUTE  
OF ARCHITECTS

DECEMBER 1958



## KANSAS CITY

### CHAPTER

#### PRESIDENT

John T. Murphy  
15 West Tenth Street  
Kansas City 5, Missouri

#### VICE-PRESIDENT

Henry D. Krug, Jr.  
310 Ward Parkway  
Kansas City 12, Missouri

#### SECRETARY

William M. Conrad  
4149 Pennsylvania  
Kansas City 11, Missouri

#### TREASURER

Conrad J. Curtis  
912 East 63rd Street  
Kansas City 10, Missouri

#### DIRECTOR ('56-'58)

William H. Simon  
25 East 12th Street  
Kansas City 6, Missouri

#### DIRECTOR ('57-'59)

Angus McCallum  
1016 Baltimore Avenue  
Kansas City 5, Missouri

#### DIRECTOR ('58-'60)

John M. Hewitt  
607 Westport Road  
Kansas City 11, Missouri

*Specialized Photography*  
*for*  
**ARCHITECTS**

- ★ **K & E PHOTACT**  
Tracing Reproductions on cloth or paper
- ★ **Faithful Delineation Duplicates**  
on glossy or matte
- ★ **All Special Techniques to**  
save you drafting time,  
including **MICRO-MASTER 105mm**

**WESTERN**  
**BLUE PRINT CO.**

909 GRAND • KANSAS CITY, MO.  
SOUTH SIDE PLANT 4241 PENN.

**TECHNICAL**  
**PHOTOGRAPHY**

**VICTOR 2-7881**

*Authorized*  *Distributor*



# SKYLINES

Vol. 8

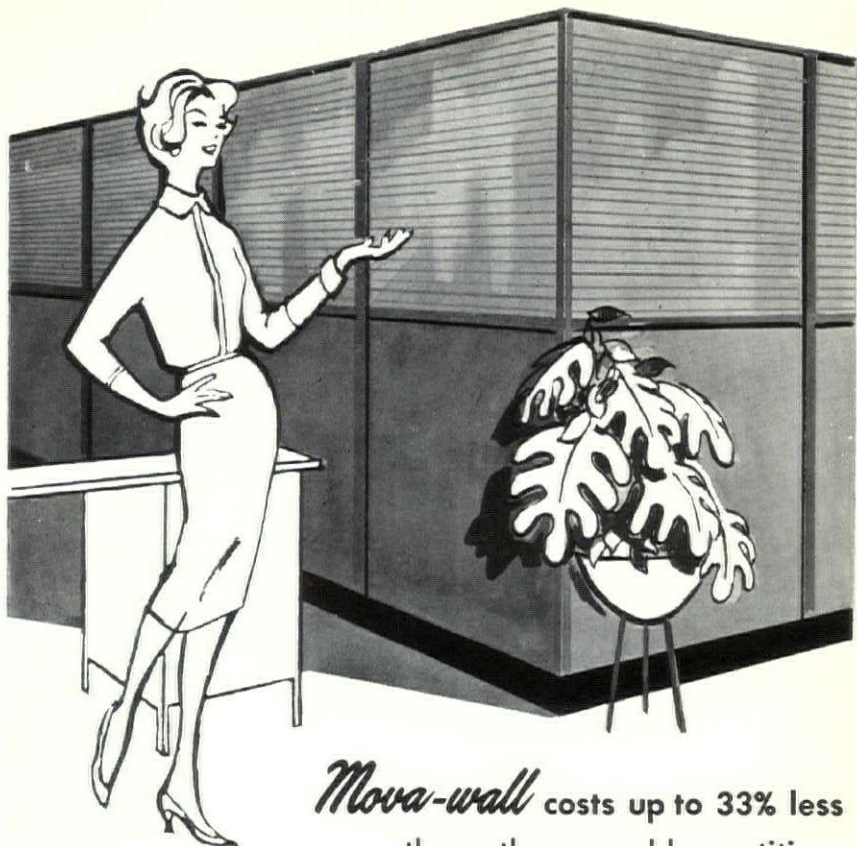
No. 12

DECEMBER, 1958

CONTENTS	Page
New Chief of Planning & Construction for the State of Missouri.....	6
Calendar .....	7
Cafeteria—Kansas City Life Insurance Co. Edward W. Tanner & Assoc., Architects....	8
New Members.....	12
Chapter News.....	13
New Books.....	16

SKYLINES is the monthly publication of the Kansas City Chapter of the American Institute of Architects, and mailed without charge.

EDITOR.....	J. DAVID MILLER
7830 FLOYD	OVERLAND PARK, KANS.
LITHO.....	VOLKMER LITHO CO.



*Mova-wall* costs up to 33% less  
than other movable partitions  
of comparable quality!

Here's a new product that's an architect's dream because it not only adds warmth and beauty to any office interior but also because it is so low in cost. You can actually save your client about 1/3 on your next office partition application if you'll specify Mova-wall.

Mova-wall is already providing unlimited flexibility and maximum privacy in hundreds of installations from coast to coast. Available solid and glazed in a choice of heights and panel materials, for both partitions and railing. Call or write your nearest distributor for free literature and prices.

*Henges* COMPANY, Inc.

ST. LOUIS 3, MO.  
2814 Locust Street  
Franklin 1-1776

KANSAS CITY 8, MO.  
2619 Grand Avenue  
Baltimore 1-7544

WICHITA 11, KANSAS  
1040 S. Santa Fe  
AMherst 5-3186



# Interior Decorative Service for Architects, Builders & Realtors

*Saves time . . . provides additional income*

Now, available to architects and builders for the first time, Interior Classics, Inc., offers you brand name merchandise which we will sell through you to your customers for prices far below those featured on comparable items in retail stores.

Interior Classics, Inc., also offers these services to you as a no cost, extra bonus.



- Top notch decorator at your disposal at all times to help you with color planning or work with your customers on color arrangements. This is without charge to you or your customer, unless time consuming.
- Guaranteed satisfaction.
- Regular bank rate financing.
- Lower prices than on comparable item in retail stores.
- Free delivery and installation.
- Special ordering from floor room samples.

Interior Classics, Inc., is not open to the public. You are not competing with yourself, but working with us as an agent.

Interior Classics, Inc., will give your customers every courtesy and help build customer relations for you as well as increase your profits.

**SEE OVER  
5000 ITEMS  
NOW ON DISPLAY  
IN OUR  
SHOWROOM**

*Interior  
Classics, inc.*

Decorative Service for Architects,  
Builders and Realtors.

**WAbash 1-5885**

**3415 Prospect Ave.  
Kansas City 28, Mo.**

EXPANDED SHALE

# concrete

— No. 43 —

CHARTER



MEMBER

# facts

## "Statistical Quality Control"

Masonry units of Buildex expanded shale are consistently uniform in texture and pleasing to the eye. This consistent uniformity results from production in a modernly engineered plant employing the control of quality by instrumentation, sampling, testing and analysing. Extreme care is taken to insure consistent gradation that meets A.S.T.M. and our customers requirements.

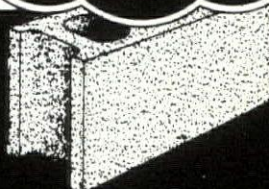
The final result of this deliberate care is a wall surface of beautiful TEXTURE.

1. Lightweight
2. Strength
3. Insulation
4. Fire Insurance
5. Sound Reduction
6. Durable
7. Versatile
8. Economical
9. Shock Resistant
10. Minimum Shrinkage
11. Nailable
12. TEXTURED

*"... so much for  
so little!"*



**BUILDEX, INC.**  
Phone 240  
OTTAWA, KANSAS



## **ARCHITECT APPOINTED AS CHIEF OF PLANNING AND CONSTRUCTION FOR THE STATE OF MISSOURI**

This past summer the profession was honored by having one of its fellow architects, Mr. John D. Paulus, Jr., appointed by the Governor of Missouri, to the position of Chief of Planning and Construction for the State of Missouri. A member of the St. Louis Chapter and formerly Director of Hospital Facilities of the Missouri Division of Health, Mr. Paulus has in the past performed on the highest plane of professional conduct in gaining healthy cooperation and fair dealing between State Government and the private practitioner.

Reared in the environment of the Construction Industry—with his Grandfather, Father and Brothers, members of the Robert Paulus Construction Company of St. Louis,—Mr. Paulus received his architectural training at Washington University, Harvard, and M. I. T. His experience ranges from his own private practice to National Park Service (Associate Architect, Jefferson National Expansion Memorial, St. Louis Riverfront); War Service (under professional, civilian contract to Navy, Electronics); Chief Architect, State Parks of Missouri, and Director of Missouri Hospital Facilities.

The position of Chief of Planning and Construction was created by Senate Bill No. 3 last year and was effective beginning June 20, 1958. Duties are as follows:

1. "The Governor, by and with the advice and consent of the senate shall appoint a chief of planning and construction who shall be the head of the planning and construction section of the division of budget and comptroller."
2. "The chief of planning and construction shall assemble and maintain complete files of information on the repair, utilization, cost and other data for all state building, including power plants, pump houses and similar facilities, shall also assemble and maintain files containing a full legal description of all real estate owned by the state and blueprints of all state buildings.



3. "The chief of planning and construction shall formulate and submit to the budget director a current and long-range repair, construction and rehabilitation program ranked in the order of the urgency of need from the stand-point of the state as a whole."
4. "The chief of planning and construction shall inspect all buildings and report to the general assembly at the commencement of each regular session on their condition, maintenance, repair and utilization."
5. "The chief of planning and construction shall serve as advisor and consultant to all departments heads in obtaining architectural plans, letting contracts, supervising construction, purchase of real estate, inspection and maintenance of buildings. No contracts shall be let for repair, rehabilitation or construction of buildings without approval of the chief of planning and construction."
6. "The chief of planning and construction may secure information and data relating to state buildings from all departments and agencies of the state and each department and agency shall furnish information and date when requested by the chief of planning and construction."

We wish to congratulate Mr. Paulus and wish him continued success in this difficult post. ●

## CALENDAR

FEBRUARY CHAPTER MEETING	Feb. 12 Golden Ox
PRODUCERS' COUNCIL SEMINAR ON ROOFS	Feb. 26 Hotel President
MARCH CHAPTER MEETING	March 12 Golden Ox
KU SIXTH ARCHITECT'S CONFERENCE "Facilities For The Aging"	March 18-19 Lawrence, Kans.

# CAFETERIA

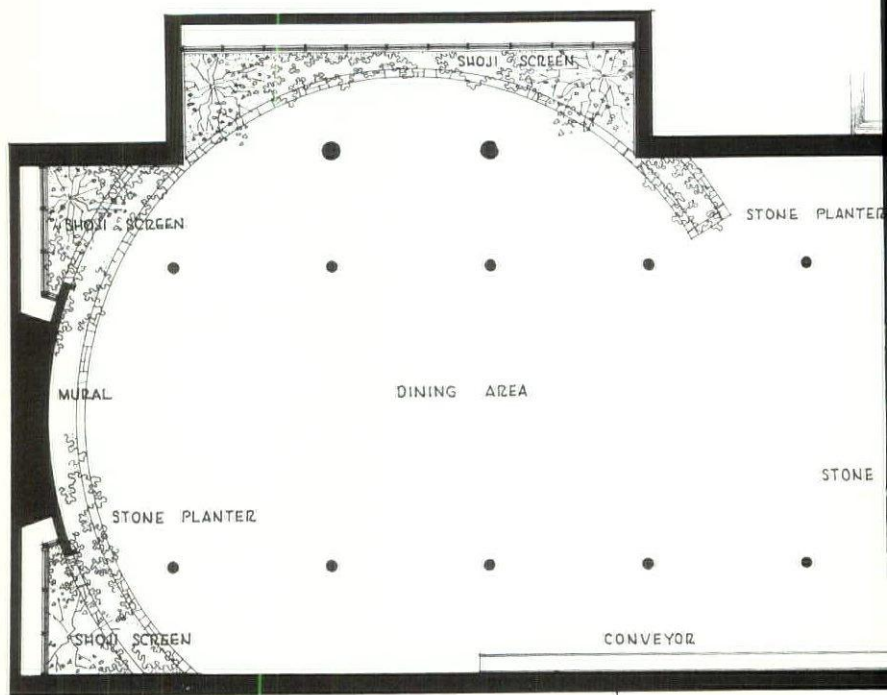
## KANSAS CITY LIFE INSURANCE COMPANY

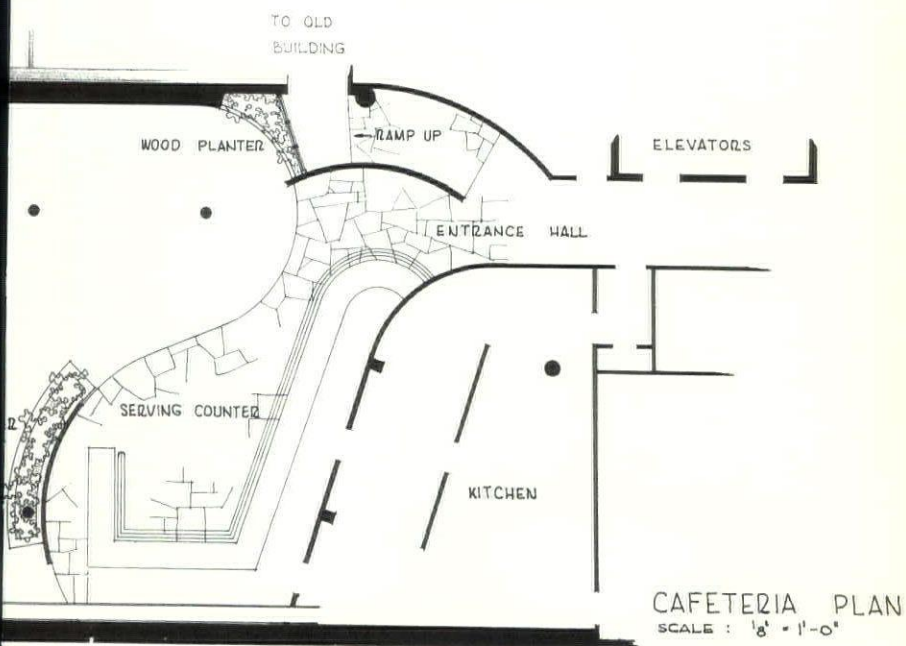
3520 Broadway

Kansas City, Missouri

### ARCHITECTS:

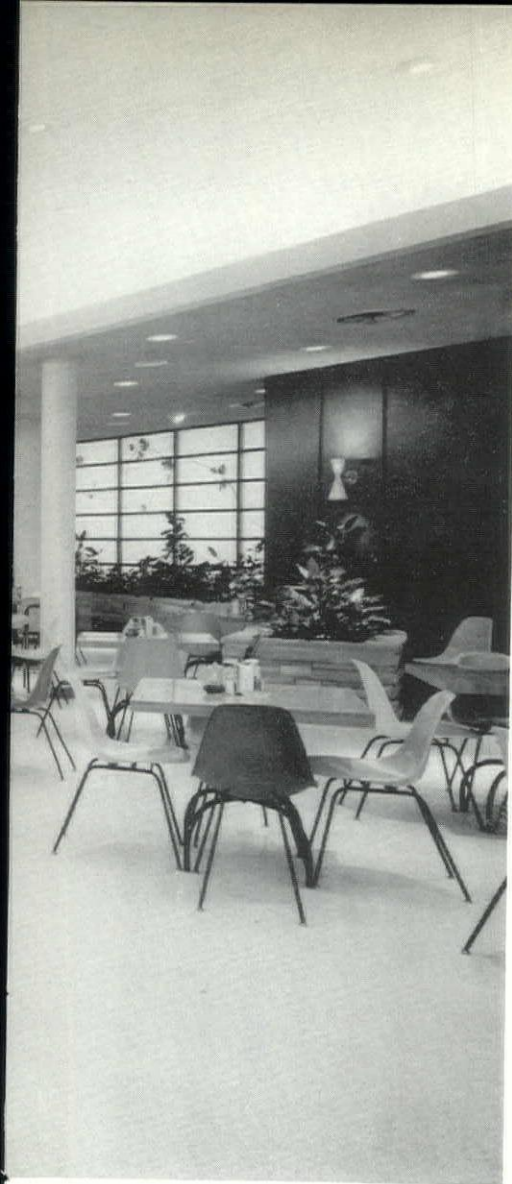
Edward W. Tanner & Associates











The Architect achieved here an unusually open and unconfined feeling for a completely interior room. The cove-lighted ceiling and the back-lighted plastic screens around the walls give an illusion of outdoor space — enhanced with the spacious planting areas. Walnut paneled walls and a white vinyl floor serve as a dramatic backdrop for the large mural and the colorful plastic furniture.

## NEW MEMBERS

The following applications for membership have recently been accepted and SKYLINES wishes to welcome and introduce these new members:



**MORRIS E. NORTON, JR.**, new Junior Associate, has worked with Burns and McDonnell and is now with Marshall and Brown. Born at Pittsburg, Kansas, he attended high school at Paseo and received his B.S. of Architecture at K.U.



**HERBERT E. DUNCAN, JR.**, new Junior Associate, graduated from Southwest High School in Kansas City and received his B.S. of Architecture at Washington University. He is with the office of his father, Herbert E. Duncan.



**CHARLES T. BERGER**, new Junior Associate, was born in Eldorado, Kansas, and received his B.S. of Architecture at Washington University. After spending a year in the office of Hellmuth, Obata and Kassabaum in St. Louis, he is now in the office of Herbert E. Duncan.



**ROBERT W. ROYER**, new Associate member, is well known to Chapter members as a partner in the firm of Hewitt and Royer. He was born at St. Joseph, Missouri and received his B.S. of Architecture degree at K.U. Registered in Missouri and Kansas, he also is a member of the Missouri Association of Registered Architects.



The following members have changed their membership status:  
from Jr. Associate to Associate:

**RICHARD L. NICHOLS** — Springfield, Missouri  
from Associate to Corporate:

**EARL C. McCAMIS** — Kansas City, Missouri  
from Associate to Corporate:

**IRWIN DALE ALLMON** — Springfield, Missouri  
from Associate to Corporate:

**ALBERT CASSIUS ESTERLY** — Springfield, Missouri

## CHAPTER NEWS

● The SKYLINES deadline has stretched monthly to embarrassing mailing dates. With the enlarged budget voted at the December meeting, the prospect of an Executive Secretary becomes more realistic and could well be the answer to a more effective use of Chapter communication.

● The PRODUCERS' COUNCIL Christmas Party put its "social highlight of the year" best foot forward at the Kansas City, Kansas, Town House Hotel on December 18th. The PRODUCERS' COUNCIL Committee responsible for the long hours of preparation consisted of Lee Dalglish, Chairman (U. S. Plywood), Dick Watson and John LaVelle (Armstrong), Fred Bratchie (American Air Filters), Joe Rollins (Westinghouse), Jack Manderin (Kewanee Boilers), Larry Lyons (Eddleman-Lyons), and Glen Roderique (Carter-Waters).

The program this year was a side-splitting affair with Joe Adelman (of the Kansas City Police Department, and well-known for his clumsy antics as a waiter and ability to reel off jokes with Satellite speed) in the convincing role of an architect protesting the selection of the "Top Banana" Award. His hilarious monologue accompanying a completely unrelated slide show was a bit that would be fare for National Convention. In response to his plea for "Top Banana," he was awarded the "Low Banana" Award. Then after a Hitchcock build-up in suspense, the "Top Banana" Award was presented to J. David Miller, as the Architect who has done the most in 1958 to promote the relations between the Producers' Council and the AIA.

The Annual Christmas Party has become the most looked-forward-

to event of the year and it was most appreciated by the Architects and the Engineers who were asked to be the guests of Producers' Council.

● The Steering committee of the National AIA Public Relations Committee met at Kansas City, December 19th and 20th. Present were the three members of the committee: Gordon Wittenberg, of Little Rock, Arkansas; Steve Allen (of Anshen & Allen), Los Angeles, and John T. Murphy. Also here were Edwin B. Morris, Jr., Assistant to the AIA Executive Director, and Robert Denny, of Henry J. Kauffman & Associates, National Public Relations Counsel. On Thursday afternoon members of the Kansas City PR Committee, Art Pearson, Roger Blessing, Lloyd Roark, Regional Director, Evans Folger, Program Chairman, and Dave Miller, had an opportunity to meet with the Committee at the Rockhill Club to preview the final draft of the latest PR film, "A Place To Worship". Following the pattern of the two recent releases, "A School For Johnny" and "What Is a House" (The Chapter has purchased "A School For Johnny"), all three films are geared to appeal to the general public and to present the best side of architecture without being too "arty". They will be fine instruments to accompany talks to Club groups and to spread a better understanding of Architecture and what Architects are trying to achieve. Inspired by Ralph Myers, "Architecture, U.S.A." these films provide a needed specialization of topic, each covering 13 minutes of film

time on a particular subject. The Committee also viewed the first draft of "Building For Business", which shows promise of being as excellent as the other films. These films will all be shown at an early Chapter meeting this year with a proposal that the Chapter purchase them all to aid in Public Relations activity.

● John T. Murphy presented a talk on KC/80 at a meeting of the Business District League early in December at the Hotel Pickwick.

● Speaking of KC/80, the tremendous coverage in the December AIA JOURNAL was a real Christmas present. With such excellent national publicity, it appears that that should set an example for local publicity. Mentions in the KANSAS CITY STAR have been increasing and suggests that the time may be approaching when the objectives of KC/80 may yet reach the attention of the Kansas City public on a large scale. Several weeks ago, an Editorial from Denver was quoted in the STAR, pointing at the example of planning which Kansas City has set for the nation. It is indicative of a growing national reputation for the synonymous meaning of Kansas City and farsightedness.

● Welcome to our new advertiser, the HENGES COMPANY, who will be advertising every other month during the coming year. As has been frequently pointed out on these pages, SKY-LINES is published solely on the income from advertising and through the attention which is given to the monthly ads.

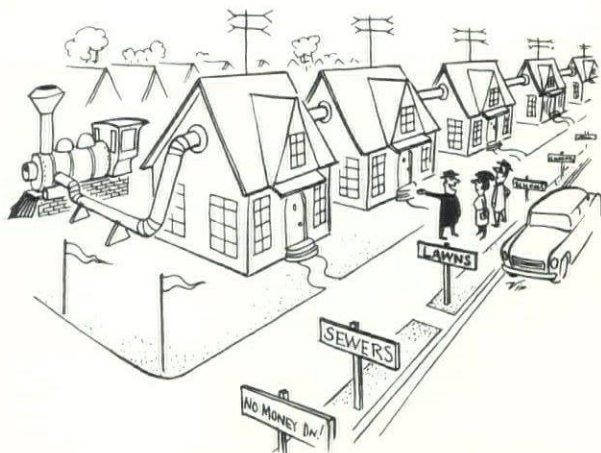


● Pictured below are the Kansas City Architects who were the guests of Armstrong Cork Company in Lancaster, Pennsylvania on October 14th and 15th.

Rear Row (l. to r.) is R. D. Watson, Armstrong Cork Company; J. P. LaVelle, Armstrong Cork Company; William Conrad, William Merrill Conrad; Earl McCamis, Fullerton & McCamis; William Linscott, Linscott, Kiene & Haylett; John Monroe, Monroe & Le-

febvre; Porter Smith, Kievett & Myers & McCallum; Edgard Voskamp, Gentry & Voskamp.

Front Row (l. to r.) is Gordon Heffley; Louis Geis, Geis, Hunter, & Ramos; Hugh Hamlin, Kievett & Myers & McCallum; Walter Linville, Edward W. Tanner & Associates; Donald R. Hollis, Donald R. Hollis; Roland Carlson, Elswood Smith & Carlson; Conrad Curtis, Curtis & Cowling.



"...And what is More, We Furnish the Heat at No Cost to you."

For your enjoyment—courtesy Pomona Tile Manufacturing Co.



## NEW BOOKS

Have you got some Christmas and bonus money left? Or better yet, look these books over before filling out your income tax and see if these aren't some very logical deductions.

### THE EXPLORING METROPOLIS

by the Editors of *FORTUNE*

Doubleday & Company \$3.95

Those who read the very excellent series of articles in *FORTUNE* Magazine during the winter and spring of 1957-58 on city growth either clipped them or wished they could be assembled in book form. To us in Kansas City the civic awareness of the problems of the city are well known and hence the need for more information is vital to that spirit.

This book presents a careful study of the problems of the city from decentralization to centralization, from cars to people, and of effective means of fusing new life and vitality to the framework of existing city composition.

### GROUND MAINTENANCE HANDBOOK

by H. S. Conover

F. W. Dodge \$10.75

An enlarged edition based on an earlier manual which TVA published for its maintenance field men, this book is unique in that it is the only book ever published with complete information on maintenance of public, semi-public, private, and industrial grounds. Its contents with 225 drawings, photographs, tables, and chapters covering: (1) Plan-

ning, (2) Growing and Maintaining Turf, (3) Planting and Care of Trees, Shrubs and Perennials, (4) Equipment Maintenance and Use, (5) Insect and Disease Control, (6) Weeds, (7) Soil Erosion, (8) Maintenance of Roads and Parking Areas, and (9) Material Specifications, indicate the value and need for this book in the Architect's office. Complete plant information and the layout and design of roads and parking areas alone make this book an addition to your library which will save time in your office and provide a valuable source of specification material in compact form.

### PARKING

by Geoffrey Baker  
and Bruno Frenaro

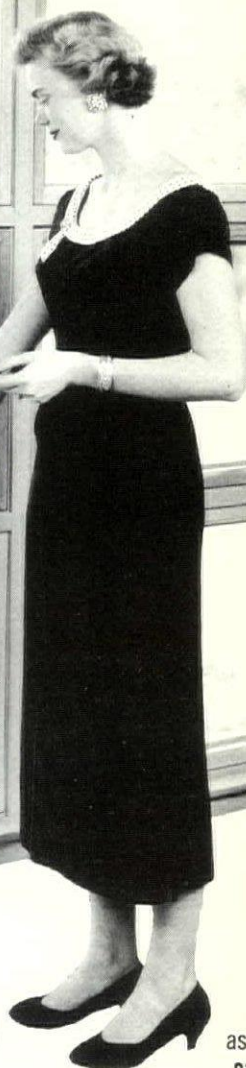
Reinhold

\$9.50

Ever need easy reference tables for parking layout dimensions at any angle? Ever need reference material on ramp garages, parking decks, underground garages, elevator garages, drive-in banks, and freight docks? What parking arrangement is most efficient for that odd-shaped plot plan on your boards now? **PARKING** is an essential handbook covering all of these problems and one which is bound to become the outstanding authority on this subject.



wood multi-purpose windows



used  
stacked  
as awning  
casement  
or hopper  
vent  
full 1 3/4" sash

zinc-coated, rust-resistant 16-mesh screens  
stainless steel, spring-type weather stripping  
cam-type underscreen operator opens sash without moving screen

**R**ay

413 Southwest Blvd. • Kansas City 8, Mo. • phone VI 2-0804

2322 West 6th Street • Topeka, Kansas • phone CE 3-1491

**A**

nderson company, inc.



*Niedringhaus*

**HOLLOW  
METAL DOORS  
and TRIM**

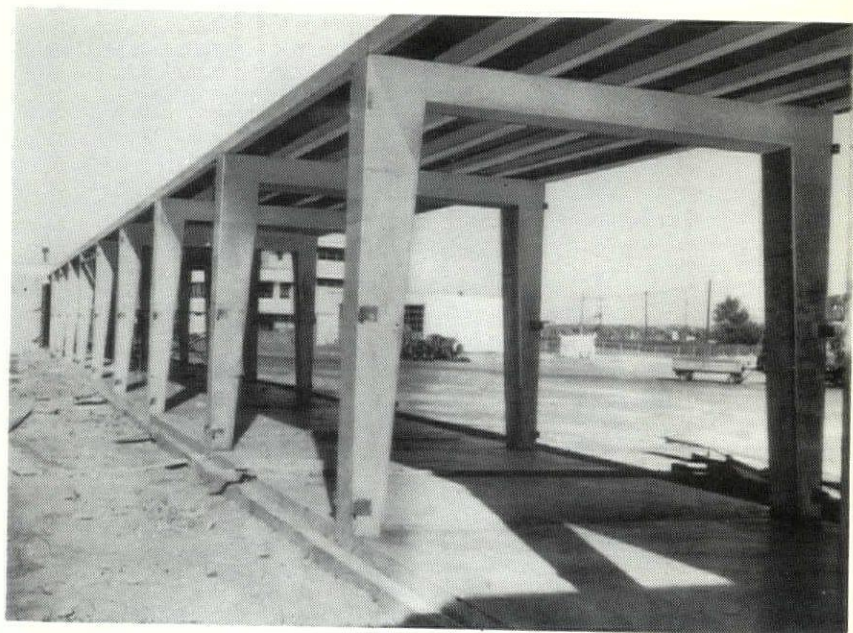
**CLAUDE COOKE COMPANY, INC.**

5920 Nall Avenue (P. O. Box No. 2)

MISSION, KANSAS



# Precast Haydite Concrete Structural Members



**New Concourse at Kansas City Municipal Airport**

**Architect:** Cooper, Robinson, Carlson & O'Brien

**Contractor:** Interstate Construction Co.

Precast Haydite Concrete Channel Slabs were used in the roof of the new concourse at the Kansas City Municipal Airport. Here is another example of utilizing precast Haydite concrete structural members for fast, economical, and durable construction.

*If you would like more  
information about precast  
and prestressed Haydite  
concrete construction, call . . .*



Phone GRand 1-2570

2440 Pennway

PRATT & LAMBERT-INC.

***Specification and Color Service***

**John L. Dyche, Jr.  
Harvey Kallberg**

**BA 1-3400**

# **SOME MISTAKES DON'T SHOW**

But those jobs that aren't "for the birds" had better be right the first time. Let's face it, now days you just can't **afford** mistakes!

note:

The use of the term "or equal" imposes on both the specifier and the user the responsibility of assuring that the basic formula of the alternate material actually can deliver the qualities specified above.

**avoid the unknown-use ZOLATONE**

ZOLATONE is manufactured only by  
PARAMOUNT PAINT & LACQUER CO.



**DEVOE OF KANSAS CITY, Inc.**

**STERLING RONAI**  
General Manager

**200 S. W. Blvd.**  
**Phone VI 2-5672**





AIA