





KANSAS CITY
CHAPTER

CHAPTER OFFICE

306 DAVIDSON BLDG.
KANSAS CITY, MO.

EXECUTIVE SECRETARY

MR. GERRE JONES

PRESIDENT

Angus McCallum
1016 Baltimore Avenue
Kansas City 5, Missouri

VICE-PRESIDENT

Louis H. Geis
7920 State Line
Kansas City 15, Missouri

SECRETARY

James R. Baker
P.O. Box 7088
Kansas City 14, Missouri

TREASURER

Conrad J. Curtis
406 East 62nd Street
Kansas City 10, Missouri

DIRECTOR ('58-'60)

John M. Hewitt
607 Westport Road
Kansas City 11, Missouri

DIRECTOR ('59-'61)

John T. Murphy
15 West Tenth Street
Kansas City 5, Missouri

DIRECTOR ('59-'61)

Frank Grimaldi
3543 Broadway
Kansas City 11, Missouri

SKYLINES

Vol. 9

No. 5

May, 1959

CONTENTS	PAGE
Introduction to Medal Awards.....	6
Holy Cross Lutheran Church.....	8
Parke-Davis Offices and Warehouse.....	10
Meadowbrook Junior High School.....	12
Hallmark Offices and Factory.....	16
Multi-Purpose Zoo Building.....	18
KC/80 Presentation	20
Thomas Hart Benton Presentation.....	21
Chapter News	22

SKYLINES IS THE MONTHLY PUBLICATION OF THE KANSAS
CITY CHAPTER OF THE AMERICAN INSTITUTE OF ARCHITECTS

306 DAVIDSON BUILDING

KANSAS CITY 8, MO.

LITHO..... VOLKMER LITHO CO.

**GREAT
WESTERN**
Colorizer
PAINTS

KANSAS CITY

CHICAGO



FT. SMITH

...for modern design concept-

BROWNE CURTAIN WALL

A COMPLETE SERVICE

- DESIGN
- CUSTOM FABRICATION
- ERECTION
- COMPLETE WARRANTY
- CUSTOM WINDOWS
- PANELS
- FINS
- LOUVERS
- SOLAR SHADES
- CANOPIES

and Related Architectural
Accessories
of

ALUMINUM

BRONZE

STAINLESS STEEL

ARCHISON TOWER BUILDING
DENVER, COLORADO
Architect: Raymond Harry Ervin
Contractor: Mead & Mount
Construction Co.



THE BROWNE WINDOW MANUFACTURING CO.

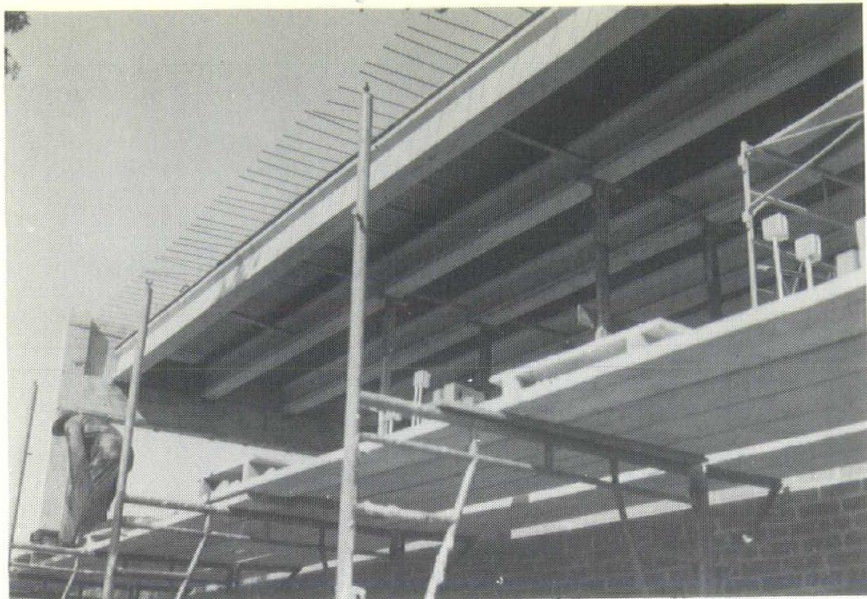
INCORPORATED
BOX 4823 • DALLAS, TEXAS

"FINESSE IN FENESTRATION"

CLAUDE COOKE COMPANY, INC.

5920 Nall Avenue (P. O. Box No. 2)

MISSION, KANSAS



Designed by: Burns & McDonnell Engineering Co.
Built by: Hiram Elliott Construction Co.







Prestressed Haydite Concrete Structural Members

Precast, prestressed lightweight Haydite concrete I beams were used on the new office building for Burns & McDonnell Engineering Company.

This is another example of fast, economical and durable construction with precast, prestressed, lightweight Haydite concrete structural members.

If you would like more information
about precast and prestressed Haydite
concrete construction, call . . .

CONSTRUCTION  MATERIALS
CARTER-WATERS
KANSAS CITY  8, MISSOURI
2440 Pennway GRand 1-2570

					
Double Tee Beams	Inverted Tee Beams	Channel Slabs	I Beams	Bridge Beams	Piling

Our "Specialty of The House" -
**TRACING
REPRODUCTIONS**

**WESTERN
BLUE PRINT CO**

909 GRAND • KANSAS CITY, MO.
SOUTH SIDE PLANT 17 E. GREGORY

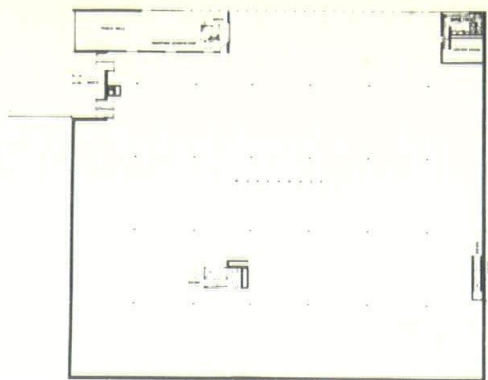
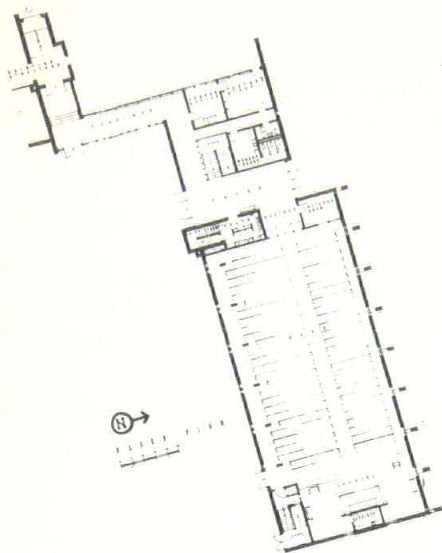
**T E C H N I C A L
P H O T O G R A P H Y**

VICTOR 2-7881

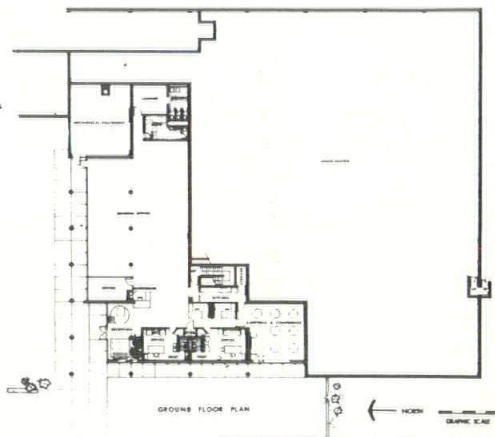
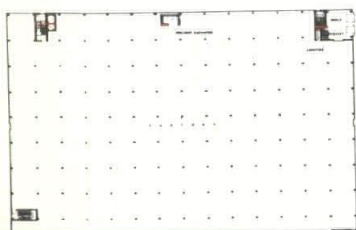
Authorized



Distributor

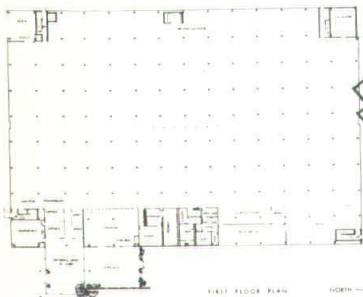


FIRST FLOOR PLAN

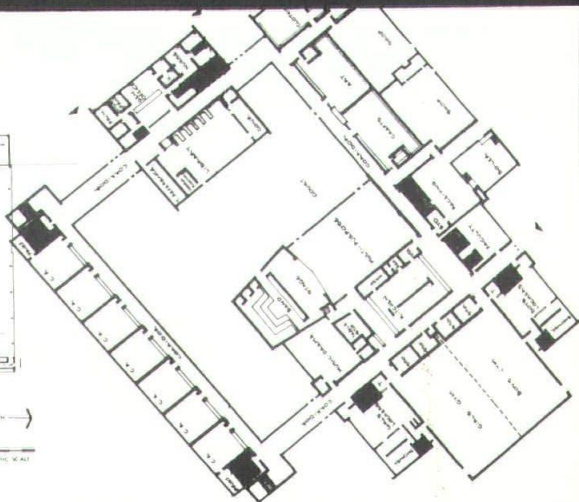


GROUND FLOOR PLAN

MEDAL AWARDS—1959



FIRST FLOOR PLAN



One man's dream castle is another man's shack, and thus it will always be as long as individuals remain that way. The architect, seeking to inject into his creation his own aesthetic beliefs and techniques, rarely pleases his entire audience. At times, gratification with the architect's work extends not far beyond the client himself (and, as any architect will hasten to add, there are more than a few disgruntled clients as well).

Thus honesty is perhaps the architect's greatest virtue, surpassing even his technical ability. If the architect believes in what he has created, then it has merit because it reflects a forthright attitude, regardless of the popular reaction.

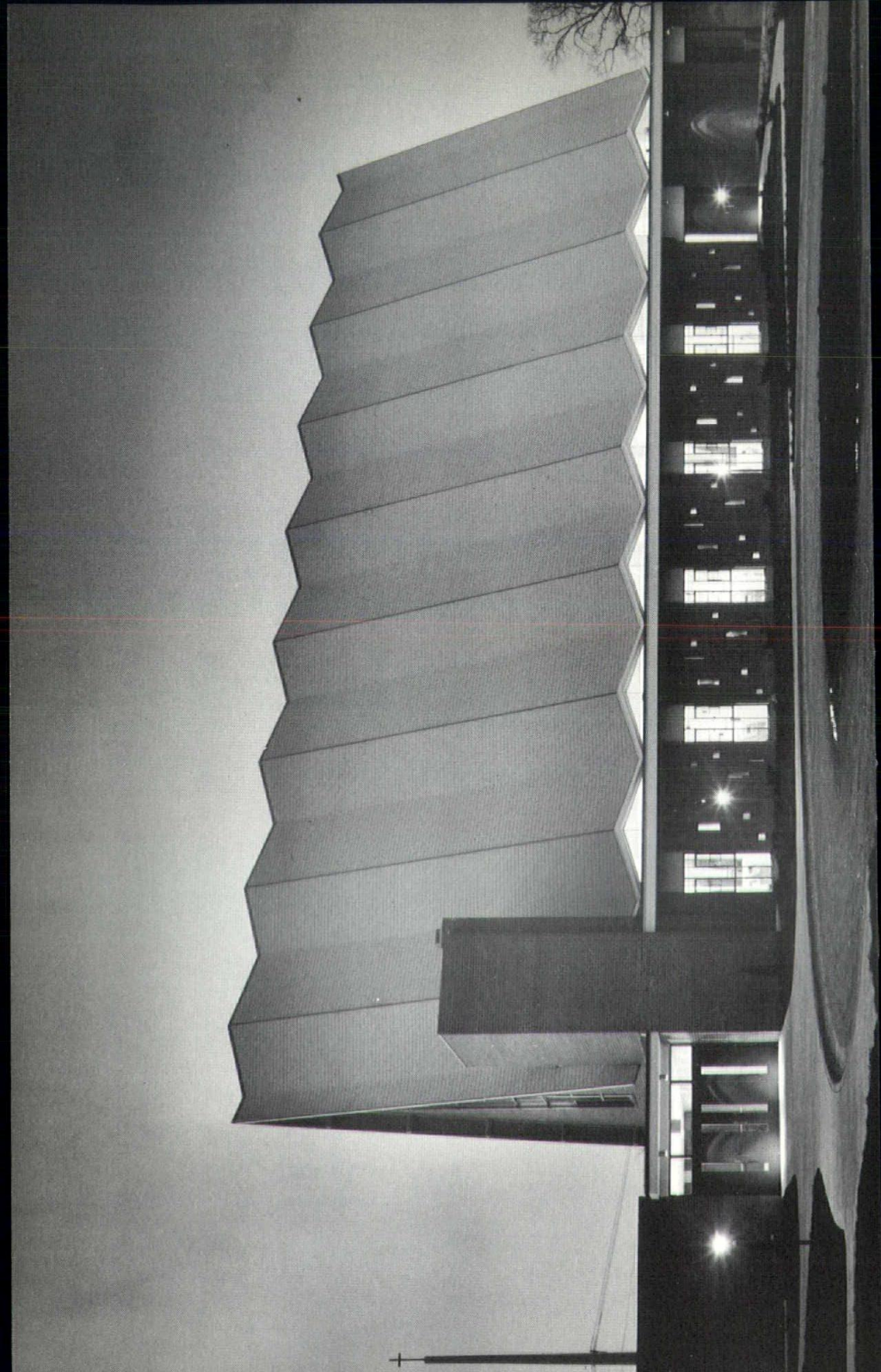
It is the architect who designs merely what he is told to design, or who repeats a popular plan only because of its popularity and not for its integrity, who is responsible for much of the contemporary mediocrity.

Fred Fitzsimmons, Real Estate Editor
KANSAS CITY STAR

One of the architectural highlights of the year for members of the Kansas City Chapter is the annual Medal Awards competition, to recognize buildings completed during the past twelve months by Kansas City architects. This year 18 outstanding entries were submitted for consideration of the jury. After several days of deliberation, viewing photographs and plans and, where practical, making on the site inspections, the jury chose four entries for the Medal Award and one design for the Special Award.

Most of this issue of SKYLINES is devoted to a presentation of the Award winning designs. The other entries will be featured in future issues of SKYLINES.

A special vote of thanks from the Chapter goes to the hard working Medal Awards Jury. James M. Hunter, FAIA, of Boulder, Colorado, was chairman and Glenn Benedict, Wichita, and Eugene Mackey, St. Louis, completed the judging panel. The text of Mr. Hunter's talk at the Medal Awards banquet was carried in the April SKYLINES.



MEDAL AWARD

HOLY CROSS LUTHERAN CHURCH

2003 East Englewood Road
Kansas City, Missouri

Architects: Monroe and Lefebvre

● JURY COMMENT

The very strong statement of function and structure placed this building in the eyes of the jury on a high plateau for ecclesiastical architecture . . . The jury was impressed with the sure courage demonstrated in the expression of the wood frame and the care with which the details of membering were handled. With the installation of the sanctuary and celestary stained glass, the light quality within the structure will be vastly improved and add immeasurably to the atmosphere of worship. The architect is to be commended on his thoughtfulness in exercising economies which can be added when funds become available. The workmanship was of very high order and the adapting of the building to the site added to its very strong statement.



MEDAL AWARD

PARKE-DAVIS & COMPANY

OFFICES AND WAREHOUSE

6633 Troost Avenue

Kansas City, Missouri

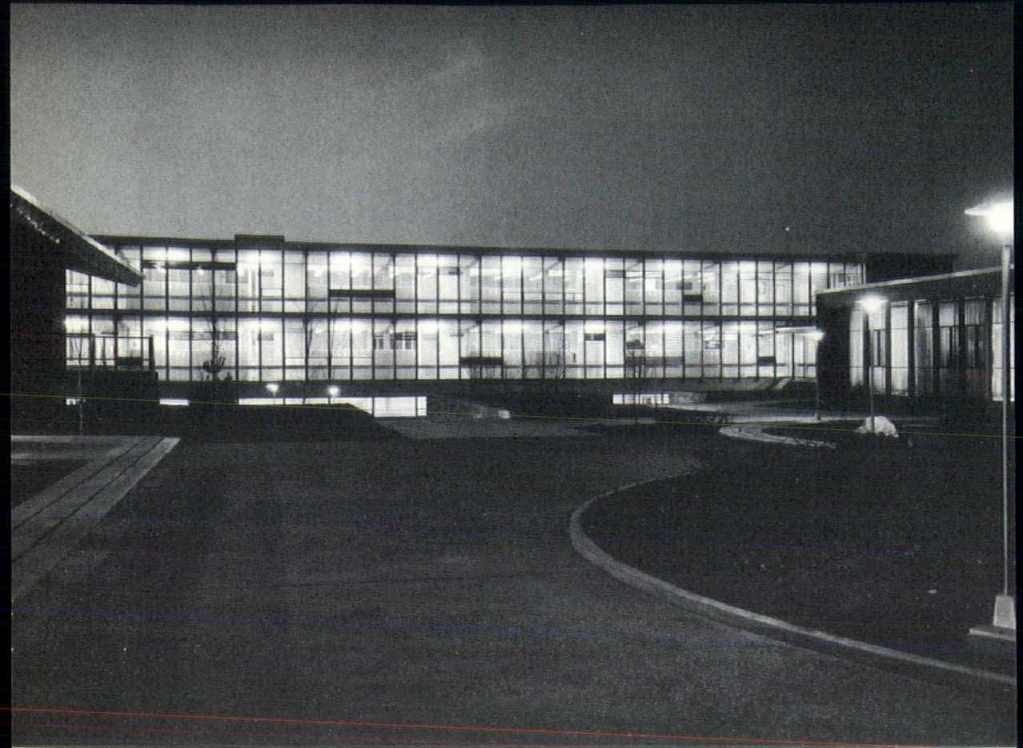


Architects: Kivett and Myers and McCallum



● JURY COMMENT

The jury felt the quality of professional competence permeated the building. The clarity of expression and the use of materials was of a very high order as was the simple and direct approach to the problem. While the waiting area at the entrance seemed a bit confining as to space, the soft light and exquisite color concept seem to compensate and visually expand this space restriction. The refinement of detail and the sense of rightness in the furniture and appointments added to the cohesiveness of the entire concept. Obviously, the building was done with tender, loving care.



MEDAL AWARD

MEADOWBROOK JUNIOR HIGH SCHOOL

8500 Mission Road

Johnson County, Kansas

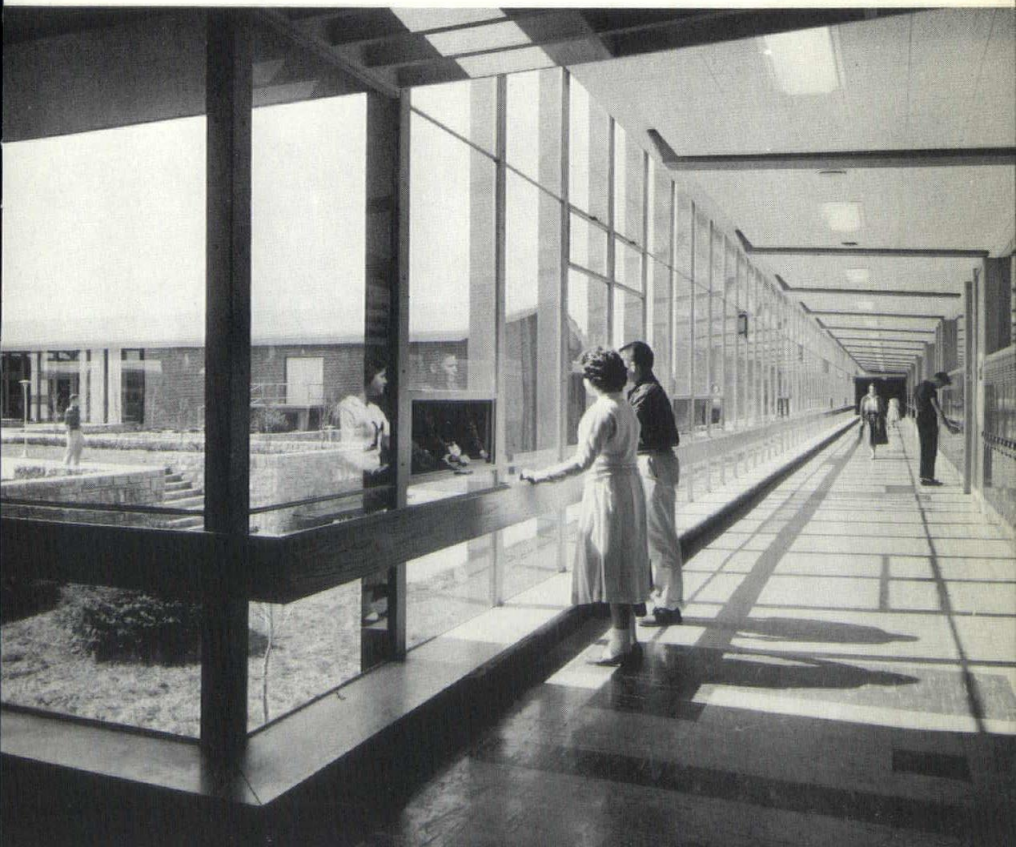
Architects: Donald R. Hollis

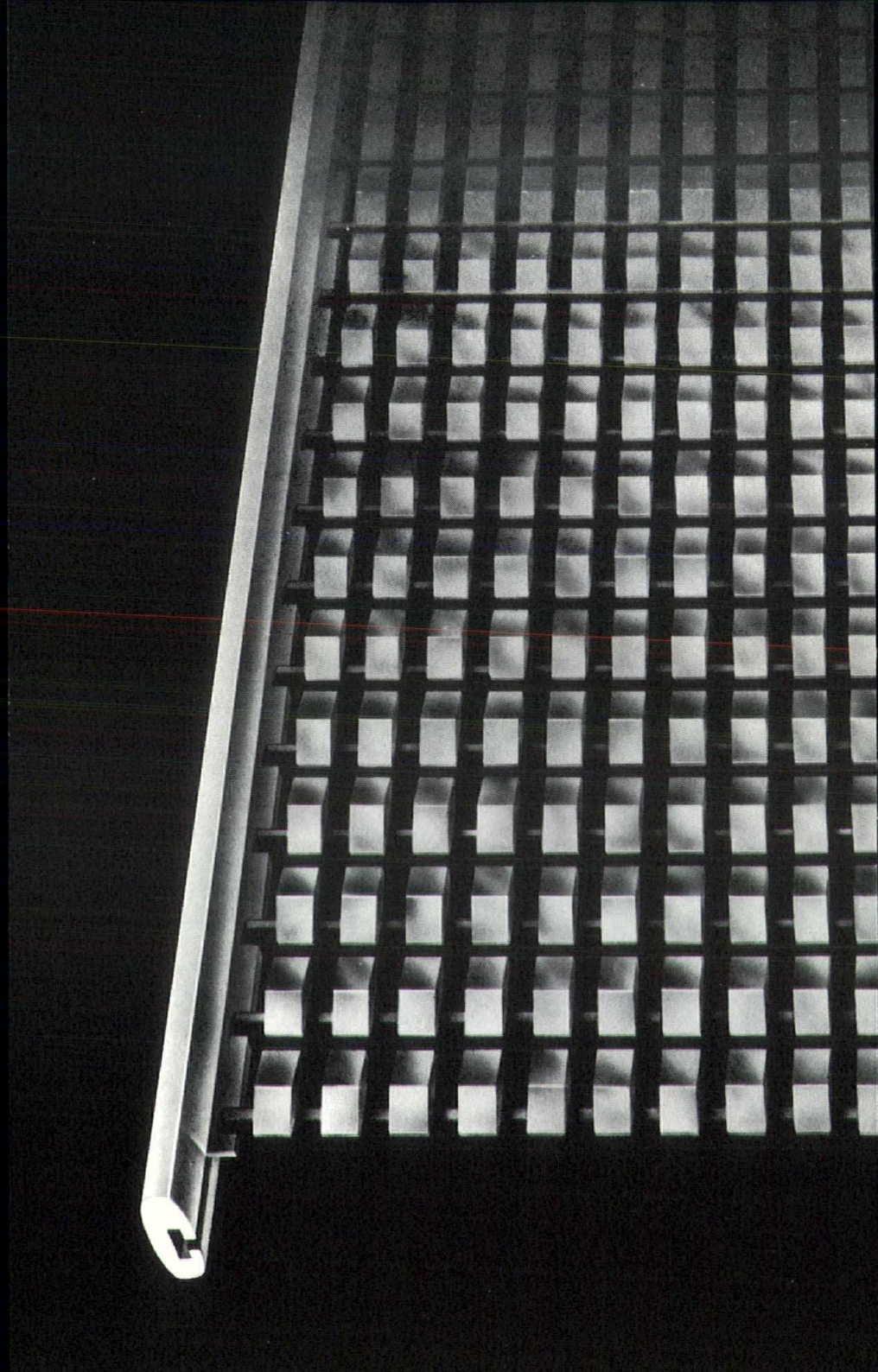
J. David Miller, Associate

Perkins and Will, Associates

● JURY COMMENT

The intimate small scale of the entrance element was consistently carried out through the entire complex. We were delighted with the organization of the plan and the interrelationship of the various elements which gave privacy both visually and activity-wise without creating complications or confusion . . . The general atmosphere was youthful, spritely and in good taste. The craftsmanship and skill of the contractors deserve commendation; particularly the orderliness and ease with which the mechanical installation was achieved. The gymnasiums and dining facilities were particularly well handled as were the indoor-outdoor relationships between building and its charming internal court, which can be anticipated even on entering the building.



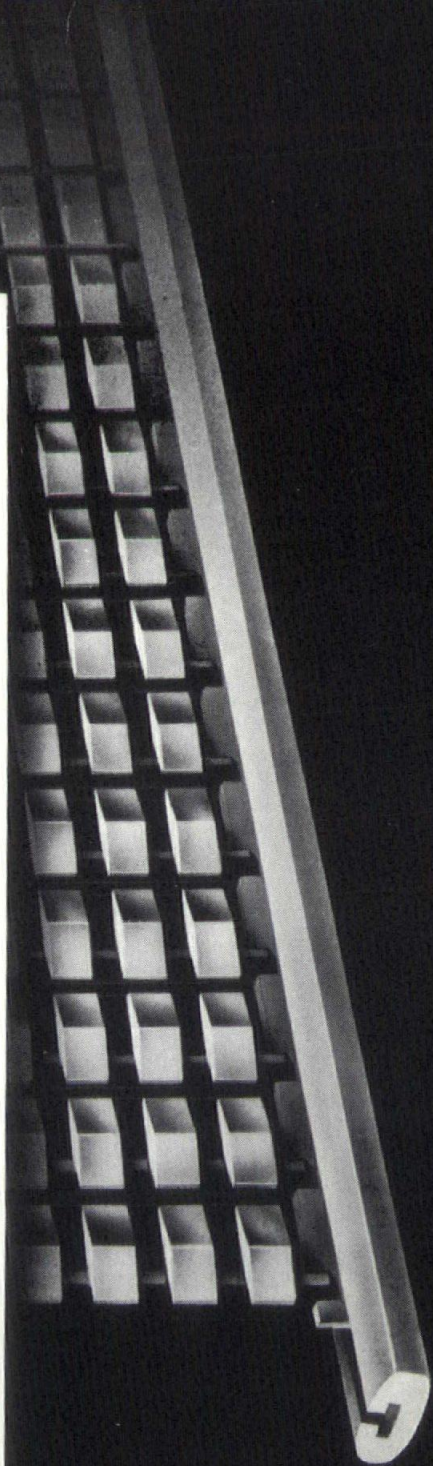




TRADE MARK

Gnill-O-Metrix^{} by Blumcraft[®]*

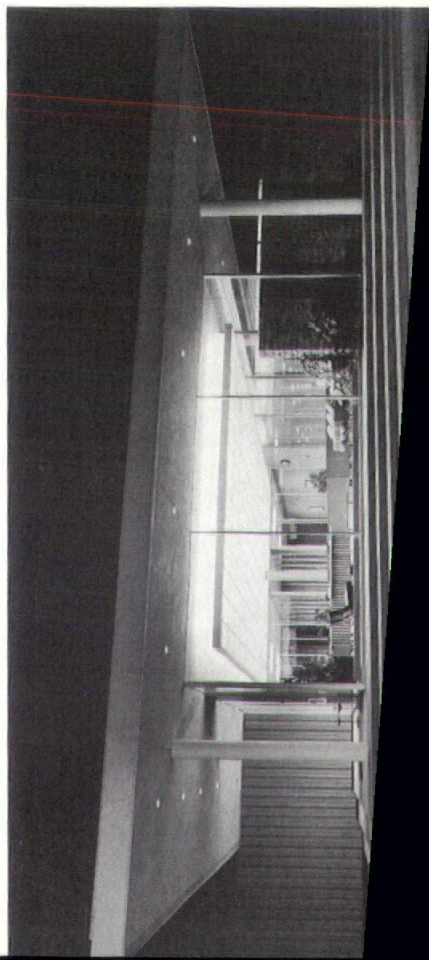
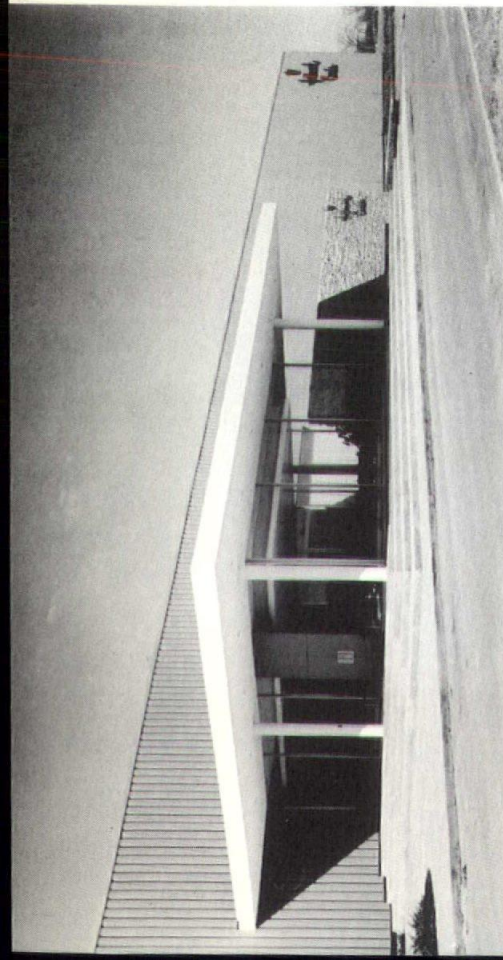
3-DIMENSIONAL ALUMINUM GRILLES FOR RAILINGS AND DECORATIVE SCREENS
REFER TO 1959 SWEETS FILE 6e/BIU OR SEND FOR CATALOG M-59
BLUMCRAFT OF PITTSBURGH, 460 MELWOOD STREET, PITTSBURGH 13, PA.



MEDAL AWARD

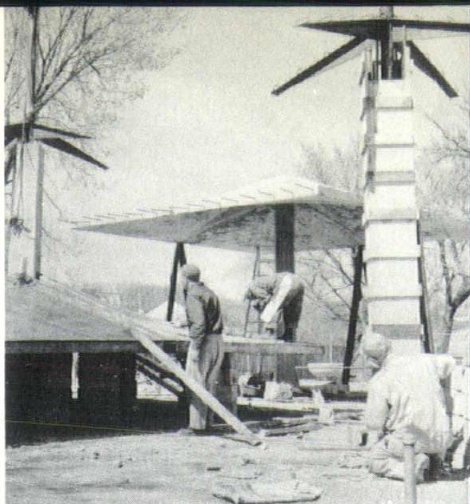
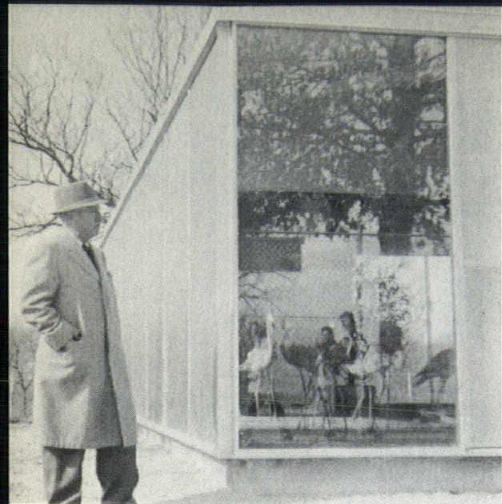
HALLMARK CARDS, INC.
OFFICES AND FACTORY
Lawrence, Kansas

Architects: Kivett
and
Myers
and
McCallum



There is a thoroughly professional competence demonstrated in all aspects and details of the job. We felt the result was architecture of a high order and an excellent solution to a very difficult problem—the molding of a human occupancy element for administrative personnel with the great mass and rigidity of the construction required by a manufacturing process. The architectural amenities were in excellent scale and the use and play of material exciting and in good taste. These qualities permeated the building over and above the excellent planning solution involved with the manufacturing and housing problem . . . the indoor-outdoor space created by the interplay of the small court with the interior occupancy areas was done with dignity and appropriateness . . . as well as being well disciplined to the total concept and to the manufacturer's product.





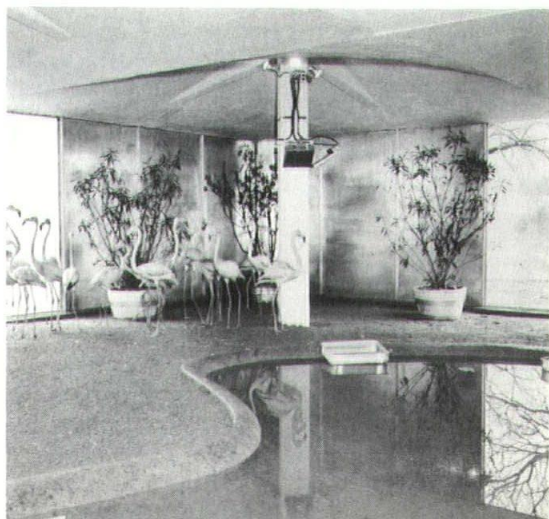
SPECIAL AWARD

MULTI-PURPOSE BUILDING

Swope Park Zoological Gardens

Kansas City, Missouri

Architect: Elpidio Rocha



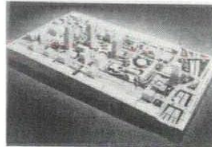
● JURY COMMENT

Because of the nature of the structure its mobility, flexibility and multi-use, it could not be considered as a building in the same sense as architecture of a more permanent nature. However, because of the gay, spritely concept and the good solution for the use to which the building elements will be put, it was deserving of a special award for its very creditable solution to the problem of housing animals in a zoo. To quote from (the architect's) own statement of his problem, in conclusion, it was fun. We add, for the jury, too.





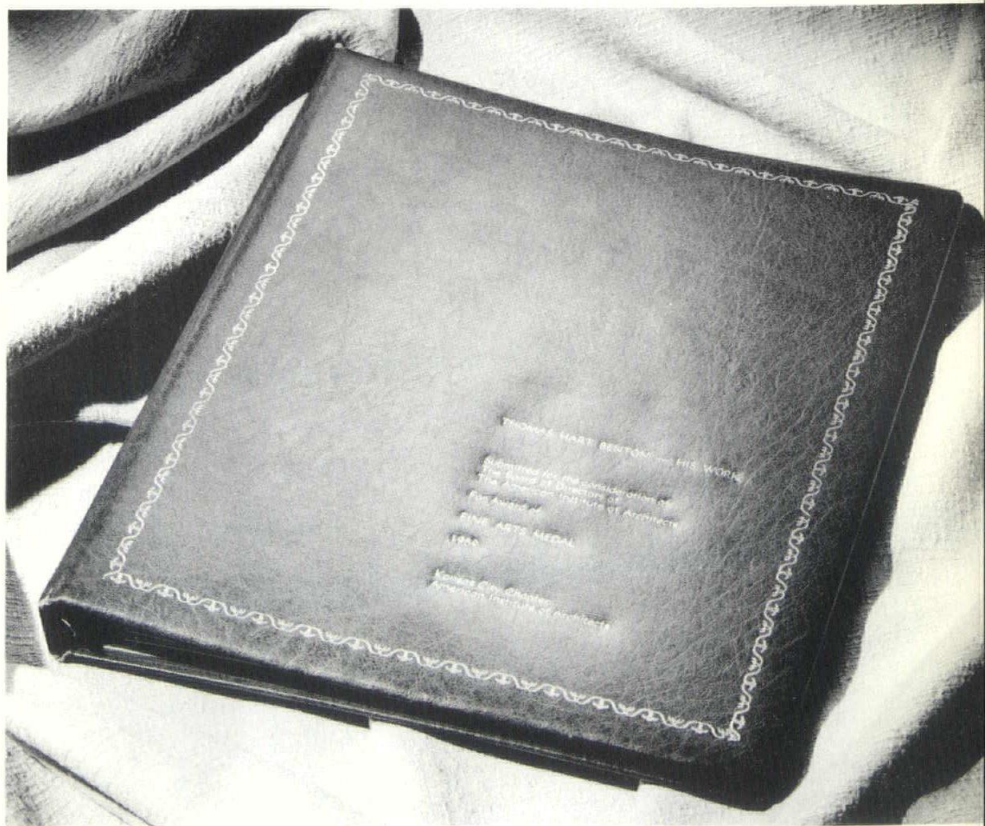
KANSAS CITY—1980



CIVIC PROJECT PREPARED BY THE
KANSAS CITY CHAPTER OF THE
AMERICAN INSTITUTE OF ARCHITECTS

On the subjects of awards, the Chapter has submitted two entries to the Executive Committee of the American Institute of Architects for consideration. A presentation on the KC/80 plans was compiled by the KC/80 and Community Development Committee with exhibits of articles, reprints, letters and news clippings from Chapter files. The king-sized presentation, 18 inches wide and 24 inches long, will be considered for a special award.

To supplement Regional Director I. Lloyd Roark's nomination of home-town artist Thomas Hart Benton for the Fine Arts Medal, a presentation was prepared under the direction of John Morley for the A.I.A. Executive Committee. Trying to squeeze Mr. Benton's accomplishments into a reasonably brief book type of entry was no small task. Highlight of the presentation is an autobiographical sketch of the internationally known painter, written by Mr. Benton for the Chapter.



CHAPTER NEWS

Congratulations are in order for Guy Mabry, former Kansas City Branch Manager for Owens-Corning Fiberglas and President of the Producers' Council. Guy was recently appointed Southeast Regional Sales Manager for Owens-Corning. In his new position he will make his home in Atlanta. His new office address is the Rhodes-Haverty Building, Atlanta 3, Georgia. Moving up to Kansas City Branch Manager of Owens-Corning is R. E. Trumbell, formerly assistant to Mr. Mabry. Robert N. Ecton of the Crane Company takes over as local Producers' Council head.

Lou Geiss, Vice President of the Chapter, moderated a Technical Clinic of the Producers' Council on Interiors on Wednesday, May 27, at the Wishbone. Panel members, their subjects and firm affiliations were: Lee Dalglish, plywood wall covering (U. S. Plywood); George Beisler, Weldwood wall covering (U. S. Plywood); Glenn Jones, interior glass (Pittsburgh Plate Glass); Ted Peifer, decorative and fireproof interiors (Zonolite Company) and C. J. McCormick and A. R. Hoedl, modern interior walls. McCormick is with the E. F. Hauserman Company and Hoedl represents the Mills Company.

A session on ceilings was also included. Kansas City Chapter members in attendance agreed that Lou and the Council came up with another outstanding seminar for architects.

Members Dave Mackie and I. Lloyd Roark, associated as Mackie and Roark, announce their new office address in the Ward Parkway Building at 4725 Wyandotte Street on the Country

Club Plaza. The firm was formerly at 7133 West Eightieth Street in Overland Park, Kansas.

We also have a change of business address for Luther O. Willis, from 2811 East Linwood to offices in the V.F.W. Building, 406 West 34th Street, Kansas City. Both of these changes were effective May 1, 1959.

President Angus McCallum represented the Chapter at the annual dinner of the K. U. Department of Architecture in Lawrence on May 15. On behalf of the Chapter, he presented the annual Scholarship Award to student Robert R. Seacat. The Kivett and Myers and McCallum annual award for excellence in site planning went to Thomas E. Davis.

Nothing but compliments heard on the Missouri Association of Registered Architects meeting in Kansas City on May 1 and 2. Frank Grimaldi's program arrangements were tops in everyone's book—the only dark spot in the whole picture was the comparatively small turnout of Kansas Citians for this important event. Congratulations to the new officers of M.A.R.A.

John D. Sweeney, President
John M. Hewitt, Vice President
David Brey, Secretary
Gene Englehardt, Treasurer

M.A.R.A. Directors for the coming year are:

Roland Bockhorst
Dave P. Clark
Fred E. Dormeyer, Jr.
Lynn Elan
Frank Grimaldi
Max Sandford
Ernest Ward

Interior Decorative Service for Architects, Builders & Realtors

Saves time . . . provides additional income

Now, available to architects and builders for the first time, Interior Classics, Inc., offers you brand name merchandise which we will sell through you to your customers for prices far below those featured on comparable items in retail stores.

Interior Classics, Inc., also offers these services to you as a no cost, extra bonus.



- Top notch decorator at your disposal at all times to help you with color planning or work with your customers on color arrangements. This is without charge to you or your customer, unless time consuming.
- Guaranteed satisfaction.
- Regular bank rate financing.
- Lower prices than on comparable item in retail stores.
- Free delivery and installation.
- Special ordering from floor room samples.

Interior Classics, Inc., is not open to the public. You are not competing with yourself, but working with us as an agent.

Interior Classics, Inc., will give your customers every courtesy and help build customer relations for you as well as increase your profits.

**SEE OVER
5000 ITEMS
NOW ON DISPLAY
IN OUR
SHOWROOM**

*Interior
Classics, inc.*

Decorative Service for Architects,
Builders and Realtors.

WAbash 1-5885

3415 Prospect Ave.
Kansas City 28, Mo.

Now! ALL NEW ZURN ENGINEERED PRODUCTS HELP IMPROVE YOUR BUILDING SPECIFICATIONS!

NEWEST DEVELOPMENT IN
WATER HAMMER ARRESTMENT
THE ZURN

SHOKTROL

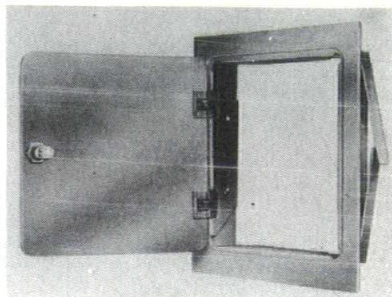


For elimination of destructive shock pressure and disturbing noises in plumbing systems with quick-closing valves—

- ... All stainless steel construction.
- ... Small, compact and lightweight.
- ... Pre-charged with air pressure.

ULTRA-MODERN APPROACH TO
CONTROL CONCEALMENT
THE ZURN

ACCESS DOOR



For full, unhindered entrance to control equipment concealed in walls and ceilings—

- ... Fits any type of wall.
- ... High-quality lustrous finish.
- ... Protective cylinder lock.
- ... Snug door on concealed hinges.

U.S. PATENTS AND PATENTS PENDING



ZURN MIDWEST SERVICES, INC.

Represented by

JAMES V. IRVIN CO.

557 Westport Road Kansas City 11, Missouri

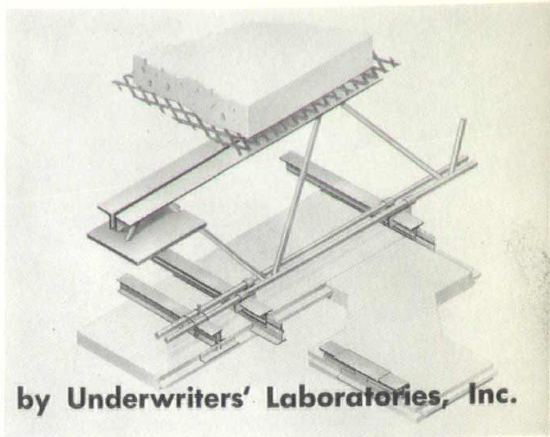
Phone: JEFFERSON 1-5452

A COMPLETE LINE OF PLUMBING DRAINAGE PRODUCTS

- ZURN SYSTEMS for supporting wall type plumbing fixtures
 - NON-FREEZING HYDRANTS
 - SUPREMO CLEANOUTS
 - SWIMMING POOL FITTINGS
 - ROOF DRAINS
 - FLOOR DRAINS
 - INTERCEPTORS

Armstrong ACOUSTICAL FIRE-GUARD:
*The first time-design rated
acoustical ceiling tile*

**NOW! 4 HOUR
ACOUSTICAL
D-2 ASSEMBLY**



Completely tested and approved by Underwriters' Laboratories, Inc.



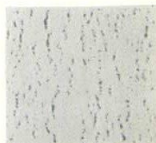
Full Random



Textured



Classic



Save clients' dollars . . . specify



Fire Guard

For complete information call

Kansas City Natural Slate Company

TOM HANDLEY

PLaza 3-5040

BILL ELDER

B

...., as in

BDRENGINEERING
CORPORATION**B D R DIRECTORY****A**

71	ACORN wire partitions	JE 1-8366	You
80	AETNA doors and frames	JE 1-8366	You
89	AMER. STEEL storack	JE 1-8366	You
98	AMER. 3 WAY skylites	JE 1-8366	You
107	ART METAL elevator doors	JE 1-8366	You

B

124	BETHLEHEM guard rail	JE 1-8366	You
130	BILCO roof scuttles	JE 1-8366	You
131	BOSTON elevator cabs	JE 1-8366	You
136	BROWN sun controls	JE 1-8366	You
149	BURT ventilators	JE 1-8366	You
150	BYRNE hangar doors	JE 1-8366	You

C

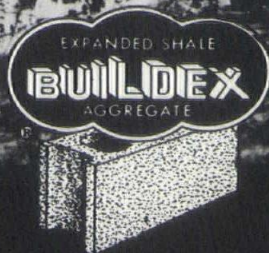
171	CAPITOL mail chutes	JE 1-8366	You
174	CECO windows	JE 1-8366	You
177	CORRULUX plastics	JE 1-8366	You

PST 1-2410



**"... so much for
so little!"**

**Please consult a
concrete masonry
producer!**



Prepared by BUILDEX, INC.,

Phone CHerry 2-2177,

OTTAWA, KANSAS

a ceiling that makes like the sun and you control it!

The sun's energy warms only after it strikes solid objects.

In the same way, heat radiated from the panels of a BURGESS-MANNING 3-Way Functional Ceiling warms persons and fixtures but not excess air.

No floor space is wasted by radiators.
There is no need for costly air moving equipment.



BURGESS-MANNING

For cooling the radiation process is reversed. As the cooler objects absorb radiant energy from the warmer ceiling, a cooler ceiling absorbs the excess energy radiated by warmer persons and fixtures.

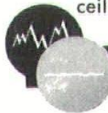
The heat-radiating or heat-absorbing (cooling) quality of your Burgess-Manning ceilings is controlled by conventional thermostats and at your fingertips.



BURGESS-MANNING

On top of their heating and cooling quality The BURGESS-MANNING 3-Way Functional Ceiling's twice-enameled, perforated aluminum panels offer exceptional acoustic control.

Most important to you, however, is the fact that a Burgess-Manning ceiling costs no more than cooling, heating and sound control ceiling units installed separately.

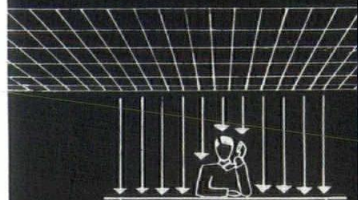
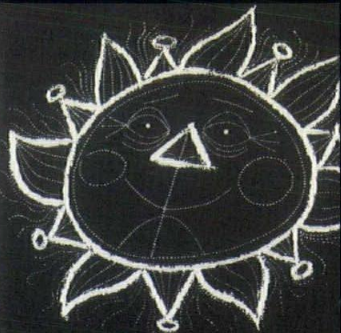


BURGESS-MANNING

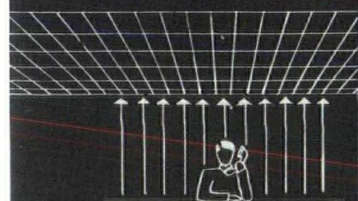
for more information on quality ceilings call or write

ceilings of quiet distinction by

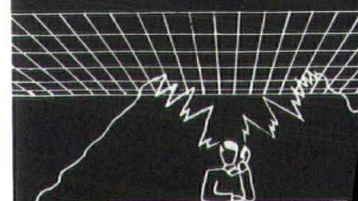
1735 Charlotte • Kansas City, Mo. • Phone HA 1-2288



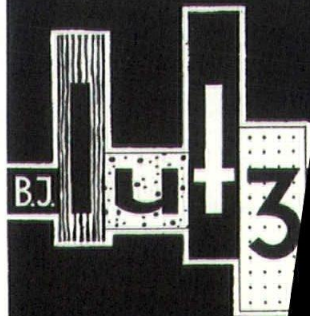
radiant heating



radiant cooling



acoustic control





SOME MISTAKES DON'T SHOW

But those jobs that aren't "for the birds" had better be right the first time. Let's face it, now days you just can't **afford** mistakes!

note:

The use of the term "or equal" imposes on both the specifier and the user the responsibility of assuring that the basic formula of the alternate material actually can deliver the qualities specified above.

avoid the unknown-use ZOLATONE

ZOLATONE is manufactured only by
PARAMOUNT PAINT & LACQUER CO.



DEVOE OF KANSAS CITY, Inc.

STERLING RONAI

General Manager

200 S. W. Blvd.

Phone VI 2-5672

