

A.I.A. CH
Library

AMERICAN INSTITUTE

1959

S
K
Y
L
I
N
E
S

LIBRARY

59

KANSAS CITY CHAPTER OF THE
AMERICAN INSTITUTE OF ARCHITECTS



KANSAS CITY
CHAPTER

CHAPTER OFFICE

306 DAVIDSON BLDG.
KANSAS CITY, MO.

EXECUTIVE SECRETARY

MR. GERRE JONES

PRESIDENT

Angus McCallum
1016 Baltimore Avenue
Kansas City 5, Missouri

VICE-PRESIDENT

Louis H. Geis
7920 State Line
Kansas City 15, Missouri

SECRETARY

James R. Baker
P.O. Box 7088
Kansas City 14, Missouri

TREASURER

Conrad J. Curtis
406 East 62nd Street
Kansas City 10, Missouri

DIRECTOR ('58-'60)

John M. Hewitt
607 Westport Road
Kansas City 11, Missouri

DIRECTOR ('59-'61)

John T. Murphy
15 West Tenth Street
Kansas City 5, Missouri

DIRECTOR ('59-'61)

Frank Grimaldi
3543 Broadway
Kansas City 11, Missouri

SKYLINES

Vol. 9

No. 9

SEPTEMBER, 1959

CONTENTS	PAGE
Our Savior's Lutheran Church.....	6
Midwest Regional Conference Program.....	10
New Members.....	12-13
Graduate Work in Urban Design.....	13
Nevada Junior-Senior High School.....	14
Chapter Booklet on Services- Compensation	18
Chapter News.....	18
A.I.A. Convention Report.....	21
Chapter Meeting Dates.....	23
Architectural Representative.....	23
List of Advertisers.....	23

SKYLINES IS THE MONTHLY PUBLICATION OF THE KANSAS
CITY CHAPTER OF THE AMERICAN INSTITUTE OF ARCHITECTS

306 DAVIDSON BUILDING

KANSAS CITY 8, MO.

LITHO.....VOLKMER LITHO CO.

Our "Specialty of The House" -
**TRACING
REPRODUCTIONS**

**WESTERN
BLUE PRINT CO**

909 GRAND • KANSAS CITY, MO.
SOUTH SIDE PLANT 17 E. GREGORY

**TECHNICAL
PHOTOGRAPHY**

VICTOR 2-7881

Authorized  Distributor



**"... so much for
so little!"**

EXPANDED SHALE
BUILDEX
AGGREGATE

**Please consult a
concrete masonry
producer !**

Prepared by BUILDEX, INC.,

Phone CHerry 2-2177,

OTTAWA, KANSAS

Interior Decorative Service for Architects, Builders & Realtors

Saves time . . . provides additional income

Now, available to architects and builders for the first time, Interior Classics, Inc., offers you brand name merchandise which we will sell through you to your customers for prices far below those featured on comparable items in retail stores.

Interior Classics, Inc., also offers these services to you as a no cost, extra bonus.



- Top notch decorator at your disposal at all times to help you with color planning or work with your customers on color arrangements. This is without charge to you or your customer, unless time consuming.
- Guaranteed satisfaction.
- Regular bank rate financing.
- Lower prices than on comparable item in retail stores.
- Free delivery and installation.
- Special ordering from floor room samples.

Interior Classics, Inc., is not open to the public. You are not competing with yourself, but working with us as an agent.

Interior Classics, Inc., will give your customers every courtesy and help build customer relations for you as well as increase your profits.

**SEE OVER
5000 ITEMS
NOW ON DISPLAY
IN OUR
SHOWROOM**

*Interior
Classics, inc.*

Decorative Service for Architects,
Builders and Realtors.

WAbash 1-5885

**3415 Prospect Ave.
Kansas City 28, Mo.**

Now! ALL NEW ZURN ENGINEERED PRODUCTS HELP IMPROVE YOUR BUILDING SPECIFICATIONS!

NEWEST DEVELOPMENT IN
WATER HAMMER ARRESTMENT
THE ZURN

SHOKTROL

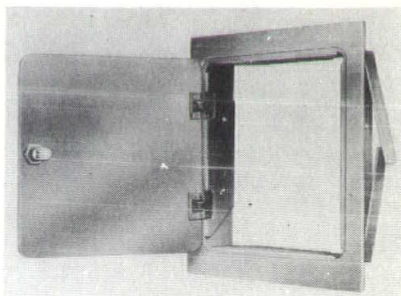


For elimination of destructive shock pressure and disturbing noises in plumbing systems with quick-closing valves—

- ... All stainless steel construction.
- ... Small, compact and lightweight.
- ... Pre-charged with air pressure.

ULTRA-MODERN APPROACH TO
CONTROL CONCEALMENT
THE ZURN

ACCESS DOOR



For full, unhindered entrance to control equipment concealed in walls and ceilings—

- ... Fits any type of wall.
- ... High-quality lustrous finish.
- ... Protective cylinder lock.
- ... Snug door on concealed hinges.

U.S. PATENTS AND PATENTS PENDING



ZURN MIDWEST SERVICES, INC.

Represented by

JAMES V. IRVIN CO.

557 Westport Road Kansas City 11, Missouri

Phone: Jefferson 1-5452

A COMPLETE LINE OF PLUMBING DRAINAGE PRODUCTS

- ZURN SYSTEMS for supporting wall type plumbing fixtures
- NON-FREEZING HYDRANTS
- SUPREMO CLEANOUTS
- SWIMMING POOL FITTINGS
- ROOF DRAINS
- FLOOR DRAINS
- INTERCEPTORS

1959 MEDAL AWARD ENTRY



OUR SAVIOR'S LUTHERAN CHURCH

Greeley, Colorado

Architect: Donald R. Hollis

J. David Miller, Associate



Area.....21,700 sq. ft.

Total Contract Cost
(exclusive of furnishings, landscaping,
architect's fees)\$309,300.00

Cost Per Square Foot.....\$14.25

Facilities: Nave (Seating 500)

Balcony Choir (Seating 50)

Lounge and Overflow (Seating 100
additional)

Fellowship Hall (275 at tables)

Chapel (Seating 80)

Offices: Pastor's Study, General Office
Library-Conference Room, Vault

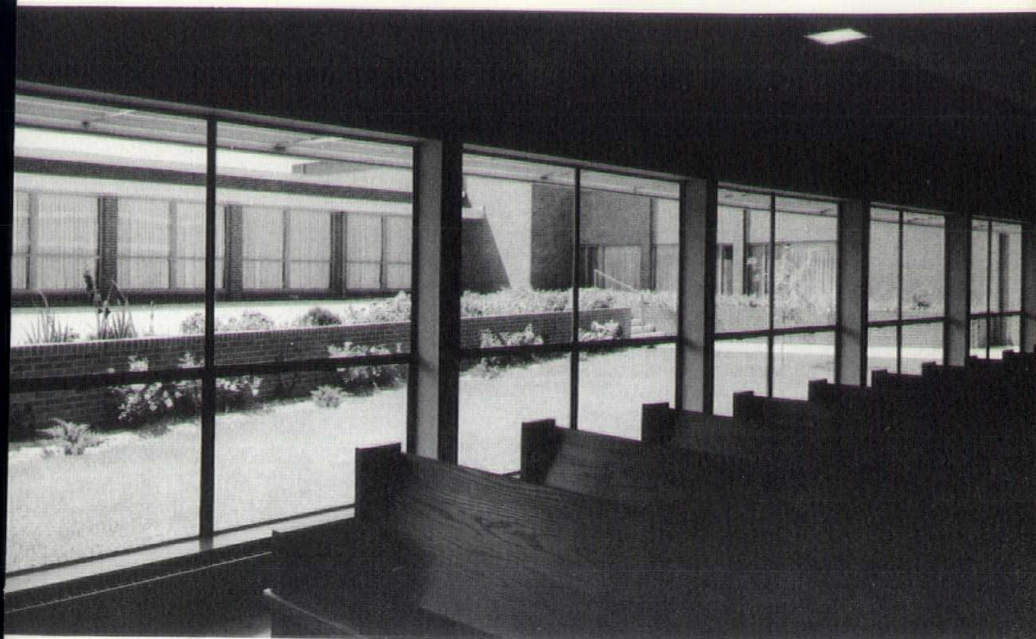
20 Classrooms and Assembly Rooms

Basement Furnace Room

Site.....3 acres

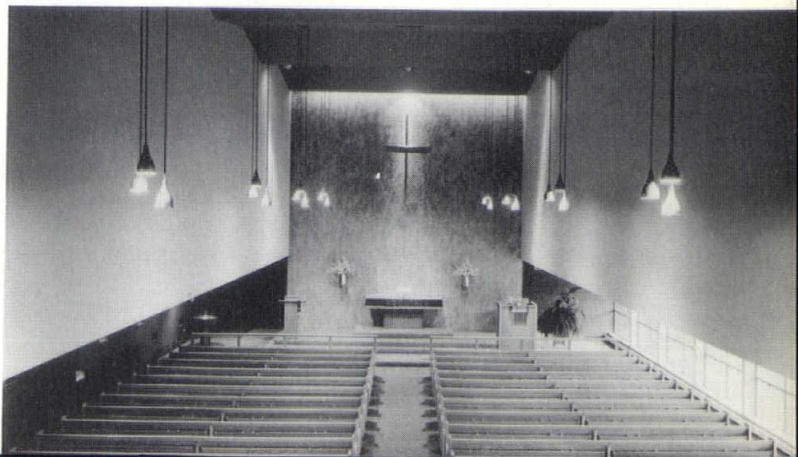
Parking.....110 cars





The design is in a "U"-shaped form, surrounding a central courtyard. One unusual feature is the patterned ceramic veneer 8"x8" squares used on the exterior. The sculptured symbols, designed by the architect, symbolize the Trinity and the Trinity relationship.

"Bridge Truss" construction in the Nave features masonry-filled steel trusses the full height of the upper walls. The Parish Hall features a stage with underfloor folding table storage. A special coffee and water dispensing center allows for efficient service and storage for these services, separate from the kitchen.



MIDWEST REGIONAL CONFERENCE DES MOINES, IOWA, OCTOBER 8-10

Combining a touch of humor with a strong program of speakers, Regional Conference Chairman Charles Silletto of Des Moines believes the A.I.A. members of the Central States will find every day of the 1959 event worthwhile.

"Kansas City Chapter members will be particularly interested in speakers like Walter McQuade, Bernard Tomson, Professor Alan Laing, and Garrett Eckbo.

"We are expecting at least three other top quality speakers as part of our program, and the entertainment should be enjoyed by everyone.

"Nearly the entire 'house' has been reserved for the Community Playhouse production of 'The Happiest Millionaire' on Thursday evening.

"Hospitality chairman Bill Woodburn assures me that the welcoming end of the program will be in good shape. Progress is being made rapidly on the remodeling work at the Hotel Savery, and we'll have beautiful new quarters for our conference."

How do the speakers line up?

Iowa's Governor Herschel C. Loveless has accepted an invitation to welcome the regional guests at the beginning of the formal program Thursday, October 8. Iowa Chapter President George Horner has been assured that top representatives of The Institute will be on hand for that event.

Heading immediately into the convention theme of "Education—the Architect's Perpetual Challenge" will be the first speaker on Thursday afternoon, widely-known journalist and architectural commentator Walter McQuade, author of "Schoolhouse". His is the opening gambit under the title: Performance Requirements for Educational Buildings.

Judge Bernard Tomson of New York, a contributing editor of *Progressive Architecture*, in which he authors a continuing column entitled "It's The Law", will discourse on that same subject as the second point of the regional program.

The excellent preparations of the Hotel Savery kitchens will be sampled at the buffet dinner Thursday evening before the A.I.A. members and their ladies go by bus to the Community Playhouse in the Roosevelt shopping area of Des Moines. Here they will see the first 1959-60 Playhouse presentation, "The Happiest Millionaire". An ice show will be playing at the Des Moines Memorial Auditorium for those who like their entertainment on the cool side.

Special breakfasts for officers, chapter affairs committees, public relations committees and others have tentatively been set for Friday morning.

Tackling education and the architect from another angle, the Friday morning program will feature three educators for a view of the architect's education and development. Featured in this session will be Professor Alan Laing, head of the department of architecture at the University of Illinois, and John Harris, superintendent of schools in the city of Des Moines, along with an educator representing another one of the nation's outstanding architectural schools.

Luncheon Friday at the Des Moines Art Center will be the only major dining event for men only, but the auditorium capacity at the art center prevents planning for a crowd of more than 300 persons.

Garrett Eckbo, whose prominence in the field of landscape architecture is such that he needs little introduction to the architects of the region, will be the principal speaker at the session following the art center luncheon. His illustrated presentation will be in the Art Center auditorium before the delegates return to the hotel for a major session on business of the region.

O. H. Thorson of the firm of Thorson and Brom, Waterloo, has been chosen by the Executive Committee of the Iowa Chapter as the man whom the Iowa Chapter will propose for nomination as the Regional Director for the Central States. Presidents of the Chapters in the region have been informed of this choice.

What Iowa calls a "Hospitality Hour" (but is commonly known in other states as "Cocktails") is next on the program preceding the Annual Dinner at which student award winners in a design contest sponsored by SCPI will be announced and awards presented.

Dr. C. C. Byers of Palma, Ohio, widely known lecturer and philosopher, will reach into a portion of the architect's world in his discussion of "New Horizons in Living". A former superintendent of the Parma Public Schools, a Cleveland suburb, his theories on the relationship of life to living are becoming wide-spread as the result of many articles authored throughout the past 15 years.

Wind-up meetings of the regional business affairs and of the various committees are on the program for Saturday morning. A lucky few will be leaving via the "Special" for Iowa City and the Iowa-Michigan State Homecoming Football game; others may be able to watch the game over closed circuit television in Des Moines' huge KRNT Theatre.

Visitors to Des Moines who wish to tour the city, its newly developed shopping centers and its architectural landmarks will be escorted individually, or in small groups, on Thursday and Saturday mornings by members of the Iowa Chapter.

All Des Moines members of the Chapter have been assigned the duties of "Hosts" and will assist all visitors during the three-day meeting.

NEW MEMBERS



RICHARD C. BAHR, left, Associate member, has his own firm in Springfield, Mo. He holds B.S. and Bach. of Arch. degrees from Georgia Institute of Technology and is registered in Missouri.

ROBERT W. MARSHALL, right, Corporate member, is with Eugene F. Johnson & Associates, Inc., Springfield, Mo. Born in Mattoon, Illinois, Bob earned his B.S. in Arch. from the University of Illinois. He is registered in Missouri and Illinois.

HARVARD OFFERS MA'S IN URBAN DESIGN

Advanced courses leading to one of three new master's degrees in urban design will be offered in the Harvard Graduate School of Design starting a year from this fall.

The courses will be open to selected candidates who have demonstrated capacity in design as applied to improvement of the urban environment and who hold one of the professional degrees of the Graduate School of Design in architecture, landscape architecture, city planning or the equivalent.

"There is a dire need for designers whose training and ability go beyond what is normally to be found in any single profession," Dean Jose Luis Sert said. "Physical planning in our cities calls upon the co-ordinated skills of the architect, the landscape architect and the city planner. Intelligent and sympathetic collaboration among practitioners of these professions is required to solve the plight of our cities."

The new program will require a minimum of one year's study in residence at Harvard and will lead to the degrees Master of Architecture in Urban Design, Master of Landscape Architecture in Urban Design or Master of City Planning in Urban Design, depending on the profession in which the candidate already holds his degree.

Students will work together in joint studies but will be able to develop their own specialties under critics from the three departments of the school.



ROBERT B. JARVIS, right, Corporate member, has been a partner in Marshall & Brown since October, 1958. Born in Kansas City, Missouri, he graduated from Wyandotte High School in Kansas City, Kansas, and attended K. C., Kansas, Jr. College and Findlay Engineering College. Bob is registered in Kansas and Missouri.

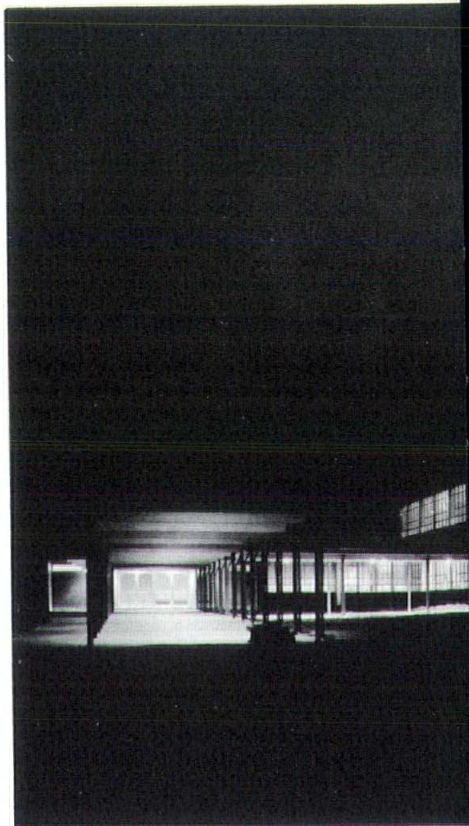


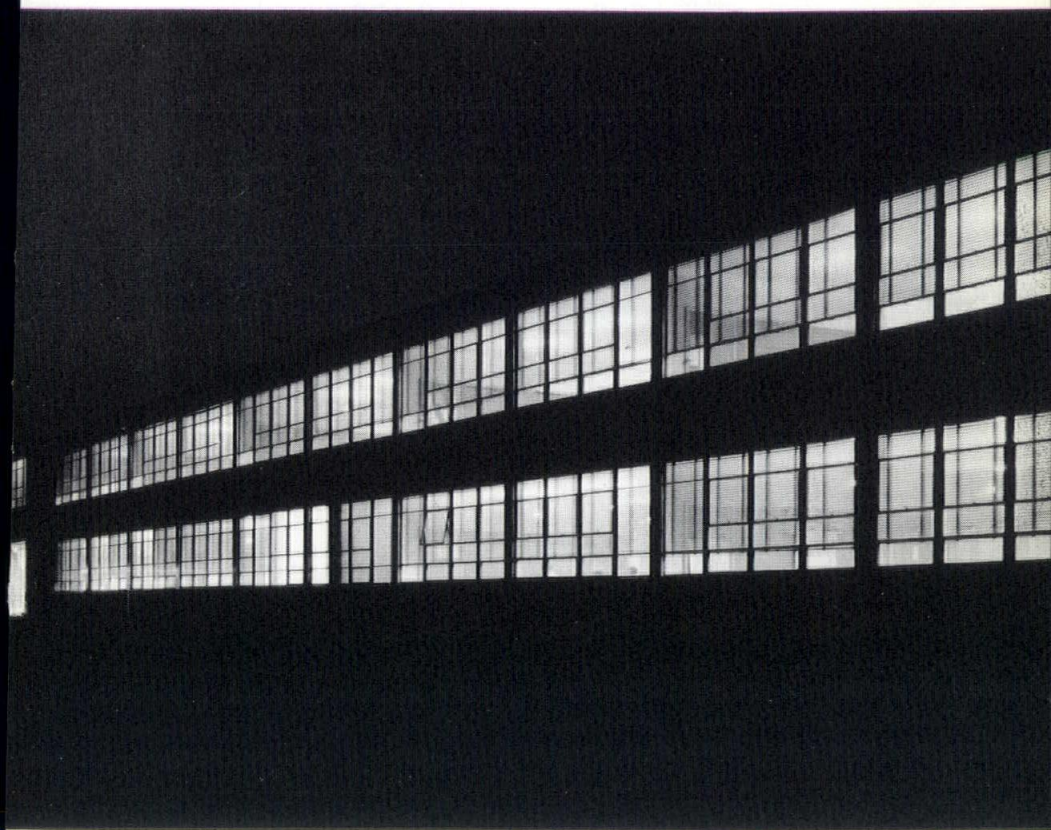
1959 MEDAL AWARD ENTRY

NEVADA JUNIOR-SENIOR HIGH SCHOOL

Nevada, Missouri

Architects: Marshall & Brown







The school was designed to accommodate approximately 400 junior high school students and approximately 600 senior high school students.

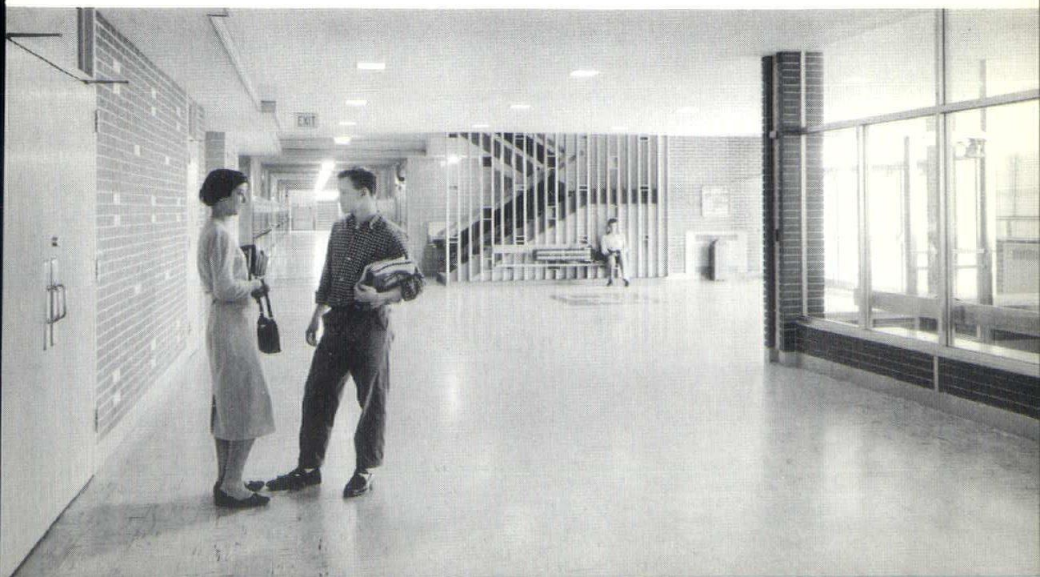
Features of the design include three major lobby areas, administrative suite, a special Student Council room, three canopy areas, faculty lounge, library and auditorium.

The typical classroom has an area of 700 square feet and is equipped with teacher's cabinet and file, wardrobe, storage space, a large bookcase, chalkboard, tack panel, map rails, venetian shades, inter-communication center and clock.

The vocational agriculture unit contains 3,528 square feet of space, adjoined by an outdoor hard-surfaced service and work area of 7,200 square feet. This unit can be used independently of the rest of the building, as for evening classes.



Total Area.....	96,265 sq. ft.
Building Cost.....	\$1,210,047.00
Cost per sq. ft. (Building cost only).....	12.58

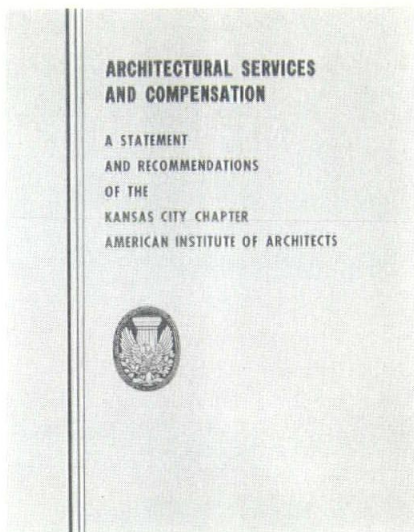


ARCHITECTURAL SERVICES AND COMPENSATION

The executive Committee announces that the Chapter booklet, "Architectural Services and Compensation", has been reprinted and copies are now available through the Chapter office. Printing economies effected on the reprint allow the booklets to be sold for 20c each, instead of the former price of a quarter.

In the past the booklets have been utilized in many ways by various offices. Some firms make it a policy to get a booklet into the hands of every client.

Sections in the pamphlet cover selection of the architect; responsibilities of the owner; reimbursements, supplementary services and special cases; compensation; recommended minimum basic rates; cost of the work; payments; standards of professional practice and the architectural and engineering registration law.



CHAPTER NEWS

- Approximately 50 couples from the Chapter and Producers' Council membership attended the A.I.A. Summer Party on August 15 at the Bellerive Hotel. Excellent food, congenial companions and danceable music were the features of this annual event of the Associate-Junior Associate Committee under the leadership of Bob Ervin and Dick Gyllenborg, co-chairmen.

● I. Lloyd Roark, Jr., A.I.A. Regional Director, recently served as a juror for the American Institute of Steel Construction's annual awards event. The jury, in addition to Roark, was made up of Clinton E. Brush III, A.I.A., Nashville, Tennessee; Linn Smith, A.I.A., Birmingham, Michigan; Leslie Cheek, Jr., Director of the Virginia Museum of Fine Arts, Richmond, and Francis S. Freiel, President of the American Society of Civil Engineers, Philadelphia, Pennsylvania.

The jury met at the Society's offices in New York City on September 16 to select winning bridge designs in four classes, on the basis of the most attractive and effective solutions to bridging problems. The prize winners will be announced shortly, according to Lloyd Roark.

The competition dates back to 1928 and several area bridges have won prizes over the years. They include the Truman Bridge (1945), the Missouri River Bridge (1954) and a Missouri River pipeline bridge at Plattsmouth, Nebraska (1956).

● After some recent misunderstandings developed, we checked with George Catts, Executive Vice President of the Kansas City Chamber of Commerce for clarification of the Chamber's policy on identifying architectural firms in connection with news stories about building construction in the Greater Kansas City Area. This pertains to the Chamber's monthly magazine, THE KANSAS CITIAN.

Mr. Catts explained that, until recently, their editorial policy was to omit all reference to architect's names. This policy has been revised within the past few months and architectural firm members of the Chamber are now routinely credited in news-type stories in THE KANSAS CITIAN. Certain stories concerning building activity, in the editor's opinion, do not fall into this classification and in such cases, no architectural firm will be mentioned.

Incidentally, in the event you missed it, the July, 1959, KANSAS CITIAN carried a lengthy story on the A.I.A. Citation of Honor given the KC/80 plan. This particular issue is the annual industrial review and is sent to hundreds of industrial prospects throughout the United States, in addition to the regular subscription list.

● John Murphy will be attending a meeting of Public Relations Committee at the Octagon in Washington, D.C., on September 28 and 29. On his return trip, the evening of the 29th, he will address the St. Louis Chapter, A.I.A., on the KC/80 project.

CHAPTER NEWS

● Max Sanford, Chairman of the Education and Research Committee, reports a large turnout is indicated for the Review Classes for State Registration Examination. The classes will meet Monday and Thursday evenings from September 8 through the 25th. Topics and instructors scheduled are:

Design and Site Planning	
Building Construction.....	Albert Yanda
Building Equipment.....	John Fasnacht
	Pierre Breton
History and Theory	
Professional Administration.....	Kenneth Coombs
Structure.....	Charles Hengler
	B. D. Campbell

The meetings will be held in the Stewart Sand and Material Company Auditorium, 4049 Penn.

● John C. Monroe, Jr., was recently elected chairman of the Kansas City American Legion City Central executive committee.

● Marvin Siebels, general program chairman for the Producers' Council, has announced the scheduling of three "Pause & Chat" sessions. The P & C meetings will be in the form of a social hour immediately preceding Chapter meetings on October 13, February 16 and May 10. Chapter members will be guests of the Producers' Council at these times. The get-togethers are primarily to give the two groups a better opportunity to visit informally with each other. A limited number of displays will be provided by the Producers' Council.

Cliff McCormick and John P. LaVelle, of the P.C., are co-chairmen for the Pause & Chat sessions.

A. I. A. CONVENTION REPORT

by Ward Haylett

K. C. Chapter Jr. Associate and Associate Representative

It may, at first glance, appear incongruous that the same minds that gave Walter Gropius the Institute Gold Medal could have selected New Orleans in late June for the National A.I.A. Convention site. At any rate, the temperature was high in the nineties and the discomfort index was high in the eighties.

However, I would be remiss if I did not report the convention in a more objective manner, since the Chapter has a goodly amount invested in said report. So, meanwhile, back at the Roosevelt—

Monday, June 22nd, was devoted to registration, the cashing of travelers checks and the location of the Vieux Carre (that's French for "old square", not French Quarter, in case you want to describe the boss and gain yourself a reputation as a very continental type at the same time).

Tuesday, June 23rd. Keynote address by New York architect Edward Dorrell Stone, FAIA. There were quite a few people there who remembered him as Ed Stone from Arkansas. The address, a kind of "Whither Architecture?", was done better by James Hunter on the occasion of his appearance before the Kansas City Chapter earlier this year.

I was somewhat disappointed in Paul Thiry's address, "Total Design", but the second of the afternoon's sessions was Samuel Wilson's illustrated lecture "The Architecture of Historic New Orleans", which really held me spellbound.

I had the good fortune of talking with Mr. and Mrs. Wilson on the Mississippi River boat jazz cruise Wednesday night. It turned out that they are also appreciative devotees of New Orleans most famous export, jazz. At the President's Reception, President and Mrs. Richards were as usual charming hosts and had an uncanny knack for remembering everyone from Kansas City who had entertained them at our Chapter Officers Installation Banquet.

Wednesday, June 24th. The afternoon session was a highlight of the convention, and featured "A Personal Approach to Design" by Minoru Yamasaki, Phillip Johnson, Bill Pierra and Charles Pratt.

The ensuing question and answer period brought out the immutable fact that such contemporary architectural giants as these men have problems, even as you and I. They further have the wit and good nature to describe their creative agonies. I personally enjoyed this particular program very much, and, again, had the further pleasure of talking with Yamasaki and Phillip Johnson later and got a little elaboration on Yamasaki's "desire to create an atmosphere of serenity and delight in architecture" as described in his earlier address and slides. So, Wednesday was great, too.

Thursday, June 25th. At the morning session, the Kansas City Chapter received the American Institute of Architects Citation of Honor from National President John Noble Richards for the KC/80 project, amid the "Huzzahs" of those there assembled. Some of the Chapter delegates seemed to think we have "gotten all the mileage" out of KC/80 we can get—but perhaps it should be noted that other cities, Toledo and Waukegan among others, have already tried the ideas embodied in KC/80 while all of our work is still on paper. The afternoon session was a forum on the "Economic Value of Design", featuring Morris Ketchum who talked about the subject as related to shopping centers, with a noble assist from Larry Smith, one of the finest real estate consultants in the country. The other gentlemen avoided the topic, more or less, but had many slides to support their diverse points. And, so, on to the Investiture of new Fellows and presentation of the Gold Medal of the Institute to Walter Gropius.

Friday morning, June 26th. Last day of convention—cashed remaining travelers checks and drove around New Orleans, seeing some of the million things I'd missed. Samuel Hurst, AIA, Dean of the School of Architecture and the Arts, Alabama Polytechnic Institute, in his final critique of the convention hit a few well chosen nails on the head with regard to the architect's failure to be great and assume the responsibilities necessary to greatness. Very well presented and perhaps should have been the Keynote Address. And so on to Brennan's for luncheon and a final look at the Vieux Carre. I swear I'll return sometime when it's cooler. Then made a mad race to the station to join the Murphys and the Shaugnessys for a pleasant trip back to Kansas City. Thanks again to the Chapter from Jeanette and myself.

CHAPTER MEETING DATES ANNOUNCED

The dates of all of the 1959-60 regular Chapter meetings have been set by James E. Mantel, Chapter program chairman. You might want to note them on your calendar now:

Tuesday, November 10, 1959

Tuesday, December 8, 1959

Tuesday, February 16, 1960

Tuesday, March 8, 1960

Tuesday, May 10, 1960

Tuesday, June 14, 1960

Dates for the January meeting (installation of officers) and the April meeting (Medal Awards) will be announced later.

All of the regular meetings listed above will be held in the Fountain Room of Wolferman's on the Plaza.

GREAT WESTERN ARCHITECTURAL REPRESENTATIVE

Homer E. (Ren) Reynolds is the Kansas City area architectural representative for Great Western Paint Manufacturing Corporation. According to Mr. F. N. Redheffer, Great Western President, Mr. Reynolds has some 25 years experience as an architectural and engineering representative. He has been a resident of Kansas City for the past 12 years.



ADVERTISERS IN THIS ISSUE

	Page
Western Blue Print Company.....	2
Buindex, Inc.....	3
Interior Classics, Inc.....	4
Jim V. Irwin Company.....	5
Henges Company, Inc.....	24
B D R Engineering Company.....	25
B. J. Lutz, Inc.....	26
The Carter-Waters Corp.....	27
Kansas City Natural Slate Company.....	28
Devoe of Kansas City, Inc.....	29

Mova-Wall **MOVABLE PARTITIONS**

Provide Office Space . . . As You Want It



WHY *Mova-Wall* IS YOUR BEST BUY:

Available in any height, plain or glazed railings — privacy without sacrificing circulation or lighting.

Designs for free standing partitions, or ceiling high where sound control is a factor.

Attractively designed, choice of panel materials, painted any desired color. Wiring is concealed.

Expert installation by our workmen if desired; or easily changed by your own staff whenever needed.

Lower in cost.

Immediate delivery from warehouse stocks.

Can be added to—from stock, at any future date.

Mova-Wall Meets the Requirements of Modern Business

Henges **COMPANY, INC.**

For more information, write

ST. LOUIS 3, MO.
2814 Locust Street
FRanklin 1-1776

KANSAS CITY 8, MO.
2619 Grand Avenue
BALtimore 1-7544

WICHITA 11, KANSAS
1040 S. Santa Fe
AMherst 5-3186

BDR

ENGINEERING
CORPORATION

. . new address . . . 1933 NORTH TENTH STREET, P.O. BOX 486
KANSAS CITY 4, KANSAS

. . new phones . . . M^Ayfair 1-0600

. . new wire . . . FAX, KANSAS CITY, KANSAS

. . new teletype . . . TWX KCKAN 1035

. . same folks . . . AT YOUR SERVICE . .

B-D-R ENGINEERING CORPORATION

the ceiling's not the limit!

we handle also

removable partitions

folding doors

chalk and tack board

resilient floor covering

industrial floor covering

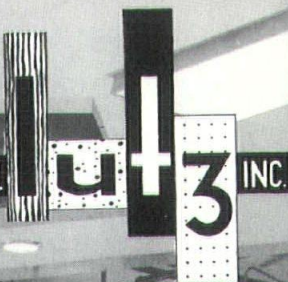
but

we are

best known for

ceilings of quiet distinction by

B.J.



KANSAS CITY, MO. • 1735 Charlotte — Phone HA 1-2288
DES MOINES, IOWA • 1167 25th Street — Phone CH 4-0820
OMAHA, NEBRASKA • 3712 N. 50th Street — Phone PL 5626



Green Hills Super Market, St. Joseph, Mo.
 Architect—Herschman & Douglas
 Contractor—Thomas Construction Co., Inc.

Prestressed Haydite Concrete Structural Members

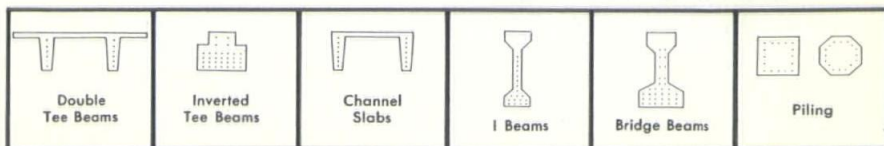
Fifty foot spans of prestressed Haydite concrete double T slabs have been left exposed, and painted in a heavy stippled finish, to make an attractive and functional ceiling in this modern super market. Notice how few columns are used — only three in over 8,000 sq. ft. of floor area.

In addition to the economy of this design, the sound level of the store has been materially lowered through the baffle effect created by the slab legs.

This is another outstanding example of fast, economical and durable construction with precast, prestressed, lightweight Haydite concrete structural members.

If you would like more information about precast and prestressed Haydite concrete construction call . . .

CONSTRUCTION THE MATERIALS
CARTER-WATERS
 KANSAS CITY, MO. 8 MISSOURI
 2440 Pennway Phone GRand 1-2570





SPRAYED "LIMPET" ASBESTOS

The modern, versatile insulating material that simplifies architectural design!

For fireproofing, sound control, thermal insulation, and condensation control

- Provides up to 4 hours of fire-retardance • Won't crack under heat
- Continuous, felt-like covering • Provides double sound absorption
- Faithfully follows contours of curved and irregular surfaces
- Hides no architectural details • Doesn't hold up construction schedules
- Spray gun application • Needs no forms or shoring
- Minimum clean-up time • Tested and approved by Underwriters' Laboratories

Lightweight SPRAYED "LIMPET" ASBESTOS reduces structural stress. Gives you more freedom in design. And, it's more economical than ordinary insulating materials. For further information, please call us.

KANSAS CITY NATURAL SLATE COMPANY

Tom Handley • PLaza 3-5040 • Bill Elder



SOME MISTAKES DON'T SHOW

But those jobs that aren't "for the birds" had better be right the first time. Let's face it, now days you just can't **afford** mistakes!

note:

The use of the term "or equal" imposes on both the specifier and the user the responsibility of assuring that the basic formula of the alternate material actually can deliver the qualities specified above.

avoid the unknown-use ZOLATONE

ZOLATONE is manufactured only by
PARAMOUNT PAINT & LACQUER CO.



DEVOE OF KANSAS CITY, Inc.

STERLING RONAI
General Manager

200 S. W. Blvd.
Phone VI 2-5672

