



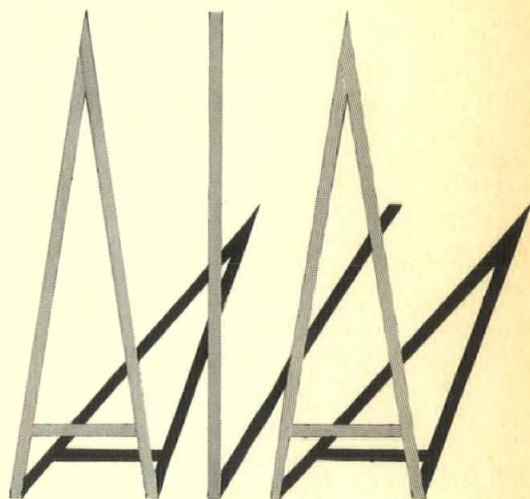
Library
C2

SKYLINE

AMERICAN INSTITUTE
OF
ARCHITECTS

JAN 12 1960

LIBRARY



11/59



KANSAS CITY
CHAPTER

CHAPTER OFFICE

306 DAVIDSON BLDG.
KANSAS CITY, MO.

EXECUTIVE SECRETARY

MR. GERRE JONES

PRESIDENT

Angus McCallum
1016 Baltimore Avenue
Kansas City 5, Missouri

VICE-PRESIDENT

Louis H. Geis
7920 State Line
Kansas City 15, Missouri

SECRETARY

James R. Baker
P.O. Box 7088
Kansas City 14, Missouri

TREASURER

Conrad J. Curtis
406 East 62nd Street
Kansas City 10, Missouri

DIRECTOR ('58-'60)

John M. Hewitt
607 Westport Road
Kansas City 11, Missouri

DIRECTOR ('59-'61)

John T. Murphy
15 West Tenth Street
Kansas City 5, Missouri

DIRECTOR ('59-'61)

Frank Grimaldi
3543 Broadway
Kansas City 11, Missouri

SKYLINES

Vol. 9

No. 11

NOVEMBER, 1959

CONTENTS	PAGE
Whittier Elementary School.....	5
Marshall & Brown Expansion.....	9
New Members.....	13
Architectural Openings.....	13
Booneville Chapel Building.....	16
Midwest Hospital Exhibit.....	20
Cartoon	20
Regional Conference Echoes.....	21
List of Advertisers.....	21

SKYLINES IS THE MONTHLY PUBLICATION OF THE KANSAS
CITY CHAPTER OF THE AMERICAN INSTITUTE OF ARCHITECTS

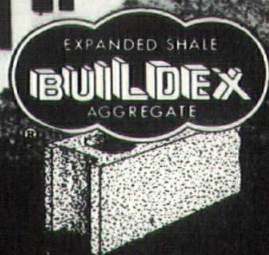
306 DAVIDSON BUILDING

KANSAS CITY 8, MO.



**"...so much for
so little!"**

**Please consult a
concrete masonry
producer !**



Prepared by BUILDEX, INC.,

Phone CHerry 2-2177,

OTTAWA, KANSAS

Our "Specialty of The House" -

TRACING REPRODUCTIONS

**WESTERN
BLUE PRINT CO**

909 GRAND • KANSAS CITY, MO.
SOUTH SIDE PLANT 17 E. GREGORY

**TECHNICAL
PHOTOGRAPHY**
VICTOR 2-7881

Authorized  Distributor



Von Duprin

KENNATRACK

Zero

HIAWATHA



LAWRENCE BROTHERS, INC.

SOSS



YALE & TOWNE

STANLEY



grant



MIAMI



McKINNEY

NORTON

GARCY

LUND



DURAFlex



A.P.W.

COLONIAL



IN CONTRACT BUILDERS' HARDWARE

. . . . AT YOUR SERVICE

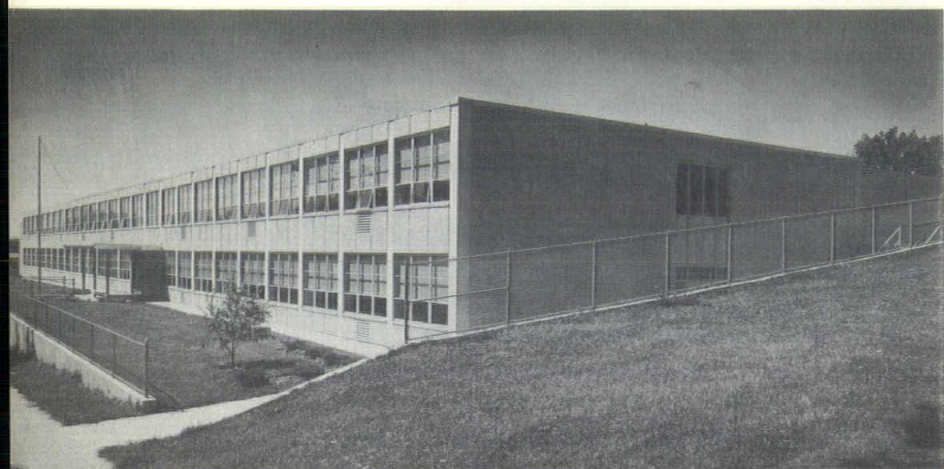


WHITTIER ELEMENTARY SCHOOL

11th and Indiana

Kansas City, Missouri

Architects: Curtis & Cowling



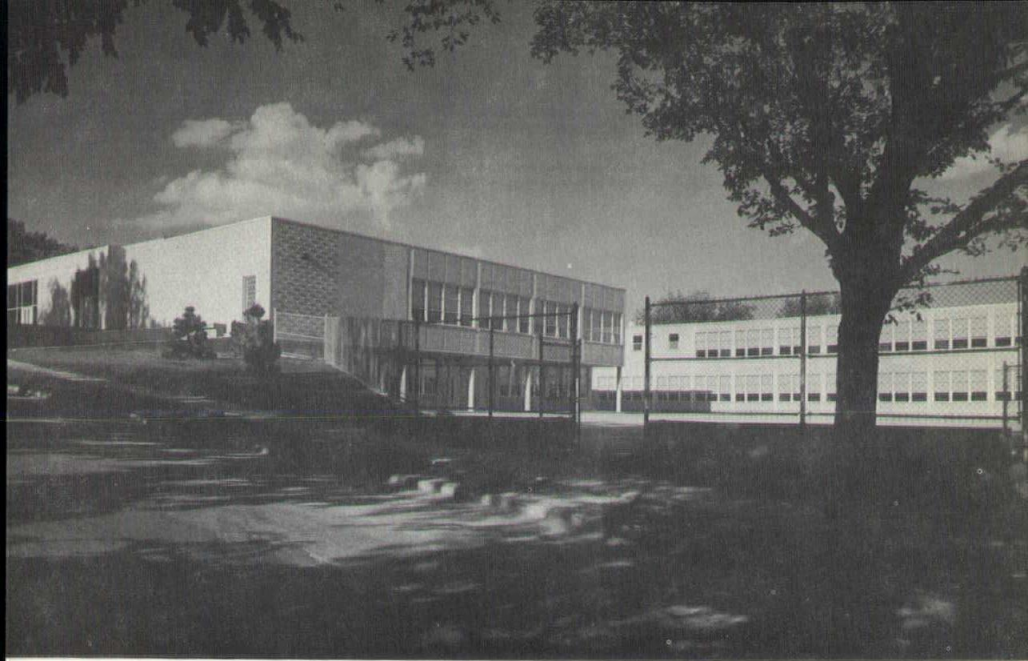
SIZE OF SCHOOL SITE	238'x690'
COST OF SITE DEVELOPMENT	\$ 52,000.00
COST OF CONSTRUCTION	898,000.00
COST OF EQUIPMENT	70,000.00

FACILITIES PROVIDED:

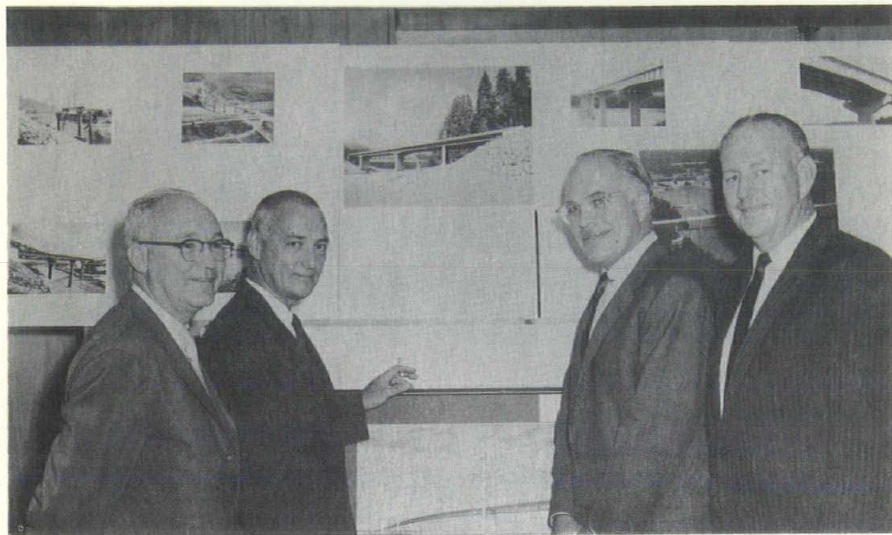
24 classrooms, 2 Kindergartens, crafts room, auditorium, gymnasium, administrative facilities and teachers' lounge.

The program provided for the design of a six grade, 24 classroom elementary school to replace an existing 65-year-old structure which was to be left standing until completion of the new building.

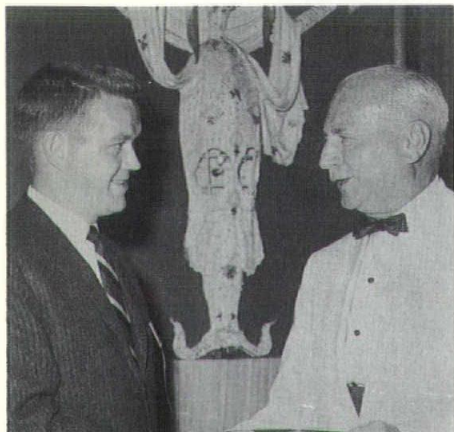
Consideration was given to both window wall construction and masonry spandrels, and the latter was selected for economy in this case. Because of the extreme differences in elevation of the site, the playground was broken into upper and lower level. The upper level is utilized by Kindergarten and primary grades and the lower level by the upper grades. To maintain the building elements on one level, the gymnasium was placed on the first floor level some ten feet above the playground area, automatically providing a covered play area for staggered use in inclement weather.



CHAPTER NEWS



● I. Lloyd Roark, Jr., at right in the above picture, is shown with other members of the jury who selected winning entries in the annual Aesthetic Prize Bridge Competition in New York recently. The American Institute of Steel Construction sponsors the competition annually. The winning entry for bridges with spans greater than 500 feet was the Mackinac Straits Bridge, Michigan.



● In the photo at the left, Marvin Seibels, president of the Kansas City Producers' Council Chapter, receives the National P.C. Silver Bowl award on be-

MARSHALL & BROWN EXPAND OFFICES NAME NEW PARTNER AND ASSOCIATES

The firm of Marshall & Brown, architects and engineers, has recently completed an expansion and remodeling program for their offices in the 1016 Baltimore Building and Frank H. Fisher has been named a new partner.

Fisher joined Marshall & Brown as an associate in 1945, following World War II service in the Army. He is a member of the Kansas City Chapter of the American Institute of Architects and the Missouri Association of Registered Architects. He is registered in both Missouri and Kansas.

Two other staff members have been made associates of the 21-year-old firm. They are Gerald B. Baru and Herbert M. Woolley.



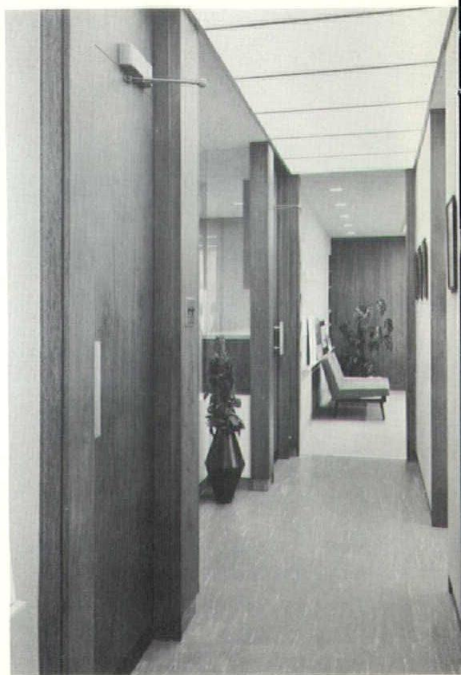
FRANK H. FISHER





The design problem in expanding and remodeling the offices centered around the location of the elevators and the fact that it is a long, narrow building. The elevator shafts, toward the top right corner of what is essentially an L-shaped office with a short leg, dictated that the lobby and reception area be located immediately in front of the elevator doors.

The drafting, reference and reproduction rooms were placed to the left of the lobby and the offices and conference rooms to the right of the reception area. For communication control, the business office was located between the offices and drafting room and immediately behind the reception desk.







Many built-in and free standing storage units are found throughout the new offices. Part of the storage shelves in the drafting room are used for displaying plans and renderings of current projects.

The shallow wall shelves for display of plans and renderings in the offices and conference rooms are an interesting innovation. For client comfort, the shelves are placed slightly below eye level of a person seated. Three graduated light intensities are controlled by panel switches in each office. Large glass windows between the principal's offices allow the center office to borrow light from the adjoining ones and serve to open up the space involved.

Other partners in the firm, besides James D. Marshall, M. Dwight Brown and Frank Fisher, are Charles C. Campbell and Robert B. Jarvis.

NEW MEMBER



ELWIN S. ELSWOOD, left, new Junior Associate member, is a partner in the Mission, Kansas, firm of Elswood, Smith & Carlson. He attended Kansas State College, graduating in 1951 with B.S. degrees in Architecture and Architectural Engineering. While in school, he served as secretary of the student A.I.A. Chapter.



DEAN R. SMITH, right, is also a new Junior Associate and is also a partner in Elswood, Smith & Carlson. A native of Kansas, Smith graduated from Kansas State College in 1951 with a B.S. in Architecture. He is registered in Kansas and Elswood is registered in Both Kansas and Missouri.

ARCHITECTURAL OPENINGS

SKYLINES has been asked to publicize several openings with local and state governmental planning boards. Jerry Manning, of the Kansas City Plan Commission, needs four Senior Planners, one Principle Planner and several Junior Planners and Planning Internes. Present monthly salary scales are \$575-\$675 for Senior Planners and \$645-\$820 for the Principle Planner. For further information contact Mr. Manning in the City Hall.

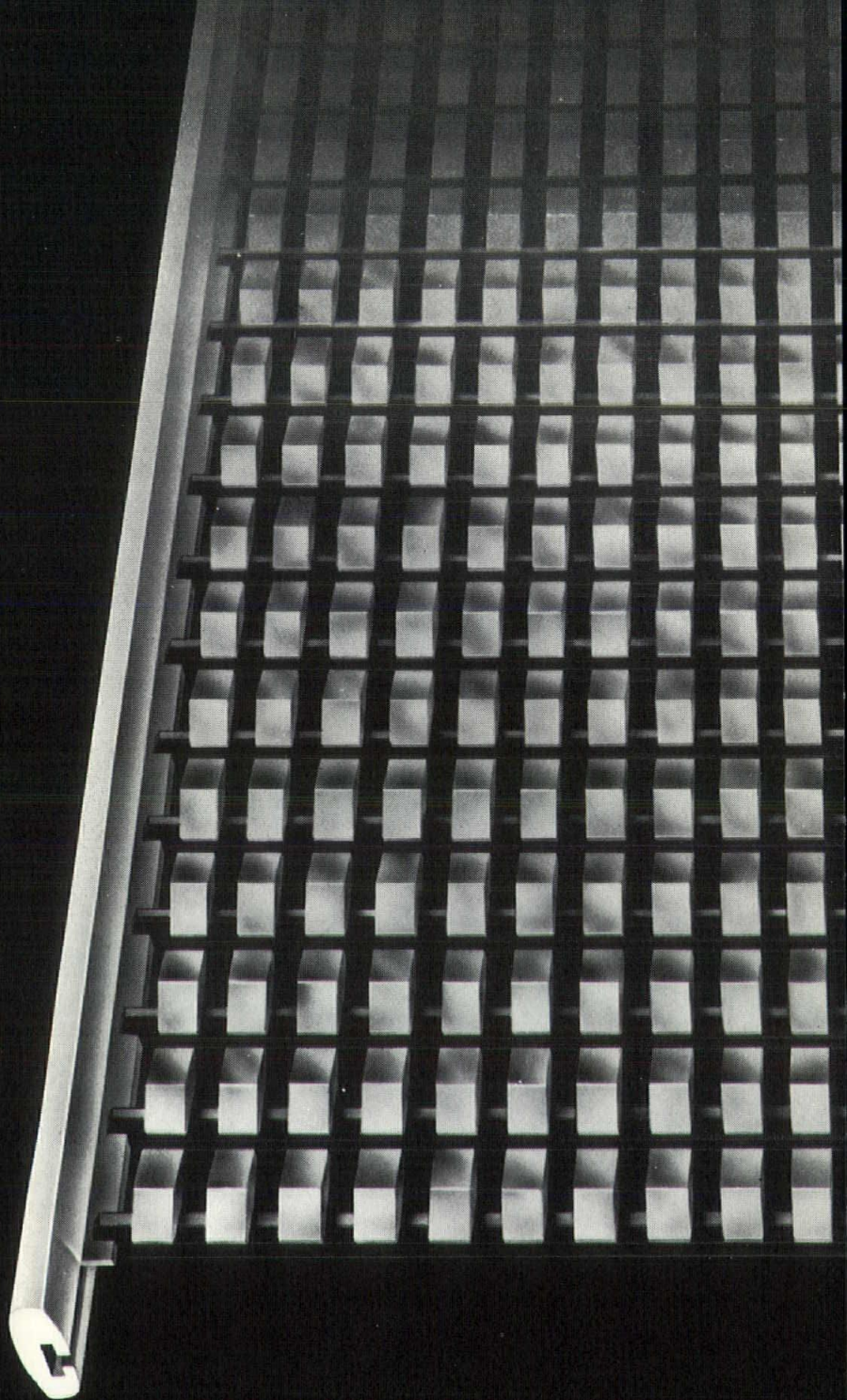
John D. Paulus, Jr., Chief of Planning and Construction for the State of Missouri, offers the following appointments for experienced engineers:

Mechanical Engineer—Missouri Registration

Structural Engineer—Missouri Registration

Maintenance Engineer—Registration desirable

Positions do not involve design work. Salary range \$6000 to \$8400, plus travel expense. Address resumes to Mr. Paulus at the Division of Budget and Comptroller, P.O. Box 809, Jefferson City, Missouri.

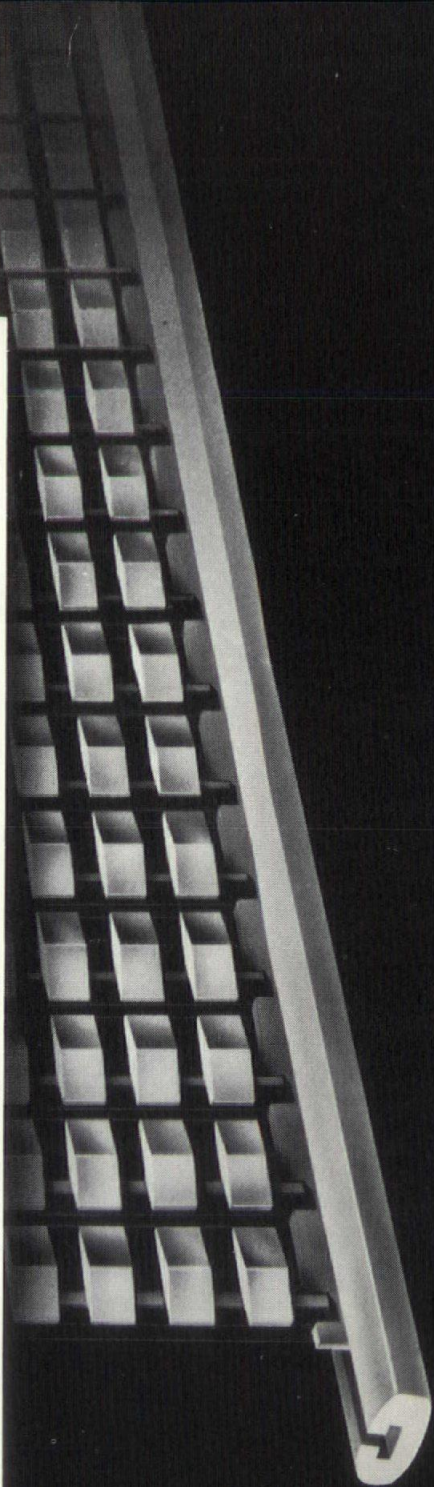


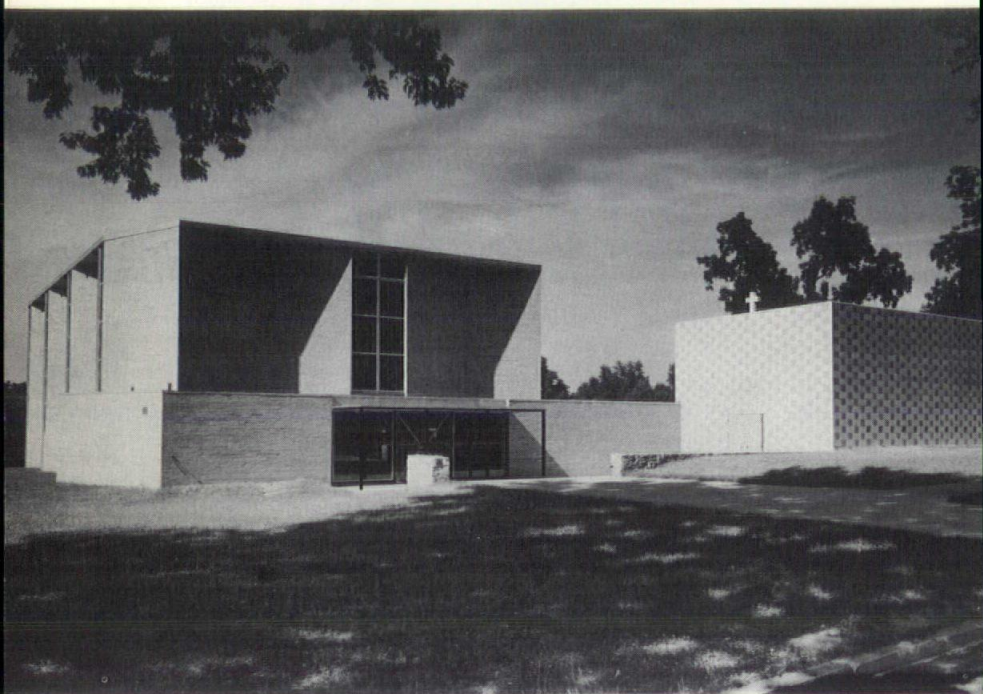


*TRADE MARK

Grill-O-Metries^{}* by Blumcraft[®]

3-DIMENSIONAL ALUMINUM GRILLES FOR RAILINGS AND DECORATIVE SCREENS
REFER TO 1959 SWEETS FILE 6e/BIU OR SEND FOR CATALOG M-59
BLUMCRAFT OF PITTSBURGH, 460 MELWOOD STREET, PITTSBURGH 13, PA.





L. D. Jones Photog

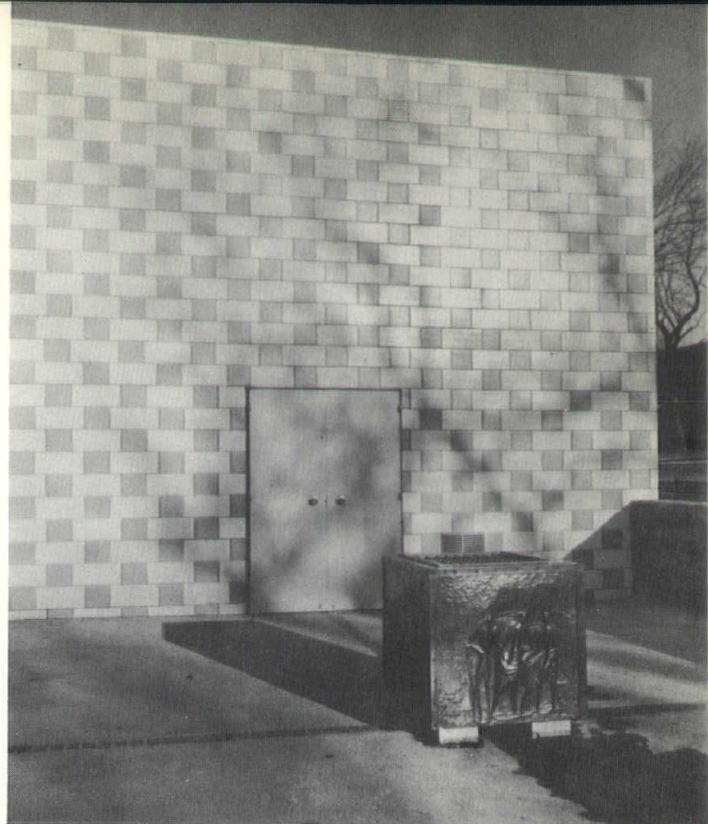
1959 MEDAL AWARD ENTRY

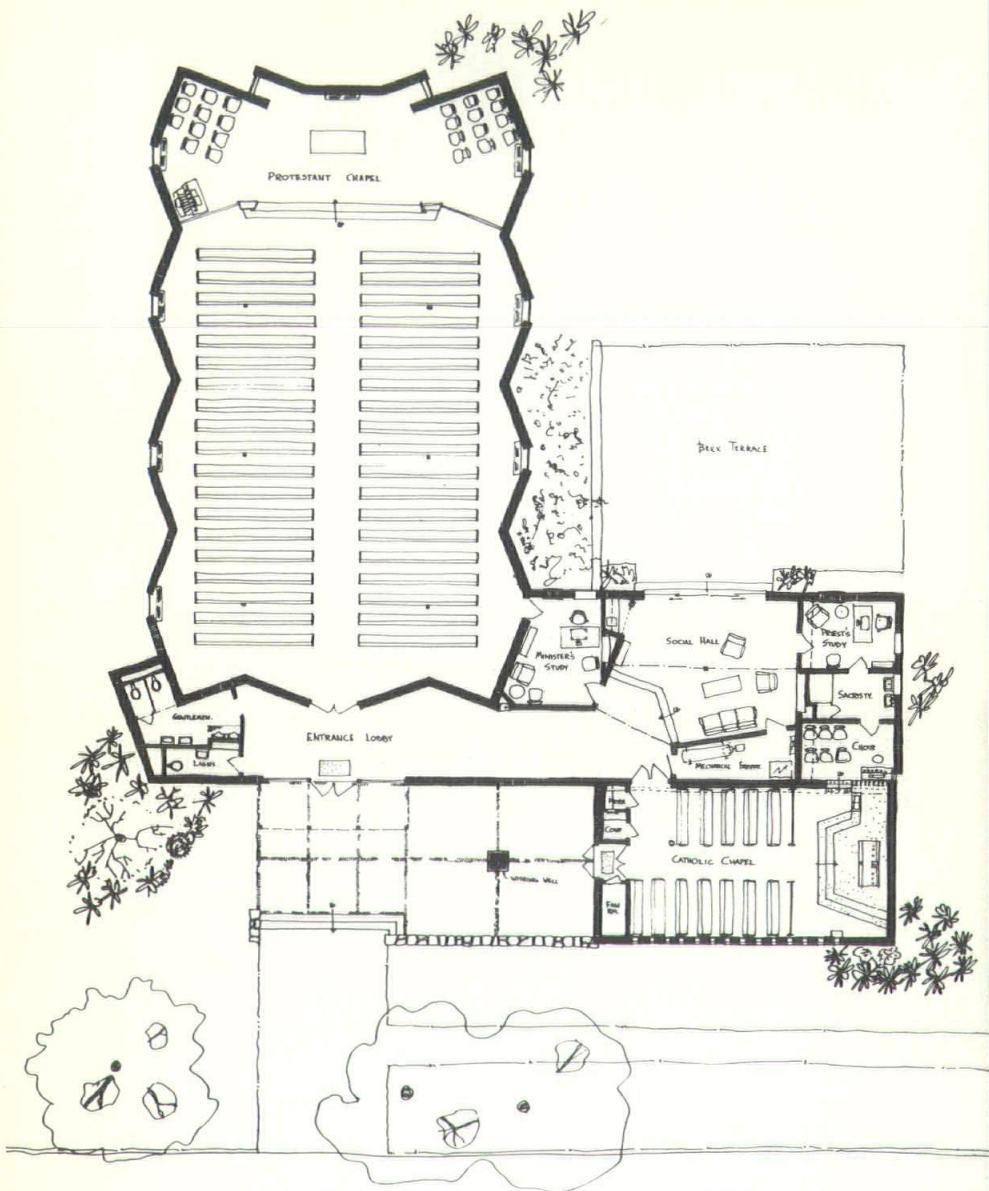
CHAPEL BUILDING

Boy's Training School

Booneville, Missouri

Architects: Everitt & Keleti





The program asked for accommodating both protestant and catholic worship services simultaneously. To avoid sound interference the two Chapels were separated in plan. In elevation they are expressed as contrasting masses.

The protestant chapel has its walls splayed for structural stability. This wall layout also eliminates any acoustical standing reverberation time. Columns are split on top to cut down the beam span and to increase the column spacing. Stained glass windows are an abstract composition of broken and rondel forms, avoiding symbolism except for the inset dove over the entrance doors.

The Catholic chapel is more severe in concept and richer in texture. The glass-cloissone stations of the cross are backlit with an aluminum reflector by natural light through a glass brick on the exterior. This row of glass bricks is layed out to be part of the exterior structural glazed tile pattern. The free standing fluorescent tubes simulate huge candlesticks standing on wall brackets. Daylight enters the chapel through a narrow skylight over the stations of the cross and through a beam to beam glass brick strip on the opposite side.

In front of the Chapel building in the Courtyard there is a bronze repouse wishing well depicting the story of the prodigal son on its four sides.



CHAPTER SPONSORS HOSPITAL EXHIBIT

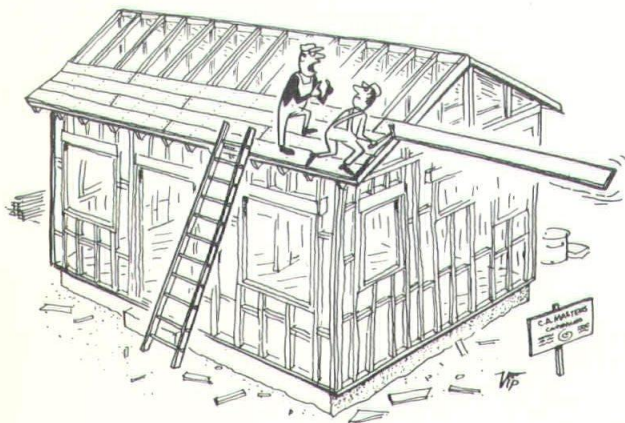
The Midwest Hospital Association will have a Convention in Kansas City on April 27th, 28th, and 29th, 1960, at the Municipal Auditorium. In past years the Chapter has sponsored a Hospital Exhibit at this Convention which proved to be a good public relations activity. The general arrangements for this exhibit are as follows:

- The Midwest Hospital Association will provide one ten foot booth free of charge. In the past this booth has accommodated two exhibitors. If more than two exhibitors take part it will be necessary for us to pay for additional booths at the rate of \$200.00 per booth.
- There are some additional costs in setting up exhibits and the cost of any extra booths and the cost of setting up will be distributed between all exhibitors.
- Each exhibitor will provide the materials for his exhibit and organize them for exhibition purposes.
- When all firms desiring to exhibit have made themselves known, a Committee will be formed with a representative from each firm to organize the entire exhibit.

Any firm desiring to exhibit at this convention under the conditions stated above will please communicate with:

John M. Hewitt
607 Westport Road
Kansas City, Missouri
Phone: Logan 1-1070

All requests for exhibiting must be in by January 1, 1960.



"In a case like this, Filstrup, we usually look around for a little *bitty* board"

Regional Conference Scenes . . .

These two views of the Des Moines Art Center will recall the pleasant luncheon followed by Garrett Eckbo's talk on landscape architecture enjoyed by Chapter members attending the Regional Conference in Des Moines last month.

At the left is the statue of Pegasus in the pool and below is a view of the Center's entrance. The elder Saarinen's touch is everywhere in this beautiful building.



ADVERTISERS IN THIS ISSUE

Buildex, Inc.	2
Western Blue Print Company	3
BDR Engineering Company	4
Blumcraft of Pittsburgh	14-15
Great Western Colorizer Paints	23
Henges Company, Inc.	24
Interior Classics, Inc.	25
Jim V. Irwin Company	26
The Carter-Waters Corp.	27
B. J. Lutz, Inc.	28
Devoe of Kansas City, Inc.	29

FACTS ABOUT YOUR ARCHITECT

SEQUENCE AND RESPONSIBILITY IN BUILDING

OWNER

ARCHITECTS

JOINT

1. Seeks architectural services		2. Preliminary conferences 3. Owner/Architect agreement 4. Establish building program 5. Set production time limits
8. Approves schematic documents	6. Program analysis 7. Schematic designs	
14. Approves preliminary documents 15. Authorizes final documents 16. Approves special consultants	9. Preliminary drawings 10. Preliminary specifications 11. Preliminary estimates 13. Revisions to preliminaries	12. Conference on preliminaries
25. Approves final documents	17. Final working drawings 19. Final specifications 20. Final estimates 23. Revisions if required	18. Conference on specifics 21. Set construction time limit 22. Conference and review 24. Conference and acceptance
28. Receives bids	27. Issue documents for bidding	26. Select contractors for bidding
31. Awards contract	30. Advise on contract award	29. Bid tabulation and review
33. Executes contract	32. Assist in execution of contract	
35. Arranges for waiver of liens	34. Approve bonds and insurance	
42. Pays construction costs monthly	36. Issue proceed letters to contractor 37. Supervise construction 38. Prepare field inspection reports 39. Review and approve shop drawings 40. Inspect and approve samples 41. Prepare monthly certificates	43. Review construction reports
45. Countersigns change orders	44. Prepare and sign change orders 46. Receive special guarantees from contractor 47. Make final inspection	
48. Receives release of liens 49. Makes final payment 50. Accepts building		51. Celebration

Homer E. (Ren) Reynolds
Architectural Representative

Phone BA 1-1322



**GREAT
WESTERN
Colorizer
PAINTS**

KANSAS CITY

CHICAGO



FT. SMITH

Mova-Wall MOVABLE PARTITIONS

Provide Office Space . . . As You Want It



WHY *Mova-Wall* IS YOUR BEST BUY:

Available in any height, plain or glazed railings — privacy without sacrificing circulation or lighting.

Designs for free standing partitions, or ceiling high where sound control is a factor.

Attractively designed, choice of panel materials, painted any desired color. Wiring is concealed.

Expert installation by our workmen if desired; or easily changed by your own staff whenever needed.

Lower in cost.

Immediate delivery from warehouse stocks.

Can be added to—from stock, at any future date.

Mova-Wall Meets the Requirements of Modern Business

Henges COMPANY, INC.

For more information, write

ST. LOUIS 3, MO.
2814 Locust St.
FRanklin 1-1776

KANSAS CITY 30, MO.
3007 E. 85th Street
EMerson 3-1385

WICHITA 2, KANSAS
125 North Mosley
AMherst 5-3186

Interior Decorative Service for Architects, Builders & Realtors

Saves time . . . provides additional income

Now, available to architects and builders for the first time, Interior Classics, Inc., offers you brand name merchandise which we will sell through you to your customers for prices far below those featured on comparable items in retail stores.

Interior Classics, Inc., also offers these services to you as a no cost, extra bonus.



- Top notch decorator at your disposal at all times to help you with color planning or work with your customers on color arrangements. This is without charge to you or your customer, unless time consuming.
- Guaranteed satisfaction.
- Regular bank rate financing.
- Lower prices than on comparable item in retail stores.
- Free delivery and installation.
- Special ordering from floor room samples.

Interior Classics, Inc., is not open to the public. You are not competing with yourself, but working with us as an agent.

Interior Classics, Inc., will give your customers every courtesy and help build customer relations for you as well as increase your profits.

**SEE OVER
5000 ITEMS
NOW ON DISPLAY
IN OUR
SHOWROOM**

Interior Classics, inc.

Decorative Service for Architects,
Builders and Realtors.

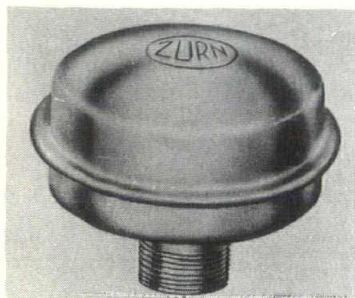
WAbash 1-5885

3415 Prospect Ave.
Kansas City 28, Mo.

Now! ALL NEW ZURN ENGINEERED PRODUCTS HELP IMPROVE YOUR BUILDING SPECIFICATIONS!

NEWEST DEVELOPMENT IN
WATER HAMMER ARRESTMENT
THE ZURN

SHOKTROL

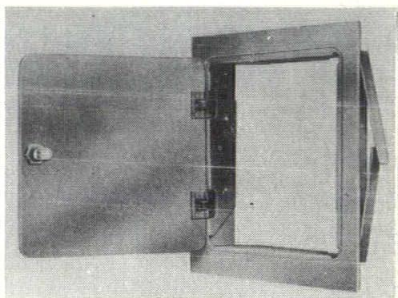


For elimination of destructive shock pressure and disturbing noises in plumbing systems with quick-closing valves—

- ... All stainless steel construction.
- ... Small, compact and lightweight.
- ... Pre-charged with air pressure.

ULTRA-MODERN APPROACH TO
CONTROL CONCEALMENT
THE ZURN

ACCESS DOOR



For full, unhindered entrance to control equipment concealed in walls and ceilings—

- ... Fits any type of wall.
- ... High-quality lustrous finish.
- ... Protective cylinder lock.
- ... Snug door on concealed hinges.

U.S. PATENTS AND PATENTS PENDING



ZURN MIDWEST SERVICES, INC.

Represented by

JAMES V. IRVIN CO.

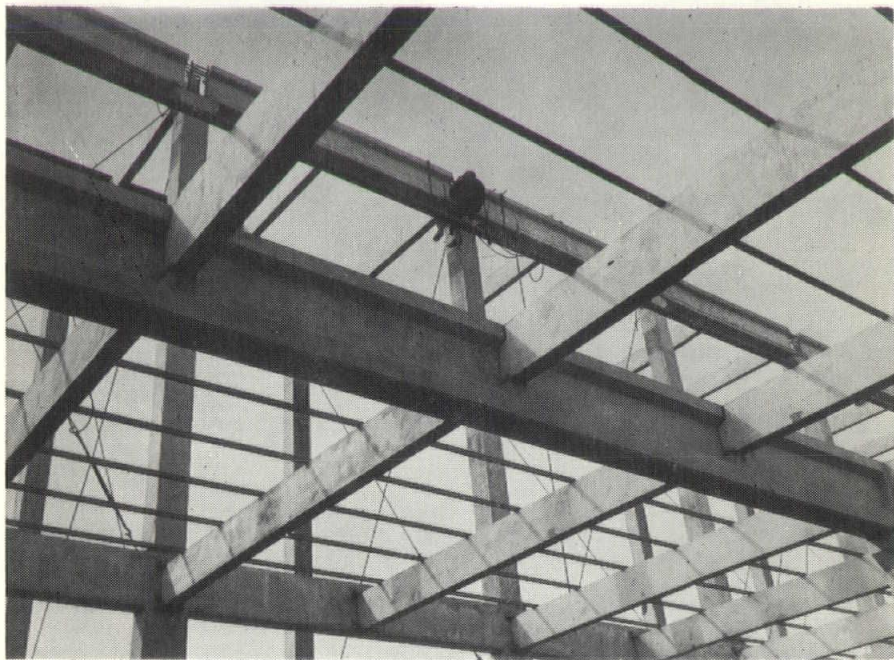
557 Westport Road Kansas City 11, Missouri

Phone: JEFFerson 1-5452

A COMPLETE LINE OF PLUMBING DRAINAGE PRODUCTS

- ZURN SYSTEMS for supporting wall type plumbing fixtures
 - NON-FREEZING HYDRANTS
 - SUPREMO CLEANOUTS
 - SWIMMING POOL FITTINGS
 - ROOF DRAINS
 - FLOOR DRAINS
 - INTERCEPTORS

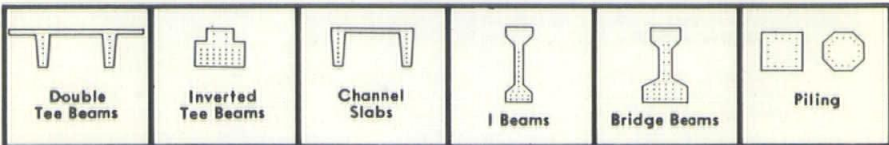
Precast Haydite Concrete Structural Members

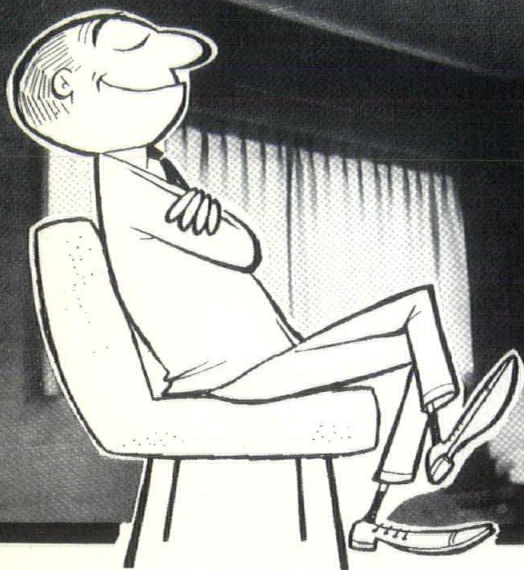


Precast, prestressed, lightweight haydite structural members have proved to be the fast, economical method for many recent projects calling for durable construction.

If you would like more information about precast and prestressed Haydite concrete construction, call . . .

CONSTRUCTION  MATERIALS
CARTER-WATERS
 KANSAS CITY  8 MISSOURI
 2440 Pennway GRand 1-2470





comfortable overhead?

A Burgess-Manning ceiling, in addition to perfect noise control, gives overhead radiant heating and cooling at your fingertips—in other words, real year-round comfort-conditioning. And a Burgess-Manning ceiling costs no more than heating, cooling and acoustical ceiling units installed separately.

BURGESS-MANNING's new kind of comfort is so revolutionary words won't do it justice.

Why don't you come to our Kansas City BURGESS-MANNING Room and experience for yourself an overhead, you too will enjoy and be happy to recommend to your friends and customers?


TO BETTER SERVE OUR CUSTOMERS
IN IOWA AND NEBRASKA
WE HAVE OPENED OFFICES
IN OMAHA AND DES MOINES


ceilings of quiet distinction by **B.J. PUTZ INC.**

KANSAS CITY, MO. • 1735 Charlotte — Phone HA 1-2288
DES MOINES, IOWA • 1167 25th Street — Phone CH 4-0820
OMAHA, NEBRASKA • 3712 N. 50th Street — Phone PL 5626



**playing
blind man's bluff . . .
with your specifications? . . .**

There is a detailed  specification for each type of work . . . for each type of surface. It covers preparation, equipment, application and material handling.

Your  representative can steer you straight . . . save you money.

Avoid the Unknown



—Use Zolatone

avoid the unknown-use ZOLATONE

ZOLATONE is manufactured only by
PARAMOUNT PAINT & LACQUER CO.



DEVOE OF KANSAS CITY, Inc.

STERLING RONAI
General Manager

200 S. W. Blvd.
Phone VI 2-5672

KANSAS CITY CHAPTER OF THE AMERICAN INSTITUTE OF ARCHITECTS