

AMERICAN INSTITUTE  
OF  
ARCHITECTURE

6 663  
**SKY LINES**

and MIDWEST ARCHITECT  
LIBRARY

8  
—  
63

Call  
**INDUSTRIAL**

for Make-up  
Service!



Distributor of Reynolds Aluminum

WAREHOUSE AND OFFICE  
1110 North Sixth  
ST. LOUIS 1, MISSOURI  
Phone-MAin 1-4703  
Area Code 314

WAREHOUSE AND OFFICE  
410 Southwest Boulevard  
KANSAS CITY 8, MISSOURI  
Phone-Victor 2-1041  
Area Code 816

WAREHOUSE AND OFFICE  
2028 Northern Street  
WICHITA, KANSAS  
Phone-LYric 1-3455  
Area Code 316

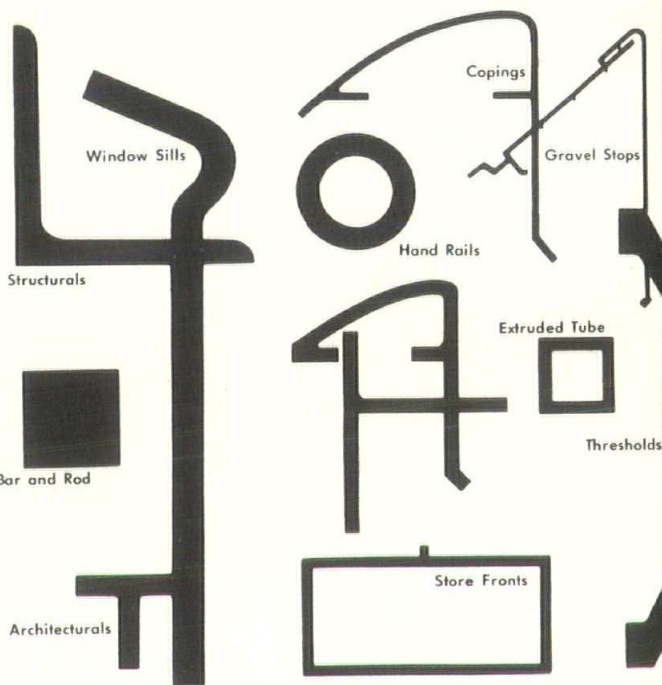
WAREHOUSE AND OFFICE  
7201 East Reading Place  
TULSA, OKLAHOMA  
Phone-Temple 5-8454  
Area Code 918



# Industrial Metals

COMPLETE STOCKS

## ARCHITECTURAL ALUMINUM PLAIN AND ALUMILITED



A complete selection of architectural shapes and all other types of aluminum are available to architects and contractors from the modern metals centers of Industrial Metals, as near as your telephone.

FREE! New illustrated catalog and stock list of aluminum architectural is now ready. For your FREE copy write or call your nearest Industrial Metals office.

**ALUMINUM • BRASS • COPPER  
STAINLESS STEEL • GALVANIZED SHEET**

SKYLINES is the official monthly journal of the Kansas City Chapter of The American Institute of Architects



# SKYLINES

and  
MIDWEST ARCHITECT

Vol. 13, No. 8

August 1963

THE AUGUST ISSUE OF SKYLINES is a pictorial review of buildings designed by Chapter Architects. All architectural firms with Chapter membership were invited by letter, datelined July 19, to submit a maximum of three pictures for inclusion in the issue. If your firm is not included, it's because you did not respond to the invitation to be represented in the PICTORIAL REVIEW.

## Pictorial Review Of Buildings By Chapter Architects

### EDITOR

Dorothy Lamoree

### EDITORIAL BOARD

Chris P. Ramos, Chairman  
Frederick P. Chael  
Richard E. Gyllenborg  
Theodore H. Seligson

Opinions expressed herein are those of the editor or contributors and the appearance of products or services, names or pictures in either advertising or editorial copy does not necessarily constitute endorsement of the product by the Kansas City Chapter of The American Institute of Architects.

Advertising in SKYLINES is subject to the approval of the Executive Committee of the Kansas City Chapter, A. I. A.

Subscription: one year \$3.00, three years \$8.00, single issue 50 cents. Special roster issue \$1.50. Copyright 1963 by the Kansas City Chapter, A. I. A.

# A. I. A.



## KANSAS CITY CHAPTER

FOUNDED 1890

## CHAPTER OFFICE

960 Home Savings Building  
Kansas City 6, Missouri  
Telephone: Vctor 2-9737

## EXECUTIVE SECRETARY

DOROTHY LAMOREE

## OFFICERS

### PRESIDENT

Louis H. Geis  
Geis-Hunter-Ramos  
704 Davidson Building  
Kansas City, Missouri

### VICE PRESIDENT

Gene E. Lefebvre  
Monroe & Lefebvre  
818 Grand Avenue  
Kansas City, Missouri

### SECRETARY

Frank H. Fisher  
Marshall & Brown  
1016 Baltimore Avenue  
Kansas City, Missouri

### TREASURER

John E. Jameson  
Voskamp & Slezak  
18 East 11th Street  
Kansas City, Missouri

## DIRECTORS

### 1963-1965

Dwight C. Horner  
Horner & Horner  
1401 Fairfax Trfkwy.  
Kansas City, Kansas

### 1962-1964

Mark S. Sharp  
Neville, Sharp & Simon  
25 East 12th Street  
Kansas City, Missouri

### 1961-1963

Clarence Kivett  
Kivett & Myers  
1016 Baltimore Avenue  
Kansas City, Missouri



LOUIS GEIS

## President's Page

Without minimizing in any way the important functions of The Institute which are discharged at national, regional and state organization levels, it is correct to say that the basic operations of the AIA in contacts within the profession and with the public and the construction industry are at the chapter level. The leadership and the strength of The Institute are measured in the eyes of the great majority of the American public by the reputation earned by the chapters.

It is necessary, whether its membership is numbered by tens or by hundreds, that each chapter reflect to the greatest possible degree the vigor, the policies and the programs of The Institute in its area and that it strive constantly through its public relations to keep the profession in a pre-eminent position. This calls, not only for a closely knit, harmonious organization but also for one in which all the constituent units work together as a well balanced team. An intelligent understanding by all chapter officers and committee chairmen of their functions and their responsibilities is a prerequisite to effective operation of the chapter. This has been the objective of your executive committee.

Since their formation at the first of the year all of our committees have been very active. Each person in general and their chairmen in particular are pressing to produce a more active chapter and consequently a more effective professional national status.

### *The Importance of the Chapter*



*Blumcraft*  
OF PITTSBURGH

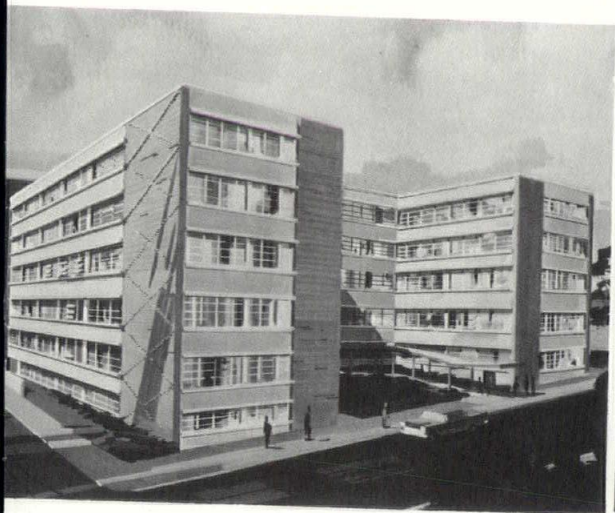
**NEW**

classic tapered aluminum  
post 149-S. Sculptured pattern  
shown. Available with a plain  
surface or inlaid natural wood.

Complete catalogue of railings  
and grilles available upon request.

Permanent display - Architects  
Building, 101 Park Ave., New York, N.Y.

COOPER, ROBISON & CARLSON



Above left, Missouri Methodist  
Hospital, St. Joseph

Upper right, Control Tower,  
Mid-Continent International  
Airport

Below, Terminal facilities,  
Municipal Airport



# WE SERVE YOU... THE ARCHITECT

AS PLANNERS AND DESIGNERS... AND AS A PRIMARY SOURCE OF CONTEMPORARY  
AND TRADITIONAL FURNISHINGS FOR BUSINESS, INSTITUTIONS AND HOME...

RESEARCH HOSPITAL LOBBY

Gentry & Voskamp, Architects  
Edgar B. Voskamp, A.I.A., partner in charge  
Kansas City, Mo.



HERBERT E. DUNCAN & ASSOC.

Penthouse Tower Apartments,  
Kansas City, Kansas.  
Construction start in  
November.

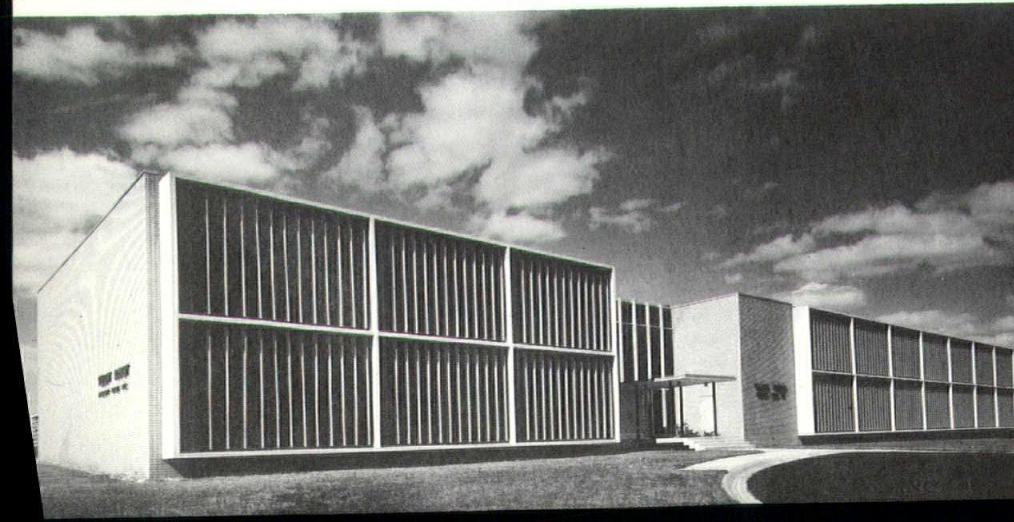
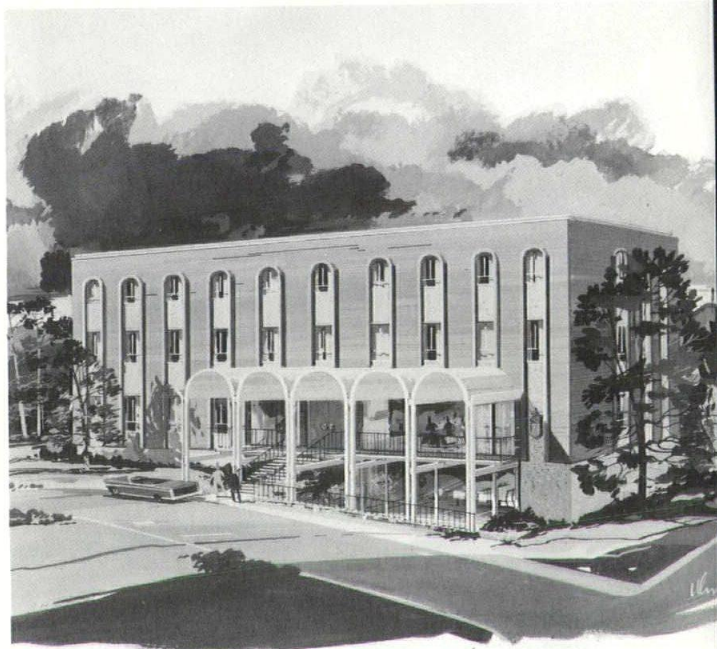


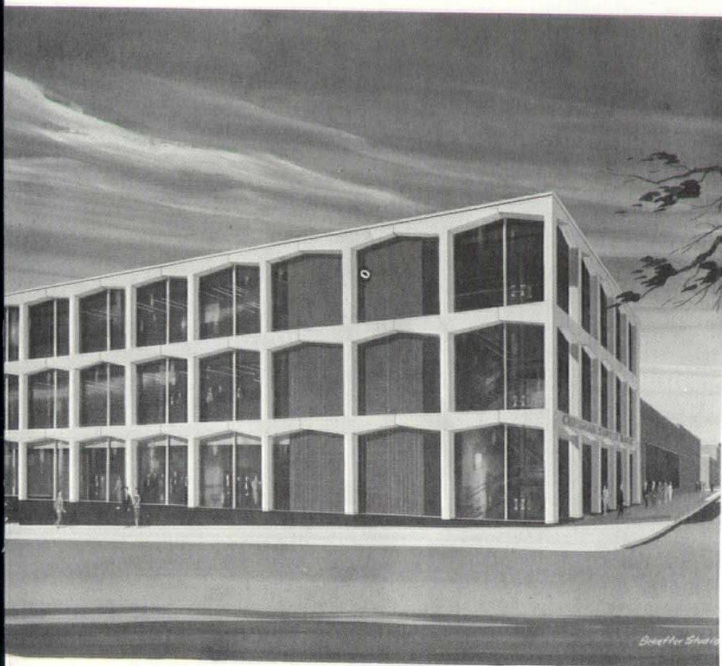
## FOLGER & PEARSON

Above, Old Westport  
Shopping Center,  
1010 Westport Road

Center, Phi Kappa  
Psi Fraternity  
House, University  
of Kansas

Below, Yellow  
Transit Freight  
Lines' executive  
office building,  
92nd and State Line





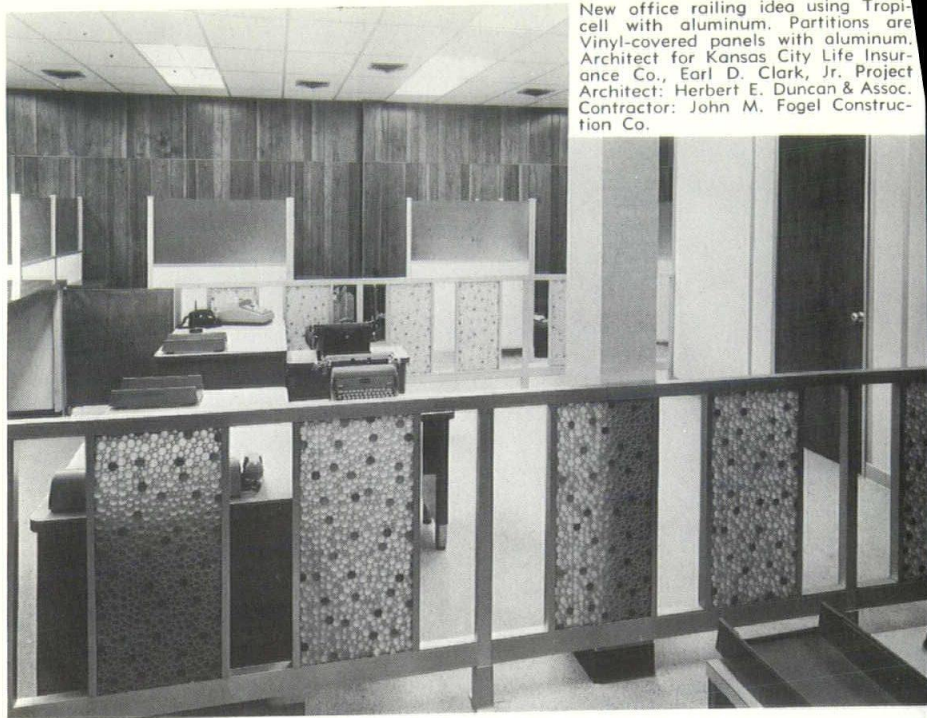
**GEIS-  
HUNTER-  
RAMOS**

Top, Sears Roebuck  
Warehouse, North  
Kansas City

Center, Chrisman &  
Sawyer Bank,  
Independence, Mo.

Lower, Roe Village  
Garden Apartments





New office railing idea using Tropi-cell with aluminum. Partitions are Vinyl-covered panels with aluminum. Architect for Kansas City Life Insurance Co., Earl D. Clark, Jr. Project Architect: Herbert E. Duncan & Assoc. Contractor: John M. Fogel Construction Co.

## MOVABLE PARTITIONS

. . . OUR ONLY BUSINESS

**CUSTOM DESIGNED AND INSTALLED AT A MINIMUM COST!**

"Quick-Change" movable partitions add privacy and beauty to office and industrial space. They are installed for permanent use — yet can be easily rearranged — providing work areas you can grow in.

The movable partitions business is for experts. As specialists, partitions are our only business — and service to our customers is of prime importance.

Call or write for information.

**\*NOTE OUR NEW ADDRESS:**

**4905 LISTER, P.O. BOX 6842 — KANSAS CITY, MO. — WA 3-9705**

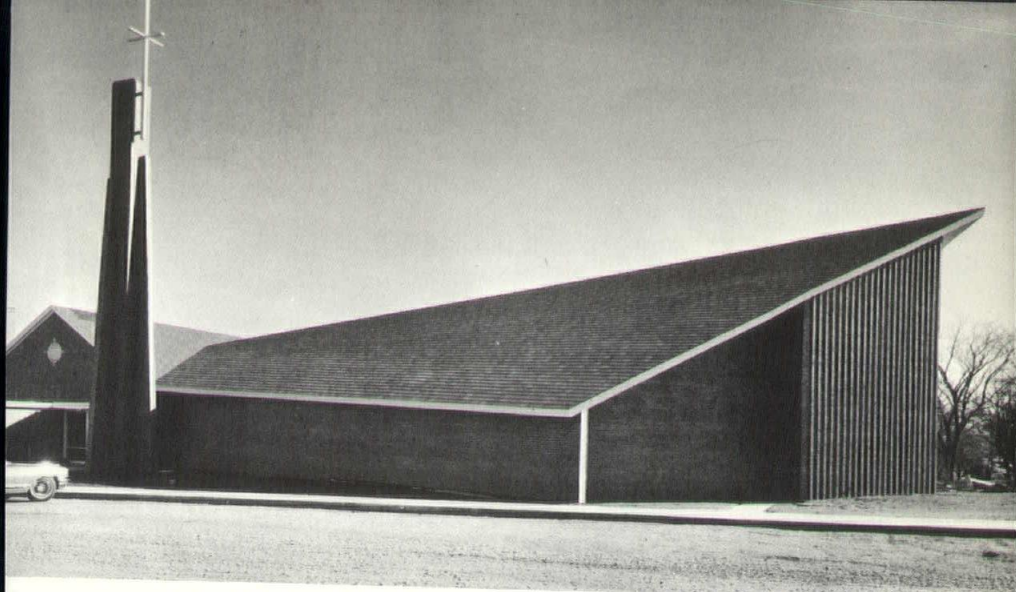
**GLEN**

**PHONE  
WA 3-9705**

**"QUICK-CHANGE"  
PARTITIONS**

**BRIEN**

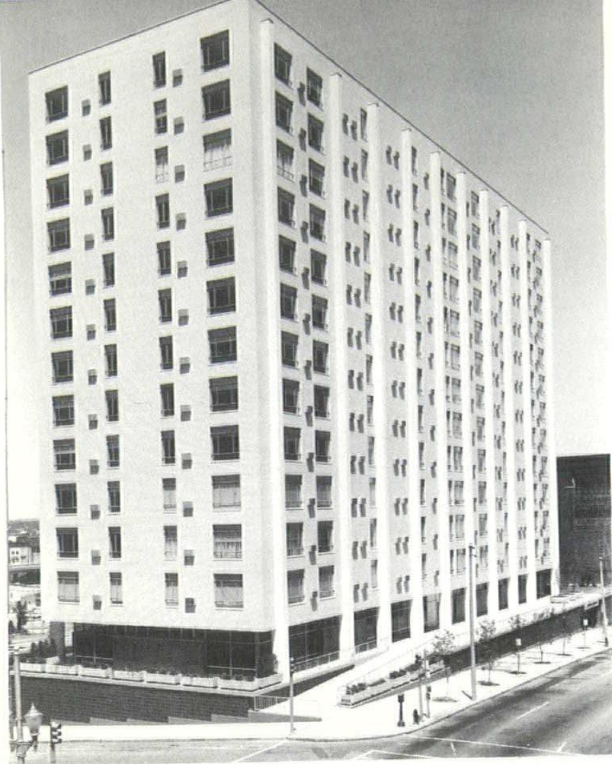
**4905 LISTER  
Kansas City, Mo.**



HOLLIS & MILLER

Above, Sanctuary addition,  
Shawnee Presbyterian Church  
Center, Home office, Patrons Mutual  
Insurance Company, Olathe  
Below, Paul R. McCollem, Inc.

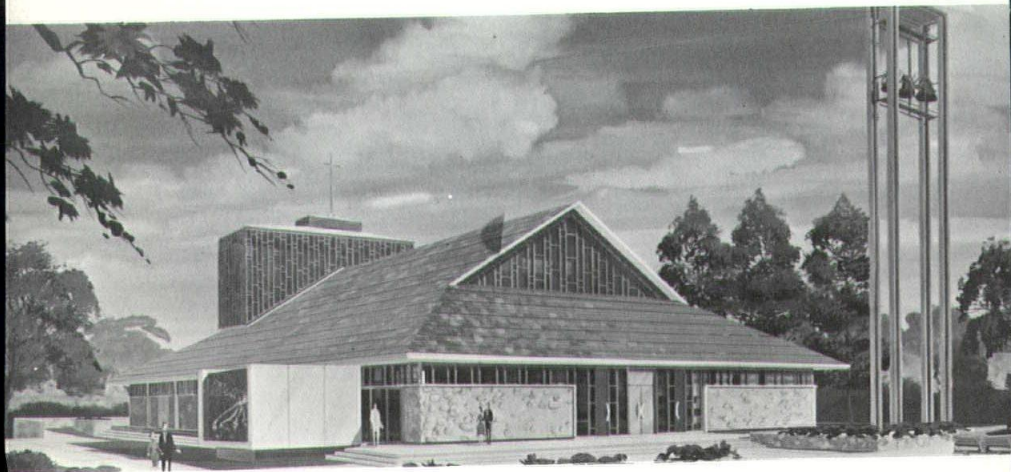


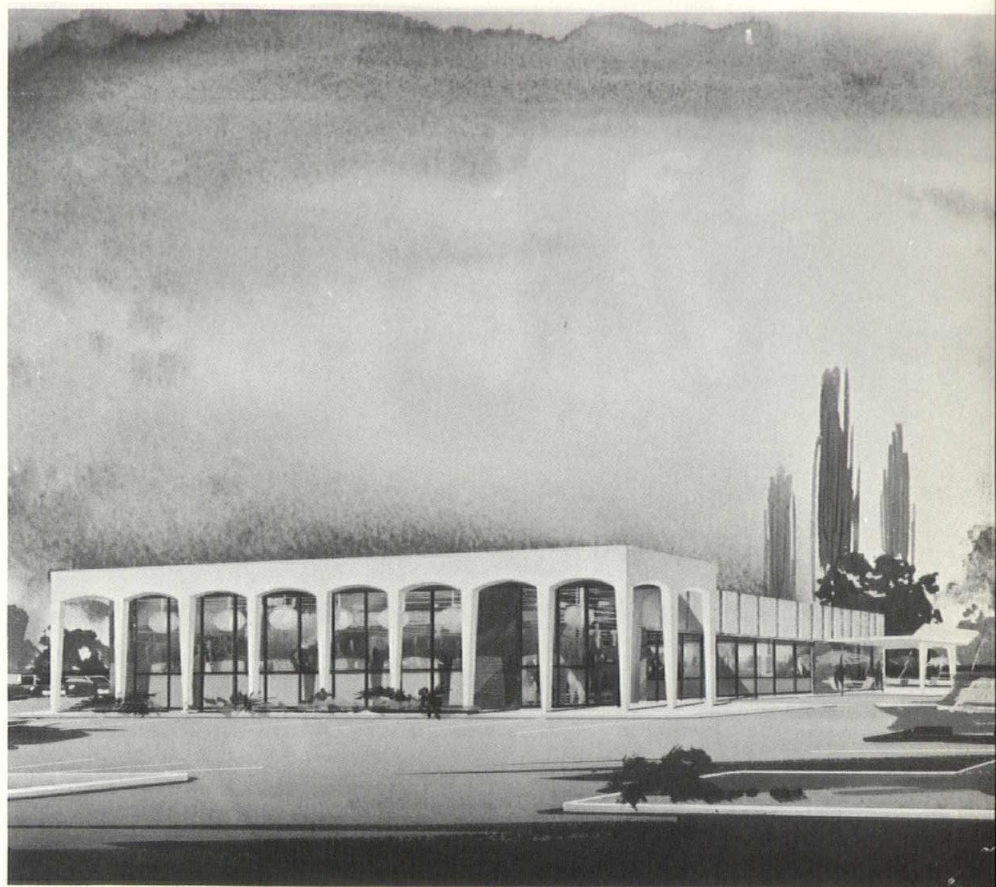


KEENE,  
SIMPSON  
& MURPHY

Above, Walnut Tower  
Apartments,  
922 Walnut

Below, Church of  
the Immaculate  
Conception,  
Leavenworth,  
Kansas



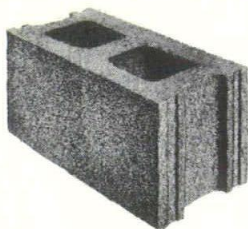


WM. S. LOTH & ASSOC.

James P. Regan's Restaurant Drive-In,  
Overland Park

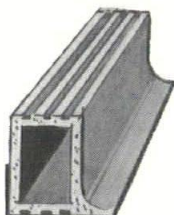
# CARTER-WATERS

a single source for  
quality masonry materials



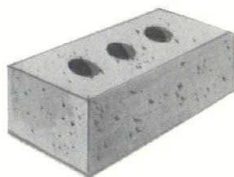
## HAYDITE BLOCK

The original light-weight concrete block.



## GLAZED TILE

—precision quality ROBCO and ELGIN-BUTLER tile surpasses ASTM and FTI dimensional tolerances.



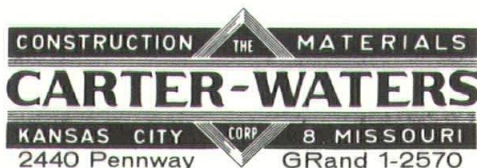
## BRICK

We represent more than 30 producers from Pennsylvania to Colorado—manufacturing brick of all kinds.

Carter-Waters prides itself on its experienced personnel, as well as on the high quality products it handles. These specialists can provide you with technical data, samples, literature and specification information.

Delivery scheduling is given careful attention to avoid delays, and to prevent unnecessary jobsite storage and possible damage.

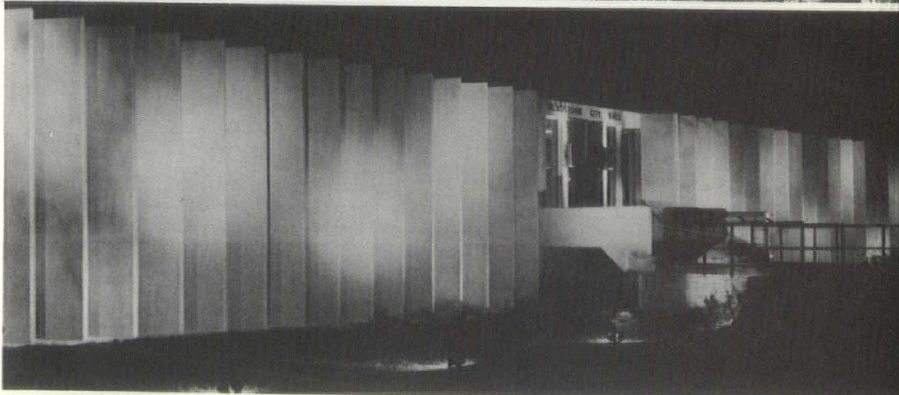
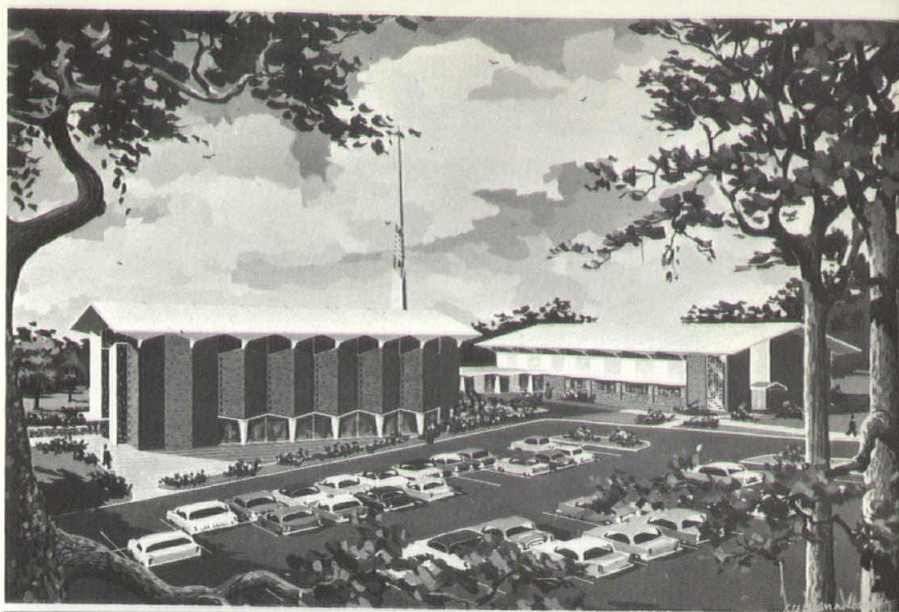
We urge you to call Carter-Waters on your next job.



**BLOK-MESH** wire reinforcing for masonry walls

**BLOK-JOINT** rubber control joint for masonry walls

**BLOK-SEAL** cement base paint

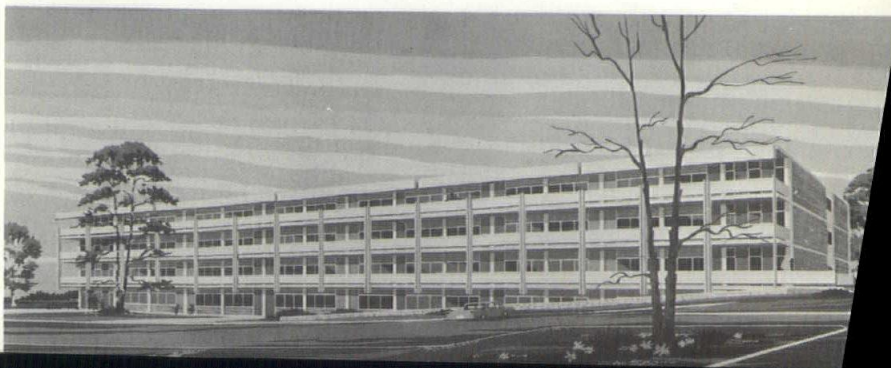


Top, Northgate Baptist Church, 800  
Vivion Road, completed June, 1963.

Center, Gladstone City Hall, 7010  
North Holmes, completed May, 1962.

Lower, Scheduled for completion  
August, 1964, married student  
dormitory, Central Missouri State  
College, Warrensburg.

MANTEL & STEELE



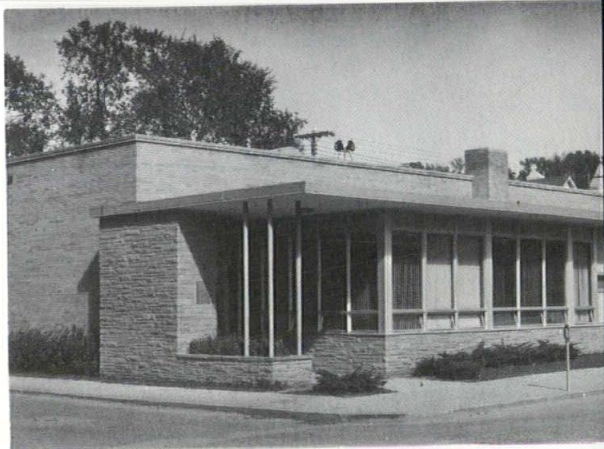


## MARRA & LAW

Above, St. Catherine's  
Convent

Center, dial equipment  
building, Southwestern  
Bell Telephone,  
Excelsior Springs

Below, educational  
building, Countryside  
Methodist Church,  
79th and Blue Ridge  
Extension

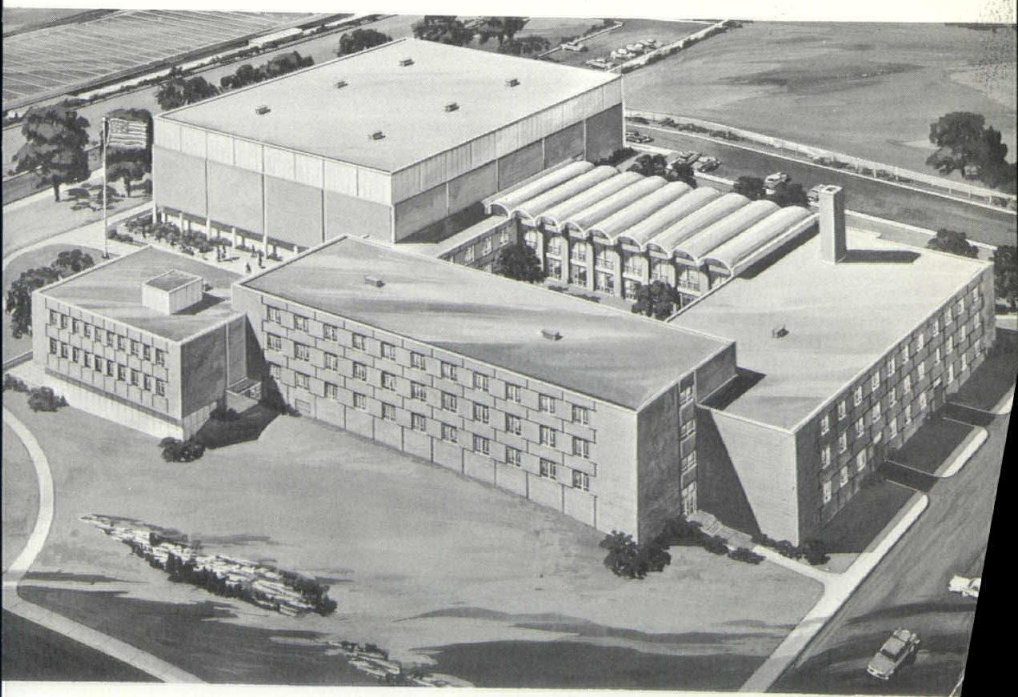




## MARSHALL & BROWN

Above, Home State Bank,  
Kansas City, Kansas.  
Scheduled for completion,  
June, '64.

Below, Under construction,  
Jefferson City Senior  
High School



*new dimensions in creating with masonry*  
**FOR DISTINCTIVE INTERIORS**  
**SELECT VERSATILE ACME BRICK**

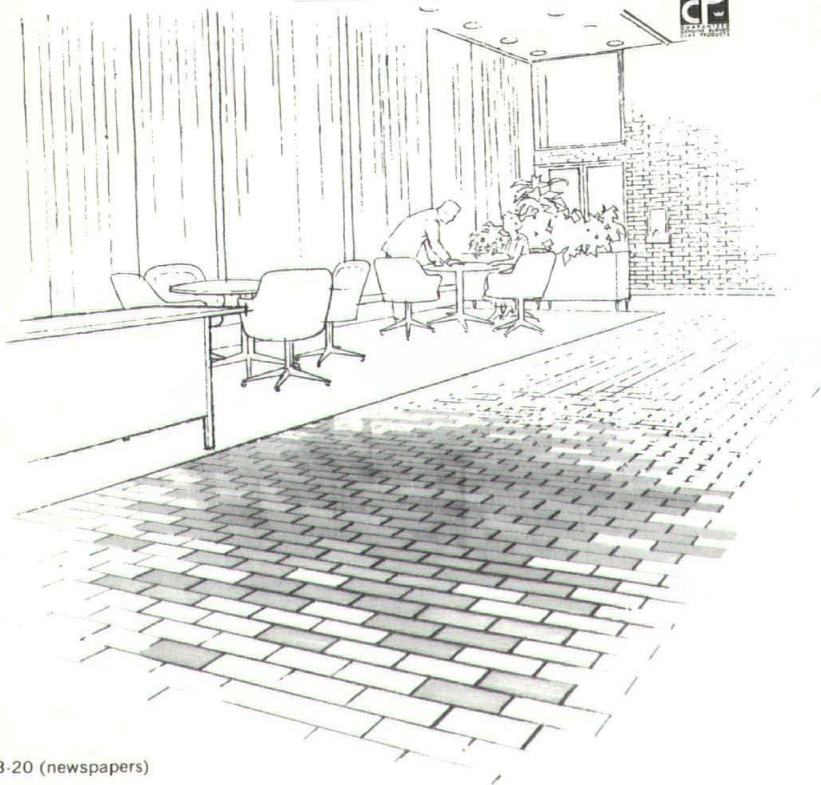
Truly the designer's material, Acme Brick, in almost countless colors, textures and combinations, makes possible the creative expression of any interior mood or functional requirement.

One course of Acme Brick will give **two** lateral walls that will never need finishing or upkeep. Acme Brick floors can be laid in many patterns with or without mortar, and will retain their good looks with a minimum of routine care.

Genuine new burned clay Acme Brick can never fade or wear. It cushions sound and diffuses light. Fire insurance premiums are much lower in many areas on fire-resistant clay masonry. Heating and air-conditioning costs are lower because of its excellent insulating qualities.

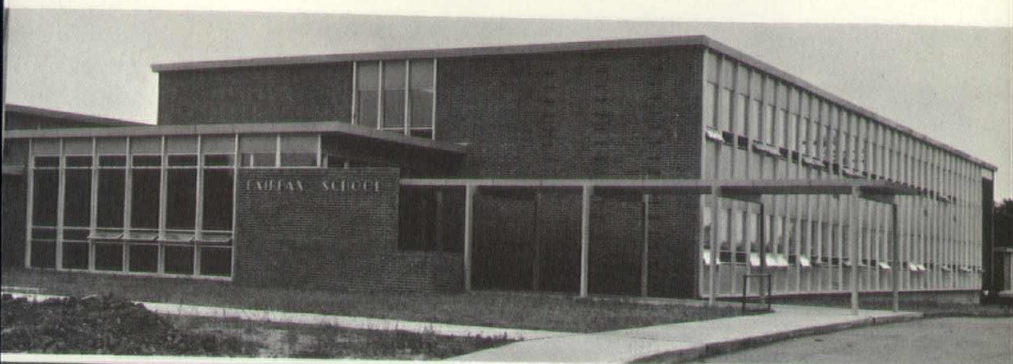
Visit soon with your Acme Brick representative and investigate fully the unique creative opportunities possible with interiors of Acme Brick.

 **ACME BRICK COMPANY**  
Since 1891 • Sales offices in principal cities



AB-63-20 (newspapers)

AB-63-22 (journals)

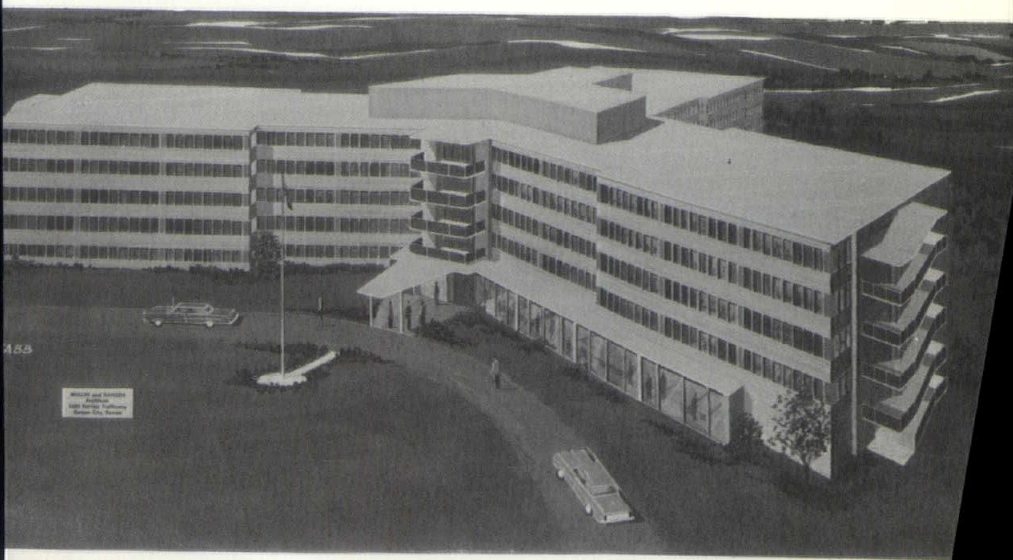


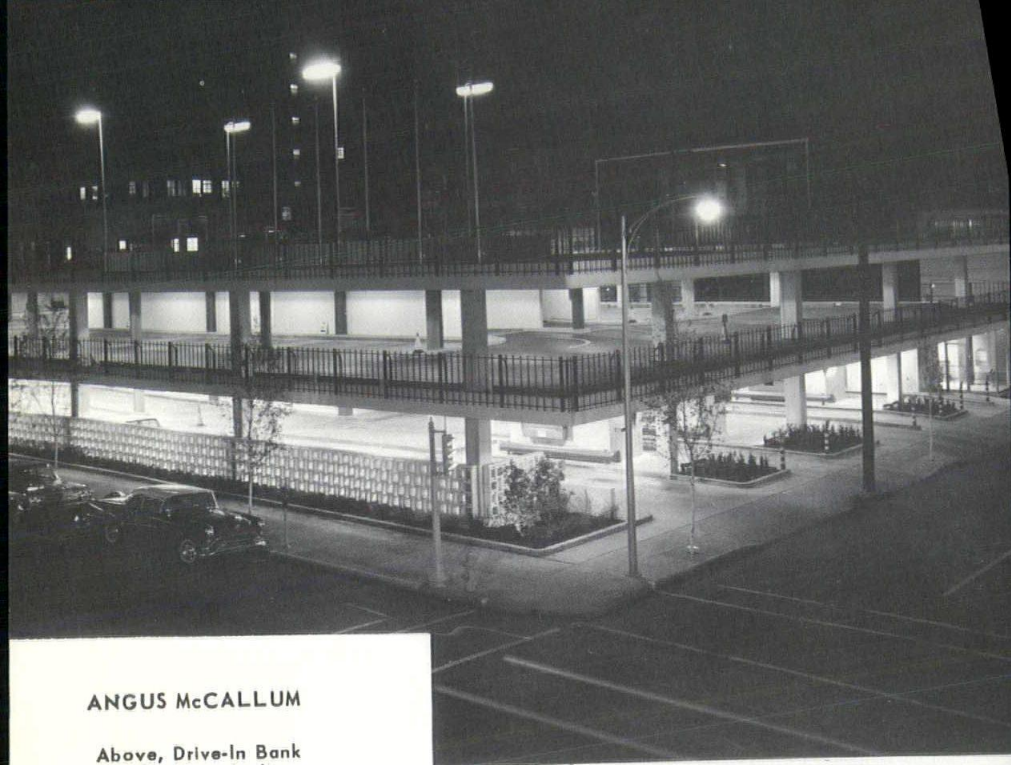
Top, Built in 1960, Fairfax School in Kansas City, Kansas, the first all-electric school in the metropolitan area.

Center, Ridgeview Christian Church, the first unit built in 1962 at Sni-A-Bar and Byram's Ford Road.

MULLIN & HANSEN

Lower, Slated for construction start in September, Evangelical Village Retirement Home, Lenexa, Kansas.





# ANGUS McCALLUM

Above, Drive-In Bank  
and Parking, Joplin

Below, Our Lady of  
Sion High School





# **NEVILLE SHARP & SIMON**

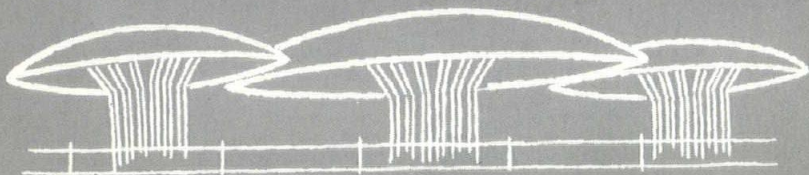
Upper left, The Medical Plaza,  
4320 Wornall Road; Roger F.  
Blessing, Jr., Associate

Top right, Clipper Mfg. Co.,  
Grandview, Missouri

Below, Wayne-Miner Public  
Housing Project, \$12-million  
project completed in 1962



**thin shells...**



**...of lightweight concrete**

**“reduced  
weight  
and  
increased  
strength”**

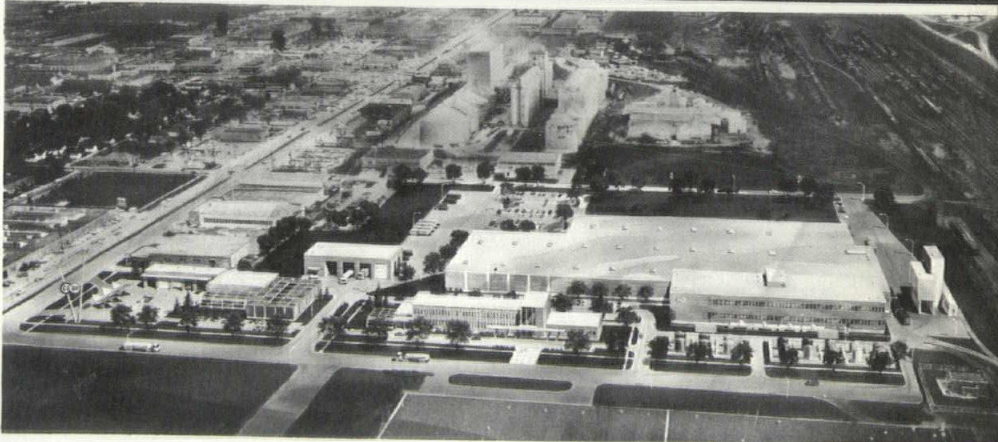
**...with**



**BUILDEX, INC.,**

**BOX 15,**

**OTTAWA, KANSAS**

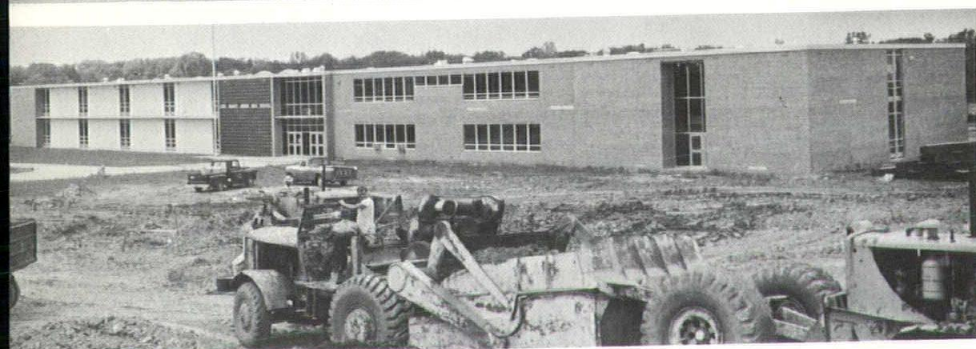


**RADOTINSKY, DEARDORFF & ASSOC.**

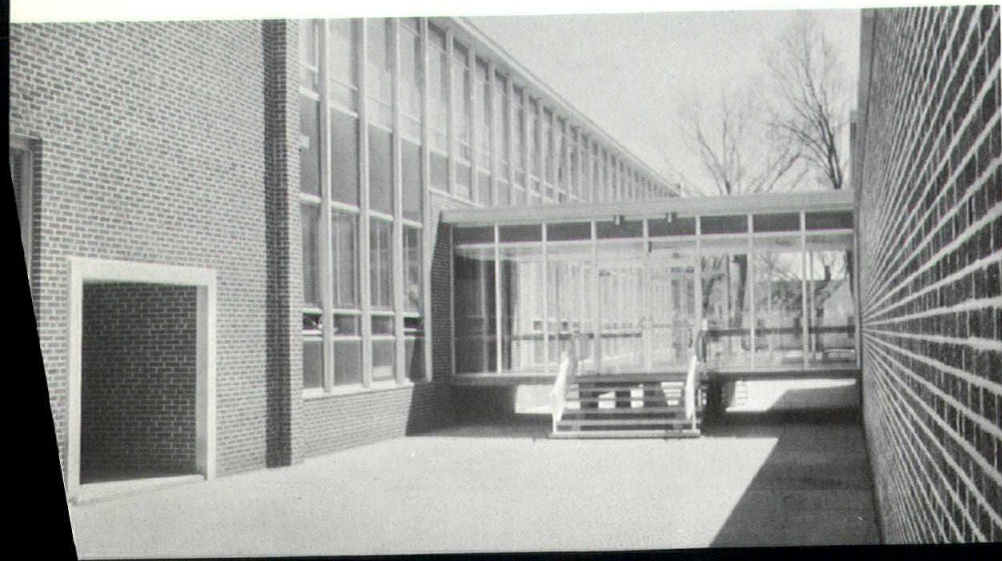
Above, Nearing completion,  
Board of Public Utilities,  
Kansas City, Kansas

Below, Set for start,  
CCA Research and Industrial  
Center, North Kansas City.  
Howard, Needles, Tammen &  
Bergendoff, associates.

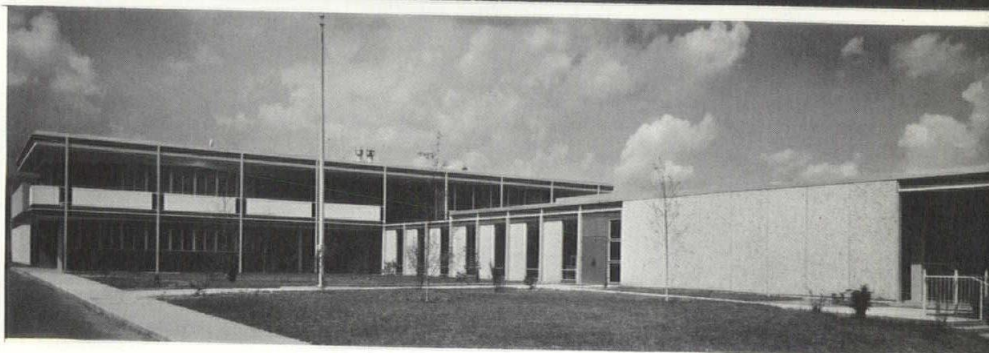
DAN R. SANDFORD & SONS



Top, Jess L. Taylor Memorial Building, Grandview High School  
Center, Construction underway for separate cafeteria and gymnasium  
building at new Lee's Summit Junior and Senior high schools  
Below, Junior high school addition, Reorganized School District 2,  
Chillicothe, Missouri



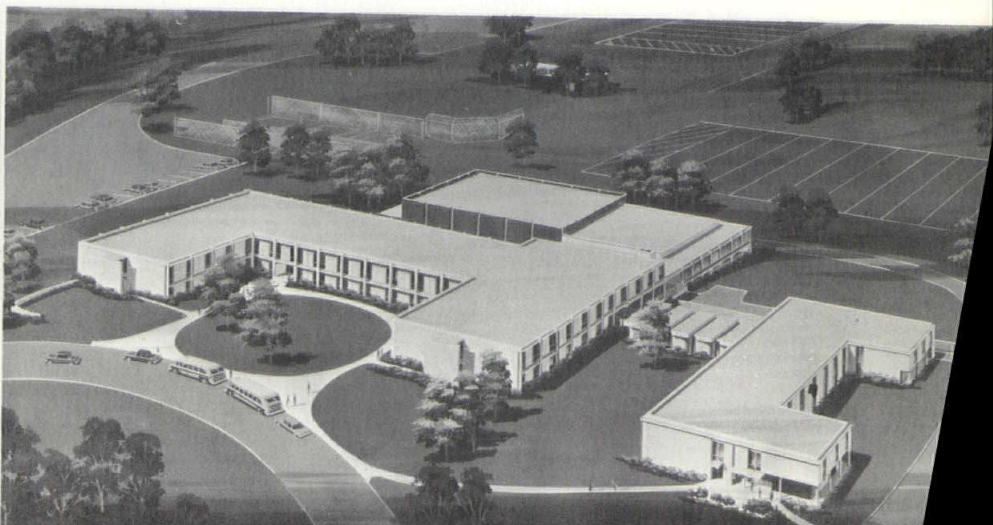
SHAUGHNESSY, BOWER & GRIMALDI

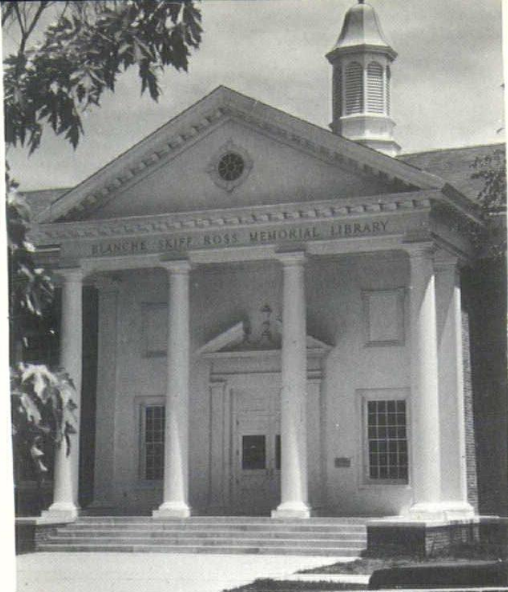


Top, St. Mary's Catholic Church, Parsons, Kansas

Center, St. Francis Xavier School and Convent, 53rd and Troost

Below, Rockhurst High School and Faculty Residence, 93rd and  
State Line Road





TANNER,  
LINSCOTT  
& ASSOC.



Top, Blanche Skiff Ross  
Memorial Library, Cottey  
College, Nevada, Missouri  
Center, Dr. George Hamilton  
Combs Memorial Chapel,  
Country Club Christian Church  
Lower right, Sears Roebuck &  
Company Parking Station,  
Country Club Plaza



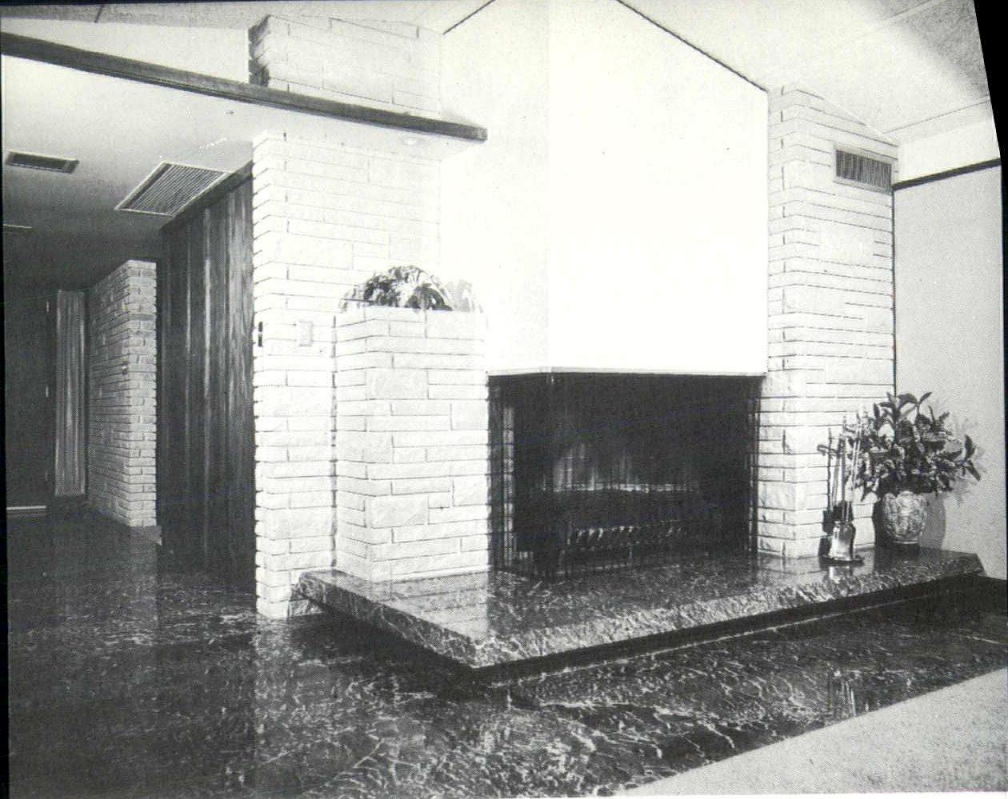


V. PRESTON TERRELL

Above, Hillcrest Elementary School,  
Belton

Below, R-III High School, Holden,  
Missouri





Rugged Split-Face Carthage Marble protects the outside of this house and forms the durable surface for many of the interior walls, finally framing this handsome fireplace.

Forest Green marble leads the visitor from the parking area with stepping stones, paves the covered entrance porch, and leads him through the door and down the entry hall to the fireplace, where it forms the wide, raised hearth.

Sparkling white Colorado Yule marble tops counters in kitchen, family room and dining room, finally reaches its focal point within the house with two huge slabs enclosing the chimney above the fireplace.

This is unity, purpose, and harmony in the architectural use of marble.

*Architect:* Albert C. Esterly, Springfield, Missouri

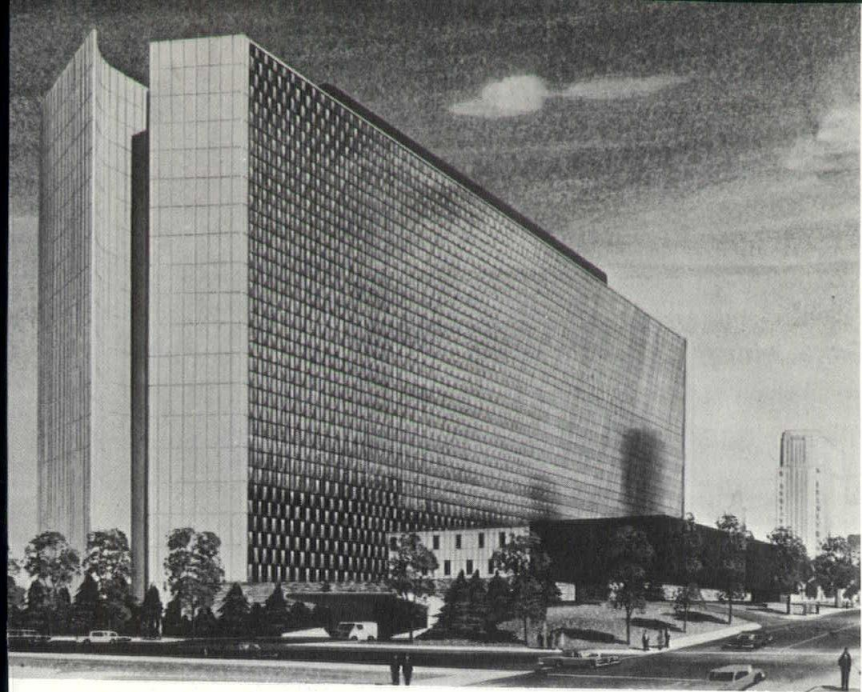
*The House:* M. E. Potter Residence, near Carthage, Missouri

# CARTHAGE MARBLE

3030 Wyoming  
Kansas City, Mo.

P.O. Box 718  
Carthage, Mo.





# **VOSKAMP & SLEZAK**

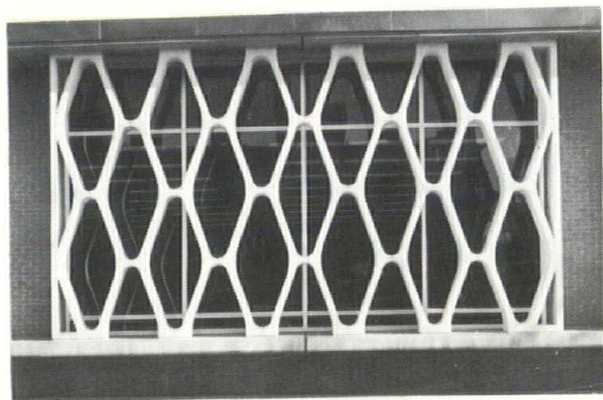
Above, Federal Office Building on the horizon for K.C.  
 Everitt and Keleti; Radotinsky, Meyn,  
 Deardorff; Howard, Needles, Tammen &  
 Bergendoff, associated.

Below, Old American Insurance  
 Company, 4900 Oak



# EXPOSED!

....aggregat



## ARCHITECTURAL

## FLEXIBILITY



**Capital-Journal Building**  
**Topeka, Kansas**  
**Kiene & Bradley, Architects**  
**M.W. Watson, Contractor**

**Lusco Brick and Stone Co.**  
**Wichita • Kansas City • Oklahoma City •**

## ADVERTISERS IN THIS ISSUE

	PAGE
Industrial Metals, Inc. . . . .	2nd Cover
Blumcraft of Pittsburgh . . . . .	4
Modern Center . . . . .	6
O'Brien Movable Partitions. . . . .	10
The Carter-Waters Corp. . . . .	14
Acme Brick Co. . . . .	18
Buildex, Inc. . . . .	22
Carthage Marble Corp. . . . .	28
Lusco Brick & Stone Co. . . . .	30
Zonolite Co. . . . .	31
Ronai Performance Materials, Inc. . . . .	3rd Cover
PFAC Contractor . . . . .	4th Cover

The readers of SKYLINES are responsible for purchasing, financing and designing at least 85 per cent of all construction in the Kansas-Missouri area. The above firms and associations have demonstrated their interest in reaching this important readership with their advertising message.



# DRY-HARD

## Zonolite Mono-Kote Fireproofing dries solid, not punky

Three things contribute to Mono-Kote's low installed cost on floors and beams. First, you use less material to get the fire rating required. Second, material cost is low to begin with. Third, installation is fast because Mono-Kote builds up fast, sets fast so you're ready for the second pass within minutes. And when you're through, it's solid. For complete information, write:

## ZONOLITE

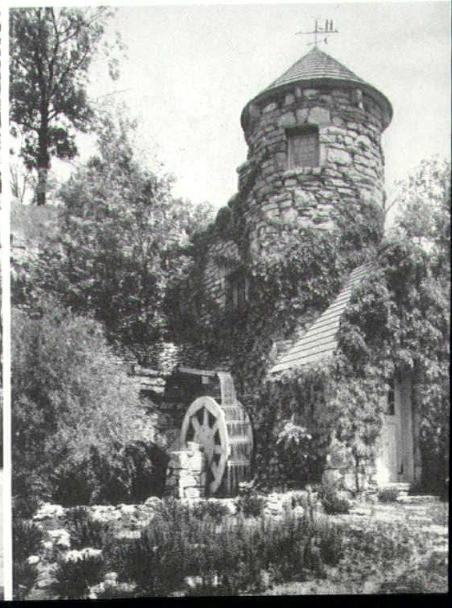
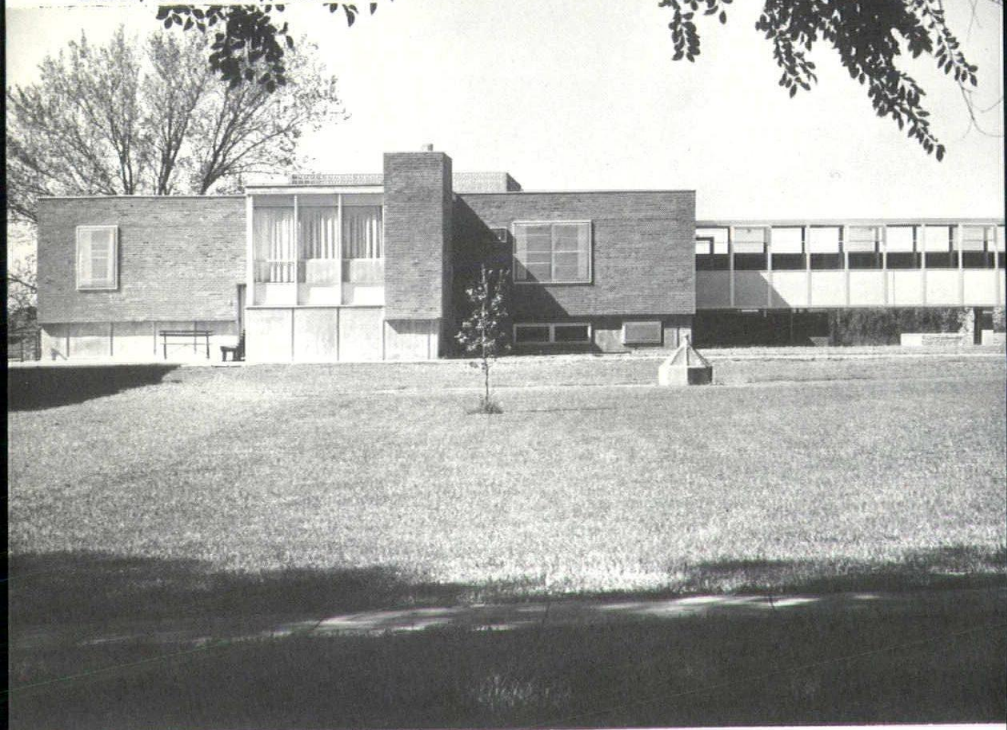
ZONOLITE COMPANY 135 S. LA SALLE STREET CHICAGO 3, ILLINOIS

**KEENE, SIMPSON & MURPHY**

Top, Conception Abbey  
Infirmary, Conception,  
Missouri, Keene & Simpson  
& Murphy

**LUTHER O. WILLIS**

Lower right, The Martin Mill  
House in Clay County  
Lower left, Congregational  
Church, Garden City, Kansas



# WHY ?

At NO GREATER APPLIED COST than conventional paint,

## ALL THIS:

- Ultimate in durability over any Paint system
- Minimum interruption maintenance-type finish
- You don't have to have spots
- Complete decorative flexibility of color—coarse or fine in tones, textures, blends or solids
- Proof of performance before acceptance
- Three-year Maintenance-free Service Agreement—Cost-free service guarantees surface to remain brand new for the first three years

**IF YOU HAVEN'T** been getting this kind of result **FOR YOUR CLIENT**—at a bid price of conventional painting—

Call Ronai for help—

- Specification writing
- Preliminary cost analysis
- Qualified painting contractor bids



**RONAI**

BA 1-6777

*Performance Materials, Inc.*

*200 Southwest Blvd. Kansas City 8, Mo.*



Zolatone



Wilbur  
&  
Williams



Devco  
Paint

AN IMPORTANT MESSAGE FOR

# SEPARATE MECHANICAL BIDDING IS EASY AS

## A. B. C.

- A.** The owner and/or architect takes bids on Mechanical installation direct from qualified sub-contractors.
- B.** The owner and/or architect incorporates the successful bid under one contract and awards the job to a general contractor for supervision.
- C.** The owner and/or architect is satisfied because he received most construction for his money.

call your...

**PFAC** contractor for better



When considering construction consult a registered architect and consulting engineer.

**SKYLINES**  
and  
MIDWEST ARCHITECT

960 Home Savings Building  
Kansas City 6, Missouri

**BULK RATE**  
U. S. POSTAGE  
**PAID**  
KANSAS CITY, MO.  
PERMIT NO. 3736

THE OCTAGON  
THE AM. INST. OF ARCH.  
1735 NEW YORK AVENUE NW  
WASHINGTON 6, D. C.

RETURN REQUESTED