

AMERICAN INSTITUTE  
OF  
ARCHITECTS

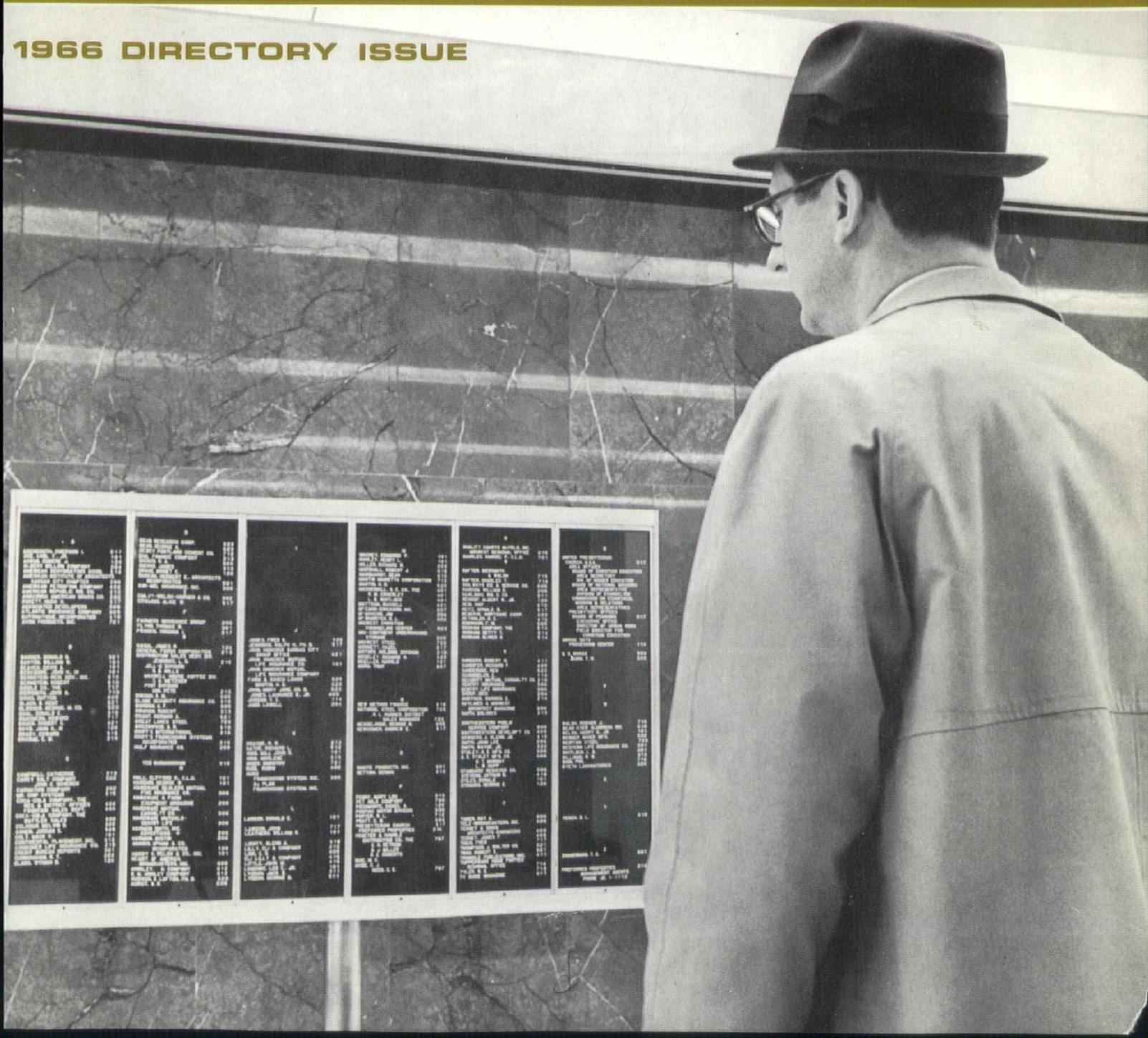
FEB 9 1966

LIBRARY

# SKYLINES

MIDWEST ARCHITECT / DECEMBER 1965 JANUARY 1966

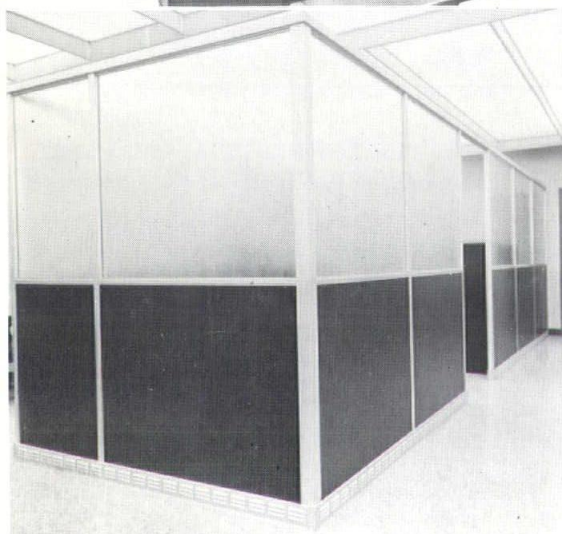
1966 DIRECTORY ISSUE



# How Folger Coffee Company added 33% more desks to their general offices . . .



COOPER-ROBISON & CARLSON, Architects



Photographed in  
the general offices of the  
Folger Coffee Company,  
division of Procter &  
Gamble.

Available work area was partitioned—designed for maximum utilization, most efficient work flow. Now  $\frac{1}{3}$  more workers enjoy the pleasant, attractive offices made possible by O'BRIEN Partitions manufactured in Kansas City from modern Masonite Royalcote Woodgrain Panels.



4905 LISTER  
KANSAS CITY, MISSOURI 64130

TELEPHONE  
(816) WABASH 3-9705

MOVABLE PARTITIONS ARE OUR ONLY BUSINESS

YOUR ASSURANCE OF SPECIALIZED SERVICE

**PUBLISHED BY THE  
KANSAS CITY CHAPTER  
AMERICAN INSTITUTE OF ARCHITECTS**



**VOLUME 16 / NUMBER 1 / DECEMBER 1965 JANUARY 1966**

**EXECUTIVE OFFICERS:**

Herbert E. Duncan, Jr., President  
John E. Jameson, Vice President  
Joseph J. Oshiver, Secretary  
Clarence F. Watson, Treasurer

**EDITORIAL BOARD:**

Richard E. Gyllenborg, Chairman  
Frederick P. Chael  
James R. Combs  
Keith Edwards  
M. Neil Hansen  
Theodore H. Seligson

**EXECUTIVE OFFICE STAFF:**

John Lee Smith, Executive Secretary  
Austin Harmon, Skylines Editor

**DIRECTORS:**

Roger F. Blessing, Jr., 1964-1967  
William M. Conrad, 1965-1968  
C. James Balderson, 1966-1969

SKYLINES is the official publication of, and is published bi-monthly by the Kansas City Chapter of the American Institute of Architects at 800 West 47th Street, Kansas City, Missouri 64112. Telephone (816) Plaza 3-8567. Subscriptions for A.I.A. members are included with A.I.A. memberships. Subscriptions for non-members, \$3.00 per year; \$8.00 for three years. Single copies 50c, special roster directory issue \$1.50.

Opinions expressed herein are those of the editor or contributors and the appearance of products or services, names or pictures in either advertising or editorial copy does not necessarily constitute endorsement of the product by the Kansas City Chapter of the American Institute of Architects. Advertising in SKYLINES is subject to the approval of the Executive Committee. Copyright 1966, Kansas City Chapter of the American Institute of Architects.

Cover photograph by Swetman & Greer, Illustrative photography, HA 1-6484

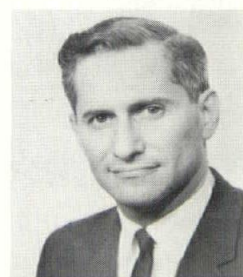
**NEW  
CHAPTER  
OFFICERS  
ELECTED  
DECEMBER 21**



**PRESIDENT.**  
Herbert E. Duncan, Jr.,  
partner in Herbert E.  
Duncan Architects, Inc.,  
800 West 47th Street,  
Kansas City, Missouri.



**VICE PRESIDENT.**  
John E. Jameson, partner  
in Voskamp & Slezak,  
Architects,  
18 East Eleventh Street,  
Kansas City, Missouri.



**SECRETARY.**  
Joseph J. Oshiver,  
Architect,  
1005 Grand Avenue,  
Kansas City, Missouri.



**TREASURER.**  
Clarence F. Watson,  
Partner in McCall-Watson,  
822 Argyle Building,  
Kansas City, Missouri.



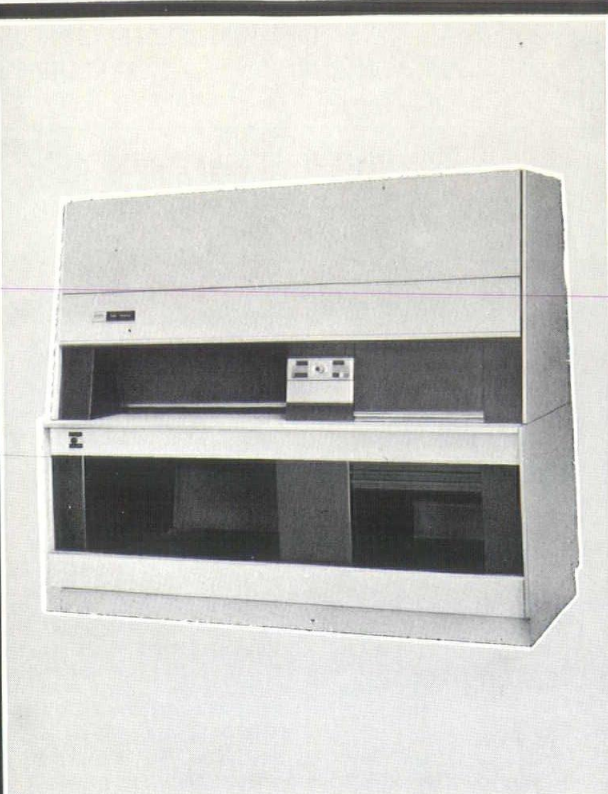
**DIRECTOR.**  
Roger F. Blessing, Jr.,  
partner in Horner &  
Blessing, Architects,  
801 Commerce Trust  
Building,  
Kansas City, Missouri.



**DIRECTOR.**  
C. James Balderson,  
associated with Angus  
McCallum, Architect,  
1221 Baltimore Avenue,  
Kansas City, Missouri.



**DIRECTOR.**  
William M. Conrad,  
Architect,  
4149 Pennsylvania,  
Kansas City, Missouri.



**What? Lane is  
first with a Xerox  
1860 Printer,  
too?**

That's right, Lane Blueprint is first with a remarkable advance in low cost print making! The new Xerox 1860 Printer actually produces high quality paper offset masters, vellum intermediates, and **reduced-size prints** up to 18" x 60" from originals as large as 36" x 120". Your material is produced in a few seconds ready for immediate use, and can be made 100%, 95%, 75%, 62%, 50% or 45% the size of your original.

The Xerox 1860 copies pencil and all colors—in sharp, clean black-on-white of anything written, drawn, printed or typed. You can use originals up to 1/8" thick, single sheet or board mounted. Prints can be written on with pen or pencil, and are so inexpensive you can throw them away after use.

Take advantage of this new Lane service now... you'll be quality and dollars ahead.

**For the most complete reproduction facilities call Lane at BA 1-2225.  
900 Baltimore Ave., Kansas City, Mo.**

**CONSTRUCTION THE MATERIALS**  
**CARTER-WATERS**  
**KANSAS CITY CORP. MO. 64108**

**diversified materials service**

—offers you a single source of supply for a wide range of products and services. Carter-Waters manufactures or jobs well over a hundred major construction materials, some of which are listed below. A telephone call, a letter, or **this coupon** will bring you the information you want, whether specifying, bidding or building. Just mark, tear out and mail:

**Send Complete Information On:**

- ☐ AD-AIRE
- ☐ ASPHALT SEAL COAT
- ☐ BAR SUPPORTS
- ☐ BLOK-JOINT
- ☐ BLOK-MESH
- ☐ BRICK
- ☐ COFAR
- ☐ CORRUFORM
- ☐ CULVERT PIPE
- ☐ DEK-SEAL
- ☐ EPOXIES
- ☐ EXPANSION JOINT
- ☐ FENESTRA DOORS & FRAMES
- ☐ GLAZED TILE
- ☐ GUARD RAIL
- ☐ HAYDITE AGGREGATE
- ☐ HUNT PROCESS
- ☐ JAHN FORMS
- ☐ JOINT SEALER
- ☐ REINFORCING BARS
- ☐ SATUROCK
- ☐ STEEL ROOF DECK
- ☐ SONAIRDUGT
- ☐ SONOTUBES
- ☐ SONOVOIDS
- ☐ STRIP-EEZ
- ☐ TUF COR
- ☐ WELDED WIRE MESH

NAME.....

FIRM.....

ADDRESS.....

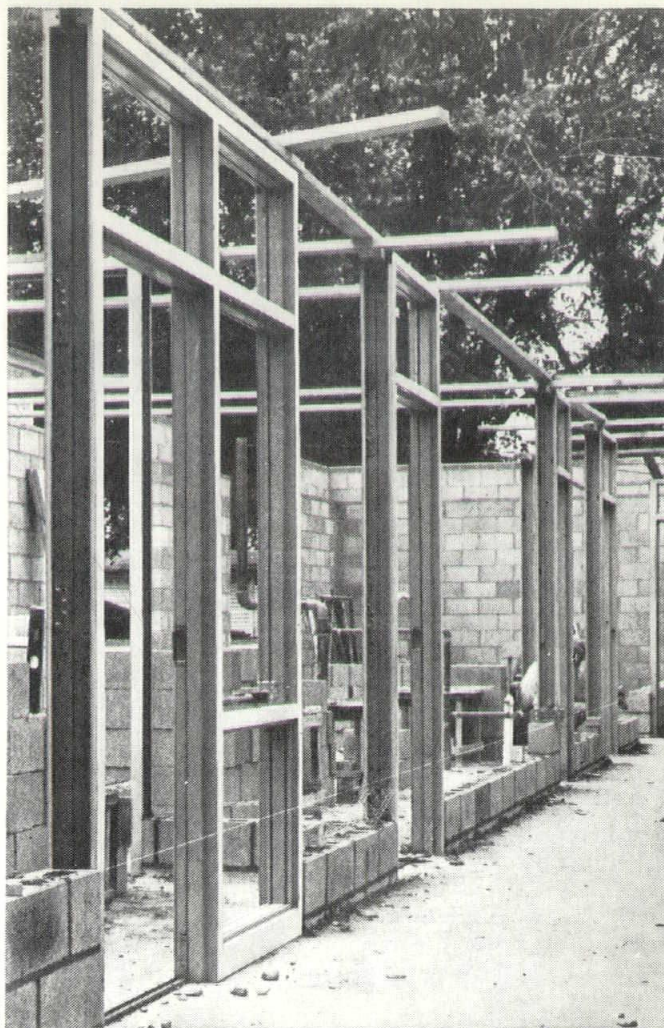
CITY & STATE.....

☐ Architect ☐ Engineer ☐ Contractor

MAIL TO: The Carter-Waters Corp.  
2440 Pennway • Kansas City, Mo. 64108  
Telephone GRand 1-2570  
SMA-12A

# HOLLOW METAL

## doors and frames



**Fenestra Steel Doors and Frames with the "Custom Touch" provided by Carter-Waters' fabrication service.**

Two important factors are working for you when you take advantage of Carter-Waters' Fenestra service: 1. The proven quality and reputation of the famous Fenestra line. 2. The outstanding fabrication service offered by Carter-Waters' skilled fabricators. Doors and frames are fabricated in our shop, from warehouse stock, to your specifications, for jobsite delivery without delays. Call us before you specify or bid. You'll like this new "Custom Touch" service.

diversified materials service





# *Schoolline* semi-concealed wardrobe by VOGEL-PETERSON

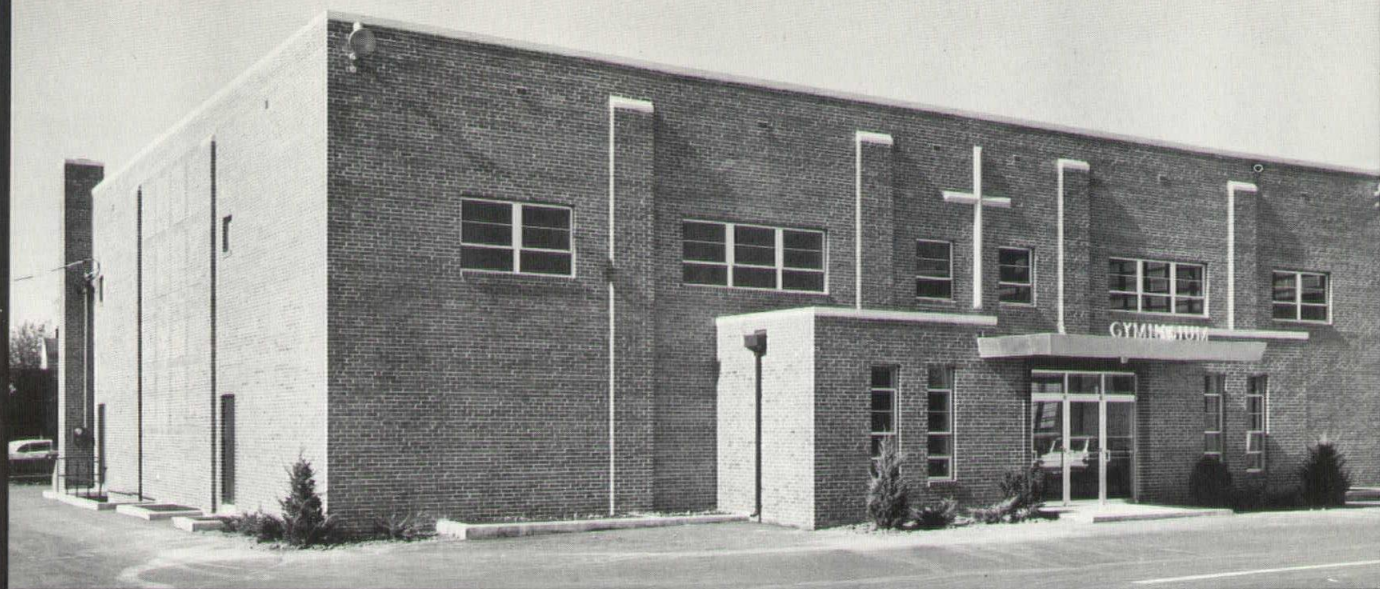
"The newest and most exciting answer yet for the classroom wraps problem" . . . That's the almost universal reaction of architects and school administrators. *Colorful:* Faced with panels of attractive vinyl covered tack-board in Aqua, Coral, Gray, Off-white, Mocha or chalkboard. *Space Savers:* Sixteen students per wardrobe without crowding—or 2 for the average classroom. *Sanitary:* Healthfully dry and open to air and light. *Safe and Quiet:* Provide confusion free access with no doors to slam, jam or pinch fingers. *Economical:* Require no recessed areas or special vent ducts—delivered as complete teaching service area package, quickly installed and easily maintained.

Telephone: Adams 6-4100

**Arnold-Newbanks, Inc.**

*Building Products and School Equipment*

27 Southwest Boulevard, Kansas City, Kansas 66103



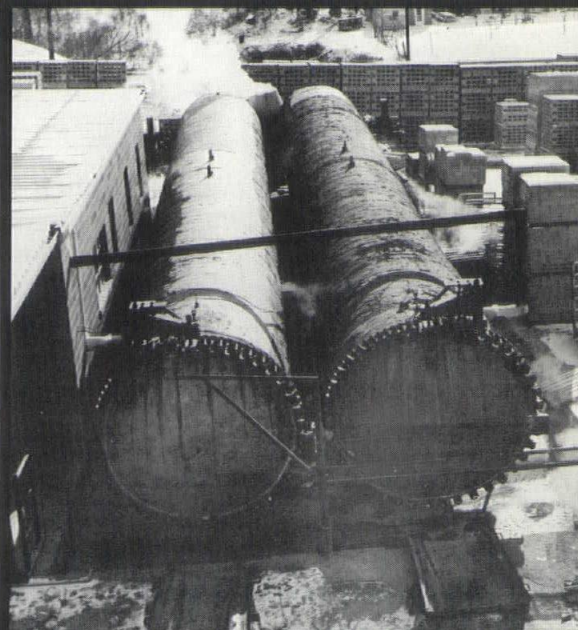
CITY BLOCK pre-shrunk masonry units were specified in Christ the King Parish Gymnasium, Kansas City, Missouri. Architect: Marra & Law; General Contractor: J. E. Dunn Construction Company.

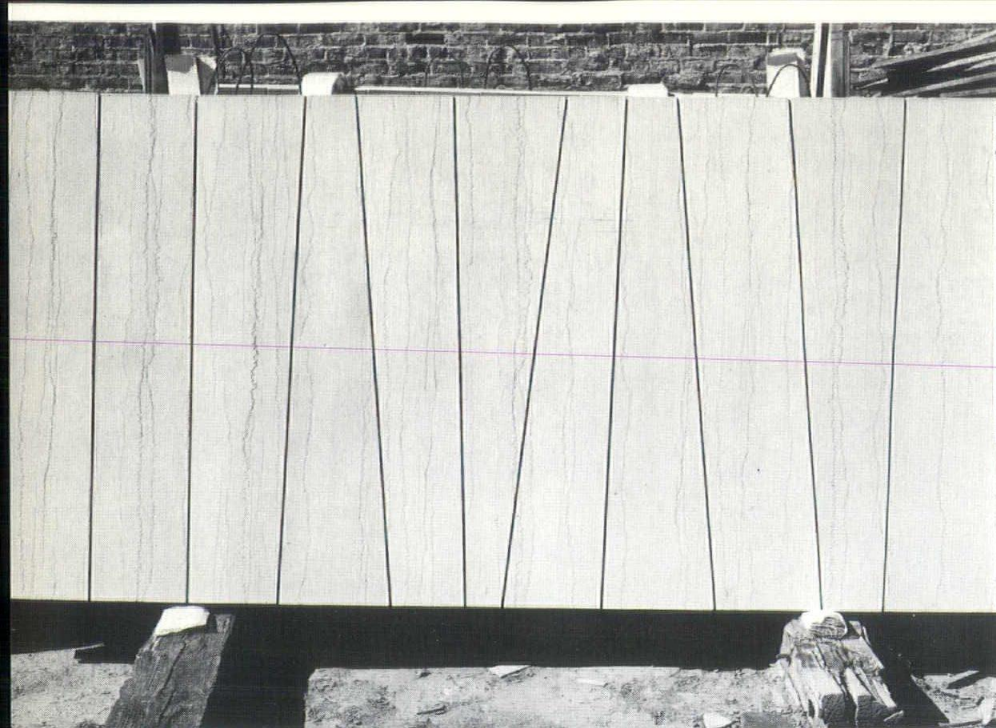
## CITY BLOCK'S PRE-SHRUNK MASONRY UNITS ELIMINATE "AFTER BUILDING" SHRINKAGE!

High pressure steam cured for eight hours, CITY BLOCK'S pre-shrunk masonry units have a maximum moisture content of 30% with maximum linear shrinkage .030. These are specifications you can count on... and the blocks can be delivered in one day's time! CITY BLOCK'S remarkable new 80 foot long dual high pressure steam curing vessels cure blocks at a temperature of 360° F under pressure of 150 lbs. P. S. I. for consistent product uniformity and building reliability.

For more information contact  
**CITY BLOCK  
AND PRODUCTS  
COMPANY**  
1212 West 24 Highway /  
Independence /  
Missouri 64050  
Telephone (816) Clifton 2-8760

**CITY  
BLOCK  
AND  
PRODUCTS  
COMPANY**





Segments of Carthage Texture Vein marble create patterns of light and shadow on this precast panel, designed by Architects Schaefer, Schirmer and Eflin.

NAME:

American Savings and Loan  
Wichita, Kansas

ARCHITECT:

Schaefer, Schirmer and Eflin

GENERAL CONTRACTOR:

E. W. Johnson, Inc.

MARBLE:

Carthage Texture Vein  
Carthage Marble Corporation

PRECASTER:

Harter Concrete Products, Inc.

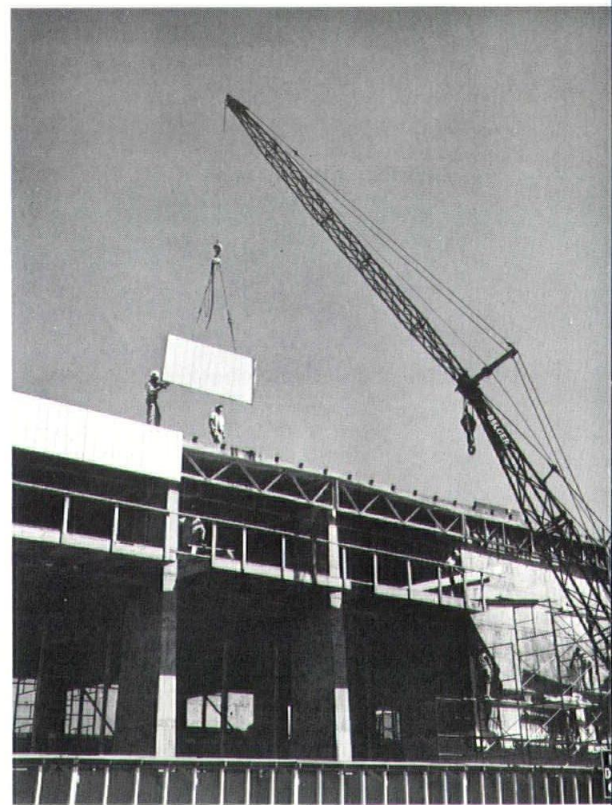
## Look what they're doing with Carthage marble!

*They're sand-blasting it* to produce a rough, clean, near-white surface etched with the marble's own pattern of fine, parallel veins. They call the new finish Carthage Texture Vein, and it actually costs less than sand-rubbed Carthage marble!

*They're using it as facing for precast panels*, like these going into place along the fascia of the new American Savings and Loan Building in Wichita. The panels are roughly 4'6" high by 9' long. The concrete is 21½" thick with a 7/8" facing of Carthage Texture Vein.

*They're cutting it into segments*, then putting the segments back together again to form unique designs. A case in point: these panels designed by Architects Schaefer, Schirmer and Eflin of Wichita.

Look what they're doing with Carthage marble, then do it yourself . . . or do them one better!



Guided by workmen on the roof, derrick lowers panel into position.



CARTHAGE MARBLE CORPORATION

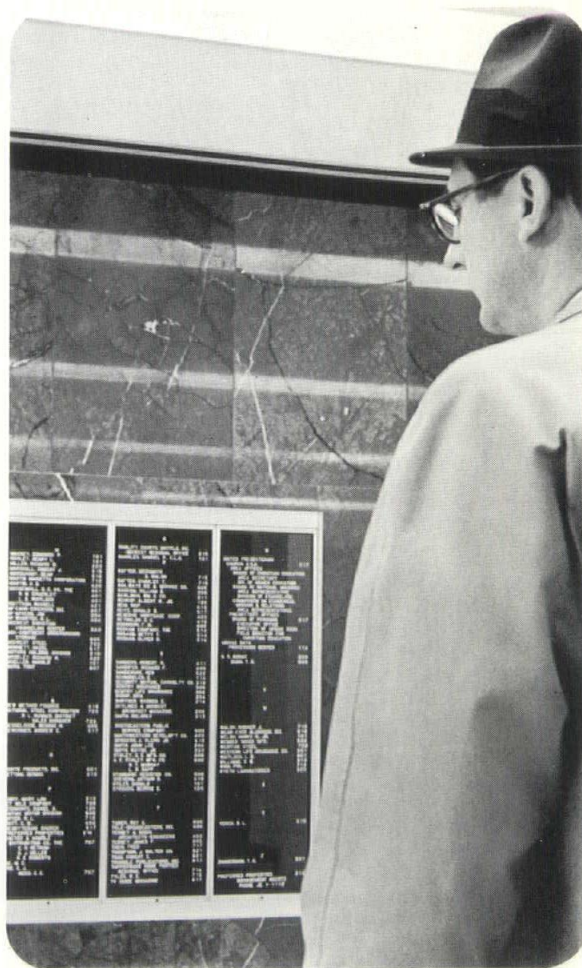
P. O. BOX 718 / CARTHAGE, MO.

3030 WYOMING / KANSAS CITY, MO.



# 1966 MEMBERSHIP DIRECTORY

The objectives of The American Institute of Architects shall be to organize and unite in fellowship the architects of the United States of America; to combine their efforts so as to promote the aesthetic, scientific, and practical efficiency of the profession; to advance the science and art of planning and building by advancing the standards of architectural education, training and practice; to coordinate the building industry and the profession of architecture to insure the advancement of the living standards of our people through their improved environment; and to make the profession of ever-increasing service to society.





**FELLOWS**  
AMERICAN  
INSTITUTE  
OF ARCHITECTS

**KEENE, ARTHUR S. (Emeritis)**  
333 Meyer West / HI 4-4707  
Kansas City, Missouri 64113  
Wife: Helen

**MURPHY, JOHN T.**  
Keene, Simpson & Murphy / HA 1-7633  
911 Main  
Kansas City, Missouri 64105  
Wife: Martha / JE 1-0825  
968 West 32nd Street  
Kansas City, Missouri 64111

**MYERS, RALPH E.**  
Kivett & Myers / VI 2-8110  
1016 Baltimore  
Kansas City, Missouri 64105  
Wife: Jean / EN 2-8786  
5530 Mission Drive  
Shawnee Mission, Kansas 66208

**ROARK, I. LLOYD**  
Roark & See / PL 3-2285 & JA 3-8368  
3611 Main  
Kansas City, Missouri 64111  
Wife: Aldene / HE 2-2052  
5017 West 66th Terrace  
Mission, Kansas 66208

**SLEZAK, FRANK R.**  
Voskamp & Slezak / GR 1-4575  
18 East 11th Street  
Kansas City, Missouri 64106  
Wife: Lora / PL 3-1164  
827 Valentine Road  
Kansas City, Missouri 64111



**EMERITUS  
MEMBERS**  
AMERICAN  
INSTITUTE  
OF ARCHITECTS

**BOVARD, WILLIAM R.**  
William R. Bovard, Architect /  
LO 1-7724  
3614 Wyoming  
Kansas City, Missouri 64111

**BROSTROM, ERNEST O.**  
Ernest Brostrom, Architect  
1604 Terrie Drive  
Bridgeville, Pennsylvania 15017  
Wife: Esther

**KRIEHN, ARTHUR**  
Arthur Kriehn, Architect / CO 2-3032  
5435 Pawnee  
Shawnee Mission, Kansas 66205

**MARCOUX, JOSEPH V.**  
George M. Ewing Company /  
WO 1-8283  
6200 U.S. Post Office Building  
12th & Pennsylvania Avenue N. W.  
Washington, D.C. 20006  
Wife: Clara / TE 6-1677  
3204 Ravensworth Place  
Alexandria, Virginia 22302

**MEIER, EUGENE RALPH**  
Eugene R. Meier, Architect / AD 4-5875  
816 North 11th Street  
St. Joseph, Missouri 64501  
Country Club Place / AD 2-2700  
St. Joseph, Missouri

**SANDFORD, DAN R., SR.**  
Dan R. Sandford & Sons / JE 1-3450  
800 Westport Road  
Kansas City, Missouri 64111  
Wife: Grace / MI 9-0201  
7736 Home Drive  
Shawnee Mission, Kansas 66208

**SCHUMACHER, RAMON**  
Ramon Schumacher, Architect /  
LO 1-5155  
750 West 47th Street  
Kansas City, Missouri 64112  
Wife: Ina

**SIEBEN, SIGMUND H.**  
6436 Morningside / JA 3-8634  
Kansas City, Missouri 64113  
Wife: Helen

**TANNER, EDWARD W.**  
2921 West 69th Street / EN 2-7170  
Shawnee Mission, Kansas 66208  
Wife: Katherine K.

**WILLIS, LUTHER O.**  
1305 East Armour / LO 1-0392  
Kansas City, Missouri 64109



**CORPORATE  
MEMBERS**  
AMERICAN  
INSTITUTE  
OF ARCHITECTS

**ANDREWS, LEWIS P.**  
Lewis P. Andrews & Associates /  
WE 1-0404  
406 West 34th Street  
Kansas City, Missouri 64111  
Wife: Jane / EN 2-6423  
6541 High Drive  
Shawnee Mission, Kansas 66208

**BAKER, JAMES ROBERT**  
Tanner-Linscott & Associates /  
LO 1-3456  
310 Ward Parkway  
Kansas City, Missouri 64112  
Wife: Frances / HI 4-0079  
8300 Madison  
Kansas City, Missouri 64114

**BALDERSON, C. JAMES**  
C. James Balderson, Architect /  
MI 9-8644  
7751 Canterbury Road  
Prairie Village, Kansas 66208  
Wife: Jo Anne / MI 9-8644  
7751 Canterbury Road  
Prairie Village, Kansas 66208

**BARTON, WILLIAM C.**  
William C. Barton, Architect /  
WE 1-2866  
406 West 34th Street  
Kansas City, Missouri 64111  
Wife: Betty / HE 2-0793  
4711 West 65th Street  
Shawnee Mission, Kansas 66201

**BARU, GERALD B.**  
Marshall & Brown / HA 1-2400  
1016 Baltimore Avenue  
Kansas City, Missouri 64105  
Wife: Evelyn / RA 2-4589  
7301 Newton  
Overland Park, Kansas 66204

**BAYERL, EMIL O.**  
Emil O. Bayerl, Architect / VI 2-1559  
20 West 9th Street  
Kansas City, Missouri 64105  
Wife: Helen / LO 1-3901  
500 Knickerbocker Place  
Kansas City, Missouri 64111

**BELL, DAVID H. M.**  
Monroe & Lefebvre / HA 1-7478  
818 Grand Avenue  
Kansas City, Missouri 64106  
Wife: Gay / MI 9-1488  
3117 West 79th Street  
Prairie Village, Kansas 66208

**BLESSING, ROGER F., JR.**  
Horner & Blessing / BA 1-0540  
801 Commerce Trust Building  
Kansas City, Missouri 64106  
Wife: Jeanne / RA 2-3177  
7208 Lowell Avenue  
Overland Park, Kansas 66204

**BLOCK, WILLIAM E.**  
William E. Block, Architect / EM 7-2736  
318 Commercial  
Atchison, Kansas 66002  
Wife: Shirley / EM 7-4231  
321 Atchison  
Atchison, Kansas 66002

**BOWER, EDMUND L., SR.**  
Shaughnessy, Bower & Grimaldi /  
PL 3-1155  
3543 Broadway  
Kansas City, Missouri 64111  
Wife: Nelle / AD 6-6823  
3614 West 50th Terrace  
Shawnee Mission, Kansas 66205

**BOWKER, LEON JACK**  
Black & Veatch / EM 3-1402  
1500 Meadow Lake Parkway  
Kansas City, Missouri 64114  
Wife: Betrenia / HI 4-6277  
1821 East 76th Terrace  
Kansas City, Missouri 64132

**BOYLE, KENNETH ROY**

Boyle & Wilson / NI 2-3794  
8017 Floyd  
Overland Park, Kansas 66204  
Wife: Norma / HE 2-6763  
6520 Eby  
Merriam, Kansas 66202

**BRADY, CHARLES W.**

C. Wynn Brady, Architect / GI 3-3362  
909 Cherry  
Columbia, Missouri 65201  
Wife: Nancy / GI 2-6723  
3308 Isherwood Circle  
Columbia, Missouri

**BRANDT, FRANK O.**

Keene, Simpson & Murphy /  
HA 1-7633  
911 Main Street  
Kansas City, Missouri 64105  
Wife: Wanda / RA 2-5870  
2008 West 60th Terrace  
Shawnee Mission, Kansas 66205

**BREY, DAVID MARTIN**

D. M. Brey & Associates / VI 2-6762  
306 East 12th Street  
Kansas City, Missouri 64106  
Wife: Ruth / HI 4-4025  
214 East 73rd Street  
Kansas City, Missouri 64114

**BROWN, M. DWIGHT**

Marshall & Brown / HA 1-2400  
1016 Baltimore Avenue  
Kansas City, Missouri 64105  
Wife: Gayle / DE 3-2777  
815 East 77th Street  
Kansas City, Missouri 64131

**CAREY, JOHN L.**

John L. Carey, Architect / GR 1-0183  
617 City National Bank Building  
Kansas City, Missouri 64106  
Wife: Patricia / TU 8-5913  
10302 West 89th Terrace  
Overland Park, Kansas 66204

**CHAMPLIN, ROBERT EARL**

Robert Champlin, Architect /  
WE 1-8119  
4550 Main  
Kansas City, Missouri 64111  
Wife: Katherine / RA 2-0034  
7209 Hadley  
Overland Park, Kansas 66204

**CHINN, PON YING**

Chinn, Darrough & Company /  
GI 2-9335  
810 East Broadway  
Columbia, Missouri 65201  
Wife: Elsa C. / GI 9-6642  
#5 Willis Avenue  
Columbia, Missouri

**CLARK, DAVE P.**

Dave P. Clark, Architect / 449-6349  
302 Miller Building  
Columbia, Missouri 65201  
Wife: Ethel / 449-5982  
417 West Walnut Street  
Columbia, Missouri

**CONRAD, WILLIAM M.**

W. M. Conrad, Architect / WE 1-0200  
4149 Pennsylvania  
Kansas City, Missouri 64111  
Wife: Esther / RA 2-3398  
6120 West 69th Street  
Overland Park, Kansas 66204

**COOMBS, KENNETH E.**

Kenneth E. Coombs, City Architect /  
BA 1-1400  
City Hall  
414 East 12th Street  
Kansas City, Missouri 64106  
Wife: Gerry  
1347 East 109th Terrace  
Kansas City, Missouri 64131

**COOPER, CECIL E.**

Cooper, Robison & Carlson /  
HA 1-6587  
413 Commerce Trust Building  
Kansas City, Missouri 64106  
Wife: Theresa / NI 2-3529  
9721 Lee Boulevard  
Shawnee Mission, Kansas 66206

**COWLING, ROBERT**

Robert Cowling, Architect / HA 1-6550  
1221 Baltimore  
Kansas City, Missouri 64105  
Wife: Grace / WI 2-3527  
629 East 96th Street  
Kansas City, Missouri 64131

**CRAGIN, WILLIAM J.**

Porter-Brierly Associates / 442-1495  
2211 Country Lane  
Columbia, Missouri 65201  
Wife: Cora / 442-1495  
2211 Country Lane  
Columbia, Missouri 65201

**CURTIS, CONRAD J.**

Curtis Associates / LO 1-5450  
4324 Main  
Kansas City, Missouri 64111  
Wife: Mary / CO 2-4185  
4214 West 63rd Street  
Prairie Village, Kansas 66208

**DAVIDSON, GEORGE J.**

Director of New Building Inspection  
School District of Kansas City /  
BA 1-3157  
800 East 21st Street  
Kansas City, Missouri 64108  
Wife: Ruth / JA 3-6215  
7305 Pennsylvania  
Kansas City, Missouri 64114

**DAW, JOHN L.**

John Daw, Architect / GR 1-6885  
912 Baltimore  
Kansas City, Missouri 64105  
Wife: Alberta / HI 4-2567  
812 West 60th Terrace  
Kansas City, Missouri 64113

**DEARDORFF, FRED M.**

7214 West 65th Street  
Overland Park, Kansas 66204  
Wife: Mary / HE 2-1814

**DUNCAN, HERBERT E., SR.**

Herbert E. Duncan & Associates /  
LO 1-6900  
800 West 47th Street  
Kansas City, Missouri 64112  
Wife: Evelyn / DE 3-3811  
439 West 58th Street  
Kansas City, Missouri 64113

**DUNCAN, HERBERT E., JR.**

Herbert E. Duncan & Associates /  
LO 1-6900  
800 West 47th Street  
Kansas City, Missouri 64112  
Wife: Pat / NI 8-4533  
Lake Quivira  
Kansas City, Kansas 66106

**DUY, H. DONALD**

Cooper, Robison & Carlson /  
HA 1-6587  
418 Commerce Trust Building  
Kansas City, Missouri 64106  
Wife: Dorothy / FA 1-2181  
3501 Longwood  
Kansas City, Kansas 66104

**EDWARDS, KEITH**

Burns & McDonnell / DE 3-4375  
P.O. Box 173  
Kansas City, Missouri 64141  
Wife: Jodean / WI 2-9833  
9717 Baltimore Avenue  
Kansas City, Missouri 64114

**ERNST, F. GENE**

Urban Renewal Agency / FI 2-0222  
619 Ann Avenue  
Kansas City, Kansas 66101  
Wife: Marjorie / NI 2-7277  
4725 West 78th Street  
Prairie Village, Kansas 66208

**EVERITT, ROBERT S.**

Robert S. Everitt, Architect /  
GR 1-4100  
2305 Commerce Tower  
Kansas City, Missouri 64199  
Wife: Paulina / CL 2-5422  
107 East South Side Boulevard  
Independence, Missouri 64050

**FISHER, FRANK H.**

Marshall & Brown / HA 1-2400  
1016 Baltimore  
Kansas City, Missouri 64105  
Wife: Polly / NI 2-3975  
4509 West 78th Street  
Prairie Village, Kansas 66208

**FOLGER, EVANS**

Folger & Pearson / GR 1-8383  
1009 Baltimore  
Kansas City, Missouri 64105  
Wife: Paula / HE 2-2409  
4714 West 69th Terrace  
Prairie Village, Kansas 66208

**FORD, RONALD W.**

Cooper, Robison & Carlson /  
HA 1-6587  
418 Commerce Trust Building  
Kansas City, Missouri 64106  
Wife: Shirley A. / NI 2-3556  
7800 Ash  
Shawnee Mission, Kansas 66208

**FRANKLIN, GEORGE W.**

Franklin-Friese / PL 3-1010  
3706 Broadway  
Kansas City, Missouri 64111  
Wife: Frances / EN 2-8398  
2921 West 73rd Street  
Shawnee Mission, Kansas 66202

**FRIEZE, CLARENCE I., JR.**  
Franklin-Frieze / PL 3-1010  
3706 Broadway  
Kansas City, Missouri 64111  
Wife: Babs / EN 2-6512  
2904 West 73rd Street  
Shawnee Mission, Kansas 66202

**FULLER, EDWARD M.**  
Edward M. Fuller, Architect /  
GR 1-3479  
701 East 14th Avenue  
North Kansas City, Missouri 64116  
Wife: Eleanor / GL 2-1232  
503 Sagamore Lane  
Kansas City, Missouri 64116

**FULLERTON, WILLIAM B., JR.**  
Fullerton & Associates / VI 2-7110  
15 West 10th Street  
Kansas City, Missouri 64105  
Wife: Ruby / CL 2-7346  
604 Red Road  
Independence, Missouri 64050

**GEIS, LOUIS H.**  
Geis-Hunter / GR 1-3633  
1627 Main  
Kansas City, Missouri 64108  
Wife: Helen / MI 9-0490  
8606 Belinder Road  
Leawood, Kansas 66206

**GENTRY, ALONZO H.**  
Alonzo H. Gentry, Architect / JE 1-4118  
750 West 47th Street  
Kansas City, Missouri 64112  
Wife: Ernestine

**GERAUGHTY, THOMAS J.**  
Morley & Geraughty / VI 2-8242  
911 Main  
Kansas City, Missouri 64105  
Wife: Virginia / HE 2-0737  
5209 West 67th Street  
Shawnee Mission, Kansas 66202

**GILLESPIE, WILES L.**  
Howard, Needles, Tammen &  
Bergendoff / BA 1-6900  
1805 Grand Avenue  
Kansas City, Missouri 64108  
Wife: Margaret / LO 1-0838  
4017 Locust  
Kansas City, Missouri 64110

**GRIMALDI, FRANK**  
Shaughnessy, Bower & Grimaldi /  
PL 3-1155  
3543 Broadway  
Kansas City, Missouri 64111  
Wife: Mary Jane / JA 3-4235  
5505 Oak  
Kansas City, Missouri 64113

**GUNN, CLAUDE M.**  
Claude M. Gunn & Associates /  
HA 1-8324  
114 West 10th Street  
Kansas City, Missouri 64105  
Wife: Helen / DU 1-1986  
9235 Woodward  
Overland Park, Kansas 66212

**GYLLENBORG, RICHARD E.**  
Hollis & Miller / NI 2-6111  
9417 West 75th Street  
Overland Park, Kansas 66204  
Wife: Anne / MI 9-8767  
7814 Canterbury  
Prairie Village, Kansas 66208

**HANSEN, M. NEAL**  
Mullin & Hansen / FA 1-4227  
1401 Fairfax Trafficway  
Kansas City, Kansas 66115  
Wife: Adda Lee / HE 2-2505  
6545 Eby  
Shawnee Mission, Kansas 66202

**HAYLETT, WARD H., JR.**  
Linscott, Kiene & Haylett / JE 1-7700  
917 West 43rd Street  
Kansas City, Missouri 64111  
Wife: Jeanette / HI 4-2764  
219 West 68th Street  
Kansas City, Missouri 64113

**HAYS, R. PRICE**  
R. Price Hays, Architect / MI 9-8284  
7009 West 81st Street  
Overland Park, Kansas 66204  
Wife: Betty Jean / DU 1-0868  
7604 Chadwick  
Prairie Village, Kansas 66208

**HEWITT, JOHN M.**  
Hewitt & Royer / LO 1-1070  
607 Westport Road  
Kansas City, Missouri 64111  
Wife: Alice / EN 2-4321  
3104 West 72nd Street  
Prairie Village, Kansas 66208

**HOLLIS, DONALD R.**  
Hollis & Miller / NI 2-6111  
9417 West 75th Street  
Overland Park, Kansas 66204  
Wife: Leah / DU 1-0696  
7642 Hemlock  
Overland Park, Kansas 66204

**HORNER, DWIGHT C.**  
Horner & Blessing / BA 1-0540  
801 Commerce Trust Building  
Kansas City, Missouri 64106  
Wife: Josephine / ME 1-7962  
Lake Quivira  
Kansas City, Kansas 66106

**HORNER, JOHN R.**  
Horner & Krause / DR 1-1132  
1401 Fairfax Trafficway  
Kansas City, Kansas 66115  
Wife: Beryl / ME 1-8151  
Lake Quivira  
Kansas City, Kansas 66106

**HUNTER, BENJAMIN R.**  
Geis-Hunter / GR 1-3634  
1627 Main  
Kansas City, Missouri 64108  
Wife: Jo Ann / DE 3-7659  
427 East 55th Street  
Kansas City, Missouri 64110

**JACKSON, JEROME D.**  
Tanner-Linscott & Associates /  
LO 1-3456  
310 Ward Parkway  
Kansas City, Missouri 64112  
Wife: Mary / CO 2-1333  
5333 Mission Road  
Shawnee Mission, Kansas 66205

**JAMESON, JOHN E.**  
Voskamp & Slezak / GR 1-4575  
18 East 11th Street  
Kansas City, Missouri 64106  
Wife: Beverly / NI 2-5001  
8800 Horton  
Overland Park, Kansas 66207

**JARCHOW, GORDON C.**  
Tanner-Linscott & Associates /  
LO 1-3456  
310 Ward Parkway  
Kansas City, Missouri 64112  
Wife: Frances / SO 1-1782  
11110 Bristol Terrace  
Kansas City, Missouri 64134

**JARVIS, ROBERT B.**  
Marshall & Brown / DR 1-6402  
461 New Brotherhood Building  
Kansas City, Kansas 66101  
Wife: Mary / CY 9-3076  
7003 Greeley  
Bethel, Kansas 66009

**JOHNS, EVERETT**  
Everett Johns, Architect / AD 4-5040  
510 Faraon  
St. Joseph, Missouri 64501  
1102 Corby Street  
St. Joseph, Missouri 64501

**JOHNSON, WILLIAM HENRY**  
William Johnson, Architect / HA 1-7435  
1207 Grand—#435  
Kansas City, Missouri 64106  
Wife: Clarissa M. / GR 1-3538  
2214 Tracy  
Kansas City, Missouri 64108

**JONES, ELLIS R.**  
Ellis R. Jones, Architect / HI 4-9029  
6225 Brookside Boulevard  
Kansas City, Missouri 64113  
Wife: Nannette / EN 2-6205  
2110 West 71st Terrace  
Shawnee Mission, Kansas 66208

**KELETI, GEORGE PETER**  
Peter Keleti & Associates / LO 1-1131  
4550 Main  
Kansas City, Missouri 64111  
Wife: Patricia Lee / WE 1-4220  
4310 Gillham  
Kansas City, Missouri 64110

**KIVETT, CLARENCE**  
Kivett & Myers / VI 2-8110  
1016 Baltimore  
Kansas City, Missouri 64105  
Wife: Margaret / LO 1-2846  
414 East 45th Street  
Kansas City, Missouri 64110

**KOPPE, ROBERT J.**  
Hollis & Miller / NI 2-6111  
9417 West 75th  
Overland Park, Kansas 66204  
Wife: Carolyn / HE 2-7051  
5001 West 66th Terrace  
Prairie Village, Kansas 66208

**KRATZ, EDWIN G.**  
c/o F. H. A. / BA 1-7000  
427 West 12th Street  
Kansas City, Missouri 64105  
Wife: Edith / DE 3-3591  
2101 East 73rd Street  
Kansas City, Missouri 64132

**KRAUSE, PAUL EDWARD**  
Horner & Krause / DR 1-1132  
1401 Fairfax Trafficway  
Kansas City, Kansas 66115  
Wife: Donna / ME 1-5643  
Lake Quivira  
Kansas City, Kansas 66106

**KRUG, HENRY D., JR.**  
Tanner-Linscott & Associates /  
LO 1-3456  
310 Ward Parkway  
Kansas City, Missouri 64112  
Wife: Josephine / CO 2-5127  
4123 West 68th Terrace  
Shawnee Mission, Kansas 66208

**KUEHN, SIEGFRIED N.**  
Angus McCallum, Architect /  
HA 1-4998  
1221 Baltimore  
Kansas City, Missouri 64105  
Wife: Patricia / GL 3-3622  
4258 North Colorado  
Kansas City, Missouri 64117

**LAKEY, JACK E.**  
Marshall & Brown / HA 1-2400  
1016 Baltimore  
Kansas City, Missouri 64105  
Wife: Norma K. / FL 3-4094  
9117 East 73rd Street  
Raytown, Missouri 64133

**LAW, BRUCE E.**  
Marra & Law / WE 1-9366  
1103 East 47th Street  
Kansas City, Missouri 64110  
Wife: Joan / FL 3-5543  
7104 Harecliff  
Kansas City, Missouri 64133

**LAWHON, EDWARD**  
Neville, Sharp & Simon / HA 1-2030  
25 East 12th Street  
Kansas City, Missouri 64106  
Wife: Beatrice / EM 1-1281  
3884 East 62nd Street  
Kansas City, Missouri 64130

**LEFEBVRE, GENE E.**  
Monroe & Lefebvre / HA 1-7478  
818 Grand Avenue  
Kansas City, Missouri 64106  
Wife: Bertha / NI 8-5167  
5907 West 77th Terrace  
Prairie Village, Kansas 66208

**LEWIS, PAUL F.**  
Black & Veatch / EM 3-1402  
1500 Meadow Lake Parkway  
Kansas City, Missouri 64114  
Wife: Hazel / NI 2-2390  
6616 West 80th Terrace  
Shawnee Mission, Kansas 66204

**LINSCOTT, MAYOL H.**  
Tanner-Linscott & Associates /  
LO 1-3456  
310 Ward Parkway  
Kansas City, Missouri 64112  
Wife: Susan / LO 1-4873  
4938 Summit  
Kansas City, Missouri 64112

**LINSCOTT, WILLIAM MASON**  
Linscott, Kiene & Haylett / JE 1-7700  
917 West 43rd Street  
Kansas City, Missouri 64111  
Wife: Mary / EN 2-6268  
6551 Overbrook Road  
Shawnee Mission, Kansas 66208

**LINTECUM, DEAN P.**  
Tognascioli & Lintecum / HA 1-1322  
101 West Eleventh Street  
Kansas City, Missouri 64105  
Wife: Frances / NI 2-6858  
4820 West 78th Terrace  
Prairie Village, Kansas 66208

**LINVILLE, WALTER N.**  
Tanner-Linscott & Associates /  
LO 1-3456  
310 Ward Parkway  
Kansas City, Missouri 64112  
318 West 46th Terrace / PL 3-5521  
Kansas City, Missouri 64112

**LOTH, WILLIAM S.**  
William S. Loth, Architect / HE 2-1020  
Mission State Bank Building  
Shawnee Mission, Kansas 66202  
3711 Eastvale Road / EN 2-7055  
Shawnee Mission, Kansas 66205

**LOVE, WILLIAM**  
Kivett & Myers / VI 2-8110  
1016 Baltimore  
Kansas City, Missouri 64105  
Wife: Nancy / ME 1-5824  
10408 West 63rd Terrace  
Shawnee Mission, Kansas 66203

**LUND, GEORGE W.**  
Kivett & Myers / VI 2-8110  
1016 Baltimore  
Kansas City, Missouri 64105  
Wife: Jann / NI 2-9741  
8324 High Drive  
Leawood, Kansas 66206

**McARTHUR, FRANK P.**  
Tanner-Linscott & Associates /  
LO 1-3456  
310 Ward Parkway  
Kansas City, Missouri 64112  
Wife: Elizabeth V. / EN 2-2460  
3008 West 71st Street  
Prairie Village, Kansas 66208

**McCALL, KENNETH A.**  
McCall-Watson / VI 2-5440  
822 Argyle Building  
Kansas City, Missouri 64106  
Wife: Jo / GL 2-8200  
2 East 43rd Terrace North  
Kansas City, Missouri 64116

**McCALLUM, ANGUS**  
Angus McCallum, Architect /  
HA 1-4998  
1221 Baltimore  
Kansas City, Missouri 64105  
Wife: Kathleen / EM 1-0063  
1001 West 61st Street  
Kansas City, Missouri 64113

**McCAMIS, EARL C.**  
Earl McCamis, Architect / HA 1-7067  
15 West 10th Street  
Kansas City, Missouri 64105  
Wife: Dorothy / GL 2-0185  
5600 Oaktree Lane North  
Kansas City, Missouri 64118

**McMULLEN, MAURICE D.**  
Black & Veatch / EM 3-1402  
1500 Meadow Lake Parkway  
Kansas City, Missouri 64114  
Wife: Dorothy / ME 1-5060  
7302 Edgewood Boulevard  
Shawnee Mission, Kansas 66203

**MARRA, JAMES V.**  
Marra & Law / WE 1-9366  
1103 East 47th Street  
Kansas City, Missouri 64110  
Wife: Ada / EM 3-0837  
8600 Summit  
Kansas City, Missouri 64114

**MARSHALL, JAMES D., SR.**  
Marshall & Brown / HA 1-2400  
1016 Baltimore  
Kansas City, Missouri 64105  
Wife: Helen / EM 3-3662  
110 East 69th Terrace  
Kansas City, Missouri 64113

**MASLAN, LEON**  
Leon Maslan & Company / VI 2-1528  
1005 Grand  
Kansas City, Missouri 64106  
Wife: Sarah / JA 3-5610  
1215 West 76th Street  
Kansas City, Missouri 64114

**MEALING, E. THORPE**  
212 Schneider Building / AD 3-2090  
St. Joseph, Missouri 64501  
#14 Crestview / BR 9-3186  
St. Joseph, Missouri 64506

**MEYN, RAYMOND E.**  
Raymond E. Meyn, Architect /  
DR 1-1747  
1401 Fairfax Trafficway  
Kansas City, Kansas 66115  
Wife: Nadine / SU 8-7736  
8722 Greeley Drive  
Bethel, Kansas 66009

**MILLER, J. DAVID**  
Hollis & Miller / NI 2-6111  
9417 West 75th Street  
Overland Park, Kansas 66204  
Wife: Diana / HE 2-8943  
4840 West 75th Street  
Prairie Village, Kansas 66208

KANSAS CITY

# PRODUCERS' COUNCIL, INC.

COUNTRY CLUB CHAPTER

SPECIFICATION CONSULTANTS  
QUALITY CONSTRUCTION PRODUCTS

13 EAST 39TH STREET, KANSAS CITY, MISSOURI 64111

TELEPHONE (816) LOGAN 1-9750



PRESIDENT.....HAROLD VINCE  
Hillyard Chemical Co.  
CL 2-1667  
Res. CL 2-4279

1st VICE PRESIDENT.....GENE STANLEY  
Allied Chemical Corp.  
816-625-4566  
Res. 816-625-4566

2nd VICE PRESIDENT.....PAT O'CONNOR  
U. S. Plywood Corp.  
FI 2-1210  
Res. FL 6-2884

SECRETARY.....JIM BERG  
Sargent & Company  
HI 4-2440  
Res. HI 4-2440

TREASURER.....RICHARD PLETTNER  
Barber-Colman Company  
LO 1-1829  
Res. NI 2-8204

## 1965/1966 ROSTER

### Acme Brick Co.

Bruce Kessler  
Jim Clemans  
6001 Manchester  
Kansas City, Mo.  
EM 1-5900

### Allied Chemical Corp.

Barrett Division  
Gene Stanley  
Bob Reed  
Route 1  
Oak Grove, Mo.  
816-625-4566

### Amarlite Div. of Anaconda Aluminum

Bill Horesky  
Serf Formentini, Jr.  
105 Embassy Lane  
Kirkwood, Mo.  
TA 2-1088

### American-Saint Gobain Corp.

B. M. Briggs  
R. Spitz  
2600 Power & Light Bldg.  
Kansas City, Mo.  
GR 1-3111

### Armco Steel Corp.

Steel Division  
C. A. Shoop  
7000 Roberts  
Kansas City, Mo.  
HU 3-5100

Armstrong Cork Co. J. R. Cook  
Matt Waters  
500 W. 26th  
Kansas City, Mo.  
VI 2-3324

### Azrock Floor Products

Uvalde Rock Asphalt  
C. F. Nelson  
J. Jordan  
5609 W. 61 Terr.  
Mission, Kans.  
HE 2-1119

### Barber-Colman Co.

Richard Plettner  
Othel Deason  
1503 Westport Rd.  
Kansas City, Mo.  
LO 1-1829

### Bradley-Wash- fountain

Rivard Sales Co.  
Frank Jones  
Mark Rivard  
2540 W. 47th  
Kansas City, Kans.  
CO 2-3090

### Cambridge Tile Mfg. Co.

Home of Tile, Inc.  
Roger L. Ewing  
2514 Summit  
Kansas City, Mo.  
HA 1-6265

### Carthage Marble Corp.

Robert Staats  
Roy Mayes, Jr.  
3030 Wyoming  
Kansas City, Mo.  
LO 1-7020

### The Celotex Corp.

John Shelton  
A. E. Rogers  
2210 W. 75th  
P. O. Box 8245  
Shawnee-Mission, Ka  
EN 2-0453

### Construction Specialties, Inc.

Bud Cody  
2704 Jarboe  
Kansas City, Mo.  
WE 1-1330

### Day-Brite Lighting Fixtures

M. H. Burwell Co.  
Milt Burwell  
2601 Cherry  
Kansas City, Mo.  
BA 1-0868

### Dover Elevator Co.

B. L. "Bob" Bailey  
Ernie Priest  
1316 McGee  
Kansas City, Mo.  
VI 2-0727

### The Dow Chemical Co.

Styro Products, Inc.  
Tom Plunkett  
2029 Harrison  
Kansas City, Mo.  
GR 1-6333

### Dwyer Products Co.

Doolittle Equip. Co.  
Bob Rogers  
Lloyd Doolittle  
1301 Westport Rd.  
Kansas City, Mo.  
PL 3-4455

### Elkay Manufacturing Co.

Robert Jochens Co.  
Robert Jochens  
4307 Madison  
Kansas City, Mo.  
LO 1-0181

### Fiat Products Department

McQueeny-Cain Cor  
M. J. "Mike" McQ  
C. D. "Dan" Cain  
2600 Oak  
Kansas City, Mo.  
VI 2-3504

<b>Flintkote Co.</b>	R. Blake Christian 7204 E. 108th Kansas City, Mo. SO 3-1085	<b>Owens-Corning Fiberglas Corp.</b>	Kemp Ruffner Jim Myers 4900 Oak Kansas City, Mo. PL 3-7725	
<b>Formica Corp.</b>	<b>Pyramid Products Co.</b> Richard Anthony Ralph Reid 1916 McGee Kansas City, Mo. VI 2-7450	<b>Pittsburgh Plate Glass Company</b>	Glenn S. Jones W. O. Gooch 1201 Burlington N. Kansas City, Mo. VI 2-8350	<b>STANDING COMMITTEES</b>
<b>Gas Service</b>	Paul Chamberlin John Luff 824 Grand Kansas City, Mo. BA 1-3300, Ext. 366	<b>Portland Cement Association</b>	Jack Boyd 1125 Grand, Rm. 2007 Kansas City, Mo. HA 1-0626	<b>AIA-PC</b> Bob Koob, Chairman Kentile Floors, Inc. BA 1-0820
<b>Inco Steel Products Company</b>	L. A. Schaefer Dwayne Best 1609 W. 92nd Kansas City, Mo. EM 3-2411	<b>H. H. Robertson Company</b>	Don Sandberg 4518 W. 89 St., Rm. 107 Prairie Village, Kans. DU 1-3486	<b>MEMBERSHIP</b> Bob Rogers, Chairman Dwyer Products Co. PL 3-4455
<b>E. F. Hauserman Company</b>	Art Carlson Bob Nickel 1637 Iron N. Kansas City, Mo. VI 2-9607	<b>Rohm &amp; Haas Co.</b>	Jim Troester W. Condon 4324 Main Kansas City, Mo. PL 3-4800	<b>PROGRAM</b> Glenn Jones, Chairman Pittsburgh Plate Glass Co. VI 2-8350
<b>Lyard Chemical Co.</b>	Harold Vince John Oliver 203 North Main Independence, Mo. CL 2-1667	<b>The Ruberoid Co.</b>	<b>Floor Tile Division</b> Phillip Milazzo Don Maddux 3407 Overton Independence, Mo. FL 6-6862	<b>PUBLICITY</b> Paul Chamberlain, Chairman The Gas Service Co. BA 1-3300 Ext. 366
<b>and Steel Products Company</b>	John W. Berg W. D. Epperson P.O. Box 918 Kansas City, Mo. AD 6-9605	<b>Sargent &amp; Company</b>	Jim Berg Walt Bobbitt 1022 W. Gregory Blvd. Kansas City, Mo. HI 4-2440	<b>LIAISON COMMITTEES</b>
<b>ns-Manville poration</b>	Dick Triggs Tom Barnekoff 1222 Quebec N. Kansas City, Mo. GR 1-0202	<b>The Sherwin-Williams Co.</b>	M. E. Anderson Jack Merriman 1520 Grand Kansas City, Mo. GR 1-1490	<b>AGC-PC</b> Bruce Kessler Acme Brick Co. EM 1-5900
<b>as City Power Light Co.</b>	Jerry Custead Jack N. Jester 1330 Baltimore Kansas City, Mo. GR 1-0060, Ext. 448	<b>The Stanley Works</b>	Don Merwin Kragg Kysor 9231 Nieman Rd. Overland Park, Kans. TU 8-2237	<b>CEC-PC</b> Milt Burwell Day-Brite Lighting Fixtures BA 1-0868
<b>tile Floors, Inc.</b>	R. B. Koob Cal Caldwell 106 W. 14th, Suite 1900 Kansas City, Mo. BA 1-0820	<b>U. S. Plywood Corp.</b>	Pat O'Connor Gene Frazier 3225 Harvester Rd. Kansas City, Kans. FI 2-1210	<b>CSI-PC</b> Don Sandberg H. H. Robertson Co. DU 1-3486
<b>ey-Owens-Ford s Co.</b>	R. Z. Graham 910 Dwight Bldg. Kansas City, Mo. VI 2-5360	<b>Westinghouse Electric Corporation</b>	Joe Rollins Marshall Bliss 1215 W. 12, P.O. Box 458 Kansas City, Mo. HA 1-7122	<b>MARA-PC</b> Blake Christian The Flintkote Company SO 3-1085
<b>ael Flynn Mfg.</b>	<b>Architectural Metal Products Co.</b> Oran Gatchell 928 Grand Kansas City, Mo. VI 2-4661	<b>Weyerhaeuser Co.</b>	Robert Dunn J. E. Parlee 2108 W. 75th Shawnee-Mission, Kansas EN 2-2580	<b>NAHB-PC</b> Roger Ewing Cambridge Tile Mfg. Co. HA 1-6265
<b>Mills Company</b>	<b>K. C. Natural Slate Co.</b> Herb George 5301 E. 9th Kansas City, Mo. HU 3-1544	<b>Wheeling Corrugating Co.</b>	J. J. Winger Doug Spradling 820 Atlantic St. N. Kansas City, Mo. GR 1-4141	<b>SPECIAL COMMITTEES</b>
<b>Mosaic Tile Co.</b>	Earl Blystone Don Evans 2524 Summit Kansas City, Mo. GR 1-5826	<b>Wilson Concrete Co.</b>	Louis Orr Box 193, Turner Branch Kansas City, Kans. AT 9-5125	<b>A. I. A. CHRISTMAS PARTY</b> Frank Jones, Chairman Bradley-Washfountain Co. CO 2-3090
<b>Elevator Co.</b>	Ronald Dugdale W. Cox 1710 Wyandotte Kansas City, Mo. GR 1-0430	<b>Zonolite Div. W. R. Grace &amp; Co.</b>	Harold Bishop 515 Madison Kansas City, Mo. VI 2-0567	<b>COMPANY SPONSORED PROGRAMS</b> Gene Stanley, Chairman Allied Chemical Corp. 816-625-4566
				<b>EDUCATION COMMITTEE</b> Chuck Nelson, Chairman Azrock Floor Products HE 2-1119
				<b>PAST PRESIDENTS COMMITTEE</b> John Berg, Chairman Inland Steel Products Co. AD 6-9605
				<b>P. C. CHRISTMAS PARTY</b> Glenn Jones, Chairman Pittsburgh Plate Glass Co. VI 2-8350
				<b>RECEPTION COMMITTEE</b> Jerry Custead, Chairman K. C. Power & Light Co. GR 1-0060 (Ext. 448)
				<b>SATELLITE COMMITTEE</b> Joe Winger, Chairman Wheeling Corrugating Co. GR 1-4141
				<b>TELEPHONE COMMITTEE</b> Dick Anthony, Chairman Formica Corp. VI 2-7450

**MITCHELL, RALPH M.**  
Burns & McDonnell / DE 3-4375  
P.O. Box 173  
Kansas City, Missouri 64141  
Wife: Edith / CL 2-9886  
9630 Linwood  
Independence, Missouri 64052

**MONROE, JOHN C., JR.**  
Monroe & Lefebvre / HA 1-7478  
818 Grand Avenue  
Kansas City, Missouri 64106  
Wife: Wallie / GL 3-2123  
123 Greentree Lane North  
Kansas City, Missouri 64116

**MORLEY, JOHN C.**  
Morley & Geraughty / VI 2-8242  
911 Main  
Kansas City, Missouri 64105  
Wife: Marie / EN 2-9663  
6735 Belinder Road  
Shawnee Mission, Kansas 66208

**MORRIS, MANUEL**  
Manuel Morris, Architect / LO 1-7558  
4534 Wornall Road  
Kansas City, Missouri 64111  
Wife: Victoria / EN 2-6071  
2201 West 71st Street  
Shawnee Mission, Kansas 66208

**MULLIN, CHARLES E., JR.**  
Mullin & Hansen / FA 1-4227  
1401 Fairfax Trafficway  
Kansas City, Kansas 66115  
608 Glen Park Lane  
Kansas City, Kansas 66102

**NEARING, HOWARD H.**  
Nearing & Staats / HE 2-9424  
4800 Rainbow  
Shawnee Mission, Kansas 66205  
Wife: Ann / NI 2-2664  
4512 West 79th Street  
Prairie Village, Kansas 66208

**NEVILLE, HOMER F.**  
Neville, Sharp & Simon / HA 1-2030  
25 East 12th Street  
Kansas City, Missouri 64106  
Wife: Alice / RA 2-1497  
5318 Mission Wood Terrace  
Shawnee Mission, Kansas 66205

**NORTHERN, JAMES E.**  
Northern & Hamlin / JE 1-9196  
4016 Washington  
Kansas City, Missouri 64111  
Wife: Shirley / SO 3-2386  
6003 East 97th Terrace  
Kansas City, Missouri 64134

**NORTON, M. GENE**  
Marshall & Brown / HA 1-2400  
1016 Baltimore  
Kansas City, Missouri 64105  
Wife: Sallie / EN 2-6484  
7411 Chadwick  
Shawnee Mission, Kansas 66208

**OSHIVER, JOSEPH J.**  
Joseph Oshiver, Architect / HA 1-0866  
1005 Grand  
Kansas City, Missouri 64106  
Wife: Theodora / HI 4-8237  
7401 Terrace  
Kansas City, Missouri 64114

**PATTY, RAYMOND BRUCE**  
Kivett & Myers / VI 2-8110  
1016 Baltimore  
Kansas City, Missouri 64105  
Wife: Donna / AN 9-4558  
2401 West 76th Street  
Prairie Village, Kansas 66208

**PAYNE, MORTON**  
2301 West 63rd Street / EN 2-7875  
Shawnee Mission, Kansas 66208  
Wife: Barbara

**PEARSON, ARTHUR E., JR.**  
Folger & Pearson / GR 1-8383  
1009 Baltimore  
Kansas City, Missouri 64105  
Wife: Zula / GL 2-8460  
4419 North Grand  
Kansas City, Missouri 64106

**PRICE, SAM R.**  
Sam R. Price, Architect / LO 1-2711  
4638 J. C. Nichols Parkway  
Kansas City, Missouri 64112  
Wife: Jean A. / NI 2-5892  
10221 El Monte Lane  
Overland Park, Kansas 66207

**PRYOR, EUGENE FRANK**  
621 Fenimore Drive  
Mamaronek, New York 10543

**RADOTINSKY, JOSEPH W.**  
Radotinsky-Deardorff / DR 1-7383  
1401 Fairfax Trafficway  
Kansas City, Kansas 66115  
Wife: Edna / AT 9-5799  
2901 North 55th Street  
Kansas City, Kansas 66104

**RAMOS, CHRIS PETER**  
Chris Ramos Associates  
21 West 10th Street  
Kansas City, Missouri 64105  
Wife: Fannie / HI 4-1597  
6134 Blue Hills Road  
Kansas City, Missouri 64110

**REED, ROGER VERNON**  
Vernon Reed, Architect / TH 7-0994  
9 West Franklin Street  
Liberty, Missouri  
Wife: Darlene / TH 7-0994  
24 Main Court  
Liberty, Missouri 64068

**ROBISON, EMMITT M.**  
Cooper, Robison & Carlson /  
HA 1-6588  
418 Commerce Trust Building  
Kansas City, Missouri 64106  
Wife: Cora May / JA 3-9143  
7123 Grand Avenue  
Kansas City, Missouri 64114

**ROYER, ROBERT W.**  
Hewitt & Royer / LO 1-1070  
607 Westport Road  
Kansas City, Missouri 64111  
Wife: Mary / NI 8-5257  
2409 West 104th Street  
Leawood, Kansas 66206

**RUNNELLS, DAVID B.**  
David B. Runnells, Architect /  
GR 1-5322  
910 Pennsylvania  
Kansas City, Missouri 64105  
Wife: Helen / EN 2-2407  
6017 Windsor Drive  
Shawnee Mission, Kansas 66205

**SALISBURY, JOHN L.**  
Burns & McDonnell / DE 3-4375  
Box 173  
Kansas City, Missouri 64141  
Wife: Ruby / CO 2-4645  
3911 Homestead Drive  
Prairie Village, Kansas 66208

**SANDFORD, DAN R., JR.**  
Dan R. Sandford & Sons / JE 1-3450  
800 Westport Road  
Kansas City, Missouri 64111  
Wife: Aline / DE 3-7372  
845 West 71st Terrace  
Kansas City, Missouri 64114

**SANDFORD, MAXWELL T.**  
Dan R. Sandford & Sons / JE 1-3450  
800 Westport Road  
Kansas City, Missouri 64111  
Wife: Mary / HI 4-7398  
5715 Kenwood  
Kansas City, Missouri 64110

**SCHARHAG, HERMAN A.**  
Herman A. Scharhag, Architect /  
BA 1-9297  
1806 Swift Avenue  
North Kansas City, Missouri 64116  
Wife: Phyllis / GL 2-9224  
2 West Englewood  
Kansas City, Missouri 64118

**SCHECHTER, MORRIS**  
Morris Schechter, Architect /  
BA 1-7785  
1619 Baltimore Avenue  
Kansas City, Missouri 64108  
Wife: Mary / ST 2-2377  
532 West Elm  
Olathe, Kansas 66061

**SEE, JOHN J.**  
Roark & See / PL 3-2285 & JA 3-8368  
3611 Main  
Kansas City, Missouri 64111  
Wife: Mary / JA 3-0726  
6039 Walnut  
Kansas City, Missouri 64110

**SHARP, MARK S.**  
Neville, Sharp & Simon / HA 1-2030  
25 East 12th Street  
Kansas City, Missouri 64106  
Wife: Mary A. / AD 6-8618  
2901 West 51st Street  
Shawnee Mission, Kansas 66205

**SHAUGHNESSY, JOSEPH B., SR.**  
Shaughnessy, Bower & Grimaldi /  
PL 3-1155  
3543 Broadway  
Kansas City, Missouri 64111  
Wife: Frances / EN 2-2556  
6645 Seneca  
Shawnee Mission, Kansas 66208

**SHAUGHNESSY, JOSEPH B., JR.**  
Shaughnessy, Bower & Grimaldi /  
PL 3-1155  
3543 Broadway  
Kansas City, Missouri 64111  
Wife: Patricia / EM 1-0815  
5746 Harrison  
Kansas City, Missouri 64110

**SIDOROWICZ, NORBERT J.**  
McLain & Sidorowicz / DR 1-7959  
712 North Sixth Street  
Kansas City, Kansas 66101  
Wife: Florence / CY 9-4393  
1407 North 81st Street  
Kansas City, Kansas 66112

**SIMON, W. H.**  
Neville, Sharp & Simon / HA 1-2030  
25 East 12th Street  
Kansas City, Missouri 64106  
Wife: Pam / HE 2-5832  
4900 Pawnee Drive  
Shawnee Mission, Kansas 66205

**SIMPSON, MAX R.**  
Tanner-Linscott & Associates /  
LO 1-3456  
310 Ward Parkway  
Kansas City, Missouri 64112  
Wife: Pat / DE 3-2798  
38 West 59th Street  
Kansas City, Missouri 64113

**SMITH, JAMES R.**  
Tanner-Linscott & Associates /  
LO 1-3456  
310 Ward Parkway  
Kansas City, Missouri 64112  
Wife: Nadine / NI 8-7680  
8121 Granada  
Prairie Village, Kansas 66208

**STAATS, PAUL S.**  
Nearing & Staats / HE 2-9424  
4800 Rainbow  
Shawnee Mission, Kansas 66205  
Wife: Barbara / NI 2-6824  
10215 Dearborn Drive  
Shawnee Mission, Kansas 66207

**STEELE, CHARLES E., JR.**  
Mantel & Steele / LO 1-0273  
4550 Main  
Kansas City, Missouri 64111  
Wife: Phyllis Arlene / SH 1-6162  
5710 Valley Road North  
Kansas City, Missouri 64151

**SUMNER, GUY L.**  
Tanner-Linscott & Associates /  
LO 1-3456  
310 Ward Parkway  
Kansas City, Missouri 64112  
Wife: Helen / CO 2-5075  
6839 Granada Road  
Prairie Village, Kansas 66208

**TAYLOR, JAMES E.**  
Tanner-Linscott & Associates /  
LO 1-3456  
310 Ward Parkway  
Kansas City, Missouri 64112  
Wife: Jane / WI 2-0565  
11230 Oak Street  
Kansas City, Missouri 64114

**TERNEY, JAMES F.**  
Terney & Biggs / LO 1-0595  
800 West 47th Street  
Kansas City, Missouri 64112  
Wife: Grace / EN 2-7065  
5431 Mission Drive  
Shawnee Mission, Kansas 66208

**TERRELL, V. PRESTON**  
Preston Terrell, Architect / HA 1-4174  
1016 Baltimore  
Kansas City, Missouri 64105  
Wife: Helen / GL 2-4065  
5621 North Lake Drive  
Kansas City, Missouri 64118

**TOGNASCIOLI, HERSCHEL J.**  
Tognascioli & Lintecum / HA 1-1322  
101 West 11th Street  
Kansas City, Missouri 64105  
Wife: Carolyn / GL 3-1571  
2008 Shady Lane Drive  
Kansas City, Missouri 64118

**TRASK, FRANK E.**  
Frank Trask, Architect / JA 3-3964  
7570 Olive  
Kansas City, Missouri 64132

**VOSKAMP, EDGAR B.**  
2525 Gilham Road / HA 1-6437  
Kansas City, Missouri 64108  
Wife: Regina / MI 9-8917  
9240 High Drive  
Leawood, Kansas 66206

**VOSKAMP, RAYMOND L., SR.**  
Voskamp & Slezak / GR 1-4575  
18 East 11th Street  
Kansas City, Missouri 64106  
Wife: Ruth / MI 9-0003  
8311 Meadow Lane  
Leawood, Kansas 66206

**WAGNER, HARRY L.**  
Harry L. Wagner & Associates /  
BA 1-3575  
15 West 10th Street  
Kansas City, Missouri 64105  
Wife: Jane / SO 1-3045  
Red Gates Farm  
Longview Road  
Kansas City, Missouri 64134

**WATSON, CLARENCE F. (Doc)**  
McCall-Watson / VI 2-5440  
822 Argyle Building  
Kansas City, Missouri 64106  
Wife: Patricia / TU 8-5500  
9028 Melrose  
Overland Park, Kansas 66214

**WATSON, DALE R.**  
Linscott, Kiene & Haylett / JE 1-7700  
911 West 43rd Street  
Kansas City, Missouri 64111  
Wife: Martisha / TE 3-2294  
13201 East 40th Terrace  
Independence, Missouri 64050

**WILSON, EARL R.**  
1645 Washington Boulevard /  
DR 1-1400  
Kansas City, Kansas 66102  
Wife: Grace / FA 1-2308  
2500 Freeman Avenue  
Kansas City, Kansas 66102

**WILSON, WILLIAM H.**  
Boyle & Wilson / NI 2-3794  
8017 Floyd  
Overland Park, Kansas 66204  
Wife: Rowena / MI 9-1423  
6825 West 100th Street  
Shawnee Mission, Kansas 66212



# **PROFES- SIONAL ASSOCIATE MEMBERS**

**AMERICAN  
INSTITUTE  
OF ARCHITECTS**

**BEHRMAN, WILLIAM E.**  
Crossing Building / CO 2-1153  
5830 Woodson Road  
Mission, Kansas 66202  
Wife: Joyce / CY 9-8045  
7133 Greeley  
Bethel, Kansas

**BECK, THORNTON**  
5000 Oak / JE 1-1916  
Kansas City, Missouri 64112

**BLOOM, JACK L.**  
McCall-Watson / VI 2-5440  
822 Argyle Building  
Kansas City, Missouri 64106  
Wife: Marcia / WI 2-0083  
504 East 108th Terrace  
Kansas City, Missouri 64131

**BOONE, DAN E.**  
Neville, Sharp & Simon / HA 1-2030  
25 East Twelfth Street  
Kansas City, Missouri 64106  
Wife: Betty / RA 2-4767  
7215 West 65th Street  
Overland Park, Kansas 66202

**BROWN, JOSEPH R.**  
Black & Veatch / EM 3-1402  
1500 Meadow Lake Parkway  
Kansas City, Missouri 64114  
Wife: Betty / NI 2-4312  
4306 West 78th Terrace  
Shawnee Mission, Kansas 66208

**BRUNNER, OTTO**  
Brunner & Brunner / BR 9-0809  
1105 Corby Building  
St. Joseph, Missouri 64501  
Wife: Wilma / AD 2-4604  
2007 Ashland  
St. Joseph, Missouri 64506

**CARLSON, ROLAND A.**  
Elswood-Smith-Carlson / HE 2-5656  
5920 Nall  
Mission, Kansas 66202  
Wife: Betty Gene / HE 2-1998  
7115 Hardy Street  
Overland Park, Kansas 66204

**CHAEI, FREDERICK P.**  
Black & Veatch / EM 3-1402  
1500 Meadow Lake Parkway  
Kansas City, Missouri 64114  
Wife: Martha / LO 1-9036  
4821 State Line  
Kansas City, Missouri 64112

**CHEESEBROUGH, JOSEPH P., JR.**  
Herman A. Scharhag, Architect /  
BA 1-9217  
1806 Swift Avenue  
North Kansas City, Missouri 64116  
Wife: Natalie / GL 2-6023  
7925 East 54th Street North  
Kansas City, Missouri 64119

**COMBS, JAMES R.**  
Mantel & Steele / LO 1-0273  
4550 Main  
Kansas City, Missouri 64111  
Wife: Becky Ann / NI 8-4954  
8201 West 77th Street  
Overland Park, Kansas 66204

**CORY, LESLIE W.**  
L. W. Cory, Architect / MI 9-0272  
4500 West 89th Street  
Leawood, Kansas 66206  
Wife: Lorene / MI 9-0603  
9808 Mohawk  
Leawood, Kansas 66206

**DAVIS, THOMAS E.**  
Hollis & Miller / NI 2-6111  
9417 West 75th Street  
Overland Park, Kansas 66204  
Wife: Myrna / TU 8-2284  
9321 Reeder Road  
Overland Park, Kansas 66214

**EGGEN, JOHN A., JR.**  
Seligson & Eggen / HA 1-4133  
20 West Ninth Street  
Kansas City, Missouri 64105  
Wife: Gayle / NI 8-1448  
4600 West 79th Street  
Shawnee Mission, Kansas 66202

**ELSWOOD, ELWIN S.**  
Elswood-Smith-Carlson / HE 2-5656  
5920 Nall  
Mission, Kansas 66202  
Wife: Nathalie / NI 2-3198  
Leawood, Kansas 66206

**FAIRHURST, DONALD P.**  
Donald P. Fairhurst, Architect /  
BA 1-2654  
1016 Baltimore  
Kansas City, Missouri 64105  
Wife: Marjorie / EN 2-7312  
2711 West 73rd Terrace  
Prairie Village, Kansas 66208

**FENNEL, JAMES E.**  
Meyn & Fennel / DR 1-1747  
1401 Fairfax Trafficway  
Kansas City, Kansas 66115  
Wife: Barbara / AT 1-1959  
4373 Troup  
Kansas City, Kansas 66102

**FORMAN, W. EMIL**  
Lerner Shops Corporation / LE 2-6330  
354 Fourth Avenue South  
New York City, New York 10010  
Wife: Virginia / PO 7-2778  
41 Cornwall Lane  
Port Washington, New York

**GIBSON, WARREN E.**  
Howard, Needles, Tammen &  
Bergendoff / BA 1-6900  
1805 Grand Avenue  
Kansas City, Missouri 64108  
Wife: Luella / CY 9-2108  
6341 Roswell  
Kansas City, Kansas 66104

**GIESE, WALTER R.**  
Burns & McDonnell / DR 3-4375  
P.O. Box 173  
Kansas City, Missouri 64141  
Wife: Janice / WI 2-3788  
406 West 109th Street  
Kansas City, Missouri 64114

**GRAVES, DEAN W.**  
Herbert E. Duncan & Associates /  
LO 1-6900  
800 West 47th Street  
Kansas City, Missouri 64112  
Wife: Ginny / CO 2-0691  
5328 West 67th Street  
Shawnee Mission, Kansas 66202

**HAMLIN, HUBERT J.**  
Northern & Hamlin / JE 1-9196  
4016 Washington  
Kansas City, Missouri 64111  
Wife: Maxine / AD 6-5684  
3510 West 47th Terrace  
Shawnee Mission, Kansas 66202

**HOFFMAN, JOHN E.**  
Burns & McDonnell / DE 3-4375  
P.O. Box 173  
Kansas City, Missouri 64141  
Wife: Ruth / NI 2-7990  
5900 West 88th Terrace  
Overland Park, Kansas 66207

**HUFFMAN, JOHN A.**  
John A. Huffman, Architect / VI 2-6762  
411 Argyle Building  
Kansas City, Missouri 64106  
Wife: Evelyn / HI 4-2065  
5701 Central  
Kansas City, Missouri 64113

**JACKSON, ROBERT W.**  
Jackson & Smith / GR 1-7659  
911 Main  
Kansas City, Missouri 64105  
Wife: Thelma / JA 3-3199  
724 West Gregory Boulevard  
Kansas City, Missouri 64113

**KEELING, GEORGE ROBERT**  
5419 West 100th Terrace / NI 8-7254  
Shawnee Mission, Kansas 66207  
Wife: Barbara

**McELWEE, WAYNE HUNT**  
Black & Veatch / EM 3-1402  
1500 Meadow Lake Parkway  
Kansas City, Missouri 64114  
Wife: Pauline / NI 2-3321  
5900 West 88th Street  
Overland Park, Kansas 66207

**MAUK, R. GALE**  
R. Gale Mauk, Architect / WE 1-8838  
4550 Main  
Kansas City, Missouri 64111  
Wife: Carol / HE 2-6955  
7435 Riggs Lane  
Overland Park, Kansas 66204

**MEYER, DALE H.**  
Terney & Biggs / LO 1-0595  
800 West 47th Street  
Kansas City, Missouri 64112  
Wife: Marilyn / MI 9-8679  
7801 Chadwick  
Prairie Village, Kansas 66208

**MYERS, ALBERT O.**  
Western Electric Company / WO 4-5400  
220 Church Street  
New York City, New York 10013  
Wife: Frances

**NELSON, VERN A.**  
Vern A. Nelson, Architect / BA 1-9838  
1920 Swift  
North Kansas City, Missouri 64116  
Wife: Rosa Lee / SO 3-5286  
11309 Manchester  
Kansas City, Missouri 64134

**NOVAK, GILBERT A.**  
Turnbull-Novak, Inc. / EM 3-6525  
6724 Troost  
Kansas City, Missouri 64131

**PALMER, DONALD M.**  
7942 Washington / DE 3-4150  
Kansas City, Missouri 64114

**PHILO, DONALD R.**  
Donald R. Philo, Architect / AT 1-1641  
1818 North 30th Street  
Kansas City, Kansas 66104

**SELDERS, ALLAN HUNT**  
Neville, Sharp & Simon / HA 1-2030  
25 East 12th Street  
Kansas City, Missouri 64106  
Wife: Mabel / NI 8-7664  
7756 Briar Drive  
Shawnee Mission, Kansas 66208

**SELIGSON, THEODORE H.**  
Seligson & Eggen / HA 1-4133  
20 West Ninth Street  
Kansas City, Missouri 64105  
Wife: Jacqueline / PL 3-2380  
209 East 36th  
Kansas City, Missouri 64111

**SHEPARD, JIM B.**  
Jim Shepard Associates / LO 1-8838  
4550 Main  
Kansas City, Missouri 64111  
Wife: Virginia / EM 1-3625  
7207 Norton  
Kansas City, Missouri 64132

**SHULER, F. WILLIAM**  
Department Health, Education &  
Welfare / FR 4-7000  
New Federal Office Building  
601 East 12th Street  
Kansas City, Missouri 64106  
Wife: Alice Jean / GL 3-1522  
3707 East 49th Street North  
Kansas City, Missouri 64119

**SIME, RICHARD WALLACE**  
Black & Veatch / EM 3-1402  
1500 Meadow Lake Parkway  
Kansas City, Missouri 64114  
Wife: Rosetta / MI 9-1878  
7939 Falmouth  
Prairie Village, Kansas 66208

**SKLAR, ETHEL**

Burns & McDonnell / DE 3-4375  
Box 173  
Kansas City, Missouri 64141  
4127 Locust / WE 1-5366  
Kansas City, Missouri 64110

**SLEDD, DONALD ROBERT**

Marshall & Brown and Cooper, Robison  
& Carlson / HA 1-2400  
1016 Baltimore  
Kansas City, Missouri 64105  
1502 West 23rd Street Terrace /  
CL 2-6806  
Independence, Missouri 64050

**SMITH, DEAN R.**

Elswood-Smith-Carlson / HE 2-5656  
5920 Nall Avenue  
Shawnee Mission, Kansas 66202  
Wife: Pat / CO 2-6194  
7215 West 54th Terrace  
Shawnee Mission, Kansas 66202

**SMITH, DOUGLAS C.**

Howard, Needles, Tammen &  
Bergendoff / BA 1-6900  
1805 Grand  
Kansas City, Missouri 64108  
Wife: Joan / CL 4-2268  
1211 West 25th Terrace  
Independence, Missouri 64052

**SMITH, WILLARD G.**

Herbert E. Duncan & Associates /  
LO 1-6900  
800 West 47th Street  
Kansas City, Missouri 64112  
Wife: Phyllis / MI 9-1756  
3005 West 90th Street  
Leawood, Kansas 66206

**SUTTON, IRA**

E. H. Waddington, Architect / VI 2-2127  
910 Pennsylvania  
Kansas City, Missouri 64105  
Wife: Minnie / CH 1-2855  
422 North Jackson  
Kansas City, Missouri 64123

**TOTTA, JAY MICHAEL**

Kivett & Myers / VI 2-8110  
1016 Baltimore  
Kansas City, Missouri 64105  
Wife: Vita / CL 2-0810  
3911 South Fuller  
Independence, Missouri 64052

**WESTVOLD, ROBERT G.**

Marshall & Brown / HA 1-2400  
1016 Baltimore  
Kansas City, Missouri 64105  
Wife: Beverly / NI 2-2591  
4406 West 77th Place  
Prairie Village, Kansas 66208

**WILKIN, RODGER A.**

Boyle & Wilson / NI 2-3794  
8017 Floyd  
Overland Park, Kansas 66204  
Wife: Betty / MI 9-0987  
5312 West 67th Street  
Prairie Village, Kansas 66208

**WUNSCH, BILLY DEAN**

Kivett & Myers / VI 2-8110  
1016 Baltimore  
Kansas City, Missouri 64105  
Wife: Sally / ME 1-8224  
7111 Larson  
Shawnee Mission, Kansas 66214

**YOUNG, EDWARD EUGENE**

Geis-Hunter / GR 1-3633  
1627 Main Street  
Kansas City, Missouri 64108  
Wife: Mary Ellen / JE 1-2124  
1208 West 45th  
Kansas City, Missouri 64111

**ZUCK, JOHN K.**

Burns & McDonnell / DE 3-4375  
Box 173  
Kansas City, Missouri 64141  
Wife: Patricia / WI 2-9641  
27 West 97th Street  
Kansas City, Missouri 64114

**ASSOCIATE  
MEMBERS**

AMERICAN  
INSTITUTE  
OF ARCHITECTS

**ABRAHAM, JOHN EDGAR**

1124 North 37th Street / DR 1-0752  
Kansas City, Kansas 66102  
Wife: Joyce

**BARDEN, MARVIN**

Herbert E. Duncan & Associates /  
LO 1-6900  
800 West 47th Street  
Kansas City, Missouri 64112  
Wife: Barbara / SO 1-2069  
11206 Sunnyslope  
Kansas City, Missouri 64134

**BARKHOUSE, DAVID R.**

4829 Holly Street / JE 1-5510  
Kansas City, Missouri 64112  
Wife: Mary Sue

**BILLS, RICHARD N.**

Folger & Pearson / GR 1-8383  
1009 Baltimore  
Kansas City, Missouri 64105  
7227 Jefferson / JA 3-3006  
Kansas City, Missouri 64114

**BROOKER, ELIZABETH**

Voskamp & Slezak / GR 1-4575  
18 East 11th Street  
Kansas City, Missouri 64106  
5328 Canterbury Road / CO 2-1439  
Shawnee Mission, Kansas 66205

**BRYANT, ROBERT E.**

1519 West Hines Street  
Midland, Michigan  
Wife: Billie

**CORWIN, EVERETT F.**

Marshall & Brown / HA 1-2400  
1016 Baltimore  
Kansas City, Missouri 64105  
Wife: Samira / GL 3-0733  
6306 North Wayne  
Kansas City, Missouri 64118

**DENT, JAMES L.**

Folger & Pearson / GR 1-8383  
1009 Baltimore  
Kansas City, Missouri 64105  
Wife: Catherine Anne / CO 2-3062  
4801 West 61st Terrace  
Mission, Kansas 66205

**ELLIS, GENE DIRK**

Folger & Pearson / GR 1-8383  
1009 Baltimore  
Kansas City, Missouri 64105  
4916 Grand / JE 1-3383  
Kansas City, Missouri

**FEINSTEIN, ALVIN**

Horner & Blessing / BA 1-0540  
801 Commerce Trust Building  
Kansas City, Missouri 64106  
Wife: Carrie S. / MI 9-1741  
6701 West 87th Street  
Overland Park, Kansas 66212

**GIBSON, THOMAS W.**

Herbert E. Duncan & Associates /  
LO 1-6900  
800 West 47th Street  
Kansas City, Missouri 64112  
Wife: Gloria / IN 1-5873  
12504 East 33rd Terrace  
Independence, Missouri 64050

**HERRIN, R. KEITH**

Tanner-Linscott & Associates /  
LO 1-3456  
310 Ward Parkway  
Kansas City, Missouri 64112  
Wife: Patricia / HI 4-0517  
201 West 73rd Terrace  
Kansas City, Missouri 64114

**HYMER, MARION G.**

Boyle & Wilson / NI 2-3794  
8017 Floyd  
Overland Park, Kansas 66204  
Wife: Sandy / RA 2-4347  
7918 Johnson Drive  
Shawnee Mission, Kansas 66202

**KORFF, EDWIN W.**

Marshall & Brown / HA 1-2400  
1016 Baltimore  
Kansas City, Missouri 64105  
Wife: Marvel / NI 2-9473  
7536 Colonial Drive  
Prairie Village, Kansas 66208

**KOUPAL, HOWARD R.**

Curtis Associates / LO 1-5450  
4324 Main  
Kansas City, Missouri 64111  
Wife: Janice / NI 2-2054  
4303 West 77th Terrace  
Shawnee Mission, Kansas 66208

**KREEGER, KARL KEITH**

William S. Loth, Architect / HE 2-1020  
Mission State Bank Building  
Shawnee Mission, Kansas 66202  
Wife: Jean Ann / AD 6-5333  
5328 Briar  
Mission, Kansas 66205

**LANCE, THOMAS O.**

Boyle & Wilson / NI 2-3794  
8017 Floyd  
Overland Park, Kansas 66204  
5050 Oak Street / WE 1-7126  
Kansas City, Missouri 64112

**LARGE, LARRY EUGENE**

Morley & Geraughty / VI 2-8242  
911 Main  
Kansas City, Missouri 64105  
Wife: Russlyn / FL 3-2157  
4715 Chrysler  
Independence, Missouri 64050

**LAWRENCE, PHILIP ARCHER, JR.**

Keene, Simpson & Murphy / HA 1-7633  
911 Main  
Kansas City, Missouri 64105  
Wife: Shirley Dale / EN 2-8327  
4112 Oxford Road  
Prairie Village, Kansas 66208

**LEIMKUHLER, ELMER DANIEL, JR.**

Hollis & Miller / NI 2-6111  
9417 West 75th Street  
Overland Park, Kansas 66204  
Wife: Patricia / SO 1-7545  
13711 Cypress  
Grandview, Missouri 64030

**LOGAN, PHILLIP W.**

Hollis & Miller / NI 2-6111  
9417 West 75th Street  
Overland Park, Kansas 66204  
Wife: Marlene / HU 3-1848  
6007 East 14th Street  
Kansas City, Missouri 64126

**MARSHALL, JAMES D., JR.**

Marshall & Brown / HA 1-2400  
1016 Baltimore  
Kansas City, Missouri 64105  
Wife: Shelley M. / DU 1-4091  
9737 Slater Lane  
Overland Park, Kansas 66212

**MAXWELL, WILLIAM DOYLE**

Brunner & Brunner / AD 4-0809  
1105 Corby Building  
St. Joseph, Missouri 64501  
Wife: Mary / AD 3-5521  
2709 Faraon Street  
St. Joseph, Missouri 64501

**MILES, CURRY WARD**

Tanner-Linscott & Associates /  
LO 1-3456  
310 Ward Parkway  
Kansas City, Missouri 64112  
Wife: Barbara / AN 9-4203  
2517 West 76th Street  
Shawnee Mission, Kansas 66208

**MISCHLICH, JOHN HENRY**

Burns & McDonnell / DE 3-4375  
P.O. Box 173  
Kansas City, Missouri 64141  
4029 North Cleveland / GL 2-6043  
Kansas City, Missouri 64117

**QUANT, DOROTHY**

Neville, Sharp & Simon / HA 1-2030  
25 East 12th Street  
Kansas City, Missouri 64106  
5000 Oak / JE 1-6281  
Kansas City, Missouri 64112

**RANNEY, GERALD A.**

Marshall & Brown / HA 1-2400  
1016 Baltimore  
Kansas City, Missouri 64105  
Wife: Barbara / NI 9-7742  
8106 Sagamore Road  
Leawood, Kansas 66206

**ROLSKY, MORTON**

Kansas City Park Department /  
BA 1-1400  
414 East 12th Street  
Kansas City, Missouri 64106  
Wife: Ruth / HI 4-3617  
7441 Ward Parkway  
Kansas City, Missouri 64114

**SANDERS, JULIAN M.**

Deseret Enterprises / EM 1-3482  
9006 Central  
Kansas City, Missouri 64114  
Wife: Jean / EM 1-3482  
9006 Central  
Kansas City, Missouri 64114

**SALTS, RONALD A.**

Black & Veatch / EM 3-1402  
1500 Meadow Lake Parkway  
Kansas City, Missouri 64114  
Wife: Betty L. / FA 1-5301  
6609 Rowland  
Kansas City, Kansas 66104

**SMITH, PORTER JACKSON**

Jackson and Smith Inc. / GR 1-7659  
911 Main—Suite 1700  
Kansas City, Missouri 64105  
Wife: June / SH 1-0887  
516 North Lakeshore Drive  
Parkville, Missouri

**SWINNEY, FRANK C.**

Scheffer, Schirmer & Eflin  
3210 East Douglas  
Wichita, Kansas 67208  
705 Hunter  
Wichita, Kansas 67207

**TEATE, WILLIAM H.**

Burns & McDonnell / DE 3-4375  
Box 173  
Kansas City, Missouri 64141  
Wife: Sallie A. / ME 1-5415  
4822 Black Swan Drive  
Shawnee Mission, Kansas 66216

**TERRY, CHARLES LEE**

Tanner-Linscott & Associates /  
LO 1-3456  
310 Ward Parkway  
Kansas City, Missouri 64112  
Wife: Patricia / HE 2-7512  
7806 West 67th Street  
Overland Park, Kansas 66202

**ULTICAN, GARY DUANE**

Morley & Geraughty / VI 2-8242  
911 Main  
Kansas City, Missouri 64105  
Wife: Linda / CL 4-1223  
1900 Blue Ridge Boulevard  
Kansas City, Missouri 64126

**VOSKAMP, RAYMOND L., JR.**

Voskamp & Slezak / GR 1-4575  
18 East 11th Street  
Kansas City, Missouri 64106  
Wife: M. J. / MI 9-8982  
7813 Fontana  
Prairie Village, Kansas 66208

**WALKER, STUART ALLEN**

William E. Behrman, Architects and  
Associates / CO 2-1153  
5830 Woodson Road  
Mission, Kansas 66202  
Wife: Joan / HE 2-6107  
7132 Beverly  
Overland Park, Kansas 66204

**WATSON, JAMES DELANE**

William E. Behrman / HE 2-2334  
5830 Woodson  
Mission, Kansas 66202  
Wife: Kay / ME 1-7906  
11810 West 52nd Terrace  
Shawnee, Kansas 66203

**WILSON, KENNETH GEORGE**

W. M. Conrad, Architect / WE 1-0200  
4149 Pennsylvania  
Kansas City, Missouri 64111  
Wife: Wanda / TU 8-3993  
8925 Long  
Lenexa, Kansas 66051

**HONORARY MEMBERS**

AMERICAN  
INSTITUTE  
OF ARCHITECTS

**JONES, GERRE L.**

8023 Pullach (Isartol)  
Muenchnerstr. 43  
Germany

**SMITH, MERLE H.**

American S & L Association /  
CE 6-2234  
221 North LaSalle  
Chicago, Illinois  
6910 North Oakley / AM 2-0324  
Chicago, Illinois



## a.i.a. notes

**FRANK GRIMALDI APPOINTED TO STATE POST.** Frank Grimaldi, a partner in Shaughnessy, Bower & Grimaldi, was nominated October 20 by Governor Hearnes and confirmed by the Missouri Senate as a member of the Missouri State Board of Registration for Architects, Engineers and Land Surveyors. □ From Arma, Kansas, Grimaldi now resides in Kansas City. He attended elementary and high school in Pittsburg, Kansas, and holds an architectural degree from the University of Notre Dame. □ Grimaldi succeeds Everett Johns on the board, and his term expires March 5, 1970. The board has jurisdiction over 1400 practicing architects, 8400 professional engineers and 1000 land surveyors, as well as 8000 architectural and engineering trainees. □ He has been associated with Shaughnessy and Bower since 1947 and has been a partner since 1955. He is a former president, and has held many other offices in the Kansas City Chapter, A.I.A.



**KENNETH E. COOMBS APPOINTED CITY ARCHITECT.** Appointed December 6 to the post of city architect for Kansas City, Missouri, Coombs will be responsible for control of design as well as construction and maintenance of all city buildings. He will head the existing architectural and maintenance departments and will work closely with the City Art Commission. □ Coombs attended elementary and high school in Waterville, Maine, received his architectural degree from Rensselaer Polytechnic Institute and did graduate work in architecture and city planning at the University of Kansas. He is a member of the Kansas City Chapter, A.I.A.

He will head the existing architectural and maintenance departments and will work closely with the City Art Commission. □ Coombs attended elementary and high school in Waterville, Maine, received his architectural degree from Rensselaer Polytechnic Institute and did graduate work in architecture and city planning at the University of Kansas. He is a member of the Kansas City Chapter, A.I.A.

**LIGHTING FUNDAMENTALS COURSE.** Co-sponsored by the Kansas City Power and Light Company and the Heart of America Section, Illuminating Engineering Society, this training course will consist of two hour sessions beginning 6:45 P.M. Thursday, February 3 and continuing each Thursday thereafter for a total of eight classes. All sessions will be held in the Electric Living Center, first floor, Power and Light Building, 1330 Baltimore. □ The tuition fee of \$12.00 includes a complete course booklet as well as considerable reference material. □ The class size will be limited to approximately 30 persons so reservations should be made immediately. For more information call Jerry Custead, GR 1-0060, Ext. 448, or Robert Wilson, BA 1-4292.

## CONTROL TECHNIQUE

# Lightweight

## AGGREGATE FOR STRUCTURAL CONCRETE

## BATCHING and MIXING

Batching and mixing requirements of **BUILDEX** lightweight concrete are no different than normal weight concrete. Therefore, the batching and mixing of **BUILDEX** lightweight concrete should be in accordance with the "Standard Specification for Ready-Mixed Concrete" ASTM Designation C94.



**BUILDEX, INC.**  
**BOX 15 OTTAWA, KANSAS**



## LIKE A BIG CHALLENGE? WE DO, TOO!

Such a challenge was extended to us several years ago by Kivett & Myers, Architects for the Oak Park High School in Kansas City North, Missouri.

The challenge was simply to produce a coating system that would be as hard as ceramic, as strong as steel, colorful as a rainbow, and most of all—not look like a coating.

The hardness and strength were required inasmuch as either plaster or sheet rock were to be used for wall construction—neither of which are suitable for general use in a high school without further protection. With the help of plastering and dry wall contractors, analyses were made of various construction methods and costs; mock-ups were prepared and evaluated.

These studies revealed that the heavy fiberglass reinforced Evershield Liquid Tile application contributed such strength to the surface making it possible to use sheet rock throughout except in toilets, shops, and kitchen areas.

The wide variations available only in Liquid Tile were called upon to produce a flat, solid colored, finely textured finish that bears little resemblance to normal coating systems. The density of Liquid Tile was such as to make it practical to use off-white with eight accent colors to further enhance the structure. Even a ball point pen fails to mark Liquid Tile, and straight muriatic acid can be used to clean it if necessary.

Another major contribution to the building was the pre-cast Dex-O-Tex terrazzo stair treads, developed by similar studies. These treads cost little more than rubber treads, but contribute tremendously to the permanence and beauty of the building.



# AFI

**ARCHITECTURAL FINISHES, INC.**

5301 East 9th Street  
Kansas City, Missouri 64109  
HU 3-6766



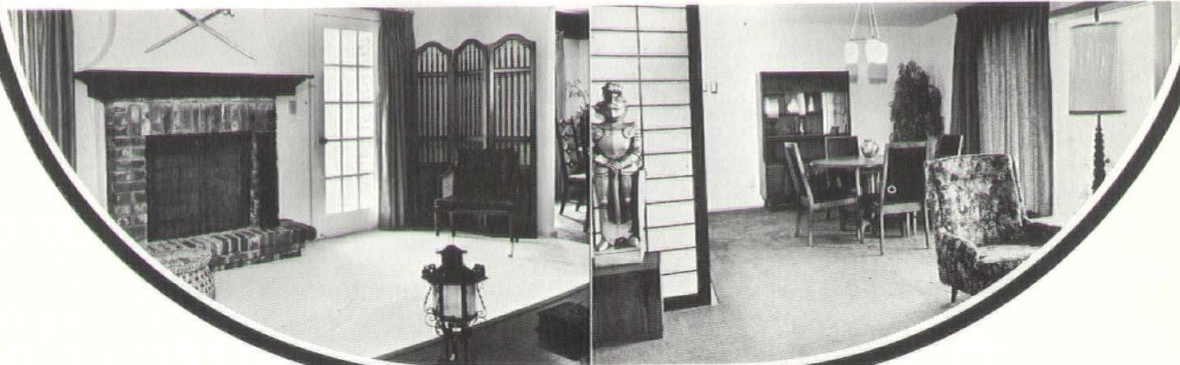
WHATEVER THE JOB,  
**ARCHITECTS CAN RELY ON RODDIS**  
FOR THE FINEST IN ARCHITECTURAL

- ☐ MOLDING AND TRIM   ☐ DOORS  
☐ SOLID AND VENEER PANELING   ☐ PLYWOOD

Telephone Ed Menefee at Grand 1-0922 or visit the Roddis sales office, display room and warehouse at 1601 West 25th Street, Kansas City, Missouri 64108. Remember, Roddis has served architects for over 40 years.

Georgetown Apartments  
Architect: Linscott Kiene & Haylett  
Contractor: E. J. Straub

Kenilworth Apartments  
Architect: Boyle & Wilson  
Contractor: Max Okun



Benjamin  
**Moore**  paints

The sky's the limit when you make your color selection from more than 1300 automatically tinted interior and exterior paint colors with the Moor-O-Matic Universal Color System. With Benjamin Moore you have color you can count on . . . available in all finishes for every application. Based on more than 80 years experience, Benjamin Moore paints and varnishes are formulated to the highest standards . . . to assure constant quality uniformity. On your next project, call Kasey and see for yourself how Benjamin Moore can work for the architect.



Whether you are designing or redecorating an intimate restaurant, grand ballroom, executive office, or motel room, Modern-cote can provide you with an unlimited range of colors, textures and patterns in wall coverings. With Modern-cote you can choose from over 50 flexible wood coverings, standard and custom vinyl coated fabrics in any weight and color, and 20 gauge clear vinyl sheets with color applied to the under-side. Choose from a wide range of colors and finishes . . . or have your own design created for a special dramatic effect. Call Kasey and see how Modern-cote can work for the architect.

**CALL** *Kasey Paint Co.* **EM 3-6113**

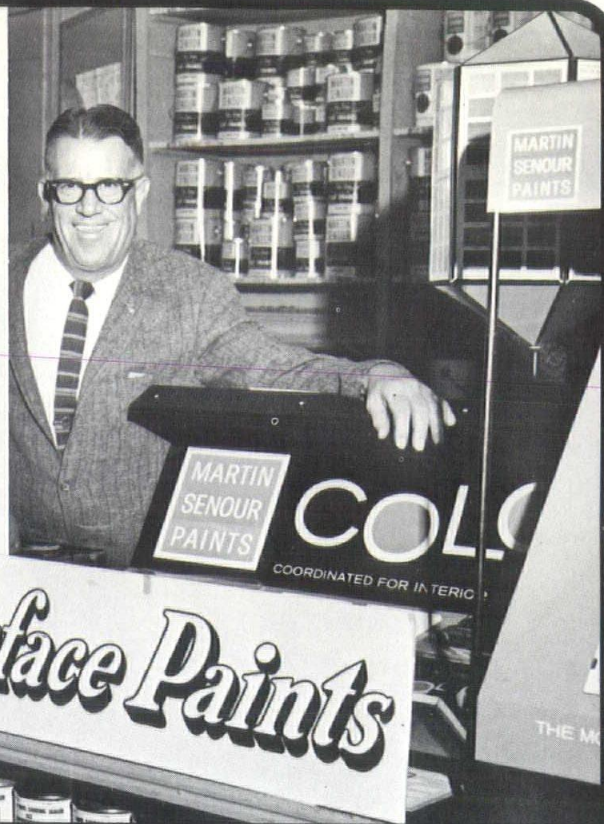
Telephone Emerson 3-6113 / 7920 Troost / Kansas City / Missouri 64131



## AIA ALWAYS INSTANTLY AVAILABLE

Whenever you need anything in paints or colors, call Hal Surface, Jr. or Chuck Stuart. They're always ready to help. SHELTER TONES by MARTIN SENOUR represent the ultimate in color efficiency and product performance in a range of pastels never before available in exterior finishes. See the new collection of 250 "most durable colors under the sun" in MARTIN SENOUR Gloss House Paint, Acrylic Latex and Exterior Flat Oil.

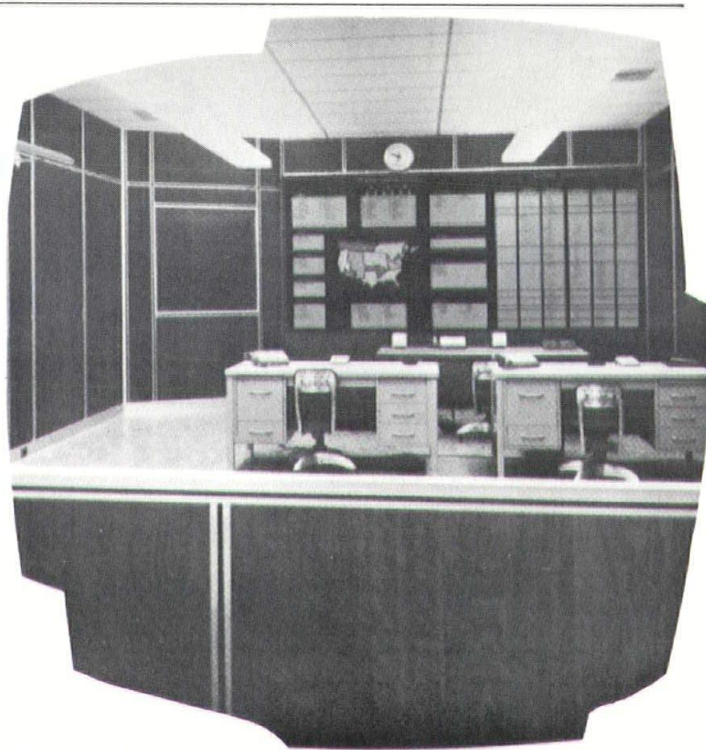
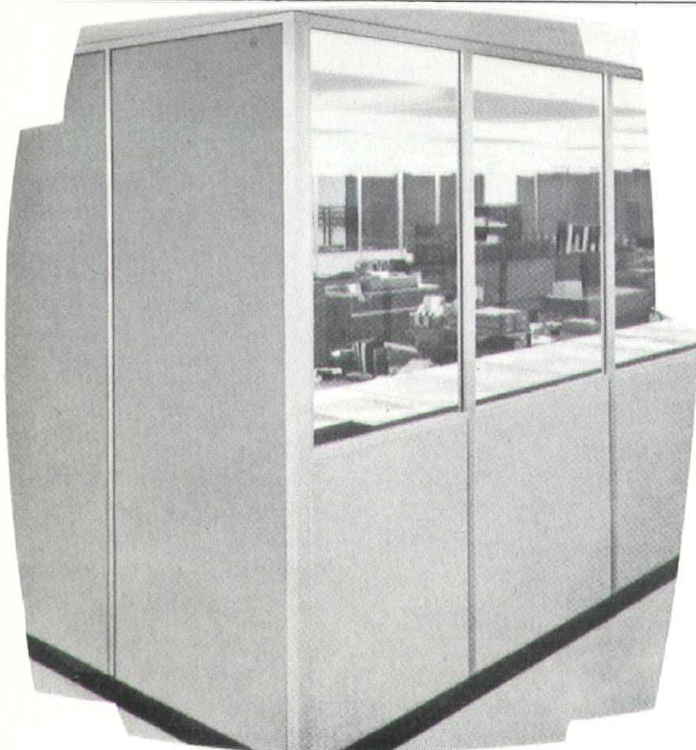
MARTIN  
SENOUR  
PAINTS



*Surface Paints*

*Surface Paints*

- DOWNTOWN: 1737 Oak Street / Harrison 1-0455
- MEADOW LAKE: 7712 State Line / Andrew 9-4222
- OVERLAND PARK: 7217 W. 80th Street / Dupont 1-4910
- INDEPENDENCE: 11716 E. 23rd Street / Clifton 4-4911



Architects can rely on Dick Henges for prompt professional assistance in:

- ☐ Movable partitions and railings
- ☐ Sound conditioning
- ☐ Folding partitions and doors
- ☐ Floor coverings
- ☐ Ceiling materials

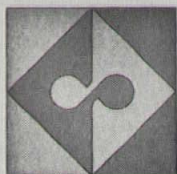
*Dick Henges & Assoc. Inc.*

Telephone Emerson 3-1385

3007 East 85th Street / Kansas City / Missouri 64132



## Producers Council notes



**SCHOOL CONSTRUCTION SEMINAR.** On March 16, 1966, a Seminar entitled, "New Ideas for School Construction", will be held at the Hotel President. The program will bring together architects, engineers, and school officials from the surrounding area. The afternoon meeting will be concerned with school construction products and will be beneficial to all in attendance. This is a program initiated by 20 National Producers' Council members and implemented by the local chapters. The Seminar is being held in all the major cities throughout the United States over the next 18 months.

The program will consist of a keynote address by a speaker of national prominence; an open discussion period between the audience and a professional panel of local educators, architects and engineers and another open discussion period between the audience and a product panel of Producers' Council members. Product exhibits by the 20 sponsoring firms will also be featured.

Glenn Jones of Pittsburgh Plate Glass Company is chairman of the Seminar Committee and has stated that more details will follow. Mark your calendar for this event.



**MAXIMUM SECURITY KEY MEETING.** Sargent & Company will sponsor an informational meeting tentatively set for January 18, 1966. At this luncheon Sargent will present the Midwest Premiere of their Maximum Security Key System. This system has been acclaimed throughout the United States as the first major improvement in lock security in the past 100 years. Don't miss it.



**CHRISTMAS PARTY A BIG SUCCESS.** The Producers' Council's annual Christmas Party was a thoroughly enjoyable occasion again this year. Designed to give the architects, engineers and Producers' Council members an opportunity to get together informally, the party more than accomplished that goal. The Producers' Council thanks all the architects and engineers who enjoyed it with them. Best wishes for a successful 1966.

### CENTER for FINE ARTS-KNOX COLLEGE

Architect: Perkins and Will, Chicago, Illinois  
General Contractor: Kraus-Anderson of Minneapolis, Inc., Minneapolis, Minnesota



The Center for the Fine Arts at Knox College, Galesburg, Illinois, completed in 1965 at a cost of more than \$2,750,000.00. Most notable of its many features is the Otto Harbach Theatre, which, by means of a huge turntable, can be transformed in minutes from a conventional proscenium theatre into an intimate open theatre. The Center includes the Sebastian S. Kresge Recital Hall, large rehearsal hall, a studio theatre, art galleries, classrooms, art studios and music practice rooms.

## ROSEMOLD<sup>®</sup> FACE BRICK

by Midland Brick Sales Co.  
Chillicothe, Missouri

Originators of LOS RANCHOS;  
ROSEMOLD<sup>®</sup> and RAWHIDE<sup>®</sup> FACE BRICK

# YOUR STRUCTURAL GLAZED FACING TILE SPECIALISTS!

## SONKEN-GALAMBA CORPORATION

2nd & Riverview  
Kansas City, Kansas 66118  
Telephone (913) Mayfair 1-4100

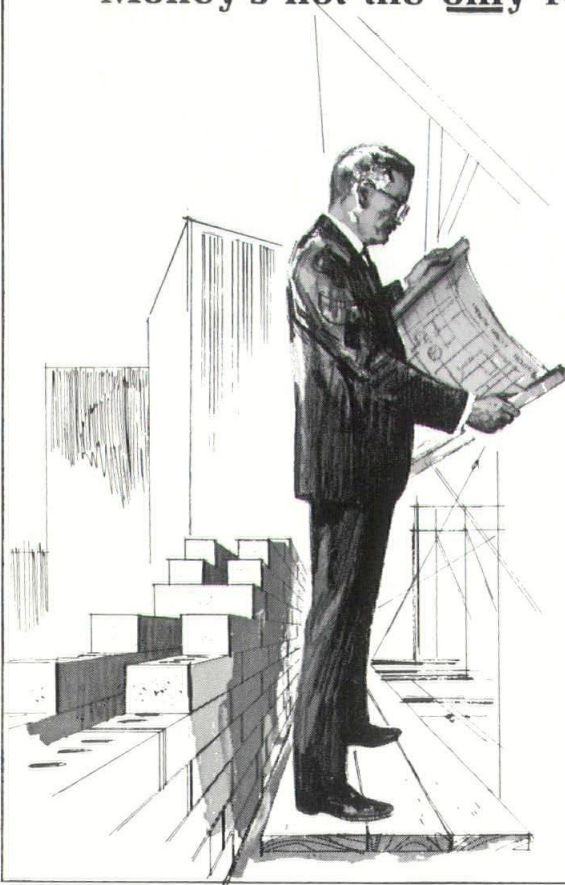
**EXCLUSIVE DISTRIBUTORS:**  
Arketex Ceramics Corporation  
Stark Ceramics, Inc.  
Darlington Glazed Brick

**P.S. Ask us about CERAMITEX!**

## DIRECTORY OF ADVERTISERS

Acme Brick .....	26
Arnold-Newbanks, Inc. ....	6
Architectural Finishes, Inc. ....	22
Associated General Contractors .....	back cover
Bauman Business Interiors, Inc. ....	inside back cover
Buildex, Inc. ....	25
Carter Waters Corporation .....	4 and 5
Carthage Marble Corporation .....	8
City Block & Products Company .....	7
Dick Henges & Assoc. Inc. ....	24
Glen O'Brien Company .....	2
Kasey Paint Co. ....	23
Lane Blueprint .....	4
Midland Brick Sales Company .....	25
Roddis Lumber & Veneer Co. ....	23
Sonken-Galamba Corporation .....	26
Surface Paints .....	24

## Money's not the only reason... **CREATE WALL BEAUTY, INSIDE AND OUT WITH ACME BRICK DOUBLE WALL SYSTEMS**



Anyone who sees your new *Acme Brick Double Wall* building will be immediately attracted to the warm natural beauty of its brickwork, inside and out.

And, of special interest, building with *Acme King Size Brick* gives you all the advantages of Double Wall construction at a cost comparable to or less than ordinary brick and block.

You will also value the *combination* of low initial and ultimate costs, and the ease with which engineering, functional efficiency, and lasting beauty can be developed together in *Acme Brick Double Wall Systems*.

**For the full story of  
Acme Brick Double  
Wall Systems contact  
your Acme Brick  
representative.**





## THE "BUBBLE" CHAIR FROM BAUMAN, NATURALLY!

The design is unique, simple and functional. Created in Norway, the craftsmanship is in the Stow & Davis tradition—superb! Tailored to retain its inviting contour despite the rigors of constant use, the "Bubble" chair is ideal for lobby, conference room or desk-bound duty. Available as a side chair with or without a low revolving base, tiltline desk chair with casters, and a conference chair with or without a high revolving base, you'll find the "Bubble" chair at home almost anywhere. See it and the entire Stow & Davis collection for yourself at Bauman soon. Remember, Bauman is geared to work with the architect.

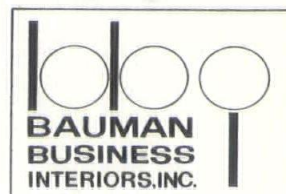
The "Bubble" chair is available in vinyl or a wide color range of nylon stretch fabrics that maintain a smooth, wrinkle-free appearance (see swatch above).

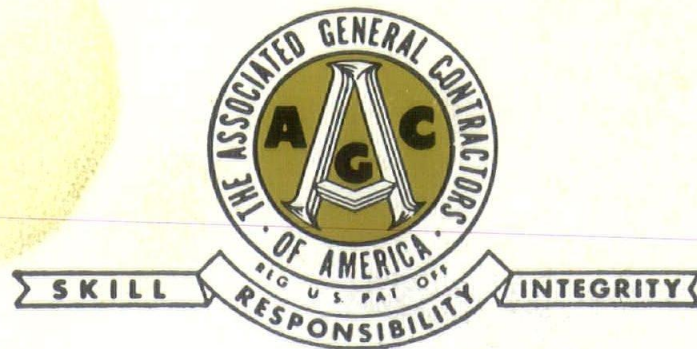


### SHOWROOMS:

2940 Main Street  
Kansas City, Missouri  
JE 1-1600

221 North Main Street  
Wichita, Kansas  
AM 5-2688





**LOOK for this sign . . . it Assures Good Construction!**

Be sure your contractor is qualified—select a Kansas City Chapter, A.G.C. General Contractor.

#### KANSAS CITY DIVISION

Barcus, L. G., & Sons, Inc.  
Bellanti Const. Co., Inc.  
Bennett Const. Co., Inc.  
Brunn, S. R., Const. Co.  
Cahill, D. F., Const. Co.  
Callegari-Kahn Const. Co., Inc.  
Collins Const. Co.  
Dean, Chester A., Const. Co.  
Drier & Son Const. Co.  
Dunn, J. E., Const. Co.  
Eldridge, Bob, Const. Co., Inc.  
Elliott, Hiram, Const. Co.  
Farmer, Richard W., Gen. Contr.  
Fogel-Anderson Const. Co.  
Fogel, John M., Const. Co.  
Fox, H. H. (Honorary)  
Haren & Laughlin Const. Co.  
Henry, R. L., Const. Co., Inc.

Hoffman-Cortes Contr. Co.  
Hucke, Clarence P., Co.  
Hughes, O. W., Corp.  
Interstate Const. Corp.  
Kelly, C. A.  
Lapham, Reese, Const. Co., Inc.  
Messina Bros., Co., Inc.  
Mid-Western Const. Co.  
Miller-Stauch Const. Co.  
Patti, S., Const. Co.  
Rau Const. Co.  
Rawlings, William S., Co.  
Seal, J. R., Const. Co., Inc.  
Searce, Jas., Inc.  
Sharp Bros. Contr. Co.  
Swenson Const. Co.  
Universal Const. Co., Inc.  
Vick-Lintecum, Gen. Contrs., Inc.  
Watson-Warren Const. Co., Inc.  
Weeks Const. Co., Inc.

Weeks-Maxwell Const. Co., Inc.  
Weitz Company, Inc., The  
Winn-Senter Const. Co.

#### CENTRAL DIVISION

Dean Construction Co., Inc.  
Epple, John, Const. Co.  
Hathman, J. E., Inc.  
Knipp, Richard, Const. Co.  
Scheperle, Roy A., Const. Co.  
Simon, B. D., Const. Co.  
Westport Const. Co.

#### NORTHERN DIVISION

Martin Const. Co.  
Thomas Const. Co., Inc.

#### SOUTHERN DIVISION

Aton Bros. Const. Co.

Baumann, Geo. E.  
Bonjour Const. Co.  
Bramer Const. Co.  
Carr, Homer, Const. Co.  
Carson-Mitchell, Inc.  
Dalton-Killinger Const. Co.  
Dondlinger & Sons Const. Co., Inc.  
Garbee, William P.  
Gold Const. Co.  
Jones Bros. Const. Co.  
M-P Const. Co.  
Maggi Const. Co., Inc., The

#### VISITING DIVISION

Alport Const. Co.  
Beck, Henry C., Builders, Inc.  
Eby, Martin K., Const. Co., Inc.  
Fegles Const. Co.  
Fruin-Colnon Contr. Co.

## ASSOCIATED GENERAL CONTRACTORS

### KANSAS CITY CHAPTER

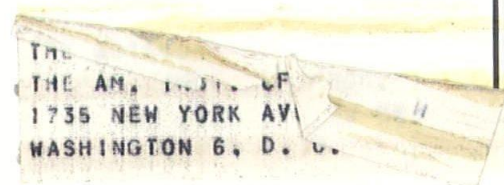
Room C 906 Grand Avenue Kansas City Missouri Telephone Victor 2-8005



## SKYLINES

Suite 206  
800 West 47th Street  
Kansas City, Missouri 64112

**TO:**



BULK RATE  
U. S. POSTAGE  
**PAID**  
KANSAS CITY, MO  
PERMIT NO. 373