

AMERICAN INSTITUTE
OF
ARCHITECTS

AUG 6 1968

LIBRARY

THE KENTUCKY ARCHITECT

KRA

JUNE, 1968

*Interior doors
and toilet partitions*

ANDERSON

WOOD PRODUCTS COMPANY/LOUISVILLE, KENTUCKY
1381 BEECH STREET LOUISVILLE, KY. 40217



778-5591
laminated plastic



**DeHART
PAINT & VARNISH CO.**

Finest Quality Finishes

**INDUSTRIAL
COMMERCIAL
ARCHITECTURAL
PAINTS**
also
EPOXY COATINGS
and government
specifications

906 E. Main St. 584-6397 Louisville, Ky. 40206



ICE MACHINE MAKES

Sno-Flake, Cube-Flake, Mini-Cube & Cube

Hospitals--Restaurants--Schools

Industrial & Commercial Units

JOHN W. BISHOP, INC.

502-583-3832

958 S. Third St. Louisville, Ky. 40203



**Fire Protection
Of Louisville, Inc.**

CONTRACTORS

AUTOMATIC SPRINKLER EQUIPMENT

8013 ASHBOTTOM RD., LOUISVILLE, KY. 40213 • 366-1431



THE GEORGE MARR COMPANY

Blueprinting·Whiteprinting·Photocopying

Cloth·Film and Paper Reproductions

652 SOUTH SECOND STREET
LOUISVILLE, KENTUCKY

**STANDARD PAVING
& ENGINEERING CO., INC.**

2101 Outer Loop

Louisville, Kentucky 40219

Phone: 964-5971

Asphalt Paving
Excavating

Concrete Paving
Earth Moving

**Food Service Equipment
& Supply Co., Inc.**



1900 WEST MAIN STREET
LOUISVILLE, KY. 40203
AREA CODE 502 584-5106



**LARGEST STOCK OF MODERN FOOD SERVICE
EQUIPMENT AND ACCESSORIES IN KENTUCKIANA**

VISIT OUR SHOWROOMS

THE KENTUCKY ARCHITECT

Volume VII, Number 6

June, 1968

THE KENTUCKY SOCIETY OF ARCHITECTS

AMERICAN INSTITUTE OF ARCHITECTS EXECUTIVE OFFICERS

President Norman Chrisman, Jr., AIA
Vice-President Lloyd G. Schleicher, AIA
Sec.-Treasurer Robert E. Olden, AIA

BOARD OF DIRECTORS

K. Norman Berry, AIA Arnold M. Judd, AIA
John Bickel, III, AIA Paul B. Kiel, AIA
Norman Chrisman, Jr., AIA Robert E. Olden, AIA
C. A. Coleman, Jr., AIA Donald Schnell, AIA
Lloyd G. Schleicher, AIA

EAST CENTRAL REGION, AIA

Director A. Bailey Ryan, AIA

EAST KENTUCKY CHAPTER, AIA

President C.A. Coleman, Jr., AIA
Vice-Pres. K. Norman Berry, AIA
Secretary James B. Tune, AIA
Treasurer Vito Girone, AIA

WEST KENTUCKY CHAPTER, AIA

President Lloyd G. Schleicher, AIA
Vice-Pres. Edward Cooke, III, AIA
Secretary Laurence Melillo, AIA
Treasurer Robert F. Crump, AIA

NORTHERN KENTUCKY SECTION

EAST KENTUCKY CHAPTER

President Paul B. Kiel, AIA
Vice-Pres. Carl C. Bankemper, AIA
Secretary Edward J. Beiting, Jr., AIA

EDITORIAL COUNCIL

Louis R. Hugg, AIA, Ch.

Jim Halbleib Henry Thoben, AIA
Robert F. Crump, AIA James B. Tune, AIA

CONTENTS:

KENTUCKY STATE PARKS

Within the last twenty years and particularly the last ten years, the Commonwealth of Kentucky has effected great strides in building a superb state park system. The Department of Parks, in providing comprehensive recreational facilities, has demanded the caliber of design which could be compared by Kentuckians and out-of-state guests to any other park system in the United States. How well Kentucky Architects have passed

that test is answered by the thousands of letters received by the Department of Parks since the massive renovation and building program of 1960. This issue attempts to illustrate the variety of recreational parks which currently delight all who visit them. A special note of thanks is hereby expressed to Tom Nelson, Department of Parks, Keith Ashby, AIA, Department of Finance, Sara Goins, Department of Public Information, James Host, Department of Public Information and Arnold Judd, AIA.

COVER PHOTO Rough River State Park Lodge (Page 4)

THE KENTUCKY ARCHITECT

is the monthly official magazine of the Kentucky Society of Architects of the American Institute of Architects, Inc. Opinions expressed herein are not necessarily those of the Society or the Institute. The Kentucky Architect is available at a subscription cost of \$4.00 each year or 50 cents per issue. Subscriptions may be obtained at 804 E. Jefferson St., Louisville, Kentucky 40206. The Kentucky Architect reserves the right to refuse or alter editorial material. All material is reviewed by the Editorial Council prior to publication. EDITORIAL OFFICE: Quentin D. Allen, Editor, 663 West Cooper Drive, Lexington, Kentucky 40502; phone 266-4990. ADVERTISING AND PUBLISHING OFFICE: J. Marvin Gray & Associates, Inc., 804 E. Jefferson Street, Louisville, Kentucky 40206; phone 587-8806.



Get this heating/cooling system into any motel...without reservations.

It's General Electric's ZONELINE system and it provides unequalled design freedom for motels, hotels, nursing homes, apartments and office buildings. Choose any of three basic chassis—cooling only, cooling with built-in electric resistance heating, or Zone-line heat pump. Units are mounted through the wall—high or low—wherever you wish, and controlled by integral or wall-mounted thermostats. A simple touch gives positive, room-by-room control of heating or cooling.

A Zoneline system for every need — 208V or 230V application

	COOLING	HEATING
Cooling	6,000, 8,000, 12,000, 15,000 BTU	
Cooling with resistance heating	6,000, 8,000, 12,000, 15,000 BTU	Up to 4.5 KW heat

GENERAL  ELECTRIC

SOUTH CENTRAL DISTRICT

Call 451-9611 for more information. Or write: General Electric Co., P. O. Box 18813, Louisville, Ky. 40218

The performance of Kentucky State Parks has attracted the attention of the nation. Americans, now more vacation minded than ever, are coming to Kentucky in vastly increasing numbers with each passing year. As a result, out-of-state-tourists are now supplying a dramatic addition to the gross state revenue enjoyed by all Kentuckians. A key ingredient in Kentucky's success story is the contributions of its architects.

KENTUCKY ARCHITECTS DESIGN A WINNER

by Quentin D. Allen, Editor



Lure Lodge, Lake Cumberland State Park, McCulloch & Bickel, AIA, of Louisville, Kentucky*.

Until the Kentucky State Park system experienced a wholesale renovation and construction program which began in the early 1960's, the Bluegrass suffered from a "Brand X" vacation image. "Beautiful state but no vacation facilities" described Kentucky's vacation facilities. Then, a series of events occurred which created a new image for the Bluegrass State.

A bond issue with \$90 million for roads and \$10 million for parks was one of the key points. With a new outlay of state money matching federal expenditures for a national system of turnpikes, there was the assur-

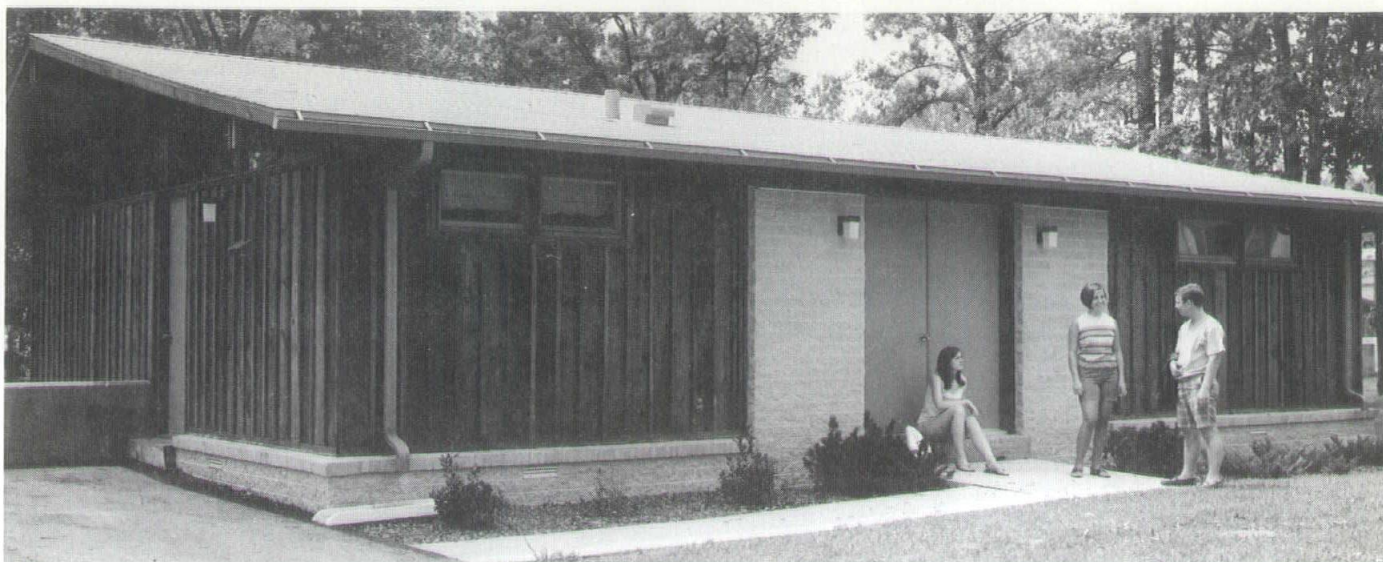
ance of Kentucky sharing the country's superhighway system. With the anticipation of an active road building era and the possession a state already bequeathed with natural beauty, Kentuckians began a dynamic focus upon state park recreational complexes as both an index to the livability of Kentucky and also an attraction to out-of-state guests.

From the early 1960's to the present, Kentuckians have rediscovered a beauty and in awe of their own state. From the opinions of out-of-state tourists, Kentuckians have discovered anew the state's immense importance in its central location near the metropolitan

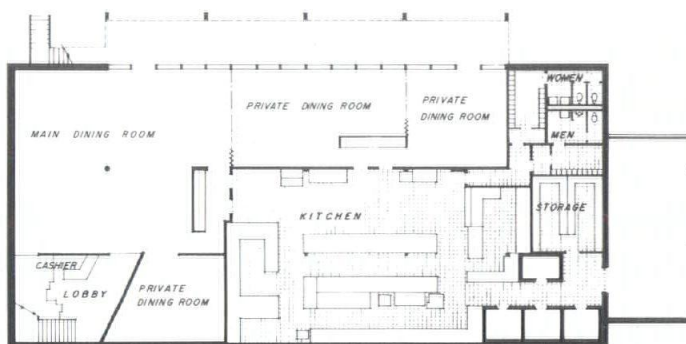
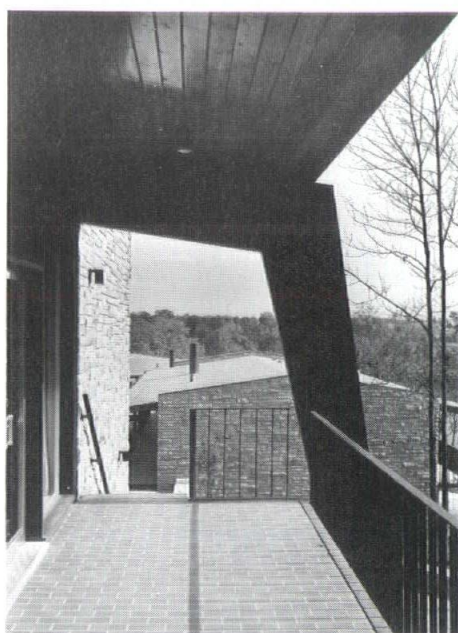
areas of the country, its dramatic cross roads history, its varied and abundant mineral resources and its wondrous range of visual plenty in natural beauty. If the magic inherent to the name of Kentucky was ever tarnished, it is not so today. With wise investment in roads and state parks, Kentuckians have received a dollar-wise and recreation-rich state park system.

The Kentucky State Park system's reputation for excellence has received attention from the nation's magazines and newspapers. Numerous awards have been won by the Kentucky State Park System and its principal outlet of news, the State Department of Public In-

*Firm now dissolved (reorganized into separate practices)



New Executive Cottage at Kentucky Dam Village State Park, by Peck and Peck Associates, AIA, Paducah, Kentucky



GROUND FLOOR PLAN MAIN LODGE

0' 5' 10' 15'

Rough River State Park Lodge, Sweet & Judd, AIA*, Louisville, Kentucky

formation and the Division of Travel. While handsome brochures have flooded eager requestees over the nation, the philosophy "selling" Kentucky parks has been the theme "you've got to see Kentucky Parks to believe them".

Kentucky Architects comprise a major ingredient in the state park success story. The very idea of recreation is honored at Kentucky State Parks. The marriage of physical facilities to the offerings of thirteen different sites manages to produce as much recreational return as possible from the environment. The importance of the lodge cannot be overstated. It is the center of activities, which tones and colors the zest and flavor

of its other facilities.

Recreation is many things. It is aloneness, silence, romance, card parties, meeting new people, communion with nature, meditation, undisturbed reading, lazy television days, active sports as golf, swimming, hiking, boating, fishing, tennis (among many other offerings), maid service, sun fun, tasty food, and many other alluring facets of Kentucky State Parks.

The above comprises a partial list of why people insist on breaking attendance records at Kentucky State Parks on an annual basis. These great magnetic points have drawn an astounding number of out-of-state tourists. From the zestful nature of guests

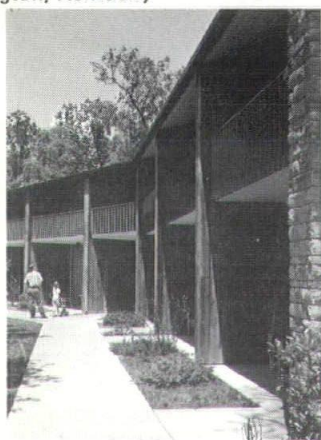
who visit Kentucky parks, it seems logical to conclude that guests leave our parks satisfied, refreshed and rewarded for the experience of a Kentucky vacation.

Individuality of design has aided the Kentucky park system. Kentucky Architects have approached their design problems from the standpoint of linking each lodge with the distinct characteristics of its respective location. Hence, we find at Kentucky state park lodges that the traditions and history of each area have been respected and observed. The geographic distribution of the 13 major state parks represent all sections of Kentucky. It is expected that two additional major state parks shall soon be

*Firm now reorganized into separate practices

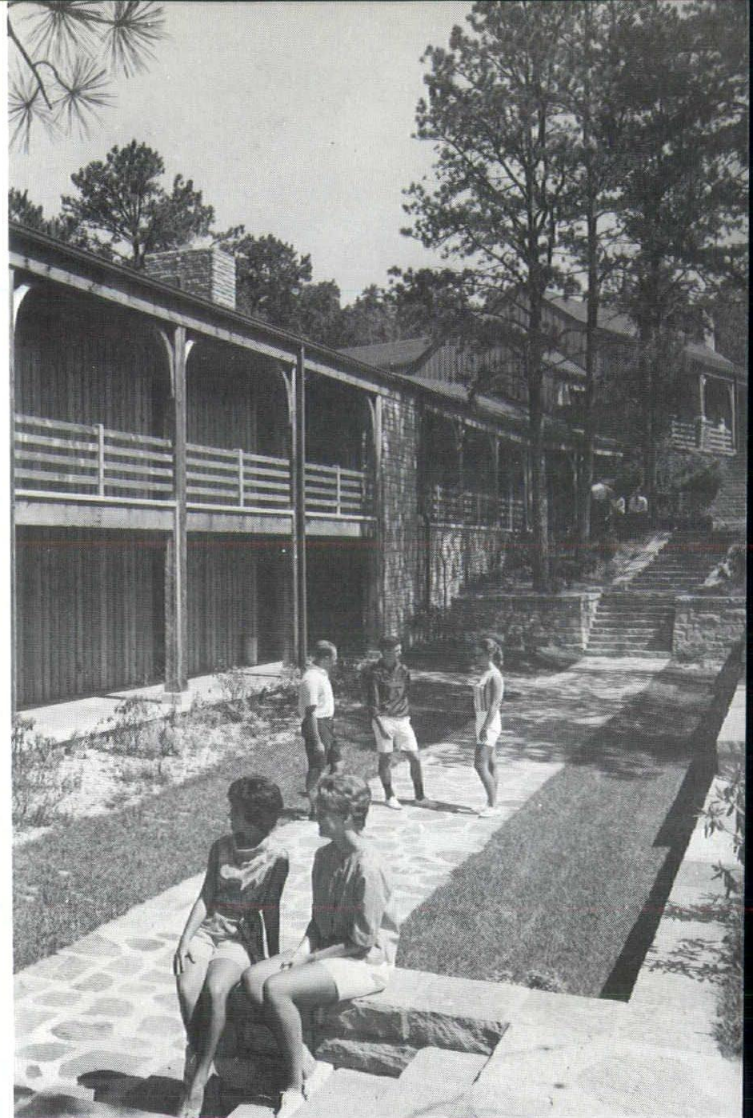


Lodge at Natural Bridge State Park, Brock, Johnson and Romanowitz, AIA, Lexington, Kentucky



Addition to Pennyrite State Park, Sweet & Judd, AIA*, Louisville, Kentucky

Caveland Lodge, Carter Caves State Park, Harry Holman, AIA, Ashland, Kentucky



Addition to Lodge at Pine Mountain State Park, Architect, Robert V. McMeekin, AIA, Lexington, Kentucky.

Lodge at Buckhorn Lake State Park, original building, Gillig-Chrisman & Miller, AIA, Lexington, Kentucky.

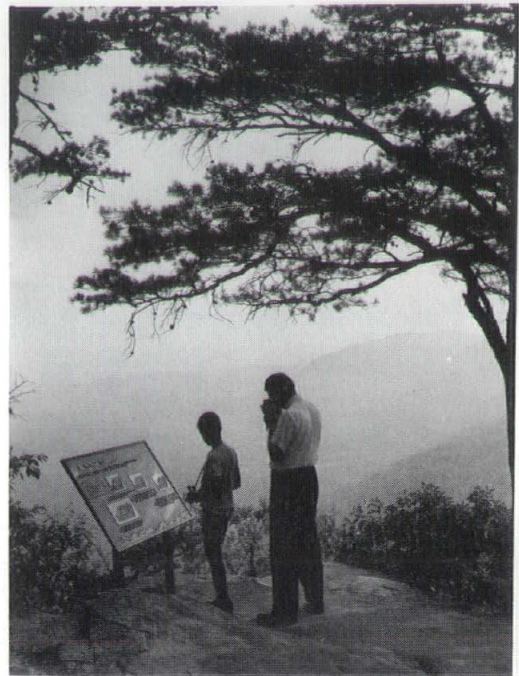


A lodestone of vacation plenty has been struck in Kentucky. The amazing range of recreational return offered by the variety of scenic settings in the shadow of stately mountains, sparkling lakes and verdant forests have intrigued vacation seekers over the nation. The quality of Kentucky's recreational facilities have transformed its natural panoramas of scenic beauty into tangible cash profits for all Kentuckians.



Lodge at Rough River State Park, original building, Sweet & Judd, AIA,* Louisville, Kentucky, addition to Rough River State Park Lodge, Arrasmith, Judd, Rapp and Associates, AIA, Louisville, Kentucky.

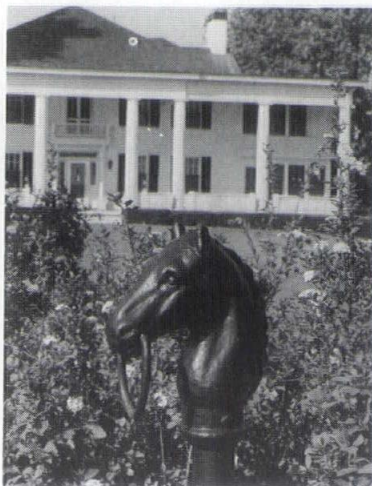
Lexington, Kentucky; addition,



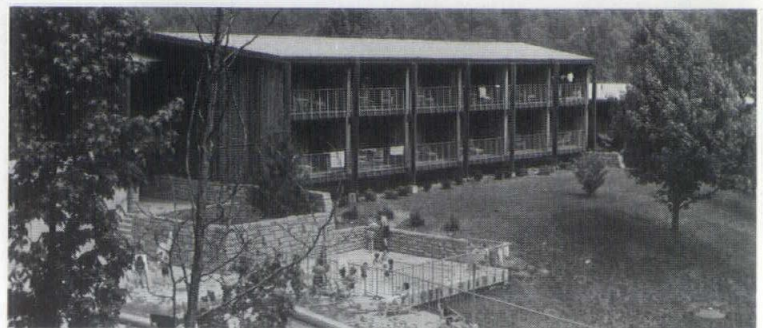
A view at Cumberland Gap



Carter Caves State Park



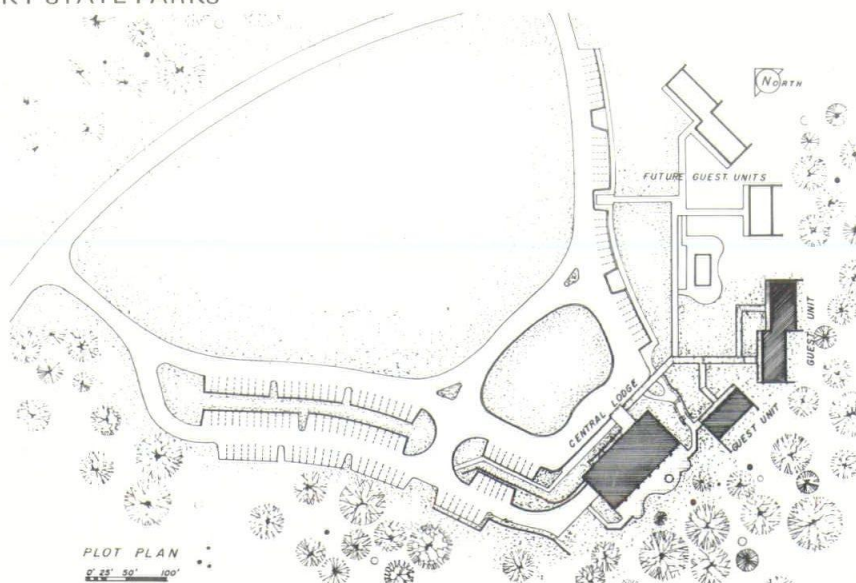
A Kentucky trademark



May Lodge, Jenny Wiley State Park, original building, Jack T. Hatcher, AIA, Pikeville, deceased; lodge addition, Chrisman & Miller, AIA, Lexington, Kentucky

**Firm now reorganized into separate practices)*

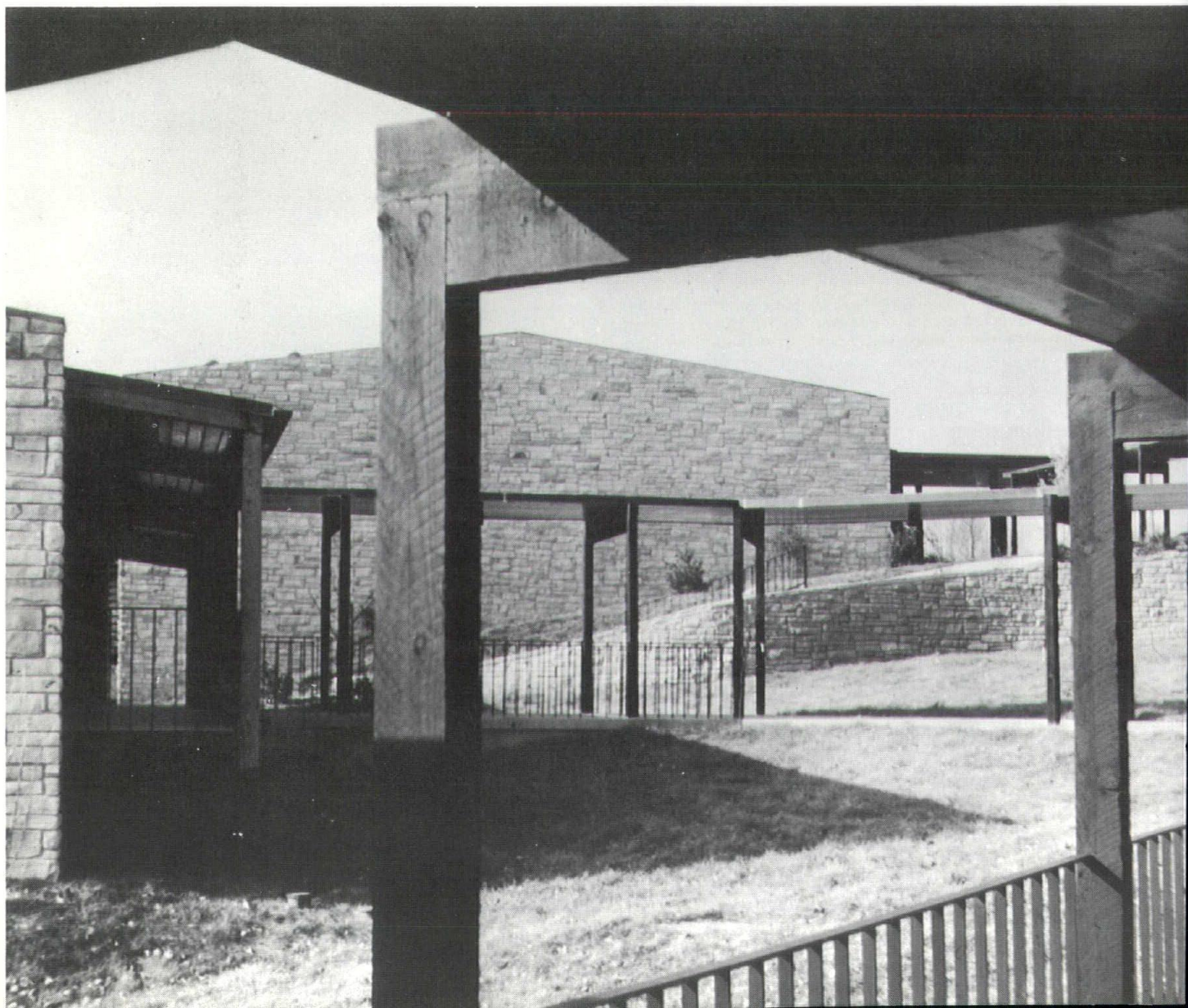
KENTUCKY STATE PARKS

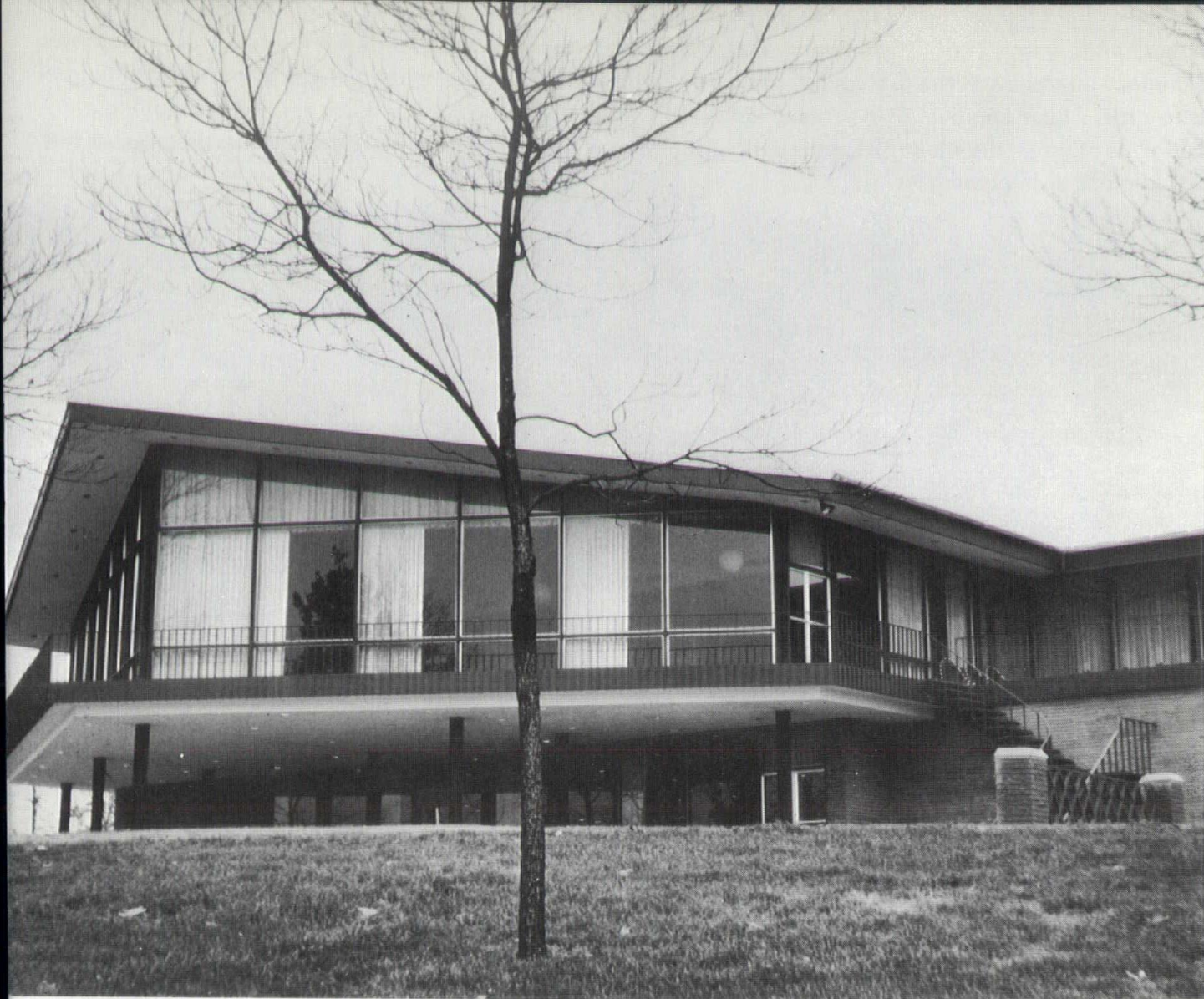


Lodge Buildings
Rough River State Park
Falls of the Rough, Kentucky
Sweet and Judd, A. I. A.*
Louisville, Kentucky

A. M. Judd, Designer and
Partner in Charge — now
Senior Partner of
Arrasmith, Judd, Rapp and
Associates, A. I. A.
Louisville, Kentucky

**Firm now reorganized
into separate practices*

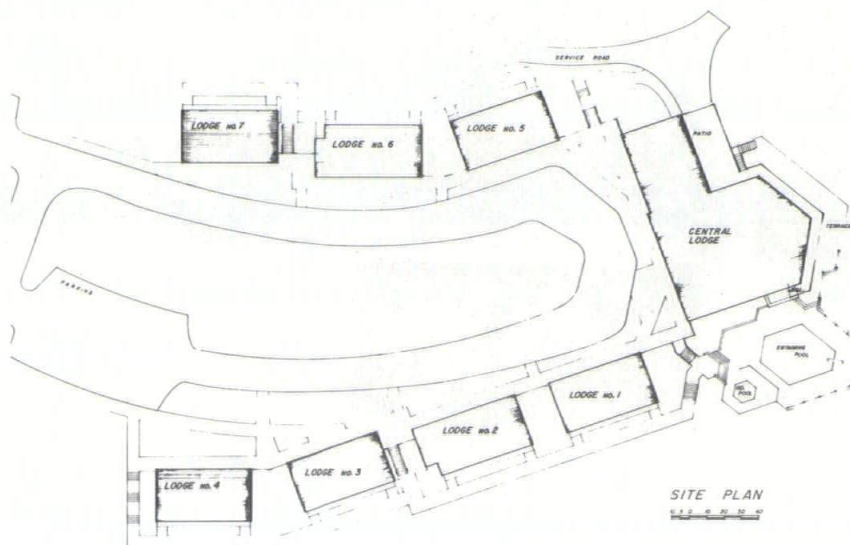




Village Inn
 Kentucky Dam State Park
 Gilbertsville, Kentucky
 Sweet and Judd,
 A. I. A.

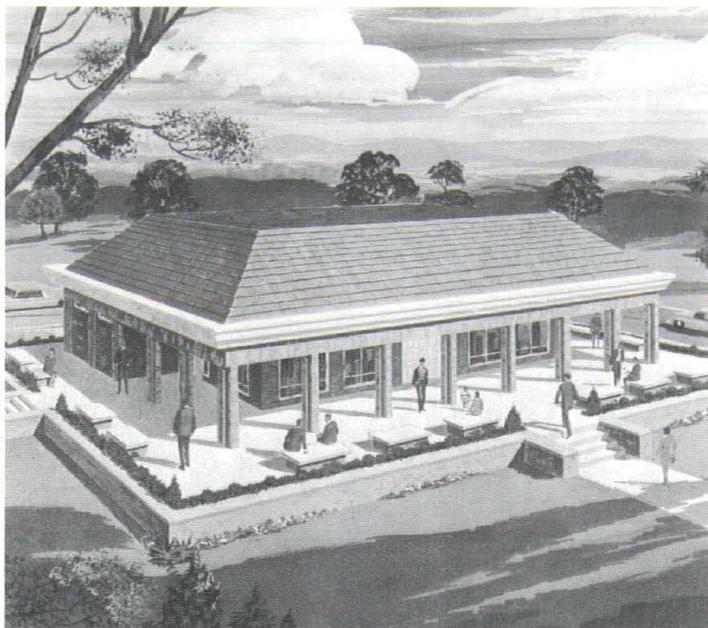
Firm now dissolved

A. M. Judd, Designer and
 Partner in charge – now
 Senior Partner of
 Arrasmith, Judd, Rapp and
 Associates, A. I. A.
 Louisville, Kentucky



**Firm now reorganized
 into separate practices*

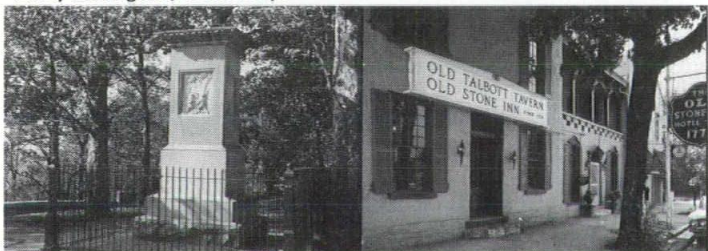
Other states, wishing to initiate a state park system with the style and zest of the Kentucky example, have examined all aspects of the total design package which has been so pleasing to in-state and out-of-state-tourists who affirm their approval of Kentucky State Park facilities by their repeat business. While enjoying a superior position in the matter of state parks, Kentucky is not looking backward to relish its past laurels but to plan further improvement.



Tourist Information Center, Prestonsburg, Caruthers A. Coleman, Jr., AIA, Lexington, Kentucky.



Lodge at Lake Barkley State Park, Architect, Edward D. Stone, of New Associate Architect. Lee Potter Smith & Associates of Paducah, Kentucky



In History . . . Famous Inns . . .



Horse country . . . and History . . . and Ky. Food!!

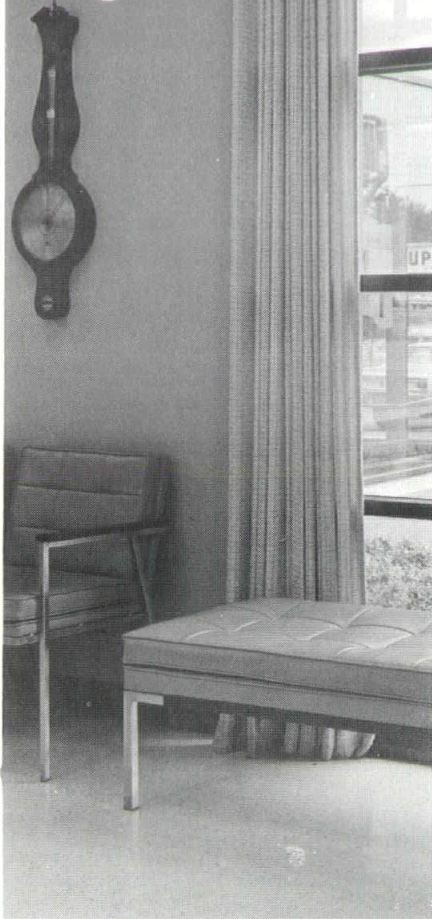


Thrilling aircapes



and Parks in Scenic Plenty!

Where does Architecture end and Decor begin?



It need not happen at all. We collaborate with you for color schemes, fixtures, and furnishings that complete and enhance your interior design. Without obligation, ask for a get-acquainted meeting with the architecture oriented designer assigned to work with you.

HUBBUCH BROS. & WELLENDORFF

FURNISHINGS, ACCESSORIES • RESIDENTIAL, COMMERCIAL DECORATING • 642 SOUTH 4TH STREET • 582-2695 • FREE PARKING AT VIC'S 5TH STREET LOT OR ANY PARK & SHOP LOT

ready at Barkley Lake and Greenbo. It is easily seen that recreational complexes of the size and nature of Kentucky state parks also lend to the generation of additional jobs, and, in many cases, the attraction of industrial plants.

Individuality in the design of lodging units has been observed throughout the Kentucky State Park system. Individual verandas opening onto vistas of mountain ranges, forests and lakes present thrilling spectacles. Individual enjoyment of these visual adornments dramatize the benefits of the verandas. The rooms-or-units reflect a decor peculiar to the region and is individualized in motif as separate and different from the remainder of the state park system. Thick rugs, tasteful fixtures, paintings, furniture and accessories, make the interior as visually acceptable as the scenic qualities of Kentucky water and landscapes.

A notable amount of success has been scored by Kentucky Architects in designing to supplement and not artificially replace what each site has to offer. In some cases this has meant renovation and the merging of a new structure into the lines of an older one. In some locales of new impoundments there has been the need to stamp the area with a distinctive recreation characteristic.

Success has been achieved. Thousands of letters to the State Department of Parks have said so. Cynical "show me" travel writers of national magazines and newspapers have said so. A boom in travel related receipts of \$135 million in 1954 to \$295 million in 1966 from out-of-state tourists has said so. And it all says that the Kentucky Architect—State of Kentucky client relationship has been an immense success.

Weldwood® Paneling

for architectural installations

Weldwood® Doors

custom tailored for every opening

Just two of the fine products available
from the world's largest plywood organization



U. S. Plywood Corporation

358 Farmington Ave., Louisville Phone: 635-2675

— SERVICES —

C.E.C.

LEGGETT & IRVAN

Consulting Engineers
Civil and Structural

1434 Forbes Road Dial 255-3611
Lexington, Kentucky 40505

American Testing & Engineering Corp.

Soil and Foundation
Engineering Consultants

5417 Lodema Way 502/969-3241

SOIL & FOUNDATION ENGINEERS
GEOLOGICAL ENGINEERS

james e. hough
& ASSOCIATES

7188 Pippin Rd - Cincinnati - 513/521-1967
7520 Preston - Louisville - 502/964-3900

SOILS and CIVIL ENGINEERING
Investigation • Design • Reports

MILTON M. GREENBAUM, P.E.

CONSULTING ENGINEERS

306 YORK STREET
LOUISVILLE, KENTUCKY 40203
TELEPHONE: 584-4941

E. R. RONALD & ASSOCIATES

CONSULTING ENGINEERS

543 South Third Street
Louisville, Kentucky

K.A.C.E.

C.E.C.

**Hummel,
George, & Kleine-Kracht, Inc.**

Consulting Engineers
Design—Supervision—Consultation

on
Structures and Foundations
3825 Bardstown Rd. Louisville

**ATLAS PLASTER AND
SUPPLY CO.**

2932 GREENWOOD AVE
LOUISVILLE, KY. 40211

FEATURING NATURALITE SKY DOMES

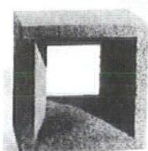
**ARCHITECTURAL METAL
SPECIALISTS**

PHONE US FOR SERVICE
776-4621



DISTINCTIVE FACE BRICK	<i>Darlington</i>	Regal Glazed	Royal Grays
WOOD MOULD FACE BRICK	<i>Bickerstaff</i>	Hand Mold	Light-Medium-Dark
MATCHING FACE BRICK	<i>All Kinds</i>	Try us for a match	40 Yrs. Experience

Call 587-8821
1044 E. Chestnut, Louisville, Ky.



INTRODUCING—The New Solar Screen Block, which never has ugly core-bar blemishes; consequently, a screen wall built with these blocks is beautiful on all sides. Available in white, natural gray or colors. As used extensively in the South and West.

Hardy's INC.

8507 GRADE LANE (OUTER LOOP)
LOUISVILLE, KENTUCKY 40219
PHONE AREA CODE 502 367-7083

TO CREATE THE LIGHTING EFFECTS REQUIRED
FOR MODERN DESIGN IN ARCHITECTURE

SPECIFICATION FLUORESCENT FIXTURES
MADE IN KENTUCKY

MANUFACTURERS OF LIGHTING FIXTURES
FOR OVER 36 YEARS

PHONE 587-6094

LOUISVILLE LAMP CO., INC.

724 W. BRECKINRIDGE ST.

LOUISVILLE, KY., 40203

Kentucky LUMBER CO.

WHERE YOUR DOLLARS GO FURTHER!
WHOLESALE and RETAIL

*The Best from the
WEST and the SOUTH*

WE CARRY ALL BUILDING MATERIALS
FOR HOME OWNERS—INDUSTRY—CONTRACTORS
(Except Plumbing & Electrical)

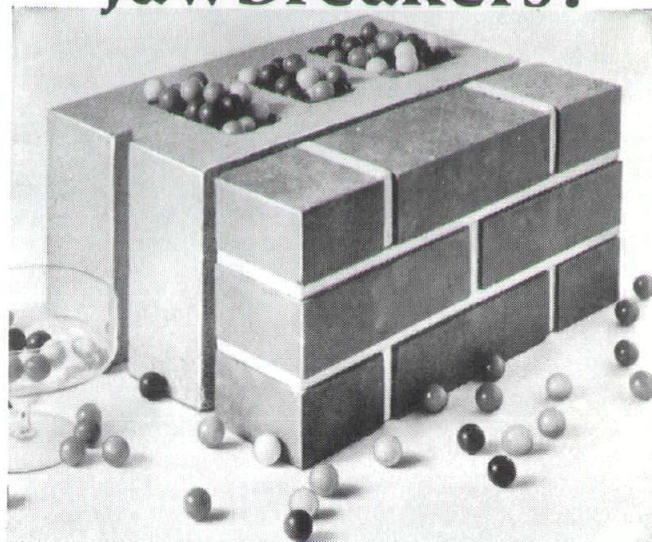
"THERE ARE NO LOWER PRICES"

ONE STOP-FRIENDLY, HELPFUL SERVICE

Special rates to Contractors and big quantity buyers

1540 S. 9th St. 635-5261 Louisville, Ky. 40208

Use something to insulate cavity and block walls. How about jawbreakers?



Whenever the temperature differs on the inside and outside of these walls (that's all the time), convection occurs in the cavities. The more different the temperature, the bigger the wind in the voids. The wind carries therms from the side where you want them to the side where you don't. These walls are as good as—or better—than other kinds of walls. But like all walls, they need insulation. Without it the occupants are as miserable as the heating and air conditioning bills.

Zonolite® Masonry Fill Insulation: better than everything

Zonolite Masonry Fill Insulation was developed specifically for these kinds of walls. It doubles their insulation value; a real boon to mankind. Keeps inside wall temperatures comfortable and the heating and air conditioning bills easy to take.

Zonolite pours right into the voids, fills them completely, never settles. It is water repellent; any moisture that gets into the wall drains down through it and out.

Cost: as low as 10¢ per square foot, installed.

RUUD COMMERCIAL GAS WATER HEATERS

NOW LARGEST
SELECTION GREATER RECOVERY ...
ASME CODE



The unique construction of the storage gas water heaters and the multi-tube gas water heaters assures long life.

RUUD WATER HEATER SALES CO.

840 E. Chestnut St. 583-7629
Louisville, Kentucky 40204

GRACE

Zonolite Division, W. R. Grace & Co., Dept. 000
135 South LaSalle Street, Chicago, Illinois 60603

Gentlemen:

Somehow using jawbreakers doesn't sound like a good solution to the problem of insulating masonry walls. Send me Zonolite Masonry Fill Insulation Folder No. MF-83, with complete technical data and specifications.

NAME _____

TITLE _____

FIRM _____

ADDRESS _____

CITY _____ STATE _____ ZIP _____



MURPHY ELEVATORS and SERVICES

- PASSENGER
FREIGHT
RESIDENCE
DUMBWAITERS
MATERIAL HANDLING EQUIP.
GLOBE WAYNE
- INSPECTION SERVICE,
FULL MAINTENANCE
AND REPAIRS ON ALL
MAKE ELEVATORS

Area Code 502 587-1225

**The MURPHY
ELEVATOR CO.**
INCORPORATED

128 E. MAIN ST. — LOUISVILLE, KY. 40202
741 PRICE AVE. — LEXINGTON, KY. 40508

MAY WE JOIN YOUR WINNING TEAM WITH OUR INTERIOR DESIGN RESOURCES AND SERVICES?



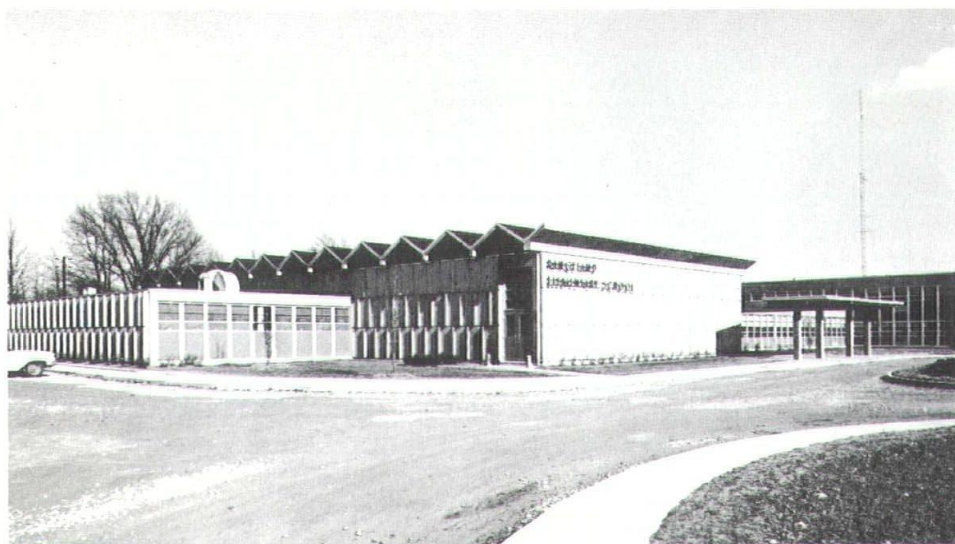
hubbuck in kentucky
Interiorly yours

Louisville • 324 West Main Street • 583-2716
Lexington • 1127 Commercial Drive • 254-0327
Owensboro • 2021 Parrish Avenue • 683-6224



SARGENT Hardware

Complete Line of Builders Hardware
Call Us For Design and Technical
Service . . . 587-8821
1044 E. Chestnut — Louisville, Ky.



**RANGELAND
ELEMENTARY
SCHOOL**

Hartstern,
Louis & Henry
Architects

SCHOOL CONSTRUCTION

ROMMEL-McFERRAN CO.

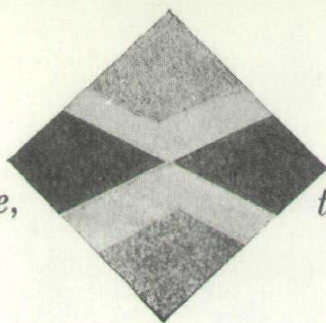
4504 Poplar Level Road

R
M

GENERAL CONTRACTORS

(451-4141) LOUISVILLE

The beauty of marble,



the durability of concrete . . .

TERRAZZO brings an old-world touch to a structure of modern elegance

Textured on the plaza, highly polished for interior floors, traditional terrazzo in a bold new pattern sweeps across the entire ground level of the new administration building of the American College of Surgeons.

The striking design keys the shape and placement of outdoor pools and fountains, provides a pleasing continuity as the building is entered. To achieve the special tones desired, the architects specified both white and grey cement matrices, combined with white, black or

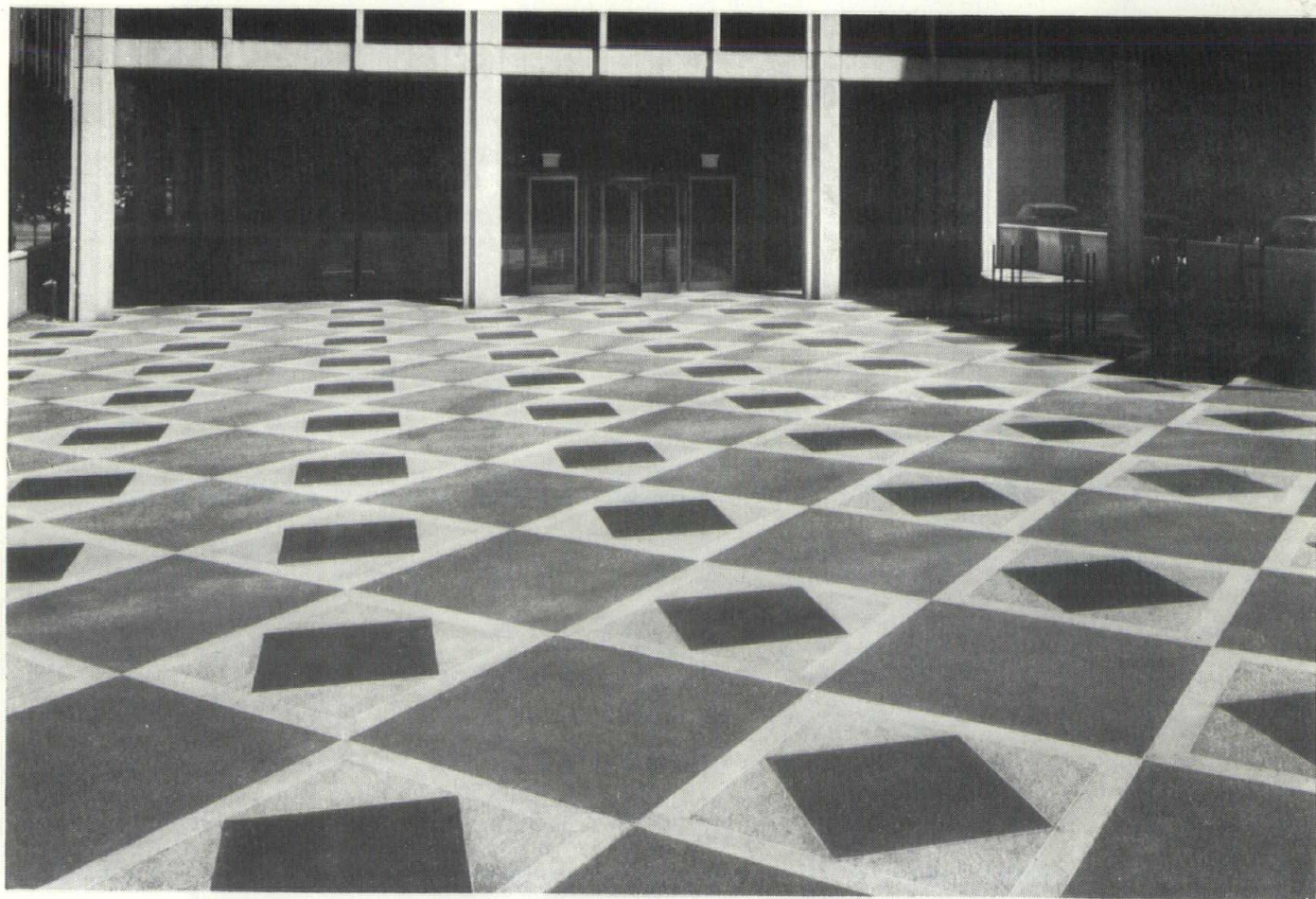
grey marble chips, and black obsidian.

The beauty will last. Terrazzo has exceptional life expectancy, easy maintenance. Everywhere architects are recognizing the esthetic as well as the practical advantages of the age-old terrazzo process. Offering an almost unlimited range of colors and patterns, terrazzo enhances the most modern design ideas.

PORTLAND CEMENT ASSOCIATION

1105 Commonwealth Bldg., Louisville, Ky. 40202

An organization to improve and extend the uses of portland cement and concrete



American College of Surgeons' Administration Building. Architects-Engineers: Skidmore, Owings & Merrill, Chicago, Illinois.
Terrazzo Contractor: Roman & Co., Chicago General Contractor: Turner Construction Company, Chicago

The Kentucky Architect

**804 E. Jefferson St.
Louisville, Ky. 40206**

Return Requested

GEORGE E. PETTINGILL &
AMERICAN INSTITUTE OF
ARCHITECTS
1735 NEW YORK AVE
WASHINGTON D C 20006

**BULK RATE
U. S. POSTAGE
PAID
Louisville, Ky.
Permit No. 352**



Floor 'em...with Kuramic Seamless

Kurfees KURAMIC Seamless Floor Coating is a proven, durable epoxy base and urethane-finish that looks expensive, but installs and maintains for less than most floorings. Kuramic Seamless goes over practically all subfloorings; is available in a wide choice of colors. Kuramic film builds 35 mils minimum in three coats. Wears like tile. Cleans easily by simply mopping. No waxing. For kitchens, shower rooms, hallways, auditoriums, recreational areas, surgical rooms and most everywhere. Inside or out. Makes exciting dados. For more information, write J. B. Tabler, Kurfees Paint Company, 201 E. Market Street, Louisville.

