

THE KENTUCKY ARCHITECT

OCTOBER NOVEMBER 1968

AMERICAN INSTITUTE  
OF  
ARCHITECTS  
JAN 6 1969  
LIBRARY



Interior doors  
and toilet partitions

**ANDERSON**

WOOD PRODUCTS COMPANY/LOUISVILLE, KENTUCKY  
1381 BEECH STREET LOUISVILLE, KY. 40211



778-5591  
laminated plastic



Fire Protection  
Of Louisville, Inc.

CONTRACTORS

AUTOMATIC SPRINKLER EQUIPMENT

8013 ASHBOTTOM RD., LOUISVILLE, KY. 40213 • 366-1431



THE GEORGE MARR COMPANY

*Blueprinting • Whiteprinting • Photocopying  
Cloth • Film and Paper Reproductions*

652 SOUTH SECOND STREET  
LOUISVILLE, KENTUCKY

*Food Service Equipment  
& Supply Co., Inc.*



1900 WEST MAIN STREET  
LOUISVILLE, KY. 40203  
AREA CODE 502 584-5106



LARGEST STOCK OF MODERN FOOD SERVICE  
EQUIPMENT AND ACCESSORIES IN KENTUCKIANA

VISIT OUR SHOWROOMS



**Get this heating/cooling system into  
any motel...without reservations.**

It's General Electric's ZONELINE system and it provides unequalled design freedom for motels, hotels, nursing homes, apartments and office buildings. Choose any of three basic chassis—cooling only, cooling with built-in electric resistance heating, or Zone-line heat pump. Units are mounted through the wall—high or low—wherever you wish, and controlled by integral or wall-mounted thermostats. A simple touch gives positive, room-by-room control of heating or cooling.

A Zoneline system for every need —  
208V or 230V application

	COOLING	HEATING
Cooling	6,000, 8,000, 12,000, 15,000 BTU	
Cooling with resistance heating	6,000, 8,000, 12,000, 15,000 BTU	Up to 4.5 KW heat

**GENERAL ELECTRIC**

SOUTH CENTRAL DISTRICT

Call 451-9611 for more information. Or write: General Electric Co., P. O. Box 18813, Louisville, Ky. 40218

THE KENTUCKY SOCIETY OF  
ARCHITECTS  
OF THE  
AMERICAN INSTITUTE OF  
ARCHITECTS

Charles J. Hellmann, Executive Director

EXECUTIVE OFFICERS

Norman Chrisman, Jr., AIA, President

Lloyd G. Schleicher, AIA, Vice-President

Robert E. Olden, AIA, Secretary-Treasurer

BOARD OF DIRECTORS

K. Norman Berry, AIA

John Bickel, III, AIA

Norman Chrisman, Jr., AIA

C. A. Coleman, Jr., AIA

Arnold M. Judd, AIA

Paul B. Kiel, AIA

Robert E. Olden, AIA

Donald Schnell, AIA

Lloyd G. Schleicher, AIA

EAST CENTRAL REGION, AIA

A. Bailey Ryan, AIA, Director

EAST KENTUCKY CHAPTER, AIA

K. Norman Berry, AIA, President

Robert E. Olden, AIA, Vice-President

Martin H. Ginocchio, AIA, Secretary

James B. Tune, AIA, Treasurer

WEST KENTUCKY CHAPTER, AIA

Lloyd G. Schleicher, AIA, President

Edward Cooke, III, AIA, Vice-President

Laurence Melillo, AIA, Secretary

Robert F. Crump, AIA, Treasurer

NORTHERN KENTUCKY SECTION

EAST KENTUCKY CHAPTER

Paul B. Kiel, AIA, President

Carl C. Bankemper, AIA, Vice-President

Edward J. Beiting, Jr., AIA, Secretary

EDITORIAL COUNCIL

Louis R. Hugg, AIA, Ch.

Jim Halbleib

Robert F. Crump, AIA

Charles R. Akers, AIA

James B. Tune, AIA

THE KENTUCKY ARCHITECT

is the monthly official magazine of the Kentucky Society of Architects of the American Institute of Architects, Inc. Opinions expressed herein are not necessarily those of the Society or the Institute. The Kentucky Architect is available at a subscription cost of \$4.00 each year or 50 cents per issue. Subscriptions may be obtained at 213 St. Clair Street, Frankfort, Kentucky 40601. The Kentucky Architect reserves the right to refuse or alter editorial material. All material is reviewed by the Editorial Council prior to publication.

EDITORIAL, PUBLISHING AND  
ADVERTISING OFFICE:

Charles J. Hellmann, Executive Director,  
213 St. Clair Street, P. O. Box 557,  
Frankfort, Kentucky 40601;  
phone 502 - 875-3286.

VOLUME VII, NO. 10/OCT.-NOV., 1968

Contents:

4 The Team: The Commonwealth and  
the Private Architect

6 Hart Hall Project

8 Fort Boonesborough Project

10 KSA News Notes

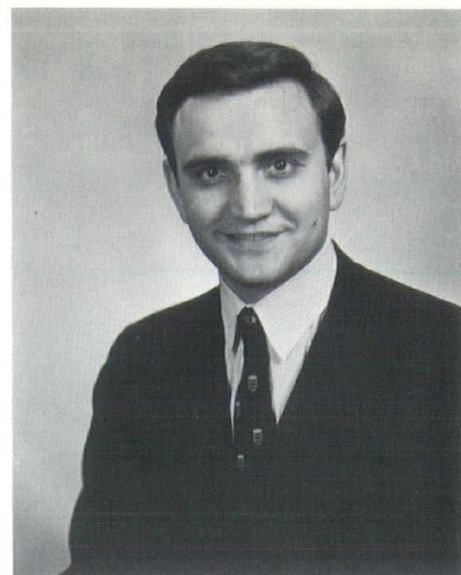
Cover photo: Hart Hall, Murray State  
University

# THE TEAM: THE COMMONWEALTH AND THE PRIVATE ARCHITECT

*By William T. McConnell*



*Albert Christen, Commissioner  
Department of Finance*



*Lawrence Forgy, Jr., Deputy Commissioner  
Department of Finance*

## FOREWORD

Many of the past issues of the Kentucky Architect have been devoted to projects of the State of Kentucky. This practice will continue because the Commonwealth instigates more architecture and construction of buildings than any other single architectural client in the state. Therefore we have invited William T. McConnell, director, Division of Engineering, Department of Finance, to outline their building and design processes.

The Finance Department, through the Division of Engineering is to be commended for the part it plays in the programming, development and construction of state projects. There is sometimes disagreement but in the end the Commonwealth has proved the capabilities of architects and the Division of Engineering by developing such buildings as dormitory complexes and unique State Park lodges. Two such completed projects are featured in this issue; the bathhouse-restaurant facility at Ft. Boonesborough State Park, and Hart Hall, a dormitory at Murray State University.



*William T. McConnell, Director  
Division of Engineering  
Department of Finance*

By law the Department of Finance is responsible for all building projects in which the Commonwealth is the owner. The Division of Engineering is the control point. We serve as architect-engineer to all agencies of state government and handle all contracts between the state and the private architect.

Instead of developing a large staff to prepare plans and specifications for state buildings we prefer to contract with private architects and engineers. Some states have taken the other route but we are of the firm opinion that this leads to mediocrity in architecture.

In our system the architect is given freedom of building design within the context of the problem, but our division architects and engineers stay close to the situation to insure of no wasted effort. When the design is presented by the architect we try not to be critical. We do not want to inhibit design. However, we might see a few things that are not working properly and design revisions are requested.

Although the complete control of the project rests with the Department of Finance we are primarily looking after the interest of the state agency we represent. Depending on the agency, its personnel, and the scope of the project we become involved in varying degrees. We are in full control at the beginning of all projects. Gradual changes are made as the projects progress. The agency normally has one person who is assigned to work with the private architect.

During the design phase an architect or engineer from the Division of Engineering is assigned to the project. When tracings and specification masters are completed the division turns them over to the Division of Purchasing for bidding. The responsibility stays with Purchasing until the project is under contract. Then Engineering resumes control.

At the initiation of a project three persons are greatly involved; the Commissioner of Finance, the Deputy Commissioner of Finance, who is also the budget director, and the head of the agency that requested authorization of the project. Many variables, including available sites and types of funding, are involved in approving a project. By law the means of financing must be feasible and the facility must be useable upon completion.

We want to insure fair and open competition. We review the plans and specifications in this context to see that they serve the purpose and represent good construction.

When selecting an architect we always keep in mind that we are a public client. Architects are selected through agency recommendations, past performance of the architect, the effort to disperse the contracts in fair and equal amounts, and by an architect's particular knowledge in a particular type of design. However, there is no policy to classify architects according to the size of the firm.

Sometimes the architect fails to understand the financial scope of the project and both the architect and the project plan get into difficulty. He must stay within the cost figures established at the programming stage. If a construction contract cannot be

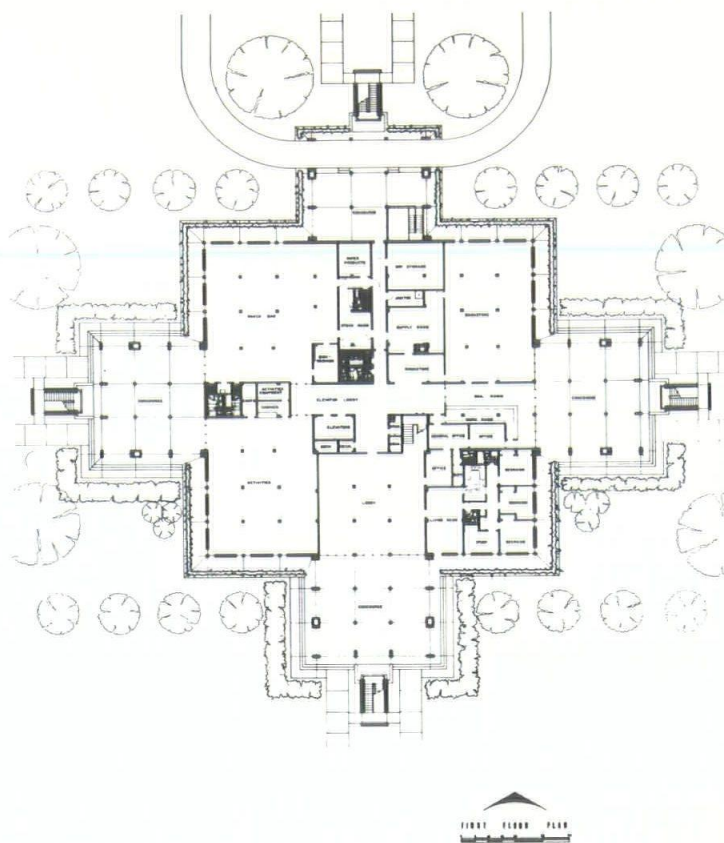
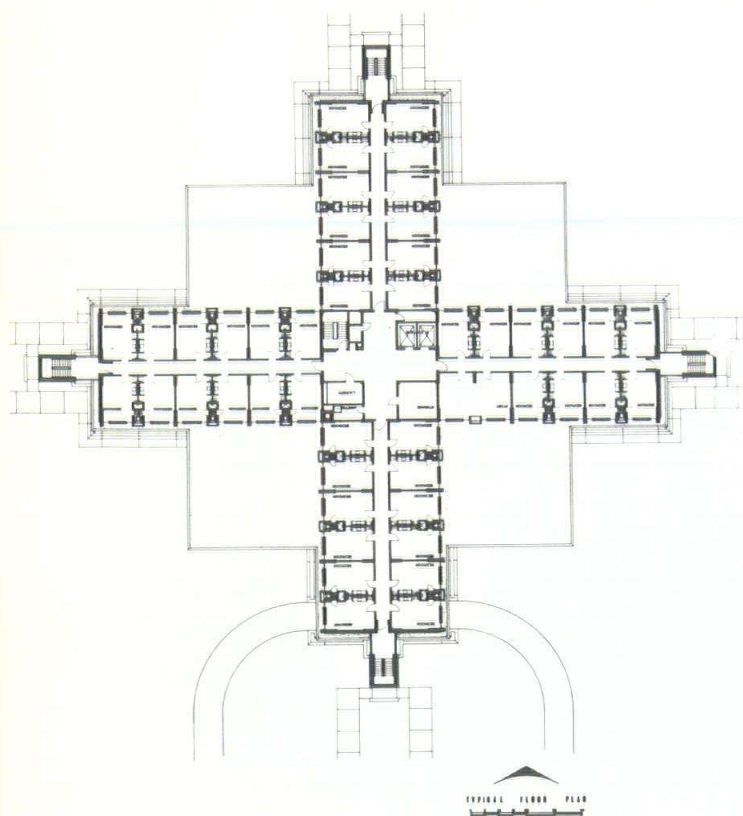
awarded then no useful service has been performed.

Some of our best relationships with architects have been through more frequent meetings than the standard three interviews of programming, preliminaries, and final design. This approach enables everyone concerned to accomplish the project objective; a good design, one that is functional, and a design that can work within the available funds allocated.

Credit should be given to the three sections within the Division of Engineering: Administration, headed by James W. Stocker; Construction, supervised by Carl T. Hancock; and Design, headed by our chief architect, Keith Ashby. Other members of the Design Section staff members working with architects are: Raymond B. Hayes, Jr., architect; William E. Smith, architect; Melbourne Mills, architect and engineer; and Byrnes Fairchild, engineer.

The excellence of talents of the above groups and the private architect will come into prominence when projects, similar to those featured in this issue are completed. Dormitories currently under construction are: two at Eastern Kentucky University, one at Murray State University, two at Morehead State University, and one at Kentucky State College. A resort lodge is being designed for Barren River State Park. Under construction are two dormitories at Western Kentucky University, two at Eastern Kentucky University, and two at Morehead State University. The Lake Barkley State Park resort lodge is also under construction.

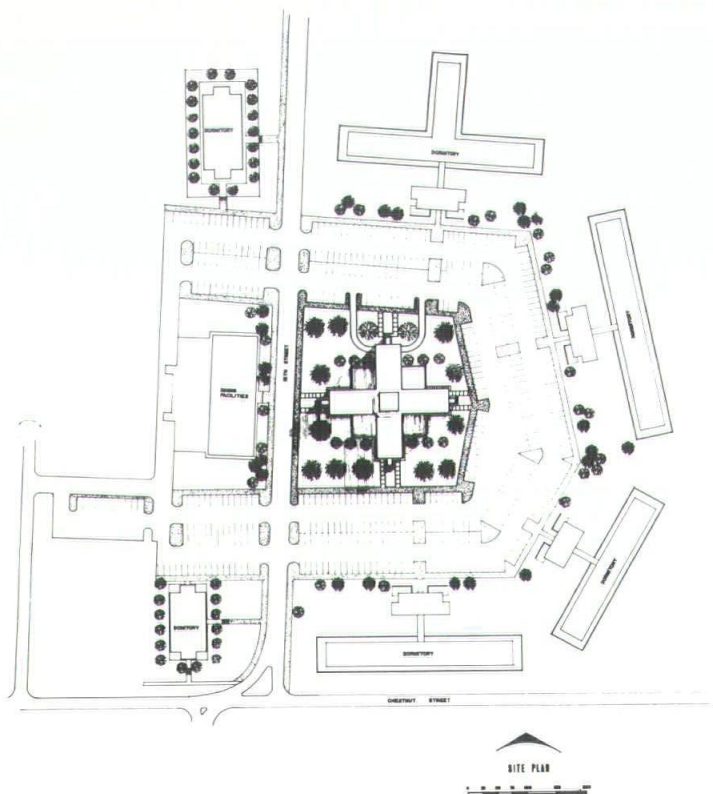
The current administration under Gov. Louie B. Nunn intends to keep the Commonwealth on the move with its Capital Construction Program.



## HART HALL

*Murray State University  
Murray, Kentucky*

*Architect: Lee Potter Smith and  
Associates of Paducah, Inc.*



This dormitory was programmed to house 550 men and to provide supporting facilities that include a post office, snack bar and grill, bookstore, recreational and activities area, and a full time married proctor's residence. The site had been previously established by the master plan of the campus, with this dormitory as the hub of the housing complex. The problems posed by the site were those of correct orientation to each of the existing buildings within the complex, as well as its effect as a high rise campus structure.





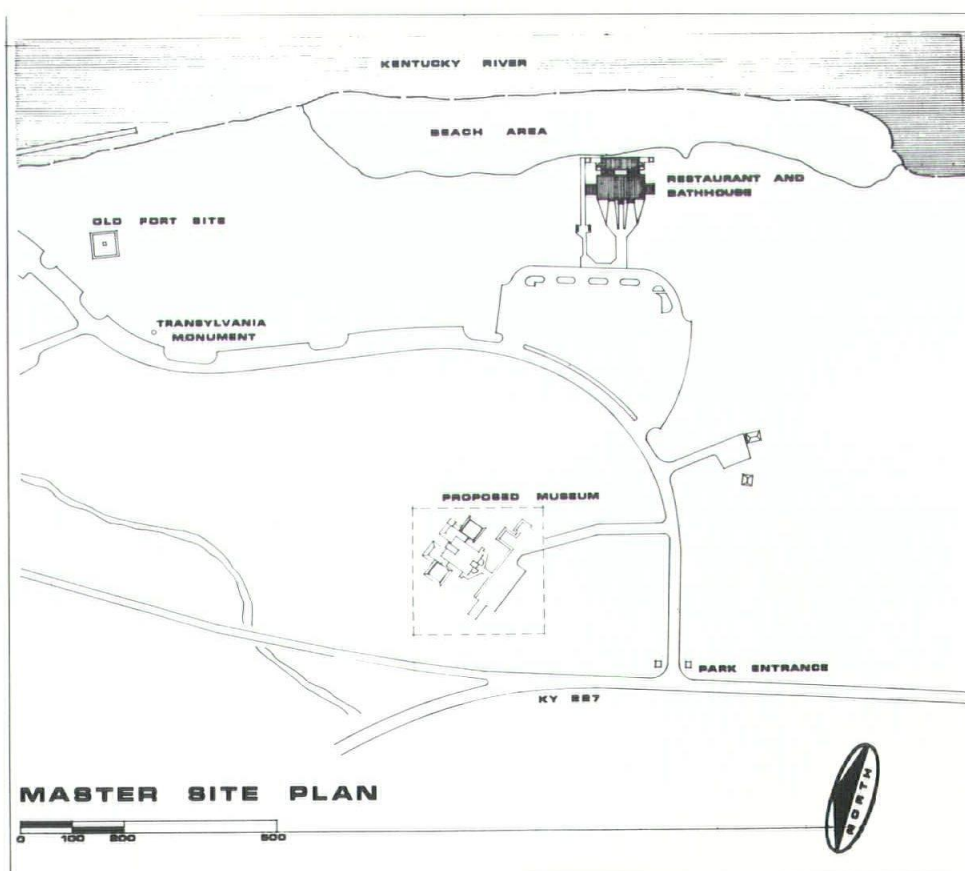
## FT. BOONESBOROUGH STATE PARK

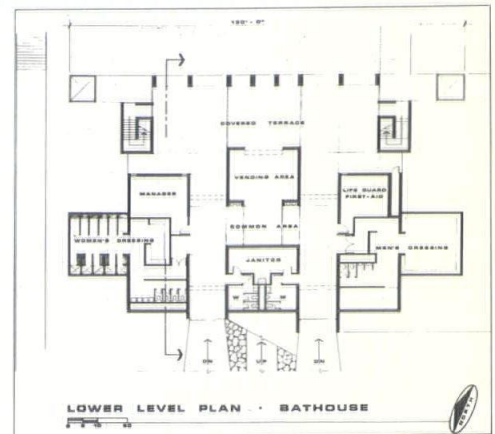
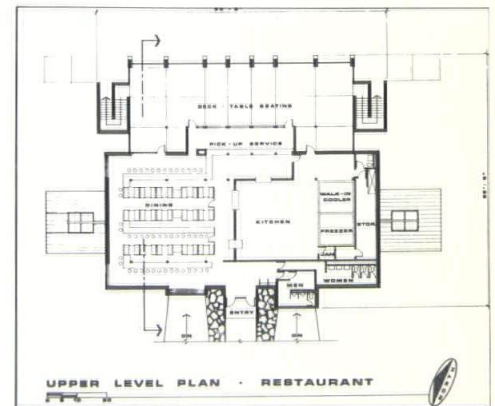
*Bathhouse-Restaurant*

*Boonesborough, Kentucky*

*Architects: Chrisman, Miller, and  
Wallace, Lexington*

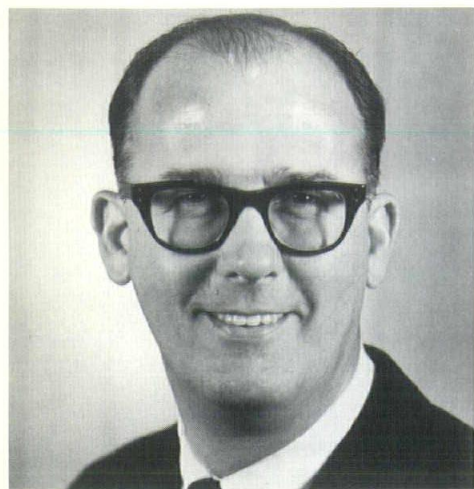
This facility, located on the Kentucky River in Madison County, was designed along with a museum (to be built at a later date) for one of the most active day use parks in the state. The site is considered to be the original site of the Boonesborough Fort founded by Daniel Boone. The primary design considerations were the proper placement of the two buildings on the site in such a way as to establish a visual entry into the park and an attempt to create an identity image with some relevance to the past and the present. Through this facility and the future museum the Parks Department hopes to upgrade service to the individual visitor (bathhouse-restaurant) and place emphasis on the historical-educational values (museum), while still attempting to keep the park primarily a day use facility.





## KSA NEWS NOTES

### EXECUTIVE DIRECTOR NAMED



Charles Hellmann

The Board of Directors of the Kentucky Society of Architects has announced the appointment of Charles J. Hellmann, Frankfort, as the Society's Executive Director.

In this newly-created position Mr. Hellmann will perform the administrative and public relations functions of the Society. He also becomes editor, publisher and advertising representative for the KENTUCKY ARCHITECT, the monthly official magazine of the Society.

It has been the intention of K.S.A. for some time to employ an executive director who could represent the Society in a public relations capacity and also assist in the administration of K.S.A.'s business affairs.

All inquiries concerning the editorial and advertising content of the KENTUCKY ARCHITECT should be sent directly to Mr. Hellmann at P. O. Box 557, Frankfort, Ky. 40601.

Until K.S.A. can obtain permanent headquarters, a temporary office for Mr. Hellmann has been established at 213 St. Clair Street, Frankfort. The telephone number is 875-3286, area code 502.

Mr. Hellmann, 42, comes to K.S.A. from the Kentucky Department of Parks where he served as administrative assistant to the Commissioner of Parks in a public relations capacity. He has had a wide variety of experience in the fields of management, administration, communications, publications, and employee and public relations. His work with the Parks Department and the Allied Con-

struction Industries office in Cincinnati has enabled him to become acquainted with the field of architecture.

Mr. Hellmann is a native of Ludlow, in Northern Kentucky. He is a graduate of the University of Kentucky where he received a Bachelor of Arts degree in Journalism-Radio Arts. He completed his resident work toward a Master of Science in Public Relations at Boston University. He is married to the former Judith Kae Lauer, of Cincinnati, a school teacher, who graduated from Ohio University, in Athens, and Xavier University, Cincinnati. They have a daughter, Angela, 22 months, and a son, Chris, 8 months.

### NEW OFFICERS ELECTED

The following officers were elected at a recent meeting of the East Kentucky Chapter of the American Institute of Architects: President, K. Norman Berry; Vice President, Robert E. Olden; Secretary, Martin H. Ginocchio; Treasurer, James B. Tune; Directors, Douglas W. McLoney, and Donald Q. Wallace.

The Northern Kentucky Section of the East Kentucky Chapter also held its election. The new officers for the coming year are: President, Carl C. Bankemper; Vice President, Edward J. Beiting, Jr.; Secretary, Harley B. Fisk.

### "HONOR AWARD FOR DISTINGUISHED ACHIEVEMENT IN ARCHITECTURE"

The next issue of THE KENTUCKY ARCHITECT will be devoted to the recipients of the annual "Honor Award for Distinguished Achievement in Architecture." Each project will be featured with plans, photos, and jury comments.

### OUR APOLOGIES

The KENTUCKY ARCHITECT was in error by improperly crediting two dormitory complexes in the August issue. The rendering identified as Men's Dormitories Nos. 6 and 7, Western Kentucky University, by Arrasmith, Judd, Rapp and Associates, Louisville, was actually Men's Dormitory No. 7 at Morehead State University, by Marye

and Bond, Architects and Engineers, Lexington. And credit was not given Johnson-Romanowitz, Architects, Lexington, for the photo of their model of the South Dormitory Complex for Men at Eastern Kentucky University. Our apologies!

### FORTY-FOUR ATTEND ANNUAL DESIGN SEMINAR



H. Candela



R. Crites

The Annual Design Seminar, sponsored by the Kentucky Society of Architects, was held in the AIA award-winning classroom building at Kentucky State College, Frankfort, on September 28. Attending the seminars were forty-four KSA members, their associates, architectural students, and guests.

The seminar was divided into sections. The morning session was a presentation by Hilario Candela, AIA, distinguished designer and partner in the Miami firm of Pancoast, Ferendina & Grafton, Architects. Mr. Candela presented his South Campus Development of the Miami-Dade Junior College. This is a completed architectural project.

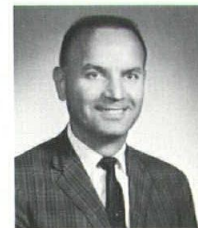
The afternoon session was devoted to an uncompleted project, the education, cultural, convention center project at Iowa State University, Ames. The speaker was Mr. Ray Crites, partner in the firm of Crites and McConnell, Architects, of Cedar Rapids, developers of the project. Mr. Crites has also distinguished himself with a number of award winners.

The excellence of the program is a credit to John Bickel, program chairman.

### PCA APPOINTMENTS



M. Evans



H. J. Stockinger

The Kentucky regional office of the Portland Cement Association at Louisville has announced the appointments of Herbert J. Stockinger as structural engineer for Kentucky, and Milton Evans, Jr., as field engineer for eastern Kentucky.

Mr. Stockinger, of Visalia, Calif., is a native of Austria. He has lived in the United States since 1957. He is a civil engineering graduate of the Institute of Technology, Vienna. He has broad experience in precast, prestressed, post-tensioned and cast-in-place concrete in this country, Austria and Switzerland. Mr. Stockinger comes to Portland from Kabo-Karr of Visalia, manufacturer of precast prestressed concrete components.

Mr. Evans, a native of Lexington, was a consulting engineer at White Bear Lake, Minn. He is a civil engineering graduate of the University of Kentucky.

## **TWO BECOME ASSOCIATES**

D. Kenneth Meyer, Ft. Thomas, Ky., and Jerry L. Keltch, of Cincinnati, have been named Associates in the firm of Fisk, Rinehart, and Hall, McAllister, Stockwell, Architects and Engineers. Both are registered architects. The firm has offices in Cincinnati and Covington.

Mr. Meyer has been with the firm for seven years. He is 35, and a graduate of the University of Cincinnati. He also holds a Master Degree in City Planning from Miami University, Oxford, O. For two years he taught architectural and planning design courses at U.C.

Mr. Keltch, 36, is a graduate of the University of Cincinnati, and has been with the partnership for three years. He served five years on the faculty at the University of Kansas.

## **SIX PASS STATE BOARDS**

C. Julian Oberwarth, FAIA, Executive Director of the State Board of Examiners and Registration of Architects, Commonwealth of Kentucky, has announced the following have recently passed their State Board examinations and are now licensed to practice architecture in the Commonwealth:

David C. Banks, 27, of Frankfort, with the firm of Lee Potter Smith, Pritchett, Hugg and Carter, Architects and Engineers in Frankfort.

Donald L. Barth, 28, of Lexington. He is with Johnson-Romanowitz, Architects, Lexington.

Davie G. Crawley, 37, of Owensboro, who is with Walter Scott Roberts, Architect, Owensboro.

Frank H. Dries, 30, of Lexington, also with the firm of Johnson-Romanowitz, Architects, Lexington.

James L. Gibson, 34, of Louisville. He is with Design Environment Group Architects, Louisville.

John D. Meyers, 32, of Lexington, who has recently joined the firm of Marye and Bond, Architects and Engineers, Lexington.

## **ANNUAL KENTUCKY CONCRETE CONFERENCE**

George Sample of Chicago, participating associate in the ranking architectural firm of Skidmore, Owings and Merrill, will be the dinner speaker of the one-day seventh annual Kentucky Concrete Conference in Louisville December 13. His subject has been announced as "Developments in Residential Systems."

This year's conference will be held at the Jefferson Community College under the co-sponsorship of the University of Kentucky and the University of Louisville.

Speakers on the program include Herbert J. Stockinger of Louisville, structural engineer in the Kentucky office of the Portland Cement Association; Rupert Bullock of Chicago, Midwestern Region structural engineer of the Portland Cement Association; John S. Morgan, Lexington architect; Ross Bryan of Nashville, Tenn., consulting engineer and A. F. Campbell of Louisville, consulting engineer.

Participants in a panel discussion on "Responsibility for Concrete Testing" will be Robert E. Shaver of the University of Kentucky, speaking for the owner; Bailey Ryan, Louisville architect, speaking for the architect; James Lyons of Louisville, for the concrete producer; Kenneth Haines of Louisville, for the contractor, and Carl Clayworth of Louisville, for the testing laboratory.

Others on the program are D. K. Blythe of Lexington, associate dean of the College of Engineering, University of Kentucky; Dr. John Heer, chairman of the Department of Civil Engineering, University of Louisville; and Dr. Herbert M. Jelley, director of Jefferson Community College.

Cooperating in sponsorship of the conference are the American Institute of Architects, American Society of Civil Engineers, Associated General Contractors, Kentucky Association of Consulting Engineers, Kentucky Ready Mix Concrete Association, Kentucky Society of Professional Engineers, Portland Cement Association, Prestressed Concrete Association of Kentucky, and the University of Kentucky student chapters of the American Institute of Architects and the American Society of Civil Engineers.

Copies of the program may be obtained from Associate Dean David K. Blythe, College of Engineering, University of Kentucky, Lexington, Ky. 40506.

## **AIA COMPONENT EDITORS MEET IN WASHINGTON**

Nearly 30 editors of official magazines and newsletters published by chapters and state associations of The American Institute of Architects were in Washington recently for a two-day conference on "The Profession: Inside Out."

Among the highlights of the meeting was the presentation of a citation for the best component publication of 1968, UTAH ARCHITECT, edited by David R. Hayes, AIA. Members of the jury who judged the magazines were: Mr. A. Bailey Ryan, AIA, member of the Public Relations Committee and Director of the East Central States, chairman; Donald Canty, editor of CITY magazine, and Mr. Paul Grotz, graphic designer and managing editor of ARCHITECTURAL FORUM. Also a liaison group of the component editors was established to coordinate their work with AIA's Public Relations Committee and staff. Selected by the editors were: John P. Conron, AIA, editor of NEW MEXICO ARCHITECTURE; Ello Brink, editor of the WISCONSIN ARCHITECT, and David Dibner, AIA, Chairman of the Editorial Board for ARCHITECTURE NEW JERSEY.

The conference opened with an address by AIA Vice President Jules Gregory of Lambertville, N.J., followed by a panel discussion on "The Public and Professional Roles of Component Publications. Mr. Conron served as moderator, and panelists were Mr. Ryan, James M. Fenelon, Hon. AIA, Executive Director of the Minnesota Society of Architects and incoming Assistant to the Executive Director of AIA, and Ray Lackey, PR Counsel of Henry J. Kaufman

& Associates, Washington, D. C.

Other speakers were Archibald C. Rogers, FAIA, of Rogers, Taliaferro, Kostritsky, Lamb, in Baltimore; Donald W. Lief, senior editor of CITY magazine, and Ted Morris, AIA, publisher of EMPIRE STATE ARCHITECT. The meeting closed with a two-hour workshop in which Mr. Grotz, Mr. Lief, and Mr. Ryan discussed the editorial and graphic considerations of the magazines with the editors.

### Ed Downs & Son, Inc.

5731 Locust Ln., Paducah, Ky. 42011

502-898-2193

Masonry Contractors for Hart Hall

### J. B. O'Nan Glass Co.

321 East Short St., Lexington, Ky. 40507

"Glass For Any Purpose"

Glass and Glazing Contractors for

Ft. Boonesborough Project

### Ray Tramontin Company, Inc.

705 Allendale

Lexington, Ky. 40503

606-277-5177

Tile and Marble  
Contractors

Ft. Boonesborough Project

TO CREATE THE LIGHTING EFFECTS REQUIRED  
FOR MODERN DESIGN IN ARCHITECTURE

SPECIFICATION FLUORESCENT FIXTURES  
MADE IN KENTUCKY

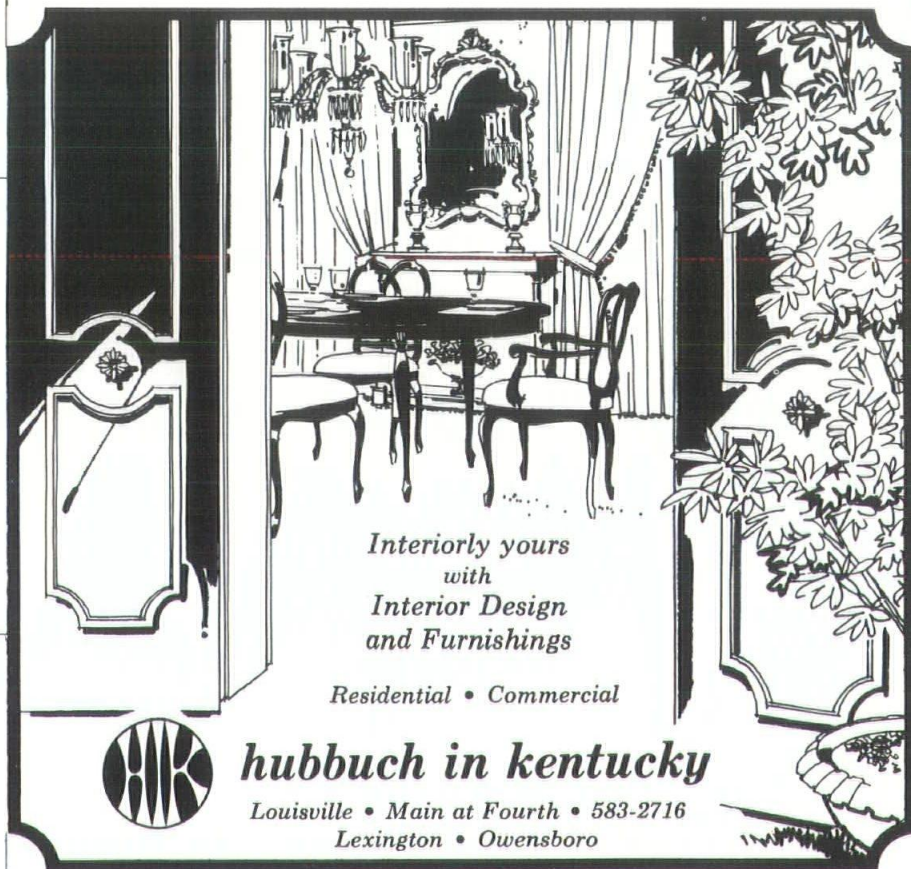
MANUFACTURERS OF LIGHTING FIXTURES  
FOR OVER 36 YEARS

PHONE 587-6094

## LOUISVILLE LAMP CO., INC.

724 W. BRECKINRIDGE ST.

LOUISVILLE, KY., 40203



*Interiorly yours  
with  
Interior Design  
and Furnishings*

*Residential • Commercial*

**hubbuch in kentucky**

Louisville • Main at Fourth • 583-2716  
Lexington • Owensboro



SPECIFY  
**GOLD BOND TECTUM**  
STRUCTURAL — INSULATING — ACOUSTICAL  
Call 587-6821/1044 E. Chestnut St., Lou., Ky.



DISTINCTIVE FACE BRICK *Darlington* Regal Glazed Royal Grays  
WOOD MOULD FACE BRICK *Bickerstaff* Hand Mold Light-Medium-Dark  
MATCHING FACE BRICK *All Kinds* Try us for a match 40 Yrs. Experience

Call ... 587-8821  
1044 E. Chestnut, Louisville, Ky.

## PASSENGER AND FREIGHT ELEVATORS

MARTIN A.  
**CEDER**  
INC.

LOUISVILLE, KY.  
2520 W. Market St.  
Phone 502-778-1671

LEXINGTON, KY.  
1202 Industry Road  
Phone 606-252-0386

EVANSVILLE, IND.  
163 S. Third Avenue  
Phone 812-423-7771

## PASSENGER AND FREIGHT ELEVATORS

## Trust us . . . for a Better Roof Truss HYDRO-AIR Trusses



12 Foot to 100 Foot Clear Span  
Save Money, Time and Labor  
We Make Trusses to Order

Lumber Millwork    Roofing Moulding Siding    Doors Windows

BUILDING BOARD INSULATION  
STORM WINDOWS • DOORS  
PRE-HUNG DOORS



**Kentucky Lumber Co., Inc.**

Phone 635-5261

1540 S. 9th Street

Louisville, Ky.

## — SERVICES —

C.E.C.

### LEGGETT & IRVAN

Consulting Engineers  
Civil and Structural

1434 Forbes Road    Dial 255-3611  
Lexington, Kentucky 40505

### Hummel, George, & Kleine-Kracht, Inc.

Consulting Engineers  
Design-Supervision-Consultation  
on  
Structures and Foundations  
3825 Bardstown Rd. Louisville

SOILS and CIVIL ENGINEERING  
Investigation • Design • Reports

MILTON M. GREENBAUM, ASSOCIATES, INC.



CONSULTING ENGINEERS

306 York Street  
LOUISVILLE, KENTUCKY 40203  
TELEPHONE: 584-4941

### E. R. RONALD & ASSOCIATES CONSULTING ENGINEERS

543 South Third Street  
Louisville, Kentucky  
K.A.C.E.                      C.E.C.

### American Testing & Engineering Corp.

Soil and Foundation  
Engineering Consultants  
5417 Lodema Way    502/969-3241

SOIL & FOUNDATION ENGINEERS  
GEOLOGICAL ENGINEERS

**james e. hough**  
& ASSOCIATES

7188 Pippin Rd - Cincinnati - 513/521-1967  
7520 Preston - Louisville - 502/964-3900

**Edward T. Hannan & Associates**  
Consulting Engineers

2221 Broadway, Paducah, Ky. 42201  
502-443-8491

923 Bond St., Evansville, Ind. 47708  
812-426-1401  
Consulting Engineers for Hart Hall

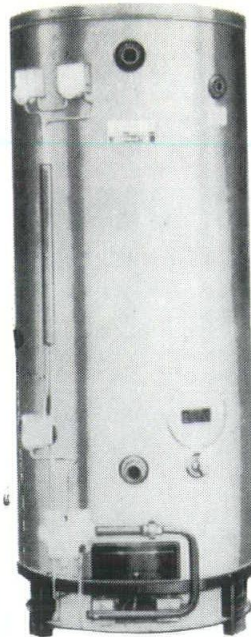
**Lassiter Plaster Co., Inc.**

4th & Chestnut, Murray, Ky.  
502-753-5370

511 Park Ave., Paducah, Ky.  
502-442-0498  
Lathing - Plastering - Accoustical Ceilings  
for Hart Hall

**RUUD COMMERCIAL**  
**GAS WATER HEATERS**

NOW LARGEST  
SELECTION GREATER RECOVERY ...  
ASME CODE



The unique construction of the storage gas water heaters  
and the multi-tube gas water heaters assures long life.

**RUUD WATER HEATER SALES CO.**

840 E. Chestnut St. 583-7629  
Louisville, Kentucky 40204

# Our 16-mil epoxy wall coating smells like nothing at all.



And no odor is just one advantage you get with Kurfees' new KURAMIC COATING . . . a high build catalyzed epoxy wall coating. Other good reasons for specifying Kurfees KURAMIC are: simple, two step application; a true 16-mil thickness in one coat; 1/3 the cost of installed ceramic wall tile; and good looks, long wear, high resistance to impact.

Why not get the full story on our Kuramic seamless floor and wall systems. Write J. B. Tabler, Maintenance Coatings Division, Kurfees Paint Company, 201 E. Market, Louisville.



**Leininger Cabinet**

**& Woodworking**

116 S. Forbes Rd.

Lexington, Ky. 40505

606-252-0429

"Custom Millwork &

Formica Fabricator"

Millwork for

Ft. Boonesborough Project

---

**Weldwood® Paneling**

---

for architectural installations

---

**Weldwood® Doors**

---

custom tailored for every opening

---

Just two of the fine products available  
from the world's largest plywood organization

---



**U. S. Plywood Corporation**

358 Farmington Ave., Louisville Phone: 635-2675

**Hartz-Kirkpatrick Construction**

**Company, Inc.**

New Hartford Pike, Owensboro, Ky. 42301

502-684-3205

"Helping Kentucky Progress"

General Contractors for Hart Hall

**Augsurger Construction Co.**

**of Lexington, Inc.**

708 Donley St., Lexington, Ky. 40505

606-252-6395

General Contractors for Boonesborough Project

THE KENTUCKY ARCHITECT  
213 St. Clair Street, P. O. Box 557  
Frankfort, Kentucky 40601  
Return Requested

BULK RATE  
U.S. POSTAGE  
**PAID**  
Louisville, Ky.  
Permit No. 352

GEORGE E. PETTENGILL, LL.M.  
AMERICAN INSTITUTE OF  
ARCHITECTS  
1735 NEW YORK AVE.  
WASHINGTON D.C. 20006

**Refrigeration Sales  
Company, Inc.**

315 E. Breckinridge  
Louisville, Ky. 40203  
502-582-1607  
Kitchen and Food Service  
Equipment and  
Restaurant Furnishings  
Ft. Boonesborough Project

**ATLAS PLASTER AND  
SUPPLY CO.**

2214 SOUTH FLOYD ST.  
LOUISVILLE, KY. 40217

**FEATURING  
FIRE EXTINGUISHERS & CABINETS**

**ARCHITECTURAL METAL  
SPECIALISTS**

PHONE US FOR SERVICE  
637-3607



**MURPHY  
ELEVATORS  
and SERVICES**

- PASSENGER  
FREIGHT  
RESIDENCE  
DUMBWAITERS  
MATERIAL HANDLING EQUIP.  
GLOBE WAYNE
- INSPECTION SERVICE,  
FULL MAINTENANCE  
AND REPAIRS ON ALL  
MAKE ELEVATORS

Area Code 502 587-1225

**The MURPHY  
ELEVATOR CO.**  
INCORPORATED

128 E. MAIN ST. — LOUISVILLE, KY. 40202  
741 PRICE AVE. — LEXINGTON, KY. 40508

**KENLITE**

**LIGHTWEIGHT**

- CONCRETE MASONRY UNITS
- REINFORCED CONCRETE
- PRESTRESSED CONCRETE
- PRECAST CONCRETE

High Strength, Increased Insulation,  
Reduced Dead-Load, Durability, Greater  
Fire-Resistance, Economy

**ONE-  
THIRD / LESS WEIGHT  
LESS WORK**