

ARCHITECTURE MN

SEP/OCT 17 \$3.95 architecturemn.com

WASHINGTON AVE

New design
along a busy
Minneapolis
boulevard

LIGHT HOTEL

A creative,
eco-friendly
weeHotel
on wheels



INTERIORS DIRECTORY

A VISIT WITH
WITTKAMPER REIFF

CORRUGATED METAL:
COOL OR CLICHÉ?

Homes by Architects

Our annual tour preview highlights
a sustainable Stillwater residence



—+ reserved for +—
HISTORY

Pella® Architect Series® Reserve™ windows and patio doors evoke the craftsmanship of previous generations. But it's today's conveniences and your unique vision that can turn traditional into timeless. We'd call this new offering a modern-day classic. And, Pella offers the best limited lifetime warranty for wood windows and patio doors*.



EXPLORE ARCHITECT SERIES | THE COLLECTION
PLYMOUTH | 13810 24TH AVENUE NORTH #430 | 952-915-6080
WOODBURY | 7730 HUDSON ROAD | 651-704-9939

PellaReserve.com

*Based on comparison of written limited warranties of leading national wood window and patio door brands. See Pella written limited warranty for details, including exceptions and limitations, at pella.com/warranty, or contact Pella Customer Service at 877-473-5527.



Inviting Homes. Casual Living. Sophisticated Style.

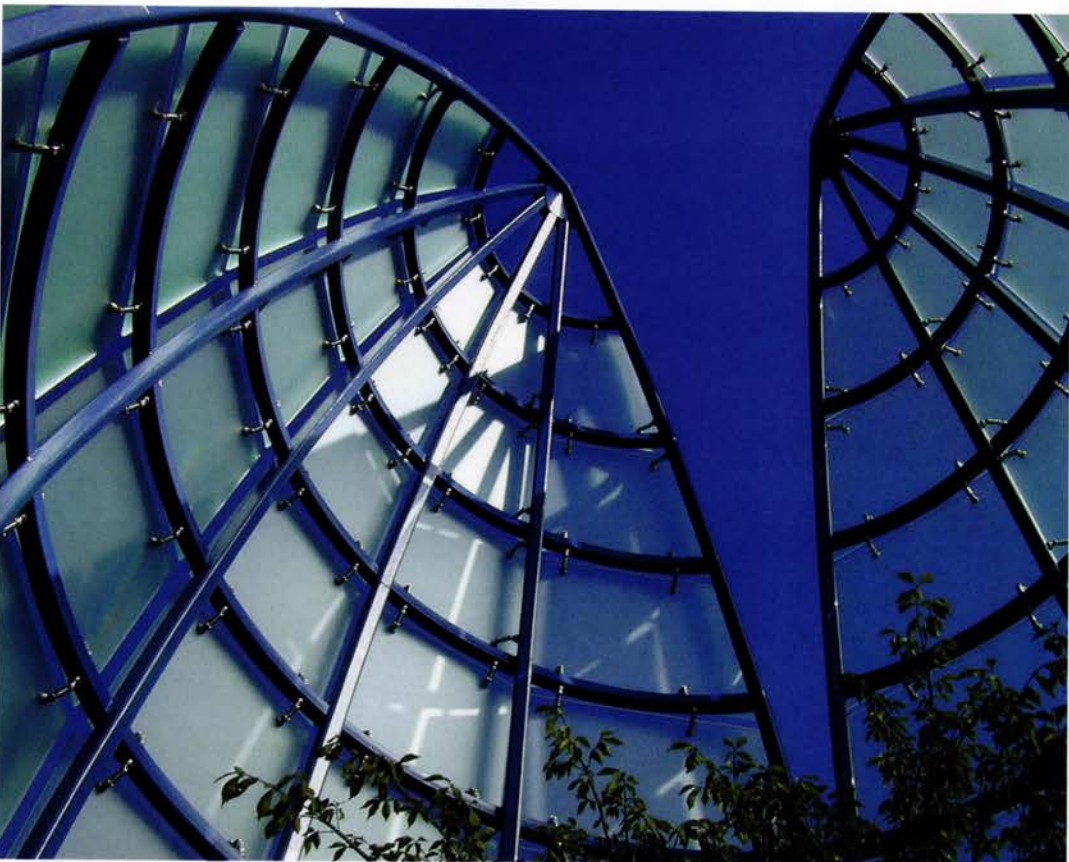


A renovation collaboration by

Rehkamp Larson Architects Martha Dayton Design Streeter & Associates Renovation



COREY GAFFER PHOTOGRAPHY
STILLS MOTION
Duluth, MN
Salmela Architects



DESIGN | FABRICATION | INNOVATION



WHERE DESIGN MEETS FUNCTION

MINNESOTA'S LEADER IN
DECORATIVE GLASS SINCE 1984

Visit us at glassartdesign.com or explore our showroom in the North Loop area of Minneapolis where hundreds of glass samples and projects are on display. Let's discuss your project possibilities today and we'll give you a quick quote.



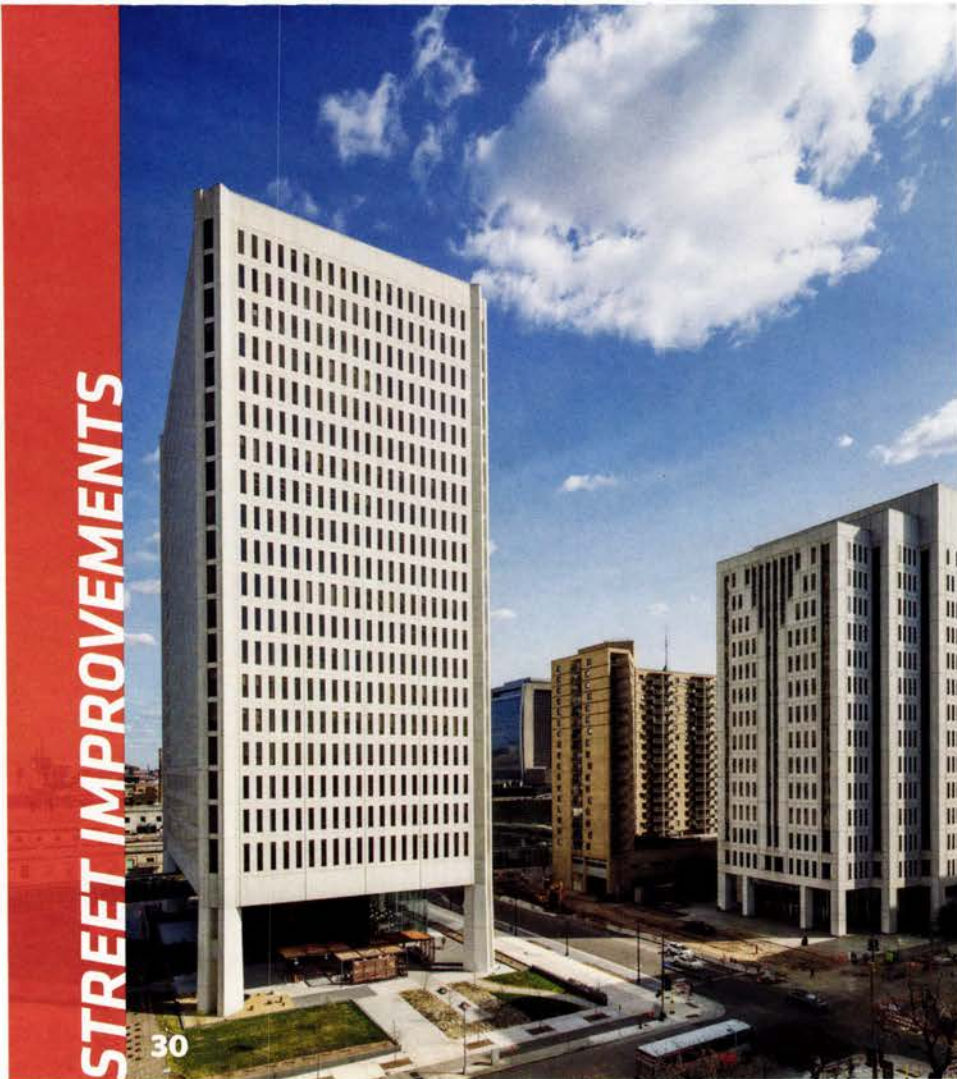
RESIDENTIAL - COMMERCIAL
ENTRYWAYS - CORPORATE IDENTITY
TABLETOPS - COLOR COATED GLASS
AWARDS - GLASS RAILINGS - WALLS
ACCENTS & ART - COUNTERTOPS
ETCHED & CARVED GLASS
STAINED GLASS - SHOWER ENCLOSURES

427 NORTH 10TH AVENUE, MPLS MN 55401 • 612.870.0247 • glassartdesign.com

ARCHITECTURE MN

Architecture MN is a publication of
The American Institute of Architects Minnesota
architecturemn.com

Architecture MN, the primary public outreach tool of the American Institute of Architects Minnesota, is published to inform the public about architecture designed by AIA Minnesota members and to communicate the spirit and value of quality architecture to both the public and the membership.



Features

21 *Street Improvements*

By Joel Hoekstra

Washington Avenue is fast becoming Minneapolis' premier address for work and play, thanks to a string of new office and hotel projects.

Land O'Lakes/FLM+
page 22

The Hewing
page 24

111 Washington Square
page 30

100 Washington Square
page 32

Code 42
page 34

Millwright Building
page 36

40 *2017 Homes by Architects Tour*

The most design-forward home tour in the Upper Midwest celebrates its 10th year this fall, and we've got all the details—and an extended showcase of one of the houses. Page through our colorful preview to note your must-sees and chart your weekend itinerary.

House #17: Shadow Box
page 43
By Linda Mack



ON THE COVER

Homes by Architects House #17
Stillwater, Minnesota

"Of the home's many unique design features, the one that stands out for me is the dining-room bridge with its two glass curtain walls," says photographer **Morgan Sheff**. "The visual effect of the glass extending below the floor, combined with the views, make it a very exciting space."



HOMES BY ARCHITECTS



Departments & Directories

7 EDITOR'S NOTE

11 CULTURE CRAWL

BY AMY GOETZMAN

Join us at Room & Board for a free design-conversation event with three leading Twin Cities residential architects.

13 STUDIO

Wittkamper Reiff serves up answers to our rapid-fire questions at one of their recent projects—Wild Mind Artisan Ales.

15 SPEED READING

BY AMY GOETZMAN

Boathouses of Lake Minnetonka is proof that smaller lakeside structures can easily out-charm the larger homes they serve.

17 MATERIAL WORLD

BY ANDY STURDEVANT

Our columnist wonders "if the presence of the Weisman in the collective consciousness gave Twin Cities architects and builders a taste for metal."

19 WAYFARER

PHOTOGRAPH BY COREY GAFFER

A Minneapolis photographer uses an opening in the floor to get an unexpected view of Giotto's Bell Tower in Florence, Italy.

88 PLACE

PHOTOGRAPH BY COREY GAFFER
Transportable. Sustainable. Cozy. Meet the one-room LightHotel—if you haven't already seen it in your neighborhood.

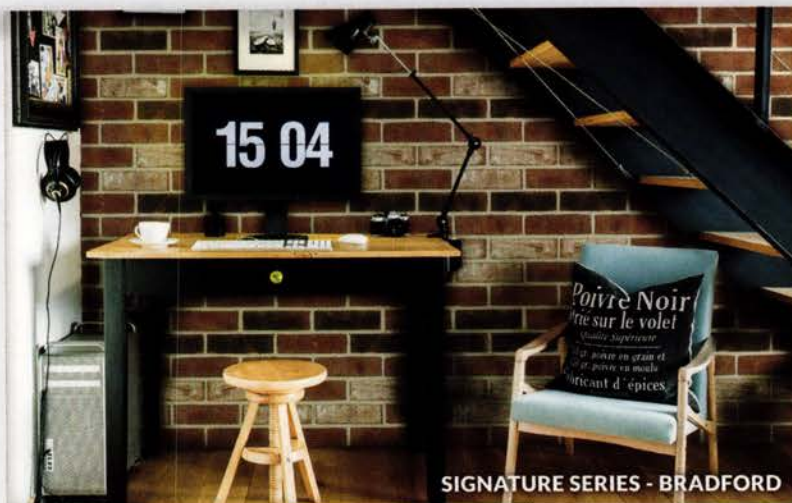
76 DIRECTORIES OF INTERIOR ARCHITECTURE AND INTERIOR DESIGN FIRMS

86 CREDITS

87 ADVERTISING INDEX



SIGNATURE SERIES - SMOKY MOUNTAIN



SIGNATURE SERIES - BRADFORD



ROMAN MAXIMUS - FLINT HILLS



ROMAN MAXIMUS - SADDLE BROWN

AUTHENTIC KILN-FIRED THIN BRICK

We kiln fire clay to create authentic thin brick evocative of the sand-molded masonry crafted centuries ago by colonial Americans. This thin brick transforms any wall surface into an architectural focal point. It's the optimal choice to add a classic look and beauty both inside and outside from siding to kitchen backsplashes to accent walls.

Contact Minnesota Brick & Tile to request **Signature Series Thin Brick** & **Roman Maximus Thin Brick** for your next residential or commercial project.



520 W. 86TH STREET, BLOOMINGTON, MN 55420
(952) 888.9239 | WWW.MNBRICK.COM



An artist's rendering of the view from the Walker's Cargill Lounge out to the redesigned Wurtele Upper Garden.

INSIDE OUTSIDE (AMSTERDAM)

Art & Design

LATE LAST FALL, *Architecture MN* helped the Walker Art Center celebrate the opening of its new entry pavilion by bringing HGA Architects and Engineers' Joan Soranno and John Cook, Minnesota Design Center director Thomas Fisher, and Walker director Olga Viso together for a design conversation on the ideas and considerations that shaped the addition. This September, we continue our event partnership with the Walker with a Target Free Thursday Night presentation by Inside Outside's Petra Blaisse, who led the redesign of the museum's Wurtele Upper Garden.

When I think of all the beautifully integrated changes to the Walker campus, one of my favorite articles from the magazine archives leaps to mind. In our January/February 1969 issue—back when we were called *Northwest Architect*—Walker director Martin Friedman penned a preview of the Edward Larrabee Barnes building, which would be completed in 1971. Friedman had a flare for writing about architecture:

While innovative design solutions distinguish new museums around the world, there is frequently the suspicion that architects are not always grateful for the presence in their impressive structures of such competing phenomena as paintings and sculptures. Perhaps that's why [Frank Lloyd] Wright introduced the element of peril in the Guggenheim—with its slanted, spiraling floors, tilted exhibition walls, and scant space for the acrophobic viewer who risks plunging over the railing.

Well, sure, if Wright is your example, then the suspicion is probably warranted. But I've never met an architect who bristled at the chance to design an environment in which world-class artworks can thrive. Friedman himself was delighted to have his suspicions alleviated by Barnes:

Edward Larrabee Barnes likes art! He collects it. His offices and drafting rooms contain constantly changing displays of lively new works by young painters and sculptors. While Barnes' minimalistic design for the Art Center is unmistakably assertive, he maintains that the paramount function of a museum is to exhibit, not overwhelm, works of art.

Olga Viso and her team had a similar experience with their architects and landscape architects. Join us in the Walker Cinema on September 7 and you'll see what an art center with big ideas and talented designers can achieve when it aims to create an enduring sense of place.

Chris Hudson

Christopher Hudson
hudson@aia-mn.org

INTERACT & CONNECT



Sep/Oct issue launch at Room & Board

architecturemn.com/events



Petra Blaisse at the Walker Art Center

architecturemn.com/events



Des Moines design tour on Instagram

@archmnmag

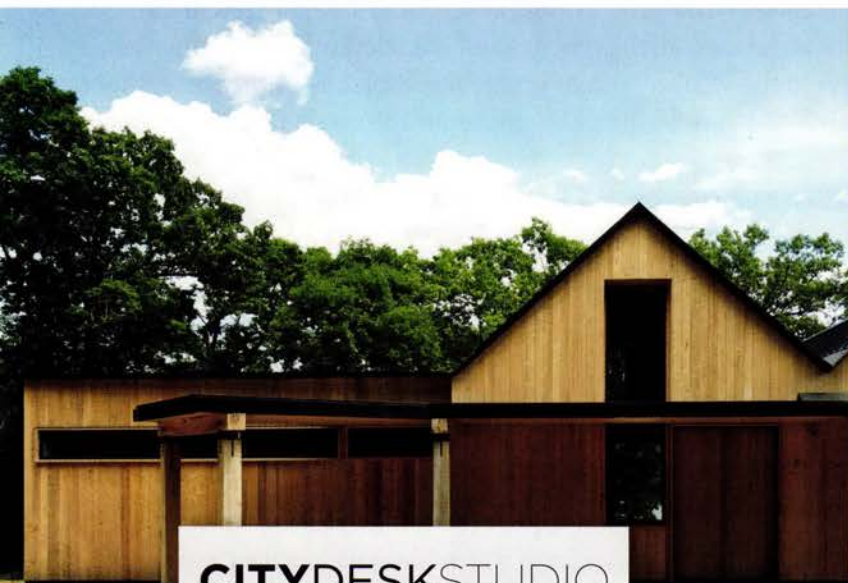


@archmnmag

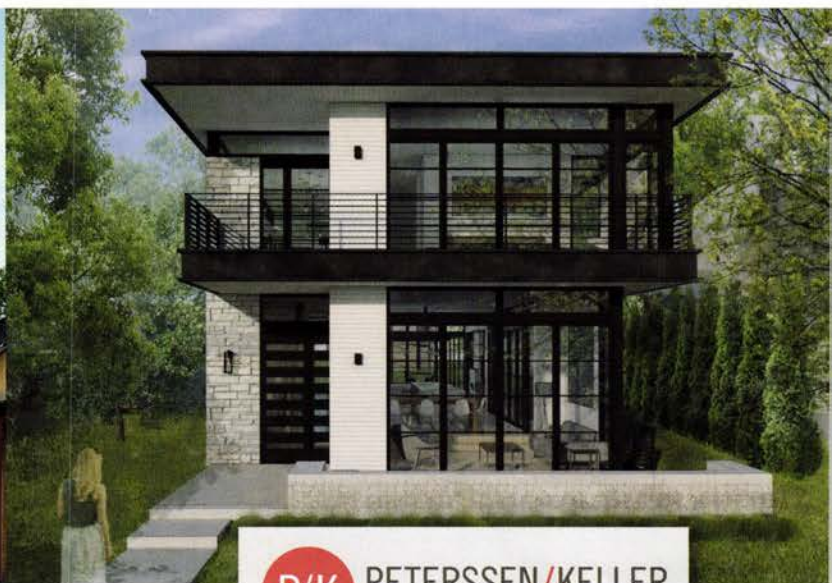
No matter the project style, local experts
rely on the team at Kolbe Gallery Twin Cities.



LANDMARK
BUILD CO.



CITYDESKSTUDIO
architecture + design



P/K PETERSSSEN/KELLER
architecture

View Kolbe's VistaLuxe® Collection in these incredible homes by CityDeskStudio and Peterssen/Keller Architecture on the 2017 Homes by Architects tour!

Whether your project is traditional, contemporary, or anything in between, the experts at Kolbe Gallery Twin Cities can help you choose handcrafted Kolbe windows and doors to enhance your one-of-a-kind design. With the multitude of options for which Kolbe is known, the Kolbe Gallery Twin Cities team will help you select a window and door package that meets your architectural requirements for both functionality and style.

KOLBE Gallery
TWIN CITIES

7545 Washington Ave. S in Edina
866.460.4403 | kolbegallerytwincities.com

ARCHITECTURE MN



AIA
Minnesota

*Advancing a vital profession,
vibrant communities,
and architecture that endures.*

Architecture MN Staff

Editor:
Christopher Hudson
hudson@aia-mn.org

Advertising Sales:
Pam Nelson
nelson@aia-mn.org

Circulation:
PaviElle French
subscriptions@aia-mn.org

Art Direction and Design:
LN Design Co.
klarson@lndesignco.com

Publisher:
Mary-Margaret Zindren
zindren@aia-mn.org

Architecture MN Committee

Edward Eichten, AIA
Co-chair

Matthew Finn, AIA
Co-chair

Jonathan Bartling, AIA

Amy Douma, AIA

Monica Hartberg, AIA

Randy Moe, AIA

Scott Muellner, AIA

Tony Rauch, AIA

Brandon Stengel, Assoc. AIA

Tom Wasmoen, AIA

Peggy Weller

Heather West

Daniel Yudchitz, AIA

AIA Minnesota Board of Directors

Meredith Hayes Gordon, AIA
President

Nathan Johnson, AIA
President-Elect

Michelle Mongeon Allen, AIA
Past President

Claire Lonsbury, Assoc. AIA
Secretary

Brian Tempas, AIA
Treasurer

Gretchen Camp, AIA
AIA Minneapolis President

Rachel Spires, AIA
AIA St. Paul President

Aaron Kelly, AIA
AIA Northern President

Derek McCallum, AIA
AIA Minneapolis Director

Michael Schellin, AIA
AIA Minneapolis Director

Michael A. Fischer, AIA
AIA Minneapolis Director

Brian Larson, AIA
AIA St. Paul Director

Jill Winkler, AIA
AIA St. Paul Director

Hugh Reitan, AIA
AIA Northern Director

Marc Swackhamer, Assoc. AIA
College of Design

Kyle Palzer, Assoc. AIA
Associate Director

Amy Poburka, AIAS
AIAS Representative

Sandra Dickenson, AIA
Regional Director

Matt Johnson, AIA
Regional Director

Mary-Margaret Zindren
Executive VP

CONTRIBUTORS

Get to know our writers and
photographers. They're an
interesting bunch.



Architectural photographer
COREY GAFFER learned his trade
while apprenticing with Hedrich
Blessing of Chicago. He now
resides in Minneapolis, where
he works for top architects
and designers.



Minneapolis-based **LINDA MACK**,
author of *Madeline Island
Summer Houses: An Intimate
Journey* (2013), writes on
architecture and design for
local and national publications.



AMY GOETZMAN is a
Minneapolis freelance writer.
She writes about the arts and
culture and other inspiring things
that happen in inspiring spaces.



ANDY STURDEVANT is a writer
and artist living in Minneapolis.
He is the author of *Potluck
Supper with Meeting to Follow*
and *Downtown: Minneapolis
in the 1970s*.



Minneapolis writer **JOEL
HOEKSTRA** contributes
frequently to *Architecture MN*.



We create windows and doors that flawlessly unite wood, glass and metal
-- captivating the eye, elevating the spirit and bringing your world
one step closer to perfection.



Contact your Loewen Window Center:



Windows • Doors • Cabinets

6011 Culligan Way, Minnetonka, MN 55345
Ph: 952-224-2202 • Fax: 952-224-2203 • synergy-trt.com

Follow Us On Social Media:





MORGAN SHEFF

COREY GAFFER



TEA2 ARCHITECTS

Homes (and a Traveling weeHotel) by Architects

Architecture MN previews the Homes by Architects Tour with an evening of drinks, hors d'oeuvres, and design conversation at Room & Board



Geoff Warner, AIA, confesses that he's not really a tiny house fan. That's a little surprising, because the firm he founded, Alchemy Architects, is best known for the weeHouse, a modular home system with sections that measure 14 feet wide—the better to fit on a truck. The weeHouse is prefabricated and delivered to its site.

It's not about the wee-ness, though. It's about thoughtful, sustainable, beautiful modern design. Warner can tell you more at *Architecture MN*'s next design conversation event at Room & Board in Edina, on September 13. Warner will be joined by SALA Architects' Katherine Hillbrand, AIA, and TEA2 Architects' Dan Nepp, AIA, both of whom designed a house on this year's Homes by Architects Tour (page 40).

"Before the recession, there was more emphasis on quantity than on quality of living spaces. Then people realized all that space didn't really give them a meaningful, or even very usable, home," says Warner, whose firm recently complemented the weeHouse with the LightHotel (top right and page 88), a transportable, eco-friendly, one-room hotel that's inhabited some notable locations around the Twin Cities since it debuted in late 2015.

The solar-powered LightHotel began life as an 8-by-20-foot shipping container, but kitted out by Alchemy it's downright airy, with sleek wood walls, luxe lighting, and contemporary furniture.

"We did this weird little art installation to show how it relates to our other work and the whole concept of the luxury of less," says Warner. "People are valuing experiences over things, and the LightHotel is a unique experience."

Hillbrand's Homes by Architects Tour project (top left and page 43) is firmly fixed in its location—on a small lake in Stillwater—but it shares Warner's intention to deliver quality sustainable design. Nepp's story-and-a-half, shingle-style home on Lake Minnetonka (bottom) echoes the scale and character of Excelsior's historic lake homes while offering sweeping views of the water. Both houses also feature outdoor "rooms" that are seamlessly integrated with the architecture.

—Amy Goetzman

Clockwise from top left: HBA House #17, by SALA's Katherine Hillbrand; the LightHotel, by Alchemy's Geoff Warner; HBA House #1, by TEA2's Dan Nepp.



Sep/Oct Issue Launch

Room & Board, Edina

Wednesday,
September 13,
5:30 - 7:30 P.M.

The panel conversation begins at 6:00 P.M. Visit architecturemn.com/events to register for this free public event.



WOOD DESIGN AWARDS

NOMINATION DEADLINE: SEPTEMBER 29, 2017



Each year, WoodWorks hosts an award program to recognize excellence in wood design and showcase innovative buildings that demonstrate wood's strength, beauty, versatility and cost-effectiveness.

Categories:

- Multi-Family Wood Design
- Commercial Wood Design: Mid-Rise
- Commercial Wood Design: Low-Rise
- Wood School Design
- Institutional Wood Design
- Wood in Government Buildings
- Durable & Adaptable Wood Structures
- Green Building with Wood
- Beauty of Wood

About WoodWorks

Free project assistance for wood buildings

WoodWorks provides free resources related to the design, engineering and construction of non-residential and multi-family wood buildings.

For technical support, visit woodworks.org/project-assistance or email help@woodworks.org.

There is no cost to nominate a project for a wood design award. Visit woodworks.org for details.



WoodWorks™
WOOD PRODUCTS COUNCIL

2017 winners (clockwise from top left): Rosewood Beach, Woodhouse Tinucci Architects, photo Bill Timmerman; One North - Karuna East and West Buildings, Holst Architecture, photo Andrew Pogue; T3 Minneapolis, MGA | Michael Green Architecture, DLR Group, photo Ema Peter; Albina Yard, LEVER Architecture, photo LEVER Architecture; Common Ground High School, Gray Organschi Architecture, photo David Sundberg; Dixon Water Foundation Josey Pavilion, Lake | Flato Architects, photo Casey Dunn

Designers **Aaron Wittkamper, Assoc. AIA**, and **Amy Reiff** visit with *Architecture MN* at one of their recent projects, **Wild Mind Artisan Ales**

WITTKAMPER REIFF

AARON'S BACKGROUND IN 140 CHARACTERS OR LESS: @StOlaf undergrad, M.Arch from @MIT, 12 years practicing in MN. Avid oil painter #loveallthingsart. **AMY'S:** Accounting @NotreDame, interior design @Parsons. #loveallthings about the creative life after 7 years on Wall Street #norisknoreward. **HOW ARE YOU TWO MOST ALIKE?** We're active participants in the food-and-bev world, constantly observing what makes a place special and how design can strengthen an overall concept. A lot of our best ideas flow from discussions in these spaces. **AND DIFFERENT?** Amy's a CPA/Libra and Aaron's an artist/Capricorn. It's all about balance. **DESIGN INGREDIENTS IN A GREAT TAPROOM:** An engaging, space-anchoring bar for social mingling, with nuanced moments of discovery throughout. **WHAT'S SPECIAL ABOUT THE WILD MIND SPACE?** Wild Mind is brewing a unique product using unique fermentation techniques, so we wanted to deliver a unique space. We imagined a Chelsea gallery—clean, light, and refined, with wild color splashes. Glass is used to frame views of specific stages in the brewing process. **RECENT VOLUNTEER ACTIVITY:** Aaron is a member of the design and research collective MINN_LAB, whose award-winning "Orbacles" installation is on display in the East Town Commons in downtown Minneapolis. **DESIGN HEROES:** It's impossible to point to only a few; our influences constantly evolve. Right now, we're particularly inspired by Mexico and artist-product designers who mix wildly different materials. **RECENT BRUSH WITH CELEBRITY:** Justin Vernon's impromptu late-night rhythm session at the Esko Thompson pop-up during Art-a-Whirl. **MINNESOTA RESTAURANT OR PATIO YOU WISH YOU HAD DESIGNED:** Young Joni. **DREAM PROJECT:** Boutique resort of detached villas that recede into the landscape.

FAST FACTS

FOUNDED: 2015

CITY AND AREA: Minneapolis' Marcy-Holmes neighborhood

NUMBER OF EMPLOYEES: 2

AREAS OF SPECIALTY: Hospitality, workplace, and residential design

wittkamperreiff.com



HARDSCAPE DESIGNS CRAFTED BY BORGERT

Holland Stone™



BORGERT

PAVERS | SLABS | WALLS | EST. 1923

Your reputation is everything. It generates repeat business and separates you from your competition. That's why you need products you're proud to attach your name to. For more than 90 years, we've delivered the features you need - Unmatched durability. Premium quality. Limitless designs and colors. That's why those in the industry choose Borgert.

Crafting your vision

Request a Lunch and Learn or for more information call 800.622.4952 | borgertproducts.com

Water Craft

A new book celebrates more than a century of boathouse design on one of Minnesota's most famous lakes



PHOTOGRAPHY: KAREN MELVIN



*Clockwise from left:
Two sides of the Gluek
Boathouse, the view from
the Shevlin Boathouse,
and the elegant interior
of the Bell Duck House.*

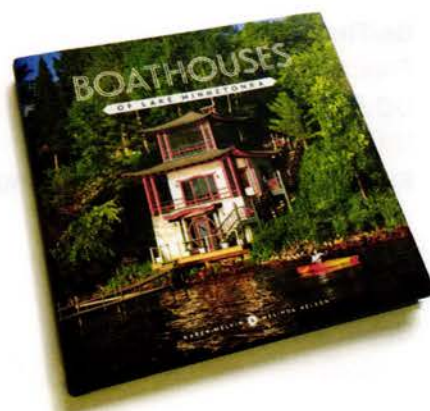


COFFEE TABLE BOOKS ABOUT THE fabulous homes of the super-rich can be a little hard to relate to—or even unappealing, if all that excess lacks soul. As every architect knows, good design doesn't have to be big design. In fact, smaller structures can be so much more inviting and livable. See for yourself in *Boathouses of Lake Minnetonka*.

In this beautiful book of stories, photographer Karen Melvin and writer Melinda Nelson peek into nearly three dozen boathouses that are at least as interesting as the structures they accompany. They ponder the mystery of who designed the pagoda-style boathouse near Smithtown Bay. They share family stories, like the one about the birch-bark canoe that spent a century in the rafters of the Gluek family boathouse. They revisit past design eras through the amazing structures that the Daytons, Bells, Fruens, and other moneyed Minnesota families commissioned for their watercraft.

Some of these places look like they were hauled over from the old country. A few are still in the hands of the families that first settled the lake. The boathouse built on J.J. Hill's former Crystal Bay farm is as lovely as anything on Summit Hill in St. Paul. The structure William Channing Whitney designed for General Mills founder James Ford Bell embodied the beauty and simplicity of Scandinavian modernism long before that style took off in Minnesota. A few of the boathouses still hold old canoes and classic Chris-Crafts, but many more have been repurposed as indoor-outdoor living spaces or sweet guesthouses. The best ones reek of history and boast a down-to-earth yet unmistakably artful design character.

These little structures overflow with personality. They express the idea that the point of living on this remarkable lake isn't about showing off your wealth; it's about creating an environment that feels like you're on vacation every day of your life. It's about making a Minnesota summer last forever. —Amy Goetzman



BOATHOUSES OF LAKE MINNETONKA

*Photography by Karen Melvin
Text by Melinda Nelson
Big Picture Press, 2017*

2017 MERIT AWARDS

The AIA Minneapolis Merit Awards recognize and celebrate projects that tell a story of excellence through the variety of innovations and collaborations that shape a building. The AIA Minneapolis member projects were selected based on the following criteria: client/team satisfaction, technical innovation, environmental responsibility, budget/business success, community impact, and architectural solution.

Be The Match

Perkins+Will

DC Group Office Headquarters

UrbanWorks Architecture LLC

Fireman's Park & Chaska Curling and Event Center

292 Design Group

Sandcastle

LOCUS Architecture

South Minneapolis Office

LOCUS Architecture

Michael L. Schrock, AIA, Merit Award

Twin Cities Academy

Kodet Architectural Group, Ltd.

This award was created in 2008 and is given to the project that most embodies the spirit of the Merit Awards.



Be The Match



DC Group Office Headquarters



Fireman's Park & Chaska Curling and Event Center



Sandcastle



South Minneapolis Office



Twin Cities Academy



AIA
Minneapolis

License to Steel

Musings on the corrugated-metal craze in multifamily housing

Essay and illustration by Andy Sturdevant

FORMER MINNEAPOLIS MAYOR

R.T. RYBAK IS ON RECORD, I BELIEVE,

AS SAYING his favorite building in

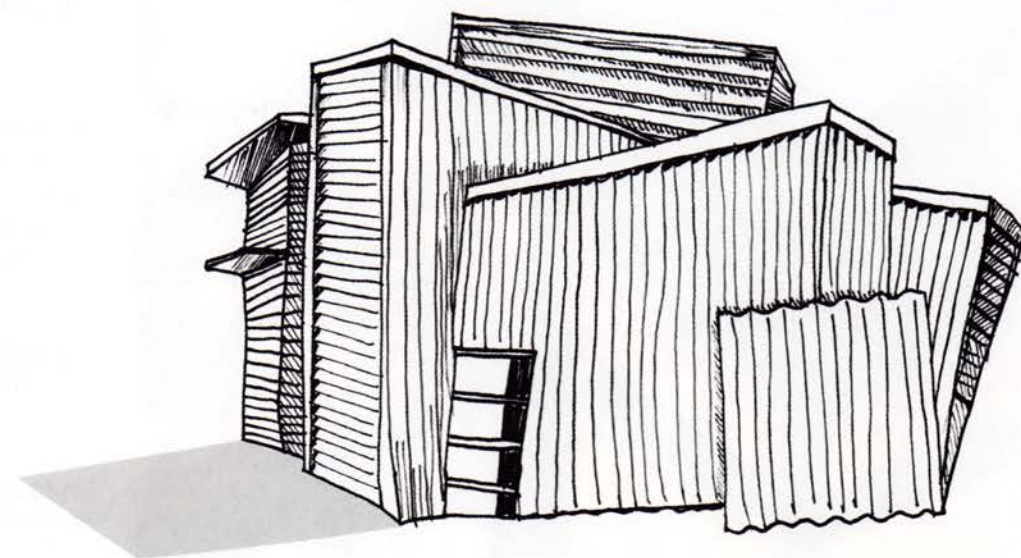
Minneapolis is Frank Gehry's Frederick R.

Weisman Art Museum at the University

of Minnesota. I think it's a sentiment shared by many Twin Citians of his generation. It's especially common among those, like R.T., with an interest in the public perception of the cities as a forward-looking modern metropolis. In the days before the Walker expansion and the new Guthrie, the Weisman was the savvy graphic designer's best friend when some visual shorthand for the dynamism of the Twin Cities was required for print publication purposes. In fact, the first guidebook to the Twin Cities I ever purchased, in 2004 or so, had the Weisman front and center. Before I even moved here, I knew what the Weisman looked like.

When Gehry's museum crested the bluffs of the Mississippi River in 1993, steel gleaming in the sunlight, it was an instant standout civic attraction, an architectural statement that was, in a particularly Minnesotan way, just the slightest bit ahead of the curve. Just the slightest bit—tiptoeing right to the line of immodesty but not quite crossing it. When it opened, *Star Tribune* architectural critic Linda Mack wasn't sure whether it was "a Martian spacesuit of a museum" or "a pile of tin." In her first preview of the building, she called it both, in the space of three sentences.

As Mack's ambiguity suggests, metal can seem simultaneously cosmic and colloquial in a way no other material can. It can reflect the surroundings, both literally and metaphorically. All that metal on the Weisman not only reflected the wide-open prairie sky into the water; it also suggested a monolithic industrial past wrapped in steel cladding, a past that had been tidied up, modernized, and streamlined into something novel and chic. What early 21st-century urban mayor wouldn't gaze upon that tableau—



Frank Gehry's landmark museum on the Mississippi River and his architecture career as a whole may give some insights into how corrugated metal went from avant-garde eccentricity to developer cliché in the space of 30 years.

a picturesque metaphor for the economic revitalization of the riverfront—and smile fondly?

BROWN OR GUNMETAL GRAY

It's hard to say how national trends intersect with local trends, but I often wonder if the presence of the Weisman in the collective consciousness gave Twin Cities architects and builders a taste for metal. In the past decade, as mixed-use buildings have sprouted up around the denser

precincts of the cities, an inescapable feature has been panels of corrugated metal. In Minneapolis, think of the residential developments in Uptown, or in the Warehouse District, or especially student rental properties by the U. The image that comes to mind is a four- or five-story building, boxy in shape, suspended balconies uniformly barnacled to the sides, and the exterior clad in brown, taupe, and gray EIFS panels. The rental properties in particular take a let's-try-four-or-five-materials approach to design.

Mixed in there, invariably, are sheets of corrugated aluminum. Sometimes they're brown, but often they're a buffed gunmetal gray, not much different in color or form from the industrial sheds that sat on these sites not that long ago. They add a touch of what you might call either a postmodern sleekness or a post-industrial grittiness, depending on your mood.

In fact, this type of corrugated-metal accent on new apartment buildings is so pervasive it's metastasized into cliché. When people complain about new trends in multifamily residential architecture—and oh, they do, all over the Internet—it's usually the corrugated metal that's singled out.

"I've seen more attractive pole barns," one Internet commenter complained about a proposed development in the Warehouse District several years ago. "Was there a deal going on

>> continued on page 60

—
YOUR REPUTATION STANDS ON A NAME

So Does Ours

—

Generation after generation, Marvin Windows and Doors has built our reputation through dedication – the same dedication you build into every home. Together, we share a commitment to design, personal attention and the unparalleled ability to customize. As partners, we both draw from these strengths to build a reputation that can be shared.

**CONTACT YOUR LOCAL, INDEPENDENT DEALER TO
DISCOVER THE MARVIN DIFFERENCE TODAY.**

MARVIN DESIGN GALLERY

by Shaw/Stewart

645 Johnson St. NE
Minneapolis, MN
612-378-1520
MDGbySS.com

Hiawatha Lumber

3233 E 40th St.
Minneapolis, MN
612-729-2358
HiawathaLumber.com

Lampert Lumber

Apple Valley - Lake Elmo
North Branch - Northfield
Rockford - St. Croix Falls
651-695-3600
LampertLumber.com

ABC Millwork

18800 W 78th St.
Chanhassen, MN
952-937-9060
ABCMillwork.com

Arrow Building Center

16 Locations
Minnesota & Wisconsin
abc-clc.com

Custom Millwork, Inc.

2298 N 2nd St.
North Saint Paul, MN
651-770-2356
CustomMillworkInc.com

Dakota County Lumber

28 8th Street
Farmington, MN
651-460-6646
DakotaCountyLumber.com

Glenbrook Building Supply, Inc.

5215 Gershwin Ave. N
Oakdale, MN
651-770-9071
GlenbrookLumber.com

Hamel Building Center

18710 Hwy. 55
Plymouth, MN
763-478-6601
HamelBuildingCenter.com
MN LIC #BC631040

McCarron's Building Center, Inc.

23840 Lake Blvd.
Forest Lake, MN
651-464-5427
McCarronsBuildingCenter.com

Scherer Bros. Lumber Co.

Arden Hills
Hopkins
Shakopee
612-379-9633
SchererBros.com

Spring Lake Park Lumber

8329 Central Ave. NE
Minneapolis, MN
763-784-3062
SLPLumber.com

TS Building Supply

5234 Barthel Industrial Dr. NE
Albertville, MN
763-515-3255
TSBuildingSupply.com

MARVIN 
Windows and Doors
Built around you.



INNER LIGHT

EVERYONE LOOKS UP AT TOWERING ARCHITECTURE, but it can be just as exhilarating to look down. When Minneapolis architectural photographer Corey Gaffer visited Florence, Italy's famed Piazza del Duomo and climbed the Gothic Giotto's Bell Tower earlier this year, he bravely lowered his camera into an opening in a floor grate that once accommodated the ropes used to ring the bells. "At the top of the bell tower are easily the best views of the city," Gaffer recalls. "But when I got back to the hotel room that night, the first image I went digging for was this one. I knew the light was perfect."

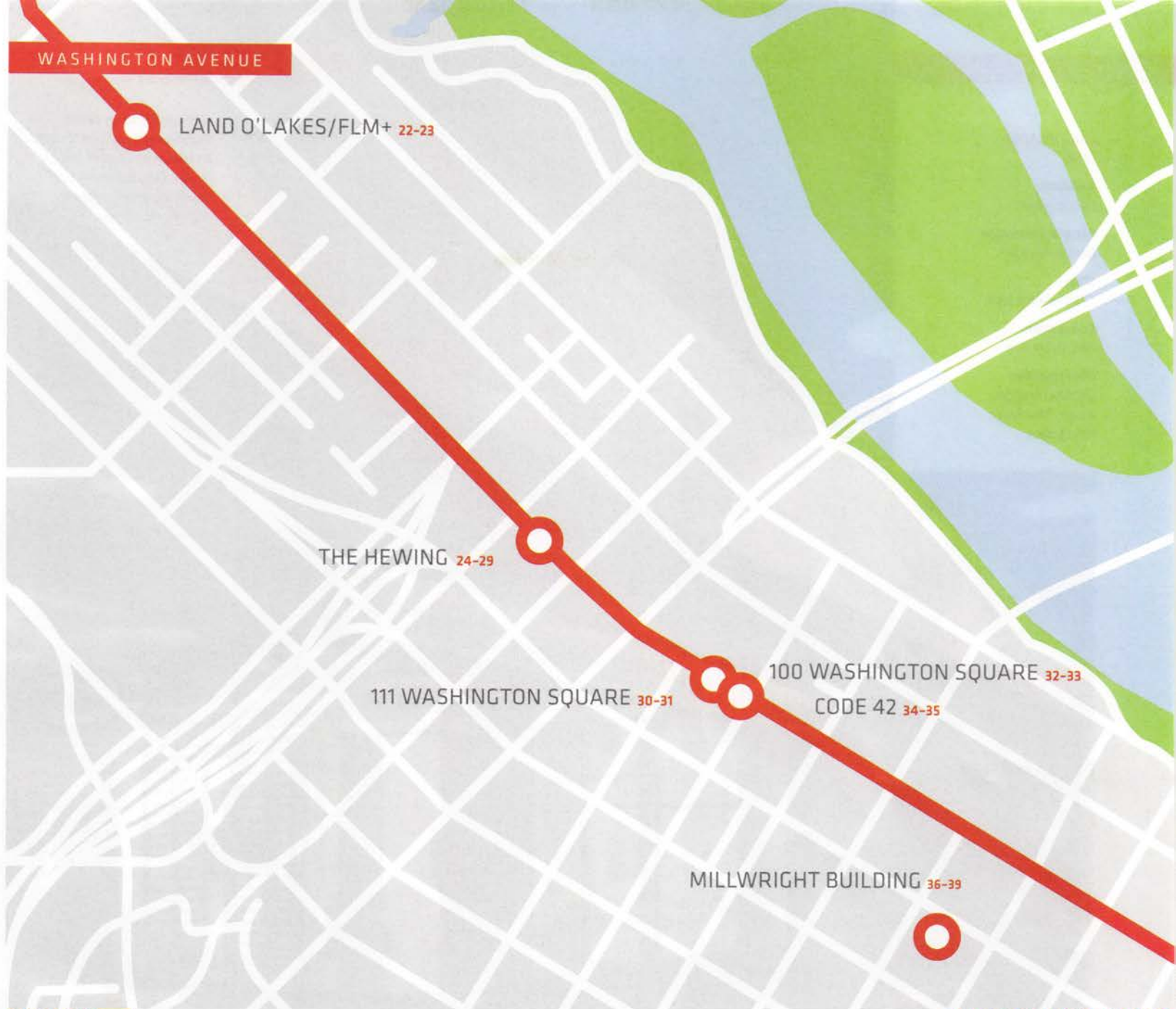
Steen dining cabinet, \$2399; Corbett dining table, \$2699; Lira chairs, \$699 each.

7010 France Avenue South, Edina

roomandboard.com



Room&Board



STREET IMPROVEMENTS

A string of new design projects makes Washington Avenue in Minneapolis a prime destination for work and play

By Joel Hoekstra

WASHINGTON AVENUE WAS PLATTED IN 1854 TO RUN PARALLEL TO THE MISSISSIPPI RIVER, and it quickly became a vital conduit for commercial activity, its unpaved surface traveled by merchants, millers, farmers, and blacksmiths busily building the city. Today, the thoroughfare still plays a key part in moving traffic and commerce in Minneapolis. Tech companies, commercial builders, advertising agencies, and architecture firms now populate the boulevard, fueling the city's modern economy. Here are six new architect-designed spaces that are remaking the Washington Avenue corridor as Minneapolis' premier address.

**LAND O'LAKES/
FLM+**

Architect:

Perkins+Will

General contractor:

Gardner Builders

Size:

13,021 square feet

Completion:

November 2016

Photographer:

Brandon Stengel,
Assoc. AIA/Farm
Kid Studios

The Land O'Lakes facility is designed to accommodate meetings of all sizes and styles. Crisp lines give the historic warehouse space a 21st-century feel.

The conference facility allows employees to meet with clients or spend time working before attending downtown appointments.



LAND O'LAKES/FLM+

Hardworking and timeless

*Above: The glassy view into the FLM+ reception area.
Below: Mobile workstations in the Land O'Lakes space.*

MINNESOTA-BASED LAND O'LAKES IS A COOPERATIVE OWNED BY FARMERS.

So it seems fitting that the Arden Hills-based organization chose to lease space in a former John Deere tractor factory for its most recent expansion in Minneapolis. The company's new offsite conference facility and wholly owned subsidiary FLM+, a marketing agency, now occupy a renovated space in the TractorWorks Building on Washington Avenue in the North Loop.

The Minneapolis office of Perkins+Will tapped the historic roots of both the company and the building in its design for Land O'Lakes. The 7,400-square-foot space for FLM+ is contemporary, with glassed-in conference rooms, a digital-editing suite, and adjustable desks arranged in an open, collaborative workspace. But exposed-brick walls and an old wooden gate unearthed in the building's basement serve as reminders of the past.

The 5,600-square-foot conference facility, where Land O'Lakes employees meet with clients or spend time working before attending downtown appointments, features three conference rooms, a food bar, locker spaces, several phone rooms, a dozen workstations, and a glassed-in lounge with a sofa and chairs. A light fixture made from old milk jugs hints at the cooperative's dairy-centric origins.

"Like the building's original owners, Land O'Lakes needed a hardworking, timeless space," says Tony Layne, AIA, managing director of Perkins+Will's Minneapolis office. "Our design embraced the brick and timber structure by leaving the brick walls exposed and framing out the timber columns." •



THE HEWING

Stylish comfort

ANCHORED BY THE STRETCH OF WASHINGTON AVENUE TO THE NORTH OF HENNEPIN AVENUE, the North Loop has become Minneapolis' hottest neighborhood over the past decade. Home to some of the city's most-booked restaurants and most-lauded retailers, the area has lacked—until recently—that hallmark of every trendy district: a boutique hotel.

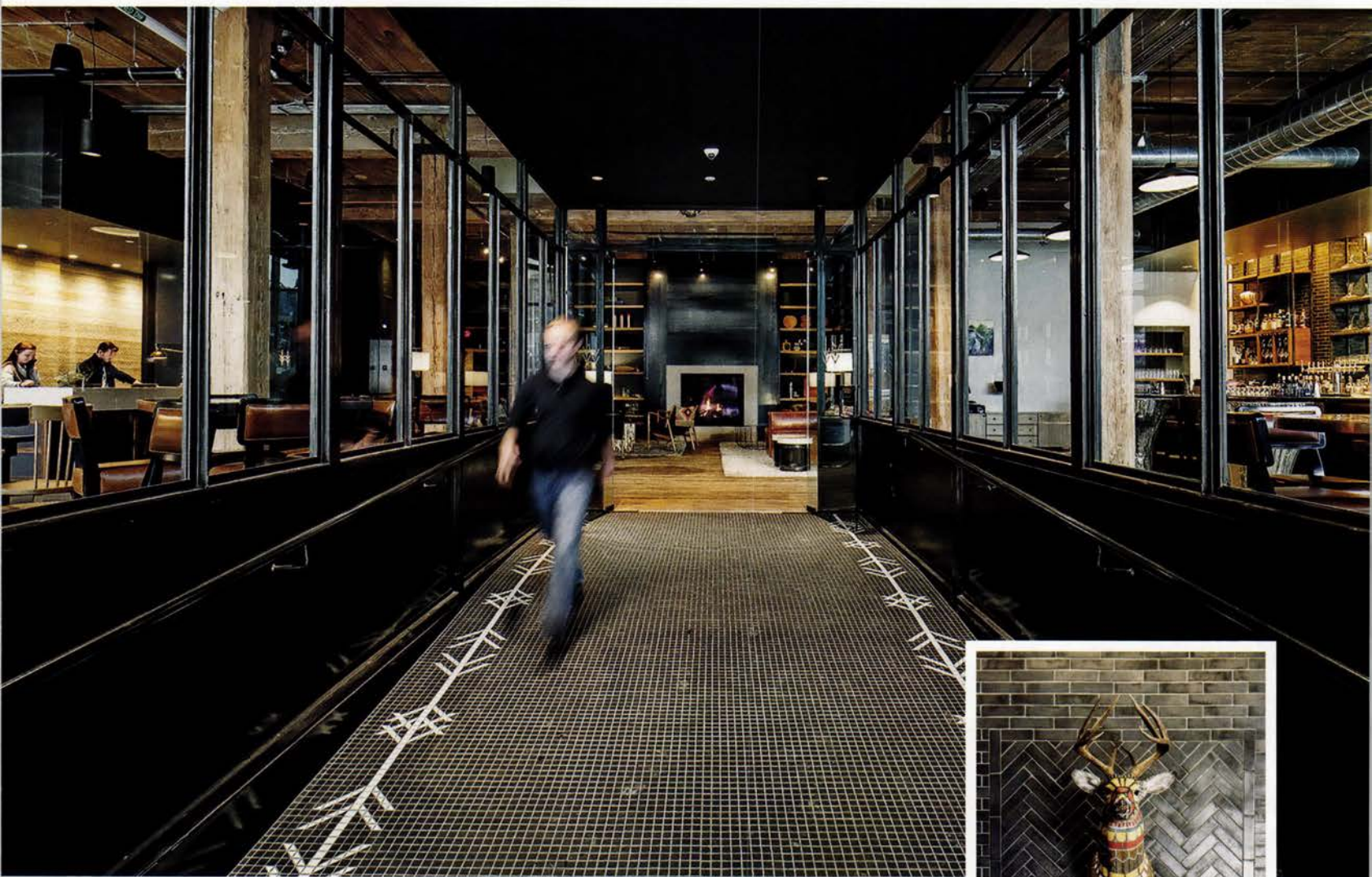


After years of neglect, the 1899 Jackson Building needed stabilization, so ESG Architecture & Design and Greiner Construction took a "bottom-up" approach to the renovation.



"The owners' vision was that this would be a hotel that celebrated Minnesota, as well as the North Loop culture. We put a lot of personal pride into this project."

The vestibule is paved with tiles designed to recall the Hewing's two-tree logo; it's also lined with glass, allowing guests to absorb the visual energy of the space even before they reach the lobby.



Distinctive tile and brick patterns contribute to the Nordic-meets-North-Loop ambience.

But that changed last year with the opening of the Hewing, an upscale 124-room hotel infused with a heady mix of cool, contemporary Scandinavian design and Minnesota-made art, products, and memorabilia. "The owners' vision was that this would be a hotel that celebrated Minnesota, as well as the North Loop culture," says Steve Oakley, AIA, vice president at ESG Architecture & Design, the Minneapolis firm that designed the project for Aparium Hotel Group of Chicago and Fe Equus Development of Milwaukee. "That's our background, so as Minnesotans we put a lot of personal pride into this project."

The Hewing, at the corner of Washington and Third Avenue North, occupies a former farm-implement showroom and warehouse completed in 1899. Roughly 116,000 square feet in size, the building had been constructed in stages, creating odd intersections at some floor elevations. It eventually fell into disrepair, with only one tenant, a music school, leasing the first floor.

The architects worked closely with Minnesota's State Historic Preservation Office (SHPO) to preserve the building's exposed brick and heavy timber framing. In the lobby, leather and wool elements counterbalance the industrial materials.



Visitors can sip cocktails from the cozy rooftop bar and drink in the dramatic view of downtown Minneapolis.



The rooftop amenities were designed to welcome travelers and provide a social hub for locals in equal measure.

But underneath the dust and cobwebs the new owners and ESG saw a structure full of character and potential. The brick exterior had unique window patterns on every level, and a forest of solid timber posts and beams populated the interior. "We like to work *with* the building—not against it—and embrace that era of construction and materials," says Fe Equus owner Tim Dixon, whose firm made a splash with its 2008 conversion of a century-old warehouse in downtown Milwaukee into the luxury Iron Horse Hotel. "The building has endured for more than 115 years, and now it will live on for another 100 years."

"We pulled back more than we added as the design process went on," says Ann Fritz, ESG's director of interiors. But two significant structural additions were made: A contemporary glass-walled atrium was thrust through the center of the building to bring light into the building's interior and create visual connections between the floors, and a sixth floor was added on the rooftop, along with a deck, pool, sauna, and bar.



*Clockwise from above:
Private dining space adjacent
to Tullibee (the hotel's
restaurant); the rooftop pool
with deck seating; the Tullibee
bar with billiards table.*

Visitors entering the hotel pass through a vestibule paved with tiles designed to recall the Hewing's two-tree, chevron-like logo; it's also lined with glass, allowing guests to absorb the visual energy of the space even before they reach the lobby. Shelves that surround the fireplace in the lobby are filled with Minnesota-themed items, including books on Bob Dylan and Prince, vintage hockey gear, Faribault Woolen Mill blankets, pairs of deer antlers, and glass jugs from local dairy operations. Furniture throughout the space evokes a classic Northwoods cabin. "We only used genuine leather and real wood, so things will patina and age properly," says Fritz.

Opposite the reception desk is a full-service bar and restaurant. Lacquered tree trunks serve as cocktail tables, and a contemporary artist's take on a classic deer-head trophy peers out over the bar. The tables in the restaurant are constructed of planks that were

>> continued on page 67



THE HEWING

Client: Fe Equus Development, LLC

Architect: ESG Architecture & Design

General contractor: Greiner Construction

Size: 116,123 square feet

Cost: \$21.2 million

Completion: November 2016

111 Washington Square, designed by BWBR, and 100 Washington Square (left), designed by Yamasaki & Associates, stand across the street from each other.



**111 WASHINGTON
AMENITIES FLOOR**

Client: Shorenstein

Architect:
ESG Architecture & Design

General contractor:
Adolfson & Peterson
Construction

Size: 7,070 square feet

Cost: \$1.1 million

Completion: February 2017

Photographer:
Brandon Stengel, Assoc.
AIA/Farm Kid Studios

111 WASHINGTON SQUARE

A private lounge for tenants

111 WASHINGTON, the third and final installment in the Washington Square campus, was designed by BWBR and completed in 1987. For many years, it was home to the Minneapolis Division of the Federal Bureau of Investigation. In 2014, the 15-story tower was purchased by Shorenstein, which undertook a renovation of the third-floor tenant lounge to increase interest among prospective lessees.

ESG Architecture & Design was retained to create an upscale amenities lounge, restyling the 7,000-square-foot space as well as the adjoining outdoor patio. Communal work tables and a variety of seating options in an eclectic mix of styles fill the room, and unique light fixtures supplement the natural light that floods the space during the day. Artfully perforated white-metal panels hide structural columns while lending the environment a contemporary flavor. The designers also took advantage of the building's raised floors by carving out a "sunken" lounge area anchored by a fireplace faced with textured porcelain tiles. Tenants who need a quick snack but don't want to venture down to the skyway or street can stop by the lounge's grab-and-go food counter.

The design team created a room-within-a-room with an area that steps down to seating arranged around a modern fireplace.

"Minoru Yamasaki [the architect of two of the three Washington Square buildings] had a deep philosophical and artistic approach to his work," says Ronnie Ragoff, senior vice president, asset management, at Shorenstein. "We created amenities spaces in these buildings that are congruous to Yamasaki's philosophy and unmatched in the Minneapolis market." ●





100 WASHINGTON SQUARE

A contemporary cafeteria


An inviting mix of café and cocktail tables, lounge seating, and pool and ping-pong tables draws workers throughout the day.

COMPANY CAFETERIAS WERE COMMON IN SKYSCRAPER DESIGN IN 1981, the year that 100 Washington Square went up in downtown Minneapolis. Employees from Northwestern National Life, the insurance company that erected the building as an expansion to its nearby headquarters, flocked to the fourth floor on coffee breaks and at lunchtime to get a cup of Sanka or dine on whatever was warming under the heat lamps.

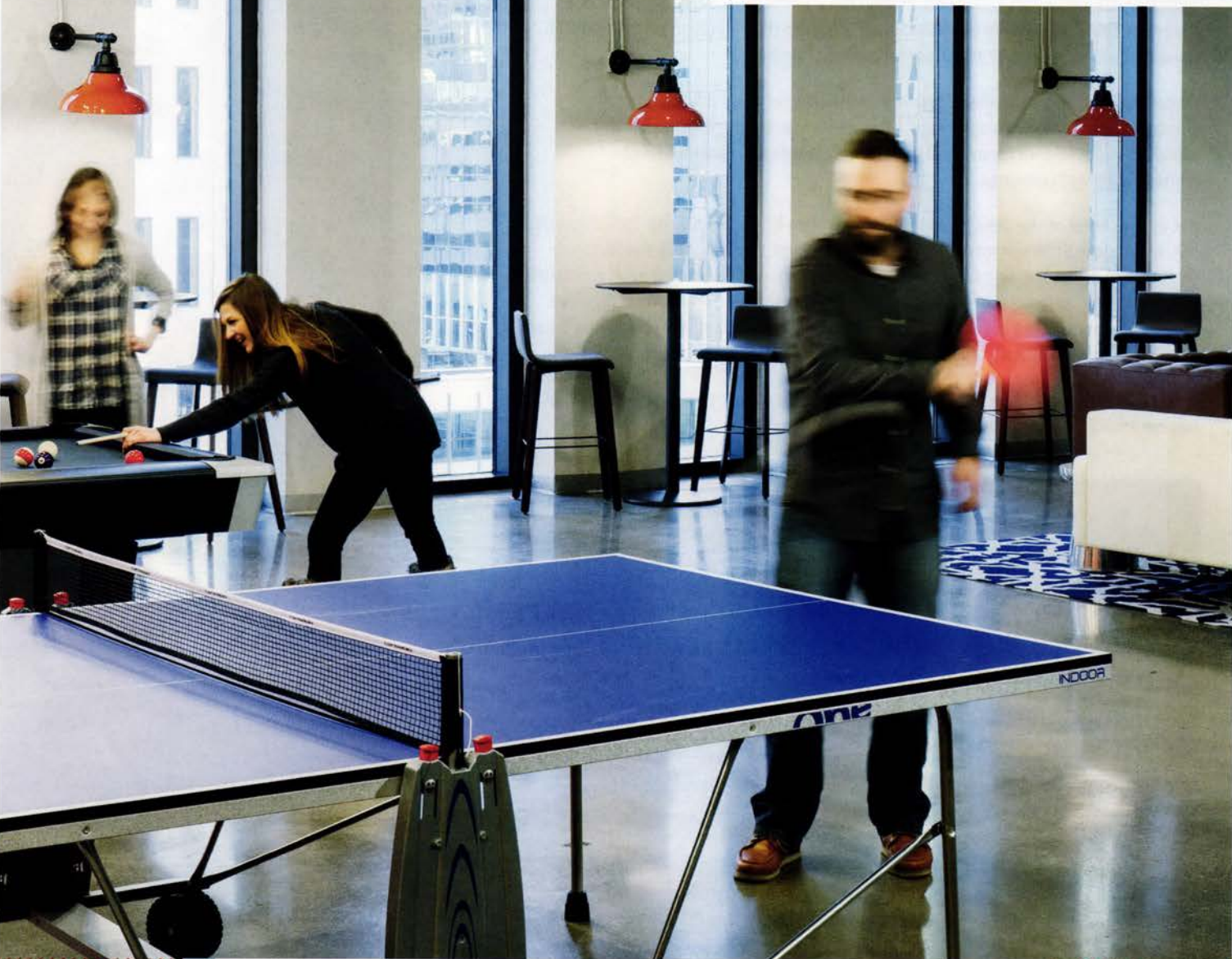
By 2014, when San Francisco-based real estate investor Shorenstein acquired the tower, the space had lost its luster. Yet rather than convert the dated space into square footage for more offices and cubicles, the new owner chose to hire ESG Architecture & Design—whose own headquarters is also located on Washington Avenue—to transform the space. Drab acoustic tiles and worn carpeting were stripped out with an eye to maximizing the open floor plan and ceiling heights. “We were fortunate to have a building that already had great bones,” says ESG vice president Nate Enger. “This project was really about exposing all that.”

ESG gave the space a colorful, contemporary feel, using frosted glass, plane-sawn oak panels, and floor coverings made of triangular heat-fused plastic panels in bright blue, yellow, and gray. Five-globe brass chandeliers were hung in the dining area, and half the space was converted into a lounge with area rugs, standing lamps, comfortable furniture, and even pool and ping-pong tables.

Accessible to tenants even after the cafeteria closes, the space is multifunctional. “We took it from a room that could be used eight hours a day to a space that can be enjoyed 24 hours a day,” says Enger. ●



*Distinctive overhead
light fixtures are a standout
feature of the space.*



100 WASHINGTON AMENITIES FLOOR

Client: Shorenstein
Architect:
ESG Architecture & Design

General contractor:
Greiner Construction
Size: 18,000 square feet
Cost: \$700,000

Completion: December 2015
Photographer:
Brandon Stengel, Assoc.
AIA/Farm Kid Studios

CODE 42

Tech chic

COLLABORATION IS KEY TO TECHNOLOGY WORK. So when Code 42, a global tech company whose Minneapolis employees were spread across eight suites in a complex in St. Anthony Main, had the chance to consolidate its 450-person workforce in a single location, its managers grasped the opportunity.

In February, the company took up residence on two and a half floors of the Yamasaki & Associates–designed 100 Washington Square, having retained Eastlake Studio and ESG Architecture & Design to redesign the 60,000-square-foot space. “We wanted a place where employees could work at their desk, in the break room, in a beanbag chair—whatever made them comfortable and boosted their ability to be creative and collaborative,” says Code 42 facilities manager Jon Gambill.

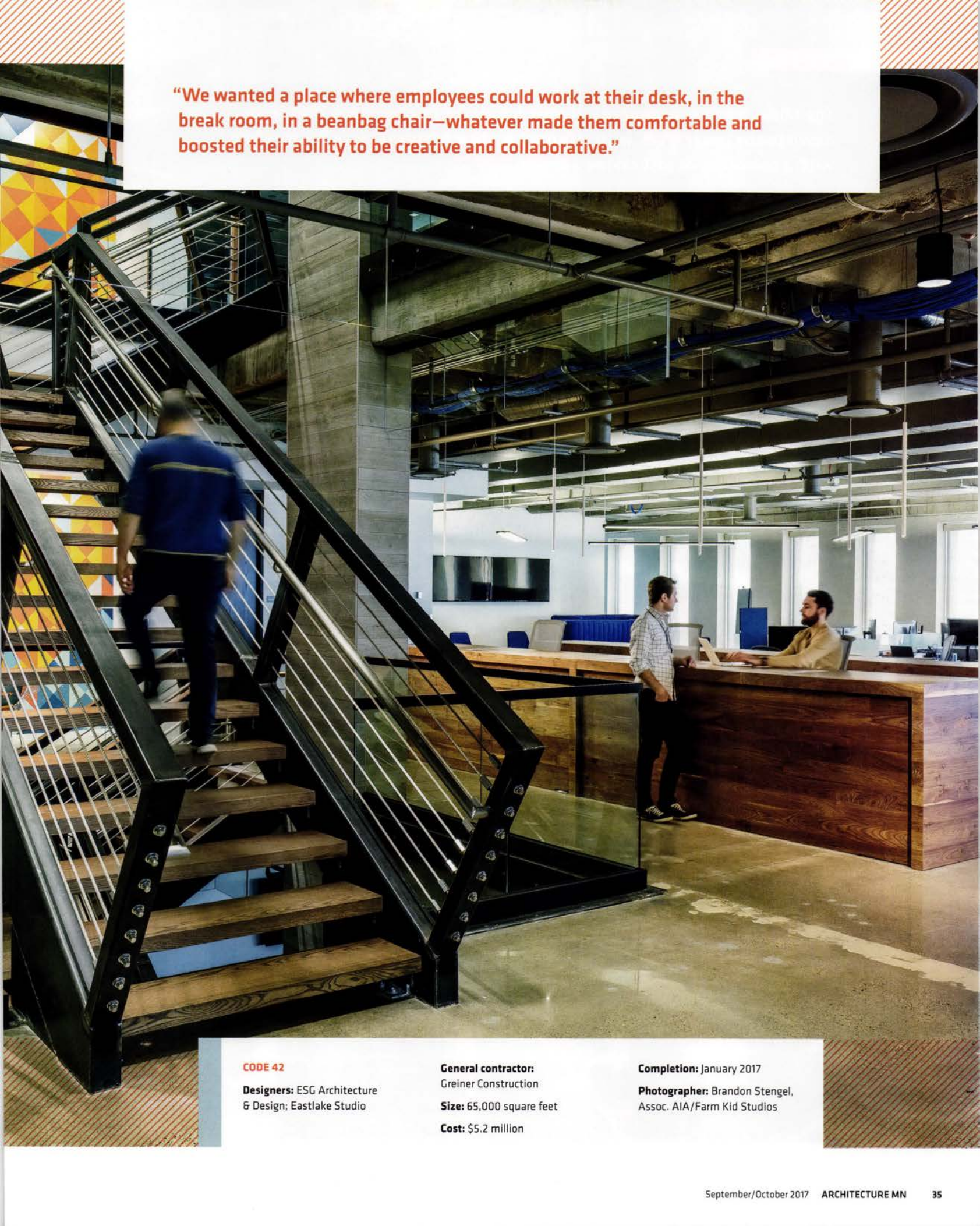
Visitors arriving via the elevator step into a lobby clad in wood planks, its floor emblazoned with the company’s logo. Glass doors lead to a reception area and a glassed-in conference room wired for teleconferences and decorated with printed-fabric wall coverings.

But at the center of the design, led by principals Nate Enger of ESG and Tom Zurowski, AIA, of Eastlake Studio, is an open, three-story, welded-steel stairway that cuts through two of the building’s floor plates. Rather than using elevators, employees walk up to reach the coffee station on the top level or head down to reach the conference room/lunchroom on the lowest floor. Lounge spaces and key resources, including a help desk lined with reclaimed walnut planks, are clustered around the stairwell.

“The stairway connects people in a way I didn’t fully expect,” says Gambill. “Overall, our collaboration is now through the roof.”



An industrial-grade staircase brings the three levels of the studio together both visually and functionally. Left: Folding glass doors turn a conference room into an open collaboration space.



"We wanted a place where employees could work at their desk, in the break room, in a beanbag chair—whatever made them comfortable and boosted their ability to be creative and collaborative."

CODE 42

Designers: ESG Architecture
& Design; Eastlake Studio

General contractor:
Greiner Construction

Size: 65,000 square feet

Cost: \$5.2 million

Completion: January 2017

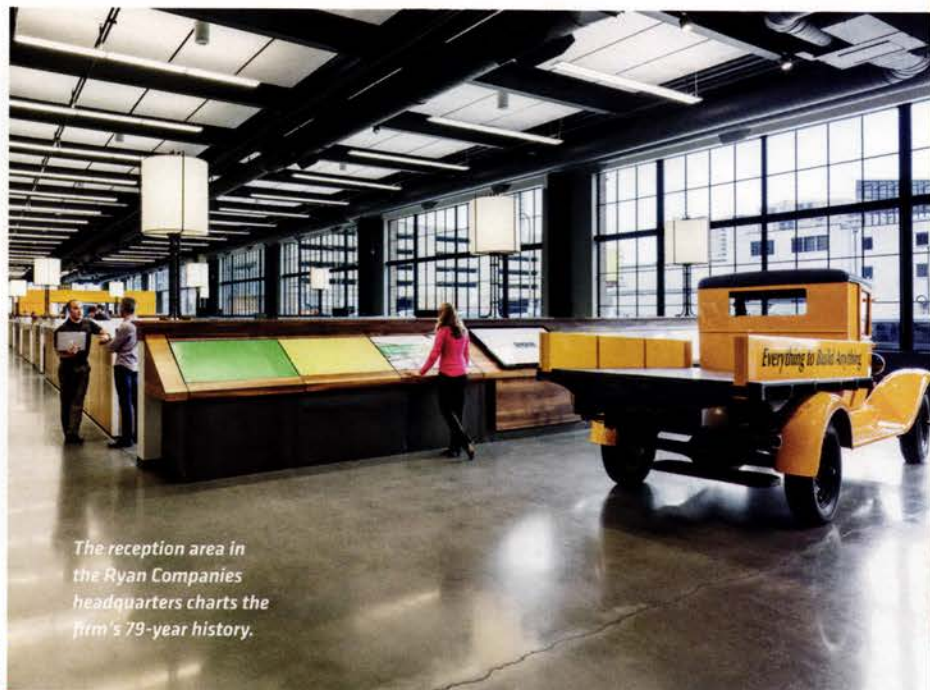
Photographer: Brandon Stengel,
Assoc. AIA/Farm Kid Studios

The Millwright's centerpiece is a tiered, hickory-floored lobby that steps down to the lower level, with informal seating for presentations, meeting with a coworker, or just taking a break.





Above: Brick from the exterior carries into the lobby. Opposite, bottom: Main-floor workstations enjoy light from broad, tall windows and library lamps made of rebar, and a meeting space is clad in yellow-painted metal in the manner of a construction-site toolbox.



The reception area in the Ryan Companies headquarters charts the firm's 79-year history.

MILLWRIGHT BUILDING

The newest "old" building in town

MINNEAPOLIS' EAST TOWN COMMONS, the new two-block park that stretches out in front of U.S. Bank Stadium, was developed by Ryan Companies. And several of the new buildings surrounding the green space—including two Wells Fargo towers, a Radisson RED hotel, and a parking garage—are Ryan projects. So it's not surprising that the firm wanted to move into the neighborhood.

Ryan relocated from its central downtown location this past spring, setting up shop in the new Millwright Building, a 172,000-square-foot facility that the company designed, built, manages, and now inhabits. "It's great for telling our story," says Mike Ryan, AIA, president of Ryan A+E. "We can walk out our front door with customers and point to projects we've worked on."

The four-story Millwright fills half of a city block, standing adjacent to one of the two 17-story Wells Fargo buildings. It's clad in thin-brick precast panels and accented with steel, exposed fasteners, and divided-light windows; a series of broad arches along the Third Street facade completes the building's turn-of-the-century look. "It's new construction, but we had a lot of contractors come into the space and say, 'We're so glad you were able to rehab this building and keep it from being demolished,'" says Josh Ekstrand, AIA, Ryan's director of design.

The historic-looking exterior also serves to link the building visually with the Mill District to the north, says Mike Ryan. The entry tower at the northeast corner of the building overlooks a cobble plaza and a bike path that connects the Commons and the iconic Stone Arch Bridge. Portland Avenue, technically a county highway, became a cycling route as the area transformed.



MILLWRIGHT BUILDING

Client: Ryan Companies US, Inc.

Architect: Ryan A+E, Inc.

Energy modeling:
Michaud Cooley Erickson

General contractor:
Ryan Companies US, Inc.

Size: 172,000 square feet

Cost: \$27 million

Completion: April 2017

Photographer: Paul Crosby



The Northwoods-themed lounge on the lower level is anything but dark and cramped. Right: The four-story building helps transition the neighborhood from the taller Wells Fargo towers to the south to the historic Mill District structures to the north.



Ryan Companies is the building's primary tenant, occupying the main level, mezzanine, and lower level. (The latter has a much smaller footprint.) But all tenants have access to the Millwright's centerpiece: a tiered, hickory-floored lobby that steps down to the lower level, with informal seating for presentations, meeting with a coworker, or just taking a break. A bike storage area and the hall to an underground passage to the neighboring Wells Fargo tower are easily seen from the entry.

Polished concrete floors, 18-foot-high ceilings, and exposed ventilation create an airy industrial atmosphere on the main level. Eye-catching, construction-themed features include oversize library lamps made of rebar, a wall festooned with shovels and helmets, and a small group space housed in what resembles a giant yellow gang box (a large toolbox typically found on commercial construction sites). Conference rooms are named after notable Ryan projects, and a vintage Ryan Companies pickup truck is parked in the reception area.

"All of that is part of our culture," says Mike Ryan. "But we never put it on display before. The soul of the place is measurably different than that of our old space."

An open lounge area on the lower level, as well as booths and other small-group workspaces throughout the office, encourage staff interaction. "You can look up and see someone across the floor plate and know they're at their desk," says Ashley Wurster, Ryan's director of interior design. "Before we had so many physical barriers. Here we have no excuse not to be collaborating."

"We wanted quality you can feel," adds Mike Ryan. "It couldn't look ostentatious, stately, or overspent. At the same time, we wanted the space to feel sophisticated and thoughtful. We wanted to demonstrate the value we deliver. This space speaks to what we do." ●

HOMES *by*
ARCHITECTS

2017



TROY THIES

6

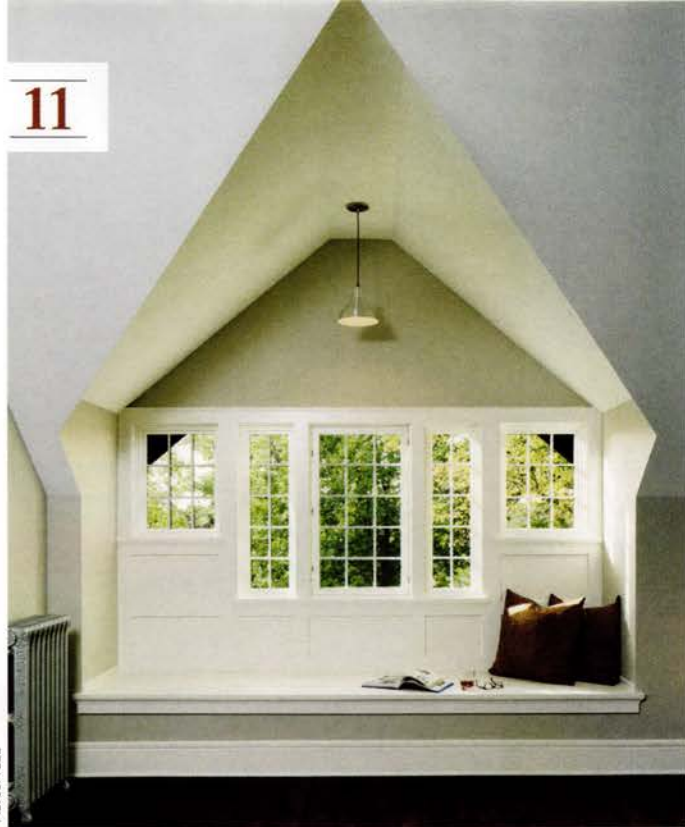
The Homes by Architects Tour celebrates its 10th year with its greatest variety of offerings yet. From Lake Minnetonka to Little Carnelian Lake in Stillwater, the 17 architect-designed homes come in a wide range of sizes, styles, and settings, and tour-goers can speak with the architect at each stop.

New this year? A chance to walk through the Hex House, a highly sustainable, rapidly deployable, disaster-relief shelter designed by a nonprofit architecture collective with a local connection (#14).



1

11



ALYSSA LEE



STEVE HENKE STUDIO

4



CHRISTIAN DEAN, AIA

9



KIM CORNELISON

8

The tour offers residential styles for nearly every taste, and design solutions for every living space. Houses #6 and #9 are smaller homes in the core of the Twin Cities metro that were renovated to live much larger.



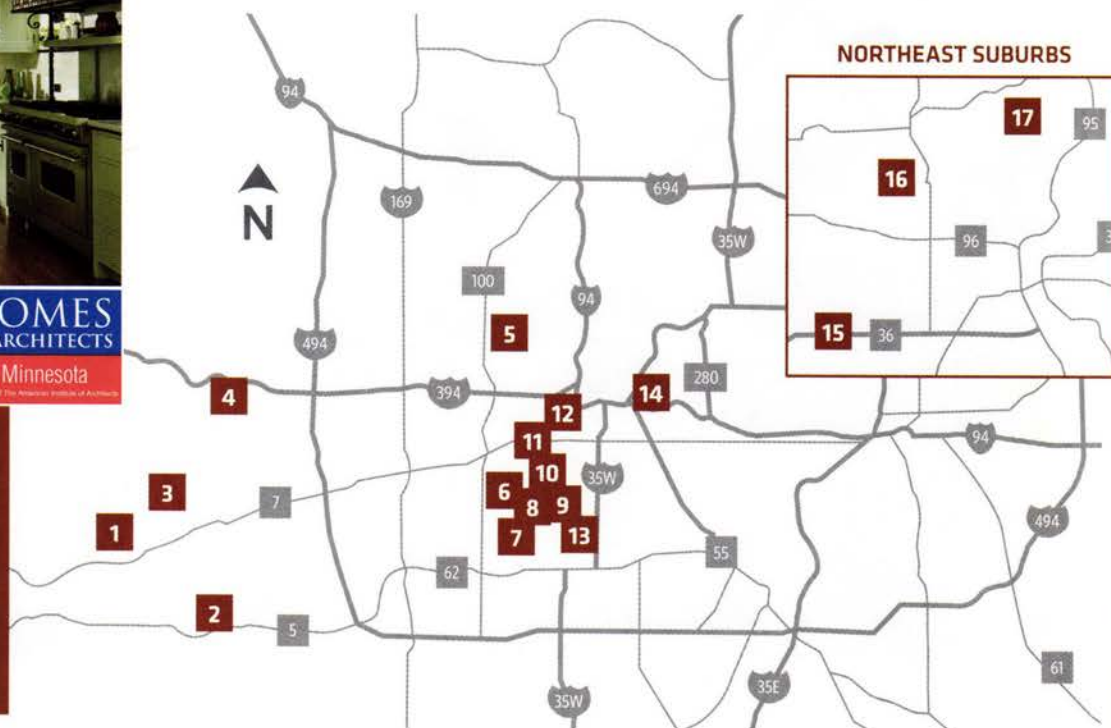
SATURDAY, SEPTEMBER 16,
AND SUNDAY, SEPTEMBER 17

10 A.M. to 5 P.M.

Tickets for the entire tour can be purchased for \$15 online at homesbyarchitects.org until September 15 or at any home during the tour for \$20. Tickets for a single-home visit are \$10.



2017 HOMES BY ARCHITECTS TOUR LOCATIONS



1

422 Lafayette Avenue
Excelsior, MN 55331

TEA2 Architects

Design team: Dan Nepp, AIA;
Tom Van De Weghe
www.tea2architects.com

2

7603 Frontier Trail
Chanhassen, MN 55317

**Charles R. Stinson Architecture
+ Design**

Design team: Charles Stinson,
AIA; Chuck Thiss; Larry Ward;
Larry Glenn, AIA
www.charlesrstinson.com

3

20200 Lakeview Avenue
Excelsior, MN 55331

Peterssen/Keller Architecture

Design team: Gabriel Keller,
Assoc. AIA; Bob Le Moine, AIA;
Lars Peterssen, AIA
pkarch.com

4

998 East Shady Lane
Wayzata, MN 55391

Peterssen/Keller Architecture

Design team: Ryan Fish, AIA;
Lars Peterssen, AIA; Jason
Briles, Assoc. AIA; Katie Bassett
pkarch.com

5

1546 St. Croix Trail
Golden Valley, MN 55422

Modern Oasis

Design team: Charles Stinson,
AIA; Josh Norman; Ryan
Andrews, Assoc. AIA; Bill Potter
www.modernoasis.com

6

4824 West 41st Street
St. Louis Park, MN 55416

SALA Architects

Design team: Eric Odor, AIA;
Brittney Roberts;
Paul Buem, AIA
salaarc.com

7

5333 Drew Avenue South
Minneapolis, MN 55410

Newland Architecture, Inc.

Architect: Scott Newland, AIA
www.newlandarchitecture.com

8

4110 Upton Avenue South
Minneapolis, MN 55410

Rehkamp Larson Architects

Architect: Mark Larson, AIA
rehkamplarson.com

9

3836 Upton Avenue South
Minneapolis, MN 55410

Christian Dean Architecture

Design team: Christian Dean,
AIA; Jessica Harner, Assoc. AIA;
Nathan VanWylen, Assoc. AIA
deanarch.com

10

3213 East Calhoun Parkway
Minneapolis, MN 55408

Peterssen/Keller Architecture

Design team: Lars Peterssen,
AIA; Gabriel Keller, Assoc. AIA;
Chad Healy, Assoc. AIA; Ashley
Peterson, Assoc. AIA
pkarch.com

11

2727 East Lake of the
Isles Parkway
Minneapolis, MN 55408

Christopher Strom Architects

Architect:
Christopher Strom, AIA
www.christopherstrom.com

12

2021 Harriet Avenue
Minneapolis, MN 55405

SALA Architects

Design team: Marc Sloom, AIA;
Katie Leaf, Assoc. AIA
salaarc.com

13

115 Valleyview Place
Minneapolis, MN 55419

David Heide Design Studio

Design team: Mark Nelson, AIA;
David Heide, Assoc. AIA;
Kyle Veldhouse, AIA
www.dhdstudio.com

14

Hex House (Sunday only)
801 22nd Avenue Southeast
Minneapolis, MN 55415

Architects for Society

Design team: Amro Sallam,
AIA; David Dwars; Yousef Ogleh
www.architectsforsociety.com

15

5230 Keats Avenue North
Lake Elmo, MN 55042

Rehkamp Larson Architects

Design team: Jean Rehkamp
Larson, AIA; Sarah Nymo, AIA
rehkamplarson.com

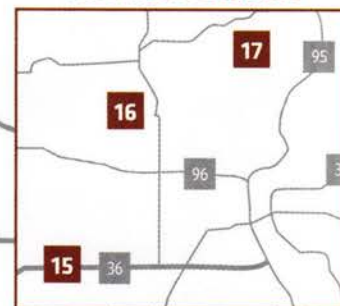
16

10000 Lansing Avenue North
Stillwater, MN 55082

CityDeskStudio

Design team: Ben Awes,
AIA; Nate Dodge; Chris Bach,
Assoc. AIA
citydeskstudio.com

NORTHEAST SUBURBS



17

15290 113th Street North
Stillwater, MN 55082

SALA Architects

Design team: Katherine
Hillbrand, AIA; Chris Meyer, AIA;
Katie Leaf, Assoc. AIA;
Max Mahaffey
salaarc.com

TOUR SPONSORS

Gold

Hage Homes
Marvin Windows & Doors

Bronze

Amsum & Ash
Anderson Reda
Brooke Voss Design
Elevation Homes
Kolbe Gallery Twin Cities
Mattson Macdonald Young
Ridge Construction
Ron Beining Associates
Streeter & Associates
Warners' Stellan Appliances

HOUSE

17

Text by Linda Mack
Photography by Morgan Sheff

Strong, simple forms make a statement: The bedroom wing cantilevers dramatically over the garage, while the dining room bridges a swale.



HOUSE

17



A Stillwater couple with a passion for design and creativity build a family home that's sophisticated yet approachable, lively, and open

There's a jungle gym in Josh and Trish Hanson's yard, but it's hard to imagine their children play there. Their house on Little Carnelian Lake, north of Stillwater, is full of architectural creativity. A weathering steel walkway slopes up to a faded pink door. The dining room occupies a glass bridge floating over a swale. Green roofs slant up from the black steel structure to punctuate the Minnesota sky.

"The house is close to museum quality, but four kids, two dogs, two cats, and several stingrays live here!" says architect Katherine Hillbrand, AIA, of SALA Architects.

The secret to the sophisticated sense of fun is undoubtedly Josh Hanson, whose business, WORKSHOP, designs marketing campaigns and consumer spaces for brands around the world. "He literally would sketch with us," says Hillbrand. "He allowed us to do things we'd never had the opportunity to do before."

In his younger years, Hanson spent time with friends swimming in the lake, which is known for its clear water. So when he and Trish started looking for property on which to build a "forward-looking house," they drove by the site many times and eventually bought it. They found Hillbrand through SALA's Stillwater office and started an intense and detailed design process.



SHADOW BOX

Location: Stillwater, Minnesota

Clients: Josh and Trish Hanson

Architect: SALA Architects, Inc.
salaarc.com

Principal-in-charge:

Katherine Hillbrand, AIA

Project lead designers: Katherine Hillbrand, AIA; Chris Meyer, AIA


Energy modeling: Katie Leaf, Assoc, AIA; Marc Slood, AIA

Landscape architect: LHB, Inc.
www.lhbcorp.com

General contractor:
Choice Wood Company

Size: 7,348 square feet

Completion: July 2015



A three-story wing clad in Endicott brick and durable Shou Sugi Ban charred cedar anchors the house. A slender living wing containing the glass dining room pierces the taller wing, its black steel roof sloping up to the east.

The wood-screened sitting room juts out toward the lake, while the dining room bridge links to the taller kitchen/bedroom wing. The library and a deck snuggle into the hillside.

HOUSE

17



They wanted a house that made a design statement—that married art and function, says Hillbrand. And so it does.

A three-story wing clad in Endicott brick and durable Shou Sugi Ban charred cedar anchors the house. A slender living wing containing the glass dining room pierces the taller wing, its black steel roof sloping up to the east. “We wanted the house to be dark,” says Hillbrand. “If you make the structure dark and recessive, it allows what’s around it to pop.”

Inside, in contrast, walls are white, stair railings are glass, and curtain wall opens the living spaces to the verdant surroundings. “The contrast makes it more refreshing,” says Hillbrand.

In the dining room, the curtain wall extends below the floor, accentuating the feeling of floating. “This is definitely the heart of the house,” says Hanson.

It’s also the pivot between the social spaces (a sunken sitting room with walls extending out to focus the view on the lake, and a small living room with a high, sloping ceiling and a steel-and-black-brick hearth) and the private spaces (the

The kids love the kitchen’s square table with built-in bench seating. Above: The living room steps out onto a narrow deck through a series of sliding doors.





The curtain wall in the sitting room is pulled back to focus the view on the lake.

Inside, walls are white, stair railings are glass, and curtain wall opens the living spaces to the verdant surroundings. “The contrast makes it more refreshing,” says architect Katherine Hillbrand.



generous kitchen with an “every meal” nook, a cozy, contemporary library focused on an Italian mirror and French-style mantelpiece, and the bedroom wing). “We didn’t want to make any room that wasn’t used,” says Hanson.

A three-story stairway with perfectly detailed glass railings and a translucent roof connects the lower-level lounge and second-story bedrooms. The minimalist master with its marble bathroom and built-in closets occupies the corner overlooking the lake and the larger green roof. The three girls’ rooms line up almost like a bunk room; they are small but cool, each with a daybed or hanging chair, built-in closet, small skylight over the entry, and translucent door (so the parents know when lights are out).

The girls all picked their own wallpaper, and it’s clear their parents’ design genes were passed on.

>> continued on page 71



CHAD HOLDER
PHOTOGRAPHY

612.384.7553 / chadholder.com / chad@chadholder.com



Residential Firm Showcase

Your guide to some of Minnesota's best residential design firms





CityDeskStudio

citydeskstudio.com • 651.644.1106

APPROACH TO DESIGN

The name CityDeskStudio speaks to our interest in projects that explore the boundaries that architecture operates within—from the larger boundless environment suggested by city to the intense, focused craftsmanship of a single object, the desk. We believe architecture exists between and always engages both of these scales.

Ultimately architecture is realized through the relationships formed between the people involved. We work to create buildings that express who our clients are and what they believe. We ask questions, push boundaries, and challenge pre-conceptions, all while utilizing proven construction practices. Through collaboration with our clients and the chosen contractors, every project draws on and benefits from the combined expertise of the entire team.

FIRM BACKGROUND

At CityDeskStudio, we are modernist at heart. We believe architecture points to the future while still being of today. Since 2004, CityDeskStudio, led by partner Ben Awes, has been designing award winning modern homes that are graceful, warm, and inviting. Our homes offer shelter, but more than that, we strive for meaning, permanence, and identity, to make places that represent our clients, the relationships in their lives, and connect them to the world around them. Great architecture gains richness and meaning through these contexts and in this capture our understanding of our place in the world.

SERVICES WE OFFER

Full architectural services including custom home design, small and large home remodeling, sustainable design, commercial building design, retail design, restaurant design, corporate interiors and office fit-outs, furniture design, sacred space and sacred object design, and any other special projects!

Our process includes full 2-dimensional and 3-dimensional drafting as well as 3D modeling, rendering and virtual reality services. We also partner to provide 3D printing, and CNC milling.

CITYDESKSTUDIO
architecture + design





Christopher Strom Architects

christopherstrom.com • 612.961.9093

SERVICES WE OFFER

Christopher Strom Architects specializes in custom residential design. Our portfolio includes accessory dwelling units, new homes, remodels and additions, and commercial renovations. We care deeply about your investment and will help you articulate your goals. Our goal is to provide you with thoughtful and inspired architecture that adds grace to everyday living.

CLIENT TESTIMONIAL

"Working with Chris Strom as a homeowner is a very constructive process. Chris listens to his clients, perceives their ideas and is able to translate them into a distinctive architectural language...We believe Chris is technically a very good architect whose design aesthetics are innovative and respectful of all resources. We love working with him and are very happy with the process as well as the outcome."

— Jutta E., homeowner

WHAT WE DO BEST

We have a strong track record of regional and national awards, but our favorite projects are the ones on our desks right now. We care about your peace of mind throughout the project. We communicate well with you, city agencies, and contractors. When you work with Christopher Strom Architects, we are your advocates.

**CHRISTOPHER STROM
ARCHITECTS**

PROUDLY FEATURING:

MARVIN 
Windows and Doors
Built around you.®





Kell Architects

kellarchitects.com • 612.812.5687

FIRM BACKGROUND

Founded in 2010, Kell Architects is a young firm with loads of professional experience in designing spaces that enhance the way we live and play. With over 20 years of residential design experience, founder Meghan Kell Cornell, AIA has built a solid reputation amongst her clients as someone who provides "experience, creativity, honesty and spirit" to all her projects. Projects for cabins, new homes, additions, remodelings and retreats are all treated with the same level of design intensity, no matter the scale of the project. Kell Architects is the next generation of Kell owned architecture firms, continuing her father's legacy in the profession.



WHAT WE DO BEST

Our most successful projects stem from clients who enthusiastically share their project dreams and are eager to find a solution that is creatively functional, financially attainable, and utterly personal.

Kell Architects seeks the exploration of how remodeling and new homes can support modern family life and strengthen the quality of neighborhood communities. We work to find harmony between old and new when designing remodels and additions for homes of all vintages. When designing new homes, we are inspired by the context of the site and by expressing the owner's desires while employing ecological considerations.

APPROACH TO DESIGN

Our approach to design always has proportion and scale at the helm, promoting beauty in simplicity. Whether designing a brand new structure or a remodeling, we do this by interpreting our clients functional desires into thoughtful layouts and aesthetically engaging solutions. By carefully studying the sites advantages, daylight, views, circulation patterns, we methodically render spaces that are valued and enhance lifestyles.

Kell Architects approaches the interior architecture and exterior of our designs with the same rigor, creating homes for our clients that feel holistic and are ultimately timeless.



Peterssen/Keller Architecture

pkarch.com • 612.353.4920



Paul Crosby Photography

OUR APPROACH TO CLIENT RELATIONSHIPS

Working with our clients is one of the most exciting and rewarding aspects of each project. Our clients are entrepreneurs, artists, art collectors, designers, world travelers, and other intriguing individuals who appreciate great design and have a vision for how they want to live. Our collaborative planning process is designed to capture our clients' thoughts and ideas, so that together, we can create a home that brings their story to life.

WHAT WE DO BEST

Whether by happenstance or design, many of our clients share our passion for oceans, lakes, and rivers. Our portfolio includes organic modern homes in Minnesota, California, Costa Rica, New York, and other destinations. While each P/K project is as unique as the homeowners, our work is always guided by a respect for the environment, an understanding of how a home should relate to its surroundings, and our commitment to exceptional design and enduring quality.

APPROACH TO DESIGN

We view ourselves and our clients as stewards of the home and the land. Using light, space, line, and form, we respond to the site to create an environment for living for the next hundred years. From small-scale renovations to luxurious, LEED-certified new homes, we integrate sustainable design practices into every project, finding solutions that merge environmental thinking with exceptional design.



Karen Melvin Photography



Spacecrafting Photography

Rehkamp Larson Architects

rehkamplarson.com • 612.285.7275

FIRM BACKGROUND

We provide a full range of design services from conception through the final punch list, partnering with our clients throughout the process. Our design-focused projects include modest renovations, substantial additions, and grand new houses.

APPROACH TO DESIGN

Our design style is refined, energetic, and engaging. We bring warmth to modernism and a fresh eye to traditional design. We engage the whole team—builder, interior designer, craftspeople, and landscape architect—to draw on the knowledge and skill of each, ultimately bringing together a whole that is more than the sum of its parts.

WHAT WE DO BEST

Our collaborative design process centers around each unique homeowner. Our goal is to engage, explore, and together find the right balance of dreams and reality. We are great listeners, creative thinkers, and problem-solvers who combine the art and science of architecture.



REHKAMP LARSON ARCHITECTS INC.





SALA Architects

salaarc.com • 612.379.3037

SA
LA

WHAT WE DO BEST

Sustainability is at the core of our work, melding beauty and functionality into a single expression of harmony with the environment. To accomplish this, we perform a holistic review of our clients' needs and apply a range of solutions that improve energy efficiency, reduce the consumption of resources, and enhance the health and well-being of the home and the surrounding landscape.

We incorporate time-tested approaches to sustainable design such as orienting to the sun, promoting cross-ventilation, and providing protection from the elements. As budgets allow, we also integrate more technical solutions such as solar panels, and geo-thermal heating systems to provide on-site generation of energy.

"At SALA, we believe architecture is more than designing shelter, our practice is about nurturing the relationship between people and the environment."

ABOUT US

Now in our 34th year, SALA Architects has the experience, creativity, and depth of architectural design talent to match your vision and expectations for the most personal of projects, your home.

Our philosophy goes beyond stylistic patterns, and is rooted in a deep understanding of how to create spaces that nurture the soul. In collaboration with our clients, we explore the fundamental design moves that respond to our place in the world, as well as support the daily activities of life.

APPROACH TO DESIGN

Every SALA home is created with a spirit of authenticity. As humans we all desire a sense of belonging, a sense of connection to family, friends, and community. Home is the place where we feel most comfortable, most ourselves, and most grounded in life. In an ever-increasingly complex world, your dwelling should be the place that reconnects you with who you are. Our mission is to craft a home that is a re-energizing resource to your wellbeing and individual spirit.



Shelter Architecture

shelterarchitecture.com • 612.870.4081

FIRM BACKGROUND

Shelter is an award winning design studio based on a human centered, empathetic design approach focused on improving peoples lives. Shelter was founded with the desire to explore, research and implement sustainable design, to make an impact in the world by ensuring that our designs are accessible to all ages and abilities. We embrace design challenges that change lives, create unique experiences and reflect the values of the people who live and work there. We provide informed design solutions to people and organizations that possess a true appreciation of the value of great design.

WHAT WE DO BEST

We provide informed design solutions to people and organizations that possess a true appreciation of the value of great design. People we team with tend to be **wildly independent** individuals who have **bold** vision and strong opinions. Through design we explore, research and implement sustainable solutions to make positive impact in the world and to ensure that design is accessible to all ages and abilities. We embrace design challenges that change lives, create unique experiences and reflect the values of the people who live and work there.

APPROACH TO DESIGN

Our clients' needs and desires are the engine of our design process. With their in-depth input our process delivers homes that encourage family interaction, bring people together and ignite the imagination. Through thoughtful design we promote environmental responsibility while improving, not compromising, personal comforts. Great design incorporates barrier free access, improves indoor air quality, promotes an active and healthy lifestyle, and offers time saving solutions.



SHELTER
ARCHITECTURE

SKD Architects

skdarchitects.com • 763.591.6115



FIRM BACKGROUND

Founded in 1977, SKD Architects has been designing residential and commercial buildings for over 40 years. Starting as a commercial based firm, SKD was attracted to single family residential projects in the mid 1980's. The projects required closer and more personal client/architect relationships, and creative opportunities to design meaningful, functional, and artful living for their clients. Residential design includes new and remodel projects of all sizes. Recent commercial projects include office, retail showrooms, municipal and manufacturing. The blend of both project types influence the way people live, work and play by bringing a broad range of expertise and more personal human character to their projects.

PROCESS

SKD takes their clients through a series of design and construction phases, starting by developing a thorough understanding of their needs and the site. They develop the design with close client interaction, refine it and produce very detailed construction documents. SKD educates their clients about design and construction, managing their expectations while helping them make better informed decisions. Clients learn the reasons for each design and building construction decision, and what it takes to develop a creative and functional home. SKD is typically involved throughout the entire process from site selection, through construction and beyond. Their goal is to protect the client throughout the building process.

WHAT SKD DOES BEST

There is a lot that SKD does really well, but their attention to detail and communication skills allow for more creative and consistent design. They bring out the best in every project by listening to and understanding their clients. SKD is a master at blending functional design with an art. Thoughtful detailing leads to the design continuity. Each form or wall is a composition. Each detail is well thought out to create a synergy in design that is more than the sum of its parts. Many clients call SKD's physical design interpretation of their needs, living, functional art with a Zen like quality.



TEA2 Architects

tea2architects.com • 612.929.2800

OUR APPROACH TO A CLIENT RELATIONSHIP

Clients have hopes and visions of what they want their home to be, but understandably are not practiced in how to express it. Our approach is to nurture and develop a client's vision. We do this by asking a lot of questions and bringing options to the table to fuel a productive dialogue. Collaboratively, we create a design that balances needs, desires, and budget. Our approach has one goal: to give our client a home that feels exactly right to them.

CLIENT TESTIMONIAL

"We had a terrific experience with TEA2 in building a new home in the Kenwood section of Minneapolis. They were attentive to our needs and respectful of the impact our new home would have on the neighborhood. They were excellent at listening to our vision and reducing it to a design that incorporated great insight and imagination. They were particularly helpful in overseeing the construction and assuring that plans were meticulously articulated. **They are artists and engineers with great taste.** Always available. Always responsive. Considerate, empathetic, and trustworthy."

— Steve O., homeowner



WHAT WE DO BEST

We're known for design, but what we do best is assemble a great team empowered with a process that consistently delivers wonderful homes. Our thoughtful and thorough construction documentation ensures a competitive, and a no-big-surprises, construction process. We represent our client throughout bidding and construction to ensure no corners are cut—and if there's an issue, our people are there to make sure the solution is appropriate and seamless. Each project is a unique journey. An expert guide can make it eye-opening, enjoyable, and immensely satisfying for clients.



YES, THIS IS AN AD FOR AN ARCHITECTURE FIRM. WITHOUT ANY PICTURES OF ARCHITECTURE.

IF YOU'RE THINKING ABOUT BUILDING A HOME, STOP LOOKING AT PHOTOS OF HOMES, OK?

Instead, let's talk about what no picture, especially a teeny tiny cellphone-sized image can capture: the experience of living in a beautiful home. By that, we mean a structure that not only delights the eye but feels exactly right—every hour the sun passes through it, every season of the year. A home that perfectly complements site, neighborhood, landscape and the other way around. A home that feels as if it's been there forever, and will be there forever. These are some of the things we consider when we design a new home. The context, environment, and most importantly you.



At TEA2, we don't have a cookie-cutter style; every home we design is a reflection of our clients' vision and dreams. Yours. We come to the table with no preconceived notions, no greatest hit that we're intent on replicating. Just questions and curiosity and experience and loads of talent. Our fans say they can always identify a TEA2 home—not by period, or style, or size, or location (because we've designed them all) but because it "looks like you took your time." The simplest translation of that? God isn't in the details; God is the details. We make functional necessities like roof vents beautiful and integral to the design.

If we're creating a curved surface, we make it a sexy curve. We design kitchens that feel like living spaces but work like workhorses, and great rooms that live up to their adjectives. The list goes on. Is obsessive attention to detail important to you? Do you want your balusters carefully and lovingly considered? (Do you know what balusters are?) If so, we should talk. We help clients at every level, not just multi-millionaires, get the most house for their money. And if you don't mind reading more words (yes we like words), visit our website. tea2architects.com



WE'D LOVE TO CONTINUE THIS CONVERSATION IN PERSON.
When we do, we'll bring pictures.

AKF

Global Engineering &

Integrated Services



100 South 5th Street, Suite 2060
Minneapolis, MN 55402
(612) 354-2442 | akfgroup.com

License to Steel

<< continued from page 17

with brown corrugated sheet and they figured they should build something with it?" Assigning partial blame to the City of Minneapolis' design guidelines, Thomas Fisher, then dean of the University of Minnesota's College of Design, wrote a newspaper editorial in 2015 decrying the "cluttered patchworks of metal, brick, stone, and glass, as if concocted by a number of collage artists." Fisher didn't mean that as a compliment, but his evocation of a spectral collective of materials-crazed artists throwing up whatever construction-site junk they could get their hands on is instructive. Initially, it was artists, doing just that.

CRADLE OF THE CRAZE

This trend is not specifically a Minnesota phenomenon—you see it in cities all over the U.S.—and neither are these critiques. But returning to Gehry's landmark museum on the Mississippi River and his architecture career as a whole may give some insights into how corrugated metal went from avant-garde eccentricity to developer cliché in the space of 30 years. As with many of these origin stories in American culture, we can locate the earliest stirrings in Southern California.

Before Gehry was the signature starchitect of the era, he was just another young sculptor knocking around the Southern California art scene in the 1960s. The Los Angeles art scene was distinct from the elite New York scene of the same time: less snobby, more egalitarian, more likely to draw on the American vernacular in both content and form. Think of Ed Ruscha's gas stations, stretching off into infinity on an endless concrete and steel freeway. An early Gehry collaborator was the Angeleno sculptor and painter Billy Al Bengston, whose interest in motorcycles and the automotive culture of California manifested itself in artworks incorporating banged-up hunks of steel; in an early sculpture, he depicted himself on a motorcycle, bedecked in a racing jumpsuit and looking ready to jump through a flaming hoop. It wasn't all show—Bengston really did race motorcycles semi-professionally.

He and Gehry collaborated on a Los Angeles County Museum of Art retrospective of Bengston's work in 1968—Gehry built the

>> continued on page 62

US Bank Stadium

Commercial Aquatic Engineering
Now a part of
landscape structures

It's Just Water Without Us

Providing:
Concept Development & Budgeting Assistance
Consultation
Engineering & Construction Document Services
Single Source Design / Build Services

Specializing in The Complete Fountain
Structure
Waterproofing
Finishes
Mechanical Systems
Electrical & Control Systems

For a complimentary conceptual design & budgetary analysis
Contact gstoks@caqua.com

877.632.0503 | fountaindesigns.com

HOME #12 NET-ZERO VICTORIAN ON THE HOMES BY ARCHITECTS TOUR



SALA

SALA ARCHITECTS

Visit us at homes #6, #12 and #17 on the Homes By Architects Tour
September 16-17 and experience three thoughtfully crafted SALA homes.

LEARN MORE AT SALAARC.COM/HBAT

Impeccable Design

with Concrete Masonry and Landscape Products



- Permeable Pavers and Concrete Deck Pavers
- Retaining Walls
- Architectural Masonry Units
- Thin Veneers
- Natural Stone
- Concrete & Clay Brick

Roberts, WI Location: 1203 70th Avenue

(800) 207-9962

Email: info@countymaterials.com

Request our 2017 Inspirations Catalog online today.



Proud to be American based & American made

countymaterials.com



BEGA

LED pole-top luminaire.
A new, modern pole-top
designed to light residential
streets, parking areas, or
pedestrian walkways.

BEGA sets the standard

jth LIGHTING ALLIANCE
952.223.6302
jthlighting.com

License to Steel

<< continued from page 60

scenography for the show, the entrance to which was a wall of stark, corrugated-steel forms salvaged from around the museum's storage facilities and nearby sites. "They didn't have any money to do anything new, and I said we would use the old materials," Gehry later recalled. "I guess maybe I told them we'd paint it, but then when it got up it looked so great that we kept it up."

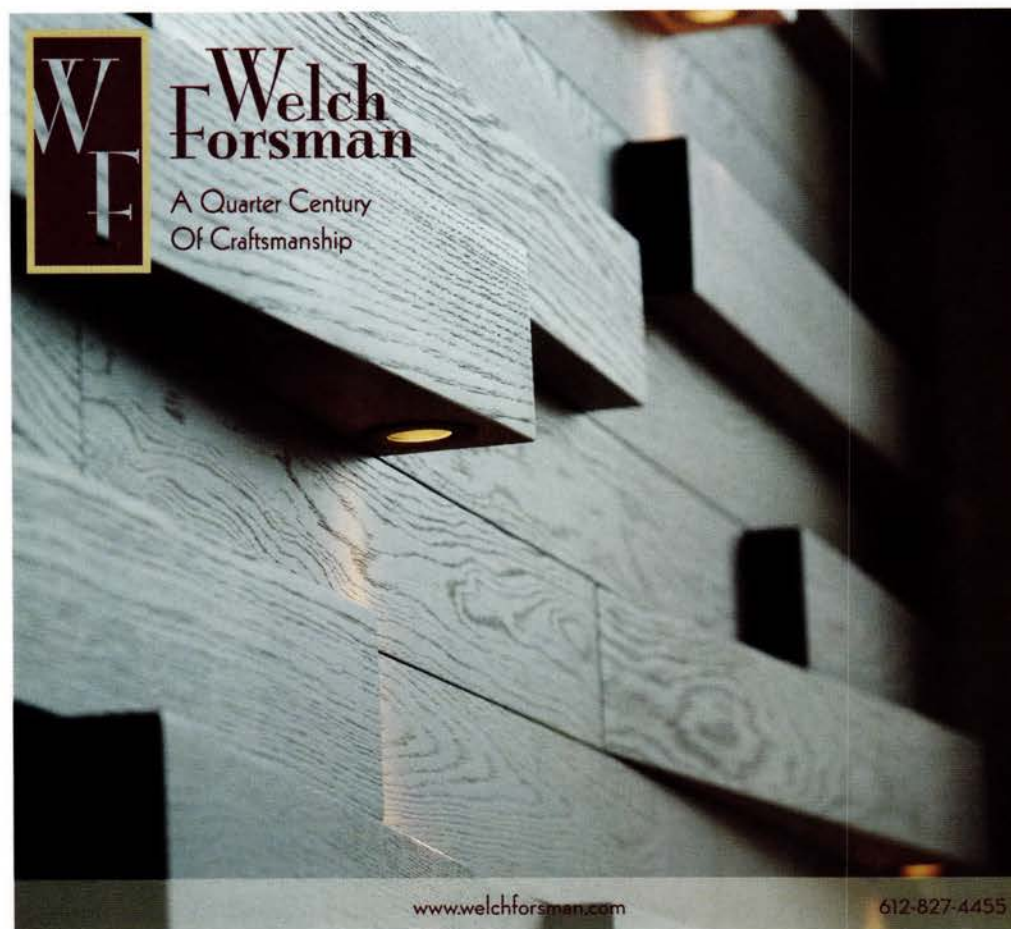
As Gehry became more involved in architecture, he made it a point to use salvaged materials, including steel. A major professional (and personal) project that gained him some early attention in the 1970s was his own bungalow in Santa Monica, which he had clad in corrugated aluminum, using materials that were "part of the vocabulary" of the landscape of Southern California, as he wrote later. It was, echoing Fisher's suggestion in his editorial, a type of Rauschenberg-like collage using found materials.

RENDERINGS AND REALITY

Corrugated metal has long had an outlier role in American residential architecture. Before World War II, it was used occasionally, but when cheap, rust-resistant, dent-resistant, and generally indestructible vinyl siding became the norm in the 1950s, corrugated metal was relegated exclusively to the least glamorous varieties of industrial architecture. Even as the material's popularity has increased in recent decades, and metal has become more viable economically, neighbors will still occasionally sneer: Back in the 1970s, Gehry's house was referred to as a "Tijuana sausage factory" and a chicken coop, but even a recent feature in the *New York Times* on stylish new corrugated-metal residential structures in Brooklyn suggested comparisons to sardine cans and giant refrigerators. The industrial stigma is hard to shake.

Which is perhaps why artists and young architects were initially drawn to metal: It's reasonably cheap, it can be recycled, and it strikes a blow against the airy glass *nowhere* of international modernism by reflecting the gritty *somewhere* of the urban landscape. As is often the case, it's when the material acquires a patina of artiness that it starts to trickle back into the mainstream. By the late 1990s, the corrugated-

>> continued on page 65



WF Welch Forsman
A Quarter Century
Of Craftsmanship

www.welchforsman.com 612-827-4455

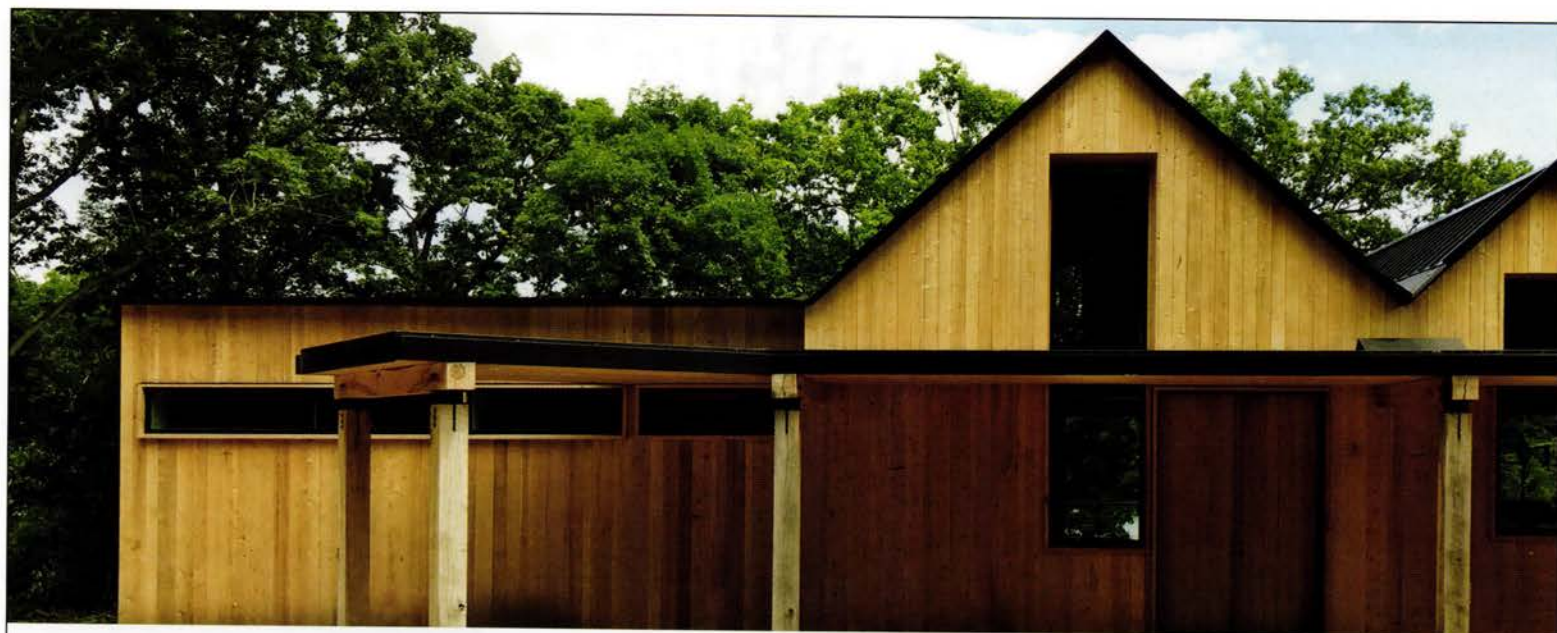
HOME #17 ON THE HOMES BY ARCHITECTS TOUR

SALA

SALA ARCHITECTS

Visit us at homes #6, #12 and #17 on the Homes By Architects Tour
September 16-17 and experience three thoughtfully crafted SALA homes.

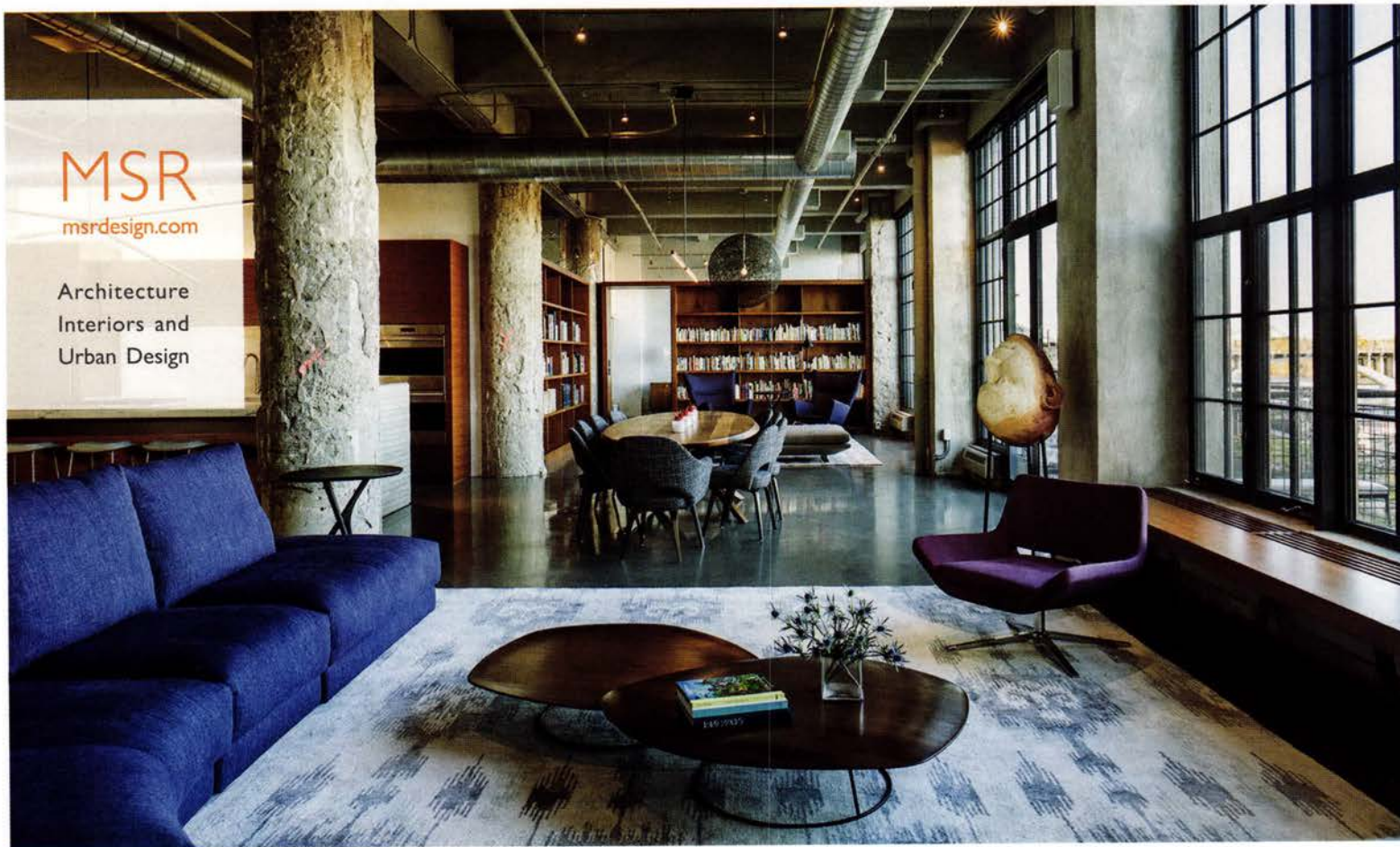
LEARN MORE AT SALAARC.COM/HBAT



SAVE THE DATE 2017 HOMES BY ARCHITECTS
SATURDAY & SUNDAY, SEPTEMBER 16 - 17
ARCHITECT-DESIGNED, ONE-OF-A-KIND HOME TOUR: HomesByArchitects.org



Project: CityDeskStudio. Photo: By Architect



ARTISTIC

— STONE & CONCRETE —

Trust your Natural Stone Project with the Best

Now Recognized as a Commercial A Contractor

At Artistic Stone & Concrete, we understand the complexities of natural stone and concrete projects. And now we've been recognized with MIA Accreditation as a Commercial A Contractor, meeting the industry's highest standards for business activities, product knowledge, reliability, fabrication and installation.

As a natural stone and concrete contractor, we offer a variety of custom exterior and interior installations:

- Historical Restoration
- Places of Worship
- Civic Projects
- Stone Veneer
- Stone Paving
- Monumental

artisticstoneandconcrete.com | 320.363.7781



License to Steel

<< continued from page 62

steel decorating the interior of a new burrito joint called Chipotle in Minneapolis' Stadium Village was noteworthy enough to prompt *Star Tribune* restaurant critic Rick Nelson to wonder if the chain's funky aesthetic was echoing the influence of—yes, you guessed it—the nearby Weisman Art Museum.

I called Thomas Meyer, FAIA, of MSR Design in Minneapolis for some further insights from someone working in the field. He suggested that some of that arty frisson made its way into the conversation via the rise of computer-generated renderings: In a digital architectural rendering, those corrugated panels look, to use a nontechnical term, really cool. "If you're an architect and you're presenting a proposal to a planning commission or community group, I think you're likely to get more flak about a design being boring and monolithic than having lots of color and variety," said Meyer. "It may be harder to convey the design quality of a masonry building, or a conservative building design. But if you have lots of materials and color, and in the renderings you have kids and trees, it just looks like a vibrant place." There's an instantly lived-in quality to metal.

There's an alchemical quality at work here, in the sense of taking base metals and turning them into gold. Corrugated metal echoes vernacular construction, familiar to anyone who grew up in a landscape of train sheds, pole barns, and grain silos. Those student rentals lining Washington Avenue near the Weisman use corrugated metal as a way of positioning themselves just slightly ahead of the curve. It's a building pointing out its own chicness, and gesturing to a former landscape of 20th-century griminess that's been transformed into a type of consumer luxury good.

All of those pole barns and train sheds were built with corrugated metal for a particular reason, though: not to develop a chic, post-industrial patina, but to be inexpensive, easy to build, and durable. The metal ages over time, but not in the way something like brick ages. What looks glossy and exciting today may look dumpy in 50 or 20 years—or even fewer. "If buildings are industrial, we accept a little funky wear and tear over time," Meyer told me. "If it's where we live, though, that might be a challenge." **AMN**

20th anniversary

NORTH HOUSE FOLK SCHOOL

ENRICHING LIVES • BUILDING COMMUNITY
TEACHING TRADITIONAL NORTHERN CRAFT

On the harbor in Grand Marais, MN
888-387-9762 • www.northhouse.org



October 6 - 8, 2017

Event Registration
August 16 - September 29

Keynote Address | Panel Exchanges
Local Tours

What Public/Private partnership creates the most INNOVATIVE HOUSING IN THE WORLD?

Though driven by a moral imperative to **house everyone...** their projects still turn a profit.

It's the Dutch . . . they've been doing it for 100 years! What can we learn from their successful, complex collaborations? How can we help the Dutch as they move to more market-influenced planning?

Join visiting Dutch architects, developers, politicians and residents for a unique unique opportunity to explore how profitable, innovative, housing is possible.

This will be a key housing conversation for **HUD officials, architects, developers, bankers, funders, city planners, and neighborhood residents.**

Register now! Space is very limited.
<http://z.umn.edu/complexitysymposium>

In conjunction with the exhibition "Dutch Complex Housing"
<http://goldstein.design.umn.edu/exhibitions/upcoming/>

Hospitality Homerun

The elegant and eclectic décor of McKinney Roe incorporates modified checkerboard ceramic flooring and glazed ceramic column inserts with stone, wood and glass. It's a great example of a Hospitality Homerun in the dramatic new 2-story East Town restaurant.



Casual character in McKinney Roe's stunning 7,000 square foot space is enhanced with Solistone Hoshi Clay Mosaic column inserts behind the bar and Soho Studio Terra Ingnis column inserts in the main and mezzanine-level dining areas.

JOB
McKinney Roe Restaurant
Minneapolis

OWNER
Born Hospitality
Waconia

ARCHITECT
Shea Design
Minneapolis

CONTRACTOR
Zeman Construction
Golden Valley

TILE CONTRACTOR
Harrison Tile Company
St. Paul

TILE SUPPLIERS
Kate Lo and Rubble Tile
Plymouth
Fantasia Tile & Stone
Minneapolis
Minnesota Tile & Stone
Minnetonka



CERAMICA
MINNESOTA CERAMIC TILE INDUSTRY
www.Ceramicatile.net
www.ceramicatile.info

team



UNION MASONRY CRAFTWORKERS
CONTRACTORS & CONSULTANTS



Our skilled craftworkers install ceramic tile and stone products in commercial architecture and interior design applications.



LN DESIGN CO.

A new studio of brand
developers and designers.

*Proud design partners
of AIA Minnesota for
Architecture MN magazine
and Matrix newsletter.*

info@lndesignco.com
lndesignco.com

15 S. FIFTH ST. #500 MPLS, MN 55402

The Hewing

<< continued from page 29

removed from the building to make way for the atrium. A pool table, wingback chairs, and plush rugs fill the bar area, while a banquette runs along the Washington Avenue-side windows. "Every time I'm here, the furniture is in a different spot, which means people are doing what they're supposed to do: moving it around and making it their own," says Fritz.

In addition to the public spaces, the hotel's amenities include conference spaces, a junior ballroom, two private dining rooms, and a spa and fitness facility. The Hewing logo is subtly woven into artwork and fixtures used throughout the hotel. The hand-blown glass bulbs in the atrium were each produced by a different glass artist, and several of the Hewing's raindrop-shaped pendants are tinted purple, in homage to Minnesota's late, beloved Prince.

Guest rooms fill floors two through five, and the building's quirky layout necessitated a unique configuration for each room—a design challenge. On the fifth floor, for example, adherence to preservation standards resulted in windows that were eight feet above the floor. ESG responded with a handful of "lofted" bedrooms with views out of the high windows.

The fixtures, furnishings, and equipment in each room are contemporary, Nordic, and stylish. Wallpaper patterns recall the decorative brick patterns on the building's exterior, and a wood-handled hatchet hangs in each bathroom—a winking reference to the practice of felling trees and hewing them into rough timbers.

Only guests and members of the hotel's social club have access to the sixth floor and roof deck, open year-round. In summer, visitors can sip cocktails from the cozy bar and drink in the dramatic view of downtown Minneapolis. In winter, they can dash from the 24-person sauna into the pint-sized heated pool—reminiscent of the Scandinavian practice of diving into an icy lake after a good sweat.

"We wanted to create a hotel that was experiential," says Oakley. "This place—from the structure to the design elements to the artwork and furnishings—is all about making memories." 🍷



HEWING HOTEL
MINNEAPOLIS, MN

**CRAFT COCKTAILS
CRAFT LIGHTING**

THEATRE PLANNERS / LIGHTING DESIGNERS
Schuler Shook



Mpls St Paul MAGAZINE **HomeTour** ASID MN SHOWCASE

**OPEN FOR TOURS | OCTOBER 21 – NOVEMBER 12
DON'T MISS YOUR CHANCE TO TOUR THIS BREATHTAKING HOME!**

For tickets and more info visit mspmag.com/hometour

AMERICAN
SOCIETY OF
INTERIOR
DESIGNERS
MINNESOTA



BUILDER:

KRAEMER
SONS
CUSTOM BUILDERS

MARVIN
WINDOWS AND DOORS
Built around you™

RUBBLE TILE

SPONSORED BY:

TWIN CITIES
CLOSET COMPANY

WARRIOR
STELLIAN

WELLS FARGO
THE PRIVATE BANK

COMMUNITY
PARTNER:

smile!
network international

Simply Revolutionary

Simply Beautiful

Simply the Best



130 CREATIVE PEOPLE
WORKING AS A TEAM.

11 WHEREABOUTS ACROSS
ND, MN, SD, CO, VT, & ARG.

50 REMARKABLE YEARS
OF ACHIEVEMENTS.

COUNTLESS WONDERFUL
CLIENTS WHO GOT US HERE.

THANK YOU!

www.eapc.net | #EAPC50 | 1967-2017





AIA Architects

The AIA Minnesota architect works in your best interest within the building industry to bring your idea to light



AIA Minnesota

A Society of The American Institute of Architects

www.aia-mn.org



AIA
Minnesota

It's time to show the
architectural
industries the
best of what's
new.

**THE
BIG
T
H
E
X**



AIA Minnesota Annual Convention
November 14–17, 2017
Minneapolis Convention Center

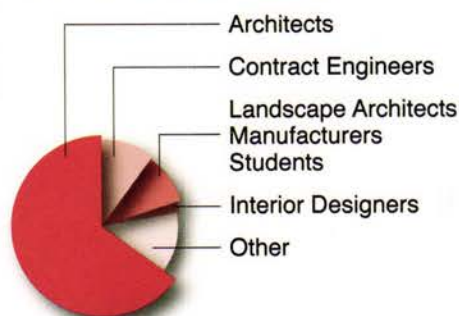
Reach the largest architecture and design market in Minnesota! The AIA Minnesota Annual Convention & Product Exposition is known for consistently attracting 2,000+ attendees, offering exceptional programs, and opportunities to network with cutting-edge exhibiting companies.

Visit us online to see which industry leaders will join us this year with the latest in product innovation and services.

www.aia-mn.org

For questions about booth space reservations contact
Pam Nelson at 612-338-6763 or nelson@aia-mn.org.

Who attends?



Other category includes:
Specifiers
Builders
Facility Managers
Graphic Designers
other related design &
building professionals

House 17

<< continued from page 47

Their bathroom features penny-round tile on all surfaces (including the bathtub) and three sinks with pink faucets.

During design, the Hansons learned they were expecting a baby boy, so the bedroom wing was lengthened to add another bedroom and bath. It cantilevers 10 feet over the garage below, with the roof extending an additional seven feet. The roof is lined with solar panels, which supply 100 percent of the electricity needed for the house and electric car in summer, and 50 percent of the electricity needed year-round.

Seventeen geothermal wells provide heating and cooling without unsightly mechanicals. All lighting is LED, and the walls are super-insulated.

Hanson's home office occupies a glass-walled space next to the garage. It features his aquarium, which hums with movement from the teeming fish and black-and-white freshwater stingrays. The stingrays seem emblematic of the house itself: impeccably designed, cool but not pretentious, and ready for action. **AMN**

**Adaptable
electronic security.**

**It's ready for anything
Even the future.**



SCHLAGE AD Series
Flexible • Adaptable • Scalable



TCH | Integrated
Access
Systems

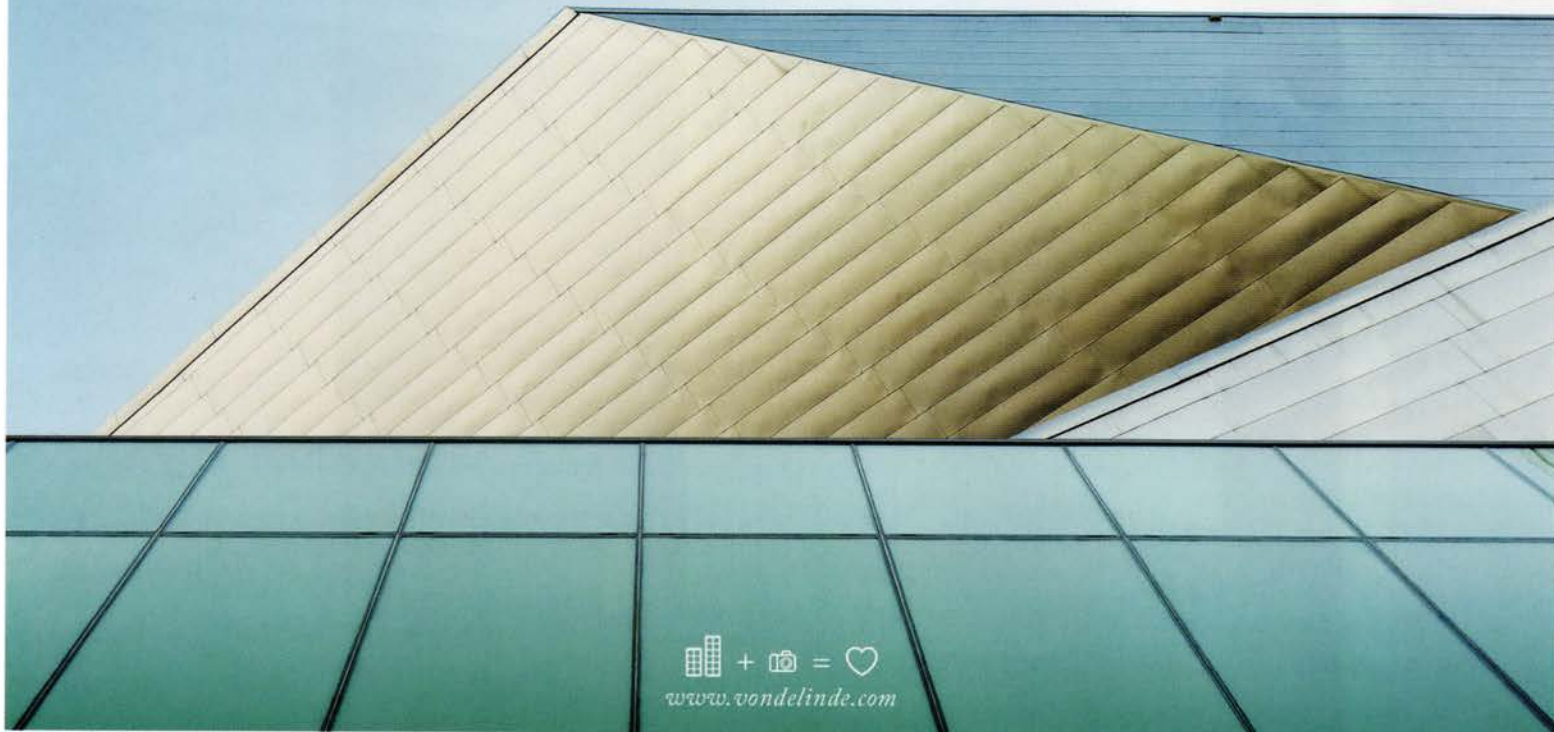
- Networked or standalone
- Wireless or hardwired
- Expandable and upgradable
- Door and frame modifications
- State-of-the-art end user training lab


888-747-1989
tchco.com



PETER VONDELINDE VISUALS

Architectural Photography & Experiential Cinema




www.vondelinde.com



**Mattson
Macdonald
Young**
structural
engineers

www.MattsonMacdonald.com 612-827-7825



**Don't miss out on updates
from AIA Minnesota!**



Like us on Facebook
AIA Minnesota



Follow us on Twitter
@aiamn



**Get the latest on
upcoming events, activities and
learning opportunities offered
by AIA Minnesota, and see the
membership in action.**

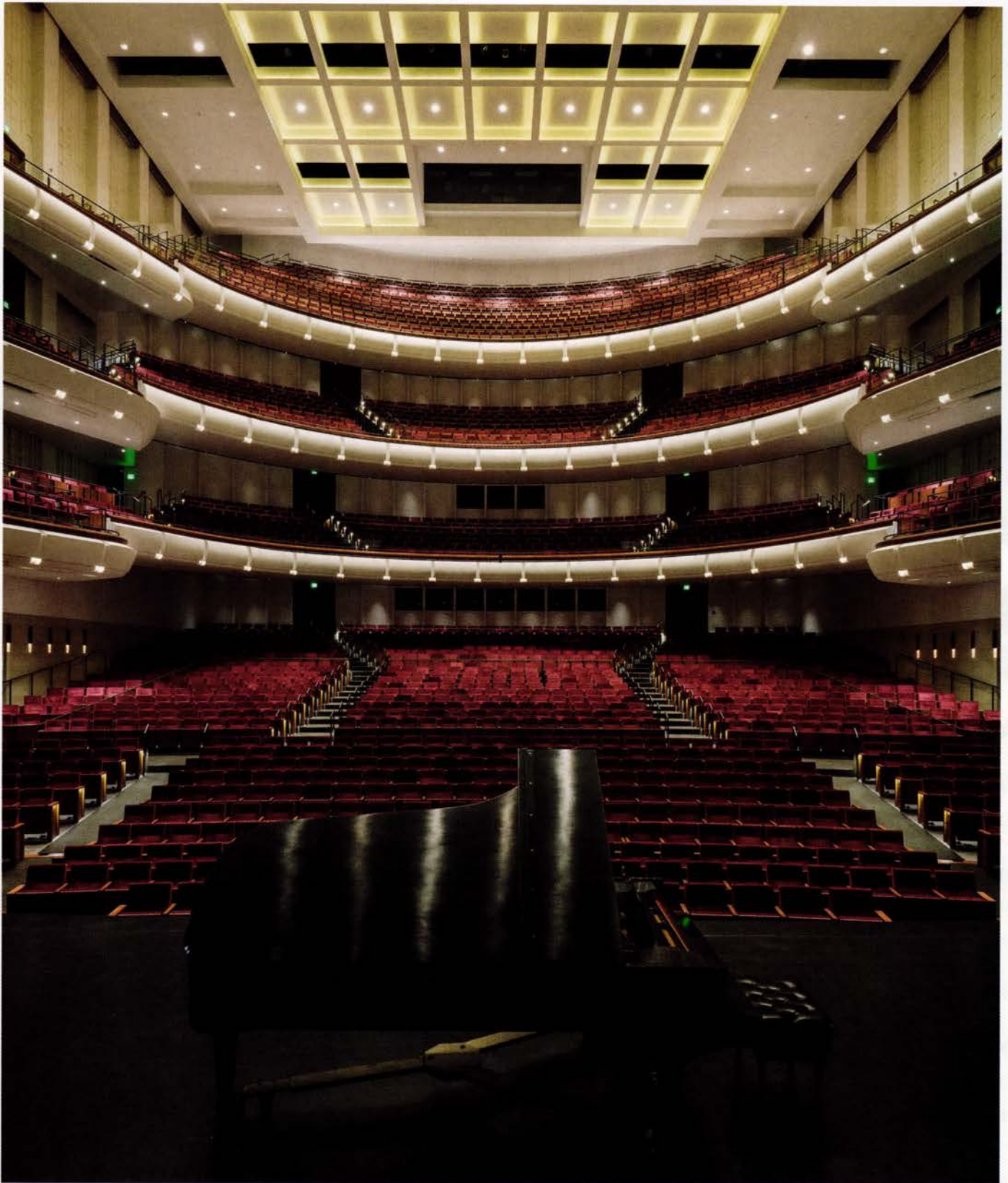
TICKETS ON SALE NOW



2017 Homes by Architects Tour
September 16 & 17

Tickets at homesbyarchitects.org

MORGAN SHEFF PHOTOGRAPHY





Gensler | Fluid Interiors

Brandon Stengel | 612-750-1337 | www.farmkidstudios.com

Northwest Architectural Archives

AT YOUR SERVICE...


We are the Northwest Architectural Archives. And we're here to help you.

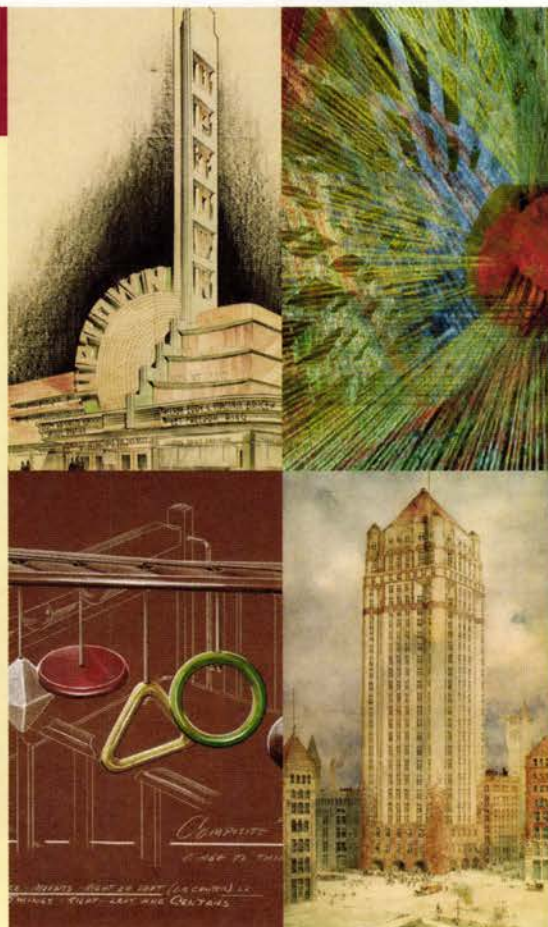
Are you an architect searching for original building plans? Or perhaps you're a preservationist seeking information to save a historic building?

Either way, we can help!

We are known for our extensive collections of materials and broad range of building types and architectural styles that span over 150 years.

lib.umn.edu/scrbm/naa


UNIVERSITY OF MINNESOTA
LIBRARIES
Archives and Special Collections



HEAVY METAL.

IF OUR MAGAZINE WERE MUSIC,
THIS WOULD BE OUR GENRE.

We are pleased to announce that Architecture MN was honored with four golds at the Minnesota Magazine & Publishing Association 2016 Excellence Awards:

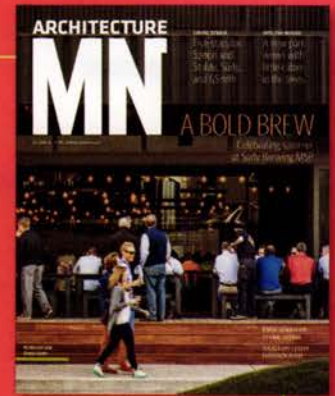
- Overall Excellence
- Overall Design
- Cover Design—Nov/Dec 2015
- Profile Article—"High Modern," Nov/Dec 2015

CONSIDER ADVERTISING in this award-winning publication.
SHARE A SUBSCRIPTION with clients and friends!

For information on advertising & subscriptions, go to architecturemn.com



AIA
Minnesota



INTERIOR ARCHITECTURE FIRMS

The firms listed on the following pages include design professionals, members of the American Institute of Architects Minnesota (AIA Minnesota), who offer a broad range of architectural, space planning and interior design services. Each firm has special areas of expertise and project competence with capabilities ranging from homes to corporate headquarters, from hospitals to schools, restaurants to retail facilities, justice facilities to libraries, etc.

Contact these firms to discuss your specific project needs.

Legend

AIA	Registered Member, American Institute of Architects
Associate AIA	Associate Member, American Institute of Architects
ACHA	American College of Healthcare Architects
AICP	American Institute of Certified Planners
ASID	American Society of Interior Designers
CCS	Certified Construction Specifier
CDT	Construction Documents Technology (Certified)
CFM	Certified Facility Manager
CID	Certified Interior Designer
FAIA	Fellow, and Registered Member of the American Institute of Architects
IFMA	International Facilities Management Association
IIDA	International Interior Designers Association
LEED	Leadership in Energy and Environmental Design
LEED AP	Leadership in Energy and Environmental Design Accredited Professional
PE	Professional Engineer
RA	Registered Architect

ALBERTSSON HANSEN ARCHITECTURE, LTD.



2800 Lyndale Avenue South, Ste. 220
Minneapolis, MN 55408
Tel: (612) 823-0233
Email: quiries@aharchitecture.com
www.aharchitecture.com
Contact: Christine Albertsson

Firm Principals

Christine L. Albertsson, AIA, CID, NCARB
Todd P. Hansen, AIA, CID
Mark E. Tambornino, Assoc. AIA

Thoughtful Design. Delightful Living. Founded in 2000, Albertsson Hansen creates residential architecture for clients who value beautiful, functional design. We take pride in being able to subtly transform traditional details and sources with a clean, modern sensibility. Our goal is to honor and serve our clients through transformative and meaningful design. We offer a full spectrum of residential work — from small remodeling projects and additions, to new houses, retreat houses, cabins, outbuildings, and barns.

Madeline Island Retreat, Madeline Island, WI; Lowry Hill Revival, Minneapolis, MN; North Woods Lake Home, Grand Rapids, MN; English Kitchen, Long Lake, MN; Deephaven Colonial, Deephaven, MN; Loft Remodeling, Minneapolis, MN; Carmel Valley Retreat, Carmel Valley, CA; Crocus Hill Residence, St. Paul, MN

ALLIANCE

ALLIANCE

400 Clifton Avenue
Minneapolis, MN 55403
Tel: (612) 874-4100
Email: thysell@alliance.us
www.alliance.us
Other Offices: Minneapolis-St. Paul International Airport, St. Paul, MN
Contact: Tom Hysell, AIA LEED AP

continued next column

Firm Principals

Eric Peterson, AIA, LEED AP
April Meyer, NCIDQ, LEED AP
Carey Brendalen, AIA, LEED AP
Thomas DeAngelo, FAIA, LEED AP
Mamie Harvey, AIA, LEED AP BD+C
Tom Hysell, AIA, LEED AP BD+C
Ken Sheehan, AIA, LEED AP
Anna Pravinata, AIA, LEED AP BD+C

Alliance is a group of individuals with specialized expertise who work with clients to realize their goals. We are planners, architects, and interior designers skilled in the art of creative problem solving and knowledgeable about every step it takes to achieve it. Since 1970, we have solved real-world problems with design that is inspiring, innovative, responsive, and sustainable. Our clients rely on us to provide innovative solutions for aviation, business, civic, entertainment, learning, and science environments.

Ecolab Global Headquarters, St. Paul, MN; Wells Fargo WFC Renovation, Minneapolis, MN; Medtronic Boulder Campus, Boulder, CO; Minneapolis-St. Paul International Airport, multiple projects; Memphis International Airport Concourse B Modernization, Memphis, TN; University of Minnesota Tate Science and Teaching Renovation, Minneapolis, MN; Target Center Renovation, Minneapolis, MN; Creative Kidstuff, multiple locations

BDH+YOUNG INTERIORS | ARCHITECTURE



7001 France Avenue South
Edina, MN 55435
Tel: (952) 893-9020
Email: info@bdhyoung.com
www.bdhyoung.com

Firm Principals

Kim Dennis | CID, IIDA, NCIDQ, LEED
Jill Brecount | CID, NCIDQ, LEED

Founded in 1971, bdh+young has built an enduring reputation as a full service design firm focusing on healthcare, corporate, and housing. Driven by our passion to understand our clients' needs, we value an integrated team approach that creates a lasting connection

continued next column

between people and the built environment. With expertise in varying scopes of design from renovation to ground-up architecture, bdh+young executes a proven success to build lasting relationships and project success.

610 West, Brooklyn Park, MN; Children's Hospitals and Clinics, Edina, MN; 4 Front Campus, Oakdale, MN; Health East, Maplewood, MN; Zvago, Minnetonka, MN; CLA, Minneapolis, MN; North Memorial, Minnetonka, MN; Allina Health, River Falls, WI

BENTZ/THOMPSON/RIETOW, INC.

801 Nicollet Mall, Ste. 801
Minneapolis, MN 55402
Tel: (612) 332-1234
Email: info@btr-architects.com
www.btr-architects.com
Contact: Ann Voda or Randy Moe

Firm Principals

Ann Voda, AIA, CID
Randy Moe, AIA, CID
Bob Zimmerman, AIA, CID

We help clients realize the full value of their interior spaces from small office workplace or classroom environments to entire buildings. Interior projects bring exciting opportunities to improve the design quality of the indoor environment, increase energy efficiency and optimize performance, all the while enhancing the lives of the people who use them. Important to that end is maintaining a high degree of attention to the details of design not only in the architecture but carried through all of the interior furnishings and finishes. Right from the start of the design process we collaborate with our clients through the full cycle of the property from planning through design and occupancy.

Dakota County Galaxie Library Renovation, Apple Valley, MN; Hennepin County Southdale Service Center, Edina, MN; Fergus Falls Public Library, Fergus Falls, MN; Andersen Special Collections Research Center & Rare Books Storage, University of MN; South Snarr Renovation, MSU Moorhead, Moorhead, MN; Hennepin County Jury Assembly & Law Library, Hennepin County Government Center; Kryzsko Commons Addition & Renovation, Winona State University; White Bear Lake Library, White Bear Lake, MN

BKV GROUP



222 North 2nd Street, Ste. 101
Minneapolis, MN 55401
Tel: (612) 339-3752
Email: knaylor@bkgvgroup.com
www.bkgvgroup.com
Other Offices: Chicago, IL; Washington, DC
Contact: Kelly Naylor

Firm Principals

Kelly Naylor, CID, LEED AP
Michael Krych, AIA
Bruce Schwartzman, AIA
Jack Boorman, AIA, NCARB
Tom Daszkiewicz, Assoc. AIA
Mat Nugent, AIA
Mark Bradby, AIA

BKV Group is a multi-discipline award-winning firm established in 1978. We provide a high level of service to our clients in architecture, engineering, interior design, landscape architecture and construction administration. We strive to develop creative, practical solutions that meet our client's goals, are fiscally responsible, and serve the needs of communities well into the future. We specialize in housing, corporate and government projects with a mission of "Enriching Lives and Strengthening Communities."

Custom House, St. Paul, MN; A-Mill Artist Lofts, Minneapolis, MN; Mill City Quarter, Minneapolis, MN; The Shoreham, St. Louis Park, MN; Rise at Prospect Park, Minneapolis, MN; One Southdale Place, Edina, MN; Fridley Municipal Center, Fridley, MN; Shakopee City Hall, Shakopee, MN

BWBR



380 St. Peter Street, Ste. 600
Saint Paul, MN 55102
Tel: (651) 222-3701
Email: marketing@bwbr.com
www.bwbr.com
Other Offices: Madison, WI
Contact: Tom Hanley, AIA, LEED AP
(608) 829-3701

Firm Principals

Peter G. Smith, FAIA
Brian B. Buchholz, AIA, CID
Timothy J. Sessions, AIA
Richard W. Dahl, AIA
Greg Fenton, AIA

BWBR is a design solutions firm with practices in architecture, interior design, and planning. One of the Upper Midwest's oldest and largest firms, BWBR has established a reputation for service and quality designing complex facilities in health care, higher education, corporate, justice, government, manufacturing, transportation, worship, and recreation markets. Working with organizations to leverage facility improvements for better service delivery and operations, BWBR designs solutions to enhance what people do.

HealthPartners Neuroscience Center, Saint Paul, MN; University of Minnesota Athletes Village, Minneapolis, MN; Regional Health, Custer Regional Hospital, Custer, SD; Minnesota Senate Building, Saint Paul, MN; Carroll University Jaharis Science Laboratories, Waukesha, WI; Pine Rest Christian Mental Health Services Van Andel Center, Cutlerville, MI; Self Esteem Brands/Anytime Fitness Corporate Headquarters, Woodbury, MN; Spooner Health, Spooner, WI

CUNINGHAM GROUP ARCHITECTURE, INC.



201 Main Street SE, Ste. 325
Minneapolis, MN 55414
Tel: (612) 379-3400
Email: hello@cuningham.com
www.cuningham.com
Other Offices: Los Angeles, CA; Las Vegas, NV; Biloxi, MS; Denver, CO; San Diego, CA; Phoenix, AZ; Seoul, Republic of Korea; Beijing, People's Republic of China; Doha, Qatar
Contact: Rebecca Martinez, Principal

Firm Principals

Timothy Dufault, AIA, NCARB, LEED AP
Jeff Mandych, AIA, NCARB, LEED AP
Brian Tempas, AIA, NCARB, LEED AP
Margaret Parsons, AIA, NCARB, REFP, LEED AP
Jeffrey Schoeneck, AIA, NCARB, LEED AP
Thomas Hoskens, AIA, NCARB, LEED AP
Kathryn Wallace, AIA, NCARB, LEED AP
Michele Espeland, CID

Founded in 1968, Cuningham Group has earned an outstanding reputation for creating and delivering excellence in architecture, interior design, urban design, landscape architecture, and planning for a diverse mix of client and project types. Our more than 385 employees in ten offices are dedicated to delivering inspired, innovative, and sustainable design solutions that Uplift the Human Experience™.

The Hotel Landing, Wayzata, MN; Nine Twenty Five Restaurant, Wayzata, MN; Wedge Community Co-op, Minneapolis, MN; Galleria Expansion, Edina, MN; The 700 on Washington, Minneapolis, MN; Twin Cities PBS (TPT), Saint Paul, MN; Grand Casino Hinckley, Hinckley, MN; Oakwood Community Church, Waconia, MN

DLR GROUP



520 Nicollet Mall, Ste. 200
Minneapolis, MN 55402
Tel: (612) 977-3500
Email: ktait@dlrgroup.com
www.dlrgroup.com
Other Offices: Austin, TX; Charlotte, NC; Chicago, IL; Cleveland, OH; Colorado Springs, CO; Denver, CO; Des Moines, IA; Dubai, UAE; Honolulu, HI; Houston, TX; Las Vegas, NV; Lincoln, NE; Los Angeles, CA; Nairobi, Kenya; New York, NY; Omaha, NE; Orlando, FL; Overland Park, KS; Phoenix, AZ; Portland, OR; Riverside, CA; Sacramento, CA; San Francisco, CA; Seattle, WA; Tucson, AZ; San Francisco, CA; Shanghai, China; Washington, DC
Contact: Kathy Tait

Firm Principals

William Davenport, AIA
Thomas Gerster, AIA
Edward Wilms, AIA
Janice Linster, FASID
Gregory Hollenkamp, AIA, LEED AP
Staci Patton
Lee Meyer, NCARB, LEED AP
Donald Horkey, PE, LEED AP

DLR Group's brand promise is to elevate the human experience through design. Founded as an architecture and engineering firm in 1966, today we serve clients through integrated delivery of planning, architecture, engineering, interiors, and building optimization for new construction, renovation, and adaptive reuse. Our core areas of expertise are organized around Civic, Courts, Detention, Energy Services, Healthcare, Higher Education, Hospitality, K-12 Education, Museum, Performing Arts, Retail/Mixed-Use, Sports, and Workplace design.

Hines T3 Office, Minneapolis, MN; Canopy by Hilton, Minneapolis, MN; 50 S. 6th St Amenity Center, Minneapolis, MN; ADM Corporate Offices, Minneapolis, MN; Western National Insurance, Edina, MN; UMN Track & Field Facility, Minneapolis, MN; Sheraton Denver Downtown, Denver, CO; Robert W. Depke Juvenile Justice Center, Vernon Hills, IL

ESG ARCHITECTURE + DESIGN



500 Washington Ave South
Minneapolis, MN 55415
Tel: (612) 339-5508
Email: andy.mcdermott@esgarch.com
www.esgarch.com
Contact: Andy McDermott, Director of Marketing

Firm Principals

Aaron Roseth, President
Mark G. Swenson, FAIA, LEED AP
David L. Graham, FAIA, LEED AP
Trace Jacques, AIA, CID
Art Bartels, AIA, LEED AP
Terry Gruenhagen, AIA, LEED AP

Our mission is to enrich the built environment by designing artful interiors that creatively differentiate our clients in the marketplace, tell vibrant stories of people and place, and uplift the human spirit. Focusing on three primary markets—multifamily housing, hospitality and workplace design—ESG's Interiors Group brings a wealth of expertise and interdisciplinary knowledge to every project, in order to bring the best and most thoughtful design solutions to our clients.

The Hewing Hotel (Historic Jackson Building Renovation), Minneapolis, MN; The Lexington Restaurant Renovation, St. Paul, MN; The Stillwater Hotel, Stillwater, MN; Embassy Ste.s, (Historic Plymouth Building Renovation), Minneapolis, MN; Renaissance Minneapolis Hotel-The Depot Renovation, Minneapolis, MN; Maverick North Loop, Minneapolis, MN; Code 42, Minneapolis, MN; 100 Washington Square, Minneapolis, MN

HDR



600 Hennepin Avenue South, Ste. 260
Minneapolis, MN 55403
Tel: (612) 524-6000
Email: megan.berg@hdrinc.com
www.hdrinc.com/follow-us
Contact: Megan Berg

Firm Principal

Amy Williams, AIA, LEED AP

For more than a century, HDR has partnered with clients to shape communities and push the boundaries of what's possible. Our expertise spans 10,000 employees, in more than 225 locations around the world—and counting. Our engineering, architecture, environmental and construction services bring an impressive breadth of knowledge to every project. Our optimistic approach to finding innovative solutions defined our past and drives our future.

The Mother Baby Center at Abbott Hospital, Minneapolis, MN; The Mother Baby Center at Mercy Hospital, Coon Rapids, MN; The Mother Baby Center at United Hospital, St. Paul, MN; Knutson Construction Headquarters, Minneapolis, MN; HDR Minneapolis Office, Minneapolis, MN; Mayo Radiology, Rochester, MN; Children's MN, NICU Remodel, St. Paul, MN; Etobicoke General Hospital, Ontario, Canada

HGA ARCHITECTS AND ENGINEERS

420 North 5th Street, Ste. 100
Minneapolis, MN 55401
Tel: (612) 758-4000
Email: info@hga.com
www.hga.com
Other Offices: Rochester, MN; Milwaukee, WI; Sacramento, CA; San Francisco, CA; Los Angeles, CA; San Jose, CA; and Washington, DC
Contact: Debra Barnes, CID, IIDA, LEED AP ID+C

Firm Principals

Debra Barnes, CID, IIDA, LEED AP ID+C
Richard Bonnin
Nancy Blankford, AIA
Stephanie Reem, CHID, CID, EDAC, LEED AP ID+C
David Loehr, AIA, LEED AP BD+C, AICP
Mia Blanchett, AIA, LEED AP BD+C
David Little, AIA, CID, LEED AP ID+C
Paula Storsteen, CID, LEED AP ID+C

Recognizing the global nature of design today, HGA's team addresses the connection between an organization's strategic view and their customers. Our designs focus on understanding the unique needs of the occupants whether they are from corporate work environments, college campuses, hospitality, retail or healthcare design. We listen to our clients to understand their strategic needs and then respond with creative, flexible interior solutions that provide long-term value.

Ramsey County Library-Shoreview, Shoreview MN; Temple Israel, Minneapolis MN; Church of the Resurrection, Leewood KS; Sawmill Private Management, Minneapolis MN; UnityPoint Health, Allen Prairie Parkway Ambulatory Care Center, Cedar Falls IA; Northern Arizona Healthcare, Camp Verde Valley Campus, Camp Verde AZ; Walker Art Center/Esker Grove, Minneapolis, MN; West End Office, Parkdale Plaza, St. Louis Park, MN

MILLER DUNWIDDIE ARCHITECTURE

100 Washington Avenue South, Ste. 500
Minneapolis, MN 55401
Tel: (612) 337-0000
Email: info@millerdunwiddie.com
www.millerdunwiddie.com
Contact: Kathryn Hunsley, CID, IIDA

Firm Principals

Monica Bettendorf Hartberg, AIA
Daniel Green, AIA
Kathryn Hunsley, CID, IIDA
Craig Lau, AIA
Denita Lemmon, AIA
Paul May, AIA
John Mecum, AIA
Joel Stromgren, AIA

Since 1963, Miller Dunwiddie has worked to shape and preserve the environment through responsible, creative design. From providing decades of service to the Metropolitan Airports Commission—to completing over 700 historic preservation projects—our range of work is a testament to the firm's commitment to improving and preserving the built environment through excellent design—both in new facilities and existing structures. Our architects, interior designers and building envelope staff offer clients complete planning and design services.

Miller Dunwiddie Office Washington Square; Minneapolis, MN; St. Paul Public Schools: Highland Park Elementary & Horace Mann School Renovations & Additions; St. Paul, MN; St. Louis Park Public Schools, Multiple Renovations; St. Louis Park, MN; Terminal 2 Renovations & Expansions; MSP International Airport, MN; Terminal 1 Parking Ramp Expansion, Parking Management Building and RAC Facilities; MSP International Airport, MN; Berean Baptist Church Expansion; Burnsville, MN; Church of St. Raphael Adoration Chapel; Crystal, MN; Beacon Bluff Building 21 Rehabilitation for Archdiocese of Saint Paul & Minneapolis; St. Paul, MN

**MOHAGEN HANSEN
ARCHITECTURE | INTERIORS**

1000 Twelve Oaks Center Drive, Ste. 200
Wayzata, MN 55391
Tel: (952) 426-7400
Email: info@mohagenhansen.com
www.mohagenhansen.com
Contact: Susan Kimbrel, Marketing Director

Firm Principals

Todd Mohagen, AIA, NCARB
Mark L. Hansen, AIA, NCARB, LEED AP BD+C
Lyn Berglund, CID, ASID

Mohagen Hansen Architecture | Interiors is a full-service planning, architecture and interior design firm, specializing in the development of functional and creative design solutions. We work in a variety of markets including healthcare, corporate, industrial, financial, retail, dental, government and housing. Our planning and design solutions directly reflect our clients' vision, brand, culture and objectives, while being sensitive to schedules and budgets. We partner with our clients to create inspirational designs that result in lasting relationships.

City of Minnetonka City Hall Interior Remodel, Minnetonka, MN; Luther Automotive Support Center Interior Build-Out, Golden Valley, MN; HealthPartners Lake Elmo Specialty Dental Clinic, Lake Elmo, MN; Entira Family Clinics Renovations, St. Paul, MN; Nexus Solutions Office Design & Build-Out, Champlin, MN; Sterling Specialty Pharmacy Services Office Remodel, Owatonna, MN; Frandsen Bank & Trust Remodel, Dundas, MN; Lakeview Hospital, Lobby Remodel, Stillwater, MN

MSR DESIGN

710 South 2nd Street, 8th floor
Minneapolis, MN 55401
Tel: (612) 375-0336
Email: info@msrdesign.com
www.msrdesign.com
Other Offices: Hyattsville, MD
Contact: Josh Stowers, josh@msrdesign.com,
(612) 889-0034

continued next column

Firm Principals

Matthew Kruntorád, AIA, LEED AP
Traci Engel Lesneski, CID, IIDA, LEED AP
Paul C.N. Mellblom, AIA, LEED AP BD+C
Thomas Meyer, FAIA
Jack Poling, AIA, LEED AP
Garth Rockcastle, FAIA
Josh Stowers, AIA, LEED AP BD+C

MSR is an award-winning architecture and interior design firm committed to excellence. Since 1981, our firm has produced work of enduring value: buildings that are diverse in type, size and location, with specific depth of experience serving library, office, cultural, higher education and residential clients. The firm has earned a national reputation for both designing exceptional new spaces and through preservation, renovation and adaptive reuse, designing innovative ways to reuse buildings.

BAYADA Home Health Care Office Headquarters, Pennsauken, NJ; Fayetteville Public Library Expansion, Fayetteville, AR; Haverford College VCAM Center, Haverford, PA; Missoula Public Library Main Library, Missoula, MT; Norman Public Library Central, Norman, OK; SEI Investments Headquarters North Campus, Oaks, PA; Stahl Construction Office Relocation, Minneapolis, MN; Wooddale Church Renovation, Eden Prairie, MN

PERKINS + WILL**PERKINS+WILL**

80 South 8th Street, Ste. 300 IDS
Minneapolis, MN 55402
Tel: (612) 851-5000
Email: tony.layne@perkinswill.com
www.perkinswill.com
Other Offices: Atlanta, GA; Austin, TX; Boston, MA; Charlotte, NC; Chicago, IL; Dallas, TX; Houston, TX; Los Angeles, CA; Miami, FL; New York, NY; Durham, NC; San Francisco, CA; Seattle, WA; Washington D.C.; Canada: Hamilton, Ottawa, Toronto, Vancouver; Dubai; London; Sao Paulo; Shanghai
Contact: Anthony (Tony) Layne

Firm Principals

Anthony Layne, AIA, LEED AP BD+C
David Dimond, FAIA, CID, LEED AP
Lisa Pool, LEED AP
Jeff Ziebarth, AIA, LEED AP
Robert Novak, AIA, NCARB, LEED AP
John Slack, ASLA, LEED AP w/spec ND
Jeanne Ekholm, LEED AP BD+C

continued next column

Perkins+Will is an interdisciplinary, research-based architecture and design firm established in 1935 and founded on the belief that design has the power to transform lives and enhance communities. Each of the firm's 24 offices focuses on local, regional, and global work in a variety of practice areas. With hundreds of award-winning projects annually, Perkins+Will is highly ranked among top global design firms. Perkins+Will is recognized as one of the industry's preeminent sustainable design firms due to its innovative research, design tools, and expertise.

AVI Learning Center, Eden Prairie, MN; 801 Marquette Avenue, TCF Bank Building repositioning, Minneapolis, MN; Be the Match Coordinating Center, Minneapolis, MN; Holland Hall, St. Olaf College, Northfield, MN; Land O'Lakes, Arden Hills, MN; Mayo-Rochester Methodist Hospital, Surgical Master Plan + Phase 1 Fit Out, Rochester, MN; St. Louis County Government Services Center, Duluth, MN; Wells Fargo Bank Downtown East, Minneapolis, MN

POPE ARCHITECTS, INC.**POPE
ARCHITECTS**

1295 Bandana Blvd. North, Ste. 200
St. Paul, MN 55108
Tel: (651) 642-9200
Email: elarson@popearch.com
www.popearch.com
Contact: Erica Larson, CID, CHID, EDAC, LEED AP BD+C, Principal,

Firm Principals

Ward M. Isaacson, AIA
Paul A. Holmes, AIA
Erica L. Larson, CID, CHID, EDAC
Gonzalo Villares, AIA
Sandra L. Buehler
Thomas B. Kuck, AIA
Robert S. Howard, AIA
Gregory A. Woollums, AIA

Pope Architects is an established local design firm with a national practice. We bring a wealth of design experience and sound business practices together to create beautiful, sustainable and compelling building environments. Together, we are shaping environments that enhance lives.

continued next column

Pope Architects has a diverse practice encompassing corporate and workplace, senior living and multi-family housing, healthcare and behavioral health, and community design. Our interior design team delivers high quality services to our clients in all practice areas.

Kraus-Anderson Companies Headquarters, Minneapolis, MN; Summit Orthopedics Eagan, Eagan, MN; C.H. Robinson Eden Bluff Tech Center, Eden Prairie, MN; St. David's Center for Child and Family Development, Minnetonka, MN; The Cottages at Hearthstone, Pella, IA; PrairieCare Brooklyn Park, Brooklyn Park, MN; Wurth Adams Corporate Headquarters, Brooklyn Park MN; 71 France Apartments, Edina, MN

**REHKAMP LARSON
ARCHITECTS****REHKAMP LARSON
ARCHITECTS**

2732 West 43rd Street
Minneapolis, MN 55410
Tel: (612) 285-7275
Email: info@rehkamplarson.com
www.RehkampLarson.com
Contact: (612) 285-7275

Firm Principals

Mark Larson, AIA
Jean Rehkamp Larson, AIA

We are great listeners, creative thinkers, and problem solvers who engage and explore with the homeowner to find the right balance of dreams and reality. We provide a full range of design services, partnering with our clients from conception through final punch list. Our design-focused projects include modest renovations, substantial additions, and grand new houses. Our design style is refined, energetic, and engaging. We bring warmth to modernism and a fresh eye to traditional design.

Lake of the Isles Redux, Minneapolis, MN; Northwoods Cabin & Guest House, Northern Wisconsin; Midcentury Makeover, Golden Valley, MN; West Edina Refined, Edina, MN; Woodland Cottage & Motor Lounge, Lake Minnetonka, MN; Urban Fit, Minneapolis, MN; Fox Run Farmhouse, Grant, MN; Prairie Modern, Lake Elmo, MN

RSP ARCHITECTS



1220 Marshall Street NE
Minneapolis, MN 55413
Tel: (612) 677-7100
Email: communications@rsparch.com
www.rsparch.com
Other Offices: Rochester, MN; Fort Worth, TX; Phoenix, AZ
Contact: Jackie.peacha@rsparch.com

Firm Principals

Jon Buggy, AIA
Heather Dunn
Bonnie Krause, AIA
Bob Lucius, AIA
Derek McCallum, AIA, LEED BD+C
David Norback, AIA
Ian Scott, LEED AP
David Serrano, AIA, NCARB

RSP is one of the region's largest architecture firms with over 300 employees across five offices. Our practice is broad -- we design for corporate, distribution, education, healthcare, hospitality, government, retail and restaurant clients. Plus facilities consulting and experience design. We work with everyone. From start-ups with single projects to Fortune 50 clients with national programs. We are fiercely committed to our clients, united in a goal to discover the unique design solutions that best support their future success.

Intercontinental Minneapolis-St. Paul Airport Hotel, MN; Baker Center, Minneapolis MN; Discovery Square, Rochester, MN; Atmosphere Commercial Interiors, Phoenix, AZ; Jack Links Headquarters, Minneapolis, MN; Hubbard Radio, various locations; CityPlace, Woodbury, MN; Central Park Commons, Eagan, MN

RYAN A+E, INC.



533 South 3rd Street, Ste. 100
Minneapolis, MN 55415
Tel: (612) 492-4000
Email: AshleyWurster@RyanCompanies.com
www.RyanCompanies.com
Other Offices: Davenport, IA; Phoenix, AZ; Austin, TX
Contact: Ashley Wurster

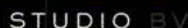
Firm Principals

Mike Ryan, AIA, LEED AP
Mike Rodriguez AIA, LEED AP, EDAC
Ashley Wurster, CID, IIDA
Karl Drecktrah, AIA
Amy Maldonado, AIA
Josh Ekstrand, AIA
Tim Bauer
Mike Rother, AIA

At Ryan Architecture + Engineering (A+E), our job is to take ideas and shape them into tangible, meaningful structures that bring value to our customers, the people who use the building and the surrounding community. We rely on advanced technology and processes, as well as a little heart, to consider the elements that affect beauty, cost, operational efficiency and use. Our disciplines span the areas of architectural design, interior design, civil engineering, and landscape design.

Cargill Headquarters Remodel, Wayzata, MN; Millwright & Ryan Companies Headquarters, Minneapolis, MN; TÜV-SÜD, New Brighton, MN; MN Energy Resources, Rosemount, MN; University of St Thomas Facility Design Center Remodel, St Paul, MN; Grand Living Senior Living Community, Jacksonville, FL; Clarendale Senior Living Community, Bellevue, TN; CVM Cardiovascular Medicine, Moline, IL

STUDIO BV



1400 Van Buren Street NE, Ste. 200
Minneapolis, MN 55413
Tel: (651) 335-3455
Email: betsy@studio-b-v.com
www.studio-b-v.com
Contact: Betsy Vohs

Firm Principals

Betsy Vohs, Associate AIA, LEED AP ID +C
Courtney Armstrong, IIDA, LEED AP ID +C

We are multidisciplinary in our background and experience. We design everything with equal importance and integrate our design concepts across many scales. Studio BV brings creativity to clients wanting to leverage design to drive change. We have deep and diverse experience in workplace design, restaurant and retail design, commercial office buildings, residential design, and design strategy. We are devoted to fostering authentic, intimate, and bold connections to people and places.

Nordic House, Minneapolis, MN; Fallon, Minneapolis, MN; Field Nation, Minneapolis, MN; When I Work, Minneapolis, MN; Kickernick Building, Minneapolis, MN; Nolo's Kitchen & Basement Bar, Minneapolis, MN; Cozen O'Connor, Minneapolis, MN; YMCA Twin Cities, Minneapolis, MN

TKDA

**TKDA**

444 Cedar Street, Ste. 1500
Saint Paul, MN 55101
Tel: (651) 292-4400
Email: info@tkda.com
www.tkda.com
Other Offices: Duluth, MN; Chicago, IL; Tampa, FL; Seattle, WA; Los Angeles, CA
Contact: DJ Heinle, Architecture VP

Firm Principals

Kathryn Poore-Larson, AIA, CID
Michelle Gallagher
Dean Johnson, AIA, CID
Ron Stanius, AIA, CID
Ken Johnson, AIA, CID
Brian Fitzgerald, AIA, LEED AP
DJ Heinle, AIA
Brian Morse, AIA

TKDA is an employee-owned architecture, interior design, planning, and engineering firm with Minnesota offices in Saint Paul and Duluth. More than 250 employees deliver solutions nationwide to clients seeking single-source, integrated design services. TKDA provides interior and architectural design services to corporate, institutional, government, K-12, and higher education clients.

Anoka County Technical College Nursing Simulation Lab; NorShor Theatre Historic Renovations; Johnson High School Renovations & Addition; Johnny Bird Veteran's Memorial Hall; Flint Hills Resources North Facility Office Building; Xcel Energy 414 Nicollet Renovations; Dakota County Tech College Transportation & Emerging Tech; Metro Transit Bus Stop Renovations

INTERIOR DESIGN FIRMS

The firms listed on the following The firms listed in this directory include interior designers who are members of the American Society of Interior Designers (ASID) and the International Interior Designers Association (IIDA), or who have the designation of Certified Interior Designer (CID). They offer a broad range of interior design, space planning and furnishings selection experience. Each firm has specific areas of expertise and project competence. Contact them to discuss your specific project needs.

Legend

AIA	Registered Member, American Institute of Architects
Associate AIA	Associate Member, American Institute of Architects
ACHA	American College of Healthcare Architects
AICP	American Institute of Certified Planners
ASID	American Society of Interior Designers
CCS	Certified Construction Specifier
CID	Certified Interior Designer
CDT	Construction Documents Technology (Certified)
CFM	Certified Facility Manager
FAIA	Fellow and Registered Member of the American Institute of Architects
FASID	Fellow, American Society of Interior Designers
FIIDA	Fellow, International Interior Designers Association
IFMA	International Facilities Management Association
LEED	Leadership in Energy and Environmental Design
LEED AP	Leadership in Energy and Environmental Design Accredited Professional
PE	Professional Engineer

ALBERTSSON HANSEN
ARCHITECTURE, LTD.

2800 Lyndale Avenue South, Ste. 220
Minneapolis, MN 55408
Tel: (612) 823-0233
Email: quiries@aharchitecture.com
www.aharchitecture.com
Contact: Christine Albertsson

Firm Principals

Christine L. Albertsson, AIA, CID, NCARB
Todd P. Hansen, AIA, CID
Mark E. Tambornino, Assoc. AIA

Thoughtful Design. Delightful Living. Founded in 2000, Albertsson Hansen creates residential architecture for clients who value beautiful, functional design. We take pride in being able to subtly transform traditional details and sources with a clean, modern sensibility. Our goal is to honor and serve our clients through transformative and meaningful design. We offer a full spectrum of residential work—from small remodeling projects and additions, to new houses, retreat houses, cabins, outbuildings, and barns.

Madeline Island Retreat, Madeline Island, WI; Lowry Hill Revival, Minneapolis, MN; North Woods Lake Home, Grand Rapids, MN; English Kitchen, Long Lake, MN; Deephaven Colonial, Deephaven, MN; Loft Remodeling, Minneapolis, MN; Carmel Valley Retreat, Carmel Valley, CA; Crocus Hill Residence, St. Paul, MN

ALLIANCE

ALLIANCE

400 Clifton Avenue
Minneapolis, MN 55403
Tel: (612) 874-4100
Email: thysell@alliance.us
www.alliance.us
Other Offices: Minneapolis-St. Paul International Airport, St. Paul, MN
Contact: Tom Hysell, AIA LEED AP

continued next column

Firm Principals

Eric Peterson, AIA, LEED AP
April Meyer, NCIDQ, LEED AP
Carey Brendalen, AIA, LEED AP
Thomas DeAngelo, FAIA, LEED AP
Mamie Harvey, AIA, LEED AP BD+C
Tom Hysell, AIA, LEED AP BD+C
Ken Sheehan, AIA, LEED AP
Anna Pravinata, AIA, LEED AP BD+C

Alliance is a group of individuals with specialized expertise who work with clients to realize their goals. We are planners, architects, and interior designers skilled in the art of creative problem solving and knowledgeable about every step it takes to achieve it. Since 1970, we have solved real-world problems with design that is inspiring, innovative, responsive, and sustainable. Our clients rely on us to provide innovative solutions for aviation, business, civic, entertainment, learning, and science environments.

Ecolab Global Headquarters, St. Paul, MN; Wells Fargo WFC Renovation, Minneapolis, MN; Medtronic Boulder Campus, Boulder, CO; Minneapolis-St. Paul International Airport, multiple projects; Memphis International Airport Concourse B Modernization, Memphis, TN; University of Minnesota Tate Science and Teaching Renovation, Minneapolis, MN; Target Center Renovation, Minneapolis, MN; Creative Kidstuff, multiple locations

BDH+YOUNG
INTERIORS | ARCHITECTURE

7001 France Avenue South
Edina, MN 55435
Tel: (952) 893-9020
Email: info@bdhyoung.com
www.bdhyoung.com

Firm Principals

Kim Dennis | CID, IIDA, NCIDQ, LEED
Jill Brecon | CID, NCIDQ, LEED

Founded in 1971, bdh+young has built an enduring reputation as a full service design firm focusing on healthcare, corporate, and housing. Driven by our passion to understand our clients' needs, we value an integrated team approach that creates a lasting connection between

continued next column

people and the built environment. With expertise in varying scopes of design from renovation to ground-up architecture, bdh+young executes a proven success to build lasting relationships and project success.

610 West, Brooklyn Park, MN; Children's Hospitals and Clinics, Edina, MN; 4 Front Campus, Oakdale, MN; Health East, Maplewood, MN; Zvago, Minnetonka, MN; CLA, Minneapolis, MN; North Memorial, Minnetonka, MN; Allina Health, River Falls, WI

BENTZ/THOMPSON/
RIETOW, INC.

801 Nicollet Mall, Ste. 801
Minneapolis, MN 55402
Tel: (612) 332-1234
Email: info@btr-architects.com
www.btr-architects.com
Contact: Ann Voda or Randy Moe

Firm Principals

Ann Voda, AIA, CID
Randy Moe, AIA, CID
Bob Zimmerman, AIA, CID

We help clients realize the full value of their interior spaces from small office workplace or classroom environments to entire buildings. Interior projects bring exciting opportunities to improve the design quality of the indoor environment, increase energy efficiency and optimize performance, all the while enhancing the lives of the people who use them. Important to that end is maintaining a high degree of attention to the details of design not only in the architecture but carried through all of the interior furnishings and finishes. Right from the start of the design process we collaborate with our clients through the full cycle of the property from planning through design and occupancy.

Dakota County Galaxie Library Renovation, Apple Valley, MN; Hennepin County Southdale Service Center, Edina, MN; Fergus Falls Public Library, Fergus Falls, MN; Andersen Special Collections Research Center & Rare Books Storage, University of MN; South Snarr Renovation, MSU Moorhead, Moorhead, MN; Hennepin County Jury Assembly & Law Library, Hennepin County Government Center; Kryzsko Commons Addition & Renovation, Winona State University; White Bear Lake Library, White Bear Lake, MN

BKV GROUP

222 North 2nd Street, Ste. 101
Minneapolis, MN 55401
Tel: (612) 339-3752
Email: knaylor@bkgvgroup.com
www.bkgvgroup.com
Other Offices: Chicago, IL; Washington, DC
Contact: Kelly Naylor

Firm Principal

Kelly Naylor, CID, LEED

BKV Group is a multi-discipline award-winning firm established in 1978. We provide a high level of service to our clients in architecture, engineering, interior design, landscape architecture and construction administration. We strive to develop creative, practical solutions that meet our client's goals, are fiscally responsible, and serve the needs of communities well into the future. We specialize in housing, corporate and government projects with a mission of "Enriching Lives and Strengthening Communities."

Custom House, St. Paul, MN; A-Mill Artist Lofts, Minneapolis, MN; Mill City Quarter, Minneapolis, MN; The Shoreham, St. Louis Park, MN; Rise at Prospect Park, Minneapolis, MN; One Southdale Place, Edina, MN; Fridley Municipal Center, Fridley, MN; Shakopee City Hall, Shakopee, MN

BWBR

380 St. Peter Street, Ste. 600
Saint Paul, MN 55102
Tel: (651) 222-3701
Email: marketing@bwbr.com
www.bwbr.com
Other Offices: Madison, WI
Contact: Tom Hanley, AIA, LEED AP
(608) 829-3701

Firm Principals

Peter G. Smith, FAIA
Brian B. Buchholz, AIA, CID
Timothy J. Sessions, AIA
Richard W. Dahl, AIA
Greg Fenton, AIA

BWBR is a design solutions firm with practices in architecture, interior design, and planning. One of the Upper Midwest's oldest and largest firms, BWBR has established a reputation for service and quality designing complex facilities in health care, higher education, corporate, justice, government, manufacturing, transportation, worship, and recreation markets. Working with organizations to leverage facility improvements for better service delivery and operations, BWBR designs solutions to enhance what people do.

HealthPartners Neuroscience Center, Saint Paul, MN; University of Minnesota Athletes Village, Minneapolis, MN; Regional Health, Custer Regional Hospital, Custer, SD; Minnesota Senate Building, Saint Paul, MN; Carroll University Jaharis Science Laboratories, Waukesha, WI; Pine Rest Christian Mental Health Services Van Andel Center, Cutlerville, MI; Self Esteem Brands/Anytime Fitness Corporate Headquarters, Woodbury, MN; Spooner Health, Spooner, WI

**CUNINGHAM GROUP
ARCHITECTURE, INC.**

**CUNINGHAM
GROUP**

201 Main Street SE, Ste. 325
Minneapolis, MN 55414
Tel: (612) 379-3400
Email: hello@cunningham.com
www.cunningham.com
Other Offices: Los Angeles, CA; Las Vegas, NV; Biloxi, MS; Denver, CO; San Diego, CA; Phoenix, AZ; Seoul, Republic of Korea; Beijing, People's Republic of China; Doha, Qatar
Contact: Rebecca Martinez, Principal

Firm Principals

Timothy Dufault, AIA, NCARB, LEED AP
Jeff Mandyck, AIA, NCARB, LEED AP
Brian Tempas, AIA, NCARB, LEED AP
Margaret Parsons, AIA, NCARB, REFP, LEED AP
Jeffrey Schoeneck, AIA, NCARB, LEED AP
Thomas Hoskens, AIA, NCARB, LEED AP
Kathryn Wallace, AIA, NCARB, LEED AP
Michele Espeland, CID

Founded in 1968, Cunningham Group has earned an outstanding reputation for creating and delivering excellence in architecture, interior design, urban design, landscape architecture, and planning for a diverse mix of client and project types. Our more than 385 employees in ten offices are dedicated to delivering inspired, innovative, and sustainable design solutions that Uplift the Human Experience™.

The Hotel Landing, Wayzata, MN; Nine Twenty Five Restaurant, Wayzata, MN; Wedge Community Co-op, Minneapolis, MN; Galleria Expansion, Edina, MN; The 700 on Washington, Minneapolis, MN; Twin Cities PBS (TPT), Saint Paul, MN; Grand Casino Hinckley, Hinckley, MN; Oakwood Community Church, Waconia, MN

DLR GROUP

520 Nicollet Mall, Ste. 200
Minneapolis, MN 55402
Tel: (612) 977-3500
Email: ktait@dlrgroup.com
www.dlrgroup.com
Other Offices: Austin, TX; Charlotte, NC; Chicago, IL; Cleveland, OH; Colorado Springs, CO; Denver, CO; Des Moines, IA; Dubai, UAE; Honolulu, HI; Houston, TX; Las Vegas, NV; Lincoln, NE; Los Angeles, CA; Nairobi, Kenya; New York, NY; Omaha, NE; Orlando, FL; Overland Park, KS; Phoenix, AZ; Portland, OR; Riverside, CA; Sacramento, CA; San Francisco, CA; Seattle, WA; Tucson, AZ; San Francisco, CA; Shanghai, China; Washington, DC
Contact: Kathy Tait

Firm Principals

William Davenport, AIA
Thomas Gerster, AIA
Edward Wilms, AIA
Janice Linster, FASID
Gregory Hollenkamp, AIA, LEED AP
Staci Patton
Lee Meyer, NCARB, LEED AP
Donald Horkey, PE, LEED AP

DLR Group's brand promise is to elevate the human experience through design. Founded as an architecture and engineering firm in 1966, today we serve clients through integrated delivery of planning, architecture, engineering, interiors, and building optimization for new construction, renovation, and adaptive reuse. Our core areas of expertise are organized around Civic, Courts, Detention, Energy Services, Healthcare, Higher Education, Hospitality, K-12 Education, Museum, Performing Arts, Retail/Mixed-Use, Sports, and Workplace design.

Hines T3 Office, Minneapolis, MN; Canopy by Hilton, Minneapolis, MN; 50 S. 6th St Amenity Center, Minneapolis, MN; ADM Corporate Offices, Minneapolis, MN; Western National Insurance, Edina, MN; UMN Track & Field Facility, Minneapolis, MN; Sheraton Denver Downtown, Denver, CO; Robert W. Depke Juvenile Justice Center, Vernon Hills, IL

ESG ARCHITECTURE + DESIGN

esg

500 Washington Ave South
Minneapolis, MN 55415
Tel: (612) 339-5508
Email: andy.mcdermott@esgarch.com
www.esgarch.com
Contact: Andy McDermott, Director
of Marketing

Firm Principals

Aaron Roseth, President
Mark G. Swenson, FAIA, LEED AP
David L. Graham, FAIA, LEED AP
Trace Jacques, AIA, CID
Art Bartels, AIA, LEED AP
Terry Gruenhagen, AIA, LEED AP

Our mission is to enrich the built environment by designing artful interiors that creatively differentiate our clients in the marketplace, tell vibrant stories of people and place, and uplift the human spirit. Focusing on three primary markets—multifamily housing, hospitality and workplace design—ESG's Interiors Group brings a wealth of expertise and interdisciplinary knowledge to every project, in order to bring the best and most thoughtful design solutions to our clients.

The Hewing Hotel (Historic Jackson Building Renovation), Minneapolis, MN; The Lexington Restaurant Renovation, St. Paul, MN; The Stillwater Hotel, Stillwater, MN; Embassy Ste.s. (Historic Plymouth Building Renovation), Minneapolis, MN; Renaissance Minneapolis Hotel-The Depot Renovation, Minneapolis, MN; Maverick North Loop, Minneapolis, MN; Code 42, Minneapolis, MN; 100 Washington Square, Minneapolis, MN

HDR

HDR

600 Hennepin Avenue South, Ste. 260
Minneapolis, MN 55403
Tel: (612) 524-6000
Email: megan.berg@hdrinc.com
www.hdrinc.com/follow-us
Contact: Megan Berg

continued next column

Firm Principal

Amy Williams, AIA, LEED AP

For more than a century, HDR has partnered with clients to shape communities and push the boundaries of what's possible. Our expertise spans 10,000 employees, in more than 225 locations around the world—and counting. Our engineering, architecture, environmental and construction services bring an impressive breadth of knowledge to every project. Our optimistic approach to finding innovative solutions defined our past and drives our future.

The Mother Baby Center at Abbott Hospital, Minneapolis, MN; The Mother Baby Center at Mercy Hospital, Coon Rapids, MN; The Mother Baby Center at United Hospital, St. Paul, MN; Knutson Construction Headquarters, Minneapolis, MN; HDR Minneapolis Office, Minneapolis, MN; Mayo Radiology, Rochester, MN; Children's MN, NICU Remodel, St. Paul, MN; Etobicoke General Hospital, Ontario, Canada

HGA ARCHITECTS AND ENGINEERS

420 North 5th Street, Ste. 100
Minneapolis, MN 55401
Tel: (612) 758-4000
Email: info@hga.com
www.hga.com
Other Offices: Rochester, MN; Milwaukee, WI; Sacramento, CA; San Francisco, CA; Los Angeles, CA; San Jose, CA; and Washington, DC
Contact: Debra Barnes, CID, IIDA, LEED AP ID+C

Firm Principals

Debra Barnes, CID, IIDA, LEED AP ID+C
Richard Bonnin
Nancy Blankfard, AIA
Stephanie Reem, CHID, CID, EDAC, LEED AP ID+C
David Loehr, AIA, LEED AP BD+C, AICP
Mia Blanchett, AIA, LEED AP BD+C
David Little, AIA, CID, LEED AP ID+C
Paula Storsteen, CID, LEED AP ID+C

Recognizing the global nature of design today, HGA's team addresses the connection between an organization's strategic view and their customers. Our designs focus on understanding the unique needs of the occupants whether they are from corporate work environments, college campuses, hospitality, retail

continued next column

or healthcare design. We listen to our clients to understand their strategic needs and then respond with creative, flexible interior solutions that provide long-term value.

Ramsey County Library-Shoreview, Shoreview MN; Temple Israel, Minneapolis MN; Church of the Resurrection, Leewood KS; Sawmill Private Management, Minneapolis MN; UnityPoint Health, Allen Prairie Parkway Ambulatory Care Center, Cedar Falls IA; Northern Arizona Healthcare, Camp Verde Valley Campus, Camp Verde AZ; Walker Art Center/Esker Grove, Minneapolis, MN; West End Office, Parkdale Plaza, St. Louis Park, MN

MILLER DUNWIDDIE ARCHITECTURE

100 Washington Avenue South, Ste. 500
Minneapolis, MN 55401
Tel: (612) 337-0000
Email: info@millerdunwiddie.com
www.millerdunwiddie.com
Contact: Kathryn Hunsley, CID, IIDA

Firm Principals

Monica Bettendorf Hartberg, AIA
Daniel Green, AIA
Kathryn Hunsley, CID, IIDA
Craig Lau, AIA
Denita Lemmon, AIA
Paul May, AIA
John Mecum, AIA
Joel Stromgren, AIA

Since 1963, Miller Dunwiddie has worked to shape and preserve the environment through responsible, creative design. From providing decades of service to the Metropolitan Airports Commission—to completing over 700 historic preservation projects—our range of work is a testament to the firm's commitment to improving and preserving the built environment through excellent design—both in new facilities and existing structures. Our architects, interior designers and building envelope staff offer clients complete planning and design services.

Miller Dunwiddie Office Washington Square, Minneapolis, MN; St. Paul Public Schools; Highland Park Elementary & Horace Mann School Renovations & Additions; St. Paul, MN; St. Louis Park Public Schools, Multiple Renovations; St. Louis Park, MN; Terminal 2 Renovations & Expansions; MSP

continued next column

International Airport, MN; Terminal 1 Parking Ramp Expansion, Parking Management Building and RAC Facilities; MSP International Airport, MN; Berean Baptist Church Expansion; Burnsville, MN; Church of St. Raphael Adoration Chapel; Crystal, MN; Beacon Bluff Building 21 Rehabilitation for Archdiocese of Saint Paul & Minneapolis; St. Paul, MN

MOHAGEN HANSEN ARCHITECTURE | INTERIORS



1000 Twelve Oaks Center Drive, Ste. 200
Wayzata, MN 55391
Tel: (952) 426-7400
Email: info@mohagenhansen.com
www.mohagenhansen.com
Contact: Susan Kimbrel, Marketing Director

Firm Principals

Todd Mohagen, AIA, NCARB
Mark L. Hansen, AIA, NCARB, LEED AP BD+C
Lyn Berglund, CID, ASID

Mohagen Hansen Architecture | Interiors is a full-service planning, architecture and interior design firm, specializing in the development of functional and creative design solutions. We work in a variety of markets including healthcare, corporate, industrial, financial, retail, dental, government and housing. Our planning and design solutions directly reflect our clients' vision, brand, culture and objectives, while being sensitive to schedules and budgets. We partner with our clients to create inspirational designs that result in lasting relationships.

City of Minnetonka City Hall Interior Remodel, Minnetonka, MN; Luther Automotive Support Center Interior Build-Out, Golden Valley, MN; HealthPartners Lake Elmo Specialty Dental Clinic, Lake Elmo, MN; Entira Family Clinics Renovations, St. Paul, MN; Nexus Solutions Office Design & Build-Out, Champlin, MN; Sterling Specialty Pharmacy Services Office Remodel, Owatonna, MN; Frandsen Bank & Trust Remodel, Dundas, MN; Lakeview Hospital, Lobby Remodel, Stillwater, MN

MSR DESIGN

710 South 2nd Street, 8th floor
Minneapolis, MN 55401
Tel: (612) 375-0336
Email: info@msrdesign.com
www.msrdesign.com
Other Offices: Hyattsville, MD
Contact: Josh Stowers, josh@msrdesign.com,
(612) 889-0034

Firm Principals

Matthew Krontorád, AIA, LEED AP
Traci Engel Lesneski, CID, IIDA, LEED AP
Paul C.N. Mellblom, AIA, LEED AP BD+C
Thomas Meyer, FAIA
Jack Poling, AIA, LEED AP
Garth Rockcastle, FAIA
Josh Stowers, AIA, LEED AP BD+C

MSR is an award-winning architecture and interior design firm committed to excellence. Since 1981, our firm has produced work of enduring value: buildings that are diverse in type, size and location, with specific depth of experience serving library, office, cultural, higher education and residential clients. The firm has earned a national reputation for both designing exceptional new spaces and through preservation, renovation and adaptive reuse, designing innovative ways to reuse buildings.

BAYADA Home Health Care Office Headquarters, Pennsauken, NJ; Fayetteville Public Library Expansion, Fayetteville, AR; Haverford College VCAM Center, Haverford, PA; Missoula Public Library Main Library, Missoula, MT; Norman Public Library Central, Norman, OK; SEI Investments Headquarters North Campus, Oaks, PA; Stahl Construction Office Relocation, Minneapolis, MN; Wooddale Church Renovation, Eden Prairie, MN

PERKINS + WILL**PERKINS + WILL**

80 South 8th Street, Ste. 300 IDS
Minneapolis, MN 55402
Tel: (612) 851-5000
Email: tony.layne@perkinswill.com
www.perkinswill.com
Other Offices: Atlanta, GA; Austin, TX; Boston, MA; Charlotte, NC; Chicago, IL; Dallas, TX; Houston, TX; Los Angeles, CA; Miami, FL; New York, NY; Durham, NC; San Francisco, CA; Seattle, WA; Washington D.C.; Canada: Hamilton, Ottawa, Toronto, Vancouver; Dubai; London; Sao Paulo; Shanghai
Contact: Anthony (Tony) Layne

Firm Principals

Anthony Layne, AIA, LEED AP BD+C
David Dimond, FAIA, CID, LEED AP
Lisa Pool, LEED AP
Jeff Ziebarth, AIA, LEED AP
Robert Novak, AIA, NCARB, LEED AP
John Slack, ASLA, LEED AP w/spec ND
Jeanne Ekholm, LEED AP BD+C

Perkins+Will is an interdisciplinary, research-based architecture and design firm established in 1935 and founded on the belief that design has the power to transform lives and enhance communities. Each of the firm's 24 offices focuses on local, regional, and global work in a variety of practice areas. With hundreds of award-winning projects annually, Perkins+Will is highly ranked among top global design firms. Perkins+Will is recognized as one of the industry's preeminent sustainable design firms due to its innovative research, design tools, and expertise.

AVI Learning Center, Eden Prairie, MN; 801 Marquette Avenue, TCF Bank Building repositioning, Minneapolis, MN; Be the Match Coordinating Center, Minneapolis, MN; Holland Hall, St. Olaf College, Northfield, MN; Land O'Lakes, Arden Hills, MN; Mayo-Rochester Methodist Hospital, Surgical Master Plan + Phase 1 Fit Out, Rochester, MN; St. Louis County Government Services Center, Duluth, MN; Wells Fargo Bank Downtown East, Minneapolis, MN

POPE ARCHITECTS, INC.**POPE
ARCHITECTS**

1295 Bandana Blvd. North, Ste. 200
St. Paul, MN 55108
Tel: (651) 642-9200
Email: elarson@popearch.com
www.popearch.com
Contact: Erica Larson, CID, CHID, EDAC, LEED AP BD+C, Principal,

Firm Principals

Ward M. Isaacson, AIA
Paul A. Holmes, AIA
Erica L. Larson, CID, CHID, EDAC
Gonzalo Villares, AIA
Sandra L. Buehler
Thomas B. Kuck, AIA
Robert S. Howard, AIA
Gregory A. Woollums, AIA

Pope Architects is an established local design firm with a national practice. We bring a wealth of design experience and sound business practices together to create beautiful, sustainable and compelling building environments. Together, we are shaping environments that enhance lives. Pope Architects has a diverse practice encompassing corporate and workplace, senior living and multi-family housing, healthcare and behavioral health, and community design. Our interior design team delivers high quality services to our clients in all practice areas.

Kraus-Anderson Companies Headquarters, Minneapolis, MN; Summit Orthopedics Eagan, Eagan, MN; C.H. Robinson Eden Bluff Tech Center, Eden Prairie, MN; St. David's Center for Child and Family Development, Minnetonka, MN; The Cottages at Hearthstone, Pella, IA; PrairieCare Brooklyn Park, Brooklyn Park, MN; Wurth Adams Corporate Headquarters, Brooklyn Park MN; 71 France Apartments, Edina, MN

RSP ARCHITECTS**RSP**

1220 Marshall Street NE
Minneapolis, MN 55413
Tel: (612) 677-7100
Email: communications@rsparch.com
www.rsparch.com
Other Offices: Rochester, MN; Fort Worth, TX; Phoenix, AZ
Contact: Jackie.peacha@rsparch.com

Firm Principals

Jon Buggy, AIA
Heather Dunn
Bonnie Krause, AIA
Bob Lucius, AIA
Derek McCallum, AIA, LEED BD+C
David Norback, AIA
Ian Scott, LEED AP
David Serrano, AIA, NCARB

RSP is one of the region's largest architecture firms with over 300 employees across five offices. Our practice is broad—we design for corporate, distribution, education, healthcare, hospitality, government, retail and restaurant clients. Plus facilities consulting and experience design. We work with everyone. From start-ups with single projects to Fortune 50 clients with national programs. We are fiercely committed to our clients, united in a goal to discover the unique design solutions that best support their future success.

Intercontinental Minneapolis-St. Paul Airport Hotel, MN; Baker Center, Minneapolis MN; Discovery Square, Rochester, MN; Atmosphere Commercial Interiors, Phoenix, AZ; Jack Links Headquarters, Minneapolis, MN; Hubbard Radio, various locations; CityPlace, Woodbury, MN; Central Park Commons, Eagan, MN

RYAN A+E, INC.



533 South 3rd Street, Ste. 100
Minneapolis, MN 55415
Tel: (612) 492-4000
Email: AshleyWurster@RyanCompanies.com
www.RyanCompanies.com
Other Offices: Davenport, IA; Phoenix, AZ;
Austin, TX
Contact: Ashley Wurster

Firm Principals

Mike Ryan, AIA, LEED AP
Mike Rodriguez AIA, LEED AP, EDAC
Ashley Wurster, CID, IIDA
Karl Drecktrah, AIA
Amy Maldonado, AIA
Josh Ekstrand, AIA
Tim Bauer
Mike Rother, AIA

At Ryan Architecture + Engineering (A+E), our job is to take ideas and shape them into tangible, meaningful structures that bring value to our customers, the people who use the building and the surrounding community. We rely on advanced technology and processes, as well as a little heart, to consider the elements that affect beauty, cost, operational efficiency and use. Our disciplines span the areas of architectural design, interior design, civil engineering, and landscape design.

Cargill Headquarters Remodel, Wayzata, MN; Millwright & Ryan Companies Headquarters, Minneapolis, MN; TÜV-SÜD, New Brighton, MN; MN Energy Resources, Rosemount, MN; University of St Thomas Facility Design Center Remodel, St Paul, MN; Grand Living Senior Living Community, Jacksonville, FL; Clarendale Senior Living Community, Bellevue, TN; CVM Cardiovascular Medicine, Moline, IL

STUDIO BV



1400 Van Buren Street NE, Ste. 200
Minneapolis, MN 55413
Tel: (651) 335-3455
Email: betsy@studio-b-v.com
www.studio-b-v.com
Contact: Betsy Vohs

Firm Principals

Betsy Vohs, Associate AIA, LEED AP ID +C
Courtney Armstrong, IIDA, LEED AP ID +C

We are multidisciplinary in our background and experience. We design everything with equal importance and integrate our design concepts across many scales. Studio BV brings creativity to clients wanting to leverage design to drive change. We have deep and diverse experience in workplace design, restaurant and retail design, commercial office buildings, residential design, and design strategy. We are devoted to fostering authentic, intimate, and bold connections to people and places.

Nordic House, Minneapolis, MN; Fallon, Minneapolis, MN; Field Nation, Minneapolis, MN; When I Work, Minneapolis, MN; Kickernick Building, Minneapolis, MN; Nolo's Kitchen & Basement Bar, Minneapolis, MN; Cozen O'Connor, Minneapolis, MN; YMCA Twin Cities, Minneapolis, MN

TKDA



444 Cedar Street, Ste. 1500
Saint Paul, MN 55101
Tel: (651) 292-4400
Email: info@tkda.com
www.tkda.com
Other Offices: Duluth, MN; Chicago, IL;
Tampa, FL; Seattle, WA; Los Angeles, CA
Contact: DJ Heinle, Architecture VP

Firm Principals

Kathryn Poore-Larson, AIA, CID
Michelle Gallagher
Dean Johnson, AIA, CID
Ron Stanius, AIA, CID
Ken Johnson, AIA, CID
Brian Fitzgerald, AIA, LEED AP
DJ Heinle, AIA
Brian Morse, AIA

TKDA is an employee-owned architecture, interior design, planning, and engineering firm with Minnesota offices in Saint Paul and Duluth. More than 250 employees deliver solutions nationwide to clients seeking single-source, integrated design services. TKDA provides interior and architectural design services to corporate, institutional, government, K-12, and higher education clients.

Anoka County Technical College Nursing Simulation Lab; NorShor Theatre Historic Renovations; Johnson High School Renovations & Addition; Johnny Bird Veteran's Memorial Hall; Flint Hills Resources North Facility Office Building; Xcel Energy 414 Nicollet Renovations; Dakota County Tech College Transportation & Emerging Tech; Metro Transit Bus Stop Renovations

Land O'Lakes/FLM+

Page 22

Location: Minneapolis, Minnesota
 Client: Land O'Lakes
 Architect: Perkins+Will
 Principal-in-charge: Lisa Pool
 Project lead designer: Anne Smith
 Project manager: Russell Philstrom, AIA
 Project architect: David Dimond, FAIA
 Project team: Jamey Berg (designer); Kathryn Watson (technical support); Melissa Rasmussen (technical support); Brian Weatherford (branded environments); Cary Lancaster (branded environments); Darrin Klejeski (technical director)
 Mechanical and electrical engineer: Michaud Cooley Erickson
 Lighting designer: Pulse Products
 Interior designer: Perkins+Will
 General contractor: Gardner Builders
 Wood flooring: Schaefer Hardwood Floors
 Carpet: Bentley; Tandus; Bolyu
 Millwork: Focal Point Fixtures
 Photographer: Brandon Stengel, Assoc. AIA/Farm Kid Studios

The Hewing

Page 24

Location: Minneapolis, Minnesota
 Client: Fe Equus Development, LLC
 Architect: ESG Architecture & Design
 Principal-in-charge: Aaron Roseth, Assoc. AIA
 Project lead architect: Steve Oakley, AIA
 Project lead interior designer: Megan Eckhoff
 Project interior designer: Ciarah Coenen
 Project manager: Steve Oakley, AIA
 Project architects: Jennifer Garman; Mike Gordon
 Structural engineer: Ericksen Roed & Associates
 Mechanical, electrical, and plumbing engineer: Steen Engineering
 Civil engineer: Sunde Engineering, PLLC
 HVAC engineer: Modern Heating & Air
 Lighting designer: Schuler Shook
 Interior designer: ESG Architecture & Design
 General contractor: Greiner Construction
 Electrical contractor: OlympiaTech Electric

Plumbing contractor: Wenzel Engineering Inc.
 Face brick: Building Restoration Corporation
 Tile: Grazzini Brothers & Company
 Cabinetwork: Blu Dot
 Flooring systems/materials: KMAC, Inc.; Acoustic Associates Inc.
 Window systems: Pella Replacement Windows & Doors
 Storefronts: Northwestern Glass Fab
 Architectural metal panels: Nordstrom Architectural Sheet Metal
 Concrete work: DRF Concrete Construction LLC
 Millwork: Distinctive Cabinet Design
 Specialty millwork: Scathain
 Metal fabrication: DG Welding & Mfg., Inc.
 Fire protection: Frontier Fire
 Painting: Sunrise Painting & Wallcovering
 Drywall installer: Mulcahy Nickolaus
 Photographers: Brandon Stengel; Peter VonDeLinde; Gustav Hoiland

111 Washington Square Amenities Floor

Page 30

Location: Minneapolis, Minnesota
 Client: Shorenstein
 Architect: ESG Architecture & Design
 Principal-in-charge: David Graham, FAIA
 Project interior designer: Amanda Iverson
 Project manager: Melissa Young
 Project architect: Nate Enger
 Interior designer: ESG Architecture & Design
 Furniture, fixtures, and equipment procurement: Fluid Interiors
 Tile distributor: Tile X Design
 Flooring systems/materials: Piece Interior Resources
 Architectural metal panels: Astro Engineering & Manufacturing Inc.
 Wood cladding: TerraMai
 Millwork finisher: O'Keefe Incorporated
 Acoustic ceiling panels: Twin Cities Acoustics
 Restaurant equipment and design: Boelter Landmark
 General contractor: Adolfsen & Peterson Construction
 Mechanical contractor: MMC
 Electrical contractor: Hunt Electric Corporation
 Photographer: Brandon Stengel, Assoc. AIA/Farm Kid Studios

100 Washington Square Amenities Floor

Page 32

Location: Minneapolis, Minnesota
 Client: Shorenstein
 Architect: ESG Architecture & Design
 Principal-in-charge: Nate Enger
 Project lead designers: Mathew Enos; Amanda Iverson
 Project manager: Amanda Iverson
 Project architect: Nate Enger
 Interior designer: ESG Architecture & Design
 General contractor: Greiner Construction
 Furniture, fixtures, and equipment procurement: Fluid Interiors
 Tile distributor: Acoustic Associates, Inc.
 Flooring systems/materials: Acoustic Associates, Inc.
 Architectural metal panels, wood cladding, and millwork finisher: Distinctive Cabinet Design
 Restaurant equipment and design: Boelter Landmark
 Mechanical contractor: Modern Heating & Air
 Electrical contractor: Mayer Electric Corp.
 Photographer: Brandon Stengel, Assoc. AIA/Farm Kid Studios

Code 42

Page 34

Location: Minneapolis, Minnesota
 Client: Code 42
 Designers: ESG Architecture & Design; Eastlake Studio
 Principals-in-charge: Nate Enger (ESG); Tom Zurowski, AIA (Eastlake)
 Project lead designer: Kevin Kamien
 Project manager: Lynn Beise
 Project architect: Nate Enger
 Interior designer: ESG Architecture & Design
 General contractor: Greiner Construction
 Furniture, fixtures, and equipment procurement: Fluid Interiors
 Tile distributor: CD Tile & Stone
 Flooring systems/materials: Floors by Beckers
 Architectural metal panels: National Steel
 Wood cladding and millwork finisher: Distinctive Cabinet Design
 Acoustic ceiling baffles: Sonus Interiors
 Restaurant equipment and design: Boelter Landmark

Mechanical contractor: Modern Heating & Air
 Electrical contractor: Fraser-Morris Electrical Co.
 Photographer: Brandon Stengel, Assoc. AIA/Farm Kid Studios

Millwright Building

Page 36

Location: Minneapolis, Minnesota
 Client: Ryan Companies US, Inc.
 Architect: Ryan A+E, Inc.
 Principal-in-charge: Mike Ryan, AIA
 Project lead designers: Josh Ekstrand, AIA; Ayman Arafa, AIA
 Project manager: Ayman Arafa, AIA
 Project architects: Ayman Arafa, AIA; Chase Prepula, AIA
 Project team: Kaitlin Veenstra
 Energy modeling: Michaud Cooley Erickson
 Structural engineer: Ericksen Roed & Associates
 Mechanical engineer: Master Mechanical, Inc.
 Electrical engineer: Egan Company
 Civil engineer: Ryan A+E, Inc.
 Lighting designer: Egan Company
 Interior designer: Ryan A+E, Inc.
 Interior design project team: Ashley Wurster; Sage Roshau
 General contractor: Ryan Companies US, Inc.
 Landscape architect: Ryan A+E, Inc.
 Landscape project team: Casey Redland
 Architectural precast: Gage Brothers
 Face brick: Belden Belcrest 760
 Stone: Cold Spring Granite
 Cabinetwork: Shaw-Stewart Lumber Co.
 Flooring systems/materials: Polished concrete by Ryan Companies US, Inc.
 Window systems: St. Cloud Window
 Architectural metal panels: Innovative Building Concepts
 Concrete work: Ryan Companies US, Inc.
 Millwork: The Woodshop of Avon
 Name and logo: Little & Co.
 Photographer: Paul Crosby

Homes by Architects House 17

Page 43

Location: Stillwater, Minnesota

Clients: Josh and Trish Hanson

Architect: SALA Architects, Inc.

Principal-in-charge: Katherine Hillbrand, AIA

Project lead designers: Katherine Hillbrand, AIA; Chris Meyer, AIA

Project manager: Katherine Hillbrand, AIA

Project architects: Katherine Hillbrand, AIA; Chris Meyer, AIA

Project team: Katie Leaf, Assoc. AIA; Max Mahaffey (intern); Anne Hauer (associate)

Energy modeling: Katie Leaf, Assoc. AIA; Marc Sloat, AIA

Structural engineer: Align Structural

Mechanical engineer: Select Mechanical

Electrical engineer: Milo Electric

Lighting designer: SALA Architects, Inc.

Interior designers: owners and architect

General contractor: Choice Wood Company

Landscape architect: LHB, Inc.

Face brick: Endicott brick

Cabinetwork: Choice Wood Company

Flooring systems/materials: Carlisle Wide Plank Floors

Window systems: Loewen Windows; Heritage Window & Door (operable and fixed units); INGlass, LLP (glass curtainwall); Quantum Window and Doors (lift-and-slide doors); W.L. Hall Company (Kalwall skylights)

Architectural metal panels: Loftus Ornamental Iron

Concrete work: Stockness Construction

Millwork: Cabinets by Choice

Photographer: Morgan Sheff

AIA Contract Documents	C3	Kell Architects	52
AIA Minnesota	69	Kolbe Gallery Twin Cities	8
AIA Minnesota Exhibit	70	LN Design Co.	66
AIA Minneapolis Merit Awards	16	Marvin Windows and Doors	18
AKF Group	60	Mattson Macdonald Young	72
Architecture MN Awards	75	MN Brick & Tile	6
Artistic Stone & Concrete	64	MSR Design	64
ASID Showcase Home	67	North House Folk School	65
Borgert Products	14	Northwest Architectural Archives	74
Ceramica	66	Pella Windows & Doors	C2
Christopher Strom Architects	51	Peterssen/Keller Architecture	53
CityDeskStudio	50	Rehkamp Larson Architects	54
Commercial Aquatic Engineering	60	Residential Firm Showcase	49-59
County Materials	61	Room & Board	20
Directories of Interior Architecture/Interior Design	76-85	SALA Architects	55, 61, 62
Dutch & American Housing Symposium	65	Schuler Shook	67
EAPC Architects Engineers	68	Morgan Sheff Photography	73
Emanuelson-Podas	C4	Shelter Architecture	56
Farm Kid Studios	74	SKD Architects	57
Gaffer Photography	2	Streeter & Associates	1
GlassArt Design	3	Synergy Products	10
H Window	68	TCH	71
Chad Holder Photography	48	TEA2 Architects	58, 59
Homes by Architects Tour	63, 72	Peter VonDeLinde Visuals	71
JTH Lighting Alliance	62	Welch Forsman	62
		Wood Products Council	12



Architecture MN is published bimonthly by AIA Minnesota. The opinions expressed herein are not necessarily those of the Board of Directors or the Editor of *Architecture MN*. **Editorial office:** International Market Square, 275 Market Street, Suite 54, Minneapolis, MN 55405. (612) 338-6763. FAX: (612) 338-7981. **Web address:** architecturemn.com. **Note to subscribers:** When changing address, please send address label from recent issue and your new address. Allow six weeks for change of address. **Subscription rate:** \$21 for one year, \$3.95 for single issue. **Postmaster:** Send address change to *Architecture MN* at above address. Periodical postage paid at Minneapolis and additional mailing offices. **Advertising and Circulation:** *Architecture MN*, above address and phone. **Printing:** St. Croix Press. **Color separations:** Southern Graphics Systems. Copyright 2017 by *Architecture MN* (ISSN 0149-9106).

Only one hotel has had the Minneapolis Institute of Art, Stone Arch Bridge, and Minnesota State Fairgrounds at its doorstep. It's the LightHotel, a salvaged 8-by-20-foot shipping container ingeniously converted to an eco-friendly, one-room dwelling on wheels by Alchemy, creators of the prefab weeHouse. This summer, the neighborhood conversation starter continued its travels with extended stays at two Twin Cities community gardens.

Don't let the industrial shell fool you: It offers five-star comfort thanks to solar-powered HVAC, LED lighting, and hydronic in-floor heat, plus a self-contained water system. "The first night I stayed in the LightHotel was when my brother came to visit around Thanksgiving," says Alchemy founder Geoff Warner, AIA. "It was parked on the street outside Bang Brewing in St. Paul, and it was the first full-on blizzard of the season. We just sat out there drinking Bang beer and enjoying ourselves."

