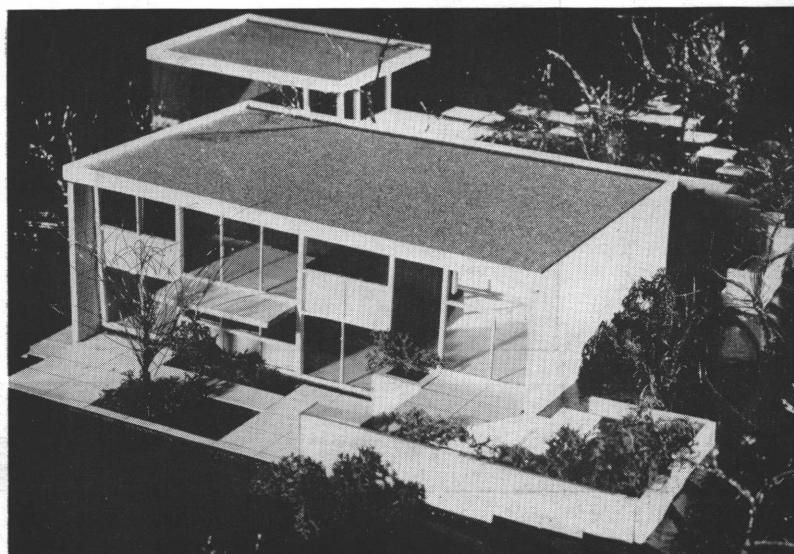
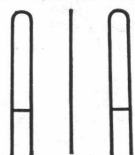


# SOUTHERN ARCHITECT

FEBRUARY 1956



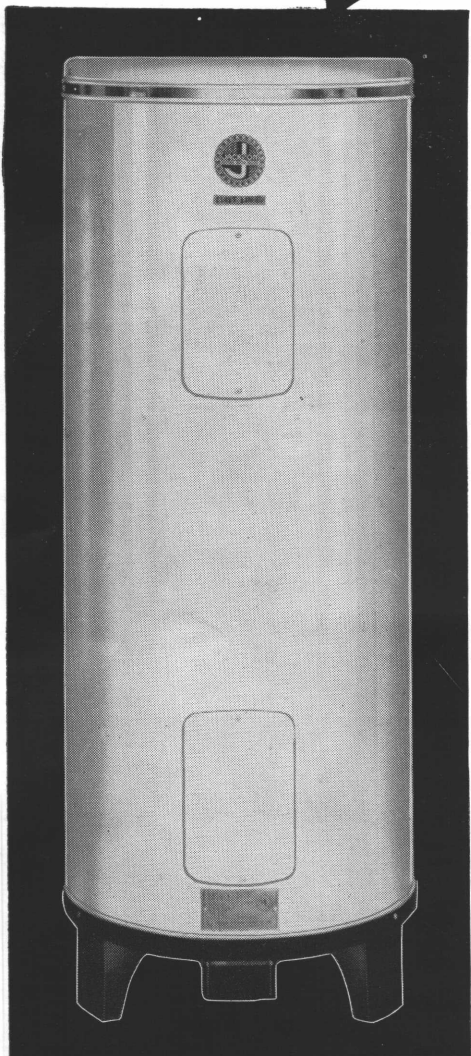
Official Publication  
North Carolina Chapter



American Institute  
of Architects



## JACKSON'S 6 for '56



- 1** *Inspection:* Every Jackson Water Heater is thoroughly inspected before it leaves the factory — not just once, but at every stage of production!
- 2** *Complete Line:* Jackson's line is complete — all models available in all standard sizes!
- 3** *Quality Controlled:* Practically every part is produced in Jackson's modern factory. ALL parts must face Jackson's rigid quality controls!
- 4** *Immediate Delivery:* Four fully stocked shipping points: Atlanta, Ga., Charlotte, N. C., Siloam Springs, Ark., and Chattanooga, Tenn.!
- 5** *Warranty:* Every Jackson Water Heater has its own Warranty — protecting you and your customers!
- 6** *Progress:* Jackson has the latest types of glass-lined tanks and other up-to-the-minute features!

**Wire, write or phone NOW for complete details on Jackson Gas and Electric Water Heaters. Your inquiry does not obligate you in any way.**

**W. L. JACKSON MANUFACTURING COMPANY**  
1222 EAST 40TH STREET CHATTANOOGA 7, TENN.

#### SALES REPRESENTATIVES

J. A. Lloyd, Factory Sales Agent  
375 Whitehall Street, S. W.  
Atlanta, Georgia  
Telephone: LAmar 1977

J. P. Schoenfeld  
3434 Howard Road  
Richmond 23, Virginia  
Telephone: 2-6197

Carl A. Scholle  
3517 Hanover  
University Park  
Dallas 25, Texas  
Telephone: EMerson 4228

Ralph Jones Company  
P. O. Box 190  
Siloam Springs, Arkansas  
Telephone: 827

L. O. Ledford, Sales Agency  
311 Chickamauga Avenue  
Rossville, Georgia  
Telephone: 89-5554

J. A. Lloyd, Factory Sales Agent  
204 North Dalton Avenue  
Charlotte, North Carolina  
Telephone: FRanklin 5-8258



**with**  
**Davidson**  
**Architectural**  
**Porcelain**

Jessup Building — Fayetteville, N. C.  
Basil G. F. Laslett, Architect  
Jessup Construction Co., Contractor



## you get *Shopping Center Utility*

This colorful shopping center store-front will be maintenance free for years and years to come. It will never need painting or cleaning thanks to lifetime Architectural Porcelain. Too, the color is there to stay. Because Architectural Porcelain is a non-porous vitreous coating fused to heavy gauge steel, it can not fade nor crack . . . maintenance is zero.

Design wise, Davidson Architectural Porcelain is one of the most versatile facing materials you can use. It can be fabricated to most any shape or design you specify, and there's a color or texture to please even the most discriminating architect or building owner.

Make sure you check the advantages of Architectural Porcelain before you start designing your next store-front or shopping center.

**For full information, fill out and mail the coupon below today.**

**BEAMAN ENGINEERING COMPANY, INC.**  
1106-D Battleground Ave. • Greensboro, N. C.

Gentlemen:  
Please send me further information on Davidson Architectural Porcelain facings as engineered and erected by BECO.

Name \_\_\_\_\_  
Address \_\_\_\_\_  
City \_\_\_\_\_

SALES • ENGINEERING • DESIGN • ERECTION

*Beaman*  
**ENGINEERING CO., INC.**

GREENSBORO ATLANTA **BECO** BALTIMORE RICHMOND

1106 BATTLEGROUND AVE. GREENSBORO, N. C.  
**DAVIDSON ARCHITECTURAL PORCELAIN**



## universal SCOTCH UNIT

The **TRUE ECONOMY** unit  
preserving high quality

Made with the same frame designs and materials as Universal's fine Premium Units.

Treated Grade-A Ponderosa Pine frames and sash.

Anodized Aluminum Weather-strip.

Flocked Spring Balance . . . adjustable.

Write for further details.

# UNIVERSAL WINDOW CORP.

3200 SOUTH BOULEVARD, CHARLOTTE, N. C.

69 MANGUM STREET SW, ATLANTA, GA.

## ARCHITECTURAL CALENDAR

**MARCH 1:** Raleigh Council of Architects. S & W Cafeteria, Raleigh

**MARCH 2:** Guilford Council of Architects. Bliss Restaurant, Greensboro.

**MARCH 6:** Winston-Salem Council of Architects. El-Cam-Rey Restaurant, Winston-Salem.

**MARCH 7:** Charlotte Council of Architects. Thackers Restaurant, Charlotte.

**MARCH 14-15:** Roofing and sheet metal school of the Carolina Roofing and Sheet Metal Contractors Association. North Carolina State College, Raleigh.

**MARCH 15:** Raleigh Council of Architects. S & W Cafeteria, Raleigh.

**APRIL 9-10:** National Housing Conference. Statler Hotel, Washington, D. C.

**APRIL 12-13-14:** South Atlantic District Regional Conference, American Institute of Architects, Washington Duke Hotel, Durham.

**APRIL 21-28:** Historic Garden Week in Virginia. Headquarters, Jefferson Hotel, Richmond, Va.

**APRIL 25:** Western North Carolina Council of Architects. Statesville.

**MAY 14-17:** Design Engineering Show. Convention Hall, Philadelphia, Pa.

**MAY 15-18:** 88th Convention, American Institute of Architects. Hotel Biltmore, Los Angeles, Calif.

# PRESTRESSED PRECAST CONCRETE

YOUR ANSWER TO

... **SPEED**  
... **ECONOMY**  
and **FIRE PROOF**  
**CONSTRUCTION**

"Bonded Warehouses & Transit, Inc."

**90,000 Sq. Ft.**

architect: C. W. Connelly, AIA  
contractor: J. A. Jones Construction Co.

Roof columns, girders and standard COMP-  
CO "Double tee" roof units erected in  
record time of 14 days. Prestressed concrete  
is your answer to fast, safe and quality  
construction.

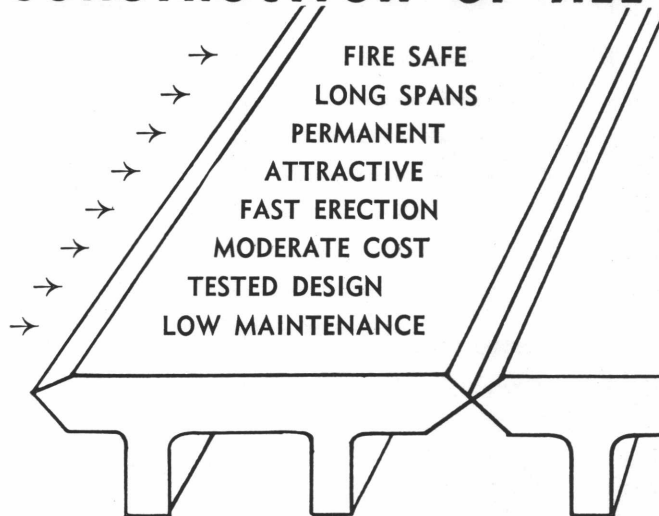


above: Precast, prestressed columns, girders and double tees in typical 25' x 40' bays.

below: Exterior walls of Tilt-up concrete construction. Panel size: 16' x 20' x 5".



## PRESTRESSED CONCRETE FOR CONSTRUCTION OF ALL TYPES



Engineers and architects are accepting prestressed concrete where it is available, and finding it doing the job desired. It is being specified because of its superior qualities.

The precasting of prestressed concrete products has become a great new industry. It has made possible efficient building prefabrication such as never seen before. New techniques are developing monthly. We will keep you informed.

For further information write or call

**CONCRETE MATERIALS, INC.**  
CHARLOTTE, NORTH CAROLINA

P. O. Box 5290

Dial EDison 3-8671

123 Creosote Rd.

### 3 ALL NEW THIN-LITE TROFFERS

Designed to save depth. All that is required is  $2\frac{7}{8}$ ". Designed to save space—like in new buildings where a minimum recessing depth is desired. The THIN LITE troffer has an unusually clean-cut appearance, no exposed hinges, latches, screws or bolt heads. Three types of diffusers are available.

**Available in following models:**

- 1274PR2-40— $42^{\circ} \times 42^{\circ}$  Polystyrene louver
- 1274BR2-40—Corning No. 70 low brightness lens
- 1274FR2-40—Formed Acrylic diffuser

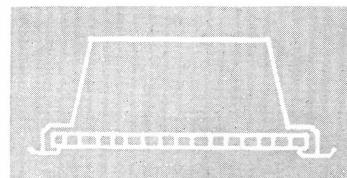
ACTUAL SIZE

**$2\frac{7}{8}$ "**

THIN

WRITE FOR LPI CATALOG 545

**CONVENTIONAL TROFFER**



↓  
6" PLUS  
↑

11  $\frac{3}{4}$ "

WRITE OR CALL FOR FURTHER INFORMATION AND LITERATURE

***Wm. B. Gile & Associates***

REPRESENTING: KIRLIN; KURT VERSEN; LIGHTING PRODUCTS; MAJOR  
117 East Third St. — FR 5-5843 — CHARLOTTE, NORTH CAROLINA  
BRANCH OFFICE: 2803 FLOYD AVE—6-3649—RICHMOND, VA.

**LIGHTING  
PRODUCTS**  
INCORPORATED  
HIGHLAND PARK, ILL.



Check the advantages of

**PAN - A - LITE**

ALUMINUM PANEL WALLS

by *Altex*

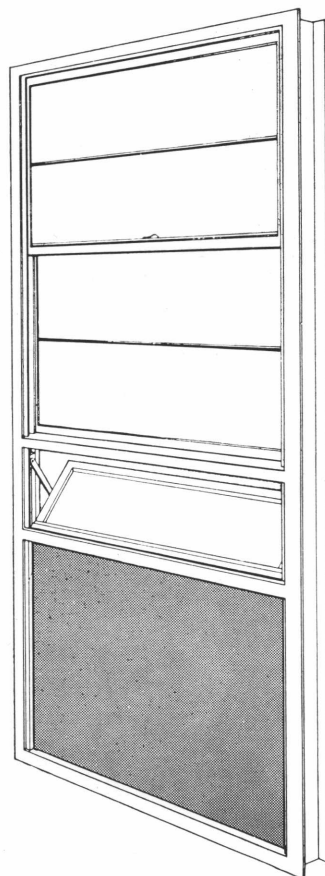
- ✓ Lower foundation cost
- ✓ Reduction in wall thickness up to 75%
- ✓ Spandrel of any material or filler
- ✓ Clean, new design
- ✓ Lower maintenance cost
- ✓ Adaptable to all specifications, single or multi-story
- ✓ Window and frame available in several colors
- ✓ Spandrel available in any color

NORTH CAROLINA DISTRIBUTORS  
**CHARLOTTE SALES CO.**

200 S. Brevard

ED 3-1760

RAY WHEATLEY, Field Rep.





# Southern Architect

Volume 2

February 1956

Number 10

## CONTENTS

### Publisher

Thomas H. Broughton

### Advertising

J. C. Davis

### COMMITTEE ON PUBLICATIONS

A. G. Odell, Jr., AIA, Chairman	Charlotte
James L. Beam, Jr., AIA	Cherryville
Louise Hall, AIA	Durham
Henry L. Kamphoefner, AIA	Raleigh
Edward Loewenstein, AIA	Greensboro

### PUBLIC RELATIONS COMMITTEE

S. Scott Ferebee, Jr., Chairman	Charlotte
Robert E. Bush, AIA	Hickory
Fred W. Butner, Jr., AIA	Winston-Salem
R. L. Clemmer, AIA	Hickory
Robert W. Conner	High Point
Eric G. Flannagan, Jr., AIA	Henderson
John C. Higgins, AIA	Charlotte
Arthur McKimmon, AIA	Raleigh
H. R. McLawhorn, Jr., AIA	Greensboro
Andrew L. Pendleton, AIA	Statesville
Robert H. Stephens, AIA	Beaufort
John Scott Thomas, AIA	Rocky Mount
Turner G. Williams, AIA	Raleigh

### A KEY PUBLICATION

Southern Architect is the official publication of the North Carolina Chapter of the American Institute of Architects and is published monthly by Key Publications, Inc., 117 East Third Street, Charlotte, North Carolina. Telephone EDison 2-7537.

Address all communications to Southern Architect, Post Office Box 517, Charlotte, North Carolina. Advertising rates on request.

Opinions expressed by contributors are not necessarily those of the North Carolina Chapter of the American Institute of Architects or the Publisher. Reproduction of any articles, pictures, or any other material appearing in Southern Architect is forbidden without the specific approval of the Publisher.

Subscription price: One year \$3.00; Two years \$5.00. Single copies 25 cents. Full name and address shall accompany all subscriptions. Kindly notify Southern Architect in the event of change of address.

● Architectural Calendar	4
● President's Message	9
● 42nd Annual Meeting NCAIA Highly Successful	11
● Matsumoto Wins National Design Award	12
● Office Building, Home Finance Group	14
● Branch Bank, Bank of Elkin	16
● Proposed St. Ann's Elementary School	17
● The Dutch Club	18
● Five Buildings Selected for Awards in Architecture	20
● Cape Hatteras Project Wins Citation	20
● Annual Meeting Highlights	21
● Loewenstein Architectural Foundation President	23
● 19 New Architects Licensed to Practice	25
● Announce NCAIA Committees for 1956	27
● Architects and Builders in the News	34
● New Products and Services	36

### COVER PHOTO

The design by George Matsumoto, AIA, for the proposed residence of Mr. and Mrs. Eric M. Lipman of Richmond, Va., recently received an Award Citation in the residential category from Progressive Architecture.

### NORTH CAROLINA CHAPTER • THE AMERICAN INSTITUTE OF ARCHITECTS

F. Carter Williams, AIA	President	Leslie N. Boney, Jr., AIA	Director
133 Fayetteville Street, Raleigh		120 S. Fifth Street, Wilmington	
William R. James, Jr., AIA	V.-President	Robert L. Clemmer, AIA	Director
602 Reynolds Bldg., Winston-Salem		Box 2469, Hickory	
James L. Beam, Jr., AIA	Treasurer	A. G. Odell, Jr., AIA	Director
204 N. Jacob Street, Cherryville		109 West Third Street, Charlotte	
Cyrill H. Pfohl, AIA	Secretary	Louise Hall, AIA	Archivist
324 N. Main Street, Winston-Salem		Box 6636, College Station, Durham	
		R. Mayne Albright	Attorney
		Insurance Building, Raleigh	



the

# Leering TRI-PAK

**HEATS COOLS**  
**and furnishes**  
**year around**  
**HOT WATER**  
*too!*

A SINGLE COMPACT UNIT  
GAS OR OIL  
WITHIN THE PRICE RANGE  
OF EVERY HOME OWNER

Comes completely wired and assembled  
Available for all types of gases

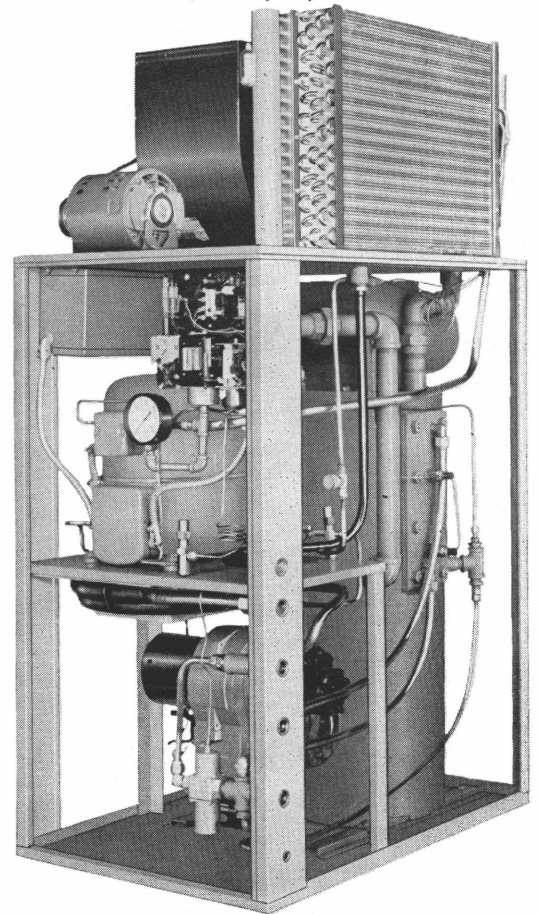
Hot and Cool air system

3 or 5 ton Air Conditioning capacity  
air or water cooled

Uses 1 to 1.25 gal. nozzle for oil  
3½ to 4 GPM of Hot Water at 140 or  
better, continuously . . .  
or 200 gals/hour

Space Saver for Builders  
(24" x 36" — 66" high)  
zero clearance

20% to 25% cheaper operation



EXCLUSIVE  
DISTRIBUTORS  
IN THE  
CAROLINAS

## A. F. EPTING

2116 THRIFT ROAD

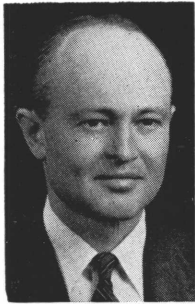
CHARLOTTE, NORTH CAROLINA

## APPLIANCE COMPANY

FRANKLIN 6-1641

## ❖ PRESIDENT'S MESSAGE ❖

We acknowledge once again the honor and trust placed in the hands of your Officers and Executive Committee. We also want to express sincere appreciation for jobs well done by retiring Treasurer, J. W. Griffith, AIA, and Director, Eccles Everhart, AIA. They have been faithful to every task and in constant attendance at every meeting.



WILLIAMS

This year we would like to see progress in Research providing valuable information to our members on the use of new materials and methods of construction. This is especially appropriate for 1956 since the theme of our Regional Conference April 12, 13 and 14 in Durham-Raleigh-Chapel Hill is "New Materials and Construction in Architecture."

We would also like to see additional progress in Public Relations, in the Collaboration of Design Professions, and in the strengthening of community services through the Councils of Architects in all areas of the State. The opportunity of service in our community in this manner on matters where our training can be most valuable is potentially beneficial to every professional interest.

Some planning is necessary in connection with the Centennial Observance of the American Institute of Architects in 1957.

The committee on the Regional Conference, headed by William H. Deitrick, FAIA, has reported and called on all Architects for their cooperation. We would like our friends in the materials industry to have choice locations for booth displays since we anticipate a good attendance from Architects all over the Southeast. These will be allotted on a first request basis, and we urge a prompt reply to the announcements already sent out.

Committee assignments are being made, and we would like to know your preference. Your active interest is needed.

+ + +

### SOUTHERN ARCHITECT IN RUSSIA

An official request for a sample copy of Southern Architect has been received from the Russian government, the request coming from V/O "Mezh-dunarodnaja kniga" (Import Department), Moscow, G-200, USSR.

In making the request, it was stated that the Russian government is ordering a number of foreign publications for various Soviet Institutions and Libraries and that Southern Architect is desired for consideration for that purpose.

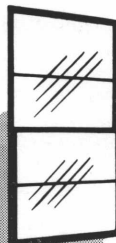
Since no defense matter is contained in Southern Architect a sample copy was sent, not in any hope of improving contemporary living in Russia, but in the hope that it might improve the Russians' ability to live with their contemporaries, Publisher Thomas Broughton said.

# TRUSCON

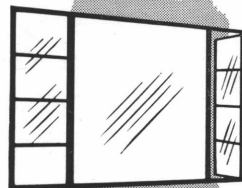


## METAL BUILDING PRODUCTS

Residential • Commercial • Industrial



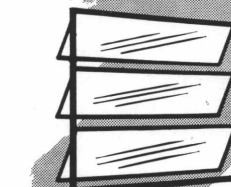
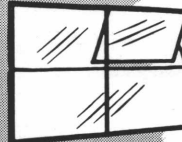
DOUBLE-HUNG STEEL WINDOWS



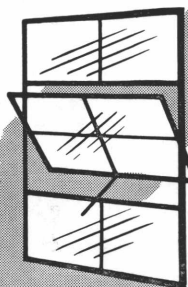
STEEL CASEMENTS



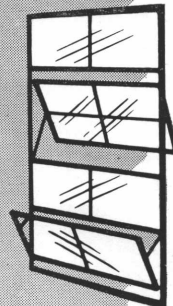
RANCH  
WINDOWS



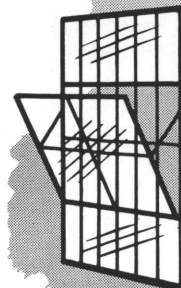
ALUMINUM AWNING WINDOWS



PIVOTED WINDOWS



PROJECTED WINDOWS



SECURITY WINDOWS

and other famous TRUSCON products including . . .  
SCREENS — STORM SASH — CASINGS  
METAL LATH PRODUCTS

WHEN you specify TRUSCON . . . your client knows he's getting the best. And Delph service matches Truscon quality — a good combination.



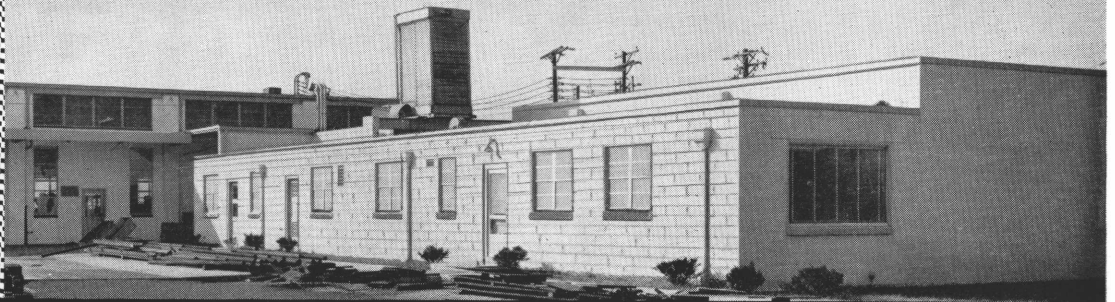
Distributed in the Carolinas by

**HARDWARE & SPECIALTY CO.**

CHARLOTTE + RALEIGH + RICHMOND

## SOLITE LIGHTWEIGHT UNITS

ARE CHEMICALLY INERT—WILL NEVER RUST OR STAIN.



# Build with **SOLITE** and avoid this headache!

## ORDINARY MASONRY UNITS

DEVELOP RUST SPOTS AND STAINS  
THAT CAN NEVER BE CORRECTED.



Photographs of two wings of the same building. Owner's name supplied upon request.

**SOLITE**®

Masonry Units will never rust or stain. This single feature, which Solite's controlled manufacturing process *guarantees*, saves owners thousands of dollars in maintenance cost yearly. Rust spots and staining of ordinary units will bleed through several coats of paint in a matter of a few months . . . a condition that can not be permanently corrected.

**SOLITE**®

because of its controlled manufacturing process, also guarantees masonry units that are . . . **EXTRA LIGHT**—yet extra strong . . . **FIRE RESISTANT** . . . **SOUND ABSORBERS**—extra quiet . . . **NATURAL INSULATORS**—lower heating and cooling costs . . . **TERMITE PROOF**. In addition Solite masonry units hold nails without chipping and their smooth, uniform texture offers unlimited design possibilities.

**Yes, you avoid building headaches when you build with SOLITE. Consult your local Block Manufacturer about these money saving advantages of building with Solite Lightweight Masonry Units.**

**REMEMBER** — Architects and engineers are professional advisors. Regardless of what type of construction you are interested in, consult them. They will be glad to help you build better.

# **SOLITE**®

**PLANTS:** Aquadale, N. C., Bremo Bluff, Va.

**OFFICES:** P. O. Box 205, Richmond, Va., P. O. Box 1843, Charlotte, N. C.





Officers of the North Carolina Chapter of the American Institute of Architects for 1956 are pictured above, left to right, as follows: F. Carter Williams, AIA, of Raleigh, re-elected President; Robert L. Clemmer, AIA, of Hickory, Director; William R. James, Jr., AIA, of Winston-Salem, re-elected Vice-President; Cyrill H. Pfohl, AIA, of Winston-Salem, re-elected Secretary; Leslie N. Boney, Jr., AIA, of Wilmington, Director; and James L. Beam, Jr., AIA, of Cherryville, Treasurer. A. G. Odell, AIA, of Charlotte, Director, was not present when the above photograph was made.

## 42nd ANNUAL MEETING NCAIA HIGHLY SUCCESSFUL

The 42nd annual meeting of the North Carolina Chapter of the American Institute of Architects at Chapel Hill January 26-27-28 was highlighted by the adoption of a resolution calling for state legislation to enable local communities to facilitate the promotion of redevelopment projects with federal assistance, addresses by professional and construction industry leaders, and the re-election of F. Carter Williams, AIA, of Raleigh as President.

Also re-elected to serve with President Williams were William R. James, Jr., AIA, of Winston-Salem, Vice-President; and Cyrill H. Pfohl, AIA, of Winston-Salem, Secretary. James L. Beam, Jr., AIA, of Cherryville, was elected Treasurer, succeeding James W. Griffith, AIA, of Greenville. Leslie N. Boney, Jr., AIA, of Wilmington, was elected to a three-year term on the board of directors. Mr. Boney replaces Eccles D. Everhart, AIA, of High Point, who completed a three-year term. Hold-over directors are Robert L. Clemmer, AIA, of Hickory, 1957, and A. G. Odell, Jr., AIA, of Charlotte, 1958.

The nominating committee paid high tribute to President Williams in presenting his name for re-election, pointing out that the Chapter had completed a very successful year and that a number of Chapter projects are in progress and need experienced leadership to carry them through to completion.

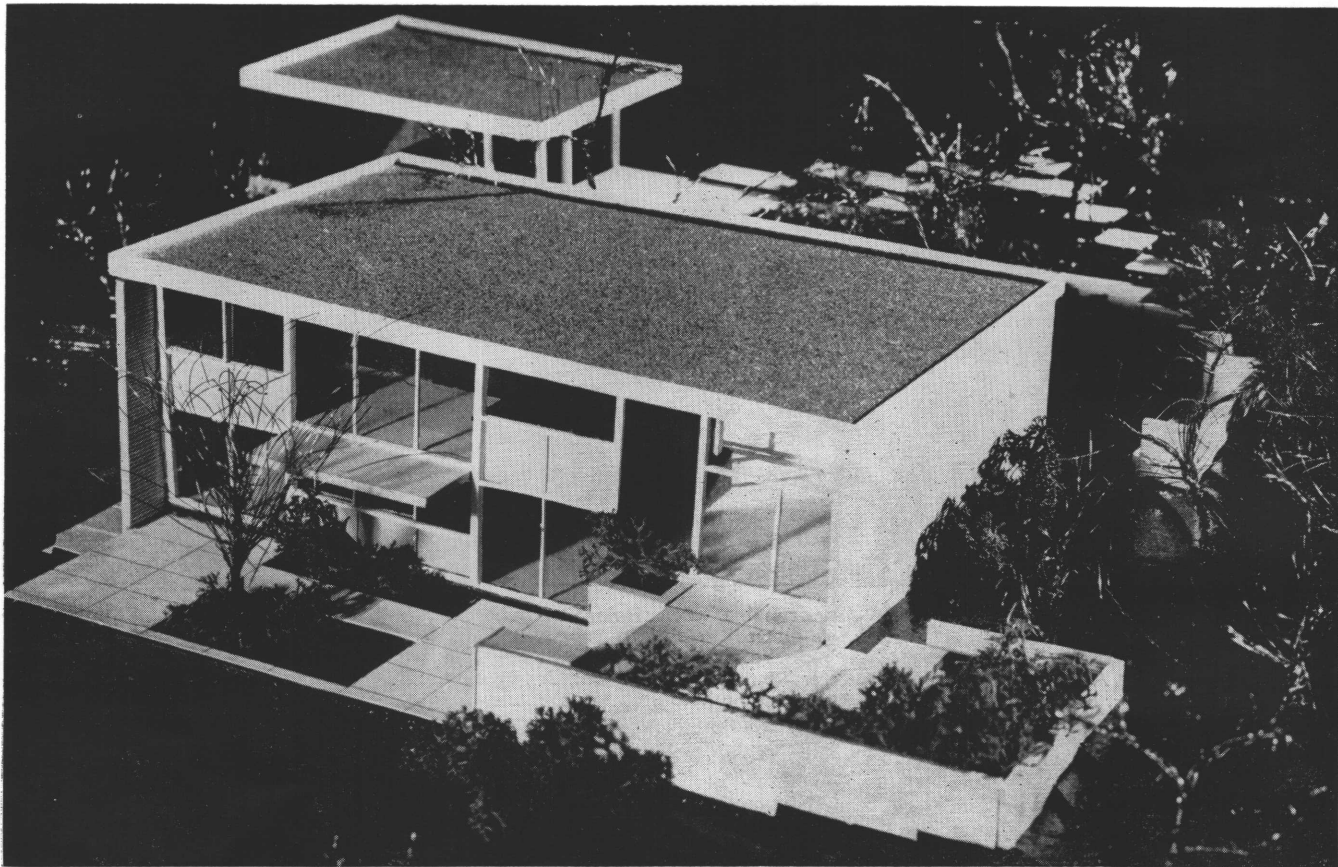
Among the speakers appearing on the program were Douglas Haskell, AIA, Editor of Architectural

Forum; Stanton Walker, Director of Engineering for the National Ready Mixed Concrete Association; Herbert M. Millkey, AIA, Regional Director of the South Atlantic Region of the American Institute of Architects; and Henry L. Logan, Vice-President of the Holophane Company and a national authority on lighting.

Plans for the coming Regional Conference of the South Atlantic District at Durham in April were presented by General Chairman William Henley Deitrick, FAIA, of Raleigh, and Regional Director Millkey. Another feature of the sessions was the presentation of the AIA film, "Architecture — U. S. A." by Cyrill H. Pfohl.

New corporate members who were accepted included Julian A. Altobellis, AIA, of Wilmington; Robert Edward Bush, AIA, of Hickory; Robert L. Daniels, AIA, of Brevard; J. Stanley Fishel, AIA, of Raleigh; Don Deleno Folk, Jr., AIA, of Charlotte; Jack Thurston Gray, AIA, of Charlotte; George Albert Griffin, AIA, of Concord; Henry C. McDonald, AIA, of Brevard; and William Roy Wallace, AIA, of Winston-Salem.

New associate members included Robert Lee Clark of Hickory, Robert Gladstone of Chapel Hill, William D. H. Jackson of Durham, Henry C. Moore of Winston-Salem, Peter R. Norris of Raleigh, Herbert L. Walker, Jr., of Durham, and Herschel Gray Walters of Charlotte.



MODEL OF LIPMAN RESIDENCE

## MATSUMOTO WINS NATIONAL DESIGN AWARD

The design by George Matsumoto, AIA, of Raleigh, for the proposed house of Mr. and Mrs. E. M. Lipman in Richmond, Virginia, has won an award citation in the residential category of the third annual Design Awards Program sponsored by Progressive Architecture, national architectural magazine.

The award-winning designs were selected by an eminent professional jury composed of Architects William Lescaze, FAIA, Robert E. Alexander, AIA, Alfred L. Aydelott, AIA, and Pietro Belluschi, FAIA, and Engineer Paul Weidlinger.

The award was presented by Editor Thomas H. Creighton at an awards banquet held in Detroit on January 20. The principal speakers on that occasion were Pietro Belluschi, Dean of the School of Architecture and Planning at Massachusetts Institute of Technology, and Walter Reuther, head of the Industrial Union Department of AFL-CIO and a member of the Citizens' Redevelopment Corporation of Detroit.

The Progressive Architecture competition is the only national architectural competition based on projects in the design stage rather than on completed buildings. The editors believe that good

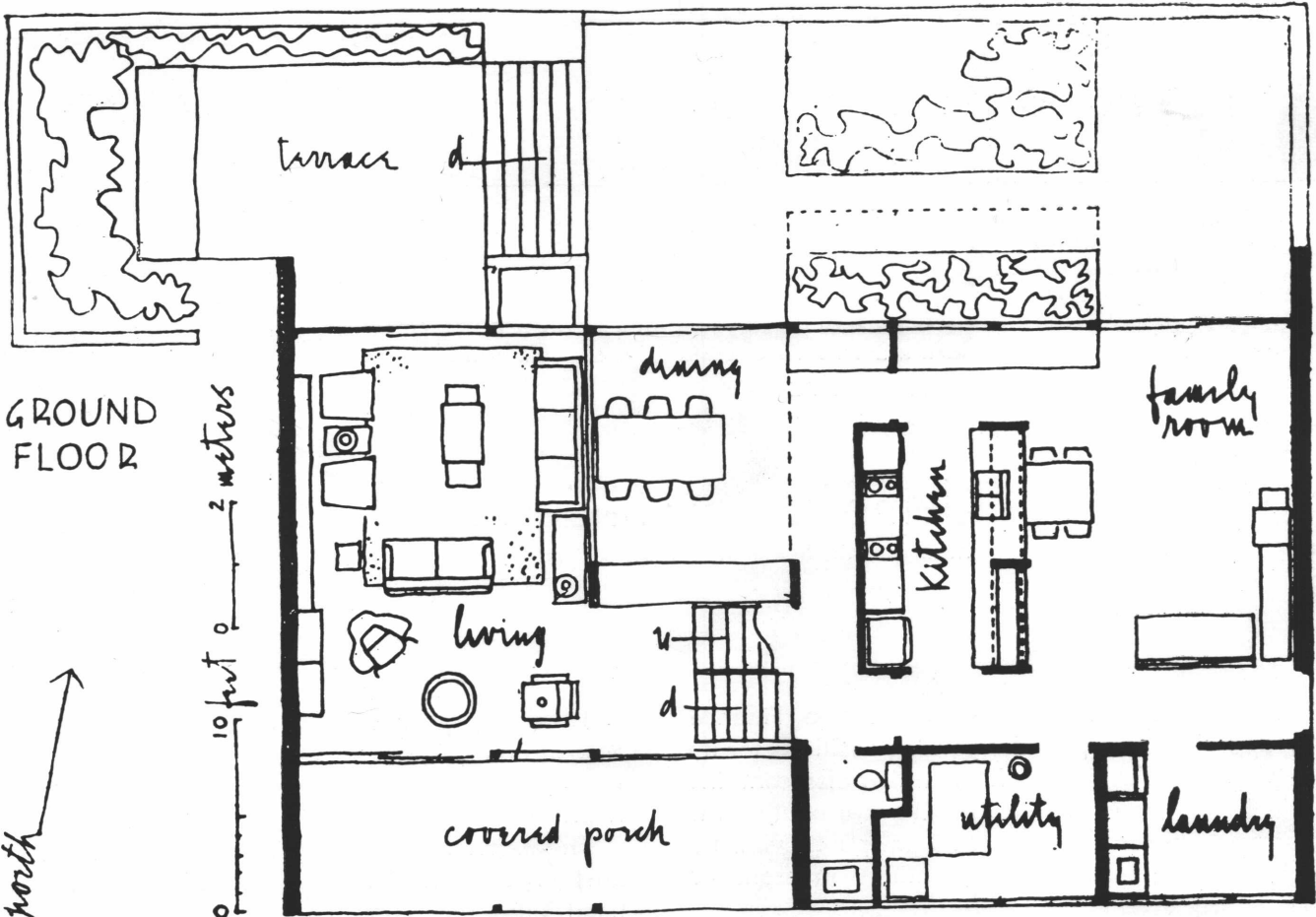
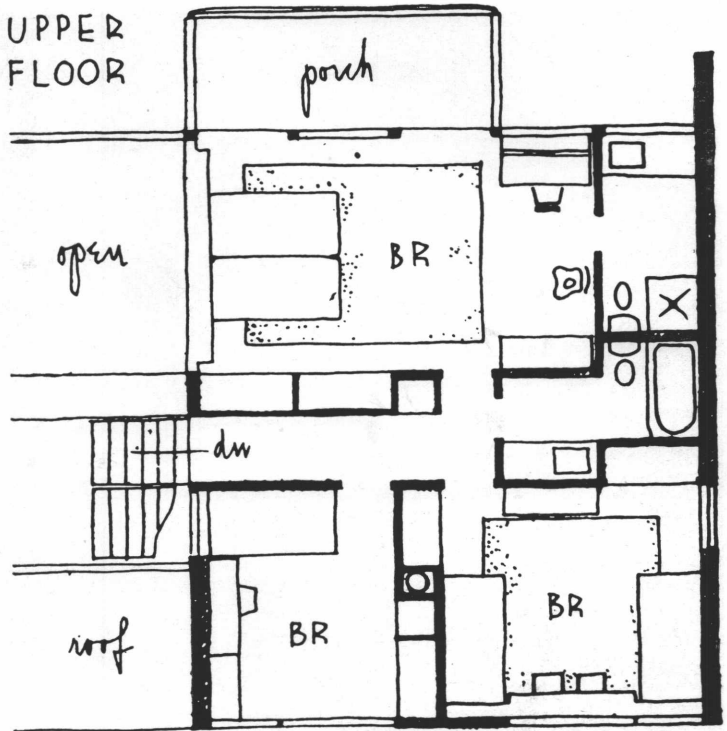
design ideas need recognition in order to give encouragement not only to the architects and clients recognized but also to other individuals and communities concerned with similar problems. From the more than 700 designs submitted by the country's leading architects, a First Design Award was selected, seven Design Awards were made in various building categories, and forty-two award citations were presented.

The Lipman house will be situated on a rather hilly site overlooking the James River. The jury commended the architect for his expert solution to this difficult site. Provision is made for the large gatherings which the family likes to entertain. Large glass-wall areas will take full advantage of the view.

George Matsumoto is a member of the North Carolina chapter of the American Institute of Architects and the Raleigh Council of Architects. He is presently Associate Professor of Architecture in the School of Design of North Carolina State College. He is on the board of directors of the Raleigh Chamber Music Guild. Mr. Matsumoto's associate on the Lipman house is Wayne F. Koontz, and T. C. Brown of Raleigh is the Mechanical Engineer.



UPPER  
FLOOR





## OFFICE BUILDING, HOME FINANCE GROUP

CHARLOTTE

James A. Stenhouse, AIA

Member of the firm of J. N. Pease & Company

CHARLOTTE

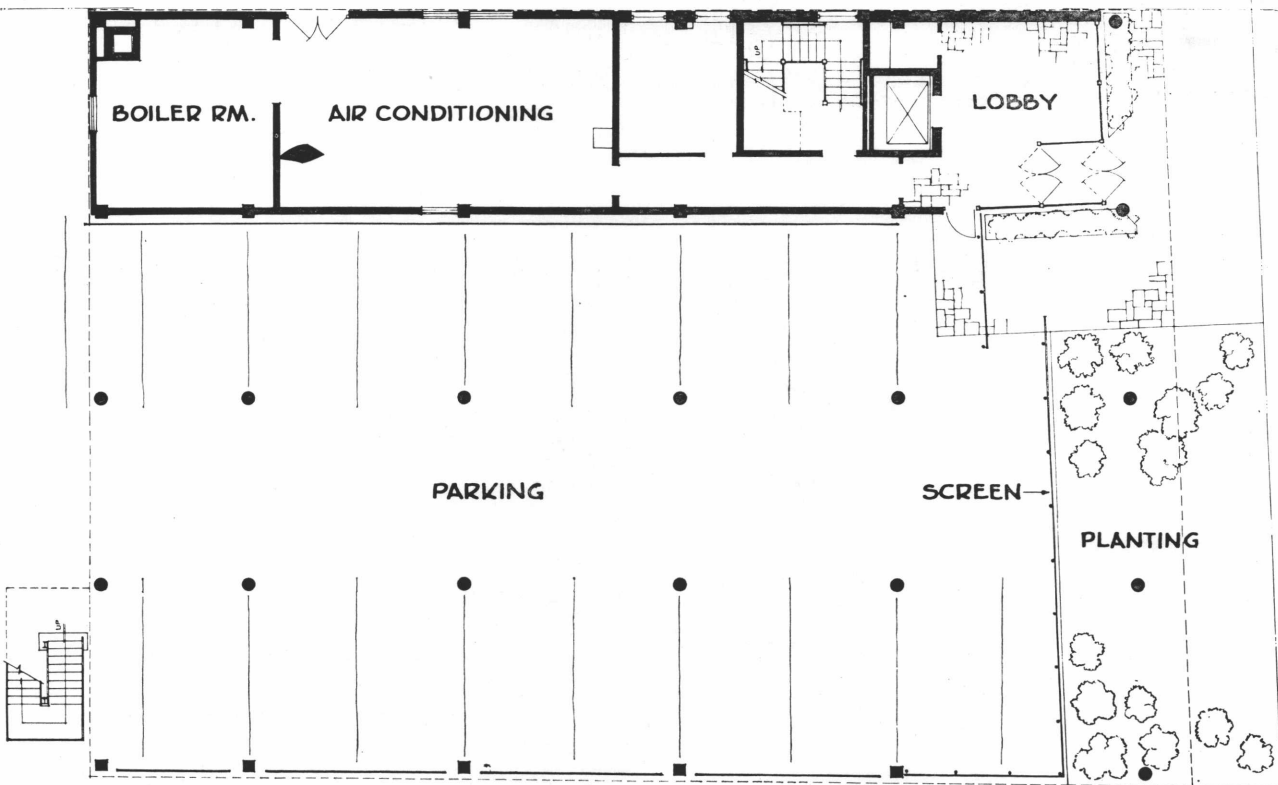
The new office building of the Home Finance Group in Charlotte provides parking facilities for its employees on the ground floor, which also contains a lobby and space for the mechanical equipment. The parking area is screened from public view by corrugated asbestos, with plantings in front of the wall.

The lobby is glassed in, with a flagstone floor. Second and third floors are entirely devoted to office space except for a coffee bar on the third floor.

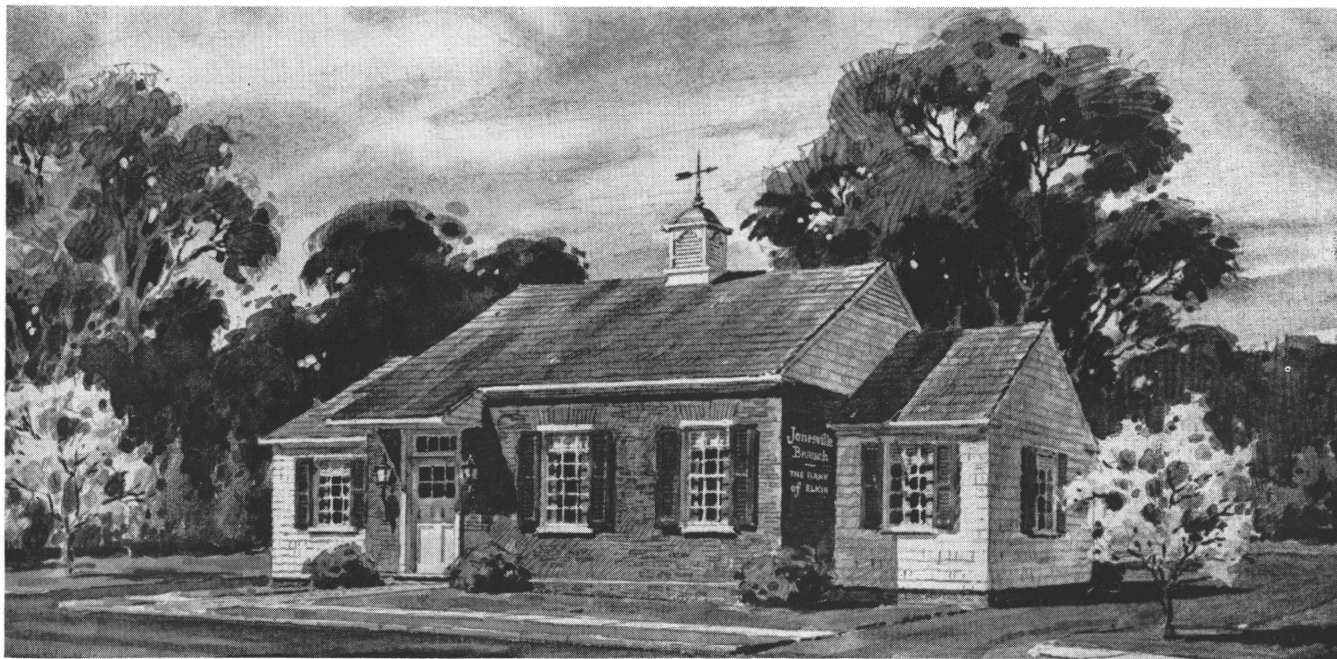
The exterior of the building is stacked Norman buff brick, with tinted heat absorbent glass. All head joints are plumb.



TYPICAL FLOOR



FIRST FLOOR



EXTERIOR

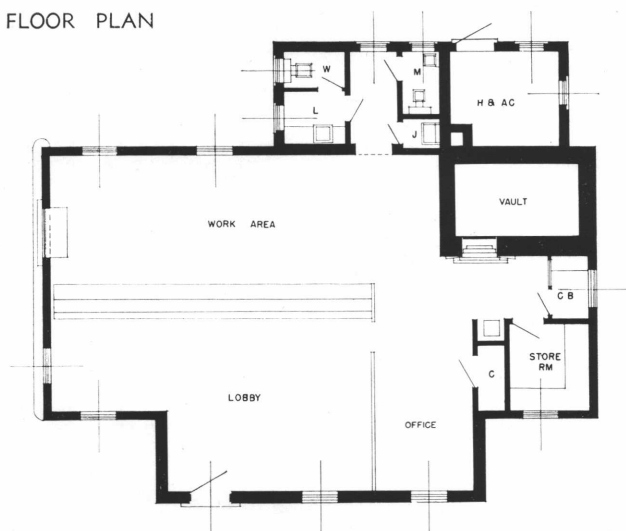
## BRANCH BANK, BANK OF ELKIN

JONESVILLE

William Roy Wallace, AIA

WINSTON-SALEM

FLOOR PLAN

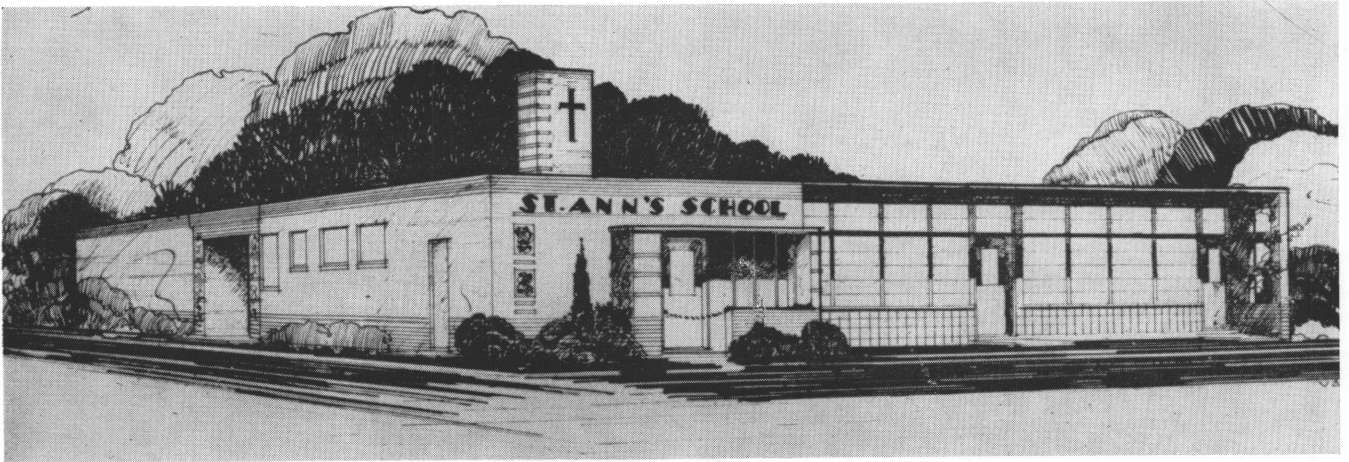


A branch bank designed along the lines of a colonial residence is the Jonesville branch of the Bank of Elkin. William Roy Wallace, AIA, of Winston-Salem was the architect.

Hand-made brick and cedar shingles compose the exterior of the building, while the roof is asbestos shingles, with wood double-hung windows. The interior wainscot and trim is old pine. The building has an acoustical ceiling, plaster side-walls, vinyl tile floor and is air-conditioned. Lighting is incandescent recessed. A flush wall drive-in window serves patrons who do not wish to leave their automobiles.

To bring the grade up to the level of the public highway, the property required a 20-foot fill at the rear of the building and around the building for the driveway. As the fill was fresh, having been completed just prior to construction, it was necessary to locate pads throughout the slab and the slab itself was designed to distribute the load of the footings throughout the entire area covered by the structure.





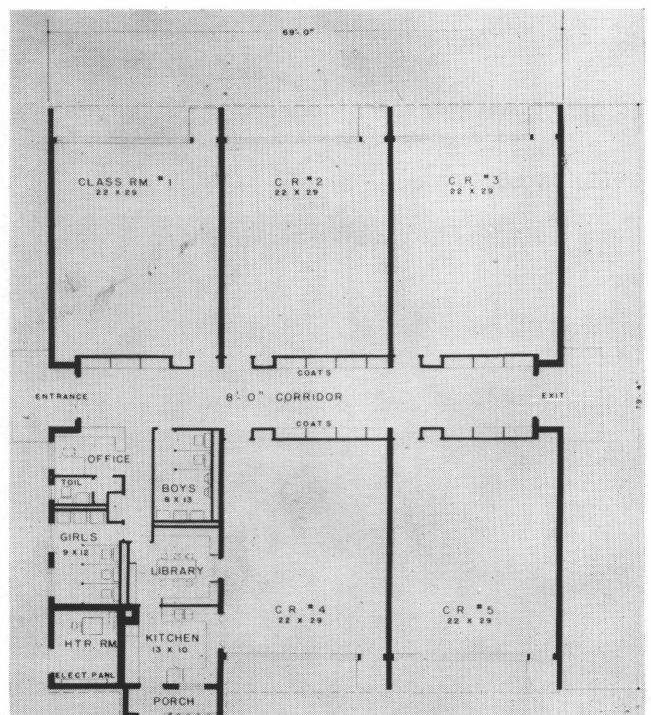
**PROPOSED**  
**ST. ANN'S PARISH ELEMENTARY SCHOOL**  
 FAYETTEVILLE

John R. Valentine, AIA  
 MOREHEAD CITY

In the drawing stage is the St. Ann's Parish School at Fayetteville, which is being designed by John R. Valentine, AIA, of Morehead City. The project is expected to be ready for bids in the near future. Owner of the school is the Roman Catholic Diocese of Raleigh, of which the Most Reverend Vincent S. Waters in Bishop.

Construction plans call for slab on floor construction; exterior walls of cavity type with brick face exterior; and aluminum awning type sash. The roof construction will be prestressed re-enforced poured concrete roof joists with light weight filler-block with grout fill and rigid fiber board insulation of built-up white marble chip finish roofing. Heating will be hot water or low pressure steam. Skylights and flourescent fixtures will provide lighting.

FLOOR PLAN







EXTERIOR FRONT



EXTERIOR REAR

## THE DUTCH CLUB

LEXINGTON

Breeze, Holland & Riviere, AIA

SHELBY

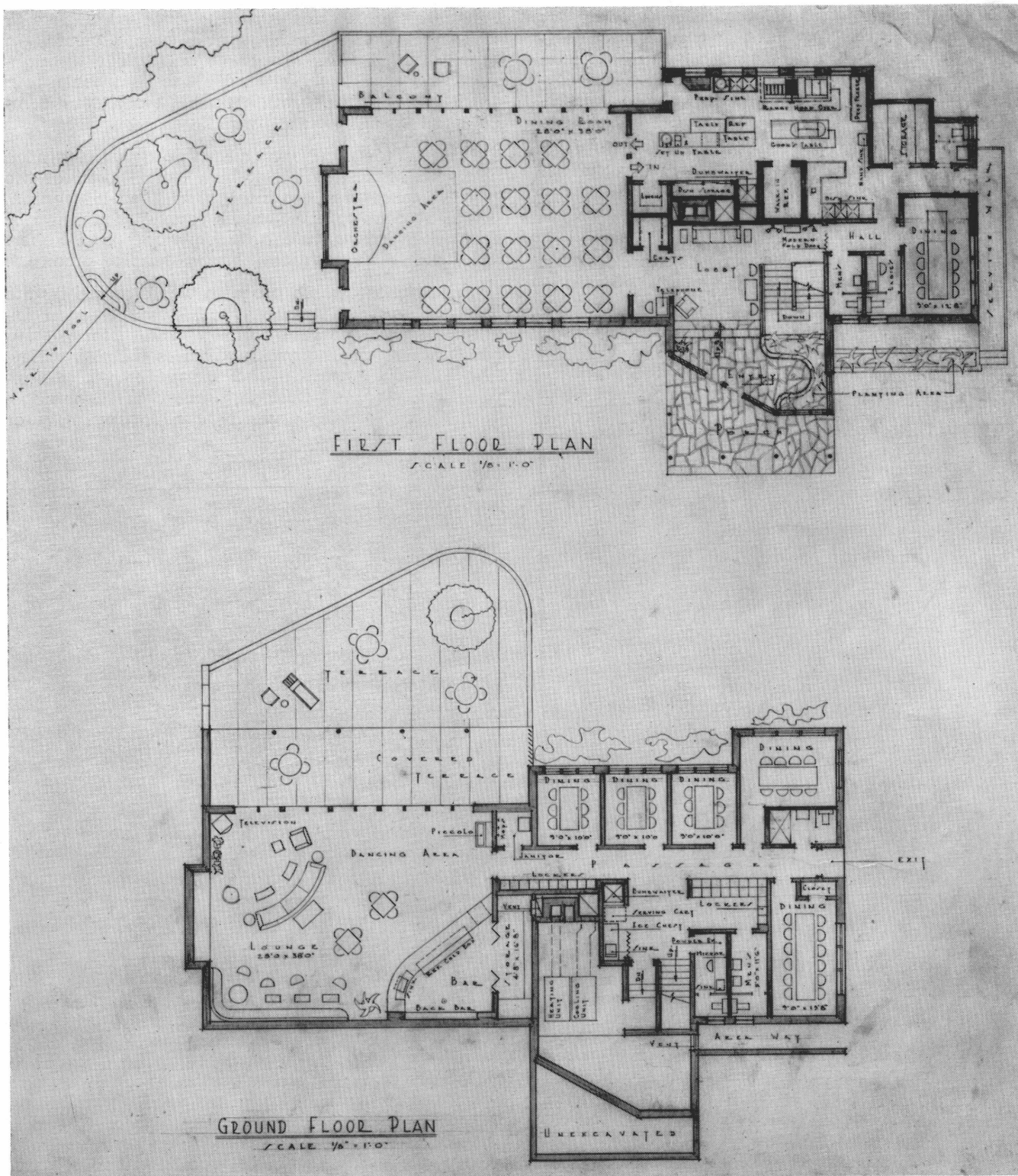
INTERIOR LOBBY



The Dutch Club utilizes a steep slope to provide facilities for the private use of members and the general public, which taking advantage of the best view, which was from the rear.

The ground floor provides private facilities for the use of members only, while the first floor has public areas for members and their guests.

Since the best view on the property overlooks the golf course, the architects took this factor into consideration in developing the design for the clubhouse. The exterior of the building is painted common brick, with mahogany trim. The interior is formed of brick, block and various wood paneling.



FLOOR PLAN, THE DUTCH CLUB



## 5 BUILDINGS SELECTED FOR AWARDS IN ARCHITECTURE

Five North Carolina buildings were selected for honor awards in architecture at the annual meeting of the North Carolina Chapter of the American Institute of Architects at Chapel Hill January 26-27-28. The honor awards program marked the second time that such awards have been made, the program having been inaugurated in 1955.

Eduardo Catalano of the faculty of the School of Design of North Carolina State College of Raleigh received special commendation for his residence in Raleigh.

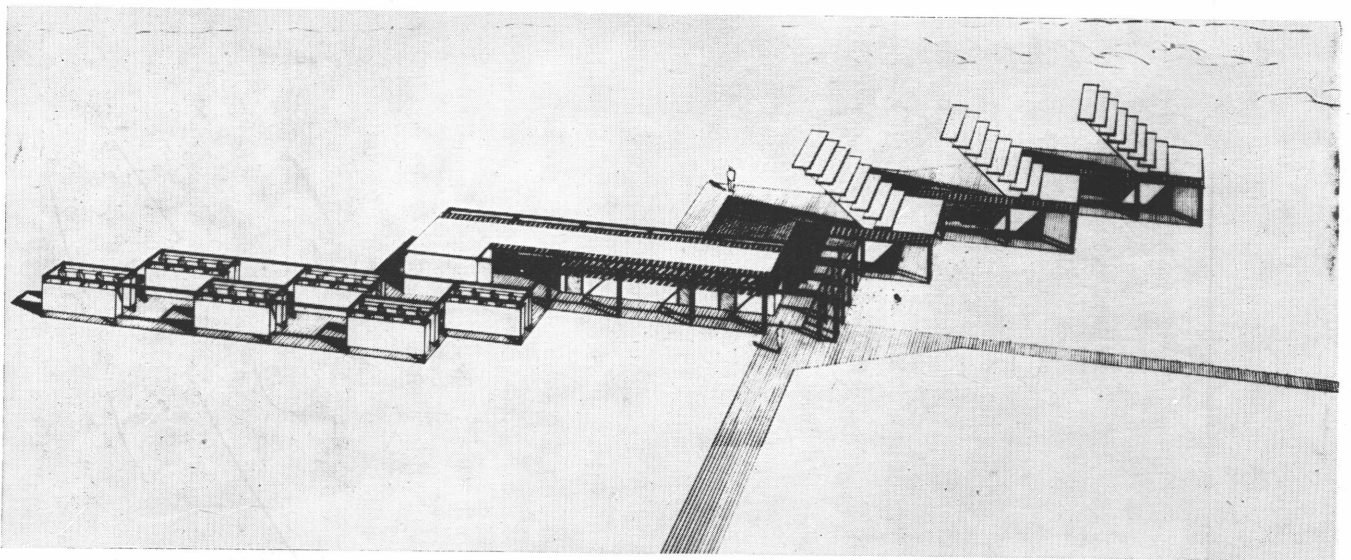
Ewards of merit were received by A. G. Odell, Jr., AIA, of Charlotte for the Charlotte Auditorium-Coliseum, and the Wilson Junior High School in Mecklenburg County; Stuart Baesel, AIA, of Charlotte for his own residence in Charlotte; and G. Milton Small, AIA, and George Matsumoto, AIA, of Raleigh, associated architects for the Gregory Poole Equipment Company building in Raleigh.

The 23 entries in the program, designed to

recognize architects for excellence of design in North Carolina buildings, will be on display in the Person Hall Art Gallery at Chapel Hill throughout February. The exhibits include 10 schools, four residences, one apartment, one library, four commercial buildings, and two clinics.

Judges for the honor awards program included Douglas Haskell, AIA, of New York, Editor of the Architectural Forum, Chairman; Paul Heffernan, AIA, of Atlanta, Ga., Professor of Architecture of the Georgia Institute of Technology; and Robert M. Little, AIA, of Miami, Fla., practicing architect.

The honor awards program was directed by the North Carolina Chapter, AIA, Committee on Exhibitions, composed of Mangum W. Sloan, AIA, of Charlotte, Chairman; Charles H. Wheatley, AIA, of Charlotte, Co-Chairman; Henry L. Kamp-hoefner, AIA, of Raleigh; Robert W. Etheredge, Jr., AIA, Raleigh; and Kenneth McCoy, AIA of Raleigh.



## CAPE HATTERAS PROJECT WINS CITATION

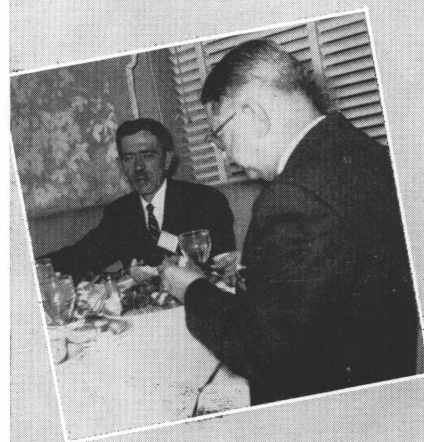
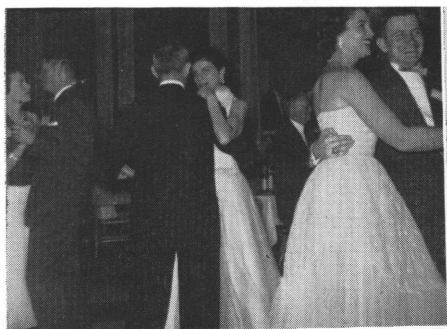
The design by the Design and Construction Division of the National Park Service of the United States Department of the Interior for the proposed Coquina Beach Day Use Area in Cape Hatteras National Seashore Recreational Area has won an award citation in the recreation category of the third annual Design Awards Program sponsored by Progressive Architecture, national architectural magazine.

Coquina Beach is a portion of the Hatteras Seashore area suitable for bathing, picnicking or other daytime uses. The architects have provided appropriate structures for picnickers, dressing enclosures, rest rooms, first aid and life guard headquarters, information and control points, and shel-

ters for tools and concession supplies. These groups will be repeated at intervals along the more than 50 miles of beach front. Particular attention was given to sun and wind factors in designing these various shelters. A shade screen with cantilevered and stepped fins, allowing even winds of hurricane force to pass through, was found to be most practical. Variations of this method will be used throughout the project.

John B. Cabot of the National Park Service is Supervising Architect of the Eastern Office of the Division of Design and Construction. Donald F. Benson is Project Architecture for the Coquina Beach Day Use Area.

# NCAIA ANNUAL MEETING, CHAPEL HILL, JANUARY 26, 27, 28, 1956





YOU ASKED FOR IT . . . MR. ARCHITECT

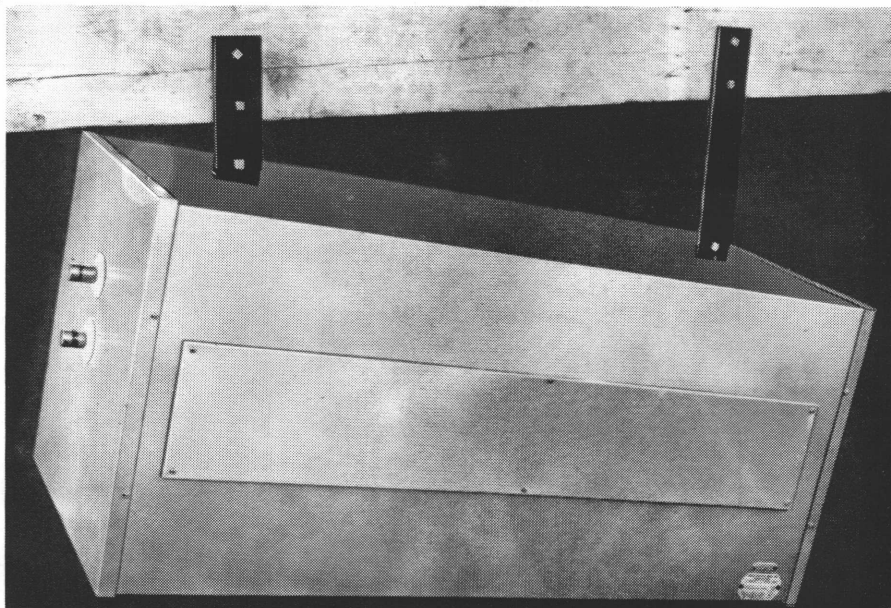
**SPACE SAVER**

**AUTOMATIC  
ELECTRIC**

**WATER HEATER**

*A Horizontal*  
**WATER HEATER**  
*For The Home*

For beneath the floor installation



**SAVES over 4 Sq. Ft.**  
OF VALUABLE FLOOR SPACE

Available in 30, 42 and 52 gallon capacities.

Heavily insulated for low cost operation.

New extended service and warranty plans on all models.

Five and Ten Year Warranty.

Deluxe models can be furnished with hot dipped galvanized or Vitaglas lined tanks.

**NOTE:** This Space Saver model can also be installed in an upright position.

**A. F. EPTING** **APPLIANCE COMPANY**

2116 THRIFT ROAD

CHARLOTTE, NORTH CAROLINA

FRANKLIN 6-1641



# LOEWENSTEIN RE-ELECTED FOUNDATION PRESIDENT

Edward Loewenstein, AIA, of Greensboro was re-elected President of the North Carolina Architectural Foundation at the annual meeting of the Board of Directors of the Foundation at Chapel Hill January 27.

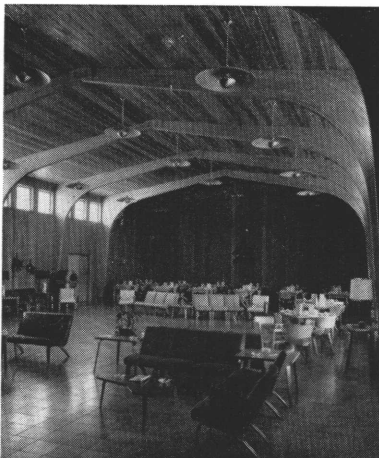
A. G. Odell, Jr., AIA, of Charlotte was chosen Vice-President, succeeding George Hackney, AIA, of Durham. L. L. Ray of Raleigh was re-elected Secretary and J. C. Vann of Raleigh was renamed Treasurer.

Elected to membership on the Board of Directors were Kenneth Scott, AIA, Leif Valand, AIA, and G. Milton Small, AIA, all of Raleigh; A. C. Woodruff, AIA, of Greensboro; Robert F. Arey, AIA, of Winston-Salem; and B. H. Stephens, AIA, of New

Bern. Mr. Stephens was also chosen to serve on the Foundation's Executive Committee.

Dean Henry L. Kamphoefner, AIA, of the School of Design of North Carolina State College, was a guest speaker and spoke briefly describing activities of the School of Design, including an announcement of plans for the dedication of the new School of Design building on April 12. Dean Kamphoefner also expressed the hope that the 1957 general assembly will make available an appropriation for a products design department.

A financial report revealed that the Foundation has received contributions of \$32,584.00 since it was organized in 1949. Contributions for 1955 amounted to \$6,321.15.



**PILOT LIFE INSURANCE  
CLUB HOUSE, Sedgfield, N. C.**

**Architects**  
McMinn, Norfleet and Wicker, AIA  
Greensboro, N. C.

**Contractor**  
H. D. Barnes, Greensboro, N. C.

## UNIT DECK

The versatile new sheathing which eliminates Purlins, Bridging, Insulation and Interior Finish. Available in White Fir and Cedar. Ask for detailed catalog.

# UNIT STRUCTURES, Inc.

The Nation's Largest Fabricator of Southern Pine Laminated  
Members proudly announce the appointment of

<p>.....</p>	
<p>• <b>A. P. HUBBARD</b></p> <p>• <b>WHOLESALE LUMBER</b></p> <p>• Box 881 GREENSBORO, N. C.</p> <p>• Ph. 5-3545 TWX: GN 341</p> <p>•</p>	<p>• <b>GEORGE ROBERTS LUMBER CO., INC.</b></p> <p>• 221 S. Church St. Box 3133, Station A</p> <p>• Charlotte 1, N. C. Greenville, S. C.</p> <p>• Phone ED 3-7566 Phone 3-4973</p> <p>•</p>
<p>.....</p>	

as district representatives for

## GLUED LAMINATED ARCHES • BEAMS • TRUSSES

Whatever your requirements may be, you'll find these two conscientious representatives ready and capable of serving you. All Unit laminated members are prefabricated to exacting dimensions to meet your specifications from Southern Pine—Supreme Structural Wood of the World. For complete information on design, quotations and erection, contact your nearest representative. Whatever your roof structure needs, you'll find the answer just as near as your telephone or write—



## UNIT STRUCTURES, INC.

General Offices—PESHTIGO, WISCONSIN  
Plants at MAGNOLIA, ARKANSAS and PESHTIGO, WISCONSIN

## ETOWAH BRICK

IN

- ▶ Red Face
- ▶ Buff Face
- ▶ Colonial Sand Finish Red
- ▶ Colonial Sand Finish Peach Blossom

### THE MOLAND-DRYSDALE CORP.

HENDERSONVILLE, N. C.

TEL. 6561



## SOUTHEASTERN CONSTRUCTION CO.

CHARLOTTE, N. C.

*Industrial, Commercial, Institutional Building*

## McDevitt & Street Company

GENERAL CONTRACTORS

505 Builders Building  
Charlotte, North Carolina



*Over 35 Years Continuous Experience in General  
Construction in the Southeast.*

## ISENHOUR

BRICK & TILE CO., INC.

Complete Lines  
Buff, Red Brick &  
Tile Products

SUBSIDIARY

## TAYLOR CLAY PRODUCTS

SALISBURY, N. C.

## BORDEN

BRICK & TILE COMPANY

GOLDSBORO—SANFORD—DURHAM  
NORTH CAROLINA

*Manufacturers of*

FACE BRICK

HOLLOW TILE

COMMON BRICK

STRUCTURAL TILE

**BUILD WITH BRICK**

## Central LUMBER CO.

ARCHITECTURAL WOODWORK  
TO DETAIL IN SOFTWOODS  
AND HARDWOODS

H. H. BAXTER - J. T. LAND - C. L. KISER

Tel ED 3-1194  
300 South Brevard Street  
Charlotte, N. C.

## 19 NEW ARCHITECTS LICENSED TO PRACTICE

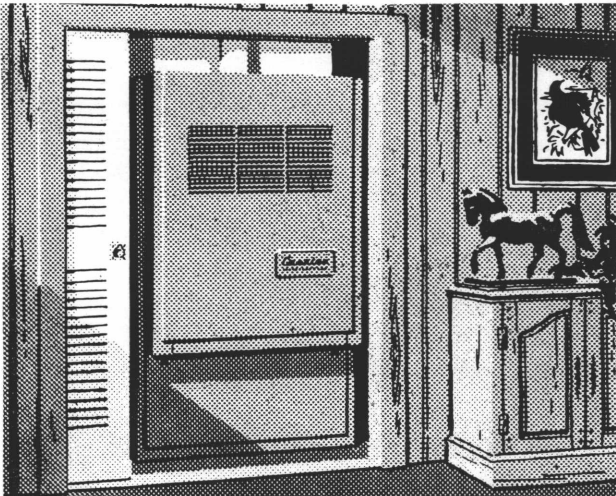
Nineteen new architects have been admitted to the practice of architecture in North Carolina by the North Carolina Board of Architectural Examination and Registration, according to an announcement by Ross Shumaker, AIA, Executive Secretary of the Board. The new architects were formally presented their certificates Saturday, January 28.

Admitted to practice were: Richard M. Arnold, Alvis O. George, Jr., James P. Milan, Peter R. Norris, and Stanford C. West, all of Raleigh; James E. Biggs, of Hickory; Walter L. Bost, Kannapolis; John A. Burton, IV, Sanford; William R. Campbell,

Jr., and Jesse J. Clark, Jr., of Greensboro; Robert E. Dilfield, of Atlanta, Ga.; George C. Hedden, Jr. and Frank Woodruff, Jr., of Charlotte; Hollis L. Ivey, of Lumberton; George J. Jernigan, Jr., of Dunn; David H. Journey, of High Point; William B. Keener, of Cary; Bruno Leon, of Fresh Meadows, N. Y.; and Joseph O. Riley, Jr., of Asheville.

Members of the registration board are Henry I. Gaines, AIA, of Asheville, President; Eric G. Flannagan, AIA, of Henderson, Vice-President; Leon McMinn, AIA, of Greensboro, Treasurer; and William A. Bowles, AIA, of Charlotte, and John Erwin Ramsay, AIA, of Salisbury, members.

## When Your Clients Talk Air Conditioning — Remember This...



THE CARRIER RESIDENTIAL WEATHERMAKER—\*heats with gas or oil \*cools with electric refrigeration \*fits in ten square feet \*installs in utility room, basement, closet \*needs no water

• Call on

**Carrier**

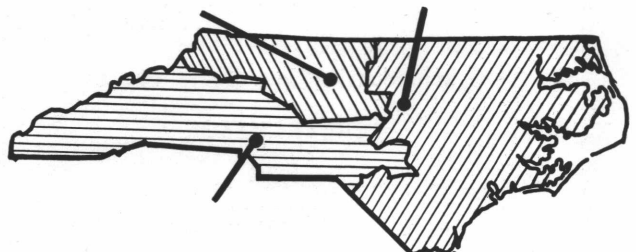
*the people who know air conditioning best*

- Carrier is the oldest and largest manufacturer in the field
- Carrier can air condition anything . . . from one small room to a many-storied structure
- Carrier has a strong, state-wide distributor-dealer organization which willingly puts its experience and service facilities to work for you, your contractor, your client

Carrier distributors and dealer areas in North Carolina:

**AIR CONDITIONING CORPORATION**  
481 English St., Greensboro

**STAHL-RIDER DISTRIBUTING COMPANY**  
500 Hoke St., Raleigh



**CAROLINA CONDITIONERS, INC.**  
1641 W. Morehead St., Charlotte, N. C.

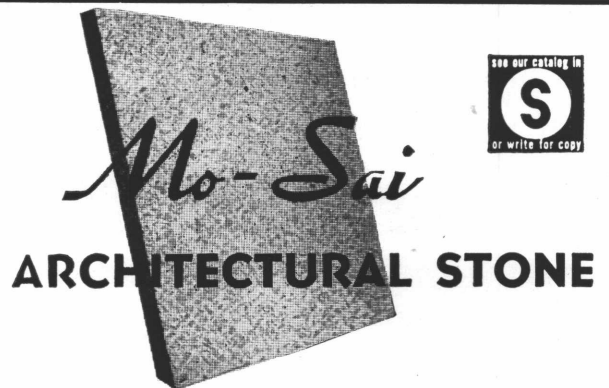
## MCCLURE LUMBER COMPANY

*Lumber and Building Materials*

Mount Holly Road

Telephone EX 9-5681

Charlotte, N. C.



## THE MABIE-BELL COMPANY

P. O. Box 2909 + Phone 4-7674 + Greensboro, N. C.

MORE AND MORE ARCHITECTS NOW SPECIFY . . .

- High Insulation Efficiency
- Positive Vapor Barrier
- Odorless and Clean



FIRST IN REFLECTIVE INSULATION



BOX 1050, DURHAM, NORTH CAROLINA

## Salisbury Lumber & Supply Co.

MILLWORK — BUILDING MATERIALS

S. Main St. at City Limits

Phone 2280

Salisbury, N. C.



Dial 8828  
Box 9514  
Raleigh

**STRUCTURAL STEEL  
FABRICATING  
ORNAMENTAL IRON**

OFFICE, PLANT AND WAREHOUSE  
RALEIGH, N. C.

## You Get More With MONARCH ELEVATORS

Monarch is a well established local company with a complete and experienced organization in Elevator Engineering, Manufacturing, Installation and Service. Ask a Monarch owner how 'you get more with Monarch Elevators'.

Phone 2-4563 • Greensboro, N. C.  
Phone Edison 4-5971 • Charlotte, N. C.

Offices in Principal Southern Cities

## DUNCAN PRINTMAKERS, INCORPORATED

Reproduction in All Its Phases

**DISTRIBUTOR  
FOR  
OZALID**

Machines — Sensitized Materials

303 W. 4th St.

Charlotte, N. C.

## Piedmont Industries

I N C O R P O R A T E D

MANUFACTURERS OF

**all-*Flexalum.***

**VENETIAN BLINDS  
AND  
METAL AWNINGS**

Tel. ED 2-1982  
FR 5-1132

Charlotte, N. C.



# ANNOUNCE NCAIA COMMITTEES FOR 1956

## CHAPTER AFFAIRS

(Executive Committee)

**Duties:** To formulate guides to the organizing and conduct of Chapter activities. Co-ordinating responsibility for all committee activities.

William R. James, Jr., AIA, Chairman  
F. Carter Williams, AIA  
Cyrill H. Pfohl, AIA  
James L. Beam, Jr., AIA  
A. G. Odell, Jr., AIA  
Robert L. Clemmer, AIA  
Leslie N. Boney, Jr., AIA

## MEMBERSHIP

**Duties:** To foster a consistent growth of the Chapter membership; to instruct all candidates for membership regarding his professional obligations; to induct new members by means of appropriate ceremonies.

Robert L. Clemmer, AIA, Chairman  
J. L. Beam, AIA  
C. L. Vaughn, AIA  
George F. Hackney, AIA  
Roy F. Kendrick, AIA

## OFFICE PRACTICE

**Duties:** To explore the possibility of assisting the Architect to perfect himself in his profession through technical improvement in his office organization and techniques, and to develop office aids to accomplish this purpose. This committee shall have sub-committees on:

- (a) Fees—to act for and on behalf of the Chapter in matters relating to fees.
- (b) Contracts—to advise regarding any needed revisions in the Standard AIA Documents and to promote their general use.
- (c) Ethics and Procedure.
- (d) Office Procedures—to develop and promote the use of aids to office routine and accounting methods.

Luther S. Lashmit, AIA, General Chairman

Leon S. McMinn, AIA, Co-Chairman  
Walter W. Hook, FAIA  
Anthony Lord, AIA

H. Raymond Weeks, AIA, Co-Chairman  
George Watts Carr, AIA  
John F. Wicker, AIA

S. Porter Graves, AIA, Co-Chairman  
James A. Malcolm, AIA

Gorrell B. Stinson, AIA, Co-Chairman  
William Roy Wallace, AIA  
Charles C. Hartmann, Jr., AIA

## CONSTRUCTION INDUSTRY RELATIONS

**Duties:** To maintain contact with and foster cooperative relationships between contractor organizations, producer and dealer organizations, and labor organizations for the purpose of promoting efficient and economical building operations.

Jesse M. Page, AIA, Chairman  
Louis F. Voorhees, AIA  
Robert H. Stephens, AIA

### AIA-AGC Sub-Committee:

Macon S. Smith, AIA, Co-Chairman  
Ralph B. Reeves, Jr., AIA  
Marion H. Ham, AIA

## PUBLIC RELATIONS

**Duties:** By means of planned publicity through all public information media to promote public recognition of the profession and encourage the use of architectural services for all public and private construction projects.

S. S. Ferebee, AIA, Chairman  
H. R. McLawhorn, Jr., AIA  
Turner G. Williams, AIA  
Andrew L. Pendleton, AIA  
Robert H. Stephens, AIA  
Arthur McKimmon, AIA  
John Scott Thomas, AIA  
Robert E. Bush, AIA  
John C. Higgins, AIA  
Fred W. Butner, Jr., AIA  
Eric G. Flannagan, Jr., AIA  
Robert L. Clemmer, AIA  
Robert W. Conner, Associate

## COLLABORATION OF DESIGN PROFESSIONS

**Duties:** To cooperate on problems of mutual interest to the Institute, the National Society of Professional Engineers, the American Society of Civil Engineers, and other groups dealing with matters of building design.

## EDUCATION

**Duties:** To promote long-range objectives in architectural education in cooperation with public and private schools and Schools of Architecture within the territory of the Chapter and with the State Board of Examiners for the purpose of perfecting the Architect's preparation for the practice of his profession; to foster relationships with artists practicing the Arts of Design related to Architecture.

## INSTITUTE FELLOWSHIP

**Duties:** To make nominations and complete submissions of necessary data for proposed advancement of Chapter members to Fellowship in the Institute in accordance with Institute requirements.

## EXHIBITIONS

**Duties:** To conduct periodic programs of exhibitions and awards in order to encourage the appreciation of excellence in architecture, building construction, and craftsmanship. To arrange for public showings and publicity.

Lucien J. Dale, AIA, Chairman  
Thomas T. Hayes, AIA  
George Matsumoto, AIA  
J. Stanley Fishel, AIA  
Albert B. Cameron, AIA

Robert F. Arey, AIA, Chairman  
Edwin F. Schnedl, AIA  
Guy E. Crampton, Jr., AIA  
Cecil D. Elliott, AIA  
Henry L. Kamphoefner, AIA

Erle G. Stillwell, FAIA, Chairman  
Walter W. Hook, FAIA  
William Henley, Deitrick, FAIA

Kenneth McC. Scott, AIA, Chairman  
Henry L. Kamphoefner, AIA  
Robert W. Etheridge, AIA  
Jack M. Pruden, AIA  
Albert B. Cameron, AIA



"above all . . . a good roof"

SPECIFY

# BUCKINGHAM SLATE

*With confidence*

## Buckingham-Virginia Slate Corp.

1103 East Main Street

RICHMOND, VA.

PHONE 3-2947

## HOWARD V. CATON CO.

### ● HERMAN NELSON DIV., AAF CO.

Unit Ventilators, Propeller Fans,  
Centrifugal Fans, Unit Heaters

### ● MARLO COIL COMPANY

Air-handling Units, Coils,  
Cooling Towers

### ● JENN AIR

Power Roof Ventilators

### ● DAVIDSON HY-DUTY

Power Roof Ventilators

### ● J. J. FINNIGAN COMPANY

Hot Water Generators  
Storage Tanks

### ● SPENCER HEATER CO.

Boilers

### ● UNARCO

Air Conditioning Equipment

Builder's Bldg., Charlotte, N. C.

Phone FR 5-5869

## DUES

**Duties:** To formulate a revised dues structure in keeping with the financial needs of the Chapter, contemplating a possible Executive Secretary and additional public relations activity.

## GOVERNMENT RELATIONS

**Duties:** To promote the employment on public works of Architects in private practice. To limit the functions of governmental agencies to policy making and programming. To promote an interchange of information between Architects in order to defend the profession against further encroachments of bureaus at city, county, state, and federal levels.

## LEGAL AFFAIRS

**Duties:** To maintain a thorough knowledge of all state legislation and local ordinances and the enforcement thereof pertaining to architectural practice. To maintain close coordination with the Chapter attorney. To keep informed regarding potential legislation at its formative stage during sessions of the North Carolina State Legislature. To assist Chapter actions regarding the profession as affected by proposed or existing ordinances or laws.

A. G. Odell, Jr., AIA, Chairman  
Henry I. Gaines, AIA  
John C. Knight, AIA  
Leslie N. Boney, AIA  
Walter W. Hook, FAIA  
H. R. McLawhorn, AIA  
Cyrill H. Pfohl, AIA

Anthony Lord, AIA, Chairman  
H. Raymond Weeks, AIA  
John R. Holloway, AIA

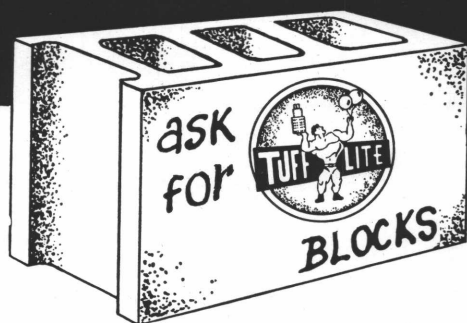
Albert L. Haskins, Jr., AIA, Chairman  
A. G. Odell, Jr., AIA  
J. Burton Wilder, AIA  
R. L. Rice, AIA  
T. P. Hawkins, AIA  
Hugh E. White, AIA

## EXPANDED-CLAY AND SHALE AGGREGATE

USE



it makes BETTER LIGHTWEIGHT BLOCKS  
AND LIGHTWEIGHT CONCRETE



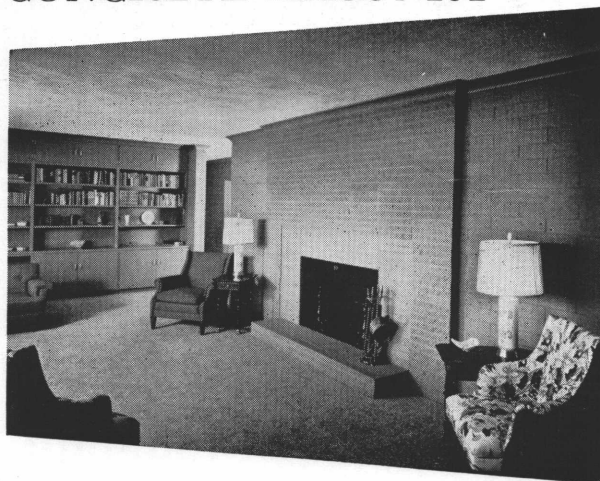
## For Better Building

CAROLINA TUFF-LITE CORPORATION

P. O. BOX 432      PHONE 188

SALISBURY, N. C.

## Finer Homes Of CONCRETE MASONRY



The truth about concrete masonry is proven in the above picture, this interior shot shows the exposed walls and fire place, as an example of the type of Finer Masonry construction at its best.

Call on the N. C. Masonry Association Member in your area, or an Architect, for complete information.

## N. C. CONCRETE MASONRY ASSN.

1411 Insurance Bldg.

Phone 3-6357

RALEIGH, NORTH CAROLINA



## BUILDING CODES

**Duties:** To keep informed of governing codes, confer with interested parties in discussion of matters relating thereto and make recommendations as to any proposed changes.

## HOSPITALS AND PUBLIC HEALTH

**Duties:** To cooperate with public and private agencies within the territory of the Chapter in programs effecting hospitalization and public health.

## COMMUNITY DEVELOPMENT

**Duties:** To cooperate on problems of mutual interest to the AIA, the Public Housing Administration and the State Organization of Housing Officials in matter of community planning, Housing Design and Construction Standard, and to demonstrate by interest and activity the ability of the Architectural profession to assume a position of leadership in the replanning and development of existing communities, as well as the planning and development of rural areas.

## REGIONAL CONFERENCE 1956

**Duties:** To plan and carry out 1956 Southeastern Regional Conference, American Institute of Architects, at Durham, Raleigh, and Chapel Hill.

Eccles D. Everhart, AIA, Chairman  
John Erwin Ramsay, AIA  
H. K. Olive, Associate

Walter W. Hook, FAIA, Chairman  
William M. Weber, AIA  
Charles H. Boney, AIA  
Charles C. Hartmann, AIA  
Walter D. Toy, AIA

James M. Webb, AIA, Chairman  
Arthur C. Jenkins, AIA  
John J. Rowland, AIA  
John Parker, Associate  
Robert Gladstone, Associate

William Henley Deitrick, FAIA, Chairman  
Richard L. Rice, AIA, Treasurer  
Robert G. Etheridge, AIA, Secretary  
Henry L. Kamphoefner, AIA, Co-Chairman  
for Raleigh  
Archie R. Davis, AIA, Co-Chairman  
for Durham  
James M. Webb, AIA, Co-Chairman for  
Chapel Hill

## Only Way To Protect Investment Is Tested Modern Materials

Newest floors, walls and acoustical  
sanitary ornamental ceilings.

New vinyl floors, no waxing.

New vinyl wall coverings eliminate  
painting and papering.

Barwick, Beattie and New Loma  
Loom Carpets.

Come see 4 types of steel or wood  
kitchens to make modern decisions.

## BOST BUILDING EQUIPMENT CO.

FLOOR AND ACOUSTICAL CONTRACTORS

912 E. 4th St., Charlotte, N. C. Phone ED 3-0321

## SNOW LUMBER COMPANY

*Quality*  
**MILLWORK**  
*Since 1880*

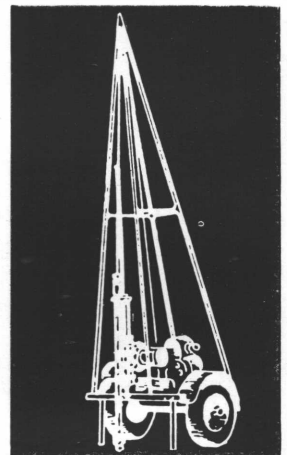
HIGH POINT, NORTH CAROLINA

## Gardner & Meir

- LABORATORY &  
FIELD SOIL TESTING
- SOIL BORING
- ROCK DRILLING
- REPORTS

Phone: 21636

DURHAM, N. C.



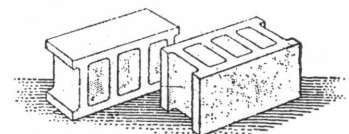
*For Quality Block*

*Contact*

## Hoke Concrete Works

PHONE 721

RAEFORD, N. C.



MEMBER NORTH CAROLINA CONCRETE MASONRY ASSN.

## HOME BUILDING INDUSTRY

**Duties:** To promote utilization of architectural services by merchant builders; and to collaborate with Associations in the Home Building field.

## RESEARCH

**Duties:** To study problems affecting the Architectural profession arising from the National Defense Emergency including the interest of the profession in matters of manpower, regulation of the building industry, procurement of design services, civil defense housing, dispersal programs, design of buildings for applications of Nuclear Science, and fellowships for the study of the applications of Nuclear Science to Architecture. To explore the possibilities of interesting components of the building industry, the government and others in sponsoring building research programs to be administered by the AIA. To develop a central evaluation and information center for new materials and construction for the benefit of Chapter members.

R. Emory Holroyd, Jr., AIA, Chairman  
Leif Valand, AIA  
Louis H. Asbury, Jr., AIA  
Cyrill H. Pfohl, AIA  
Don Delano Folk, Jr., AIA

Mangum W. Sloan, AIA, Chairman  
G. Milton Small, AIA  
Charles H. Wheatley, AIA  
Stuart R. Penn, AIA  
Louis Voorhees, AIA  
Walter W. Hook, FAIA

## PUBLICATIONS

**Duties:** To supervise Chapter publications with particular regard to conformity with Chapter and Institute policies. To stimulate membership participation.

A. G. Odell, Jr., AIA, Chairman  
Louise Hall, AIA  
Henry L. Kamphoefner, AIA  
Edward Loewensten, AIA  
J. L. Beam, Jr., AIA



● STRUCTURAL STEEL ● CONCRETE REINFORCING BARS ● ORNAMENTAL & MISCELLANEOUS IRON  
● FENESTRA STEEL WINDOWS, DOORS, ROOF DECK & BUILDING PANELS ● FIAT TOILET PARTITIONS  
● WILLIAMSBURG CUSTOM HOLLOW METAL DOORS & FRAMES ● LUDMAN ALUMINUM AUTO-LOK WINDOWS & JALOUSIES ● MOESCHL EDWARDS STEEL ROLLING DOORS.

## SOUTHERN ENGINEERING COMPANY

Little Pittsburgh

CHARLOTTE, N. C.

## J. P. PHIFER CONSTRUCTION COMPANY

ROCKINGHAM, N. C.

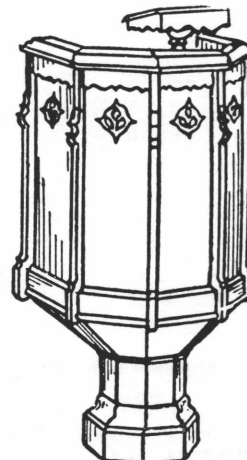
Phone 3250



NOTICE OF CHANGE OF ADDRESS  
PLEASE ADDRESS ALL  
COMMUNICATIONS  
TO

## Southern Architect

P. O. Box 517  
Charlotte, N. C.



## ENDURING QUALITY

*Fine Workmanship*

Chancel furnishings and Church pews, designed and manufactured to meet the requirements of all churches

Phone 1665

or  
Write for Catalog

**Page CHURCH FURNITURE  
COMPANY**

Albemarle, N. C.

## SCHOOL BUILDINGS

**Duties:** To study methods of planning up-to-date school buildings in cooperation with related agencies within the territory of the Chapter and to maintain effective contacts with the school officials and organizations on matters relating to professional services.

## PRESERVATION OF HISTORIC BUILDINGS

**Duties:** To foster the preservation of the Historic Buildings within the territory of the Chapter particularly those having Architectural significance, by encouraging the establishment of bodies to care for them and by collaboration with established restoration organizations.

## PROGRAM

**Duties:** To prepare programs for the regular Chapter meetings, correlate all activities including arrangements for visitors, reservations, and scheduling of all events. Activities and fiscal obligations of this committee are subject to the approval of the Executive Committee.

## CENTENNIAL OBSERVANCE 1957

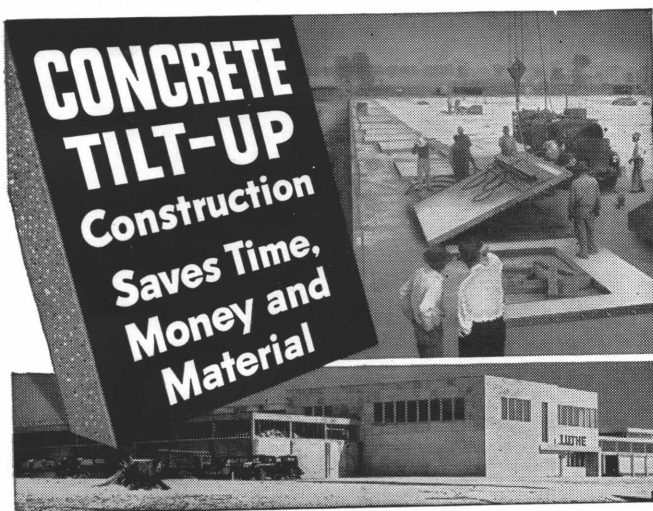
**Duties:** To plan and carry out NCAIA participation in nationwide observance of Centennial Observance of the American Institute of Architects.

Leslie N. Boney, Jr., AIA, Chairman  
Owen F. Smith, AIA  
John J. Croft, Jr., AIA  
Edward Loewenstein, AIA  
Richard P. Leaman, Associate

James A. Stenhouse, AIA, Chairman  
Ross Shumaker, AIA  
Archie R. Davis, AIA  
Louise Hall, AIA  
Richard S. Smith, AIA

Archie R. Davis, AIA, Chairman  
John J. Rowland, AIA  
G. Milton Small, AIA  
Edward W. Waugh, AIA

Anthony Lord, AIA, Chairman  
James A. Stenhouse, AIA  
Ross Shumaker, AIA  
Archie R. Davis, AIA  
Louise Hall, AIA  
Henry L. Kamphoefner, AIA  
Edward Loewenstein, AIA  
B. H. Stephens, AIA



Tilt-up, a fast, economical method of concrete construction, is adaptable to buildings of one story or more. It reduces form building to a minimum. Wall panels are cast flat on the concrete floor with simple edge forms, then tilted up into position with hoists or power cranes. Cast-in-place piers and beams tie the panels into one unit.

For more information, write for free technical bulletins. Distributed only in the U.S. and Canada.

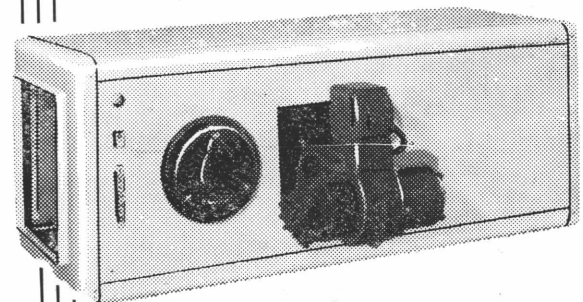
## PORTLAND CEMENT ASSOCIATION

1401 State Planters Bank Bldg., Richmond 19, Virginia

A national organization to improve and extend the uses of portland cement and concrete ... through scientific research and engineering field work



*America's Finest*  
**AUTOMATIC HEAT**



Oil and Gas-Fired

**BASEMENT or HORIZONTAL FURNACES**

Combination Heating and Cooling Units

For Complete Information Call or Write

**PAUL W. BROWN**

Distributor

Div. York-Shipley

321 W. 1st St. Charlotte, N. C. FR 7-5322



## N. C. STATE FACULTY MEMBERS WIN HONORS IN NATIONAL CONTEST

Four faculty members of the North Carolina State College School of Design recently were announced as winners of prizes totaling \$5,000.00 in a National Porcelain Enamel Design Competition sponsored by the Ferro Corporation.

Horacio Caminos and Eduardo F. Catalano of Route 6, Raleigh, will share a \$3,000 first prize for their plans for an elementary school. They also received a \$500 honorable mention award for their plans for a community youth center.

The second prize of \$1,500 for a community youth center design went to Cecil D. Elliott, AIA, and George Matsumoto, AIA.

Catalano is acting head of the Department of Architecture in the School of Design. A native of Argentina, he went to Raleigh in 1951 from the Architectural Association School in London.

Caminos, a professor of architecture, is also a native of Argentina. He served on the faculty of the Architectural Association School in London before going to Raleigh three years ago.

Matsumoto, an associate professor of architecture, has been on the faculty of the N. C. State School of Design since it was established in 1948. He is a graduate of Washington University in St. Louis and Cranbrook Academy in Detroit.

Elliott, assistant professor of architecture, has been on the School of Design faculty since 1950. He is a graduate of the University of Oklahoma and obtained his M. A. degree at Harvard.



E. P. MITCHEM, President

## ATLANTIC BUILDING COMPANY, INC.

GENERAL CONTRACTORS

P. O. Box 3345

Telephone ED 4-7287

2401 W. Morehead St.

CHARLOTTE, NORTH CAROLINA

## Now, for the first time in AMERICA PARCOLITE

### MONOLITHIC HARDWOOD FLOORING

Time-tested in Europe, PARCOLITE is a floor that is mixed and poured at the job site and consists of specially treated hardwood cubes, rubber latex, and color pigment. The actual pouring is preceded by the cementing of plastic divider strips to the structural slab in a design as selected by the architect.

PARCOLITE provides the best qualities of a wood floor and a terrazo floor without the undesirable features of either product.

1. It is a wood floor, but not effected by moisture.
2. Will not swell and buckle, nor dry out and shrink.
3. Quiet under foot.
4. Resilient . . . easy to walk or stand on.
5. Will not indent under heavy loads.
6. Long wearing.
7. Easy to maintain.
8. Warm and beautiful in appearance.

*Fact Sheet And Specifications  
Upon Request.*

### DEALERSHIPS AVAILABLE

*Southeast Distributor—*

**EDWIN C. BOYETTE & SON, Inc.**

*Manufacturers Agent*  
216 E. Morehead St.  
Charlotte, N. C.

# ARCHITECTS AND BUILDERS IN THE NEWS

## HEADS SCAIA

Robert I. Upshur, AIA, of Columbia has been elected President of the South Carolina Chapter of the American Institute of Architects for 1956. The election was held during the annual meeting in Columbia January 28.

Other officers elected include Louis M. Wolff, AIA, of Columbia, Vice-President; John M. Mitchell, Jr., AIA, of Charleston, Secretary-Treasurer; Homer D. Blackwell, AIA, of Columbia, Assistant Secretary; Ralph H. McPherson, AIA, of Greenville, Director; Kaare S. Espedahl, AIA, of Columbia, Director; and C. T. Cummings, AIA, of Charleston, Director.

## NATIONAL OFFICER

Robert W. Barker, Executive Director of the Home Builders Association of Charlotte has been

named Second Vice-President of the Executive Officers Council of the National Association of Home Builders.

## VICE-PRESIDENT

Rufus C. Barkley, Jr., has been named Vice-President of the Cameron & Barkley Company, Charleston, S. C., distributors of industrial supplies and machine tools. Mr. Barkley represents the fourth generation of his family to be actively engaged in the affairs of the company which was started in 1865.

## GUEST SPEAKER

John Erwin Ramsay, AIA, of Salisbury was the guest speaker at meetings of the Salisbury Civilian Club and the Salisbury Rotary Club recently. Mr. Ramsay presented a film, "Architecture—U. S. A."

## OFFICERS ELECTED

The South Piedmont Chapter of the American Society of Heating and Air Conditioning Engineers elected officers to serve during 1956 at a meeting of the group January 30 in Charlotte.

Jack Rice was chosen President, with other officers being named as follows: G. C. Garrett, Vice-President; E. D. Strang, Secretary; Jim Clark, Treasurer; and L. Frank Lawrence, C. E. Petty, and George Payne, Directors.

## SERVES AS AWARDS JUROR

A. G. Odell, Jr., AIA, served as a member of the 1956 School Building Architectural Exhibit Jury, at Atlantic City, February 17, which was jointly sponsored by the American Association of School Administrators and the American Institute of Architects.

## TAYLOR IS HEARD

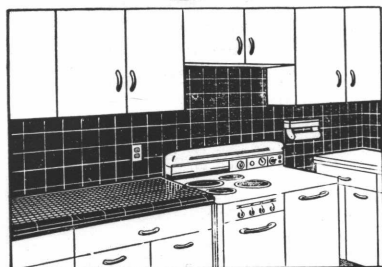
Prof. C. Fayette Taylor of MIT was the guest speaker before the Piedmont Carolina Section of the American Society of Mechanical Engineers February 3. Prof. Taylor is a recognized authority on the internal combustion engine.

**For better tile —**

**better installation**

**ask us about**

**real clay** *Suntile*



Suntile offers you two-way satisfaction. Quality in the tile itself—quality in the installation.

This real clay tile will make you proud of your bathroom or kitchen for years to come. You get a choice of many beautiful colors—freedom from costly upkeep—lifetime economy. And it's so easy to keep Suntile clean with a wipe of a damp cloth.

You'll always be happy with our Suntile installation. Let us show you why.

**Renfrow Distributing Co., Inc.**

1820 Sunnyside Avenue  
Telephone ED 4-6811  
CHARLOTTE, N. C.

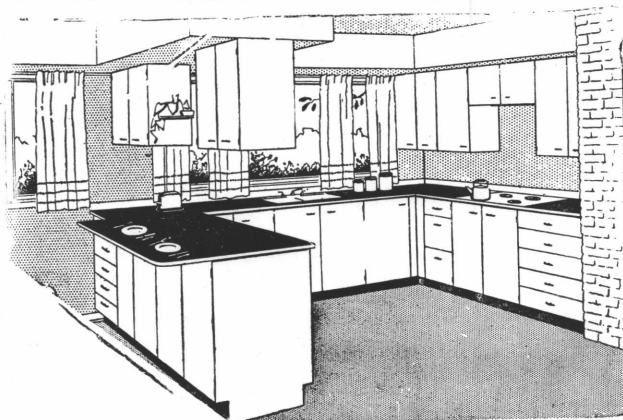
## AWARDED DEGREE

Roy Lee More, Jr., of Charlotte, recently was awarded the degree of Bachelor of Science in Civil Engineering from Clemson College.

## THEY'RE NEW — THEY'RE DIFFERENT

They're  
Curtis  
Kitchen  
Cabinets

—  
53 features  
incorporated  
in so  
many  
sizes—  
any kitchen  
can be  
easily fitted.



New architectural details contain types and sizes for easy specifying. All cabinets in stock.

FOR FURTHER INFORMATION CALL OR WRITE

**H. & S. LUMBER CO.**

Tel. ED 2-5191

520 Dowd Road

Charlotte, N. C.

### DEGREE AWARDED

A Bachelor of Science in Mechanical Engineering degree has been awarded William J. Lawson, Jr., of Charlotte by Clemson College.

### FORUM SPEAKERS

Albert S. Haskins, AIA, and Richard L. Rice, AIA, of Raleigh will represent the North Carolina Chapter of the American Institute of Architects on an architectural forum sponsored by the Carolina Roofing & Sheet Metal Contractors Association March 14-15 at North Carolina State College. The forum will be held March 15 at nine o'clock as a part of a two-day school on roofing and sheet metal problems.

### BRANCH MANAGER

Beaman Engineering Company, Inc., Greensboro, Bruce E. Beaman, General Manager, engineers, designers, and erectors of Davidson Architectural Porce-

lain, announce the appointment of Robert L. Hughes as Branch Manager of Beaman Engineering Company of Maryland, Inc., effective immediately. Hughes replaces Allman Beaman who has been moved to the home office in Greensboro.

A native of Asheboro, Hughes joined the Beaman organization in January of 1955. He was promoted to Sales Engineer in August of 1955. He has received specialized training in the Architectural Porcelain field at the factory of the manufacturer, Davidson Enamel Products, Inc., Lima, Ohio.

From the Maryland office Hughes will cover Maryland, Delaware, and District of Columbia.

Beaman Engineering, a prime curtain and window wall contractor specializes in the engineering, design and erection of architectural porcelain. Beaman serves the entire Southeastern seaboard from offices in Atlanta, Richmond, Baltimore and Greensboro.

### OFFICERS ELECTED

Seth W. Hinson has been elected to succeed Tom A. Kirkwood as President of the Warm Air Heating and Air Conditioning Association of Charlotte for 1956. Other officers were chosen as follows: Paul H. Moore, First Vice-President; W. G. Smith, Second Vice-President; James Sangster, Jr., Secretary-Treasurer; Frank B. Fuller, Assistant Secretary-Treasurer; and E. Miles Annas, Ralph D. Finlayson, Tom A. Kirkwood, James B. Kuykendall, Jr., and L. Banks Simpson.

### COONE ELECTED

L. A. Coone of the General Electric Company has been elected President of the South Piedmont Chapter of the Professional Engineers of North Carolina. The Chapter embraces 12 counties in the Charlotte area. Other officers are W. F. Crist, Jr., First Vice-President; H. E. McKenzie, Second Vice-President; R. G. Agnew, Secretary-Treasurer; R. E. Mason, Director; and W. A. Kurtz, State Delegate.

## F. N. THOMPSON INC.

General Contractors



Charlotte, N. C.

Tel. ED 4-4742

Raleigh, N. C.

Tel. 2-2687

**Largest resort of its kind in the world!**

# GOLDEN GATE

...plus the finest  
convention facilities

650 luxurious, air conditioned Hotel, Motel, Apartment and Villa-accommodations with every fun-facility for your vacation enjoyment!

Private Beach, Pools, Sports, special supervised Children's Playtown . . . dining rooms, cafeteria, cocktail lounges, entertainment.

**FREE PARKING** at your door

See your travel agent or write for color brochure and rates.

John M. Duff, Jr., Gen'l Mgr.



**ON THE OCEAN AT 194th STREET, MIAMI BEACH**



# GOODE

## CONSTRUCTION CORPORATION



General Contractors

200 BUILDERS BUILDING

CHARLOTTE, NORTH CAROLINA

OUR 45th YEAR

IN THE INTEREST OF  
BETTER SERVICE . . .

A new and  
modern warehouse  
and office at

225 Fairwood Ave.  
Charlotte, N. C.

(Left off 2800 Block  
of S. Tryon)

GARAGE DOOR  
HEADQUARTERS



**Crawford**  
MARVEL-LIFT  
DOORS

SALES  
INSTALLATION  
SERVICE

**Crawford Door Sales Co.**

Our representative will be happy  
to call on you, or information  
and specifications returned by  
mail.

Call ED 3-0722

## NEW PRODUCTS

**STEEL-X**, new channel bridging of 20-gage galvanized steel, to provide lateral support for joists, is quickly snap-locked in place by hand, without cutting, sawing or nailing.

Other labor costs are eliminated with **STEEL-X**, because it can be installed after capping and after the plumber, heating engineer and electrician have completed their jobs. **STEEL-X** braces fit readily around heating ducts, conduit and pipes in locations where it would be impossible to nail other types of bridging.

High structural strength (the formed channel is ribbed laterally for added strength) plus practically complete resistance to corrosion (because of galvanizing) differentiate **STEEL-X** from other metal bridging on the market, according to the manufacturer. **STEEL-X** is more than strong enough to support a 230-pound man, who can chin himself easily on one brace (by actual test). Taber, Bushnell & Co., Inc., 1112 Metropolitan Bldg., Minneapolis, Minn.

Drafting procedure has been facilitated with the development of **DRAFTRAY**, that places working tools at the draftsman's fingertips, yet off the drawing board.

A partitioned tray, swivelly supported by a ball and socket joint on a fully adjustable arm which clamps to the

edge of the drawing board, provides unobstructed use of board, drafting machine, straight edge or T-square.

The **DRAFTRAY** provides orderly space for all the tools a draftsman requires and permits instant adjustment to correspond with all angles of the drawing board. Draftray Company, 1316 East 24th St., Minneapolis 4, Minn.

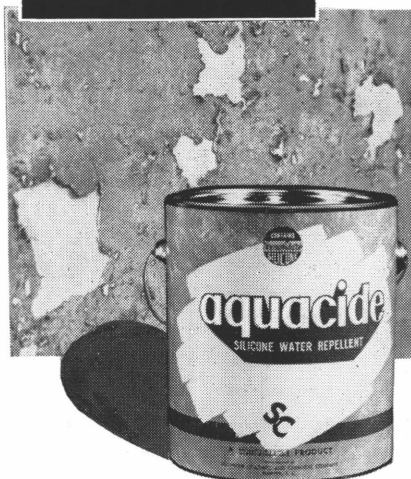
The first stainless steel pressurized water extinguisher now being produced was installed recently in the offices of the Dayton Rubber Company.

This new pressurized clear water extinguisher is approximately 4 lbs. lighter than any 2½ gallon brass model and can be put into action quicker with unmatched control of the water. A slight pressure on the release lever expels a strong, controllable, 45 ft. stream of water . . . release the lever and the pressure is immediately shut off.

Because of its exceptional lightweight and great maneuverability, the extinguisher is useful for fire hose and extinguisher cabinets in schools, institutions, hospital, industry or anywhere women might be called upon to extinguish a fire.

The extinguisher can be repressurized with air at a filling station or with nitrogen recharge units. A visual pressure gage tells instantly if extinguisher is adequately charged. Repressurizing is simplified by means of an air-inlet valve which is similar in construction to the valve on an automobile tube. No special tools are necessary in repressurizing as the brass shut-off valve unscrews easily from the dome of the extinguisher by means of a hexagonal nut. A special overfill tube prevents the extinguisher from being overfilled with water. Buffalo Fire Appliance Corporation, 221 Crane St., Dayton, Ohio.

aquacide . . .  
death to water damages  
on above-grade masonry



You can prevent  
water seepage . . .

minimize efflorescence,  
retard weathering and  
spalling,—when you

specify **Aquacide**

silicone water repellent  
for all types of  
above-ground masonry.

—meets Federal Specifications  
SS-W-00110.

—for details, write  
SOUTHERN COATINGS & CHEMICAL CO.  
Sumter, South Carolina

The **LITTLE GEM**, a motor driven self-priming pump is an extremely useful piece of equipment to the plumbing and heating contractor, it was explained. Equipped with a powerful ¼ HP motor, it is capable of producing capacities to 23 GPM and heads to 50 feet. The **LITTLE GEM** is also available with an explosion-proof motor.

Two gasoline engine driven self-priming pumps are also available. These completely self-contained pumping units will operate for more than two hours on a full tank. They are capable of producing capacities up to 135 GPM and heads up to 100 feet. Bell & Gossett Company, Morton Grove, Ill.

A new vein of granite unearthed in a Minnesota quarry accounts for the introduction of **CHARCOAL BLACK**. Size of the vein indicates the material will be available in large supply for indefinite time.

The new stone, black with small white flecks, has excellent fabricating characteristics, resulting in a company claim that it will be approximately 20 per cent less expensive than other black, contrasty architectural granites. Cold Spring Granite Co., Cold Spring, Minn.

### ATTENDS CONFERENCE

Joseph Ray of Charlotte was one of 72 sales representatives attending a five-day seminar in New York City, which was conducted by the building products division of L. Sonneborn Sons, Inc. The discussions were largely devoted to the latest developments in products designed to increase the life of masonry structures and industrial floors.

### PRESENT PROGRAM

Members of the Winston-Salem Council of Architects were in charge of the program for the dinner meeting of the Winston-Salem Engineers Club January 10.

The program consisted of a presentation of the film, "Architecture—U. S. A." and a panel discussion. Participating on the panel were Gorrell R. Stinson, AIA, W. R. James, AIA, Robert Arey, AIA, Roy Wallace, AIA, Fred Butner, AIA, Ralph Crump, AIA, and Nils Larson, AIA associate member.

### HEADS ENGINEERS GROUP

Harold S. Crain of Durham was elected President of the North Carolina Society of Engineers at the 38th annual meeting of the group in Greensboro January 27. Named to serve with President Crain were John D. Watson of Greensboro, First Vice-President; Henry M. Von Oesen of Wilmington, Second Vice-President; and LeRoy M. Keever of Raleigh, Secretary-Treasurer. Mr. Crain was elected to succeed Howard B. Hicks of Raleigh.

### JOHNSON SPEAKER

Marvin R. A. Johnson, AIA, design consultant with the Division of School Planning of the State Department of Public Instruction, was the guest speaker at the meeting of the Raleigh Council of Architects February 2. President Henry L. Kamphoefner, AIA, presided over the meeting.

### ATTENDS MEETING

Don Quisenberry, of Acousti Engineering of the Carolinas, Inc., of Charlotte, recently attended a conference of Celotex distributors in New Orleans, La. The meeting was featured by discussions relating to products developments and new techniques of installing acoustical materials.

### PLANNING DIRECTOR

Paul W. Brooks has been named Planning Director for the City of Durham. He was formerly planning director in High Point and Fayetteville. Rudy Griffin, who has been serving as Planning Director at Durham will become head of the Durham traffic department.

### RECEIVES AWARD

Charles T. Wanzer of Charlotte, veteran engineer and construction manager of the Duke Power Company, was recently presented the annual award of the North Carolina Society of Engineers for outstanding achievement. Mr. Wanzer has been with the Duke

Power Company since 1918. A native of New York, he is a civil engineering graduate of Cornell University.

### Pendleton Heads Western Council

Andrew L. Pendleton, AIA of Statesville was elected President of the Western North Carolina Council of Architects at a meeting of the group in Gastonia January 20.

Other officers elected include L. P. Holland, AIA, of Shelby, Vice-President; Walter Boggs of Asheville, Secretary-Treasurer; and Robert E. Bush, AIA, of Hickory, Director.

Outgoing officers are James L. Beam, Jr., AIA, of Cherryville, President; Mr. Pendleton, Vice-President; J. Bertram King, AIA, of Asheville, Secretary-Treasurer, and Bernard Olson, AIA, of Le-noir, Director.

Hubbard Sullivan, manager of the Building Division; Carolinas Branch of the Associated General Contractors of America, Beaumont Whitten, Vice-President of the Southeastern Construction Company and R. H. Pinnex, general contractor of Gastonia, discussed problems of interest to both contractors and architects, especially those relating to bidding procedure.

### Boney Will Head Eastern Council

Leslie N. Boney, Jr., AIA, of Wilmington was recently elected President of the Eastern North Carolina Council of Architects. Named to serve with the new president were Harry J. Harles, AIA, of Rocky Mount, Vice-President, and John R. Oxenfeld of Wilmington, Secretary-Treasurer.

Retiring officers who served during the past year were Arthur C. Jenkins, Jr., AIA, of Fayetteville, President; Mr. Boney, Vice-President; and Robert H. Stephens, AIA, of New Bern, Secretary-Treasurer.

The election sessions were held at New Bern January 13.

# BOREN

## CLAY PRODUCTS COMPANY

Manufacturers of

# BRICK

and STRUCTURAL TILE

Phone Greensboro 4-6353

Offices

PLEASANT GARDEN, N. C.

Colonial  
Antique  
Tapestry  
Special Shapes

Roman  
Norman  
Common  
Jumbo

# ACOUSTI ENGINEERING CO.

OF THE CAROLINAS, INC.

ACOUSTICAL ENGINEERS  
AND CONTRACTORS



2501 South Boulevard  
Charlotte 3, N. C.  
Phone FR 6-3518

# PINE HALL BRICK

*of  
distinction*



PHONE  
4-8331

**PINE<sup>®</sup> HALL**  
**BRICK AND PIPE CO.**  
WINSTON-SALEM, N. C.



## Lightweight Insulating Products

Save Labor and Structural Steel

PLASTER AGGREGATE: for fireproofing, heat and sound reduction.

FINISH PLASTER AGGREGATE: for slick trowel finish at low cost.

STABILIZED CONCRETE AGGREGATE: for insulating, lightweight roof decks and floors.

ACOUSTICAL PLASTIC: for the lowest cost fireproof acoustical ceilings, old or new construction, .65 sound reduction at half inch thickness.

HOME INSULATION: for attics and walls; harmless, efficient.

ZONATILE: a short-span, concrete roof tile for lightweight, economical construction.

# ZONOLITE COMPANY

PLANTS AT

HIGH POINT, N. C. AND WASHINGTON, D. C.

## DEWEY BROS., INC.

- Structural Steel
- Ornamental Iron
- Bar & Longspan Joists
- Miscellaneous Iron
- Metal Windows, Doors
- Building Specialties

## DEWEY BROS., INC.

Goldsboro, N. C.

Grey Iron Construction Castings

Since 1885

**BUILD BETTER WITH BEAUTIFUL KENDRICK BRICK**

**MANUFACTURERS OF**

Plantation Colonial  
Sand Face  
Golden and Pink  
Antiques  
Roman  
Jumbo  
"SCR" Brick  
Common

We cordially invite you to visit our display rooms at our Charlotte office and see our large display of various textures and color ranges



*"Serving Charlotte and North Carolina  
For Over 40 Years"*

**KENDRICK**



**& TILE Co., Inc.**

Telephone FR 6-8465

3235 South Boulevard

Charlotte, North Carolina

Plant No. 1 Mount Holly, N. C.

Plants No. 2-3-4 Monroe, N. C.



**OIL AND GAS FIRED  
HORIZONTAL FURNACES  
... AT LOW COST**

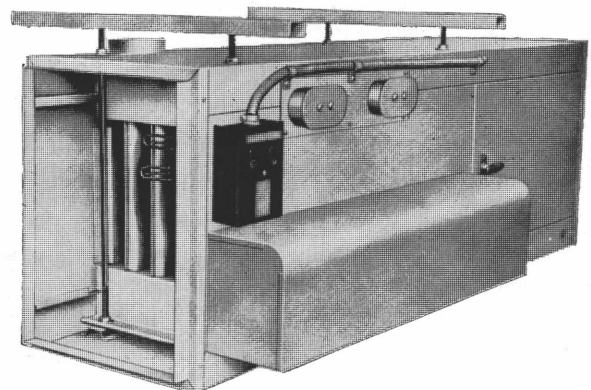
**The World's Most Versatile Furnace  
Styled for Modern Living**

**FOR INSTALLATION**

- .. IN THE ATTIC
- .. IN THE UTILITY ROOM
- .. UNDER THE FLOOR

**FOR HEALTHFUL LIVING:**

- FULLY AUTOMATIC**
- ... **ECONOMICAL**
- ... **CLEAN**
- .. **UNIFORM HEAT**
- ... **SAFE**



The HORIZONTAL FURNACE represents warm air heating reduced to the smallest dimension. The small overall length dimensions give sufficient space to connect ducts and elbow out of the smallest of utility rooms.

**A. F. EPTING APPLIANCE COMPANY**

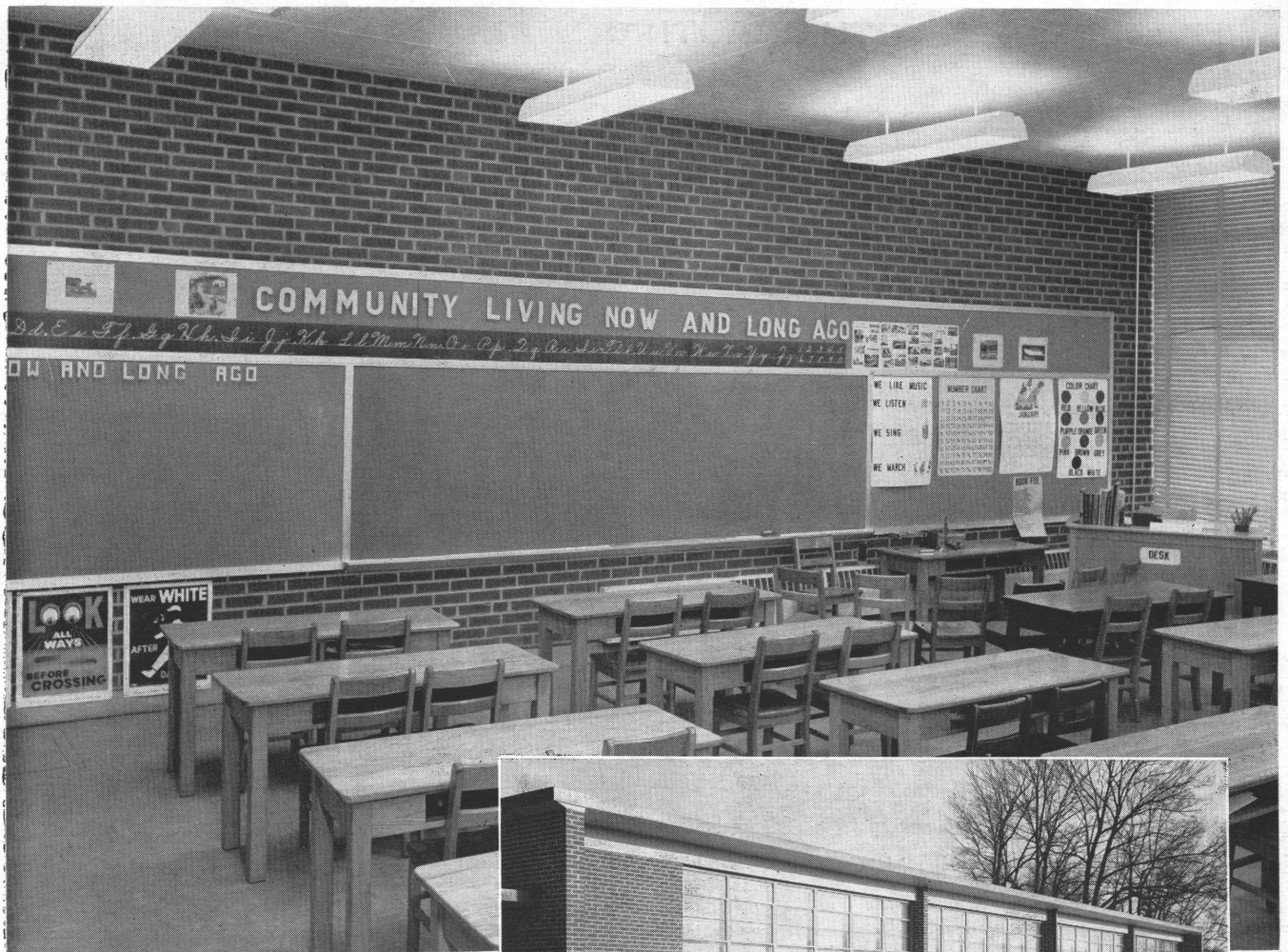
FRanklin 6-1641

2116 THRIFT ROAD

CHARLOTTE, N. C.

FRanklin 6-1641





Skyland Elementary School, Winston-Salem  
 Architect: Fred W. Butner, AIA  
 Contractor: Charles E. Fetter



# Beauty

## INSIDE AND OUT

Load-bearing brick walls between classrooms provide maximum construction economy in this school — with interior beauty and near-perfect sound insulation as extra bonuses.

**BRICK & TILE SERVICE, INC.**

*A Service of North Carolina's Clay Products Manufacturers*  
**Greensboro, North Carolina**