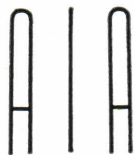


SOUTHERN ARCHITECT

FEBRUARY 1957



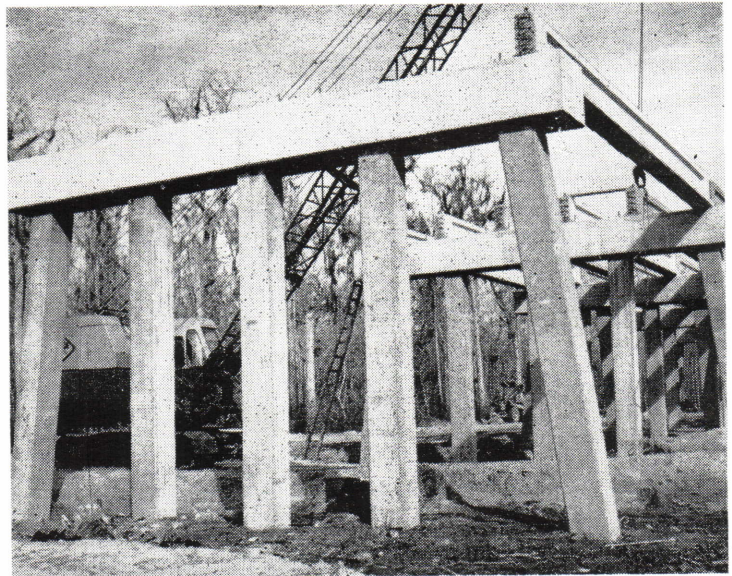
Official Publication
North Carolina Chapter



American Institute
of Architects

SAFETY, PERMANENCE and TESTED DESIGN

That's what you get when you build with PRE-STRESSED PRECAST CONCRETE. Today, more and more Architects, Engineers and Contractors are turning to Precast Prestressed Concrete.



Typical scene of Prestressed pilings and girders on new Federal highway.

The use of prestressed concrete in scores of structures from parking lot curbs to bridges and warehouses is increasing at a tremendous rate. There is PRE-STRESSED CONCRETE for construction of all types:

BRIDGES
TRESTLES
SCHOOLS
STADIUMS
GYMNASIUMS
WAREHOUSES

For further information call EDison 3-8671

MATERIALS, Inc.

P. O. BOX 5290

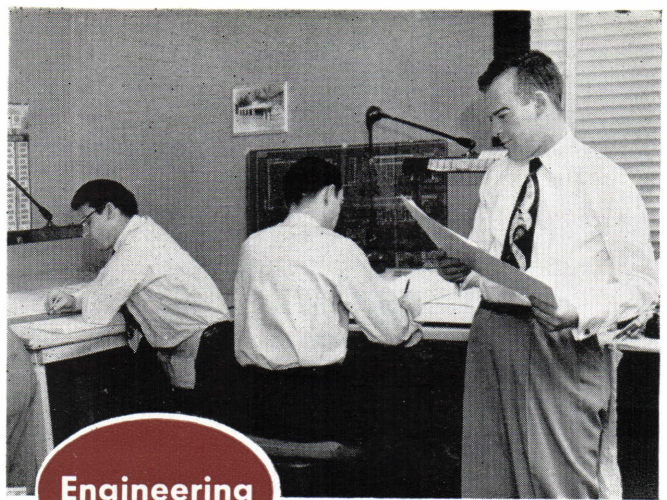
**CHARLOTTE,
NORTH CAROLINA**

BEAMS • COLUMNS • GIRDERS • DOUBLE "T" UNITS

CONCRETE



**Design
Assistance**



Engineering

In
Davidson
Architectural Porcelain...

**Beaman Engineering
gives you a Complete
Design, Engineering
and Erection Service**

Erection



No matter how large or small your plan may be — from a small store front to a multi-story structure — BECO offers you a complete engineering service in Architectural Porcelain construction.

Experienced BECO sales engineers field measure each job carefully, assuring you of accuracy in every detail. In turn, complete Architectural Porcelain drawings are prepared by highly trained BECO engineers. Upon approval by the architect,

these drawings are used in fabricating individual panels to exacting specifications.

Simplified mechanical fastening to basic structure by factory trained BECO erection crews assures that Davidson Architectural Porcelain goes up to stay on *for a lifetime*.

For a complete design, engineering and erection service in Architectural Porcelain facing, curtain wall or window wall construction, make sure you call BECO. You'll be glad you did.

CLIP AND MAIL TODAY

BEAMAN ENGINEERING COMPANY, INC.
1106-E Battleground Ave. • Greensboro, N.C.

Gentlemen:

Please send me further information on Davidson Architectural Porcelain as engineered and erected by BECO.

Name _____

Address _____

City _____

Beaman
ENGINEERING CO., INC.
1106 BATTLEGROUND AVE. GREENSBORO, N. C.
DAVIDSON ARCHITECTURAL PORCELAIN

SALES • ENGINEERING • DESIGN • ERECTION

GREENSBORO ATLANTA **BECO** BALTIMORE RICHMOND

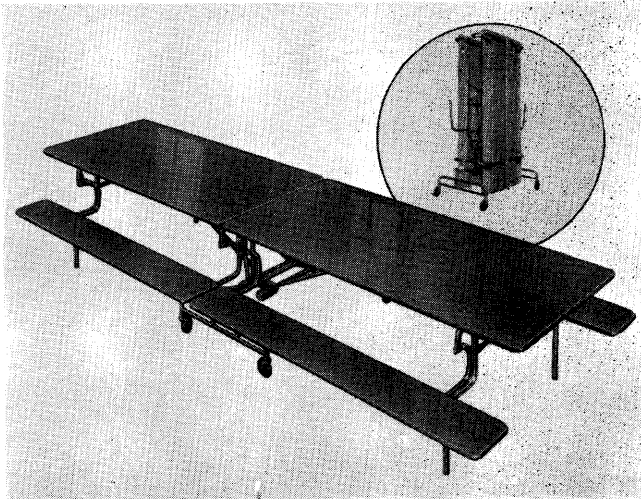
sico system of table seating

*lets you double
your use of
existing space*

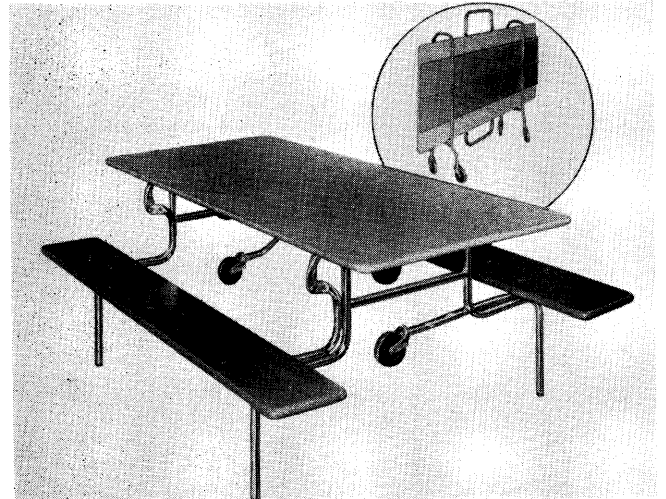
The SICO SYSTEM of table seating allows rapid conversion of fixed floor space from one use to another. Complete flexibility is possible because no wall fastenings, no special arrangements of windows or facilities are needed. Sico's smooth, sanitary table surfaces have no cracks or crevices to collect spilled food and are easy to keep clean.

Simple to operate . . . no locks, latches or hinges to pinch fingers! Built to last a lifetime. Unconditionally guaranteed for 10 years.

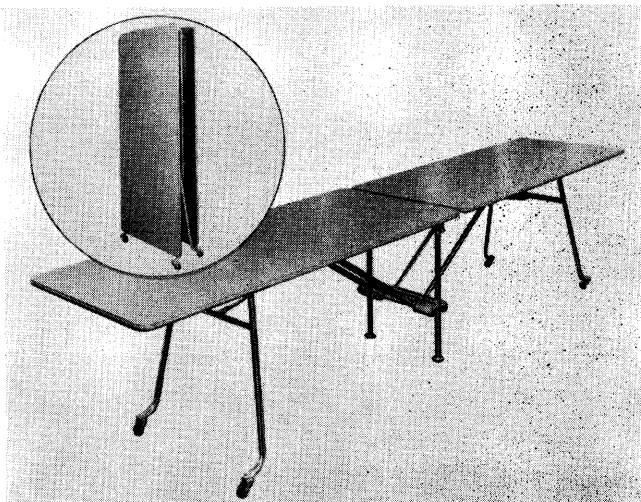
New FREE Booklet Explains SICO System, contains full specifications—shows how to seat more in less space at lower cost. Available on request.



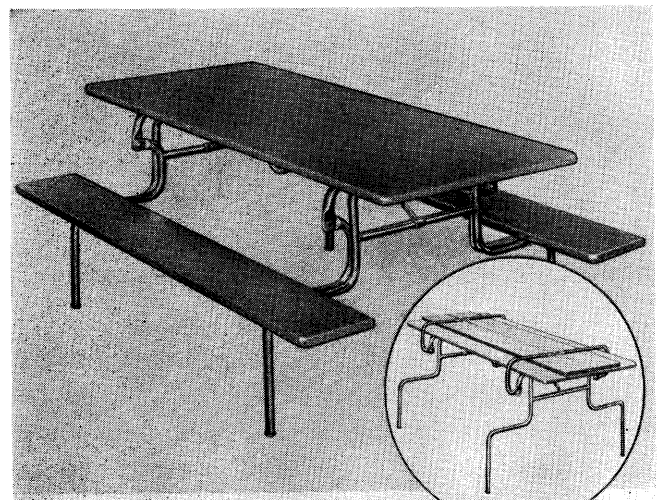
SICO B-Y—Rolling, folding table that easily seats 100% more people than ordinary table systems. Easy to use, the Sico Floating Fold is the only unit manufactured that can be truly operated by a child. No hinges, locks or latches to pinch fingers or wear out. Seats 16 adults or up to 20 children.



SICO TIP-TOP—Ideal for use in confined areas. Saves at least 100% more floor space than ordinary tables. Seats 8 adults or up to 10 children. Simple, safe action makes it easy to move and store. Benches eliminate aisle blocking, other features reduce confusion and noise.



SICO L-B—Rolling, folding table ideal for use in multi-purpose rooms using chairs, such as for banquets, meetings, social functions, etc. Features Sico Floating Fold. Takes only 3 seconds to fold or unfold . . . cannot tip . . . does not bang and mar the floor. Table resists movement while in use. Rugged construction assures long life.



SICO 1900—Table with attached, folding benches and folding legs. Designed for the absolute maximum efficiency in regular cafeteria seating within a fixed dimension area. No cracks or crevices to collect spilled liquids and dirt. All Sico tables with attached benches are tip-proof, no matter how uneven the seating load may be.



manufacturing company

5215 EDEN AVE., SOUTH
MINNEAPOLIS 24, MINN.

Write, Wire or Call

HUGHES-RANKIN COMPANY

1229 Montlieu Ave., High Point, N. C.

Telephone 6981 or 6988

Southern Architect

Volume 4

February 1957

Number 2

COMMITTEE ON PUBLICATIONS

Richard L. Rice, AIA, Chm.	Raleigh
Sam T. Snoddy, Jr., AIA	Charlotte
James L. Brandt, AIA	Raleigh
Edward E. Aldrich, AIA	Asheville
A. Lewis Polier, AIA	Raleigh
H. R. McLawhorn, Jr., AIA	Greensboro
Turner G. Williams, AIA	Raleigh

PUBLIC RELATIONS COMMITTEE

A. G. Odell, Jr., AIA, Chm.	Charlotte
Louise Hall, AIA	Durham
Nils F. Larson, AIA	Winston-Salem
Allen J. Bolick, AIA	Hickory
Anthony Lord	Asheville
Norman J. Pease, Jr., AIA	Charlotte
Edward Loewenstein, AIA	Greensboro
Conrad B. Wessell, Jr., AIA	Goldsboro
Cecil D. Elliot, AIA	Raleigh

Southern Architect is the official publication of the North Carolina Chapter of the American Institute of Architects and is published monthly by H. J. Stockard, Jr., 122 W. Hargett St., Raleigh, North Carolina, Telephone TEmple 4-4384.

Address all communications to Southern Architect, Post Office Box 408, Raleigh, North Carolina. Advertising rates on request.

Opinions expressed by contributors are not necessarily those of the North Carolina Chapter of the American Institute of Architects or the Publisher. Reproduction of any articles, pictures, or any other material appearing in Southern Architect is forbidden without the specific approval of the Publisher.

Subscription price: One year \$3.00; Two years \$5.00. Single copies 25 cents. Full name and address shall accompany all subscriptions. Kindly notify Southern Architect in the event of change of address.

CONTENTS

● President's Message	7
● Governor Proclaims Architects Week	8
● 43rd Meeting Largest Ever	9
● 1957 Honor Awards	10-16
● Archivist Reports by Souvenir Booklet	17
● Camera Records Centennial Meet	18-19
● AIA Gives Walker Highest Award	21
● Homes for Better Living Awards	22
● Foard Made Member Emeritus	22
● Model Studio Opens	23
● Architects and Builders in the News	23
● U.S. Issues Architect Stamp	25
● Brick & Tile Research Gives Color	25
● 1957 Committees Announced	26-29
● Professional Engineers Congratulate AIA	29
● Architectural Calendar	30
● Advertisers Index	30

NORTH CAROLINA CHAPTER • THE AMERICAN INSTITUTE OF ARCHITECTS

William R. James, Jr., AIA President 602 Reynolds Bldg., Winston-Salem	Leslie N. Boney, Jr., AIA Director 120 S. Fifth Street, Wilmington
Robert L. Clemmer, AIA, V.-President 226 Second Street, N.W., Hickory	F. Carter Williams, AIA Director 133 Fayetteville Street, Raleigh
Arthur C. Jenkins, Jr., AIA Treasurer Box 1003, Fayetteville	A. G. Odell, Jr., AIA Director 109 West Third Street, Charlotte
Kenneth M. Scott, AIA Secretary 3126 Eton Road, Raleigh	Louise Hall, AIA Archivist Box 6636, College Station, Durham
H. J. Stockard, Jr. Executive Secretary 122 W. Hargett Street, Raleigh	R. Mayne Albright Attorney Insurance Building, Raleigh

DUNCAN PRINTMAKERS, INCORPORATED

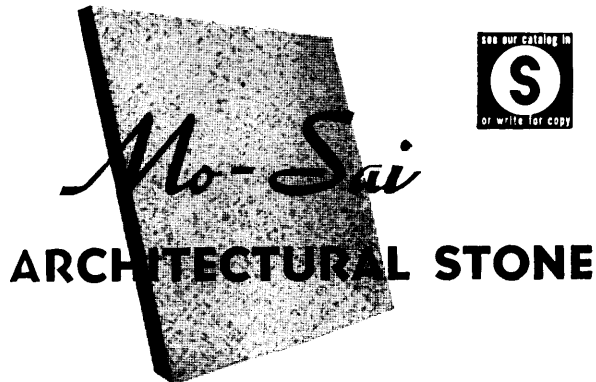
Reproduction in All Its Phases

DISTRIBUTOR
FOR
OZALID

Machines — Sensitized Materials

303 W. 4th St.

Charlotte, N. C.



THE MABIE-BELL COMPANY

P. O. Box 2909 -- Phone 4-7674 -- Greensboro, N. C.



Lightweight Insulating Products

Save Labor and Structural Steel

PLASTER AGGREGATE: for fireproofing, heat and sound reduction.

FINISH PLASTER AGGREGATE: for slick trowel finish at low cost.

STABILIZED CONCRETE AGGREGATE: for insulating, lightweight roof decks and floors.

ACOUSTICAL PLASTIC: for the lowest cost fireproof acoustical ceilings, old or new construction, .65 sound reduction at half inch thickness.

HOME INSULATION: for attics and walls; harmless, efficient.

ZONATILE: a short-span, concrete roof tile for lightweight, economical construction.

ZONOLITE COMPANY

PLANTS AT

HIGH POINT, N. C. AND WASHINGTON, D. C.

PINE HALL BRICK *of distinction*



PHONE
4-8331



DEWEY BROS., INC.

- Structural Steel
- Ornamental Iron
- Bar & Longspan Joists
- Miscellaneous Iron
- Metal Windows, Doors
- Building Specialties

DEWEY BROS., INC.

Goldsboro, N. C.

*Grey Iron Construction Castings
Since 1885*

PRESIDENT'S MESSAGE



JAMES

At the beginning of a new chapter administration it seems appropriate to outline a few of the objectives of the chapter for the coming year. We are now in a position to expand our activities because of the significant action taken at our recent meeting in Chapel Hill in regard to the By-Laws Amendment which provides for a substantial increase in available funds. It will be our aim to direct the expenditures of these increased funds to the best interest of all.

We will have an expanded Public Relations program under the guidance of A. G. Odell, Jr., A.I.A., who has accepted the chairmanship of this most important committee. Public relations is also an important part of the duties of many other committees, such as Government Relations, Tony Lord, AIA chairman, Construction Industry Relations, Jesse M. Page, AIA chairman, Collaboration of Design Professions, Lucien J. Dale, AIA chairman, School Buildings, Leslie Boney, AIA chairman, Community Development, James Webb, AIA chairman, Exhibitions, Robert W. Etheridge, chairman, Centennial Observance, Tony Lord, chairman, Legal Affairs, Carter Williams, AIA and A. L. Haskins, AIA co-chairman and Chapter Publications, Dick Rice, AIA chairman.

Another important activity will be the publication and distribution of the current project of the Office Practice Committee, Luther Lashmit, AIA

chairman. Members who attended the winter meeting at Chapel Hill had an opportunity to see the display of office aids documents which they have collected and displayed. These documents can be of invaluable help in the efficient operation of our offices and increase the quality of our service to our clients.

There is great potential in the activities of our Research Committee, Norman J. Pease, AIA chairman. Information about new products and experiences in the use (and misuse) of materials and techniques can be shared by the professions to the advantage, not only of ourselves, but also of our clients and the general public.

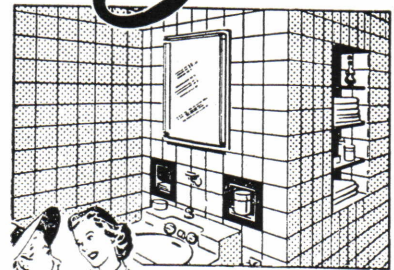
We expect all of our members to work toward the improvement of our professional service and welcome all ideas and suggestions to this end.

W. R. James, Jr., AIA
President

FIRST CHOICE—LAST COST

It's real clay

Suntile



When you choose Suntile for your home you put an end to costly upkeep and maintenance—practically forever. This durable, real clay tile resists mar- rling, chipping or cracking—is so easy to clean—never needs any painting or redecorating. Year after year it will reduce your household expense.

Suntile's Color-Balanced beauty and exclusive quality are built-in. Let us help you select the right colors for your bathroom, laundry or kitchen.

Let us show you why it's long term economy to select real clay Suntile.

Renfrow Distributing Co., Inc.

1820 Sunnyside Avenue

Telephone ED 4-6811

CHARLOTTE, N. C.

—TYPE—

Colonial
Antique
Handmade
Tapestry
Common
Special Shapes

B O R E N

CLAY PRODUCTS COMPANY

Manufacturers of

B R I C K

—SIZES—

Standard
Modular
Oversize
Roman
Norman
Jumbo

for Color and Texture

Phone Greensboro 4-6353

Offices

PLEASANT GARDEN, N. C.



STATE OF NORTH CAROLINA
GOVERNOR'S OFFICE
RALEIGH

LUTHER H. HODGES
GOVERNOR

February 11, 1957

STATEMENT BY GOVERNOR LUTHER H. HODGES

Throughout the United States the week of February 17-23 will be observed as Architects' Week in recognition of the founding of the American Institute of Architects a century ago on February 23, 1857.

Founded by 13 architects of high ideals and great vision, the Institute seeks to unite in fellowship architects of the United States and to use their combined efforts to promote the aesthetic, scientific and practical efficiency of the profession in order to make it one of ever-increasing service to society.

Down through the years the members of the Institute have contributed much to the advancement of architecture and have been responsible for many improvements in the construction industry. They have encouraged the development of the allied arts and expressed the aspirations of our people, thereby bringing into their lives inspiration, beauty, safety and comfort.

In recognition of the Centennial Year of the American Institute of Architects and of their invaluable contributions to our way of life, I am glad to designate the week of February 17-23, 1957, as

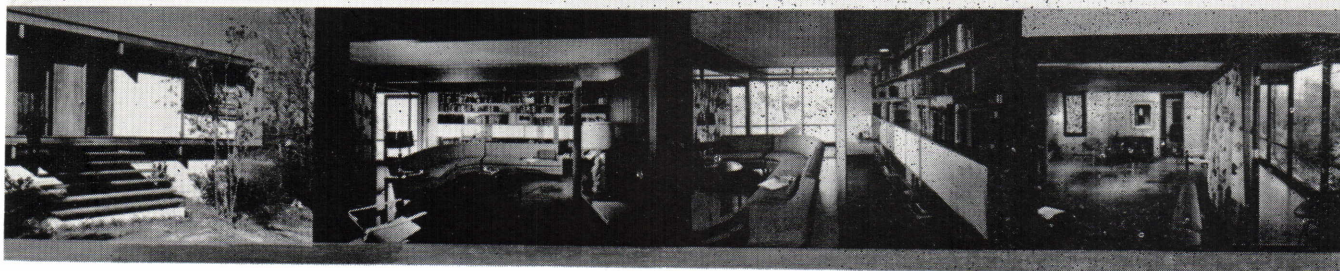
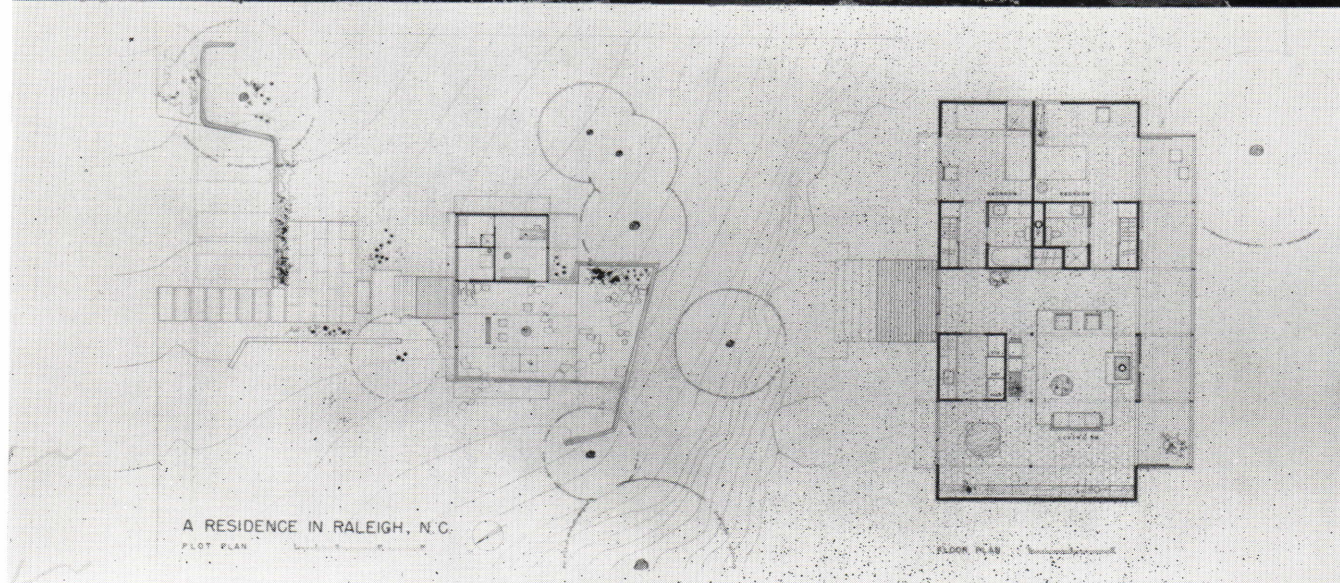
ARCHITECTS' WEEK IN NORTH CAROLINA

and urge all of our citizens to observe this week in an appropriate manner.

A handwritten signature in cursive script that reads "Luther H. Hodges".

lg

1957 NCAA Honor Award Winner With Special Commendation



RESIDENCE

RALEIGH, N. C.

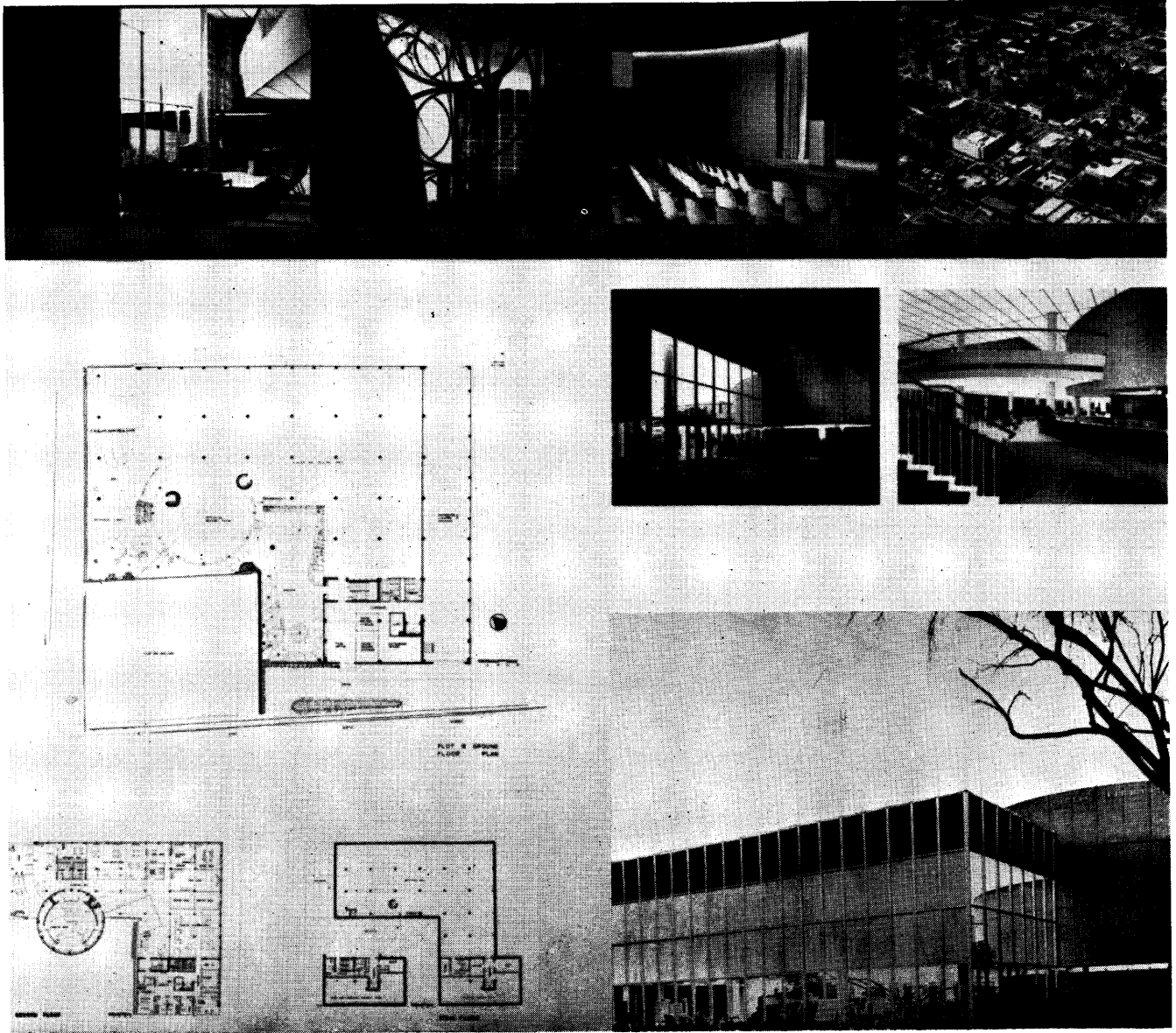
George Matsumoto, AIA

RALEIGH, N. C.

Wayne E. Koontz, Associate

RALEIGH, N. C.

The report of the Honor Award Jury said, "Not only an Award of Merit, but also Special Commendation to a residence in Raleigh, N. C., by George Matsumoto, Architect; Wayne E. Koontz, Associate. For its delicate and appropriate design solution. For its admirable organization of space; sensitive detailing and respect for the dignity of simple materials, handsomely used."



PUBLIC LIBRARY

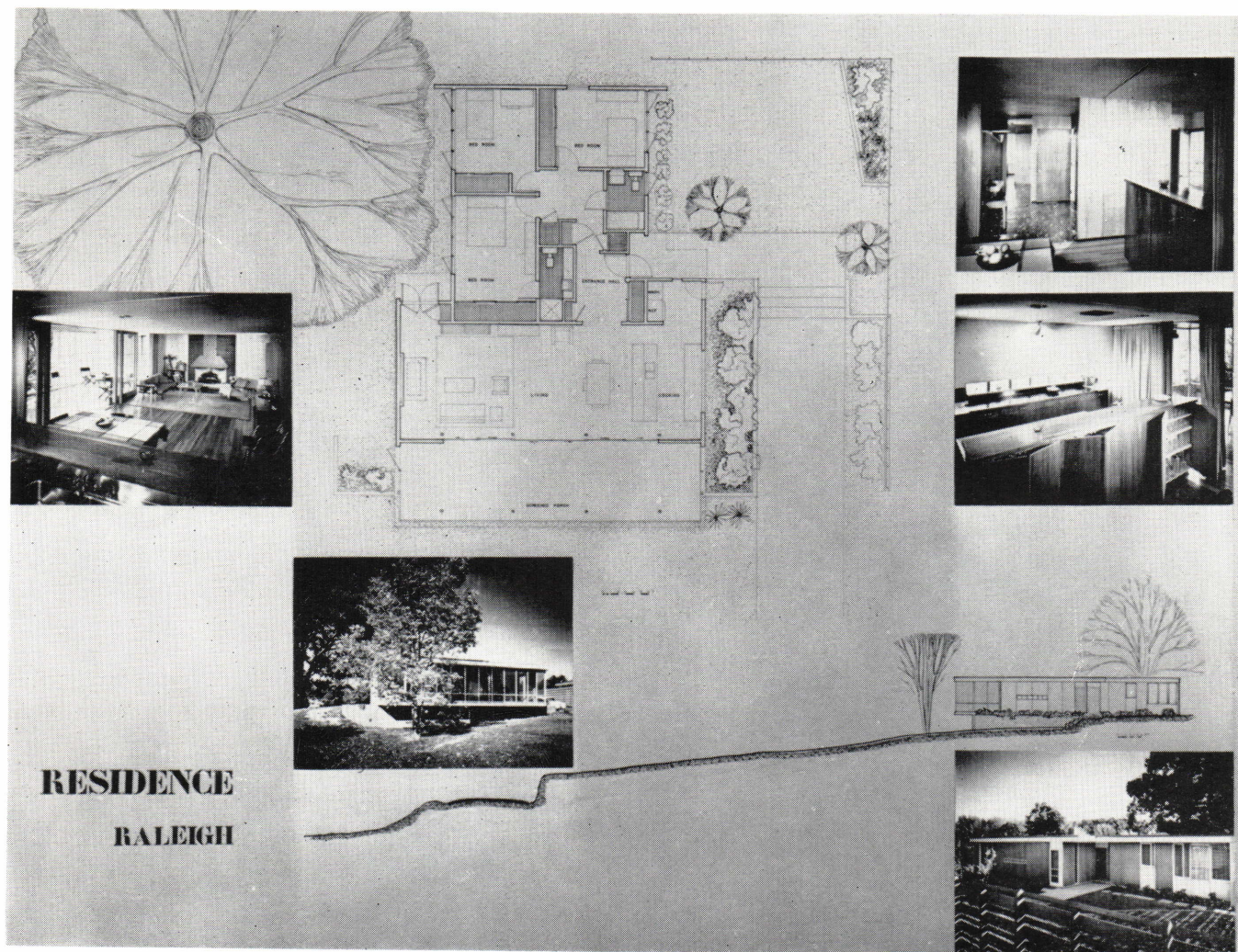
CHARLOTTE, N. C.

A. G. Odell, Jr., AIA

CHARLOTTE, N. C.

The report of the Honor Awards Jury said "An Award of Merit to the Public Library for Charlotte, N. C., A. G. Odell, Jr., Architect. For excellent use of a restricted downtown site; a pleasant entrance and approach; well considered drive-in access; and the quiet garden court adjoining the reading room."

1957 NCAIA Honor Award Winner



RESIDENCE
RALEIGH

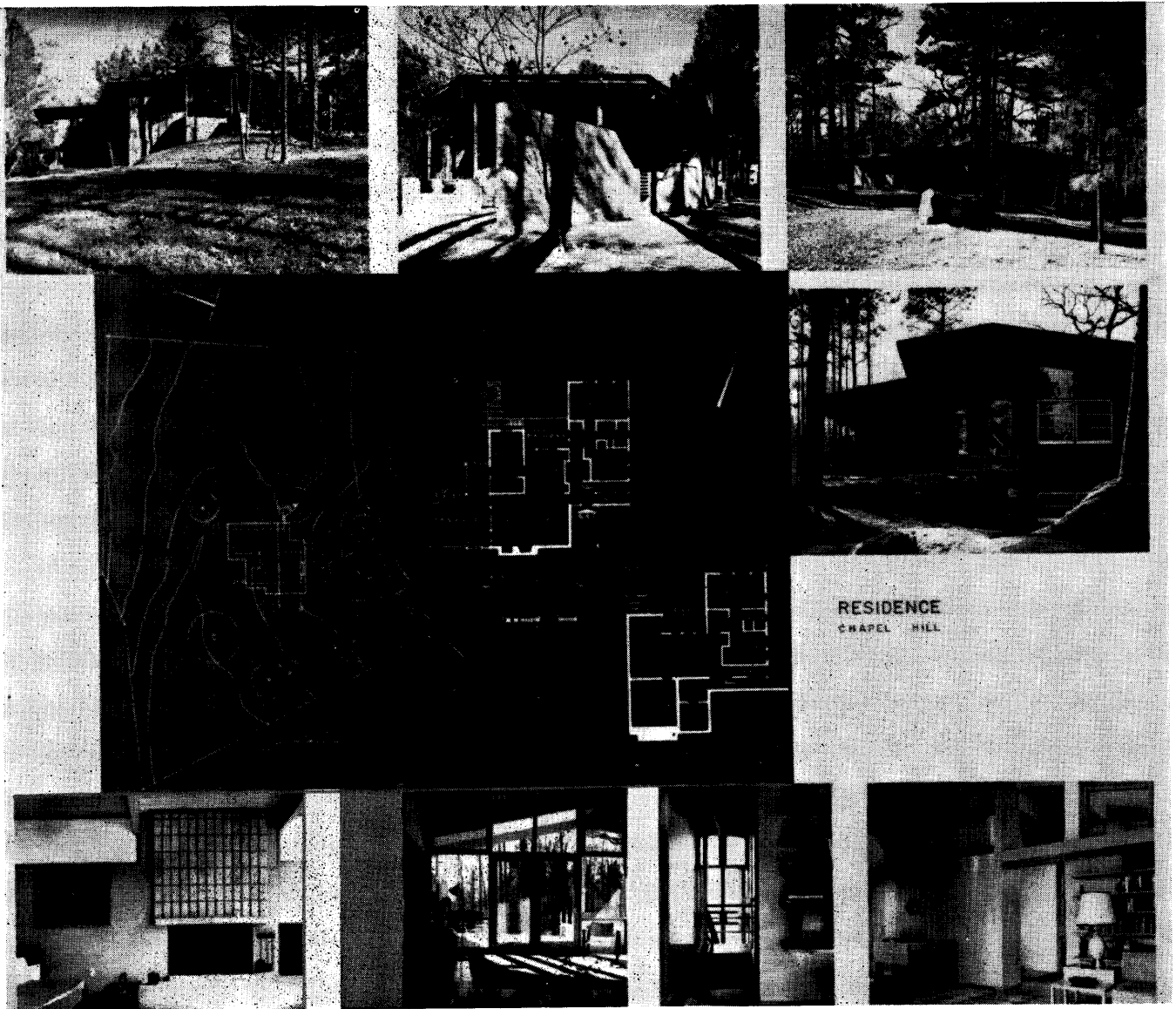
RESIDENCE

RALEIGH, N. C.

G. Milton Small, AIA

RALEIGH, N. C.

The report of the Honor Award Jury said "An Award of Merit to a residence in Raleigh, N. C. by G. Milton Small, Architect. For the site-free plan with the porch taking full advantage of the view and the happy interrelation of the porch and interior living spaces. Except for minor details on the approach side, this house would have qualified for first consideration."



RESIDENCE

CHAPEL HILL, N. C.

James M. Webb, AIA

CHAPEL HILL, N. C.

The report of the Honor Award Jury said "An Award of Merit to a residence in Chapel Hill, N. C. by James M. Webb, Architect. For its sympathetic relationship with the site, and for its pleasant silhouette, that echoes the rolling contours of the ground."

AIA SAYS WALKER MOST SIGNIFICANT ARCHITECT



"Ralph T. Walker, New York architect, inventor, community planner, and humanitarian, has been named by the American Institute of Architects to receive a special Centennial Medal which was struck in commemoration of the 100th anniversary of the national professional society.

"The unprecedented award, according to A.I.A. President Leon Chatelain, Jr., means that Walker, 67, is considered by the 11,500 society members to have made "the most significant contribution of any living American architect to humanity and the planning of human environment."

Walker will receive the award at the annual A.I.A. banquet, to be held May 16 in Washington. The Institute Centennial program will be held May 13-17 in the capital city.

"Other Awards announced by A.I.A. were as follows:

"The coveted Gold Medal for 1957 goes to Louis Skidmore, senior partner of the architectural firm of Skidmore, Owings & Merrill, a native of Lawrenceburg, Indiana, and now of New York City, 'in recognition of Mr. Skidmore's leadership in the formation and conduct of a firm which has made outstanding contributions to the profession of architecture.' "

"The Fine Arts Medal, the Institute's highest award in the non-architectural fine arts, goes to Mark Tobey, of Seattle, Wash., for distinguished achievement in painting.

"The Craftsmanship Medal, awarded for achieve-

ment in the industrial arts, goes to Charles Eames, of Venice, California, for distinguished design of furniture.

"Citations of Honor were awarded to the Foreign Buildings Operation of the U. S. Department of State, for distinguished achievement in directing the foreign building program, and to Milton Horn, Chicago sculptor, for achievements in the arts.

"Honorary A.I.A. Fellowships were awarded to Pier Luigi Nervi, of Rome, Italy, and Christiano das Neves, of Sao Paulo, Brazil.

"David C. Baer, Houston, Texas architect, received the Edward C. Kemper Award, made annually for significant contributions to the profession. Baer is chairman of the A.I.A. Committee on Office Practice.

"President Chatelain declared that Walker, a Fellow and former president of the American Institute of Architects and a member of the New York architectural firm of Voorhees, Walker, Smith & Smith, was chosen as the recipient of the Centennial Medal "for the unstinting use of his talents and energies in many fields of public service."

"'It is our belief,' the Institute president said, 'that Mr. Walker has made the most significant contribution of any living American architect to humanity and the planning of human environment. It appeared to our board of directors that his unique contributions would be recognized most fittingly through the creation of a special award to be given only once—on the occasion of our Centennial celebration.

"Walker, a native of Waterbury, Conn., has been the designer of the New York Telephone Co. headquarters in New York City and Brooklyn; Prudential Life Insurance building in Newark, N. J.; General Foods Offices building, White Plains, N. Y.; Union Carbide and Carbon Corp., New York; A.F.L.-C.I.O. building, Washington, D. C.; Charles Hayden Memorial Library, Cambridge, Mass.; Loyola Seminary, Shrub Oak, N. Y. and the Luxembourg American Cemetery, Hamm, Luxembourg. He designed U.S. Army bases in the British West Indies; the Niraco community for the Nicaro nickel plant in Cuba, and a proposed community development to house workers for the Aswan fertilizer plant in Egypt. As an inventor, Walker held the original patent on the Vitarama photographic process, which was the parent of Cinerama and was the first to recognize the principal of peripheral vision."

HOMES FOR BETTER LIVING AWARD

In celebration of its Centennial, the American Institute of Architects is sponsoring a program of "Homes For Better Living Awards". This is the second annual participation in this project. Last year the American Institute of Architects recognized the West Coast achievements in the home design. It is conducted in cooperation with "Better Homes and Gardens" magazine, "House and Home" magazine, the National Broadcasting Company and the following thirteen national groups assisting: American Bankers Association; American Society of Landscape Architects; Institute of Life Insurance; Mortgage Bankers Association of America; National Association of Home Builders; National Association of Mutual Savings Banks; National Association of Real Estate Boards; National Retail Lumber Dealers Association; National Savings & Loan League; Prefabricated Home Manufacturers' Institute; Producers' Council, Inc.; US Savings & Loan League; and US Chamber of Commerce. The purpose of the program is to pick the best houses built since January 1954 in the eastern region of the United States. This includes the seventeen eastern seaboard states, the District of Columbia, as well as Puerto Rico, the Virgin Islands and the Canal Zone.

Awards will be made in two major categories: (1) Houses designed specifically for an individual owner, divided according to size: a) under 1,600 sq. ft. of living space. b) between 1,600 sq. ft. and 2,800 sq. ft. of living space. c) over 2,800 sq. ft. of living space. (2) Houses designed for a merchant builder and sold speculatively, divided into three classes: a) under \$15,000. b) \$15,000 to \$20,000. c) over \$20,000.

Awards will be made and the

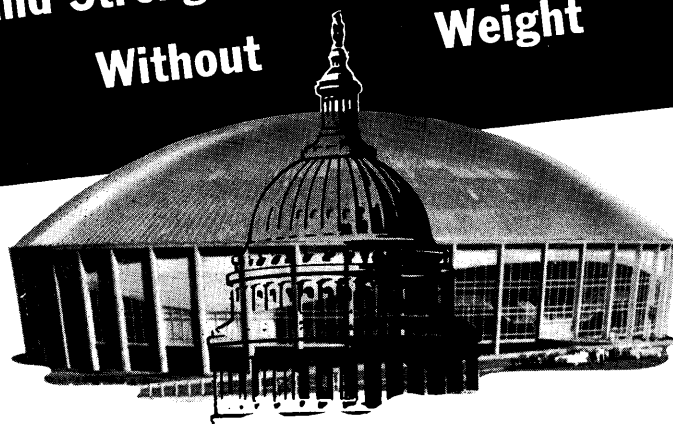
winning designs will be shown at the Centennial Convention in Washington May 13-17. Entries must be postmarked before midnight March 30th, and notification of entry should be sent immediately to "Homes For Better Living Awards" care of the American Institute of Architects, 1735 New York Avenue, N.W., Washington, D. C.

FOARD MADE MEMBER EMERITUS BY AIA

Mr. O. G. Foard, AIA of Wilmington, has been notified by the American Institute of Architects that he was elected a Member Emeritus of the Institute effective January 1, 1957. He was an active member of the N. C. Chapter for many years and through 1956.

Size and Strength
Without

Weight



	Capitol	Charlotte Coliseum
Width of dome.....	97'6"	332'2"
Height of dome proper.....	45'3 1/2"	60'
Weight of dome.....	4,454.6 tons (iron)	2000 tons (970 tons of structural steel)

Although the dome of the Charlotte Coliseum (built by Southern) could comfortably hold many Capitol Domes, it weighs less than half as much.

The construction industry has made great advances in methods and materials since our Nation's Capitol was built—a great many of them in the past few decades. Southern is proud to have contributed materially to these developments. Southern's large engineering staff has kept constantly abreast of—and sometimes ahead of—the newest and best in structural steel construction. Our experience is at your service.



Highest Quality and Prompt Service

ENGINEERING COMPANY

"Little Pittsburgh"

P. O. Box 10588

Charlotte, North Carolina

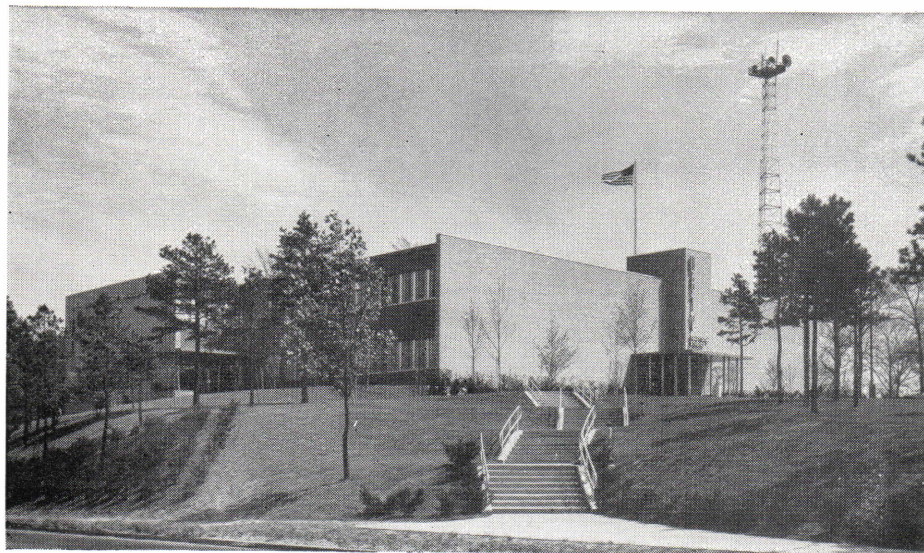


MODEL STUDIO OPENS IN RALEIGH

On February 12th the Model Display Studio, the first in North Carolina, held "Open House" at its location in Cameron Village in Raleigh. It is managed by R. F. Geoghegan, a native New Yorker, graduate of Columbia University,

assistant head of the Model Shop in the Special Devices Division of the Navy during World War II, and the founder of the Rogay Industrial and Commercial Models studio in Washington, D. C., and its manager since the War until

November 1956. The studio is prepared to render special services in architectural models, design models, engineering models, research and development models, displays and exhibits, and special effects.



The new WBTV television station in Charlotte, N. C. J. N. Pease and Company, Charlotte, architects. Southeastern Construction Company, Charlotte, contractors.

ARCHITECTS AND BUILDERS IN THE NEWS

James A. Stenhouse, AIA of Charlotte, has been promoted to Vice-President of J. N. Pease and Company, according to a recent announcement by the company. — Mr. and Mrs. Robert Lee Clemmer of Hickory announce the marriage of their daughter Mildred to Charles Hunt Shuford of Hickory on January 26th. Mr. Shuford is a senior at N. C. State College, and the couple will reside in Raleigh's Cameron Village until June. — The Charlotte Council was among the first to receive congratulations on AIA's Centennial celebration when President Stowe Moody of Charlotte's Chamber of Commerce included remarks during his organization's annual banquet January 18th. — The firm of Thomas, Harles, Shields & Edwards, formerly located at 111 Nash Street, Rocky Mount, has been changed to Thomas, Harles & Edwards and are now located in their new offices at 115 Forest Hills Avenue, Englewood in Rocky Mount. — Beaman Engineering Company of Greensboro has announced the opening of a Tampa branch office at 2303 West Elatt Street. Other offices are in Atlanta, Richmond and Baltimore. — Cyrill H. Pfohl, AIA of Winston-Salem, announces the moving of his office from 234 N. Main St. to 713 O'Hanlon Bldg.

In Industrial Design...
there's no substitute for SOLITE®

At the Jefferson Standard Broadcasting Company in Charlotte, N. C., versatile SOLITE structural concrete was put to two interesting uses. In this new, all-modern building, SOLITE was used both in the roof and second floor slabs . . . thus sharply reducing dead weight.

Part of the second floor has step-down, over-hanging viewing booths, from which sponsors and others may watch live programs in progress. More tributes to modern construction ingenuity achieved through SOLITE versatility!

so versatile...so permanent SOLITE®

PLANTS: Aquadale, N. C.

Bremo Bluff, Va.

OFFICES: P. O. Box 205, Richmond, Va.

P. O. Box 1843, Charlotte, N. C.

FOR BETTER BUILDING — consult your architect or engineer. No matter what type of construction you are interested in, their professional advice can save you time and money!

ETOWAH BRICK

IN

- Red Face
- Buff Face
- Colonial Sand Finish Red
- Colonial Sand Finish Peach Blossom

THE MOLAND-DRYSDALE CORP.

HENDERSONVILLE, N. C.

TEL. 6561

F. N. THOMPSON INC.

GENERAL CONTRACTORS



Charlotte, N. C.

Raleigh, N. C.

Tel. ED 4-4742

Tel. TE 2-2687

McDevitt & Street Company

GENERAL CONTRACTORS

505 Builders Building
Charlotte, North Carolina



*Over 35 Years Continuous Experience in
General Construction in the Southeast.*

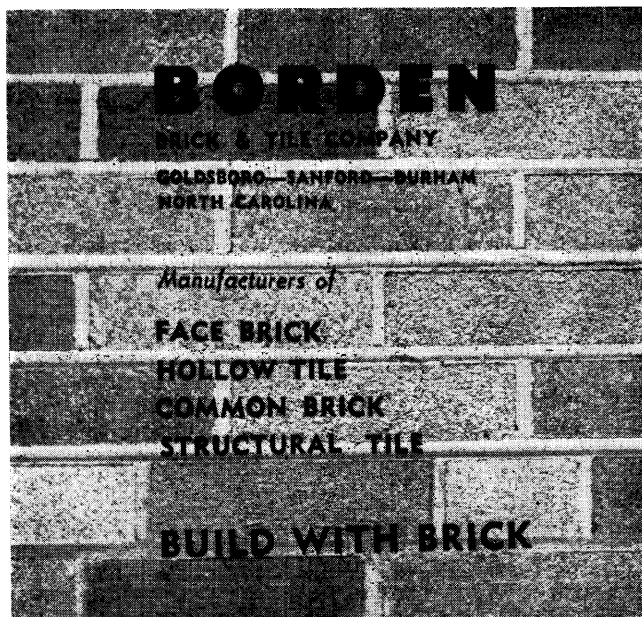
ISENHOUR BRICK & TILE CO., INC.

Complete Lines
Buff, Red Brick &
Tile Products

SUBSIDIARY

TAYLOR CLAY PRODUCTS

SALISBURY, N. C.



Central LUMBER CO.

ARCHITECTURAL WOODWORK
TO DETAIL IN SOFTWOODS
AND HARDWOODS

H. H. BAXTER - J. T. LAND - C. L. KISER

Tel. ED 3-1194
300 South Brevard Street
Charlotte, N. C.

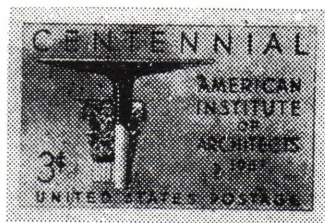
COMMEMORATIVE STAMP HONORS AIA CENTENNIAL

In January Postmaster General Arthur E. Summerfield announced that on February 23rd the United States would release in New York City a 3¢ commemorative stamp honoring the American Institute of Architects 100th birthday. The date and place were selected in that on February 23, 1857 a small group of architects met at 111 Broadway and organized the American Institute of Architects. This year the Institute will hold Centennial ceremonies at the same address, where an outdoor plaque attached to the building will be unveiled. The plaque, designed by McKim, Meade and White, will bear the Institute's seal and an inscription prepared by E. J. Gamboro, a Brooklyn architect, reading as follows: "The American Institute of Architects was founded on this site February 23, 1857, by thirteen architects of ideals and vision. Throughout the years its members have contributed to the advancement of architecture and have encouraged the development of the allied arts, expressing the aspirations of our people, bringing into their lives inspiration, beauty and comfort."

The stamp features "A modern mushroom type head and shaft" superimposed on a Corinthian capital, thus symbolizing developments made in architecture during the past century.

The word "Centennial"

is along the stamp's top border, and at the right of the shaft and column is the phrase "American Institute of Architects 1957" in five lines. This vignette, prepared by Robert J. Schultz, an Institute member in South Bend, Ind., won first award in a competition conducted by the Institute. The stamp, arranged horizontally, is being printed by the rotary process, electric-eye perforated, in sheets of fifty. The colors are light purple letters on a pink background. A supply of 120,000,000 has been authorized. They are expected to be in local post offices around the end of the month. It is recommended that architects consider purchasing a supply of them for use throughout the year.



DR. BELL TELLS OF RESEARCH FOR N. C.

One of the features of the North Carolina Chapter American Institute of Architects winter meeting was a talk February 1 arranged after the program was printed. It was by Dr. W. C. Bell, Head of the Industrial Experiment Program for North Carolina and also Director of Ceramic Research at N. C. State College. Dr. Bell arranged an exhibit of new building materials being manufactured in the state, including wood, clay and mineral products. These were displayed in Person Art Gallery with the Honor Award exhibit, and received much favorable comment. Perhaps foremost of the new products was the revelation for the first time of the results of their research for the brick industry. This may have far-reaching implications, in that the process has never been done anywhere before. It allows normally red-burning brick clays to be made to take on virtually all the colors of the proverbial rainbow.

The nationally famed research ceramist punctuated his remarks with actual sample brick panels in a variety of colors all produced with a typical North Carolina red clay. Furthermore, he said, such colors are permanent, acid-and-stain resistant, and will soon be commercially available at surprisingly low cost.

Dr. Bell likened the new development to the ancient alchemist's search for a method to turn iron

into gold. "For many years ceramic scientists have dreamed of obtaining greater color variety from red brick clays, which have the dual advantage of being plentiful as well as providing excellent physical properties in the finished building product", he said. "Now, by delving into the relatively new science of crystalline chemistry, we can at last offer the architect the permanence and other virtues of burned clay products while at the same time permitting him to express his design concepts without such strict color limitations," he added.

"It is natural and just," the architects were told, "that North Carolina designers would be the first to enjoy the new discovery, since the Tar Heel state now produces about one-tenth of all the brick made in the United States and has earned the title of 'Brick Capital of the Nation.'"

The new method of coloring brick differs from the well-known "glazing" system in several respects: it is far less expensive; it can be readily adapted to standard production in any modern brick and tile plant; and, probably most important in today's architectural trend toward natural finishes, the color is actually a part of the brick surface and may therefore be had in any of the infinite variety of textures associated with regular face brick. The new brick has a soft, natural and unglossy appearance.

NCAIA COMMITTEES FOR 1957 ANNOUNCED

STANDING COMMITTEES

CHAPTER AFFAIRS

Duties: To formulate guides to the organizing and conduct of Chapter activities. Co-ordinating responsibility for all committee activities.

(Executive Committee)

W. R. James, Jr., AIA, Chairman
R. L. Clemmer, AIA
Kenneth M. Scott, AIA
Arthur C. Jenkins, AIA
A. G. Odell, Jr., AIA
Leslie N. Boney, Jr., AIA
F. Carter Williams, AIA

MEMBERSHIP

Duties: To foster a consistent growth of the Chapter membership; to instruct all candidates for membership regarding his professional obligations; to induct new members by means of appropriate ceremonies.

J. L. Beam, Jr., AIA, Chairman
George F. Hackney, AIA
C. L. Vaughan
Roy F. Kendrick
Cyrill H. Pfohl, AIA
James N. Sherrill, AIA

GOVERNMENT RELATIONS

Duties: To promote the employment on public works of Architects in private practice. To limit the functions of governmental agencies to policy making and programming. To promote an interchange of information between Architects in order to defend the profession against further encroachments of bureaus at city, county, state, and federal levels.

Anthony Lord, AIA, Chairman
John R. Holloway, AIA
Leon McMinn, AIA
F. Carter Williams, AIA

EDUCATION

Duties: To promote long-range objectives in architectural education in cooperation with public and private schools and Schools of Architecture within the territory of the Chapter and with the State Board of Examiners for the purpose of perfecting the Architect's preparation for the practice of his profession; to foster relationships with artists practicing the Arts of Design related to Architecture.

Edward Loewenstein, AIA, Chairman
Frank I. Ballard, AIA
Andrew L. Pendleton, AIA
James M. Webb, AIA
Edward St. Clair Pugh, Jr., AIA
Robert H. Stephens, AIA
Henry L. Kamphoefner, AIA

OFFICE PRACTICE

Duties: To explore the possibility of assisting the Architect to perfect himself in his profession through technical improvement in his office organization and techniques, and to develop office aids to accomplish this purpose. This committee shall have sub-committees on:

- (a) Fees—to act for and on behalf of the Chapter in matters relating to fees.
- (b) Contracts—to advise regarding any needed revisions in the Standard AIA Documents and to promote their general use.
- (c) Ethics and Procedure.
- (d) Office Procedures—to develop and promote the use of aids to office routine and accounting methods.

Luther S. Lashmit, AIA, General Chairman

Ralph B. Reeves, Jr., AIA, Co-Chairman
Leslie N. Boney, Jr., AIA
William Henley Deitrick, AIA

John F. Wicker, AIA, Co-Chairman
John C. Higgins, AIA
Walter W. Hook, AIA

Robert F. Arey, AIA, Co-Chairman
Andrew L. Pendleton, AIA
Erle G. Stillwell, AIA

Fred W. Butner, Jr., AIA, Co-Chairman
S. Scott Ferebee, Jr., AIA
Anthony Lord, AIA

PUBLIC RELATIONS

Duties: By means of planned publicity through all public information media to promote public recognition of the profession and encourage the use of architectural services for all public and private construction projects.

A. G. Odell, Jr., AIA, Chairman
Allen J. Bolick, AIA
Cecil P. Elliott, AIA
Louise Hall, AIA
Nils F. Larson, AIA
Edward Loewenstein, AIA
Norman J. Pease, Jr., AIA
Anthony Lord, AIA
C. B. Wessell, Jr., AIA

CONSTRUCTION INDUSTRY RELATIONS

Duties: To maintain contact with and foster cooperative relationships between contractor organizations, producer and dealer organizations, and labor organizations for the purpose of promoting efficient and economical building operations.

Walter D. Toy, AIA, Chairman
William J. Boney, AIA
Thomas T. Hayes, Jr., AIA
Jesse M. Page, Jr., AIA
Thomas E. Whitmire, AIA
Tebee P. Hawkins, AIA

COLLABORATION OF DESIGN PROFESSIONS

Duties: To cooperate on problems of mutual interest to the Institute, the National Society of Professional Engineers, the American Society of Civil Engineers, and other groups dealing with matters of building design.

Lucian J. Dale, AIA, Chairman
John E. Ramsey, AIA
S. Porter Graves, AIA
Robert F. Arey, AIA
Joseph N. Boaz, AIA
James A. Benton, AIA

SCHOOL BUILDING

Duties: To study methods of planning up-to-date school buildings in cooperation with related agencies within the territory of the Chapter and to maintain effective contacts with the school officials and organizations on matters relating to professional services.

Leslie N. Boney, AIA, Chairman
R. L. Clemmer, AIA
Lindsey M. Gudger, AIA
A. G. Odell, Jr., AIA
John J. Croft, Jr., AIA
Robert H. Stephens, AIA
James L. Beam, AIA
W. R. James, Jr., AIA
J. Scott Thomas, AIA
Jesse M. Page, AIA

HOSPITALS AND PUBLIC HEALTH

Duties: To cooperate with public and private agencies within the territory of the Chapter in programs effecting hospitalization and public health.

Walter W. Hook, AIA, Chairman
W. Stewart Rodgers, AIA
Robert W. Carr, AIA
Charles H. Boney, AIA
William M. Weber, AIA

RESEARCH

Duties: To study problems affecting the Architectural profession arising from the National Defense Emergency including the interest of the profession in matters of manpower, regulation of the building industry, procurement of design services, civil defense housing, dispersal programs, design of buildings for applications of Nuclear Science and fellowships for the study of the applications of Nuclear Science to Architecture. To explore the possibilities of interesting components of the building industry, the government and others in sponsoring building research programs to be administered by the AIA. To develop a central evaluation and information center for new materials and construction for the benefit of Chapter members.

Norman J. Pease, Jr., AIA, Chairman
Marvin R. A. Johnson, AIA
John J. Croft, AIA
James C. Hemphill, AIA
George Matsumoto, AIA
Robert E. Bush, AIA
David M. MacIntosh, AIA

HOME BUILDING INDUSTRY

Duties: To promote utilization of architectural services by merchant builders; and to collaborate with Associations in the Home Building field.

R. Emory Holroyd, AIA, Co-Chairman
Don Deleno Folk, Jr., AIA, Co-Chairman
Leif Valand, AIA
Louis H. Asbury, Jr., AIA
Cyrill H. Pfohl, AIA

COMMUNITY DEVELOPMENT

Duties: To cooperate on problems of mutual interest to the AIA, the Public Housing Administration and the State Organization of Housing Officials in matters of community planning, Housing Design and Construction Standard, and to demonstrate by interest and activity the ability of the Architectural profession to assume a position of leadership in the replanning and redevelopment of existing communities, as well as the planning and development of rural areas.

James M. Webb, AIA, Chairman
John Parker, AIA
Walter D. Toy, Jr., AIA
Gorrell R. Stinson, AIA
Archie R. Davis, AIA
Walter W. Hook, AIA
John F. Wicker, AIA
Milton G. Small, Jr., AIA

PRESERVATION OF HISTORIC BUILDINGS

Duties: To foster the preservation of the Historic Buildings within the territory of the Chapter particularly those having Architectural significance, by encouraging the establishment of bodies to care for them and by collaboration with established restoration organizations.

James A. Stenhouse, AIA, Chairman
Ross Shumaker, AIA
Louise Hall, AIA
W. R. Wallace, AIA
J. Scott Thomas, AIA

SPECIAL COMMITTEES

CONVENTIONS

Duties: To make arrangements for chapter meetings including arrangements for visitors, reservations, and scheduling all events. Activities and fiscal obligations of this committee are subject to the approval of the Executive Committee.

Archie R. Davis, AIA, Chairman
John J. Rowland, AIA
Joseph D. Rivers, AIA
Mangum W. Sloan, AIA
Elizabeth B. Lee, AIA

EXHIBITIONS

Duties: To conduct periodic programs of exhibitions and awards in order to encourage the appreciation of excellence in architecture, building construction, and craftsmanship. To arrange for public showings and publicity.

Robert W. Etheredge, Jr., AIA, Chairman
Alvis O. George, Jr., AIA
Richard P. Leaman, AIA
George C. Pyne, Jr., AIA
Herbert P. McKim, AIA
Robert W. Conner, AIA
Henry L. Kamphoefner, AIA

BUILDING CODES

Duties: To keep informed of governing codes, confer with interested parties in discussion of matters relating thereto and make recommendations as to any proposed changes.

Eccles D. Everhart, AIA, Chairman
Howard K. Olive, AIA
S. Scott Ferebee, Jr., AIA
Frank Horton, AIA
James C. Hemphill, AIA

CENTENNIAL OBSERVANCE 1957

Duties: To plan and carry out NCAIA participation in nationwide observance of Centennial Observance of the American Institute of Architects.

Anthony Lord, AIA, Chairman
James A. Stenhouse, AIA
Ross Shumaker, AIA
Archie R. Davis, AIA
Louise Hall, AIA
Henry L. Kamphoefner, AIA
Edward Loewenstein, AIA
Robert H. Stephens, AIA

CHAPTER PUBLICATIONS

Duties: To supervise chapter publications with particular regard to conformity with Chapter and Institute policies. To stimulate membership participation.

Richard L. Rice, AIA, Chairman
A. Lewis Polier, AIA
Turner G. Williams, AIA
Sam T. Snoddy, AIA
H. R. McLawhorn, Jr., AIA
Edward E. Aldrich, AIA
James L. Brandt, AIA

LEGAL AFFAIRS

Duties: To maintain a thorough knowledge of all state legislation and local ordinances and the enforcement thereof pertaining to architectural practice. To maintain close coordination with the Chapter attorney. To keep informed regarding potential legislation at its formative stage during sessions of the North Carolina State Legislature. To assist Chapter actions regarding the profession as affected by proposed or existing ordinances or laws.

Albert L. Haskins, Jr., AIA, Co-Chairman
F. Carter Williams, AIA, Co-Chairman
Arthur G. Odell, Jr., AIA
Leslie N. Boney, Jr., AIA
John E. Ramsay, AIA

INSTITUTE FELLOWSHIP

Duties: To make nominations and complete submissions of necessary data for proposed advancement of Chapter members to Fellowship in the Institute in accordance with Institute requirements.

William H. Deitrick, FAIA, Chairman
Erle G. Stillwell, FAIA
Walter W. Hook, FAIA

CHAPTER MANUAL

Cyrill H. Pfohl, AIA, Chairman
Eccles D. Everhart, AIA
John E. Ramsay, AIA
Kenneth M. Scott, AIA

ADVISORY COMMITTEE TO SCHOOL OF DESIGN

Duties: See policy.

W. R. James, Jr., AIA, Chairman
Marion A. Ham, AIA
Henry I. Gaines, AIA
William H. Deitrick, AIA
Arthur G. Odell, Jr., AIA

PROFESSIONAL ENGINEERS NOTE AIA'S CENTENNIAL

The Professional Engineers of North Carolina adopted a resolution congratulating AIA and wishing it many more years of service. It reads as follows:

Whereas, the American Institute of Architects will celebrate one-hundred years of organization during the week of February 17-23, and

"Whereas, the American Institute of Architects Carolina take pride in the wide contribution of the Architectural profession, its sister organization, the American Institute of Architects and its membership to our way of life and the comforts we

enjoy, now therefore

Be It Resolved, that the Professional Engineers of North Carolina extend and it does hereby extend to the North Carolina Chapter the American Institute of Architects its heartiest congratulations on its 100 fruitful years of existence and that it may long continue to serve its membership, its profession and its community as it has during the past, and be it further Resolved that the Secretary of PENC spread this Resolution on the minutes of this meeting of the Board of Governors of PENC and forward a copy of this Resolution to the President and Secretary of the N. C. Chapter AIA.

Index of Advertisers

	page
Acousti Engineering Company	22
Beaman Engineering Company	3
Guy M. Beaty Company	20
Borden Brick & Tile Company	24
Boren Clay Products Company	7
Bost Building Equipment Company	20
Brick & Tile Service, Inc.	Back
Carolina Solite Corp.	23
Carolina Tuff-Lite Corp.	31
Central Lumber Company	24
Concrete Materials, Inc.	1
Dewey Brothers, Inc.	6
Duncan Printmakers, Inc.	6
H & S Lumber Company	20
Hoke Concrete Works	20
Hughes-Rankin Co.	4
Isenhour Brick & Tile Co., Inc.	24
Kendrick Brick & Tile Company	31
The Mabie-Bell Company	6
McDevitt & Street Company	24
The Moland-Drysdale Company	24
Monarch Elevators	20
N. C. Concrete Masonry Association	31
Pine Hall Brick and Pipe Company	6
Renfrow Distributing Company	7
Salisbury Lumber & Supply Company	20
Snow Lumber Company	20
Southernair Company	20
Southern Engineering Company	22
F. N. Thompson, Inc.	24
Zonolite Company	6

The N. C. Chapter American Institute of Architects is appreciative of the support of our advertisers and invites your consideration of their products and their representatives.

ARCHITECTURAL CALENDAR

Mar. 1: Guilford Council of Architects. Bliss Restaurant, Greensboro.

Mar. 5: Winston-Salem Council of Architects. El-Cam-Rey Restaurant, Winston-Salem.

Mar. 6: Charlotte Council of Architects. Thackers Restaurant, Charlotte.

Mar. 7: Raleigh Council of Architects, S.&W. Cafeteria, Raleigh

Mar. 12-14 Carolina Lumber & Building Supply Assn., Charlotte.

APRIL 4-6: South Atlantic Regional Conference, AIA. Atlanta, Ga.

MAY 14-17: Centennial Celebration Convention, American Institute of Architects. Shoreham Hotel, Washington, D. C.

June 20-22: North Carolina Chapter, American Institute of Architects. Summer Meeting. Atlantic Beach Hotel, Atlantic Beach, N. C.

Make Reservations Early
Summer Meeting

NORTH CAROLINA CHAPTER AMERICAN INSTITUTE OF ARCHITECTS

June 20-22, 1957

**Atlantic Beach
Hotel**

Atlantic Beach, N. C.

PLANTATION
SAND FACE

GOLDEN
AND PINK
ANTIQUES

ROMAN
JUMBO
COMMON
BRICK

Kendrick Brick & Tile Co., Inc.

MR. ARCHITECT
MR. BUILDER
MR. HOME OWNER

*We cordially invite you to visit
our (all brick and tile) display
rooms at our Charlotte office and
see our large display of various
textures and color ranges.*



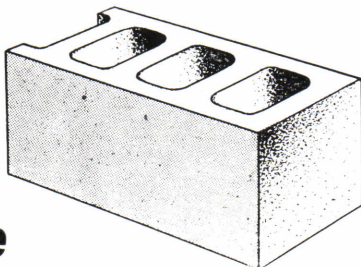
FRANKLIN 6-8465
3225 S. Boulevard—Charlotte, N. C.

Plant No. 1
Mt. Holly, N. C.
Plant No. 2-3-4
Monroe, N. C.

YOU GET KNOWN

Quality

when you buy
CONCRETE BLOCKS
from a member of the
NCCMA!



They're
QUALITY CONTROLLED

for DENSITY • AGGREGATE
• STRENGTH

TESTED by recognized independent laboratories

**NORTH CAROLINA CONCRETE
MASONRY ASSOCIATION**

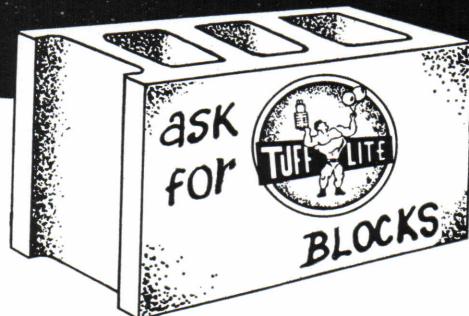
715 W. Johnson St., Raleigh, N. C.

EXPANDED-CLAY AND SHALE AGGREGATE

USE



it makes **BETTER LIGHTWEIGHT BLOCKS
AND LIGHTWEIGHT CONCRETE**



For Better Building

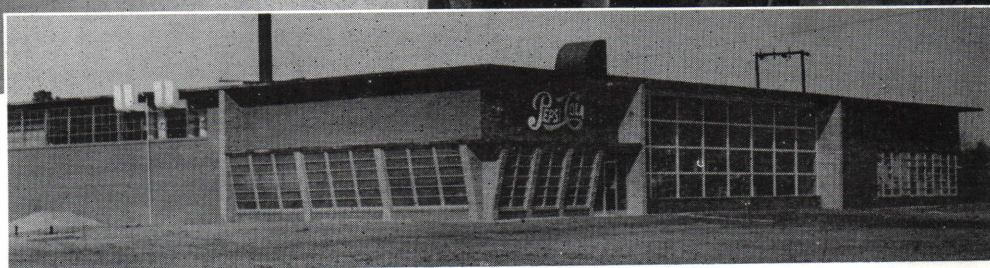
CAROLINA TUFF-LITE CORPORATION
P. O. BOX 432 PHONE 188
SALISBURY, N. C.



Pepsi-Cola Plant
Lumberton, N. C.

Architect: Ross Shumaker,
Raleigh

Associate: Hollis L. Ivey,
Lumberton



Beauty

INSIDE AND OUT

Handsome brickwork, both inside and out, provides that air of substantial quality so important to a business firm.

And it's so economical, here in the Brick Capital of the Nation.

BRICK & TILE SERVICE, INC.

A Service of North Carolina's Clay Products Manufacturers
Greensboro, North Carolina