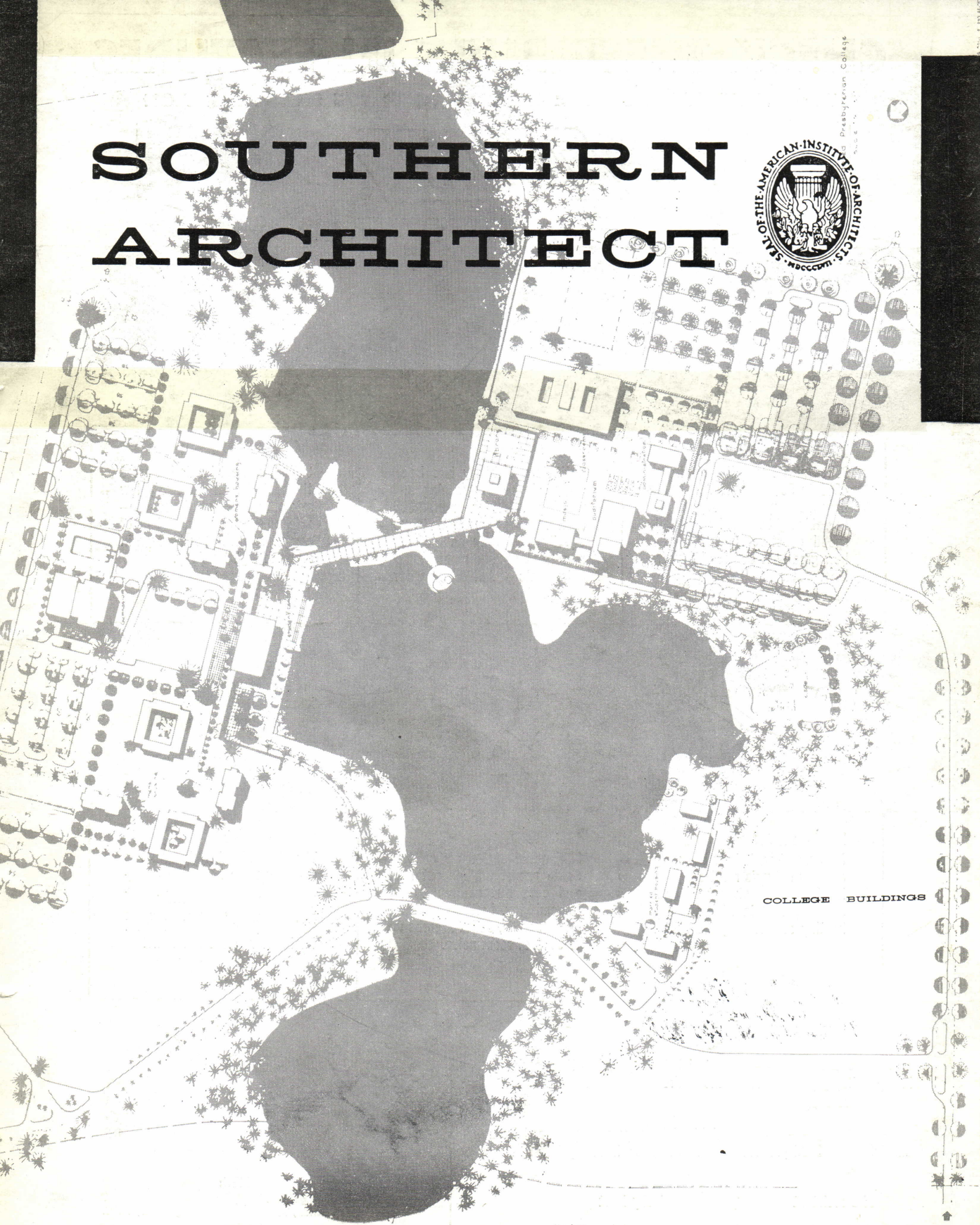


SOUTHERN ARCHITECT



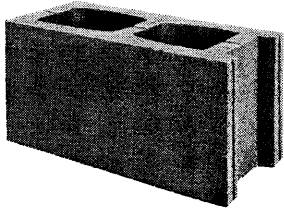
Presbyterian College
August 1962



COLLEGE BUILDINGS

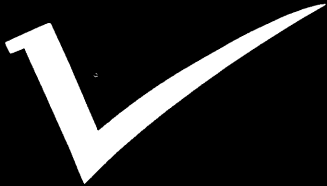
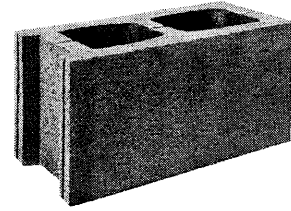
CHECK THESE BUILT-IN FEATURES

THERE IS NO SUBSTITUTE FOR QUALITY! WHEN YOU SPECIFY INSIST ON



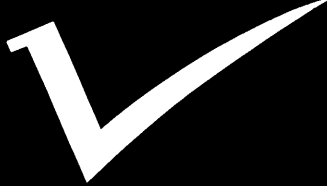
SOLITE[®]

LIGHTWEIGHT MASONRY UNITS



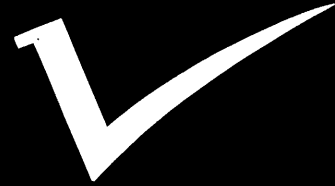
LIGHT!

Solite masonry units are from 40% to 50% lighter than ordinary masonry units. Just think how this lightweight feature can speed construction . . . and how greatly it can reduce your labor costs.



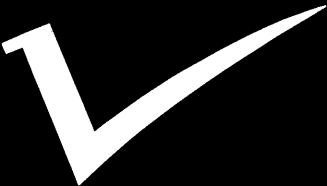
TOUGH!

Solite's durability has been proven in rapid freezing and thawing tests of more than 600 cycles. Solite masonry units are equally as strong as ordinary masonry units and meet the requirements of ASTM Specs. for grade A load bearing units.



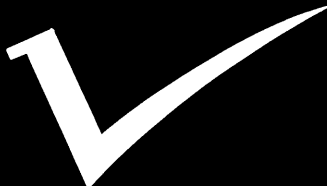
DRY!

Solite's natural insulation gives the material an extremely low rate of moisture condensation—also eliminates the problem of damp, "sweating" walls even in areas of high humidity.



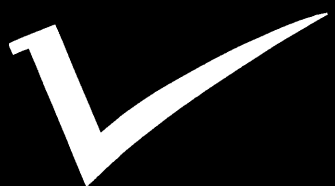
INSULATES!

Millions of sealed air cells are actually nature's most effective insulators. Block out heat in summer, cold in winter. Keep heating and cooling costs low.



QUIET!

Millions of sealed air cells in Solite not only block out heat and cold but reduce sound transmission. Left exposed on interior walls, Solite absorbs up to 50% of room noise.



BEAUTIFUL!

The distinctive beauty of Solite masonry units has been recognized throughout the East! Versatile patterns, smooth texture and flexibility of design! Ideal for interior or exterior walls!

SOLITE — the material that has proved its superiority in top building projects along the entire Eastern Seaboard!

SOLITE — the lightweight aggregate produced by a carefully controlled process — fired at 2300° in rotary kilns!

- ✓ Fire resistant
- ✓ Holds nails
- ✓ Solite saves time and money on the job!
- ✓ Chemically inert
- ✓ Requires minimum maintenance

SOLITE[®]
CORPORATION

PLANTS:

Green Cove Springs, Fla.
Leaksville Junction, Va.

Bremo Bluff, Va.
Aquadale, N. C.

OFFICES:

Atlantic Coast Line Building, Jacksonville, Fla.
Box 9138, Richmond, Va. Box 1843, Charlotte, N. C.

SOUTHERN ARCHITECT



CONTENTS

President's Message	4
St. Andrews Presbyterian College, Laurinburg	5, 6 & 7
Lenoir Rhyne College, Hickory	8 & 9
Queens College, Charlotte	10 & 11
Award of Merit, Atlantic Christian College, Wilson	12 & 13
Johnson C. Smith University, Charlotte	14
Personality of the Month	15
NCAIA Summer Meeting	17
NCAIA New Members, News	20
Directory of Salesman's Products	21
Calendar of Events	22

COMMITTEE ON PUBLICATIONS

JAMES P. MILAM, AIA, CHAIRMAN	RALEIGH
EDWARD E. ALDRICH, AIA	ASHEVILLE
JOSEPH N. BOAZ, AIA	RALEIGH
CHARLES H. BONEY, AIA	WILMINGTON
JAMES L. BRANDT, AIA	RALEIGH
WILLIAM W. DODGE III, AIA	RALEIGH
CECIL D. ELLIOTT, AIA	RALEIGH
RAYMOND FUSON, AIA	NEW BERN
L. P. HOLLAND, JR., AIA	SHELBY
PAUL H. MCARTHUR, JR., AIA	FAYETTEVILLE
ROBERT G. MILLER, AIA	CHARLOTTE
JACK M. PRUDEN, AIA	DURHAM
WILLIAM M. WEBER, AIA	RALEIGH
JOHN F. WICKER, AIA	GREENSBORO
J. B. WIGGINS, AIA	RALEIGH

IN CHARGE THIS ISSUE

JOSEPH N. BOAZ, AIA

NORTH CAROLINA CHAPTER THE AMERICAN INSTITUTE OF ARCHITECTS

ARTHUR C. JENKINS, JR., AIA	PRESIDENT
S. SCOTT FEREBEE, JR., AIA	VICE-PRES.
ELIZABETH B. LEE, AIA	SECRETARY
MACON S. SMITH, AIA	TREASURER
ARCHIE R. DAVIS, AIA	DIRECTOR
ROBERT L. CLEMMER, AIA	DIRECTOR
ALBERT L. HASKINS, JR., AIA	DIRECTOR
LOUISE HALL, AIA	ARCHIVIST
R. MAYNE ALBRIGHT	ATTORNEY
BETTY W. SILVER	EXECUTIVE SECRETARY

cover — site plan

page 5 — student union

photo p. 5 — Joseph W. Molitor

St. Andrews
Presbyterian College
Laurinburg

SOUTHERN ARCHITECT IS PUBLISHED BY THE NORTH CAROLINA CHAPTER OF THE AMERICAN INSTITUTE OF ARCHITECTS, BETTY W. SILVER, EXECUTIVE SECRETARY, POST OFFICE BOX 666, RALEIGH, NORTH CAROLINA. ADVERTISING RATES ON REQUEST.

OPINIONS EXPRESSED BY CONTRIBUTORS ARE NOT NECESSARILY THOSE OF THE NORTH CAROLINA CHAPTER OF THE AMERICAN INSTITUTE OF ARCHITECTS.

JULY 1962
VOLUME 9
NUMBER 7



The North Carolina Chapter of the American Institute of Architects held its regular summer meeting at the Biltmore Motor Hotel in Morehead City in June. It was a successful meeting and a real "fun meeting" for everyone. There was a good registration with all of the councils being represented.

Speaking of council representation—The Raleigh Council had more members in attendance than any other Council. The representation from the Eastern Council was a little disappointing, in so much as the eastern architects had the shortest distances to travel.

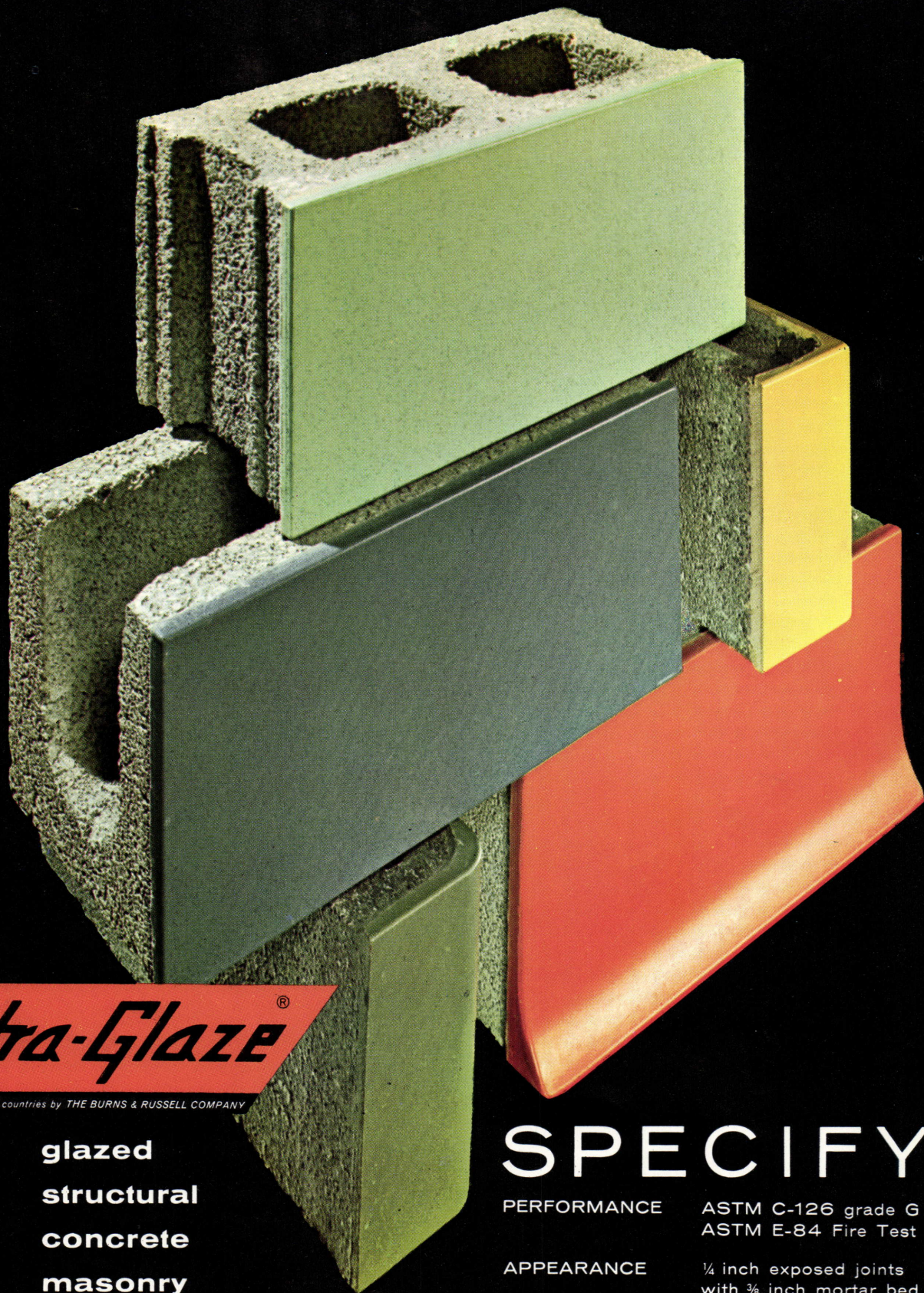
Several years ago when the various Councils were organizing, it was thought that by forming these local groups a closer association between area Architects would result. This closer association, it was hoped, would strengthen the profession by allowing the members to get better acquainted.

Since the formation of the various Councils, I feel there is a closer relationship between the Architects across the state, and this closer association has stimulated better attendance at our AIA meetings.

Membership in AIA is not mandatory in any of the Councils. However, the membership of the various Councils is predominantly AIA. This aspect is good, but steps should be taken to interest more council members in becoming associated with our AIA Chapter.

This year I hope to be able to meet with each of the Councils at least once, in order to get to know more of our Architects personally. The new officers and directors will be a working group this year, doing everything possible to keep our Chapter growing. Can we count on you to help?

A handwritten signature in black ink. The signature is written in a cursive style and appears to read "Arthur D. Johnson". The signature is fluid and elegant, with a large, sweeping loop at the end.



Spectra-Glaze®

Reg. U.S. Pat. Off., Canada and other foreign countries by THE BURNS & RUSSELL COMPANY

**glazed
structural
concrete
masonry
units**

SPECIFY

PERFORMANCE	ASTM C-126 grade G ASTM E-84 Fire Test
APPEARANCE	¼ inch exposed joints with ⅜ inch mortar bed
BY NAME	
SPECTRA-GLAZE	for ECONOMY inherent in block construction

The only glazed concrete block internationally manufactured in 27 locations to a single code of quality control standards.

S SEE SWEET'S CATALOG 4g/Bu for details or write direct:

Tidewater Concrete Block & Pipe Co.

P.O. Box 162, Charleston, S.C. -- Area Code 803, SH 4-5376





BRUCE ROBERTS

**ST. ANDREWS PRESBYTERIAN COLLEGE
LAURINBURG**

architect:

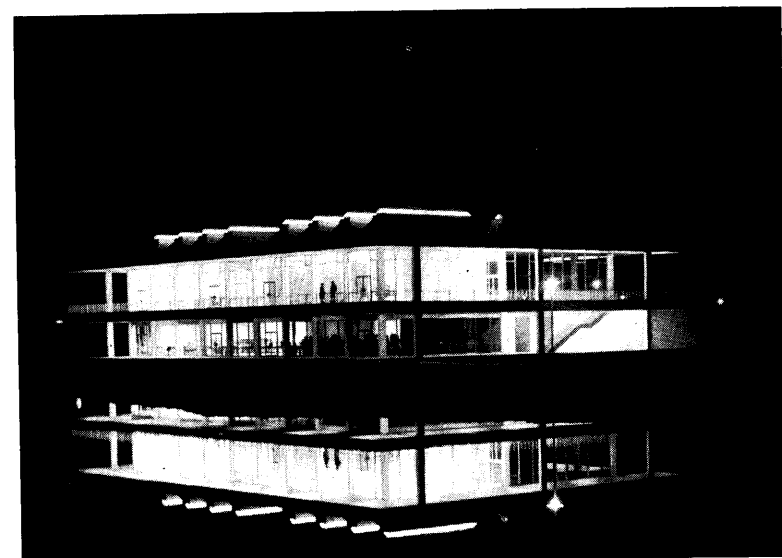
A. G. ODELL, JR. AND ASSOC.
charlotte

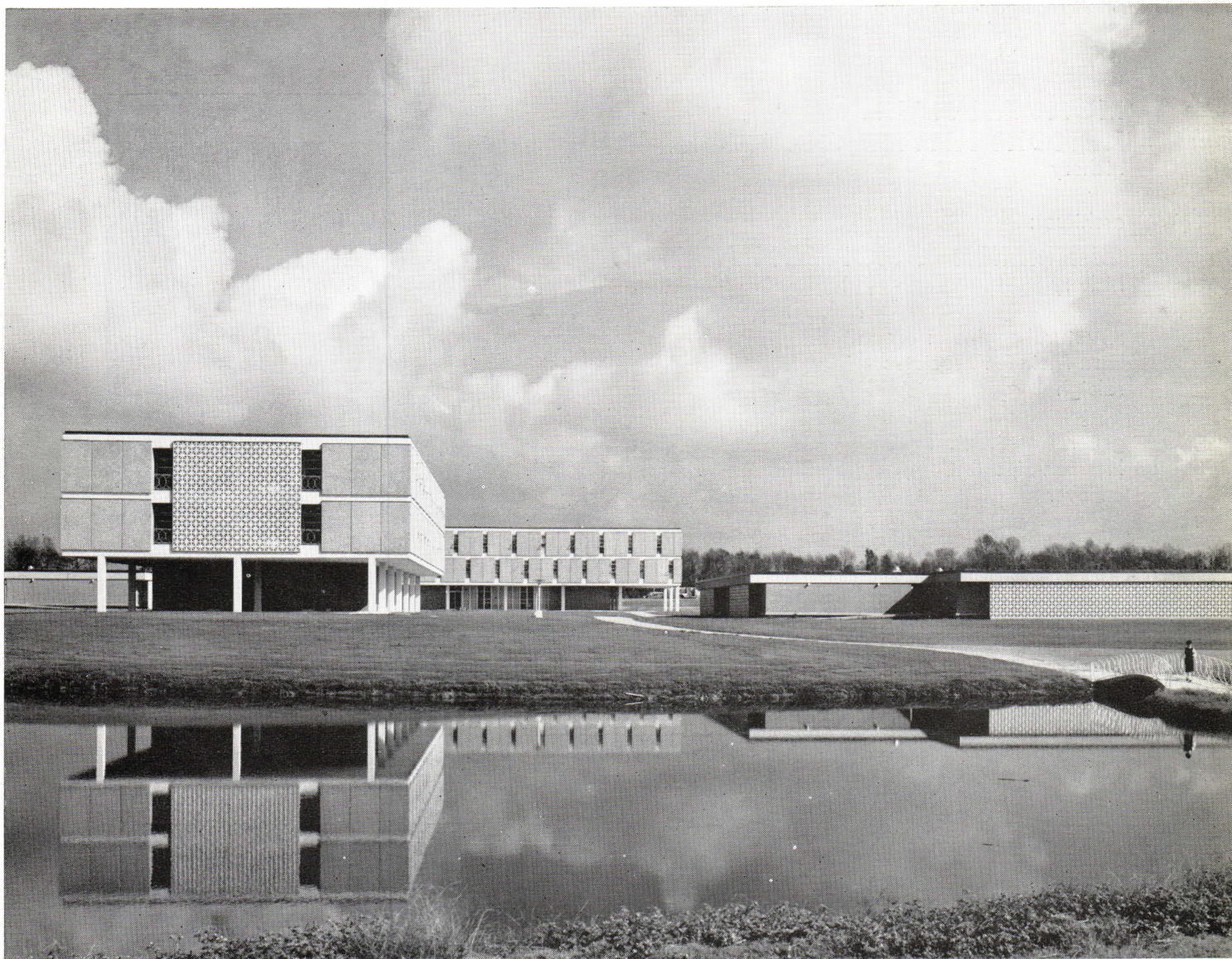
general contractor:

Boyle Construction Co.
sumter, s. c.

landscape architect:

LEWIS CLARKE
raleigh





JOSEPH W. MOLITOR

St. Andrews College campus, a tract of 838 acres, studded with pine and sycamore trees, lies at the southern border of Laurinburg, and extends beyond the city limits. The land stretches along Highway 401, some two miles from the business center.

A beautiful 65 acre lake bisects the campus. On the south shore rise the academic and administrative buildings. Here will be found the Liberal Arts and Science Building, the Music Building, Library, Auditorium and the College offices.

On the north side of the lake the student community will live. Eight residence buildings — one and three-story structures — will be home for young men and women during their college years. The Student Center, by the lakeside, looks across to the Library and Liberal Arts and Science Building. It stands on two levels, the upper opening toward the dormitories, the lower toward the shore. In this northern area, too, will lie the gymnasium and swimming pool.

Focal center of the campus is the lake, its natural setting enhanced by the beauty of careful planting. A landscaped, pedestrian causeway crosses the lake, uniting the student living and recreational section with the academic.

Many miles of paved roads connect the various areas of the campus. Paved and curbed parking spaces accommodate more than 1,000 cars. The beauty of the campus will not be marred by unsightly utility poles and wires since all power and telephone lines lie underground.

MORGAN HALL
LENOIR RHYNE COLLEGE
hickory

architect:

CLEMMER & HORTON ASSOC.
hickory

structural engineer:

Ezra Meir & Associates
raleigh

general contractor:

Herman-Sipe & Company
conover



MEN'S DORMITORY





FRANK J. MILLER

Enhancing the beauty of the dormitory building is a lovely natural hillside setting with many surrounding trees. A central circular stairway provides ample traffic circulation for the three-storied building. Eighty-eight double rooms house 176 men,

plus a resident head's apartment, lounges and community bathrooms. Construction is poured-in-place, cantilevered flat slabs for floors and roof, with walls of metal curtain wall construction.



**EVERETT LIBRARY
QUEENS COLLEGE**

charlotte

architect:

J. N. PEASE AND COMPANY

Norman Pease, Jr., AIA
Partner In Charge

Frederick F. Sadri, AIA
Project Designer

muralist:

Edmund D. Lewandowski
Mural Artist

general contractor:

Myers and Chapman



The Everett Library is located on the main campus of Queens College, a liberal arts college for women in Charlotte.

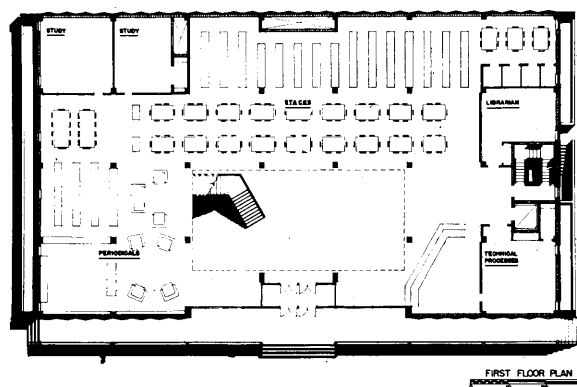
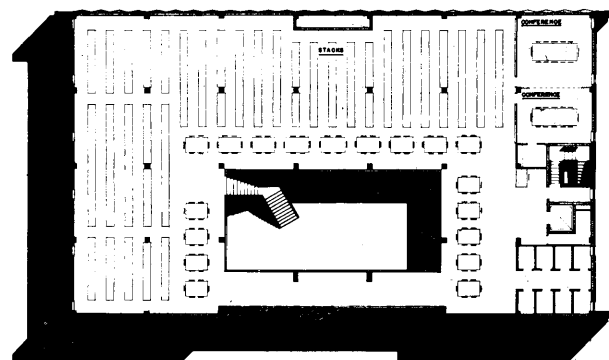
Recent campus planning has created a second axis which provides access from a boundary street and the library building now serves as the focal point for this new campus area. The building is located five hundred feet back from the street allowing approach through a landscaped mall.

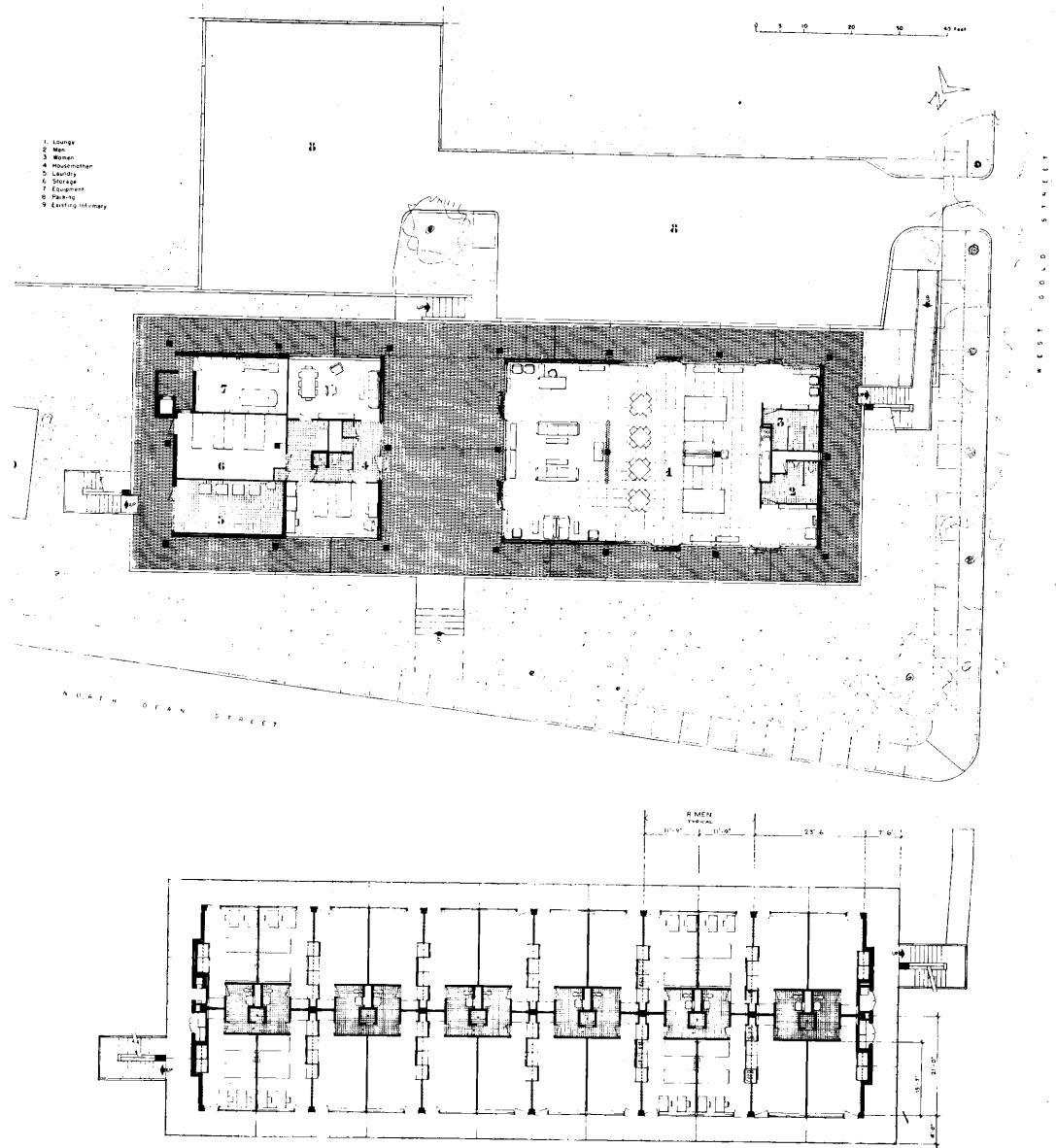
Two hundred thousand volumes are accommodated, with 100,000 in open stacks on the first and second floor and an additional 100,000 in closed stacks on the ground floor.

The Owner desired a library that would be "different" at the same time "tie-in" with the existing. With its location on the new campus axis, the building now occupies a place of prominence and tends to open up a whole new area on an otherwise crowded campus.

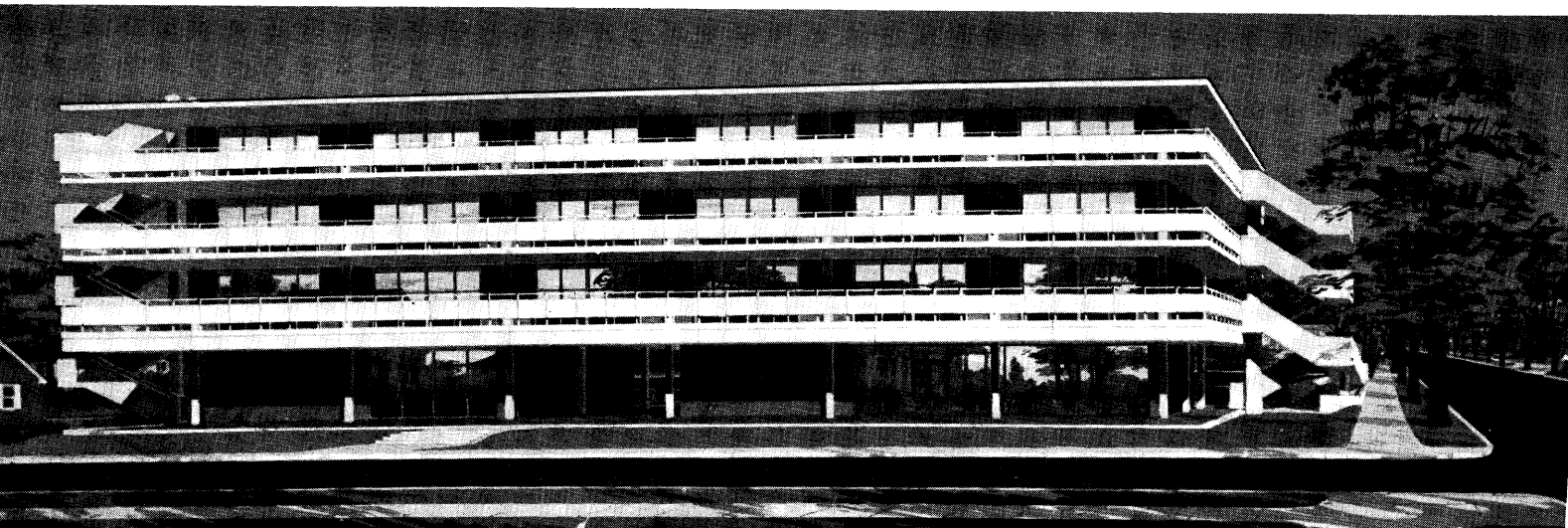
The large, colorful mosaic was designed by Edmund D. Lewandowski, director of the Layton School of Art. This mural is complemented by the relative simplicity of the white stone. Symbolism seen here represents the fields of knowledge included in the materials (of learning) of a college library.

The building frame is of reinforced concrete with pan type floor and roof. Raised front veranda and interior and exterior stairs are also of reinforced concrete. Walls are masonry with face brick and precast stone panels.





The dormitory was constructed with maximum above-ground-floor housing capacity, within the limitations of the available loan, on an extremely constricted site (no larger site available for purchase). Other considerations were municipal height restrictions and off-street parking regulations. A maximum capacity was derived by use of eight-man suites with central bathroom and as much "built-in" furniture as possible. Included on the ground floor are a student lounge with kitchenette, a housemother's suite, laundry machine concession, trunk storage and mechanical equipment room.





Hall and Wright

NCAIA

AWARD OF MERIT

1962

MEN'S DORMITORY
ATLANTIC CHRISTIAN COLLEGE
wilson

architect:

SMALL & BOAZ

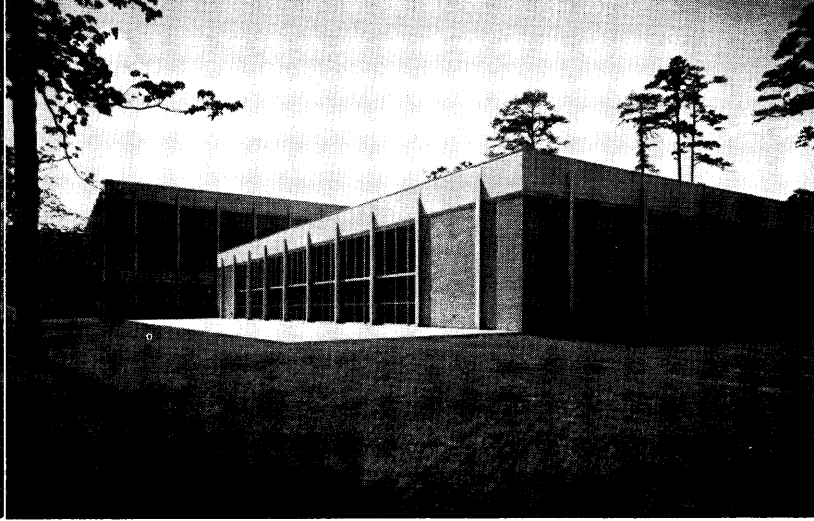
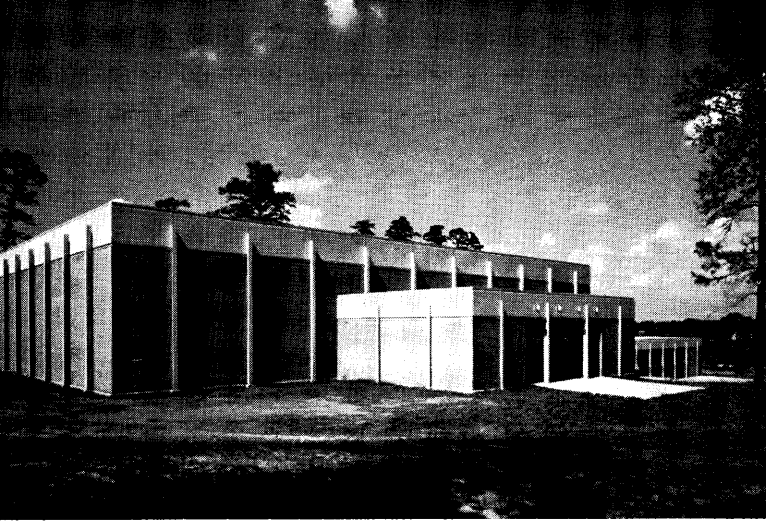
raleigh

Joseph N. Boaz, AIA, Partner-in-Charge

general contractor:

Jones Brothers and Company

wilson



JOHNSON C. SMITH UNIVERSITY

charlotte

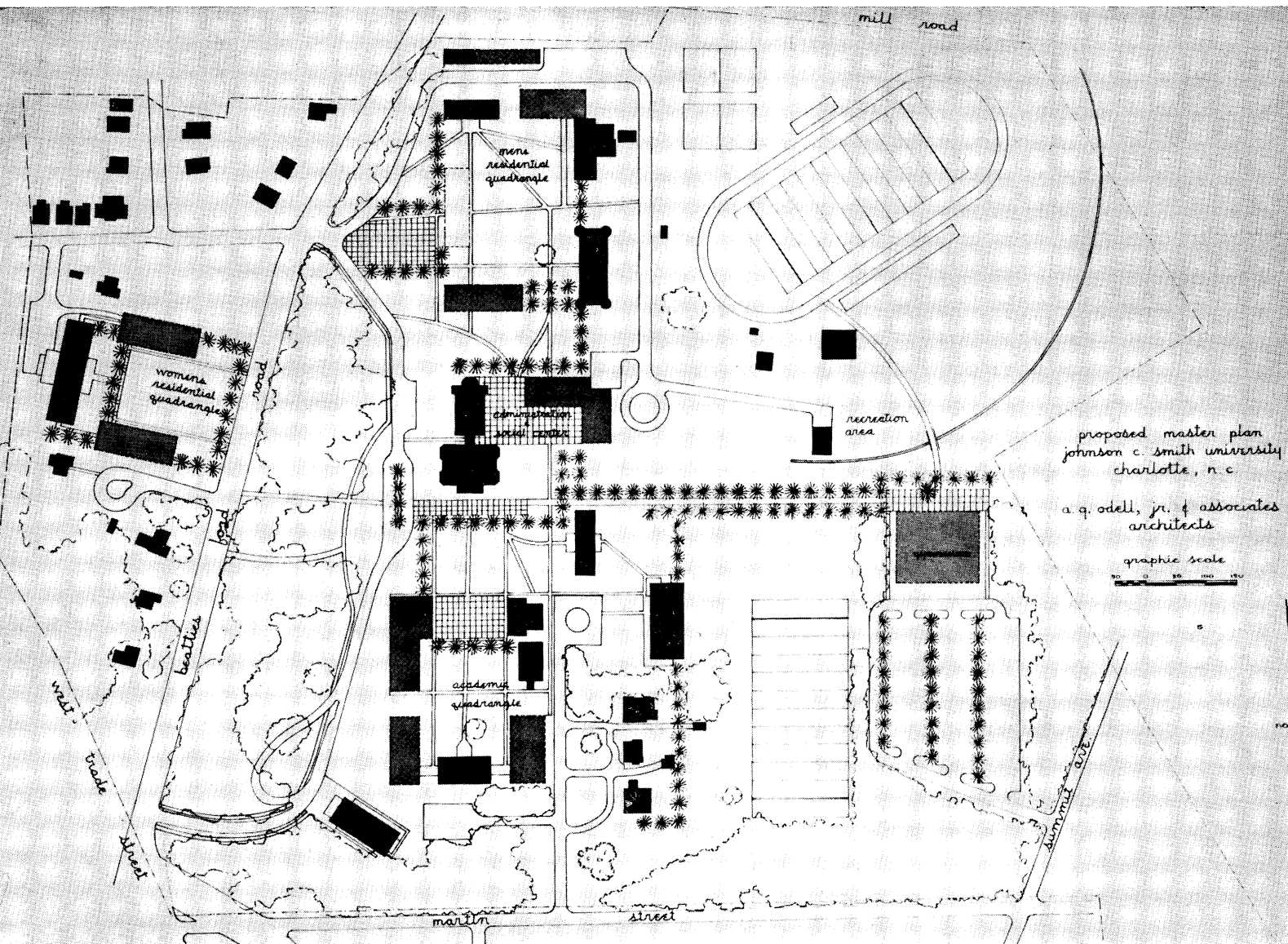
architect:

A. G. ODELL, JR. AND ASSOC.
charlotte

general contractor:
Laxton Construction Co.
charlotte

photos by Tom E. Walters
charlotte

It is anticipated that a master expansion program begun at the school in 1960 will be completed by 1967. First to be completed in February 1962 was the gymnasium and health center and presently under construction is a girls' dormitory which will house 200 students. Soon to be started is a new student union building. Other major improvements will include an addition to the science building, a new library and a residence for seminary students.





PERSONALITY

Arthur D. Wenger, whether greeting you for the first or the hundredth time, invariably radiates good-humored, alert intelligence. The youthful appearing president of Atlantic Christian College, Wilson, N. C., combines these qualities with a friendliness that is unmistakably genuine; yet the serious dedication and essential dignity of a strong leader are there, too.

Native of Idaho, graduate of Bethel College in Newton, Kansas, and of Texas Christian College in Fort Worth (B.D. '48, LL.D. '56), Dr. Wenger was no newcomer when he assumed the presidency of A.C.C. in 1956. He had been assistant to the president and an instructor in the Department of Philosophy and Religion on the Wilson campus during 1950-52, before returning to T.C.U. to complete his doctorate work and serve as Director of Special Promotions and Director of Religious Activities. During World War II, he saw combat duty as an army chaplain in Europe and later served as pastor of churches in California, Texas and Pennsylvania.

As president of a church-related liberal arts college, Dr. Wenger's duties are many and varied. The maintenance of high standards of instruction, and hence the needs of his faculty, seem his prime goals; and toward this end improvements and extensions of the physical plant are essential. The new men's dormitory presented in this issue has been planned and constructed during his administration, and more new buildings are projected. Other facets of his work include public relations, business operations, and the interplay between college and community; all of these, to Dr. Wenger, are parts of a challenging and stimulating job.

Mrs. Wenger, the former Miss Doris Kellenbarger, is also a graduate of Bethel College, and with their three sons, Arthur Frank, 15; Jon Michael, 12; and Mark Randolph, 9, the Wengers are a close family who enjoy travel and music together. We presume that while the family may derive no pleasure from Dr. Wenger's habit of reading at 5:30 or 6:00 a.m., his hobby of cooking exotic foreign dishes must surely add to his hearthside popularity.

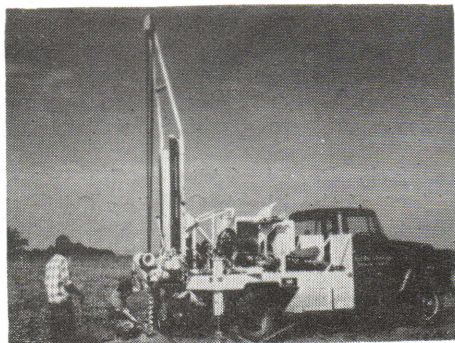
He has served as chairman of the Board of Higher Education of the Christian Church, president of the North Carolina Council of Church Related Colleges, and is currently a member of the Board of Directors of Wilson County United Fund. He received the "Distinguished Alumnus Award" from T.C.U. in 1960 and was "Tar Heel of the Week" in the January 3, 1960 edition of the Raleigh News and Observer.

J-D-WILKINS Co.
 MANUFACTURERS
Architectural Metal
 W. LEE ST. AT GLENWOOD AVE.
 GREENSBORO, N.C.



THE MABIE-BELL COMPANY
 P. O. Box 1558 - Phone CY 9-6122 - Greensboro, N. C.

Ezra Meir & Associates
 709 W. Johnson St. Raleigh, N. C.
 Phone TE 4-8441



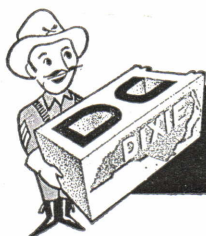
- Soil Borings
- Rock Drilling
- Laboratory Analysis
- Field Testing
- Reports

Announcing

EXPOSÁIC

Precast Aggregate Panels

By



DIXIE CONCRETE PRODUCTS, INC.

3300 N. Liberty St.

Winston-Salem, N. C.

ACOUSTICS INCORPORATED

*Acoustical & Roof Deck
 Contractors*

Movable Partitions — Fireproofing



2501 South Boulevard
 Charlotte 3, N. C.
 Phone JACkson 3-4316



Mary Milam and Cabell Foard—Contest Winners.



NCAIA's Own Captain Kangaroo Enjoying the Children.

The 1962 Summer Meeting of the North Carolina Chapter of The American Institute of Architects, held at the Biltmore Motor Hotel, Morehead City, June 14-16, was deemed by those attending to have been a most pleasant and successful occasion. The program on Friday featured discussions of "Expanded Services" moderated by those members who had attended the national convention in Dallas. Also on the Friday program was Hal S. Crain, who gave an interesting talk on the Construction Education Foundation of the Carolinas Branch of the Associated General Contractors. At the Saturday morning meeting R. Mayne Albright, Chapter Attorney, told the group of his meeting with thirty-three other Chapter attorneys at the national convention. His talk was on architects' liability and as he put it "The meeting of the attorneys in Dallas dealt primarily with the matter of expanded liability while the general convention was discussing expanded services of the architect."

Special guests attending were William E. Freeman, Jr., Director, South Atlantic Region, AIA, and Mrs. Freeman; Robert G. Bourne, President, Professional Engineers of North Carolina, and Mrs. Bourne; Hal S. Crain, Chairman, A.G.C. Committee on Construction Education Foundation, and Mrs. Crain; and Lawrence E. Irvine, President, Carolinas Chapter of The Producers' Council. Nine new corporate members, two new associate members and one transfer were welcomed into the Chapter. At the conclusion of the business meeting, the Regional Director, Mr. Freeman, inducted the new officers of the Chapter as follows: President: Arthur C. Jenkins, Jr.; Vice President: S. Scott Ferebee, Jr.; Secretary: Elizabeth B. Lee; Treasurer: Macon S. Smith; Directors: Archie R. Davis, Robert L. Clemmer, Albert L. Haskins, Jr.

It was announced that the January 1963 Chapter meeting would be in Greensboro and the 1963 summer meeting would be held in Western North Carolina.

NCAIA SUMMER MEETING



President Jenkins and Regional Director Freeman chatting at Friday evening banquet.

AUTOCLAVED

For Wall's
of
Stability



For Wall's
of
Fashion

MANUFACTURED only by
SMITH CONCRETE PRODUCTS, Inc. • KINSTON, N. C.
Phone JA 3-5136

ETOWAH BRICK

IN

- ◆ Red Face
- ◆ Buff Face
- ◆ Colonial Sand Finish Red
- ◆ Colonial Sand Finish Sea Island Pink
- ◆ Colonial Sand Finish Peach Blossom

THE MOLAND-DRYSDALE CORP.
HENDERSONVILLE, N. C. TEL. OX 3-6561

Delph
HARDWARE & SPECIALTY
COMPANY



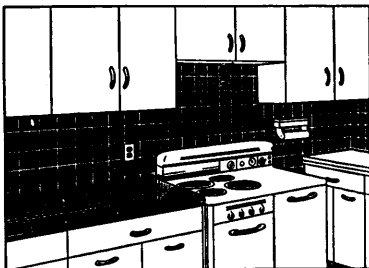
**MATERIAL
SUPPLIERS**



Charlotte, N. C.
Raleigh, N. C.
Columbia, S. C.
Greenville, S. C.

For better tile —
better installation
ask us about
real clay

Suntile



Suntile offers you two-way satisfaction. Quality in the tile itself—quality in the installation.

This real clay tile will make you proud of your bathroom or kitchen for years to come. You get a choice of many beautiful colors—freedom from costly upkeep—lifetime economy. And it's so easy to keep Suntile clean with a wipe of a damp cloth.

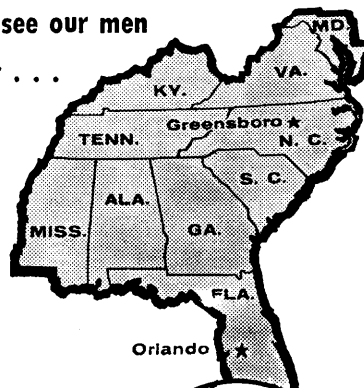
You'll always be happy with our Suntile installation. Let us show you why.

Renfrow Distributing Co., Inc.
1820 Sunnyside Avenue
Telephone ED 4-6811
CHARLOTTE, N. C.

Wherever you see our men
and equipment . . .

**THERE
IS
PROGRESS!**

Builders for:
**INDUSTRY
COMMERCE
EDUCATION
DEFENSE
HEALTH**



GREENSBORO, N. C. • ORLANDO, FLA.

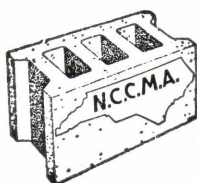
- Industrial
- Institutional
- Commercial



DICKERSON, Inc.

General Contractors
AT 3-3111
Monroe, N. C.

THE
SIGN



OF
QUALITY

MEMBERS OF NCCMA ARE DEDICATED TO THE
PRODUCTION OF QUALITY CONCRETE BLOCK

Adams Concrete Products Company, Varina
Adams Concrete Products Company, Durham
Asheboro Concrete Products Company, Asheboro
Cape Fear Block Company, Fayetteville
Carolina Block Company, Durham
Carolina Concrete & Block Works, Rocky Mount
Carolina Quality Block Company, Greensboro
Catawba Concrete Products Company, Hickory
Charlotte Block, Inc., Charlotte
Concrete Products Co. of Asheville, Asheville
Dixie Block Co., Four Oaks
Dixie Concrete Products, Inc. of Mount Airy
Dixie Concrete Products, Inc. of Wilmington
Dixie Concrete Products, Inc., Winston-Salem
Dixon Block Co., Belmont
Gray Concrete Pipe Company, Thomasville
Gray Concrete Pipe Company, Wilson
Greystone Concrete Products Company, Henderson
H. & O. Concrete Block Company, Durham
Hoke Concrete Works, Raeford
Johnson Concrete Company, Salisbury
King Brick & Pipe Company, Burlington
Linstone Inc., Wilson
Maymead Block Company, Inc., Boone
Morehead Block & Tile Co., Morehead City
N. C. Products, Inc., Raleigh
Reidsville Concrete & Specialties, Reidsville
Rockingham Block Company, Spray
Shelby Concrete Products, Inc., Shelby
Smith Concrete Products, Inc., Kinston
Southeastern Block & Tile, Inc., Albemarle
Southern Concrete Products, Inc., Rocky Mount
Standard Concrete Products Company, North Wilkesboro
Standard Concrete Products Company, Raleigh
Stevenson Brick & Block Company, New Bern
Superior Block Company, Charlotte
Surry Concrete Products, Mt. Airy
Tarboro Concrete & Building Supplies, Inc., Tarboro
Triece's Concrete Plant, Kannapolis

TESTED by recognized independent laboratories

**NORTH CAROLINA CONCRETE
MASONRY ASSOCIATION**
715 W. Johnson St., Raleigh, N. C.

AFFILIATED WITH NATIONAL CONCRETE MASONRY ASSN.

Write or call us for literature

On Frederic Blank Co.'s
Newest Vinyl wall covering.
Just think! Always spotless walls.

BOST BUILDING EQUIPMENT CO.

FLOOR AND ACOUSTICAL CONTRACTORS
912 E. 4th St., Charlotte, N. C. Phone ED 3-0321

Newest floors, walls, acoustical
sanitary ornamental ceilings.
Folding Doors and Partitions.
Standard and Synthetic Carpets.
Come see 4 types of steel or wood
kitchens to make modern decisions.

For beauty and permanence . . .

BORDEN

FACE BRICK

BUILDING BRICK

STRUCTURAL TILE

DRAIN TILE



Borden
BRICK & TILE CO.

GOLDSBORO

RE 4-3771

DURHAM

SANFORD



Mr. Strut Says

"UNISTRUT!"

THE ULTIMATE IN METAL
FRAMING

CONCRETE INSERTS

ULTRA CLEAN ROOMS

MOVABLE PARTITIONS

DATA PROCESS FLOORS

CONDUIT & PIPE SUPPORTS

CABLE TRAY

TUNNEL STAUNCHIONS

EQUIPMENT SUPPORTS"

FOR INFORMATION
CALL

Mill-Power Supply Co.

WHOLESALE DEPT.
300 WEST FIRST STREET
CHARLOTTE, N. C.

375-5761

TWX CE387

THREE N. C. ARCHITECTS NAMED TO AIA

Three North Carolina Architects were elected to membership in The American Institute of Architects on June 15 and assigned to the North Carolina Chapter. These men were inducted into the Chapter at ceremonies held during the Summer Meeting at Morehead City, June 16.



Eugene Herman Copeland, Jr.
1301 Drexel Place, Charlotte



Richard Dillard Mitchell
102 W. Trade Street, Charlotte



James Bradford Wiggins
208 Chamberlain Street, Raleigh

ARDLEY W. HART

On May 25 Ardley W. Hart, who had been associated with Robert W. Conner, AIA of High Point, died suddenly from a heart attack.

He is survived by his wife, Mary Hart, two sons, William of Gainesville, Fla., and Robert of Chapel Hill.

Burial was in Fayetteville.

He had been an Associate Member of the N. C. Chapter for approximately two years.

NEW PLANT MANAGER

Alex Drys has been named Plant Manager for Unit Structures, Inc. new manufacturing operation at Morrisville, North Carolina. The appointment was effective June 15. Unit Structures, Inc. is a manufacturer of laminated wood building members.

The Morrisville plant is located in the heart of the North Carolina "research triangle area" between Raleigh and Durham.



Wachovia Bank and Trust Co.
Wilmington, N. C.

For America's finest office buildings the choice is modern concrete

More and more architects and builders today are finding new beauty and real economy in high-rise structures of modern concrete. Everywhere you see them rising—each a dramatic addition to a city's skyline.

Precast curtain walls, exposed aggregate, facings of white portland cement—such new uses of concrete bring both beauty and savings. With concrete frames and new handling methods, construction moves along at record speed. Even further savings result from multiple use of forms. Scheduling goes along smoothly because concrete is always available on short order. It's *there* when you need it. Then, too, concrete needs no special fireproofing. There is no need for painting. No other material offers such low maintenance cost.

For impressive structural strength, beauty and freedom from upkeep nothing matches modern concrete construction.

PORTLAND CEMENT ASSOCIATION

1401 State Planters Bank Bldg., Richmond 19, Va.

A national organization to improve and extend the uses of concrete

ACOUSTICAL CONTRACTORS

Acoustics, Incorporated

(See our ad on page 16)

Acoustical and Roof Deck Contractors
Movable Partitions, Fire Proofing
Reps.: Floyd Montgomery, Harold Sivertsen, Robert
Russell, P. O. Box 3204, Charlotte

Bost Building Equipment Company

(See our ad on page 19)

Floor and Acoustical Contractors
P. O. Box 4033, Charlotte 4

ARCHITECTURAL METALS

J. D. Wilkins Company

(See our ad on page 16)

BRICK

Borden Brick & Tile Company

(See our ad on page 19)

Brick & Tile Service

(See our ad on back cover)

Isenhour Brick & Tile Co., Inc.

(See our ad on page 22)

Moland-Drysdale Corporation

(See our ad on page 18)

Sanford Brick & Tile Company

(See our ad on page 23)

BUILDER'S HARDWARE

Delph Hardware & Specialty Company

(See our ad on page 18)

Charlotte, N. C., Raleigh, N. C., Columbia, S. C.,
Greenville, S. C.

CONCRETE

Portland Cement Association

(See our ad on page 20)

CONCRETE MASONRY UNITS

N. C. Concrete Masonry Association

(See our ad on page 19)

Smith Concrete Products, Inc.

(See our ad on page 18)

Tidewater Concrete Block & Pipe Company

(See our ad between pages 4 & 5)

CONCRETE, PRECAST STRUCTURAL

Arnold Stone Company

(See our ad on page 22)

Reps.: Clyde Poovey, Ed Wilson
P. O. Box 3346, Greensboro

Solite Corporation

(See our ad on page 2)

CONCRETE FACINGS, PRECAST

Dixie Concrete Products

(See our ad on page 16)

Omnia Precast Floor & Roof Systems,
Reps.: Jim Forkner, Terry Blankinship
3300 Liberty St., Winston-Salem

Mabie-Bell Company

(See our ad on page 16)

CONTRACTORS, GENERAL

H. L. Coble Construction Company

(See our ad on page 18)

Dickerson, Incorporated

(See our ad on page 19)

Jones Bros.

(See our ad on page 23)

McDevitt & Street Company

(See our ad on page 22)

ELECTRICAL SUPPLIES & EQUIPMENT

Mill-Power Supply Company

(See our ad on page 19)

INSULATION

Zonolite Company

(See our ad on page 23)

SOIL BORINGS

Ezra Meir & Associates

(See our ad on page 16)

TILE, CERAMIC

Renfrow Distributing Company

(See our ad on page 18)

Mc Devitt & Street Company

GENERAL CONTRACTORS

145 Remount Road
Charlotte, North Carolina



*Over 35 Years Continuous Experience in
General Construction in the Southeast.*

**In BRICK
and TILE**

means
ISENHOUR *quality*

Over 300 types, sizes and colors. Pink Colonial to Roman. Taylor buffs. Reds.

ISENHOUR Salisbury, N.C.

Affiliate, **TAYLOR Clay Products**

STRUCTURAL

PRECAST & PRESTRESSED

CONCRETE

ARNOLD STONE CO.

P. O. Box 3346

Greensboro, N. C.

Phone 668-2427

CALENDAR OF EVENTS

JULY 18, 25, AUGUST 1, 8, 15: Architect's Guild
of High Point,
Marguerite's Restaurant
George C. Connor, Jr., AIA, President

JULY 19, AUGUST 16: Winston-Salem Council of
Architects, Y.W.C.A.
Cyrill H. Pfohl, AIA, President

JULY 26, AUGUST 23: Greensboro Registered Archi-
tects, Maplehouse Restaurant, 6:30 P.M.
Carl F. Andrews, President

AUGUST 1: Deadline for material for September issue.

AUGUST 1: Charlotte Council of Architects,
Stork Restaurant No. 2
J. Norman Pease, Jr., AIA, President

AUGUST 1: Durham Council of Architects,
Harvey's
Robert W. Carr, AIA, President

AUGUST 2: Raleigh Council of Architects, Y.M.C.A.
William W. Dodge III, AIA, President

NCAIA Executive Committee Meetings:

1962	
August 18	Charlotte
October 20	Durham
1963	
January 12	Raleigh
April 27	Hickory
June 8	Fayetteville

A I A

1962 SOUTH ATLANTIC
REGIONAL CONFERENCE

OCTOBER 25, 26 and 27

ATLANTA, GEORGIA

Headquarters:

Architects and Engineers Building
230 Spring Street

THEME: 'FORM & SPACE'

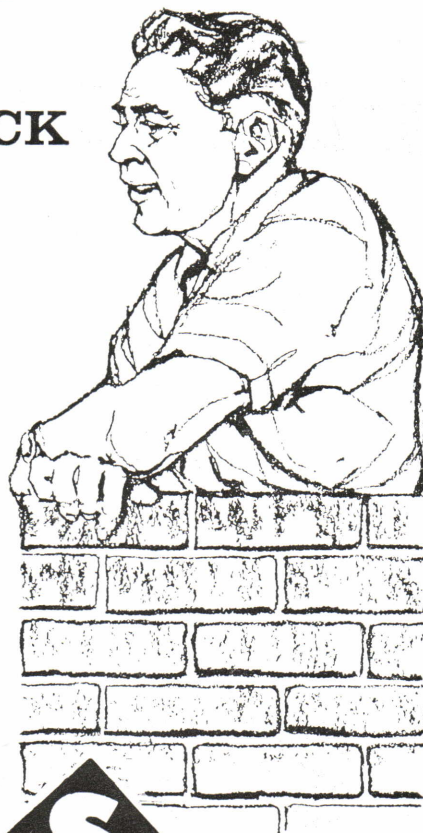


We specify
SANFORD BRICK
 for all our
 *important
 building jobs

(*such as

a new home . . . an office building . . . a garden terrace . . . large apartments . . . a modern factory . . . an outdoor fireplace . . . a new patio . . . a handsome school . . . an enlarged garage—every building job is important enough for genuine Sanford Brick.)

Smart builders specify brick from the "Big S" kilns for many good reasons. There's a color, size and texture in the Sanford Brick line to meet every need—with *quality* you can depend on every time.



SANFORD BRICK and TILE CO.

COLON: NORTH CAROLINA



Lightweight Insulating Products

Save Labor and Structural Steel

PLASTER AGGREGATE: for fireproofing, heat and sound reduction.

FINISH PLASTER AGGREGATE: for slick trowel finish at low cost.

STABILIZED CONCRETE AGGREGATE: for insulating, lightweight roof decks and floors.

ACOUSTICAL PLASTIC: for the lowest cost fireproof acoustical ceilings, old or new construction, .65 sound reduction at half inch thickness.

HOME INSULATION: for attics and walls; harmless, efficient.

ZONATILE: a short-span, concrete roof tile for lightweight, economical construction.

ZONOLITE COMPANY

PLANTS AT

HIGH POINT, N. C. AND WASHINGTON, D. C.

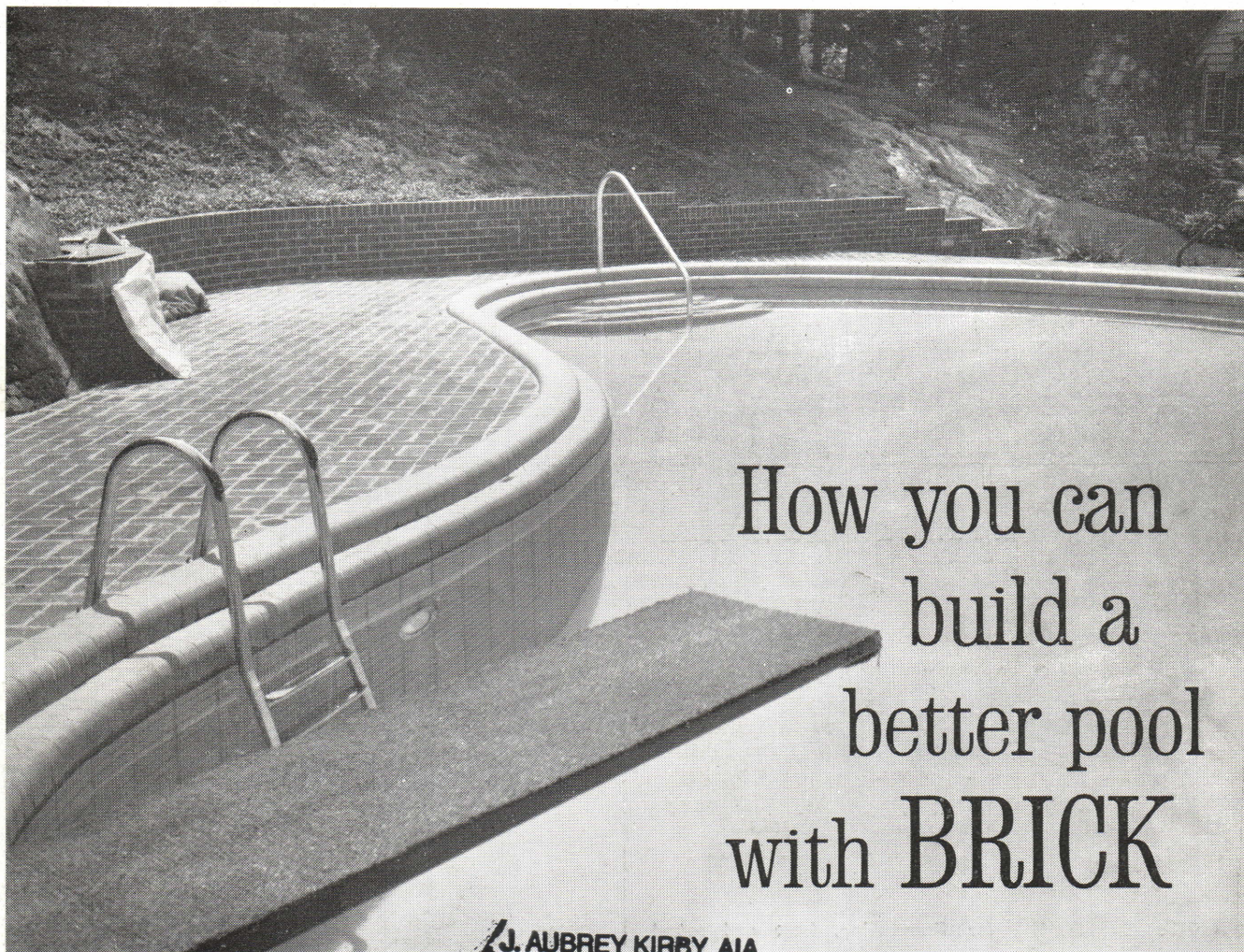
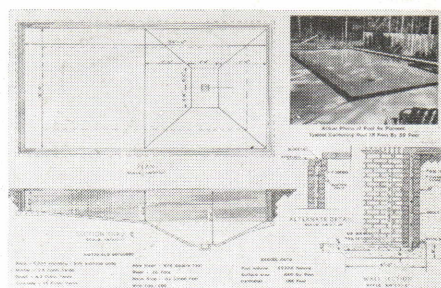
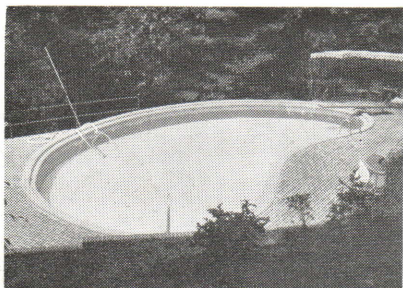
Jones Brothers & Company



CONTRACTORS AND BUILDERS

BOX 1454

WILSON, N. C.



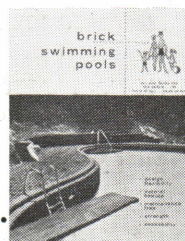
How you can build a better pool with BRICK

J. AUBREY KIRBY, AIA
454 Archer Road
Winston-Salem, NC 27106-5406

New pool construction techniques with reinforced brick masonry (RBM) enable you to get so much more for your money.

The cost is low because all materials are easily available locally . . . and your favorite local contractor can do the complete job. And you can design any shape or size you want. Strong, reinforced brick masonry means your pool will be maintenance free. No painting. No replaceable liner. This better way to build a swimming pool is the result of years of engineering research and development. You'll be surprised to find how easy it is to own one. Get the full details today.

Complete
information
and working
plans in this
free booklet



BRICK AND TILE SERVICE • GREENSBORO, N. C.

TO Brick and Tile Service, Box 6305, Greensboro, N. C.
Please send me the free booklet "Swimming Pools"

NAME _____

ADDRESS _____

CITY _____ STATE _____