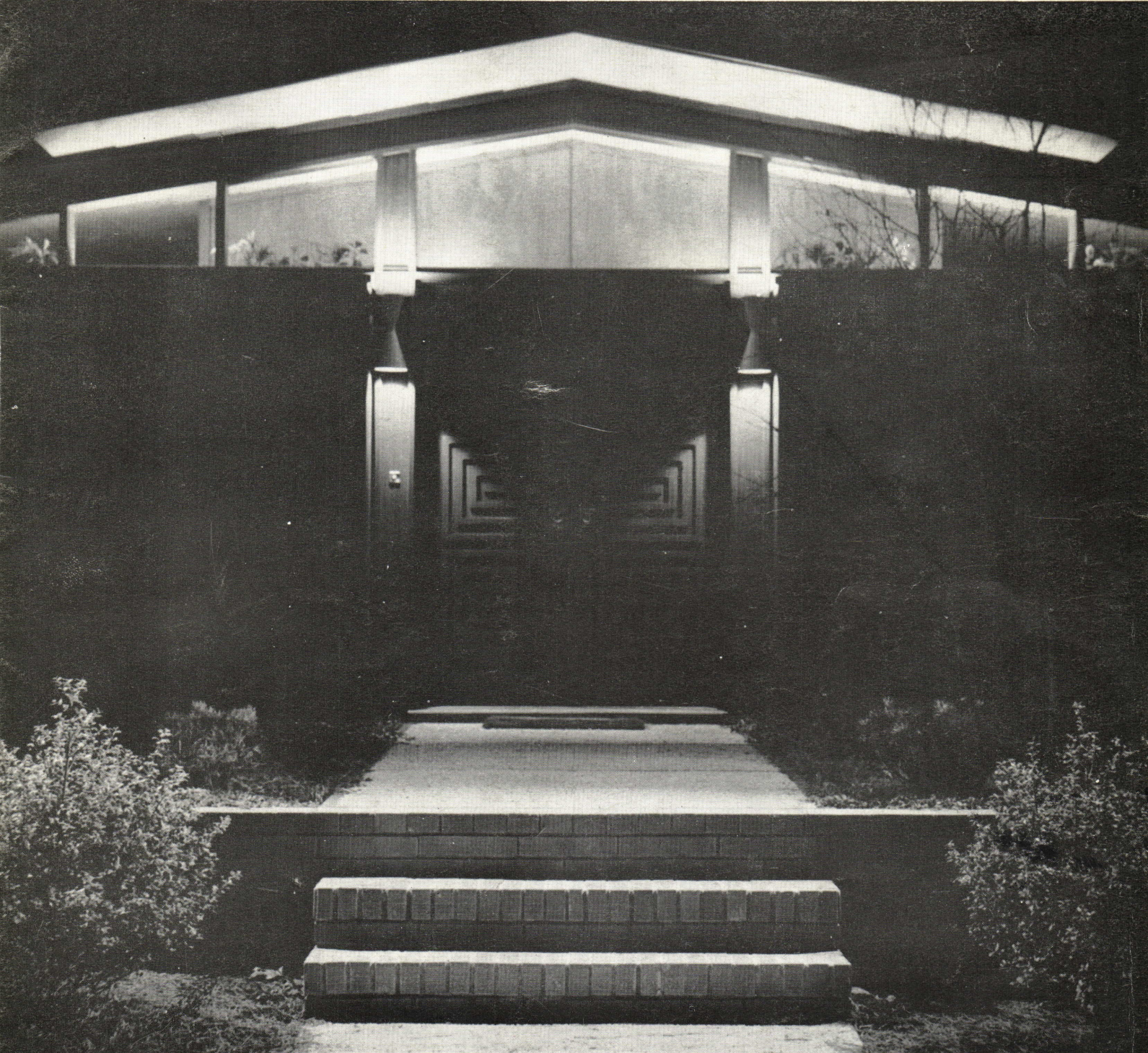
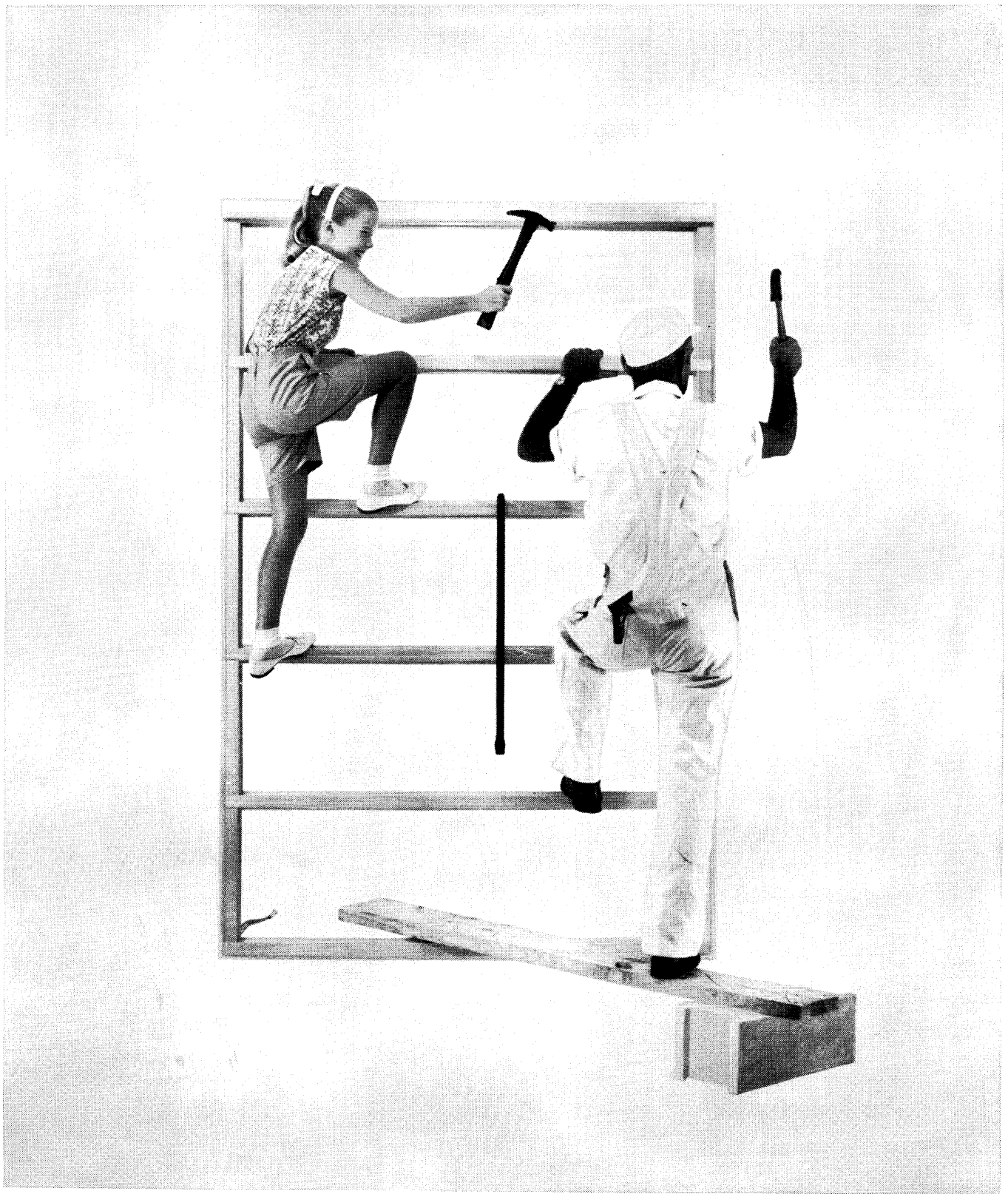


SOUTHERN ARCHITECT



PUBLISHED BY THE NORTH CAROLINA CHAPTER, AMERICAN INSTITUTE OF ARCHITECTS

DECEMBER 1962



hammering home a point? WELL, MAYBE WE ARE. BUT IT SERVES TO ILLUSTRATE THAT WHEN THE WORLD'S FINEST ALUMINUM WINDOWS ARE MADE, THEY PROUDLY BEAR THE BIG M, SYMBOL OF EXCELLENCE OF MIAMI WINDOW CORPORATION. CHANCES ARE, YOU WON'T HAMMER ON OUR WINDOWS, BUT IT'S COMFORTING TO KNOW THAT THEY'RE DESIGNED TO STAND MANY YEARS OF USE — AND ALMOST ANY ABUSE!

IT'S NOT A MIAMI WINDOW UNLESS IT'S MADE BY
MIAMI WINDOW CORPORATION

P. O. BOX 48-877, INTERNATIONAL AIRPORT BRANCH, MIAMI, FLORIDA



DECEMBER 1962

VOLUME 9

NUMBER 12

SOUTHERN ARCHITECT



COMMITTEE ON PUBLICATIONS

JOHN T. CALDWELL, AIA, CHAIRMAN	RALEIGH
JAMES L. BRANDT, AIA	RALEIGH
WILLIAM W. DODGE III, AIA	RALEIGH
J. STANLEY FISHEL, AIA	RALEIGH
GENE W. JONES, AIA	RALEIGH
J. P. MILAM, AIA	RALEIGH
RAYMOND C. SAWYER, AIA	RALEIGH
GILBERT M. SLACK, AIA	RALEIGH
J. B. WIGGINS, AIA	RALEIGH

IN CHARGE OF LAYOUT THIS ISSUE

J. STANLEY FISHEL, AIA

IN CHARGE OF MATERIAL THIS ISSUE

BASIL G. F. LASLETT, AIA	FAYETTEVILLE
PAUL H. MCARTHUR, JR., AIA	FAYETTEVILLE

NORTH CAROLINA CHAPTER THE AMERICAN INSTITUTE OF ARCHITECTS

ARTHUR C. JENKINS, JR., AIA	PRESIDENT
S. SCOTT FEREBEE, JR., AIA	VICE-PRES.
ELIZABETH B. LEE, AIA	SECRETARY
MACON S. SMITH, AIA	TREASURER
ARCHIE R. DAVIS, AIA	DIRECTOR
ROBERT L. CLEMMER, AIA	DIRECTOR
ALBERT L. HASKINS, JR., AIA	DIRECTOR
LOUISE HALL, AIA	ARCHIVIST
R. MAYNE ALBRIGHT	ATTORNEY
BETTY W. SILVER	EXECUTIVE SECRETARY

SOUTHERN ARCHITECT IS PUBLISHED BY THE NORTH CAROLINA CHAPTER OF THE AMERICAN INSTITUTE OF ARCHITECTS. BETTY W. SILVER, EXECUTIVE SECRETARY, POST OFFICE BOX 12025, RALEIGH, NORTH CAROLINA. ADVERTISING RATES ON REQUEST.

OPINIONS EXPRESSED BY CONTRIBUTORS ARE NOT NECESSARILY THOSE OF THE NORTH CAROLINA CHAPTER OF THE AMERICAN INSTITUTE OF ARCHITECTS.

CONTENTS

President's Message	5
1963 Honor Awards Jury	6 & 7
Residence in Wilmington	8 & 9
Residence in Salisbury	10 & 11
Residence in Greensboro	12 & 13
Residence in Charlotte	14 & 15
News Items	16, 17 & 18
NCAIA 1963 Convention	19
Directory of Salesman's Products	21
Calendar of Events	22

Cover Photo—Reynolds Residence,
Salisbury
John Erwin Ramsay, Architect
Torrence Studio, Photographer

NCAIA WINTER MEETING
January 17, 18, 19 – Greensboro



QUALITY METALWORK

Railings for over four stories of circular ramp are made of aluminum tubing and aluminum woven wire mesh.

The exposed roof framing is fabricated from steel tubing.

Harrelson Hall, N. C. State College,
Raleigh, N. C.

Architects: Holloway-Reeves & Associates, Raleigh, N. C.

J - D - WILKINS Co.

GREENSBORO, N. C.



Last month I was invited to attend the banquet and present the speaker at the annual meeting of the North Carolina Chapter of the Society for Crippled Children and Adults. The speaker for this occasion was Leon Chatelain, Jr., FAIA, of Washington, D. C., and a past president of The American Institute of Architects.

Mr. Chatelain is chairman of the American Standard's Association Project A 17. This project deals with the setting up and eventual adoption of a set of building standards that will eliminate architectural barriers confronting the physically handicapped. This architectural barriers project is co-sponsored by the National Society for Crippled Children and Adults and the President's Committee on Employment of the Handicapped. It is designed to modify existing public buildings and influence the construction of new ones so that they can be accessible to the 22 million handicapped Americans in our country today.

How many of us consider the physically handicapped when we design our buildings? I'm sure

not very many of us do consider them unless we have had reason to be directly associated with the problems of the physically handicapped personally. Some serious thinking along these lines would do all of us a lot of good.

The American Standard's Association have a specification, "Making Buildings and Facilities Accessible to and Usable by, the Physically Handicapped." The Association approved this publication in October 1961. Copies can be obtained by writing directly to the American Standard's Association in New York City.

One other item—the Winter Meeting of the North Carolina Chapter AIA in Greensboro, January 17-19, 1963. The meeting will be interesting and informative so why not plan to attend. Mark these dates on your calendar and write for reservations.

Now that the year is drawing to a close and our thoughts are turning to the holiday season—may I wish you and yours a MOST HAPPY HOLIDAY SEASON and A PROSPEROUS NEW YEAR.

A stylized, handwritten signature in black ink, reading "Arthur D. Johnson".



Emerson Goble, AIA, has been on the editorial staff of the *Architectural Record* for 21 years, as associate editor, managing editor, and editor. He was born in Elgin, Illinois, and educated at the University of Illinois. After graduation, he worked in the field of engineering for a few years and then began a long career as editor of various building magazines extending over 35 years.

Special interests at *Architectural Record* include a long series of articles on the philosophy of design, a series on health and old age facilities, industrial buildings, and design features.

JURORS: NINTH ANNUAL NORTH CAROLINA HONOR AWARDS



Charles M. Goodman, FAIA, is head of The Architectural and Land Planning firm Charles M. Goodman Associates, Washington, D. C., is a distinguished innovator and pioneer of Modern Architecture. As designing architect for the Supervising Architect's Office of the Treasury of the U. S. from 1934-1939, he designed the U. S. Government Group at the N. Y. World's Fair of 1938 and the Washington National Airport. During World War II Goodman was Head Architect for the Air Transport Command. In private practice his interests have mainly centered around land planning and large-scale development areas, being associated with a number of urban renewal projects. He has been honored with a number of awards from his profession and from various communities for his executed work.

EXHIBITIONS COMMITTEE — CHARLES M. SAPPENFIELD, AIA, CHAIRMAN



G. Holmes Perkins, FAIA, Dean of Fine Arts and Chairman of the Department of Architecture of the University of Pennsylvania since 1951, began his teaching career at the University of Michigan. He later became professor and then Chairman of Regional Planning at Harvard Graduate School of Design. Perkins has served on National Housing Agency; consultant to Ministry of Town and Country Planning, United Nations, Baltimore Redevelopment Authority and Washington, D. C. Land Agency. He has served on city planning boards in Philadelphia and Cambridge and was Editor of the *Journal of the American Institute of Planners* for four years. His contributions to architectural and land planning publications have been numerous. Perkins is also a Member of American Institute of Planners and a Fellow of International Institute of Arts and Letters.

ELIGIBILITY

Each entry shall show a building or a group of related buildings designed by a registered architect who is practicing professionally in North Carolina and who is a member of the North Carolina Chapter of the American Institute of Architects. Also entries may be submitted of buildings constructed in North Carolina which were designed by architects who are corporate members of the American Institute of Architects residing elsewhere in the United States. All entries must have been completed since January 1, 1952. Buildings which have previously received Chapter, Regional or National A.I.A. awards will not be eligible for Chapter competition.

CLASSIFICATIONS

General classification of entries by building type will be arranged by the Architectural Exhibit Committee as an aid to the Jury. The jury will give equal attention to entries in all classifications.

THE NORTH CAROLINA CHAPTER OF THE AMERICAN INSTITUTE OF ARCHITECTS DESIRES TO ENCOURAGE THE APPRECIATION OF EXCELLENCE IN ARCHITECTS AND TO AFFORD RECOGNITION OF EXCEPTIONAL MERIT IN BUILDINGS COMPLETED SINCE JANUARY 1, 1952. JUDGMENT FOR AWARDS OF MERIT WILL THEREFORE BE HELD IN CONJUNCTION WITH THE CHAPTER'S WINTER MEETING, JANUARY 17, 18, 19, 1963 AT GREENSBORO, N. C. ENTRIES ARE INVITED.



PHOTOS BY JOSEPH NESBITT

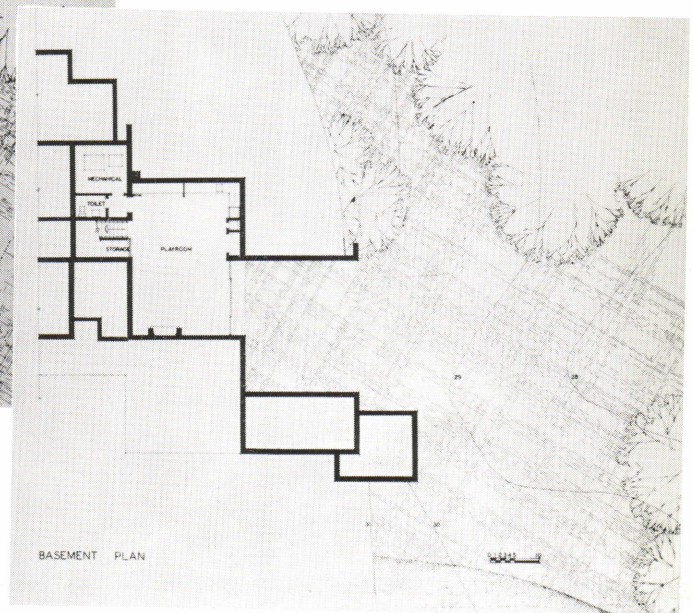
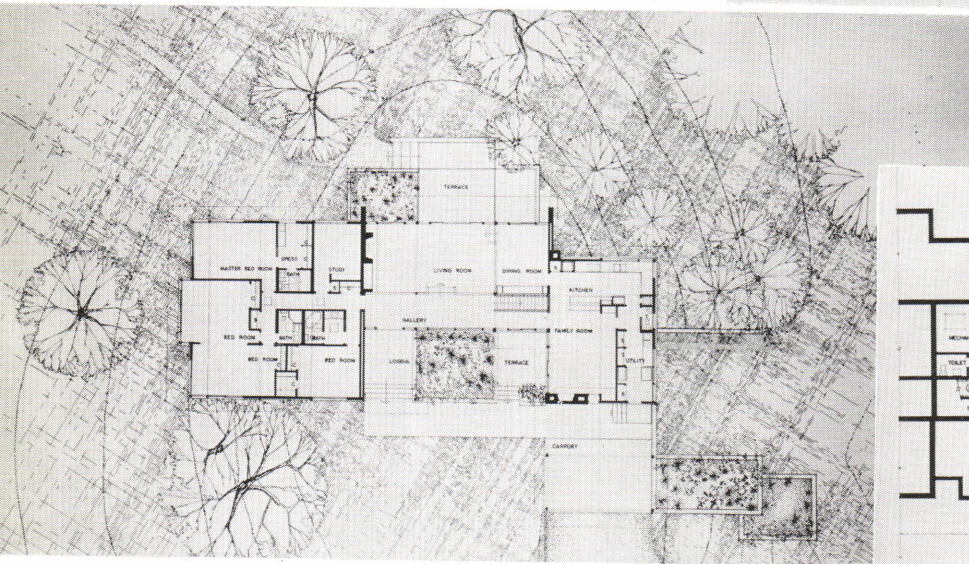
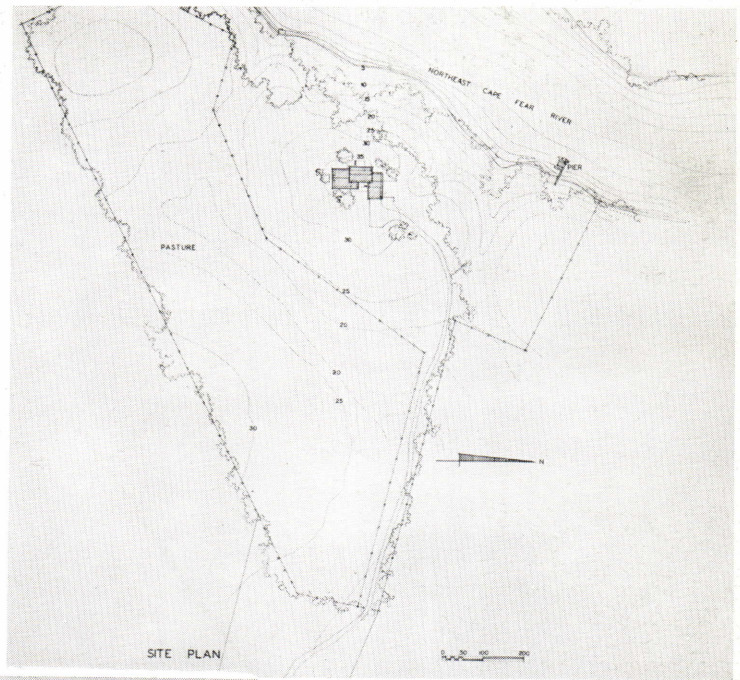
owner: DR. & MRS. GEORGE KOSERUBA

location: WILMINGTON



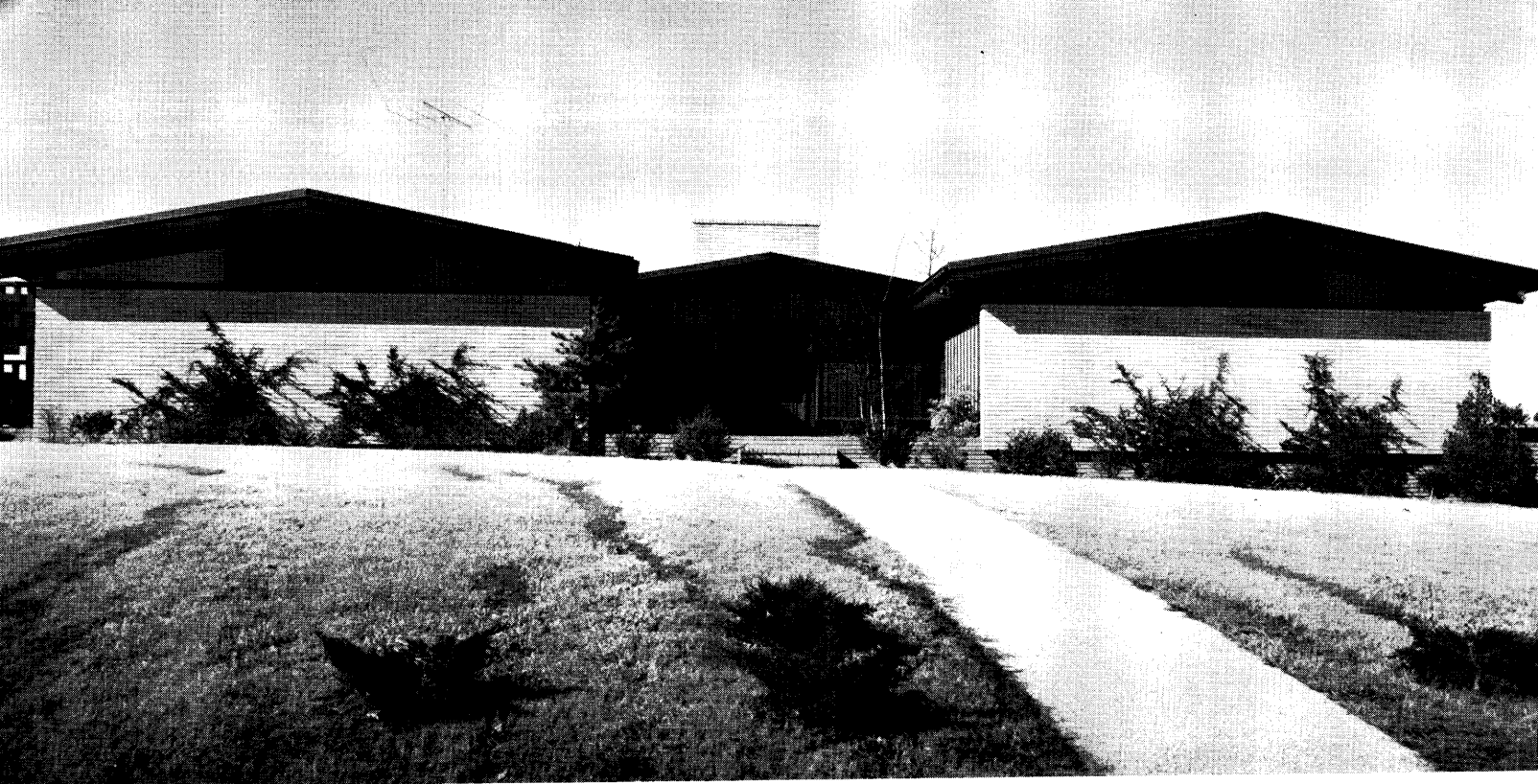
architect: BALLARD, McKIM and SAWYER
wilmington

contractor: J. FRED MURRAY
wilmington



The owner's primary requirement was that the house take full advantage of the beautiful and spacious site, but that glass exposure be sensible and judiciously used. They had no prejudice as to "style", but expressed the opinion that most contemporary houses seemed cold and lacked a sense of shelter. The family consists of a doctor, his wife and two boys, ages 12 and 15. The parents are musically inclined and are high-fidelity enthusiasts.

The mother is an accomplished violinist and organist, the oldest boy plays the piano, and the younger boy plays the drums. They are also outdoor people as evidenced by the choice of property which is quite secluded and remote from populated areas with river, woods and pasture. They all hunt, fish and ride. To promote these interests without conflict was another major consideration.



PHOTOS BY TORRENCE STUDIO

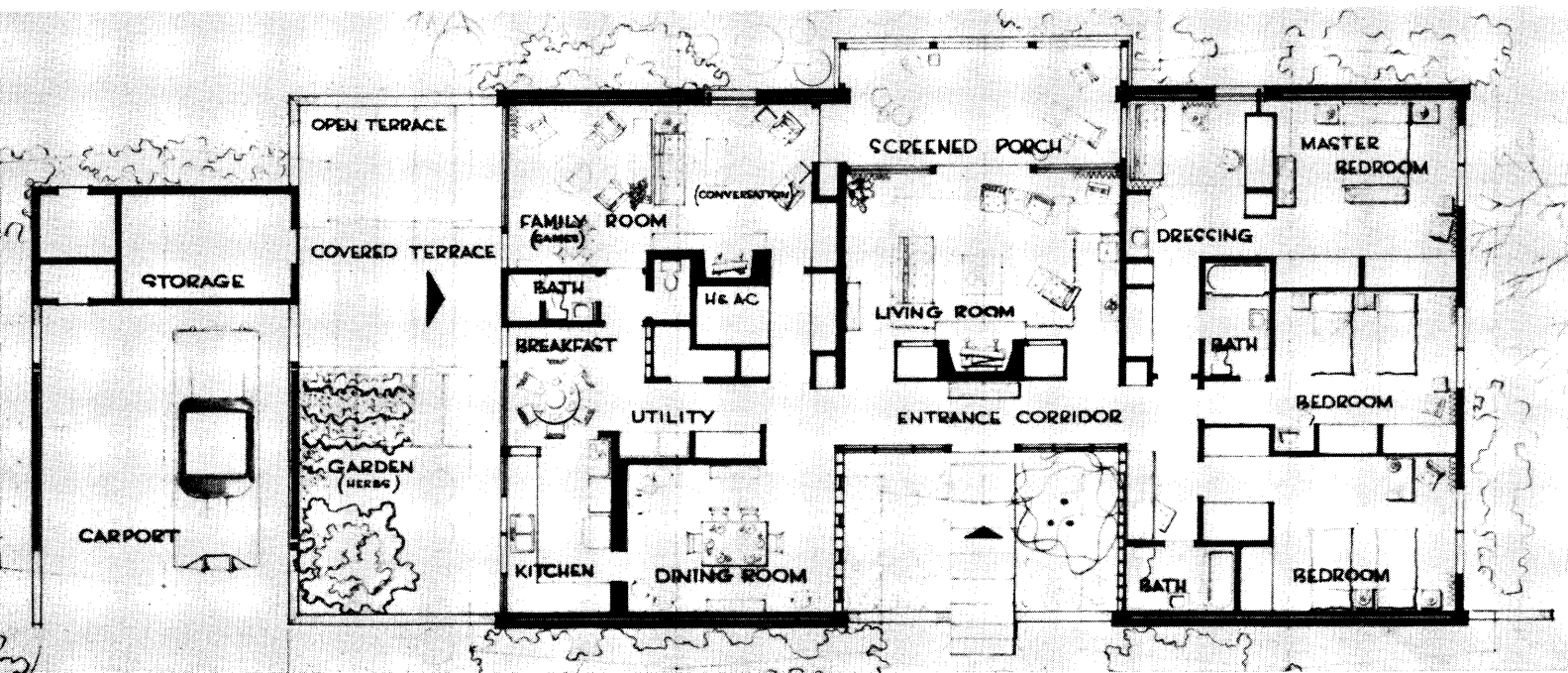
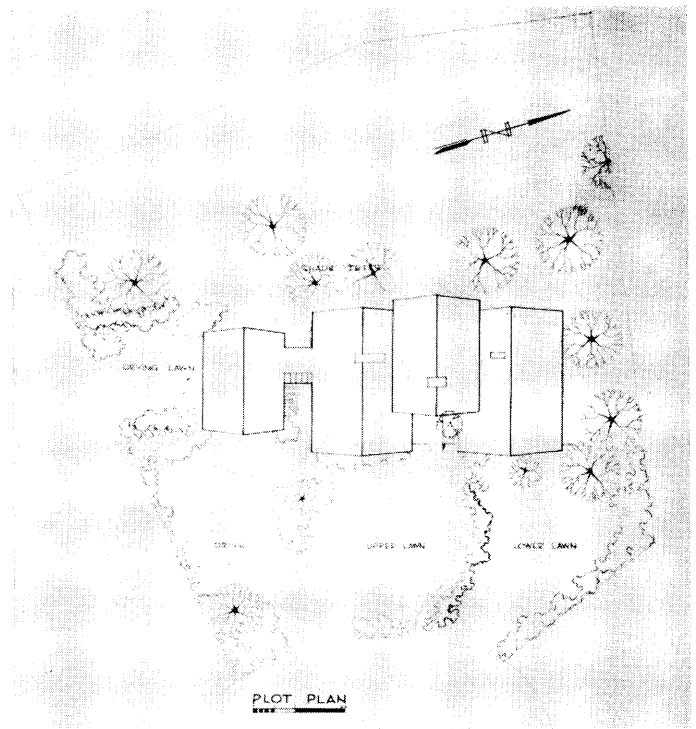


owner: MR. & MRS. P. B. REYNOLDS

location: SALISBURY

architect: JOHN ERWIN RAMSAY & ASSOCIATES
salisbury

contractor: PAUL R. DANIELS
salisbury



A combination of light gray brick, asbestos board and redwood has been used effectively to create a distinctive residence. The recessed entrance is surrounded by a charming small garden area.

A design was formulated to assure the owners com-

plete living privacy with the living area well away from the sleeping area. By a well arranged use of exposed brick, gypsum board and redwood the home is tastefully decorated. The several separate living areas are arranged adjacent to outdoor living spaces, and for easy circulation.



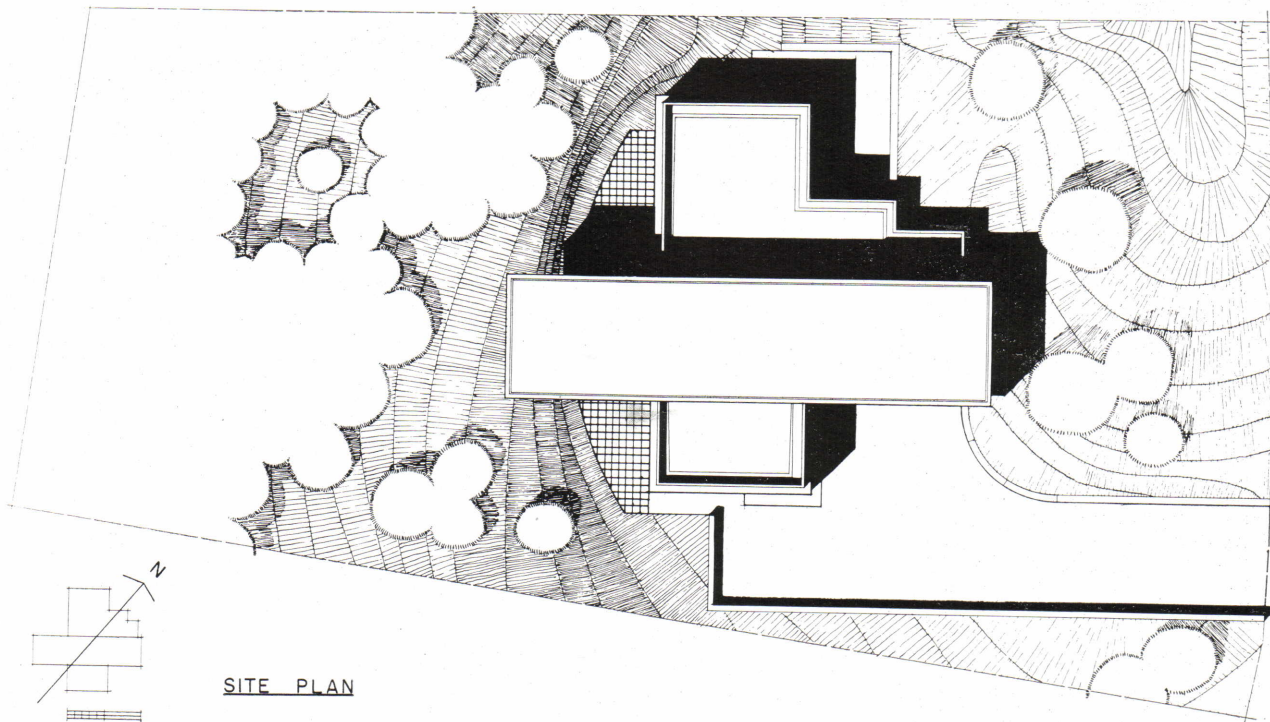
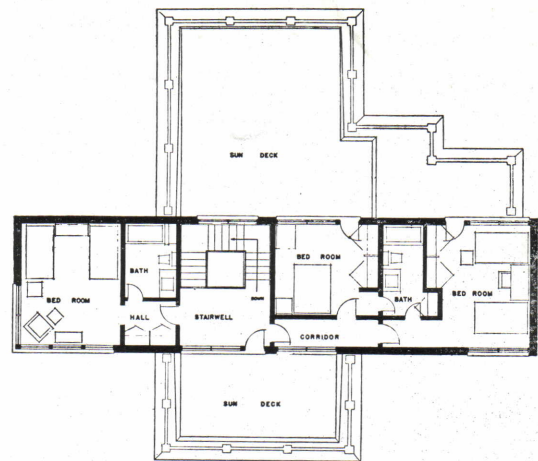
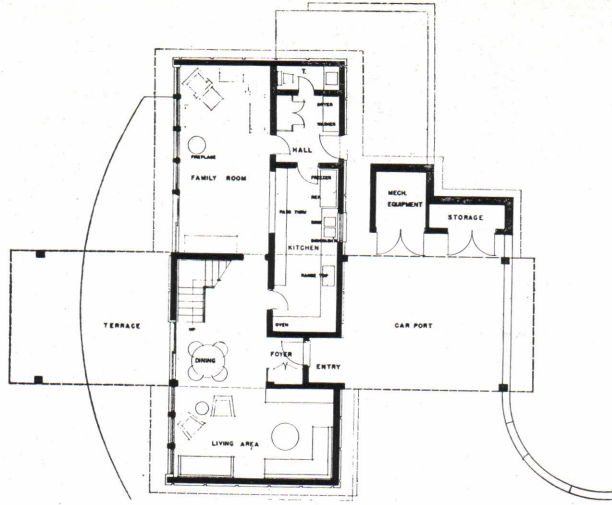
PHOTO BY MARTIN'S STUDIO

owner: SUPERIOR CONSTRUCTION CORP.

location: GREENSBORO

architect: LOEWENSTEIN-ATKINSON
greensboro

contractor: SUPERIOR CONSTRUCTION CORP.
greensboro



SITE PLAN

Site chosen was wooded, contained a small stream and ground that sloped from front and rear toward the stream. The primary aim of site planning was the preservation of the natural features of the site to the maximum extent. Abundant trees of several species and sizes called for glass areas, on both floors, which would allow views of stream, tree trunks and foliage.

First floor was closed on three sides not only to provide privacy, but to focus attention on the interesting site at the rear of the house. The rear wall is practically all glass to get the widest possible view of exterior features. Transition from out-of-doors to inside environment was emphasized by use of polished block at entry-foyer, brown tone paving at terrace, white stone floors in living-dining and adobe tile floors in family room-kitchen. Warm brown tones of pre-finished plywood wall paneling enhanced this transition. Together these materials achieve a warm, informal, friendly and earthy atmosphere. The fireplace in front of a window protects the entrance to a modern "cave". Second floor, overhanging first floor at front and rear, has open sun decks on first floor roof which add to the livability of the sleeping quarters. The stair hall can easily double as a sitting area with an almost "outdoor" feeling.

Planning of the house was aimed at providing housing for a young couple with children or for a retired couple. Living-entertaining and sleeping areas are "remote" although easily accessible to each other. Maintenance work in the future will be minimum.

Unusual features:

- Glazed block and stacked concrete "stone" walls in half bath. A relief from the antiseptic tile look, an added richness of color and texture. Mexican terrazzo floor for completing the unusual.
- Exterior pre-cast concrete panels using native North Carolina river gravel as exposed aggregate.
- Terrace, partially covered by second floor, paved with brown concrete "stone" and exposed aggregate joints to match wall panels.
- Preservation of shade trees close to the house and the use of light colored, reflective materials which contribute to decreasing air conditioning loads.
- Use of cement applied plastic laminate to kitchen walls in a teak pattern to give the effect of a real, exotic wood, yet little maintenance is required.

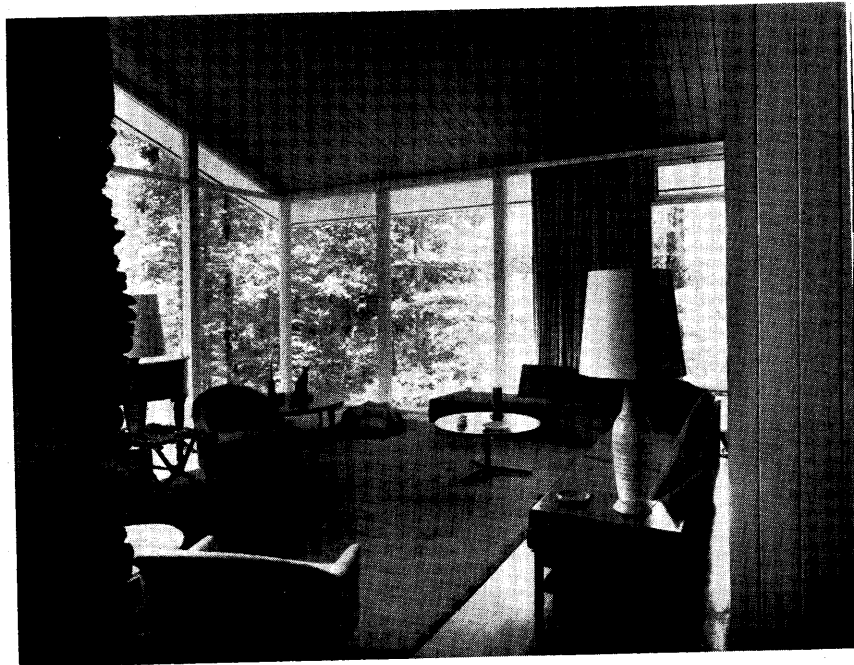


INTERIOR PHOTOS BY HAVILAND SMITH STUDIOS



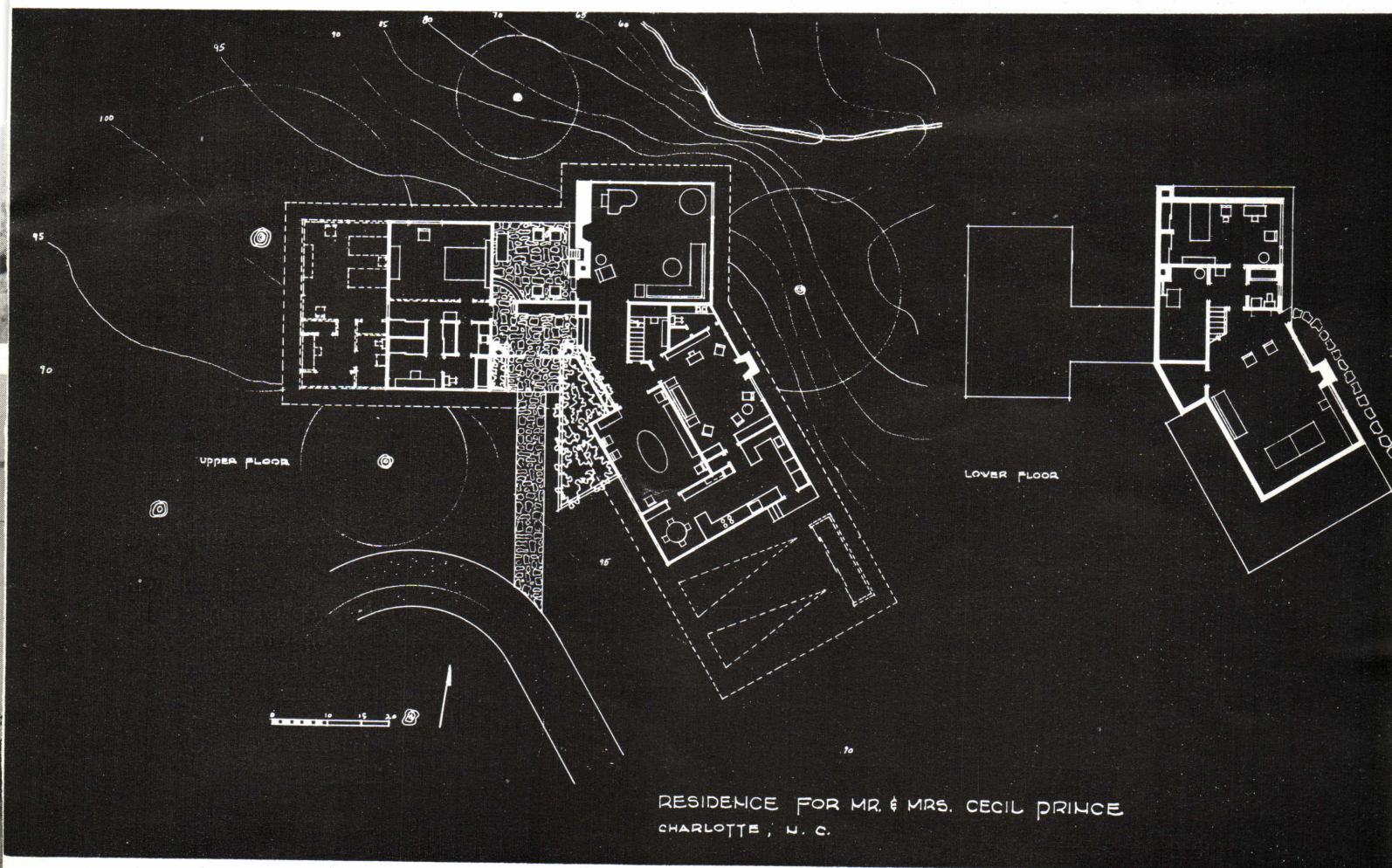
owner: MR. AND MRS. CECIL PRINCE

location: CHARLOTTE



architect: RICHARD GILLESPIE, AIA
charlotte

contractor: D. A. STOUT
charlotte



Privacy is complete for the owners of this house situated on a heavily wooded knoll overlooking a rambling stream. Large hardwood trees spread a protective covering over the entire site of dogwood and wild azaleas. The living, sleeping and eating areas of the house are separated not only for quiet living, but to offer the stimulation of several varied

wooded scenes. The exterior of the house is of rough board and batten stained grey. Interior walls are of blue stone and vertical wood paneling. The stairway leads down through a small study to a large playroom and studio bedroom. Plans call for a future duplication of the present bedroom wing and open carport.

AIR CONDITIONING SEMINAR

Approximately 100 representatives of architects, engineers, and building material firms met in the Terrace Room of the Barringer Hotel to attend the Air Conditioning Seminar arranged by the Carolinas' Chapter of the Producers' Council.

Groups came from Florence, Rock Hill, Newberry, Hickory, Concord, Salisbury and other towns throughout the two states.

The guest speaker was Roy Hardy, Government Services Representative, Washington, D. C., for Barber-Coleman Company, who was moderator for the following panel:

Marcus R. Durlach, Consulting Engineer, Columbia, S. C.

Glenn Agnew, Engineer, Mechanical Engineers, Charlotte

Otto Overcash, Sales Engineer, Kirk Cousart & Assoc., Charlotte

Ken Durham, Sales Engineer, Pittsburgh Plate Glass, Charlotte

Herb Hunter, Contracting Engineer, Southern Comfort, Charlotte

The panel opened discussion at 2 o'clock in the afternoon and continued through a dinner meeting in the same hotel.

The Seminar had a three-fold purpose: 1. To review changes and new developments in air conditioning as related to architectural practice. 2. To advance the use of, or provision for, air conditioning, on economic grounds, in many buildings that would benefit by its use. 3. To improve the quality of performance that can, and should be achieved with modern equipment.

The Producers' Council will hold a Table-Top Display at the O. Henry Hotel, Greensboro, on January 17, in connection with the NCAIA Winter Meeting.

CHARLOTTE COUNCIL ELECTS OFFICERS

At the regular monthly meeting of the Charlotte Council of Architects, held on November 7, the following were elected to serve as officers of the Council for the coming year:

Beverly L. Freeman, AIA,
President

James H. Benton, AIA,
Vice President

S. C. Wilber, Jr., AIA, Sec'y-Treas.


Charles H. Wheatley, AIA,
Director

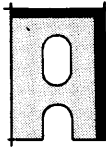
Paul Braswell, AIA, Director

J. Norman Pease, Jr., Director

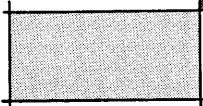
Mr. Pease is the retiring president of the Council.

SHAPES
coves - caps - jambs

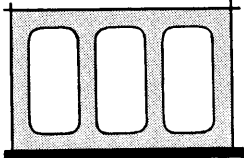




exact
dimensions

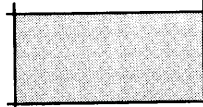


COLORS
field - accent - trim




nationally
manufactured


locally
distributed



precise color control



SEE SWEET'S CATALOG 4g/Bu
for details or write direct:



Reg. U.S. Pat. Off., Canada and other foreign countries by THE BURNS & RUSSELL COMPANY

glazed concrete masonry units

TIDEWATER
CONCRETE BLOCK & PIPE CO.
P. O. Box 162, Charleston, South Carolina
Area Code 803, SH 4-5376



**AGC NAMES
NEW PRESIDENT**

Erwin L. Laxton of Charlotte, N. C., president and treasurer of Laxton Construction Company, was elected president of Carolinas Branch, AGC, at its forty-second annual convention at Boca Raton, Fla.

Mr. Laxton attended Charlotte city schools and the University of North Carolina, graduating in 1935 with a bachelor of science degree in chemical engineering. While at UNC, he was initiated into Tau Beta Phi, the engineering equivalent of Phi Beta Kappa.

After graduation, Mr. Laxton was employed by the Grinnell Company and worked for them in Charlotte, Florida and Pennsylvania, resigning in 1940 to join Arnold Hoffman and Company, Inc., manufacturing chemists.

Mr. Laxton worked with this firm until 1942. He then joined Laxton Construction Company, which was founded in 1941 by his brother.

SHORT COURSE AT STATE COLLEGE

The Civil Engineering Department, School of Engineering, and the Extension Division of North Carolina State College, together with the Carolinas' Branch, Associated General Contractors of America, announce a

Two-Day Short Course
on the
CRITICAL PATH METHOD (CPM)
of
Construction Management Control
to be conducted at
North Carolina State College, Raleigh
on

Friday and Saturday, January 11 and 12, 1963

*The O. Henry Hotel
and
Personnel*

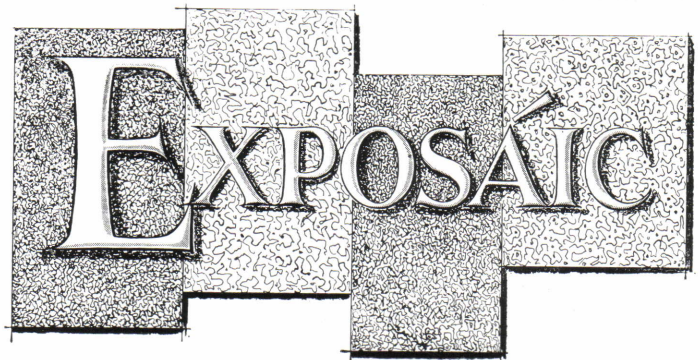
Cordially Welcome the N.C.A.I.A.
Convention to Greensboro.

Certainly we are pleased that the O. Henry was chosen as headquarters for your convention January 17-18-19, 1963.

It is our intention to do everything to make your stay in our city a pleasant and successful one.

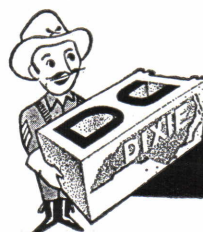
NOLAN B. WILLIAMS
O. HENRY HOTEL

Specify



Precast Aggregate Panels

By



DIXIE CONCRETE
PRODUCTS, INC.

3300 N. Liberty St.

Winston-Salem, N. C.

STUDENTS SPONSOR ART AUCTION

The tenth annual Art Auction of the N. C. State College School of Design was held on Monday evening, December 17, at 8:00 p.m. in the Ballroom of the State College Union Building. Guest auctioneer was Dr. William K. Stars of the Duke University Department of Art. The works to be auctioned were previewed at a coffee hour in the college union galleries at 8:00 p.m. on Sunday evening prior to the auction. Among the various items for sale were paintings, drawings, sculpture and graphic work including wood cuts, silk screens and lithographs. Works are donated by the students and faculty of the School and interested local artists, with all proceeds going toward the financing of the student publication of the School of Design.

DEWEY BROS., INC.

- Structural Steel
- Ornamental Iron
- Bar & Longspan Joists
- Miscellaneous Iron
- Metal Windows, Doors
- Building Specialties



DEWEY BROS., INC.

Goldsboro, N. C.

*Grey Iron Construction Castings
Since 1885*

CAROLINAS BRANCH

THE ASSOCIATED GENERAL CONTRACTORS OF AMERICA, INC.

Urges All Architects To:

1. Follow the 1962 recommendations of the NCAIA Construction Industry Relations Committee, as outlined in a report released by the committee after the annual winter meeting in Southern Pines.

2. Furnish Carolinas Branch, AGC with advance information on large public and private construction projects, since many contractors and subcontractors establish bidding and work schedules well in advance.

Carolinas Branch, AGC will gladly furnish any architect with prevailing wage rate information on any area in North or South Carolina. Just call or write.



SUITE 222, BUILDERS BUILDING, CHARLOTTE 2, N. C.

NCAIA 49th ANNUAL MEETING

An interesting and informative program is being arranged for the forty-ninth annual winter meeting of the North Carolina Chapter of The American Institute of Architects. Registration will begin at noon on Thursday, January 17, at the O. Henry Hotel, Greensboro, with the concluding activities scheduled for Saturday night. An Executive Committee meeting and various Chapter committee meetings will be the order of business for Thursday afternoon. The Carolinas' Chapter of Producers' Council is planning a Table-Top Display during the afternoon and evening and have also extended an invitation for cocktails and a dance.

On Friday morning the Chapter will hold its annual meeting with committee reports and consideration of a by-law change. Luncheon on Friday for the ladies will be at the Starmount Country Club and will include a fashion show by Contessa, Ltd. of Greensboro with local architects' wives as models. Friday afternoon will be devoted to speakers, one from the Octagon on the Building Products Register and another to be selected. The Friday evening annual banquet at the hotel will be preceded by a social hour. Honor Awards and Press Awards will be presented at the banquet, as well as an address by Dr. Otis Singletary, Chancellor of The Woman's College of The University of North Carolina. Following the banquet, dancing in the hotel ballroom is on the agenda.

Saturday morning's session will feature a panel discussion on "The Image of the Architect" with Dean Henry L. Kamphoefner of the School of Design, North Carolina State College, moderating a panel composed of G. Holmes Perkins, FAIA, Dean of the School of Fine Arts of the University of Pennsylvania; Emerson Goble, AIA, Editor of *Architectural Record*; and A. G. Odell, Jr., FAIA, Second Vice President of The American Institute of Architects. In the afternoon, buses will be available for sightseeing in Greensboro, with cocktails and a wonderful buffet dinner and dancing at the *fabulous* Embassy Club scheduled for Saturday night.

O. HENRY HOTEL

GREENSBORO

January 17 - 18 - 19

STRUCTURAL

PRECAST & PRESTRESSED

CONCRETE

ARNOLD STONE CO.

P. O. Box 3346

Greensboro, N. C.

Phone 668-2427

Mc Devitt & Street Company

GENERAL CONTRACTORS

145 Remount Road

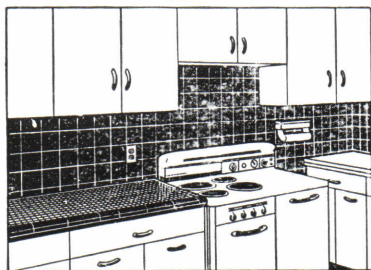
Charlotte, North Carolina



*Over 35 Years Continuous Experience in
General Construction in the Southeast.*

For better tile —
better installation
ask us about
real clay

Suntile



Suntile offers you two-way satisfaction. Quality in the tile itself—quality in the installation.

This real clay tile will make you proud of your bathroom or kitchen for years to come. You get a choice of many beautiful colors—freedom from costly upkeep—lifetime economy. And it's so easy to keep Suntile clean with a wipe of a damp cloth.

You'll always be happy with our Suntile installation. Let us show you why.

Renfrow Distributing Co., Inc.
1820 Sunnyside Avenue
Telephone ED 4-6811
CHARLOTTE, N. C.

AUTOCLAVED

For Wall's
of
Stability



For Wall's
of
Fashion

MANUFACTURED only by
SMITH CONCRETE PRODUCTS, Inc. • KINSTON, N. C.
Phone JA 3-5136

For beauty and permanence . . .

BORDEN
FACE BRICK
BUILDING BRICK
STRUCTURAL TILE
DRAIN TILE



Borden
BRICK & TILE CO.

GOLDSBORO
RE 4-3771
DURHAM SANFORD



CAROLINAS' CHAPTER

THE PRODUCERS' COUNCIL, INC.

Allied Chemical Corp.
Aluminum Company of America
Amarlite Corp.
American Air Filter Corp.
American Olean Tile Company
Armco Steel Corp.
Armstrong Cork Company
Azrock Floor Products Division
Barber-Coleman Company
Caloric Appliance Corp.
Cambridge Tile Manufacturing Co.
C. F. Church—Division
Congoleum-Nairn, Inc.
Crawford Door Company
Cupples Products Corp.
Day-Brite Lighting, Inc.
Duke Power Company
Dwyer Products Corp.
Flintkote Company
Michael Flynn Mfg. Company
Formica Corp.
Georgia-Pacific Corp.
Holcomb & Hoke Manufacturing Co.
Hillyard Chemical Company
Inland Steel Products Company

George F. Brown
Dana M. Hicks
James R. Carter
Kirk Cousart
William R. Brittain
J. D. Joslin
Walter Koenig
Joe L. Funderburke
S. Edward Jordan
Arco Industries, Inc.
W. G. "Bill" White
Lawrence E. Irvine
Allison-Erwin Company
Crawford Doors Sales Co., Inc.
Edwin C. Boyette & Son, Inc.
Ladd M. Massey
T. M. Patrick, Jr.
Clark Distributing Co.
J. G. Wood, Jr.
General Specialties, Inc.
Faison Kuester
Kermit L. Mann
Maxson-Betts Co.
Ralph L. Jones
Connor B. Stroup

Johns-Manville Sales Corporation
Kawneer Company
Kentile, Incorporated
LCN Closers, Inc.
Libbey-Owens-Ford Glass Company
Mastic Tile Division
Benjamin Moore & Company
Miracle Adhesives
MO-SAL Institute, Inc.
Natco Corporation
Natco Corp.
National Gypsum Company
New Castle Products, Inc.
Northrup Architectural Systems
Otis Elevator Company
Owens-Corning Fiberglass Corporation
Piedmont Natural Gas Company
Pittsburgh Plate Glass Company
H. H. Robertson Company
Sargent and Company
Stanley Works
Unistrut Products Company
United States Ceramic Tile Company
United States Plywood Corporation
Yale & Towne Manufacturing Co.
Zonolite Company

Wm. A. Lee, Jr.
Robt. W. Aiken
Everett H. Bolte
L. E. "Woody" Atkins, Jr.
Robert C. Bainbridge
Van Williams
William Wilson Brown
Howard V. Caton Co.
F. R. "Butch" Krulish
James F. Traylor
W. Fred Casey Co.
Acoustics, Inc.
Delph Hardware & Specialty Co.
H & S Lumber Co.
R. Reagin Warren
Ray L. Loflin
Robert Erskine
John R. Howard
Perry S. Hudnell
Hal Owen
Randolph D. Ghezzi
Mill-Power Supply Co.
O. T. Jones
Bruce F. Laing
Industrial & Textile Supply Co.
E. G. Vincent

CONSULT AN ARCHITECT

ACOUSTICAL CONTRACTORS

Bost Building Equipment Company
(See our ad on page 22)

Floor and Acoustical Contractors
P. O. Box 4033, Charlotte 4

ARCHITECTURAL METALS

J. D. Wilkins Company
(See our ad on page 4)

BRICK

Borden Brick & Tile Company
(See our ad on page 20)

Brick & Tile Service
(See our ad on back cover)

BUILDER'S HARDWARE

Delph Hardware & Specialty Company
(See our ad on page 20)

Charlotte, N. C., Raleigh, N. C., Columbia, S. C.,
Greenville, S. C.

BUILDING MATERIALS

Producers' Council
(See our ad on page 20)

Salisbury Lumber & Supply Company
(See our ad on page 22)

CONCRETE MASONRY UNITS

N. C. Concrete Masonry Association
(See our ad on page 23)

Smith Concrete Products, Inc.
(See our ad on page 20)

Tidewater Concrete Block & Pipe Company
(See our ad on page 16)

CONCRETE, PRECAST STRUCTURAL

Arnold Stone Company
(See our ad on page 19)

Reps.: Clyde Poovey, Ed Wilson
P. O. Box 3346, Greensboro

CONCRETE FACINGS, PRECAST

Dixie Concrete Products
(See our ad on page 17)

Omnia Precast Floor & Roof Systems,
Reps.: Jim Forkner, Terry Blankinship
3300 Liberty St., Winston-Salem

Mabie-Bell Company
(See our ad on page 22)

CONTRACTORS, GENERAL

Associated General Contractors of America, Inc.
(See our ad on page 18)

McDevitt & Street Company
(See our ad on page 19)

CONVENTION HOTEL

O. Henry Hotel, Greensboro
(See our ad on page 17)

SOIL BORINGS

Ezra Meir & Associates
(See our ad on page 22)

STEEL, STRUCTURAL

Dewey Bros., Incorporated
(See our ad on page 18)

TILE, CERAMIC

Renfrow Distributing Company
(See our ad on page 20)

WINDOWS

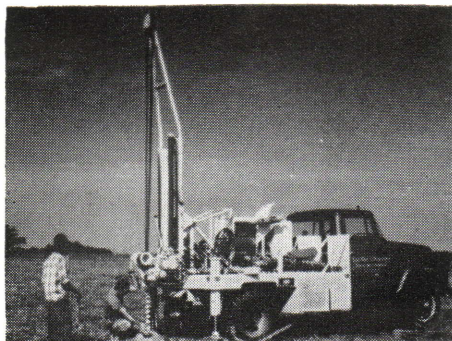
Miami Window Corporation
(See our ad on page 2)

Ezra Meir & Associates

709 W. Johnson St.

Raleigh, N. C.

Phone TE 4-8441



- Soil Borings
- Rock Drilling
- Laboratory Analysis
- Field Testing
- Reports



ARCHITECTURAL STONE

THE MABIE-BELL COMPANY

P. O. Box 1558 - Phone CY 9-6122 - Greensboro, N. C.

Write or call us for literature

On Frederic Blank Co.'s
Newest Vinyl wall covering.
Just think! Always spotless walls.

BOST BUILDING EQUIPMENT CO.

FLOOR AND ACOUSTICAL CONTRACTORS

912 E. 4th St., Charlotte, N. C. Phone ED 3-0321

Newest floors, walls, acoustical
sanitary ornamental ceilings.
Folding Doors and Partitions.
Standard and Synthetic Carpets.
Come see 4 types of steel or wood
kitchens to make modern decisions.

Salisbury Lumber & Supply Company



MILLWORK

BUILDING
MATERIALS

S. Main St. at City Limits Phone ME 6-5821
Salisbury, N. C.

CALENDAR OF EVENTS

DECEMBER 19-JANUARY 9, 16: Architect's
Guild of High Point,
Marguerite's Restaurant
George C. Connor, Jr., AIA, President

DECEMBER 20-JANUARY 17: Winston-Salem
Council of Architects, Y.W.C.A.
Cyrill H. Pfohl, AIA, President

DECEMBER 20-JANUARY 24: Greensboro Registered
Architects, Maplehouse Restaurant,
Carl F. Andrews, President

JANUARY 2: Charlotte Council of Architects,
Stork Restaurant No. 2
Beverly L. Freeman, AIA, President

JANUARY 2: Durham Council of Architects,
Harvey's
Robert W. Carr, AIA, President

JANUARY 3: Raleigh Council of Architects,
Y.M.C.A.
G. Milton Small, AIA, President

JANUARY 15: Deadline for material for February
issue.

JANUARY 17: Producers' Council Table-Top Display
Greensboro

NCAIA Executive Committee Meetings:

1963	
January 17	Greensboro
April 27	Hickory
June 8	Fayetteville

NCAIA WINTER MEETING

JANUARY 17, 18, 19, 1963

O. HENRY HOTEL
GREENSBORO

Prepare Your Exhibits for the 1963
Honor Awards Program



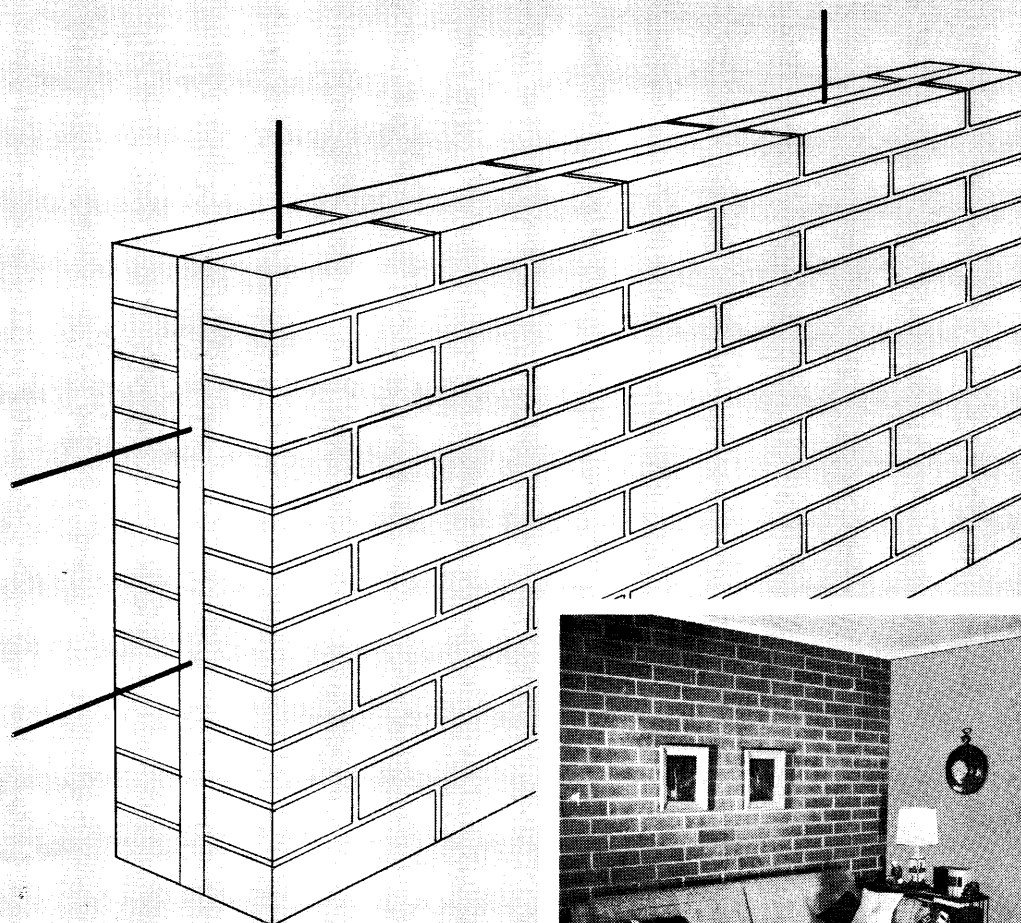
Merry Christmas

Adams Concrete Products Company, Varina
 Adams Concrete Products Company, Durham
 Asheboro Concrete Products Company, Asheboro
 Cape Fear Block Company, Fayetteville
 Carolina Block Company, Durham
 Carolina Concrete & Block Works, Rocky Mount
 Carolina Quality Block Company, Greensboro
 Catawba Concrete Products Company, Hickory
 Charlotte Block, Inc., Charlotte
 Concrete Products Co. of Asheville, Asheville
 Dixie Block Co., Four Oaks
 Dixie Concrete Products, Inc. of Mount Airy
 Dixie Concrete Products, Inc. of Wilmington
 Dixie Concrete Products, Inc., Winston-Salem
 Dixon Block Co., Belmont
 Gray Concrete Pipe Company, Thomasville
 Gray Concrete Pipe Company, Wilson
 Greystone Concrete Products Company, Henderson
 H. & O. Concrete Block Company, Durham
 Hoke Concrete Works, Raeford

Johnson Concrete Company, Salisbury
 King Brick & Pipe Company, Burlington
 Linstone Inc., Wilson
 Maymead Block Company, Inc., Boone
 Morehead Block & Tile Co., Morehead City
 N. C. Products, Inc., Raleigh
 Reidsville Concrete & Specialties, Reidsville
 Rockingham Block Company, Spray
 Shelby Concrete Products, Inc., Shelby
 Smith Concrete Products, Inc., Kinston
 Southeastern Block & Tile, Inc., Albemarle
 Southern Concrete Products, Inc., Rocky Mount
 Standard Concrete Products Company, North Wilkesboro
 Standard Concrete Products Company, Raleigh
 Stevenson Brick & Block Company, New Bern
 Superior Block Company, Charlotte
 Surry Concrete Products, Mt. Airy
 Tarboro Concrete & Building Supplies, Inc., Tarboro
 Tiece's Concrete Plant, Kannapolis

NORTH CAROLINA

Concrete Masonry Association



J. AUBREY KIRBY, AIA
 454 Archer Road
 Winston-Salem, NC 27106-5406



How this new development in firewalls adds beauty... saves valuable space

NEW R-B-M (REINFORCED BRICK) MASONRY SPACE-SAVER FIREWALL

- Now you can build a firewall that offers important new advantages. The RBM Space-Saver Firewall combines the rugged durability of reinforced brick masonry with the beauty and finer finish of exposed brick. And you'll be surprised at the economy of materials and labor.

You save space because codes permit this type of firewall to be thinner than other masonry types. Maintenance is at a minimum, too. No painting, no cracking walls, no costly waterproofing. And an RBM Space-Saver Firewall is the answer to soundproofing problems.

Get the full details — including specifications and a cost work sheet — from your brick supplier or by writing to Brick and Tile Service.

Brick and Tile Service, Inc., Box 6305, Greensboro, N. C.