

North Carolina  
**Architect**



**21/1&2** Volume 21  
Numbers 1 & 2  
Jan / Feb 74

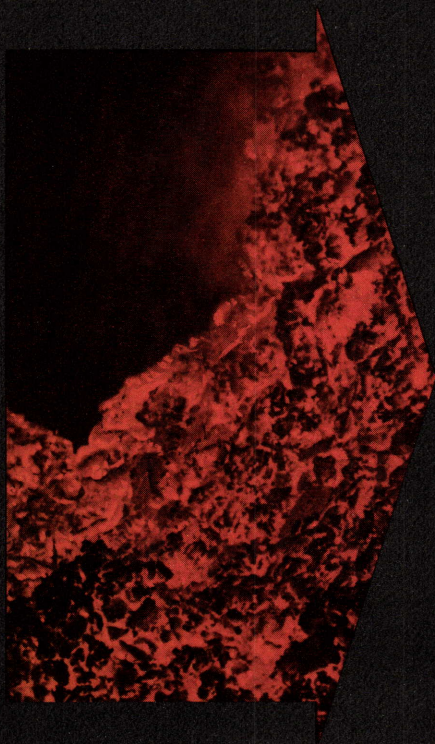
NCAIA  
HONOR  
AWARDS  
PROGRAM

1974

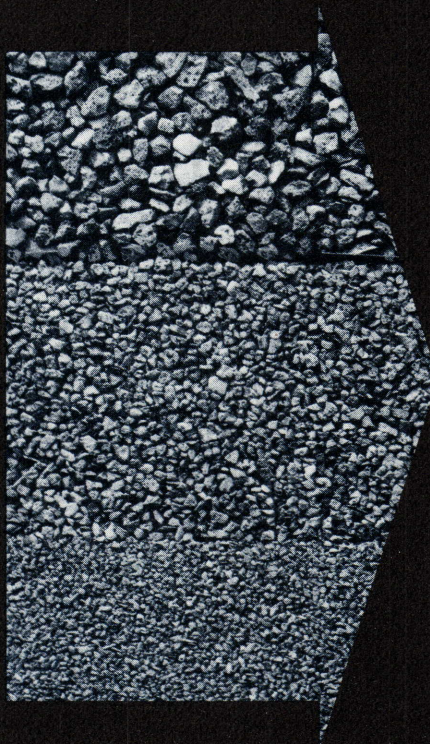


# Reduce Heat Loss with SOLITE

Cut thermal cost and conserve fuel year after year...



(1) In the rotary kilns,  
2.5 million BTU makes  
2000 lbs. of SOLITE  
Lightweight Aggregate.



(2) 2000 lbs. of SOLITE  
makes 100 concrete  
masonry units.



(3) This provides 89 sq.  
ft. of finished 8" thick  
concrete masonry walls.

## SOLITE Fuel Saving Heat Loss Calculations

Winter conditions on which insulation and heating equipment are designed for homes and buildings are based upon degree days, with 4500 winter degree days as a median for the United States.

With an 8" hollow concrete masonry wall, during the 40 year life of a building, the SOLITE wall will save:

$(.51 - .32) \times 4500^\circ \text{Days} \times 24 \text{Hours} \times 89 \text{Sq. Ft.} \times 40 \text{Years} = 72 \text{million BTU}$   
BTU/Hr°F/SF

**This means: for every gallon of fuel used to produce SOLITE aggregate, the finished wall of SOLITE saves 29.22 gallons of fuel.**



Lightweight Masonry Units and Structural Concrete

P.O. Box 27211, Richmond, Virginia 23261 (804) 355-5761

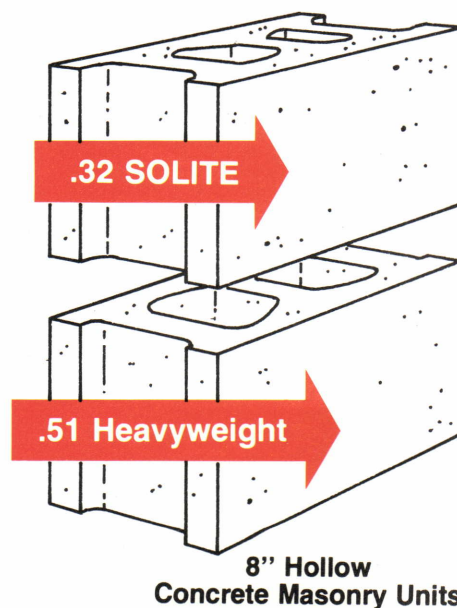
P.O. Box 539, West New York, New Jersey 07093 (201) 868-1911

P.O. Box 2015, Arlington, Virginia 22202 (703) 979-1090

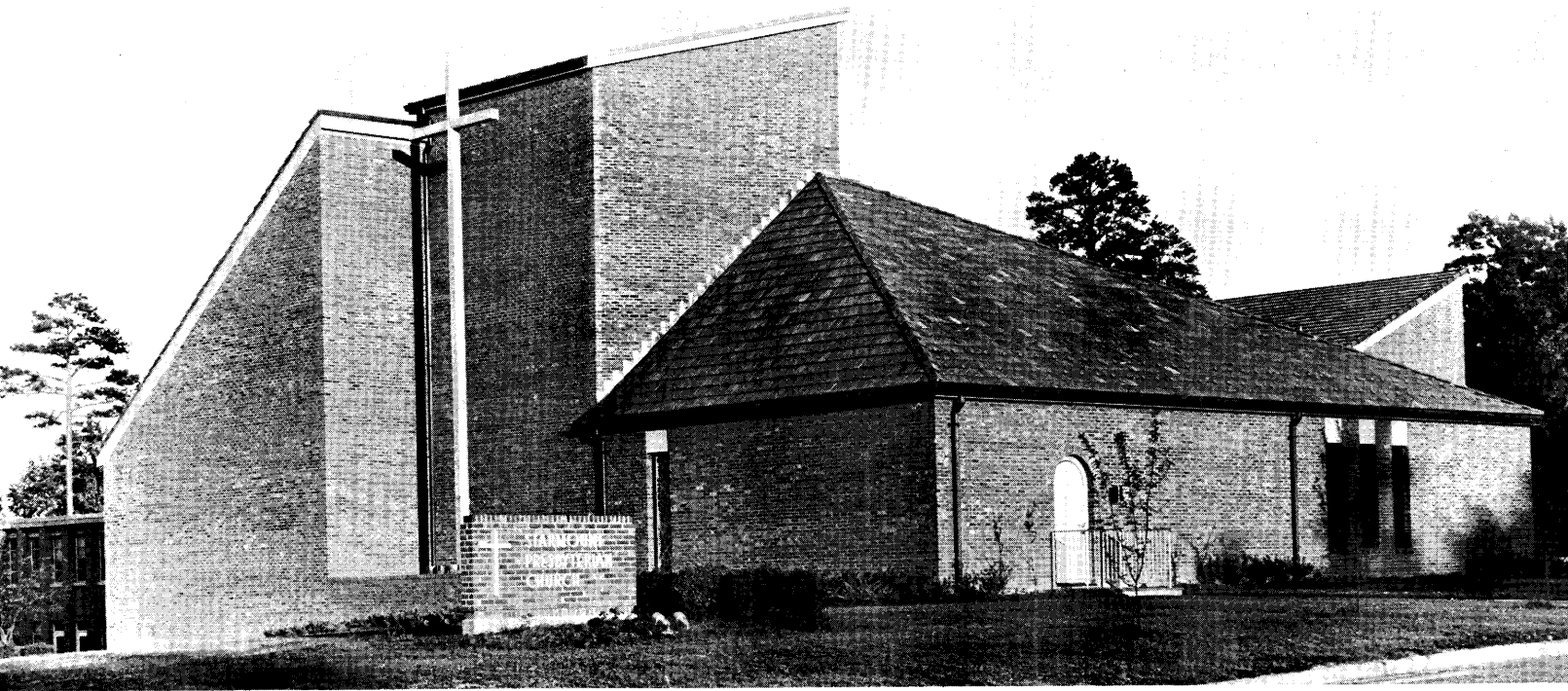
4425 Randolph Road, Charlotte, North Carolina 28211 (704) 366-0055

Seaboard Coast Line Building, Jacksonville, Florida 32202 (904) 353-9653

P.O. Box 21238, Louisville, Kentucky 40221 (502) 361-9424







### **Ageless Architecture Through Brick Beauty**

Starmount Presbyterian Church  
Greensboro, N. C.

Architect:  
Harold E. Wagoner & Associates

Supervising Architect:  
McMinn, Norfleet, Wicker & Associates

Structural Engineer:  
Sam Hunter, Jr.

Landscape Architect:  
Manley C. Lewis

General Contractor:  
Waynick Construction Co.

Masonry Contractor:  
H. C. Lowdermilk & Sons



# GROUT CAN BE BEAUTIFUL

Mid-State Tile has come up with a pre-mixed grout that can be truly beautiful.

It can be red. It can be green. It can be just about any color you want it to be.

And that opens up a whole world of design possibilities for you.

Because now you'll not only specify the color tile you want, but the color grout you want to go with it.

And color capability is only one of the outstanding features of pre-mixed grout.

Here are some more:

Because our grout is pre-mixed, your contractor will get a good mix every

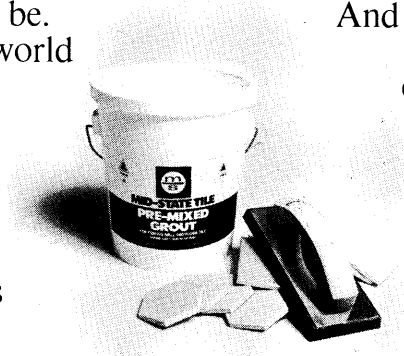
time, in just the right proportions. A good mix that not only adheres well to ceramics, but to places where tile butts against wood or metal.

And pre-mix dries hard and smooth.

And it doesn't shrink. And it doesn't get chalky. And it resists mildew. So it's very easy to maintain.

And when the contractor is through using the pre-mix, he can put the lid back on the can and use the rest later. And that saves money.

So next time you specify grout, specify Mid-State pre-mixed. It's one beautiful product.

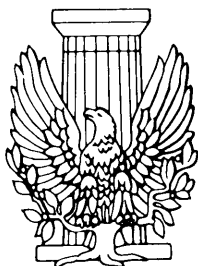


 **MID-STATE TILE CO.**

For a sample and more information write Barron Kinsey, Mid-State Tile Company, P.O. Box 627, Lexington, N.C. 27292.



# North Carolina Architect



**21/1&2** Volume 21  
Numbers 1 & 2  
Jan / Feb 74

**Peter Batchelor**

**North Carolina Architect  
Forum for the Profession**

A new look—a new  
Chairman comes on  
the scene **7**

**1974 Honor Awards Program**

Presentation of the 44  
entries designed by  
NCAIA members **9**

**Program Rules**

**32**

Index to Advertisers **32**

## **NORTH CAROLINA CHAPTER THE AMERICAN INSTITUTE OF ARCHITECTS**

Charles H. Boney  
Turner G. Williams  
Tebbe P. Hawkins  
Michael G. Newman  
Claude L. Vaughan, Jr.  
Robert E. Bush  
A. Lewis Polier  
J. Bertram King, FAIA  
C. Robert Shields  
Robert P. Burns, Jr.  
Michael R. Tye  
W. Dean Best  
Herbert P. McKim  
Carl P. Myatt  
Frank I. Ballard  
Alvis O. George, Jr.  
Louise Hall  
R. Mayne Albright  
Betty W. Silver

President  
First Vice-President  
Vice-President  
Vice-President  
Vice-President  
Secretary  
Treasurer  
Director  
Director  
Director  
Director  
Director  
Director  
Director  
Director  
Archivist  
Attorney  
Executive Director

## **PUBLICATIONS COMMITTEE**

Peter Batchelor, Chairman  
E. H. Hunter  
William L. Laslett  
James L. Brandt

Contributing Editors:  
Harwell H. Harris, FAIA  
James C. Wallace, Assoc. Prof, NCSU  
E. H. & M. K. Hunter

North Carolina Architect is published by the North Carolina Chapter of The American Institute of Architects, Mrs. Betty W. Silver, Executive Director, 115 W. Morgan Street, Raleigh, North Carolina 27601. Advertising rates on request.

North Carolina Architect was formerly published as Southern Architect, Volume I, No. 1, through Volume XI, No. 11, 1954-1964.

Opinions expressed by contributors are not necessarily those of the North Carolina Chapter of the American Institute of Architects.

Lithographed by Theo. Davis Sons, Inc., Zebulon, N. C.



A black and white line drawing of a man in a suit and hat, walking on a path that is cracked and uneven. He is holding a cane. The path is dark and textured, contrasting with the white background.

# rain

A problem in any construction situation! But when it comes to paving, your worries are minimized when you use Asphalt Base. Protection from adverse weather conditions is but one of the many advantages of Asphalt Base.

Keeping you informed of improvements and the benefits of plant mixed Asphalt pavement is our aim. Drop us a line or give us a call and we'll send you more information about Asphalt Base.



**Carolina Asphalt Pavement Association, Inc.**

P. O. Box 1266  
Raleigh, North Carolina 27602  
919/828-4350



## NORTH CAROLINA ARCHITECT FORUM FOR THE PROFESSION

After several years as a contributing editor to the magazine, this issue signifies the beginning of my chairmanship of the *North Carolina Architect* Committee. The magazine, now in its twentieth year of publication, will continue to provide its readership with the high quality of professional news for which it is so well known. Also, by way of an innovation, the publications committee will begin to spread the search for identifying relevant thematic material onto the members of the Chapter. This will give Betty Silver, our Managing Editor, a breather from the responsibility of having to track down manuscripts for every issue. In addition, it will open up the profession for the interchange of ideas.

It is this last point which will become the focus for some policy changes in the magazine. There are many times when I hear the plaintive cry "what can one small voice of dissent do?" Well, for one thing all of you have your own private news medium: *The North Carolina Architect*. Rather than editorialize, the publications committee will attempt to use the magazine as a forum for the expression of ideas. Therefore, we will print any constructive idea or criticism which falls within the bounds of ethical conduct. It is our desire to help raise our standards of self-evaluation and thereby build a stronger profession. If you want to write a "letter to the editor", then go ahead and do it!

There are many other ways in which the magazine can support professional activity, and we intend to pursue them: Building type studies; office management studies; articles devoted to the architects' roles in vital social issues; guides to historical and modern architecture in North Carolina towns; reports on education and research; book reviews, and many items of interest. Furthermore, let me stress that the extent to which we succeed in bringing such diversity of professional activity to the surface rests on your ability to help us. Indeed, the publications committee has adopted a fairly ambitious schedule in order to bring the *North Carolina Architect* into alignment with current practice, and we will need your assistance as individuals from time to time.

Some of our other innovations will be a redesign of the basic magazine format, the use of Contributing Editors from related disciplines and professions, and the identification of information sources in public agencies and the news media. But most of all — and I would like to reemphasize this point — these are the wrappings; the content comes from you. It is your magazine, your voice and your information system.

Give us the message, and we will get it across!



Peter Batchelor  
Chairman, Publications Committee



# Tindall introduces Versa-space building systems

Now Tindall offers new Versa-space Building Systems throughout their service areas in the Carolinas and Georgia. Versa-space Building Systems provide a wide range of precast, prestressed concrete structures for a variety of commercial and industrial purposes . . . tailored to current needs . . . adaptable to future changes and expansions. These systems feature large, uncluttered bays with clear heights to 32 feet. Versa-space buildings have almost no ledges to collect dust and are thus ideally suited to applications where cleanliness is important.



Precast Systems, Inc. is a unique national organization dedicated to the development and marketing of practical building systems . . . owned by over 40 manufacturers of precast concrete components supplying engineering skills, production and erection facilities in markets from coast to coast. Tindall is proud to be a member of the PSI organization.

WRITE FOR DESCRIPTIVE BROCHURES.



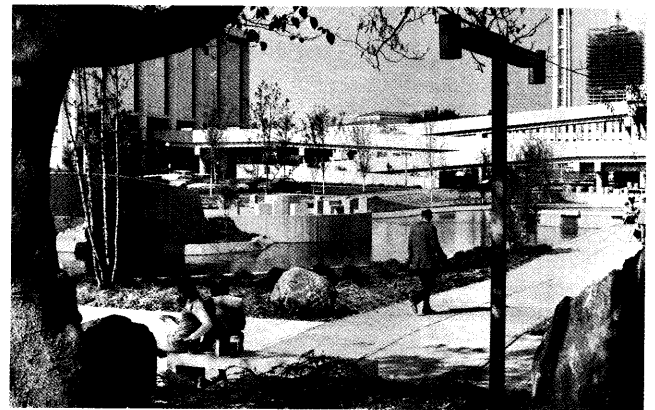
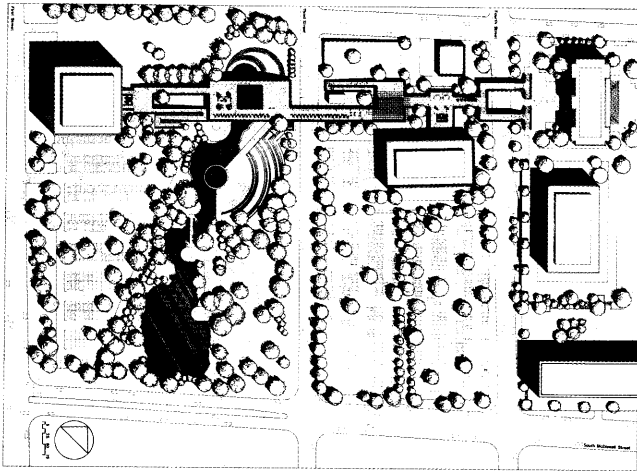
TINDALL CONCRETE PRODUCTS, INC. / BOX 1778 / SPARTANBURG, S. C. 29301 / TEL 803-576-3230

**This year the Jury for the 1974 Honor Awards Program decided against giving either the “Honor Award” or “Award of Merit” distinction to any of the following forty-four entries. The Publications Committee agreed that this was a startling conclusion to reach, and not knowing the criteria used by the Jury we decided to let the profession make its own judgment. Each entry was treated as equitably as possible in terms of space and content and the order shown here is similar to that in which the entries were numbered. On the back page of the article you will find the competition rules. We would like to know your reactions to the jurists conclusion, so write a letter to us at the AIA Tower.**

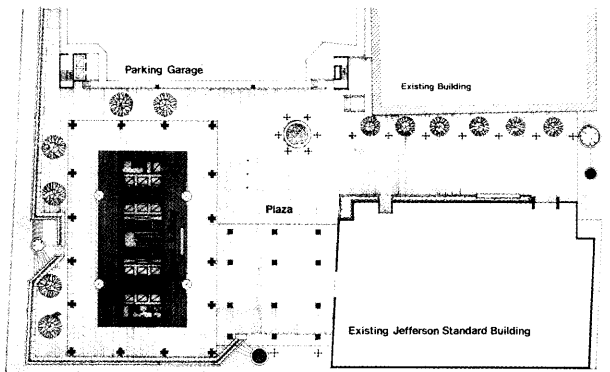
# NCAIA HONOR AWARDS PROGRAM

## 1974





**GOVERNMENTAL CENTER WALKWAY**  
CHARLOTTE, N. C.  
J. N. PEASE ASSOCIATES, ARCHITECTS

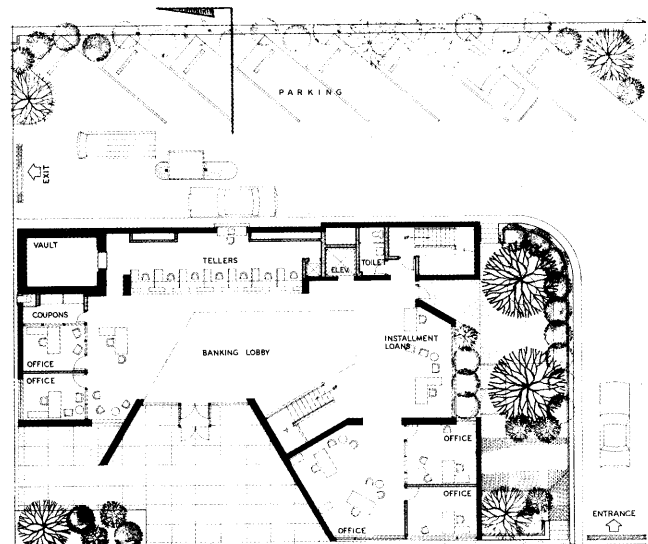
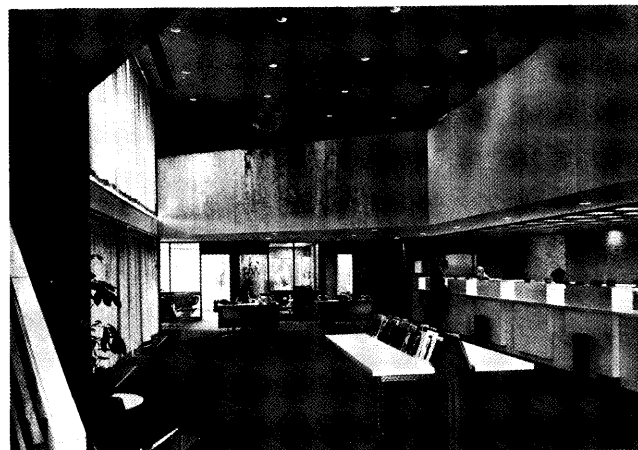
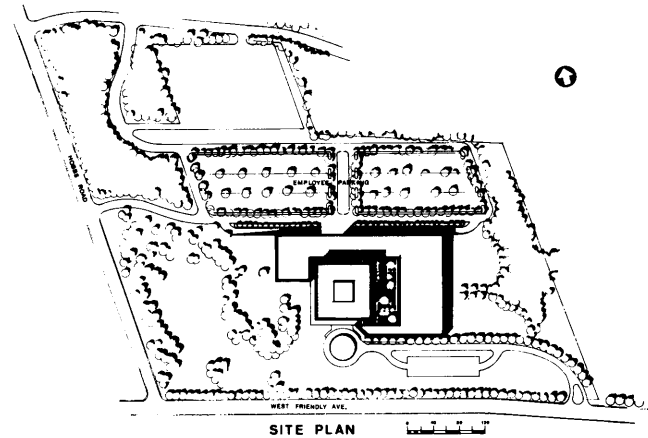


**JEFFERSON FIRST UNION BUILDING**  
CHARLOTTE, N. C.  
J. N. PEASE ASSOCIATES, ARCHITECTS



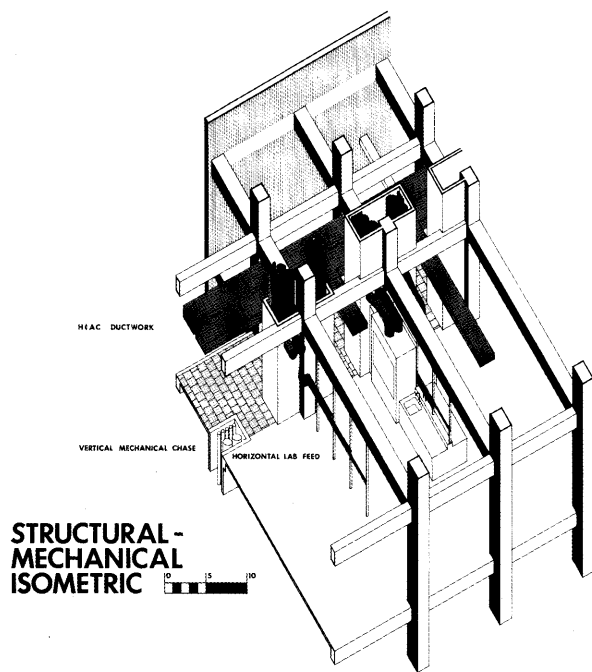


**BURLINGTON CORPORATE HEADQUARTERS**  
GREENSBORO, N. C.  
ODELL ASSOCIATES, INC., ARCHITECTS

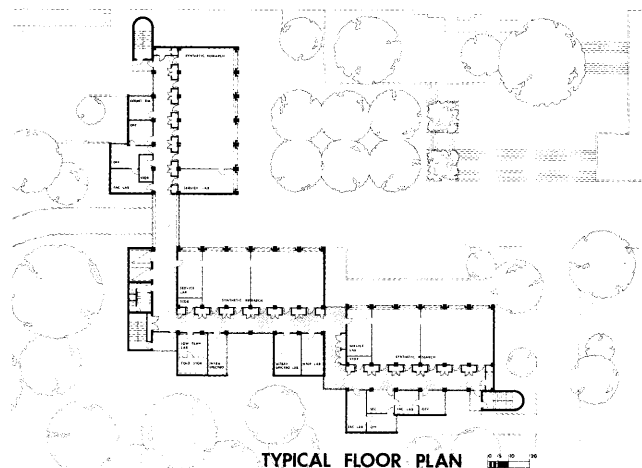


**WACCAMAW BANK & TRUST CO.**  
WILMINGTON, N. C.  
BALLARD, McKIM & SAWYER, ARCHITECTS

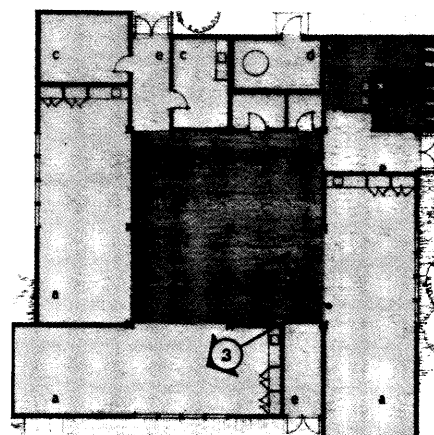


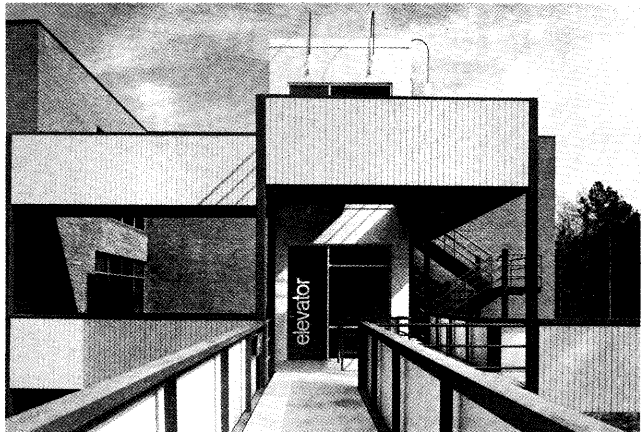
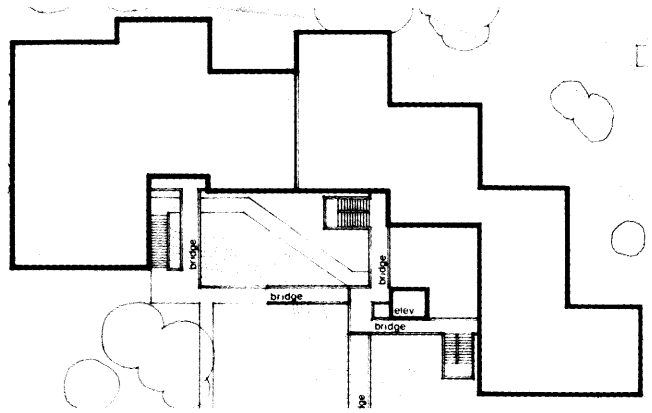
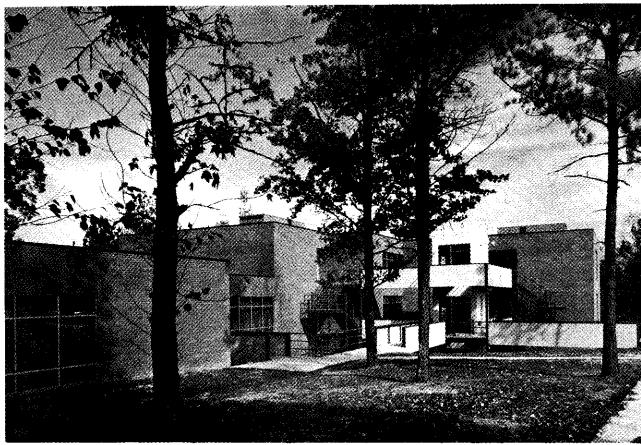


**PHYSICAL SCIENCE BUILDING**  
 UNC-CHAPEL HILL, N. C.  
 BALLARD, McKIM & SAWYER, ARCHITECTS

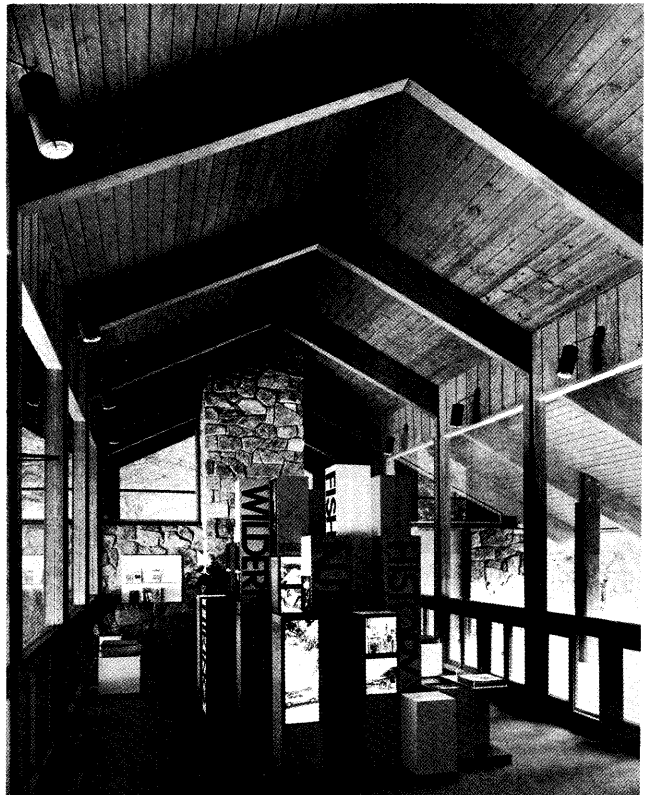


**PUBLIC SCHOOL**  
 OCRACOCKE, N. C.  
 JAMES B. WILLIS, JR., AIA, ARCHITECT

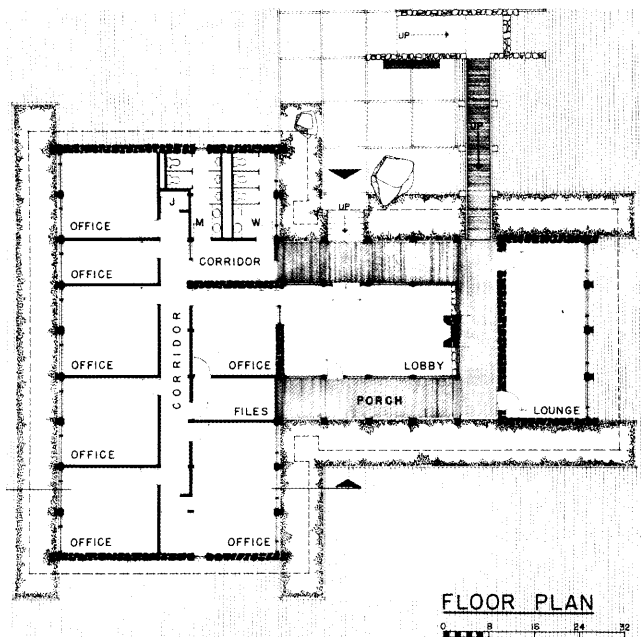




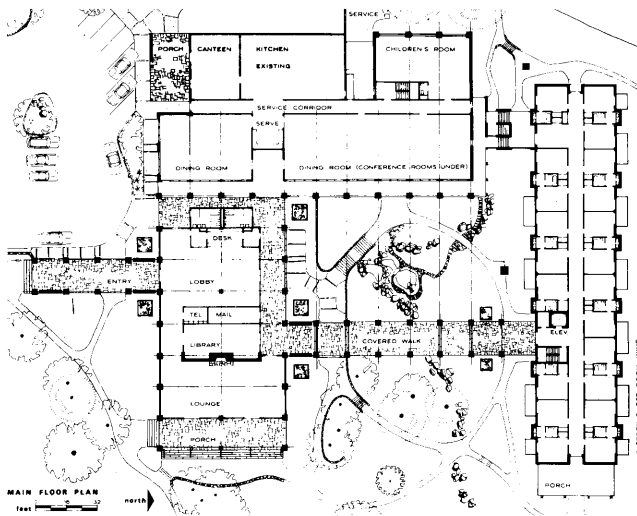
**CEDAR TERRACE EAST OFFICE PLAZA**  
DURHAM, N. C.  
JOHN D. LATIMER & ASSOCS., ARCHITECTS



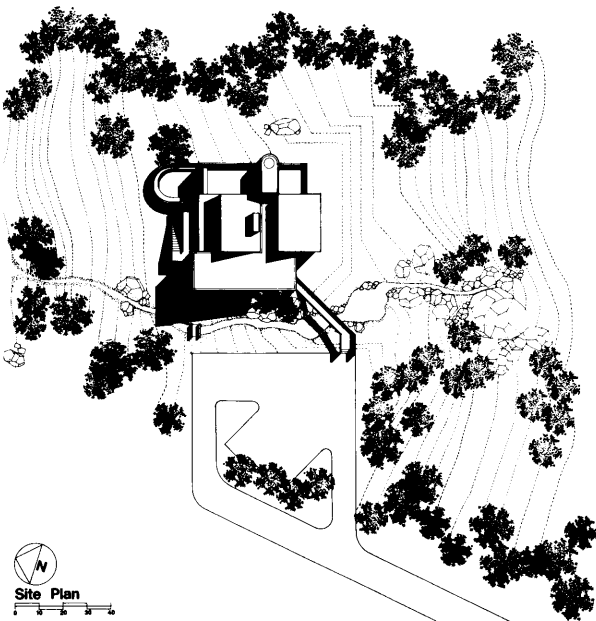
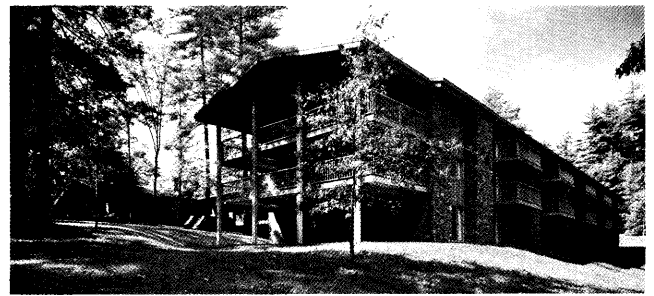
**RANGER STATION**  
TRANSLYVANIA COUNTY, N. C.  
J. BERTRAM KING, FAIA, ARCHITECT







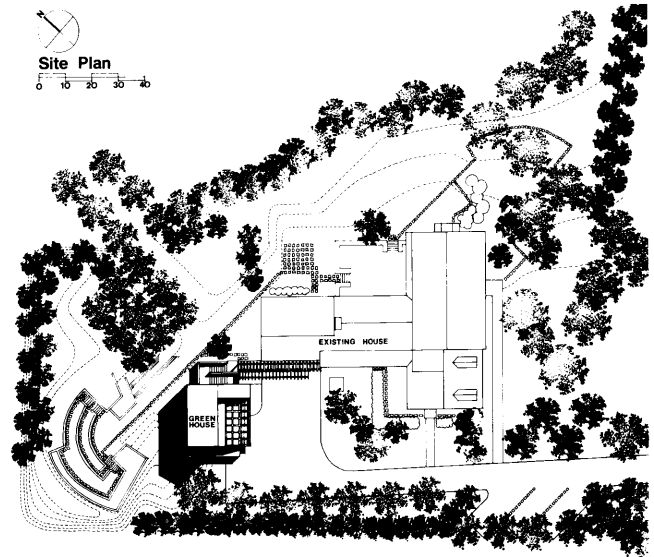
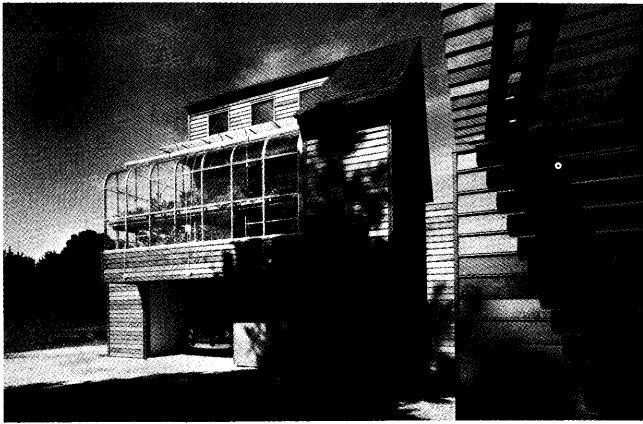
**KANUGA CONFERENCES**  
 HENDERSON COUNTY, N. C.  
 J. BERTRAM KING, FAIA, ARCHITECT



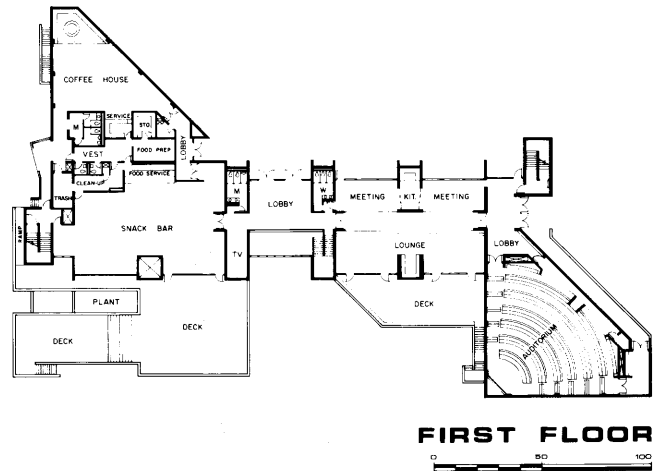
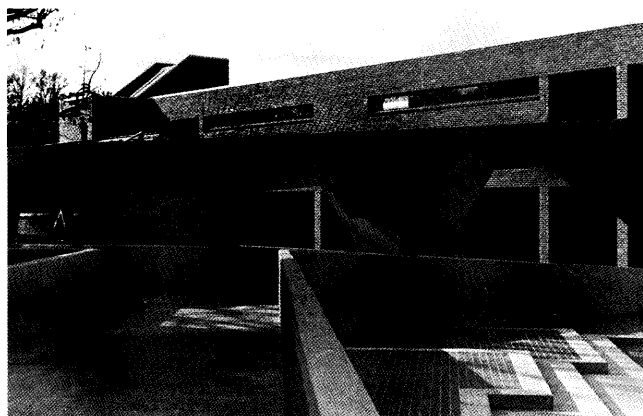
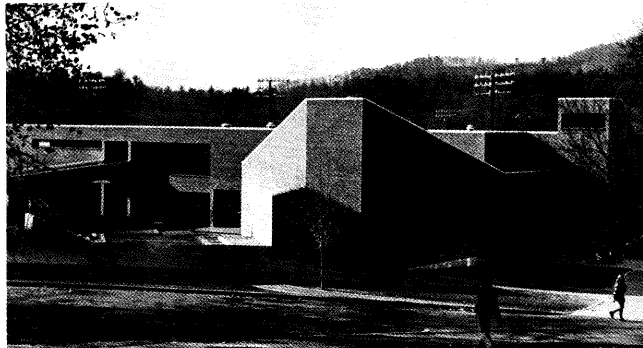
**RESIDENCE**  
 GRANDFATHER MOUNTAIN, N. C.  
 MICHAEL TRIBBLE, AIA, ARCHITECT



LS3P

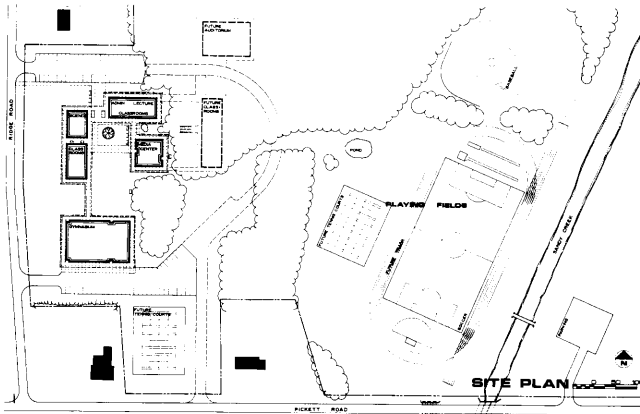


**GREENHOUSE/GARAGE**  
 CHARLOTTE, N. C.  
 MICHAEL TRIBBLE, AIA, ARCHITECT

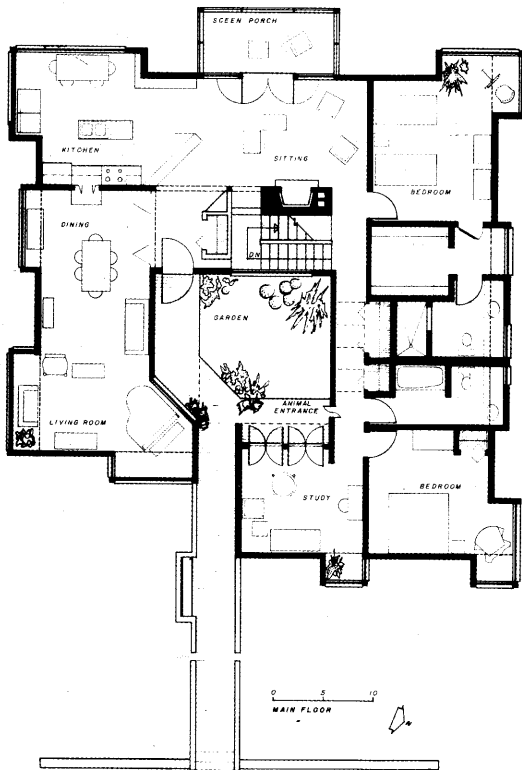
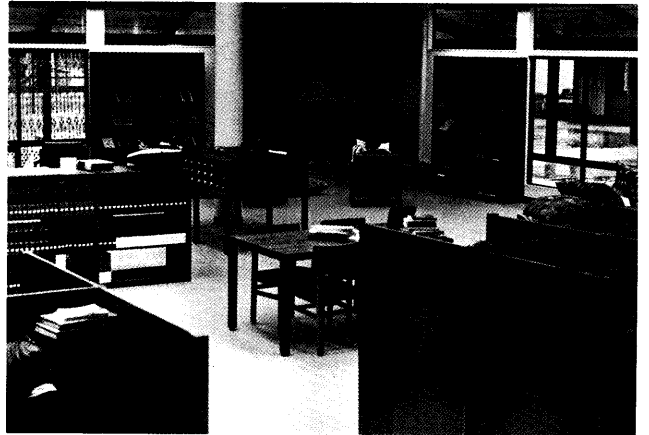
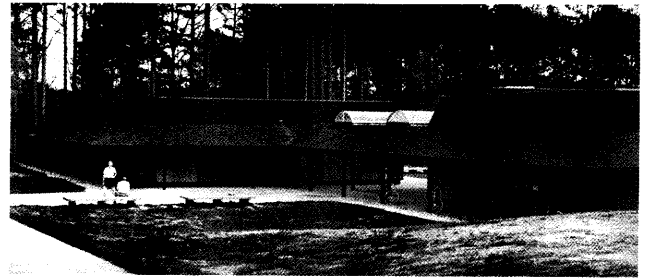


**STUDENT CENTER**  
 MARS HILL, N. C.  
 SIX ASSOCIATES, INC., ARCHITECTS



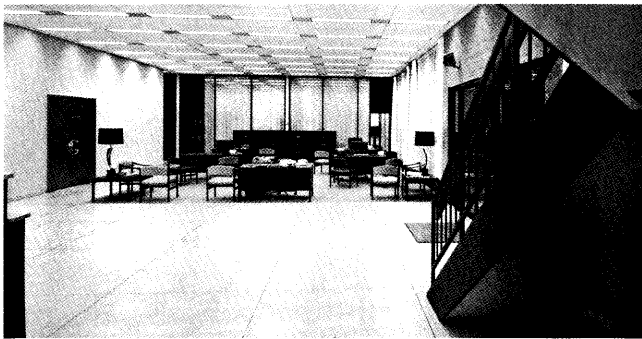
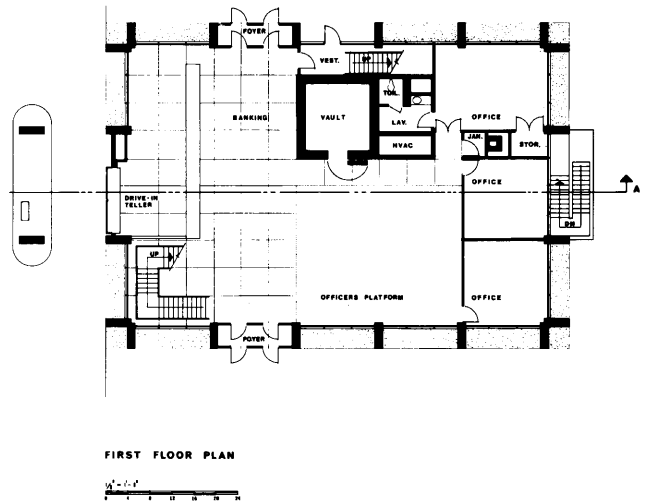
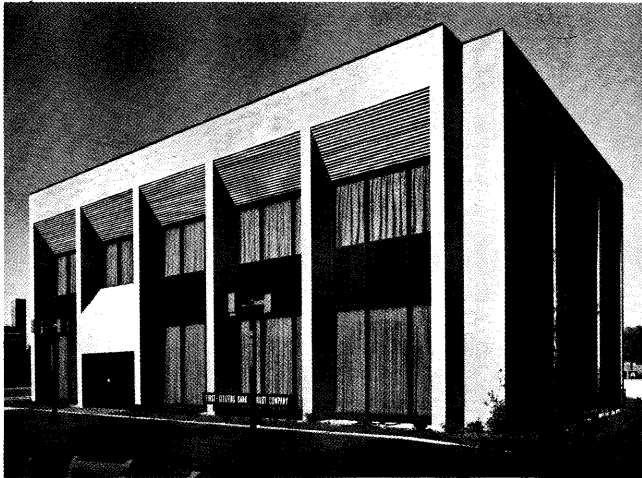


**DURHAM ACADEMY HIGH SCHOOL**  
 DURHAM, N. C.  
 SMART/WOODALL/ISLEY/HERRING, ARCHITECTS

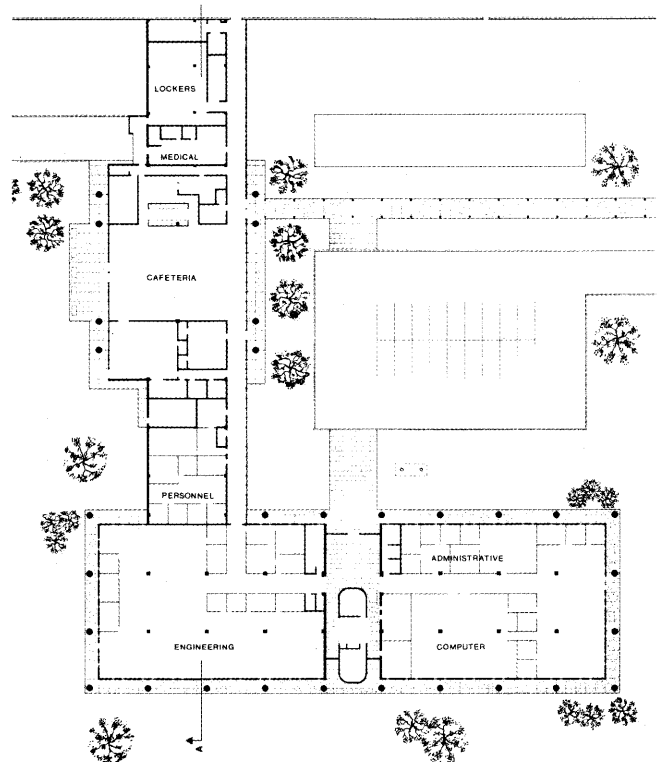
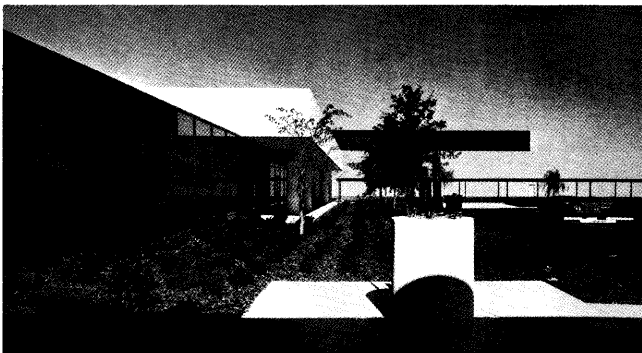


**GREY FOX FARM**  
 PINEHURST, N. C.  
 BASIL G. F. LASLETT & WILLIAM L. LASLETT, ARCHITECTS

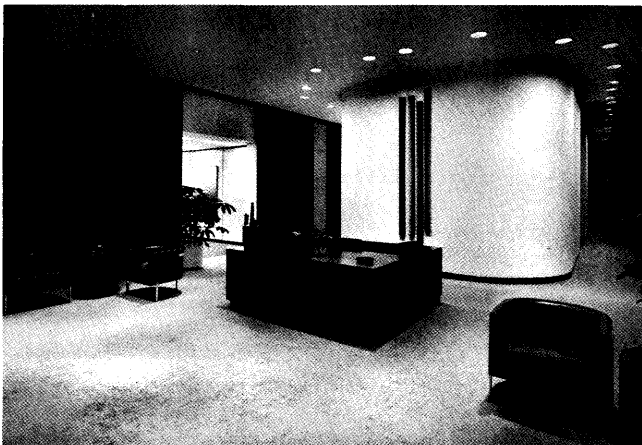


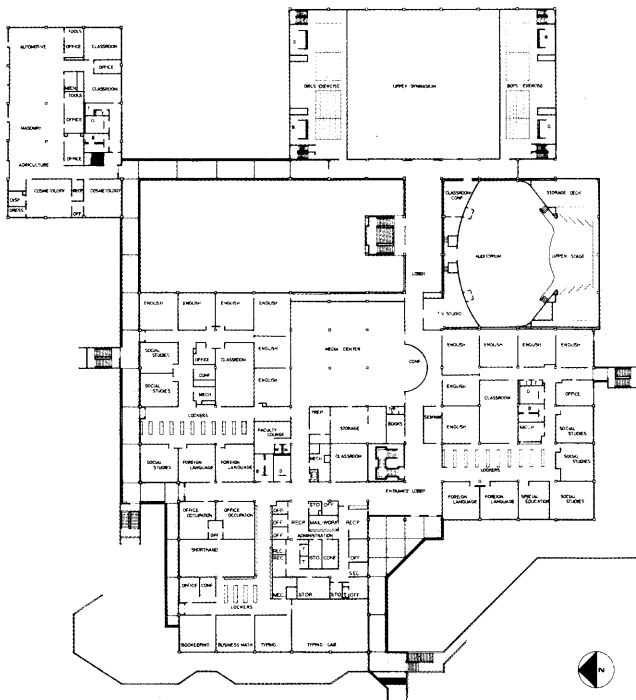


**BANK BUILDING**  
SANFORD, N. C.  
J. N. PEASE ASSOCIATES, ARCHITECTS

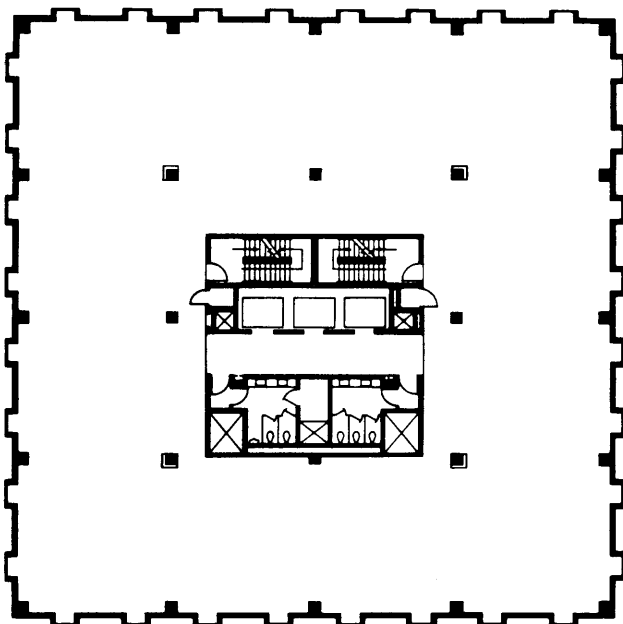
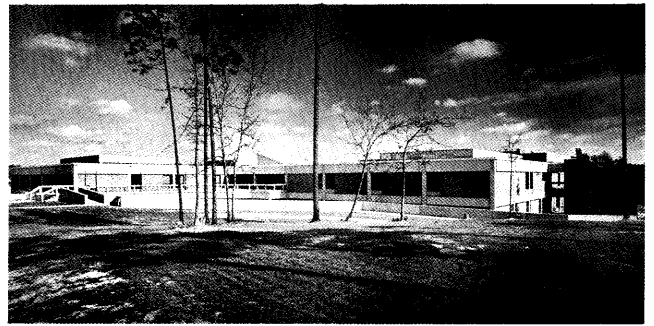


**WESTINGHOUSE PLANT**  
RURAL HALL, N. C.  
J. N. PEASE ASSOCIATES, ARCHITECTS

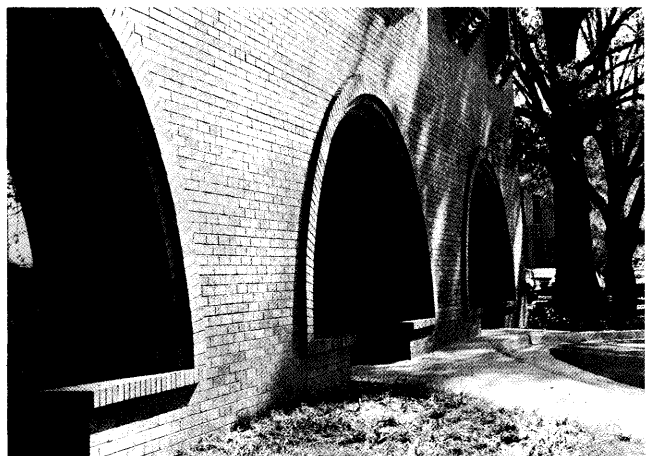
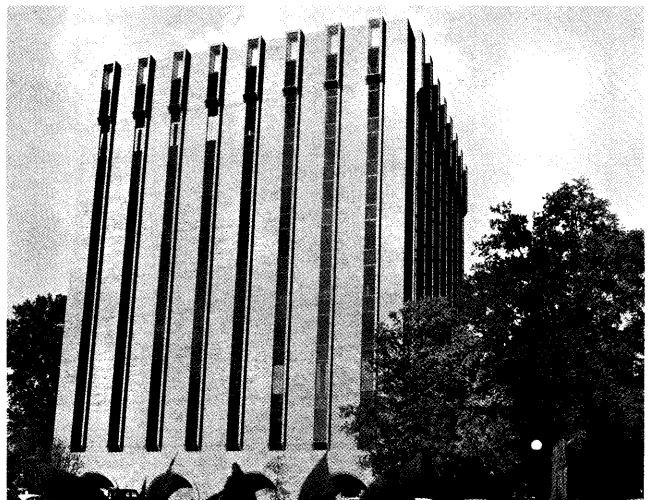




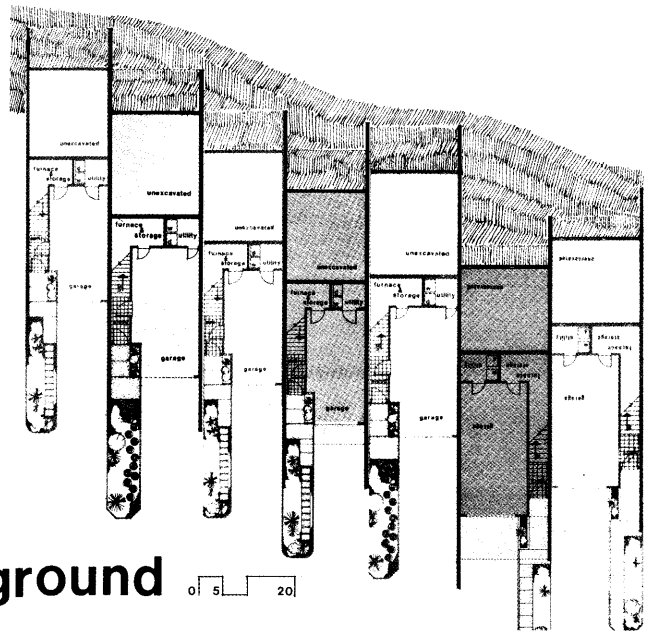
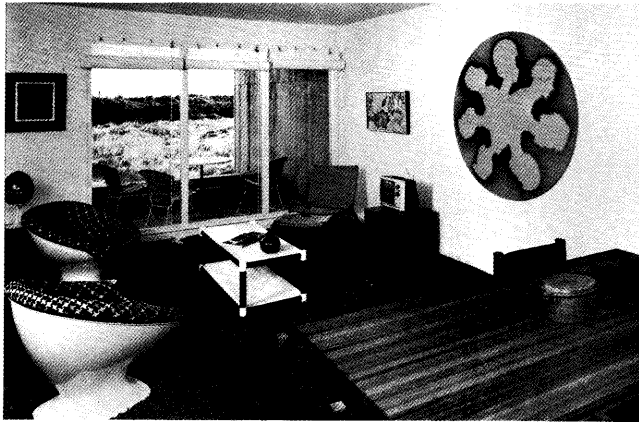
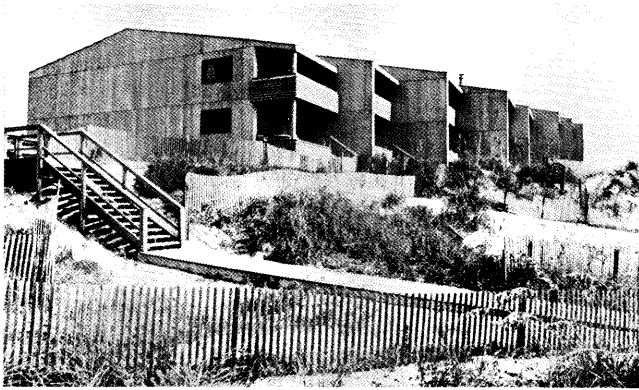
**RICHMOND SENIOR HIGH SCHOOL**  
 ROCKINGHAM, N. C.  
 HAYES-HOWELL & ASSOCS., ARCHITECTS



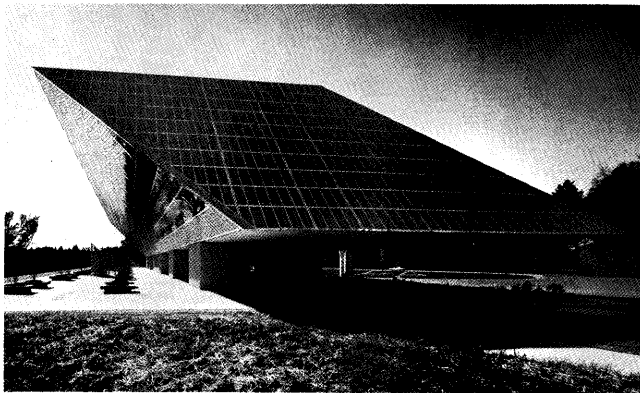
**METROVIEW PROFESSIONAL BUILDING**  
 CHARLOTTE, N. C.  
 ODELL ASSOCIATES INC., ARCHITECTS



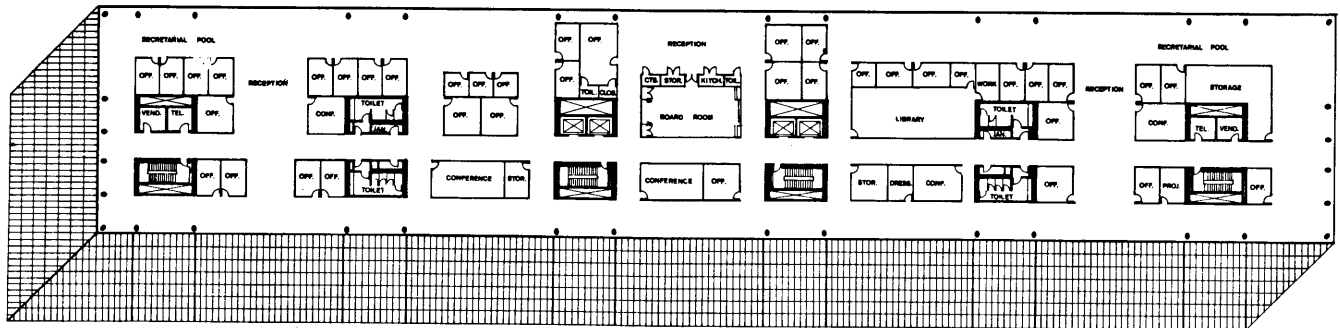
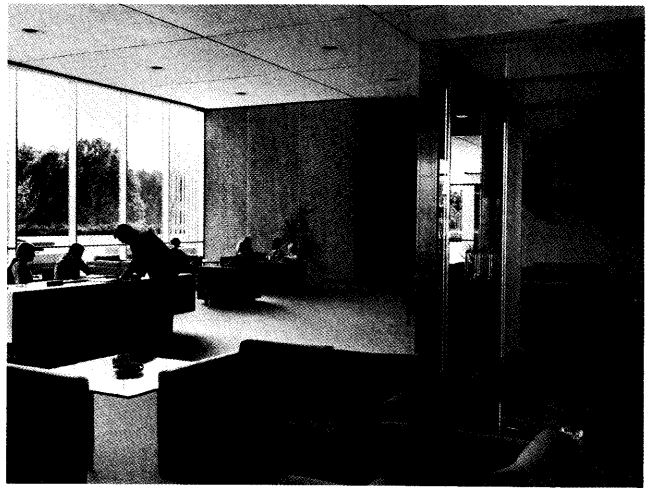


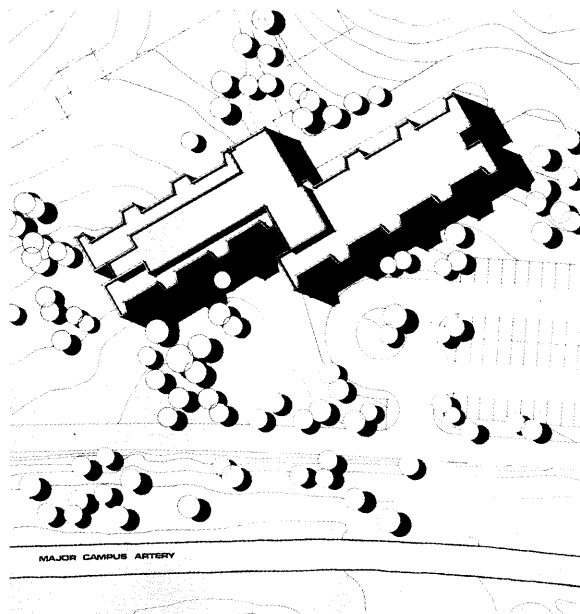


**TAR LANDING VILLAS**  
ATLANTIC BEACH, N. C.  
JAMES B. WILLIS, JR., AIA, ARCHITECT

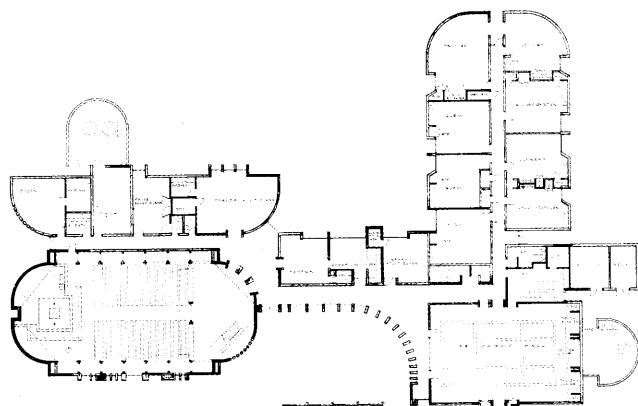
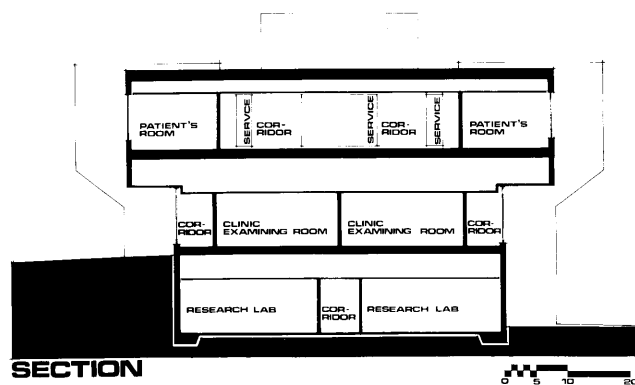
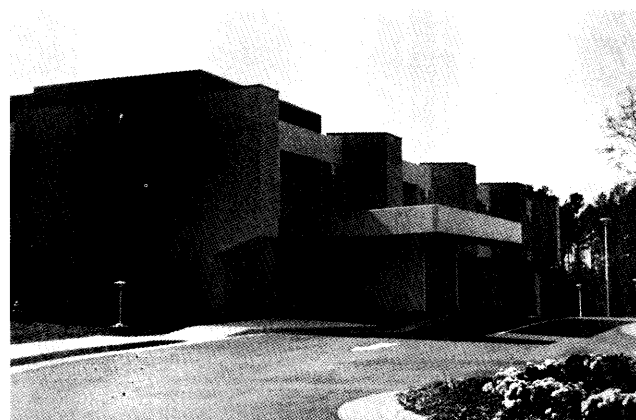


**N. C. BLUE CROSS/BLUE SHIELD HEADQUARTERS**  
CHAPEL HILL, N. C.  
ODELL ASSOCIATES INC., ARCHITECTS

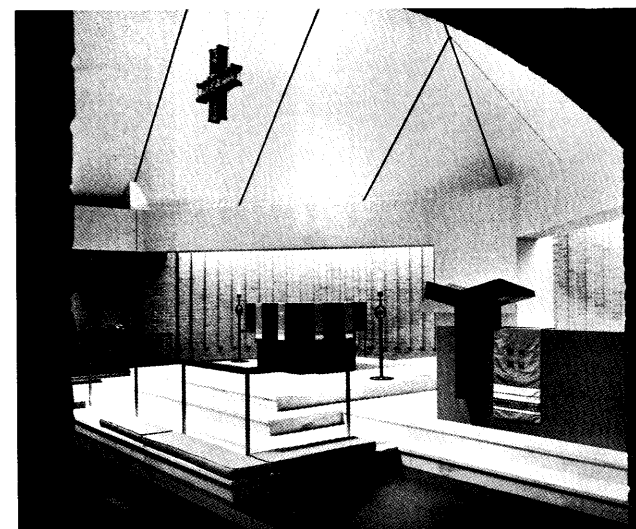


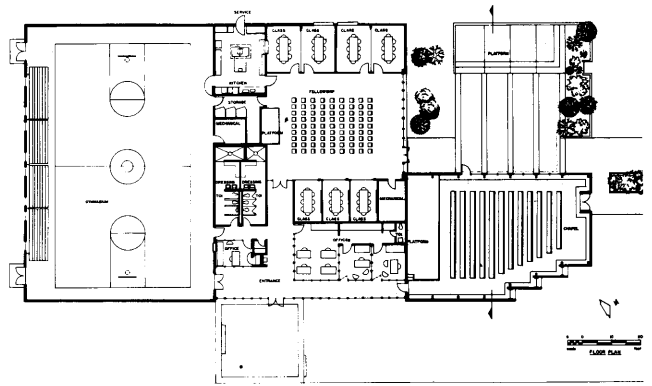
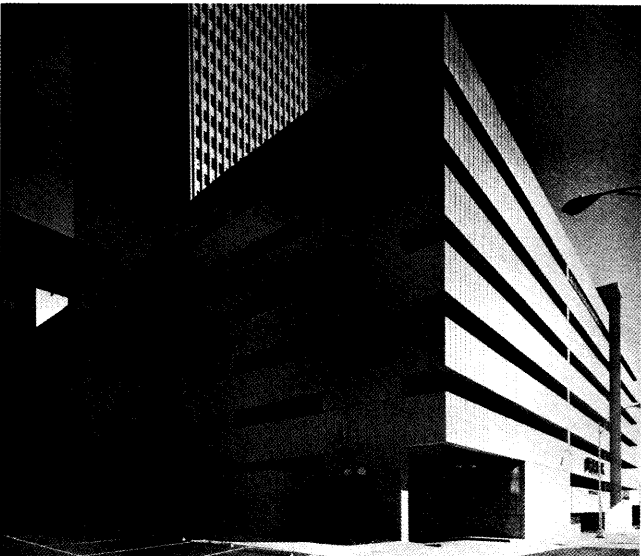
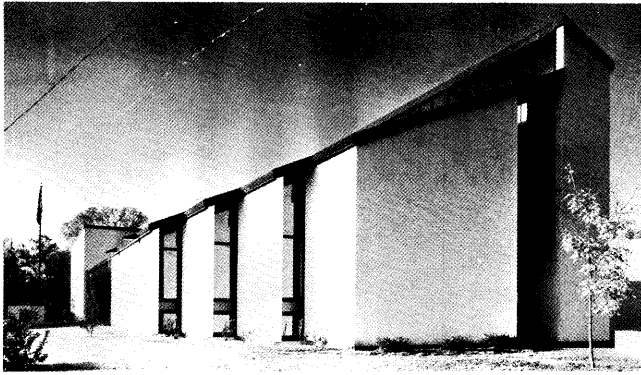


**EYE CENTER**  
DUKE UNIVERSITY, DURHAM, N. C.  
SIX ASSOCIATES, INC., ARCHITECTS



**FARMVILLE UNITED METHODIST CHURCH**  
FARMVILLE, N. C.  
THE FREEMAN-WHITE ASSOCS., INC., ARCHITECTS

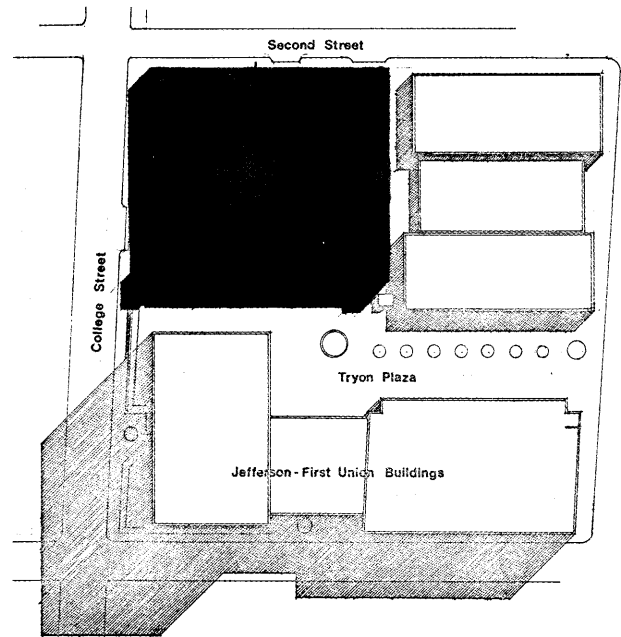




## SALVATION ARMY HEADQUARTERS

FAYETTEVILLE, N. C.

BASIL G. F. LASLETT & WILLIAM L. LASLETT, ARCHITECTS

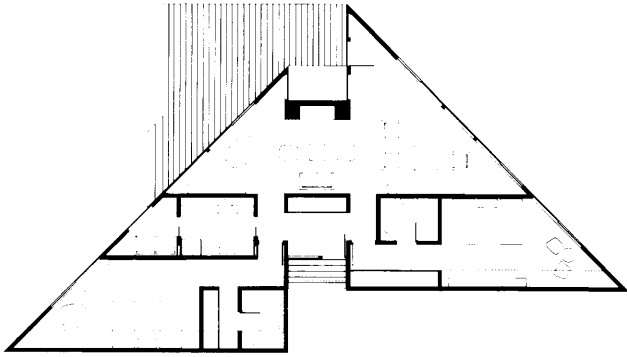


## JEFFERSON FIRST UNION PARKING DECK

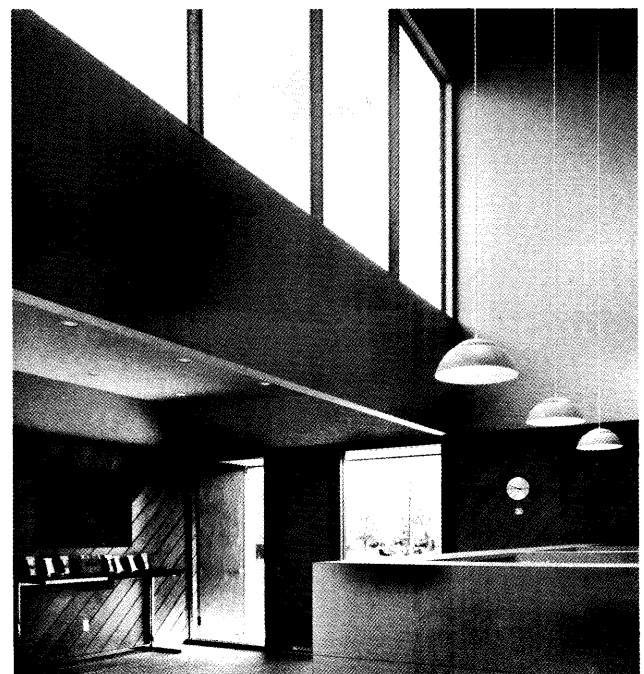
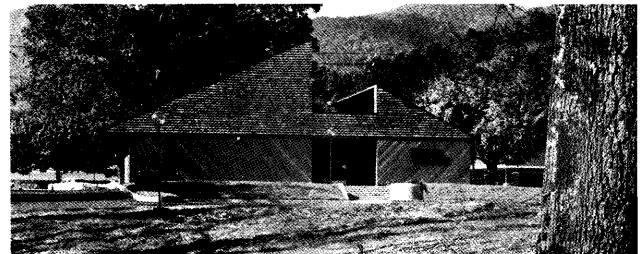
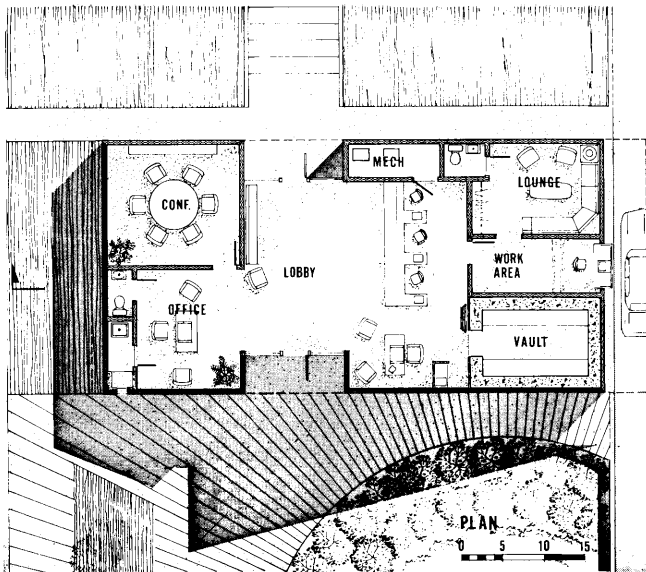
CHARLOTTE, N. C.

J.N. PEASE ASSOCIATES, ARCHITECTS

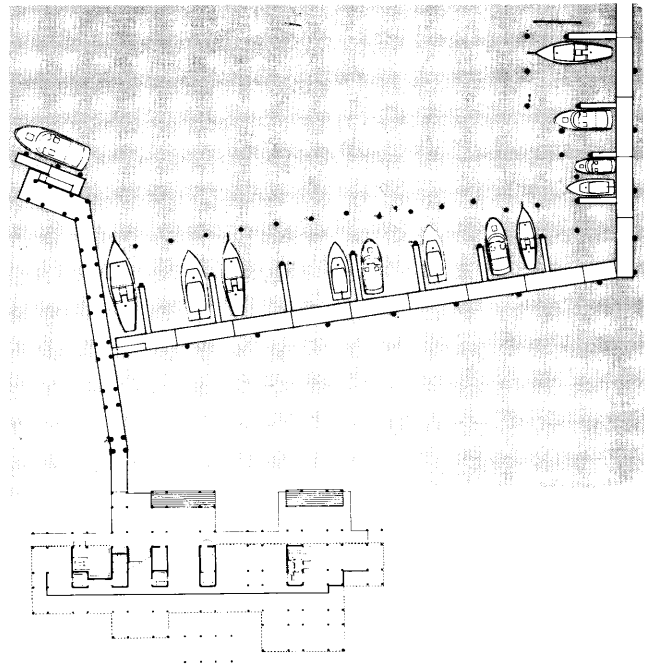
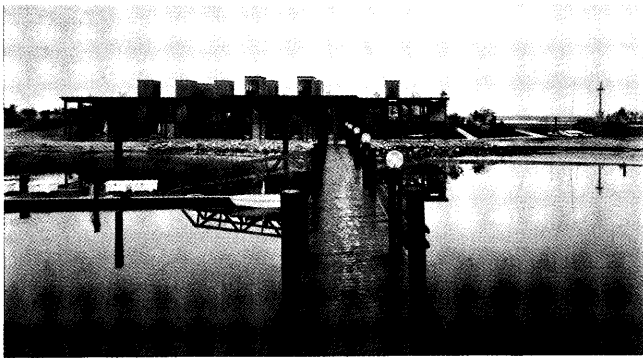




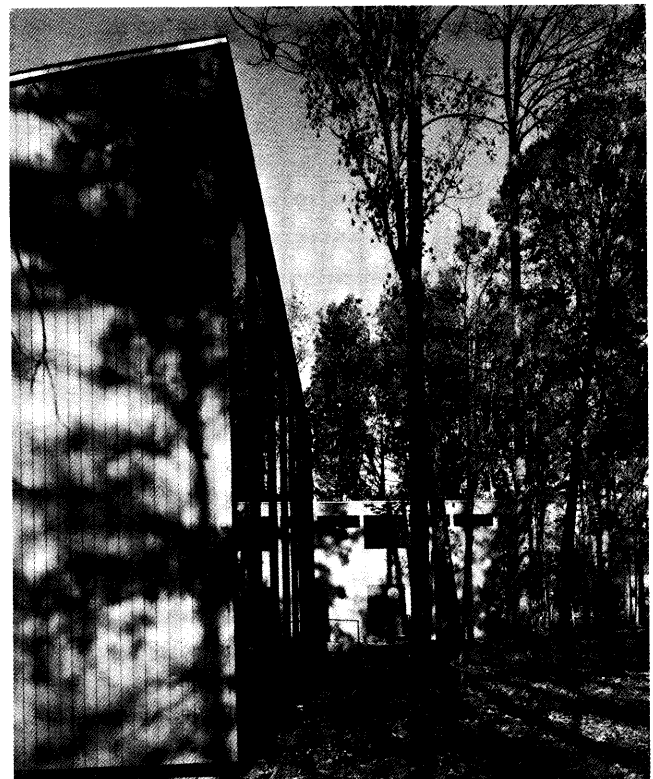
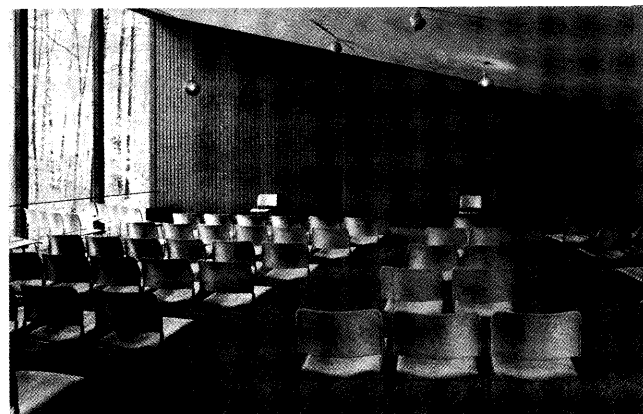
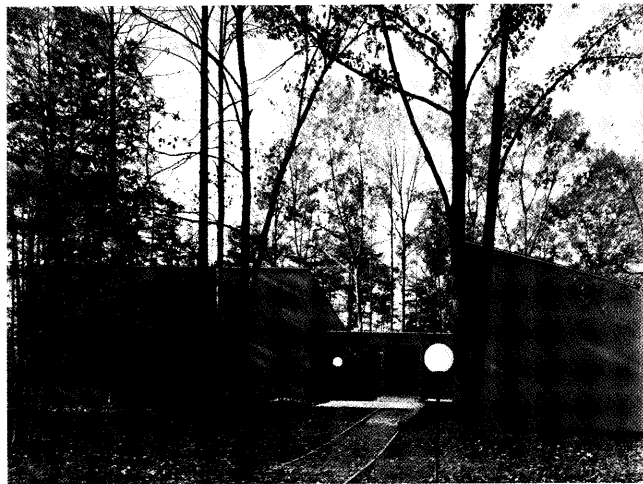
**SHEPLEY RESIDENCE**  
BLOWING ROCK, N. C.  
CHARLES L. McMURRAY, AIA, ARCHITECT



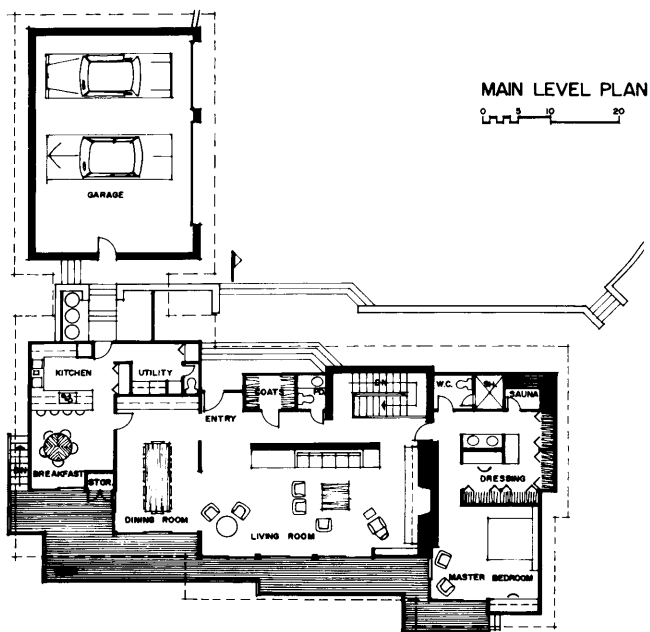
**NCNB BRANCH BANK**  
COLUMBUS COUNTY  
THE FREEMAN-WHITE ASSOCS., INC., ARCHITECTS



**FIGURE EIGHT ISLAND MARINA**  
WILMINGTON, N. C.  
FLYNN-JOHNSTON, ARCHITECTS



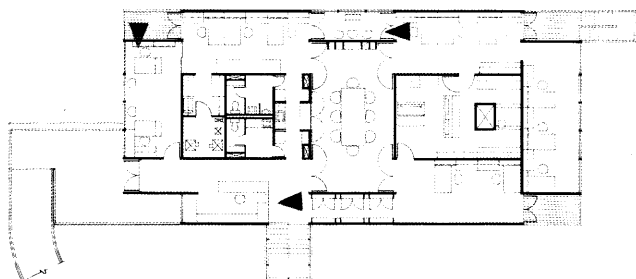
**UNITARIAN CHURCH**  
GREENSBORO, N. C.  
MacRAE, FUNDERBURK, MARSHALL, ARCHITECTS



### KINNEY RESIDENCE

TRYON, N. C.

WILLIAM O. MOORE, AIA, ARCHITECT



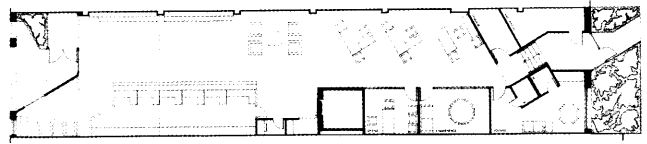
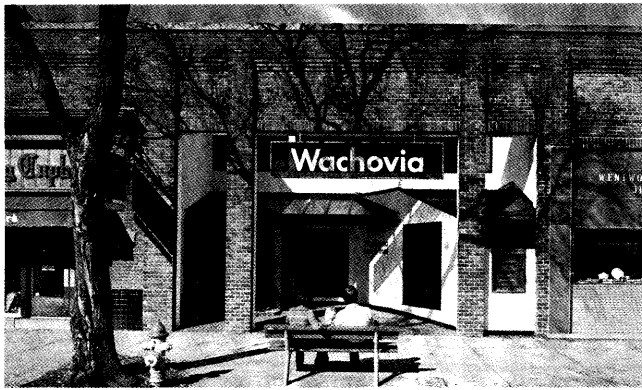
### LITCHFIELD PLANTATION HEADQUARTERS

WILMINGTON, N. C.

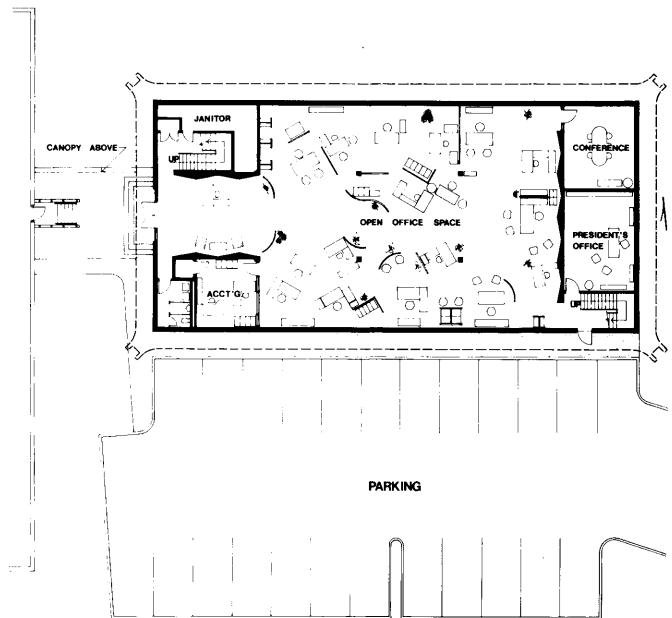
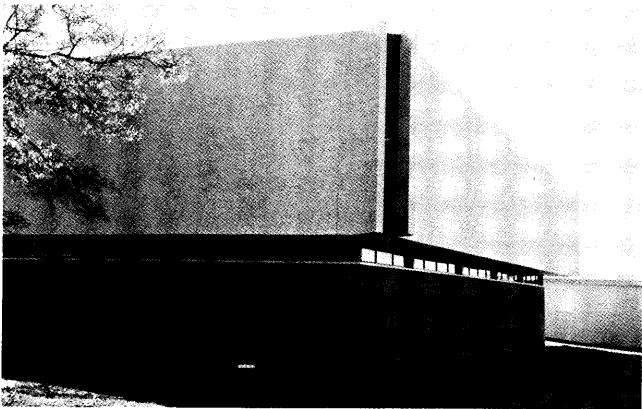
FLYNN-JOHNSTON, ARCHITECTS



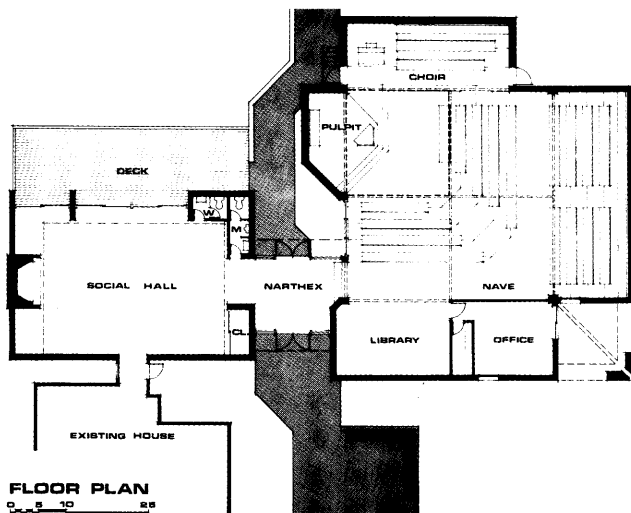




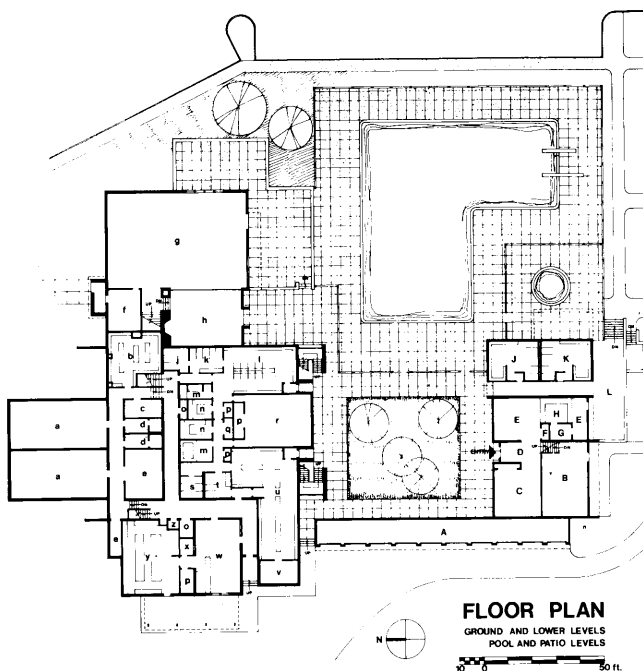
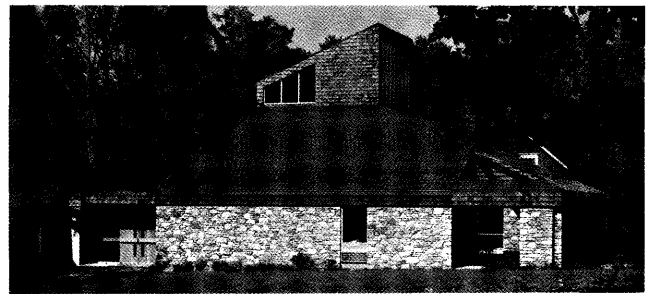
**WACHOVIA BANK OFFICE**  
CHAPEL HILL, N. C.  
JOHN D. LATIMER & ASSOCS., ARCHITECTS



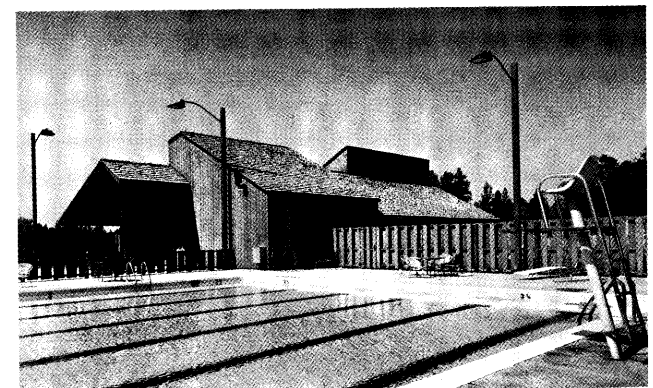
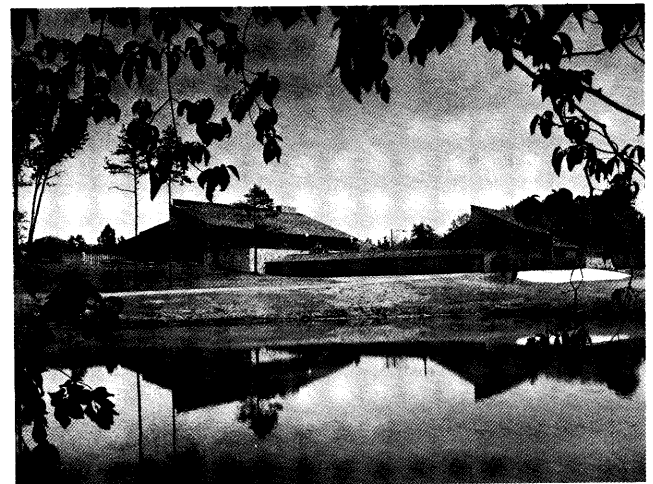
**INTECH OFFICE BUILDING**  
CHARLOTTE, N. C.  
FEREBEE, WALTERS & ASSOCIATES, ARCHITECTS

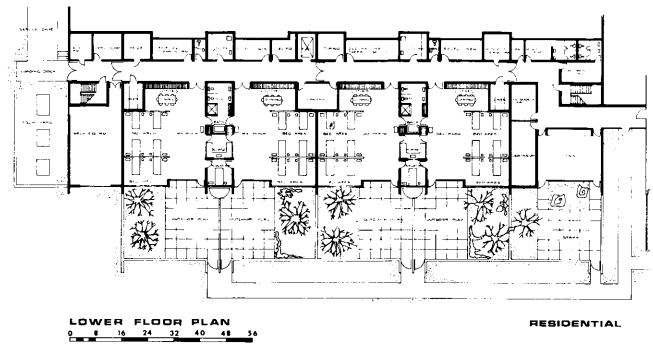
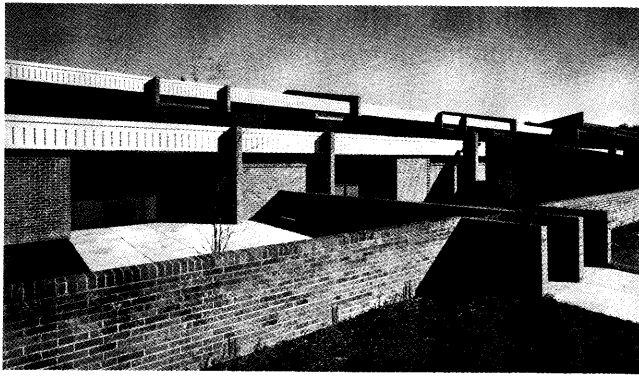


**UNITARIAN-UNIVERSALIST CHURCH**  
ASHEVILLE, N. C.  
WILLIAM O. MOORE, AIA, ARCHITECTS

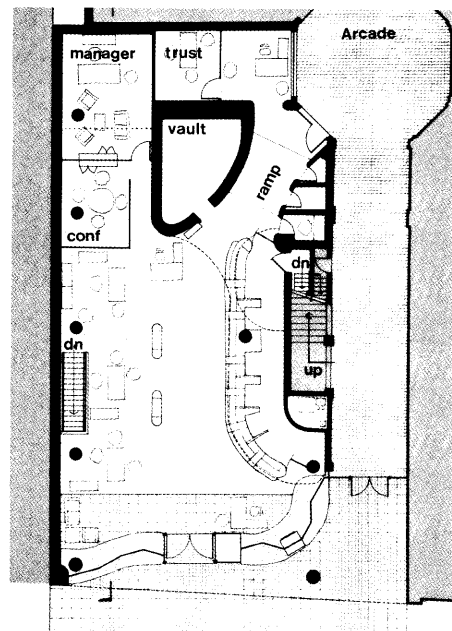


**COMMUNITY CLUB**  
CHARLOTTE, N. C.  
FEREBEE, WALTERS & ASSOCIATES, ARCHITECTS



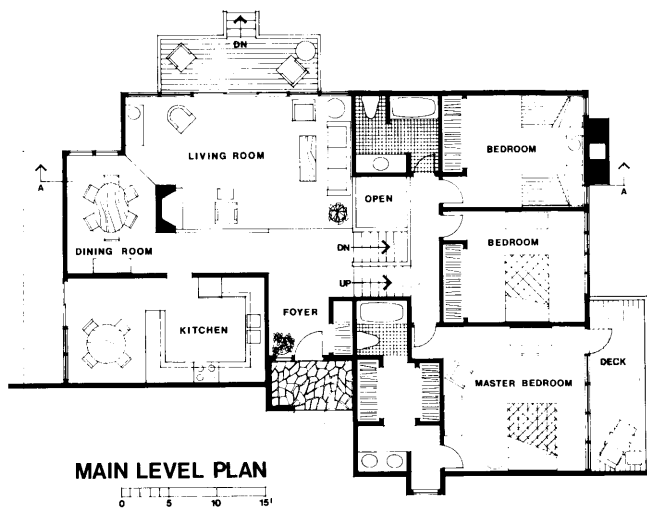


**MECKLENBURG CENTER  
FOR HUMAN DEVELOPMENT**  
CHARLOTTE, N. C.  
BRACKETT ASSOCIATES, ARCHITECTS



**BRANCH BANKING & TRUST CO.**  
CHARLOTTE, N. C.  
G. MILTON SMALL & ASSOCS., ARCHITECTS

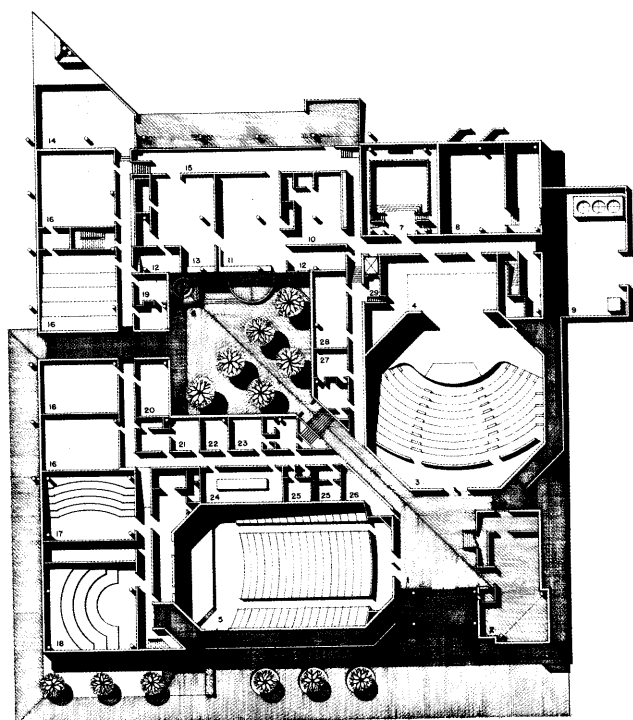
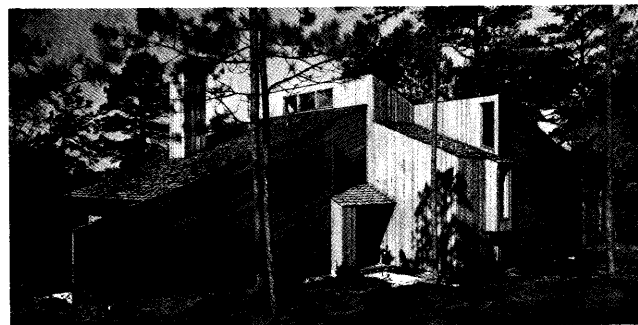




### PROTOTYPE RESIDENCE

CHARLOTTE, N. C.

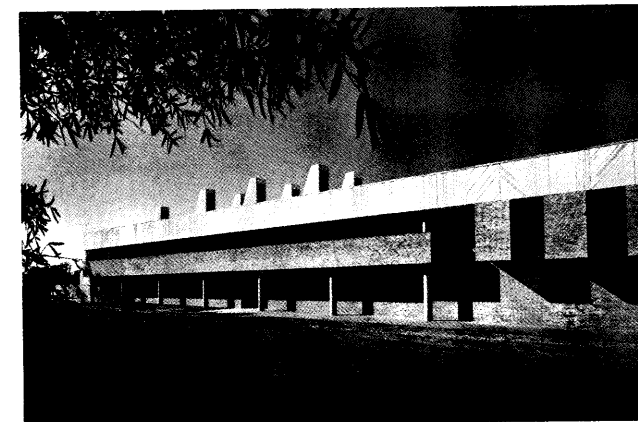
FEREBEE, WALTERS & ASSOCIATES, ARCHITECTS

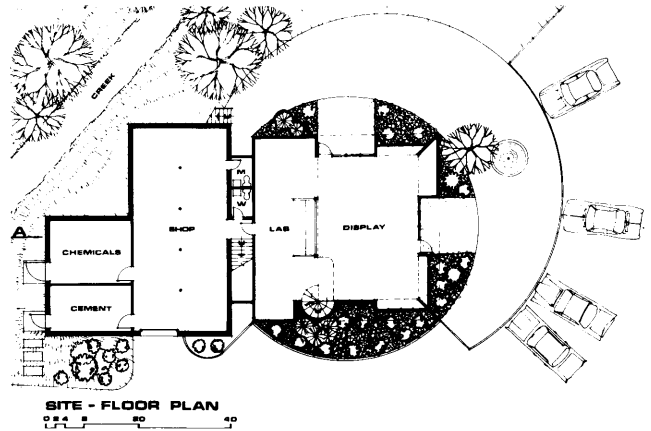
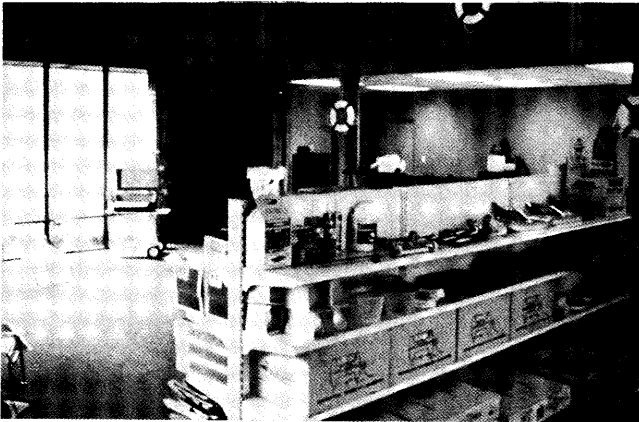
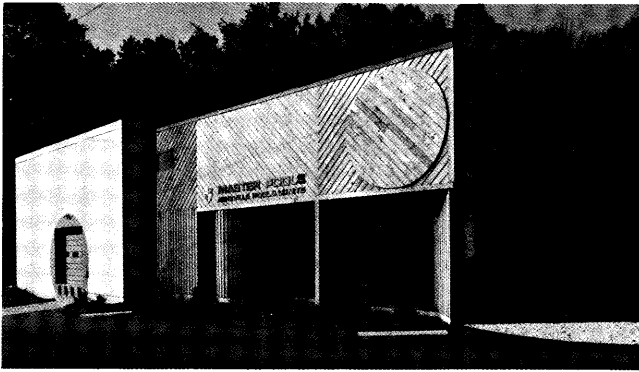


### ROWE ARTS CENTER

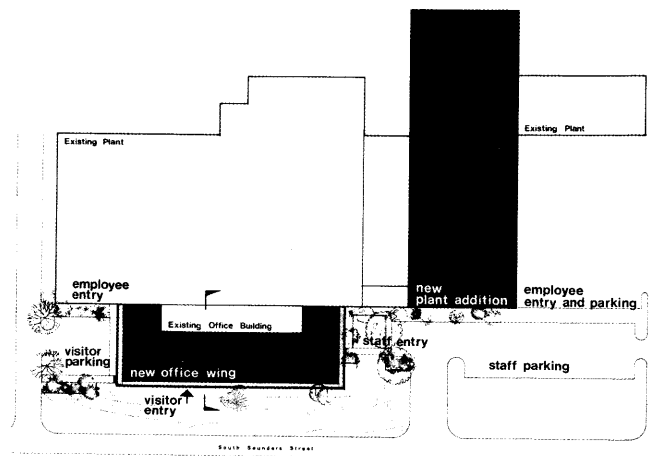
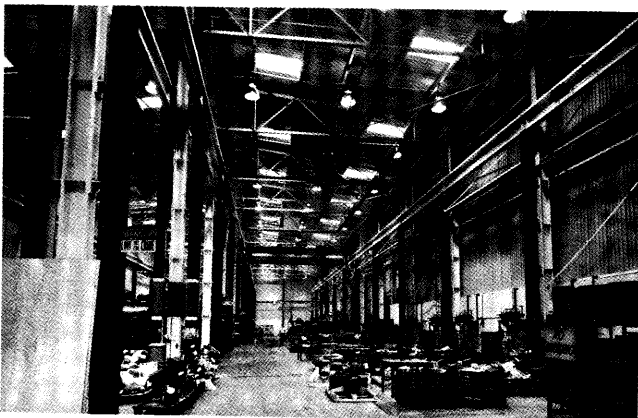
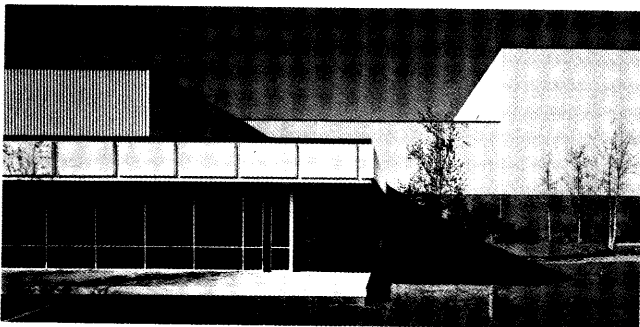
UNC-CHARLOTTE, N. C.

WHEATLEY-WHISNANT & ASSOCS., ARCHITECTS

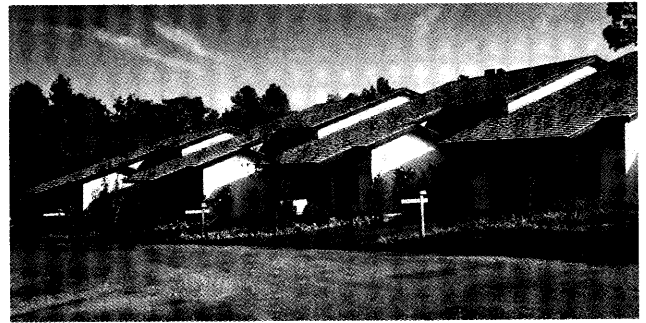
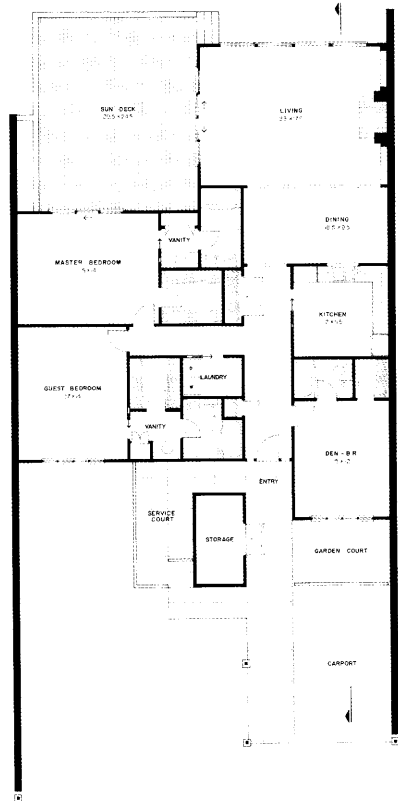




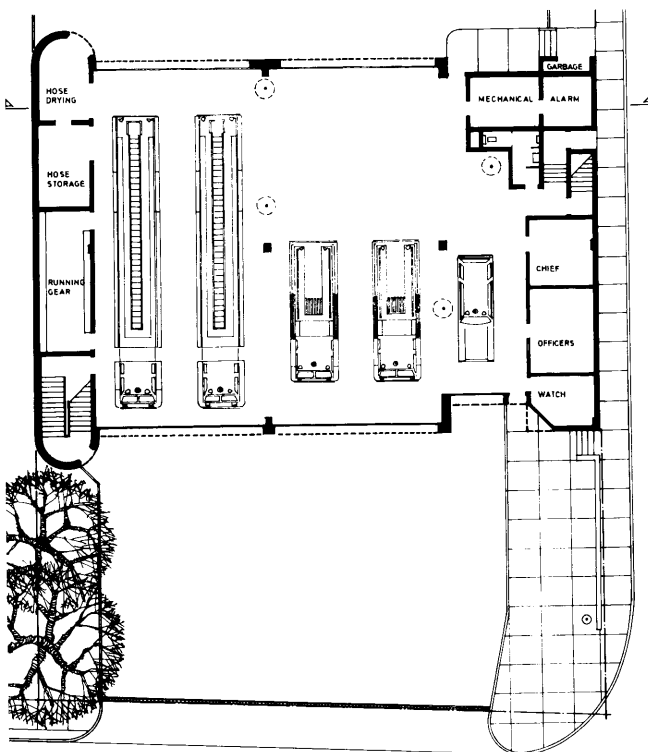
**ASHEVILLE POOL & GUNITE**  
 ASHEVILLE, N. C.  
 WILLIAM O. MOORE, AIA, ARCHITECT



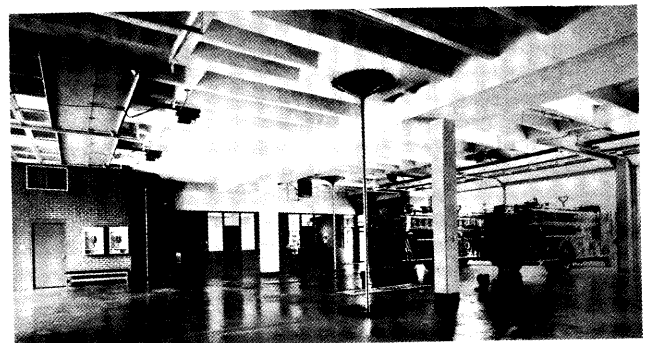
**ROCKWELL MFG. CO.**  
 RALEIGH, N. C.  
 G. MILTON SMALL & ASSOCS., ARCHITECTS

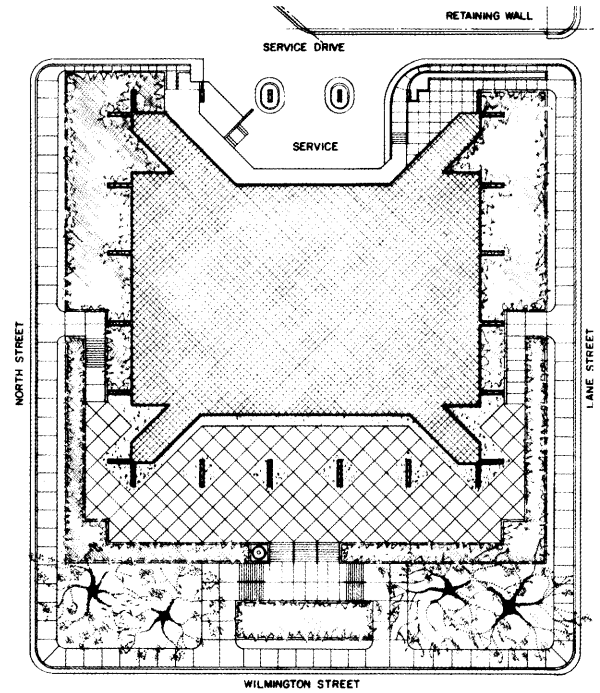
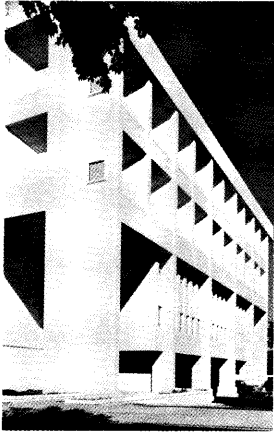
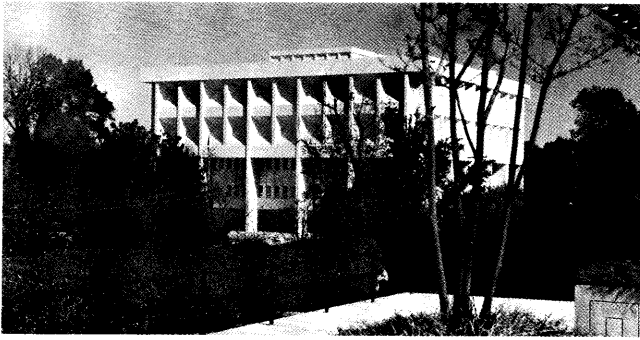


**QUAIL HILL HOMES**  
SOUTHERN PINES, N. C.  
AUSTIN-FAULK ASSOCIATES, ARCHITECTS



**FIRE STATION 4**  
CHARLOTTE, N. C.  
BENTON-HOBSON ASSOCIATES, ARCHITECTS

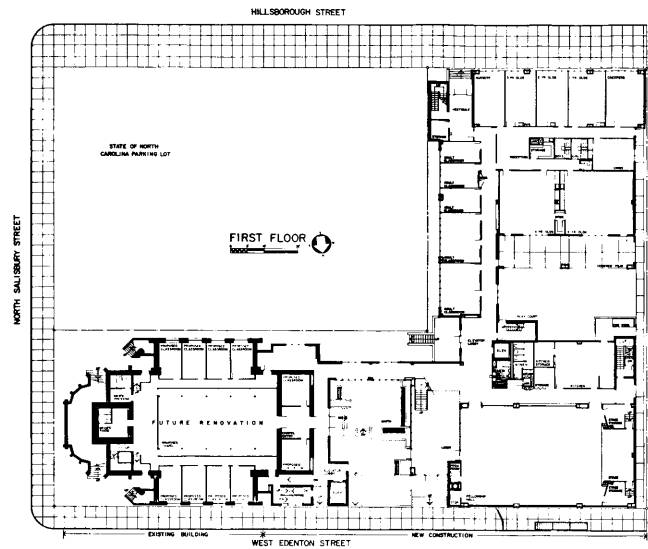




## BATH BUILDING

RALEIGH, N. C.

JESSE M. PAGE & ASSOCS., INC., ARCHITECTS



## RENEWED FIRST BAPTIST CHURCH

RALEIGH, N. C.

HASKINS & RICE, ARCHITECTS



# North Carolina Chapter The American Institute Of Architects

## 1974 HONOR AWARDS PROGRAM

### ELIGIBILITY

All entries shall be executed projects designed by corporate members of the North Carolina Chapter, AIA. The projects may have been executed anywhere in the United States or abroad, and must have been completed after January 1, 1963.

The program is open to design projects of all classifications. No designation is required. In the judgment, equal emphasis will be given to all classifications.

All entries shall be submitted to the Executive Director, NCAIA, 115 West Morgan Street, Raleigh, North Carolina 27601, as herein specified and prior to November 30, 1973.

### ENTRY FEE

A registration fee of \$25.00 for each entry submitted by an NCAIA corporate member must be paid by the entrant. The entry slip and fee must be received by the NCAIA office prior to November 23, 1973.

Checks or money orders shall be payable to "The North Carolina Chapter, AIA." No entry fees will be refunded for entries which do not materialize.

### TIME SCHEDULE

November 23, 1973: Entry slips and fee deadline.

November 30, 1973: Deadline for receipt of submission in brochure form.

December 13: Meeting of the Jury.

January 2, 1974: Notification to architects of winning projects with specification for exhibition presentation.

February 8, 1974: Announcement and Exhibition of Awards at NCAIA Winter Meeting.

### METHOD OF SUBMITTING ENTRY

In the submission for judgment, all material shall be contained in the 8½" x 11" binder furnished by NCAIA which contains nine (9) transparent window sleeves. Award winning entries will subsequently be presented comprehensively on 2" x 2" colored 35mm. slides. Special display panels will not be required.

### DRAWINGS AND DIAGRAMS

Site plan, floor plan or plans, and one or

more sections sufficient to explain the solution are required. The scale of all drawings must be graphically shown, but may be at the discretion of the entrant. The presentation of drawings may be in any medium, but must be on 8½" x 11" sheets slipped into transparent window sleeves of the binder. Plans on larger sheets or folded plans will be discarded.

### PHOTOGRAPHS AND SLIDES

Photographs may be either black and white or color, glossy finish. In the case of a single building, a minimum of two (2) 8" x 10" photographs. In the case of a group of buildings, a minimum of one (1) photograph of the whole group with necessary supporting photographs showing the principal buildings in the group. There must be at least one (1) 8" x 10" interior photograph. Each brochure may contain such supplemental photographs or informal snapshots as shall be necessary in order to show the relationship of the project to its immediate environment, including adjacent structures.

There must be at least three (3) 2" x 2", colored 35mm. slides, but not more than nine (9) for each entry. The slides must be of the completed buildings with emphasis on adequate and effective slides which show the merit of the project including all principal exposed sides of the building. Color slides are to be mounted for use in standard 2" x 2" projection equipment, and shall be enclosed in a separate plain #10 envelope which is placed behind the final transparent window of the binder.

### DESCRIPTIVE DATA

The sheet which accompanies the folder shall be used for recording descriptive data. Please record the data concisely on this one sheet and insert it in the first window sleeve of the brochure.

### CONCEALED IDENTIFICATION

All information requested on this form MUST be included. Should your submission receive an award, material for publicity and certificates will be taken directly from the information provided on this form. It is the entrant's responsibility that this information is accurate. When complete, this form is to be folded and placed in an opaque, sealed #10 envelope which is inserted behind the final transparent window sleeve. Do not include the slides in the same envelope.

### JURY

The Jury for the 1974 Honor Awards Program shall be comprised of Hugh Newell Jacobsen, FAIA, William L. Ensign, FAIA, and George E. Hartman Jr., AIA. The Jury will meet in Washington during the month of December.

### AWARDS

There will be two categories of awards to be called "Honor Award" and "Award of Merit."

The entrant should bear in mind that his project will not be judged in competition with other entries, but on the basis of his solution of the problem presented him and its worthiness for an award for excellence in design.

Announcement and certificates will be presented to the architects, owners, and consultants as indicated on the identification form for all premiated projects.

Announcement of projects receiving awards and the classification of award will be made at the Chapter's Awards Banquet during the NCAIA Winter Meeting, February, 1974, Pinehurst, North Carolina.

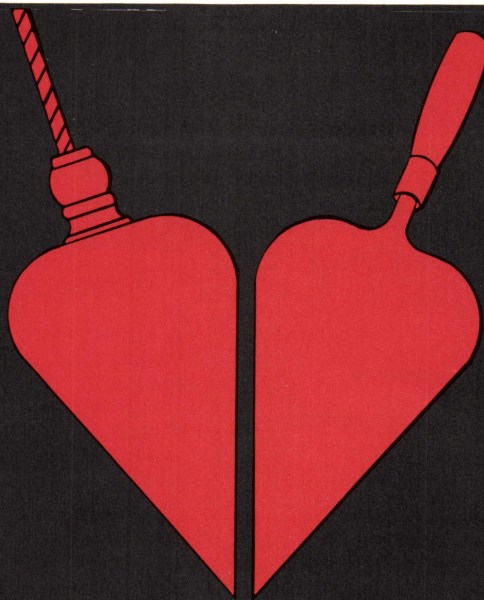
### EXHIBITION

Entrants whose projects have been selected for awards will be notified by the first week in January. The class of award will not be announced until the Winter Meeting. All brochures submitted will be retained by the Chapter and exhibited at the Winter Meeting.

Award recipients will receive instructions on preparation of slides and photographs for exhibition at the Winter meeting.

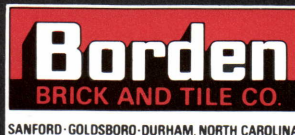
### PUBLICATION

The Chapter will give wide publicity to the entries receiving awards. It is therefore essential that drawings and photographs not be restricted against publication for the Chapter Honor Awards Program or publicity therefor. It is the entrant's responsibility to clear all drawings and photographs for release by the North Carolina Chapter which will assume no responsibility for copyrights or photographic fees. The designated photographs of each award winning entry will be used for unrestricted newspaper and magazine publicity. Credit will be given to the photographer when requested.



## THE SUPERIOR EXTERIOR

As listed in Sweet's Catalog  
4.5/Bo



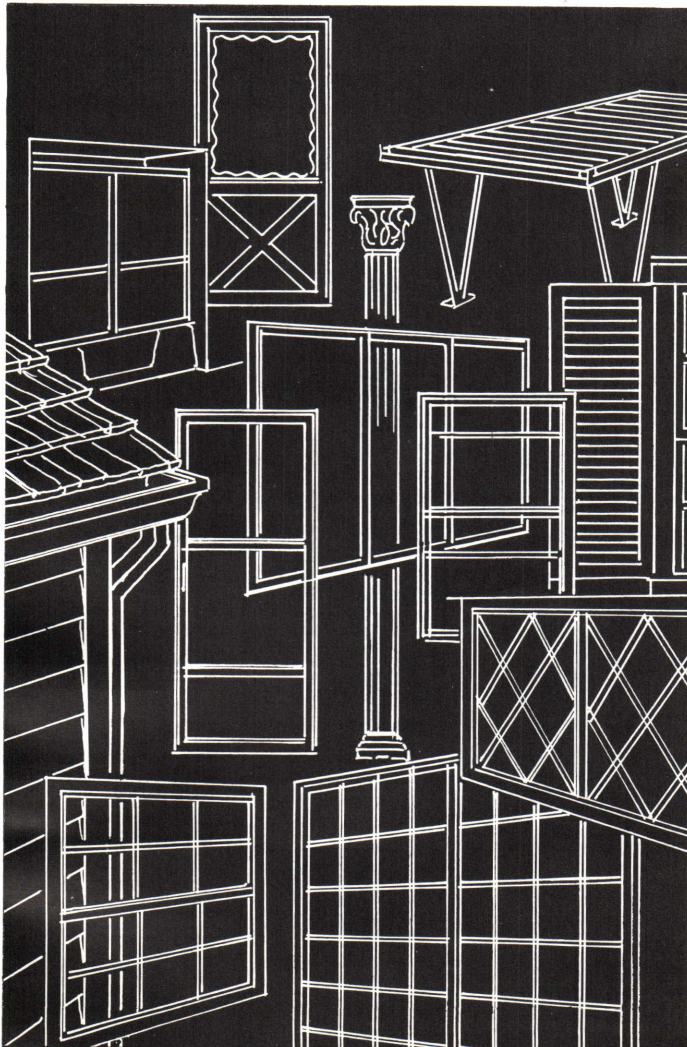
P.O. Box 11558, Durham, N.C. 27703, Phone (919) 596-8241

## look to binning's for everything

When you are designing a building you may think of us as the developer of the innovative "Bin-A-Wall" curtain system. But when you are detailing construction...remember, we also are the southeast's leading supplier of all finest aluminum building products. Direct delivery from our plant to your site insures "On Schedule" construction for you. Specify Binning's with confidence.



LEXINGTON, N. C. 27292 AREA 704-249-9193



*Now!!—24 Hour Service on*  
**PRINTING and COLLATING**  
**SPECIFICATIONS**

*Any Where in the Two Carolinas  
 and Eastern Georgia!*

PHONE 803/782-5542

*Southeastern Printing Company*  
 4457 DEVINE ST. COLUMBIA, S. C. 29205

**a** acoustics  
 incorporated

**BUILDING SPECIALTY CONTRACTORS**

- ACOUSTICAL PRODUCTS.
- MOVABLE & DEMOUNTABLE PARTITION SYSTEMS.
- RAISED ACCESS FLOORS & ENVIRONMENTAL CONTROL PRODUCTS FOR COMPUTER ROOMS.
- MAPLE FLOORS & WALL SYSTEMS FOR GYMNASIUMS & INDUSTRY.
- OTHER BUILDING SPECIALTY PRODUCTS.

3324 PELTON STREET  
 CHARLOTTE, N. C. 28203  
 TELEPHONE 704—523-4316

*For Permanent Beauty*

**BUILD BETTER WITH**

**ETOWAH**

**BRICK**

**The Moland-Drysdale**

1635-41 Asheville Hwy., Hendersonville, N. C. Phone 693-6561

*Corporation*



*Carolina* BUILDERS CORPORATION

On Raleigh Beltline Between U. S. 1 North & 64 East

Post Office Box 17737/Raleigh, North Carolina 27609/ Phone (919) 828-7471



**We're at hand when you need us most**

We can supply just about everything you'll need to get back on the job. (Except, maybe, a cape and sword.)

We'll repair any piece of surveying equipment you bring in. If it can't be done fast enough to suit you, we'll rent you a precision-engineered instrument for the duration. And, of course, if the piece is beyond repair, we'll be glad to sell you a new one.

**DUNCAN  
 PARNELL  
 INCORPORATED**

(FORMERLY DUNCAN PRINTMAKERS)

CHARLOTTE, N.C. 704/334-9761

**INDEX TO ADVERTISERS**

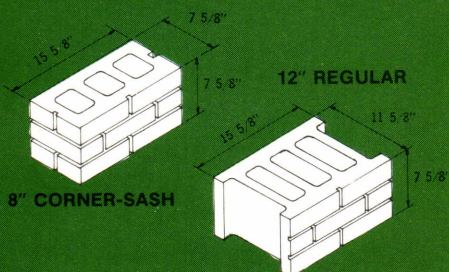
Acoustics, Inc. ....	33
Adams Concrete Products Co. ....	35
Binnings Inc. ....	32
Borden Brick & Tile Co. ....	32
Brick Association of N. C. ....	3
Carolina Asphalt Pavement Assoc. ....	6
Carolina Builders Corp. ....	33
Carolina Solite Corp. ....	2
Duncan-Parnell ....	33
Mid-State Tile Co. ....	4
Moland-Drysdale ....	33
Southeastern Printing Co. ....	33
Tindall Concrete Products, Inc. ....	8





## 5 Reasons for Using ADAMS EMBOSSED BLOCK in Apartment Construction

- ★ Low construction costs
- ★ Low operating costs
- ★ High net income
- ★ High investment value, and
- ★ Maximum cash return on investment



AVAILABLE WITH AN EMBOSSED FACE  
ON ONE SIDE OR BOTH SIDES IN A  
WIDE VARIETY OF COLOR TREATMENTS.

### ADAMS CONCRETE PRODUCTS COMPANY

Att: Raymond M. Marker

P. O. Box 33392 Method Station, Raleigh, North Carolina 27606

Please send me additional information about Adams' Embossed Block. My interest would be in buildings for: Multiple Family Housing \_\_\_\_\_ Schools and Colleges \_\_\_\_\_ Commercial \_\_\_\_\_ Industrial \_\_\_\_\_ Public \_\_\_\_\_ Hospital and Health \_\_\_\_\_ Other \_\_\_\_\_ of approximately \_\_\_\_\_ sq. ft. of floor area, starting \_\_\_\_\_ 19\_\_\_\_\_. I would like your representative to arrange to call on me, \_\_\_\_\_ / \_\_\_\_\_ month \_\_\_\_\_ / \_\_\_\_\_.

date \_\_\_\_\_ year \_\_\_\_\_  
NAME \_\_\_\_\_ TITLE \_\_\_\_\_  
NAME OF FIRM \_\_\_\_\_  
ADDRESS OF FIRM \_\_\_\_\_  
CITY \_\_\_\_\_ STATE \_\_\_\_\_ ZIP \_\_\_\_\_  
AREA CODE \_\_\_\_\_ TELEPHONE \_\_\_\_\_

## ADAMS CONCRETE PRODUCTS COMPANY

Durham • Raleigh • Fuquay-Varina • Kinston • Fayetteville • Morrisville



