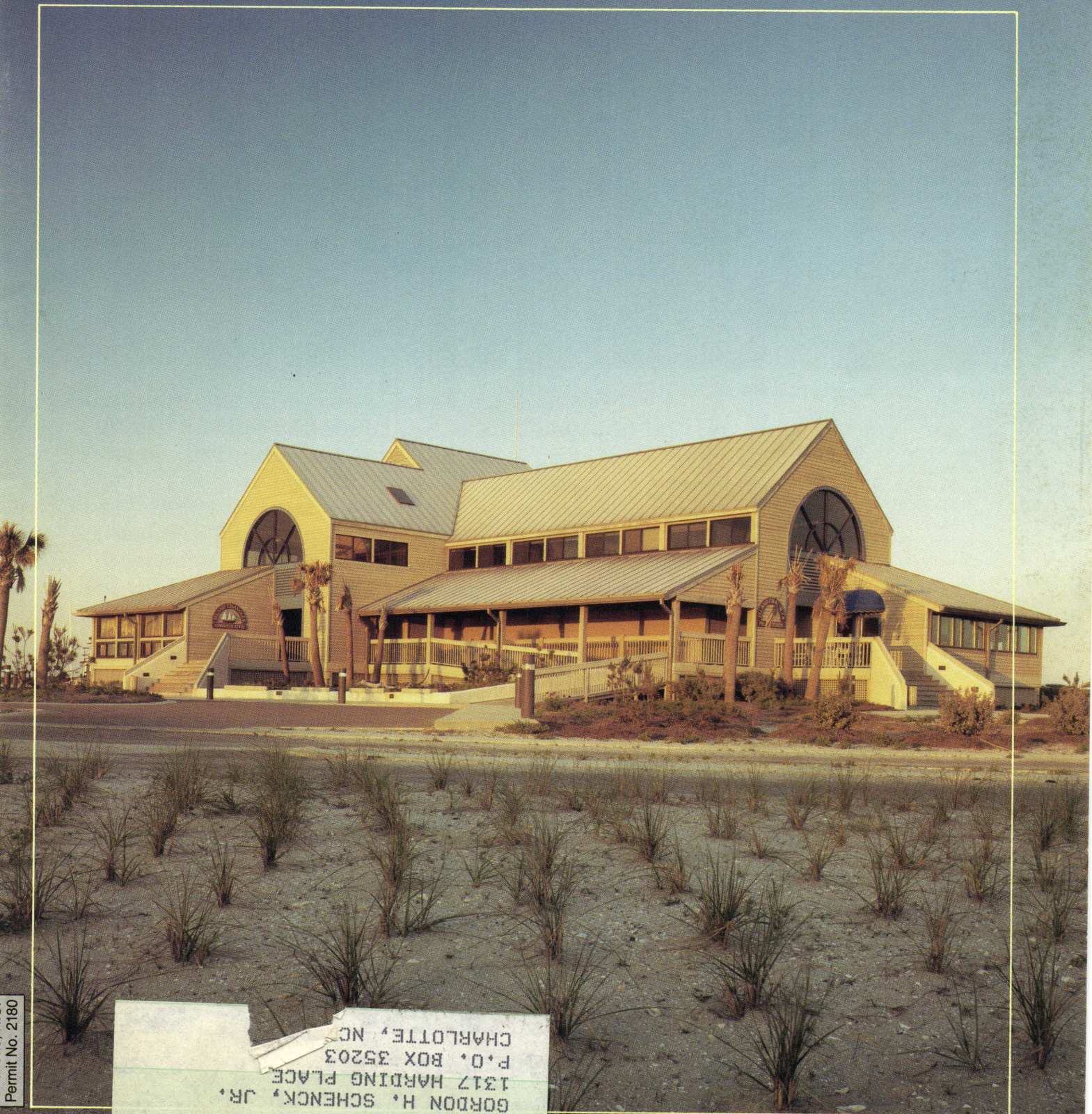


MAY-JUNE 1986

NORTH CAROLINA ARCHITECT

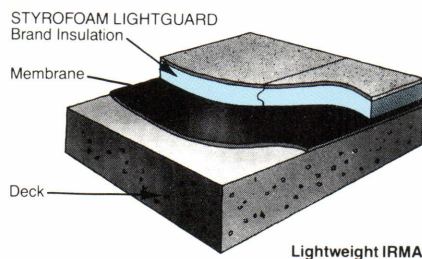


2878
GORDON H. SCHENCK, JR.
1317 HARDING PLACE
P.O. BOX 35203
CHARLOTTE, NC

Piedmont Airlines has seen the Light. Styrofoam Lightguard Roof Insulation And Ballast

Project: Piedmont Airlines
Maintenance Hanger/Offices,
Greensboro, NC
Architect: Odell Associates, Inc.,
Charlotte, NC
Contractor: J. H. Allen Construction
Company, Asheboro, NC
Roofing Contractor: Northstate Roofing, Inc.,
Raleigh, NC
Dow Wholesaler: J. R. Morton & Associates,
Inc., Charlotte, NC

STYROFOAM LIGHTGUARD* brand insulation is intended for use above waterproofing membranes in IRMA systems. The product is comprised of STYROFOAM RM brand insulation with a factory applied nominal $\frac{3}{8}$ " latex modified cementitious facing as the ballast. The product has a drain channel on the bottom of the board. The long edges of the product are tongue-and-grooved.



Styrofoam Lightguard was specified on this project by Odell Associates. Future plans call for vertical expansion, so the Styrofoam Lightguard can be removed and reused on the new roof. To get the desired slope, tapered Styrofoam was used over the roof deck followed by a single-ply membrane and then the Styrofoam Lightguard. Lightguard protects the membrane from physical and thermal abuse while adding more R-value and serving as the roof ballast. This unique product protects the membrane and weighs only 4.5 pounds per square foot.

Styro Systems and Dow can help you see the Light on your next project.

Styrofoam Lightguard Brand Insulation—A Creative Alternative.

**If It's Not Blue, It's Not STYROFOAM.™
Don't Accept Anything Less.**



WE BUILD CONFIDENCE

*Trademark of The Dow Chemical Company

Dow Wholesaler:
J. R. Morton & Associates, Inc.
Charlotte 704-399-7663
Raleigh 919-847-4595

Represented By:
Styro Systems, Inc.
1320 Starbrook Drive
Charlotte, NC 28210
704-552-0829



A Pattern Of Quality

It begins with Christina Marble Company, fabricators and suppliers of the world's choicest marble and granite.

It continues with David Allen Company, expert contractors and parent company of Christina Marble.

Together, they turn design dreams into living stone. Each building is unique. Each fits an exacting pattern of quality.

For information and technical assistance, contact:

Christina Marble Company

P.O. Box 27685, Raleigh, NC 27611 919/828-8001

A subsidiary of



DAVID ALLEN CO.

P.O. Box 27705, Raleigh, NC 27611 919/821-7100

SINCE 1920

