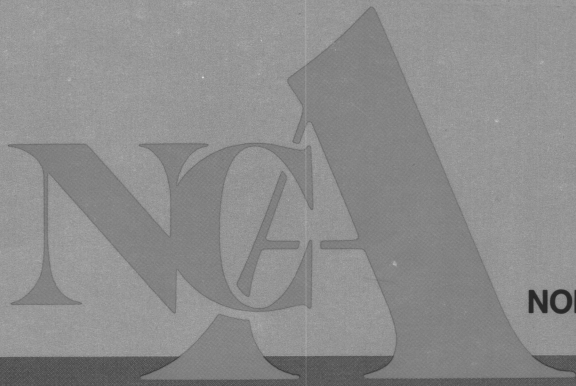
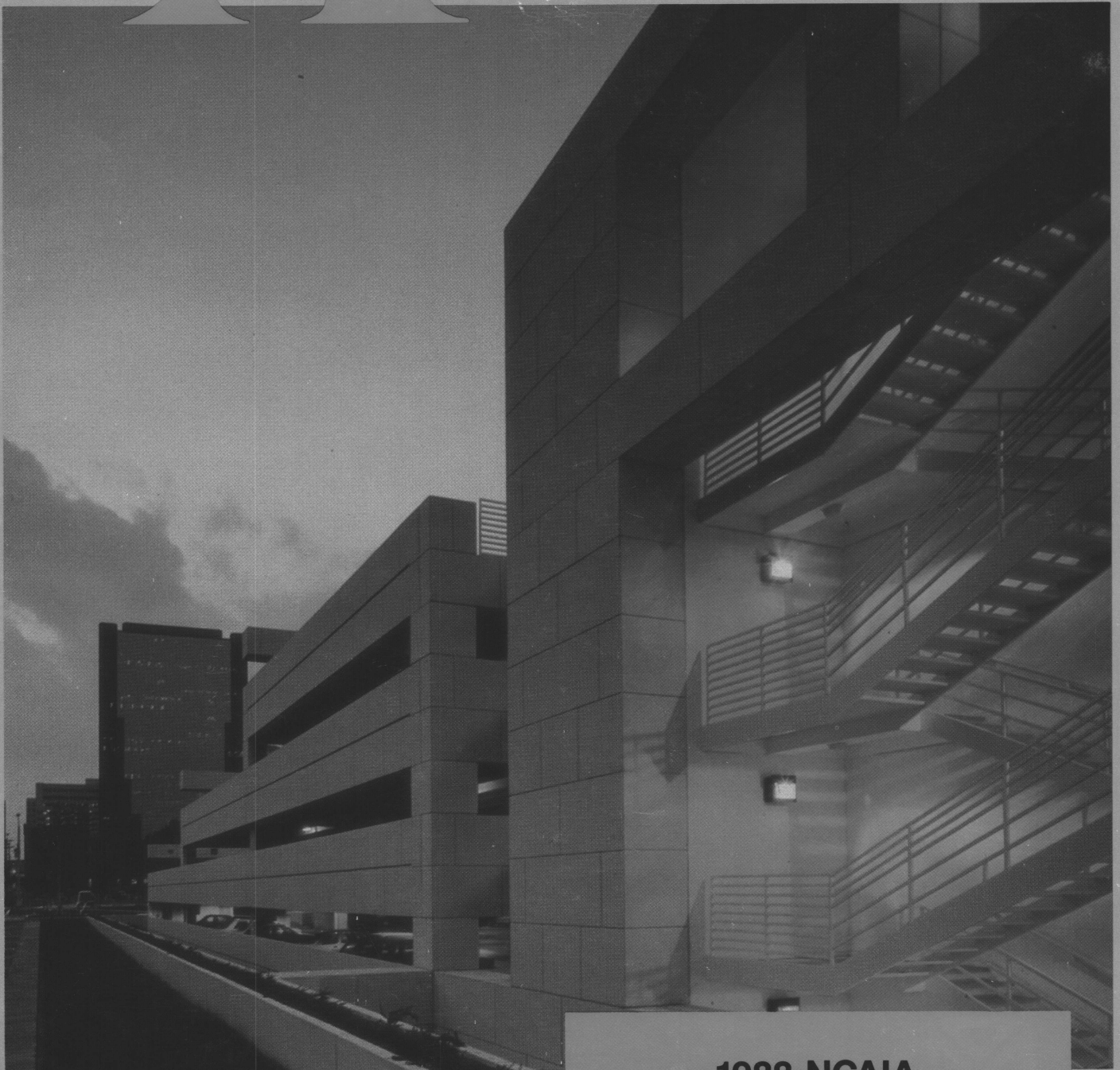


Bulk Rate  
U.S. Postage  
PAID  
Raleigh, N.C.  
Permit No. 455  
Nonprofit Org.



**NORTH CAROLINA ARCHITECTURE** □ **JULY-AUGUST, 1988**



**1988 NCAIA  
DESIGN AWARDS**



# MASTER PIECES



Let David Allen Company help you construct your masterpiece. We can supply you with the finest marble, granite, tile and terrazzo as well as over 68 years of experience. We are also available to assist you with technical information, specifications, product recommendations and budget prices.

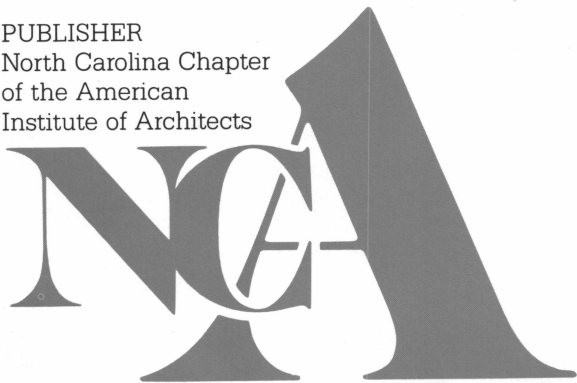
For more information  
call (919) 821-7100.



DAVID ALLEN CO.

SINCE 1920

PUBLISHER  
North Carolina Chapter  
of the American  
Institute of Architects



VOLUME 36 NO. 4 □ JULY-AUGUST, 1988

## STAFF

EDITOR  
Sharon Kilby

PRODUCTION/ADVERTISING  
DIRECTOR  
Kay King

ART DIRECTION  
Blagdon Smart Design Studio

EXECUTIVE DIRECTOR,  
NCAIA  
Lillian Woo

DIRECTOR OF  
ADMINISTRATION/  
SPECIAL PROJECTS  
Michelle Goode

ACCOUNTANT  
Grace Li

PRINTING  
Greensboro Printing  
Company

## ADVISORY BOARD

Walter T. Vick, III, AIA  
Alva H. Ward, III, AIA  
John F. Thompson, AIA  
Stephen L. Meehan,  
Consultant

NCAIA is not responsible for  
statements or opinions expressed  
in *North Carolina Architecture*,  
nor do such statements neces-  
sarily express the view of NCAIA  
or its committees.

*North Carolina Architecture* is  
published six times a year by the  
North Carolina Chapter of the  
American Institute of Architects.  
Advertising and editorial offices  
are located at 115 W. Morgan St.,  
Raleigh, N.C. 27601. Address  
editorial, advertising and circula-  
tion correspondence to *North  
Carolina Architecture*, 115 W.  
Morgan St., Raleigh, N.C. 27601.  
Telephone (919) 833-6656. Sub-  
scription rate: \$30 a year for non-  
NCAIA members. Third class  
postage (permit number 455)  
paid at Raleigh, N.C. Copyright  
1988 by NCAIA. POSTMASTER:  
Send Form 3579 to *North  
Carolina Architecture*, 115 W.  
Morgan St., Raleigh, NC 27601.



Cover: *The Charlotte-Mecklenburg  
Government parking deck by J.N. Pease  
Associates of Charlotte was one of five  
projects selected for the NCAIA Design  
Award. The cover photograph is by JoAnn  
Sieburg-Baker. Above: The Buzzard Cliff  
Condominiums in Blowing Rock by  
Dellinger/Lee Associates, PA of Charlotte  
is one of 95 projects submitted this year  
in the NCAIA Design Award competition.*

## NCA SPONSORS

Ramsay Associates, Inc.  
David Patrick Moses/Architects  
Dellinger/Lee Associates, PA

5

## 1988 NCAIA DESIGN AWARDS

A jury of distinguished Atlanta  
architects reviewed a record  
number of entries to name its pick  
of the best in North Carolina  
architecture.

6

## FIVE WINNERS

This year's winning projects were  
designed by firms large and small  
and ranged from a three-story  
parking deck to a simple garden  
storage building.

11

## ENTRIES

A wide sampling of architectural  
work in the state—houses and an  
airport terminal, camps and a  
university campus, churches and a  
bottling plant.

33

## OFF THE DRAWING BOARD

Who's designing what, where in  
North Carolina, plus names and  
changes among the state's design  
firms.



# Some Concrete Evidence That Parking Can Be Beautiful.



Charlotte-Mecklenburg Government Center Parking Structure, Charlotte, NC.  
Architect-J. N. Pease Associates.  
Contractor-Laxton Construction Company, Inc.

To prove that decks don't have to be ugly, we offer the following evidence:

The Charlotte-Mecklenburg Government Center Parking Structure. Winner of several 1986 design awards. An integral part of an architecturally-consistent Government Center Plaza. A parking deck that inspired Richard Maschal, Art and Architecture Editor for The Charlotte Observer to say, "It is a handsome parking deck, a beautiful parking deck. It sets a new standard in Charlotte for what decks can be."



pre-stressed and custom-made in our factory for a perfect fit, to provide beauty and structural integrity in a very cost-effective package.

So if you have a parking deck to build, make Exposaic a part of your team. We'll show you how something beautiful can be cast in concrete.

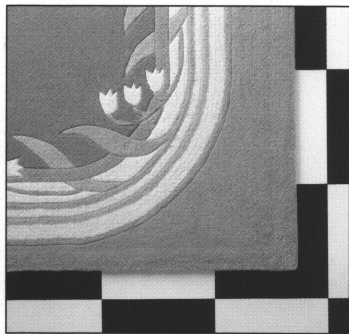
We're very proud of those words, because much of the beauty of that deck comes from Exposaic pre-cast exterior panels. And beneath its pretty face there are more Exposaic products. L girders. T girders. Columns. Double tees. All pre-cast,

**EXPOSAIC INDUSTRIES, INC. OF NORTH CAROLINA**

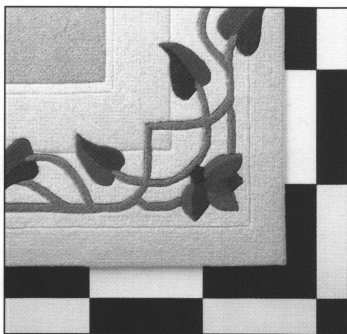
*When the finish counts.*

P.O. Box 5445, Charlotte, NC 28225 (704)372-1080

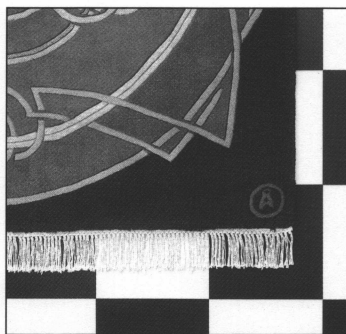




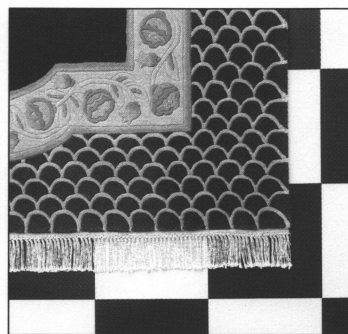
Lily of the Valley



Iris Nouveau



Dulcet Line



Meadowhearth

## Personality in Present Tense

Whether you feel coolly contemporary, quietly elegant, warmly inviting or boldly dramatic, Capel Rugs design a distinctive collection that complements your taste. Rugs set the stage for the imagination. Express your attitude. Excite your environment with the right rug. A Capel Rug. For our new 56 page Decorating Book send \$10 check or money order to Capel Rugs, Troy, N.C. 27371.

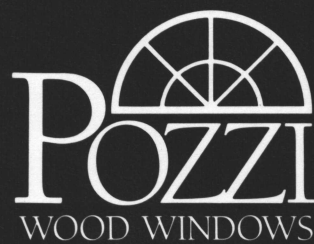






# I m a g i n e

4,000 Window Designs.  
Equally Remarkable.  
Equally Suited To Their Uses.



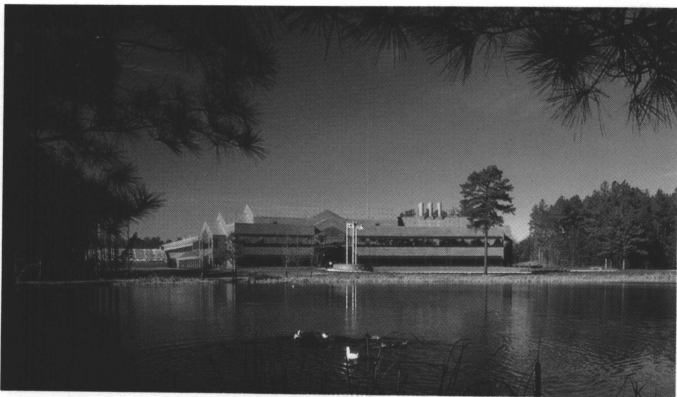
Call 1-800-821-1016 to receive  
detailed full-color product literature  
and dealer information.

# HONORABLE DESIGNS

United Postal Service Branch Office  
Kings Mountain  
*The FWA Group*  
Charlotte



▼ Rake and Hoe Garden and Nursery Center  
Utility Storage Building  
Raleigh  
*Frank Harmon*  
Raleigh



▲ Agricultural Research Center  
Research Triangle Park  
*The FWA Group*  
Charlotte



▲ Commercial Rehabilitation of Reynolda Village  
Winston-Salem  
*Edwin Bouldin Architect, PA*  
Winston-Salem

The five projects selected as winners in the 1988 NCAIA Design Awards represent the functional, the simple, the institutional and the historical faces of architectural design.

The awards were presented June 7 at the annual convention of the North Carolina Chapter of the American Institute of Architects in Charleston, S.C.

The honors this year went to firms large and small and projects ranged from a five-story parking deck to a simple storage building. The FWA Group in Charlotte took two awards: one award compliments the blending of site and building in a BASF Agricultural Research Center; the other notes the majesty of a U.S. Post Office. Frank Harmon, AIA, of Raleigh, won for the presence his design gives a simple storage building.

The Charlotte-Mecklenburg Government Center parking deck by J.N. Pease Associates of Charlotte was applauded as a significant utilitarian contribution. And Edwin Bouldin Architect, PA, of Winston-Salem, was

recognized for a sensitive renovation and adaption of the historic Reynolda Village.

The competition this year was especially keen. The contest attracted a record 95 submissions this year, compared to 67 entries last year. The projects ranged from a \$34 million airline hub to a modest storage building. Projects included houses, schools, churches, hospitals, industrial plants, office buildings, shopping centers, restorations and art centers. The entries represented the entire range of projects designed by North Carolina architects.

The entries were reviewed by an Atlanta jury composed of John C. Portman Jr., FAIA, the chairman, and Joseph Amisano, FAIA, and Raymond Stainback, FAIA, both of Atlanta.

This issue of *North Carolina Architecture* is devoted to the NCAIA Design Award winners and the other projects submitted for consideration.



# 1988 NCAIA DESIGN AWARDS: FIVE WINNERS

## Agricultural Research Center Research Triangle Park

The FWA Group  
Charlotte

Owner/Developer: BASF Corporation,  
Parsippany, N.J.  
General Contractor: Suitt Construction  
Company, Raleigh  
Masonry Contractor: Snow, Jr. and King, Inc.,  
Cary  
Photography: Rick Alexander Photography,  
Charlotte



---

*Juror's comment: The design makes use of a nice simplicity of materials and forms for what could have been a complex building type. It is a comfortable blending of the building with its site.*

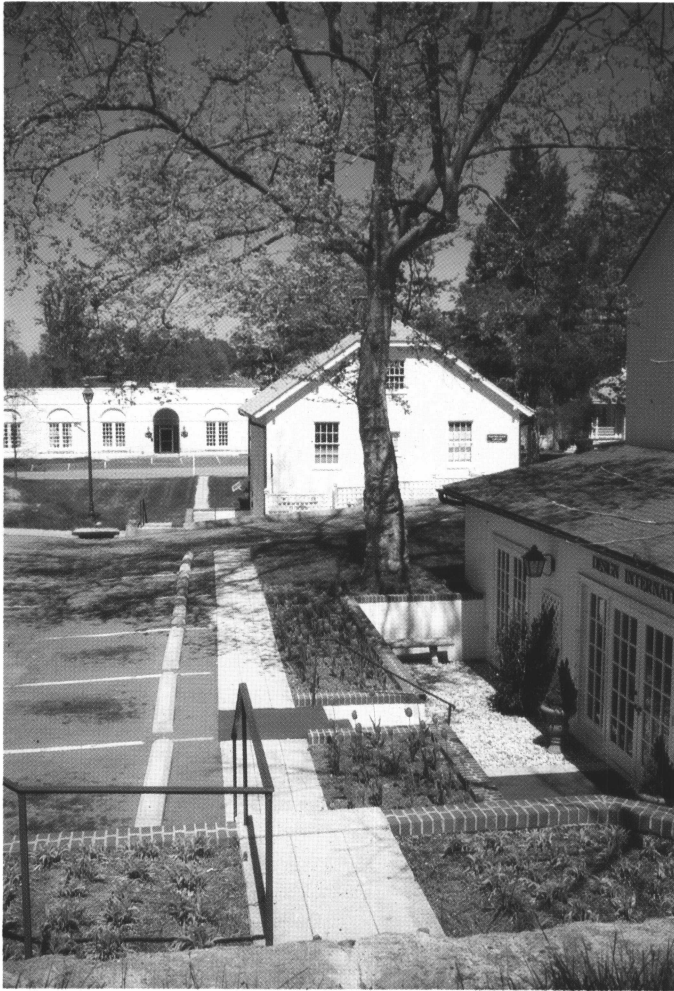
---



**A**rchitect's description: The Agricultural Research Center houses 105,000 square feet of biological and chemical research facilities as well as common use areas that serve both research arms. The design takes full advantage of the 46-acre site by wrapping the two-story main building in a sweeping arc around the existing four-acre man made lake. Another two-story wing radiates from the arc of the main building. The facility is designed to accommodate 100 percent expansion by extending the arc of the building even further around the lake.

The greenhouses, as an integral part of the agricultural research process, inspired the design of the facility. Windows project from the face of the building in a greenhouse shape. Greenhouse gable forms are the focal point of the main entry. The color green is an accent on window mullions, door frames, metal roofs and interior wall surfaces throughout the facility.

Brick was chosen for warmth and color and complemented by matching mortar on exterior and interior walls and floors. In creating the focal point for the facility, brick clay material was used by the sculptor, who carved a mural which has become the company's corporate signature.



**A**rchitect's description: The challenge was to retain the village ambience and the existing palate of this 1916 village, with its tuscan columns, white stucco exteriors, green roofs and open grassed areas, while allowing for the amenities of a shopping center—cars, parking, refuse, deliveries, etc.

The architect designed all the exterior signage; landscaping (terraces, allee, courtyard, entry lozenge, berms, "village green," and oval at Sunday School addition); vehicular and pedestrian patterns (parking, paths, driveways); amenities, including benches, fountains and dumpster enclosures of lattice fence to match existing laundry yards; utilities; and building adaptation for retail, office, restaurant, museum, as per proximity and highest and best use.

Alterations to buildings were achieved by using similar design motifs, but in a contemporary manner. Examples are found in the combination of an entry tuscan colonnade with a plexiglass canopy; the use of an interior courtyard in the reconstruction of the cattleshed building; and the preservation of exterior columns for interior use.

## Commercial Rehabilitation of Reynolda Village Winston-Salem

Edwin Bouldin Architect, PA  
Winston-Salem

Owner/Developer: Wake Forest University,  
Winston-Salem

General Contractor: George W. Kane, Inc.,  
Winston-Salem

Photography: Rick Alexander, Smith/Weiler/Smith




---

*Juror's comment: This is a very neat adaptive re-use. It is respectful of the original forms and landscape and is very sensitive to the original mood.*

---



**Charlotte Mecklenburg  
Government Center Parking  
Structure  
Charlotte**

**J.N. Pease Associates  
Charlotte**

Owner/Developer: City of  
Charlotte Engineering  
Department, Charlotte  
General Contractor: Laxton  
Construction Co., Inc.,  
Charlotte

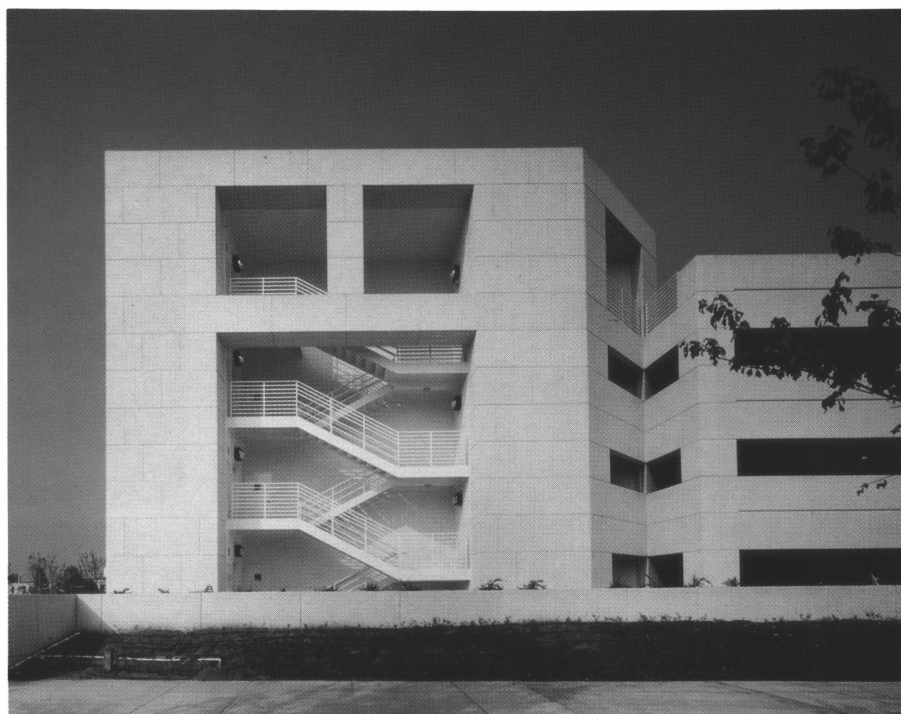
Traffic Consultant: Travers  
Associates, Clifton, N.J.

Photography: JoAnn Sieburg-  
Baker

---

*Juror's comment: This is a sensitive, honest and well-done building. It is a good utilitarian member of an important civic complex.*

---



**A**rchitect's description: This parking deck for 1,036 automobiles was designed to be an integral part of the government center complex, which stretches from McDowell to Caldwell Street. Vehicles access through openings in a strongly articulated planter/berm line, level with the Government Center Plaza. One level of parking occurs below this line with four additional levels rising in stepped

configuration above.

The composition faces Davidson Street, providing a punched wall facade to contain the open space between it and the 12-story elevation of the office building under construction that it faces. The ground plane between becomes a tree-lined plaza, with similar paving textures on both sides of the street to link the two. The project's design module of 3-feet, 6-

inches, extends between the two structures and is articulated in both.

The stepped form of the parking structure is further pronounced by precast concrete linear planters, providing a strong architectural form within which the storage of cars becomes secondary in visual appearance. When viewed from buildings in the uptown areas, the cars are tucked behind bands of greenery.

**Rake and Hoe Garden and Nursery Center  
Utility Storage Building  
Raleigh**

Frank Harmon  
Raleigh

Owner/Developer: Steve Gurganus, Raleigh  
General Contractor: J.C. Edwards, Inc., Raleigh  
Landscape Design: Jeff Evans  
Structural Design: T.C. Howard/Synergetics, Inc.  
Job Captain: Eppi Pazienza  
Photography: Tom Aldi



---

*Juror's comment: Architects do simple buildings well, too. This one has its own presence for a modest unassuming building—very sensitive, simple. The user will be disciplined by this architecture.*

---

Architect's description: The building is a low horizontal structure constructed of wood frame, built-up columns, glue-laminated beams, plywood, concrete floor and a metal roof. It was constructed in three weeks on a tight budget. Its purpose is to house large items, such as hay bales, bags of seed, fertilizer and patio furniture. It was also the client's wish that a second level could be converted into comfortable office space in the future.

What might have been just another storage building has become a well-proportioned, delightful play of mater-

ials, structure and color. The building forms a storage wall separating a new parking lot from a residential street. Facing the entrance to the Garden Center, the building takes its place behind and to the right of the existing retail store and plant sales area. This juxtaposition of the new and old buildings offers a clear visual coherency to the Garden Center while not calling unnecessary attention to the new building. Common building materials are used in an uncommonly handsome manner to describe the building's intended simplicity.



**United States Postal Service Branch Office  
Kings Mountain**

**The FWA Group  
Charlotte**

Owner/Developer: United States Postal Service,  
Atlanta, GA

General Contractor: Kenneth Reed Construction  
Corp., Huntersville

Photography: Rick Alexander Photography,  
Charlotte



---

*Juror's comment: A simple system of layering lends majesty to a public building.*

---



**A**rchitect's description: The diagrammed look of this design is a heroic gesture at establishing a single, readable solution for a diverse citizenry. This solution is dissected into three elements which deny the building's completeness and express the budgetary constraints placed upon it.

The tripartite gains its first meaning from the postal service's current concern for having a highly efficient operational facility. Not only must it function well, but it also must express cost consciousness to the public. Therefore, the body of operations and its vital importance is expressed in an omnipresent "platonic block." The warehouse becomes nothing more than the foundation base from which the two remaining elements gain their strength and significance.

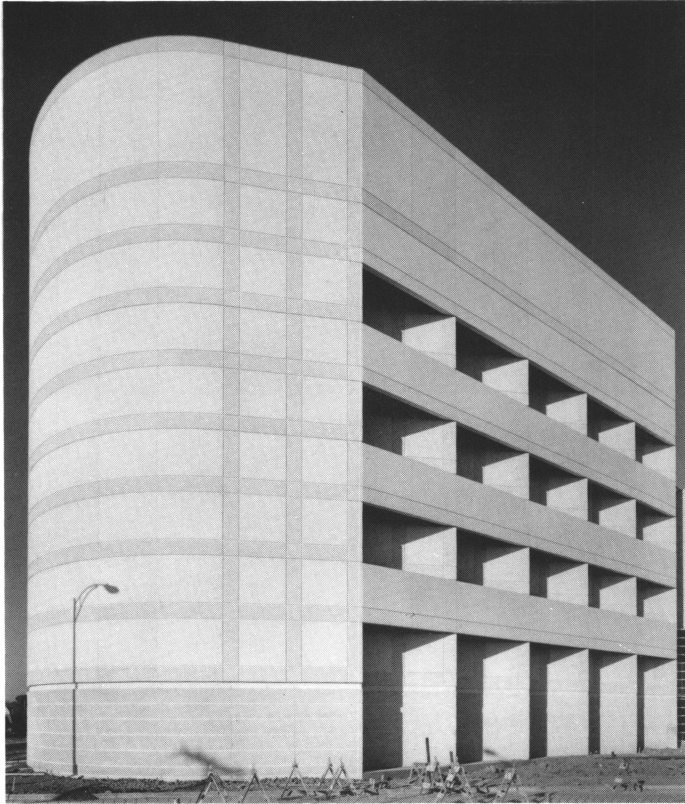
The second element is a free-standing colonnade—a gesture to graphically address the street and convey a residual, reductive and fossil-like appearance reminiscent of the "Federal" presence.

The third element defines a porch or hearth for the community. This vaulted environment exalts the appropriate grandness of public space, found in Federal architecture. The raised plinth and glass enclosure strengthen the high visibility natural to the activities which make this a social institution.

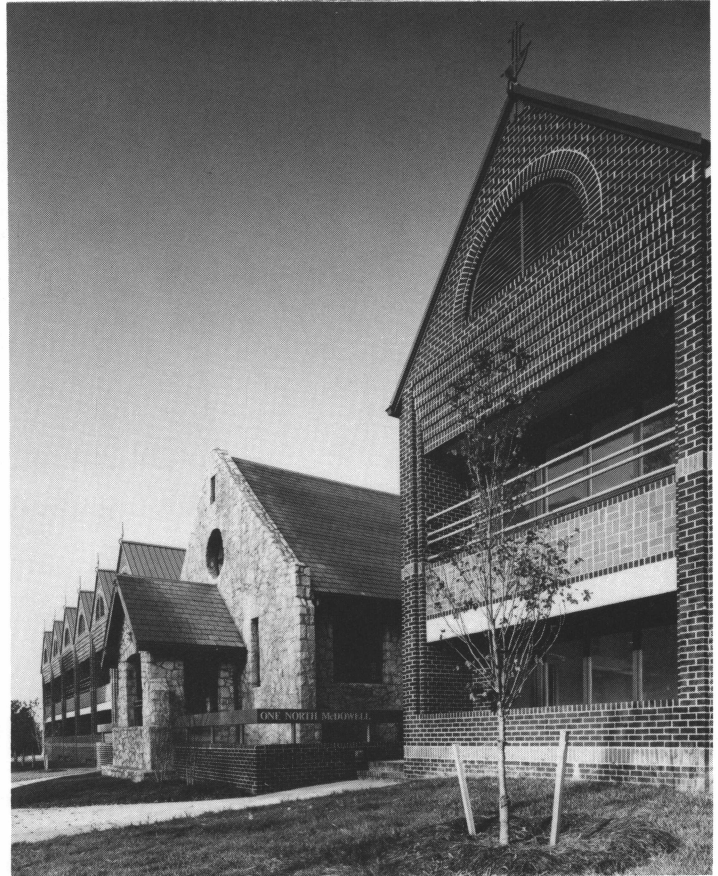
# ENTRIES

## OFFICE BUILDINGS

- ▼ Duke Power Computer Center  
Charlotte  
*J.N. Pease Associates*  
Charlotte



- ▼ One North McDowell  
Charlotte  
*Hal Tribble Architects*  
Charlotte



- ▲ Offices for Gantt Huberman Architects  
Charlotte  
*Gantt Huberman Architects*  
Charlotte



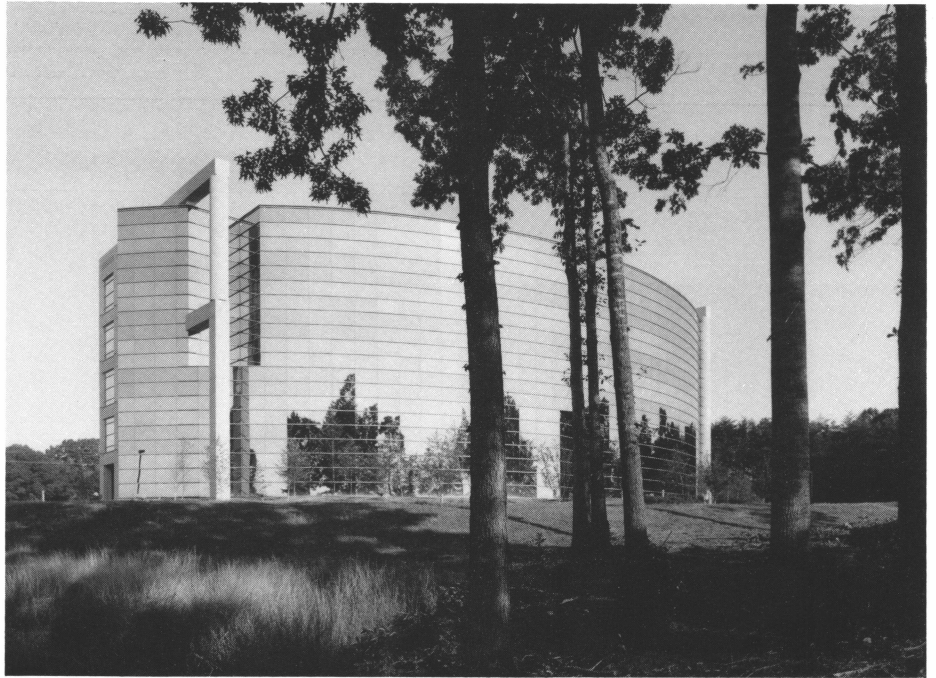
- ▲ Coltsgate Two  
Charlotte  
*Jenkins-Peer Architects PA*  
Charlotte



## OFFICE BUILDINGS

Regency I ►  
Charlotte  
*Jenkins-Peer Architects PA*  
Charlotte

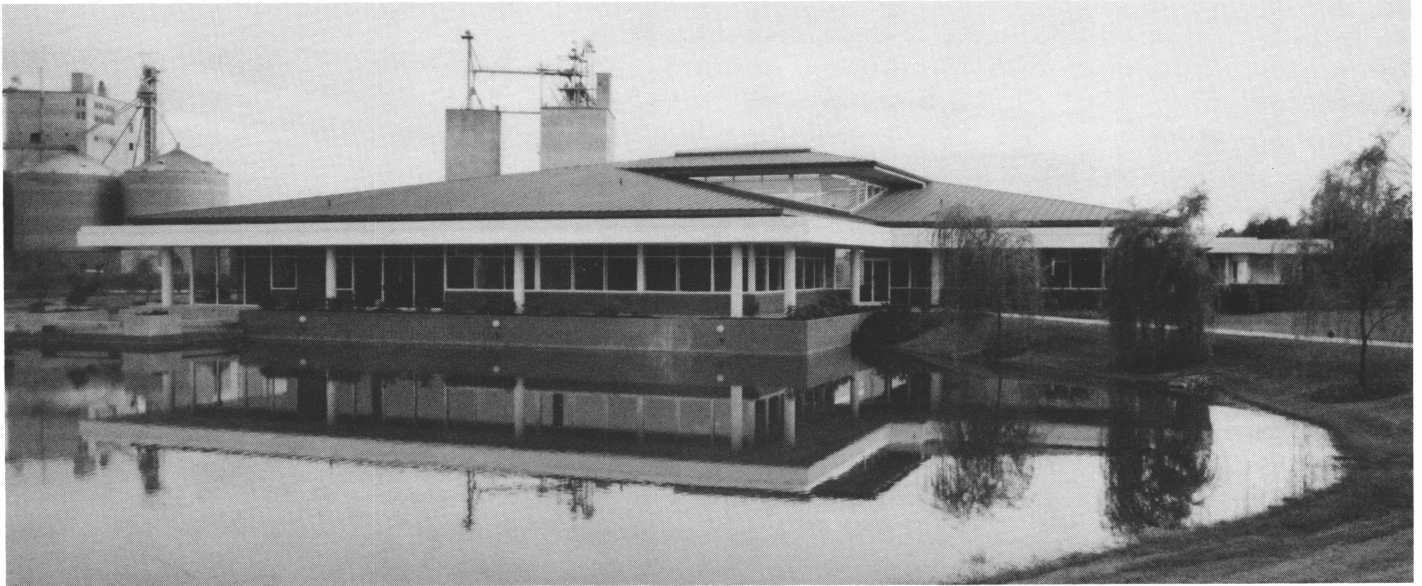
▼ Charlotte Motor Speedway  
Corporate Headquarters  
Harrisburg  
*Clark Tribble Harris & Li Architects*  
Charlotte



One Salem Tower ►  
Winston-Salem  
*Calloway Johnson Moore PA*  
Winston-Salem

▼ Executive Office Building  
Winston-Salem  
*Edwin Bouldin Architect PA*  
Winston-Salem





▲ Goldsboro Milling Co.  
Goldsboro  
*Bartholomew Associates, Inc.*  
Raleigh

Springs Company Corporate Offices ►  
Lancaster, S.C.  
*Dellinger/Lee Associates, PA*  
Charlotte



▲ Tenant Upfitting  
One Triad Park  
Winston-Salem  
*Hammill-Walter Associates, Inc.*  
Winston-Salem

Offices of Atkinson/Dyer Architects ►  
Charlotte  
*Atkinson/Dyer Architects*  
Charlotte



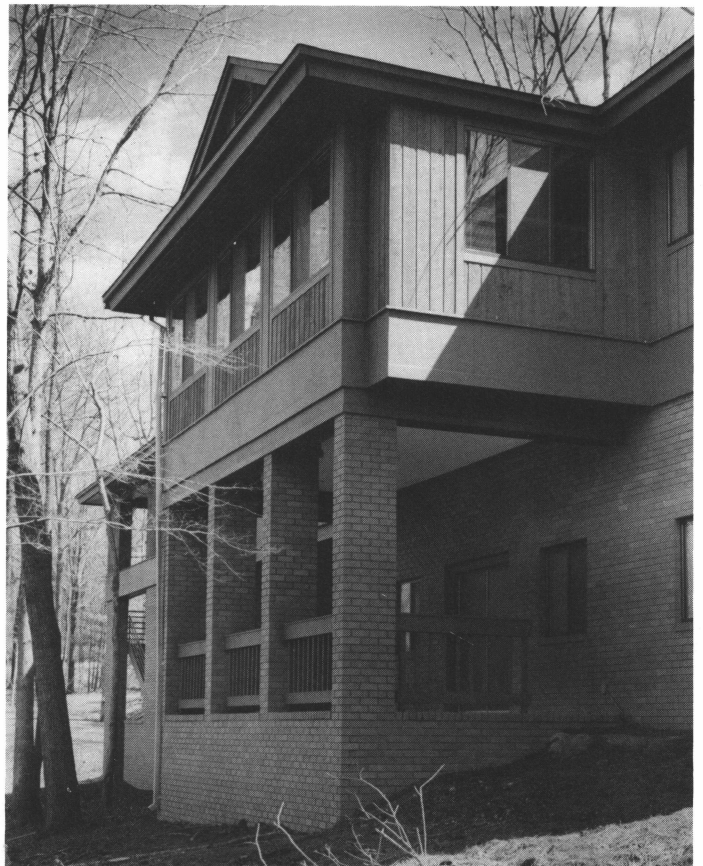


## OFFICE BUILDINGS

- ▼ Doggett/Lippi Advertising  
Charlotte  
*Knight Hepler & Hall Architects, PA*  
Charlotte



- ▲ Renovation, Floors 10, 18, 19, 20  
R.J. Reynolds Tobacco Co. Building  
Winston-Salem  
*Hammill-Walter Associates*  
Winston-Salem



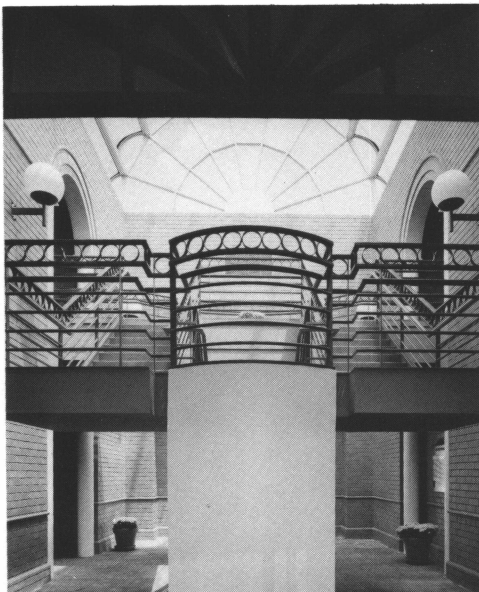
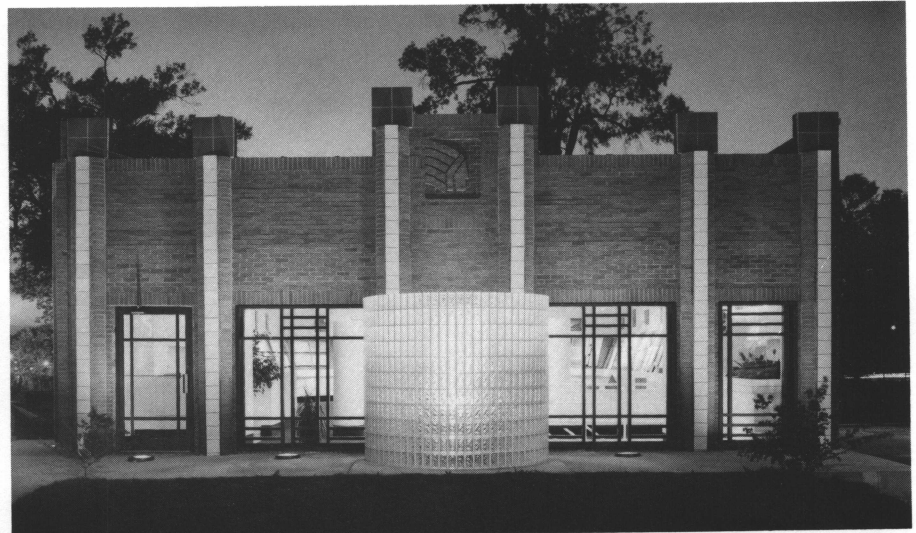
- ▲ Pines of Carolina  
Girl Scout Council Headquarters  
*McKimmon/Edwards/Hitch, Architects*  
Raleigh



▲ McMullen Creek Market  
Pineville  
*Dalton Morgan Shook & Partners, Inc.*  
Charlotte

Cherokee Sanford Group ▶  
Product Showroom  
Sanford  
*Camas Associates*  
Charlotte

▼ University Place Multi-Cinema  
Charlotte  
*Atkinson/Dyer Architects PA*  
Charlotte



▲ East Town Market  
Charlotte  
*Dalton Morgan Shook & Partners, Inc.*  
Charlotte

James Center ▶  
Richmond, Va.  
*Odell Associates*  
Charlotte





## COMMERCIAL BUILDINGS

First Federal Savings & Loan ►  
Charlotte  
*Jenkins-Peer Architects PA*  
Charlotte

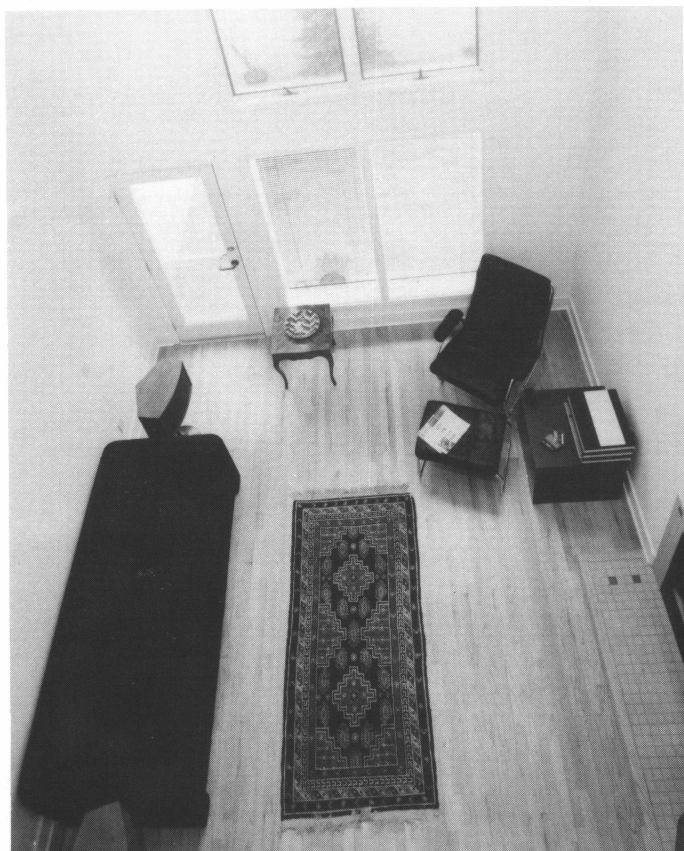
▼ Street Car Station  
Charlotte  
*Murray Whisnant/Architects*  
Charlotte



▲ Pennsylvania House Showroom  
High Point  
*Calloway Johnson Moore PA*  
Winston-Salem

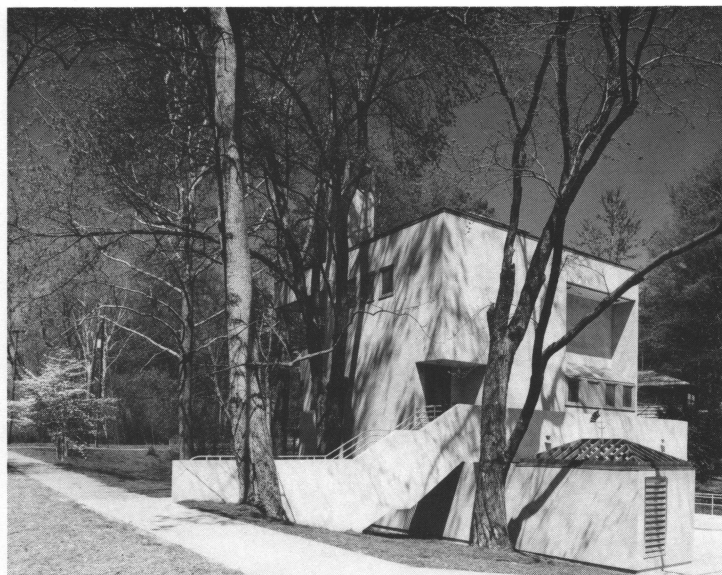


Holly Hill Mall ►  
Burlington  
*Dalton Moran Shook & Partners, Inc.*  
Charlotte



◀ 29 South Front Street  
Wilmington  
*John Sawyer, AIA, Architect*  
Wilmington

▼ Private Residence  
Charlotte  
*Hal Tribble Architects*  
Charlotte



▲ Wornoms Residence  
Sanford  
*Mullins-Sherman, Architects*  
Sanford

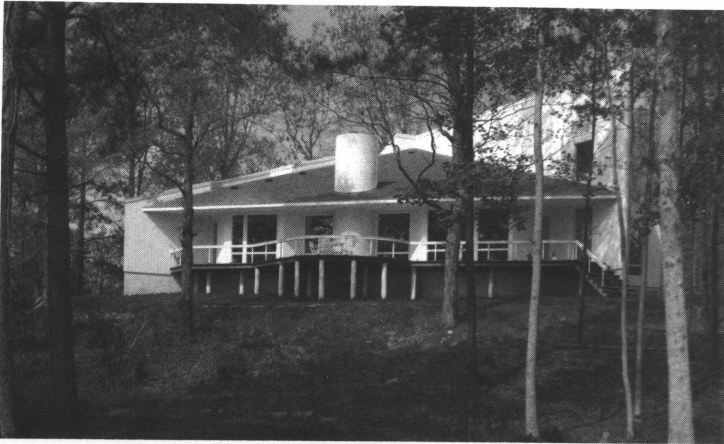


▲ Cooke-Lawrence Residence  
Orange County  
*Dail Dixon & Associates*  
Carrboro

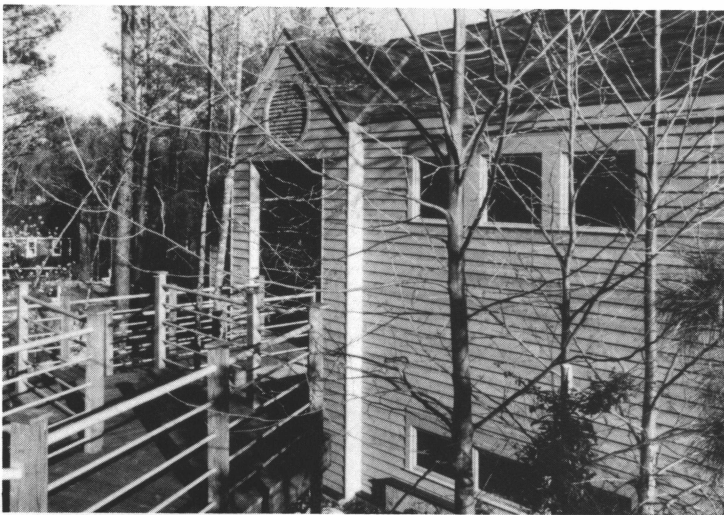


## RESIDENCES

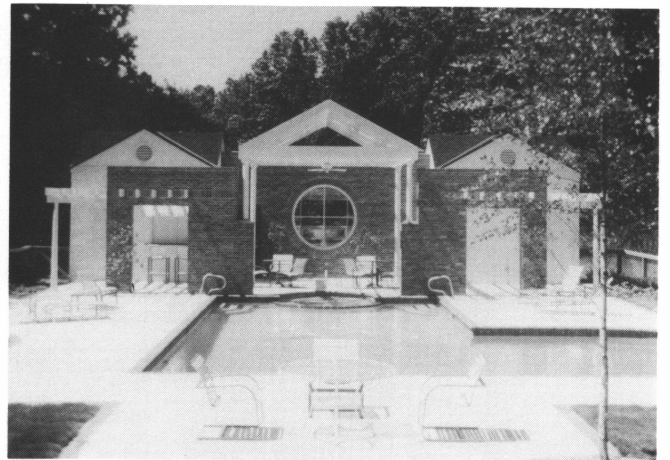
▼ Hamilton Residence  
New Bern  
*Stephens & Francis, PA*  
New Bern



▼ Nathan Residence  
Waynesville  
*Dail Dixon & Associates*  
Carrboro



▲ Private Residence  
Durham  
*J. William Waddell*  
Durham



▲ Newton Residence  
Pool House  
Winston-Salem  
*Thomas H. Hughes, AIA*  
*Patrick M. West, AIA*  
Winston-Salem



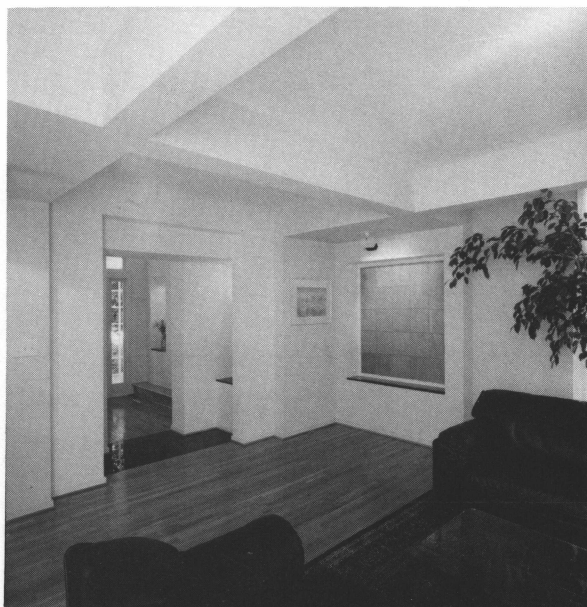
▲ Private Residence  
Figure 8 Island  
Wilmington  
*Hal Tribble Architects*  
Charlotte



▲ Stout Residence  
Monroe  
*Dickerson Architects*  
Monroe

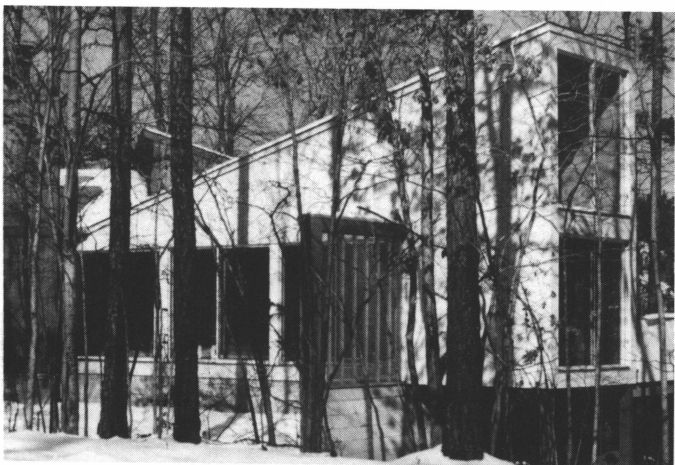


▼ Wojnowich Residence  
Charlotte  
*Wayne H. Camas, AIA*  
*Camas Associates*  
*Charlotte*

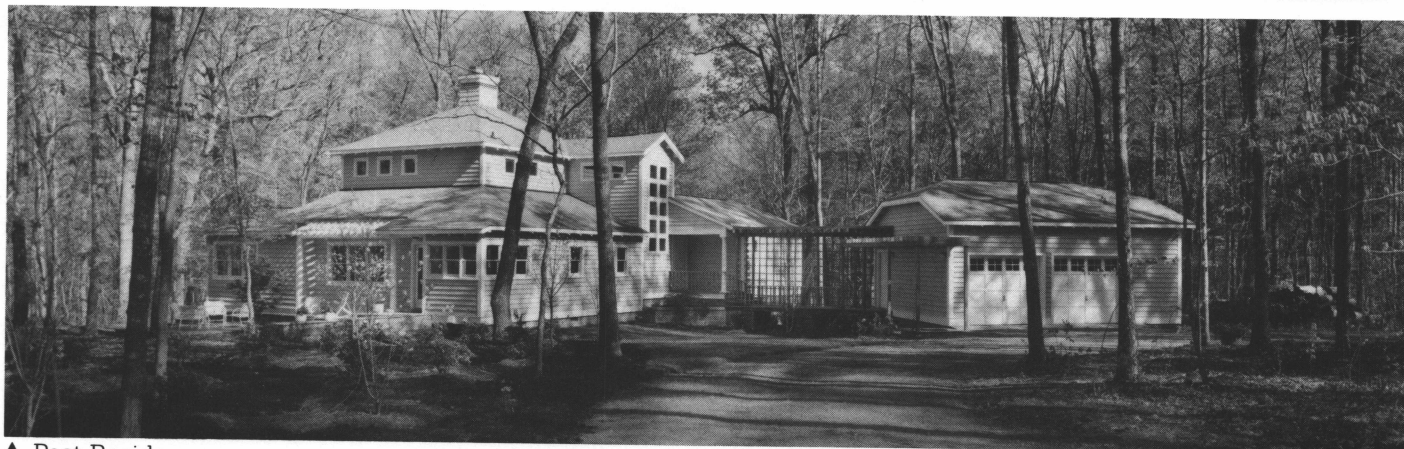


▲ Davis Residence  
Raleigh  
*Jeffrey T. Davis, Architect*  
*Raleigh*

▼ Addition to Lowrey Residence  
Raleigh  
*Frank Harmon Architect*  
*Raleigh*



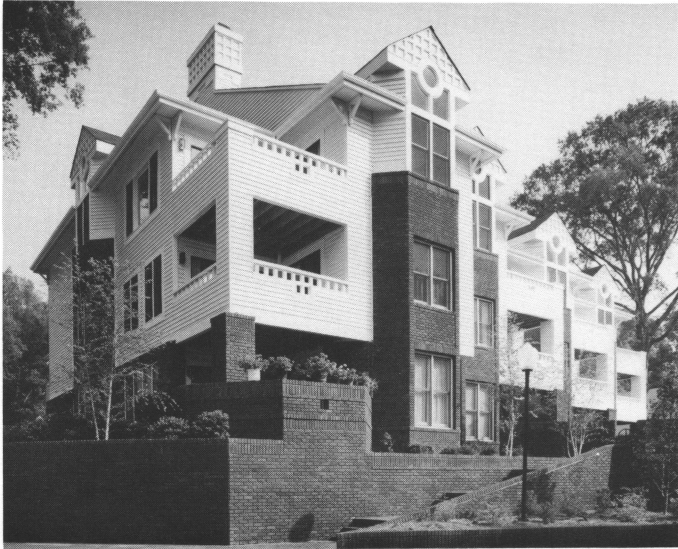
▼ Shallowford Cliffs  
Pfafftown  
*Edwin Bouldin Architect PA*  
*Winston-Salem*



▲ Peet Residence  
Chapel Hill  
*Dail Dixon & Associates*  
*Carrboro*

## RESIDENCES

- ▼ Oakmore on Selwyn  
Charlotte  
*David Furman Architecture, PA*  
Charlotte



- ▼ 2300 Roswell  
Charlotte  
*David Furman/Architecture, PA*  
Charlotte



- ▼ Fairway Villas  
Blowing Rock  
*David Furman/Architecture, PA*  
Charlotte



- ▲ Buzzard Cliffs Condominiums  
Hound Ears Club  
Blowing Rock  
*Dellinger/Lee Associates, PA*  
Charlotte



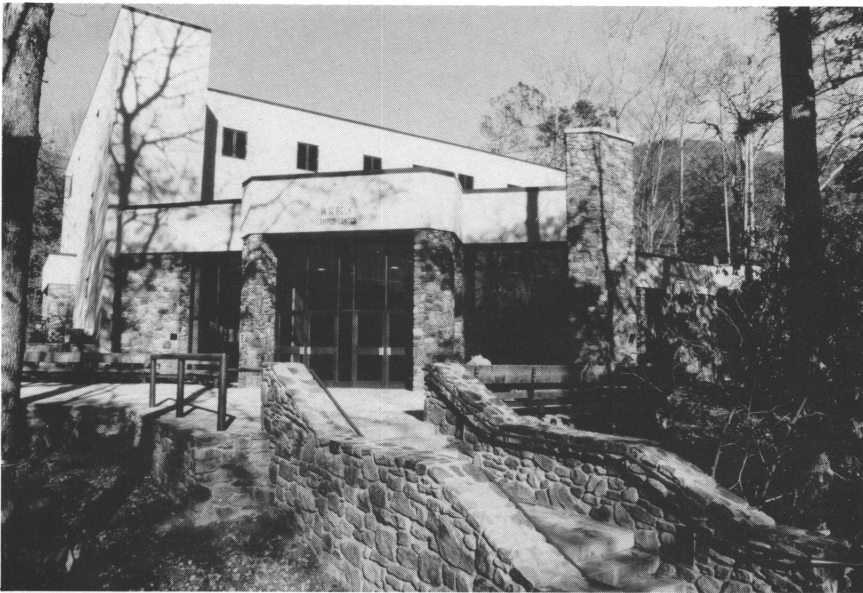
- ▲ The Waterfront  
Manteo  
*The FWA Group*  
Charlotte



- ▲ Southminster Retirement Community  
Charlotte  
*Hawkins-Kiber Associates*  
Charlotte



## INSTITUTIONAL BUILDINGS

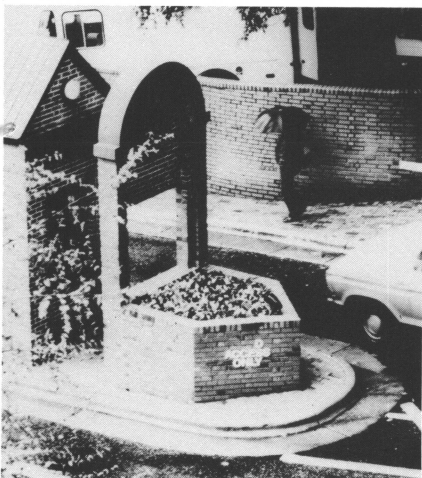


◀ W.H. Belk Campus Center  
Montreat-Anderson College  
Montreat  
*McCulloch/England Associates Architects*  
Charlotte

▼ Table Rock Base Camp  
N.C. Outward Bound School  
*Alfred F. Platt, Jr., AIA, PA*  
Brevard



▲ Media Center  
Claxton Elementary School  
Asheville  
*Danie A. Johnson*  
Asheville



▲ NCSU Information Booth  
Raleigh  
*Campus Planning and Construction*  
NCSU  
Raleigh



▲ Wake County Public School System  
Raleigh  
*Shawcroft-Taylor, Architects*  
Raleigh



## INSTITUTIONAL BUILDINGS

▼ Carmichael Gymnasium  
N.C. State University  
Raleigh  
*Dellinger/Lee Associates, PA*  
Charlotte



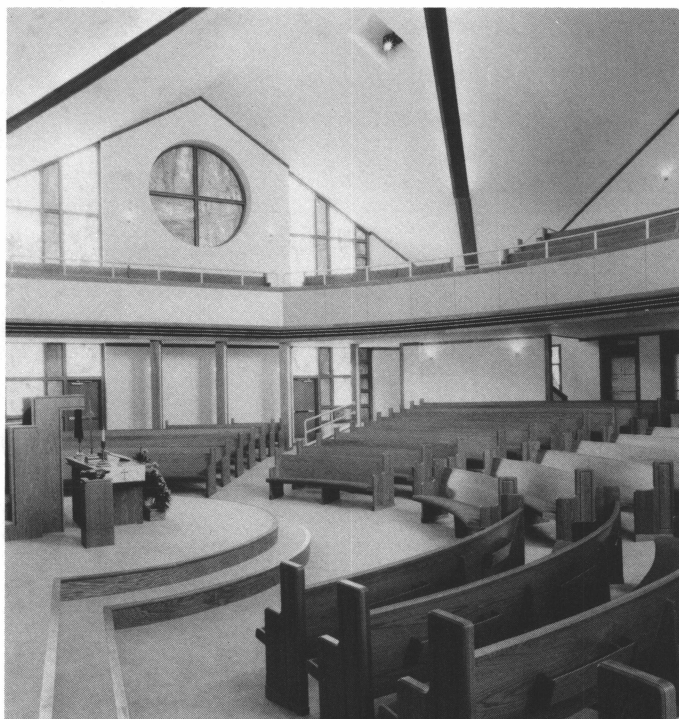
Student Services Center ►  
North Carolina State University  
Raleigh  
*McClure-NBBJ Inc.*  
Raleigh



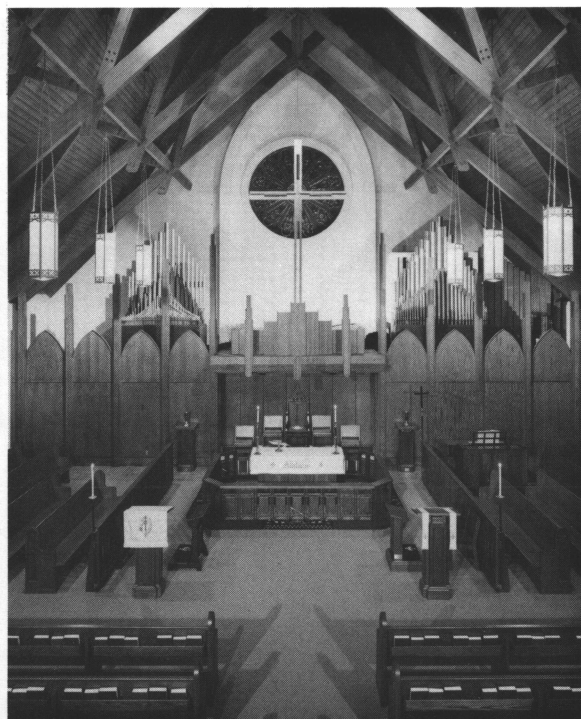
▼ Campus Courtyards  
N.C. State University  
Raleigh  
*Edwin F. Harris, University Architect*  
Raleigh



▲ Student Dormitories, Phase V  
The University of North Carolina at Charlotte  
Charlotte  
*Gantt Huberman Architects*  
Charlotte

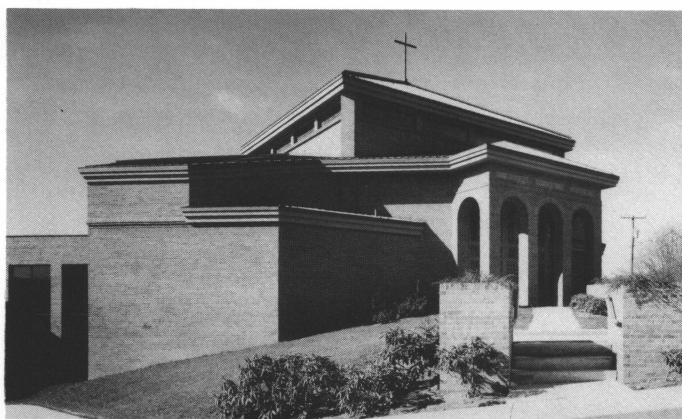


▲ Additions to Guilford College United Methodist Church  
Greensboro  
*Donald O. Tise, Jr.*  
*Chapel Hill*



▲ Grace Episcopal Church  
Lexington  
*Ramsay Associates Inc.*  
*Salisbury*

Boone United Methodist Church ►  
Boone  
*Padgett & Freeman, Architects, PA*  
*Asheville*



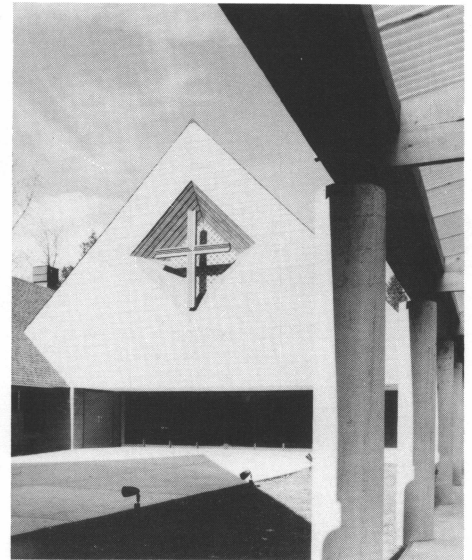
▼ Diocesan House  
Kinston  
*McClure-NBBJ Inc.*  
*Raleigh*





## CHURCHES

- ▼ St. Francis United Methodist Church  
Cary  
*Burnstudio Architects PA*  
*Raleigh*



- ▲ Messiah Lutheran Church  
Charlotte  
*Murray Whisnant/Architects*  
*Charlotte*

## MANUFACTURING AND INDUSTRIAL FACILITIES

- ▼ Pepsi-Cola Bottling Co. Inc.  
Charlotte  
*Clark Tribble Harris & Li Architects*  
*Charlotte*



- ▼ Phillip Morris Cigarette Manufacturing Facility  
Concord  
*Herbert Beckhard, Frank Richlan & Associates*  
*J.E. Sirrine Co.*  
*New York, N.Y.*





▲ YWCA  
Winston-Salem  
*Edwin Bouldin Architect, PA*  
Winston-Salem

▼ Sanderling Inn  
Sanderling  
*McClure-NBBJ*  
Raleigh



Figure 8 Harbor ►  
Wilmington  
*Bartholomew Associates, Inc.*  
Raleigh

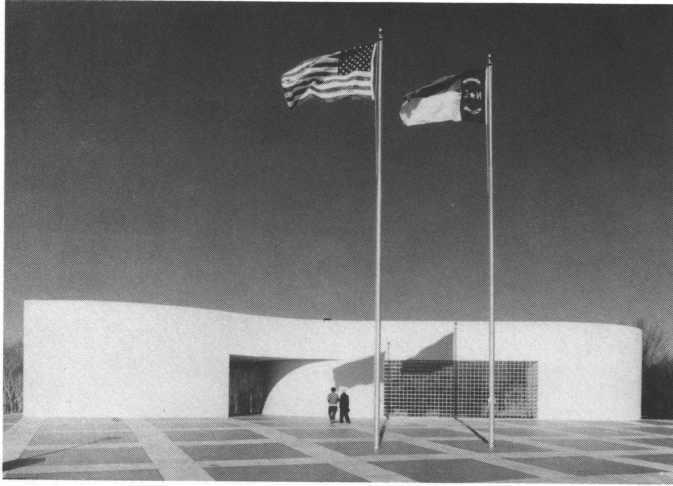


▼ Winston Lake YMCA  
Winston-Salem  
*Gantt Huberman Architects*  
Charlotte



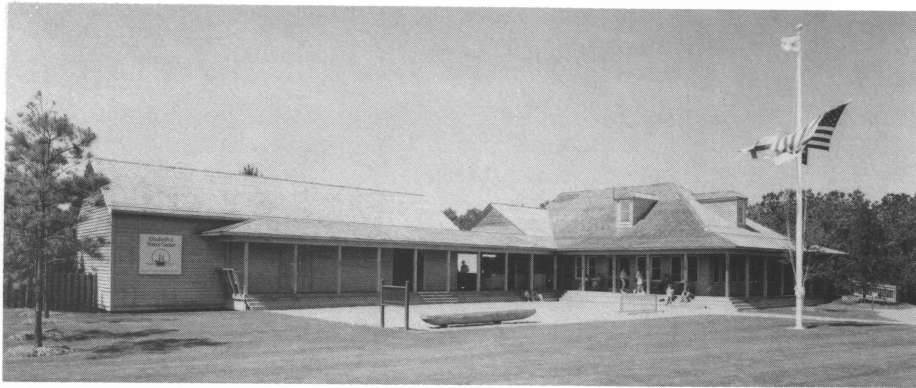


## PUBLIC BUILDINGS

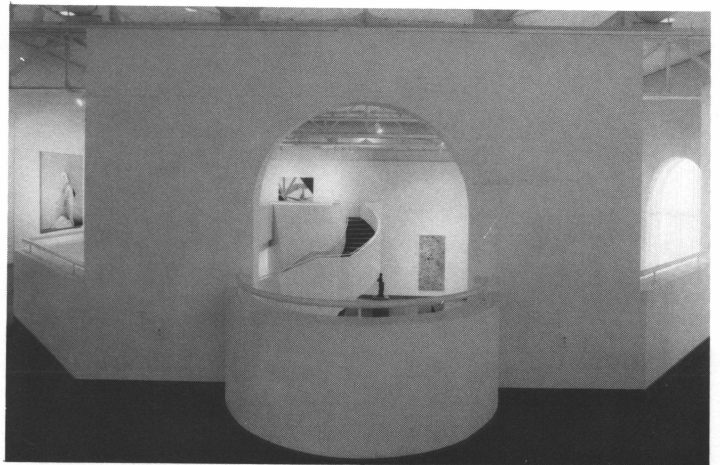


▲ I-77 Welcome Center  
Charlotte  
*J.N. Pease Associates*  
Charlotte

▼ Visitor Center—Elizabeth II  
Manteo  
*McClure-NBBJ, Inc.*  
Raleigh



▼ Renovation of Abandoned School  
Hickory  
*Clemmer Bush Sills Abernathy*  
Hickory



Renovations: Train Station ►  
Cultural Civic Center  
Washington  
*Stephens & Francis, PA*  
New Bern

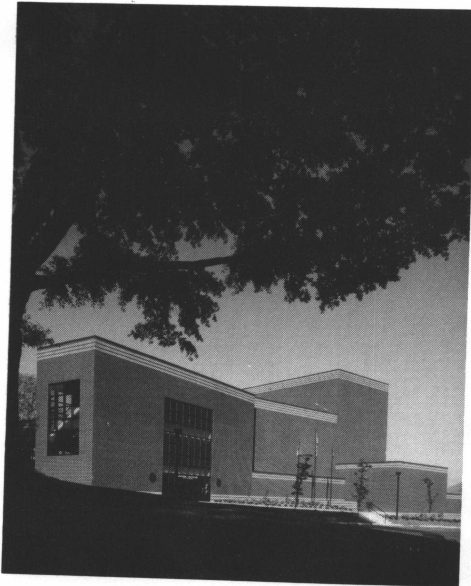


▲ Terminal C  
Raleigh Durham Airport  
Morrisville  
*O'Brien/Atkins Associates, PA*  
Research Triangle Park

► Southside Branch Library  
Forsyth County Public Library  
Winston-Salem  
*Calloway Johnson Moore PA*  
Winston-Salem



▼ Morganton Municipal Auditorium  
Morganton  
*Calloway, Johnson, Moore, PA*  
Winston-Salem



► New Hanover County Judicial Building  
Wilmington  
*Ballard, McKim & Sawyer, Architects*  
Wilmington



▼ North Tryon Station Post Office  
Charlotte  
*Gantt Huberman Architects*  
Charlotte







## Prefer Custom Elevator Interiors? Southern is the Simple Solution.

More and more elevator interiors are taking on a sophisticated look...a discriminating image extension of the building's own interior design.

Southern Elevator realizes those first and last impressions are important. That's why we custom build our elevators tailored to your particular design requirements. Period.

Whether the image commands rich woods, sleek mirrors, or carpeting. Subtle tones or vibrant colors.

Be demanding.

Call Southern Elevator: 800-632-1307. Outside NC, call collect: 919-274-2401. Main offices and plant in Greensboro, NC. Branches in Charlotte, Raleigh, Durham, and Fayetteville.

**southern**  
**elevator**

A Southern Company for Southern Services.

# We Created The Max<sup>™</sup> Because Buyers Today Know All About Home Economics.



She may never put on an apron. And he may not be the only one bringing home the bacon. In fact, with all that's changed, there's not much you can assume about today's couples. Except for this: The buyers you want most — those in the market for your best houses — are smarter than ever about the economics of buying a home. That's because they're better educated, better paid and have a higher self image than any previous generation. Which means they think carefully about what they purchase. They have money to spend on the things they want. And what they want is excellent value for their money — value that reflects well on them.

Which is why they'll buy a Maximum Value Home. Because it promises energy-efficient construction, The Comfort Machine<sup>™</sup> High Efficiency Heat Pump and safe, electric water heating. Plus it gives them the biggest discounts possible on their power bills. And even today's toughest buyers will be impressed by a home that's this economical.

If you're not already building The Max, ask your Duke Power representative for details. He or she will give you all the reasons it's where the next generation will live.

Trademark of Duke Power Company **DUKE POWER**



# SCALE MODELS

Concepts Unlimited

*Specialists in Three-Dimensional Communications*

- Architectural
- Topographical
- Interior Studies
- Display
- Engineering
- Plant Layout
- Site Development
- Sales

## **Models . . .**

- Communicate to the Layman
- Sell Conceptual Ideas
- Check Feasibility of Design
- Visualize the all important 3rd Dimension

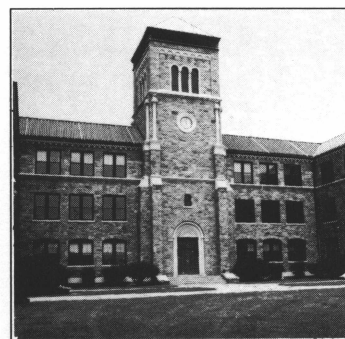
For more information contact:

Concepts Unlimited

P.O. Box 471144, Charlotte, NC 28247, (704) 542-6061

## SEASON • ALL

**Aluminum  
Retrofit Windows**



*For energy efficient,  
custom-fit, replacement  
windows, call North  
Carolina's window expert...*

**800-472-7274**

**Davidson Sash  
& Door, Inc.**

500 E. Center Street  
Lexington, NC 27293

## THOUSANDS OF SUCCESSFUL N.C. BUSINESSES CHOOSE COMFORT



Quality conscious businesses rely upon the **BRADY COMPANIES** to provide the finest air conditioning products and services from the industry's leader, **THE TRANE COMPANY**. For over twenty-five years, we have served the commercial market in North Carolina as an authorized **Trane** representative.

If your company demands reliable and quality air care, choose the **Brady Companies**. We provide new or replacement equipment, building automation and control, repair and maintenance service, and replacement parts and supplies.

**Choose the best. Choose Brady for Quality  
Air Conditioning Products and Services.**

## **BRADY MEANS HVAC SATISFACTION — GUARANTEED**

For new or replacement equipment:  
**BRADY SALES AND SERVICE**

GREENSBORO 919-378-0680 RALEIGH 919-851-4131  
WINSTON SALEM 919-765-0791

For repairs or maintenance service:

**BRADY TRANE SERVICE**  
919-378-0670 or 800-632-0349 (NC only)

For Building Automation and Controls:

**BRADY AUTOMATED SYSTEMS**  
GREENSBORO 919-378-0680

For parts and supplies

**BRADY PARTS**  
GREENSBORO 919-379-0267 or 800-332-7729 (NC only)  
RALEIGH 919-828-9040 or 800-532-4629 (NC only)



## This skylight took 58 years to build.

Super Sky built some of the first modern aluminum skylights ever, in 1930. Today, our designs reflect the experience and innovation that only a pioneer can offer. Take advantage of it. After all, we've been working on your next skylight for the past 58 years. Contact our local representative.



SCPI  
Post Office Box 45  
Apex, NC 27502  
(919) 362-8611

DAVID PATRICK MOSES  
ARCHITECTS

P.O. BOX 783 LINVILLE, NC 28646  
(704) 898-6396 • (704) 963-4478

## Harris & Associates

*Estimating & Scheduling*

1601 Cedar Lane Road  
Centre West, Suite 15  
Greenville, SC 29611

(803) 246-8040

We specialize in CACES  
estimating for Corps of  
Engineers and CES for Naval  
Facilities Engineering Command.

Estimates are available  
on computerized format  
upon request.



## T.R. DRISCOLL, INC.

• SINCE 1924 •

### SLATE AND TILE ROOFS

- Renovation
- Replacement
- Installation

SERVING ALL OF  
N.C. & S.C.

1000 Starlite Drive.  
P.O. Drawer 1549  
Lumberton, N.C. 28359  
(919) 738-6226

Suite 1206  
Northwestern Plaza  
1 Park Square  
Asheville, N.C. 28801  
(704) 258-8335



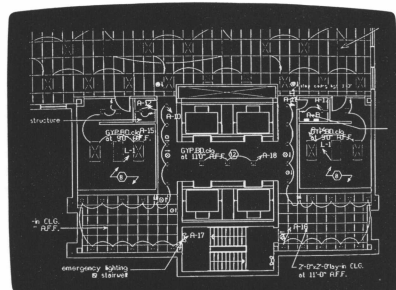
Why the most  
advanced CAD system  
for architects and  
building designers  
puts you on the edge.

**ARRIS**

And keeps you there.



Presentations — Dramatic visualizations help you win new business and communicate design ideas.



Production — Design automation, design refinement and 3-D capability increase your productivity.

Today, there is a revolutionary CAD system that puts you on the edge — the competitive edge. A CAD system that goes far beyond the ordinary, and gives you the edge in production, presentations, plus a lot more.

The name of this system is ARRIS™. And it is the remarkable system that will instantly show you why ordinary CAD is no longer enough for architecture and building design and management.

#### THE COMPETITIVE EDGE IN PRODUCTION.

With ARRIS, you don't have to make drawings line by line. Instead, you enter basic design parameters — and let the system do the rest of the work, *automatically*. So more work gets done, in less time.

#### THE COMPETITIVE EDGE IN PRESENTATIONS.

With ARRIS, you can create extraordinary design and marketing presentations that help you win more business. For example, ARRIS 3D modeling and rendering allows you and your clients to view your project from any perspective, at any angle, at any time of night or day. And to "walk through" rooms as if they really existed.

#### PLUS.

ARRIS allows your project teams to share data, drawings and systems — so they can work on entire projects, not just single drawings. Plus, ARRIS will grow as you grow, so you keep your competitive edge.

So be sure to call today for our *free* ARRIS demonstration. We're your ARRIS Power Dealer — and we can show you how ARRIS provides extraordinary CAD capabilities. And we can also provide you with the very best in training, service, and support. Call now to get the competitive edge.

You can get the competitive edge at: \_\_\_\_\_



**PIEDMONT CAD/CAM**



**814 Tyvola Road, Charlotte, NC  
(704) 523-2400**

## OFF THE DRAWING BOARD

### NC Architect named vice president of NCARB

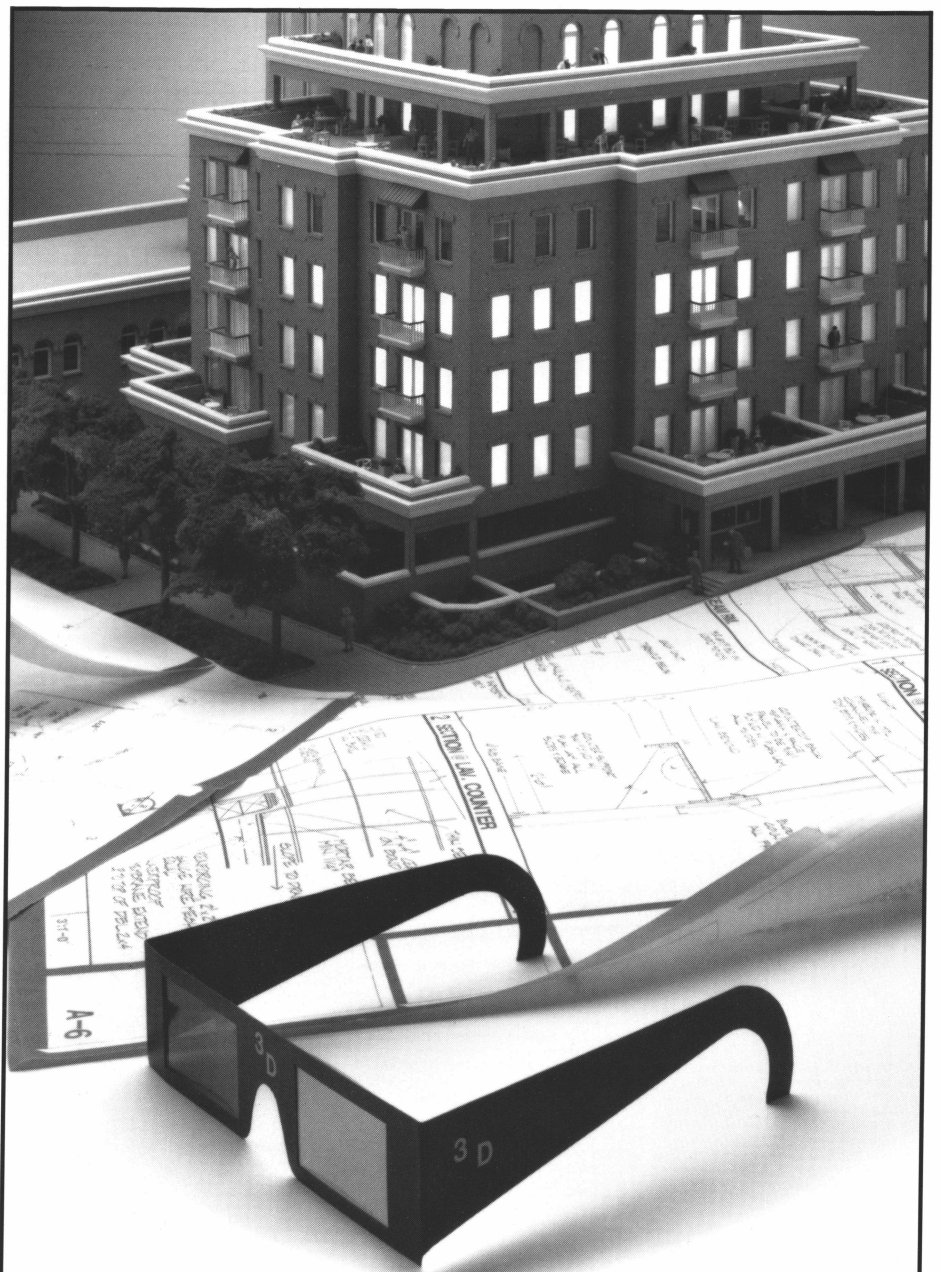
Herbert P. McKim, AIA, president of Ballard, McKim & Sawyer, Architects, PA, of Wilmington, has been named first vice president and president-elect of the National Council of Architectural Registration Boards (NCARB).

NCARB, headquartered in Washington, D.C., is the regulatory arm of the architectural profession. It is composed of the architectural registration boards of the 50 states plus those of the District of Columbia, Guam, the Northern Marianas, Puerto Rico, and the Virgin Islands.

McKim is the first North Carolinian to receive this honor in the 68-year history of NCARB. "It is the highlight of my professional career," McKim said. "I am in awe of the scope and responsibility of the National Council of Architectural Registration Boards, but I see it also as an opportunity to make a lasting contribution to the practice of architecture especially as the practice of architecture faces changes."

McKim is a 1950 graduate of NCSU School of Design and has been active in architectural circles at all levels for over 30 years. He served as a member of the North Carolina Board of Architecture for 10 years and was a president of that board. In addition, he has served on the board of directors of the NCAIA.

McKim has also been very active in business and civic affairs in Wilmington. He is a former president of the Greater Wilmington Chamber of Commerce and president and campaign



## IF YOUR PRESENTATIONS GO FLAT, IT'S TIME TO GO 3-D

At Scale Model & Design (formerly Carolina Architectural Model), our clients report up to a 125% increase in pre-sale statistics when they use our scale models. Many developers have received immediate city and county approval when they used our models to show a project's aesthetic harmony and blend. And architects swear that scale models are one of the best ways to help both the developer and potential tenants visualize.

If your project needs to communicate, then it's time to go three dimensional. Give us a call at 919/832-4304 and ask for our brochure. Or stop by our studios at the corner of Harrington and Morgan Streets in Raleigh. Either way, at Scale Model & Design, our exquisite attention to model detail (so realistic in photographs that many people can't tell it's a model) is certain to help your project stand up and get noticed.

SCALE  
MODEL  
AND  
DESIGN

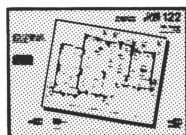
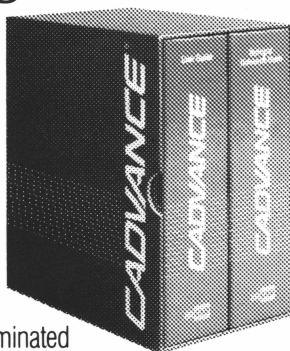
100 S. Harrington St. Raleigh, NC 27603  
919/832-4304



# CADVANCE

## RNL Design meets an architectural challenge on time and under budget

When a large aerospace manufacturing facility presented an architectural challenge for RNL Design, the firm relied on CADVANCE PC-CAD software from ISICAD. CADVANCE helped RNL respond quickly and with ease to drawing changes. Its flexibility made it possible to explore numerous options and its precision eliminated problems at the construction site.



**FREE CASE STUDY**

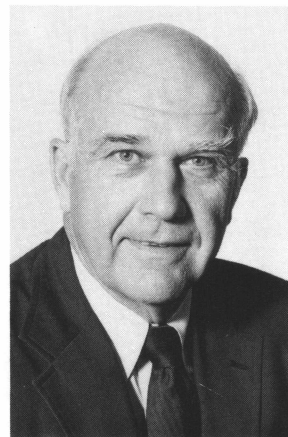
**Cad Resources**  
768 Tyvola Rd.  
Charlotte, NC 28217  
(704) 523-6445

CADVANCE also enabled RNL to log detail sheets as office standards, saving time on subsequent projects. Every challenge had a solution...in one easy to learn, easy to use system.

Find out how RNL Design faced its challenge with CADVANCE. Call or write for your free copy of Case Study #122.

**Piedmont Reprographics, Inc.**  
6A Oak Branch Dr.  
Greensboro, NC 27407  
(919) 299-2703

**ISICAD**  
DESIGN SYSTEMS  
FOR THE REAL WORLD



*Herbert P. McKim, AIA*

chairman of the United Way. He has also been a member of the board of trustees of New Hanover Memorial Hospital and a president of the Thalian Association and the Lower Cape Fear Council for the Arts.

## Raleigh Architect Elected to International Board

Michael Nicklas, AIA, principal in the Raleigh firm of Innovative Design, was recently elected to the board of directors of the International Solar Energy Society. With headquarters in Australia, the organization encourages the development of solar energy utilization through international educational forums, technical information exchange and promotion. Nicklas also serves as chair person with the American Solar Energy Society, the newly created North Carolina Solar Center and the Wake County Energy Advisory Commission.



## E.M.A. INC. Consulting Engineers

- Structural Engineering
  - Geotechnical Engineering
  - Civil Engineering
    - Materials Testing & Inspection
    - Failure Investigations
    - Computer Aided Design and Drafting (CADD) Services

401 Glenwood Avenue—P.O. Box 12447—Raleigh, N.C. 27605  
919/828-0801



*Michael Nicklas, AIA*

## Raleigh Architect Chosen As National Exhibitor

The American Institute of Architects has chosen Norma DeCamp Burns, AIA, president of Burnstudio Architects, PA, Raleigh, as an exhibitor in a nationally touring Exhibition of Women in Architecture. Her Chatham County Social Services Building in Pittsboro and the Burnstudio Building in Raleigh will be among 100 projects chosen to illustrate the quality and diversity of current contributions of women in the profession. The panel exhibit is part of "That Exceptional One: Women in American Architecture, 1888-1988," which opened in May in New York at the 1988 AIA National Convention and will tour 15 major cities over the next three years. It will be at AIA Headquarters in Washington, D.C., from Sept. 12 through Oct. 31.



*Norma DeCamp Burns, AIA*

## Cancer Center Wins Bronze Award in IBD Competition

Peterson Associates PA Architects-Engineers was awarded the IBD Bronze Award in the institutional category for the Rex Hospital Cancer Center. The award was presented by the Carolinas Chapter of the Institute of Business Designers. The 48,000 square foot Rex Hospital Cancer Center is in Raleigh, next to the 400-bed main hospital, also designed by Peterson Associates.

# DELLINGER · LEE · NICHOLS

ARCHITECTURE



MALLARD CREEK CENTER

119 EAST SEVENTH STREET  
CHARLOTTE, NORTH CAROLINA 28202  
704 • 332 • 2446



THE MOST EXCLUSIVE CLUB IN THE WORLD —

YOUR OWN *Signature* CUSTOM LEISURE PAVILION

*Distributor for IBG Solar Structures*

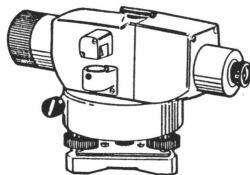
**CAROLINA SOLAR STRUCTURES**

A Division of Bob Thompson Builders, Inc.  
Box 9325, Asheville, NC 28802

(704) 298-7171



## LEVELS • TRANSITS



**LIETZ • TOPCON • KERN**  
Call For Free Catalog

## **HEWLETT PACKARD CALCULATORS**



HP-41CV ...\$124.95	HP-27S .....\$78.00
HP-41CX ...\$177.95	HP-28S .....\$167.95
HP-15C .....\$57.95	HP-17BS .....\$78.95
HP-12C .....\$57.95	HP-19B .....\$124.95

To order call 1-800-334-0095. Visa and MasterCard accepted. Orders over \$100 SHIPPED FREE (less than \$100.00, add \$5.00 shipping and handling charge).

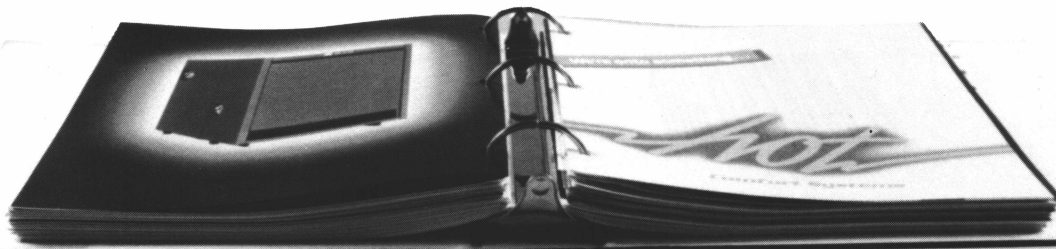
A few contest entries were submitted without black and white photographs, and subsequent attempts to obtain those photographs were unsuccessful. We regret that we were unable to include those entries.

## **SURVEYORS SUPPLY CO.**

HWY 64 AT SALEM STREET • P.O. DRAWER 808 • APEX, NC 27502 • (919) 362-7000 • HRS: MON-FRI 8:00-5:00



# How To Avoid Manual Labor.



With all the recent innovations and improvements in high efficiency gas equipment, the sheer volume of information generated is staggering. So is the valuable time it takes you to analyze, evaluate and compare your options.

We've put together a comprehensive Architects' and Engineers' Manual that consolidates all this data

in one easy-to-use volume. Including spec sheets and rates. And we update these for you as they change. We can even provide estimated operating cost analysis if requested. The manual is free. So is the service. Doesn't it make sense to avoid manual labor and send for our manual instead?



**To get more information on how you can avoid manual labor, call John Stanley, at 704-864-6731 or fill in this coupon.**

☐ Please send me a free copy of your Architect's and Engineer's Manual.

Mail to: John Stanley, Public Service Company,  
P.O. Box 1398, Gastonia, N.C. 28053-1398

Name \_\_\_\_\_

Address \_\_\_\_\_



## Charlotte Firm Will Design NCSU Parking Deck

N.C. State University has commissioned Dellinger Lee Nichols of Charlotte to design a 1,200-space parking deck to be located on Dan Allen Drive in Raleigh. The four-level deck will be constructed of poured-in-place post-tensioned concrete, with brick veneer at the front of the structure. The design includes a brick paved plaza and glass block stair towers to admit light and increase security.

## Names and Changes in N.C. Architecture

With the naming of **William A. Nichols, Jr.**, as a full partner, the firm of Dellinger/Lee Associates of Charlotte has changed its name to Dellinger Lee Nichols Architecture. The firm is moving into new offices at 119 E. Seventh Street. The building has been renamed the Dellinger Lee Nichols Building.

**John J. Haggerty** is a new intern-architect with Dail Dixon & Associates of Carrboro. Haggerty has a Master of Architecture from Virginia Polytechnic Institute and N.C. State University and a Bachelor of Arts from the University of Virginia.

Hammill-Walter Associates, Inc., of Winston-Salem has added four new staff members: **Kevin R. Smith**, intern-architect, who has seven years of architectural experience and a Bachelor of Architecture degree from Kansas State University; **Pamela B. Aaron**, interior designer, who has four years of commercial experience in space planning and drafting and a Bachelor of Science in Interior Design from Winthrop College; **Dorothy Law Snyder**, marketing coordinator; **Judy K. Davis**, accounting assistant.

**David H. Snider** has been named an associate of Odell Associates in Charlotte. Snider, whose degree in architecture is from Auburn University in Alabama, has worked on the Charlotte-Douglas International Airport, University Place, and Process Systems since joining Odell. Another Odell

---

## RAMSAY ASSOCIATES, INC.

ARCHITECTURE • PLANNING • DEVELOPING



3008 ANDERSON DRIVE • SUITE 103 • RALEIGH, NC • 27609  
PO BOX 19903 • RALEIGH, NC • 27619 • 919 • 781 • 0026

## Johnson & Higgins designs *Professional Liability Coverages.*

We know the field of professional liability protection as few other brokers do. That's why we've won the endorsement of the NCAIA, PENC, and SCAIA. And our worldwide network enables us to negotiate with underwriters everywhere. We'd like to talk with you about this. Call a J&H account executive at 1-800-433-2702 in North Carolina.

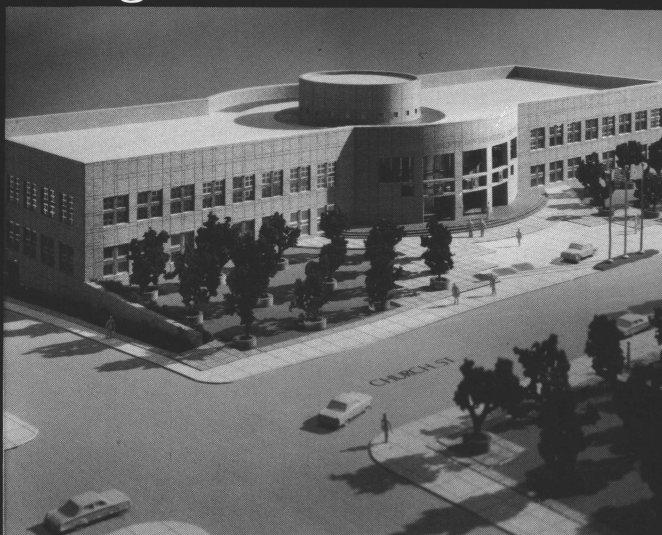
---

## JOHNSON & HIGGINS

JOHNSON & HIGGINS CAROLINAS, INC.  
750 First Union Tower  
Charlotte, NC 28282-8265  
(704) 374-1845

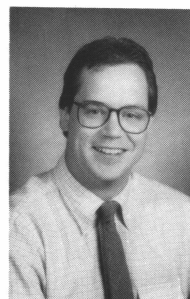
Risk and Insurance Management Services;  
Human Resources and Actuarial Consulting  
Throughout the World.

## Signature Architecture.

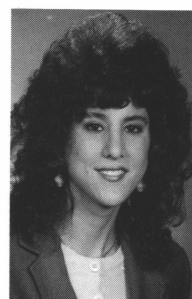


# DennisYates Associates

18 Spring Street, N.W.    Architecture  
Concord, N.C. 28025    Interiors  
(704) 788-9115    Planning



*Kevin Smith  
Hammill-Walter Associates*



*Connie R. Harris  
Odell Associates*

newcomer is **Connie Roulidis-Harris** as marketing coordinator. A graduate of the University of Virginia, she held a similar position with the Atlanta firm of Thompson, Ventulett & Stainback.

The FWA Group is on the move. Corporate headquarters and the Charlotte division, formerly at Woodfield Corporate Center, have moved uptown to the third floor of Two-Twenty North Tryon, formerly the Montaldo's building. In the Research Triangle, the firm has moved to Triangle Executive Park, One Copley Parkway, Suite 200 in Morrisville from 4501 Alexander Drive, Suite 109, Research Triangle Park.

The New Bern firm of Earl Asher Applegate, Architect, has changed its name to Applegate Architects.

**Moodye R. Clary, AIA**, president of Clary Architects Inc., Charlotte, and **Michael A. Martin** and **Timothy F. McMullen**, principals of ARCH Architects and Planners, announced a merger of their firms into Clary, Martin, McMullen and Associates. The firm's office is in Charlotte.

**William Michael Phillips, AIA**, has joined the Raleigh office of Quick-Associates, PA as Director of Marketing. Phillips holds a bachelor of architecture from NCSU School of Design



*Meets ASTM E84-82 Flame  
Spread Rating <25 and  
Smoke Contribution <15.*

## Easy Spec FOR Hard Codes

Flame Test® Hardboard Siding has fire retardant properties manufactured in, not added on afterwards. You can meet difficult code requirements with beautiful real wood fiber siding.

Available in many traditional styles. If you have to meet tough fire safety standards call today for our "Easy Spec/Hard Codes" data pack. We'll show you how easy it is to specify safety and style!

## AND High Style

CALL: 1-800-848-3673



P.O. BOX 33476 — 1941 BANCROFT STREET  
CHARLOTTE, N.C. 28233 704-377-3461



and a Masters of Architecture from Colorado.

The Raleigh architectural firm of Polier, Ballard, Associates, PA has changed its name to Ballard, McCredie, Elliott, Associates.

**A. Lewis Polier, AIA**, senior principal, has retired.

Reg Narmour/The Architectural Group, PA has announced an expansion of operations and transition of ownership. Narmour will continue to be involved in various consulting and design activities for the firm. The new principals of the firm are **James C. Heffner, III** of Virginia, **Gary D. Cline, AIA**, Raleigh, **William Raines**, of Charlotte and **Arthur Oldham** also of Charlotte.

The Architectural Group consists of six offices located in Washington, D.C.; Raleigh and Charlotte, North Carolina; Myrtle Beach, South Carolina; Tampa, Florida; and Denver, Colorado.

**CUSTOM  
BRICK CO.**

"SERVING RALEIGH, THE TRIANGLE  
and EASTERN NORTH CAROLINA"

VISIT OUR SHOWROOM  
COMPLETE DISPLAY  
OF SAMPLES

**PRODUCTS**

FACE BRICK  
HAND-MADE BRICK  
GLAZED BRICK  
PAVERS

**SUPPLIERS**

*Borden • Taylor Clay • Boren  
Lee • Old Virginia • Nash  
Isenhour • Hanley • Merry  
Palmetto • Lynchburg • Waccamaw  
Ashe • Delta Macon • Southern  
Bickerstaff • Pine Hall  
Baltimore • Glen Gery*

1613 Old Louisburg Rd., Raleigh, N.C. Ph. 832-2804



## When Your Construction Is More Technical Than Just Bricks and Blocks...

- Clean Rooms
- Computer Rooms
- Washdown Production Facilities
- Radiation Containment
- Biological Containment
- Chemistry Laboratories
- Anechoic Sound Control
- Vibration Testing Areas
- Superflat Slabs

**Call Us.**

Raleigh 919-834-3601  
Wilmington 919-392-5220

# CLANCY & THEYS

GENERAL CONTRACTORS

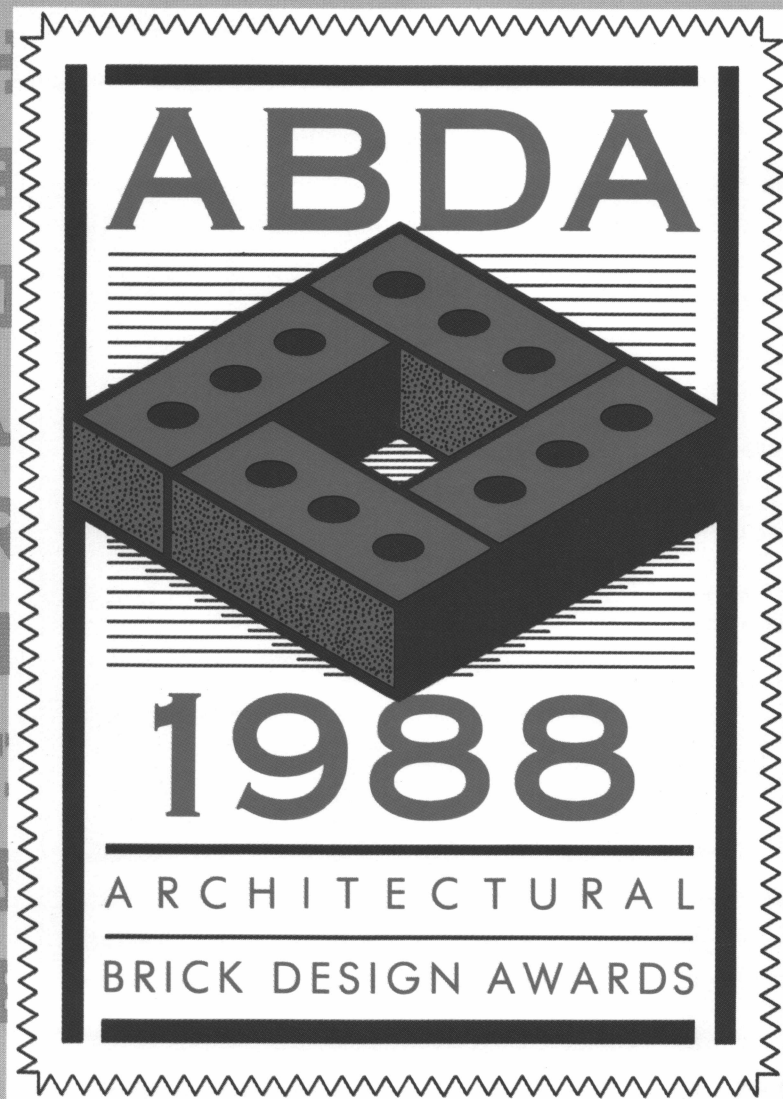
Certified Fabricators Of Du Pont

# CORIAN®

Solid Beauty That Lasts.

**CORILAM FABRICATING Co. Inc.**  
P.O. Box 361 Kernersville, N.C. 27285 (919) 993-3511

ER • YOUR LAST CHANCE TO ENTER • YO



Your outstanding designs using brick could win in the 1988 Architectural Brick Design Awards sponsored by the Brick Association of North Carolina.

You should have already received the 1988 ABDA Call For Entries with all of the entry details. If you have not received the Call For Entries, and you want to participate, call 1-800 NC BRICK now. But don't delay.

Deadline for ABDA entries is 5 p.m., Friday, September 16, 1988. All submissions must be sent to the Brick Association offices at 1917 E. Wendover Avenue, Greensboro, NC 27405. Show the world your very best in brick design!

**BRICK**

Smarter than you think

1-800-NC BRICK





# The best names in building depend on Adams Products.

"At H.S. Lichtin Developer, Inc. we're sticklers for details.

"We don't cut corners because as developer, owner and managers of our office, retail and industrial projects, we must construct our buildings so that they will hold their quality for the long term.

"That's why we have used Adams Products Company materials—they meet our high standards for performance.

"And Adams' people have shown a willingness to apply the latest in building technology to fit into our concept. And they treat a schedule with real respect.

"Adams has always delivered on time over the many years we've dealt with them. You can't ask for more."

**ADAMS**  
**PRODUCTS COMPANY**  
 Adams Builds Confidence. *You Said It!*

Durham  
 106 LaSalle Street  
 27705  
 1-800-845-0001

Morrisville  
 Highway 54 West  
 27560  
 1-800-672-3131

Raleigh  
 530 Pershing Road  
 27608  
 1-800-672-3131

Fayetteville  
 957 Country Club Dr.  
 28303  
 1-800-682-7025

Kinston  
 Highway 70 East  
 28501  
 1-800-682-5740

Wilmington  
 801 Bess Street  
 28402  
 1-800-722-3845

Rocky Mount  
 Highway 97 East  
 27801  
 1-800-672-6712

Greenville  
 309 Hooker Road  
 27834  
 (919) 355-7258

**T**he old Willard Hotel, now the Willard Inter-Continental, was once called the Unofficial White House. During the meticulous Willard restoration, architects insisted on 1,675 custom Pella Windows. Pella created historic accuracy outside, wood's beauty inside and a new lifetime of Pella quality.

The custom Pella window units precisely match original profiles with special sash dimensions, exterior jamb extensions and perimeter trim extrusions modeled after pieces of original wood trim.

Pella built the new Willard's Traditional Double-hung (TD)

units with insulating glass, including archtops. Huge fixed windows with venting casements above match original 7' x 14' double-hungs.

Even the classic Willard trim color was matched with aluminum cladding in baked enamel.

Now, we know every window treatment challenge isn't the Willard. But should that really make any difference?

Willard Inter-Continental  
Constructed 1901, Reopened Aug.  
18, 1986 Following Restoration

Owner/Developer  
The Oliver T. Carr Company,  
Washington, DC

Architect  
The Office of Vlastimil Koubek,  
Washington, DC

General Contractor  
George Hyman Construction  
Company, Bethesda, Maryland

**The Pella  
Window  
Store®**  
Windows, Doors  
Sunrooms & Skylights

# The Willard Hotel deserved Pella Windows, and so do your clients.



Now, you can get commercial help at any Pella Window Store listed below or by using these numbers:

1-800-632-1016 (Greensboro) 1-800-438-1112 (Raleigh)

Asheville • Charlotte • Kitty Hawk • Pinehurst • Winston-Salem • Hickory •  
Greensboro • Raleigh • Durham/Chapel Hill • Wilmington, NC • Roanoke • Lynchburg, VA



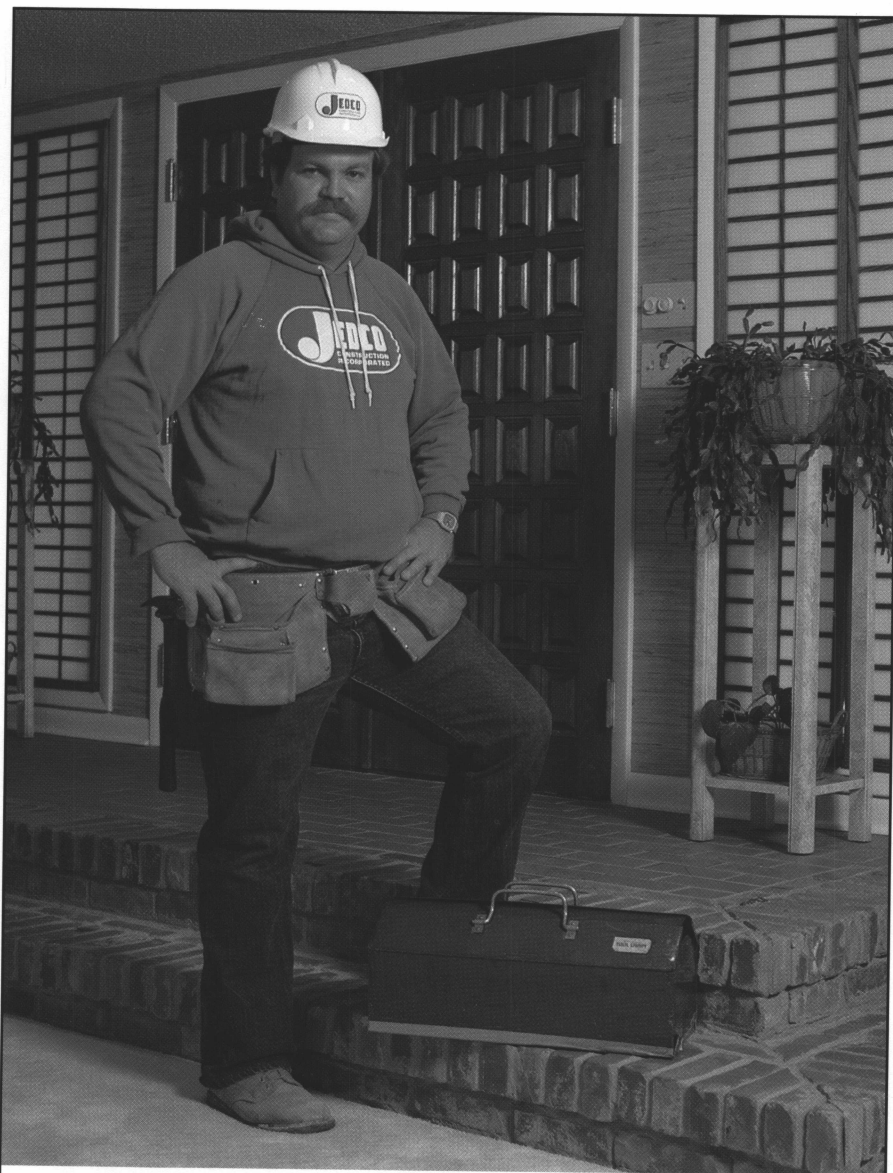
## NEW PRODUCTS

### No Glare with New Window

Schott America has developed a new non-reflecting shop window glass that eliminates glare, provides high UV-absorption, reduces lighting costs and provides a clear view of shop displays. Called AMIRAN, the new glass cuts the 8-percent to 15-percent light reflection common with other glasses to only 1 percent. As a result, shop displays are enhanced rather than distorted. High UV-absorption slows down fading of goods. AMIRAN also cuts down on the need for artificial illumination because it eliminates the need to compensate for reflection. For additional information, contact Schott America Glass & Scientific Products, Inc., 3 Odell Plaza, Yonkers, NY 10701, or call (914) 968-8900.

### A New Level

Nikon has introduced a level designed specifically for users such as custom builders, landscape architects and swimming pool contractors. The 18-power AX-1 Automatic Level is sealed against dust and dampness and, at less than 2 pounds, is sturdy, compact and light. It measures to within 1.6 inches to 0.5 miles double-run leveling. A built-in magnetically dampened compensator automatically levels the line of sight. Nikon optics provide an 18X image that is sharp and clear. A minimum focusing distance of 2.79 feet makes the AX-1 ideal for precise leveling in tight spaces. Another model of the AX-1, the AX-1S, is supplied with a stadia



# CONFIDENCE BUILDER

Since 1964, JEDCO has been synonymous with Armco pre-engineered steel buildings. We built our early reputation on our expert erection of these high quality, well-planned metal systems. Now, after decades of diversification, JEDCO is known for providing economical, fast track solutions for every building need: conventional construction, tilt-up concrete, pre-engineered building systems, renovation and remodeling, custom interior finishing, structural concrete foundation work and providing new roofs for old or new buildings.

JEDCO can put it all together for you. JEDCO Construction, Inc., Raleigh, NC Telephone (919) 851-6060  
Wilmington, NC Telephone (919) 392-1000,  
Toll free in NC 800-662-9719.





# BEAUTY IS MORE THAN SKIN DEEP

**Beyond the surface is the comfort  
of gas heat.**

When Royal Insurance moved its headquarters, it became a beautiful addition to Charlotte. But the company realized that comfort as well as beauty is important. That is why a natural gas heating system was included in the design. Gas heat, combined with conventional air conditioning, provides much more comfortable temperatures than a heat pump. This comfort adds to employee efficiency and well being while the company is enjoying the savings in operating costs. Royal Insurance realizes additional savings with a gas kitchen and gas water heating.

Before you design your next beautiful building, get all the technical information on the many possibilities of gas and no-charge assistance from one of our Technical Service Engineers. Call toll free. From NC: 1-800-532-0462. From SC: 1-800-438-8410. Within Charlotte: 364-3120.



**Piedmont  
Natural Gas  
Company**

reticle. For further information, contact Nikon Inc., Instrument Group, Surveying Department, 19601 Hamilton Ave., Torrance, CA 90502, (213) 516-7124.

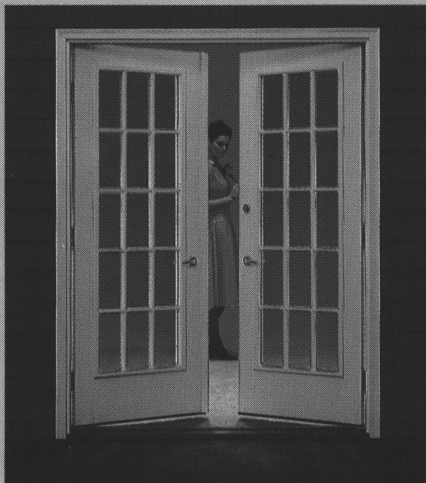
## **New Fibers Combat Concrete Cracks**

Grace Fibers, a specially-fabricated polypropylene additive that reduces plastic shrinkage cracking in concrete, has been introduced by Grace Specialty Chemical Co. Added to concrete during batching, Grace Fibers have a reinforcing effect that can reduce plastic shrinkage cracking by 80 percent or more. Plastic shrinkage cracks commonly occur when fresh concrete dries too quickly through exposure to high temperatures, low humidity and high wind. The cracks can widen with time and seriously weaken the concrete. Besides inhibiting cracking, the polypropylene fibers also enhance concrete's abrasion-resistance without reducing compressive and flexural strengths. For information, write Robert McGrath, W.R. Grace & Co., Construction Products Division, 62 Whittemore Ave., Cambridge, MA 02140.

## **New Coatings Meet Environmental Standards**

Urethane Plastics, Inc., has developed a complete line of waterproofing products that meet all current Environmental Protection Agency and California Air Resource Board standards. Each system is designed to withstand harsh environmental conditions as well as structural stress. They also provide superior abrasion and chemical resistance, application flexibility and fast cure rate. The products are used together to form systems for particular applications—for instance, helipad waterproofing, mechanical equipment rooms, pedestrian or vehicular traffic, etc. Urethane Plastics, Inc., 550 W. Crowther Ave., Placentia, CA 92670. Phone (800) 443-6024.





CHATEAU AUTHENTIC FRENCH DOOR.



ARIEL CIRCLE HEAD WINDOW.



ARIEL SLIDING PATIO DOOR.



ARIEL DOUBLE HUNG WINDOW.



PRADO INSULATED SWINGING PATIO DOOR.



ARIEL CASEMENT WINDOW.

ADD SOMETHING SPECIAL TO YOUR HOME. ADD PEACHTREE INSULATED WINDOWS AND DOORS.

EASTERN REGION OF N.C.  
**EASTERN MILLWORK & SUPPLY CO.**  
PO BOX 469

WINTERVILLE, NORTH CAROLINA 28590-0469  
PHONE (919) 756-3150 • 1-800-682-8180

RALEIGH-DURHAM, NORTH CAROLINA  
PHONE (919) 781-0143 • 1-800-821-1911

WESTERN REGION OF N.C.  
**EAST COAST MILLWORK  
DISTRIBUTORS INC.**

PO DRAWER 349  
ELKIN, NC 28621  
NC 1-800-682-3263  
OUT OF STATE 1-800-222-3263



A COMPANY OF THE INDAL GROUP



AVANTI INSULATED ENTRY DOOR SYSTEM.




PRADO CLASSIC WOOD SWINGING PATIO DOOR.



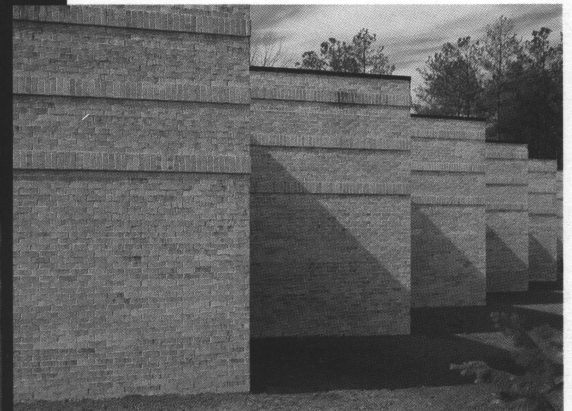
CARVEL WOOD SLIDING PATIO DOOR.





# A Good Idea Makes Borden Look Good

As proud as we are of our brick, we know that it's the ideas and skills of the architects, contractors and craftsmen that make brick into buildings. But when it's an especially good idea — like the Lord Research & Development Building — an especially good brick — like Borden's Waynesboro — is shown at its best.



It's a utility brick that compliments the architect's graceful design.

The people that specify Borden brick have thousands of ideas, some of them very demanding. That's why Borden manufactures thousands of bricks in different colors, textures and shapes. We meet those demands.

An idea like the Lord Building does make us look good. And we like to think we do our part to make the building as good as the idea.



Post Office Box 11558, Durham, NC 27703  
In NC, call 800/672-0081  
Outside NC, 919/596-8241