

# NC Architecture

A publication of The American Institute of Architects North Carolina Chapter  
[www.aianc.org](http://www.aianc.org) | Volume 8 Issue 1



***In This Issue***

**AIA NC Single-Family Residential Firm Issue**





# A personalized payment solution built with your clients in mind

9:00 AM: Consultation

**PAYMENT RECEIVED**

VISA  DISCOVER  eCheck

12:00 PM: Site Visit

3:00 PM: Design Brief

At ClientPay, we make accepting payments simple, so you can focus on what matters most to your business: your clients.

Our user-friendly payment solution allows building and design professionals like you to securely accept credit, debit, and eCheck payments anytime, from anywhere—in the office, online, or even at a project site.

- ✓ Make it easy for your clients to pay you 24/7
- ✓ Enjoy faster, more reliable payments
- ✓ Experience customer support from real people every time you call



**clientpay.com/aia-north-carolina**  
**866-351-1851**

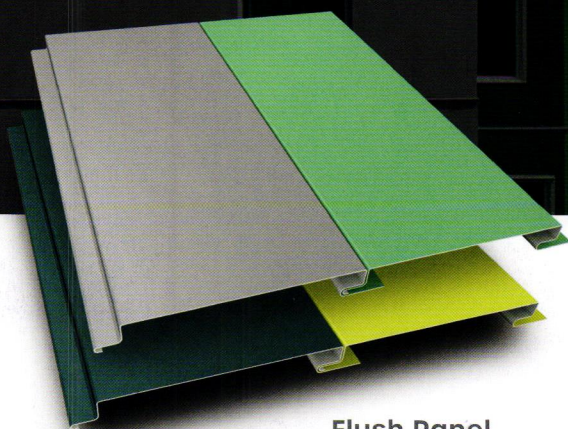


# Healthy Dose of Color



**PAC-CLAD Flush panels provide pops of playful color:** Stripes of Patina Green, Teal and custom Parakeet Yellow against a field of neutral Cityscape Gray create a cheerful backdrop for an outdoor courtyard where guests can relax and play.

Ronald McDonald House, Cincinnati    Installing contr. (walls): Neiheisel Steel    Architect: GBBN Architects  
General contractor: Messer Construction    Photo: hortonphotoinc.com



## Flush Panel Metal Wall System

Patina Green, Teal, Cityscape  
and custom Parakeet Yellow



View the  
case study  
and video



**PAC-CLAD**  
P E T E R S E N  
A CARUSLE COMPANY



# UNIQUE. DISTINCT. FACADES.

University of Texas - Tyler  
Architect: Smithgroup JJR  
Location: Tyler, TX

Dri-Design Metal Wall Panels offer virtually limitless possibilities of design within the same fully tested, easy to install, dry joint system. Additionally, the unique attachment method allows several variations to be used together, which can produce a truly customized look. The University of Texas in Tyler used varying depths of Shadow Series panels in combination with a custom wood-look Dri-Design soffit to create this beautiful façade.

- No sealants, gaskets or butyl tape means no streaking and no maintenance for owners.
- Not laminated or a composite material, so panels will never delaminate.
- At Dri-Design, we have a strict policy of recycling and creating products that the world can live with.
- Fully tested to exceed ASTM standards and the latest AAMA 508-07.
- Available in a variety of materials and colors.
- Non-combustible and NFPA-285 compliant.

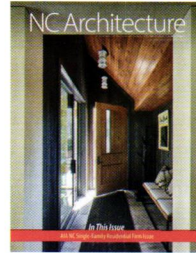


616.355.2970 // DRI-DESIGN.COM



# CONTENTS

- 6 President's Message
- 9 Firm Profiles
- 39 Firm Profiles Index



## ON THE COVER

Alpine Modern  
Kersting Architecture  
Wilmington, North Carolina  
Photo: Michael Blevins Photography

## Thank You to Our Advertisers

ClientPay ..... 2  
[www.clientpay.com/aia-north-carolina](http://www.clientpay.com/aia-north-carolina)  
 Custom Brick and Supply Company ..... 37  
[www.custombrick.com](http://www.custombrick.com)  
 Dri-Design ..... 4  
[www.dri-design.com](http://www.dri-design.com)

Metromont ..... 37  
[www.metromont.com](http://www.metromont.com)  
 Patterson Pope ..... 8  
[www.pattersonpope.com](http://www.pattersonpope.com)  
 Petersen Aluminum Corporation ..... 3  
[www.pac-clad.com](http://www.pac-clad.com)

Resolute Elevator ..... 7  
[www.resoluteelevator.com](http://www.resoluteelevator.com)  
 Riggs Ward ..... 37  
[www.riggsward.com](http://www.riggsward.com)  
 Sherwin-Williams ..... 8

### Published for:

The American Institute of Architects  
 North Carolina Chapter  
 14 E. Peace St.  
 Raleigh, NC 27604  
 p: (919) 833-6656  
 f: (919) 833-2015  
 e: [info@aianc.org](mailto:info@aianc.org)  
 w: [www.aianc.org](http://www.aianc.org)

NC Architecture is published by  
 Innovative Publishing.  
 10629 Henning Way, Suite 8  
 Louisville, KY 40241  
 (844) 423-7272

[www.innovativepublishing.com](http://www.innovativepublishing.com)

To advertise in future issues of  
 NC Architecture, please contact  
 (844) 423-7272 or [advertise@innovativepublishing.com](mailto:advertise@innovativepublishing.com).



INNOVATIVE  
PUBLISHING





Matthew Hart, AIA  
2022 President

## Welcome Home

"There's no place like home," said Judy Garland as Dorothy in the 1939 classic film *The Wizard of Oz*, as she closed her eyes and clicked her heels next to the Good Witch. She was hoping for a swift return to the comforts of her own bed in Kansas, and to her beloved Auntie Em and Uncle Henry. She certainly got it right; there really is no place like home.

Let's be honest; where else do you have rules but never break any of them? At our house, we have a "no slime" rule, in part because it not only ended up on the kitchen ceiling, but it also ended up in my daughter's hair ... all in just a matter of minutes! This resulted in blue stains on the white ceiling and a gracious chunk out of my daughter's red hair! This turn of events frustrated my wife and me in the moment, but it has also generated loads of laughter in our family since "the incident!" Memories that we and our home will have forever.

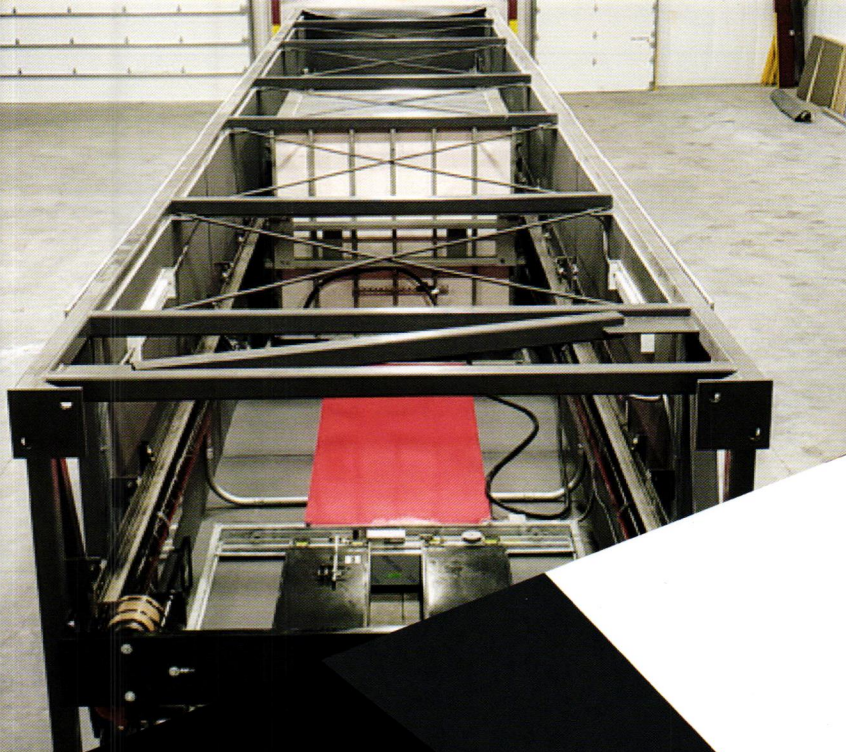
Your home is the physical place where you and your family live and spend a great deal of time, so it's no wonder that it's such a special place for so many. For most, home has taken on an especially significant meaning over the last few years. Through the pandemic, we have all spent more time at home than ever, and it's worth being thankful for the physical space that has been through it all with you.

This NC Architecture Issue is devoted to homes and celebrates the myriad architects and firms who have dedicated their careers to turning buildings into homes. I am amazed (but certainly not surprised) at the quality of work that has been included within this issue. For those published, I share my personal gratitude for the work you have designed in North Carolina and hope other members across the state will do the same!

Keep up the great work!

Matthew Hart, AIA  
2022 AIA North Carolina President





## RESOLUTE ELEVATOR LLC

Mailing: PO Box 723, Snow Camp, NC

Address: 2309 Air Park Drive,  
Burlington NC 27215

Phone: 919-903-0189

Fax: 336-232-9789

ResoluteElevator.com

Info@ResoluteElevator.com

Resolute Elevator continues to show the construction industry just how safe an elevator installation can be by using a modular elevator system. Not only is the customer receiving industry leading non-proprietary equipment and the job site becoming safer, but the client is also saving economically as well.

A quick summary of the modular elevator system includes: rubberized membrane roof, self-supporting fire rated shaft, pit light, pit ladder, pit GFCI, and all elevator equipment pre-installed and wired. Typical production time after approved submittal drawings are at 12 weeks, shipping 1 day, craning takes about 15 minutes and adjustment and inspection about 1 week. This means that all the trades associated with the above material related to the elevator no longer affect the pricing, timeline nor the susceptibility of change orders.

The modular elevator system changes the way that elevators are installed. Instead of a piece-by-piece installation, several redeployments and the possibilities of change orders, the modular elevator system (hoistway with all Code compliant elevator equipment and associated product) installs in one day.

**NOW OFFERING IN-PERSON FACILITY TOURS AND AIA  
CONTINUING EDUCATION CREDIT LUNCH AND LEARNS.**

### **KEY POINTS FOR OUR MODULAR ELEVATOR SYSTEM:**

Non-Proprietary Equipment • Expedited construction schedule • Economical Design • Increased job site safety



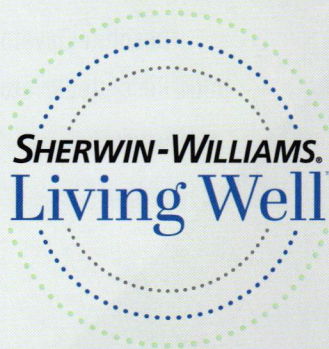
**50<sup>P2</sup>** YEARS OF STUFF



Only mother  
nature has  
more ingenious  
storage solutions.

STUFF MADE **SIMPLE.**

[pattersonpoppe.com](http://pattersonpoppe.com) | 866.866.4778



## The paint you trust.

**Now with Air Purifying Technology  
or Sanitizing Technology.**

The Living Well™ Collection includes paints and colors  
specially formulated to create a sense of comfort, style  
and well-being.

LEARN MORE AT **S-W.COM/SHOPLIVINGWELL**

SuperPaint® with  
Air Purifying Technology

SuperPaint® with  
Sanitizing Technology



### CONTACT YOUR LOCAL REP:

Russ Hansen  
Architectural AE / Specification Consultant  
Sherwin-Williams Company  
NACE CIP 2 Cert 75423, LEED GA, CSI  
**980.207.9410 | [Russell.E.Hansen@sherwin.com](mailto:Russell.E.Hansen@sherwin.com)**

© 2022 The Sherwin-Williams Company



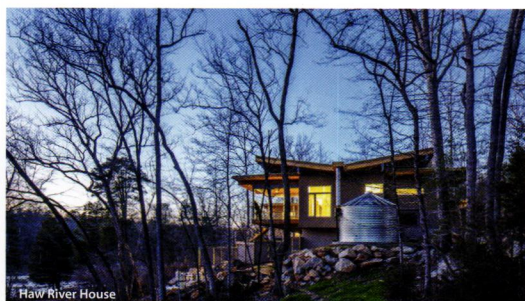
## Arielle Condoret Schechter, Architect PLLC

440 Bayberry Dr. Chapel Hill, NC 27517

(919) 933-1400 • acsarchitect@icloud.com • www.acsarchitect.com



Photographer: © Tzu Chen Photography



### Projects:

#### Baboolal Residence

The property's north side is adjacent to a neighbor's grassy meadow, which happens to be the dominant view from the residence as well as a butterfly and bee haven in the summer. Inspired by Shaker, we "borrowed" this serene view. The north side is also one of the more private sections of the site; the only houses visible from there are in the far distance.

The floor plan creates a progression of spatial experience. From the main entrance to the south, the interior soon expands into the spacious main living/dining/kitchen core. There, the entire north wall is composed of a massive, custom, operable glass door assembly that provides a panoramic view of the "borrowed" landscape. A broad, low-profile deck under a sweeping 12-foot cantilevered roof just outside those glass doors provides an immediate physical connection with the natural environment and greatly expands the owners' living space. The windows and doors were all custom made to passive house standards for energy efficiency and are part of the design strategy to bring the house to net-zero.

A few notable features designed specifically for this family's lifestyle include:

- A state-of-the-art gourmet kitchen with a small, sleek bar
- A "quiet zone" adjacent to the parents' suite
- A sequestered study off the open living space for listening to vintage vinyl jazz records
- A "secret playroom" that can only be accessed from the children's bedrooms

The house won a Matsumoto Prize in 2021.

#### General Contractor:

Newphire Building  
(919) 928-2664 • kevin@newphirebuilding.com

#### Haw River House

The house perches on a knoll above a broad band of rapids on the Haw River in Chatham County. Nestled into the edge of the forest, the elegant structure fits seamlessly into its surroundings. Expansive decks, —including a "floating" deck off the main bedroom suite, a deck with a soaking pool and integral hot tub, a deck off the main living core, and a screened porch — extend out toward the river like the trees that gracefully bend over it. The butterfly roof echoes a massive cleft boulder on-site.

The house's linear design parallels the river to maximize panoramic views. The open plan and fenestration are designed for natural light and ventilation. The main living core enjoys custom 20-foot-wide sliding glass doors. Luxury features include a master bathroom with a soaking tub, a fireplace and a corner window.

Distant from reliable sources of power, the 2,600-square-foot net-positive house is equipped with three geothermal wells for heating and cooling, a discreet rooftop photovoltaic (PV) array, and triple-glazed windows manufactured to European Passive House standards. A large central gutter in the butterfly roof collects water into two 5,000-gallon aboveground cisterns. The water collection system is currently rated as "graywater" but, after further testing by the local health department, will be designated "potable."

The Haw River House, winner of a 2020 juried Matsumoto Prize, provides its owners with both the maximum enjoyment of their spectacular site and a self-sufficient haven for their family.

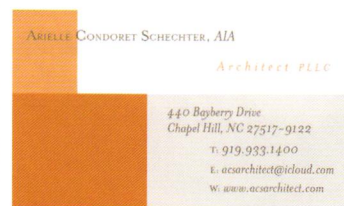
#### General Contractor:

Village Building Co.  
(919) 942-9006

### Firm Principals:

#### Arielle Schechter, AIA

Arielle Condoret Schechter, Architect PLLC, AIA, is a multi-award winning architect with a specialty in very sustainable but elegant modern houses. From her tiny 400- to 1,500-square-foot Micropolis® houses to luxurious 6,000-square-foot family homes and compounds — as well as other buildings of all types and sizes, her homes are located throughout North Carolina from the mountains to the coast. Prominent among her residential designs are Net Zero/ Net Positive Passive houses with data and certifications that prove their success at providing as much or more energy than the houses require, large or small.





## Arkatec/Kim Anderson, AIA

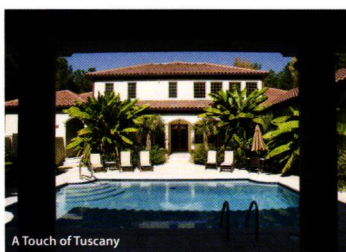
4500 Governor Hunt St. Efland, NC 27243  
(919) 621-7260 • arkatec@mindspring.com • arkatec.com



A Craftsman Ranch Home



A Craftsman Ranch Home



A Touch of Tuscany



A Touch of Tuscany

Photographer: Les Todd

### Projects:

#### A Craftsman Ranch Home

An Orange County horse estate for a couple with a passion for boarding, riding, training and showing their horses.

#### General Contractor:

Krichco Construction, Inc. • (919) 933-1211 •  
krichco@nc.rr.com

#### A Touch of Tuscany

A home inspired by the clients' extensive travel through Italy, who wanted a home which would reflect their love of

the Italian countryside, and of the estates, villas and wineries they had visited in the region's farmlands and vineyards.

#### Developer:

Kevin Huggins, Christopher Road Realty • (919) 360-1259 •  
kevinhuggins@chapelhillrealty.com

#### General Contractor:

Krichco Construction, Inc  
(919) 360-1259 • kevinhuggins@chapelhillrealty.com

### Firm Principals:

#### Kim Anderson, AIA

Arkatec/Kim Anderson, AIA, is a sole proprietorship formed in 1997 after the principal's earlier experiences working in the construction trades for seven years inspired him to turn to architecture school. That invaluable hands-on training helped to form the firm's operational philosophy that "the devil in the details" can inductively inform and inspire the development of design.

Our firm strongly believes that rather than imposing a personal architectural style on our client's projects, it is more satisfying to allow the client to drive the design's architectural style. This approach has given the client an appreciation of and a stake in the design process and a knowledge that the team is on the same side of the table as the client.

It also ensures the client's engagement and excitement in the design progress. It has helped the architect develop an understanding of the history of architectural styles and has led to the development of his personal architectural style that can contribute to client projects and to his work for himself.

**arkatec/**  
KIM ANDERSON AIA



## Arrowhead Designs

1520-5 Brookside Dr. Raleigh, NC 27604

(919) 228-8421 • info@arrowhead-nc.com • www.arrowhead-nc.com



Photographer: N/A



### Firm Principals:

**Jesse White, AIA**

Arrowhead Designs is a full-service architecture and landscape architecture design firm working in concert with Arrowhead Building Company to deliver modern design solutions with a focus on materiality, performance and artful detailing.

Designers and builders, Arrowhead offers a total package, integrating extensive fluency and experience in design and construction. Arrowhead Designs and Arrowhead Building Company have sought and attracted singular talents in architecture, landscape architecture, building science, carpentry and project management. Our diversity of experience culminates in an unrivaled turnkey experience.

ARROWHEAD

### Projects:

#### Burch Residence

Located on an urban lot in southwest Durham, the project places a strong emphasis on building science and architectural design. Painstaking efforts were made to achieve a high-performance building envelope with integrated sustainable systems — radiant floors, photovoltaic panels and high-efficiency appliances and fixtures. The architectural design utilizes a material palette of thermally modified wood cladding

and reclaimed local brick to balance contemporary design within the local context of Durham. The end result is a forward-thinking house full of artful details that embrace the patina of time.

#### General Contractor:

Arrowhead Building Company

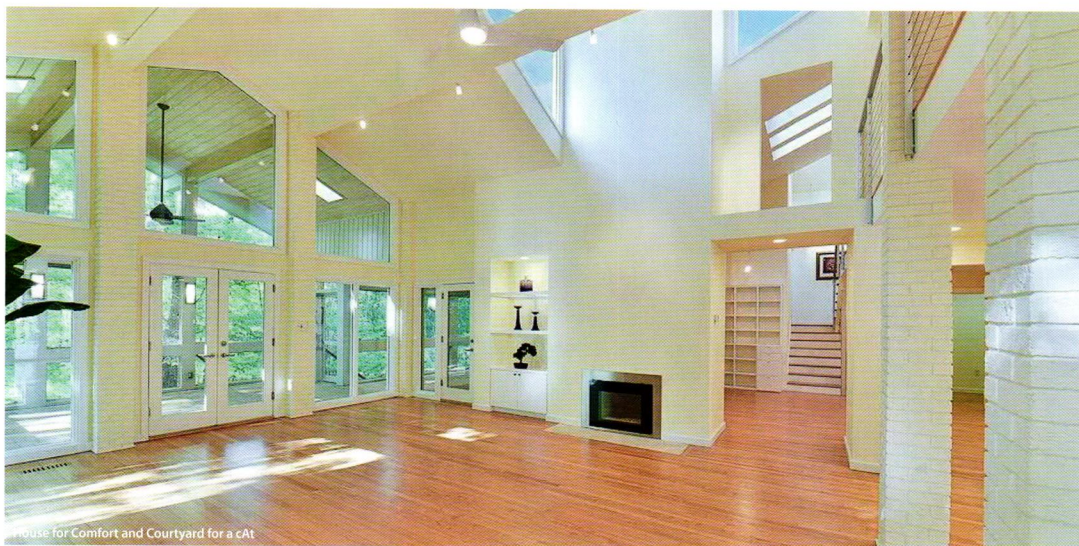
(919) 228-8421 • info@arrowhead-nc.com



## Arx Design Co.

8317 Stryker Ct. Raleigh, NC 27615

(919) 413-3371 • office@arxdesignco.com • www.arxdesignco.com



House for Comfort and Courtyard for a Cat



House for Art and Kids

Photographer: Lyn McClay

### Projects:

#### House for Art and Kids

This substantial addition and renovation was an update to an existing ranch home, opening the spaces to the surrounding hilltop views. The new shed roof-forms and large overhangs flood the interiors with natural light at ideal times.

The project included a lawn expansion and a large car-port that doubles as a shade shelter, outdoor play area and maybe a stage for the neighbor's band.

#### General Contractor:

Craig Fox • (336) 264-6571 • foxgcinc@gmail.com

#### House for Comfort and Courtyard for a Cat

This was a substantial renovation to an existing home in which we took the interior down to the studs, re-insulated, and included high-efficiency fireplaces and HVAC systems, efficient lighting and sustainably sourced materials. The result was a bright, open space in which the clients could display treasured art and read rare books.

#### General Contractor:

Kenny Pope

### Firm Principals:

#### Matthew Szymanski, AIA

Arx Design Co. is a small architecture firm specializing in residential work and branded spaces. Whenever possible, we start the design process by building a team including the builder. This cooperative process creates achievable expectations and helps us avoid surprises. Involving the contractor in preliminary phases also provides pricing in time to ensure clients can apply resources to the greatest project priorities.

We keep things simple, clean and clear in our designs and processes.

# ARX DESIGN CO.



## Bruce Johnson Architecture

66 Forest Rd. Asheville, NC 28803

(828) 274-3922 • bjaia@charter.net • www.brucejohnsonaia.com



Photographer: N/A

### Projects:

#### High Camps

Single-family vacation lake home, broken down into four separate buildings — main house, game lodge, guest house and garage with apartment.

#### Developer:

Owner

(828) 712-1621 • bjaia@charter.net

#### General Contractor:

Lake James Custom Homes LLC

(828) 712-8436 • kyle@lakejamescustomhomesllc.com

### Firm Principals:

#### Bruce Johnson, FAIA

Bruce has been designing environmentally sensitive, site-responsive residential and commercial buildings since 1976. In 1990, he started Bruce Johnson-Architecture, PA, in Asheville, North Carolina. The firm specializes in primary residences and vacation retreats ranging from small rustic cabins and bungalows to large mountain camps and lodges.

Bruce's projects can be found in Maine, Florida, the Caribbean, throughout North Carolina and, most recently, in China. Before moving to Asheville, Bruce was a principal at Innovative Design in Raleigh, where he designed energy-conscious commercial facilities and residences. Bruce has a B.A. in fine arts from the University of North Carolina at Chapel Hill, a Master of Architecture from North Carolina State in Raleigh and is certified by the National Council of Architectural Registration Boards. He is a member of the American Institute of Architects and the American Solar Energy Society, and is chairman of the Town of Biltmore Forest Design Review Committee.

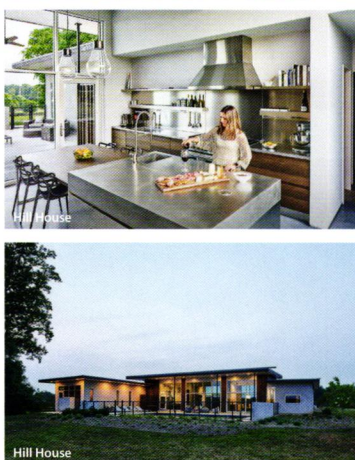
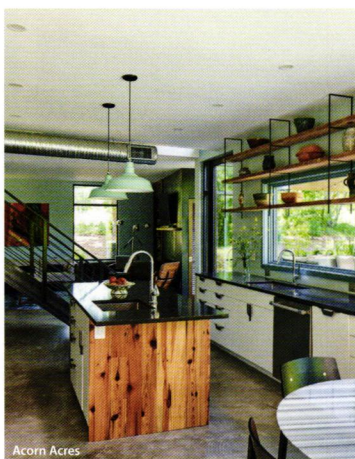
In order to ensure that clients receive the highest level of personal service over the course of their projects, the firm has been kept small and workflows scheduled accordingly. Bruce does all the design and construction consultation as well as supervising the construction documents.

**Bruce Johnson**  
ARCHITECTURE



## Calico Studio PLLC

1141 Smith Level Rd. Chapel Hill, NC 27516  
(919) 537-9659 • info@calico-studio.com • www.calico-studio.com



Photographer: Keith Isaacs Photo LLC

### Projects:

#### Acorn Acres

In creating Acorn Acres, our clients needed a place where family, friends and community could come together. The structure needed to support the clients' goals of living entwined with nature and cultivating social wellness. Inspired by the abundance of butterflies seen throughout the property, we began to build an understanding of the organism's wing structure and how they interact with their environment, applying this knowledge to our overall goals of being self-sufficient and off-grid. Connected to the property with well-worn paths, this space inspires living in community and harmony with the land.

#### General Contractor:

David Ballard, Ballard Construction  
(919) 291-0556 • buildernc@hotmail.com

#### Hill House

Our clients have strong feelings for order balanced with a passion for entertaining. Referring back to the classic architecture of the Greeks and Romans, we created a framework of quiet and active bars that capture the views as well as organize the program along the broad crest of their prominent hill. We accentuated the natural drama by playing off the shape of the hill by inverting the trusses in the active bar to open up the views to the west and east.

#### General Contractor:

Bold Construction

### Firm Principals:

#### Heather Washburn, AIA, LFA

Calico has a wide variety of experience in architecture, graphic and product design. Our studio enjoys working with clients that are appreciative of both the artistry of design and the process. We look for opportunities to push beyond the norm and investigate innovative materials, forms and processes.

We are a studio of problem solvers and idea generators. What sets us apart is our teamwork, service and ability to think outside the box. We follow our passions to find projects that challenge us to think in different ways. We make a conscientious effort to be kind to the environment and look to Mother Nature as a resource of knowledge in all of our design work.

Most importantly, we are our client's advocate. We listen to our client's needs and desires; we help them come up with a plan that incorporates their goals, budget and timeline. We help our clients execute the plan, acting as their facilitator, designer and/or architect.

CALICO STUDIO



## Coffey Architecture

7883 Hwy. 105 S., Ste. C Boone, NC 28607  
(828) 963-7639 • hunter@hpcarch.com • www.hpcarch.com



Blackburn Homestead



The Block House

Photographer: Michael Blevins

### Projects:

#### Blackburn Homestead

Quite literally sibling houses, the Blackburn Homestead was a study of form, ambiguity and tectonics, as a dialogue shared by two structures is stretched across a rural landscape. The owners challenged us with the task of designing for two different programs and personalities while reflecting their close relationships within the architecture of their individual homes. The rectangular shell of house one extends beyond the walls of the house, with its program strategically tucked beneath. The line of sight upon entering visually stitches this program together as its user looks through the glass entrance door, over the stairway, through a window into the office, out the window on the other side of the office and finally through the glass door out to the porch. The agrarian nature of the vertical cedar planks define the edge of the enclosure and controls daylight and views to its neighboring house below. House two's main living space is captured by a two-story mass on each end, clad in the same vertical planks as house one, and "bookending" the transparent center that connects the south garden, great room, kitchen and north porch, visually blurring the lines between the two. Finally, each house contains its own outlier space, whose footprint is rotated off of its owner's axes and floats over its program/landscape below.

These outlier spaces, clad in anodized aluminum and floating over the landscape, visually communicate with one another and allow its users to step outside the boundary of its architecture below.

#### General Contractor:

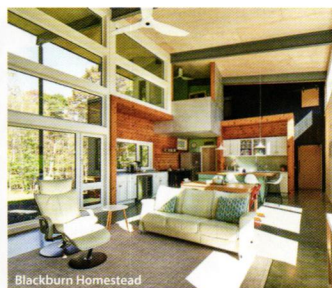
Dacchille Construction  
(828) 964-5150 • bill@dacchillconstruction.com

#### The Block House

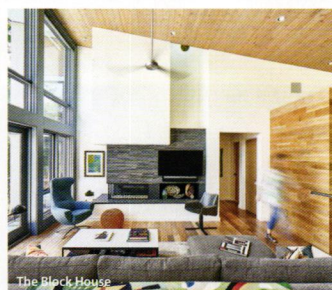
Separating the nearby road to the north from the woodlands to the south, this linear home creates a place where a couple and their dog can appreciate the mountain setting. Views, daylight and breezes flowing through carefully considered gaps in a composition of stacked blocks offer an intimate relationship with the natural surroundings. Thick walls provide thermal protection, niches for occupation and a heightened sense of shelter. A sunny terrace, with steel trees supporting a canvas canopy, adapts to seasonal occupation. This sustainable residence promotes a relationship with nature, employs efficient construction and offers an environment for "aging in place."

#### General Contractor:

Dacchille Construction



Blackburn Homestead



The Block House

### Firm Principals:

#### Hunter Paul Coffey, AIA

Hunter Paul Coffey Architecture PLLC is a licensed, full-service architecture and design firm located in Boone, North Carolina. Under the direction of Hunter Coffey, a native of the North Carolina High Country with more than 18 years of experience in a variety of project types, the firm is dedicated to creating meaningful, carefully considered, accessible and complete designs.

HUNTER PAUL  
**COFFEY**  
ARCHITECTURE PLLC



## Dogwood Architecture PC

1106 Audubon Blvd. Wilmington, NC 28403

(910) 769-4467 • [eric@dogwoodarchitecture.com](mailto:eric@dogwoodarchitecture.com) • [www.dogwoodarchitecture.com](http://www.dogwoodarchitecture.com)



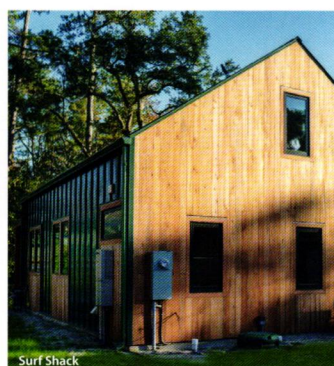
Blue Avenue



Blue Avenue



Surf Shack



Surf Shack

Photographer: Harry Taylor Photography

### Projects:

#### Blue Avenue

Blue Avenue has an odd-shaped lot in the historic, coastal Summer Rest neighborhood at the foot of the bridge to Wrightsville Beach. The goal was to introduce a contemporary design into the eclectic vernacular of the well-established neighborhood in a way that is inspired by and acknowledges the location but still maintains a modern feel. Overlapping rectangular boxes connect to enclose living spaces that flow between interior and exterior. There are 4,200 square feet of conditioned space with separate public and private entrances and circulation. A standing seam metal roof, brick veneer and Balau siding were selected for resiliency in a harsh coastal environment. The primary entrances have cantilevered porch roofs that mimic being peeled back and up to reveal the Balau siding and ceiling to represent the warmth of the home's interior. Twenty-two 400-watt photovoltaic solar panels generate power on-site. An on-demand gas water heater, foam insulation and tight building envelope ensure energy efficiency is maximized.

#### Developer:

Owners

#### General Contractor:

Bell Custom Homes  
(910) 859-8062 • [info@bellcustomhomes.com](mailto:info@bellcustomhomes.com)

#### Surf Shack

The goal was to design a simple, small home for a pro surfer on his family's land off Bradley Creek. The owner travels the world chasing large waves and needed a place to rest and recuperate when not following the swells. The home utilizes standing seam metal roofing/siding, cypress and polished concrete to endure weather and hurricanes in the coastal environment. An exposed interior wood truss is inspired by an adjacent wood shop that was used by his grandfather. The bottom chord of the trusses will be utilized to store the owner's eclectic collection of surfboards in the future. A glass overhead door connects the living room to the landscape of live oaks and Spanish moss, allowing the blurring of interior and exterior. Soon, a concrete skateboarding bowl will be added, connecting to the side porch to complete the concept.

#### General Contractor:

Southern Tide Construction Company

### Firm Principals:

#### Eric Jabaley, AIA

Dogwood Architecture focuses on helping clients to realize their dreams for their living environment. Dogwood strives to find modern solutions for designs that are rooted in the local vernacular. Dogwood is dedicated to designs that create energy-efficient and sustainable buildings that are also resilient and durable, contributing to a healthy home and community.





## Edgens Herzog Architects AIA

10 Foreman Rd. Highlands, NC 28741, and 238 Clingman Ave. Ext. Asheville, NC 28801  
(828) 526-2413 • contact@edgensherzog.com • www.edgensherzog.com



Cow Rock Residence



Old Horse Barn Road Residence



Cow Rock Residence



Old Horse Barn Road Residence

Photographer: Aaron Hogshed

### Projects:

#### Cow Rock Residence

This project is located in Lonesome Valley, a spectacular box canyon near Cashiers, North Carolina. The private community emphasizes stewardship of the land and covers 800 acres of native forests, streams and waterfalls. The majority of the lots have spectacular views of the surrounding canyon. This project has a spectacular view of Cow Rock. The dining area and kitchen flow seamlessly into the large screened porch and to the yard beyond.

#### General Contractor:

Tim Sadlon, Sadlon & Associates  
(828) 349-0400 • tim@sadlonandassociates.com

#### Interior Design:

Tracy Interiors

#### Landscape Architect:

Jeremy Smearman, Planters, Inc.

#### Old Horse Barn Road Residence

Originally there was a small cabin located on the property. That cabin ultimately became the main bedroom, and its language became the inspiration for the project. The owners want a family compound that they can continue to add to over the years. The first phase is the renovation and expansive addition to the original structure as well as the new "car barn." The large porches off of the living room and kitchen are organized so they overlook the stream and gorgeous waterfall, which are predominant features of the site.

#### General Contractor:

John Lupoli, Lupoli Real Estate & Construction

#### Interior Design:

Teri Thomas, Teri Thomas Interiors

#### Landscape Architect:

Jeremy Smearman, Planters, Inc.

### Firm Principals:

**Sam Edgens;**

**Sarah Frances Herzog, AIA**

We founded our firm, Edgens Herzog Architects, in Highlands, North Carolina, almost 20 years ago. The Highlands Plateau is a uniquely beautiful area located up in a temperate rainforest. The mountain views are stunning, the forests are full of natural rhododendron and mountain laurel, and there are abundant streams and lakes. We strongly believe that our architecture should respond to its surroundings and that the experience inside the residence should incorporate and be an exploration of the exterior features of the site. Active listening with our clients is critical at every step of the process. We want each project to be an expression of our client's personality, taste and lifestyle. We cherish the long-term relationships with our clients that we have built over the years. We focus on strong and collaborative relationships with the builders, landscape architects, interior designers and other professionals we work with on every project. We work as a team from the beginning of the project to the end. We want the process to be as smooth for the client as possible. All of our projects are unique, as each one is a reflection of the site, the client and then our ability to turn those desires into physical form. The best part of our practice is that we are creating unique places that become integral in our clients', their friends' and their families' lives and memories.

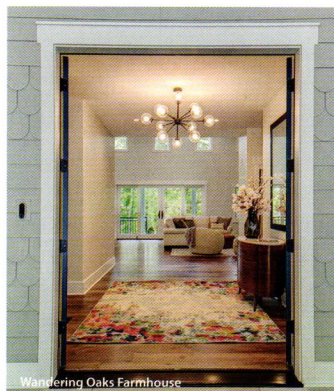




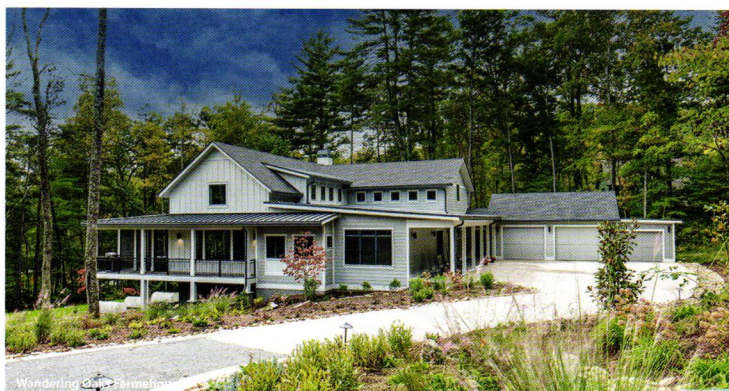
## Form & Function Architecture

9 Walnut St., Ste. 3B Asheville, NC 28801

(828) 575-2423 • info@ffarchitecture.com • www.ffarchitecture.com



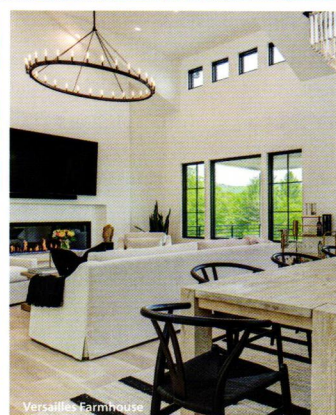
Wandering Oaks Farmhouse



Wandering Oaks Farmhouse



Versailles Farmhouse



Versailles Farmhouse

Photographer: Danny Gale

### Projects:

#### Wandering Oaks Farmhouse

This home is a lovely five-bedroom, three-bath contemporary farmhouse in a gated community in Swannanoa, North Carolina. The great room concept creates a lovely family room with plenty of windows to take in the mountain views, and transom windows to let in natural sunlight in purposeful places. The home features a beautiful stone fireplace, custom built-ins, a large screened-in porch, vaulted ceilings, a second living suite in the basement, a three-car garage and a lower-level hobby garage. Unique but thoughtful details are found all over, from the flooring patterns to the play of scallop siding with the lap siding and the tile layouts. Even the door to the pantry has fun cutouts and accentuates the design intent of the space. This home is the encompassment of family with beautiful yet functional design.

#### General Contractor:

Silver Dog Construction  
(828) 230-5727 • jimmy@silverdog.org

#### Versailles Farmhouse

This private residence located in the Thom's Estate gated community is the second home in Thom's Estate that Form & Function has designed. The phenomenal clients wanted some interesting features and tons of windows allowing panoramic views of the mountains. Some of the fun features in this home include radiant floors, a corner window in the kitchen, mullioned black windows to contrast with the light beige exterior and large upper and lower decks. This home provides plenty of space for the owners to entertain their guests, both indoor and outdoor.

#### General Contractor:

Chris Kaselak

### Firm Principals:

**Myles Alexander, AIA;**

**Emili McMakin, AIA**

A small firm by choice, Form & Function Architecture's reputation is one of providing a professional and personal experience that larger firms are unable to duplicate due to the level of involvement of the principal in the project. Not only intimately involved in the front-end programming and design processes, the managing principal has a key role in the creation and quality control of the contract documents. The managing principal then moves with the project to the construction phase and is responsible for all construction contract administration for the project. This attitude of professional and personal responsibility is present in each staff member at Form & Function and is another key element in our success.

We believe our professional responsibility goes beyond just providing drawings for construction purposes; our commitment to a complete integration of your current and future needs, budget requirements and construction techniques creates a design that satisfies your architectural and environmental needs. We approach all our projects with a desire to carefully understand our clients' needs, analyze the existing conditions and integrate the design between the two. Doing anything less would be performing a disservice to the various stakeholders of your project.



**FORM & FUNCTION**  
ARCHITECTURE



## Grant Group Architecture

1502 W. NC Hwy. 54, Ste. 602 Durham, NC 27707  
(919) 490-3733 • office@grantgrouparch.com • www.grantgrouparch.com



Photographer: Marilyn Peryer

### Projects:

#### A Vision of Home

The owners of a beautiful piece of land in Orange County had worked on ideas about their future home for a long time and arrived in our office with a clear vision of the spaces and adjacencies they wished for in their new house. We were delighted to apply our process of iterative, collaborative design to assist in making their dreams a reality. At the heart of the home is a kitchen for an avid chef, casual and sophisticated dining options and a double-height living room. Laminated structural wooden elements combined with steel connectors support a loft for work and play and a guest suite for visiting grandparents. The same language of wood and steel appears in a custom "floating" staircase. Other parts of the house include a cozy family room, two first-floor bedroom suites, a home office and a gym outfitted for aerial dancing. A variety of outdoor spaces include a pond viewing deck above the covered front porch, private bedroom porches, a screen porch and poolside patios.

#### General Contractor:

Owners

#### Screen Porch Paradise

Outdoor living at its finest! This screen porch added 750 square feet of pleasure to a delightful, eclectic home in the Solterra community in Durham, North Carolina. Amenities include a gracious dining area, a generous seating area with a stone fireplace and a copper hot tub. A stunning antique door connects to the main house's living room. A dramatic open stair leads to a cozy balcony above, also accessible from the upstairs bedrooms. On the west side of the porch is a private patio courtyard. On the east side, a gravel path leads to the community greenway.

#### General Contractor:

JD W Roberts Construction

### Firm Principals:

**Brian Grant, AIA;**

**Katie Wakeford;**

**Georgia Bizios, FAIA Member**

**Emeritus (Principal Emerita)**

At Grant Group Architecture, we are devoted to creating value for our clients through personalized, high-caliber design services. Our designs originate from a unique and engaging process that results in a holistic understanding of each client's needs and dreams. This customized perspective is then carried to the project site, where issues of landscape, neighborhood, views, solar orientation, sustainability and energy efficiency are brought together in a creative, value-focused design process.

The strength of Grant Group Architecture lies in our approach. We directly and personally engage clients and collaborators. Through our process, the simple acts of listening, learning and discussion provide insight into the unique aspects of each new project. Sketching, drawing and all types of modeling, including 1-to-1 scale mockups, expanding design ideas into built reality.

Since our founding in 1990 (previously Bizios Architect), our portfolio includes an eclectic mix of projects, from new construction and additions to small and large homes to places of worship and to small renovations that breathe life into older spaces. Our team approach provides flexible, accessible and personalized assistance to clients embarking on the rewarding journey of designing, building, renovating or expanding their built world.

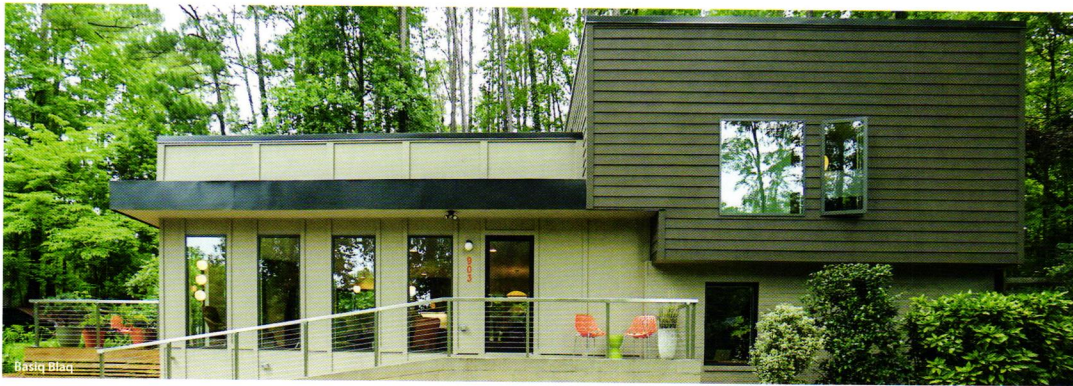
**GRANT GROUP**  
architecture



## Habanero Architecture

555 Fayetteville St., Ste. 300 Raleigh, NC 27601

(919) 830-3928 • joe@habaneroarchitecture.com • www.habaneroarchitecture.com



Photographer: Janssen Strother

### Projects:

#### Basiq Blaq

The elements of the natural context of North Carolina blend perfectly with this gable-shaped home. Basiq Blaq is a beautiful black and tan house located in Raleigh. The project's goal is to introduce more affordable contemporary homes for Triangle-area housing.

This modern ranch-style residence takes its shape from the archetypal gable form and helps to integrate itself into the neighborhood. Although the house presents a modern intervention, the project's scale and proportional parameters integrate into its context.

Natural light and ventilation are passive goals for the project. A strong indoor-outdoor connection was sought by establishing views toward the wooded landscape and having a deck structure weave into the public area.

#### General Contractor:

Jose Lopez, AIA, NCARB

(919) 830-3928 • joe@habaneroarchitecture.com

#### Greenwood Residence

This remodeling project acquired a new face and interpretation of the spaces by liberating the floor plan. Walls were removed to allow natural light to come into the space. This old split-level home was transformed from the inside to the outside.

On the outside, a new material palette was introduced by the use of metal and cementitious panels. The interior living area connects to a wooded deck that wraps this social area. The program was simplified by allowing the kitchen and living room to share the same space.

#### Developer:

New Native Realty

(919) 272-1753 • tim@newnativerealty.com

#### General Contractor:

Remade Modern

(919) 272-1753 • tim@newnativerealty.com

### Firm Principals:

**Jose Lopez, AIA, NCARB**

Custom and creative is our standard. Habanero Architecture is a pragmatic and innovative architecture studio established in 2020 in Raleigh, North Carolina. We are a collective group of passionate architects and designers who are fully committed to delivering design excellence. At heart we wish that every project brings uniqueness in form and function.





## Harding Huebner

573 Fairview Rd., Ste. 4 Asheville, NC 28803  
(828) 333-9018 • inquiry@hardinghuebner.com • www.hardinghuebner.com



Photographer: Keith Isaacs

### Projects:

#### Nova Residence

The Nova Residence is approximately 3,300 square feet and built of glass, steel, stone, concrete and Garapa.

The narrow wooded site is about 0.5 acres and has a steep cross slope from the northeast corner to the southwest corner.

The Nova Residence is located in the mountains of Asheville, North Carolina, in the western part of the state. The site is steeply sloped with long-range views of the Appalachians to the west and foreground views of downtown Asheville.

The homeowners, formerly of Austin, Texas, were attracted to Asheville by its robust beer and food culture, mild winter and summer climates, pristine air quality, active outdoor lifestyle and as a respite from the hustle of a big city.

The site's unique cross slope starts gradually but becomes more severe moving away from the street and toward the middle of the house. The design is an almost

inevitable synthesis of site conditions and the homeowners' vision. The parti diagram is a roof plane and floor plane suspending a completely glass center. The views take center stage, but the interiors are enlivened by ample use of clear-stained walnut, light-hued natural stone slabs, blonde oak floors and neutral-toned fabrics and furniture.

Exterior materials were selected to both weather naturally and gracefully but also blend with the surroundings: the Garapa wood siding was left to weather over time without the application of stain or paint, the concrete (an inherently local material) foundation is exposed and the stone was quarried locally.

The footprint is compact, and the all-glass wrapper conceals a complex, cantilevered steel structure that allows the house to float lightly above the steep terrain.

#### General Contractor:

Milestone Contracting/Dustin Penland  
(828) 342-8211 • dustin@milestonebuilding.com

### Firm Principals:

**Chad Harding, AIA;**  
**Scott Huebner, AIA**

Harding Huebner is an Asheville, North Carolina-based architectural practice led by principal architects Chad Harding and Scott Huebner. With their nearly 50 years of collective experience, they explore an architecture that is highly detailed, is rooted in place, honors the materials and craftspeople who build them and seeks solutions that connect more deeply to the environment. The firm is composed of a diverse and talented team of designers and architects.

HARDING  
HUEBNER



## in situ studio

704 North Person St. Raleigh, NC 27604  
(919) 397-3949 • staff@insitustudio.us • www.insitustudio.us



Photographer: © Keith Isaacs

### Projects:

#### Fault House

The Fault House is located at the edge of a deep ravine, between the forest and a suburban street. Four site walls create a perch for the main volume of the house — a spare box with articulated roof forms. The curvaceous entry and stair spaces are accessed at the southeast corner of the plan and direct movement toward the open north wall of the main living space, an elevated deck and views of the forest and ravine. The boxy exterior of the house shrouds a voluptuous and porous interior.

#### General Contractor:

Aiello Builders  
(919) 427-8844 • aiellobuilders@gmail.com

#### House BC

House BC is in a post-war suburb on a tight lot by Raleigh's Hebrew Cemetery. The house is solid from the street, with only a deep entry and a hint of green roof suggesting what is within. The entry void leads to a front door in the middle of the house, by a courtyard. Every space in the house opens to the courtyard. Inside, the wonder of the site becomes clear — an unimpeded view across the cemetery to the skyline. Contrasting the heavy front, primary spaces at the rear of the house open to the lush yard and distant view.

#### General Contractor:

Kemp Harris Builders

### Firm Principals:

**Matthew Griffith, AIA;**  
**Zach Hoffman, AIA**

We are an intentionally small, design-based architecture practice located in Raleigh, North Carolina.

As both practitioners and teachers, we pursue work that matters in our community, seek unique outcomes for each client and site that elevate the imagination for design in our region and have a leading voice in the still-vital modernist narrative in the American South.

We have been nationally recognized for the quality of our work across many building types. We do not sell a "product," instead relying on a time-intensive, collaborative design process to produce beautiful, well-functioning architecture. We value architecture that is timeless and permanent in the way it reflects a long-term commitment to the quality of a place.

The work we do is immensely fun and endlessly varied. We are very pragmatic in the fact that nearly every project we have designed has been built. We are insatiable students of precedent, building from local traditions of modernism and learning from current work farther afield. Most critically, we want to provoke our nearby building community to imagine a more thoughtful and well-made built environment.

## in situ studio



## Josh Allison Architecture PLLC

2031 Euclid Ave. Charlotte, NC 28203

(704) 996-4949 • josh@joshallisonarchitecture.com • www.joshallisonarchitecture.com



Chadds Ford Pool House



Modernist Addition

Photographer: Scott LePage

### Projects:

#### Chadds Ford Pool House

The project added a pool and pool house addition to a historic Pennsylvania estate. Intended to blend with the historic surroundings, the newly constructed pool house offers convertible functionality and an interior that is a sensitive departure from the 19th century architecture.

#### General Contractor:

Cherokee Construction

(215) 248-1800 • info@cherokeekonstruction.com

#### Modernist Addition

Located in Charlotte, this project was a remodel and addition to a 1950s ranch that was intended to bring fresh life, more space and a midcentury modern vibe to an awkward 1950s ranch.

#### General Contractor:

Hopedale Builders

### Firm Principals:

#### Josh Allison, AIA

Josh Allison Architecture has a focus and passion for single-family projects. Founded on the belief that single-family architects should serve more than just the high-end projects, JAA seeks to keep an interesting mix of design-oriented projects on the boards. This means JAA projects range from small-scale, budget-sensitive renovations to large additions, historic remodels and new construction homes of all sizes. With a portfolio of work that represents contemporary and traditional projects, JAA looks for opportunity to bring creativity, value and a high level of personalized service to each client.

**JOSH ALLISON**  
ARCHITECTURE



## Kersting Architecture

4022 Market St., Ste. 201 Wilmington, NC 28403

(910) 763-1348 • kerstingarchitecture@gmail.com • www.kerstingarchitecture.com



Photographer: Michael Blevins Photography

### Projects: Surrender

Time is the rarest commodity. So little do we set aside for simply being, to surrender to its passing. It is with this notion we created a family beach home on Figure Eight Island, North Carolina.

In order to reach this condition of stasis, balance must be achieved — just as the wind and sea coalesce to create a dune. We sought a similar equilibrium in all aspects of the design, between sanctuary and transparency, novelty and timelessness, organic and refined. Through this parity we hoped to make a place of meaning, to create a home called Surrender.

#### General Contractor:

KingPost Builders

(910) 367-9323 • kingpostadambutler@gmail.com

### Alpine Modern

"Alpine Mod" is located at the foot of Grandfather Mountain in North Carolina. Located on the foundation of the owner's childhood home and built around the memory-filled central fireplaces, the house engages the sloped site with main-level access in front and a walkout basement behind. The vaulted living core has glass end walls, allowing the wood ceilings to flow onto the outdoor living spaces, letting the residents enjoy the natural surroundings while blurring the interior and exterior separation. The core is flanked with a service wing to the south and a wing of bedroom suites to the north.

#### General Contractor:

Dacchille Construction

### Firm Principals:

**Michael Kersting, AIA;**  
**Mark Wilson; Toby Keeton**

Established in 1995, Kersting Architecture is a Wilmington, North Carolina-based boutique architecture firm focused on designing and executing built, landscape-specific, high-quality custom architecture. Through the practice of architecture, Kersting Architecture seeks to enhance the lives of our clients and our community by offering thoughtful and progressive design solutions. Kersting Architecture takes care to understand the specific needs and desires of their clients and the physical and cultural characteristics particular to each project. By pursuing ideas that arise from these unique conditions, Kersting Architecture strives to create places that are authentic, provocative, meaningful and responsive.

**KERSTING**  
ARCHITECTURE | PERIDOT  
INTERIORS  
Wilmington Raleigh



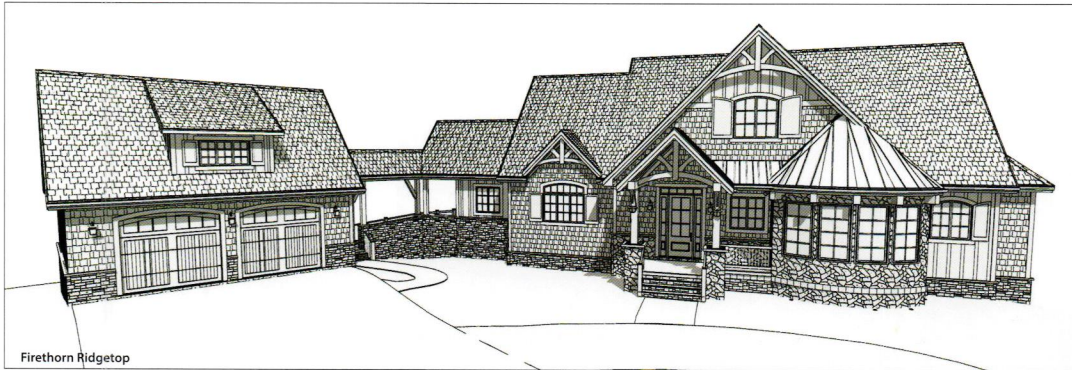
## Marland Architecture

314 Hillandale Dr. Boone, NC 28607

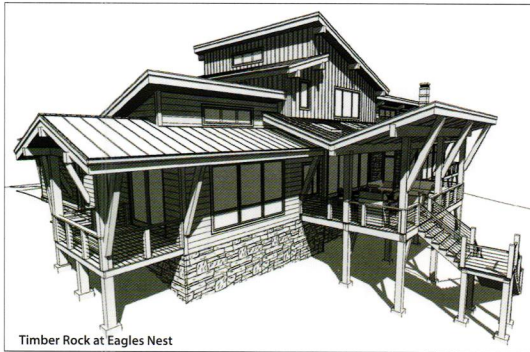
(828) 964-9274 • marlandarchitecture@gmail.com • www.marlandarchitecture.com



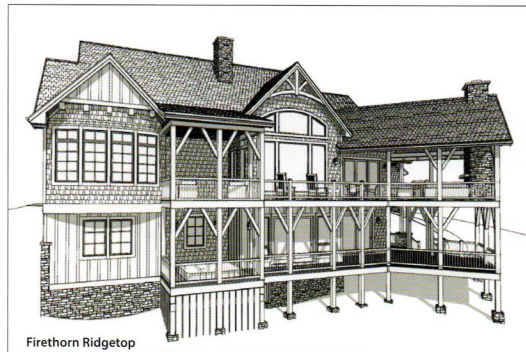
Timber Rock at Eagles Nest



Firethorn Ridgetop



Timber Rock at Eagles Nest



Firethorn Ridgetop

Photographer: K. Marland

### Projects:

#### Timber Rock at Eagles Nest

The Timber Rock House is a private residence currently under construction in the Eagles Nest community of Banner Elk, North Carolina.

#### General Contractor:

Tom Eggers Construction LLC

(828) 963-7000 • tomeegersconstruction@gmail.com

#### Firethorn Ridgetop

The Firethorn Ridgetop House is a private residence currently under construction in the Firethorn community of Blowing Rock, North Carolina.

#### General Contractor:

Alair Homes High Country

### Firm Principals:

#### Kimberly Marland, AIA, LEED AP

Marland Architecture in Boone, North Carolina, focuses on residential design and strives to design unique homes to bring the dreams of their clients to life while realizing the opportunities of the mountain topography of our area. Kimberly Marland, AIA, LEED AP, is the principal and sole proprietor, with an expansive portfolio of projects in the towns of Boone, Blowing Rock, Banner Elk and Beech Mountain including the neighborhoods of Eagles Nest, Blue Ridge Mountain Club, Sweetgrass, Firethorn, Councill Oaks and Sunalei Preserve. Founded in 2002, Marland Architecture thrives on providing personal service and attention and believes in a team approach with clients and builders to achieve excellence in design and construction.



Marland  
Architecture



## Meadows Architecture

2745 Old Sugar Rd. Durham, NC 27707

(205) 243-5029 • jmeadows@meadows.eco • www.meadows.eco



Photographer: Meadows Architecture



### Projects: Courtyard House

The Courtyard House is a renovation and addition to a single-story house in a quiet Durham neighborhood. The tight budget meant much of the existing structure had to be preserved, and the small lot meant limited room for expansion. The resulting design made use of a central courtyard space as an outdoor room and extension of the public-facing living spaces.

The wraparound porch doubles as an outdoor seating and planting area, while pervious pavers keep the courtyard drained and dry. The exterior appearance drew inspiration from the pines heavily populating the site, featuring an all-natural wood siding carefully

selected to resist rot and insects. The living room was constructed in place of the existing carport, a clever move that saved money while also adding valuable square footage to the home.

The amount of natural daylight now entering the living spaces has radically changed how the house is used by its owners. This merging of indoor and outdoor space has promoted a healthy and sustainable lifestyle, both in personal relaxation and for hosting guests.

#### General Contractor:

Horizon Building Solutions

(919) 868-2493 • hortoncustoms@yahoo.com

#### Firm Principals:

##### Jonathan Meadows, AIA

Meadows Architecture offers a full range of architectural services that includes initial walk-throughs and consultations, conceptual and schematic design, full construction drawings and construction administration. We also partner with reputable local construction firms and building consultants to ensure the completed design is of the highest quality.

Sustainability can mean a lot of things, but to us the focus is always on energy efficiency, the natural environment and local materials and craftspeople. By building in a way that directs our senses toward the natural beauty around us, our homes can promote a healthy and sustainable lifestyle. And when we utilize local businesses, products and artisans, we not only reduce the carbon emissions related to transportation and shipping, but we also help to bolster the local economy and provide economic incentives for further investment in the state.

# Meadows

ARCHITECTURE



## Nick Nye

Ocean Isle Beach, NC

(910) 540-3663 • [nick@nicknye.biz](mailto:nick@nicknye.biz) • [www.nicknye.biz](http://www.nicknye.biz)



Photographer: Chris Kiser

### Projects:

#### Kiser Residence

Cherry Grove NMBSC canal home.

#### Developer:

Chris Kiser

(910) 540-3663 • [clydekiser@gmail.com](mailto:clydekiser@gmail.com)

#### General Contractor:

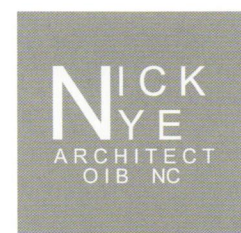
Clyde Kiser

(910) 540-3663 • [clydekiser@gmail.com](mailto:clydekiser@gmail.com)

### Firm Principals:

#### Nick Nye

Nick Nye – Architect is a sole proprietor providing design services in OIB since 2008.





## Notch Design

P.O. Box 9052 Chapel Hill, NC 27515  
(919) 260-5709 • info@notchdesign.us • www.notchdesign.us



Sliding Gable House



Sanctuary Study

Photographer: Michael Dickson-Mills

### Projects:

#### Sliding Gable House

A simple yet deconstructed house form with a thoughtful floor plan creates a rich relationship to a gorgeous, wooded site.

#### Developer:

Steven Mills  
(919) 614-1131 • stevenmills@gmail.com

#### General Contractor:

Newphire  
(919) 928-2664 • kevin@newphirebuilding.com

#### Sanctuary Study

A peaceful home office provides a quiet place for escape and study for an academic researcher.

#### Developer:

Elvira Vilches  
(919) 259-6536 • elvira.vilches@duke.edu

#### General Contractor:

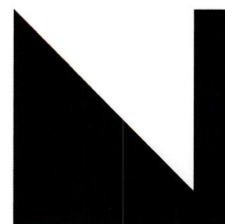
Mongoven Builders  
(919) 259-6536 • elvira.vilches@duke.edu

### Firm Principals:

**Michael Dickson-Mills, AIA;**  
**Jose Noya, AIA**

Notch Design is a full-service architecture and design firm based in the Triangle area of North Carolina. We design new construction and renovations of residential and commercial buildings at a variety of scales for a diverse range of clients. We started this firm in 2019.

We employ modern design strategies that are driven by performance rather than style. We strive for bold, thoughtful design solutions specific to each project's function and context. Our designs are personal and reflect our clients' desires and personalities.



**NOTCH**



## O'Brien Architecture

121 Bull Mountain Rd. Asheville NC 28805  
(704) 651-7144 • michael@obrienaia.com • www.obrienaia.com



Eastway Village



Bull Mountain

Photographer: Sharon O'Brien/O'Brien Studios

### Projects:

#### Eastway Village

These are houses designed to fit into an urban context. They are affordably priced but have details and materials that give them individual identity. These are intended for homeowners as part of a new village of homes near downtown.

#### Developer:

City of Durham  
(919) 560-4570 • richard.valzonis@durhamnc.gov

#### General Contractor:

Blue Ridge Enterprises  
(336) 789-2134 • thgreenwood@bre-inc.com

#### Bull Mountain

This house is on a winding country road, and it was designed to feel like an old house that has been here for a long time. It's on a mountainside, so a modest, cozy one-story front becomes multistory at the back.

#### Developer:

Michael O'Brien  
(704) 651-7144 • michael@obrienaia.com

#### General Contractor:

Michael O'Brien  
(704) 651-7144 • michael@obrienaia.com

### Firm Principals:

#### Michael O'Brien, AIA

Our designs fit into their surroundings, whether that's an urban neighborhood or a mountainside. We are not limited to a particular style but work with the context and the owner to find the character that fits the situation. We design moderately priced homes that meet the needs and dreams of the residents.

*O'Brien*  
O'Brien Architecture



## Platt Architecture

33 West Main St. Brevard, NC 28712  
(828) 884-2393 • info@platt.us • www.platt.us



Camp Mending Heart



Haraka Haraka

Photographer: Jerry Markatos

### Projects:

#### Camp Mending Heart

This lakefront house, guest house and boathouse integrates into the surrounding environment using living roofs, local stone and wood, large glass openings and seamless indoor/outdoor connection and living.

#### Developer:

Platt Architecture  
(828) 884-2393 • info@platt.us

#### General Contractor:

Platt Construction  
(828) 630-9490 • anna@platt.us

#### Haraka Haraka

This mountainside family home is centered around a large rock outcrop with long-range lake and mountain views and close-range views of rock faces above. The natural and unworked materials help the home connect to the site and surroundings, while the large openings and strategic siting and planning help to connect the residents in a meaningful way to their surroundings.

#### Developer:

Platt Architecture  
(828) 884-2393 • info@platt.us

#### General Contractor:

Bronco Construction  
(828) 884-2393 • info@platt.us

### Firm Principals:

**Parker Platt, AIA,**  
**President/Architect;**  
**Alfred F. Platt Jr., AIA,**  
**Founder/Architect**

Platt, now celebrating 40 years in business, is a full-service architecture, construction and interior design firm based in Brevard, North Carolina, serving clients throughout the Southern Appalachian Highlands and beyond. Founded in 1982 by Al Platt, the company is now led by his son Parker Platt and supported by a team of 15-plus professionals. Specializing in custom homes and unique commercial structures, we have successfully completed more than 500 projects across the United States, including an HGTV Dream Home, a private lodge featured on DIY Network's *Barnwood Builders* and the East Coast Oskar Blues Brewery. We strive to create well-designed, service-oriented projects.

Our award-winning group designs projects through the use of sensitive planning, indigenous materials, captured views, abundant daylight, simple comforts and sustainable practices. We relate our projects to their settings so as to complement landforms, foster belonging and soften the boundaries between indoors and out.

Through our integrated suite of services, clients can achieve exceptional design and quality at a predictable cost and on a predictable schedule, all through one trusted source. We strive to bring humility, simplicity and service to our designs, minimizing the noise of our own involvement so that we leave behind not a metaphor, not a performance, but simply the structure itself.

**PLATT** ARCHITECTURE  
CONSTRUCTION  
INTERIORS



## Samsel Architects

60 Biltmore Ave., Ste. 240 Asheville, NC 28801

(828) 253-1124 • info@samselarchitects.com • www.samselarchitects.com



Windy Gap Residence



Windy Gap Residence



Camp Campos



Camp Campos

Photographer: Keith Isaacs

### Projects:

#### Windy Gap Residence

The Windy Gap Residence seeks to balance an understated, minimal design with the soul of our mountain region. The low-profile form and dark palette keep the exterior of the home hidden along the mountainside while dramatic glass walls inside frame views to the distant mountains beyond.

#### General Contractor:

Jade Mountain Builders

(828) 216-3948 hans@jademountainbuilders.com

#### Camp Campos

Camp Campos celebrates connection to family, place and nature. With busy lives working in medicine and raising two young daughters, the owners wanted a place

to unwind. The design of the house takes cues from historic vernacular architecture to create a modern home that still feels timeless and rooted to place. The layout is a compact and practical dual-cabin concept. The two sides are joined by a low connector, which delineates the public/private and daytime/nighttime dynamics. All interior spaces provide a relationship to the outdoors, from generous windows to multiple outdoor living spaces. Being able to enjoy the outdoors with family and friends was very important to the owners, whether it's dinner on the screened porch, roasting marshmallows by the fire or enjoying warm days swimming in the nearby lake. Camp Campos strikes the right balance of function and fun.

#### General Contractor:

Lake James Custom Homes

### Firm Principals:

**Nathan Bryant, AIA, NCARB;**

**Duncan McPherson, AIA, LEED AP**

Samsel Architects is an Asheville-based studio with more than 30 years of experience. Our work is rooted in a keen sense of place and stewardship of the environment. Since our founding in 1985, we have been dedicated to creating exceptional designs for our clients and our community. Each of our projects reflects the special character of its setting and client desires. We draw inspiration from historic architectural influences, as well as creative modern interpretations that respect the simplicity and beauty of the materials with which we build.

## SAMSEL ARCHITECTS



## SILO

1116 Louise Ave. Charlotte, NC 28205  
(704) 593-6996 • info@siloard.com • www.siloard.com



Heads House

Photographer: Aaron Kimberlin

### Projects:

#### Heads House

Heads House derives its name from a series of sculptural heads created by the client's father, Richard Staples Dodge, who was a painter and sculptor. Compelled by the client's story, the architecture acts as a memory device. The façades reference Dodge's sculptural forms, which are stitched together by the house's massive roof. The house is organized as two volumes — one long and low that contains the main living spaces and master suite, and a two-story volume containing the garage and guest rooms. The gap between is the main entry. Once inside, each space is defined by a unique ceiling vault to create implied "rooms" in an otherwise open plan with expansive views to the landscape. The material palette (metal, shake) and red color are borrowed from the utilitarian buildings that surround the site, grounding the abstract form in its local context.

#### General Contractor:

Brandon Schrock Construction  
(479) 601-4650 • brandon@schrockdevelopments.com



Hillside Rock

#### Hillside Rock

Like a mineral, the architecture of Hillside Rock emerges from interactions with its dramatically sloping site in the Ozark Mountains of Fayetteville, Arkansas. The crystalline form is shaped in response to the desire to provide distinct views and experiences from each main living space. Three separate terraces are carved from an otherwise solid volume, each with a different perspective of the environment. The interior's split-level organization is tuned to the hillside slope, animating an ever-changing section of cascading and nested spaces. A central wooden stair stitches together an intricate spatial section that transitions from a concrete base into sculpted white volumes whose scale mimics the immediate external environment, capturing the alternating exposure and enclosure found on the original untouched site.

#### General Contractor:

SILO

### Firm Principals:

**Marc Manack, AIA;**  
**Frank Jacobus**

SILO is the architecture, research and design practice of Marc Manack and Frank Jacobus. We operate out of Charlotte, North Carolina; Fayetteville, Arkansas; and Cleveland, Ohio. SILO works on residential projects across the United States, many of which have been recognized for their design and execution.

Our work is the hybrid energy of two partners who engage architecture through building, teaching and writing. Rather than a single guiding theory, SILO has an enthusiasm to create architecture that is qualitatively rich, with vividly distinct characters that are revealed through changes in time, use and place. We don't over-romanticize our regionalism or use it as a crutch, instead embracing it as a work ethic that is equal parts resourceful and experimental.

SILO's work has been featured by *The Wall Street Journal*, *Architect Magazine*, *The Architect's Newspaper*, *Wallpaper*, *Slate*, *Dwell* and *Fast Company* among many others. Our architecture has been honored nationally and internationally with design awards, including those from the AIA. SILO has been recognized as an Emerging Voice by the Architectural League of New York, a Next Progressive by *Architect Magazine* and recently by the Walton Foundation for its Design Excellence Program.

**SILO**



## Sketchline Architecture PLLC

452 Sunset Dr., Ste. H Blowing Rock, NC 28605

(828) 729-3290 • david@sketchlinearchitecture.com • www.sketchlinearchitecture.com



Avery Farmstead



Avery Farmstead



Gretel's Haus



Gretel's Haus

Photographer: Real Boone Visuals

### Projects:

#### Gretel's Haus

This cozy cottage was designed for special clients who were relocating from Tennessee to Blowing Rock, North Carolina. The clients desired the home to have Bavarian touches to reflect their ancestry. The home features vaulted ceilings with top-lit beams, large north-facing windows for light-filled rooms, and a central floating fireplace that separates the dining area from the living room. We were honored to design this 2,500-square-foot home that was recently featured on Blowing Rock's Tour of Homes. Our architectural team collaborated with 4 Forty Four Interiors to design a home that provides the perfect relaxing space for Gretel — and Mom and Dad!

#### General Contractor:

4 Forty Four  
(828) 295-8929 • info@4fortyfour.com

#### Interior Design:

4 Forty Four Interiors  
(828) 295-8929 • info@4fortyfour.com

#### Avery Farmstead

Located on a microfarm in the heart of Avery County, North Carolina, this new home features three bedrooms, three-and-a-half bathrooms and 2,300 square feet of personalized space for the animal-loving, nature-oriented young family for which it was custom designed. Avery Farmstead was constructed on a beautiful 40-acre piece of land with the intention to create a special family home and provide a sanctuary for animals in need of fostering or finding a new home.

#### General Contractor:

4 Forty Four  
(828) 295-8929 • info@4fortyfour.com

#### Interior Design:

4 Forty Four Interiors  
(828) 295-8929 • info@4fortyfour.com

### Firm Principals:

#### David E. Harwood, AIA

We are a full-service architecture practice providing innovative and thoughtfully considered design for residential and commercial clients. We have a passion for design and crafting places that excite and inspire our clients, our community and ourselves. We are experienced in designing a diverse range of projects from exceptional single-family homes to larger commercial buildings. As a full-service firm, we can deliver a unique style for each client and see a project from conception to completion. Our intent is to always listen to the client's needs, ideas and aspirations.

We've built a reputation for excellence through a balanced commitment to quality design and personal service. Our most inspiring work has been when we collaborate with clients that share our passion for design and want to create homes and buildings tailored to their needs and that fit within their environment. Sketchline's services integrate architecture, interior design and element design through a collaborative, coordinated and cohesive process. We are fortunate to work with extraordinary clients, organizations and individuals with ambitious ideas. This has developed into a process and design approach that values collaboration with clients, consultants, builders and designers. Great design comes from the synthesis of many ideas.

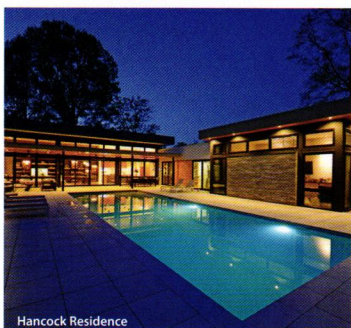
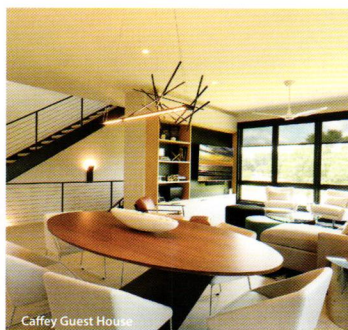




## STITCH Design Shop

630 N. Liberty St. Winston-Salem, NC 27101

(336) 701-0130 • info@stitchdesignshop.com • www.stitchdesignshop.com



Photographer: Adam Sebastian

### Projects:

#### Caffey Guest House

Positioned in a meadow between the main house and tractor barn, the Caffey Guest House serves as a respite for owner and guests alike. With three volumes and two materials, the focus is simplicity in form and clear organization of plan. The three-story structure touches the ground lightly with a small footprint but commands attention through verticality. The rooftop deck affords beautiful views of the meadow and grounds. The home is organized around a vertical circulation tower flanked by a volume containing two private lower floors and a public top floor.

#### Developer:

Chris and Laura Caffey  
(336) 758-8742 • chris.caffey@caffeydist.com

#### General Contractor:

Gary Jobe Builders  
(336) 272-2772 • garyjobebuilder@yahoo.com

#### Hancock Residence

Located in a quiet section of the Buena Vista neighborhood in Winston-Salem, North Carolina, the Hancock Residence is a one-level modern home. Its floor plan was developed around providing intimate views of the interior pool deck and 100-year-old oak tree. With natural light abundant and overhangs designed to protect against the summer sun, the home is flooded with light but not the excess summer heat. The residence is divided into two overlapping sections: one private and the other public. The main entry is located at the overlapping intersection between the public and the private, and once there, folks are greeted with a "mass wall" composed of fired clay brick from Italy. These Italian brick mass walls become architectural features on the interior as well as the exterior.

#### Developer:

Drew + Kelley Hancock  
(336) 748-4403 • dhancock@flblum.com

#### General Contractor:

Timberwolf Designs – Buddy Glasscoe  
(336) 748-4403 • dhancock@flblum.com

### Firm Principals:

**Pete Fala, AIA, LEED AP;**  
**Ben Schwab, AIA, LEED AP;**  
**Adam Sebastian, AIA**

STITCH Design Shop is an award-winning architectural and interior design firm rooted in the City of Arts and Innovation: Winston-Salem, North Carolina. Born in 2013 from a desire to fearlessly pursue creative ideas that reflect the individuality of our client's culture, identity and values, we pride ourselves on the premise of "There has got to be a better way." We consider ourselves the design firm that is leading the way in progressive and transformative design in the Southeast. We work on a multitude of project types and scales, from mixed-use buildings to commercial interiors. Our skill sets are varied and our passion for high design is unwavering. We push ourselves every day to create buildings and spaces that enhance our community.

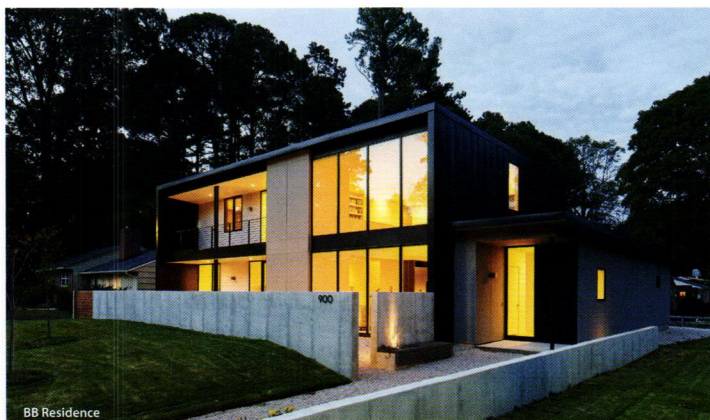
**STITCH**  
DESIGN SHOP



## The Raleigh Architecture Company

716 S. Saunders St. Raleigh, NC 27603

(919) 831-2955 • info@raleigh-architecture.com • www.raleigh-architecture.com



BB Residence



LaFera-Wilson Residence

Photographer: Keith Isaacs



BB Residence



LaFera-Wilson Residence

### Firm Principals:

**Robby Johnston, AIA;**

**Craig Kerins, AIA**

The Raleigh Architecture Company and the Raleigh Construction Company are two separate companies bound by a passion for modern architecture and high-quality production. Our constant collaboration enables us to engage in design, build and design-build projects.

As licensed architects and general contractors, we consider designing and making to be the same. This unique position allows us to maximize our clients' economic means by providing efficient, cost-appropriate solutions to design problems that meet each project's design intent. We are able to successfully exceed standard material and craft expectations through our intimate understanding of each subcontractor's skill sets, our own fabricator's abilities and by employing only makers with an architectural education.

Our names reflect a commitment to our evolving, exciting city and a desire to spread the innovation and creativity found in Raleigh to other parts of the world. We maintain both our office and shop under one roof in Raleigh's downtown Warehouse District where design, woodworking and steel fabrication intersect with our clients' ideas and experiences to inform each of our projects.

### Projects:

#### BB Residence

The BB Residence unites a couple after years of living in separate houses on the same block. The project's challenges were an abundance of ground-floor program and restrictive corner lot setbacks. The design response extends the footprint within the setback boundaries, stacking additional program above, and joins the combined households through form with a wrapping roof. Shared public area connects the separate programs through light-filled, double-height space and opens to a modest, private courtyard bordered by a cast-in-place landscape wall to provide retreat and security. Two houses join under one roof.

#### General Contractor:

The Raleigh Construction Company  
(919) 831-2955 • info@raleigh-architecture.com

#### LaFera-Wilson Residence

Perched above steep slopes under the shade canopy of towering hardwoods sits the LaFera-Wilson Residence. Opposing shed roofs cover adjoining public and private wings, each appearing "flat" from the street to satisfy the owner's request for flat roofs and the design covenant's required sloping roofs. A shift in plan informs entry and circulation along a spine of continuous walnut casework. Roof extensions force the inside out and provide exterior shelter above the forest floor. Floor-to-ceiling glazing alternates with solid wall panel to differentiate the public pavilion from the more secluded private spaces.

#### General Contractor:

The Raleigh Construction Company



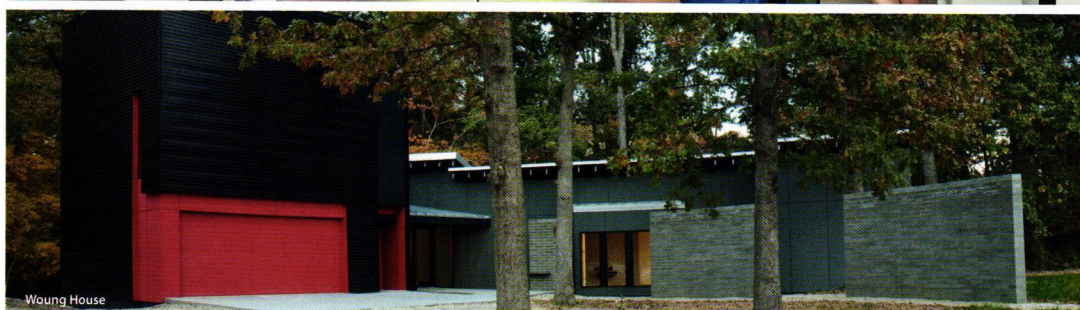


## Wittehaus

Our main hub is located in Charlotte: 1213 W. Morehead St., 5th Fl., Charlotte, NC 28204.

Our clients can also visit us in our Greenville, SC, and Durham, NC, locations.

(704) 488-6811 • toby@witteha.us • www.witteha.us



Photographer: Dustin Peck

### Projects:

#### Woung House

A wall she walked by in her childhood in Jamaica was the memory our client brought to us. The need to make it handicap accessible and to provide a live-in suite over the garage was added, as well as the wish to keep as many trees as possible.

So we surveyed the woods, cut up the functions of the house, weaved a masonry wall through the trees and reassembled the house all around it. And then we traced the movements through the house and provided views at every turn, inviting the exterior back in. We took a long look at the topography, exposed concrete floors on solid ground and wood floors over shallow crawl spaces and engineered zero-edge transitions, and provided for 3-foot-wide doors and 5-foot turning radii to make the home a playground for a wheelchair.

#### General Contractor:

Qube 11  
(704) 763-0506 • info@qube11.com

#### Witte Home

This was a tricky one. How to squeeze five family members into 1710 square feet and make it feel spacious?

How to make it feel open and luxurious on a shoestring budget? And how to harness Toby's design fervor and focus his attention on these goals? For this was a house for his family. Let's just say the stakes were high.

As for understanding our clients, he had a leg up.

He structured the home around three ideas. Give the daughters each a spacious room on the top floor and let them stick out from each other with connecting windows, so that the sisters always have a sense of each other. Create a loft environment downstairs where the parents' private spaces overlap with the public family spaces through sliding panels and a signature wall. Eliminate all square feet-robbing walk-in closets and instead provide a slew of built-in wardrobes, niches and shelving.

#### Developer:

Wittehaus  
(704) 488-6811 • toby@witteha.us

#### General Contractor:

Wittehaus  
(704) 488-6811 • toby@witteha.us

### Firm Principals:

#### Toby Witte, AIA

At Wittehaus we follow one passion — to bring magic to our clients' life experience. Turning their world just a titch more beautiful. More livable. For those who seek a cutting-edge, energy-efficient modern home and who dare to dream big, we help to find intimate and poetic solutions. Beyond taking our clients on an in-depth design journey, we help to smooth out the entire process of creating a new home, from finding a property to construction and moving in.

We are a design-build firm providing custom design services and creative consultation for our visionary local and international clients as well as offering innovative built homes ready for sale.

# wittehaus

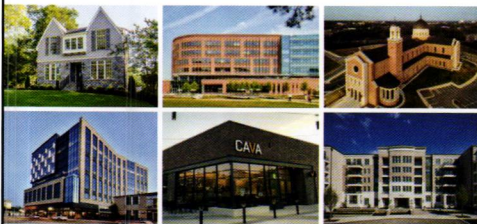




**North Carolina's Premier  
Masonry Distributor  
Since 1961**

**Showroom — Offices — Yard**

Brick • Block • Stone • Pavers  
Cleaners • Wallties • Mortar • Sand  
Fireplaces • Thin Systems  
Arriscraft • Ladderwire



**(919) 832-2804**

1833 Capital Boulevard, Raleigh, NC 27604  
[www.custombrick.com](http://www.custombrick.com)

HAWK — Charlotte, NC



### **Precast Delivers Upscale High-Rise Living in South End Charlotte**

Metromont's total precast concrete MetroDeck system and MetroMass insulated wall panels delivered the cost efficiency and construction speed needed to make the HAWK a reality. Located on less than .4 acre and completed nearly six months ahead of schedule, the 13-story HAWK is among the first total precast, multifamily high-rise structures in the Carolinas.

844.882.4015 | [METROMONT.COM](http://METROMONT.COM)

# powerful SOLUTIONS.

We make it easy to reach more of your target  
market with print and digital ad options,  
customized to fit your needs.

Powering up your marketing — That's Innovative.



844.423.7272 | [advertise@innovativepublishing.com](mailto:advertise@innovativepublishing.com) | [www.innovativepublishing.com](http://www.innovativepublishing.com)



**riggs ward**  
EXHIBITS | A/V MEDIA





**Disaster  
could show up at  
YOUR doorstep.**

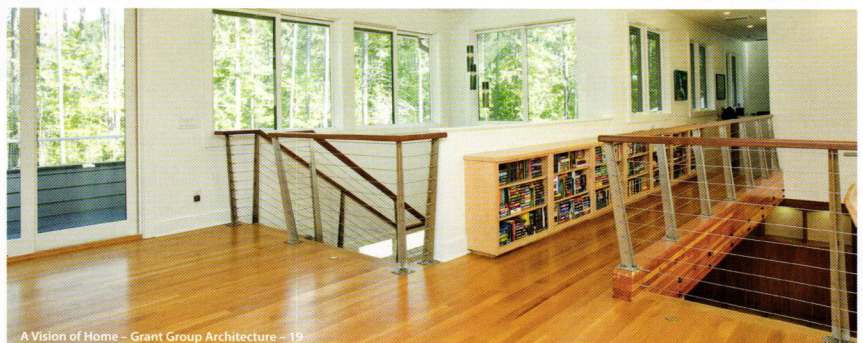
**Make a  
plan today.**

**Ready.gov/plan**





Arielle Condoret Schechter, Architect PLLC ...9	Grant Group Architecture .....19	O'Brien Architecture.....29
Arkatec/Kim Anderson, AIA.....10	Habanero Architecture .....20	Platt Architecture.....30
Arrowhead Designs.....11	Harding Huebner.....21	Samsel Architects .....31
Arx Design Co.....12	in situ studio .....22	SILO.....32
Bruce Johnson Architecture .....13	Josh Allison Architecture PLLC.....23	Sketchline Architecture PLLC .....33
Calico Studio PLLC.....14	Kersting Architecture.....24	STITCH Design Shop.....34
Coffey Architecture.....15	Marland Architecture.....25	The Raleigh Architecture Company.....35
Dogwood Architecture PC .....16	Meadows Architecture .....26	Wittehaus .....36
Edgens Herzog Architects AIA.....17	Nick Nye .....27	
Form & Function Architecture.....18	Notch Design .....28	





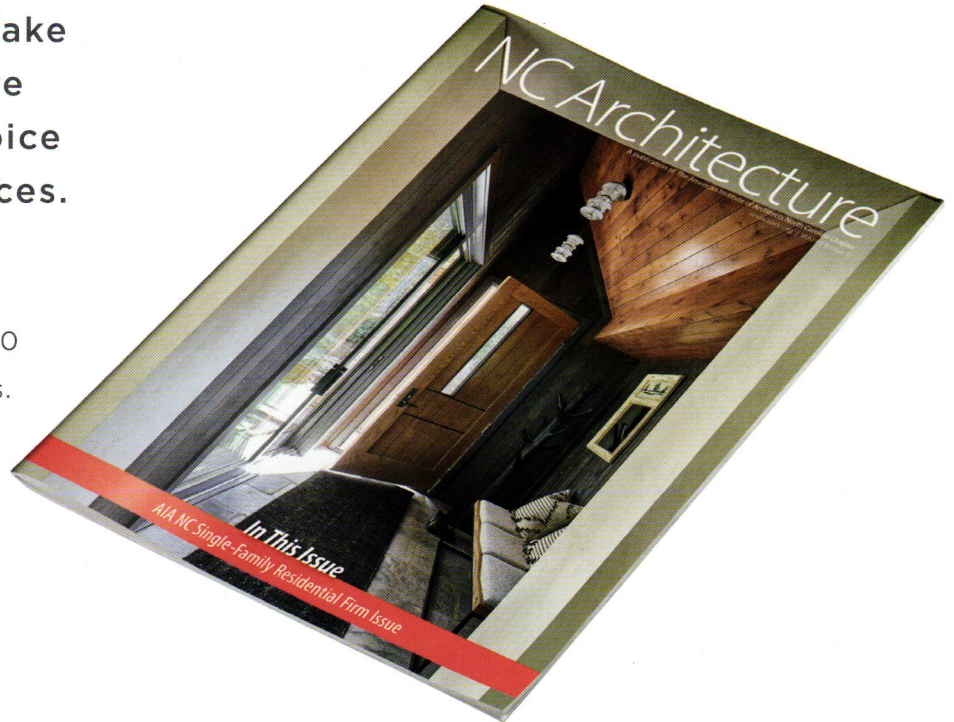
**AIA North Carolina**

14 East Peace Street  
Raleigh, NC 27604

# WE SAVED YOU A *spot.*

Advertise with us to make  
sure you're architecture  
professionals' first choice  
for products and services.

- *NC Architecture* magazine is involved with more than 2,200 registered architect members.
- AIA North Carolina reaches more than 5,500 members across three states with its annual Aspire Conference preview issue.



844.423.7272 | [advertise@innovativepublishing.com](mailto:advertise@innovativepublishing.com) | [www.innovativepublishing.com](http://www.innovativepublishing.com)