

Oculus

Which Way Gateway?

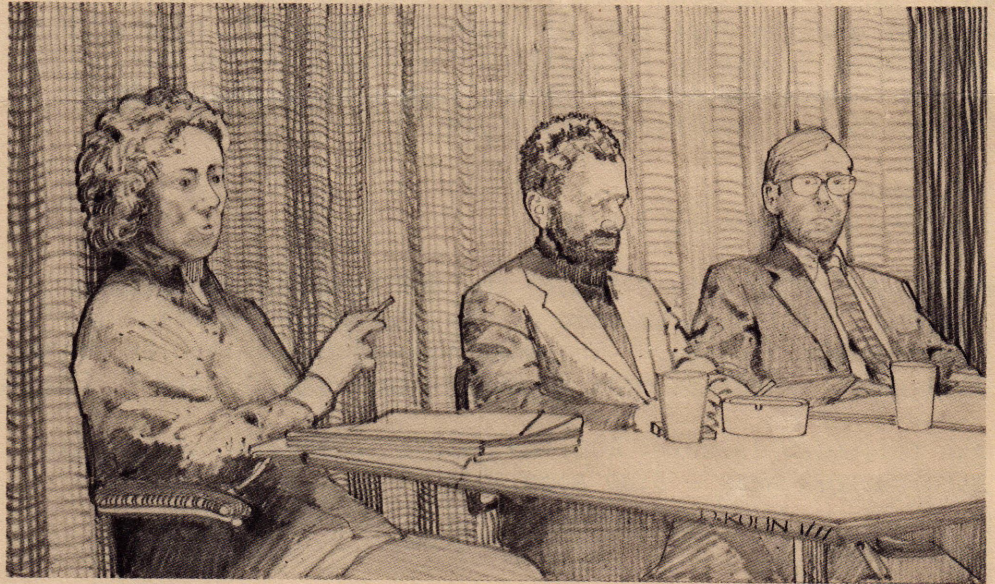
Anguish over our city's problems should not obscure a project that will greatly enhance this region's life: the Gateway National Recreation Area. This is a national park right at our own harbor, for which plans are rapidly proceeding.

The areas of the park include: Sandy Hook, a major stretch of Staten Island waterfront, Breezy Point, the wildlife refuge at Jamaica Bay, and Floyd Bennett Field, an area larger than Central Park to the north of Breezy Point. The park has been approved by Congress - the Chapter lobbied strongly for it through the AIA in Washington - and \$282 million for capital development is contemplated.

The Gateway Citizens Committee, a loose collection of many groups including the Chapter, deserves great credit for recommending courses of action developed over a period of years. The National Park Service, which is more accustomed to dealing with, say, Yellowstone Park and Smokey the Bear, is less experienced in contemplating how to reconcile a varied, often fragile waterfront and an abandoned airfield with a huge urban population near at hand.

continued on page 3

The Code of Ethics and Professional Conduct Draft Presents a Maze of Cross Purposes



The Chapter's Vice-President Judith Edelman, President Richard G. Stein and Executive Director George S. Lewis during Jan.13 Chapter meeting. Sketch by Denis Glen Kuhn.

The Institute's draft for a revised Code of Ethics and Professional Conduct deals with advertising and other standards of conduct whose wording and content it seems, will incite the membership all the way to the final vote at this year's June 6 thru 9 National AIA Convention in San Diego.

In preparation for a Grassroots meeting leading to the Convention members gathered at the Chapter on Jan.13. Chapter Vice-President Judith Edelman, who lead the Chapter's special committee on the subject, chaired the meeting and got a very clear response from the membership.

The members favored continuation of the Institute's rule that paid advertising in the public media be prohibited.

On the subject of "free sketches," which the Institute also proposes to continue to ban, Judith Edelman's committee's proposed language was commended: "members may indicate to those

continued on page 3

Calendar

Exhibit, Tues., Feb. 8 - 18
Chapter Headquarters - 9:30 to 4:00

- This summer, a group of eight architecture students from Pratt Institute successfully participated in the "Pratt in the Greek Space 76" International Program. The work of these students will be on display at Chapter Headquarters, Monday thru Friday.

Thurs., Feb. 24
Williams Club, 24 E. 39 St. - 5:30 to 8:00

- The New York Section Illuminating Engineering Society, the NYC/AIA and the Institute of Store Planners will hold a joint program on "Lighting for Selling for Profit." Fee per person is \$2. Contact Susan A. Forbes, Forbes Ergas Design Assoc., 157 E. 86 St., New York, NY 10028

Fri., Feb. 25
Chapter Headquarters - 5:30

- "The Shrinking City - Should the Shrinkage be Accepted or Fought?" will be discussed at the "Forum on Architecture, Planning and Society." The meeting will be chaired by Herman J. Jessor, panelists will be Roger Starr and Richard G. Stein.

The following lectures will be held at Columbia University, Schermerhorn Hall - 5:30 Room 501.

Wed., Feb. 9

- Rodolfo Machado - "Architect's Stream of Consciousness."

Wed., Feb. 16

- Jonathan Barnett - "Architect as Developer."

Wed., Feb. 23

- Edward L. Barnes - "Architectural Flow."

Thurs., Mar. 3
Chapter Headquarters - 5:30

- The Municipal Art Society and the Chapter will co-sponsor a meeting on the Gateway National Recreation Area (see article page 1). Sheldon Pollack will be one of the representatives of the Gateway Citizen's Committee and Jonathan Barnett will represent the National Park Service; Chapter member Burt Blumberg, moderator.

Candidates for Membership

Information received by the Secretary of the NYC/AIA regarding the qualifications of candidates for membership will be considered confidential:

CORPORATE
James Peter Kastl

PROFESSIONAL ASSOCIATE
Stephen James Johnston

ASSOCIATE
Cecilia Ann Irene Browne
Michael Parley

New Members

The NYC/AIA Welcomes the following members:

CORPORATE
Richard A. Fisher
Donald L. Jewell, Jr.
Bun Wah Nip
Kamalakar D. Pendse

New York Chapter
The American Institute of Architects
20 West 40th Street
New York, New York 10018
212/730-1221
George S. Lewis, Executive Director

Executive Committee 1976/77
Richard G. Stein, President
Peter Samton, 1st Vice President
Judith Edelman, Vice President
Eason H. Leonard, Vice President
Stephen A. Kliment, Secretary
Anna M. Halpin, Treasurer
John Belle, Director
George Dudley, Director
Roy Friedberg, Director
Gillet Lefferts, Director
Donald Ryder, Director
Robert A.M. Stern, Director

Oculus Committee
Denis Glen Kuhn, Editor/Chairman
Albert Barash
Stephen N. Carter
Mary Jane Clark
Bonnell Irvine
Lawrence Levine
Kenneth T. Lydon
Kenneth Ricci
William C. Shopsin

Robert A.M. Stern
Executive Committee Liaison
Stephen A. Kliment
Secretary, NYC/AIA
Cathanne Piesla
Chapter Staff Member

A Maze of Cross Purposes

continued from page 1

who are interested in engaging their services the manner in which they would proceed; they shall not, however, offer or provide architectural services, including architectural designs, excepting when no other architect is involved and there is an agreement regarding compensation, and excepting through participation in organized design competitions, preferably those conducted in accordance with established guidelines."

The Institute's wording concerning brochures, that they could be distributed to "identifiable potential clients," was rejected in favor of the Chapter's wording, "members shall not distribute brochures or other literature indiscriminately. They may solicit the interest of those whom they know to be contemplating projects requiring architectural services."

The Chapter's recommendations for the June convention were furthered by a vote to strike the Institute's attempt to define permissible paid representatives, and it was recommended that this matter be further studied. The issue of architect as contractor continues to generate heated discussion. The meeting favored the wording of the Chapter committee, "members shall be free to participate in any activity in conjunction with their role as architects, including participation in contracting and design/build enterprises."

The question remains: Should the Code bend to the profession's realities, or should it influence the profession?□

Stephen N. Carter

Which Way Gateway?



Gateway National Recreation Area

continued from page 1

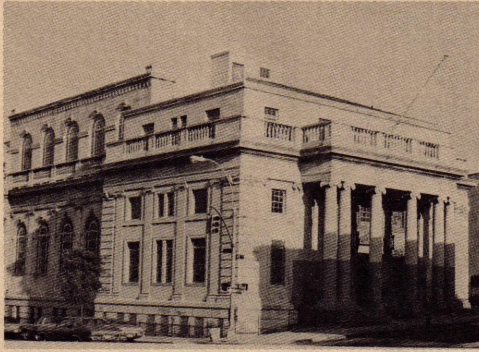
The Committee, of which Sheldon Pollack of the Regional Plan Association is Director and our member Felicia Clark is a consultant, recommended that Chapter member Jonathan Barnett be retained for preliminary planning. His proposals are prominent in the Park Service's draft General Management Plan, on which public comments were invited to be submitted by Jan.19.

The Citizens Committee's comments were quite complimentary to the Management Plan, but certain aspects were pointed out as requiring much further attention, particularly the problem of organizing public transportation by land and water so that the millions of people without cars can get to the park, and the question of how to develop Floyd Bennett as a vital activity center, still remains. The Chapter, through a special committee of which Bertram Blumberg is chairman, forwarded a supplementary letter with the Citizens Committee's comments expressing our concern with how the planning is to be done: "We believe it to be imperative that the planning and detailed designing be done by people with experience in urban issues and the problems of urban recreation. We cannot stress this enough."

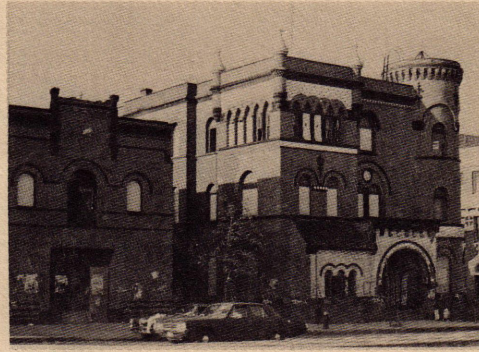
The Chapter will continue to work through the Citizens Committee, and developments will be closely monitored. Gateway and Westway are two prospects of enormous importance to New York.□

George Lewis

Landmarks of Decay and Transition May Serve as Regenerative Seeds



Surrogate's Court



Police Precinct

*Both are at the intersection of 4th Ave. and 42 St.
Sunset Park, Brooklyn. Photos by Richard Ferrara*

The two buildings pictured above represent only a fraction of existing structures throughout the City which for aesthetic or social reasons may be classified as "landmarks." Vacant or under-utilized, their new role as "landmarks" of decay and transition only serves to spread blight and apathy throughout their immediate surroundings, like an infectious disease. For the most part these schools, firehouses, police stations, churches and other structures were abandoned in the past decade during the boom years for new modern facilities. They have been left unused or under-utilized by shifting patterns of society. To most, the next logical step is demolition.

However, this is not the view of the Chapter's Task Force on Preservation and Rehabilitation, which feels that these "landmarks" may serve as the seeds for regenerative growth in many neighborhoods, both for public and private purposes. This can happen by utilizing, to some extent, existing legislation as a source of funding as well as by taking advantage of new legislation which favors preservation (i.e. Tax Reform Act of 1976).

Members of the Task Force are preparing a report for submission to City officials, realtors, developers and other organizations with the intent of providing suggestions and information on actual practical sites as examples for possible projects.

Assisting the Task Force are the Historic Buildings Committee, the Urban Design Committee, the Educational Facilities Committee, which is securing a list of surplus schools and hopes to prepare a school site as an example, and the Governmental Facilities Committee, which is preparing a program for a typical community board facility, a new building type mandated by the recent Charter Revisions.

The success of this study depends on the maximum participation of chapter members who, because of their knowledge of particular building or a building type, can assist in providing conceptual solutions and creative financing mechanisms. Those individuals can contact Giorgio Cavaglieri, Task Force Coordinator, at (212)245-4207.□

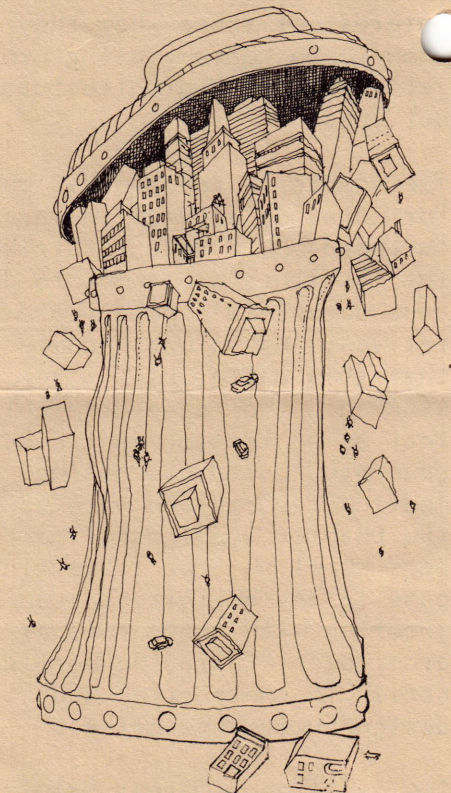
Richard Ferrara

Chapter Recommends Lugovina For City Planning Commission

The new City Charter requires representation from all boroughs on the 7 person Commission; Chester Rapkin's place (his term is up) must be filled from the Bronx or Staten Island.

The Chapter Executive Committee at its Jan. meeting voted enthusiastically to recommend Francisco Lugovina of the Bronx. A letter to Mayor Beame stressed that the commissioners be experienced people who can view the City as a whole; it endorsed Lugovina as one with extensive close-up knowledge of the Bronx who told us that all the City must move ahead if his own area is to turn around.□

George Lewis



*Cartoon by Albert Lorenz
Assistant Professor at Pratt
Institute.*

Preservation Films A Part of the Story

I enjoyed the "preservation" films shown on Jan. 17, sponsored by the Preservation League of New York State, the Municipal Art Society, and the Architectural League of New York. The showing was the beginning of a film festival entitled "Focus on the Built Environment."

The film form is probably one of the best ways for showing the values and virtues of preservation of urban centers, neighborhoods or specific buildings since one can relate the improvement to the surrounding areas and to the environment of the locale and can show usually in some form the "before" and "after" conditions. However, since the film can only see what the eye sees, the narrator must fill in the unseen non-physical elements which may be more successful than the physical, i.e. the struggles for improvement and preservation, the economic failures or successes, the social factors which have been improved or disturbed, the political infighting, etc. However, the end result is a physical one which can be seen and can be very instructive to other preservationists.

The film medium is a good one but it does require an audience to transmit the message to. Fortunately the meeting was well attended, even on a very cold night which says something for the strengthening of interest in the subject. Chapter member Bill Shopsin served as an interesting moderator to introduce and to tie the sponsors and the films together, filling in all the unseen elements. □

*William A. Hall
AIA Committee on
Historic Resources*

Westway, Gateway, Architectural Credits and a New Chapter Highlight Executive Committee Meeting

After the Executive Committee voted 8-3 to support Westway (OCULUS Jan. '77), Executive Director George Lewis delivered the majority and two minority statements, along with a covering letter from President Stein, to then Secretary of Transportation William Coleman, with copies to Gov. Carey, Mayor Beame and other officials. A news release also went to the press. As though on cue, Secretary Coleman gave his final approval to Westway a week later. With Westway in a manner of speaking out of the way, the Executive Committee turned to another way, this time the proposed Gateway National Recreation Area (see page 1).

News of architects who are not credited by name for work published in the daily press regularly comes to the ears of the Executive Committee. Latest, as the Committee learned at its Jan. 10 meeting, is a heated debate between certain staff at the NEW YORK POST and chapter member Abraham Rothenberg, whose new playground at 85th St. and Central Park West was pictured sans credit. The Executive Committee agreed to approach a sympathetic reporter on that paper to try to improve matters in the future.

The Westchester Chapter has its collective eye on certain outlying counties (Rockland, Orange, Putnam, Sullivan and parts of Dutchess and Ulster) which right now are part of the NYC/AIA. A representative of the Westchester Chapter made a case to the Executive Committee to combine those counties with his own chapter to form a brand new Mid-Hudson Chapter. After sifting the pros and cons, the Executive Committee decided (for the second time in as many years) to poll chapter members who live or practice in those counties, and to agree to the change if there is no strong opposition. In any case, members who want to remain in the New York Chapter could do so, with no strings attached.

Highlights of other recent Executive Committee actions are:

- The Chapter will push for a single dues billing and collection by the National AIA to take the place of the present multiple, variously timed billings from national, state and chapter organizations.
- Rejoiced at the in-the-black operation of the Chapter in the fiscal year ending Sept. '76.
- Agreed to join the Municipal Arts Society in an amicus curiae brief as the New York State Court of Appeals reviews the lower court decision upholding the landmark designation of Grand Central Terminal.
- Appointed Paul Silver to represent the Chapter on the Concrete Industry Board, and John P. Jansson to represent the Chapter on the board of the NYSAA/AIA along with Sarelle T. Weisberg and George Lewis. □

Stephen A. Kliment

Playground for Able-Bodied and Handicapped Children Competition Winners Announced

The NYC/AIA along with the New York State Council of Landscape Architects and the National Institute for Architectural Education endorsed the recent City design competition, organized and conducted by the City Planning Department's Special Projects Section, for New York's first playground for disabled as well as able-bodied children.

A jury of professional architects and designers picked the winners from among 60 of those in their field who entered the competition. A student competition, with the top prize of \$1,000 was also completed. The four winning professional teams are:

- Hisham N. Ashkouri and James Charnisky of Cambridge, Mass.
- Richard Dattner, Thomas Bitner and Joseph Smith of New York City.
- R.M.Toole of Saratoga Springs, N.Y.
- Paul Benowitz and Secundino Fernandez of Rye, N.Y.

The creators of each design were awarded \$10,000 to continue their work. One of them will finally be awarded \$60,000 to prepare construction contract documents for the playground, which will be built on a 2.6 acre site in Flushing Meadows Park at an expected cost of \$700,000.

Victor Marrero, Chairman of the City Planning Commission, said, "Only by mounting a design competition have we been able to get design know-how that will enable this project to go forward properly, meeting the needs of able-bodied and handicapped children. □

Denis Glen Kuhn



Aerial perspective view (above) and detail sketches of Paul Benowitz and Secundino Fernandez solution.