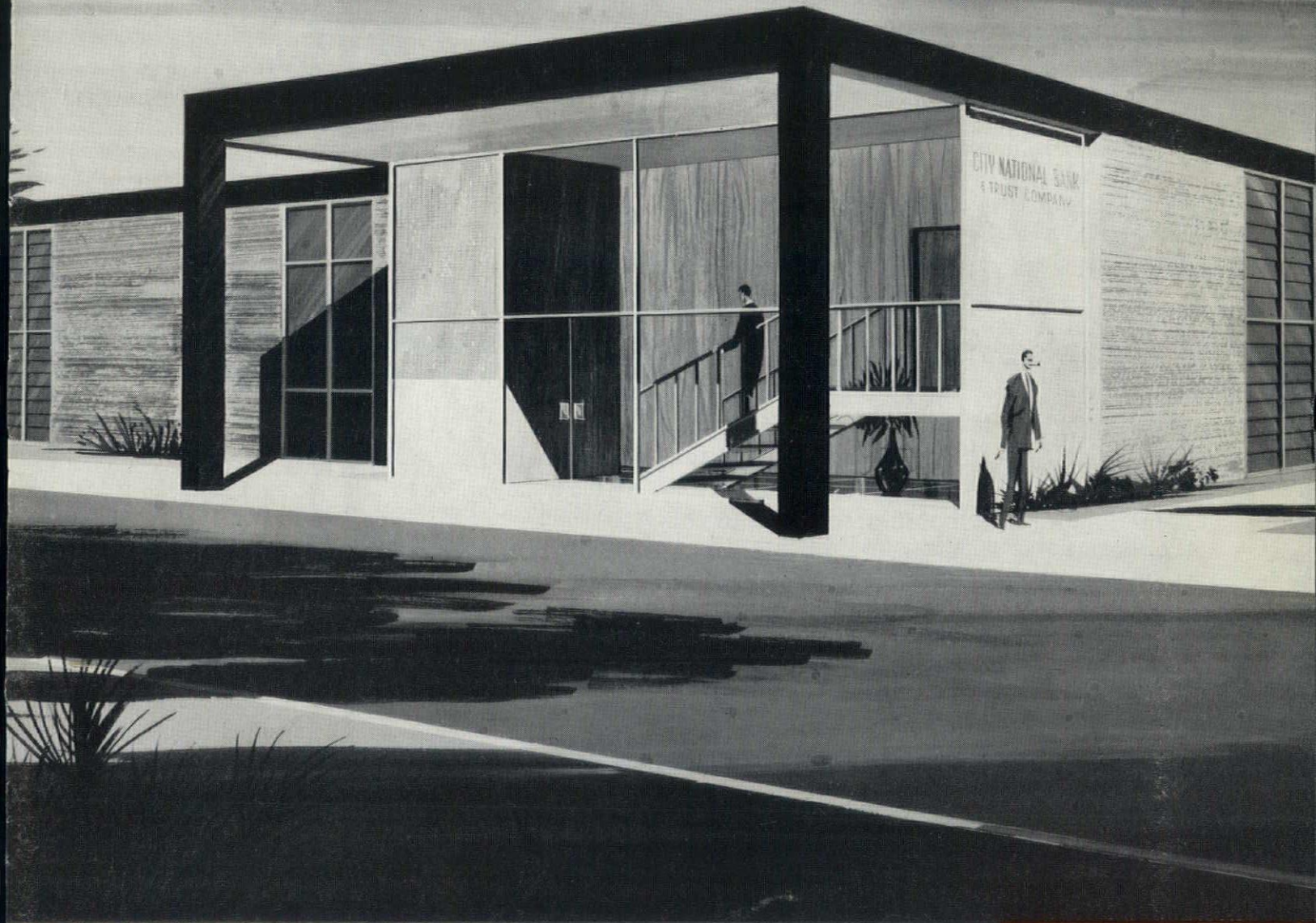


AMERICAN INSTITUTE
OF
ARCHITECTS
FEB 7 1963
LIBRARY



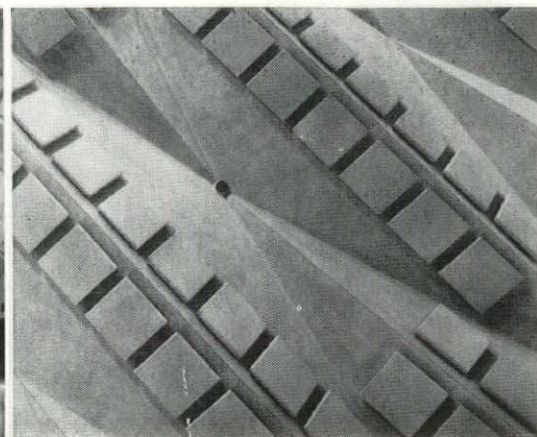
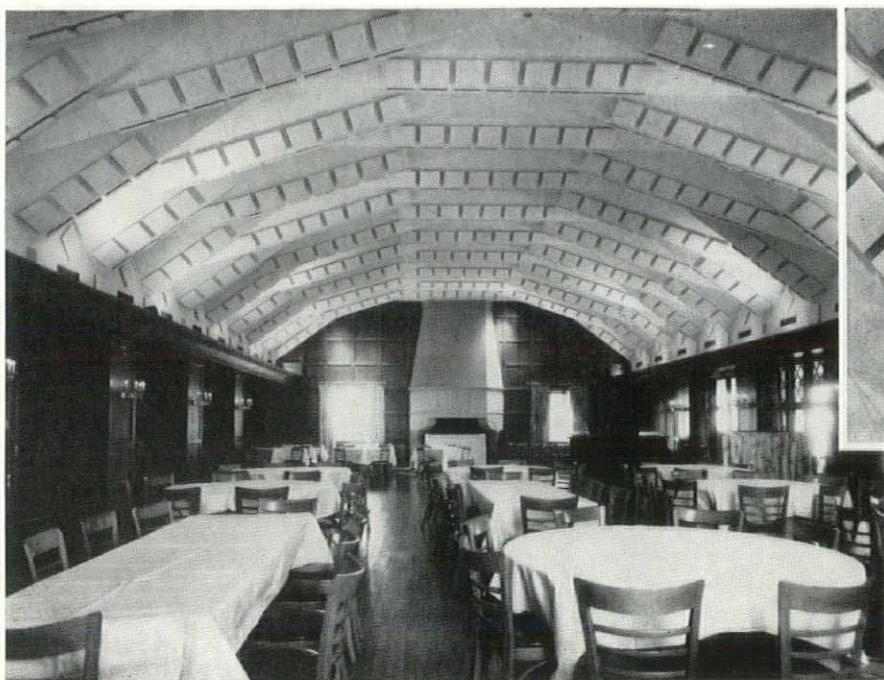
OHIO ARCHITECT

OFFICIAL PUBLICATION OF THE ARCHITECTS SOCIETY OF OHIO
A REGION OF THE AMERICAN INSTITUTE OF ARCHITECTS, INC.

january
1963

Get better sound control
faster . . . at lower cost . . . with

GEOCOUSTIC[®]



Members and guests now dine in quiet comfort at the Chautauque Country Club, Pittsburgh—thanks to Geocoustic. These acoustical units can be used to achieve interesting designs, both on walls and ceilings.

GEOCOUSTIC

A material — cellular glass for high unit absorption.

A method — distributed absorption to control both reverberation and diffusion.

To hear and be heard in a room—sound intelligibility—is the only valid measure of satisfactory room acoustics. It depends entirely on achieving the proper balance of sound reverberation and sound diffusion in the room.

The key is placement of patches of absorption on

a room's reflective surfaces to take advantage of the so-called area effect. The result is a balance between reflection and absorption that promotes controlled reinforcement of sound.

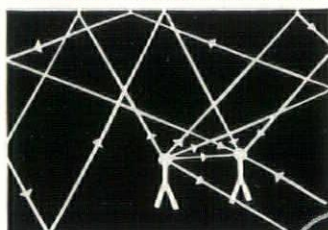
Orthodox acoustical treatment has made it virtually impossible to take advantage of the patch technique. Practical application of the patch technique requires higher unit absorption efficiency than commonly used acoustical materials provide.

Thus, you have until now been unable to utilize the most effective means of achieving good acoustics in a room. *Now you can do something about it.*

This 3-dimensional product is equally useful to you in designing new buildings and in improving the acoustical environment in existing rooms. Installed cost is surprisingly low.

We have made many successful installations of Geocoustic in schools, bowling alleys, meeting rooms, offices, churches and restaurants. May we tell you about the results that were achieved?

GEOCOUSTIC: A material and a method



... to hear and be heard in a room

Registered trademark
Pittsburgh Corning Corp.

CLEVELAND 29: 8551 Brookpark Road
COLUMBUS 12: 1313 Edgehill Road
TOLEDO 9: 3264 South Avenue
PITTSBURGH 33: 1018 Pennsylvania Ave.



GEO. P. LITTLE CO.
ACOUSTICAL CONTRACTORS
BUILDING SPECIALTIES

Who Specifies GAS Air Conditioning?

Look at This Partial List of Distinguished Ohio
Businesses, Industries and Institutions
Which Use Gas Air Conditioning!



Riverside Methodist Hospital

3535 Olentangy River Rd., Columbus
Assoc. Architects: Inscho, Brand & Inscho

St. James Episcopal Church

3430 Calumet St., Columbus
Architect: Eiselt & Eiselt

Standard Oil Company

Cedar Point Rd., Oregon
Architect: Dalton, Dalton & Assoc.

Park Towers Apartments

1620 E. Broad St., Columbus
Architect: Benham, Richards & Armstrong

L & K Restaurants

879 Park Avenue West, Mansfield
Route #5, Marion
Architect: Edwards & Burris

Nationwide Insurance Company

899 E. Broad St., Columbus
Architect: Seidel & Dunn

Town House Motel

Monroe & Bancroft Sts., Toledo
Architect: Paul H. Deneau

Western Electric Company, Inc.

6200 E. Broad St., Columbus
Architect: Charles T. Main

Boston Store

Northern Lights Shopping Ctr., Columbus
Architect: Titus & Prindle

Thompson, Ramo, Wooldridge, Inc.

6325 Huntley Rd., Columbus
Architect: Brooks & Coddington

1100 East Broad Apartments

1100 E. Broad St., Columbus
Architect: Tibbals, Crumley & Musson

Parma Community Hospital

Parma, Ohio
Architect: George S. Voinovich

The Huntington National Bank

1531 W. Lane Ave., Columbus
Architect: A. C. Lenander

Columbus Board of Education

Administration Building
270 E. State St., Columbus
Architect: David Schackne, Jr.

Lincoln Village Lanes

4170 W. Broad St., Columbus
Architect: Richard C. Clarke

St. John's Youth Center

657 S. Ohio Ave., Columbus
Architect: Charles Egelhoff

Nationwide Inn

4104 W. Broad St., Columbus
Architect: Gamble, Pawmall & Gilrow

Reynoldsburg Bank

7112 E. Main St., Reynoldsburg
Architect: Taylor & Liebersbach

First Federal Savings & Loan Assn.

Oberlin Ave. at W. 37th St., Lorain
Architect: T. A. Badowski & Assoc.

Yes, leading architects are meeting the demands of their clients for service, economy, and quality, with Gas Air Conditioning. Names of additional Gas Air Conditioning customers — large and small volume — available upon request. The Gas Company also maintains a staff of trained air conditioning representatives, ready to work with you in planning for this most economical method of air conditioning. Just give us a call.

THE OHIO FUEL GAS COMPANY



THE OHIO VALLEY GAS COMPANY

ARCHITECTS SOCIETY OF OHIO OFFICERS

President

Orville H. Bauer
1600 Madison Avenue
Toledo 2, Ohio

First Vice-President

Joseph Tuchman
777 West Market Street
Akron 3, Ohio

Second Vice-President

Robert W. Lecklider
Third National Building
Dayton 2, Ohio

Third Vice-President

Eugene F. Schrand
1701 Fifth-Third Bank Building
Cincinnati 2, Ohio

Secretary

William H. Wiechelman
1404 East Ninth Street
Cleveland 14, Ohio

Treasurer

Loren J. Staker
2353 1/2 East Main Street
Columbus 9, Ohio

Immediate Past President

Howard B. Cain
614 Park Building
Cleveland 14, Ohio

Regional Director

George B. Mayer
616 The Arcade
Cleveland 14, Ohio

Executive Director

Clifford E. Sapp
5 East Long Street
Columbus, Ohio

EDITORIAL STAFF

Publication Committee

Chairman

Orville H. Bauer, AIA
1600 Madison Avenue
Toledo 2, Ohio

Technical Editor

David A. Pierce, AIA
4501 North High Street
Columbus 14, Ohio

Managing Editor

Clifford E. Sapp
5 East Long Street
Columbus 15, Ohio
Telephone: 221-6887

Editor

Loretta M. Docter
5 East Long Street
Columbus, Ohio

Advertising Representative

William R. Close
1010 Euclid Avenue
Cleveland, Ohio

ASSOCIATE EDITORS

Cincinnati

Alfred W. Ambrosius
309 Ludlow Avenue
Cincinnati 20, Ohio

Cleveland

William S. Cullen
3092 Livingston Road
Cleveland 20, Ohio

Columbus

Robert R. Reeves, Jr., AIA
1480 Road's End
Columbus 9, Ohio

Dayton

Robert J. Makarius, Jr., AIA
312 Harries Building
Dayton 2, Ohio

Eastern Ohio

Leonard S. Friedman, AIA
3602 Southern Blvd.
Youngstown 7, Ohio

Toledo

Alfred J. Garner
Security Building
Toledo 4, Ohio

OHIO ARCHITECT is the monthly official magazine of the Architects Society of Ohio, Inc., of the American Institute of Architects. Opinions expressed herein are not necessarily those of the Society.

Accepted as controlled circulation published at Athens, Ohio, U.S.A.

Editorial and Advertising office: Five East Long Street, Columbus 15, Ohio. Printed at: The Lawhead Press, 900 East State Street, Athens, Ohio, U.S.A.

OHIO ARCHITECT publishes educational articles architectural and building news, news of persons and the activities of the Architects Society of Ohio, a Region of the American Institute of Architects.

OHIO ARCHITECT is available at a subscription cost of \$4.00 each year or .50 each issue. Roster issue: \$1.00.

OHIO ARCHITECT

OFFICIAL PUBLICATION OF THE ARCHITECTS SOCIETY OF OHIO,
A REGION OF THE AMERICAN INSTITUTE OF ARCHITECTS, INC.

JANUARY, 1963

Volume XXI

Number 1

CONTENTS

FEATURES

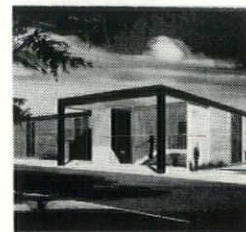
- 5 Bank Architecture —
Design for Profit and Service
- 12 Austin Memorial Chapel
Travis Gower Walsh, Architect
- 16 Moody Junior High School
Robert A. Little & George F. Dalton

AIA AND ASO NEWS

- 8 Dosztal Joins Cleveland AIA Staff
- 14 "Quality" Theme of 1963 AIA Convention
- 14 Columbus Chapter Elects Officers
- 15 Toledo Chapter Elects Munger Jr.
- 18 Advertisers in Ohio Architect

COVER

This month's cover is a rendering of the City National Bank Operations Center in Columbus, designed by Tully and Hobbs, Architects. (See article on page 6)



Copyright 1963 Architects Society of Ohio, Inc. of the American Institute of Architects. All rights reserved.

Bank Architecture — Design for Profit and Service

Leading economists predict that 600 billion worth of construction will be undertaken in the next decade. A large share of this huge sum will be spent on bank buildings in Ohio. Bank architecture, as is true of all business architecture, has at its heart the fulfillment of function. The form of the building should grow out of what is to happen in the structure, how it is to be done, by how many, and for what purpose. The design should create the maximum useful space, provide the straightest possible work-flow traffic pattern; encourage working efficiency in a carefully-controlled environment, and specify construction materials and methods which keep operating and maintenance expenses to a minimum.

But even these prime elements of building function and sound structure do not, in themselves, answer the complete architectural requirements of the banker. Esthetics, which might be termed the science of beauty, is both an intrinsic part of design and an economic tool of your business today. Through the skillful use of esthetics, banks can provide a modern institutional image of themselves and the community which they serve.

Good bank architecture is a professional synthesis of functional space planning, sound engineering, and beauty—a design for profit and service.

Generally, architecture not only reflects—it determines civilization. Thus, bank architecture becomes a part of the face of Ohio.

Architecture deals not only in steel and stone, brick and glass, it deals with the movement of people, the flow of traffic—every civilizational requirement of man. It has the power to protect, to channel and to encourage or discourage activity. Sometimes it has the power to awe.

In Ohio, today's bank building is an example of the design pioneering of contemporary architects. This planning revolution has swept away the massive and forbidding facades of yesterday's financial institutions and replaced them with a light airiness that welcomes the visitor rather than intimidates him. Today's bank expresses in form and appearance the wealth of new services which it offers to society without sacrifice of its traditional dignity.

These services differ from bank to bank, and so do individual space requirements, personnel needs, and local customs and traditions. The bank represents an architectural problem which must be solved individually by the professional whose only interest is the satisfaction of his client's requirements.

The architect must be free to choose from today's wide palette of materials and construction techniques, unhindered by vested interests in the sale or use of either. Many bank projects today are on-the-site remodeling jobs requiring imaginative re-planning of space to provide more working room within the same site boundaries. Unnecessary partitions and old tellers' cages come down. Waste motion is eliminated by equipment design and

location which allow the teller to compute figures and check signatures without either turning around or leaving his station. The loan officers emerge from the box-like, dark offices of yesterday to demonstrate their talents in attractively-zoned open areas within view of the bank's patrons.

In this vast enterprise, it is the architect's responsibility to serve as the building owner's professional counsel, un beholden to any interest but that of his client. The ethics of his practice and the fulfillment of this responsibility prohibit him from accepting any monetary gain from the sale or use of building materials or services, or from assuming the job of building as well as designing. The architect's duties begin with careful analysis of the owner's requirements and desires. Only after these have been studied fully and measured against a host of alternative solutions does the actual design preparation begin. This may include the services of many specialists and consultants who are paid out of the architect's fee.

After acceptance of the design by the client, the architect prepares working drawings and a voluminous book of specifications which may involve hundreds of pages. These make tight competitive bidding possible. The architect will also assist the owner with the screening and awarding of bids. During the construction phase, he will supervise the project. This service includes periodic inspections of the site, as required by the individual project, the checking of suppliers' shop drawings, monthly reports to the owner that the contractors' bills are in order and should be paid, and finally, certification that the building has been satisfactorily completed and is ready for occupancy.

This is what the banker should look for and get in launching a new building project. At the same time, he should beware of the non-professional building service, offered by the package merchant, who purports to offer both design and building services in one contract. A common lure is the guaranteed-price "package" contract.

No human being can look into the future and accurately guess at the exact future cost of materials and services. Thus the only way in which such a contract can be offered is either to pad the price or leave the specifications purposely vague to allow later leaway. This practice destroys the economic advantages of competitive bidding; nor will there be professional supervision during construction. The packager supervises his own work. Finally, the back-room designer hired by the packager cannot provide the imagination or experience of the professional architect who competes on the sole basis of talent.

Good architecture is produced by the professional building team—the banker who spells out the requirements and objectives, and the architect who translates them into design and structure.

Operations Center

New Concept in Banking

The City National Bank Operations Center, located in Thurber Village in Columbus, is unlike any other facility in the State of Ohio. The 20,000 sq. ft. building will house all of the bookkeeping and processing functions of the Bank; and with the use of modern electronic equipment will provide the greatest possible efficiency for its customers.

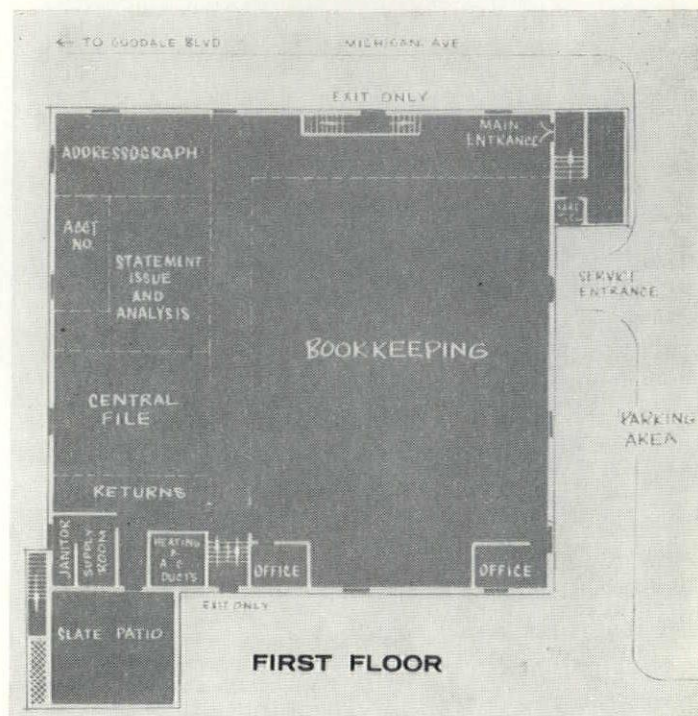
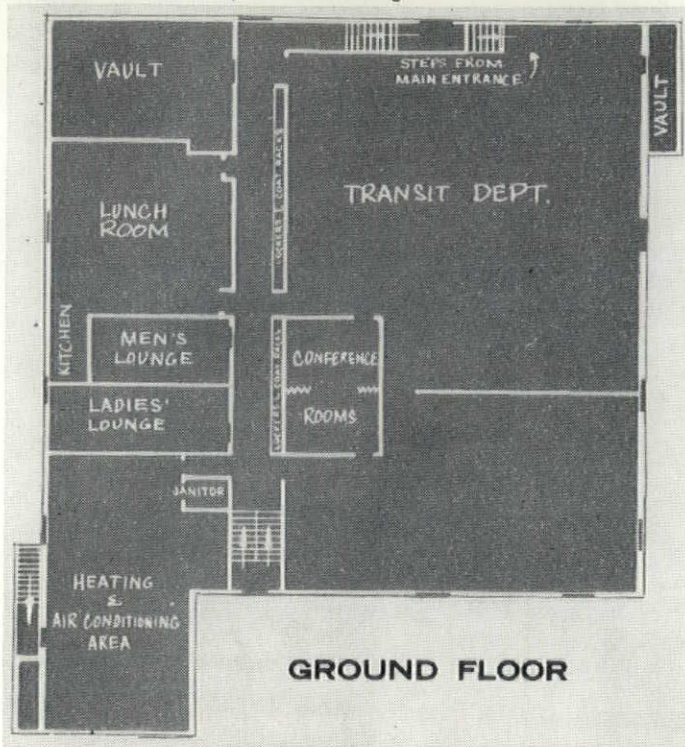
The Operations Center, designed by Columbus architects Tully & Hobbs, is part of a high quality commercial and light industrial complex which is planned along Michigan Avenue as a buffer for the Goodale Urban Renewal Project. The Center, and the neighboring U.S. Trotting Association (both awarded honorable mention for their design by the Junior League of Columbus), together with a small medical center, and buildings of similar design and quality, will fulfill the planning concept. Meanwhile, plans are being undertaken to remodel the school that lies within the area, and to construct multi-story and garden apartments to house the 1,000 families involved in the Goodale redevelopment project. A shopping center has been completed and dedicated, and the total program is fully underway.

The entire Thurber Village concept is being sponsored by the United Redevelopment Corporation, which is a joint venture of the Nationwide Insurance Company and the John W. Galbreath Company. Mr. A. Charles Brooks has coordinated all the activities of the program for the United Redevelopment Corporation. President of the Corporation is John W. Galbreath, and Murray D. Lincoln is Chairman of the Board of Directors.

TULLY & HOBBS, ARCHITECTS



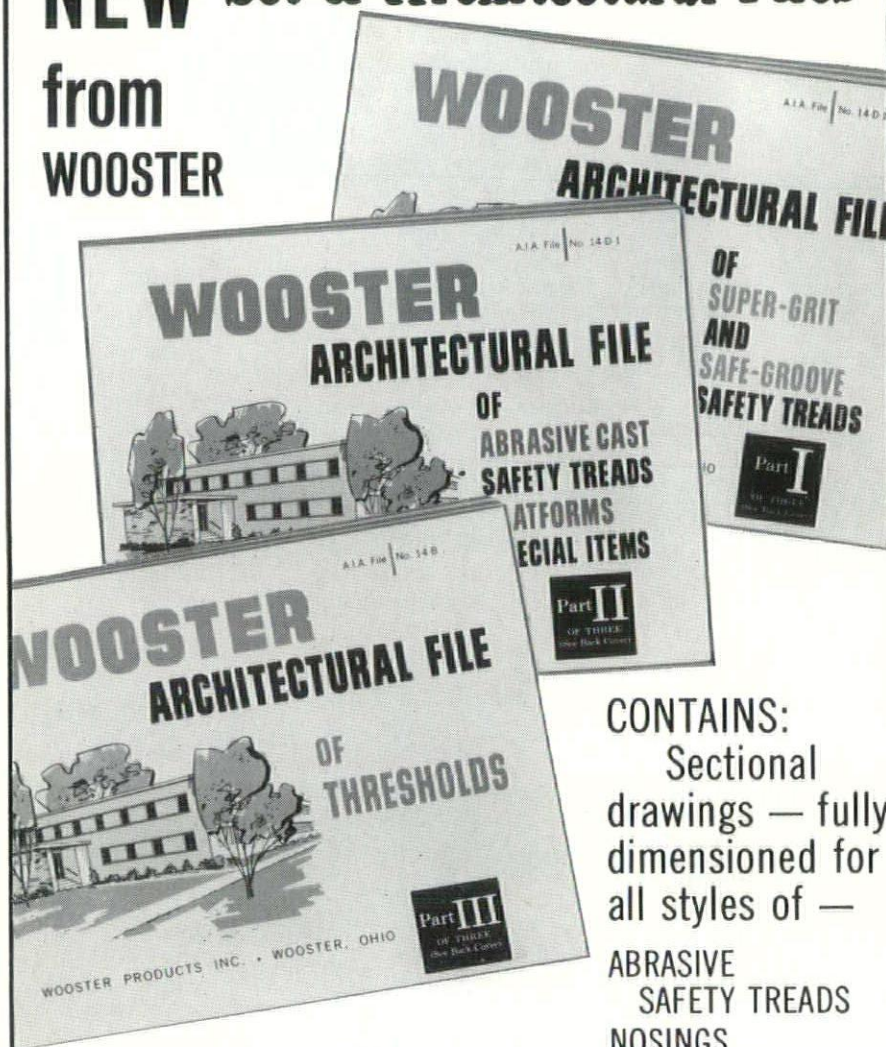
The 20,000 square foot building provides complete facilities for the 140 staff members. Absolute temperature and humidity control, ideal lighting and sound proofing, and pleasant working conditions contribute to the efficiency of the building.



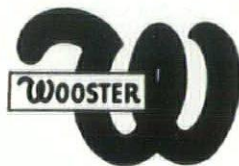
INTERIOR VIEW OF THE CITY NATIONAL BANK OPERATIONS CENTER



NEW Set of Architectural Files from WOOSTER



If you have not
yet received
your personal file
SEND TO:



WOOSTER PRODUCTS INC.

Phone 262-8065

Spruce St., WOOSTER, OHIO

CONTAINS:
Sectional
drawings — fully
dimensioned for
all styles of —
ABRASIVE
SAFETY TREADS
NOSINGS
THRESHOLDS
FLOOR PLATES
AND OTHER
SPECIAL ITEMS

DOSZTAL JOINS CLEVELAND AIA STAFF

New Executive Secretary of the Cleveland Chapter AIA is Miss Rose Marie Dosztal. A graduate of Heidelberg College, she worked as Alumni Secretary for the Schools of Architecture, Law, and Nursing of Western Reserve University before joining the Chapter last July. Earlier in her career, she served as Assistant to the University Editor of the same college.



A native Cleveland, but new to the west side, Miss Dosztal has taken on the role of amateur interior decorator in her recent move. With alternating seasons, skis and sails dominate her leisure hours.

HANDRAIL AVAILABLE IN FOUR NEW HUES

A new bulletin describing *Colorail*, now offered in four new hues, is available from Julius Blum & Co., manufacturer of this flexible plastic handrail. A lightweight but sturdy thermoplastic, *Colorail* is now supplied in yellow, green, blue, and satin-black. These new tones supplement a list of five other vivid colors — glossy-black, red, gray, gold and off-white. In all shades, this tough, easy-to-maintain handrail is designed to give strong but discreet accent to architectural or interior designs.

The new full-color brochure outlines qualities and special characteristics of *Colorail* and gives guidance for special types of application. It describes in illustrations and dimensions the shapes and sizes in which *Colorail* is available. Two helpful items of equipment which accelerate and simplify installation are discussed. One page is devoted to an illustrated set of step-by-step instructions for installation. Write for 1962 A.I.A. File No. 14-D-4, Bulletin No. 021-A, 4 pp., Julius Blum & Co., Inc., Carlstadt, New Jersey.

Columbus Firm Has New Partner

Fred E. Wright and William W. Gilfillen, Columbus architects, take pleasure in announcing the association of Ronald W. Keske as a partner in the firm of Fred E. Wright-Wm. W. Gilfillen-Ronald W. Keske, Architects. The firm is located at 1026 West Goodale Blvd. in Columbus.

POSITION WANTED

Registered architect
28 years old—Married
Experienced in institutional and commercial architecture. Eight years of varied background with Columbus architects. Member AIA. Write OHIO ARCHITECT Magazine, Box 413, 5 East Long Street, Columbus 15, Ohio.

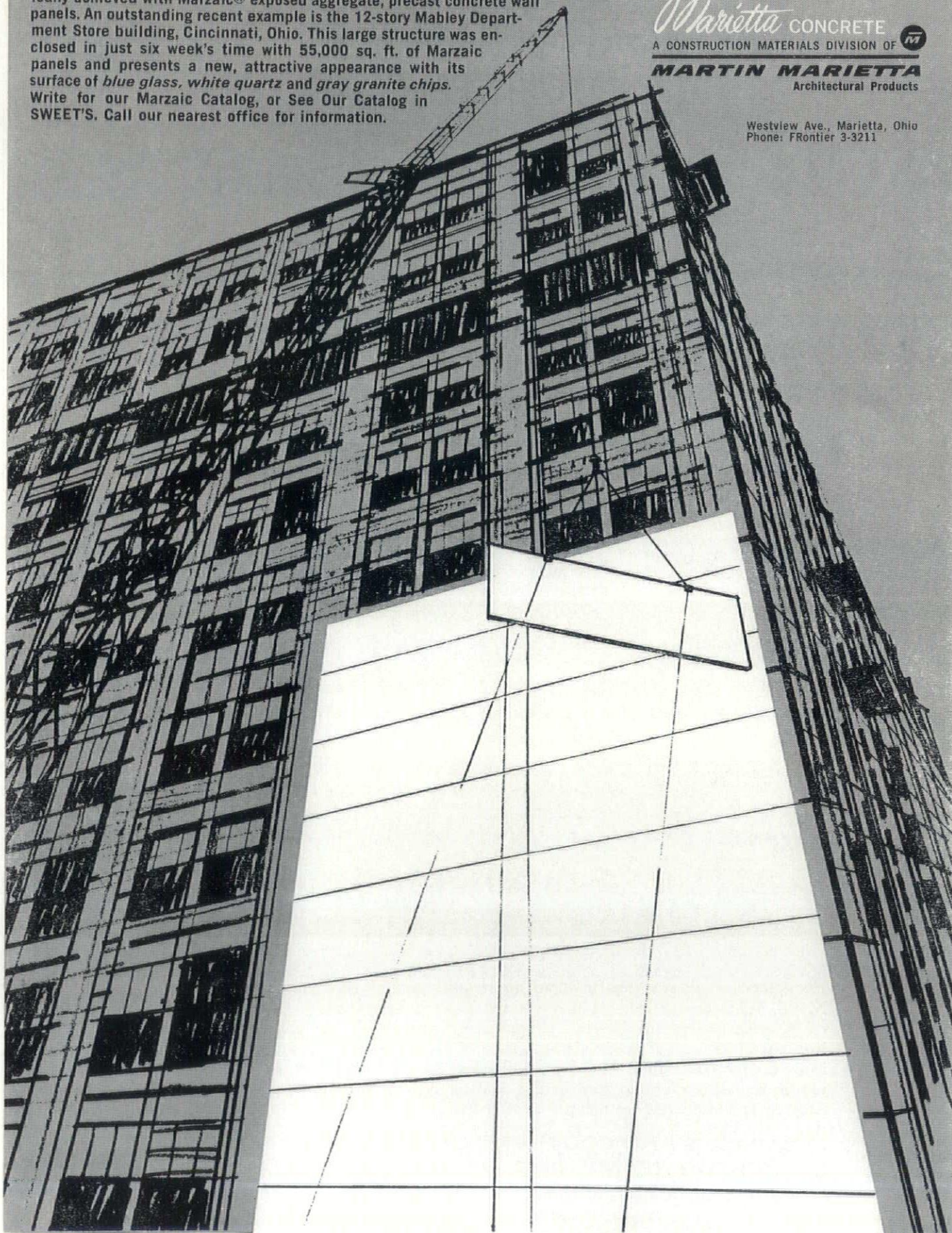
RESTORATION

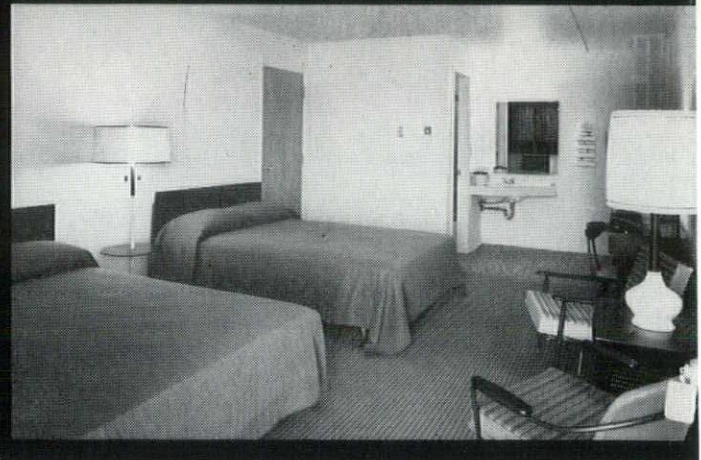
... of older downtown buildings to the latest in modern architectural design can be quickly and economically achieved with Marzaic® exposed aggregate, precast concrete wall panels. An outstanding recent example is the 12-story Mabley Department Store building, Cincinnati, Ohio. This large structure was enclosed in just six week's time with 55,000 sq. ft. of Marzaic panels and presents a new, attractive appearance with its surface of blue glass, white quartz and gray granite chips. Write for our Marzaic Catalog, or See Our Catalog in SWEET'S. Call our nearest office for information.



Marietta CONCRETE
A CONSTRUCTION MATERIALS DIVISION OF 
MARTIN MARIETTA
Architectural Products

Westview Ave., Marietta, Ohio
Phone: FRontier 3-3211





Flameless, all-electric heating and air conditioning pleases guests at Northland Motel, 887 Morse Road. All of the 25 modern units are completely heated, electrically, with Chromalox baseboard panels completely cooled, electrically, by in-the-wall General Electric air conditioners. Each motel unit is automatically and individually controlled. However, a master control panel, located in the office, allows the desk clerk to control the heating system when units are unoccupied. Stop in and see what we mean . you'll like it.

**COLUMBUS AND SOUTHERN OHIO ELECTRIC COMPANY
SERVING THE MIDDLE OF MARKETING AMERICA**

EUROPEAN STUDY TOUR SET FOR ARCHITECTS

Alitalia Airlines has announced a unique, 12-day study tour of Europe designed especially for American, Canadian and Mexican Architects, with visits to England, France, and Italy.

The tour, limited to 40 persons, will depart on March 9th from New York's Idlewild International Airport. The low price of \$698.00 includes DC-8 jet transportation both ways, first class hotel accommodations with Modified American Plan, all tours and professional visits. The participants have an option of returning with the group on March 21st or remaining in Europe on their own for an additional four days.

In each country the architects will inspect not only historical landmarks but, too, many examples of European contemporary work. Included in the tour will be England's Roehampton Estates and Bethnal Green low-cost housing developments, luxury housing near Green Park, the Royal Festival Hall, the new town of Harlow, modern office buildings; the UNESCO Building and the new city of Marly-les-Grandes Terres in France; and in Italy, several buildings by Nervi (Palazzo delle Esposizioni, Italia '61 Pavilion, Palazzo dello Sport, etc.), the Olivetti complex, the Pirelli skyscraper, Torre Velasca, Termini Station, Leonardo da Vinci Airport and many others.

In each city, Alitalia has arranged for famous local architects and architectural editors to be guests of the group at lunches or dinners and to accompany the group during visits to the sites. There will also be opportunities to tour the various architects' offices. Among those who will meet the group are: Gio Ponti, Bruno Zevi, Ernesto Rogers, Pier Luigi Nervi, architects of the London County Council, editors of the "Architectural Review", of "L'architecture d'aujourd'hui", and of "L'architettura", as well as several senior members of the Royal Institute of British Architects, the Conseil Supérieur de l'Ordre des Architectes, and the Ordine degli Architetti.

Jan C. Rowan, AIA, practicing architect and Managing Editor of "Progressive Architecture" will accompany the group throughout the trip. Mr. Rowan was educated in Europe, has worked professionally in Great Britain and France.

For further information contact Mr. James Branciforti of Alitalia Airlines, 666 Fifth Avenue, New York 19, New York, or the local Alitalia office in Cleveland or Cincinnati.

ARCHITECTS, JOB CAPTAINS, AND DRAFTSMEN

Interested in progressive and exciting work with a long future.

Three years experience minimum requirement for applicants.

Salary open depending on experience and ability.

Wright-Gilfillen-Keske, Architects
1026 W. Goodale Blvd.
Columbus 12, Ohio—Telephone 291-4651



NEW FIRE RATINGS

for improved

MONO-KOTE®

If you have encountered Zonolite Mono-Kote before, you know of its good working characteristics, high speed application and low cost. Now we have improved Mono-Kote still further to increase its fire resistance. The new fire ratings as established by Underwriters' Laboratories, Inc., are:

BLEND SYSTEM DECK— $\frac{7}{8}$ " Mono-Kote applied direct-to-steel, following contours, 3-hour fire rating. $\frac{1}{2}$ " Mono-Kote, applied direct-to-steel, following contours, 2-hour fire rating.

CELLULAR FLOOR— $\frac{1}{2}$ " Mono-Kote below filled flutes provides a fire rating of 3 hours.

BEAMS— $1\frac{1}{4}$ " Mono-Kote applied direct-to-steel, following contour, 5-hour fire rating. 1" Mono-Kote applied direct-to-steel, following contour, 3-hour fire rating.

A complete summary of fire tests on improved Mono-Kote is yours for the asking. Mail the coupon below.

ZONOLITE COMPANY

135 S. LA SALLE STREET • CHICAGO 3, ILLINOIS

Zonolite Company, Dept. OA-163

135 S. LaSalle Street, Chicago 3, Illinois

Gentlemen: Please send me technical data and latest fire test information on Zonolite Mono-Kote.

NAME _____ TITLE _____

FIRM _____

ADDRESS _____

CITY _____ ZONE _____ STATE _____

AUSTIN

MEMORIAL

CHAPEL



Architect: TRAVIS GOWER WALSH, AIA

THE AUSTIN MEMORIAL CHAPEL which honors the memory of Wilbert J. and Ida Stewart Austin has seating for 106 persons. It is to be open to members of the Windermere Methodist Church and all others in East Cleveland as a place of worship, meditation and prayer.

The focal feature on the altar is the reredos which is a carefully delineated Gothic design in hand carved oak with a canopy that projects over the altar. A high oak wainscot with hand carved cornice extends across the entire chancel.

The pulpit, lectern and baptismal font are all of hand carved oak and the ceiling is comprised of twelve panels to represent the twelve disciples, each with a multi-colored design and includes representation of the four evangelists with a pointed oval or nimbus representing our Lord.

Walls of the chapel proper above the wainscoting are platinum shade plaster with leaded glass windows on the street side. Visitors entering the chapel from the tower entrance on Holyoke Avenue find themselves in an octagonal narthex which is separated from the church narthex

by handsome wrought iron gates relieved with brass. A cast bronze lantern from the John L. Severance mansion hangs from the center of a vaulted ceiling where six candle-type bulbs bathe the surrounding wainscoting and stalls with soft light. Stalls have carved posts representing the twelve disciples and the center posts support heads of the four evangelists.

The narthex floor is paved with Moravian tile with religious symbols with marble around the border. Two pair of cast bronze Gothic wall brackets from the Severance mansion have also been installed in the narthex, where the principal feature of interest is a pair of faceted stained glass windows created by Douglas Phillips and presented as a memorial gift by Mr. and Mrs. Austin's grandchildren.

Another feature of special interest is a 15th Century Italian renaissance lantern fashioned in silver and studded with turquoise. This fixture has been installed in the ambulatory between the church narthex and the chapel narthex and, like the other lighting fixtures, is a gift of Mr. and Mrs. Severance A. Millikin.

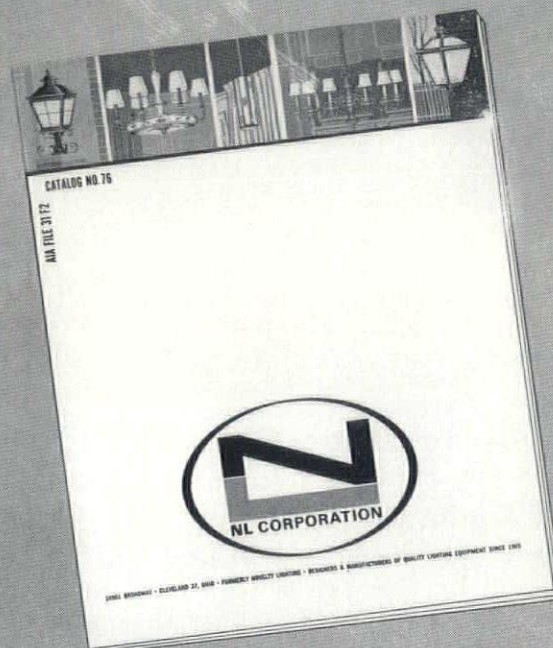


This view in the narthex reveals the stairway leading to the chapel proper where an early carved statuette of St. Michael of the Angels can be seen behind the handsome wrought iron rail. The dedication plaque can be seen above the stall on the left framed in the high oak wainscot which has a hand carved cornice.



This view in the narthex of the Austin Memorial Chapel at the Windermere Methodist Church shows how stalls have been adorned with hand carved posts. These represent the twelve disciples and flank heads of the four evangelists which cap the posts. The cast bronze wall brackets and lantern which hangs from the center of the vaulted ceiling came from the John L. Severance mansion and were a gift from Severance A. Millikin. The narthex floor is paved with Moravian tile with religious symbols and has a surrounding border of marble.

it's
NEW
for you

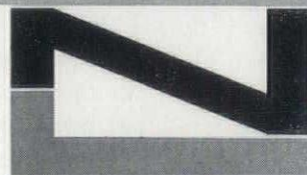


the new NL lighting catalog

Complete new lines of commercial and institutional incandescent fixtures, including custom design, for:

Hotels	Restaurants
Motels	Churches
Banks	Public Buildings

Write for your free catalog today!



NL CORPORATION (FORMERLY NOVELTY LIGHTING)

14917 Broadway
Cleveland 37, Ohio



Columbus Chapter Elects Officers

Robert H. Myers (seated center) has been elected President of the Columbus Chapter, AIA, for the year 1963. Other Chapter officers elected are Frederick E. Wright (seated left), Secretary; Dan A. Carmichael (seated right), Vice President. Pictured standing (left to right) are William A. Liebersbach, Treasurer; and Directors Richard Henry Eiselt, James J. Foley and Robert R. Reeves, Jr.

Pittsburgh Plate Glass Foundation Announces City Planning Fellowship

PITTSBURGH—The Pittsburgh Plate Glass Foundation has announced the three winners of its 1962 Fellowship Awards for Graduate Study in City Planning.

According to William Carpenter, administrative officer for the Foundation, these Fellowships carry a maximum stipend of \$1500 per term were awarded to David R. Godschalk of Key West, Florida; Oliver J. Selfridge, Jr., of Baldwin, Kansas; and Clark P. Turner of Yellow Springs, Ohio.

Each Fellowship is intended for a four-term program and also includes a \$500 cost-of-education grant per term to the universities attended by the Foundation Fellows.

Mr. Godschalk, who has earned a Bachelor of Arts degree from Dartmouth College and a Bachelor of Architecture from the University of Florida, will attend the University of North Carolina upon completing a year of active duty in the U. S. Navy.

Mr. Selfridge was graduated from the University of Kansas with a Bachelor of Arts degree and is presently employed as a graphic designer for the University. He plans to attend Yale University.

Mr. Turner is a graduate of Antioch College, having received a Bachelor of Arts degree in government. He is currently serving as an associate planner for Springfield-Clark County Regional Planning Association in Springfield, Ohio; and will attend Ohio State University this fall.

The candidates were evaluated on previous education, experience, leadership and breadth of vision by a selection

"Quality" To Be Theme For 1963 AIA Convention

"The Quest for Quality in Architecture" will be the theme of the professional program of The American Institute of Architects' 1963 Convention May 5-9 in Miami. President Henry L. Wright, FAIA, announced today.

In describing the program subject, Wright said: "At its 1962 convention in Dallas, the Institute discussed the expansion of architects' services, both to the community and the individual client. In 1961 in Philadelphia, the convention theme centered on extension of the scope of architects' practice into the field of urban design.

"AIA's current major programs also are concerned with a broadening of the architect's function to meet the requirements of a rapidly changing society. The 1963 convention seems an appropriate time to pause in this period of expansion and again explore the concept of architectural quality, to perform the re-examination of 'basic doctrine' in architecture."

The first session, on Wednesday morning, May 8, will be titled "What Is Quality." Speakers and panelists will explore, among other topics, the criteria for defining quality and the reasons why these criteria are ever-changing.

The second session, on Thursday morning, will be concerned with "What and Who Influences Quality?" Examined will be the role of government, education, professional press, public taste, and other influences, both internal and external.

The final session, on Thursday afternoon, will take up "The Attainment of Quality," with discussion of such subjects as collaborative vs. individual approach, and native ability vs. acquired knowledge.

Burnham Kelly, Dean of the College of Architecture at Cornell University, will serve as moderator for the entire program. The roster of speakers, to be announced later, includes distinguished architects and noted experts in other related fields, Wright said.

In charge of planning the 1963 professional program is a committee composed of five AIA directors: William W. Eshbach, AIA, of Philadelphia, chairman; Robert Murray Little, FAIA, of Miami; Charles M. Nes, Jr., FAIA, of Baltimore; Oswald H. Thorson, AIA, of Waterloo, Iowa; and Julius Sandstedt, AIA, of Oshkosh, Wisconsin.

committee composed of Patrick J. Cusick, Jr., vice president, American Institute of Planners and executive director, Pittsburgh Regional Planning Association; Bernard E. Loshbough, executive director, ACTION-Housing, Inc., of Pittsburgh and John Miller, executive secretary, National Planning Association.

These Pittsburgh Plate Glass Foundation Fellowships are designed to encourage qualified students to pursue careers in city planning. Three new awards will be made annually by the Foundation which established the City Planning Fellowships program earlier this year.

Toledo Chapter AIA Elect Munger, Jr. President

Harold C. Munger, Jr., partner in the Toledo architectural firm of Munger Munger and Associates, has been elected President of the Toledo Chapter, American Institute of Architects for 1963.

Mr. Munger started his Toledo Chapter term of office as Treasurer in 1958, and each succeeding year moved up through Secretary, Second Vice President and First Vice President. He is the first in the history of the Toledo Chapter to hold and perform the duties of all five of these offices in consecutive order.



He is a 1951 graduate of the University of Notre Dame, with the degree of Bachelor of Science in Architecture. At graduation, he received the *G. S. Sollitt Prize*, highest award honor given to a graduating student in architecture. Mr. Munger resides on East Second Street in Perrysburg, and is a member of the Board of Trustees, Perrysburg Way Public Library. Other civic contributions of time and experience are: Perrysburg City Charter Commission; Downtown Toledo Associates, Convention Hall Committee.

To complete the slate of Toledo Chapter officers for 1963, Mr. Robert M. Lutz was elected to fill the post of First Vice President; Mr. Robert E. Stough, Second Vice President; Mr. Richard Valasek, Secretary; and Mr. Robert E. Martin, Treasurer.

APRIL ROSTER ISSUE MEMO

The April 1963 issue of OHIO ARCHITECT will carry the names and addresses of all architects registered to practice in Ohio. If you have had a recent change of address, be sure to notify the office of the Architects Society of Ohio, 5 East Long Street, Columbus 15, Ohio.

JANUARY, 1963

ARKETEX CERAMIC INTRODUCES NEW PRODUCT

A new brochure from Arketex Ceramic Corporation offers a Grade SS (Super Select) ceramic glazed structural tile at the price of the industry's Grade S (Select) line. The new product, called Accuratile, is offered in two series and all shapes needed for a complete job. It is available in eighteen contemporary colors, all of which are shown in the brochure. In effect, the new literature states, Accuratile provides the advantages of super select sizing at no increase in cost. The firm credits new, automated production facilities and quality controls for making the product possible. For the benefit of prospective building owners, who may not be acquainted with industry grading terms, Arketex explains that Grade SS standards are the highest in the masonry field. Because of the extreme dimensional uniformity required in this grade, the craftsman can build walls with narrower, straighter, more attractive lines of mortar. The Arketex brochure also describes a new type of portable, unitized packaging, offered with Accuratile at no extra cost. This packaging method, called Arketote, is said to eliminate palletizing expenses, speed handling, simplify inventory and sharply reduce tile damage. Architects, contractors and prospective owners of new construction may obtain the Accuratile brochure free of charge from Arketex Ceramic Corporation, Brazil, Indiana.

Blumcraft of Pittsburgh Wins Award

Blumcraft of Pittsburgh received an award for their 1962 catalogue in the product literature competition conducted jointly by the American Institute of Architects and the Producers Council, Inc.

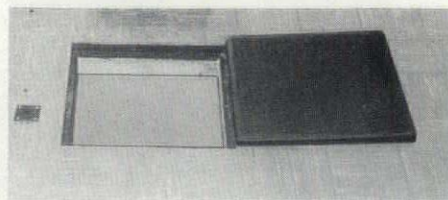
The citation concerning the Blumcraft aluminum railings catalogue M-62 reads:

"An example of the type of reference material architects find most helpful. Technical informative, complete."

In each of the two years that Blumcraft submitted an entry, they have been successful in receiving an award.

FIRE-RATED FLOOR ACCESS DOORS

approved by the
State of Ohio *



When you need Fire-Rated floor access doors—be sure you specify the one door and frame that does the job all the way. Investigate the Fire-Rated 'FlorDor' today—specify it tomorrow—FIRE-RATED, 'FlorDor' is approved as an opening protective for ratings up to 3 hours. Write for full story. Be sure your specifications provide the most protection against heat transmission and explosive pressure from below.

* An administrative action by the Division of Factory and Building Inspection, of the Ohio Department of Industrial Relations based upon the facts provided by the fire test of the 'FlorDor' made by the Ohio State University, Engineering Experimental Station against the standard ASTM time-temperature curve.



This label of State approval appears on every door and frame.

MOSCRIP, INC.

750 GREENLAWN AVE. — P. O. BOX 1155
PHONE: 225-4010 LIMA, OHIO

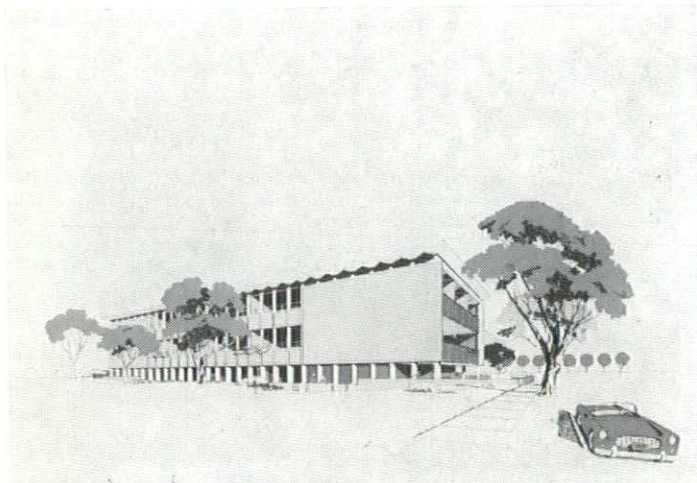
SUSANE JOINS MACCO

Andrew A. Susane has joined The Macco Adhesives Company, Wickliffe, Ohio, A Division of The Macco Chemical Company, as a factory sales representative.

Mr. Susane will be responsible for the sale of Macco's complete line of adhesives, grouts, mortars and other products for the ceramic tile industry in western Ohio, Indiana and Michigan. He will work closely with architects, contractors-engineers, and tile and flooring product distributors and dealers.

Prior to joining Macco, Mr. Susane was associated with The Ruberoid Company, Tile Division, Joliet, Illinois, in a similar capacity. He has been active in both resilient and ceramic tile distribution and retail contract work since 1946. He attended Mississippi State and Fenn Colleges.

Married, with two children, Mr. Susane lives at 7231 Marko Lane, Parma, Ohio.



This drawing, prepared by Robert A. Little & George F. Dalton & Associates, Architects, shows the new structure proposed to be built at the Moody Junior High School in Bedford, Ohio. The building is a three-story expansion of the present school at 653 Washington Street near downtown Bedford, and will be built of concrete, red brick and glass.

The building will contain the departments of Science, Art, Home Economics, Music, Library and a large Group Room for visual aid and future television teaching. The ground floor will have a kitchen and 600-seat cafeteria which may be divided into three study halls or opened for assembly purposes.

The educational program, worked out in detail by the Board of Education and Faculty with the Architects, indicated that future school needs may vary and develop considerably in the next thirty years. Therefore the building has been designed to be highly flexible to future changes in room use and arrangement. This will be achieved by a new structural system, which uses seventy-foot-long prestressed concrete beams across the whole building, and provides over 50,000 square feet of teaching space without a post of column.

Ralph Deevers is Clerk-Treasurer of the Bedford Board of Education, Dale D. Heskett, the Superintendent of Schools, and William E. Dellard is Principal of the Moody School.

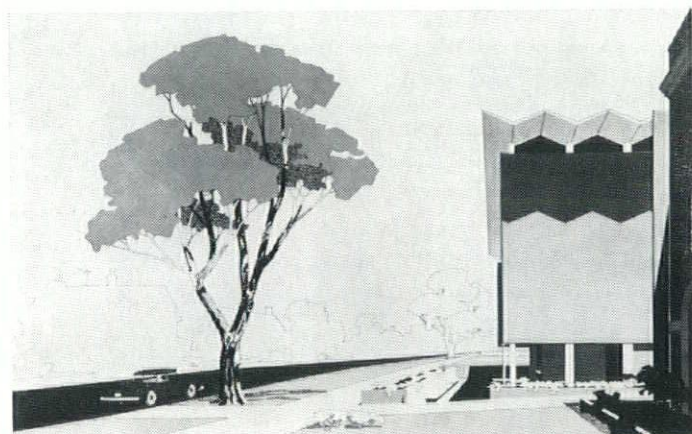
The architectural firm of Little & Dalton & Associates has also designed the recently completed Board of Education Administration Building for Bedford on Warrensville Road near Northfield Road (Route 17).

MOODY JUNIOR HIGH

Bedford, Ohio

One end of the structure planned for the Moody Jr. High School in Bedford, seen from the existing building, shows the new three-story wing of red brick and reinforced concrete.

For purposes of economy and tying-in with the present School, the new wing is partially set into the ground, forming a sunken walk space outside the new Faculty lunch room.

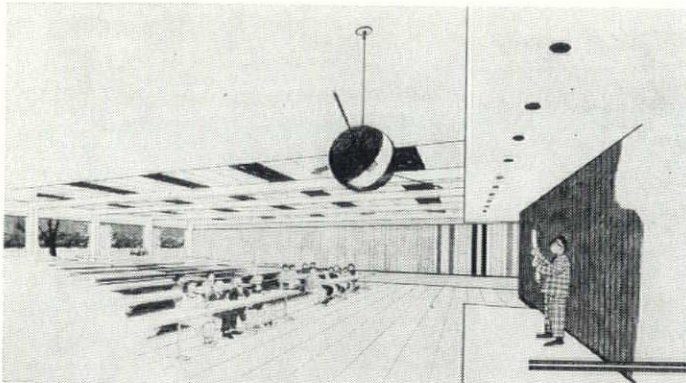


This sketch, by Architects Little & Dalton & Associates shows the ends of the concrete "Y" beams on the roof, which were engineered to span across the large building and to leave space for high windows in the studio rooms behind. The building has been designed to fill the needs of future educational programs and to harmonize with the earlier building and the residential neighborhood.

OHIO ARCHITECT

Architects and Engineers

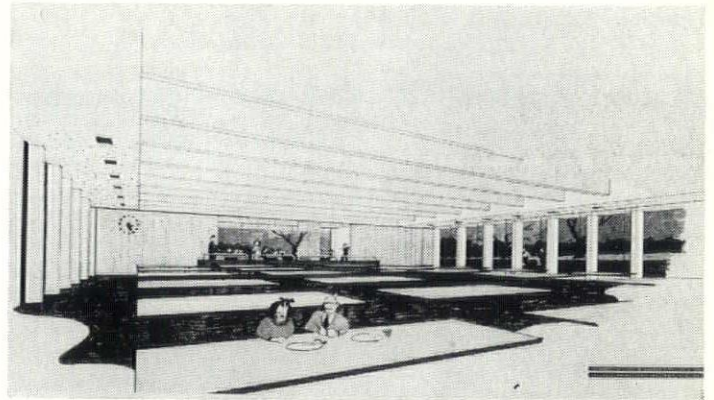
Robert A. Little and George F. Dalton & Associates



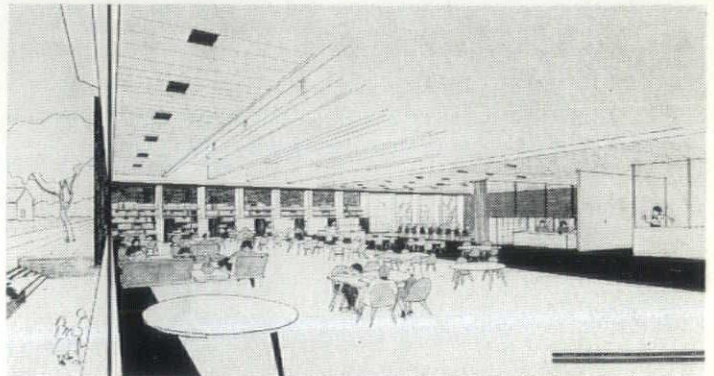
New type of education is planned in this "Group Room" of the proposed Moody Jr. High School addition. Raised tiers of seats will allow several classes of students to take advantage of special demonstrations, films, slide presentations, or future television instructions. The School is planned to give junior high students the opportunities and facilities of new teaching methods now developing across the United States.

The Library of the proposed Moody Junior High School extension shows the same red brick and exposed concrete beams as used outside. Lighting and acoustics are engineered to provide a quiet and efficient study space, while low ceilings, warm colors and wood finishes will avoid an institutional look. A library classroom, listening booths and individual study carrels are in the right background.

JANUARY, 1963



Multi-use cafeteria of the new Bedford Moody Jr. High School opens on a brick walkway and pleasant green space to the right. The end of the room contains a raised Faculty lunch room, which can also serve as a platform for meetings, graduation exercises, and musical preformances. The 600-seat dining room will be divided by folding partitions to form three large study halls or meeting rooms.



THERM-O-PROOF LISTED IN SWEET'S CATALOG

Incorporation of Therm-O-Proof insulating glass specifications in the new issue of Sweet's Architectural File 7A is announced by J. K. Froehlich, sales manager for Thermoproof Glass Company, Detroit, Michigan.

In addition to information on standard sizes and specialty configurations, complete data is included on savings realized in air conditioning and heating costs when Therm-O-Proof is used.

A copy of the eight page insertion used in Sweet's is available by writing Thermoproof Glass Company, Sales Promotion Department, 4815 Cabot Avenue, Detroit 10, Michigan.

Advertisers in Ohio Architect

Columbus & Southern Ohio Electric Co.	10
Dyfoam Corp. (Meek and Thomas, Inc.)	22
Eggers Plywood Company (Van Handel Company)	23
The Jennison Wright Corp. (Phillipps Associates)	21
George P. Little Co. (Belden & Frenz & Lehman, Inc.)	2
Marietta Concrete Division (Harry M. Miller, Inc.)	9
Moscip, Inc. (Central Advertising Agency, Inc.)	15
N. L. Corporation (Nelson Stern Advertising)	13
Ohio Fuel Gas Company	3
Professional Cards	19
Wooster Products, Inc. (McDaniel, Fisher & Spelman Co.)	8
Zonolite Co. (Fuller & Smith & Ross)	11

FREE "BEST SELLER" OFFERS MANY MONEY-SAVING BUILDING IDEAS

Did you know that a privately printed book was vying for the best seller honors with some of the world's most widely distributed volumes? It's true! The publication, now in the 15th edition, is the Homasote Handbook published by the Homasote Company of Trenton, New Jersey.

Over 2,000,000 copies of this fact-packed book have been distributed in the past six years. It has helped hundreds of thousands of people since then to benefit from the many inherent advantages of insulating-building boards.

Architects and interior designers will find in this handbook a key to many sound, cost-cutting construction ideas that enhance the beauty and appearance of almost every structure. The book gives complete details of physical properties which include insulating factor, tensile and transverse strength, nail-holding ability, sound-absorption qualities as well as size and weight information.

The book outlines the many advantages of using "big sheets" and tells of the high tolerance and resistance of the material to the ravages of floods and hurricane-force winds.

The handy little volume also covers many installation quirks and short-cuts that are not widely known. One of the interesting facts included is instructions for taking a big 8-foot by 14-foot sheet of insulating board through an ordinary 2-foot, 6-inch by 6-foot, 8-inch door without damaging the material or the door.

For the most part, the book describes how the insulating board can be used for exterior walls, sheathing, soffits, siding or clapboards. For exterior construction, the material can be installed as grooved vertical siding, as a board-

and-batten finish or as roof decking. Interior uses of the material include dry walls, plaques, decorative ceilings, sub-flooring and floor covering underlayments. Copies of this highly useful manual are available, free of charge, from any neighborhood lumber dealer or at 10 cents a copy from Homasote Company, Trenton 3, New Jersey.

Zonolite Named a National Distributor For Fiberglas Form Board

The Zonolite Company of Chicago, the country's leading manufacturer of vermiculite for poured lightweight concrete roof decks, has been named a national distributor for Fiberglas Form Board, according to an announcement made today by W. J. Lemasters, manager of distribution sales for Owens-Corning Fiberglas Corporation.

"The combination of lightweight vermiculite concrete and Fiberglas Form Board affords architects and contractors many unique advantages," Lemasters stated. "The system is firesafe, light in weight and has high thermal insulating, acoustical, and light reflectivity characteristics."

Three types of Fiberglas Form Board—DeLuxe, Industrial, and Concealed Economy—will be offered by Zonolite Company through its plants and approved applicators.

At the same time, Zonolite Company announced the appointment of Henry White as manager of its Concrete Products Department, which will handle sales of the Form Board product. Mr. White was formerly with Anning-Johnson Company, Chicago.

STEEL DOORS AND FRAMES FOR SCHOOLS

Steel doors and frames for all types of school construction are described in detail in a new four-page brochure introduced by Amweld Building Products. The new folder depicts actual country-wide installations and features a large variety of styles and designs available for school construction. Fully covered are Underwriters' listed fire doors and frames, plus hardware flexibility of the line. Borrowed lights and transoms are also discussed. The brochure is complete with testimonials from leading architects.

Stained Glass Association Elect Officers

John A. Riordan of the Riordan Stained Glass Studio in Covington, Kentucky, recently attended a convention in Washington D. C. where he was named president of the Stained Glass Association of America. Elected with Riordan were Otto Winterich of Cleveland, First Vice President, and Robert Rambusch of New York, Second Vice President.

Architects Invited to State Meeting on Construction Failures

The Consulting Engineers of Ohio organization has extended an invitation to all architects in Ohio to participate in a meeting to discuss "Costs of Failures for Architectural and Engineering Projects", scheduled for 9:30 Saturday morning, February 2 at the Arlington Arms Motel in Columbus.

Architects and engineers throughout the country have become intensely interested in professional liability in connection with damage claims for construction failures. Professional people feel they cannot afford to be without liability insurance, and the rising number of claims has resulted in substantial increases in insurance premiums.

Program Chairmen Neal Slane and Paul Shepard, members of the CEO Executive Committee, have arranged for Victor O. Schinnerer of New York and Washington, head of the professional liability insurance agency for architects and engineers, to speak. Glen H. Abplanalp, attorney and engineer for Havens and Emerson in New York and Cleveland who specializes in analysis and evaluation of design failures; and Fred Bostleman, President of a contracting firm bearing that name and President of the Toledo Contractors Association will also present their views on the subject.

A panel comprised of the above speakers will answer questions from the floor, and a luncheon will follow.

Architects interested in attending the meeting are asked to drop a postcard to P. K. Furney, Executive Secretary, CEO, 5 East Long Street in Columbus, so that luncheon arrangements may be made.

GORDON H. FROST & ASSOCIATES CONSULTING MECHANICAL ENGINEERS

HEATING - VENTILATING
AIR CONDITIONING
PLUMBING - DRAINAGE

2000 W. CENTRAL AVE. REGISTERED
TOLEDO 6, OHIO OHIO-MICHIGAN
INDIANA

CA. 1-2714

CA. 1-1439

RALPH & CURL, ENGINEERS DESIGN & CONSULTING

Heating, Ventilating, Air Conditioning,
Electrical, Plumbing, Plant Layout

3720 E. Fifth Ave., Columbus 19, O.

Robert S. Curl & Associates

Consulting and Designing Mechanical

ENGINEERS

• Air Conditioning • Refrigeration • Plumbing
• Heating • Boiler Plants • Process
• Ventilating • Electric Work • Piping
1309 E. Broad St., Columbus 5, O.

Fling & Eeman, Inc.

Consulting Engineers

Structural Design & Supervision

224-7718

101 N. High St. Columbus 15, Ohio

LIMESTONE HANDBOOK

New ideas, details, specifications, engineering and maintenance data on Indiana Limestone is furnished in a comprehensive Limestone Handbook offered to architects. Authentic information on standards of grades, color tone, finishes, and other technical data is included. Formed almost 300 million years ago by the Salem Sea, Indiana Limestone comes from south central Indiana, and can be obtained in shades of gray and buff, and a mixture of the two. For a free looseleaf Handbook on Limestone, write to Indiana Limestone Institute, Box 757, Bloomington, Indiana.



HAUSERMAN BROCHURE AVAILABLE

The E. F. Hauserman Company has issued a new 16 page brochure on the Hauserman Operable Wall . . . a sliding wall which can be moved in or out of place in a matter of minutes to adapt space in schools, commercial office buildings, hotels, motels and institutional buildings. The catalog includes pictures of the product and detailed drawings and specifications. It is available on request. Address inquiries to The E. F. Hauserman Company, Department OW, 5711 Grant Avenue, Cleveland 5, Ohio.

LUMINOUS CEILING BOOKLET AVAILABLE

How to install a smart, modern luminous ceiling is demonstrated in a new step-by-step four page pamphlet offered by Alsynite Division of Reichhold Chemicals, Inc.

Illustrations show the effectiveness of the translucent panel ceiling in kitchens, bathrooms, offices and basements or family rooms. Each photograph shows a close-up of the five easy steps to installing a luminous ceiling, including the use and application of the molding, framing, clips, pre-cut Alsynite panels and other accessories.

To help in the installation of a handsome new suspended light ceiling in any room in the house, the pamphlet includes a graph and instructions showing how to measure for the Alsynite panels and component parts, regardless of room size or configuration.

For new installations or in remodeling, Alsynite's suspended ceiling improves over-all lighting. The glass reinforced panels transmit evenly diffused light for greater lighting efficiency and the elimination of shadows.

For free pamphlet or more details, write for booklet CS-962, Alsynite Division of Reichhold Chemicals, Inc., San Diego 9, California.

WILL HONOR JOHN SUPPES

The memory of John F. Suppes, an Akron Architect more than half a century at the time of his death in 1959, is being honored.

The National Encyclopedia of American Biography has accepted the story of his life, and it will appear shortly.

Suppes, one of the first men active in zoning here, designed—much of the City's Firestone Park section along with numerous buildings of the Firestone Tire and Rubber Company.

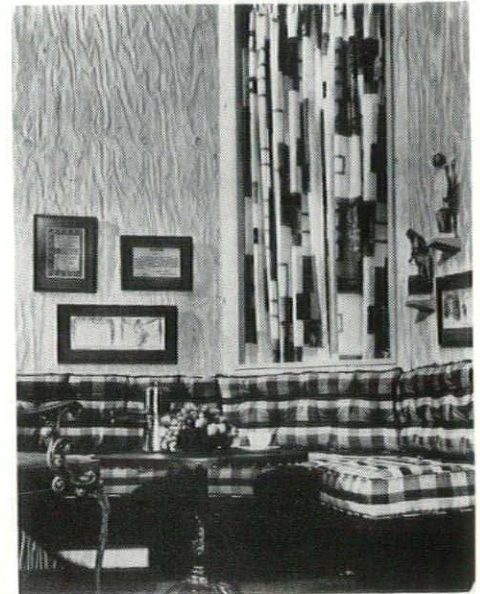
Martin Marietta Names Dodd Assistant to President

Earl R. Dodd, formerly president of Martin Marietta Corporation's O-Cedar Division, has been named assistant to Dr. Harry N. Huntzicker, president of the corporation's Construction Materials Division. The O-Cedar Division recently was sold to the Drac-kett Company, Cincinnati.

The Chicago-based Construction Materials Division consists of 14 companies in the cement, lime, concrete products, aggregates, brick, refractory and electrical construction products fields.

Mr. Dodd, a 16-year veteran of American-Marietta Company (which merged last fall with The Martin Company), joined the O-Cedar organization in 1954 as executive vice president, becoming president in 1956. In 1961, O-Cedar posted its best year in history.

Mr. Dodd was with Adhesive Products Company, Seattle, in 1946, when American-Marietta acquired the firm. Next year, he became manager of Canadian-Marietta, Ltd., in New Westminster, B.C., returning to Seattle in 1950 as general manager, Northwest Operations, of American-Marietta's Adhesive, Resin and Chemical Division. From there, Mr. Dodd went to O-Cedar.



Coffee Corner by John Elmo, AID, features Concord White paneling — one of the new decorator colors just added to U. S. Plywood's Surfwood line of wall panels. The rugged, textured surface of this paneling makes an interesting background here for the designer's collection of antique theatre programs and East Indian figurines. Other colors are Autumn Smoke, Golden Sand, Silver Grey, Frosted Ebony and Fawn.

MARLITE OFFERS NEW REFERENCE FOLDER

"Quick Facts About Marlite," a new reference file folder containing color swatches, descriptive literature and technical information on the complete line of Marlite plastic-surfaced hardboard, now is available from Marsh Wall Products, Inc., Dover, Ohio. Color swatches and actual product samples showing Hi-gloss panels, Plank and Block, Random Plank and Wood-panels, and a variety of Marble and Decorator Patterns are included in the folder. Color swatches for Korelock, a rigid hollow-core panel that reduces installation time to the minimum, also are included. The new reference folder contains a 1962 Marlite catalog, general information and specifications sheets and an 8x10-inch full color photograph of a Marlite-paneled kitchen. The file folder, which will fit in standard file cabinets, is handy for reference or presentations.



Bounce on it!

and Feel the Cushioned Flex of KREOLITE Gym Floors

With apologies to Pepsi-Cola, we are saying "KREOLITE, the floor with more bounce to the ounce".

It so aptly describes KREOLITE FLEXIBLE STRIP End Grain Wood Block Flooring with its built-in cushioning resiliency.

Kreolite has other most wanted features that make it a better gym floor; Durable Beauty, Easy and Economical to install and maintain . . . it's safer too, because it's splinter-proof.

Liked by players and coaches and preferred by budget conscious school officials, Kreolite will prove to be the most satisfactory floor you ever specified. Write today for performance data and specifications. Take your first step to better floors for gyms, multi-purpose rooms or shops.

KREOLITE

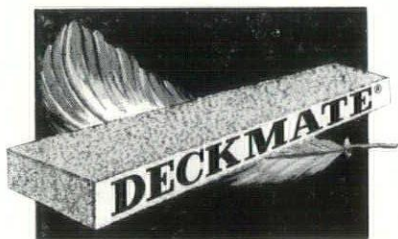
FLEXIBLE STRIP

END GRAIN FLOORING

THE

**JENNISON-WRIGHT
CORPORATION**

TOLEDO 9, OHIO



NEW PLASTIC FOAM ROOF INSULATION

- STRONG
- LIGHTWEIGHT
- NON-SHRINKING
- FEWER JOINTS
- LOWEST C FACTOR

ARCHITECTS — ENGINEERS — Write
for free complete Information
Brochure . . .

**DYFOAM®
CORPORATION**
202 E. CHERRY STREET
NEW CASTLE, PENNSYLVANIA

New Evans' Brick Folder Illustrates Tebco Face Brick

The wide range of colors, sizes and textures of Tebco Face Brick are described and illustrated in a new folder, published by the Evans Brick Co., Uhrichsville, Ohio, one of the nation's largest producers of brick and clay products.

Ten brick panels from the Tebco line, from which a total of 592 color combinations are possible, are illustrated in full color. Tebco Face Brick is available in 37 colors, four textures and four sizes.

Copies of the new Tebco Face Brick folder, and other information about the complete Tebco line, may be obtained by writing to the Evans Brick Co., Uhrichsville, Ohio.

OSPE Elects Slowter President

Edward E. Slowter, 2748 Northwest Blvd. in Columbus, has been elected President of the Ohio Society of Professional Engineers for 1963-64. He will take office in March.

Mr. Slowter, who is Vice President and Secretary of Battelle Memorial Institute, is a graduate of Ohio State University and a member of Phi Eta Sigma, Phi Lambda Upsilon, Tau Beta Pi and Sigma Xi honorary societies. He is a member of the American Institute of Chemical Engineers, American Management Association, the



American Ordinance Association and is the author of many technical articles.

Mr. Slowter, who holds three pat-

ents, was awarded the Commendation Ribbon, U.S. Army in 1944, for development of improved anti-aircraft fire control procedures. In 1960 he received the Distinguished Alumnus Award from Ohio State University and in 1961 was Columbus Technical Man of the Year. He is Organization Chairman, Committee of 100 for College of Engineering—Ohio State University, a member of the Development Committee for Greater Columbus and a member of the Columbus Chamber of Commerce.

He has served for the past year as a Vice President of the Ohio Society of Professional Engineers, a professional engineers society representing some 20,000 professional engineers in Ohio.

Mr. Slowter is married to the former Elizabeth Turner of Detroit, Michigan and has three children.

JOYCE ELECTED

W. M. "Mike" Joyce, Regional Sales Manager, Marietta Concrete Division of the Martin Marietta Corp., Marietta, Ohio, was elected President of the Ohio Pre-Stress Concrete Association at their statewide meeting held in Columbus on November 3, 1962.

A member of the Marietta organization since 1959, Joyce is in charge of sales of the division's pre-cast concrete building components in Ohio and the surrounding areas.



Before joining the Marietta Company, Joyce had been Sales Manager of the Buildex Incorporated plant at New Lexington, Ohio, for several years. Prior to this he had been a Sales Engineer for Buildex at their plant in Ottawa,

Kansas, and specialized in sales of light-weight concrete and the sales promotion of light-weight masonry and concrete.

His business experience also includes several years with the Truscon Steel Division of Republic Steel Corporation, Kansas City, Missouri, where he was employed as an engineer and estimator. He also worked as an engineer for the La Plant Choate Company, Cedar Rapids, Iowa, and Bendix Aviation Corporation, Kansas City, Missouri.

Joyce is a native of Kansas City, Missouri, and attended Kansas City Junior College and the University of Kansas. During his military service he was a construction engineer and surveyor with the Army Corps of Engineers for two years.

ARCHITECTS SOCIETY OF OHIO

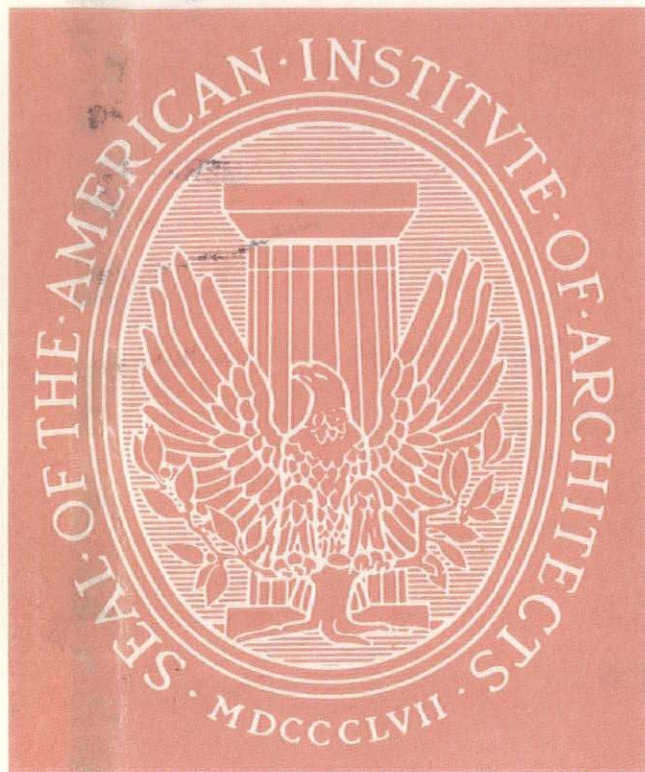
FIVE EAST LONG STREET

COLUMBUS 15, OHIO

RETURN REQUESTED

Accepted as controlled circulation
publication at Athens, Ohio

MR. G.E. PETTINGILL,
LIBRARIAN, AMERICAN
INSTITUTE OF ARCHITECTS
1735 N.Y. AVE., N.W.
WASHINGTON 6, D.C.



Have You Studied OHIO ARCHITECT
Circulation And Editorial Quality?

Have You Discovered The Value Of Low
Cost Advertising In OHIO ARCHITECT?

If Not, Then Examine The Architects'
Official Publication — Your Best Media For
Advertising To Ohio Architects.

OHIO ARCHITECT REACHES

1275 Architects Registered in Ohio - (Paid Subscriptions)

728 Architects Registered in Ohio - (Free Circulation)

409 Engineers (Consultants to Architects)

PLUS County Engineers . . . City Engineers . . . County
Commissioners . . . City Directors of Safety & Service . . .

District Building Inspectors . . . Hospital Superintendents

Superintendents - County School Boards . . . State
Department of Education Officers . . . City Council
Presidents . . .

Presidents - County School Boards . . . And Many
Other Important Buying Influences.

TOTAL OHIO ARCHITECT CIRCULATION . . . 5790

OHIO ARCHITECT IS THE COUNTRY'S FASTEST

GROWING REGIONAL PUBLICATION IN ITS FIELD

ARCHITECTS SOCIETY OF OHIO

5 EAST LONG STREET

Phone 221-6887 or 221-6888

COLUMBUS 15, OHIO

Eggers Ohio Representative: Mr. Robert Weed, 244 Glenridge Road, Akron 19, Ohio, MI 4-4623