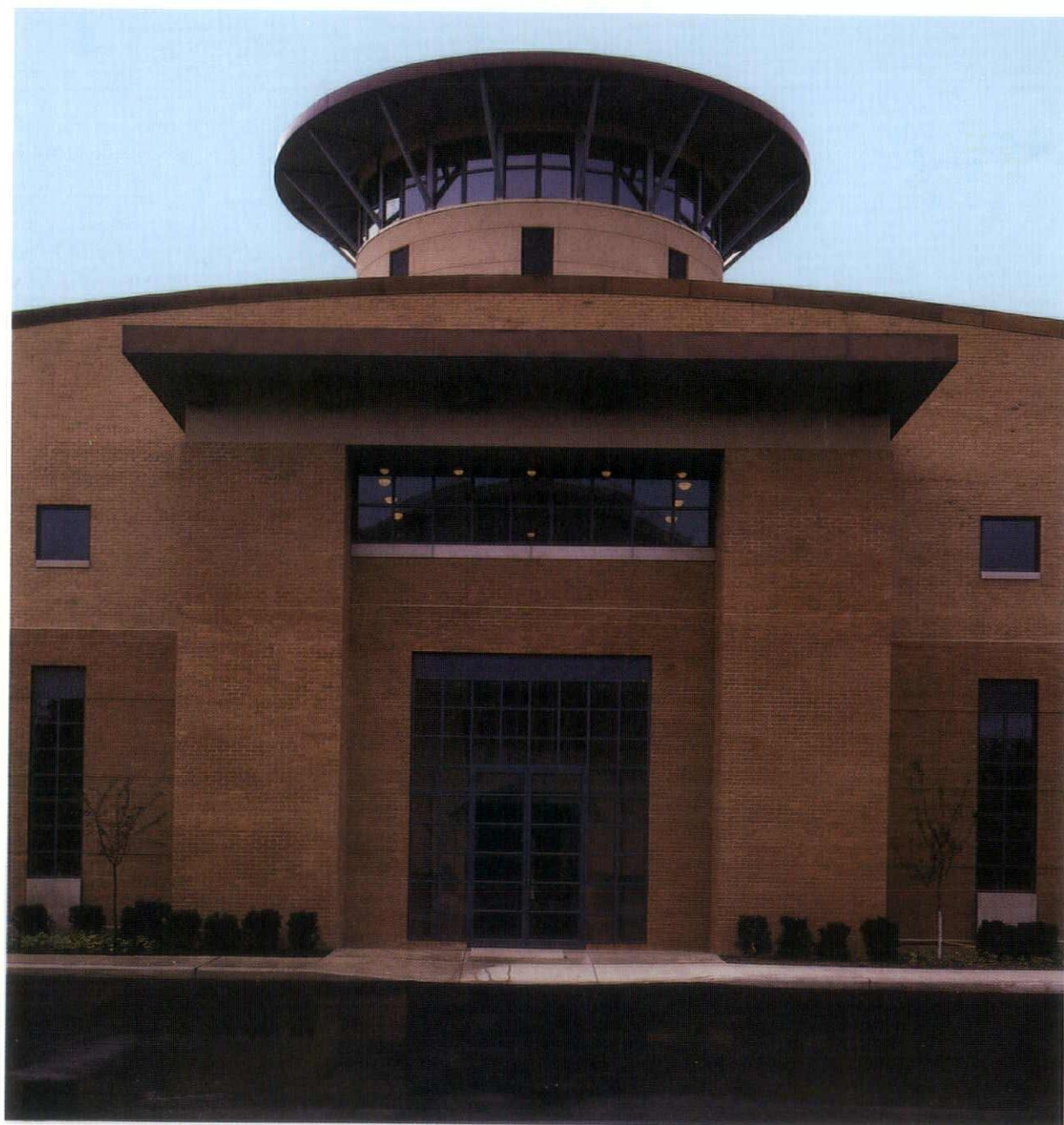


D. 6705

# ARCHITYPES

FEBRUARY 1990  
VOLUME NO. 6  
ISSUE NO. 1

ARCHITECTS  
SOCIETY OF  
OHIO/AIA



WILLIAM TAYLOR

## THIS ISSUE

GOLD MEDAL AWARDS • 25-YEAR BUILDING AWARD  
CONVENTION HIGHLIGHTS • EASTERN OHIO CHAPTER AWARDS  
MASONARY INSTITUTE DESIGN AWARDS



February 1990  
Volume 6, Issue 1

## Architypes

Editor: John H. Carr, AIA  
Design: Robertson Design  
Printing: Ohio Printing Company, Ltd.

## Architects Society of Ohio/American Institute of Architects

17 South High Street, Suite 1200  
Columbus, Ohio 43215  
614/221-0338  
David W. Field, *Executive Vice President*  
Madeline Mohanco Field, *Director of Services*  
Christy Gonzalez, *Executive Secretary*  
Deb Lyons Parsley, *Administrative Assistant*  
Diane Rossbach, *Administrative Assistant*

## Board of Directors

President	Jack L. Hawk, AIA
President-Elect	E. Lynn App, AIA
Secretary	David S. Collins, AIA
Treasurer	Joseph E. Vetter, AIA
Regional Director	Phillip T. Markwood, AIA
National Director	Gerald S. Hammond, AIA

## Directors

Akron Chapter	Douglas L. Steidl, AIA
Cincinnati Chapter	Richard H. Mellott, AIA
Cleveland Chapter	G. Robert McCullough, AIA
Columbus Chapter	Larry R. Browne, AIA
Dayton Chapter	John H. Carr, AIA
E. Ohio Chapter	Robert Mastriana, AIA
Toledo Chapter	Craig A. Stough, AIA
Schools of Architecture	Robert S. Livesey, AIA
AIAS Representative	Christopher Kern

ARCHITYPES (ISSN 0883-7082) is published bi-monthly by The Architects Society of Ohio/AIA.

POSTMASTER: Send address changes to ARCHITYPES, 17 S. High St., Suite 1200, Columbus, OH 43215.

Subscription prices: Members-\$4.00. Non-members-\$10.00 per year, \$3.00 per copy.

Address all communications to ARCHITYPES, 17 S. High St., Suite 1200, Columbus, OH 43215.

Second class postage paid at Columbus, Ohio.

## On The Cover:

*The Historical Center of Industry and Labor in Youngstown designed by Michael Graves and Raymond J. Jaminet and Partners Architects. Winner of a 1989 Eastern Ohio Chapter of the AIA design award and a focus of the 1991 ASO Convention.*

## ASO Opposes Filing Plans With County Recorders

ASO is opposed to a state legislative proposal that would require the filing of public building plans with county recorders. The proposal is HB 683 introduced by Representative Katherine H. Walsh (D-Oberlin.)

In an early November letter to Walsh, ASO Legislative Chairman, John Harris, AIA, Akron, said his legislative committee believes that filing plans with eighty-eight county recorders would overburden them. "We question the ability of county recorders to properly handle and supervise the storage of plans for each public building," he said.

He pointed out that bid documents are already required to be filed with the governing authorities for verification of code compliance and issuance of permits.

For state contracts, the Deputy Director of the Department of Administrative Services and the sponsoring agency each receive two sets of bid documents at the architect's cost. After construction, the Deputy Director gets a reproducible set of record drawings incorporating the changes and adjustments made during the construction process.

Similar filing requirements are part of Standard AIA Owner Architect Agreements.

Harris noted that architectural firms maintain originals and microfiche copies of most projects.

He said the legislative committee believes that "the problem which prompted HB 683 may not be typical of conditions generally and that to enact such an expensive, new filing requirement is uncalled for."

ASO maintains a legislative network of thirty-five AIA volunteers who review all bills introduced into the Ohio General Assembly. Their combined opinion forms the foundation of ASO legislative policy which is set by the ASO Board.

A list of state bills ASO is monitoring is included elsewhere in this issue.

Celeste to draft an appropriate response for Ohio on its range of housing affordability problems from homelessness to home ownership.

Recommendations included:

1) Adopt a statewide, mandatory uniform code for one and two family dwellings. The COBO code was suggested.

2) Adopt the National BOCA plumbing code.

3) Develop a statewide rehabilitation code for the rehabilitation and repair of existing older one and two-family dwellings.

4) Consolidate building permit and construction-related activities under one agency, the Ohio Department of Industrial Relations. Agencies included: Factory and Building, Fire Marshal and Department of Health (plumbing).

Other recommendations include a proposed constitutional amendment to make housing a public purpose and the establishment of a Trust Fund with a dedicated revenue source for the development and preservation of affordable housing.

## Statute of Limitations Decision

Oral arguments before the Ohio Supreme Court were made October 25 in a case challenging the constitutionality of Ohio's 10 year statute of limitations for engineers, architects and contractors. A decision is expected late this month.

ASO and other professional and construction associations filed amicus (friend of the court) briefs in behalf of the statute.

The challenge to the law resulted from a suit filed by a student who was injured in 1985 when he ran his hand through a panel of wire mesh-reinforced glass in a dormitory door at Kent State University.

Even though the dorm was designed and constructed more than 20 years earlier, the plaintiff sued the architect and contractor, but not the owner of the building, the university.

The defendants, who contended they were protected by the 10 year statute of limitations, won in the Cuyahoga County Common Pleas Court. The Eighth District Court of Appeals rejected the plaintiff's appeal, but the Supreme Court agreed to hear the case indicating that the high court may be in substantial disagreement with the lower courts.

## Governor's Housing Commission Recommendations

Governor Celeste's Commission on Housing had several recommendations of interest to architects in December. The Commission was directed by



## School Buildings and Codes

School building officials no longer need to worry about bringing an entire building up to current code requirements when making alterations or repairs to one part. This is the result of S.B. 140 which became effective October 2.

The bill provides that qualifying buildings need not be altered or repaired in any part of the building which is not being altered or repaired. In order to qualify for this exemption, school buildings must: 1) meet all of the applicable building code requirements in existence at the time of original construction, 2) satisfy the requirements of Section 3781.06 of the Ohio Revised Code (General Safety), and 3) the part altered or repaired must conform to all rules of the board existing on the date of the repair or alteration.

The Board of Building Standards will adopt implementing rules.

## Preservation Legislation

The Ohio Senate is expected to take up preservation legislation in January. SB 244 authorizes the Ohio Historic Preservation Office of the Ohio Historical Society to review state actions that affect state-owned historic resources.

It would also allow county and township governments to enact laws protecting historic properties within their jurisdictions.

The bill would establish a state grants program to assist historic preservation projects and mandates a review of the Ohio Basic Building Code, which currently doesn't recognize many historic building materials in fire, safety, and other standards.

The bill is endorsed by the Ohio Preservation Alliance, the Ohio Historic Site Preservation Advisory Board, the Ohio Archaeological Council and the Coalition for Ohio's Heritage.

## "In Full Payment" Law

It now may be more difficult to resolve disputes. Before actually writing a check as partial payment for a dispute, a debtor may have to obtain a signed, written agreement from the creditor accepting partial payment.

This is the result of a recent Supreme Court decision (AFC Interiors vs.

DiCello, d.b.a. Ohio State Home Services, 46 Ohio Street 3d 1 (1989).

The decision effectively overturns the common practice of offering checks in "full payment" which, when cashed have been viewed (for the past eighty years) as removing the creditor's right to sue for the balance due.

All the creditor has to do is "explicitly reserve all rights by endorsing the check 'under protest' or any legend sufficient to appraise the debtor that the check is not accepted as full payment," according to the decision.

## Jack L. Hawk, AIA Elected President

Jack L. Hawk, AIA, Wilson Architects, Canton, assumes the leadership of the ASO this month after his election to the office last October.

Hawk, instrumental in ASO activities over the past three years, comes to the office with definitive goals for the society outlined in a six-point mission for the year. Hawk is asking the board to boost the effectiveness and value of the organization by developing a strategic plan, implementing a programmatic budget, contributing significantly to reserves by conducting a financially successful convention, working to establish programs to assist the chapters in membership development and con-

tinuing the society's direction in working on the passage of "seal bill" legislation.

New to the board under Hawk's presidency are **Craig A. Stough, AIA, Stough & Stough Architects** and **Douglas L. Steidl, AIA, Braun & Steidl Architects**.

Steidl assumes the position of Akron Director replacing **John E. Harris, AIA, Harris/Day Architects**, whose term has expired. Harris served as Legislative



Jack L. Hawk, AIA

Chairman in 1988 and 89.

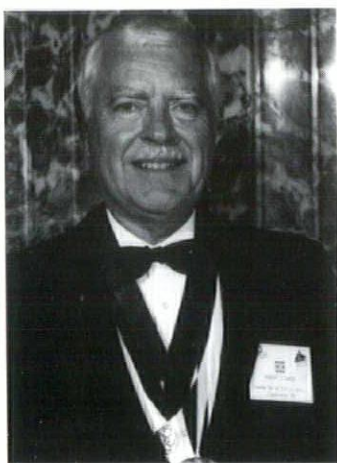
Stough is filling the Toledo Director's vacancy due to the election in October of Joseph E. Vetter, AIA, Vetter Design, as Treasurer.

**Robert S. Livesey, AIA**, Chairman of the Department of Architecture at OSU succeeds Gordon Simmons from the University of Cincinnati as the Director representing the schools of architecture on the ASO Board.



"Cleveland's Got It" announces Convention Chairmen **Norm Perttula** and **Fred Holman** along with **Dianne Hart** and **Todd Schmidt**. They'll be hosting ASO's 1990 Convention Friday and Saturday, October 12 & 13, at Stouffer's Tower City Plaza. **Gerhard Kallmann, Kallmann, McKinnell & Wood**, has agreed to present the Design Program and serve as Jury Chairman for the '90 Design Awards.





Robert C. Gaede, FAIA receives his Gold Medal Award, during the ASO Convention on September 29, 1989 at the Omni Netherland Plaza Hotel in Cincinnati. The Gold Medal is the highest honor the society bestows.

# GOLD

MEDAL INDIVIDUAL & FIRM AWARD

# 25

YEAR BUILDING AWARD

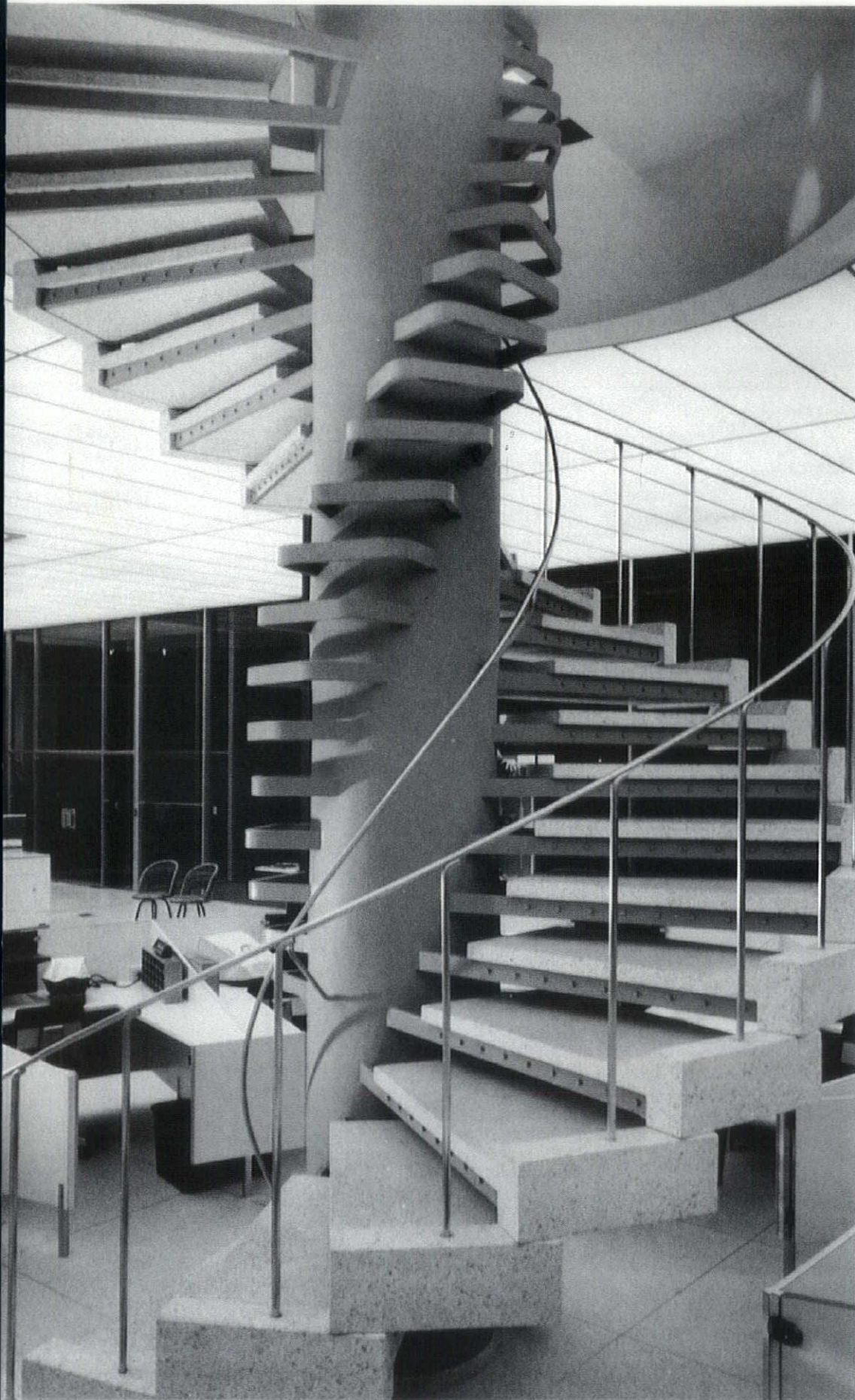
ROBERT C. GAEDE, FAIA, a partner in Gaede, Serne, Zofcin Architects, Inc. was selected by a jury of his peers to receive ASO's Gold Medal.

Awarded in recognition of the most distinguished service to the profession of architecture and to the Society, the Medal is the highest honor the society bestows. The Cleveland Chapter of the AIA in nominating Gaede credited him for "awakening the community to the incalculable value of our architectural heritage. Long before 99% of the architects in the country knew of 'historic preservation' or 'adaptive reuse', Gaede was at work in behalf of the then little-recognized building stock in our cities."

As early as 1963, Gaede chaired the AIA's National Committee on Historic Buildings, and was co-chairman of the 1st Ohio Conference on Historic Buildings in 1965. Since that time he has served in numerous membership and leadership roles in local, state and national preservation groups.

In the forefront of the historic preservation movement, Gaede quickly became a national expert in preservation and restoration. His efforts have been rewarded by a number of Cleveland Chapter Design Awards, as well as awards from the ASO, the Ohio Masonry Council and the National Wood Council.



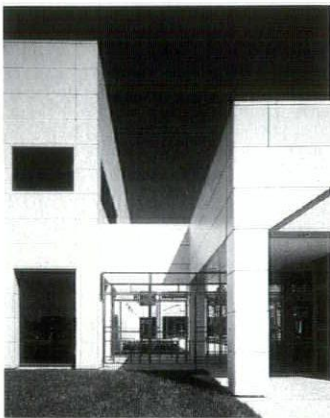


This unique spiral staircase is one of the prominent features of the Columbia Gas Building, ASO's 25 Year Building Award. Read more about this structure on page 7.





The Bicentennial Commons at Sawyer Point revitalized riverfront recreation along the Ohio River in Cincinnati.



(Above) one of the display areas designed for the Cincinnati Zoo and Botanical Gardens; and the corporate headquarters for Airborne Express in Wilmington, Ohio. (Above, right) Centennial Plaza, in Cincinnati, consists of three office structures that surround a courtyard where "Cincinnati Venus," a sculpture, is featured.



GLASER ASSOCIATES, INC. in Cincinnati has been awarded the distinctive ASO Gold Medal, presented to the firm which continually exemplifies the highest quality of professional service and significant design.

In its nomination, the Cincinnati Chapter of the American Institute of Architects cited Glaser Associates' long history of public projects utilizing a skillful ability to translate citizen and public agency requirements into effective, well-designed projects. A worthy example of this is the Bicentennial Commons at Sawyer Point which received an honor award in 1989. The 22 acre riverfront recreation development has revitalized a long neglected area and made the Ohio River accessible to the public.

The firm has been entrusted with the renovation and adaptive reuse of some of Cincinnati's most treasured architectural elements and was the first local firm in 50 years to design a major new downtown office building.





Designed in 1959, the Columbia Gas Building has stood the test of time. Simplistic in design, yet innovative in materials and features.

THE COLUMBIA GAS BUILDING in Toledo, a simple, steel framed structure, innovative when built, has stood the test of time and is the 1989 recipient of ASO's Twenty-five Year Building Award. Designed by Bellman, Gillette and Richards now Bauer, Stark + Lashbrook Architects and Engineers remains much the same as when it was designed in 1959 and constructed in 1960.

Located on the corner of Jefferson and Erie, the building is enclosed by a light weight glass curtain wall using a neoprene window gasket, a system relatively new in 1959. The glass sheets effortlessly extend from floor to ceiling on all three floors, which allows the "Vitrolite" spandrel panels to be kept narrow and to a minimum. Aluminum honeycomb core panels balance out the remaining open spaces within the building, while granite is extensively used on the first floor.

One of the prominent interior features is a spiral stair connecting the payment counter with the accounting department on the floor above. Gas Company tellers handling large sums of money would not need to cross public spaces enroute to the accounting offices, a clear cut circulation path was established. The stair was constructed of a concrete column with bent steel bars projecting through openings cut in the "sonotube" form. After the form was stripped, the metal columns were painted and precast treads were set on top of the bars and secured with bolts.

Parking in the lower level of the building is accessible by a ramp between the street and an alley. There is also a drive up window which was a relatively innovative concept at the time this building was built.



## Mayer New IDP State Coordinator, Moody Becomes Regional IDP Rep.

David M. Mayer, William Dorsky Associates, Cleveland is Ohio's new IDP Coordinator. He replaces C. Douglas Moody, AIA, Design Group, Columbus, who has accepted the post as Regional Coordinator. In his new position Moody will work as a member of the IDP National Coordinating Committee.

### Project Architects Architectural Draftspersons

If you are disciplined, well-organized and willing to work hard. One who sweats the details. We have the projects to challenge you to the limits of your ability.

Here's an opportunity to join one of the area's oldest, largest and fastest-growing architectural and commercial interior design firms. SHP's diversified client base and management structure affords you a path for genuine professional growth and development.

Qualified applicants should respond in writing, with a resume to:

James E. Steed, President  
205 W. Fourth Street, Suite 1140  
Cincinnati, Ohio 45202, or  
82 Williams Avenue  
Hamilton, Ohio 45015

**STEED-HAMMOND-PAUL**  
ARCHITECTS INC.  
Cincinnati Hamilton  
An Equal Opportunity Employer

### EMPKO, Inc. represents Architectural Surfaces, Inc.

**Product Line**  
Architectural Tambours  
Architectural Metal and Mouldings  
Linear Ceilings  
Open Cell Ceilings  
Solid Wood T & G Ceilings and  
Wall Planking  
Specialty Lighting Enclosures  
Wood and Metal Coffered Ceilings  
and Walls  
Wood and Metal Grills  
Woodscreen Wooden Lattice  
Woodstick Wall Panels

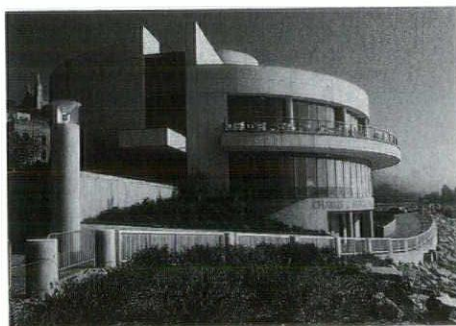
THE ENERGY MINDED PRODUCTS COMPANY  
**EMPKO**  
INCORPORATED P.O. Box 246  
Wadsworth, OH 44281-0246  
Tom Huchko Telephone 216-336-6168

## AROUND OHIO

### KUDOS

PDT + Co. Architects/Planners received a Precast/Prestressed Concrete Institute 1989 Design Award for the Boathouse at Sawyer Point in Cincinnati.

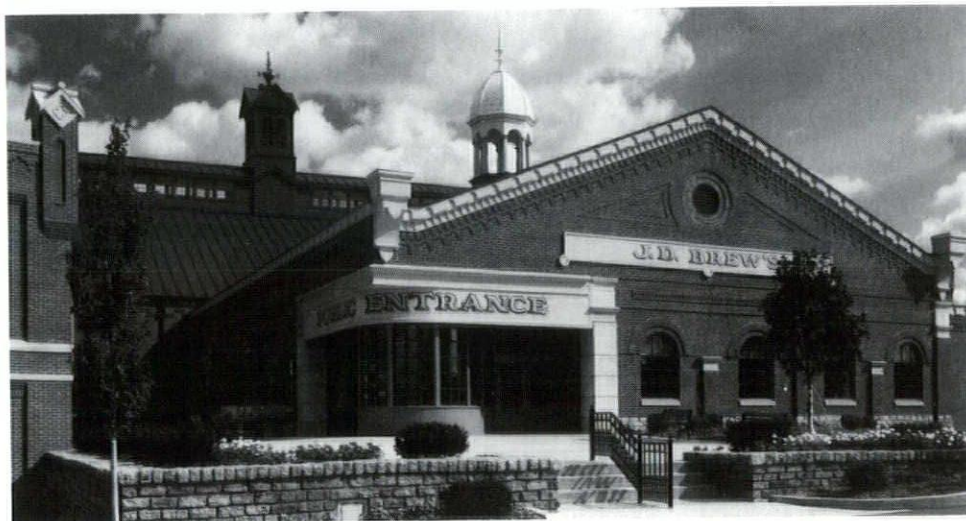
The circular design was chosen as the basis for a unique architectural statement in this boathouse incorporating a training center and a restaurant. The design also takes full advantage of the site's river-front views. The jury commented that the project was a well handled modernist solution and a very skillful geometric expression showing that concrete is the ideal material for curved shapes.



*Boathouse at Sawyer Point, Cincinnati*

Robert E. Gramann, FAIA received the AIA Presidential Citation for his efforts in developing a resolution concerning the AIA Benefit Insurance Trust out of "his concern for the welfare of the profession."

Addison Clipson Architects, Inc. received the Award of Excellence in Masonry Construction from the Kentuckiana Masonry Institute for the design of the Oldenberg Brewery in Ft. Mitchell, Kentucky.



*Oldenberg Brewery in Ft. Mitchell, Kentucky*

As expected the architectural exhibit "Concept Architecture for a Post-Conceptual Age" (see September's issue) featuring the work of Thom Stauffer, AIA, Paul Westlake, Jr., AIA, Ronald Reed, AIA, and Vince Leskosky, AIA, received raves for its innovation and design excellence. Dorothy Shinn, art critic for the Akron Beacon Journal called the show "one of the best shows in the Gallery (at Kent State University's School of Art) in the past decade." Helen Cullinan, art critic for the Cleveland Plain Dealer, called it "a fresh, provocative and potentially intimidating experience ... visually it's a total-impact switch from anything previously seen in the gallery space, beautifully planned and built and exciting." Demanding in its stark geometrics, the exhibit presented four installations embodying far-put concepts applicable to residential design.

Westlake, a partner at van Dijk, Johnson & Partners in Cleveland, explored "spatial stratification created by the meshing of two systems of coordinates." His gallery-sized model of "Stratification" is a summation of several of Paul's studies dating back to 1982. He is a dual degree recipient from the University of Pennsylvania with a Masters of Architecture from Harvard and has won numerous AIA and ASO awards for his innovative designs.

Reed and Leskosky, associate partners with van Dijk, Johnson, displayed "Setpieces for Habitation" and "Transformation to a Current Reality" respectively. Reed's "Setpieces" plumbs the "creation of articulate space where there is an emphasis on spatial continuity and a concern for identity of place."

Leskosky's "Transformation" continues his pursuit of the dialogue between

*(Continued on page 14)*



# PROJECT PROFILE

**Project:** Lakota School District

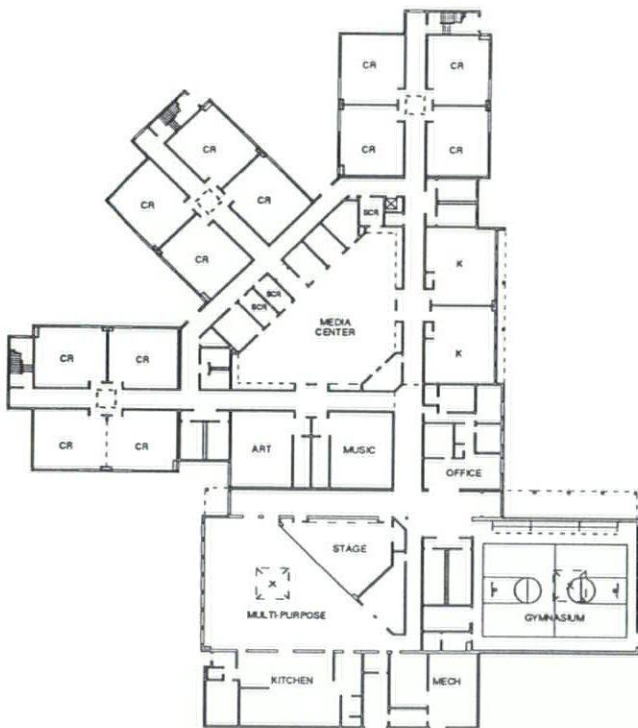
**Architect:** Steed Hammond Paul Architects Inc.

**Individual Credits:** Andrew Paul, AIA—Principal Architect; Michael Dingeldein, AIA—Project Manager for Woodland and Shawnee Schools; Kevin Kreuz, AIA—Project Manager for Additions and Improvements; Mel Pike—Construction Representative

**Location:** Butler County

**About the project:** Three, new elementary schools with a combined square footage of 163,033, a total occupancy of 2,200 and designed with Macintosh-based computer-aided design (CAD). Each school utilizes similar mechanical systems for easier maintenance and upkeep.

The first school, Freedom Elementary opened September, 1988 with a total square footage of 55,120. Designed for 650 students, the building is internally divided into three rectangular areas. The first is made up of regular classrooms; the second, specialized classrooms such as music and art and the third encloses the gym, stage and multi-purpose area.



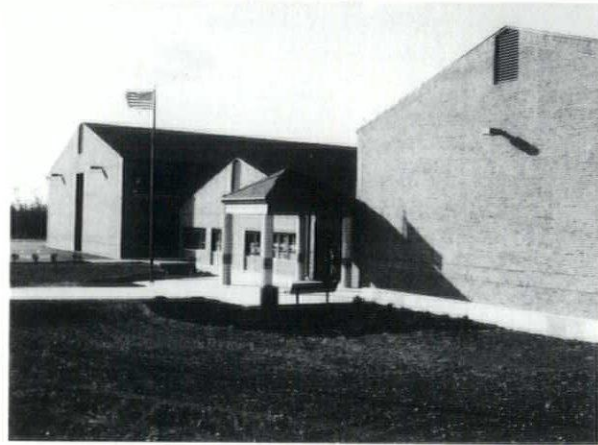
▼ Elevation

▲ First Floor Plan



Scheduled for completion in January of 1990 is Woodland Elementary. Designed for 850 students and covering 59,113 square feet, the building features windows in almost every room to make maximum use of natural lighting.

Shawnee Elementary School has just begun construction. Scheduled for completion in August of 1990, the school is designed with many of the same architectural features included in the Woodland school project. It will accommodate 650 students with 48,800 square feet.



**About the firm:** During the past five years approximately 85% of Steed Hammond Paul Architects Inc.'s work has been for repeat clients with projects ranging from small improvements to multi-million dollar office space to award-winning renovations.

Originally established in 1900, with offices in Cincinnati and Hamilton, the firm is market driven with primary areas being: commercial/offices, education facilities, financial institutions, day-care and retirement facilities, justice facilities, libraries and other public/government buildings.

Among the 21 member staff are four managing principals who provide input on each project based on expertise and management responsibilities. Primary functions of the principals is divided into four categories: personnel and quality control, marketing and finance, design and production and construction administration.

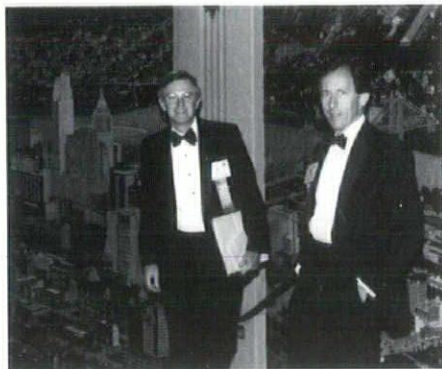
With totally automated design and production capabilities, each office is equipped with computer work stations for design, drafting, database development, word processing, desktop publishing, accounting and financial management.

The two offices are electronically linked via modem and have the capability to transmit information as well as allow individuals at both locations to view and work on the same drawing at the same time. The firm's engineering consultants also have electronic connections to each of the firm's offices which proves to be highly productive and makes a significant impact on their ability to control cost and schedule. The firm has been nationally recognized by Apple Computer Inc. for their use of the Macintosh in architectural and interior design.

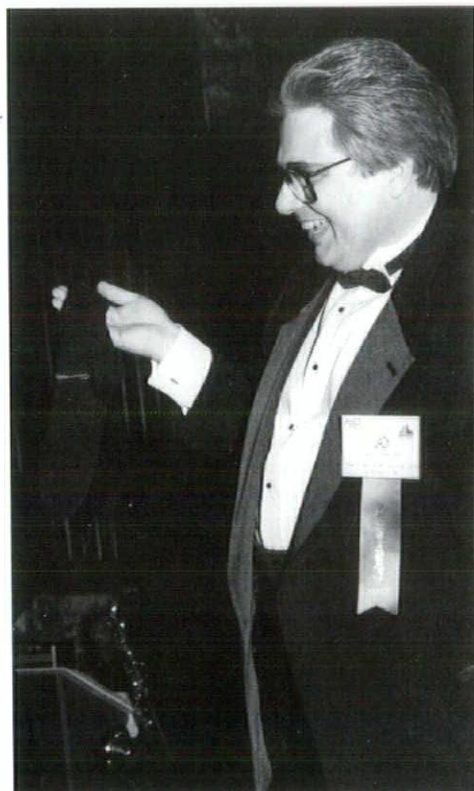
*If you would like your work profiled in this column, please submit a set of sketches and/or hard-line drawings with an appropriate photo, a description of the project up to 250 words and a description of the firm up to 200 words.*



# ASO CONVENTION



Phil Markwood and David Field against a Cincinnati panorama at the Netherland.

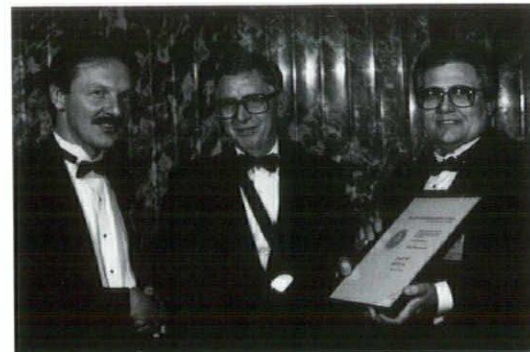


Jack Hawk receives his black socks from Ken Fogle.

A joint venture between the ASO and the Indiana Society of Architects proved a success when over 300 architects met for three days in Cincinnati. A dynamic Grassroots session preceded the convention. The opener was a twilight cruise of the Ohio with the Cincinnati skyline providing the sparkle. Bernardo Fort Brescia drew a full house, one of the largest in the society's history, to the art deco elegance of the Netherland. The exposition at Longworth Hall had an atmosphere unequalled by any exhibit hall. And the President's banquet was a feast amid splendor.



Robert C. Gaede is presented with ASO's Gold Medal.



Richard E. Glaser receives ASO's Gold Medal for Glaser Associates.

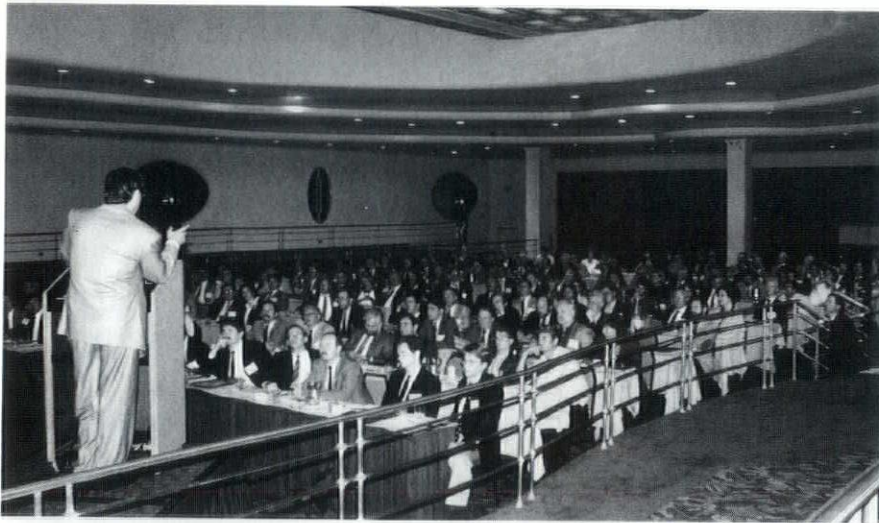


Charles Stark accepts the 25 Year Building Award for the Columbia Gas Building in Toledo.



...and Lynn App receives his bold ones.





Many people deserve our thanks, most notably Jack Hawk, the Chairman, and from Cincinnati: Joan Tepe Wurtenberger, Chris Beghtel, Bob Doran, Roger Brady, Jim Harrell and Margaret Breagy.



# ASO

# CONVENTION



Bob Williams, John Schooley and Ken Fogle elaborate on ASOF fundraising during the ASO Annual Meeting.



Don Junker wins a Herman Miller chair from Miller representative, Nancy Sells, during the expo door prize drawing.



Roundtables at Grassroots.



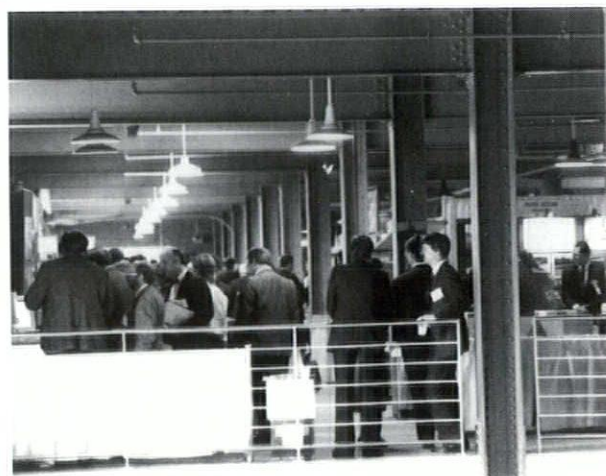
ASO President, Ken Fogle, leads the discussion during the Government Affairs Roundtable.



A booth visit during the expo.



Michael Dunn presents the art of political action to Grassroots attendees.

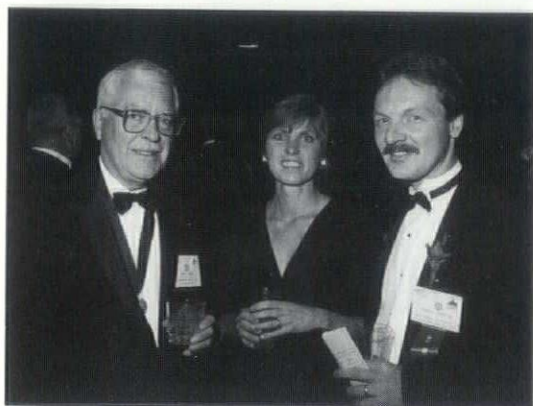


The Exposition Jubilee at Longworth Hall Design Center.





# H I G H L I G H T S



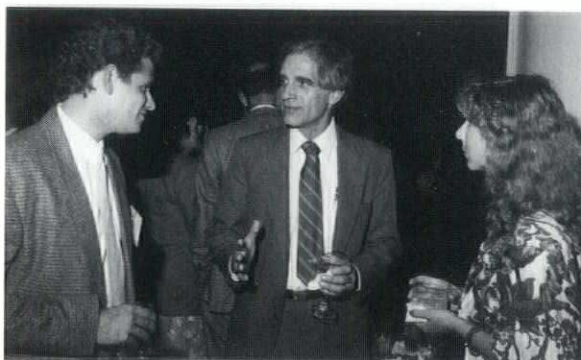
Bob Gaede is joined by Janet and Ken Fogle.



Alex Luque and Terry Welker, Dayton members, enjoy themselves during the Registrant's Reception.



Madeline Field, Jack Hawk and Indiana Executive, Ken Englund share a toast to the completion of the Ohio and Indiana joint venture.



Bill Wilcox chats with new registrants.



Bob Martin (center), President of the State Board of Examiners, visits during the Registration Reception.



Sue and John Hoellrich catch up with old acquaintance, Chuck McLaughlin during the reception.



The President's Banquet at the Netherland.



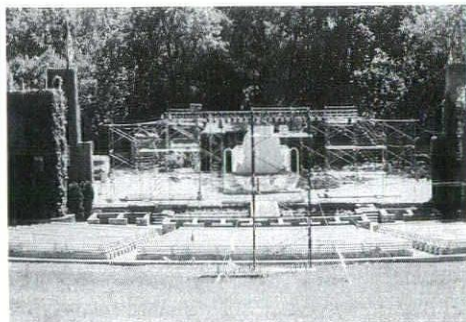
## AROUND OHIO

architecture and painting.

Both are graduates and Assistant Professors of Kent State School of Architecture and have collaborated on many award winning projects such as the Amethyst Grille in Shaker Heights, an independent project which recently won a 1989 ASO Honor Award and was reviewed in USA Today and Esquire Magazine.

Stauffer, who received his bachelor of architecture from Kent and two masters from the University of Pennsylvania, is a Professor at Kent State. His exhibit, "In-Between," is "a composite layering of fragments from three recent house projects . . . although the layers are never distinct or separate just as there is no abrupt beginning or end to life experiences."

Peter van Dijk, FAIA, and Vince Leskosky, AIA, of van Dijk, Johnson & Partners received this year's Northern Ohio Live Magazine "Award for Architecture" for the rehabilitation of the historic Cain Park theaters in Cleveland Heights. The magazine stated that the "results of the renovation not only look great, but also serve to make Cain Park more functional and accessible to the public."



*Cain Park, Amphitheater-Before*



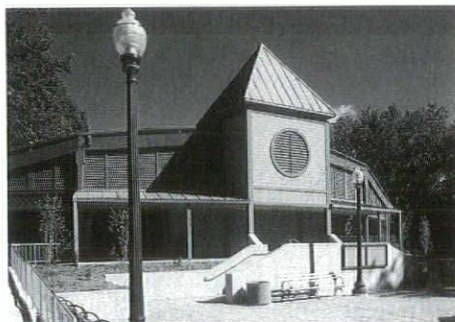
*Amphitheater-After*

The 3,000-seat theater opened on August 10, 1938 as the first municipally-owned and operated outdoor theater in America. The adjacent Alma Theater, a

smaller covered facility without permanent walls, was built in 1944.



*Cain Park, Alma Theater-Before*



*Alma Theater-After*

The amphitheater stage and permanent seating area are now covered with a skylit roof which forms a simple covering plane high over the audience and stage. The stage floor was completely rebuilt with a waterproof piano storage area added beneath and the orchestra pit has been modified and enlarged. Catwalks and a control booth, suspended from the roof, contain the new sound and lighting system controls. The entire floor under the seats has been rebuilt and modern seats with improved sightlines replace the original wooden benches.

The smaller 300-seat Alma Theater's roof was repaired and expanded with sloping wing extensions. New retractable canvas drops form the theater sides with ceiling fans and a louvred back wall allowing better air circulation. Improvements such as new catwalks, a new air conditioned control room, updated sound system, new house and aisle lighting and renovated dressing rooms bring the facility to present day standards.

*(Around Ohio-continues on page 20)*

## ARCHITECTURAL CAD

Finally, a CAD system designed specifically for architectural design and drafting. Presenting the ARRIS Architectural Design Software and the Sun386i™ Workstation.

The ARRIS™ family of CAD software products was designed specifically for architects, building design and management professionals, and facilities designers in a production/design environment. With ARRIS you don't have to make drawings line by line. Instead, you enter the basic design parameters—and let the system do the rest of the work, automatically. So more work gets done, in less time.

And when you put the features and capabilities of the ARRIS software on the Sun386i platform, you are equipped with the finest architectural workstation available. This combination gives you the advanced features of: superior price/performance ratios, high-resolution graphics and the ability to communicate with every computer in your organization.

This revolutionary architectural CAD system is available from the professionals at Cad Cam, Incorporated. Cad Cam, Inc. has earned the reputation as the area's leader in CAD technology. With over ten years of experience in the CAD industry, our expertise in the field gives you the service and support that you can rely on to significantly improve your productivity and make your investment profitable.

Products and services ranging from micro-based CAD systems to CAD drafting services and one-day delivery of CAD supplies make Cad Cam, Incorporated the single source for all of your CAD needs. For a free needs analysis and demonstration, please call CAD CAM's MicroCAD Group at the location closest to you.



Cad Cam, Incorporated  
2844 East River Rd  
Dayton, Ohio 45439-1574

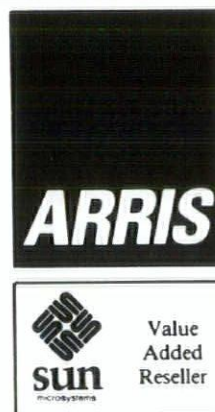
DAYTON, OH  
(513) 293-3381  
FAX 513-293-9149

ATLANTA, GA  
(404) 449-5186  
FAX 404-449-0843

DETROIT, MI  
(313) 425-8494  
FAX 313-425-8487

FT. LAUDERDALE, FL  
(305) 968-8591  
FAX 305-968-1622

ARRIS is a trademark of Sigma Design, Inc.







## Ohio's 1989 Newly Registered Architects

### AKRON CHAPTER

Alan R. Burge  
*Ellis-Myers, Inc.*  
Dennis Michael Check  
Richard L. Cooper  
Larry R. Everhard  
Brian G. Feeley  
Joan Hawkins Griffin  
Richard Lee Hawksley  
Gregorio Maievici  
Diane Thomas McCort  
*University of Akron*  
Steven J. Miller  
Michael E. Serafin  
*Peterson/Raeder Inc., Architects*  
Daniel R. Shirkey  
David John Starkey  
Robert S. White

### CINCINNATI CHAPTER

Robert A. Bartolt  
Otto Bauer-Nilsen, Jr.  
*E/BN Architects*  
Michael Brent Bishop  
Jeffrey K. Black  
Steven James Bostwick  
Pamela Polley Brockmann  
Allan Craig Childress  
Matthew Thomas Clear  
*PDT & Co., Architects/Planners*  
Loren M. Defilippo  
Douglas S. DeVeny  
Lawrence DiGennaro  
Brian Shannon Donovan  
David Moore Engelhard  
Richard T. Ernst, Jr.  
Timothy E. Hansma  
Mark Phillip Jones  
James Michael Koerner  
Carl W. Lamping  
*Burgess & Niple, Ltd.*  
Gregory F. Lang  
Michael R. Mauch  
Patrick Moore  
Saul Naim  
John R. Perkins  
LeDoux R. Provosty  
Xiaobai She  
Rodney L. Sidley  
Martin R. Simon  
James P. Simon  
John A. Spencer  
John Wallis  
Kenneth H. Workman

### CLEVELAND CHAPTER

Charles R. Bauer, II  
Joseph E. Begany  
Karen L. Berman  
Robert W. Blatchford  
*Blatchford Architects*  
Richard Bozic  
Bonnie Brewer-Kraus  
*Michael Benjamin Architect*  
John Gunther Burk  
Dominic G. Carbone, Jr.  
Jeffrey M. Certo  
*Davison, Smith Architectural Group*  
Noel L. Cupkovic  
Paul G. Dion  
David H. Ellison  
Julio A. Espinosa  
William Feller, II  
William J. Fugo, Jr.  
Keith Joseph Gurnick  
Mark Anthony Henning  
Michael B. Hobbs  
Scott L. Hoffland  
Christopher W. Jammal  
Donald James Kaspar  
Philip S. LiBassi  
David M. Mayer  
*William Dorsky Associates*  
Thomas Pietro Montalto  
Harvey Zvi Offer  
Reid R. Patten  
Frank H. Randel, III  
Mark W. Ruby  
Andrew Philip Sacher  
James Skala  
Peter F. Spittler  
Jane L. Tannehill  
William M. Tetzlaff, Jr.  
Jacqueline A. Van Auker  
*Richard L. Bowen & Associates, Inc.*  
Denis C. Vogel  
James A. Wallis  
Edwin J. Williams, Jr.  
Michael F. Woods  
Kristine Anne Young  
Vjekoslav Zlataric

### COLUMBUS CHAPTER

Terrence N. Banbury  
Dean C. Bollinger  
Allen S. Bornstein  
*Williams Shepherd Architects, Inc.*  
Marcus Jay Brewer  
James A. Butz

David L. Chapman  
Louis H. Cowan  
Mark Edward Cross  
Michael Joseph Cucciarre  
Mark W. Daniels  
Mike C. Delleva  
Geoffrey D. Eaton  
*Marr Knapp Crawfis Associates*  
David A. Efaw  
Robert L. Fiorita, Jr.  
Timothy Michael Fishking  
Robert K. Gibson  
William Mark Holsinger  
David C. Johnson  
Spencer M. Johnson  
James Paul Koehler  
David Peter Lenox  
Thomas Mark McCash  
Michael Paplow  
Araceli L. Paz  
Robert Alan Powell  
Edward A. Pyrch  
David Anthony Rinaldi  
Gerald W. Schultz  
Jerome M. Scott  
Steven Shinn  
Charlotte B. Sounik  
Douglas E. Stone  
Gerald A. Sutton  
James L. Tate  
Nancy L. Thomas  
Whitney Tussing  
Craig S. Van Horn  
*Renier Corporation*  
William Wagner  
Rick Walkenspaw  
Brian Zingelmann

### DAYTON CHAPTER

R. Drew Dalton  
*Woolpert Consultants*  
Douglas Todd Fisher  
Douglas T. Fisher  
*John Poe Associates, Inc.*  
Craig Steven Moreo  
Brian D. Smith  
Chris E. Whitney  
*Levin Porter Associates, Inc.*  
Christopher R. Widener  
Daniel Wyckoff

### EASTERN OHIO CHAPTER

Robert M. Hanahan  
David Bruce Kelly  
Joseph A. Yank

### TOLEDO CHAPTER

John P. Boyce, Jr.  
Kevin Patrick Carroll  
Tony Damon  
Michael J. Dinardo  
John F. Faile  
Stan G. Guidera  
Thomas J. Janowiecki  
Thomas H. Jordan  
Jay T. Lingnell  
Brad Rossi  
*Rossi McCreery & Assoc., Inc.*  
Kenneth V. Schafer

### OUT-OF-STATE

Daniel Joseph Borcicky  
*Mobile, AL*  
Wayne E. Buhl  
*Williamsburg, VA*  
Anne M. Burns  
*Cambridge, MA*  
David Michael Fratianne  
*East Hampton, NY*  
Rodney Hartleib  
*Belleville, IL*  
Joseph M. Jancuska  
*Wilmington, DE*  
Constantine M. Kayafas  
*Wheeling, WV*  
Craig J. Kosuta  
*Winter Park, FL*  
Chalay Kunawong  
*Des Plaines, IL*  
Stephen H. Marr  
*Basking Ridge, NJ*  
David Ross McMahon  
*Boston, MA*  
Gregg Olmstead  
*Philadelphia, PA*  
Jayshree Palmer Pugh  
*North Oxford, MA*  
George Skarmas  
*Ambler, PA*  
Steven D. Stein  
*Birmingham, AL*  
Rick Willinger  
*Grand Rapids, MI*





## 1989 EASTERN OHIO CHAPTER HONOR AWARDS

Eastern Ohio Chapter AIA

Charles J. McLaughlin, AIA, Chairman

Richard Trott & Partners - Jury



**Historical Center of Industry and Labor - Michael Graves and Raymond J. Jaminet & Partners Architects**

**Jury Comments:** Very skilled composition of typical manufacturing facility forms.

Exhibits a very high degree of quality craftsmanship in the execution of all the construction trades.

Color and material palette successfully employed to compliment the context in which the facility is sited.

Exquisite use of common interior finish materials.

A very credible and skilled interpretation of romantic icons referencing local and ancient historical building types that could have and frequently are more easily misrepresented.

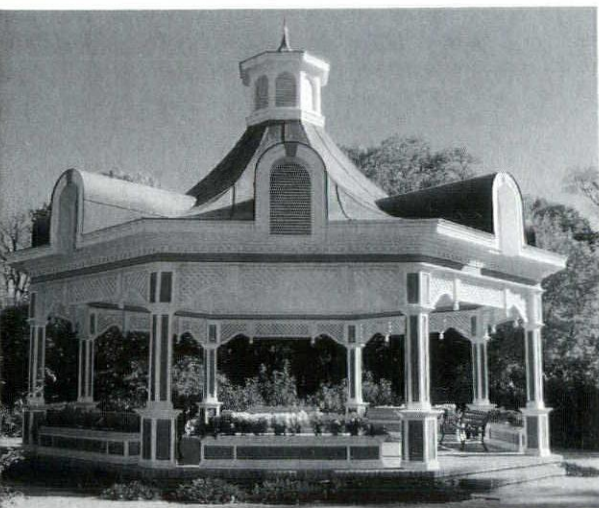
A special recognition should go to Raymond J. Jaminet and Partners for implementation of the design and details.

**Fellows Riverside Garden Gazebo - 4M Company**

**Jury Comments:** A fun, well interpreted Victorian style gazebo effectively incorporating programmatic requirements of modern uses.

Innovative use of moveable planter boxes and benches to provide safe barriers along the edge of the podium while promoting openness to the surrounding site and flexibility for multipurpose uses.

The handicap ramp was successfully integrated so not to detract from the detail, use of material, and color.







**Ursuline Motherhouse Chapel -  
Buchanan, Ricciuti & Balog  
Architects**

**Jury Comments:** Exquisite use of simple materials; blending of wood, glass, painted wall surfaces and artificial light.

Well done response to project goals and objectives and an exciting rebirth of a place of worship.

Interesting juxtaposition and dialogue between religious symbols of faith, of fixed and ordered elements and modern congregation's changing attitudes and values.

**Lally Pipe & Tube - Buchanan,  
Ricciuti & Balog Architects**

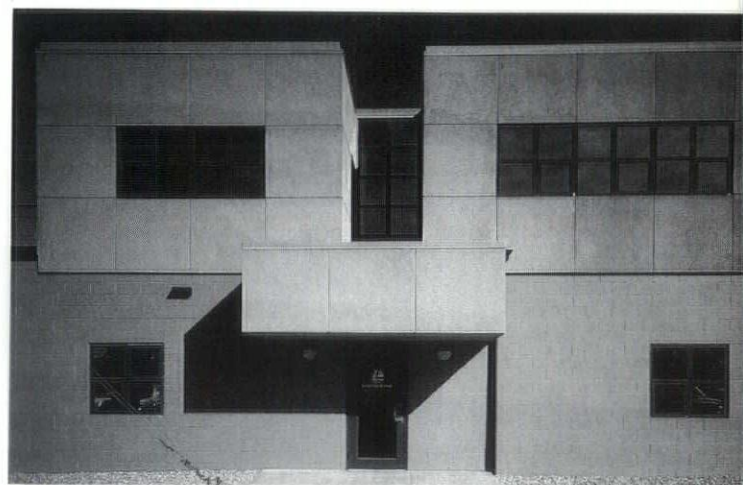
**Jury Comments:** Very well done composition of economical building materials.

Materials used honestly.

Understated and tastefully detailed interior and use of colors.



*Eastern Ohio Chapter AIA honor award winners pose following the awards presentation program.*





## Honor Awards for Exc

Award Winner: Washington Public Library  
 Architect: Munger Munger + Associates Architects, Inc.  
 Mason/Contractor: MacKinnon-Parker, Inc.

Brick lent itself easily to the geometric building shapes demanded by the lovely meadow and wooded park site secured from the local school system. Brick was used extensively on inside walls, giving a warmth and beauty unable to be matched by other materials. The passive solar considerations of brick, soaking up heat during the day and radiating it at night, helps to take off the chill on cold winter mornings. Design footprint and parking evolved around saving major trees and preserving the environment.

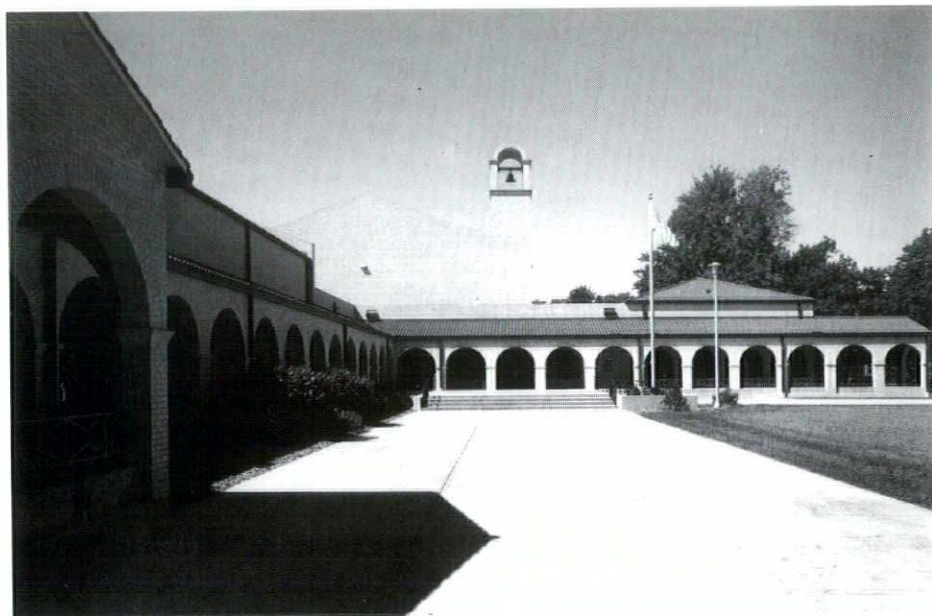


**Washington Branch Library**

Award Winner: Franciscan Life Center  
 Architect: Angel, Mull + Associates, Inc.  
 Mason/Contractor: Rudolf/Libbe Inc.

The Center contains a theater, conference rooms, gymnasium, student lounge and a commons/lobby area. Masonry materials were important in achieving the design intentions of being unobtrusive and yet integrated. The use of these materials in similar forms, as found on other campus buildings, harmonizes the Center with its environment. These materials were also chosen for their practical qualities of being very durable, highly fire-resistive, and easy to maintain.

The total area of the building is approximately 77,000 square feet (almost two acres under roof) and contains over one halfmillion bricks. The exterior is adorned by 21 ceramic art mosaic pieces which were hand carved and fired on site by the owner.



**Franciscan Life Center**

Sponsored by: Masonry Institute of Northwestern Ohio, in cooperation with Toledo Chapter, AIA





**Oak Harbor Public Library**

Award Winner: Oak Harbor Public Library  
 Architect: Munger Munger + Associates Architects, Inc.  
 Mason/Contractor: Studer-Obringer, Inc.

The new structure, replacing an out-of-date residence used for fifty years, called for a simple, economical, brick and stone design. The exterior had to be residential in scale but needed to be three times as large as the current facility. Building shape, composition and imagery were designed to be reminiscent of the Victorian era housing stock of the neighborhood, the brick colonial revival post office, the brick municipal building and masonry church down the street and the 1890's era downtown business district one block away. A nearby 1890's period masonry garage with rooftop cupola served as a major design influence, around which the simple brick cube achieved height and scale.



**Residential Entertainment Area & Pool Addition**

Award Winner: Entertainment Area & Pool Addition  
 Architect: Seyfang Blanchard Duket Inc.  
 Contractor: John Longthorne Contractors, Inc.  
 Mason: Wilson Tile Co.

The house is located in an early sixties neighborhood of Toledo on a sloping site. The owners desired a fully enclosed lap pool addition with an entertainment and sitting area including a small kitchenette and shower facilities.

Masonry has been used as a major structural component, but the most striking use of masonry is the Penn Bluestone used for floor and exterior walks. The beautiful natural blue-grey color sets off the black pond-like pool and black slate accent colors perfectly. The room has a wonderful ambiance. Natural cleft stone provides a tough non-slip surface which is water resistant and maintenance free. The exterior front entrance was enhanced by the addition of fieldstone landscape walls and Bluestone paving.



## OUR APOLOGIES

**William A. Blunden, FAIA**, was inadvertently omitted from the Cleveland Chapter listing in the 1989 ASO Handbook. We apologize for the error.

## ANNOUNCEMENTS

Construction Materials Seminars covering soil, concrete, reinforcing steel for concrete, asphalt/bituminous pavement, structural steel, bolted fasteners, roofing and masonry and mortar. One and two-day formats. January 10, 11 & 12 - Dayton; January 17, 18 & 19 - Cleveland; January 24, 25 & 26 - Toledo; January 31, February 1 & 2 - Columbus; February 21, 22 and 23 - Cincinnati. Presented by Bowser Morner Consulting Engineers and Testing Laboratory. Call Gerald Degler (513)236-8805 for details.

## CHANGE OF ADDRESS

**LOM Corporation** has relocated to 400 TechneCenter Drive, Suite 402, in the Park 50 TechneCenter in Milford.

## PUBLICATIONS

The National Glass Association has produced three new and expanded *Glazing Reference Guides* to update the glass industry on the latest changes in the model building code groups. Included in the 48-page guide is the actual code language followed by a detailed, easy-to-understand explanation. The cost is \$19.95 each for NGA members and \$29.95 for non-members. NGA also offers an Annual Code Update Service at \$49.95 per year to help firms stay current on all proposed and actual changes to the code until new code books are issued. Contact NGA's Technical Services Division (703)442-4890 for information.

## PROMOTIONS & STAFF ADDITIONS

**Michael J. Battoclette, Robert A. Schilling, Jr., AIA**, **Joan Tepe Wurttenberger, AIA** and **John L. Wyler** have joined **Russell L. Champlin, AIA** and **Robert K. Haupt, AIA** as principals in **Champlin/Haupt, Inc.** in Cincinnati.

**David F. Stone, AIA** has joined **Earl C. Hayes, Jr., AIA** and **Mark E. Tanner, AIA** as a partner to form **Hayes, Tanner & Stone Architects** at 1010 Coles Blvd., Portsmouth 45662.

**Stone** joined the firm after graduating from OSU with a bachelor of science in architecture. He serves as a board member to the Design Review Board for Portsmouth's Historical District.

**Charles W. Murray** has joined **Karlsberger Companies** as Executive Vice President of **Karlsberger Planning Associates**.

**Paul Cianelli** has been promoted to architectural designer with the firm, **Stephen Zilles** as project coordinator, **Brad Kendall** and **Gebran Esber** as senior architectural staff and **Jeff Metheney** as a member of the architectural staff/CADD department. **Dorothy Leachman** has been promoted to interior designer of **Interior Dynamics**, a division of **Karlsberger**.

**William H. Sander**, Senior Vice President, **Hixson, Inc.** addressed a major international conference of food and dairy processors in November on plant design and engineering trends.

New to **Richard Trott and Partners** is **Steven Pottschmidt, IBD** and **Gary Collier**. Pottschmidt holds a bachelor of design from UC and worked for Continental Office before joining Trott. Collier is a graduate of OSU and holds a bachelor of science in landscape architecture.

**Baxter Hodell Donnelly Preston, Inc.** has brought **T. Patrick Donnelly** on board as Business Development Manager. Donnelly has a bachelor of architecture and extensive experience in the construction industry having served in all phases of commercial design/build and construction projects including new facilities and renovations.

New to **URS Consultants** is **Lawrence E. Fischer, AIA** Project Manager with the **Health Care Group** and **Roland C. Vollmer**, Director of Interior Architecture.

Fischer's position was created as a result of the firm's continual growth in health care. Prior to joining URS, Fischer served as a health care associate with an A/E firm. He earned a bachelor of architecture degree from Kent State. His work on the State Theatre restoration in Cleveland won an ASO Honor Award.

After returning from a three-year program in Virginia Beach where he completed a major interior project, Vollmer brings over 20 years of interior experience to URS. For 12 years he directed his own firm in Cleveland and

University.

## AKRON TUDOR

Office suites from 400 to 1,900 sq. ft. available in Tudor Home (circa 1930) with beautiful grounds in Akron. Perfect for architects/interior designers.

Call (216) 374-0065

## HOT DIP GALVANIZING CORROSION PROTECTION WITH ZINC

**S**teel used to construct buildings, equipment, ornamental iron, bolts, nuts and other small parts require corrosion protection. The proven effectiveness of zinc in controlling corrosion makes it an ideal choice for protecting structural steel. Hot dip galvanizing is generally the most effective method of applying zinc to steel.

A National Bureau of Standards study in the late 70's estimated corrosion costs in the United States to be 4.2% of the Gross National Product. Based on this estimate, current corrosion costs in North America would be over \$200 billion a year. The study also found that 15% of this figure could be avoided by making the best possible use of existing technology. Galvanizing is usually the most cost effective, readily available corrosion protection technology.

Corrosion prevention systems are specified based on a facility's design life, the service environment, coating appearance and lifetime costs. It is up to the architect, designer, specifier and builder to ensure that plant owners receive the best value for their capital investment. In the majority of cases, zinc applied by hot dip galvanizing is the best coating system to satisfy these criteria.



**Submitted By Your Friends  
At Columbus Galvanizing  
Call (614) 443-4621  
For More Information  
On Hot Dip Galvanizing**



**Gregory K. Rhoads, AIA**, has been elected Executive Vice President and Chief Operating Officer of **KZF Incorporated**. Rhoads has been with the firm for 22 years. Since 1984 he has managed KZF's Federal Division and prior to assuming his most recent post, was the firm's manager of operations.

**Robert B. Steele** has been appointed as manager of finance and administration. He also serves as KZF's treasurer and chief financial officer.

## IN MEMORY

**Robert W. Lecklider, AIA**, suffered a heart attack and died on October 1 while bicycling. Friends and associates in the ASO were shocked to learn of his death after having met with him at the ASO Convention two days before.

President of Lecklider-Jay Architects, Lecklider helped design several Dayton landmarks, including the Museum of Natural History, Sinclair Community College, Wright State University and the Kettering Memorial Hospital Complex. Corporate clients included Mead Data Central, Reynolds and Reynolds Co., EDS Corporation, NCR Credit Union and Monarch Marketing.

A 1950 graduate of Miami University, Lecklider became a partner in Yount and Sullivan in 1957 before establishing a broad architectural practice with Lecklider-Jay. He served as President of the Dayton AIA chapter and the ASO in 1976 and served for years on the ASO Foundation Board, most recently as Secretary. His friendship and commitment will be sorely missed.

**J. Henry Chambers, FAIA**, an internationally renowned restoration architect and past president of the Akron Chapter died last August 14.

Formally educated at the Fountainbleau School of Fine Arts, Columbia and Yale Universities, Chambers established his firm with his wife, Lorraine in 1965. The firm produced a number of significant public buildings including the Akron-Canton Airport Terminal. In more recent years the firm's work was devoted to urban design and preservation.

Chambers was inducted into the College of Fellows in 1980. He served on the Akron Chapter Urban Design Committee and was chair of the national AIA Preservation Committee.

**James W. Baas, AIA**, passed away suddenly on September 3 while undergoing additional treatment for leukemia. As past legislative chairman for the

ASO, Baas was an early and important contributor to ASO's efforts in obtaining merit selection for state work.

A graduate of OSU's School of Architecture and Capital University's Law School, Baas served as Vice President of Trott and Bean Architects before assuming the position of Executive Vice President of Pizzuti Development Company.

**George Roth, Jr., FAIA**, an architect noted for hospital design and past president of the Cincinnati Chapter passed away on October 22.

His influence touched many people in the architecture he designed, the students which he taught and the writings that he authored.

His practice encompassed many building types and styles, from the Art Deco of the John Shillitos Department Store in Cincinnati, to the Georgian style architecture at Miami University, to the 20th Century Modern style of the John Weld Peck Federal Building, to the International style of WCET studios.

Roth enthusiastically espoused historic preservation throughout Ohio and Kentucky. An AIA letter of commendation was issued in 1943 to him for his successful efforts to retain five excellent examples of early Kentucky architecture.

# Brick Ideas



## Darlington Brick & Clay Products Company

*Manufacturer of Architectural and Residential Face Brick*

*Billy L. Hefner*  
Manor Oak #1, 1910 Cochran Rd.  
Pittsburgh, PA 15220  
(412) 343-9993

*William Pilati*  
P.O. Box 346  
Darlington, PA 16115  
(412) 827-2121

## Pavers

*Exterior—Interior—Paving*

In 1977 the U.S. Department of the Interior presented him the Preservation Award for his efforts to preserve the Cincinnati Union Terminal and other projects.

Roth received a bachelor of science in architecture from the University of Cincinnati in 1927 and a master of architecture in 1929. In 1937 in Cincinnati he joined Potter, Tyler and Martin and became a partner in 1945. During this time he began teaching at the University of Cincinnati. He taught until 1965 when he devoted all his time to his professional practice.

In 1967 Roth became president of George F. Roth and Partners and in 1976 he became Chairman of the Board of Roth Partnership. In 1981 he was awarded the ASO Gold Medal Award, in 1985 he received the Apple Award from the Architectural Foundation of Cincinnati and in 1983 he was made a member of the AIA College of Fellows. He remained active in the firm until his death.

Roth participated in numerous television shows and helped author several books about the architectural history of the Cincinnati area. The most recent of which was a Downtown Walking Tour of Cincinnati called Architecture and Construction in Cincinnati.



1990 Central Ohio Construction Expo, February 21 & 22, Veterans Memorial. Over 265 exhibits. Charles Moore the featured speaker on Thursday. No charge to members of the industry. For more information call (614) 486-9521.

[illegible]

- carpet
- resilient
- wood
- ceramic
- marble
- granite
- computer flooring

3950 INDIANOLA AVENUE  
COLUMBUS, OHIO 43214  
614-267-5463

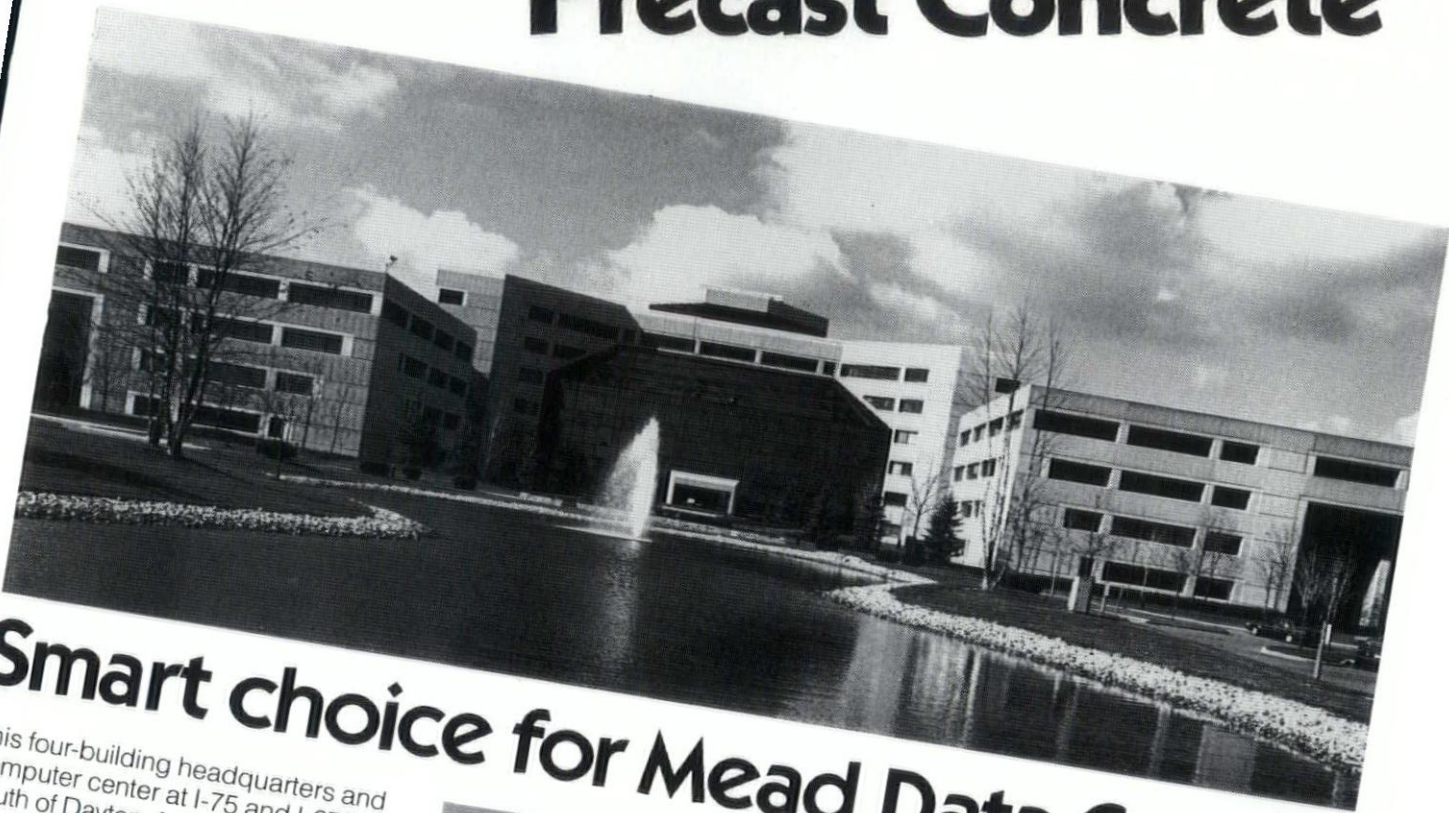
"OUTDOOR FURNISHINGS AND SITE  
AMENITIES. . . . PLASTISOL COATING  
PERMANTLEY BONDED TO STEEL. . . . A  
NEW LEVEL OF DURABILITY ADDED TO THE  
INDUSTRY"



In West Virginia & Indiana 1-800-848-7556



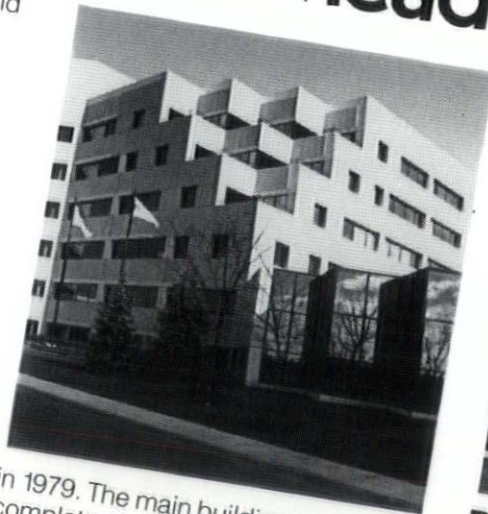
# Architectural Precast Concrete



## Smart choice for Mead Data Central

This four-building headquarters and computer center at I-75 and I-675 south of Dayton, features 189,145 square feet of architectural precast concrete cladding.

Mead Corporation and the architects, Lecklider-Jay Architects Inc., both of Dayton, chose fractured fin textured panels with smooth areas surrounding the windows. On the stepped-back terrace areas, smooth panels were given a medium sandblast finish. All were made with gray cement, local limestone aggregate and natural sand. The first building was started



in 1979. The main building was completed in 1986. The 1605 precast panels were produced by Concrete Technology.

For information on our company, precast and prestressed products and projects, contact Charles Hilgeman, Vice President & General Sales Manager.



**Precast today...  
for a lifetime  
of tomorrows.**

### Concrete Technology Inc.



156 east mill st.  
springboro, ohio 45066  
513/224-1867



## AROUND OHIO

### ANNOUNCEMENTS

Earthquake provisions in the 1988 Uniform Building Code will be presented on February 22 in Columbus by the International Conference of Building Officials. The '88 revisions are the most significant since 1971. To register call (213) 699-0541.

**EMPKO, Inc.**  
**represents**  
**Finestone Coatings**

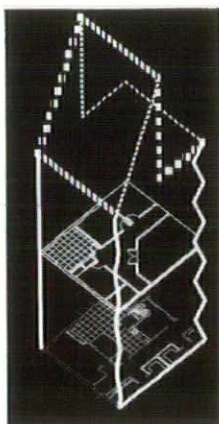
**Product Line**

Exterior Insulated Finish Systems  
Base Mortar System  
Non-Cementitious EIFS  
Aggregate Surfacing  
Textured Surfacing  
Racquetball Court Systems



P.O. Box 246  
Wadsworth, OH 44281-0246  
Tom Huchko Telephone 216-336-6168

M  
R  
C  
B  
u  
i  
l  
d  
e  
r



**MRC Cadd Systems introduces "MRC Builder". Designed by architects, MRC Builder is a powerful pc-based design, drafting and data management tool for architects, space planners and engineers.**

CADD SERVICE BUREAU WORK  
MICROSTATION CADD TRAINING  
COMPUTER PROGRAMMING SERVICES  
—dBASE III+  
—LOTUS MACROS  
—C/DOS  
—MICROSTATION  
USER COMMAND  
PROGRAMMING  
COMPUTER TRAINING  
—LOTUS 1-2-3  
—dBASE III+  
—DOS



**MRC**  
Cadd  
Systems

1 513 866 8000  
FAX 1 513 866 8897  
1 800 322 MRC 1

915 E. Central Avenue  
West Carrollton, Ohio  
45449

**Ralph G.**  
**O'Neil, A.I.A.**  
**Michael W.**  
**Schleman**

President  
General  
Manager

## ARCHI TYPES

17 South High Street, Suite 1200  
Columbus, Ohio 43215

Susan Hecht  
AIA - Component Affairs  
1735 New York Ave., NW  
Washington, DC 20006

21546