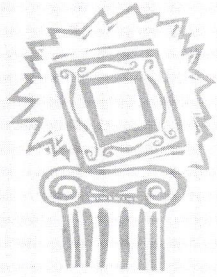
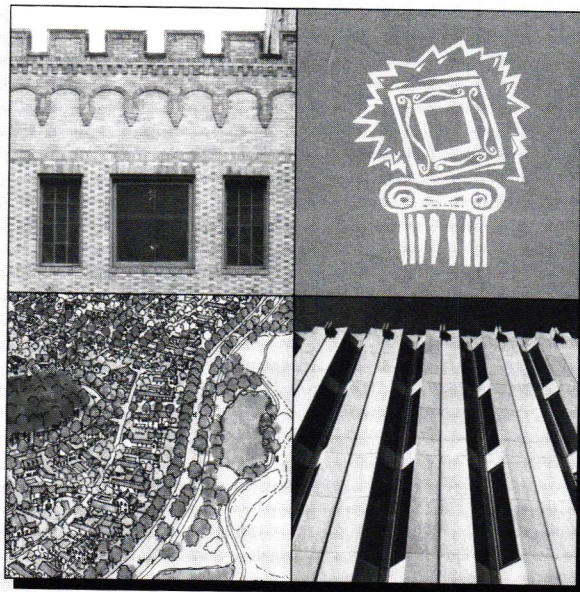


C O L U M N S



1996 *Design Awards*



Rock Solid



John Deklewa & Sons, Inc. has made its mark as one of the premier general contractors in the Western Pennsylvania construction industry by being attentive to detail. Since the company's founding in 1918 by John Deklewa Sr., the firm has engaged in most types of construction activity. From building construction, water and waste treatment facilities to high-end residential and fine millwork installation, Deklewa applies state of the art construction technique and a sense of fine craftsmanship.

Everyone at
John Deklewa & Sons, Inc
is proud of its 75 year history and of their
rock solid reputation as a provider of quality
service and materials.

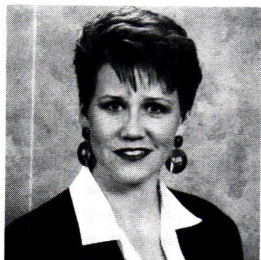
JOHN DEKLEWA & SONS, INC.

1273 Washington Pike • P.O. Box 158 • Bridgeville, PA 15017 • (412) 257-9000

GENERAL CONTRACTORS BUILDING SUCCESS

Architects: Leaders for Change

by Maureen Guttman, AIA President



Architects, by training and by nature, possess an excellent combination of skills in problem-solving, negotiation, communication, and leadership that, I believe, can and should be applied to the role of public servant.

As you read this issue, you have already

had an opportunity to review the outstanding projects submitted and honored for this year's Design Awards Program. Every project submitted represents its author's pride in resolving a unique architectural challenge. Those projects awarded by the jury represent the very best in creative resolution of the myriad components, constraints, and characters that a design problem involves.

It seems relevant to me that our Design Awards issue this year comes about at election time. At this time of year especially, our attention is sought by all manner of people who believe they possess the right mix of experience and ability to best serve and protect the public interests. Architects, by training and by nature, possess an excellent combination of skills in problem-solving, negotiation, communication, and leadership that, I believe, can and should be applied to the role of public servant.

A couple of years ago, the chapter Board of Directors met as we do every year to discuss the long range plans for AIA Pittsburgh. In a really noteworthy planning session, we developed a vision for the organization and some major strategies needed to achieve our goals. As we randomly offered ideas on how we are to become a highly visible and respected resource to the community, one Board member jokingly suggested that another Board member should run for Mayor. Fortunately for Pittsburgh, that particular Board member doesn't live in the city and isn't eligible for the office.

The point of the proposition, though, was not lost on us. If it is an objective of the AIA to increase public perception of the value of architects, then it is incumbent on us as individuals to find ways to showcase our resourcefulness in as many venues as possible. At this year's AIA National Convention in Minneapolis, Ronald A. Altoon, FAIA (Institute President for 1998) spoke of the need for architects

to serve in the public realm. "Architects should embrace a philosophy of bridge building to cultural institutions, schools, collateral professions, communities, and governmental entities to be positioned appropriately as collaborators and leaders of change."

Architects possess the creative ability to look at an issue from many perspectives and offer innovative solutions with respect to a client's needs and budget. We are considered to be consensus-builders and team leaders. These talents are exercised and refined as we move through our careers creating buildings and places. Too few of us, however, consider how great an asset these very skills can be in the management of our communities and cities.

This year there are two AIA architects running for the U.S. Senate. In North Carolina, Harvey Gantt, FAIA is attempting to unseat Jesse Helms, and according to the most recent polls, Dick Swett, AIA is the favorite to win his race in New Hampshire. If both of these gentlemen should succeed, AIA architects would constitute 1/50th of the U.S. Senate!

I don't want to push anyone to run for Congress before he or she is ready. But give some thought to whether those distinguishing proficiencies that set you apart as an architect could be shared with your community. School boards, planning commissions, code review boards, and town councils can benefit from the architect's ability to first shape a vision, and then to give it form and character. Winning design honors is not in the cards for all of us. But as we step up to the responsibilities of civic leadership, the community will reap the benefits of our problem-solving expertise, as we win the greater reward of public recognition and respect.

Make no small plans: today the Mayor's office; tomorrow, the world!

IN THIS ISSUE

Viewpoint: from the president	3
What Are Design Awards?	4
Architectural Design Awards	6
Open Plan Awards	26
Timeless Awards	30
Contractors' Directory	32
Engineers' Directory	34
Chapter Meeting Info	35

AIA Pittsburgh serves 12 Western Pennsylvania counties as the local component of the American Institute of Architects and the Pennsylvania Society of Architects. The objective of AIA Pittsburgh is to improve, for society, the quality of the built environment by further raising the standards of architectural education, training and practice; fostering design excellence; and promoting the value of architectural services to the public. AIA membership is open to all registered architects, architectural interns, and a limited number of professionals in supporting fields.

AIA Pittsburgh
211 Ninth Street
Pittsburgh, PA 15222
Telephone: 412/471-9548
FAX: 412/471-9501

Chapter Officers

Maura Guttman, AIA, President
Frank McCurdy, AIA, 1st V. Pres.
Al Culeri, AIA, 2nd V. Pres.
Gwen Williams, AIA, Treasurer
Deepak Wadhvani, AIA, Secretary
Anne Swager, Executive Director

Columns Staff

Michelle Fanzo, Managing Editor
Joseph Ruesch, Art Director
Tom Lavelle, Ad Manager
Gloria Forouzan, Project Manager

Editorial Board

David J. Vater, AIA
Alan L. Fishman, AIA
David J. Roth, AIA
Robert J. Bailey, AIA
Deepak Wadhvani, AIA
Donald G. Zeilman, AIA

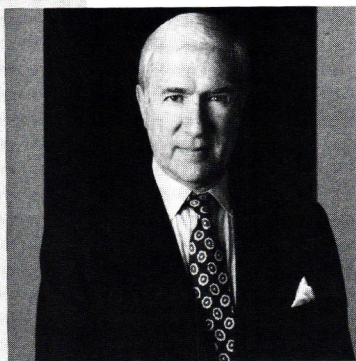
COLUMNS is published ten times a year by, and primarily for, members of AIA Pittsburgh, A Chapter of the American Institute of Architects. Preference may be given to the selection of works, articles, opinions, letters, etc. of members for publication. However, in the interest of furthering the goals of the Chapter, as stated monthly at the top of the masthead and in the membership directory, COLUMNS will publish the names of and properly credit non-members, whether as participants in the design of works submitted by a member, or as designers of their own work, or as authors of articles, opinion or letters.

Opinions expressed by editors and contributors are not necessarily those of AIA Pittsburgh. The Chapter has made every reasonable effort to provide accurate and authoritative information, but assumes no liability for the contents.

What Are Design Awards? *And who gets to judge them?*

Who...?

Internationally renowned architect Eugene Kohn, FAIA, partner of Kohn Pedersen Fox Associates, was the keynote speaker and jury chair for AIA Pittsburgh's 1996 Design Awards. Kohn Pederson Fox won the AIA's Firm of the Year Award in 1990. Mr. Kohn was joined by William Louis, FAIA, Kevin Kennon, AIA, and Jamie von Klemperer, AIA,



Keynote speaker Eugene Kohn, FAIA, partner of Kohn Pedersen Fox Associates.

all of Kohn Pedersen Fox Associates, to form the jury for this year's awards. Their comments accompany photographs of the award-winning projects on the following pages.

Mr. Kohn is widely respected for his 40-year architecture career and his inspirational leadership qualities. Co-founder of Kohn Pedersen Fox Associates PC in 1976, Mr. Kohn has contributed to each of the firm's designs from corporate headquarters and office buildings to hotels and institutional facilities. As the international reputation of his firm has grown, garnering work in over 20 countries, Mr. Kohn has spoken at conferences worldwide. In recent years he has lectured in Kuala Lumpur, New Zealand, Australia, Hong Kong, Washington DC, and New York, among many other locations. He discussed "Experiencing A Global Practice" at the AIA Pittsburgh Design Awards.

What...?

Every year, a Design Awards jury, comprised of architects outside of western Pennsylvania, reviews and evaluates work of AIA members and firms whose principal(s) are members of AIA Pittsburgh. There are two categories of design awards, **Architectural Awards** and **Open Plan Awards**, with three levels of recognition—*Silver Medal*, *Honor Awards*, and *Citation of Merit*—given at the jury's discretion. The Silver Medal is the highest honor, celebrating an extraordinary building. An Honor Award is given to the best of this year's submissions and a Citation—the only level awarded for Open Plan Awards—is presented for a particularly noteworthy project. The jury may award as many or as few Honor Awards and Citations as they like. However, no more than one Silver Medal can be awarded and the jury may choose not to award any.

The **Timeless Award**, a third category, honors the designers of classic buildings that we have grown to cherish.

Architectural Awards require an entry be a work of architecture—such as a building, urban design restoration, or interior design—completed since January 1, 1991. Open Plan Awards are open to all members with architectural degrees and can be unbuilt work, research, theoretical projects, or work in the allied arts completed since January 1, 1991. The latter category, allowing architects to show their creativity as well as the diverse talents of their profession, was particularly enjoyed by the jury.

AIA Pittsburgh Presents the 1996 Design Awards

An exhibit of Design Award winning projects will be on view at the Chapter office through the month of November.

A display of Kohn Pederson Fox's international projects will run concurrently.

Exhibit Information:

October 22 - throughout November
AIA Gallery hours: 9:30 a.m. - 4:30 p.m.
Monday through Friday

AIA Gallery
211 Ninth Avenue
Downtown Pittsburgh
471-9548



Columns is printed on recycled paper.

AIA MEMBERS: COMMUNICATE MORE CLEARLY!

With Bell Atlantic NYNEX Mobile as your cellular service provider, you'll enjoy a clear signal and superior system reliability. And you'll save money on your cellular phone bill, too.

PITTSBURGH AIRTIME RATES

Monthly Access ... \$17.95
Peak Rate (Usage) ... \$.37/minute
Off Peak Rate (Usage) ... \$.17/minute

No Activation Fee!

A \$25 Savings.

AIA USAGE DISCOUNTS

100-199..... 2%
200-299..... 5%
300-499..... 8%
500-799 10%
800 or more 11%

Whether you already have a cellular phone or are thinking about buying one, you can start taking advantage of this offer from Bell Atlantic NYNEX Mobile now. Visit one of our communications stores or call 480-2489 for a wireless consultation visit in your office.



BUSINESS SALES • VOICE AND DATA • 480-2489

North Hills – 4930 McKnight Road, 369-8500 • Downtown – 2 PPG Place, 392-0300

South Hills – 2895 Banksville Road, 571-3300 • Ross Park Mall – 364-5041 • Century III Mall – 655-8850

Monroeville – 3828 William Penn Highway, 856-2300 • Shadyside – 810 South Aiken Ave., 687-6300

Indiana Mall – 465-1040 • Westmoreland Mall – 830-9900 • Robinson Town Centre – 787-4220

Butler – Moraine Pointe Plaza, 285-2900 • Beaver Valley Mall – 775-2866

A new two-year contract with Bell Atlantic NYNEX Mobile is required, and a \$175 early termination fee applies. This offer is subject to the AIA/Bell Atlantic NYNEX Mobile agreement. Roaming, toll and long distance charges not included in the above rates. If you are a current Bell Atlantic NYNEX Mobile customer and would like to change your price plan, call our Customer Service Department at 1-800-922-0204, toll and airtime free, 24 hours a day, 7 days a week. Have your mobile telephone number ready. Proof of AIA membership is required.

Bell Atlantic NYNEX Mobile

AIA Pittsburgh Presents the 1996

Design Awards

PART ONE: ARCHITECTURAL AWARDS

Architectural Awards are composed of any work of architecture—such as a building, urban design restoration or interior design—completed since January 1, 1991.



Silver Medal

FIRM: **Bohlin Cywinski Jackson**

PROJECT: **Harris Theater Renovation**
809 Liberty Avenue, Pittsburgh, PA

CLIENT: The Pittsburgh Cultural Trust

ARCHITECT/DESIGN TEAM:

Peter Q. Bohlin, FAIA; Jon C. Jackson, AIA
Gregory R. Mottola; C. Roxanne Sherbeck, AIA

CONTRACTOR:

Jendoco Construction Corporation

CONSULTANTS:

Structural Engineering Corporation (*Structural Engineering*)

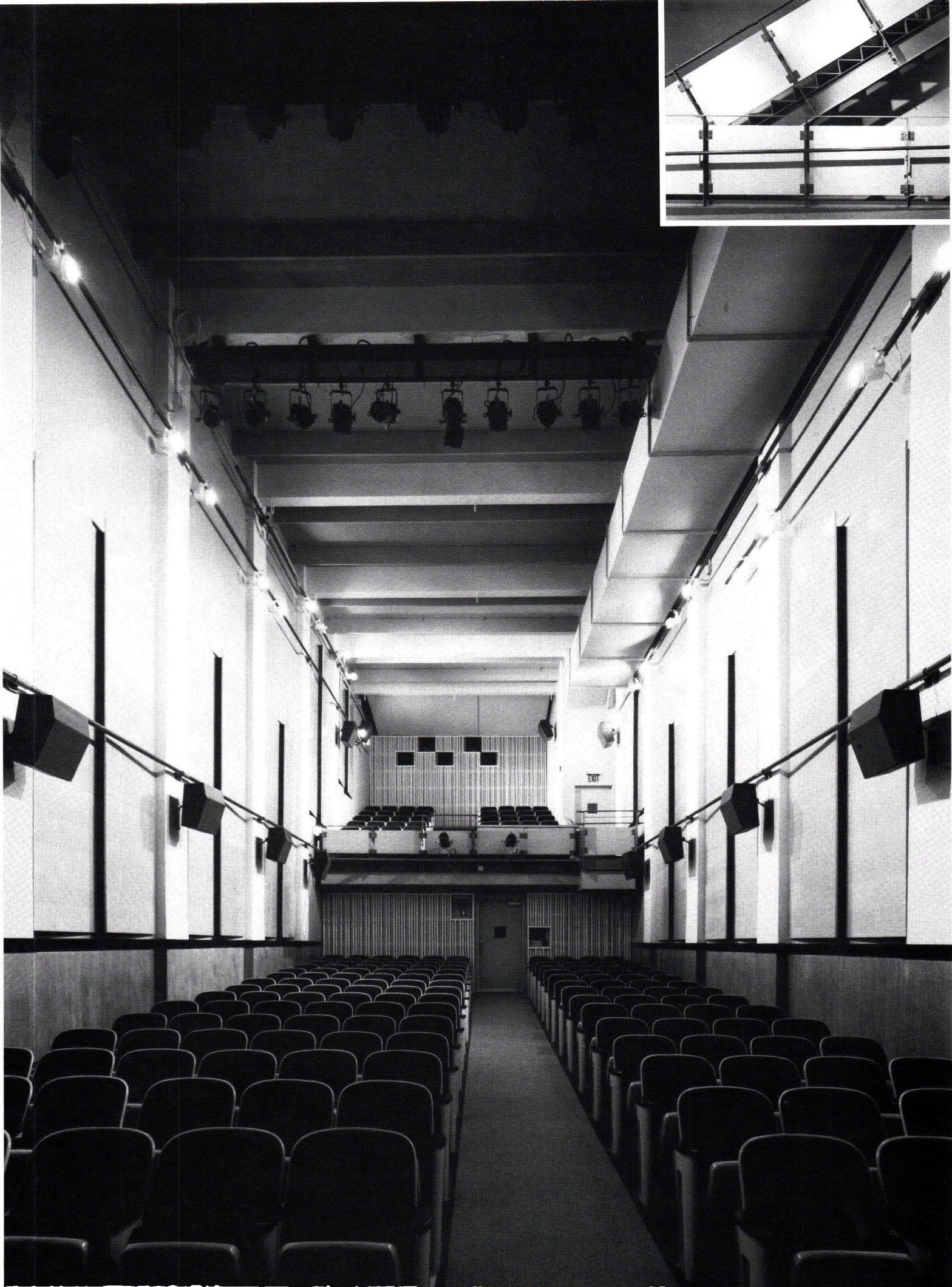
Mark Valenti (*Acoustical Design*)

Meucci Engineering, Inc. (*Mechanical Engineering*) with

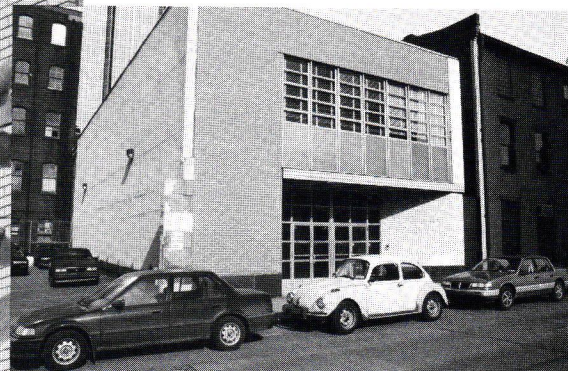
A.R. Scalise Industries (*Mechanical Design/Build*)

Hoffman Electric (*Electrical Design/Build*)

"On looking at this project, one experiences instant enthusiasm and desire to be in the space. The instant reaction is enthusiasm. Upon further reflection, looking at details and surfaces, there is strong but simple use of material and various elements within the space which tie it together. The quality of the plans and presentations is very important. As one goes through this very beautiful theater, one gets the feeling of going into a space that says 'Wow!'."



ARCHITECTURAL AWARDS



HONOR AWARD

FIRM: **L.D. Astorino & Associates, Ltd.**

PROJECT: **133 First Avenue, Pittsburgh, PA**

CLIENT: The Catholic Diocese of Pittsburgh

ARCHITECTS/DESIGN TEAM:

Louis D. Astorino, FAIA, Chairman

Dennis L. Astorino, AIA, President

Christopher R. Haupt, AIA, Principal in Charge

CONTRACTOR: Coco Brothers

CONSULTANTS: Astorino Branch Engineers, Inc.

"Sustained interest in the materials to develop a language that is appropriate for the neighborhood."

"Excellent example of adapting and renovating a building to fit its surroundings. Particularly strong facade and image. It looks beyond its immediate space to create an image and thus shows responsibility to its neighbors. Unlike so many post-modern efforts of its kind, there is an integrity in the muscular articulation of the material. It recognizes some of the traditions of regional architects such as Frank Furness."

ARCHITECTURAL AWARDS



CITATION OF MERIT

FIRM: **Bohlin Cywinski Jackson**

PROJECT: **Headquarters for WESCO Distribution, Inc., 4 Station Square, Pittsburgh, PA**

ARCHITECT/DESIGN TEAM:

Jon C. Jackson, AIA; Rebecca L. Boles,
Erik W. Hokanson, Kruti H. Majmudar
Natalie Gentile Wetmore

CONTRACTOR: Poerio, Inc.

CONSULTANTS: RCF Engineering (Mechanical)
Hornbeck Engineering (Electrical)

"Color and material palette in its lightness is successful in giving one a sense of more open interior. Further, the multiple door configuration allows light to come into the space. The light fixture design is especially noteworthy."



CITATION OF MERIT

FIRM: **Bohlin Cywinski Jackson**

PROJECT: **Senator John Heinz Regional History Center, 1212 Smallman Street, Pittsburgh, PA**

ARCHITECT/DESIGN TEAM:

Peter Q. Bohlin, FAIA, Principal for Design
Jon C. Jackson, AIA, Principal for Administration
Robert S. Pfaffmann, AIA, Project Manager
Charles J. Cwenar, AIA; Gregory R. Mottola
Rebecca L. Boles; Erik W. Hokanson; Maria Keares
Wyant; Michael D. Maiese; Keith Cochran; Stephanie
Jacobs, AIA; David Senft; Veronica Berchok

CONTRACTOR: Jendoco Construction Corporation

CONSULTANTS: Notter & Associates Architects and
Preservation Planners Washington, DC
George Notter, FAIA; Thomas Butcavage, AIA; John Mott

CONSULTANTS/ENGINEERS: RAY Engineering
(Mechanical/Electrical)
Structural Engineering Corporation (Structural)

"Good adaptive reuse. Exciting interior, strong forms—creating an exciting people place. The building succeeds in being restrained. The design strategy emphasizes the strong character of the building's original structural materials. New systems, such as exposed ductwork, conduit, and low-voltage lighting systems and integrated with the structure while adhering to the same direct, unembellished design approach that pervades the old building. The result is an amalgam of old and new that is a fitting setting for the preservation and celebration of history in America's premier industrial city."

ARCHITECTURAL AWARDS



CITATION OF MERIT

FIRM: **The Design Alliance**

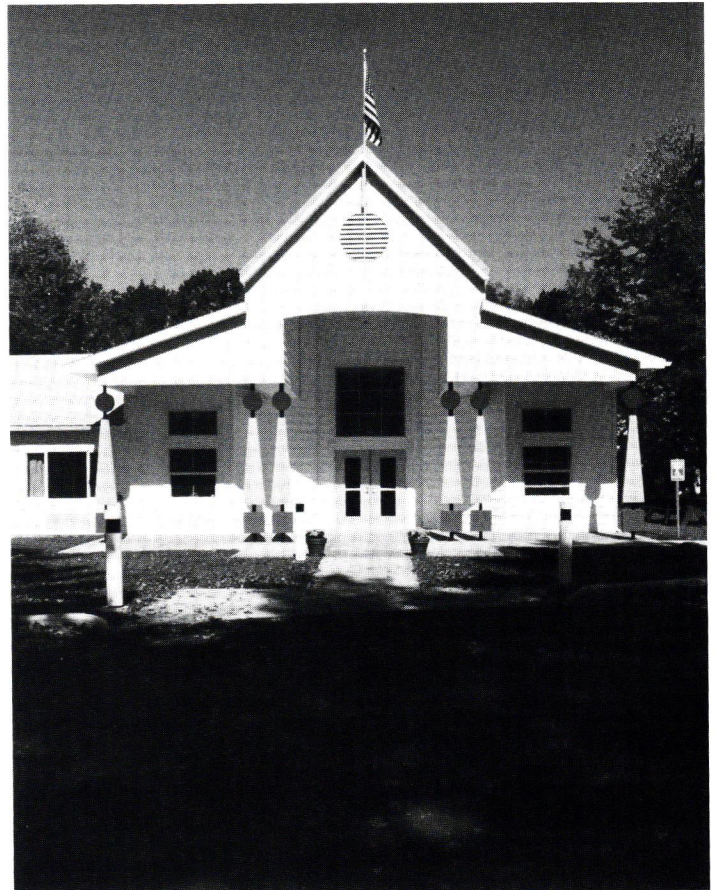
PROJECT: **Weekend Home, Laurel Highlands, PA**

ARCHITECT/DESIGN TEAM: Jules Labarthe, AIA; Paul Graf

CONTRACTOR: Rossman/Hensley, Inc.

CONSULTANTS: W. Cleland Dowler, Jr. (*Landscape Architect*)

"Southwest view is strong and seductive. It is a compelling way to create vernacular architecture. Strong Pennsylvania landscape has been thoughtfully adapted."



CITATION OF MERIT

FIRM: **Ruprecht Schroeder Hoffman Architects**

PROJECT: **White-Cliff Nursing Home, Greenville, PA**

ARCHITECT/DESIGN TEAM: Richard H. Hoffman, AIA; Robert Rokop, AIA; David Noss, AIA

CONTRACTOR: Repal Construction Co., Inc.

CONSULTANTS: Arthur Schock Engineers (*Mechanical/Plumbing*)
Carl J. Long and Associates (*Electrical*)

"Uplifting sense of youth and joy. Certain playfulness of design. Colors are vivid yet they have a light touch. There is a feeling of optimism upon entering. This adds a new 'image' to what may have been a tired building. The whimsical colored forms could serve as reminders and orientation devices to older users who inhabit the facility."

ARCHITECTURAL AWARDS



CITATION OF MERIT

FIRM: **Indovina Associates Architects**

PROJECT: **Private Residence**
Allegheny County, PA

ARCHITECT/DESIGN TEAM: Joseph P. Indovina, AIA, Principal-in-Charge

CONTRACTOR: Indovina Construction Corp.

CONSULTANTS: John Campbell, PE (*Structural Engineer*)

"Impeccably crafted and well thought out and competently detailed."



CITATION OF MERIT

FIRM: **Johnson/Schmidt and Associates**

PROJECT: **PNC Bank Airport Banking Services Center**
Pittsburgh International Airport, Findlay Township, PA

ARCHITECT/DESIGN TEAM: James B. Johnson, AIA, Design Principal
Edward A. Shriver, AIA, Project Principal; Tony Pitassi, AIA, Project Architect

CONTRACTOR: Dick Corporation

CONSULTANTS: Brace Engineering (*Structural Engineering*)
Lawler Engineering, a division of JSA (*M/E/P/F/P Engineering*)
John Ryan, Inc. (*Market Consultant*)

"Skillfully integrates the furniture, lighting, signage and video display which are part of today's banking experience. The plan and central core suggest planetary and orbital motions which seem appropriate imagery for an airport setting. It is unusual to see such an imaginative installation associated with a bank program in an airport."

ARCHITECTURAL AWARDS



CITATION OF MERIT

FIRM: **DRS/Hundley Kling Gmitter**

PROJECT: **Garage Rehabilitation Program, Comprehensive Renovations, Port Authority of Allegheny County, West Mifflin Division Garage**

ARCHITECT/DESIGN TEAM:
S. Philip Hundley, AIA; Frank J. Becker, Jr.

CONTRACTOR: C&M Contracting Inc.

CONSULTANTS: Tri-State Design & Development, Hiroo Patel, Professional Affiliate (*Civil/Structural/Electrical*)
Baker & Associates, Ralph Trepel (*Mechanical/Plumbing*)
Mark Ellis (*Equipment Fleet Maintenance*)

"This building type is not one where one would expect to see such a thoughtful effort. The use of material and color is quite successful and recalls bus forms and surface textures. Strong emphasis on horizontal creates a sensation of speed. The masonry implies a ruggedness characteristic of this mode of transportation."

GO WITH THE WINNER.



Centimark Corporate offices*

General Industries has been leading the industry in custom-engineered building systems for over 20 years. This tradition of excellence has helped us to design and build some of the most award winning new construction projects in the area. Projects such as:

- Southpointe Golf Club
- Polycom Huntsman, Inc.
- Centimark Corporation
- U.S. Naval & Marine Reserve
- Accutrex Products
- Millcraft Industries
- Pennsylvania-American Water Company

When you want a winner...call Don Ivill at 412/483-1600



GENERAL INDUSTRIES
GENERAL CONTRACTORS

15 Arentzen Boulevard • Charleroi Industrial Park • Charleroi, PA 15022

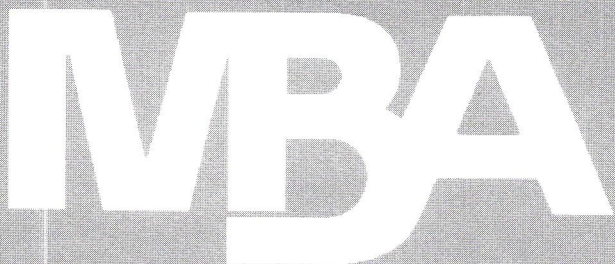
* Project Architect: Johnson/Schmidt and Associates

AUTHORIZED BUILDER



Varco-Pruden
Buildings
A United Dominion Company

Pre-engineered building systems and custom construction - Call for a FREE guide to building planning and construction.



***The Master Builders Association of Western PA
Representing Your Best Overall Construction Value***

Investing in a skilled workforce,
experienced management,
and safer, more productive jobsites.

**Congratulations to the MBA firms building
the winners of the 1996 AIA Pittsburgh
Design Awards:**

■ **COCO BROTHERS**

133 First Avenue

■ **DICK CORPORATION**

PNC Bank Airport
Banking Services Center

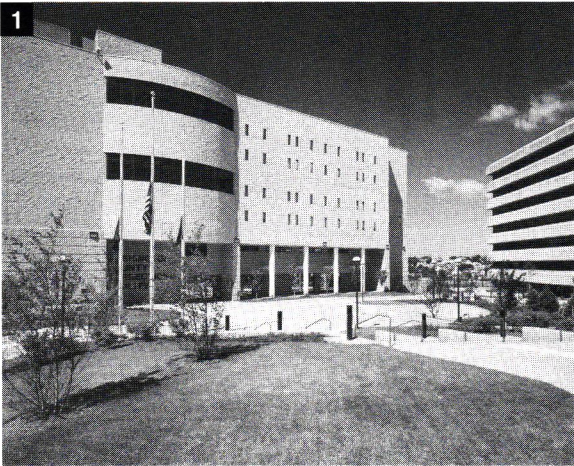
Hillman Library

The Master Builders Association of Western PA
2270 Noblestown Road
Pittsburgh, PA 15205
(412) 922-3912

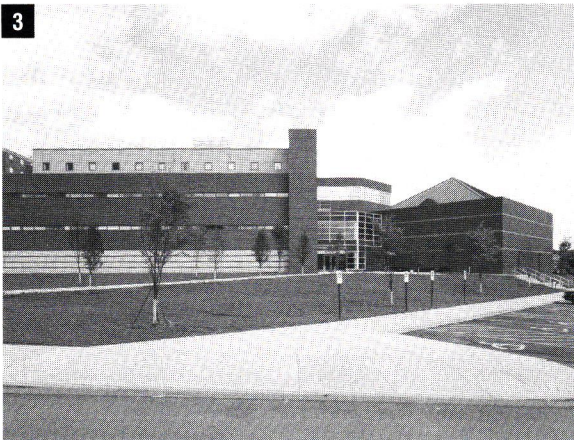
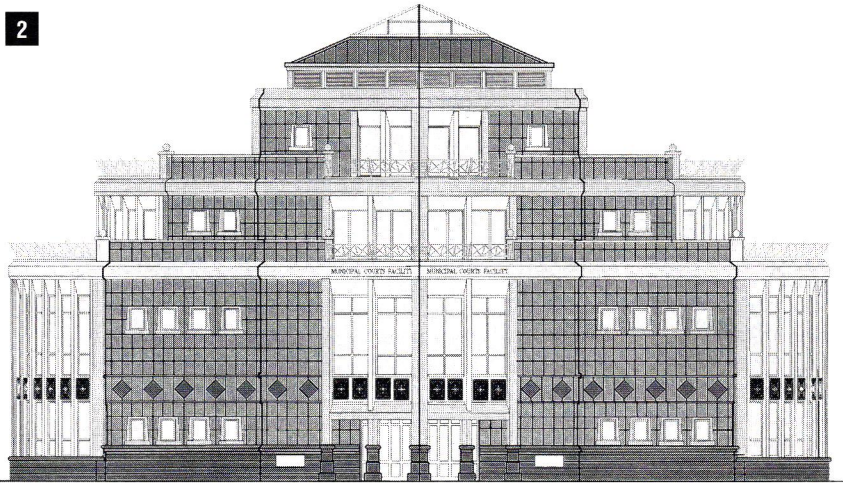
Western PA Building Chapter of the
Associated General Contractors of America (AGC)



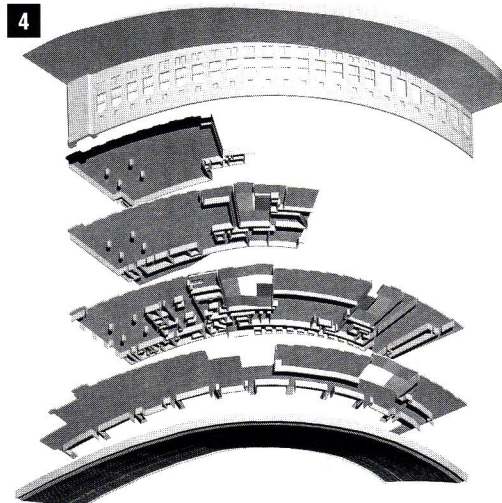
ARCHITECTURAL AWARDS—entries



2



4



1 Apostolou Associates
*Washington County Justice
Center Complex
Washington, Pennsylvania*

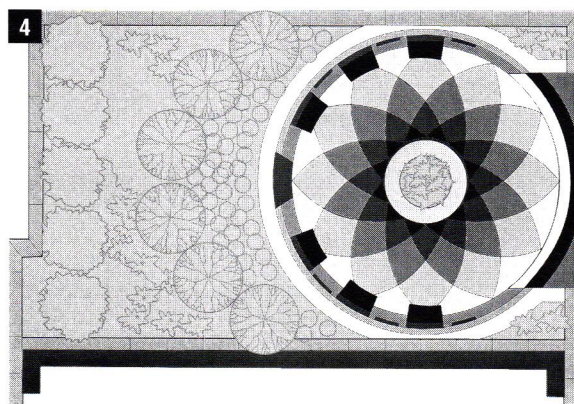
4 L.D. Astorino & Associates, Ltd.
*Pitt Stadium/Athletic Facilities
University of Pittsburgh (Main Campus),
Pittsburgh, Pennsylvania*

2 L.D. Astorino & Associates, Ltd.
*Municipal Courts Facility
Pittsburgh, Pennsylvania*

5 L.D. Astorino & Associates, Ltd.
*Blue Cross Primary Care Center —
McCandless
McCandless, Pennsylvania*

3 Apostolou Associates
*Eberly College of Business
Classroom Building
Indiana University of Pennsylvania,
Indiana, Pennsylvania*

ARCHITECTURAL AWARDS—entries



1 L.D. Astorino & Associates, Ltd.

*Workmens Savings Bank
Pittsburgh, Pennsylvania*

2 L.D. Astorino & Associates, Ltd.

*Greater Pittsburgh Masonic Center
Pittsburgh, Pennsylvania*

3 L.D. Astorino & Associates, Ltd.

*Three Rivers Stadium — Marquee and Miscellaneous
Renovations, Pittsburgh, Pennsylvania*

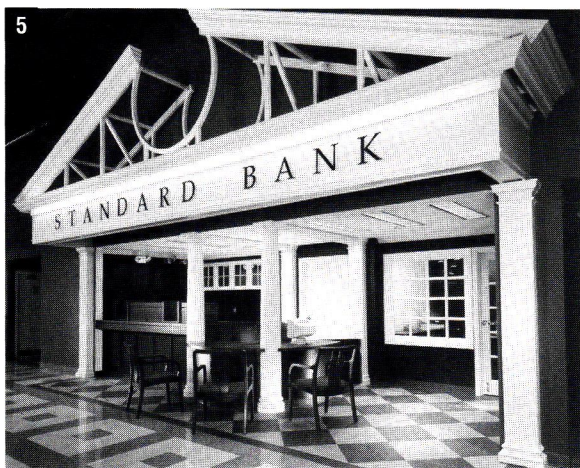
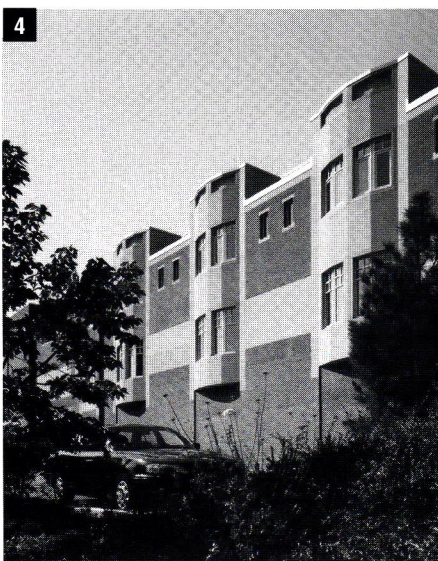
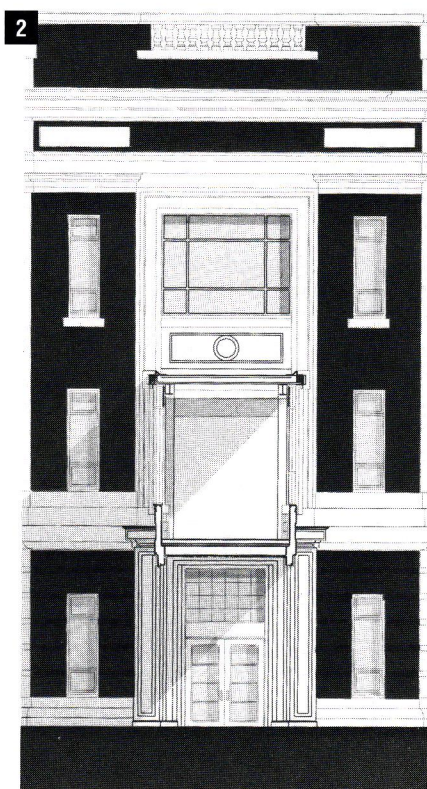
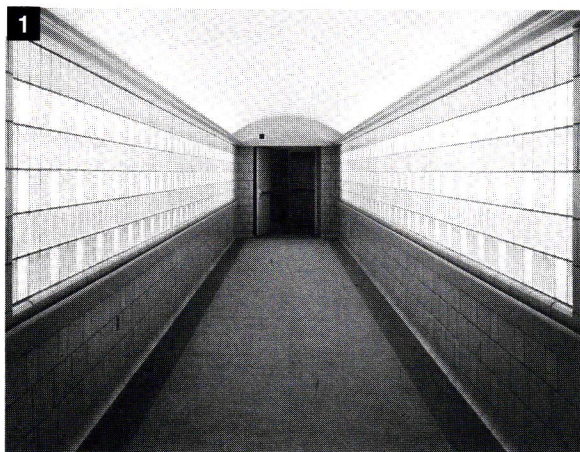
4 L.D. Astorino & Associates, Ltd.

*PNC Bank Employee Memorial
Pittsburgh, Pennsylvania*

5 Atelier Denig Architect

*PA 5-3 Crawford Village for
The Housing Authority of the City of McKeesport
McKeesport, Pennsylvania*

ARCHITECTURAL AWARDS—entries



1 Burt Hill Kosar Rittelmann Associates (Butler)
DeSoto Street Tunnel
Pittsburgh, Pennsylvania

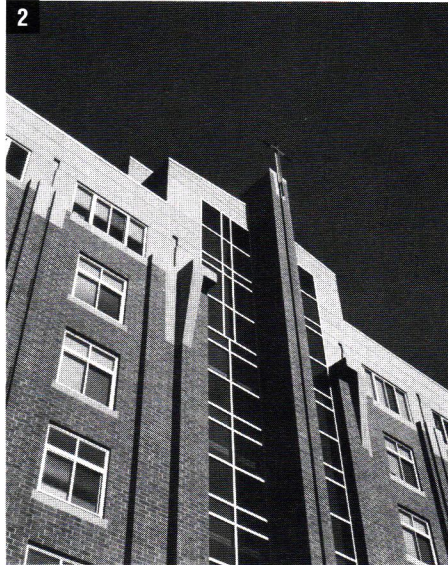
2 Burt Hill Kosar Rittelmann Associates (Butler)
Butler Junior High School
Butler, Pennsylvania

3 Burt Hill Kosar Rittelmann Associates
Cartoon Cinema Classics
Pittsburgh International Airport

4 Burt Hill Kosar Rittelmann Associates (Butler)
The Rehabilitation Institute of Pittsburgh
Pittsburgh, Pennsylvania

5 Burt Hill Kosar Rittelmann Associates
Standard Bank
Latrobe, Pennsylvania

ARCHITECTURAL AWARDS—entries



1 Burt Hill Kosar Rittelmann Associates

*Federal Home Loan Bank
Pittsburgh, Pennsylvania*

2 Burt Hill Kosar Rittelmann Associates

*Wheeling Jesuit University
Wheeling, West Virginia*

3 Charles L. Desmone and Associates

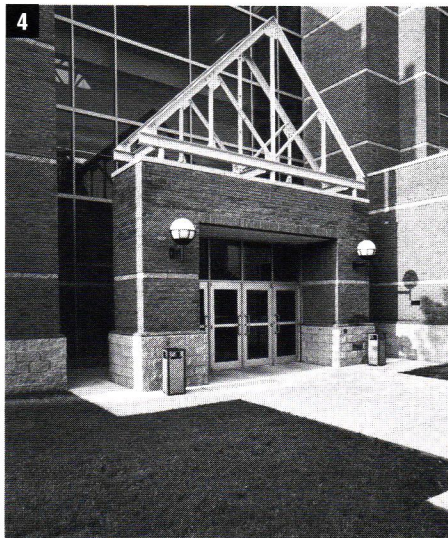
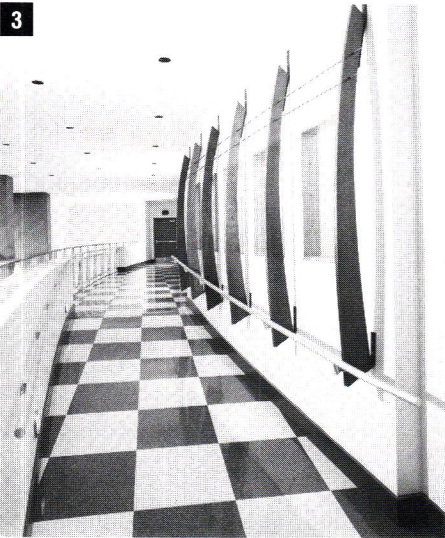
*Renovation to Eiesland Hall
West Virginia University, Morgantown, WV*

4 DRS/Hundley Kling Gmitter

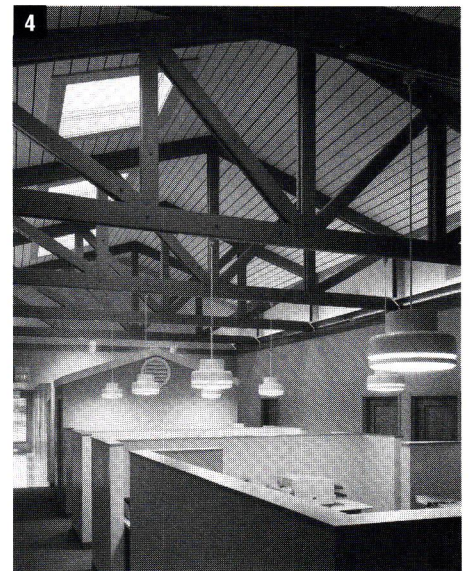
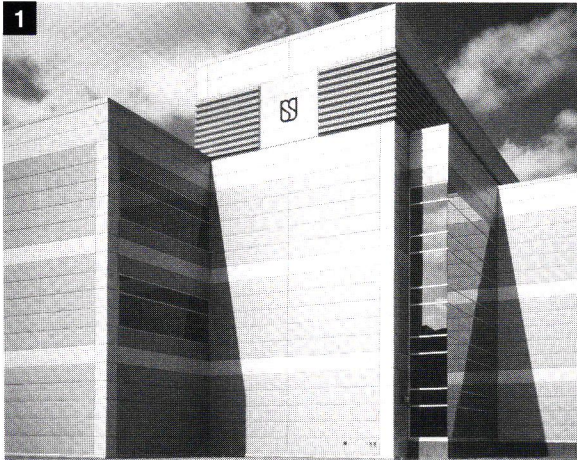
*Tom Foerster Student Services Building
Community College of Allegheny County,
Pennsylvania*

5 N. John Cunzolo Associates, Inc.

*Alcosan Administration Building
Pittsburgh, Pennsylvania*

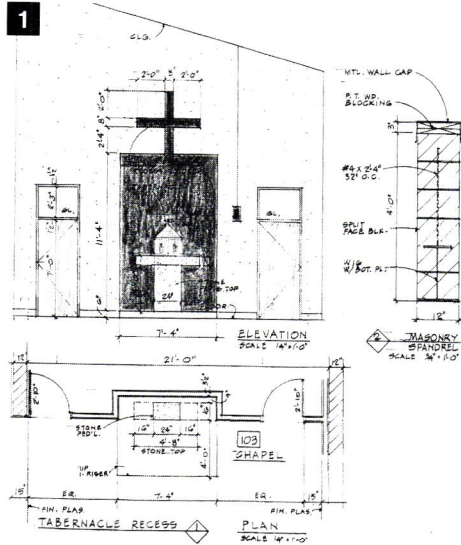


ARCHITECTURAL AWARDS—entries



- 1 The Design Alliance**
Union Switch & Signal
Pittsburgh, Pennsylvania
- 2 The Design Alliance**
Equitable Resources, Inc.
Pittsburgh, Pennsylvania
- 3 The Design Alliance**
Alcoa 31st Floor Executive Offices
Pittsburgh, Pennsylvania
- 4 The Design Alliance**
Center for Organ Recovery and Education
Pittsburgh, Pennsylvania
- 5 The Downtown Design Company**
Downtown Condominium
Pittsburgh, Pennsylvania

ARCHITECTURAL AWARDS—entries



1 Fanning/Howey Associates Inc.
*Saint Richard Roman
Catholic Church
Richland Township, Pennsylvania*

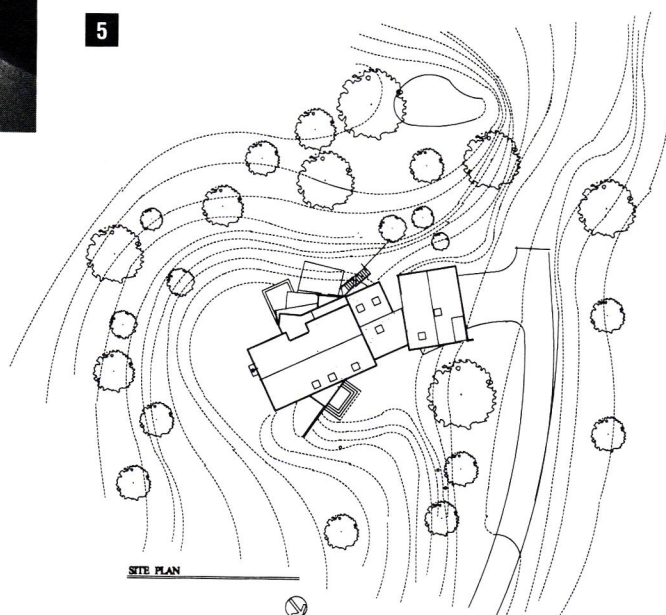
2 Gardner + Pope Architects
*TCG Pittsburgh
Pittsburgh, Pennsylvania*

3 Gardner + Pope Architects
*Federated Investors – Stadium Box
Pittsburgh, Pennsylvania*

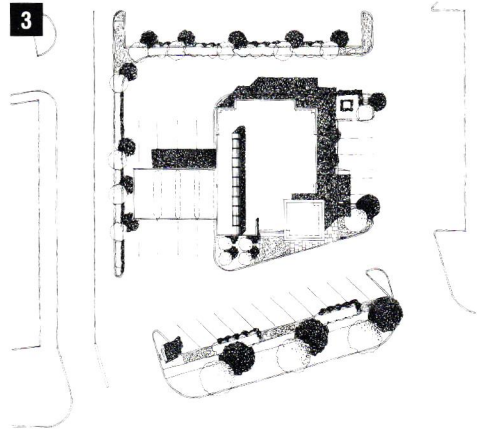
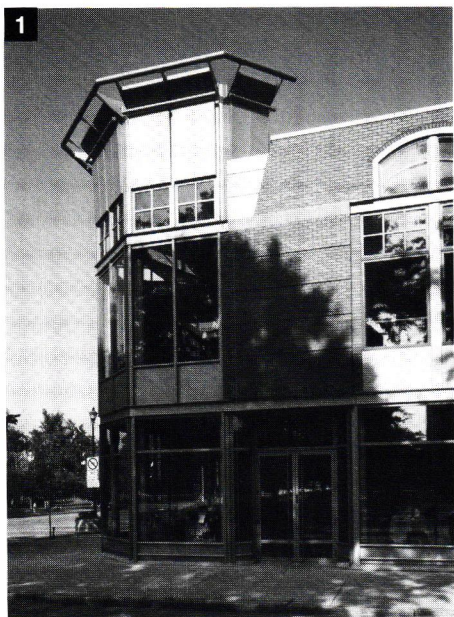
4 Gardner + Pope Architects
*Federated Services Company –
Retirement Plan Services
Pittsburgh, Pennsylvania*



5 Indovina Associates Architects
*Indovina Residence
O'Hara Township, Pennsylvania*



ARCHITECTURAL AWARDS—entries



1 Integrated Architectural Services Corporation

*Oberlin Co-op Bookstore
Oberlin, Ohio*

2 Integrated Architectural Services Corporation

Cafe at the Frick Art & Historical Center, Pittsburgh, Pennsylvania

3 Integrated Architectural Services Corporation

*Dollar Bank, Brooklyn Branch
Brooklyn, Ohio*

4 Integrated Architectural Services Corporation

*Dollar Bank, McIntyre Square Branch
Pittsburgh, Pennsylvania*

5 IKM Incorporated

*Allegheny General Hospital,
Northwest Wing
Pittsburgh, Pennsylvania*

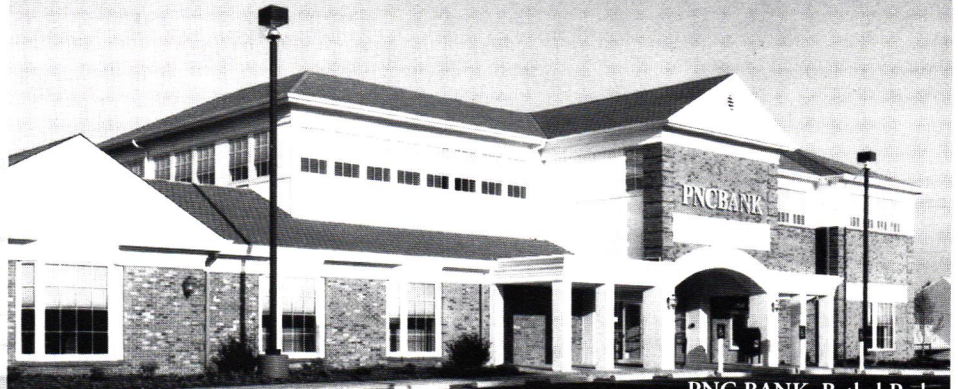
A LASTING HERITAGE

Our skills and reliability in the construction industry reach back over 45 years, building a reputation for construction excellence and integrity.

Today, our experience and resources are at work on a number of major assignments including...

- PA Turnpike Commission—Western Office Facility
- Washington County Airport
- Bon Air Elementary School
- Consolidated Coal—Bailey Mine Facilities
- Nabisco Plant Addition

We pride ourselves in our accomplishments and we look forward to making a difference in yours.



PNC BANK, Bethel Park
Last project of our CEO, Giulio Torriero.
A dedication to his memory

N E L L O
CONSTRUCTION COMPANY

3 Glass Street • Carnegie, Pennsylvania 15106 • 412/276-0010 • FAX 412/276-8123
* Project Architect: Johnson/Schmidt and Associates

THE BOLD LOOK
OF **KOHLER**®



See our extensive display of plumbing products for the kitchen and bath, including the cast iron Vintage™ Bath. Quality you'd expect from Kohler.

THE REPUTATION OF

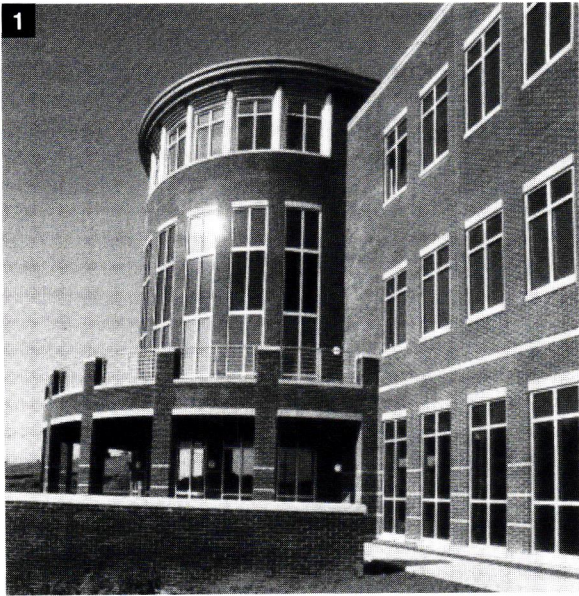
Crescent Supply 

Crescent Supply has served local design professionals for nearly 45 years. Our Pittsburgh showroom features 6,000 square feet of quality bathroom and kitchen products with experienced, full-time personnel to assist you and your clients in new construction and renovation.

412 782-3300

6301 Butler Street, Pittsburgh
Under the Robert D. Fleming (62nd Street) Bridge
Showroom hours 9-5 M-F, Wednesdays to 8, Saturday 10-2

ARCHITECTURAL AWARDS—entries



1 Johnson/Schmidt and Associates

Centimark Corporate Headquarters Building, Washington County, Pennsylvania

**2 KSBH Architects
Rothschild Architects**

CCAC South Campus Learning Resources & Continuing Education Centers, West Mifflin, Pennsylvania

3 KSBH Architects

Slippery Rock University Art Center Slippery Rock, Pennsylvania

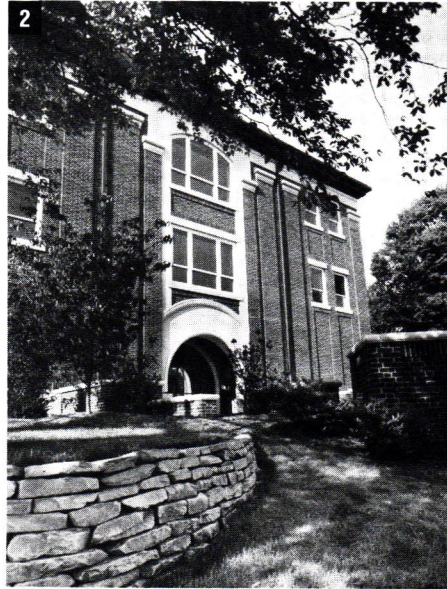
4 MacLachlan, Cornelius & Filoni, Inc.

Thomas Phillips Johnson Health and Recreation Center Bethany College Bethany, West Virginia

5 MacLachlan, Cornelius & Filoni, Inc.

P.C. Rossin Campus Center Washington, Pennsylvania

ARCHITECTURAL AWARDS—entries



1 MacLachlan, Cornelius & Filoni, Inc.

*Kenarden Lodge
Wooster, Ohio*

2 MacLachlan, Cornelius & Filoni, Inc.

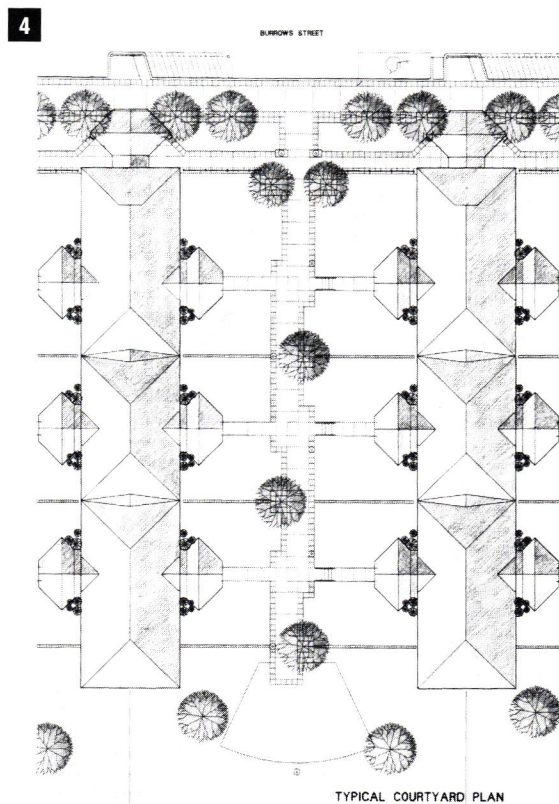
*F.W. Olin Science Center
Granville, Ohio*

3 Mavrovic Architects, PC

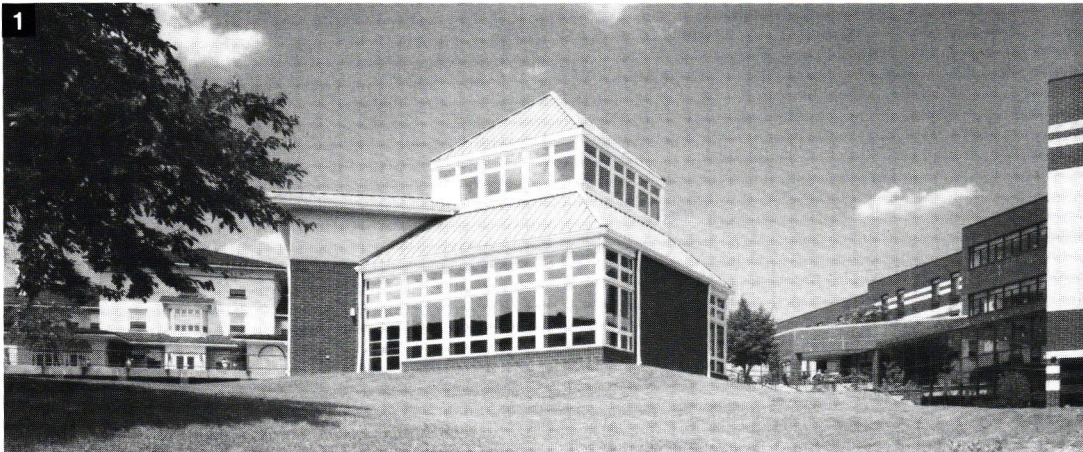
*Jordan Residence
Pittsburgh, Pennsylvania*

4 Perfido Weiskopf Architects

*Allequippa Terrace – MROP/1
Pittsburgh, Pennsylvania*



ARCHITECTURAL AWARDS—entries



1 Perkins Eastman Architects
Hillsview Chapel
Washington, Pennsylvania



2 Poli & Cuteri Architects
John Minadeo Elementary School
Pittsburgh, Pennsylvania



3 Rothschild Architects
Samuel Land Company Interiors
Pittsburgh, Pennsylvania

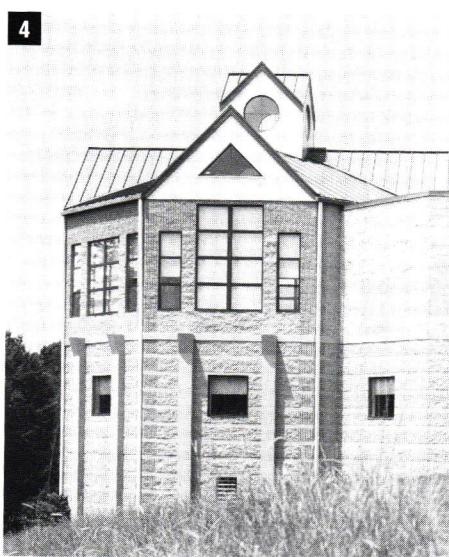


4 Ruprecht Schroeder Hoffman Architects
Addition to Private Residence
(Peters Twp), Washington County, Pennsylvania



5 Mavrovic Architects, PC
Griff Hair Salon
Pittsburgh, Pennsylvania

ARCHITECTURAL AWARDS—entries



1 WTW Architects

*RPS Inc., Corporate Headquarters
Moon Township, Pennsylvania*

2 Ruprecht Schroeder Hoffman Architects

*Negley Commons
Pittsburgh, Pennsylvania*

3 Ruprecht Schroeder Hoffman Architects

*St. Peter's Evangelical and Reformed Church
Pittsburgh, Pennsylvania*

4 Ruprecht Schroeder Hoffman Architects

*Mariner Health of West Hills
Coraopolis, Pennsylvania*

5 WTW Architects

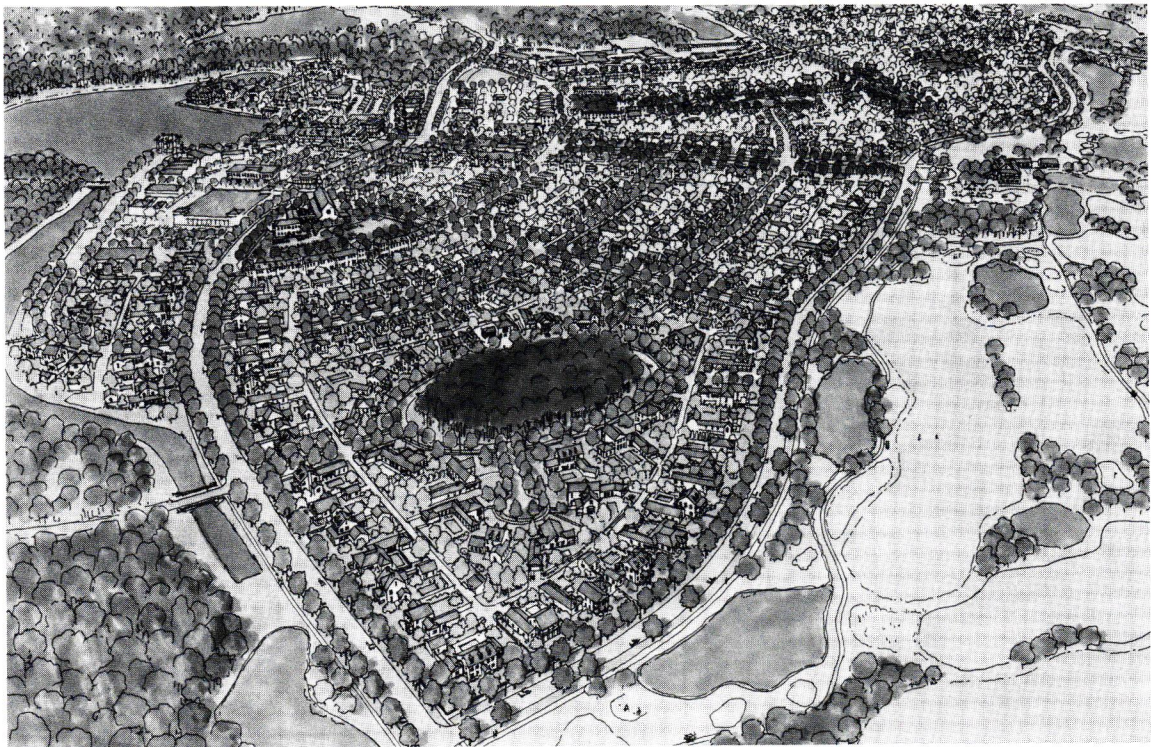
*Private Residence
Lower Burrell, Pennsylvania*

AIA Pittsburgh Presents the 1996

Design Awards

PART TWO: OPEN PLAN AWARDS

Open Plan Awards are open to all members with architectural degrees and can be built work, research, theoretical projects or work in the allied arts completed since January 1, 1991.



CITATION OF MERIT

DESIGNER & AUTHOR: **UDA Architects**

PROJECT: **Celebration Pattern Book**

CONSULTANT: UDA Architects (Master Code Consultant)

"The Celebration Pattern Book is being used as intended, and has been instrumental in the creation of houses, streets and neighborhoods which attempt to carry forward the great traditions of American town-building. It has been an inspiration, resource, and tool for all involved in the design and construction of the town-land developers, architects, builders, sales agents, homeowners, etc. The value of the exercise lies in the very strategy of creating something more organic, which is very difficult to do. Very unusual role of the architect and planner—well done assignment—sometimes architects get involved and need to be rewarded. We also see an outstanding example of application of research on standard American towns."

OPEN PLAN AWARDS

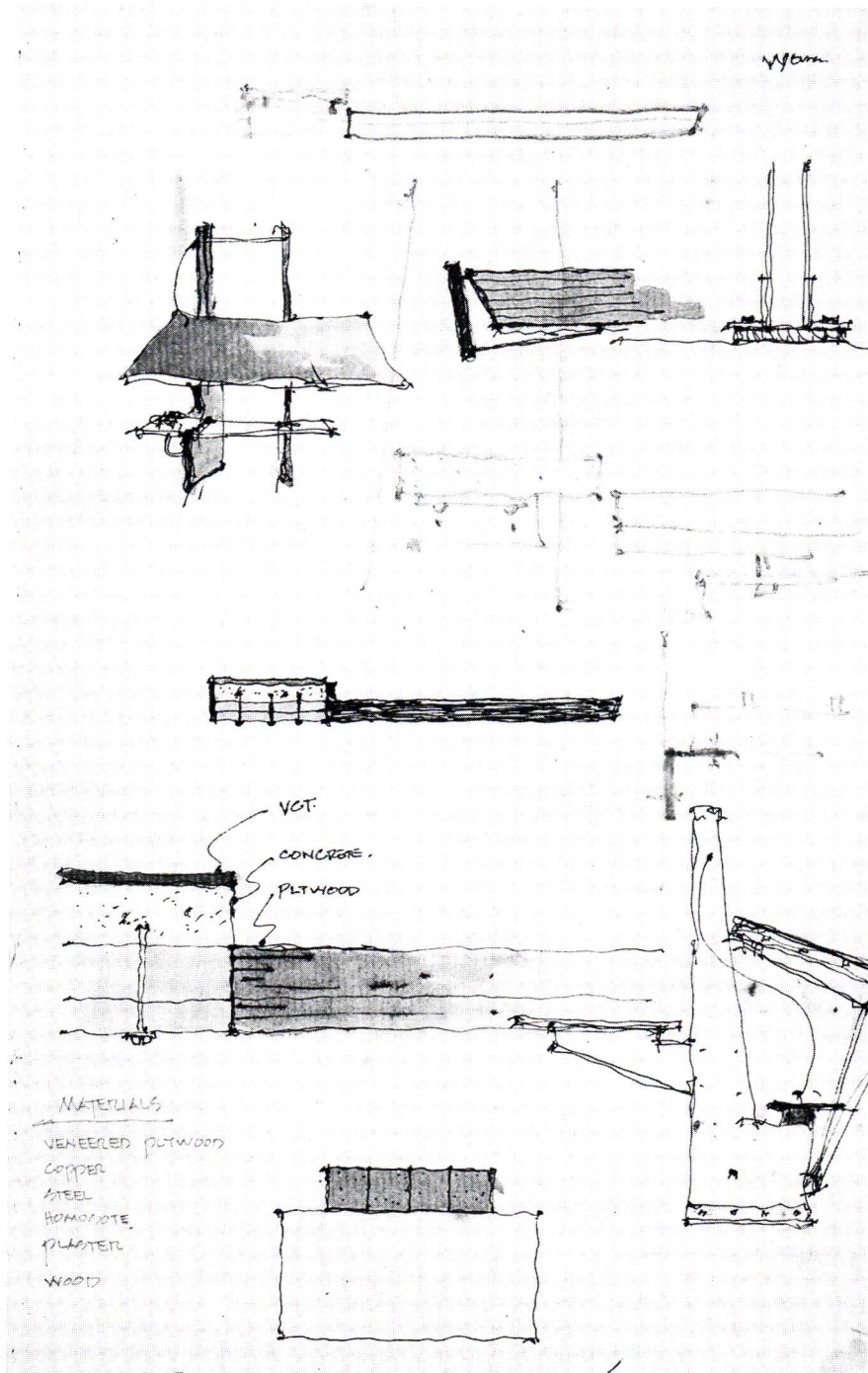
CITATION OF MERIT

ARCHITECT: **Jimmy DeCecco, AIA**

PROJECT: **Work Tables**

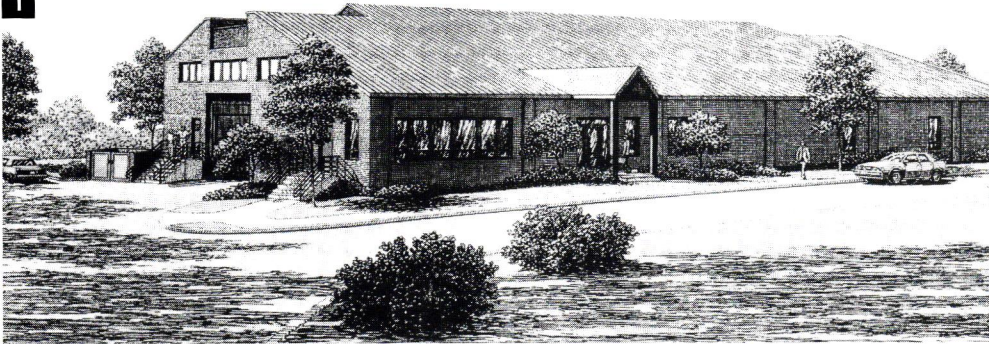
FIRM: Charles L. Desmone & Associates

"This goes beyond the normal expectation of the open space building. It demonstrates a good use of craftsmanly details. If this had been on the scale of a building, its creativeness and craftsmanship would have merited a higher honor. These forms create an atmosphere of an atelier which is refreshing in a age of computers. Marvelous execution of a thoughtful design."



OPEN PLAN AWARDS—entries

1



1 Atelier Denig Architects

*Manufacturing Facilities for
National Draeger
South Point, Pennsylvania*

2



2 L.D. Astorino & Associates, Ltd.

*North Shore Development
Pittsburgh, Pennsylvania*

3



3 Davis + Gannon Architecture

*Water Garden and Subway Station
Central Park Reservoir
New York City, New York*

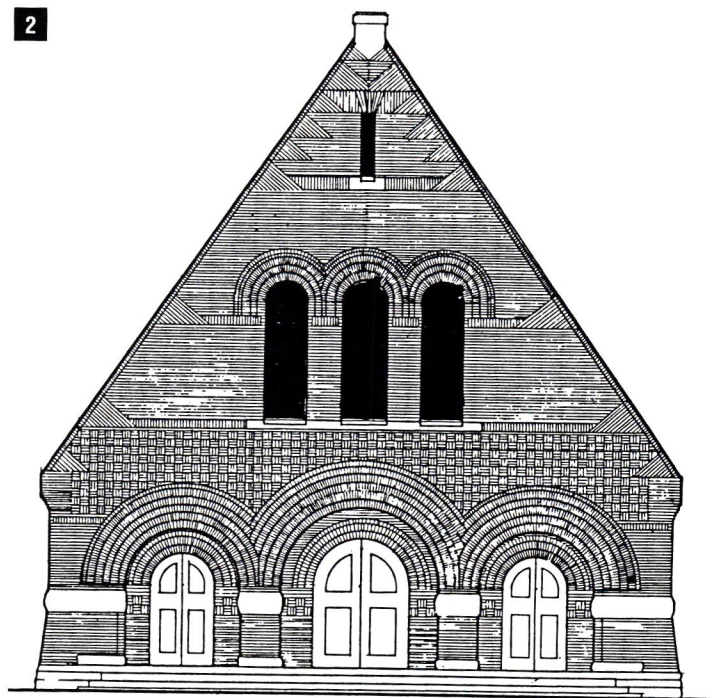
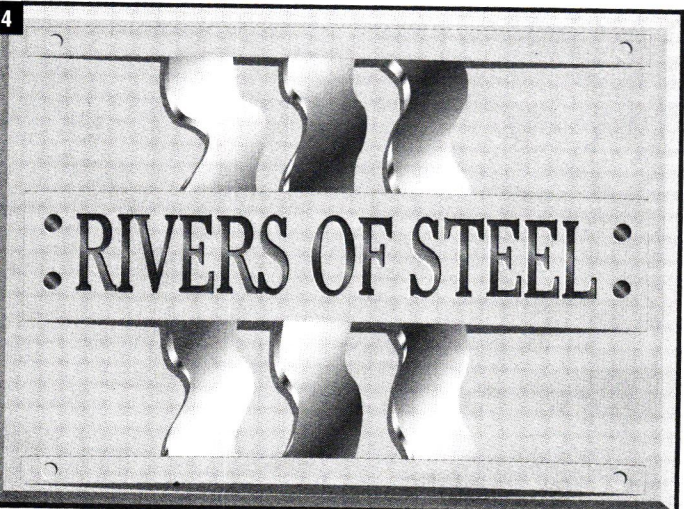
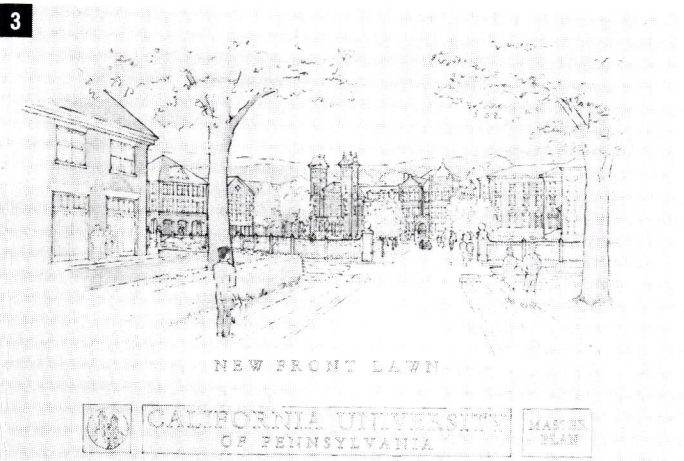
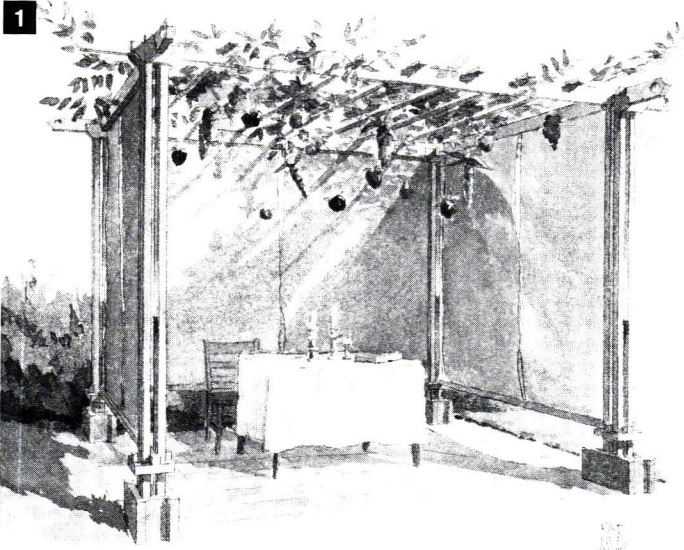
4



4 Fanning/Howey Associates, Inc.

*James R. Thompson, AIA
Sculptural Tribute to Troop 28
Hopewell Township, Pennsylvania*

OPEN PLAN AWARDS—entries



1 Jon Willingham Shimm, AIA

*Sukkah
Pittsburgh, Pennsylvania*

2 Glance & Associates Architecture + Planning

*Emmanuel Episcopal Church
Pittsburgh, Pennsylvania*

3 MacLachlan, Cornelius & Filoni, Inc.

*California University of Pennsylvania Master Plan
California, Pennsylvania*

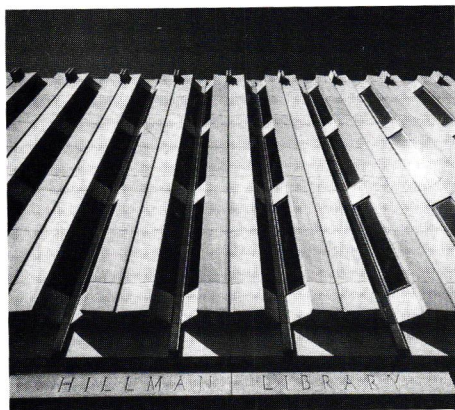
4 UDA Architects

*Rivers of Steel
Pittsburgh, Pennsylvania*

AIA Pittsburgh Presents the 1996

Timeless Awards

Special awards for enduring contributions to Pittsburgh architecture



HONOR AWARD

FIRM: **Celli-Flynn and Associates**

(Coordinating Architect)

Kuhn, Newcomer & Valentour

(Associated Architect)

Mario C. Celli, FAIA, Louis F. Valentour, AIA

PROJECT: **Hillman Library for the University of Pittsburgh**

NAME OF CLIENT: University of Pittsburgh

CONTRACTOR: Dick Corporation

NAMES OF CONSULTANTS:

Simonds & Simonds (now Environmental Planning and Design) (Site)

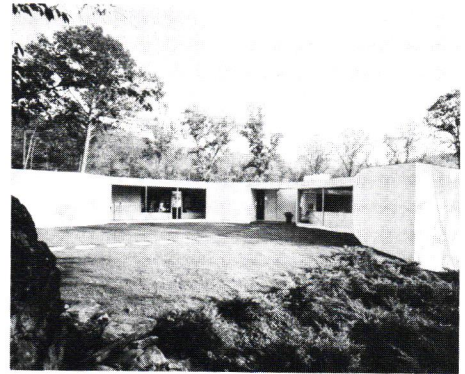
Theodore F. Rockwell (HVAC)

Celli-Flynn and Associates (Plumbing)

Carl J. Long (Electrical)

"Strength of the clean geometry, bold massing, articulate clarity of intent and program. Filtering of light through the facade reflects the order of stacks and carrels and supports the building diagram. The raising of the building mass on a base which separates from the perimeter allows for light to enter into the lower floors in an imaginative fashion."

TIMELESS AWARDS



HONOR AWARD

NAME OF SPONSOR: **Leonard Perfido, AIA**

PROJECT: **MacLean Residence**

AIA MEMBER FIRM THAT IS AUTHOR OF PROJECT:
Perfido Weiskopf Architects

CLIENT: Robert & Marna MacLean

CONTRACTOR: A. Poccia & Sons

CONSULTANT: George Langer (*Mechanical*)
Bob Silman (*Structural*)

"This house displays a great relationship to the site. A drama is created between solids and voids resulting in excellent view corridors. Crisp execution and minimal detailing contribute to the sense of the flawless object. Given its simplicity the house becomes a powerful setting for display of paintings, furniture. It's interesting to note that it satisfies our sense for the contemporary."

CONTRACTORS' DIRECTORY

A LISTING OF AREA CONTRACTORS AND THEIR PROFESSIONAL SERVICES. To include your firm in this directory, call Tom Lavelle at 882-3410.

■ BRIDGES

1300 Brighton Road, Pittsburgh, PA 15233
PHONE: 321-5400 FAX: 321-9823
CONTACT: Paul R. Bridges
*Commercial / Construction management
Exterior / General / Industrial / Interior
Renovations*

■ J. R. BUNN, INC.*

P.O. Box 243, Washington, PA 15301
PHONE: 223-8211 FAX: 225-5990
CONTACT: Jim Bunn
*Commercial / Construction management
Industrial / Interior / Renovations*

■ BURCHICK CONSTRUCTION CO., INC.*

500 Lowries Run Road, Pittsburgh, PA 15237
PHONE: 369-9700 FAX: 369-9991
CONTACT: Joseph E. Burchick
*Commercial / Construction management
General / Industrial / Interior / Renovations*

■ F.J. BUSSE CO., INC.*

P.O. Box 8540
Pittsburgh, PA 15220
PHONE: 921-1231 FAX: 921-9861
CONTACT: John Paul Busse
*Commercial / Exterior / General / Industrial
Interior / Renovations*

■ CAMERON CONSTRUCTION, LTD.*

180 Nichol Avenue, Bldg. 1A
McKees Rocks, PA 15136
PHONE: 931-7455 FAX: 931-7459
CONTACT: David C. Peters, P.E.
*Commercial / Construction management
Exterior / General / Industrial / Interior
Renovations*

■ CMI GENERAL CONTRACTORS, INC.

9800 McKnight Road, Pittsburgh, PA 15237
PHONE: 829-9220 FAX: 369-9223
CONTACT: Doug Gawronski
*Commercial / Construction management
Exterior / General / Industrial / Interior
Renovations*

■ CRUMP INCORPORATED*

21 Yost Blvd., Suite 502, Pittsburgh, PA 15221
PHONE: 829-5100 FAX: 829-5107
CONTACT: Scott H. Wardle
*Commercial / Construction management
Exterior / General / Industrial / Interior
Renovations*

■ DICICCO CONTRACTING CORPORATION*

1005 Beaver Grade Road, Coraopolis, PA 15108
PHONE: 262-3540 FAX: 269-6699
CONTACT: Samuel E. DiCicco
*Commercial / Construction management
Exterior / General / Industrial / Interior
Renovations*

■ DICK CORPORATION

900 U.S. Route 51, Pittsburgh, PA 15236
PHONE: 384-1320 FAX: 384-1215
CONTACT: John R. Bonassi
*Commercial / Construction management
Exterior / General / Highway / Industrial
Interior / Renovations*

■ P.J. DICK INCORPORATED*

P.O. Box 98100, Pittsburgh, PA 15227
PHONE: 462-9300 FAX: 462-2588
CONTACT: Chuck Pryor
*Commercial / Construction management
Exterior / General / Industrial / Interior
Renovations / Institutional*

■ GENERAL INDUSTRIES

15 Arentzen Blvd., Charleroi, PA 15022
PHONE: 483-1600 FAX: 483-0990
CONTACT: Donald Ivill
*Commercial / Exterior / General / Industrial
Interior / Renovations*

■ HARCHUCK CONSTRUCTION CO., INC.

122 Kerr Road, New Kensington, PA 15068
PHONE: 339-7073 FAX: 339-7076
CONTACT: David A. Harchuck
*Commercial / Construction management
Exterior / General / Industrial / Interior
Renovations*

■ KACIN, INC.

795-22 Pine Valley Drive, Pittsburgh, PA 15239
PHONE: 327-2225 FAX: 333-5993
CONTACT: Jeffrey D. Ferris
*Commercial / Construction management
General / Industrial / Interior / Renovations
Residential*

■ T. E. KENNEDY, INC.

1369 McLaughlin Run Road, Pittsburgh, PA 15241
PHONE: 257-5994 FAX: 257-8423
CONTACT: Tom or Lorie
*Commercial / Construction management
Exterior / General / Interior / Renovations
Residential*

■ KUSEVICH CONTRACTING

P.O. Box 95042,
Pittsburgh, PA 15223
PHONE: 782-2112 FAX: 782-0271
CONTACT: George Kusevich
*Commercial / Construction management
Exterior / General / Industrial / Interior
Renovations*

■ LANDAU BUILDING COMPANY*

9855 Rinaman Road, Wexford, PA 15090
PHONE: 935-8800 FAX: 935-6510
CONTACT: Thomas A. Landau
*Commercial / Construction management
General / Industrial / Interior / Renovations*

■ MARCO CONTRACTORS, INC.

377 Northgate Drive, PO Box 515,
Warrendale, PA 15086
PHONE: 935-8160 FAX: 935-8159
CONTACT: Martin R. Smith
*Commercial / General Contractors
specializing in Retail Build Outs / Interior
Renovations*

■ A. MARTINI & CO., INC.*

320 Grant Street, Verona, PA 15147
PHONE: 828-5500 FAX: 828-6488
CONTACT: Angelo Martini, Sr.
*Commercial / Construction management
Exterior / General / Industrial / Interior
Renovations*

■ MISTICK CONSTRUCTION

1300 Brighton Road, Pittsburgh, PA 15233
PHONE: 322-1121 FAX: 322-9336
CONTACT: Robert Mistick
*Commercial / Construction management
Exterior / General / Interior / Renovations
Residential*

■ MOSITES CONSTRUCTION COMPANY*

4839 Campbells Run Road, Pittsburgh, PA 15205
PHONE: 923-2255 FAX: 788-1169
CONTACT: M. Dean Mosites
*Commercial / Construction management
Exterior / General / Highway / Industrial
Interior / Renovations*

■ NELLO CONSTRUCTION COMPANY

3 Glass Street, Carnegie, PA 15106
PHONE: 276-0010 FAX: 276-8123
CONTACT: George Leasure
*Commercial / Construction management
Exterior / General / Industrial / Interior
Renovations*

■ RECCO CORPORATION

1046 Pittsburgh Street, Springdale, PA 15144
PHONE: 274-2000 FAX: 274-2001
CONTACT: Bill Schwartz
*Commercial / Construction management
Exterior / General / Industrial / Interior
Renovations / Residential*

■ REPAL CONSTRUCTION CO., INC.

2400 Ardmore Blvd., Suite 400,
Pittsburgh, PA 15221
PHONE: 271-3700 FAX: 271-3866
CONTACT: Bill Palmer, Jr.
*Commercial / Construction management
Exterior / General / Industrial / Interior
Renovations / Residential*

■ ROSS & KENNEDY CORPORATION*

1610 Babcock Blvd., Pittsburgh, PA 15209-1696
PHONE: 821-2424 FAX: 821-7850
CONTACT: John N. Broeren
*Commercial / Construction management
General / Industrial / Renovations*

■ STEVENS PAINTON CORPORATION*

5168 Campbells Run Road, Pittsburgh, PA 15205
PHONE: 787-1995 FAX: 787-0554
CONTACT: Alex Pociask, President
*Construction management / General
Industrial / Design/Build
Engineering & Professional Services
Acid Brick / Specialty Coatings*

■ TEDCO CONSTRUCTION CORPORATION*

TEDCO Place, Carnegie, PA 15106
PHONE: 276-8080 FAX: 276-6804
CONTACT: Ted Frantz
*Commercial / Construction management
Exterior / General / Industrial / Interior
Renovations*

■ TRAFALGAR HOUSE CONSTRUCTION*

Suite 345, One Oliver Plaza, Pittsburgh, PA 15222
PHONE: 566-5300 FAX: 566-5323
CONTACT: Mark Makary
*Commercial / Construction management
Exterior / General / Industrial / Interior
Renovations*

■ UHL CONSTRUCTION CO., INC.*

P.O. Box 8 - 4912 Vernon Drive
Allison Park, PA 15101
PHONE: 443-0600 FAX: 443-7966
CONTACT: Lisa Hengelsberg
*Commercial / Construction management
Exterior / General / Industrial / Interior
Renovations*

■ JOSEPH VACCARELLO, JR., INC.*

50 Arch Street Ext., P.O. Box 663
Carnegie, PA 15106
PHONE: 276-2755 FAX: 276-7985
CONTACT: Gary Dickinson
*Commercial / Highway / Industrial
Residential / Bulk Excavation
Site Development*

■ VOLPATT CONSTRUCTION CORPORATION*

250 Curry Hollow Road, Pittsburgh, PA 15236
PHONE: 653-5454 FAX: 653-5755
CONTACT: Raymond A. Volpatt
*Commercial / Construction management
General / Industrial / Interior / Renovations*

add your firm to the contractors' directory today!
list your firm by specialty & reach every
registered architect in Southwestern PA.
call Tom Lavelle: 882-3410

*Member of the MASTER BUILDERS' ASSOCIATION.

Diversityworks

*A resource for
W/MBE companies
serving the built
environment*

represents a group of experienced, certified woman- and minority-owned and managed companies providing goods and services for the design, construction and post-construction phases of commercial building projects. Diversityworks' specialized expertise and resources can help you build a team that wins commissions and completes successful projects.

Contact Susan Faigen, President, at 412/381-4910.



**WILLIAM R.
THORNTON**
Ph.D., P.E.

**Consultant
in
Acoustics
and
Noise**

250 Shagbark Drive
R D #1 Cheswick, PA 15024
(412) 265-2000

Resource Center = **RESULTS**

AIA Pittsburgh's Resource Center puts the spotlight on your architectural firm. For a nominal fee your firm can display its work to the many people that visit the AIA in search of an architect.

For more information call the Chapter office at (412) 471-9548.

THINK ABOUT IT...

The top 10 reasons to use Union Carpenters

1. For over 100 years, we have been in the forefront of the construction industry due to safety and good work standards which get projects completed on schedule with low insurance costs.
2. You are assured of a continuing supply of highly-skilled, trained Carpenters.
3. We are involved in every phase of commercial, residential and industrial construction in 33 Counties of Western Pennsylvania.
4. We are a leader in the Affirmative Action Programs.
5. We will meet your project's scheduled deadlines using the best quality craftsmen.
6. The Carpenters' Apprenticeship Program has produced a long line of well-trained, proficient craftsmen which graduate from a 4 year Apprentice Program.
7. We offer advanced training to our graduated Apprentices to upgrade their Journeymen skills through credited courses at Allegheny County Community College, keeping our Carpenters abreast of changes in the industry.
8. We stand ready to assist in vital projects providing craftsmen for nearly every construction need, including Carpenters, Millwrights, Carpet Layers, Heavy Highway Workers, Cabinet Makers, Pile Drivers and Residential Carpenters.
9. We're in close cooperation with local business, government and the Master Builders Association and we look forward to a period of growth and prosperity for Western Pennsylvania.
10. We have a staff of qualified Business Representatives and Organizers always ready to expedite your firm's needs.

The Carpenters' District Council of Western PA
495 Mansfield Avenue, Pittsburgh, PA 15205 • (412) 922-6200

ENGINEERS' DIRECTORY

A LISTING OF AREA ENGINEERS AND THEIR PROFESSIONAL SERVICES. To include your firm in this directory, call Tom Lavelle at 882-3410.

■ **ACKENHEIL ENGINEERS, INC.**, (WBE Cert.)
1000 Banksville Road, Pittsburgh, PA 15216
PHONE: 531-7111 FAX: 531-4334
CONTACT: Gary L. Van Balen, P.E.

*Testing & Inspection / Civil / Construction
Consulting / Environmental / Geotechnical*

■ **ALMES & ASSOCIATES, INC.**

Four Triangle Drive, Suite 200
Export, PA 15632
PHONE: 327-5200 FAX: 327-5280
CONTACT: Lewis W. Ernest, P.E.

*Testing & Inspection / Blasting Vibrations
Civil / Consulting / Environmental
Geotechnical / Structural / Transportation*

■ **ASTORINO BRANCH ENGINEERS, INC.**

227 Fort Pitt Boulevard, Pittsburgh, PA 15222
PHONE: 765-1700 FAX: 471-5726
CONTACT: Patrick I. Branch, P.E.

Civil / Electrical / Mechanical / Structural

■ **BURT HILL KOSAR RITTELMANN
ASSOCIATES**

400 Morgan Center, Butler, PA 16001
PHONE: 285-4761 FAX: 285-6915
CONTACT: David R. Linamen, P.E.

Electrical / Mechanical

■ **CIVIL & ENVIRONMENTAL
CONSULTANTS, INC.**

601 Holiday Drive, Foster Plaza 3
Pittsburgh, PA 15220
PHONE: 921-3402 FAX: 921-1815
CONTACT: Gregory P. Quatchak, P.E.

*Testing & Inspection / Civil / Consulting
Environmental / Geotechnical*

■ **CLAITMAN ENGINEERING ASSOC., INC.**

960 Penn Avenue, Pittsburgh, PA 15222
PHONE: 261-4662 FAX: 261-5670
CONTACT: Robert Rosenthal

Consulting / Mechanical

■ **CONWAY ENGINEERING**

Investment Building
235 4th Avenue, Suite 1408
Pittsburgh, PA 15222
PHONE: 765-0988 FAX: 765-2530
CONTACT: Bob Conway

Consulting / Structural

■ **DODSON ENGINEERING, INC.**

420 One Chatham Center, Pittsburgh, PA 15219
PHONE: 261-6515 FAX: 261-6527
CONTACT: Herbert J. Brankley

Consulting / Mechanical

■ **DOTTER ENGINEERING, INC.**

345 Fourth Avenue, Suite 700
Pittsburgh, PA 15222
PHONE: 261-4745 FAX: 261-3189
CONTACT: Chuck Fedon, P.E.

Consulting / Structural

■ **ELWOOD S. TOWER CORPORATION**

8150 Perry Highway, Suite 319,
Pittsburgh, PA 15237
PHONE: 931-8888 FAX: 364-8115
CONTACT: David E. Tower

*Consulting / Electrical / Mechanical
Telecommunications*

■ **ENGINEERING MECHANICS, INC.**

4636 Campbells Run Road, Pittsburgh, PA 15205
PHONE: 923-1950 FAX: 787-5891
CONTACT: Annette Forsythe

*Blasting Vibrations / Civil / Consulting
Environmental / Geotechnical*

■ **FIRSCHING, RUSBARKY & WOLF
ENGINEERING, INC.**

4240 Greensburg Pike, Pittsburgh, PA 15221
PHONE: 271-5090 FAX: 271-5193
CONTACT: David Rusbarsky

Consulting / Mechanical

■ **GAI CONSULTANTS, INC.**

570 Beatty Road, Monroeville, PA 15146
PHONE: 856-6400 FAX: 856-4970
CONTACT: Henry A. Salver

*Testing & Inspection / Blasting Vibrations
Civil / Consulting / Environmental
Geotechnical / Structural / Transportation*

■ **HERBERT, ROWLAND & GRUBIC, INC.**

215 Executive Drive, Suite 202
Cranberry Township, PA 16066
PHONE: 779-4777 FAX: 779-4711
CONTACT: James M. Lopresti

*Civil / Construction / Consulting
Environmental / Structural / Transportation*

■ **HORNFECK ENGINEERING, INC.**

1020 North Canal Street, Pittsburgh, PA 15215
PHONE: 781-1500 FAX: 781-5593
CONTACT: Richard W. Petrie, P.E.

*Consulting / Electrical / Instrumentation
Lighting / Telecommunications*

■ **L. ROBERT KIMBALL & ASSOCIATES**

415 Moon Clinton Road
Moon Township, PA 15108
PHONE: 262-5400 FAX: 262-3036
CONTACT: Tom Blank, CIH, CSP / Mike Petrell

*Asbestos Management / Environmental
Site Assessments / Indoor Air Quality
Lead Based Paint Management
Radon Testing-Mitigation
Industrial Hygiene-Safety*

■ **LARSEN AND LUDWIG, INC.
ENGINEERING ARCHITECTURE
CONSTRUCTION**

806 Penn Avenue, Pittsburgh, PA 15222
PHONE: 338-0700 FAX: 338-0701
CONTACT: Charles P. Haynes

*Testing & Inspection / Construction
Consulting / Electrical / Environmental
Mechanical / Telecommunications
Structural*

■ **LENNON, SMITH, SOULERET
ENGINEERING**

1836 Broadhead Road
Aliquippa, PA 15001-4301
PHONE: 378-3000 FAX: 375-6950
CONTACT: Daniel S. Gilligan

*Civil / Construction / Consulting
Electrical / Environmental / Mechanical
Structural / Transportation*

■ **PETER F. LOFTUS DIVISION**

Eichleay Engineers Inc., 6585 Penn Avenue
Pittsburgh, PA 15206-4407
PHONE: 365-3457 FAX: 365-3304
CONTACT: Samuel C. Lyon

*Civil / Consulting / Electrical
Mechanical / Structural
Telecommunications*

■ **CARL J. LONG & ASSOCIATES**

One Gateway Center, 5 West, Pittsburgh, PA 15222
PHONE: 471-9100 FAX: 471-5468
CONTACT: John Wilhelm

Electrical / Telecommunications

■ **MAZZA ENGINEERING
ASSOCIATES, INC**

236 Center Grange Road, Aliquippa, PA 15001
PHONE: 728-8110 FAX: 728-8559
CONTACT: Jacqueline K. Mazza

*Civil / Consulting / Mechanical / Structural
Transportation*

■ **MEUCCI ENGINEERING, INC.**

409 Elk Avenue, Carnegie PA 15106
PHONE: 276-8844 FAX: 276-2960
CONTACT: James B. Fath, P.E.

Consulting / Electrical / Mechanical

■ **MURRAY ASSOCIATES, INC.**

413 Penn Avenue, Turtle Creek, PA 15145
PHONE: 823-2020 FAX: 824-7302
CONTACT: Paul J. Messineo, Jr.

*Structural / Civil / Geotechnical
Environmental / Testing & Inspection
Construction*

■ **POLYTECH, INC.**

Two Gateway Center, Suite 620
Pittsburgh, PA 15222
PHONE: 355-2096 FAX: 355-2376
CONTACT: Michael C. Moore

*Civil / Consulting / Electrical
Environmental / Mechanical / Structural
Transportation*

■ **PRECISION SCIENCE &
CONSULTING, INC.**

5 Mallard Court, Export, PA 15632
PHONE: 327-7427 FAX: 327-7428
CONTACT: Jay McPartland

*Testing & Inspection / Construction
Consulting / Electrical / Mechanical*

■ **PSI**

850 Poplar Street, Pittsburgh, PA 15220
PHONE: 922-4000 ext. 220 FAX: 922-4043
CONTACT: James Platz

*Testing & Inspection / Civil / Construction
Consulting / Environmental / Geotechnical*

■ **RCF ENGINEERS, INC.**

Fourth Floor, 209 Sandusky Street
Pittsburgh, PA 15212
PHONE: 231-5500 FAX: 231-6427
CONTACT: Mark S. Wolfgang, P.E., President

Consulting / Electrical / Mechanical

■ **SE TECHNOLOGIES, INC.**

98 Vanadium Road, Bridgeville, PA 15017
PHONE: 221-1100 FAX: 220-3003
CONTACT: Philip J. Damiani

*Testing & Inspection / Civil / Construction
Consulting / Electrical / Environmental
Geotechnical / Mechanical / Structural
Telecommunications*

■ **STRUCTURAL ENGINEERING CORP.**

300 Sixth Avenue, Suite 300
Pittsburgh, PA 15222
PHONE: 338-9000 FAX: 338-0051
CONTACT: Dennis A. Roth, P.E.

Structural

■ **WIDMER ENGINEERING**

806 Lincoln Place, Beaver Falls, PA 15010
PHONE: 847-1696 FAX: 847-0419
CONTACT: Joseph H. Widmer, P.E.

*Testing & Inspection / Civil / Consulting
Environmental / Geotechnical / Structural
Transportation*

add your firm to the engineers' directory today!
list your firm by specialty & reach every registered
architect in southwestern PA.
call Tom Lavelle: 882-3410

AIA PITTSBURGH WANTS YOU!

We Need Mentors!

AIA Pittsburgh wants you to be a mentor for new AIA members. Attend meetings with new members and show them the ropes. Recruit new members for AIA committees, or just introduce them to other AIA members and architects.

***It's American, it's patriotic,
and your Membership
Committee needs you!
Call the Chapter office
for enlistment papers,
or contact
Frank McCurdy
at 394-7000.***



AIA Pittsburgh, in conjunction with CSI
cordially invites you to:

Wyndham Gardens

(formerly the Airport Hilton)

Tuesday, November 12

**6:00 p.m.
\$20 per person**

*Join us for a
presentation on the*

Reshaping the

Region effort led

by David Pecharka, AIA.

RSVP by Friday, November 8

to Sheila Cardoff at 823-5063.



The Flying Wallendas reincarnated As Bar Stools

THEY FIT ANY ROOM WITH THE GREATEST OF EASE.
THESE DARING DESIGNS COME IN COLORS TO PLEASE.

COME LOOK THEM UP. ADMISSION IS FREE.

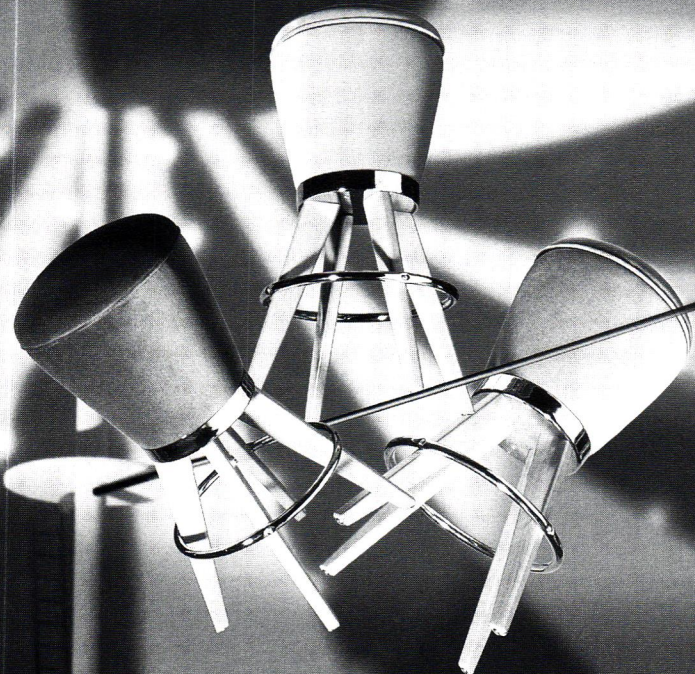
MON - TUES - THURS 10 TO 6

WED - FRI - SAT 10 TO 9, SUN 12 TO 5

2220 E. CARSON ST., SOUTHSIDE

431-2220

PERLORA
furnishings with personality





Hastings City Hall

*Historical
Renovation*

*Hastings,
Minnesota*

Lindberg Pierce Architects

Kolbe & Kolbe[®] PREMIUM WOOD WINDOWS and DOORS

From products simple and economical, to specialty creations of incredible beauty, Kolbe's fine wood windows and patio doors are the creative elements for unparalleled architectural freedom.

As a company who specializes in custom arrangements and whose quality is absolute, Kolbe & Kolbe manufactures ideas into spectacular reality.

Kolbe & Kolbe windows are available in both standard and custom sizes, custom designs, aluminum clad or maintenance-free K-Kron finishes in a variety of beautiful colors with every glazing option available, backed by a 20 year warranty.

For new construction or replacement, commercial or residential applications, Kolbe & Kolbe has nearly 50 years of experience in fulfilling architectural demands for uncompromising quality, superior design and creative versatility.



RECENT KOLBE & KOLBE PROJECTS INCLUDE:

- Nevillewood Clubhouse
- Nevillewood Carriage Houses
- Nevillewood Private Residences (several)
- Southpointe Country Club
- Chestnut Ridge Condominiums
- Fox Chapel Presbyterian Church
- Westminster Presbyterian Church
- D.T. Watson Rehabilitation Center
- Curry Senior Citizens Home
- Grace Manor Nursing Home

Al Lorenzi BUILDING PRODUCT CENTERS

Washington, PA
Washington
(412) 222-6100

McMurray, PA
(412) 941-4800

Now in WEXFORD, PA
(412) 933-3220

1-70, Exit 6 – 1600 Jefferson Ave.
Pittsburgh
(Toll Free 412) 561-6610

Rt. 19 at Donaldson's Crossroads

Perry Highway (Rt. 19)
across from Wright Pontiac