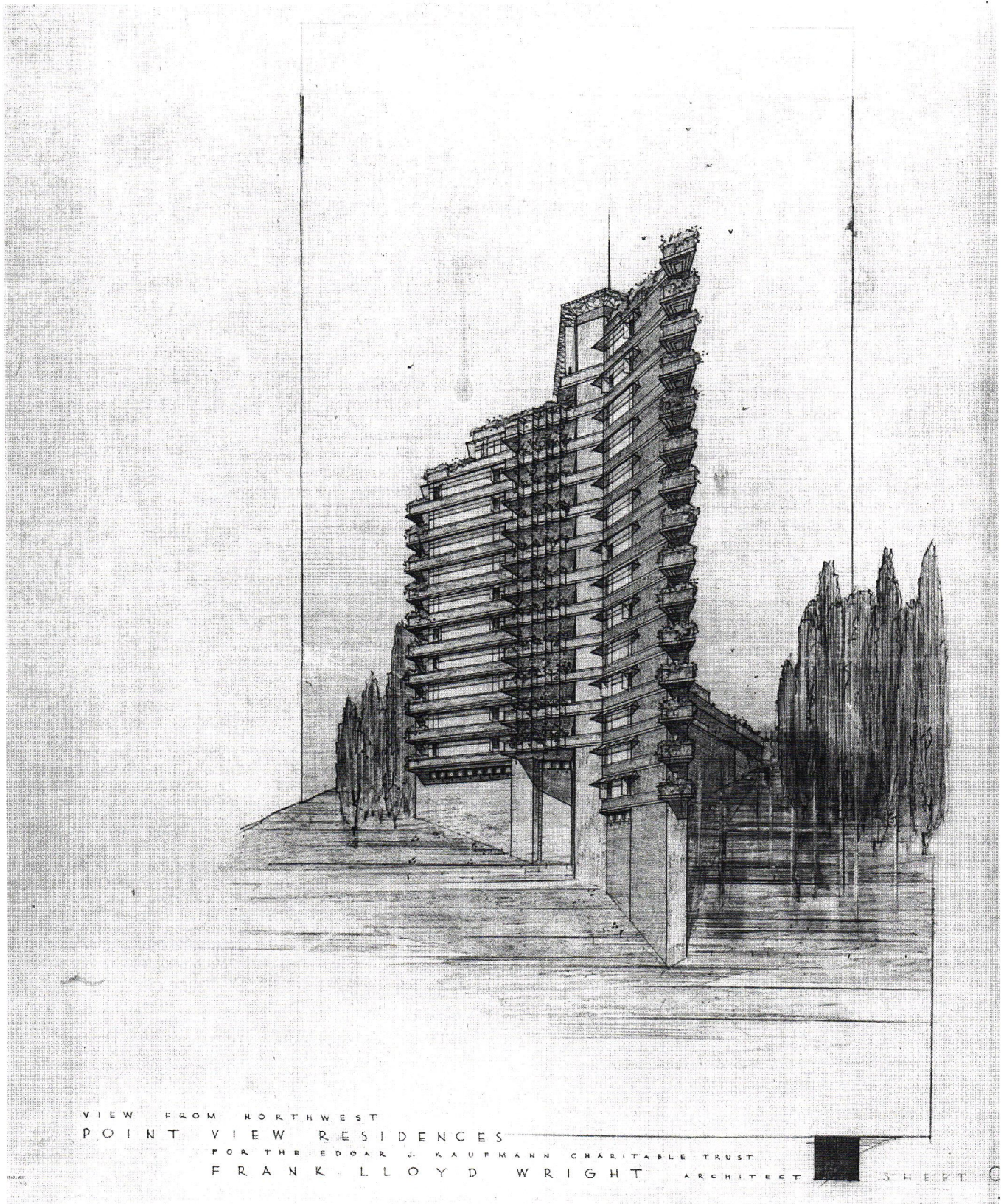
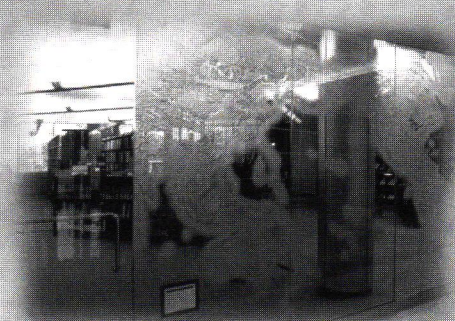
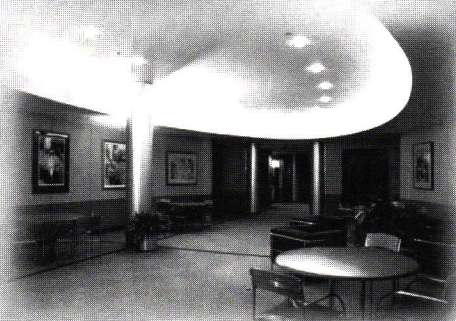
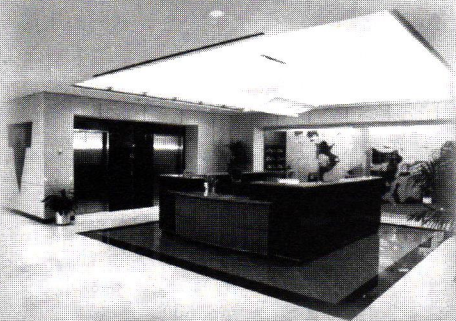


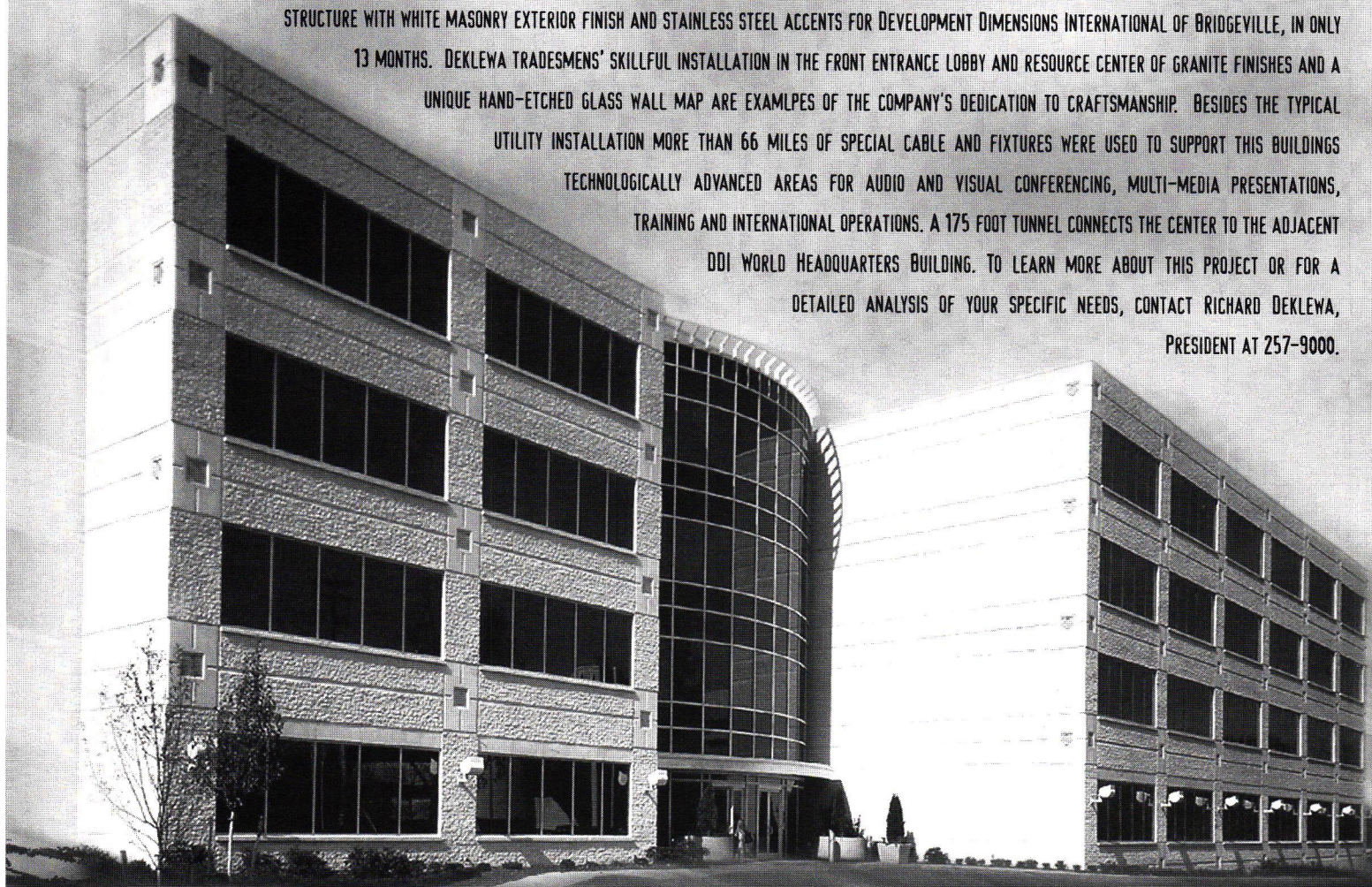
C O L U M N S





DEKLEWA DEVELOPS A NEW DIMENSION

THE RECENT COMPLETION BY JOHN DEKLEWA & SONS, INC. OF THE NEW CENTER FOR ADVANCED LEARNING AND ASSESSMENT TECHNOLOGY SIGNALS ANOTHER MILESTONE IN THE CONSTRUCTION FIRM'S LONG HISTORY OF PROJECTS FOR HIGH PROFILE CLIENTS. DEKLEWA CONTRACTORS ERECTED THIS "STATE OF THE ART" FOUR STORY STEEL FRAME STRUCTURE WITH WHITE MASONRY EXTERIOR FINISH AND STAINLESS STEEL ACCENTS FOR DEVELOPMENT DIMENSIONS INTERNATIONAL OF BRIDGEVILLE, IN ONLY 13 MONTHS. DEKLEWA TRADESMEN'S SKILLFUL INSTALLATION IN THE FRONT ENTRANCE LOBBY AND RESOURCE CENTER OF GRANITE FINISHES AND A UNIQUE HAND-ETCHED GLASS WALL MAP ARE EXAMPLES OF THE COMPANY'S DEDICATION TO CRAFTSMANSHIP. BESIDES THE TYPICAL UTILITY INSTALLATION MORE THAN 66 MILES OF SPECIAL CABLE AND FIXTURES WERE USED TO SUPPORT THIS BUILDING'S TECHNOLOGICALLY ADVANCED AREAS FOR AUDIO AND VISUAL CONFERENCING, MULTI-MEDIA PRESENTATIONS, TRAINING AND INTERNATIONAL OPERATIONS. A 175 FOOT TUNNEL CONNECTS THE CENTER TO THE ADJACENT DDI WORLD HEADQUARTERS BUILDING. TO LEARN MORE ABOUT THIS PROJECT OR FOR A DETAILED ANALYSIS OF YOUR SPECIFIC NEEDS, CONTACT RICHARD DEKLEWA, PRESIDENT AT 257-9000.



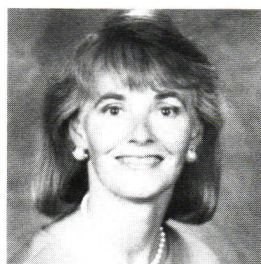
Project Architect: Johnson/Schmidt & Associates

JOHN DEKLEWA & SONS, INC.

1273 Washington Pike • P.O. Box 158 • Bridgeville, PA 15017 • (412) 257-9000

GENERAL CONTRACTORS BUILDING SUCCESS

Love Is A Many Splendored Thing by Cheryl R. Towers



"The built environment, its relationship to the natural world, and the civic life that results make a city vital."

I love cities. They are marvelous, unabashed

miracles of both human achievement and serendipity. Trains run, trash is picked up, people more or less get along, the arts thrive. What makes a city especially wonderful is when it has a particular sense of place that defines who and what it is. The built environment, its relationship to the natural world, and the civic life that results make a city vital.

Pittsburgh is a city that you can't help but love, all criticism aside for a moment about our stodginess, lack of risk taking, parochialism, etc. We have wonderful architecture, and thanks to our rivers and hills, a setting that almost rivals San Francisco. We have a system of parks that is a fine legacy of our industrial past. Largely due to our difficult albeit attractive terrain, city dwellers haven't fled to the suburbs at the same rate as other urban areas, keeping neighborhoods alive — the middle class still lives here, and many so called "blue collar" neighborhoods are healthy. And we do have neighborhoods — lots and lots of neighborhoods. Whether it's Oakland or Polish Hill or the Strip District, local color abounds. Culture abounds, too, with an array of first class institutions usually found in much larger communities.

In other words, the stars in Pittsburgh don't just come out at night — they are here for all to see twenty four hours a day. And come to see them they will, as we're rewarded by efforts of the Chapter's representatives to the Architectural Tourism Marketing Committee. By focusing on architecture as a niche market, the Committee is set to begin luring tourists to Pittsburgh to experience what makes this city a stop worthy of anyone's itinerary. Our reward will be the continued elevation of the architectural profession and the spin-off benefits of dollars spent by out of town visitors.

Another benefit may be that we will all have greater access to the many architecturally fine private buildings and sites in Western Pennsylvania. Whether it's an office building whose upper floors are off limits to the general public, a residence, or a development such as Chatham Village, the advent of architectural tourism may well create a demand for access that finds welcome response through organized tours and visits once critical mass is reached. Demand could also create a climate for the preservation and opening to the public of more buildings as they come on the market.

1999 is truly a watershed year for Pittsburgh and for this tourism initiative. The sheer number of events is impressive and the quality is first rate and imaginative — a quick look at the calendar on pages 14 and 15 will tell you that. The Taliesin® Conference in June will be an international draw, and the dialogue established between students at Carnegie Mellon University's Department of Architecture and Taliesin® Fellows should provide intellectual stimulation that has long term ramifications. For the first time, an important architectural element has been introduced into the Pittsburgh Home and Garden Show — a long overdue development.

Each element of the program has its own appeal and will attract people with different interests. But, the bottom line is that Pittsburgh — risk averse, parochial ol' Pittsburgh — is doing something exciting and unique by using its rich architectural legacy to promote itself.

And on top of everything else and barring major ice storms, the trash still gets picked up. Love, when it comes to this city, really is a many splendored thing.

IN THIS ISSUE

Architectural Tourism Lifts Off! 6

Launching a program that shows off the region's built environment.

The Value of Small Projects 12

A small job for a firm may have major impact on a community.

Living Architecture — Alive in Pittsburgh 14

1999 Frank Lloyd Wright & Architectural Tourism Calendar of Events.

News	5
Breaking Ground	19
Calendar	21
Dossier	23

On the cover: Perspective rendering, Point View Residences 2, Frank Lloyd Wright, ©1952 FLLW FDN 1999.

AIA Pittsburgh serves 12 Western Pennsylvania counties as the local component of the American Institute of Architects and AIA Pennsylvania. The objective of AIA Pittsburgh is to improve, for society, the quality of the built environment by further raising the standards of architectural education, training and practice; fostering design excellence; and promoting the value of architectural services to the public. AIA membership is open to all registered architects, architectural interns, and a limited number of professionals in supporting fields.

AIA Pittsburgh
211 Ninth Street
Pittsburgh, PA 15222
Telephone: 412/471-9548
FAX: 412/471-9501

Chapter Officers

Edward A. Shriver, Jr., AIA, President
J. David Hoglund, AIA, First Vice President
John Missell, AIA, Second Vice President
Paul B. Ostergaard, AIA, Secretary
Alan J. Cuteri, AIA, Treasurer
Anne J. Swager, Executive Director

Columns Staff

Cheryl R. Towers, Editor
Joseph Ruesch, Art Director
Tom Lavelle, Ad Manager

Editorial Board

David J. Vater, AIA, Chair
Robert J. Bailey, AIA
Alan L. Fishman, AIA
Gregory Miller, Professional Affiliate
Arthur R. Ruprecht, AIA
Deepak Wadhvani, AIA
Donald G. Zeilman, AIA

COLUMNS is published ten times a year by, and primarily for, members of AIA Pittsburgh. A Chapter of the American Institute of Architects. Preference may be given to the selection of works, articles, opinions, letters, etc. of members for publication. However, in the interest of furthering the goals of the Chapter, as stated monthly at the top of the masthead and in the membership directory, COLUMNS will publish the names of and properly credit non-members, whether as participants in the design of works submitted by a member, or as designers of their own work, or as authors of articles, opinion or letters.

Opinions expressed by editors and contributors are not necessarily those of AIA Pittsburgh. The Chapter has made every reasonable effort to provide accurate and authoritative information, but assumes no liability for the contents.



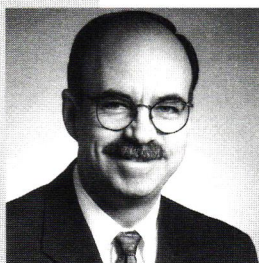
COLUMNS is printed on recycled paper.

Where Ideas Collide

by J. David Hoglund, AIA

Previewing at Grassroots —

a conference for chapter directors, presidents and presidents elect — in Washington, D.C. — the new AIA television advertisements that refer to environments “where ideas collide.” We lobbied on Capitol Hill, discussed technological changes in the profession, envisioned a world of livable cities, learned about AIA’s national agenda, networked with chapter leaders, and assessed AIA Pittsburgh’s place in our profession. We experienced the haunting power of architecture at the Holocaust Museum, the confusion of a Congress embroiled in an imminent impeachment acquittal, and the constant reminder of technology’s expanding role in our lives with cell phone, laptop, and palm pilot users dotting the hotel lobby. Throughout the three-day conference, ideas collided.



“Throughout the three-day conference, ideas collided”

I learned that AIA Pittsburgh architects should be proud of our chapter. First, Anne Swager received a National Service Award for her professional contributions. Second, the new *Design Pittsburgh!* awards program affirms AIA’s national goals for increased recognition of what architects offer. Third, the chapter’s activities (e.g. *Columns*, job placement, staffing of other local chapters) rival the undertakings of much larger chapters.

It was also clear that AIA national is aware of Pittsburgh’s activities. Chuck Hamlin, Vice President of Communications and Dan Wilson, Director of Federal Affairs for AIA Government and Industry Affairs have helped the chapter and voiced a strong commitment to continue their support. In addition, the leadership of Ed Shriver, AIA and Anne is strong and can be best described through the words of Executive Vice President and Chief Executive Officer Norman Koonce, FAIA, who said, “Excellence does not come by chance, but by choice.”

The nation’s capital was a fitting backdrop as AIA National announced its legislative agenda and we delivered it to Congressman Mike Doyle. The platform is straightforward with three broad agendas and a position on specific legislative acts, including taxes, liability reform, and livable communities. AIA’s platform calls for adopting the commercial revitalization tax credit, allowing full deductibility of health insurance premiums, and providing capital gains tax relief. The liability reform platform seeks an end to frivolous lawsuits, a clarification of ADA, and a limit on product liability. And finally, the AIA endorses the need for livable communities, which can be achieved in part through funding school construction and modernization; passing “Better America Bonds” (Vice President Gore’s livability agenda for tax credit); and bolstering TEA21 Fund usage (public transit and transportation). These issues are key to Pittsburgh and Pennsylvania as well as individual firms.

On a slightly different note, 1999 *Design Pittsburgh!* planning is well underway with five different committees comprising twenty volunteers. Consistent with our long-range plan, we will expand *Design Pittsburgh!* to become a week of multiple events and educational opportunities. The design awards opening gala will be held at the Carnegie Museum of Art on October 14, 1999 - plan to be there! Design submissions will once again be displayed, this time, at the request of the Museum, for a two-week period due to public interest and response. The design awards will have some new features and possibly even special feature awards. Over the coming year, we will be developing a new logo for *Design Pittsburgh!* and an improved *Business Times* insert profiling all award submittals as winners. Watch *Columns* for future updates.

Exciting things are happening in Pittsburgh — a city where ideas collide!

AIAPA Update by Gwen Dakis, AIA

- Through a series of long range planning meetings, solicitation of priorities at the 1998 President's Day, and incorporation of the 1997 survey results, a strategic plan was adopted at the January Board Meeting. In addition to re-aligning the Commission/Committee structure, the plan contains prioritized goals and actions by which those goals will be achieved. The plan will be distributed to all Members in the coming weeks.

- Convention 2000 is in Philly! The National AIA Convention will be held in Philadelphia in May 2000. Information will be available in the coming months — but mark your calendars now!

- Though the Statewide Building Code passed the House of Representatives, the bill did not come out of the Senate Committee prior to the end of the session. The bill is expected to be re-introduced in the House early in this session. The passage of this bill, which appears to be likely, may take some time. There was a tremendous response in the form of letters to our Senators last fall. More opportunities for this type of participation will exist via "Legislative Alerts" — we encourage you to become involved.

- The Board approved additional funds to increase our lobbyist's efforts on our behalf. Numerous important pieces of legislation are already evidencing themselves — forecasting a busy year for our lobbyist, Matt Steck, and the membership.

- A Communications Director should be on board as a full-time employee of AIAPA by the end of February. It is our intention that this Director, working as part of David Morrison's staff, will facilitate relaying important information from AIAPA to its membership, to local chapters, and to National.

1999 Easy Access Housing Design Awards Program Call for Entries

Easy Access is a program sponsored by Easter Seals, organized by the AIA Center for Building Performance, and supported by the Partnership for Advancing Technology for Housing (PATH) to recognize excellence in accessible housing that incorporates new or advancing technologies. Submissions are due at AIA headquarters in Washington, DC on or before March 26, 1999. For further information and an entry form, contact Stephanie Vierra, Director of Research, AIA Center for Building Performance. Phone 202/626-7446; fax 202/626-7425; or email vierras@aiaemail.aia.org. The information is also available on the AIA's web site at www.e-architect.com.

CES Deadlines Extended by AIA Board

The 1998 AIA Board of Directors amended the Rules of the Board stating membership lapse and reinstatement policies for the continuing education requirement to provide a grace period until September 30, 1999, for completion of the 1997 CES requirement, and until September 30, 2000 for completion of the 1998 CES requirement. (*reported in AIArchitect*)

The Society of Design Administrators announces new officers for 1999.

PRESIDENT — Ellen Lockhart, Valentour English Bodnar & Howell

VICE PRESIDENT — Christine Taylor, RCF Engineers

SECRETARY — Susan Omslaer, Radelet McCarthy, Inc.

TREASURER — Karen Mueller, WTW Architects

Chestnut Ridge Beamery

- Handcrafted Post & Beam Frames
 - Custom Made Mantles
 - Beams up to 16 x 16 x 40 ft.
 - Timbers and Related Items - paneling, flooring, siding
- Oak
Pine
Douglas Fir
Other Species Available

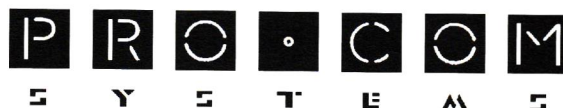
We have been working with engineers and architects for over 15 years creating beautiful living and work spaces.



Greg Secorie
R.D.#1 Box 362
Bolivar, PA 15923
724-676-4392 or 888-882-7559
Fax: 724-238-4091

CONSULTANTS IN PRESENTATION TECHNOLOGIES

Specializing in: board rooms, conference centers, training facilities, teleconferencing/telemedicine rooms, auditoria & command/control rooms.



VOICE (412) 621-1950
VIDEO (412) 687-7340
FAX (412) 621-9887

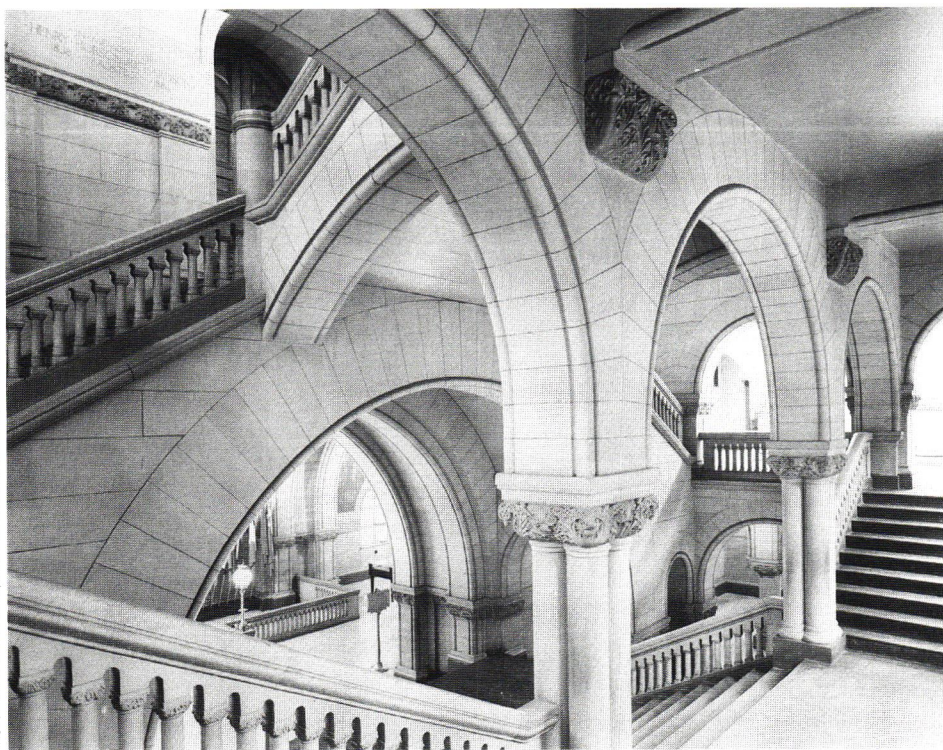
PITTSBURGH • PHILADELPHIA • 8 NATIONAL AWARDS

Architectural Tourism Lifts Off!

by Cheryl R. Towers

Launching a program that shows off the region's built environment.

PHOTO BY WILLIAM RYDBERG, COURTESY PITTSBURGH HISTORY & LANDMARKS FOUNDATION



Allegheny County Courthouse and Jail, Henry Hobson Richardson, 1884 - 1888

This time last year, we were asking whether or not architectural tourism could fly in Pittsburgh. The question was in part rhetorical, of course, since the Chapter was already deeply involved in exploring how to make it work as a founder of the Architectural Tourism Marketing Committee. Happily, a campaign is under launch this month to test the market and measure the results. Assuming positive feedback, the program will be handed over to the Pittsburgh Convention and Visitors Bureau to manage as part of a larger program of cultural tourism. As project consultant Bill Lafe notes, "This is the first time that anyone has developed a promotion strategy based on a niche market approach."

We reviewed the reasons in our previous article why so called "cultural tourists" are coveted. To re-cap, these are the individuals who focus on the arts, heritage, historic

and/or environmental attractions, and who stay longer and spend more money in the destination city. They meet the definition of a "tourist", which is someone who spends at least one night in the area. In other words, these are not the folks who drive in to see a football game, eat and drink at a tailgate party rather than in the stadium, and drive home. These folks stay, and they spend.

Fortunately, Pennsylvania is third after only California and New York in attracting historic/cultural travelers. In addition, as the St. George Group stated in its 1998 background report on architectural tourism, citing economic information from the Travel Industry Association, "Historic/cultural travelers were more likely to include multiple destinations on their itinerary than were other travelers." The St. George group also observed that this is "good news for us, with widely dispersed regional attractions."

Again according to Lafe, "The difficulty was in identifying our product. The (Architectural Tourism Marketing) Committee struggled with this for a long time. We talked about the different historic architectural eras, for instance, and the transformation of the region. We talked about the abundance of interesting buildings. In the end, though, the product was pretty simple and straight forward. What the Pittsburgh region has is unique: the two most important buildings by America's two most important architects."

With the product identified, the Committee worked with The St. George Group to develop an actual marketing strategy. The conclusion was to determine how well architectural tourism could be sold to five cities: Detroit, Cleveland, Erie, Philadelphia, and Washington, D.C. These cities were picked because each is within a 500 miles radius and contains a significant cohort corresponding to the target market. Erie was included to represent the medium/small town market, and because it had the best demographic of the three choices (Erie, Wheeling and Charleston, WV).

A sequence of three mailings will be sent out to these five communities for a total of 15,000 mail pieces. The results will be tracked: who actually came, what did they do, and if they didn't come, why not?

The mailings will be supported by a public relations campaign that emphasizes placing stories with a Western Pennsylvania focus, and by educating people who will then "talk up" Pittsburgh's architectural tourism potential. Ultimately, the latter is the most important component, since word of mouth is the most effective selling tool. To that end, the involvement of the Chapter in this effort is crucial, since no one is in a better position to wax eloquent on the subject than the architects who live and practice here. By the same token, no one benefits more. The emphasis on architectural tourism elevates the profession and reinforces the importance of Pittsburgh as an important architectural and design center.

"Everyone should be very proud of the Chapter's involvement in developing this program," according to Anne Swager, Chapter executive director. "Architects have been involved from the beginning and are leading many of the major initiatives. I can honestly say that tourism bureaus in other areas are envious of our members' willingness to put forth the kind of effort that has gone into making this happen."

The unusual aspect of the Marketing Committee's approach is the incredible array of activity that will take place throughout 1999. The Committee recognized that it isn't enough to simply have great architecture, or the tourists would already be here. Instead, it was necessary to develop any number of significant events to entice people to experience what we know we already have. From efforts to make the Allegheny County Courthouse more attractive and "user friendly" for tourists to a wide array of exhibitions and programs, 1999 will be a memorable year. Activities available at press time and open to the public are listed on the calendar on pages 14 - 15. Pull it out, post it on the bulletin board, copy it and send it to everyone you know. Architecture lives!

Members of the Architectural Tourism Marketing Committee include:

PATTY AHLBRANDT, William Lafe Associates

CATHY BROUCEK, Pittsburgh History & Landmarks Foundation

LAURA FISHER, Allegheny Conference on Community Development

GEORGE GARBER, The St. George Group

JUDY KELLY, Marketing Consultant

WILLIAM LAFE, William Lafe Associates

JOYCE LEE, Greater Pittsburgh Convention & Visitors Bureau

MARGE LUBAWY, Office of Allegheny County Commissioner Mike Dawida

JOHN MARTINE, AIA, IAS

DENNIS MCFADDEN, The Heinz Architectural Center

ANNE SWAGER, AIA Pittsburgh

SAM TAYLOR, Allegheny County Chief Architect

LYNDA WAGGONER, Fallingwater

ARTHUR ZIEGLER, Pittsburgh History & Landmarks Foundation



Fallingwater, Mill Run, Fayette County, Frank Lloyd Wright, 1935 -1937

Special thanks to Cathy Broucek from Pittsburgh History & Landmarks Foundation, Dennis McFadden of the Heinz Architectural Center, The Carnegie Museum of Art, and Henry Lenard of The St. George Group for their assistance.

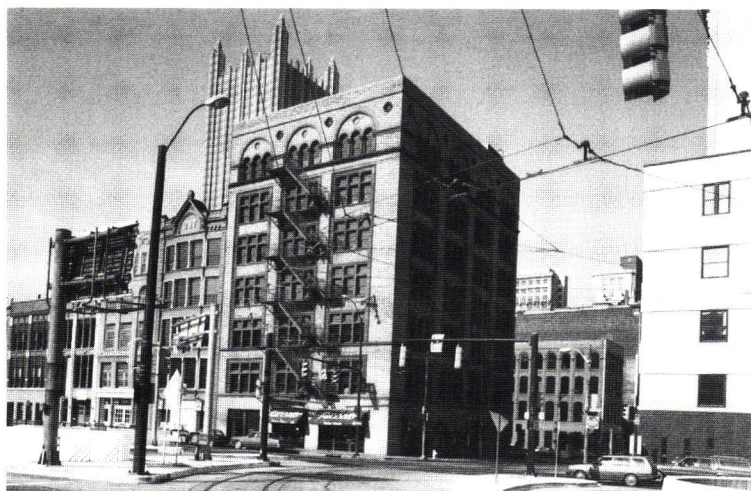
Funding for The Architectural Tourism Marketing Committee was provided by the McCune Foundation.

ARCHITECTURAL

Tourism

*A Sampling of Western
Pennsylvania's Architectural
Attractions*

PHOTOS COURTESY PITTSBURGH HISTORY & LANDMARKS FOUNDATION



Conestoga Building, Longfellow, Alden & Harlow



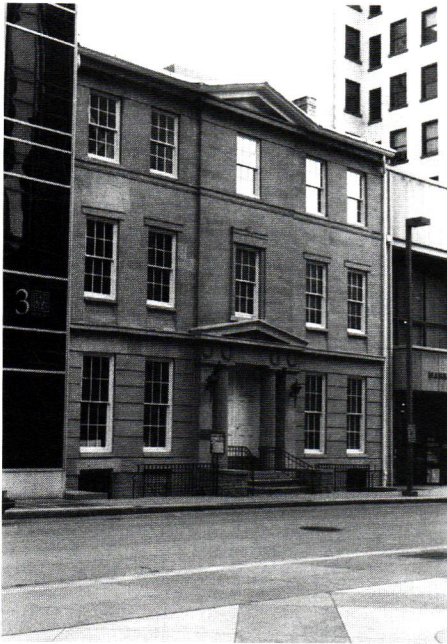
Union Station, (The Pennsylvania), D.H. Burnham & Co.



Industrial Bank, Charles M. Bartberger



Dollar Bank, Isaac Hobbs & Sons



Burke Building, John Chislett



Arrott Building, Frederick Osterling

STARS

The Greatest Works of Two Great Architects

Allegheny County Courthouse and Jail, Henry Hobson Richardson, 1884-1888

Fallingwater, Mill Run, Fayette County, Frank Lloyd Wright, 1935-1937

SUPPORTING CAST

Some Other Significant Buildings

DOWNTOWN:

Alcoa Building, Mellon Square, Harrison & Abramovitz, 1953

Arrott Building, Frederick Osterling, 1902

Burke Building, 209 Fourth Avenue, John Chislett, 1836

CNG Tower, Kohn Pederson Fox, 1987

Conestoga Building, NW corner Fort Pitt Blvd. & Wood Street, Longfellow, Alden & Harlow, 1890

Dollar Bank, 348 Fourth Avenue, Isaac Hobbs & Sons, 1871

Frick Building, 437 Grant Street, Daniel Burnham, 1901

Gateway Center One, Two and Three, Eggers and Higgins, 1950-1953

Gulf Building, NW corner Grant Street & Seventh Avenue, Trowbridge & Livingston, 1932

Industrial Bank, Charles M. Bartberger, 1903

Koppers Building, SW corner Grant Street & Seventh Avenue, Graham, Anderson, Probst & White, 1929

Mellon Institute, 4400 Fifth Avenue, Janssen and Cocken, 1931-1937

One Oliver Plaza, William Lescaz, 1968

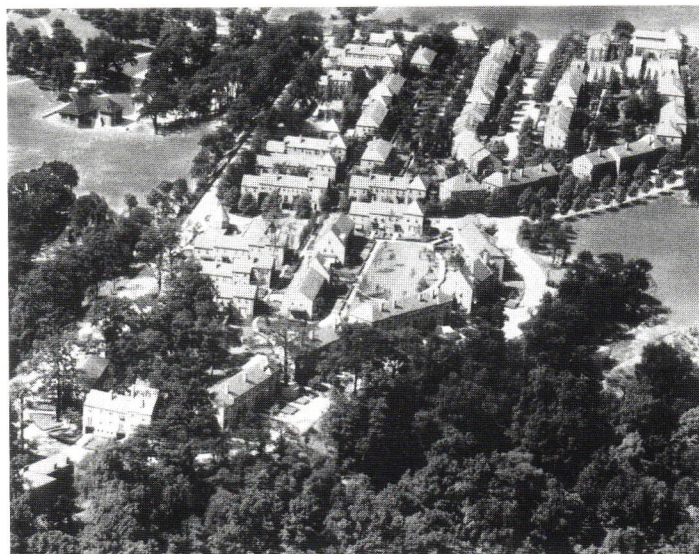
Park Building, NW corner Fifth Ave. & Smithfield Street, George B. Post, 1896

PPG Place, Philip Johnson, 1979-1984

Richard King Mellon Hall of Engineering, Duquesne University, Mies van der Rohe, 1962-1968



Richard King Mellon Hall of Engineering, Duquesne University, Mies van der Rohe



Chatham Village, Clarence Stein and Henry Wright



St. Paul's Cathedral, Synod Hall, Edward J. Weber

ARCHITECTURAL

Tourism

Smithfield Street Bridge, Gustave Lindenthal, 1883

Smithfield United Church, 620 Smithfield Street, Henry Hornbostel, 1926

Two PNC Plaza (Equibank Building), Natalie de Blois and Myron Goldsmith for SOM, 1979

Union Station (The Pennsylvanian), D.H. Burnham & Co., 1898-1901

Union Trust Building, 535 Grant Street, Frederick Osterling, 1906

OTHER NEIGHBORHOODS:

Calvary Episcopal Church, Shadyside, Ralph Adams Cram, 1905-1906

Carnegie Mellon Campus Plan & Buildings, Oakland, Henry Hornbostel, 1904-1924

Chatham Village, Mt. Washington, Clarence Stein and Henry Wright, 1932-1936

East Liberty Presbyterian Church, East Liberty, Ralph Adams Cram, 1931-1936

Emmanuel Episcopal Church, North Side, Henry Hobson Richardson, 1833

First Baptist Church, Oakland, Berram G. Goodhue, 1901-1911

Cecilia & Robert Frank home, Shadyside, Walter Gropius and Marcel Breuer, 1939-1940

Frank Giovanitti house, Woodland Road, Shadyside, Richard Meier, 1981-1983

Greenfield Elementary School, Greenfield, Richard Kiehnel for Kiehnel & Elliott Designed: 1916, Built: 1922

Holy Rosary R.C. Church, Homewood, Ralph Adams Cram, 1928-1930

Lemington Elementary School, Lincoln/Lemington, Edward J. Weber, M.M. Steen: supervising architect, 1937

"Old Heidelberg", South Braddock, Frederick G. Scheibler, Jr., 1904 - 1906

Rodef Shalom Temple, Fifth & Morewood Avenues, Oakland, Henry Hornbostel, 1907

Software Engineering Institute, Carnegie Mellon Institute, Fifth Avenue, Dithridge & Henry Streets, Oakland, Bohlin, Cywinski, Jackson, 1987

Abraam Steinberg house, Squirrel Hill, Cornelia Brierly and Peter Berndtson, 1951

St. Paul's Cathedral, Synod Hall, Oakland, Edward J. Weber, 1914

"Sunnylegge", Shadyside, Longfellow, Alden & Harlow, 1886

WQED, 4802 Fifth Avenue, Oakland, Paul Schweikher, 1970

SURROUNDING COUNTIES:

Kentuck Knob, Stewart, Fayette County, Frank Lloyd Wright, 1953

INTERIORS:

Urban Room, Westin William Penn Hotel, Joseph Urban, 1929

Frank Lloyd Wright San Francisco Field Office, (at The Heinz Architectural Center—The Carnegie Museum of Art), Frank Lloyd Wright with Arron Greene, 1951

As ambassadors for the architectural tourism program, this is a quick reminder for you of the many attractions available in Pittsburgh and the region.



Gulf Building, Trowbridge & Livingston



Frick Building, Daniel Burnham

The Value of Small Projects by Anne-Marie Lubenau, AIA

A small job for a firm may have major impact on a community.

With local architecture firms doing record business, it's becoming increasingly difficult for principals and owners to justify taking on small projects with proportionally modest fees. However, a small, strategic project can have a very big impact on a community, and play a vital role in encouraging development and construction in years to come.

Each year, the Community Design Center of Pittsburgh (CDCP) makes approximately \$60,000 in Design Fund grants to community-based organizations (CBOs) to hire architects and landscape architects to complete schematic designs for neighborhood revitalization projects. Although these grants are small, ranging from \$500 to \$15,000, they enable CBOs to get professional design assistance in the early phases of a project, and often lead to construction of the project, as well as additional development. Over half of the projects that received funding from the CDCP in the past 10 years progressed to completion with still more pending financing. In 1998 alone, eight of those generated over \$2.5 million in construction.

In recent years, an increasing number of Design Fund grants have supported community planning and urban

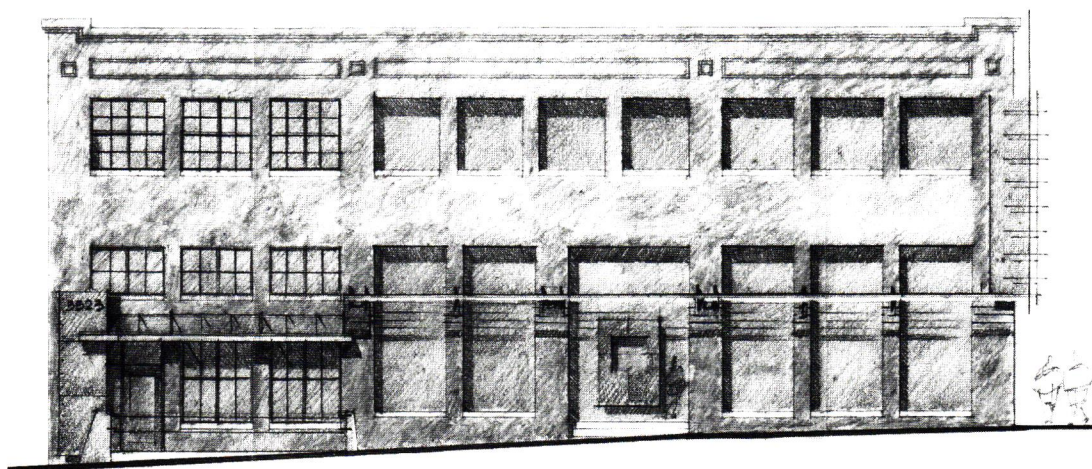
design projects. A planning study enables a community to establish a long-range vision for its future and seek development that is consistent with its goals. In 1990, the CDCP provided a grant to Bloomfield-Garfield Corporation (BGC) to hire Quick Ledewitz Architects PC — now part of Perkins Eastman Architects PC — to prepare an Urban Design Study for Penn Avenue, from Negley Avenue to Mathilda Street, where it borders the communities of Bloomfield, Friendship, and Garfield. The study's recommendations included building upon the district's existing strengths to create a unique multi-cultural arts district.

With this in mind, BGC and Friendship Development Associates (FDA) worked to recruit new businesses to establish the district's identity. Over the past 16 years, the organizations have succeeded in attracting 30 new businesses and \$10,000,000 in new investment to the street, generating an average of \$20,000 in architectural fees a year. And the arts district is taking shape.

"In recent years, an increasing number of Design Fund grants have supported community planning and urban design projects. A planning study enables a community to establish a long-range vision for its future and seek development that is consistent with its goals."

How To Get Involved:

Please consider taking the time to participate in and support local community revitalization efforts that help strengthen



Proposed façade improvements for 5523 Penn Avenue, designed by Edge Architecture.

Pittsburgh neighborhoods and increase the quality of life in our region. Contact the CDCP at 412-391-4144 to find out more about the following programs:

Design Fund

Each year the CDCP issues a Request for Qualifications (RFQ) to design professionals in the Pittsburgh community. Submit your firm's qualifications to be included in the list of consultants we refer to community-based organizations.

Renovation Information Network (RIN)

For a fee of \$50 or less (based on income) City of Pittsburgh homeowners can discuss their renovation plans on

an informal one-on-one basis with a volunteer architect or intern-architect. Some consults lead to requests for additional, paid design work. Call our office to volunteer.

Pedal Pittsburgh Mile Sponsors

This annual fundraising event takes bicycle riders through City of Pittsburgh neighborhoods and highlights design and community revitalization projects. Your firm can become a mile sponsor for as little as \$100, and help support CDCP programs and activities through the year 2000.

Anne-Marie Lubenau, AIA is associate director of the Community Design Center of Pittsburgh.

R E T A I L • R E S T A U R A N T • H E A L T H C A R E

we build smart

Diverse. Innovative. Dedicated.

Time is money.

we build fast

we build right

Quality projects. On time. Within budget.

Call Robert Crawford at 724.274.5000
or visit www.recrawford.com.
Pittsburgh • Bradenton



R.E.CRAWFORD
CONSTRUCTION

C O M M E R C I A L • H O S P I T A L I T Y • F I N A N C I A L

LIVING ARCHITECTURE – ALIVE IN PITTSBURGH!

1999 FRANK LLOYD WRIGHT & ARCHITECTURAL TOURISM CALENDAR OF EVENTS

MARCH 11

Public Lecture & Kickoff Event for Living Architecture – Alive in Pittsburgh

Eric Lloyd Wright, Eric Lloyd Wright
Architects & Planners

CALL 471-5808 FOR INFORMATION

Organized by Taliesin® Fellows and AIA Pittsburgh

MAY 16

LECTURE*

Richard Cleary, University of Texas at Austin:
“Edgar J. Kaufmann and the Pittsburgh
Renaissance”

CARNEGIE MUSEUM OF ART THEATER, 3 P.M.

MARCH 11

Black Tie Preview Fundraiser & kickoff event for Living Architecture – Alive in Pittsburgh

Full Scale Interior Model: A Typical Residential Unit
from Frank Lloyd Wright's 1953 design for
Mt. Washington: *Point View Residences 2*
DAVID R. LAWRENCE CONVENTION CENTER
\$60 per ticket by reservation only, 7:30 p.m. – 10 p.m.
Space is limited. Contact AIA Pittsburgh

*Organized by Taliesin® Fellows with support from the 18th
Annual Pittsburgh Home & Garden Show, in cooperation
with the Frank Lloyd Wright® Foundation, Taliesin® Architects, Ltd.
and Gerald Lee Morosco Architect, P.C.*

JUNE 8

LECTURE*

**Donald Hoffmann, Independent Scholar and
Writer: “Fallingwater: The Strangeness of
Beauty”**

CARNEGIE MUSEUM OF ART THEATER, 6:30 P.M.

JUNE 18

*Exhibit runs
through July 2*

OPENING

Taliesin® Apprentices: Seven Decades of Organic Architecture

AIA GALLERIES 211 NINTH STREET PITTSBURGH

*Organized by Taliesin® Fellows, Carnegie Mellon University School
of Architecture, Frank Lloyd Wright® School of Architecture, and AIA
Pittsburgh, in cooperation with Tobias Guggenheimer*

MARCH 12 – 21

18th Annual PITTSBURGH HOME & GARDEN SHOW: David R. Lawrence Convention Center

Exhibition of Frank Lloyd Wright® Foundation
Licensees – The Frank Lloyd Wright® Collection

*In cooperation with the Frank Lloyd Wright® Foundation,
ARCHETYPE® ASSOCIATES and weisshouse*

Full Scale Interior Model: A typical residential unit from
Frank Lloyd Wright's proposed 1953 design for
Mt. Washington: *Point View Residences 2*

*Sponsored by the 18th Annual Pittsburgh Home & Garden Show, in
cooperation with the Frank Lloyd Wright® Foundation, Taliesin®
Architects, Ltd., Gerald Lee Morosco Architects, P.C., Giffin Interior
& Fixture, Inc., ARCHETYPE® ASSOCIATES and weisshouse*

JUNE 18

*Exhibit runs
through July 2*

OPENING

Precedent & Principle: the Architecture of Peter Berndtson & Cornelia Brierly

ASSOCIATED ARTISTS OF PITTSBURGH GALLERY

937 LIBERTY AVENUE, Charles Rosenbloom, Curator

*Organized by Taliesin® Fellows, Pittsburgh History & Landmarks
Foundation, and ARCHITRAVE – a charitable foundation of AIA
Pittsburgh, in cooperation with Carnegie Mellon University
Architecture Archives, and Associated Architects of Pittsburgh with
support from Taliesin® Architects.*

APRIL 9

*Exhibit runs
through Aug. 30*

OPENING

Merchant Prince & Master Builder: Edgar J. Kaufmann & Frank Lloyd Wright

The Heinz Architectural Center – Carnegie Museum

* This lecture is presented in conjunction with the exhibition **Merchant Prince and Master Builder: Edgar J. Kaufmann and Frank Lloyd Wright.**

JUNE 19
Exhibit runs
Jun. 19 – Oct. 10

OPENING
The Architecture of Reassurance: Designing the Disney Theme Parks
THE ANDY WARHOL MUSEUM
Organized by the Canadian Centre for Architecture, Montreal

JUNE 19-20

HEINZ ARCHITECTURAL CENTER SYMPOSIUM
Merchant Prince & Master Builder: Edgar J. Kaufmann & Frank Lloyd Wright
CARNEGIE MUSEUM OF ART
Organized by Heinz Architectural Center – Carnegie Museum of Art

JUNE 22

LECTURE*
James O’Gorman, Wellesley College: “Kindred Spirits: The Architecture of Henry Hobson Richardson and Frank Lloyd Wright”
CARNEGIE MUSEUM OF ART THEATER, 6:30 P.M.

JUNE 23

ARCHITECTURAL TOURS
Organized by Taliesin® Fellows, Pittsburgh History & Landmarks Foundations, and ARCHITRAVE – a charitable foundation of AIA Pittsburgh

JULY 13

LECTURE*
Edgar Tafel, Architect: “The Frank Lloyd Wright I Knew”
CARNEGIE MUSEUM OF ART THEATER, 6:30 P.M.

OCTOBER 3

LECTURE*
Franklin Toker, University of Pittsburgh: “Fabricating Fallingwater: What–And Who–Made It So Famous So Fast?”
CARNEGIE MUSEUM OF ART THEATER, 2 P.M.

TALIESIN® FELLOWS CONFERENCE

JUNE 24 – 27

TALIESIN® FELLOWS CONFERENCE
When Past is Future: Frank Lloyd Wright’s Taliesin® Legacy Continues...
HILTON HOTEL PITTSBURGH
Organized by Taliesin® Fellows, Pittsburgh History & Landmarks Foundation, & ARCHITRAVE- a charitable foundation of AIA Pittsburgh

JUNE 24

ARCHITECTURAL TOURS
Organized by Taliesin® Fellows, Pittsburgh History & Landmarks Foundation, and ARCHITRAVE- a charitable foundation of AIA Pittsburgh

JUNE 25

Black Tie Gala Evening
Keynote address: Olgivanna Lloyd Wright: Her Life, Her Words, Her Works
CARNEGIE MUSEUM OF ART
Bruce Brooks Pfeiffer, Taliesin® Fellow; Director, the Frank Lloyd Wright Archives

JUNE 26

Frank Lloyd Wright® Film Festival
HARRIS THEATER, 809 LIBERTY AVENUE
Organized by Taliesin® Fellows, Pittsburgh History & Landmarks Foundation, and ARCHITRAVE- a charitable foundation of AIA Pittsburgh, in cooperation with Pittsburgh Filmmakers and the Pittsburgh Cultural Trust

JUNE 26
Exhibit runs through 24 July

OPENING RECEPTION
A Taliesin® Legacy in the Allied Arts: The Work of Val M Cox, Heloise Crista, & Susan Jacobs Lockhart
LA FOND GALLERIES, 1711 EAST CARSON STREET
Organized by Taliesin® Fellows, Pittsburgh History & Landmarks Foundation, and ARCHITRAVE- a charitable foundation of AIA Pittsburgh in cooperation with La Fond Galleries

JUNE 26

OPEN HOUSE & RECEPTION
1999 Metropolitan Home® Magazine: Met Home of the Year Finalist
Home & Studio of Taliesin® Fellow: Gerald Lee Morosco, AIA
SOUTH 15TH STREET BETWEEN MURIEL & BINGHAM STREETS
Organized by Taliesin® Fellows, Pittsburgh History & Landmarks Foundation and ARCHITRAVE- a charitable foundation of AIA Pittsburgh, in cooperation with Gerald Lee Morosco Architects, P.C.

JUNE 26

Dinner Evening at Berndtson’s Brayman-Rodgers House and Conversations With Cornelia Brierly
(Transportation for this event is from South Side Reception site)
Organized by Taliesin® Fellows, Pittsburgh History & Landmarks Foundation and ARCHITRAVE- a charitable foundation of AIA Pittsburgh

JUNE 28

ARCHITECTURAL TOURS
Organized by Taliesin® Fellows, Pittsburgh History & Landmarks Foundation, and ARCHITRAVE- a charitable foundation of AIA Pittsburgh

Some events listed are open to the public. Preregistration and admission charges may apply. Call 471-5808 for further information.

AIA PITTSBURGH

WELCOMES OUR

1999 PROFESSIONAL AFFILIATES

(THROUGH JANUARY 1, 1999)

Glenn J. Ament, Jr. - Volz Environmental Services, Inc.
1200 Gulf Lab Rd., Pittsburgh, PA 15238
tel. 412/826-8480 fax 412/826/8488

Brian W. Ashbaugh - Rose Schmidt Hasley & DiSalle, PC
900 Oliver Bldg., 535 Smithfield St., Pittsburgh, PA 15222
tel. 412/434-8600 fax 412/263-2829

Robert T. Balkovec - SAI Consulting Engineers, Inc.
1400 Penn Ave., Penn Liberty Plaza II, Ste. 101, Pittsburgh, PA 15222
tel. 412/392-8750 fax 412/392-8785

Joseph S. Bianco - Management Engineering Corp.
1370 Washington Pike, Bridgeville, PA 15017
tel. 412/563-2111 fax 412/257-3202

Christian James Bonomi - St. Lawrence Cement
615 Brushton Ave., Westmoreland, PA 15601
tel. 800/462-8800 x 3101

Herbert J. Brankley - Dodson Engineering
420 Chatham Center, Pittsburgh, PA 15017
tel. 412/261-6515 fax 412/261-6527

Danny P. Brown - MBM Contracting
338 E. 9th Ave., Pittsburgh, PA 15120
tel. 412/461-4990 fax 461-5030

Jesse C. Campayno - McKamish Chesapeake, Inc.
50 55th St., Pittsburgh, PA 15201-2397
tel. 412/781-6262 fax 412/781-2007

Steve Cobb - John Tisdell Distributing, Inc.
700 Brusa Drive, Ste. 706, Bridgeville, PA 15017
tel. 412/220-9441 fax 412/220-9471

Theodore H. Dannerth - Elwood S. Tower Corp.
8150 Perry Hwy. #319, Pittsburgh, PA 15237
tel. 412/931-8888 fax 412/364-8115

William Davies - ISK Biosciences
105 Circle Dr., Greenville, PA 16125
tel. 724/646-2093 fax 724/646-0165

Stephen H. Donaldson - Civil & Environmental Consultants
601 Holiday Dr., Foster Plaza 3, Pittsburgh, PA 15220
tel. 412/429-2324 fax 412/429-2114

James R. Firrell - Acordia Northeast
The Gulf Tower, Ste 700, 707 Grant St., Pittsburgh, PA 15219-1909
tel. 412/765-3510 fax 412/765-1164

Douglas P. Fowkes - Pittsburgh Stage, Inc.
8325 Ohio River Blvd., Pittsburgh, PA 15202
tel. 412/734-3902 fax 412/734-5411

Ted H. Frantz - TEDCO Construction
TEDCO Place, Carnegie, PA 15106
tel. 412/276-8088 fax 412/276-6804

Gordon D. Giffin - Giffin Interiors & Fixtures, Inc.
500 Scotti Dr., Bridgeville, PA 15017
tel. 412/221-1166 fax 221-3745

Mack Godfrey - Columbia Gas of Pennsylvania
650 Washington Rd., Pittsburgh, PA 15228
tel. 412/572-7124 fax 412/572-7161

William J. Gormley, Jr. - WJG Contracting, Inc.
P.O. Box 4286, Pittsburgh, PA 15203-0286
tel. 412/381-7098 fax 412/381-7698

David A. Harchuck - Harchuck Construction, Inc.
122 Kerr Rd., New Kensington, PA 15068
tel. 724/339-7073 fax 724/339-7076

Daniel T. Kiefer - Crawford Consulting Services, L.P.
239 Highland Ave., Allegheny, PA 15112
tel. 412/823-0400 fax 412/823-2004

Gerald Stanley Kimball - GSK Enterprises, Inc.
200 Thelma Dr., Carnegie, PA 15106
tel. 412/276-8045 fax 412/276-8936

Christian E. Klehm - Clearview Project Services Co.
3977 William Flynn Hwy., Rte. 8, Ste. 2, Allison Park, PA 15101
tel. 412/487-3984 fax 412/487-8205

Morgan Paul Kronk - Kronk Construction Consultant Co.
P.O. Box 15540, Pittsburgh, PA 15244
tel. 412/787-0720 fax 412/787-0730

George R. Marshall - Tri-State Reprographic, Inc.
911 Penn Ave., Pittsburgh, PA 15222
tel. 412/281-3538 fax 412/281-3344

Traci McGavitt - Landau Building Company
9855 Rinaman Rd., Wexford, PA 15090
tel. 724/935-8800 fax 724/935-6510

Paul J. Messineo, Jr. - STV, Inc.
Four Gateway Ctr., Ste. 325, Pittsburgh, PA 15222
tel. 412/392-3500 fax 392-3501

Raymond H. Meucci - Meucci Engineering, Inc.
409 Elk Ave., Carnegie, PA 15106
tel. 412/276-8844 fax 412/276-2960

William D. Mullin - GWSM, Inc.
1101 Greenfield, Pittsburgh, PA 15217
tel. 412/521-3000 fax 412/521-1206

Dominic Navarro, Jr. - The Bowerston Shale Co.
338 Guys Run Rd., Cheswick, PA 15024
tel. 412/828-3220 fax 412/828-4011

Elwood M. Ott, Jr. - Lincoln Contracting & Equipment Co.
P.O. Box 96, Boswell, PA 15531
tel. 814/629-6641 fax 814/629-6588

James W. Pashek - Pashek Associates, PC
619 E. Ohio St., Pittsburgh, PA 15212
tel. 412/321-6362 fax 412/321-9202

James F. Pevarnik - PDC Builders, Inc.
1303 Jefferson St., P.O. Box 149, Latrobe, PA 15650
tel. 724/532-1090 fax 724/532-4084

Frank T. Poerio - Poerio Incorporated
P.O. Box 11036, 9401 McKnight Rd., Pittsburgh, PA 15237
tel. 412/366-6767 fax 412/366-1404

Frank J. Raducz - Raducz Stone Corp.
284 Rockdale Rd., Butler, PA 16002
tel. 724/352-3984 fax 724/352-5835

Dennis Roth - Structural Engineering Corporation of Pittsburgh
Centre City Tower, 650 Smithfield St. #1200, Pittsburgh, PA 15222
tel. 412/338-9000 fax 412/338-0051

Timothy D. Sauer - VISTA Network Integration Services, Inc.
101 Ewing Rd., Carnegie, PA 15106-1523
tel. 703/561-4000 fax 703/561-4045

Joseph A. Schoedel - Cassidy-Pierce Company, Inc.
2295 Preble Ave., P.O. Box 9997, Pittsburgh, PA 15233
tel. 412/321-8987 fax 412/321-6306

Wilson Schrock - Pella Windows
79 North Industrial Park, Bldg. 304, Sewickley, PA 15143
tel. 412/741-8855 x 109 fax 412/741-6728

Heidi White - R. E. Crawford Company
1046 Pittsburgh St., Springdale, PA 15144
tel. 724/274-5000 fax 724/274-2323 or 2001

William Leslie Wilson II - J. Leslie Wilson
302 N. Mercer St., New Castle, PA 16101
tel. 724/652-6311 fax (same as phone number)

Making Commercial Building Dreams A Reality... *Affordably & Efficiently*

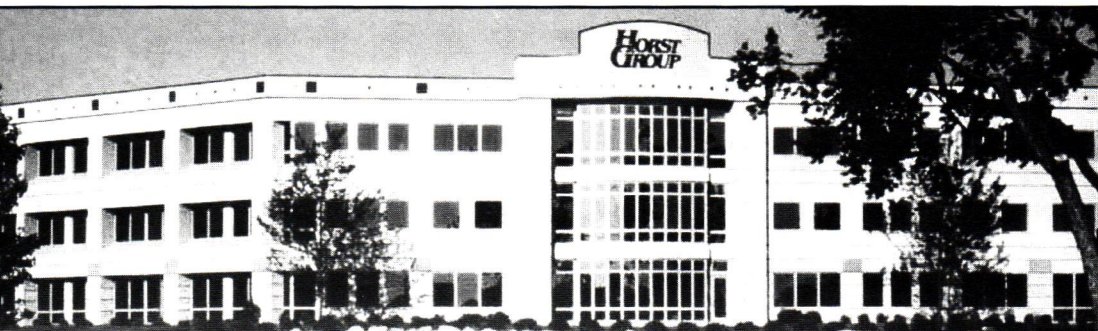
- Commercial/Industrial Construction
- Authorized builder/distributor for Ceco Metal Building Systems

EACH AND EVERY JOB WE DO IS A REFLECTION OF OUR REPUTATION. THAT'S WHY WE EXERCISE PAINSTAKING ATTENTION TO DETAIL AND PROVIDE A FIRM COMMITMENT TO OUR CUSTOMERS' TOTAL SATISFACTION. THERE'S JUST NO OTHER WAY TO DO BUSINESS.

ST. VINCENT COLLEGE
TECHNOLOGY RESOURCE CENTER
TKA Architects

PDC BUILDERS, INC.

PDC BUILDERS, INC. ■ P.O. BOX 149 ■ LATROBE, PA 15650 ■ (724) 532-1090 ■ FAX (724) 532-4084



Throw office design a curve with Andersen® Windows.

- Local, dedicated commercial professionals
- Estimating, shop drawings, installation services available
- Specializing in institutional / office / retail / multi-family / churches / schools / banks / hospitals / lodging
- Visit www.andersenwindows.com/commercial for complete product information

HORST GROUP CORPORATE HEADQUARTERS, LANCASTER, PA.

ARCHITECT: CORNERSTONE DESIGN, LTD. - ARCHITECTS. DEVELOPER: KEVIN BROWN/CLABELL MANAGEMENT

Angelo DiNardo 724-864-1458
Angelo Petricca 724-334-0622

ICC
IRON CITY
COMMERCIAL
IRON CITY SASH & DOOR CO.

**ANDERSEN
COMMERCIAL
GROUP**

Claude Dilanni
330-758-6793

CALL FOR A COMMERCIAL CATALOG AND A FREE CD-ROM WITH 150+ ANDERSEN COMMERCIAL PROJECTS

Andersen is a registered trademark of Andersen Corporation ©1999 All rights reserved

*A million options,
Ten thousand decisions,*

One Builder.



Levin Furniture, Smithton PA
Owner: Robert Levin
Architect: Lorenzi, Dodds & Gunnill

When Levin Furniture needed an office and warehouse, they knew what they wanted: a building designed to meet their specific needs. And, they wanted it built on-time and within their budget. There were a million options on how to approach the project and thousands of decisions to be made on design, materials, scheduling and construction.

That's why they turned to General Industries to handle their construction project at Westmoreland Industrial Park, Smithton. The architectural firm of Lorenzi, Dodds & Gunnill developed an office and warehouse design that encompassed 203,880 square feet, including 10,000 square feet for office space. The finished project was completed on-time and on-budget, with the exacting standards, attention to detail and professionalism that are General Industries hallmarks.

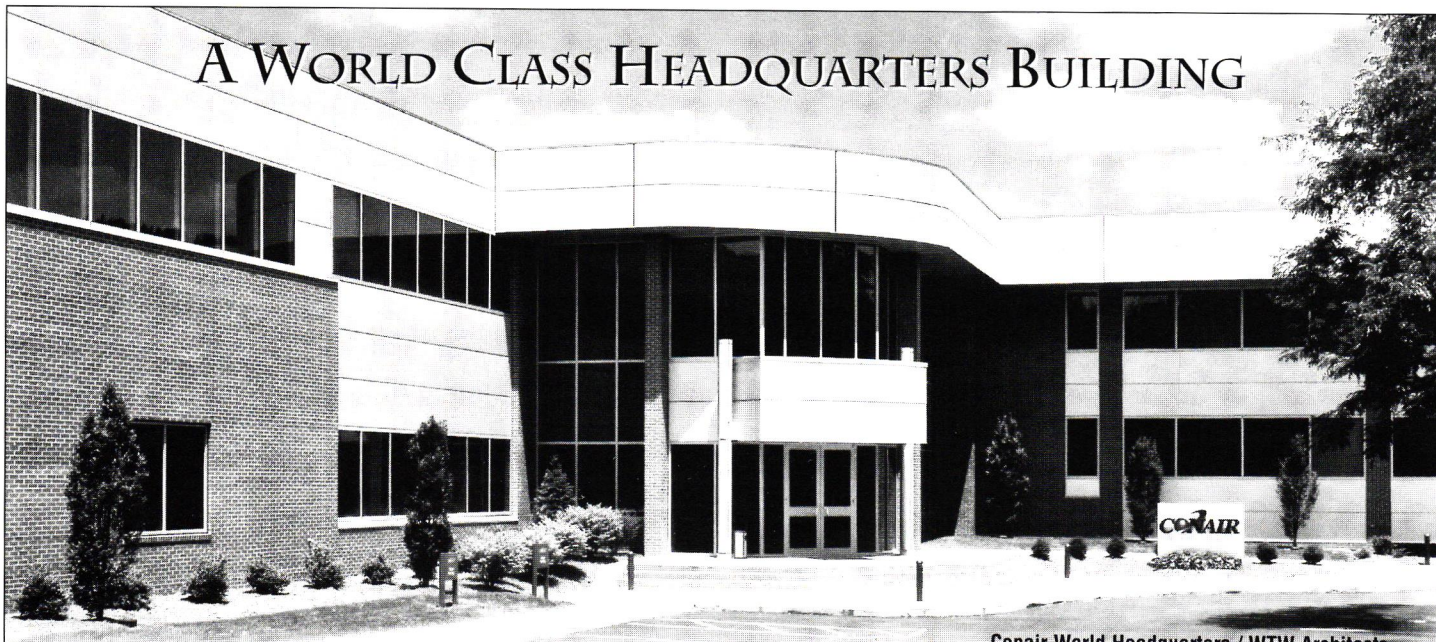
When you're facing millions of options and thousands of decisions, there's only one builder.



GENERAL CONTRACTORS

15 Arentzen Boulevard, Charleroi, PA 15022 724-483-1600

A WORLD CLASS HEADQUARTERS BUILDING



Conair World Headquarters / WTW Architects

At DiCicco Contracting, each job is treated as a world class project. Our reputation for excellence in craftsmanship and customer satisfaction has made us a leader among General Contractors. Contact us for assistance with your next world class project.



DiCicco Contracting Co.

General Contractors (412) 262-3540

From the Firms

→ **The Hayes Design Group - Architects** are designing additions and alterations to the California Area Middle/Elementary School; TEDCO Construction Corporation, professional affiliate, is the construction manager.

Charles L. Desmone & Associates are the architects and General Industries the contractor for a new 69,000 square foot furniture showroom for Levin Furniture at The Pointe in North Fayette Township.

Perkins Eastman Architects is providing architectural and interior design services for Half Century More, an operator/developer located in Tokyo that is constructing nursing and assisted living facilities.

STUDIO Delisio Architecture & Design principal Deborah Elliott is architect for The Smallman Street Deli.

Norman Y. Harai Associates has recently begun an ownership transition in which **Norman Harai, AIA** has assumed the position of chairman and **Robert J. Klauscher, AIA** has become president of the firm.

WTW Architects has been selected to complete two design projects for the Veterans Administration Hospital in Butler, PA.

Business Briefs

→ **Eckles Architecture** has added Elizabeth A. Ayres to the firm as interior designer. Earl Lanious, a recent addition and member of the construction administration staff, will serve as project representative.

DRS Architects has hired **Stephen J. Sobina, AIA** as project architect.

Scott Keener, AIA has joined **Norman Y. Harai Associates** as an associate and Beverly Spagnolo has joined the firm as vice president of business development.

Tony Albrecht, AIA has been named an associate of **Rothschild Architects**.

Perkins Eastman Architects has expanded its professional staff to include William Curran, Marc Ford, William Fullerton, Quintin Kittle, Joanna Konieczka, John Lingley, and Lori Shaw.

KSBA Architects has hired Patricia E. Canfield as an interior designer.

Burt Hill Kosar Rittelmann Associates has named Terri Schmitt Principal for Interiors in the Pittsburgh office.

Hayes Large Architects announced the recent promotions of Michael L. Federici and **Jason A. Fournier, AIA** to associate.



SCHMITT

SAI Consulting Engineers, Inc. has added four engineers to their Westover, WV office: John P. Perkun joins as Manager of the West Virginia office; Robert R. Milne as highway engineer, Terri D. Frye as structural engineer; and Amy S. Barth as structural engineer.

Kudos

→ **Urban Design Associates** has won the AIA Honor Award for their urban design which transformed Diggs Town, located in Norfolk, VA, from a "public housing development" to a "neighborhood".

Gerald L. Morosco, AIA was a finalist in the 1999 MET HOME OF THE YEAR contest and received an Honorable Mention from *Metropolitan Home* magazine.

Burt Hill Kosar Rittelmann Associates' images of the new library in Gerstacker Science Hall at Hiram College have been selected as winner of *Computer-Aided Engineering Magazine's* 1998 Cover Image Contest.

P. Richard Rittelmann, FAIA has been nominated by the AIA to represent the U.S. as a member of the Science and High-tech Facilities Work Program of the International Union of Architects.

The Master Builders' Association recently honored the following construction teams:

BEST PROJECT OVER \$5 MILLION - *Magee Womens Hospital*

Tsoi/Kobus & Associates, architect

Turner Construction Company, contractor

BEST PROJECT UNDER \$5 MILLION - *Oberg Industries Office Building Addition*

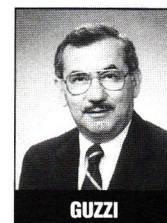
Burt Hill Kosar Rittelmann Associates, architect

Uhl Construction Company, contractor

EXCELLENCE IN CRAFTSMANSHIP - *Nemacolin Woodlands Spa & Resort/Lafayette Hotel*

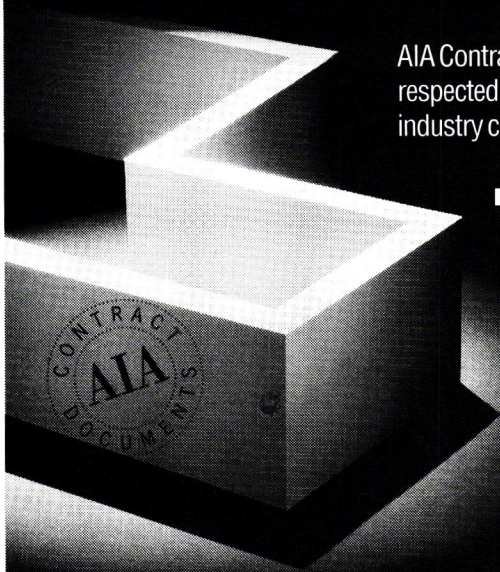
Giffin Interior & Fixture, Inc., contractor

Louis A. Guzzi has been re-elected as president of Pennsylvania's State Registration Board for Engineers, Surveyors and Geologists. Mr. Guzzi is president of professional affiliate firm **Dynamic Design Engineering, Inc.**



GUZZI

The **best**
foundation for all
your **projects.**



AIA Contract Documents are fair to everyone — not just architects. They've been respected and used for over 100 years because they're based on broad construction industry consensus. Get the contracts that are balanced and fair.

Put your contracts on solid footing.

Find the Distributor for Documents with fairness built in. For automatic updates on Document changes as they occur, be sure to ask about the Document Supplement Service. Contact AIA Pittsburgh, your local distributor, at 412-471-9548 now.

AIA CONTRACT DOCUMENTS.

You can build on them.

AIA Contract Documents are a product of The American Institute of Architects.



Wondering where to
find **your** next super
staff person?

Why not join the Chapter's Placement Service.
We work with both employers and applicants to
help you make a perfect match

To sign up call Joan Kubancek at (412) 471-9548.

C O L U M N S

AIA ACTIVITIES

March 5, Friday

Communications Committee Meeting, noon at the Chapter office, 471-9548.

March 9, Tuesday

AIA Pittsburgh Board Meeting
5 p.m. at the Chapter office. All members are welcome, 471-9548.

March 10, Wednesday

Professional Development Committee Meeting, noon at the Chapter office, Scott Keener, AIA, 241-3385.

March 12, Friday

Committee on the Environment, noon at the Chapter office, Gary Moshier, AIA, 252-1500.

See pages 14-15 for Architectural Tourism Calendar of Events.

AROUND TOWN

March 9, Tuesday

CSI Meeting, "Enhancement Tools and Expert Systems for Electronic Specification Generation" presented by Bob Tench, AIA, CSI, specifications associate with Burt Hill Kosar Rittelmann. New specification tools provided by ARCOM, producer of AIA MasterSpec. 6 p.m. social, 6:30 dinner (\$20), 7:30 program, Alrport Marriott Reservation 412-823-5063 by Fri. March 5. 2 AIA L.U.s.

March 10, Wednesday

Society of Design Administrators, monthly meeting at the AIA Pittsburgh office. Program: Roundtable Discussion. 11:30 a.m.-1:30 p.m. Lunch \$15 members, \$17.50 non-memebers. Reservations call Ellen Lockhart 561-7117.

Through March 21

Affordable Housing, an exhibition exploring various artists' view of this aspect of human experience, at the Morgan contemporary glass gallery, 5833 Ellsworth Avenue. 412-441-5200.

Through March 28

Zigzags and Speed Stripes: The Art Deco Style comprised of approximately 150 objects including architectural drawings and other works on paper, historical photographs, exposition souvenir books. Developed to complement and celebrate the debut of the Carnegie Museum's permanent installation of "The Chariot of Aurora" *An Art Deco Masterpiece from the Normandie Ocean Liner*. Carnegie Museum of Art, Heinz Architectural Center. 622-3131.

Calling All Continuing Education Programs, Seminars, Symposia and Workshops!



In order to make it easier for architects to identify opportunities to earn continuing education credits, we will list appropriate events in this space in future issues. If you intend to offer such an event, please send your information to the attention of Joan Kubancek, AIA Pittsburgh, 211 Ninth Street, Pittsburgh, PA 15222, or fax it to Joan at 412/471-9501.

The deadline for inclusion is normally eight weeks prior to publication. For the May 1999 issue only, the deadline is March 26.

If you would like information describing qualified continuing education programs, please call the AIA office at 412/471-9548.

CONTRACTORS' DIRECTORY

A LISTING OF AREA CONTRACTORS AND THEIR PROFESSIONAL SERVICES. To include your firm in this directory, call Tom Lavelle at 882-3410.

■ AIC, INC.

128 Hanover Street, Carnegie, PA 15106
PHONE: 276-7577 FAX: 276-7578
CONTACT: Robert A. Ardolino
*Commercial / Construction management
General / Interior / Renovations*

■ BAKER MELLON STUART CONSTRUCTION, INC.*

410 Rouser Road, Coraopolis, PA 15108
PHONE: 412-269-7312 FAX: 412-269-2020
CONTACT: Chuck Russell
*Commercial / Construction management
General / Industrial / Interior / Renovations
Institutional*

■ BRIDGES

1300 Brighton Road, Pittsburgh, PA 15233
PHONE: 321-5400 FAX: 321-9823
CONTACT: Paul R. Bridges
*Commercial / Construction management
Exterior / General / Industrial / Interior
Renovations*

■ J. R. BUNN, INC.*

717 Millers Run Road, McDonald, PA 15057
PHONE: 221-7144 FAX: 257-4456
CONTACT: James Bunn, Jr.
*Commercial / Construction management
Industrial / General*

■ BURCHICK CONSTRUCTION CO., INC.*

500 Lowries Run Road, Pittsburgh, PA 15237
PHONE: 369-9700 FAX: 369-9991
CONTACT: Joseph E. Burchick
*Commercial / Construction management
General / Industrial / Interior / Renovations*

■ BURNS & SCALO ROOFING CO., INC.

400 Bursa Drive, Suite 402, Bridgeville, PA 15017
PHONE: 221-6300 FAX: 221-6262
CONTACT: Jack F. Scalo, President
*Commercial / Industrial / Residential
Roofing sheetmetal / Architectural panels
1998 ABC Subcontractor Of The Year
1998 National Roofing Contractor Of The Year*

■ F.J. BUSSE CO., INC.*

P.O. Box 8540
Pittsburgh, PA 15220
PHONE: 921-1231 FAX: 921-9861
CONTACT: John Paul Busse
*Commercial / Construction management
Exterior / General / Industrial / Interior
Renovations*

■ R.E. CRAWFORD COMPANY

1046 Pittsburgh Street, Springdale, PA 15144
PHONE: 724-274-5000 FAX: 724-274-2323
CONTACT: Heidi White
*Commercial / Construction management
General / Interior / Renovations*

■ DICICCO CONTRACTING CO.*

1009 Beaver Grade Road, Suite 200
Coraopolis, PA 15108
PHONE: 262-3540 FAX: 269-6699
CONTACT: Samuel E. DiCicco
*Commercial / Construction management
General / Industrial / Interior Renovations*

■ DICK CORPORATION*

P.O. Box 10896, Pittsburgh, PA 15236
PHONE: 384-1320 FAX: 384-1215
CONTACT: John R. Bonassi
*Commercial / Construction management
Exterior / Highway / Industrial Interior /
Renovations*

■ P.J. DICK INCORPORATED*

P.O. Box 108100, Pittsburgh, PA 15227-0500
PHONE: 462-9300 FAX: 462-2588
CONTACT: Charles S. Pryor
*Commercial / Construction management
Exterior / General / Industrial / Interior
Renovations / Institutional*

■ FLYNN CONSTRUCTION, INC.

610 Ross Avenue, Wilkinsburg, PA 15221
PHONE: 243-2483 FAX: 243-7925
CONTACT: Thomas O'Connor
*Commercial / Construction Management
Exterior / General / Interior / Renovations*

■ GENERAL INDUSTRIES

15 Arentzen Blvd., Charleroi, PA 15022
PHONE: (724) 483-1600 FAX: (724) 483-0990
CONTACT: Donald Ivill
*Commercial / Exterior / General / Industrial
Interior / Renovations*

■ HARCHUCK CONSTRUCTION CO., INC.

122 Kerr Road, New Kensington, PA 15068
PHONE: (724) 339-7073 FAX: (724) 339-7076
CONTACT: David A. Harchuck
*Commercial / Construction management
Exterior / General / Industrial / Interior
Renovations*

■ JENDOCO CONSTRUCTION CORPORATION*

2000 Lincoln Road, Pittsburgh, PA 15235
PHONE: 412-361-4500 FAX: 412-361-4790
CONTACT: Ruth Mazza
*Commercial / Construction management
Exterior / General / Industrial / Interior
Renovations*

■ A. RICHARD KACIN, INC.

795-22 Pine Valley Drive, Pittsburgh, PA 15239
PHONE: 724-327-6694 FAX: 724-733-5993
CONTACT: A. Richard Kacin, Pres.
*Commercial / Construction management
General / Industrial / Residential*

■ KUSEVICH CONTRACTING, INC.

3 Walnut Street

Pittsburgh, PA 15223
PHONE: 782-2112 FAX: 782-0271
CONTACT: George Kusevich, Jr.
*Commercial / Construction management
General / Industrial / Interior Renovations
Institutional*

■ LANDAU BUILDING COMPANY*

9855 Rinaman Road, Wexford, PA 15090
PHONE: 935-8800 FAX: 935-6510
CONTACT: Thomas A. Landau
*Commercial / Construction management
Exterior / General / Industrial / Interior
Renovations*

■ A. MARTINI & CO., INC.*

320 Grant Street, Verona, PA 15147
PHONE: 828-5500 FAX: 828-6488
CONTACT: Angelo Martini, Sr.
*Commercial / Construction management
Exterior / General / Industrial / Interior
Renovations*

■ MISTICK CONSTRUCTION

1300 Brighton Road, Pittsburgh, PA 15233
PHONE: 322-1121 FAX: 322-9336
CONTACT: D. Thomas Mistick
*Commercial / Construction management
Exterior / General / Interior / Renovations
Residential*

■ MOSITES CONSTRUCTION COMPANY*

4839 Campbells Run Road, Pittsburgh, PA 15205
PHONE: 322-2255 FAX: 788-1169
CONTACT: M. Dean Mosites
*Commercial / Construction management
Exterior / General / Highway / Industrial
Interior / Renovations*

■ NELLO CONSTRUCTION COMPANY*

3 Glass Street, Carnegie, PA 15106
PHONE: 276-0010 FAX: 276-8123
CONTACT: Janet Torriero
*Commercial / Construction management
Exterior / General / Industrial / Interior
Renovations*

■ PDG ENVIRONMENTAL, INC.*

102 Technology Drive, Export, PA 15632
PHONE: (724) 325-1449 FAX: (724) 327-3717
CONTACT: Shawn P. Regan
Asbestos abatement contractor

■ POERIO INC.*

P.O. Box 11036, Pittsburgh, PA 15237
PHONE: (412) 366-6767 FAX: (412) 366-1404
CONTACT: Frank T. Poerio
*Commercial / Construction Management
General / Interior / Renovations*

■ REPAL CONSTRUCTION CO., INC.

2400 Ardmore Blvd., Suite 400,
Pittsburgh, PA 15221

PHONE: 271-3700 FAX: 271-3866
CONTACT: Bill Palmer, Jr.
*Commercial / Construction management
Exterior / General / Industrial / Interior
Renovations / Residential*

■ TEDCO CONSTRUCTION CORPORATION*

TEDCO Place, Carnegie, PA 15106
PHONE: 276-8080 FAX: 276-6804
CONTACT: Beth Cheberenchick
*Commercial / Construction management
Exterior / General / Industrial / Interior
Renovations*

■ TURNER CONSTRUCTION COMPANY*

1400 Koppers Building
436 Seventh Avenue, Pittsburgh, PA 15219
PHONE: 412-255-5400 FAX: 412-255-0249
CONTACT: Raymond H. Steeb, III
*Commercial / Construction management
General / Industrial / Interior / Renovations*

■ JOSEPH VACCARELLO, JR. INC.*

P.O. Box 663, Carnegie, PA 15106
PHONE: 412-276-2755 FAX: 412-276-7985
CONTACT: Gary Dickinson
*Commercial / Highway / Industrial
Residential / Bulk excavation
Site development*

■ VOLPATT CONSTRUCTION CORPORATION*

250 Curry Hollow Road, Pittsburgh, PA 15236
PHONE: 412-653-5454 FAX: 412-653-5755
CONTACT: Raymond A. Volpatt
*Commercial / Construction management
Exterior / General / Industrial / Interior
Renovations*

■ WJG CONTRACTING, INC.

P.O. Box 4286, Pittsburgh, PA 15203-0286
PHONE: 381-7098 FAX: 381-7698
CONTACT: William J. Gormley, Jr.
*Commercial / Construction management
Exterior / General / Interior / Renovations*

■ WRIGHT CONTRACT INTERIORS

2735 Railroad Street, Pittsburgh, PA 15222
PHONE: 412-471-2700 FAX: 412-471-5008
CONTACT: Robert C. Baiel
Commercial / Interior

Samuel A. Taylor

Architect, Allegheny County Department of Public Works



Family: wife, Janet, and daughters, Robin and Jennifer.

Years in practice: 21.

Education: B.S. Architecture, Ohio State University.

First job: research/design consultant to O.S.U. for a proposed sub-surface habitation complex in West Virginia.

Project you're proudest of: the soon-to-be-renovated old Allegheny County Jail.

Most embarrassing project/moment: backstop for the Pittsburgh Police Firing Range. When we were finished, there were more bullets bouncing back than when we started.

Building you wish you had designed: former Alcoa headquarters.

Building you'd like to tear down: to be politically correct, I dare not say.

If you hadn't been an architect, you would have been: an industrial designer.

If someone made a movie of your life, who would play you? I would request Arnold Schwarzenegger, but settle for Martin Mull.

If you could live anywhere in the world, it would be: on the beach, any beach.

The best part of the job is that: my days are unpredictable and therefore never dull.

If you could change something about your job, it would be: the perception others have of what an architect should be.

You've always wanted to tell your boss: mail my paycheck to Paris, I just hit the lottery!

You've always wanted to tell your clients: if you want to play architect, then let me play client.

The most annoying thing architects do is: ignore time and budget constraints.

Your advice to young architects is: listen to the words in Frank Sinatra's *That's Life*. It sums up the profession perfectly.

The one thing you wish they'd teach in school is: the business side of the profession.

Favorite interior: Soldiers and Sailors Memorial Hall.

Favorite building: impossible to choose.

Favorite city: Paris or New York.

Favorite architect: Charles Renne Mackintosh.

Favorite Pittsburgh neighborhood: Oakland/Schenley Park on a warm summer afternoon or Shadyside any time.

Most architecturally appealing restaurant in Pittsburgh: The Grand Concourse.

Best gift to give an architect: enough money to do his/her own home.

Wish list for Pittsburgh/Downtown: restore and fill what's there and forget about indoor malls.

Your thoughts on the next big architectural trend: hopefully, individualism.

Someday, I'd like to: bicycle the entire length of Rt. 66.

I want to be remembered for: turning our public buildings into places we can be proud of.

People would be surprised to know that: the public sector is the best place to gain comprehensive experience.

The secret to my success is: having more accomplishments than disappointments.

ENGINEERS' DIRECTORY

A LISTING OF AREA ENGINEERS AND THEIR PROFESSIONAL SERVICES. To include your firm in this directory, call Tom Lavelle at 882-3410.

■ BARBER & HOFFMAN, INC.

101 E. Diamond Street, #302
Butler, PA 16001-5905
PHONE: (724) 477-1298 FAX: (724) 285-6675
CONTACT: Michael R. Miller, P.E.
Consulting / Structural

■ BRACE ENGINEERING, INC.

3440 Babcock Boulevard, Box 15128
Pittsburgh, PA 15237
PHONE: 367-7700 FAX: 367-8177
CONTACT: Frank C. Brace
Structural

■ BURT HILL KOSAR RITTELMANN ASSOCIATES

400 Morgan Center, Butler, PA 16001
PHONE: (724) 285-4761 FAX: (724) 285-6815
CONTACT: David R. Linamen, P.E.
Construction / Consulting / Electrical Mechanical

■ BURT HILL KOSAR RITTELMANN ASSOCIATES

650 Smithfield Street, Pittsburgh, PA 15222
PHONE: 394-7000 FAX: 394-7880
CONTACT: Don Rimer
Construction / Consulting / Electrical Mechanical

■ CIVIL & ENVIRONMENTAL CONSULTANTS, INC.

333 Baldwin Road, Pittsburgh, PA 15205
PHONE: 921-3402 FAX: 921-1815
CONTACT: Gregory P. Quatchak, P.E.
Testing & Inspection / Civil / Construction Consulting / Environmental / Geotechnical

■ CLAITMAN ENGINEERING ASSOC., INC.

1340 Old Freeport Road, Pittsburgh, PA 15238
PHONE: 963-6700 FAX: 963-7217
CONTACT: Robert Rosenthal
Consulting / Mechanical

■ DODSON ENGINEERING, INC.

420 One Chatham Center, Pittsburgh, PA 15219
PHONE: 261-6515 FAX: 261-6527
CONTACT: Herbert J. Brankley, P.E., Gregory L. Calabria, P.E.
Consulting / Mechanical

■ ELWOOD S. TOWER CORPORATION

8150 Perry Highway, Suite 319,
Pittsburgh, PA 15237
PHONE: 369-7777 FAX: 364-8115
CONTACT: Theodore H. Dannerth, P.E.
Consulting / Electrical / Mechanical Telecommunications

■ ENGINEERING MECHANICS, INC.

4636 Campbells Run Road, Pittsburgh, PA 15205
PHONE: 923-1950 FAX: 787-5891
CONTACT: Daniel Grieco, Jr., P.E.
Testing & Inspection / Geotechnical Consulting / Environmental Blasting Vibrations

■ FIRSCHING, RUSBARSKY AND WOLF ENGINEERING, INC.

4240 Greensburg Pike, Pittsburgh, PA 15221
PHONE: 271-5090 FAX: 271-5193
CONTACT: Daniel J. Wolf / David D. Rusbarsky
Consulting / Mechanical

■ FOREMAN ARCHITECTS ENGINEERS, INC.

P.O. Box 189, Zelienople, PA 16063
PHONE: 724-452-9690 FAX: 724-452-0136
CONTACT: David E. Foreman, P.E.
Civil / Consulting / Electrical / Mechanical Structural

■ THE GATEWAY ENGINEERS, INC.

1011 Alcon Street, Pittsburgh, PA 15220
PHONE: 921-4030 FAX: 921-9960
CONTACT: Rose Griffin
Civil / Testing & Inspection / Consulting Environmental

■ GIPSON ENGINEERING

122 Kerr Road, P.O. Box 14359
Pittsburgh, PA 15239
PHONE: (724) 339-2911 FAX: (724) 339-8814
CONTACT: Stephen R. Gipson, P.E.
Consulting / Electrical / Mechanical Structural

■ HORNFECK ENGINEERING, INC.

1020 North Canal Street, Pittsburgh, PA 15215
PHONE: 781-1500 FAX: 781-5593
CONTACT: Richard W. Petrie, P.E.
Consulting / Electrical / Instrumentation Lighting / Telecommunications

■ JSA/LAWLER ENGINEERS

P.O. Box 15508, Pittsburgh, PA 15244
PHONE: 412-788-1500 FAX: 412-787-5960
CONTACT: M. Timothy Lawler, Phd, P.E.
Consulting / Electrical / Mechanical

■ L. ROBERT KIMBALL & ASSOCIATES

415 Moon Clinton Road
Moon Township, PA 15108
PHONE: 262-5400 FAX: 262-3036
CONTACT: Thomas L. Blank, CIH, CSP
Joseph F. Moon, PE
Asbestos Management / Environmental Site Assessments / Indoor Air Quality Lead Based Paint Management Radon Testing-Mitigation Industrial Hygiene-Safety Civil / Site / Structural

■ KONEFAL & COMPANY, INC.

1108 South Braddock Avenue,
Pittsburgh, PA 15218
PHONE: 244-5044 FAX: 244-5045
CONTACT: Stephan V. Konefal, P.E.
Structural

■ LENNON, SMITH, SOULERET ENGINEERING, INC.

846 Fourth Avenue
Coraopolis, PA 15108
PHONE: 264-4400 FAX: 264-1200
CONTACT: Daniel S. Gilligan
Civil / Consulting / Environmental

■ PETER F. LOFTUS DIVISION

Eichleay Engineers Inc., 6585 Penn Avenue
Pittsburgh, PA 15206-4407
PHONE: 363-9000 FAX: 365-3304
CONTACT: Glenn Avick
Civil / Consulting / Electrical / Mechanical Structural / Telecommunications Fire Detection & Protection

■ MAZZA ENGINEERING ASSOCIATES, INC

236 Center Grange Road, Aliquippa, PA 15001
PHONE: (724) 728-8110 FAX: (724) 728-8559
CONTACT: Jacqueline K. Mazza
Civil / Consulting / Mechanical / Structural Transportation

■ MEUCCI ENGINEERING, INC.

409 Elk Avenue, Carnegie PA 15106
PHONE: 276-8844 FAX: 276-2960
CONTACT: James B. Fath, P.E.
Consulting / Electrical / Mechanical

■ MURRAY ASSOCIATES, INC.

413 Penn Avenue, Turtle Creek, PA 15145
PHONE: 823-2020 FAX: 824-7302
CONTACT: Debbie Faust
Structural / Civil / Geotechnical Environmental / Testing & Inspection Consulting

■ POLYTECH, INC.

Three Gateway Center, 12th Floor, East Wing
Pittsburgh, PA 15222
PHONE: 995-1300 FAX: 995-1306
CONTACT: Michael C. Moore
Civil / Consulting / Electrical Mechanical / Structural / Transportation Construction Management

■ RCF ENGINEERS, INC.

Fourth Floor, 209 Sandusky Street
Pittsburgh, PA 15212
PHONE: 231-5500 FAX: 231-6427
CONTACT: Mark S. Wolfgang, P.E., President
Testing & Inspection / Consulting Electrical / Environmental / Mechanical Telecommunications

■ SAI CONSULTING ENGINEERS, INC.

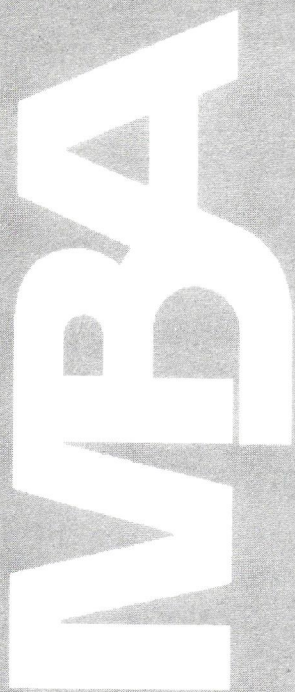
300 Sixth Avenue, Pittsburgh, PA 15222-2571
PHONE: 392-8750 FAX: 392-8785
CONTACT: Walter S. Krasneski, Jr.
Testing & Inspection / Civil / Consulting Structural / Transportation

■ SE TECHNOLOGIES, INC.

98 Vanadium Road, Bridgeville, PA 15017
PHONE: 221-1100 FAX: 257-6103
CONTACT: Frank Berchin
Testing & Inspection / Civil / Construction Consulting / Electrical / Environmental Geotechnical / Structural Telecommunications / Transportation

■ TRANS ASSOCIATES ENGINEERING CONSULTANTS, INC.

2419 Baldwin Road, Pittsburgh, PA 15205
PHONE: 412-937-8070 FAX: 412-937-8071
CONTACT: Sandra A. Sabo
Civil / Consulting / Transportation



Building Excellence

***In design...craftsmanship...
project teamwork...client service...
meeting the challenge of a difficult job...
innovation...use of new technology***

The Master Builders' Association salutes its contractor members who bring excellence to the projects they build.

Congratulations to the 1998 Building Excellence Award Recipients:

BEST PROJECT OVER \$5 MILLION:

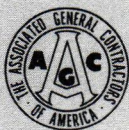
Magee-Womens Hospital
Turner Construction Company
Tsoi/Kobus & Associates

BEST PROJECT UNDER \$5 MILLION:

Oberg Industries Office Building Addition
Uhl Construction Company, Inc.
Burt Hill Kosar Rittelmann Associates

EXCELLENCE IN CRAFTSMANSHIP:

Nemacolin Woodlands Spa &
Resort/Lafayette Hotel – Interior Millwork
Giffin Interior & Fixture, Inc.
Hughes Design Associates – Interior Package



Western Pennsylvania Building
Chapter of the Associated General
Contractors of America (AGC)

Master Builders' Association of Western PA
2270 Noblestown Road
Pittsburgh, PA 15205
(412) 922-3912
www.mbawpa.org/AIA-MBA

GENERAL SERVICES DIRECTORY

A LISTING OF AREA BUSINESSES AND THEIR PROFESSIONAL SERVICES. To include your firm in this directory, call Tom Lavelle at 882-3410.

BLUEPRINTS

■ MATHIAS REPROGRAPHICS

950 Penn Avenue, Pittsburgh, PA 15222
PHONE: 281-1800 FAX: 281-8243
CONTACT: Mark Mathias

Digital document plotting/printing, Blueprinting, Construction Document Management, Large format bond copies, Photo reproductions, Copiers, plotters, printers, papers, inks, toners.

■ TRI-STATE REPROGRAPHICS, INC.

911 Penn Avenue, Pittsburgh, PA 15222
PHONE: 281-3538 FAX: 281-3344
CONTACT: George R. Marshall

Document Management, Digital B&W Plotting, Blueprinting, Specs/Binding, Large & Small Format Color Copies, Mounting/Laminating, Supplies, Pickup & Delivery

■ WASHINGTON REPROGRAPHICS, INC.

DOWNTOWN PITTSBURGH • 514 Liberty Avenue
2 ROBINSON TOWNSHIP LOCATIONS
700 Vista Park Drive & 400 Hightower Boulevard
WASHINGTON LOCATION • 234 E. Maiden Street
CALL: 788-0640 or visit our website at
www.reproresource.com.
CONTACT: John J. Dziak

Print project management, Digital black & white (D/prints), Plotting, Scanning, CADD Services, Specs/Binding, Color display services, Mounting/Laminating, Equipment/Supplies, Blueprinting, Pickup & delivery

CADD SERVICES

■ THE WOZNIAK CORPORATION

2103 Montour Street, Coraopolis, PA 15108
PHONE: 412-264-7444 FAX: 412-264-7441
EMAIL: WOZCORP@aol.com
CONTACT: David Walter Wozniak, AIA, NCARB
CONTRACT DRAFTING – AutoCad or Manual
....Plus Pre-Design and Pre-Construction Services, Construction Documents Review & Coordination....and other support services.

HVAC

■ CLIMATECH, INC.

P.O. Box 367, Bridgeville, PA 15017
PHONE: 221-3844 FAX: 221-7786
CONTACT: Mitch Taback
HVAC design & budget pricing, System evaluation, Consultation, Installation, Emergency service, Repair, Air balancing, Comfort & energy enhancements, Commercial, Industrial, Residential

OFFICE FURNITURE

■ WORKSCAPE, INC.

436 S. Main Street, Pittsburgh, PA 15220
PHONE: 920-6300 FAX: 920-7570
CONTACT: Dave Sauter
Sales, Service, Installation and project management for all of your KNOLL & KIMBALL office furniture. Special discounts for architects.

SIGNAGE

■ C-AD SIGNS

111 Third Street, Pittsburgh, PA 15215-2002
PHONE: 782-1147 FAX: 782-0645
CONTACT: Jack Harnick
Commercial signage, illuminated and non-illuminated. Design, fabrication, erection and maintenance.

■ MVP/MATHIAS VISUAL PRODUCTS

950 Penn Avenue, Pittsburgh, PA 15222
PHONE: 281-1800 FAX: 281-8243
CONTACT: Chris Mathias
Signs, banners, exhibits, displays. COLOR DIRECT prints & Duratrans. Digital inkjet printing. Mounting & laminating. Display frames, stands, lightboxes. Trade show exhibits.

SPECIFICATIONS

■ DEBORAH D. MARTONIK, CCS, WBE

EMAIL: Jaymax@pathway.net
PHONE: 1-888-220-4600 PHONE/FAX: 475-4266
CONTACT: Deb Martonik
Contract Documents, Architectural and Engineering Specifications Divisions 1-14 Certified Construction Specifier.

WATERPROOFING CONTRACTOR

■ T-n-D OF PITTSBURGH, INC.

1422 Frey Road, Pittsburgh, PA 15235
PHONE: 412-374-1330 FAX: 412-374-1330
CONTACT: Art Hawk or John Gibbon
W. PA's selected contractor utilizing KOCH material's "TUFF-N-DRI" waterproofing systems. "GUARANTEED DRY"

With the new General Services Directory, you can list your business by specialty in *Columns*. List your firm under the heading of your choice.

- Security Systems
- Blue Prints
- HVAC
- Electrical Service
- Design
- Roofing
- Signage
- Windows and Doors
- Brick Waterproofing
- Interior Design
- CADD Services
- Lumber
- Data
- Flooring
- Carpeting
- Tile
- Plumbing

Call Tom Lavelle at 412-882-3410 for details on how you can reach the right audience with our new directory!

LITERALLY THE BEST

CHECK OUT OUR REFERENCES

PETERS TOWNSHIP
PUBLIC LIBRARY
Mc MURRAY, PA

Structured to meet the everchanging demands of our clients, we provide a full range of engineering and construction services. Today, Nello Construction Company continues to build on it's strength and offers a full range of construction services—from general construction, project management, and construction management for over 47 years. The scope and variety of our work enables us to expand our creative talents continuously.

NELLO

CONSTRUCTION COMPANY

3 Glass Street • Carnegie, Pennsylvania 15106 • 412/276-0010 FAX 412/276-8123
Project Architects: Ross, Schonder, Sterzinger, Cupcheck

THE BOLD LOOK OF KOHLER®



See our extensive display of plumbing products for the kitchen and bath, including the cast iron Vintage™ Bath. Quality you'd expect from Kohler.

THE REPUTATION OF

Crescent Supply

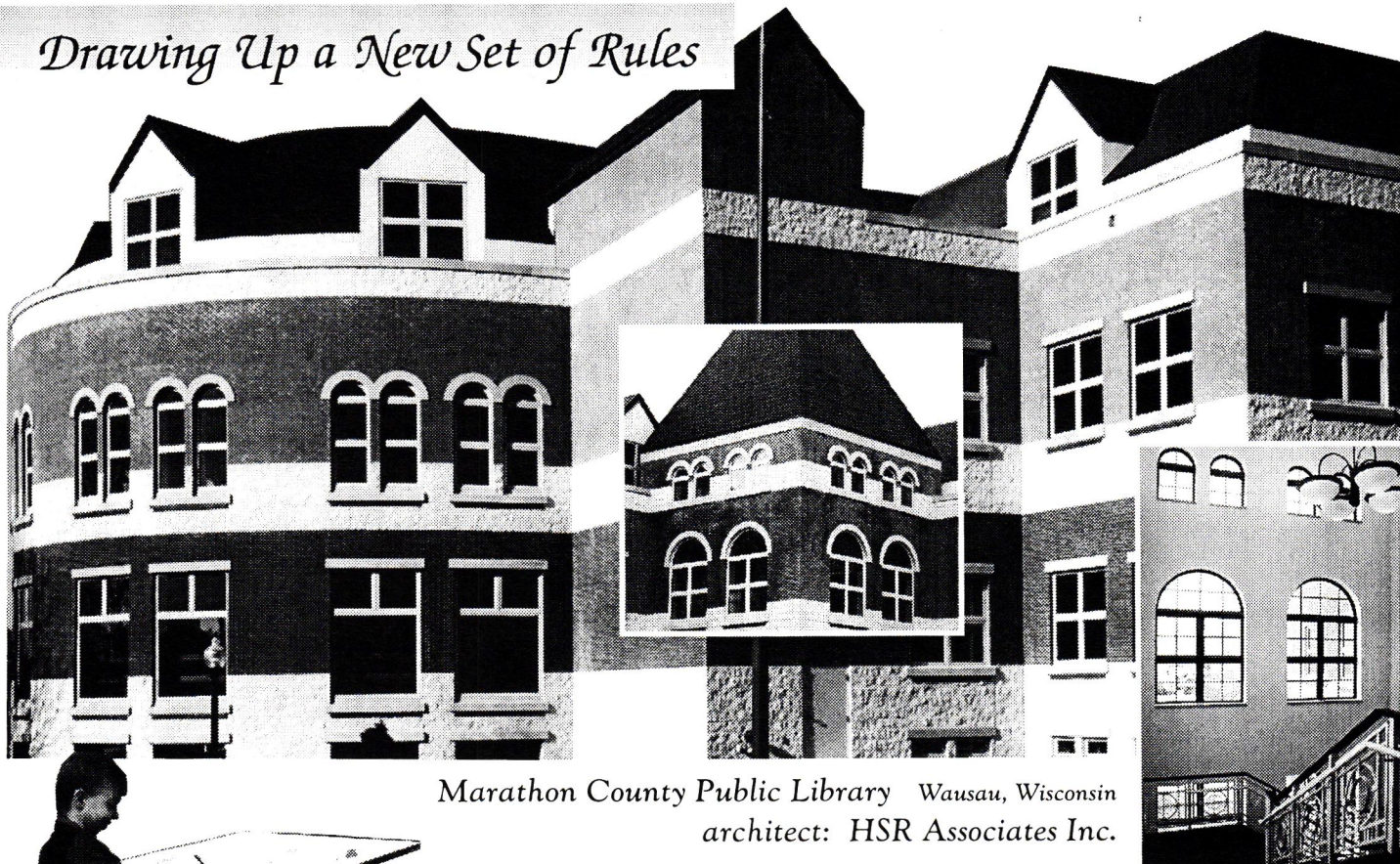


Crescent Supply has served local design professionals for nearly 45 years. Our Pittsburgh showroom features 6,000 square feet of quality bathroom and kitchen products with experienced, full-time personnel to assist you and your clients in new construction and renovation.

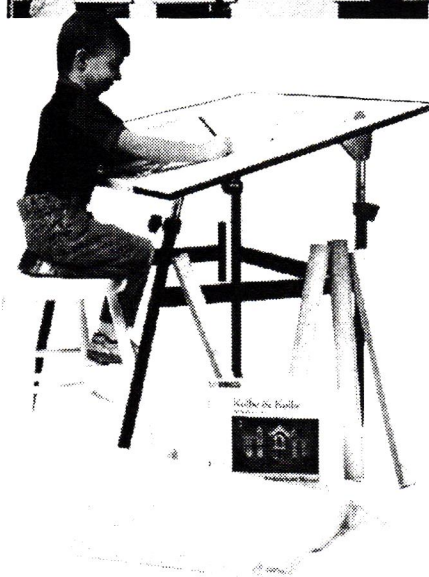
412 782-3300

6301 Butler Street, Pittsburgh
Under the Robert D. Fleming (62nd Street) Bridge
Showroom hours 9-5 M-F, Wednesdays to 8, Saturday 10-2

Drawing Up a New Set of Rules



Marathon County Public Library Wausau, Wisconsin
architect: HSR Associates Inc.

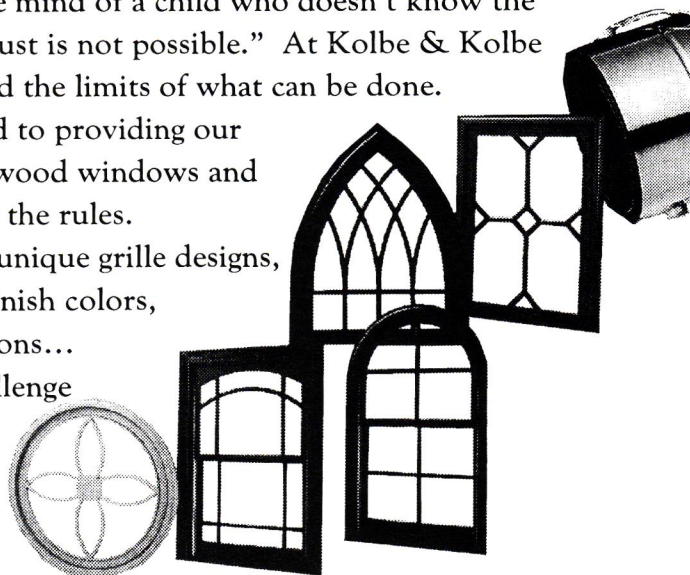


Design with the mind of a child who doesn't know the meaning of, "It just is not possible." At Kolbe & Kolbe we have extended the limits of what can be done.

We are dedicated to providing our customers with wood windows and doors that break the rules.

Custom shapes, unique grille designs, exotic exterior finish colors, historic replications...

we meet the challenge of making your designs a reality.



Local
Kolbe & Kolbe
Projects include:

- Nevillewood Clubhouse
- Nevillewood Carriage Houses
- Nevillewood Private Residences (several)
- Southpointe Country Club
- Chestnut Ridge Condominiums
- Fox Chapel Presbyterian Church
- Westminster Presbyterian Church
- D.T. Watson Rehabilitation Center
- Curry Senior Citizens Home
- Grace Manor Nursing Home

Al Lorenzi
BUILDING PRODUCT CENTERS

Washington, PA
I-70, Exit 6
1600 Jefferson Ave.

McMurray, PA
Rt. 19 South
Donaldson's Crossroads

Wexford, PA
Perry Highway (Rt. 19)
across from Wright Pontiac

(724) 222-6100 (724) 941-4800 (724) 933-3220

www.lorenzilumber.com