

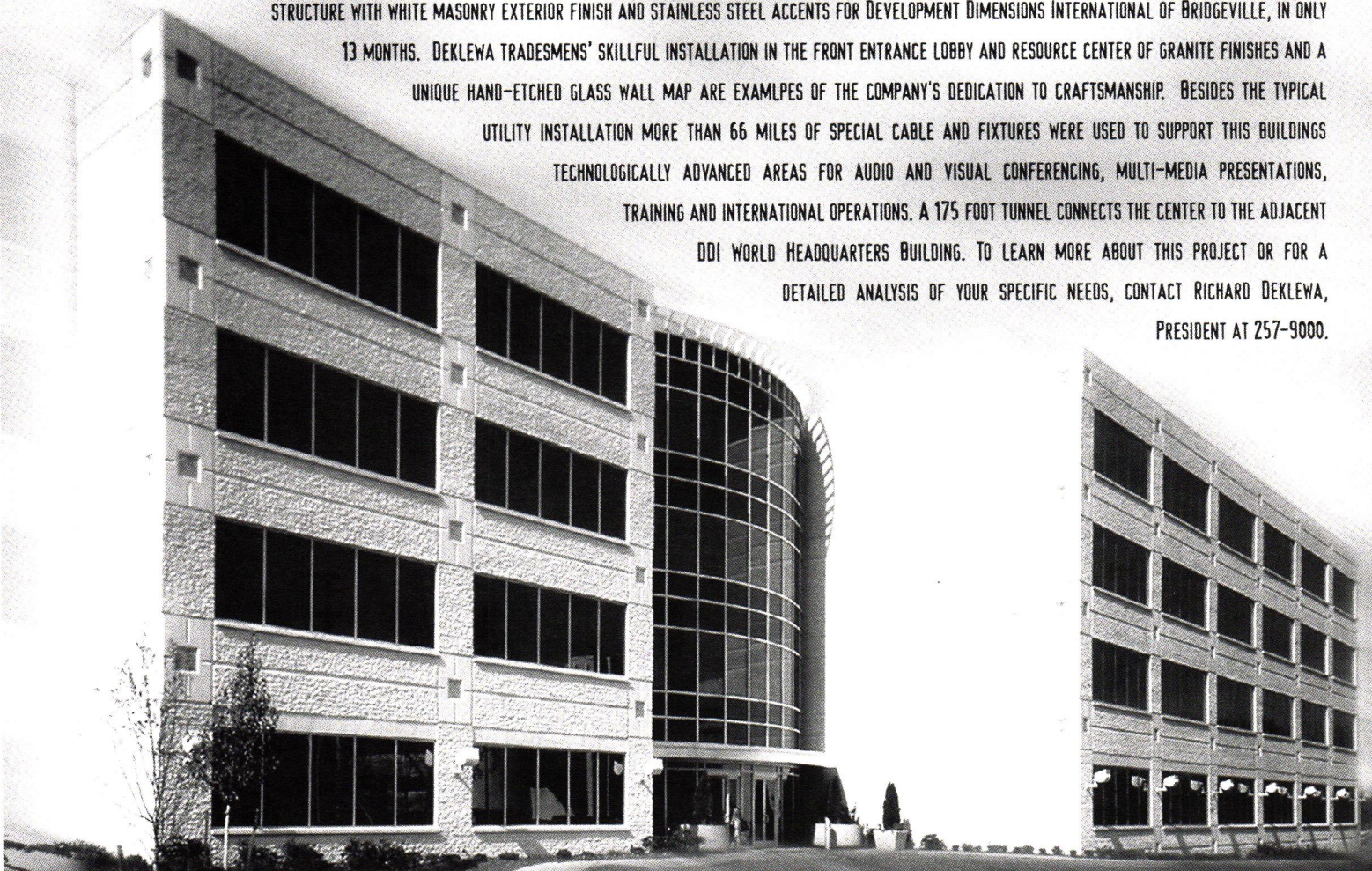


COLUMNS



DEKLEWA DEVELOPS A NEW DIMENSION

THE RECENT COMPLETION BY JOHN DEKLEWA & SONS, INC. OF THE NEW CENTER FOR ADVANCED LEARNING AND ASSESSMENT TECHNOLOGY SIGNALS ANOTHER MILESTONE IN THE CONSTRUCTION FIRM'S LONG HISTORY OF PROJECTS FOR HIGH PROFILE CLIENTS. DEKLEWA CONTRACTORS ERECTED THIS "STATE OF THE ART" FOUR STORY STEEL FRAME STRUCTURE WITH WHITE MASONRY EXTERIOR FINISH AND STAINLESS STEEL ACCENTS FOR DEVELOPMENT DIMENSIONS INTERNATIONAL OF BRIDGEVILLE, IN ONLY 13 MONTHS. DEKLEWA TRADESMEN'S SKILLFUL INSTALLATION IN THE FRONT ENTRANCE LOBBY AND RESOURCE CENTER OF GRANITE FINISHES AND A UNIQUE HAND-ETCHED GLASS WALL MAP ARE EXAMPLES OF THE COMPANY'S DEDICATION TO CRAFTSMANSHIP. BESIDES THE TYPICAL UTILITY INSTALLATION MORE THAN 66 MILES OF SPECIAL CABLE AND FIXTURES WERE USED TO SUPPORT THIS BUILDING'S TECHNOLOGICALLY ADVANCED AREAS FOR AUDIO AND VISUAL CONFERENCING, MULTI-MEDIA PRESENTATIONS, TRAINING AND INTERNATIONAL OPERATIONS. A 175 FOOT TUNNEL CONNECTS THE CENTER TO THE ADJACENT DOI WORLD HEADQUARTERS BUILDING. TO LEARN MORE ABOUT THIS PROJECT OR FOR A DETAILED ANALYSIS OF YOUR SPECIFIC NEEDS, CONTACT RICHARD DEKLEWA, PRESIDENT AT 257-9000.



Project Architect: Johnson/Schmidt & Associates

JOHN DEKLEWA & SONS, INC.

1273 Washington Pike • P.O. Box 158 • Bridgeville, PA 15017 • (412) 257-9000

GENERAL CONTRACTORS BUILDING SUCCESS

Future Tense

by Ed Shriver, AIA



"Most of us are about as eager to be changed as we were to be born, and go through our changes in a similar state of shock."

— JAMES BALDWIN

I decided I needed to make a change

back in September after 20 years with the same firm, so I resigned. Between that, the end of my term as president of the chapter, and the general millennium hoopla, I've been thinking a lot about change. I promise this isn't going to be an article about the wondrous changes to come, or how far we've come in the last 100 years. It's not even going to be a pseudo debate over the relative advantages brought about by the invention of indoor plumbing or the Internet. Indoor plumbing wins, hands down! What I've been thinking about is the *process* of change.

Whether it's changing jobs, changing some program at the chapter, or making changes in the city, change represents a trek into the unknown. The Chinese have a saying: "in chaos lies opportunity". I've been told that in Chinese, the words for chaos and change are the same. My Mandarin isn't good enough to disagree. As architects though, change is an area where we have considerable experience, at least with other people's changes. Our clients hire us to solve problems, to help them make changes that improve their lives. James Baldwin, the great American author of the early 20th century said, "Most of us are about as eager to be changed as we were to be born, and go through our changes in a similar state of shock." I can attest to this personally. Change may mean opportunity, but we should recognize that change can be frightening, or at least unsettling.

It takes courage to make changes, to abandon the ways things have been, setting sail for some uncharted land of what could be. It's not the short term, adrenaline rush sort of courage that comes with a threat and goes just as quickly. It's a long term, daily courage. It's the courage to persevere. And it's a collective courage, because very little in this world affects only one person. Vision makes it possible to maintain the long term, collective courage that it takes to make major changes. Without a clear vision of where a change will lead or why it's important, you embark into a black hole of unknown danger and unclear gains.

With a clear vision, it is easier to maintain the courage to change and to stay the course when the inevitable difficul-

ties arise. It's easier to accept temporary inconvenience for permanent improvement if the vision is clear and compelling. The ability to conceive and then articulate a clear and compelling vision to provide people with a bulwark for their courage as changes occur is also the definition of leadership.

As architects, we are trained to "do the vision thing". We work in the future. Almost everything architects do is future tense, and this is a rare capacity. We are agents of change. But we need to realize that this expertise, this broad experience in conceiving clear and compelling visions, puts us in a unique position, with special responsibilities. We don't typically think of ourselves as leaders. We tend to prefer more collaborative titles. But what we do is *lead*. We need to accept this role, not shy away from it. Running for elective office or serving on a public board is a perfect opportunity to use our leadership skills. If not as public servants, then as citizens, we must work to develop a collective vision and inspire others to leave their comfort zones and follow.

John F. Kennedy said, "To those whom much is given, much is expected." We cannot abdicate our responsibility to others. Not to politicians, not to the AIA, not to anyone else. Those are there to support and facilitate our efforts. We must do this as individuals. Our ability to develop the visions that can solidify people's courage to make changes is sorely needed, especially now.

It has been my great privilege and honor to represent this chapter for the past year. I will miss this job, even the time commitments and impositions. But it has been well worth the effort. It has changed me for the better, and maybe even made me a better architect. I want to thank each and every one of you for that opportunity. In return, I want to challenge you to find some way to put your vision, courage and leadership to work helping our community to change.

IN THIS ISSUE

1999 AIA Pittsburgh Design Awards 6

1999 Middle Pennsylvania Chapter Design Awards 14

News 5
Breaking Ground 19
Calendar 21
Dossier 23

On the cover: Point State Park. Design by Stotz, Hess and MacLachlan (predecessor firm to MacLachlan, Cornelius & Filoni, Inc.). Photo by R.M. Keddal & Associates.

AIA Pittsburgh serves 12 Western Pennsylvania counties as the local component of the American Institute of Architects and AIA Pennsylvania. The objective of AIA Pittsburgh is to improve, for society, the quality of the built environment by further raising the standards of architectural education, training and practice; fostering design excellence; and promoting the value of architectural services to the public. AIA membership is open to all registered architects, architectural interns, and a limited number of professionals in supporting fields.

AIA Pittsburgh
211 Ninth Street
Pittsburgh, PA 15222
Telephone: 412/471-9548
FAX: 412/471-9501

Chapter Officers

Edward A. Shriver, Jr., AIA, President
J. David Hoglund, AIA, First Vice President
Paul B. Ostergaard, AIA, Second Vice President
Charles DeLisio, AIA, Secretary
Alan J. Cuteri, AIA, Treasurer
Anne J. Swager, Executive Director

Columns Staff

Cheryl R. Towers, Editor
Joseph Ruesch, Art Director

Editorial Board

David J. Vater, AIA, Chair
Robert J. Bailey, AIA
Alan L. Fishman, AIA
Donald G. Zellman, AIA

COLUMNS is published ten times a year by, and primarily for, members of AIA Pittsburgh, A Chapter of the American Institute of Architects. Preference may be given to the selection of works, articles, opinions, letters, etc. of members for publication. However, in the interest of furthering the goals of the Chapter, as stated monthly at the top of the masthead and in the membership directory, COLUMNS will publish the names of and properly credit non-members, whether as participants in the design of works submitted by a member, or as designers of their own work, or as authors of articles, opinion or letters.

Opinions expressed by editors and contributors are not necessarily those of AIA Pittsburgh. The Chapter has made every reasonable effort to provide accurate and authoritative information, but assumes no liability for the contents.

A Decade of Difference

by Anne Swager

Until recently I'd never given much thought

to the end of the century and the beginning of the new. Born rather close to the middle of this soon to be past century, maybe it's just that I took it for granted that barring some unforeseen accident or hideous disease, I'd be rolling into the new millennium. Whatever the reason, it's pretty hard to miss the national hoopla about the new millennium that really doesn't begin until 2001. Never one to miss a party, I'll celebrate its arrival this year and probably next year as well.



"While all of these changes along with the many that won't fit in a one page column are noteworthy, none are nearly as important as seeing a Pittsburgh project on the cover of October's Architectural Record."

Whether it's the surrounding hoopla or the dawning that I really am middle aged and can't escape it, I have been giving a bit of thought to what this new century might mean. Since I can't even fathom the changes that will continue to happen in my lifetime much less the changes that will occur in the next century, I've been thinking about how AIA Pittsburgh has changed since I've been here. May 15, 2000 will mark my 10 year anniversary with AIA Pittsburgh, which is quite auspicious in these times when people change careers much like they change hair color.

When I started at AIA Pittsburgh, we were in transition waiting for our new office space at the CNG Tower to be completed. I sat in a borrowed conference room while Nancy Tragard, the only other employee, in a closet sized office with one phone, one phone line and no computer. We filed in cardboard boxes and did document invoices by hand with a calculator. *Columns* was written and produced by an outside consultant. It varied in size and there was constant complaining about its graphic integrity. Design Awards had 62 entries and the big event was a lecture by the jury chair. I didn't know that Burt Hill was the biggest firm then as it is now until at least three weeks into my tenure. On a document order for Reid and Stuhldreher, I had to ask the man to repeat the firm name three times and then finally asked him to spell the name when I still couldn't get it. Certainly, ten years has brought a number of changes.

There are obvious changes like storefront office space, six phone lines, four full-time employees, four contract employees, computers for everyone and email as a primary means of communication. We have expanded Design Awards to a week long celebration with a gala evening and separate awards presentation events. *Columns* has grown and we have expanded our communication options by adding a website. Our directory is moving to a digital format, voice mail has replaced pink slips and our membership data base is consolidated between national, AIA PA and AIA Pittsburgh.

While all of these changes along with the many that won't fit in a one page column are noteworthy, none are nearly as important as seeing a Pittsburgh project on the cover of October's *Architectural Record*.

The concept of Pittsburgh as a growing design center was not on anyone's radar screen ten years ago. At most national meetings, your Pittsburgh representatives had to be the brightest shining stars to prove that we weren't from a backwater town still mired in grit and grime. This year, out of nine *Business Week/Architectural Record* Awards, two go to home town firms and best of all they were built right here. That stunning curtain wall on the front of *Architectural Record* is on our riverfront. The Intelligent Workplace, a remarkable laboratory for cutting edge building systems is in Oakland. Sure there are still a number of people who don't know that Pittsburgh has a thriving architectural community of national renown, but then they probably don't realize that french fries go best with Heinz ketchup and farkleberries are only to be had during the holiday season.

The onus is on us to make sure the rest of the world knows what we are. I want to add my congratulations to The Design Alliance and Rusli Associates for The Alcoa Corporate Center and to Bohlin Cywinski Jackson, Volker Hartkopf, Steve Lee and Pierre Zoelly, AIA for The Intelligent Workplace. You deserve the accolades. Thanks for putting us on the map. You make my job so much easier!



Columns is printed on recycled paper.

Outstanding Contributions in Historic Preservation

The Pittsburgh History & Landmarks Foundation presented eighteen *Awards of Merit* to individuals and organizations for outstanding contributions made to the preservation of Pittsburgh's historic architecture and for increasing public knowledge about our historical heritage. The 1999 recipients are:

Architectural Tourism Marketing Committee, John DeSantis, and Gerald Lee Morosco, AIA:

for raising awareness of Pittsburgh's Architectural heritage through "Living Architecture Alive in Pittsburgh."

Artists and Cities, and Landmarks Design Associates (architects):

for adaptive reuse of Constantin Pontiac as the Spinning Plate Artist Lofts in Friendship.

John A. Baranowski of Smith Baron, Inc.: for restoring the Mamaux building, downtown.

Melinda Beard: for her work originally in saving the Mamaux building, downtown.

Bellefield Presbyterian Church: for remodeling the basement into meeting rooms and useable space and for its on-going campaign to restore the stained-glass windows in the sanctuary.

Community Design Center of Pittsburgh and City Source Associates: for establishing a media and tour campaign to promote public interest in affordable home restoration through the Model Home Project at 214 South Millvale Avenue, Bloomfield.

Councilman Jim Ferlo, David Hance of the Highland Park Community Club, and John Kasper: for efforts in averting the threat of covering Highland Park Reservoir Number One.

Michael Kapeluck: for paintings in the traditional style of the Eastern Orthodox Church in St. Peter and St. Paul Ukrainian Orthodox Church in Carnegie.

Dennis J. Kelleher: for restoring "La Tourelle," the former Kaufmann house in Fox Chapel.

Kingsland Scott Bauer Associates: for adaptive reuse of 3441 Butler Street, in conjunction with the Lawrenceville Development Corporation.

Patricia Lowry: for raising public awareness in regard to the need for sound design in architecture and city planning through feature articles in the *Pittsburgh Post-Gazette*.

Anthony and Edi Mainiero: for preserving 141 Mayflower Street, Larimer.

Donna and Jeff Martin: for rehabilitating their house in North Point Breeze.

The National Association of Letter Carriers, Branch 84, and Brenenberg Brown Group: for adaptive reuse of the Brighton Theatre on the North Side.

William and Bonnie Poole: for restoring 920 St. James Street, Shadyside.

Dr. Robert Quinlin and Mr. and Mrs. Frank Giovannitti: for restoring the Giovannitti house (1979-83, Richard Meier, AIA architect) on Woodland Road in Shadyside.

Edward Urban, Deputy Warden of Allegheny County: for maintaining an archive for the Allegheny County Jail, downtown, and sharing photographs and artifacts with Landmarks when the Jail was open for public tours in the fall of 1998.

Western Pennsylvania School for the Deaf, Edgewood: for creative reuse and restoration of its library and auditorium.

PH&LF Awards Scholarships

Recent high school graduates Steven P. Albert, Gregory R. Bykowski, Kathryn R. Davis, and Emily M. Sullivan recently received four year scholarships to colleges of their choice. Applications for next year must be received by April 26, 2000. Contact Louise Sturgess at 412/471-5808 for more information and an application form, or visit the web site at www.phlf.org.

Firm Dead Sure the Smell is Gone

Engineer David Linamen of Burt Hill Kosar Rittelmann Associates led the successful effort to eliminate a pervasive odor problem which brought local and national media attention to the Erie County (PA) Morgue. Visitors to the Erie County Courthouse became ill from rancid fumes emanating from the adjacent morgue while county employees occasionally had to be sent home. Remediation costs for the project were held to approximately \$60,000 and work was expedited in a matter of weeks.

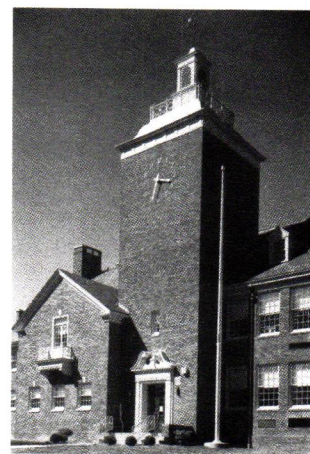
Touring Reaps Rewards

Lynn Mykiety of Coraopolis won dinner for two from Southwest Bistro in a drawing of members of the public who toured all seven architecture offices on "Architects Saturday" back in October.

Correction:

The October cover photo of the Northside Elementary School (Hayes Large Architects) was taken by Jim Schafer.

C O L U M N S



1999

AIA Pittsburgh Design Awards

Architectural Awards are composed of any work of architecture — such as a building, urban design restoration or interior design — completed since January 1, 1994.



PHOTO BY ART GRICE

Architectural Awards

HONOR AWARD

PROJECT: **Ocean Sciences Building**, School of Oceanography, University of Washington
 FIRM: **Bohlin Cywinski Jackson**
 PRINCIPAL IN CHARGE: Jon C. Jackson, AIA
 PRINCIPAL FOR DESIGN: Peter Q. Bohlin, FAIA
 PROJECT MANAGER: Gregory R. Mottola, AIA
 PROJECT TEAM: Stephen C. Gibson, Teresa Bucco, Steven D. Chaitow, Michael D. Maiese, AIA, Rosa Sheng, Shelly Maiese, Shari Ann Lersch, Greg George, Associate AIA, Robert S. Pfaffmann, AIA
 CLIENT: University of Washington
 CONTRACTOR: Turner Construction Company

JURY COMMENTS: *This project was not only consistent from its interior to its exterior, but it also implied an overall sensitivity to the master plan of the campus. It achieved this by using color, transitioning from the heavier earth tones to the lighter colors as it approached the waterfront.*

HONOR AWARD

PROJECT: **School of Fisheries Building**, University of Washington

FIRM: **Bohlin Cywinski Jackson**

PRINCIPAL IN CHARGE: Jon C. Jackson, AIA

PRINCIPAL FOR DESIGN: Peter Q. Bohlin, FAIA

PROJECT MANAGER: C. Roxanne Sherbeck, AIA

PROJECT TEAM: Stephen Altherr, AIA, Veronica Berchok, Raymond Calabro, Randall Curti, Tina Lindinger, Michael Maiese, AIA, Kruti Majmudar, Sean Pulsifer, David Senft

CLIENT: University of Washington

CONTRACTOR: Turner Construction Company

JURY COMMENTS: *Though the program of this project was very complex, the architect competently handles all of its levels. The L-shape massing is particularly nice, and the interior spaces are very clear and based on a well-organized plan. Wonderful attention to details.*



PHOTO BY ART GRICE

HONOR AWARD AND PEOPLE'S CHOICE AWARD*

PROJECT: **Alcoa Corporate Center**

FIRM: **The Design Alliance Architects**

PRINCIPAL IN CHARGE: Martin Edgar Powell, AIA

PRINCIPAL IN CHARGE OF DESIGN: David L. Ross

PRINCIPAL IN CHARGE OF INTERIOR DESIGN: Mary Ann Mozelewski

PROJECT MANAGER: Lisa Dabinett

PROJECT ARCHITECT: Darrell Kauric

PROJECT TEAM: Rick Avon, Dan Delisio, Thomas O. Gray, Lynn Kredel, Jules Labarthe, AIA, Christopher Lasky, John Palmer, William Pope, Michael Ryan, Walter Tien, Matt Wilcox, Sara Mahrer, Michaela Maurer

DESIGN CONSULTANT: Rusli Associates

CONTRACTOR: Turner Construction Company

JURY COMMENTS: *This is a signature building. Its extraordinary curtain wall is absolutely stunning. This project is an example of extraordinary work, by both the client and the architect, to understand how the company works.*



PHOTO BY STEVE HALL © HEDRICH BLESSING

* Members of the public voted for their favorite project during the week that all entries were on display at the Carnegie Museum of Art.



PHOTO BY LOCHWOOD HOEHL

HONOR AWARD

PROJECT: **The Strip Lofts**

PROJECT TEAM: **EDGE Architecture**

PRINCIPAL IN CHARGE: Donald J. MacDonald, AIA

PROJECT TEAM: Gary K. Carlough, AIA, Andrew Owens, Elizabeth Wellman, John Ferri

CLIENT: Frontier Lofts, Strip Ltd.

CONTRACTOR: Allegheny City Restoration

JURY COMMENTS: *This loft space features a gracious sense of livability while still celebrating the value of the place that once existed. This is an example of the ultimate sustainable design strategy. The architect kept within the loft vocabulary and used a sensible restraint in articulating the public spaces. An aspect that is also very interesting is the creation of the outside spaces. So many lofts don't have outside spaces. Yet by pulling away from the windows, the architect created outside spaces for many of the loft units. This detail solves so many different issues.*

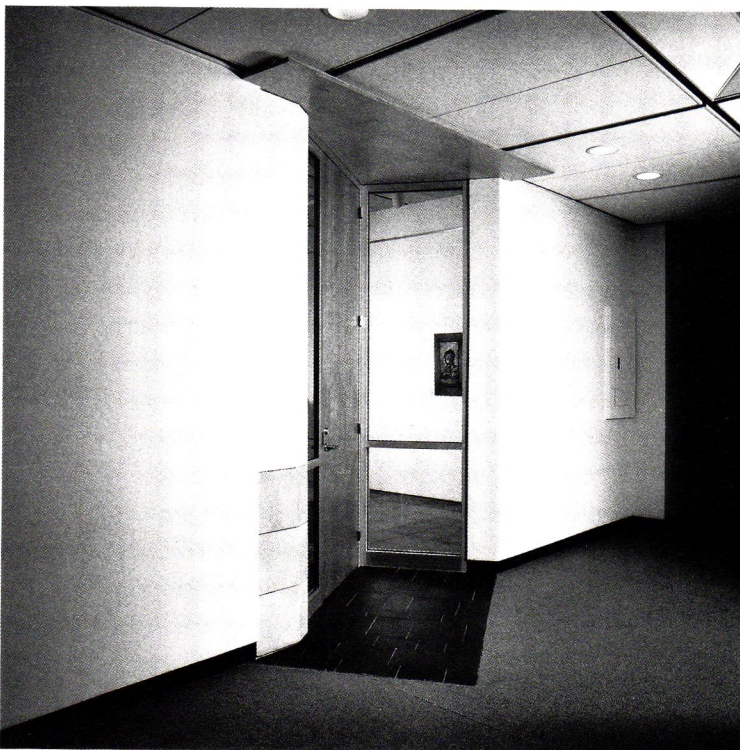


PHOTO BY DAVID ASCHENAS

HONOR AWARD

PROJECT: **Carnegie Gallery – Manderino Library**, California University of Pennsylvania

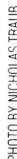
FIRM: **Integrated Architectural Services Corp. (IAS)**

PRINCIPAL IN CHARGE: Douglas T. Philp, AIA

CLIENT: California University of Pennsylvania

CONTRACTOR: Physical Plant, California University of Pennsylvania

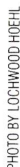
JURY COMMENTS: *This space has a very finished and elegant look. It is rich because the details support more than one meaning and reason for its decision. We were really attracted to the simplicity and elegance of the door.*



THE KITCHENETTE CLEARLY ARTICULATES EACH FUNCTIONAL ELEMENT AND ITS OWN INDEPENDENT ASSEMBLY METHOD. A ROUND, GALVANIZED STEEL DUCT TRUNK SERVES THE SPACE AS WELL AS ARTICULATES THE EMPLOYEE/CLIENT CIRCULATION ROUTE WHICH CONCLUDES IN THE REAR CONFERENCE AREA. ADDITIONAL HEATING AND COOLING IS SUPPLIED BY A HEATING AND COOLING UNIT LOCATED ATOP THE KITCHENETTE.

EXPOSED PLUMBING, OPEN CABINETRY AND BENT GALVANIZED METAL ARE INTEGRATED IN THIS COMPOSITION TO REINFORCE THE IDEA THAT ONE CAN FIND BEAUTY AND FUNCTION IN THE ORDINARY.

DETAIL PHOTO OF KITCHENETTE; CONSTRUCTION PHOTOS DURING DEMOLITION AND CONSTRUCTION; SKETCH SECTION OF KITCHENETTE



JURY COMMENTS: *This project makes a wonderful neighbor. It is simple and the plans are not overdone. The exterior of the project is quiet, but competently detailed. For instance, the balconies minimize the impact of the garages facing the street. The interior spaces, many of them making use of natural light, seem to be genuinely nice spaces to live in, a success considering the cost constraints of the project.*



PHOTO BY DAVID ASCHENAS

CERTIFICATE OF MERIT

PROJECT: **The Denny Row**
 FIRM: **Integrated Architectural Services Corporation (IAS)**
 PROJECT TEAM: John A. Martine, AIA, Lee Calisti, AIA
 CLIENT: Allegheny West Civic Council
 CONTRACTOR: Avanti Construction, Inc.

JURY COMMENTS: *This project is a beautiful, sensitive and well-detailed solution. The architect practiced restraint, making small gestures to an already significant structure. It is a wonderful civic project.*

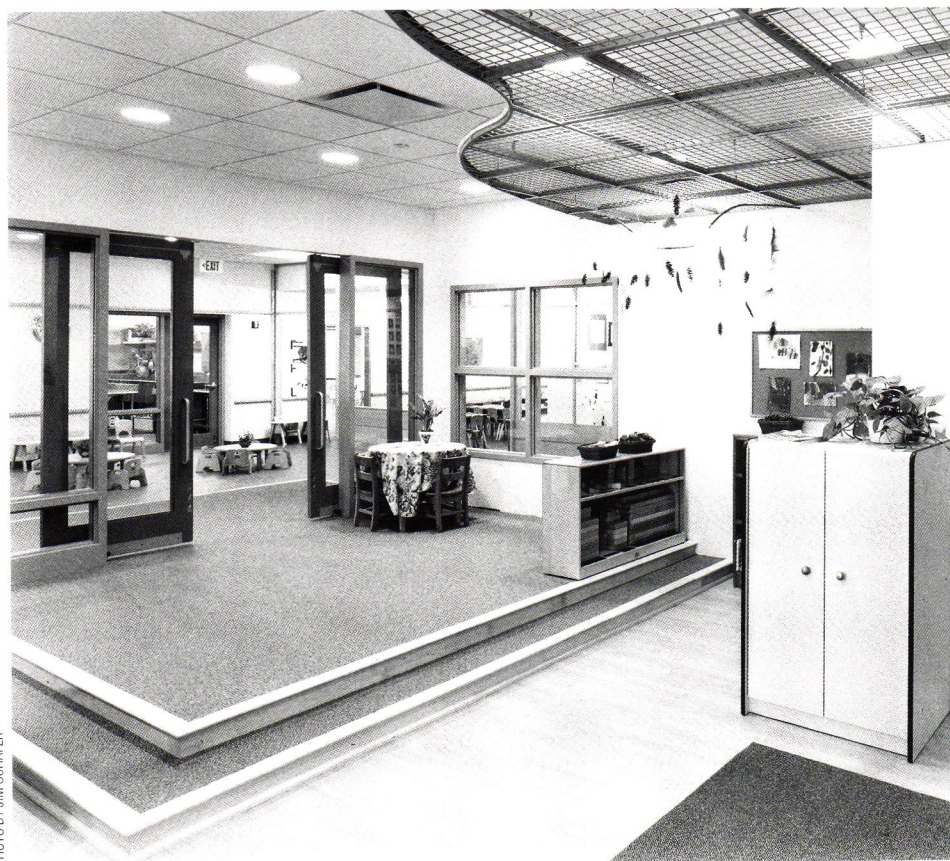


PHOTO BY JIM SCHAEFER

CERTIFICATE OF MERIT

PROJECT: **Margaret Shadick Cyert Center for Early Education**, Carnegie Mellon University
 FIRM: **Perkins Eastman Architects PC**
 PRINCIPAL IN CHARGE: J. David Hoglund, AIA
 PROJECT MANAGER: Stefani Ledewitz, AIA
 PROJECT ARCHITECT: Alan Schlossberg, AIA
 ARCHITECT: Angie Lee
 INTERIOR DESIGNER: Tracy Delisio
 CLIENT: Carnegie Mellon University
 CONTRACTOR: Turner Construction Company

JURY COMMENTS: *A wonderful achievement, this project shows that the architect took care to design an interior space that focuses on children. The scale, interior detailing and use of daylight creates a space that achieves its mission. The use of the children's work enlivens the areas. It is not overdone, trite, or "cute."*

Open Plan Awards

CERTIFICATE OF MERIT

PROJECT: **Gounod's Faust – Opera Production Set**

FIRM: **MacLachlan Cornelius & Filoni**

PRINCIPAL IN CHARGE: Albert Filoni, AIA

PROJECT TEAM: Terrance Shannon and Brian Ulbrich

CLIENT: Pittsburgh Opera

JURY COMMENTS: *By creating different lighting conditions, this project created an environment and utterly transformed the set over the period of a few hours.*



CERTIFICATE OF MERIT

PROJECT: **Interchange** (a publication of the Dance Alloy)

PROJECT TEAM: **EDGE Architecture**

PRINCIPAL IN CHARGE: Donald J. MacDonald, AIA

PROJECT TEAM MEMBER: Andrew Owens

CLIENT: Dance Alloy

JURY COMMENTS: *It is a always a pleasure to see architects successfully designing in other mediums. Though the design of this publication changes in texture based on the different subjects, it still creates an identifiable presence on the newsstand. This presentation of an interesting collection of graphics and text also manages to maintain its legibility.*



Timeless Award

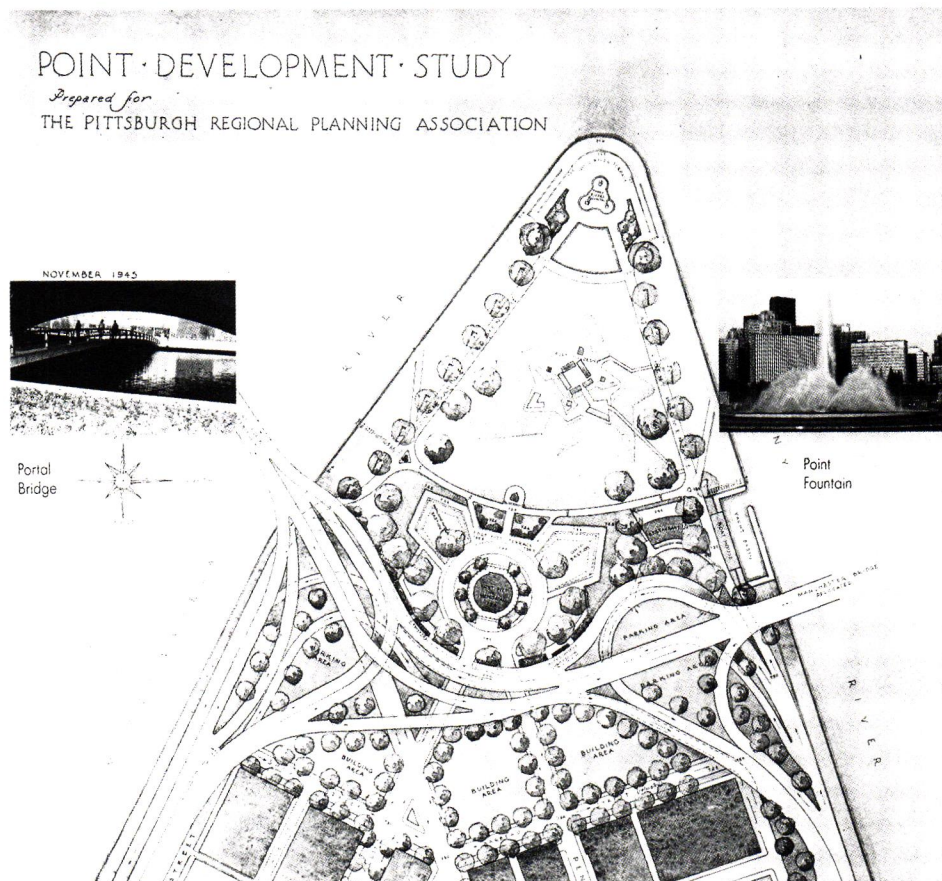
PROJECT: Point State Park, The Portal Bridge, Fort Pitt Museum

FIRM: Stotz, Hess and MacLachlan (predecessor firm to MacLachlan, Cornelius & Filoni, Inc.)

In association with Griswold, Winters & Swain Landscape Architects

CLIENT: Pittsburgh Regional Planning Association

JURY COMMENTS: *This project is about relocating a historic space by making the right specific gestures and using small infrastructure and landscape pieces. The city rediscovers itself because the architect created a place that wasn't there before. This project continues to get better as time goes by.*



Awards for Contributions to the Field of Architecture



HONOR AWARD

INDIVIDUAL: Dennis L. Astorino, AIA

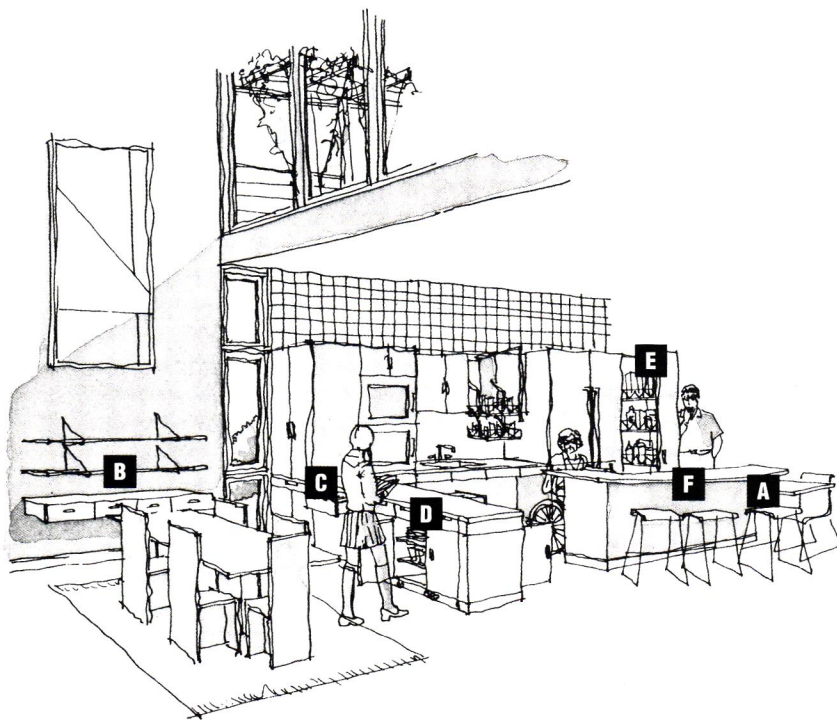
PRESENTER'S REMARKS: *"Dennis L. Astorino, AIA, whose dedication to educating youth and the younger members of the profession along with his efforts to strengthen and protect the practice of architecture has insured our future. Indeed, he has shown us that growing a firm with a national reach does not obviate our responsibility to each other. A gentleman in every way, his leadership is an example to us all." — Ed Shriver, president, AIA Pittsburgh*

SPECIAL AWARD

GROUP: The Southwestern Pennsylvania Design Commission

PRESENTER'S REMARKS: *"For their recognition that the process of choosing an architect for the convention center expansion deserved their utmost care and consideration. By sponsoring a compensated competition based on qualifications, they affirmed the value of the architect's product — design." — Ed Shriver, president, AIA Pittsburgh*

2001 Pittsburgh Post-Gazette Dream Home Competition



The problem required entrants to design a three bedroom, universally accessible house. The winning design will be translated into the model home exhibit at the 2001 Pittsburgh Home and Garden Show.

FIRM: **Perkins Eastman Architects**

PROJECT TEAM: Michael Whartnaby,
Walter Boykowycz, AIA, Stefani Ledewitz, AIA

ILLUSTRATION: Dream Home Competition design by
Perkins Eastman Architects PC. Illustration by Michael
Whartnaby.

- A)** 30" high surface wraps around to meet breakfast bar, provides opportunity for individuals unable to use bar stools to sit with individuals at breakfast bar
- B)** Wall mounted furniture eases cleaning, allows great access for individuals with mobility aids
- C)** Buffet counter features drawers and cabinets that open from both kitchen and dining side, clean dishes and silver can be loaded at kitchen side, placed on table from dining side
- D)** Pull-out pantry offers access from both sides
- E)** Pull-down shelves at upper cabinets
- F)** 36" counter features caster mounted cabinets below drawers, open space below counter is easily re-configurable

THE JURY

Francis Halsband is a fellow of the American Institute of Architects. Francis co-founded the firm of R.M. Kliment & Francis Halsband Architects with her partner in 1972, a firm that has received 39 design awards. Frances is currently chair of the 1999 AIA Committee on Design, and has served in a variety of roles, including the commissioner of the New York City Landmarks Preservation Commission and dean of the School of Architecture at the Pratt Institute. She chaired the first annual *Business Week/Architectural Record* Design Awards jury in 1997, and the AIA National Honor Awards jury in 1995.

At the beginning of her career, **Kate Diamond** lived in Israel for ten years where she served as a lieutenant in the Israeli airforce and practiced architecture. She returned to Los Angeles in 1985 to become a partner in Siegel Skalrek Diamond, where in 1996 she then became the managing principal. Siegel Diamond Architecture is a 10 person design firm located in Los Angeles. Kate is also a professor of architecture at the University of California and a fellow of the American Institute of Architects.

Julie Snow is also a fellow of the American Institute of Architects and is principal of Julie V. Snow Architects located in Minneapolis, Minnesota. Her firm has received numerous awards locally and nationally, recently winning their second *Business Week/Architectural Record* Design Award. As an adjunct professor, Julie also teaches graduate architecture design studios at the University of Minnesota.

1999 AIA Middle Pennsylvania Design Awards

MEDAL WINNER

PROJECT: Recreation Building, Main Gym
Renovation, Penn State University
FIRM: L.D. Astorino & Associates
PRINCIPAL IN CHARGE: Dan Willis, AIA
PROJECT TEAM: Howard Kingsbury (acoustic engineer),
 Mike Zeuger (lighting), Dan Dolan (mechanical
 engineer), Mike Brennan (structural engineer),
 Anna Childe
CLIENT: The Pennsylvania State University
Contractor: Alexander Construction

JURY COMMENTS: *This project epitomizes the maxim that a little goes a long way. The architects are to be congratulated for recognizing the potential of the existing concealed structure, and treating it with respect and restraint in the final solution. The soffit at the perimeter provides containment and highlights the drama of the existing structure.*

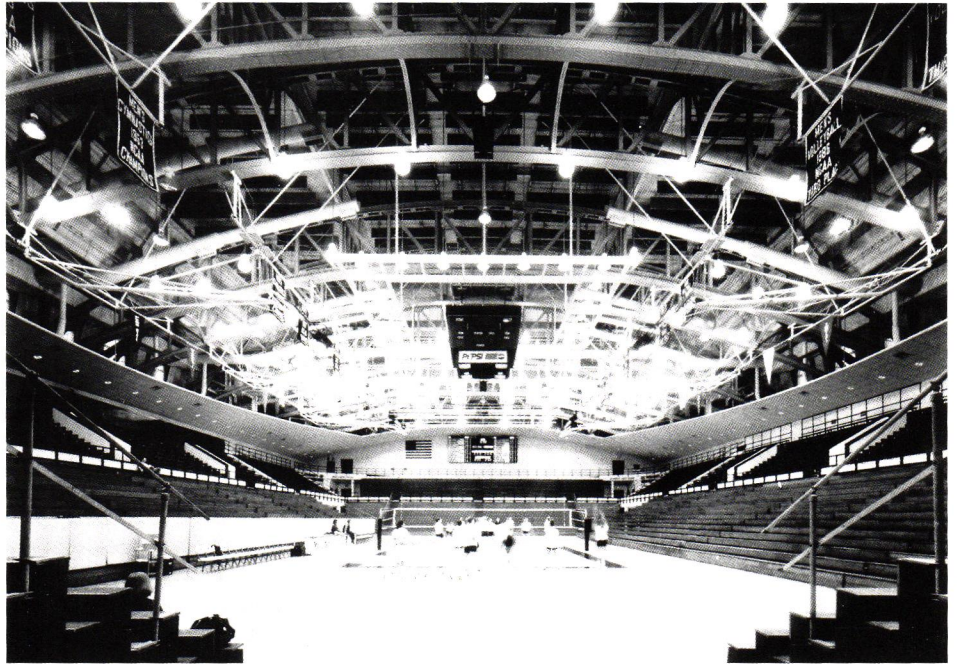


PHOTO BY ED MASSERY

CERTIFICATE OF MERIT

PROJECT: Juniata Gap Elementary School
FIRM: Hayes Large Architects
PRINCIPAL IN CHARGE AND PROJECT ARCHITECT:
 Richard L. Karcher, AIA
DESIGN ARCHITECT: Christopher J. Dietrich, AIA
PROJECT MANAGER: Grace U. Oh, AIA
JOB CAPTAIN: John Chi, AIA
INTERIOR DESIGN: Kathleen Muffie-Witt
EQUIPMENT PLANNERS: Craig Meadows,
 Kathleen Muffie-Witt
LANDSCAPE ARCHITECT: Carolyn DuBois, RLA
SPECIFICATIONS: David Kirsch, AIA
STRUCTURAL ENGINEER: Richard Haupt
CONSTRUCTION ADMINISTRATOR: Grant Walk
CLIENT: Altoona Area School District
CONTRACTOR: Devore Construction, Inc.

JURY COMMENTS: *The jury appreciated the innovative disposition of program elements throughout the site. They especially noted the use of the library as an icon for the school and for the pleasant views it affords from the interior.*



PHOTO BY JIM SCHAFER

Exposed original structural elements contrast the rich wood interior finishes with a main space meant to immortalize the tradition of tennis.



Player's Lounge



Trophy Case



Clerestory



Players Mural



Trophy Case (detail)

ALAN POPOVICH

HONORABLE MENTION

PROJECT: **Sarni Tennis Facility**

FIRM: **Hoffman Popovich Architects & Associates**

PRINCIPAL IN CHARGE: Alan R. Popovich, AIA

PROJECT ARCHITECT: Alan R. Popovich, AIA

PROJECT TEAM: Erin Hare, Project Designer*

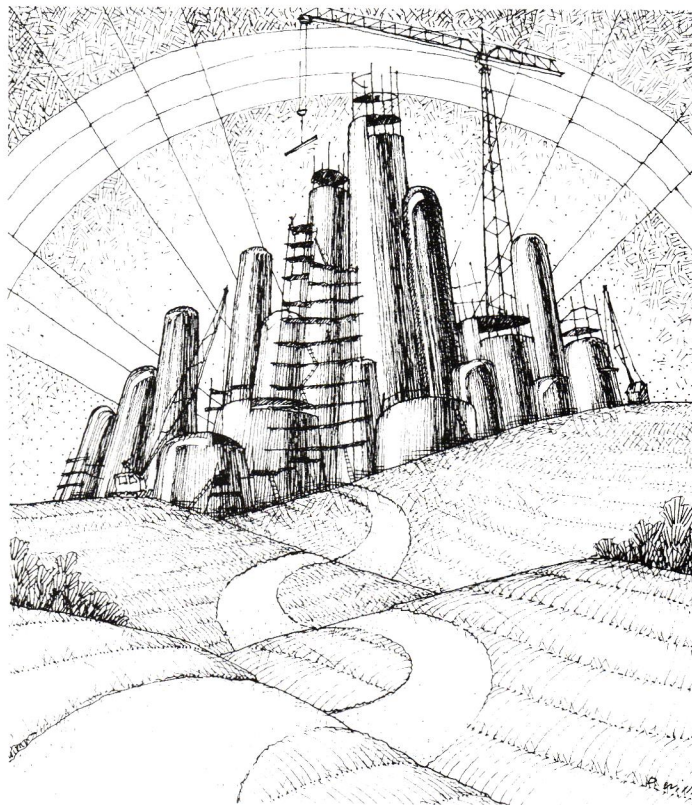
CLIENT: The Pennsylvania State University

CONTRACTOR: L.S. Fiore, Inc.

* Parfitt/Ling, Consulting Engineers

Robert D. Davis, Structural Engineer

JURY COMMENTS: *This project takes a charming existing building and extends that to the site plan, while redistributing the interior in a logical way.*



HONORABLE MENTION

PROJECT: **Book – *The Emerald City***

AUTHOR: **Daniel Willis, AIA**, Associate Professor of Architecture, Penn State University

JURY COMMENTS: *This book represents someone trying to do the right thing. The demands of practice do not often permit architects to reflect on their profession. This book provides a valuable contribution, and is to be congratulated for its erudition and breadth of sources used in the work.*

THE JURY

Susan Maxman, AIA, Principal, Susan Maxman Architects, Philadelphia, PA

Dan Hoffman, AIA, Architect of Cranbrook, Principal of David Osler & Associates, Ann Arbor, MI

Jon Pickard, AIA, Principal Jon Pickard Architects, Inc., New Haven, CT



AIA Pittsburgh thanks the following sponsors for their generous support of the 1999 Design Awards.

GOLD SPONSORS

Columbia Gas of Pennsylvania
Poerio Inc.
John Deklewa & Sons, Inc.
Mistick Construction
R.E. Crawford
GAI Consultants
Turner Construction Company
Pittsburgh Business Times
Quantapoint
Landesberg Design Associates

SILVER SPONSORS

Atlantic Engineering Corporation
Knoll, Inc.
Brace Engineering
Marsico Corporation
Civil & Environmental Consultants, Inc.
National Development Co. of Pennsylvania

People's Choice
Gala Event
Gala Event
Gala Event
Awards Ceremony
Design Exhibit
Design Exhibit
Media
Technology
Communication

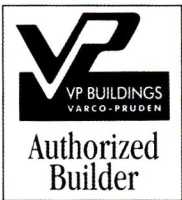
Centria
Rycon Construction, Inc.
Elwood S. Tower Corporation
The Gateway Engineers
Kirkpatrick & Lockhart LLP
Washington Reprographics

CONTRIBUTORS

Barry Flooring, Inc.
O'Brien Kreitzberg
Burchick Construction Co., Inc.
Pashek Associates, PC
Crawford Consulting Services
PDC Builders, Inc.
Dodson Engineering, Inc.
Peter F. Loftus Division, Eichleay Engineers
Giffin Interior & Fixture, Inc.
Rose, Schmidt, Hasley & DiSalle, PC
GWSM, Inc.
Sauer, Inc.
Haverford Systems
TEDCO Construction Co.
Hornfeck Engineering, Inc.
The Bowerston Shale Co.
Integrated Office Concepts
TriState Reprographics
International Masonry Institute
Volpatt Construction Corporation
Keane Construction Company, Inc.
Whitney, Bailey, Cox & Magnani
Landau Building Company
Wyatt Incorporated

Commercial Stone wanted rock-solid performance.

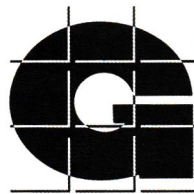
That's why they called General Industries. Lettrich Architects created a design that combined style and practicality, and construction was completed on-time and on-budget. Today, Commercial Stone's facility in Connellsville is a prime example of meeting and exceeding a client's needs.



Exacting standards.
Attention to detail.
Professionalism. Ideals
set in stone at General
Industries.



Commercial Stone Co., Inc., Connellsville, PA
Architect: Lettrich Architects



**GENERAL
INDUSTRIES**
GENERAL CONTRACTORS

15 Arentzen Boulevard, Charleroi, PA 15022 • 724-483-1600

A Reputation Cast in Stone

Not every project initially comes in on budget, that is where Nello's experience in construction makes us excel above the competition. Through collaboration with the Owner, Architect; Ruprecht, Schroeder, Hoffman and Associates, and our selected subcontractors, the construction team used Value-Engineering solutions to bring this project within budget, without compromising the quality and aesthetics that the Owner and Architect had originally envisioned.

With over 48 years of experience Nello, is equipped to handle any type of project and contract option. Whether as a Design/Builder, Construction Manager, Program Manager, or General Contractor, you can feel comfortable that you are receiving the highest quality service.



Church of the Covenant
Washington, Pa
Architect: RSH Associates



N E L L O
CONSTRUCTION COMPANY

3 Glass Street - Carnegie, Pa 15106
Phone- 412.276.0010



20 years, \$1.3 Billion, & Growing!

During its 20-year history, P.J. Dick Incorporated has managed more than \$1.3 billion in construction activity for public, corporate, healthcare, educational, industrial, aviation, and special project markets. Our firm is ranked by *Engineering News Record* as one of the nation's Top 400 General Contractors and Construction Managers.

We've been in business since 1979 — continuously adding talented staff, expanding our skills and our accomplishments. We plan to keep up this growth rate, providing our clients with intelligent solutions well into the 21st century.



P.J. DICK
INCORPORATED

CELEBRATING 20 YEARS OF

BUILDING & CONSTRUCTION MANAGEMENT
{Intelligent} **Solutions** 1979-1999

PITTSBURGH • COLUMBUS

P.O. BOX 98100 PITTSBURGH, PA 15227-0500 (412) 462-9300
64 EAST BROAD STREET COLUMBUS, OH 43215 (614) 280-0772

AN EEO DRUG FREE EMPLOYER WWW.PJDICK.COM

From the Firms

→ **Elwood S. Tower Corporation** has relocated its office to 115 Evergreen Heights Drive, Suite 400, Pittsburgh, PA 15229. Phone: 412/931-8888; fax 412/939-2525.

Business Briefs

→ **Frank A. Colletti, AIA** has joined **Burt Hill Kosar Rittelmann Associates** as a project manager/senior architect in the firm's K-12 school design group, while **David Hatton, AIA** has joined as an architect in the higher education group.

IKM Incorporated announced several staff changes. **Robert J. Bailey, AIA** and G. Richard Myers have been named associates, Susan L. Fournier was appointed director of interior design, and Patty Swisher was promoted to director of marketing. Susan M. Tartaglio was appointed interior designer and Joseph R. Ancona was hired as an intern architect. Daniel P. Antonacci, Jr. was hired as a plumbing engineer with PWI Midwest, an **IKM-PWI** company.

WTW Architects announced several promotions at the firm. Charles G. Hanlon, AIA and C. Barton Schindel, AIA were named senior associates while Warren T. Bulseco, AIA, Jill Morris Payne, Lawrence J. Payne, AIA, Gregory A. Smith, AIA and Thomas P. Wiley, AIA were promoted to associates. In addition, Iris Gehrke and David Ange Saint-Jacques were added to the design team.

Civil & Environmental Consultants, Inc. has added surveying capabilities to its list of services with the hiring of Evan D. Baker, Jr. and James Bruggeman.

Kudos

→ **Lami•Grubb•Architects** was presented with several design awards by the International Masonry Institute at the 1999 Western Pennsylvania Golden Trowel Masonry Awards Ceremony. Awards included Best of Category, Mu-

nicipal and Community Category for the Zone One Police Station renovation (City of Pittsburgh, client; MARSA, Inc., mason contractor; Clint Myers and Suzan Lami, AIA, project architects); Best of Category, Commercial Building for the Mt. Washington Rite Aid (The Mosites Company, owner; Kusler Masonry, Inc., mason contractor; Masco Construction, general contractor; Clint Myers, project designer) and Special Recognition for the Phillips Park Recreation Center Gymnasium addition (Tony Mustachio, project architect).

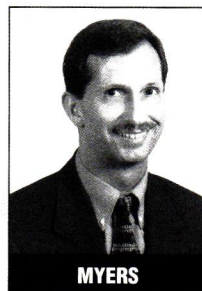
The *Pittsburgh Business-Times* named L.V. Contracting the #1 fastest growing commercial contractor in Western Pennsylvania.



HATTON



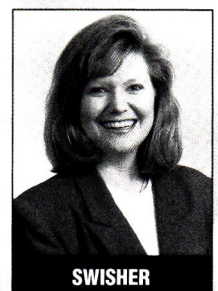
BAILEY



MYERS



FOURNIER



SWISHER

FLYNN

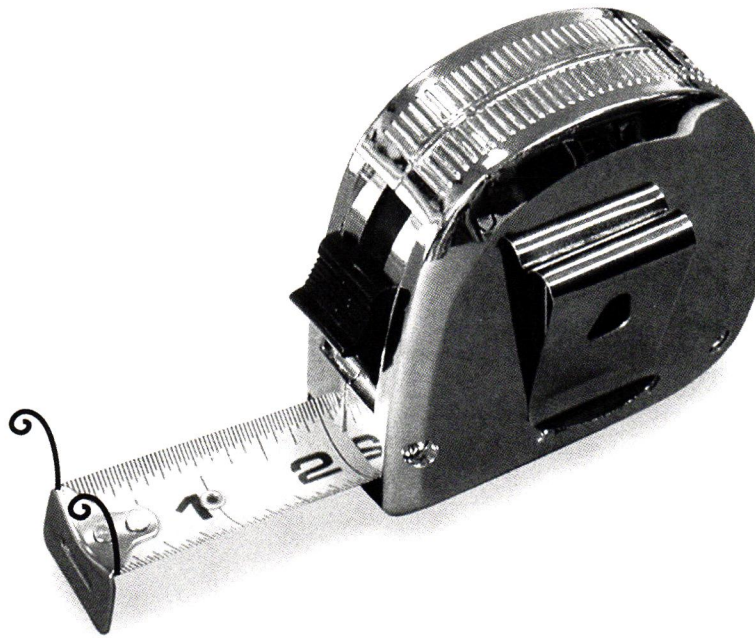
CONSTRUCTION MANAGEMENT GENERAL CONTRACTING INC.

**Congratulations to 1999 Design Pittsburgh
Award Winner Gerard Damiani, AIA Studio d'ARC Architects**

FLYNN celebrates commitment to design excellence.

*We go that extra mile. We solve problems.
We get the job done right.*

800.434.7759 • 610 ROSS AVENUE, PITTSBURGH, PA 15221 • flynn-construction.com



Our laser can beat your snail.

Just landed a great renovation project but ... no existing drawings and an impossible deadline? Stop searching your office for the 100' tape and someone to hold the dumb end.

You're working at a snail's pace.

Instead, call Quantapoint. We can

- compress your schedule
- free up resources
- improve the quality and accuracy of the base drawings
- hold the line on cost

And we can provide final CAD documents in either AutoCAD or MicroStation.

Contact Susan Prokopchak at 412.469.3150 x26 or info@quantapoint.com.

Work the laser, not the snail.

Quantapoint.

Existing condition documentation

Building Blocks

*Continuing Education Programs,
Seminars, Symposia and
Workshops.*

January 13, Thursday Pennsylvania Construction Defect Claims.

A one-day seminar designed for contractors, developers, subcontractors, architects & engineers.

Topics to be discussed include:

- Identifying a Defect
- Investigating the Defect
- Contractual Assignment of Responsibility
- Legal & Factual Defenses
- Remedying the Defect
- Disput Resolution Clauses
- Shifting the Risk Through Insurance & Surety Products

Holiday Inn South, 164 Fort Couch Road
8:00 a.m. – 4:30 p.m. Call Lohman at
(715) 833-3959 for information.
(8 L.U.'s)

Please send your information to the attention of Joan Kubancek, AIA Pittsburgh, 211 Ninth Street, Pittsburgh, PA 15222, or fax it to Joan at 412/471-9501. The deadline for inclusion is normally six weeks prior to publication. If you would like information describing qualified continuing education programs, please call the AIA office at 412-471-9548.

**For advertising information and
rates, call Joan Kubancek, AIA Pittsburgh.
(412) 471-9548.**

MARKETPLACE

FOR RENT: Architects/Designer studio & office space.
2000 sq. ft. New construction inside, restored 1892
Victorian. Track lighting, security system & parking.
Rent negotiable 412-781-3997.

AIA ACTIVITIES

December 3, Friday

Communications Committee Meeting,
noon at the Chapter office, 471-9548.

December 6, Monday

President's Party, call AIA at
412-471-9548 for information.

December 9, Tuesday

**Professional Development Committee
Meeting** noon at the Chapter office,
471-9548.

December 10, Friday

Committee on the Environment, noon
at the Chapter office, Gary Moshier, AIA,
252-1500.

December 14, Tuesday

AIA Pittsburgh Board Meeting
5 p.m. at the Chapter office. All members are
welcome, 471-9548.

December 16, Thursday

Legislative Committee Meeting, noon
at the Chapter office, Chuck Coltharp, AIA,
252-1500.

AROUND TOWN

December 6, Monday

**Brown Bag Lunch: Procurement, Use
and Disposal of Used Building
Materials.** Leader: Mike Gable, Construc-
tion Junction at CCI Center, 64 S. 14th Street,
South Side. Noon – 1 p.m. Free. For
information 412-431-0709. Info@gbapgh.org.

December 6, Monday

**CALL FOR ENTRIES: Architecture in
Perspective 15.** The American Society of
Architectural Perspectives announces the world's
foremost architectural drawing competition with
two categories of entry: Formal Drawings and
Informal Sketches. Awards will be presented for
best artwork in each of the categories, as well as
individual Juror Awards. The Hugh Ferriss
Memorial Prize, the highest honor for an
architectural drawing, will be awarded to the
author of the work that exemplifies superior
achievement in the field of architectural
representation. For submission forms contact
ASAP @ 202-737-4401.

December 7, Tuesday

**CSI Meeting. Tour of the new O'Reilly
Theatre** with Steven Kline of the Pittsburgh
Public Theatre. Tour 5:30 p.m. Dinner
following at Duets Restaurant (\$20). For
reservations call Les Cartiff at 412-823-5063
by Friday Dec. 3.

December 9, Thursday

Society of Design Administrators,
Christmas party at Kason's. 5:00 – 8:00 p.m. Gifts
for Bethlehem Haven. Members \$17. Reservations
call Christine Taylor, 412-231-5500.

December 15, Wednesday

AIA/MBA Committee Meeting
Master Builders Association, 2270 Noblestown
Road 6:00 p.m. 412-922-3912.

December 19, Sunday

**Celebrate the holidays by visiting a cluster
of historic churches in Homestead.** Spon-
sored by Pittsburgh History & Landmarks
Foundation. These architectural landmarks are
centers of cultural traditions, community activity,
and worship. There will be organ music and carol
singing, and the Mayor of Homestead will join us
for refreshments. \$15 PH&LF members, \$35 non-
members. Reservations by Monday, December 13.
Call Mary Lu Denney at 412-471-5808.

January 7, Friday

**Brown Bag Lunch: Green Design and the
New Birmingham Housing in the South
Side.** Leader: Stephanie Ledewitz, AIA, Perkins
Eastman Architects at CCI Center, 64 S. 14th
Street, South Side. Noon – 1 p.m. Free. For
information call 412-431-0709. Info@gbapgh.org.

CONTRACTORS' DIRECTORY

A LISTING OF AREA CONTRACTORS AND THEIR PROFESSIONAL SERVICES. To include your firm in this directory, call AIA Pittsburgh at 412-471-9548.

■ BAKER MELLON STUART CONSTRUCTION, INC.*

410 Rouser Road, Coraopolis, PA 15108
PHONE: 412-269-7312 FAX: 412-269-2020
CONTACT: Chuck Russell
*Commercial / Construction management
General / Industrial / Interior / Renovations
Institutional*

■ BRIDGES

1300 Brighton Road, Pittsburgh, PA 15233
PHONE: 321-5400 FAX: 321-9823
CONTACT: Paul R. Bridges
*Commercial / Construction management
Exterior / General / Industrial / Interior
Renovations*

■ BURCHICK CONSTRUCTION CO., INC.*

500 Lowries Run Road, Pittsburgh, PA 15237
PHONE: 369-9700 FAX: 369-9991
CONTACT: Joseph E. Burchick
*Commercial / Construction management
General / Industrial / Interior / Renovations*

■ BURNS & SCALO ROOFING CO., INC.

400 Bursca Drive, Suite 402, Bridgeville, PA 15017
PHONE: 221-6300 FAX: 221-6262
CONTACT: Jack F. Scalo, President
*Commercial / Industrial / Residential
Roofing sheetmetal / Architectural panels
1998 ABC Subcontractor Of The Year
1998 National Roofing Contractor Of The
Year*

■ F.J. BUSSE CO., INC.*

P.O. Box 8540
Pittsburgh, PA 15220
PHONE: 921-1231 FAX: 921-9861
CONTACT: John Paul Busse
*Commercial / Construction management
Exterior / General / Industrial / Interior
Renovations*

■ R.E. CRAWFORD COMPANY

1046 Pittsburgh Street, Springdale, PA 15144
PHONE: 724-274-5000 FAX: 724-274-2323
CONTACT: Judi Nadeau
*Commercial / Construction management
General / Interior / Renovations*

■ DICICCO CONTRACTING CO.*

1009 Beaver Grade Road, Suite 200
Coraopolis, PA 15108
PHONE: 262-3540 FAX: 269-6699
CONTACT: Samuel E. DiCicco
*Commercial / Construction management
General / Industrial / Interior Renovations*

■ DICK CORPORATION*

P.O. Box 10896, Pittsburgh, PA 15236
PHONE: 412-384-1320 FAX: 412-384-1215
CONTACT: John R. Bonassi
*Commercial / Construction management
Exterior / General / Highway / Industrial
Interior / Renovations / Design Build*

■ P.J. DICK INCORPORATED*

P.O. Box 98100, Pittsburgh, PA 15227-0500
PHONE: 462-9300 FAX: 462-2588
CONTACT: Charles S. Pryor
*Commercial / Construction management
Exterior / General / Industrial / Interior
Renovations / Institutional*

■ FLYNN CONSTRUCTION, INC.

610 Ross Avenue, Wilkinsburg, PA 15221
PHONE: 243-2483 FAX: 243-7925
CONTACT: Dawn Pratillo
*Commercial / Construction Management
Exterior / General / Interior / Renovations*

■ GENERAL INDUSTRIES

15 Arentzen Blvd., Charleroi, PA 15022
PHONE: (724) 483-1600 FAX: (724) 483-0990
CONTACT: Donald Ivill
*Commercial / Exterior / General / Industrial
Interior / Renovations*

■ HARCHUCK CONSTRUCTION CO., INC.

705 Route 66, Building II, Suite 222,
Apollo PA 15613
PHONE: (724) 727-3700 FAX: (724) 727-2800
CONTACT: David A. Harchuck
*Commercial / Construction management
Exterior / General / Industrial / Interior
Renovations*

■ JENDOCO CONSTRUCTION CORPORATION*

2000 Lincoln Road, Pittsburgh, PA 15235
PHONE: 412-361-4500 FAX: 412-361-4790
CONTACT: John W. Zang III
*Commercial / Construction management
Exterior / General / Industrial / Interior
Renovations*

■ A. RICHARD KACIN, INC.

795-22 Pine Valley Drive, Pittsburgh, PA 15239
PHONE: 724-327-6694 FAX: 724-733-5993
CONTACT: A. Richard Kacin, Pres.
*Commercial / Construction management
General / Industrial / Residential*

■ KUSEVICH CONTRACTING, INC.

3 Walnut Street
Pittsburgh, PA 15223
PHONE: 782-2112 FAX: 782-0271
CONTACT: George Kusevich, Jr.
*Commercial / Construction management
General / Industrial / Interior Renovations
Institutional*

■ LANDAU BUILDING COMPANY*

9855 Rinaman Road, Wexford, PA 15090
PHONE: 935-8800 FAX: 935-6510
CONTACT: Thomas A. Landau
*Commercial / Construction management
Exterior / General / Industrial / Interior
Renovations*

■ A. MARTINI & CO., INC.*

320 Grant Street, Verona, PA 15147
PHONE: 828-5500 FAX: 828-6488
CONTACT: Angelo Martini, Sr.
*Commercial / Construction management
Exterior / General / Industrial / Interior
Renovations*

■ MISTICK CONSTRUCTION

1300 Brighton Road, Pittsburgh, PA 15233
PHONE: 322-1121 FAX: 322-9336
CONTACT: D. Thomas Mistick
*Commercial / Construction management
Exterior / General / Interior / Renovations
Residential*

■ MOSITES CONSTRUCTION COMPANY*

4839 Campbells Run Road, Pittsburgh, PA 15205
PHONE: 923-2255 FAX: 788-1169
CONTACT: M. Dean Mosites
*Commercial / Construction management
Exterior / General / Highway / Industrial
Interior / Renovations*

■ NELLO CONSTRUCTION COMPANY*

3 Glass Street, Carnegie, PA 15106
PHONE: 276-0010 FAX: 276-8123
CONTACT: Janet Torriero
*Commercial / Construction management
Exterior / General / Industrial / Interior
Renovations*

■ PDG ENVIRONMENTAL, INC.*

102 Technology Drive, Export, PA 15632
PHONE: (724) 325-1449 FAX: (724) 327-3717
CONTACT: Shawn P. Regan
Asbestos abatement contractor

■ POERIO INC.*

P. O. Box 11036, Pittsburgh, PA 15237
PHONE: (412) 366-6767 FAX: (412) 366-1404
CONTACT: Frank T. Poerio
*Commercial / Construction Management
General / Interior / Renovations*

■ REPAL CONSTRUCTION CO., INC.

2400 Ardmore Blvd., Suite 400,
Pittsburgh, PA 15221
PHONE: 271-3700 FAX: 271-3866
CONTACT: Bill Palmer, Jr.
*Commercial / Construction management
Exterior / General / Industrial / Interior
Renovations / Residential*

■ TEDCO CONSTRUCTION CORPORATION*

TEDCO Place, Carnegie, PA 15106
PHONE: 276-8080 FAX: 276-6804
CONTACT: Beth Cheberenchick
*Commercial / Construction management
Exterior / General / Industrial / Interior
Renovations*

■ TURNER CONSTRUCTION COMPANY*

1400 Koppers Building
436 Seventh Avenue, Pittsburgh, PA 15219
PHONE: 412-255-5400 FAX: 412-255-0249
CONTACT: Raymond H. Steeb, III
*Commercial / Construction management
General / Industrial / Interior / Renovations*

■ JOSEPH VACCARELLO, JR. INC.*

P.O. Box 663, Carnegie, PA 15106
PHONE: 412-276-2755 FAX: 412-276-7985
CONTACT: Gary Dickinson
*Commercial / Highway / Industrial
Residential / Bulk excavation
Site development*

■ VOLPATT CONSTRUCTION CORPORATION*

250 Curry Hollow Road, Pittsburgh, PA 15236
PHONE: 412-653-5454 FAX: 412-653-5755
CONTACT: Raymond A. Volpatt
*Commercial / Construction management
Exterior / General / Industrial / Interior
Renovations*

■ WJG CONTRACTING, INC.

P.O. Box 4286, Pittsburgh, PA 15203-0286
PHONE: 381-7098 FAX: 381-7698
CONTACT: William J. Gormley, Jr.
*Commercial / Construction management
Exterior / General / Interior / Renovations*

■ WRIGHT CONTRACT INTERIORS

2735 Railroad Street, Pittsburgh, PA 15222
PHONE: 412-471-2700 FAX: 412-471-5008
CONTACT: Robert C. Baieri
Commercial / Interior

Dennis L. Astorino, AIA



Firm: President and Chief Operating Officer, LDA - L.D. Astorino Companies

Family: Wife, Jill; daughter, Bethany 14; Sam 18, attending the University of Colorado; Scott 21, attending North Carolina State. Jill is presently pursuing her Masters Degree- so we have three in our family attending college at the same time.

Years in Practice: 24

Education: Bachelor Arch., University of Cincinnati

First job: Artist for Ecclesiastical Art Studio (refurbishing existing church paintings).

Project I'm proudest of: ISMETT (Transplant Hospital in Sicily).

Building I wish I had designed: Hadrian's Villa.

If you hadn't become an architect, you would have been: A sculptor — at one time I had my bags packed on my way to Cranbrook Academy - then changed my mind and returned to Pittsburgh.

If you could live anywhere in the world, it would be? Positano, Italy

The best part of your job is: Interaction with the staff on a daily basis.

The thing I would change about my job is: Chasing money.

What have you always wanted to tell your clients? If you don't have faith in us, go somewhere else.

Annoying things architects do: Criticize the profession.

Advice to young architects: Don't wait for people to come to you, make it happen.

What do you wish they would teach in architectural school? How to work more effectively in a team environment.

Favorite interior: Notre Dame Du Haut - Ronchamp, France - LeCorbusier.

Favorite building: La Sagrada Familia - Barcelona, Spain.

Favorite city: Paris (most pleasant city to walk).

Favorite architect: Antoni Gaudi.

Favorite architecture book: *The Emerald City* by Dan Willis.

Favorite Pittsburgh neighborhood: Brookline.

Best gift to give an architect is: Time for the creative process.

Wish list for downtown Pittsburgh: Pittsburgh is blessed with exceptional architectural talent. We need more local involvement.

What's the next big architectural trend? Architects having more involvement in the overall building process.

Someday I would like to: Visit Kathmandu.

I want to be remembered for: Being a positive influence on young professionals.

People would be surprised to know: That I worked for an architectural firm in England for a year.

The secret to my success is: The ability to never give up (some may call it relentless).

The reason I belong to AIA is: We can be more effective as a group than we can as individuals.

ENGINEERS' DIRECTORY

A LISTING OF AREA ENGINEERS AND THEIR PROFESSIONAL SERVICES. To include your firm in this directory, call AIA Pittsburgh at 412-471-9548.

■ BARBER & HOFFMAN, INC.

101 E. Diamond Street, #302
Butler, PA 16001-5905
PHONE: (724) 477-1298 FAX: (724) 285-6675
CONTACT: Michael R. Miller, P.E.
Consulting / Structural

■ BRACE ENGINEERING, INC.

3440 Babcock Boulevard, Box 15128
Pittsburgh, PA 15237
PHONE: 367-7700 FAX: 367-8177
CONTACT: Frank C. Brace
Structural

■ BURT HILL KOSAR RITTELMANN ASSOCIATES

400 Morgan Center, Butler, PA 16001
PHONE: (724) 285-4761 FAX: (724) 285-6815
CONTACT: David R. Linamen, P.E.
Construction / Consulting / Electrical Mechanical

■ BURT HILL KOSAR RITTELMANN ASSOCIATES

650 Smithfield Street, Pittsburgh, PA 15222
PHONE: 394-7000 FAX: 394-7880
CONTACT: Don Rimer
Construction / Consulting / Electrical Mechanical

■ CIVIL & ENVIRONMENTAL CONSULTANTS, INC.

333 Baldwin Road, Pittsburgh, PA 15205
PHONE: 921-3402 FAX: 921-1815
CONTACT: Gregory P. Quatchak, P.E.
Testing & Inspection / Civil / Construction Consulting / Environmental / Geotechnical

■ CLAITMAN ENGINEERING ASSOC., INC.

1340 Old Freeport Road, Pittsburgh, PA 15238
PHONE: 963-6700 FAX: 963-7217
CONTACT: Robert Rosenthal
Consulting / Mechanical

■ DODSON ENGINEERING, INC.

420 One Chatham Center, Pittsburgh, PA 15219
PHONE: 261-6515 FAX: 261-6527
CONTACT: Herbert J. Brankley, P.E.,
Gregory L. Calabria, P.E.
Consulting / Mechanical

■ DYNAMIC DESIGN ENGINEERING, INC.

416 Main Street, Suite 200
Johnstown, PA 15901-1828
PHONE: 814-536-1651 FAX: 814-536-5732
CONTACT: Louis A. Guzzi, P.E.
www.dynamic-engineering.com
Consulting / Mechanical / Electrical Telecommunications / Building Audits

■ ELWOOD S. TOWER CORPORATION

115 Evergreen Heights Drive, Suite 400
Pittsburgh, PA 15229
PHONE: 412-931-8888 FAX: 412-939-1743
CONTACT: Theodore H. Dannerth, P.E.
Consulting / Electrical / Mechanical Telecommunications

■ ENGINEERING MECHANICS, INC.

4636 Campbells Run Road, Pittsburgh, PA 15205
PHONE: 788-3650 FAX: 787-5891
CONTACT: Daniel Grieco, Jr., P.E.
Testing & Inspection / Geotechnical Consulting / Environmental Blasting Vibrations

■ FIRSCHING, RUSBASKY AND WOLF ENGINEERING, INC.

4240 Greensburg Pike, Pittsburgh, PA 15221
PHONE: 271-5090 FAX: 271-5193
CONTACT: Daniel J. Wolf / David D. Rusbasky /
Ted Marsteller, P.E.
Consulting / Mechanical

■ FOREMAN ARCHITECTS ENGINEERS, INC.

P.O. Box 189, Zelienople, PA 16063
PHONE: 724-452-9690 FAX: 724-452-0136
CONTACT: David E. Foreman, P.E.
Civil / Consulting / Electrical / Mechanical Structural

■ GAI CONSULTANTS, INC.

570 Beatty Road, Monroeville, PA 15146
PHONE: 412-856-9220 FAX: 412-372-2161
CONTACT: Anthony F. Morrocco, PE/PLS
Testing & Inspection / Civil / Construction Monitoring / Consulting / Environmental / Geotechnical / Structural / Transportation / Archaeological

■ THE GATEWAY ENGINEERS, INC.

1011 Alcon Street, Pittsburgh, PA 15220
PHONE: 921-4030 FAX: 921-9960
CONTACT: Rose Griffin
Civil / Testing & Inspection / Consulting Environmental

■ GIPSON ENGINEERING

122 Kerr Road, P.O. Box 14359
Pittsburgh, PA 15239
PHONE: (724) 339-2911 FAX: (724) 339-8814
CONTACT: Stephen R. Gipson, P.E.
Consulting / Electrical / Mechanical Structural

■ HENRY A. HEGERLE, P.E. C.B.O.

211 Charles Street
Pittsburgh, PA 15210-1603
PHONE: (412) 381-4989 FAX: (412) 381-4990
E-mail: hegerle@usaor.net
CONTACT: Henry A. Hegerle
Code Consulting / Plan Review / Site Evaluation / Training

■ HORNFECK ENGINEERING, INC.

1020 North Canal Street, Pittsburgh, PA 15215
PHONE: 781-1500 FAX: 781-5593
CONTACT: Richard W. Petrie, P.E.
Consulting / Electrical / Instrumentation Lighting / Telecommunications

■ JSA/LAWLER ENGINEERS

6450 Steubenville Pike, Pittsburgh, PA 15205
PHONE: 412-788-1500 FAX: 412-787-5960
CONTACT: M. Timothy Lawler, Phd, P.E.
Consulting / Electrical / Mechanical

■ THE KACHELE GROUP

1014 Perry Highway, Suite 100
Pittsburgh, PA 15237
PHONE: 412-369-9020 FAX: 412-369-9021
CONTACT: Tony Moscollic
Structural

■ L. ROBERT KIMBALL & ASSOCIATES

415 Moon Clinton Road
Moon Township, PA 15108
PHONE: 262-5400 FAX: 262-3036
CONTACT: Thomas L. Blank, CIH, CSP
Joseph F. Moon, PE
Asbestos Management / Environmental Site Assessments / Indoor Air Quality Lead Based Paint Management Radon Testing-Mitigation Industrial Hygiene-Safety Civil / Site / Structural

■ LENNON, SMITH, SOULERET ENGINEERING, INC.

846 Fourth Avenue
Coraopolis, PA 15108
PHONE: 264-4400 FAX: 264-1200
CONTACT: Daniel S. Gilligan
Civil / Consulting / Environmental

■ PETER F. LOFTUS DIVISION

Eichleay Engineers Inc., 6585 Penn Avenue
Pittsburgh, PA 15206-4407
PHONE: 363-9000 FAX: 365-3304
CONTACT: Glenn Avick
Civil / Consulting / Electrical / Mechanical Structural / Telecommunications Fire Detection & Protection

■ MAZZA ENGINEERING ASSOCIATES, INC

236 Center Grange Road, Aliquippa, PA 15001
PHONE: (724) 728-8110 FAX: (724) 728-8559
CONTACT: Jacqueline K. Mazza
Civil / Consulting / Mechanical / Structural Transportation

■ MEUCCI ENGINEERING, INC.

409 Elk Avenue, Carnegie PA 15106
PHONE: 276-8844 FAX: 276-2960
CONTACT: James B. Fath, P.E.
Consulting / Electrical / Mechanical

■ MURRAY ASSOCIATES, INC.

413 Penn Avenue, Turtle Creek, PA 15085
PHONE: 412-823-2020 FAX: 412-824-7302
CONTACT: Debbie Faust
Structural / Civil / Geotechnical Environmental / Testing & Inspection Construction / Consulting

■ POLYTECH, INC.

Three Gateway Center, 12th Floor, East Wing
Pittsburgh, PA 15222
PHONE: 995-1300 FAX: 995-1306
CONTACT: Michael C. Moore
Civil / Consulting / Electrical Mechanical / Structural / Transportation Construction Management

■ RCF ENGINEERS, INC.

Fourth Floor, 209 Sandusky Street
Pittsburgh, PA 15212
PHONE: 231-5500 FAX: 231-6427
CONTACT: Mark S. Wolfgang, P.E., President
Testing & Inspection / Consulting Electrical / Environmental / Mechanical Telecommunications

■ SAI CONSULTING ENGINEERS, INC.

1400 Penn Avenue, Suite 101
Pittsburgh, PA 15222-2571
PHONE: 392-8750 FAX: 392-8785
CONTACT: Walter S. Krasneski, Jr.
Testing & Inspection / Civil / Consulting Structural / Transportation

■ SE TECHNOLOGIES, INC.

98 Vanadium Road, Bridgeville, PA 15017
PHONE: 221-1100 FAX: 257-6103
CONTACT: Frank Berchin
Testing & Inspection / Civil / Construction Consulting / Electrical / Environmental Geotechnical / Structural Telecommunications / Transportation

■ TRANS ASSOCIATES ENGINEERING CONSULTANTS, INC.

2419 Baldwick Road, Pittsburgh, PA 15205
PHONE: 412-937-8070 FAX: 412-937-8071
CONTACT: Sandra A. Sabo
Civil / Consulting / Transportation

Upcoming Issues

Throughout the year 2000, Columns will explore innovative uses of various materials. All members are encouraged to submit designs in the categories below.

MARCH 2000

- Glass (Deadline for submission is January 21)

APRIL 2000

- Wood (Deadline for submission is February 15)

MAY 2000

- Masonry (Deadline for submission is March 15)

JUNE 2000

- Steel and other metals EXCEPT for aluminum (Deadline for submission is April 15)

JULY/AUGUST 2000

- Water as a material and/or system (Deadline for submission is May 15)

SEPTEMBER 2000

- Other materials not covered (Deadline for submission is June 15)

OCTOBER 2000

- Aluminum (Deadline for submission is August 15)

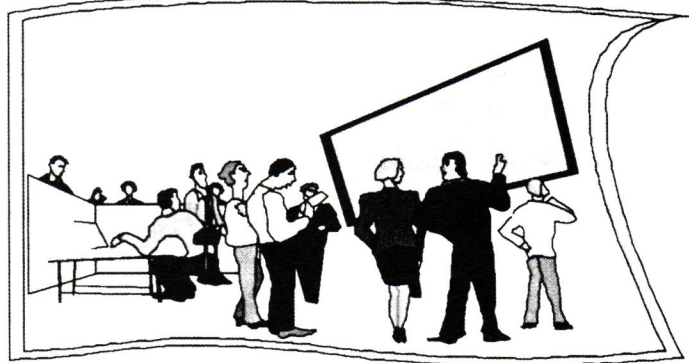
To contribute to an issue or to submit a story idea, please contact the editor at 412/362-1844 or by email: cheryltowers@mizeraktowers.com.

HAVERFORD SYSTEMS

Home Of

HavaVision
DISPLAYS™

*Design and installation of
presentation, meeting and entertainment facilities*



visit one of our demonstration facilities in PA, MD & NJ
call Hugh Richards at 1-800-486-5276

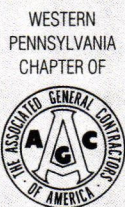
www.haverford.com

THE MASTER BUILDERS ASSOCIATION OF WESTERN PENNSYLVANIA (MBA)

Our Resources Keep Jobs On Schedule

While some local contractors waste their days recruiting workers to keep their projects going, Master Builders Association (MBA) contractors use their time to focus on quality, cost effectiveness and other owner concerns. That's because MBA contractors have immediate access to a pool of thousands of highly trained craftspeople: a resource they've found valuable enough to invest in for decades.

So the next time you're looking for a qualified contractor, select MBA members who will focus their time on you, the client. Call Executive Director Jack Ramage at 412-922-3912 for a copy of the MBA Sourcebook or visit the MBA web site at www.mba.wpa.org.



GENERAL SERVICES DIRECTORY

A LISTING OF AREA BUSINESSES AND THEIR PROFESSIONAL SERVICES. To include your firm in this directory, call AIA Pittsburgh at 412-471-9548.

BLUEPRINTS

■ MATHIAS REPROGRAPHICS

950 Penn Avenue, Pittsburgh, PA 15222
PHONE: 281-1800 FAX: 281-8243
CONTACT: Mark Mathias

Digital document plotting/printing, Blueprinting, Construction Document Management, Large format bond copies, Photo reproductions, Copiers, plotters, printers, papers, inks, toners.

■ TRI-STATE REPROGRAPHICS, INC.

911 Penn Avenue, Pittsburgh, PA 15222
PHONE: 281-3538 FAX: 281-3344
CONTACT: George R. Marshall

Document Management, Digital B&W Plotting, Blueprinting, Specs/Binding, Large & Small Format Color Copies, Mounting/Laminating, Supplies, Pickup & Delivery

■ WASHINGTON REPROGRAPHICS, INC.

DOWNTOWN PITTSBURGH • 514 Liberty Avenue
2 ROBINSON TOWNSHIP LOCATIONS
700 Vista Park Drive & 400 Hightower Boulevard
WASHINGTON LOCATION • 234 E. Maiden Street
CALL: 788-0640 or visit our website at
www.washingtonreprographic.com.
CONTACT: John J. Dziak

Print project management, Digital black & white (D/prints), Plotting, Scanning, CADD Services, Specs/Binding, Color display services, Mounting/Laminating, Equipment/Supplies, Blueprinting, Pickup & delivery.

CUSTOM METAL WORK

■ APPLEBY DESIGN

408 Crestview Drive, Greensburg, PA 15601
PHONE: 724-834-5077 OR: 412-681-3907
WEB SITE: www.sweetseat.com

Welded steel plus: Interior and exterior detailing. Design and/or fabrication. Rails, fences, gates, furniture, etc. Commercial or residential. Large or small projects.

CADD SERVICES

■ THE WOZNAK CORPORATION

2103 Montour Street, Coraopolis, PA 15108
PHONE: 412-264-7444 FAX: 412-264-7441
EMAIL: WOZCORP@aol.com

CONTACT: David Walter Wozniak, AIA, NCARB
CONTRACT DRAFTING – AutoCad or Manual Plus Pre-Design and Pre-Construction Services, Construction Documents Review & Coordination.... and other support services.

HVAC

■ CLIMATECH, INC.

P.O. Box 367, Bridgeville, PA 15017
PHONE: 221-3844 FAX: 221-7786
CONTACT: Mitch Taback

HVAC design & budget pricing, System evaluation, Consultation, Installation, Emergency service, Repair, Air balancing, Comfort & energy enhancements, Commercial, Industrial, Residential

OFFICE FURNITURE

■ WORKSPACE, INC.

1900 Lowe St., Pittsburgh, PA 15220
PHONE: 920-6300 FAX: 920-7570
CONTACT: Dave Sauter

Sales, Service, Installation and project management for all of your KNOLL & KIMBALL office furniture. Special discounts for architects.

SIGNAGE

■ C-AD SIGNS

111 Third Street, Pittsburgh, PA 15215-2002
PHONE: 782-1147 FAX: 782-0645

CONTACT: Jack Harnick
Commercial signage, illuminated and non-illuminated. Design, fabrication, erection and maintenance.

■ BUNTING GRAPHICS, INC.

20 River Road, Verona, PA 15147-1159
PHONE: 412-820-2200 FAX: 412-820-4404
E-MAIL: jody@buntinggraphics.com
CONTACT: Jody Bunting

Quality Architectural & Commercial Signage, Neon, Interior & Exterior Illuminated & non-illuminated, design, fabrication, installation, maintenance (local 110,000 sq. ft. Mfg. Plant)

■ MVP/MATHIAS VISUAL PRODUCTS

950 Penn Avenue, Pittsburgh, PA 15222
PHONE: 281-1800 FAX: 281-8243

CONTACT: Chris Mathias

Signs, banners, exhibits, displays. COLOR DIRECT prints & Duratrans. Digital inkjet printing. Mounting & laminating. Display frames, stands, lightboxes. Trade show exhibits.

SPECIFICATIONS

■ DEBORAH D. MARTONIK, CCS, WBE

EMAIL: Jaymax@pathway.net

PHONE: 1-888-220-4600 PHONE/FAX: 475-4266

CONTACT: Deb Martonik

Contract Documents, Architectural and Engineering Specifications Divisions 1-14 Certified Construction Specifier.

WATERPROOFING CONTRACTOR

■ T-N-D OF PITTSBURGH, INC.

1422 Frey Road, Pittsburgh, PA 15235

PHONE: 412-374-1330 FAX: 412-374-1330

CONTACT: Art Hawk or John Gibbon

W. PA's selected contractor utilizing KOCH material's "TUFF-N-DRI" waterproofing systems. "GUARANTEED DRY"

With the General Services Directory,

you can list your business by specialty in *Columns*. List your firm under the heading of your choice.

- Security Systems
- Blue Prints
- HVAC
- Electrical Service
- Design
- Roofing
- Signage
- Windows and Doors
- Brick Waterproofing
- Interior Design
- CADD Services
- Lumber
- Data
- Flooring
- Carpeting
- Tile
- Plumbing

Call AIA Pittsburgh at 412-471-9548 for details.



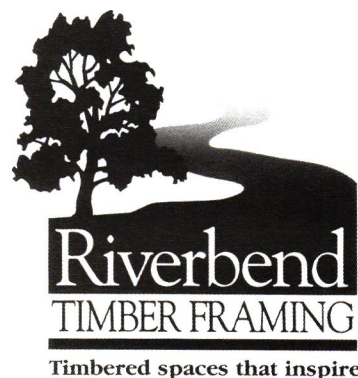
Personally Serving the West Pennsylvania and Ohio areas.

Dan Trimble & Co.

80 Old Gate Road 800-357-8555
Penn Run, PA 15765 Fax: 724-349-2335
www.riverbendtf.com
dtrimble@microserve.net

Seminars brought to your firm.

**Master
the
Timber
Frame
space.**



Timbered spaces that inspire

COMMERCIAL • EDUCATIONAL • FINANCIAL • HEALTHCARE

we build smart

The latest technologies available.

Time is money.

we build fast

we build right

Call us to discuss your plans.

HOSPITALITY • INDUSTRIAL • RESTAURANT • RETAIL

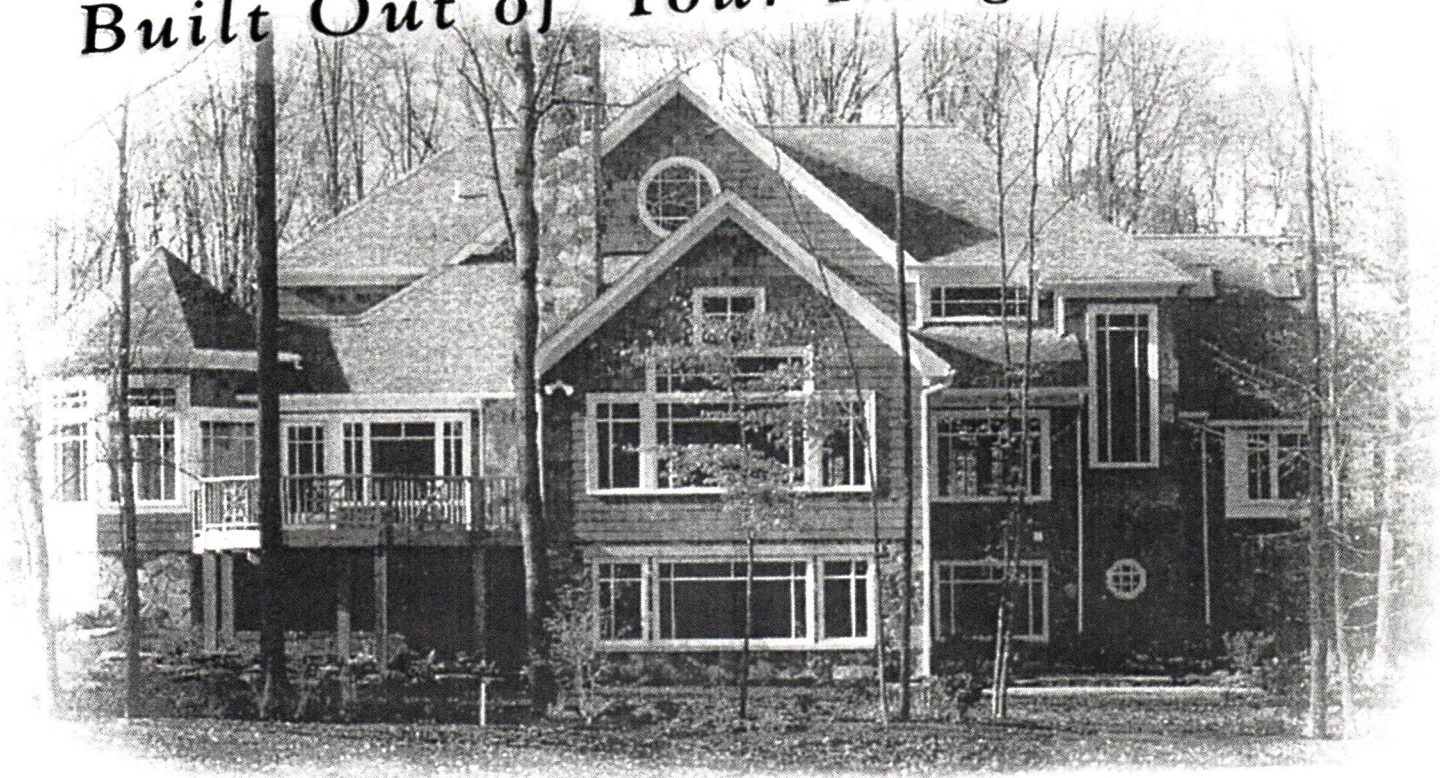


R.E. CRAWFORD

CONSTRUCTION

724.274.5000 www.recrawford.com Pittsburgh, PA Bradenton, FL

Because the Best Windows Are Built Out of Your Imagination



Building a home is like putting together a puzzle. Every detail, from the windows to the electrical outlets, is a piece of the homeowner's bigger picture.

Kolbe & Kolbe offers wood windows and doors in a wide variety of standard shapes and sizes. In addition, Kolbe & Kolbe specializes in custom millwork providing you with endless design possibilities. Bring the pieces of your puzzle together with Kolbe & Kolbe wood windows and doors.



Local Kolbe & Kolbe Projects include:

- Nevillewood Clubhouse
- Nevillewood Carriage Houses
- Nevillewood Private Residences (several)
- Southpointe Country Club
- Chestnut Ridge Condominiums
- Fox Chapel Presbyterian Church
- Westminster Presbyterian Church
- D.T. Watson Rehabilitation Center
- Curry Senior Citizens Home
- Grace Manor Nursing Home

Al Lorenzi BUILDING PRODUCT CENTERS

Washington, PA
I-70, Exit 6
1600 Jefferson Ave.

McMurray, PA
Rt. 19 South
Donaldson's Crossroads

Wexford, PA
Perry Highway (Rt. 19)
across from Wright Pontiac

(724) 222-6100 (724) 941-4800 (724) 933-3220

www.lorenzilumber.com