

C O L U M N S



Design Awards 2001



*Respected **Builder**, Valued Construction **Leader**, Trusted **Partner***

Builder.

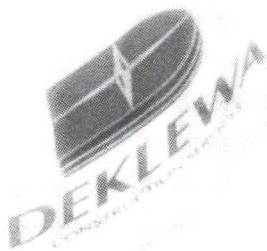
Site Work
Demolition
Concrete
Carpentry
Drywall & Acoustic

Leader.

Program Management
Site Selection
Feasibility Study
Pre-construction

Partner.

General Contracting
Construction Management
Design-build
Estimating/budgeting
Value Engineering



JOHN DEKLEWA & SONS, INC.

1273 Washington Pike • P.O. Box 158 • Bridgeville, PA 15017

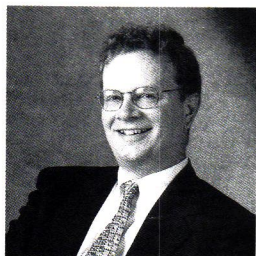
Tel: 412-257-9000 • Fax: 412-257-4486 • www.deklewa.com

Building Excellence with Superior Service Since 1918

A MESSAGE FROM THE PRESIDENT

How Do We Measure Success

by Paul Ostergaard, AIA



Great buildings are never labyrinths, never mazes, never confusing, never uninviting. They have a clarity of organization that invites comprehension.

How do we measure success in the

buildings we design? One method is to assemble a jury of our peers, and ask them to compare works of architecture, choosing what most interests them. This is a difficult task and juries are exhausting experiences. We ask a lot of our peers in a short amount of time: to evaluate complex three-dimensional objects reduced in their description to drawings, photographs and paragraphs. This year's Design Awards selections — showcased in this issue—are no doubt compelling and worthy of merit. But I would argue, and I believe our jurors would as well, that an AIA Award is an inadequate measure of success. The jurors told me there were many projects they felt were successful that did not receive an award.

We all measure our works based on an internal form of evaluation that for most is difficult to externalize. Vitruvius developed a way to measure success. Alberti tried it. So did Viollet-le-Duc. Most educators today try to instill their measures in future practitioners. With this opportunity, I will propose my own inadequate method of measuring success keeping mind that the ultimate judgment, however, is with the individual who lives with what we create.

Affordability

I am sure that many great works have broken the bank: costs that way exceeded budgets, driving clients to despair, divorce, bankruptcy, perhaps even ruin. Our job is to insure that our clients avoid that experience. There is nothing so rewarding as a tight set of bids, all below the budget. A financially sound client on opening day is a sure measure of success.

Sustainability

"To keep in existence; maintain; prolong". As I understand it, for architects sustainability means to use and consume as few non-renewable resources as possible. This is a relatively new term for the profession but a profoundly important concept that is as old as architecture itself. When I was in school, we studied how indigenous architecture consumed few resources and responded to the climate. We studied not just the buildings but whole settlement patterns. Do our buildings contribute to efficient compact cities or do they contribute to sprawl? In the age of the automobile, the greatest threat to sustainability is not the build-

ing itself but our uncontrolled consumption of land for settlement and the requisite consumption of energy to move us about.

Accessibility

We have the responsibility of protecting the civil rights of all who use our buildings. They should have access to all that buildings offer regardless of particular disabilities. The evolution of design criteria and codes which enable architects to practice with some sense of confidence has had a positive and profound influence on design. But there is another aspect to accessibility. Great buildings are never labyrinths, never mazes, never confusing, never uninviting. They have a clarity of organization that invites comprehension. The path through a great building reveals all that is within and adds a dimension to life that is greater than the uses listed in the design program. I believe that much of the delight of architecture is this idea of inspired accessibility.

Respectability

Respectability is something that is earned over time and awarded upon a building by others. But a sure fire way to start off on the right path is to show respect. Does the building contribute to making great streets, squares, and parks or does it diminish them? Just as a group of neighbors face each other in conversation, do buildings properly face the public or is one facing the wrong direction? Does a building block views, close streets, or internalize everything for itself? Does the building exhibit a certain deference to its neighbors or is it loud and obnoxious? Being a good neighbor is the first step in earning respect.

Lovability

The greatest compliment, a sure measure of success, is when someone loves something about your building. It may be a grand space with a lot of "vaboom" that captures the imagination or a cozy bay window with a cherished view. It may be a particularly elegant use of materials or colors. It is hard to know. Love is unexpected and hard to predict but it is a thrill when it happens.

There it is, my own measure of success in architecture: affordability, sustainability, accessibility, respectability and lovability. What's yours?

IN THIS ISSUE

Design Awards 2001

Jurors' Bios 4

Remarks from Teresa Heinz 5

The Winners 6

News: Architects Saturday 4

Breaking Ground 19

Calendar 25

On the cover: Silver Medal Award winner, Fort Duquesne & Sixth Parking Garage Renovation by Pfaffmann + Associates. Photo by Charles Uhl.

AIA Pittsburgh serves 12 Western Pennsylvania counties as the local component of the American Institute of Architects and AIA Pennsylvania. The objective of AIA Pittsburgh is to improve, for society, the quality of the built environment by further raising the standards of architectural education, training and practice; fostering design excellence; and promoting the value of architectural services to the public. AIA membership is open to all registered architects, architectural interns, and a limited number of professionals in supporting fields.

AIA Pittsburgh
211 Ninth Street
Pittsburgh, PA 15222
Telephone: 412/471-9548
FAX: 412/471-9501

Chapter Officers

Paul B. Ostergaard, AIA, President
Jonathan W. Shimm, AIA, 1st VP.
Richard DeYoung, AIA, 2nd VP.
Daniel K. Rothschild, AIA, Treasurer
Anne J. Swager, Hon. AIA,
Executive Director

Columns Staff

Tracy Certo, Editor
Joseph Ruesch, Art Director
Joan Kubancek, Coordinator

Editorial Board

David J. Vater, AIA, Chair
Robert J. Bailey, AIA
Alan L. Fishman, AIA
Eileen M. Kinney, Professional Affiliate
Daniel K. Rothschild, AIA
Donald G. Zeilman, AIA

COLUMNS is published ten times a year by, and primarily for, members of AIA Pittsburgh, A Chapter of the American Institute of Architects. Preference may be given to the selection of works, articles, opinions, letters, etc. of members for publication. However, in the interest of furthering the goals of the Chapter, as stated monthly at the top of the masthead and in the membership directory, COLUMNS will publish the names of and properly credit non-members, whether as participants in the design of works submitted by a member, or as designers of their own work, or as authors of articles, opinion or letters.

Opinions expressed by editors and contributors are not necessarily those of AIA Pittsburgh. The Chapter has made every reasonable effort to provide accurate and authoritative information, but assumes no liability for the contents.

For information about AIA Pittsburgh, AIA Middle PA and the North West PA Chapter, call 1-888-308-9099.
Online: www.aiapgh.org
email: aiapgh@stargate.net.

Design Awards Jurors' Bios

This year's Jury judged both the 100 entries in the AIA Pittsburgh Design Awards and the 20 entries in the AIA Pittsburgh Design Awards in Landscape Architecture. The Jury included:

Hank Koning, FAIA (Lead Juror) is principal of Koning Eizenberg Architecture, an award-winning Santa Monica-based architecture and planning firm. Many of Koning Eizenberg Architecture's buildings have won multiple awards and have been published in architectural and general interest publications in the U.S. and abroad. Also, the firm recently won The Pittsburgh Children's Museum Competition and the Chicago Public Schools Design Competition.

Celeste Novak, AIA, an officer of the Damian Farrell Design Group in Ann Arbor, Michigan, focuses her practice on community development and sustainable and environmental design. Celeste will be president of AIA Michigan and has participated in the President's Council for Sustainable Development as well as the LEED'S Certifi-

cation Training Program. She has won the Sterling Award of Merit from the National Commercial Builders Council for her unique automobile service center, which incorporates native landscaping and pollution prevention plans.

Brian Orland, ASLA, is a professor and head of Landscape Architecture at Penn State University. Both an architect and a landscape architect, he has written numerous articles on the subject of landscape and urban planning and environmental design. He is an elected fellow of the American Society of Landscape Architects, has received numerous awards and fellowships, and is founder and director of Imaging Systems Laboratory.

This Year, New Meaning to Architects' Saturday

By Larry Slater, Research Director for the Pittsburgh Business Times

This year's AIA Pittsburgh Architects' Saturday tour on October 13 of six South Side architectural firms took on an extra, healing significance in light of the Sept. 11 destruction of the World Trade Center towers and severe damage to the Pentagon. After a month of seeing

what true evil can destroy, after one too many videotaped ravings from fanatics who celebrate the cult of death, I found it soothing to instead see designs for living and to talk with professionals passionately committed to creating, building, improving and transforming.

Each of the buildings on this year's tour was a model of adaptive reuse, a skillful blend of often century-old brick, wood beams or pressed tin ceilings with cutting edge creative spaces, green design and the latest in architectural technology. Innovations ranged from the radiant heat-conducting recycled tile flooring and computer-powering solar panels of the CCI Center to the natural wood

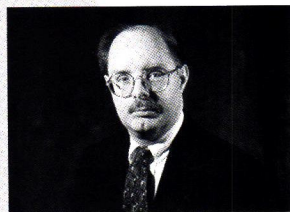
poles supporting the basement ceiling and first floor of Hanson Design Group Ltd. and the spectacular refit of an ethnic social club as

offices for Gardner + Pope Architects. Each firm on the tour showcased what it can design from concept to finish. What a welcome — and necessary — change from the warped practitioners of murder and demolition.

At Lynch & Associates, Architects, I was absorbed for quite some time in the floor plans and exterior renderings of a splendid private residence. The house, which will incorporate the natural landscape on which it will be built, seemed more a series of skillfully interconnected pavilions than one single structure. To think and create on these terms, rather than to ruminate on how to achieve, with maximum media attention, the death of thousands and the obliteration of modern landmarks, is truly the gift of a giver and sustainer, rather than of a taker of life.

The annual Architects' Saturday tours are highly enjoyable and thought provoking under normal circumstances. In the wake of the Sept. 11 atrocities, however, seeing plans for building and the people who design them took on a more affirming and comforting aspect.

LARRY SLATER can be contacted at lslater@bizjournals.com



"I found it soothing to instead see designs for living and to talk with professionals passionately committed to creating, building, improving and transforming."



Columns is printed on recycled paper.

Remarks of Teresa Heinz

on receiving the First AIA Pittsburgh Gold Medal • 23 October 2001

I am tremendously honored to be the first recipient of the AIA's new Pittsburgh Gold Medal Award.

In our efficiency-minded modern era, excellence in design so often has been dismissed as a luxury, something to pursue if you can afford it and if you happen to care about that sort of thing. I believe the opposite. I believe that, for our community, design excellence — adherence to the high standards celebrated by this award — is not a luxury, but an absolute must.

This is a conviction that has long been held by the Heinz family. When my late father-in-law, Jack Heinz, had the notion of a revitalized downtown being reborn around a thriving Cultural District, he was adamant that the place itself — the physical design of the District's buildings and streets and parks — had to be as inspiring and superb as the artistry it housed.

Both he and his son, my late husband John, were adamant on another point as well: Design excellence doesn't just mean creating spaces that inspire other architects and other designers; it means creating places that inspire the people who use them. Ultimately, it means creating places that make our cities better and more desirable places to live in. Not just look at, or to read about in architectural magazines, but to live in.

For Pittsburgh, this has never been more important than it is today. In the modern economy, quality of life plays a major role in determining which regions will thrive, and which will not. And nothing shapes quality of life so definitively — and so enduringly — as the design of the public realm.

That is why, at The Heinz Endowments, we have created a multi-program focus on promoting superior civic design. It is why we underwrote the design competition for the David L. Lawrence Convention Center, and why we have aggressively supported the efforts of the Riverlife Task Force to help Pittsburgh make the best possible use of its magnificent rivers and riverfronts.

And it is why we support the work of the Green Building Alliance and others to promote sustainable urban design. Pittsburgh has become a leader — arguably, the leader — in the green design architectural movement. We now have more LEED-certified buildings than any city in America. That's an accomplishment that should make other cities across the country, if you'll forgive the expression, green with envy.

And it should make us proud. The geography, the history, the economy, and the character of the region have, in the past, made Pittsburgh an architectural melting pot. Now they are combining to place us in an architectural avant garde.

Today, thanks to the creative collaboration of business and civic leaders, academics, architects, activists and, of course, the ultimate consumers — the citizens — a new vision for our city is rising up around us: a vision of a place that is comfortable and safe, but also exciting and fun; a place where people actually want and like to live and work and go to school and raise families.

In these newly and so terribly troubled times, such efforts might seem small and secondary. They are not. If anything, the events of September 11 and its aftermath have dramatically underscored their importance.

What terrorism seeks is to destroy community — what we think we know and believe about each other and ourselves, and the institutions and customs and ways of life and ways of living that knowledge, and those beliefs, have created.

I don't have to tell this audience that the architecture of a building goes far deeper than its façade. And the architecture of a community goes far below its surface. The hearts of buildings, like the hearts of communities, like the hearts of people, are more hidden than manifest. The terrorists' acts opened for us a frightening window in to the heart of darkness. But, everywhere, people's instinctive reactions immediately affirmed the overflowing compassion and incredible clarity and nobility of the normal heart.

The point of terrorism is to isolate people. To make them fearful, and to make them flee. What we saw happen in New York was the opposite. Instead of fomenting fear and increasing isolation, the attack stimulated the desire for communion — for community.

And that desire was nourished, quite clearly, by the physical infrastructure of the city. As a former garden designer for two New York parks wrote in The New York Times just this morning, Union Square, at most times a neighborhood park, became "a sacred meeting ground."

People gathered on street corners, met in cafes, found quiet solace in parks. They gazed out on the mutilated skyline of their city and discovered enduring beauty — architecture that still soared, buildings that still spoke of pride, public spaces that still inspired hope.

Fred Kent, the director of the Project for Public Spaces, put it very well. He wrote, "The need to gather, to share stories, to celebrate, protest and grieve in a common place is basic, human, and universal. We must continue to allow — and encourage — the diversity, culture and commerce of the United States to thrive in healthy, livable cities, markets, parks and neighborhoods."

DESIGN AWARDS 2001

How it Works

Awards may be given in the following four categories: Timeless, Open Plan, Detail and Architectural.

The Silver Medal is AIA Pittsburgh's highest award and is only presented in the Architectural Awards category in the AIA Pittsburgh Design Awards. Honor Awards are granted for overall excellence to projects in the Architectural Awards category. Certificates of Merit recognize an outstanding aspect of a project such as detailing or adaptive reuse. Open Plan and Architectural Detail are only eligible for Certificates of Merit.

Also, new to this year's Design Awards program is the Green Design Citation. Presented in conjunction with the Green Building Alliance, this citation recognizes projects that have integrated green building strategies and practices into the design to reduce environmental impact. This award also recognizes the growing impact that buildings have on human health, worker productivity, and natural environmental and regional prosperity.

That is why I say the work you do — the work of planners and designers and architects — has never been more important. You are designers not just of our buildings and our streets and our parks; you are the designers of our future. And in designing the future, excellence should always be our standard.

I believe Pittsburgh is in the forefront of an emerging national movement that is recognizing the importance of good design to our lives. If I have been able to play a part in that, I am truly gratified. And for the single honor you are bestowing on me here this evening, I am deeply grateful.

Design Awards 2001

Architectural Awards

SILVER AWARD

FIRM: **Pfaffmann + Associates**

PROJECT: **Fort Duquesne & Sixth
Parking Garage Renovation**

CLIENT: Pittsburgh Parking Authority,
Ralph Horgan, Executive Director

ARCHITECT/DESIGN TEAM: Rob
Pfaffmann, AIA Principal in Charge, Erik
Hokanson, AIA Principal, Kurt Beres,
Assoc. AIA, David Green,
Julie Chen

CONTRACTOR: F. J. Busse Company and
Carl Walker Construction Group

JURY COMMENTS: *A piece of art in the city. Sculptural. This project shows that parking garages have a legitimate form of their own and don't have to necessarily look like or imitate other building types. This structure sets up its own identity on the streetscape. The project is expedient — but very, very effective.*



PHOTO: SUELLEN FITZSIMMONS

Architectural Awards

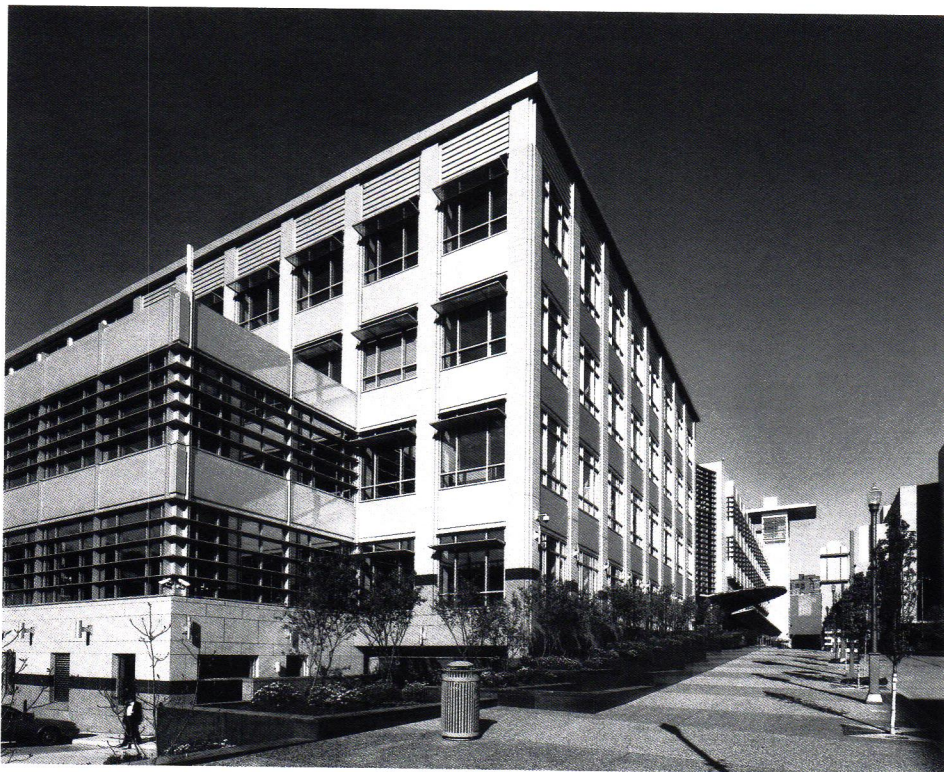


PHOTO: ED MASSERY

HONOR AWARD

FIRM: **LDA - L.D. Astorino Companies**

PROJECT: **PNC Firstside Center**

CLIENT: PNC Financial Services Group/PNC Realty Services Group

ARCHITECT/DESIGN TEAM: Louis D. Astorino, FAIA - Senior Principal, Dennis L. Astorino, AIA-Senior Principal, Elmer B. Burger II, AIA, Ronald J. Emanuele, AIA, Christopher Haupt, AIA, Anthony Lucarelli, AIA, James Routh, AIA, Robert Beckjord, AIA, Sandra A. Wasik, Jacqueline S. Kaiser, George Halkias, AIA, Michael Linder
CONTRACTOR: Dick Corporation

JURY COMMENTS: *Besides a Green Merit, this building deserves an Honor Award. It is a beautifully detailed project and a fine building. The massing while making the building read as one unit also makes this structure feel like separate spaces which helps it to fit into the scale of the surrounding buildings. We love the way the elevation is different on all sides, and particularly favored the river elevation. We also liked the way the designers varied the interior materials, yet kept the space clean and handsome.*



PHOTO: ED MASSERY

HONOR AWARD

FIRM: **IKM Incorporated**

PROJECT: **Adaptive Reuse, Allegheny County Jail**

CLIENT: Allegheny County

ARCHITECT/DESIGN TEAM: Mihai Marcu, AIA - President, CEO, Alan L. Fishman, AIA - Principle-in-Charge, Frederick C. Watts, AIA - Project Manager, Robert J. Moro, AIA - Director of Design, Alan Dunn, Designer, Robert Burnett, Designer, Project Architect
CONTRACTOR: Mascaro Construction Co., LP.

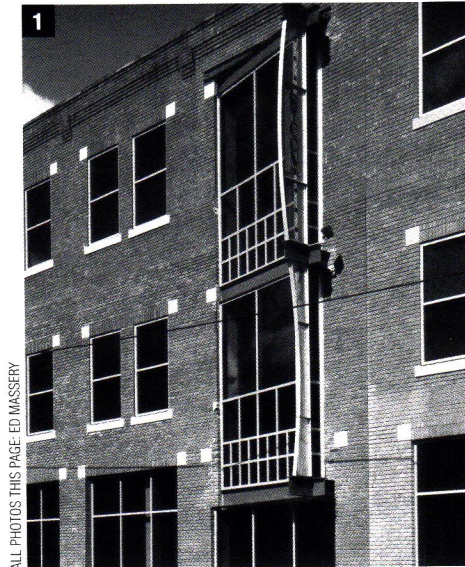
JURY COMMENTS: *This is a fabulous building. The designers only touched the design of the old building lightly. They did not try to copy the historic detailing. Instead, they moved on in time. The building is better because of their efforts.*

Architectural Awards

1. CERTIFICATE OF MERIT

FIRM: **WTW Architects**
 PROJECT: **Rycon Construction Offices**
 CLIENT: Rycon Construction, Inc.
 ARCHITECT/DESIGN TEAM: Richard Bamburak, AIA - Principal in Charge, Thomas Wiley, AIA - Project Architect, Heather Marra Lipchak - Interior Designer, Marc Mondor, W. Paul Lipchak, Ginger Horvath, Robert Schanck, AIA
 CONTRACTOR: Rycon Construction, Inc.

JURY COMMENTS: *We admired the willingness of the client to resurrect this building and adaptively reuse it. The design is sensible, employs smart materials, and contrasts those materials well. We thought the interiors were wonderful. There is a good contrast between the contemporary and traditional face of this building. We appreciated the architects' restraint as they did not overdo the street front of the building. The signage fits perfectly.*



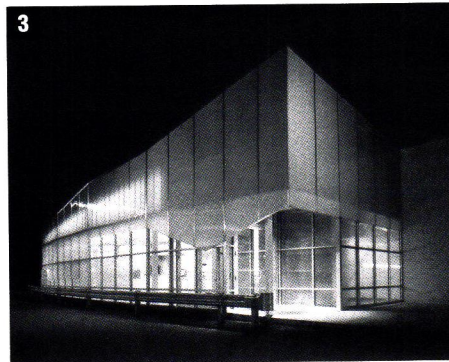
ALL PHOTOS THIS PAGE BY ED MASSERY



2. CERTIFICATE OF MERIT

FIRM: **EDGE studio**
 PROJECT: **AT&T Broadband Eastern Region Communications Center**
 CLIENT: AT&T Broadband
 ARCHITECT/DESIGN TEAM: Gary K. Carlough, AIA - Principal in Charge, Anne Chen, Jen Bee, Delphine Ammann, Mary Beth Coyne, Chloe Hiyu
 CONTRACTOR: Burchick Construction Corporation

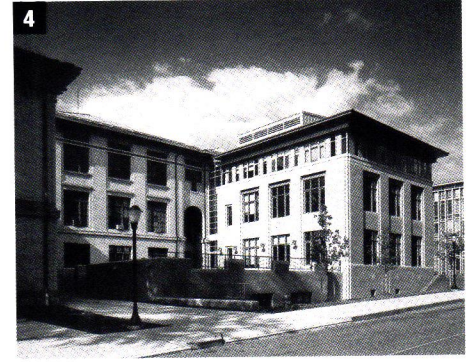
JURY COMMENTS: *This building is very interesting and the design is very well executed. It could have just been a concrete block building. Instead, there was great effort and much attention to the color and detail in a space that houses pipes and wires.*



3. CERTIFICATE OF MERIT

FIRM: **EDGE studio**
 PROJECT: **AT&T Broadband Suburban Technical Operations Facility**
 CLIENT: AT&T Broadband
 ARCHITECT/DESIGN TEAM: Gary K. Carlough, AIA - Principal in Charge, Donald J. MacDonald, AIA, Matt Fineout, AIA, Delphine Ammann, Hyla Willis, Andre Kamili, Mary Beth Coyne, Chloe Hiyu, Ben Hartlage
 CONTRACTOR: Repal Construction

JURY COMMENTS: *We love the look of this place and what the designers offered in terms of the layering of the space. The marketing of the project to the street is handled very well. We also appreciated the translucent material utilized for this project. It creates a lantern-like quality at night.*



4. CERTIFICATE OF MERIT

FIRM: **Burt Hill Kosar Rittelmann Associates**
 PROJECT: **Baker Hall Addition, Carnegie Mellon University**
 CLIENT: Carnegie Mellon University
 ARCHITECT/DESIGN TEAM: Anton Germishuizen, AIA - Principal-in-Charge, Thomas Demko - Project Manager, Naomi Yoran, AIA - Project Architect, Steve Altherr, AIA, P. Richard Rittelmann, FAIA, Frank McCurdy, AIA, Melissa Sarko, Robert Noah, AIA, Fred Holmes, Jim Gaynor, Robert Butorac, Sara Moore, Jim Kraus
 CONTRACTOR: Jendoco Construction Corporation

JURY COMMENTS: *We considered this a nice, quiet building. It is not a "screamer" — it is sensible. We appreciated how the attention to detail picked up the flavor of the original building.*

Architectural Awards



PHOTO: DAVID ASCHKEWAS

CERTIFICATE OF MERIT

FIRM: **Integrated Architectural Services Corporation**

PROJECT: **813 Liberty Avenue Reconstruction**

CLIENT: Seddon and Frances Bennington

ARCHITECT/DESIGN TEAM: Lee Calisti, AIA, John A.

Martine, AIA, Douglas T. Philip, AIA, Richard Gribble

CONTRACTOR: Bridges

JURY COMMENTS: *A building that was rescued and resurrected. It displays a new façade where the elements work very hard — particularly the reinterpreted cornice. This is an example of a beautiful intervention.*

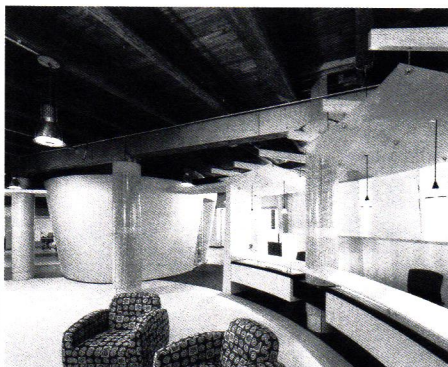


PHOTO: ED MASSERY

CERTIFICATE OF MERIT

FIRM: **The Design Alliance Architects**

PROJECT: **TechWorks@PNC**

CLIENT: PNC Financial Services, Inc.

ARCHITECT/DESIGN TEAM: LeRoy J. Frederick, - Principal-in-Charge, Louis Krupnick, AIA - Project Architect, Amie Piz - Project Interior Designer, Jeremy

Tooke - Architectural Designer, Scott Hinerman - CAD

CONTRACTOR: Innovative Construction Services, a division of P. J. Dick Inc.

JURY COMMENTS: *This space encourages people to mix. The floor plan and the furniture lend itself very well to the mission of a business where work groups are constantly changing. There is a clear distinction between old and new. We also liked the stripping out of the old building and how the new peaks through.*

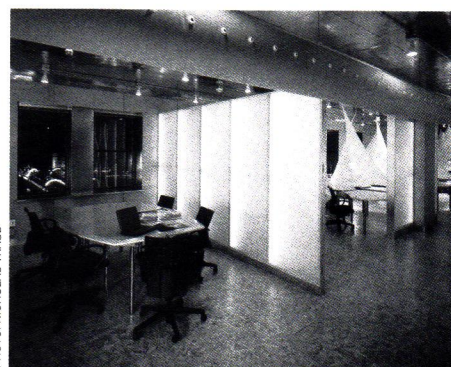


PHOTO: NICHOLAS TRAUB

CERTIFICATE OF MERIT

FIRM: **studio d'ARC architects**

PROJECT: **BodyMedia, Inc. Offices**

CLIENT: Body Media, Inc.

ARCHITECT/DESIGN TEAM: Gerard Damiani, AIA - Principal, Gretchen Bigsby

CONTRACTOR: Havrilla Construction

JURY COMMENTS: *This is a playful space that employs very exciting use of different materials. We love the floor and the way the steel ceiling reflects the wood and natural light. This is an example of a very intelligent use of space within a limited budget.*

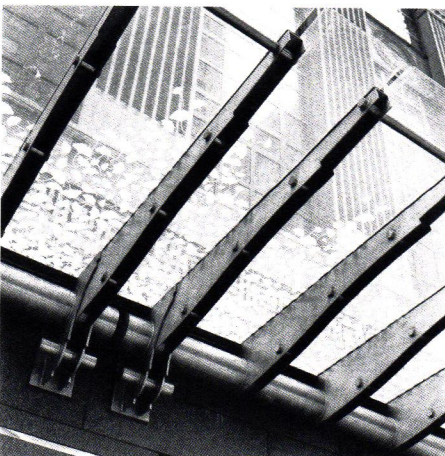


PHOTO: MUNCH

DETAIL CERTIFICATE OF MERIT

FIRM: **Jeffrey DeNinno, Architect, in association with GAEC: Parsons Transportation Group, URS Greiner Woodward Clyde, Camp Dresser and McKee, a joint venture.**

PROJECT: **Liberty Avenue Canopy, Wood Street T Station**

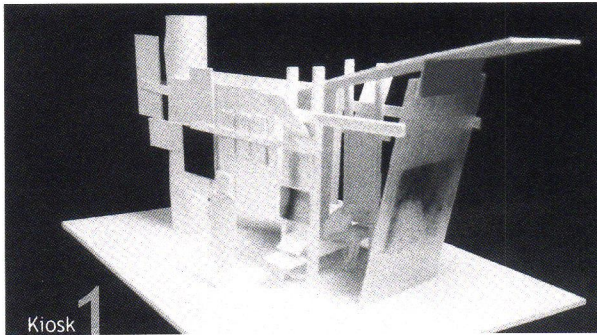
CLIENT: Port Authority of Allegheny County

ARCHITECT/DESIGN TEAM: Jeffrey DeNinno, AIA, Todd Meyer

CONTRACTOR: F. J. Busse Company

JURY COMMENTS: *This canopy was beautifully detailed and exquisitely expressed. We particularly liked the leaf pattern. We also appreciated the quality of the engineering.*

Architectural Awards



OPEN PLAN CERTIFICATE OF MERIT

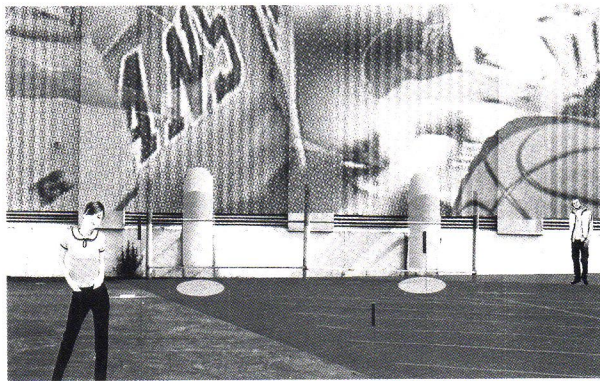
FIRM: **Hanson Design Group, LTD**

PROJECT: **International Concourse Kiosks**

CLIENT: Thom Jones, Producer, On Target Systems: Performance-Driven Media

ARCHITECT/DESIGN TEAM: Henry Hanson, AIA, Robert Kobet, AIA, Mark Kinan, Christine Mondor

JURY COMMENTS: *This project is a great example of the designer getting inside of the user's head. The design shows a true understanding of what the user of the space needs. It's a great example of analyzing a process and translating it into a functional design. More airports could use such a system.*



OPEN PLAN CERTIFICATE OF MERIT

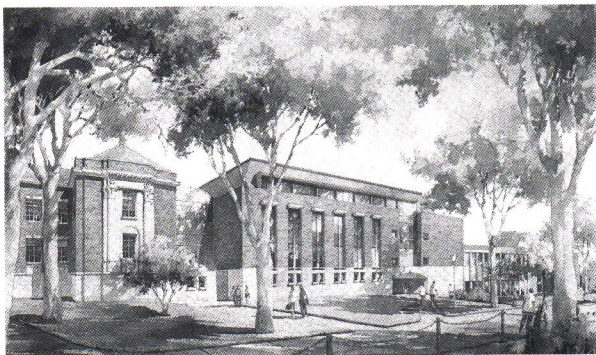
FIRM: **studio d'ARC architects**

PROJECT: **Sportsworks** (unbuilt)

CLIENT: Carnegie Museums of Pittsburgh/Carnegie Science Center

ARCHITECT/DESIGN TEAM: Gerard Damiani, AIA Principal, Debbie Battistone, Lee Christian Minnerly, Edward Parker, Gretchen Bigsby

JURY COMMENTS: *The vitality of this project is very nice. It is a wonderful temporary amenity. We particularly liked that the quality of the billboard works with the temporary usage of the space.*



OPEN PLAN CERTIFICATE OF MERIT

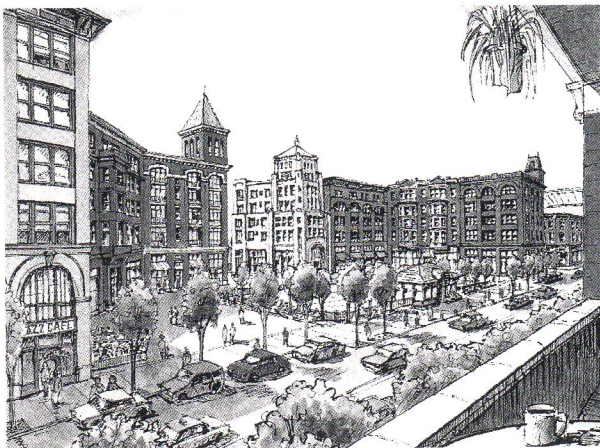
FIRM: **Perkins Eastman Architects PC**

PROJECT: **Henderson Complex**

CLIENT: The Pennsylvania State University

ARCHITECT/DESIGN TEAM: Arch Pelley, AIA, Aaron Schwarz, Sonny Sanjari

JURY COMMENTS: *The client should be applauded for thinking about university work in a different way. First, they thought about how to better plan the space and define a section of the university. They valued the potential aesthetics of the solution. We also appreciated that the architect uses the building as a backdrop to the green space.*



OPEN PLAN CERTIFICATE OF MERIT

FIRM: **Urban Design Associates**

PROJECT: **Cincinnati Central Riverfront**

CLIENT: Hamilton County and the City of Cincinnati

ARCHITECT/DESIGN TEAM: Paul Ostergaard, AIA - Principle-in-Charge, Barry Long, AIA - Principle - Project Manager, William Boyle, Michael Dwyer

JURY COMMENTS: *This project made a lot of sense to us. It demonstrated obvious solutions to important problems that are often overlooked. The plan considers how users move through the project and how it should interact with the different layers of building types.*

Architectural Awards

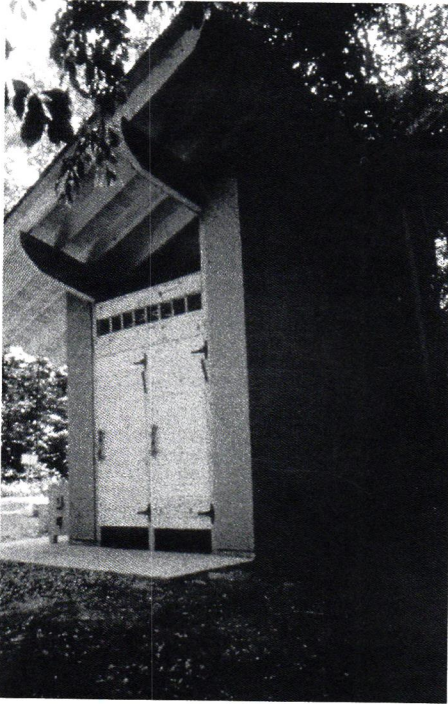


PHOTO: CHRISTINE MONDOR

GREEN DESIGN CERTIFICATE OF MERIT

FIRM: Gardner + Pope Architects
PROJECT: Villa Maria Comfort Station
CLIENT: Sisters of the Humility of Mary
ARCHITECT/DESIGN TEAM: Christine Mondor
CONTRACTOR: Scheiderly Construction

JURY COMMENTS: *This project is a great little icon in the woods that uses natural materials. It particularly pays wonderful attention to the details, the quality of the form and the intent of the space. It truly shows that you can "green in a beautiful fashion".*

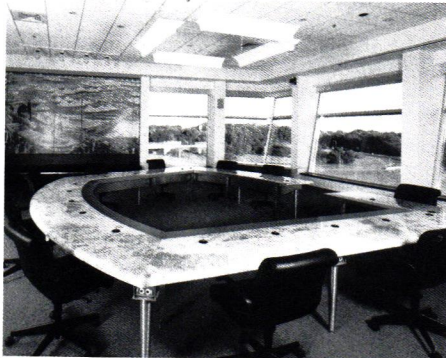


PHOTO: DAVID LAMB

GREEN DESIGN CERTIFICATE OF MERIT

FIRM: Burt Hill Kosar Rittelmann Associates
PROJECT: PTC Central Administration Building
CLIENT: The Pennsylvania Turnpike Commission
ARCHITECT/DESIGN TEAM: P. Richard Rittelmann, FAIA - Principal-in-Charge, Alexander K. Wing, AIA - Project Architect, Dan Burlingham, Fran Colby, Beverly Figes, Jayesh Hariyani, Shawn Maley, Steve Newcaster, Curt Phillips, Dana Steadman, AIA, Mark Studeny, Scott Swartzbek, Jill Swensen, AIA, Robert Tench, Sara Moore
CONTRACTOR: Alexander Constructors, Inc.

JURY COMMENTS: *Not only does this seem to be a nice place to work, but it is also a great example of green design. The integrated use of green technologies like the under floor airflow and use of daylighting is great.*

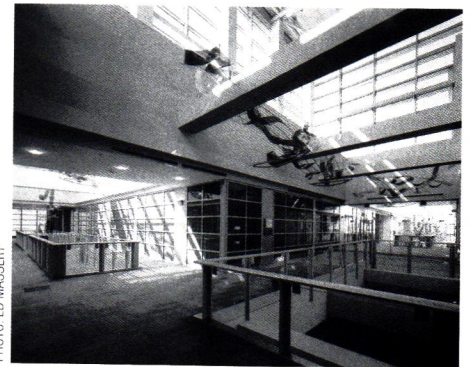


PHOTO: ED MASSERY

GREEN DESIGN CERTIFICATE OF MERIT

FIRM: LDA - L.D. Astorino
PROJECT: PNC Firstside Center
CLIENT: PNC Financial Services Group/PNC Realty Services Group
ARCHITECT/DESIGN TEAM: Louis D. Astorino, FAIA - Senior Principal, Dennis L. Astorino, AIA - Senior Principal, Elmer B. Burger II, AIA, Ronald J. Emanuele, AIA, Christopher Haupt, AIA, Anthony Lucarelli, AIA, James Routh, AIA, Robert Beckjord, AIA, Sandra A. Wasik, Jacqueline S. Kaiser, George Halkias, AIA, Michael Linder
CONTRACTOR: Dick Corporation

JURY COMMENTS: *Not only is it a beautifully detailed project, but it has great natural light, energy facility, recycled concepts, underfloor air flow, amenities for staff, and it's constructed on a brown-fill site. It has also received a LEED Silver Rating.*

Architectural Awards



PHOTO: ED MASSERY

TIMELESS WINNER

FIRM: **WTW Architects**

PROJECT: **South Campus, Community College of Allegheny County**

CLIENT: Community College of Allegheny County

ARCHITECT/DESIGN TEAM: Paul A. Whitehead, AIA

CONTRACTOR: Dick Corporation

JURY COMMENTS: *We were impressed with the beautiful massing of this project — it is wonderful. We also like the way the interior breaks apart and the concrete "hangs" in the space. This is a place that invites people to connect. And it includes wonderful changes in levels — which we can't do anymore.*



PHOTO: GARY BARANEC

PEOPLES CHOICE

FIRM: **Baechle and Associates Architects**

PROJECT: **New Construction for Smith Transport Corporate Headquarters**

CLIENT: Mr. Barry Smith, President Smith Transport

ARCHITECT/DESIGN TEAM: Patrick Baechle, AIA

CONTRACTOR: Ralph J. Albarno & Sons Builders, Inc.

Design Awards in Landscape Architecture 2001

HONOR AWARD

FIRM: **Klavon Design Associates, Inc.**
 PROJECT: **First Avenue Parking Garage**
 CLIENT: Pittsburgh Parking Authority
 DESIGN TEAM: Dina Cole Klavon, ASLA
 Patrice Hanulak, ASLA, Philip A. Lisotta,
 Michelle A. Evans, ASLA
 CONTRACTOR: Butler Landscaping

JURY COMMENTS: *This project goes beyond the usual "Let's stick plants in the ground to fill an empty space." Instead, it matches the strength of the building's architectural statement with a statement of its very own. Over time, this project will just get better and eventually it will start to define the space.*



PHOTO: KLAVON DESIGN ASSOCIATES

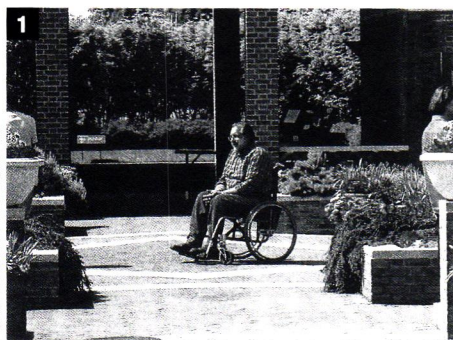


PHOTO: MARSHALL TYLER RAUSCH LLC

1. CERTIFICATE OF MERIT

FIRM: **Marshall Tyler Rausch LLC**
 PROJECT: **The Buehler Enabling Garden**
 CLIENT: The Chicago Botanic Garden
 DESIGN TEAM: Geoffrey L. Rausch, ASLA, Melissa R. Marshall, ASLA, R. Martin Hartman, ASLA
 CONTRACTOR: Brown and Associates, Inc.

JURY COMMENTS: *This project is a fabulous idea that enables people with disabilities to enjoy gardening. It offers a rich set of experiences within a very limited space. There are so many elements to touch and interact with. We particularly like the terraced planting beds and the spillover fountain.*



PHOTO: RICHARD RAUSO

2. CERTIFICATE OF MERIT

FIRM: **Richard P. Rauso Landscape Architects P.C.**
 PROJECT: **The Promenade at Pittsburgh Office and Research Park**
 CLIENT: Zell Two Inc. c/o Cushman and Wakefield of Pennsylvania
 DESIGN TEAM: Richard P. Rauso, ASLA, R. Brian Dudley, Assoc. ASLA
 CONTRACTOR: Eisler Landscapes Inc.

JURY COMMENTS: *This project effectively demonstrates the idea of using leftover land to create a very attractive place of refuge. The wilderness — and the way it flows through the space — is wonderful. We commend the drainage solution and liked the bocce and putting green.*

Design Awards in Landscape Architecture



PHOTO: MICHAEL HARITAN

DETAILS AWARD

FIRM: **LaQuatra Bonci Associates**

PROJECT: **Washington's Landing Overlooks and Arbors**

CLIENT: Urban Redevelopment Authority of Pittsburgh

DESIGN TEAM: Jack LaQuatra, ASLA

CONTRACTOR: ASTCO Construction

JURY COMMENTS: *This project demonstrates a nice sense of place and starts a very natural looking landscape. It "talks well" with the other structures across the river. We particularly liked that the stone paving follows the path of the rivers.*

OPEN PLAN AWARD

FIRM: **Pashek Associates, Ltd.**

PROJECT: **Beaver Borough Riverfront Park**

CLIENT: Beaver County Economic Development Corporation Borough of Beaver, Pennsylvania

DESIGN TEAM: Nancy Lonnott Roman, ASLA, Marcy Campbell, ASLA

JURY COMMENTS: *We liked the presentation of this space and how the designer worked together with the client to envision the client's future. Here, the client is not just "the people" — but it is also the frogs as well. You can tell that the question, "Is this where you want to go?" was asked during this process. The brevity of this master plan is refreshing.*

OPEN PLAN AWARD

FIRM: **LaQuatra Bonci Associates**

PROJECT: **Pittsburgh Regional Parks Master Plan**

CLIENT: Department of City Planning, City of Pittsburgh

DESIGN TEAM: Michael A. Stern, ASLA, BioHabitats, Landscapes, Tai + Lee Architects, Earthware/Landscapes Systems

JURY COMMENTS: *Though this is a very comprehensive document, it is still one that you can read. This master plan was beautifully done and the goals are wonderful. They actually tell you what the "big idea" is for this space. We also appreciated that they identified the different qualities of the parks.*

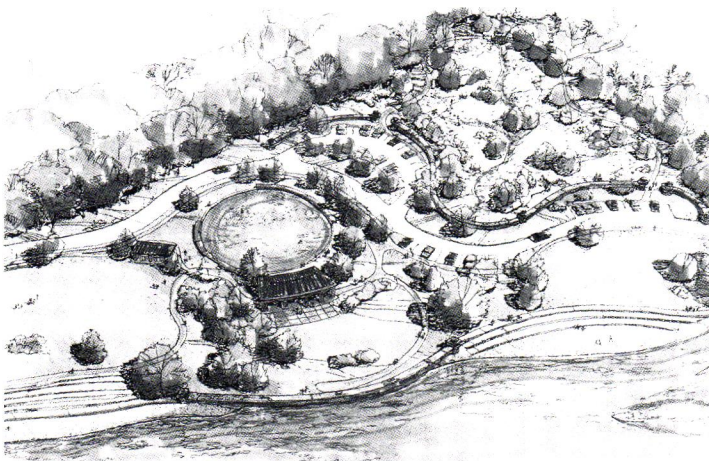


PHOTO: LAQUATRA BONCI ASSOCIATES

Design Awards in Landscape Architecture

PHOTO: MARSHALL TYLER RAUSCH & CHICAGO BOTANIC GARDEN



TIMELESS AWARD

FIRM: **Marshall Tyler Rausch LLC**

PROJECT: **Chicago Botanic Garden Master Plan**

CLIENT: The Chicago Botanic Garden

DESIGN TEAM: Geoffrey Rausch, ASLA

JURY COMMENTS: *This is an incredible place and a very evident landmark when you fly into Chicago. Though a constantly changing garden, it has stood the test of time. It is an invaluable "green lung" on the edge of Chicago.*

If you would like to discuss
your building plans and
possibilities, please call

George Leasure at

412.276.0010

N E L L O
CONSTRUCTION

Three Glass Street, Carnegie, PA 15106
412.276.0010 | www.nello.net

thanks to our sponsors...



Design Pittsburgh Hosts

Carnegie Museum of Art
Photo Forum Gallery

Design Pittsburgh Media Sponsor

Pittsburgh Business Times

Design Awards Sponsor

John Deklewa & Sons, Inc.

People's Choice Award Sponsor

Columbia Gas

Carnegie Museum of Art Exhibit Gold Sponsors

Crawford Consulting Services, Inc.
Mistick Construction
R.E. Crawford Construction

Gala Gold Sponsors

NDC Builders
Poerio Incorporated
Rycon Construction, Inc.

Photo Forum Gallery Exhibit Gold Sponsors

Dick Corporation
ReedSmith LLP

Technology Gold Sponsors

CAD Research, Inc.
Tri-State Reprographics, Inc.

Architects' Saturday Gold Sponsor

AIA Pittsburgh's Foundation for
Architecture

Silver Sponsors

Atlantic Engineering Services
Bunting Graphics, Inc.
Burchik Construction Company, Inc.
Centria
Civil & Environmental Consultants, Inc.
Flynn Construction, Inc.
Forbo Linoleum, Inc.
GAI Consultants, Inc.
H.F. Lenz Company
Marsico Corporation
Repal Construction Co., Inc.
Sota Construction Services, Inc.
The Gateway Engineers, Inc.
Tower Engineering

Contributors

Acordia
A.G. Cullen Construction, Inc.
AMEC Construction Management, Inc.
Armstrong WJG, Inc.
Carl Walker Construction Group, Inc.
Claitman Engineering Assoc., Inc.
Clearview Project Services Co.
ClimaTech, Inc.
Coker Construction Co.
Construction Junction, Inc.
Dodson Engineering, Inc.
Dollar Bank
F.J. Busse Co., Inc.
General Industries
Gipson Engineering
Grossman, Yanak & Ford LLP
GSK Enterprises, Inc.
Hammer Design Associates, Inc.
Henry A. Hegerle, P.E., C.B.O.

thanks to our sponsors...



DESIGN
PITTSBURGH

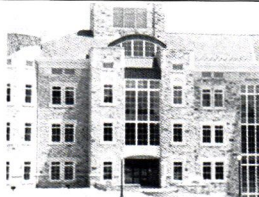
Contributors cont'd.

Horizon Properties
Jeffrey Associates
Keane Construction Company, Inc.
Kirkpatrick & Lockhart LLP
Landau Building Co.
LaQuatra Bonci Associates
M. B. Squires Company, Inc.
Maguire Hilbish Associates
Markovitz Dugan & Associates
Massaro Company
Massery Photography, Inc.

McKamish Chesapeake
P.J. Dick Incorporated
Pashek Associates, Ltd.
Pittsburgh Technical Institute, Inc.
Steelcase, Inc.
Taylor Structural Engineers, Inc.
TEDCO Construction Corporation
The Kachele Group
The Rubinoff Company
Trans Associates Engineering
Consultants, Inc.
Workscape

Special thanks to Design Pittsburgh Ambassadors and Volunteers!

IMI Mid-Atlantic Office
300 Northpointe Circle, Suite 303
Seven Fields, PA 16046



MacLachlan, Cornelius, & Filoni

1-800-IMI-0988
www.imiweb.org



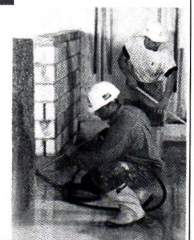
WTW Architects

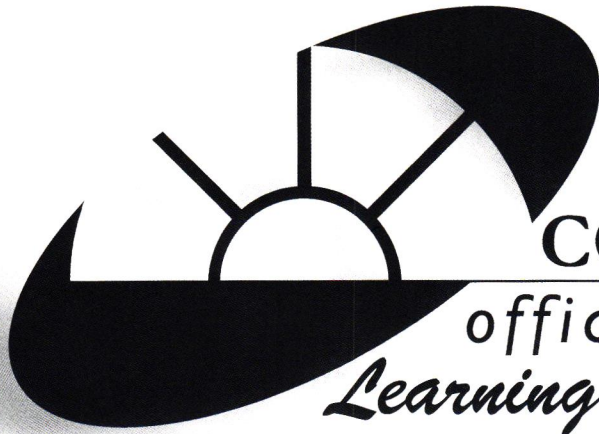


Working Together to
Create a Better Built
Masonry Environment.



UNION MASONRY CRAFTWORKERS
CONTRACTORS & CONSULTANTS





CONTINENTAL
office environments
Learning & Resource Center

SEE THE LIGHT.



**see the seating
see the casegoods
see the systems furniture
see the commercial flooring
see the constructive solutions
see the result of expert installation**

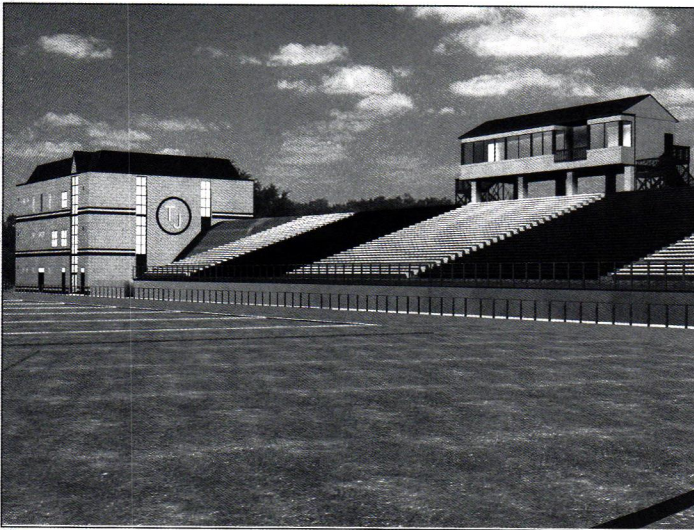
Creating environments that reflect your nature.

285 east waterfront drive, suite 100
homestead, pa 15120
tel. 412.464.2500
fax 412.464.2525
<http://www.continentaloffice.com>

an authorized  Herman Miller resource

From the Firms

→ The outdoor athletic facility for the West Jefferson Hills School District (pictured below), designed by the **Hayes Design Group - Architects**, is in construction with a scheduled completion date of March, 2002. Design highlights include a 42-foot high, 800-foot long retaining wall; a combination football/soccer field, an eight-lane all weather track; separate press box and concession/ticket buildings and a field house with four separate locker rooms.



Gardner + Pope Architects recently completed design and construction for a new community building for East Union Presbyterian Church in Cheswick, PA. The 12,000 sf facility includes athletic facilities and a commercial kitchen.

Gardner + Pope Architects also completed the following: a single vault cancer center for Millennium Cancer Associates in Queens, New York; a conversion of a 65,000 sf Wal-Mart store into a "medical mall" in Grenada, Mississippi; a new community building for East Union Presbyterian Church in Cheswick, PA; and the addition and renovations to the Port Vue United Method Church in Port Vue, PA.

Rothschild Architects PC has been selected to renovate the top floors of the Cathedral of Learning for the University Honors College (pictured at right). The project includes creating openings between the floors for a grand stair, and a two-story Reading Room at the great arched window at the top of the building. The architects worked with the University to create a symbolic beacon within the Cathedral that reflects the spirit of the grand Commons Room at the base. This will include using local artisans to produce works in iron, stone, wood and glass.

CelliFlynnBrennan Architects have begun schematic drawings for an addition and renovation of Oakland Catholic High School; the firm has also been awarded a contract for an addition and renovation to the Allegheny College campus.

Business Briefs

→ **DRS Architects** announced the following: **Richard J. Allyn, AIA** has returned after heading his own firm in Tucson, AZ; Robert Graham has rejoined the firm as an information technology specialist; Jason Woynar and Patti Lock, recent graduates of LaRoche College, have joined as interior designers; Keith Ranone was hired as a CADD technician; and **David Roth, AIA** and Mario diCorcia have joined as project architects.

Perfido Weiskopf Architects hired Lauren Wegel as an intern architect and Louis Krupcick, a registered architect with a specialty in design and project management.

JSA Architecture Planning Engineering Interior Design announced the hiring of Dorothy R. Moyta, as a project architect. Dorothy received her Bachelor of Architecture degree from Penn State University in 1984 and obtained her architectural registration for Pennsylvania in 1992.

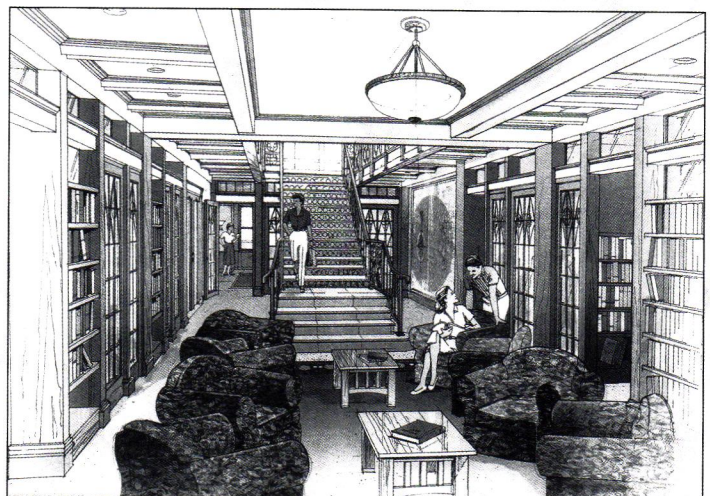
Rothschild Architects PC hired **Michele Adrianse, Assoc. AIA**. She is a graduate of Carnegie Mellon University where she served as Student Coordinator of the Professional Development Committee.

Allen & Shariff Corporation announced that Donald K. Beyer, P.E. has joined their Pittsburgh office as senior electrical engineer.

Kudos

→ **Nathan Hart, AIA** of **Charles L. Desmone & Associates Architects** was the \$5,000 first place winner in the Pittsburgh History & Landmarks Foundation's competition for the design of public spaces and squares open to architects and others in related professions under the age of 35. Hart's entry focused on Oakland.

(continued on page 20)



(continued from page 19)

Renaissance 3 Architects, P.C., a 17 person firm on the South Side, was ranked among the fastest growing companies in Western PA in the Pittsburgh Business Times' annual ranking.

Jimi Yucas, AIA, president of **Architect Atelier** in the Strip District, was awarded "Special Recognition" in the 2001 Western Pennsylvania Golden Trowel Awards presented by the International Masonry Institute for the design of the New Gatehouse at Sherwood Oaks Retirement Community in Cranberry Township.

Hammer Design Associates, Inc. received the 2001 FCSI Excellence in Design Award for the Abercrombie & Fitch office campus dining facility in New Albany, Ohio. The project was selected from an international field of competitors by the Foodservice Consultants Society International.

LDA-L.D. Astorino Companies' PNC Firstside Center and PNC Park each received a Golden Trowel award. The LEED-rated PNC Firstside received the "Best of Commercial" awards while PNC Park received the "Best in Stone" award.

LDA-L.D. Astorino also received a 2001 Facility of Merit Award by Athletic Business for the Louis E. Lasch Football Building, designed in association with HOK Sport and engineered by **Astorino**.

CelliFlynnBrennan participated in the dedication of the Thiel College Alumni Stadium. **CFB** also recently completed a master plan for Allegheny College in Meadville, PA.

CelliFlynnBrennan was project manager for the renovation of the Fulton Building, now the Renaissance Pittsburgh Hotel, recently recognized by the Pittsburgh History & Landmarks Foundation for excellence in historic renovation.

A new kind of construction company.


*Developed to provide
high-quality construction
services with a high level of
personal contact, and
a great attitude.*



**Innovative
Construction Services**
A DIVISION OF P.J. DICK INCORPORATED

1020 Lebanon Road West Mifflin, PA 15122
(412) 462-9300 Phone (412) 462-9341 Fax

Harbor Gardens, Pittsburgh, PA
Architect: LDA - L.D. Astorino Companies

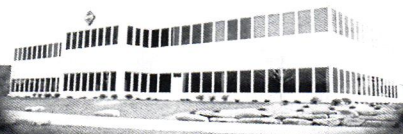


If you would like to discuss your
building plans and possibilities,
please call **Gino Torriero**
at **412.278.0477**

TORRIERO
CONSTRUCTION

3 GLASS STREET, SUITE B
CARNEGIE, PA 15106
412.278.0477

www.torrieroconstruction.com



VEKA Inc., Zelienople, PA
Architect: John D. Gailey, R.A.

(l-r) Richard Kacin,
president, Jeff Ferris,
vice president, and
Bruce Corna, vice
president.



MAKE US A PART OF YOUR FUTURE DESIGNS

KACIN General Contractors is always looking ahead for new ideas that optimize form and function. Your professional involvement upfront is key to the success of our projects.

We have more than 30 years experience in industrial facilities, banks, offices, nursing homes, restaurants, country clubs and churches throughout Allegheny and Westmoreland counties.

KACIN also has a reputation for quality, integrity, and a commitment to our industry.

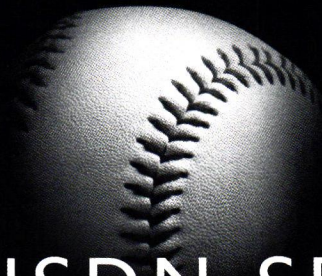
Make us a part of your future designs. Call Richard Kacin at 724/327-2225.

KACIN
GENERAL CONTRACTORS

795-22 Pine Valley Drive • Pittsburgh, PA 15239
Tel: 724/327-2225 • Fax: 724/733-5993
www.kacin.com



www.kacin.com



OUR ISDN SERVICE IS A HIT WITH THE PIRATES

OUR BROADBAND SOLUTIONS

will be a homerun with your business, too. Get a lightning-fast, always-open gateway to the essential, new world of data, voice and multimedia. High-speed Internet and data services are no longer just a luxury – they're a necessity. Penn Telecom's lineup of broadband products will keep you ahead of the curve.

..... ***Service. Savings. Simplicity.***

THE LOCAL AND LONG DISTANCE PROVIDER OF THE PITTSBURGH PIRATES

ISDN • DSL • FRAME RELAY • DS-1 • DS-3 • OC-3 • OC-12 • ATM

800.449.SAVE | www.penntele.com

 **PennTelecom**
Total Telecommunications

A Letter From Rebecca Flora, *Executive Director Green Building Alliance.*

Dear AIA members,

Congratulations to the winners of this year's Design Pittsburgh awards! Green Building Alliance applauds the introduction of a Green Building Citation into these awards, our local AIAs special recognition of buildings that apply good design to reduce environmental impacts. Providing further recognition of this critical area, GBA is proud to announce the release of our first annual report, *Shades of Green*, in conjunction with this year's Design Pittsburgh events. The report celebrates Greater Pittsburgh's success in shifting towards more sustainable building practices, as evidenced by the fact that our region has the most buildings certified by the U.S. Green Building Council under their LEED® building rating system.

In keeping with GBA's efforts to build the demand for green building, the target audience for the report is the building owner/developer. GBA seeks to convince owners and developers to invest in the better quality that green design brings. An important message for this audience is that green building is achieved through a team process and systems integration. To convey the collaborative green building process, it was important to either acknowledge the entire design and construction team in the report, or to defer all acknowledgements to our website, www.gbapgh.org. As noted in the report, we chose the latter to allow for space to highlight the building features. Another important message for the decision maker audience is that the building industry is rapidly moving towards green and this can help boost our regional economic development. This is expressed by the perspectives of local, state and national leaders — including AIA Pittsburgh's president Paul Ostergaard.

For firms involved with green design, we are happy to provide copies of *Shades* for you to use in educating your clients. And please be in touch with us about your current projects so that we can include them in the next issue of *Shades*. For firms not yet involved with green design, please call GBA or visit our website to find out about the exciting opportunities.

We look forward to our continued partnership with AIA in promoting better quality building for Greater Pittsburgh through green design.

Remember when construction seemed easy.

*Gateway can't bring your youth,
but we can make construct
project go a lot better*

What can go wrong on a construction project?

Plenty! But the engineers and surveyors at Gateway can help you minimize the chance that anything can go wrong, and maximize the possibility that everything will proceed according to plan.

In fact, we at Gateway have made it our mission to give developers and construction firms with all the services necessary to make their construction projects go as smoothly as possible:

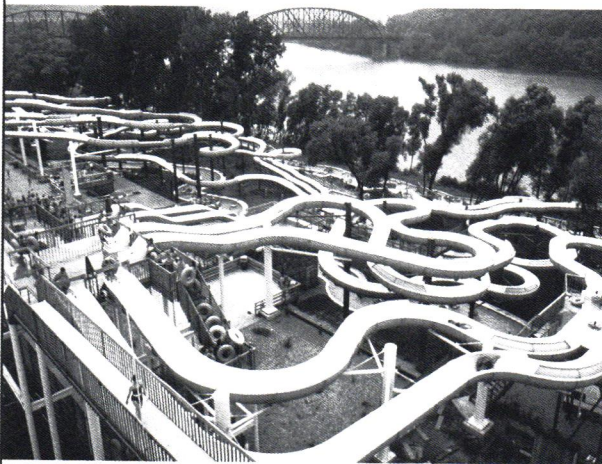
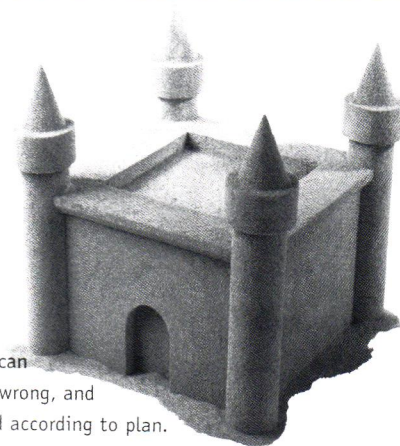
Precision surveyors and experienced engineers find potential problems in advance and develop the best ways to overcome them.

Core sampling and material testing save money while making knowledge the firm foundation of every project we take on.

Fast, accurate stakeout services keep projects moving along quickly and smoothly on-site.

GIS mapping and data services help keep track of everything you've done, and everything you're about to do.

So whether you're building a highway, an amusement park, or anything in between, make sure Gateway is your construction partner. At Gateway, we know how the construction business works, and we'll make it seem easy for you.



Sandcastle Water Park,
Pittsburgh, PA

Service

Above,

Solutions

Beyond

The Gateway Engineers, Inc.

1011 Alcon Street, Pittsburgh, PA 15220
412-921-4030 (phone) 412-921-9960 (fax)

Gigliotti Plaza Suite 201
20120 Route 19, Cranberry Township, PA 16066
724-779-8940 (phone) 724-779-8942 (fax)

www.gatewayengineers.com



"IS YOUR ISP e-LIMINATED?"

GET CONNECTED AND **STAY** CONNECTED. DON'T KEEP
SEARCHING FOR THE MISSING LINK. **KNOW NAUTICOM DSL**
AND KNOW **RELIABILITY**. GIVE YOUR BUSINESS A **HIGH-SPEED,**
ALWAYS-ON CONNECTION FOR **FASTER NET ACCESS** AND
DOWNLOADS WITH VOICE & DATA ON ONE SECURE LINE.

KNOW NAUTICOM. NO DOUBT.

724.933.9800

WWW.NAUTICOM.NET



Building Blocks

Send your event information.

*Continuing
Education Programs,
Seminars, Symposia
and Workshops.*

Please send your information to the attention of Joan Kubancek, AIA Pittsburgh, 211 Ninth Street, Pittsburgh, PA 15222, or fax it to Joan at 412/471-9501. The deadline for inclusion is normally six weeks prior to publication. If you would like information describing qualified continuing education programs, please call the AIA office at 412-471-9548.

Experience the authentic Italian lifestyle
in an 18th Century villa in Tuscany



In the rolling pastoral hills of Tuscany, Graniolo offers beautiful one and two bedroom units carefully restored and updated with modern bathrooms and kitchens. Weekly rentals start at \$1100.

For more information,
contact:
tcerto@adelphia.net or
(412) 563-7173



AIA Pittsburgh is using e-mail to keep our members informed of the chapter's activities. If you would like to be included and are a member, please send your address to aiapgh@sgi.net.

AIA ACTIVITIES

December 3, Monday

AIA Pittsburgh's Presidents Party,
5:30 – 8:30 p.m. at the Mattress Factory.
Food, drinks, music and tours of the
museum. \$10 for members, \$25 for non-
members. Advance registration and payment
by November 26 is necessary,
412-471-9548.

December 3, Monday

AIA Pittsburgh Board Meeting
4 p.m. at the Chapter office. All members are
welcome, 471-9548.

December 7, Friday

Communications Committee Meeting,
noon at the Chapter office, 471-9548.

December 11, Tuesday

**Professional Development Committee
Meeting** noon at the Chapter office,
471-9548.

December 21, Thursday

Legislative Committee Meeting, noon
at the Chapter office, Chuck Coltharp, AIA,
724-452-9690.

AROUND TOWN

December 6, Thursday

ASLA Western Section Holiday Social:
Asiago Oxford Centre at 6:00 p.m. \$15.00 for
members, \$25.00 non-members. You may pay
at the door.

December 1, Saturday

Gabriel Prize 2002 Competition. The
winner receives a stipend of \$15,000 to cover
all costs of travel and study in France between
May 1 and August 1. The final day to request
information is Dec. 1. www.gabrielprize.org

2 C O A L E N D A R

December 11, Tuesday

ULI Pittsburgh Networking Social:
Steve Greenberg, VP of Ballpark Development/
Communications will also give a brief
presentation on the proposed development
between the stadiums. Rivers Club at Oxford
Centre, 5:30 – 8:30 p.m. RSVP to ULI at
412-471-5141.

December 12, Wednesday

Society of Design Administrators:
Holiday Lunch and Charity Gift Giving, Opus
Restaurant, Renaissance Hotel. 11:30 a.m. –
1:30 p.m. Lunch \$17 for members, \$19.50 for
non-members. Reservations call Cheryl Marlatt
at 412-281-1337.

December Weekends

Fallingwater: Structural Tour. The Hard Hat
Restoration Tour is a truly unique experience
that will show the important balance of design,
structure and restoration that preserve
Fallingwater as one of the best examples of
organic architecture in the world. See the
exposed structural steel and concrete installed
during the 1936 construction. \$50 per person,
\$20 for students over 9. Reservations only
724-329-8501 www.paconserve.org

Through January 6

Perfect Acts of Architecture at HAC.

During the 1970s and '80s, a group of talented
young architects created a radical, visionary
"paper architecture" that redefined the role and
nature of architectural drawing. These "perfect
acts of architecture" launched Peter Eisenman,
FAIA, Rem Koolhaas, Daniel Libeskind, Thom
Mayne, AIA, and Bernard Tschumi, AIA to the
forefront of a new conceptual architecture.
At The Heinz Architectural Center.

CONTRACTORS' DIRECTORY

A LISTING OF AREA CONTRACTORS AND THEIR PROFESSIONAL SERVICES. To include your firm in this directory, call AIA Pittsburgh at 412-471-9548.

■ ALLEGHENY CONSTRUCTION GROUP, INC.*

456 Washington Avenue, PO Box 425
Bridgeville, PA 15017
PHONE: 412-221-0500 FAX: 412-221-0188
CONTACT: Laura S. Deklewa
**Commercial / Construction management
Exterior / General / Industrial / Interior
Renovations / Pre-engineered Metal
Buildings / Certified DBE/WBE**

■ BRIDGES

1300 Brighton Road, Pittsburgh, PA 15233
PHONE: 321-5400 FAX: 321-9823
CONTACT: Paul R. Bridges
**Commercial / Construction management
Exterior / General / Industrial / Interior
Renovations**

■ BURCHICK CONSTRUCTION CO., INC.*

500 Lowries Run Road, Pittsburgh, PA 15237
PHONE: 369-9700 FAX: 369-9991
CONTACT: Joseph E. Burchick
E-MAIL: burchick@burchick.com
VISIT: www.burchick.com
**Commercial / Construction management
General / Industrial / Interior / Renovations**

■ BURNS & SCALO ROOFING CO., INC.

400 Bursca Drive, Suite 402, Bridgeville, PA 15017
PHONE: (412) 221-6300 FAX: (412) 221-6262
CONTACT: Jack F. Scalo, President
E-MAIL: bscom@sgi.net
VISIT: www.burns-scalo.com
**Commercial / Industrial
Residential Roofing / Architectural
Structural / Specialty Sheetmetal
1998 National Roofing Contractor Of The
Year Award
1999 SPRI Contractor Achievement Award**

■ F.J. BUSSE CO., INC.*

P.O. Box 8540
Pittsburgh, PA 15220
PHONE: 921-1231 FAX: 921-9861
CONTACT: John Paul Busse
**Commercial / Construction management
Exterior / General / Industrial / Interior
Renovations**

■ CONTINENTAL BUILDING SYSTEMS

285 E. Waterfront Drive
Homestead, PA 15120
PHONE: 464-8933 FAX: 464-2994
CONTACT: Traci McGavitt-Yates
**Commercial / Construction management
Exterior / General / Interior / Renovations**

■ R.E. CRAWFORD CONSTRUCTION

1046 Pittsburgh Street, Springdale, PA 15144
PHONE: 724-274-5000 FAX: 724-274-2323
CONTACT: Thomas J. Churchill
**Commercial / Construction management
General / Interior / Renovations**

■ JOHN DEKLEWA & SONS, INC.*

1273 Washington Pike, P.O. Box 158
Bridgeville, PA 15017-0158
PHONE: 412-257-9000 FAX: 412-257-4486
CONTACT: Donald W. Dempsey, President
WEB SITE: www.deklewa.com
**General construction / Construction
Management / Design-Build / Development
Services**

■ DICK CORPORATION*

P.O. Box 10896, Pittsburgh, PA 15236
PHONE: 412-384-1320 FAX: 412-384-1215
CONTACT: John R. Bonassi
**Commercial / Construction management
Exterior / General / Highway / Industrial
Interior / Renovations / Design Build**

■ P.J. DICK INCORPORATED*

P.O. Box 98100, Pittsburgh, PA 15227-0500
PHONE: 462-9300 FAX: 461-7900
CONTACT: Bernard J. Kobosky
**Commercial / Construction management
Exterior / General / Industrial / Interior
Renovations / Institutional**

■ FLYNN CONSTRUCTION, INC.

600 Penn Avenue, Pittsburgh, PA 15221
PHONE: 243-2483 FAX: 243-7925
CONTACT: Tom O'Connor
**Commercial / Construction Management
Exterior / General / Interior / Renovations**

■ GENERAL INDUSTRIES

15 Arentzen Blvd., Charleroi, PA 15022
PHONE: (724) 483-1600 FAX: (724) 483-0990
CONTACT: Donald Ivill
**Design-Build/Commercial Building
Contractors**

■ HARCHUCK CONSTRUCTION CO., INC.

705 Route 66, Building II, Suite 222,
Apollo PA 15613
PHONE: (724) 727-3700 FAX: (724) 727-2800
CONTACT: David A. Harchuck
**Commercial / Construction management
Exterior / General / Industrial / Interior
Renovations**

■ JENDOCO CONSTRUCTION CORPORATION*

2000 Lincoln Road, Pittsburgh, PA 15235
PHONE: 412-361-4500 FAX: 412-361-4790
CONTACT: John W. Zang III
**Commercial / Construction management
Exterior / General / Industrial / Interior
Renovations**

■ A. RICHARD KACIN, INC.

795-22 Pine Valley Drive, Pittsburgh, PA 15239
PHONE: 724-327-6694 FAX: 724-733-5993
CONTACT: A. Richard Kacin, Pres.
**Commercial / Construction management
General / Industrial / Residential**

■ KUSEVICH CONTRACTING, INC.

3 Walnut Street
Pittsburgh, PA 15223
PHONE: 782-2112 FAX: 782-0271
CONTACT: George Kusevich, Jr.
**Commercial / Construction management
General / Industrial / Interior Renovations
Institutional**

■ L.V. CONTRACTING, INC.

105 Thomson Business Park, Cranberry
Township, PA 16066
PHONE: 724-779-8300 FAX: 724-779-8305
CONTACT: Bob Leone
**Commercial / Construction management
General / Interior / Renovations**

■ MARCO CONTRACTORS, INC.

100 Commonwealth Drive P.O. Box 805
Warrendale, PA 15095-0805
PHONE: 724-741-0300 x.17 FAX: 724-741-0335
CONTACT: Susan Tarasenkova
E-MAIL: starasenkova@marcocontractors.com
VISIT: www.marcocontractors.com
**Commercial / Construction management
Interior / Renovation / Restaurants / Retail**

■ A. MARTINI & CO., INC.*

320 Grant Street, Verona, PA 15147
PHONE: 828-5500 FAX: 828-6488
CONTACT: Angelo Martini, Sr.
**Commercial / Construction management
Exterior / General / Industrial / Interior
Renovations**

■ MELE & MELE & SONS, INC.

One Mele Place, Rankin, PA 15104
PHONE: 412-351-1234 FAX: 412-351-1278
CONTACT: Anthony W. Mele
**Site Development / Commercial Industrial
Institutional / Highway / Bulk Excavation
Grading / Utilities**

■ MISTICK CONSTRUCTION

1300 Brighton Road, Pittsburgh, PA 15233
PHONE: 322-1121 FAX: 322-9336
CONTACT: D. Thomas Mistick
**Commercial / Construction management
Exterior / General / Interior / Renovations
Residential**

■ MOSITES CONSTRUCTION COMPANY*

4839 Campbells Run Road, Pittsburgh, PA 15205
PHONE: 923-2255 FAX: 788-1169
CONTACT: M. Dean Mosites
**Commercial / Construction management
Exterior / General / Highway / Industrial
Interior / Renovations**

■ NELLO CONSTRUCTION COMPANY*

3 Glass Street, Carnegie, PA 15106
PHONE: 276-0010 FAX: 276-8123
CONTACT: Janet Torriero
**Commercial / Construction management
Exterior / General / Industrial / Interior
Renovations**

■ POERIO INC.*

467 Lowries Run Road, Pittsburgh, PA 15237
PHONE: (412) 366-6767 FAX: (412) 366-1404
CONTACT: Frank T. Porio
**Commercial / Construction Management
General / Interior / Renovations**

■ REPAL CONSTRUCTION CO., INC.

2400 Ardmore Blvd., Suite 400,
Pittsburgh, PA 15221
PHONE: 271-3700 FAX: 271-3866
CONTACT: Bill Palmer, Jr.
**Commercial / Construction management
Exterior / General / Industrial / Interior
Renovations / Residential**

■ SOTA CONSTRUCTION SERVICES INC.

80 Union Avenue, Pittsburgh, PA 15202
PHONE: 412-766-4630 FAX: 412-766-4634
CONTACT: Ernie Sota
E-MAIL: esota@sotaconstruction.com
VISIT: www.sotaconstruction.com
**Commercial / Construction management
Exterior / General / Industrial / Interior
Renovations**

■ TEDCO CONSTRUCTION CORPORATION*

TEDCO Place, Carnegie, PA 15106
PHONE: 276-8080 FAX: 276-6804
CONTACT: Beth Cheberenchick
**Commercial / Construction management
Exterior / General / Industrial / Interior
Renovations**

■ TURNER CONSTRUCTION COMPANY*

1400 Koppers Building
436 Seventh Avenue, Pittsburgh, PA 15219
PHONE: 412-255-5400 FAX: 412-255-0249
CONTACT: Raymond H. Steeb, III
**Commercial / Construction management
General / Industrial / Interior / Renovations**

■ JOSEPH VACCARELLO, JR. INC.*

P.O. Box 663, Carnegie, PA 15106
PHONE: 412-276-2755 FAX: 412-276-7985
CONTACT: Gary Dickinson
**Commercial / Highway / Industrial
Residential / Bulk excavation
Site development**

■ VOLPATT CONSTRUCTION CORPORATION*

250 Curry Hollow Road, Pittsburgh, PA 15236
PHONE: 412-653-5454 FAX: 412-653-5755
CONTACT: Raymond A. Volpatt
**Commercial / Construction management
Exterior / General / Industrial / Interior
Renovations**

■ WJG CONTRACTING, INC.

P.O. Box 4286, Pittsburgh, PA 15203-0286
PHONE: 381-7098 FAX: 381-7698
CONTACT: William J. Gormley, Jr.
**Commercial / Construction management
Exterior / General / Interior / Renovations**

*Member of the
MASTER BUILDERS'
ASSOCIATION.

Welcome New Member

William L. Pascoli joins AIA as a professional affiliate with the American Institute of Steel Construction, Inc. Bill is married to Lina Pascoli, and they have three children. Hobbies include golf, photography, gardening and following the champion Mt. Lebanon Girls soccer team. A graduate of Penn State, Bill is interested in getting involved in the program committee to enhance the communications between architects, engineers and the fabricated structural industry.

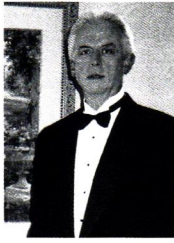


Photo Credit

Please note: All the photographs of the Kelly St. Childcare Center in Homewood featured in the October issue were taken by Craig Thompson.

Upcoming Issues

Columns welcomes your ideas and suggestions

January / February

- Architects Giving Back: Volunteers in the Community
- The Business of Architecture: Marketing Your Firm
- A Brief History of the Origins of AIA Pittsburgh

March

- Designing Overseas
- Security by Design: What You Need To Know

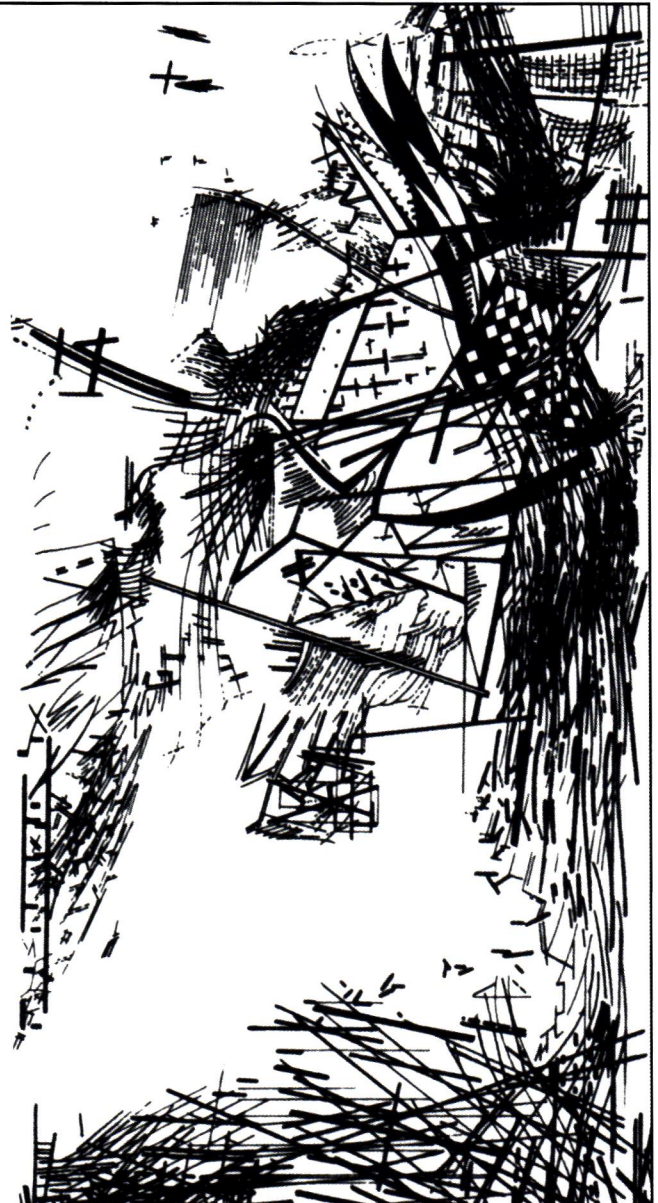
To contribute to an issue or to submit a story idea, please contact the editor at 412/563-7173 or email tcerto@adelphia.net.

Radical Visionary

Drawings of the 1970s and 1980s

Peter Eisenman
Rem Koolhaas
Daniel Libeskind
Thom Mayne
Bernard Tschumi

Inspired by the unlikely muses of politics, music, philosophy, linguistics, and film theory, these architects changed the course of architecture.



Perfect Acts of Architecture

September 15, 2001 - January 6, 2002
The Heinz Architectural Center

 **CARNEGIE
MUSEUM OF ART**
One of the four Carnegie Museums of Pittsburgh
Open Thursdays until 9 pm

4400 Forbes Avenue, Oakland • 412.622.3131 • www.cmoa.org

Perfect Acts of Architecture was organized by the Wexner Center for the Arts at The Ohio State University

ENGINEERS' DIRECTORY

A LISTING OF AREA ENGINEERS AND THEIR PROFESSIONAL SERVICES. To include your firm in this directory, call AIA Pittsburgh at 412-471-9548.

■ ALLEN & SHARIFF CORPORATION

700 River Avenue, Suite 237
Pittsburgh, PA 15212
PHONE: (412) 322-9280 FAX: (412) 322-9281
CONTACT: Anthony E. Molinaro, P.E.
*Consulting / Electrical / Mechanical
Telecommunications*

■ BARBER & HOFFMAN, INC.

215 Executive Drive, Suite 202
Cranberry Twp. PA 16066
PHONE: (724) 741-0848 FAX: (724) 741-0849
CONTACT: Michael R. Miller, P.E.
E-MAIL: BHP@barberhoffman.com
Consulting / Structural

■ BRACE ENGINEERING, INC.

3440 Babcock Boulevard, Box 15128
Pittsburgh, PA 15237
PHONE: 367-7700 FAX: 367-8177
CONTACT: Frank C. Brace
Structural

■ CIVIL & ENVIRONMENTAL CONSULTANTS, INC.

333 Baldwin Road, Pittsburgh, PA 15205
PHONE: 412-429-2324 FAX: 412-429-2114
CONTACT: Gregory P. Quatchak, P.E.
*Testing & Inspection / Civil / Construction
Consulting / Environmental / Geotechnical*

■ CLAITMAN ENGINEERING ASSOC., INC.

1340 Old Freeport Road, Pittsburgh, PA 15238
PHONE: 963-6700 FAX: 963-7217
CONTACT: Robert Rosenthal
*Consulting / HVAC / Plumbing / Fire
Protection*

■ CONWAY ENGINEERING

Investment Building
235 4th Avenue, Suite 1408
Pittsburgh, PA 15222
PHONE: 765-0988 FAX: 765-2530
CONTACT: Bob Conway
Consulting / Structural

■ DODSON ENGINEERING, INC.

420 One Chatham Center, Pittsburgh, PA 15219
PHONE: 261-6515 FAX: 261-6527
CONTACT: Gregory L. Calabria, P.E.
Herbert J. Brankley, P.E.,
Consulting / Mechanical

■ DYNAMIC DESIGN ENGINEERING, INC.

416 Main Street, Suite 200
Johnstown, PA 15901-1828
PHONE: 814-536-1651 FAX: 814-536-5732
CONTACT: James M. Vizzini, P.E.
www.dynamic-engineering.com
*Consulting / Mechanical / Electrical
Telecommunications / Building Audits*

■ ELWOOD S. TOWER CORPORATION

115 Evergreen Heights Drive, Suite 400
Pittsburgh, PA 15229
PHONE: 412-931-8888 FAX: 412-939-2525
CONTACT: Theodore H. Dannenrth, P.E.
*Consulting / Electrical / Mechanical
Telecommunications / Sustainable
Building Design / Energy Analysis
Building Commissioning*

■ ENGINEERING MECHANICS, INC.

4636 Campbells Run Road, Pittsburgh, PA 15205
PHONE: 788-3650 FAX: 787-5891
CONTACT: Daniel Grieco, Jr., P.E.
*Testing & Inspection / Geotechnical
Consulting / Environmental
Blasting Vibrations*

■ FIRSCHING, MARSTILLER, RUSBARSKY AND WOLF ENGINEERING, INC.

2 Parkway Center East
2030 Ardmore Boulevard, Suite 250
Pittsburgh, PA 15221
PHONE: 271-5090 FAX: 271-5193
CONTACT: Daniel J. Wolf / David D. Rusbarsky /
Ted Marstiller, P.E.
Consulting / Mechanical

■ FOREMAN ARCHITECTS ENGINEERS, INC.

P.O. Box 189, Zellenople, PA 16063
PHONE: 724-452-9690 FAX: 724-452-0136
CONTACT: David E. Foreman, P.E.
*Civil / Consulting / Electrical / Mechanical
Structural*

■ GAI CONSULTANTS, INC.

570 Beatty Road, Monroeville, PA 15146
PHONE: 412-856-9220 FAX: 412-372-2161
CONTACT: Anthony F. Morrocco, PE/PLS
*Testing & Inspection / Civil / Construction
Monitoring / Consulting / Environmental /
Geotechnical / Structural / Transportation /
Archaeological*

■ THE GATEWAY ENGINEERS, INC.

1011 Alcon Street, Pittsburgh, PA 15220
PHONE: 921-4030 FAX: 921-9960
CONTACT: Rose Griffin
*Civil / Testing & Inspection / Consulting
Environmental*

■ HERBERT, ROWLAND & GRUBIC, INC.

290 Executive Drive, Suite 1A,
Cranberry Twp., PA 16066
PHONE: (724) 779-4777 FAX: (724) 779-4711
CONTACT: James M. Lopresti, P.E., Regional
Manager
VISIT: www.hrg-inc.com
*Civil / Consulting / Electrical / Structural
Environmental / Site / Transportation /
Traffic / Wetlands / Surveying / Parking
Construction Phase Services*

■ HORNFECK ENGINEERING, INC.

1020 North Canal Street, Pittsburgh, PA 15215
PHONE: 781-1500 FAX: 781-5593
CONTACT: Richard W. Petrie, P.E.
*Consulting / Electrical / Instrumentation
Lighting / Telecommunications*

■ THE KACHELE GROUP

1014 Perry Highway, Suite 100
Pittsburgh, PA 15237
PHONE: 412-369-9020 FAX: 412-369-9021
CONTACT: Tony Moscollic
Structural

■ L. ROBERT KIMBALL & ASSOCIATES

415 Moon Clinton Road
Moon Township, PA 15108
PHONE: 262-5400 FAX: 262-3036
CONTACT: Thomas L. Blank, CIH, CSP
Joseph F. Moon, PE
*Asbestos Management / Environmental
Site Assessments / Indoor Air Quality
Lead Based Paint Management
Radon Testing-Mitigation
Industrial Hygiene-Safety
Civil / Site / Structural*

■ PETER F. LOFTUS DIVISION

Eichleay Engineers Inc., 6585 Penn Avenue
Pittsburgh, PA 15206-4407
PHONE: 363-9000 FAX: 365-3304
CONTACT: Glenn Avick
*Civil / Consulting / Electrical / Mechanical
Structural / Telecommunications
Fire Detection & Protection*

■ MURRAY ASSOCIATES, INC.

413 Penn Avenue, Turtle Creek, PA 15085
PHONE: 412-823-2020 FAX: 412-824-7302
CONTACT: Jack G. Murray, P.E.
*Structural / Civil / Geotechnical
Environmental / Testing & Inspection
Construction / Consulting*

■ POLYTECH, INC.

Three Gateway Center, 12th Floor, East Wing
Pittsburgh, PA 15222
PHONE: 995-1300 FAX: 995-1306
CONTACT: Michael C. Moore
*Civil / Consulting / Electrical
Mechanical / Structural / Transportation
Construction Management*

■ SAI CONSULTING ENGINEERS, INC.

1400 Penn Avenue, Suite 101
Pittsburgh, PA 15222-2571
PHONE: 392-8750 FAX: 392-8785
CONTACT: Walter S. Krasneski, Jr.
*Testing & Inspection / Civil / Consulting
Structural / Transportation*

■ TAYLOR STRUCTURAL ENGINEERS

250 Mt. Lebanon Blvd.
Pittsburgh, PA 15234
PHONE: 412-344-1889 FAX: 412-344-4898
CONTACT: Dirk A. Taylor
E-MAIL: tsestruct@aol.com
Structural

■ TRANS ASSOCIATES ENGINEERING CONSULTANTS, INC.

2419 Baldwick Road, Pittsburgh, PA 15205
PHONE: 412-937-8070 FAX: 412-937-8071
CONTACT: Sandra A. Sabo
Civil / Consulting / Transportation

Award-Winning Designs Built by MBA Contractors

***Congratulations to the following
AIA Design Pittsburgh 2001 Award Winners:***

Ft. Duquesne & Sixth Street Parking Garage Renovation
Pfaffman + Associates
F.J. Busse Company

Adaptive Reuse, Allegheny County Jail
IKM Incorporated
Mascaro Construction Co., L.P.

PNC Firstside Center
LDA – L.D. Astorino Companies
Dick Corporation

Rycon Construction Offices
WTW Architects
Rycon Construction, Inc.

AT&T Broadband Eastern Regional Communications Center
EDGE studio
Burchick Construction Company, Inc.

CMU Baker Hall Addition
Burt Hill Kosar Rittelmann Associates
Jendoco Construction Corporation

TechWorks @ PNC
The Design Alliance Architects
Innovative Construction Services,
A Division of P.J. Dick, Inc.

Liberty Avenue Canopy, Wood Street T Station
Jeffrey De Ninno, Architect
F. J. Busse Company

South Campus, Community College of Allegheny County
WTW Architects
Dick Corporation

WESTERN
PENNSYLVANIA
CHAPTER OF



To select a qualified contractor for your next project, contact Jack Ramage at 412-922-3912 for a copy of the MBA Sourcebook or visit the MBA website at www.mbawpa.org.

GENERAL SERVICES DIRECTORY

A LISTING OF AREA BUSINESSES AND THEIR PROFESSIONAL SERVICES. To include your firm in this directory, call AIA Pittsburgh at 412-471-9548.

ARCHITECTURAL ILLUSTRATOR

■ TM DOVE ILLUSTRATIONS

120 Oak Hills Manor
Butler, PA 16002
CONTACT:
PHONE: 724-283-2790
WEB SITE: www.tmdove.com

Presenting architectural designs in outstanding full-color, hand painted renderings. Finished work is frame ready. Prints are also made available.

BLUEPRINTS

■ F.L. HAUS COMPANY

921 Ridge Avenue, Pittsburgh, PA 15212-6093
PHONE: 412-231-7700 FAX: 412-231-7709
CONTACT: Clem Sutton
info@flhaus.com
plot@flhaus.com

Digital plotting/printing, Large format bond copies, Project document management, Electronic file transfer, specification copying, Mounting, Laminating, Authorized OCE imaging equipment & supplies dealer, Embroidery, Screen printing, Ad specialty, Awards programs, Pick-up & delivery

■ MATHIAS REPRO. TECHNOLOGY

950 Penn Avenue, Pittsburgh, PA 15222-3706
PHONE: 412-281-1800 FAX: 412-281-8243
CONTACT: Mark Mathias
VISIT: www.mathiasrepro.com

Online electronic document management, Online electronic job submission, Electronic national printing network, Construction document management, High-speed large document plotting/printing, Large & small format scanning/indexing, File conversion, Blueprinting, Spec copying, HP plotters, KIP digital systems, Service & repair, RSA superstore for materials & supplies.

■ TRI-STATE REPROGRAPHICS, INC.

907 Penn Avenue, Suite 700, Pittsburgh, PA 15222
PHONE: 281-3538 FAX: 281-3344
CONTACT: George R. Marshall

Document Management, Digital B&W Plotting, Blueprinting, Specs/Binding, Large & Small Format Color Copies, Mounting/ Laminating, Supplies, Pickup & Delivery

■ WASHINGTON REPROGRAPHICS, INC.

DOWNTOWN PITTSBURGH • 514 Liberty Avenue
2 ROBINSON TOWNSHIP LOCATIONS
700 Vista Park Drive & 400 Hightower Boulevard
WASHINGTON LOCATION • 234 E. Maiden Street
CALL: 788-0640 or visit our website at
www.washingtonreprographic.com.
CONTACT: John J. Dziak

CADD Services, Digital black & white (D/prints), Plotting, Scanning, Print project management, Specs/Binding, Color display services, Mounting/Laminating, Equipment/ Supplies, Blueprinting, Pickup & delivery.

ENGINEERS/ARCHITECTS SUPPLIES

■ ALMART ENTERPRISES INC.

1392 Frey Road, Frey Industrial Park
Pittsburgh, PA 15235
PHONE: 412-380-1335 FAX: 412-380-1020
E-MAIL: Almartent@juno.com
CONTACT: Martin H. Smith
Inkjet Plotter, Xerographic & Diazo Media and Supplies, Foamboard and Art Boards, Hanging and Flat Files, Drafting Tables, Drafting and Art Supplies, Builders/ Surveyors Instruments and Supplies

FOODSERVICE DESIGN

■ BRYSCO FOODSERVICE DESIGN

590 Vista Park Drive, Building #5
Pittsburgh, PA 15205
PHONE: 412-787-3250 FAX: 412-494-0234
CONTACT: Ken Harris
E-MAIL: Ken@brySCO.com
Complete Foodservice Design, Construction and Consultation, Restaurant Corporate, Educational, Hospital, Nursing Care, Custom Stainless Steel Design and Fabrication

OFFICE FURNITURE

■ FRANKLIN INTERIORS

Suite 600, 2740 Smallman Street,
Pittsburgh, PA 15222-4720
PHONE: 412-261-2525 FAX: 412-255-4089
Complete project and furniture management. Reconfigurations and installations: non-union and union. Meeting any budget—we are your authorized Steelcase dealer.

■ WORKSCAPE, INC.

1900 Lowe St., Pittsburgh, PA 15220
PHONE: 920-6300 FAX: 920-7570
CONTACT: Dave Sauter
Sales, Service, Installation and project management for all of your KNOLL & KIMBALL office furniture. Special discounts for architects.

■ WRIGHT CONTRACT INTERIORS

2735 Railroad Street Pittsburgh, PA 15222-4715
PHONE: 412-471-2700 FAX: 412-471-5008
VISIT: www.wrightcontract.com
Your KIMBALL office furniture and commercial flooring specialists. Try our client-centered approach to sales, service, project management and installation.

SANDSTONE

■ ANNADALE SANDSTONE

219 Golf Station Road, Boyers, PA 16020
PHONE: 724-735-4939 FAX: 724-735-4933
CONTACT: Raymond John or Sam Tiche
*Wide range of colors
Silicon dioxide 96.56% / Absorption 3.9%
P.S.I. 12,500 Total Load (IBF) 44,300
Weight Per Cubic Foot 144 LBS.*

SIGNAGE

■ BUNTING GRAPHICS, INC.

20 River Road, Verona, PA 15147-1159
PHONE: 412-820-2200 ext. 240 FAX: 412-820-4404
E-MAIL: jody@buntinggraphics.com
VISIT: www.buntinggraphics.com
CONTACT: Jody Bunting
Fabricated Graphics & Signage, Custom Railings & Architectural Metal Work, Decorative Truss Work, Cold Cathode Lighting, Custom Lighting Fixtures, Sculpture & 3D Graphics, Custom Fabrication, Latest Technology & Skilled Craftsmen. (Local 110,000 Sq. Ft. Mfg. Plant)

■ KOLANO DESIGN

6026 Penn Circle South, Pittsburgh, PA 15206-3921
PHONE: 412-661-9000 FAX: 412-661-9606
E-MAIL: wk@kolano.com
CONTACT: William Kolano
www.kolano.com
Design of sign & wayfinding systems, design standards, fabrication packages and contract administration. For facilities, corporate, transportation, education, medical, retail, government, hospitality

■ MVP IMAGING

950 Penn Avenue, Pittsburgh, PA 15222-3706
PHONE: 412-281-1800 FAX: 412-434-5752
A division of A.H. Mathias & Co. Inc.
CONTACT: Chris Mathias
VISIT: www.mvpimaging.com
Full color exterior job site banners & signage, Fleet vehicle graphics, Trade show exhibits, Photo duplication, Large format digital imaging, Mounting & laminating, Interior signage, banners, exhibits, displays

WATERPROOFING CONTRACTOR

■ T-N-D OF PITTSBURGH, INC.

1422 Frey Road, Pittsburgh, PA 15235
PHONE: 412-374-1330 FAX: 412-374-1330
CONTACT: Art Hawk or John Gibbon
W. PA's selected contractor utilizing KOCH material's "TUFF-N-DRI" waterproofing systems. "GUARANTEED DRY"

With the General Services Directory, you can list your business by specialty in *Columns*. List your firm under the heading of your choice.

- Security Systems
- Blue Prints
- HVAC
- Electrical Service
- Design
- Roofing
- Signage
- Windows and Doors
- Brick Waterproofing
- Interior Design
- CADD Services
- Lumber
- Data
- Flooring
- Carpeting
- Tile
- Plumbing

Call AIA Pittsburgh at
412-471-9548 for details.

COMMERCIAL • EDUCATIONAL • FINANCIAL • HEALTHCARE



R.E. CRAWFORD

CONSTRUCTION

724.274.5000 • WWW.RECRAWFORD.COM • PITTSBURGH, PA • BRADENTON, FL

HOSPITALITY • INDUSTRIAL • RESTAURANT • RETAIL

Our most powerful tool



*Adelphia Business Solutions
Canonsburg, PA
Architect: Gerard-Nagar Associates*

is our ability to listen.

Listening. It may be the most critical component of an effective partnership. How accurately and efficiently a contractor executes your construction plan is, in part, a measure of their ability to truly comprehend your needs. And ultimately, a measure of their potential to be a reliable business partner.

With more than 25 years in the industry, General Industries has amassed a wealth of experience in every aspect of commercial construction. But during that time, we've also honed our skills in the art of listening to the intricate needs of our customers. And that, as much as our ability to execute, is what makes building with General Industries the reliable, efficient process that it is.

Find out more about building with General Industries. Call Don Ivill at 724-483-1600.



15 Arentzen Boulevard, Charleroi, PA 15022, 724-483-1600