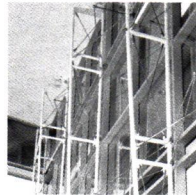
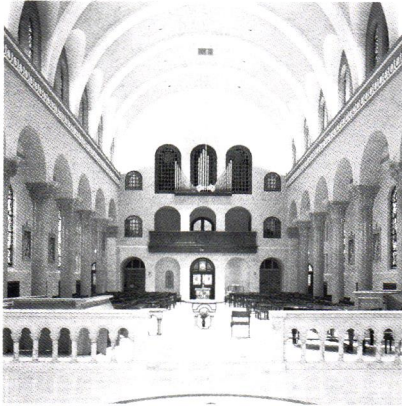
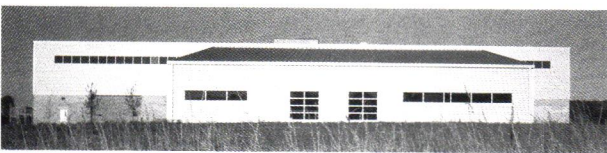
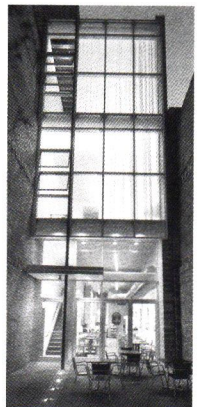
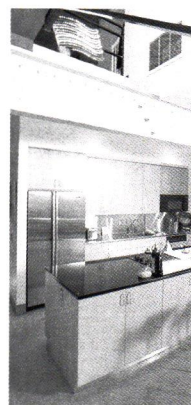
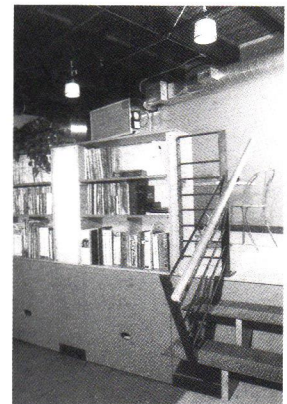


# C O L U M N S



## DESIGN **AWARDS**

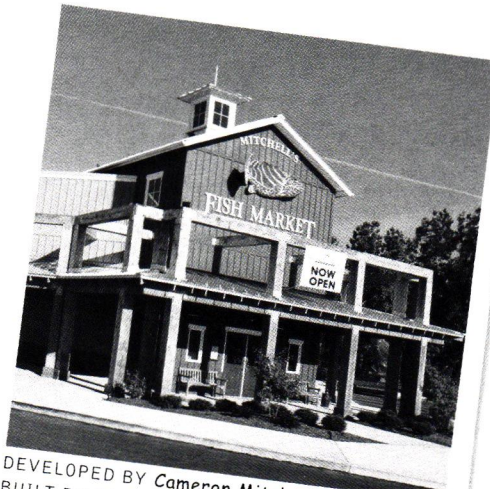


2003





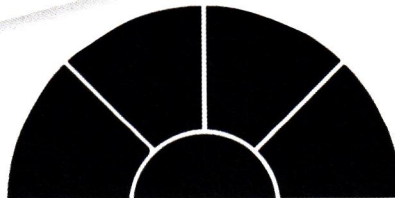
*When it's YOUR construction project,  
RESULTS are everything.*



DEVELOPED BY *Cameron Mitchell Restaurants.*  
BUILT BY CONTINENTAL BUILDING SYSTEMS.  
DESIGN COLLECTIVE ARCHITECTS



DEVELOPED BY *Nationwide Realty Investors.*  
BUILT BY CONTINENTAL BUILDING SYSTEMS.  
HEINLEIN-SCHROCK ARCHITECTS



## CONTINENTAL BUILDING SYSTEMS

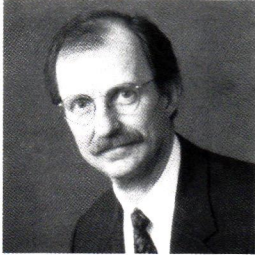
**GENERAL CONTRACTOR ■ CONSTRUCTION MANAGER**

COMMERCIAL OFFICE ■ RETAIL ■ WAREHOUSE/DISTRIBUTION  
HEALTHCARE ■ INTERIOR/EXTERIOR RENOVATION ■ RESTAURANTS

*Call Traci McGavitt-Yates at 412.464.8933 to get results  
on your next construction project, or visit  
[www.continental-buildingsystems.com](http://www.continental-buildingsystems.com).*

# Design Quality and Public Policy

By Rich DeYoung, AIA



*"When we participate and affect the environment in which we practice, our opportunity to provide quality design services improves and we all win."*

## Hopefully, you joined in at least some,

if not all, of the activities offered as part of AIA Pittsburgh's *Design Pittsburgh*, our month-long celebration of architecture in October. This year, for the first time, our firm opened its doors for the firm tour on Architects' Saturday. What a great opportunity to present what we do as a profession to a group of eager and inquisitive high school students just beginning to consider what architecture could offer them as a career. If you haven't participated before, I highly recommend that you consider participating in the future.

Two new twists on old events breathed a bit of new life into Design Pittsburgh this year. First, the format of the Gold Medal presentation was changed to more properly reflect the prestige of the award by presenting it in a special reception preceding the Design Gala, cosponsored by AIA Pittsburgh's Foundation for Architecture. Recognizing contributions to the quality of the built environment is squarely on target with the mission for the Foundation and the event provided an important source of funding for its activities. By her own admission, our honoree, Carol Brown, couldn't have been more thrilled to have been honored for her contributions by the architectural community.

The second change was in the format of the Design Awards ceremony. This year the board decided to first present the awards, followed by a reception celebrating architecture and the winners. From observations and comments, it appears to have been a success.

So what does this discussion about celebrating architecture and recognizing our best have to do with public policy? Let me start by saying that for most of my career, I have been a pretty typical architect when it comes to politics, in a word: apolitical. Not such a bad perspective you might say; after all, who has time for politics and how will that improve the profession's contribution to society? A few years ago, when AIA PA started the process of forming a political action committee (AIA PA PAC), I gradually became more enlightened regarding the importance of participation in the political process as a profession.

In a recent discussion with a state senator, not the one you are thinking of, another one, the relationship between

public policy and design quality became even clearer to me. I was pointing out to the senator the grossly inadequate fee schedule under which Pennsylvania's Department of General Services compensates architects. Not knowing the details of the schedule, he guessed that we were paid something like 10% or 12% of the construction cost for our services. Wouldn't that be great! He was somewhat shocked to find out that DGS usually pays from 4.5 to 6% depending on the size of the project.

The citizens of Pennsylvania deserve the benefits accrued from exceptionally well-designed public buildings. To achieve this, architects need to be adequately compensated to provide the level of service and attention to detail and the quality of design demanded by public projects.

The AIA PA PAC is very new and still quite small, but we have begun to make an impact. When I mentioned my involvement on the board, the senator was aware of the PAC's efforts and appreciative of the fact that we are participating in the political process. We are making small steps forward. The success of the PAC depends on your continued regular annual contributions.

Our efforts in Harrisburg can improve our ability to practice and provide our best for our clients. When we participate and affect the environment in which we practice, our opportunity to provide quality design services improves and we all win: architects, clients, and society at large. Take a minute to think about that as you consider your support for the PAC. Even a few dollars from every practicing architect in the state will make a big difference in the level of effectiveness we can have in Harrisburg.

As I write this final report to you as President of AIA Pittsburgh, I pause to reflect on what a great opportunity it has been to serve the profession in Pittsburgh. We have a lot going for us. This city is emerging as a significant national design center, with many firms, large and small, now practicing nationally and even internationally. Architecture is a "growth industry" in Pittsburgh, creating jobs as a net exporter of services. We should be proud of our contribution to the city on all levels: economic, social, political and artistic. Let's keep up the great work!

## IN THIS ISSUE

### DESIGN AWARDS 2003

*Juror Bios* . . . . . 5

*The Awards* . . . . . 6

*Design Pittsburgh Photo Album* . . . . . 14

Breaking Ground . . . . . 17, 19

Calendar . . . . . 21

**On the cover:** Winners from Design Awards 2003.



AIA Pittsburgh serves 12 Western Pennsylvania counties as the local component of the American Institute of Architects and AIA Pennsylvania. The objective of AIA Pittsburgh is to improve, for society, the quality of the built environment by further raising the standards of architectural education, training and practice; fostering design excellence; and promoting the value of architectural services to the public. AIA membership is open to all registered architects, architectural interns, and a limited number of professionals in supporting fields.

AIA Pittsburgh  
945 Liberty Avenue, Loft #3  
Pittsburgh, PA 15222  
Telephone: 412/471-9548  
FAX: 412/471-9501

#### Chapter Officers

Richard DeYoung, AIA, President  
Daniel Rothschild, AIA, 1st VP.  
Stephen L. Quick, AIA, 2nd VP.  
Rebecca Henn, AIA, Secretary  
Deborah Rouse, AIA, Treasurer  
Anne J. Swager, Hon. AIA,  
Executive Director

#### Columns Staff

Tracy Certo, Editor  
Joseph Ruesch, Art Director

#### Editorial Board

David J. Vater, AIA, Chair  
Robert J. Bailey, AIA  
Thomas Briney, AIA  
Alan L. Fishman, AIA  
Donald G. Zeilman, AIA

COLUMNS is published ten times a year by, and primarily for, members of AIA Pittsburgh, A Chapter of the American Institute of Architects. Preference may be given to the selection of works, articles, opinions, letters, etc. of members for publication. However, in the interest of furthering the goals of the Chapter, as stated monthly at the top of the masthead and in the membership directory, COLUMNS will publish the names of and properly credit non-members, whether as participants in the design of works submitted by a member, or as designers of their own work, or as authors of articles, opinion or letters.

Opinions expressed by editors and contributors are not necessarily those of AIA Pittsburgh. The Chapter has made every reasonable effort to provide accurate and authoritative information, but assumes no liability for the contents.

For information about AIA Pittsburgh, AIA Middle PA and the Northwest PA Chapter, call 1-888-308-9099.  
Online: [www.aiaappgh.org](http://www.aiaappgh.org)  
email: [info@aiaappgh.org](mailto:info@aiaappgh.org)

# Orchids, Onions and Good Design By Anne J. Swager, Hon., AIA

## Controversy always seems to surround

the jury choice for Design Awards. I have heard complaints ranging from "the jury has too much of a sleek, modern bent" to "who are they anyway?" but the biggest undercurrent of discontent swirls around the People's Choice Award.

We got the idea for the "People's Choice Award" from AIA Dallas which runs an "Orchid and Onion contest" every year. In their version, the public is asked to vote for their favorite and least favorite project of the year. Most startling of all is that most often the same project wins both the Orchid and the Onion. This could lead you to the conclusion that the public just doesn't understand design but I think there is more to their vote than that. I won't disagree that when most people are asked to define "good design" they cannot. Worse yet, most of us "lay people" cannot translate your drawing on paper, your computer rendering or even your model into a reasonable facsimile of how the final project will appear. The fact that you can sets you apart from the rest of us but it doesn't mean that the public doesn't care about the places you design.

We have spent considerable time in the past few issues of Columns exploring a variety of ways in which architecture affects the mind. In September, our editor Tracy Certo looked at how design impacts healing in a hospital setting. An additional article talked about the ground breaking and revolutionary research being done at AIA by John Eberhard, FAIA on neuroscience. Last month, Tracy explored the issue of increased worker productivity due to the design of their office environment. As a profession architecture is working towards putting a quantifiable value on design for the client and society at large. It is an attempt to put numbers on an idea that you bought into a long time ago. Design makes a difference and good design is worth the effort.

When I look back on the recent winners of the People's Choice Award, it is an affirmation of how space can positively affect people. Let's take PNC Park, last year's winner

as the first example. It is touted as the best urban ballpark experience in the country. As a baseball fan, I would have to agree although I have to confess to very limited experience in other venues. My enthusiasm for PNC Park is all about the view of the city, the closeness to the field, the comfort of the seats and the relative ease of finding where you are going. It is a place I like to go and links directly to my favorite memories of sunny days, cold beer and being with my children even though the Pirates are lousy. The new Alcoa headquarters is a positive statement about where we are headed as a city. It is all about reclaiming the riverfront and providing a public access. It is a beacon of light on a cold dark night which perhaps lacks the glory of a roaring steel mill but exemplary nonetheless of an industry still thriving in Pittsburgh.

This year's winner, the Southside Works building located at the corner of East Carson Street and Hot Metal Street, once again speaks to what Pittsburgh hopes to become. At the risk of dating myself, I do remember driving down East Carson Street past the old J&L Mill as it belched fire in its heyday. What I remember most is how foreboding that place was as it towered over the roadway and dwarfed we mere humans. The plans for Southside Works are monumental in their own right. The area is large and if all of the new development is achieved it will encompass many uses including a large hotel. What the development does well is extend the street grid of the traditional Southside neighborhood and offer a variety of housing, work spaces and play spaces that at this point do not exist. The public voted for only one piece of the new development but I bet they were also voting for their community and the difference that a new development can bring.

I think we miss the point if we obsess about why the public's choices very seldom coincide with the jury's picks. The jury's picks are based solely on what they consider to be good design and are unencumbered by memory or context. The public picks are more about dreams and ideas of what places can become or the memories they invoke.



*As a profession architecture is working towards putting a quantifiable value on design for the client and society at large. Design makes a difference and good design is worth the effort.*



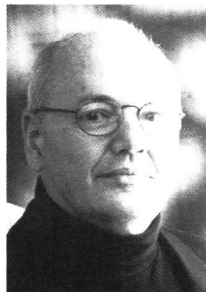


## MEET THE JURORS DESIGN AWARDS 2003

**Warren Schwartz, FAIA**, is principal of award-winning Schwartz/Silver Architects located in Boston. Mr. Schwartz received his Bachelor of Architecture at Cornell University and his Master of Architecture in Urban Design at Harvard University. In 1972, he met Robert Silver while working at Charles Hilgenhurst Associates. From there, they founded Schwartz/Silver Architects in 1980. Many of Schwartz/Silver Architects' projects have won awards, including several AIA National Honor Awards for the Tanglewood House, an AIA/ALA Library Award for the MIT Rotch Library of Architecture and Planning, and an AIA National Honor Award for the Newburyport Firehouse Civic Center. Most recently, the firm won another AIA National Honor Award for the Hyde Park Branch of the Boston Public Library.



**Jorge Silvetti, Assoc. AIA** was born in Buenos Aires, Argentina, where he received his diploma in architecture from the University of Buenos Aires. He continued studies at the University of California, Berkeley, receiving his Master of Architecture degree and pursuing post-graduate work in the area of architectural theory and criticism. Mr. Silvetti's architectural practice, Machado and Silvetti Associates, was formed with Rodolfo Machado in 1974. Incorporated in 1985, it is now a forty-person office.



**Maryann Thompson, AIA**, received a BA in Architecture, *magna cum Laude*, from Princeton University; and a Master of Architecture, with distinction, and the AIA Certificate of Merit, from Harvard University Graduate School of Design. She also received a Master in Landscape Architecture from Harvard Graduate School of Design. In 1987 she founded Thompson & Rose Architects. In 2000 she founded Maryann Thompson Architects.



# Allen & Shariff CORPORATION

Mechanical

Electrical

Plumbing

Information  
Technology

Fire Protection

Construction  
Management

Consulting Engineers

[www.AllenShariff.com](http://www.AllenShariff.com)

700 River Avenue • Suite 333 • Pittsburgh, PA • 15212 • (412) 322-9280

design  
engineer

2010 CHAPMAN STREET  
PITTSBURGH, PA 15215**(412) 781-8111**  
**FAX: 781-0622**[kinfo@kisheetmetal.com](mailto:kinfo@kisheetmetal.com)  
[www.kisheetmetal.com](http://www.kisheetmetal.com)

**Fabricators and Installers of Industrial,  
Commercial and Institutional Sheet Metal Products**



# DESIGN AWARDS 2003

## HOW IT WORKS

Awards may be given in the following four categories: Timeless, Open Plan, Detail and Architectural. The Silver Medal is AIA Pittsburgh's highest award and is presented at the jury's discretion. It is only presented in the Architectural Awards category. Honor Awards are granted for overall excellence to projects in the Architectural Awards category. Certificates of Merit recognize an outstanding aspect of a project such as detailing or adaptive reuse. Open Plan and Architectural Detail are only eligible for an Award of Excellence.

The Green Design Citation was introduced in 2001 to recognize projects that have integrated green building strategies and practices into the design to reduce environmental impact.

## ARCHITECTURAL AWARDS

---

### HONOR AWARD AND GREEN DESIGN CITATION

FIRM: **Perkins Eastman Architects, P.C.**

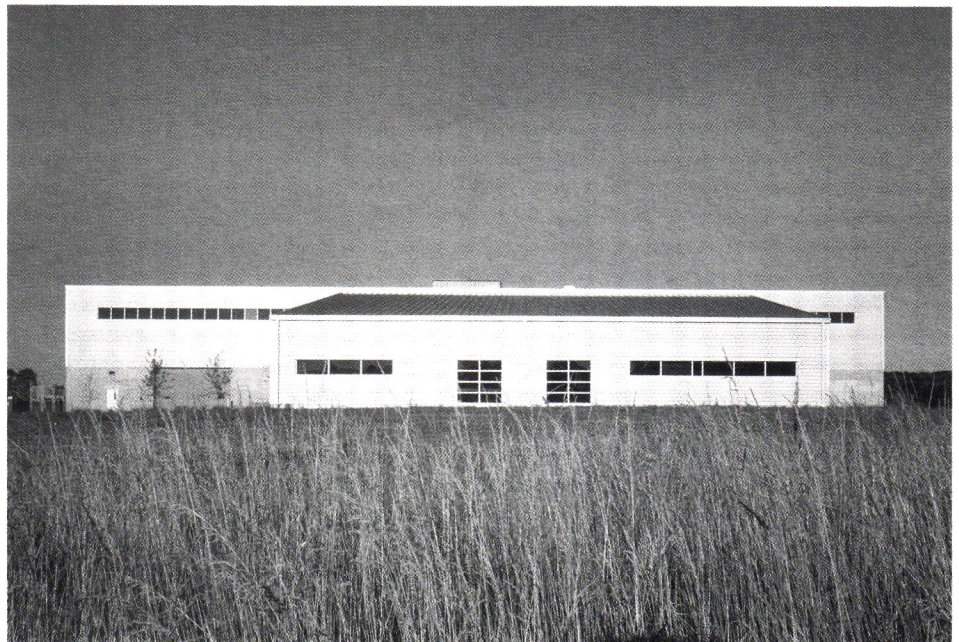
PROJECT: **Castcon Stone, Inc.**

CLIENT: Castcon Stone, Inc.

PROJECT TEAM: Stephen Quick, AIA, Alan Schlossberg, AIA, Tom Pierce, Jeff Schmitt, Jason Kaney

CONTRACTOR: Clearview Project Services Company

JUROR COMMENTS: *We have welcomed the return of the industrial architecture that is true to itself but which also updates itself with the notion of simple forms and one single material. Rational siting has been enlightened by an attempt to make a green building. It proves that when dealing with very demanding functional constraints you can still bring in traditional architectural elements. Very convincing building that masterfully handles the different scales of office space and manufacturing. In challenging the traditional idea of a shed by responding functionally, it freshens up the building.*





## ARCHITECTURAL AWARDS

### HONOR AWARD

FIRM: **Davis Gardner Gannon Pope Architecture, LLC and Bruce Lindsey**

PROJECT: **The Pittsburgh Glass Center**

CLIENT: The Pittsburgh Glass Center

PROJECT TEAM: Gretchen Bigsby, Jeff Davis, AIA, Kevin Gannon, AIA, Carmen Gong, Matt Lundgren, Hee Park, Jeremy Smith, Takako Tajima

CONTRACTOR: Clearview Project Services Company

**JUROR COMMENTS:** *Sophisticated use of materials juxtaposed in a collage-like quality, inspired by the use of light and its relationship to glass and different qualities of glass. We appreciated the honest industrial qualities of the interior and particularly appreciated the sensibility to green design and natural ventilation, daylighting and use of natural materials. Juxtaposition of old and new materials where new overlays old in a very respectful way.*



### HONOR AWARD

FIRM: **EDGE studio**

PROJECT: **947 Liberty Avenue Lofts**

CLIENT: no wall productions, Inc.

PROJECT TEAM: Dutch MacDonald, AIA, Jen Bee, Anne Chen

CONTRACTOR: TEDCO Construction Corporation

**JUROR COMMENTS:** *Very sweet. It represents a very successful infill which respects many of the issues of context in a modern architectural language. The texture of the facades on either side and the tracery in the façade does not mimic but enhances the understanding of the relationship between newer and older structures. The plan is very sophisticated in its economic use of the required elements of the building: stairs, elevator and ladders to loft spaces above three ingeniously planned dissimilar units. The café loading area exit path and courtyard is an elegant solution to the problem of an almost impossibly long 18 ft wide site. The two-story spaces within the tall units match the tall floor-to-floor construction of the adjoining building. The interiors are cleanly configured, as is the exterior. The courtyard space is an extension of the café by means of the details of the doors which swing open to the complete width of the space creating an exterior courtyard in a very confined place which almost seems to create a pocket park.*





## ARCHITECTURAL AWARDS

### CERTIFICATE OF MERIT

FIRM: **Bohlin Cywinski Jackson**

PROJECT: **Natural Sciences Building**

CLIENT: University of California, San Diego

PROJECT TEAM: Peter Q. Bohlin, FAIA, Jon C. Jackson, AIA, C. Roxanne Sherbeck, AIA, Darrell Kauric, AIA, Amy Bradac, Charles J. Cwenar, AIA, Michael Kuchera, Shari Ann Lersch, Michael D. Maiese, AIA, Michelle Maiese, Terry Oden, AIA, Sara M. Snyder, Doug Speckhard, Peter Streibig, Brent van Gunten, Esmeralda Ward, Michael A. Wychers  
CONTRACTOR: Soltek Pacific

**JUROR COMMENTS:** *This building expresses an architectural language which has been developed by the architect over the decade. In doing so it suits its site and climate beautifully and expressfully. The construction materials are both tectonic and warm at the same time. A mature and sculptural expression of plan.*



### CERTIFICATE OF MERIT

FIRM: **EDGE studio**

PROJECT: **EDGE studios New Design Offices**

CLIENT: EDGE studio

PROJECT TEAM: Dutch MacDonald, AIA, Gary K. Carlough, AIA, Matt Fineout, AIA, Swee Hong Ng, Jen Bee, Hyla Willis  
CONTRACTOR: Burchick Construction Company, Inc.

**JUROR COMMENTS:** *We appreciated the juxtaposition of the plywood with the existing garage, the street elevation, and the clear use of plywood as a skin that folds over the entry door creating a sense of threshold. Also liked the industrial material palette of the interior that reflects the previous use of the building.*





## ARCHITECTURAL AWARDS



### CERTIFICATE OF MERIT

FIRM: **Perfido Weiskopf Architects**

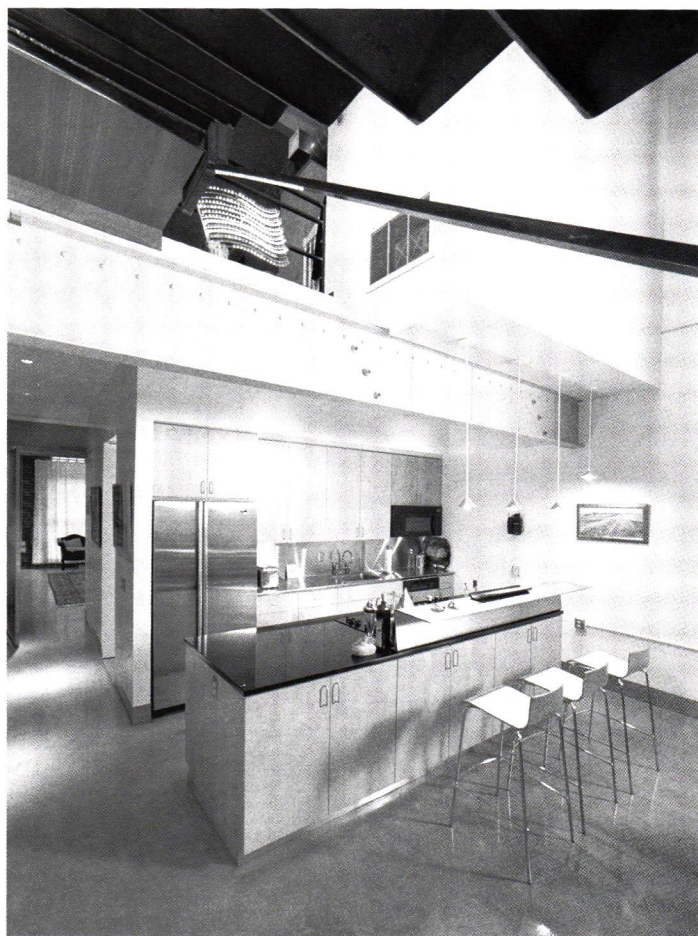
PROJECT: **Whole Foods Market**

CLIENT: The Mosites Company and Whole Foods Market

PROJECT TEAM: Leonard P. Perfido, AIA, Eric Fisher, Kevin Wagstaff, AIA, Antonio Rella, AIA, Jenna Yerger, AIA, Richard Miller, AIA, James Voelzke, AIA, Emmanuel Mdingi, AIA, Thomas Smith

CONTRACTOR: Mosites Construction

**JUROR COMMENTS:** *Clean. Refined sense of detail on the entry canopy and the creation of a daylight interior and exterior seating area which addresses the street. We appreciated the honest material of palette in the interior which lets fruits and vegetables take center stage.*



### CERTIFICATE OF MERIT

FIRM: **Stephen Casey Architects**

PROJECT: **Loft Living – Pittsburgh**

CLIENT: Anonymous

PROJECT TEAM: Stephen Casey, AIA, John Weinheimer, Assoc. AIA

CONTRACTOR: Rycon Construction Inc.

**JUROR COMMENTS:** *We appreciated the courage to envision a minimalist insertion into the existing architectural pattern without the desire to overdesign or overdecorate.*



## ARCHITECTURAL AWARDS

### CERTIFICATE OF MERIT

FIRM: **JDBA Architects**

PROJECT: **Renovations to the Mother of Divine Providence Chapel**

CLIENT: Sisters of Divine Providence

PROJECT TEAM: James D. Brown, AIA, William Joyce, Karin Martin, Jude Cleary

CONTRACTOR: Mistick Construction/Church Restoration Group

JUROR COMMENTS: *Architect enhanced and enlivened the original language which was not that good. They have revealed some of the special potential and the symbolic implications which were latent but not really evident in the original language.*



### CERTIFICATE OF MERIT

FIRM: **Desmone & Associates Architects, Inc.**

PROJECT: **Bally Design @ ROAM North Shore Center**

CLIENT: Bally Design

PROJECT TEAM: Chip Desmone, AIA, Jimmy DeCecco, AIA, Christy Lederer

CONTRACTOR: Jendoco Construction Corporation

JUROR COMMENTS: *This is a extremely successful renovation of a warehouse building. Impressed by the economy of means and clean and fresh look of materials. Very intelligent strategic location of particularized events like the concrete corner shell, the use of color, the restraint of color and the concrete floor "carpets".*





## ARCHITECTURAL AWARDS



### CERTIFICATE OF MERIT

**FIRM:** Integrated Architectural Services Corporation

**PROJECT:** 903 Liberty Avenue Façade Reconstruction

**CLIENT:** Berger Real Estate

**PROJECT TEAM:** Lee Calisti, AIA, John A. Martine, AIA, Douglas T. Philp, AIA

**CONTRACTOR:** Repal Construction Company

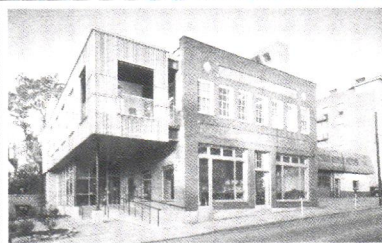
**JUROR COMMENTS:** *The elegant façade is a good renovation with nice contemporary dimension. The use of steel juxtaposed with existing historical columns; the depth of the steel flange allows for a shadow pattern which has a lot of chiaroscuro.*

## AWARD WINNING DESIGNS BUILT BY ABC CONTRACTORS



Western Pennsylvania Chapter  
412-231-1446  
[www.abcwpa.org](http://www.abcwpa.org)

Associated Builders and Contractors of WPA members support Apprenticeship training in Carpentry, Electrical, Sheet Metal and Sprinkler Fitter to insure quality work and career development for employees.



Photograph by Ed Massery

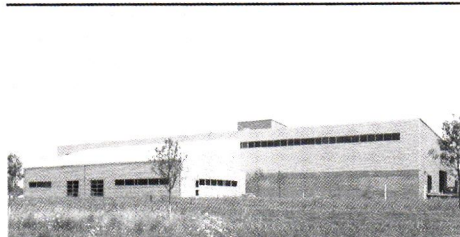
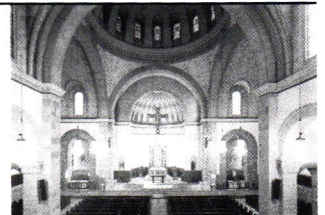
### Clearview Project Services:

The Pittsburgh Glass Center's 18,300 square foot facility, is heated from the recovery of the glass furnaces and features natural daylighting and ventilation. It focuses on used and pure form materials and has minimal finishes requiring maintenance.

Architect: Davis Gardner Gannon Pope Architecture, LLC

### Church Restoration Group:

Church Restoration Group, a division of Mistick Construction, specializes in disaster recovery and renovation of churches. The Church Restoration Group recently restored the St. Boniface Church's interior after it suffered major water damage.



### Clearview Project Services:

CastCon's new 41,123 square foot manufacturing and office facility, features natural daylight and ventilation, tight building envelope, non-toxic finishes, no-maintenance landscaping and bioretention ponds.

Architect: Perkins Eastman Architects



## ARCHITECTURAL DETAIL



### AWARD OF EXCELLENCE

FIRM: **EDGE studio**

PROJECT: **Waterfront Corporate Park, Building Number 2, Truss Detail**

CLIENT: Spectra Development Corporation

PROJECT TEAM: Gary K. Carlough, AIA, Matt Fineout, AIA, Anne Chen, Tsunehisa J.

Tsuda, Delphine Ammann, Chloe Hiyu, Andre Kamili

CONTRACTOR: Spectra Development Corporation

JUROR COMMENTS: *Elegant. We appreciate that unlike most metal expressionist over the last decade, the scale of the detail and the size of the pieces are handled very elegantly. It is not heavy handed and does not call too much attention to itself and yet it is also a distinctive feature of the building's expression.*

## OPEN PLAN



### AWARD OF EXCELLENCE

FIRM: **STRADA**

PROJECT: **Downtown Bedford Revitalization Plan**

CLIENT: Downtown Bedford, Inc.

PROJECT TEAM: Michael A. Stern, ASLA, John Martine, AIA, Abigail Stallkamp

JUROR COMMENTS: *A very honest and nice effort. We liked the master planning strategy, very sound and site specific. Very concerned with the history of the site and carrying it into the future.*



## LANDSCAPE OPEN PLAN



### AWARD OF EXCELLENCE

FIRM: Klavon Design Associates, Inc.

PROJECT: Strawberry Way

CLIENT: Pittsburgh Downtown Partnership

Project Team: Dina Cole Klavon, ASLA, Philip A. Lisotta, Maria S. Riley, Kara Snatchko

**JUROR COMMENTS:** *Great idea for enlivening an alley condition which pulls together parts of the city which were used for circulation but not for contemplation of the environment. Without gentrifying the alley this proposal turns a space into an artistic experience. It turns every person into an art lover. More cities should do this with their abandoned spaces. It expands the definition of landscape architecture.*

## COLUMBIA GAS OF PENNSYLVANIA PEOPLE'S CHOICE AWARD

Voted on over the three week period the design boards were on display to the public. The boards were on display at the U.S. Steel Tower and the Carnegie Museum of Art's Hall of Architecture. This year the People's Choice Award was presented to:

FIRM: **Design 3 Architecture, P.C.**

PROJECT: **South Side Works, Lot D1a – Retain and Office Building**

CLIENT: The Soffer Organization

PROJECT TEAM: William Snyder, AIA, Don G. Lightner, Jr., Sean P. Cosgrove, Michael D. Moyta, AIA, Lisa M. Intrieri, Larry Novak, John C. Parrish

CONTRACTOR: P.J. Dick Incorporated



### PROGRAM DIRECTOR, LANDSCAPE ARCHITECTURE

Chatham College is a 133-year-old private educational institution located on 32 park-like acres in Pittsburgh, PA. We seek a dedicated leader and mentor to develop, market and grow the college's Landscape Architecture and Studies programs. Key facets of this role involve teaching, managing curriculum, advising and mentoring students, and overseeing program instructors.

This position requires a Master's degree in Landscape Architecture (Ph.D. preferred); registration as a Landscape Architect along with practical experience in the field; significant experience in theory and practice of sustainable landscape design; and teaching/program development experience in a higher education setting.

Chatham College offers a competitive salary, an excellent benefits package including tuition remission for qualified personnel, and a generous retirement plan. Interested candidates may submit a letter of application, writing sample, and names of three references to: **CHATHAM COLLEGE**, Attn: HR Department, Job #634, Woodland Road, Pittsburgh, PA 15232, Email: [chathr@chatham.edu](mailto:chathr@chatham.edu). Visit [www.chatham.edu](http://www.chatham.edu). Chatham College is an

**CHATHAM**  
1869  
**COLLEGE**

affirmative action/  
equal opportunity  
employer.



# DESIGN AWARDS 2003



*Jon Shimm, AIA and Mary Crawford of Crawford Consulting Services, Inc.*

Whether it was at the Design Awards Gala on the 9th, Architects' Saturday on the 18th, or the Design Awards Ceremony on the 28th, October provided many occasions to showcase AIA Pittsburgh members' outstanding architectural design work. The events were also a great opportunity to keep in touch with those in the design community. Here we feature just a few. PHOTOS BY TRACY CERTO AND MICHELE Q. MARGITTAI



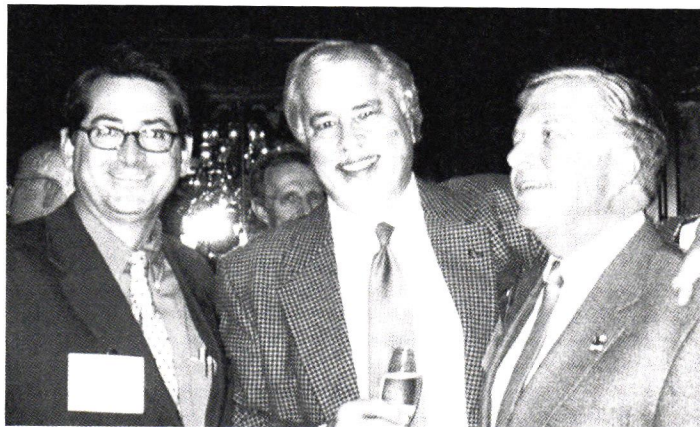
*Carol Brown, Gold Medal Honoree, with Rich De Young, AIA and Al Filoni, AIA. Machlachlan Cornelius & Filoni sponsored the Gold Medal reception prior to the Gala*



*Award winners from left, Tom Pierce, Sandy Ussia, Stephen Quick, AIA, and Laura Huch joined by Warren Schwartz, FAIA, Design Awards lead juror. Ussia and Huch are owners of Castcon Stone, Inc.*



*Marc Mondor, AIA, Janice Cook, and AIA Pittsburgh's Mike Sriprasert at the Design Awards Ceremony*

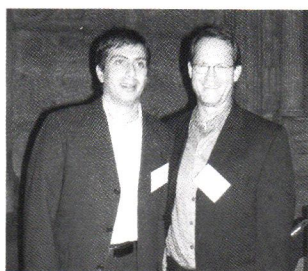


*Chip Desmone, AIA, Syl Damianos, FAIA, and Doug Berryman, AIA at the Gold Medal reception*



*Rebecca Mizikar, center, at Burt Hill Kosar Rittelmann Associates on Architects' Saturday*





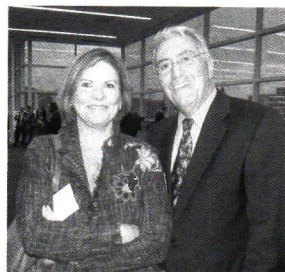
Triple award winners Dutch McDonald, AIA and Gary Carlough, AIA of EDGE studio



Ed Shriver, AIA, Dan Rothschild, AIA, Anne J. Swager, Hon. AIA, Honoree Carol Brown and Rich DeYoung, AIA at the Design Awards Gala



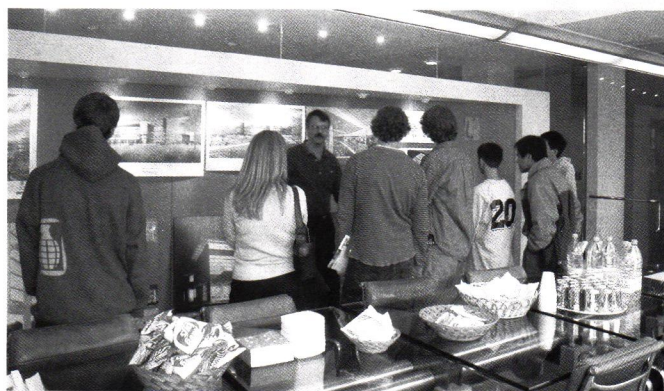
Tracy Myers (center), Curator at Heinz Architectural Center, joined by Scott Bulera (left) and Joseph Milicia of Turner Construction Company.



Jeannie and Luke Desmore, AIA at the Gala



Rob Pfaffmann, AIA



On Architects' Saturday, Tom Grden, AIA shows a group around Burt Hill Kosar Rittelmann Associates



Laura Cooper, Lisa Ma and Wayne Chang of Fukui Architects at the Design Awards Gala



Sonya Ford, center, guides a group through Urban Design Associates on Architects' Saturday



# thanks to our sponsors...



## **Design Pittsburgh Hosts**

Carnegie Museum of Art  
Photo Forum Gallery

## **People's Choice Award Sponsor**

Columbia Gas of Pennsylvania

## **Green Design Citation Sponsor**

Clearview Project Services  
Company

## **Exhibit Gold Sponsors**

Crawford Consulting Services, Inc.  
Mistick Construction  
R.E. Crawford Construction

## **Technology Gold Sponsors**

CAD Research, Inc.  
Tri-State Reprographics, Inc.

## **Silver Sponsors**

A. Martini & Co.  
Allegheny Construction Group, Inc.  
Atlantic Engineering Services  
Bohlin Cywinski Jackson  
Burchick Construction Company, Inc.  
Centria Architectural Systems  
Compu-Site Technologies  
Flynn Construction  
Gateway Engineers  
H.F. Lenz Company  
Reed Smith Construction Group  
Sota Construction  
TEDCO Construction Corporation  
Turner Construction Company  
VDA  
Vollmer Associates LLP

## **Media Sponsor**

Pittsburgh Business Times

## **AIA Pittsburgh Gold Medal Reception Sponsor**

MachLachlan Cornelius & Filoni

## **Gala Gold Sponsor**

GAI Consultants

## **Contributors**

Allen & Shariff Corporation  
Baierl & McKean Honda  
Bert Davis & Associates  
BRIDGES, pbt  
Carl J. Long & Associates  
Carl Walker Construction  
Civil & Environmental Consultants, Inc.  
D-M Products, Inc.  
Dynamic Building Corporation  
Fenner & Esler Agency, Inc. -  
Professional Liability  
Hilbish McGee Lighting Design  
Jendoco Construction Corporation  
Keane Construction  
Landau Building Company  
Markovitz Dugan & Associates  
Massaro Company  
Massery Photography, Inc.  
Pittsburgh Construction News  
Poerio Incorporated  
Repal Construction  
Rycon Construction  
Steelcase Inc.  
The Kachele Group  
The Rubinoff Company  
Tower Engineering  
Whitney, Bailey, Cox & Magnani, LLC

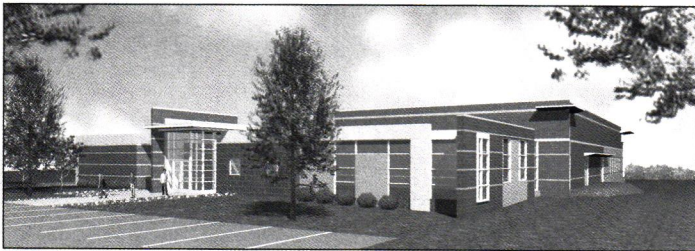


## From the Firms

► **Valentour English Bodnar & Howell** is designing phases for a series of projects at Monongahela Valley Hospital that will relocate several departments and culminate in a major expansion of the emergency department. A study conducted by **VEB&H** for the hospital had determined a variety of options for the improvements.

**JSA Architecture Planning Engineering Interior Design** has been selected by the May Department Stores Company as architect of record for the new two-level Filene's Department Store in North Dartmouth, Massachusetts. Also, **JSA** announced the opening of the new two-level Kaufman's Department Store located at the Waterfront development in Homestead. **JSA** project manager for both projects is Michael Pappas. Principal-in-charge is **Thomas J. Mrozinski Jr., AIA**.

**WTW Architects** and Turner Construction Company were awarded the design/build contract for the creation of a new practice and administrative facility for the Pennsylvania State University marching band. The PSU Blue Band proposed site is currently occupied by a facility for the Centre County hazardous materials emergency response team. The commission also included the design and construction of a new HazMat facility on a nearby site.



**PSU Blue Band facility**

**Cerrone Architects** is collaborating with Montgomery and Rust and Ibacos for the design of the Model Town Home at Summerset at Frick Park, a traditional neighborhood development in Squirrel Hill. A "Green Demonstration Home," the house features highly energy-efficient HVAC and lighting design and the use of recycled and ecologically-sensitive products throughout. Construction is underway.

**Ligo Architects** is devising plans for expanding Pullman Park from the current 1,200 seating capacity to a new 4,200 seating capacity, as well as building new locker rooms, a press box, concession area and private boxes.

Dynamic Building Corporation, Prof. Affil., was awarded a contract for the construction of a 53,000 sf retail/commercial building for Alex Enterprises on Murray Avenue in Squirrel Hill. The architectural firm is **McCormick Architects**.

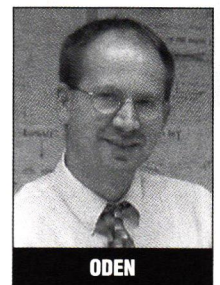
Dynamic Building Corporation was also awarded a contract for the construction of the Village at Sewickley Hills, a \$30,000,000 multi-family development in Sewickley. The architectural firm is Sullivan-Bruck of Columbus, OH.

General Industries, Prof. Affil., was recently selected to build the new, 38,800 sf Gerry Raymond Washington Chevrolet Dealership at the intersection of I-70 and Rt. 19 in Washington, PA.

General Industries also recently completed a total renovation project for the 84 Fitness Center in Eighty-Four, PA. The remodeled fitness center is 9,000 sf on two floors and features an indoor running track and other exercise facilities.

## Business Briefs

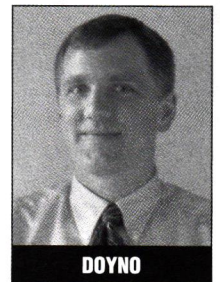
► **Rothschild Doyno Architects PC** hired **Terry Oden, AIA** as a project architect. Mr. Oden has previously worked for **Bohlin Cywinski Jackson** and holds a Master of Architecture degree from the University of Wisconsin-Milwaukee. An accomplished photographer, he is a past winner of the AIA National Photography Competition.



**ODEN**

## Kudos

► **Kenneth Doyno, AIA** of **Rothschild Doyno Architects PC** was selected to Pittsburgh magazine and PUMP's (Pittsburgh Urban Magnet Program) "40 under 40" list of "younger Pittsburghers who help shape all of our tomorrow."



**DOYNO**

**RESIDENTIAL  
COMMERCIAL**



**FREE ESTIMATES  
FULLY INSURED**



**Don't Be Left In The Dark  
Our Prices Won't Shock You**

**B.C. ELECTRIC**

**Fuse Boxes Converted To Circuit Breakers A Specialty**

- Outdoor Lighting & Design Specialist • 18 Year Exp.
- Data Wiring • Business Phone Systems & Installation
- Office/Whse Build-outs • Emergency Service
- 220 Lines • Sign & Parking Lot Lighting Repair

**BUCKET SERVICE  
HEIGHTS TO 60 FT.**

**412-824-7555 • MONROEVILLE**



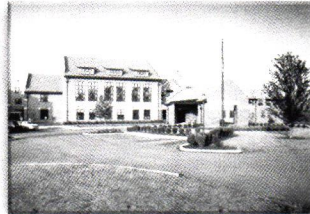
# Congratulations

To all the winners of IMI's  
2003 Western Pennsylvania Golden Trowel Awards

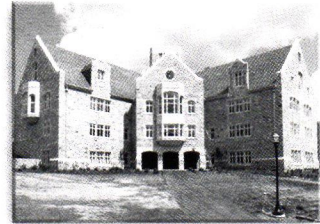
*Recognizing Outstanding Achievements in Masonry Design and Construction*



The Town Center at the Waterfront  
Meacham & Apel Architects  
and Meleca Architecture



**Grand Award**  
Masonic Village at Sewickley  
Perkins Eastman Architects



Vilar Technology Center  
Washington & Jefferson College  
MacLachlan, Cornelius & Filoni Architects, Inc.



Holiday Inn Express  
Hotel & Suites - Southside  
Indovina Associates Architects



Watersteps at North Shore  
Riverfront Park  
Joseph B. Fay Co., Inc.



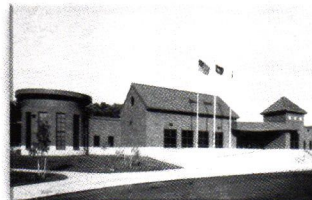
Three Mellon Center  
Lobby Renovations  
IKM Incorporated



The Petersen Events Center  
University of Pittsburgh  
Apostolou Associates, Inc./Rosser  
International, Inc.



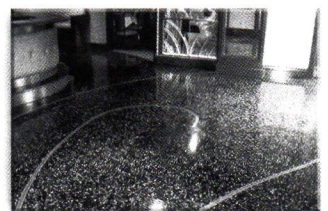
UPMC Hillman Cancer Center  
IKM Incorporated



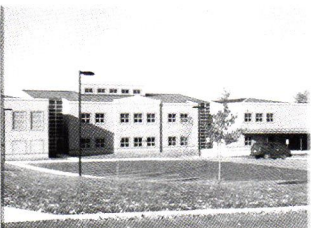
Sunset Valley Elementary School  
N. John Cunzolo Associates, Inc.



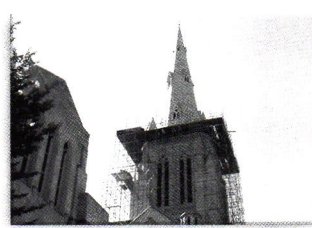
Beaver County Courthouse  
WMB & Associates Inc.



Colony Restaurant  
Zahradnik-Storrs & Associates



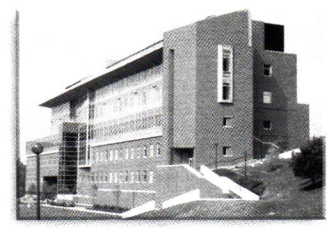
Merit Award  
South Brook Middle School  
Radelet McCarthy Incorporated



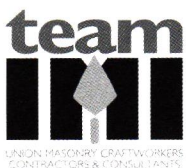
Calvary Episcopal Church  
Bell Tower & Spire Renovations  
Atkinson-Noland & Associates, Inc.



Private Residence  
Ligo Architects



Merit Award  
West Virginia University Life Sciences Bldg.  
Payette Associates, Inc.



**International Masonry Institute**

300 Northpointe Circle, Suite 303 ♦ Seven Fields, PA 16046

1-800-IMI-0988 ♦ [www.imiweb.org](http://www.imiweb.org)

**We Build  
for Life**



## Kudos

► **Kevin Hayes, AIA** of **Hayes Design Group – Architects**, was presented with The Distinguished Service Award for 2003 by the Notre Dame Club of Pittsburgh. Mr. Hayes has been the social concerns coordinator for the club since 1983. He is also co-founder of Pittsburgh Habitat for Humanity and has served on numerous charitable organization boards.

The **EDGE studio** Web site was awarded the "Most Innovative Site" award in the national 2003 Architecture Web site Awards competition sponsored by Entablature.com. Jurors commented that they were impressed by a site "that breathes," and praised the site for its "simple beauty, contrasting its soft feel with the firm's name."

EDGEstudio

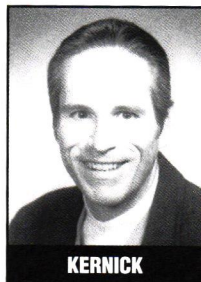
2003 Architecture Web site Awards



2003 Architecture Web site Awards

2003 Architecture Web site Awards

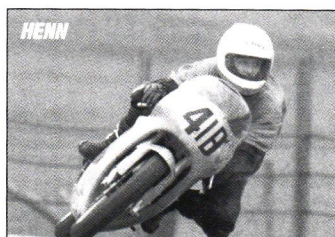
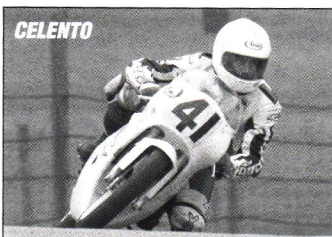
Richard O. Kernick, a project manager at **WTW Architects** became the third member of the firm to achieve LEED certification from the US Green Building Council.



KERNICK

**David Celento, AIA** of **CelentoHenn Architects + Designers** was the National Champion in the 250 Grand Prix Novice Class at the 2003 AMA Sports Race Grand Championships. He also finished first in the 125 Grand Prix Novice Class. **Rebecca Henn, AIA**, also of **CelentoHenn**

**Architects + Designers** finished second place in the 250 Grand Prix Novice Class and third place in the 125 Grand Prix Novice Class. Both Henn and Celento have been invited to Atlanta, Georgia for the WERA Grand National Finals. They are both in the top 15<sup>th</sup> in points standings for the Northeast Region. — *By Maya Haptas*



## IT'S HIP. IT'S YOUNG. IT'S FREE.

PIYAF (The Pittsburgh Interns and Young Architects Forum) is AIA Pittsburgh's component Young Architects Forum, initiated by interns and young architects. PIYAF is open to all Interns and Young Architects (registered 0-10 years). Membership is Free. Email: [piyaf@yahoo.com](mailto:piyaf@yahoo.com)

### New Additions

PIYAF is pleased to announce the additions of Sheila Moore and Ana Migone, Assoc. AIA to its board of directors. Congratulations!

### December Happy Hour

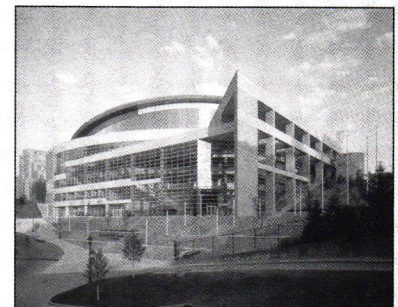
For those of you who participated in the first Happy Hour organized by PIYAF, on September 15, you don't need to be briefed...but for those of you who didn't attend, you missed one heck of a good time. PIYAF has decided to hold one every quarter. This is your perfect opportunity to network and meet some interesting people in architecture and allied professions. The event is open to *anyone* related to the profession, including architects, intern architects, engineers, consultants, contractors, interior designers, reps, etc. The next Happy Hour will be held December 12th from 6 to 9:00pm. Location T.B.A.. To r.s.v.p., please contact Joe Touvell at [jtouvell@d3a.com](mailto:jtouvell@d3a.com) or 412-373-2220.

### Tour the Pete!

PIYAF members are invited to tour the new Petersen Events Center at the University of Pittsburgh on Thursday, December 4th from 5:30 to 7:00 pm. A state-of-the-art venue, "the Pete" is an exciting new addition to the Pitt campus. Designed in Joint Venture by Rosser International and Apostolou Associates, Inc., the building has opened to rave reviews and will serve as an excellent site for a visit from interns and young architects. All participants should r.s.v.p. to Arthur Sheffield at [as@apostolou-associates.com](mailto:as@apostolou-associates.com).

### Things to Know about "the Pete"

- Opened in August, 2002
- Project cost: \$96 million
- Building is 430,000 square feet
- Built on the footprint of the University's old football stadium
- Negotiates 100 foot slope that formerly deterred foot traffic through the center of campus
- Escalators and elevators connect the building's five levels with entrances at the bottom and top, making it a spine between upper and lower campus
- A five-tiered glass "atrium" style lobby is 16,000 square feet with 72 -foot high ceilings
- Lobby features a marble floor emblazoned with a Pitt Panthers head and a big-screen video board which used to hang in Pitt Stadium
- Arena seats 12,500 with sightlines designed for basketball
- Permanent wood basketball floor extends into the courtside luxury suites and runways
- Outdoor roof terrace provides skyline views of campus and downtown Pittsburgh
- Long-span steel roof has 100,000 pound rigging capacity, enabling it to also function as a premier concert facility
- Sustainable design feature – technologically advanced coating on windows is barely visible but allows an abundance of sunlight to shine through while controlling heat loss and heat gain within the space
- 42,000 square feet of glass was used on the building's exterior





# Professional Engineering Services in Acoustics & Vibrations

**William R. Thornton, Ph.D., P.E.**  
Consulting Engineers in Acoustics & Vibrations



Architectural Acoustics Analysis & Design

Theater & Auditorium Room Acoustics

School Acoustics & Noise Transmission

Building Acoustics & Noise Transmission

MRI & Sensitive Instrument Vibrations

Vibration Measurement & Control

HVAC Noise & Vibration Control

Community Noise Measurement

Environmental Impact Studies

Noise Control Engineering

Industrial Noise Control

Measurement & Testing

Product Development

Training Seminars

Expert Witness



724.265.2000 Pittsburgh

[www.acoustics-vibrations.com](http://www.acoustics-vibrations.com)

[wrt@acoustics-vibrations.com](mailto:wrt@acoustics-vibrations.com)



**William R. Thornton, Ph.D., P.E.**

Consulting Engineers in Acoustics & Vibrations  
250 Shagbark Drive  
RD1 Cheswick, PA 15024

**SPECIALIZING IN METAL  
ARCHITECTURAL DETAIL FOR  
COMMERCIAL, RESTAURANT  
AND RESIDENTIAL SPACES.**

Furniture  
Stairways, Railings  
Point of Purchase Displays  
Monumental Doors  
Environmental Graphics

*Precise execution of your design.*

Stainless Steel  
Mild Steel  
Copper  
Bronze  
Aluminum



80 Hafner Avenue, Pittsburgh, PA 15223  
Tel: (412) 799-0228 Fax: (412) 782-1104  
[varamg@bellatlantic.net](mailto:varamg@bellatlantic.net)  
[www.techniquemfg.com](http://www.techniquemfg.com)



**Bunting Graphics** 20 River Road Verona, PA 15147-1159  
Tel. 800-735-0445 ext. 240 FAX 412-820-4404  
e-mail: [jody@buntinggraphics.com](mailto:jody@buntinggraphics.com)

- 3 Dimensional Fabrication
- Custom Light Fixtures
- Handrails
- Laser Cutting
- Cast Resin
- ADA Signs
- Metal Letters / Logos
- Metal & Plastic Fabrication
- Neon / Cold Cathode Lighting
- Architectural Signage
- Architectural Products

*Excellence in Architectural Products*



# C A L E N D A R

## AIA ACTIVITIES

DECEMBER 2, TUESDAY

**AIA Pittsburgh Board Meeting**, 5 p.m. at the Chapter office. All members welcome. 412-471-9548.

DECEMBER 12, FRIDAY

**CSI Christmas Gathering**. CSI will be hosting their Christmas gathering at Jimmy G's Restaurant at 6 p.m. The event is \$25/person. Please RSVP by Friday, December 5 to Deborah Merges at 412-855-0928.

## AROUND TOWN

DECEMBER 10, WEDNESDAY

**AIA Holiday Party**. AIA Pittsburgh will hold its annual holiday party at the Penn Brewery. For more information, please contact AIA Pittsburgh at 412-471-9548.

## BUILDING BLOCKS

DECEMBER 16, TUESDAY

**Fire Resistive Construction Requirements**

Pittsburgh, Pennsylvania

This class will provide you with a thorough understanding of requirements for fire walls, separation assemblies and shaft enclosures. You will also be able to determine requirements to protect use groups, fire areas, and multi-story buildings.

**Earn 6 LUs and HSW credit.**

Cost is \$165.

For more information on schedule, location and registration, contact Richard Piccolo at 847-884-4969.

## When AIA Contract Documents are in force, everyone's interests are in balance.

AIA Contract Documents were created from a consensus of contractors, developers, lawyers, and architects.

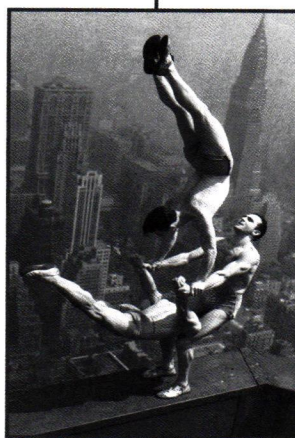
They have been written expressly to balance the interests of all parties. They cover all phases of a project from beginning to end. And, they have been

clarified by 115 years of legal precedent. Courts have recognized their legal legitimacy time after time. Which is why no other standard contract document

system is as effective at keeping projects running smoothly and finishing successfully. They're

available in paper or electronic form, with flexible pricing. Plus, our new software release features full Microsoft® Word functionality and improved navigational

aids, as well as formatting and collaboration options. To learn more or to download the software, go to [www.aia.org](http://www.aia.org) or call 1-800-365-2724.



## AIA Contract Documents

**New software just released. Order now at [www.aia.org](http://www.aia.org).**

© Copyright 2003, The American Institute of Architects. Microsoft® and Microsoft® Word are either registered trademarks or trademarks of Microsoft Corporation in the United States and/or other countries.

## DODSON ENGINEERING, INC.



### Consulting Engineers

420 One Chatham Center  
Pittsburgh, Pennsylvania 15219  
Phone: 412-261-6515  
Fax: 412-261-6527

**SPECIALIZING IN HVAC, PLUMBING & FIRE PROTECTION DESIGN**



# CONTRACTORS' DIRECTORY

\*Member of the MASTER BUILDERS' ASSOCIATION.

A LISTING OF AREA CONTRACTORS AND THEIR PROFESSIONAL SERVICES. To include your firm in this directory, call AIA Pittsburgh at 412-471-9548.

## ■ ALLEGHENY CONSTRUCTION GROUP, INC.\*

456 Washington Avenue, PO Box 425  
Bridgeville, PA 15017  
PHONE: 412-221-0500 FAX: 412-221-0188  
CONTACT: Laura S. Deklewa  
*Commercial / Construction management  
Exterior / General / Industrial / Interior  
Renovations / Pre-engineered Metal  
Buildings / Certified DBE/WBE*

## ■ AMEC

707 Grant Street, Suite 3000, Pittsburgh, PA 15219  
PHONE: 412-258-3620 FAX: 412-258-3621  
E-MAIL: doug.boyd@amec.com  
*Commercial / Construction management  
General / Interior*

## ■ BRIDGES

1300 Brighton Road, Pittsburgh, PA 15233  
PHONE: 321-5400 FAX: 321-9823  
CONTACT: Paul R. Bridges/Gus Marquart  
VISIT: www.BRIDGESPBT.com  
*Commercial / Construction management  
Exterior / General / Industrial / Interior  
Renovations*

## ■ BURCHICK CONSTRUCTION CO., INC.\*

500 Lowries Run Road, Pittsburgh, PA 15237  
PHONE: 369-9700 FAX: 369-9991  
CONTACT: Joseph E. Burchick  
E-MAIL: burchick@burchick.com  
VISIT: www.burchick.com  
*Commercial / Construction management  
General / Industrial / Interior / Renovations*

## ■ BURNS & SCALO ROOFING CO., INC.

22 Rutgers Road, Suite 200, Pittsburgh, PA 15205  
PHONE: (412) 928-3060 FAX: (412) 928-8702  
CONTACT: Jack F. Scalo, President  
E-MAIL: info@burns-scalo.com  
VISIT: www.burns-scalo.com  
*Commercial / Industrial / Residential  
Roofing / Architectural / Structural  
Specialty Sheetmetal. National Roofing  
Contractor of the Year Award and RSI Metal  
Roofing Project of the Year Award.*

## ■ CONTINENTAL BUILDING SYSTEMS

285 E. Waterfront Drive, Homestead, PA 15120  
PHONE: 464-8933 FAX: 464-2994  
CONTACT: Traci McGavitt-Yates  
*Commercial / Construction management  
Exterior / General / Interior / Renovations*

## ■ R.E. CRAWFORD CONSTRUCTION

1046 Pittsburgh Street, Springdale, PA 15144  
PHONE: 724-274-5000 FAX: 724-274-2323  
CONTACT: Thomas J. Churchill  
*Commercial / Construction management  
General / Interior / Renovations*

## ■ DYNAMIC BUILDING CORPORATION

51 Pennwood Place, Suite 200  
Warrendale, PA 15068  
PHONE: 724-772-9020 FAX: 724-772-5770  
CONTACT: Judith Nadeau  
E-MAIL: jnadeau@dynamicbuilding.com  
*Commercial / Construction management  
General / Industrial / Interior Renovations  
Multi-Family*

## ■ FLYNN CONSTRUCTION, INC.

600 Penn Avenue, Pittsburgh, PA 15221  
PHONE: 243-2483 FAX: 243-7925  
CONTACT: Tom O'Connor  
*Commercial / Construction Management  
Exterior / General / Interior / Renovations*

## ■ GENERAL INDUSTRIES

15 Arentzen Blvd., Charleroi, PA 15022  
PHONE: (724) 483-1600 FAX: (724) 483-0990  
CONTACT: Donald Ivill, divill@genindustries.com  
VISIT: www.genindustries.com  
*Design-Build/Commercial Building  
Contractors*

## ■ HARCHUCK CONSTRUCTION CO., INC.

705 Route 66, Building II, Suite 222,  
Apollo PA 15613  
PHONE: (724) 727-3700 FAX: (724) 727-2800  
CONTACT: David A. Harchuck  
*Commercial / Construction management  
Exterior / General / Industrial / Interior  
Renovations*

## ■ A. RICHARD KACIN, INC.

795-22 Pine Valley Drive, Pittsburgh, PA 15239  
PHONE: 724-327-6694 FAX: 724-733-5993  
CONTACT: A. Richard Kacin, Pres.  
*Commercial / Construction management  
General / Industrial / Residential*

## ■ KUSEVICH CONTRACTING, INC.

3 Walnut Street, Pittsburgh, PA 15223  
PHONE: 782-2112 FAX: 782-0271  
CONTACT: George Kusevich, Jr.  
E-MAIL: gkjr@kusevich.com  
VISIT: www.kusevich.com  
*Commercial / Construction management  
General / Industrial / Interior Renovations  
Institutional*

## ■ MARCO CONTRACTORS, INC.

100 Commonwealth Drive P.O. Box 805  
Warrendale, PA 15095-0805  
PHONE: 724-741-0300 x.27 FAX: 724-741-0335  
CONTACT: Erica Gillis  
E-MAIL: egillis@marcocontractors.com  
VISIT: www.marcocontractors.com  
*Commercial / Construction management  
Interior / Renovation / Restaurants / Retail*

## ■ MASSARO COMPANY

120 Delta Drive, Pittsburgh, PA 15238  
PHONE: 412-963-2800 FAX: 412-599-0034  
CONTACT: Steven Massaro  
VISIT: www.massarocompany.com  
*Commercial / Construction management  
General / interior / Renovations  
Design/Build*

## ■ MISTICK CONSTRUCTION

1300 Brighton Road, Pittsburgh, PA 15233  
PHONE: 322-1121 FAX: 322-9336  
CONTACT: D. Thomas Mistick  
*Commercial / Construction management  
Exterior / General / Interior / Renovations  
Residential*

## ■ NELLO CONSTRUCTION COMPANY\*

100 Houston Square, Suite 200  
Cannonsburg, PA 15317  
PHONE: 724-746-0800 FAX: 724-746-1966  
CONTACT: Janet Torriero  
VISIT: www.nello.net  
*Commercial / Construction management  
Exterior / General / Industrial / Interior  
Renovations*

## ■ RAIMONDO CONSTRUCTION CO. INC.

131 South Lincoln Avenue, Greensburg, PA 15601  
PHONE: (724) 837-3146 FAX: (724) 837-3154  
CONTACT: David A. Raimondo  
WEB SITE: www.raimondo.com  
*General Construction / Concrete / Pre-  
Engineered Metal Buildings / Interior  
Renovations / Commercial / Industrial*

## ■ SOTA CONSTRUCTION SERVICES INC.

80 Union Avenue, Pittsburgh, PA 15202  
PHONE: 412-766-4630 FAX: 412-766-4634  
CONTACT: Ernie Sota  
E-MAIL: esota@sotaconstruction.com  
VISIT: www.sotaconstruction.com  
*Commercial / Construction management  
Exterior / General / Industrial / Interior  
Renovations*

## ■ TEDCO CONSTRUCTION CORPORATION\*

TEDCO Place, Carnegie, PA 15106  
PHONE: 276-8080 FAX: 276-6804  
CONTACT: Jim Frantz  
*Commercial / Construction management  
Exterior / General / Industrial / Interior  
Renovations*

## ■ TORRIERO CONSTRUCTION

100 Houston Square, Suite 102  
Cannonsburg, PA 15317  
PHONE: 724-746-0800 FAX: 724-746-1966  
CONTACT: Gino Torriero  
E-MAIL: gino@torrieroconstruction.com  
VISIT: www.torrieroconstruction.com  
*Commercial / Construction management  
Exterior / General / Interior / Renovations*

## ■ TURNER CONSTRUCTION COMPANY\*

1400 Koppers Building  
436 Seventh Avenue, Pittsburgh, PA 15219  
PHONE: 412-255-5400 FAX: 412-255-0249  
CONTACT: Joseph Milicia, Jr.  
*Commercial / Construction management  
General / Industrial / Interior / Renovations*

## ■ VOLPATT CONSTRUCTION CORPORATION\*

250 Curry Hollow Road, Pittsburgh, PA 15236  
PHONE: 412-653-5454 FAX: 412-653-5755  
CONTACT: Raymond A. Volpatt  
*Commercial / Construction management  
Exterior / General / Industrial / Interior  
Renovations*



# ***Award-Winning Designs Built by MBA Contractors***

***Congratulations to the following  
AIA Design Pittsburgh 2003 Award Winners:***

**947 Liberty Avenue Lofts**

no wall productions, Inc.

EDGE studio

**TEDCO Construction Corporation**

**Whole Foods Market**

The Mosites Company and Whole Foods Market

Perfido Weiskopf Architects

**Mosites Construction**

**Loft Living – Pittsburgh**

Anonymous

Stephen Casey Architects

**Rycon Construction Inc.**

**EDGE studio New Design Offices**

EDGE studio

EDGE studio

**Burchick Construction Company, Inc.**

**Bally Design @ ROAM North Shore Center**

Bally Design

Desmone & Associates Architects, Inc.

**Jendoco Construction Corporation**

**South Side Works, Lot D1a – Retain and Office Building**

The Soffer Organization

Design 3 Architecture, P.C.

**P.J. Dick Incorporated**

WESTERN  
PENNSYLVANIA  
CHAPTER OF



To select a qualified contractor for your next project, contact Jack Ramage at 412-922-3912 for a copy of the MBA Sourcebook or visit the MBA website at [www.mbawpa.org](http://www.mbawpa.org).



# ENGINEERS' DIRECTORY

A LISTING OF AREA ENGINEERS AND THEIR PROFESSIONAL SERVICES. To include your firm in this directory, call AIA Pittsburgh at 412-471-9548.

## ■ ALLEN & SHARIFF CORPORATION

700 River Avenue, Suite 333  
Pittsburgh, PA 15212  
PHONE: (412) 322-9280 FAX: (412) 322-9281  
CONTACT: Anthony E. Molinaro, P.E.  
**Consulting / Electrical / Mechanical  
Telecommunications**

## ■ BARBER & HOFFMAN, INC.

215 Executive Drive Suite 202  
Cranberry Twp. PA 16066  
PHONE: (724) 741-0848 FAX: (724) 741-0849  
CONTACT: Michael R. Miller, P.E.  
E-MAIL: BHP@barberhoffman.com  
**Consulting / Structural**

## ■ BRACE ENGINEERING, INC.

3440 Babcock Boulevard, Box 15128  
Pittsburgh, PA 15237  
PHONE: 367-7700 FAX: 367-8177  
CONTACT: Frank C. Brace  
**Structural**

## ■ CIVIL & ENVIRONMENTAL CONSULTANTS, INC.

333 Baldwin Road, Pittsburgh, PA 15205  
PHONE: 412-429-2324 FAX: 412-429-2114  
CONTACT: Gregory P. Quatchak, P.E.  
**Civil / Geotechnical / Surveying  
Environmental / Construction Consulting  
Testing & Inspection**

## ■ CJL ENGINEERING

416 Main Street, Suite 200  
Johnstown, PA 15901-1828  
PHONE: 814-536-1651 FAX: 814-536-5732  
PGH. OFFICE PHONE: 412-262-1220  
PGH. OFFICE FAX: 412-262-2972  
CONTACT: Matthew R. Sotosky, P.E.  
www.dynamic-engineering.com  
**Consulting / HVAC / Plumbing / Fire  
Protection / Electrical / Telecommunications  
Building Audits / LEED Accredited  
Professionals**

## ■ CLAITMAN ENGINEERING ASSOC., INC.

1340 Old Freeport Road, Pittsburgh, PA 15238  
PHONE: 963-6700 FAX: 963-7217  
CONTACT: Robert Rosenthal  
**Consulting / HVAC / Plumbing / Fire  
Protection / Electrical**

## ■ CONWAY ENGINEERING

Investment Building  
235 4th Avenue, Suite 1408  
Pittsburgh, PA 15222  
PHONE: 765-0988 FAX: 765-2530  
CONTACT: Bob Conway  
**Consulting / Structural**

## ■ DODSON ENGINEERING, INC.

420 One Chatham Center, Pittsburgh, PA 15219  
PHONE: 412-261-6515 FAX: 412-261-6527  
CONTACT: Gregory L. Calabria, P.E.  
**Consulting / Mechanical**

## ■ ENGINEERING MECHANICS, INC.

4636 Campbells Run Road, Pittsburgh, PA 15205  
PHONE: 788-3650 FAX: 787-5891  
CONTACT: Daniel Grieco, Jr., P.E.  
**Testing & Inspection / Geotechnical  
Consulting / Environmental  
Blasting Vibrations**

## ■ FAHRINGER, McCARTY, GREY, INC.

1610 Golden Mile Highway  
Monroeville, PA 15146  
PHONE: 724-327-0599 FAX: 724-733-4577  
CONTACT: Dale K. Earl  
E-MAIL: fmg1@stargate.net  
**Landscape Architecture / Site Master  
Planning / Civil / Consulting**

## ■ FIRSCHING, MARSTILLER, RUSBARKY AND WOLF ENGINEERING, INC.

2 Parkway Center East  
2030 Ardmore Boulevard, Suite 250  
Pittsburgh, PA 15221  
PHONE: 271-5090 FAX: 271-5193  
CONTACT: Daniel J. Wolf / David D. Rusbarsky /  
Ted Marstiller, P.E.  
**Consulting / HVAC / Plumbing  
Fire Protection / Electrical  
Telecommunications**

## ■ GAI CONSULTANTS, INC.

570 Beatty Road, Monroeville, PA 15146  
PHONE: 412-856-9220 FAX: 412-372-2161  
CONTACT: Anthony F. Morrocco, PE/PLS  
**Testing & Inspection / Civil / Construction  
Monitoring / Consulting / Environmental /  
Geotechnical / Structural / Transportation /  
Archaeological / Surveying**

## ■ THE GATEWAY ENGINEERS, INC.

1011 Alcon Street, Pittsburgh, PA 15220  
PHONE: 921-4030 FAX: 921-9960  
CONTACT: Rose Griffin  
**Civil / Testing & Inspection / Consulting  
Environmental**

## ■ HORNFECK ENGINEERING, INC.

1020 North Canal Street, Pittsburgh, PA 15215  
PHONE: 781-1500 FAX: 781-5593  
CONTACT: Richard W. Petrie, P.E.  
**Consulting / Electrical / Instrumentation  
Lighting / Telecommunications**

## ■ JSA

6450 Steubenville Pike, Pittsburgh, PA 15205  
PHONE: 412-788-1500 FAX: 787-5960  
CONTACT: Christopher DiCianna  
**Consulting / Electrical / Mechanical  
Telecommunications / Commissioning**

## ■ THE KACHELE GROUP

1014 Perry Highway, Suite 100  
Pittsburgh, PA 15237  
PHONE: 412-369-9020 FAX: 412-369-9021  
CONTACT: Tony Moscollic  
**Structural**

## ■ L. ROBERT KIMBALL & ASSOCIATES

Architects and Engineers  
415 Moon Clinton Road, Coraopolis, PA 15108  
PHONE: 412-262-5400 FAX: 412-262-3036  
ALT. PGH PHONE: 412-201-4900  
CONTACT: Emil R. "Jack" Lerch, PE  
CONTACT: J. Philip Andrews, FAIA  
www.lrkimball.com  
**Civil / Site / Water / Wastewater / Indoor  
Air Quality / Environmental Site  
Assessments / Land Development  
Industrial Hygiene and Safety**

## ■ MORGAN PROPERTY AND CONSTRUCTION CONSULTANTS, INC.

P. O. Box 15540, Pittsburgh, PA 15244  
PHONE: 412-787-1720 FAX: 412-787-0730  
CONTACT: Morgan P. Kronk  
E-MAIL: mpkcci@msn.com  
**General construction consulting,  
estimating services, and value  
engineering / Consulting / Owners  
representative inspections and  
management / Building and property  
evaluations.**

## ■ MURRAY ASSOCIATES, INC.

413 Penn Avenue, Turtle Creek, PA 15145  
PHONE: 412-823-2020 FAX: 412-824-7302  
CONTACT: Jack G. Murray, P.E.  
**Geotechnical / Civil / Environmental  
Structural / Testing & Inspection  
Forensic**

## ■ TAYLOR STRUCTURAL ENGINEERS

250 Mt. Lebanon Blvd.  
Pittsburgh, PA 15234  
PHONE: 412-344-1889 FAX: 412-344-4898  
CONTACT: Dirk A. Taylor  
E-MAIL: pkoval@taylorstructuralengineers.com  
**Structural**

## ■ TOWER ENGINEERING

115 Evergreen Heights Drive, Suite 400  
Pittsburgh, PA 15229  
PHONE: 412-931-8888 FAX: 412-939-2525  
CONTACT: Theodore H. Dannerth, P.E.  
**Consulting / Electrical / Mechanical  
Telecommunications / Sustainable  
Building Design / Energy Analysis  
Building Commissioning**

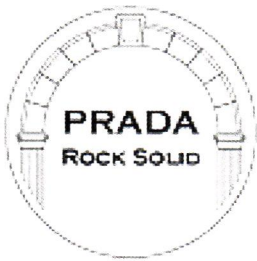
## ■ TRANS ASSOCIATES ENGINEERING CONSULTANTS, INC.

2419 Baldwick Road, Pittsburgh, PA 15205  
PHONE: 412-937-8070 FAX: 412-937-8071  
CONTACT: Mark J. Magalotti P.E.  
**Civil / Consulting / Transportation**

DISPLAY ADVERTISING • INSERTS • DIRECTORY LISTINGS

REACH THE PROFESSIONALS YOU WANT TO REACH • REASONABLE RATES • CALL AIA PITTSBURGH AT 412-471-9548.





# THE PRADA COMPANY, INC.

2000 Donner Street  
McKeesport, Pennsylvania 15135-1204

Phone (412) 751-4900 (412) 829-9911  
FAX (412) 754-6070

Rock Solid Materials — Rock Solid Performance

## FABRICATORS OF INDIANA LIMESTONE

The PRADA Company, Inc., has been fabricating Indiana limestone for 15 years. With over 35 years of experience in all aspects of the natural stone industry, we can create the finished stone product to meet your design requirements. The expertise of our estimating and drafting departments combined with our skilled craftsmen and technicians allow us to supply a wide variety of building stone including limestone, architectural precast concrete, granite, rubblestone, bluestone, sandstone, marble, and slate for both commercial and residential projects.

- Coping
- Window Sills
- Window & Door Surrounds
- Veneer
- Balustrade
- Custom Signage
- Steps
- Ball Finials
- Rubblestone

*Our goal is to exceed your expectations in the quality and beauty of the natural stone of your choosing.*

### Some of our projects include:

- 903 Liberty Avenue  
Pittsburgh, PA
- North Allegheny High School  
Wexford, PA
- Patee Library – Step Replacement  
State College, PA
- Highland Park Reservoir –Filtration  
Facility  
Pittsburgh, PA
- St. Louise DeMarillac – Parish Hall  
Upper St. Clair, PA
- UPMC – McKeesport – Ambulatory  
Entrance  
McKeesport, PA
- Connemaugh Memorial Hospital  
Johnstown, PA
- Mellon Park – Wall Restoration  
Pittsburgh, PA
- John Paul Library – Rotunda  
Renovations  
Steubenville, OH
- Felician Sisters Convent  
Carnegie, PA
- Plaza Theater  
Pittsburgh, PA



**WWW.STONECOMPANY.NET**



# GENERAL SERVICES DIRECTORY

A LISTING OF AREA BUSINESSES AND THEIR PROFESSIONAL SERVICES. To include your firm in this directory, call AIA Pittsburgh at 412-471-9548.

## BLUEPRINTS

### ■ TRI-STATE REPROGRAPHICS, INC.

907 Penn Avenue, Suite 700, Pittsburgh, PA 15222  
PHONE: 281-3538 FAX: 281-3344  
CONTACT: George R. Marshall  
*Document Management, Digital B&W Plotting, Blueprinting, Specs/Binding, Large & Small Format Color Copies, Mounting/Laminating, Supplies, Pickup & Delivery*

## CADD SERVICES

### ■ KG DRAFTING SERVICES

507 West 3rd Street, Dairy, PA 15627  
PHONE: 724-694-8366 FAX: 724-694-8367  
CONTACT: Katrina Gray  
*CADD Services*

## LANDSCAPE ARCHITECTS

### ■ DAHLKEMPER LANDSCAPE ARCHITECTS AND CONTRACTORS

P1650 Norcross Road, Erie, PA 16510  
PHONE: 814-825-3253 FAX: 814-825-0775  
CONTACT: Daniel J. Dahlkemper  
E-MAIL: diac@erie.net  
*Athletic Sports Complexes, Environmental Green Design, Park and Recreation Planning, Site Master Planning, Ordinance Development*

### ■ KENDALL LANDSCAPE ARCHITECTS

524 Locust Place, Sewickley, PA 15143  
PHONE: 412-741-5244 FAX: 412-741-0809  
CONTACT: Heather O'Brian or Patricia Kendall  
E-MAIL: design@kendallobrien.com  
*Parks and Recreation Planning, Residential Landscapes, Site Master Planning, Streetscapes*

### ■ MARSHALL TYLER RAUSCH LLC

101 Bellevue Road, Pittsburgh, PA 15229  
PHONE: 412-931-6455 FAX: 412-931-7764  
CONTACT: Cindy Tyler  
E-MAIL: mtr@mtr1a.com  
*Woman Owned Business, Environmental Green Design, Site Master Planning, Estate Landscapes, Conservatory Design, Playground and Educational Landscapes*

### ■ PASHEK ASSOCIATES, LTD.

619 East Ohio Street  
Pittsburgh, PA 15212  
PHONE: 412-321-6362 FAX: 412-321-9202  
CONTACT: Nancy Lonnott Roman RLA  
E-MAIL: nlonnett@pashekla.com  
VISIT: www.pashekla.com  
*Environmental Green Design, Historic Preservation, Park and Recreation Planning, Site Master Planning, Streetscapes, Urban Planning*

## MASONRY

### ■ M. I. FRIDAY

148 Perrysville Avenue, Pittsburgh, PA 15229  
PHONE: 412-931-7444 FAX: 412-931-2601  
CONTACT: Mark Friday  
*Commercial, Industrial, Institutional Masonry Work, Brick/Block/Limestone/Granite*

## OFFICE FURNITURE

### ■ FRANKLIN INTERIORS

Suite 600, 2740 Smallman Street, Pittsburgh, PA 15222-4720  
PHONE: 412-261-2525 FAX: 412-255-4089  
*Complete project and furniture management. Reconfigurations and installations: non-union and union. Meeting any budget—we are your authorized Steelcase dealer.*

## SIGNAGE

### ■ BUNTING GRAPHICS, INC.

20 River Road, Verona, PA 15147-1159  
PHONE: 412-820-2200 ext. 240 FAX: 412-820-4404  
E-MAIL: jody@buntinggraphics.com  
VISIT: www.buntinggraphics.com  
CONTACT: Jody Bunting  
*Fabricated Graphics & Signage, Custom Railings & Architectural Metal Work, Decorative Truss Work, Cold Cathode Lighting, Custom Lighting Fixtures, Sculpture & 3D Graphics, Custom Fabrication, Latest Technology & Skilled Craftsmen. (Local 110,000 Sq. Ft. Mfg. Plant)*

### ■ KOLANO DESIGN

6026 Penn Circle South, Pgh, PA 15206-3921  
PHONE: 412-661-9000 FAX: 412-661-9606  
E-MAIL: wk@kolano.com  
CONTACT: William Kolano  
www.kolano.com  
*Design of sign & wayfinding systems, design standards, fabrication packages and contract administration. For facilities, corporate, transportation, education, medical, retail, government, hospitality*

## WATERPROOFING CONTRACTOR

### ■ T-n-D OF PITTSBURGH, INC.

1422 Frey Road, Pittsburgh, PA 15235  
PHONE: 412-374-1330 FAX: 412-374-1330  
CONTACT: Art Hawk or John Gibbon  
*W. PA's selected contractor utilizing TREMCO material's "TUFF-N-DRI" waterproofing systems. "GUARANTEED DRY"*

## LIST YOUR SERVICES IN THE GENERAL SERVICES DIRECTORY

With the General Services Directory, you can list your business by specialty in *Columns*. List your firm under the heading of your choice.

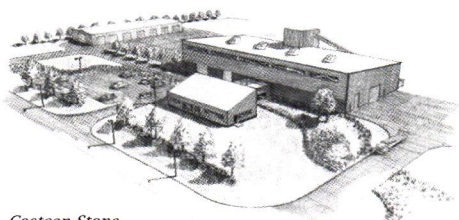
- Security Systems
- Blue Prints
- HVAC
- Electrical Service
- Design
- Roofing
- Signage
- Windows and Doors
- Brick Waterproofing
- Interior Design
- CADD Services
- Lumber
- Masonry
- Data
- Flooring
- Carpeting
- Tile
- Plumbing

Call AIA Pittsburgh at 412-471-9548 for details.

## OLSEN & ASSOCIATES, LLC

www.OlsenAndAssociates.us

ENGINEERS . COMMUNITY PLANNERS . SURVEYORS  
LANDSCAPE ARCHITECTS . GRANTS WRITERS / ADMINISTRATORS  
126 S. MAIN STREET . BUTLER, PENNSYLVANIA 16001 . PHONE (724) 282-4786 . FAX (724) 282-7619



Castcon-Stone  
Saxonburg, Pennsylvania

Congratulations to Castcon-Stone, Tom Pierce, and Perkins Eastman PC on their 2003 AIA Honor Award and Green Design Citation Award. Olsen & Associates, LLC was pleased to be part of the design team.



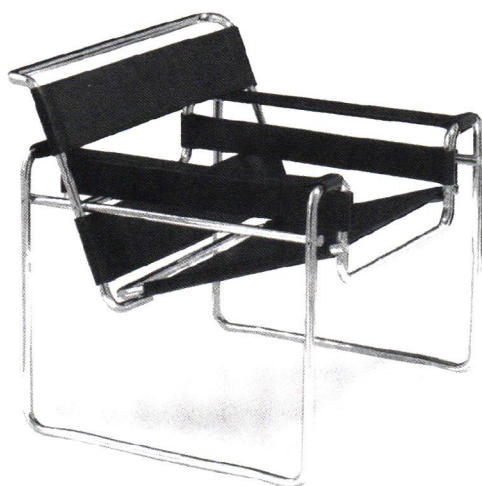
Stunning Italian-made design classics—up to an incredible 50% off for a limited time only!



\$1498 Mies van der Rohe Barcelona Chair



\$1099 LeCorbusier Chaise Cowhide; \$569 LeCorbusier Chaise Black Leather



\$189 Wassily Chair

For the furniture aficionado, The Leather Hideout has it all. Fabulous furnishings, the largest leather showroom between New York and Chicago, and right now, some of the lowest sale prices absolutely anywhere. Magnifico!

29th and smallman  
in the strip

412.434.7425

Mon-Fri, 9:30-5

Sat, 9-5

Sun, Noon-5

LEATHER  
**hideOut!**



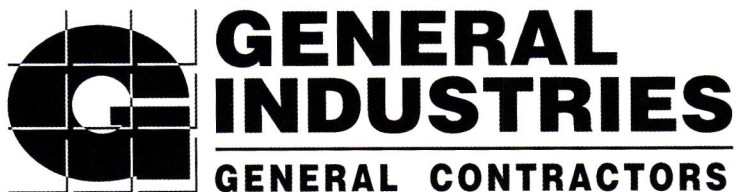
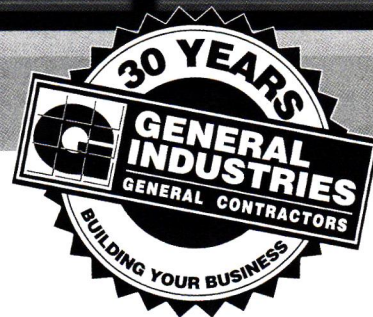
# IMAGINE



**YOUR VISION BUILT ON TIME AND WITHIN BUDGET, EVERY TIME.**

Imagine your top client driving up to their new General Industries-built corporate headquarters; ample parking, immaculate landscaping, inviting entryway and spacious floor plans. All designed by you to best suit the changing needs of their growing business.

As the region's leading commercial contractor, we welcome the opportunity to discuss our strengths in providing a facilities-construction solution that is always delivered on time, within budget and of course, guaranteed to impress your toughest clients.



► **CAN WE BUILD AN AWARD-WINNER FOR YOU?**

FIND OUT MORE ABOUT BUILDING WITH GENERAL INDUSTRIES. CALL DON IVILL AT (724) 483-1600  
15 ARENTZEN BOULEVARD ► CHARLEROI, PA 15022 ► [www.genindustries.com](http://www.genindustries.com)