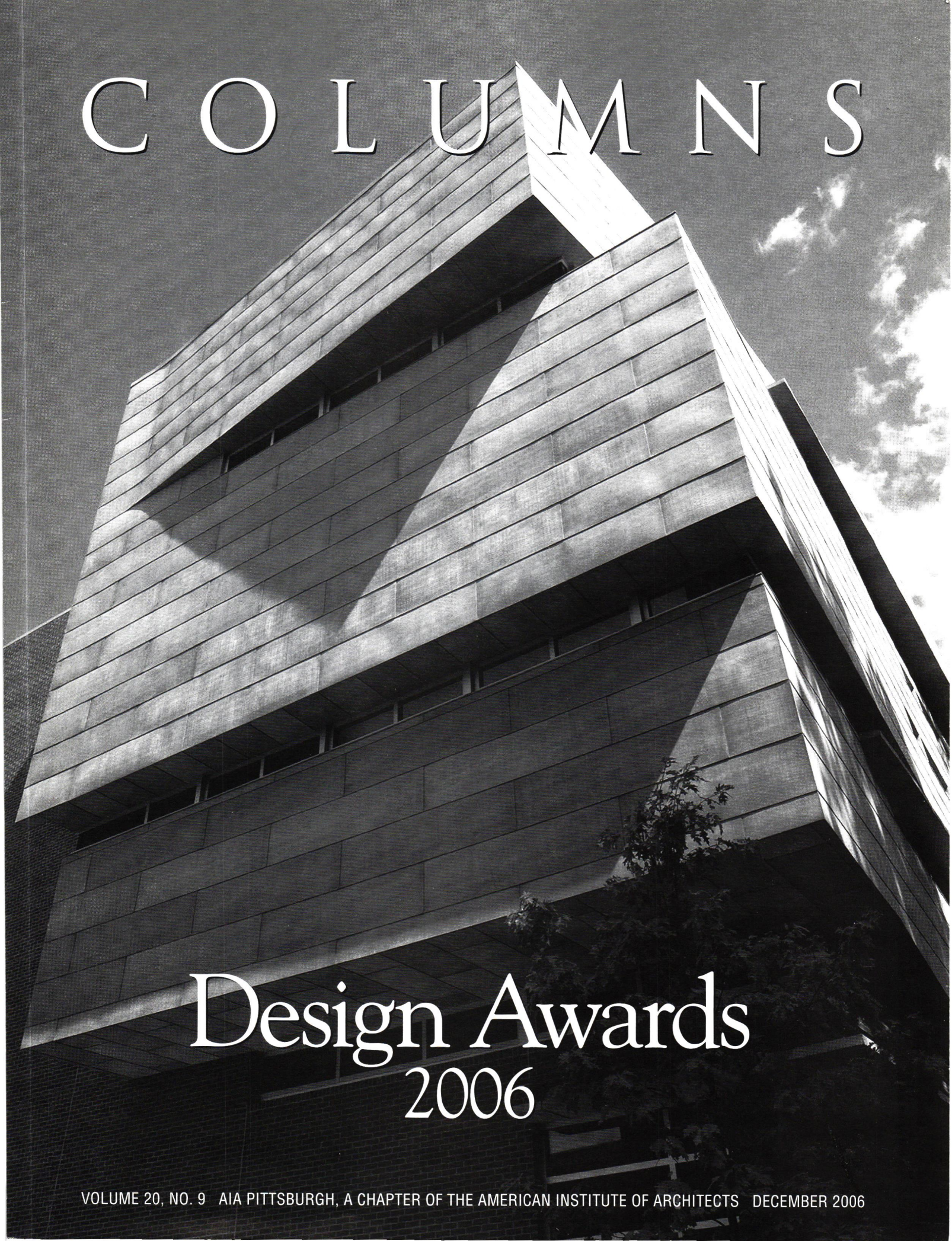


COLUMNS



Design Awards 2006

VOLUME 20, NO. 9 AIA PITTSBURGH, A CHAPTER OF THE AMERICAN INSTITUTE OF ARCHITECTS DECEMBER 2006



Look what we've done...

Boilermakers

Bricklayers & Allied Crafts

Carpenters

Cement Masons

Drywall Finishers

Electricians

Floor Coverers

Glaziers

Heavy & Highway Carpenters

Insulators

Ironworkers

Laborers

Millmen / Cabinetmakers

Millwrights

Operating Engineers

Painters

Pile Drivers

Plasterers

Plumbers

Roofers

Sheet Metal Workers

Sprinkler-Fitters

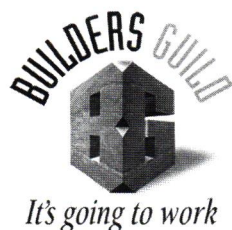
Steamfitters



...Imagine what we can do!

The Builders Guild of Western Pennsylvania, Inc.

Professional Contractors - Union Craftsmen
Working in Partnership for a Better Community



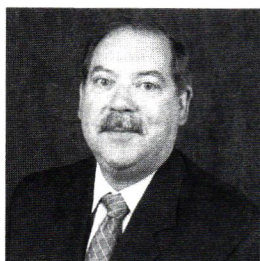
412.921.9000

pittsburgh
imagine what you can do here.

WWW.BUILDERSGUILD.ORG

Design Matters

By Tom Briney, AIA



The value of getting this message across is hard to measure—but it's good to let the world know what we do!

Yes. Good design does matter.

This year the events of Design Pittsburgh have underscored how true this is for our region and our professional community. Beginning with the Gallery Crawl exhibition on September 29th, we kicked off Design Pittsburgh (a little early) with a public display of the 96 submissions for this year's awards competition. If you attended, you were one of **over 600 guests** to view and discuss the work of AIA Pittsburgh firms. (The vast majority of the attendees were not architects.) As I viewed the boards and mingled, what impressed me most were the conversations I overheard from non-professionals. Almost without exception, our "guests" talked of the quality of the design and presentations, the range of project types and the care and professionalism evident in the submissions. Some people expressed gratification that AIA Pittsburgh architects were spawning "these kinds of positive impacts in our communities." Clearly, a number of the attendees got to appreciate (for the first time) what we have been broadcasting for years: Our design is recognized for its quality and our work represents the best aspirations to make a difference in improving quality of life and our environment. The value of getting this message across is hard to measure—but it's good to let the world know what we do!

Two weeks later at the Design Gala, we hosted **over 420 people** to formally begin Design Pittsburgh's annual Design Awards competition. Our sponsors, membership and clients shared a highly enjoyable evening of fellowship and discussion about the design submissions. Here the discussions were more about the consistent quality of the work and how we continually value the collaboration with clients and the other professionals that make good projects happen. We all should be gratified in how Design Pittsburgh continues to grow in participation and recognition. It's also noteworthy that a number of our younger and emerging professionals attended the exhibit—what a great

opportunity for them to see what AIA firms are doing locally and beyond.

At the Design Awards Ceremony, Andrew Herdeg, AIA from AIA San Antonio, the jury chair, emphasized a number of times the jury's positive comments about the thoughtful and well-crafted submissions they reviewed. In my discussions with him, this will be a message that I'm sure he will repeat next year at the convention in San Antonio. And, of course, we extend our congratulations to the award winners—peer recognition is probably the highest compliment, and this year it is well deserved.

Beyond the more immediate events of Design Pittsburgh, AIA Pittsburgh has allied itself over the past few years with the Allegheny County Medical Society (and recently with the Allegheny County Bar Association) to create forums to discuss topics of concern to our professions and region (for example: obesity and diversity). While our collaboration might seem odd at first glance, we each share a common concern for the future of the Western Pennsylvania region and how we can each influence public policy in creating healthier, more vibrant and sustainable communities. As part of Design Pittsburgh month, we co-hosted a radio spot with the Allegheny County Medical Society on KQV radio—and the message was how good design can create opportunities for healthy living.

As you all know it takes considerable effort for us to get the recognition we deserve. Consider, too, the numbers I have quoted and the potential reach of AIA Pittsburgh's message. At your urging, the Chapter Board has worked diligently (and will continue) to create the right opportunities for this to occur. Let's enjoy this success and commit together to build on it for the future.

IN THIS ISSUE

Design Awards 6

Design Pittsburgh Photo Album 16

Breaking Ground 18

On the cover: The Stuckeman Family Building for the School of Architecture and Landscape Architecture, at The Pennsylvania State University. By Overland Partners / WTW Architects. Photo by Esto Photographics, Inc.

AIA Pittsburgh serves 12 Western Pennsylvania counties as the local component of the American Institute of Architects and AIA Pennsylvania. The objective of AIA Pittsburgh is to improve, for society, the quality of the built environment by further raising the standards of architectural education, training and practice; fostering design excellence; and promoting the value of architectural services to the public. AIA membership is open to all registered architects, architectural interns, and a limited number of professionals in supporting fields.

AIA Pittsburgh
945 Liberty Avenue, Loft #3
Pittsburgh, PA 15222
Telephone: 412/471-9548
FAX: 412/471-9501

Chapter Officers

Thomas J. Briney, AIA, President
James C. Radock, AIA, 1st VP
Paula R. Maynes, AIA, 2nd VP
Kenneth K. Lee, AIA, Secretary
Chip Desmone, AIA, Treasurer
Anne J. Swager, Hon. AIA,
Executive Director

Columns Staff

Tracy Certo, Editor
Becky Spewack, Coordinator
Joseph Ruesch, Art Director

Editorial Board

Donald G. Zeilman, AIA, chair
Michael Kuchera, AIA
Eric R. Osth, AIA
Roxanne Sherbeck, AIA

COLUMNS is published ten times a year by, and primarily for, members of AIA Pittsburgh, A Chapter of the American Institute of Architects. Preference may be given to the selection of works, articles, opinions, letters, etc. of members for publication. However, in the interest of furthering the goals of the Chapter, as stated monthly at the top of the masthead and in the membership directory, COLUMNS will publish the names of and properly credit non-members, whether as participants in the design of works submitted by a member, or as designers of their own work, or as authors of articles, opinion or letters.

Opinions expressed by editors and contributors are not necessarily those of AIA Pittsburgh. The Chapter has made every reasonable effort to provide accurate and authoritative information, but assumes no liability for the contents.

For information about AIA Pittsburgh, AIA Middle PA and the Northwest PA Chapter, call 1-888-308-9099.
Online: www.aiapgh.org
email: info@aiapgh.org

Something Old, Something New

By Anne Swager, Hon. AIA

I have been with the AIA long enough

to have heard almost every complaint several times. I am actually at that scary point where someone will bring up a "new" idea that we did a number of years ago. That's not to say that a good idea cannot be successfully recycled because it certainly can. It just makes my knees ache a little more when I find myself reliving our history.

Hands down, we get more unsolicited advice, running commentary, praise and criticism over design awards than for anything else we do. Members seem to break into two camps. A group of you think giving each other awards is akin to the emperor without any clothes. It is nothing more than self congratulatory flaunting of projects that please architects more than the clients for whom they were designed. The other camp thinks of awards night as closer to the Oscars replete with the intrigue of who is going to win and what was the jury really thinking. Of course, the vast majority of you fall somewhere in between.

My true confession...I love design awards. I love buildings. I love cities. I love towns and villages.

Mostly I love the art of architecture done well and how it shapes cities, towns and villages. I am fascinated by your abilities to pull a building together and have it work on so many levels. I know that spaces done well make me feel better, function better and even can lift my doldrums on a grey Pittsburgh day. Obviously, I am an architecture junky. If you were to listen to my mother, she would tell you that because my heinous kindergarten teacher squashed my innate artistic abilities by trying to make me use my right hand instead of my left, I became an executive director instead of an architect. I

am not sure how she came to this profound deduction but she's said it with the greatest of conviction for as long as I can remember. Be that as it may, I have a great time looking through the binders as they arrive and then again as the jury is going through them. Before any of the events began this year, I snuck over to our rented space and looked through the boards which gave me an entirely different perspective on the range of projects submitted.

Once again, Design Pittsburgh was a rousing success! For the first time this year, we were able to participate in one of the Cultural Trust's Gallery Crawls. It was mind boggling to get 600 visitors milling around looking at the projects and actually talking about them. By the end of the evening the ballot box for the People's Choice Award was overflowing. We had long run out of the "way more wine than we will ever need" and came close to exhausting our supply of garbage bags, cups, and napkins. It was exhilarating (and exhausting) to see just how many people cared enough about the art of what you do to not just look over the 90 plus submissions, but to argue about what they liked best, or least and why.

Next year we hope to replicate the success of the Gallery Crawl. To do so we will have to find a large enough space in the Cultural District that can accommodate all of the boards, people and our events. Throughout the upcoming year we will be looking for more opportunities to get the word out about what you do and how artfully you do it. Your suggestions on how we might accomplish this are always welcome. Who knows? We might even dust off a few old ideas and put them to good use.



It was exhilarating (and exhausting) to see just how many people cared enough about the art of what you do to not just look over the 90 plus submissions, but to argue about what they liked best, or least and why.



AIA Pittsburgh Would Like to Thank **THE DESIGN PITTSBURGH 2006 SPONSORS**

The success of this year's Design Pittsburgh events is a direct result of your contribution!

People's Choice Award Sponsor

Columbia Gas of Pennsylvania

Media Sponsors

Pittsburgh Business Times

WDUQ 90.5 FM

Technology Sponsors

CAD Research, Inc.

Tri-State Reprographics, Inc.

Green Design Citation Sponsor

Mascaro Construction Company, LP

Gold Sponsors

Allen & Shariff Corporation

Burt Hill

Civil & Environmental Consultants, Inc.

Epic Metals Corporation

Fenner & Esler Insurance

The Gateway Engineers, Inc.

Silver Sponsors

A. Martini & Co, Inc.

Atlantic Engineering

BRIDGES & Company, Inc.

Civil & Environmental Consultants, Inc.

Cost Corporation

Dietrich Metal Framing

DMJM Harris

GAI Consultants

H.F. Lenz Company

Jendoco Construction Corporation

Mosites Construction Company

Sota Construction Services Inc.

Turner Construction Company

Contributors

Accu-copy Reprographics, Inc.

Armstrong Ceilings

Barber & Hoffman, Inc.

BDA Engineering, Inc.

BRACE ENGINEERING, INC.

Breaking Ground Magazine/Tall Timber Group

Bridges & Company, Inc.

Centria Architectural Systems

CJL Engineering

Compu-Site Technologies, Inc.

Construction Engineering Consultants, Inc.

DMJM Harris

Dodson Engineering, Inc.

Forbo Flooring/ Skoloda Sales Group, LLC

Fukui Architects, P.C.

General Industries

Heinz Architectural Center, Carnegie Museum of Art

Houston Harbaugh, P.C.

Iams Consulting, LLC.

Landau Building Company

LING PARTNERSHIP, Consulting Engineering

LLI Engineering, Inc.

Lovorn Engineering Associates, Inc.

M.I. Friday

Markovitz Dugan & Associates, CPAs and
Business Advisors

Massaro Corporation

Massery Photography, Inc.

Mistick Construction

Pashek Associates

Rycon Construction, Inc.

Steelcase, Inc.

The Kachele Group

the studio i company

Tower Engineering, Inc.

Trans Associates Engineering Consultants, Inc.

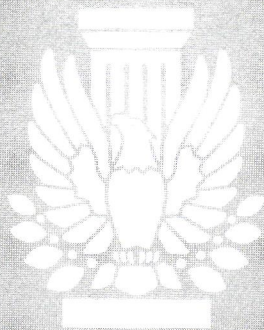
Valspar

W.R. Grace & Co.

WHITNEY, BAILEY, COX & MAGNANI, LLC

YKK AP America





AIA PITTSBURGH PRESENTS

Design Awards

2 • 0 • 0 • 6

How it Works

Each year, AIA Pittsburgh hosts Design Awards which are judged by an out of town jury and open to any member of AIA Pittsburgh, AIA Middle Pennsylvania or any member of any AIA chapter across the country who has a project in the 22-county area represented by AIA Pittsburgh and AIA Middle Pennsylvania.

The mission of these awards is to recognize and promote excellence in the craft of architecture, as created by the members of AIA. This year, awards were given in five categories: Architectural Detail/Craftsmanship, Open Plan, Regional and Urban Design, Interior Architecture and Architectural.

What do the awards mean?

— The Silver Medal is AIA Pittsburgh's highest award and is presented at the jury's discretion. It is only presented in the Architectural category. Only one Silver Medal can be awarded and the jury may choose not to award it. The last Silver Medal was awarded to Bohlin Cywinski Jackson for The Barn at Fallingwater in 2005.

— Honor Awards are granted for overall excellence to projects in the Architectural, Regional and Urban Design and Interior Architecture categories. Certificates of Merit recognize an outstanding aspect of a project such as detailing or adaptive reuse. Open Plan and Architectural Detail/Craftsmanship projects are only eligible for Awards of Excellence.

— The Green Design Citation, presented this year by Mascaro Construction and The Mascaro Sustainability Initiative, recognizes projects that have integrated green building strategies and practices into the design to reduce environmental impact. This award also recognizes the growing impact that buildings have on human health, worker productivity, and environmental and regional prosperity. Projects in the Architectural and Interior Architecture categories are eligible for Green Design Citations.

The jury may award as many or as few Honor Awards, Certificates of Merit or Awards of Excellence as they like.

ARCHITECTURAL AWARDS



HONOR AWARD AND GREEN DESIGN CITATION

Project: The Stuckeman Family Building for the School of Architecture and Landscape Architecture

Client: The Pennsylvania State University

Architecture Firm: Overland Partners / WTW Architects

Project Team: Richard DeYoung, AIA, Joseph Nagy, AIA, Thomas Wiley, AIA, Ken Schrock, Betsy Garrity, Carol Glorioso, Rocky Kernick, Alan Klauss, AIA, Paul Greb, Christine Kwolek, Jeff Mataya, Jamie Gamble, Robert Schanck, AIA, Ginger Teapole, Robert Shemwell, AIA, James Shelton, Juan Ortego, Richard Archer, FAIA, Timothy Blonkvist, FAIA, Madison Smith, Robert Schmidt, Laurie Zapalac, Jeff Russell, Pi Cheng Sun, Greg Snow, Greg Seay, Kyle Onderko

Contractor: Whiting-Turner Contracting Company

Photographer: Esto Photographics, Inc.

Description: Just as the school seeks to unify the departments of architecture and landscape architecture, this building encourages collaboration with the design of open and interconnected interior spaces and studios. The exterior addresses its site with two distinct personalities — one façade a contemporary completion to a brick quadrangle, the other a recycled copper response to its surroundings.

Jurors' comments: *The design benefits from a strong and very programmatically relevant diagram that is expressed throughout the interior and is clearly translated to the exterior. The use of the public open space interlocking with the studios is very successful. Combined with abundant daylighting, these strategies make for a really wonderful learning environment. The thinness of the building reinforces strong interior spatial connections as well as to the surrounding campus. You seem to be ever aware of the surrounding green space. The dramatic and iconic gesture to the campus on the east end of the building is particularly strong. The exterior articulation strikes a balance and allows the building to appropriately respond to its various solar orientations and campus context."*

ARCHITECTURAL AWARDS



HONOR AWARD AND GREEN DESIGN CITATION

Project: Children's Museum of Pittsburgh

Client: Children's Museum of Pittsburgh

Architecture Firm: Koning Eizenberg Architects / Perkins Eastman

Project Team: J. David Hoglund, FAIA, Richard Northway, AIA, Debbie Przekop, AIA, Shayne Blackburg, Nate Burdette, Holly Jordon, Kris Kennedy, Lee Pellegrino, AIA, Rick Rebottini, Erica Paul

Contractor: Mascaro Construction Company, L.P.

Photographer: Esto Photographics, Inc.

Description: This Silver LEED certified project was planned, designed, and constructed using sustainable practices. The expansion and renovation involves adaptive reuse of landmark historic structures linked by an innovative steel and glass contemporary structure which forms a dynamic wind sculpture.

Jurors' comments: *It is a fairly simple equation, but realized with confidence and a certain amount of restraint: a little jewel box. The addition as an art piece along with its generous porch dramatically but gracefully achieves its public role. It does things well for the city and the kids. It seems very purposeful in its strategy...A wonderful ephemeral piece that changes throughout the day. As a Children's Museum, it is wonderful that you can inhabit the art piece as well as admire it...It is very successful at connecting two structures with its modernity being a nice counterpoint to the two historical structures. I like the lightness of it compared to the two very heavy historical structures.*

ARCHITECTURAL AWARDS



HONOR AWARD

Project: Biomedical Sciences Tower III

Client: University of Pittsburgh School of Medicine

Architecture Firm: Payette / JSA Architecture
Planning Engineering Interior Design

Project Team: Kevin Sullivan, AIA, George Marsh, Jr., AIA, Thomas Mrozinski, Jr., AIA, Scott Womack, AIA, Robert Cortopassi, John Barnett

Contractor: Mascaro/Hunt, A Joint Venture

Photographer: Warren Jagger Photography

Description: The building is organized into two bars of laboratory facilities, shared by a central corridor. The articulation of the building's twin bars of laboratories both maximizes the number of labs within the square footage and anchors its position at the meeting point of the University's upper and lower campus grids.

Jurors' comments: *We like the playfulness of the fenestration which differentiated the various programmatic volumes. The scale of this building could have been a burden, but the designers took the issue to task. All of us appreciated the strategies to break down the overall mass especially the end volumes. It is an unusually handsome urban building especially given its program. They took a complex building and wove a series of handsome facades out of it. There is a good layering and bridging of interior and exterior spaces. The open public glass corners would seem to be a wonderful surprise for visitors and an appropriate use for such an important area within a complex building"*



ARCHITECTURAL AWARDS



CERTIFICATE OF MERIT

Project: David Johnson Memorial Chapel

Client: Thiel College

Architecture Firm: Desmone & Associates Architects

Project Team: Luke Desmone, AIA, William Brocious, AIA

Contractor: Rien Construction

Photographer: Massery Photography, Inc.

Description: This project consists of a new multi-denominational chapel for an independent liberal arts college, using the liturgical progression of rituals as the primary theme for ordering the placement of liturgical spaces and symbols. The exterior use of red brick and limestone trim reflects the character of the 135-year old campus while the interior laminated wood timber and steel structure creates a rhythmic pattern through the gathering space.

Jurors' comments: *Super simple programmatically but lots of restraint shown in the design. Nicely articulated and reverential. Great use of natural light. Simple details that are not overwrought on the inside. It appears to match the scale and context of the other college buildings and the residences that are implied beyond.*



CERTIFICATE OF MERIT

Project: Arch Street Loft

Client: Name withheld

Architecture Firm: Loysen + Kreuthmeier Architects

Project Team: Peter Kreuthmeier, Karen Loysen, AIA, Dave Green, Jennifer McCarthy, Sallyann Kluz, Eugene Leung

Contractor: Clearview Project Services Company

Photographer: Massery Photography, Inc.

Description: What used to be home to an automotive service garage and warehouse has been converted into a contemporary living space. The large open space uses level changes to define various "rooms" and sandblasted glass to allow light in while maintaining a level of privacy.

Jurors' comments: *I appreciate the restraint, the rich but simple palate of materials on the interior and very honest expression of what the building is about. Only made a few moves which are all clean and simple, and do not detract from the overall existing space. The design maximizes the potential of the original structure. The entrance as a three-dimensional forced perspective creates a dramatic entrance event in a very short space without being a room.*

ARCHITECTURAL AWARDS



CERTIFICATE OF MERIT

Project: Fairmont

Clients: Affirmative Investments, Presbyterian SeniorCare, Housing Authority City of Pittsburgh

Architecture Firm: Rothschild Doyno Architects, P.C.

Project Team: Daniel Rothschild, AIA, Kenneth Doyno, AIA, Michele Andrianse, Assoc. AIA, Geoff Campbell, AIA, Carrie DiFiore, Assoc. AIA, Tara Earnest, Assoc. AIA, Glenn Gilbert, Assoc. AIA, Jeff Kalina, Nuri Miller, Terence Oden, AIA, John Orsini, AIA, Kate Tunney, Assoc. AIA

Contractor: Mistick Construction

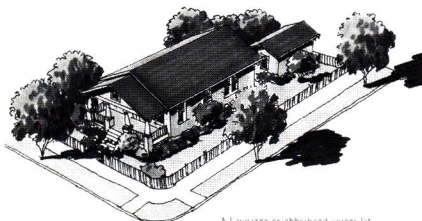
Photographer: Massery Photography, Inc.

Description: The building connects to the existing neighborhood fabric by responding to the rotated street grid and the historic lot widths across the street. Street frontage is maintained by providing parking to the rear accessed through a drive-under bridge.

Jurors' comments: *This is a very smart project. It employs many sound traditional urban strategies while managing to keep the design fresh and modern. Nice detailing in spite of a very tight budget. Kept it simple. Right proportions. The designers achieved a design that accomplished much more than its budget might have implied. The use of geometry is very purposeful in breaking up and scaling the buildings. It is a retrained but thoughtful response to the precedent set across the street without being slavishly historic. Simple gestures in the rhythm and the palette."*

REGIONAL AND URBAN DESIGN AWARDS

section A INTRODUCTION



A Louisiana neighborhood corner lot



HISTORICALLY SENSITIVE BUILDING

Building in Historically Sensitive Areas
This Pattern Book is intended to provide basic guidance to help new construction be consistent with, and sensitive to, the existing built landscape of South Louisiana. But some places—New Orleans in particular—already have extensive and detailed guidance on historically sensitive building design. This Pattern Book should be considered as a supplement to pre-existing local regulations and guidance; it does not presume to supersede them. Specific resources for some existing local regulations can be found on the Resources page in the Appendix.

HOW TO USE THE PATTERN BOOK

The following sequence of steps will provide for an orderly and thorough application of the design principles and patterns contained in this Pattern Book to both renovation and new development projects.

STEP 1: IDENTIFY LOCATION

Before beginning your project, determine its location, Velocity Zone (per the International Residential Code), climate, soil type, and floodplain elevation. In siting the buildings, consider solar orientation and prevailing wind patterns to take advantage of environmental opportunities for passive heating and cooling.



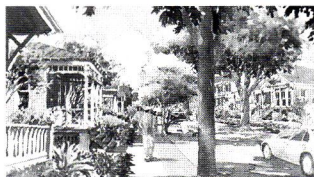
Step 1: Identify Location



Single-Family House

STEP 2: IDENTIFY NEIGHBORHOOD TYPE AND CHARACTER

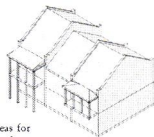
Within the Community Patterns section, you'll find a discussion of Neighborhood Patterns that includes an overview of the unique characteristics of each type of traditional neighborhood street, each keyed to the Transect Zone which identifies the range of appropriate building types and architectural character.



Step 2: Identify Neighborhood Type and Character

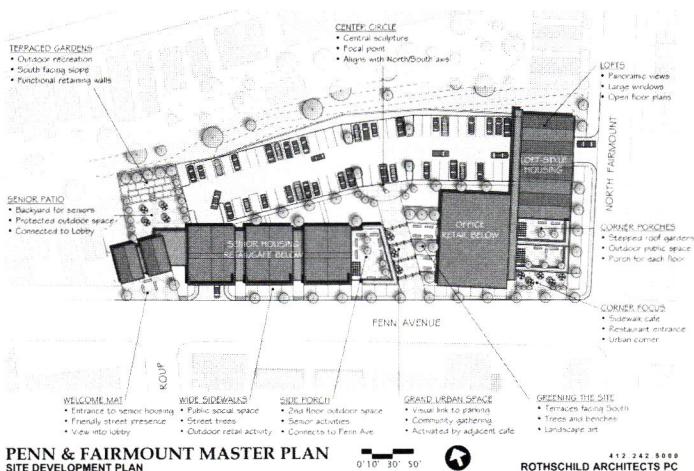
STEP 3: IDENTIFY APPROPRIATE BUILDING TYPES

The rebuilding effort will identify areas for different building and lot types, ranging from small cottages to large and complex mixed-use buildings. Review the potential building types in terms of the building technology which will be used to construct them and factor in the necessary construction hardening techniques and ADA requirements for visitability and accessibility.



Rowhouse

Step 3: Identify Appropriate Building Type



PENN & FAIRMONT MASTER PLAN
SITE DEVELOPMENT PLAN

ROTHSCHILD ARCHITECTS PC

HONOR AWARD

Project: Louisiana Speaks: Pattern Book

Client: Plan Baton Rouge

Architecture Firm: Urban Design Associates

Project Team: Raymond Gindroz, FAIA, Rob Robinson, AIA, David Csont, Eric Osth, AIA, Andrew Dresdner, Alexandra Laporte, Erica Bertke, Emily Burnett, Edward Erfurt, Melissa Piper, Jeffery Schwaiger, Atul Sharma, Susann Reimann, Donald Zeilman, AIA

Description: In response to the vast number of houses and buildings that need to be rebuilt since Hurricanes Katrina and Rita, this pattern book provides both the guidance and tools for builders to take on this task.

Jurors' Comments: *Wonderful effort as a planning document which can be used by a community. Focus is on the most positive aspects of the established vernacular. Information is clear and concise and beautifully illustrated.*

CERTIFICATE OF MERIT

Project: Penn-Fairmont Master Plan

Clients: Friendship Development Associates with Bloomfield Garfield Corporation, Garfield Jubilee Association, Affirmative Investments, and Presbyterian SeniorCare

Architecture Firm: Rothschild Doyno Architects, P.C.

Project Team: Daniel Rothschild, AIA, Kenneth Doyno, AIA, Lisa Baker, Assoc. AIA

Description: A process involving two neighborhood organizations and numerous neighborhood meetings, the goal was to produce a community-inspired, context solution for this dense, mixed-use project in the City of Pittsburgh. Both groups and the city offered enthusiastic acceptance at the end of the process and Phase One construction began in 2005.

Jurors' Comments: *The architectural project was worthy more of recognition because of what they accomplished from an urban design standpoint with a very limited budget. The design plan is a hopeful expression of what it means to have an urban community.*

INTERIOR ARCHITECTURE AWARDS



HONOR AWARD

Project: Macromedia Corporate Headquarters (now Adobe)

Client: Macromedia (now Adobe)

Architecture Firm: Bohlin Cywinski Jackson

Project Team: Jon Jackson, AIA, Michael Maiese, AIA, Kent Suhrbier, AIA, Gregory Mottola, AIA, Maria Danielides, Doug Speckard, Jonathan Hayes, Mike Gwin, AIA, Jarrett Pelletier, Kyle Hollick, Darin Curtis

Contractor: Devcon Construction Inc.

Photographer: Nic Lehoux Photography, Ltd.

Description: The goal of this space was to create a new centralized workplace that would foster community. The headquarters spans an entire city block, incorporating a historic warehouse, a parking structure, and a newer office building. The project renovates the 210,000 square foot warehouse into a facility which includes a 'Town Hall', focus group research rooms, digital screening rooms, a ninety seat auditorium, recording studios, and labs, as well as open teaming areas for workstations.

Jurors' comments: *A very honest response to the integrity of an old industrial building. The interventions are to the point, simple and well crafted, allowing the existing building components and the systems to be celebrated. The best darn looking mail room/post office ever!*



HONOR AWARD

Project: The Center For Turning and Furniture Design

Client: Indiana University of Pennsylvania

Architecture Firm: Pfaffmann + Associates, P.C.

Project Team: Robert Pfaffmann, AIA, Jimmy DeCecco, AIA, Gregory George, Assoc. AIA

Contractor: Mid-State Construction

Photographer: Roy Englebrecht Photography and Pfaffmann + Associates, P.C.

Description: Interior renovation as a collaborative project with the College of Fine Arts, creating a design which directly reflects its use and is itself an educational tool. All elements of the project were considered for their value in illustrating how materials and methods can be used.

Jurors' comments: *I appreciate the consistency of the detailing and attitude that is carried throughout the project. Simple architectural moves to constantly reinforce the program. The materials that are expressed are what the kids are learning about...there is no better way to illustrate the program to the kids. The design seems almost surgical which makes each event the more compelling.*

INTERIOR ARCHITECTURE AWARDS



HONOR AWARD

Project: Hughes Residence Renovation

Client: Ms. Kristin Hughes

Architecture Firm: studio d'ARC architects, P.C.

Project Team: Gerard Damiani, AIA

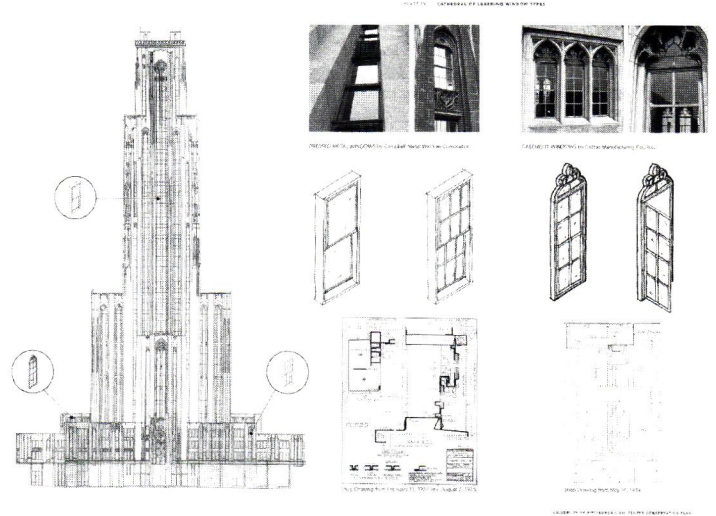
Contractor: Ms. Kristin Hughes, Owner

Photographer: Denmarsh Photography

Description: A substantially modified interior space, this home now allows for an abundance of natural daylight and creates a series of open spaces. A series of sliding door panels, open grid fiberglass grating and translucent surfaces were all used to allow the spatial depth of the interior to be modified by the owner.

Jurors' comments: *I like the variety and complexity of space in a relatively small house. I like the essentially open plan that it defined spatially by some simple skillful articulation like the transparent wall. Delightfully simple level of complexity. With the exposed system, the level of design and execution is wonderful.*

OPEN PLAN AWARDS



AWARD OF EXCELLENCE

Project: Cathedral of Learning/Oakland Civic Center Conservation Study

Client: University of Pittsburgh

Architecture Firm: Pfaffmann + Associates, P.C.

Project Team: Robert Pfaffmann, AIA, Matthew McNutt, Assoc. AIA, Christine Brill, William Eastlick, John Axtell

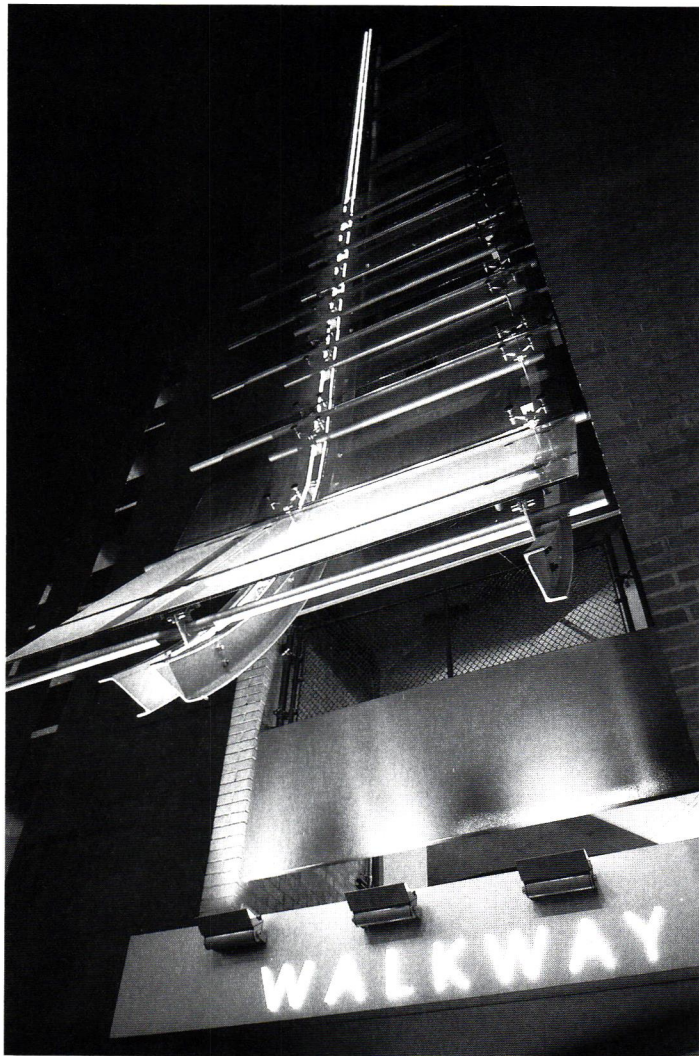
Contractor: FJ Busse Company

Photographer: Archival and/or Pfaffmann + Associates, P.C.

Description: Made possible by a grant to assist universities in managing and preserving the integrity of significant historic buildings, sites and landscapes, the Cathedral of Learning/Oakland Civic Center Conservation Study provides a comprehensive architectural conservation assessment and preservation plan for a contiguous group of architecturally significant structures that comprise the heart of the University of Pittsburgh's campus.

Jurors' comments: *A level of inquiry that rarely happens and is even more rarely implemented. Understanding the historical nature to that level of detail is admirable. Even given the limited information we were provide, it was a joy to admire. There is a notion that the firm basically worked with the client to recognize the past, understand the maintenance and developed a plan that has a potential to be implemented. By being so thorough and pragmatic, they have created a very sustainable strategy by allowing this wonderful old campus to be maintained. It is a wonderful celebration of the art of building and construction craftsmanship.*

ARCHITECTURAL DETAIL / CRAFTSMANSHIP AWARDS



AWARD OF EXCELLENCE

Project: Smithfield Liberty Parking Garage Canopy

Client: Pittsburgh Parking Authority

Architecture Firm: Pfaffmann + Associates, P.C.

Project Team: Robert Pfaffmann, AIA, Erik Hokanson, AIA, Greg George, Assoc. AIA, Kurt Beres

Contractor: FJ Busse Company

Photographer: Pfaffmann + Associates, P.C.

Description: A steel spine with ribs that supports the progressive placement of glass panels that increase in size and slope as they reach the bottom, the canopy was been added to the existing garage to highlight a pedestrian entrance. The panels are backlit and highlighted from below with floodlights and then accented with a vertical blue LED line along the spine of the structure.

Jurors' comments: *Successful in the way it handles marking an entry and doing so in a way that brings elegance and whimsy to a mundane parking garage. Lots of fine-grained detail that is beautifully executed. Most successful at night with a notion of a shaft of colored light. Very simple marker without having to have a giant flashing sign. The integration of the lighting is obviously the most successful part.*



COLUMBIA GAS PEOPLE'S CHOICE AWARD

Project: Arch Street Loft

Architecture Firm: Loysen + Kreuthmeier Architects

Project Team: Peter Kreuthmeier, Karen Loysen, AIA, Dave Green, Jennifer McCarthy, Sallyann Kluz, Eugene Leung

Contractor: Clearview Project Services Company

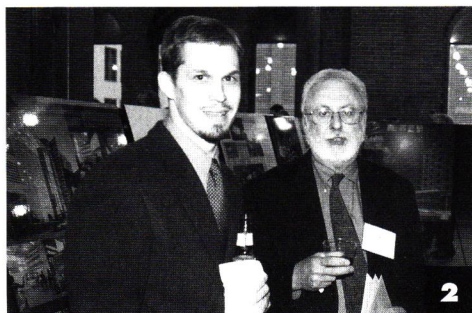
Photographer: Massery Photography, Inc.

Columbia Gas[®]
of Pennsylvania
A NiSource Company

Design Pittsburgh 2006

PHOTO ALBUM

Photos by Renee Rosensteel and Tracy Certo



AT THE DESIGN PITTSBURGH GALA October 12, 2006

PHOTOS BY RENEE ROSENSTEEL

1. Jessica Manual, DJ McClary, and Ken Reeser, all with Tri-State Reprographics, Inc. and Tom Underiner of Pixel River

2. Joe Nelson of Sota Construction and John Martine, AIA of Strada

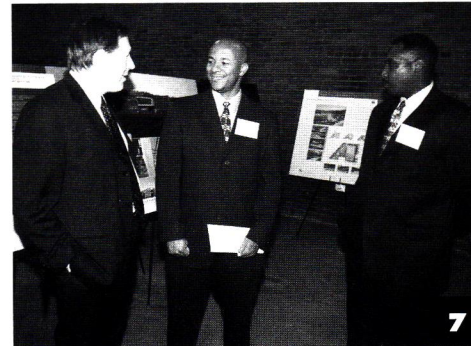
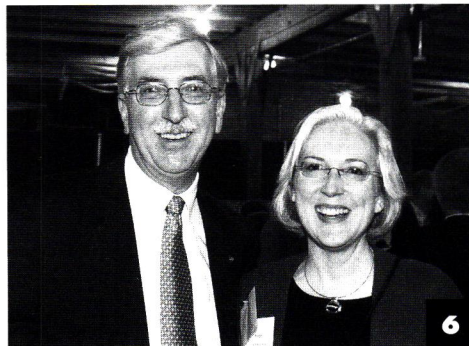
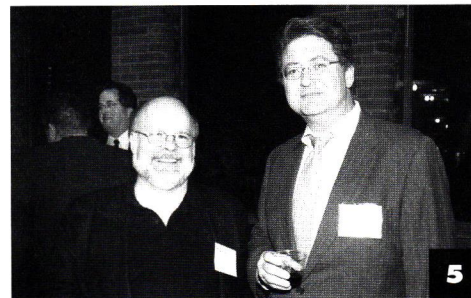
3. Gala overview

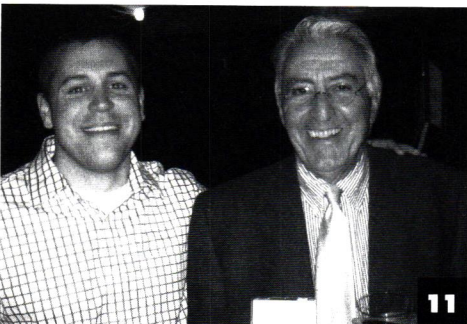
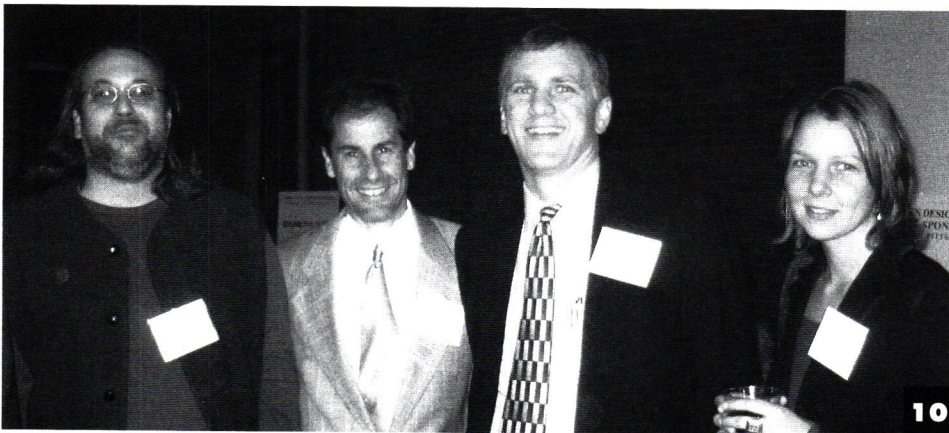
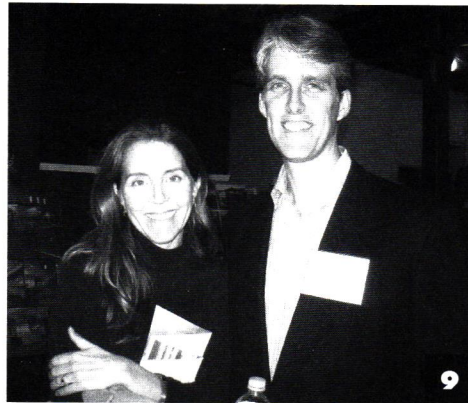
4. Anathea Kirk of Dirtt Environmental Solutions, Ian Kirk of Allen & Shariff Corporation, and Kathryn Petrie of Strada

5. Ed Shriver, AIA of Strada and Tom Mrozinski, AIA of JSA Architecture

6. Brian Rohleder, AIA of Mosites Development Co. and Paula Maynes, AIA of Maynes Associates Architects

7. Brian Whitecape, AIA of The Design Alliance Architects, Art Sheffield, Assoc. AIA, of WTW Architects and Jeff Flowers, AIA of Jeff Flowers Associates





AT THE DESIGN AWARDS CEREMONY
October 24, 2006
PHOTOS BY TRACY CERTO

8. Tom Briney, AIA and Jim Radock, AIA

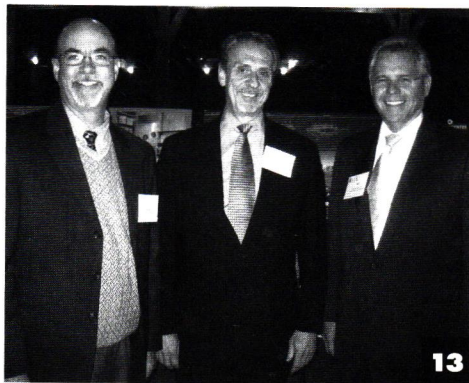
9. Head juror Andrew Herdeg, AIA of Lake | Flato along with his wife Maggie

10. Rami el Samahy, Dan Rothschild, AIA, Ken Doyno, AIA, and Kelly Hutzell

11. Greg LaForest and Luke Desmone, AIA

12. Rob Pfaffmann, AIA and Greg George, Assoc. AIA

13. David Hoglund, FAIA, Kent Edwards, AIA and Stephen Quick, AIA



AIA PITTSBURGH'S

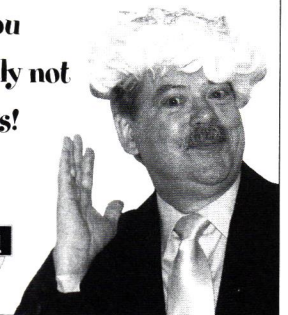
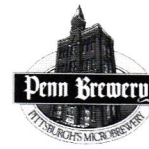
Holiday Party

Wednesday, December 6, 2006
6:00 - 8:00 p.m.

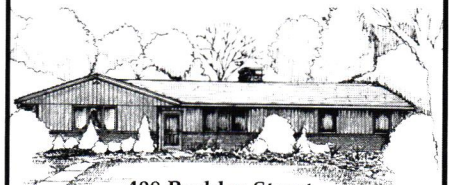
Penn Brewery • 800 Vinial Street
Pittsburgh, PA 15212

RSVP to the AIA office at 412-471-9548
by Monday, Dec. 4 or visit aiapgh.org

An event you
will definitely not
want to miss!



Real Estate Mortgage Title Insurance



408 Peebles Street
SEWICKLEY

LOCATION! LOCATION! 53-year-old custom redwood ranch, featuring 3 Bedrooms and 2 Full baths, on nearly 1/2 acre in Sewickley Village. New mechanicals, partial new roof, new 150-amp service, double-sided fireplace make this opportunity full of unique possibilities. MLS# 647489. **Offered at \$379,000.**

MINTA ROBERTS BAUER

Sewickley Office • 412.741.2200, x245
401 Broad Street, Sewickley, PA 15143
www.howardhanna.com/mintabauer



Minta Roberts Bauer is a
Multi-Million Dollar producer.
mbauer@howardhanna.com



By Becky Spevack

From the Firms

→ The Housing and Redevelopment Authority of Butler County has contracted with **Burt Hill** for design services for the new West End Community and Learning Center and a new 72 unit low-income elderly housing apartment building as well as renovations to Cliffside Apartments.

Pine-Richland School District broke ground in September for a new Upper Elementary School, designed by **Eckles Architecture**. The new facility will be 190,000 sf with 52 classrooms to accommodate 1,200 students in grades four through six.

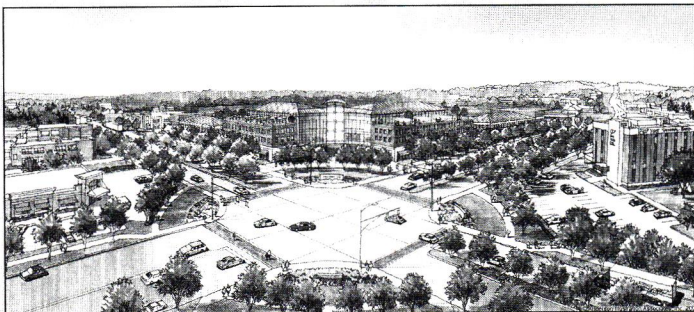
Edgeworth Elementary School has completed a new renovation and additions, designed by **Eckles Architecture**. The project included 64,000 sf in renovations and 37,000 sf in additions.

Foreman Architects Engineers have been selected to perform a study for the Uniontown Area School District for the additions and renovations to the Uniontown Senior High School.

Rothschild Doyno Architects recently completed urban planning and schematic design on Montgomery Place (below), a \$77 million mixed-use project in Newark, NJ. The centerpiece of the urban design is a block-long retail street that can be converted to a public square for concerts and farmers' markets.

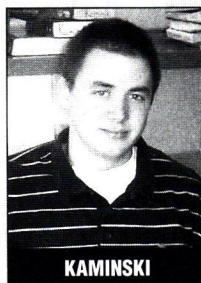


Working in collaboration with Millcraft Industries, **Strada** is leading the design of the Fifth Avenue District master plan development for the downtown Pittsburgh. Strada has completed another master plan, for the redevelopment of Hermitage, PA (below).

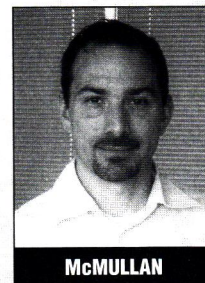


Business Briefs

→ **Burt Hill** announced three new employees to its Pittsburgh office. John Kaminski of Ross Township is a graduate engineer. **James McMullan, AIA**, brings more than 15 years of design and production experience focusing on large scale residential and hospitality projects. Nicole Duncan, Allied Member of American Society of Interior Designers, has joined the firm as an interior designer. Joining the Butler office are Sarahann Bordick as a technical specialist for Plumbing and Fire Protection and Diane Bookwalter as an electrical engineer.



KAMINSKI



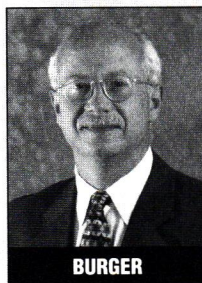
McMULLAN



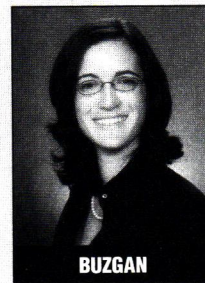
DUNCAN

Perfido Weiskopf Wagstaff + Goettel announced that **Elmer B. Burger, II, AIA** has joined the firm as a senior associate and director of business development. He has more than 30 years of experience with firms in Boston Massachusetts, Providence, Rhode Island and Washington, DC as well as Pittsburgh.

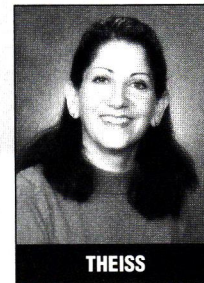
Rothschild Doyno Architects PC hired **Melanie Buzgan, Assoc. AIA** and Pam Theiss. Ms. Buzgan joins the staff as an Intern Architect. She holds dual Master degrees in Architecture and Urban Design at Kent State where she served with the Cleveland Urban Design Collaborative. Ms. Theiss was employed at Chatham College as part of the administrative staff.



BURGER



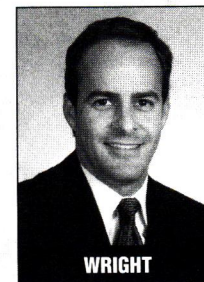
BUZGAN



THEISS

Loren Wright, AIA was promoted to associate at Pieper O'Brien Herr Architects. Loren serves as the managing director of the Pittsburgh office of Pieper O'Brien Herr Architects.

Strada hired **Raymond F. McCaughey, AIA** as a senior project manager. A graduate of Carnegie Mellon University, he will be actively involved in major projects such as the Fifth and Forbes Redevelopment for the City of Pittsburgh.



WRIGHT



Houston Harbaugh
ATTORNEYS AT LAW

Robert J. Burnett, Esq.
Samuel H. Simon, Esq.
Representing Design Professionals

Litigation

Construction
Health Care
Estates & Trusts
Commercial
Labor & Employment

Corporate

Commercial
General Corporate
Employee Benefits
Financial/Securities Law
Merger & Acquisition

Real Estate and Finance

Municipal Finance
Real Estate
Real Estate Development
Lending

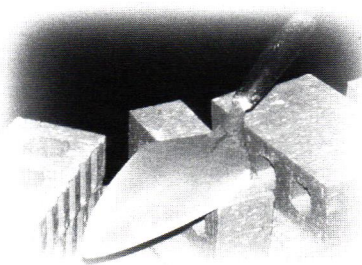
Health Care

Labor & Employment
Estate Planning and
Administration

Call or visit us at: www.hh-law.com 412.281.5060

The Right Materials

- ◆ Fire Resistant
- ◆ Low Maintenance
- ◆ Durable & Safe
- ◆ Aesthetically Valuable



- ◆ Design Flexible
- ◆ Superior Longevity
- ◆ Cost Effective
- ◆ Fast Construction Time

The Right Way

Constructed by Experienced Union Craftworkers & Contractors



UNION MASONRY CRAFTWORKERS
CONTRACTORS & CONSULTANTS

International Masonry Institute

We Build For Life

For answers to your masonry questions, call 1-800-IMI-0988.

300 Northpointe Circle, # 303
Seven Fields, PA 16046
Ph: (724) 776-1930
Fax: (724) 776-4963
mtheis@imiweb.org
www.imiweb.org

CONTRACTORS' DIRECTORY

* Member of the MASTER BUILDERS' ASSOCIATION.

† Member of ASSOCIATED BUILDERS AND CONTRACTORS, INC.

A LISTING OF AREA CONTRACTORS AND THEIR PROFESSIONAL SERVICES. To include your firm in this directory, call AIA Pittsburgh at 412-471-9548.

■ ALLEGHENY CONSTRUCTION GROUP, INC.*

456 Washington Avenue, PO Box 425
Bridgeville, PA 15017
PHONE: 412-221-0500 FAX: 412-221-0188
CONTACT: Laura S. Deklewa
**Commercial / Construction Management
Exterior / General / Industrial / Interior
Renovations / Pre-engineered Metal
Buildings / Certified DBE/WBE**

■ BRIDGES†

1300 Brighton Road, Pittsburgh, PA 15233
PHONE: 321-5400 FAX: 321-9823
CONTACT: Paul R. Bridges/Gus Marquart
WEB SITE: www.BRIDGESPBT.com
**Commercial / Construction Management
Exterior / General / Industrial / Interior
Renovations**

■ BURCHICK CONSTRUCTION CO., INC.*

500 Lowries Run Road, Pittsburgh, PA 15237
PHONE: 369-9700 FAX: 369-9991
CONTACT: Joseph E. Burchick
E-MAIL: burchick@burchick.com
WEB SITE: www.burchick.com
**Commercial / Construction Management
General / Industrial / Interior / Renovations**

■ CAVCON CONSTRUCTION COMPANY

211 Huff Avenue, Suite B
Greensburg, PA 15601
PHONE: 724-834-5220 FAX: 724-834-7533
CONTACT: Michael C. Philips
E-MAIL: mphilips@cavcon.com
WEB SITE: www.cavcon.com
**Commercial / Construction Management
General / Industrial / Design-Build / Metal
Buildings / Project Management**

■ JOHN DEKLEWA & SONS, INC.*

1273 Washington Pike, P.O. Box 158
Bridgeville, PA 15017-0158
PHONE: 412-257-9000 FAX: 412-257-4486
CONTACT: David Deklewa
WEB SITE: www.deklewa.com
**General construction / Construction
Management / Design-Build / Development
Services**

■ DYNAMIC BUILDING CORPORATION†

51 Pennwood Place, Suite 200
Warrendale, PA 15086
PHONE: 724-772-9020 FAX: 724-772-5770
CONTACT: John Nolan
E-MAIL: jnolan@dynamicbuilding.com
WEB SITE: www.dynamicbuilding.com
**Commercial / Construction Management
General / Industrial / Interior Renovations
Multi-Family / Design/Build**

■ GENERAL INDUSTRIES†

15 Arentzen Blvd., Charleroi, PA 15022
PHONE: (724) 483-1600 FAX: (724) 483-0990
CONTACT: Donald Ivill, divill@genindustries.com
WEB SITE: www.genindustries.com
**Commercial / Design-Build / Construction
Management / Industrial / Pre-Engineered
Metal Buildings / General Construction
Interior & Exterior Renovations**

■ HARCHUCK CONSTRUCTION CO., INC.

4203 Route 66, Building II, Suite 222,
Apollo PA 15613
PHONE: (724) 727-3700 FAX: (724) 727-2800
CONTACT: David A. Harchuck
WEB SITE: www.harchuck.com
**Commercial / Construction Management
Exterior / General / Industrial / Interior
Renovations**

■ A. RICHARD KACIN, INC.†

3875 Old William Penn Hwy.
Murrysville, PA 15668
PHONE: 724-327-6694 FAX: 724-733-5993
CONTACT: A. Richard Kacin, Pres.
**Commercial / Construction Management
General / Industrial / Residential**

■ KUSEVICH CONTRACTING, INC.

3 Walnut Street, Pittsburgh, PA 15223
PHONE: 412-782-2112 FAX: 412-782-0271
CONTACT: George Kusevich, Jr.
E-MAIL: gkjr@kusevich.com
WEB SITE: www.kusevich.com
**Commercial / General / Renovations
Education / Design-Build**

■ LLI/CMi CONSTRUCTION, INC.

6000 Brooktree Road, Suite 110
Wexford, PA 15090-9279
PHONE: 724-934-8000 FAX: 724-934-8006
CONTACT: Rege Etzel
E-MAIL: retzel@llicmi.com
WEB SITE: www.llicmi.com
**Commercial / Construction Management
General / Industrial / Interior / Renovations**

■ MARCO CONTRACTORS, INC.

100 Commonwealth Drive P.O. Box 805
Warrendale, PA 15095-0805
PHONE: 724-741-0300 x.35 FAX: 724-741-0335
CONTACT: Amy Fonzi
E-MAIL: afonzi@marcocontractors.com
WEB SITE: www.marcocontractors.com
**Commercial / Construction Management
Interior / Renovation / Restaurants / Retail**

■ MASCARO CONSTRUCTION COMPANY, LP*

1720 Metropolitan Street, Pittsburgh, PA 15233
PHONE: 412-321-4901 FAX: 412-321-4922
CONTACT: Michael Mascaro
E-MAIL: mrm@mascaroconstruction.com
WEB SITE: www.mascaroconstruction.com
**Commercial / Construction Management
General / Highway / Industrial
Renovations**

■ A. MARTINI & CO.*

320 Grant Street, Verona, PA 15147
PHONE: 412-828-5500 FAX: 412-828-6488
CONTACT: Anthony Martini
E-MAIL: afm@amartinigc.com
WEB SITE: www.amartinigc.com
**Commercial / Construction Management
General / Industrial / Interior
Pre-engineered metal buildings**

■ MISTICK CONSTRUCTION†

1300 Brighton Road, Pittsburgh, PA 15233
PHONE: 322-1121 FAX: 322-9336
CONTACT: M. Robert Mistick
**Commercial / Construction Management
Exterior / General / Interior / Renovations
Residential**

■ NELLO CONSTRUCTION COMPANY*

100 Houston Square, Suite 200
Cannonsburg, PA 15317
PHONE: 724-746-0800 FAX: 724-746-1966
CONTACT: Janet Torriero
WEB SITE: www.nello.net
**Commercial / Construction Management
Exterior / General / Industrial / Interior
Renovations**

■ RYCON CONSTRUCTION, INC.

2525 Liberty Avenue, Pittsburgh, PA 15222
PHONE: 412-392-2525 FAX: 412-392-2526
CONTACT: Todd Dominick
E-MAIL: todd@ryconinc.com
WEB SITE: www.ryconinc.com
**Commercial / Construction Management
General / Industrial / Interior / Renovations**

■ SOTA CONSTRUCTION SERVICES INC.†

80 Union Avenue, Pittsburgh, PA 15202
PHONE: 412-766-4630 FAX: 412-766-4634
CONTACT: Ernie Sota
E-MAIL: esota@sotaconstruction.com
WEB SITE: www.sotaconstruction.com
**Commercial / Construction Management
Exterior / General / Industrial / Interior
Renovations**

■ TURNER CONSTRUCTION COMPANY

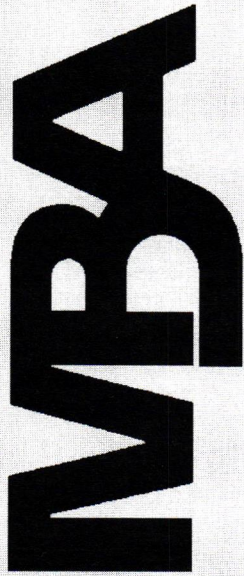
Two PNC Plaza, 620 Liberty Ave.,
27th Floor, Pittsburgh, PA 15222-2719
PHONE: 412-255-5400 FAX: 412-255-0249
CONTACT: Joseph Milicia, Jr.
**Commercial / Construction Management
General / Industrial / Interior / Renovations**

■ WJM CONTRACTING, INC.†

P.O. Box 1324, Wexford, PA 15090
PHONE: 724-933-9136 FAX: 724-933-9147
CONTACT: William J. Gormley, Jr.
E-MAIL: wgormley@wjmc.net
WEB SITE: www.wjmc.net
**Commercial / Construction Management
Design / Build / General / Industrial /
Interior / Pre-Engineer Metal Building**

■ VOLPATT CONSTRUCTION CORPORATION*

100 Castleview Road, Pittsburgh, PA 15234
PHONE: 412-942-0200 FAX: 412-942-0280
CONTACT: Raymond A. Volpatt
E-MAIL: rayjr@volpatt.com
WEB SITE: www.volpatt.com
**Commercial / Construction Management
Exterior / General / Industrial / Interior
Renovations**



Award-Winning Designs Built by MBA Contractors

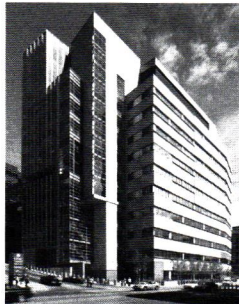
***Congratulations to the following Project
Teams for Succeeding in Their Partnering
Ventures***

ARCHITECTURAL AWARDS



Children's Museum of Pittsburgh

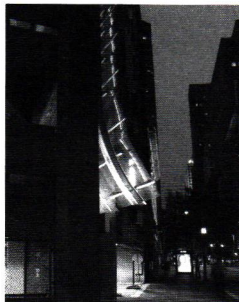
Children's Museum of Pittsburgh
Perkins Eastman / Koning Eizenberg Architects
Mascaro Construction Company, L.P.



Biomedical Sciences Tower III

University of Pittsburgh School of Medicine
Payette / JSA Architecture Planning Engineering
Interior Design
Mascaro / Hunt, A Joint Venture

ARCHITECTURAL DETAIL/CRAFTSMANSHIP AWARD



Smithfield Liberty Parking Garage Canopy

Pittsburgh Parking Authority
Pfaffmann + Associates, P.C.
F. J. Busse Company, Inc.

WESTERN
PENNSYLVANIA
CHAPTER OF



To select a qualified contractor for your award-winning designs, contact Jack Ramage at 412-922-3912 or visit the MBA website at www.mbawpa.org.

ENGINEERS' DIRECTORY

A LISTING OF AREA ENGINEERS AND THEIR PROFESSIONAL SERVICES. To include your firm in this directory, call AIA Pittsburgh at 412-471-9548.

■ ALLEN & SHARIFF CORPORATION

700 River Avenue, Suite 333
Pittsburgh, PA 15212
PHONE: 412-322-9280 FAX: 412-322-9281
CONTACT: Anthony E. Molinaro, P.E.
**Consulting / Electrical / Mechanical
Telecommunications**

■ BARBER & HOFFMAN, INC.

215 Executive Drive Suite 202
Cranberry Twp. PA 16066-6409
PHONE: 724-741-0848 FAX: 724-741-0849
CONTACT: Michael R. Miller, P.E.
E-MAIL: bhp@barberhoffman.com
Consulting / Structural

■ BDA ENGINEERING, INC.

19 35th Street, Pittsburgh, PA 15201
PHONE: 412-682-3603 FAX: 412-682-3605
CONTACT: Bert Davis
E-MAIL: bdavis@bdaengineering.com
WEB SITE: www.bdaengineering.com
**Electrical / Mechanical / Fire Protection
LEED AP / Renewable energy system design
Energy Analysis - Building Commissioning**

■ BRACE ENGINEERING, INC.

3440 Babcock Boulevard, Box 15128
Pittsburgh, PA 15237
PHONE: 367-7700 FAX: 367-8177
CONTACT: David A. Brace
Structural

■ CIVIL & ENVIRONMENTAL CONSULTANTS, INC.

333 Baldwin Road, Pittsburgh, PA 15205
PHONE: 412-429-2324 FAX: 412-429-2114
CONTACT: Gregory P. Quatchak, P.E.
**Civil / Geotechnical / Surveying / Structural
Environmental / Construction Consulting
Testing & Inspection / Landscape
Architecture**

■ CONWAY ENGINEERING

Investment Building
235 4th Avenue, Suite 1408
Pittsburgh, PA 15222
PHONE: 765-0988 FAX: 765-2530
CONTACT: Bob Conway
Consulting / Structural

■ DODSON ENGINEERING, INC.

420 One Chatham Center, Pittsburgh, PA 15219
PHONE: 412-261-6515 FAX: 412-261-6527
CONTACT: Gregory L. Calabria, P.E.
**Consulting / HVAC / Plumbing / Fire
Protection**

■ ENGINEERING MECHANICS, INC.

4636 Campbells Run Road, Pittsburgh, PA 15205
PHONE: 788-3650 FAX: 787-5891
CONTACT: Daniel Grieco, Jr., P.E.
**Geotechnical / Consulting / Testing &
Inspection / Blasting Vibrations**

■ FAHRINGER, McCARTY, GREY, INC.

1610 Golden Mile Highway
Monroeville, PA 15146
PHONE: 724-327-0599 FAX: 724-733-4577
CONTACT: Dale K. Earl
E-MAIL: design@imginc.us
**Landscape Architecture / Site Master
Planning / Civil / Consulting**

■ FIRSCHING, MARSTILLER, RUSBARKY AND WOLF ENGINEERING, INC.

2 Parkway Center East
2030 Ardmore Boulevard, Suite 250
Pittsburgh, PA 15221
PHONE: 271-5090 FAX: 271-5193
CONTACT: Daniel J. Wolf / David D. Rusbarsky /
Ted Marstiller, P.E.
**Consulting / HVAC / Plumbing
Fire Protection / Electrical
Telecommunications**

■ GAI CONSULTANTS, INC.

385 East Waterfront Drive
Homestead, PA 15120-5005
PHONE: 412-476-2000 FAX: 412-476-2020
CONTACT: Anthony F. Morrocco, PE/PLS
**Testing & Inspection / Civil / Construction
Monitoring / Consulting / Environmental /
Geotechnical / Structural / Transportation /
Archaeological / Surveying / Land
Development**

■ GARVIN BOWARD ENGINEERING, INC.

180 Bilmar Drive, Suite IV
Pittsburgh, PA 15205
PHONE: 412-922-4440 FAX: 412-922-3223
CONTACT: Joseph F. Boward, P.E.
E-MAIL: jboward@garvinbowardeng.com
**Geotechnical / Forensic / Testing &
Inspection / Consulting / Environmental**

■ THE GATEWAY ENGINEERS, INC.

400 Holiday Drive, Suite 300
Pittsburgh, PA 15220-2727
PHONE: 921-4030 FAX: 921-9960
CONTACT: Ryan Hayes
**Civil / Land Development / Structural
Engineer / Consulting / Landscape
Architecture**

■ HORNFECK ENGINEERING, INC.

1020 North Canal Street, Pittsburgh, PA 15215
PHONE: 781-1500 FAX: 781-5593
CONTACT: Richard W. Petrie, P.E.
**Consulting / Electrical / Instrumentation
Lighting / Telecommunications**

■ THE KACHELE GROUP

1014 Perry Highway, Suite 100
Pittsburgh, PA 15237
PHONE: 412-369-9020 FAX: 412-369-9021
CONTACT: Tony Moscollic
Structural

■ L. ROBERT KIMBALL & ASSOCIATES

Architects and Engineers
CORAPOLIS OFFICE:
415 Moon Clinton Road, Coraopolis, PA 15108
PHONE: 412-262-5400 FAX: 412-262-3036
CONTACT: Emil R. "Jack" Lerch, PE
DOWNTOWN PITTSBURGH OFFICE:
Frick Building - North Mezzanine
437 Grant Street, Pittsburgh, PA 15219
PHONE: 412-201-4900 FAX: 412-201-2338
CONTACT: Christopher R. Haupt, AIA
WEB SITE: www.lrkimball.com
**Civil / Site / Water / Wastewater / Indoor
Air Quality / Environmental Site
Assessments / Land Development
Industrial Hygiene and Safety / Mechanical
Electrical / Structural / Telecommunica-
tions / Geotechnical / Transportation**

■ LLI ENGINEERING

808 Penn Avenue, Pittsburgh, PA 15222
PHONE: 412-338-0700 FAX: 412-338-0237
CONTACT: James D. White, P.E.
E-MAIL: jwhite@llitechnologies.com
WEB SITE: www.llitechnologies.com
**Construction / Electrical / Mechanical
Structural / Telecommunications
Commissioning**

■ LOFTUS ENGINEERING, LLC

555 North Bell Avenue, Carnegie, PA 15106
PHONE: 412-429-1396 FAX: 412-429-6474
CONTACT: Glenn Avick, P.E.
E-MAIL: gavick@loftusllc.com
WEB SITE: www.loftusllc.com
**HVAC / Plumbing / Fire Protection
Structural / Electrical / Data-Telecom
LEED Accredited Professionals / Certified
Commissioning Authority CxA**

■ MURRAY ASSOCIATES, INC.

413 Penn Avenue, Turtle Creek, PA 15145
PHONE: 412-823-2020 FAX: 412-824-7302
CONTACT: Jack G. Murray, P.E.
**Geotechnical / Civil / Structural
Testing & Inspection / Forensic**

■ PROFESSIONAL SERVICES INDUSTRIES, INC. (PSI)

850 Poplar Street, Pittsburgh, PA 15220
PHONE: 412-922-4000 FAX: 412-922-4013
CONTACT: Steve Simonette, P.E.
E-MAIL: steve.simonette@psiusa.com
WEB SITE: www.psiusa.com
**Consulting Engineering & Testing
Environmental / Geotechnical /
Construction Materials Testing &
Engineering / Industrial Hygiene & Indoor
Environmental Quality / Facilities & Roof
Consulting / Nondestructive Examination
& Testing**

■ SENATE ENGINEERING CO.

University of Pittsburgh Applied
Research Center (U-PARC)
420 William Pitt Way, Pittsburgh, PA 15238
PHONE: 412-826-5454
CONTACT: Gordon T. Taylor
E-MAIL: gttaylor@senateengineering.com
WEB SITE: www.senateengineering.com
**Civil Land Development / Surveying /
Construction Stake Out / Landscape
Architecture / Structural / Electrical /
HVAC / Plumbing**

■ TAYLOR STRUCTURAL ENGINEERS

2275 Swallow Hill Road, Building 100
Pittsburgh, PA 15222
PHONE: 412-722-0880 FAX: 412-722-0887
CONTACT: Dirk A. Taylor
E-MAIL: pkoval@taylorstructuralengineers.com
Structural

■ TOWER ENGINEERING

115 Evergreen Heights Drive, Suite 400
Pittsburgh, PA 15229
PHONE: 412-931-8888 FAX: 412-939-2525
CONTACT: James N. Kosinski, P.E.
WEB SITE: www.estower.com
**Consulting / Electrical / Mechanical
Telecommunications / Sustainable
Building Design / Energy Analysis
Building Commissioning**

■ TRANS ASSOCIATES ENGINEERING CONSULTANTS, INC.

4955 Steubenville Pike, Ste. 400
Pittsburgh, PA 15205
PHONE: 412-490-0630 FAX: 412-490-0631
CONTACT: Mark J. Magalotti, P.E.
E-MAIL: magalottim@transassociates.com
Civil / Consulting / Transportation

Support the *smarts*.



Become a member.

wduq.org

Add a complete staff of local fleet experts without ever hiring a soul.

From acquisition and insurance to maintenance and disposal, only Enterprise will give you a local Account Team to work directly with you, in person, and take responsibility for your entire fleet. With more locations nationwide than any other company, only your Enterprise Team has access to a complete staff of local fleet management experts. We have over 40 years of experience and as a corporation, currently manage over 500,000 vehicles, so you can rest assured Enterprise knows all the ins and outs of fleet management. Call us today and let Enterprise introduce you to the best fleet management staff you never hired.

Call 1 888-353-3875 toll-free or visit our website at www.efleets.com



GENERAL SERVICES DIRECTORY

A LISTING OF AREA BUSINESSES AND THEIR PROFESSIONAL SERVICES. To include your firm in this directory, call AIA Pittsburgh at 412-471-9548.

ARCHITECTURAL PRODUCTS

■ BUNTING GRAPHICS, INC.

20 River Road, Verona, PA 15147-1159
PHONE: 412-820-2200 ext. 240
FAX: 412-820-4404
E-MAIL: jody@buntinggraphics.com
WEB SITE: www.buntinggraphics.com
CONTACT: Jody Bunting
Fabricator of Graphics & Signage, Stainless Steel Railings & Architectural Metal Work, Canopies, Sunscreens & Grills, Decorative Truss Work, Cold Cathode Lighting, Custom Light Fixtures, Sculpture & 3D Graphics, Custom Fabrication, Design-Build, Latest Technology & Skilled Craftsmen. (Local 100,000 Sq. Ft. Mfg. Plant)

GRAPHIC DESIGN

■ SEWICKLEY GRAPHICS & DESIGN, INC.

605 Beaver Street, Suite 102, Sewickley, PA 15143
PHONE: 412-741-3777 FAX: 412-741-2346
CONTACT: Donna P. Barger
E-MAIL: dbarger@sewickleygraphics.com
WEB SITE: www.sewickleygraphics.com
Certified WBE / Corporate Identity / Collateral / Web Design and Multimedia Ad and PR Campaigns / Direct Mail / Event Planning

■ THE GATEWAY ENGINEERS, INC.

1011 Alcon Street, Pittsburgh, PA 15220
PHONE: 412-921-4030 FAX: 412-921-9960
CONTACT: Jason Jesso
Civil / Testing & Inspection / Consulting Environmental

LANDSCAPE ARCHITECTS

■ KENDALL O'BRIEN LANDSCAPE ARCHITECTS

524 Locust Place, Sewickley, PA 15143
PHONE: 412-741-5244 FAX: 412-741-0809
CONTACT: Heather O'Brien or Patricia Kendall
E-MAIL: design@kendallobrien.com
Women Owned Business, Parks and Recreation Planning, Estate Landscapes, Site Master Planning, Streetscapes

■ PASHEK ASSOCIATES, LTD.

619 East Ohio Street, Pittsburgh, PA 15212
PHONE: 412-321-6362 FAX: 412-321-9202
CONTACT: Nancy Lonnett Roman RLA
E-MAIL: nlonnett@pashekla.com
WEB SITE: www.pashekla.com
Environmental Green Design, Historic Preservation, Park and Recreation Planning, Site Master Planning, Streetscapes, Urban Planning

■ SITE SIGNATURES, INC.

300 Corbet Street, Tarentum, PA 15084
PHONE: 724-224-1997 FAX: 724-224-1998
CONTACT: Robert Jack
E-MAIL: rjack@sitesig.com
WEB SITE: www.sitesig.com
Land Planning / Urban Design Sustainable Design / Specializing in Retail Development, Mixed-use Development and Parks & Recreation Planning

■ TERRA DESIGN STUDIOS, LLC

73 South 13th Street, Pittsburgh, PA 15203
PHONE: 412-481-3171 FAX: 412-481-3173
CONTACT: Cindy Tyler
E-MAIL: ctyler@terradesignstudios.us
Woman Owned Business, Site Master Planning, Children's Gardens, Campus Planning, Urban Design, Estate Landscapes

OFFICE FURNITURE

■ FRANKLIN INTERIORS

Suite 600, 2740 Smallman Street, Pittsburgh, PA 15222-4720
PHONE: 412-261-2525 FAX: 412-255-4089
Complete project and furniture management. Reconfigurations and installations: non-union and union. Meeting any budget—we are your authorized Steelcase dealer.

PHOTOGRAPHY

■ MICHAEL HARITAN PHOTOGRAPHY

184 Fireside Drive, Pittsburgh, PA 15317
PHONE: 724-941-2002 FAX: 724-941-2002
CONTACT: Michael Haritan
E-MAIL: michaelharitan@hotmail.com
WEB SITE: www.haritan.com
Creative architectural photography of interiors, exteriors and landscape design. Building products, industrial and corporate. Digital and film formats, custom printing. Member: PPA Certified, ASMP

REPROGRAPHICS

■ TRI-STATE REPROGRAPHICS, INC.

907 Penn Avenue, Suite 700, Pittsburgh, PA 15222
PHONE: 281-3538 FAX: 281-3344
CONTACT: George R. Marshall
Document Management, Digital B&W Plotting, Blueprinting, Specs/Binding, Large & Small Format Color Copies, Mounting/Laminating, Supplies, Pickup & Delivery

SIGNAGE

■ KOLANO DESIGN

6026 Penn Circle South, Pgh, PA 15206-3921
PHONE: 412-661-9000 FAX: 412-661-9606
E-MAIL: wk@kolano.com
CONTACT: William Kolano
WEB SITE: www.kolano.com
Design of sign & wayfinding systems, design standards, fabrication packages and contract administration. For facilities, corporate, transportation, education, medical, retail, government, hospitality

STORAGE & FILING

■ STUART DESIGN GROUP, INC.

605 Plum Industrial Court, Pittsburgh, PA 15239
PHONE: 724-325-4566 FAX: 724-327-9128
E-MAIL: info@stuartdesigngroup.com
WEB SITE: www.stuartdesigngroup.com
Over twenty years of experience providing the most efficient on-site space/storage solutions for corporate, healthcare, government, library & education clients.

TECHNOLOGY

■ XCELIC CORPORATION

393 Vanadium Road, Ste. 205 Pittsburgh, PA 15243
PHONE: 412-204-8491 FAX: 412-204-8535
CONTACT: Patti Pribish
E-MAIL: php@xcelic.com
WEB SITE: www.xcelic.com
Excellence in Infrastructure Consulting – Building Technologies, VoIP and Wireless; a WBE certified company



ready for graduate school?

ENROLL IN THE COEDUCATIONAL **INTERIOR ARCHITECTURE** OR **LANDSCAPE ARCHITECTURE** PROGRAM AT CHATHAM COLLEGE

NEW INTERIOR ARCHITECTURE PROGRAM

- Three degrees offered:

Bachelor of Interior Architecture (for women only)

Master of Interior Architecture, for students with a bachelor's degree in a discipline other than interior design or architecture

Master of Science in Interior Architecture, for students with an accredited degree in interior design or architecture

- Program emphasis on social responsibility and a holistic design process in which interior design is integrated with the surrounding architecture
- Sample courses include Interior Architecture Studios, Computer Design Technology, 20th & 21st Century Architecture, Materials & Assemblies, Environment & Behavior, Environmental Systems, Lighting & Acoustics

MASTER OF LANDSCAPE ARCHITECTURE

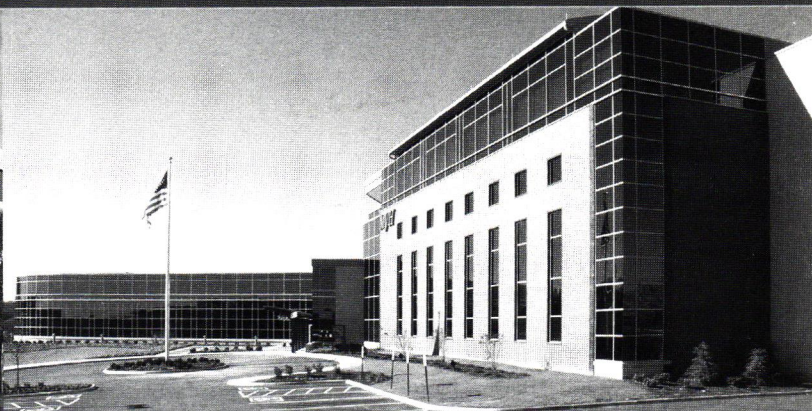
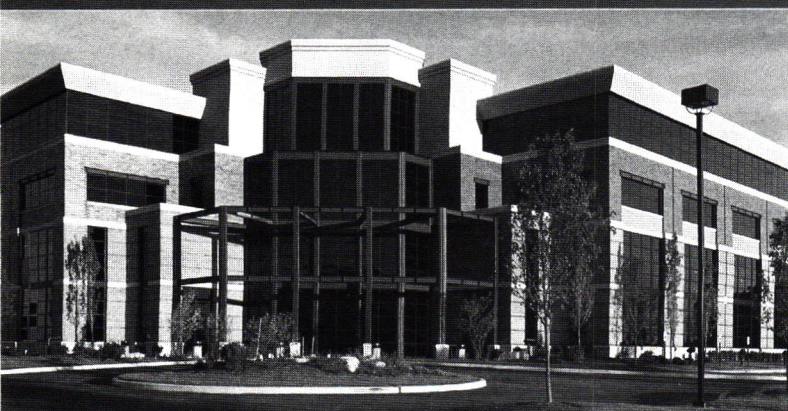
- Pittsburgh's *only* landscape architecture program
- Earn a professional, applied degree leading to licensure
- Curriculum emphasizes environmental concerns and sustainability
- Sample courses include Landscape Ecology, Historic Landscape Preservation, Soil Science, and Community Design of Public Landscape
- Field work and design integral to curriculum

MASTER OF ARTS IN LANDSCAPE STUDIES ALSO AVAILABLE

www.chatham.edu ■ 800-837-1290 ■ admissions@chatham.edu

Chatham College ■ Woodland Road ■ Pittsburgh, PA 15232

SINGLE SOURCE

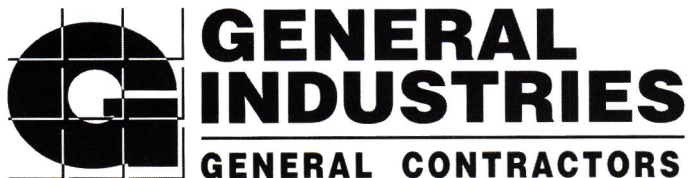


Turn-key Real Estate Development & Construction

Your next Real Estate Investment is your most important investment. Vale Vista Associates and General Industries will direct your project from start to finish; from land acquisition, planning, design and construction, you can be assured that your next development is your most successful investment.

- Commercial Contractors
- Design / Build
- Construction Management
- Tenant Improvements / Build-outs
- Office, Retail, Medical, Mixed-use
- Manufacturing, Warehouse, Distribution
- Real Estate Development
- Design / Build / Lease-back
- Creative Financing
- Leasing Management
- Site Selection & Feasibility Analysis
- Proforma Analysis and Direction

Visit: www.genindustries.com or www.valevista.com



► **CAN WE DEVELOP YOUR NEXT PROJECT?**

CONTACT BRIAN MERDIAN OR MARK CASKEY: (724) 483-1600

15 ARENTZEN BOULEVARD ► CHARLEROI, PA 15022 ► www.genindustries.com