

AMERICAN INSTITUTE  
OF MATHEMATICS  
LIBRARY  
1986

**PVA**

JANUARY/FEBRUARY VOLUME 9, NO. 4



## POTOMAC VALLEY ARCHITECT

Jan./Feb.

•

Volume 9, No. 4

OFFICIAL PUBLICATION • POTOMAC VALLEY  
CHAPTER OF MARYLAND AMERICAN INSTITUTE  
OF ARCHITECTS

### CHAPTER OFFICERS

JOHN W. LAWRENCE ..... *President*  
EUGENE A. DELMAR ..... *President Designate*  
PHILIP W. MASON ..... *Vice President*  
EDWIN F. BALL ..... *Secretary*  
CLYDE E. GRIMM ..... *Treasurer*  
JOHN E. MOORE ..... *Director*  
LOREN L. MURRAY ..... *Director*  
NEIL R. GREENE ..... *Director*

### EXECUTIVE SECRETARY

Amalie Dobres, 588-1125

### CHAPTER ACCOUNTANTS

Borders and Associates, 772-5000

### POTOMAC VALLEY ARCHITECT

#### EDITOR

James F. Hilleary, A.I.A., 427-7086

#### CONTRIBUTING EDITOR

Neil R. Greene, A.I.A.

#### MANAGING EDITOR

Joseph C. Dennison, RA 6-1005

#### ADVERTISING MANAGER

J. Leo Sugrue, WH 6-5814

*Published bi-monthly by the Potomac Valley Chapter of Maryland, American Institute of Architects, 912 Thayer Avenue, Silver Spring, Maryland. Entered as second class matter at the Silver Spring Post Office. Subscription price: 50c per copy, \$2.50 per year. Unsolicited manuscripts and photographs will be returned only if accompanied by a self-addressed, stamped envelope.*

*Change in advertising copy should be directed to: MR. J. LEO SUGRUE, 11111 Lund Place, Kensington, Maryland.*

*The articles in this magazine represent the personal opinions of the authors and/or the editor and should not be construed as representing the viewpoint of the Potomac Valley Chapter, A.I.A.*

### ON THE COVER

This bit of mid-winter trickery is not a snow crystal but a chandelier in the Library of the Supreme Court caught by the camera of Lowell A. Kenyon, Chevy Chase.

### NEW ADDRESS

John Henry Sullivan, Jr., AIA, announces the change in his firm's name to Sullivan & Associates, and the removal of their offices to 255 N. Washington St., Rockville, Md. Phone: 762-7800.

## CHAPTER NEWS

### NATIONAL COMMITTEE APPOINTMENTS

The following members of Potomac Valley Chapter have been appointed to national committees of The American Institute of Architects:

Jack C. Cohen, AIA—Committee on Housing  
Benjamin P. Elliott, AIA—Corresponding Member, Committee on Religious Architecture  
Milton J. Prassas, AIA—Corresponding Member, Committee on Insurance

### ANNOUNCEMENTS

Milton J. Prassas, AIA, has been awarded a Citation by The American Institute of Architects for his contribution in the Southwest Redevelopment Area, for his St. Matthews Lutheran Church, as an example of "Excellence in Community Architecture."

President John W. Lawrence, Dennis W. Madden and Benjamin P. Elliott have been elected to the Guild for Religious Architecture. Ben will serve as chairman for the Washington Regional Conference to be held in the Fall of 1966.

### NEW MEMBERS

Potomac Valley Chapter welcomes several new members:

M. WILLIAM PERRAULT, AIA—a transfer from the Philadelphia Chapter, Mr. Perrault earned his B. of Arch. at Cornell University. He served in the Korean conflict and now holds the rank of Commander in the U. S. Naval Air Reserve. He was an assistant professor in design at Cornell, served as Director of Education of The American Institute of Architects, and is now a project architect in the office of Perkins & Will. He resides in Bethesda with his wife and two children.

HANS J. PRAUSER, AIA, has been elected a Corporate member of The Institute. Born in Breslau, Germany, Mr. Prauser received part of his architectural education in that country and was awarded his B. of Arch. at Catholic University. He has been associated with the offices of John S. Samperton, Berla & Abel and Cohen, Haft & Associates. He now manages the Washington office of Nelson & Daft, Architects and Land Planners, and lives in Silver Spring with his wife and four children.

DAVID F. RINN, AIA, has recently been elected a Corporate member of The American Institute of Architects, having previously been an active Associate member of the Chapter. He earned his B. of Arch. at Catholic University, where he has also completed the credit requirements toward his Master's degree. Dave was formerly in the office of Collins and Kronstadt, and is now associated with Edwin F. Ball, AIA. A devotee of hi-fi, he lives in Hyattsville with his wife and small son.

AMERICAN INSTITUTE  
OF ARCHITECTS  
MAR 7 1966  
LIBRARY

## A TIME OF RESOLUTION

*Since the beginning of a New Year is traditionally the time for new resolutions or the reaffirming of old ones, and we are firm observers of tradition, we will restate our editorial aims and expand them as follows; with the hope that in the coming year we can live up to this ambitious list, but beg indulgence should we fall short of this ambition:*

**To foster a better understanding of the profession**

**To focus attention on the Best that's being accomplished by our practitioners**

**To crusade for beautification generally and specifically—**

**For better graphics in street signs and advertising**

**Design awareness in street furnishings**

**Better landscaping in public areas**

**Greater consideration of nature**

**Enlightened zoning and planning**

**To encourage closer collaboration of allied arts**

**To champion the incorporation of art in architecture  
And above all to champion better design**

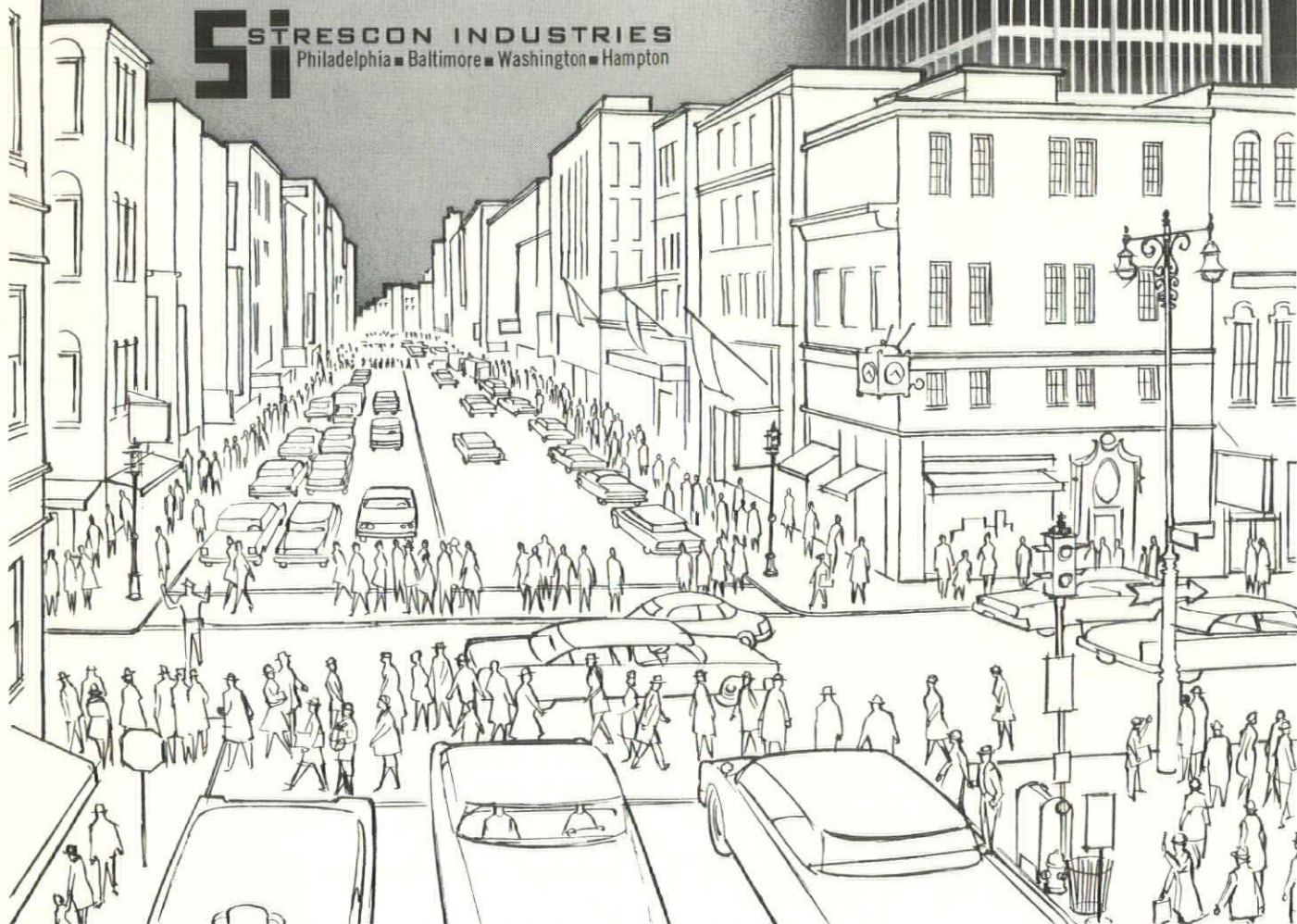
*This list could be expanded, but lest we appear too ambitious and risk disappointing, we shall stop here and hope for the best.*



# *Skylines in Precast Concrete*

Look around you. The familiar silhouette of the skyline is changing to towers of precast concrete. Schools, offices, department stores, apartments, civic structures, and many others are now rising in precast concrete. The demand for floor and roof systems, beams, columns, wall panels, balconies, and architectural precast concrete is rising as fast as the skyline. That's because precast concrete is easy to assemble, strong, fire resistive, weather proof, beautiful, and economical. Specify precast concrete — for your addition to the skyline.

**SI** STRESCON INDUSTRIES  
Philadelphia ■ Baltimore ■ Washington ■ Hampton



WASHINGTON SALES OFFICE / Summit Building, 8555 16th Street / Silver Spring, Md. 20910 / 588-9233



**PVA'S MAN OF THE MONTH — LEO URBAN-SKE, JR.**, Chairman of the Arlington County Board and January's Potomac Valley A.I.A. Speaker—for his distinguished effort in improving Arlington County, the imaginative development of Rosslyn, support of rapid transit, encouragement of natural and structural beauty of highways, projects to beautify county streets, construction of new street lighting and sidewalks, and support for the County Cultural Center.

**HIGHEST RISER IN WASHINGTON AREA** is the 33-story apartment tower planned for the new urban center near Prince Georges Plaza. This highest of privately-owned buildings is the first of four such towers and part of a 20-acre complex off East-West Highway. The towers will have 253 units each and underground parking for 3,000 automobiles. Designed by Edward Durrell Stone, the building having received site plan approval, will go under construction in February. Developer Herschel W. Blumberg says work will begin next year on the 1,200-seat theater and a 9-story office building. An eight year building program will provide the complex with a cultural center, a pedestrian mall, and sculpture gardens. The project should become a splendid showcase for Prince Georges County and a handsome contribution by the developer in seeking a handsome urban community.

**THE SECOND HIGHEST RISER GETS A COMPANION PIECE**, as the plans are announced for the latest Eig Enterprise, a 14-story convention hotel at Gaithersburg. Plans for the 8-million dollar hotel-convention-resort center at the site of the Washingtonian Country Club were prepared by the architectural firm of Morris Lapidus Associates, designers of the Fontainebleau Hotel in Miami, Skyline Inn and Chalk House West in Southwest Washington, D.C. The golf course and motel, known to most of Maryland's architects, will now have added to the usual functions, a 1,500-seat banquet hall, 300 guest rooms, ice skating rink, indoor and outdoor swimming pools, health and wealth clubs and a restaurant.

**BREWMASTER SAYS WASHINGTON IS 1500 YEARS BEHIND OTHER CITIES** in its public parking program. Senate District Subcommittee hears from all as Senator Tydings outlines the issue: "We want to find out how the parking can be controlled so as to insure that parking is a functioning part of a balanced transportation system." The valid observation of U. of P. Professor and City Planner — the location, quantity and price of parking, "is a matter for public concern, and in some circumstances is central to the attainment of urban development objectives. Washington is growing out of this juvenile stage," of regarding freeways and transit as alternates to each other.

**COMPUTERIZED CONVEYOR BELT PARKING SYSTEM PLANNED FOR TOWN CENTER IN SOUTHWEST.** Charles S. Bresler, Republican Delegate from Montgomery County, told the Senate District Subcommittee of the March ground breaking of the

first increment of a 2,000-car garage. Several tiers of conveyors will provide return of an "orbiting" car in seconds and will usually guarantee return of a similar car, if not the exact one. (Children ride free.) The cost of a \$4,000 space per car, without the usual labor involved, becomes competitive and looks like the best solution yet for the growing parking problem.

**MOUNT VERNON SQUARE TRADE CENTER AND BUS TERMINAL** proposed by private developers downtown. The 2-million dollar center would bring interstate, suburban buses and subway together in a massive, sheltered terminal served by escalators and the new K Street tunnel expressway under study by the District Highway Department. The 8th Street Mall, new office buildings, highrise apartment houses and related boom will provide the pedestrian lure which the Center's supporters hope to create by taking over the eight block area.

"HEAVENS PRESERVE US" said the Southeast Market to the Georgetown Market in issue that has been stewing for years. The two remnants of Old Washington were recommended for preservation by the National Capital Planning Commission. Although the Capitol Hill Market is making a remarkable comeback as a market, the National Park Service is eyeing the 1789 Georgetown Market as a museum and terminal for its barge trips.

**ZONING MORATORIUM AND TRAILERS** dominate the Montgomery County Council January meeting. The actions taken include a six-month freeze on zoning applications in areas where master plans are being drawn, approval of a public housing program, reactivation of a County Housing Authority, a request for review of County Ordinances restricting the use of house trailers as residences, and a recommendation for a 100-thousand dollar task force study on planning the County's future growth. The latter recommendation by Architect Chloethel W. Smith advises the County to engage the best thinking of lawyers, builders, bankers and other experts who would seek the best ideas and get a first-hand look at what other cities and counties have done in the way of planning for further growth and translate those ideas into a first rate grand design for Montgomery County. With the ladies taking over the Council, architecture and community planning, the next step will be a Moratorium of Montgomery Co. Men, M.M.M.

**WHICH ROUTE FOR THE GEORGE WASHINGTON MEMORIAL PARKWAY?** Along the river, of course — that is the way George would have wanted it! Who ever heard of a shoreline parkway through tobacco farms? Our A.I.A. message to M.N.C.P.P.C. is do it the way N.C.P.C. says and not U.D.A.L.L. (Unwarranted Destruction of America's Lovely Landscape).



MARYLAND QUESTIONS PARTICIPATION IN FEDERAL HIGHWAY BEAUTIFICATION PROGRAM because it might cost more to fulfill program than State receives in aid. For a state that thrives on the Federal spending of Washington, controls half the roads into the Capital, is experiencing great growth and an expanded economy; its highways (unless operated by National Parks) are among the ugliest, sign-cluttered, junk-littered in the U.S. The Federal Law prohibits billboards within 660 feet of primary highways and junkyards, unless screened 1,000 feet from similar roads. Let's get on these Maryland Congressmen!

AIA ENDORSES PLAN TO HAVE A "BALL ON THE MALL". Architect John Woodbridge, of Skidmore, Owings and Merrill, developing the plan for the Park Service, said the AIA endorsement is a big boost for the emerging concept of an "urban park". "This will be a special kind of national park, one that belongs to everybody in the country, one with the kind of amenities Europeans take for granted."

Proposals under study include closing of all streets within the Mall to automobile traffic, with transportation provided by shuttle buses or low-speed trains much like the ones used at the World's Fair. Facilities for boating, a tea garden, band shells, recreation areas, information kiosks and small shops are among the other planned improvements.

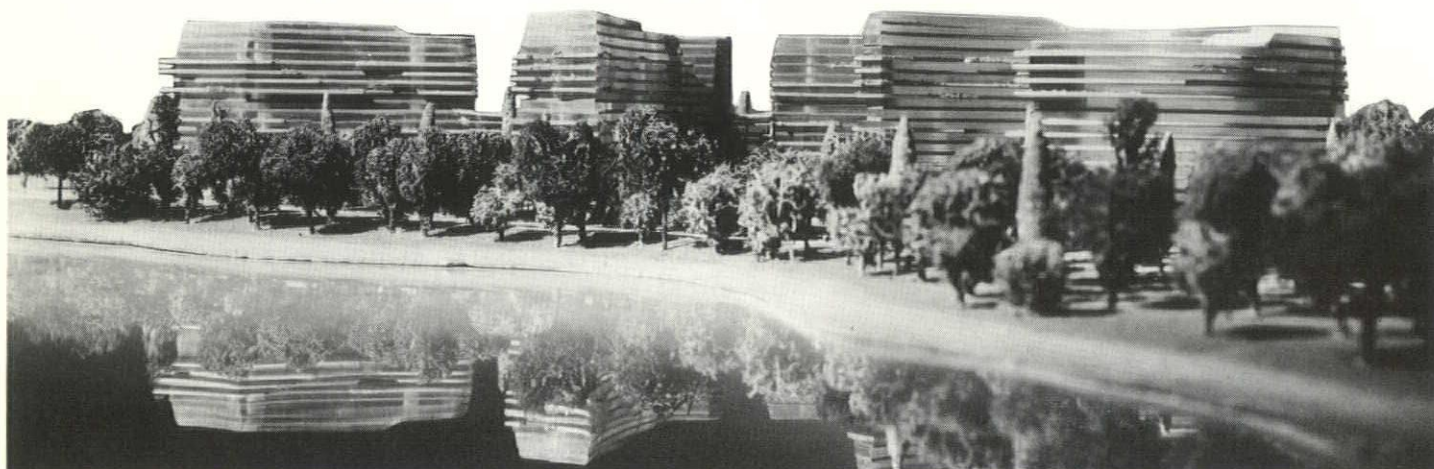


VICKI WENGER INTERIORS LTD.  
IN THE AIR RIGHTS BUILDING  
7315 WISCONSIN AVENUE  
BETHESDA, MARYLAND 654-6900

*Washington's changing skyline  
shows you why the future  
belongs to gas!*

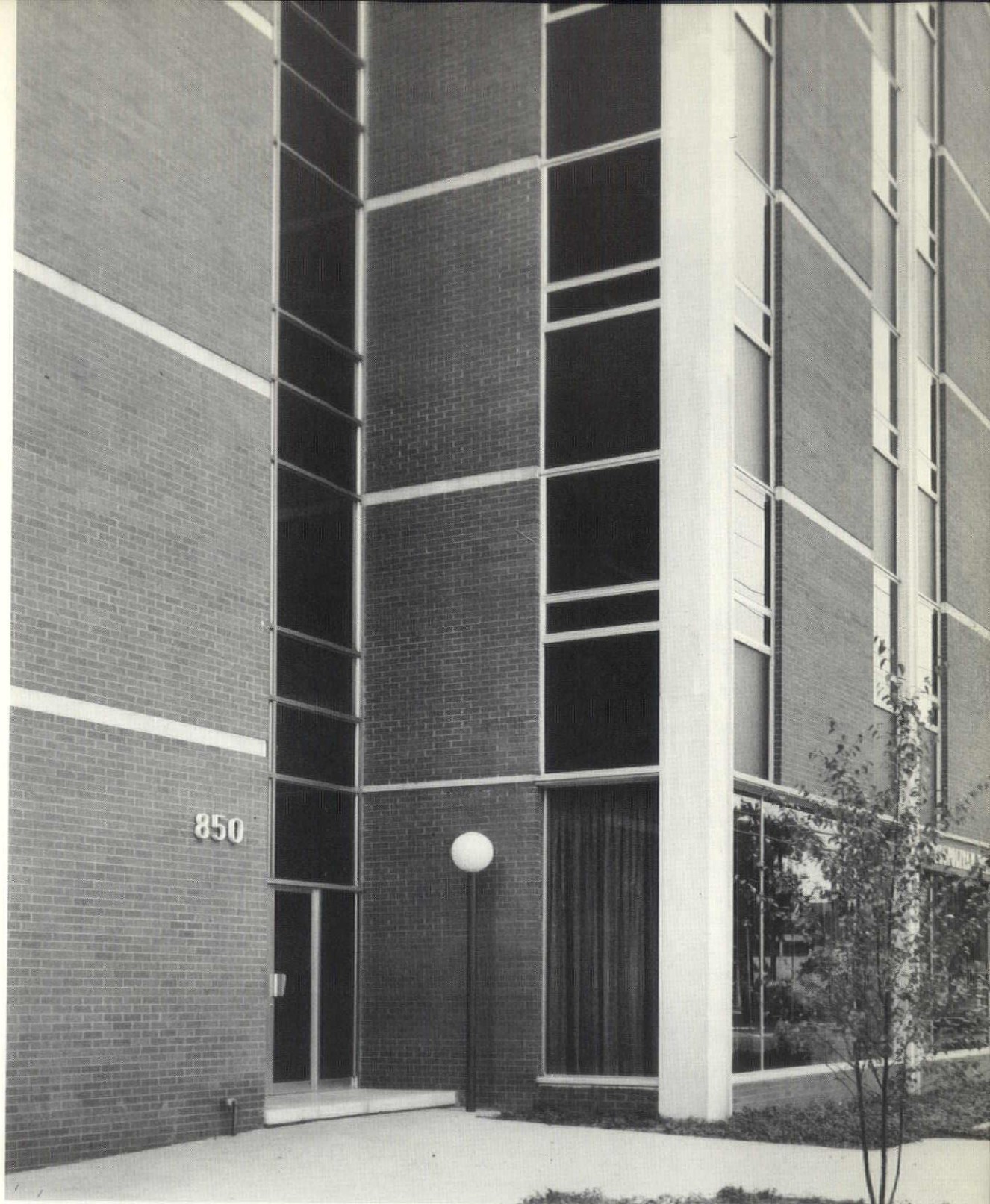


*The Watergate: one of many new buildings air conditioned with gas*



ARCHITECTS: PROF. LUIGI MORETTI, ROME; CORNING, MOORE, ELMORE & FISHER, AIA, WASHINGTON, D.C.





GENE'S OFFICE IS QUARTERED ON THE TOP FLOOR OF ONE OF HIS DESIGNS, THE METROPOLITAN NATIONAL BANK BUILDING, SILVER SPRING.

## VISIT WITH A CHAPTER MEMBER

Office of Eugene A. Delmar, A.I.A.

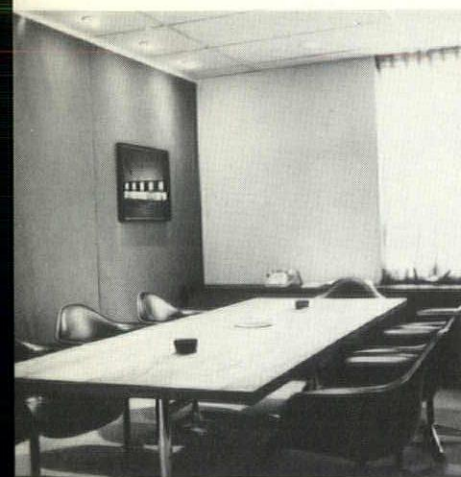




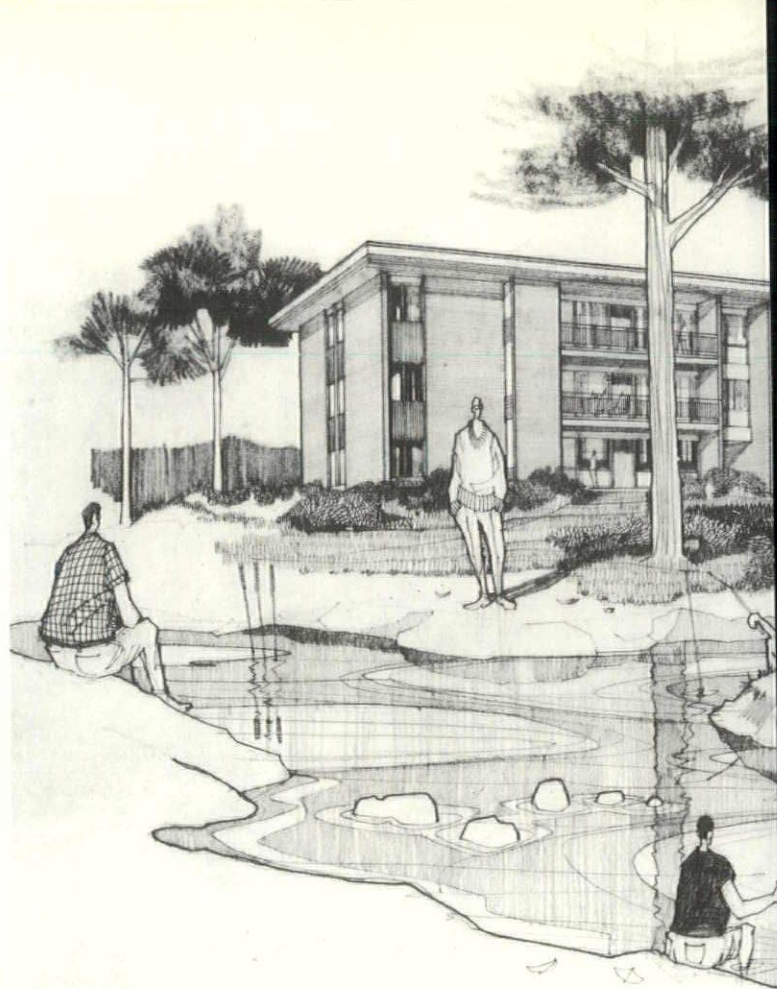
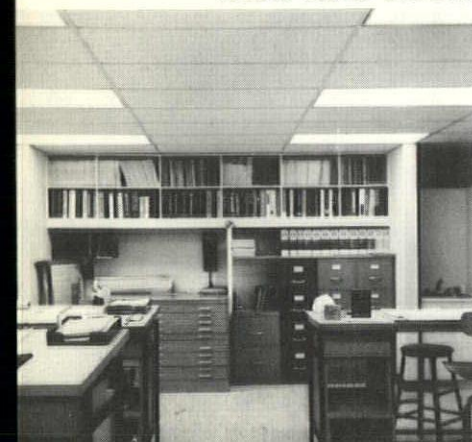
RECEPTION



OFFICE



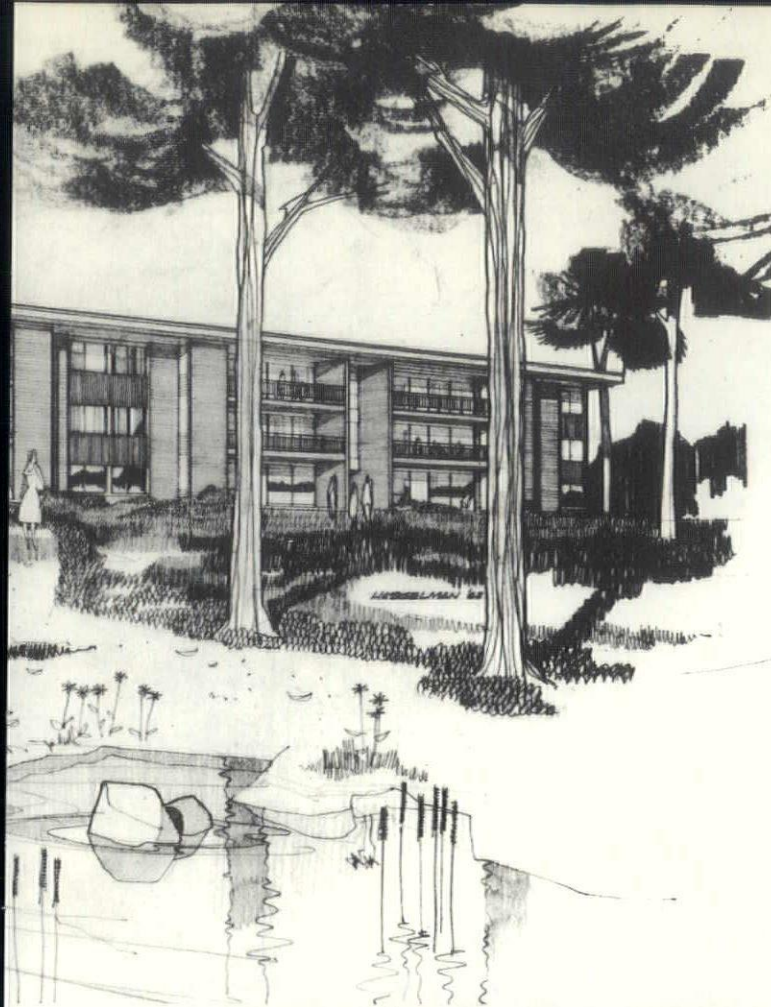
CONFERENCE  
DRAFTING ROOM



TOWNEHOUSE MANOR APART-  
MENTS — HAGERSTOWN, MD.

## OFFICE FACILITIES





## RECENT WORK

OFFICE BUILDING —  
WASHINGTON, D.C.

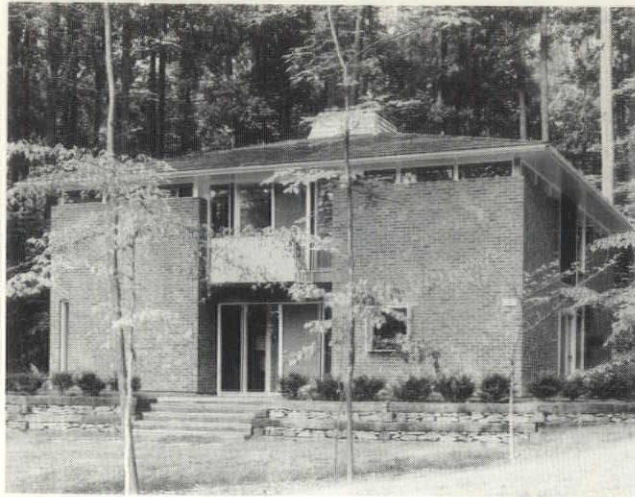






RIVER ROAD UNITARIAN CHURCH — BETHESDA, MD.





WYNKOOP - BETHESDA, MD.

## BETHESDA-CHEVY CHASE CHAMBER OF COMMERCE ARCHITECTURAL AWARDS PROGRAM

The Bethesda-Chevy Chase Chamber of Commerce has this month announced winners in its Architectural Awards Program.

First place winner and recipient of the Oliver Owen Kuhn Memorial cup was the River Road Unitarian Church designed by the Washington architectural firm of Keyes, Lethbridge and Condon.

Second place and a certificate was awarded to Wynkoop, a residential design by Cross and Adreon, Architects of Washington, D.C.

Edwin F. Ball of the Potomac Valley Chapter served as competition advisor for the event and; Seymour Auerback of the D. C. Chapter, Eugene Delmar and Harold Lionel Esten of the Potomac Valley Chapter comprised the jury.

There were thirteen entries representing churches, residences and office buildings in the area. The jury, after reviewing the photographic stage of the competition, visited the sites of the six projects held for further consideration before reaching their final conclusion. They were impressed with the simplicity of the Unitarian Church, its excellent relationship to site, the selection and use of materials and especially the pleasant and unobtrusive handling of parking facilities. At Wynkoop, the jury praised attention to details, the placement of the varied units in the landscape and their inter-relationship.

The Chamber of Commerce is to be congratulated on the manner in which the program was conducted. Professional assistance lent stature and encouraged the participation of the architects thus broadening the variety and quality of submissions.

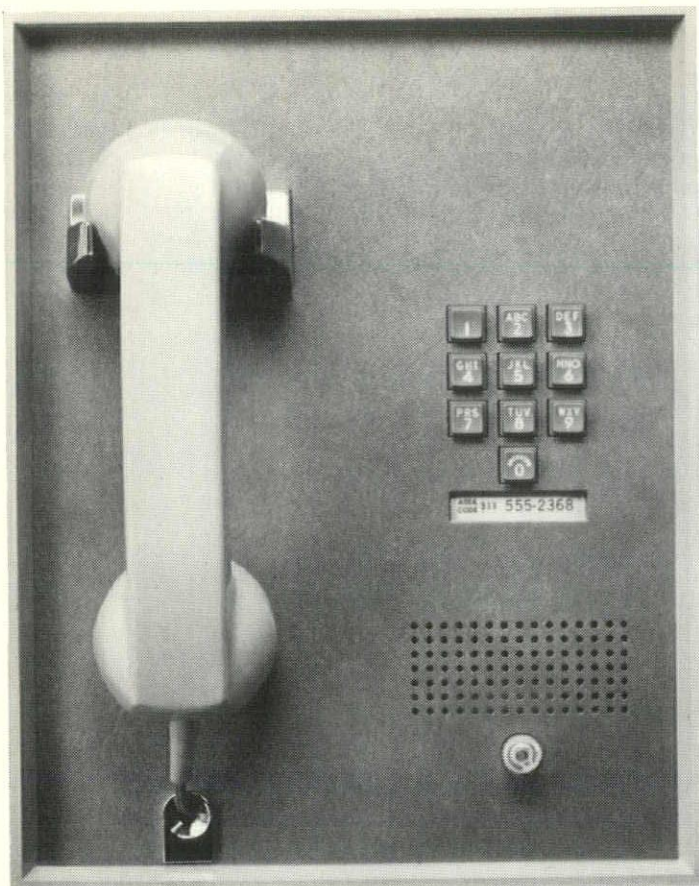
The jury, in a follow-up report to the Chamber of Commerce outlined positive steps for encouraging more entries in the next event. Among their suggestions were that more publicity prior to the event would encourage greater participation and that an out of town jury selection would be preferable, since there would be less familiarity with the actual buildings.

We are further grateful to this organization for its interest, participation and leadership in the general cause of urban beauty.



WYNKOOP - BETHESDA, MD.





## The built-in PANEL PHONE belongs in your future plans

Clients will appreciate your including provisions for a recessed Panel Phone when building or remodeling. With a special apparatus box and concealed wiring in position before the interior sheathing is placed, the space-saving Panel Phone (with or without Touch-Tone® service) can be installed easily and neatly any time in the future.

For information, call or write your Architects and Builders Service, 629 Constitution Ave., N.E., Washington, D. C. Dial Area Code 202-392-3349.



**The C & P Telephone Company**  
Part of the Nationwide Bell System



The Freudberg Building's octagonal design is highly individual . . . and so is tenants' control of heating and cooling in this new total electric office structure. In your designs for comfort, feel free to utilize electric heating and cooling facts, figures, case histories and PEPCO engineering assistance. Call Commercial Customer Department, National 8-8800, ext. 591.

MATCHLESS SERVICE®

**PEPCO**

POTOMAC ELECTRIC  
POWER COMPANY

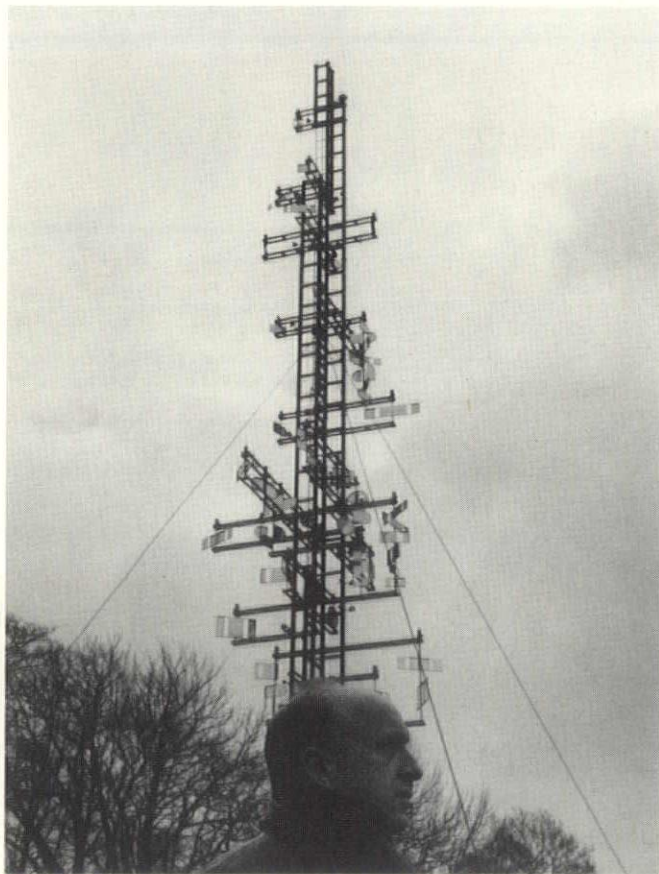


THE NEW FREUDBERG BUILDING, 4201 CONNECTICUT AVENUE • ARCHITECTS: ALAN J. LOCKMAN & ASSOCIATES, 818 18TH STREET, N.W.  
CONSULTING ENGINEERS: SHEFFERMAN & BIGELSON, 1330 NEW HAMPSHIRE AVENUE, N.W.



An astounding spectacle is taking place presently at the **Washington Gallery of Modern Art** where the serene old mansion seems momentarily transformed into a mechanical garden. At the flick of a switch the many machines can be activated with accompanying gyrations and noises in a Rube Goldbergish manner to delight the child or the adult-child. Should the accompanying illustrations fail to convey the idea, let me hasten to point out that this is kinetic sculpture, a form reaching maximum potential only when set in motion.

Kinetic art is not a recent innovation, for the machine has been a stimulus for artists over the last half century. Italian futurists saw it as a symbol of speed and dynamism. Dadaists, following World War I, employed the machine in their fantastic inventions. Perhaps the most widely acclaimed innovator is Calder, whose mobile sculptures express good humor and innocent pleasure. Some see, in the machine an instrument of a more perfect social organization, while, it breeds fear and helplessness in others. Today's resurgence may be a reaction to recent extreme individualism in art but, whatever the cause, it is presently strong. We are fortunate in having the opportunity to see the work of two of the ablest and most original innovators in the field, Jean Tinguely and Nicolas Schoffer. Interestingly enough, their work seems to express opposing views.

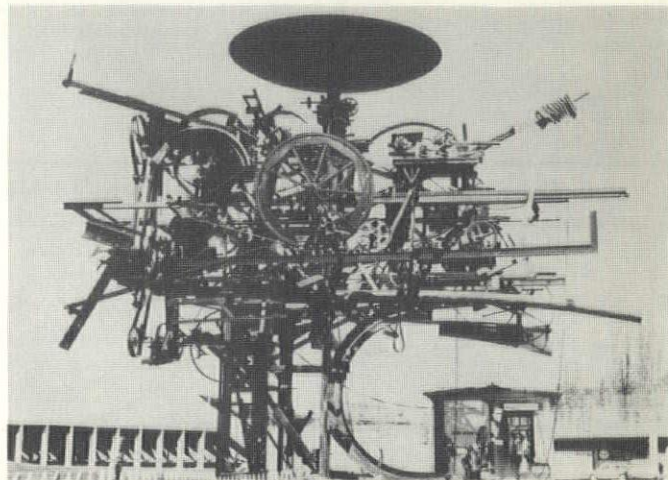


Nicolas Schoffer: Spatiodynamic Tower, 1961, Liege, Belgium.

Photograph: Doisneau — Rapho.

## TWO KINETIC SCULPTORS

### A Delight For The Whole Family



Tinguely: Eureka, 1964, motorized construction, 30 feet high, Lausanne, Switzerland.

Tinguely's sculptures in motion are amusing. Their infectious humor, satire, energy and variety are imbued with a dual power as pure invention and clowning commentary. While delighted by their antics, we are reminded of the daily mechanical failures and a sense of helplessness at the sight.

Nicolas Schoffer, has an engineers optimistic point of view and, of the two, proves the most interesting for an architect since he is something of a visionary architect himself. Employing sound, light, color, motion and trickery, he has devised a form not only interesting for what he has so far accomplished but its potential for future elaboration. At best, they are capable of adding a new dimension to human experience. The inherent danger in the form is the potential for a gadgety, pseudo scientific display with fun house overtones. We have not witnessed a performance by the one hundred and fifty foot high "cybernetic" tower which this artist has installed for the city of Liege, Belgium. In season, regular performances are staged for the delight of the population and visitor. To view it could give a clue to how well the sampling on display here translates to a major form.

The show is a guaranteed delight, and we have never enjoyed an art opening more; but as sculpture, we have reservations. Some of the pieces, rich in material and of a constructivist nature seem to squeeze under the wire, while the major portion, though offering momentary delight tend to lose their fascination. They are truly the work or by-product of a talented pair of artists and if the form stays around very long, we are going to have to invent a new name for the category. Machine, No! Sculpture? But don't miss the display!



## DIRECTORY OF PROFESSIONAL SERVICES

**Foundation Test Service, Inc.**  
James J. Schnabel, President  
Test Borings—Auger Borings  
Rock Core Drilling — Soil Testing  
4911 Cordell Ave. Bethesda, Maryland  
Phone: OL 2-8430

**Granger & Oliver**  
Test Borings  
Box 31 — Kensington, Md. 20795  
946-3313

**Wayne C. Greathouse & Assoc.**  
Engineers — Land Surveyors  
2401 Blueridge Ave., Wheaton, Md.  
833-1616  
6038 28th Ave., Marlow Heights 28, Md.  
735-1320

**Sterling Maddox & Associates**  
Surveyors & Site Planners  
Plane & Geodetic Surveys  
Aerial Topographic Maps  
4924 Hampden Lane, Bethesda, Md.  
OL 4-8980

**Thomas G. Oyster  
And Associates, Inc.**  
Civil Engineers and Land Surveyors  
2419 Reddie Drive Wheaton, Md.  
949-2011

**SHEPHERD, WORTHINGTON  
& PRESCOTT, INC.**  
Civil Engineers — Land Surveyors  
Land Planners  
8226 Fenton St. — Silver Spring, Md.  
JUniper 5-8840

## DIRECTORY OF BUILDING EQUIPMENT & SERVICES

**MT. VERNON  
CLAY PRODUCTS CO.**  
800 Hamlin Street, N.E.  
Washington 17, D. C.  
832-8400

**United Clay Products Co.**  
— Headquarters for —  
Georgetown Colonial Brick  
Aluminum Windows and Doors  
Bryant Heating Equipment  
931 Investment Building DI 7-0787

**United Clay Products Co.**  
— Headquarters for —  
Georgetown Colonial Brick  
Aluminum Windows and Doors  
Bryant Heating Equipment  
931 Investment Building DI 7-0787

**A & E BLUEPRINTERS, INC.**  
Washington - 2009 K St., N.W. 338-6220  
Silver Spring - 1111 Bonifant St. 588-7262  
Bethesda - 4934 St. Elmo St. 657-3555  
Featuring Excellent Service At Modest  
Prices • No Minimum Charge • Free  
Delivery in Metro Area • Night —  
Weekend — Holiday Service.

**“One builder to another—for  
the best construction loan,  
see Suburban Trust.”**



**Kidwell & Kidwell Inc.**  
“Your Partners In Progress”  
Irving L. Kidwell, President  
D. A. Kidwell, Sr., Chairman  
— Specializing In Walls & Ceilings —  
Box 566, Berwyn Station, College Park, Md.  
GR 4-4500

**JAMES H. CARR, INC.**  
Structural Timber Specialists  
Glulam Arches and Bowstring Trusses  
Prefabricated Trussed Rafters  
2138 P Street, N. W. Washington, D. C.  
ADams 4-7979

## SUBURBAN TRUST COMPANY

36 Friendly Community Banking Offices In  
Prince Georges And Montgomery Counties  
**Resources over 320 Million Dollars**  
Telephone 588-5000 For All Offices And All Services  
Member Federal Deposit Insurance Corporation

**Bladensburg Blueprint Shop**  
BLUE PRINTS - DIAZO PRINTS  
PHOTO PRINTS - SUPPLIES  
XEROX

4319 Baltimore Ave.  
Bladensburg, Md.  
UNion 4-7950



# DIRECTORY OF BUILDING EQUIPMENT & SERVICES

## BUILDING MATERIAL & EQUIPMENT

### Atlantic Perlite Company

Panacalite Perlite Plaster, Lightweight Concrete Roofdecks, Silicone Treated Perlite Loose Fill for Masonry Walls.  
1919 Kenilworth Ave.  
Beaver Heights, Md. (Washington 20027)  
773-0200

### Metal Construction Services

#### Fenestra & Kalwall

Arlite Panels, Federal Steel Windows, Ware Aluminum, Davidson Porcelain  
P.O. Box 306 Kensington, Md. 20795  
Bob Knopf, Mgr. 949-6550

### Perry Steel Sales

Dietrich Bros. — Structural Steel  
Macomber — Steel Joists  
805 King St., Silver Spring, Maryland  
P.O. Box 973—Blair Station—JU 9-7554

### Klon O. Row, Inc.

Sanymetal and Wels Toilet Partitions  
Flour City Ornamental Iron Co.  
4380 MacArthur Blvd., N.W.,  
Wash. 7, D. C. FE 3-4410

### Milo Products Corp.

Milo Cabinet-Wall Closets and Fronts  
Milo Bi-Fold Doors, Metaloc Warp-Proof  
Sliding Doors, Accordion-Fold and  
Worwood Doors  
1010 Vermont Ave., N.W., Wash. 5, D. C.  
ST 3-9047

### Schatz Kitchen Equipment, Inc.

Washington's Oldest Manufacturers of Kitchen Equipment for Restaurants and Schools  
5011 Minnesota Ave., N.E.  
Wash. 27, D. C. SP 3-5500

## CONCRETE PRODUCTS

### Tecfab, Inc.

Precast Structural Insulating Panels and Window Wall Systems  
Plastic Mosaic and Tile Facings  
Beltsville, Md. GR 4-8211

## GENERAL CONTRACTORS AND BUILDERS

### Briggs Construction Co., Inc.

Contractors & Builders  
4909 Cordell Ave., Bethesda, Md.  
OL 6-4545

## Precast and Prestressed Concrete LAUREL CONCRETE PRODUCTS, INC.

"Service Beyond The Contract"

Phone: 725-8822 Baltimore Area  
776-7787 Washington Area

## HARDWARE

### Builders Hardware Corp.

Architectural Hardware Consultants  
Builders' Finishing Hardware  
4908 St. Elmo Ave., Bethesda, Md.  
OL 6-6800

### Fries, Beall & Sharp Co.

Architectural Hardware Consultants  
Representative of Sargent & Co. and Schlage  
Shirley Hwy. and Edsell Rd.,  
Springfield, Va. FL 4-3600

## HEATING FUELS

### Griffith-Consumers Co.

Distributors of All Types of Commercial and Residential Fuels and Heating Equip.  
1232 1st Street, N.E., Wash., D.C. 20002  
638-4840

## MASONRY AND MASONS

### A. Myron Cowell, Inc.

Quality Masonry Contractors  
Brick-Glazed Tile, Cinder & Glass Block  
Rubble Stone — Cut Stone Setting  
538 Forest Glen Rd., Silver Spring, Md.  
JU 9-3340 JU 9-4580

### McLeod & Romborg Stone Co., Inc.

Cut Stone Contractors  
46th & Webster, Bladensburg, Md.  
WA 7-2462

### National Brick & Supply Company

High Pressure Cured Block and Brick  
Dox Plank Floor and Roof System  
Terra Cotta, Wash. 11, D. C. LA 9-4000

### Washington Brick Co.

Div. Thos. Somerville Co.  
Masonry Manufacturers & Distributors  
6th and Deatur Sts., N.E.,  
Wash. 11, D. C. LA 9-7000

## PAINT & GLASS

### Cunningham Paint Company

Distributors: PVA Muraltone; Muralo  
Masonry Finishes for All Interior and  
Exterior Walls  
2020 14th St., N.W., Wash. 9, D. C.  
CO. 5-2031

### Hugh Reilly Co.

Distributors: Dupont, Bruning, Pecora,  
Rustoleum, Rez  
931 Brentwood Rd., N.E.,  
Wash., D. C. 20019 529-8600

### W. R. Winslow Co.

Distributors for Benjamin Moore, Samuel  
Cabot and National Gypsum  
Winslow Products  
922 New York Ave., N.W., Wash. 1, D. C.  
NA 8-8610

## PLASTERING-ACOUSTICAL

### John H. Hampshire Corp., Inc.

Acoustical Tile, Plastering, Flooring,  
Partitions, Roof Deck  
4628 Annapolis Rd., Bladensburg, Md.  
UN 4-0300

### T. M. Woodall, Inc.

Plastering and Acoustical Contractor  
6480 Silgo Mill Rd., Takoma Park 12, Md.  
589-3811

## PLUMBING, HEATING & ELECTRICAL

### American Radiator and

Standard Sanitary Corp.  
Specifications for Plumbing and Heating  
8641 Colesville Rd., Silver Spring, Md.  
587-1314

### W. B. Maske Sheet Metal Works, Inc.

Sheet Metal Experts Since 1935  
Heating • Air Conditioning • Roofing  
4505 Baltimore Ave., Bladensburg, Md.  
WA 7-3412

### Nutone, Inc.

Built-Ins for the Home  
Local Sales Representative:  
Leslie A. Meil NA 8-9655

## REPRODUCTIONS & SUPPLIES

### A & E Blueprinters, Inc.

Night—Week-end—Holiday Service  
Washington - 2009 K St., N.W. 338-6220  
Silver Spring - 1111 Bonifant St. 588-7262  
Bethesda - 4934 St. Elmo St. 657-3555

### Cooper-Trent

Your Authorized K & E Distributor  
Complete Reproduction Services  
4923 Cordell Ave., Bethesda, Md.  
OL 6-8800

### Leet-Melbrook, Inc.

Blueprints, Architectural Photos,  
Drafting Supplies  
950 Silgo Ave., Silver Spring, Md.  
JU 9-8444  
Rockville — 206 Commerce Lane 762-2187

### Geo. F. Muth Co., Inc.

Architects', Engineers', Drafting and  
Artists' Supplies, 3M-Adhesives  
Office Equipment and House Paints  
1332 New York Ave., N.W., Wash. 5, D. C.  
ST 3-6323

### Silver Spring Blueprinting Co., Inc.

White Prints—Drafting Supplies  
Immediate Service  
8425 Georgia Avenue, Silver Spring, Md.  
587-8570

## TILE

### Tile Supply Co.

Ceramic Tile Distributor  
Cambridge Suntile-Camtile  
Summitville Quarry Tile  
Silver Spring, Md. 589-7822  
Falls Church, Va. 533-1050

### The Mosaic Tile Co. of Virginia

Tile Manufacturer  
Warehouse and Showroom  
607 S. Ball St., Arlington, Va.  
OT 4-5553 OT 4-5554

### Standard Art, Marble & Tile Co.

Scagliola, Marble, Mosaic, Terrazzo, Tile,  
Ceramic, Slate  
117 D St., N.W., Wash., D. C. NA 8-7413

## WATERPROOFING

### Peter Gordon Co., Inc.

Commercial-Industrial  
WATERPROOFING  
also Neoprene Waterproofing  
Parking, Decks, Ramps, Terraces  
5201 First Pl. N. E. Wash., D. C.  
726-4344

## NATCO

Corporation  
Manufacturers of the Complete  
Line of Structural Clay Products.

Sales Representative  
L. W. Paugh, Jr. P.O. Box 125  
Lanham, Md. Phone 773-2549



MAY WE DO YOUR PRINTING?  
JUniper 8-4666

## JACK T. IRWIN, INC.

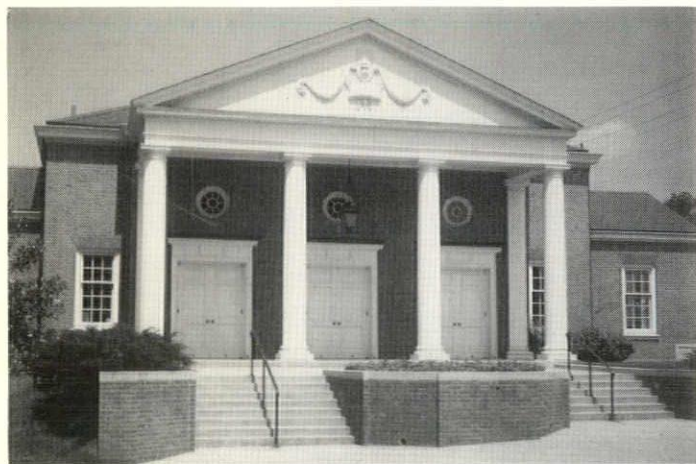
"Dealers in Natural Stone"  
Flagstone, Building Stone  
Jacko Stone Products

1460 Rockville Pike Rockville, Md.  
424-5444



Raymond L. Gaio, Director  
State, Chapter & Student Affairs  
Amer. Inst. of Archs.  
1735 New York Ave., N.W.  
Washington, D.C. 20006

Bulk Rate  
U. S. POSTAGE  
**PAID**  
SILVER SPRING, MD.  
PERMIT NO. 274



THE RIGHT BRICK FOR THAT SPECIAL JOB



# CUSHWA

**BRICK AND BUILDING SUPPLY CO.**

137 INGRAHAM STREET, N.E.

TU 2-1000

OVER 1,000 DIFFERENT KINDS OF BRICK

