

AMERICAN INSTITUTE
OF
ARCHITECTS

MAR 19 1968

LIBRARY

POTOMAC VALLEY ARCHITECT

POTOMAC VALLEY ARCHITECT

JAN./FEB. 1968

Vol. 11, No. 3

OFFICIAL PUBLICATION • POTOMAC VALLEY
CHAPTER OF MARYLAND AMERICAN INSTITUTE
OF ARCHITECTS

CHAPTER OFFICERS

PHILIP W. MASON *President*
EDWIN F. BALL *President Designate*
CLYDE E. GRIMM *Vice President*
NEIL R. GREENE *Secretary*
LOREN L. MURRAY *Treasurer*
EUGENE A. DELMAR *Director*
DONALD J. HOGAN *Director*
DAVID A. HOLTZ *Director*
FON J. MONTGOMERY *Director*

EXECUTIVE SECRETARY

Amalie B. Dobres, 588-1125

Office Hours: 9:00 A.M. to 3:00 P.M.

CHAPTER ACCOUNTANTS

Borders and Associates, 772-5000

POTOMAC VALLEY ARCHITECT

EDITOR

Paul J. Clarke, A.I.A., 277-6707

CONTRIBUTING EDITOR

David F. Rinn, A.I.A.

MANAGING EDITOR

Joseph C. Dennison, RA 6-1005

ADVERTISING MANAGER

J. Leo Sugrue, WH 6-5814

Published bi-monthly by the Potomac Valley Chapter of Maryland, American Institute of Architects, 912 Thayer Avenue, Silver Spring, Maryland. Subscription price: 50c per copy, \$2.50 per year. Unsolicited manuscripts and photographs will be returned only if accompanied by a self-addressed, stamped envelope.

Change in advertising copy should be directed to: MR. LEO SUGRUE, 11111 Lund Place, Kensington, Maryland.

The articles in the magazine represent the personal opinions of the authors and/or the editor and should not be construed as representing the viewpoint of the Potomac Valley Chapter, A.I.A.

ON THE COVER

Interior view of Calvert Mansion showing original chandelier, fireplace and door details. Photograph by Borland.

CHAPTER NEWS

NATIONAL COMMITTEE APPOINTMENTS

The following members of Potomac Valley Chapter have been appointed to National A.I.A. Committees:

JACK C. COHEN—Chairman, Housing Committee and corresponding member, Legislation Committee

DONALD S. JOHNSON, JR.—member, Legislation Committee

STANLEY H. ARTHUR—corresponding member, School and College Architecture Committee

EUGENE A. DELMAR—corresponding member, Research for Architecture

ANTHONY N. JOHNS, JR.—corresponding member, Education Committee

NEW MEMBERS

The chapter is pleased to welcome these new Corporate Members:

DAVID WATSON DRAPER, A.I.A.—with the office of Collins and Kronstadt, Leahy, Hogan and Collins in Silver Spring.

LENNART HUGO FOLKEE—with the office of Walton and Madden in Riverdale.

PETER WARREN HAHN—partner in the firm of Hahn and Hendon in Washington, D. C.

NEW ADDRESSES

WILLIS A. GORTNER, II, A.I.A., announces the opening of his office for the practice of architecture at 10400 Connecticut Avenue, Kensington, Maryland. Phone: 942-1977.

NEIL R. GREENE, A.I.A., announces the formation of a partnership with VICTOR SMOLEN, A.I.A., with offices at 805 15th Street, N.W., Washington, D.C. Suite 532. Phone: 393-8047.

EDITOR'S NOTE

In an article appearing in the 29 January *Washington Post*, reference was made to Skyline Elementary School and Robert Frost Elementary School designed for the Prince George's County Board of Education without mention of the architects responsible. We would like to take this opportunity to credit Kea, Shaw, Grimm and Crichton for Skyline Elementary and Ronald S. Senseman, FAIA, for Robert Frost.

The Architect's Phone.

There's a special phone in our office that's reserved for architects and builders who want to find out what's new in modern communications.

They need to know in order to make provision for today's (and tomorrow's) equipment.

Our special phone for architects has been ringing a lot lately, and we've been telling all we know about what's new and what's coming along in communications.

We have the newest information on Data-Phone* and Teletypewriter services, for example, which have special cable and conduit needs. And the specs on Tele-Lecture, and closed-circuit TV, all in addition to regular telephone service that is planned with expansion in mind.

Before you design your next building, get in touch with us. (And keep in touch—our business changes as fast as yours does.) Your special number is
District of Columbia 202-392-3349
Maryland Suburban 202-392-3844
Virginia Suburban 202-392-6476

And if you'd like fast, new Touch-Tone® push-button phones for your offices and studios, just call the Business Office. We'll update your system in a jiffy.

At C&P, service to you comes first with us.

*Service mark of the Bell System



The C & P Telephone Company
Part of the Nationwide Bell System





ARCHITECT: JOHNSON AND BOUTIN, A.I.A. / BUILDER: ALTON ENGINEERING COMPANY, INC.

a Cassidy point of view . . .

There's no doubt about the view of the Christian Brothers Retreat House. It's beautiful . . . **inside and outside.** And there's a reason—the handsome Pella Casement and Multi-Purpose windows. These attractive windows combine the beauty of wood and the strength of steel to give a life-time of dependable, trouble-free service.

For more than 35 years, we've been serving Washington area architects and builders with a wide selection of quality building products. Cassidy Representatives are always available to assist you in determining the windows, doors and other products best suited for your needs. When planning your next project—be it residential, commercial, or industrial—call us. We think you'll soon see the value of a Cassidy point of view.

JAMES A. CASSIDY COMPANY • INC.

EIGHTH & LAWRENCE STREETS, N.E./WASHINGTON, D.C. 20017/202-529-5400
10604 WARWICK AVENUE / FAIRFAX, VIRGINIA 22030 / 703 • 273-9004

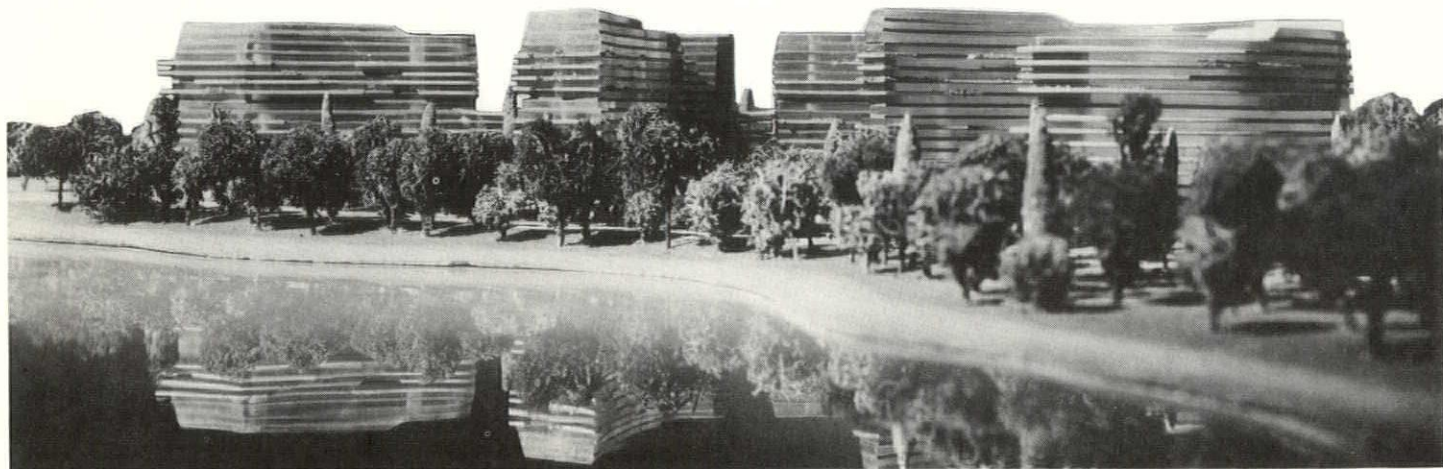
BUILDING PRODUCTS



*Washington's changing skyline
shows you why the future
belongs to gas!*



The Watergate: one of many new buildings air conditioned with gas



ARCHITECTS: PROF. LUIGI MORETTI, ROME; CORNING, MOORE, ELMORE & FISHER, AIA, WASHINGTON, D.C.



A · I · A

POTOMAC VALLEY CHAPTER OFFICERS

PRESIDENT:

PRESIDENT DESIGNATE:

VICE PRESIDENT:

SECRETARY:

TREASURER:

DIRECTORS:

1968

PHILIP W. MASON

EDWIN F. BALL

CLYDE E. GRIMM

NEIL R. GREENE

LOREN L. MURRAY

EUGENE A. DELMAR

DONALD J. HOGAN

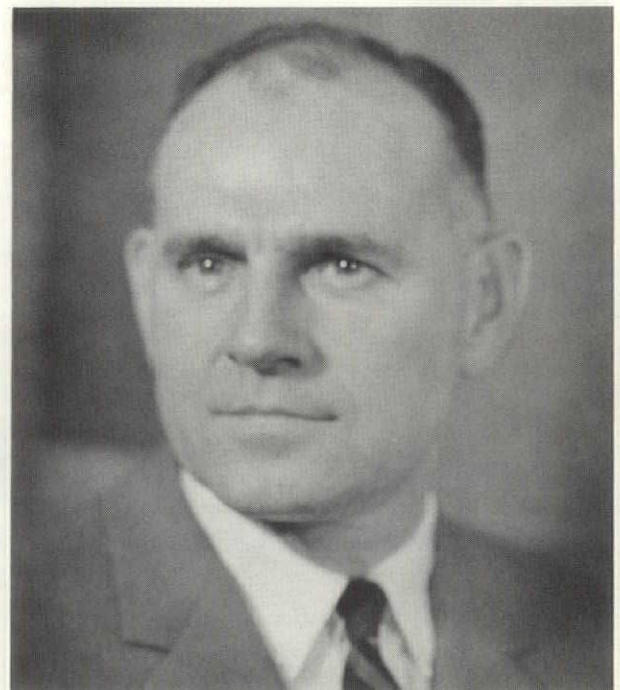
DAVID A. HOLTZ

FON J. MONTGOMERY

PHILIP W. MASON, A.I.A.

Born in the State of Washington in 1922, at an early age moved to Silver Spring and attended Montgomery County Public Schools, graduating from Montgomery Blair High School in 1939. Attended the University of Illinois and after a four year stint as a Naval Aviator in World War II returned to the University of Illinois to graduate from the School of Architecture in February 1947. Upon graduation, returned to Washington, D.C. and Silver Spring working in the offices of Leon Chate-lain and Ted Englehardt. In August 1952 opened office for the general practice of architecture. Practice is of a general nature but heavy in the industrial area.

Lives with wife, the former Anne Derrick of Takoma Park, and three children in the Colesville area of Mont-gomery County. Active in community affairs and a member of Silver Spring Rotary Club. Seriously be-lieves Montgomery County is the best place in the world to live.





Geo. Washington House



Want Water

Photos Courtesy David F. Rinn, A.I.A.



Mt. Calvert

PRINCE GEORGE'S COUNTY, MARYLAND

DAVID F. RINN, A.I.A.

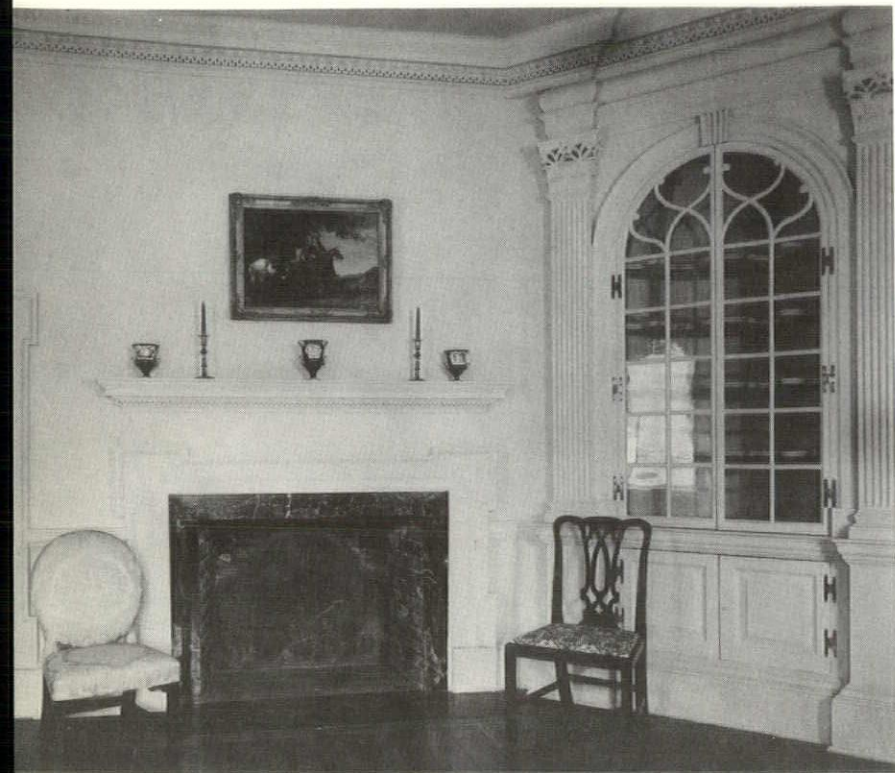
Few residents of Prince George's County are aware of the richness of the architectural heritage in their presence. There are about a hundred buildings in the County which were erected prior to 1800, most of which have value unknown to the public.

The better known buildings are well preserved, including the five eighteenth century churches, Christ Church in Accokeek, St. John's in Broad Creek, St. Barnabas in Leeland, St. Paul's in Baden and St. Thomas in Croom. Several elegant homes are also in excellent condition. Most of these are privately owned and include Beall's Pleasure, Bellefields, Compton Bassett and His Lordship's Kindness. Smaller but important houses in this group are Dunblane, Mullikin's Delight, Sasscer's Green and Wyoming. There is a growing number of historic buildings receiving the attention of public agencies. Adelphi Mill, Belair, Harmony Hall, Montpelier, Riversdale, Rossborough Inn, Snow Hill and Walnut Grange are owned by public or semi-public groups, and the Mill and Montpelier may be inspected by the public. The future of the George Washington House, Marietta, Mount Calvert and the Surratts House are being studied by historic groups.

However, there are other buildings of great value which lack such good fortune. The worst example is Want Water, a priceless two-room house of 1710, owned by the Federal government but abandoned and a hollow ruin. The futures of Content, Magruder House and Wilson House are still unclear.

Historic preservation in Prince George's County is somewhat impaired by the lack of a public County Historical Trust. A law was enacted by the state legislature to establish such a Trust, but the implementation of the law has proceeded slowly. The Prince George's County Historical Society and the volunteer County History Program carry the load.

There are extremely few seventeenth century buildings in the County. Of the eighteenth century buildings, at least three are known to have been designed by architects: Calvert Mansion, His Lordship's Kindness and Montpelier. And even in the case of His Lordship's Kindness the architect is not known.



North Drawing Room

MONTPELIER

Montpelier was one of several Snowden family houses in Prince George's and Anne Arundel County. This one was supposed to have been designed by William Buckland but there are no Buckland or Snowden papers existing to substantiate this information. On the grant to Richard Snowden, the "Ironmaster", the house was erected by his son Thomas Snowden, and Thomas, Jr. added the wings. The front and rear of the house are identical except for the wings, which are semi-octagonal. The octagonal side of the wings show dormers which would indicate a second level, but there is no way to get to such a level.

The bond of the exterior brickwork is Flemish; the facade of the main section has five bays with double hung windows. The entrance doors look far older than the house in that they are the battened type of the Medieval period. The rest of the house's woodwork is superbly executed in the Georgian manner.

Rear Elevation

Photographs: A. Borland





Entry Hall

HIS LORDSHIP'S KINDNESS

This elegant home is that of Mr. and Mrs. John Walton. He is the senior partner of Walton and Madden. Mr. Walton has personally attempted to research the identity of the building's architect. One historian has stated that His Lordship's Kindness was the first house in America designed AND SUPERVISED by an architect, but no author mentions the man's name.

The legend attached to the house's history is also subject to confirmation; supposedly the Earl of Shrewsbury gave the house as a wedding present to his niece, Anne Talbot, upon her marriage to Henry Darnall. Some say the gift was to be a surprise, since the Earl had not previously voiced approval of the marriage. But other sources say that the Earl and Darnall had reached an agreement about the house before the marriage.

The grant had been given to another Henry Darnall in 1672, and included 27,000 acres. The house was built about 1724-27, but this fact is contradicted by some papers.

The rooms of the main section are quite large, and there are two wings attached by means of "curtains". The brickwork is in common bond, which was rather unusual for that time. The brick shows evidence of restoration work, and the color is not perfectly uniform.

The main portion of the house is two stories high under a hip roof. Centered in the hip at the front facade is a pediment with a semi-circular window. The fireplaces are the interior type, so that two back-to-back rooms share a common flue housing. The plan of the central house is the four-room type with a central hall; the hall is very large.

Rear Elevation

Photographs Courtesy J. C. Wilfong

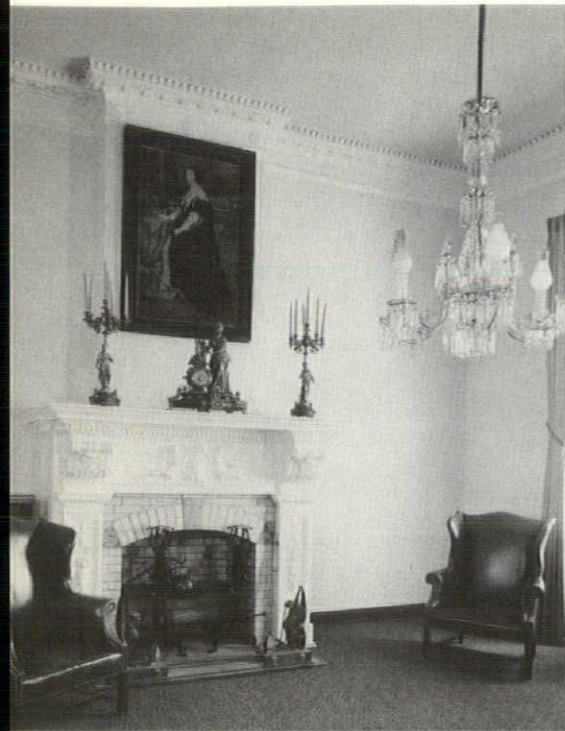


CALVERT MANSION (RIVERSDALE; RIVERDALE)

Until recently Riversdale was the regional office of the Maryland-National Park and Planning Commission, and is now the office of the delegates to the state legislature. Construction dates vary from 1794 to 1802, according to various sources. It was built by Henry Joseph Stier for his daughter Rosalie, who married George Calvert of Mount Airy. Stier, a descendant of Reubens, brought from his native Antwerp many original paintings. Stier's estate was once 2,000 acres with the entrance two miles east of Bladensburg. At the time of its construction it was one of the most lavishly appointed homes in the County.

The house was reputedly designed by William Thornton. The exterior is of brick with a yellow stucco finish. The brick was reportedly brought from England, and one of the building's chroniclers states that the columns used in the construction were originally intended for use in the U. S. Capitol. Since the columns arrived at the Capitol site with an incorrect dimension, they were rejected and used instead at Riversdale.

A central building has wings at either end. Originally the house had forty rooms but the number has since been reduced by remodelings. It has a broad imposing stairway; the rails and newels are of rosewood. One of the original mantels was once sold for \$5,000, and today few of the mantels, or the interior trim in its entirety, are original.



Main Ballroom

Rear Elevation

Photographs: A. Borland





Let the lighting do the heating. Link does.

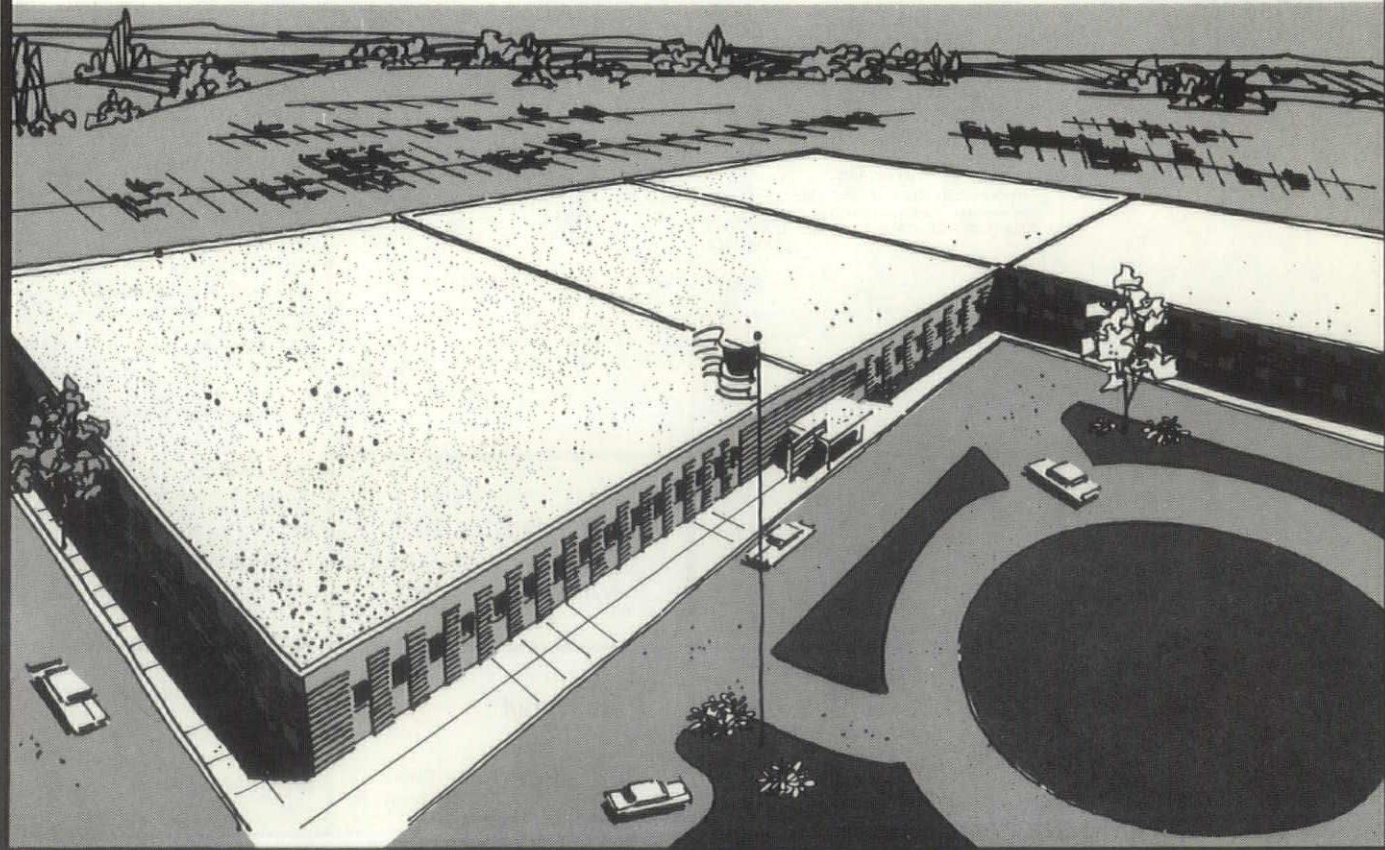
Hold your hand up to an electric light. Feel the heat? Now there's a way to capture this clean, gentle warmth, and heat an entire building with it. It's called heat-by-light.

The Link Group, world leaders in flight simulation and computer programming development, specified heat-by-light for their new plant in Montgomery Industrial Park. Careful studies told them that heat-by-light, teamed with electric air conditioning, would cost them less to install and operate than other heating-cooling combinations. Link expects less maintenance, too, because their system is so simple.

Tell us your heating problem. Our engineers will survey your heating needs and help you decide which of several electric heating systems is right for you. Call NATIONAL 8-8800, ext. 442 for residential buildings, ext. 591 for commercial and industrial buildings.

MATCHLESS SERVICE
PEPCO
POTOMAC ELECTRIC
POWER COMPANY

*The new all-electric Link Group plant in Montgomery Industrial Park, White Oak, Maryland. A Division of General Precision Systems Inc.
Architect: Phillip W. Mason, A.I.A.; Consulting Engineer: Goodwin H. Taylor & Associates*



DIRECTORY OF BUILDING EQUIPMENT & SERVICES

BUILDING MATERIAL & EQUIPMENT

Metal Construction Services

Arlite exposed aggregate—Federal, Fapco, Kawneer & Ware Windows-Kalwall panels
P.O. Box 309 Kensington, Md. 20795
Bob Knopf, Mgr. 949-6550

Perry Steel Sales

Dietrich Bros. — Structural Steel
Member — Steel Joists
805 King St., Silver Spring, Maryland
P.O. Box 973—Blair Station—JU 9-7554

Klon O. Row, Inc.

The Sanymetal . . . Chemclad Doors
5112 MacArthur Blvd., N.W.,
Wash., D. C. 20016 244-3252

Schatz Kitchen Equipment, Inc.

Washington's Oldest Manufacturers of Kitchen Equipment for Restaurants and Schools
5011 Minnesota Ave., N.E.
Wash. 27, D. C. SP 3-5500

CONCRETE PRODUCTS

Tecfab, Inc.

Precast Structural Insulating Panels and Window Wall Systems
Plastic Mosaic and Tile Facings
Beltsville, Md. GR 4-6211

JAMES H. CARR, INC.

Structural Timber Specialists
Glulam Arches and Bowstring Trusses
Prefabricated Trussed Rafters
2138 P Street, N. W. Washington, D. C.
ADams 4-7979

NATCO

Manufacturers of the Complete
Line of Structural Clay Products.

Sales Representative
L. W. Paugh, Jr. P.O. Box 125
Lanham, Md. 20801 Phone 298-8177

HARDWARE

Builders Hardware Corp.

Architectural Hardware Consultants
Builders' Finishing Hardware
12220 Wilkins Ave., Rockville, Md.
949-6400

Fries, Beall & Sharp Co.

Architectural Hardware Consultants
Representative of Sargent & Co.
and Schlage
Shirley Hwy. and Edsell Rd.,
Springfield, Va. 354-0350

MASONRY AND MASONS

A. Myron Cowell, Inc.

Quality Masonry Contractors
Brick-Glazed Tile, Cinder & Glass Block
Rubble Stone — Cut Stone Setting
538 Forest Glen Rd., Silver Spring, Md.
JU 9-3340 JU 9-4580

McLeod & Romborg Stone Co., Inc.

Cut Stone Contractors
46th & Webster, Bladensburg, Md.
927-2462

National Brick & Supply Company

High Pressure Cured Block and Brick
Dox Plank Floor and Roof System
Terra Cotta, Wash II, D. C. LA 9-4000

PAINTING-DECORATING

Apex Decorating Co.

Residential & Commercial Work
Special Coatings & Exposies Urethones
9200 Talbot Street
Silver Spring, Md. 588-6234

Bryan Associates Inc.

Interior and Exterior Painting
Commercial and Residential
3009 20th St., N.E., Wash., D.C.
529-1222

PAINT & GLASS

Cunningham Paint Co.

Distributors: PVA Muraltone; Muralo
Masonry finishes for all surfaces.
Washington-2020 14 St., N.W., CO 5-2031
Bethesda-7931 Wisconsin Ave., OL 4-7900

Hugh Reilly Co.

Distributors: Dupont, Bruning, Pecora,
Rustoleum, Rez
931 Brentwood Rd., N.E.,
Wash., D. C. 20019 529-8600

C. I. Smith Co., Inc.

O'Brien, Dutch Boy, DeRusto Paints
Ladders
DeVibless Spray Equipment
2328 Champlain St., N.W.
Washington, D.C. 485-3300

W. R. Winslow Co.

Benjamin Moore—Samuel Cabots
Winslow's—Gold Bond.
Marine & Pool Paints — Sprayers
4568 St. Barnabas Rd., Marlow Hgts., Md.
12 stores—Quality & Service 423-3700

PLASTERING- ACOUSTICAL

T. M. Woodall, Inc.

Plastering and Acoustical Contractor
6480 Sligo Mill Rd., Takoma Park 12, Md.
589-5811

PLUMBING, HEATING & ELECTRICAL

American Standard

Plumbing & Heating Div.
Specifications for Plumbing and Heating
8641 Colesville Rd., Silver Spring, Md.
Louis F. Brecht 587-1314

W. B. Maske Sheet Metal Works, Inc.

Sheet Metal Experts Since 1935
Heating • Air Conditioning • Roofing
4505 Baltimore Ave., Bladensburg, Md.
927-3412

MT. VERNON CLAY PRODUCTS CO.

800 Hamlin Street, N.E.
Washington 17, D. C.
832-8400



MAY WE DO YOUR PRINTING?
857-5200

REPRODUCTIONS & SUPPLIES

A & E Blueprinters, Inc.

Washington - 2009 K St., N.W. 338-6220
Silver Spring - 1004 Ripley St. 588-7262
Bethesda - 4934 St. Elmo St. 657-3555
Silver Spring - 2409 Linden La. 585-3000
Featuring Excellent Service At Modest
Prices • No Minimum Charge • Free
Delivery in Metro Area • Night —
Weekend — Holiday Service.

Cooper-Trent Division

Keuffel & Esser Co.
• Reproduction and Microfilming Services
• Engineering and Drafting Supplies
• Printing and Lithography
4923 Cordell Ave., Bethesda, Md. 20014
OL 6-8800

Leet-Melbrook, Inc. "Since 1893"

Blueprints, white prints, photostats
Architectural photography, scale enlargements
& reductions—Drafting Supplies
Silver Spring—950 Silgo Ave., 589-8444
Rockville—681 Southlawn La. 762-8181

Geo. F. Muth Co., Inc.

Art, Drafting and Engineers',
Supplies, 3M-Adhesives
Office Equipment and House Paints
1332 New York Ave., N.W., Wash. 5, D.C.
ST 3-6323

Silver Spring Blueprinting Co., Inc.

White Prints—Drafting Supplies
Immediate Service
8425 Georgia Avenue, Silver Spring, Md.
587-8570

TILE

Tile Supply Co.

Ceramic Tile Distributor
Cambridge Suntile-Camtile
Summitville Quarry Tile
Falls Church, Va. 533-1050

The Mosaic Tile Co. of Virginia

Tile Manufacturer
Warehouse and Showroom
607 S. Ball St., Arlington, Va.
OT 4-5553 OT 4-5554

Standard Art, Marble & Tile Co.

Scagliola, Marble, Mosaic, Terrazzo, Tile,
Ceramic, Slate
117 D St., N.W., Wash., D. C. NA 8-7413

WATERPROOFING

Peter Gordon Co., Inc.

Commercial-Industrial
WATERPROOFING
also Neoprene Waterproofing
Parking, Decks, Ramps, Terraces
5201 First Pl. N. E. Wash., D. C.
726-4344

Kidwell & Kidwell Inc.

"Your Partners In Progress"
Irving L. Kidwell, President
D. A. Kidwell, Sr., Chairman
— Specializing In Walls & Ceilings —
Box 566, Berwyn Station, College Park, Md.
GR 4-4500

DIRECTORY OF PROFESSIONAL SERVICES

Foundation Test Service, Inc.
 James J. Schnabel, President
 Test Borings—Auger Borings
 Rock Core Drilling — Soil Testing
 4909 Cordell Ave. Bethesda, Maryland
 Phone: OL 2-8430

Granger & Oliver
 Test Borings
 Box 31 — Kensington, Md. 20795
 946-3313

Wayne C. Greathouse & Assoc.
 Engineers — Land Surveyors
 2401 Blueridge Ave., Wheaton, Md.
 933-1616

**Oyster, Imus
 And Associates, Inc.**
 Civil Engineers and Land Surveyors
 2419 Reddie Drive Wheaton, Md.
 949-2011

**Sterling Maddox &
 Associates**
 Surveyors & Site Planners
 Plane & Geodetic Surveys
 Aerial Topographic Maps
 4924 Hampden Lane, Bethesda, Md.
 OL 4-8980

PROVIDING BUSINESS AND INDUSTRY WITH QUALITY PHOTOGRAPHS
 INDUSTRIAL ADVERTISING ARCHITECTURAL COMMERCIAL

outstanding realism and quality!

BORLAND PHOTOGRAPHY

9623 TELEGRAPH ROAD, SEABROOK LANHAM, MARYLAND

PHONE (301) 577-1877

DIRECTORY OF BUILDING EQUIPMENT & SERVICES

CREATIVE PRESTRESSED AND
 PRECAST CONCRETE
 PRODUCTS FOR PUBLIC,
 INDUSTRIAL, COMMERCIAL
 STRUCTURES.

**LAUREL CONCRETE
 PRODUCTS, INC.**

"Service Beyond The Contract"

P. O. Box 209, Laurel, Md.

Phone: 792-7857 Baltimore Area
 776-7787 Washington Area

A & E BLUEPRINTERS, INC.

Washington - 2009 K St., N.W. 338-6220
 Silver Spring - 1004 Ripley St. 588-7262
 Bethesda - 4934 St. Elmo St. 657-3555
 Silver Spring - 2409 Linden La. 585-3000

Featuring Excellent Service At Modest
 Prices • No Minimum Charge • Free
 Delivery in Metro Area • Night —
 Weekend — Holiday Service.

PHONE 587-0005

KLEIN MODELS

ARCHITECTURAL • PLANT LAYOUT • TOPOGRAPHICAL

9160 BROOKVILLE RD., SILVER SPRING, MD.

Jack T. Irwin
 Stone — Slate

1460 Rockville Pike
 Rockville, Md. 20852

"Dealers in Natural Stone"
 Flagstone, Building Stone
 Jackco Stone Products

424-5444

United Clay

PRODUCTS COMPANY

HEADQUARTERS FOR:

Georgetown Colonial Brick
 Aluminum Windows & Doors
 Bryant Heating Equipment
 Float-Away Folding Closet Doors
 Aluminum Sliding Glass Doors
 Johns-Manville Building Products
 Brick & Building Materials

931 INVESTMENT BUILDING
 15TH & STREET, N.W.
 WASHINGTON, D. C. 20005
 PHONE: 832-8000

Front Door to Washington, D. C.



*The prestige address
 in Washington's ever
 expanding suburbs*

- 162 Guest rooms and director's suites for gracious living for the business or casual traveler.
- The Islander Pool, designed for year-round swimming.
- Convention and conference rooms accommodating 5 to 500 for an informal luncheon or a sumptuous banquet.
- Free Valet Parking - Credit Cards
- The Fashionable Fire Fountain Restaurant, offering American and Continental cuisine at its best.
- The fabulous El Fontanal Supper Club with Dinner and Cocktails from 5 p.m. and Dancing from 8:30.
- Complete Cocktail service available 7 days a week.

Sheraton Silver Spring

8727 COLESVILLE ROAD, SILVER SPRING, MD.
 Reservations, Call 589-5200

