







Pomegranate Market

Sioux Falls, SD



CLIENT:

Pomegranate Market

ARCHITECT:

Koch Hazard Architects

CONSULTANTS:

Associated Consulting Engineering, Inc.
RISE, Inc.

CONTRACTOR:

Gil Haugan Construction

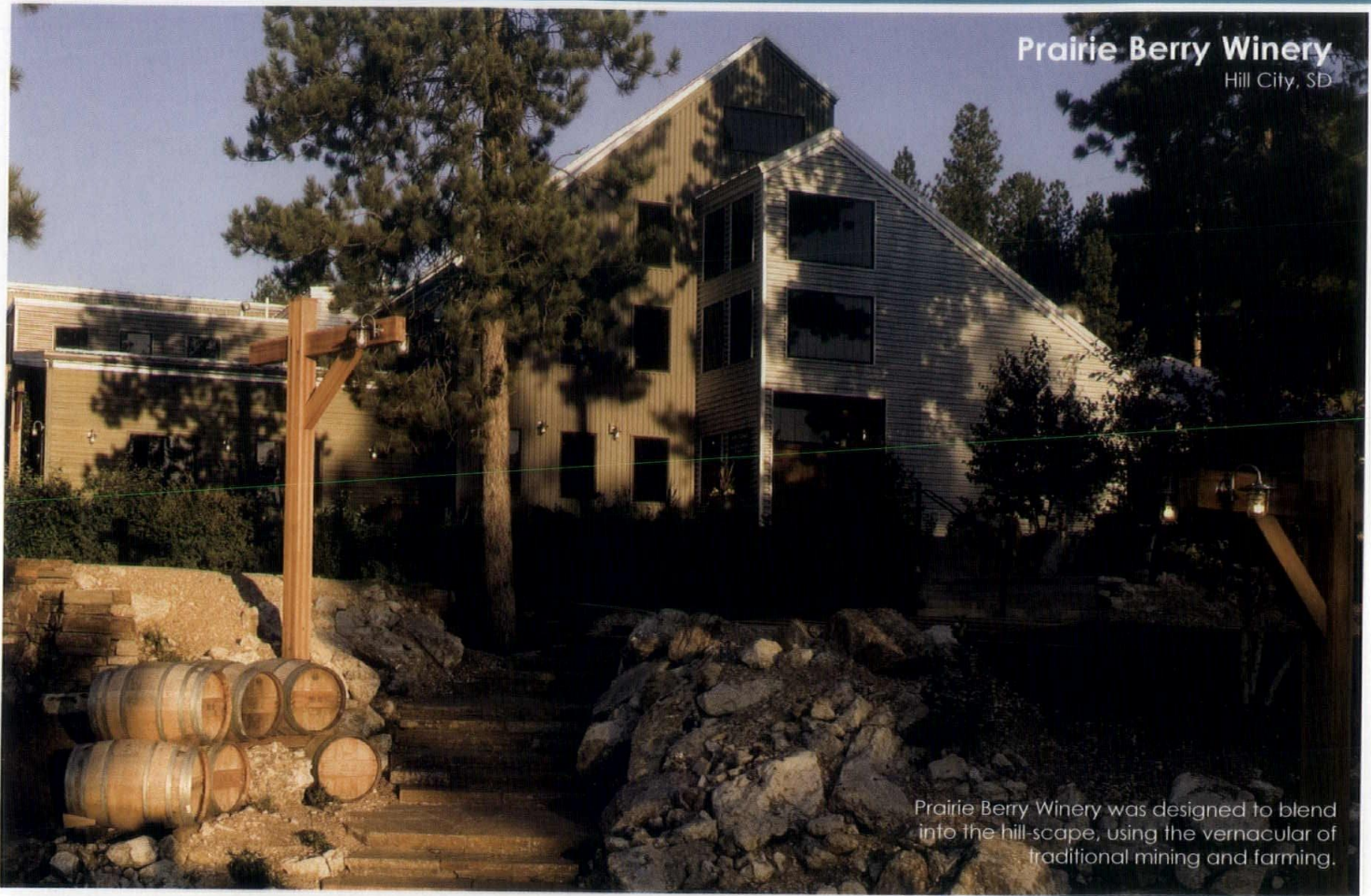
The use of simple, neutral materials, such as natural maple wood, corrugated metal, and polished concrete, provides a background to highlight the products while reinforcing the store's brand. Wood ceiling elements help customers find their way and incorporate specialty lighting that accentuates the merchandise.

The integration of artwork and the market's brand takes place throughout, from the incorporation of a wall-length mural and screened photos that mask office windows to aisle signs that reflect the store's logo.

2011 MERIT Awards

The building layout strikes a balance between accommodating future phases while creating a beautiful guest experience.





Prairie Berry Winery

Hill City, SD

Prairie Berry Winery was designed to blend into the hill-scape, using the vernacular of traditional mining and farming.



Warm concrete floors, local stone and textured plaster walls provide a welcoming backdrop for major events.

CLIENT:

Prairie Berry Winery

ARCHITECT:

Fennell Design, Inc.

Gene Fennell with Lund & Assoc. (phase 1)

Gene Fennell (phases 2 & 3)

CONSULTANTS:

CETEC Engineering Services, Inc.

Skyline Engineering

Tom Keck

Albertson Engineering, Inc.

CONTRACTOR:

Bill Barber, GBA

The additive quality of this building style complemented the winemaking process: from stem removal to packaging, each component was designed to flow with the site, based on an early process sketch provided by the owners. Demand on natural resources was minimized, with an emphasis on water and waste reuse; even manufacturing waste is reused to provide animal feed. Due to careful programming that streamlined the manufacturing process, the facility has become extraordinarily efficient, with the flexibility to grow and expand organically on-site.



The Center's east facade, facing Howard's Main Street, is designed to strengthen the historic downtown streetscape. The tower turns the corner to a contemporary north facade.

Maroney Commons

Phase 2 | Howard, SD



The multi-use restaurant space faces Main Street and incorporates reused wood in its floor and ceiling.



Polished concrete floors and revived wood bleacher seats are highlights of the primary circulation path.

CLIENT:

Rural Learning Center

ARCHITECT:

Koch Hazard Architects

CONSULTANTS:

Goldsmith Heck Engineers, Inc.
Confluence
Structural Engineering Associates
Associated Consulting Engineers, Inc.

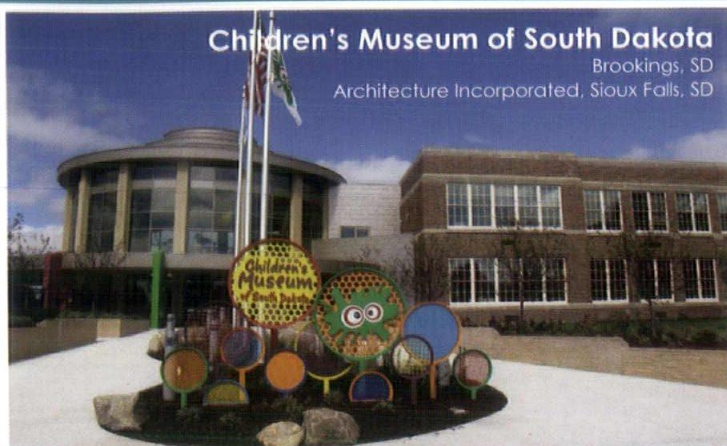
CONTRACTOR:

Henry Carlson Company

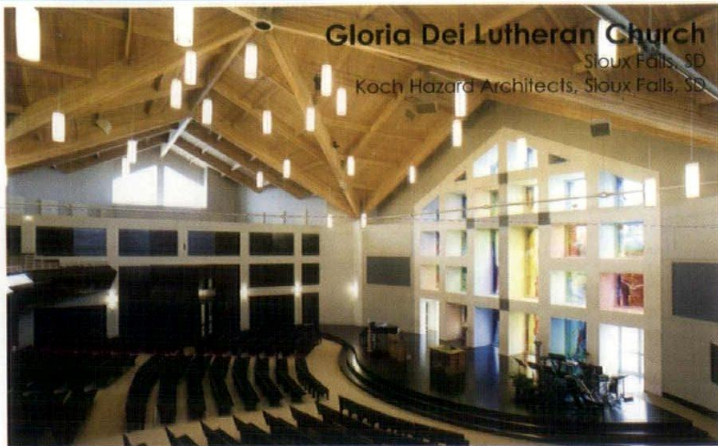
The Maroney Commons project is a major expansion of the organization's existing facility, serving and enhancing their mission with new conference and training rooms, a community kitchen, lodging space, and flexible offices for business incubators. Cutting-edge sustainable technologies and materials are integrated throughout, with interactive displays providing real-time system performance data.

Visitors are welcomed by a new public plaza and are invited to use a series of outdoor spaces, green roofs, and community gardens. The project is targeting LEED® Platinum certification.

Other 2011 Submissions



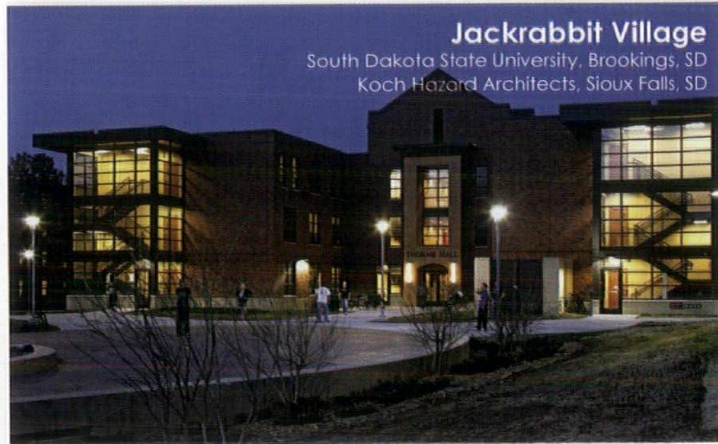
Children's Museum of South Dakota
Brookings, SD
Architecture Incorporated, Sioux Falls, SD



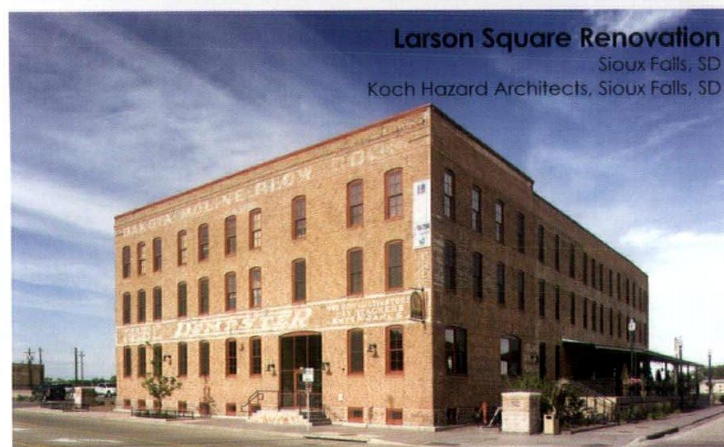
Gloria Dei Lutheran Church
Sioux Falls, SD
Koch Hazard Architects, Sioux Falls, SD



Harrisburg High School
Harrisburg, SD
Architecture Incorporated, Sioux Falls, SD



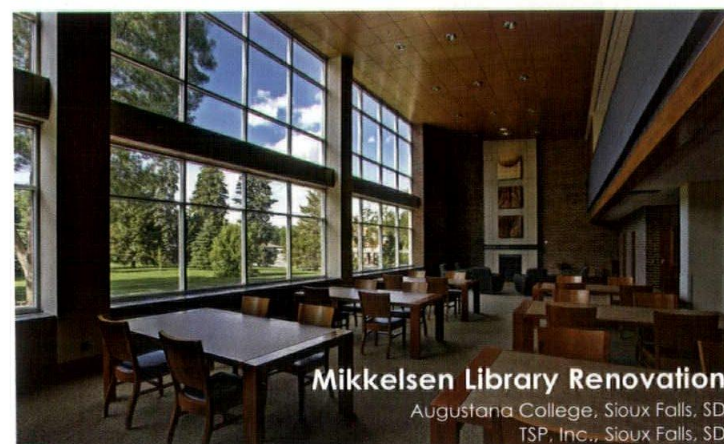
Jackrabbit Village
South Dakota State University, Brookings, SD
Koch Hazard Architects, Sioux Falls, SD



Larson Square Renovation
Sioux Falls, SD
Koch Hazard Architects, Sioux Falls, SD



Longfellow Elementary
Mitchell, SD
Koch Hazard Architects, Sioux Falls, SD



Mikkelsen Library Renovation
Augustana College, Sioux Falls, SD
TSP, Inc., Sioux Falls, SD



Plastic Surgery Associates & Law Office
Sioux Falls, SD
MSH Architects, Sioux Falls, SD

Other 2011 Submissions

Prairie Creek Assisted Living

Sioux Falls, SD
Koch Hazard Architects, Sioux Falls, SD



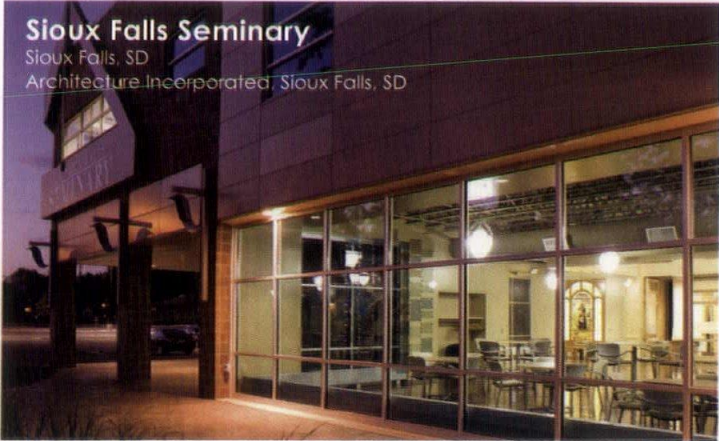
Robl Residence

Canton, SD
MSH Architects, Sioux Falls, SD



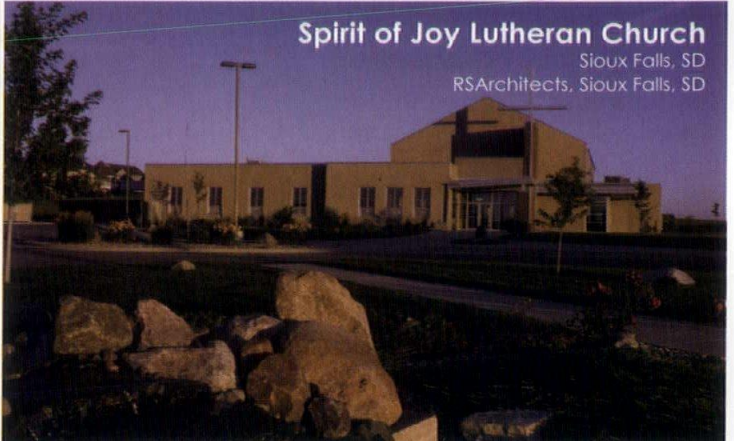
Sioux Falls Seminary

Sioux Falls, SD
Architecture Incorporated, Sioux Falls, SD



Spirit of Joy Lutheran Church

Sioux Falls, SD
RSArchitects, Sioux Falls, SD



2011 Judge



Min | Day Office



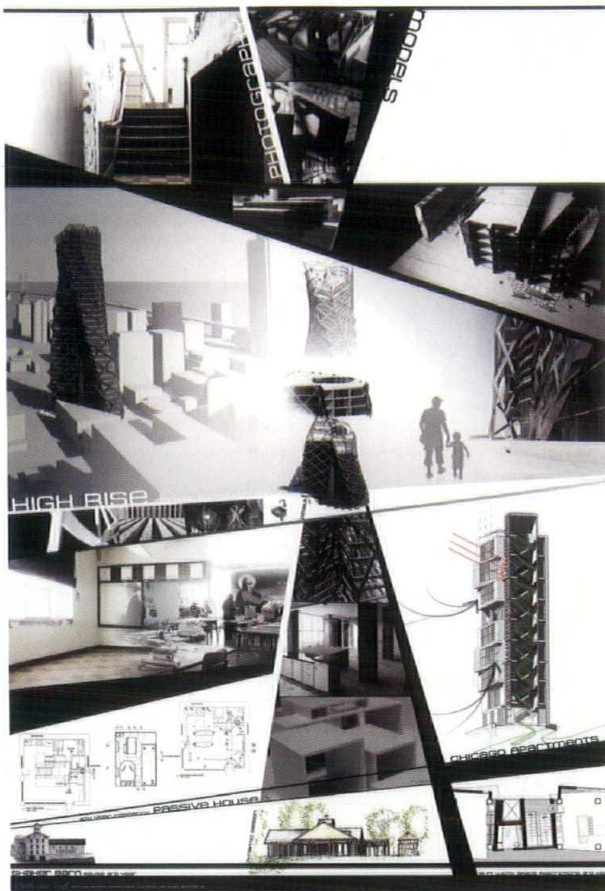
Jeffery L. Day, Min | Day Architects, Omaha, NE
Professor of Architecture and Landscape Architecture, UNL-Lincoln



Jeffrey L. Day, AIA, graduated magna cum laude from Harvard College in 1988, with an AB in Visual and Environmental Studies and received a Master of Architecture from U.C. Berkeley in 1995. At UN-L Jeff runs FACT (Fabrication And Construction Team), an academic/professional collaborative design lab that offers architecture students a forum for exploration of the complex relationships between thinking (conceiving, designing, theorizing) and making. FACT is a "do-tank," a lab in which ideas and new knowledge are developed through action as well as thought. Working with Min | Day, FACT engages design intensive projects and creative, non-profit clients in collaborations that span design and construction. The widely published work of the firm has garnered numerous national and regional AIA awards and other honors including the 2007 AIA California Council Emerging Talent award, the 2009 New Practices San Francisco award, Residential Architect's Rising Star award, *California Home + Design's* 10 To Watch and *Architectural Record* magazine's 2009 Design Vanguard feature.

2011 Scholarship Awards

Ashely Martel: North Dakota State University
Hometown: Aberdeen, SD

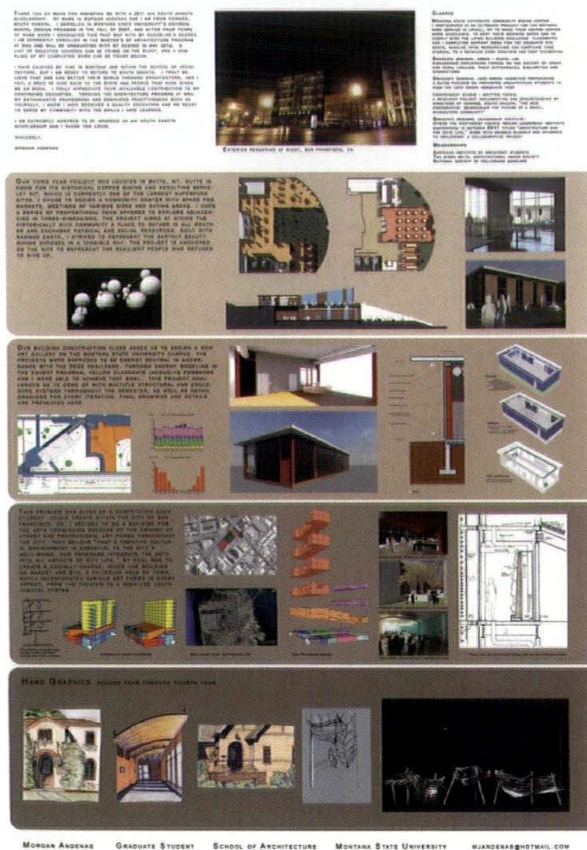


Evan Bliss: University of Nebraska-Lincoln
Hometown: Sioux Falls, SD

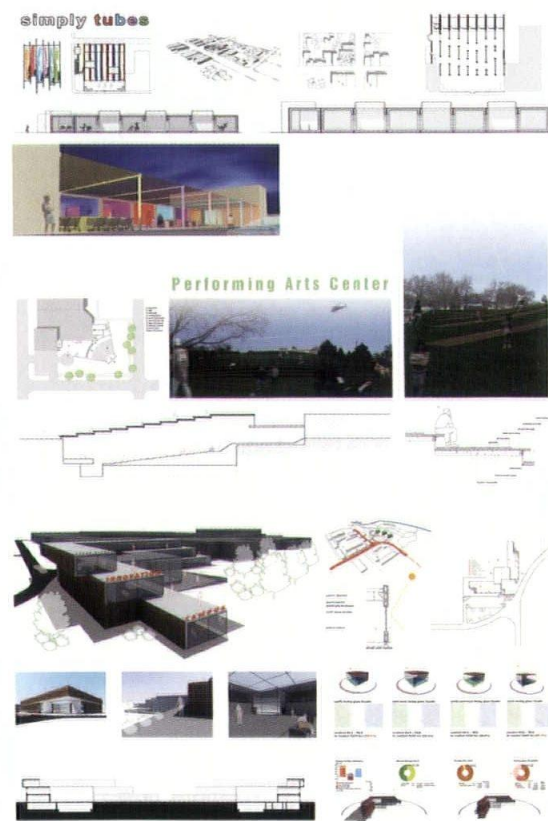
evan wyatt bliss
Bachelor of Science in Design - Architectural Studies

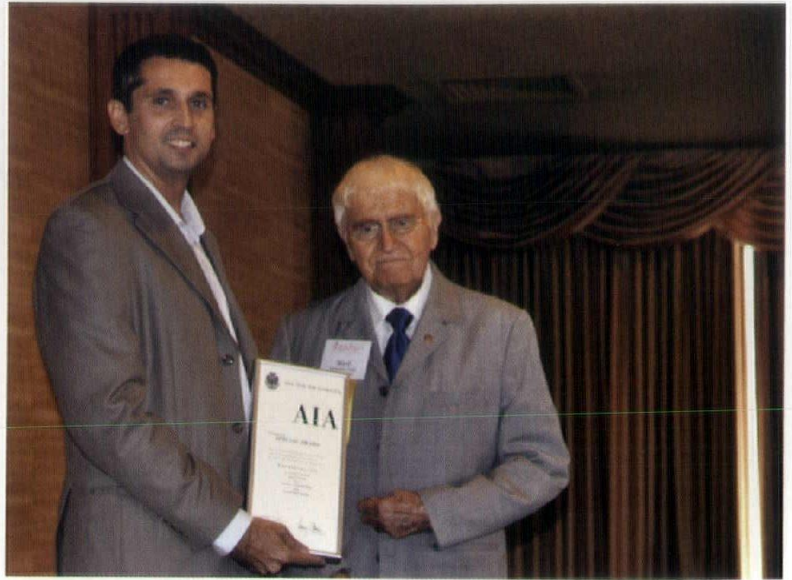


Morgan Andenas: Montana State University
Hometown: Howard, SD



Lucas Fiegen: University of Nebraska-Lincoln
Hometown: Sioux Falls, SD





AIA South Dakota introduced a new category of award in 2011: The President's Award is presented to an AIA member who has demonstrated remarkable passion and dedication to South Dakota communities, the architecture profession, and AIA South Dakota. AIA SD President Larry Crane, AIA, honored Ward Whitwam, FAIA, with the inaugural award for his more than 60 years of service as a celebrated architect and his leadership of AIA South Dakota for 19 years.

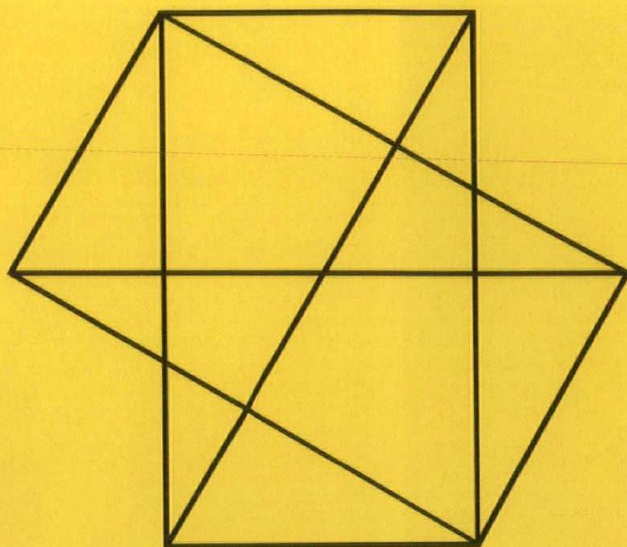
I AM AIA

Engage. Connect. Succeed.

Consider becoming an Allied Member of AIA South Dakota – you'll get insider access to architects and design firms in our state and save money at the same time. Annual membership is just \$100.00!

Join any time! Download a complete packet of detailed information about the benefits of membership at aiasouthdakota.org.

AIA South Dakota



S I O U X F A L L S

**DESIGN
CENTER**

I N F O R M

+

Inform and engage the public on
the **Function** and impact of design
in our community and daily lives.

F U N C T I O N

www.siouxfallsdesigncenter.org

DoArch

YEAR TWO

The Department of Architecture at South Dakota State University (SDSU) began its second year of instruction in fall 2011 with 60 new freshman students. Our first class, now totaling 36, began its second year after a successful inaugural year under the direction of Associate Professor and Department Head Brian Rex. Working through studio projects and pioneering their way across campus, they built work spaces, furniture, and other necessities previously not available or in existence. The DoArch credo of "Learning by Making" seemingly applies to every facet of student life. Studios are now housed in Solberg Hall (in the old engineering drafting rooms), while the Barn continues to be our gallery, pinup space, and administrative home.

The design work from first year has been published in *DRAFT*, the first edition of what will be our annual student portfolio. The book was compiled and edited by second-year student Dustin Jones and includes additional DoArch projects plus commentary from faculty and professionals associated with the program. (Copies of *DRAFT* are available from DoArch and at www.lulu.com.)

The students have also initiated an SDSU chapter of the American Institute of Architecture Students (AIAS). Our first meetings were held during the fall semester, including one with AIA South Dakota President Larry Crane, AIA, and Ward Whitwam, FAIA. AIAS officers were elected at the beginning of spring semester, and events are being scheduled including sponsored lectures, fundraisers, campus outreach projects, and field trips. AIAS and DoArch are working together to formalize the policy on studio culture, an important piece of our accreditation.

In June 2011, DoArch received an exceptionally positive review from National Architectural Accrediting Board (NAAB) member Miguel Rodriguez, FAIA. He met with faculty, students, and donors during his visit and was especially impressed with the familiarity and support of DoArch beyond the confines of campus. Our next visit from NAAB occurs this fall.

With the new class of students came the addition of faculty and staff. Assistant Professor Charles MacBride, AIA, is the new DoArch Professional Program Coordinator. He has taught previously at Iowa State University and the University of Colorado Denver. Geoff Graff is a licensed architect and DoArch studio instructor, having practiced in New Mexico and Colorado. Whitney Parks, project designer at Koch Hazard Architects in Sioux Falls, taught the first of a three-course history sequence in the fall semester. Jennifer Sorenson is the new full-time DoArch Program Coordinator. A search for the next faculty hire began as DoArch prepared for the new incoming class in August 2012. 🍎



CHARLES MCBRIDE, AIA, is Assistant Professor of Architecture and Professional Program Coordinator at South Dakota State University. He is a practicing architect and has previously taught at Iowa State University and the University of Colorado.



SDSU DoArch Class of 2011.

(AFH) ARCHITECTURE IS FOR HUMANITY, RIGHT?



The prototype garden shelter at Avera McKennan's St. Isidore Centennial Garden.

In December 2009, four young Sioux Falls designers met over drinks to discuss ways to get more involved in the community. Each having been influenced by the work of Architecture for Humanity (AfH), the group decided to start a local chapter and add Sioux Falls to the international network of design volunteers who share ideas and help initiate change in their communities. After 2 years, the Sioux Falls Chapter of AfH has grown from 4 to 15 members, in addition to numerous other volunteers, and has completed several exciting projects including participating in a national competition to design an affordable home in New Orleans, building a community tool library in the Pettigrew Heights neighborhood, facilitating a citywide affordable housing competition, and designing a prototype garden shelter.

The Sioux Falls Affordable Housing Competition, sponsored by City of Sioux Falls Community Development and Sioux Falls Housing Corporation, aimed to challenge entrants to create both short-term and long-term affordability, a high-quality life for residents, and replicable strategies that could contribute to the future of affordable housing. A jury made up of an educator, city resident, planner, architect, and other professionals selected Architecture Incorporated's Shift House as the winning competition entry. Shift House was designed to "shift the perception of what affordable housing can be." Construction began in late 2011 and was complete early this spring. The home was sold before it ever entered the market.

The Sioux Falls Chapter's most recent endeavor has been to design a prototype garden shelter at Avera McKennan Hospital's St. Isidore Centennial Garden. The shelter is a prototype for other community gardens around the city of Sioux Falls, as each shelter will highlight a different sustainable building material including gabion construction, rammed earth, straw bale, compressed earth block, and cordwood. The shelter was built by Sioux Falls Construction Company with the support of numerous donors. The sustainable landscape was completed as a community service project, integrating hands-on learning, sustainable concepts, and community stewardship for local volunteers. The garden shelters will serve the local urban agriculture community, providing a place to gather, share information, provide storage for gardening tools, and demonstrate sustainable building techniques.

If you are looking to get involved, join us! The Sioux Falls Chapter of Architecture for Humanity meets the first Wednesday of every month at Monks House of Ale Repute. You can also send us an email at siouxfalls@architectureforhumanity.org or visit us at siouxfalls.architectureforhumanity.org.



WHITNEY PARKS, LEED® AP BD+C, is a founding member and chair of the Sioux Falls Chapter of Architecture for Humanity. She is also a project designer at Koch Hazard Architects.

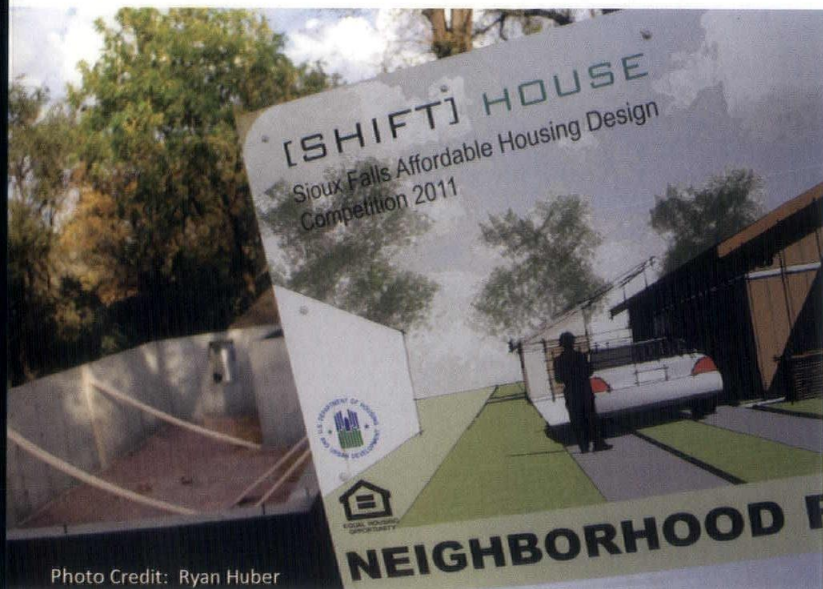


Photo Credit: Ryan Huber

The Shift House under construction.



Photo Credit: Cipher Imaging

Sioux Falls Affordable Housing Competition winner, the Shift House designed by Architecture Inc.

DESIGN:SD

PROJECT HURON

THE MOVIE



TOM REASONER, RA, is a free-range architect practicing in the upper Midwest. He can be reached at tomreasoner@gmail.com.

Projects like this bring in talented people with years of experience doing just what we want to do. Who wouldn't volunteer to have a group like this come in to help their town?¹

It probably looks like the beginning scenes out of a science fiction thriller, where it's a calm, sunny afternoon in a small town somewhere in Middle America. Suddenly a car appears on the horizon, then as the credits unroll another car appears and then another. They all have out-of-county plates, are just this side of fuel efficient, and slowly make their way down Main Street and then back again. The vehicles pull off onto side streets and then resurface a few minutes later from other directions. Could be a mass GPS malfunction, but no, the cars then parallel park in the unmarked diagonal stalls along Main Street. The engines stop; the brake lights dim. All you hear is the sound of NPR's All Things Considered.

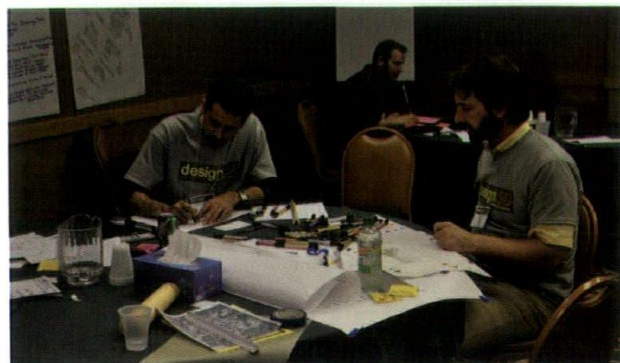
What was it like? I found the process to be overwhelming and awe inspiring at the same time. The design:SD team is a diverse and talented group of professionals who are familiar with small-town America, have experience in projects like ours, and also have interest in the redevelopment of downtown. The pace of the two-day event bordered on frantic.

Suddenly the doors open and out step nonresidents, men and women in black mostly. Designer sunglasses are pocketed or pursed, they stand transfixed as if they have never been to town before. One points, another gestures as others reach for digital paraphernalia. Within seconds they begin to disperse, apparently aimlessly, yet intently—eyes constantly moving, scanning all objects horizontal, vertical, or otherwise inclined. So begins “The Night of The Design Professionals,” aka a design:SD charrette.

There wasn't much “snooping” unless your definition of snooping includes building tours with twenty-some participants. We visited some absolutely wonderful, completely unused spaces in our downtown. Our second (and some third) floors downtown constitute a tremendous, untapped resource.

Each design:SD event is as unique as the community it serves. While many rural issues and concerns may have common ground, each community is its own creation. The men and women in black are design professionals, architects, landscape architects, community and regional planners, interior designers, artists, interns, and students who have volunteered their time and talents to work with community volunteers who share their time, town, homes, businesses, and experiences to help develop and create a community re-vision.

I learned that though my community is unique, what we are suffering from—a few vacant storefronts and upper stories downtown—is not unique across the Middle West and perhaps across the country in similarly situated rural communities. Since we are not unique, we can learn from the experience of others who are already making progress with similar projects.



Larry Crane and Tom Hurlbert during the charrette.

SMITH
JEWELRY

Smith Jewelry - Gifts EST 1909

100 YEARS

100 YEARS

Smith Jewelry
www.smithjewelry.com

PLANNING

www.smithjewelry.com

Through a two-day, nonstop series of interactive communitywide meetings, presentations, tours, work sessions, and bowling (sometimes), the design:SD charrette engages everyone in building a sense of the community and then a renewed sense and strategies of how the community might build and grow in sometimes new and different ways. It's a two-way street, a dialogue where fresh eyes and professional skills and experiences are brought into play alongside the hopes, schemes, and dreams of citizens who are determined to invest in their future with all the resources available and designers who continue to expand their disciplines in real time and place.

The design:SD process and team will reinforce what you already know about your community, will bring a multitude of new ideas to whatever particular area, neighborhood, or community they are asked to focus on. And, they will cause a few glimpses of what should have been obvious to us all (those "aha" moments), but we all live too close and don't see them anymore. The diverse education and experience of the design team provides qualifications to the team that simply can't be replicated in any other process that I've ever participated in. And, add to that, the team has a nice measure of Midwestern cordiality (yup, they're just nice folks) for a learning experience in your community that you just can't replicate at the local coffee shop.

Participants all share and learn from each other in the charrette process. The design team prepares to capture the spirit of a place and its people, which culminates in a group presentation to the community, leaving a visual record as reference and reminder of their work together. The process is intense and exciting and creates a communal buzz that gets everyone thinking out loud and outside the box to see not only clearly, not only what is but what might be: a commitment in the present with the goal of defining a commitment to the future.

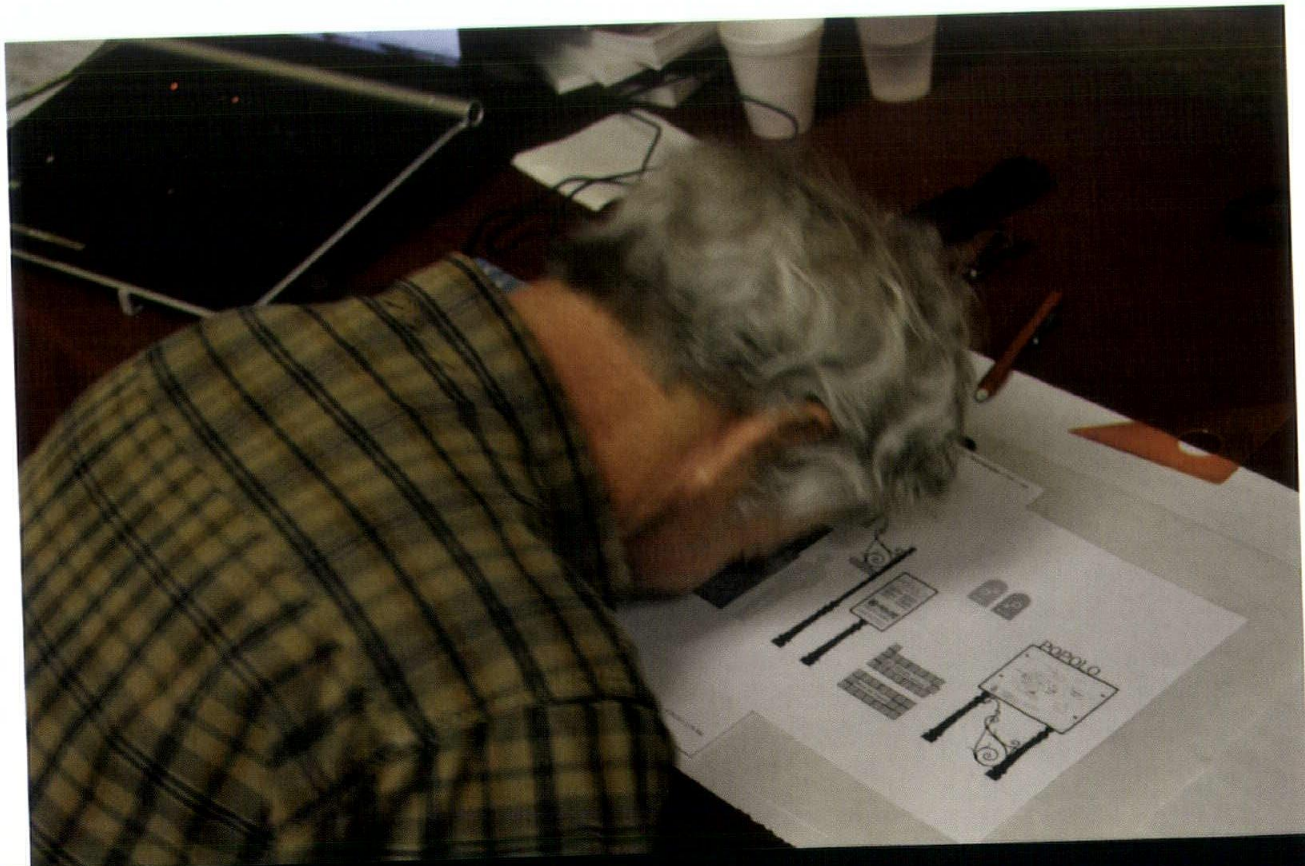
I was impressed by the artistry of your team members. It was surprising to me the different resources that the team had available as they created graphics to illustrate the various points that they were trying to impart.

They were able to take a concept presented in a few minutes of conversation and make it into an artist's rendering in a short period of time.

The design:SD team brought great ideas to our community. Our challenge locally is to determine the best way to implement those ideas.

Endnote

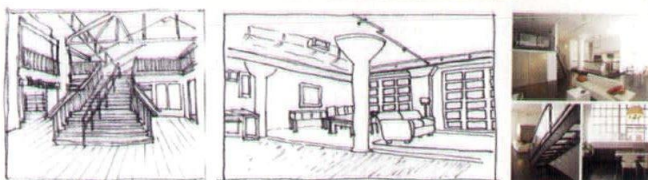
1. Quotes from a post-stress-charretted interview with Ralph Borkowski, City Planner, Huron. 🍷





RESTORE THE
GROUND FLOOR

QUICK FIX:
UPDATED COLORS
REPAIRED NEON
SIMPLIFIED
WINDOWS



DRAW THE EYE
UPWARD



UPDATED FACADE

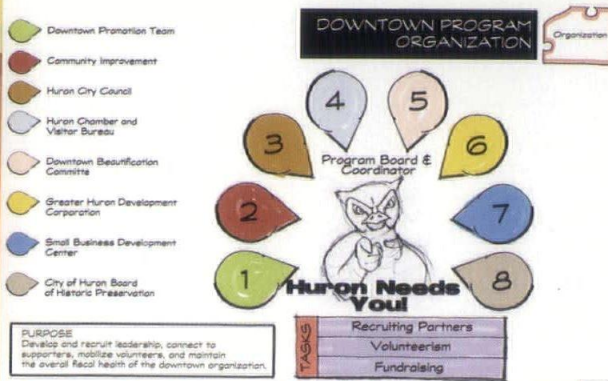
VISIONING PROJECTS



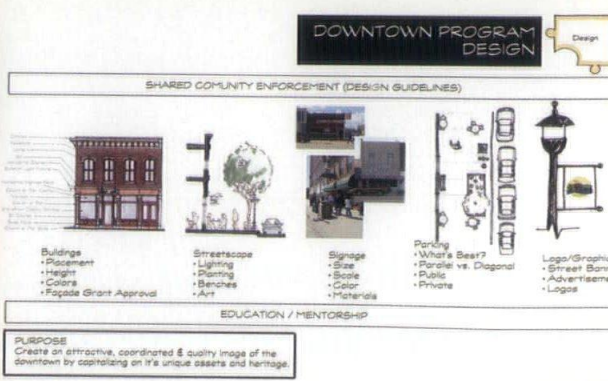
BRINGING PEOPLE DOWNTOWN



FACADE RESTORATION AND IMPROVEMENTS



MAKING IT HAPPEN - ORGANIZATION



MAKING IT HAPPEN - DESIGN GUIDELINES

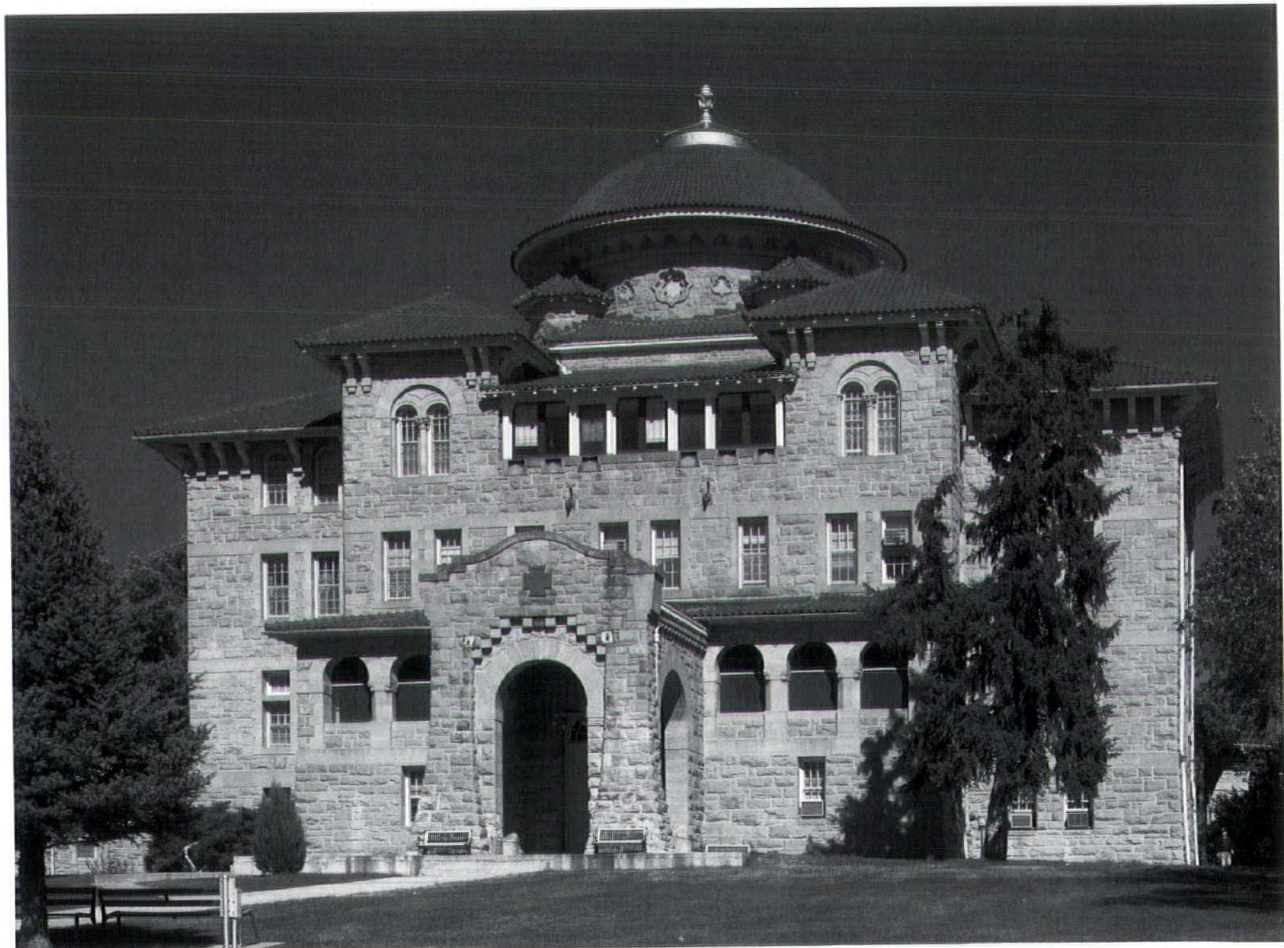
SOUTH DAKOTA LEGACY: THE BATTLE MOUNTAIN SANITARIUM



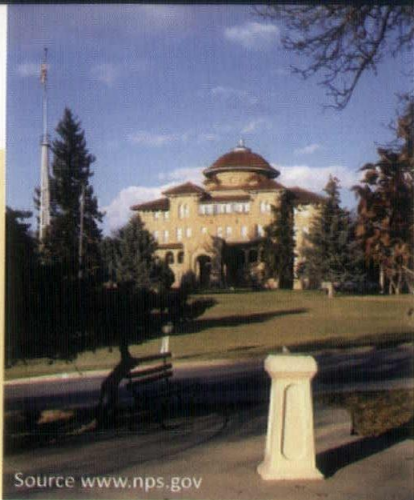
JAY VOGT is Director of the South Dakota State Historical Society and State Historic Preservation Officer. He can be reached at jay.vogt@state.sd.us.

The Battle Mountain Sanitarium¹ in Hot Springs recently became the 16th National Historic Landmark in South Dakota. Now part of the Veterans Affairs Black Hills Health Care System, it was the first national hospital for veterans and the only medical facility for treating those veterans with musculoskeletal conditions and lung problems. Originally part of the National Home for Disabled Volunteer Soldiers, it initially provided care for Union veterans following the Civil War and the Spanish-American War. Prior to the Battle Mountain Sanitarium, veterans only had access to residential institutions.

However, late in the 19th century, veterans' increased medical needs necessitated short-term medical care rather than simply residential facilities. Beginning in the 1890s, the entrepreneurs of Hot Springs embarked on an ambitious plan to turn the town into a health spa. As the community was beginning to develop as a warm-water, mineral-springs health resort and with the state soldiers' home already located in the community, residents of Hot Springs, along with state and local politicians, promoted the town as an excellent location for such a national soldiers' facility.



The Administration/Hospital Building is the primary focal point on the Battle Mountain Campus. The complex features a symmetrical pavilion plan central to the administrative section with six radiating wards all accessed by a circular arcade.



Today the Battle Mountain Sanitarium complex consists of 31 historic and 14 non-historic buildings and 9 other historic and 3 non-historic features

In 1902 Congress authorized and appropriated initial funding for buildings and equipment, and local citizens helped raise money to purchase the land for the facility. Opening in 1907, the Battle Mountain Sanitarium took advantage of the nearby mineral springs to treat muscle, joint, and nerve disorders, while the high, dry air was believed to ease respiratory ills.

Today the Battle Mountain Sanitarium complex consists of 31 historic and 14 non-historic buildings and 9 other historic and 3 non-historic features. The complex overlooks downtown Hot Springs, which is dominated by Richardsonian Romanesque buildings constructed of local pink sandstone. Most of the original buildings still exist and many continue to be used for their primary purposes.

Omaha, Nebraska, architect Thomas Rogers Kimball designed the original buildings of Battle Mountain Sanitarium. He used a Spanish Mission Colonial Revival-inspired style that also incorporated elements of the Richardsonian Romanesque architecture of the town. Although Kimball typically did not go beyond generally accepted designs of his day, he developed beautiful and functional structures that in the case of the Battle Mountain Sanitarium featured rough sandstone, massive walls, rows of arched windows, and vaulted entries. Complementing Kimball's design was the landscape planned by George E. Kessler of Kansas City, Missouri. The complex has a commanding site, and Kessler designed a flowing road and path system. Because the sanitarium was not a residential facility and was already sited in a scenic location, an elaborate landscape was not required. Kimball later served as president of the American Institute of Architects, and Kessler was a founder of the American Institute of Planners.

The Battle Mountain Sanitarium complex features a symmetrical pavilion plan designed around an inner courtyard. The centerpiece of the site is the original administration-hospital edifice, with its prominent dome and ward buildings emanating from the center court with

a fountain. The wards featured sophisticated ventilation systems, ramps instead of stairways, and expansive open porches. This design allowed for the separation of patients based on the type of disease to avoid contamination. An arcade connects the wards with a service tunnel underneath. Original support buildings included a power plant, stable, carriage house, and houses for officers and staff located below the main building. The complex preserves nearly all of the buildings constructed between 1900 and 1930. Few structures were constructed after 1930, and they have been placed outside the historic area and positioned down-slope, outside of primary viewsheds.

Fewer than 2,500 historic places in the United States are National Historic Landmarks. The Battle Mountain Sanitarium in Hot Springs was part of a U.S. Department of Veterans Affairs study to determine the department's nationally significant historic properties. The Secretary of the Interior designated it a National Historic Landmark for its exceptional value and excellence in illustrating the development of a national policy for veteran health care. As the oldest facility in the Veterans Affairs medical system established solely to provide medical care, the Battle Mountain Sanitarium is also highly symbolic of the development of medical benefits for veterans.

1. According to *South Dakota Geographic Names*, edited by Virginia Driving Hawk Sneve (Sioux Falls, SD: Brevet Press, 1973), "BATTLE MOUNTAIN (Fall River Co., alt. 4,431), rising just north of the city of Hot Springs, was so named because it was the scene of an important battle between the Sioux and Cheyenne Indians for the possession of the Black Hills."

Sources

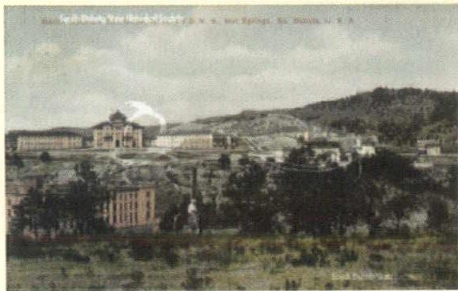
Battle Mountain Sanitarium Web page, accessed at http://www.nps.gov/nr/travel/veterans_affairs/Battle_Mountain_Sanitarium.html on February 23, 2012.

National Historic Landmark Nomination: Battle Mountain Sanitarium, National Home for Disabled Volunteer Soldiers (Draft). Washington, DC: U.S. Department of the Interior, National Park Service, undated. Accessed at <http://www.nps.gov/nhl/Fall10Noms/BattleMountain.pdf> on February 23, 2012.

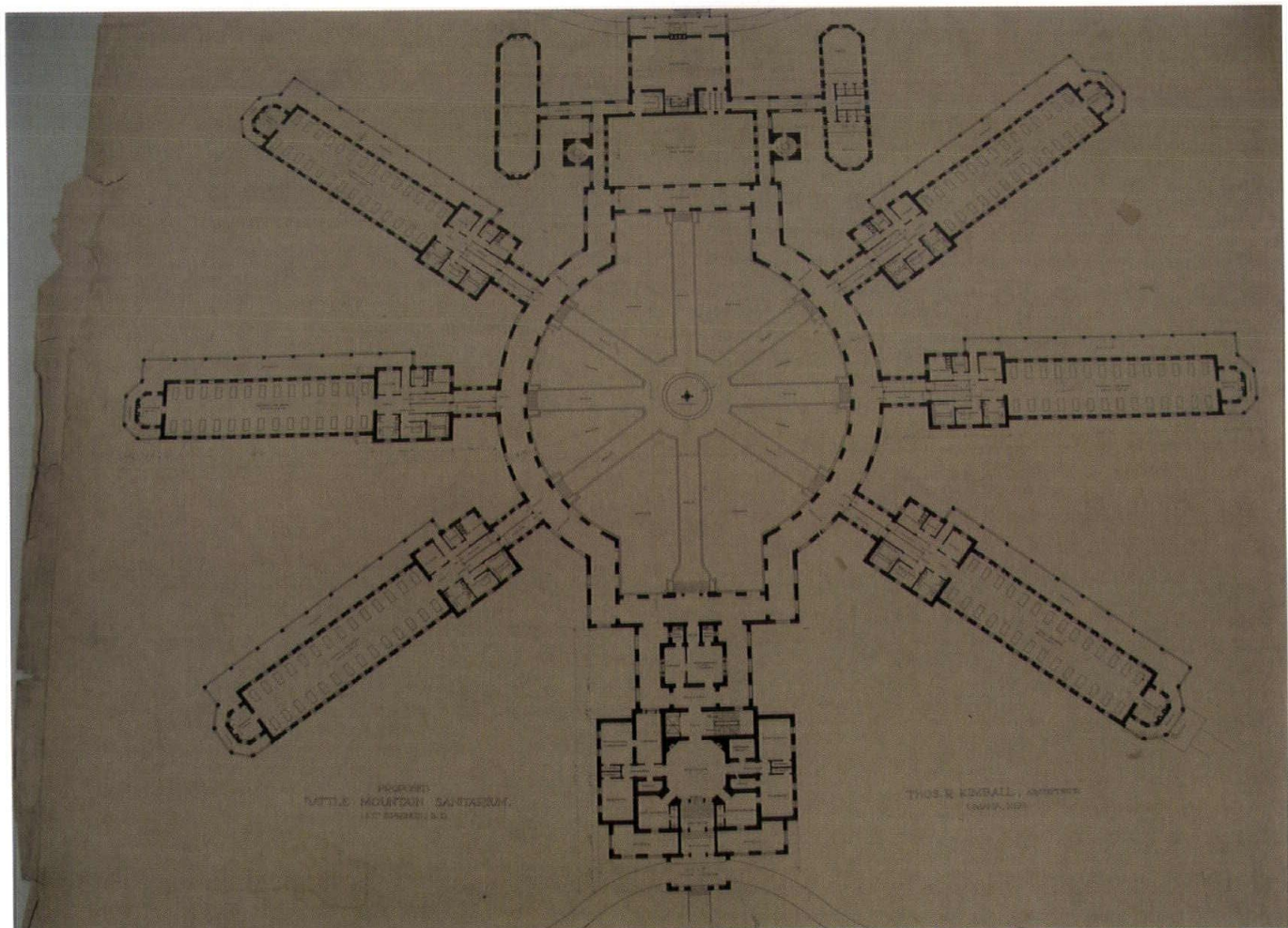
Suzanne Julin, National Home for Disabled Volunteer Soldiers; Assessment of Significance and National Historic Landmark Recommendations (Draft), a study completed in 2007 under a Cooperative Agreement between the National Council on Public History and the National Park Service, Midwest Regional Office. Accessed at <http://www.nps.gov/history/nhl/Downloads/NHDVS/NHDVS%20Draft%20Two.pdf> on February 23, 2012.



Battle Mountain Sanitarium Governor's Residence.



South Dakota Historical Society postcards featuring Battle Mountain Sanitarium.



The Battle Mountain Sanitarium complex features a symmetrical pavilion plan designed around an inner courtyard.



TOP: The Battle Mountain Conservatory was designed to grow flowers and seedlings for garden vegetables used by the facility.

BOTTOM: There are six Hospital Ward Wings, which radiate out from the central court of the hospital complex. Nearly identical, the wards are oriented to include a sheltered porch on one side, and full-sun exposure on the other.



THESE JOKES ARE NOT SUSTAINABLE

YOUNG ARCHITECT'S FORUM



TOM HURLBERT, AIA, LEED® AP At 6 feet 2 inches and 215 pounds, Hurlbert is a hard-throwing right-hander hailing from the Hub City of the Dakotas, Aberdeen, SD. He has 14 starts with a 7-4 record and a 3.28 ERA. He recently threw a complete game shutout and was named player of the week after striking out 12 batters and scattering 9 hits in 2 victories for the CO-OP All-Stars.

Showing case studies of homes to a potential client, I flashed a picture of an award-winning LEED® Platinum house with bunchgrass growing off the roof and modern glass and mechanical louvers all around. Cisterns catch invisible rivers, and wind turbines turn softly in the breeze. My small-town South Dakota client says, "Now that's a hilarious house."

As it turns out, in my experience, many people in South Dakota think "sustainability" is the green equivalent of an Ole and Lena joke—a tiny bit funny, but mostly very stupid.

I suppose sparsely populated, wide-open spaces assist my client's thought process. In South Dakota, we've got room to hide the trash, figuratively and literally. To confuse the issue, sustainability is usually linked politically to liberalism, and liberalism is usually received like a crack on the head in South Dakota. As for me, I try to find humor in the irony of it all.

Pre-supposing I subscribe to the sustainability movement, how do I move forward convincing the aforementioned client about the merits of green architecture? Facts. I enjoy facts. Facts can persuade people. Facts* are usually accurate. Did you know sustainability has more facts* written about it than any other topic? (Hurlbert, *Architecture South Dakota*, 2012).

Fact: Buildings in the United States are responsible for 39 percent of our total energy consumption. Fact: 60 percent of our electricity use comes from buildings. Fact: Transportation uses 27 percent of energy consumption. Fact: By building green, you will save money (anywhere from zero to infinity). Fact: My

client's green house will keep the oceans from swallowing Rhode Island. Fact: Rhode Island is similar in size to Day County, South Dakota. Fact: If every U.S. household replaced one old-timey light bulb with one ENERGY STAR light bulb, we would prevent 9 billion pounds of greenhouse gas emissions per year. Fact: There are 3,618 housing units in Day County, and one ENERGY STAR bulb in each Day County home would probably save 19 pounds of greenhouse gasses.

My client is unimpressed with my facts and explains to me that my facts are more or less estimates and generalities and that the oceans won't swallow Day County, or even Rhode Island, and that higher levels of CO₂ existed 15 million years ago during the Middle Miocene period, and 400,000 years of ice core research indicate dramatic swings in CO₂ levels over the last four ice ages.

Incidentally, my aforementioned client is from Webster, South Dakota, the county seat of Day County. (I should've gone with Faulk County; it's 1,000 square miles in size and far less controversial—fact.*)

So here's my imbroglio: my client believes sustainability is hype. He has the audacity to give me facts showing that solar energy will only supply a fraction of our nation's energy needs (currently, well under 1 percent of our nation's energy use). He says "green" might even be a hippy, left-wing, liberal, big-government conspiracy. I tell my client I'm a registered independent, and he says, "Even worse." He says I should keep my RECs (renewable energy credits) to myself because trading carbons is like giving the corner wino

some fancy Chilean red just to have him stop pestering me. I tell my client that doesn't even make sense and anyways I always buy California wine, but it doesn't matter.

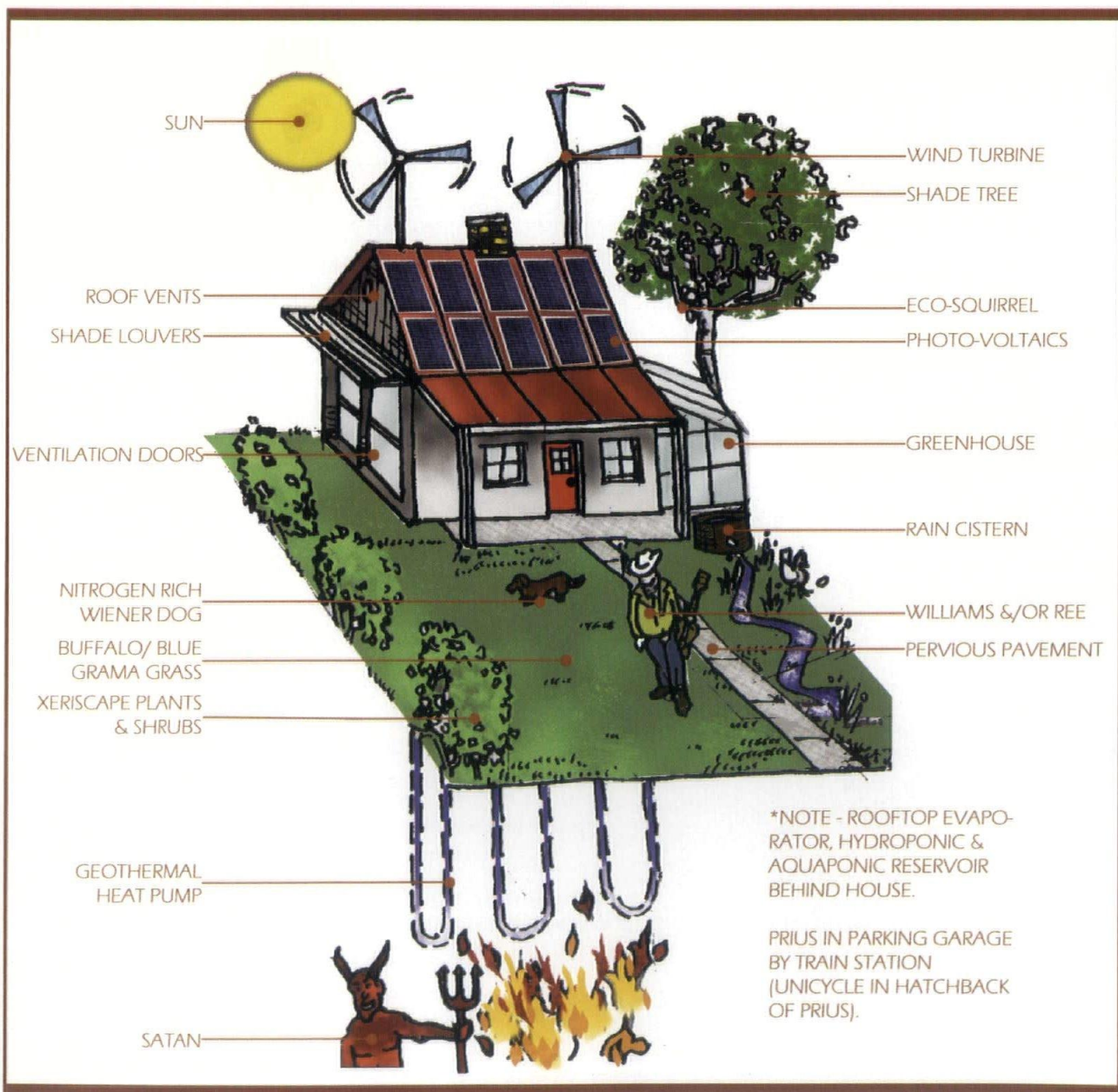
I've lost my chance at greening him.

But you know what? That's copacetic with me. Because my client doesn't need a house with bunchgrass roofs and windmills and cisterns to be "sustainable." It can just be plain old "sensible" architecture. I may not get a LEED sticker, but as an architect, I (and the profession in South Dakota) can go green without overtly advertising. According to the U.S. Department of Energy's Building

America Program, an integrated, systems-engineering approach can reduce as much as 50 percent of the energy consumption of a new home—with little or no impact on the cost of construction. Thus, my client can get many of the benefits of sustainability, including savings and quality, without paying a penny more. And that's a fact.

Say, you ever hear the one about when Ole tried to calculate the azimuth angle on the barn's solar panels? It's a good one. But mostly stupid.

Note: Facts with an asterisk () by them are not really facts. Some aren't even coherent opinions. 🍷



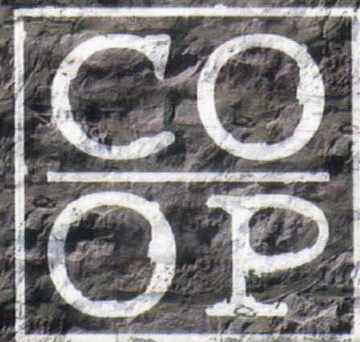


909 East 50th Street North
Sioux Falls, South Dakota 57104
P: 605-335-5512 F: 605-335-0773
1-800-354-5512
www.geotekeng.com



Geotechnical Engineering · Construction Materials/NDT
Environmental · Indoor Air Quality/Industrial Hygiene

co-op architecture ~ www.co-oparch.com



ARCHITECTURE



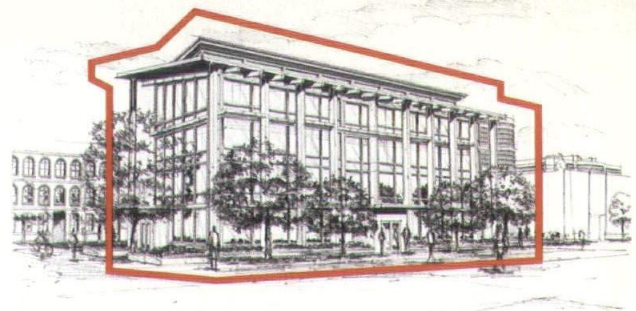
Protect Your Projects – One Contract at a Time.

AIA Documents-on-Demand®

The Contracts You Need – Whenever You Need Them

Draft your contracts with the insight and experience of the industry's brightest legal minds – in a quick, compact format. AIA Documents-on-Demand enables PC and MAC users to select individual documents from the AIA's most popular contracts and fill them out electronically with an easy-to-use, web-based service. Enjoy the peace of mind that comes with using the most widely accepted and time-tested documents in the industry.

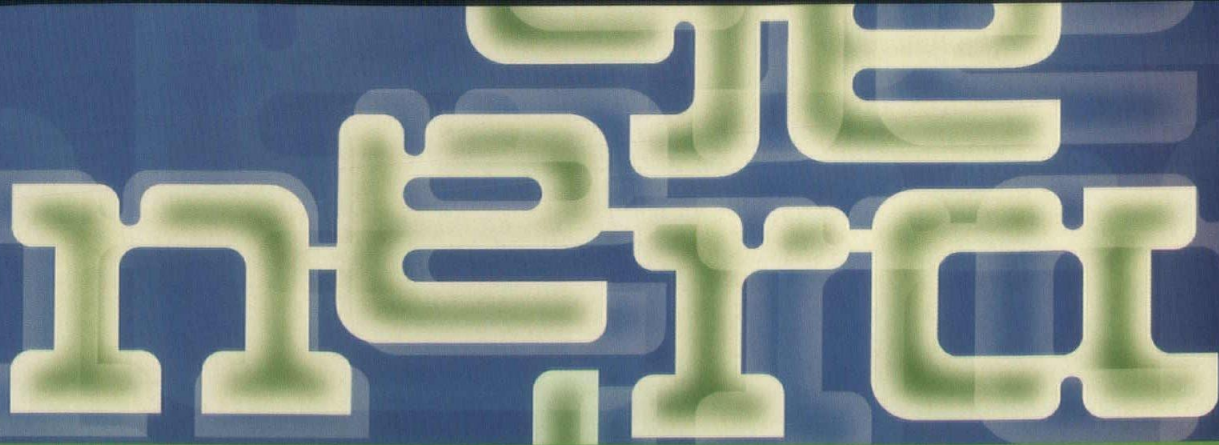
AIA Contract Documents® | aia.org/contractdocs
THE INDUSTRY STANDARD.



- **Choose from over 70 of AIA's most popular forms and contracts**
Easy-to-use, web-based tool is accessible any time, from anywhere.
- **Purchase only the documents you need**
Ideal for firms with limited budgets and smaller projects.
- **Compatible with both Mac & PC platforms**
Save time with reliable, easy-to-complete electronic documents*.
- **Focus more on the project, less on the contract**
Widely accepted and balanced fairly for all parties involved – get off to a smart start with AIA Documents-on-Demand.

For more information visit documentsondemand.aia.org.

*While a customer can complete the document electronically, there is limited editing capability, and the document is meant to be shared in hard copy.



Firm Profiles

ACV2 ARCHITECTURE, LLC.

AcV2 architecture

713 7th Street, Dahl Arts Center
Rapid City, SD 57701
605.484.6071
www.acv2architecture.com
Established: 2010

Principal

Patri Acevedo, AIA, NCARB

Firm Description/Philosophy

AcV2 is passionate about revitalizing town centers throughout the Black Hills and Great Plains, which we accomplish by initiating sustainable development and preserving our historic buildings. AcV2 specializes in adaptively reusing existing buildings and creating infill solutions that catalyze smart growth and renewal.

Recent Projects

Vertex Sky Bar, Outdoor Areas, Rapid City, SD;
Hawkeye Valley Mill, Wessington Springs, SD;
Murphy's Bar & Grill Patio, Rapid City, SD;
Dakota Soda Company, Rapid City, SD

ARCHITECTURE AUTOMATED, INC.



Burnside Business Center
2108 W. Burnside St., Ste. 3
Sioux Falls, SD 57104
605.351.2457
Fax 605.336.3708
archauto@midconetwork.com
Established: 1986

Principal

Gene Murphy, AIA, NCARB

Firm Description/Philosophy

AAI is a full service architectural firm offering a wealth of experience

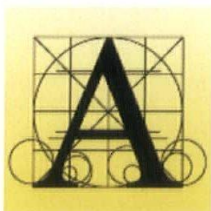
in all parameters of design, but especially in the fields of educational, ecclesiastical, and governmental design.

Our geographical range extends from the far reaches of South Dakota to Southwestern Minnesota. We pride ourselves in our dedicated service to our clients with representation extending through the one-year construction warranty period.

Recent Projects

School Facilities Expansion, Sioux Valley School District, Volga, SD;
School Facilities Expansion, Dupree School District, Dupree, SD;
Sioux Falls Area Complex, South Dakota Department of Transportation, Sioux Falls, SD;
Worship Center Expansion, St. Matthew Lutheran Church, Worthington, MN

ARCHITECTURE INCORPORATED



415 S. Main Ave.
Sioux Falls, SD 57104
605.339.1711
Fax 605.339.2331
mail@architectureinc.com
www.architectureinc.com
Established: 1976

Additional Location

Rapid City, SD

Principals

Alan Richard Dempster, AIA, LEED®AP – President
Mark Aspaas, AIA – Vice President
Steven Jastram, AIA – Corporate Secretary

Elizabeth Squyer, AIA – Principal Architect

Patti Monson, Assoc. AIA, LEED® AP – Principal Production Manager
Sarah Aldinger, AIA, LEED® AP – Principal Architect
Mitchell Aldinger, AIA, LEED® AP – Principal Architect
Lisa VandeVoort, LEED® AP – Principal Business Manager
Kristine Bjerke, AIA, LEED® AP

Firm Description/Philosophy

Founded in 1976, Architecture Incorporated in Sioux Falls, South Dakota, has firmly established its reputation as a regional leader in innovative and award-winning design. In 2010, we broadened our state-wide presence by opening an office in Rapid City, South Dakota. As a well-diversified design firm, our awards are as varied as our portfolio. Indeed, we are proud to be architects of distinction, earning national recognition and designing for international clients. However, our pride is deepened by the fact that many of our awards represent the priority we place on listening. We listen to our clients. We listen to each other. Our philosophies are simple. Respect History. Preserve Beauty. Build Longevity. Embrace Stewardship. Advocate Sustainability. Create Innovation. Enhance Living. Imagine Better.

Recent Projects

Minnehaha County Courthouse Vertical Expansion, Sioux Falls, SD;
Children's Museum of South Dakota, Brookings, SD;
Sanford Children's Clinic, Duncan, OK;
Dakota Middle School Theatre Renovation, Rapid City, SD

BAFFUTO ARCHITECTURA



baffuto architettura

623 West Boulevard
Rapid City, SD 57701
605.341.7501
Fax 605.341.7501
bbaffuto@aol.com
Established: 1998

Principal

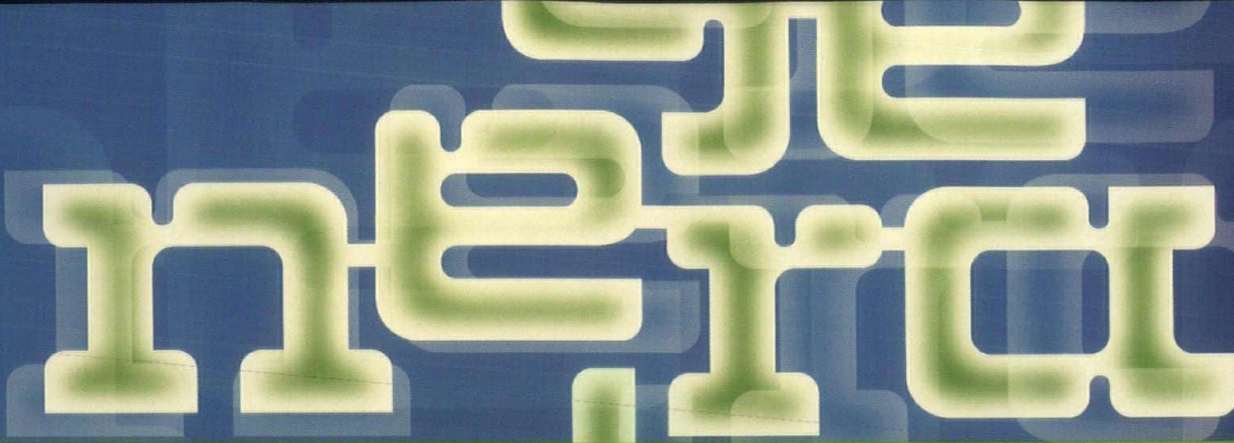
Thomas Baffuto, AIA/NCARB - Principal Architect & Owner

Firm Description/Philosophy

A design oriented architectural firm established by the desire to offer meaningful design through the "art" and "technology" of architecture, baffuto architettura seeks to work with enthusiastic clients interested in creating a new vision for their special projects. Mr. Baffuto, AIA, is known for his creative design work that integrates client needs in programming and planning, into building solutions that are alive with architectural detail and functional expression.

Recent Projects

Rapid City Fire Stations #4, #7, and #9, Rapid City, SD;
Thirsty's Outdoor Garden Dining, Rapid City, SD;
Historic Kleemann House Rehabilitation and Addition, Custer, SD;
Veterans Outreach Center Addition to the Cornerstone Rescue Mission, Rapid City, SD



Firm Profiles

BALDRIDGE & NELSON ARCHITECTS AND ENGINEERS, INC.



408 W. Lotta St., Ste. 2
Sioux Falls, SD 57105
605.334.2841
Fax 605.334.2841
jeff.nelson@baldrige-nelson.com
Established: 1982

Additional Location
Amherst, VA

Principals

Jeffrey J. Nelson, AIA - President
Sherry R. Nelson, AIA - President

Firm Description/Philosophy

Baldrige & Nelson Architects and Engineers, Inc. believes that quality design comes from a total commitment to each individual project. Every client has unique and important needs. Our team of professionals ensures that these needs are met through programming, design, and communication. Our goal in working toward the successful completion of each project is exemplified in our design philosophy. It simply states:

"Quality architecture is never an accident. It is the result of good design, sincere effort, intelligent direction, and skillful execution."

Recent Projects

Madison High School Additions and Renovations, Madison, SD;
South Dakota State University, Student Union Renovations, Brookings, SD;
Kadoka Schools Renovation, Kadoka, SD;
South Dakota State Library, MacKay Building Renovation, Pierre, SD

BANNER ASSOCIATES INC.



409 22nd Ave. South
Brookings, SD 57006
605.692.6342
Fax 605.692.5714
contact@bannerassociates.com
www.bannerassociates.com
Established: 1947

Additional Locations

Sioux Falls, SD
Rapid City, SD
Vermillion, SD
Pipestone, MN
St. Peter, MN

Principals

Daryl Englund, PE - President
David Odens, PE - Principal
Richard Salonen, PE - Principal
Timothy Connor, PE - Principal
Dennis Micko, PE - Principal

Firm Description/Philosophy

Banner Associates is a multidiscipline engineering and architectural firm dedicated to developing innovative solutions for our client's specific needs. To best serve our clients we offer the personalized service that a small firm provides, along with the proficient and knowledgeable staff and resources that a large firm offers. Virtually all projects have numerous disciplinary facets. As a multi-disciplined firm with a cross section of expertise available, we will tailor a team of qualified and experienced professionals backed by skilled technical and support staff, to provide the level of expertise and service that is precisely right for each project. Banner's wide range of expertise includes architecture; civil/transportation, municipal, and structural engineering; land development; water resources planning and development; water storage, distribution, and treatment; wastewater collection and treatment; and GIS and surveying.

Recent Projects

SDSU Innovation Center, Brookings, SD;
SDDOT Region/Area Office Addition, Pierre, SD;
Camelot Intermediate School, Brookings, SD;
SDDOT Brookings Area Maintenance Facility, Brookings, SD

CO-OP ARCHITECTURE



205 6th Ave. SE, Ste. 301
Aberdeen, SD 57401
605.725.4852
tom@co-oparch.com
www.co-oparch.com
Established: 2011

Additional Location
Sioux Falls, SD

Principals

Thomas Hurlbert, AIA, LEED® AP
Kyle Raph, LEED® AP

Firm Description/Philosophy

We're a South Dakota firm with a simple philosophy, "Let's have better architecture in our own backyard!"

Recent Projects

Aberdeen Housing Authority Remodel, Aberdeen, SD;
The Bishop's Residence Remodel, Sioux Falls, SD;
2nd Street Corridor Hotel and Retail Development, Rochester, MN;
Olive Drive Patio Homes Development, Aberdeen, SD;
Simmons Elementary School Renovation and Addition, Aberdeen, SD;
Presentation College Campus Improvements, Aberdeen, SD

FENNELL DESIGN, INC.



■ ARCHITECTURE
■ INTERIORS
■ PROJECT
MANAGEMENT

201 Main Street, Suite 201
Rapid City, SD 57701
605.716.0520
Fax 605.716.0521
gene@fendesinc.com
www.fennelldesigninc.com
Established: 2006

Additional Location
Custer, SD

Principals

Gene Fennell, AIA, LEED® AP - President
Tanya Davis, DArch, LEED® AP
Cindy Chapman, NCIDQ

Firm Description/Philosophy

Our philosophy is simple and direct. We are dedicated to great design and the satisfaction of our clients. Composed of talented professionals, our firm offers an integrated team working collaboratively to provide a robust and comprehensive design process. We are committed to excellence.

Recent Projects

Pennington County Campus Expansion: Administration, Evidence/Energy Plant & Site, Rapid City, SD;
Custer County Courthouse, Custer, SD
Custer Regional Hospital Clinic and Emergency Services, Custer, SD;
Prairie Berry Winery Phases IV and V, Hill City, SD

FOURFRONT DESIGN, INC.



517 7th Street
Rapid City, SD 57701
605.342.9470
Fax 605.342.2377
kanderson@4front.biz
Established: 2006

Additional Location
Spearfish, SD

Principals

Bryan S. Vulcan, PE - President/CEO
Curt Huus, PE/LS - VP/COO
Ken Anderson - VP/CFO

Firm Description/Philosophy

The name FourFront Design, Inc. reflects the four core values of our firm: quality, cost-effectiveness, sustainability, and commitment to the community. Our primary disciplines include architecture; interior design; civil, mechanical, and electrical engineering; landscape architecture; planning; and surveying. These services are backed by our promise to serve clients with leading-edge, award-winning services in a professional practice. With more than 50 staff and professionals, FourFront Design, Inc. proudly serves clients throughout the continental United States from offices in Rapid City and Spearfish, South Dakota, and Gillette, Wyoming. FourFront Design employs LEED AP-certified professionals and is at the forefront of sustainable design.

Recent Projects

Main Street Square, Rapid City, SD;
Western Dakota Tech, Mickelson Expansion, Rapid City, SD;
Toyota of the Black Hills, Rapid City, SD;
South Dakota National Guard Joint Force Headquarters Readiness Center, Camp Rapid, SD;

GALYARDT ARCHITECTS INC.



1506 Mt. View Road, Ste. 102
Rapid City, SD 57702
605.343.5282
Fax 605.343.2378
gemgold@aol.com
Established: 1968

Principal

Gary E. Galyardt, AIA - President

Firm Description/Philosophy

GAI provides architectural and planning services for educational and recreational facilities, commercial offices and retail buildings, government and community-use facilities, industrial and warehouse facilities, and multi-unit housing. Our philosophy of combining strong design skills along with practical technical skills, as well as providing personal attention to our clients, creates projects that are responsive to our clients' programs and budget constraints, resulting in successful projects and satisfied clients.

Recent Projects

Easyriders Saloon and Steakhouse, Sturgis, SD;
Samson USA Manufacturing Plant, Sturgis, SD;
St. Francis Mission New Administration Building and Recovery Addition, St. Francis, SD;
United Blood Services Building, Mitchell, SD

HKG ARCHITECTS



524 South Arch Street
Aberdeen, SD 57401
605.225.6820
Fax 605.227.7770
dean@hkgarchitects.com
www.HKGarchitects.com
Established: 1952

Principal

Dean Marske, AIA

Firm Description/Philosophy

For more than five decades, we at HKG Architects have been empowering our clients to grow and expand by bringing their visions to life. Our technical know-how means your project stays on schedule. And our years of experience mean we know how to operate easily within any budget. From beginning to end, we keep you in the loop through every phase of the project. With unparalleled access to our experts, you get the personal touch you deserve.

Recent Projects

Northern State University Barnett Center Addition, Aberdeen, SD;
McLaughlin Middle and High School, McLaughlin, SD;
North Central Farmers Elevator Office Building, Ipswich, SD;
NorthWestern Energy Office Building, Aberdeen, SD

KOCH HAZARD ARCHITECTS



KOCH • HAZARD
ARCHITECTS

431 North Phillips 200
Sioux Falls, SD 57104
605.336.3718
www.kochhazard.com
Established: 1961

Principals

Jeff Hazard, AIA, LEED® AP
Chris Schiltz, AIA
Stacey McMahan, AIA, LEED® AP
Todd Stone, AIA
Tony Taylor, Assoc. AIA
Keith Thompson, Assoc. AIA, LEED® AP
Ed Lund, Assoc. AIA

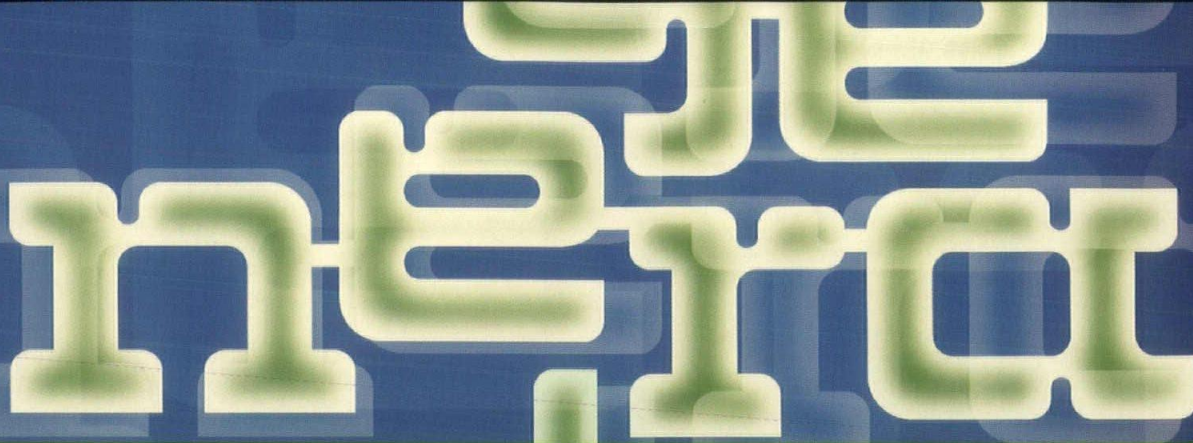
Firm Description/Philosophy

Koch Hazard Architects focuses on client mission and vision, providing thoughtful advice, responsive management, insightful design, comprehensive documentation, and diligent follow through, building lasting relationships.

The firm provides architecture, planning, and interiors services in South Dakota, Minnesota, Iowa, and Nebraska. Firm expertise includes education, healthcare, and recreation facilities; governmental and cultural facilities; churches; multifamily, senior residential, and mixed-use facilities; and sustainable development, preservation, restoration, and adaptive reuse. Koch Hazard's work has received numerous local, regional, and national professional and civic awards.

Recent Projects

Sioux Falls Events Center, Sioux Falls, SD; National Music Museum, Vermillion, SD; Jackrabbit Village, Brookings, SD; University of South Dakota Sanford School of Medicine, Vermillion, SD



Firm Profiles

KROEGER COMPANY

630 Westwind Dr.
Rapid City, SD 57702-2068
605.341.9746
www.kroegercompany.com
Established: 1995

Principal

Jean R. Kroeger II, AIA, NCARB,
CCS, MCRP

Firm Description/Philosophy

The Kroeger Company specializes in architecture, construction management, quality control, scheduling, and construction claims consulting. Mr. Kroeger draws on his experience in architecture and construction to provide clients with comprehensive design and construction consulting services.

Recent Projects

Custer School District, High School (2005), Elementary School (2011), Custer, SD;
BAE/US Combat Systems, Aberdeen, SD;
Total Environmental Restoration Contract (TERC), Ellsworth Air Force Base, SD;
Denver International Airport Office Building, Denver, CO

LUND ASSOCIATES LTD.

1621 Sheridan Lake Road
Rapid City, SD 57702
605.348.3555
Fax 605.348.6254
lund@lundltd.com
www.lundltd.com
Established: 1980

Principal

Cam Lund - President

Recent Projects

Deadwood Mountain Grand — Hotel/Casino/Entertainment Center, Deadwood, SD;
Deadwood Gulch Resort Remodel, Deadwood, SD;
Chadron Community Hospital, Chadron, NE;
Black Hills Community Bank, Rapid City, SD;
Days of '76 Museum, Deadwood, SD;
VA Black Hills Health Care System, Renovation of Primary Care, Hot Springs, SD

MANNES ARCHITECTS

800 Douglas Avenue
Yankton, SD 57078
605.665.1852
Fax 605.665.1875
info@mannesarchitects.com
www.mannesarchitects.com
Established: 1982

Principals

Glenn H. Mannes, AIA - Principal/
Owner
Sarah Mannes Homstad - Project
Architect

Firm Description/Philosophy

We provide comprehensive services for clients in Southeast South Dakota and Northeast Nebraska, putting our experience and expertise to work for clients that range from congregations and communities to factories and families. We take pride in our thorough process, thoughtful approach, and attention to detail, striving to achieve practical, economical design solutions that engage occupants and enhance communities.

Recent Projects

Dakota Trailer Manufacturing, Inc., Yankton, SD;
City of Yankton Fire Department, Station #2, Yankton, SD;
Cedar County Courthouse Addition and Remodel, Hartington, NE;
Yankton School District Administration Building and Bus Barn, Yankton, SD

MSH ARCHITECTS



625 S. Minnesota Ave., Ste 204
Sioux Falls, SD 57104
605.332.7850
Fax 605.332.3539
robin@msharch.com
www.msharch.com
Established: 1989

Principals

Robin Miller, AIA - CEO
David Sellers, AIA - Principal
James Heroux, AIA - Principal
Adam Alrubaie, International Assoc. AIA, ARB, RIBA - Healthcare Design Partner

Firm Description/Philosophy

MSH Architects delivers innovative, timely, and cost-effective solutions with full respect to our client's budgets. MSH specializes in healthcare, sports, commercial, church, and government projects. Our principals come from major markets with extensive national experience. The firm draws from this rich and diverse national experience.

Recent Projects

Capitol Lake Plaza, LEED®, Pierre, SD;
Plastic Surgery Associates of South Dakota, Sioux Falls, SD;
University of Sioux Falls NCAA Division II Athletic Complex, Sioux Falls, SD;
Church of Jesus Christ of Latter-day Saints, Multiple Locations

PERSPECTIVE, INC.



196 E. 6th Street, Suite 100
Sioux Falls, SD 57104
605.271.9877
Fax 605.271.9879
info@perspective-inc.com
www.perspective-inc.com
Established: 2007

Principals

Larry Crane, AIA, LEED® AP -
Architect/Partner
Jim Bruget - Project Manager/Partner

Firm Description/Philosophy

Perspective seeks to visually process information, objects, and space in their true relation. Perspective, Inc., is Sioux Falls' progressive architectural and interior design studio, providing a fresh vision, purposeful design, and client-focused service. Full of energy and passion for design, Perspective's team works with clients to create a vision for their project. The team has extensive experience in hospitality, health care, and corporate building projects. Each team member contributes unique talents to the studio, including architecture, interior design, and project management.

Recent Projects

Avera Flandreau Hospital Addition/
Remodel, Flandreau, SD;
ClubHouse Hotel & Suites, Pierre,
SD;
CNA Surety, Sioux Falls, SD;
SDSU McCrory Gardens Education
Center, Brookings, SD

PUETZ CORPORATION



800 N. Kimball St.
Mitchell, SD 57301
605.996.2276
www.puetzcorp.com
Established: 1952

Principals

Wayne Puetz
Mary Puetz
Mark Puetz
Jim Weber
Jon Schmitz

Corporate Architect: Herm Harmes,
AIA, LEED® AP

Firm Description/Philosophy

Listen to the client's wants, needs, budget, and environmental concerns, accurately define the problem, and investigate different ways to solve the problem. Then determine the best solution and create a structure that both functions as it is intended and improves the environment that it occupies.

Recent Projects

Dakota Wesleyan University Health
Sciences Center, Mitchell, SD
Mitchell Technical Institute Campus
Center, Mitchell, SD
Redfield Community Memorial
Hospital, Redfield, SD
Hanson County Courthouse,
Alexandria, SD

RANDALL STANLEY ARCHITECTS, INC.



405 South 3rd Avenue
Sioux Falls, SD 57104
605.336.6891
Fax 605.335.5858
rsa@rsarchitects-sd.com
www.rsarchitects-sd.com
Established: 1989

Principals

Gary L. Stanley, AIA, NCARB -
Principal
Keith Neuharth, AIA, NCARB -
Associate
Jeremy Christopherson, Assoc. AIA,
LEED® AP - Associate
Jeri Breck - Associate

Firm Description/Philosophy

The firm was established in 1989 by Gary L. Stanley to provide vision & design solutions that are functional, economical and aesthetically represent our client's needs.

RSA serves a variety of markets locally and nationally. RSA is committed to implementing LEED standards of sustainable design into all of our projects to ensure the development of high performance buildings.

Establish, cultivate and nurture is our approach to building solid client relationships. Our philosophy is simple...to listen, learn, and design around YOUR unique project goals.

Recent Projects

North Commons Dining Hall
Renovation, University of South
Dakota, Vermillion, SD;
Human Services Center Dietary
Addition, Yankton, SD;
Watertown Police Department, City
of Watertown, Watertown, SD;
Holy Cross Lutheran Church, Sioux
Falls, SD;
East River Electric Corporate
Headquarters, Madison, SD;

Hope Haven Training and
Administration Facility, Rock Valley, IA;
Hy-Vee Stores (projects in SD and MN);
Good Samaritan Society (projects in
SD, MN, and IA)

TOM REASONER, ARCHITECT



915 Ridgecrest Drive
Vermillion, SD 57069
605.624.7076
tomreasoner@gmail.com
Established: 1997

Principals

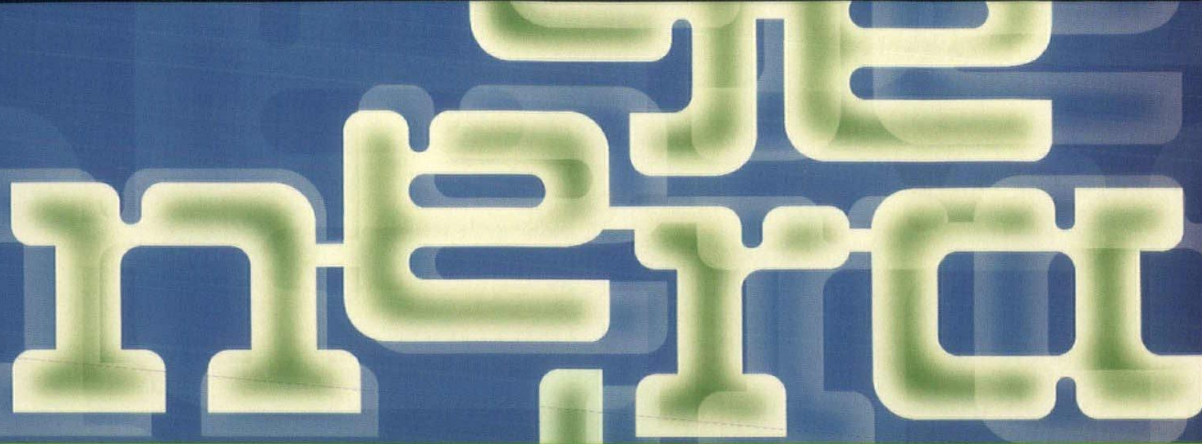
Thomas E. Reasoner, RA

Firm Description/Philosophy

A general practitioner practicing generally in South Dakota. Classically trained and romantically inspired design. Architecture and design services scaled for the client and performed as a partner in the quality and care of the built environment.

Recent Projects

Petterson Residence Green Remodel,
Clay County, SD;
Bluestem House Study, Clay
County, SD;
Jane Street Residence Remodel/
Addition, Vermillion, SD;
Fairholm Residence Remodel/
Addition, Vermillion, SD



Firm Profiles

ROBERT J. RYSAVY, LLC

2801 W. Oak Street
Sioux Falls, SD 57105
605.610.7786
rysb@sio.midco.net
Established: 2009

Principal

Bob Rysavy, AIA

Firm Description/Philosophy

Our approach to quality design is to form a long-term client/team relationship and understand the project goals and expectations. By listening and hearing the client, we are able to develop solutions that meet the program and design requirements. The firm provides architectural programming/planning, design, and construction services.

Recent Projects

Pierre Indian Learning Center, New Dormitory Construction Phase, Pierre, SD;
Youth & Family Services Center, Volunteers of America, Sioux Falls, SD;
Buffalo Lake Healthcare Center, Project I Addition/Remodel, Buffalo Lake, MN;
Buffalo Lake Healthcare Center, Projects II & III Addition/Remodel, Buffalo Lake, MN

SANDRA LEA DICKENSON ARCHITECTURE

Sandra Lea Dickenson, A.I.A.

16 Cypress Dr.
Vermillion, SD 57069
605.624.6670
sandy.dickenson@gmail.com
Established: 2001

Principal

Sandra Lea Dickenson, AIA

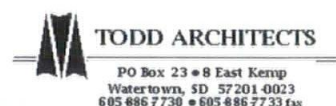
Firm Description/Philosophy

Sandra Lea Dickenson Architecture provides services in Southeast South Dakota for small building projects,

both commercial and residential. We recognize that small projects often are more design intensive than larger projects, and we are positioned to provide the special attention that small projects require.

Recent Projects

SESDAC, Inc. Office Renovation, Vermillion, SD;
Center for Children and Families, Vermillion, SD;
Coker Residence, Vermillion, SD;
Main Street Center Renovation, Vermillion, SD



PO Box 23 • 8 East Kemp
Watertown, SD 57201 0023
605.886.7730 • 605.886.7733 fax

TODD ARCHITECTS LTD.

PO Box 23
8 East Kemp Avenue
Watertown, SD 57201
605.886.7730
Fax 605.886.7733
dave@toddarchitects.com
Established: 1969

Principal

David J. Todd, AIA - President

Firm Description/Philosophy

Our philosophy is to have a principal in charge and in direct contact with the project throughout all phases of the work. Our sound reputation and ability allows us to establish good communications with our clients and meet tight project schedules.

Recent Projects

Lake Area Technical Institute, Phase IV, Watertown, SD;
Timber Lake School Addition, Timber Lake, SD;
Watertown School District Transportation Center, Watertown, SD;
South Dakota State University Regional Center, Watertown, SD;

TSP, INC.



To Solve. To Excel. Together.

1112 N. West Avenue
Sioux Falls, SD 57104
605.336.1160
Fax 605.336.7926

600 Kansas City Street
Rapid City, SD 57701
605.343.6102
Fax 605.343.7159
info@teamtsp.com
www.teamtsp.com
Established: 1930

Additional Locations

Minneapolis, MN
Rochester, MN
Marshall, MN
Marshalltown, IA
Omaha, NE
Sheridan, WY

Principals

Paul Boerboom, AIA - Senior Architect, Principal
Sean Ervin, AIA, MCM, LEED® AP - Senior Architect, Principal
Rex Hambrook, AIA, LEED® AP - Project Architect
Brian Heidbrink, AIA - Architectural Graduate, Associate
Michelle Holter, AIA, LEED® AP - Project Architect
Kent Larsen, AIA - Senior Architect, Principal
Gerald (Jerry) Lindberg, AIA - LEED® AP, Architect, Associate
Jared Nesje, AIA - Project Architect
Elizabeth Obaka, AIA, LEED® AP - Project Architect
Tim Roach, AIA - Senior Project Architect

Firm Description/Philosophy

TSP is a full-service firm employing 120 skilled professionals and offering architecture, engineering, interior design, and construction services. We believe that successful projects are the result of experience, knowledge, and team leadership. We are committed to the development of long-term relationships with our clients. Our high-quality planning services and appropriate design solutions illustrate this dedication and commitment.

Recent Projects

South Dakota Army National Guard, Watertown Readiness Center, Watertown, SD;
South Dakota School of Mines and Technology, Chemistry Building, Rapid City, SD;
Department of Veterans Affairs, Sioux Falls Inpatient Medical/Surgical Addition, Sioux Falls, SD;
South Dakota State Veteran's Home, Hot Springs, SD

UPPER DECK ARCHITECTS, INC.



UPPER DECK
ARCHITECTS, INC.

1301 W. Omaha St., Ste. 212
Rapid City, SD 57701
605.721.0237
Fax 605.721.0240
timc@upperdeckarchitects.com
www.upperdeckarchitects.com
Established: 2007

Principal

Timothy D Cheever, AIA - Principal

Firm Description/Philosophy

Upper Deck Architects is a unique company with the goal of providing a personalized service that is unequaled in the region. Dedicated to client satisfaction, we pride ourselves on listening to our clients to completely understand their project needs and goals.

Established in 2007, Upper Deck Architects is a new firm composed of familiar faces. While working together at a large architectural firm, our personnel had the desire to work in a fun, creative, and collaborative environment.

Recent Projects

East Middle School, Rapid City, SD;
Fountain Springs Community Church, Rapid City, SD;
Black Hawk Volunteer Fire Department, Black Hawk, SD;
Security First Bank, Chadron, NE

VAN DE WALLE ASSOCIATES



212 S. Phillips Ave., Ste. 200
Sioux Falls, SD 57104
605.339.4411
www.vandewallearchitects.com
Established: 1972

Principals

David Erickson, AIA, Owner/Partner
Brad Dietzenbach, Assoc. AIA, Owner/Partner

Firm Description/Philosophy

Van De Walle Associates perceives architectural design as a combination of two different goals. It must be efficient and functional in meeting the specific needs of each client but, at the same time, be aesthetically pleasing and distinctive. We are committed to providing a "team" approach between owner, architect, consultants, and contractors. For more than 40 years, Van De Walle Associates has demonstrated the ability to balance the opposing forces of design innovation and environmentally friendly design solutions with the practical concerns of budget, schedule, and program. Our ability to accomplish these goals is demonstrated by a loyal list of repeat clientele.

Recent Projects

Monterey Apartments, LEED-for-Homes-Certified, Sioux Falls, SD
Raven Applied Technology Division Facility, Sioux Falls, SD
Boyce Greenfield Pashby & Welk, LLP, Historic Rehab, Sioux Falls, SD
Eastbank Hotel, Sioux Falls, SD

WARD WHITWAM, ARCHITECT



401 East 8th Street, Ste. 200C
Sioux Falls, SD 57103
605.376.7633
Firm 605.334.2422
wardwhitwam@yahoo.com
Established: 1953

Principal

Ward Whitwam, FAIA

Firm Description/Philosophy

Creative design tailored to the individual client.

Recent Projects

David and Erika Billion Guest House, Yankton, SD;
Lam's Vietnamese Restaurant, Sioux Falls, SD;
Club David, Sioux Falls, SD;
W. Carson Smith's Residential Projects, Sioux Falls, SD

WILLIAMS & ASSOCIATES ARCHITECTURE, INC.



WILLIAMS & ASSOCIATES
ARCHITECTURE, INC.

125 E. Colorado Blvd., Ste. 2A
Spearfish, SD 57783
605.642.2009
swilliams@rushmore.com
Established: 1993

Principal

Steven K. Williams, AIA

Firm Description/Philosophy

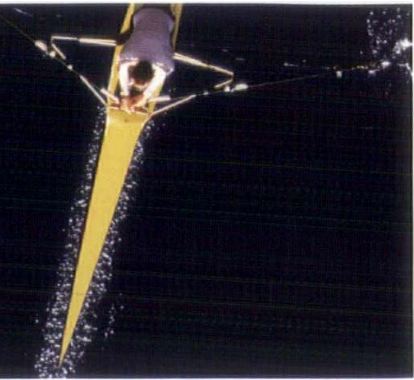
Williams and Associates has provided design services to the Black Hills region since 1993. We strive to provide exceptional value to all clients. We recognize that successful projects are a team effort in which all stakeholders become vested in the process. We listen intently to owners, designers, and contractors so that great ideas blend together to result in remarkable projects.

Recent Projects

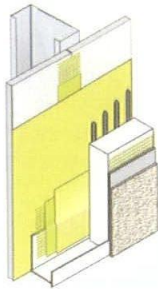
Black Hills State University, Student Union Remodel/New Construction, Spearfish, SD
Spearfish School District 40-2, Creekside Elementary School, Spearfish, SD
Queen City Regional Medical Clinic Expansion, Spearfish, SD
Spearfish Recreation and Aquatics Center, Spearfish, SD

Over 50 years of innovation worldwide

In the reemerging
cladding category of EIFS,
**StoTherm™ NExT is setting
the new standard.**



StoTherm™ NExT is your solution with:



- Two layers of waterproof protection
- More testing and research than any other brand of EIFS
- Highly insulated for proven energy efficiency
- Design flexibility, color options and aesthetic appeal

Discover the world of Sto. Start specifying StoTherm™ NExT and see why pros in the know go with Sto. Contact your Sto representative or visit www.stocorp.com/stonext for more details.

Sto | Building with conscience.

Agan Drywall Supply

Distributed by Agan Drywall Supply
2609 S. Carolyn Ave., Sioux Falls, SD 57106-4306
800-393-4930

sto 
www.stocorp.com



**Engage.
Connect.
Succeed.**

Seize the opportunity and see what happens.

When you are a member of the American Institute of Architects, you have access to professional resources that add value to your career, like government advocacy to back your practice, and continuing education programs to keep your skills and knowledge current. And, with the support of almost 80,000 colleagues, you also have an expansive professional network to draw upon.

AIA membership is an essential investment in your career, your business, and your profession.



THE AMERICAN
INSTITUTE
OF ARCHITECTS

www.aia.org/join



FELLOW EMERITUS

WARD B. WHITWAM, FAIA
401 East 8th Street, Suite 200C
Sioux Falls, SD 57103

EMERITUS

EARL E. ANGLE, AIA
1330 East 28th Street
Sioux Falls, SD 57105

HERBERT M. ASLESEN, AIA
1810 Saint Joseph Street
Spearfish, SD 57783

DON R. BALTZER, AIA
Koch Hazard Architects
2501 South Kiwanis Avenue, Apt. 208
Sioux Falls, SD 57105

SANDRA LEA DICKENSON, AIA
Fine Line Architecture, Inc.
16 Cypress Drive
Vermillion, SD 57069

GARY E. GALYARDT, AIA
Galyardt Architects, Inc.
1506 Mountain View Road, Suite 102
Rapid City, SD 57702

TERRY J. GEISLER, AIA
HKG Architects, Inc.
1423 North Arch Street
Aberdeen, SD 57402

RAYMOND J. HENGEL, AIA
PO Box 1601
Rapid City, SD 57709

JAMES M. HEROUX, AIA
MSH Architects
625 South Minnesota Avenue
Sioux Falls SD 57104

RALPH R. KOCH, AIA
728 Woodlawn Drive
Sioux Falls, SD 57105

AUGUST M. MASSA, AIA
28307 300th Avenue
Carter, SD 57580

RICHARD J. MCCONNELL, AIA
201 Franklin Street
Rapid City, SD 57701

E.J. MURPHY, AIA
Architecture Automated, Inc.
2108 West Burnside Street, Suite 3
Sioux Falls, SD 57104

OLIN E. ODLAND, AIA
Architectural Services
6216 West Chad Circle
Sioux Falls, SD 57106

GARY A. OHNSTAD, AIA
Ohnstad Architects
27207 Fountain Circle
Harrisburg SD 57032

JAMES R. POPE, AIA
10511 Clear Lake Road, Apt. 213
Minnetonka, MN 55305

ROBERT J. RYSAVY, AIA
Robert J. Rysavy, LLC
2801 West Oak Street
Sioux Falls, SD 57105

ORRIN H. WENDT, AIA
Orrin H. Wendt Architects
204 West 23rd Street
Sioux Falls, SD 57105

PHILIP R. WHITE, AIA
DLR Group
2700 South Groveland Avenue
Sioux Falls, SD 57110

ARCHITECTS

PATRICIA E. ACEVEDO, AIA
AcV2 architecture, LLC
713 7th Street
Rapid City, SD 57701

MITCHELL ALDINGER, AIA
Architecture Incorporated
415 South Main Avenue
PO Box 2140
Sioux Falls, SD 57104

SARAH JOHNSTON ALDINGER, AIA
Architecture Incorporated
415 South Main Avenue
PO Box 2140
Sioux Falls, SD 57104

MICHAEL K. ARCHBOLD, AIA
FourFront Design, Inc.
517 7th Street
Rapid City, SD 57701

MARK I. ASPAAS, AIA
Architecture Incorporated
415 South Main Avenue
PO Box 2140
Sioux Falls, SD 57104

THOMAS BAFFUTO, AIA
Baffuto Architectura
1025 Duffer Drive
Rapid City, SD 57702

BRIAN BEILKE, AIA
712 West Shady Hill Street
Sioux Falls, SD 57108

DAVID OWEN BERTELSON, AIA
Mills Construction, Inc.
1311 Main Avenue South
Brookings, SD 57006

KRISTINE E. BJERKE, AIA
Architecture Incorporated
909 Saint Joseph Street, Suite 202
Rapid City, SD 57701

PAUL H. BOERBOOM, AIA
TSP, Inc.
1112 North West Avenue
Sioux Falls, SD 57104

JACOB TODD BUNDE, AIA
Baldrige & Nelson Architects & Engineers, Inc.
408 West Lotta Street, Suite 2
Sioux Falls, SD 57105

BRADLEY P. BURNS, AIA
Chamberlin Architects, PC
2939 Country Club Drive
Rapid City, SD 57702

TIMOTHY D. CHEEVER, AIA
Upper Deck Architects, Inc.
1301 West Omaha Street, Suite 212
Rapid City, SD 57701

SHERYL COLEY, AIA
Upper Deck Architects, Inc.
1301 West Omaha Street, Suite 212
Rapid City, SD 57701

LARRY JOE CRANE, AIA
Perspective, Inc.
196 East 6th Street, Suite 100
Sioux Falls, SD 57104

ALAN RICHARD DEMPSTER, AIA
Architecture Incorporated
415 South Main Avenue
PO Box 2140
Sioux Falls, SD 57104

JOHN P. ENGELHARDT, AIA
Architectural Guild, LLC
219 East 12th Street
PO Box 1084
Sioux Falls, SD 57104

DAVID E. ERICKSON, AIA
Van De Walle Associates, LLC
212 South Phillips Avenue, Suite 200
Sioux Falls SD 57104

SEAN O. ERVIN, AIA
TSP, Inc.
1112 North West Avenue
Sioux Falls, SD 57104

GENE A. FENNELL, AIA
Fennell Design Inc.
237 North 6th Street
Custer, SD 57730

RANDAL J. FISHER, AIA
Designworks, Inc.
526 Saint Joseph Street, Suite B
Rapid City, SD 57701

TIM J. FONDER, AIA
Banner Associates, Inc.
2307 West 57th Street, Suite 102
Sioux Falls, SD 57108

REX ALAN HAMBROCK, AIA
TSP, Inc.
1112 North West Avenue
Sioux Falls, SD 57104

HERM HARMS, AIA
Puetz Corporation
800 North Kimball Street
PO Box 968
Mitchell, SD 57301

ROGER G. HARTMAN, AIA
Hartman Architecture
2117 East Tricia Lane
Sioux Falls, SD 57103

JEFFERY HAZARD, AIA
Koch Hazard Architects
431 North Phillips Avenue, Suite 200
Sioux Falls, SD 57104

MICHELLE L. HOLTER, AIA
TSP, Inc.
1112 North West Avenue
Sioux Falls, SD 57104

SARAH MANNES HOMSTAD, AIA
Glenn H. Mannes, Architect
800 Douglas Avenue
Yankton, SD 57078

THOMAS J. HURLBERT, AIA
Co-op Architecture
PO Box 1402
Aberdeen, SD 57402

STEVEN R. JASTRAM, AIA
Architecture Incorporated
415 South Main Avenue
PO Box 2140
Sioux Falls, SD 57104

LARRY JIRSA, AIA
L.L. Jirsa Architect
123 North Main Street
Mitchell, SD 57301

DAVID J. JOLLY, AIA
FourFront Design, Inc.
517 7th Street
Rapid City, SD 57701

LEONARD S. KEMNITZ, AIA
Evangelical Lutheran Good Samaritan Society
4800 West 57th Street
Sioux Falls, SD 57108

JOHN E. KOLANDER, AIA
Evangelical Lutheran Good Samaritan Society
3125 South Newcastle Court
Sioux Falls, SD 57110

RYAN C. KRANZ, AIA
Perspective, Inc.
196 East 6th Street, Suite 100
Sioux Falls, SD 57104

JEFFREY R. KREITER, AIA
Sioux Falls School System
1101 North Western Avenue
Sioux Falls, SD 57104

JEAN R. KROEGER II, AIA
Kroeger Company
630 Westwind Drive
Rapid City, SD 57702

WILLIAM S. LAMONT, AIA
Lamont Associates
PO Box 18
Aberdeen, SD 57402

KENT E. LARSEN, AIA
TSP, Inc.
1112 North West Avenue
Sioux Falls, SD 57104

MEREDITH LARSON, AIA
Henry Carlson Company
5109 East Fairway Place
Sioux Falls, SD 57110

GERALD E. LINDBERG, AIA
TSP, Inc.
1112 North West Avenue
Sioux Falls, SD 57104

CHARLES JAMES MACBRIDE, AIA
South Dakota State University
5107 East Fairway Place
Sioux Falls, SD 57110

GLENN H. MANNES, AIA
Glenn H. Mannes, Architect
800 Douglas Avenue
Yankton, SD 57078

DEAN A. MARSKE, AIA
HKG Architects, Inc.
524 South Arch Street
Aberdeen, SD 57401

STACEY L. MCMAHAN, AIA
Koch Hazard Architects
431 North Phillips Avenue, Suite 200
Sioux Falls, SD 57104

ROBIN J. MILLER, AIA
MSH Architects
625 South Minnesota Avenue
Sioux Falls, SD 57104

BRADLEY D. MOLLET, AIA
898 Wynstone Drive
Jefferson, SD 57038

ERIC C. MONROE, AIA
Eric Monroe Architecture, LLC
814 West Boulevard
Rapid City, SD 57701

PATTI E. MONSON, AIA
Architecture Incorporated
415 South Main Avenue
PO Box 2140
Sioux Falls, SD 57104

JEFFREY J. NELSON, AIA
Baldrige & Nelson Architects & Engineers, Inc.
408 West Lotta Street, Suite 2
Sioux Falls, SD 57105

JARED P. NESJE, AIA
TSP, Inc.
1112 North West Avenue
Sioux Falls, SD 57104

KEITH A. NEUHARTH, AIA
Randall Stanley Architects
405 South 3rd Avenue
Sioux Falls, SD 57104

ERIC THOMAS NORUM, AIA
Ringdahl Architects
4711 West Latoka Lane Southwest
Alexandria, MN 56308

ELIZABETH OBAKA, AIA
TSP, Inc.
1112 North West Avenue
Sioux Falls, SD 57104

Membership Roster

ARCHITECTS, CONT.

KIM D. OTTEN, AIA
Evangelical Lutheran Good Samaritan Society
4800 West 57th Street
Sioux Falls, SD 57108

STEVEN C. PEDERSEN, AIA
By Design, LLC
807 West 17th Street
Sioux Falls, SD 57104

GARRETT W. PETERS, AIA
Avera McKennan Hospital
800 East 21st Street
Sioux Falls, SD 57105

HEATHER MICHELLE REDERTH, AIA
FourFront Design, Inc.
517 7th Street
Rapid City, SD 57701

TIMOTHY J. ROACH, AIA
TSP, Inc.
600 Kansas City Street
Rapid City, SD 57701

SPENCER R. RUFF, AIA
Spencer Ruff Associates, Inc.
405 South 3rd Avenue, Suite 302
Sioux Falls, SD 57104

DUDLEY C. RUMRILL, AIA
SHP Engineering & Architecture
301 West Capitol Avenue
Pierre, SD 57501

LOREN D. SCHAEFER, AIA
Brosz Engineering & Architecture
750 West 2nd Street
Pierre, SD 57501

CHRISTOPHER M. SCHILTZ, AIA
Koch Hazard Architects
431 North Phillips Avenue, Suite 200
Sioux Falls, SD 57104

JEFFREY JED SCHLEPP, AIA
Southeast Technical Institute
2320 North Career Avenue
Sioux Falls, SD 57107

KIMBERLY K. SCHMIDT, AIA
FourFront Design, Inc.
5010 Stoney Creek Drive
Rapid City, SD 57702

ELIZABETH S. SQUYER, AIA
Architecture Incorporated
415 South Main Avenue
PO Box 2140
Sioux Falls, SD 57104

DAVID BRUCE STAFFORD, AIA
809 South Street
Rapid City, SD 57701

GARY L. STANLEY, AIA
Randall Stanley Architects
405 South 3rd Avenue
Sioux Falls, SD 57104

TODD RANDALL STONE, AIA
Koch Hazard Architects
1400 Parkview Boulevard
Brandon, SD 57005

ELIZABETH R. TELLEKSON, AIA
Banner Associates, Inc.
2307 West 57th Street, Suite 102
Sioux Falls, SD 57108

DAVID J. TODD, AIA
Todd Architects
PO Box 23
Watertown, SD 57201

DAVID A. VAN NIEUWENHUYZEN, AIA
Fiegen Construction Company
PO Box 1687
Sioux Falls, SD 57101

NATHAN G. VOLLMUTH, AIA
Avera McKennan Hospital
800 East 21st Street
Sioux Falls, SD 57105

CATHERINE A. WAGNER, AIA
University of South Dakota
414 East Clark Street
Vermillion, SD 57069

STEVE K. WILLIAMS, AIA
Williams & Associates Architecture
125 East Colorado Boulevard, Suite 2A
Spearfish, SD 57783

ROBERT J. WINKELS, AIA
Sanford Health
3070 West Donahue Drive
Sioux Falls, SD 57105

ASSOCIATES

JEREMY B. ALTMAN, ASSOC. AIA
FourFront Design, Inc.
517 7th Street
Rapid City, SD 57701

SCOTT AMUNDSON, ASSOC. AIA
Baldridge & Nelson Architects & Engineers, Inc.
408 West Lotta Street, Suite 2
Sioux Falls, SD 57105

SCOTT F. ANDERSON, ASSOC. AIA
Cannon Moss Brygger & Associates
302 Jones Street, Suite 200
PO Box 3689
Sioux City, IA 51102

KRISTINE BOOZE, ASSOC. AIA
7022 East High Meadows Drive
Black Hawk, SD 57718

JORDAN G. BURBACH, ASSOC. AIA
Architecture Incorporated
415 South Main Avenue
PO Box 2140
Sioux Falls, SD 57104

JAN N. BURI, ASSOC. AIA
TSP, Inc.
1112 North West Avenue
Sioux Falls, SD 57104

JARED D. CARDA, ASSOC. AIA
Co-op Architecture
39833 306th Street
Wagner, SD 57380

TRENT R. CHRISTIANSEN, ASSOC. AIA
Fiegen Construction Company
PO Box 1687
Sioux Falls, SD 57101

JEREMY J. CHRISTOPHERSON, ASSOC. AIA
Randall Stanley Architects
1701 East Edgewood Road
Sioux Falls, SD 57103

TANYA DAVIS, ASSOC. AIA
Fennell Design, Inc.
237 North 6th Street
Custer, SD 57730

CATHERINE M. DEKKENGA, ASSOC. AIA
Architecture Incorporated
415 South Main Avenue
PO Box 2140
Sioux Falls, SD 57104

BRADLEY J. DIETZENBACH, ASSOC. AIA
Van De Walle Associates, LLC
212 South Phillips Avenue, Suite 200
Sioux Falls, SD 57104

STEVEN A. DIX, ASSOC. AIA
Koch Hazard Architects
431 North Phillips Avenue, Suite 200
Sioux Falls, SD 57104

ANDREW EITREIM, ASSOC. AIA
Architecture Incorporated
415 South Main Avenue
PO Box 2140
Sioux Falls, SD 57104

ROBERT P. EVERETT, ASSOC. AIA
Everett Design, Inc.
1315 North Holbrook Avenue
Sioux Falls, SD 57107

KEVIN DEAN GENZLINGER, ASSOC. AIA
Puetz Corporation
25956 Ridgewood Place
Brandon, SD 57005

RONALD A. GRIEBEL, ASSOC. AIA
Architecture Incorporated
415 South Main Avenue
PO Box 2140
Sioux Falls, SD 57104

BRIAN W. HEIDBRINK, ASSOC. AIA
TSP, Inc.
1112 North West Avenue
Sioux Falls, SD 57104

RYAN J. HUBER, ASSOC. AIA
Architecture Incorporated
415 South Main Avenue
PO Box 2140
Sioux Falls, SD 57104

CHASE D. KRAMER, ASSOC. AIA
Van De Walle Associates, LLC
4020 West 91st Street
Sioux Falls, SD 57108

KATIE L. KRANTZ, ASSOC. AIA
Van De Walle Associates, LLC
401 Pheasant Ridge Drive
Sioux Falls, SD 57108

GEOFFREY V. LITTLE, ASSOC. AIA
Banner Associates, Inc.
409 22nd Avenue South
Brookings, SD 57006

DAVID F. LORANG, ASSOC. AIA
Banner Associates, Inc.
2307 West 91st Street, Suite 102
Sioux Falls, SD 57108

ROBERT J. NATZ, ASSOC. AIA
Site2
2028 South Dakota Avenue
Sioux Falls, SD 57105

JASON A. NELSON, ASSOC. AIA
TSP, Inc.
1112 North West Avenue
Sioux Falls, SD 57104

JUSTIN R. OLESON, ASSOC. AIA
RSArchitects
5509 West 45th Street
Sioux Falls, SD 57106

PHILIP C. RAMSAY, ASSOC. AIA
Puetz Corporation
700 East 6th Avenue
Mitchell, SD 57301

BRENT STURLAUGSON, ASSOC. AIA
Surely Design, LLC
554 10th Street, Apt. 3
Brooklyn, NY 11215

DORSEY G. TELLEKSON, ASSOC. AIA
Architecture Incorporated
415 South Main Avenue
PO Box 2140
Sioux Falls, SD 57104

KEITH THOMPSON, ASSOC. AIA
Koch Hazard Architects
431 North Phillips Avenue, Suite 200
Sioux Falls, SD 57104

ALLIED

AGAN DRYWALL SUPPLY
c/o Jason Ziegeldorf
2609 South Carolyn Avenue
Sioux Falls, SD 57106
605.361.6210

ALVINE & ASSOCIATES
c/o Randy Wilson
1102 Douglas on the Mall
Omaha, NE 68102
402.346.7007

AMERICAN ENGINEERING TESTING
c/o Bruce Card
601 East 48th Street North
Sioux Falls, SD 57702
605.388.0029

ASSOCIATED CONSULTING ENGINEERING, INC.
c/o John Dewitt
110 East 12th Street
Sioux Falls, SD 57104
605.357.4767

AUTOMATIC DOOR GROUP, INC.
c/o Paul Page
1109 South Enterprise Street, Suite D
Sioux Falls, SD 57110
605.335.1425

BELL STRUCTURAL SOLUTIONS
c/o Dustin Imholte
778 1st Street Northwest
New Brighton, MN 55112
651.203.2716

BENCHMARK FOAM, INC.
c/o Alan Hendricks
401 Pheasant Ridge Drive
Watertown, SD 57201
605.886.8084

BUILDERS SUPPLY COMPANY
c/o Todd England
3501 North Lewis Avenue
Sioux Falls, SD 57104
605.336.2790

BUILDING PRODUCTS INC.
c/o Darrell George
1500 Industrial Avenue North
Sioux Falls, SD 57101
605.336.3460

CENTRAL STATES TERRAZZO ASSOCIATION
c/o George Hardy
PO Box 368
Purcellville, VA 20134
703.431.2711

CERAMIC TILEWORKS
c/o Jo Marie Jensen
11225 86th Avenue North
Maple Grove, MN 55369
701.540.2138

C.H.I. OVERHEAD DOORS
c/o Lamar Schrock
1485 Sunrise Drive
Arthur, IL 61911
800.677.2650

COMBS & ASSOCIATES, INC.
c/o Paul Lepeska, AHC
1100 Zane Avenue, North, Bay #4
Golden Valley, MN 55422
763.746.3666

CONCRETE MATERIALS
c/o Casey Scheidt
1201 West Russell Street
Sioux Falls, SD 57104
605.357.6000

DAKOTA CRAFT
c/o James Schaefer
2135 Dakota Craft Drive
Rapid City, SD 57701
605.341.6544

ALLIED, CONT.

DAKOTA GRANITE COMPANY
c/o Kevin Wright
PO Box 1351
Milbank, SD 57252
605.432.7105

DAKOTA WALL SYSTEMS, INC.
c/o Steven Frey
1400 East 39th Street North
Sioux Falls, SD 57104
605.357.9301

DALTILE
c/o Abbi Muhl
14005 13th Avenue, North
Plymouth, MN 55441
651.246.6530

DESCO ARCHITECTURAL, INC.
Attn: Debra Combs
716 3rd Street, Southeast
De Smet, SD 57321
605.854.9126

DON JOHNSON CONSTRUCTION
c/o Don Johnson
8600 East 38th Street
Sioux Falls, SD 57110
605.359.6570

EMPIREHOUSE, INC.
c/o Alana S. Griffith
5200 Quincy Street
Mounds View, MN 55112
763.535.1150

EXTREME PANEL TECHNOLOGIES, INC.
c/o Brian Bossuyt
PO Box 435
475 East 4th Street North
Cottonwood, MN 56229
800.977.2635

FABCON, INC.
Attn: Dick Duckstad
6111 West Highway 13
Savage, MN 55378
952.896.4444

FABRICATORS UNLIMITED
Attn: Sue Wolf
828 NP Avenue
Fargo, ND 58102
701.235.1185

FARGO GLASS AND PAINT COMPANY
c/o David Skoglund
400 East 54th Street North
Sioux Falls, SD 57104
605.336.9484

FARRIS ENGINEERING
c/o Jeni Merryweather
11239 Chicago Circle
Omaha, NE 68154
402.330.5900

FASTSIGNS
c/o Sam Ryman
709 South Minnesota Avenue
Sioux Falls, SD 57104
605.357.0018

FRANZ DIGITAL
Patricia Franz
1208 West 51st Street, Suite 3
Sioux Falls, SD 57105
763.503.3401

GAGE BROTHERS CONCRETE PRODUCTS, INC.
Attn: Lori Summers
4301 West 12th Street
Sioux Falls, SD 57106
605.336.1180

GEOTEK ENGINEERING & TESTING SERVICES
c/o Jeff Christensen
909 East 50th Street North
Sioux Falls, SD 57104
605.335.5512

HARDLINES
c/o Mike Gall
1006 120th Lane Northwest
Coon Rapids, MN 55448
612.719.0545

HEBRON BRICK SUPPLY
c/o Randy Aker
1543 Deadwood Avenue North
Rapid City, SD 57702
605.343.3733

HOLMES MURPHY & ASSOCIATES
c/o Sean Mayer
5120 South Solberg Avenue
Sioux Falls, SD 57108
605.333.2438

INGERSOLL RAND SECURITY TECHNOLOGIES
c/o Kevin Braaten
6230 Bury Drive
Eden Prairie, MN 55346
952.674.4940

JASPER STONE COMPANY
c/o Brian Phelps
300 South Phillips Avenue, Suite 200
Sioux Falls, SD 57104
605.330.6587

KATE-LO TILE & STONE OUTLET CENTER
c/o Craig Boelke
701 Berkshire Lane North
Plymouth, MN 55441
763.545.5455
800.288.3026

K.R. KLINE & ASSOCIATES
c/o Eric Johnson
3050 Metro Drive, Suite 214
Bloomington, MN 55425
952.854.8723

LAVELLE COMPANY
c/o Steve Skedsvold
PO Box 2583
Fargo, ND 58108
701.371.6450

LG HAUSYS AMERICA, INC.
c/o Sarah Elliott
5616 101st Avenue
Brooklyn Park, MN 55443
612.655.5818

MAJOR INDUSTRIES, INC.
c/o Mark Mitchell
7120 Stewart Avenue
Wausau, WI 54401
888.759.2678

MATHISON'S EXPRESS PRESS GRAPHICS
c/o Mary Klinefelter
1038 North Minnesota Avenue
Sioux Falls, SD 57104
605.336.2437

MCCOY SELECT
c/o Robb McCoy
47154 South Clubhouse Road
Sioux Falls, SD 57108
605.212.3303

METAL SALES MANUFACTURING CORPORATION
c/o Scott Benneweis
22651 Industrial Boulevard
Rogers, MN 55374
763.428.8080

MINNETONKA ARCHITECTURAL PRODUCTS
c/o Joel Meyer
8635 Jefferson Highway
Osseo, MN 55369
763.391.9434

MOLIN CONCRETE PRODUCTS
c/o Bob Clauson
415 Lilac Street
Lino Lakes, MN 55014
651.786.7722

PLAIN GREEN CONFERENCE
c/o Whitney Parks
415 North Phillips Avenue
Sioux Falls, SD 57104
605.782.8731

RURAL WEAVER, LLC
c/o Joe Bartmann
PO Box 104
Montrose, SD 57048
605.941.2708

SDSU DEPARTMENT OF ARCHITECTURE
c/o Brian T. Rex
Intramural Building, Box 2203
Brookings, SD 57007
605.688.4841

SKOLD SPECIALTY CONTRACTING, LLC.
c/o Clark Bruellman
811 East 50th Street North
Sioux Falls, SD 57104
605.335.6444

SOUTH DAKOTA READY MIXED CONCRETE ASSOCIATION
c/o Jody Titze
5024 South Bur Oak Place, #206
Sioux Falls, SD 57108
605.274.0145

STO CORPORATION
c/o William J. Pelissier
720 East 4th Street
Pueblo, CO 81001
719.542.9905

SYVERSON TILE & STONE
c/o Chad Nordling
4015 South Western Avenue
Sioux Falls, SD 57105
605.336.1175

TFC CANOPY & FABRICATION
c/o Gary Henderson
1107 North Taylor Road
Garrett, IN 46738
260.357.6665

THYSSENKRUPP ELEVATOR
c/o Linda Kokenge
2703 West 7th Street
Sioux Falls, SD 57104
605.212.7434

ULTEIG ENGINEERING, SURVEYING, AND CONSULTING SERVICES
c/o Mike Fisher
5701 South Corporate Place
Sioux Falls, SD 57108
605.351.9296

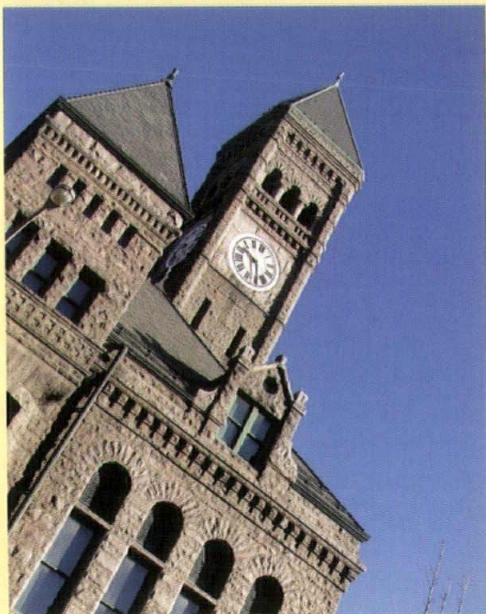
WILSEY COMPANY/PELLA WINDOWS AND DOORS
c/o Bill Carney
712 South Cliff Avenue
Sioux Falls, SD 57106
605.334.1124

W.L. HALL CO. BUILDERS SPECIALITIES
c/o Brent Hall
530 15th Avenue South
Hopkins, MN 55343
952.937.8400

REGENERATION OF A SOUTH DAKOTA

ICON

Wallace Leroy Dow (1844-1911), the great 19th Century "Builder of the Plains" designed the 1889 Minnehaha County Courthouse building in the Richardsonian Romanesque style. The building was liberally styled after the Allegheny County Courthouse in Pittsburgh, PA, using local Sioux quartzite. Dow called it the largest courthouse between Chicago and Denver, and it served the county until 1962. The *Argus Leader*, whose early editor, ironically, was Wallace Dow's brother, Baron Cecil Dow, called for the razing of the building in favor of a parking lot. Fortunately, a public campaign saved the building, which was restored and repurposed as one of two Siouxland Heritage Museums. The other museum, the Pettigrew House, was also designed by Dow.



Sioux Falls Court

ABOVE: Photos courtesy of the Siouxland Heritage Museum.

Casting New Dimensions



- Educational
- Medical & Health Services
- Retail
- Commercial
- Industrial
- Public Works
- Residential

"Giving all projects
a LEED advantage..."

www.gagebrothers.com

Gage
Brothers
Concrete Products Inc.
An Employee Owned Company

Call us today to see how we can help with your next project. (605) 336-1180



AIA South Dakota
PO Box 1596
Sioux Falls, SD 57101

Presort Standard
US Postage Paid
La Crosse, WI
Permit No. 25

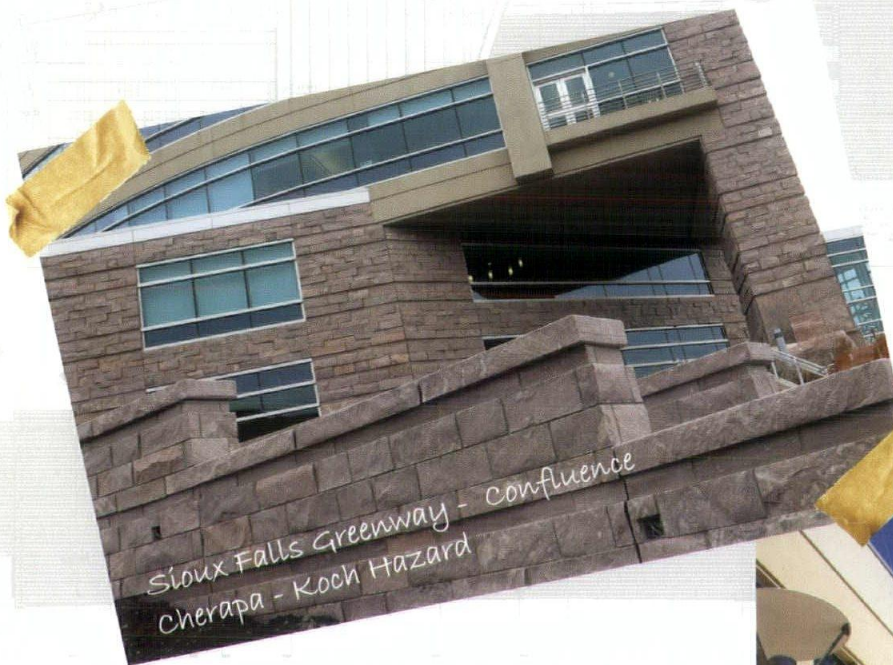
*****AUTO**MIXED ADC 50902 S42 P6
THE AMERICAN INSTITUTE OF ARCHITECTS
1735 NEW YORK AVE NW
WASHINGTON DC 20006-5292



YOUR VISION



SET IN STONE



Add the natural beauty and rich history of South Dakota to your next project with Sioux Quartzite stone. We can help set your vision in stone to last a lifetime.

See Our Current Projects

Jasper Stone Company
Brian Phelps
blphelps@lgeverist.com
(605) 595-3422
www.jasperstoneco.com

