

ARCHITECTURE

sd

innovate

Features:

- "I Look Up"
- Harold T. Spitznagel
- Passive House for South Dakota
- Continuity & Revitalization:
Historic Preservation
- Harley Davidson Rally Point

Awards:

- 2014 AIA SD Design Awards
- 2015 AIA SD Design Awards

Departments:

- DoArch - Department of
Architecture at SDSU:
Initiation to Refinement
- National American
Institute of Architects:
AIA Regional Director
- Young Architects Forum:
An Interview
- Architects in Action
- South Dakota Images



AIA
South Dakota

Over 50 AIA South Dakota
Design Awards
in less than
25 years.





AIA South Dakota

PO Box 1596
Sioux Falls, SD 57101
aiasouthdakota.org

AIA South Dakota 2016 Board of Directors

President

Gene Fennel, AIA

President Elect

Patri Acevedo-Riker, AIA

Secretary/Treasurer

Thomas Hurlbert, AIA

Directors

Kristine Bjerke, AIA

Keith Thompson, AIA

Andrew Eitrem, AIA

Michelle Klobassa, AIA

Andrew Fett, AIA

Jeremy J. Christopherson,

Assoc. AIA

Jeremy B. Altman, Assoc. AIA

Leap Chear, AIA

Brian Rex, Department Chair

Past President

Executive Director

Angela Lammers

Architecture South Dakota

Editorial Committee

Keith Thompson, AIA (Chair)

Paul Boerboom, AIA

Larry Crane, AIA

Sandra Lea Dickenson, AIA

Lucas Fiegen, Assoc. AIA

Tom Hurlbert, AIA

Chase Kramer, AIA

Brian J. Rotert

Todd Stone, AIA

Dave Van Nieuwenhuyzen, AIA

Graphic Artists

Brian J. Rotert | Cover Design

Jill Pudwill | Layout Design



Architecture

SD

President's Letter

5

Chapter News

7

FEATURES

Innovate

"I Look Up"

10

Harold T. Spitznagel

12

Passive House for South Dakota

18

Continuity & Revitalization: Historic Preservation

20

Harley-Davidson Rally Point

24

AWARDS

2014 AIA South Dakota Design Awards

29

2015 AIA South Dakota Design Awards

38

DEPARTMENTS

DoArch: Department of Architecture at SDSU

46

Initiation to Refinement

American Institute of Architects

48

AIA Regional Director

Young Architects Forum

50

An Interview

Architects in Action

52

South Dakota Images

70

DIRECTORIES

Firm Profiles

55

Membership Roster

64

ON THE COVER

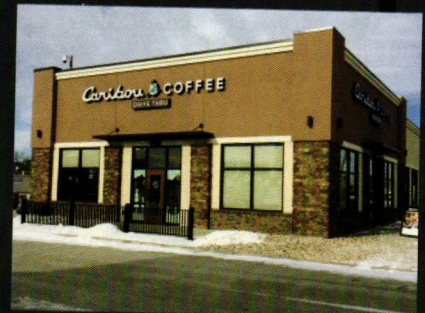
A cantilevered glass box opposite the Raven Industries lobby entrance overlooks the Big Sioux River. The original warehouse now serves as the lobby, museum, and event floor. Photographed by CIPHER IMAGING

BECK & HOFER CONSTRUCTION

"Building for All Your Plans"

Providing design-build,
general contracting,
construction management,
Butler® Building Solutions, and
self-performed concrete,
steel, and carpentry work.

Leading in Commercial Construction Since 1980.



INNOVATE



GENE FENNEL, AIA, is the Owner and Architect of Fennel Design Inc., an architecture and interior design firm in Custer and Rapid City. Engaging in collaborations for large campus plan design and planning plus complex re-purpose are the kind of projects that "keep the fire burning" in his design and construction career of 41 years. Gene and his wife Linda have two children: Neil (director/video editor in NYC); Zach (USAF F-16 pilot); a guardian son Derek (Minneapolis); and an exchange daughter, Katrine (Copenhagen).

Architecture SD presents this issue entitled INNOVATE. Innovation is the follow-up to our previous themes, CONNECTIONS and ENGAGE. Innovation, in its truest form, is an active term that speaks to invention, originality, and even revolution in the context of approach to our organization, projects, and solutions.

Through our connections to and engagement with our peers within the American Institute of Architects, we gather innovative approaches, ideas, and ideals, bringing them into our smaller, daily circle of peers. We become better people, better advisors, and better community builders and leaders—better architects.

As I communicate with American Institute of Architects members in South Dakota and take the innovative approaches to our unique South Dakota situations to the national body of AIA, I see the excitement in the eyes of those from other states and components of AIA. They ask questions of our engagement with our emerging Department of Architecture at SDSU and of our connections with smaller communities in our state through our unique design:SD program. They want to know more about our innovative Design in the Hills (DITH) summer meeting in the Black Hills where we engage with surrounding communities, artists, and other design professionals to learn and express that design really matters in all walks and levels of life.

As AIA members interact with our local help, church, and governance organizations, we bring our leadership skills and sustainable design processes to the planning, problem solving, and community building that are so important to the future of our larger community. We AIA members need to be "at the table" to assure that the conversation includes the larger DESIGN word and intention; we can only do that through our connections and engagement. We need to bring our innovative approach to these leadership roles.

We are living through a "shift" in our profession where we are seeing technological innovation leading to changes in information gathering and sharing, as well as cultural, gender, and communication diversification. It is important for us be innovative with those changes, that we may "understand the old to inform the new."

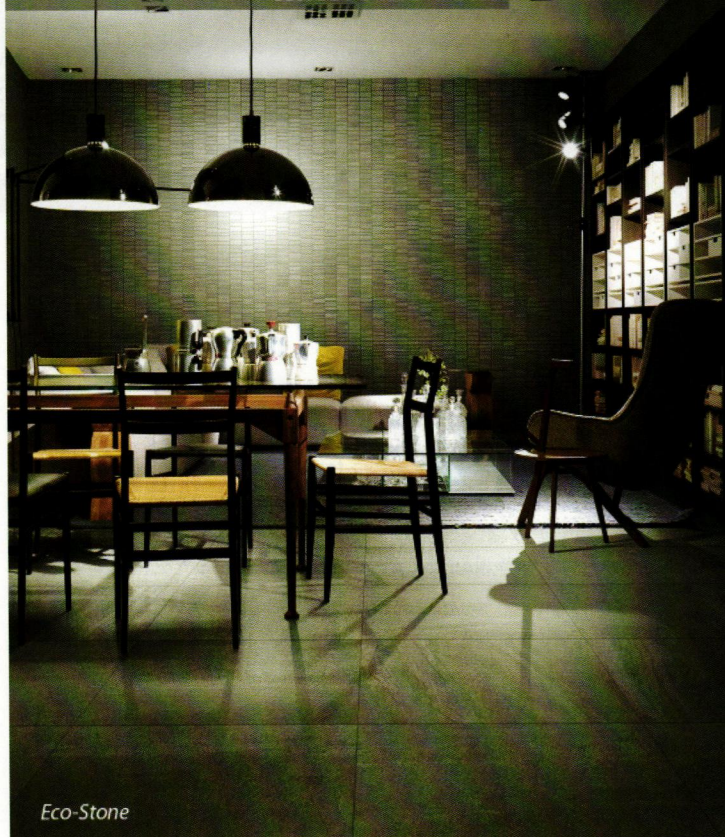
As your AIA South Dakota Chapter President, I challenge you (as I challenge myself) to engage in a conversation, a project, or an organization that is new to you this year. Encourage your local and state legislators to look to the AIA to be the "go-to" entity for all things related to the built environment. This should be our daily mantra, "Today what can I engage in that will help?"

On behalf of the board of directors of AIA South Dakota, I extend a hearty "Thank You" to the contributors and organizers of this publication of *Architecture SD*. Read on, enjoy the articles referencing INNOVATION, and be observant of innovative opportunities through this year and beyond and remember to let people know "I am AIA".

kate-lotile & stone

a division of olympia tile (usa), inc.

katelotile.com Craig Boelke | 612.859.2248



Eco-Stone



STONE GROUP
ARCHITECTS

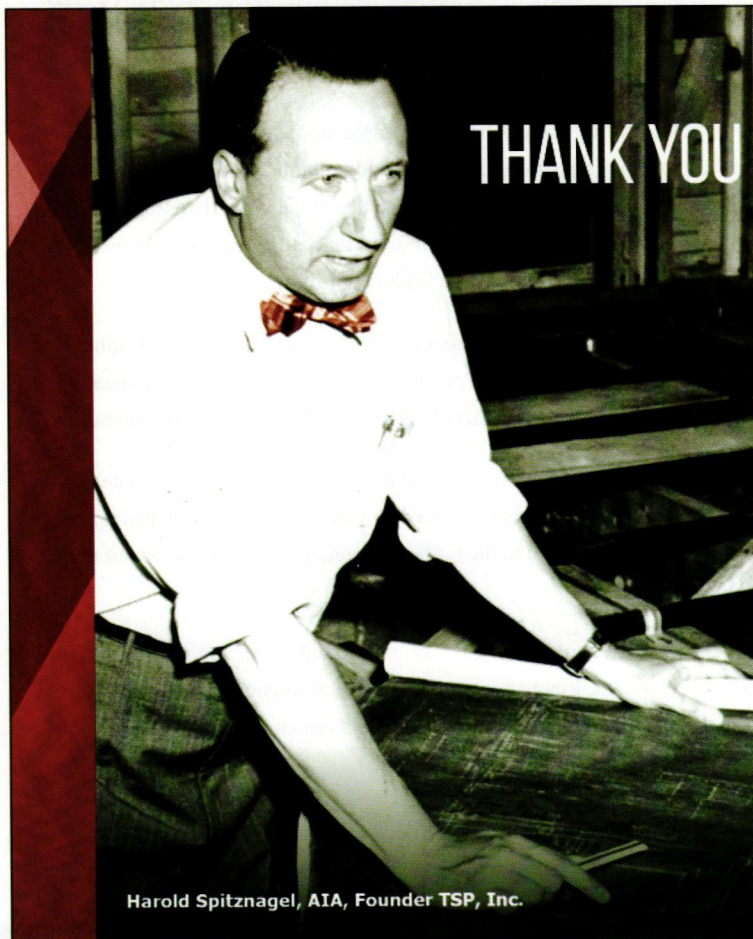
designers // planners // visionaries



■ 319 North Main Avenue | Suite 2 | Sioux Falls, South Dakota 57104

■ stonegrouparchitects.com | facebook.com/StoneGroupArchitects

■ 605.271.1144



Harold Spitznagel, AIA, Founder TSP, Inc.

THANK YOU FOR SHOWING US THE WAY

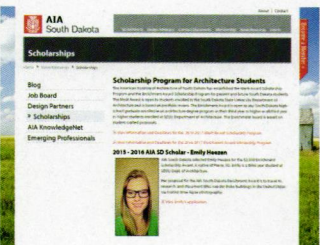
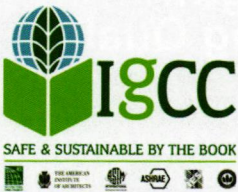
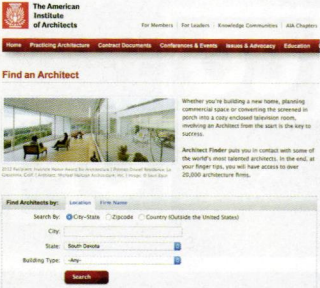
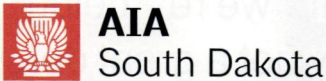
“(Harold Spitznagel) had an amazing facility for becoming his clients’ respected friend as well as their architect.”

— Wallace S. Steele, AIA
Former TSP, Inc. Principal



Architecture
Engineering
Planning

WWW.TEAMTSP.COM



Welcome to the organization of South Dakota's architects. AIA South Dakota is a non-profit membership organization made up of architects, future architects, and partners in the built design industries. Our members tap into a network of design professionals from across our state to enjoy great opportunities to learn, share, and promote architecture as well as to advance the important idea that design matters in every South Dakota community. For architect, associate, or allied membership information, please visit aiasouthdakota.org.

For Community Leaders: Who Needs an AIA Architect?

Hiring an architect for your commercial or residential design project could be the best decision you'll ever make. But many people don't know how or why architects make design work. At AIA's How Design Works For You website you'll learn how to work with an architect, as well as how to find the right architect for your project. Visit howdesignworks.aia.org.

Find an Architect Near You

Whether you're dreaming of a new home or planning commercial or public space, involving an architect from the start is the key to success. Use the Find an Architect feature at aiasouthdakota.org to locate South Dakota architecture firms in your area (click "SD Architects"). You can search by city or firm name. You can also search for architects anywhere in the world on AIA's Architect Finder at aia.org. (Members: log in to your aia.org account to update your Architect Finder listing and profile today.)

AIA Supports International Green Construction Code

The AIA supports the International Green Construction Code (IgCC), a model code expected to help conserve energy in both commercial buildings and residential structures while providing direction for safe and sustainable building design and construction. See the code and how it will impact design at aia.org/igcc.

Enhanced Scholarship Program for Architecture Students

AIA South Dakota continues to strengthen its architecture student scholarship program. If you know of an architecture student from South Dakota entering his or her third or fourth year in 2017, spread the word. The Enrichment Award is \$2,500 and the Merit Award is \$1,000. Visit the scholarship section (under News/Resources) of aiasouthdakota.org for more information.

The Industry Standard: AIA Contract Documents

AIA Contract Documents have defined the contractual relationships in the design and construction industry for 120 years. They save you time and money, are updated to reflect current industry practice, streamline the reviewing process, address emerging issues within design and construction, and demonstrate fair and balanced consideration to all parties. Now you can sign up for webinars and in-person trainings on the AIA's free Contract Documents learning portal at www.aia.org/docucation.



REALIZING YOUR VISION
with purposeful design
& quality client service



South Dakota State University, Brookings, SD
Architecture, Mathematics & Engineering Building

Sioux Falls, SD • p 605.271.9877 • www.perspective-inc.com

This is Wild Bill Hickok. He's a wiener dog. He works at CO-OP Architecture. If we're being honest, he's really not a great designer. But we've got other people for that.



**Wick
Buildings**



WickBuildings.com

Enduring Strength. Uncompromising Quality.

And, its affordable.

Wick Buildings uses only the best construction design, techniques and materials. This ensures you and your client get a structure that both looks great and lasts a long, long time.

Contact Larry Edema to schedule a free *Lunch and Learn* session at your firm and earn one AIA continuing education credit.

Call Larry at 608-795-1535 or email larry.edema@wickbuildings.com



For Members:

Membership Update

	2015	2016
Architect Fellow Emeritus Member	1	1
Architect Emeritus Member	18	18
Architect Members	81	84
Associate Members	43	40
Allied Members	75	77

Total 2015 AIA Members = 143

Total 2016 AIA Members = 143

ARE Study Guide Program

AIA South Dakota is working to help architectural graduates in our state complete their journey to architecture licensure. Associate members can check out a complete study guide from public libraries in Rapid City and Sioux Falls. For more information go to aiasouthdakota.org/study to learn more about the suite of information available to emerging professionals.

Join a Committee Today!

There's only one way to get the full value of your AIA membership—get involved in shaping what and how AIA South Dakota advocates for architects and architecture in our state. You are invited to make your membership organization stronger by volunteering for one of our committees. Teams are continually forming around activities such as planning the annual convention or Design in the Hills events, coordinating the scholarship program, working on a design:South Dakota project, helping emerging professionals advance their careers, or improving chapter communications. To learn more or sign up, visit aiasouthdakota.org/getinvolved.

2016 AIA South Dakota Annual Convention

Design professionals are gathering on September 15–16, 2016, for the annual AIA South Dakota Convention in downtown Sioux Falls. This year's convention will have a tremendous group of speakers including a special luncheon keynote by Governor Dennis Daugaard. SDSU DoArch is sponsoring leading Architect Marlon Blackwell, FAIA, and the Sioux Falls Design Center is sponsoring Dan Pitera, FAIA, who will speak on community building. Landscape architects will be joining the AIA again this year. As always, the Exhibit Hall will be an exciting attraction, which will be held on September 15. The convention is a gathering place for architects and all who collaborate with them to shape our buildings and communities. Don't miss it. See the full schedule and register at aiasouthdakota.org/convention. Plus, save the date for the 2017 AIA South Dakota Annual Convention in September 2017.

AIA Knowledge Communities

Connect with your colleagues and like-minded professionals who share your interests. Customize your AIA membership with the AIA Knowledge Communities in your specific professional interest areas. Joining these communities will help the AIA provide you with timely information on awards, research, industry news, programs, and opportunities to network both in-person and online in your specific areas of interest. To learn more, log into the AIA KnowledgeNet at network.aia.org.

Chapter Calendar

(subject to change)

2016 AIA South Dakota Design Awards Submission Deadline*

August 12, 2016

AIA South Dakota Convention and Annual Meeting

September 15–16, 2016

Exhibitor Expo – September 15, 2016

Hilton Garden Inn

AIA South Dakota Design Awards Gala

Hilton Garden Inn

September 16, 2016

AIA South Dakota 2016 Design Award Exhibit and First Friday Reception

Sioux Falls Design Center

October 7, 2016

Winter Membership Meeting

DDN sites

January 18, 2017

Spring Membership Meeting

DDN sites

April 19, 2017

Design in the Hills/

Summer Membership Meeting

Rapid City/Black Hills area

July 2017

*Visit aiasouthdakota.org for complete information.

“I LOOK UP”

connecting the public with architecture and positioning new generations of architects as catalysts of growth and visionaries for renewal



SANDRA LEA DICKENSON, AIA EMERITUS, is one of two North Central Regional representatives to the AIA Strategic Council. She represents the states of South Dakota, North Dakota, Minnesota, and Wisconsin to the national AIA. Sandy holds a BArch from the University of Oklahoma and has recently retired from a practice spanning more than 40 years. She has been active with AIA South Dakota for many years, serving as president in 2007.

The American Institute of Architects (AIA) has launched a three-year integrated public awareness campaign designed to re-connect the public with architecture and position new generations of architects as catalysts of growth and visionaries for renewal.

The initiative, a first for AIA, cuts across all platforms—social media, digital marketing, broadcast and print advertising. The campaign’s theme, “Look Up”, capitalizes on the original thinking architects bring to solving problems, the ability of architects to imagine and visualize, and, literally, “look up” to find solutions. The campaign highlights the unique perspective architects bring to the global challenges the world faces. “We are undertaking this campaign, which was months in the making, to not only change the perception of architecture and architects among the public, but to also place the architect back into the national discussion on infrastructure, economy, the health of communities, and the future of our country,” said AIA CEO Robert Ivy, FAIA.

“Our overarching goal with this campaign is to make sure that when clients are considering whether to design or build anything, the first call they make is to an architect,” said AIA Past President Elizabeth Chu Richter, FAIA. “We have the skills, talents and creative thinking that is best for a holistic approach to the design and building process.”

“We needed to get the public – the country – to also look up – to see, appreciate and be inspired about the architecture around them,”

– Roy Spence, CEO of The Purpose Institute

“When we took on this assignment, we realized early on that we needed to get the public – the country – to also look up, to see, appreciate and be inspired about the architecture around them,” said Roy Spence, CEO of The Purpose Institute, an Austin, Texas, marketing and communications firm that helps organizations discover, articulate and align all stakeholders around a genuine and authentic purpose.

“Working with Robert and AIA leadership, we conceptualized a three-year comprehensive public awareness effort to change the perception of architects and increase the value of architecture here in the U.S. and abroad,” Spence said. The Purpose Institute collaborated with The Butler Bros, a creative communications firm hired to co-develop strategy, lead creative development, and oversee production.

The social media campaign began in late 2014, but in 2016, the AIA rolls out a bigger public awareness push that includes two new ad campaigns, industry briefings, legislative advocacy, emerging professionals support, and additional media. The target audiences are AIA members, AIA component leaders, volunteer leadership, emerging architect professionals, influencers, community of practice, media, policy-makers, and the general public. ■

More information, the ad and other videos can be found on <http://ilookup.org> and on YouTube. Every firm is allowed and encouraged to place the ad on their website.



PHOTO CREDIT: Brian Rotert, Cipher Imaging

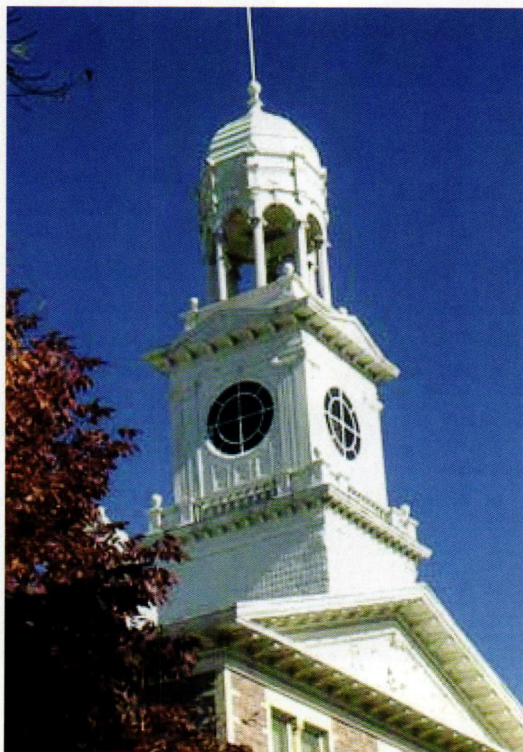


PHOTO CREDIT: Brian Rotert, Cipher Imaging

ABOVE: STI Health
Science Building, Sioux
Falls, SD.

LEFT: University of South
Dakota, Old Main Building,
Vermillion, SD.

RIGHT: Parker Block
Building, Sioux Falls, SD.

HAROLD T. SPITZNAGEL

visionary who designed spaces where
people still live, worship, work, play,
and heal



ABOVE LEFT: Sioux Falls City Hall, 1936. Spitznagel's first major commission.

ABOVE RIGHT: Harold Spitznagel, at the wheel of his prized MG Midget roadster.

Harold T. Spitznagel was a baker's son with an artist's eye and a head for solving technical challenges. He was proud of his work, his family, his prominent nose, and his British-made MG Midget roadster with right-hand steering. If it stung the few times he wasn't the first choice for a top project, he channeled those early slights in the most productive way possible. He seized the opportunity to create something only he could see, until he showed us. Those projects—an iconic city hall, a sophisticatedly rustic lake resort—put him “on the map” and led to an inevitable public opinion: Fate had meant those projects for no one else.

Spitznagel gave shape to spaces where people lived, learned, worshipped, worked, played, and healed. “Spitz” possessed a playful humor to balance his strong personality. That combination garnered trust, turning business dealings into lasting friendships. Spitz dedicated himself to understanding his clients and their needs. He was a consummate marketer who knew all the businessmen in town, had the ear of decision-makers in government, and counted plenty of friends on college campuses. Together, they created some of the most enduring designs in South Dakota and the surrounding states.

Spitz's work encompassed private residences and churches, schools and colleges, hospitals and clinics, businesses, libraries, civic arenas, and government buildings. His designs evolved from streamline modern to a distinctly individual, no-frills style. He recognized the need to integrate form and function, bringing full-time engineers and interior designers into his practice in the early 1950s. Spitz drew inspiration from fine art, scientific pursuits, and cultural discoveries during his numerous international travels. He found equal spark in his relationships with colleagues and clients. A full 85 years later, The Spitznagel Partners—TSP, Inc.—holds to his principle: “Design it like you own it.”

Spitz aimed to “solve the problem as straight-forwardly as possible and leave the client with the fewest number of headaches.” He wanted to give clients something real: a thoughtfully made space that fulfilled its purpose and stirred a personal reaction. He also was driven by another powerful force that ran like a current through his work, no matter the range “from Sunday schools and churches to bars and penitentiaries.” He understood art's power to move people, and he infused his designs with it. In doing so, he made these surprising touches part of our everyday built surroundings. Spitz commonly suggested

his clients set aside 1% of the budget for artwork. Over the course of his career, he collaborated with two dozen fine artists, nearly half of them from South Dakota.

STARVING AT HOME | TRUST IN RELATIONSHIPS

Born in Sioux Falls on Dec. 7, 1896, Spitznagel graduated from Washington High School in 1916. He studied for two years at the Art Institute of Chicago and then transferred to the University of Pennsylvania, where he earned his Bachelor of Architecture degree in 1925. He spent six months in Indianapolis, and then the big, raw-boned German and his tiny, spitfire Norwegian wife moved to Chicago. Spitz worked for more than three firms in as many years. The nation teetered on the cusp of the stock market crash, and even those flush enough to finish a project weren't starting new ones.

Spitz reasoned it would be best to “starve at home.” He and Engla returned to Sioux Falls in 1930, and with \$20 in capital, he rented a \$15-a-month office on the third floor of the downtown Western Surety Building. He hung his shingle as “Harold Spitznagel, Architect.” Fittingly, his first job was designing a front for a local bakery. He received his fee in baked goods.

Spitz was nearly fired from his first real commission, a private home, when he and the owner disputed the headroom needed for a stairwell. To illustrate his point, he drew a decapitated figure descending the steps. Spitz's design prevailed. He had an instinct for knowing when to push and when to give. Architects, he said, relied on clients to convey their thoughts on how a space would be used. And architects had the responsibility to ask for input, and to

listen. That philosophy of mutual respect was the basis for Spitz's entire practice. Until the late 1940s, most of his project agreements were made on a handshake or in a simple letter that described the work to be done.

Nowhere was that unspoken trust more implicit than in the private commissions that kept the doors open in the early years. In fact, such projects accounted for nearly 90% of the firm's work throughout its first decade. Word traveled, and these jobs often led to larger projects at the client's place of business (or vice versa). Spitz



JENNIFER S. HYK is Marketing Coordinator at TSP, where Spitz's legacy lives through design and the firm's culture. Hyk is a former journalist and lifelong South Dakotan whose work background includes nonprofit development. She and her husband, Rob, have two young boys who design their own masterpieces in Minecraft and LEGO blocks.

“There is an old saying that while the lawyer's mistakes are behind bars and a doctor's errors are buried, the architect's blunders confront him as long as he lives.”

– Spitz, during a seminar he presented at the University of Minnesota, circa 1965



ABOVE: Sioux Falls City Hall Commission Room, 1936. First fine art incorporated as part of a Spitznagel design.



ABOVE: Sylvan Lake Lodge, Black Hills, 1937.

completed numerous crossover projects for John Morrell Foster, owner of the meatpacking industry giant, in addition to home and office work for the Fantle, Rysdon, Ortman, Egger, and Billion families, among others.

A garrison colonial style home earned Spitz his first published work, featured in a 1935 edition of *House and Garden*. Many others followed, including the Sioux Falls home he designed for Engla and their children—Betty, Molly, and Steve. The 1,904-square-foot ranch was lifted up as the “research home” of the future in the July 1946 issue of *Popular Home* and later was featured in *Better Homes & Gardens*. In all, Spitz completed roughly 50 new homes, additions, and substantial renovations in South Dakota, Minnesota, Iowa, and Nebraska. Many “Spitz houses” are lovingly protected by the families who own them today. Marv Looby and her husband are only the second owners of a Sioux Falls ranch completed in 1951 for attorney Robert May. The Loobys bought the property in 1987 and have the original plans. They’ve kept the core house as Spitz designed it. Even when making additions, they used the same style brick and wood, and continued the window scheme and interior design sensibilities.

SEIZING OPPORTUNITY | EARLY WORK

Spitznagel’s first major commission wasn’t his, at the outset. It came in 1932 via a colleague. Joseph Schwartz, Jr., recruited Spitz to collaborate on a new Sioux Falls City Hall but retired soon after Spitz joined the project. Spitz recognized it for the name-making chance it was. He persuaded John Schoening, a co-worker from Chicago, to move to Sioux Falls. The two abandoned Schwartz’s initial tower design and pitched a concept

that would make City Hall one of the few local public buildings without a cornice.

City Hall still stands at Dakota Avenue and Ninth Street. Influenced by the late art deco movement, it combines clean lines with artistic elements such as limestone plaques above windows and frescos in the Commission Room. Palmer Eide, an Augustana University art faculty member, carved a series of granite panels to go over the exterior doorways. Altogether, it was the first significant artwork provided as part of a Spitznagel design. Spitz went on to design many civic buildings across South Dakota and neighboring states: post offices, a zoo, municipal halls and state offices, federal buildings, swimming pools, justice chambers, and others. During World War II, Spitz served as director of housing for the Sioux Falls Army Air Field. The experience led to military contracts for housing design there as well as bases and army depots in Rapid City, Custer, and Edgemont, among other defense projects.

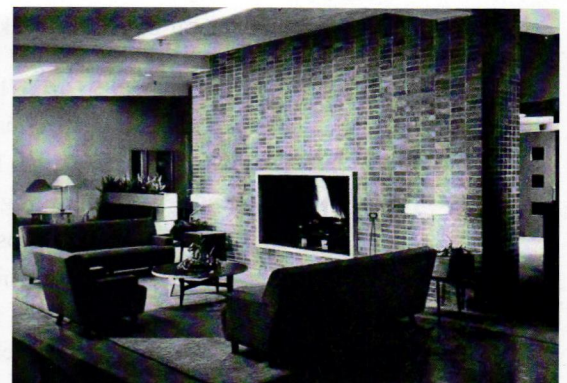
In the recovery decade that followed, the firm secured its first sport-venue commission. The Huron Arena, dedicated in 1952, featured tangent arches that eliminated the need for columns or trusses and offered unrestricted sight-lines to its 6,800 patrons. It stood as the state’s largest such venue until Spitz designed the Sioux Falls Arena. Created to seat 9,550 for basketball games, the upsized octagon opened in 1961. Its curving roofline became a unifying theme for the structures that built up around it, including the Sioux Falls Convention Center and the Denny Sanford PREMIER Center. Spitz’s reputation on public projects was well-earned. He deftly coaxed buy-in from officials, navigated their processes, and delivered

extraordinary results on high-profile investments such as the Mount Rushmore Visitors Center, completed in 1962.

DEVELOPING HIS STYLE | COMMUNITY & BUSINESS

Spitz wasn't the leading pick for his other big break, either—until he was. He'd steadily built his name through civic work and designed Custer State Park Museum, now the Peter Norbeck Visitor Center. By September 1935, Spitz was a supervising architect for Federal Housing Administration projects in the state. Still shy of 40, he eagerly accepted Sen. Norbeck's request: Drive Frank Lloyd Wright through Spearfish Canyon and wrap with a dinner party hosted by Wright's friend, Rushmore sculptor Gutzon Borglum. A small group was wooing Wright to design a replacement for Sylvan Lake Lodge, which had burned to the ground that June.

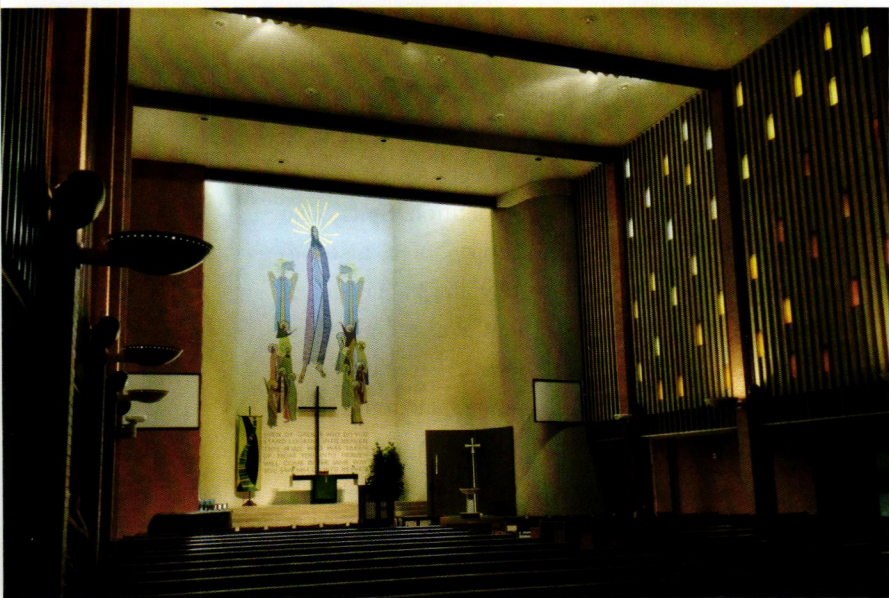
Numerous political forces unraveled the effort. Wright, by then 68 and internationally renowned for his prairie style, believed the trip to the Black Hills meant the commission was his. He was surprised and then alienated when Custer State Park Board members asked him to submit a preliminary sketch for competition. Spitz, who strongly supported Wright as the top choice, also declined to submit a drawing. Ultimately, the state engineer announced the job as Spitz's without ever seeing either man's concept for the new resort. Spitz's career-changing design departed from the usual log style seen in the Hills. The exterior's local stone and zigzag siding blend harmoniously with the forested surroundings. Completed in 1937, the lodge is furnished with a knotty pine interior, open trusses and plank floors in the main lounge, and details that suggest Native American symbols.



TOP: First Federal Savings and Loan, Sioux Falls. First Honor Award 1968, AIA South Dakota.

BOTTOM LEFT: Hollywood Theater, Sioux Falls, 1939. Spitz's only movie house.

BOTTOM RIGHT: Ottumwa Country Club, Iowa, 1950. Depicts Spitz's individual style.



ABOVE: Our Savior's Lutheran Church, Sioux Falls. Mural by Robert Aldern. Merit Award 1960, National Council of Churches of Christ.

Two years later, the only Spitz-designed motion picture house opened to the public. The Hollywood Theater beckoned guests to downtown Sioux Falls with 1,500 bulbs and neon tubing on an impressively engineered marquee. With its premiere, Spitznagel embarked on a series of community and commercial projects. The firm saw repeat work for John Morrell & Co., completed extensive remodels of both the Carpenter Hotel and the Cataract Hotel, and created coolly inviting spaces for the Sport Bowl, area banks, and merchants selling goods from candy to menswear. Spitz also developed bold, modern looks for the Minnehaha Country Club in Sioux Falls, and for Iowa's Ottumwa Country Club. The latter exemplifies his unmistakable style—a mix of modern lines, expansive windows, and natural wood and brick.

SERVING HIGHER POWERS | FAITH, ART, EDUCATION

Spitznagel's firm grew, attracting partners and then offices in other cities and states. By the 1950s, the office had its first mimeograph, but all drafting was done by hand. Drawings appeared in ink on linen, usually in Spitz's preferred felt-tipped pens. Through architecture, Spitz found opportunities to make good on his promises to clients, serve his community, learn and teach, and uplift artistic expression. It's no wonder, then, that educational projects drew him like few others. His firm found a niche in K-12 design throughout the region, while cultivating what would grow into decades-long relationships with South Dakota State University and the University of South Dakota.

It was Spitznagel's connection to Augustana University, however, that took hold most deeply. During his decades

of campus work, he designed everything from the president's house to the Gilbert Science Center. Spitz's first job for Augie was developing a 1945 master plan that led to the Tuve Hall women's dormitory. Art professor and City Hall collaborator Eide designed the interior, and Spitz found other kindred spirits within his friend's department. He'd work with Eide, Ogden Dalrymple, and Robert Aldern in multiple ways on civic and church projects.

Sacred works became a specialty emphasis for the firm. Each design fused divine inspiration and Midwest practicality. The 24 churches created between 1960 and 1970 provided Spitz an opportunity to develop potential within his younger staff architects. William Bentzinger was born the same year Spitz graduated high school, and Wallace Steele was born the year Spitz graduated college. Both flourished at the firm, earning numerous state and national awards for their work at churches in South Dakota, Minnesota, and Iowa.

"In a way," Spitznagel told *Progressive Architecture* magazine in 1951, "I have always felt that I have been conducting a school for fledgling architects." Once Spitz assigned a project, he allowed the architect to follow through, even though he provided design critiques to ensure a sense of continuity in the firm's work. He did so, he said, to help foster a great sense of personal responsibility, as "pride in the work results in a better solution to the problem."

"He was a great critic," says architect Gary Stanley, who joined the firm in 1967. Spitz would come up behind a workstation and wait, silently, until his presence became obvious. "He might say, 'That looks like crap,' and then walk away."

Spitz had a similarly straightforward way of dividing up so many church projects among the architectural support staff. Catholic draftsmen were given Protestant church projects, and vice versa. Spitz reasoned that if the designer wasn't from the same faith background, he wouldn't be able to rely on familiar assumptions. In Spitz's mind, asking more questions meant a greater opportunity to deliver exactly what the client needed.

"He believed in hiring the best and pushing them to do their best," says Ruth Schemmel, who began her decade at the firm in June 1957. She was 18, hired as a secretary, and advanced to bookkeeper in her first two years. The office

was humming along, and the commission for the Sioux Falls Arena was just around the corner. “The philosophy was that there was no limit to what you can learn, and if you don’t know something—ask,” Schemmel says. “I owe him a great deal for the person I became because he set very high standards.”

As committed as Spitz was to serious work, he also had a healthy respect for fun. His calm demeanor was the perfect cover for his many pranks. Spitz was the kind of boss who, in his seventies, looked past a too-long haircut to hire a designer fresh from architectural school. “He didn’t seem old to me,” says Dick Dempster, who got a trim and a new suit in short order. He still has the autographed farewell portrait Spitz gave him during a round of unavoidable layoffs in the early 1970s. Dempster recalls a fellow designer who agonized over the size of a detail on an important project, working it out to fractions of an inch. When asked, Spitz settled things simply. “Spitz told him, ‘Just make it two inches tall, or nobody will see it,’ ” Dempster says. “There was no formula for that sort of thing.”

SAYING GOODBYE | LEGACY

Spitz retired in June 1972, 42 years to the month since founding his firm. He left with little ceremony, which was his request. His staff kept his office for him. As his

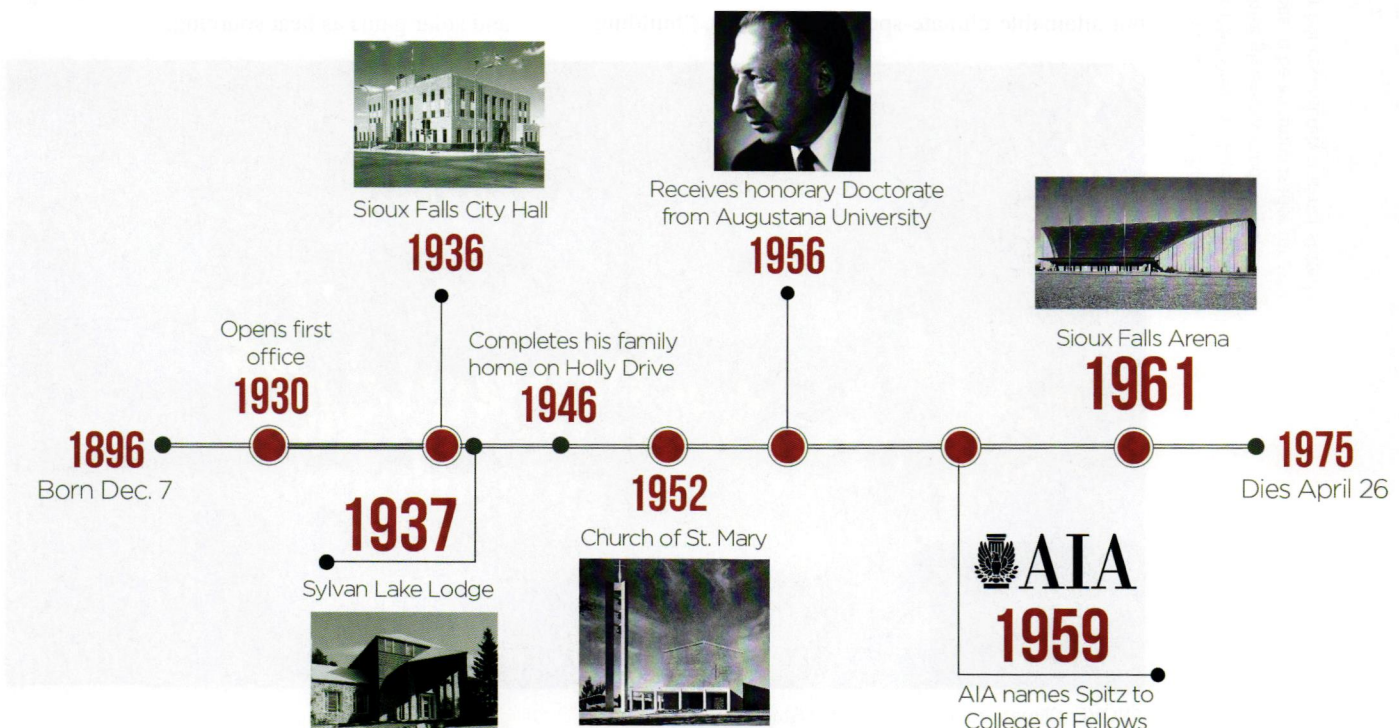
health failed, colleagues and contemporaries realized how profound the loss would be. Spitznagel died April 26, 1975. “What a void for me, our firm, the architectural profession, and the world,” firm partner Steele wrote in a tribute piece for the autumn edition of *Architecture Minnesota*.

That same fall, a four-city exhibition of Spitz’s professional and student work opened to the public. The retrospective toured for four months. One of his many Augie art friends, Carl Grupp, helped frame the idea for the Harold Spitznagel Medal for Achievement in Art. It’s the highest award the department bestows, and given only occasionally. At South Dakota State University, architecture and engineering students receive TSP-sponsored scholarships, and graduates compete for the new Harold Spitznagel Architectural Fellowship.

Spitz’s true design legacy is greater than even the impressive list of buildings he created. His purest gifts to our field are in the relationships he cultivated, the ideas those connections inspired, and all the works yet to come. In Steele’s words: “Our strength is what he gave us—his love, his philosophy, and memories.”

View an extensive list of Spitznagel’s early work, learn more about legendary office pranks, or share your own Spitz story at www.teamtsp.com/haroldspitznagel

SPITZNAGEL MILESTONES



PASSIVE HOUSE FOR SOUTH DAKOTA

Designed, Sealed, and Delivered



ALLISON DVORAK, AIA, CPHC, is a project architect with Koch Hazard Architects in Sioux Falls, SD. As a recently licensed architect and now a Certified Passive House Consultant, she plans to further her knowledge in energy efficient design through energy modeling and a comprehensive understanding of building sciences. She hopes to be an ambassador for responsible design driven by the methods taught by PHIUS for her community and her state.

PHIUS+

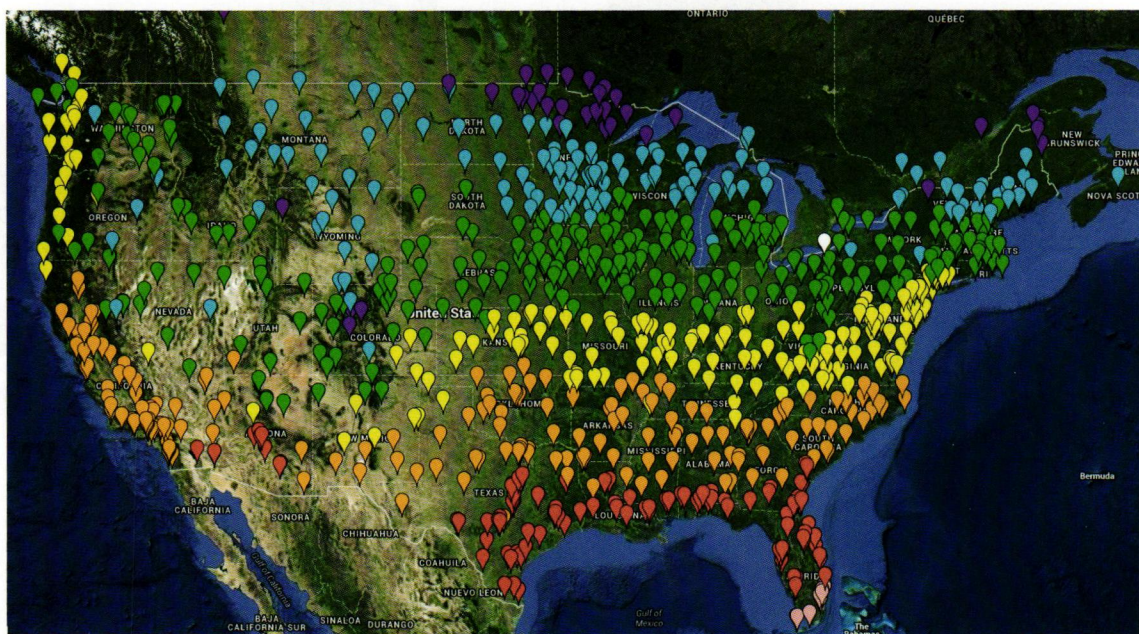
In response to the oil embargo of the 1970s, passive house concepts, using super insulation, airtight construction and balanced ventilation were developed. As oil prices dropped again in the 1980s, little was invested into the passive house. However, Germany and Sweden adopted these principles to develop Passivhaus in the late 1980s. These thorough, voluntary standards for energy/efficiency and reduction of ecological footprint have been driven by PHI, or the Passive House Institute, leaders in “research and development of construction concepts, building components, planning tools and quality assurance.”

Interest in passive house has begun returning to the U.S., however the country’s diverse climate regions require variations in the international standards of certification to make PHIUS cost effective, practical, and easily adopted throughout the country. According to the PHIUS website, with these stricter but attainable climate-specific standards, “building

energy performance targets substantially cut carbon emissions and energy consumption, in buildings that provide superb comfort, indoor air quality, and resilience.”

PHIUS + 2015 construction is based on the following set of design principles:

1. Continuous Insulation with Minimized Thermal Bridges: Minimizes heat loss/gain.
2. Airtight Construction: Prevent moisture migration.
3. High Performance Windows and Doors Customized to Orientation: Minimize heat loss/gain through openings.
4. Balanced Ventilation: Provide fresh outdoor air through filtered recovery ventilation system for conditioned interior spaces.
5. Minimized Systems: Utilize internal heat loads and solar gains as heat sourcing.



ABOVE: Climate zones of the United States.

SOUTH DAKOTA PHIUS

Various energy conserving design standards have been implemented in the United States to improve energy efficiency in our design environment. PHIUS stands out beyond these other programs with a performance based certification of a building in its specific climate. As new PHIUS+ 2015 standards have been implemented, climate specific criteria is now used in more challenging climates, such as South Dakota.

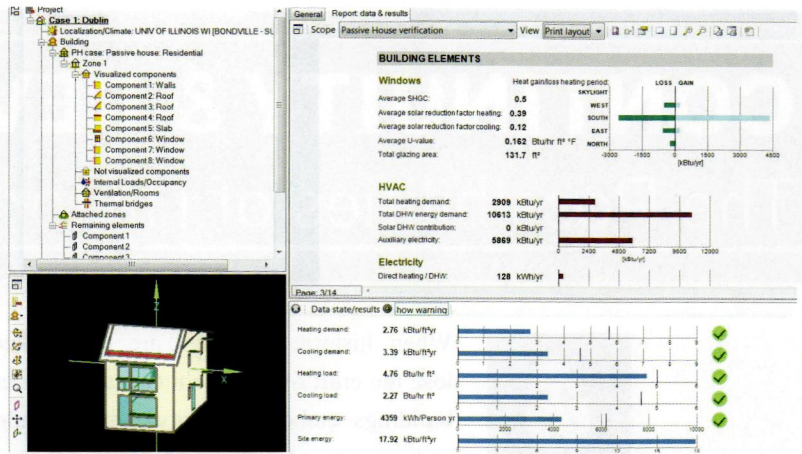
SOUTH DAKOTA PILOT PROGRAMS

Governor Dennis Daugaard has held a long-term interest in passive building techniques for energy efficiency and durable construction and has applied these to the Governor's House program. While creating opportunities for incentives in designing to the passive house PHIUS+ 2015 standards, the Certified Passive House Consultant grant program was created to bring continuing education and energy efficiency training to design professionals in South Dakota.

"Home ownership is a part of the American dream, and the Governor's House program has made that dream come true for hundreds of South Dakotans—people who may not otherwise ever own a home. By continuing to make the homes even more efficient and affordable, we'll be making that dream a reality for many more in the future." (Column by Gov. Dennis Daugaard, Feb. 28, 2014. <http://news.sd.gov/newsitem.aspx?id=15787>)

Eight architectural professionals, including myself, were accepted into a nine-week training provided by the PHIUS program in March-June of this year. Through a series of online classes, a rigorous week long on-site training session ending with an exam and take home design test, we were pushed to learn how buildings perform as a passive system, which also included completing hygrothermal analysis in example projects.

Two programs were introduced as a way to complete a PHIUS+ certified project: WUFI, which performs static and dynamic simulations of building components and behaviors; and THERM, a



ABOVE: WUFI Analysis for PHIUS Certification.

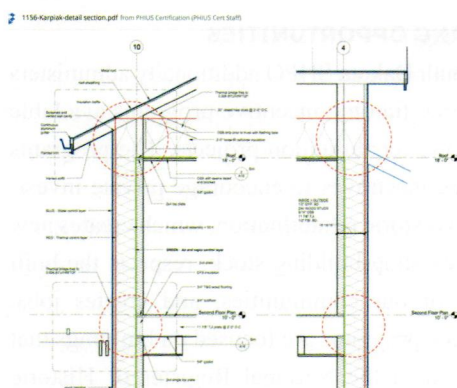
program used to determine heat loss through modeling specific thermal bridges.

Concurrently, Governor Daugaard is implementing a pilot program consisting of a multi-family housing project designed to meet passive certification to create a model project in South Dakota as a learning tool for future projects. Both the grant and pilot project were created to incite interest and develop a foundation for advanced building design within our own statewide design and development community, which will bring the durability and energy efficiency of each building to a higher level.

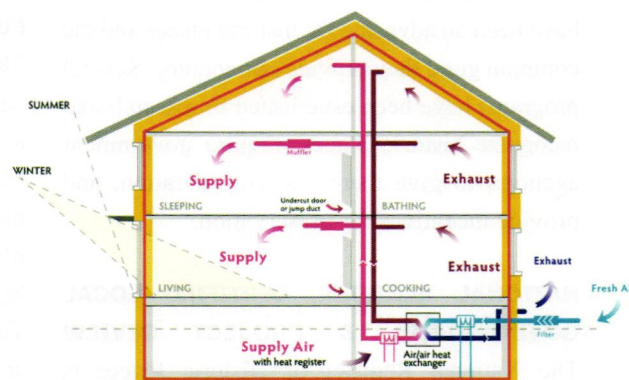
OUTCOMES

As architects, we must be stewards of the environment we continually reshape through our designs. Reducing energy consumption is a great contribution, not only for the occupant in the buildings we design, but in how those buildings are thoughtfully put together to be durable and perform effectively and efficiently for their useful life. I must tip my hat to our state's leader, Governor Daugaard, for not only being on the forefront of this design challenge, but also for creating opportunities for South Dakota architects to come together to help lead this change in our profession for our communities, our state, and our world. ■

For more information on Passive House design, please refer to the PHIUS website: www.phius.org



ABOVE: Potential thermal bridges in construction.



ABOVE: 2014 PH Basic - Basic Passive House Principles.

CONTINUITY & REVITALIZATION:

The Possibilities of Historic Preservation



LIZ ALMLIE has worked for the South Dakota State Historical Society as a Historic Preservation Specialist since 2011. She received her B.A. in History at Augustana College (now University), Sioux Falls, in 2008, and her M.A. in Public History at the University of South Carolina, Columbia, in 2010.

When historic buildings are demolished, we lose the craft of past architects and builders, the buildings' embodied energy, familiar landmarks, and pieces of our connection to the past. When historic buildings are rehabilitated for a contemporary use, we can see the carpenter's skill in the windows and stair railings, or the mason's craft in arches and bond patterns. We see innovation in programming, materials, methods, and design to adapt historic spaces for new uses. We conserve energy that has already gone into sourcing, transporting, and constructing the building. We benefit from the efficient inherent features of natural daylighting, air circulation through double-hung windows, storm windows, and awnings. Historic main streets support local business and build community. Local residents can deepen their ties to the past, new residents create connections to their new home, and visitors search for both the unique and the shared heritage of our world.

A wide array of partners contribute to historic rehabilitation projects, from building owners, to architects, developers, contractors, historians, lawyers, real estate agents, and city planners. Since 1972, when South Dakota established a State Historic Preservation Office (SHPO) within the State Historical Society under the 1966 National Historic Preservation Act, we have been an advocate for historic places and the common good they provide our country. Several programs have been established to research and recognize historic places, require government agencies to give them due consideration, and provide incentives for preservation.

NATIONAL REGISTER, CERTIFIED LOCAL GOVERNMENTS, & PROJECT REVIEW

The National Register of Historic Places is our national inventory of places worthy of

preservation for historical significance and integrity of location, setting, design, workmanship, materials, feeling, and association. While listing on the National Register places no inherent restrictions or requirements on property owners, it is an important avenue for recognition, research, education, and planning. The South Dakota SHPO prepares or helps facilitate the National Register nominations, reviews pending nominations, and manages records for listed properties. SHPO is also privileged to support the work of several Certified Local Governments (CLGs) that have demonstrated a commitment to the preservation of their local built environment and been certified by the National Park Service. CLGs establish local preservation boards or commissions, participate in consultation and advising on the treatment of historic buildings, and can apply for grant funds for research, nomination, outreach, and education.

SHPO is also responsible for reviewing and commenting on projects that are working through the review processes mandated by either Section 106 of the National Historic Preservation Act or South Dakota Codified Law 1-19A-11.1, which require government agencies to consider the effects and feasible alternatives for proposed projects that may impact historic properties.

FUNDING OPPORTUNITIES

The South Dakota SHPO additionally administers with three funding incentive programs available to historic rehabilitation projects. The programs leverage incentives to encourage private investment in historic rehabilitation, which creates new life in existing building stock, respects the built legacy of our communities, and creates jobs. The three programs are focused on buildings that are listed in the National Register of Historic Places and projects that adhere to the Secretary



of the Interior's Standards for Rehabilitation. Full program requirements can be found on the SHPO website at <http://history.sd.gov/Preservation/FundingOpps/FundingOpportunities.aspx>. The Secretary's Standards, as well as extensive guidance on interpreting the Standards and preservation methods, can be found on the National Park Service website at <http://www.nps.gov/tps/standards/rehabilitation.htm>.

Whether applying for one of these programs or not, our office is available to comment on rehabilitation plans or help research solutions that will meet the Secretary's Standards. If interested in more information about the Deadwood Fund Grant, contact the regional Historic Preservation Specialist, and if interested in the two Tax Incentive programs, contact the Restoration Specialist: <http://history.sd.gov/Preservation/staff.aspx>

DEADWOOD FUND GRANTS

Deadwood Fund Grants are awarded in two application cycles each year for upcoming projects that will retain, restore, or rehabilitate historic buildings, structures, and archaeology sites in South Dakota for commercial, residential, or public purposes. Applicants can request \$1,000 to \$25,000 in matching funds. In 2014, eleven projects for residential and commercial buildings, museums, courthouses, and state historic sites were awarded Deadwood Fund Grants totaling \$121,921. From 1997 to 2014, grant awards for 224 historic places of more than \$2.3 million have been made by the South Dakota State Historical Society. (Some grant awards are not completed for a variety of reasons, and funds are then re-allocated in later award cycles).

The Yankton County Historical Society has applied for and received two Deadwood Fund Grants as one of many funding sources for the rehabilitation of the historic Mead Building. The Mead Building was part of the former Human Services Center campus, vacated in the 1990s. The building will become the future Mead Cultural Education Center and new home for the Dakota Territorial Museum. Grants supported the removal of historic clay roof tiles, repairs to the roof structure, replacement of the historic tiles,

ABOVE: The Yankton County Historical Society has applied for and received two Deadwood Fund Grants as one of many funding sources for the rehabilitation of the historic Mead Building.

BELOW: Grants supported the removal of historic clay roof tiles, repairs to the roof structure, and replacement of the historic tiles, as well as ongoing repairs to damaged sections of the historic plasterwork on the grand interior.



BEFORE



AFTER

ABOVE: The Masonic Temple in downtown Brookings went through a major rehabilitation and received the City of Brookings' Mayor's Award for Historic Preservation.

and ongoing repairs to damaged sections of the historic plasterwork in the grand interior. The other major ongoing project at the building is the repair of hundreds of historic windows and construction of customized wood storm windows.

THE 8-YEAR STATE PROPERTY TAX MORATORIUM

Property owners can apply for the 8-year State Property Tax Moratorium for projects that meet the Standards and would impact the property taxes of a historic building. If approved, applicants receive an 8-year moratorium from that date on the increase in property taxes that those preservation projects would bring. For multi-year projects, owners can apply again each year for the work done during that calendar year. Applications are due to SHPO each year on November 1st and are reviewed by the South Dakota State Historical Society Board of Trustees in December. We recommend contacting us at the SHPO office while you're planning work so that we can review the proposed projects under the Secretary's Standards. In 2014, twenty residential and commercial projects in ten counties applied for the State Property Tax Moratorium, projects that invested more than \$9.4 million into the revitalization of historic places.

Awarded a State Property Tax Moratorium in 2014, the Masonic Temple in downtown Brookings went through a major rehabilitation to recreate retail/commercial space on its ground floor and install a historically-compatible storefront in lieu of a non-historic front installed in 1953 when the building was converted for a

mortuary business. The building was constructed in 1894, designed by Burlington, IA architect Charles A. Dunham, and the local masonic lodge continues to maintain meeting space on the second floor of the building. In the fall of 2014, the project received the City of Brookings' Mayor's Award for Historic Preservation.

THE 20% FEDERAL HISTORIC REHABILITATION INCOME TAX CREDIT

For the more substantial rehabilitation projects, the SHPO, the National Park Service, and the Internal Revenue Service administer the 20% Federal Historic Rehabilitation Tax Credit for income-producing properties. To be considered a substantial rehabilitation, project expenditures need to exceed the adjusted basis of the building or \$5,000, whichever is greater. There is a three-part application that certifies the historic status of the building, presents the scope of work in compliance with the Secretary's Standards for approval by the NPS, and submits proof that the final work met the Standards. In 2014, the National Park Service approved four projects in South Dakota, which invested more than \$10 million into the revitalization of historic places.

In Deadwood, the turn-of-the-century Clark/Mullen and Munn Block (formerly the Pineview Apartments) had been vacant and deteriorating for many years and was facing the prospect of demolition before current owners undertook a massive rehabilitation to turn the building into the Gold Dust Hotel. Interior deteriorated materials were removed, the structure repaired, and an approved addition was erected on a side elevation.

IRREPLACEABLE CULTURAL HERITAGE

These projects and others, large and small, are shining examples of what is possible when we conserve continuity in our built environment and respect the legacy of the past for our world today. Historic places are irreplaceable. You cannot fully recapture their ingrained history, architectural legacy, or embodied energy after they have vanished. There are still major challenges—a great web of factors that impact the fate of historic places for which our office’s regulatory and incentive programs offer only partial support. There are heartbreaking demolitions, rural places facing neglect or obsolescence, and flare-ups of the tense balance between the rights of private property owners and the public benefits of historic places. Advocates for preservation lack active statewide non-profit support. There is minimal coverage across South Dakota for access to architects, contractors, and craftspeople with the training and experience to work on historic rehabilitation projects. There also remains a lag in understanding the importance of (and knowledge about) less popular kinds of historic places of vernacular design, archaeological sites, diverse and multivocal histories, cultural landscapes, or modern/recent past architecture.

To become a part of conserving our state’s built heritage, there are many ways to get involved. The

first would be to learn about the historic places in your community through current National Register listings, local historic preservation commissions, or historical societies. You can become a member of and/or follow the work of the State Historical Society, the National Trust for Historic Preservation, or other organizations. There are some, like the Black Hills Historic Preservation Trust, that specialize in a specific region, or others that work for a particular category of built heritage, like the Recent Past Preservation Network. Many of these organizations (including SHPO) use Facebook and other social media to share information on current projects and issues.

The SHPO office also maintains resource lists for property owners of architects, architectural historians, and contractors who are willing to work on rehabilitation projects. If you work in one of those fields, you can request to be included on those lists. Local preservation commissions and boards in many communities across South Dakota also regularly seek new members with interest and expertise. Communities rely on grassroots level historic preservation to ensure that our cultural heritage is still here to teach us where we have been and provide a foundation for where we are going. We look forward to supporting the conservation of our state’s rich historical legacy! ■



LEFT: In Deadwood, the turn-of-the-century Clark/Mullen and Munn Block (formerly the Pineview Apartments) had been vacant and deteriorating for many years and was facing the prospect of demolition before current owners undertook a massive rehabilitation to turn the building into the Gold Dust Hotel.

HARLEY-DAVIDSON RALLY POINT IN DOWNTOWN STURGIS





PHOTO CREDIT: Don Kates, Shooters Images, Inc.

LEFT: A custom designed stage for the plaza creates a center focus. Overhead canterenary lighting provides a pleasant ambiance during nighttime events, while seat wall planters with decorative railings define and separate the space.

BACKGROUND

Sturgis, South Dakota is a typical small prairie town with some not-so-typical issues. Thanks to past motorcycle enthusiasts like Pappy Hoel, Sturgis enjoys an international brand and worldwide recognition. Sturgis also welcomes a seasonal critical mass that is nearly ridiculous; an estimated 739,000 visitors attended the 75th Sturgis Motorcycle Rally in 2015. Although the “Rally” brings crowds of people, economic benefits, and notoriety to the normally 6,800 person town, the month-long Motorcycle Rally and mass exodus each year leaves the downtown with vacant storefronts, empty streets, and a devoid of energy. Like many small western and midwestern towns, Sturgis was lacking a year-round sense of place that highlighted its unique setting, local culture, and vibrancy of other communities in the region.

The citizens of Sturgis realized an effective approach to increase economic development, prosperity, and a sense of pride about their community would be to highlight their downtown through aesthetic, functional, walkable, and unique improvements. A keystone piece of this downtown effort was needed. A gathering space modeled like traditional historical plazas/piazzas was strongly considered, one that allowed a place for events, encouraged downtown visitation, and served as a catalyst for economic development.

In 2013 the City decided to revisit their planning and zoning ordinance to see if they could address some of their challenges on a policy-based level. A “Downtown Framework Plan” was authored by a 15 member Task Force consisting of citizens, city officials, and their planner, FourFront Design. This document focused on branding, revitalization, and empowerment and challenged Sturgis to “Make it Yours, Take it Back, Make it Great”. The Framework also proposed changes to the zoning ordinance that would increase the ability for new, progressive development in the downtown area. For example, street cafes were included as an allowed use, mixed-use development was incentivized, and pilot projects that would enhance the downtown experience were conceptualized.

This initial step was the first in moving the revitalization of Sturgis’ downtown into reality. Through this effort, a true collaborative environment was created. Partnerships were formed, meetings held, and Sturgis leaders and citizens began a collective movement to better their community. These efforts were recognized, and in 2013, Sturgis was named the “Community of the Year” at the Governor’s Economic Development Conference. The award recognized the cooperative effort of the City of Sturgis, Sturgis Economic Development Council, Sturgis Area Chamber of Commerce, Meade County, and numerous local businesses. The document was



EIRIK HEIKES, ASLA, is the Principal of Landscape Architecture and Planning of FourFront Design, Inc., Rapid City, SD established in 2007. He has been designing a diverse mix of landscapes and sites for his 19 years of landscape architecture with a passion for sustainability and conservation.



IMAGE CREDIT: FourFront, Inc.

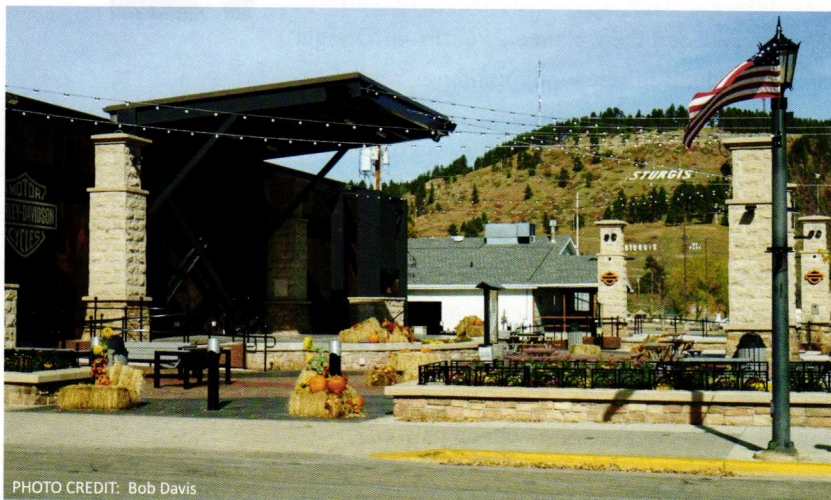


PHOTO CREDIT: Bob Davis

TOP: A still shot from a digital animation that was created during the project shows the vision of Rally Point Plaza.

BOTTOM: The plaza will integrate with the new streetscape design on Main Street. The space has already been used for a variety of community events outside of the Sturgis Rally and is quickly becoming a place where residents gather year-round.

well received; however, the community needed to maintain momentum and implement a showcased project that was tangible and embodied the Framework. With some persistence to “build something real”, these partnerships catalyzed the City to move forward with their first big piece of the downtown redevelopment puzzle – a plaza.

DESIGN PROCESS

In 2014, FourFront Design then was hired to create a conceptual plaza plan and accompanying graphics for a parking lot in the heart of the downtown area. The site was selected because of its convenient downtown location, vacancy, and willingness of adjacent property owners to collaborate with the City to turn over ownership.

The initial plaza plan included a conceptual-level design that incorporated a stage, landscape and shade features, information kiosk, and “convertible street” that could be opened for larger events with vendors and booths. These initial design efforts served to inform the public about the project, increase interest and excitement, and gain ideas and headway for fundraising efforts. FourFront focused on simple, measurable, and festive concepts.

The success of the initial design and graphics resulted in the next step of the project. FourFront Design began a master planning effort for the plaza, which aligned the conceptual design with construction drawings. The design was refined, elements were added (and some taken away), and partnership efforts continued moving forward. In early 2015, the City was able to bring a large key partner into the plaza project that would help catapult the project into the national spotlight. As the design team was nearing completion on an animation video displaying the proposed design of the plaza, Harley-Davidson, Inc. was in negotiations with the City regarding the funding of a portion of the plaza's construction budget via a private-public partnership. The animation highlighted the design features of the plaza including:

- Open, flexible, colored hardscaped plaza with space to accommodate a variety of events and layouts with integrated “super columns” to frame the space
- Raised planting beds with seat walls and decorative railings along the perimeter of the plaza to create a sense of enclosure and seating functionality (These details became part of the fabric of the adjacent Main Street reconstruction project with intention of aligning with Sturgis Complete Streets criteria.)
- A central permanent stage with ramps and stairs to the performance stage
- Weathered steel panel and flange steel backdrop to align with Harley-Davidson brand
- Masonry fireplaces with television screens
- Benches, tables, and seating
- String lighting overhead for evening and event ambience
- A “photo plinth” for visitors to pose with motorcycles with the “Sturgis” letters on the hillside behind them (borrowed scenery from the natural vista)
- Sculptures incorporated into the plaza to showcase the work of local artists

RESULTS

As things turned out, the timing for the negotiations and animation aligned at the perfect moment. With the caveat that the plaza would be theirs for one month of the year, Harley-Davidson and the City of Sturgis agreed to a private-public partnership. The 11,000 sf plaza was officially named “Rally Point”; the street intersecting Main became “Harley-Davidson Way”. Harley supplied much of its own materials—including bricks brought in from Milwaukee yanked from their headquarters building to stones salvaged from the Davidson Homestead in Scotland.

FourFront completed contract documents, the project was bid in the winter of 2015, and construction started in early spring. Ainsworth Benning Construction of Rapid City was awarded the project and proved to be a strong partner that accomplished the complex effort. The buzz and excitement started to become notoriety among the citizens of Sturgis and a strong sense of curiosity as well as curbside speculation (and coaching) soon developed.

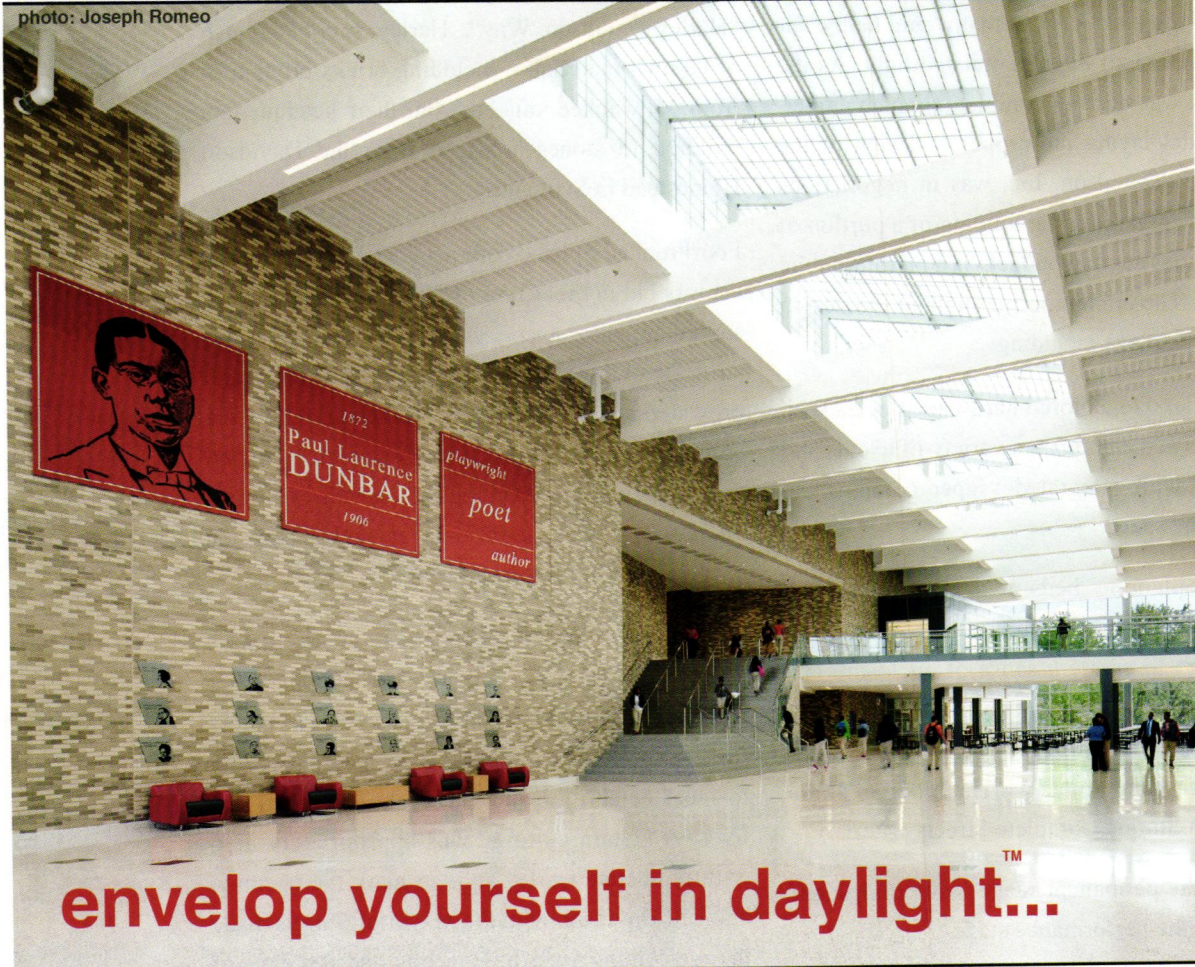
Just six days before the opening of the Sturgis Motorcycle Rally, the project reached completion and the space was opened. Thousands of visitors flocked to the facility looking for the opportunity to meet celebrities and Harley-Davidson executives. A “chain cutting” was appropriately held with deliberate Harley style to mark the opening, and Bill Davidson with the Mayor of Sturgis made the welcoming speech. Concerts and ten days of programmed activities were held in the plaza in early August.

On August 19th, a community picnic was held at Rally Point. Nearly 1,000 citizens of Sturgis arrived to usher in their public space, enjoy a burger with their families and neighbors, and gather to socialize, see and be seen. Community pride was evident; the local endorsement was even better than that of the droves of national and international visitors who had flocked to the space just one week prior. ■

KALWALL®

Energy-Efficient Translucent Building Systems

Available with CABOT's Lumira® aerogel



envelop yourself in daylight...

Wall Systems | Skyroof™ + Skylight Systems | Canopies + Walkways | Hurricane-Rated E-Series™ Windows

Produce: soft, glare-free, diffused natural daylighting with superior thermal performance

Promote: healthy, comfortable, productive learning environments where students excel

Protect: by offering visual privacy to occupants and vandal, graffiti + high impact options

Provide: durable, low maintenance construction that translates to lower life cycle costs

Predict: proper lighting designs utilizing our complimentary daylight modeling services

Contact your K A L W A L L Distributor today:

wllhall.com | t: 952 974 7620 | f: 952 937 9126

W. L. HALL CO. *Builders Specialties*

530 15th Avenue South Hopkins, MN 55343-7834



AIA
South Dakota
Design
Awards
2014-2015

The background image shows a modern industrial interior with a high ceiling, exposed ductwork, and large windows. In the foreground, there is a wooden table with four wooden stools. To the left, there is a white partition wall with several framed pictures. In the center, there is a blue armchair. The exhibition booth is a large black structure with the AIA logo and text.

2014 Awards:

- Raven Industries (Honor Award) 30
- Vance Thompson Vision Center (Honor Award) ... 32
- Bel Brands USA (Merit Award) 34
- Firesteel House (Merit Award) 35
- Rammed Earth Bench (Merit Award) 36
- Other submittals 37

2015 Awards:

- Gil Haugan Construction (Honor Award) 38
- The Bakery (Merit Award) 40
- Howard Wood Press Box (Merit Award) 41
- Other submittals 42
- Garage (People's Choice Award) 43





Raven Industries

Sioux Falls, SD



CLIENT:

Raven Industries

ARCHITECT:

Koch Hazard Architects

CONSULTANTS:

Associated Consulting Engineers, Inc.
Structural Engineering Associate

CONTRACTOR:

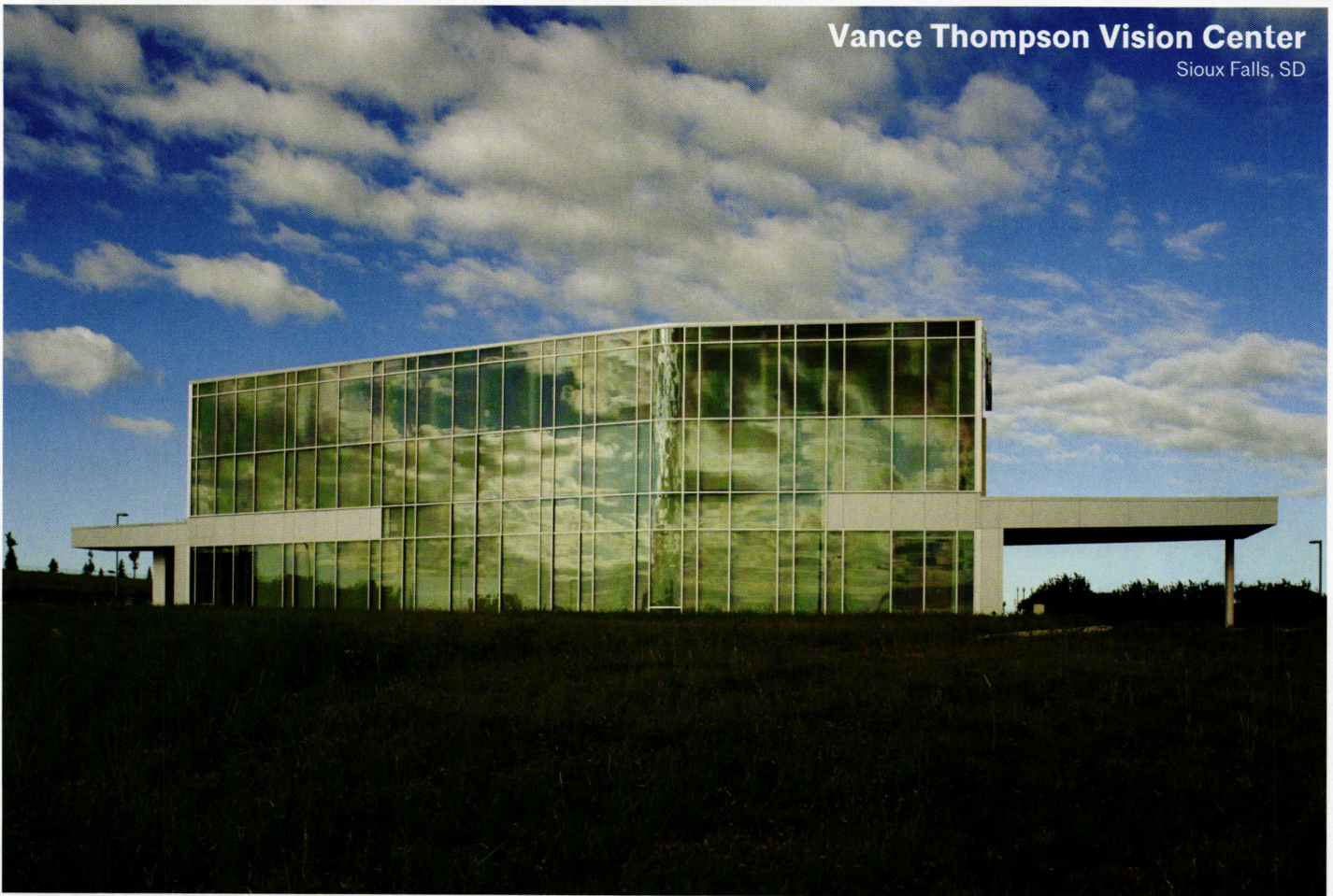
Henry Carlson Company

Raven Industries Corporate Headquarters is a full renovation of the 150,000 square-foot, five-story Manchester Biscuit Company building in the heart of historic downtown Sioux Falls. Key design features include a new west entry and remodel of all five floors. Offices and open work areas are on all floors. Scattered throughout these spaces are many areas created for collaboration and workgrouping, which consist of creative, flexible and informal seating arrangements with technology integration. One wall in each conference room is covered with white board paint and also serves as the projection screen. The lower level is a commons area with a kitchen, meeting rooms, and access to a large outdoor terrace, connected to the River Greenway.



Vance Thompson Vision Center

Sioux Falls, SD



CLIENT:

Vance Thompson Vision

ARCHITECT:

Koch Hazard Architects

CONSULTANTS:

HOK Architects

Associated Consulting Engineers, Inc.
Structural Engineering Associates

CONTRACTOR:

Henry Carlson Company

The Vance Thompson Vision Center is located on a triangular site bordered by two busy thoroughfares, Interstate 229 and 57th Street. Spaces are designed within a clear, and precisely detailed patient and family waiting area, access to three clinical areas with an open reception island, comfortable furnishings and a coffee bar. Lounge seating, tall tables, and stools provide a variety of seating options spread throughout this dramatic space. The atrium looks out onto a meadow, planted with species to provide year round variety and color, a pond, and pathways, all to meet LEED green building requirements and provide opportunities, and patient serenity all the while preserving the environment and saving energy.

Bel Brands USA, New Administration Building Brookings, SD



CLIENT:
Bel Brands USA

ARCHITECT:
Perspective, Inc.

CONSULTANTS:
Alvine Engineering
Structural Engineering Associates
Banner Associates, Inc.

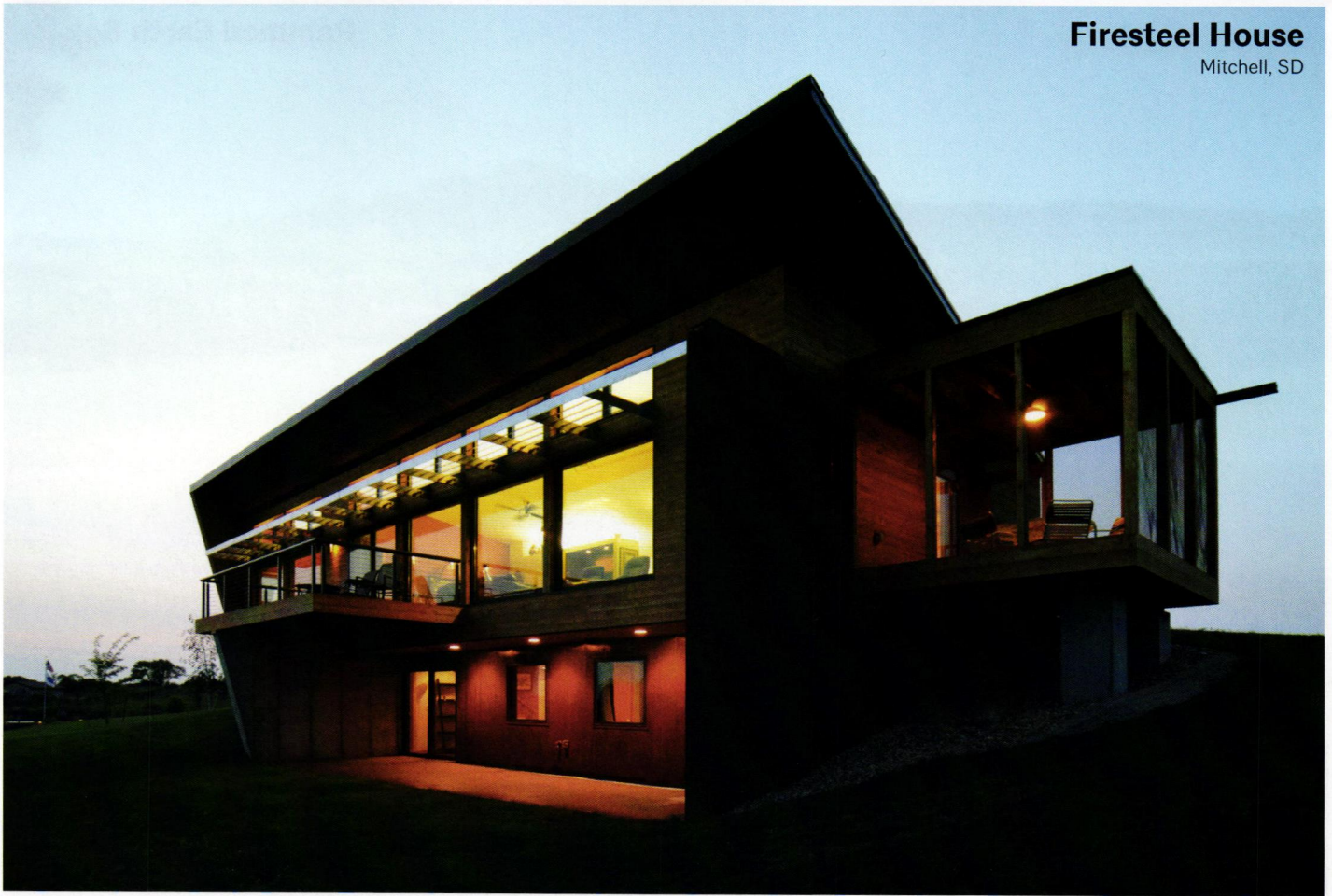
CONTRACTOR:
Clark Drew Construction

A modern design that promotes the Bel Brands corporate image and culture, the 12,700 square foot administration building is located at the new manufacturing plant. With the goal to create a design that communicates a sense of place and tells the Bel Brands corporate story, the \$2 million project uses wood, metal, and glass to create visual impact against the mass of the stark white manufacturing plant. Key office spaces include a reception desk, open conference room, and "techy" staff teaming areas along with the offices, work stations, rest rooms, and a break room. The project was also designed to achieve LEED Silver certification.



Firesteel House

Mitchell, SD



CLIENT:

Rick Snedeker and Pat Aylward

ARCHITECT:

Ciavarella Design

CONSULTANTS:

Rise, Inc.

CONTRACTOR:

ProBuild, Mitchell, SD

This 2,500 square foot residence is located on the banks of Firesteel Creek in Mitchell, SD. Well traveled clients wanted an efficient home to house themselves and their large collections of Middle East and Asian rugs and art objects from their time living in Saudi Arabia. Beginning with a sloped, south facing site that overlooks the water, a passive solar home was designed tailored to its site and features three types of glass and custom aluminum sunshades to allow passive solar heat gain in winter but block it in summer.

The form is a continuously vaulted volume with cedar siding installed in a rain screen application sitting atop a volume clad in cor-ten steel left to weather. Proportions were kept at 24 feet in depth and windows on the north, east, and west sides are limited but strategically placed to frame views and provide natural light and cross ventilation to all spaces.

Rammed Earth Bench Spearfish, SD

**CLIENT:**

City of Spearfish

ARCHITECT:

Andrew and Shauntel Fett

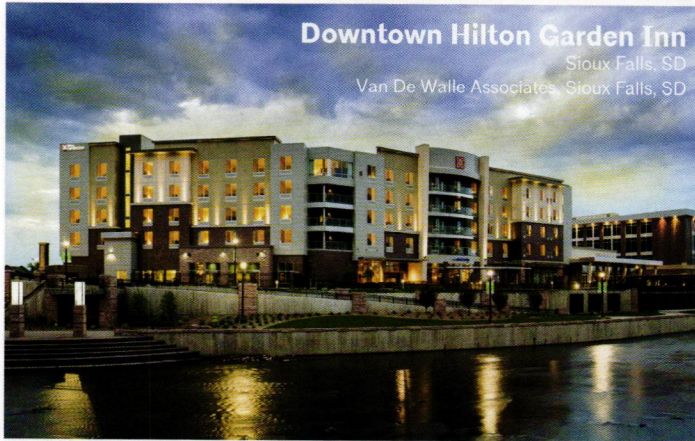
CONTRACTOR:

Andrew and Shauntel Fett

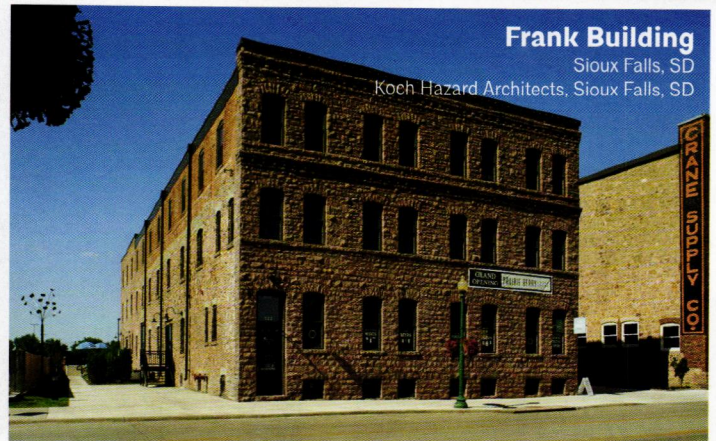
This project was designed to connect with its surroundings. With that in mind, sustainable building materials and methods were a primary focus. Three building materials were utilized; rammed earth, charred pine, and steel. The rammed earth portions of the bench contain local materials, such as on-site soils, recycled asphalt aggregate from an adjacent walking path, and sand from Lookout Mountain, a local landmark. The bench mimics the limestone and sandstone outcroppings of the area, and will continue to blend with its context as it ages.



Other **2014** Submittals



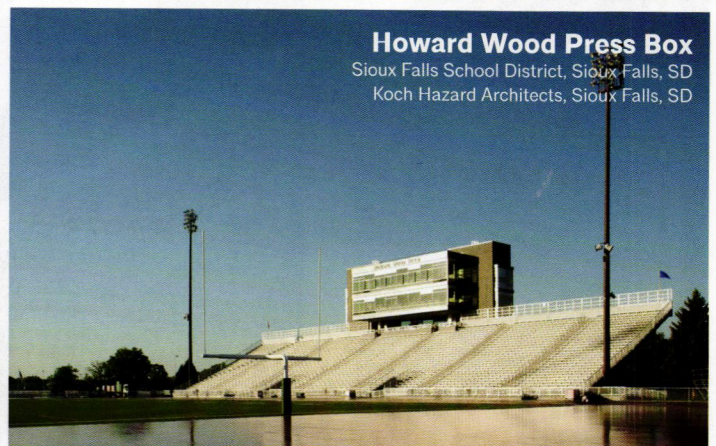
Downtown Hilton Garden Inn
Sioux Falls, SD
Van De Walle Associates, Sioux Falls, SD



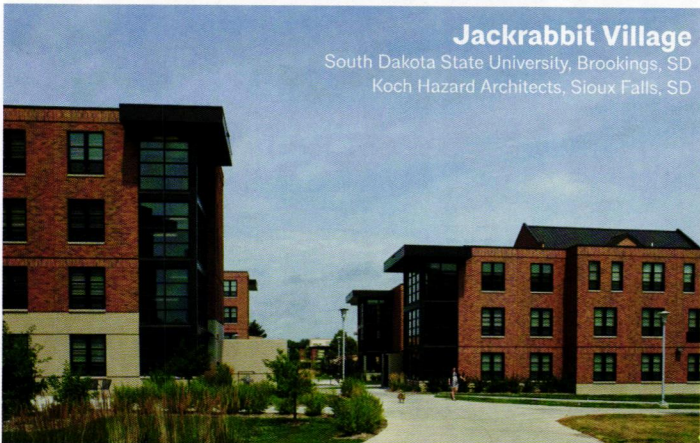
Frank Building
Sioux Falls, SD
Koch Hazard Architects, Sioux Falls, SD



Gil Haugan Construction, Addition/Renovation
Sioux Falls, SD
Koch Hazard Architects, Sioux Falls, SD



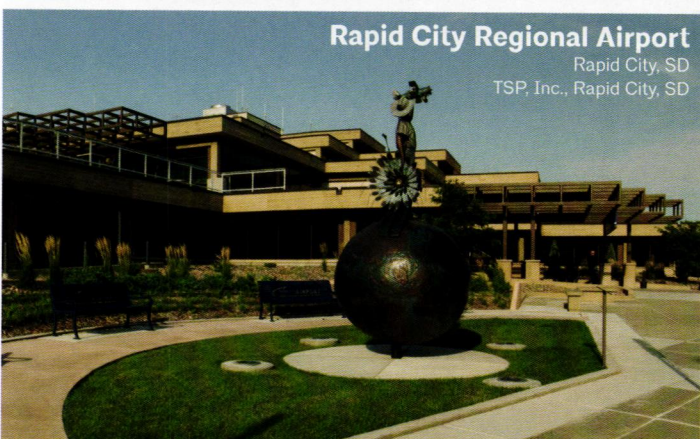
Howard Wood Press Box
Sioux Falls School District, Sioux Falls, SD
Koch Hazard Architects, Sioux Falls, SD



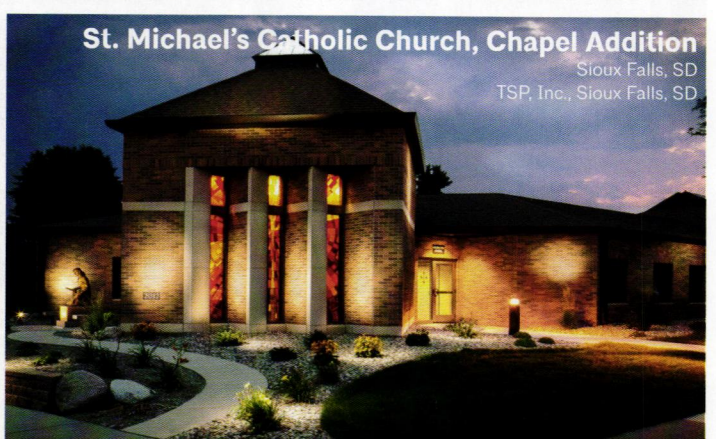
Jackrabbit Village
South Dakota State University, Brookings, SD
Koch Hazard Architects, Sioux Falls, SD



Little Free Library
Sioux Falls, SD
TSP, Inc., Sioux Falls, SD



Rapid City Regional Airport
Rapid City, SD
TSP, Inc., Rapid City, SD



St. Michael's Catholic Church, Chapel Addition
Sioux Falls, SD
TSP, Inc., Sioux Falls, SD



Gil Haugan Construction

Sioux Falls, SD



CLIENT:
Gil Haugan Construction

ARCHITECT:
Koch Hazard Architects

CONSULTANTS:
Associated Consulting Engineers, Inc.
Structural Engineering Associates
Sayre Associates

CONTRACTOR:
Gil Haugan Construction

The project re-orientated the building with a new, clearly defined public entrance on the west side. Intuitive circulation links the lobby to the main conference room, staff meeting room and open office area. Abundant skylights provide natural light throughout the workstations and offices.



The Bakery
Sioux Falls, SD

CLIENT:
Fluxxr

ARCHITECT:
Koch Hazard Architects

CONSULTANTS:
Associated Consulting Engineers, Inc.
Structural Engineering Associates

CONTRACTOR:
Swift Contractors

The L & A Bakery was established at its present location in 1916. When purchased by the current owners, the roof had been leaking badly for several years and the building was full of junk and not far from collapse. The program was to restore the building's historic grace while inserting, as unobtrusively as possible, new HVAC, lighting, power and technology.



Howard Wood Press Box

Sioux Falls, SD

**CLIENT:**

Sioux Falls School District

ARCHITECT:

Koch Hazard Architects

CONSULTANTS:

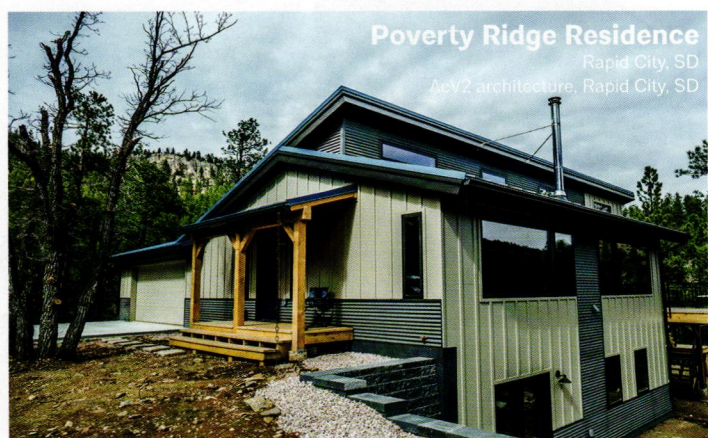
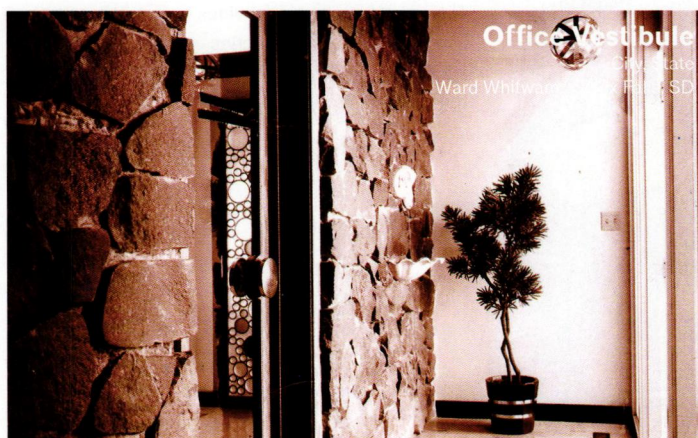
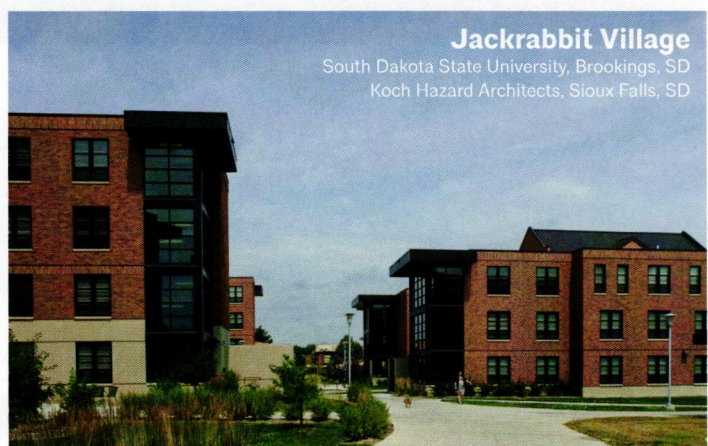
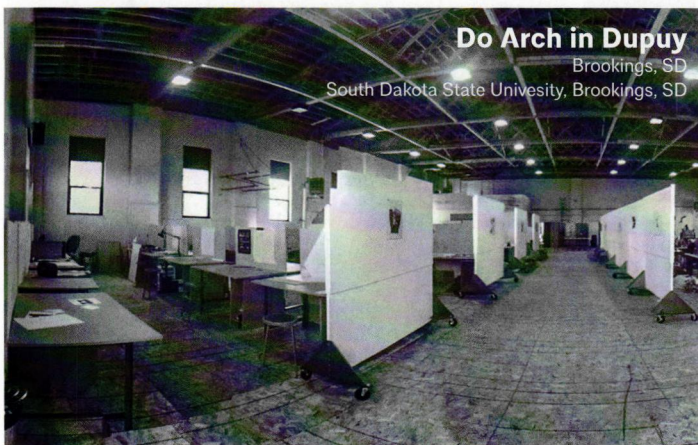
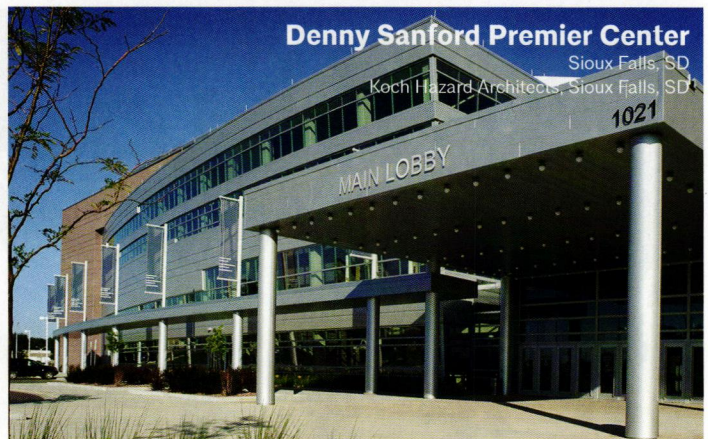
Associated Consulting Engineers, Inc.
Structural Engineering Associates
Stockwell Engineering

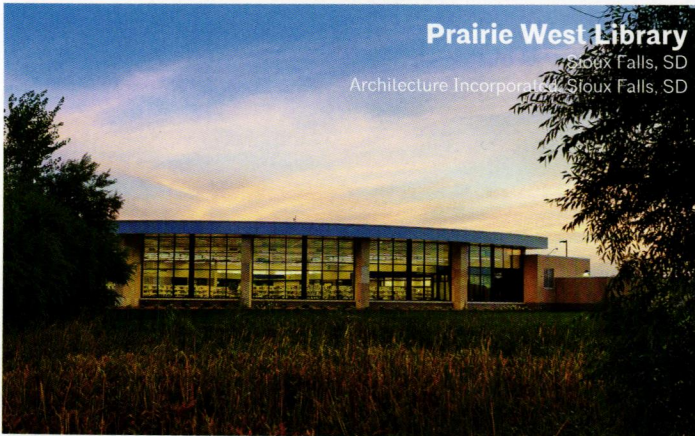
CONTRACTOR:

Peska Construction

Originally constructed in 1957, Howard Wood press box and grand stand accommodates 10,000 fans along with players, coaches and press members. The new press box provides a greatly improved user experience for coaches and media, a covered accessible seating area and enhanced gravitas for the Howard Wood Field facility.

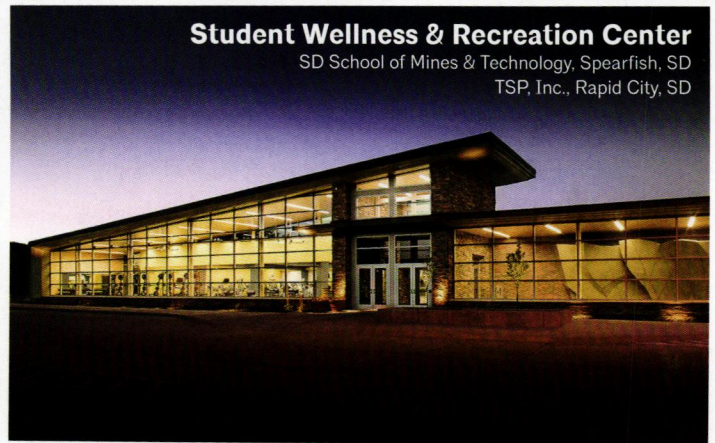
Other 2015 Submittals





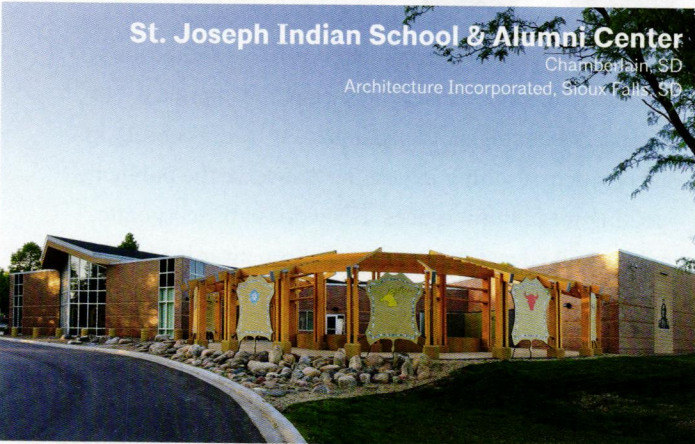
Prairie West Library

Sioux Falls, SD
Architecture Incorporated, Sioux Falls, SD



Student Wellness & Recreation Center

SD School of Mines & Technology, Spearfish, SD
TSP, Inc., Rapid City, SD



St. Joseph Indian School & Alumni Center

Chamberlain, SD
Architecture Incorporated, Sioux Falls, SD



Sweetman Construction

Sioux Falls, SD
TSP, Inc., Sioux Falls, SD



Tuthill Entrance Signage

Sioux Falls, SD
Ward Whitwam, Sioux Falls, SD



Wisconsin Residence

Wisconsin
Ward Whitwam, Sioux Falls, SD



The Garage

Rapid City, SD
AcV2 architecture, Rapid City, SD



People's Choice Winner 2015

The Garage

Rapid City, SD
AcV2 architecture, Rapid City, SD

The high-bay garage has been transformed into "The Garage, a co-working space." During normal business hours, The Garage offers various workspaces, from a series of private and semi-private offices to a shared conference room to shared work stations. For off-peak hours, the building's owners reconfigure the space to host a diverse range of events, from a monthly lecture series to exclusive film screenings and concerts to yoga classes.

2015 Jurors

Jeffrey J. Dolezal, AIA, LEED AP

Jeff Dolezal co-founded TACKarchitects in 2011 after directing the design efforts at his previous firm beginning in 1996. During that tenure he amassed over twenty-five design awards through the American Institute of Architects, locally, regionally, and nationally. Aside from guest lecturing at Kansas State University and the University of Nebraska-Lincoln, Dolezal has been invited to speak at several museum conferences such as the Small Museum Association, Mid Atlantic Association of Museums, and the International Design Symposium in London, England.

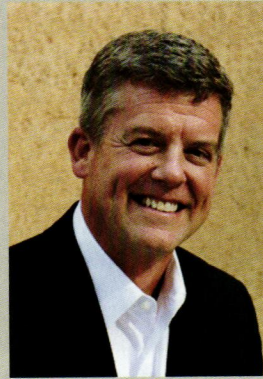
Emily Andersen, RA, NCARB

Emily Andersen, RA, is a founding partner of DeOld Andersen Architecture and an Adjunct Instructor at the University of Nebraska-Lincoln College of Architecture. Prior to DAA, Emily was an Associate at Slade Architecture in New York City, where she contributed extensively to several award winning projects. She received her BSAS and Masters of Architecture from the University of Nebraska in Lincoln, and was a 2015 Fellow of the New Leaders Council. She is NCARB certified and is licensed to practice in the State of Nebraska.

Thomas J. Trenolone, AIA, NCARB, LEED AP

Tom Trenolone is a Design Principal and Vice President with the international design practice of HDR Architecture. His work has been published and exhibited internationally, most notably is the *New York Times*, *Architectural Record* *Interior Design* and the 2000 Venice Biennale. He was the recipient of the 2002 Kagan Design Fellowship and founded daOMA in 2006 a non-profit dedicated to bringing greater awareness of progressive architecture and the design arts to Nebraska and western Iowa. He is the recipient of the 2011 AIA National Young Architects Award and is currently teaching at the University Of Kansas School Of Architecture Design and Planning.

2014 Juror



Bill Baxley, AIA
Director of Design
Leo Daly Architects
Minneapolis, MN

Bill is a designer of exceptional creativity and vision, especially notable for his client-centered approach. He emphasizes dialogue, transparency, and accessibility in his practice, resulting in designs that serve the public by creating meaningful spaces. His work in the corporate, public, and educational realm has been awarded locally and nationally. He emphasizes the message of sustainability not only through the selection of materials and methods, but by creating work that will meet the evolving needs of clients and the community for generations.

2014 Presidential Award Winner

Tom Baffuto, AIA



Tom Baffuto, Baffuto Architettura, has provided unparalleled service to AIA South Dakota. Through his 20 years of service to the AIA South Dakota Board of Directors, he has served as Past President and in other officer roles. In his leadership, Tom has represented the profession of architecture well. His voice has been one of positive change to improve the chapter and increase member outreach to the public. Tom grew up on the east coast, but has made Rapid City and South Dakota his home.

2014 Scholar Award Winners



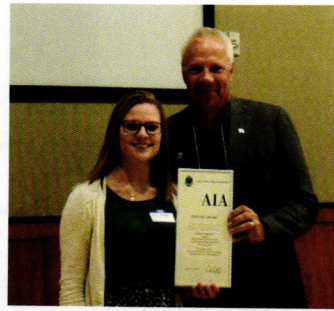
ABOVE: Brent Sturlaugson



ABOVE: Shawn Barron

Rapid City-native Brent Sturlaugson, Assoc. AIA, was awarded the AIA South Dakota Enrichment Award Scholarship for 2014. Sturlaugson was pursuing a Master of Environmental Design degree at Yale School of Architecture, New Haven, CT during the time of the award. He is a graduate of Stevens High School. Shawn Barron, a student at SDSU DoArch was awarded the 2014 Merit Scholarship. Barron is a graduate of Washington High School in Sioux Falls.

2015 Scholar Award Winners



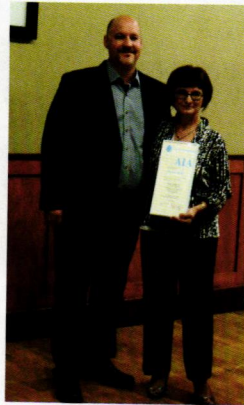
ABOVE: Emily Heezen



ABOVE: Levi Wager

Two SDSU architecture students won AIA South Dakota scholar awards for 2015. Pierre native, Emily Heezen was a third year architecture student at SDSU DoArch when she was awarded the \$2,500 Enrichment Award Scholarship. Levi Wager, then a third year architecture student from Sioux Falls, was awarded a \$1,000 Merit Award Scholarship. Heezen researched and documented via motion time-lapse photography Mies van der Rohe buildings that she traveled to nationwide. She presented the results of her project at the 2015 AIA South Dakota Annual Convention.

2015 Presidential Award Winners Larry Crane, AIA, & Susie Wiswall, Executive Director



Susie Wiswall, AIA South Dakota's Executive Director from 2012-2015, was honored by President Dave Van Nieuwenhuyzen with a special President's Award for her dedication and service to the organization. Wiswall retired her post at the end of 2015 and continues to serve the organization as an administrative assistant. Larry Crane, architect and partner at Perspective, was honored by Van Nieuwenhuyzen with a second President's Award for more than 14 years continual service to the board. Crane's most recent position on the board was the immediate Past President of AIA South Dakota.

DoArch: INITIATION TO REFINEMENT

DEPARTMENT OF ARCHITECTURE AT SDSU

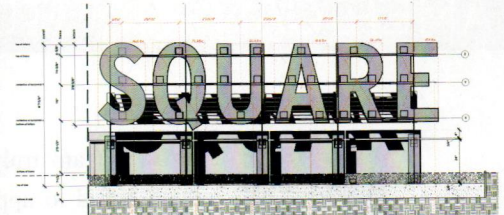
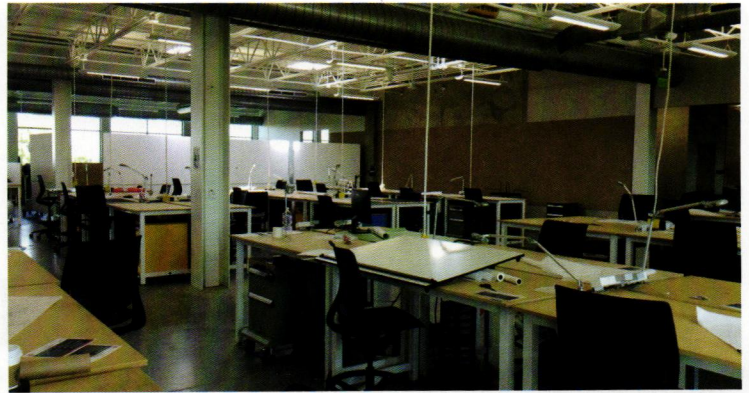
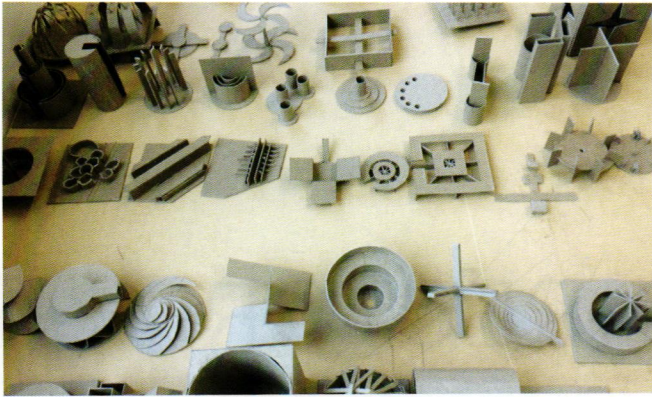
BRIAN REX is Associate Professor and Department of Architecture Head at South Dakota State University. Before SDSU, he was a professor at Texas Tech University and the universities of Colorado, Nebraska, and Oklahoma. He worked in the offices of Cooper, Robertson & Partners Architects in New York, NY, and Humphries Polk Architects in Denver, CO. He was educated at the University of Texas at Arlington, Carleton University in Canada, Technische Universität Berlin, and Columbia University.



The new Department of Architecture (DoArch) at South Dakota State University (SDSU) will be reviewed for full professional accreditation by the National Architectural Accrediting Board (NAAB) on October 15-19, 2016. With this accreditation all SDSU Master of Architecture graduates, including the first ten grads we saw off in May 2016, will have professional degrees. This marks a major milestone for the program as DoArch moves from initiation and into refinement of its direction and curriculum.

In these first six years, DoArch has grown into a faculty of seven professors and 150 students with a 7,000 volume architectural library, state-of-the-

art studio, with CNC wood, hot metal, masonry, concrete, plastics, machine metal, and fabrication shops that we share with Mechanical Engineering and Construction & Operations Management. Capitalizing on its location and new facility, DoArch has built a tradition on campus of building and studying “novel tectonics” such as Guastavino Vaults, Lamela Arches, and Dieste Walls as both curriculum and scholarship. It has found research opportunities with the Precast Concrete Institute (PCI) through Gage Brothers Concrete Products in Sioux Falls. Along with the SD Agricultural Heritage Museum, DoArch has rebuilt a tradition of cutting edge rammed earth construction research.



OPPOSITE PAGE: Assembly team at work in Wrigley Square in Mobridge, SD.

TOP LEFT: Studies for a new campus American Indian Center @ SDSU.

TOP RIGHT: The new AME studio facility designed by Perspective.

BOTTOM LEFT: Analysis, design & assembly elevation drawing for Wrigley Square in Mobridge.

DoArch has found funding for research of Passive House residential construction systems through the Governor's Office of Economic Development. DoArch has engaged in public space studies for Webster, Wagner, Beresford, Pickstown, Aberdeen, Volga, Huron, and Mobridge.

None of this would be possible without the support of the state's professional community, especially DoArch's four "Founding Firms" comprised of Architecture Incorporated; Koch Hazard Architects; TSP, Inc.; and Perspective (the architects for the new DoArch facility, opened Fall 2015). These firms have willed the first new school of architecture into this region in over a century by opening their wallets and pouring out their time as critics and mentors.

How a building is made (Building Arts) and how buildings make cities (Public Works) are independent but symbiotic fundamental issues of our profession.

Looking under the hood, DoArch's curriculum and activities focus on a professional education that takes the "Building Arts" as its foundation. The program's introductory architectural history course teaches a cross-cultural history of stacking, casting, carving, and framing to make buildings. This course is a require for all Architecture, Interior Design, Construction Management, and Civil Engineering majors at SDSU. The Fall third year studio is a collaborative effort to fabricate and construct a project in a SD community. Our terminal professional studio, The Forensics Studio, is an engagement with professionals, their clients, consultants that produce graphical analyses of the collaborative decisions, construction, and occupancy of a recently built regional building.

Outside of its walls, DoArch has found its stride working for the communities of South Dakota, advocating for strong public spaces through its "Public Works" program. Some urban studies have been simple analyses.

Some have been elaborate on site constructions. Some have been proposals to significantly alter the way people move through a town. All of them have been about telling the story of the community while advocating for enhanced civic space—like Rapid City has done so well with their new downtown plaza.

Academic programs take time to exert their impact on professional and public communities. These first six years have been about establishing relevant professional instruction, building an intellectual foundation to our studies, creating standards in scholarship, testing teaching methods, finding a physical home for the program, and forming a quality faculty. Now, its time to bear down on supporting the profession in South Dakota and this region, taking a seat at the larger dialog about the future of the profession, and refining the service we can provide to regional communities while DoArch grows into a unique, mature, and professional program. ■

AIA REGIONAL DIRECTOR

AMERICAN INSTITUTE OF ARCHITECTS



SANDRA LEA DICKENSON, AIA EMERITUS, is one of two North Central Regional representatives to the AIA Strategic Council. She represents the states of South Dakota, North Dakota, Minnesota, and Wisconsin to the national AIA. Sandy holds a Batch from the University of Oklahoma and has recently retired from a practice spanning more than 40 years. She has been active with AIA South Dakota for many years, serving as president in 2007.

“Wow! I am truly honored,” was my response when asked to apply for consideration to be the South Dakota representative to the American Institute of Architects (AIA) national Strategic Council. South Dakota is part of the North Central Region which includes the states of South Dakota, North Dakota, Minnesota and Wisconsin. There are two representatives from each region serving staggered three-year terms on the Strategic Council. Since Minnesota and Wisconsin have so many more architects than North and South Dakota, they each have two chances to appoint a representative for every turn the Dakota states do. That means that South Dakota only appoints a Regional Representative every 18 years. So it truly was an honor when I was selected.

The national AIA underwent an organizational change over the last few years. Until recently, there was a Board of Directors that included all regional representatives and nationally elected officers of the AIA. That created a board of nearly 60 people often making meetings unwieldy. Under the new structure, the national representatives moved to the Strategic Council and are charged with visioning for the organization. The smaller, more nimble Board of Directors implements the recommendations of the Strategic Council and funds the work of the organization. The Strategic Council is divided into classes. I am a member of the Class of 2018. We have a symbol and password and are developing our own projects. Further, there are council committees. I serve on

the Council Steering Committee and the Outreach Committee. We have monthly telecom meetings to develop initiatives. But, my most important job is to serve as a conduit between the North Central Region and the national AIA. I have made many contacts in the region and have traveled to Minnesota and Wisconsin. I try to listen and network. There is other travel. I received orientation at the combined Council and Board conference in Washington DC in December. In February, I attended the Grassroots Conference in Detroit and in April, the National AIA Convention in Philadelphia. I volunteer for this position, my expenses are covered for national meetings, and I have a budget for regional travel.

I am six months into my three-year term and am starting to understand what goes on behind the curtain. I am impressed by the caliber and passion of the architects leading our organization but am also amazed at how approachable they are. I believe every member of the Strategic Council feels valued and appreciated.

I came to architecture the way that every high school student should. I met with my counselor and we talked about my future. I thought I wanted to be an interior designer but he thought my test scores indicated that I could reach higher and suggested architecture. However, this was the sixties and what he didn't tell me was that there were almost no women in this field. I was isolated on an Air Force Base in Puerto Rico and had never met an architect but I trustingly enrolled in the

architecture program at the University of Oklahoma. I was stunned my first day of class to find I was the only female student among the 250 freshmen. I endured equal parts encouragement and derision and five years later joined the 40 graduating architecture students among the 300 graduating from the school of engineering, still the only female. When I was licensed in Oklahoma in 1972 I was honored to be the fifth woman architect in the history of the state, the first in 15 years, and the only practicing female architect in the state. It wasn't until I moved to South Dakota in 1989 that I encountered another women architect. I have always just kept working where I could. I did not feel a lot of prejudice. I did not feel I was part of the feminist movement. I did not feel I was paving the way for other women. I just wanted to continue to work and do my personal best to be a good architect, regardless of gender. I am so pleased to see more women join the profession every year. We have some work to do, but the progress in the last forty years is heartening.

After university, I did an internship in New York City, returned to Oklahoma to get my license, and then moved to the California Bay Area. I met my Army husband and we went to Germany where I was the community master planner. Then there was Colorado and Washington State and back to Germany before coming to South Dakota. There were eight years that I did not work while raising our family of three girls but remained active with volunteer work in historic preservation and studying the great buildings of Europe. After my husband's time as Professor of Military Science at the University of South Dakota, we decided to make South Dakota our permanent home. Over the years, I have worked for large firms, small firms, and have been a sole practitioner. I have worked on huge projects and small kitchen renovations. I am retired now but still use my skills to improve my community by sitting on several boards and helping my neighbors get the design services they need.

For the last 15 years, I have been active with South Dakota Chapter of the AIA, serving as president in 2007. I helped create design:SD, a



ABOVE: Sandy Dickenson was recently appointed to the AIA national Strategic Council.

volunteer group that provides design direction to rural communities, and have continued on the editorial staff of this magazine. I also led the effort to pass legislation to extend the protections of the building code to all of South Dakota, not just the cities.

My passion is K-12 architectural education. We don't have enough architects to meet the needs of the profession, but, beyond that, we need to educate our clients of the future on the value of architects to protect our profession. I am pleased to be appointed by Russ Davidson, AIA President, to his K-12 Task Force. ■

AN INTERVIEW

A SDSU DOARCH 4TH YEAR STUDENT PERSPECTIVE

YOUNG ARCHITECT'S FORUM



TOM HURLBERT, AIA, LEED® AP At 6 feet 2 inches and 215 pounds, Hurlbert is a hard-throwing right-hander hailing from the Hub City of the Dakotas, Aberdeen. He has 14 starts with a 7-4 record and a 3.28 ERA. He recently threw a complete game shutout and was named player of the week after striking out 12 batters and scattering nine hits in two victories for the CO-OP All-Stars.

TOM HURLBERT: OK, you've been around the SDSU Department of Architecture for a while, what's the future of architecture in SD look like from your angle?

CASSIE POSPISHIL: From what I can see in our studios, pretty bright. We have had opportunities to study South Dakota towns and delve into the architectural issues; there is a ton of creative and innovative design being inspired here at SDSU which can be expected to be carried into South Dakota firms in the next decade.

TH: You are admirably active in the student AIA program (AIAS), why?

CP: I am active in AIAS because I am looking for opportunity, connections, and fellowship with other students like me. As a leader this year, I have also made it a priority to build a foundation for future students that will be joining in years to come. There is a lot of prospect in our lower classmen, and I am excited to see so many of them interested in the organization...

TH: Right now there is a discussion in the profession regarding the title for interns. What do you think is an appropriate title for a graduate of architecture school, but not yet a licensed Architect?

CP: Hmm, good question. I would say if the graduate is an intern, use the title of Intern, otherwise use the term 'Non-Licensed Graduate' or 'Dependent Architect,' so that

the job title informs the client about the current status of the graduate.

TH: What's the best advice you've ever heard?

CP: A Frank Lloyd Wright quote: "You have to go whole heartedly into anything in order to achieve anything worth having." One should have a passion for the work they do and work hard for it, otherwise it is meaningless to them.

TH: Hard to argue with old man Wright, but he could be quite a critic. One of my favorite quotes from FLW is, "taste is a matter of ignorance. If you know what you are tasting, you don't have to taste." Speaking of critics, do SDSU architecture professors conduct harsh critiques in design classes?

CP: Yes, some of them can get quite sharp. However, it's all for the best I think. I enjoy a good debate, because that means that the reviewers have moved past technical drawing and are interested in the design decisions made in the project. At the time, harsh critiques can make anyone frustrated and upset, but they help to develop a designer's philosophy and method; I personally would rather have a long, drawn out, bad review than a boring, uninspiring good one.

TH: So is 'fear' ever involved in design?

CP: Of course. There are several fears: fear of a

design being rejected, fear of a building collapsing, fear of natural events destroying entire city grids, etc. Healthy fear keeps a person vigilant; fearing and preparing for the worst is better than hoping and praying for the best.

TH: Yes. Do you have a nickname? Where did it come from?

CP: Well, people have a hard time pronouncing my last name (Pospishil), so friends call me "Popsicle" instead.

TH: (laughs) Popsicle is an excellent nickname. Do you have a vice?

CP: Procrastination and complicated ideas...

TH: What would you tell an incoming freshman about the school of architecture?

CP: Get out while you can!! Ha, just kidding. I am always happy to help younger students and tell them about the experiences I've had over the past few years...

TH: What music do you prefer while designing or model building?

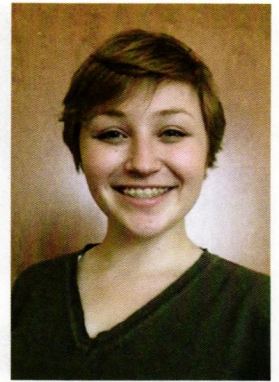
CP: I prefer bubbly music, something I can jam out to. From time to time I'll put on some classical/ movie soundtrack radio.

TH: Classical music? You are a mature college student. Where do you see yourself professionally in 20 years?

CP: I can definitely see myself working in the Midwest as a professional with my own firm, or a co-principal of a firm. But who knows what the future holds?

TH: Let's finish with a serious question, what's the best food joint in Brookings or in your hometown of Yankton?

CP: That's a tough one. I think for me it is between George's Pizza of Brookings and Charlie's Pizza in Yankton. ■



ABOVE: Cassie Pospishil, a SDSU DoArch fourth-year student.

WORKING WITH YOU TO
DESIGN WHAT'S NEXT

Civil Engineering ■ Land Surveying ■ Road Sign Inventory ■ Municipal Development ■ Wetland Delineation ■ Landscape Architecture

CLARK
ENGINEERING

CLARK-ENG.COM

SIoux FALLS ■ ABERDEEN ■ WATERTOWN



ARCHITECTS IN ACTION



TOP TO BOTTOM, LEFT TO RIGHT: 1) Viewing new products at the AIA SD Annual Convention Exhibit Hall; 2) Networking at the AIA SD 2015 Design Awards; 3) Socializing at the AIA SD Annual Convention Exhibitor Party; 4) Listening intently at the AIA SD Spring Membership Meeting (Brookings DDN site); 5) Strategizing at the AIA SD Board Retreat in Chamberlain;

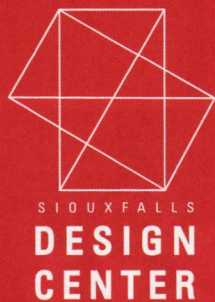
6) Educating future architects at SDSU DoArch; NEXT PAGE: 7) Observing at the Architecture Forum tour of the new Journey Construction headquarters; 8) Posing after the Architecture Forum tour of the Dana J. Dykhouse Stadium on the SDSU campus; 9) Engaging with construction professionals on site at Dykhouse Stadium.





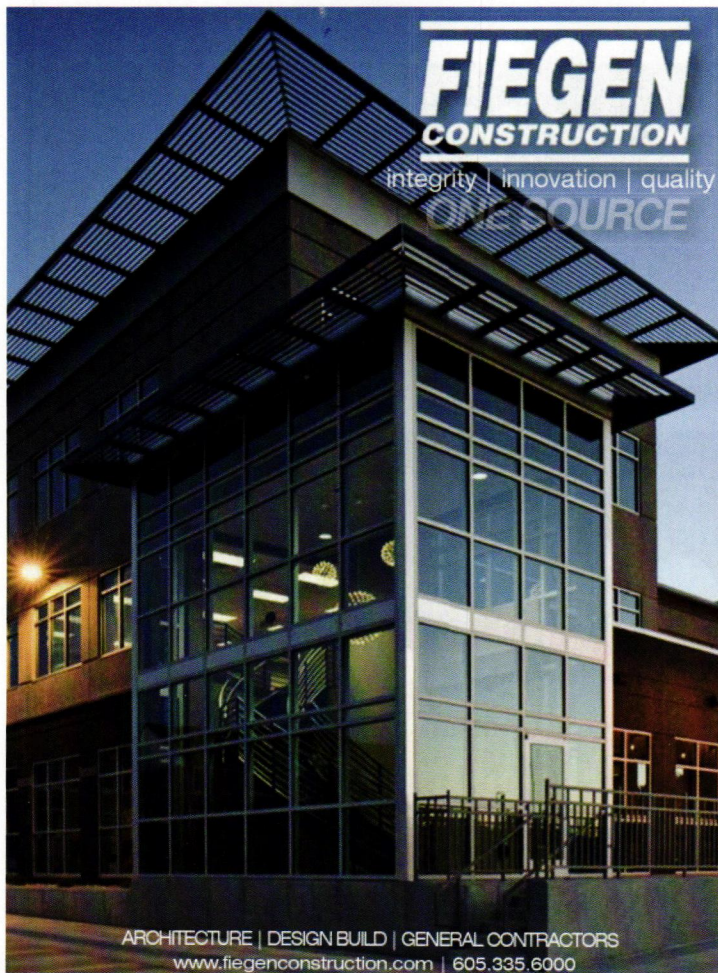
life with

life without



architecture matters

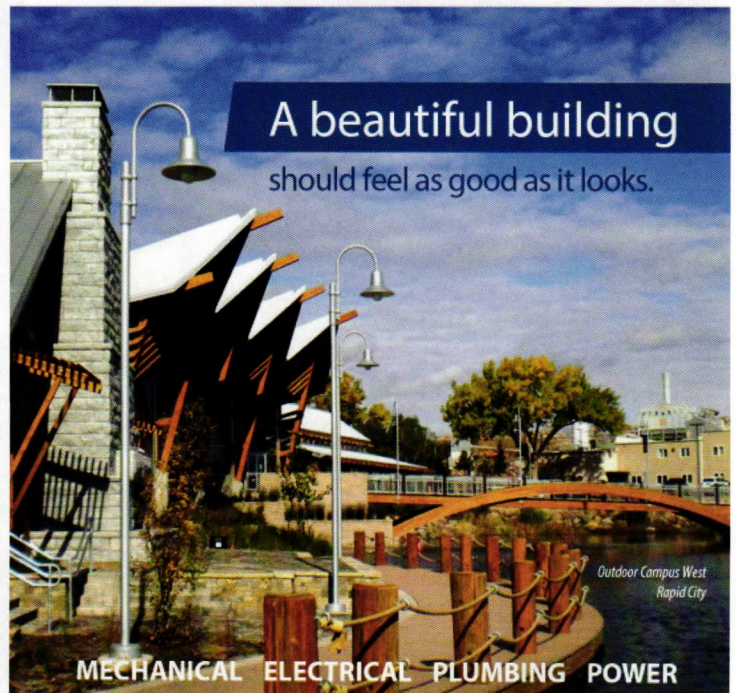
Design is everywhere, yet it can be easily overlooked. Our mission at the Sioux Falls Design Center is to inform and engage the public on design in the community. We do this by partnering with design groups like AIA SD, hosting events, workshops and lectures. See more of what we do at www.sioxfallsdesigncenter.org



FIEGEN
CONSTRUCTION
integrity | innovation | quality
ONE SOURCE

ARCHITECTURE | DESIGN BUILD | GENERAL CONTRACTORS
www.fiegenconstruction.com | 605.335.6000

WPE WEST
PLAINS
ENGINEERING, INC.



A beautiful building
should feel as good as it looks.

MECHANICAL ELECTRICAL PLUMBING POWER

RAPID CITY
(605) 348-7455

SIOUX FALLS
(605) 362-3753

westplainsengineering.com



NOTHING GREAT IS ACCOMPLISHED ALONE.

Great results require many people, guided by a managed process and working towards a shared purpose. Confluence is the place where all that comes together. Here we convert collective input into great outcomes. We convert generic outdoor spaces into exciting, living places. **Together, we make destinations.**



CONFLUENCE

Des Moines / Kansas City / Sioux Falls / Cedar Rapids / Minneapolis

WWW.THINKCONFLUENCE.COM

FIRM PROFILES

ACV2 ARCHITECTURE, LLC.

AcV2 architecture

510 9th Street, Suite 2
Rapid City, SD 57701
605.484.6071
www.acv2architecture.com
Established: 2010

Principals

Patri Acevedo, AIA, NCARB
John Riker, Assoc. AIA

Firm Description/Philosophy

AcV2 is passionate about revitalizing town centers throughout the Black Hills and Great Plains, which we accomplish by initiating sustainable development and preserving our historic buildings. AcV2 specializes in adaptively reusing existing buildings and creating infill solutions that catalyze smart growth and renewal.

Recent Projects

Rapid City Public Library Main Floor Master Plan, Rapid City, SD;
Unkenholz Family Dental, Rapid City, SD;
Rim Rock Lodge & Cabin, Spearfish, SD;
DoubleTree by Hilton Omaha Southwest, Omaha, NE;

ARCHITECTURE AUTOMATED, INC.

Burnside Business Center
2108 W. Burnside St., Ste. 3
Sioux Falls, SD 57104
605.351.2457
Fax 605.336.3708
joe@repro360.com
Established: 1986

Principal

Gene Murphy, AIA, NCARB

Firm Description/Philosophy

AAI is a full service architectural firm offering a wealth of experience in all parameters of design, but especially in the fields of educational, ecclesiastical, and governmental design. Our geographical range extends from the far reaches of South Dakota to southwestern Minnesota. We pride ourselves in our dedicated service to our clients with representation extending through the one-year construction warranty period.

Recent Projects

School Facilities Expansion, Sioux Valley School District, Volga, SD;
School Facilities Expansion, Dupree School District, Dupree, SD;
Sioux Falls Area Complex, South Dakota Department of Transportation, Sioux Falls, SD;
Worship Center Expansion, St. Matthew Lutheran Church, Worthington, MN

ARCHITECTURAL GUILD LLC



ARCHITECTURAL GUILD LLC
ARCHITECTURE & PLANNING

219 East 12th Street
Sioux Falls, SD 57101
605.332.3130
Fax: 605.332.4702
aguild1@qwestoffice.net
www.AG-Firm.com
Established: 1976

Principal

John P. Engelhardt, AIA, NCARB,

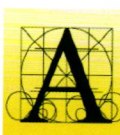
Firm Description/Philosophy

Architectural Guild, LLC, was founded in 1976 and re-established in 1996 after returning to South Dakota from working on aviation/historical projects in Washington, D.C. for ten years. AG is a small firm with broad capabilities, talents and expertise in various areas of design and planning. We take pride in being responsive to our clients' architectural needs and goals as we work together.

Recent Projects

Eastside Baptist Church, Sioux Falls, SD;
Karmazin Family Dentistry, Sioux Falls, SD;
Wheeleo Brake and Supply, Sioux Falls, SD;
Home Federal Bank, Watertown, SD

ARCHITECTURE INCORPORATED



Established in 1976
415 South Main
Avenue
PO Box 2140
Sioux Falls, SD
57104-2140
605.339.1711

Fax: 605.339.2331

815 St. Joseph Street, Suite 203
Rapid City, SD 57701
605.721.1158
Fax: 605.721.4114
www.architectureinc.com

Principals

Alan Richard Dempster, AIA, LEED AP
Mark Aspaas, AIA

Steven Jastram, AIA
Patti Monson, AIA, LEED AP BD+C
Elizabeth Squyer, AIA, LEED
Sarah Aldinger, AIA, LEED AP
BD+C
Lisa VandeVoort, LEED AP BD+C
Mitchell Aldinger, AIA, LEED AP
BD+C
Kristine Bjerke, AIA, NCIDQ,
LEED AP BD+C
Andrew Eitrem, AIA, CDT, LEED
AP BD+C

Firm Description/Philosophy

Architecture Incorporated was established in 1976 and has grown to be the largest architectural firm in South Dakota. We have more registered architects than anyone else in the state, as well as three interior designers. But that doesn't mean we have forgotten our roots. Our top priority has always been listening to our clients, and each other. Our reputation as a regional leader in innovative and award-winning design is a reflection of that priority. Our diverse leadership team collectively brings more than 275 years of experience to the table. This knowledge is invaluable to our clients; we know what works well, how to accurately estimate costs, and ultimately save time and money. Our secret to success? A combination of this wealth of experience and a creative energy that flows through our office, sparking innovation on a daily basis.

Recent Projects

USD Sports Performance Enhancement Complex, Vermillion, SD;
SDSU Dana J. Dykhouse Stadium, Brookings, SD;
Community Health Center of the Black Hills, Rapid City, SD;
Edith Sanford Breast Center, Sioux Falls, SD;
Brandon Valley Intermediate School, Brandon, SD
Hosanna Lutheran Church, Watertown, SD;
SDSU Sanford Jackrabbit Athletic Complex, Brookings, SD;
Journey Group Office Building, Sioux Falls, SD

FIRM PROFILES

BAFFUTO ARCHITECTURA



baffuto
architectura

Studio: Village on the Green – Hart Ranch

1025 Duffer Drive
Rapid City, SD 57702
605.341.7501
bbaffuto@aol.com
baffutoarchitectura.com
Established: 1998

Principal

Thomas Baffuto, AIA, NCARB,
LEED AP

Firm Description/Philosophy

A design-oriented architectural firm established by the desire to offer meaningful design through the “art” and “technology” of architecture, baffuto architectura seeks to work with enthusiastic clients interested in creating a new vision for their special projects. Mr. Baffuto, AIA, is known for his creative design work that integrates client needs in programming and planning, into building solutions that are alive with architectural detail and functional expression.

Recent Projects

South Dakota DOT, New Truck Maintenance Shop, McIntosh, SD;
Re-Member Campus Buildings, Porcupine, SD;
Cornerstone Mission, Bathroom Remodeling, Rapid City, SD;
Pennington County JDC Re-roofing, Rapid City, SD;
Anderson-Bachman Residence, Pactola, SD;
Jett Residence, Hisegsa, SD;
Groves Residence Remodeling, Rapid City, SD

BANNER ASSOCIATES INC.

BANNER

Engineering | Architecture | Surveying

409 22nd Ave. South | PO Box 298
Brookings, SD 57006
605.692.6342 or 855.323.6342
Fax 605.692.5714
contact@bannerassociates.com
www.bannerassociates.com
Established: 1947

Additional Locations

Sioux Falls, SD
Vermillion, SD
Milbank, SD
Rapid City, SD
Pipestone, MN

Principals

David Odens, PE - President
Timothy Connor, PE - Principal
Doug Wessel, PE, - Principal
Brad Wermers, PE - Principal
Sig Zvejnieks, PE - Principal

Firm Description/Philosophy

Banner Associates is a multidisciplinary engineering and architectural firm dedicated to developing innovative solutions for our client's needs. Banner offers the personalized service that a small firm provides, along with the experienced, knowledgeable staff and resources a large firm offers. Banner Associates has a wide range of expertise to meet each client's unique needs. Our expertise includes architectural and interior design; structural engineering; surveying; and civil engineering which includes site planning/land development, transportation, municipal, water resources planning/development, water storage/distribution/treatment, and wastewater collection/treatment.

Recent Projects

FarmHouse Fraternity Chapter House, SDSU;
First Assembly of God Fellowship Hall Remodel, Sioux Falls, SD;
Scheels IcePlex, Sioux Falls, SD;
Dakota Nature Center, Brookings, SD;
Camelot Intermediate School Addition, Brookings, SD;
GF&P Outdoor Campus Exterior Renovation, Sioux Falls, SD

CHARLES MACBRIDE ARCHITECT



5902 S Grand Lodge Pl,
Sioux Falls, SD 57108
303.883.6250
cmacbride@macbridestudio.com
Established: 2002

Principal

Charles MacBride, AIA, NCARB,
LEED GA

Firm Description/Philosophy

Charles MacBride Architect is a collaborative, multidisciplinary practice exploring architecture and urbanism through innovative design and research. We provide creative ideas and full design services for diverse clients and communities, investigating multiple building types at many scales. The office is run as a collaborative studio which has the ability to handle any size or type of project. We are interested foremost in challenging design ideas, and have worked in architecture, landscape, planning and urbanism, interiors, and graphic design.

Recent Projects

Wessington Springs Community Center, Wessington Springs, SD
Riverfront Masterplan, Mobridge, SD;
Nordby Center for Recreation, Huron, SD;
Laura Ingalls Wilder Society Historic Homes Masterplan, De Smet, SD;
Beadle County Courthouse Remodel and Restoration, Huron, SD

CIAVARELLA DESIGN, INC.



410 W. 2nd Ave Suite 4
Mitchell, SD 57301
605.996.3735
www.ciavarelladesign.com
Established: 1998

Principals

Brad Ciavarella, AIA, NCARB
Jim Carlson, Landscape Architect

Firm Description/Philosophy

Ciavarella Design is a full-service architectural firm founded in 1998 and licensed in South Dakota, North Dakota, Wyoming, and Michigan. We are focused on a commitment to design excellence. Our combination of inspiration and innovative design ideas provides our clients architectural solutions for all of their building projects and respective budgets.

As creative design professionals, we strive to engage our clients in the design process through active listening in order to form flexible designs on budget that meet our client's needs while enhancing environments.

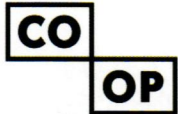
Recent Projects

El Culpio Mexican Restaurant, Mitchell, SD;
Hyde Stadium, Pierre, SD;
USD East Hall Roof, Vermillion, SD;
NSU Lincoln Hall, Aberdeen, SD;
Warner School, Warner, SD;
Whittier Lofts, Mitchell, SD;
Bethesda Adult Day Health Facility, Aberdeen, SD;
Kulm School Addition & Remodel, Kulm, ND;



FIRM PROFILES

CO-OP ARCHITECTURE



1108 South Main Street
Aberdeen, South Dakota, 57401
605.725.4852
www.co-oparch.com
Established 2012

Additional Location

300 North Phillips Avenue, #120
Sioux Falls, South Dakota, 57104

Principals

Thomas Hurlbert, AIA, LEED AP
Kyle Raph, AIA, LEED AP

Firm Description/Philosophy

We don't have a philosophy.
We just try to do quality architecture.

Recent Projects

Aberdeen Library, Aberdeen, SD;
NSU Suites/Residence Hall,
Aberdeen, SD;
Mike Miller Elementary School,
Aberdeen, SD
Hoven High School, Hoven, SD;
Hitchcock/Tulare Elementary/High
School, Hitchcock, SD;
FEM Electric Cooperative
Bethlehem Lutheran Church,
Aberdeen, SD;
Drifters Restaurant and Banquet, Ft.
Pierre, SD

EAPC ARCHITECTS ENGINEERS



404 West 9th Street
Sioux Falls, SD 57104
605.444.1600
www.eapc.net
Established: 1967

Additional Locations

Fargo, ND
Grand Forks, ND
Bismarck, ND
Minot, ND
Williston, ND
St. Paul, MN
Bemidji, MN
Fort Collins, CO
Norwich, VT

Principals

Alan Dostert, AIA, President/CEO
Wayne Dietrich, AIA
James Tyler, PE
Jay Haley, PE
Paul Prout, PE
Leap Chear, AIA, NCARB, LEED
AP, Director of Operations – Sioux
Falls Office

Firm Description/Philosophy

EAPC is an award-winning, full-service design consulting firm providing the knowledge and experience to create usable, efficient structures, and the creativity to produce spaces that stimulate the senses and enrich the experience of the end user. We believe that function and form should co-exist, that a structure should serve a specific purpose while also providing the intangible benefits inherent in quality design. We blend our client's ideas with our experience and expertise to develop a concept that meets or exceeds project requirements. Then we refine the concept, adding elements as necessary, and deleting extraneous clutter that only dilutes the purity of the design. At every step of the process, form and function are carefully balanced so that the end result is a structure that functions as

designed, while inspiring users to expand their own capabilities beyond the ordinary.

Recent Projects

SDSU Precision Agriculture
Laboratory and Classroom,
Brookings, SD;
Logistics Buddy Warehouse and
Distribution Center, Sioux Falls, SD
Plaza 600 Mixed-use Development,
Sioux Falls, SD;
RH Johnson Plaza Master Plan,
Sioux Falls, SD ;
SWMHP Solace Apartment
Complex, St. Peters, MN;
Sanford Worthington X-Ray Lab
Remodel, Worthington, MN;
Sanford Worthington Dialysis
Remodel, Worthington, MN;
Bridges Bay Resort, Okoboji, IA;

FALLS ARCHITECTURE STUDIO, LLC

4300 South Louise Ave, Suite 103
Sioux Falls, SD 57106
605.334.0402
jeff@fallsarch.com
www.fallsarch.com

Principals

Jeffrey J. Nelson, AIA, NCARB
Sherry R. Nelson

Firm Description/Philosophy

Great buildings don't just happen. They are planned to be aesthetically pleasing and to perform exceptionally well. They come about when conscientious architects and discriminating clients come together in a thoughtful, cooperative effort. At Falls Architecture Studio, it is our goal to make the architectural experience one that is professional and thorough. We have dedicated our careers to design and the built environment. We strive to make each of our projects something special and give each client an experience that enhances their projects.

A key point of our services is that at Falls Architecture, we offer a single person point of contact throughout the duration of your project. Our president, Jeff Nelson, will be that point of contact. His experiences will ensure that each project is done to the standards of Falls Architecture. Quality architecture is never an accident. It is the result of good design, sincere effort, intelligent direction, and skillful execution.

Recent Projects

Nobles County Armory Masterplan
for Art Center and Museum,
Worthington, MN;
Residential Hospice Cottage, Tracy,
MN;
Faith United Methodist Church,
Superior, WI;
Precious Angels Learning Center,
Sioux Falls, SD

FIRM PROFILES

FENNELL DESIGN, INC.



■ ARCHITECTURE
■ INTERIORS
■ PROJECT
MANAGEMENT

1113 St. Joseph Street
Rapid City, SD 57701
605.716.0520
gene@fendesinc.com
www.fennelldesigninc.com
Established: 2006

Additional Location

237 North 6th Street
Custer, SD 57730
605.716.0520

Principals

Gene Fennell, AIA, LEED® AP -
President

Firm Description/Philosophy

Our philosophy is simple and direct. We are dedicated to great design and the satisfaction of our clients. Composed of talented professionals, our firm offers an integrated team working collaboratively to provide a robust and comprehensive design solution. We are committed to excellence.

Recent Projects

Horace Mann Pool & Park, Rapid City, SD;
Custer Community Center Repurpose, Custer, SD;
Bowen Ranch Residence & Stable, Rapid City, SD

FIEGEN CONSTRUCTION CO.



3712 S. Western Ave., Ste. 200
Sioux Falls, SD 57105
605.335.6000
Fax 605.335.3346
www.fiegenconstruction.com
Established: 1967

Principals

Jeff T. Fiegen, President
Rusty Fiegen, Vice President

Firm Description/Philosophy

Fiegen Construction Co. is the area's premier design/build firm and the only local company offering unparalleled experience in design/build architecture and construction. Fiegen Construction Co. was founded in 1967 specializing in commercial and industrial construction including complex steel and precast erection services. In 2000, we added in-house architectural services to complement our diverse general construction experience and have thrived as the region's foremost one-source design/builder.

Recent Projects

Sioux Falls Specialty Hospital, Sioux Falls, SD;
O'Gorman High School, Sioux Falls, SD;
Benchmark Foam, Watertown, SD;
Stan Houston Equipment, Aberdeen, SD;

FOURFRONT DESIGN, INC.



517 7th Street
Rapid City, SD 57701
605.342.9470
Fax 605.342.2377
kanderson@4front.biz
www.4front.biz

Established: 2006

Additional Location

Lakewood, CO

Principals

Bryan Vulcan, PE
Curt Huus, PE

Firm Description/Philosophy

The name FourFront Design, Inc. reflects the four core values of our firm: quality, value, sustainability, and community. As a service-disabled, veteran-owned small business, we offer full services in the disciplines of architecture, interior design, civil engineering, mechanical engineering, electrical engineering, landscape architecture, planning, and energy management. These services are backed by our 60+ year promise to serve clients with leading edge, award-winning services in a professional practice.

Recent Projects

Lakota Freedom Veterans Cemetery, Kyle, SD;
Sheridan VAMC Mental Health Treatment Facility, Sheridan, WY;
Kansas City Street Reconstruction, Rapid City, SD;
Rapid Chevrolet New Dealership, Rapid City, SD

GALYARDT ARCHITECTS INC.



1506 Mt. View Road, Ste. 102
Rapid City, SD 57702
605.343.5282
Fax 605.343.2378
gemggold@aol.com
Established: 1968

Principal

Gary E. Galyardt, AIA - President

Firm Description/Philosophy

GAI provides architectural and planning services for educational and recreational facilities, commercial offices and retail buildings, government and community-use facilities, industrial and warehouse facilities, and multi-unit housing. Our philosophy of combining strong design skills along with practical technical skills, as well as providing personal attention to our clients, creates projects that are responsive to our clients' programs and budget constraints, resulting in successful projects and satisfied clients.

Recent Projects

Easyriders Saloon and Steakhouse, Sturgis, SD;
Samson USA Manufacturing Plant, Sturgis, SD;
St. Francis Mission New Administration Building and Recovery Addition, St. Francis, SD;
McKie Ford Lincoln Dealership, Rapid City, SD.

FIRM PROFILES

HKG ARCHITECTS



524 South Arch Street
Aberdeen, SD 57401
605.225.6820
Fax 605.227.7770
dean@hkgarchitects.com
www.HKGarchitects.com
Established: 1952

Principal

Dean Marske, AIA

Firm Description/Philosophy

For more than five decades, we at HKG Architects have been empowering our clients to grow and expand by bringing their visions to life. Our technical know-how means your project stays on schedule. Our years of experience mean we know how to operate easily within any budget. From beginning to end, we keep you in the loop through every phase of the project. With unparalleled access to our experts, you get the professional touch you deserve.

Recent Projects

Boys & Girls Club of the Aberdeen Area, Aberdeen, SD;
Faulkton Oncology, Faulkton, SD;
Waverly/South Shore School, Waverly, SD;
Safe Harbor, Aberdeen, SD
Willow Lake School, Willow Lake, SD;
Summit School, Summit, SD;
City Hall, Aberdeen, SD;
Gettysburg High School, Gettysburg, SD;

JLG ARCHITECTS



232 South Main
Avenue
Sioux Falls, SD
57104-6310
605.271.2531

www.JLGarchitects.com
Established: 1989

Principals

JLG Architects is 100% Employee-Owned

Firm Description:

We know that it takes more than just bricks and mortar to build a community. It takes passionate local stewardship, progressive leaders, and designers who understand how to turn a small idea into a big future. For over 27 years, our 100 JLGers have raised the bar on what is expected from architecture in the Upper Midwest so that we can continuously improve the quality of life of our clients, our neighbors, and our families, while remaining dedicated to our clients' bottom lines, today, tomorrow and for the next generation to come. We are inspired by the future, and work passionately to make our impact go beyond a building. As a result, JLG has been identified as one of the hottest architecture firms in the United States by Inc., Building Design+Construction, Architectural Record, the Zweig Group, and the Minneapolis-St. Paul Business Journal and is a "Best Place to Work" according to Prairie Business magazine, the Zweig Group, and the National American Institute of Architects Intern Development Program.

Recent Projects:

Sanford Pentagon; Sioux Falls, SD;
Watertown Community Wellness Center; Watertown, SD;
Northern State University
Greenhouse; Aberdeen, SD;
Sanford Fieldhouse Power Center; Sioux Falls, SD

KROEGER COMPANY

630 Westwind Dr.
Rapid City, SD 57702-2068
605.341.9746
www.kroegercompany.com
Established: 1995

Principal

Jean R. Kroeger II, AIA, NCARB, CCS, MCRP

Firm Description/Philosophy

The Kroeger Company specializes in architecture, construction management, quality control, scheduling, and construction claims consulting. Mr. Kroeger draws on his experience in architecture and construction to provide clients with comprehensive design and construction consulting services.

Recent Projects

Custer School District, High School (2005), Elementary School (2011), Custer, SD;
BAE/US Combat Systems, Minneapolis, MN;
Total Environmental Restoration Contract (TERC), Ellsworth Air Force Base, SD;
Denver International Airport Office Building, Denver, CO

KOCH HAZARD ARCHITECTS



431 North
Phillips Ave,
Suite 200
Sioux Falls,
SD 57104
605.336.3718

KOCH • HAZARD
ARCHITECTS

www.kochhazard.com
Established: 1961

Principals

Jeff Hazard, AIA, LEED® AP
Stacey McMahan, AIA, LEED® AP
BD + C
Keith Thompson, AIA, LEED® AP
BD + C

Firm Description/Philosophy

Our community inspires us, our clients set us in motion and our team is phenomenal. We believe thoughtful design can improve lives. Koch Hazard Architects strives to provide clients with a perfect project experience, including efficient and frequent communication, meticulous management and respect towards scope schedule and budget.

The firm provides architecture, planning, and interiors services in South Dakota and Minnesota. Areas of expertise include education, healthcare, recreation facilities; governmental and cultural facilities; churches, housing, and mixed-use facilities; corporate facilities. Focuses include sustainability, preservation, and making people happy. Koch Hazard's work has been praised by its peers with numerous local, regional, and national professional and civic awards.

Recent Projects

Good Samaritan Society
Headquarters, Sioux Falls, SD;
Student Housing, Dakota State University, Madison, SD;
The Bakery, Sioux Falls, SD;
Denny Sanford Premier Center, Sioux Falls, SD;
Raven Corporate Headquarters, Sioux Falls, SD;
Jackrabbit Grove, South Dakota State University, Brookings, SD

FIRM PROFILES

MANNES ARCHITECTS, LLC



Mannes Architects, LLC

800 Douglas Avenue
Yankton, SD 57078
605.665.1852
Fax 605.665.1875
info@mannesarchitects.com
www.mannesarchitects.com
Established: 1982/2013

Principals

Sarah Mannes Homstad, AIA - Owner
Glenn H. Mannes, AIA - Principal Emeritus

Firm Description/Philosophy

We provide comprehensive services for clients in southeast South Dakota and northeast Nebraska, putting our experience and expertise to work for clients that range from families to congregations to communities. We take pride in our thorough process, thoughtful approach, and attention to detail, striving to achieve practical, economical design solutions that engage occupants and enhance communities.

Recent Projects

Boys & Girls Club of Yankton, Yankton, SD
South Dakota Magazine addition, Yankton, SD;
Trinity Lutheran Church sanctuary, Yankton, SD

MILLS CONSTRUCTION



Mills
Construction

BUILDWITHMILLS.COM

1311 Main Ave. S.
Brookings SD 57006
605.697.3100
Fax: 605.697.3131
millscest@brookings.net
www.buildwithmills.com
Established: 1949

Principals

Randy Hanson, President
Angela Boersma, AIA, NCIDQ, LEED AP
Matthew Sjurseth, Assoc. AIA

Firm Description/Philosophy

Mills Construction, Inc. provides quality design/build, construction management, and general contracting services with pride, determination, imagination, and teamwork creating places to live, work, learn, and worship in Brookings and the surrounding region.

Recent Projects

Outdoor Adventure Center of South Dakota, Brookings, SD;
Global Polymer Industries Inc., Madison, SD;
Tiyata Place Apartments, Brookings SD;
Teen Challenge of the Dakotas, Brookings, SD

MSH ARCHITECTS



625 S. Minnesota Ave.
Suite 204
Sioux Falls, SD 57104
605.332.7850
Fax: 605.332.3539
robin@msharch.com
www.msharch.com
Established: 1989

Principals

Robin Miller, AIA, NCARB – CEO
David Sellers – Principal

Firm Description/Philosophy

MSH Architects delivers innovative, timely, and cost effective design solutions for commercial and government facilities. Our talented and growing staff has rich and diverse experience in a wide variety of building types and architectural markets. We've enjoyed working with large international clients who must remain confidential, as well as our many local and regional friends. The majority of our client's are experienced and sophisticated buyers who seek us out, asking us to repeat what we have done for them or their friends on past projects. The firm has experienced steady development of both our staff and client base and looks forward with enthusiasm to several upcoming projects that will be announced soon.

Recent Projects

SD Air National Guard (multiple)
Veterans Administration, SF;
Minneapolis and Des Moines Aquatics Center, Mitchell, SD;
Performing Arts Center, Mitchell, SD;
Tea Area School District (multiple);
SDSU Brown Hall Renovation, Brookings, SD;
SDSU Seed Lab, Brookings, SD;
City of Sioux Falls, (multiple)

PERSPECTIVE, INC.



perspective
architecture • design studio

525 N. Weber Avenue
PO Box 1066
Sioux Falls, SD 57104
605.271.9877
www.perspective-inc.com
Established: 2007

Principals

Larry Crane, AIA, LEED® AP
Jim Bruget

Firm Description/Philosophy

Perspective, Inc., is a Sioux Falls "design matters" architectural and interior design studio, providing a fresh vision, purposeful design, and client-focused service. Full of energy and passion for design, Perspective's team works with clients to create a vision for their project. The team has extensive experience in hospitality, health care, and corporate building projects.

Recent Projects

DSU Trojan Center Student, Renovation & Addition, Madison, SD;
Avera Emergency & Family Health Center, New Clinic, Sioux Falls, SD;
Custer State Park, Facility Improvements, Rapid City, SD;
Avera Milbank Area Hospital & Clinic, New Replacement Facility, Milbank, SD;
Sioux Falls Federal Credit Union, Louise Branch, Sioux Falls, SD

FIRM PROFILES

PUETZ CORPORATION



800 N. Kimball St.
Mitchell, SD 57301
605.996.2276
www.puetzcorp.com
Established: 1952

Principals

Wayne Puetz; Mary Puetz; Mark Puetz; Jim Weber; Jon Schmitz
Herm Harms, AIA, LEED® AP

Firm Description/Philosophy

Puetz Corporation's architecture team listens to our clients' needs and wants while making design recommendations towards a blend of building esthetics, functional efficiency, and operational cost savings. Knowing that maintaining our clients upfront budget is critical to the success of the project, a building estimate is consistently reviewed and updated as design details are determined. Puetz Corporation's architecture team specializes in K-12 schools, health care facilities, government, and commercial building projects.

Recent Projects

Dakota Wesleyan University Health Sciences Center, Mitchell, SD;
Mitchell Technical Institute, Campus Center, Mitchell, SD;
Eagle Creek Software Services, Vermillion, SD;
Selby Area School, Selby, SD

RSARCHITECTS, INC.



2307 West 57th Street
Suite 201
Sioux Falls, SD 57108
605.336.6891
Fax 605.335.5858
rsa@rsarchitects-sd.com
www.rsarchitects-sd.com
Established: 1989

Principals

Gary L. Stanley, AIA, NCARB
President
Keith Neuharth, AIA, LEED AP
BD+C, Vice President and Treasurer
Jeremy Christopherson, Assoc. AIA
LEED AP BD+C
Justin Oleson, Assoc. AIA

Firm Description/Philosophy

RSA was established by Gary Stanley to provide design solutions that are functional and aesthetically represent our clients vision. We serve a variety of markets, locally, regionally and nationally. RSA is committed to implementing sustainable design into all of our projects to ensure the development of high performance buildings. Establish, cultivate and nurture is our approach to building a solid client relationship. Our philosophy is simple....to listen, learn and design around the clients unique project goals.

Recent Projects

DeSmet Event & Wellness Center, DeSmet, SD;
Woodlake/Great Life Fitness Addition & Remodel, Sioux Falls, SD;
Horizon Health Care Clinic, Aberdeen, SD;
SDDOT Service Centers, Armour & Martin, SD;
Police Stations, Sioux Falls & Watertown, SD;
Downtown Fire Station, Watertown, SD;
Village at Skyline Pines Assisted Living Center, Rapid City, SD;

ROBERT J. RYSAVY, LLC

2801 W. Oak Street
Sioux Falls, SD 57105
605.610.7786
rysb@sio.midco.net
Established: 2009

Principal

Bob Rysavy, AIA

Firm Description/Philosophy

Our approach to quality design is to form a long-term client/team relationship and understand the project goals and expectations. By listening and hearing the client, we are able to develop solutions that meet the program and design requirements. The firm provides architectural programming/planning, design, and construction services.

Recent Projects

Pierre Indian Learning Center, New Dormitory Construction Phase, Pierre, SD;
Youth & Family Services Center, VOA, Sioux Falls, SD;
Buffalo Lake Healthcare Center, Projects I, II, & III Addition/Remodel, Buffalo Lake, MN;

STONE GROUP ARCHITECTS



STONE GROUP
ARCHITECTS

319 N. Main, Suite 2
Sioux Falls, SD 57104
605.271.1144
605.310.0318 (cell)
todd.stone@stonegrouparchitects.com
www.stonegrouparchitects.com
Established: 2012

Principal

Todd Randall Stone, AIA, NCARB

Firm Description/Philosophy

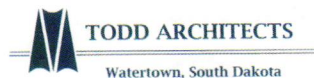
Stone Group Architects, Inc. offers a wide range of architectural and planning services. We utilize state-of-the-art Building Information Modeling (BIM) technology to create high-performance, cost-effective facilities. Our staff members are extremely effective communicators and even better listeners. We share a passion for creative, problem-solving design, an inclination to push the envelope and a commitment to satisfying clients. At Stone Group Architects, we welcome opportunity and maintain a positive, collaborative office culture. We stand behind our work and we choose to be readily available for all our clients.

Recent Projects

The Residence Townhomes, Sioux Falls, SD;
SDSU Wellness Center Remodel & Addition, Brookings, SD;
Three Fountains One Office Building, Sioux Falls, SD;
LEECO Steel Building, Brandon, SD;
WINGs Gymnastics Center, Sioux Falls, SD;
Home Federal Bank Remodel-East 10th Street, Sioux Falls, SD;
Graystone Heights Apartment Complex, Sioux Falls, SD;
The Commons Apartments and Community Center, Sioux Falls, SD

FIRM PROFILES

TODD ARCHITECTS LTD.



PO Box 23
8 East Kemp Avenue
Watertown, SD 57201
605.886.7733
dave@toddarchitects.com
www.toddarchitects.com
Established: 1969
Principal
David J. Todd, AIA - President

Firm Description/Philosophy

Our philosophy is to have a principal in charge and in direct contact with the project throughout all phases of the work. Our sound reputation and ability allows us to establish good communications with our clients and meet tight project schedules.

Recent Projects

Building Addition for Municipal Utilities, Watertown, SD;
New Middle School, Watertown School District, Watertown, SD;
Gym and Kitchen Addition, Florence Public School, Florence, SD;
Children's Zoo and Otter Exhibit, Bramble Park Zoo, Watertown, SD;
Lake Area Technical Institute, Phase IV, Watertown, SD

TSP, INC.



Architecture
Engineering
Planning

1112 N. West Avenue
Sioux Falls, SD 57104
605.336.1160

600 Kansas City Street
Rapid City, SD 57701
605.343.6102
info@teamtsp.com
www.teamtsp.com
Established: 1930

Additional Locations

Marshalltown, IA
Marshall, MN
Minneapolis, MN
Rochester, MN
Omaha, NE
Sheridan, WY

Principals

Jared Nesje, AIA - CEO
Trygve Fredrickson, PhD - CFO
Paul Boerboom, AIA
Tony Dwire, PE
Sean Ervin, AIA
Richard Gustaf, PE
Brian Heidbrink
Michael Jamison, PE
Timothy Jensen, PE
Michelle Klobassa, AIA
Ronald Mielke, PE
Eric Monroe, AIA
Robert Morcom, PE

Firm Description/Philosophy

Since 1930, TSP has existed to perform fulfilling work. It's fulfilling for us because it makes our clients better at what they do. That personal connection is the very foundation of our focus on Exceptional Client Service and Outstanding Design Solutions—where form, function, economy, and culture fit simply and beautifully to fulfill the client's story. The space we create together symbolizes and supports who our client wants to be. Because the only measure of our success is the outcome we achieve for—and with—the client who chose us for our best efforts.

Recent Projects

Midco Aquatic Center, Sioux Falls, SD
Rapid City Regional Health Urgent Care Clinic, Rapid City, SD;
Augustana University Froiland Science Complex, Sioux Falls, SD;
Madison Regional Health System Replacement Hospital, Madison, SD;
Southeast Technical Institute New Laboratory Building, Sioux Falls, SD;
Sioux Falls Regional Airport Ticketing, Baggage Claim, & Security Remodel, Sioux Falls, SD;
Sweetman Construction Co. Corporate Office Building, Sioux Falls, SD;
South Dakota School of Mines & Technology Student Wellness & Recreation Center, Rapid City, SD

UPPER DECK ARCHITECTS, INC.



UPPER DECK
ARCHITECTS, INC.

50 Minnesota St. Ste. 1
Rapid City, SD 57701
605.721.0237
Fax 605.721.0240
time@upperdeckarchitects.com
www.upperdeckarchitects.com
Established: 2007

Principal

Timothy D. Cheever, AIA

Firm Description/Philosophy

Upper Deck Architects is a unique company with the goal of providing a personalized service that is unequalled in the region. Dedicated to client satisfaction, we pride ourselves on listening to our clients to completely understand their project needs and goals. Established in 2007, Upper Deck Architects is a new firm composed of familiar faces. While working together at a large architectural firm, our personnel had the desire to work in a fun, creative, and collaborative environment.

Recent Projects

Rapid City Utility Maintenance Facility, Rapid City, SD;
Western Dakota Tech Campus Expansion, Rapid City, SD;
Scott Peterson Ford, Sturgis, SD;
Sully Buttes Secondary School, Onida, SD

FIRM PROFILES

VANDEWALLE ARCHITECTS LLC



Van De Walle
Architects LLC
ARCHITECTURE • INTERIORS

212 S. Phillips Ave.,
Ste. 200
Sioux Falls, SD
57104
605.339.4411

www.vandewallearchitects.com
Established: 1972

Principals

David Erickson, AIA, Owner/Partner
Brad Dietzenbach, Assoc. AIA,
Owner/Partner

Firm Description/Philosophy

VanDeWalle Architects perceives architectural design as a combination of two different goals. It must be efficient and functional in meeting the specific needs of each client, but, at the same time, be aesthetically pleasing and distinctive. We are committed to providing a collaborative approach between owner, architect, consultants, and contractors. For more than 40 years, VanDeWalle Architects has demonstrated the ability to balance the opposing forces of design innovation and environmentally friendly design solutions with the practical concerns of budget, schedule, and program. Our ability to accomplish these goals is demonstrated by a loyal list of repeat clientele.

Recent Projects

University Hills Village II; Sioux Falls, SD;
First Bank & Trust at Dawley Farms; Sioux Falls, SD;
CarsForSale.com Corporate Headquarters; Sioux Falls, SD;
SGS; Brookings, SD;
Hilton Garden Inn; Arvada, CO;
Frontier Bank at The Plaza; Sioux Falls, SD;
Pappy's at The Plaza; Sioux Falls, SD;

WARD WHITWAM, ARCHITECT



401 East 8th Street, Ste. 200C
Sioux Falls, SD 57103
605.376.7633
Firm 605.334.2422
wardwhitwam@yahoo.com
Established: 1953

Principal

Ward Whitwam, FAIA

Firm Description/Philosophy

Creative design tailored to the individual client.

Recent Projects

Salon Artist Suites, Inc., Sioux Falls, SD;
Residential Studies for Rich Engel, Sioux Falls, SD;
Residential Studies for Carson Smith, Sioux Falls, SD;
Design for Mary Jo Wagner Arboretum, Sign Post at road entrance, Sioux Falls, SD

WILLIAMS & ASSOCIATES ARCHITECTURE, INC.

125 E. Colorado Blvd., Ste. 2A
Spearfish, SD 57783
605.642.2009
steve@williamsassociatesarch.com
Established: 1993

Principals

Steven K. Williams, AIA
Jason R. Roberdeau, AIA

Firm Description/Philosophy

Williams and Associates has provided design services to the Black Hills region since 1993. We strive to provide exceptional value to all clients. We recognize that successful projects are a team effort in which all stakeholders become vested in the process. We listen intently to owners, designers, and contractors so that great ideas blend together to result in remarkable projects.

Recent Projects

Black Hills State University - Crow Peak Residence Hall, Spearfish, SD;
Black Hills Surgical Hospital Expansion, Rapid City, SD;
Black Hills Urgent Care - 1, 2, & 3, Spearfish, SD and Rapid City, SD
Schaak Dental, Rapid City, SD
City of Spearfish, Atlas Center, Business Park, Spearfish, SD;
Northern Hills Training Center - Office/Activity Center, Spearfish, SD;
Black Hills Community Bank - Spearfish, Spearfish, SD;
Spearfish Regional Hospital - O.R. Expansion, Spearfish, SD

MEMBERSHIP ROSTER

FELLOW EMERITUS

WARD WHITWAM, FAIA

Ward Whitwam, Architect
401 East 8th Street, Ste 200C
Sioux Falls, SD 57103
(605) 376-7633

EMERITUS

EARL ANGLE, AIA

913 S. Williams Ave.
Sioux Falls, SD 57104
(605) 496-1148

HERBERT ASLESEN, AIA

1810 St Joe St
Spearfish, SD 57783-0237
(605) 722-1165

DON BALTZER, AIA

Koch Hazard Architects, Inc.
431 N Phillips Ave Ste 200
Sioux Falls, SD 57104-5933
(604) 336-3718

SANDRA DICKENSON, AIA

Fine Line Architecture, Inc.
16 Cypress Dr
Vermillion, SD 57069-7079
(605) 624-6670

GARY GALYARDT, AIA

Galyardt Architects, Inc.
1506 Mountain View Rd Ste 102
Rapid City, SD 57702-4349
(605) 343-5282

TERRY GEISLER, AIA

HKG Architects, Inc.
524 S Arch St
Aberdeen, SD 57401-4443
(605) 225-6820

JAMES HEROUX, AIA

MSH Architects
625 S Minnesota Ave
Sioux Falls, SD 57104-4871
(605) 332-7850

WILLIAM LAMONT, AIA

Lamont Associates
401 S Main St Ste 206
Aberdeen, SD 57401-4363
(605) 226-0161

GLENN MANNES, AIA

Mannes Architects, LLC
800 Douglas Ave
Yankton, SD 57078-3643
(605) 665-1852

AUGUST MASSA, AIA

28307 300th Avenue
Carter, SD 57580-4507
(605) 879-2569

RICHARD MCCONNELL, AIA

201 Franklin St
Rapid City, SD 57701-3739
(605) 348-4392

E.J. MURPHY, AIA

Architecture Automated, Inc.
2108 W Burnside St Ste 3
Sioux Falls, SD 57104-2035
(605) 351-2457

OLIN ODLAND, AIA

Architectural Services
6216 West Chad Circle
Sioux Falls, SD 57106
(605) 271-0916

GARY OHNSTAD, AIA

EAPC Architects Engineers
404 W 9th St
Sioux Falls, SD 57104-3602
(604) 444-1600

JAMES POPE, AIA

10511 Cedar Lake Road, Apt 213
Minnetonka, MN 55305
(605) 886-5396

ROBERT RYSAVY, AIA

Robert J. Rysavy, LLC
2801 W Oak St
Sioux Falls, SD 57105-3340
(605) 610-7786

ORRIN WENDT, AIA

Orrin H. Wendt Architects
204 W 23rd Street
Sioux Falls, SD 57105-1826
(605) 366-8581

PHILIP WHITE, AIA

DLR Group
2700 S. Groveland Avenue
Sioux Falls, SD 57110
(605) 371-1188

ARCHITECT

PATRICIA ACEVEDO, AIA

AcV2 architecture, LLC
510 9th St Ste 2
Rapid City, SD 57701-2627
(605) 484-6071

SARAH ALDINGER, AIA

Architecture Incorporated
415 S Main Ave
Sioux Falls, SD 57104-6811
(605) 339-1711

MITCHELL ALDINGER, AIA

Architecture Incorporated
415 S Main Ave
Sioux Falls, SD 57104-6811
(605) 339-1711

MARK ASPAAS, AIA

Architecture Incorporated
415 S Main Ave
Sioux Falls, SD 57104-6811
(605) 339-1711

THOMAS BAFFUTO, AIA

Baffuto Architectura
1025 Duffer Dr
Rapid City, SD 57702-7307
(605) 341-7501

BRIAN BEILKE, AIA

Fiegen Construction Company
3712 S Western Ave, Ste 200
Sioux Falls, SD 57105-6138
(605) 335-6000

KRISTINE BJERKE, AIA

Architecture Incorporated
815 Saint Joseph St Ste 203
Rapid City, SD 57701-4111
(605) 721-1158

PAUL BOERBOOM, AIA

TSP, Inc.
1112 N West Ave
Sioux Falls, SD 57104-1333
(605) 336-1160

ANGELA BOERSMA, AIA

Mills Construction, Inc.
1311 Main Ave S.
Brookings, SD 57006
(605) 697-3100

JACOB BUNDE, AIA

Avera McKennan Hospital
1322 S. Cliff Ave
Sioux Falls, SD 57105
(605) 322-7802

BRADLEY BURNS, AIA

Chamberlin Architects, PC
1030 Wilderness Trail
Rapid City, SD 57702
(605) 786-5592

LEAP CHEAR, AIA

EAPC Architects Engineers
404 W 9th St
Sioux Falls, SD 57104-3602
(604) 444-1600

TIMOTHY CHEEVER, AIA

Upper Deck Architects, Inc.
50 Minnesota St Ste 1
Rapid City, SD 57701-6218
(605) 721-0237

BRAD CIAVARELLA, AIA

Ciavarella Design Inc.
410 W 2nd Ave Ste 4
Mitchell, SD 57301-2507
(605) 996-3735

ROBERT COLLINS, AIA

TSP, Inc.
1112 N West Ave
Sioux Falls, SD 57104-1333
(605) 336-1160

LARRY CRANE, AIA

Perspective Inc.
525 N. Weber Avenue
Sioux Falls, SD 57103
(605) 271-9877

SHAWN CROWLEY, AIA

EAPC Architects Engineers
404 W 9th St
Sioux Falls, SD 57104-3602
(604) 444-1600

CATHERINE DEKKENGA, AIA

Architecture Incorporated
415 S Main Ave
Sioux Falls, SD 57104-6811
(605) 339-1711

ALAN DEMPSTER, AIA

Architecture Incorporated
415 S Main Ave
Sioux Falls, SD 57104-6811
(605) 339-1711

ALLISON DVORAK, AIA

Koch Hazard Architects, Inc.
431 N Phillips Ave Ste 200
Sioux Falls, SD 57104-5933
(604) 336-3718

ANDREW EITREIM, AIA

Architecture Incorporated
415 S Main Ave
Sioux Falls, SD 57104-6811
(605) 339-1711

JOHN ENGELHARDT, AIA

Architectural Guild LLC
219 E 12th St
Sioux Falls, SD 57104-6911
(605) 332-3130

DAVID ERICKSON, AIA

VanDeWalle Associates, LLC
212 S Phillips Ave Ste 200
Sioux Falls, SD 57104-6390
(605) 339-4411

SEAN ERVIN, AIA

TSP, Inc.
1112 N West Ave
Sioux Falls, SD 57104-1333
(605) 336-1160

ROBERT EVERETT, AIA

Renaissance Inc.
1315 N Holbrook Ave
Sioux Falls, SD 57107-0978
(605) 338-1475

GENE FENNELL, AIA

Fennell Design Inc.
1113 St. Joseph St.
Rapid City, SD 57701
(605) 716-0520

ANDREW FETT, AIA

Williams & Associates Architecture, Inc.
125 E Colorado Blvd Ste 2A
Spearfish, SD 57783-2793
(605) 642-2009

SHAUNTEL FETT, AIA

Williams & Associates Architecture, Inc.
125 E Colorado Blvd Ste 2A
Spearfish, SD 57783-2793
(605) 642-2009

BEAU FEY, AIA

Architecture Incorporated
415 S Main Ave
Sioux Falls, SD 57104-6811
(605) 339-1711

LUCAS FIEGEN, AIA

Fiegen Construction Company
3712 S Western Ave, Ste 200
Sioux Falls, SD 57105-6138
(605) 335-6000

RANDAL FISHER, AIA

Designworks, Inc.
526 Saint Joseph St Ste B
Rapid City, SD 57701-2792
(605) 721-3312

TIM FONDER, AIA

Banner Associates, Inc.
2307 W 57th St Ste 102
Sioux Falls, SD 57108-5049
(605) 335-6117

REX HAMBROCK, AIA

TSP, Inc.
1112 N West Ave
Sioux Falls, SD 57104-1333
(605) 336-1160

HERM HARMS, AIA

Puetz Corporation
800 N Kimball St
Mitchell, SD 57301-2024
(605) 996-2276

ROGER HARTMAN, AIA

Hartman Architecture
402 N Mystic Cir
Sioux Falls, SD 57110-6200
(605) 838-9306

JEFFERY HAZARD, AIA

Koch Hazard Architects, Inc.
431 N Phillips Ave Ste 200
Sioux Falls, SD 57104-5933
(604) 336-3718

THOMAS HURLBERT, AIA

CO-OP Architecture
300 N Phillips Ave Ste 120
Sioux Falls, SD 57104-6035
(605) 725-4852

MEMBERSHIP ROSTER

TEDD HURT, AIA

G. A. Johnson Construction, Inc.
27153 SD Hwy 115, Suite 101
Harrisburg, SD 57032
(605) 361-8800

STEVEN JASTRAM, AIA

Architecture Incorporated
415 S Main Ave
Sioux Falls, SD 57104-6811
(605) 339-1711

JENNIFER JOHNSON, AIA

TSP, Inc.
600 Kansas City Street
Rapid City, SD 57701
(605) 343-6102

LEONARD KEMNITZ, AIA

EAPC Architects Engineers
404 W 9th St
Sioux Falls, SD 57104-3602
(604) 444-1600

MICHELLE KLOBASSA, AIA

TSP, Inc.
1112 N West Ave
Sioux Falls, SD 57104-1333
(605) 336-1160

JOHN KOLANDER, AIA

EAPC Architects Engineers
404 W 9th St
Sioux Falls, SD 57104-3602
(604) 444-1600

CHASE KRAMER, AIA

TSP, Inc.
1112 N West Ave
Sioux Falls, SD 57104-1333
(605) 336-1160

KATIE KRANTZ, AIA

VanDeWalle Associates, LLC
212 S Phillips Ave Ste 200
Sioux Falls, SD 57104-6390
(605) 339-4411

RYAN KRANZ, AIA

Perspective Inc.
525 N. Weber Avenue
Sioux Falls, SD 57103
(605) 271-9877

JEFFREY KREITER, AIA

Sioux Falls School System
1101 N Western Ave
Sioux Falls, SD 57104-1200
(605) 357-8119

JEAN KROEGER, AIA

Kroeger Company
630 Westwind Dr
Rapid City, SD 57702-2068
(605) 341-9746

MEREDITH LARSON, AIA

Henry Carlson Company
1205 Russell St.
Sioux Falls, SD 57104
(605) 336-2410

JAMES LUSHBOUGH, AIA

FourFront Design, Inc.
517 7th St.
Rapid City, SD 57701
(605) 342-9470

CHARLES MACBRIDE, AIA

Charles MacBride Architect
5902 S Grand Lodge Pl
Sioux Falls, SD 57108
(303) 883-6250

SARAH MANNES HOMSTAD, AIA

Mannes Architects, LLC
800 Douglas Ave
Yankton, SD 57078-3643
(605) 665-1852

DEAN MARSKE, AIA

HKG Architects, Inc.
524 S Arch St
Aberdeen, SD 57401-4443
(605) 225-6820

STACEY MCMAHAN, AIA

Koch Hazard Architects, Inc.
431 N Phillips Ave Ste 200
Sioux Falls, SD 57104-5933
(604) 336-3718

JORDAN METZGER, AIA

Puetz Corporation
800 N Kimball St
Mitchell, SD 57301-2024
(605) 996-2276

ROBIN MILLER, AIA

MSH Architects
625 S Minnesota Ave
Sioux Falls, SD 57104-4871
(605) 332-7850

TERRI MILLER, AIA

Architecture Incorporated
415 S Main Ave
Sioux Falls, SD 57104-6811
(605) 339-1711

ERIC MONROE, AIA

TSP, Inc.
600 Kansas City Street
Rapid City, SD 57701
(605) 343-6102

PATTI MONSON, AIA

Architecture Incorporated
415 S Main Ave
Sioux Falls, SD 57104-6811
(605) 339-1711

JEFFREY NELSON, AIA

Falls Architecture Studio
4300 S Louise Ave Ste 103
Sioux Falls, SD 57106-3124
(605) 334-0402

JARED NESJE, AIA

TSP, Inc.
1112 N West Ave
Sioux Falls, SD 57104-1333
(605) 336-1160

KEITH NEUHARTH, AIA

RSArchitects, Inc.
2307 W 57th St Ste 201
Sioux Falls, SD 57101-1568
(605) 336-6891

LESLIE OLIVE, AIA

South Dakota State University
420 Ash Avenue
Brookings, SD 57006
(605) 692-1425

KIM OTTEN, AIA

The Evangelical Lutheran Good Samaritan Society
4800 W 57th St
Sioux Falls, SD 57108-2239
(605) 362-3111

STEVEN PEDERSEN, AIA

EAPC Architects Engineers
404 W 9th St
Sioux Falls, SD 57104-3602
(604) 444-1600

GARRETT PETERS, AIA

Avera McKennan Hospital
800 E 21st St
Sioux Falls, SD 57105-1003
(605) 322-7874

KYLE RAPH, AIA

CO-OP Architecture
300 N Phillips Ave Ste 120
Sioux Falls, SD 57104-6035
(605) 929-7813

JASON ROBERDEAU, AIA

Williams & Associates Architecture, Inc.
125 E Colorado Blvd Ste 2A
Spearfish, SD 57783-2793
(605) 642-2009

DUDLEY RUMRILL, AIA

Aaron Swan & Associates
301 W Capitol Ave
Pierre, SD 57501-2409
(605) 224-1742

LOREN SCHAEFER, AIA

Brosz Engineering & Architecture
750 W 2nd St
Pierre, SD 57501-1302
(605) 222-2865

JEFFREY SCHLEPP, AIA

Southeast Technical Institute
2320 N Career Ave
Sioux Falls, SD 57107-1301
(605) 212-7878

KIMBERLY SCHMIDT, AIA

Upper Deck Architects, Inc.
50 Minnesota St Ste 1
Rapid City, SD 57701-6218
(605) 721-0237

ELIZABETH SOUYER, AIA

Architecture Incorporated
415 S Main Ave
Sioux Falls, SD 57104-6811
(605) 339-1711

DAVID STAFFORD, AIA

809 South St
Rapid City, SD 57701-3592
(605) 348-2648

GARY STANLEY, AIA

RSArchitects, Inc.
2307 W 57th St Ste 201
Sioux Falls, SD 57101-1568
(605) 336-6891

DIANE STEINBRONN, AIA

MSH Architects
625 S Minnesota Ave
Sioux Falls, SD 57104-4871
(605) 332-7850

TODD STONE, AIA

Stone Group Architects, Inc.
319 N Main, Ste 2
Sioux Falls, SD 57104
(605) 271-1144

KEITH THOMPSON, AIA

Koch Hazard Architects, Inc.
431 N Phillips Ave Ste 200
Sioux Falls, SD 57104-5933
(604) 336-3718

DAVID TODD, AIA

Todd Architects
8 East Kemp Avenue
Watertown, SD 57201-0023
(605) 886-7733

DAVID VAN NIEUWENHUYZEN, AIA

JLG Architects
232 S Main Ave
Sioux Falls, SD 57104
(603) 271-2531

CATHERINE WAGNER, AIA

University of South Dakota
529 W Clark St
Vermillion, SD 57069-1915
(605) 624-4219

STEVE WILLIAMS, AIA

Williams & Associates Architecture, Inc.
125 E Colorado Blvd Ste 2A
Spearfish, SD 57783-2793
(605) 642-2009

ROBERT WINKELS, AIA

Sanford Health
3070 W Donahue Dr
Sioux Falls, SD 57101-1568
(605) 336-6891

ASSOCIATES

JEREMY ALTMAN, ASSOC. AIA

AcV2 architecture, LLC
510 9th St Ste 2
Rapid City, SD 57701-2627
(605) 484-6071

ROBERT ARLT, ASSOC. AIA

Ciavarella Design Inc.
410 W 2nd Ave Ste 4
Mitchell, SD 57301-2507
(605) 214-2625

CATHERINE BECKER, ASSOC. AIA

JLG Architects
232 S Main Ave
Sioux Falls, SD 57104
(603) 271-2531

KRISTINE BOOZE, ASSOC. AIA

7022 East High Meadows Drive
Black Hawk, SD 57718
(605) 787-6862

JORDAN BURBACH, ASSOC. AIA

Architecture Incorporated
815 Saint Joseph St Ste 203
Rapid City, SD 57701-4111
(605) 721-1158

SANDRA CALLIES, ASSOC. AIA

Koch Hazard Architects, Inc.
431 N Phillips Ave Ste 200
Sioux Falls, SD 57104-5933
(604) 336-3718

JARED CARDA, ASSOC. AIA

CO-OP Architecture
1108 South Main St, Suite 102
Aberdeen, SD 57401
(605) 725-4852

JEREMY CHRISTOPHERSON, ASSOC. AIA

RSArchitects, Inc.
2307 W 57th St Ste 201
Sioux Falls, SD 57101-1568
(605) 336-6891

LAUREN DENNEY, ASSOC. AIA

4D Design + Consulting
4301 W 57th St # 110B
Sioux Falls, SD 57108-2251
(402) 707-6370

LAUREN DESHLER, ASSOC. AIA

Architecture Incorporated
415 S Main Ave
Sioux Falls, SD 57104-6811
(605) 339-1711

MEMBERSHIP ROSTER

BRADLEY DIETZENBACH, ASSOC. AIA

VanDeWalle Associates, LLC
212 S Phillips Ave Ste 200
Sioux Falls, SD 57104-6390
(605) 339-4411

JUSTIN FUHS, ASSOC. AIA

RSArchitects, Inc.
2307 W 57th St Ste 201
Sioux Falls, SD 57105
(605) 929-6318

FEDERICO GARCIA LAMMERS, ASSOC. AIA

South Dakota State University DoArch
Box 2203
Brookings, SD 57007
(605) 688-4841

KEVIN GENZLINGER, ASSOC. AIA

Puetz Corporation
800 N Kimball St
Mitchell, SD 57301-2024
(605) 996-2276

RONALD GRIEBEL, ASSOC. AIA

Architecture Incorporated
415 S Main Ave
Sioux Falls, SD 57104-6811
(605) 339-1711

RANDY GUNNINK, ASSOC. AIA

MSH Architects
625 S Minnesota Ave
Sioux Falls, SD 57104-4873
(605) 332-7850

BRIAN HEIDBRINK, ASSOC. AIA

TSP, Inc.
1112 N West Ave
Sioux Falls, SD 57104-1333
(605) 336-1160

JASON KANN, ASSOC. AIA

TSP, Inc.
1112 N West Ave
Sioux Falls, SD 57104-1333
(605) 336-1160

GEOFFREY LITTLE, ASSOC. AIA

Banner Associates, Inc.
409 22nd Ave S
Brookings, SD 57006-2819
(605) 692-6342

DAVID LORANG, ASSOC. AIA

Banner Associates, Inc.
2307 W 57th St Ste 102
Sioux Falls, SD 57108-5049
(605) 929-5554

SARA LUM, ASSOC. AIA

JLG Architects
232 S Main Ave
Sioux Falls, SD 57104
(603) 271-2531

ANGELA MCKILLIP, ASSOC. AIA

South Dakota State University
Box 2275A
Brookings, SD 57007
(605) 688-5551

HEATHER MERGEN, ASSOC. AIA

MSH Architects
625 S Minnesota Ave
Sioux Falls, SD 57104-4871
(605) 332-7850

ELIZABETH MEYER, ASSOC. AIA

EAPC Architects Engineers
404 W 9th St
Sioux Falls, SD 57104-3602
(604) 444-1600

RYAN MURPHY, ASSOC. AIA

JLG Architects
314 Main Ave
Brookings, SD 57006-2011
(605) 692-1288

JASON NELSON, ASSOC. AIA

TSP, Inc.
1112 N West Ave
Sioux Falls, SD 57104-1333
(605) 336-1160

JUSTIN OLESON, ASSOC. AIA

RSArchitects, Inc.
2307 W 57th St Ste 201
Sioux Falls, SD 57101-1568
(605) 336-6891

JASON PITTMANN, ASSOC. AIA

Architecture Incorporated
415 S Main Ave
Sioux Falls, SD 57104-6811
(605) 339-1711

PHILIP RAMSAY, ASSOC. AIA

Ciavarella Design Inc.
410 W 2nd Ave Ste 4
Mitchell, SD 57301-2507
(605) 999-3516

LYNN REMMERS, ASSOC. AIA

JLG Architects
232 S Main Ave
Sioux Falls, SD 57104
(603) 271-2531

BRIAN REX, ASSOC. AIA

South Dakota State University DoArch
Box 2203
Brookings, SD 57007
(605) 688-4841

MICHAEL REYNOLDS, ASSOC. AIA

Reynolds Construction Management
4402 S. Technology
Sioux Falls, SD 57106
(605) 274-8900

JOHN RIKER, ASSOC. AIA

AcV2 architecture, LLC
510 9th St Ste 2
Rapid City, SD 57701-2627
(605) 484-6071

AARON SANDERS, ASSOC. AIA

TSP, Inc.
600 Kansas City Street
Rapid City, SD 57701
(605) 343-6102

MATTHEW SJURSETH, ASSOC. AIA

Mills Construction, Inc.
1311 Main Ave S.
Brookings, SD 57006
(605) 697-3100

STEVEN THOMPSON, ASSOC. AIA

MSH Architects
625 S Minnesota Ave
Sioux Falls, SD 57104-4873
(605) 332-7850

JUSTIN VANMAANEN, ASSOC. AIA

CO-OP Architecture
300 N Phillips Ave Ste 120
Sioux Falls, SD 57104-6035
(605) 334-9999

BRANDON WATTS, ASSOC. AIA

FourFront Design, Inc.
517 7th St.
Rapid City, SD 57701
(605) 342-9470

SANDRA WOLFSWINKEL, ASSOC. AIA

University of South Dakota
30376 458th Ave
Wakonda, SD 57073-6319
(605) 267-0028

ALLIED

AGAN DRYWALL SUPPLY

c/o Ryan Konz
2609 S Carolyn Ave
Sioux Falls, SD 57106
(605) 361-6210

ALLEGION

c/o Alec Walsh
6230 Bury Drive
Eden Prairie, MN 55346
(952) 674-4945

AMERICAN ENGINEERING TESTING, INC.

c/o Bruce Card
601 East 48th Street North
Sioux Falls, SD 57104
(605) 332-5371

ANCHOR BLOCK MN AN OLDCASTLE COMPANY

c/o Matt Strand
5959 Baker Road, Suite 390
Minnetonka, MN 55345
(800) 440-8657

ASSOCIATED CONSULTING ENGINEERING, INC.

c/o Kelly Loudenslager
110 E 12th St
Sioux Falls, SD 57104
(605) 357-4773

AUTOMATIC DOOR GROUP

c/o Paul Page
1109 S Enterprise Ave Suite D
Sioux Falls, SD 57110
(605) 335-1425

BACHMAN'S WHOLESALE NURSERY AND HARDSCAPES

c/o Brett Hansen
6877 235th Street West
Farmington, MN 55024
(612) 849-2150

BECK & HOFER CONSTRUCTION

c/o John Beck
618 E. Maple
Sioux Falls, SD 57104
(605) 336-0118

BELL STRUCTURAL SOLUTIONS

c/o Dustin Imholte
778 1st Street NW
New Brighton, MN 55112
(651) 203-2716

BENCHMARK FOAM, INC.

c/o Alan Hendricks
401 Pheasant Ridge Drive
Watertown, SD 57201
(605) 886-8084

BORGERT PRODUCTS INC.

c/o Allison Bell
8646 Ridgewood Road, PO Box 39
St. Joseph, MN 56374
(320) 428-5130

BOYCE LAW

c/o Gregory Wheeler
300 South Main Avenue
Sioux Falls, SD 57104
(605) 371-0206

BRIDGER STEEL

c/o Tom Mooney
11835 Quaal Road
Blackhawk, SD 57718
(605) 716-9003

BTU ENGINEERING

c/o Derek Hengeveld
2021 25th Ave.
Brookings, SD 57006
(888) 288-2126

BUILDERS CHOICE

c/o Charles Bentshetler
1212 N. Norbeck
Vermillion, SD 57069
(605) 658-3219

BUILDERS SUPPLY CO.

c/o Todd Englund
3501 N. Lewis Ave.
Sioux Falls, SD 57104
(605) 336-2790

BUILDING PRODUCTS INC

c/o Darrell George
1500 Industrial Ave N
Sioux Falls, SD 57104
(605) 351-8731

CANFIELD BUSINESS INTERIORS

c/o April Koobman
402 W 9th St
Sioux Falls, SD 57104
(605) 274-8142

CENTRAL STATES TERRAZZO ASSOCIATION

c/o George Hardy
P.O. Box 368
Purcellville, VA 20134
(703) 431-2711

CERAMIC TILEWORKS

c/o Jo Jensen
11225-86th Ave. North
Maple Grove, MN 55369
(763) 493-5238

CLARK ENGINEERING CORPORATION

c/o Mike Merron
1410 West Russell Street
Sioux Falls, SD 57104
(605) 553-6765

COBBLESTONE SCIENCE LLC

c/o Rachel Headley
221 Upper Valley Road
Spearfish, SD 57783
(605) 323-9650

CONCRETE MATERIALS

c/o Scott Larson
1500 N. Sweetman Place
Sioux Falls, SD 57107
(605) 906-0454

CONVERGINT TECHNOLOGIES

c/o Bob Peplinski
2201 E 54th St. North
Sioux Falls, SD 57104
(605) 271-7000

CAD TECHNOLOGY CENTER, INC.

c/o Oliver Turan
8101 34th Avenue South, Suite 100
Bloomington, MN 55425
(952) 941-1181

DAKOTA BUSINESS CENTER

c/o Carter Taylor
1635 Deadwood Ave
Rapid City, SD 57702
(605) 391-0339

MEMBERSHIP ROSTER

DAKOTA WALL SYSTEMS, INC.

c/o Steve Larson
1400 E. 39th St. N.
Sioux Falls, SD 57104
(605) 366-3910

DESCO ARCHITECTURAL, INC.

c/o Fred Prahl
716 3rd St. SE
De Smet, SD 57231
(800) 952-5534

DON JOHNSON CONSTRUCTION, LLC

c/o Don and Amy Johnson
8600 E 38th St.
Sioux Falls, SD 57110
(605) 359-6570

ELEVATE DESIGN STUDIOS

c/o Mark Jobman
6517 Bandon Lane
Rapid City, SD 57702
(605) 877-4804

EMPIREHOUSE, INC.

c/o Alana Griffith
5200 Quincy Street
Mounds View, MN 55112
(763) 535-1150

EXTREME PANEL TECH, INC.

c/o Brian Bossuyt
P.O. Box 435
Cottonwood, MN 56229
(800) 977-2635

FABCON PRECAST

c/o Dick Duckstad
12520 Quentin Ave S
Savage, MN 55378
(952) 882-7224

FABRICATORS UNLIMITED

c/o Shawn Rye
828 NP Ave
Fargo, ND 58102
(701) 235-1185

FARGO GLASS & PAINT CO.

c/o Dan Rombough
400 E. 54th St. North
Sioux Falls, SD 57104
(605) 929-7932

FRANZ DIGITAL

c/o Wade Coffey
1208 W 51st St - Ste 3
Sioux Falls, SD 57105
(605) 335-4710

FARRIS ENGINEERING

c/o Amy Bruner
3420 South Alpine Avenue
Sioux Falls, SD 57110
(605) 376-5556

FULLERTON BUILDING SYSTEMS, INC.

c/o Julie VerSteege
34620 250th Street
Worthington, MN 56187
(763) 464-5766

GAGE BROTHERS CONCRETE PRODUCTS

c/o Joe Bunkers
4301 W. 12th Street
Sioux Falls, SD 57106
(605) 336-1180

GEOTEK ENGINEERING & TESTING SERVICES, INC.

c/o Ralph Lindner
909 E. 50th St N
Sioux Falls, SD 57104
(605) 335-5512

HAGER COMPANIES/HARDLINES

c/o Mike Gall
1006 120th Lane NW
Coon Rapids, MN 55448
(612) 719-0545

HEBRON BRICK SUPPLY

c/o Adam Thymian
2211 W. 50th
Sioux Falls, SD 57105
(605) 331-3640

HILLESHEIM ARCHITECTURAL PRODUCTS, INC.

c/o Rick Hillesheim
1417 Westwood Drive SW
Faribault, MN 55021
(507) 331-0486

HOLMES MURPHY & ASSOC.

c/o Sean Mayer
5120 S Solberg Avenue
Sioux Falls, SD 57108
(605) 333-2438

HUNTER XCI

c/o Richard Quandt
12 Tamarisk Road
St. Paul, MN 55110
(612) 747-0378

INDUSTRIAL COATINGS SOLUTIONS

c/o Brian Boie
1577 Bluebill Trail
Chanhausen, MN 55317
(612) 805-6293

JS DRAFTING & DESIGN

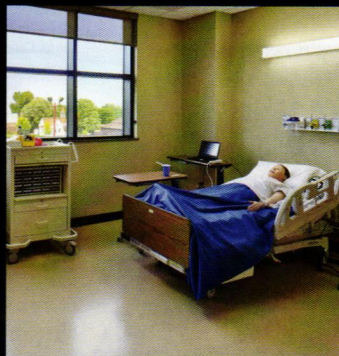
c/o Scott Moffatt
44350 273rd St.
Marion, SD 57043
(605) 214-0862

K.R. KLINE & ASSOCIATES

c/o Philip Rosso
2950 Metro Drive
Bloomington, MN 55425
(612) 270-9772

KATE-LO TILE & STONE

c/o Craig Boelke
701 Berkshire Lane N
Plymouth, MN 55441
(800) 288-3026



Puetz
CORPORATION

Architecture • Development
Construction Management • Construction

800 N Kimball Street • Mitchell, SD 57301
P: 605.996.2276 • www.puetzcorp.com

MEMBERSHIP ROSTER

L. G. EVERIST

c/o Brian Phelps
300 S. Phillips Ave, Suite 200
Sioux Falls, SD 57104
(605) 595-3422

MAJOR INDUSTRIES, INC

c/o Mark Mitchell
7120 Stewart Ave
Wausau, WI 54401
(888) 759-2678

MALARKEY ROOFING PRODUCTS

c/o Mark Hausman
1700 24th Street South
Brookings, SD 57006
(605) 861-9810

MANAGED DESIGN

c/o John Thalacker
7200 Metro Blvd., Suite B
Edina, MN 55439
(952) 564-3423

MCCOY SELECT

c/o Robb McCoy
47154 S Clubhouse Rd
Sioux Falls, SD 57108
(605) 212-3303

MINNKOTA ARCHITECTURAL PRODUCTS

c/o Nick Terry
6845 20th Ave Unit 150
Centerville, MN 55048
(763) 391-9434

MOLIN CONCRETE PRODUCTS

c/o Bob Clauson
415 Lilac St.
Lino Lakes, MN 55014
(651) 786-7722

PANGEA DESIGN GROUP

c/o Jared Capp
609 Nellie Lane
Spearfish, SD 57783
(605) 639-9041

PARKSITE

c/o Brandon Hopperstad
115 31st St S
Fargo, ND 58108
(218) 368-0172

PPG INDUSTRIES, INC.

c/o Christian Holmes
6167 Dreamcatcher Rd.
Stevensville, MI 49127
(248) 981-5494

REYNOLDS CONSTRUCTION MANAGEMENT

c/o Paul Reynolds
44402 Technology Drive
Sioux Falls, SD 57106
(605) 274-8900

ROSE-FLEISCHAKER ASSOCIATES

c/o Hannah Fleischaker
333 Washington Ave. N.
Minneapolis, MN 55401
(612) 597-2032

SDRMCA

c/o Jody Titze
5024 S Bur Oak Place #206
Sioux Falls, SD 57108
(605) 274-0145

SKOLD SPECIALTY CONTRACTING, LLC

c/o Mitch Stouil
608 Augustana Ave, Suite 110
Harrisburg, SD 57032
(605) 335-6444

SMARTT INTERIOR CONSTRUCTION

c/o Paula Klein
PO Box 2002
Fargo, ND 58107
(800) 231-1669

SYVERSON TILE & STONE

c/o Chad Nordling
4015 S. Western Ave
Sioux Falls, SD 57105
(605) 336-1175

TFC CANOPY

c/o Gary Henderson
1107 North Taylor Road
Garrett, IN 46738
(701) 282-6657

THE OFFICE ADVANTAGE

c/o Mark VanDenHoek
318 North Main St
Mitchell, SD 57301
(605) 996-4899

THOMPSON, DREESSEN & DORNER, INC. (TD2)

c/o Josh Storm, P.E.
5000 S. Minnesota Ave., Suite 300
Sioux Falls, SD 57108
(605) 951-0886

THYSSENKRUPP ELEVATOR

c/o Jake Uphus
3021 39th Street SW, Ste. B
Fargo, ND 58104
(701) 205-8301

TIM HEALY & ASSOCIATES

c/o Tim Healy
10921 Excelsior Blvd, Suite 123
Hopkins, MN 55343
(952) 929-5686

W. L. HALL COMPANY

c/o Brent Hall
530 15th Avenue South
Hopkins, MN 55343
(952) 974-7620

WARREN WINDOW & SUPPLY

c/o Doug Jones
1051 Concourse Drive
Rapid City, SD 57703
(605) 342-1400

WEST PLAINS ENGINEERING

c/o Marty Christensen
4609 S. Techlink Circle
Sioux Falls, SD 57106
(605) 362-3753

WESTWOOD PROFESSIONAL SERVICES

c/o Robert Olson
3701 12th St. North, Suite 206
St. Cloud, MN 56303
(320) 229-2303

WICK BUILDINGS

c/o Labecca Schott
405 Walter Road
Mazomanie, WI 53560
(605) 795-1597

WILSEY CO-PELLA PRODUCTS

c/o Clif Gano
7401 Bitterroot Pl., Suite 200
Sioux Falls, SD 57108
(605) 334-1124

YKK AP AMERICA

c/o Jeremy Nordby
10620 256th Avenue NW
Zimmerman, MN 55398
(612) 209-1826

Defining space for 40 years.

Commemorating our anniversary with sponsorship of the new exhibition in Sioux Falls at the Washington Pavilion:

SPACE
AN OUT-OF-THIS-WORLD EXPERIENCE
OPENING SOON
washingtonpavilion.org

Architecture Incorporated
Celebrating 40 Years: 1976-2016
architectureinc.com