

THE ARCHITECTS' JOURNAL

PUBLIC LIBRARY

FEB 27 1947

DETROIT



standard contents

every issue does not necessarily contain all these contents, but they are the regular features which continually recur.

NEWS and COMMENT

Diary

News

Architects' Commonplace Book

Astragal's Notes and Topics

Letters

Societies and Institutions

TECHNICAL SECTION

Information Sheets

Information Centre

Current Technique

Questions and Answers

Prices

The Industry

PHYSICAL PLANNING SUPPLEMENT

CURRENT BUILDINGS

HOUSING STATISTICS

Architectural Appointments
Wanted and Vacant

No. 2716]

[Vol. 105

THE ARCHITECTURAL PRESS

Editorial: Thirteen Queen Anne's Gate,
Westminster, S.W.1. Phone: Whitehall 0611

Subscriptions and Advertising: Forty-Five
The Avenue, Cheam, Surrey. 'Phone:
Vigilant 0087-9.

Price 9d.

Registered as a Newspaper

★ A glossary of abbreviations of Government Departments and Societies and Committees of all kinds, together with their full address and telephone numbers. The glossary is published in two parts—A to H one week, I to Z the next. In all cases where the town is not mentioned the word LONDON is implicit in the address.

IAAS	Incorporated Association of Architects and Surveyors. 75, Eaton Place, S.W.1.	Sloane 3158
ICE	Institution of Civil Engineers. Great George Street, S.W.1.	Whitehall 4577
IES	Institution of Electrical Engineers. Savoy Place, W.C.2.	Temple Bar 7676
IGE	Illuminating Engineering Society. 32, Victoria Street, S.W.1.	Abbey 5215
IHV	Institution of Gas Engineers. 1, Grosvenor Place, S.W.1.	Sloane 8606
IHVE	Institution of Heating and Ventilating Engineers. 72/74, Victoria Street, S.W.1.	Victoria 0146/7
IIBD	Incorporated Institute of British Decorators. Drayton House, Gordon Street, W.C.1.	Euston 2450
ILA	Institute of Landscape Architects. 12, Gower Street, W.C.1.	Museum 1783
IOB	Institute of Builders. 48, Bedford Square, W.C.1.	Museum 7197
IRA	Institute of Registered Architects. 47, Victoria Street, S.W.1.	Abbey 6172
ISE	Institution of Structural Engineers. 11, Upper Belgrave Street, S.W.1.	Sloane 7128-29
LIDC	Lead Industries Development Council. Eagle House, Jermyn Street, S.W.1.	Whitehall 7264
LMBA	London Master Builders' Association. 47, Bedford Square, W.C.1.	Museum 3767
MARS	MARS Group (English Branch of CIAM). 46, Sheffield Terrace, W.8.	Park 7678
MOA	Ministry of Agriculture and Fisheries. 55, Whitehall, S.W.1.	Whitehall 3400
MOE	Ministry of Education. Belgrave Square, S.W.1.	Sloane 4522
MOH	Ministry of Health. Whitehall, S.W.1.	Whitehall 4300
MOLNS	Ministry of Labour and National Service. St. James's Square, S.W.1.	Whitehall 6200
MOS	Ministry of Supply. Shell Mex House, Victoria Embankment, W.C.	Gerrard 6933
MOT	Ministry of Transport. Berkeley Square House, Berkeley Square, W.1.	Abbey 7711
MOTCP	Ministry of Town and Country Planning. 32-33, St. James's Square, S.W.1.	Whitehall 8411
MOW	Ministry of Works. Lambeth Bridge House, S.E.1.	Reliance 7611
NAMMC	Natural Asphalt Mine-Owners and Manufacturers Council. 94, Petty France, S.W.1.	Abbey 1010
NAS	National Association of Shopfitters. 9, Victoria Street, S.W.1.	Abbey 5277/8
NBR	National Buildings Record. 37, Onslow Gardens, S.W.7.	Kensington 8161
NCBMP	National Council of Building Material Producers. 2, Caxton Street, S.W.1.	Abbey 5111
NFBTE	National Federation of Building Trades Employers. 82, New Cavendish Street, W.1.	Langham 4041
NFBTO	National Federation of Building Trades Operatives. 8, Rosebery Houses, Breams Buildings, E.C.4.	Holborn 1881
NFHS	National Federation of Housing Societies. 13, Suffolk St., S.W.1.	Whitehall 2881/2/3
NHBRC	National House Builders Registration Council. 82, New Cavendish Street, W.1.	Langham 4041
NHTPC	National Housing and Town Planning Council. 41, Russell Square, W.C.1.	Museum 1264
NPL	National Physical Laboratory. Head Office, Teddington.	Molesey 1380
NRIAD	National Register of Industrial Art Designers. National Gallery, Trafalgar Square, W.C.2.	Whitehall 2415
NSAS	National Smoke Abatement Society. Chandos House, Buckingham Gate, S.W.1.	Abbey 1359
NT	National Trust for Places of Historic Interest or Natural Beauty. 42, Queen Anne's Gate, S.W.1.	Whitehall 0211/2
PEP	Political and Economic Planning. 16, Queen Anne's Gate, S.W.1.	Whitehall 7245
PWB	Post War Building Directorate of Ministry of Works, Lambeth Bridge House, S.E.1.	Reliance 7611
RCA	Reinforced Concrete Association. 94, Petty France, S.W.1.	Whitehall 9936
RICS	Royal Institution of Chartered Surveyors. 12, Great George Street, S.W.1.	Whitehall 5322
RIAS	Royal Incorporation of Architects in Scotland. 15, Rutland Square, Edinburgh.	Edinburgh 20396
RIB	Rural Industries Bureau. 35, Camp Road, Wimbledon, S.W.9.	Wimbledon 5101
RIBA	Royal Institute of British Architects. 66, Portland Place, W.1.	Wellbeck 5721
RFAC	Royal Fine Art Commission. 6, Burlington Gardens, W.1.	Regent 1446
RS	Royal Society. Burlington House, Piccadilly, W.1.	Regent 3335
RSA	Royal Society of Arts. 6, John Adam Street, W.C.2.	Temple Bar 8274
RSI	Royal Sanitary Institute. 90, Buckingham Palace Road, S.W.1.	Sloane 5134
SCR	Society for Cultural Relations with the USSR. 98 Gower Street, W.C.1.	Euston 6272/3
SFMA	School Furniture Manufacturers' Association. 13, New Square, Lincoln's Inn, W.C.	Chancery 5313
SIA	Society of Industrial Artists. 20, Wellfield Avenue, N.10.	Tudor 7027
SNTPC	Scottish National Town Planning Council. 11, Drumsheugh Gardens, Edinburgh, 3.	Society for the Protection of Ancient Buildings. 55, Great Ormond Street, W.C.1.
SPAB		Holborn 2646
TCPA	Town and Country Planning Association. 28, King Street, Covent Garden, W.C.2.	Temple Bar 5006
TDA	Timber Development Association. 75, Cannon Street, E.C.4.	City 6146 (3 lines)
TPI	Town Planning Institute. 18, Ashley Place, S.W.1.	Victoria 8815
TTF	Timber Trades Federation. 81, Cannon Street, E.C.4.	City 1476
WDC	War Damage Commission. Devonshire House, Mayfair Place, Piccadilly, W.1.	Mayfair 8866
WEDA	Welfare Equipment Development Association. 61, St. Paul's Churchyard, E.C.4.	City 4263/4
ZDA	Zinc Development Association. Lincoln House, Turl Street, Oxford.	Oxford 47988

EXCEL ASPHALTE

Send us your Enquiries for

**Asphalte • Laminated Felt Roofings
Pitchmastic • Tar Paving**

ON APPROVED LIST OF ALL GOVERNMENT DEPARTMENTS.

EXCEL SERVICE ENDURES

EXCEL ASPHALTE CO. LTD.

Broadway Chambers, Hammersmith, W.6

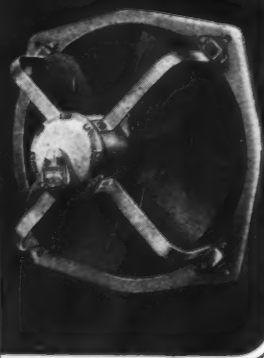
Telegrams: "CESLYM," LONDON. Telephone: RIVerside 6052 (4 lines)

WOODS OF COLCHESTER FANS

PROPELLER FANS
Standard and
Flameproof

AEROFOIL
AXIAL FLOW FANS
ROOF EXTRACTOR
UNITS

ROOF INPUT UNITS
MAN COOLING FANS



WOODS OF
COLCHESTER LTD

An Associate Company of
The General Electric Co., Ltd.
of England

Braswick Works
Colchester

Member of



AND AT LONDON, BIRMINGHAM,
CARDIFF, GLASGOW & MANCHESTER

**GALVANIZED TANKS
CYLINDERS &
CALORIFIERS**



Also FUEL OIL TANKS
and PETROL STORAGE
TANKS

Robert Jenkins & Co. LTD
IVANHOE WORKS ROTHERHAM
Estd. 1855



WALLBOARDS & PLASTERBOARDS

Send us your enquiries for delivery from stock.

You Buy RIGHT from

**BRYCE WHITE
& COMPANY LIMITED**

LANGLEY, SOUTHAMPTON, BRISTOL & LONDON

ESTABLISHED 1879

Head Office: DESERONTO WHARF, LANGLEY, BUCKS
(Telephone: LANGLEY 232 & SOUTHALL 2231)

KS

KS
GE



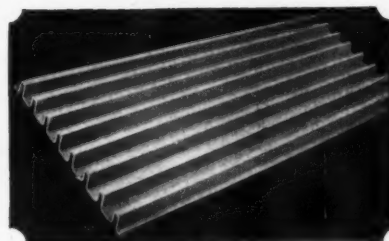
DS

s

SAVE TIMBER! UNIVERSAL' TRAYS REPLACE WOOD BATTENS IN ASBESTOS CEMENT and **BOARDS**



Made in lengths of 6ft. by 32ins. wide and $\frac{3}{8}$ ins. thick. Tile Batten Trays are designed to carry clay or concrete tiles and to replace timber boarding and battens on domestic roofs. Rafters may be either timber, steel or concrete and can be spaced up to 3ft. centres. Trays are light in weight and are fixed to the rafters by means of gimlet pointed screws or galvanized hookbolts—any cutting may be done with an ordinary saw.



For complete technical details and fixing instructions ask for Catalogue.

THE UNIVERSAL ASBESTOS MANUFACTURING CO. LTD.
CHANSITOR HOUSE 37-38 CHANCERY LANE LONDON W.C.2. TELEPHONE: HOLBORN 7001-3

TO THE ARCHITECT-SURVEYOR AND BUILDER

**Yours the problem—
Harveys the answer!**

Whenever the question of where-to-get, not only Tanks, but Cisterns and Cylinders arises—remember Harveys. Our illustration shows a typical "Harco" product—unsurpassed for soundness of construction and galvanized after manufacture for lasting use. Get all supplies from your Builders' Merchant. For full information of all ranges write for Pocket List A.J. 716.

Harvey

G.A. Harvey & Co. (London) Ltd.
Woolwich Rd. London, S.E.7

CH/GH32/46



It comes as a bit of a shock to read in a newspaper column headed "Secret Service News" that one of our allies has developed a process for making bricks from clinker and cement and that this idea may assist our own reconstruction programmes. Sutcliffe Speakman make no secret of the fact that their Emperor Presses have been making similar bricks for a long time now. In fact, people who want to know more about making bricks from waste materials should put their secret service agents on our track.

**SUTCLIFFE
SPEAKMAN**

SUTCLIFFE SPEAKMAN & COMPANY LTD., LEIGH, LANCASHIRE

LONDON OFFICE: GODLIMAN HOUSE, GODLIMAN STREET, E.C.4.

TELEPHONE: CITY 9284

** Emperor' Presses are made in various sizes capable of producing from 1,200 to 2,400 bricks per hour and of exerting pressures of from 100 to 200 tons. They make excellent Sand Lime Bricks, Refractory Bricks and bricks from waste materials such as shale, clinker, ashes, etc.*



If Merlin joined our board

No doubt Merlin's magic could produce M.E.M. switchgear out of thin air. But without such assistance, even the most enlightened board of directors must contend with shortages, controls and restrictions in the face of an increasingly heavy post-war demand. All the same, good progress is being made in stepping up production and increasing quantities of M.E.M. gear are being rushed to the wholesalers.



They in turn are doing a splendid job of work in distributing all available supplies fairly and equitably. Depend on it you will get your supplies more quickly through your wholesaler.



MIDLAND ELECTRIC MANUFACTURING CO. LTD., TYSELEY, BIRMINGHAM, 11

SWITCH, FUSE, AND MOTOR CONTROL GEAR, ELECTRIC FIRES
AND LOCALISED LIGHTING EQUIPMENT

London Showrooms & Stores: 21-22 Rathbone Place, W.1

Manchester Showrooms & Stores 48-50 Chapel Street, Salford, 3

"Fair-weather sailing"

NOW that this fair country of ours has safely negotiated the storm of war, and is entering the more serene waters of peace, our illustration serves to symbolise a hoped-for better future for all. In the great task of post-war reconstruction, Architects, Engineers and Builders aim at the realisation of many urgent plans and projects. The Ruberoid Company Ltd. is again devoting its entire resources to the production of those famous Ruberoid Products which so firmly established the confidence of Architects, Builders and Engineers before the war, and which are certain to play a worthy and important part in all present plans for rebuilding and rehousing.

RUBEROID *Roofing*



RUBEROID CONTRACT DEPARTMENTS located in London, Birmingham, Manchester, Newcastle, Edinburgh and Belfast, undertake to supply and fix the Ruberoid Built-up Roof complete in any part of the country. Estimates sent on receipt of particulars.

The execution of contracts is subject to regulations of the Ministry of Works.

ARCHITECTS, ENGINEERS AND BUILDERS are invited to write for Ruberoid Publication No. 326 entitled "Standard specifications for Ruberoid Roofs".

THE RUBEROID COMPANY LTD., 1, COMMONWEALTH HOUSE, NEW OXFORD STREET, LONDON, W.C.1



SPECIALISTS IN ENGINEERING EQUIPMENT FOR BUILDINGS

*Heating
Air Conditioning
Industrial Process Services
Dust and Fume Extraction Installations
Cold Water Supply. Plumbing and Sanitation
High Pressure Hot Water and District Heating Installations*



*Ventilating
Hot Water Supply
Electrical Installations
Invisible Panel Warming Installations
Steam and Electrical Generating Plant
Oil Firing and Mechanical Stoker Equipment*

G. N. HADEN & SONS LTD.

Established 1816

HEAD OFFICE: 19-29 WOBURN PLACE, LONDON, W.C.1. Terminus 2877

MAIN BRANCHES

MANCHESTER • GLASGOW • BIRMINGHAM
BRISTOL • LINCOLN • BOURNEMOUTH
CANTERBURY • EASTBOURNE • TORQUAY

SUB-BRANCHES

LIVERPOOL • NEWCASTLE-ON-TYNE
YORK • BELFAST • ABERDEEN
NOTTINGHAM • NORWICH

HADENS ENGINEERING COMPANY LTD., 199 PEARSE STREET, DUBLIN, C.5. Dublin 43987



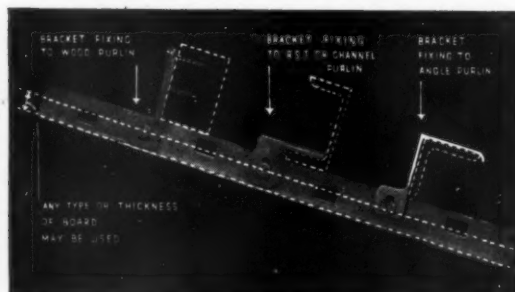
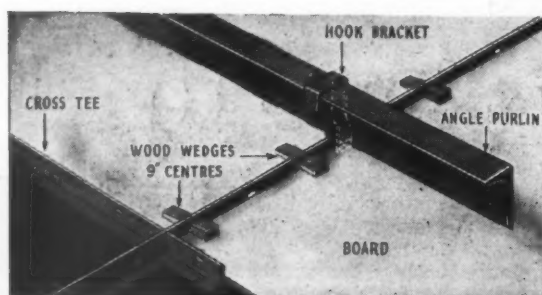
C. F. ANDERSON & SON LTD — WALLBOARD DISTRIBUTORS

HEAD OFFICE
HARRIS WHARF
GRAHAM STREET
LONDON, N.1
TEL: CLERKENWELL 4582

SCOTTISH OFFICE
NATIONAL BANK BUILDINGS
2 ST. MIRREN STREET
PAISLEY
TEL: PAISLEY 4982



FOR APPLYING ANY TYPE OF BOARD TO CEILINGS & WALLS





Architect: N. Martin, A.R.I.B.A. Painting Contractor: W. Mooney & Son Ltd., Liverpool

These distinctive premises are "SNOWCEM-PROTECTED"

Wherever there is a main shopping centre you find a distinctive Montague Burton building. One noticeable characteristic is the clean, light coloured upper portion — the kind of job for which Snowcem has no equal. That is why Snowcem was chosen for the recent redecoration of the branch at London Road, Liverpool.



Supplied in white, cream, pink and silver-grey.

Our Technical and Advisory Dept. is at your disposal.

SNOWCEM WATERPROOF CEMENT PAINT

THE CEMENT MARKETING COMPANY LIMITED
192, Ashley Gardens, London, S.W.1. Telephone: Victoria 6677

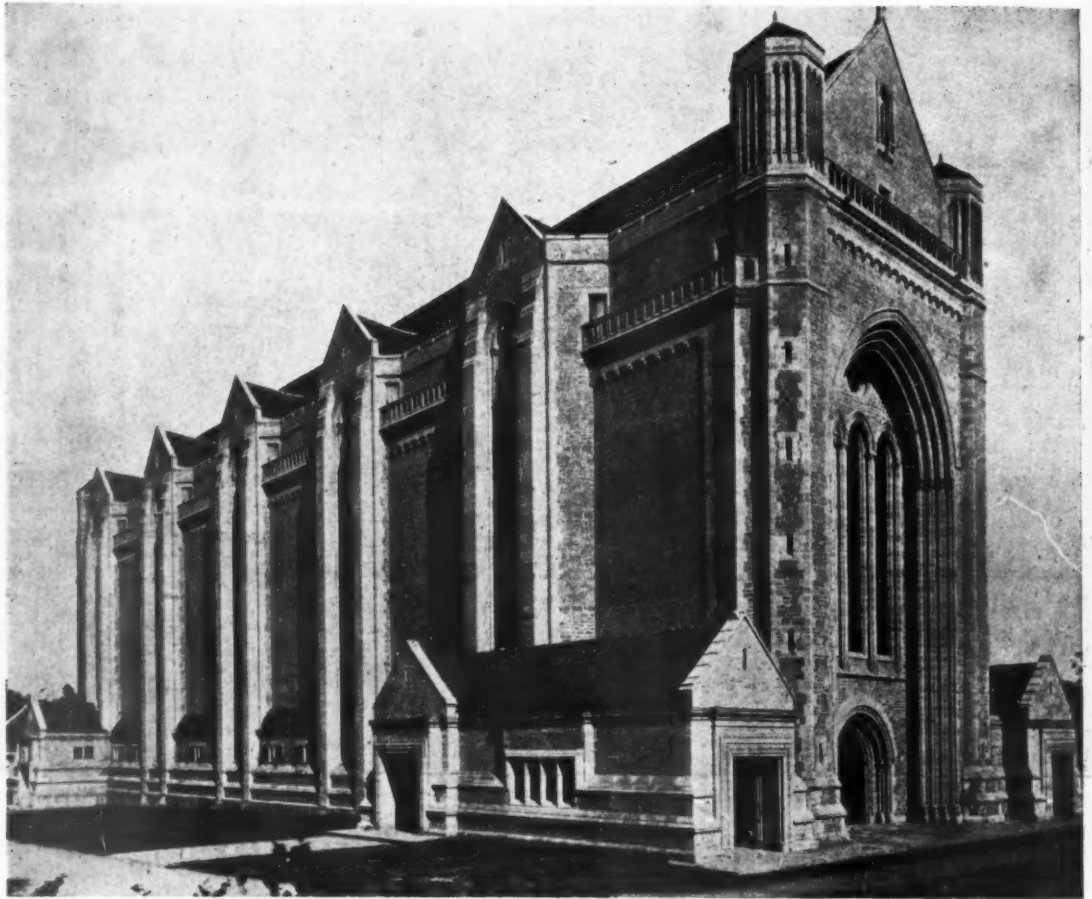
or: G. & T. Earle Ltd., Cement Manufacturers, Hull. Phone: Hull 16121

The South Wales Portland Cement & Lime Co. Ltd., Penarth, Glam. Phone: Penarth 300

SM147



**ELECTRICAL INSTALLATIONS
FOR CHURCHES AND CHAPELS**



Charterhouse Memorial Chapel. Architect: Sir Giles Gilbert Scott, O.M., R.A., F.R.I.B.A.

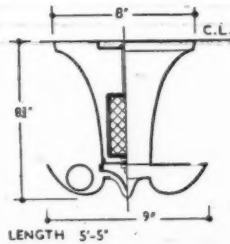
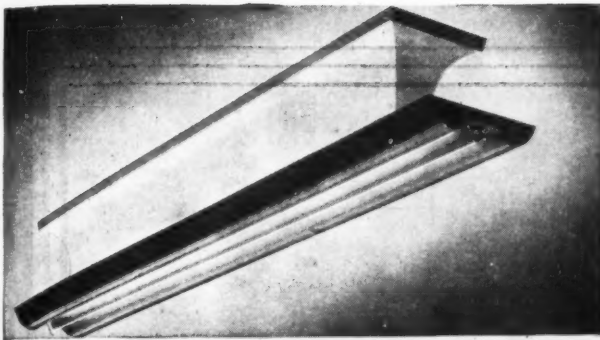
COMPLETE ELECTRICAL INSTALLATION BY

G R I E R S O N
LIMITED

Engineering and Electrical Contractors

St. George's House, 195-203 Waterloo Road, London, S.E.1

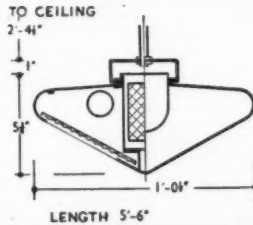
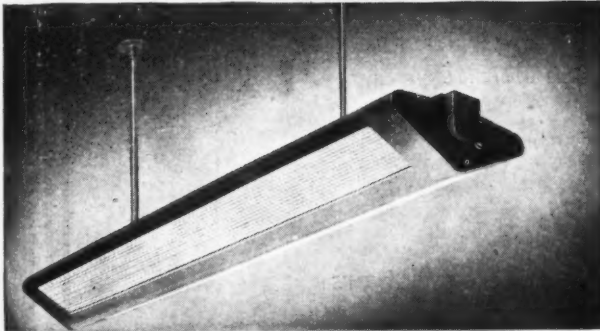
Telephone: Waterloo 4575



T.1

Finish :
Stove — Enamelled
Off-White
Lamps : Two — 5ft 80W
Tubular Fluorescent
Registered Design
No. 847938

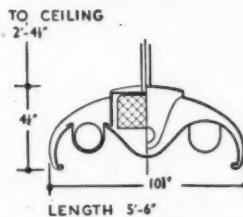
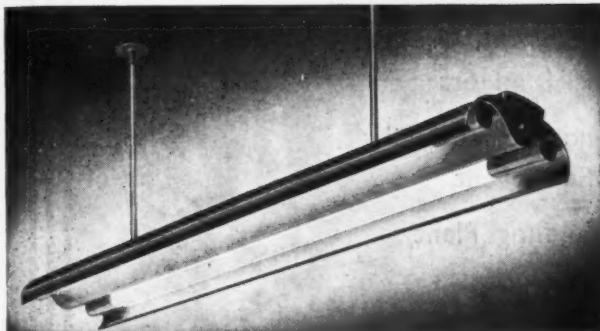
TUBALUX



T.2

Finish : Body Stove —
Enamelled Off-White.
End Pieces Duck Egg Blue,
Reeded and Clear Glass.
Chromium Suspension.
Lamps : Two — 5ft 80W
Tubular Fluorescent
Registered Design
No. 847937

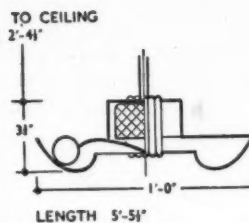
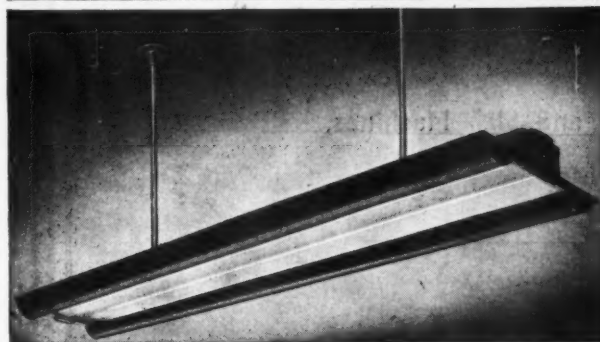
pleasant new shapes



T.3

Finish : Reflector Stove —
Enamelled Off-White.
End Pieces Duck Egg Blue,
Chromium End Studs.
Lamps : Two — 5ft 80W
Tubular Fluorescent
Registered Design
No. 847941

for fluorescent fittings



T.4

Finish : Reflector Stove —
Enamelled Off-White.
Chromium End Pieces.
Lamps : Two — 5ft 80W
Tubular Fluorescent
Registered Design
No. 847940

Registered design Nos. pending

We design and install special fluorescent lighting schemes suitable for every class of building, from the strictly functional factory to the essentially decorative restaurant. Our Director of Design is A. B. Read, R.D.I., whose staff is ready to collaborate with architects and consulting engineers.

TROUGHTON & YOUNG (LIGHTING) LTD.

The Lighting Centre
LTD.

143 KNIGHTSBRIDGE, LONDON, S.W.1

Telephone : KENSINGTON 7457 (10 LINES)

The
WINGET

*range of equipment
includes:*

Tilting and Non-Tilting Concrete Mixers
of all sizes

Pan Mills, Counter Current, Trough,
and other special mixers

Batching Plants, and special Civil
Engineering Equipment

Bulk Cement Handling Plant

Self-Priming Pumps

Brick Breakers and Stone Crushers

Vibrating Screens

Concrete Brick, Block and Slab Machines,
etc., etc.

WINGET LIMITED



ROCHESTER KENT

REGD. TRADE MARK

Telephone: STROOD 7276 (5 lines)

Telegrams: WINGETISM, ROCHESTER



"BIG FLEAS HAVE LITTLE FLEAS . . .

. . . upon their backs to bite 'em, and little fleas have lesser fleas, and so *ad infinitum*." Man is the recognised meat of blood-suckers like fleas, bugs and lice, and his property and the crumbs that fall from his table feed an army of insect pests like house flies, crickets, cockroaches and clothes moths. Even in these temperate and sheltered islands there are six species of flea and three of lice which may attack human beings. We are prone to dismiss them too lightly. History shows plainly how parasitic insects have, for example, by spreading typhus and plague from rat to human being, caused death-rolls higher than the deadliest weapons of man's devising. In Britain we owe an immunity from such insect-borne diseases to our cleanly habits, and the unrelenting vigilance of our

health authorities, backed by the research of our scientists and the products of our chemical industry. Research has unravelled the mysteries of infection and the complex life histories of pests and parasites: the chemist has provided an extensive armoury of dusts, sprays, fumigants and disinfectants with which to attack them, either directly or by assisting man to keep his house, clothes and person clean and wholesome. Air traffic has increased the danger of new pests and diseases. The health services are on their toes to protect the community. At their back the British chemical industry is constantly at work to maintain the output of essential insecticides and to discover new ones in order to uphold the nation's immunity from insect-borne disease.



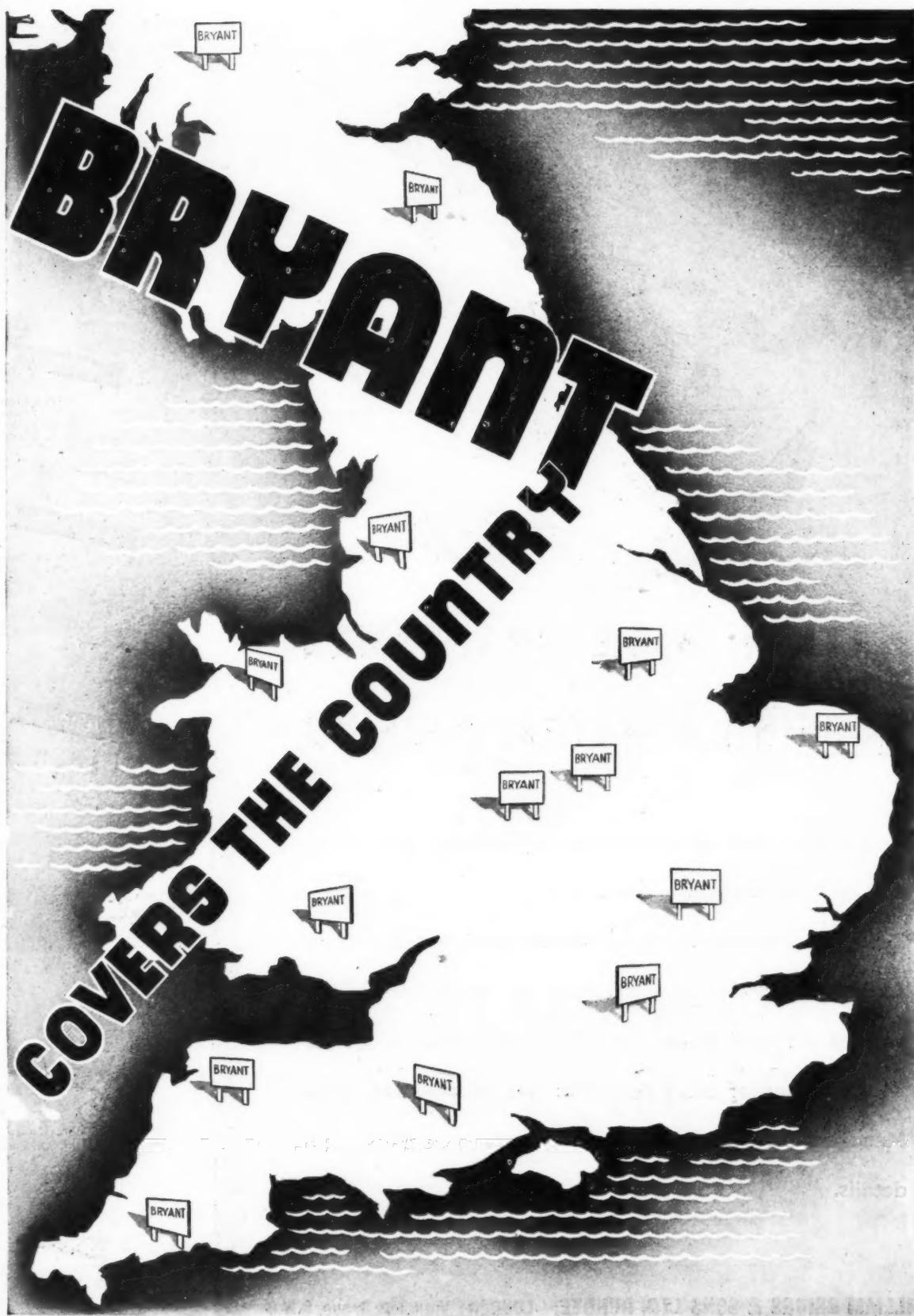


**Wherever moisture has to be
kept in its place—in concrete
to ensure proper setting and
out of wood floors or walls
or roofs—there's a job in
which IBECO★ excels**



IBECO is a tough-textured kraft paper made completely impervious to moisture by a patented bitumen emulsion totally permeating the paper fibres. Folding and creasing do not impair its waterproofness since there is no 'free' bitumen to harden and crack. Five weights are made—for concrete work, roof work, floor and wall-lining. Samples are available on request.

MADE BY C. DAVIDSON & SONS LTD (DEPT K.57), MUGIE MOSS, BUCKSBURN, ABERDEEN



C. BRYANT & SON LTD., BUILDING & CIVIL ENGINEERING CONTRACTORS, BIRMINGHAM & LONDON

G.B. 175 D

Briggs



NATION WIDE CRAFTSMEN IN ROOFING & WATERPROOFING

Briggs have built up a co-ordinated Roofing organisation at 8 centres throughout the country.

Technical information is periodically pooled, and precise factual knowledge is exchanged on many interesting aspects of roof construction. This information is now at the command of every Architect and Builder, and Area Managers now are ready to discuss full constructional details.

WILLIAM BRIGGS & SONS LTD. DUNDEE. LONDON: Vauxhall Grove, S.W.8

ABERDEEN EDINBURGH GLASGOW LEICESTER LIVERPOOL NORWICH



Bedford Road,
Area Manager:
Mr. E. J. Dick.



East Camperdown Street,
Area Manager:
Mr. R. H. Boyle.



Murrayfield
L.M.S. Stn.
Area Manager:
Mr. G. J. Darge.



200 Old Dumbarton Rd., C.3.
Area Manager:
Mr. R. S. Carberry.



1 Copy Lane.
Area Manager:
Mr. W. T. Lindsay.



Trowse Mill-gate.
Area Manager:
Mr. G. F. Bond.



L.N.E.R. Stn.
Belgrave Rd.
Area Manager:
Mr. A. M. Smith.



Vauxhall
Grove, S.W.8.
Area Manager:
Mr. L. H. McCoan.



On Such Days



As These . . .

COATED MACADAM for *MAXIMUM* TYRE GRIP

For information apply:

Federation of Coated Macadam Industries, 37, Chester Square, London, S.W.1.

FCMI



TRETOL Bituminous Coatings are the result of years of experience and research.

For use wherever Iron, Steel, Concrete and Woodwork need protection against water or chemical and atmospheric influences. Supplied in Black, Red, Brown, Green and Aluminium. Quick-drying. Ready for use. ACID PROOF. Applied cold by brush, spray or dipping. A protective coating of highest elasticity.

TRETOL LTD., 12-14 North End Road, London, N.W.11
Telephone : SPeedwell 4621 (5 lines)

TRETOL
BITUMINOUS COATINGS



FURSECROFT · LONDON · W1

W. E. MASTERS, F.R.I.B.A.

*Ellis' did the plumbing and
heating installations.*

heating ventilating & plumbing

ELLIS (KENSINGTON) LTD
KENDRICK PLACE
LONDON · S.W. 7

Kensington 1420



VINCULUM



A large, dark, rectangular pre-cast concrete slab is shown at an angle. A tag is attached to it, featuring a circular logo with a stylized 'V' and the text 'RAPID PRE-CAST FLOORS'. The background is a light, textured surface.

LICENSEES FOR
THE WEST MID-
LAND & SOUTH
EASTERN AREAS.

TARMAC LTD VINCULUM DEPT., ETTINGSHALL, WOLVERHAMPTON

REBUILD WITH PATCHETT

STEEL CONSTRUCTION



A detailed line drawing of a large industrial building under construction. The building has multiple stories with a grid of windows. Scaffolding and cranes are visible around the structure. The foreground shows a construction site with debris and a large sign for Patchett & Co. Ltd.

PATCHETT & CO. LTD
CONSTRUCTIONAL ENGINEERS
Westland Road,
LEEDS 11.

CONSTRUCTIONAL STEEL WORK
MACHINING & GENERAL ENG.
ELECTRIC ARC WELDING.
STEEL CASEMENTS.

HEATING & VENTILATING
CYLINDER WORK, BUNKERS
GAS CUTTING & WELDING
ORNAMENTAL IRON WORK

Phone 75858

This hand forged and polished balustrade indicates the artistic possibilities of "Birmabright," the aluminium alloy which is particularly suitable for architectural applications.



BIRMABRIGHT

1787

Nobles & Hoare's

ALBAMATTE Flat Oil Paint.

NOBLEX Washable Distemper.

NOBELIN A high-grade synthetic Enamel supplied in a full range of colours. Suitable for use on wood or metal surfaces.

ALBAGLOSS

A perfect white Enamel, hard drying, elastic, providing a fine lustrous finish and highly resistant to atmospheric conditions.

BODICOTE Ready mixed flat white Under-coating with exceptional degree of obliteration.

VARNISHES For interior and exterior use.

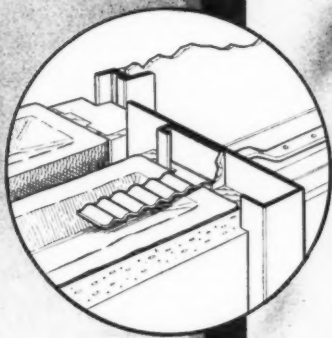
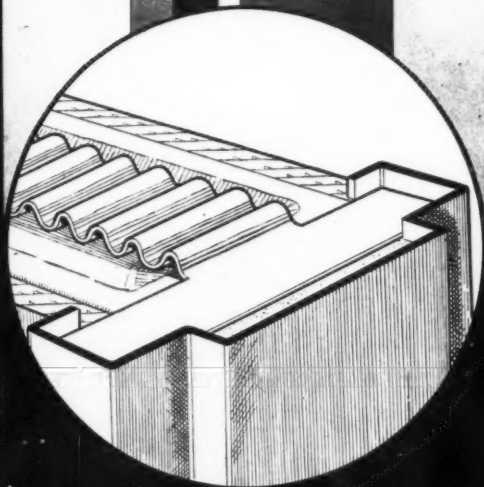
NH

Nobles & Hoare
LIMITED

Varnish, Paint and Cellulose Lacquer Manufacturers
Woodbridge Works, Kingston Road, Leatherhead, Surrey.
Tel. : Leatherhead 2450 & 2992

1947

DOOR FRAMES AND WINDOW LININGS IN PRESSED STEEL



MORRIS
SINGER
COMPANY

FERRY LANE WORKS, FOREST ROAD, WALTHAMSTOW, LONDON, E.17

Telephone: LARKSwood 1055

Telegrams: MORRISINGER WALT. LONDON

More bricks mean more houses



Contractors: Wates Ltd. Photograph: Helmut Gernsheim

The output of **PHORPRES Bricks**
has now reached 100,000,000 a month—
60% of pre-war production

See our exhibit at the Building Centre, 9, Conduit Street, W.1



LONDON BRICK COMPANY LIMITED

HEAD OFFICE: AFRICA HOUSE, KINGSWAY, LONDON, W.C.2. TEL: HOLBORN 8282
MIDLAND DISTRICT OFFICE: PRUDENTIAL BUILDINGS, ST. PHILIP'S PLACE, BIRMINGHAM, 3. TEL: COLMORE 4141
SOUTH WESTERN DISTRICT OFFICE: 11 ORCHARD STREET, BRISTOL, 1. TEL: BRISTOL 23004/5
NORTHERN DISTRICT OFFICE: GASCOIGNE STREET, BOAR LANE, LEEDS, 1. TEL: LEEDS 20771. 'GRAMS: PHORPRES, LEEDS L.B.14.



THE 'LEDA' RANGE OF LAVATORY LEGS has many advantages over the lavatory stand. They are graceful and distinctive in design, simple to fix. They are supplied as single legs in three patterns—plain, with fixed towel rail, or with swinging towel rail, each pattern being available with circular or octagonal sections, with or without invisible height adjustment. Heavily chromium plated on brass, they are constructed to mount on a mild steel top-frame which is made in sizes to fit all standard basins. Thus it will be seen that the legs are interchangeable, can be arranged in a wide variety of combinations, and are equally suitable for a range of lavatories or for a single basin. Carrying the modern motif that distinguishes the range of which they form a part, 'Leda' Fitments are distributed only through recognised stockists, but descriptive literature is available direct from the manufacturers.



A Youngman PRODUCT

quality
fitments
for the
modern
bathroom

W. C. YOUNGMAN LIMITED

Bathroom Fittings Department,

WANDSWORTH WORKS, WANDSWORTH ROAD, LONDON, S.W.8

Telephone: MACaulay 2233 (7 lines)

Telegrams: "Bildaplant, Claproad, London."



★ THAT'S WHY THERE'S A UNIVERSAL PREFERENCE FOR

SUNDEALA

The Pioneer all-British

BUILDING BOARDS

for exterior and interior use

SCIENTIFICALLY WATERPROOFED

SUNDEALA BOARD CO. LTD. ALDWYCH HOUSE, LONDON, W.C.1

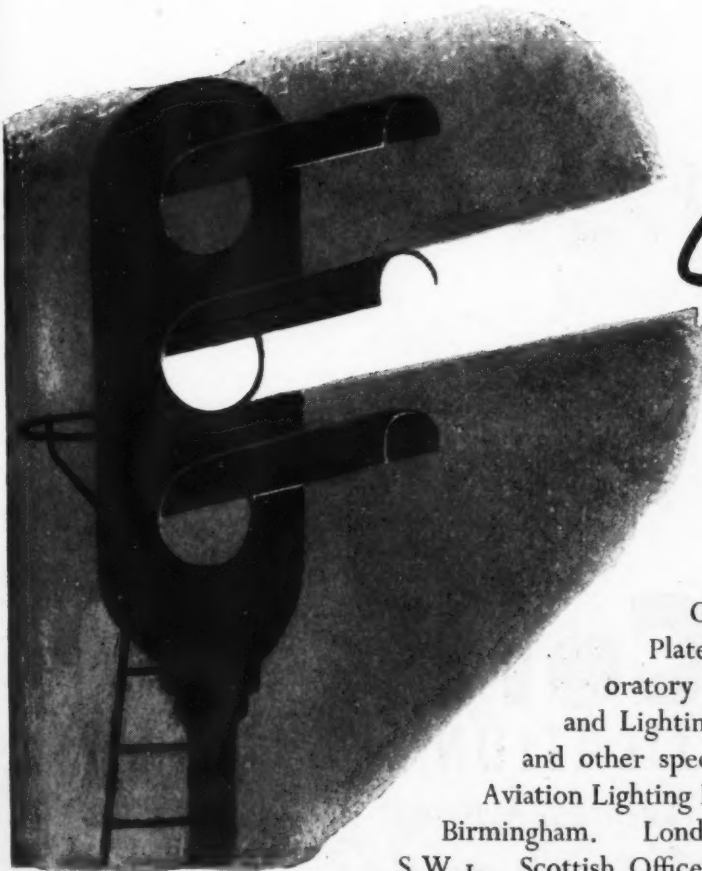
Tel: CHAncery 8159

Works: Sunbury-on-Thames, Middx.

Members of Building Board Manufacturers Association

THE CHANCES ARE . . .

*When more railways are
electrified, the signalling and
lighting systems will use*



Chance
GLASS

CHANCE BROTHERS LTD

Glass-makers since 1824, produce Rolled Plate, Wired Glass, Pressed Glassware, Laboratory Glassware, Architectural, Decorative and Lighting Glassware, Optical Glass, Scientific and other specialised Glass Products. Marine and Aviation Lighting Equipment. Head Office: Smethwick, Birmingham. London Office: 28, St. James's Square, S.W.1. Scottish Office and Works: Firhill, Glasgow, N.W.



Though its windows are shut tight against the blast of winter's gale, there is still a constant change of air in this room, draughtless and controlled by the Colt Constant Flow Ventilator.... Silent, Automatic, Non-Mechanical.... Costs from only 9/2^d per room. Write for details **Colt V.L.T.** from :—

Colt

VENTILATION LTD.

SURBITON

Tel: ELMBRIDGE 6511 (4 LINES)

SURREY

constant flow ventilation constant flow ventilation

on

y

m

SADD'S STANDARD JOINERY

WINDOWS

in the **EJMA** Range of Wood case-ments.

DOORS

Panelled and flush doors to British Standard Specification.

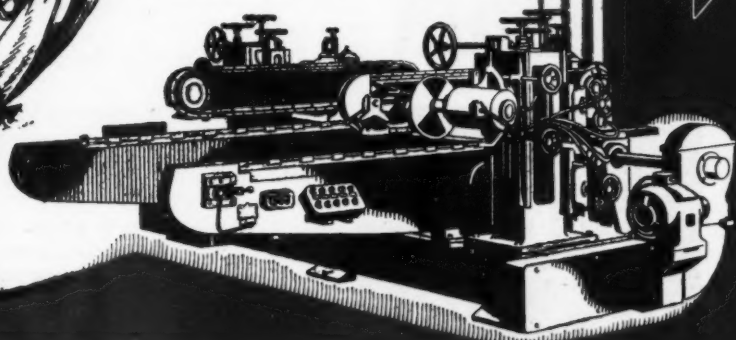
STAIRCASES

Standard designs for low cost housing.

CUPBOARDS

EJMA Kitchen Units in a wide range of types and sizes.

SADD'S take great pride in fine woodwork to architects' designs. Today they are extending their tradition of good workmanship to the quantity manufacture of every type of joinery for standard housing, which their works are equipped to produce on a large scale.



JOHN SADD & SONS, LTD.

HIGH-CLASS JOINERY

MALDON

Telephone: Maldon 131.

ESSEX

London Office: ALDWYCH HOUSE, W.C.2.

Holborn 7225

THE MASTICON PROCESS

FOR

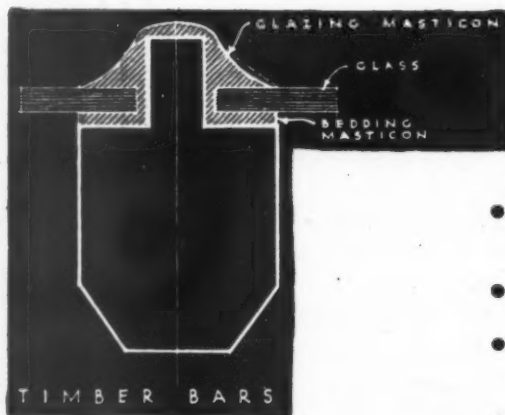
MODERN FACTORY GLAZING

by

INDUSTRIAL ENGINEERING LTD.

THE MASTICON PROCESS is a service for the glazing of roofs of Industrial premises. It combines the supply and fixing of special type metal T. bars, the glass being cushioned on

resilient Bedding MASTICON. The bars are sealed against the weather by the application of plastic GLAZING MASTICON over the exposed cap of each bar.



ADVANTAGES OF GLAZING BY THE MASTICON PROCESS

- Ensures permanently sound glazing which will withstand roof movement and vibration.
- Makes glazing joints which remain watertight.
- Protects metal bars against corrosion and timber bars against decay.
- Eliminates painting costs.
- Is unaffected by changes in temperature.

Our technical service is at your disposal to conduct surveys and submit estimates willingly and without obligation.

INDUSTRIAL ENGINEERING LTD.

Head Office : Mellier House, Albemarle Street, London, W.1

Telephone Number : Regent 1411 (P.B.X. 4 lines)

In common with every other periodical this JOURNAL is rationed to a small part of its pre-war needs of paper. Thus a balance has to be struck between circulation and number of pages. We regret that unless a reader is a subscriber we cannot guarantee that he will get a copy of the JOURNAL. Newsagents now cannot supply the JOURNAL except to a "firm order." Subscription rates: by post in the U.K. or abroad, £1 15s. od. per annum. Single copies, 9d.; post free, 11d. Special numbers are included in subscription; single copies 1s. 6d.; post free, 1s. 9d. Back numbers more than 12 months old (when available), double price. Volumes can be bound complete with index, in cloth cases, for 15s. each; carriage 1s. extra. Goods advertised in the JOURNAL and made of raw material now in short supply, are not necessarily available for export.



DIARY FOR FEBRUARY MARCH AND APRIL

Titles of exhibitions, lectures and papers are printed in italics. In the case of papers and lectures the authors' names come first. Sponsors are represented by the initials as given in the glossary of abbreviations on the front cover.

HIGHGATE. Film show. *Colour in Clay, Steel, Development of the English Town, and St. Paul's Cathedral.* At the Highgate Literary and Scientific Institution, 11, South Grove, Highgate, W.6. (Sponsor, Highgate Institute and DIA.) 8 p.m. FEB. 18

HORSHAM. Lord Sempill. *A Few Things to be Avoided.* F. R. Yerbury. Design and Amenities in Everyday Life. At the Gas Company Theatre, London Road, Horsham. (Sponsor, DIA.) 6.30 p.m. FEB. 14

[LONDON.] Exhibition of the King's Pictures. At the Royal Academy, Piccadilly, W. About 500 paintings in the Royal Collection, selected from all the Palaces in which the collection is permanently kept. Includes a large number of works not normally accessible to the public. Weekdays, 10 a.m. to 7 p.m. Sundays, 2 p.m. to 7 p.m. Admission 1s. 6d. Until MAR. 16

Rural Building Materials Exhibition. At the Building Centre, 9, Conduit Street, W.1. Exhibits include 25 panels of hand-made bricks from various counties, examples of stone walling, rubble Bath limestone, Kent flintwork, repatching straw thatching, and slates from Westmorland, Wales and Cornwall. (Sponsor, Rural Industries Bureau.) 10 a.m. to 5 p.m. Until FEB. 15

More Furnishings for Today. Exhibition at the Good Housing Furnishing Studio, 28-30, Grosvenor Gardens, S.W.1. (Sponsor, Good Housekeeping.) FEB. and MARCH

Paintings by Peter Lowry. Exhibition at the Batsford Gallery, 15, North Audley Street, W.1. (Sponsor, Batsford Gallery.) 10 a.m. to 5.30 p.m. Until FEB. 26

Contemporary Indian Art. Exhibition at India House, Aldwych, W.C.2. First section to be seen in London of the International Exhibition of Modern Art organised by UNESCO in Paris. (Sponsor, Royal India Society.) 10 a.m. to 5 p.m. Saturdays, 10 a.m. to 1 p.m. Until MAR. 5

Spanish Paintings. Exhibition at the National Gallery, Trafalgar Square, W.C. (Sponsor, National Gallery and the Arts Council.) Until MAR. 23

F. Widnall and R. Newbound. *Protective Finishing of Electrical Equipment.* At the Institution of Electrical Engineers, Savoy Place, Victoria Embankment, W.C.2. (Sponsor, IEE.) 5.30 p.m. FEB. 13

Captain Montagu Evans. *Town and Country Planning Bill.* In the Temple Room, Bonnington Hotel, Southampton Row, W.C.1. (Sponsor, IRA.) 6.30 p.m. FEB. 14

Rt. Hon. Lewis Silkin, M.P., Minister of Town and Country Planning. *Provisions of the Town and Country Planning Bill.* At the Royal Institution of Chartered Surveyors, 12, Great George Street, S.W.1. (Sponsor, RICS.) 5.30 p.m. FEB. 17

Danish Domestic Design. Exhibition at the RIBA, 66, Portland Place, W.1. Sponsor, CID and The Arts Council.) 10 a.m. to 6 p.m. FEB. 21-MAR. 15

Gower Pimm. *The Engineer as an Expert Witness.* At the Royal Society of Arts, 6, John Adam Street, Adelphi, W.C.2. After a general review of the subject, including the strategy and tactics of evidence, Mr. Pimm will make a plea for a better understanding on the part of the public and legal fraternity of what an expert witness can and should do for them acting as a member of a team rather than as a mere mouthpiece who will answer questions in a certain way. He will deal in detail with the expert witness as:—(1) Technical advocate for a project; (2) technical opponent to a project; and (3) technical witness in a dispute. Visitors are invited to attend, and to take part in the discussion. (Sponsor, the Engineers Guild.) 6.30 p.m. FEB. 14

Brigadier K. M. Papworth. *Maps for Planning.* At Livingstone Hall, Broadway, Westminster, S.W.1. (Sponsor, TPI.) 5.30 p.m. FEB. 20

Colin Penn, late Organiser of ABT. *Trade Union View of Housing.* At the Housing Centre, 13, Suffolk Street, S.W.1. 1.15 p.m. (Sponsor, HC.) FEB. 25

AA Exhibition of Photographs by Members. At the AA, 34-36, Bedford Square, W.C.1. As far as possible photographs should be mounted on white cards 16 inches high, and title, name, make of camera, etc., should be printed on the front of the mount in the bottom right-hand corner. Photographs should be delivered to No. 36, Bedford Square not later than February 20. (Sponsor, AA.) FEB. 26

Brixton School of Building Association Re-union. Reception and dance at the Bedford Hotel, Balham, S.W. Past students, from all sections of the School, cordially welcomed. Tickets, price 5s. (including buffet), obtainable before March 1 from the Hon. General Secretary, Brixton School of Building, Ferndale Road, S.W.4. MAR. 8

NEWCASTLE-ON-TYNE. J. Hacking. *The Generation and Wholesale Distribution of Electricity.* At the Literary and Philosophical Society, Newcastle-on-Tyne. (Sponsor, IEE, North-Eastern Centre.) 7 p.m. FEB. 19

NEWS

THURSDAY, February 13, 1947
No. 2716 VOL. 105

News	161
Strange Monument	162
This Week's Leading Article	163
Astragal's Notes and Topics	164
Letters from Readers	165
Winner of Bus Shelter Competition	166
House at Luccombe, Isle of Wight. Designed by F. R. S. Yorke, E. Rosenberg and C. S. Mardall	167
Societies and Institutions	170
Technical Section	171
Information Centre	172
Prices	175

Though no feature in the JOURNAL is without value for someone, there are often good reasons why certain news calls for special emphasis. The JOURNAL's starring system is designed to give this emphasis, but without prejudice to the unstarred items which are often no less important.

★ means spare a second for this, it will probably be worth it.

★★ means important news, for reasons which may or may not be obvious.

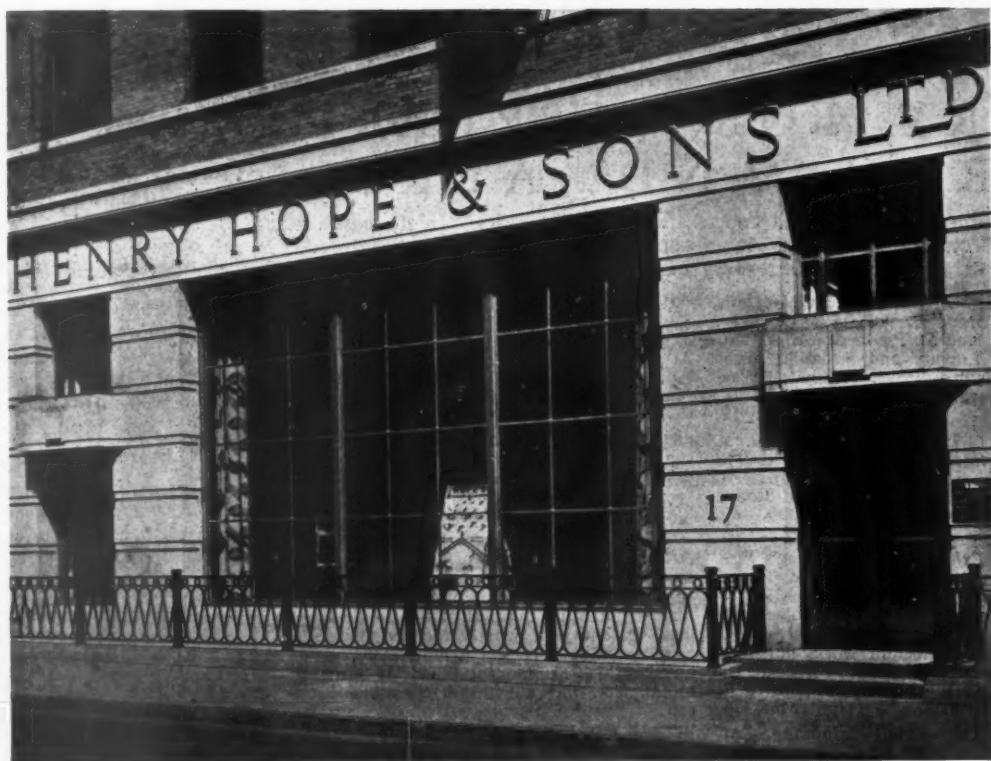
Any features marked with more than two stars is very big building news indeed.

Mr. Ivor F. Bowden, deputy architect to the Wiltshire County Council, has been APPOINTED COUNTY ARCHITECT in succession to Mr. Tom Walker, who is retiring after 26 years' service. Mr. Bowden was educated at the Royal West of England School of Architecture, Bristol. For some years he was an architect's assistant under the Bristol Corporation and Education Committee before going to Trowbridge ten years ago.

THE EMERGENCY

Owing to the printing difficulties arising from the drastic cut in electricity, the Government has prohibited the publication of weekly periodicals for two weeks following this one. The Architects' Journal will therefore not appear on February 20th or 27th unless the situation is changed by further official decisions.

Visit HOPE'S



EXHIBITION OF STEEL DOOR FRAMES

and their use in actual building practice
at 17 Berners Street, London, W.1
(five minutes from Oxford Circus)

Fr
SAV
Esda
are c
extre
or by
any
as th
Let C
of Su
spoile
charg
any p
decea
her M
to em
such
They

Notes
cants
given
LIC
being
tractor
While
Regula
which
ing wo
should
orders
work v
the diff
and a
guidanc
apply f
and a
include
and pr
A brie
ing ma
ing th
Officers
concern
leaflet,
contract
traction
P.I.40,

★

Durin
posed
PO
UN
A ten-
estima
vide f
pre-wa
versity
and o
Metall
ment
velopm
donati
£5,000
Sheffe

★

From
an E
DO
is t
The F

From AN ARCHITECT'S Commonplace Book

SAVE US OUR MONUMENTS. [*From English Church Monuments, 1510-1840, by Katharine A. Esdaile (Batsford).*] It is for us to see that sacrilege is not committed where our raid-damaged churches are concerned; John Neve's experience in 1718 is only too apt to be repeated: "When a church extremely decay'd, or out of Repair, by the mere injury of Time, shall by the zeal of the Parishioners, or by any other Assistance, be pulled down and rebuilt, there has been no Care, or Thought of re-erecting any Monuments which must of Necessity come down: but—the Marble is thrown in Heaps in a Corner, as the Bones into a Charnel-house." From such sacrilege, Heaven defend this blitzed generation. Let Queen Elizabeth have the last word: "The Queenes Maiestie understanding, that by the meanes of Sundrie people, partly ignorant, partly malicious or covetous; there hath been of late yeares spoiled and broken certaine ancient Monuments, some of metall, some of stone . . . Her Maiestie chargeth and commandeth all manner of persons hereafter to forbear the breaking or defacing of any parte of any Monument, or Tombe, or Grave, or other Inscription and memory of any person deceased . . . and for such as bee already spoiled in any Church, or Chapell, now standing . . . her Maiestie enjoyneth and straightly chargeth the governors and companies of every such Church, to employ . . . such sums (as any wise may be spared) upon the speedy repairs or re-edification of such Monuments so defaced or spoilt, as agreeable to the originall, as the same conveniently may be." They managed these things better in 1561.

Notes for the guidance of applicants for civil building licences are given in a leaflet BUILDING LICENSING, which is being sent to all registered contractors by the Ministry of Works.

While the leaflet explains the Defence Regulation and Statutory Rules and Orders which apply to the licensing of civil building work, it is not a legal document, and it should not be read independently of the orders to which it refers. Those classes of work which require no licence are defined; the difference between an "authorization" and a "licence" is made clear; and useful guidance is given on how and where to apply for a licence, a supplementary licence and a maintenance licence; what must be included in calculations of cost of works and procedure in case of emergency work. A brief note on the procedure for obtaining materials is included. An appendix giving the addresses of Regional Licensing Officers and the areas with which they are concerned is also included. A copy of this leaflet, P.I.49, is sent to all newly registered contractors with their Certificate of Registration and a copy of the earlier leaflet, P.I.40, on Registration of Contractors.

★

During the next ten years it is proposed to carry out a SIX MILLION POUND SHEFFIELD UNIVERSITY PLAN.

A ten-year plan of extensions involving an estimated expenditure of £6,000,000 to provide for four times as many students as in pre-war years, is proposed by Sheffield University. The plans include a new foundry and other extensions to the Department of Metallurgy and a greatly enlarged Department of Engineering. The University Development Campaign has already received donations amounting to £52,849, including £5,000 given by Thos. W. Ward, Ltd., the Sheffield industrial concern.

★

From February 21 until March 15 an EXHIBITION OF DANISH DOMESTIC DESIGN is to be held at the RIBA. The Exhibition of Danish Domestic Design

has been brought to this country under the auspices of the Council of Industrial Design and the Arts Council. Although a part of the exhibition has already been shown in this country, it has been augmented and re-designed to be displayed at the RIBA for its most important showing in England. The exhibits have been selected by the Society of Danish Handicraft and Industrial Art, and the architect, Mr. Sten Møller, is coming over to England to collaborate with the RIBA Exhibition Committee in the layout of the Exhibition. The exhibition will consist of a wide range of furnishings, textiles, household utensils, etc., and aims to show how a Dane earning about £500 a year can furnish a modest home. No effort will be made to include furnishings of wealthy Danish homes, and it is probable that this limitation will be more interesting to us in these austerity days than a display of the expensive silver, china and porcelain which distinguish the wealthier homes of

Denmark and for which the Danes have a long-established reputation. The Exhibition on the Swedish Home, recently shown in London, has made many people want to see more from Scandinavia, and this exhibition from Denmark provides such an opportunity. As with the high standard of architecture at the exhibition of Swiss Planning and Building held at the RIBA last autumn, so in the sphere of design the Danish Exhibition shows that the Danes too maintain a very high level of industrial design. They have been able to continue a natural condition of good design, less hampered by the effects of a century of industrialism than many other European countries where those principles have had to be rediscovered in the last fifty years. In Denmark the interest in handicrafts is natural and contemporary, very different from the self-conscious cult of the craftsman which has sometimes existed elsewhere.



The London Transport perfect kerbstand shelter competition has been won by Mr. D. Dex Harrison, Dip.Arch., A.R.I.B.A. In the photograph he is seen receiving the first prize, a cheque for 300 guineas, from Mr. John Cliff, Chairman of the London County Council (left) at LPTB Headquarters, 55, Broadway, Westminster. The winning design is illustrated on page 166.



Strange Monument

ASTRAGAL this week reviews a book on English church monuments which has just been published. So many and varied are such monuments throughout the country that, although the book is very fully illustrated, it was obviously impossible to depict in it more than a selection. One which does not appear in the book is that of Sir Robert Holmes, Governor of the Isle of Wight from 1667 to 1692, which stands in a chapel in Yarmouth Church, I.O.W.

The monument, of white marble, has a curious story. Sir Robert, a stout soldier and seaman, captured the body of the statue together with its sculptor on board a French ship. It was intended to be completed with a head of Louis XIV, but Holmes compelled the sculptor to receive him as a sitter instead of *le Grand Monarque*. In carving Sir Robert's face, the sculptor clearly had a subtle revenge. (Photo: Eric de Maré.)

The Arc
received
W. Lam
in J. P.
he ann
unsolite
(£124
for the
CANTE

The m
authority
HOUS
be deter
sent by
of Heal
in E
The first
directed t
of the ho
let. Seco
be made
should be
be placed
private tim
effort wil
secure
materials
smooth
local aut
sites, pr
and deve

Mr. M
APPO
OF
AND
Thirty-s
Govern
its Ch
at Eton
service
to the
the end
was M
which
time su
London
accepte
on his
Comp
ing Di

Mr.
Goo
pan

The Archbishop of Canterbury has received a letter from Mr. Thomas W. Lamont, of New York (a partner in J. P. Morgan and Co.), in which he announces an "entirely unsolicited" gift of \$500,000 (£124,069) for the fund for the RESTORATION OF CANTERBURY CATHEDRAL.

The method by which each local authority's share in the 1947 HOUSING PROGRAMME is to be determined is described in a letter sent by Mr. Aneurin Bevan, Minister of Health, to all housing authorities in England and Wales.

The first efforts, the letter states, should be directed to completing as many as possible of the houses which are in contracts already let. Secondly, a realistic estimate should be made of the additional tenders which should be invited, and the contracts should be placed within this estimate at the appropriate times. In conjunction with this, every effort will be made by the Government to secure the abundance of supplies of materials and fittings which is necessary for smooth and speedy operations. He asks local authorities to press on with acquiring sites, preparing lay-outs and house plans, and developing sites.

Mr. Michael Milne-Watson has been APPOINTED GOVERNOR OF THE GAS LIGHT AND COKE COMPANY.

Thirty-seven years old and youngest Governor since the Company received its Charter in 1812, he was educated at Eton and Balliol, entered the Company's service in 1933 and was appointed Assistant to the General Manager in 1935. From the end of 1940 to the middle of 1943 he was Manager of the London Gas Centre, which organised and controlled the war-time supplies of gas for the whole of Greater London; in 1943 he volunteered and was accepted for service in the Royal Navy; and on his return in October, 1945, rejoined the Company and was appointed Joint Managing Director.



Mr. Michael Milne-Watson, the new Governor of the Gas Light and Coke Company. See News Item.

THE ETERNAL LAWS

IF we have hopes of leading a new renaissance of popular art, we must first put our own house in order. Before we can prove to a public, now at long last receptive, that architecture is first and foremost an art, we must reaffirm this truth amongst ourselves. Such was the argument which concluded our leading article on January 9.

The headmaster of a leading architectural school remarked the other day, admittedly with some misgiving, "We don't teach architectural design." Now this is an astonishing statement. The supreme thing that matters above all others is simply not taught. An immense effort is continuously put forth to crowd into the curriculum one subject after another that is subordinate to design, so that the technical equipment of the architect becomes more and more impressive—in fields other than his own. But in his own peculiar field, in the expertise of architecture itself, the secrets of his master craft, these are left untaught. As if you could add up history, geometry, building science, statics, sociology, sanitation, acoustics, statistics, bricklaying and all the rest, and the answer would be Architecture.

The reason for this incredible situation is not far to seek. The struggle to throw over the Beaux Arts system, with its dead clichés of standardised design, proved to be so long and arduous that no instruction at all in design could be tolerated for a while. The eternal secrets were thrown away at the same time as the glib formulæ—the baby with the bath water—so that now the student has only either an arid functionalism to lean upon, or if he revolts from that, as the better ones do, he claims the personal right of the god-almighty artist to design as he sees best, responsible only to his inner consciousness. It is remarkable in the face of this how much good work there is amongst the students: but it is uneven, wayward, there is a lack of confidence as there is in the profession at large.

It would have been impossible in any age previous to the middle of the last century, when the literary critics got a stranglehold upon the visual arts, to have conducted an architectural school without teaching architectural design. The cardinal factors of design exist regardless of Style and are common to the architecture of every age and every climate. The Burmese temple, the Red Indian's wigwam, the Arab mosque exhibit the same laws of architecture as the Parthenon, Chartres Cathedral, Euston Station or the Pavillon Suisse. To-day every architect must operate within these laws, for no others exist, but how much better that he should be taught them at school and study them consciously in practice. That way lies the return to confidence which is so much desired.

What are these laws? First we have the essential architectural concept from which all else derives—Spatial Enclosure. Then, the simple geometrical forms in which men of all ages have formed their enclosures of space—difficult abstractions from the observed laws of nature, characteristically human.

From this beginning all the rest has a spatial connotation. Consider the terms used in architecture that have no primary meaning in the other arts. It is in the ideas at the back of those terms that the essence of architectural design is to be found. There are only a few of them. Proportion, Scale, Modulus are the chief. With Symmetry-versus-Balance and Unity-versus-Duality we begin to move towards other arts, though still in architecture. When we get to Rhythm, Punctuation, Variety, Charm, Expression, we can hand over to the general theory of æsthetics for we are outside the exclusive realm of architecture.

Here then is our proper study. This is not to say that other things are unimportant, nor that the study of architectural design is sufficient in itself. But all effort is fruitless if we fail to equip ourselves with the basic technique.



The Architects' Journal

19 Queen Anne's Gate, Westminster, S.W.1
Phone: Whitehall 0611

N O T E S

&

T O P I C S

CITY VERSUS LCC

The Court of Common Council of the City Corporation are suspicious that the transfer of their powers to the LCC is only a first step in the elimination of their ancient privileges and independence. As one councillor put it, "This question of town plannin' is all eyewash. The Government is trying to start somethin' that will take us down a peg. There's somethin' more serious behind it all." But the Councillors have only themselves or their predecessors to blame.

*

W. A. Robson, in his *Government and Misgovernment of London*, de-

scribed "the record of the City Corporation in delaying, obstructing or defeating legislation aimed at the reform of London government between 1835 and 1880" as "one of unbroken success from their point of view. They defeated the intention of Lord John Russell to introduce a Bill in 1837. They managed to exclude the square Mile of the City from the Police Bill of 1837. . . They defeated Lord Grey's City Reform Bill in 1856 and prevented the withdrawal of the Government Bill of 1858. They used all their influence against measures introduced in 1859, 1863, 1867, 1868, 1869, 1870, and 1875."

*

If Lord Elcho's Bill of 1875 had been passed the City Corporation's jurisdiction would have been extended over the whole of London and we should never have heard of the London County Council. All we should be needing now is another Bill to extend the City's jurisdiction over the whole of London so as to take in the great sprawl beyond the present County boundary. As things are it looks as though a second stage of ossification has begun with the LCC suspicious of reforms for a Greater London Council and likely to play the same opposition rôle as the City played in the 19th century. For it should be noted that Section 105 of the Town and Country Planning Bill not only provides for the transfer of town planning powers from the City Corporation to the County Council but also for the exemption of the LCC from any proposals for establishing a joint planning board for the London area as a whole.

Fundamentally this problem is one of local government reorganization, and it is very doubtful whether a satisfactory solution can be achieved by a piecemeal transfer of powers. Already the provisions of the Bill are very much in the nature of a compromise, for they allow by regulation for the delegation of town planning functions of the County Council to the City and stipulate in any case that the Corporation must be consulted on all applications for planning permission. From the friendly references made by the Minister and subsequent Government speakers on the Second Reading of the Bill it seems likely that even greater concessions may emerge in these regulations, and the result may be a dual responsibility which will be unsatisfactory both to the LCC and the City—not to mention the poor developer, who will have to satisfy them both.

*

The need for a single town planning authority for London is obvious, but it is quite unfair that Mr. Silkin should be expected to solve in his sphere what the Government has so far failed to solve in the larger field of local government organization.

ENGLISH CHURCH MONUMENTS

To enter a typical English parish church would for anyone whose eyes are not dimmed by custom be a bewildering experience. Nowhere else, surely, has the national cult of individualism been indulged so freely. Everyone of importance in the parish seems to have contributed something at some time, with a sublime disregard of anyone else's contribution, so that objects in every conceivable style are to be found in the strangest combination.

*

Yet who would have it otherwise? Only, I trust, the Diocesan Advisory Board. The interior Sharawaggi of the English church has a unique charm, once you have learnt to overcome the prejudices instilled by antiquary schoolmasters. Among the least fitting ornaments of a Gothic church are the monuments of the 17th, 18th and early 19th centuries—often least fitting in a quite literal sense, and those



Wooden effigies of Sir Alexander and Lady Culpeper (1537) adorned with painted and modelled gesso, at Goudhurst, Kent. An illustration from *English Church Monuments 1510-1840* by Katharine A. Esdaile, just published by Batsford, and reviewed by Astragal this week.

that set them up thought nothing of blocking a window or cutting through the mouldings of an arch to make them more so.

But they are very often the most elegant, and deserve more attention than they generally get from the average church gazer. Thus there is a good reason for welcoming Mrs. Esdaile's new book.* If it is a book which anyone who wished could have written, given the time, it contains a remarkable profusion of out of the way information. And if it is rather hard to find one's way about in, and if a proportion of the monuments chosen for illustration are pretty indifferent—well, that no doubt is a true reflection of the subject.

NATIONAL INSTITUTE OF ECONOMIC AND SOCIAL RESEARCH

What exactly is this National Institute of Economic and Social Research? The name keeps cropping up, so I have asked our contributor, Mr. Ian Bowen, who works there, to tell me. It was founded in 1938, and is financed by the Rockefeller Founda-

tion, the Leverhulme Trustees, the Nuffield Foundation, and many well-known British banks and business firms. It is an independent body which finances research projects on such subjects as the Distribution Industry, Advertising, and National Expenditure.

*

Of special interest is the project known as the Building Enquiry. This is being undertaken by Mr. Bowen, who began his work at the Institute late in 1945. He has already published one article, *The Future Output of the Constructional Industries in the United States* [*Economic Journal*, June, 1946], and he is studying the British building industry under three heads—structure and efficiency, housing demand, and the economic effects of new building techniques.

*

We wish him luck, if he can throw any light on topics which, personally, we think will always be subjects for argument. His American study, though full of equations, gives an interesting picture of the housing problem on the other side.

WHEN GREEK MEETS TORPEDO

Visiting recently the Cooling Galleries to see an exhibition of drawings by Miss Barbara Constantopoulis, I was handed a typed document "prepared by an enthusiastic admirer." From this I learned that Miss Constantopoulis is self-taught, draws in pencil because she couldn't get paints and brushes, was trained as a Wagnerian opera singer, but was prevented from making her debut by an attack of facial paralysis, is an accomplished musician, and was torpedoed in mid-Atlantic during the war. After such a breathtaking tale of artistic mishaps, Miss C.'s unassuming pencil drawings seemed to glow with the fresh colours of triumph. "Miss C.," they seemed to say, "may or may not be able to draw, but, by God, she's had a terrible life."

*

This form of attack upon the susceptibility of the gallery visitor is a new one on me. Whether it is a legitimate one or not, is open to question—but at least it's better than those infernal turnstiles at the Leicester Galleries.

ASTRAGAL



LETTERS

Alec Davis

Neville Coventry

Dudley Harbron, F.R.I.B.A.

Peter A. Dannenbaum,
Student in industrial design.

Holland in England

SIR.—Astragal's recent note on Lincolnshire and Mr. John Gloag's letter on Norfolk are timely reminders of the fine domestic architecture to be seen in the Fen Country. The magnificent stone-built churches of the Fens, from Ely Cathedral to Boston Stump, are well known, but—perhaps for this very reason—we are inclined to overlook the more homely beauty of the many old houses in the same district, built largely in the local brick. Yet Bank House, Wisbech, acquired by the National Trust during the war, is one reminder that it really should not be overlooked, and the accompanying picture may serve as a further reminder. It shows the doorway of a house in the main street of Burnham Market, in the part of Norfolk to which Mr. Gloag made special reference.

London

ALEC DAVIS



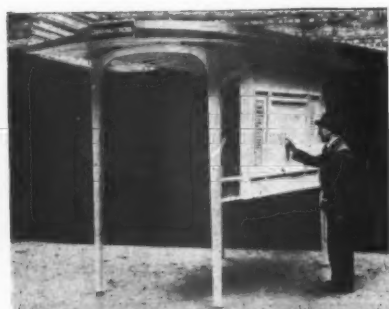
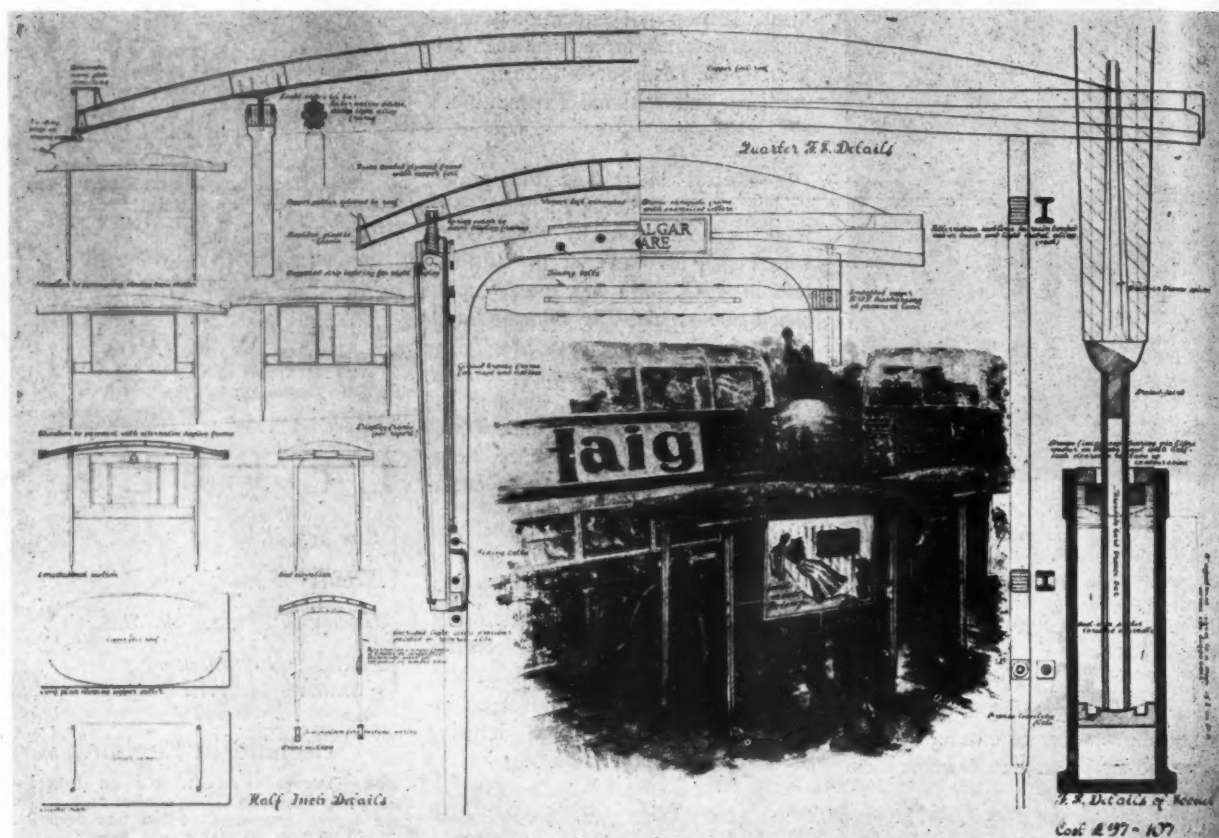
House at Burnham Market. See letter above.

Coventry Cathedral

SIR.—Since the news was published that the architectural plans for the new Cathedral will have to be started all over again, many people have said to me "Surely this does not mean that you are giving up

* *English Church Monuments 1510 to 1840*. With an introduction by Sir Sacheverell Sitwell. By Katharine A. Esdaile. (B. T. Batsford, 21s. 0d.)

WINNER OF BUS SHELTER COMPETITION



The winner of the London Passenger Transport Board's competition for a standard bus-passenger shelter to replace the present utility war-time model is D. Dex Harrison, of Harrison and Seal, who receives 300 guineas. The second prize of 100 guineas goes to Messrs. Arcon and O. Safir. The designs of J. Lacey and C. Hamp, S. H. Smith, Vine and Vine, Clive Entwistle were highly commended. More than 300 designs were submitted, which, together with a full scale model of the winning design (shown on the left) are now being displayed at a public exhibition at Charing Cross Underground Station until February 14. The assessors of the competition were Professor W. G. Holford, F. R. S. Yorke and the Board's architect, Thomas Bilbow. It is interesting to note that all the winners are Registered Architects. The chief material used in the winning design (the drawing is shown above) is resin bonded plywood with light cast metal alloy as an alternative for the supports. The roof is copper foil.

your plans for greater unity among the churches?" I write this letter, therefore, to make two things clear.

First, our plans for united Christian work go forward—and it is for this that the Coventry Cathedral Reconstruction Fund primarily exists. We are deeply grateful for the help that has been given, is being given, and will be given. The Reconstruction Fund remains open and gifts should be sent to the office of the Fund at the Bishop's House, Coventry.

Second, I realise that everybody who is interested in our work is naturally keenly interested in the buildings in which it will be carried on. As soon as new architectural plans are ready—and they are not drawn in a day—they will be given the widest publicity. Meanwhile, we shall restrict our expenditure on publicity to a minimum and rely on the already great circle of our friends to continue their own support and to enlist the active help of others for the pioneer work of Christian co-operation.

NEVILLE COVENTRY

G. W. Godwin 1833-86

SIR,—Before I finish writing a life of the above, upon which I have been engaged for several years, I am anxious to trail the present ownership of any of the furniture designed by Godwin; in particular non-reproductive pieces. If any of your readers can help to this end, or indicate the whereabouts of any of his work or letters. I should be most grateful. My address is: 4, Bond Street, Hull!

Hull

DUDLEY HARBON

Modern Design for New Housing

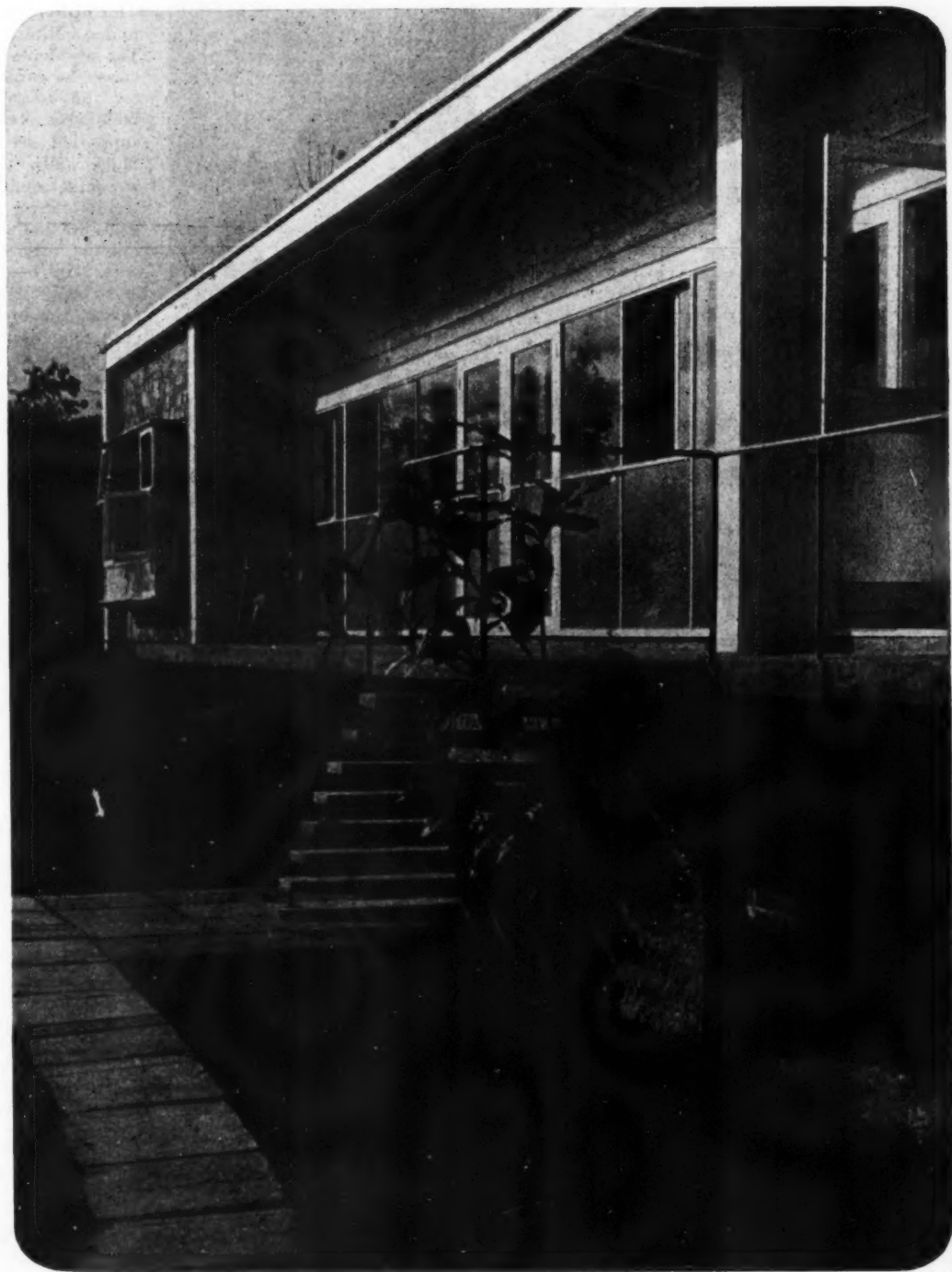
SIR,—Austerity should force upon us more modern and better designed houses—but apparently the authorities and builders, who have done little about the need for good design, have not done much about the present need for economy either.

Surely we ought to build terrace houses on

our new estates, to get a more beautiful street picture and to save one party wall between each pair of houses. Furthermore, to save labour and materials, as well as in the interest of better architecture, we should omit the partition walls between living room, kitchen and parlour, and devote the ground floor to a large modern living space instead of several small rooms. For it we need, of course, kitchen equipment that is fit to be living-room furniture and not mere machinery (surely designers can solve that problem?), and ventilation to carry away cooking smells. Such houses would offer all the advantages of modern large rooms, and also give the housewife the chance to use the living room instead of locking herself into a small, hot, smelly kitchen.

A house should, furthermore, have bed-sitting rooms instead of bedrooms, into which members of the family may retire in privacy for study and quiet.

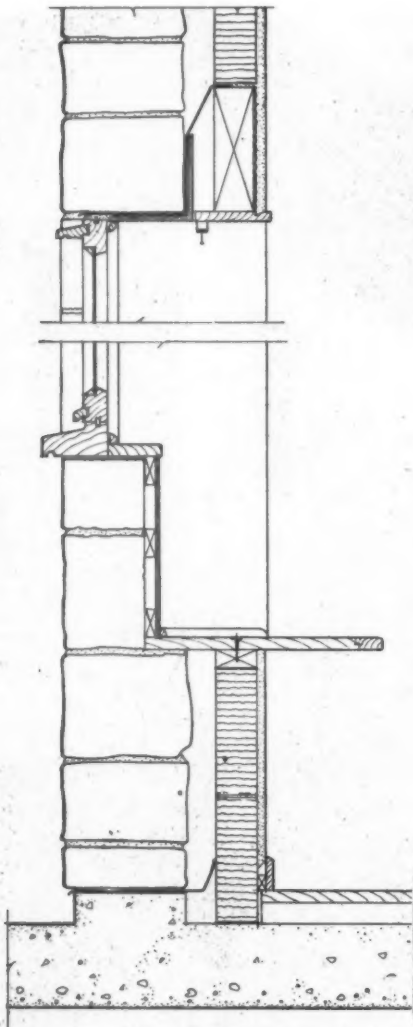
PETER A. DANNENBAUM
Twickenham Student of industrial design



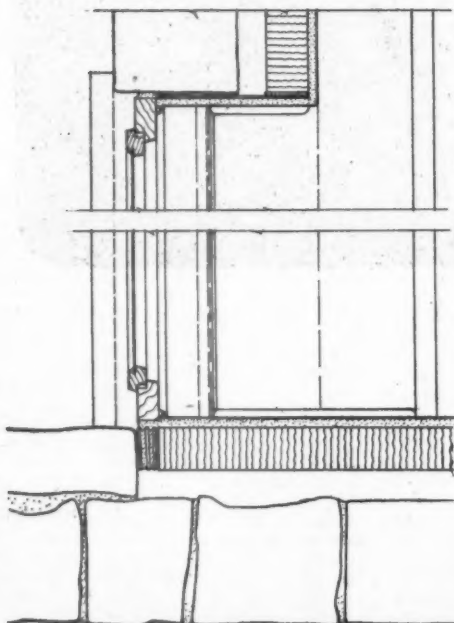
H O U S E

AT LUCCOMBE, ISLE OF WIGHT

DESIGNED BY F. R. S. YORKE,
E. ROSENBERG AND C. S. MARDALL



SECTION THROUGH WALL



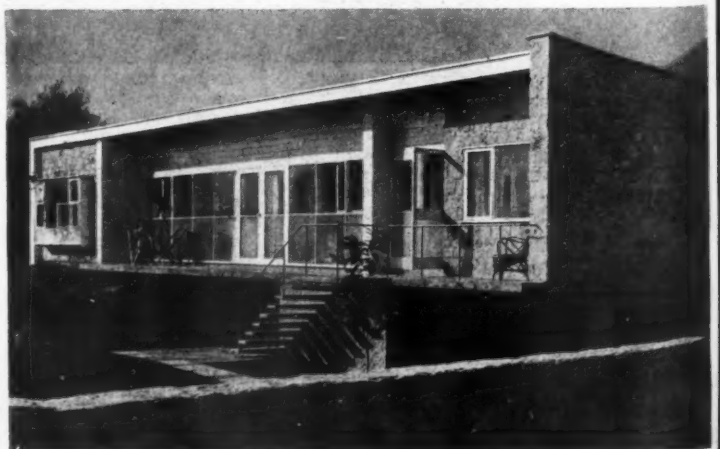
PLAN OF WALL (Scale 1" = 1' 0")



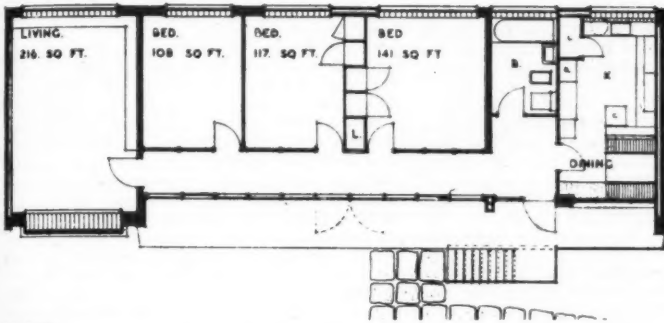
This little house was built in 1946 under a Ministry of Works licence. The site slopes about ten feet from corner to corner, so a foundation for the house was provided by building a reinforced-concrete slab supported on pre-cast concrete block walls. A part of the slab is cantilevered forward to form a terrace facing the sea. External walls are built of: (a) local stone random rubble 9 in. thick lined with 2 in. breeze blocks, the two leafs being separated by a 2 in. cavity, the breeze blocks being plastered and distempered; (b) timber framing with large glazed panels, and (c), a cavity wall of pre-cast concrete blocks. Windows facing the sea are EJMA section wooden casements, the other windows being of aluminium. The bedrooms have windows on both sides, to give cross ventilation and to give a view of the sea across the corridor. The drawings show Truscon Composite Joists carrying the roof but at the last minute, owing to the non-delivery of the joists, timber had to be substituted.

The accommodation conforms to the standards required by the Ministry of Health, though the third bedroom is rather more generous in size than usual, being 108 sq. ft. in area. Meals are taken in a dining alcove next to the kitchen. Heating, hot-water and cooking are all electric.

Above and below are views of the south-east front facing towards the sea. Left, above, a section through the external wall and the window seat of the dining recess. Left, below, plan through a window. The walling is local stone rubble with 2 in. breeze block lining and a 2 in. cavity. A steel angle carries the stonework over the window head, the breeze blocks being carried on a timber lintel. The wood window frames are EJMA standard. The floor is wood boarding on battens.

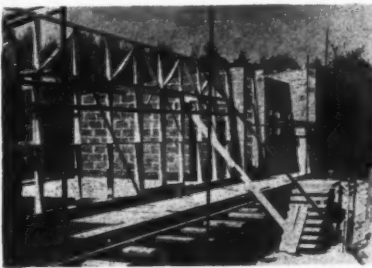


HOUSE AT LUCCOMBE

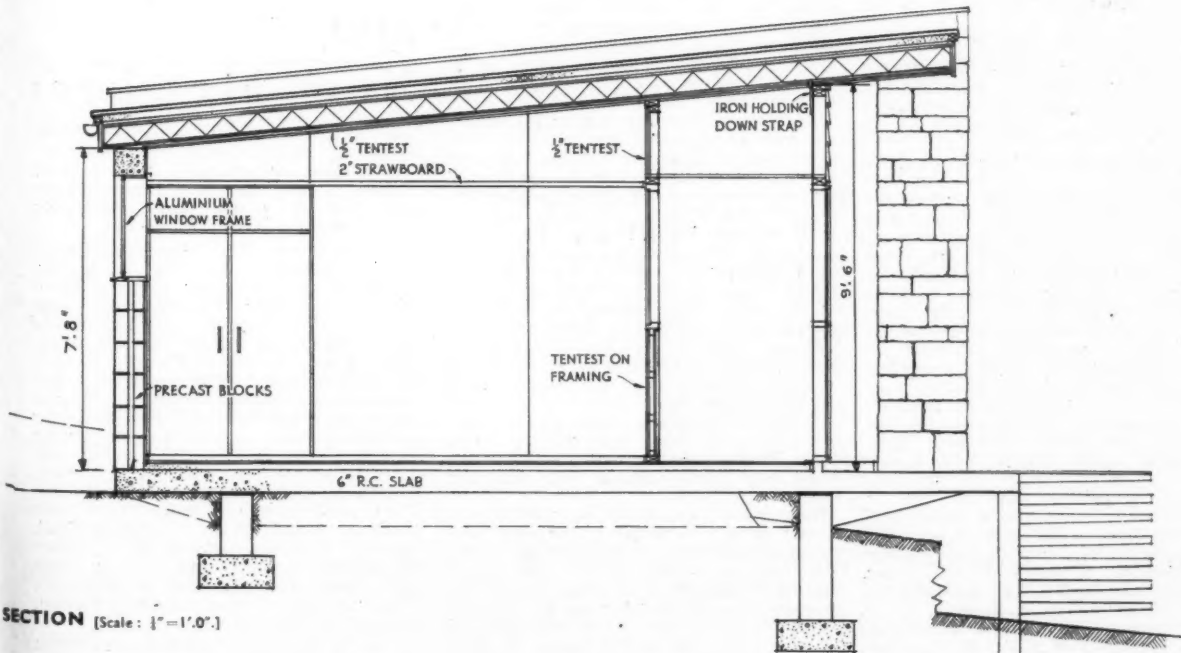


PLAN

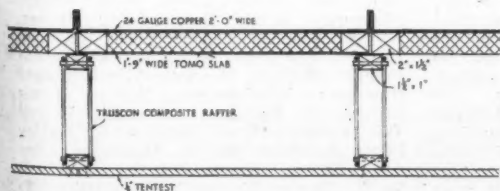
[Scale: $\frac{1}{4}$ " = 1'-0"]



Progress photos showing the timber framings to the external wall to the corridor.

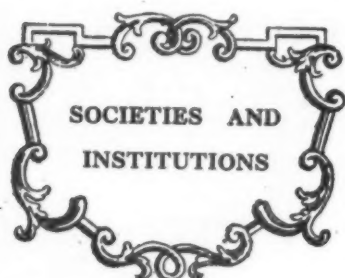


SECTION [Scale: $\frac{1}{4}$ " = 1'-0"]



SECTION THROUGH ROOF [Scale: 1" = 1'-0"]

Above, cross section. Left, cross section through the roof, showing how pre-fabricated roof panels are laid on the Truscon composite joists; the copper sheeting is applied before the roof units are fixed and are welled on the site.



Speeches and lectures delivered before societies as well as reports of their activities, are dealt with under this title, which includes trade associations, Government departments, Parliament and professional societies. To economize space the bodies concerned are represented by their initials, but a glossary of abbreviations will be found on the front cover. Except where inverted commas are used, the reports are summaries, and not verbatim.

AA

H. Robertson

January 29, at 34, Bedford Square, W.C.1. Ordinary General Meeting of the Architectural Association. Address on DESIGN OF INTERIORS by Howard Robertson, F.R.I.B.A., S.A.D.G.

H. Robertson: Interior architecture can provide a close and intimate link between the architect and the public. It is nevertheless to a large degree a forgotten branch of architecture. Architects of skill and repute have too often neglected to bother with interiors; they have despised such work as being within the purview of the decorator. There was a day when the architect in his planning did not even bother to draw out his plan of furniture. You may remember a former AA teacher, H. P. G. Maule, relating the story of an architect confronted by a lady client with one of his bedrooms into which it was impossible to fit a bed. After an ineffective parade with a two-foot rule he turned angrily to his client and said, "My God, Madam, do you take me for an upholsterer?" Architects might well devote more time to the study of interiors; it is one means of restoring our prestige with the public. If we allow the engineer to do the outside and the decorator the inside, that is the end of architecture.

In considering interior architecture I perceive the possibility of a classification, for the sake of simplicity, into two main divisions. These two main divisions are (i) the systematic—that is, the organic, the integrated—and (ii) the superimposed—that is, the comparatively unrelated and independent.

In its purest expression decoration is inherent in the treatment of the structure; it is derived from the patterning of the structure. We see an example of this in the lamella roof of a hangar near Rome. The basic architectonic form and its elements provide not only the foundation for the decorative theme but the inspiration for its possible enrichments. Examples of this

occur at all periods. They provide the noblest and most permanent examples of interior architecture. Their essential permanence, the insistence on fundamentals, limits, however, the utilization of this basic type of interior architecture, and under many modern conditions, where flexibility, fluidity, impermanence, are to a greater or less degree demanded by the nature of the programme, its qualities may become defects.

This brings us to the second category—superimposed interior architecture. In this category the characteristic is the independence of the interior *vis-à-vis* the basic structure. The interior space is treated as a shell within the building enclosure. The interior becomes essentially a *décor*. It may be intended as permanent, semi-permanent, or quite temporary, and in any case it can be modified without affecting basic structure. Its elements, moreover, can be almost wholly independent of this structure. An extreme example of this is found in the buildings used in exhibitions. Another example of this type of interior architecture is the series of rooms typifying national character which were erected within the general structure of the Palace of the League of Nations in Geneva.

Let us examine the implications of these two systems. I think that we shall conclude that their adoption and development are largely governed by the nature of the programme.

Truly organic interior architecture must ignore fashion as a basis. It will have style in the sense that style derives from structure. Decoration based on dignified structure will have an integrity and sincerity which can appear out of date but will never be incongruous, because the principles of design are timeless. That is not to say, however, that such decoration is a suitable expression for many modern purposes. It is also true that organic interior architecture is not entirely static; it is subject to evolution, and in the course of evolution is tinged by fashion, which can be an artistic efflorescence leaving a permanent mark on style.

The Gothic cathedral interior exemplifies systemic decoration with the structure developed as decorative pattern. So does the church interior of Le Raincy, by Perret. So does the Johnson office building by Frank Lloyd Wright. All three examples show in some degree fashion influences of their time. The architect may think that he is superior to and can ignore fashion. He may not use a fashionable idiom consciously or at the beginning, but gradually something of this fashion idiom soaks into him and tends to saturate his expression. For there are fashions in form, in colour, in surface treatment, in materials, in equipment; and they produce a powerful and cumulative effect. Such diverse types of interior as those produced by Inigo Jones, William Morris, Voysey and Norman Shaw have both reflected and influenced fashion.

Truly organic decoration is comparatively a rare thing. It occurs in the early and purest developments of what we call styles. But there is an ever-present and human urge in all decoration to express something over and beyond structure; and an enduring example of that urge is the persistence of symbolism as a decorative theme. A great many familiar decorative motifs had a meaning which by vulgarisation and repetition is now lost to those who employ them. The ancients used the serpent as a motif; it was an emblem of the sun, of time, of eternity. The acanthus was an emblem of fire—which makes it such a favourite decoration for candelabra. The lotus symbolised the sun. Our old friend the egg and dart symbolised the mundane system, with the dart as the sun's rays, which may possibly explain its one-time popularity as a decoration for the most prosaic of sanitary ware. The patera was a symbol of goodness, of benevolence. In

neo-Renaissance architecture all these features have been slapped on to buildings regardless of meaning. No wonder we have revolted against them. But it is not the fault of the emblems themselves, which still retain their basic interest. The ancients used symbols with propriety. We have long ceased to do so.

What should be the architect's mental attitude in considering the design of interiors? As part of his mental equipment I would include a respect for tradition, custom, and human sentiment (very important this), an awareness of trends in art and aesthetics generally, an ability to guide but not necessarily to impose his convictions, the strength of mind not to indulge in preconceptions, passing whims, self-advertisement, exciting treatments indulged in for a momentary notoriety, and *not* to design primarily with an eye to the photographs. Lastly, there must be a determination to prune his conceptions with the same care that an author devotes to the correction of his proofs.

What is the requisite technique? I suggest that it involves first of all an ability to visualise forms and compose them in effective relationship, including vertical relationships which are too often neglected; to bear in mind that a study of circulation is vital, including the effective development of every section of room space; to remember that an awareness of the reaction of colour and surface treatments on room-space is a necessity; to cultivate an ability to relate natural and artificial lighting to form; and finally, to concede that the interior architect must have a sense of drama, of dominant and subsidiary effects. To sum it all up, the design of interiors requires imagination, considerable technical resource and feeling for detail, and a wide and sympathetic knowledge of human nature.

RIBA

New Members

As Hon. Corresponding Member (1): Hitchcock, Henry-Russell.

As Fellows (4): Budgen, Percy Graham (London); Jury, Archibald George (Taunton); Parsons, Leslie Harry (Horsham); Rutter, William Arthur (London).

As Associates (23): Bowness, Rodger Haigh (Yeadon, near Leeds); Bulmer, Robert Harold (London); Clough, Robert Taylor (Keighley); Cooper, Cecil John (Howth, Co. Dublin); Crisp, Raymond Miles (London); Currey, Ronald (London); Evans, Elizabeth (Cardiff); Giffard, Colin Carmichael (London); Hallam, Arthur (Wallasey); Hardy, Kenneth Oswald Walter (London); Kenvon, John Christopher (Allerton Park, near Knaresborough); Knight, Frank Stewart (Wincanton); Lindars, Leslie William (Bromley); Loasby, Eric (Kettering); Mackenzie, Robert Walker Rannie (Edinburgh); Marsden, Tom Lowe (Oldham); Martin, Bruce (Chatham); Noall, Norman McKirdy (Ilford); Pritt, Albert (Blackpool); Roche, Eamonn Devin (Dublin); Sharp, Peter Edward (Woodthorpe); Tickell, Richard Caxton (Heswall); Vincent, Leonard Grange (Ilford).

As Licenciates (16): Arnett, Francis Albert Ernest (Southwick); Coleman, John Norman (Horam); Collier, Edwin Walter (Worcester Park, Surrey); Cortis, Walter Nugent (Gregories Road, Beaconsfield); Judges, Alfred Charles (Amersham); Knapp, Douglas Eric John (Bath); Lewis, Kenneth Francis (Belfast); Merriott, Alfred Edward (London); Micklewright, Wilfred Louis (Brighton); Pentelow, Francis Howell (Weston-super-Mare); Rowbottom, Stanley Edgar (London); Rowell, Montague (London); Sharpe, Kenneth Leslie (London); Smith, Charles George William (Westcliff-on-Sea); Wattie, James (London); Wood, Thomas Edward (Brighton).

INFORMATION CENTRE

- 1 SOCIOLOGY
- 2 PLANNING;
General
- 3 PLANNING ;
Regional and National
- 4 PLANNING ;
Urban and Rural
- 5 PLANNING ;
Public Utilities
- 6 PLANNING ;
Social and Recreational
- 7 PRACTICE
- 8 SURVEYING,
SPECIFICATION
- 9 DESIGN ;
General
- 10 DESIGN ;
Building Types
- 11 MATERIALS ;
General
- 12 MATERIALS ;
Metal
- 13 MATERIALS ;
Timber
- 14 MATERIALS ;
Concrete
- 15 MATERIALS ;
Applied Finishes, Treatments
- 16 MATERIALS ;
Miscellaneous
- 17 CONSTRUCTION ;
General
- 18 CONSTRUCTION ;
Theory
- 19 CONSTRUCTION ;
Details
- 20 CONSTRUCTION ;
Complete Structures
- 21 CONSTRUCTION ;
Miscellaneous
- 22 SOUND INSULATION,
ACOUSTICS
- 23 HEATING,
VENTILATION
- 24 LIGHTING
- 25 WATER SUPPLY,
SANITATION
- 26 SERVICES,
EQUIPMENT Miscellaneous
- 27 FURNITURE,
FITTINGS
- 28 MISCELLANEOUS

TECHNICAL SECTION

IT is an interesting fact that questions received frequently reflect the subject of those recently published. That is, the publication of an answer to a legal question is often followed by a spate of similar enquiries.

Now this suggests that some readers are reluctant to ask for help in connection with certain subjects ; only doing so, in fact, after seeing a published precedent. This need not be so, for our panel of specialists covers the whole field of architectural practice, and any legitimate question on an architectural subject is given the fullest consideration. We say legitimate, because questions have been received—enclosing several pages of steelwork calculations—asking “are these calculations correct?” and equally, the optimistic reader who writes “my client is 50 years old, has a wife and two children, and wants to live in the country. . . . Please supply the best plan to meet his requirements” has to be disappointed. However, if your question is, in fact, a question, then, no matter what its subject, the JOURNAL will do its best to produce the most helpful reply possible.

To avoid delay and assist us in preparing really useful answers, enquiries should be accompanied by all the relevant information available ; for instance, questions referring to the condition of existing structures will often be more satisfactorily answered if a sketch section is attached. Questions dealing with more than one subject should be submitted on separate sheets of paper, and include the name and address of the sender. The service is entirely confidential—the name of the reader is not disclosed to a third party, and it is unnecessary to use a pseudonym as every answer published is done so without reference being made to the sender.

The function of this feature is to supply a digest of, and commentary on, current information of interest to architects as recorded in technical publications and statements of every kind throughout the world. Items are prepared by specialists of the highest authority who are not on the permanent staff of the Journal, and views expressed are disinterested and objective. The Editors welcome information on all developments from any source.

INFORMATION CENTRE

10.2 design: building types HOUSING PRACTICE: USA

Housing Practices—War and Pre-War. US National Housing Agency. (National Housing Bulletin, No. 5. US Government Printing Office, Washington, D.C., 1946, 15 cents).

Review of some pre-war practices and wartime developments in design and construction of both private and public housing.

The report is based on an extensive survey prepared at the request of John B. Blandford, Jr., while he was NHA housing administrator. In three main sections it covers the following aspects:

(1) *Nature of War Housing Job.* Through the war housing programme, shelter was provided for over 4,000,000 war workers and their families, involving 4,000,000 accommodations in more than 1,300 different localities. The major portion of needed new housing was privately financed. In all, war housing cost about \$8,000,000,000 of which \$5,500,000,000 was supplied by private capital and approximately \$2,250,000,000 by public funds.

Because of the concentrated demands in many areas housing was built in large scale projects. In the publicly financed programme some of the projects were complete cities, e.g., Vanport, Oregon. The size of dwellings was limited, the area depending on the number of bedrooms. The price was also limited so as to keep a house within reach of the war worker's income. The rent did not exceed \$50 a month, plus utilities.

In the general field of construction, quantity production methods and factory and site fabrication of structural parts have been widely used. Plumbing and heating equipment have been simplified and standardized. The use of insulation was increased and lightweight roof and floor construction was tried out extensively.

(2) *Changes in Construction.* This section deals in detail with developments in structure and materials; with the design and construction of mechanical and electrical systems; with the effect of wartime regulations on building codes; and with performance requirements and methods of testing.

(3) *Trends in Dwelling Design and Site Planning.* Private and public housing are here examined separately because the extent and nature of the information available in each field differs in many instances.

The following aspects are covered: types of dwellings; number and size of bedrooms; size of living rooms; provision of basements; garages; storage space; laundry facilities; kitchens; site size, costs and market prices; site layout; neighbourhood planning and development; street layout and parking facilities; playgrounds; and refuse collection.

Although the report is limited to a sampling of the total housing experience, the results indicate some of the trends and the extent to which building practice is likely to be affected by wartime developments. With regard to dwelling design and site layout the indications are that the emergency wartime practices generally represent too great a lowering of standards and should not be continued. In construction, however, a number of wartime developments deserve further study because they show definite possibilities for future housing.

13.4 materials: timber PLYWOOD DEVELOPMENTS

New Developments in the Use of Plywood in America. Reprints of articles in "The Timberman." (Timber Development Association, Ltd., London.)

Reprints from annual plywood number of USA journals. Illustrated articles on new and increasing uses of plywood, particularly the waterproof (exterior) type. Including uses in boat building industry and farming.

13.5 materials: timber SUBSTITUTES FOR SOFTWOOD

Substitutes for Softwood in Housing. MOH Circular 201/46.

Permitted maximum quantities of timbering. Economies in construction. Covering for solid floors. Licensing procedure.

Owing to the shortage of supply of softwood, the maximum quantity allowed for new houses has been reduced to 1.6 standards per 1,000 sq. ft. of floor area; the maximum quantities of hardwood (10 cu. ft. per dwelling) and plywood (450 sq. ft. per dwelling) remain as before. Sufficient home-grown hardwood for a 10 ft. length per house of close boarded fencing, not exceeding 6 ft. in height, will also be allowed.

The principal economies in softwood specified for house construction are:—(1) The elimination of timber joists and boarding throughout the ground floor and the substitution of solid floors; (2) the elimination of timber from roofs of outbuildings and the substitution of concrete or other flat roof construction. Consideration should also be given to providing a higher proportion of houses with flat roofs or to using materials other than timber for roof construction.

The most suitable surfacing materials for solid floor which are available and at a reasonable cost are pitch mastic, mastic asphalt, and quarry tiles, but in the future the supply of these materials will be inadequate. They should be used in living rooms only; a granolithic or cement finish with a suitable hardener should be used at least in kitchen and hall floors.

Relief from the present shortage of softwood cannot be foreseen and the economies indicated may have to be applied for some time to come.

14.1 materials: concrete AGGREGATE FROM WAR DEBRIS

Building Materials from War Debris. (The Builder. September 13, 1946, pp. 275-7.)

Mechanical crushing plant producing aggregate and sand from rubble of air raid shelters.

To meet part of the requirements of the LCC for their housing programme, a plant, of a capacity of approximately 2,000 cu. yd. of crushed material per week, was erected in January, 1946. The article describes the operation of the plant and contains some test results obtained with processed materials which are very satisfactory. The LCC contemplate setting up similar plants in other parts of London.

16.5 materials: miscellaneous ASPHALT TILES

Asphalt Tiles for Paving and Flooring. Natural rock asphalt. BSS 1,324:1946. (British Standards Institution. 2s. 0d.)

Asphalt tiles suitable for general purposes including domestic dwellings. Pigment for coloured tiles. Details of materials. Dimensions (8 in. x 9 in.: 8 in. x 4 in.: 8 in. x 5 in., in thicknesses of $\frac{1}{2}$ in., $\frac{3}{4}$ in., and $1\frac{1}{2}$ in.) Manufacture, analysis of composition, inspection, sampling and testing. Recommendations for application, pending completion of Code of Practice.

16.6 materials: miscellaneous COAL TAR PITCH

Coal Tar Pitches for Building Purposes. BSS 1,310:1946. (British Standards Institution. 2s. 0d.)

Range suitable for buildings. Origin and preparation. Characteristics. Appendices: methods for determination of characteristics, and applications. Appendix F. *Applicability*, tabulates ring and ball values to be specified for various uses of the material. Importance is stressed of specifying this value according to the grade of pitch required.

17.2 construction: general CARPENTRY AND JOINERY

The New Carpenter and Joiner. R. V. Boughton. 3 volumes. (The Caxton Publishing Co. Ltd., £3 15s. 0d.)

Comprehensive reference book for the craftsman. Many illustrations, plans and tables.

The whole work has been written in simple language, and where necessary an explanation is given of technical terms which may not be understood by the majority of readers. The diagrams are clear and the numerous tables very useful. They allow the determination of sizes and spacings of timbers when the loads and stresses are not calculated. The interest of the work is enhanced by a number of good photographs. Many references are made to publications of the Timber Development Association and to the LCC By-laws for timber construction. Cross references and an index greatly facilitate the use of the work.

Although the author emphasizes that he intends "to bring into the limelight the most modern and practical methods," timber connectors have not been treated in the same elaborate way as traditional methods of jointing. In fact, the whole work is confined to traditional forms of construction. Laminated, glued and several other types of modern timber structure, frequently referred to and illustrated in this Information Centre, have not been dealt with.

18.1 construction : theory R.C. DESIGN: USA

The Design of Reinforced Concrete Structures. Dean Peabody, Jr. 2nd edition, 1946. (New York: John Wiley & Sons, Inc. London: Chapman and Hall, Ltd., USA, \$5.50).

Comprehensive textbook brought up-to-date by taking into account recent developments in research and theory. Examples and diagrams based on ACI Code.

Among the great number of textbooks on the design of reinforced concrete structures, this book, now in its 2nd edition, deserves special attention. It is the first publication in English in which both the traditional method of design, based on a straight line variation of concrete stresses, and design based on the plastic theory (i.e., on ultimate loads) are presented together. This change in methods is most marked at present for column design, but a similar procedure is proposed and used by certain designers in bending. Examples by both methods have been included to give comparison of ease of computation and economy of design. Another important feature of the book is the inclusion of a chapter on prestressed concrete.

An appendix contains the 1941 Building Regulations for Reinforced Concrete (ACI Code). All examples and diagrams are based on these regulations, which differ in many respects both from the LCC By-Laws and the Code of Practice. Nevertheless, the book is very valuable for readers in this country, since it approaches the subject in an unorthodox spirit and gives an up-to-date account of recent developments in theory and design. It may be surprising for many readers to find that working stresses differ from stresses actually occurring under design loads to such an extent that they become meaningless. The example of a column, designed for a working stress of 620 lb./sq. in. in the concrete and 6,200 lb./sq. in. in the reinforcement, may be quoted. If this column is loaded by half its design load for two years and then the full design load is applied, the actual stresses will be 421 and 24,250 lb./sq. in. respectively.

The adoption of the modern principles of design, well explained and exemplified in this book, would result in a radical alteration of the present Draft Code of Practice for the Structural Use of Normal Reinforced Concrete in Buildings. (See No. 2,726:19.9.46).

19.3 construction : details

STRUCTURAL DEVELOPMENTS

Structure. (The Architectural Forum, USA, July, 1946, pp. 109-126.)

Developments in construction of foundations, walls, floors, roofs, partitions and finishes.

The article describes recent structural developments in USA. Concrete is being used in house construction by an increasing number of builders. A new type of form for cast in situ walls consists of plywood panels riveted to a steel framework. It is claimed that this system permits the re-use of plywood up to 100 times. Nailing is practically eliminated, panels are easily joined and easily stripped. Monolithic cavity walls may be built by means of a portable form.

The lack of timber discourages cast-in situ construction and instead, walls are erected of concrete and light-weight concrete blocks, or precast in large panels. In view of the inadequacy of block production facilities, it is logical for large-scale builders to turn to the fabrication and use of large structural concrete panels. The system

developed by Vacuum Concrete Inc. is particularly advantageous. Panels are cast in the moulds each afternoon and raised in position the next morning. This speed is made possible by the vacuum extraction of water during the half hour period after the concrete has been poured and vibrated. Within 16 hours after this accelerated setting of the concrete, the material has acquired a strength of 3,000 lb./sq. in., ultimately reaching 6,000 lb./sq. in.

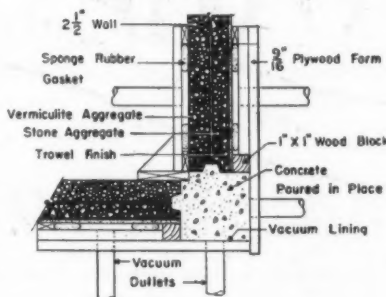
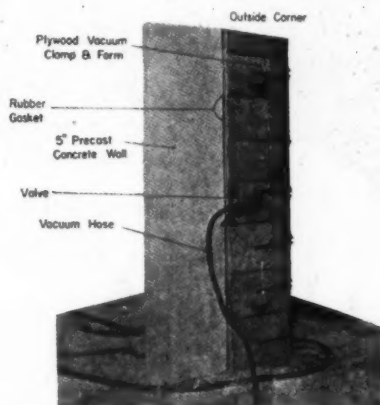
Concrete houses are assembled from panels which are completely pre-fabricated even including wall paper and lighting fixtures.

Tilt-up concrete walls are advocated by the Portland Cement Association as a house building method particularly suited to well equipped firms. Large wall panels are cast on the site in a horizontal position and erected with hoisting machinery. Complete one-piece walls for small houses have been satisfactorily produced.

The vacuum method is also used for roof trusses, which are claimed to cost less than wood framing; they are made of nailable light weight concrete. Within half an hour after the pouring of the concrete, the trusses have set sufficiently to be lifted out of the moulds and set aside to cure. They may be erected the following day without danger of damage.

Pre-cast pre-stressed concrete slabs containing two hollow cores are produced in large quantities for floors. An overall depth of only 6 ins. is required up to spans of 22 ft. 6 in.

For external finishes, stucco, gunite, asbestos cement and aluminium are most popular. For internal finishes in kitchens and bathrooms plastic coated plywood is a promising material. Its durability and resistance to abrasion also point to its possible use as a floor finish.



Vacuum extraction of water from concrete column described in No. 19.3. The photograph shows the vacuum lining and the drawing is a horizontal section through the column and adjacent panels.

20.2 construction : complete structure TRUSTEEL HOUSES

Trusteel Steel-Framed Houses, Derby. (The Builder, September 20, 1946, pp. 299-301).

Houses built in the system described and illustrated in No. 2644:1.8.46.

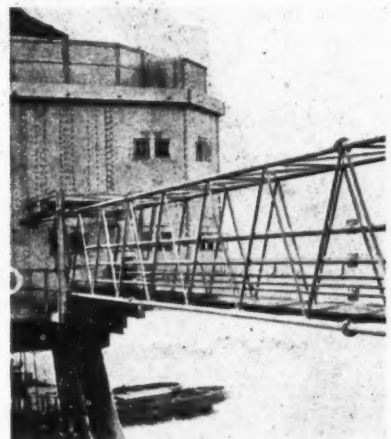
Frame designed to a module of 2 ft. 9 in.; structure adequately braced with welded tubular ties laterally and diagonally; erected on a concrete raft, so designed that a minimum of setting-out is necessary. All parts of the frame can easily be man-handled and hoisted by the fixers. The double stanchions in the party wall are separated with an insulating strip and form a wall of 12 in. in thickness, with a 6 in. enclosed cavity. The external walls are insulated with glass wool quilt.

A prototype pair of houses were erected in April, 1946, at Derby.

20.3 construction : complete structure HOUSES: MOH CIRCULAR

Non-Traditional Houses. Arrangements for supply for permanent houses, modified by MOH Circular 175/46.

The Ministry is making arrangements with the sponsors of certain approved systems under which they or their nominated contractors undertake to build during the next twelve months, in appropriate areas, a pre-arranged number of houses on standard plans and specifications at a fixed price. The price is only variable with local rates of wages and fluctuations in prices of materials. Agreements on these lines have now been concluded for the production of British Steel Construction, Cussins, Dyke C.C.C., Easiform, Orlit, Scottwood, Steane, United, Wates, and Wimpey No-Fines houses.



A welded steel tubular bridge. See No. 2.04.

20.4 construction : complete structures TUBULAR STEEL BRIDGES

Welded Steel Tubular Bridges. (Engineering, October 25, 1946, pp. 391-396.)

Interesting example of the use of steel tubes in structural work.

The bridges were used to connect the units of sea forts. Spans of 105 ft. and 75 ft. were required. Three different sections were designed. The 105 ft. span bridges were



PRIORITY CALL...

Construction replaces destruction as the national priority. "Build well and build speedily" is the new battle cry.

S.G.B., with branches and depots throughout the country, offer the largest and most efficient scaffolding service.

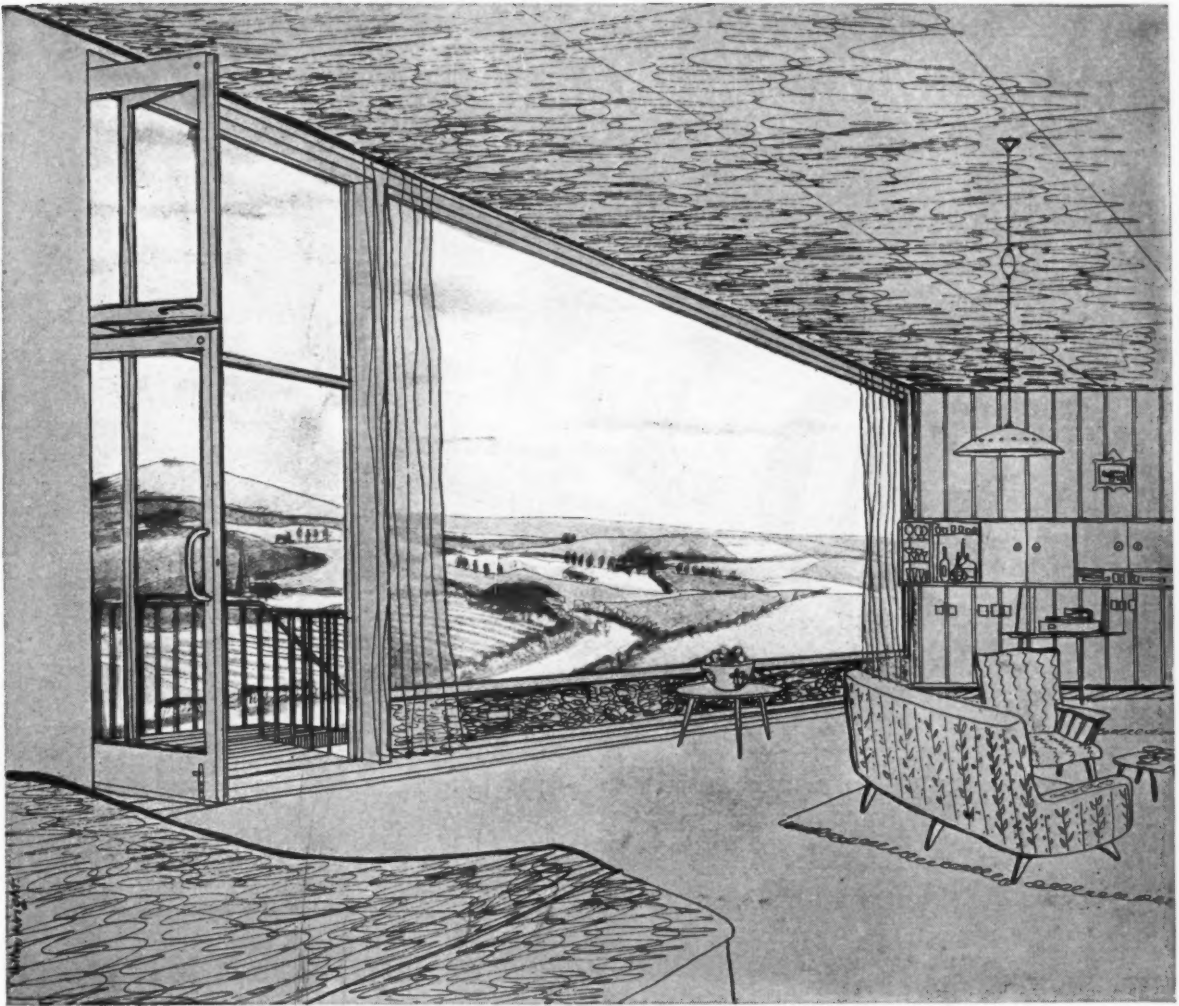
S.G.B.

SCAFFOLDING (GREAT BRITAIN) LIMITED

Registered Office & Works:
PLOUGH LANE
LONDON S.W.17
Telephone: WIMBLEDON 6201/5

Factory:
SAUNDERTON, BUCKINGHAMSHIRE
Tel: PRINCES RISBORO 480/4

BRANCHES AT:— ABERDEEN • BRIGHTON • BIRMINGHAM • BRISTOL • CARDIFF • DUNDEE
EDINBURGH • EXETER • GLASGOW • HIGH WYCOMBE • HULL • LEEDS • LIVERPOOL • LONDON
MANCHESTER • NOTTINGHAM • NEWCASTLE • PLYMOUTH • PORTSMOUTH • SOUTHAMPTON



BRIGHTER OUTLOOK

When present restrictions on building are lifted and there is scope for greater individuality, architects will be able to include in their plans a greater abundance of light and air, and wider views of the world outside. More spacious windows will span exterior walls; porches will

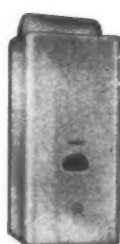
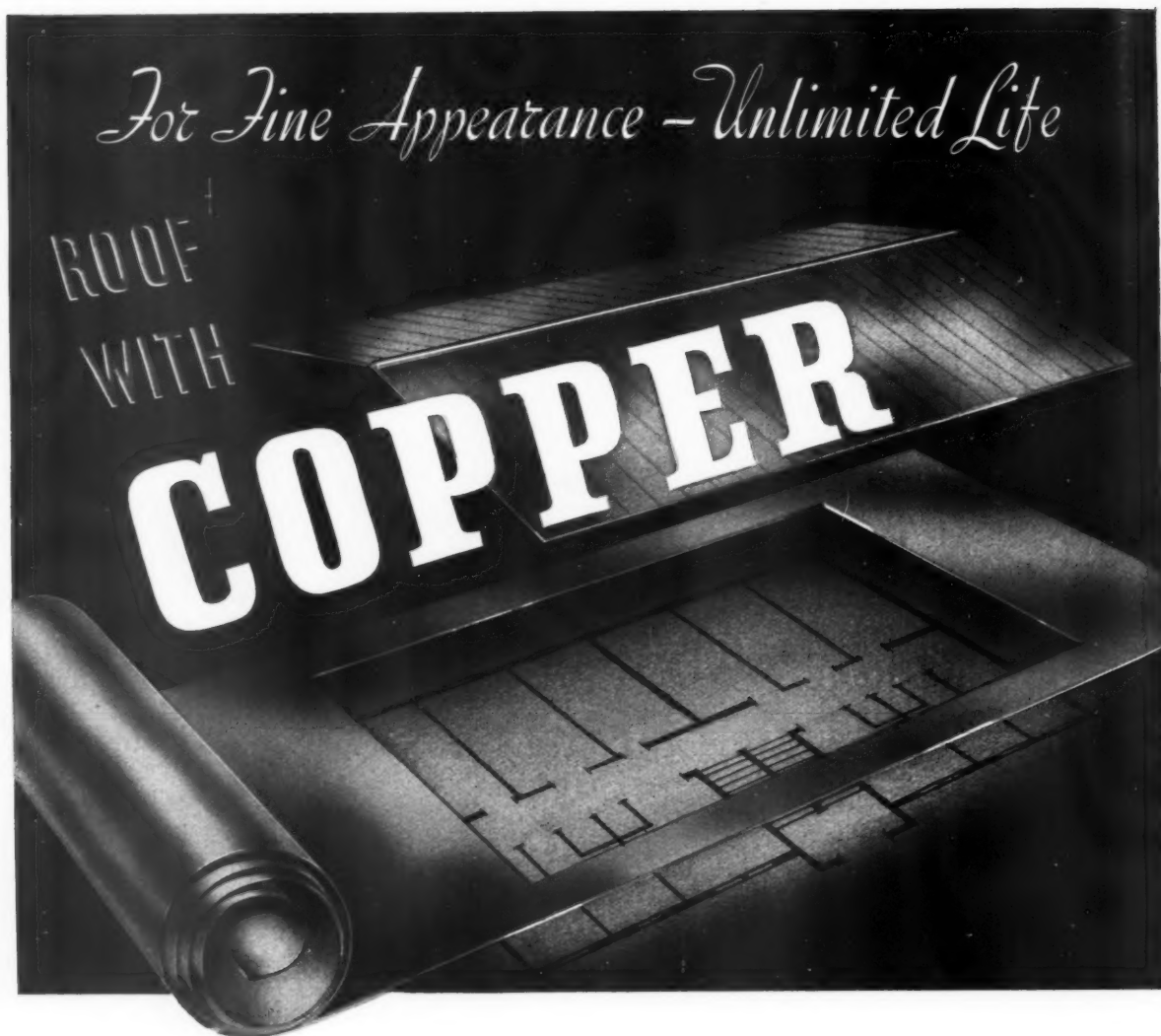
be framed in hollow glass blocks; kitchens and bathrooms will be lined with coloured "Vitrolite", for glass will undoubtedly play a major part in the new architectural era.

Pilkington Brothers Limited will be amply equipped to meet this demand for glass.

PILKINGTON BROTHERS LIMITED

Architects and architectural students are invited to consult our Technical Department at St. Helens, or our London Office, regarding the properties and uses of glass in building.

PILKINGTON BROTHERS LIMITED, St. Helens, Lancashire. London Office & Showrooms, 63 Piccadilly, W.1. Telephone: Regent 4281



*Gas saves Coal—
get your Hot Water
from a EWART
GAS GEYSER*



Household Services
Section, Stand No. 106
(Facing British Gas
Council Stand).

Call at EWART
Showrooms, 169
Regent Street,
London, W. 1.

COPPER is the ideal roofing material. A Copper Roof is highly resistant to atmospheric conditions; protected by its beautiful "patina" it gives almost unlimited life; it is extremely fire-resistant and does not "creep"—expansion and contraction is so small that permanent welded and watertight joints are possible. For over a century Ewart have enjoyed a national reputation as the specialists in copper roofing—their experience includes the roofing of the most important buildings throughout the country.

EWART

Specialists in Copper Roofing & Ventilation.

EWART & SON, LTD. 169 REGENT ST. W. 1. WORKS: LETCHWORTH, HERTS. ESTD. 1834.

PRICES

The regular feature prepared by Davis, Belfield and Everest, Chartered Quantity Surveyors, summarises basic material prices as increases over pre-war figures, and gives labour rates and grade classifications for the London District. Detail prices of materials are published quarterly.

BASIC MATERIALS	Increase over pre-war prices at end of										
	Mar. 1946	Apr. 1946	May 1946	June 1946	July 1946	Aug. 1946	Sept. 1946	Oct. 1946	Nov. 1946	Dec. 1946	Jan. 1947
Portland cement ..	Per cent. + 56.10	Per cent. + 56.10	Per cent. + 56.10	Per cent. + 56.10	Per cent. + 56.10	Per cent. + 56.10	Per cent. + 56.10	Per cent. + 56.10	Per cent. + 51.22	Per cent. + 51.22	Per cent. + 51.22
2-in. Unscreened ballast ..	+ 117.58	+ 117.58	+ 117.58	+ 117.58	+ 126.09	+ 126.09	+ 126.09	+ 143.48	+ 143.48	+ 143.48	+ 143.48
Fletton bricks (at station)	+ 36.22	+ 36.22	+ 49.19	+ 49.19	+ 51.35	+ 51.35	+ 51.35	+ 51.35	+ 51.35	+ 51.35	+ 51.35
Stoneware drainpipes (British Standard) (2 tons and over) ..	+ 43.75	+ 72.92	+ 87.50	+ 109.37	+ 109.37	+ 109.37	+ 109.37	+ 109.37	+ 109.37	+ 109.37	+ 109.37
Roofing tiles ..	+ 86.90	+ 86.90	+ 101.88	+ 101.88	+ 101.88	+ 101.88	+ 101.88	+ 101.88	+ 101.88	+ 101.88	+ 101.88
Steel joists (basic sections ex mills) ..	+ 50.03	+ 50.03	+ 50.03	+ 50.03	+ 50.03	+ 57.72	+ 57.72	+ 57.72	+ 57.72	+ 57.72	+ 57.72
Lime greystone ..	+ 57.65	+ 57.65	+ 57.65	+ 67.06	+ 67.06	+ 70.60	+ 70.60	+ 70.60	+ 70.60	+ 70.60	+ 70.60
Sheet lead ..	+ 84.79	+ 113.72	+ 113.72	+ 113.72	+ 197.82	+ 197.82	+ 197.82	+ 202.17	+ 202.17	+ 202.17	+ 269.57
Iron rainwater goods and soil pipes ..	+ 70.60	+ 70.60	+ 70.60	+ 82.37	+ 82.37	+ 84.72	+ 84.72	+ 84.72	+ 84.72	+ 84.72	+ 84.72
White lead paint ..	+ 46.21	+ 47.41	+ 47.41	+ 47.41	+ 65.15	+ 65.15	+ 65.15	+ 65.15	+ 65.15	+ 65.15	+ 65.15
RATES OF WAGES (Central London Area)											
Labourers ..	+ 60.32	+ 60.32	+ 60.32	+ 60.32	+ 60.32	+ 60.32	+ 60.32	+ 60.32	+ 60.32	+ 60.32	+ 60.32
Craftsmen ..	+ 50.00	+ 50.00	+ 50.00	+ 50.00	+ 50.00	+ 50.00	+ 50.00	+ 50.00	+ 50.00	+ 50.00	+ 50.00

LABOUR—Rates of Wages Since January 1, 1946

LONDON DISTRICT	Craftsmen	Labourers	N.B.—Prices of materials include for delivery to site in the Central London Area unless otherwise stated.
Within 12 miles radius ..	2s. 7½d.	2s. 1½d.	
From 12-15 ..	2s. 7d.	2s. 1d.	

GRADE CLASSIFICATIONS

	A	A¹	A²	A³	B	B¹	B²
Craftsmen ..	2/6	2/5½	2/5	2/4½	2/4	2/3½	2/3
Labourers ..	2/-	1/11½	1/11½	1/11	1/10½	1/10	1/9½

T. A. Davis

F.S.I., F.I.Arb.

assembled of 5, and the 75 ft. span bridges of 3 sections. The fabrication of the three types of section was arranged to be as simple as possible and two jigs could be used for any section. When the first bridge was completed, the deflections were checked and found to be so small as to be difficult to observe or measure. In service the bridges proved rigid and equal to the requirements of the specification.

21.2 construction: miscellaneous MECHANICAL EQUIPMENT

Mechanical or Earth-Moving Equipment. L. F. Goodwin. (Journal of the Institution of Municipal and County Engineers, October, 1946. Vol. LXXIII, p. 151.)

Survey of recent advances in heavy earth-moving equipment. Emphasis on tractor-drawn plant. Brief description of each type of machine with output tables and operation data. Useful summary for the non-technical. 31 figures illustrating use.

Even that ubiquitous machine, the bulldozer, was hardly known in this country before the war, but military needs brought into use here a whole range of tractor-operated excavating plant originally developed in the United States. The potentialities of this type of plant are still insufficiently realised, and it is the object of this paper to provide a condensed survey of what these machines can do, and how they are best operated. The author's illustrations are well designed to achieve this object, and as a non-technical summary the paper should prove useful. No important types of plant in general use seem to be omitted.

24.9 lighting REDUCING HEAT GAIN

Lighting and Air Conditioning. Part V. Ways to Reduce Heat Gain. Howard M. Sharp. (Lighting and Lamps, USA, August, 1946, p. 38.)

Fifth instalment of series on relation of lighting to air conditioning. Some useful details on heat gain by solar radiation.

These articles are interesting for the way they show the need for a co-ordinated treatment of heating, air-conditioning and lighting. This instalment in particular emphasises the fact that if one factor is wrong others may be blamed for the trouble.

Among detailed points are some useful statements about exclusion of solar heat, figures being given for the value of single, double and triple glazing, for glass bricks, and also for awnings and shutters. Attention is drawn to the appreciable increase in efficiency obtained by placing venetian blinds outside rather than inside windows. Values are quoted. There is a brief reference to heat-resisting glasses. This article will be particularly useful to architects working in hot sunny climates.

26.1 services and equipment: miscellaneous ELECTRIC COOKERS

Domestic Electric Ovens. Part I. Cooking Tests. B.S. 1315, Part I: 1946. (British Standards Institution, 2s. 0d.)

Conditions of test for performance of domestic electric cookers. Valuable as another step towards achievement of performance.

This feature answers any question connected with building confidentially and free of charge. Questions should be sent to the Technical Editor, The Architects' Journal, 13, Queen Anne's Gate, S.W.1.

QUESTIONS AND ANSWERS

2883 CLEANING STABLE FLOOR

Q An old stable is to be converted to a flat. How should the floor be treated to prevent fumes from years of impregnation rising through a new floor? Treatment with chemicals is likely to be preferred to the excavation and removal of old paving.

A The removal of accumulated secretions is the only way to prevent fumes rising from an old stable floor.

It is not recommended that this should be done with strong chemicals, but that the floor should be thoroughly scraped and then scrubbed down with boiling soda water using a hard yard brush. The floor should then be washed with a solution containing 5 per cent. lysol or similar carbolic preparation. In certain cases, depending on the nature of the floor, the surface can be gone over with a blow lamp.

You do not state what type of floor is existing but it has been assumed that it has some sort of cement finish. Should the floor be of cobbles or of wood the removal of this is the only method.

'BELGRAVIA' HOT CLOSET
AND CARVING TABLE

THE "GROSVENOR"
CENTRAL RANGE
WITH BAIN-MARIE

Four units as shown above
or any number of units
may be assembled

VEGETABLE
& PUDDING STEAMER

The Planning Department of Radiation Ltd.
will be pleased to advise on all problems
affecting worn-out or obsolete cooking
appliances; and will prepare new layouts
for the inclusion in existing installations of
improved and new apparatus which will
shortly be available for the speedy and
economical servicing of meals.

Radiation Ltd

RADIATION HOUSE, ASTON, BIRMINGHAM, 6. PALATINE WORKS, WARRINGTON
Showrooms and London Offices: 7 STRATFORD PLACE, LONDON, W.1

MAKERS OF THE REGULO NEW WORLD GAS COOKERS, SILENT BEAM FIRES
AND NEW WORLD WATER HEATERS

Consult



SERVICE

TELECOMMUNICATION and Time Control installations are now free of Government licence. Architects and Consultants who are considering new installations of the most modern type would do well to consult with Telephone Rentals Ltd.

We have been occupied with all types of installations for upwards of 40 years, principally but not exclusively upon a rental-maintenance basis. The firm is exceptionally well placed both to offer advice to professional men and also to carry out the installation and maintenance of the equipment itself in any part of the country, upon terms most suitable to professional men and their clients.

TELEPHONES

•

STAFF LOCATION

•

FACTORY BROADCASTING AND MUSIC

•

TIME RECORDING

Synchronised Clocks
Signals and Recorders

There are more than
200,000 T.R. Tele-
communication Instru-
ments in daily use
throughout the Country.

Telephone Rentals

LTD

Head Office :

DEPT. P2 • KENT HOUSE

RUTLAND GARDENS • KNIGHTSBRIDGE • LONDON • S.W.7

Telephone : KENsington 9201-5

Branches in LONDON • BIRMINGHAM • BRISTOL • CARDIFF • LEEDS
MANCHESTER • NEWCASTLE-ON-TYNE • SHEFFIELD • GLASGOW
BELFAST • DUBLIN: and Maintenance Engineers throughout the Country.

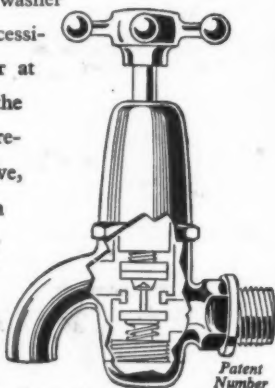
Telephone Rentals Ltd., is an organisation that has developed from the original office telephone business founded in 1903

For the new building

A NEW TAP

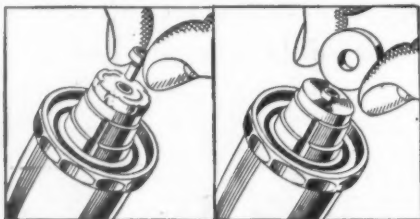
automatically turns off water while washer is being changed

Architect and builder will recognise in the *Shaff Tap* a practical and worth-while development in water-tap design. For changing a washer of a *Shaff Tap* does not necessitate turning off the water at the main or stop-tap. As the head is unscrewed and removed the secondary valve, located in the bottom housing, automatically stops the flow.



WASHER CHANGED IN 30 SECONDS!

Another time and trouble-saving feature is the absence of a nut to hold the washer in position. A spindle pin, easy to withdraw and re-insert, is substituted. In less than a minute a novice can change the washer on a *Shaff Tap*.



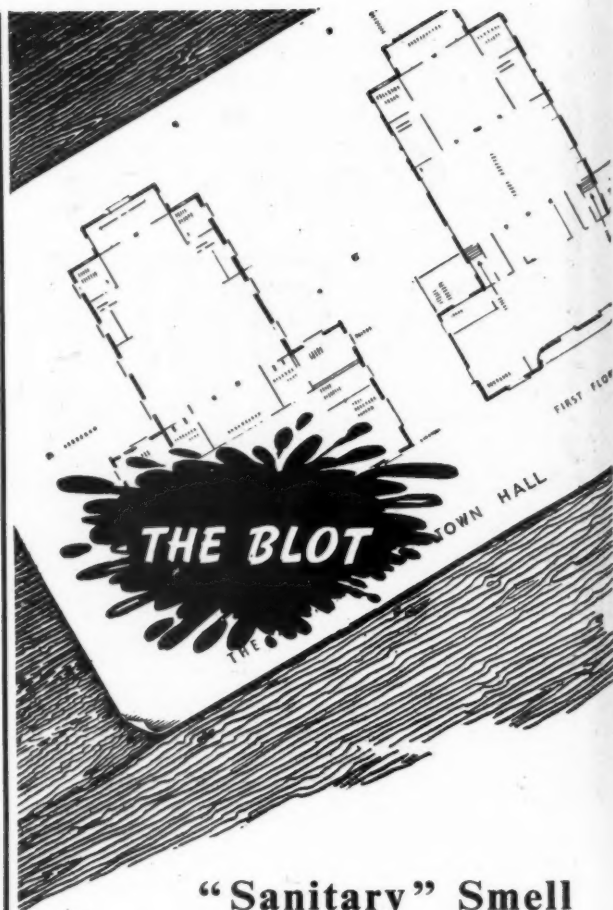
Shaff Taps

Possessing the above patented features and otherwise conforming to British Standard 1010 in quality and dimension, this tap has been accepted by the Metropolitan and many other Water Boards in U.K. and throughout the world.

Write for fully descriptive leaflet to:—

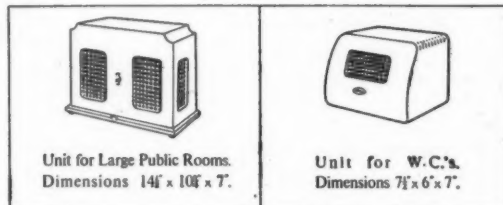
JAMES SHAFFER LTD
82-106 Cricklewood Lane, N.W.2

Tel.: Gladstone 3311/9. Grams.: 'Shaff, Crickle, London' an at South Shields.



"Sanitary" Smell

can be the blot on the most carefully planned public building. In spite of thorough ventilation, the air in the corridors carries unpleasant suggestions which are merely advertised when attacked by pungent chemicals. By installing Ozono Air-Conditioning units, the smell is destroyed at the source and the air in public toilets, wash-rooms and corridors is kept odour free. In crowded assembly rooms, also, Ozono units keep the air fresh and free from the oppressive staleness usually associated with confined gatherings.



OZONO

AIR CONDITIONER

E.C.D. LIMITED ENGINEERS
TONBRIDGE KENT TONBRIDGE 737



*"You have to live
with wood, sir"*

SCIENCE and mechanisation are playing a big part these days in timber and joinery, sir—yet there's still a place for craftsmen in the trade. "I've been working in wood for forty years, and I'm still learning about timber . . . you have to live with it to know it, and then you don't know it all.

"There's a lot like me and a good many keen young chaps who're learning fast, and between us there's few questions we can't answer."

● *There are few problems that the collective experience at Duncan Tucker's cannot answer . . . perhaps that is why a Duncan Tucker job is a good one.*

Duncan Tucker
(TOTTENHAM) LTD. ESTD. 1830

Manufactured Woodwork Division:

LONDON, N.15 • Telephone: Stamford Hill 2212 (8 lines)

WE ARE MEMBERS OF **EJMA** AND ARE ABLE

TO SUPPLY ALL **EJMA** STANDARD PRODUCTS

DREADNOUGHT

*Fireproof
Doors*



DREADNOUGHT FIREPROOF DOORS

*are particularly well adapted for all
openings where Fire Risks occur
in Cine Buildings, Libraries,
Office Blocks, etc., where a
good appearance is essential.*

DREADNOUGHT FIREPROOF DOORS (1930) LTD.
25, VICTORIA STREET, WESTMINSTER, S.W.1.

MOLER PRODUCTS LIMITED

Hythe Works
COLCHESTER
Tel: Colchester 3191

"FOSALSIL"

Flue Bricks and Setting Powder

"FOSALSIL"

Aggregate for Insulating Concrete

**FLUE
BRICKS
POWDERS
PARTITION
BLOCKS**

Biro

The New Writing Instrument

- Writes an average of 200,000 words without refilling.
- Writes on a ball-bearing with a velvet touch and a smooth gliding action.
- The ink dries as you write.
- Does not smudge even on wet paper
- Makes at least six perfect carbon copies.
- A boon to left-handed writers
- Does not leak at any altitude.

Retail Price: 55/- including tax

Place your order with local retailers.

All Trade Enquiries to Sole Distributors:

SIR HENRY LUNN LTD.,
(Commercial Dept.),
67, Brook Street,
London, W.1.

Made in England by:
**THE MILES MARTIN
PEN CO. LTD.,**

Patents granted
or pending

Biro
REFILL SERVICE

'Biro' Service retailers will fit a refill unit and service your 'Biro' for an inclusive charge of five shillings.

RECONSTRUCTION



The opportunity to instal

KEY FIBRE

UNDERFLOOR DUCT WIRING SYSTEM

used extensively in the most modern office buildings, service flats and factory premises, Key Fibre Ducts provide for all present and future wiring requirements. Designed for maximum flexibility, Key Fibre Ducts can be tapped where and when required, at any time during the life of the building. Key Fibre is non-condensing and non-corrodible.

Full details and specification will be supplied on application.

THE KEY ENGINEERING CO. LTD

4 QUEEN VICTORIA ST., LONDON, E.C.4.
Telephone: City 2235-6

TRAFFORD PARK, MANCHESTER
Trafford Park 1903

HILLALDAM

MANUFACTURERS OF GOOD SLIDING DOORS. (ALL SYSTEMS)

FLYASIDE

PANTHER - JAGUAR - LYNX

INTERIOR RESIDENTIAL SLIDING DOOR GEAR

E. HILL ALDAM & CO. LIMITED

WATFORD WORKS, WATFORD, LONDON S.W.18



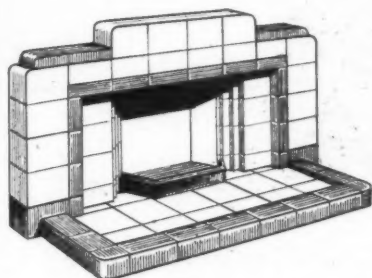
PANTHER I

Phone Wimbledon 8080

Cables Aldamilla. Put London

PROMPT DELIVERY!

of Guaranteed Fireplaces



**MADE BY EXPERT CRAFTSMEN
IN OUR OWN FACTORY**

COMPETITIVE PRICES

*May we send you Illustrations
and quote you on Special Terms.*

M. WISEPART LTD

WICK ROAD, LONDON, E.9.



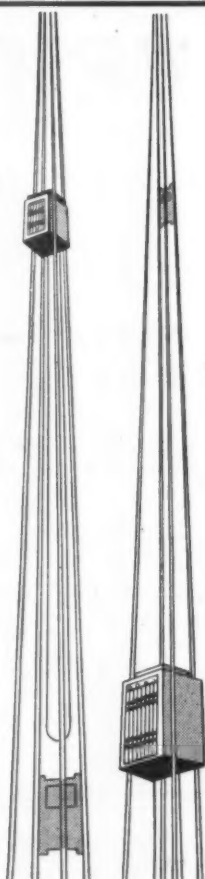
FROM THE OIL-POLL PAINTING BY LEON HODGARTH SENIOR

VOLEX AIR HEATERS ENSURE FRESH WARM AIR INDOORS

Sole Makers: T. E. SALTER LIMITED TIPTON STAFFS.

Telephone: TIPTON 1657/1658

*For Easy
Safe and
Economical
Transport*



E·C·M ELECTRIC LIFTS

Architects, Builders, Engineers and all interested
in the provision of

VERTICAL TRANSPORT for Passengers, Goods
and Service are invited to consult

ETCHELLS, CONGDON & MUIR LTD.
ANCOATS, MANCHESTER

LONDON: 25, VICTORIA STREET, WESTMINSTER, S.W.1.
Also at Liverpool, Birmingham, Sheffield, Leeds and Edinburgh.
South Wales & West of England: E. C. Jones,
20, Dumfries Place, Cardiff.



ILLUSTRATED CATALOGUE ON REQUEST



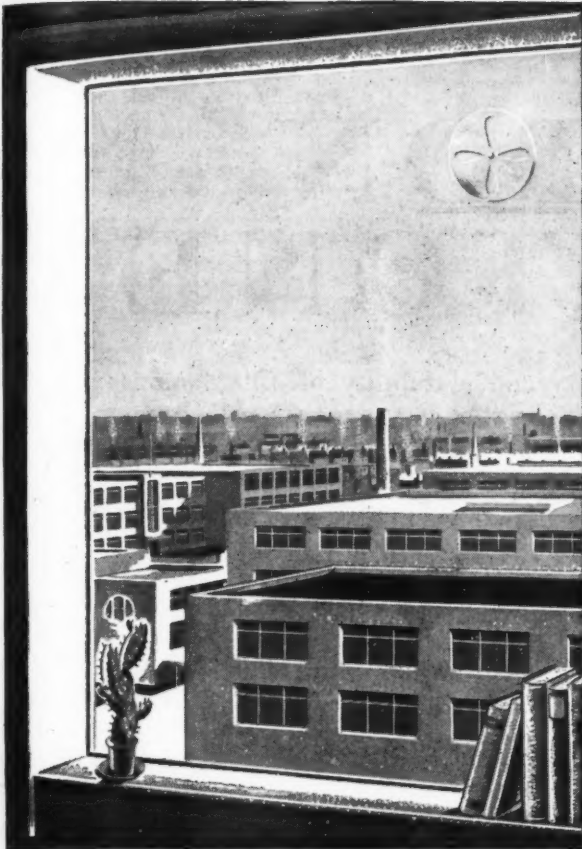
*If you could
choose your own Arteries!*

It's human nature to take for granted the important functions of the human body because nobody has any say in the choice of its components. But how much thought would be given and how painstaking would people be if the selection of their arteries were left to them. Cables are the arteries of homes and industry, the carriers of heat, light and power, to places closely associated with our everyday life. Yours is the choice here, and much depends on your decision. Will you simply say "cables and flexibles" or will you ensure trouble-free uninterrupted service by specifying Ashton Cables and Flexibles and insisting on your choice? Distributors all over the country have supplies to meet your needs and applaud the wisdom of your insistence.



MADE BY

AERIALITE LTD.
CASTLE WORKS, STALYBRIDGE, CHESHIRE



FLAT ROOFS *have come to stay!*

McNeills started to specialise in Flat roofs years ago and at once tackled the most difficult problem—how to make them *absolutely* waterproof. They succeeded so well that today many specialised waterproof covering contracts are entrusted to them.

The McNeill Bituminous Roofing is called Combinitite, it can be surface finished in Bitumen, Macadam Tile or Grit and can be used for Flat, Pitched or Belfast roofs.

Consult McNeills at the planning stage—they know so much about flat roofs that they may be able to advise you.

COMBINITE

*gives absolute waterproofing
to flat or pitched roofs*

F. McNEILL & CO., LTD.

10, Lower Grosvenor Place, London, S.W.1.

[Phone: VICToria 6022

Grams: "Eyeball" London.



CYCLONE

FANS ENSURE

EFFICIENT

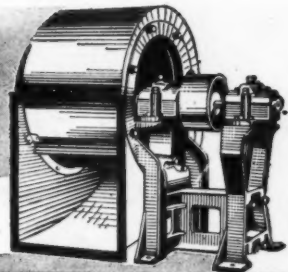
VENTILATION

— COOLING - DRYING - FUME REMOVAL Etc
★ WRITE FOR TECHNICAL BROCHURES... REF. A.J./II

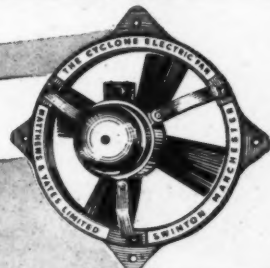
MATTHEWS & YATES LTD

SWINTON (Manchester) & LONDON

Phones: SWinton 2273 (4 lines) London CHAncery 7823 (3 lines)



"S.S." Slow Speed Multivane Fan of exceptionally low power consumption and quiet running.



Electric Propeller Fans
reversible — rotation being reversed by change-over switch — highly efficient and quiet in operation.

Also at GLASGOW, LEEDS,
BIRMINGHAM, CARDIFF

KETTON FREESTONE

All those who remember the beauty and durability of this famous limestone will welcome the news that Ketton Freestone Quarries are now in full production again after the limitations imposed by the war years.

QUARRIED AT THE KETTON FREESTONE
QUARRIES, RUTLAND AND DISTRIBUTED
By THOS. W. WARD LTD., Albion Works, SHEFFIELD

ANOTHER PART OF THE  GROUP ORGANISATION



"CONSOL"
REGD. TRADE MARK

1
STEEL (10 GAUGE)
ANCHOR FLOOR PLATES

2

3
HEAVY DUTY FLOORS
FOR EVERY INDUSTRY

FOR HEAVIER TRAFFIC CONDITIONS

1, 2 & 4—CONSOL " STEEL
ANCHOR FLOOR PLATES
Sizes: 12" x 12" & 12" x 6"

3—" FERROGRAN " STEEL FACED FLAGS
(Sizes: 12" x 12" x 2" and 12" x 12" x 1")

HEAD OFFICE
& WORKS:



WEDNESBURY
STAFFS.
Telephone: 0294
(five lines)

London Office: Artillery House, Artillery Row, S.W.1

CLASSIFIED ADVERTISEMENTS

Advertisements should be addressed to the Advl. Manager, "The Architects' Journal," War Address: 45 The Avenue, Cheam, Surrey, and should reach there by first post on Friday morning for inclusion in the following Thursday's paper.

Replies to Box Numbers should be addressed care of "The Architects' Journal," War Address: 45 The Avenue, Cheam, Surrey.

Public and Official Announcements

12 lines or under, 10s.; each additional line, 1s. 6d.

THE INCORPORATED ASSOCIATION OF ARCHITECTS AND SURVEYORS maintains a register of qualified architects and surveyors (including assistants) requiring posts, and invites applications from public authorities and private practitioners having staff vacancies. Address: 75, BAYON PLACE, LONDON, S.W.1. Tel. Sloane 5615. 901

LONDON COUNTY COUNCIL.

CLERKS OF WORKS.

Applications are invited for positions of Clerks of Works (Class II), in the Architect's Department, to supervise constructional, maintenance, and repair works at the Council's schools, hospitals, and other buildings. There may also be shortly a few Class I positions. Rates of pay (according to qualifications and experience) are: Class I, £360-£400 a year (basic), plus cost-of-living addition, at present £78-£90 a year; Class II, up to £35a. a week, plus cost-of-living addition, at present, of 30s. a week.

Successful candidates, under 55 years of age, will be subject to the Council's Superannuation and Provident Fund, but will be temporary in the first instance.

Other things being equal, preference will be given to persons registered under the Disabled Persons' (Employment) Act, 1944, and ex-Service men will also receive special consideration.

Applications (enclosing stamped addressed envelope) to be made to the Architect to the Council, County Hall, Westminster Bridge, S.E.1, for form of application.

Canvassing disqualifies. 905

LONDON COUNTY COUNCIL.

VACANCIES FOR PLANNING STAFF IN THE ARCHITECT'S DEPARTMENT FOR WORK ON THE COUNTY OF LONDON PLAN.

Applications are invited for a number of positions in the following grades:—

PLANNING OFFICER (Grade III). Up to £300 a year (basic).

TECHNICAL ASSISTANT. Up to £420 a year (basic).

Commencing rate of pay will be according to qualifications and experience. Cost-of-living addition, at present £78 to £90 a year (men), and £65 to £84 (women), are payable in addition.

There will be opportunities for competing, on merit, in due course for permanent appointment and for positions in the higher grades on the occurrence of vacancies. Successful candidates will be subject to the Council's Superannuation and Provident Fund.

The planning work involved includes assistance in the detailed development of Reconstruction Area schemes, and the preparation of revised housing plans.

A knowledge of current town planning legislation is desirable in all cases, and candidates for Grade III positions should possess architectural or surveying or town planning qualifications.

Other things being equal, preference will be given to candidates registered under the Disabled Persons (Employment) Act, 1944, and ex-Service men and women will also receive special consideration.

Application should be made to the Architect to the Council, County Hall, Westminster Bridge, S.E.1, for form of application (enclosing stamped addressed envelope), returnable not later than ten days from this date.

Canvassing disqualifies. 903

ARCHITECTURAL ASSISTANTS WANTED BY MINISTRY OF WORKS.

Applications are invited to fill vacancies for DRAWING OFFICE duties in London, Edinburgh, Newcastle-upon-Tyne, Birmingham, Tunbridge Wells, Bristol, Exeter, Manchester, Preston, Salwick, Cambridge, Nottingham and Leeds. Salary up to £510 per annum, according to qualifications and experience.

The appointments, which offer good opportunities for advancement, are in the first place in an unestablished capacity, with possibility of permanent appointment. Work is varied, giving ample scope to those seeking further experience in the design of all types of Buildings.

Applicants should have had a recognized full period of training and experience with a practising Architect or Local Authority etc.

Apply in writing, giving age, details of training and experience and indicating town or district in which employment is desired, to CHIEF ARCHITECT, W.G.10, Ministry of Works, Abell House, John Islip Street, London, S.W.1. Local interviews will be arranged where possible. 932

DEVON COUNTY COUNCIL.

Applications are invited for the appointment of a PLANNING ASSISTANT, at a salary in accordance with Grade VI of the National Scale of Salaries (£535 per annum, rising to £600 per annum), plus cost-of-living bonus, at present £59 16s. per annum, and car allowance on the County scale.

Applicants must have had considerable experience in the preparation and administration of Town Planning schemes for urban and rural areas, including supervision of staff, and must be Corporate Members of the Town Planning Institute.

The appointment will be subject to one month's notice on either side and to the provisions of the Local Government Superannuation Act, 1937. The person appointed will be required to pass a medical examination.

Applications, giving full particulars of age, qualifications, experience, and present and past appointments, accompanied by copies of three recent testimonials, should be sent to the County Planning Officer, New North Road, Exeter, so as to reach him not later than 5th March, 1947.

A. J. WITHEYCOMBE.

Clerk of the County Council.

The Castle, Exeter. 894

DEPARTMENT OF HEALTH FOR SCOTLAND. SENIOR PLANNING OFFICERS AND PLANNING OFFICERS.

Applications are invited by the Department of Health for Scotland for appointment in Edinburgh to (a) three posts of Senior Planning Officer, and (b) about twelve posts of Planning Officer. The majority of these appointments will be on a permanent basis.

Candidates appointed to the senior posts will be employed either as Regional Planning Officer or as Senior Appeals Inspector. Planning Officers will be allocated to the Planning Regions Section, the Appeals Inspectorate, or to the staff engaged on planning technique, but two will be required as research officers (a) to correlate information on economic, social and industrial factors which affect planning, and (b) to act as maps officer.

The salary scales (both for the permanent and temporary appointments) are as follows:—

Senior Planning Officer: Men, £1,010×£30—£1,200; women, £870×£30—£1,035.

Planning Officer: £730×£30—£970; women, £610×£25—£830.

The above salary scales do not include consolidation additions, which at present range (a) for Senior Planning Officer from £105 (men), £84 (women), at the minimum to £120 (men), £96 (women), at the maximum, and (b) for Planning Officer from £90 (men), £72 (women), at the minimum to £105 (men), £84 (women), at the maximum.

If a successful applicant for one of the permanent appointments is a pensionable official of a local authority, the Local Government and Civil Service (Superannuation) Rules, 1936, will apply.

Candidates must be between the ages of 30 and 49 on 1st January, 1947. Those applying for appointment to the two research officer posts referred to above must have a good University degree in economic geography. Candidates for the other appointments must be members of the T.P.I., and preference will be given to those having a basic qualification in Architecture, Engineering, or Surveying.

Applications will be considered from candidates in the Forces who expect to be released in the near future.

Forms of application, with further particulars of the appointments, may be obtained from the Establishment Officer (Room 5), Department of Health for Scotland, St. Andrew's House, Edinburgh, 1, or from the Chief Officer, Civil Service Commission, at the following addresses:—(India), 10, Underhill Lane, Delhi; (Egypt), 8, Sharia Tolmibat, Garden City, Cairo; (Italy), c/o G.H.O., C.M.F.; (Germany), c/o 2nd Echelon, G.H.Q., B.A.O.R. Completed application forms must be returned direct to the Department of Health for Scotland not later than the 15th March, 1947.

Those candidates who appear best qualified will be required to attend a Selection Board in Edinburgh or London. 803

KENT COUNTY COUNCIL.

Applications are invited from Fellows or Associates of the Royal Institute of British Architects for two appointments on the permanent staff of the Buildings Department as PRINCIPAL ASSISTANT ARCHITECTS, each at a commencing basic salary of £700, rising by annual increments of £25 to £800 a year, plus cost-of-living bonus, at present £59 16s. a year.

The posts are superannuable, and the successful candidates will be required to pass a medical examination.

Candidates must have had wide experience in the planning, designing and construction of public buildings, particularly schools, be used to staff control, and have had considerable administrative experience.

Applications, on a form obtainable from the County Architect, Springfield, Maidstone, must be delivered to him, duly completed, not later than the 28th February, 1947.

W. L. PLATTS.

Clerk of the County Council.

County Hall, Maidstone.

3rd February, 1947. 898

COUNTY BOROUGH OF DERBY.

BOROUGH ARCHITECT'S DEPARTMENT.

Applications are invited for the following appointments, on the permanent staff, in accordance with the National Scale of Salaries:—

(a) ONE CHIEF ASSISTANT ARCHITECT (EDUCATION). Grade VIII. Salary, £625-£700 per annum.

Applicants should be Associate R.I.B.A., with good experience of Architectural work, especially in the design and construction of Schools and Educational Buildings generally.

(b) ONE ASSISTANT ARCHITECT. Grade VI. Salary, £535-£600 per annum.

Applicants should be Associate R.I.B.A., with good experience of work undertaken by a Local Authority.

(c) ONE JUNIOR ARCHITECT. Grade I. Salary, £330-£375. Applicants should have passed the preliminary examination of the R.I.B.A., and have had experience in general architectural work.

Cost-of-living bonus, at present £59 16s. (male), will be payable in all cases.

The appointments will be subject to one month's notice in writing on either side, and to the terms of the National Joint Council's Scheme of Conditions of Service, and the provisions of the Local Government Superannuation Act, 1937, and the successful applicants will be required to pass a medical examination.

Applications should be tabulated, showing age, qualifications, present salary, previous experience, and date when available, accompanied by copies of three recent testimonials, and delivered to Thos. W. East, F.R.I.B.A., Borough Architect, The Council House, Corporation Street, Derby, to arrive not later than Friday, 21st February, 1947.

Canvassing directly or indirectly, will be a disqualification.

C. ASHTON, M.A.,

Town Clerk.

Market Place, Derby.

17th January, 1947. 818

NORFOLK COUNTY COUNCIL.

COUNTY ARCHITECT'S DEPARTMENT.

Applications are invited for the appointment of an ASSISTANT ARCHITECT, on National Grade V, £460-£510 per annum, plus bonus (at present £59 16s. per annum). Candidates should have a good general knowledge and experience, must be registered architects, and preferably hold a recognized Architectural qualification.

The appointment will be subject to the Local Government Officers' Superannuation Acts, to a satisfactory medical certificate, and to one month's notice on either side. National Scheme of Service Conditions will apply.

Applicants must state age, qualifications, full details of training and experience, particulars of previous appointments, with dates, salaries and designations; the names and addresses of three persons to whom reference may be made must be stated. Applications to be delivered to Mr. C. H. Thurston, L.R.I.B.A., P.A.S.I., County Architect, 25, Thorpe Road, Norwich, not later than 21st February, 1947.

H. OSWALD BROWN,

Clerk of the Council.

County Offices, Thorpe Road, Norwich.

28th January, 1947. 851

COUNTY BOROUGH OF BIRKENHEAD.

Applications are invited for the following appointments from candidates having the necessary qualifications and experience.

Members of H.M. Forces will be eligible to apply.

(a) SENIOR TOWN PLANNING ASSISTANT. Salary £450 per annum, rising to £510 per annum in accordance with Grade V of the National Scale of Salaries, plus bonus, at present £59 16s. per annum.

Applicants must have had considerable experience in the preparation of Town Planning Schemes, and dealing with Interim Development Applications. Preference will be given to candidates who hold the qualifications of A.M.T.P.I.

(b) TOWN PLANNING ASSISTANT. Salary £360 per annum, rising to £405 per annum in accordance with Grade II of the National Scale of Salaries, plus bonus, at present £59 16s. per annum. Applicants must have completed satisfactory training in Town Planning, and have had experience in the preparation of Town Planning Schemes, and consideration of Interim Development Applications.

The positions are subject to the Local Government Superannuation Act, 1937, and the persons appointed will be required to contribute the appropriate percentage of their salaries to the Corporation's Superannuation Scheme.

The appointments are subject to one month's notice on either side, and the successful candidates will be required to pass a medical examination.

Applications must be submitted in accordance with the particulars to be obtained from the Borough Engineer and Surveyor, together with copies of three recent testimonials, which should be enclosed in a plain envelope, endorsed in accordance with the position for which application is being made, and delivered to me not later than Monday, the 3rd March, 1947.

E. W. TAME.

Town Clerk.

Town Hall, Birkenhead.

25th January, 1947. 866

SOUTH-EAST KENT JOINT PLANNING COMMITTEE.

APPOINTMENT OF DRAUGHTSMAN.
Applications are invited for the post of Draughtsman, at a salary in accordance with the National Scale, viz., General Division for persons aged 26 or under and thereafter on the Miscellaneous Division, Grade I or II, up to a maximum of £350 p.a. (plus cost-of-living bonus), according to qualifications and experience. The post is superannuable. The successful candidate will be appointed to the Staff of the Kent County Council and seconded to the service of the Joint Committee at Ashford. Applicants should have had experience in the preparation of plans and maps in connection with town and country planning, and must be neat and expeditious draughtsmen. Application, in own handwriting, stating age, qualifications and experience, accompanied by copies of not more than three recent testimonials, should be received by me not later than 20th February, 1947.

J. SUDLOW,
Hon. Secretary.

Council Offices, "The Cedars," Church Road, Ashford, Kent. 819
29th January, 1947.

CORPORATION OF LONDON.

CITY SURVEYOR'S OFFICE.

APPOINTMENT OF TECHNICAL STAFF.
Applications are invited for the following appointments, in the City Surveyor's Office:—

ARCHITECTURAL ASSISTANTS. Salary £350, inclusive of consolidated bonus.

Applicants should be students of the Royal Institute of British Architects or probationers of the Royal Institution of Chartered Surveyors (Building sub-division). The appointments are for the present on a temporary basis, and will be concerned principally with the reinstatement of war damage to a variety of types of properties. There will be a possibility of establishment for suitable men, and temporary service will count for the purpose of superannuation. Such appointments will be subject to the provisions of the Local Government Superannuation Act, 1937, and applicants will be required to pass a medical examination.

Previous experience with a Municipal Body is not essential.

Applications, endorsed "Technical Staff," to be made to George Holliday, P.S.I., The City Surveyor, 55-61, Moorgate, E.C.3, giving the following particulars: Service with Armed Forces, age, qualification or intentions in connection therewith, previous training, positions and experience, date when available to commence duties if selected, together with copies of two testimonials. 805

HUNTINGDONSHIRE COUNTY COUNCIL.
COUNTY ARCHITECT'S DEPARTMENT.
APPOINTMENT OF ARCHITECTURAL ASSISTANT (GRADE V).

Applications are invited for the above-named appointment. Salary in accordance with National Grade V, £460-£15-£15-£20-£510 per annum, plus cost-of-living bonus, at present £59 16s.

Experience in connection with school buildings will be an advantage.

The appointment will be subject to the Local Government Superannuation Act, 1937, and the successful candidate will be required to pass a medical examination.

The appointment is terminable by one month's notice on either side.

Applications, stating age, qualifications, experience, and date on which duties could be commenced if appointed, together with copies of testimonials, should be sent to Mr. T. H. Longstaff, M.Inst.C.E., F.R.I.B.A., County Architect, Walden House, Huntingdon, by not later than Friday, 21st February, 1947.

J. B. KELLY,

Clerk of the County Council.

Council Offices, Old Grammar School, Huntingdon. 860

COUNTY OF LINCOLN—PARTS OF

KESTVEN.

COUNTY ARCHITECT'S DEPARTMENT.

Applications are invited for the appointment of TWO ARCHITECTURAL ASSISTANTS, in the County Architect's Department. Experience in Education and General County work is desirable.

Salary will be in accordance with National Scales (A.P.T. Division, Grade V), i.e., £460, rising by annual increments of £15 and £20 to a maximum of £510 per annum, plus cost-of-living bonus of £59 16s. per annum on the Council's scale. Travelling and subsistence allowances will also be paid.

The appointments are subject to the provisions of the Local Government Superannuation Act, 1937, to satisfactory medical certificates, and to termination by one month's notice in writing on either side.

Applications, stating age, experience and qualifications, present appointment and salary, together with copies of two recent testimonials, should be received by the undersigned not later than the 26th February, 1947.

Canvassing, either directly or indirectly, will be a disqualification.

J. E. BLOW,

Clerk of the County Council.

County Offices, Stamford, Lincs. 826

CITY OF LINCOLN.

CITY ENGINEER'S DEPARTMENT.

Applications are invited for the following appointments:—

(a) **SENIOR ARCHITECTURAL ASSISTANT.** Grade V, A.P.T. Division. Salary, £460-£510 per annum.

Candidates should be Associate Members of the Royal Institute of British Architects (or hold equivalent qualifications), and have good experience in general architectural work, including school planning and design, and in the preparation of working drawings and specifications.

(b) **ENGINEERING ASSISTANT.** Grade IV, A.P.T. Division. Salary, £420-£465 per annum. Candidates must have passed the examination of the Institution of Civil Engineers, or the Institution of Municipal and County Engineers, and have had experience in the preparation of plans, quantities, estimates for road and bridge construction, and the general work of a Municipal Surveyor's Department.

Applications for each appointment, stating age, qualifications and experience, and whether housing accommodation would be required, should be forwarded to the City Engineer and Surveyor, Silver Street, Lincoln, not later than Wednesday, 19th February, 1947.

J. H. SMITH,

Town Clerk.

Corporation Offices, Lincoln. 829
25th January, 1947.

BOROUGH OF SLOUGH.

Applications are invited from persons not liable for military service for the permanent appointment of **SENIOR ASSISTANT ARCHITECT**, within Grade A.P.T., V, of the National Scales, at a commencing salary of £460 per annum, rising by two annual increments of £15 and one of £20 to a maximum of £510 per annum, plus cost-of-living bonus (at present £59 16s. per annum). Preference will be given to applicants who are Associates of the Royal Institute of British Architects.

The appointment will be terminable by one month's notice on either side, and will be subject to the Local Government Superannuation Act, 1937, and to the successful candidate passing satisfactorily a medical examination.

Canvassing, either directly or indirectly, will be disqualifying.

Applications, on forms to be obtained from the Borough Engineer, Mr. E. Gardner Thorp, M.Inst.C.E., Town Hall, Slough, must be sent in a sealed envelope endorsed "Senior Assistant Architect," so as to reach the undersigned not later than Friday, 21st February, 1947.

NORMAN T. BERRY,

Town Clerk.

Town Hall, Slough. 844
6th February, 1947.

COUNTY OF LINCOLN—PARTS OF LINDSEY.
COUNTY ARCHITECT'S DEPARTMENT.

Applications are invited from suitably qualified persons having a modern outlook for the following appointments, on the permanent staff, at salaries in accordance with the National Scales.

(a) **ONE SENIOR QUANTITY SURVEYOR** (Grade VI), £535 per annum, rising to £600, plus bonus.

(b) **THREE SENIOR ASSISTANT ARCHITECTS** (Grade V), £460 per annum, rising to £510, plus bonus.

(c) **SENIOR ASSISTANT ARCHITECT** (Grade IV), £420 per annum, rising to £465, plus bonus.

(d) **ONE CLERK OF WORKS** (Grade IV), £420 per annum, rising to £465, plus bonus.

The cost-of-living bonus is at present £59 16s. per annum.

Candidates for (a) should be members of the Surveyors' Institution, and should have had good experience in preparing Estimates, Bills of Quantities, and Final Certificates.

Candidates for (b) should be members of the R.I.B.A., and should have had experience in architectural design and construction, especially in the design and erection of modern Educational Buildings. The successful candidates will be expected to provide their own cars, for which an allowance on the County Council's scale for an 8 h.p. car will be made.

Candidates for (c) should be members of the R.I.B.A. or Registered Architects, and should have had a sound experience in architectural design and in the preparation of working drawings.

Candidates for (d) must have had a wide experience in all classes of building, be able to set out jobs, and have had experience as a general Foreman or a Clerk of Works on large building contracts. The successful candidate will be required to live in the centre of his district, and must provide his own car, for which an allowance on the County Council's scale for an 8 h.p. car will be made.

The appointments will be terminable by one month's notice on either side, and will be subject to the provisions of the Local Government Superannuation Act, 1937. The successful candidates will be required to pass a medical examination.

Applications, which should state age, qualifications, experience, and present appointment, and be accompanied by not more than three testimonials, should be sent as soon as possible to the undersigned.

ERIC W. SCORER,

Clerk of the County Council.

County Offices, Lincoln. 845

ANGLESEY COUNTY COUNCIL.

COUNTY ARCHITECT'S DEPARTMENT.

Applications are invited for the following appointment, in the County Architect's Department:—

ONE SENIOR ASSISTANT ARCHITECT. Salary in accordance with the National Scale, Grade A.P.T., IV, commencing at £420 per annum, and rising by annual increments of £15 to £465, plus cost-of-living bonus, at present £59 16s. per annum.

Candidates should be Registered Architects and Members of the Royal Institute of British Architects, with good experience in general architectural work, especially schools, also in the preparation of working drawings and specifications.

The appointment will be subject to the provisions of the Local Government Officers' Superannuation Act, 1937, and the successful candidate will be required to pass a medical examination.

The appointment will also be subject to one month's notice on either side.

Applications, in plain envelopes endorsed "Senior Assistant Architect," stating age, qualifications, training and experience, giving particulars of present and past appointments, accompanied by copies of three recent testimonials, must be delivered to the undersigned not later than 24th February, 1947.

WILLIAM JONES,

Clerk of the County Council.

Shire Hall, Llangefni, Anglesey. 88
30th January, 1947.

BOROUGH OF TORQUAY.

APPOINTMENT OF SENIOR ARCHITECTURAL ASSISTANT.

Applications are invited for the appointment of Senior Architectural Assistant, in the permanent establishment of the Borough Surveyor's Architectural Department, on the salary scale, Grade V, A.P.T. Division, £460-£15-£20-£510 per annum, plus cost-of-living bonus, at present £59 16s. per annum.

Candidates should preferably be Associates of the Royal Institute of British Architects, and should have had experience in the design and construction of modern buildings.

The post is an established post, subject to the provision of the National Scheme of Conditions of Service, and the Local Government Superannuation Act, 1937 (and the Council's regulations thereto).

The successful candidate will be required to pass a medical examination, and the appointment will be terminable by one month's notice on either side.

Whilst no guarantee can be given, the Council will endeavour to obtain living accommodation for the successful applicant within a reasonable time of appointment.

Applications, endorsed "Senior Architectural Assistant," giving details of qualifications, experience, age, etc., together with copies of three recent testimonials, should be sent to the Borough Surveyor, Town Hall, Torquay, not later than Saturday, 22nd February, 1947.

HERBERT A. HIELD,

Town Clerk.

Town Hall, Torquay. 88
23th January, 1947.

ENNISKILLEN URBAN DISTRICT COUNCIL.
APPOINTMENT OF ARCHITECT (TEMPORARY).

The Enniskillen Urban District Council invite applications for the position of Architect (Temporary).

The primary duty of the person appointed will be to prepare a housing scheme and supervise its execution, also to examine and report on plans for subsidy houses submitted by private persons, and such other duties as may be allotted by the Council to the Architect.

Candidates must be Registered Architects, holding the diploma of A.R.I.B.A., or approved equivalent qualification, and should have wide experience in the design of buildings and dwellings, site planning and lay-out, and the carrying out of important housing schemes.

The probable duration of the work will be at least two years, and the person appointed must devote his whole time to the duties of the office, and will not be allowed to engage in private practice. The salary payable will be at the rate of £600 per annum, together with war bonus at the approved scale (at present £90 per annum), and will be inclusive of all fees, etc.

The appointment will be subject to the sanction of the Ministry of Health and Local Government, and may be terminated at any time by one month's notice in writing on either side.

Selected candidates may be required to attend for interview, when vouched travelling expenses will be paid. The person appointed will be required to take up duties as soon as possible.

Preference will be given to suitably qualified ex-Servicemen.

Applications, stating age and giving full particulars of qualifications and experience, together with copies of three recent testimonials will be received by the undersigned at his office up to 12 noon on Saturday, 1st March, 1947.

(Sgd.) N. J. CONNOR,

Town Clerk.

Town Clerk's Office, Town Hall, Enniskillen. 88
30th January, 1947.

CITY OF WESTMINSTER.

Westminster City Council invites applications for the following permanent appointments in the Housing Department.

BUILDING SURVEYOR (Housing Maintenance Staff) on a salary scale in accordance with Grade VI of the National Scale of Salaries, viz., £260-£300-£250-£260 per annum, plus bonus. (The commencing salary will be dependent on the experience of the person appointed.)

Applicants should not be over 45 years of age, and should preferably be Chartered Surveyors. They should have undertaken responsibility for maintenance repairs to flats and houses, both by building contract and direct labour, and should be thoroughly competent in the preparation of specifications, detailed estimates and reports, and in the supervision of maintenance works and improvements to buildings, and in the control of workmen.

TWO THIRD ARCHITECTURAL ASSISTANTS, on a salary scale in accordance with Grade III of the National Scale of Salaries, viz., £400-£415-£455 per annum, plus bonus. (The commencing salary will be dependent on the experience of the person appointed.)

Applicants, except existing members of the Council's staff, should not be over 45 years of age, should be Registered Architects, and should have had good architectural experience.

TRACER. Salary in accordance with the General Division of the National Scale, viz., £60-£115-£264 per annum, plus bonus. The commencing salary will be dependent on age of the person appointed.

Applicants, except existing members of the Council's staff, should be not over 30 years of age, and must possess draughtsmanship of good quality, and having Drawing Office experience, particularly tracing, and filing of plans, etc. At present the cost-of-living bonus payable to all staff over 21 is: Men, £59 16s.; women, £48 2s. per annum.

The appointments will be subject to a satisfactory medical report; to the National Scheme of Conditions of Service; and to the provisions of the Council's Standing Orders, General Regulations and Superannuation Scheme. Canvassing will disqualify.

Experience in a local government office is an advantage, and applicants must state, in the order given, full name and address, age, war service, qualifications by examination, present appointment (how long held and salary), previous appointments, particulars of experience, date on which appointment could be taken up, and whether to their knowledge they are related to any Member or Chief Officer of the Council. Applications, accompanied by copies of three recent testimonials, should be sent in an envelope marked "Housing Department—Building Surveyor (Architectural Assistant or Tracer)" so as to be received by the undersigned not later than Friday, 20th February, 1947.

PARKER MORRIS,
Town Clerk.

Westminster City Hall, Charing Cross
Road, W.C.2.
29th January, 1947. 871

CROWN AGENTS FOR THE COLONIES.

Applications from qualified candidates are invited for the following post—

ARCHITECTURAL ASSISTANT required by the Government of Tanganyika Territory, Public Works Department, for one tour of 24-36 months in the first instance. Salary, according to age, experience, and war service, in the scale £408, rising to £530 a year, plus cost-of-living allowance, which on a salary of £408 amounts to £38 for a single man, and for married men between £83 and £120, according to number of dependants. Free passages and quarters. Candidates should have had Architectural Drawing Office experience, be able to prepare complete working drawings and specifications for all normal types of buildings, and have a sound knowledge of building construction. Some knowledge of surveying and levelling work is also required. Apply at once by letter, stating age, whether married or single, and full particulars of qualifications and experience, and mentioning this paper to the Crown Agents for the Colonies, 4, Millbank, London, S.W.1, quoting M/N/14991 on both letter and envelope. 867

NEWMARKET URBAN DISTRICT COUNCIL.

Applications are invited for the following appointment, on the temporary staff of the Architect's Department, of an **ARCHITECTURAL ASSISTANT** (Grade II), £330-£375.

The salary scales are those of the A.P. and T. Division of the National Scheme of Conditions of Service. In addition a cost-of-living bonus (at present £59 16s. per annum) is payable.

Preference will be given to candidates who are students of the R.I.B.A., and who have had experience of housing. The Council is prepared ultimately to find the successful applicant, if needed, housing accommodation in the district. Temporary limited accommodation is already available.

Applications, endorsed "Architectural Assistant," stating age, qualifications and experience, past and present appointments, accompanied by copies of two recent testimonials, must be submitted to the undersigned not later than Wednesday, 20th February, 1947.

JOHN CRABB,

Clerk of the Council.

Stratford House, Newmarket. 870

UNIVERSITY OF DURHAM.
KING'S COLLEGE, NEWCASTLE-UPON-TYNE.
DEPARTMENT OF TOWN AND COUNTRY PLANNING.

The Council of King's College invite applications for the post of **LECTURER IN TOWN AND COUNTRY PLANNING**. Candidates should be Members or Associate Members of the Town Planning Institute.

The salary rises by annual increments of £25 to a maximum of £800, and the initial salary, which, in any case, will not be less than £500, will be fixed at a point on that scale in accordance with the qualifications and experience of the successful candidate. Duties to commence as soon as possible.

Ten copies of application, together with the names of three persons to whom reference can be made, should be addressed as soon as possible, and in any case not later than 14th March, 1947, to the undersigned, from whom further particulars may be obtained.

G. R. HANSON,
Registrar of King's College. 880

COUNTY BOROUGH OF STOCKPORT.
HOUSING COMMITTEE.
APPOINTMENT OF QUANTITY SURVEYOR AND ARCHITECTURAL ASSISTANTS.

Applications are invited for the following vacancies:—

(1) Quantity Surveyor. Salary: A.P.T., Grade V, £460-£510, plus bonus.

(2) 2nd Architectural Assistant. Salary: Grade II, £360-£405, plus bonus.

(3) 3rd Architectural Assistant. Salary: Grade I, £330-£375, plus bonus.

(4) Junior Architectural Assistant. Salary: General Division, National Scale, commencing salary according to age, rising to a maximum of £300 per annum, plus bonus.

Bonus at present is £59 16s. per annum. The appointments will be subject to the provisions of the Local Government Superannuation Act, 1937, and to one month's notice on either side, and also to the successful applicants satisfactorily passing a medical examination.

Applications, stating age, qualifications, and experience, together with copies of two recent testimonials, are to be delivered to the undersigned not later than 10 a.m. on Saturday, the 1st of March, 1947.

Candidates must disclose in writing whether to their knowledge they are related to any member of or the holder of any senior office of the Council.

Canvassing, directly or indirectly, will be a disqualification.

WM. F. GARDNER, M.Inst.C.E.,
Borough Surveyor.

Town Hall, Stockport. 881

BOROUGH OF SLOUGH.

Applications are invited for the permanent appointment of **CHIEF ASSISTANT ARCHITECT**, within Grade A.P.T., VI, of the National Scales, at a commencing salary of £535 per annum, rising by two annual increments of £20 and one of £25 to a maximum of £600 per annum, plus cost-of-living bonus (at present £59 16s. per annum). Applicants must be Members of the Royal Institute of British Architects.

The duties will be mainly on administration and supervision of construction, and candidates should have had considerable experience of this work.

The appointment will be terminable by one month's notice on either side, and will be subject to the Local Government Superannuation Act, 1937, and to the successful candidate passing satisfactorily a medical examination.

Canvassing, either directly or indirectly, will disqualify. Applications, on forms to be obtained from the Borough Engineer, Mr. B. Gardner Thorp, M.Inst.C.E., Town Hall, Slough, must be sent in a sealed envelope endorsed "Chief Assistant Architect," so as to reach the undersigned not later than 1st March, 1947.

NORMAN T. BERRY,

Town Clerk.

Town Hall, Slough.
14th February, 1947. 890

DORKING URBAN DISTRICT COUNCIL.

The above Council invite applications for the appointment of **ARCHITECTURAL ASSISTANT**, in the Engineer and Surveyor's Department, at a salary in accordance with Grade II of the A.P. & T. Division of the National Scales, viz., £360, rising by annual increments of £15 to a maximum of £405, plus cost-of-living bonus (at present £59 16s. per annum).

Candidates must have had previous experience of work in connection with the lay-out of Estates, design of Houses, and general Municipal Architecture.

Applications, on a form to be obtained on request, stating age, qualifications, experience, the names of three persons to whom reference may be made, and endorsed "Architectural Assistant," must reach the undersigned not later than Saturday, 22nd February, 1947.

H. D. JEFFRIES,

Clerk to the Council.

Council Offices, "Pippbrook," Dorking.
31st January, 1947. 863

COUNTY COUNCIL OF THE WEST RIDING OF YORKSHIRE.

COUNTY ARCHITECT'S DEPARTMENT.

Applications are invited for the following appointments, on the permanent staff, which may be made within the grade, according to experience:—

(a) **SENIOR ASSISTANT ARCHITECTS** (in charge). £625-£700.

(b) **SENIOR ASSISTANT ARCHITECTS**. £535-£650.

(c) **ASSISTANT ARCHITECTS**. £390-£415-£510.

(d) **JUNIOR ASSISTANT ARCHITECTS**. £330-£415-£405.

(e) **BUILDING INSPECTORS**. £330-£415-£435.

(f) **SENIOR ASSISTANT QUANTITY SURVEYORS**. £535-£650.

(g) **ASSISTANT QUANTITY SURVEYORS**. £390-£415-£510.

Candidates for Senior and Assistant appointments should be either Associates of the Royal Institute of British Architects or Professional Associates of the Royal Chartered Surveyors' Institute.

Cost-of-living bonus is payable in connection with the appointments, as follows:—Adult male officers, £59 16s. per annum. Adult female officers, £48 2s. per annum.

The appointments will be subject to the Local Government Superannuation Act, 1937, and the successful applicants will be required to pass a medical examination.

Applications, on forms obtainable from this office, must reach me not later than the 1st March, 1947.

HUBERT BENNETT, F.R.I.B.A.,

County Hall, Wakefield. 878
County Architect.

CARDIGANSHIRE JOINT PLANNING COMMITTEE.

APPOINTMENT OF TECHNICAL ASSISTANT.

Applications are invited for the appointment of Technical Assistant, on the staff of the Joint Planning Committee, at a salary in accordance with Grade I of the Administrative, Professional and Technical Division of the National Scale of Salaries (£330-£375 per annum), plus cost-of-living bonus (at present £59 16s. per annum).

Candidates should be neat draughtsmen and colourists, accustomed to Ordnance or other Map revision. Experience in the preparation and colouring of maps required in connection with Basic Planning Surveys and Schemes would be deemed an advantage, but is not essential, and preference will be given to persons with a planning qualification.

The appointment, which will be terminable by one month's notice on either side, is subject to the provisions of the Local Government Superannuation Act, 1937, and the successful candidate will be required to pass a medical examination. Applications, stating age, qualifications and experience, accompanied by copies of three recent testimonials, should reach the undersigned not later than Thursday, 20th February, 1947.

WILLIAM D. JONES,

Clerk to the Joint Planning Committee.

The County Hall, Aberystwyth, Cards.
4th February, 1947. 895

CITY OF PORT ELIZABETH—SOUTH AFRICA.

VACANCIES—CITY ENGINEER'S DEPARTMENT.

The City Council of Port Elizabeth is prepared to receive applications for the following vacancies in the City Engineer's Department, viz.:

TWO 1ST GRADE ENGINEERING: (a) Roads, and (b) Sewage Assistants. Grade VII.

£660-£30-£760.

ONE 2ND GRADE ENGINEERING ASSISTANT (WATER). Grade IX. £500-£30-£650.

TWO 2ND GRADE ARCHITECTURAL ASSISTANTS. Grade XI. £425-£25-£550.

ONE 3RD GRADE ARCHITECTURAL ASSISTANT. Grade XIV. £360-£20-£460.

The commencing salary will be at the minimum of the grade unless circumstances warrant a higher salary, and there is in addition a cost-of-living allowance on the statutory basis in each instance.

Applications for the positions must have the qualifications and experience set out in a schedule, copies of which may be obtained from the Council's London Agents, Messrs. Davis & Soper, Ltd., 54, St. Mary Axe, London, E.C.3.

The successful applicants will be required to produce satisfactory certificates of health.

The appointments will be subject to the Council's conditions of service and leave regulations, which provide for a probationary period and membership of the Municipal Pension Scheme. Details may be obtained from the Council's London Agents, Messrs. Davis & Soper, Ltd.

Canvassing of Councillors will disqualify any candidates.

Applications, incorporating full details of educational qualifications and experience, and accompanied by copies of not more than three recent testimonials, must be in the hands of the Council's London Agents, Messrs. Davis & Soper, Ltd., 54, St. Mary Axe, London, E.C.3, not later than 17th March.

By Order,

H. TREDWELL,

Town Clerk.

7th January, 1947. 897

**COUNTY BOROUGH OF EAST HAM.
APPOINTMENT OF TEMPORARY ESTI-
MATOR—BOROUGH ENGINEER'S DEPART-
MENT.**

CONDITIONS OF APPOINTMENT.

Applications are invited from qualified persons for the temporary appointment of Estimator, in the Borough Engineer and Surveyor's Department.

Candidates must be competent to take off quantities and prepare estimates in respect of housing and other types of building work. The salary will be in accordance with Grade V of the National Salary Scales, viz., £460, by two increments of £15 and one of £20 to £510 per annum, plus London allowance (£26 p.a.) and war bonus (at present £59 16s. p.a.).

The appointment will be subject to the provisions of the Local Government Superannuation Act, 1937, and to the Council's conditions of service for temporary official staff in force from time to time.

The successful candidate will be required to pass a medical examination.

Applications on the form provided must be delivered to the Town Clerk, together with copies of three recent testimonials, not later than Monday, the 3rd March, 1947.

Canvassing will disqualify.

(Sgd.) H. A. EDWARDS,
Town Clerk.

Town Hall, East Ham, E.6.
14th February, 1947. 896

COUNTY OF DEVON.

COUNTY ARCHITECT'S DEPARTMENT.

Applications are invited for the following appointments on the permanent staff, in accordance with the National Scale of Salaries:—

(a) ASSISTANT ARCHITECT. A.P.T., Grade VI. Salary, £535-£600 per annum.

(b) ASSISTANT ARCHITECT. A.P.T., Grade V. Salary, £460-£510 per annum.

(c) ASSISTANT ESTIMATOR AND SURVEYOR. A.P.T., Grade III. Salary, £390-£435 per annum.

The salaries are subject to the addition of cost-of-living bonus, at present £59 16s.

Candidates for (a) and (b) must be fully qualified, and should have had considerable experience in the design, construction, and supervision of public buildings, and should possess a sound knowledge of the organisation and administration of a large architectural department.

Candidates for (c) should have passed at least the Intermediate Examination of the Royal Institute of Chartered Surveyors (Quantities

Sub-division), and be capable of undertaking preparation of detailed estimates, taking off quantities from drawings for variations, preparation of final accounts, and the general technical duties in the Estimating Section of the County Architect's Department.

Applications, stating age, qualifications and experience, accompanied by not more than three recent testimonials, should be sent to the County Architect, 97, Heavitree Road, Exeter, not later than Saturday the 1st March, 1947.

The appointments will be subject to one month's notice on either side, and to the provisions of the Local Government Superannuation Act, 1937. The successful candidates will be required to pass a medical examination.

A. J. WITTHCOMBE,

Clerk of the County Council.

The Castle, Exeter.
3rd February, 1947. 893

**LONDON COUNTY COUNCIL.
VACANCIES FOR ARCHITECTURAL STAFF
IN THE ARCHITECT'S DEPARTMENT.**

Applications are invited for a number of positions in the following grades:—

ARCHITECT, Grade III (professional qualifications required). Up to £500 a year (basic).

TECHNICAL ASSISTANT. Up to £420 a year (basic).

Cost-of-living addition also payable, up to £90 a year at present.

Commencing rates will be according to qualifications and experience.

Required for work in connection with the design and erection of schools and other buildings.

A number of Technical Assistants also required for the preparation of specifications and estimates for works of cleaning and painting, war damage repairs, and alterations at schools and other buildings.

Successful candidates are required to contribute to the Council's Superannuation and Provident Fund, and will be eligible for permanent appointment and for advancement to higher positions according to merit.

Ex-Service men and women will receive special consideration.

Application forms may be obtained from the Architect to the Council, County Hall, Westminster Bridge, London, S.E.1, enclosing stamped addressed foolscap envelope.

Canvassing disqualifies. (299) 861

LONDON COUNTY COUNCIL.

Required at Brixton School of Building, Secondary (Technical) School, Merton Road, S.W.18 branch, to commence as soon as possible, full-time TEACHER OF TECHNICAL

DRAWING and BUILDING CONSTRUCTION. Applicants should hold A.R.I.B.A., A.M.I.Struct.E., Higher National Certificate or Diploma in Building, or other comparable qualification, and have had responsible experience in the building industry, or professional practice, and teaching experience in a Secondary (Technical) School of Building. The post will be temporary in the first instance. Salary, Burnham Scale, £300×£15 to £525 (men), plus London allowance (minimum £35) a year, and additions for training and qualifications as applicable. Commencing salary according to teaching and/or industrial experience. The payment of a special responsibility allowance will be considered. Application forms (stamped addressed foolscap envelope necessary) and further particulars from the Principal, Brixton School of Building, Fendale Road, S.W.4, returnable by 15th March, 1947. H.M. Forces abroad should apply by letter. (391) 905

**COUNTY BOROUGH OF DUDLEY.
BOROUGH ARCHITECT'S DEPARTMENT.**

Applications are invited for the following appointments on the staff of the Borough Architect's Department:—

ARCHITECTURAL ASSISTANTS:—

(a) Salary, £360-£405. Grade II (A.P.T. Division of National Joint Council).

(b) Salary, £330-£375. Grade I (A.P.T. Division of National Joint Council).

The above salaries are subject to the addition of a cost-of-living bonus, at present £59 16s. per annum. Applicants for appointment (a) must be Registered Architects, and should have passed the final examination of the R.I.B.A. and possess a sound knowledge of the construction and design of all types of public buildings. Previous experience in a Municipal office would be an advantage.

Applicants for appointment (b) should have passed the intermediate examination of the R.I.B.A. and possess a sound architectural training.

The appointments are permanent, and the selected applicants will be required to pass a medical examination.

Applications, stating age, qualifications, past experience and present appointment, together with the names of two persons to whom reference may be made, should be sent to the undersigned not later than Friday, the 7th March, 1947.

A. V. WILLIAMS,
Town Clerk.

The Council House, Dudley.
5th February, 1947. 906

The Cylinder Lock that Deadlocks

The 'K' 146 Cylinder Deadlocking Rim Latch

functions in every way as a normal cylinder

latch, but a part turn in the opposite direction

to unlatching deadlocks the bolt and inside

control knob. Only the correct key can

operate ... it is truly the safest lock to fit.



OTHER ADVANTAGES

- The outside escutcheon or rose is solid and fits flush to the door panel.
- The bolt stop is operated by a press button which cannot fall into or out of engagement.
- Interchangeable between right and left hand doors.
- The Cylinder is fitted with hardened steel protection plate which cannot be drilled.

K. 146 CYLINDER DEADLOCKING RIM LATCH

CYRIL KIEFT & CO. LTD., BRIDGEND, SOUTH WALES. PHONE BRIDGEND, 950.

Tenders

Six lines or under, 10s.; each additional line, 1s. 6d.

YEOVIL & YEOVIL WITHOUT JOINT BURIAL COMMITTEE. CEMETERY EXTENSION.

Tenders are invited for the Laying Out an Extension to the YEOVIL CEMETERY, PRESTON ROAD, YEOVIL.

The work comprises the formation of carriage-ways, footpaths, and the provision and laying of Glazed Stoneware Drains, with Manholes, Bills of Materials, Specifications, Bills of Materials, Conditions of Contract, and the Form of Tender, can be obtained from the Committee's Architect: Mr. W. H. C. Waters, 40, Hendford Hill, Yeovil.

Applications to tender will be received by the Architect up to and including 27th February, 1947, and must be accompanied by a deposit of three guineas (£3 3s.), which will be returned on receipt of a bona fide tender (not subsequently withdrawn) and the return of all documents loaned for the purpose of tendering. The date for the receipt of tenders will be announced with the despatch of documents, and will allow 21 (twenty-one) days for preparation.

The Committee do not bind themselves to accept the lowest or any tender, and any tender recommended for acceptance must be held subject to the approval and consent of the Ministry of Health.

H. C. C. BATTEN,

Clerk to the Committee.

Church House, Church Street, Yeovil.
29th January, 1947.

882

Partnership

Six lines or under 10s.; each additional line, 1s. 6d.

Qualified and Experienced TOWN PLANNER is desirous of acquiring PARTNERSHIP in Established Firm of Planning Consultants and/or Architects. Write, in first instance, giving brief particulars, to Box 892.

Architectural Appointments Vacant

Four lines or under, 5s.; each additional line, 1s. 6d.

HENRY C. SMART & PARTNERS, Architects, 120, Moorgate, E.C.2, require Assistant; working drawings, details, surveys, etc. Write, stating age, experience, and salary required. 913

APPLICATIONS are invited for the appointment of Assistant to the Technical Editor, "Architects' Journal"; applicants must be first-class draughtsmen, possess a sound knowledge of building practice, and be interested in the preparation of technical data; salary according to qualifications and experience. Application should be made to the Technical Editor, The Architectural Press, Ltd., 13, Queen Anne's Gate, Westminster, S.W.1. 215

FIRST-CLASS DRAUGHTSMAN required for work on "Architects' Journal" Library of Information Sheets; applicants must possess a sound knowledge of building practice, and be interested in the preparation of technical data; salary according to qualifications and experience. Application should be made to The Technical Editor, The Architectural Press, Ltd., 13, Queen Anne's Gate, Westminster, S.W.1. 216

ARCHITECTURAL ASSISTANTS required; must be able to prepare working drawings; houses from sketch plans; salary according to experience. Saunders & Reiss-Smith, Architects, 70, Hill Park Crescent, Plymouth. 631

QUALIFIED ARCHITECTURAL ASSISTANT required in progressive London firm of Architects. Write, stating full particulars and salary required, Box 793.

SURVEYORS.—London Architects have vacancies for Surveyors, with experience of war damage work; salary, £500-£625 per annum. Write, stating age, experience, and when free. Box 645.

TWO ASSISTANT CIVIL ENGINEERS required for private office in West Norfolk; must be good draughtsmen, and have sound experience of reinforced concrete construction, and general civil engineering work; salary, £400 to £500 per annum, according to qualifications. Reply, with full details, to Box 784.

COMPETENT JUNIOR ARCHITECTURAL DRAUGHTSMAN required for office in West Norfolk; salary, £300 to £400 per annum, according to experience. Reply, with full details, to Box 785.

ASSISTANT REQUIRED; must have passed Inter. R.I.B.A. and preparing for Final; housing, hospitals; salary £250-£350, according to qualifications and experience. G. H. N. Inman, F.R.I.B.A., The Charterhouse, Charterhouse Square, E.C.1. Tel.: Clerkenwell 4413. 812

CHARTERED ARCHITECT required to control small branch office centre of Norfolk; thorough practical experience necessary, including good knowledge surveys; own car essential; mileage allowance on County Council scale. Reply, stating salary and other particulars, to Box 816.

LONDON (W.1).—Architects invite SENIOR and JUNIOR ASSISTANTS, now employed in a temporary capacity with Ministries or Local Authorities, to contact them when available, as they have vacancies for permanent posts in a rapidly expanding office, in which ability and effort would be recognized. Details of salary, age, experience, to Box 850.

CENTRAL London Architects have immediate vacancies for ASSISTANTS (male or female) to augment their existing staff; ex-R.E. or other Services are particularly invited to reply; applicants should have up-to-date knowledge of the housing requirements of Ministries and Local Authorities; there is ample opportunity for advancement; salary according to results obtained. Full details of career and commencing salary required to Box 849.

ARCHITECT'S ASSISTANT and JUNIOR ASSISTANT required immediately in Wolverhampton office; experience in all classes of work essential. Apply, stating age, full particulars of experience, and salary required, to Box 859.

ARCHITECT'S ASSISTANT required; capable of preparing working drawings from sketch plans, details, specifications, surveys, housing, farm buildings, cottage conversions, factories. Walter Rudman & Edwards, 32, Market Place, Chippenham. 862

SENIOR ARCHITECTURAL ASSISTANTS required for Bristol office; permanent progressive appointments to experienced men able to act on own initiative, and prepared to travel extensively. Apply, Mackintosh & Partners, 11, Orchard Street, Bristol, 1. 868

SENIOR ARCHITECTURAL ASSISTANT required in busy office in South Wales; opportunity of good experience. Apply, giving particulars of experience, salary required, etc., to Box 869.

ARCHITECT'S ASSISTANTS required in West Riding office of Resident Architect to large Multiple concern; well trained, good draughtsmen, able to handle large and small jobs from sketch plans to finish; good variety of work; salary £400 to £500 per annum, according to qualifications. Write, giving full particulars, to Box 872.

CAPABLE ASSISTANT required by Architect in W.C. London; state age, experience, and salary required. Box 894.

ARCHITECTURAL ASSISTANTS required; applicants must be good draughtsmen; salary according to qualifications and experience. Write, stating age, experience, and salary required, to T. F. Parker, Architect, Wisbech. 875

BOURNEMOUTH.—Architects require ASSISTANT; fully conversant construction, and able to prepare half inch and other details, in addition to ordinary working drawings, from sketch drawings; good salary and permanency to right man. State particulars, including salary required and when disengaged, to Box 876.

ARCHITECT'S ASSISTANT, in Plymouth; quick, neat and accurate draughtsman, with general office experience, and preferably knowledge of factory work. Reply, with full details, to Box 877.

VICTOR KERR & COLBOURN, F.R.I.B.A., require Male ASSISTANT, of at least Inter. R.I.B.A. standard; surveys, working drawings, specifications; scope for initiative and responsibility; £300-£400 p.a., plus bonus. Write 7, Bedford Row, W.C.1. 874

JUNIOR (14-16) required in Chartered Architect's office; general office work, with prospects in profession. Clark, 44, Gt. Russell Street, W.C.1. Museum 4400. 888

ARCHITECTURAL ASSISTANT required immediately, in S.E. Kent practice; salary approximately £400 per annum, according to experience. Write, with full particulars, to Box 889.

ARCHITECTURAL ASSISTANT required. Apply by letter, giving details of qualifications, experience, and salary required, to Thomas F. Trower, F.R.I.B.A., 74, Upper Close, Norwich. 891

ARCHITECTURAL ASSISTANTS (Senior and Junior) required, with experience in Flat and Bank Design and Construction; good salaries and permanent appointments. Apply, in writing, to Ronald Ward & Partners, 33, St. George's Drive, S.W.1. Tel.: Victoria 5531. 904

Architectural Appointments Wanted

CHIEF ARCHITECTURAL ASSISTANT, University Diploma, seeks change; 15 years' experience high-class work, large housing schemes, flats, conversions, schools, hospitals, factories, etc.; accustomed complete charge; excellent references; London area or South of England preferred. Box 228.

QUALIFIED ARCHITECT, 10 years' varied experience, requires part-time work; to be carried out in own office; fees by arrangement. Box 240.

A.R.I.B.A. (aged 31), at present employed on Architectural staff of Brewery Co, desires change in similar capacity. Box 244.

CHARTERED ARCHITECT (L.R.I.B.A.) seeks Junior Partnership in old-established practice; would consider control of branch office or Chief Assistantship, leading to partnership in near future. Box 248.

ARCHITECT'S ASSISTANT requires work in Provincial office; can start immediately; sketch plans, working drawings, surveys; experienced housing work, etc.; moderate salary required. Box 249.

ARCHITECT'S ASSISTANT, Intermediate R.I.B.A.; willing to carry out tracing work, designs, details, working drawings from sketches, housing or otherwise, in evenings or at week-end for Architects or others, in Newcastle-upon-Tyne area. Box 250.

YOUTH (17) requires progressive position in Architect's office; 2 years' drawing board experience; 2 years' building construction studies. Box 251.

"BUSINESS METHODS AND ORGANISATION FOR HOUSE BUILDERS AND CONTRACTORS"

by Arthur W. Hopkins
(Certified Accountant)

with a special chapter on Local Government Facilities by Edwin Clarkson and notes on the Control of Labour by the Ministry of Labour and National Service.

A practical manual that should be on the desk of every Administrative worker and Student of the Industry. The best petty cash disbursement your business can make!

BRIEF SUMMARY OF CONTENTS: Raising Capital to Commence Building; Estimating and Overheads; Office Records—a complete layout; Costing the Contract; Income-Tax, P.A.Y.E., profits, allowances; Labour and Stores Control. Illustrated throughout.

10/6 (post 3d.)

Descriptive leaflet from

KEN PAX PUBLISHING CO. LTD., (AJ)
20 Buckingham Street, London, W.C.2.

NEW AIR WITH
Vent-Axia

A SIMPLE AND
ATTRACTIVE METHOD OF
UNIT VENTILATION

VENT-AXIA LTD., 9 VICTORIA STREET, LONDON, S.W.1. Telephone: ABBey 5168-9
And at GLASGOW, MANCHESTER, BIRMINGHAM, LEEDS

ARCHITECTURAL ASSISTANT (25) seeks appointment; Leeds area; 3 in. 3 in., and F.S., drawings, surveying, levelling, re-measurement, and perspective. Box 252.

CHARTERED ARCHITECT, aged 34, Dipl.Arch., Liverpool, certificate in Town Planning and Civic Design, wishes to take up appointment in Liverpool or Chester area; excellent private and commercial experience; would accept position in private firm or as company architect; minimum salary £750 per annum. Box 253.

Other Appointments Vacant

Four lines or under, 5s.; each additional line, 1s. 6d.

REQUIRED for Brickworks, British Guiana, experienced **TECHNICIAN**; to visit Colony for three or four months to advise on improving methods and manufacture Bricks, Hollow Tiles, etc; return passage paid. Reply, by letter, stating qualifications and fees, etc., to "Carib." c/o Abbots, Eastcheap, London, E.C.3. 864

WRITER of Technical Articles and Bulletins required by Manufacturers of Synthetic Resins; essential qualifications are good taste and imagination, sound general scientific training, and ability to express ideas and facts in clear but interesting English. Applicants should send full particulars of their experience and qualifications, together with a memorandum of their own composition on any scientific subject (about 500 words) to Box 902.

Other Appointments Wanted

Four lines or under, 2s. 6d.; each additional line, 1s.

PROFESSIONAL assistance offered; Land surveys, Working-up Drawings; Quantities, etc.; 30 years' experience design and construction public works. Box 757.

COMPETENT DESIGNER and **DRAUGHTSMAN**, with own staff, is available to prepare surveys, specifications, schemes; London area. Box 839.

ARCHITECT'S SPECIFICATIONS.—Copies typed quickly and accurately. Telephone: Tudor 5619. 883

ARCHITECT (31) seeks spare-time work; willing to undertake surveys, N.W. London area; also prepare working drawings of houses, etc.; 16 years' experience. Box 903.

For Sale

Four lines or under, 5s.; each additional line, 1s. 6d.

COMPLETE Correspondence Course in Architecture in preparation for R.I.B.A. Intermediate and Final Exams; original cost, 18 gns.; for sale, cheap. 34, Derby Hill, Forest Hill, S.E.23. 879

Miscellaneous

Four lines or under, 5s.; each additional line, 1s. 6d.

J. BINNS, LTD., specialists in the supply and fixing of all types of fencing, tubular guard rail, factory partitions and gates. 99-107, St. Pauls Road, N.I. Canonbury 2061.

"CAN I HELP YOU?" I have on my staff Architectural and Civil Engineering Draughtsmen, Building, Estimating, Land, Measuring and Quantity Surveyors. Write C. F. Rumble, 29/31, Whitehall, S.W.1. Tel.: Whitehall 2514.

WANTED.—One set of "Arts et Manners Graphiques." Please reply to Box 5.

WANTED.—Complete set of "Typography." Box 487.

CHARTERED STRUCTURAL ENGINEERS are prepared to undertake design, specifications and working drawings of all types of structures in timber, steel, and reinforced concrete. Box 800.

WE can undertake any type of Paint and Cellulose Spraying in our newly equipped spray workshop; highly decorative finishes our speciality. M. & E. Spraying, Ltd., 71, Lots Road, Chelsea, S.W.10. Flax 1453. 790

A Copy of "Architectural Design and Construction" required for each month, June to October, 1944 (inclusive); please state terms; matter urgent. Box 885.

WANTED.—Complete set of "Architect's Journal of Planned Information." Write G. A. Saville, 51, Doncaster Road, Selby, Yorkshire. 873

ARCHITECT wishes to share his Office in Hampstead with Architect, Surveyor, or Structural Engineer. Box 887.

CENTRAL HEATING OIL BURNERS.—Insist on the British-made Parvac—no stoking, clean, trouble free; no waiting for coal or coke deliveries; no embargo now. Write at once to Parker, Winder & Achurch, Ltd., Makers, 80, Broad Street, Birmingham, 1.

CONSULT Boulton & Paul, Ltd., Norwich, for Special design manufacture and erection of Fencing and Gates. 900
FOR "Important Editorial Opening" on the staff of "Ideal Home" see page lxiii 901

Educational Announcements

Four lines or under, 5s.; each additional line, 1s. 6d.

R.I.B.A. QUALIFYING EXAMINATIONS. Mr. C. W. Box, F.R.I.B.A., M.R.San.I. Courses of Correspondence and Personal to Studio, 115, Gower St., London, W.C.1. (Tel.: Euston 5906).

R.I.B.A. and T.P. INST. EXAMS. Private Courses of Tuition by correspondence arranged by Mr. L. Stuart Stanley, M.A., F.R.I.B.A., M.T.P.I. Tutor, 212, Euston Road, N.W.1. Tel.: EUS. 7766.

ATOMIC PARQUET FLOORING COY.

The best equipped and most efficient flooring specialists in the country.

Resurfacing and polishing any type of floor.

Work undertaken anywhere in the country.

**ATOMIC
PARQUET FLOORING COY.**
15 Maiden Lane, Strand, W.C.2.
Tem. Bar 4901-2-3.

Branches at:

BATH, BOURNEMOUTH, BRIGHTON,
HASTINGS, HERNE BAY, ISLE OF
WIGHT, MANCHESTER.

**HAND FORGED
WROUGHT IRON WORK**
to Architects designs
by highly skilled craftsmen
IMPROVED DESIGNS LTD.
LEAMINGTON SPA.

**STEELWORK BY
R. W. SHARMAN LTD.**
SWANWORKS, HANWORTH, MIDDX
Phones: Feltham 3007. Sunbury 2367. "Grams": "Sharmans," Feltham

**INDUSTRIAL ROOFING
Contractors**
SPECIALISTS IN TROUGHING
DECKING & DOUBLE SHEETING
Distributors of all A.C. Products
R.J. SYMONS LTD
STATION APPROACH HINCHLEY WOOD
TAMER SURRY LEMERBROOK 1515/6

IMPORTANT EDITORIAL OPENING

The Editor of **IDEAL HOME** is looking for a first-rate editorial assistant, capable of helping in all departments and acting, when necessary, as his deputy. Applications are invited from experienced periodical journalists of either sex.

Qualifications:

1 Practical knowledge of the modern home in all its material aspects, from initial planning to the last niceties of decoration, equipment and garden setting. This means high standards of knowledgeability and modern taste in all these matters; not technical expertise.

2 A sound over-all experience of producing a high-grade periodical; and ability to re-write technical matter in a lucid, readable, non-technical style, suited to the literary standard of the paper.

Good salary, excellent prospects. Please write fully (letters only) to The Editor, **IDEAL HOME**, 93, Long Acre, London, W.C.2.

ELLISON for

HIGH VOLTAGE SWITCHGEAR.
CIRCUIT-BREAKERS of up to 4000 amps.
and **STARTERS** for
Electric Motors of up to 1000 H.P.

Made by **GEORGE ELLISON LIMITED**, Perry Barr, Birmingham, 228

Wm. OLIVER & SONS, Ltd.
(of Bunhill Row), 12/13 Bow Lane, E.C.4
City 3335

HOME GROWN { **HARDWOODS
SOFTWOODS**

Quota Merchants for
NATIONAL STOCK

FIRE PROTECTION

See Information
Sheet No. 78. Copies
may be obtained from

**CLARKE & VIGILANT
SPRINKLERS LTD**

Atkinson St. Deansgate, Manchester.
Phone: Deansgate 2727/8
and

10/13, Bedford St., Strand, W.C.2.
Phone: Temple Bar 8314/5



for

.228

Ltd.

C.4

DDS

DS

K

ON

ion

opies

rom

ANT

LTD.

hester

/8

w.c.

45.



T

W

W

W

W

W

W

W

W

CARLTON METAL MOULDING

CO. LTD.

'Phone:
BATtersea 7464/5
& 6531.

REPETITION METAL WORK
STAMPINGS AND PRESSINGS • PROFILE CUTTING
ARC WELDING • SHEET METAL WORK
LIGHT CONSTRUCTIONAL ENGINEERING
DRAWN SECTIONS IN ALL METALS, ETC.

TAYBRIDGE WORKS • BATTERSEA • S.W.11

The man on the job is
ON THE JOB



It takes a workman to be good, to rank as a craftsman of Gaze calibre. Right from the beginning (when he is admitted to co-partnership) he is in good company—in the company of men highly trained for the sound interpretation of the architect's conception and direction. All the evidence is that, in the profession, this high measure of co-operation is valued.



W. H. GAZE & SONS LTD.
BUILDING & CIVIL ENGINEERING CONTRACTORS

40, CONDUIT STREET, LONDON, W.1.
KINGSTON-ON-THAMES, SURBITON,
WALTON, BATH



ORDNANCE FACTORY. *Covering 200 acres in West Cumberland. Completed in 15 months. Civil Engineering work by this Firm amounted to 1½ million pounds.*

JOHN LAING & SON LTD

BUILDING AND ENGINEERING CONTRACTORS

ESTABLISHED IN 1848

