



24.05.07
AJ 100



THE ARCHITECTS' JOURNAL WWW.AJPLUS.CO.UK

£3.25

Partners for better light.

DEMCO

① ② ③

Morgan Library & Museum, New York. Light as the harmonizing factor between contemporary steel and glass and the fine old bricks of the neo-Renaissance and patrician mansions of Madison Avenue. For over 30 years, iGuzzini has been working alongside great designers, architects and lighting designers (as well, of course, as clients sensitive to this issue) to give the world better light.

Architectural design: Renzo Piano Building Workshop ① in partnership with Beyer Blinder Belle LLP (New York). Lighting Consultants: Ove Arup & Partners. Client: The Morgan Library and Museum ③. iGuzzini Partner Assistance: ②. Products: Le Perroquet, design by Piano Design.www.iguzzini.com, iGuzzini Illuminazione spa, Italy.

ENQUIRY 45 ON CARD
WWW.AJPLUS.CO.UK/AJDIRECT

Better Light for a Better Life. **iGuzzini**



THE ARCHITECTS' JOURNAL
151 Rosebery Avenue,
London EC1R 4GB

Editorial enquiries
Anna Robertson/Kaye Alexander
020 7505 6700
Editorial fax
020 7505 6701
Email
firstname.surname@emap.com

Acting editor
Ruth Slavid (020 7505 6703)
News editor
Max Thompson (020 7505 6715)
Senior reporter/
Northern correspondent
Richard Waite (07918 650875)
Reporter
Richard Vaughan (020 7505 6770)
Working details editor
Susan Dawson (015242 21692)
Reviews editor
Andrew Mead (020 7505 6717)
Technical editor
Hattie Hartman (020 7505 6711)
Acting art editor
Eriko Shimazaki (020 7505 6704)
Chief sub-editor
Angus Montgomery (020 7505 6708)
Sub-editor
Isla McMillan (020 7505 6707)
Editorial assistant
James Pallister (020 7505 6713)
Editor, AJ Specification
Will Hunter (020 7505 6716)
Managing editor online
Barrie Evans (020 7505 6809)
Marketing manager
Jo Roberts (020 7505 6615)
Managing director
Ben Greenish (020 7505 6827)

Display sales manager
Katie Deer (020 7505 6743)
Conference sales manager
Sam Lau (020 7505 6746)
Account managers
Nick Roberts (020 7505 6742)
Terry Roll (020 7505 6706)
Telesales manager
Lucy Herdsman (020 7505 6873)
Senior account executives
Tom Peardon (020 7505 6835)
Ben Maslen (020 7505 6862)
Group sales manager
Midge Myatt (01902 851645)
Commercial manager
Malcolm Perryman (020 7505 6698)
Business development manager
Toby Redington (020 7505 6634)
Recruitment
Ellen Marie Stainer (020 7505 6803)
Advertisement production
Sarah Mienny (020 7505 6741)

Back issues: 01344 328 000

A subscription to the AJ (47 issues):
UK £129 or £119 (Direct Debit).
Overseas £174.
To subscribe call 0870 830 4959

emap communications

The Architects' Journal is registered as a newspaper
at the Post Office. ©2007. Published by Emap Construct, a
part of Emap Communications Ltd. Printed in the UK
by Headley Brothers Ltd

FOSTER'S DECISION TO STEP BACK FROM MANAGEMENT SHOULD REAP DIVIDENDS

By Ruth Slavid

The main focus of the AJ100, and rightly so, is which practice is the biggest. As you can see in our coverage (*see News on page 11 and the AJ100 feature on pages 27-100*), this year the result is not entirely expected. But among the headlines there is a more concealed story – if one can use that word about the UK's most high-profile architect.

Norman Foster did not hog the limelight at the AJ100 dinner last night (Wednesday 23 May). His practice was not the biggest, nor the fastest riser, although its concentration in one location meant that it was recognised for employing the largest number of architects in London and the South East of England.

But Foster + Partners did earn the highest architectural fees (*see page 78*) and also boasts one of the highest earnings per individual architect. Despite its already phenomenal growth, the practice is still forecasting a 49 per cent rise in fees over the next year. Although these predictions were made before the news of

3i's investment, the practice had already announced its expansion plans, and so must have taken the expected investment into account.

It is interesting that a practice that is already so successful sees room for growth not only in income but also, as it must with investors to satisfy, in profitability. Foster appears to have a Midas touch, plus the ability to hold together an ever-growing body of work. His decision to take a back seat from daily management and concentrate on design should reap dividends – until the time when even he decides to retire.

The growth ambitions of Foster, the introduction of younger partners by Rogers, and the deliberately non-individualistic approach of BDP are very different models of succession planning by the country's largest and most successful practices. The next few years will reveal which is the most viable approach. Younger architects would do well to pay close attention while planning their own career paths.

CONTRIBUTORS



Dean Hawkes, who reviews Josef Albers: *To Open Eyes* on pages 104-5, was formerly a professor at the Welsh School of Architecture and is an architect, writer and teacher



Alex Whitcroft, whose work features on the *Sketchbook* on page 114, is a second-year architectural student at the Welsh School of Architecture in Cardiff

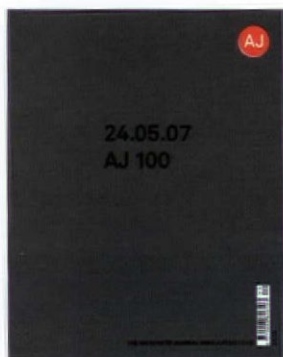


Clive Walker, who edited the AJ100 feature on pages 27-100, is a freelance architectural writer whose work has appeared in *Tatler* and the *Sunday Post*

CONTENTS



P.104 JOSEF ALBERS



P.27 AJ100



P.103 DAVID NASH

NEWS

- 7**
Weekly digest/online news
- 11**
SMC falls short in the AJ100
- 14**
PCKO's mixed-use scheme in Cambridgeshire
- 20**
Maurice Shapero's modern extension to a Victorian house

AGENDA

- 12 – 13**
Obituary: *Colin St John Wilson*
- 16**
Development plans in Salford may lead to *Leach Rhodes Walker* demolishing its own office – Modernist gem Aldine House
- 18**
What the government's new planning White Paper really means for architects

AJ100

- 29**
Introduction
- 30 – 31**
Main table
- 33 – 75**
Practice biographies
- 77 – 92**
Surveys and results
- 94 – 100**
Awards and opinions

TECHNICAL & PRACTICE

- 102**
Legal/Webwatch



P.20 MAURICE SHAPERO



P.12 SANDY WILSON

SUBSCRIBE

- Go to www.ajplus.co.uk/subssignup;
 - Call 0870 830 4959; or
 - Email ajo@subscription.co.uk
- A £129 subscription (students £89) includes:
- The AJ every Thursday;
 - AJ Specification every month;
 - Access to www.ajplus.co.uk and www.ajspecification.com;
 - Six breaking stories in a daily email alert



P.16 ALDINE HOUSE

REVIEWS

103

Wood sculpture by *David Nash*

104

The teaching of *Josef Albers*

105

Critic's Choice

REGULARS

22

Astragal and Hellman

24

Letters

114

Sketchbook: *Alex Whitcroft*

JOBS & CLASSIFIED

106

Top five jobs:

- *Foreign Office Architects* – Part 2 assistant
- *The Robert Gordon University* – lecturer in architectural history
- *CABE* – director of architecture and design review
- *Architects for Aid* – architectural assistants
- *NES Group* – Part 2 assistant

111

Classified advertising

AJPLUS.CO.UK

- Read our guide to greening your practice at www.ajplus.co.uk/sustainability
- Daily breaking news at www.ajplus.co.uk/news
- More than 550 buildings at www.ajspecification.com
- Competitions at www.ajplus.co.uk/awardscomps
- More than 70 events at www.ajplus.co.uk/diary
- The latest jobs at www.ajplus.co.uk/jobs

Experience

Revit Architecture

now

Architectural software that works the way you do.

Revit® Architecture 2008 works the way you think, letting you create naturally and design freely. Mirroring the real world, it treats information in terms of the entire building, rather than separate floors, sections or elevations. And because it's purpose-built for

building information modelling (BIM), any changes you make, anywhere, are automatically updated throughout your project. The result: your design and documentation stay co-ordinated, consistent and complete.

To find out more, get in touch today!

Please visit www.autodesk.co.uk/reseller to locate your nearest reseller.



Autodesk®

ENQUIRY 51 ON CARD
WWW.AJPLUS.CO.UK/AJDIRECT

Autodesk and Revit are registered trademarks of Autodesk, Inc., in the USA and/or other countries. All other brand names, product names, or trademarks belong to their respective holders. Autodesk reserves the right to alter product offerings and specifications at any time without notice, and is not responsible for typographical or graphical errors that may appear in this document. © 2007 Autodesk, Inc. All rights reserved.

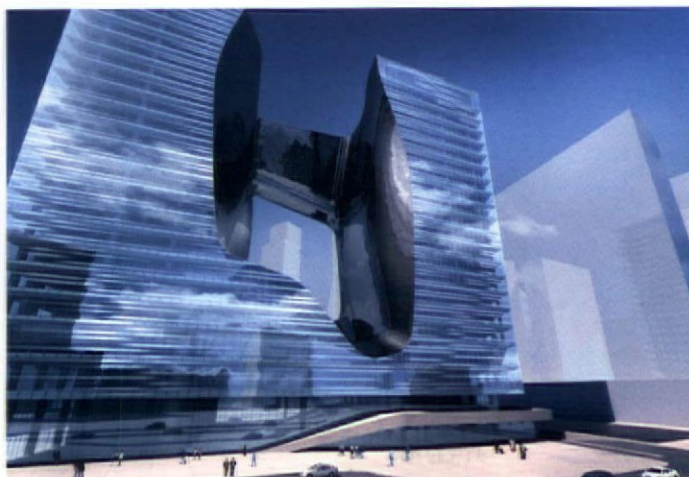
Architecture's most incisive news breaks daily on www.ajplus.co.uk. To see what attracted 50,000 visitors to the site last month, activate your online subscription at www.ajplus.co.uk/activate. For login details call 020 7505 8623

FRIDAY 18 MAY

- Government blocks Allies and Morrison's Brighton tower
- Development threatens Eero Saarinen's Bell Laboratories
- Heritage projects face 'catastrophe' due to Olympics cash drain
- Campaigners lobby Putin over threat to Moscow's buildings

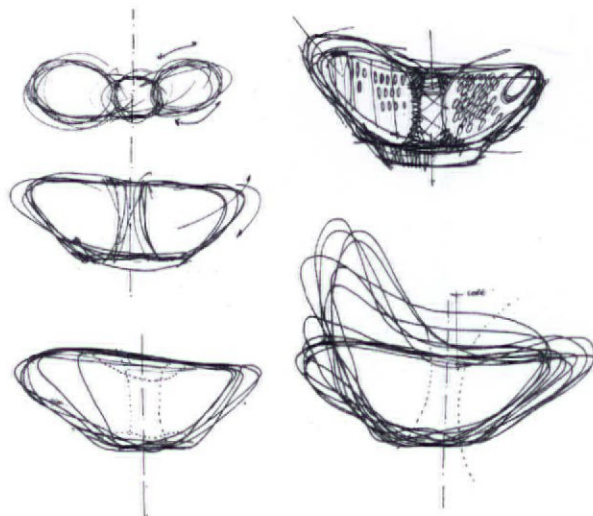
MONDAY 21 MAY

- Cutty Sark 'saved' by restoration work's timber supports
- Hadid and McAslan among shortlist for Shanghai pavilion
- Bennetts finally wins green light for City office scheme (right)
- Ritchie, Marks Barfield and Tonkin Liu win first Landmark Wales comp



THURSDAY 17 MAY

- David Walker's Milton Court replacement in the Barbican rejected
- Lack of cash halts new British High Commission in Abuja
- Court bid to stop Wilkinson Eyre's Bath 'busometer' quashed
- Kaplicky goes to Czech senate to defend contentious Prague library



TUESDAY 22 MAY

- Health and Safety fears stifling creative design, says CABE
- Aedas could demolish Edinburgh's Grade A-listed Haymarket Station
- Reid to leave footprint on Manchester (above)
- Government's proposed planning overhaul takes a battering

WEDNESDAY 23 MAY

- Unusual RIBA competition launched to design new offices in Preston
- CPMG's Huntingdon library scheme wins go-ahead despite objections
- Carey Jones bags massive £200 million regeneration scheme in Bolton
- Zaha to design 'flagship' office development in Dubai (left)



icon leisure. Loves water sports.



thrislington cubicles

Product: icon leisure

Contact: t +44 (0)1244 520 677

w www.thrislingtoncubicles.com

e info@thrislingtoncubicles.com

Scale: nts

ENQUIRY15 ON CARD

WWW.AJPLUS.CO.UK/AJDIRECT

To meet the more demanding environment of the changing room and more readily withstand the rigours of heavy use in a humid atmosphere, icon leisure now features solid grade laminate panels. All the usual Thrislington features remain, making it better value than ever.



Solid Grade panels repel water and remain stable in wet environments.



12mm door, through fixed to aluminium frame for added strength and stability.



Engineered aluminium lock, concealed fixings through door, with replaceable hard nylon shear tip.

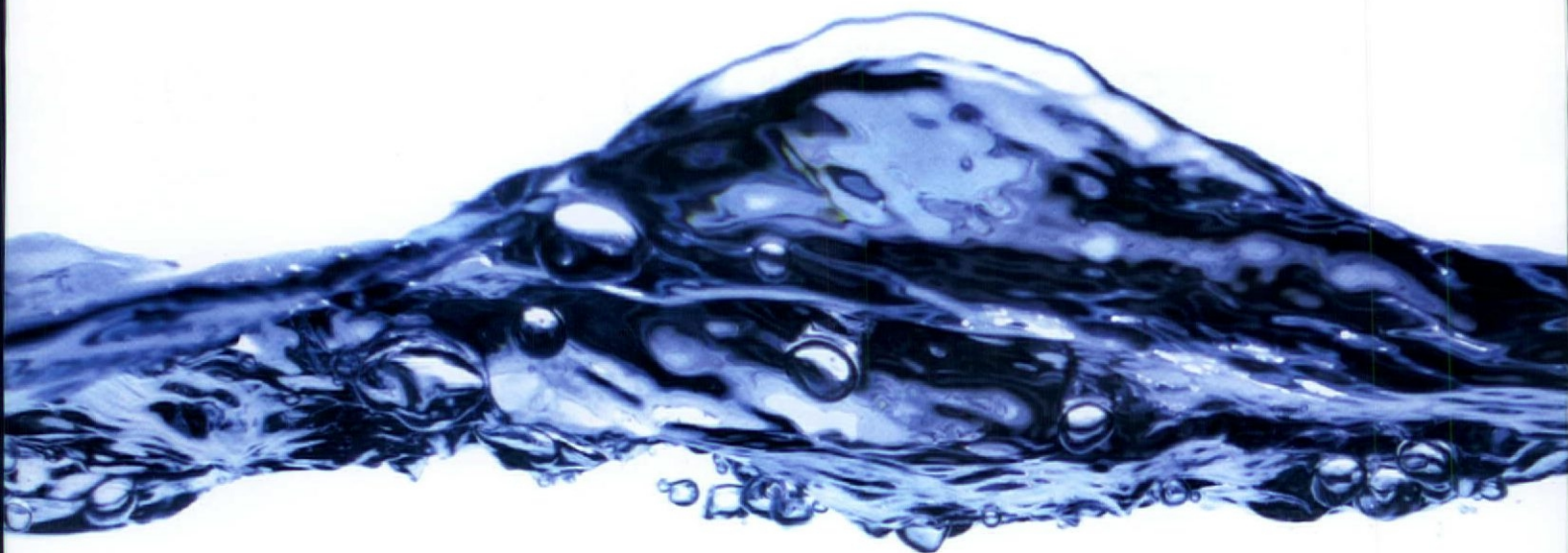
We each use about 150 litres of water every day.

Northumbrian Water
www.nwl.co.uk

nbs

Flushing apparatus for use with WC pans shall be designed to deliver a maximum flush volume of not more than six litres.

Sarah Delany, NBS work section
S90 Hot and cold water supply systems

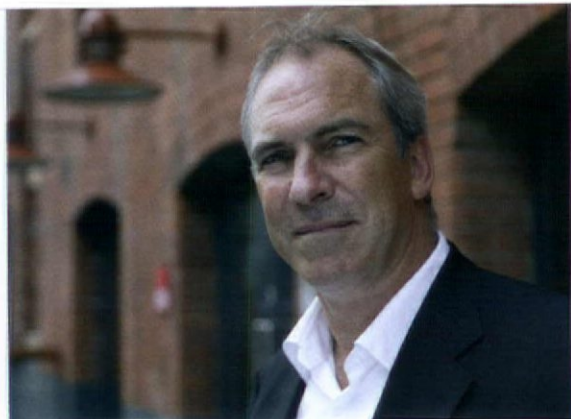


We like information. The more technical the better. Take Sarah Delany. She knows all there is to know about hot and cold water supply systems. She knows so you don't have to.

And we're not just talking about technical details. We are increasingly looking at a much bigger picture, bringing together the mass of complex information the whole project team needs. That's our job – hopefully making yours that bit easier.

For more information
Call 0845 456 9594
www.theNBS.com/water

NBS: A new perspective



1.



2.

1. BDP chief executive Peter Drummond
2. SMC founder and deputy chairman Stewart McColl

SMC MISSES OUT ON AJ100 TOP SPOT

By Max Thompson

The SMC Group's dominance of the UK architecture scene has failed to translate to the AJ100, with the firm beaten into second place in this year's rankings by BDP.

Many observers had expected SMC, which has spent much of the past 12 months gobbling up architecture practices across the country, to jump straight into the AJ100 top spot, but statistics show that it only employs 270 architects compared to BDP's 301 (*full results are in the AJ100 feature on pages 27-100*).

This means that BDP, which has held on to the top berth in the AJ100 for the past seven years, is 10 per cent bigger than its closest rival.

Nonetheless, the rise of SMC, which was formed by Stewart McColl in 1996, has been incredible, particularly

considering the firm was unranked in last year's AJ100.

That growth has been fuelled by an aggressive acquisition policy that has seen it snap up 14 practices in just over five years – among them Corstorphine & Wright Kenzie Lovell, acquired in 2002, and Alsop Architects, which was bought last year.

SMC is one of only two architecture firms listed on the UK stock market, the other being Aukett Fitzroy Robinson, which is ranked 15th in this year's AJ100.

However, SMC's impressive streak of acquisitions was brought to a sharp halt by an unexpected boardroom shake-up in February, which saw McColl moved into the deputy chairman's role to make way for former non-executive chairman Rodney Walker, who

now controls the day-to-day running of the business.

The reshuffle came after the firm posted a profit warning that downgraded expected profits from £7 million to £5 million. Walker put further acquisitions – including the expected purchase of S&P – on hold. 'In the short term we will be focusing on realising operating efficiencies and organic growth,' he said.

If SMC had bought S&P, which is ranked 85th in this year's AJ100, it would have added 32 architects to its books, giving it a total of 302, compared to BDP's 301.

And BDP chief executive Peter Drummond said he is not complacent about the year ahead and admitted that the firm would have to be 'resilient' to maintain its steady growth, and keep SMC at bay.

SMC'S ACQUISITIONS

2001

- William Gower & Partners

2002

- Corstorphine & Wright Kenzie Lovell

2005

- DTR:UK
- Corstorphine & Wright Hills
- Philip Lees & Associates

2006

- Covell Matthews Architects
- Penrose
- Alsop Architects
- Charter Consultant Architects
- Davis Duncan
- Hugh Martin
- Jenkins & Marr
- Parr Architects
- Hickton Madeley

COLIN ST JOHN WILSON 1922 – 2007

By Alan Powers

Before the 1950s, English architects who aspired to be intellectuals tended to be marginalised in the prevailing climate of pragmatism. Entering a new post-war order, Colin St John (Sandy) Wilson combined the roles of designer and thinker more completely than any other English architect of his generation.

His influence was disseminated through teaching, writing and lecturing, and through practice, particularly with the large office required for the British Library project. The son of a bishop, Wilson seems to have reproduced in secular form an almost ecclesiastical structure of doctrine and revelation.

Wilson's training at the wartime Cambridge School and the post-war Bartlett left him hungry for the authentic:

the old in the form of Italian travels; and the new at the ICA and the LCC, where in 1950 he found himself alongside Bill and Gill Howell, John Killick and Peter Carter. They were all beneath the star of Le Corbusier and the Marseilles Unité, which they reimagined with their housing at Roehampton.

Wilson wrote precocious and gutsy columns on architecture for the *Observer*, finding his lifelong role as a dissident with feet firmly planted in the establishment. He moved, unwittingly, into a flat in Primrose Hill next door to Mary and Reyner Banham. Thereafter came Saturdays among the artists at the French pub, and Sundays in Oppidans Road, plotting activities for the Independent Group. In 1956 he contributed to the exhibition

'This is Tomorrow', and began to collect work by Paolozzi, Michael Andrews and other contemporaries, which are now housed in his last major work (with Long and Kentish) – the extension to Pallant House in Chichester.

In 1951, Wilson, with Carter and Frank Newby, entered a giant space-frame enclosure into the Coventry Cathedral competition, but he soon turned towards the more material and substantial exemplars of Aalto, Lewerentz and the Corbusier of *béton brut*. The writings of Adrian Stokes were a different lodestar from an earlier stage, tugging Wilson towards the sensuous, psychoanalytical and playful aspects of buildings and places.

After the LCC came a period of private practice with Arthur Baker, building sober



TIM HURSELEY

1.

1. The British Library (1970-1997)
2. Wilson in his studio in 1985



BEN RICE

2.

brick apartments in London before transferring back to Cambridge in 1956 – alongside his wife Muriel, art historian and Arts Council curator – to teach and practice with Leslie Martin. While Martin promoted his updated version of the scientific humanism of the 1930s, Wilson began to diverge from the mini-Modulor phase of his School of Architecture extension.

Alvar Aalto's Gold Medal speech in 1957, in which he spoke out against the 'dictatorship' emerging in Modern architecture, was a revelation to Wilson, and combined with the personality and writing of Christian Norberg-Schultz to create a new perception of the Modernist field as being polarised between head and heart.

In the Martin studio, with Patrick Hodgkinson and others, courtyard projects for student rooms emerged, as built at Harvey Court (1957-62). The Oxford Library group followed in 1959-64, then the William Stone building for Peterhouse and the paired houses in Grantchester Road.

In the USA in 1964, two more defining events occurred. Wilson attended a symposium on 1930s Modernism and, demoralised by its formalist outlook, responded in print to reclaim the movement's social agenda. He narrowly avoided becoming head of architecture at Yale, but it was there that he met MJ Long, soon to become his second wife and professional collaborator. Spring House, Cambridge, (1965-7) was the partnership's first fruit, a symbol of new vernacular freedom and

warmth in materials and plan, but still controlled.

Independently of Martin, Wilson developed the Liverpool Civic Centre, with its pioneering atrium. Then, with Martin, came the first British Library scheme in Bloomsbury, dragged down with the historic decline of the public-sector Modernist machine in all its forms, and from whose ashes the St Pancras project emerged 10 years later. The catalogue of projects narrows inevitably at this point, although the Bishop Wilson Library, Chelmsford (1984), and the library for Queen Mary College (1984-89) deserve mention. Thinking, teaching and writing had ample scope with his professorship at Cambridge from 1974-89. *Architectural Reflections* (1992) and *The Other Tradition* (1995) embody a

persuasive and coherent philosophy of architecture derived from first principles and exemplars such as Lewerentz – historically situated, deep rather than broad, but alive to possibilities.

Like the British Library, these books gave Post-Modern irony a straight answer, not without an acerbic wit and tenderness. As Sarah Menin and Stephen Kite conclude in their 2005 biography of Wilson: 'Aalto recognised in 1930 that "the organic line" would not be understood "for another 100 years"'. Wilson has gone a long way towards explicating this line, and in so doing has borne witness to an 'other' reality that, once acknowledged, makes architecture much richer in its acceptance of 'those damned realities that make up our work'.



1.



2.

1 & 2. PCKO's mixed-use development will include three five-storey blocks on the River Nene, Cambridgeshire, with smaller dwellings behind them
3. Site plan

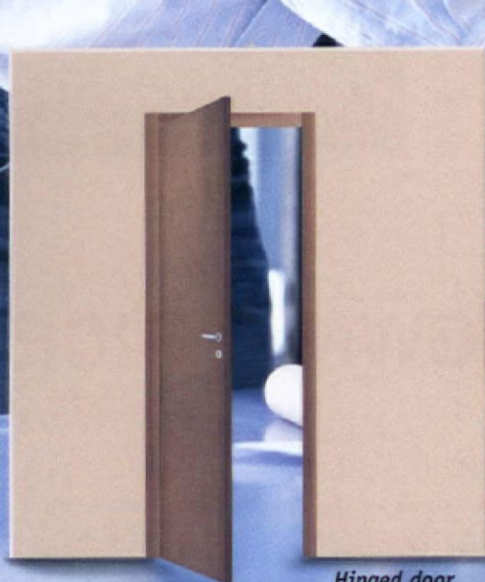
PCKO GOES DOWN TO THE RIVERSIDE

PCKO Architects has submitted this mixed-use scheme in Wisbech, Cambridgeshire, for planning. London-based PCKO and landscape designer Allen Pyke won a Cambridge County Council competition for the brownfield site along the River Nene. The Taylor Woodrow development – part of a masterplan drawn up by Tibbalds Planning and Urban Design – will include more than 300 homes, 200 of which will be in three five-storey blocks at the water's edge. Smaller dwellings will be built behind the waterfront homes. PCKO senior associate Gordon Evans said: 'We are sweeping away defunct industrial usage along the river and introducing a pedestrian footway leading to a new square and 'landmark' boat house [by landscape architect Watkins: Dally].'

By Max Thompson



3.



Hinged door



Disappearing sliding door

More and more designers are choosing Scigno disappearing sliding doors!

Extra space is always an advantage.

Now found in numerous countries, Scigno frames and framing systems for disappearing sliding doors help you gain space that would otherwise be taken up by swinging doors.

Furnish rooms more freely.

Gain more space with concealed sliding doors and furnish more freely as the doors occupy only the opening width.

Indoor space becomes more liveable.

Scigno is living. Scigno single, double and made-to-measure sliding doors make indoor space more liveable and free the imagination of those who design and plan contemporary living space.

Certified quality.

Scigno's Quality Management System is certified in compliance with UNI EN ISO 9001:2000 regulations for the "Planning and production of framing systems for disappearing sliding doors and windows".

12 years guarantee.

Each frame bears the Scigno brand, has a 12 years guarantee on the components and hanging system and is accompanied by a Scigno Certificate of Authenticity.



SCRIGNO®

Framing systems for disappearing sliding doors

For further information please contact:

The Disappearing Door Company Ltd - phone 0845 072 0102 - fax 01634 720866 - e-mail: info@disappearingdoors.co.uk

www.disappearingdoors.co.uk - www.scrigno.net

ENQUIRY24 ON CARD WWW.AJPLUS.CO.UK/AJDIRECT



1.

1. Leach Rhodes Walker's original designs for the Aldine House development
2. The complex today



2.

G TEN/UNIVERSITY OF MANCHESTER

FIRM MAY DEMOLISH OWN OFFICE

By Richard Waite

Salford-based practice Leach Rhodes Walker (LRW) is steeling itself for uproar over plans to overhaul – or even demolish – its iconic, self-designed office.

The firm's home – the Miesian, black-marble Aldine House pavilion overlooking the River Irwell – is widely regarded as one of Greater Manchester's tidiest pieces of 1960s Modernism.

Aldine House, and its surrounding five-storey office blocks clad in striking white precast sculptural concrete panels, were all drawn up by LRW back in 1967.

But developer Bruntwood is mulling over proposals to build a mixed-use residential and commercial scheme, possibly including a 'slim' 40-storey tower, on the sought-after riverside plot.

If the move goes ahead, LRW could be forced to mastermind the demolition of perhaps its finest building.

What's more, with the recent loss of some of the city's better 1960s buildings such as the Maths Tower at Manchester University, the practice is also likely to become embroiled in a heated battle over its plans with lovers of Modern architecture.

'It is very sad to hear that LRW's own office and arguably the practice's best building is to be destroyed,' says Eddy Rhead, secretary to the North West group of the Twentieth Century Society.

Rhead adds: 'The whole Aldine House development is very well handled and has a great amount of flair... Although I haven't seen the proposals, any building that requires the demolition of the

LRW office or affects its setting will undoubtedly spoil one of Manchester's better 1960s office buildings.'

The existing complex is, in fact, the only completed part of a much larger but unrealised scheme for a series of blocks reaching up to 16 storeys high.

Tom Jefferies, a senior lecturer at the Manchester School of Architecture, fears that the city's hunger for the new could spell the end for this 'glamorous, space-age' jewel.

'Buildings are coming out of the ground rapaciously in true Manchester style, swamping all before it, including the good stuff,' says Jefferies.

'At the moment there is a stylistic conformity to a lot of things going up in the city centre, removing the more

distinct work of the 1960s and reinforcing blandness.'

He adds: 'There is a growing realisation that good things are being destroyed in the name of progress, and I would be very, very disgruntled if Aldine House went.'

'I'm sure what is going up will be fine, but I guarantee it won't be as weird.'

Meanwhile, LRW is insisting that no fixed plans have been made and a number of options are still under consideration. But a source within the firm did admit that 'sometimes you have to lose little gems to build better gems'.



ENQUIRY 25 ON CARD
WWW.AJPLUS.CO.UK/AJDIRECT

**“A fully functioning
Tea-Point that gave
me everything...
including more space
to rent out.”**

Everyone can benefit from having more space... and with a Space Saver Tea-Point that's exactly what you get. Choose from the UK's biggest range of Tea-Points, Compact Kitchens, and Cupboard Kitchens. They all come pre-constructed and ready for quick easy installation and if we don't have just what you want we can design bespoke for you. So think about it... extra space means extra income.

Tel: 020 7624 1002 Email: enquiries@spacesavers.co.uk
Visit: www.spacesavers.co.uk



THE BIG
NAME IN
SMALL
KITCHENS



The current planning laws led to an eight-year inquiry for Richard Rogers' Heathrow Terminal 5

PLANNING REFORM PROMISES WORK

By Richard Vaughan

Planning is a subject that seldom attracts front-page headlines, but the White Paper published on Monday (21 May) caused a media farrago.

The government's long-awaited announcement on how it will overhaul the creaking planning system – based on economist Kate Barker's recommendations – was greeted with panic and derision.

Most outspoken in its criticism was environmental charity Friends of the Earth, which claimed that the reforms will not only accelerate climate change, but will put an end to democracy in its entirety.

Communities Secretary Ruth Kelly, who spearheaded the White Paper, hopes the changes will fast-track major infrastructure developments such as nuclear-power stations and airports.

Kelly used Richard Rogers' Heathrow Terminal 5 as an example of how the planning system is failing. The project went through an eight-year planning inquiry – the same length of time it took Rogers to conceive, design and build Madrid's Barajas airport.

The Secretary of State also wants to cut red tape on smaller projects, such as improvements to homes and small commercial properties, to alleviate pressure on local authorities.

But now that the dust has settled, the true repercussions of the proposed changes can be fully assessed. According to Boisot Waters Cohen director and planning expert Brian Waters, the White Paper can barely be called anything but a Green Paper.

'This may as well be a consultation document – it is

full of aspirational "stuff" and is peppered with questions,' says Waters. 'Whenever it comes close to saying how it will make these changes, it refers to another document that is yet to be published.'

Despite this, Waters claims that the paper is pointing in the right direction and that, at first glance, it looks as though architects will benefit.

'It has been more than a decade since the government decided to push on with Terminal 5 due to the media and public frenzy – you really can't run a country like that,' says Waters.

'The big decisions should be taken at government level... The government is dead right to look to a more centralised system like that, and it could then lead to a privatisation in parts of the system,' he adds.

According to Waters, a more centralised system would see projects pushed through the system quicker – abolishing lengthy delays such as those endured at Terminal 5.

Waters also claims that the reforms proposed by the White Paper will provide greater opportunities for smaller practices.

'The role of architects acting as consultants, particularly on small-scale projects such as extensions or microgeneration devices, will become their bread and butter,' he says.

'Home and shop owners will begin to turn to architects in greater numbers for advice on whether their developments will need planning permission,' Waters adds. 'And this, in turn, could lead to more design work for architects.'

The UK's largest green roof project.

(Ashzip 400, also available in a wide variety of other colours and finishes)

Ashzip™

Standing seam roofing systems

- Continuous standing seam sheets provide a robust, secure waterproof base for sedum blanket and growing media.
- Wide range of green and brown roof options including sedums, wild flower and mixed grasses.
- Helps control water run-off, reduces carbon footprint and improves thermal and acoustic performance.
- Full height thermal halter for speed and ease of installation, on-site roll-forming reduces transportation and scaffold costs.
- All elements fully re-cyclable or re-useable at the end of the buildings life.
- Ashzip 400, suitable for pitched, curved and waveform roof profiles in aluminium and painted steels.
- AWM warranty available covering design, latent defects and workmanship.

Ashzip for performance, durability,
value and sustainability.



Visit www.ashandlacy.com or call 0121 525 1444 to discover more.



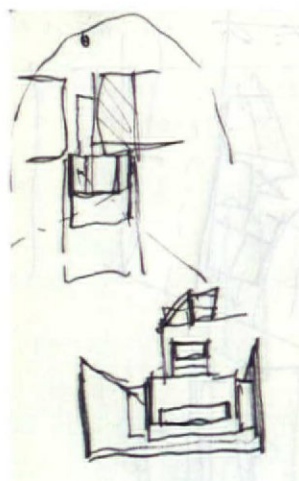


1.

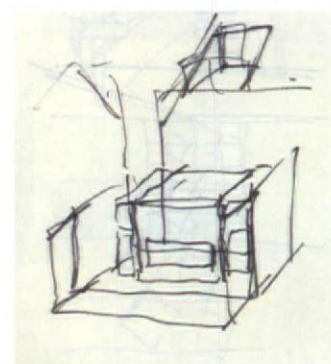
SHAPERO'S EXTENSION CATCHES THE LIGHT

Ex-Chipperfield designer Maurice Shapero has unveiled his plans for an extension to the rear of a Victorian semi-detached house in Whalley Range, Manchester. The scheme will provide around 32m² of extra space to the home. According to Shapero, the client wanted a contemporary feel to provide a contrast to the Victorian front of the house. The client has restored the facade of the house with stained-glass windows and sand-blasted stonework. The rear, says Shapero, will provide an antithesis to this, using concrete and glass. The walls will 'act like blinkers, internalising the space' but will also capture morning and evening sunlight. The project, valued at around £150,000, is about to be submitted for planning with work scheduled to begin on site in three months time.

By Richard Vaughan



2.



3.

1. The concrete and glass of the extension will contrast with the masonry of the Victorian house
2 & 3. Concept sketches




Sola-boost

The “energy free” form of air conditioning

The Sola-boost is an extension of the proven Monodraught Windcatcher system designed to provide additional solar powered ventilation, on sunny days, maintaining zero running costs but enhancing the natural ventilation rate by more than 50%.

The Patented PowerTrack™ Controller then boosts the fan power by a further 250% under full sun conditions, bringing Monodraught Windcatchers up to an even greater level of sustainability than has ever been achieved before.



 Monodraught

Tel: 01494 897700

Email: info@monodraught.com

Web: www.monodraught.com/sola-boost

ENQUIRY14 ON CARD
WWW.AJPLUS.CO.UK/AJDIRECT

'Too solid and too solemn for a lightweight age – but for a reader or writer it is heaven'

Fiona MacCarthy on Sandy Wilson's British Library. *Observer*, 19.05.07

'What might aliens deduce about human intelligence from our architecture? If they landed in London, they might rank us just above ants'

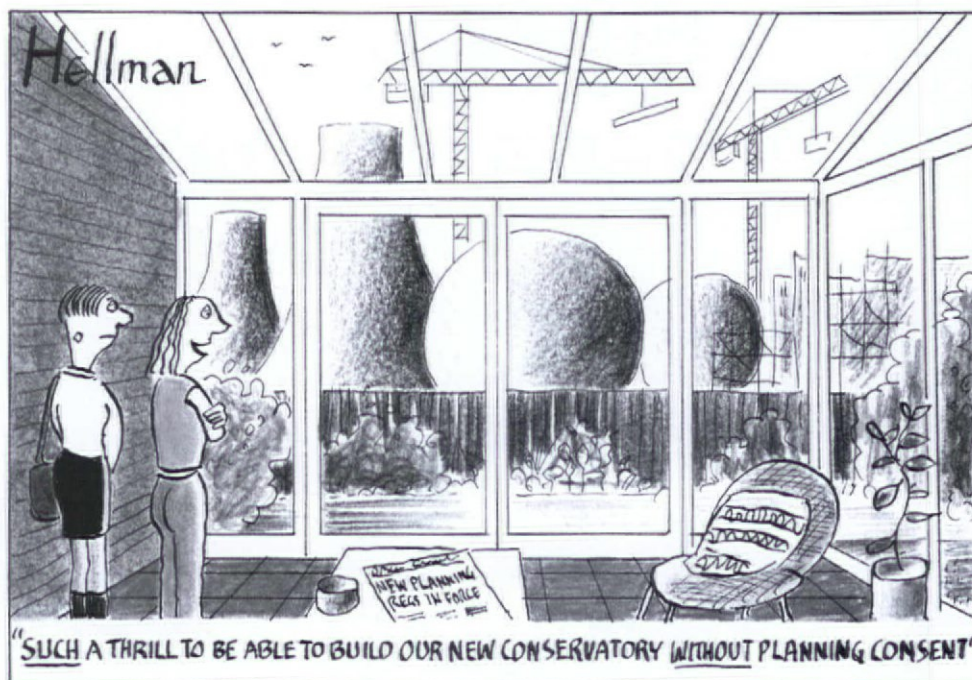
Steven Rose. *Guardian*, 21.05.07

'It is what Modernism was meant to be but politics prevented'

Stephen Bayley on the Royal Festival Hall, now refurbished. *Observer*, 20.05.07

'The biggest challenge is how to stay small'

Daniel Libeskind. *Globe and Mail*, 19.05.07



ARCH IRRITANT

Last Saturday saw the moment all footballing architecture fans had been waiting for. There were trials and tribulations, tears, recrimination, months turning to years of delays, but finally it happened. Yes, at last a wheezing Astragal took to the pitch to make his debut for the Wandsworth Common over-60s five-a-side team. Oh, and the FA Cup final between Manchester United and Chelsea kicked off in **Norman Foster** and HOK's new Wembley Stadium as well. Although the cup final itself left much to be desired, with **Didier Drogba's** goal breaking the torpor late on just as the excitement of penalties was looming, the stadium was nothing less than a triumph. Boasting more WCs than any other venue in the world and

room for 90,000 rabid spectators to sit in comfort, it is a delight. But Astragal did spot one flaw, which lies in the iconic arch. TV commentators **John Motson** and **Martin Tyler**, neither of whom has ever been known to pass up a punning opportunity, spent large parts of the game referring to 'the arch rivals clashing under the arch'. Groan. Red card!

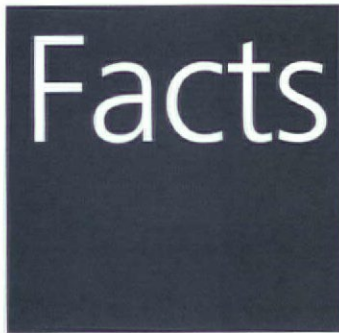
SHADOW OF A DOUBT

There was another significant flaw with the gigantic new Wembley, which may not have been spotted by those fans in attendance. Unfortunately for TV viewers at home, the balmy weather and low sun meant that a large proportion of the pitch was left in severe shadow from the huge stands. It therefore seemed as though Manchester United left wing

Cristiano Ronaldo disappeared for much of the game. And no, Astragal is strictly neutral, so that is not a comment on the Portuguese *wunderkind's* rather disappointing display.

TAKING SIDES

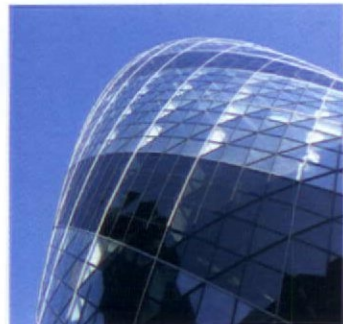
Lord Foster himself was spotted joining the corporate guests at Wembley. Nattily attired all in black, Foster took great pleasure in showing the other spectators around his newly opened arena. But he was left scrabbling for answers when a BBC correspondent popped the question Norman was dreading – who was he going to support: Manchester United or Chelsea? 'Well,' Norm started, 'I was born in Manchester but I live in Chelsea. So I've got a foot in both camps.' Come on Normski! That's just fence-sitting of the highest order.



Architects, designers and contractors have been inspired to use Lignacite Masonry products since 1947.



Lignacite Facing Masonry is used in thousands of buildings around the UK from football stadiums and shopping precincts to airports and family homes.



We have used recycled materials in our products for 60 years and we are constantly looking for ways to make our blocks more sustainable.



Facing Masonry is available in a wide range of finishes and colours – bespoke colours and special shapes can be made to order.



Facing Masonry and Commodity Ranges from Lignacite

As a leading manufacturer in the concrete and masonry products business we are continually striving to build a brighter, better and sustainable future for our stakeholders.

Committed to customers; passionate about our products

ENQUIRY 39 ON CARD
WWW.AJPLUS.CO.UK/AJDIRECT



Lignacite Norfolk House High Street Brandon Suffolk IP27 0AX
T: 01842 810678 info@lignacite.co.uk www.lignacite.co.uk

LETTERS

CONSERVATION POLICY BOWS TO TOWERING AMBITIONS

Here is a planning policy puzzle. Perhaps an astute reader can explain the contradiction between two concurrent statements.

In *ajplus* 10.05.07 you report that Birmingham City Council is backing a proposal by the West Midlands Fire Service that the conversion of its Grade II-listed Central Fire Station, which sits within the Steelhouse Conservation Area, should include a new 40-storey tower. At exactly the same time, the city's director of planning and regeneration publishes a draft management plan for this area, saying: 'The council will ensure that all alterations and additions are sympathetic to the existing building in scale, proportion, materials and detailing,' and 'new buildings must not appear to be significantly higher or lower than their neighbours'.

Is a 40-storey building not significantly higher than a three-storey building? Or is it the truth that, when faced with erectile development machismo, conservation policy is just hopelessly girly?

Joe Holyoak, by email

'MEMORY VEIL' APPEARS TO BE ALL IN THE MIND

I was pleased to see *gm + ad*'s development proposed for a key unused site in Glasgow's central urban grid (*AJ* 10.05.07) but was somewhat baffled by the text accompanying the pictures and wondered if it was a description of a different scheme.

The idea of a 'memory veil' appealed: the phrase brought to mind a thin interactive light-filled surface or screen that would engage with the streets and people surrounding. However, I was more than a little disappointed when I read that the memory veil is little more than the maintaining of a building line.

The 'existing brick box' screens the cinema halls and is an impressively featureless facade of brick. If this were to be knocked down my memory of it would certainly not be a diagonally braced steel and glass structure. Am I missing something here?

William Morris, Glasgow

REPORTS ON MCASLAN'S FINANCES ARE 'MISLEADING'

In *ajplus* 26.04.07 you claimed 'McAslan sees profits plummet despite massive turnover'. This is inaccurate and misleading. We

recorded a record turnover for the 2005-2006 financial year of close to £8 million with an operating profit of £800,000. From this, around 20 per cent was distributed to staff as part of our practice profit-sharing scheme, and over 5 per cent to charities.

We regard our performance in 2005-2006 as an exemplary financial result, particularly since we restructured the practice during that financial year and invested heavily in our infrastructure while maintaining growth and expansion. You might also like to note that our performance for the first half of this financial year is 25 per cent up on the same period last year.

Natasha Martin, finance director, John McAslan + Partners

CLIMATE CHANGE SCIENCE JUST DOESN'T ADD UP

I am grateful to Professor Colin Porteous for pointing out (*letters*, *AJ* 26.04.07) that the figure quoted in my earlier letter (*AJ* 19.04.07) with regard to the greenhouse effect of methane is not 'incontrovertible'. But neither are the figures from the BBC weather centre that Porteous cites. The fact is that none of the science is completely watertight, but those who are interested can start by consulting <http://earthsave.org/globalwarming.htm>

Peter Kellow, Finistère, France

RIBA LONDON'S 'NEW HOME' TICKLES ONE READER...

Many thanks for the hilarious 'RIBA London floats boat plan' piece (*AJ* 10.05.07) – well worth including, though such a shame it missed the 1 April publication date.

Michael West, West & Partners

...WHILE ANOTHER AGREES THE PLAN ISN'T WATERTIGHT

I suggest RIBA London remains in Portland Place. Those of us located outside London could then establish our own identity, distinct from London and with an HQ on Planet Earth.

Malcolm Green, Barrow-in-Furness

Please address letters to: The Editor, *The Architects' Journal*, 151 Rosebery Avenue, London EC1R 4GB, fax 020 7505 6701, or email angela.newton@emap.com to arrive by 10am on the Monday before publication. *The Architects' Journal* reserves the right to edit letters.

Hulley & Kirkwood are one of the UK's leading independent building consultancy engineers. We are committed to helping our clients create and operate successful building environments through sustainable solutions.

For more information, please email enquiries@hulley.co.uk or log on to www.hulley.co.uk.

Hulley & Kirkwood...Making Buildings Work
ENQUIRY 60 ON CARD / WWW.AJPLUS.CO.UK/AJDIRECT



hulley & kirkwood

OSTB

GOOD TO THE ENVIRONMENT

CHECK OUT WWW.JOSBDONE.COM/TECHNICAL

**CERTIFIED AND
GUARANTEED TO
PERFORM.**

- CE
- BBA approved
- Environmentally certified by the FSC
- Recyclable



ENQUIRY 34 ON CARD
WWW.AJPLUS.CO.UK/AJDIRECT



Tired of project surprises?

With Deltek Vision®, you get accurate, up to the minute information about the status of your projects. So, you can spend your time proactively avoiding issues rather than dealing with them.

Deltek Vision: A single solution for all your business processes.

- Project planning and management
- Resource utilisation and scheduling
- Time and expense management
- Project accounting and billing
- Client relationship management
- New business development
- Performance management



PROJECT PROVEN.
INDUSTRY SMART.™

Learn more about how Deltek is helping companies like yours - visit Deltek.co.uk/monitorperformance to view webcasts, product literature, client case studies and white papers or call **020 7518 5010**

AJ100



in association with

DAVIS LANGDON



Autodesk®



Autodesk®

Can you build
a 100-acre farm
in the middle
of a city?

Definitely. The Vertical Farm is just one of many ideas that can transform the world through sustainable design. At Autodesk®, we are helping architects, engineers and designers bring those ideas to life. We support all those who envision a smarter, more efficient, greener future. For more information, visit autodesk.com/green



Image by: atelier SoA

Autodesk is a registered trademark of Autodesk, Inc., in the USA and/or other countries. All other brand names, product names, or trademarks belong to their respective holders. Autodesk reserves the right to alter product offerings and specifications at any time without notice, and is not responsible for typographical or graphical errors that may appear in this document. © 2007 Autodesk, Inc. All rights reserved.

ENQUIRY 49 ON CARD
WWW.AJPLUS.CO.UK/AJDIRECT

Contents

Main table	Page 30
Full listing	Page 33
Regions	Page 77
Fees	Page 78
Salaries and pensions	Page 81
Work outside the UK	Page 82
Education	Page 84
Favourite building	Page 86
Least favourite building	Page 87
Best building of 2006	Page 88
Most admired architect	Page 91
Opinions on RIBA/ARB/CABE	Page 92
Awards	Page 94
Opinions	Page 100

Research

Marketlink Research

Editor

Clive Walker

Writers

Isabel Allen, James Pallister, Ruth Slavid,

Richard Vaughan, Richard Waite, Clive Walker

UK architecture is changing fast. This year's most notable 'newcomer' to the AJ100 is the SMC Group, the acquisitive publicly quoted company which has vaulted immediately to second position. One year ago we knew that it was growing fast, but since the figures were calculated from the previous December, it did not then qualify for our listing.

If the ups and ups – and then some downs – of SMC have provided the biggest business story of the year, the spotlight has also been on the succession-planning architectural lords. Richard Rogers, in the practice's most triumphant year, has brought two new names into the title, to recognise the contribution of two key younger directors. And Norman Foster has secured the future expansion of his practice by signing a long-awaited investment deal with a private-equity group.

This snapshot of life at the top end of the profession is also reflected further down the scale, with mergers, takeovers and of course new launches – often through splintering from larger practices. We have included some data this year – and even an award – for practices that are not yet in the AJ100. It will be interesting to see, in the course of time, which of them make it on to the chart. If and when they do, they will have to be fairly large. The size of practice that can sneak into the AJ100 rises inexorably. As recently as 2003 a practice needed only 21 architects; now it needs 28.

If you want a job with any of these practices, and you are talented, the prospects look good. Recruiting enough capable staff is one of the major concerns, even for those practices with an outstanding reputation. Procurement and sustainability issues also provide some sleepless nights.

But overall, the AJ100 practices are a buoyant lot, with optimistic predictions, and enthusiasm for talented work. And so they should be. To reach this level is an indication of success, and this annual feature is a celebration of that success.

Ruth Slavid



in association with



NUMBER OF QUALIFIED UK ARCHITECTS

POSITION 2006 2005		COMPANY/PRACTICE	UK ARCHITECTS 2006	UK ARCHITECTS 2005	CHANGE IN NUMBER OF ARCHITECTS	% OF FEMALE ARCHITECTS
01	01	BDP	301	281	20	23
02	N/A	SMC Group	270	N/A	N/A	11
03	03	Foster + Partners	236	175	61	14
04	06	Atkins	199	167	32	17
05	05	Capita Percy Thomas	198	172	26	11
06	02	Aedas Architects	190	190	0	24
07	06	HOK/HOK Sport	181	167	14	33
08	03	Nightingale Associates	146	175	-29	42
09	09	Benoy	133	117	16	20
09	08	PRP Architects	133	130	3	30
11	10	Broadway Malyan	117	108	9	19
12	14	Allies and Morrison	114	90	24	36
13	11	Sheppard Robson	112	101	11	28
14	15	Chapman Taylor	106	76	30	27
15	18	Aukett Fitzroy Robinson	87	72	15	18
16	22	Keppie Design	84	66	18	15
17	27	Pascall + Watson	80	63	17	15
18	12	Reid Architecture	77	101	-24	30
=19	19	Chetwood Associates	75	70	5	13
=19	N/A	EPR Architects	75	N/A	N/A	15
=19	31	RPS Group	75	57	18	16
22	43	John McAslan + Partners	71	45	26	42
=23	N/A	Allford Hall Monaghan Morris	70	N/A	N/A	21
=23	23	Kohn Pedersen Fox Associates	70	65	5	33
=23	13	Llewelyn Davies Yeang	70	95	-25	29
=26	21	RHWL Architects	68	68	0	29
=26	23	Stride Treglown	68	65	3	21
=26	17	JM Architects	66	73	-7	27
=26	29	Lewis and Hickey	66	61	5	14
=26	25	Scott Brownrigg	66	64	2	17
31	19	RMJM	65	70	-5	12
=32	41	3D Architects	63	46	17	19
=32	30	Feilden Clegg Bradley Architects	63	59	4	30
34	50	TPS	62	41	19	31
35	16	Austin-Smith:Lord	59	74	-15	25
36	34	Architects Design Partnership	58	54	4	43
37	31	TP Bennett	56	57	-1	18
38	36	Rolfe Judd	55	52	3	22
=39	33	Hamiltons Architects	54	55	-1	24
=39	39	Rogers Stirk Harbour + Partners	54	49	5	26
=39	25	Swanke Hayden Connell Architects	54	64	-10	30
42	36	Anshen + Allen	52	52	0	31
=43	38	Carey Jones Architects	50	51	-1	8
=43	41	Hunter and Partners	50	46	4	16
45	40	CDA	49	48	1	12
46	46	Fletcher Priest Architects	47	43	4	36
=47	46	Ellis Williams Architects	45	43	2	33
=47	63	Levitt Bernstein Associates	45	37	8	31
=47	34	Pollard Thomas Edwards Architects	45	54	-9	49
=47	63	SOM	45	37	8	33

NUMBER OF QUALIFIED UK ARCHITECTS

POSITION		COMPANY/PRACTICE	UK ARCHITECTS 2006		UK ARCHITECTS 2005	CHANGE IN NUMBER OF ARCHITECTS	% OF FEMALE ARCHITECTS
2006	2005						
=47	48	Wilkinson Eyre Architects	45		42	3	16
=52	45	HTA Architects	44		44	0	27
=52	96	Make	44		27	17	30
=52	53	Purcell Miller Tritton	44		40	4	27
55	70	Bond Bryan Architects	43		36	7	12
=56	96	HKR Architects	42		27	15	17
=56	77	Holder Mathias Architects	42		33	9	19
=56	63	Hopkins Architects	42		37	5	36
=56	50	Squire and Partners	42		41	1	21
60	48	David Chipperfield Architects	41		42	-1	39
=61	N/A	ESA Architecture	40		N/A	N/A	18
=61	53	Farrells	40		40	0	60
=61	89	Sidell Gibson Architects	40		29	11	15
=61	59	Stephen George and Partners	40		38	2	13
=65	50	DLG Architects	39		41	-2	21
=65	56	HLM Architects	39		39	0	15
67	59	Jacobs	38		38	0	11
68	83	Jestico + Whiles	37		31	6	22
=69	70	Barton Willmore	36		36	0	19
=69	56	Devereux Architects	36		39	-3	19
=69	72	GHM Consultancy Group	36		35	1	19
=69	89	Grimshaw	36		29	7	31
=69	59	Hawkins\Brown	36		38	-2	44
=69	77	RH Partnership Architects	36		33	3	17
=75	63	Cooper Cromar	35		37	-2	14
=75	63	DLA Architecture	35		37	-2	29
=75	80	RTKL UK	35		32	3	26
=78	80	Hadfield Cawkwell Davidson	34		32	2	18
=78	80	Michael Laird Architects	34		32	2	29
=78	93	Powell Dobson Architects	34		28	6	15
=81	59	Donald Insall Associates	33		38	-5	18
=81	N/A	Glenn Howells Architects	33		N/A	N/A	15
=81	100	Pozzoni Design Group	33		26	7	15
=81	53	Wimberly Allison Tong and Goo	33		40	-7	27
=85	63	Penoyre & Prasad	32		37	-5	34
=85	77	S&P	32		33	-1	13
=87	63	Architects Co-Partnership	31		37	-6	13
=87	93	Assael Architecture	31		28	3	26
=87	72	Taylor Young	31		35	-4	16
=87	72	YRM Architects	31		35	-4	16
=91	83	Feilden + Mawson	30		31	-1	27
=91	72	Lyons + Sleeman + Hoare	30		35	-5	7
=91	N/A	Paul Davis + Partners	30		N/A	N/A	33
=91	N/A	The Harris Partnership	30		N/A	N/A	13
=91	85	The Tooley & Foster Partnership	30		30	0	27
=96	96	Gensler	29		27	2	31
=96	93	John Thompson & Partners	29		28	1	34
=96	N/A	Eric Parry Architects	29		N/A	N/A	24
=99	N/A	Avanti Architects	28		N/A	N/A	36
=99	89	AWW Architects	28		29	-1	18

Energy²: Saving energy, generating energy



To build a sustainable future, we need sustainable buildings. Which is why energy, its conservation and generation, informs every aspect of our business from the design of highly insulated façades, doors and windows to advanced solar thermal products and PV systems. Add in increased security and automation and outstanding design and we arrive at Energy², our model for the building envelopes of tomorrow.

Schüco International

Whitehall Ave • Kingston • Milton Keynes MK10 0AL
Telephone 01908 282111 Fax 01908 282131
www.schueco.co.uk

ENQUIRY 54 ON CARD
WWW.AJPLUS.CO.UK/AJDIRECT

Your partner for windows and solar products

SCHÜCO

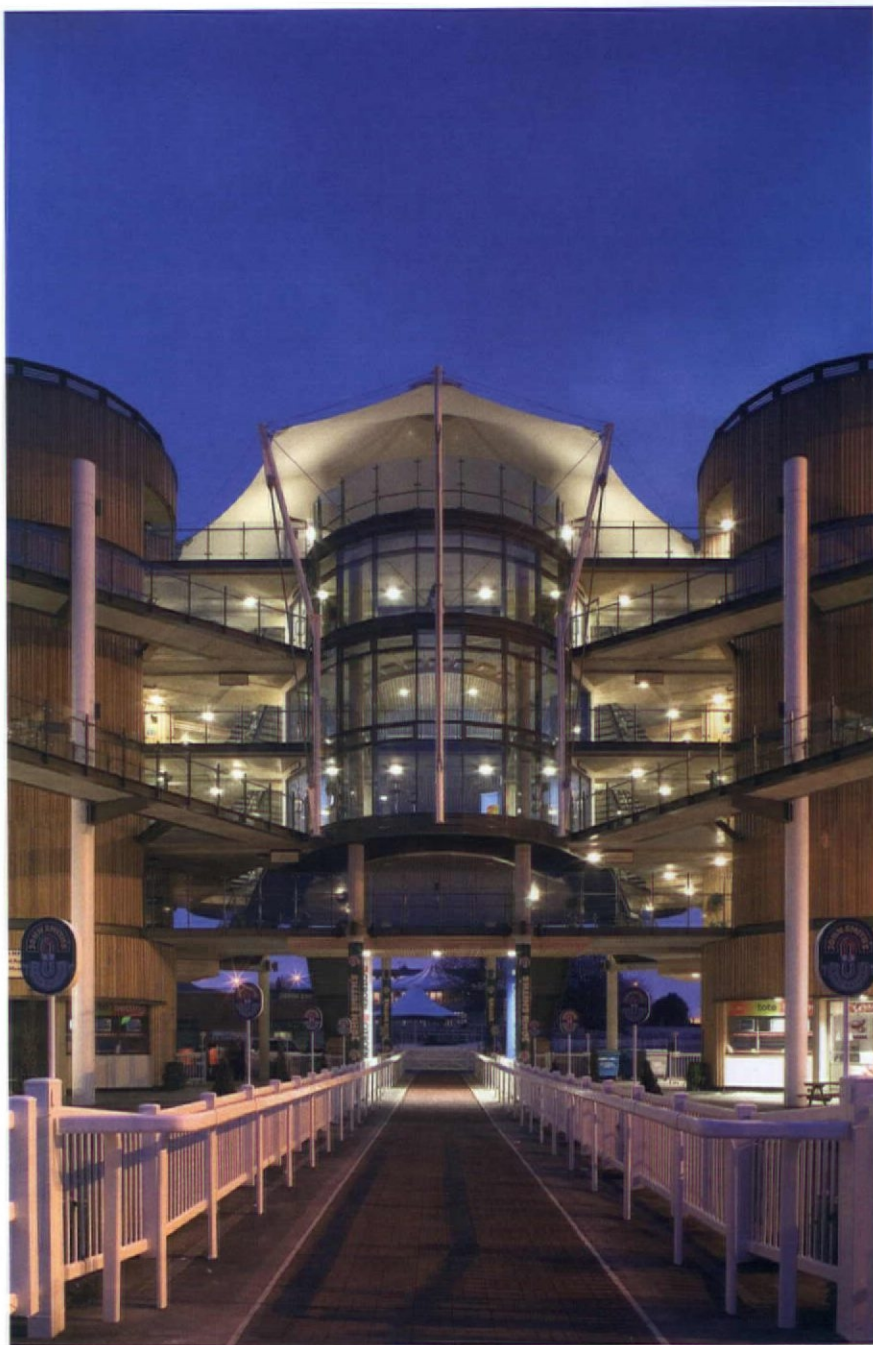
01 / BDP

Last year: 01

Number of architects: 301

Female architects: 23 per cent

Another year, another first-place for BDP. The practice, which enlisted another 20 architects during the last 12 months, has prevented the SMC juggernaut ploughing its way to pole position – at least for now. BDP chief Peter Drummond admits the practice needs to be ‘resilient’ to maintain its own steady growth. Healthcare work continues to be erratic, with the Leicester Hospitals PFI project stuttering along and the firm’s Torbay PFI scheme still ‘on stop’. But that has not prevented the commercial big-hitter opening a new outpost in Birmingham and bagging a brace of hospital schemes in Scotland. Things are looking increasingly rosy overseas too, following the link-up with French associate practice Groupe 6. Meanwhile in Liverpool, the practice’s enormous Paradise Street project is motoring forward and the firm’s new office in Piccadilly Basin, Manchester – which will house 280 staff – is already on site. Both are due to complete next year. BDP’s AJ100 domination appears unassailable – but a year is a long time in architecture and anything could happen. Right: Aintree Racecourse, Merseyside



DAVID BARBOUR



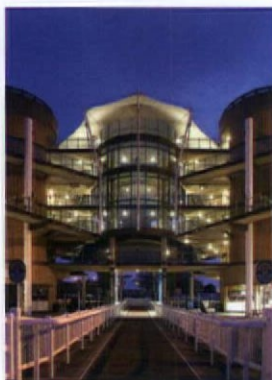
a great place for the great race

www.bdp.co.uk



ENQUIRY 23 ON CARD
WWW.AJPLUS.CO.UK/AJDIRECT

New grandstands at the Grand National course, Aintree





02 / SMC GROUP

Last year: N/A

Number of architects: 270

Female architects: 11 per cent

Widely expected to leap into first position, the phenomenon that is SMC turned out to have rather fewer architects than was believed when the strictest criteria were applied to AJ100 qualification. Nevertheless, it has been an exceptional year. In September, the firm bought three Scottish practices in a day. Chief executive Stewart McColl seemed to be breakfasting daily on potential acquisitions. In December he claimed to be looking at a £2.5 billion slice of the global architecture market. The brakes went on in February 2007, when SMC was forced to issue a profits warning and McColl stepped into the position of deputy chairman. Meanwhile, the constituent practices have been winning work, not least SMC Alsop, with a proposal for a 43-storey tower on Old Street roundabout, London. Expect more fireworks next year.

Above: Mixed-use masterplan, United Arab Emirates

03 / FOSTER + PARTNERS

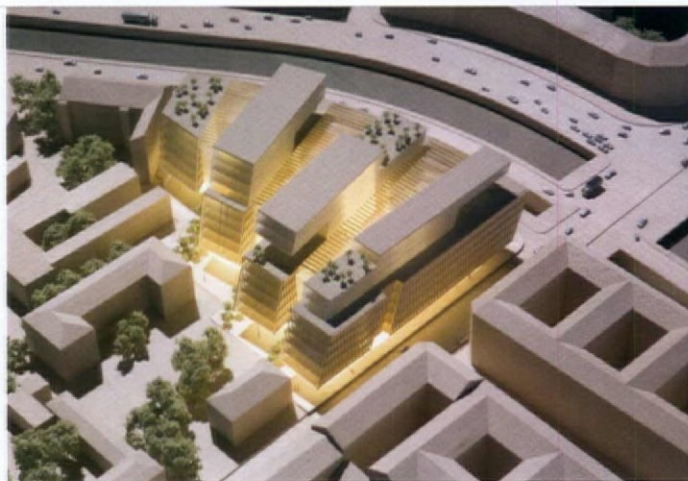
Last year: 03

Number of architects: 236

Female architects: 14 per cent

Foster ended months of speculation at the beginning of May by announcing an investment deal with private-equity group 3i, which bought a minority stake in Foster + Partners. The 71 year old also unveiled a restructuring of the executive board, installing himself as chairman and Mouzhan Majidi as chief executive. The move will allow the firm to continue to spread its wings geographically. It has already picked up its first Latin American project in Argentina, and is working on schemes in Calgary and Kazakhstan. In the UK, Foster is building yet more City Academies, and Wembley Stadium finally finished.

Right: JFC Complex, St Petersburg, Russia



NIGEL YOUNG



04 / ATKINS

Last year: 06

Number of architects: 199

Female architects: 17 per cent

Vaulting back to fourth position after a fall in the rankings last year, the Olympic masterplanner has added 32 architects in 12 months. Besides its masterplanning role, it is designing the Olympic sailing centre in Weymouth, Dorset. Almost synonymous with tall buildings in Dubai, the practice has another showstopper on the books in the form of a 32-storey mixed-use tower shaped like an up-ended clamshell in Iris Bay. Another Middle East project, Bahrain World Trade Centre, netted the firm a Leaf (Leading European Architects Forum) Award. Closer to home, it has been asked to produce an alternative proposal to the recently rejected Stanton Williams scheme for Sloane Square. And, at a time when the practice is planning aggressive expansion in architecture, it has poached former Hopkins star Martin Pease from Stride Treglown.

Left: Bahrain World Trade Centre

05 / CAPITA PERCY THOMAS

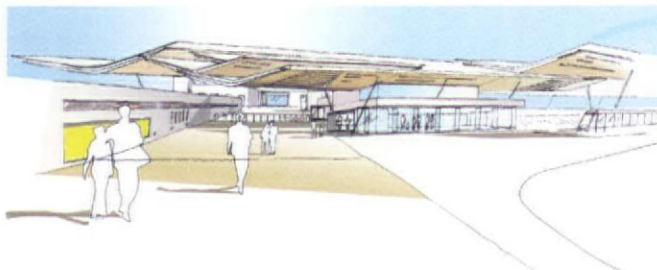
Last year: 05

Number of architects: 198

Female architects: 11 per cent

'There are more purchases on the horizon', we reported last year, and the practice promptly bought Ruddle Wilkinson. But owner Capita Symonds reported disappointing margins in the first half of 2006. Key projects include Derby City hospital, and an airport hotel in Lagos, Nigeria. August saw Birmingham City Council parachute the practice into its troubled library project. Expect more high-profile schemes under new design director Andrew Pryke, previously of John McAslan and Michael Wilford.

Right: Wales Millennium Centre



06 / AEDAS ARCHITECTS

Last year: 02

Number of architects: 190

Female architects: 24 per cent

Biggest blow last year was the departure of design director Richard Hyams in September. Hyams has set up his own practice, Astudio. Aedas is specialising in City Academies, including one to replace London's Holland Park school. It's also doing well with towers, with the Legs project in Abu Dhabi, a four-tower scheme in Salford and an 80-storey skyscraper in Karachi, Pakistan.

Left: Edinburgh Airport Rail Link Station

07 / HOK/HOK SPORT

Last year: 06

Number of architects: 181

Female architects: 33 per cent

Arsenal FC's Emirates Stadium opened in August, although its ambition was dwarfed by the contract to design the London Olympics stadium. Other projects include converting Northern Ireland's Maze prison into a sports venue. Non-sports schemes include a Docklands tower based on an Aalto vase. HOK has also masterplanned the £150 million redevelopment of Aberdeen's Bon Accord shopping centre. Right: Delhi Airport, India



08 / NIGHTINGALE ASSOCIATES

Last year: 03

Number of architects: 146

Female architects: 42 per cent

Nightingale Associates has always been associated with healthcare design, but with the perilous state of the market it is not surprising that it has been looking to new horizons – which it has managed with the appointment to design a 29-storey mixed-use tower in Croydon. That said, the practice lost nearly 30 architects over the course of a year. But it is certainly not turning its back on healthcare, with expert Richard Mazuch working with external partners on creating an environment to promote healing – to be the subject of an exhibition this autumn. Right: Croydon Vocational Tower



= 09 / BENOY

Last year: 09

Number of architects: 133

Female architects: 20 per cent

A year of growth for Benoy, which is celebrating its 60th anniversary by venturing into new projects as far afield as India, where it is designing three market cities, and Abu Dhabi, where it has designed the Ferrari Experience – a boys' toys extravaganza opening in 2009. Closer to home, it is one of the names working on the massive Salford Media City: UK for Peel Holdings. In December 2006 it was declared one of three winners of a Cathay Pacific Award for business success in Hong Kong, where it has completed more than 90 retail projects. Above: Ferrari Building, Abu Dhabi

= 09 / PRP ARCHITECTS

Last year: 08

Number of architects: 133

Female architects: 30 per cent

Although the practice saw a 2.9 per cent rise in turnover last year, profits slid from £493,005 (before tax) in 2005 to £246,311 in 2006. However, directors anticipate growth in 2007 – plans for a housing scheme at Cardington Airfield, near Bedford, have been unveiled. Internationally, the firm is working in Russia, Ukraine, Montenegro, France and Spain: in Moscow it has designed the Rublevo Residence, a £50 million luxury housing project. Right: Rublevo Residence, Russia



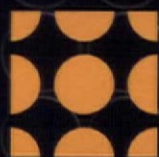


an exclusive community of
Architectural talent

siv.co.uk architectural recruitment
an exclusive network of talented Architects

ENQUIRY 53 ON CARD
WWW.AJPLUS.CO.UK/AJDIRECT

0870 240 6675



SIV

architectural career management

11 / BROADWAY MALYAN

Last year: 10

Number of architects: 117

Female architects: 19 per cent

A colossal Peel Holdings scheme on the Mersey waterfront has dominated the practice's order book. Valued at £4.5 billion, it's equalled in scale only by Argent's huge development at King's Cross, the difference being that Broadway Malyan is the sole masterplanning practice. Elsewhere, the architect is revitalising the River Irwell area as it runs through Salford, Manchester and Trafford, creating the Irwell City Park. It's also one of English Partnerships' 13 super-panel members. Right: La Terrazze, Italy



13 / SHEPPARD ROBSON

Last year: 11

Number of architects: 112

Female architects: 28 per cent

Sheppard Robson scooped the £60,000 House competition in July. The firm's Linton Hospital residential scheme in Maidstone, Kent, won high praise from CABI, which called it 'simple and effective'. This success hasn't stalled Sheppard Robson's gradual slide from a top-five high in 2002 to 13th. Malcolm McGoman, managing partner, and Tim Evans, creative director, now co-run the firm – aiming to foster a 'design-led culture'.

Below: London Business School



12 / ALLIES AND MORRISON

Last year: 14

Number of architects: 114

Female architects: 36 per cent

When practices become involved in projects on a massive scale they can take some flak, and that has happened to Allies and Morrison, which has shrunk its Brighton Marina project and rethink a scheme for Winchester in the face of local pressure. On a brighter note, it has a new skyscraper design for Bishopsgate in the City of London, and is masterplanning a huge scheme in Brent Cross, north London.

14 / CHAPMAN TAYLOR

Last year: 15

Number of architects: 106

Female architects: 27 per cent

There's no lack of confidence at this practice, which continues to scale the AJ100, energised by project wins like the 21,000m² flagship John Lewis store in Portsmouth's proposed Northern Quarter. The firm is on board the BBC's Salford Media City: UK project and its £5.5 billion Liverpool Waters scheme is expected to go in for outline planning soon.

DAVIS LANGDON



Global Project and Cost Consultancy

Building the best and most valued relationships in the industry



'100 Best Companies to Work For'
2005, 2006 & 2007



'Project of the Year'
2002 & 2003, Overseas 2005



'Surveying Practice of the Year'
1995, 1996, 2000, 2001, 2003, 2006 & 2007

www.davislangdon.com

ENQUIRY 47 ON CARD
WWW.AJPLUS.CO.UK/AJDIRECT

Project Management | Cost Management | Management Consulting | Legal Support | Specification Consulting | Engineering Services | Property Tax & Finance

Griffiths & Armour



Inspired? Innovative? Creative?

These aren't words most insurance brokers
would think of to describe their services.

Then again, we don't think like most insurance brokers.



Creative thinking for creative thinkers



PROUD SPONSORS OF
REGIONAL WINNERS
CATEGORY AJ100 2007

Offering individually designed risk management and
indemnity insurance solutions for AJ100 members.

For further information on our services, please contact Paul Berg
on 0151 600 2032 or by email to pberg@griffithsandarmour.com.

Griffiths & Armour Professional Risks

Drury House 19 Water Street Liverpool L2 0RL

Tel 0151 236 5656 Fax 0151 227 2216

Email info@griffithsandarmour.com Web www.griffithsandarmour.com

Group Offices Liverpool London Manchester Glasgow Watford Dublin Sydney Guernsey

Griffiths & Armour Professional Risks acts as manager for the professional indemnity division of Griffiths & Armour.

Griffiths & Armour Professional Risks Ltd is an appointed representative of Griffiths & Armour
which is authorised and regulated by the Financial Services Authority.

**ENQUIRY 38 ON CARD
WWW.AJPLUS.CO.UK/AJDIRECT**

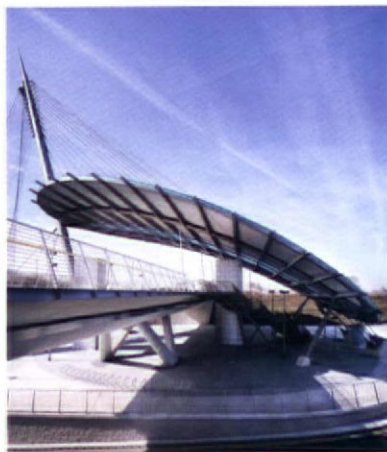
15 / AUKETT FITZROY ROBINSON

Last year: 18

Number of architects: 87

Female architects: 18 per cent

A toddler compared to most of the AJ100, three-year-old Aukett Fitzroy Robinson announced an £880,000 profit this year. Although its £150 million regeneration of St Mary le Port, Bristol, was sent back to the drawing board, it won permission to rework Cardiff Coal Exchange. Right: Central Park Gateway, Manchester



16 / KEPPIE DESIGN

Last year: 22

Number of architects: 84

Female architects: 15 per cent

It's been a great year for Keppie Design: its 1 million m² Eurocentral Business Park – one of the largest speculative office developments in Scotland – secured planning, and the practice has leapt eight places into the AJ100 top 20. Arguably its *pièce de résistance* is the £40 million shopping complex for Cumbernauld town centre – seen by some as one of Scotland's architectural eyesores.

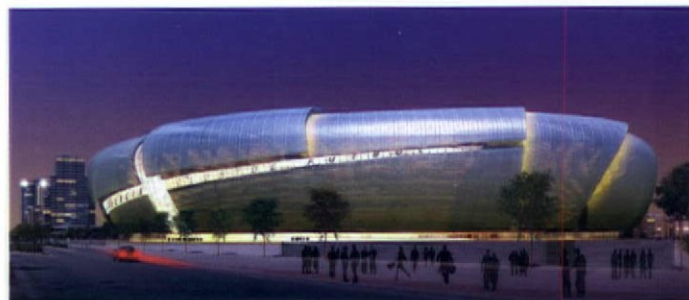
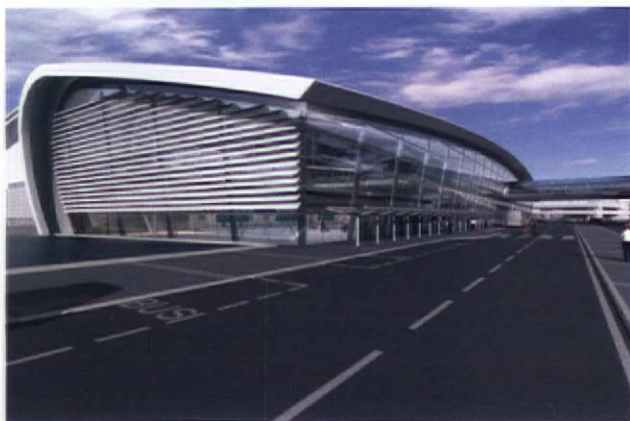
17 / PASCALL + WATSON

Last year: 27

Number of architects: 80

Female architects: 15 per cent

Transport specialist Pascall + Watson continues its AJ100 ascent – it was 43rd in 2002 and 27th last year. Its steady – and seemingly unstoppable – growth triggered a 'serious' take-over bid by Atkins which was turned down in favour of remaining independent. Work is under way on Dublin airport's £410 million Terminal 2, and Wembley Park Tube station is now complete. Below: Dublin Airport, Republic of Ireland



18 / REID ARCHITECTURE

Last year: 12

Number of architects: 77

Female architects: 30 per cent

Another slip for Reid – down six places from last year – and its third consecutive drop overall. That said, the firm has enjoyed a solid 12 months, securing outline planning for its massive £100 million Faber Street mixed-use scheme – the practice's first significant foray into Manchester. Watch out for upcoming projects like the Heart of Slough cultural initiative and the impressive Valencia football stadium.

Above: Valencia Stadium, Spain

= 19 / CHETWOOD ASSOCIATES

Last year: 19

Number of architects: 75

Female architects: 13 per cent

Clerkenwell, central London, became a beacon for sustainability thanks to Chetwoods' Oasis sculpture, unveiled in June for Architecture Week. It features solar-powered 'petals' responding to day and night. Chetwoods' reputation for sustainable design secured the firm a place in English Heritage's harem of preferred architects and urban designers.

= 19 / RPS GROUP

Last year: 31

Number of architects: 75

Female architects: 16 per cent

Planning consultancy RPS – which boasts 2,250 staff nationwide – is ranked 7th in the UK and 36th overall in Europe's 500, the independent annual index of high-growth enterprises. The year saw the acquisition of industrial specialist Burks Green & Partners for £21.2 million. RPS now runs a small Warsaw operation, providing the Oxford-based firm with a foothold in Poland.

= 23 / ALLFORD HALL MONAGHAN MORRIS

Last year: N/A

Number of architects: 70

Female architects: 21 per cent

What a year. Liverpool's Unity, the largest speculative office development outside London, was completed in February. Planning permission has been granted for the Saatchi Gallery in west London. The firm is on board Lend Lease's bid for the massive Elephant & Castle regeneration initiative in south London and also snatched victory in the competition to regenerate Runcorn's Canal Quarter. Right: Barking Town Centre

= 19 / EPR ARCHITECTS

Last year: N/A

Number of architects: 75

Female architects: 15 per cent

After a four-year hiatus, EPR jumps back into the AJ100 top 20. Founding partner Cecil Elsom died in April 2006, aged 94. City of London planners backed the contentious St Paul's office scheme, but its massive Peruvian Wharf got the thumbs down.

Below: Cardinal Place, London



PAUL GRUNDY

22 / JOHN MCASLAN + PARTNERS

Last year: 43

Number of architects: 71

Female architects: 42 per cent

From its 98th position in 2002, this firm has stormed up the AJ100. The practice also employs one of the highest percentages of female architects. Its order book includes converting Woolwich Royal Military Academy into a 316-home urban village and a £100 million zero-carbon scheme in Brighton.



BUSINESS PERFORMANCE MANAGEMENT

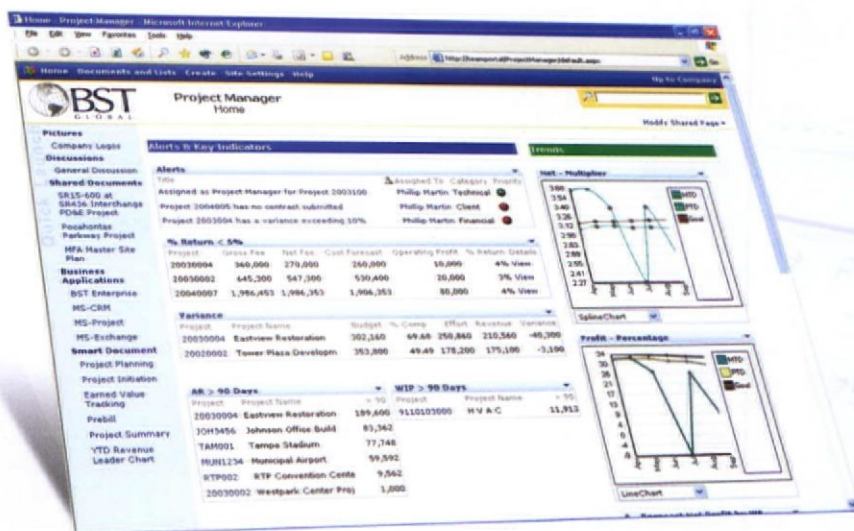
Give Front-Line Project & Operations Managers What They Need to Improve Profitability

Front-line project and operational managers have often been left out when it comes to having access to the information that would enable them to make timely decisions surrounding project variances, schedules, receivables and profitability.

Progressive enterprises are bringing financial metrics and trend analysis to their project and operational managers to drive a culture of responsibility and accountability to the front-lines of their organisations.

We can help.

BST Global's web and portal based solutions offer real-time management capabilities that bring powerful visibility, insight and efficiency to your operations. Our robust, end-to-end BST Enterprise business management software solution is based on Microsoft .NET and offers unmatched flexibility in leveraging your current technology.

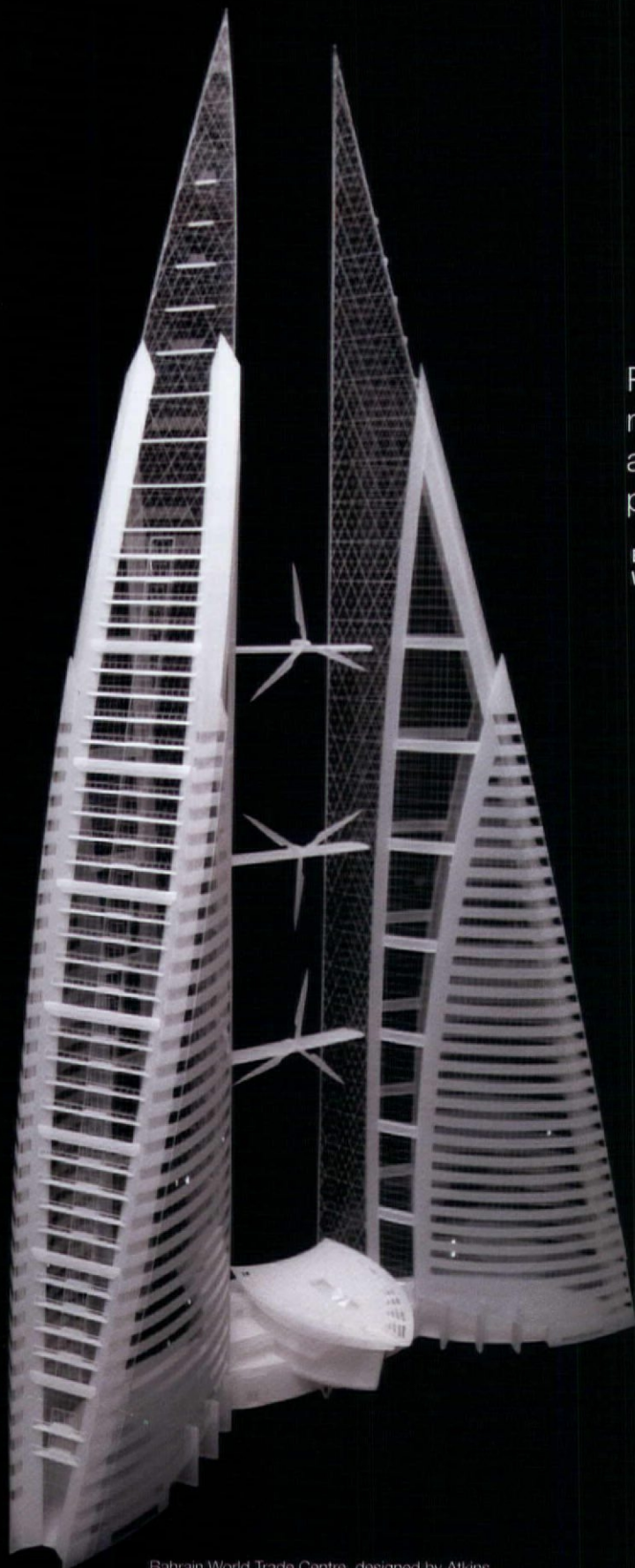


Find out why UK industry leaders like Foster + Partners, ERM Group, ENVIRON and over 80,000 users spanning 35 countries have turned to BST Global to empower their project and operational managers.

To learn how BST Global can help your organisation call (+44) 011 8963 7463 today.

ENQUIRY 58 ON CARD
WWW.AJPLUS.CO.UK/AJDIRECT

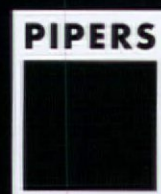




Bahrain World Trade Centre, designed by Atkins

Pipers is the UK's leading architectural
modelling practice, working alongside
architects, developers, planners and
property professionals worldwide

ENQUIRY 48 ON CARD
WWW.AJPLUS.CO.UK/AJDIRECT



pipers.co.uk



= 23 / KOHN PEDERSEN FOX ASSOCIATES

Last year: 23

Number of architects: 70

Female architects: 33 per cent

Sheldon Fox, founding member of KPF, died aged 76. Fox was instrumental in building the practice into an international force, with offices in London, New York and Shanghai. Kohn Pedersen Fox is setting out to transform London's skyline with the Helter Skelter Tower, formerly known as the DIFA Building, and its Park Fifth project in Los Angeles has scooped an American Institute of Architects prize.

Above: Cyprus National Theatre

= 26 / STRIDE TREGLOWN

Last year: 23

Number of architects: 68

Female architects: 21 per cent

It's been a vintage year for the largest practice in the South West – despite a slight dip in the AJ100 standings. Stride Treglown secured a foothold in the North by snapping up Manchester-based Chapman Robinson and appointing Gill Robinson as its first female regional director – although overall female recruitment remains average. The firm is on board Reading University's framework agreement and its profit doubled from £400,000 to £800,000. Right: Great Bow Yard, Somerset



STEVE TOWNSEND

= 23 / LLEWELYN DAVIES YEANG

Last year: 13

Number of architects: 70

Female architects: 29 per cent

Shortly after eco-superstar Ken Yeang triggered a name change and a flood of new work, the practice was forced to shed 25 architects following the collapse of the £170 million Broomfield Hospital scheme. Bosses have also admitted the future of a masterplan for the holy city of Najaf in Iraq is uncertain after a bomb attack on the Iraqi ministry backing the project.

= 26 / RHWL ARCHITECTS

Last year: 21

Number of architects: 68

Female architects: 29 per cent

RHWL beat Allies and Morrison to a key central Liverpool regeneration push – the 130,000m² office-led Pall Mall scheme. Its Northern Stage project, formerly the Newcastle Playhouse, reopened after a £9.5 million redevelopment, creating two new wings, new public spaces, and state-of-the-art backstage facilities. But the long-awaited renaissance of London's Finsbury Town Hall – now the Urdang dance centre – was late and over budget.

= 26 / JM ARCHITECTS

Last year: 17

Number of architects: 66

Female architects: 27 per cent

One story dominated JM Architects' horizon – a £4 million legal battle over alleged negligence and breach of contract at a London children's nursery. Current projects include a £4 million extension to Croydon's Virgo Fidelis girls' school. However, this hasn't prevented the firm slipping nine places in the AJ100.

Below: Quattro Distribution Centre, Doncaster



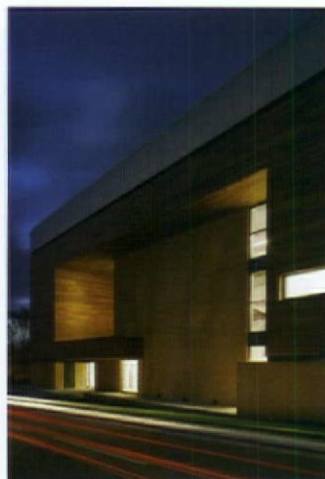
31 / RMJM

Last year: 19

Number of architects: 65

Female architects: 12 per cent

RMJM is in calmer waters after being buffeted by the Scottish Parliament tempest. It's been appointed to Napier University's £55 million Sighthill campus in Edinburgh, and a £35 million HQ for York Council in the Hungate development. Its Princes Dock Tower, Liverpool has been cut down in height from 37 to 30 storeys, however, following a damning report from CABE. Right: University of Hertfordshire School of Film and Media



NICK HUFTON

= 26 / LEWIS AND HICKEY

Last year: 29

Number of architects: 66

Female architects: 14 per cent

Bognor Regis is poised to shed its dreary hi-de-hi holiday camp image if Lewis and Hickey's plan for a £100 million redevelopment gets the go-ahead – the scheme includes a new theatre, cinemas, shops and two residential towers. This 100-year-old practice jumps three places up the chart, having taken on five new architects since 2005. Female architects still remain thin on the ground at just 14 per cent.

= 26 / SCOTT BROWNRIGG

Last year: 25

Number of architects: 66

Female architects: 17 per cent

The firm merged with interior designer Canvas Creative and joined the £16 billion St Athan Defence Training Academy project. Fingers are crossed for Reading's Station Hill, a mixed-use tower scheme featuring 130,000m² of offices, shops and cafés, which went to planning in February, despite reservations from CABE.

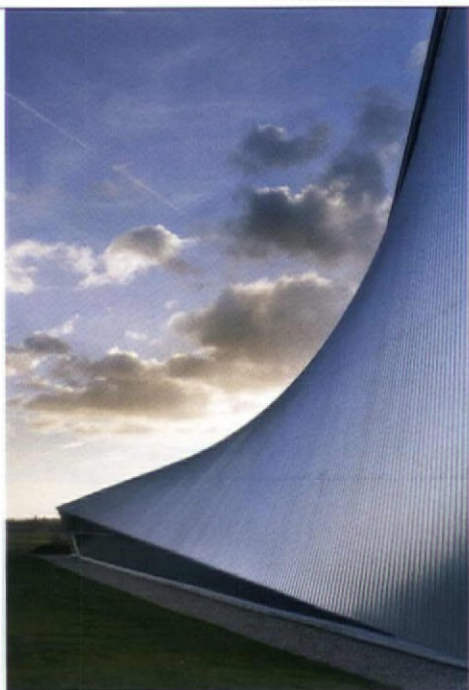
= 32 / 3D ARCHITECTS

Last year: 41

Number of architects: 63

Female architects: 19 per cent

It's been an expansive year for 3D, with the opening of Manchester and London operations and the acquisition of hospitality specialist Ferrier Crawford Architects. Some 17 architects have been added to the workforce, fuelling 3D's nine-place hike up the charts. Noteworthy projects include Gordon Lamb House, within Edinburgh's World Heritage Site, and Apsley House, in Glasgow's central business district.



= 32 / FEILDEN CLEGG BRADLEY ARCHITECTS

Last year: 30

Number of architects: 63

Female architects: 30 per cent

True to form, Feilden Clegg Bradley has been at the forefront of sustainable development, winning planning for 'the greenest ever high-rise' in Britain and securing Gallions Park, a 200-home zero-carbon development in East London. Other highlights include opening the £12.3 million Cold War Museum at RAF Cosford and winning the competition to design an art gallery in Nicosia, Cyprus.

Left: National Cold War Exhibition, RAF Cosford, Shropshire

34 / TPS

Last year: 50

Number of architects: 62

Female architects: 31 per cent

Last year was a vintage one for TPS. Part of construction behemoth Carillion, the engineering arm of the firm played an integral role in Richard Rogers' Stirling prize-winning Barajas Airport, Madrid. The firm has grown by over 30 per cent and its AJ100 performance reflects this achievement – it rises 16 places.

Right: St Raphael's, Birmingham



36 / ARCHITECTS DESIGN PARTNERSHIP

Last year: 34

Number of architects: 58

Female architects: 43 per cent

A marginal two-place slip, but nothing to concern this confident practice, whose sensitive Oxford Castle development scooped a MIPIM trophy. Work begins later this year on a £30 million integrated library and learning-resource centre for Canterbury Christ Church University which secured planning approval in March.

35 / AUSTIN-SMITH:LORD

Last year: 16

Number of architects: 59

Female architects: 25 per cent

Having lost 15 architects, it will come as no surprise that Austin-Smith:Lord has tumbled 19 places to its lowest position since 2002. This is clearly a short-term setback. The firm has just been picked to masterplan a life sciences and technology park in Croatia and its £6 million HQ building in London for Prospect trade union has been rated 'excellent' by BREEAM.

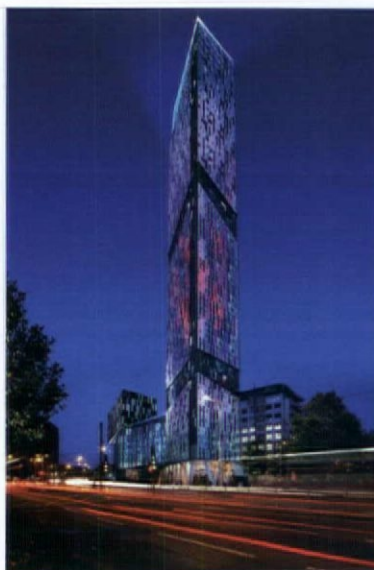
37 / TP BENNETT

Last year: 31

Number of architects: 56

Female architects: 18 per cent

An encouraging performance by this central London-based outfit; the BBC named TP Bennett and BDP its two design practices to handle medium-sized developments across the UK. Management was beefed up by recruiting three directors including Ridzwa Fathan, former design director at TR Hamzah & Yeang.



38 / ROLFE JUDD

Last year: 36

Number of architects: 55

Female architects: 22 per cent

A one-place slip on the AJ100 belies an upbeat year for Rolfe Judd. Its striking Tabard Square development in Borough, south-east London, won Best Design initiative at the Housebuilding Innovation Awards. But its *coup de grâce*, arguably, is the 43-storey Wellesley Square development which, if built, will add a splash of glamour to Croydon.

Left: Wellesley Square, Croydon

= 39 / HAMILTONS ARCHITECTS

Last year: 33

Number of architects: 54

Female architects: 24 per cent

Hamiltons Architects continues to slip down the charts, despite a number of daring schemes. Top of the pops is the mixed-use 'jewel box' in London's Islington, which now has planning. A scheme to replace the legendary Wembley Way – the 1970s concrete ramp known to football fans across the globe – has also kicked off.

Below: Jewel Box, Rodney Street, London



= 39 / ROGERS STIRK HARBOUR + PARTNERS

Last year: 39

Number of architects: 54

Female architects: 26 per cent

Last year's AJ100 claimed this practice had had a 'rather dull year'. What a change 12 months can bring. Richard Rogers won the Pritzker Prize in March 2007. And last October, the firm – now working as Rogers Stirk Harbour + Partners – secured the Stirling Prize for Barajas Airport.

= 39 / SWANKE HAYDEN CONNELL

Last year: 25

Number of architects: 54

Female architects: 30 per cent

New York, London, Paris, Moscow, Istanbul, Miami, Washington DC and Sheffield – now this really is an international practice. The firm toasted 100 years in architecture last year by winning a British Council for Offices award for its 3i project at 16 Palace Street, London. Nevertheless, it has tumbled down the AJ100 by 14 places, having lost 10 architects over the year.

InterfaceFLOR

PatternWorks

PatternWorks is a group of abstract patterns, colourful stripes and subtle geometrics – ideal for making bold statements and creating truly stunning effects.

GRADUATE

Graduate is just one of the PatternWorks group of carpet tile products, and our first non-directional installation product using hair-tile technology.

It was demand for high style that moved us to create Graduate, and we have combined the uniquely stylish designs with exceptionally high performance to provide the ideal choice for any sector.

With four colours in each of the three designs, these eye-catching tiles can complement surrounding décor or create a striking feature.

Call 08705 304030 for more information and to request samples.

ENQUIRY 21 ON CARD
WWW.AJPLUS.CO.UK/AJDIRECT

Style: Mind Set, colour: Cool

Interface Europe Ltd Shelf Mills Halifax West Yorkshire HX3 7PA
enquiries@interfaceflor.eu www.interfaceflor.eu/graduate



Mission Zero:
our promise to eliminate
any negative impact our company
may have on the environment
by the year 2020.

THE CHOICE OF PROFESSIONALS

KEIM MINERAL PAINTS. SPONSOR OF AJ100 AWARDS – HIGHEST NEW ENTRY



SCOTTISH PARLIAMENT
RUMM ARCHITECTS



EVELINA HOSPITAL
HOPKINS ARCHITECTS



BRUNSWICK CENTRE
LEVITT BERNSTEIN ASSOCIATES



WEST WHITLAWBURN HOUSING CO-OPERATIVE
ASSIST ARCHITECTS



ALBION RIVERSIDE
FOSTER + PARTNERS



EMIRATES STADIUM
HOK SPORT ARCHITECTURE



GREATER LONDON HOUSE
MUNKENBECK, MARSHALL/FINCH FORMAN



PERSISTENCE WORKS
FIELDEN, CLEGG, BRADLEY



ROYAL COLLEGE OF ORGANISTS
NIGEL UPCHURCH ASSOCIATES



WESSEX WATER HQ
BENNETTS ASSOCIATES



LONG LIFE MINERAL PAINT SYSTEMS
WWW.KEIMPAINTS.CO.UK

ENQUIRY 35 ON CARD
WWW.AJPLUS.CO.UK/AJDIRECT

= 42 / ANSHEN + ALLEN

Last year: 36

Number of architects: 52

Female architects: 31 per cent

After 20 years in practice, Anshen Dyer was absorbed into its American parent company Anshen + Allen. Anshen + Allen boasts one of the world's largest portfolios of healthcare projects – PFI schemes include Norfolk and Norwich University Hospital.

Right: University of Cambridge Hutchison/MRC Cancer Research Centre



NICHOLAS KANE

= 43 / CAREY JONES ARCHITECTS

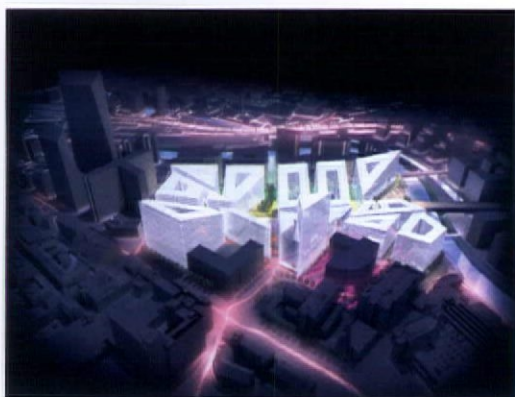
Last year: 38

Number of architects: 50

Female architects: 8 per cent

Disappointment over losing the commission for a new home for the Northern Ballet Theatre in Leeds was offset by a string of planning successes, including the £3.5 million Monarch House project in Leeds and an £18 million housing scheme in Bromley. The practice is also working with Make on Wandsworth Riverside Quarter – resubmitted after criticism from Ken Livingstone.

Below: Wellington Place, Leeds



= 43 / HUNTER AND PARTNERS

Last year: 41

Number of architects: 50

Female architects: 16 per cent

Hunter and Partners' AJ100 ascent has stalled – at least for now. After six consecutive jumps to 41st place last year, the London and West Sussex-based practice has slipped two rungs. This will no doubt prove a temporary blip, as the firm continues to benefit from the boom in residential, healthcare and education public-sector projects.

45 / CDA

Last year: 40

Number of architects: 49

Female architects: 12 per cent

It's been anything but a quiet year for CDA. Public uproar greeted its £50 million redevelopment, with Gareth Hoskins, of St Andrew Square, Edinburgh. The square is a Unesco World Heritage site, although the project will transform the derelict Scottish Provident headquarters. The firm also unveiled images of its new Telegraph Group HQ in London.

Right: Skyways House, Liverpool



46 / FLETCHER PRIEST ARCHITECTS

Last year: 46

Number of architects: 47

Female architects: 36 per cent

The firm balanced its yin and yang by securing planning permission for the Stratford City project following its reported exit from the race to design the £1.5 billion Elephant & Castle scheme. It moved to new offices and added four architects over the year but its female workforce has decreased from 44 to 36 per cent.

= 47 / LEVITT BERNSTEIN ASSOCIATES

Last year: 63

Number of architects: 45

Female architects: 31 per cent

Major completions include refurbishment of the Brunswick Centre, Bloomsbury, bringing the project full circle for John Levitt, who helped design the complex in the 1960s. The firm is enjoying a wide range of commissions in the housing, arts and education sectors, and recently won the competition for the north London headquarters for charity Jewish Care.

= 47 / POLLARD THOMAS EDWARDS ARCHITECTS

Last year: 34

Number of architects: 45

Female architects: 49 per cent

After two years in the high 30s, Pollard Thomas Edwards has dipped 13 places to 47. Boasting one of the highest percentages of female architects, it is looking forward to a prosperous year, buoyed by wins including the £100 million Packington Estate regeneration in London's Islington. Overseas, the practice is seeking a 'possible' Shanghai base to service its growing Chinese business.

= 47 / ELLIS WILLIAMS ARCHITECTS

Last year: 46

Number of architects: 45

Female Architects: 33 per cent

The most intriguing news is that this practice is set to bag various City Academy projects in Manchester following an agreement between city council and government officials. Completed projects include a £17.5 million retail and apartment development in Durham; the £30 million Darlington Learning Park; and a £750,000 visitor centre for Franciscan Nuns in Derbyshire. Below: Oriel Mostyn Gallery, North Wales



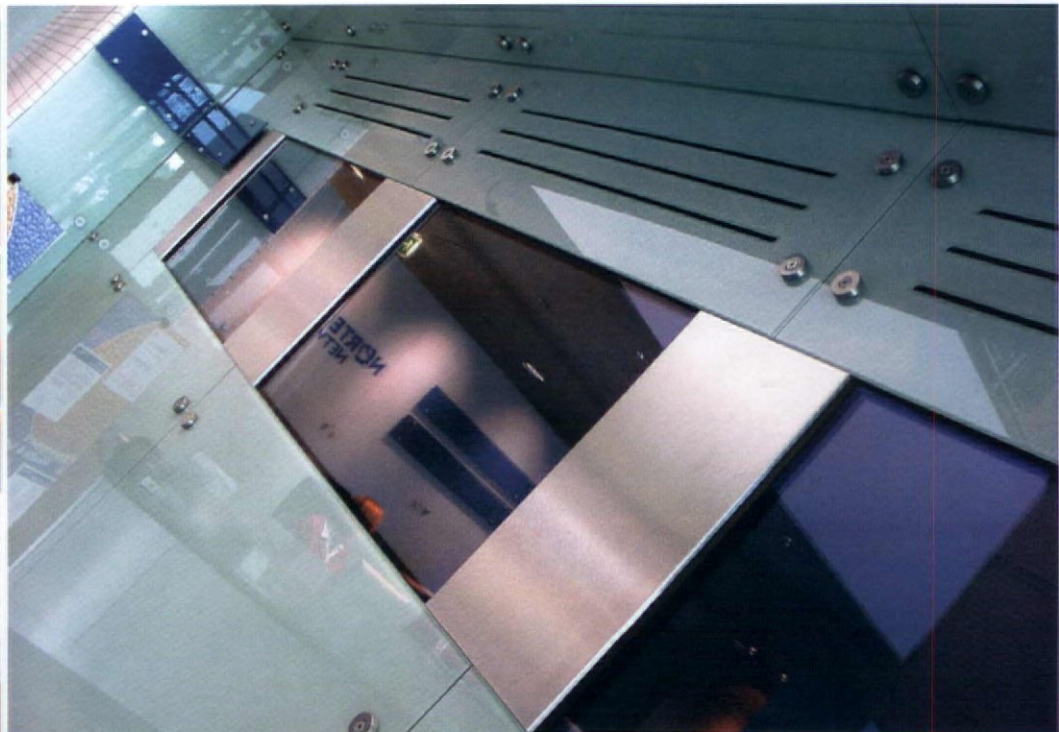
= 47 / SOM

Last year: 63

Number of architects: 45

Female architects: 33 per cent

SOM is enjoying a steady stream of work – so much so that it added eight architects to the payroll. Work is still ongoing with its 201 Bishopsgate project, and it has picked up a couple of new schemes in Canary Wharf. SOM is assisting the Kingdom of Brunei with planning strategies. Left: 201 Bishopsgate, London



solution, manufacture, installation, steel fabrication, engineering, full technical support

tel. 01923 818282 • fax. 01923 818280 • email. sales@shopkit.com •

www.shopkit.com

SHOPKIT

ENQUIRY 26 ON CARD
WWW.AJPLUS.CO.UK/AJDIRECT

architecture • interior design • planning • landscape • urban design

Keppie: talent, quality, ambition

Keppie Design is an internationally successful company. We have been practising for more than 150 years.

We offer the highest quality design services in the disciplines of architecture, interior design, town planning, landscape and urban design from six offices throughout the UK.

Current projects include: Forth Valley Hospital, North Ayrshire Schools, Kingsgate Shopping Centre Dunfermline, Eurocentral Business Park.

We are always keen to hear from experienced and talented individuals. For further information please visit our website.



Glasgow Edinburgh Perth Inverness Belfast Manchester

www.keppiedesign.co.uk

ENQUIRY 55 ON CARD
WWW.AJPLUS.CO.UK/AJDIRECT

keppie



nora®

ENQUIRY 27 ON CARD
WWW.AJPLUS.CO.UK/AJDIRECT



noraplan® 913 rubber floorings



BRE 'A' rated.

- **Dirt Repellent** - A vulcanised finish creates an extremely dense surface.
- **Outstanding Fire Protection Properties** - To DIN 4102 B1. No corrosive gases + halogen free.
- **No coatings required** - Substantially reduced maintenance costs.
- **Environmentally Compatible** - PVC free high quality rubber flooring - dimensionally stable, therefore requires no welding.
- **Excellent walking comfort due to permanent resilience**

Freudenberg Building Systems UK Ltd
Eagle House
Bilton Way, Leicester Road
Lutterworth
Leicestershire LE17 4JA

Telephone: 01455 200500
Fax: 01455 556529
Email: norauk@freudenberg.com
Web: www.nora.com

= 47 / WILKINSON EYRE ARCHITECTS

Last year: 48

Number of architects: 45

Female architects: 16 per cent

Dominic Bettison and Stafford Critchlow were made directors in 2006, and a satellite office was opened in Liverpool just before Christmas, servicing the 10,000-seat Liverpool Arena project which completes in December. The practice has an expanding workload in the Far East; the Guangzhou West Tower, currently on site, is due to be completed before Guangzhou hosts the Asian Games in 2010.
Right: Guangzhou West Tower, China



= 52 / HTA ARCHITECTS

Last year: 45

Number of architects: 44

Female architects: 27 per cent

After a spurt of growth which saw HTA leapfrog from 74th to 45th place in last year's AJ100, this housing and regeneration specialist has plateaued in the league tables. Its number of architects hasn't risen, although the proportion of women is an encouraging 27 per cent. On the project front, HTA is masterplanning a 3,500 Barratt Homes scheme in Telford – the UK's largest new community development.

= 52 / MAKE

Last year: 96

Number of architects: 44

Female architects: 30 per cent

Ken Shuttleworth's practice landed in the AJ100 at 96 last year. Pundits predicted Make would blossom quickly and, sure enough, the firm has leapt up the charts. This has been fuelled by high-profile wins like the redevelopment of Middlesex Hospital in London's Fitzrovia and a massive office complex in Glasgow. But the sweetest win must surely be Cherry Orchard Road towers in East Croydon.

Below: Sherwood Forest Visitor Centre, Nottinghamshire



= 52 / PURCELL MILLER TRITTON

Last year: 53

Number of architects: 44

Female architects: 27 per cent

Lords reform is top of the agenda for this highly respected conservation name, now transforming a Grade II-listed Arts and Crafts building next to Westminster into offices for the Upper House. The busy year saw the firm open an Oxford operation – taking its UK offices to nine – and win approval for a £20 million development within Blackburn Anglican Cathedral's precinct.

55 / BOND BRYAN ARCHITECTS

Last year: 70

Number of architects: 43

Female architects: 12 per cent

One of the largest names in the North, Bond Bryan has galvanised its position as an education leader. Projects range from the David Young Community Academy in Leeds – the first City Academy to specialise in the built environment – to a £45 million project for York College (currently the further education sector's largest ever new-build project) and a £16 million low-carbon building for Leicester College.

Below: Animal and Plant Research Centre, Sheffield



= 56 / HOPKINS ARCHITECTS

Last year: 63

Number of architects: 42

Female architects: 36 per cent

The bulk of this practice's new work is in the USA and Dubai. Yale University's School of Forestry and Environmental Studies is due for completion in 2008, and a chemistry building for Princeton University completes in 2010. A 30-strong Dubai office, headed by Simon Fraser, has now opened: projects include Gate Village, a mixed-use scheme adjacent to Dubai's World Trade Centre with a floor space three times the size of Canary Wharf's.

= 56 / HOLDER MATHIAS ARCHITECTS

Last year: 77

Number of architects: 42

Female architects: 19 per cent

A bumper year in which the Welsh firm rocketed 22 places to 55, thanks to major project completions such as the Victoria Wharf residential scheme in Cardiff Bay, and the regeneration of St Stephen's in Hull city centre. Holder Mathias grew 20 per cent over the last 12 months and expanded its London office space by a third. Moreover, profitability has increased three-fold for the fifth year running.

= 56 / HKR ARCHITECTS

Last year: 96

Number of architects: 42

Female architects: 17 per cent

A phenomenal 40-place leap for this Manchester-, Dublin- and London-based practice. HKR's *projet du jour* is the £90 million Aurora skyscraper in Great Victoria Street, Belfast. If this 109m-high colossus wins planning consent it will be Northern Ireland's tallest tower. Another project to watch is Galleon Quay, a £16 million residential block in London's Tower Hamlets.



= 56 / SQUIRE & PARTNERS

Last year: 50

Number of architects: 42

Female architects: 21 per cent

It is perhaps telling that this practice has released a greatest hits collection, *Squire and Partners 02 – 07*, while it bumps down the AJ100. From a 2003 high of 24th place, the firm now sits at 56. English Heritage continues to press Islington Council to reject the firm's 39-storey tower, bordering the City of London. Left: Creekside Village, Deptford



Map data in seconds

80 of the AJ Top 100 architects use Promap... and the reason is simple.

It's fast, flexible and cost effective and at a touch of a button you can export Ordnance Survey map data straight to your desktop ready for use in CAD or GIS applications.

Combine this with access to aerial photography, historical mapping and the latest environmental risk screening tool, EnviroScreen, confirms Promap as the UK's No. 1 professional mapping site.

Ordnance Survey
Licensed Partner

Promap is a product of Landmark Information Group – Britain's leading supplier of quality land and property search information, and the Ordnance Survey's largest Platinum Partner.

ENQUIRY 40 ON CARD
WWW.AJPLUS.CO.UK/AJDIRECT

 **Promap**[®]
A Landmark service

Register for free today

Call 01491 413030
Email sales@promap.co.uk
Visit www.promap.co.uk

dream

vision is nothing without direction
realise your ambition

ENQUIRY 31 ON CARD
WWW.AJPLUS.CO.UK/AJDIRECT

adrem

creative recruitment consultancy

020 7562 8282 | architecture@adrem.uk.com | www.adrem.uk.com



= 60 / DAVID CHIPPERFIELD ARCHITECTS

Last year: 48

Number of architects: 41

Female architects: 39 per cent

Chipperfield's lowest position in the AJ100 since 2002. Nevertheless, it's been an exciting year for the practice, marked by an ongoing battle with Richard Rogers and others to mastermind the £80 million revamp of the British Museum in central London. A £25 million contract to renovate and extend the Aust Agder Museum of Cultural History in Arendal signalled Chipperfield's first excursion into Norway.

Left: America's Cup Building, Valencia, Spain

= 61 / ESA ARCHITECTURE

Last year: N/A

Number of architects: 40

Female architects: 18 per cent

A hectic year for this new name to the AJ100: its £12 million Camden Market redevelopment won planning while the Brewery, a £20 million mixed-use development in Cheltenham, reached completion. Turnover has increased steadily at around 12 per cent over the last five years, claims creative director Nic Sampson. 'Most work is in the South East', he adds, 'but projects are on site in Leeds, Cheltenham, Birmingham and Manchester.'

= 61 / FARRELLS

Last year: 53

Number of architects: 40

Female architects: 60 per cent

Terry Farrell's name emblazons a Hull-based train, recognising his regeneration efforts in the city. The accolade contrasted sharply with CABE's panning of the £70 million extension to Edinburgh's International Conference Centre. Farrells' plans for a Thames Gateway national park hit the buffers, but a masterplan for Coventry won praise and his £500 million plan for Leeds is on track.

Below: Eastgate Quarter, Leeds

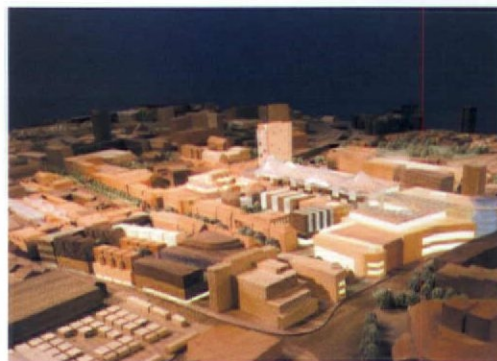
= 61 / SIDELL GIBSON ARCHITECTS

Last year: 89

Number of architects: 40

Female architects: 15 per cent

A great year for Sidell Gibson, reflected in its 28-place leap to 61st position. Of its many collaborations on the go, the most notable is One New Change tower with Jean Nouvel – a City of London mixed-use development completing in 2010. Other headline-grabbing designs include 1,000 zero-carbon homes in Ashford for ZEDHomes, a new office tower in Croydon, and Magistrates' Courts in Cambridge and Bracknell.



= 61 / STEPHEN GEORGE AND PARTNERS

Last year: 59

Number of architects: 40

Female architects: 13 per cent

A year in which Stephen George and Partners demonstrated unswerving commitment to sustainable architecture and staff edification. Its new Loughborough Courthouse secured an excellent BREEAM rating. A three-day architectural tour of Berlin for the firm's entire workforce took place in October, followed in February by a sustainability development day. Below: Sideway Warehouse, Stoke-on-Trent



= 65 / DLG ARCHITECTS

Last Year: 50

Number of architects: 39

Female architects: 21 per cent

A quiet year on the AJ news pages belies DLG's steady expansion. The firm is recruiting for projects as diverse as the 1.5km-long Waterfront Quarter in Huddersfield – which won planning this year – and the Nailloux shopping centre, Toulouse. Other schemes include a refurbishment of the Grade II-listed Cornhill office building in London's Square Mile and the £130 million Atrium – a mixed-use project in Camberley town centre, Surrey.

= 65 / HLM ARCHITECTS

Last year: 56

Number of architects: 39

Female architects: 15 per cent

With cynicism clouding PFI schools design, this firm is aiming to silence critics with a £320 million Building Schools for the Future initiative in Sheffield. In Wales, its Cardiff operation has its hands full with a £1 billion Defence Training Academy in St Athan – the largest public/private partnership investment in Wales to date.

67 / JACOBS

Last year: 59

Number of architects: 38

Female architects: 11 per cent

A gripping 12 months: the firm merged with Reading practice Crispin Wride Architectural Design Studio and added six architects to its 38-strong team. Education, regeneration, and local/central government remain the focus: Jacobs cut the ribbon on the £75 million Diamond Synchrotron laboratory near Oxford and a £45 million National Air Traffic Control Centre in Scotland. Right: Diamond Laboratory, Oxfordshire





Experience the pleasure of water with Hansgrohe.

True originals? Hansgrohe products. Our award-winning products are developed in-house and manufactured to the highest quality standards. Hansgrohe stands for more than a century of great ideas for bathrooms and kitchens and takes delight in everything to do with water. For more information contact Hansgrohe, Units D1 and D2, Sandown Park Trading Estate, Royal Mills, Esher, KT10 8BL, Telephone 0870 770 1972 or email info@hansgrohe.co.uk. Website www.hansgrohe.co.uk.

ENQUIRY 10 ON CARD
WWW.AJPLUS.CO.UK/AJDIRECT

hansgrohe



ESA are a 55-strong design focused practice based in central London.

Our current workload includes single private houses, offices, retail/mixed use and volume residential schemes at pre-planning, detailed design and construction stages.

We are always looking for project architects, assistants, 3d visualisers, project managers and town planners. Please email CVs to recruitment@esa-ltd.com

esa architecture | design

75 Wells Street
London W1T 3QH
www.esa-ltd.com

architecture | design | project management | planning

ENQUIRY 57 ON CARD
WWW.AJPLUS.CO.UK/AJDIRECT

RPS

creative people making a difference

www.rpsgroup.com

RPS Planning & Development

ENQUIRY 42 ON CARD
WWW.AJPLUS.CO.UK/AJDIRECT

68 / JESTICO + WHILES

Last year: 83

Number of architects: 37

Female architects: 22 per cent

Climbing from 83rd to 68th position, Jestico + Whiles' new AJ100 high is testament to a bustling year. Wins include apartments in Bratislava and a retail development in Romania. Work at home continues with the Old Spitalfields market and a mixed-use development in Southend.

Below: PVR Mulund Cinema, Mumbai, India



= 69 / BARTON WILLMORE

Last year: 70

Number of architects: 36

Female architects: 19 per cent

Life's a game of snakes and ladders for Barton Willmore, which has climbed one rung after last year's 14-place slump to 70th position. The firm has winged its way over to Dubai, where it is constructing the world's largest free-flight aviary. Back home, the £40 million Chelmsley Wood town centre regeneration has finally started on site after six years in development.

= 69 / DEVEREUX ARCHITECTS

Last year: 56

Number of architects: 36

Female architects: 19 per cent

Last month the firm was gobbled up by Republic of Ireland-based PM Group, and now operates as a standalone practice within the multi-disciplinary organisation. Prior to the merger, Devereux had dropped 13 places in the AJ100, despite pursuing sector and geographic diversification, with schemes in the Middle East and the Caribbean, as well as reaping the benefits of its traditional specialism – home-based health commissions.

= 69 / GHM CONSULTANCY GROUP

Last year: 72

Number of architects: 36

Female architects: 19 per cent

GHM's architectural arm, GHM Rock Townsend, continues its focus on education; having formed Mentor with FaulknerBrowns, it is on board a Leeds-based Building Schools for the Future initiative. An extensive redevelopment of Westminster University's Cavendish Street campus is now open for business and its initial scheme for Northampton PFI Schools – one of the UK's largest PFI projects – is done and dusted.

= 69 / GRIMSHAW

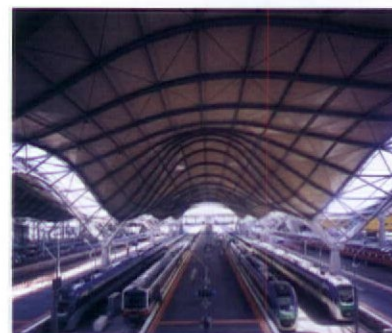
Last year: 89

Number of architects: 36

Female architects: 31 per cent

Developers pulled the plug on the Minerva tower. Overseas, clients have been a little kinder – a success being the expansion of Southern Cross station in Australia. Last month, plans for a £67 million extension to the firm's Eden Project emerged.

Right: Southern Cross Station, Melbourne, Australia





= 69 / HAWKINS\BROWN

Last year: 59

Number of architects: 36

Female architects: 44 per cent

Roger Hawkins and Greg Moss took part in the 1,500km charity cycle ride to MIPIM for Architects for Aid. They were powered by news that the practice had been appointed lead consultant on the redevelopment of London's Parliament Square. The firm is also working at Sheffield's Park Hill.

Above: Park Hill, Sheffield

= 75 / COOPER CROMAR

Last year: 63

Number of architects: 35

Female architects: 14 per cent

After last year's blip in turnover, Cooper Cromar has bounced back. A clutch of new work has prompted a move to new Edinburgh premises and the addition of three architects, taking its tally to 35. The jewel in the contracts crown is a £100 million redevelopment of St Enoch Square, Glasgow, which has won preliminary planning.

= 75 / DLA ARCHITECTURE

Last year: 63

Number of architects: 35

Female architects: 29 per cent

This firm has never been far from the AJ headlines: just before Christmas it was parachuted into the ex-Carey Jones Northern Ballet Theatre project in Leeds. Work is also continuing on its massive £175 million Marsh Way regeneration scheme in Wakefield – a collaboration with David Adjaye.

= 69 / RH PARTNERSHIP ARCHITECTS

Last year: 77

Number of architects: 36

Female architects: 17 per cent

With projects for Anglia Ruskin University, Colchester Institute and Essex University on the go, education remains RH Partnership's bread and butter. That said, housing is increasingly significant – evidenced by a £60 million scheme for Brighton. Burgeoning workloads across the South East convinced RH to open a new London office this year, creating a bridge for its Brighton and Cambridge operations.

Below: Newnham College, Cambridge



= 75 / RTKL UK

Last year: 80

Number of architects: 35

Female architects: 26 per cent

New to the AJ100 last year, RTKL UK has climbed five places in our list. This genuinely global practice – it has 11 offices across North America, Europe and Asia – is consolidating its UK healthcare work with a massive retail and commercial project in Croydon, south London. The firm is also edging into leisure and entertainment – its most headline-grabbing project being the O₂ Arena, formerly known as the Millennium Dome.

Specialist joinery & fit-out to complete your interior solutions

UK > UAE > Malaysia > Romania



199 Knightsbridge, London



Mivan Manufacturing Facility



Pan Peninsula, London



Offices of a Leading London Law Firm

Mivan is one of the UK's leading fit-out and specialist joinery manufacturers. Mivan provides solutions for:

- Private Commercial & Public Buildings
- Pre-Fabricated Toilet Core Fit-Out
- Hospitality & Themed Works
- Luxury Residential
- Visitor Attractions



Specialist Contractor
Awards Winner 2006
For
'Best Fit-Out Contractor'



Quality in Construction
Awards Winner 2006
For
'International Performance'

For assistance with your projects contact us: w: www.mivan.com e: hq@mivan.com t: +44(0)20 7623 9600

London Office Now Open !

ENQUIRY 16 ON CARD
WWW.AJPLUS.CO.UK/AJDIRECT

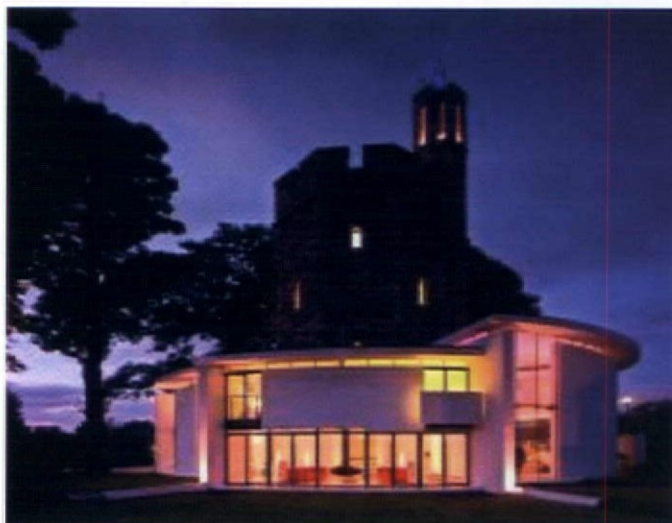
ellis williams architects is a UK top 50 international practice, winner of RIBA design awards in 2003, 2005 and 2006, and the AJ winner in 2006 for most significant practice in the Northwest. Within our core sectors of education, arts, commercial and leisure we currently have a very large and varied range of exciting projects.

To help us realise the design potential of our growing workload we are looking for talented and enthusiastic individuals with the following experience to join us in our Cheshire (Preston Brook) and London office.

- ❑ Senior architects with experience in developing designs and running multiple projects and teams
- ❑ Architects with 1-5 years post Part III experience capable of working as project architects
- ❑ Architectural technicians

Opportunities for promotion. Please email your CV to Sue Hind, Practice Manager (sue.hind@ewa.co.uk).

[ewa\(ewa.co.uk\)](http://ewa(ewa.co.uk)) is an equal opportunities employer. No agencies.



RIBA Award 2006

Project:
Lymm Water Tower
Lymm, Cheshire

ENQUIRY 41 ON CARD
WWW.AJPLUS.CO.UK/AJDIRECT



SOM

SOM London is a multi-disciplinary practice with a long history of achieving design excellence in a diverse range of projects, which currently includes office buildings, large mixed-use developments, residential towers, airport extensions and conference facilities throughout the UK and Europe. We are looking for candidates who will appreciate our innovative approach and share our passion for creating the highest-quality sustainable built environments.

Architectural Assistants – Part II

We are seeking talented candidates with 2-5 years experience. AutoCAD skills are essential and while proficiency in Revit, Rhino, 3D Max and Digital Project are desirable, training in these programs is provided.

Technical Co-ordination Architects – Part III

Applicants should have a flare for detailing, ability to develop design solutions in an innovative way and a passion for sustainable design. A working knowledge of British Codes is desirable while hands-on ability, self-motivation, leadership skills and proficiency in AutoCAD are essential.

Senior Project Managers

We require senior architects or engineers with a track record in managing large-scale innovative projects from concept design through to completion. The ability to establish strong working relationships with clients, consultants and design teams is essential, along with skills in financial management, programming, proposal preparation, and day-to-day team management.

Exterior Wall CAAD Specialist

Applicants must have an architectural design background and a thorough understanding of computer-based design for exterior wall and building envelope technology development. Working knowledge of current sustainable technologies, computer aided investigation and presentation of the environmental attributes of building envelopes is essential.

Digital Design Manager

Candidates should have 5 years + experience, team leadership abilities, and must be conversant in AutoCAD/ADT, 3D Studio Max, Autodesk Revit Building and Rhino. Knowledge of Catia/Digital Project, Maya, AutoCAD Autolisp or other scripting languages is also desirable.

Digital Design Specialists

Specialists are required to support the design and technical teams with the growing use of 3D modelling, parametric programs and scripting. Knowledge of one or more of the following programs is essential: AutoCAD/ADT, 3D Studio Max, Autodesk Revit Building, Rhino, Catia/Digital Project, Maya, AutoCAD Autolisp and scripting.

Please send your CV (quoting ref. AJMAY07) to:

HR Department
SOM, 1 Oliver's Yard
London, EC1Y 1HH
somlondon@som.com

SOM is an Equal Opportunities Employer

ENQUIRY 13 ON CARD
WWW.AJPLUS.CO.UK/AJDIRECT

Want to be a part of the top 100 next year?

Over the past year Bespoke recruited staff for the majority of practices in the Top 100, as well as for many of their competitors whose exceptional work will undoubtedly be in the running in 2008!

We are currently inundated with fantastic positions for qualified architects, interior designers, graphic designers, visualisers & admin support staff in London's leading design practices. If you'd like to be involved in groundbreaking architecture in the heart of the world's design capital please get in touch.

bespoke

w. www.bespokecareers.com
t. 0207 24 24 909

ENQUIRY 52 ON CARD
WWW.AJPLUS.CO.UK/AJDIRECT

= 78 / HADFIELD CAWKWELL DAVIDSON

Last year: 80

Number of architects: 34

Female architects: 18 per cent

The practice reports 'a spectacular year of growth' although its AJ100 performance is modest. The firm admits it's trying to break away from its 'solid commercial portfolio' and carve a niche within sustainability – it claims to have completed Sheffield's first BREEAM 'excellent'-rated office development. Below: Riverside, Sheffield



= 78 / MICHAEL LAIRD ARCHITECTS

Last year: 80

Number of architects: 34

Female architects: 29 per cent

Restoration of Robert Adam's final masterpiece, Dalquharran Castle in Ayrshire, plus office developments in Edinburgh and several large urban housing projects round out Michael Laird's prosperous year. New European schemes include an Athens city centre redevelopment and a project in Dublin. Managing director Brian Lightbody claims turnover continues to grow significantly, and a number of fresh associate directors and associates are on board.

= 78 / POWELL DOBSON ARCHITECTS

Last year: 93

Number of architects: 34

Female architects: 15 per cent

What better way to celebrate a ruby (40th) anniversary than a 15-place leap up the charts? This success is built on a reputation for imaginative sustainable developments. The firm's 2006/7 showcase includes new offices for the Welsh Assembly Government and the £110 million Bluestone holiday village in Pembrokeshire.

Below: Waterworld, Bluestone, Pembrokeshire



= 81 / DONALD INSALL ASSOCIATES

Last year: 59

Number of architects: 33

Female architects: 18 per cent

Let's hope the practice doesn't regret taking on the design of the Queen Mother's memorial in central London – some might regard this as a poisoned chalice after the Diana Fountain Memorial row. Insall will doubtless hope its vision will also escape the snags that forced costs on its Battle of Britain monument to rise.

= 81 / GLENN HOWELLS ARCHITECTS

Last year: N/A

Number of architects: 33

Female architects: 15 per cent

A crowd-pleasing Savill Garden Visitor Centre in Windsor and striking Rotunda building in Birmingham fuelled a 20 per cent growth in turnover. It also submitted the world's first rotating tower, in, rather unsurprisingly, Dubai.

= 81 / POZZONI DESIGN GROUP

Last year: 100

Number of architects: 33

Female architects: 15 per cent

Having arrived last year at the very bottom of the AJ100, Pozzoni has soared up the charts to 81st position. Now in its 35th year, the firm is venturing away from public-sector sports facilities and care homes into education, retail, office, housing and mixed-use regeneration. And it's all systems go with its £150 million Project Jennifer in Liverpool – now revised after a CABE grilling.

= 81 / WIMBERLY ALLISON TONG AND GOO

Last year: 53

Number of architects: 33

Female architects: 27 per cent

A sharp tumble down the ratings reflects a relatively static 12 months for this hospitality and leisure specialist. Playing to its strengths, the firm secured a string of hotel and resort commissions in Africa and Eastern Europe, and its Ocean Village Marina Hotel in Southampton gained planning permission. The practice is hoping to tee off this summer with a substantial clubhouse and golf-course development in Scotland for billionaire Donald Trump.

= 85 / PENOYRE & PRASAD

Last year: 63

Number of architects: 32

Female architects: 34 per cent

A good year for Sunand Prasad, who became president-elect for the RIBA, doesn't necessarily mean a good year for the firm. Although Penoyre & Prasad saw its Moorfields Children's Eye Hospital open this year, as well as its library extension at Portsmouth University, the practice has still dropped 22 places since 2006.

Right: Colliers Gardens, Bristol



= 85 / S&P

Last year: 77

Number of architects: 32

Female architects: 13 per cent

S&P's Olympic-sized heated swimming pool in Hackney is finally complete. Its £3 million Brighton International Arena has been delayed after the developer admitted proposals were not ready for planning. But builders are limbering up to start work on the 2012 Aquatics Centre designed in collaboration with Zaha Hadid.

Below: Brighton International Arena

= 87 / ARCHITECTS CO-PARTNERSHIP

Last year: 63

Number of architects: 31

Female architects: 13 per cent

Since the 1980s, Architects Co-Partnership has broadened its public-sector focus and embraced PPP, particularly schools PFI, with a vengeance. With planning pending on the first phase of Lewisham's £180 million Building Schools for the Future programme, the firm bagged a coveted spot on the Academies Framework, with contractor Kier, and a couple of gongs for its Bishops Park College for Clacton PFI.



= 87 / ASSAEL ARCHITECTURE

Last year: 93

Number of architects: 31

Female architects: 26 per cent

Assael Architecture slid down the *Sunday Times* '100 Best Small Companies To Work For' list this year; it was number seven in 2006 but has dropped 34 places to 41st. Better news on the AJ100, where it has climbed six notches. John Assael is leading a chorus of RIBA council members questioning why large firms, such as those in the AJ100 top 10, are not getting involved in council matters.

= 87 / YRM ARCHITECTS

Last year: 72

Number of architects: 31

Female architects: 16 per cent

Having settled into its new King's Cross hub, the firm continues with Heathrow Terminal 5 and is preparing design guidelines for the long overdue Crossrail London rail link. YRM is enjoying enormous success in India, where it has secured aviation, education and commercial projects in Delhi, Mumbai, Hyderabad and Rajasthan.

= 91 / LYONS + SLEEMAN + HOARE

Last year: 72

Number of architects: 30

Female architects: 7 per cent

This firm is well-known for generous staff rewards like three-day weekends. But gender equality is rather weak; just 7 per cent of staff are female. Notable completions include a primary school in West Bromwich, funded by Tesco, a police station, Slipper Baths in Lincoln, a new restaurant between two Grade I-listed buildings, and a low-energy office building in south-west England.

= 87 / TAYLOR YOUNG

Last year: 72

Number of architects: 31

Female architects: 16 per cent

A 15-place fall for this practice, which used MIPIM to announce the opening of a new Manchester-city-centre operation. Current proposals include a revamp of central Carlisle and housing near to Manchester's Grade II*-listed Gorton Monastery – the city's 'answer to the Taj Mahal'.

Below: Bolton University



= 91 / FEILDEN + MAWSON

Last year: 83

Number of architects: 30

Female architects: 27 per cent

The firm has slipped eight places. Its gender ratio hovers at the same level as last year but partner Gordon Montague says the aspiration is a 50/50 balance. Wins include a project at Brno University, Czech Republic. It is also designing a rapid-transport system in Nigeria.

Below: Brno University, Czech Republic



= 91 / PAUL DAVIS + PARTNERS

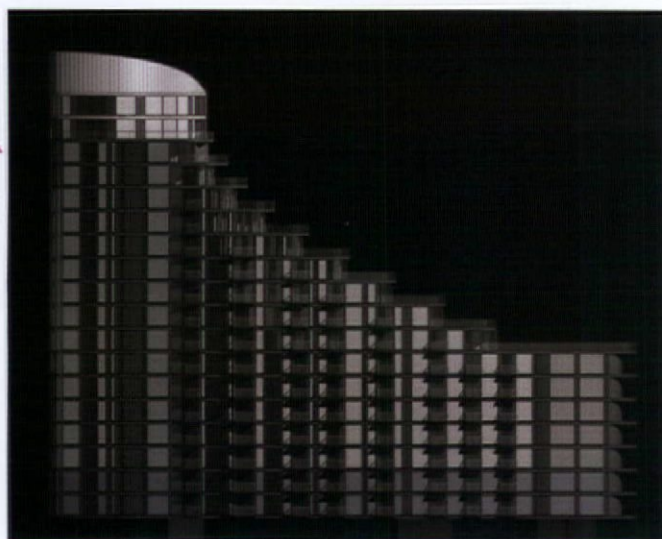
Last year: N/A

Number of architects: 30

Female architects: 33 per cent

Paul Davis hit out at UK visa policies which cost him two Russian architects working on an £80 million St Petersburg masterplan. The practice is also expanding its Chelsea office.

Below: Wapping Lane, London



= 91 / THE HARRIS PARTNERSHIP

Last year: N/A

Number of architects: 30

Female architects: 13 per cent

With more than 100 staff and offices in Wakefield, Milton Keynes, Manchester and Reading, the Harris Partnership claims to 'specialise in all building sectors'. This fresh face to the AJ100 has an extensive portfolio of UK clients, from Tesco and B&Q to the Department for Transport and English Partnerships. Although Harris Partnership has 30 architects on its books, its female representation remains low at just 13 per cent.



= 91 / THE TOOLEY & FOSTER PARTNERSHIP

Last year: 85

Number of architects: 30

Female architects: 27 per cent

Projects won in 2006 include redeveloping Canterbury High School, an East Sussex retail/housing project and a 12-storey residential tower for east London. A major extension to Bromley's Glades Shopping Centre is on site and its Wembley Arena was voted Best International Arena at the 18th Concert Industry Awards. Offices for Portman Estates and a Forest School sports complex have also completed.

Right: Sure Start Centre, Barking



= 96 / GENSLER

Last year: 96

Number of architects: 29

Female architects: 31 per cent

A run-in with CABE over its Blackpool super-casino was followed by rejection in favour of Manchester. Schemes such as Kent's £1.8 billion schools template programme boosted turnover by 52 per cent.

Above: Dubai Chamber of Commerce and Industry



ENQUIRY 19 ON CARD
WWW.AJPLUS.CO.UK/AJDIRECT

integrated design

© Nick Hufon / VIEW

Integrated Service Modules (ISMs) are designed and manufactured by SAS International to meet specific aesthetic and performance requirements. ISMs supplied with chilled beams enable energy efficient cooling and can exploit the benefits of thermal mass cooling.

Prefabricated ISMs integrate specified services including cabling, intelligent lighting, speakers, fire detection and control systems into one durable metal module. SAS ISMs can be supplied with active or passive Chilled Beams.

For further details call 0118 929 0900 or visit www.sasint.co.uk

metal ceilings • room comfort • architectural metalwork



Looking for a great place to work?

vacancies for architects & technologists

stimulating & diverse portfolio

98 strong and growing

structured career path

excellent training & personal development

attractive salary & benefits

great location in **south manchester**

dynamic working environment

investor in people

environmental commitment

team culture

work hard play hard 4^{1/2} day working week

take a look @ www.pozzoni.co.uk/recruitment



INVESTOR IN PEOPLE

We are an equal opportunities employer

POZZONI

ENQUIRY 50 ON CARD

WWW.AJPLUS.CO.UK/AJDIRECT

PRP IS GOING PLACES...

WHY NOT JOIN US ON OUR JOURNEY?

WWW.PRPARCHITECTS.CO.UK

ENQUIRY 28 ON CARD

WWW.AJPLUS.CO.UK/AJDIRECT

= 96 / JOHN THOMPSON & PARTNERS

Last year: 93

Number of architects: 29

Female architects: 34 per cent

This urban-design specialist has redeemed last year's 14-place slide under new managing director Marcus Adams. Its Edinburgh studio eclipsed the London base, recording a 30 per cent increase in staff. The limelight could shift south as the firm takes its place on English Partnership's four-year 'mega' framework and begins the £200 million Craylands Estate project in the Thames Gateway.



= 96 / ERIC PARRY ARCHITECTS

Last year: N/A

Number of architects: 29

Female architects: 24 per cent

Eric Parry is a new face to the AJ100, despite being a Stirling Prize runner-up. Earlier this month, planning inspectors saw no 'compelling justification' for a 24-storey building next to Tate Modern and refused permission. This month also saw the unveiling of an extension to the Holburne Museum of Art in Bath. Above: 60 Threadneedle Street, London



= 99 / AVANTI ARCHITECTS

Last year: N/A

Number of architects: 28

Female architects: 36 per cent

Avanti marked its 25th anniversary year by winning a raft of UK health education schemes. This fast-growing practice – turnover has grown 290 per cent over five years – gained planning consent for a £340 million reworking of Ulster Hospital and the Royal Liverpool Children's Hospital at Alder Hey. It now awaits planning on its first Procure 21 project – a low-energy academic centre for North Bristol Trust. Above: Academic Centre

= 99 / AWW ARCHITECTS

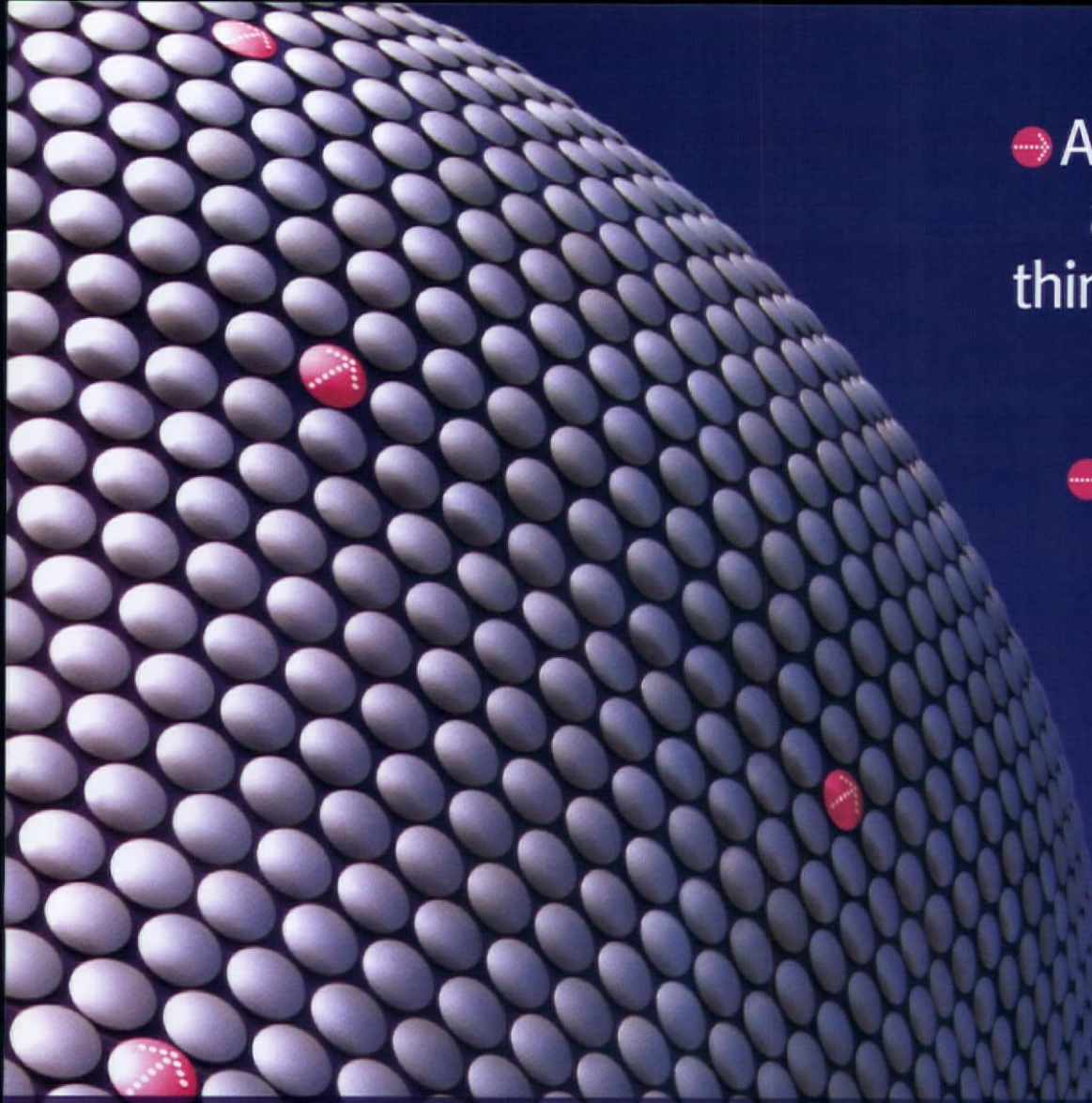
Last year: 89

Number of architects: 28

Female architects: 18 per cent

Having gained just one architect, AWW has failed to achieve last year's commitment to aggressive recruitment. AWW continues to win civic and commercial schemes and has completed several offices and masterplanning projects. In its native Bristol, the firm has bagged two Civic Society Awards for mixed-use and housing schemes. Right: King's Orchard, Bristol





• Award winning
architects see
things differently

• So do award
winning
recruiters

Judd Farris specialise in the Architecture and Design professions offering flexible recruitment solutions to practice and consultancy firms worldwide.

Due to the diversity of the sector Judd Farris act for a wide variety of clients including small and large specialised and international private practices, multi disciplinary consultancies, local authorities, client side organisations and property developers.

With our dedication to corporate, social and institutional sponsorship Judd Farris understands that putting something back in to this great industry sector allows our clients and candidates to get the most out of it!

...Its time to talk to Judd Farris

LONDON Stewart Taylor t 020 7494 2555 e stewart.taylor@juddfarris.co.uk
Leo Gee t 020 7494 2555 e leo.gee@juddfarris.co.uk

BIRMINGHAM Simon Dean t 0121 200 0800 e simon.dean@juddfarris.co.uk

BRISTOL t 0117 316 9000 e bristol@juddfarris.co.uk

MANCHESTER t 0161 834 8666 e manchester@juddfarris.co.uk

EDINBURGH t 0131 718 0783 e scotland@juddfarris.co.uk

SYDNEY t +61 2 9321 5500 e sydney@juddfarris.com.au

MELBOURNE t +61 3 9600 1487 e melbourne@juddfarris.com.au

HONG KONG t +852 2802 8062 e enquiries@juddfarris.com.hk

SINGAPORE t +65 6536 5850 e enquiries@juddfarris.com.sg

for all our latest vacancies log on to www.juddfarris.com

ENQUIRY 37 ON CARD
WWW.AJPLUS.CO.UK/AJDIRECT



Judd Farris
property recruitment

NORTHERN IRELAND

1	BDP	13
2	HLM Architects	3

SCOTLAND

1	SMC Group	86
2	Keppie Design	80
3	3D Architects	53
4	BDP	45
5	JM Architects	39
=6	RMJM	35
=6	Cooper Cromar	35
=8	Aedas Architects	34
=8	Michael Laird Architects	34
10	CDA	31
11	Atkins	30
12	Holmes Partnership	27

NORTH EAST

1	Bond Bryan Architects	43
2	Carey Jones Architects	40
3	BDP	37
4	Aedas Architects	34
5	Hadfield Cawkwell Davidson	34
6	Atkins	30
7	DLA Architecture	22
8	Chetwood Associates	17
=9	Race Cottam Associates	16
=9	P+HS Architects	16

NORTH WEST

1	SMC Group	60
2	BDP	56
3	Aedas Architects	41
4	Pozzoni Design Group	33
=5	Nightingale Associates	32
=5	Ellis Williams Architects	32
7	Taylor Young	31
8	Atkins	27
9	Austin-Smith:Lord	26
10	Buttress Fuller Alsop Williams	25

MIDLANDS

1	RPS Group	67
2	Benoy	47
3	Aedas Architects	36
=4	SMC Group	32
=4	Stephen George & Partners	32
6	Nightingale Associates	28
7	Atkins	24
8	Glenn Howells Architects	23
9	Chetwood Associates	18
10	ADP	16



WALES

1	Capita Percy Thomas	48
2	Holder Mathias Architects	35
3	Powell Dobson	34
4	Nightingale Associates	18
5	Austin-Smith:Lord	9
6	Stride Treglown	8
7	Atkins	5
=8	Chapman Taylor	2
=8	HLM Architects	2
10	Donald Insall Associates	1

SOUTH WEST

1	Anshen + Allen	52
2	Stride Treglown	51
3	Feilden Clegg Bradley	39
4	BDP	24
=5	Atkins	22
=5	AWW Architects	22
=7	SMC Group	21
=7	Stubbs Rich	21
9	Capita Percy Thomas	20
10	Parsons Brinckerhoff	15

SOUTH EAST/LONDON

1	Foster + Partners	233
2	HOK/HOK Sport	181
3	BDP	119
4	Allies and Morrison	114
5	PRP Architects	111
6	Sheppard Robson	92
=7	Capita Percy Thomas	91
=7	Broadway Malyan	91
9	Chapman Taylor	90
10	Benoy	86

Ranked according to total number of UK-qualified architects in each region

UK ARCHITECTURAL FEE INCOME

	2006	2005	Per qualified architect 2006
1 Foster + Partners	£69,200,000	£43,300,000	£293,220
2 BDP	£46,000,000	£37,200,000	£152,824
3 Atkins	£36,000,000	N/A	£180,905
4 HOK/HOK Sport	£32,300,000	£37,000,000	£178,453
=5 Capita Percy Thomas	£31,000,000	£28,000,000	£156,566
=5 SMC Group	£31,000,000	N/A	£114,815
7 Broadway Malyan	£28,258,000	£22,000,000	£241,521
8 RPS Group	£23,259,000	£19,170,000	£310,120
9 Sheppard Robson	£22,426,000	£15,415,000	£200,232
10 Kohn Pedersen Fox Associates	£22,000,000	£11,000,000	£314,286

ESTIMATED CHANGE IN UK ARCHITECTURE FEES, 2006 – 2007

Most optimistic	% Estimated change 2007
1 Dyer	74
2 SOM	70
3 Jacobs	66
4 NBBJ	65
5 Metropolitan Workshop	63
=6 SMC Group	60
=6 Richard Murphy Architects	60
8 Devereux Architects	56
9 Make	50
10 Foster + Partners	49

ESTIMATED CHANGE IN UK ARCHITECTURE FEES, 2006 – 2007

Most pessimistic	% Estimated change 2007
1 YRM	-15
2 DLG Architects	-10
=3 Pascall + Watson	0
=3 Stride Treglown	0
=3 Llewelyn Davies Yeang	0
=3 Ellis Williams Architects	0
=3 Munkenbeck + Marshall Architects	0
8 John Thompson & Partners	3
9 Purcell Miller Tritton	4
=10 Chetwood Associates	4
=10 Levitt Bernstein Associates	4
=10 Conran and Partners	4

TOTAL UK FEE INCOME 2006

1 Atkins	£985,400,000
2 Jacobs	£350,000,000
3 Capita Percy Thomas	£210,000,000
4 RPS Group	£140,000,000
5 Parsons Brinckerhoff	£105,000,000
6 BDP	£75,300,000
7 Foster + Partners	£69,200,000
8 HOK/HOK Sport	£32,300,000
9 Broadway Malyan	£32,232,000
10 SMC Group	£31,000,000

TOTAL GLOBAL FEE INCOME 2006

1 Jacobs	£4,100,000,000
2 Parsons Brinckerhoff	£606,000,000
3 RPS Group	£280,000,000
4 HOK/HOK Sport	£262,100,000
5 Gensler	£237,730,000
6 NBBJ	£143,600,000
7 SOM	£108,000,000
8 RTKL	£104,294,996
9 Atkins	£67,100,000
10 Kohn Pedersen Fox Associates	£57,000,000

UK ARCHITECTURAL FEE INCOME GENERATED FROM PFI PROJECTS

	2006	% UK fee income 2006	% Estimated change 2007
1 BDP	£17,480,000	38	No forecast
2 Capita Percy Thomas	£10,850,000	35	35
3 EPR Architects	£7,650,000	85	90
4 Anshen + Allen	£7,350,000	75	1
5 HOK/HOK Sport	£6,460,000	20	15
6 Keppie Design	£5,754,039	57	57
7 HLM Architects	£5,065,440	48	60
8 JM Architects	£4,970,700	54	57
9 Hunter & Partners	£4,017,720	42	20
10 Nightingale Associates	£4,000,000	25	18

UK ARCHITECTURAL FEE INCOME GENERATED BY WORK WON THROUGH COMPETITIONS

	2006	% UK fee income 2006	% Estimated change 2007
1 Kohn Pedersen Fox Associates	£11,000,000	50	50
2 Wilkinson Eyre Architects	£7,002,522	70	70
3 John McAslan + Partners	£6,000,000	75	75
4 Broadway Malyan	£5,651,600	20	20
5 PRP Architects	£4,888,750	25	4
6 Jestico + Whiles	£3,900,000	60	62
7 Fletcher Priest Architects	£3,720,000	60	60
8 RPS Group	£3,488,850	15	No forecast
9 Foster + Partners	£3,460,000	5	7
10 Hopkins Architects	£3,400,000	50	40

GLOBAL ARCHITECTURAL FEES

1 HOK/HOK Sport	£262,100,000
2 NBBJ	£143,600,000
3 Gensler	£114,290,000
4 SOM	£75,850,000
5 RTKL	£74,846,322
6 Kohn Pedersen Fox Associates	£54,000,000
7 Capita Percy Thomas	£31,000,000
8 Wimberly Allison Tong and Goo	£21,000,000
9 Woods Bagot	£20,000,000
10 HKR Architects	£17,400,000

ANTICIPATED CHANGE IN GLOBAL ARCHITECTURAL FEES

	% Estimated change 2007
1 Dyer	1,500
2 Buttress Fuller Alsop Williams	550
3 Assael Architecture	400
=4 PRP Architects	300
=4 Allies and Morrison	300
5 TP Bennett	250
6 Feilden + Mawson	150
7 Wilkinson Eyre Architects	111
8 Scott Brownrigg	80
=9 SMC Group	60
=9 Benoy	60

Premier London, Nationwide & International Positions with the AJ Top 100 Practices

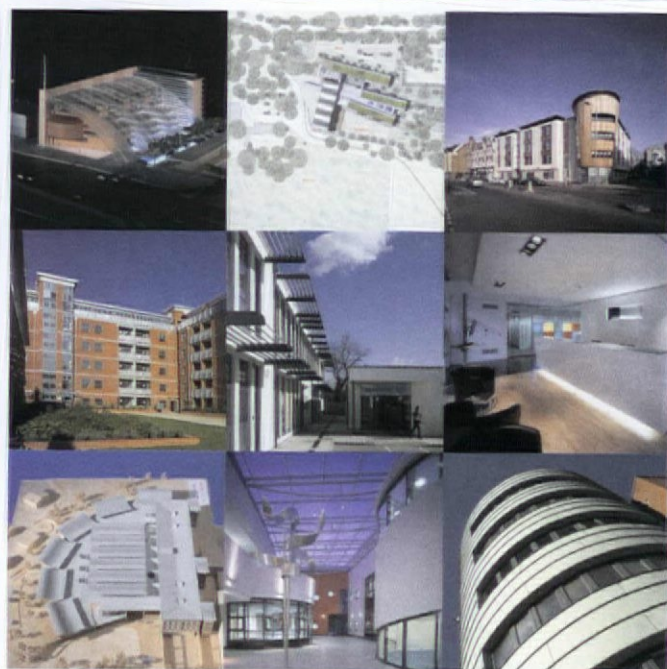


faststream
architectural recruitment

arch@faststream.co.uk 023 8033 4444 www.faststream.co.uk



ENQUIRY 30 ON CARD
WWW.AJPLUS.CO.UK/AJDIRECT



Hunter & Partners is a leading professional practice based in Hammersmith, West London and Chichester, West Sussex. We are active in a range of sectors including private and affordable residential design, hotels, health, residential care homes, community buildings, offices, retail, education, regeneration and masterplanning. The wide range of work undertaken enables our staff to bring their talent and experience from a variety of sources to each new project. We encourage our staff to be innovative and to maintain a passion for the design and building process.

HUNTER+PARTNERS

ENQUIRY 33 ON CARD
WWW.AJPLUS.CO.UK/AJDIRECT



Sidell Gibson Architects

Architecture Interiors Urban Design Project Management

The Canal Building 37 Kentish Town Road London NW1 8NX
T: 02072849005 F: 02072675999 W: www.sidellgibson.co.uk

ENQUIRY 22 ON CARD
WWW.AJPLUS.CO.UK/AJDIRECT

WHY IMPORT WORK OUT?

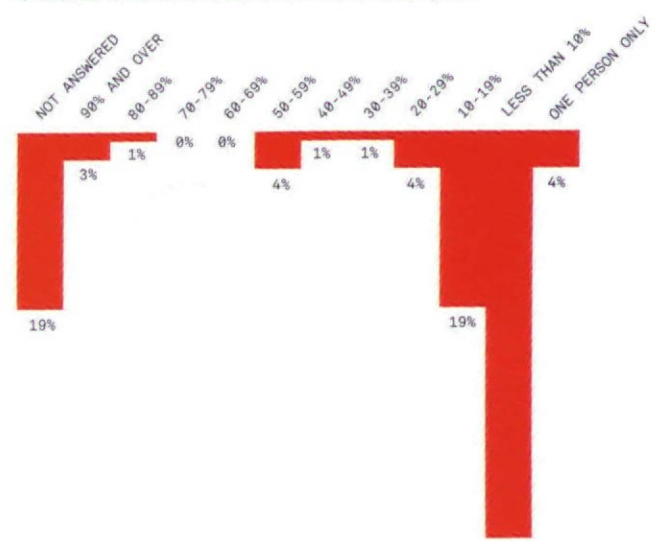
Asi
Middle
America
Eastern Euro
Africa
Australasia

AJ100 / SAL

	2006	2005	2004
	£73,373	£75,887	£70,186
	£45,303	£42,668	£40,991
	£35,687	£33,506	£32,192
	£25,610	£24,161	£22,931
	N/A	N/A	N/A

AVERAGE?

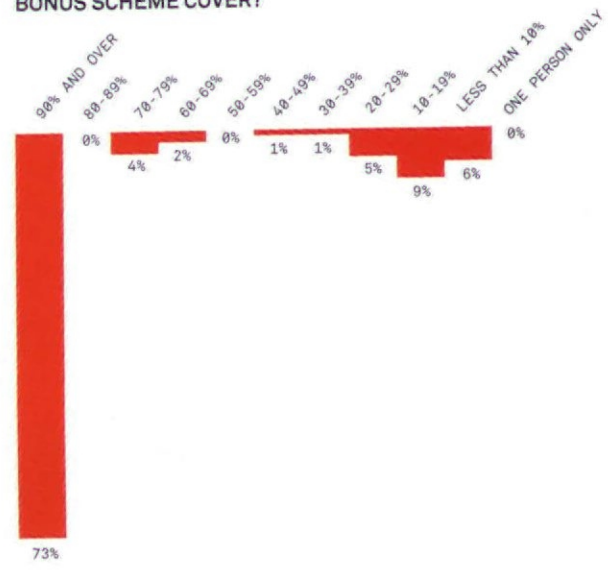
WHAT PERCENTAGE OF YOUR PRACTICE MEMBERS HAVE SHARES OR OTHER EQUITY IN THE PRACTICE?



DOES YOUR PRACTICE HAVE A BONUS SCHEME?



IF YES, WHAT PERCENTAGE OF YOUR STAFF DOES THE BONUS SCHEME COVER?



NUMBER OF QUALIFIED ARCHITECTS OUTSIDE THE UK

1	HOK/HOK Sport	721
2	Gensler	517
3	Aedas Architects	505
4	RTKL	242
5	SOM	205
6	Kohn Pedersen Fox Associates	195
7	NBBJ	190
8	Chapman Taylor	162
9	Wimberly Allison Tong and Goo	160
10	Woods Bagot	124

1
2
3
4
5
6
7

NUMBER OF OVERSEAS STAFF

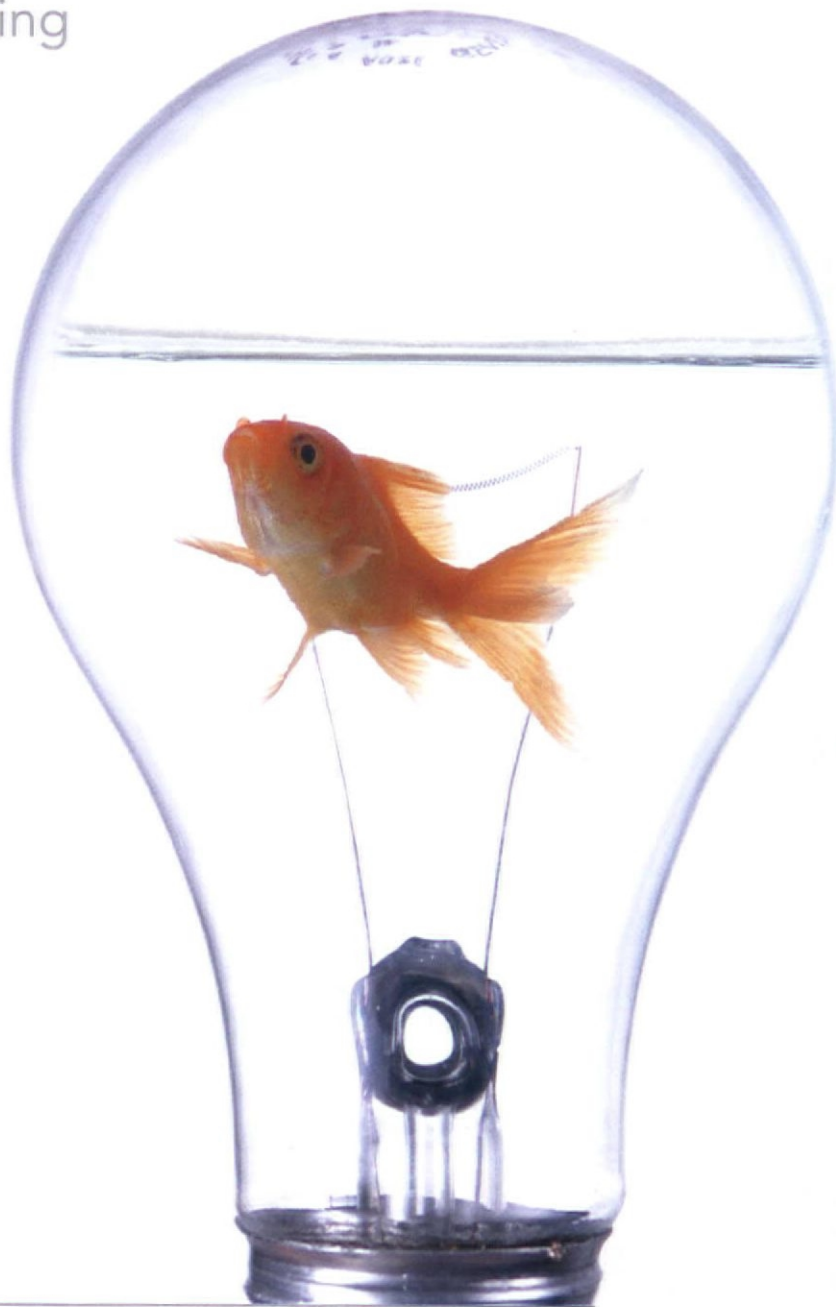
1	Jacobs	37,000
2	Parsons Brinckerhoff	8,911
3	Atkins	4,000
4	Gensler	2,345
5	HOK/HOK Sport	1,835
6	RPS Group	1,500
7	RTKL	1,047
8	SOM	1,000
9	Aedas Architects	950
10	NBBJ	688

*'Expectations are fairly stable
predictions for the future vary
from the current spread of work'*

Ruth Slavid



there's a whole world
of creative lighting
out there.



interior, exterior, colour changing, moving, static, discharge, fluorescent, led...

With a comprehensive range of expressive, programmable fixtures for creating unique environments and moods, Martin simply offers the best dynamic exterior and interior architectural lighting solutions.

For information and inspiration call 01622 755442

ENQUIRY 32 ON CARD
WWW.AJPLUS.CO.UK/AJDIRECT

Martin

TEL: 01622 755442 • www.martinpro.co.uk

Martin Professional PLC • Martin House • Boxmend Ind. Est. • Bircholt Road • Parkwood • Maidstone • Kent • ME15 9YG

WHICH IS THE BEST ARCHITECTURE SCHOOL?

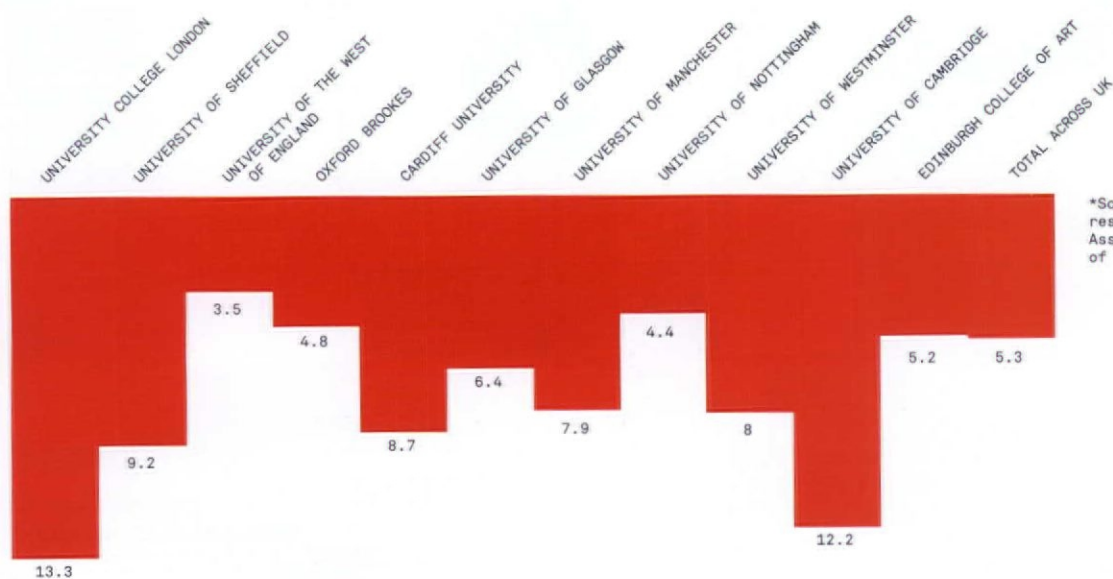
2006 2005

1	1	University College London (Bartlett)	39%
2	3	Architectural Association	19%
3	3	University of Sheffield	17%
4	N/A	University of the West of England	14%
5	2	Oxford Brookes	13%
=6	5	University of Cardiff	11%
=6	3	University of Glasgow (Mackintosh)	11%
=8	N/A	University of Manchester	9%
=8	7	University of Nottingham	9%
=8	N/A	University of Westminster	9%
=11	7	University of Cambridge	8%
=11	N/A	Edinburgh College of Art	8%

'There are growing anomalies between architectural education as translated by universities. Different architecture schools put emphasis on different parts of the curriculum'

Archaios

NUMBER OF APPLICANTS PER PLACE



*Source: UCAS. There are no results for the Architectural Association, as it is not part of the UCAS system



**Whatever your
asphalt project**

**Tarmac has
the answer**

For further information call
08456 044 114
Or visit: www.tarmac.co.uk

Tarmac 

ENQUIRY 17 ON CARD
WWW.AJPLUS.CO.UK/AJDIRECT

Stannah

PLATFORM LIFTS

access
for all...

Stannah Platform Lifts –
your **DDA** access problems solved
meeting **BS8300** and Part 'M'



Midilifts:

- ▶ Vertical travel up to 7m.
- ▶ Choice of finishes, cabin and platform sizes.

Stairisers:

- ▶ Inclined travel for straight or curved stairways.
- ▶ Choice of platform sizes.



For more information on our range of
access solutions, contact Stannah on

01264 339090

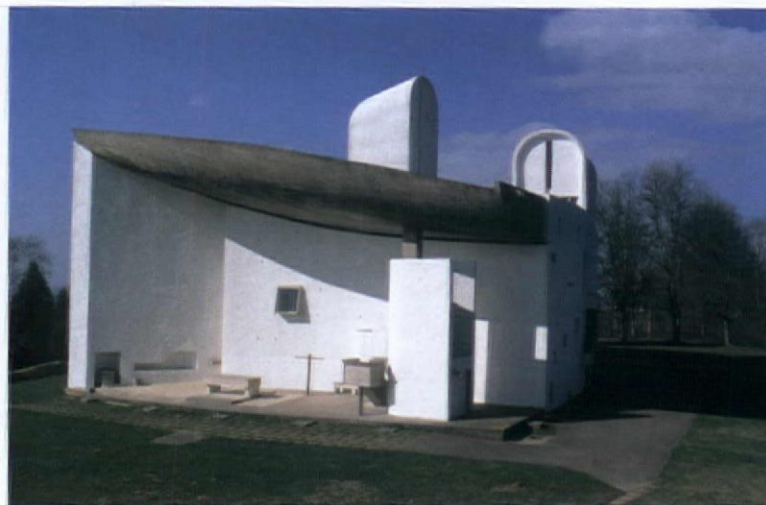
email: accessliftsales@stannah.co.uk
www.stannahaccesslifts.co.uk



ENQUIRY 18 ON CARD
WWW.AJPLUS.CO.UK/AJDIRECT

WHAT IS YOUR FAVOURITE BUILDING?

=1	Ronchamp	4%
=1	Swiss Re	4%
3	Fallingwater	3%
=4	Barcelona Pavilion	2%
=4	Getty Center	2%
=4	Barajas Airport	2%
=4	Maison de Verre	2%
=4	Lord's Cricket Ground	2%



PAUL RASTERY/VIEW

Ronchamp

JOHN LINDEN/ARCAID



Getty Center



Swiss Re



St George Wharf



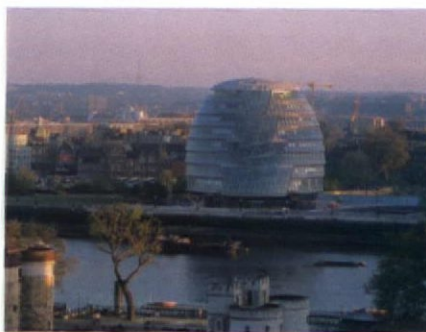
Swiss Re

'With its fantastic attention to design, St George Wharf is one of London's most sought-after riverside developments'

www.stgeorgewharf.net

WHAT IS YOUR LEAST FAVOURITE BUILDING?

1 St George Wharf	9%
2 MI6 building	4%
=3 City Hall	3%
=3 Scottish Parliament	3%
=3 Swiss Re	3%
6 Palace of Peace and Reconciliation	2%



City Hall



Palace of Peace and Reconciliation

NIGEL YOUNG



DOMINIK GIGLER

Barajas Airport



DOMINIK GIGLER

Welsh Assembly

*'I think it has a heroic quality
which is just right for an airport'*
Richard Griffiths, Richard Griffiths Architects

WHAT WAS THE BEST BUILDING OF 2006?

1	Barajas Airport	15%
2	Welsh Assembly	7%
=3	Brick House	2%
=3	Evelina Children's Hospital	2%
=3	Firminy Church	2%
=3	Savill Building	2%



IOANA MARINESCU

Brick House

A step in the right direction

CarbonNeutral solutions from Corus Panels & Profiles with Confidex Sustain™

In the past, you've often had to choose between inspirational aesthetics and environmental responsibility. Not any more. Corus Panels & Profiles is now offering the world's first CarbonNeutral metal building envelope through Confidex Sustain™.

Confidex Sustain™, developed by Corus, doesn't just consider one phase of the cladding system lifecycle. It assesses full cradle to grave emissions from steel production and manufacture through to delivery of the finished system to site, use and end-of-life disposal and recycling. When it is specified with Colorcoat HPS200® and Colorcoat Prisma® you can get the benefit of our Platinum Warranty, which means that the whole metal cladding system is CarbonNeutral and fully warranted. Furthermore, we will offset every 1kg of unavoidable CO₂ emitted in climate-friendly projects overseas.

At Corus Panels & Profiles we have long been committed to sustainability and our

unique, totally integrated Corus supply chain enables transparency and full traceability. We have invested heavily in developing systems that perform to the highest standards of air tightness and structural performance and can be recycled at end-of-life.

Most impressive of all is our portfolio. We have the largest range of Colorcoat® assessed systems currently available with Confidex Sustain™ - spanning both built up and composite systems - giving you total flexibility to design for tomorrow, today.

Roof lights and structural roof decking are not covered by Confidex Sustain™

Colorcoat, Confidex Sustain, HPS200 and Prisma are trademarks of Corus

ENQUIRY 20 ON CARD
WWW.AJPLUS.CO.UK/AJDIRECT

For more information contact:
+44 (0)1244 892457
sales@coruspanelsandprofiles.co.uk
www.coruspanelsandprofiles.co.uk
Please quote reference AJ01.





We recognise and appreciate the impact that **architecture** has on all our lives and strive **to** design buildings and spaces that **inspire**, excite and exceed the expectations of the very **people** for which they are created.

To find out more visit www.dla-design.co.uk

ENQUIRY 44 ON CARD
WWW.AJPLUS.CO.UK/AJDIRECT



WAKEFIELD | MANCHESTER | LEEDS | LONDON



1 / RENZO PIANO

16%

'Renzo Piano is an absolute master of light and lightness. I don't think there is anyone else like him'

Richard Rogers

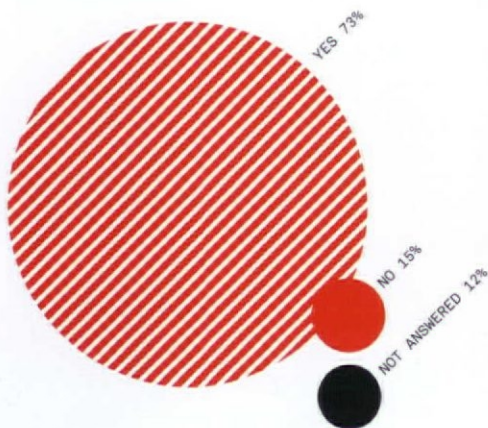
Left: Shard London Bridge



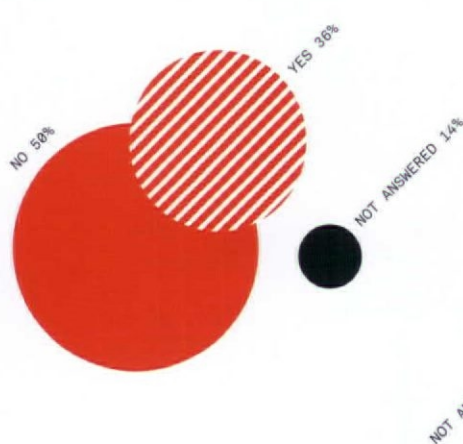
WHICH LIVING ARCHITECT DO YOU ADMIRE THE MOST?

1	Renzo Piano	16%
2	Norman Foster	7%
3	Richard Rogers	6%
=4	Ken Shuttleworth	4%
=4	Peter Zumthor	4%
=6	Edward Cullinan	3%
=6	Jacques Herzog	3%
=6	Álvaro Siza	3%
=9	Glenn Murcutt	2%

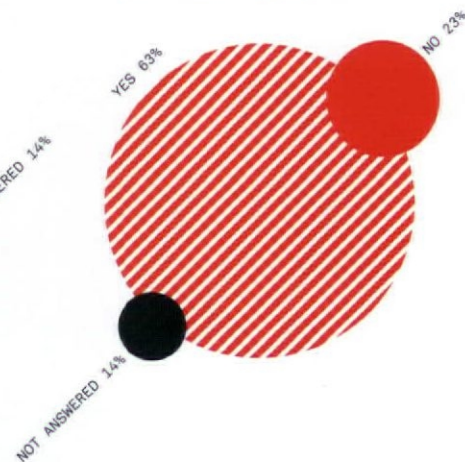
DO YOU THINK ANYBODY WOULD NOTICE
IF THE RIBA CEASED TO EXIST?



DO YOU THINK ANYBODY WOULD
NOTICE IF THE ARB CEASED TO EXIST?



DO YOU THINK ANYBODY WOULD NOTICE
IF CABE CEASED TO EXIST?



'Protecting the consumer and safeguarding the reputation of architects; the ARB promotes good professional practice, provides consumers with an accessible means of complaint and prosecutes unregistered individuals who unlawfully call themselves an architect.'

ARB

'The RIBA exists to advance architecture and promote excellence in the profession. The RIBA provides specialist information, advice and practice support and campaigns in defence of professional standards.'

RIBA

'CABE works on behalf of the public, championing well-designed buildings and public space. Through our work with planners, designers, clients and architects, we promote the improvement of people's quality of life by good design.'

CABE

The AJ's special awards are given to practices that have excelled in specific areas. The judges for this year's awards were: Isabel Allen (chair); Sara Fox (client/project manager); Maxwell Hutchinson (SMC Group); Mark Whitby (Whitbybird); and Paul Finch (Architectural Review/CABE).

LARGEST PRACTICE

Sponsored by Schüco

WINNER: BDP

REGIONAL WINNERS

Sponsored by Griffiths & Armour

Scotland

SMC GROUP

North East

BOND BRYAN ARCHITECTS

North West

SMC GROUP

Midlands

RPS GROUP

Wales

CAPITA PERCY THOMAS

South West

ANSHEN + ALLEN

South East/ London

FOSTER + PARTNERS

Northern Ireland

BDP

HIGHEST FIRST-TIME ENTRANT

Sponsored by Keim Paints

WINNER: SMC GROUP

HIGHEST CLIMBER

Sponsored by Autodesk

WINNER: MAKE



SMC Alsop's 151 City Road Tower, London

'It has been a rollercoaster ride, and we may never again see the rate of growth experienced by the SMC Group over the past three years'

Isabel Allen

BUSINESS ACHIEVER OF THE YEAR

Sponsored by BST Global

WINNER: DYER

For a fledgling practice to double turnover and staff in its first year is an impressive achievement. With barely a glance behind since severing ties with Anshen Dyer – its larger joint venture partner – Dyer's estimated turnover for the year ending July 2007 stands at £8.4 million, up from £4.2 million in July 2006. The jury, which voted unanimously for Dyer, was especially impressed by its new focus on international retail, leisure and mixed use, which has yielded numerous commissions, not least a raft of shopping malls in the Russian market. Dyer anticipates further expansion over the next six months thanks to an ever-increasing client list including Kodak, Peel Properties, and London Merchant Securities. Repeat business is evidence of an architects' commitment to consistent quality – and there's no shortage of repeat bookings here. Aston Villa Football Club has re-signed Dyer to upgrade the club's Villa Park ground, while some 15,000m² of office and ancillary space has been designed for bank MBNA over the past decade.

'An impressive reinvention of a practice was accompanied by an impressive increase in turnover and profit, and a strong list of new clients'

Paul Finch



Dyer's Queen Margaret University College, Edinburgh

INTERNATIONAL PRACTICE OF THE YEAR

Sponsored by Davis Langdon

WINNER: FOSTER + PARTNERS

Foster + Partners' trophy cabinet is positively groaning with awards won over the past 12 months – 38 in total – including the Berlin Architecture Award for the Free University, Berlin. But what really impressed the panel is the diversity of new contracts in both existing and fresh markets, such as Abu Dhabi, Argentina, Bulgaria, Egypt, Ireland, Kazakhstan, Russia, Turkey and Vietnam. In the same period, this practice has grown from 650 to 950 staff and its international office network has expanded from 16 to 20. Foster + Partners now works in 27 countries and its share of overseas work has leapt from 57 per cent to 70 per cent. The Palace of Peace, Kazakhstan; Hearst Tower, New York; and Dresden Station redevelopment are a mere *hors d'oeuvre* of its current workload. Foster + Partners has been synonymous with trailblazing design for over 20 years; from awe-inspiring skyscrapers to knock-out sports stadia; this dedication to quality in the built environment has assured its place in the pantheon of world renowned architects.



Foster + Partners' Hearst Tower, New York

'The practice's international workload represents an extraordinary breadth and depth of design and delivery, with an admirable consistency of quality'

Sara Fox

'It is unusual to see such highly focused marketing. This approach was done with great intelligence'

Isabel Allen

BEST MARKETING INITIATIVE

Sponsored by Pipers

WINNER: AEDAS

As a young brand, Aedas has launched a daring marketing strategy to raise brand profile, nurture customer relations, and focus business development. Strategic advertising and increased exposure in high-profile design and lifestyle titles, such as the *Architectural Review*, are but two elements of this hugely successful drive. By creating a key-account-management system using 'relationship owners', Aedas has sharpened its understanding of both client and market requirements. Aedas is reviewing print and online marketing to ensure future initiatives reflect a global and local approach while embodying the firm's commitment to design excellence. With its brand consultant, Bostock and Pollitt, the architect has devised a web-based knowledge bank enabling the global organisation to share expertise and create design responses 'far greater than the sum of its parts'. In so doing, Aedas is demonstrating diversity, progression and teamwork – adjectives that sum up Aedas' *raison d'être*.



Aedas' marketing material

'An outstanding building made the case for this year's award-winner'

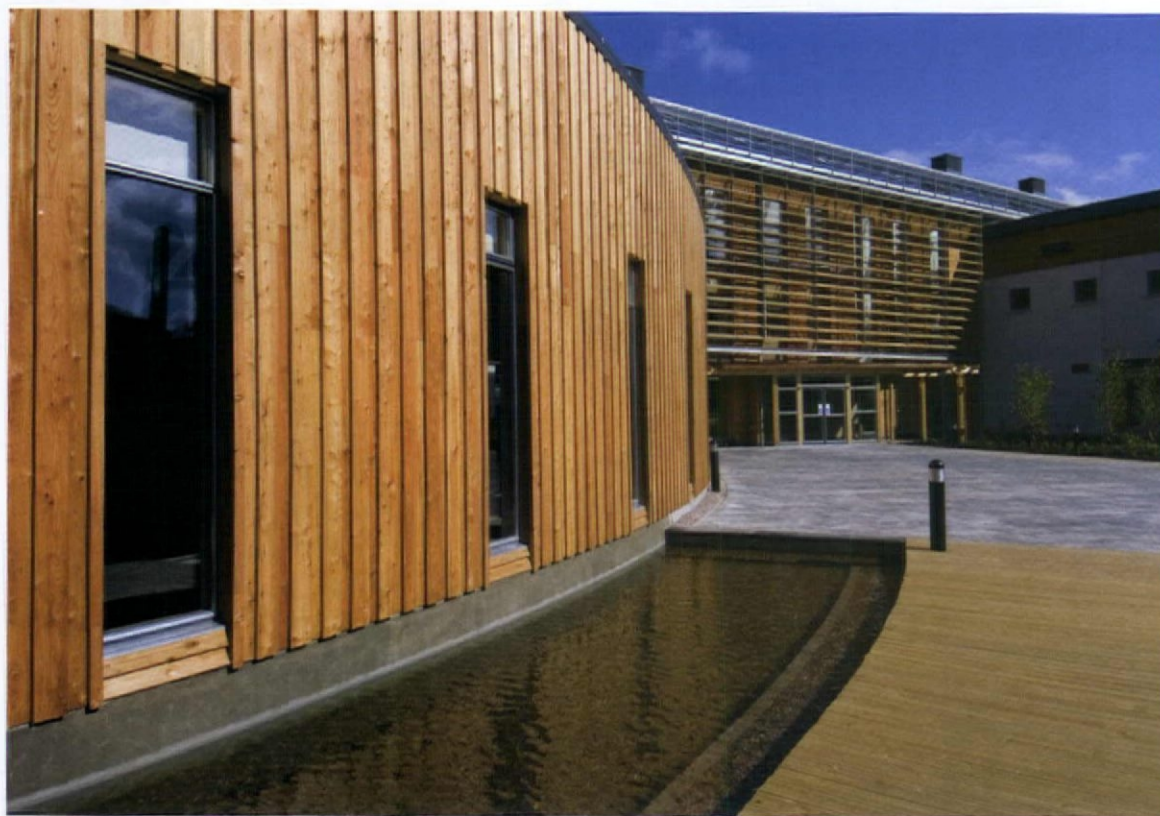
Maxwell Hutchison

SUSTAINABILITY AWARD

Sponsored by InterfaceFLOR

WINNER: KEPPIE DESIGN

The AJ100 jury is, rightly, tough to please. But Keppie Design's new HQ for Scottish Natural Heritage in Inverness was an instant hit – not least because it has the highest-ever BREEAM score of 84.01 per cent. This 6,700m² design demonstrates that sustainability and commercial viability are not mutually exclusive. Open-plan office space is structured around a vast atrium. Materials, components and systems are A-rated by the BRE Green Guide. Solar energy heats water and exposed-concrete thermal mass cools the building. Ponds and wetlands incorporate local species. Even heated bat roosts have been woven into this sensitive design. Great Glen House, as it is known, is a positive contribution to the Inverness landscape and, arguably, sets a precedent for commercial projects earmarked for rural settings.



Keppie Design's Great Glen House, Inverness



Jestico + Whiles' Haberdashers' Aske's Hatcham College, London

'The increasing suite of benefits available to staff, deriving from the firm's success and an innovative practice structure, made Jestico + Whiles a worthy winner'

Mark Whitby

EMPLOYER OF THE YEAR

Sponsored by SIV

WINNER: JESTICO + WHILES

Directors at Jestico + Whiles have made the ultimate sacrifice to retain and nurture their most valued asset. They've given the firm to staff – lock, stock and barrel. Ownership has been transferred from shareholders to an employee benefit trust – an act of altruism that won the hearts and minds of the jury. But Jestico + Whiles' commitment to staff doesn't end there. Bosses have sponsored over 400 international study trips enabling staff to gain valuable experience in overseas practices. Naturally, Jestico + Whiles runs regular in-house training as well as technical and design reviews on all its projects. Hosted by senior architects, these sessions give everyone a chance to share expertise and gain knowledge. And now, in a further step, staff get a free half-day every month for 'extra curricular activities'. Jestico + Whiles boasts an above-average ratio of female architects (22 per cent) – a crucial factor in the *Sunday Times*' decision to vote it one of the UK's top 100 companies to work for. This attention to equality also convinced the AJ100 panel to name Jestico + Whiles Employer of the Year and will, undoubtedly, bring the firm greater rewards in the future.

With many thanks to all our AJ100 sponsors.

HEADLINE SPONSORS



CATEGORY SPONSORS



WHAT IS THE BIGGEST PROBLEM FACING ARCHITECTS AND ARCHITECTURE TODAY?

'The desire for clients and government to become sustainable without spending any more money or time'

Robin Nicholson, director, Edward Cullinan Architects

'Lack of relevant leadership and cooperation within the profession'

Robert Firth, head of architecture, Capita Percy Thomas

'Continued erosion of our direct links and influence with clients through procurement mechanisms placing design quality as a low priority'

Peter Stocker, director, YRM

'Over-regulation'

Paul Mitchell, managing director, the Harris Partnership

'Architectural education which does not prepare students for the real world, leaving employers with a risk when appointing architects verses skilled technical staff'

Bob Stares, managing director, Scurr and Partners

'Global warming'

Paul Zara, director, Conran and Partners

'The tick-box culture of public-sector clients which is encouraged by "project managers"'

Laurie Chetwood, Chetwood Associates

'Too much legislation, producing too small an effect'

Gordon Watson, director, SMC Group

'Getting paid realistic fees'

Brian Lightbody, managing director, Michael Laird Architects

'Limited architectural skill base in London in the current buoyant market'

Robert Kennett, director, Eric Parry Architects

'That design is essential and not just something that "adds value" to a project. The potential for the very best design should not be lost'

Paul Crosby, director, David Chipperfield Architects

To see fuller versions of these tables, plus winners of the AJ100 awards and coverage of the AJ100 dinner, along with additional information, see our online coverage of AJ100 at www.ajplus.co.uk/aj100

Height Restriction?

Ondutile

Tile & Slate Underlay System

Allows a complementary tile or slate roof to be fixed below the manufacturers minimum roof pitch, providing increased living space.

Lower your roof pitch, not your expectations

www.Onduline.net

Onduline Building Products Limited
182-184, Campden Hill Road, London, W8 7AS
Telephone: 020 7727 0533 Fax: 020 7792 1390
E-mail: enquiries@onduline.net



Type A

For Concrete Tiles & Slates



Type B

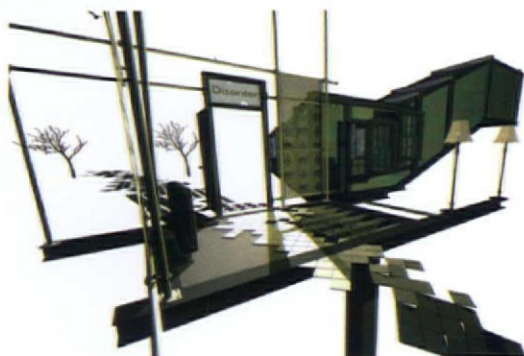
Plain Double Lap Tiles



Suggested minimum pitch

Interlocking concrete tiles:	12.5°
Pantile, natural and fibre cement slates:	17.5°
Plain double lap tiles:	22.5°

ENQUIRY 11 ON CARD
WWW.AJPLUS.CO.UK/AJDIRECT



School of Architecture & Construction

Diploma ARB/RIBA Part2

Open Day

'One of the best part-time and full-time diploma courses in the country – tackling theory, practice & sustainability in the Thames Gateway & beyond'

Friday 8th June 2007

11am, Queen Anne Building, Greenwich Maritime Campus

www.digitalstudio.gre.ac.uk/exhibition2007
Exhibition opens 6pm, 6th June and ends 16th June

For further information please contact:-

Lucy Rutherford - Team Support
School of Architecture and Construction
Tel: +44 (0)208 331 9108
Email: RL33@gre.ac.uk



the
UNIVERSITY
of
GREENWICH

Providing Higher Education in London and Kent for over 100 years



Total Commitment to
Service and Quality

- Large format printing & CAD service
- High speed colour and Black & White
- Scanning and archiving
- Fine art
- Trade sets undertaken
- Accredited O.S. reseller
- Digital press
- Exhibition displays

FREE COLLECTION &
DELIVERY SERVICE
AVAILABLE

15 VAN FLEET COVERING
BERKSHIRE, HAMPSHIRE &
SOUTH OXFORDSHIRE



"Image is everything"

READING Unit One, 8 Portman Road,
Reading, Berkshire RG30 1EA
Tel: 0118 959 6655 Fax: 0118 957 4871
E-mail: info@print-room.co.uk

SLOUGH 22b Buckingham Avenue,
Slough, Berkshire SL1 4QA
Tel: 01753 516 161 Fax: 01753 516 216
E-mail: slough@print-room.co.uk

THATCHAM Unit 3, Rivermead,
Pipers Way, Thatcham, Berkshire RG19 4EP
Tel: 01635 871 281 Fax: 01635 862 919
E-mail: thatcham@print-room.co.uk

www.print-room.co.uk

ENQUIRY 56 ON CARD
WWW.AJPLUS.CO.UK/AJDIRECT

ENQUIRY 59 ON CARD
WWW.AJPLUS.CO.UK/AJDIRECT



BEING AND BECOMING IN THE METAVERSE

In AJ 15.03.07 I did a Nostradamus about how architects would be setting up their shingles on Main Street in Second Life – that increasingly fashionable virtual world where you can buy property, mingle with communities and even, ahem, visit the virtual Playboy Mansion, all at www.secondlife.com.

Architects, I hinted, would be closely followed by a crowd of pontificators emerging cleansed from their academic clerisies in order to plunge into the architecture of Second Life. But I was way behind. There is already at least one rather serious Second Life blog, The Arch, at <http://archs1.wordpress.com>, which is devoted to exploring the convergence of the metaverse with the real-life practice of architecture.

The Treehugger blog at <http://tinyurl.com/231j96> reports how a recent Architecture for Humanity competition win was built in both real life and in Second Life. And at the recent AIA conference in San Antonio, Texas, the CAD company Autodesk ran virtual seminars and webcasts from a whole virtual island that it has recently acquired in Second Life. What planet are they on? sutherland.lyall@btinternet.com

GOING TO THE WIRE

Love it or loathe it, adjudication is nothing if not a seat-of-the-pants experience, writes *Kim Franklin*. The combination of the truncated time frame, the procedural free-for-all and the compulsive tendency to put as much material as possible before the adjudicator, leads to a situation which strongly favours the 'have-a-go' claimant.

A claimant who believes, rightly or wrongly, that they have lost out, can bamboozle the defendant and the adjudicator with a dazzling array of documents, statements, schedules and whizzy charts, all leading inextricably to a big, juicy bottom line. There is barely time to assimilate all this information and no time at all to test it. Calls for clarification can quickly descend into unseemly squabbles about whether the witnesses are simply to be questioned or, heaven forbid, cross-examined.

An unsuccessful claimant loses nothing more than their own costs. If they are successful, and they usually are – it takes a brave adjudicator to find that the claimant's vast smoky edifice has been generated without even a glimmer of a fire – they have an adjudicator's decision in their favour. The defendants may not like the decision and they may not actually want to pay up, but these days an adjudicator's

decision is as good as cash in the bank and you ignore it at your peril.

This point was strongly reinforced by the Technology and Construction Court in *Gray & Sons Builders (Bedford) Ltd v Essential Box Company Ltd* (Judgment 11.10.06). RIBA adjudicator Ian Salisbury decided that the defendant had wrongly repudiated its contract with the claimant builder firm, which was therefore entitled to compensation of £115,500.

But the defendant did not pay up. Instead it took what the judge described as 'a variety of technical points' and gave the appearance that it resisted the enforcement proceedings. On the day before the hearing, the defendant conceded that it did not oppose enforcement, but objected to paying the claimant's legal costs. The judge reiterated that the proper course for an unsuccessful party was to pay the amount which had been ordered by the adjudicator and argue about it in legal or arbitration proceedings later. He pointed out that it was entirely unreasonable for the defendant, who ought to have known that it had no reasonable defence, to give the impression that the enforcement had been resisted.

Defendants who avoid paying up until the last moment or beyond are trying to frustrate the statutory

adjudication provisions, and therefore should be penalised with indemnity costs. The last-minute offers by the defendant to defer payment by instalments were irrelevant in this case. Ultimately, save for the odd taxi fare, the claimant was entitled to judgment for £115,500 and to be indemnified for its full legal costs of £12,500.

The moral of this story is: don't take the enforcement of an adjudicator's decision to the wire. Pay up and argue later, or it will cost you.

Kim Franklin is a barrister and chartered arbitrator at Crown Office Chambers in London. Visit www.crownofficechambers.com

REVIEW

EXHIBITION

By Barrie Evans

With the Grain: Wood
Sculpture by David Nash
At Lewes Town Hall,
Sussex, daily until
10 June



1.



2.

1. Multi-Cut Column

2. Cracking Box

What strikes you first about David Nash's show is the large scale, unusual for sculpture in wood. Some pieces are monumental, like the columns of a ruined temple; some, worked from boughs, look down on you triffid-like; while others take their cue from everyday objects, upscaled to several metres high (*Two Falling Spoons*, *Big Throne*). This relation to the viewer is heightened by the proximity of the works, nearly 30 of them set close together. You walk between them as in a forest.

This visual meshing of diverse pieces doesn't always give you the repose to look at them that you would like, but it has another purpose. The show is taken from David Nash's own collection, spanning his sculpting life from 1976 to 2007 – it's an evocation of his studio

chapel in the Welsh town of Blaenau Ffestiniog.

Nash often makes his pieces locally to an exhibition using native species. Many on show here come, for example, from France, Poland or the US. But as Nash says, he is, like Brancusi, unable to let them go easily, and some that were sold he has since remade.

Above all, Nash is a man of trees, focused on what he calls the 'spirit' of them as much as their sculptural potential. Long before sustainability was a common concern he would take only trees that were wind-damaged or already felled for some other purpose. His sculptures always retain a strong sense of the tree – there is a palpable tension between the natural and the constructed. And where pieces are more constructed, the sense of

'treeness' may also be intensified. So *Cracking Box* is a cube of oak slabs, deliberately cut end-grain rather than as planks, to intensify the cracking from drying.

Surfaces, debarked but mostly hewn with Nash's favoured tool, the chainsaw, retain a sense of the outdoors. And while his recent works are often more abstractly sculpted, slicing the wood green allows the tree to respond as it dries, giving some of the individual tree's own character back to Nash's intervention.

He has also been intensifying the natural-form dynamic of trees, in works such as *Multi-Cut Column*, with the sweeping sculpting of the whole piece, as well as the surface patterning and localised movement from the cut timber drying.

While Nash celebrates the natural colour of trees, he sometimes goes further, adding a layer of abstraction to pieces by charring them intensely black, then sealing them using linseed oil. Some of these charred pieces are found shapes; others already abstract, like *Cracking Box* from his series of pyramids, spheres and cubes. These are silhouetted in the exhibition by being placed before hung white fabric.

For architects this is a stimulating show of the expression of timber. And don't forget to enjoy the town hall's Elizabethan timber staircase on the way in.

BOOK

By Dean Hawkes

Josef Albers: To Open Eyes. The Bauhaus, Black Mountain College, and Yale
By Frederick A Horowitz and Brenda Danilowitz.
Phaidon, 2006. £45.00



1.



2.

Many of the significant figures in the evolution of art and architecture in the 20th century shared a journey in which they travelled westwards from Europe to the United States. Josef Albers was one of this group, and the trajectory of his life is neatly encapsulated in this new book's subtitle.

After studying art in Berlin, Essen and Munich, Albers, in 1920 at the mature age of 32, enrolled as a student at the Weimar Bauhaus. He began teaching the *Vorkurs* (foundation course) there in 1923, following Itten's departure, and was appointed professor in 1925. He remained, through the moves to Dessau and then Berlin, until the school's enforced closure under Nazi pressure in 1933. The following year he began teaching at the newly founded Black Mountain College in

North Carolina, along with his wife Anni and visitors such as Buckminster Fuller. In 1950 he became chairman of the department of design at Yale University, New Haven, where, having retired in 1958, he continued to live until his death in 1976.

Albers' place in the history of 20th-century art is secure. His works, culminating in the series of over 1,000 pieces in the *Homage to the Square* series, which he began in 1960, are widely known and admired; many are now in the Albers Museum in Bottrop (AJ 11.10.01). He also made important contributions to theory, most significantly in the book *Interaction of Color* (1962).

The present book is concerned with Albers as teacher and traces the development and focus of

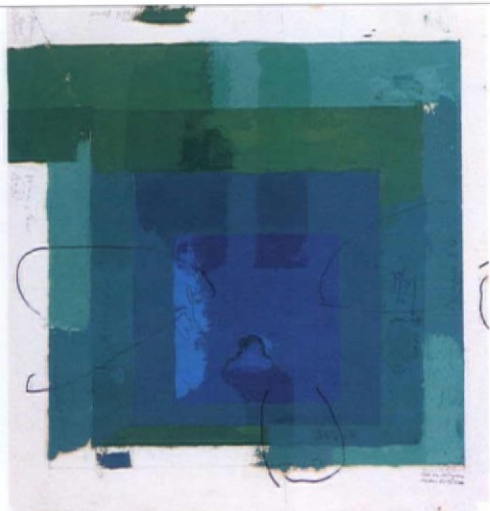
his teaching over almost 40 years. Brenda Danilowitz contributes a well-researched introductory essay, 'Teaching design: A short history of Josef Albers'. On the armature that this establishes, Frederick Horowitz, a pupil of Albers' at Yale, explores in detail the intentions and methods of Albers' pedagogy. This account is based on extensive documentary research and makes good use of numerous reminiscences and anecdotes from other former pupils.

From this it is possible to identify the sources of Albers' influence upon art education. Horowitz reports the essence of this as: 'To open the eyes'. The aim was to learn to see more acutely. 'How can you make art if you don't know how?' Albers would quiz his students. 'You have to see; otherwise you can't

do anything.' The basis of the method is revealed by detailed chapters concerned with design, basic drawing, the colour course and the painting course. These are illustrated with many well-reproduced examples of works by his students, including such later luminaries as Eva Hesse.

In the Bauhaus years Albers did not teach painting, and only inaugurated an independent painting course at Black Mountain College in the mid-1940s, some years after his arrival. At Yale he taught the advanced painting course from the outset. It was here that the highly structured *training* that students received from the formal courses met issues of individual creativity.

The concluding chapter of the book offers a review of the tensions that this produced. It reveals an intriguing



3.

1. Albers with students
2. A collage by Eva Hesse made in one of Albers' classes
3. Study by Albers for Homage to the Square

confrontation with Abstract Expressionism, which inevitably attracted the interest of painting students. Albers reacted to this with statements such as: 'You don't have to paint a wall. Look at Paul Klee. Look at what he could do in a small space.'

But nonetheless he invited James Brooks, Willem de Kooning, Stuart Davis and others to Yale as visiting critics. He clearly wanted to give his students a counterweight to his own viewpoint, even to the extent that he stayed away from the studio on the days when the visiting critics came.

The majority of former students recall Albers' teaching as exceptionally open, as long as their work was formally under control. There are a number of dissenting voices, who claim that they found his teaching too restrictive, 'like a

trap'. But this conflict of discipline and freedom lies at the core of all education in the creative arts.

In conclusion, Horowitz writes that Albers' students went on to work in many different styles and that Albers, 'never desired to release into the world little Alberses, but rather, *mindful* [my italics] artists who could sit on their own behinds or stand on their own feet.' This seems to me to be just about the best that any teacher could hope for.

Dean Hawkes is an architect in Cambridge



CRITIC'S CHOICE

By Andrew Mead

At a time when television seems to be terminally dumbed down, Jonathan Meades' occasional programmes are a real exception, and his current series on BBC2, *Abroad Again*, is proving to be one of his best. Each one is 50 minutes long, so Meades isn't just skating over the surface of his chosen topic, and while the visual gags can seem relentless and irritating, he certainly has something to say – abetted by sharp editing and well-chosen soundtracks.

This series began with a revealing account of how Meades' sensibility was formed. Describing himself as 'a midget autodidact' as a child, Meades was left to his own devices on his frequent trips with his father (a travelling salesman), and developed a feeling not just for architecture but for *place*. In this 'eccentric education in townscape', he was oblivious to conventional wisdom: that Georgian architecture was admired and Victorian dismissed, for instance, or that 'stone was nobler than brick'. So his writings and programmes (like those of his predecessor Ian Nairn) are always personal and often provocative.

Still to come in the present series is *Heaven: Folkwoven in England* on Wednesday 29 May and *Stowe: Reading a Garden* on 6 June. The first is Meades' take on the Garden City, specifically Letchworth, in which *Ebenezer Howard* gets a rough ride: 'Indifference to architecture; insensibility to topography. No wonder he's considered the father of English town planning.' Nor does the Arts & Crafts movement fare much better: 'Architects who deluded themselves that they were down to earth but were as twee as bunting... Houses like absurdly overpriced designer jeans.'

For Meades, Stowe is 'the apogee of the created landscape' (pictured above), and he leads viewers through the successive interventions of Vanbrugh, Gibbs, Kent and 'Capability' Brown – 'as averse to straight lines as *Frank Gehry*'. Though Inskip + Jenkins isn't namechecked, Meades applauds its restoration of Stowe's garden buildings, which helps keep Stowe's 'capacity for illusion' intact, unlike many truly antique sites in Greece or Italy where 'the 21st century insists on gatecrashing'. There's much to enjoy in these programmes. For forthcoming events visit www.ajplus.co.uk/diary

THE ARCHITECTS' JOURNAL
151 Rosebery Avenue,
London EC1R 4GB

Display advertising
020 7505 6823
Recruitment advertising
020 7505 6803/6737
Advertising fax number
020 7505 6750

Deadlines
Bookings/copy 5pm Monday
Artwork 12pm Tuesday
Cancellations 12pm Monday



Kingsley Symes and Scott
Chartered Building Surveyors & Architectural Consultants

Architectural Technician

Due to continued expansion a position has arisen for an Architectural Technician. Reporting to the Architectural Director, you will provide support for residential and commercial development projects.

You will have excellent AutoCAD skills and be able to demonstrate good construction and building regulation knowledge. The applicant will also have good written and verbal communication skills, be able to work to a deadline and as part of a team.
Salary commensurate with experience.

To apply, please send a full CV by email to:
paul@kingsleysymesandscott.co.uk or phone on 01737 373200

3D Architectural Visualisers

You have an in depth knowledge of:
3DMAX 9
VRAY 1.5
COMBUSTION 4
PHOTOSHOP
AUTOCAD

You have an Architectural, Design or Art degree
You have an interest in short filmmaking

We have vacancies at our Visualisation Studio
Lets Talk

glass canvas

Tel 020 7234 5910
email - careers@glass-canvas.co.uk
www.glass-canvas.co.uk/careers.pdf

Part II Architect Assistant

We seek an architect with experience in design infrastructure and large scale masterplanning. Applicants should demonstrate excellence in design preferably at post professional degree level, have exceptional graphic and verbal skills to integrate and communicate project and research information. High command of English language required. Applicants must be highly skilled in AutoCAD 2D and 3D, Maya, graphic design, web design software and publishing standards.

Apply to: FOA, 55 Curtain Road, London, EC2A 3PT Email: recruit@f-o-a.net

CENTURION

Please call or visit web site for the latest vacancies
www.4-architects.com

We have over 62 Contract / Freelance Posts PAYE / LTD Weekly Pay

Technicians Shanghai / China **Great Opportunity!**
International practice, AutoCAD and residential experience would be preferable.
Fantastic opportunity to live and work in China. **Ref: 3572 (Mark)**

Project Managers / Design Managers London / Bristol / Essex **£70k + pkg**
With a world-class and global reputation this firm is renowned for specialising in the management and consultancy of complex and major large-scale projects. With expertise and skills in an exclusive division that are much sought after, unmissable opportunities are now available to those with a proven track record in the industry, either from a civil or construction background. **Ref: L313 / 3591 (Hannah / Philip)**

Principal Architects / Team Leader Brighton **Exceptional Salary & Bens**
This post offers the opportunity for a significant contribution to the design and delivery of major public schemes within a varied and exciting portfolio. Experience within educational, commercial and residential projects would be advantageous but not essential. An excellent working environment and financial remuneration package will be offered to successful candidates. **Ref: 3527 (Philip)**

Architect / Associate Waterloo / Oxford Circus **circa £45k - £50k**
A huge opportunity to become a decision maker and leading practice member, with a company whose productivity and workload reflects their well established, and respected reputation. You will be RIBA/ARB registered, with a working history that shows your seniority within previous project teams, and a portfolio that enhances your skills and knowledge within retail, residential and education schemes. **Ref: L391 (Hannah)**

Part I / Part II Assistants Surbiton **c£12 - £24ph or Permanent**
International design consultancy of architects, planners and engineers with offices in the UK, Europe, Middle East and China. Are you motivated and able to demonstrate your skills? Can you help expand the company and meet the needs of their exciting and increasing workload? **Ref: 3577 (Philip)**

Architects & Part 2's Covent Garden **Up To £42k + Benefits**
With talented and creative teams in their various UK offices, this design led, Covent Garden based practice requires individuals who can input new, fresh faced ideas to up and coming mixed use, educational and hospitality projects. **Ref: L388 (Hannah)**

Tel: 01323 749200
jobs@centurion-recruitment.com



©: The Royal Landscape and Warwick Sweeney

GLENN HOWELLS ARCHITECTS

Glenn Howells Architects are looking to strengthen their teams both in Birmingham and London. In particular, we are searching for enthusiasm, commitment and experience at all stages of design and delivery.

We are keen to receive applications from the following talented people:-

Project Architects (Birmingham and London)
Architects/Architectural Assistants P1 & P2 (Birmingham and London)
Experienced Technicians (Birmingham and London)
3D Visualiser (Birmingham)
Experienced Landscape Architect (Birmingham)

Please send your CV and A3 samples of your work to:-

Joyce Garratt
Glenn Howells Architects
321 Bradford Street
Birmingham
B5 6ET

T: 0121 666 7640
E: joyce@glennhowells.co.uk

Joanne Taylor
Glenn Howells Architects
29 Maltings Place
169 Tower Bridge Road
London
SE1 3JB

T: 020 7407 9915
E: jo@glennhowells.co.uk

Glenn Howells Architects is an equal opportunities employer and positively welcomes applications from all sectors of the community.

COWPER GRIFFITH ARCHITECTS

are a design-led practice, currently working on projects for the University of Cambridge and the National Trust, private schools and work to Grade I and Grade II* listed buildings.

We are looking for project architects, recently qualified and Part 2 assistants to help with our varied workload, including architects with an interest in conservation.

Our offices are just south of Cambridge.

Send CV to:
James Griffith, Cowper Griffith Architects, 15 High Street, Whittlesford, Cambridge CB2 4LT
tel: 01223 835998 • email: james@cowpergriffith.co.uk • www.cowpergriffith.co.uk

Environment & Commerce

Specialist Advisor – Urban Designer

County Hall, Chelmsford

£27,492 p.a. - £34,146 p.a. (pay award pending)

Built Environment Branch

37 hours per week

Shaping the future of Essex

Essex is rapidly changing and it isn't stopping. The Draft East of England Plan proposes over 120,000 new homes in Essex by 2021, therefore we need to ensure that those homes are well-designed and as sustainable as possible.

To support this, Essex County Council leads the Essex Design Initiative; a campaign to raise the profile of creating sustainable urban places, a learning programme and we are about to launch an Urban Place Supplement to the renowned Essex Design Guide.

This post will contribute to this exciting agenda, working as part of a multi-disciplinary fee earning team that also provides specialist design advice and contributes to high profile regeneration initiatives across the County.

You will be a qualified Urban Designer or a part II qualified Architect, and relish the chance to utilise your design flair. Good illustrative and oral communication and experience of using CAD are essential.

Informal enquiries: Elizabeth Moon on 01245 437646. For more details on the Essex Design Initiative go to www.the-edi.co.uk

Join us and you'll enjoy a range of benefits including interest free season ticket loan, flexible working, paid development opportunities & relocation.

For an application pack, please contact the Essex County Council Recruitment line on 0870 169 9722 or e-mail essexcc.jobs@capita.co.uk Minicom number: 0870 169 9734. For further information and to apply online go to www.jobsatessex.co.uk

Please quote ref: JMR196H0.

Closing date: 8 June 2007.

Achieving quality through equality



2005-2006
Integrated Children's Services



Architectural Assistants - Part 1 or 2, Part 3 Architects, London

3, 6 or 12 month internships, leading to full time paid employment.

Ca. £25k pa (at Part 3) dependant on experience. Immediate start.

Please apply with a C.V and information about yourself to:

andrew.powell@a-4-a.org



A Clerkenwell based job agency set up by Architects for Architects



Move up the career ladder fast! To £60,000 p.a. + benefits.

A medium size practice of 20 in WC1 who have built a large number of buildings in the UK & overseas are looking to appoint an Associate to work on a number of their innovative & rewarding projects. Successful applicants must be able to take projects through from inception to completion & have the ability to oversee teams. A fantastic opportunity for career progression with an excellent practice!

Slick projects with slick practice! £28,000-£35,000 p.a. + benefits

A design led practice in NI are looking to appoint talented & enthusiastic Architects & Part II Assistants to work on a number of high-end residential & commercial schemes. Successful applicants must be technically confident & possess excellent communications skills. A superb opportunity to join an award winning practice with a great office environment. Microstation preferred but not essential.

Associate designate! To £47,000 p.a.

A medium sized practice of 30 in Islington are looking to appoint an Associate to work on 2 prestigious Grade II Listed schemes in excess of £40m & several high-spec residential projects. Successful applicants must be highly motivated with proven design skills & managerial ability. An incredible opportunity to join a respected practice who encourage a strong live/work balance. Autocad an advantage.

To view a comprehensive list of vacancies & to register with us please visit www.bespokecareers.com or call us on 0207 24 24 909.



Investing in People – Leading the way in Scottish Universities

www.rgu.ac.uk/job

The Scott Sutherland School of Architecture & Built Environment Lecturer in Architectural History and Theory

ref: E17011

£26,595 – £38,448

An enthusiastic individual, you will play a prominent role in the staff team, contributing to the delivery and development of teaching in both architectural design and the history and theory of architecture across the accredited architecture courses.

The School is renowned for its broad range of professional disciplines in the field of design, construction, and collaborative and practice-based research. Consequently, an interest in working with the other disciplines within the school is required. You will also engage with the research and consultancy activities of the school.

Informal enquiries to David McClean, Head of School,
Telephone: 01224 263700, Email: d.mcclean@rgu.ac.uk

Please apply online at www.rgu.ac.uk/jobs or call 01224 262085 for an application pack.

Closing date: 15 June 2007.



ellis williams architects is a UK top 50 international practice, winner of RIBA design awards in 2003, 2005 and 2006, and the AJ winner for most significant practice in the Northwest. Within our core sectors of education, arts, commercial and leisure we currently have a very large and varied range of exciting projects.

To help us realise the design potential of our growing workload we are looking for talented and enthusiastic individuals with the following experience to join us in our Cheshire (Preston Brook) or London office.

- Senior architects with experience in developing designs and running multiple projects and teams.
- Architects with 1-5 years post Part III experience capable of working as project architects.
- Architectural technicians.

Opportunities for promotion. Please email your CV to Sue Hind; Practice Manager sue.hind@ewa.co.uk

ewa (ewa.co.uk) is an equal opportunities employer. No agencies



EDCO DESIGN LONDON LIMITED

a dynamic, award winning Landscape Architecture and Urban Design practice, involved in prestigious, high profile projects seeks

- A Senior Landscape Architect (part IV qualified) to lead projects from inception to completion. Must be able to demonstrate capabilities in AutoCAD, Photoshop etc., with strong presentation skills. Salary circa £40 - 45,000
- A Landscape Architect (part II minimum) with a proven track record in Landscape design. Ideally 2 years post graduate experience. Salary circa £30 - 35,000

In return for your enthusiasm and competence, we offer excellent salary packages and good prospects of further career development and promotion to the highest level.

Please send CV's and samples of your work to:

EDCO Design London Limited
4th Floor, Durham House,
1b Amity Grove London SW20 0LQ.
barbara.wingfield@edcodesign.com

Closing date: 14 days after publication.

WSA

Welsh School of Architecture

Three MSc courses on building and sustainability

Theory and Practice of Sustainable Design

Helps prepare professionals for initiating and facilitating change in the built environment to enhance sustainability and provides an array of practical tools for implementation.

Environmental Design of Buildings

Provides the skills and knowledge required to create comfortable environments that are healthy, sustainable and energy-conscious.

Building Energy & Environmental Performance Modelling

Focuses on the use of computer software for studying such diverse aspects of building and urban design as lighting, thermal simulation, air flow, carbon-dioxide emission, and life-cycle analysis.

One bursary is offered on the basis of need and ability. Full-time, part-time, and distance learning options available. Applicants welcome from all areas of the building industry.

Diploma/MA Architecture: Professional Studies

Applications are invited for the 2007-2008 session of the Diploma/MA Architecture: Professional Studies.

Now in its 5th year, this scheme of study is undertaken while in a work placement, and taught by distance learning methods and short residential courses.

Stage 1 (the diploma), achieves the RIBA Part 3, and Stage 2 (the Masters) allows for further study of a selected professional topic.

Full and part time study options are available. Numbers are limited.

The Welsh School of Architecture is UK's top-rated research school of architecture, with a strong national reputation for teaching. It is committed to providing excellence in teaching at all levels.

For further details: <http://www.cardiff.ac.uk/archi>
email: heywoodca@cardiff.ac.uk Or telephone: 029 208 79332 (ref: wsa AJ)



EXCELLING IN RESEARCH AND TEACHING

RECRUITING? CALL US ON 020 7505 6826

Not going anywhere?

Find the latest jobs in transportation on the Industry's original job board careersinconstruction.com

careers
in construction
www.careersinconstruction.com



Director of architecture and design review

£60,000 - £65,000 Based in central London

It's one of the most influential jobs in architecture and urban design. It's an opportunity to shape the future of our towns and cities. Have you got the talent?

We are looking for an outstanding architect, landscape architect, urban designer or someone with demonstrably relevant design knowledge and expertise. Reporting to CABE's Chief Executive as a member of our senior management team, your primary responsibility will be to direct the activities of CABE's Design Review programme. You will also co-ordinate and promote CABE's approach to architectural and planning matters across the organisation.

We are looking for someone with considerable insight into practice at a senior level and a strong critical ability, as well as knowledge and understanding of the statutory planning system. You will be someone with highly developed networking skills, contacts and background in the field. You must be able to lead and motivate a team of skilled and dedicated experts and you will need to demonstrate your own design talent and the ability to support others in developing theirs.

CABE is working towards becoming a diverse organisation and welcomes applications from all sections of the community. Please visit our website www.cabe.org.uk/recruitment, email recruitment@cabe.org.uk, or phone human resources on 020 7070 6700 for further details and an application pack.

Closing date for applications is 5pm, 15 June 2007.
Interviews will be held in London from w/c 25 June 2007.

1 Kemble Street London WC2B 4AN T 020 7070 6700
F 020 7070 6777 E enquiries@cabe.org.uk www.cabe.org.uk

Commission for Architecture
and the Built Environment

The government's advisor
on architecture, urban design
and public space

Part II Architectural Assistant - Surrey - up to £28k

With projects in both the UK and Europe, our client specialises in the commercial, retail, leisure, master planning, mixed use, residential and design and build sectors. Their Surrey offices has over 30 members of staff offering full architectural services.

They are currently looking for Part II Architectural Assistant. All applicants should have some practical experience, working on retail and leisure projects and must be proficient in the use of AutoCAD, Photoshop and SketchUp. Benefits include a pension scheme, yearly discretionary bonus, active social events, summer / Xmas parties, evening events, extra study time for related professional and Part III activities, reimbursement of Professional Accreditation fees, a regular CPD support programme and provision for paid overtime working.

Please contact Sophie on 020-8335-1493 or email: sophie.wood@nes.co.uk



www.nes.co.uk



MOSS URBAN SOLUTIONS

We want to be in the AJ100, do you?

We are expanding rapidly and have opportunities for **Associate Level Architects** (with proven design excellence), **Architects, Architectural Technicians** and creative **Urban Planners**. If you would like to work as a valued member of a dynamic, innovative team based in central Richmond please email your cv and covering letter to diane@studiomoss.com

www.studiomoss.com



Scurr & Partners Architects



We are an established Practice of 70 + based near St Albans working for a number of high profile clients in a variety of sectors.

We are currently looking for talented Architects, Project Managers and Technicians, with proven track records to join our teams working on housing, care homes and branded work. All applicants must have relevant UK experience and be conversant with UK building regulations and health and safety.

Interested?

Please send your CV and salary details to our Personnel Manager Denise Naughton: denise.naughton@scurr.co.uk
Tel: 01582 793999
Fax: 01582 793444
www.scurr.co.uk

The Tithe Barn, Harpendenbury Farm, Redbourn, Nr St Albans, Herts, AL3 7QA

The Girls' Day School Trust

Estates Department Architect

Based London SW1

Salary circa £35,000 (Dependent upon experience)

The Girls' Day School Trust is the largest group of independent schools in the UK with 28 schools throughout England and Wales. Our Estates Department has a significant role to play in improving and maintaining our extensive property portfolio, with a continuing 5-year capital investment programme in excess of £75m and an annual maintenance expenditure in excess of £7m.

We are now seeking to strengthen our in-house team with the appointment of an additional post. Reporting to the Estates Director, you will act as designer and contract administrator on capital projects. An in-depth knowledge of building construction and evidence of previous design work, preferably including the education sector, is required. Candidates should have a good knowledge of current legislation. It is essential that candidates are CAD literate, preferably with experience in the use of Archicad software.

Candidates must be highly effective communicators at all levels and be able to work proactively within a friendly team environment without close supervision.

Candidates should hold Part III RIBA with some post qualification experience.

Full details, person specification and an on-line application form are available via our website www.gdst.net. Alternatively telephone 0207 393 6609 (24 hour answer phone) or email recruitment@wes.gdst.net.

Closing date for applications: 25 June 2007



The Girls' Day School Trust
at the forefront of education



NET DIRECTORY

Architects — online.co.uk
the world's leading architectural job site

adrem www.adrem.uk.com

amsa www.amsa.co.uk

BARKER ROSS barkerross.co.uk
people@barkerross.co.uk
0115 948 3757

CHAMBERLAIN ASSOCIATES
ARCHITECTURAL RECRUITMENT IN THE NORTH
www.chamberlainassociates.co.uk

dg www.dgservice.co.uk

faststream
architectural recruitment
www.faststream.co.uk/aj

rd www.rdrecruitment.co.uk

Architectural Vacancies **SIV**
www.siv.co.uk

For Advertising
Enquiries
Please Contact:

katerina
charalambous
0207 505 6823

Email:

katerina.charalambous@emap.com

IMPROVE YOUR QUALITY OF LIFE?

As a versatile practice on the edge of Exmoor, Louise Crossman Architects has an established, vibrant approach to new and historic building projects. We are seeking:-

An Associate or Senior Architect - to lead a balanced portfolio of projects and to assist in the development of the practice.

An Experienced Technologist - to develop projects from initial design stages through to production information and contract administration.

A newly qualified or Assistant Architect - we offer excellent opportunities for a part 3 or job running experience.

These posts require enthusiasm and proven design ability. They offer career development opportunities and excellent salary packages whilst working in a friendly and pleasant office environment in beautiful surroundings. Assistance with relocation costs may be available.

Please write with CV and examples of work to:

Louise Crossman Architects,
The Potato Store, Withycombe, Minehead, Somerset.
TA24 6QB
www.louiseCrossmanarchitects.co.uk



INVESTOR IN PEOPLE

RIBA Appointments

Recruitment Service of the
Royal Institute of British Architects

Part 2s & technical project leaders - Chiswick

Job Ref 1700

This small, friendly, design conscious practice located in penthouse offices in West London. They currently require a technical project leader as well as a Part 2 Assistant. Projects include high-end private residences, ecofriendly schemes and Caribbean resorts. Vector works and detail drawing experience are an advantage.

To apply for this position please send your CV to info@ribaappointments.com or call 020 7496 8370



www.ribaappointments.com

BOON EDAM
Door Systems - Security Access - Advanced Door Care

Architectural Consultant
Excellent Package and Benefits
North and Midlands

Boon Edam Limited is the UK subsidiary of Royal Boon Edam Group, global leaders in commercial entrance technology, renowned for revolving doors, security doors, and security barriers systems.

The company supplies to Main and Sub Contractors and benefits from directly employed Project Managers and trained installation teams.

To further develop our markets, we seek an experienced salesperson with extensive and current experience of working with Architects and Specifiers to provide advice and solutions to future building projects, with the objective of securing "specification" of Boon products.

This new role will require first rate current contacts with key architectural practices in the North and Midlands and a demonstrable track record in successfully promoting the application of technical building products.

A similar role was created in 2006 in the London area, and its success has led to the creation of this opportunity.

To apply please send a comprehensive CV to: Mr G Firth, National Sales Manager
Boon Edam Limited, Holland House, Crowbridge Road, Ashford Kent, TN24 0GR or
alternatively email gdf@boonedam.co.uk

BUSINESS OPPORTUNITIES

Business opportunity in Devon

Architects office with
8 professional staff based in South
Hams, South Devon is looking for a
successor or merger.

The office has an established client
base with good mixture of work,
which responds to an increasing
migration to the South West and local
regeneration of the area.

All terms negotiable.

Please reply in the strictest confidence

to:
PO Box 3234
151 Rosebery Avenue
London
EC1R 4GB

AJ CLASSIFIED

CLASSIFIED ENQUIRIES

Lucy Herdsman: T 020 7505 6873 F 020 7505 6750

lucy.herdsman@emap.com

MODEL MAKERS



KANDOR
KANDOR MODELMAKERS










Tel 020 7251 6366
Fax 020 7608 3356
email: kandor@kandormodels.com
www.kandormodels.com



COMBER

MODELMAKERS 020 8533 6592

LONDON • MAIDSTONE • INVERNESS



www.combermodels.com combermodels@btconnect.com



**BULLFROG
MODELS LTD**

Contact
STAN AUBERTIN

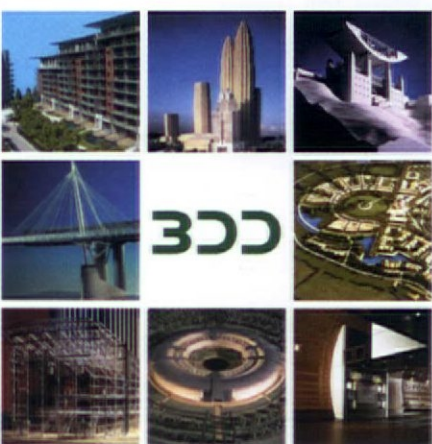
20b Tower Workshops
58 Riley Road, London SE1 3DG
Telephone: 020 7394 7866
Facsimile: 020 7394 6798



To advertise here
please contact
Lucy Herdsman on:
020 7505 6873
Email:
lucy.herdsman@emap.com

MODELMAKERS

t: 020 7739 7933



f: 020 7739 7195

3dd.co.uk



**FLIC
MODELS**

Architectural Models
Product Models
3D Computer Visualisations
Fly-throughs

020 7377 6127
www.flicmodels.com

PIPERS

CONCEPT, PLANNING & MARKETING

FOR ALL YOUR MODELMAKING NEEDS,
CONTACT CARLOS SOUSA.

PIPERS MODELS LTD
27-35 BEVENDEN STREET,
LONDON N1 6BH

020 7250 0530
STUDIO@PIPERS.CO.UK
WWW.PIPERS.CO.UK

MODEL MAKERS

PIPERS FOOKS

CONCEPT, PLANNING & MARKETING

FOR ALL YOUR MODELMAKING NEEDS,
CONTACT STEPHEN FOOKS.

PIPERS FOOKS LTD
UNIT 2, CAPEL CLOSE, LEACON RD,
ASHFORD, KENT TN23 4GY

01233 63 68 68
STUDIO@PIPERSFOOKS.COM
WWW.PIPERSFOOKS.COM

3D COMPUTER VISUALISATION

PIKCELLS
VISUALISATION STUDIO

T: +44 (0) 870 990 5279

E: info@pikcells.co.uk

W: www.pikcells.co.uk



VVM's, Photomontages, Animations & Film for Planning and Marketing

Contact Andrew Goodeve +44 (0) 20 7234 5910

www.glass-canvas.co.uk

info@glass-canvas.co.uk

glass canvas™



3D COMPUTER VISUALISATION



+44 (0) 1252 711 700 www.circlecreative.co.uk
sales@circlecreative.co.uk

Circle
CREATIVE



the digital image co.

t 020 7613 5530 www.thedigitalimageco.com



D3V
DESIGN | 3D | VISUALISATION

Interiors exteriors

www.d3v.co.uk

020 7060 2973

inspirational images for - design & development - space communication - property marketing

thorp
visualisations

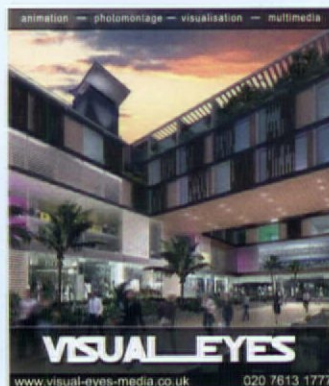
f. +44(0)1344 876583
t. +44(0)1344 876776
e. thorp@atomltd.com
i. www.thorpmodelmakers.com



Arcmedia Ltd

CGI / Photomontage / Animation / Film

tel. 01253 896616
info@arc-media.co.uk
www.arc-media.co.uk



VISUAL EYES

www.visual-eyes-media.co.uk

020 7613 1777



www.3dcom.co.uk

3d@3dcom.co.uk
01274 534130

PLANS-SECTIONS-ELEVATIONS

the only professional survey practice specialising in measured building surveys for over 35 years

Michael Gallie & Partners
Chartered Measured Building Surveyors

1 New Concordia Wharf, Mill Street,
London SE1 2BB www.michaelgallie.co.uk
T: 020-7394-1111 F: 020-7394-2499



measured land and building surveys

the true measure of excellence

t 020 8543 8884 e info@callidussurveys.co.uk
f 020 8543 6664 w www.callidussurveys.co.uk

Land & Measured Building Surveyors

London

17 Cavendish Square London W1G 0PH
T: 020 7665 8628 F: 020 7665 8629
E: london@apexsurveys.co.uk

Manchester

12th Floor Portland Tower Manchester M1 3LF
T: 0161 238 4973 F: 0161 238 4974
E: manchester@apexsurveys.co.uk

www.apexsurveys.co.uk

Apex
Surveys

apr services

+44(0) 208 447 8255

land & measured building surveys
laser scanning & visualisation

mail@aprservices.net
www.aprservices.net



POINTTOOLS VIEW
pointcloud & model viewer www.pointtools.com



Land & Measured Building Surveys
Established over 12 years

- Measured Building Surveys
- Setting Out
- Topographical Surveys
- GPS Surveys

208 Blythe Road,
Hammersmith, London,
W14 0HH
Tel: 020 7610 4132
Fax: 020 7610 4142
email: info@metroplans.com
www.metroplans.com

KINGS

Land and Architectural Surveyors
YOUR CHOICE FOR ALL YOUR SURVEY NEEDS

Specialising in:

Topographical Surveys – For large and small scale surveys using the latest high accuracy robotic instrumentation and G.P.S.

Architectural Surveys – For plans and elevations using SurBuild building survey software on pen map hand held computers

Utility Surveys – For drainage and location of all underground utility services.

Photogrammetry – For accurate 3D models of building facades, pipe works and areas of difficult access.

Kingsland Surveyors Limited

Bridge Chambers

Bridge Street

Leatherhead

Surrey KT22 8BN

Tel. 01372 362059

Fax. 01372 363059

e-mail - mail@kingslandsurveyors.co.uk

website - www.kingslandsurveyors.co.uk



REPROGRAPHIC SERVICES



020 7336 0880
www.mj.uk.com



To advertise here

please contact

Lucy Herdsman on:

020 7505 6873

Email:

lucy.herdsmen@emap.com

PERSPECTIVES

DAVID HOARE
ARCHITECTURAL ILLUSTRATOR



HAND DRAWN
-PERSPECTIVES
TEL/FAX 020 8852 7508

SOFTWARE TRAINING



Learn CAD From the Experts
AutoCAD® One-on-One Coaching
www.marsotti.com

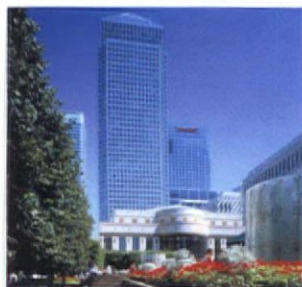


Sketches exploring spatial and structural concepts for an outdoor centre in Merthyr Tydfil. By Alex Whitcroft, a second-year student at the Welsh School of Architecture, Cardiff

Respond to these panels at www.ajplus.co.uk/ajdirect

Readers may also obtain information about these products by filling in the enquiry numbers on an AJ enquiry card. Advertisers wishing to promote their products on these pages should contact Lucy Herdsman on 020 7505 6873.

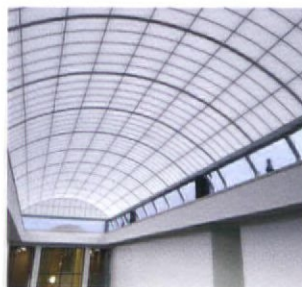
CLAXTON BLINDS



AJ ENQUIRY 201

Claxton Blinds is one of the leading commercial window-blind companies in the UK, specialising in interior window projects for any requirement. Notable projects include Tower 42, the Canary Wharf Tower and the Citigroup Tower. For more information visit www.claxton-blinds.com

STOAKES SYSTEMS



AJ ENQUIRY 202

Barge Arm at Gloucester Docks, converted by Crest Nicholson Homes into apartments, features a low-profile vaulted atrium in highly insulating Kalwall to create a stunning interior ambience flooded with diffused daylight, without shadows or glare. Visit www.stoakes.co.uk

ASH & LACY



AJ ENQUIRY 203

Ash & Lacy has supplied a complete integrated roofing system for the rebuilding of Victory Church, which features one of the largest auditoria in Glasgow's South Side. The integrated roofing system comprises an Ashzip standing-seam roof, Ashgrid spacer support and Ashfab fabrications.

CORUS



AJ ENQUIRY 204

A new leisure park on the coast of north-west England has used Corus prefinished steel as part of the roof and wall cladding. Colorcoat HPS200 was used in Sirius and Orion metallic colours on the walls and Goosewing grey on the roof, and was the obvious choice due to its suitability to coastal environments.

BWF



AJ ENQUIRY 205

The British Woodworking Federation's (BWF) Certifire Fire Door and Doorset Scheme has compiled a 'Complete Guide to Fire Door Assemblies'. The guide contains a special edition DVD – a training tool for anyone involved in fire doors – and a 33-page guide to the technical requirements of a fire door.

NORBORD



AJ ENQUIRY 206

Norbord's SterlingOSB has been chosen as the ideal engineered wood-based panel system for a new generation of prefabricated housing, due to its cost-effectiveness, thermal insulation properties, and natural strength, characteristics that make it the ideal material for stressed-skin structures.

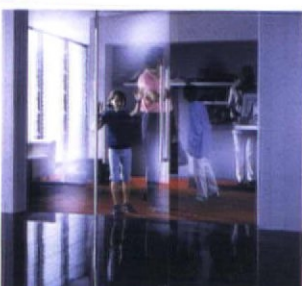
TROAX



AJ ENQUIRY 207

Excalibur double-skin steel partitioning from Troax UK has been used to create an extensive new office complex in Kirby, Liverpool. Excalibur partitioning was chosen because it provides a high level of sound and heat insulation, while its high-quality powder-coated finish is hardwearing and attractive.

DORMA



AJ ENQUIRY 208

DORMA offers four different innovative and high-quality interior glass door solutions for a range of applications. Glass is a versatile material that provides increased light and a feeling of spaciousness – useful when designing multi-room applications with only one exterior wall.

Levolux

A Knights Tale



Inspired by Architects, Levolux innovates. From state of the art aluminium aerofoil fins to internal shading solutions, light, heat and glare are all controlled by effective, discreet and often unique solutions. Harnessing the emerging possibilities of building technology, Levolux pushes the boundaries to achieve your vision.

Haberdashers Aske Knights Academy – 400mm & 200mm Aluminium Fins
– Jestico and Whiles Architects

ENQUIRY12 ON CARD
WWW.AJPLUS.CO.UK/AJDIRECT

BRISE SOLEIL • AEROFOIL FINS • LOUVRES • EXTERNAL BLINDS • INTERNAL BLINDS

LEVOLUX
DESIGNED TO CONTROL

Levolux, Forward Drive, Harrow, Middlesex HA3 8NT United Kingdom Tel: 020 8863 9111 e-mail: info@levolux.com www.levolux.com