

# BEST OF PRODUCTS 2021

AN  
Best of  
Products

The Architect's Newspaper  
[archpaper.com](http://archpaper.com)

We're happy to announce the winners for the 2021 Best of Product Awards, one of our best ever. As always, this year's recipients comprise building products of all types, ranging from architectural lighting and decorative hardware to cladding solutions and design and construction software. This breadth of coverage—31 categories in all—attests to the complex, yet interconnected nature of the AEC industry, a quality noted by our excellent jurors (see opposite). Each was given a product type that best aligned with their expertise, ensuring that the most deserving submissions were awarded accordingly (using “winners” and “honorable mentions” designations). *The Architect's Newspaper* editors ratified their selections and then chose picks of their own to complete the process.

Seeing how eventful that past 18 or so months have been, it's interesting to compare the 2021 awards with the 2020 edition. Last year, *AN* introduced categories that spoke to a time of uncertainty, before COVID-19 vaccines had been developed and at a time when the best defenses against spreading the virus (apart from masks) were hand-washing and social distancing. Hygienic surfaces remained a big category in 2021, as did products—apps as well as building materials—geared to customization and residential design. Still, one senses a subtle shift in tone in the winning submissions. Reading through the product descriptions, they strike a less anxious note and emphasize more conventional design desiderata; i.e., comfort, function, and aesthetics. On this point, the return of industry trade shows—beginning with Salone Del Mobile in September and NeoCon earlier this month—has surely had a marked effect.

Texture is among the trends exhibited by the winners, with several interior products favoring a variegated look and (seemingly) rough feel. Several manufacturers offered customizable color schemes for their wares, though calming greens and earth tones appeared to rise to the top. Safety exerts a big influence over the residential categories—no surprise here, seeing how much more time people are spending in their homes these days. For the same reason, awards for submissions falling under the “outdoor” rubric were among this year's most striking. Be it park and patio furnishings or collapsible openings, designers clearly have the outdoors on their minds. Don't we all.

Of course, this is but a small sampling of this year's award recipients. Flip through the following pages to fully immerse yourself. And then join us in toasting the honorees!



**Sandeep Ahuja**  
Co-founder and CEO  
Cove Tool, Inc.



**Stephen Burks**  
Principal  
Stephen Burks Man  
Made



**Odile Hainaut**  
Co-founder  
WantedDesign



**Alloy Kemp**  
Senior associate  
Thornton Tomasetti



**Adrian Madlener**  
Market editor  
*The Architect's  
Newspaper*



**Samuel Medina**  
Executive editor  
*The Architect's  
Newspaper*



**Christiana Moss**  
Principal  
Studio Ma



**Chris O'Hara**  
Founding principal  
Studio NYL



**Claire Pijoulat**  
Co-founder  
WantedDesign



**Ken Smith**  
Principal  
Ken Smith Workshop



**Margaret Sullivan**  
Principal  
Margaret Sullivan Studio



**Jonathan Tate**  
Founding principal  
Office of Jonathan Tate



**Tom Wiscombe**  
Principal  
Tom Wiscombe  
Architecture

All images courtesy the jurors

J  
U  
R  
Y

2 EDITOR'S NOTE

3 JURY

6 WINNERS

8 Interior Finishes & Surfaces  
Decorative Lighting & Electrical

9 Residential Furnishings  
Textiles

10 Kitchen Appliances & Plumbing  
Bathroom Appliances & Plumbing

11 Hygienic Surfaces  
Decorative Hardware

12 Architectural Hardware  
Paint & Coatings

13 Outdoor Furnishings  
Outdoor Finishes & Surfaces

14 Commercial Furnishings  
Custom Acoustics

16 Electrical Systems  
Outdoor Lighting & Electrical

17 Architectural & Commercial Lighting &  
Electrical Outdoor Finishes & Surfaces

18 Windows  
Doors

20 Safety Openings  
Cladding

21 Roofing  
Facade Structural Systems

22 Timber Building Materials  
Glass

24 Weather Barriers, Air Barriers, & Insulation  
HVAC Appliances

25 Planning & Management Software  
Smart Building, Smart Home, & Automation  
Systems  
Design & Construction Software

27 HONORABLE MENTIONS

36 EDITORS' PICKS

37 THANK YOU



Cover image: Mixu for Arper (Salva Lopez/Courtesy Arper)

Above: Verde Fantastico from Fiandre (Courtesy Fiandre)

PUBLISHER  
Diana Darling

EDITOR IN CHIEF  
Aaron Seward

Editorial	Marketing & Sales
EXECUTIVE EDITOR Samuel Medina	VICE PRESIDENT OF BRAND PARTNERSHIPS Dionne Darling
ART DIRECTOR Ian Thomas	DIRECTOR OF OPERATIONS Matthew Hoffman
MARKET EDITOR Adrian Madlener	EVENTS MARKETING MANAGERS Shabnam Zia Charlotte Barnard
WEB EDITOR Jonathan Hilburg	GRAPHICS MANAGER Sarah Hughes
ASSOCIATE EDITOR Matt Hickman	GRAPHIC DESIGNER & FRONTEND DEVELOPER Kailee McDade
CONTRIBUTING EDITOR Matt Shaw	AUDIENCE DEVELOPMENT MANAGER Ankit Rauniyar
	BRAND PARTNERSHIPS EAST, MID-ATLANTIC, SOUTHEAST, & ASIA Tara Newton
	MIDWEST & CANADA ACCOUNT EXECUTIVE Neill Phelps
	PROGRAM DIRECTOR Marty Wood
	PROGRAMMING ASSISTANT Sophie Aliece Hollis
	AD SALES & ASSET MANAGEMENT ASSISTANT Heather Peters
	MEDIA MARKETING ASSISTANT Sultan Mashriqi



# M A S T H E A D

The Architect's Newspaper (ISSN 1552-8081) is published 12 times a year (monthly) by The Architect's Newspaper, LLC, 21 Murray St., 5th Fl., New York, NY 10007.

Presort-standard postage paid in New York, NY.  
Postmaster, send address changes to:  
21 Murray St., 5th Fl., New York, NY 10007.

For subscriber service: Call 212-966-0630  
Fax 212-966-0633

\$3.95/copy, \$39.00/year; international \$160.00/year;  
institutional \$149.00/year

Entire contents copyright 2020 by The Architect's Newspaper, LLC. All rights reserved.

Please notify us if you are receiving duplicate copies.

The views of our reviewers and columnists do not necessarily reflect those of the staff or advisers of The Architect's Newspaper.

General Information: [info@archpaper.com](mailto:info@archpaper.com)  
Editorial: [editors@archpaper.com](mailto:editors@archpaper.com)  
Advertising: [ddarling@archpaper.com](mailto:ddarling@archpaper.com)  
Subscription: [subscribe@archpaper.com](mailto:subscribe@archpaper.com)  
Reprints: [reprints@parsiintl.com](mailto:reprints@parsiintl.com)

# WINNERS



Courtesy Vibia



Toni Park, Augsburg, Germany | Goldbeck

#### **concrete skin**

- | sustainable glassfibre reinforced concrete
- | non-combustible (ASTM fire rating) and maintenance free
- | crystalline silica free (detection limit: 1% by mass)
- | NEW – various colors and textures

Rieder North America  
888-573-8069 (toll free) | [sales.usa@rieder.cc](mailto:sales.usa@rieder.cc) | [www.rieder.cc/us](http://www.rieder.cc/us)



**RIEDER**

# INTERIOR FINISHES & SURFACES



## Silestone Sunlit Days Cosentino

Sunlit Days is the quartz surfaces and engineered stone industry's first carbon-neutral collection. To reach this milestone, Cosentino is offsetting CO<sup>2</sup> emissions for the series' entire life cycle. Created with HybriQ technology, the collection also uses 99 percent reused water, 100 percent renewable electric energy, and 20 percent recycled raw materials in its composition. This new formula significantly reduces the presence of crystalline silica—important for manufacturers—while maintaining the brand's renowned performance features and price point. Sunlit Days is the result of more than 1,200 hours of testing and a \$12 million investment by Cosentino.

[cosentino.com](https://cosentino.com)

**“It is encouraging and near revelatory to see such a ubiquitous product reimaged around an environmental position, especially as thorough as this. And to do it while offering a series of finish options that make it a standout in an otherwise staid product category. Remarkably well done on two critical fronts for our industry.”** —Jonathan Tate

# DECORATIVE LIGHTING & ELECTRICAL



## Fienile Suspension Luceplan

Designed by Daniel Rybakken, Fienile Suspension incorporates a powerful LED light to illuminate the underlying plane to integrate into any environment. The lamp directs nonglaring light downward and upward with 360-degree rotation. Two suspensions can be linked together with a single power cord without compromising freedom of movement. The aluminum suspension is available in white and dark gray colorways and in multiple configurations.

[luceplan.com](https://luceplan.com)

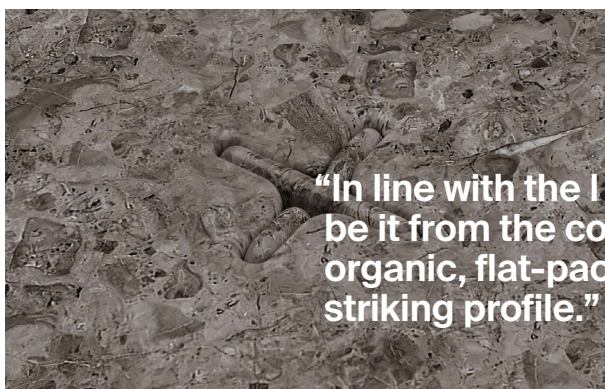
# RESIDENTIAL FURNISHINGS



## Lamé The Davani Group

Designed by INC Architecture & Design, in collaboration with DAVANI, the Lamé series of nesting, occasional, and dining tables is characterized by expressive shapes, a singular material gesture, and structural daring. Named after the mathematician who pioneered curvilinear coordinates, Gabriel Lamé, the series is at once precise and gestural, simple and sensuous. Developed as functional sculpture, the organic silhouettes of these deceptively simple tables have been rendered with an abstract clarity that is meant to balance natural and nurtured form.

[thedavanigroup.com](http://thedavanigroup.com)



**“In line with the latest trends in furniture design—be it from the collectible or contract sectors—these organic, flat-pack, and natural stone tables cut a striking profile.”** —Adrian Madlener

## TEXTILES



## Sunbrella Contract and United Fabrics Reflections Collection Sunbrella Contract

Reflections is the second contract upholstery collection from Sunbrella Contract and United Fabrics, designed to help professionals discover new opportunities for peaceful and functional spaces. The collection features 30 new fabrics in tactile textures and coordinating colors that are ideal for commercial environments. Reflections complements its predecessor, Origins, as well as other fabrics within the existing textile portfolio. The patterns in this collection evoke feelings of serenity while honoring design elements that are increasingly conscious of new demands for commercial environments. Engineered to hold its vibrant color even in high-traffic spaces, Reflections is durable, stain-resistant, bleach-cleanable, and comfortable, with fabrics that feature soft yarns and bold design.

[commercial.sunbrella.com](http://commercial.sunbrella.com)

# KITCHEN APPLIANCES & PLUMBING



## 24-inch Combination Steam Oven Fisher & Paykel

The new 2021 Combination Steam Oven offers one of the largest cavity capacities on the market, an integrated water tank, and a TFT touch screen interface for ease of use. With 22 steam and oven functions, in addition to a cleaning function, the new oven offers nine new functions, including sous vide and crisp regenerate. With its easy-to-use, intuitive display, the Combination Steam Oven is designed to fit seamlessly in the kitchen and fits flush with cabinetry to minimize gaps and add to a cohesive aesthetic. The sophisticated design and stainless-steel finish bring an element of luxury to the kitchen space.

[fisherpaykel.com](http://fisherpaykel.com)

**“Home bakers know how difficult it is to get a crisp, crackly crust on baguettes and sourdough loaves using conventional ovens. This oven ensures you’ll be turning out bakery-quality breads in no time. For the gluten-averse, there are several cooking functions to choose from.”**

—Samuel Medina

# BATHROOM APPLIANCES & PLUMBING



## SensoWash Starck f Duravit

While at first glance SensoWash Starck f looks like a super attractive but still conventional toilet, it is in fact a highly evolved designer shower-toilet, housing all shower-toilet and toilet functions within a pristine, minimal ceramic body. The flat seat and white cover form a flush fitting unit, with the technology discreetly hidden away. Operated via a remote control or smartphone app, it allows users to easily program profile settings for maximum comfort. This bold new shower-toilet design expands Duravit’s range of industry-leading offerings, allowing for greater design flexibility and enhanced hygiene in the bathroom.

[duravit.us](http://duravit.us)

# HYGIENIC SURFACES



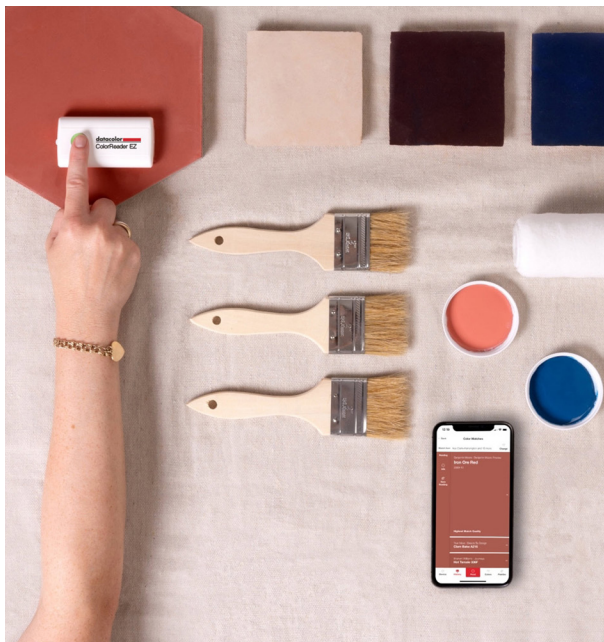
## Formica Laminate Antimicrobial Collection Formica Corporation

As a result of the COVID-19 virus, there is increased market demand for antimicrobial surfaces. In response, the Formica Corporation launched this new laminate collection featuring antimicrobial surface protection. The curated collection of solid colors, patterns, and woodgrains includes some of the company's best-selling laminates with an embedded BioCote antimicrobial additive for increased surface protection. The collection uses BioCote's safe, effective silver ion technology, which is designed to protect against the negative effects of odor causing and staining microbes like bacteria and fungi.

[formica.com](http://formica.com)

**“Antimicrobial surfaces have become the norm in the past two years. Formica not only ensured that this collection meets the strictest protection standards, but also went the extra mile, providing a full range of colors and finishes to select from.”** –Adrian Madlener

# PAINT & COATINGS



## ColorReader EZ Datacolor

The Bluetooth-enabled ColorReader EZ device works with its robust ColorReader mobile app to accurately match a color scanned from any flat surface and provide the three closest paint colors from leading paint manufacturers. By tapping the color match, users can find complementary colors and explore entire room color palettes, removing any uncertainty about color coordination. Color matches and palettes can be easily saved, then organized by project, room, client. It's simple to then share these colors and palettes with contractors, paint stores, clients, staff, anyone! Color data for matched colors such as CIE LAB, RGB, and Hex color values are also available.

[datacolor.com](http://datacolor.com)

**“This intelligent tool takes the guesswork out of identifying often elusive interior paint colors. It also reduces the need for excessive swatches and waste associated with that practice.”** –Adrian Madlener

# COMMERCIAL FURNISHINGS



## Mixu

Designed by Arper in  
Collaboration with Gensler

Mixu is a sustainable and versatile collection of chairs and stools that can be customized to suit the needs of any context, environment, or desire. The seat, backrest, and base can be personalized with myriad color and material combinations to create a silhouette whose softly rounded geometric curves and minimal gesture provide a perfect canvas for material expression. The Mixu family is thoughtfully designed with the broadest range of commercial and residential applications in mind.

[arper.com](http://arper.com)

**“We appreciated the responsible approach of the brand in choosing postindustrial recycled plastic and other recycled materials and allowing modularity and versatility. The design is pure and simple, and it’s all about customization and playing with colors and finishes. That seems to be the correct design response to what is needed now in the contract world.”** —Odile Hainaut and Claire Pijoulat

## CUSTOM ACOUSTICS



## AuralScapes Acoustic Wall Panels modularArts

This year modularArts introduced its new AuralScapes Acoustic Wall Panels. Available in four distinct surface designs and a variety of colors, the rigid felt baffles create sculptural, sound absorbent topographies. Maximum sound control is achieved with parabolic ridges at the base between these baffles. The built-in ridges are designed to reflect sound into the absorbent baffles. Surface designs are continuous, so they can be applied to an area of any size. Like all modularArts wall panels, AuralScapes panels accurately interlock for precise alignment and attach to any substrate (typically drywall). Panel joints require only caulking at the seams.

[modulararts.com](http://modulararts.com)

**“This is a very smart modular acoustic product system designed with a set of variations that allow a designer to create customized patterns over large surface areas. The variations are interesting and seem suited to a wide variety of contemporary architectural applications.”**

—Adrian Madlener



AuralScapes® Dune™ Acoustic Wall Panel felt color: Camel ©2003 modularArts, Inc. U.S.



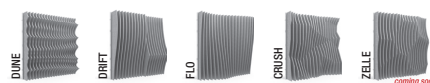
AuralScapes® Drift™ Acoustic Wall Panel felt color: Silver ©2021 modularArts, Inc. U.S.



AuralScapes™ Flo™ Acoustic Wall Panel felt color: Silver ©2013 modularArts, Inc. U.S.



AuralScapes® Crush™ Acoustic Wall Panel felt color: Silver ©2011 modularArts, Inc. U.S.



# OUTDOOR FINISHES & SURFACES



## Precision Patina Zahner

Precision Patina combines an expertise in patination with the precise control of robotics. Patinas are in a sense “living finishes” that respond to local environmental conditions and exposure, adding temporal richness to a building’s exterior finishes. Using its Fanuc robotic arm, Zahner explored brushing various patina chemistries onto cladding panels, prescribing speed, pressure, and orientation of the application. The results are robotically crafted patterns full of life and variation, celebrating inherent material variability and environmental response. A parametric configurator is included for exploring different brushstrokes and material finishes on cladding panels—users simply need to upload a design intent image and can visualize their design in seconds. In contrast to printed cladding surfaces, Precision Patina allows designers to retain control over the application. They can explore this overlap of automation and calligraphy, generating selectively patinated panels with nuanced colors.

[azahner.com](http://azahner.com)

# OUTDOOR FURNISHINGS



## Upfit 2.0 Landscape Forms

Upfit is a new approach to outdoor destinations, eliminating many of the barriers involved in creating useful and dynamic outdoor landscapes. The adaptive outdoor structure system uses flexible, modular design to transform a wide variety of spaces into tailored destinations that support a connection to nature while providing the specific functionality and desired amenities to elevate the everyday usability of the outdoors. Upfit gives designers the unique tools to look at underutilized and in-between spaces through a new lens, uncovering latent potential and providing new value for their users.

[landscapeforms.com](http://landscapeforms.com)

**“Landscape Forms introduced the first iteration of Upfit some years before the pandemic made people conscious of their work environments, the air that gets pumped into them, airborne contagion, and so on. That is to say, the design was a good deal prescient. The latest upgrade builds on the earlier model now that everyone has caught up.”**

—Samuel Medina



Partners Healthcare Administrative Campus, Somerville MA | architect: Gensler | landscape architect: OJB Landscape Architecture | photographer: Kyle J. Caldwell

# Rooftops transformed.

Connectivity to the natural environment.

Since 1994, Bison Innovative Products has led the industry in designing and manufacturing versatile pedestals, pavers, and site furnishings that offer the design flexibility to create unique and beautiful rooftop environments. Our independently tested, modular deck system allows rooftop decks to be installed quickly and easily.



[bisonip.com](http://bisonip.com) | 800.333.4234

# DECORATIVE HARDWARE



## Mixed Metals Bit Pull Top Knobs

Forge a feeling of wonder and excitement with the new mixed metals Bit series expansion. This new look shies away from the classic appearance of one-tone decorative hardware and presents an eclectic mix of 36 pieces in Top Knobs' highly sought-after Flat Black finish, paired with the Honey Bronze or Antique Pewter finishes.

[topknobs.com](http://topknobs.com)

# ARCHITECTURAL HARDWARE



## PD97PT INOX

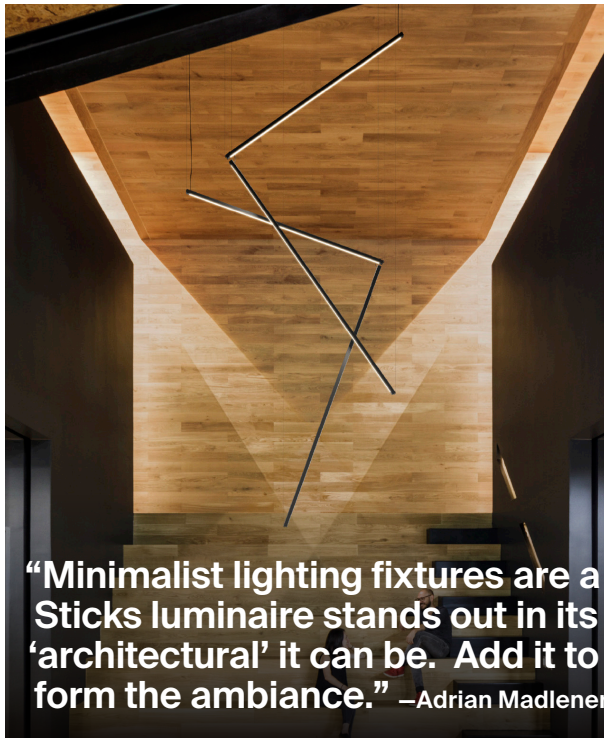
INOX debuts the PD97PT, an advanced alternative in its PD97 series of commercial grade, motor-driven mortise locks for sliding doors, providing health-care facilities and other commercial buildings with another security option for high-traffic areas. The power connects directly through the strike and into the lock motor, activating the latch and lock as soon as the door is closed, making the PD97PT the first electrified motorized lock of its type in the world. The PD97PT can be specified and installed as Entry/Office or Classroom lock functions and is compatible with most existing access control systems, including keypads and hand wave actuators. The PD97PT is tested to 25,000 cycles, ensuring commercial-grade strength. A patented antigravity winged dead bolt prevents binding, and an advanced stepper motor offers quiet operation.

[inoxlock.com](http://inoxlock.com)

Top: Courtesy Top Knobs; Bottom: Courtesy INOX

# ARCHITECTURAL & COMMERCIAL LIGHTING & ELECTRICAL

## BEST OF PRODUCTS



### Sticks Vibia

Sticks offers a creative tool kit for integrating light elements in an interior space. Pure and graphic, the minimalist aluminum rods transform linear light into floating sculpture. The namesake sticks rotate on their own axis, offering freedom in directing the light source precisely where desired. Sticks can be connected from wall to wall, floor to wall, wall to ceiling, or suspended from the ceiling. Through its physical form and the light it casts, Sticks creates and disrupts architectural planes, while doubling as an abstract light installation.

[vibia.com](http://vibia.com)

**“Minimalist lighting fixtures are a dime a dozen these days. Vibia’s Sticks luminaire stands out in its scale and proportions, and for how ‘architectural’ it can be. Add it to a room and it will completely transform the ambiance.” —Adrian Madlener**

## ELECTRICAL SYSTEMS



### Smart Lighting with Netatmo Legrand

Legrand, a global specialist in electrical and network solutions, expands its collections of designer switches and outlets to include smart lighting solutions featuring Netatmo smart home technology. With a selection of smart switches, dimmers, and outlets, the solutions will be available from both of Legrand’s design-inspired collections—named *adorne* and *radiant*—and will leverage Netatmo technology to deliver the benefits of smart lighting control with unprecedented reliability and flexibility. Homeowners can then manage their lights and power, set scenes, create automated schedules, and much more, from anywhere, through Legrand’s intuitive Home + Control app.

[legrand.us](http://legrand.us)

Top: Courtesy Vibia; Bottom: Courtesy Legrand

# OUTDOOR LIGHTING & ELECTRICAL



## Typology Collection – Lighting Landscape Forms

The Typology Collection is an innovative seating and lighting system that adds dynamic new dimension to any site, enveloping the visitor—both from above and below—in an immersive design experience. The comprehensive collection includes a modular bench system, two sculptural area lights, and a corresponding path light. Systemic and adaptable, the Typology Collection lives comfortably in both new and existing architectural environments, guiding the movement of traffic and creating unique, three-dimensional spaces that invite and connect, surprise and inspire. The materials are elegant and refined, yet resilient and enduring—cast aluminum and concrete run as a common thread through the collection to create a unified visual and tactile experience. Technological advances in manufacturing and lighting integration challenge preconceptions of form and space.

[landscapeforms.com](http://landscapeforms.com)

## DOORS



## Palisades Bi-folding and Sliding Door and Wall Systems CRL

The Palisades collection represents the next generation of movable wall and sliding door systems, offering the most desirable features in looks and performance. A new collection encompassing two innovative and complementary systems—the Palisades S100 Sliding Door and Wall System and the S90 Bi-Folding Door and Wall System—it offers grand scale and minimal hardware for virtually uninterrupted views, along with acoustical and thermal benefits. Whether installed on their own or together, they set the new architectural standard as the only system in the industry distinguished by a North American Fenestration Standard CW40 Performance Grade rating.

[crlaurence.com](http://crlaurence.com)

**“With a tendency to be bulky or cumbersome, bifolding solutions don’t always live up to the elegance of the idea. The Palisades line does, however, delivering an ultraslim frame with concealed hinges. In other words, it knows how to move out of the way.”** —Samuel Medina

# Expansive Views

Achieve grand scale and elegance with remarkable simplicity

The CRL Palisades™ S100 Sliding Door features ultra-slim, large scale panels that create expansive views while delivering exceptional structural and thermal performance.

- Slim 1-5/16" rails and stiles
- 13' maximum frame height
- 7' maximum panel width
- Frictionless sliding system
- CW40 Performance Grade rating

**CRL**  
A CRH COMPANY

For more information on our entire Palisades™ collection  
800.458.7535 • [crl-arch.com](http://crl-arch.com)  
[abd@crlaurence.com](mailto:abd@crlaurence.com)



# WINDOWS



## Single Track Thermally Broken Invisible Frame Goldbrecht LLC

This single-track invisible frame is the only thermally broken option that is exclusively available with the Vitrocsa Invisible Wall system. This innovation allows for all the framing to be concealed on all sides: the sill, jamb, and header are all hidden, with only a single slot per track, while the track underneath the flooring material is self-draining and air- and watertight. This minimal look is maintained throughout the whole system, allowing for an almost completely invisible wall system.

[goldbrecht.com](http://goldbrecht.com)



# SAFETY OPENINGS



## Model 523RX Security Shutter Wayne Dalton

Model 523RX is a unique innovation that delivers real value to homeowners seeking both visibility and security. Offered in fully perforated or fenestrated patterns, Model 523RX allows for 22 percent and 24 percent open area, respectively. The door is a UL 325-listed residential exterior security shutter opener with a weather resistant motor enclosure. This feature provides benefits such as a quiet and smooth-running motor with direct drive operation of the shutter and monitored photo eyes and force detection for safe operation. The Model 523RX Security Shutter offers an aesthetically pleasing security system due to its extruded aluminum curtain, plus compact and visually appealing design. It includes a variety of finish and slat options.

[wayne-dalton.com](http://wayne-dalton.com)

# CLADDING



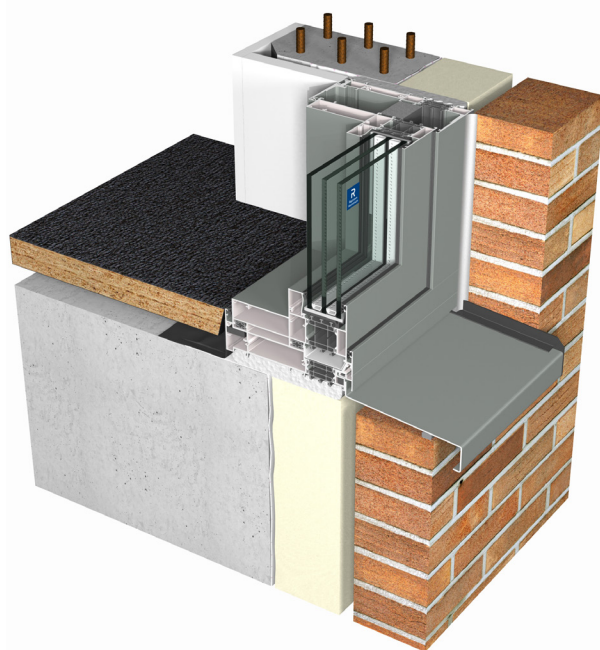
## EQUITONE [lunara] EQUITONE Fiber Cement Facades

Reminiscent of the surface of the moon, EQUITONE [lunara] is a large format cladding with randomized textures and a rough, unpolished, natural finish. This elevated fiber cement is a high-density material with through-color, allowing it to be cut, routed, and perforated without the need to be treated or hide edges. Designed in conjunction with architects, EQUITONE [lunara] offers limitless possibilities.

[equitone.com](http://equitone.com)

**“With composite siding taking the industry by storm, it’s often hard for manufacturers to stand out from the pack. But that’s what EQUITONE’s new geometric [lunara] collection does. It’s as aesthetically dynamic as it is robust.”** —Adrian Madlener

## FACADE STRUCTURAL SYSTEMS



## MasterWall Reynaers Aluminium

MasterWall builds on the robust MasterLine 8 windows-and-doors platform, providing exceptional weather sealing performances, fabrication efficiency, and design freedom. With all the profile options that the MasterWall product offers, any different expression of the facade is possible with the standard product: punched openings, horizontal or vertical accentuation, or hybrid walls. A wide variety of opening types can be chosen from the MasterLine 8 portfolio, according to which in- and outside opening elements, terrace doors, and hidden vents best fit a project’s needs. In addition to the window and door opening types, the system is able to incorporate sliding doors.

[reynaers.com](http://reynaers.com)

B  
E  
S  
T  
O  
F  
P  
R  
O  
D  
U  
C  
T  
S

# TIMBER BUILDING MATERIALS



## Mass Ply Lams Freres Lumber Co.

Mass Ply Lams (MPL) are made from a patented, veneer-based engineered wood product called Mass Ply Panel. MPL beams and columns are assembled in thin layers of stress-rated Douglas Fir veneer, creating a monolithic, large-format mass timber product prefabricated to exact dimensions. MPLs are strong, fire-resistant, and lighter per volume than traditional building materials such as concrete and steel. MPLs are sustainable and renewable wood products that can use trees as small as 8-inch diameter to produce panels as large as 12 feet wide by 48 feet long by 24 inches. The production of Mass Ply Panel and Lams requires a fraction of the energy that concrete and steel require, and sequesters carbon in their cells for their lifetime.

[frereslumber.com](http://frereslumber.com)

## STONE & CONCRETE



## Brise Blocks QCP

This collection evokes the optimism and aesthetics of midcentury design reimagined for today's architecture sensibilities. Brise Blocks creates opportunity for purposeful design exploration, providing designers and architects unique architectural elements for their projects that are unlike anything else on the market. They are a symbol of Southern California's renowned indoor-outdoor lifestyle, exemplified everywhere from Hollywood bungalows to Palm Springs estates. The blocks can be rotated and put together in different configurations, random or repeated, providing the possibility of infinite patterns, lighting effects, and shadows. They're available in a range of warm colors that reflect California landscapes.

[qcp-corp.com](http://qcp-corp.com)

**"You might think the Brise Blocks an ersatz idea. 'Not another inspired-by-midcentury-design so-and-so,' you are likely thinking to yourself. But the system is versatile enough to yield pleasing results."**

—Samuel Medina

# COMPOSITES



## Hardie Textured Panels James Hardie

Hardie Textured Panels mark the creation of a new category in home exteriors. The fiber-cement panels can be oriented vertically or horizontally and can be mixed with a variety of fiber cement products. Modern ship-lapped joints create a sleek V-groove aesthetic that improves installation efficiency with significantly less labor time than traditional three-coat stucco. Low-maintenance fiber cement siding also offers noncombustible fire resistance.

[jameshardie.com](http://jameshardie.com)

**“I like the honesty of this fiber cement panel system. It doesn’t pretend something it isn’t. This product allows for a variety of esthetic applications, and I especially like the larger scale and modularity of the panels that seem well suited to contemporary architectural expressions.” —Ken Smith**

# GLASS



## SOLARVOLT Building Integrated Photovoltaic (BIPV) Modules Vitro Architectural Glass

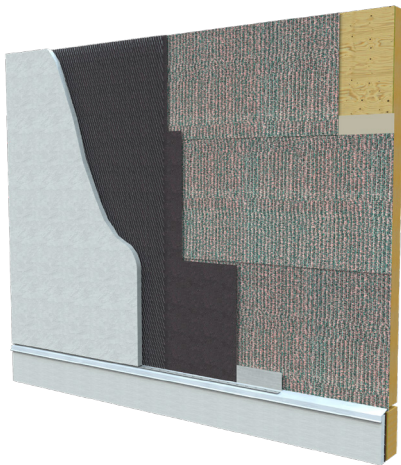
SOLARVOLT building-integrated photovoltaic (BIPV) glass modules combine the aesthetics and performance of Vitro Architectural Glass products with CO<sup>2</sup>-free power generation. Solarvolt BIPV can be used to enhance various components of commercial building exteriors, including balustrades, balconies, overhead glazing and skylights, facades and opacified spandrel glass—all while passively generating solar power, reducing air-conditioning costs, and replacing conventional cladding materials. To meet a wide range of design and environmental performance targets, Solarvolt BIPV modules can be used with virtually any Vitro Glass product, including Starphire Ultra-Clear and Acuity low-iron glasses, as well as the company’s full range of performance tinted glasses. Vitro’s wide offering on Solarvolt BIPV enables unique, truly customized green buildings.

[vitroglazings.com](http://vitroglazings.com)

C  
A  
T  
E  
G  
O  
R  
Y

Top: Courtesy James Hardie; Bottom: Courtesy Vitro Architectural Glass

# WEATHER BARRIERS, AIR BARRIERS, & INSULATION



## RainScreen SA VaproShield

RainScreen SA is a self-adhered Air Barrier and Weather Resistive membrane (WRB) with a built-in rainscreen drainage matrix. It protects the building envelope by allowing vapor to pass through but not air or liquid water, mitigating costly moisture damage and saving energy for the life of the building. RainScreen SA features a new aggressive adhesive that even sticks to OSB, and it can even be applied in below-freezing temperatures.

[vaprosshield.com](http://vaprosshield.com)

**“RainScreen SA takes the idea of a drainage mat that we all use on foundation walls and stretches it up over the building’s facades. I haven’t used it yet, but it seems like a great way to ensure the proper functioning of a rainscreen when you have a slim build-up and don’t have space for channels or other substructure on top of your sheathing.”** –Tom Wiscombe

## HVAC APPLIANCES



## ThermaPANEL Radiant Heating System Therma-HEXX Corporation

ThermaPANEL is a patented modular hydronic heat exchange system that efficiently heats or cools pedestal and ground-mounted pavers. Fully designed and engineered by Therma-HEXX, the panels are set beneath hardscapes (e.g., rooftops, pool decks, roof patios, driveways, walkways, plazas). During the winter, the system can be used to snow-melt the surface using low temp heat sources. As the sun heats the hardscape, the BTUs are absorbed by the panel. This heat transfer cools the hardscape surface while the collected energy can be used to heat domestic hot water or pool water.

[therma-hexx.com](http://therma-hexx.com)

# PLANNING & MANAGEMENT SOFTWARE

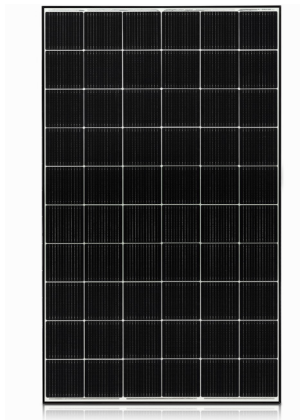


## CORE CRM BQE Software

Architects finally have a smart, intuitive, and easy-to-use CRM solution that empowers them to win more business and grow their existing client relationships. CORE CRM is the latest addition to the BQE CORE ARCHITECT platform: a fully integrated, native-cloud practice management platform that handles time and expense tracking, invoicing, accounting, project management, HR, and now CRM.

[bqe.com](http://bqe.com)

## SMART BUILDING, SMART HOME, & AUTOMATION SYSTEMS

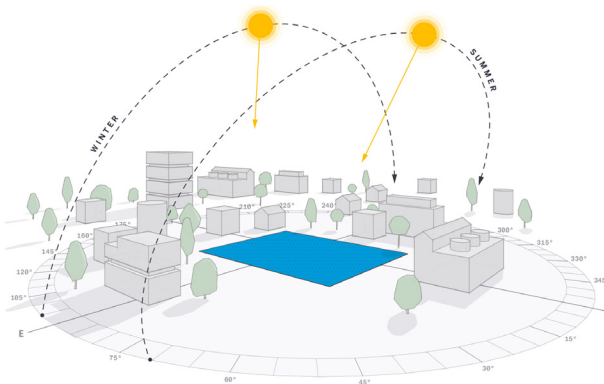


## LG NeON 2 ACe LG Electronics USA

The NeON 2 ACe model, a new addition to LG's NeON 2 lineup, is an ideal solution for both architects and installers seeking superior service and performance from an easy-to-install, highly efficient solar panel. The design of LG's new smart AC solar system is fully integrated with LG's own microinverter recessed into the frame of the panel. The LG NeON 2 ACe offers straightforward logistics and simple accessories.

[lg.com](http://lg.com)

## DESIGN & CONSTRUCTION SOFTWARE



## SketchUp PreDesign Trimble

PreDesign enables architects to test design strategies and understand how a site's climate and environment will impact design proposals. Created to help prepare designers for the conceptual phase, PreDesign also provides the data and graphics needed to articulate and build a narrative around early-stage climate-related design decisions. By providing the climate stats and insights, PreDesign simplifies and enhances design research, giving users the confidence to propose the most viable solutions.

[sketchup.com](http://sketchup.com)

B  
E  
S  
T  
  
O  
F  
  
P  
R  
O  
D  
U  
C  
T  
S

**THE ARCHITECT'S NEWSPAPER  
OUTDOOR SPACES NEWSLETTER  
AN INTERIOR TRADING NOTES**

# **Subscribe**

**THE ARCHITECT'S NEWSPAPER  
LATE EDITION NEWSLETTER  
AN INTERIOR TRADING NOTES  
OUTDOOR SPACES NEWSLETTER  
TECH+ FACADES+ CE|STRONG  
MONDAY MORNING NEWSLETTER  
THE ARCHITECT'S NEWSPAPER  
AN INTERIOR TRADING NOTES**

[archpaper.com/subscribe](http://archpaper.com/subscribe)



# HONORABLE MENTIONS

Courtesy Thermasol

A'IN  
Best of  
Products



Courtesy/ Fiandre

**INTERIOR  
FINISHES &  
SURFACES**

**Obscura**  
by Suzanne Tick  
Skyline Design  
skydesign.com

**Verde Fantastico**  
Fiandre  
granitififiandre.com

**DECORATIVE  
LIGHTING &  
ELECTRICAL**

**Candél**  
Pablo Designs  
pablodesigns.com

**Elastica**  
Martinelli Luce  
martinelliluce.com

**RESIDENTIAL  
FURNISHINGS**

**Puffy Lounge Chair** by  
Faye Toogood  
Hem  
us.hem.com

**The Sectional**  
Floyd  
floydhome.com

**TEXTILES**

**CSelect Fabrics for  
Cubicle Curtains**  
Construction Specialties  
c-sgroup.com

**Supreen**  
Carnegie  
carnegiefabrics.com

**OUTDOOR  
LIGHTING &  
ELECTRICAL**

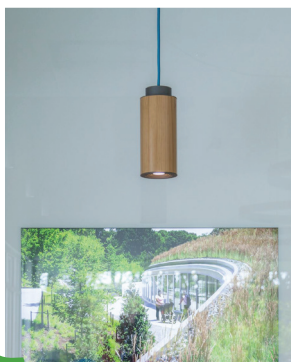
**Capital**  
Griven USA  
griven-usa.com

**Stela**  
Structura  
structura.com



## STELA

Honorable Mention in the  
Lighting + Electrical - Outdoor Category  
in the Best of Product Awards,  
Architect's Newspaper



# STRUCTURA

STRUCTURA.COM

## KITCHEN APPLIANCES & PLUMBING

**36-inch Counter Depth  
French Door with Dual  
Reveal-Doors**

Dacor  
dacor.com

**Series 11 Dish Drawer**

Fisher & Paykel  
fisherpaykel.com

## BATHROOM APPLIANCES & PLUMBING

**Parallel Faucet  
Collection**

Kohler Co.  
us.kohler.com

**HydroVive Rainhead**

Thermasol  
configurator.thermasol.  
com

## PAINT AND COATINGS

**Fluropon Continuum**  
Sherwin-Williams Coil  
Coatings  
industrial.sherwin-  
williams.com

**SPARTACOTE Lux  
Additive**  
LATICRETE  
laticrete.com

## COMMERCIAL FURNISHINGS

**Catty**  
Division Twelve  
division12.com

**Fade**  
Pair  
madebypair.com



Courtesy DEDON

## CUSTOM ACOUSTICS

**Embossed Panel Series**

Kirei  
kireiusa.com

**TECTUM Direct-  
Attach Walls**

Armstrong Ceiling  
& Wall Solutions  
armstrongceilings.com

## OUTDOOR FINISHES & SURFACES

**Artforms**  
Belgard  
belgard.com

**AS3000B Pre-Painted  
Bonded Sheet**  
Arconic Architectural  
arconic.com

## OUTDOOR FURNISHINGS

**ALUM**  
Maglin Site Furniture  
maglin.com

**KIDA Hanging Lounge  
Chair**  
DEDON  
dedon.de

## ARCHITECTURAL HARDWARE

**DriftReady Stairs**  
Construction Specialties  
c-sgroup.com

**Trex Signature**  
Trex Commercial  
Products  
trexcommercial.com

# Superior Styling and Safety Come Together with Trex Signature®

Specify Trex Signature® on Your Next Project



## Effortless Style and Exceptional Strength

Combining sophisticated design with the unparalleled strength of aluminum, Trex Signature® railing lives up to its name by affording architects and developers the flexibility and confidence to create truly distinctive spaces.

### Perfect for Commercial Settings:

- Unobtrusive design blends with surroundings
- Available in Charcoal Black, Bronze & Classic White
- Tiered delivery model to best meet project and customer requirements

### Ease of Installation:

- Pre-assembled panels
- Available in a variety of stock lengths
- Reduce installation time by up to 50%

Learn more at [trexcommercial.com](https://trexcommercial.com)



COMMERCIAL  
PRODUCTS

### Price Your Next Project

Forward plans to [bids@trexcommercial.com](mailto:bids@trexcommercial.com)

In keeping with Trex's commitment to sustainability, Trex Signature® Railing is made from more than 50% recycled aluminum, a 100% recyclable and renewable resource.  
© 2021 Trex Company, Inc. All Rights Reserved. Trex® is a federally registered trademark of Trex Company, Inc., Winchester, Virginia

## ARCHITECTURAL & COMMERCIAL LIGHTING & ELECTRICAL

illi

Luxxbox  
luxxbox.com

STENOS

Luminii  
luminii.com

## ELECTRICAL SYSTEMS

Connectrac Flex  
Raceway System and  
Wiremold ModPower  
System

Legrand  
legrand.us

## DOORS

Ultimate Swinging Door

Marvin  
marvin.com

## WINDOWS

Ascent Insulated  
Glass Unit  
AGNORA  
agnora.com

Trifab VersaGlaze  
601/601T/601UT Front  
Set Framing System

Kawneer  
kawneer.com

## CLADDING

AS3000B Pre-Painted  
Bonded Sheet  
Arconic Architectural  
Products  
arconic.com

ProdEX  
Prodema USA  
prodema.com



Courtesy Hem

# BEAUTY AND STRENGTH

INSPIRED BY NATURE

AN  
Best of  
Products

A  
B  
A



In building design, we have always been influenced by our natural surroundings. Durable and fully recyclable, the industry's only 3mm pre-painted bonded sheet won an Honorable Mention in the Building Façades Cladding category. The AS3000B Bonded Sheet combines the strength of aluminum with a broad spectrum of coil-coated, natural finishes including wood grain, concrete, stone, mineral and alternative metal effects.

[LEARN MORE](#)

A. 1.5mm (0.059") Aluminum Skin  
B. 0.16mm (0.006") Tie layer between aluminum skins



Courtesy Luxbox

## STONE & CONCRETE BUILDING MATERIALS

**Carbon Handmade Brick**  
Cultured Stone  
[culturedstone.com](http://culturedstone.com)

## COMPOSITES

**Fortress Cladding**  
Fortress Building Products  
[fortressbp.com](http://fortressbp.com)

**Wildwood Composite Cladding**  
Fiberon  
[cladding.fiberondecking.com](http://cladding.fiberondecking.com)

## GLASS

**Guardian SunGuard SuperNeutral Essential 50/25 HT Coated Glass**  
Guardian Glass  
[guardianglass.com](http://guardianglass.com)

**Precision Edge**  
Pulp Studio  
[pulpstudio.com](http://pulpstudio.com)

## WEATHER, AIR BARRIERS, & INSULATION

**FOAMULAR NGX**  
Owens Corning  
[owenscorning.com](http://owenscorning.com)

**SureSlope Prefabricated Tapered Products**  
Atlas Roofing Corporation  
[atlasrwi.com](http://atlasrwi.com)

## HVAC APPLIANCES

**Deluxe Wall-Mounted Indoor Unit**  
Mitsubishi Electric  
Trane HVAC US  
[metahvac.com](http://metahvac.com)

## DESIGN & CONSTRUCTION SOFTWARE

**Vectorworks Architect**  
Vectorworks  
[vectorworks.net](http://vectorworks.net)

## SMART BUILDING, SMART HOME, & AUTOMATION SYSTEMS

**Moxie Showerhead & Wireless Speaker**  
Kohler Co.  
[us.kohler.com](http://us.kohler.com)



AIA  
**Best of  
Design**

Winners will be announced in the Best of Design magazine

**Releasing December 1, 2021**

[archpaperawards.com/bestofdesign](https://archpaperawards.com/bestofdesign)

## INTERIOR FINISHES & SURFACES

**Blendz Patina**  
Móz Designs  
mozdesigns.com

**Pedra Palazzo**  
Walker Zanger  
walkerzanger.com

## DECORATIVE LIGHTING & ELECTRICAL

**JIM**  
Lodes  
lodes.com

## KITCHEN APPLIANCES & PLUMBING

**Blanco Vintera**  
BLANCO  
blanco.com

**Ironridge Farmhouse Kitchen Sink**  
Kohler Co.  
us.kohler.com

## BATHROOM APPLIANCES & PLUMBING

**Next Day Custom Linear Drains**  
Infinity Drain  
infinitydrain.com

**Avoir Toilet**  
Kohler Co.  
us.kohler.com

## COMMERCIAL FURNISHINGS

**Framery One**  
Framery  
frameryacoustics.com

# AN Best of Products



Courtesy Skyline Design

## CUSTOM ACOUSTICS

**REGUPOL Sonus Curve**  
REGUPOL  
regupol.com

**Scanlines**  
Turf Design  
turf.design

## OUTDOOR FURNISHINGS

**Cafe Planter Series**  
greenscreen  
greenscreen.com

## ARCHITECTURAL HARDWARE

**e-Genius**  
TownSteel  
townsteel.com

**SmartEntry SL-SM9159E Self-Latching Smartphone Mortise Lock for Sliding + Pocket Doors**  
Accurate Lock & Hardware  
accuratelockandhardware.com

# CREATING COMFORTABLE LIVING & WORKING SPACES



A/N  
Best of  
Products

The presence of unwanted noise or vibration can be debilitating. At **REGUPOL**, we work side-by-side with acousticians, architects, and developers to create spaces free of unwanted sounds and vibrations. They rely on our product versatility, flexibility, and know-how to enhance the acoustic value of their projects.

**REGUPOL sonus curve** is a durable, dimpled flooring underlayment made from 92% recycled tire rubber. Shock absorbing and impact sound reducing, **sonus curve** is perfectly suited for commercial and residential buildings underneath hardwood, concrete, screed, and floating floor systems.



800.537.8737 • REGUPOL.COM

 **REGUPOL**



Courtesy Pablo Designs

## ARCHITECTURAL & COMMERCIAL LIGHTING & ELECTRICAL

**Hilliard Chandelier**  
Arteriors  
arteriorshome.com

## DOORS

**Ultimate Swinging Door**  
Marvin  
marvin.com

## WINDOWS

**Easy-Slide Operator**  
Pella  
pella.com

## CLADDING

**BranchClad**  
Branch Technology  
branchtechnology.com

**StoVentec for Masonry Veneer  
Facades**  
Sto. Corp  
stocorp.com

## GLASS

**Lumi Frit**  
Bendheim  
bendheim.com

## WEATHER, AIR BARRIERS & INSULATION

**ArmorWall Plus Fire-Rated  
Structural Insulated Sheathing**  
MaxLife Industries  
maxlifeindustries.com

## SMART BUILDING, SMART HOME, & AUTOMATION SYSTEMS

**Leica BLK2FLY**  
Leica Geosystems  
leica-geosystems.com

## Thank you to everyone who submitted projects to AN's Best of Products Awards 2021.

3form  
5MetaCom  
84 Communications  
A ZAHNER  
Accurate Lock & Hardware  
Acuity Brands  
After Architecture  
AGNORA  
Alpha Dog Advertising  
Antenna Group  
Arconic Architectural Products LLC  
Armstrong Ceiling & Wall Solutions  
Arteriors  
Atlas Roofing Corporation  
BCI Burke Company  
Behnisch Architekten  
Belgard  
Bendheim  
BLANCO  
BQE Software  
Branch Technology  
Brandner Communications  
Brown Jordan  
Carissa Gerzeny  
Carmichael Lynch Relate  
Carnegie  
Chemetal  
Cherry Leaf Communications, Ltd.  
Chilewich  
Collons Communications  
Construction Specialties  
Cooper Smith Agency  
Cosentino  
CRL  
Crossroads  
Cultured Stone  
Dacor  
Datacolor  
Davani Group  
DEDON  
Designed by Arper in Collaboration with Gensler  
Division Twelve  
Doug Mockett & Company  
Dri-Design  
DRS and Associates  
DRS Worldwide Inc.  
Duravit  
Elkus Manfredi Architects  
Enscape GmbH  
EQUITONE Fiber Cement Facades  
Estiluz USA  
Fairgame A&D Marketing  
Falls (Communications)  
FastStartPR  
Fiandre  
Fibron  
Fisher & Paykel  
Floyd  
Fog & Apple  
Formica Corporation  
Fortress Building Products  
Framery  
Frank Advertising  
Franken-Schotter GmbH & Co. KG  
Freres Lumber Co.  
G&S Business Communications

Gensler  
Godfrey (PR Agency for Ruskin)  
Goldbrecht Inc  
Goldbrecht LLC  
Good Word PR  
GreenHouse Digital + PR  
greenscreen  
Griven USA  
Guardian Glass  
Head & Hand PR  
Hem  
HessAmerica  
INC Architecture & Design  
Infinity Drain  
INOX  
James Hardie  
Jennifer Bett Communications  
Jennings & Company  
Kawneer  
Keilhauer  
KEM STUDIO  
Kirei  
Kleber & Associates  
KnollTextiles  
Kohler Co.  
L.C. Williams & Associates  
LACAVA  
Landscape Forms  
Lapitec S.p.A.  
LATICRETE  
Legrand  
Leica Geosystems, part of Hexagon  
LG Electronics USA  
LMO  
Lodes  
Luceplan  
Lucifer Lighting Company  
Luminii  
Luminis  
Lutron Electronics  
Luxebox  
Maglin Site Furniture  
Martinelli Luce  
Marvin  
MaxLife Industries  
McIsaac Communications LLC  
Merlot Marketing, Inc.  
Mitsubishi Electric Trane HVAC US  
modularArts  
Móz Designs  
Novità PR  
Ogilvy  
Omnia Industries Inc  
Owens Corning  
Pablo Designs  
Pair  
Paxson Fay  
Pella Corporation  
Period Media  
Pineapple Contracts Inc  
Pipitone Group (c/o PPG)  
Prodema USA  
Pulp Studio  
Pure + FreeForm  
QCP  
REGUPOL

Relevance International  
Reynaers Aluminium  
Rottet Collection  
Ruskin  
Seed Factory Branding  
Sharp Communications  
Sharp Think PR  
Sherwin-Williams Coil Coatings  
Signature Kitchen Suite  
Skyline Design  
Somfy Systems, Inc.  
Sto Corp.  
Stone Forest, Inc.  
Structura  
Sunbrella Contract  
The Consultancy PR  
Therma-HEXX Corporation  
ThermaSol  
Top Knobs  
TownSteel, Inc.  
Trevelino Keller  
Trex Commercial Products  
Trimble  
Trove, Inc.  
Turf Design  
Uproar PR  
UpSpring PR  
VaproShield  
Vectorworks, Inc.  
Vibia  
Viking Range, LLC  
Vitro Architectural Glass  
VP+C  
Walker Zanger  
Wayne Dalton  
Wolf PR  
Wray Ward  
Zahner  
Zephyr Ventilation

THANK YOU

For more information about the awards visit [archpaperawards.com](https://archpaperawards.com).

facades+

# 2022

## EVENTS

**San Francisco**

January 28

**Atlanta**

February 25

**Philadelphia**

March 8

**Toronto**

March 23

**New York City**

April 13+14

**Austin**

April 27

**Boston**

June 7

**Dallas**

September 8

**Denver**

September 21

**Chicago**

October 7

**Los Angeles**

November 10+11

**Seattle**

December TBA

[facadesplus.com](https://facadesplus.com)