

atomic

MIDCENTURY MARVELS

ranch

A modern, dark-colored ranch-style house at dusk. The house features large windows and a deck with two lounge chairs. The interior is visible through the windows, showing a bathroom with a bathtub and a bedroom with a bed. The house is surrounded by trees and a lawn.

Go Groovy with Retro Tile

10 Kitchens that Balance Innovation with Style

Form Meets Function: The Best of Kitchen + Bath Design

EXETER DINING



made in america

made to order

made to last

copeland 

FURNITURE

copelandfurniture.com



Handcrafted Furniture, Made to Order

Handcrafted and customizable in hundreds of fabric & wood combinations,
our furniture is built to exceed your home-design dreams.





Soto Chair | \$799
in Taylor Tonic



Soto Ottoman | \$549
in Merit Dove



Collins Chair | \$949
in Key Largo Grass



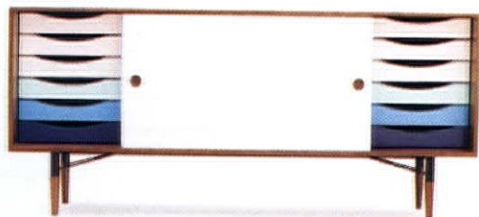
Hughes Swivel Chair | \$1,149
in Lucky Divine



Hughes Bed | \$1,849
in Impact Mist



Eliot Leather Sofa | \$2,449
in Santiago Camel



Unson Credenza | \$2,199
in Walnut



Toscana Dining Set | \$2,549
in Lucky Turquoise



Hughes Reversible Sectional | \$2,549
in Chance Sand



Xavier Desk | \$2,349
in Walnut

20% OFF*

Use Promo Code
ATFALL18
Until: 09.25.2018

365-Day Home Trial | Lifetime Warranty | Free Returns

Don't want to wait?

Shop our Quick Ship furniture. It's ready
to ship within 3-5 business days.

Joybird.com/instock

*The 20% discount is a limited time offer valid until 09.25.2018 and it cannot be combined with other offers, discounts, or prior purchases. Returns within 14 days of delivery are free for all orders shipped to the contiguous United States. Return undamaged furniture within 365 days of receiving it for a full refund. Financing options as low as 0% APR available to qualified applicants. Quick Ship items typically ships within 3-5 business days of order. Date of delivery will vary depending on your location.

Joybird.com | 855.855.9784

editor's letter



Tile with Style

HAVE YOU EVER WALKED INTO A KITCHEN AND IMAGINED YOURSELF WHIPPING UP FAMILY-FAVORITES, hosting festive events or casually enjoying everyday life—all with a perfectly tiled backdrop? What about a bath that had you imagining spa-like weekends and an idyllic morning routine? That is just what we've strived to create in *Atomic Ranch's* Kitchen & Bath issue.

For fans of Midcentury Modern design, these spaces have a lot to live up to in the style category. The bright hues of boomerang-patterned Formica counters, metal cabinets, sleek handles, pastel appliances and of course—the pink bathroom. These rooms were far from bland, and we wouldn't have it any other way.

These spaces are more than pretty, they have to be workhorses. So, what is a modernist to do when the charm of original detail is outweighed by dysfunction? What of bad renovations that left period-appropriate character to be desired?

Enter *Atomic Ranch's* Kitchen & Bath issue. Let me tell you, these kitchens and baths are as dream-worthy as they are attainable. We're featuring real homes that will have you daydreaming while simultaneously making your to-do list. Don't believe me? We've got expert insight on how to design a functional bath (page 60) and choose the right retro-inspired tile (page 70). Plus, we're showcasing three kitchens that perfectly marry midcentury style with modern conveniences (pages 24, 52 and 64).

All the usual features are here too—including two stunning homes with their own equally amazing kitchens and baths (pages 28 and 40). Be sure to check out the shopping guides (pages 15 and 19) for kitchen and bath essentials as well as stylish table and chair combos.

What will you do with all this kitchen and bath inspiration?

Sarah Jane Stone

Get connected!

Email: editor@atomic-ranch.com • Online: atomic-ranch.com • [@theatomicranch](https://www.instagram.com/theatomicranch)

**atomic
ranch**

EDITORIAL

Brand Leader: Sarah Jane Stone
Content Manager: Brooke Sanders
Managing Editor: Kris Christensen
Editorial Interns: Camella Gholbzadeh
and Jillian Chapman

DESIGN

Design Director: Gabby Oh

CONTRIBUTORS

Elaine St. Louis, George Smart, James Judge,
Leslie Thompson, Lindsay Jarvis,
Shelby Deering

CONTRIBUTING PHOTOGRAPHERS

Bret Gum, Brian Walski, Landon Wiggs, Spacecrafting,
Venessa Weber

ADVERTISING

Terry Rollman - Group President • (714) 200-1917
Toby Childs - National Advertising Director • (503) 387-5099
Sherrie Norris - West Coast Account Executive • (704) 421-1517
Julie Hale - East Coast Account Executive • (770) 377-0072
Nadia Koepke - Midwest Account Executive • (507) 581-1712
Eric Gomez - Advertising Traffic Coordinator

MARKETING

Sabra Morris: Director of Content Marketing

OPERATIONS

Devender Hasija: Newsstand and Circulation Analyst
Shalish Khandelwal: Subscriptions Manager
Alex Mendoza: Administrative Assistant
Victoria Van Vlear: Intern Program Manager

EDITORIAL, PRODUCTION & SALES OFFICE

17890 Sky Park Circle #250, Irvine, CA 92614
www.atomic-ranch.com
(714) 939-9991, Fax (800) 249-7761

ATOMIC RANCH (ISSN 1547-3902) Issue 59, Fall 2018 is published quarterly, Spring, Summer, Fall and Winter, by Engaged Media Inc. LLC, 17890 Sky Park Circle #250, Irvine, CA 92614. Periodical postage paid at Irvine, CA, and additional mailing offices. **POSTMASTER:** send address changes to Atomic Ranch c/o VSI, Inc. 905 Kent Street, Liberty, MO 64068. © 2018 by Engaged Media, Inc. All rights reserved. Reproduction of any material from this issue in whole or in part is strictly prohibited. GST #R55050365RT001 Canada Post: Publications Mail Agreement #40612608. Return undeliverable Canadian addresses to: PITNEY BOWES, INC., P.O. Box 25542, London, ON N6C 6B2.

CUSTOMER SERVICE

ENGAGED MEDIA, INC.
17890 Sky Park Circle #250
Irvine, CA 92614

SUBSCRIPTIONS, ADDRESS CHANGES,
RENEWALS, MISSING OR DAMAGED COPIES
(800) 764-6278
(239) 653-0225 Foreign Inquiries
subscriptions@engagedmediainc.com
customerservice@engagedmediainc.com

BACK ISSUES

www.engagedlifestyle.com

BOOKS, MERCHANDISE, REPRINTS
(800) 764-6278, Foreign (239) 653-0225

LETTERS TO THE EDITOR, NEW PRODUCTS OR TO
CONTRIBUTE A STORY OR PHOTO
editor@atomic-ranch.com

SUBSCRIPTION RATES

\$19.95/1 year, \$36.95/2 years, Foreign, \$34.95 per year, \$66.95 per 2 years payable in US funds. Single copy price is \$7.99. Please allow 6 to 8 weeks for new subscriptions to begin.

ENGAGED[®]
MEDIA, INC.

ENGAGED MEDIA, INC.

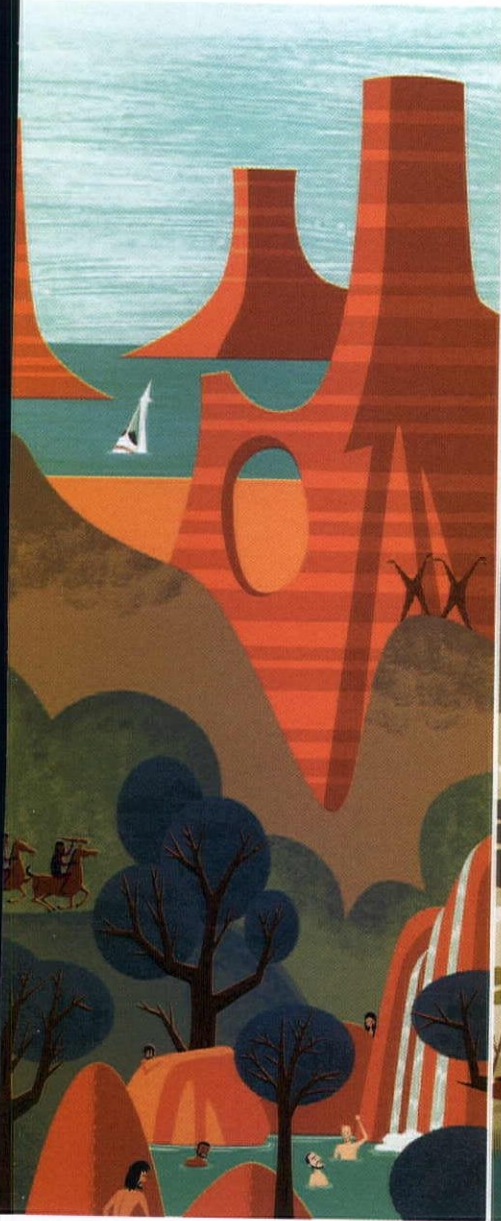
Scott Hall: Advisor
Pinaki Bhattacharya: CEO
Philip Trinkle: Newsstand Sales Director
Jickie Torres: Editorial Director
Syed Nazir Razik: Director of Digital Marketing

This magazine is purchased by the buyer with the understanding that information presented is from various sources from which there can be no warranty or responsibility by Engaged Media as to the legality, completeness or technical accuracy.

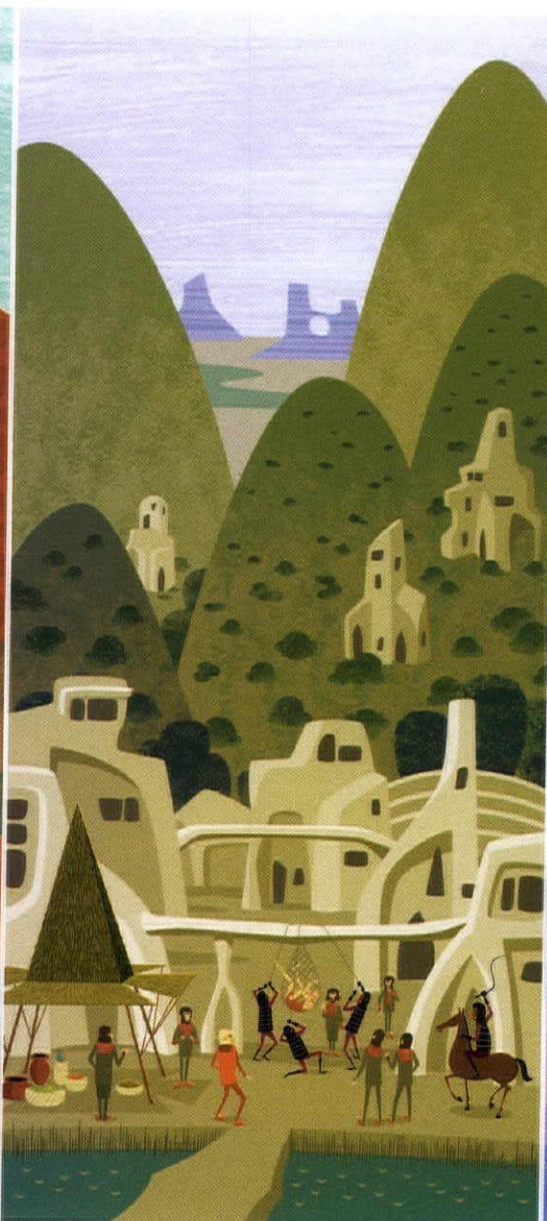
GST #R55050365RT001
Canada Post: Publications Mail Agreement #40612608
Return undeliverable Canadian addresses to:
PITNEY BOWES, INC.
P.O. Box 25542
London, ON N6C 6B2

SIMIAD LANDSCAPES

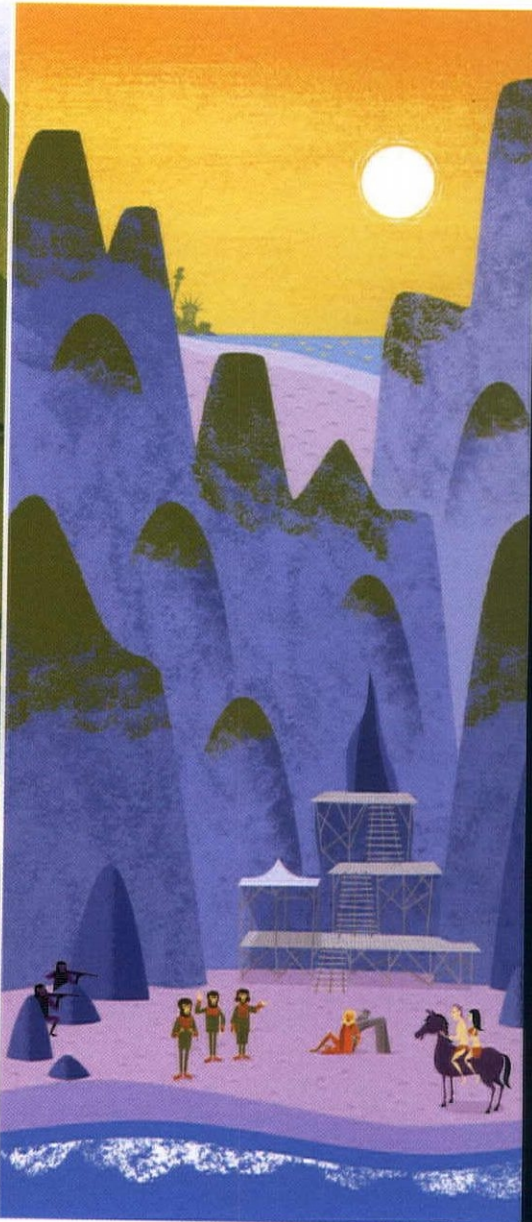
Officially licensed Planet of the Apes fine art prints by Shag



"In Six Months We'll Be Running This Planet"



"Beware the Beast, Man"



"You May Not Like What You Find"



PALM SPRINGS

745 N. Palm Canyon, Palm Springs, CA
760.322.3400 • shagstore.com

WEST HOLLYWOOD

8443 Melrose Ave, West Hollywood, CA
shagstore.com • 323.424.3005

TM & © 2018 Twentieth Century Fox Film Corporation. All Rights Reserved

PEOPLE NEED NATURE



10% OFF* with promo code
MODFALL18
FREE SHIPPING** | NO SALES TAX***

 **KARDIEL**

Located in Seattle, Professional Delivery to your home anywhere in the contiguous U.S is free.** Most items are in stock and arrive to your home in 7-10 days. Compare our quality.

FREE FABRIC AND LEATHER SWATCHES
DESIGNER ACCOUNTS AVAILABLE
WWW.KARDIEL.COM

*The 10% discount is a limited offer valid for your first order until 1/1/19 and can not be combined with other offers.

Orders over \$750. Curbside Delivery *Outside Washington State



H3K DESIGN
RENOVATION
FURNISHINGS

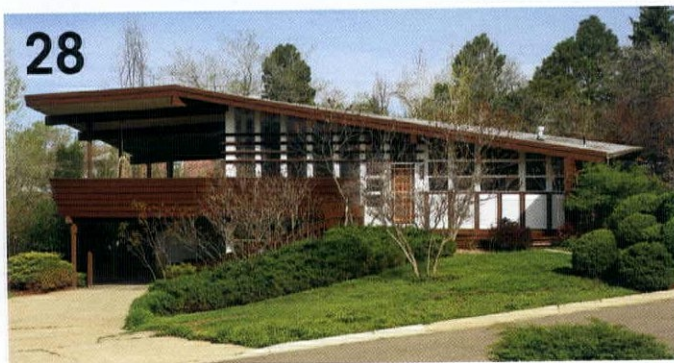
www.h3kdesign.com



Kevin Kemper & Howard Hawkes

501 South Palm Canyon Drive | Palm Springs, California | 760.325.5400

Contents fall 2018



FEATURES

28 Suburban Oasis

Necessary updates blend seamlessly with the restoration and enhancement of original features in a custom 1957 Colorado home.

40 Portland Puzzle

With a little imagination, an unusual midcentury floorplan is adapted for modern living.

52 Midcentury Minimalist

Designing a new kitchen for a midcentury home is no small task—but this refreshing take may set a new standard.

58 The Art of Escaping

An unassuming kit house is transformed into a tranquil modernist retreat.

60 Creatively Custom

Look no further for cabinets that boast midcentury style without compromising on smart, functional bath design.

64 Style by Design

New cabinets meet vintage treasures in a blogger's carefully curated kitchen and dining room.

70 Tile Done Right

Are hexagon tiles for me? Is the subway tile look "midcentury" enough? What about bubbles? Get all your tile questions answered by the pros at Clayhaus.

DEPARTMENTS

6 Editor's Letter

12 Web News

15 Cool Stuff

19 Period Picks

22 Accidental Archivist

24 Atomic Kitchens

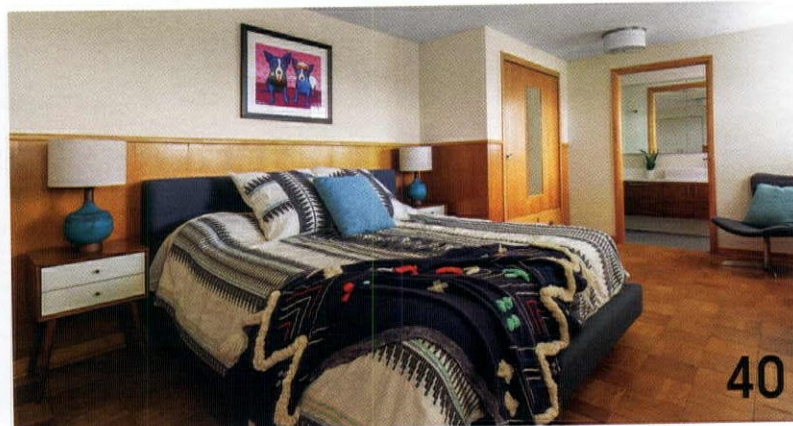
78 Resources

80 Advertisers

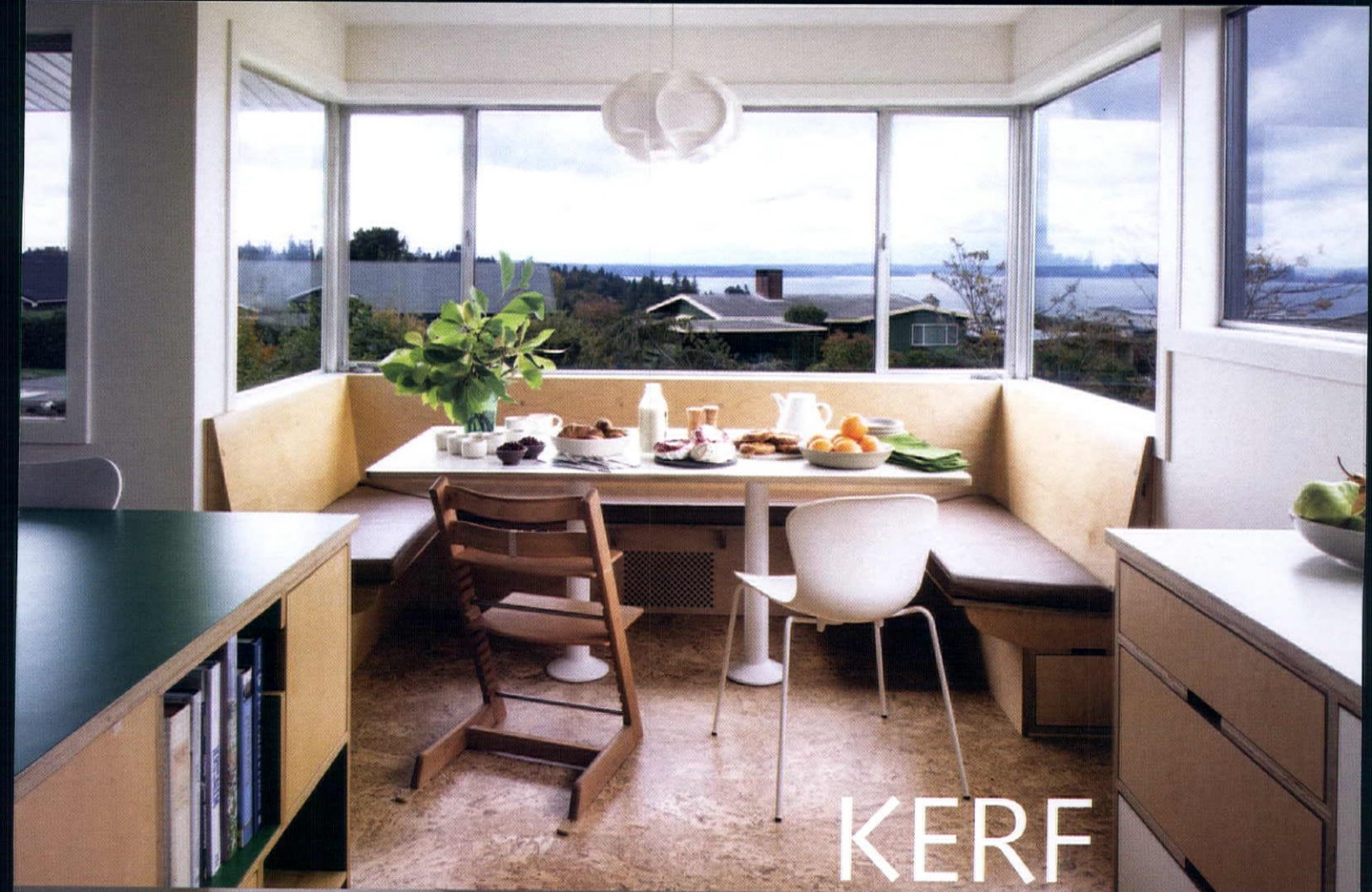
82 Last Look

cover

Cover photography by
Bates Masi + Architects
Cover design by Gabby Oh

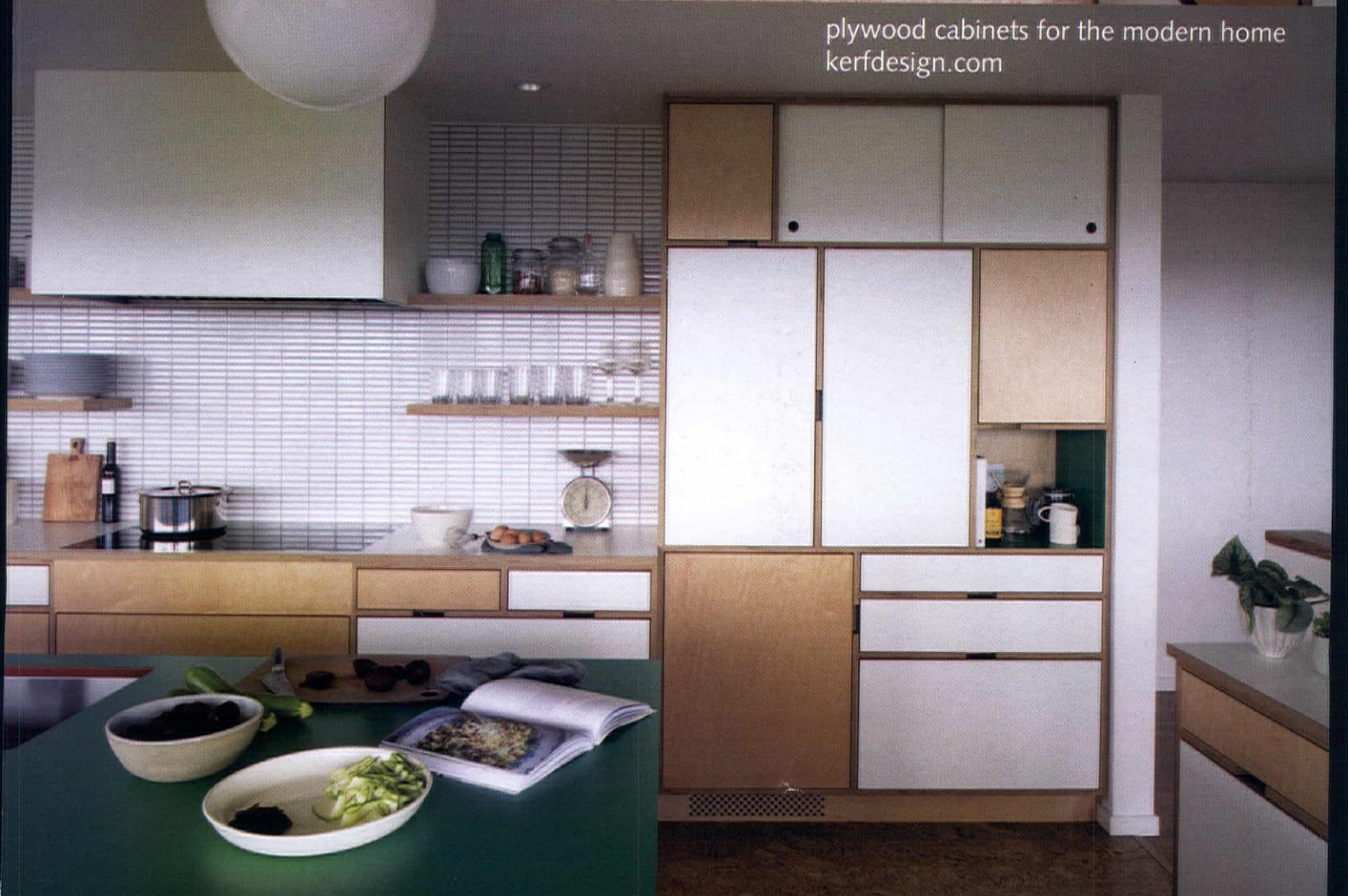


ATOMIC RANCH (ISSN 1547-3092) Issue 59, FALL 2018 is published quarterly, Spring, Summer, Fall and Winter, by Engaged Media Inc., LLC, 17890 Sky Park Circle, #250, Irvine, CA 92614. Periodical postage paid at Irvine, CA, and additional mailing offices. **POSTMASTER:** send address changes to Atomic Ranch c/o VSI, Inc. 905 Kent Street, Liberty, MO 64068. © 2018 by Engaged Media, Inc. All rights reserved. Reproduction of any material from this issue in whole or in part is strictly prohibited. GST #R5505365R1001 Canada Post: Publications Mail Agreement #40612608. Return undeliverable Canadian addresses to: PITNEY BOWES, INC., P.O. Box 25542, London, ON N6C 6B2.



KERF

plywood cabinets for the modern home
kerfdesign.com



webnews

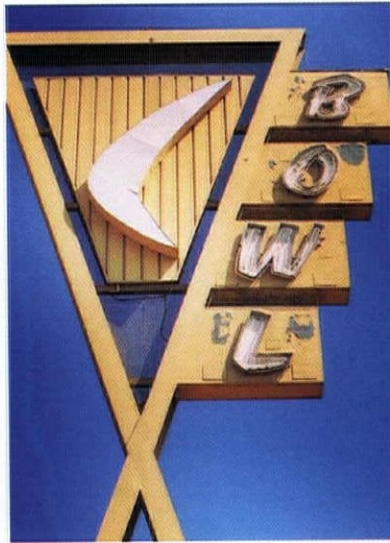
Keep tabs on us

Get a sneak peek into what's coming online at atomic-ranch.com.

Inside Scoop!

Retro Road Trip

Where will Ken MacIntyre take us next? Join us as we tour Midcentury Modern landmarks and hotspots.



Flea Market Survival Guide

Tips and tricks for scouting out the best vintage finds at the best prices.



Must-Have Mod Collectables

See what tops our list of the retro treasures we simply have to have.



Blenko 101

It's as popular as midcentury treasures come, but do you know the history—or how to spot the real thing?



Cool Stuff



"Judy's" limited edition art print, \$155 for large. Visit macartprints.com.



Eames molded plastic side chair with 4-leg base, \$295. Visit yiliving.com.



Hesse dining table, \$1,549. Visit joybird.com.



DINERA 18-piece dinnerware set in light pink, \$34.99. Visit ikea.com.

THERE'S NO PLACE LIKE HOME.



FROM UNSEEN MIDCENTURY DESERT MODERN BY DAN CHAVKIN

Especially– if it's in Palm Springs.

So many homes, so many neighborhoods, each as unique as you. How do you find yours? Take the Mid-Century Modern Neighborhood tour with the Ron Parks Team, specialists in Mid-Century Modern property acquisitions and marketing. Request a complimentary neighborhood map or schedule a private tour when you are in town.

Representing buyers and sellers in Palm Springs and beyond.



**RON
PARKS**
TEAM

Pacific

Sotheby's
INTERNATIONAL REALTY

For your copy:
760-883-8613

info@ronparksteam.com

www.ronparksteam.com



ALL MOD, ALL YEAR.



Get your midcentury architecture and design fix year-round with a subscription to Atomic Ranch. **Subscribe today and get 1 year (4 issues) directly to your door for just \$21.95.**

Visit atomic-ranch.com/subscribe to keep the Midcentury Modern design coming all year long.

coolstuff

By Jillian Chapman

Midcentury Flare

Pull together your kitchen and bath designs with accents that boast nothing but midcentury goodness.



Bend metal barstool, \$480. (310) 265-3939 or bendgoods.com.



Gnam Bread Box, \$80. (800) 236-9100 or yiving.com.



Electric kettle in red. To find a local retailer, visit smegusa.com



Starburst fruit bowl in satin nickel, \$19.99. Visit target.com.



Bamboo 20-piece flatware set, \$65.99. (844) 863-4959 or allmodern.com



Helixbath Agora bathtub, \$2,645. (877) 844-4988 or kardiel.com.

coolstuff



Stax console, \$399.
(800) 606-6252 or cb2.com.



Chip counter stool, \$399. (844) 425-8368 or bludot.com.



Winn large wall mirror, \$425.
(888) 282-0842 or joybird.com

Airstream Dream kitchen linens, starting at \$19.99. Visit sininlinen.com.



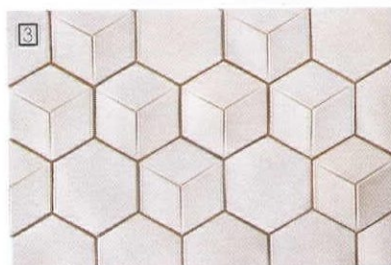
1



2



3



Prim and Polished

Show off your retro style with mod tile.

1. 3"x 6" field tile in Gloss Julep. For pricing and availability, (888) 387-3280 or atomictile.com.
2. Metro Ava tile, \$7.49 each. Visit thesmarttiles.com.
3. Hexaline tile. For pricing and availability, (718) 541-1160 or mod-craft.com.
4. Wax Wane tile in oyster. For pricing and availability, (503) 928-3076 or clayhaustile.com.

FEATURED SPEAKER OF
"ATOMIC RANCH LIVE" SERIES AT
2018 MODERNISM WEEK

FEATURED ON NETFLIX ORIGINAL
"MAKE MY STAY"

EXCLUSIVE BUILDER OF
THE DESERT EICHLER HOMES

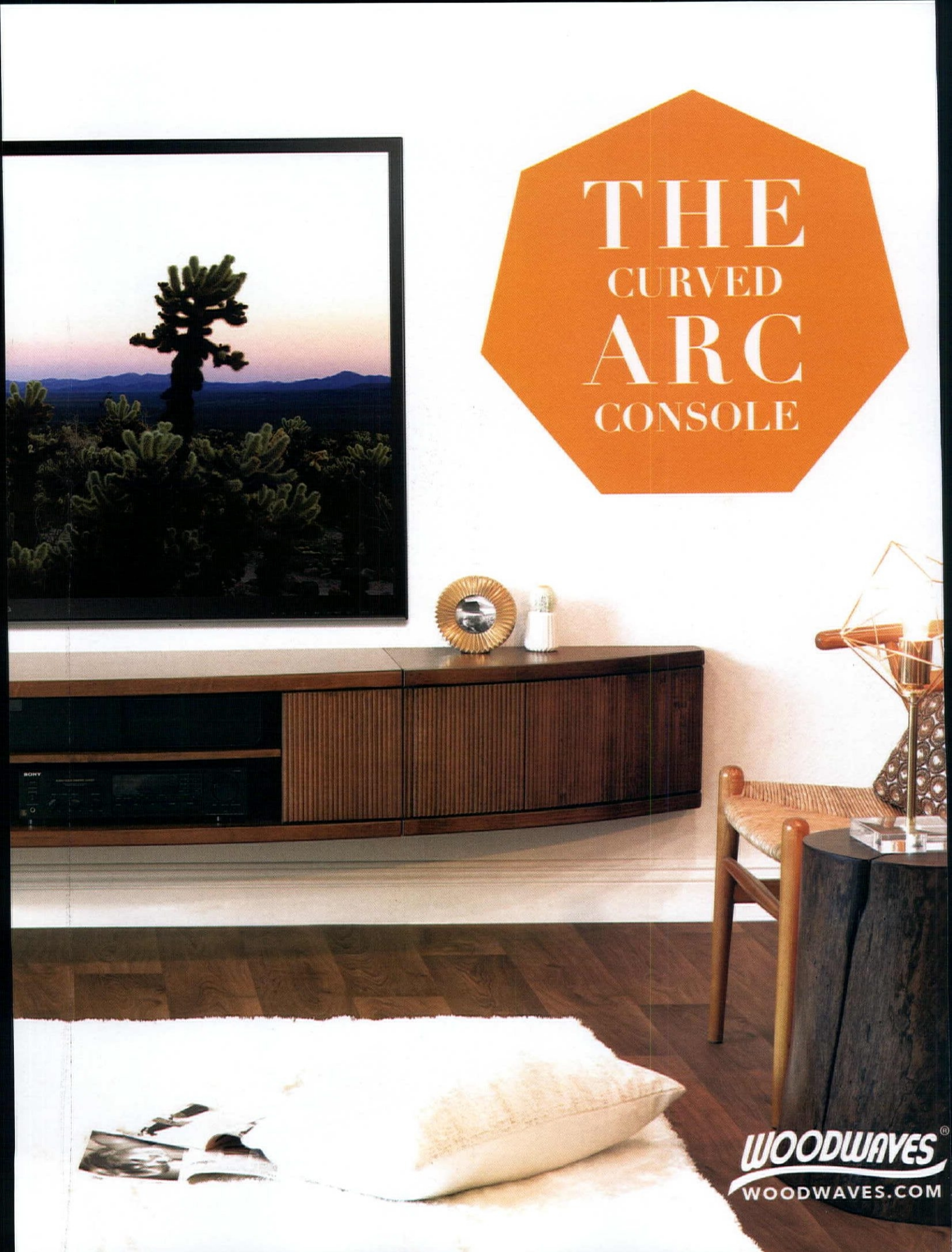
760.531.4252

SHIELDSRESIDENTIAL.COM

PALM SPRINGS, CA



SHIELDS RESIDENTIAL
CONSTRUCTION + REMODELING



THE
CURVED
ARC
CONSOLE

WOODWAVES[®]
WOODWAVES.COM

periodpicks



1. **Wenger Wishbone dining chair**, \$495. (877) 844-4988 or kardiel.com.



2. **Compass dining table**, \$399. (800) 606-6252 or cb2.com.

Sleek Design



When it comes to kitchen and dining room pieces, don't sacrifice comfort or practicality for great looks. These pieces, some vintage and some new, strike the perfect balance.

By Jillian Chapman



3. **Essentials round dining table**. For pricing and availability visit copelandfurniture.com.

4. **Lena midcentury dining table**, \$499. (888) 922-4119 or westelm.com.

5. **Set of 4 teak chairs** by Arne Vodder, \$1,495. (604) 876-5215 or bydesignmodern.com.



periodpicks



6

6. Set of 8 teak and leather dining chairs by Arne Vodder, \$3,350. Visit vintagemodernmaine.com.



7

7. Vintage teak drop leaf dining table by Arne Vodder for Sibast, \$1,975. Visit vintagemodernmaine.com.



8

8. Solomon bench, \$800. (313) 731-2485 or huntandnoyer.com.

9



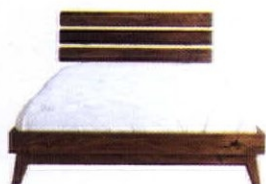
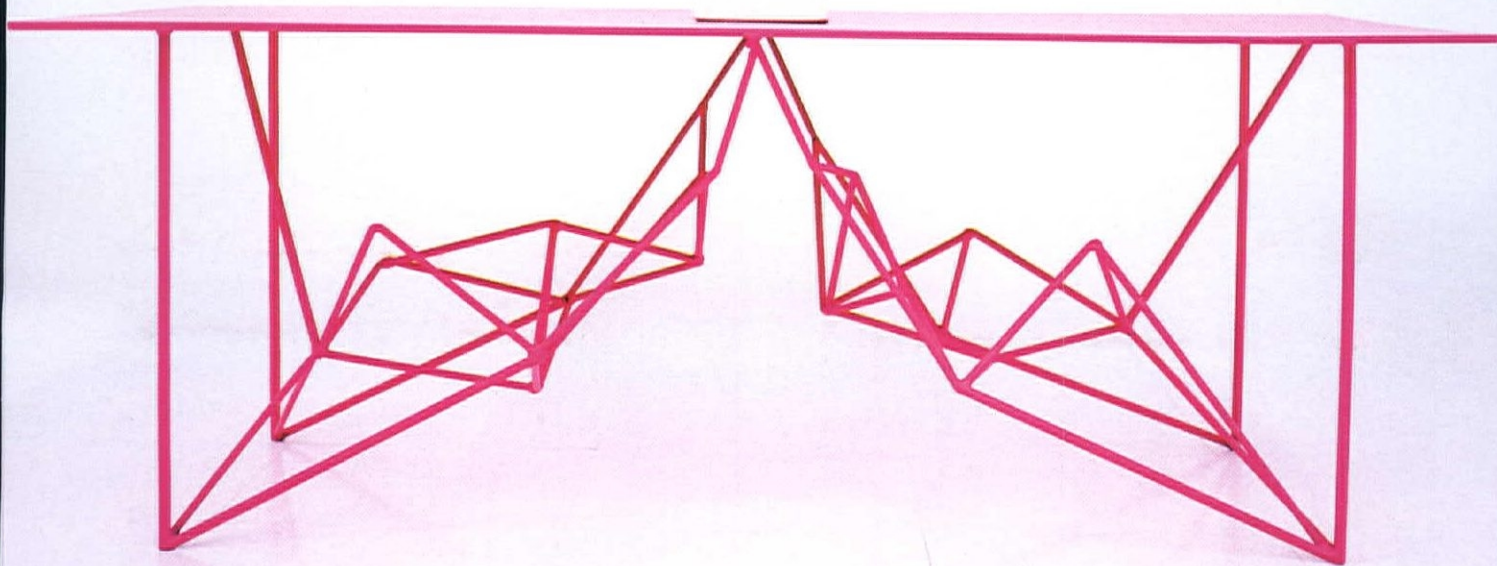
9. Toscano dining set, \$2,549. (888) 282-0842 or joybird.com.



MODERNCRE8VE



Modern and Mid-Century
Home Furnishings.
Made in USA.



10% OFF your purchase of
\$1000 with promo code **ATOMIC1**.

Free shipping. No sales tax. Valid on website only.



www.moderncre8ve.com | @moderncre8ve

MODERNCRE8VE

accidentalarchivist

Confessions of a Former Packrat

You've saved countless books, papers and blueprints in the name of research and preservation—but now what? How to know if it's time to cut through the clutter.

By George Smart

WE ARE A NATION OF PACKRATS.

We have so much stuff that the self-storage industry just laughs at us—all the way to the bank. One in 11 Americans pays an average of about \$90 per month, often for years, to store things they will likely never ever use again. Some storage spaces are even air-conditioned and heated, raising the cost.

One out of 11 of our nation, or 9.4 percent of American households, created this \$38 billion dollar industry. That is three times the volume of the entire Hollywood box office gross for a year. According to an article on the subject by Patrick Sisson for CURBED, “the volume of self-storage units in the country could fill the Hoover Dam with old clothing, skis, and keepsakes more than 26 times.”

There is nothing wrong with storing things, of course, and I say this as a former packrat. If you are moving or merging households, storage units are an inexpensive and practical way to manage transitions. However, most of us just cannot bear the emotion of parting with our grandma's favorite chair or that live model painting we did in college—



let alone our boxes of architecture magazines and books. If you are the child of an architect or a fellow accidental archivist, you may also have blueprints, specs and office records.

A few times a year, I meet someone at his or her storage unit to counsel them on the stuff inside, typically from a parent who was an architect. People open the door slowly and carefully, as if opening an ancient tomb waiting to behold glorious and priceless artifacts. The items are perhaps priceless emotionally, which is why they've been saved at such cost for so long. Financially, however, there's rarely any value. If you are convinced you are sitting on a goldmine of your architect parent's papers in a storage unit, I understand the emotional value, but financially this collection is likely worth zero unless there's a Matisse hidden in there somewhere.

HOW TO CLEAR OUT YOUR STORED COLLECTION:

• **Recent Design Magazines:**

Community colleges and high schools with drafting programs often don't have the budget for periodicals and want recent issues (within five years) of current titles. If you paid for these personally and not through a company, donate them and get a tax deduction for what you paid in subscriptions.



PHOTO COURTESY OF PIXABAY

One in 11 Americans pays an average of about **\$90 per month on storage unit fees.**

• **Past Design Magazines:** If

you're thinking there's gold in them there storage boxes, older titles (over five years) have almost no market value, and schools and libraries don't want them. USModernist has a list of needed issues you can donate, providing free shipping. After that, your best bet is recycling. The good news is, you will feel great relief in freeing up the space. Hasn't your spouse bugged you about this for years?

• **Design Books:** Coffee table books, especially those with lots of photos, have a robust second life on eBay, Amazon and Craigslist. Reasonable listing prices are 25 percent to 35 percent off face value, plus shipping.

• **Blueprints, specs and office records:** If your parent was a

notable area architect, contact the closest university offering a school of architecture. Typically, the university library can advise about donating. While blueprints typically don't have any financial market value, they do have a tax value when donated. In this situation, however, an appraisal is required. This also gives homeowners a central place to request blueprints when planning future renovations.

Letting go is an important stage in the process of growing up, moving on and freeing up space for the future. Is it your time to finally let go? ☺

PHOTOGRAPHY COURTESY OF GEORGE SMART



George Smart founded NC Modernist Houses and USModernist Houses, together the largest open digital archives for residential Modernist architecture. He is host of the podcast USModernist Radio, which posts every other Monday on iTunes. www.usmodernist.org.

atomickitchens

THE KITCHEN REFLECTS THE ATTENTIVENESS TO MIDCENTURY DESIGN SEEN THROUGHOUT THE HOME. BRAD WANTED TO, "UPDATE THE SPACE TO BE MORE EFFICIENT AND FUNCTIONAL WHILE PRESERVING THE OVERALL MIDCENTURY CHARACTER." TO CREATE A MOD LOOK, MARK BLENDED IN WARM, NATURAL FINISHES AND PERIOD FURNITURE PIECES TO BRING THE HOME BACK TO ITS MIDCENTURY GLORY DAYS.

design
MUST-HAVES:

- Open layout
- High ceilings
- Eye-catching backsplash



True Blue

A kitchen in a 1964 townhome now pops thanks to well-appointed midcentury details and a striking backsplash.

By **Shelby Deering** | Photography by **Landon Wiggs** | Styling by **James Judge**

A CONDOMINIUM MAY NOT BE THE FIRST PLACE YOU WOULD EXPECT TO FIND a stylish and functional Midcentury Modern kitchen—and when Brad Erwin moved into Phoenix, Arizona’s Roman Roads condo complex in 2015, he knew he had some work to do. His townhome, built in 1964, needed renovating to return it to its former midcentury splendor. Refreshing the first floor was at the top of his list, which included his now-stunning kitchen.

MAKING SPACE

“Essentially, the entire kitchen, along with almost all of the remainder of the first floor, was demolished down to the studs as part of the renovation,” Brad shares. “Overall, the space was



/REAL HOME 101/

TYPE OF HOME: 1964 townhome

ARCHITECT: Al Beadle

BACKGROUND: Previously, the kitchen was cramped and dark due to a restrictive floorplan, and the cabinetry needed a refresh as well.

INNOVATIVE IDEA: To avoid switch plates in the walls, particularly in the backsplash, pop-up alternatives were installed in the countertop.



TOP: BRAD SAYS THAT VISITORS FREQUENTLY COMMENT ON HIS ANGLED WATERFALL COUNTERTOP, INSPIRED BY A NEIGHBOR'S RENOVATION. "I LIKED HOW IT MADE THE ISLAND LESS OF A MONOLITHIC BLOCK AND ALSO GAVE A BIT OF A 'SPACE AGE' FEEL TO THE KITCHEN," HE SAYS.

ABOVE: DAVID EXPLAINS, "BRAD CHOSE TO USE MODCRAFT'S 'HEXON' TILE IN PACIFIC BLUE GLAZE. THIS IS A 6-INCH HEXAGONAL TILE WITH A BOLD ATOMIC PATTERN THAT CREATES A 3D ILLUSION WHEN PUT TOGETHER, RESULTING IN A MODERN KNIT PATTERN—TWO DISTINCT SHAPES CAN BE SEEN IN THE PATTERN ONCE INSTALLED. THE DEEP BLUE, TRANSLUCENT GLAZE CONTRASTS NICELY WITH THE WALNUT CABINETRY."

WHAT MAKES IT MCM?

- Natural, woodgrain cabinetry
- Geometric tile backsplash
- Vintage décor pieces

quite cramped and fairly dark. You couldn't even open the refrigerator doors all the way without hitting the countertop or walls."

The problematic layout was addressed by relocating the open staircase to allow the kitchen to grow slightly. This provided more working space and a functional bar area. Renovations were completed in early 2017, with Brad doing some of the designing alongside design consultant Christine Mettler.

WOW FACTOR

Although the entire kitchen captures midcentury style, there's one element that's perhaps more mod than all the rest—the blue porcelain backsplash, featuring dimensional geometric tiles.

"The 'Hexon' tile fits right into Brad's kitchen so perfectly, doesn't it?" says David Clark, owner of ModCraft, the company that crafted the tile. "I think it marries well with the design and history of the of the house's architecture. It's a very bold tile that really creates a dynamic look and is set off beautifully against that amazing cabinetry."

Other throwback touches include the dark woodgrain cabinetry, chosen to coordinate with Brad's furniture pieces, vintage pitchers and vases and a midcentury-inspired sculpture.

Brad, who enjoys making one-pot chili and cassoulet in his redesigned kitchen, shares, "I wanted to keep the space as clean as possible, both literally and visually." He has certainly achieved it, through carefully-chosen materials, distinctive décor and a dedication to midcentury design. 🌀

Adrian Kinney
Denver's Mid-Century Modern Expert

serves the Denver area's
Mid-Century

Modernaires



The Denver area is a great place to live, particularly if you love mid-century modern architecture. With over 6,000 MCM houses across several charming and scenic communities, and ranging from low-cost starter homes to sprawling custom ramblers, there is something for every MCM enthusiast!

Maybe you already know the magic of living in one of the Denver area's mid-century modern houses, or you aspire to live in one someday. Or maybe you want advice on what improvements to make to your current mid-mod dream home. Or perhaps you have just discovered the lifestyles of the Mid-Century and Modern and you want to learn more . . .

Helping *Mid-Century Modernaires* buy, sell, design, and preserve their homes is my joy and passion. Call, email, or DM me today, and let's talk about your mid-mod dreams!


303.219.0629

COMidModHomes.com

Adrian Kinney

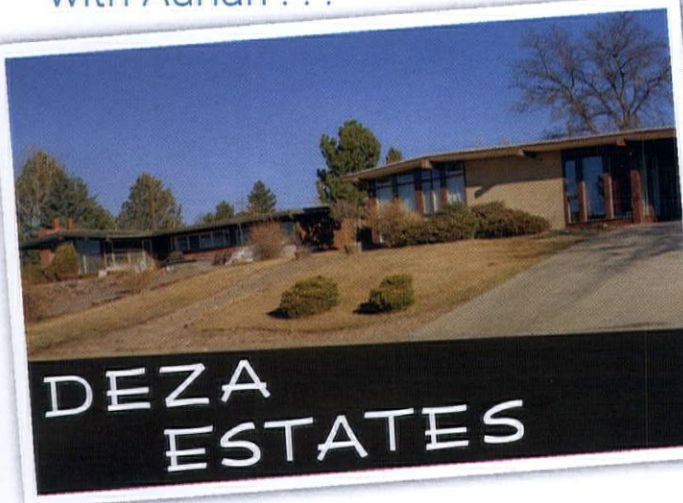
Broker Associate | Resident Realty

Adrian.Kinney@gmail.com

 [FB.me/MidCenturyRealEstate](https://www.facebook.com/MidCenturyRealEstate)

 [@COMidModHomes](https://www.instagram.com/COMidModHomes)

Get to know Denver's
Mid-Mod Neighborhoods
with Adrian . . .



99th & Huron, Northglenn, Colorado

Deza Estates is a small enclave of semi-custom mid-century modern houses built high on a ridge with spectacular views of downtown Denver and the mountains beyond. According to the developer, H. A. Swanson & Associates, "deza" means "high place" in Navajo. Featured in the 1956 Parade of Homes, houses in the neighborhood are oriented with patios and walls of glass facing the south to maximize views and to take advantage of the winter sun, while deep eaves and mature trees shade the houses in the summer. The Northglenn Historic Preservation Commission is actively working to establish historic protections for this unique neighborhood.

Visit [COMidModHomes.com/Deza](https://www.COMidModHomes.com/Deza) to learn more!


Presenting sponsor of
Denver Modernism Week, coming in August!
[DenverModernismWeek.com](https://www.DenverModernismWeek.com)

Suburban Oasis

Necessary updates
blend seamlessly with
the restoration and
enhancement of original
features in a custom
1957 Colorado home.

By **Lindsay Jarvis**
Photography by **Brian Walski**
Styling by **Elaine St. Louis**





REMOVING A WALL BETWEEN THE KITCHEN AND DINING AREA CREATED AN OPEN FLOOR PLAN WHICH ALLOWS FOR MORE NATURAL LIGHT TO FLOW INTO THE LARGE ROOM. COMPLETELY REDONE, THE GLOSSY DARKER TONES OF THE KITCHEN CONTRAST THE RICH WOOD DÉCOR IN THE DINING ROOM.



A

lready living in a 1955 Cliff May Denver, home,

Danielle and Cole St. Peter were enjoying their recent restorations and midcentury neighborhood of Harvey Park when another home fell into their laps.

"Ultimately we weren't looking. We planned on staying in the Cliff May for a while," admits Cole. However, when their friend Adrian Kinney—a Denver, Colorado, Midcentury Modern real estate expert and specialist—notification about a custom 1957 house in Northglenn, plans began to change. "We came to see it and immediately fell in love," Danielle remembers. "We were ready for another project... We saw the potential here," she continues.

THE SALE

Amazingly, the St. Peters' buying process was contingent upon a string of four off-market transactions. "It was a crazy deal and tested my abilities!" says Adrian, who handled each exchange. Adrian, also a former Cliff May neighbor, shares that, "It was a super stressful time making sure each one was able to move along for the next. But in the end, everyone ended up in the place they wanted, for the price they wanted and on time."

OPPOSITE: "THE DECK IS BASICALLY AN EXTENSION OF OUR LIVING ROOM. NO MATTER THE WEATHER, WE ENJOY SPENDING TIME OUT THERE SURROUNDED BY NATURE," SHARES DANIELLE.

WHILE NOT ORIGINAL, THE FLAT OVERHANGING PORTION OF THE ROOF WAS ADDED DURING A PREVIOUS RENOVATION. THE VISUALLY SEAMLESS ADDITION CREATES THE PERFECT SHADED OUTDOOR LIVING AREA.





ABOVE: WITH NO NEED TO CONVERT THE HOUSE'S MANY SINGLE PANE WINDOWS, DANIELLE AND COLE RELY ON THE COLORADO SUNSHINE TO PROVIDE PLENTY OF WARMTH. ORIGINALLY COVERED IN DRYWALL, WOODEN BEAMS ARE NOW EXPOSED THROUGHOUT THE HOUSE.

OPPOSITE: THE REMOVAL OF A WALL ALLOWED FOR A KITCHEN ISLAND TO BE ADDED, WHILE THE REFRIGERATOR AND SINK WERE RELOCATED TO NEW AREAS. ONCE LINOLEUM AND SALTILLO TILES, THE KITCHEN FLOORS WERE REDONE WITH "RED OAK COMMON #1" HARDWOOD, CONSISTENT WITH THE REST OF THE HOME.

THE MOTIVATOR

Just a week after moving in, the happy news of Danielle's pregnancy meant that renovations needed to be tackled quickly. "The very first thing we did was rip up the carpet. It was old and needed to be done," says Danielle. Drywall was repaired and flooring throughout the house was redone in "red oak common #1," a popular hardwood choice during the midcentury. Danielle and Cole were living downstairs while tackling upstairs renovations mostly by themselves, with Cole's father acting as the general contractor.

THE PAST

Thanks to old photos from long-time previous owners, the Pattersons, Cole and Danielle discovered the stairs leading up to the living room were originally located near the front door. Centrally located since the prior renovation, the couple notes that the stairs create a welcoming invitation up to the living room.

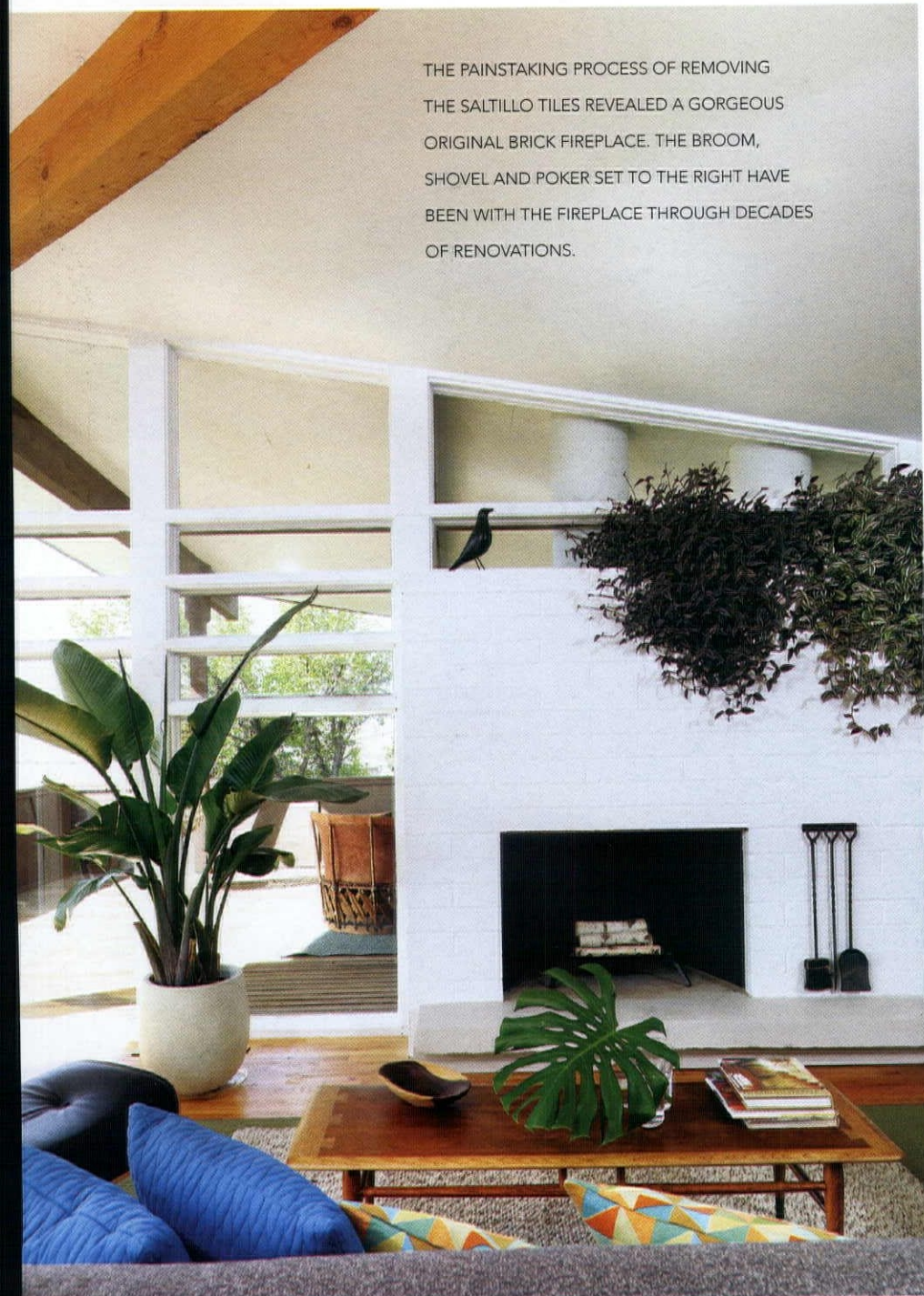


The custom design and thoughtful layout of this 1957 house was a huge draw. **"It is fun to be in a house that is completely unique,"** says Danielle.

THE PAINSTAKING PROCESS OF REMOVING THE SALTILLO TILES REVEALED A GORGEOUS ORIGINAL BRICK FIREPLACE. THE BROOM, SHOVEL AND POKER SET TO THE RIGHT HAVE BEEN WITH THE FIREPLACE THROUGH DECADES OF RENOVATIONS.



ABOVE: SALTILLO TILES AND CARPETING FROM A PREVIOUS RENOVATION WERE REMOVED FROM THE STAIRS AND REPLACED WITH HARD WOOD. AFTER REMOVING UNSTABLE RAILINGS FROM THE LIVING ROOM STAIRCASE, COLE WORKED WITH A WELDER TO DESIGN A NEW RAILING FEATURING AN ELONGATED TRIANGLE DESIGN.





During the house's early years, the Pattersons created shade for the deck by adding a roof which connects seamlessly to the existing house. "We're really grateful for it because now we can truly enjoy the space," states Danielle. "We can use it almost year-round," Cole adds.

WTHE ORIGINALS

While original to the home's design, drywall covered wooden beams throughout the house. "We wanted to expose the beams and let them become an architectural feature as opposed to being hidden by the drywall," shares Danielle. The exposed wood also provides visual breaks in the all-white living room.

Original white brick was revealed after removing Saltillo

tiles from the fireplace, a painstaking task requiring hours of chipping at mortar. Cole remembers it as "very much a labor of love."

THE ENHANCEMENTS

While the kitchen still had some original features—including a pink oven and boomerang countertops—the room needed to be gutted thanks to sixty years of wear. "It was really hard for us to decide to take this kitchen out," Cole admits. To create a truly open floor plan, a divider was removed between the family room and one side of the kitchen, while a wall was removed on the other side to connect the dining room.

Having seen a previous renovation, the guest bathroom

“For us, it’s about **honoring the architecture of the home,**” says Danielle.

SHUTTERS WERE REMOVED FROM THE THREE ASYMMETRICAL WINDOWS, FURTHER ENHANCING THE CLEAN LINES OF THE DESIGN. THIS CLUSTER OF WINDOWS, ALREADY IN THE HOME, IS MIMICKED IN THE NURSERY.





ABOVE: THE VINTAGE HUTCH—ONE OF SEVERAL BROYHILL BRASILIA PIECES FOUND THROUGHOUT THE HOUSE—SHOWCASES CERAMICS MADE BY LOCAL ARTISANS.

RIGHT: REMOVING DRAPERIES, A PRIVACY SCREEN, AND OVERGROWN PLANTS HAS ALLOWED FOR INCREDIBLE VIEWS FROM THE MASTER BEDROOM.

needed a complete makeover. Not only did the couple replace all the fixtures, they reconfigured the floorplan so that the tub could be positioned at the back of the room and the toilet next to the vanity. These changes allowed Danielle and Cole to gain a little over a foot of space to the master bath, which is located on the other side of the wall.

THE OASIS

Removing large draperies and an overgrown juniper bush cleared the



VINTAGE CURTIS JERE BIRDS SOAR ABOVE A RARE BROYHILL BRASILIA BOOKCASE HEADBOARD AND MATCHING SIDE TABLE.

OPPOSITE LEFT: EXPOSED WOODEN BEAMS PROVIDE VISUAL BREAKS IN THE WHITE LIVING ROOM. AFTER PICKING UP A FREE PIANO ON CRAIGSLIST, THE MUSICALLY INCLINED FAMILY HOPES TO LEARN THE INSTRUMENT ONE DAY.



"In our bedroom, we just see the junipers and the trees, and **it does feel like a little oasis** even though we're in the suburbs," says Danielle.

FOR MORE, VISIT
POSTANDBEAMLIVING.COM



ABOVE RIGHT: BLUE LINOLEUM FLOORING AND BLACK STICK-ON TILES WERE REMOVED DURING THE GUEST BATHROOM'S COMPLETE REFRESH. RELOCATING THE TOILET ALLOWED FOR EXTRA ROOM IN THE MASTER BATHROOM, LOCATED ON THE OTHER SIDE OF THE WALL.

RIGHT: A CLASSIC EAMES CHAIR AND OTTOMAN SITS BELOW AN ARC LAMP TO CREATE THE PERFECT SPOT FOR RELAXATION.



incredible window work in the master bedroom, allowing for outside access and mountain views. "In our bedroom, we just see the junipers and the trees, and it does feel like a little oasis even though we're in the suburbs," describes Danielle.

Living happily with baby Tabor and Sidney the dog, Danielle and Cole have plans to tackle the basement next. Hoping to continue the Pattersons' master gardening legacy, the couple looks forward to sprucing up the front yard as well. 🌿

“When you respect architecture so much, there’s definitely a lot of pressure when you make substantial changes to a home.”

ORIGINAL MAHOGANY-FRAME
WINDOWS LOOK OUT OVER A
CITY PARK ACROSS THE STREET
AND FLOOD THE MAIN LIVING
ROOM WITH NATURAL LIGHT.



Portland Puzzle

By Leslie J. Thompson
Photography by Vanessa Weber
Styling by Rachel Jacks

With a little imagination, an unusual midcentury floorplan is adapted for modern living.



R

RENOVATING A HOUSE BUILT IN THE 1950s CAN BE TRICKY. On one hand, Midcentury Modern enthusiasts often want to preserve the original footprint and design elements that were unique to the post-war era. On the other hand, a home should be conducive to modern living.

"With the major remodel, I did my best to give a nod to the original midcentury design, even though we took a lot of it down to the studs," says Beth Williamson of her split level house in Portland's Concordia neighborhood.



Built in 1954, the house is one of the few midcentury properties to be found in northeast Portland.

OPPOSITE: WHITE OAK FLOORS CONNECT THE LIVING ROOM, KITCHEN AND DINING AREA, PROVIDING A NEUTRAL PALETTE FOR THE NEWLY RENOVATED SPACE. WALNUT CABINET DOORS AND DRAWER FACES FROM SEMIHANDMADE ADD MIDCENTURY FLAIR TO BASIC IKEA CABINETS. THE FIREPLACE WAS OPENED ON BOTH SIDES TO FURTHER CONNECT THE LIVING AND EATING AREAS.



THE KITCHEN'S BACKSPLASH BECOMES A FOCAL POINT
THANKS TO THE BRIGHT HUE AND MOD SHAPE OF FIRECLAY
TILE'S "SMALL DIAMONDS-ESCHER" DESIGN IN AZURINE.









Beth and her husband Seth Berman lived in the property for three years before finally committing to a renovation, and even then, they nixed two designers before bringing in architect Risa Boyer.

"They were really debating whether they should move or stay," says Risa, who has remodeled several midcentury homes in the area. She encouraged Beth to go with her gut on her design choices and collaborated with her on adapting the home to the couple's lifestyle.

MODERN FLOW

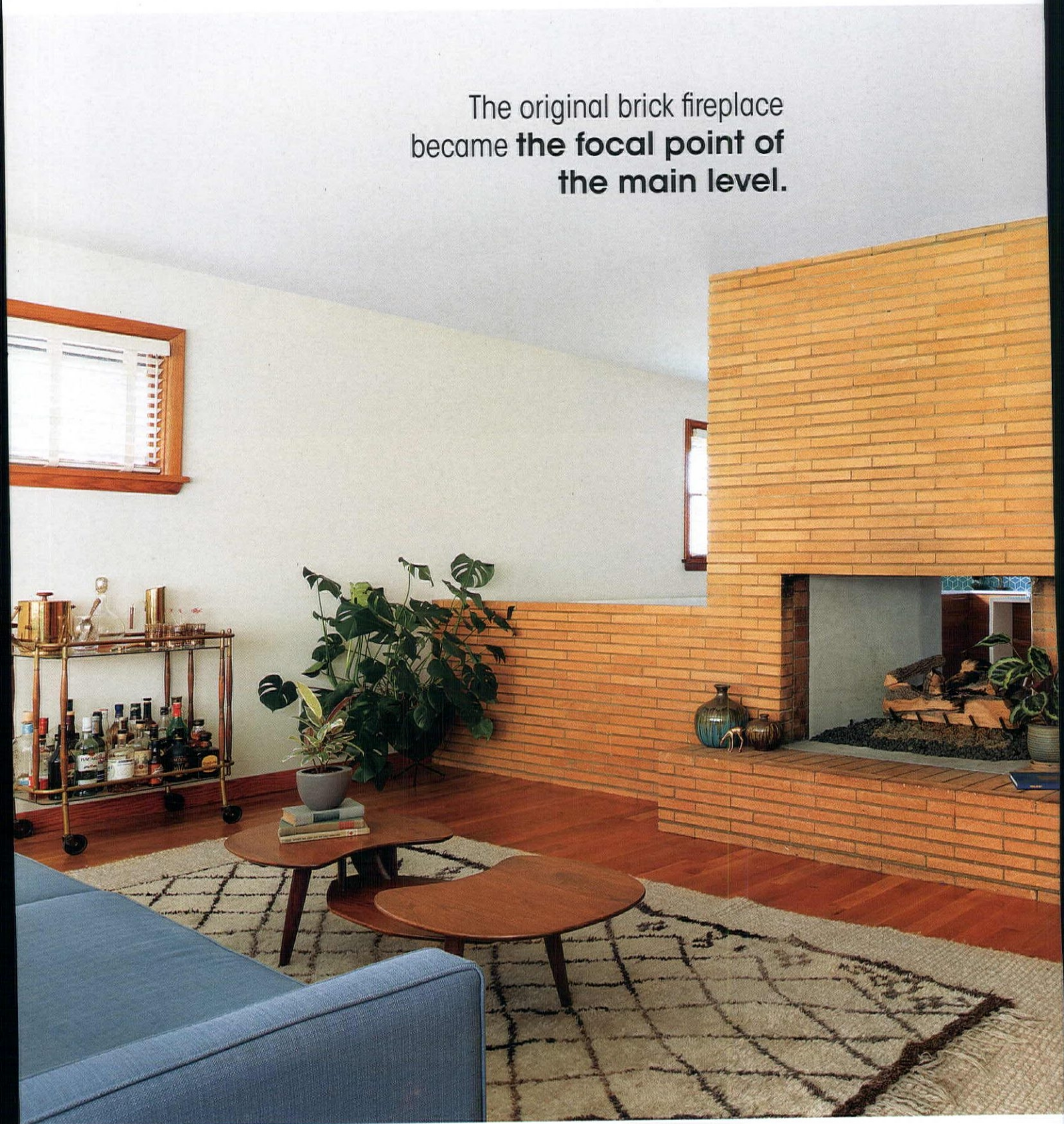
The focal point of Beth's vision was preserving the original brick fireplace in the living room at the front of the house. "We didn't have that ridiculous of a budget, so I had to really consider what was important to me," she says. But amending the floor plan to create a more open space was challenging. Although technically a split-level house, the home is divided lengthwise into four living areas. Adding to the layout puzzle, a rogue bedroom



RENOVATIONS INCLUDED REMOVING PART OF THE ORIGINAL FIREPLACE WALL TO CREATE VISUAL FLOW BETWEEN THE DINING AREA AND LIVING ROOM.

OPPOSITE: HEXAGONAL FLOOR TILE AND WALNUT CABINET DOORS HELP CREATE THE PERFECT MID MOD AESTHETIC IN THE NEWLY RENOVATED MASTER BATH.

The original brick fireplace became **the focal point of the main level.**





separated the kitchen and dining room from the living room on the main floor.

"For me to stay in the house, I needed better light, I needed a more modern flow," Beth says. They chose to move the kitchen and dining area to the center of the house, and to remove a section of the brick fireplace to make the entire space more cohesive. The homeowners hesitated at gutting the kitchen, which featured stunning plasterwork done by hand from the previous owner, but Beth held fast to her vision. "I felt that if I did that well enough and kept some nods to the midcentury, I was improving the house and not taking away from its original character," she says.

These nods include installing custom walnut doors and drawer fronts on Ikea cabinets, and white Caesarstone on the kitchen countertops with a waterfall edge island. A glass Atos dining table flanked by a walnut bench and modern wire dining chairs create a clean, minimalist aesthetic while providing a welcoming gathering place adjacent the living room.

NEW BEGINNINGS

The original dining room, meanwhile, has been reimagined as a nursery (the couple are expecting later this year). A built-in china

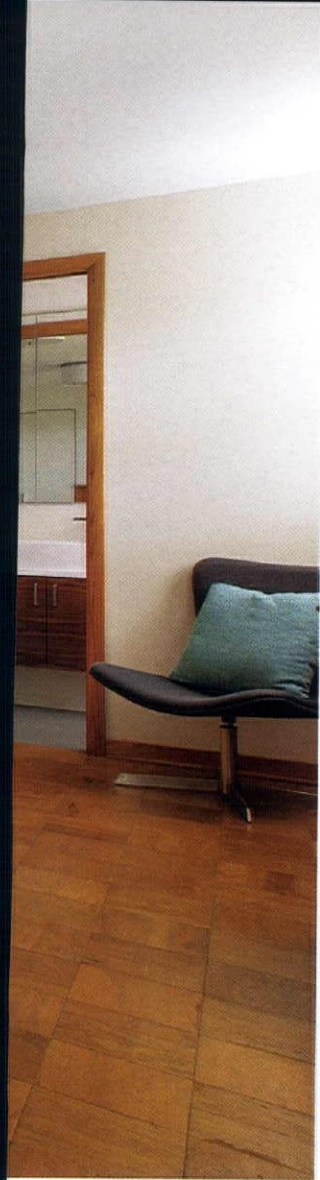


“We didn’t have that ridiculous of a budget, so I had to really consider what was important to me.”

cabinet will be used to house baby clothes and stuffed animals, Beth says. The kitchen on the northeast corner of the house was converted into a den that also doubles as the home’s main entry. “Down the road, I foresee it being the play room. Right now, my dog controls that room,” she laughs.

Upstairs, the homeowners expanded the half-bath attached to the master bedroom, while operating within the confines of the area’s peculiar layout. “We were working with a 42-inch wide space, so we had to get creative,” says Risa, who maximized the square footage by adding a pocket door across from a narrow vanity. She positioned the shower at one end of the bathroom and the toilet at the other. A large three-section mirror above the sink helps brighten the room, while walnut cabinets and hexagon floor tiles pay homage to the home’s midcentury roots.

Although the homeowners had to make due with a clunky layout for several years before saving enough for their desired renovations, they feel the end result was well worth the wait. “When you respect architecture so much, there’s definitely a lot of pressure when you make substantial changes to a home,” says Beth, who hopes to spend many more years in the newly refreshed midcentury abode. She adds, “Finding Risa was huge in helping us visualize this home in a more modern, functional way. We’re pretty proud of what we did.” ❀



LEFT: NO RENOVATIONS WERE NEEDED IN THE MASTER BEDROOM, WHICH STILL HAS THE ORIGINAL PARQUET FLOORING AND MAHOGANY-FRAMED WINDOWS.

BELOW: THE HOME'S NEWLY RENOVATED MAIN ENTRY DOUBLES AS A DEN, WITH ADDED SEATING FOR ENTERTAINING. THE BUILT-IN UNIT PROVIDES A HANDY PLACE TO STASH OUTERWEAR.



Midcentury Minimalist

Designing a new kitchen for a midcentury home is no small task—but this refreshing take may set a new standard.



By **Stephanie Agnes-Crockett** | Photography by **Spacecrafting**
Interior design by **Kristin Rackner, Studio Vice and Kimberly Scanlon, Vela Creative**

FOR THE RENOVATION of a 1959 Minneapolis, Minnesota kitchen with functionality at the core of its design, highlighting its Midcentury Modern aesthetic was an absolute must. Designers Kristin Rackner and Kimberly Scanlon, formerly of Crush Collective, collaborated with the homeowners, the Taylors, to recreate the space.

According to Kristin, the team renovated with three goals in mind: "To respect the integrity of the architecture and its time period, to integrate the homeowners' love of Scandinavian design and, most importantly, to make the space function for a busy family with three young girls."



MRS. TAYLOR SLICES INTO AN AFTERNOON SNACK WHILE TWO OF HER DAUGHTERS OBSERVE. THE SHORT ISLAND COUNTER ENABLES THE YOUNG GIRLS TO WATCH THEIR MOM PREPARE MEALS. THE MATCHING WHITE CHAIRS OFFER SEATING FOR FOUR, AND THE CENTRALIZED SINK MAKES FOR EASY CLEAN-UP.

STRATEGIC STRUCTURE

"Honoring the history of the home is always a priority when working on an original Midcentury Modern project," Kimberly says. For this project, according to Kristin, that meant "working within the parameters of numerous architectural constraints. An existing stairwell, two large openings leading to the atrium and dining

room, a large span of windows and the hidden bar all needed to remain."

At the same time, the designers did make some structural changes, like removing the doorway to the patio. "While it was convenient for bringing in groceries, it also made for a confusing first approach to the home," Kimberly says. "There is always a leap of faith a client must take. For the Taylors, this was it."



LEFT: MIDCENTURY MODERN DÉCOR THRIVES ON VARIED TEXTURES AND LINEAR ALIGNMENT. THIS KITCHEN, WITH ITS WHITE PANELED STORAGE CABINETS AND SHINY APPLIANCES, INCORPORATES HARDWOOD FLOORS, EXPOSED CEILING BEAMS AND EVEN BRICK. "THE ORIGINAL BRICKWORK WAS PRESERVED AND ADDS A GROUNDING TEXTURE TO THE SPACE," KIMBERLY SAYS.

OPPOSITE BOTTOM: EVERY SPACE, EVEN THE SEEMINGLY BLANK ONES, SERVES A PURPOSE. THE WOODEN SIDEBOARD PROVIDES ADDITIONAL STORAGE SPACE, AND THE HIDDEN BAR AREA IS EQUIPPED TO SERVE UP ANY BEVERAGE. AS YOU CAN SEE, THE ORIGINAL ARCHITECTURE OF THE KITCHEN INCLUDED A PERFECT ENCLOSURE, MASKING THE BAR FROM THE REST OF THE ROOM.



ABOVE: THE FUNCTIONAL KITCHEN-LOUNGE AREA EASILY ACCOMMODATES THE FAMILY OF FIVE. "THE CLIENT LET US KNOW RIGHT FROM THE START THAT THE KITCHEN WAS A GATHERING PLACE FOR THEIR FAMILY," KIMBERLY EXPLAINS. "IT WAS A MAJOR PRIORITY TO HAVE SPACE FOR THEIR THREE GIRLS TO BE IN THE KITCHEN WITH MOM AND DAD."



RIGHT: CLEAN WHITE CABINETS CONCEAL A VARIETY OF APPLIANCES AND NECESSARY ODDS AND ENDS. "THE KITCHEN IS RICH WITH FUNCTIONAL STORAGE OPTIONS," KIMBERLY SAYS. "FROM A CLOSED-DOOR MAIL CENTER AND POP-OUT DOOR DOGGIE STATION TO THE CONCEALED COFFEE STATION. EVERYTHING HAS ITS PLACE AND CAN BE OUT OF SIGHT TO MAINTAIN A MINIMALIST APPEAL."

BELOW: CONSIDER INTRODUCING COMFY SEATING TO YOUR MID MOD COOKING SPACE. "IT WAS VERY IMPORTANT TO THE HOMEOWNERS THAT THERE WAS LOUNGE SEATING IN THE KITCHEN FOR GUESTS TO SIT WHILE [THE HOMEOWNERS] WERE COOKING OR JUST SPENDING TIME IN THERE," KRISTIN SAYS. "THEY WANTED IT TO BE ANOTHER SPACE FOR GUESTS TO SOCIALIZE WHEN THEY HAD LARGE PARTIES."



Cooking up a *Design*

For Kristin and Kimberly, the design process truly is a process. Consider these factors as key "ingredients" in your recipe for mid mod success.

- **THE PEOPLE.** It's important to consider what Kristin calls the "human experience." Who's going to be living in the space you're decorating, and how can you tailor that area to fit their needs? As Kimberly points out, "We are all in need of a haven from the chaos of daily life."
- **THE LIGHTS.** Lighting might not be at the top of your renovation to-do list, but its importance cannot be overemphasized. Your lights, in addition to contributing to the room's décor, also determine how you'll see that décor. Change up your fixtures and you might just see your space in a whole new light.
- **THE DETAILS.** Get creative with the small stuff! Whether you're deciding on a unique trim for your hanging shelves or an accent color for throw pillows, a little forethought and coordination can go a long way.

STREAMLINED STATEMENT

To embrace midcentury design, Kristin and Kimberly chose to incorporate certain hallmark characteristics. Traditional features, Kristin says, include "suspended shelving, long linear lines, a mix of soft and hard materials and bringing nature indoors." The designers also crafted a functional space with what Kimberly dubs, "a place for everything."

For a family environment to accommodate five, the homeowners planned plenty of seating and decided to shorten the center island to better serve their children. "It was a major priority to have space for the Taylors' three girls to be in the kitchen with mom and dad," Kimberly says. ☯



Thoughtful Design. Built for Generations.

huntandnoyer.com | 313.731.2485 | Detroit, MI | @huntandnoyer



...BY
DESIGN
MØDERN
scandinavian
mid-century modern

bydesignmodern.com • Vancouver, Canada • 604.876.5215



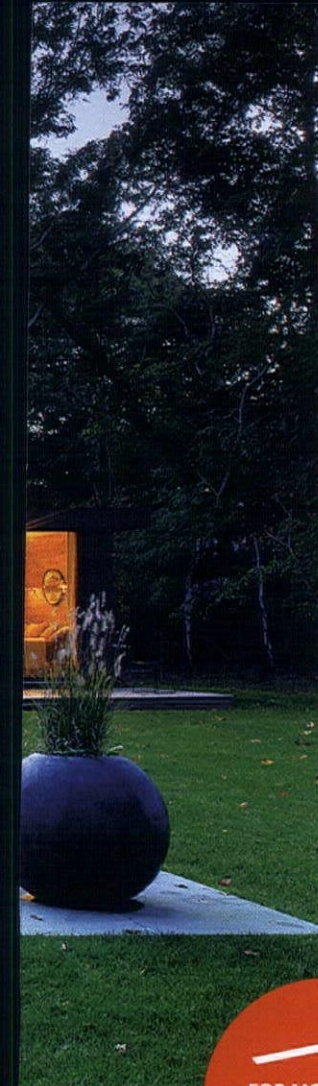
The Art of Escaping

An unassuming kit house
is transformed into a
tranquil modernist retreat.

By Sarah Jane Stone
Photography by Bates Masi + Architects

NESTLED IN AN IDYLIC WOODED NEIGHBORHOOD ONLY A HALF MILE FROM THE BAY, this 1960s kit house in Amagansett, New York, offers all that you would expect of a midcentury weekend retreat—and then some.

“The frequent turnover within a vacation community can be wasteful. Some are eager to tear down what exists and start new,” says architect Paul Masi, of Bates Masi + Architects. “This project preserved the skeleton of the house and the history in the patinated materials that the client desired. Conventional materials were utilized in new ways to unify the old and the new.”




In planning the renovation, the client's design aesthetic was married seamlessly with the home's post and beam construction. "The clients, DJ Victor Calderone and interior designer Athena Calderone—who worked on the home—gathered images of objects and conventional materials utilized in new, interesting ways as inspiration for the design," says Paul.

Their goal was to find a single design solution that could unify the home's original spaces and aesthetic with the new. "A vocabulary was developed that allowed the patina and history that the client favored to remain and new experiences to evolve," he shares.

What would such a solution be? "Between the existing ceiling joists, natural rope was woven through a digitally fabricated framework with weaving patterns used to signify different ceiling conditions," says Paul. Lighting penetrates a crossed weave while a straight weave shields speakers and utilities from view. "Since the client is a DJ, sound is very important. The rope weave acts as an acoustic baffle absorbing background noise but allows music from the ceiling-mounted speakers to be emitted," says Paul.

Unifying the exterior is a dark-stained cedar siding. It encompasses the entire home—wrapping all of the exterior facades and transitioning seamlessly into the matching frames of the replaced windows and doors. "Behind a sheet of glass, reclaimed wood lines the shower surround and one feels as though they are showering outdoors," shares Paul.

The sprawling home fits four bedrooms and three bathrooms into its 2,400 square feet. With an ease of flow between the interior and exterior spaces the home breathes effortlessly—inviting life both within its carefully restored walls and outside of them. 



FOR MORE, VISIT
ATOMIC-RANCH.COM.





ANOTHER WALL-MOUNTED VANITY LOCATED IN LAKEWOOD, WASHINGTON HAS VESSEL SINKS THAT CONTRAST AND LOWER THE HEIGHT OF THE CABINET, ADDING DIMENSION TO THE SPACE.

Creatively Custom

Look no further for cabinets that boast midcentury style without compromising on smart, functional bath design.

By **Camellia Ghotbzadeh**
Photography courtesy of **Kerf**

WHEN YOU THINK OF MIDCENTURY MODERN STYLE, functionality and quality through design likely come to mind. Nathan Hartman offers exactly this to his clients with his custom cabinet and design company, Kerf Design.

A CHANGE IN SPACE

According to the New Englander, Nathan grew up in an environment where "People were doing things themselves," and was exposed to the do-it-yourself mentality early on. After graduating from the Rhode Island School of Design with a degree in industrial design, Nathan moved to Seattle, Washington and created his company.

THE BATHROOM IN A JOSEPH EICHLER-BUILT HOME IN SUNNYVALE, CALIFORNIA FEATURES A WALL-MOUNTED VANITY THAT MAKES FOR EASY CLEANING, FUNCTIONAL DESIGN AND DISTANCE FROM EXPOSURE TO WATER FROM BELOW.

Started in 1999, Kerf Design began as an experiment to “make simple furniture” but it grew into a custom-furniture and cabinet company that combines Midcentury Modern style with their personalized services, as well as a unique aesthetic that stems from a love of plywood and plastic laminate.

MIDCENTURY SHIFT

What first drew Nathan to midcentury style was its transformative character. Coming from a background “where everything needed to be 200-years-old to be good”—over the course of his time in Seattle, Nathan began working on furniture and expanded his creative horizons. Eventually finding interest in Midcentury Modern style and design concepts, now his projects are mostly residential and his team focuses on custom-made cabinets for kitchens and bathrooms. Functionally-designed, sleek bathroom vanities are particular staples of their work.

When designing a bathroom, Nathan and his team approach the task like any other project. Looking to the space itself for areas and design opportunity, the Kerf team partners with clients by adding suggestions to their needs and vision to create a uniquely designed space perfectly suited for the client.

A functional bathroom doesn't have to mean a lack of character, and a charm-filled bath doesn't have to mean sacrificing your smooth morning routine. True Midcentury Modern style celebrates the function of design—much like Kerf's custom cabinetry. With just a little imagination, retro style can blend seamlessly with a mod bathroom renovation. ☻

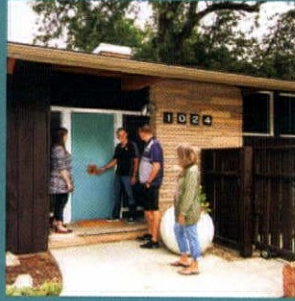


Design Checklist

GIVE YOUR BATHROOM SOME EXTRA ATTENTION WITH SIGNATURE MIDCENTURY MODERN ELEMENTS THAT ARE SURE TO MERGE FORM AND FUNCTION.

- 1. OUT IN THE OPEN.** Incorporate open shelving into your bathroom to showcase everyday essentials—like folded towels or a basket of extra paper goods—for stylish organization.
- 2. POPS OF COLOR.** Whether it's with a painting on a wall or an accent color on the vanity, a little color can go a long way in paying homage to the bright baths of the midcentury era.
- 3. LARGE MIRRORS.** Add depth and dimension to your getting-ready space by mounting a large clean-lined mirror.
- 4. WORK IN WOOD.** It is no secret that wood is an iconic element of midcentury design. Its masculine yet refined appeal can create an eye-catching bathroom design.
- 5. A TOUCH OF TILE.** Add that extra edge of mid mod personality with a unique tile backsplash.

BOISE'S
DOORS
ARE ALWAYS
OPEN...



JUST ONE
CLICK AWAY.



By Moniker Real Estate

In one of the most livable cities in America, we make mid-century dreams come true: big skies, rolling foothills, miles of river, a thriving downtown, great schools, and mid-century homes at attainable prices. All this is possible in Boise: let our team of experts show you how.

TOUR BOISE GEMS LIKE THESE AT MID-CENTURYHOMES.COM



AUTHENTICITY + CRAFT
essential elements for timeless design



ATOMIC TILE.COM



***Vintage Car and
Home Audio
Restorations***



805-704-2278

sandhurstelectronics.com

Style by **Design**

New cabinets meet vintage
treasures in a blogger's
carefully curated kitchen
and dining room.

PLANK GRILLING
Sunset Edible Garden Cookbook
Sunset GRILL
THE FRENCH LAUNDRY THOMAS ALLIER



By Jillian Chapman | Photography by Bret Gum | Styling by Annette Vartanian





ANNETTE AND ALAN OPENED UP THE WALL SEPARATING THE KITCHEN AND DINING ROOM TO GIVE A MORE OPEN FEEL TO THE AREA. THE NEED FOR A VENT HOOD OVER THE STOVE POSED A POTENTIAL AESTHETIC PROBLEM, SO INSTEAD OF GOING WITH A TRADITIONAL OPTION, ANNETTE DECIDED ON ONE THAT DISAPPEARS INTO THE CABINET STRUCTURE. "THIS WAS A REALLY IMPORTANT DESIGN CHOICE THAT ALLOWED FOR SOMETHING PRACTICAL AND FUNCTIONAL BUT STILL WORKS WITH THE DESIGN," SHE SAYS.



LOCATED IN PASADENA, CALIFORNIA,

it is hard to believe that this stunning 1959 custom-built home was once a daunting fixer-upper. Thanks to Annette Vartanian's eye for interior design and her husband Alan's architectural background, their Midcentury Modern dream was soon realized.

"The place was a hoarder's paradise," says Annette. Through all the clutter they saw the home's amazing architecture—boasting an inviting and open floor plan, large windows and a wide outdoor deck—and fell in love. "No one else saw the potential, but we did," Annette reminisces. With a can-do attitude the couple bought their dream home and began the process of renovations and touch-ups.

"Ultimately what we wanted to do with our Midcentury Modern look was to maintain the integrity of the house but update it to our modern lifestyle," Annette says.

OPPOSITE LEFT: WHAT WAS ONCE AN OPEN PLANTER IN THE HOME'S ENTRY IS NOW A WELCOMING BENCH, THANKS TO A WOOD SLAT COVER MADE BY ALAN.

OPPOSITE RIGHT: TO KEEP WITH THE ORIGINAL AESTHETIC OF THE KITCHEN ANNETTE CHOSE WALNUT HORIZONTAL GRAIN FRONTS FROM SEMIHANDMADE AND PAIRED THEM WITH THE KITCHEN'S ORIGINAL KNOBS AND PULLS.



BIG RENOVATIONS

With this in mind, they began to renovate the home, starting with the kitchen. Annette describes the original as, “dark, dingy and frankly, really gross.” In order to pay homage to the dark wood cabinetry from the original kitchen while adding some much needed brightness, the couple opted for Ikea cabinets with walnut-finish fronts from Semihandmade. The dark toned cabinets are paired with white counters and a white backsplash.

The floorplan was kept much the same. The refrigerator was the only appliance moved—swapping walls for easier accessibility. Annette, as well as the previous owner, loves to entertain. To suit their lifestyle and give a nod to the last owner, the couple decided to open up part of the wall that previously separated the kitchen from the dining room. The change better connects the space to the dining room and increases the available natural light. “Now we can continue that tradition of hosting parties,” says Annette.

Custom Kitchen

WITH THE HELP OF SEMIHANDMADE, ANNETTE WAS ABLE TO CREATE THE CUSTOM MIDCENTURY KITCHEN SHE'S ALWAYS WANTED—FOR A FOURTH OF THE PRICE.

When Annette first began to tackle the kitchen, she met with a carpenter to discuss a custom space. Discouraged by the price, she researched other options and discovered Semihandmade. “It was the obvious choice,” she says.

Founded in 2011 by John McDonald, Semihandmade specializes in creating custom doors, shelves and other accessories to fit Ikea cabinets. Their process allows for a custom space at a fraction of the cost. “With Semihandmade we could get a Midcentury Modern feel but in a fully modern kitchen that’s functional for our family,” Annette says.

For John and Semihandmade it’s been a wild ride. The company has landed on Inc. Magazine’s list of 1,000 fastest-growing private U.S. companies every year since 2015. Semihandmade has spread through word-of-mouth and its strong social media presence and continues to grow. “It’s been a blast,” John says.



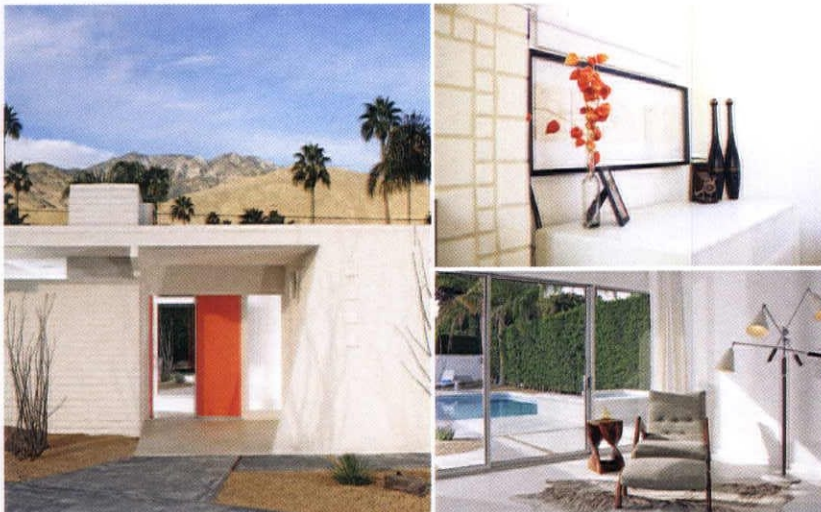
BELOW: THE STUNNING JOHNATHAN ADLER MAURICE CHANDELIER SERVES AS A STATEMENT PIECE IN THIS OTHERWISE NEUTRAL SPACE. THE LARGE RUG BRINGS A VINTAGE LOOK TO THE SPACE THAT CONTRASTS NICELY WITH THE SLEEK DESIGN OF THE REST OF THE ROOM.



ABOVE: AFTER A YEAR OF SEARCHING, ANNETTE FINALLY FOUND THE PERFECT BACKSPLASH THANKS TO FIRECLAY TILE'S SMALL DIAMOND DESIGN. THE TILE WAS INSTALLED AFTER THE KITCHEN HAD BEEN OTHERWISE COMPLETED, BUT SHE SAYS, "IT WAS WORTH THE WAIT!"



While Terrazzo was their ideal flooring choice, at a hundred dollars per square foot, it wasn't plausible. Instead, Annette chose a similar material with the same period-appropriate charm—white quartz stone tile flecked with silver and grey, which was only four dollars per square foot. The flooring stretches from the entry through the kitchen, but transitions to hardwood in the dining area. The original flooring was a worn laminate, so Annette and Alan traded it out for chestnut-stained wood. ☸



Modern &
Midcentury Interior
Design Specialists

Seattle & Palm Springs | modernous.com

atomic ranch
Modernist Beats

Feelin' Swanky?

Liven up your next cocktail party with our Modernist Beats playlist. Tune in at atomic-ranch.com/modernistbeats today!

MODERN
Mailbox

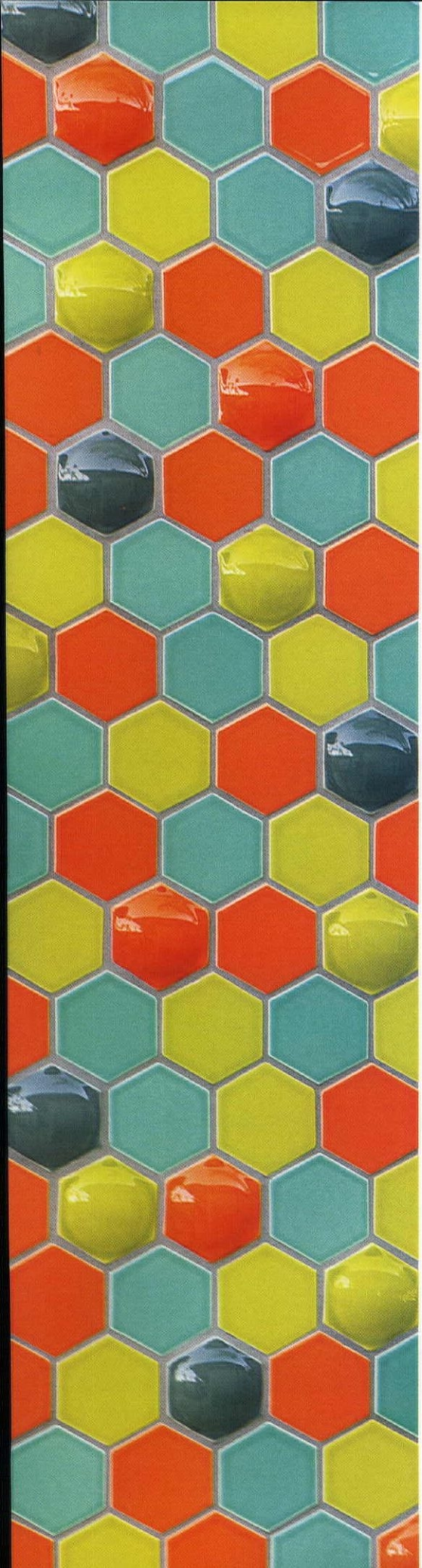
modern-mailbox.com | Handmade in the USA

MODERN
Light Switch

modern-lightswitch.com | 208-340-7597

MAC GEORGE ART PRINTS

macartprints.com



By **Camellia Ghotbzadeh**
Photography courtesy of **Clayhaus**

TILE DONE *Right*

Are hexagon tiles for me?
Is the subway tile look “midcentury” enough?
What about bubbles? Get all your tile
questions answered by the pros at Clayhaus.

ARTISANAL MAY NOT BE

the first word you’d associate with tile, but for a company influenced by Bauhaus design, nothing could be more fitting. Clayhaus founders Jason and Megan Coleman produce handcrafted, ceramic tile that combine Midcentury Modern style with artistic techniques—resulting in uniquely beautiful and entirely mid mod tiles.



Get the Lowdown on *Tile Selection*

Clayhaus offers tips and insight to find the perfect tile for your home.

1. Choose a tile that compliments your space and adds to, not overwhelms, your design.
2. Do you want your tile to be the focal point or the backdrop to other pieces? Whatever you decide, keep location and scale in mind, and visualize how they factor into the overall look.
3. "When shopping for handmade ceramic tile, allow for budget and lead time," Megan explains. To avoid the tragedy of running out of tile due to improper cuts or other installation mishaps, she suggests ordering 10-15% extra.



FROM THEN TO NOW

"Our products reflect the style and architecture of the Midcentury Modern era as well as the Bauhaus period that was popular in the 1920s and 30's," says Megan.

"Ceramic tile was the preferred building product at that time and especially during the housing boom of the 1950s," she explains. Colorful tiles were produced in an array of hues—with pink, mint green and pale yellow among the most popular options. Today, Clayhaus is taking a similar approach with their geometric and colorful designs. Drawing inspiration from atomic era tile

TOP RIGHT: YELLOW TILES IN "HALF-HEXAGON PATTERN B" SERVE AS THE BACKSPLASH FOR A DESIGN PROJECT BY CLAYHAUS. NOT ONLY DOES IT ADD A PLAYFUL ELEMENT TO THE SPACE, BUT ALSO CREATES A WARM AND CHEERFUL ENVIRONMENT WHEN PAIRED WITH THE WALNUT-TONED CABINETRY.

ABOVE RIGHT: A FITTING SHADE OF BLUE FOR A MIDCENTURY KITCHEN, AQUA TILES PAIRED WITH WHITE SHELVING BRIGHTEN THE SPACE BY CONTRASTING THE CABINETS.


"We differentiate ourselves because **we're known for our color.**"



WITH VIBRANT-COLORS AND EYE-CATCHING TILE DESIGN, AN OUTDOOR SHOWER CAN MAKE YOUR OWN BACKYARD THE ULTIMATE DESTINATION.



trends as well as pop art figures such as Andy Warhol and Victor Vasarely, their designs offer a fresh take on a kitchen and bath staple.

With dimensional designs, sheeted mosaics and a variety of collections, Jason and Megan take tiles to the next level in kitchens, bathrooms and beyond. "When it comes to kitchens or bathrooms, it's all in the eye of the beholder and up to the individual taste," says Megan. 

Background on *Bauhaus*

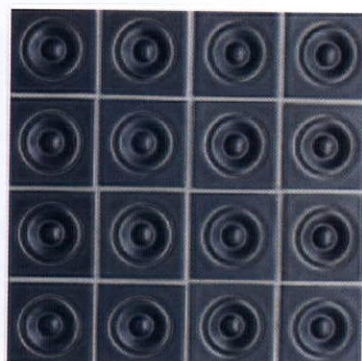
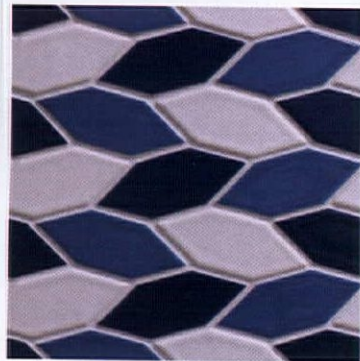
Learn about the major influence behind Clayhaus' artistic tiles.

THE TILE COMPANY, CLAYHAUS, takes its name from a prominent school and artistic movement. Bauhaus (German for "house of building") was a modernist art school founded in 1919 in Weimar, Germany. The institution stressed uniting the arts and industrial design with emphasis on practical skills, craft and techniques.

Combining elements from fine arts and design education, students were immersed into specialized workshops such as pottery, wall painting and metalworking, in order to stress the importance of designing for mass production. During World War II, many of the key figures of the Bauhaus school, such as Walter Gropius and Marcel Breuer, immigrated to the United States where they continued to foster the movement both in Europe and the United States, which reunited creativity and manufacturing through design.

Today, the movement is widely accepted and nearly every academic art curriculum includes courses that use the Bauhaus model, which features fundamental elements of design.

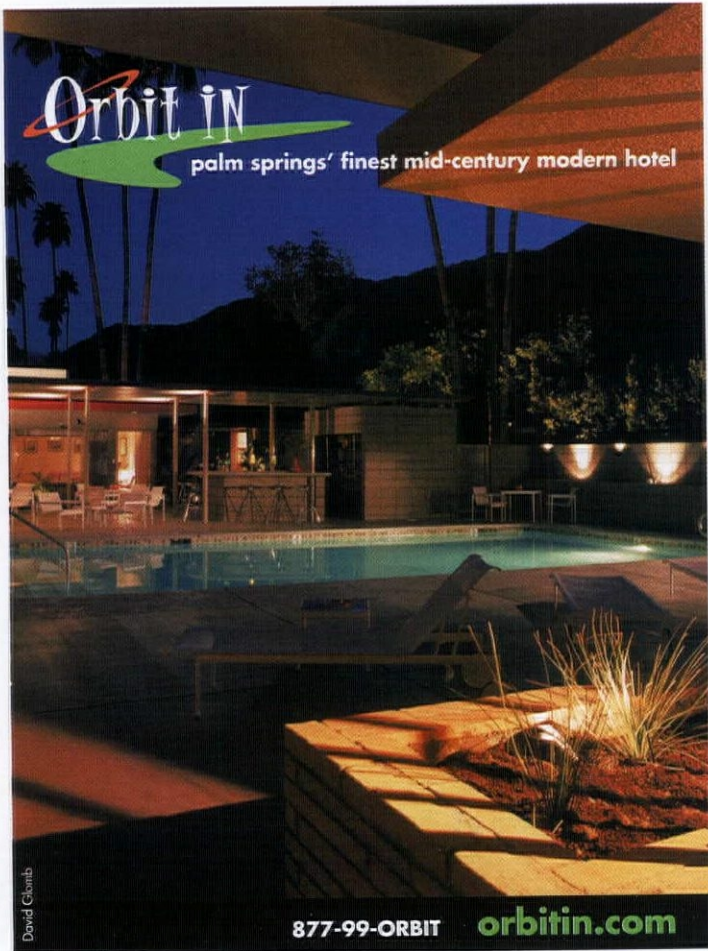
For more, visit clayhaustile.com.



WE
LOVE
COLOR.



www.clayhaustile.com | order direct at 503.928.3076
HANDCRAFTED TILE MADE IN PORTLAND, OR



Hip Haven

RETROMODERN LIGHTING + ACCESSORIES

HIPHAVEN.COM | 512-462-4755

CALIFORNIA MODERN WOODWORKS

310.469.3404
CALIFORNIAMODERNWOODWORKS.COM

glitter laminate.

We have

- Countertops.
- Furniture.
- Panels.

makeitmidcentury.com

Make it MID-CENTURY



Modtraveler.net

An Enthusiast's Guide to Modernism

Make it Modern with ModCraft Tile



MODERN MATCHMAKER

Does Mid-Century Design make you sit up and take notice? **Call me** and I will help you find a house for this chair where you will both feel at home.



ED MURCHISON
midcenturymoderndallashomes.com

214.395.7151 | emurchison@virginiacook.com



retro
midcentury
modern
mailboxes



modboxUSA

Design inspired by mailboxes from the 50s and 60s that complements your home's midcentury aesthetic.

modboxusa.com

919.781.8403

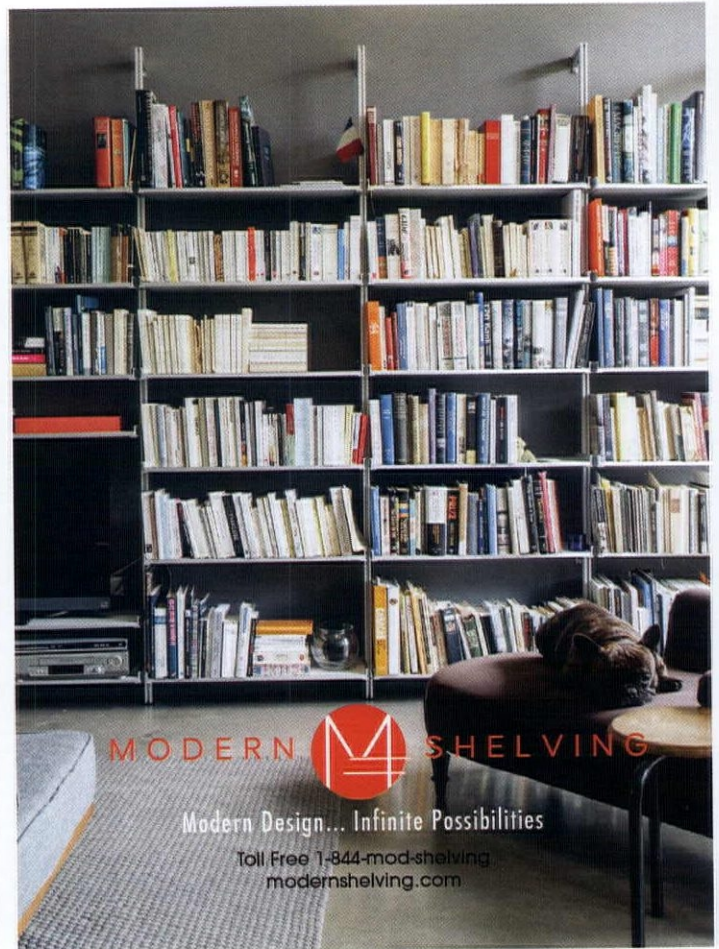
COOLSVILLE

NEW VERTICAL MOD MOBILES BY
AtomicMobiles.com



AtomicMobiles.com
atomicmobiles@gmail.com | 323.640.0003

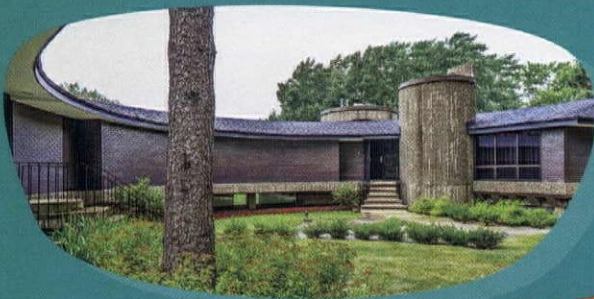
20% off code:
ATOMICRANCH



MODERN M SHELIVING

Modern Design... Infinite Possibilities

Toll Free 1-844-mod-shelving
modernshelving.com



Your Chicago-Area
Mid-Century,
Modern & Ranch
Homes Specialist

**MODERN
ILLINOIS**

modernil.com

Lou Zucaro
lou@modernil.com
Broker, Baird & Warner
312.907.4085
754 W. Northwest Hwy.
Barrington, IL 60010

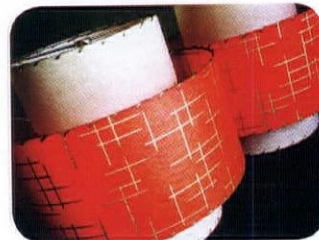
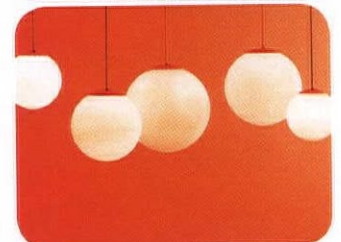


Custom Lampshades and Lighting

Indoor/Outdoor • Sconces • Large Scale Lighting • Globe Pendants
Made to your specifications with limitless options



Moon Shine
LAMP AND SHADE



moonshineshades.com • 830.935.2350

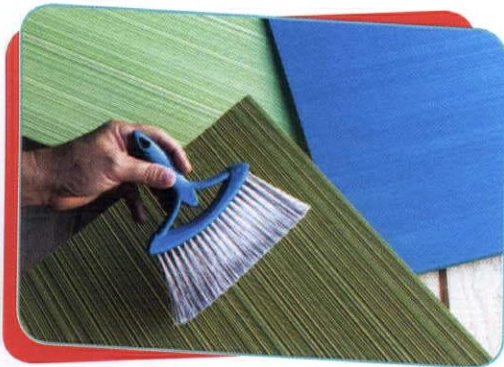


A Division of Eichler Siding

The Cool Combed Panel Back From the Mid-Century-Weldtex

Accent Walls-Siding-Wainscot-Ceiling Tiles

Featured in Starlight Village, Austin



Vintageplywood.com | 415.883.5300 | info@vintageplywood.com



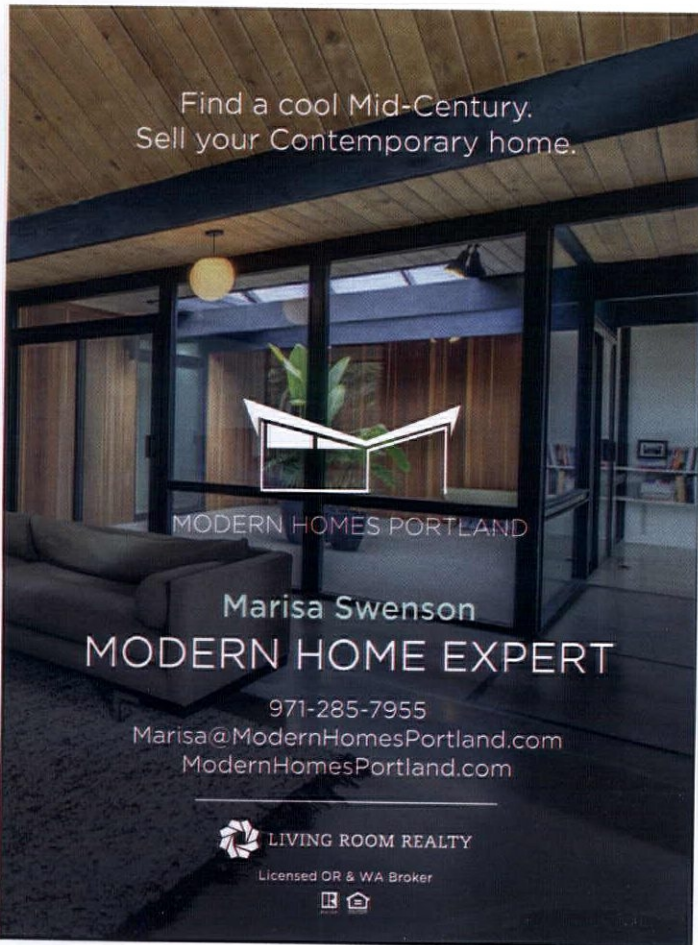
WHERE MID-CENTURY COOL MEETS 21ST CENTURY LIVING

Greater Austin's only Mid-Century Modern inspired new home community. Starlight Village consists of 29 detached homes ranging from 1,300 to 3,000 square feet in 8 authentic styles. Priced from the low \$300K's.

512-876-1559

STARLIGHTVILLAGEHOMES.COM

Find a cool Mid-Century. Sell your Contemporary home.



Marisa Swenson

MODERN HOME EXPERT

971-285-7955

Marisa@ModernHomesPortland.com

ModernHomesPortland.com



LIVING ROOM REALTY

Licensed OR & WA Broker



Love Atomic Ranch?



Subscribe to our **newsletter** and receive up-to-date features, home tours and mid mod content straight to your inbox!

Visit atomic-ranch.com today.

resources

True Blue, p. 26

Hexon tile backsplash in Pacific Blue:

ModCraft, mod-craft.com

Broyhill Brazillia Hutch: Vintage.

5 Piece Vase Set: AllModern, allmodern.com

Suburban Oasis, p. 28

DINING ROOM:

George Nelson Bubble Lamp: Design Within Reach, dwr.com.

KITCHEN:

Cabinet fronts and handles: IKEA, ikea.com.

White ceramic tiles: Floor & Décor, (877) 675-0002 or flooranddecor.com.

Hanging light above island: Deerstedt, etsy.com/shop/Deerstedt.

LIVING ROOM:

Retro rounded sectional couch: West Elm, westelm.com.

Rug: Target, target.com.

Eames lounge chair and ottoman: Design Within Reach, dwr.com.

Zenith record console: Vintage.

Arc lamp with marble base: Vintage.

Atomic gravel art: Vintage.

Lane Acclaim coffee table: Vintage.

Edward Wormley for Dunbar bench: Craigslist, craigslist.com.

American of Martinsville end table: Vintage.

DECK:

Equipale furniture: From a local estate sale.

MASTER BEDROOM:

Broyhill Brasilia dresser: Vintage from Mid Century Mike, (303) 258-6076 or midcenturymike.com.

Broyhill Brasilia bookcase headboard:

Vintage.

Broyhill Brasilia side table: Vintage from Mid Century Mike, (303) 258-6076 or midcenturymike.com.

Hans Wegner chair: Vintage.

Bedding and pillows: Target, target.com.

Rug: IKEA, ikea.com.

Curtis Jere seagulls sculpture: Vintage.

GUEST BATHROOM:

Morenobath double bathroom vanity set: Wayfair, wayfair.com.

Delta Faucet: Amazon, amazon.com.

White double hexagon polished porcelain mosaic tile: Floor & Décor, (877) 675-0002 or flooranddecor.com.

Organic resin smoke porcelain tile: Floor & Décor, (877) 675-0002 or flooranddecor.com.

Vanity light: Lowe's, (800) 445-6937 or lowes.com.

Shower curtain: Amazon, amazon.com.

Towel rail: IKEA, ikea.com.

Portland Puzzle, p. 40

KITCHEN:

Cabinets: Ikea, ikea.com.

Cabinet and drawer faces: Semihandmade, semihandmadedoors.com.

Small Diamonds-Escher backsplash tiles in Azurine: Fireclay Tile, fireclaytile.com.

DINING ROOM:

Eurostyle Atos glass and chrome dining table: Amazon, amazon.com.

Wire Lucy Dining Chairs: Bend Goods,

bendgoods.com.

Print: Nate Duval, nateduval.com.

DEN:

Gray sofa: Perch, perchfurniture.com.

Moroccan poof ottoman: Ikram Design, ikramdesign.com.

Art print: Chuck Sperry, chucksperry.net.

MASTER BEDROOM:

Platform bed: Crate & Barrel, crateandbarrel.com.

Valetta swivel lounge chair: Mobital, mobital.ca.

Bedspreed: Anthropologie, anthropologie.com.

Blue dog wedding print: George Rodrigue, georgerodrigue.com.

MASTER BATH:

Gray hex floor tile: Ann Sacks, annsacks.com.

Matte white shower tile: Daltile, daltile.com.

Midcentury Minimalist, p. 52

Lounge chair: Covet Consign, covetconsignanddesign.com.

Sideboard: Golden Age Design, goldenagedesign.com.

Overhead light fixture: Lambert & Fils, lambertetfils.com.

The Art of Escaping, p. 58

Architect: Bates Masi + Architects, batesmasi.com

General Contractor: Mannix Custom Builders, mannixcb.com

Landscape: Sweetbay Landscape Design, sweetbaylandscapes.com



Modern Retrograde LLC

MID CENTURY MODERN STYLED ART

MODERNRETROGRADE.COM | ETSY.COM/SHOP/MODERNRETROGRADE

INTERNATIONAL SHIPPING • CUSTOM DESIGNS • 100% HANDMADE

Interior Design: Rawlins Calderone Design, eye-swoon.com

Creatively Custom, p. 60

Cabinets: Kerf, kerfdesign.com

Style by Design, p. 64

Cabinet and drawer faces: Semihandmade, semihandmadedoors.com.

Midcentury expandable dining table: West Elm, (714) 662-1960 or westelm.com.

Crest Brentwood dining chair: West Elm, (714) 662-1960 or westelm.com.

Larchmere Wexler table lamp: Lamps Plus, (800) 782-1967 or lampsplus.com.

Meurice rectangle chandelier: Jonathan

Adler, (800) 963-0891 or jonathanadler.com.

Backsplash: Small diamond sheeted tile in gloss white, Fireclay Tile, Inc., (800) 773-2226 or fireclaytile.com.

Sculptural glass geo pendant: West Elm, (714) 662-1960 or westelm.com.

Crosshatched Taza dishtowel set: Anthropologie, (800) 309-2500 or anthropologie.com.

Marble paddle cutting board: Cost Plus World Market, (877) 967-5362 or worldmarket.com.

Olivewood cheese cutting board: Cost Plus World Market, (877) 967-5362 or worldmarket.com.

Eileen French Press: Nordstrom, (888) 282-6060 or shop.nordstrom.com.

Palm Jungle wallpaper: Wallpaper Direct,

(855) 823-9755 or wallpaperdirect.com.

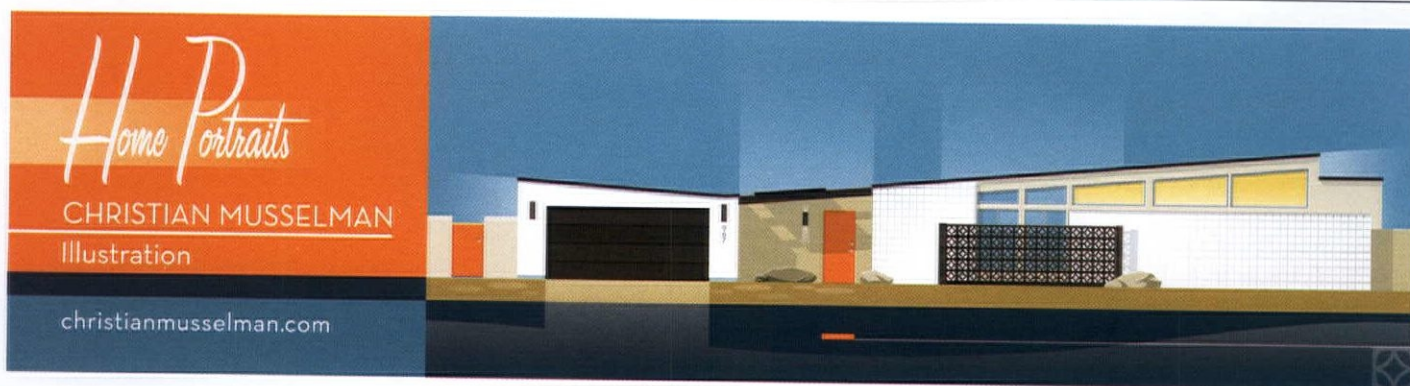
Hexagon ceramic mosaic tile: Wayfair, (844) 782-8495 or wayfair.com.

Kohler Purist bathroom sink faucet, handles and spout: Wayfair, (844) 782-8495 or wayfair.com.

Quoizel Valentina vanity light: Lowes, (800) 445-6937 or lowes.com.

Tile Done Right, p. 70

Tile: Clayhaus, (503) 928-3076 or clayhaustile.com.



HA HA
SO SO

**ARCHITECTURAL WOODWORK
CABINERY
FURNITURE**

HAHASOSO.COM
323.385.4543

Calif. Lic. No. 795372



The Purple Moon
Vintage Style for Modern Living

817 Quarrier Street
Charleston, WV 25301
304-345-0123

Furnishings - Accessories - Art

www.thepurplemoon.com

atomicadvertisers

ACCESSORIES & ARTWORK

Atomic Mobiles 76
323.640.0003
atomicmobiles.com

Christian Musselman 79
Illustration
773.209.8506
christianmusselman.com

Jetset Retro Design 81
jetsetretrodesign.com

Mac George Art Prints 69
macartprints.com

Modbox USA, Inc. 75
919.781.8403
modboxusa.com

Modern Light Switch 69
877.253.9073
modern-lightswitch.com

Modern Mailbox 69
877.253.9073
modern-mailbox.com

Modern Retrograde 78
modernretrograde.com

Shag 7
wh: 323.424.3005
ps: 760.322.3400
shagstore.com

ACCOMMODATIONS & MC LIFESTYLE

Mod Traveler 75
modtraveler.net

Orbit In 74
760.323.3585
orbitin.com

DESIGN RESOURCES

Eichler Siding 77
415.883.5300
eichlersiding.com

H3K Design 9
760.325.5400
h3kdesign.com

Kerf Design 11
206.954.8677
kerfdesign.com

Modernous 69
206.399.1419
modernous.com

Shields Residential 17
760.531.4252
shieldsresidential.com

LIGHTING

Hip Haven 74
512.462.4755
hiphaven.com

Moon Shine Lamp and Shade 76
830.935.2350
moonshineshades.com

Remcraft 81
800.327.6585
remcraft.com

YLighting.com 84
866.428.9289

MIDCENTURY REAL ESTATE

Adrian Kinney 27
303.219.0629
comidmodhomes.com/deza

Alyssa Starrelli 81
503.888.1362
aly-star.com

Craig Terrien/ Deasy Penner & Partners 79
828.312.3930
craigterrien.com

Ed Murchison, Dallas Realtor 75
214.395.7151
midcenturymoderndallashomes.com

Fresno Modern 81
559.960.3229
fresnomodern.com

HOM Sotheby International Realty 13
760.883.8613
ronparksteam.com

Mid-Century Homes 63
208.996.5759
mid-centuryhomes.com

Modern Homes Portland 77
917.285.7955
modernhomesportland.com

Modern Illinois— Lou Zucaro Baird & Warner 76
312.907.4085
modernil.com

Starlight Village 77
512.876.1559
starlightvillagehomes.com

MODERN FURNISHINGS

By Design Modern 57
604.876.5215
bydesignmodern.com

California Modern Woodworks 74
310.469.3404
californiamodernwoodworks.com

Copeland Furniture 2-3
802.222.9282
copelandfurniture.com

HahaSoso 79
323.385.4543
hahasoso.com

Hunt & Noyer 57
313.731.2485
huntandnoyer.com

Joybird 4-5
joybird.com

Kardiel 8
kardiel.com

Modern Cre8ve 21
moderncre8ve.com

Modern Shelving 76
877.477.5487
modernshelving.com

OTHER HOUSE STUFF

Asheford Institute of Antiques 81
877.444.4508
asheford.com

Clayhaus 73
503.928.3076
clayhaustile.com

Atomic Tile 63
888.387.3280
atomictile.com

ModCraft 75
718.541.1160
mod-craft.com

Modern Fan 83
modernfan.com

Woodwaves 18
888.850.3348
woodwaves.com

VINTAGE SHOPS & FURNITURE REHAB

Evans Co 81
858.461.8069
fagasstraps.com

Make It Midcentury 74
844.696.6462
makeitmidcentury.com

The Purple Moon 79
304.345.0123
thepurplemoon.com

Sandhurst Electronics 63
805.704.2278
sandhurstelectronics.com



Replace Broken or Stretched Fagas Straps!

Official US distributor
Since 1945

www.fagasstraps.com

www.fagasstraps.com info@fagasstraps.com 858.461.8069

fresnomodern.com

Eldon Daetweiler
eldon@fresnomodern.com 559.960.3229

bruce yager
mcm
paintings
sculptures
objects

etsy.com/shop/jetsetretrodesign facebook.com/jetsetretrodesign
- the art of bruce yager

Alyssa Starelli
REAL ESTATE BROKER

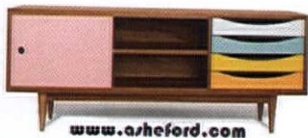
Licensed in Oregon **Call me to find your period-perfect home!**

503.888.1362 • alysa@livingroomre.com • alysa-star.com

Would You Like To Be A Mid-Century Modern Antiques Dealer?

You Can:

- *Start your own Mid-Century Modern Antiques Business
- *Choose the hours you wish to work
- * Become a "Certified" Decorative Arts Appraiser
- *Complete an internationally recognized 12 Volume Course with Diploma & Appraisal Certification (PACC & USPAP)



www.asheford.com

For A FREE Course Prospectus
Booklet:

www.asheford.com

Email: asheford@mail.com

Toll free: 877-444-4508

Or write to:

Asheford Institute: 981 Harbor Blvd.
Ste. 3, Dept. 275ATR3 Destin, FL 32541

Follow Us!

- facebook.com/atomicranch
- @theatomicranch
- @TheAtomicRanch
- theatomicranch

SWEDISH MODERN

Setting the standard...again.



RETRO
BY REMCRAFT

REMCRAFT LIGHTING PRODUCTS • MIAMI, FL
(800) 327-6585 • www.atomicremcraft.com

last look

Seeing Pink

By Sarah Jane Stone


Photography by Bret Gum | Styling by Annette Vartanian

WHEN IT CAME TIME TO UPDATE THIS 1959 BATHROOM, one thing was clear—the pink wasn't going anywhere. Homeowners Annette and Alan Vartanian have found creative solutions to preserving its iconic midcentury elements while meeting the needs and personality of their family.

“Vintage pink bathrooms are a rare breed,” says Annette. Wanting to keep as much of the pink as possible, she saved the original Venetian pink sink and shower tiles. The latest pink addition to the bath is the toilet—which was sourced to match the other elements.

As for the wallpaper, Annette jumped at the chance to honor one of her favorite shows, “The Golden Girls” by pairing Cole & Son’s ‘Palm Jungle’ print with the pink tile.

For more on this house, turn to page 64.



THE ORIGINAL TILE FLOORING WASN'T SET PROPERLY SO THE COUPLE REPLACED IT WITH MATTE WHITE HEXAGON TILES. THE PATTERN ADDS AN EXTRA DOSE OF RETRO FLAIR TO THE SPACE WHILE KEEPING IT BRIGHT.

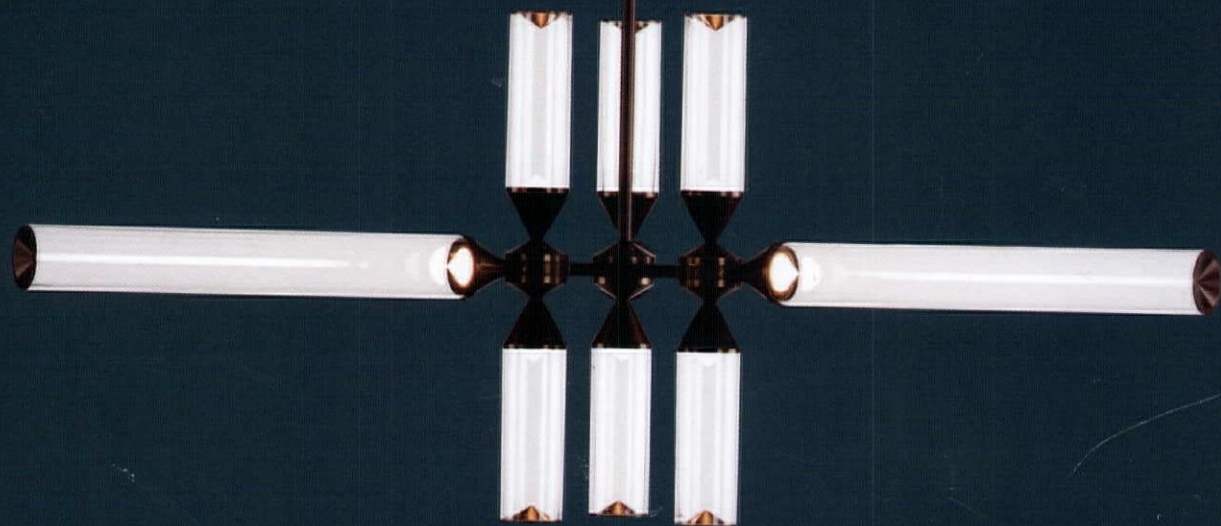
**THE
MOD-
ERN**
A Collection of
Ceiling Fans
**FAN
CO**
Designed by
Ron Rezek

IC/Air2

: designed by Guto Indio da Costa
modernfan.com



Ultra-efficient DC Motor | 2 or 3 Blades | Nickel, White or Dark Finish | Solid Color, Wood Grain or Clear Blades | Optional LED Lighting



DINNERS GO LATE.

YLIGHTING
The Best in Modern Lighting

Castle Chandelier by Roll & Hill. Shop YLighting.com or Call 866 428 9289.
Trade Professional? Exclusive Pricing and Benefits at YLighting.com/Trade.