



# atomic

MIDCENTURY MARVELS

# ranch

Reviving an Eichler Kitchen

New Column! Introducing the Preservation Corner

Palm Springs: Celebrating a Haven of MCM Architecture



AUDREY DINING







**made in america**

**made to order**

**made to last**

**copeland**

FURNITURE

[copelandfurniture.com](http://copelandfurniture.com)



# BUILT BY US, CREATED BY YOU.

Handcrafted and customizable in hundreds of fabric and wood options, our furniture is designed to exceed your home-design dreams.

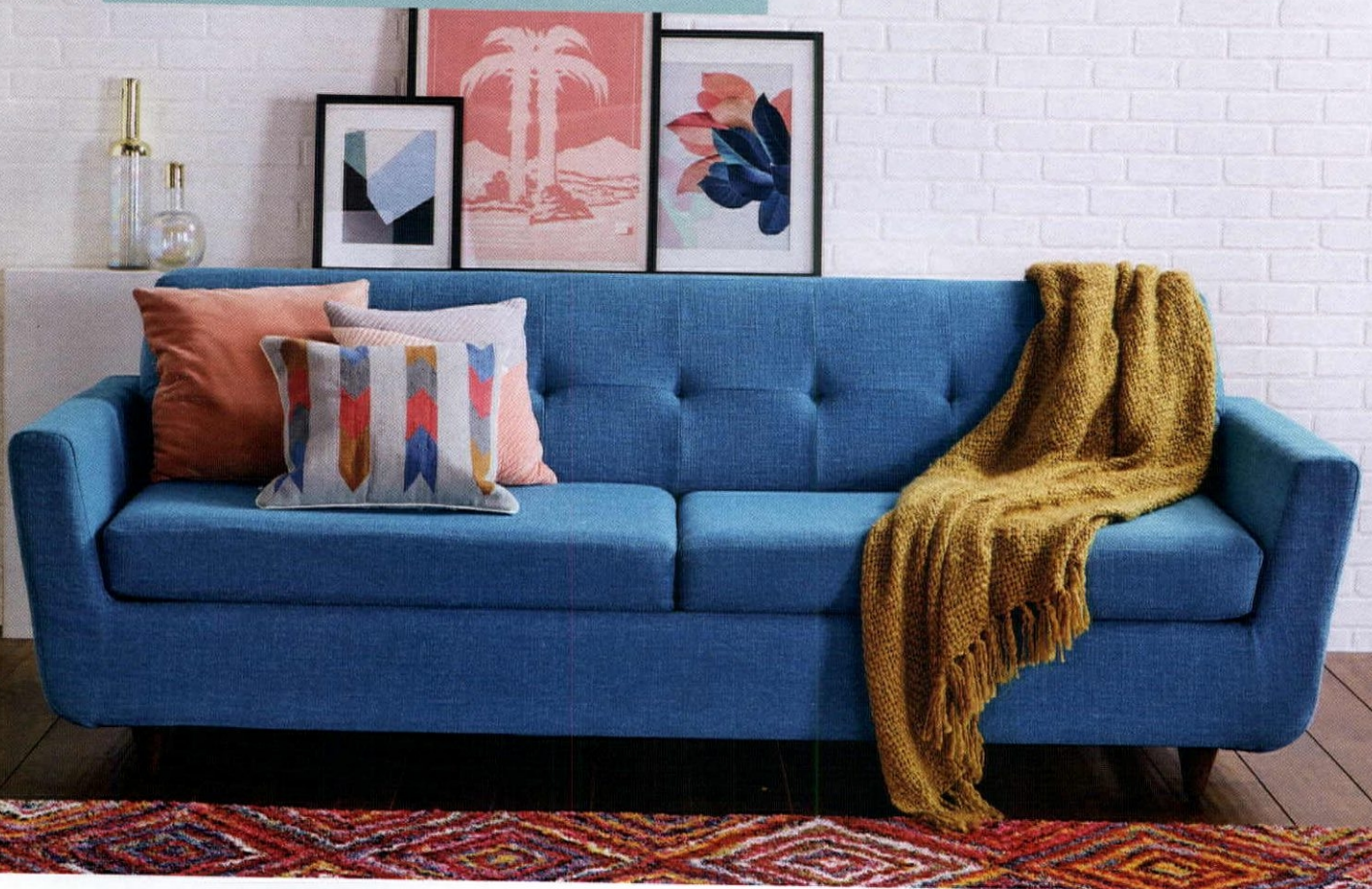
*"I love it! ...Well worth the wait. Built sturdily with excellent fabric and color. White gloved delivery."*

- Ossie S. Palm Springs, CA

NEW SLEEPER SOFAS AT JOYBIRD.COM



Family reunions, holiday get-togethers and guest rooms that double as your home office all call for furniture that can do double duty at the drop of a hat.







SOTO CHAIR | \$799  
in Taylor Tonic



SOTO OTTOMAN | \$449  
in Merit Dove



COLLINS CHAIR | \$849  
in Key Largo Grass



HUGHES SWIVEL CHAIR | \$1,049  
in Lucky Divine



SELBY BED | \$1,399  
in Bennett Moon



AUBREY SOFA | \$1,799  
in Cordova Amber



SIMIC MEDIA CONSOLE | \$2,249  
in Walnut



TOSCANO DINING SET | \$2,349  
in Lucky Turquoise



HUGHES REVERSIBLE SECTIONAL | \$2,349  
in Bennett Moon



XAVIER DESK | \$2,349  
in Walnut

**20% OFF** \* with promo code  
**ATOMS18**  
Before: 03.31.2018

365-Day Trial | Lifetime Warranty | Free Returns | 0% Financing\*

**REQUEST A FREE SWATCH KIT**

Order your kit at  
[joybird.com/atoms18](http://joybird.com/atoms18)

\*The 20% discount is a limited time offer valid until 03.31.2018 and it cannot be combined with other offers, discounts, or prior purchases. Returns within 14 days of delivery are free for all orders shipped to the contiguous United States. Return undamaged furniture within 365 days of receiving it for a full refund. Financing options as low as 0% APR available to qualified applicants. Rates from 0%-30% APR. Visit [joybird.com/product-financing](http://joybird.com/product-financing) for more details.



# editor's letter



## Mad for Mod

The first time I visited the modernism paradise that is Palm Springs, I felt like I'd stepped back in time. Everywhere I looked there was something to be enchanted by—be it the then-standing "Forever Marilyn" Monroe statue, the shops filled with vintage wares or the retro rooflines. My love affair with this California desert town has only grown over the years. The feeling seeps in just a little bit deeper with every opportunity to learn about its vibrant history, step into incredible houses and meet passionate homeowners.

I'm not the only one who feels this way about Palm Springs. People from across the country and around the world flock to the desert to get a peek at this design oasis. Luckily for you, the spring issue of *Atomic Ranch* is your ticket to our mid mod destination.

Inside you'll find three incredible homes, all located in Palm Springs, each with their own take on Midcentury style. Filled with meaningful collections, cheerful color and lots of personality, Keith and Randy's oh-so-welcoming home is the product of a loving restoration (page 30). Not too far away, Dean and Daryle's golf course vacation home dons an earthy palette and striking original details—making it a relaxing mid mod paradise (page 42). Finally, blogger Krys Melo welcomes us into the colorful and creative retro rental she shares with her husband (page 52).

Whether this is your first introduction to the desert city or you've already loved Palm Springs as a local or frequent visitor, if you are passionate about Midcentury Modern design, I am certain that you will love this issue of *Atomic Ranch*.

Sarah Jane Stone

### Get connected!

Email: [editor@atomic-ranch.com](mailto:editor@atomic-ranch.com) • Online: [atomic-ranch.com](http://atomic-ranch.com) • [@theatomicranch](https://www.instagram.com/theatomicranch)

# atomic ranch

#### EDITORIAL

Brand Leader/Editor: Sarah Jane Stone  
Managing Editor: Jolene Nolte  
Contributing Editors: Kris Christensen, Kristin Dowling  
Editorial Intern: Jessie Yount

#### DESIGN

Design Director: Gabby Oh

#### CONTRIBUTORS

George Smart, Lindsey Jarvis, Leslie J. Thompson, Sunday Hendrickson

#### CONTRIBUTING PHOTOGRAPHERS

Bret Gum, Brian Showcroft, Chad Mellon, John Ellis, John Shum, Krys Melo

#### ADVERTISING

Terry Rollman - Group Publisher • (714) 200-1917  
Sherie Norris - Account Executive • (704) 421-1517

#### MARKETING

Sabra Morris: Director of Content Marketing  
Elise Portale: Content Marketing Manager  
Brooke Sanders: Content Marketing Specialist

#### OPERATIONS

Robert Short: IT Manager  
Devender Hasija: Newsstand and Circulation Analyst  
Shalish Khandelwal: Subscriptions Manager  
Alex Mendoza: Administrative Assistant

#### EDITORIAL, PRODUCTION & SALES OFFICE

17890 Sky Park Circle #250, Irvine, CA 92614  
[www.atomic-ranch.com](http://www.atomic-ranch.com)  
(714) 939-9991, Fax (800) 249-7761

ATOMIC RANCH (ISSN 1547-3902) Issue 57, Spring 2018 is published quarterly, Spring, Summer, Fall and Winter, by Engaged Media Inc., LLC, 17890 Sky Park Circle #250, Irvine, CA 92614. Periodical postage paid at Irvine, CA, and additional mailing offices. POSTMASTER: send address changes to Atomic Ranch c/o VSI, Inc. 905 Karl Street, Liberty, MO 64068. © 2017 by Engaged Media, Inc. All rights reserved. Reproduction of any material from this issue in whole or in part is strictly prohibited. GST #R55050355R001 Canada Post: Publications Mail Agreement #60512608. Return undeliverable Canadian addresses to: PITNEY BOWES, INC., P.O. Box 25542, London, ON N6C 6B2.

#### CUSTOMER SERVICE

ENGAGED MEDIA, INC.  
17890 Sky Park Circle #250  
Irvine, CA 92614

SUBSCRIPTIONS, ADDRESS CHANGES, RENEWALS, MISSING OR DAMAGED COPIES (800) 764-6278

(239) 653-0225 Foreign Inquiries  
[subscriptions@engagedmediainc.com](mailto:subscriptions@engagedmediainc.com)  
[customerservice@engagedmediainc.com](mailto:customerservice@engagedmediainc.com)

#### BACK ISSUES

[www.engagedlifestyle.com](http://www.engagedlifestyle.com)

BOOKS, MERCHANDISE, REPRINTS (800) 764-6278, Foreign (239) 653-0225

LETTERS TO THE EDITOR, NEW PRODUCTS OR TO CONTRIBUTE A STORY OR PHOTO [editor@atomic-ranch.com](mailto:editor@atomic-ranch.com)

#### SUBSCRIPTION RATES

\$19.95/1 year, \$36.95/2 years, Foreign, \$34.95 per year, \$66.95 per 2 years payable in US funds. Single copy price is \$6.99.

Please allow 6 to 8 weeks for new subscriptions to begin.

## ENGAGED<sup>®</sup> MEDIA, INC.

ENGAGED MEDIA, INC.

Scott Hall: CEO  
Pinaki Bhattacharya: COO  
Philip Trinkle: Newsstand Sales Director  
Jickie Torres: Editorial Director

This magazine is purchased by the buyer with the understanding that information presented is from various sources from which there can be no warranty or responsibility by Engaged Media as to the legality, completeness or technical accuracy.

GST #R55050355R001  
Canada Post: Publications Mail Agreement #40612608  
Return undeliverable Canadian addresses to: PITNEY BOWES, INC., P.O. Box 25542, London, ON N6C 6B2

#### Statement of Ownership, Management, and Circulation

1. Publication Title: Atomic Ranch
2. Publication No.: 1547-3902
3. Filing Date: 25-Sep-17
4. Issue Frequency: Quarterly (Spring, summer, fall and winter a year)
5. No. of Issues Published Annually: 4
6. Annual Subscription Price: \$19.95
7. Complete Mailing Address of Known Office of Publication: Engaged Media Inc., 17890 Sky Park Circle, Suite 250, Irvine, CA 92614
8. Complete Mailing Address of Headquarters or General Business Office of Publisher: Engaged Media Inc., 17890 Sky Park Circle, Suite 250, Irvine, CA 92614
9. Full Names and Complete Mailing Addresses of Publisher, Editor, and Managing Editor: Publisher: Tom Conrad, Engaged Media Inc., 17890 Sky Park Circle, Suite 250, Irvine, CA 92614  
Editor: Sarah Jane Stone, Engaged Media Inc., 17890 Sky Park Circle, Suite 250, Irvine, CA 92614  
Managing Editor: Jolene Nolte, Engaged Media Inc., 17890 Sky Park Circle, Suite 250, Irvine, CA 92614
10. Owner: Engaged Media Inc., 17890 Sky Park Circle, Suite 250, Irvine, CA 92614
11. Known Bondholders, Mortgagees, and Other Security Holders Owning or Holding 1 Percent or More of Total Amount of Bonds, Mortgages, or Other Securities: None
12. Tax Status (for completion by nonprofit organizations authorized to mail at nonprofit rates): Not Applicable
13. Publication Title: Atomic Ranch
14. Issue Date for Circulation Data Below: Winter 2016/Jan 2017
15. Extent and Nature of Circulation:
  - A. Total No. of Copies (Net Press Run): 49,371 / 47,703
  - B. Paid and/or Requested Circulation:
    1. Paid/Requested Outside-County Mail Subscriptions Stated on Form 3541: 9,443 / 9,126
    2. Paid In-County Subscriptions: 0 / 0
    3. Sales Through Dealers and Carriers, Street Vendors, Counter Sales, and Other Non-USPS Paid Distribution: 7,427 / 7,125
    4. Other Classes Mailed Through the USPS: 0 / 0
  - C. Total Paid and/or Requested Circulation: 16,870 / 16,251
  - D. Free Distribution By Mail:
    1. Outside-County as Stated on Form 3541: 871.25 / 1295
    2. In-County as Stated on Form 3541: 0 / 0
    3. Other Classes Mailed Through USPS: 0 / 0
    4. Outside the Mail: 3,167 / 2,958
  - E. Total Free Distribution Outside the Mail: 4,038 / 3,303
  - F. Total Distribution: 20,908 / 19,604
  - G. Copies Not Distributed: 28,463 / 28,099
  - H. Total: 49,371 / 47,703
  - I. Percent Paid: 80.69% / 82.00%
16. Total Circulation Includes electronic copies. Report circulation on PS form 3526-X worksheet: Print Only (No electronic copies)
17. Publication of Statement of Ownership: Spring 2018
18. Signature: Tom Conrad, Publisher

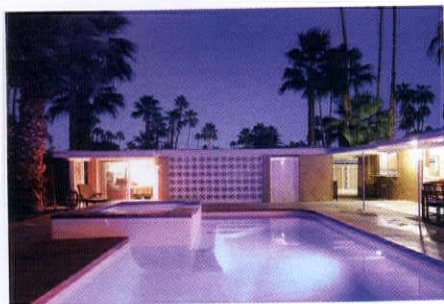


atomic  
ranch LIVE

3

DAYS. FEB. 16-18  
TOPICS.  
TOURS.

**Atomic Ranch** is back at **Modernism Week 2018**, and our popular live show is coming, too. Join us for a weekend of expert advice for MCM architecture and design enthusiasts with a 3-part series moderated by *Atomic Ranch* brand leader/editor **Sarah Jane Stone**.



## HOUSE HUNTING

Feb. 16

Real estate experts **Ron Parks** of HÔM Sotheby's International and **T.J. Pierce** of Mid-Century Homes by Moniker Real Estate will share tips and advice for finding a mid mod marvel in the right neighborhood. Afterward, tour a few local homes currently on the market.



## INTERIOR DESIGN + RENOVATION

Feb. 17

Palm Springs design/build experts **Howard Hawkes** and **Kevin Kemper** of H3K Design will reveal secrets of some of their most successful projects, including interior finishes and design. The seminar will culminate in a tour of one of their beautiful transformations and a visit to the new H3K showroom.



## RENOVATION + PRESERVATION

Feb. 18

Palm Springs contractor **Steven Shields** will tackle the difficult question of when to preserve, restore or renovate, and **George Smart** of U.S. Modernist will offer a perspective on the preservation aspect of home renovation. End the afternoon with a tour of one of Steven's completed projects.

For tickets and additional information, visit  
**modernismweek.com**

CONNECT WITH US ON SOCIAL MEDIA FOR EXCLUSIVE PHOTOS + VIDEOS FROM THE EVENT!



# Contents spring 2018

## FEATURES

### 30 Meiselmania

Drawn from Chicago to Palm Springs, this couple saw the potential in a 1960 Meiselman house, then integrated their personal style for a custom dream home.

### 42 Desert Serenity

A careful restoration, muted tones and a lovingly curated collection has revived a midcentury marvel.

### 52 Rental Renovation

New residents bring this 1960s Palm Springs apartment back to its midcentury roots.

### 64 Sunny in Palm Springs

History meets passion when a couple's love for modernism preserves a uniquely original home.

#### cover

Cover photography by Chad Mellon

Cover design by Gabby Oh



## DEPARTMENTS

6 Editor's Letter

12 Web News

15 Cool Stuff

19 Period Picks

23 Preservation Corner

26 Atomic Kitchens

78 Resources

80 Advertisers

82 Last Look



ATOMIC RANCH (ISSN 1547-3092) Issue 57, SPRING 2018 is published quarterly, Spring, Summer, Fall and Winter, by Engaged Media Inc, LLC, 17890 Sky Park Circle, #250, Irvine, CA 92614. Periodical postage paid at Irvine, CA, and additional mailing offices. **POSTMASTER:** send address changes to Atomic Ranch c/o VSI, Inc. 905 Kent Street, Liberty, MO 64068. © 2017 by Engaged Media, Inc. All rights reserved. Reproduction of any material from this issue in whole or in part is strictly prohibited. GST #R55050365RT001 Canada Post: Publications Mail Agreement #40612608. Return undeliverable Canadian addresses to: PITNEY BOWES, INC., P.O. Box 25542, London, ON N6C 6B2.







The Ultimate Celebration of Midcentury Architecture, Design and Culture in Palm Springs, California

# More than 85 Talks, Films and Presentations

**February 16**

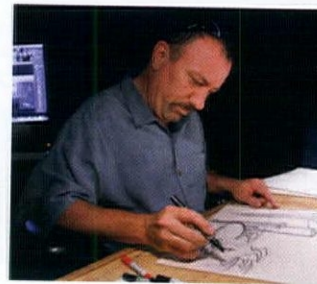

**Paul Revere Williams:  
Architect to the Stars...  
and Everyone Else**  
by Alan Hess

Palm Springs Art Museum  
Annenberg Theater  
9 – 10 a.m. • \$12

**February 17**

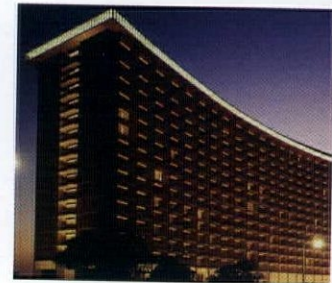

**Modernism Week Keynote**  
by Martyn Lawrence Bullard  
and “Palm Springs:  
A Modernist Paradise”

Richards Center for the Arts  
Palm Springs High School  
3 – 4:30 p.m. • \$20 - \$90

**February 18**


**Disney•Pixar's  
INCREDIBLES 2 –  
Storytelling with  
Art & Architecture**  
by Ralph Eggleston

Palm Springs Art Museum  
Annenberg Theater  
2 – 3:30 p.m. • \$12

**February 18**


**Learning From Los Angeles:  
Strategies for Saving  
Modern Buildings**  
by Linda Dishman

Palm Springs Art Museum  
Annenberg Theater  
12:30 – 1:30 p.m. • \$12

**February 19**


**Monday with Legendary  
Women of Design**  
Gere Kavanaugh  
Ruth Adler Schnee  
Barbara Stauffacher Solomon

Palm Springs Art Museum  
Annenberg Theater  
10 a.m. – 5 p.m. • \$60 for 4 lectures

**February 22**


**Snohetta / Beautiful  
Function – The Willamette  
Falls Riverwalk**  
by Michelle Delk

Palm Springs Art Museum  
Annenberg Theater  
9 – 10 a.m. • \$12

**February 23**


**From Google to Gehry**  
by Christopher Mount  
and William Menking

Palm Springs Art Museum  
Annenberg Theater  
9 – 10:30 a.m. • \$12

**February 23**


**Gregory Ain – The Most  
Dangerous Architect  
in America**  
by Christiane Robbins  
and Katherine Lambert

Palm Springs Art Museum  
Annenberg Theater  
11 – 12 p.m. • \$12

For the complete list and to purchase tickets visit

[modernismweek.com](http://modernismweek.com)

Major

Grand

Premier

Media







Kevin Kemper & Howard Hawkes

**H3K** DESIGN RENOVATION FURNISHINGS  
[www.h3kdesign.com](http://www.h3kdesign.com)

**H3K HOME**  
[www.h3khome.com](http://www.h3khome.com)

**Visit Our New Showroom!**  
501 South Palm Canyon Drive | Palm Springs, California  
760.325.5400



# webnews

## Keep tabs on us

Get a sneak peek into what's coming online at [atomic-ranch.com](http://atomic-ranch.com).

### Inside Scoop!



PHOTO BY BRET GUM

#### Top 10 Bedrooms

We're rounding up our favorite mid mod bedrooms! These walnut walls and inspiring color palettes will have you looking to do a little spring refresh.



PHOTO COURTESY OF STEVEN SHIELDS

#### AR Live!

Brand Leader / Editor Sarah Jane Stone is heading to Modernism Week, where she'll be partnering with experts from across the country for three unique seminars on finding, renovating and designing your MCM home.



PHOTO BY KEN MACINTYRE

#### Retro Roadtrip

Are you looking for a mid mod destination? Guest writer Ken MacIntyre of Mod Traveler has a slew of great finds, meaning all you have to do is book a ticket and pack your bags.



PHOTO BY BRET GUM

#### Desert Hideaway

A guest house becomes a Midcentury Modern getaway—complete with a private patio and outdoor shower.



PHOTO BY BRET GUM

#### The PS Take on Mod

It uses a little more color, throws in a few touches of glam and isn't afraid to get a little funky—take a look at Palm Springs' unique twist on mid mod design.

### Cool Stuff



Arne Jacobsen station alarm clock, \$145. Visit [yiliving.com](http://yiliving.com).



Knight chair in Cordova Amber, \$799. Visit [joybird.com](http://joybird.com).



Refurbished retro table lamp, \$285. Visit [modilumi.com](http://modilumi.com).



Domino pillow, \$59. Visit [arnge.bigcartel.com](http://arnge.bigcartel.com).





**SHIELDS RESIDENTIAL**  
REMODELING + CONSTRUCTION



FEATURED SPEAKER OF "ATOMIC RANCH LIVE" SERIES AT **2018 MODERNISM WEEK**

760.531.4252 / [SHIELDSRESIDENTIAL.COM](http://SHIELDSRESIDENTIAL.COM) / PALM SPRINGS, CA





Above:  
"The Impostors,"  
a huge new 18 color silk screen  
print available exclusively from the Shag Store.

Visit our huge new location during Palm Springs Modernism Week

**PALM SPRINGS**

745 N. Palm Canyon, Palm Springs, CA  
760.322.3400 • shagstore.com

**WEST HOLLYWOOD**

8443 Melrose Ave, West Hollywood, CA  
shagstore.com • 323.424.3005



# coolstuff

By Jessie Yount and Sarah Jane Stone

Vibrant and playful, these multi-color mid mod finds will bring a little Palm Springs sunshine to your home.

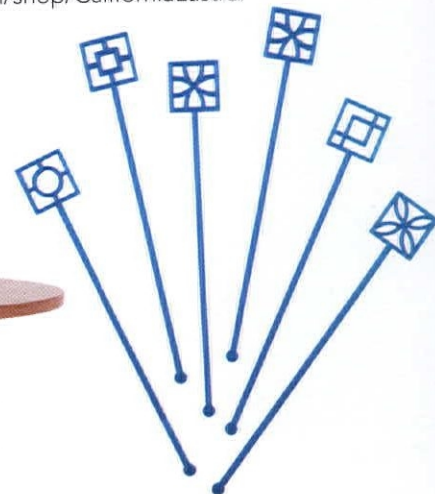
Arc shade 1 light floor lamp, \$620. Visit [ylighting.com](http://ylighting.com).



## Color is Key

Palm Springs breeze block party drink stirrers, \$16 and up. Visit [etsy.com/shop/CaliforniaLustre](http://etsy.com/shop/CaliforniaLustre).

Soto chair, \$799. Visit [joybird.com](http://joybird.com).



Pinnacle vase, \$55. Visit [bauerpottery.com](http://bauerpottery.com).



Stern end table, \$799. Visit [joybird.com](http://joybird.com).



One Night Stand sleeper sofa, \$1,999. Visit [yliving.com](http://yliving.com).



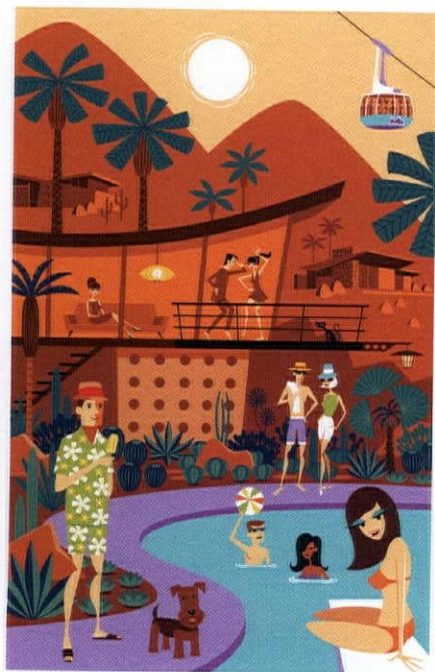


# coolstuff



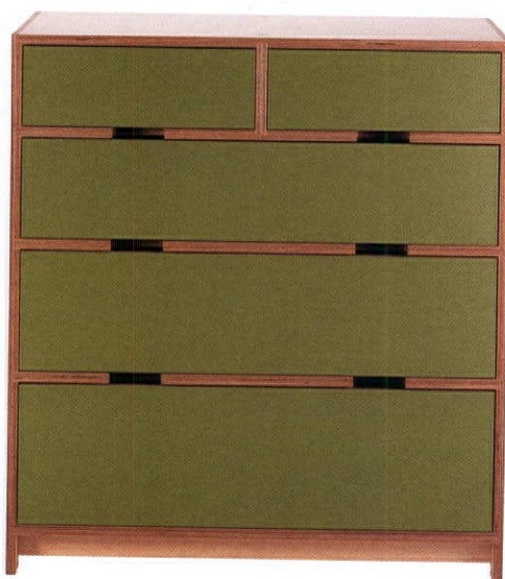
Midcentury tripod table lamp, \$149. Visit [westelm.com](http://westelm.com).

"Pina Colada Popsicle" serigraph print, \$599. Visit [shagstore.bigcartel.com](http://shagstore.bigcartel.com).



Plum ceiling fan, \$324-428. Visit [modernfan.com](http://modernfan.com).

Nate's dresser, \$2,250. Visit [kerfdesign.com](http://kerfdesign.com).



Mini retro bullet planter, \$85; retro bullet planter, \$160. Visit [hiphaven.com](http://hiphaven.com).



"Warm Plains Pattern Pillow," by 2birdstone, \$40-44. Visit [minted.com](http://minted.com).



Classic style mixing bowls, set of four, \$175. Visit [bauerpottery.com](http://bauerpottery.com).





# LIVE THE LIFE

**A SPONSOR OF PALM SPRINGS MODERNISM WEEK**  
The Palm Springs Convention Center | February 16th - 19th | 2018

**Join Ron Friday, February 16 at the Convention Center from 10 am - 11:30 am at the *Atomic Ranch* seminar on "How to Find A Mid-century Mod Marvel with Good Bones" followed at noon with a home tour.**

Visit us at Booth #105 and pick up one of our nifty, must-have maps of the iconic architects and mid-century neighborhoods of Palm Springs. It includes a list of historic and famous mid-century homes with addresses so you can create your own self-guided tour.

Contact Ron **760.883.8613**  
[ronparks@homgroup.com](mailto:ronparks@homgroup.com)



**RON  
PARKS  
TEAM**

Real estate acquisitions and marketing  
Who you work with matters!

[ronparksteam.com](http://ronparksteam.com)  
CalBRE #01351164



# Palm Springs

MODERNISM  
SHOW & SALE

FEBRUARY 16-19, 2018

PALM SPRINGS CONVENTION CENTER



85 Premier national and international decorative and fine arts dealers  
presenting all design movements of the 20th century

FEBRUARY 16 | PREVIEW GALA

Friday | 6-9 pm

Benefiting Modernism Week \$85 in advance | \$100 at the door | Tickets at [modernismweek.com](http://modernismweek.com)

FEBRUARY 17-19 | SHOW & SALE

Saturday | 10 am-6 pm

Sunday | 10 am-5 pm

Monday | 10 am-4 pm

\$20 weekend admission | includes admission to Palm Springs Modern Design Expo  
Tickets at [palmspringsmodernism.com](http://palmspringsmodernism.com) or at the door

[palmspringsmodernism.com](http://palmspringsmodernism.com)

sponsors



Bonhams

The  
Dean Sipe Group



Antiques & Fine Art

CALIFORNIA  
HOMES

media sponsors

atomic  
ranch

MODERN

ca

PALM SPRINGS LIFE

modernism week

Official Modernism Week Sponsor

DOLPHIN PROMOTIONS

CHICAGO | 708.366.2710

FLORIDA | 954.202.1955

[info@dolphinfairs.com](mailto:info@dolphinfairs.com)



# periodpicks



Dust off your books and give them pride of place, just in time for spring cleaning.

By Jessie Yount

1. Elias bookshelf, \$1,295.  
Visit [roveconcepts.com](http://roveconcepts.com).
2. Bond shelving unit - desk, \$1,425.  
Visit [lonewa.com](http://lonewa.com).
3. Kipp Stewart & Stewart MacDougall "Declaration" bookcase, \$2,895.  
Visit [danishmodernla.com](http://danishmodernla.com).

## Simple and Stylish Shelving

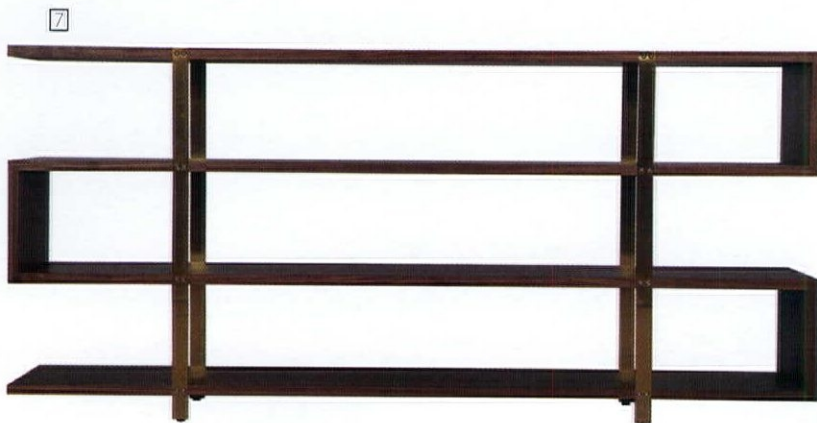




# periodpicks



4. Narrow rosewood sliding glass door bookcase, \$1,250. Visit [midcenturymobler.com](http://midcenturymobler.com).
5. Borge Mogensen 'Oresund' teak and glass cabinet, \$1,368. Visit [chairish.com](http://chairish.com).
6. Desi bookcase, \$929. Visit [joybird.com](http://joybird.com).
7. Metro 4 shelf bookcase, \$1,229. Visit [yiliving.com](http://yiliving.com).
8. PAL33FILL 33" wide pole mounted shelving with file drawer, \$850. Visit [modernshelving.com](http://modernshelving.com).







wells  
*collection*  
IN AGED BRASS

**CAPITAL**

LIGHTING FIXTURE COMPANY

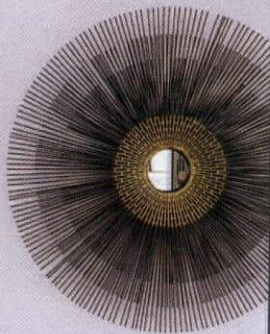
Find your local showroom at  
[www.capitalightingfixture.com](http://www.capitalightingfixture.com)

#loveatfirstLIGHT  @capitaltg





# HOME + HISTORY LAS VEGAS



## At the crossroads of History and Architecture

**April 27-29, 2018**

**Neon bus tours, architectural bus tours, vintage vegas home  
tours, nightly cocktail parties, films, lectures and panels  
Free & Ticketed Events**



**Tickets on sale January 15, 2018**

<https://www.nevadapreservation.org/hhlv/>





# Accidental Archivist

By George Smart

Curiosity leads to a long-standing endeavor to chronicle modernist masterpieces.

**N**EARLY EVERY DAY, WE READ ABOUT THE DESTRUCTION OF ANOTHER MODERNIST HOUSE IN AMERICA. We moan for a few days then move on. The grief is brief—unless it is a house in your hometown, perhaps one your family formerly owned, or one you played in as a child or one you drove by and admired for decades. Perhaps you have searched for a list of them online. It's likely that you didn't find much, as most modernist houses by local and largely unsung architects don't get much attention. Some, the most famous, get press when they're demolished. As for the rest, without knowing where they are, how can anyone try to save the good ones?

I grew up in Raleigh, North Carolina, a state capitol that, in 1961, had about 94,000 people—not very large. Raleigh's North Carolina State University had an architecture dean, Henry Kamphoefner, a maverick and avid modernist, who led the school to national prominence at a

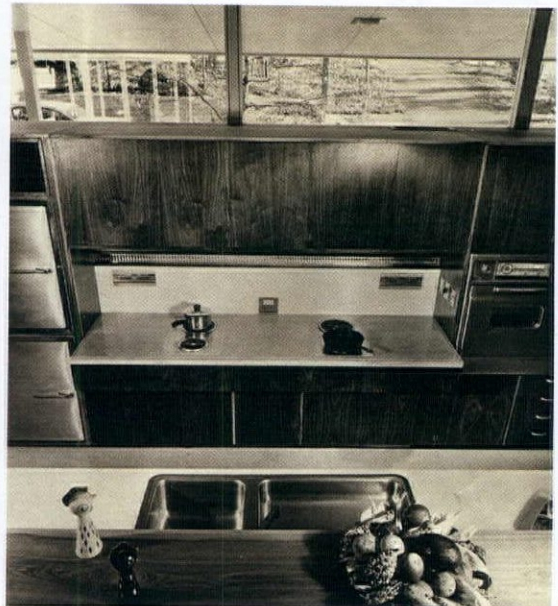




# preservationcorner



PHOTO BY BRIAN SHAWCROFT



PHOTOGRAPHY COURTESY OF GEORGE SMART

time when modernism was at its peak. Kamphoefner encouraged faculty and undergraduate students alike to take on private clients and today we have about 700 modernist houses within 25 miles of the school.

For decades after, the typical Raleigh citizen, including me, was unaware. Tucked away off main roads, these modern gems went largely unnoticed, as flashier—but typically uninspired—houses, apartments and townhouses were built over the years. I had no idea about this history until late one stormy night in 2007, when I decided to research

modernist architecture in Raleigh. I thought to myself, “surely someone has documented all these interesting, livable works of art! The city, perhaps? The School of Design? Some author?” There were records of occasional house tours and National Register applications, but there was no single, comprehensive list.

I’m not an architect, an architectural historian, a librarian or in any profession remotely related to design, but that night I thought, “what the hell, I’ll make a list.” As Jeremy Clarkson of Top Gear is fond of saying, “How hard could it be?” Turns out, not so hard! Within a few hours, I had a list of 20. My list included the home’s address, the owner’s name and—whenever available—a photo of the house and the architect’s name.

Showing that list to a few architects opened the floodgates. By mid-2007, there were several hundred. Now the nonprofit I started has documented over 6,000 houses in North Carolina and around the United States by some of the best 20th century masters like John Lautner, Walter Gropius and Richard Neutra. Quite by accident, I’ve become an archivist, and I speak around the country about my 11-year journey, something my wife calls “an extended seizure.”

If you’re concerned that the modernist houses you love are going away, the first thing to do is get Googling. A few hours online and a chat with an established local architect will get you started. You’ll be amazed at what you can discover and how many people want to help you. ☯



George Smart founded NC Modernist Houses and US Modernist Houses, together the largest open digital archives for residential Modernist architecture. He is host of the podcast US Modernist Radio, which posts every other Monday on iTunes. For more, visit [usmodernist.org](http://usmodernist.org).



# MODERNISM ICONS

Kardiel builds inspired reinterpretations of the best designs of Modernism using the finest ingredients.



**10% OFF\*** with promo code  
**ATOMIC10K**

FREE SHIPPING\*\* | NO SALES TAX\*\*\* | [WWW.KARDIEL.COM](http://WWW.KARDIEL.COM)

FREE FABRIC AND LEATHER SWATCHES.  
DESIGNER ACCOUNTS AVAILABLE.

Located in Seattle, Professional Delivery to your home anywhere in the contiguous U.S. is free.\*\*  
Most items are in stock and arrive to your home in 7-10 days. Compare our quality.

\*The 10% discount is a limited time offer valid for your first order until 08/31/18 and can not be combined with other offers.  
\*\*Orders over \$750.00. Curbside Delivery. \*\*\*Outside Washington State

 **KARDIEL**



# atomickitchens

IN ORIGINAL EICHLER FLOOR PLANS, A MULTI PURPOSE ROOM WAS TYPICALLY ADJACENT TO THE KITCHEN. SINCE A PREVIOUS HOMEOWNER'S ADDITION PROVIDES JOE AND MARK WITH AMPLE LIVING AND DINING SPACE, THEY OPTED FOR A BUILT-IN BAR AREA.

## DESIGN MUST-HAVES:

- Vibrant tile design
- Walnut cabinetry
- Improved functionality and flow





# Eichler Artistry

Reinstating midcentury lines and period charm is no small task.

By Sarah Jane Stone • Photography by John Shum

**L**OOKING TO DO A CAREFUL RENOVATION ON THEIR 1962 JOSEPH EICHLER-BUILT HOME in San Rafael, California, homeowners Joe West, a mechanical engineer, and Mark Kemler, a lawyer, turned to Karen Nepacena of Destination Eichler.

Previous renovations traded the kitchen's original details for a traditional-style design, something Joe and Mark were ready to replace in favor of a more period-appropriate aesthetic. They also wanted a modern, multi-functional space with a good flow that would blend seamlessly with the home's midcentury roots.

"The homeowners wanted to approach their renovation in a thoughtful way, keeping in the spirit of their Eichler-built home, but to provide increased functionality and use of the existing space," says Karen. "Since I specialize in working on Midcentury Modern and Eichler homes, we were a great fit for one another."

## REINSTATING ORIGINAL

What do you do when period charm has been removed? "In the case of this particular Eichler home, we brought back previously used materials—such as aluminum sliding doors and windows—and reinstalled floor-to-ceiling glass where a vinyl window and drywall had been installed by previous owners."

So, out went the non-Eichler style materials and in came materials that look as if they could be original. Karen sourced period-friendly products that are updated to better suit modern functionality, such as thermally broken aluminum windows, tempered floor-to-ceiling glass panes and an energy efficient sliding door. "The original tongue and groove ceiling and beams were kept intact, which are some of the most revered details of Eichler homes," she says.

---

## /REAL HOME 101/

**TYPE OF HOME:** 1962 ranch

**BUILDER:** Joseph Eichler

**BACKGROUND:** Prior to the renovation the kitchen was functional, but it had been updated by the previous owners with a more traditional, non-midcentury design aesthetic.

**INNOVATIVE IDEA:** A drawer-style microwave installed in the kitchen island keeps the everyday appliance easily accessible without sacrificing the space's clean lines.

---



## WHAT MAKES IT MCM?

- Original tongue-and-groove ceiling and beams
- Light countertops
- Functional design

"SINCE THE KITCHEN AND BAR AREA ARE LOCATED IN A SHARED SPACE, I CHOSE THE SAME COLORWAYS FOR BOTH AREAS, BUT LEVERAGED DIFFERENT TILE SHAPES AND PATTERNS," SAYS KAREN. "THE BAR AREA TILE DESIGN IS HANDPAINTED, SO EACH PIECE IS TRULY A WORK OF ART."

### DESIGN DETAILS


After weeks of designing and four months of construction, Karen revealed a mid mod masterpiece. Each detail speaks to Joe and Mark's initial requests and to the home's original design.

Originally separated by a long wall, the homeowners wanted to create a better flow between the kitchen and adjacent dining room. "In order to provide adequate structural support and not show support posts or framing after the wall was removed, I had the small entry area closed up where the interior support was located. This allowed the necessary structural support without random posts blocking the space and instead, offers clean lines," says Karen.

With the space's overall flow improved, Karen transformed Ikea cabinets with custom flatsawn walnut doors and fronts from Semihandmade Doors, and brought vibrancy to the space through two unique backsplash designs. Fireclay Tile in chartreuse, white and dark brown ties together the main kitchen and bar areas.

"Original Eichler kitchens featured light colored laminate-style countertops," says Karen. "I wanted to pay homage to this detail, but chose a durable quartz in a light colorway: Caesarstone's Ocean Foam. The countertops offer a nice, subtle interest in the final finish."

The design also offers plenty of functional beauty. Serveware and small appliances are stored in a row of under cabinet storage on the seating side of the island, while drawers provide ample storage for pots and pans underneath the cooktop. Rather than allow a microwave to clutter the counter or interrupt the design's clean lines, Karen installed an under-cabinet drawer-style microwave in the island.

Long gone are the non-mod fixtures and fittings, and now Joe and Mark can entertain in and enjoy a space that Karen describes as, "vibrant, modern and multifunctional." 



"WHILE EICHLER FLOOR PLANS DIDN'T USUALLY INCLUDE BUILT-IN BARS, OTHER MIDCENTURY MODERN HOMES OFTEN DID FEATURE THESE DEDICATED 'NOOKS.' I WAS INSPIRED BY THE PALM SPRINGS VIBE AND WANTED TO CREATED A UNIQUE SPACE FOR COCKTAIL CREATION, ENTERTAINING AS WELL AS ADDED DISPLAY AND STORAGE— HENCE THE INCLUSION OF MIRRORED GLASS AND FLOATING SHELVES," SAYS KAREN.





MID-CENTURY  
DECOR &  
FURNITURE

**SAVE 15%**  
OFF YOUR ORDER!

COUPON CODE:

**ARS18**

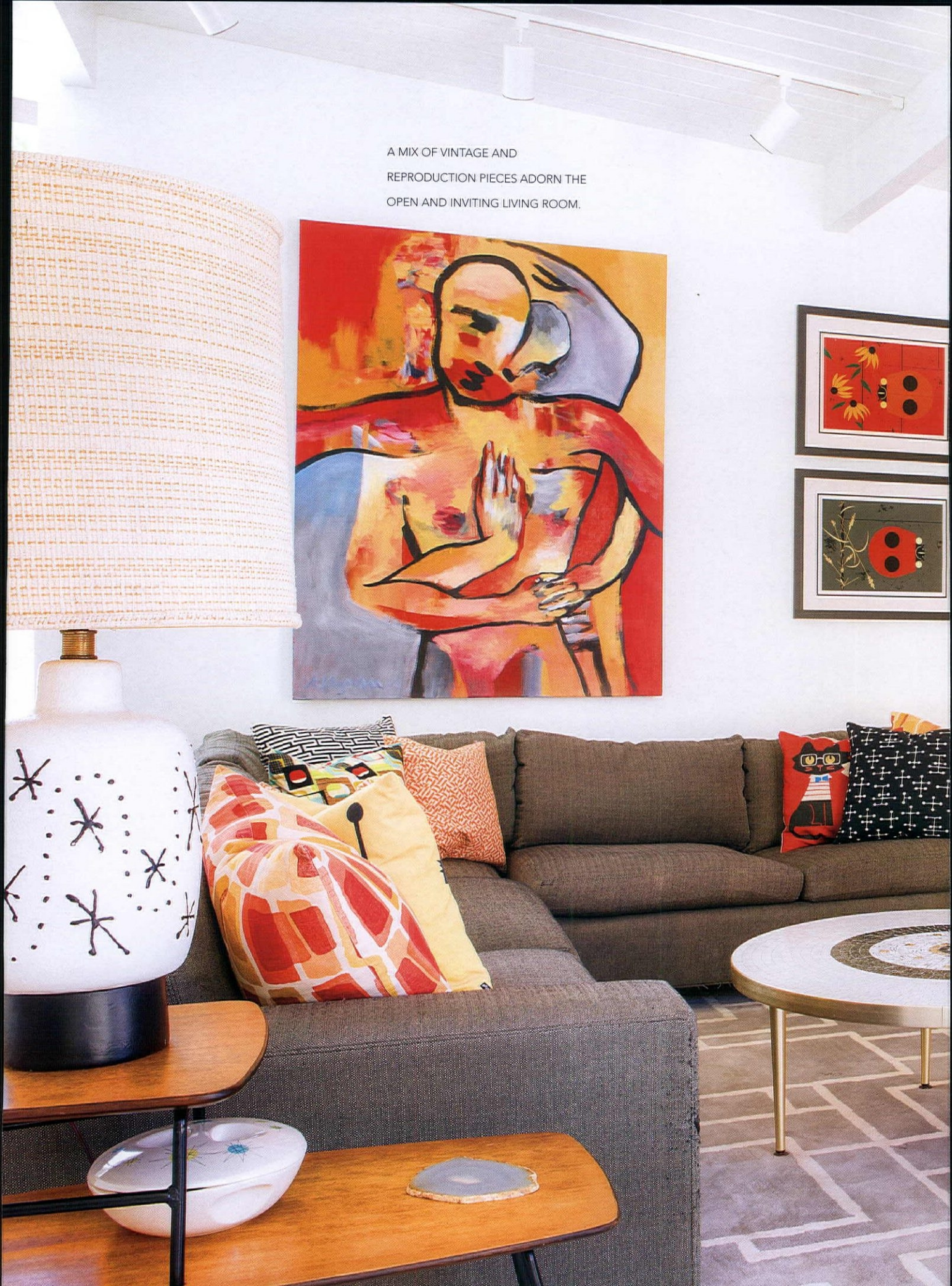
Valid Through 3/31/2018

**WOODWAVES inc.<sup>®</sup>**

[woodwaves.com](http://woodwaves.com)



A MIX OF VINTAGE AND  
REPRODUCTION PIECES ADORN THE  
OPEN AND INVITING LIVING ROOM.





# Meiselmania

By Lindsay Jarvis

Photography by Bret Gum • Styling by Sarah Jane Stone

Drawn from Chicago to Palm Springs thanks to a love of Midcentury Modern, this couple saw the potential in a 1960 Meiselman house and created their custom dream home.





## Mostly known for its population of Alexander Construction Company houses,

the Palm Springs neighborhood of Sunmor is also dotted with several iconic Jack Meiselman homes, including this home built in 1960. Keith Zabel and Randy Shemaitis, a couple from Chicago, first visited the house back in July 2011 but weren't initially impressed, leaving the property after only a few minutes.


"We visited this house a couple times, and it just wasn't inspiring to Keith. We saw some amazing homes with great architectural pedigrees, and this house was just a bit of a Plain Jane," explains Randy. However, after viewing a listing video for a neighboring house that had undergone a stunning renovation, the couple began to see the home's potential. This new inspiration—combined with the house's large lot, magnificent views and quiet neighborhood—convinced them to purchase the Plain Jane early 2012.

### PERSONAL TWIST

Knowing that they wanted to add their own stamp on the home as well as tackle some important repairs, Keith and Randy dove right in—removing old shag carpeting and ceramic tile and gutting the cramped kitchen. Their first big change was altering the small galley kitchen's footprint, creating a more functional cooking and entertaining space by opening it up to the dining room and views of the pool. The couple also expanded the home's square footage by adding a master suite with access to the backyard. There, they installed an outdoor shower with brightly colored tiling to add to the desert oasis ambiance.







The couple's goals for the home were to add enough space for year-round living, **install clerestory windows for more light and better views,** and to enhance the home's Midcentury Modern features.

THE SAN JACINTO MOUNTAINS CREATE A STUNNING BACKDROP FOR THIS 1960 MEISELMAN HOME. ICONIC TO PALM SPRINGS, ORIGINAL BREEZE BLOCKS WERE DISASSEMBLED PIECE BY PIECE, THEN REASSEMBLED FOR A MORE WELCOMING ENTRANCE.



**Keith and Randy prioritized bringing in period appropriate details—like sliding pegboard cabinet doors, Terrazo floors and mozaic tile.**

THESE VINTAGE CHARLEY HARPER SILK SCREENS ARE FROM THE COLLECTION HE DESIGNED SPECIFICALLY FOR THE FORD TIMES MAGAZINE FROM 1952-1960.



TO CREATE A MORE FUNCTIONAL COOKING SPACE, KEITH AND RANDY OPENED UP THE SMALL GALLEY KITCHEN SHORTLY AFTER PURCHASING THE HOUSE. TAYLIS, CAUGHT LOUNGING ON THE QUARTZ COUNTERTOPS, WAS ADOPTED FROM THE PALM SPRINGS ANIMAL SHELTER, WHERE THE COUPLE OFTEN VOLUNTEERS.



## BUDGET PLANNING

As any homeowner who has tackled a renovation will know, things don't always go as planned. About a month after moving in, the home's plumbing backed up due to tree roots in the clay sewer lines—an issue in obvious need of an immediate resolution. Luckily, Keith and Randy had the foresight to allocate 10% of their budget for unforeseen contingencies. Professionals were brought in where needed, but the couple stretched their budget by tackling many of the projects on their own, including the demolition, carport restoration and landscaping. Further reducing costs, they were able to avoid additions like radiant heat in the floors—something that could have been necessary in their previous hometown of Chicago, but is useless in Palm Spring's warm climate.





VINTAGE SPEAKERS BUILT BY KEITH'S GRANDFATHER JUST NEEDED SOME NEW ACOUSTIC FABRIC TO BE FUNCTIONAL ONCE MORE. WHIMSICAL BIRDS ARE THE THEME FOR THIS CLUSTER OF ORIGINAL CHARLEY HARPER ARTWORK.





ABOVE LEFT: KEITH AND RANDY FOUND THIS HEYWOOD WAKEFIELD BUFFET ON EBAY AND HAD IT PROFESSIONALLY REFINISHED IN THE ORIGINAL WHEAT COLOR—MAKING IT A BEAUTIFUL AND FUNCTIONAL ADDITION TO THEIR ENTRY.

ABOVE RIGHT: CUSTOM CABINETRY AND DIMENSIONAL TILE FROM HEATH CERAMICS IN THE GUEST HOUSE'S KITCHENETTE MAKES THE SPACE ANYTHING BUT SHORT ON MIDCENTURY STYLE.



### EASY-BREEZY

The couple loved the home's original breeze block pattern, but they didn't love its placement and wanted to create a more welcoming entrance to their front door. Rather than replace the original blocks, the couple found the best option was to carefully deconstruct the existing wall and build their new design using the recycled material.

During a later addition of a guest house, Keith and Randy sourced new breezeblocks in the same pattern to mimic the look and keep the entire property feeling cohesive.

### RESCUING MEISELMAN CHARACTER

While many of the home's original features had been altered through previous renovations, all the original tongue and groove ceilings, characteristic of Meiselman homes, were kept. "We actually exposed it, because in some rooms it had been covered over," says Randy.

The tongue and groove ceilings weren't the only original detail that the couple was able to save. "At the front of the house, every Meiselman has its own decorative stucco pattern," explains Keith. While much of the stucco was removed from other exterior walls to meet building codes, this unique feature was preserved on the front elevation to honor the home's history.









**ABOVE LEFT:** REPEATED THROUGHOUT THE HOUSE AND YARD IN VARIOUS FORMS, THE BACKSPLASH TILE PATTERN IS WHAT RANDY AND KEITH LOVINGLY CALL "TIKI WITHOUT TACKY."




**ABOVE RIGHT:** THE MASTER BATH FEATURES PERIOD-PERFECT MOSAIC TILES AND A GEORGE NELSON BUBBLE LIGHT.

**BOTTOM RIGHT:** ONCE JUST A WINDOW, THE NEW LARGE SLIDING GLASS DOOR IN THE FRONT GUEST ROOM ALLOWS ACCESS TO A SUNNY PATIO. SET ON THE OPPOSITE SIDE OF THE HOUSE FROM THE MASTER BEDROOM, THE PATIO TRULY IS A PRIVATE ESCAPE.

**OPPOSITE:** BUILT IN 1971, THE GUEST HOUSE UNDERWENT ITS OWN RENOVATION SO AS TO MATCH THE HOME'S ROOFLINE AND BECOME A VACATION RENTAL. THE PRIVATE GETAWAY HAS ITS OWN ENTRANCE, AN ENCLOSED PATIO AREA, OUTDOOR SHOWER AND IS BRIMMING WITH THE COUPLE'S ATTENTION TO DETAIL.







A patio set off the guest house is enclosed by reproduction breeze blocks. **To give their guests privacy, hinged glass panels were installed on the outside**—which can be swung open for cleaning.



**RIGHT:** THIS CUSTOM FOUNTAIN WAS MODELED AFTER THE ICONIC FIRE PIT AT THE PARKER HOTEL IN PALM SPRINGS. WITH NO DETAIL OVERLOOKED, EVEN THE STORAGE SHED HAS A MIDCENTURY MODERN CUTOUT DOOR.

**BOTTOM RIGHT:** THE LUSH, YET DESERT-APPROPRIATE, LANDSCAPING WAS ALL DONE BY KEITH AND RANDY. VINTAGE ACAPULCO ROCKING CHAIRS WERE FOUND AT THE ANNUAL MODERNISM YARD SALE, A SPECIAL PARKING LOT EVENT AT THE END OF MODERNISM WEEK.

To keep up with today's energy efficiency standards, double pane windows replaced single panes throughout the entire house. In addition, the tar and gravel roof was converted to foam roof, and the couple added spray foam insulation to the walls. This project not only helps regulate the temperature of Keith and Randy's home, but it allowed the couple to add clerestory windows and large sliding glass doors off the dining area while still meeting modern energy codes. Keith and Randy later added solar panels—a cost effective option that puts the extreme desert sunshine to work.

## LOOKING AHEAD

The dust from their initial renovation may have settled, but Keith and Randy already have their eyes set on tackling more outdoor projects. On the horizon, they hope to add a hot tub as well as redo the pool and surrounding concrete patio. There are also plans for a 'Catio', an enclosed open-air walkway accessed through the laundry room that would allow their five cats to exercise in the fresh air and sunshine. Of course, there are also plans for a shade structure with a tiki bar underneath. ☺







DEAN AND DARYLE ARE PASSIONATE ABOUT THE PRESERVATION OF THEIR BELOVED NEIGHBORHOOD. "LAKESIDE DRIVE AND PEBBLE BEACH DRIVE, THE TWO STREETS WITH THESE HOMES, ARE TWO OF THE MOST BEAUTIFUL STREETS IN TOWN. WE LOVE THAT WHILE THE HOMES SHARE A COMMON FLOOR PLAN, EACH IS UNIQUE WITH THEIR OWN SPECIAL ELEMENTS."





# Desert

Written and Styled by Sarah Jane Stone  
Photography by Chad Mellon

# Serenity

A careful restoration, muted tones and a lovingly curated collection has revived a midcentury marvel.

Hidden away between newer developments and a golf course sits a neighborhood of midcentury houses with exquisite pedigree.

Famed architect Donald Wexler, along with the Alexander Company, created this quiet Palm Springs neighborhood of sprawling desert homes in 1965.

Current owners Dean Williams and Daryle Morgan, an HR executive and a landscape architect, have lovingly cared for the home since 2008. Their passion for midcentury design runs deep, and



the couple credits Daryle's love of the Arts & Crafts movement as its foundation. Dean and Daryle surround themselves with their love for midcentury design—as evidenced by the fact that this is the second midcentury vacation home they've owned in Palm Springs and that their primary residence in Berkeley also falls into their favorite design style.

### SERENDIPITOUS FIND

While doing what the couple describes as a “casual search of MLS listings,” they spotted a photo of the fireplace and were hooked. “We had to see the house that was attached to that fireplace!” they say.

They were further drawn in by the home's blurred line of indoor/outdoor living, its walls of glass and clean lines. A family room was added to the layout in the 1980s, bringing the three bedroom, three bathroom home's square footage up to 2,224.

Upon moving into the golf course adjacent residence, the couple began making careful changes—being mindful not to alter the character of the building, but rather to subtly update it to suit their lifestyle.





Dean and Daryle kept all the original features they inherited with the home, including **interior and exterior rock walls** and the **stunning white fireplace** that first caught their eye.

IN THE FUTURE, THE COUPLE HOPES TO REPLACE THE WINDOWS, HVAC, PLUMBING, POOL FILTER AND HEATER, AND POTENTIALLY ADD SOLAR PANELS TO THE ROOF—ALL IN AN EFFORT TO MAINTAIN THE HOME'S INTEGRITY AND IMPROVE ITS ENERGY EFFICIENCY.





DARYLE'S LOVE OF CERMICS HAS RESULTED IN A COMPLETE SET OF HEATH DINNERWARE—ALL FROM THE COMPANY'S SECONDS SALES AT THEIR ORIGINAL FACTORY IN SAUSALITO. TOGETHER THE COUPLE HAS COLLECTED MANY OF THEIR VINTAGE FINDS THROUGH GARAGE AND ESTATE SALES, THE ALAMEDA AND ROSE BOWL FLEA MARKETS AND HEDGE, A VINTAGE FURNISHINGS SHOP IN CATHEDRAL CITY.







ABOVE LEFT: THIS LARGE SCALE MACRAMÉ OWL HANGS IN THE MASTER BEDROOM LOOKING OUT AT THE BACKYARD. WHILE IT MAY LOOK LIKE AN AMAZING FLEA MARKET FIND, THE PIECE IS ONLY INSPIRED BY ITS VINTAGE PREDECESSORS. DEAN USED ROPE FROM HOME DEPOT TO MAKE THE WALL HANGING BY HAND.



ABOVE RIGHT: PROUDLY HUNG IN THE LIVING ROOM, THE COLORFUL ARTWORK ARE CUSTOM PORTRAITS OF DEAN AND DARYLE COMMISSIONED THROUGH A CHARITY AUCTION.

RIGHT: A COLLECTION OF VINTAGE HEATH ASHTRAYS AND GAINNEY AND MARTZ CERAMICS ARE CURATED ON A PIECE OF FURNITURE DESIGNED BY PAUL MCCOBB. AS THE PIECE CAN ALSO SIT UTOP A BASE AND ACT AS A HUTCH, DEAN AND DARYLE HAD MARBLE CUT TO CREATE A DISPLAY-WORTHY TOP.

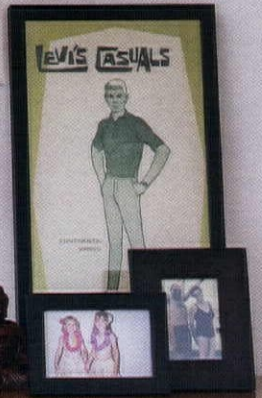
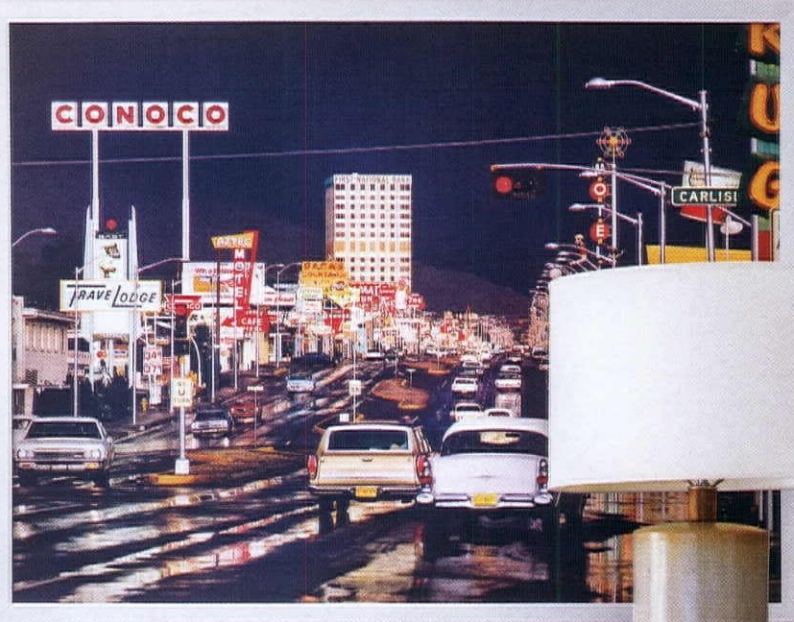




Their first projects took place in the interior—opening a wall between the dining room and addition, and repainting and installing carpet throughout. Outside, they removed the lawn and shrubs, opting instead for more desert-friendly landscaping of gravel and succulents. They also painted the entire exterior and added period-appropriate wood louvers in front of the bedroom windows for sun protection and privacy.

### ORIGINAL BEAUTY

Dean and Daryle kept all the original features they inherited with the home, including interior and exterior rock walls and the stunning white fireplace that first caught their eye.






A color palette inspired by the **desert and Daryle's love of the Arts & Crafts movement** has played a vital role in how the couple balances their home's authenticity with personalization.





A modern kitchen featuring light green cabinetry with gold handles. The countertop is a vibrant blue, and a white sink is visible. A lamp with a white shade and a glass vase sit on the counter. A large window on the right side of the frame looks out onto a patio area with a large potted plant and a building under construction.

AS PART-TIME RESIDENTS, DEAN AND DARYLE MANAGED THE RESTORATION WORK FROM A DISTANCE, AND AT TIMES WORKED WITH A PROJECT MANAGER.



Grasscloth wallpaper in the entry was too damaged to be salvageable, but the couple traced down a replacement so as not to lose this unique feature.

Sometime in the late 1970s or early '80s, previous homeowners redesigned the kitchen and baths. Rather than diving in with a full renovation, the couple has decided to make the spaces palatable until they can invest in a future remodel. A soft blue shade paired with brass hardware and peel-and-stick wallpaper, patterned with the appearance of grasscloth, has made the spaces feel cohesive with the couple's style. When the time to renovate does come, Dean and Daryle are already prepared to respect the building's integrity and continuity.

## DESIGNING HOME

A color palette inspired by the desert landscape and Daryle's love of the Arts & Crafts movement has played a vital role in how the couple balances their home's authenticity with personalized décor.

The couple describes their residence and aesthetic as relaxed and approachable—an ideal outcome for a vacation getaway. They value a mix of old and new as it creates a “lived in” feel, where nothing is too precious to be used and appreciated.

Dean and Daryle have met the adult children of the Wexlers and Alexanders, and according to the couple, both families said their parents would love the house and be proud of how well it has been cared for—a deeply meaningful and well-placed compliment. 🌀



**RIGHT:** THE COUPLE HAS BIG PLANS FOR THEIR BACKYARD. AFTER DISCOVERING THAT THEY HAVE THE OPTION TO PUSH THEIR BACK FENCE OUT 20 FEET TO CAPTURE AN EASEMENT, THEY STARTED DREAMING OF AN OUTDOOR DINING SPACE, NEW LANDSCAPING AND A SPA.



# Rental

New residents bring this 1960s Palm Springs apartment back to its midcentury roots.

# Renovation

By **Leslie Thompson**

Photography and styling by **Krys Melo**

SEVERAL MODERN FURNITURE MAKERS, INCLUDING JOYBIRD—A FAVORITE OF KRYS'—ARE HARKENING BACK TO THE CLEAN LINES AND DARKER WOOD TONES OF MIDCENTURY DESIGNS.





One of the joys of home ownership is the freedom to do whatever you want with the space.

You can knock down walls, tear out built-ins, redo the paint and carpeting—the possibilities are endless. In a rental, not so much. Landlords generally forbid changes, which can make it more difficult for an apartment to really feel like home. "For fans of Midcentury Modern style, the key is to create a vision for the space that works within the confines of the rules and to find creative ways of adding a vintage vibe," says lifelong renter Kryz Melo.



THE FREESTANDING FIREPLACE IS ORIGINAL TO THE APARTMENT, WHICH WAS BUILT IN 1960, AND IS THE PERFECT COMPLEMENT TO A WHITE TULIP DINING TABLE AND VINTAGE BURKE BUCKET CHAIRS.



"I try to be as authentic as possible, but **I try to put my own flair on it** and be relevant to whatever's in trend now."

KRYS USED AN ONLINE PROGRAM TO PRE-PLAN THE SCALE AND PLACEMENT OF THE FURNITURE BEFORE MOVING FROM LOS ANGELES INTO THE PALM SPRINGS APARTMENT.





“There are a couple of programs you can use to do a 3D rendering to scale and make sure everything is going to fit,” says Krys, who recently relocated from Los Angeles to Palm Springs with her husband. The couple found an 800-square-foot apartment in a cozy midcentury six-plex, and Krys spent three weeks planning the layout before they moved in. “Using those online programs helped me get an idea of what would fit and what layout would work best. That way, I could shop for what I had in mind,” she says.





THE VINTAGE-INSPIRED SPUTNIK  
CHANDELIER FROM LUCENT LIGHTING  
WAS CUSTOM-MADE TO FIT THE  
APARTMENT'S SMALLER DIMENSIONS.



Changing out light fixtures and hardware—  
with permission—can turn a drab rental into  
a **RETRO HAVEN.**





## DIY DESIGN

Although the couple's living space looks straight out of the atomic era, Krys bought much of their furniture from modern retailers, including Joybird, World Market and the new Project 62™ collection from Target. "I try to be as authentic as possible, but I try to put my own flair on it and be relevant to whatever's in trend now," she says. Much of her inspiration comes from vintage magazines, although Krys also has a unique knack for reimagining modern pieces to achieve a midcentury look.

In fact, the one-time wedding photographer has attracted a legion of fans through her Instagram account and lifestyle blog, Melodrama, thanks to her clever DIY hacks. Several of her furnishings are modified pieces from Ikea, jazzed up with fabric, paint or retro hardware to achieve a vintage look. The midcentury-style sofa in the couple's home office, for example, is a







standard KARLSTAD couch. Krys dyed the white slipcover pastel pink, tufted the back cushions by hand and then added tapered legs for a more authentic silhouette. The coffee table/ottoman is crafted from a VITTSJÖ nesting table that was spray-painted gold and topped with foam, upholstered in green velvet. She also painted the backboard on a white VALJE shelf to create a colorful home bar.

"Whenever I get something from Ikea, I hack it to have more flair and style," she says. "Those are my most popular posts, because people love Ikea, and when they find out they can change things for just a little bit more money, it becomes a great resource."

## THE BIG SWITCH

Knowing that furniture alone wouldn't achieve the look she was after, Krys also asked her landlord's permission to swap out lighting and hardware. He agreed, so long as she promised to replace the original fixtures before the couple's next move.

Adding a Sputnik chandelier above the dining table and matching wall sconce in the bedroom vanity gave the rental instant midcentury appeal. Krys also used mod-friendly removable peel-and-stick wallpaper throughout the apartment, including a festive lemon print in the kitchen, tropical leaves in the bathroom and a gold-and-white geometric pattern in the bedroom. She dressed up the closet doors by creating a diamond pattern with metallic foil tape and



**TOP LEFT:** THE RENTERS LAID DOWN ASTROTURF FOR A TOUCH OF GREEN ALONG THE BACK PATIO AND ADDED FAUX BOXWOOD HEDGES TO COVER THE METAL FENCE EXTENDER—CREATING THE APPEARANCE OF A HEDGE.

**LEFT:** THE DARK WALNUT DESK, ACCENT CHAIR AND GEOMETRIC WALL ART IN KRYS' HOME OFFICE ALL ARE CONTEMPORARY PIECES WITH A MIDCENTURY VIBE. THE VINTAGE MINT GREEN TABLE LAMP ADDS A TOUCH OF AUTHENTICITY.



Krys turns to modern furniture makers, such as Joybird, for **AFFORDABLE** midcentury-inspired designs she can customize.

THE HOME OFFICE IS FILLED WITH DIY HACKS, INCLUDING THE GREEN VELVET OTTOMAN/COFFEE TABLE AND AN IKEA SOFA CLAD IN A SLIPCOVER THAT WAS DYED PASTEL PINK IN THE BATHTUB.





OPPOSITE: THE HOME BAR IS AN IKEA-HACK, ACCENTED WITH VIBRANT YELLOW SIDE CHAIRS AND MODERN GOLD-TONE HOME ACCESSORIES.

KRYS USED RIT DYE TO ENSURE HER CAFÉ CURTAINS MATCHED THE VIBRANT YELLOW OF THE SELF-ADHESIVE WALLPAPER SHE INSTALLED IN THE APARTMENT'S KITCHEN.





adding vintage hardware. "I was looking through a 1957 edition of Better Homes & Gardens, and there was an ad for closet doors. One had that gold trim with a starburst nob," says Kryz, who scored similar fixtures on Etsy and found the tape on Amazon.

Sadly, the embellishments will be removed in a few years, if the couple decides to relocate again. But until then, they have a cozy retro haven in Palm Springs, complete with a pool and mountain views.

"I'm already mentally prepared that whenever I leave here, I'm going to have to put it all back," says Kryz, who says the extra effort is worth it to live in a space she loves. She notes, "At least I have two or three years of what I wanted." 🌀







**ABOVE LEFT:** A SINGLE STATEMENT PIECE, LIKE A VIBRANT GREEN PLATFORM BED, CAN TRANSFORM AN OTHERWISE UNINSPIRED SPACE. ADDING CURTAINS IN A CONTRASTING SHADE AND VINTAGE LAMPS, SCORED ON ETSY, TURNS THE BEDROOM INTO A COZY RETRO REFUGE.

**ABOVE RIGHT:** NON-POROUS SELF-ADHESIVE WALLPAPER WITH A BOLD TROPICAL PRINT HOLDS UP WELL TO MOISTURE IN THE BATHROOM AND GIVES THE SPACE A CLASSIC PALM SPRINGS VIBE.

**LEFT:** SIMPLE FIXES, LIKE SWAPPING OUT HARDWARE AND ADDING A SPUTNIK WALL SCENCE AND COLORFUL FABRIC, ARE ALL IT TAKES TO TURN A BORING BEDROOM INTO A VINTAGE-INSPIRED BOUDOIR.





ANY COLOR



THE SOFA COMPANY

Free Delivery!



Mid-Century  
-MODERN COLLECTION-

You design it, We build it!



SINCE 1998



BUY IT TODAY  
2 DAY COLLECTION  
GET IT IN 2 DAYS

FREE MEMORY FOAM



Handcrafted in L.A.



VISIT [THESEFA.CO.COM/ATOMIC](http://THESEFA.CO.COM/ATOMIC) TO GET \$100 OFF YOUR ORDER



888.267.1110

FREE FABRIC PROTECTION





# Sunny in Palm Springs


By Sarah Jane Stone  
Photography by John Ellis  
Styling by Sunday Hendrickson

History meets passion  
when a couple's love for  
modernism preserves a  
uniquely original home.



ACCORDING TO PETER, EVEN  
THOUGH THE GLAZING IN THE  
ORIGINAL STEEL CASEMENT  
WINDOWS IS NOT UP TO CURRENT  
INSULATION STANDARDS,  
INEXPENSIVE EVAPORATIVE COOLING  
MEANS THE HOUSE DOESN'T USE  
MUCH MORE ENERGY THAN IF THEY  
HAD DOUBLE PANED WINDOWS.  
HOWEVER, FOR SAFETY REASONS,  
THE COUPLE REPLACED THE  
ORIGINAL GLAZING IN THE SLIDING  
GLASS DOORS WITH TEMPERED  
SAFETY GLASS.





Custom built in 1956 by Sam Pascal, this Palms Springs gem is nestled amongst a tract of 1948-52 Paul W. Trousdale homes.

Peter Moruzzi, architectural historian and author of pictorial history books such as *Palm Springs Paradise: Vintage Photographs from America's Desert Playground*, and Lauren LeBaron, director of accounting in the healthcare industry, bought their desert home in 1998. The three bedroom, three bathroom, 2,600-square-foot home began as a second home, but became their full-time residence in 2017.

A SHORT-LIVED TREND IN THE MID 1950S THROUGH THE EARLY '60S, THE BUILT-IN INDOOR BARBEQUE HAD BEEN PAINTED WHITE WHEN PETER AND LAUREN MOVED IN. EVEN THOUGH SMOKE AND SPLATTER MAKE IT AN IMPRACTICAL FEATURE, THE COUPLE PAINTED IT IN ONE OF THEIR FAVORITE HUES AND CHERISH ITS UNIQUE PRESENCE.





## THE PERFECT FIND

Peter and Lauren were first captured by their home's originality and spaciousness. With its intact kitchen, bathrooms, flagstone fireplace, steel casement windows and steel sliding glass doors, it spoke to their preservation-loving hearts. Unique features like the wet bar off the living room, the dining room's indoor barbeque and its location on what the couple describes as "a bucolic street with spectacular views of the San Jacinto mountains" immediately won them over. "It took months of searching, and visits to dozens of houses, to find one that was original and mostly unmodified," Peter says.

## RESTORING PARADISE

Given its original condition, Peter and Lauren have been lovingly repairing the home since its purchase. Erring toward restoration, the couple has focused on keeping the house

"IN OVER 30 YEARS OF COLLECTING, I'VE FOUND PIECES AT THRIFT STORES, USED FURNITURE STORES, ANTIQUES MALLS, ROSE BOWL AND PASADENA CITY COLLEGE FLEA MARKETS, MIDCENTURY FURNISHINGS SHOPS AND THROUGH EBAY," SAYS PETER. THE COUPLE'S EXTENSIVE ART COLLECTION HELPS MAKE THE HOUSE PERSONAL.







**ABOVE:** THE BACKYARD TAKES FULL ADVANTAGE OF THE PROPERTY'S MATURE PALM TREES AND STUNNING VIEWS, WHILE DEEP OVERHANGING SOUTH-FACING EAVES PROVIDE PROTECTION FROM THE DESERT SUN AND HEAT. THE POOL'S LARGE SIZE AND PROXIMITY TO THE HOUSE IS A PALM SPRINGS TRADEMARK.

**RIGHT:** "THE FAMOUS PALM SPRINGS ILLUSTRATOR AND ARTIST O.E.L. GRAVES AND HIS WIFE VIE LIVED IN OUR HOUSE FROM 1960-1965. GRAVES WORKED IN NUMEROUS MEDIA PLATFORMS: SCULPTURE, PAINTING, ASSEMBLAGE, OILS, WATERCOLORS, PLEXIGLAS, METAL, GLASS," SAYS PETER. "HE DESIGNED MOST OF THE COVERS FOR *PALM SPRINGS VILLAGER* MAGAZINE FROM 1946-1960."







as close to its original design as possible. As a former rental, renovations to the home were essentially nonexistent, giving Peter and Lauren, who are its third owners, the retro pad of their dreams.

Upon moving in, the couple got to work removing paver tiles, worn carpeting and plantation shutters. They replaced the sprinkler system, refreshed the landscaping, added a square concrete block wall and repaired the cracked concrete pool deck. They also replaced the original galvanized pipes with copper and relocated them from the concrete slab to the upper crawl space so the pipes wouldn't be visible on the roof.

The couple removed the cracked driveway in favor of a steel-reinforced concrete driveway and replaced the gas pipes, as well as the leaking roof and flashing. While the roof was open for the latter repair, they opted for custom ductwork to be installed, freeing the roof of the evaporative cooler and air conditioner.

Perhaps Peter's passion for midcentury design is best exemplified when asked about his home's original kitchen. "Certainly, we could replace our 1956 Western Holly oven, stove and Hotpoint refrigerator with contemporary models, but why? They work perfectly well with the added benefit of extraordinary beauty, epitomizing the brilliance of midcentury American design and workmanship. Each is of solid, durable construction of the type rarely found in contemporary appliances."

Having found their dream mid mod home and given it the restoration work necessary, Peter and Lauren were finally able to create the warm, open and inviting Palm Springs home they'd longed for—a space filled with their favorite vintage furniture and art. 🌀



**BOTTOM LEFT:** SITUATED BETWEEN THE LIVING ROOM AND THE DINING ROOM, WHICH HOSTS EAMES AIRPORT SEATING, IS ONE OF THE HOME'S MORE UNIQUE FEATURES—THE ORIGINAL WET BAR. "ITS CENTRAL LOCATION AND L-SHAPE CONSISTENTLY SERVES AS A RELAXING CONVERSATIONAL SPACE FOR FRIENDS AND GUESTS," SAYS PETER.



Premiering During Modernism Week 2018

Presented by the producers of the Palm Springs Modernism Show & Sale

# PALM SPRINGS MODERN DESIGN EXPO



40 exhibitors showcasing cutting-edge modern design and technology

dynamic, energy efficient building materials  
Cutting-edge appliances and electronics  
Smart home technology and security  
Hand-crafted furniture  
Design accessories  
Contemporary art and photography  
 Tastings by GE Monogram in its stunning  
 e-of-the-art kitchen filled with cutting edge  
 new cooking technology

## February 16-19, 2018

Palm Springs Convention Center

Saturday 10 am-6 pm  
Sunday 10 am-5 pm  
Monday 10 am-4 pm

### Preview Gala Friday

6-9 pm Benefiting Modernism Week  
\$85 in advance | \$100 at the door  
Tickets at [modernismweek.com](http://modernismweek.com)

### One Ticket, Two Shows

\$20 weekend admission includes  
Palm Springs Modernism Show & Sale  
Tickets at [psmodernismweek.com](http://psmodernismweek.com) or at the door

presenting sponsor

ELEVATE EVERYTHING™

**MONOGRAM**

sponsors



DOLPHIN PROMOTIONS

CHICAGO | 708.366.2710

FLORIDA | 954.202.1955

[info@dolphinfairs.com](mailto:info@dolphinfairs.com)



DestinationPSP.com

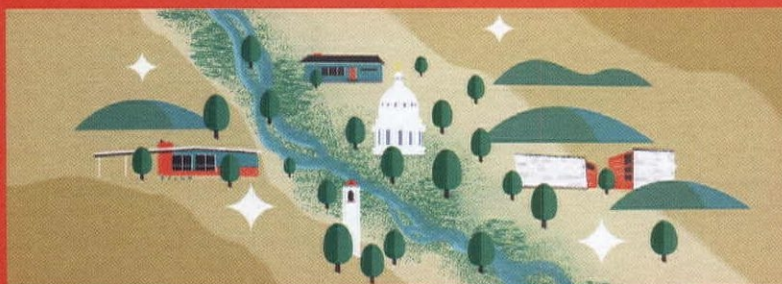
**DESTINATION  
PSP**  
PALM SPRINGS, CA

Products  
for the  
Palm Springs  
Lifestyle

Flagship Store  
170 N. Palm Canyon  
760-354-9154

Wholesale inquiries, contact  
jeffrey@destinationpsp.com

# LIFE IS BETTER IN BOISE.



In one of the most livable cities in America, we make mid-century dreams come true: big skies, rolling foothills, miles of river greenbelt, a thriving downtown, award-winning schools, and mid-century homes at attainable prices. Let our experts show you why Boise is better.

TOUR THESE HOMES AND OTHER GEMS UNDER \$275K AT [MID-CENTURYHOMES.COM](http://MID-CENTURYHOMES.COM)

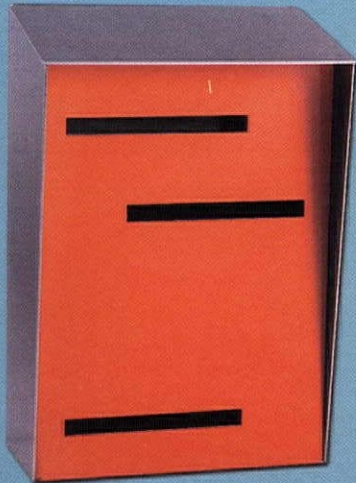


MID-CENTURY HOMES By Moniker Real Estate

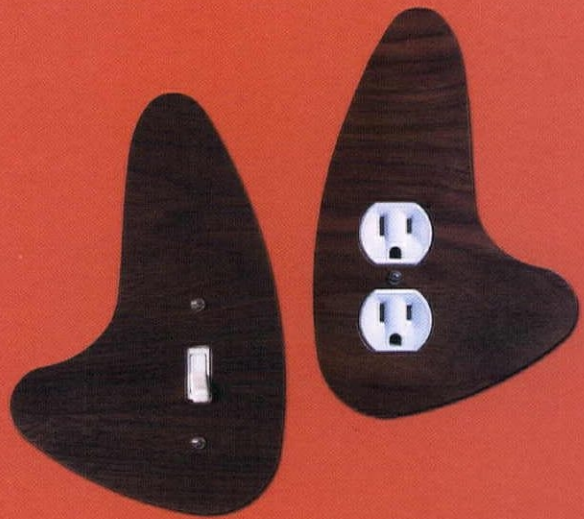


**MODERN**

*Mailbox*



modern-mailbox.com | Handmade in the USA



**MODERN**

*Light Switch*

modern-lightswitch.com | 208-340-7597

Your Home Deserves

# DOUBLE THE INSPIRATION.

**YES!** Sign me up for a subscription to **Atomic Ranch** and **Flea Market Décor** for **\$39.95**.  
(That's 10 issues for a \$57.95 savings on the cover price)

Payment Method  Check Enclosed  Credit Card  Money Order  Bill Me

Payment Through Credit Card  Visa  MC  AMEX  Discover

Name On Credit Card \_\_\_\_\_

Credit Card Number

Expiration Date \_\_\_\_/\_\_\_\_/\_\_\_\_

Subscriber Name \_\_\_\_\_ First \_\_\_\_\_ Middle \_\_\_\_\_ Last \_\_\_\_\_

Address \_\_\_\_\_

City \_\_\_\_\_ State \_\_\_\_\_

Phone (\_\_\_\_) \_\_\_\_\_ - \_\_\_\_\_ Email \_\_\_\_\_

Signature \_\_\_\_\_ Date \_\_\_\_/\_\_\_\_/\_\_\_\_

Or, log on to [www.engagedmediamags.com/combo\\_arfmd](http://www.engagedmediamags.com/combo_arfmd) and use promo code **AN7AR4D1** or call **800-764-6278** to order your subscription. Allow 6-8 weeks for delivery of first issue. Outside U.S., add \$45 per year for postage. Payment in U.S. funds only.



Get a 1-year subscription to **Atomic Ranch** and **Flea Market Décor** magazine and **save 59%** on the combined cover price!

**ONLY \$39.95**

A \$57.95 Savings On The Cover Price

Fill out the given form and mail it to:  
**Engaged Media, Inc., Lockbox #70253,  
Philadelphia, PA 19176-9883**





Modern &  
Midcentury  
Interior Design  
Specialists



modernous

Seattle & Palm Springs | modernous.com

**Modern**  
*Retrograde*  
IIC.

MID CENTURY MODERN STYIED ART  
MODERNRETROGRADE.COM | ETSY.COM/SHOP/MODERNRETROGRADE  
INTERNATIONAL SHIPPING • CUSTOM DESIGNS • 100% HANDMADE



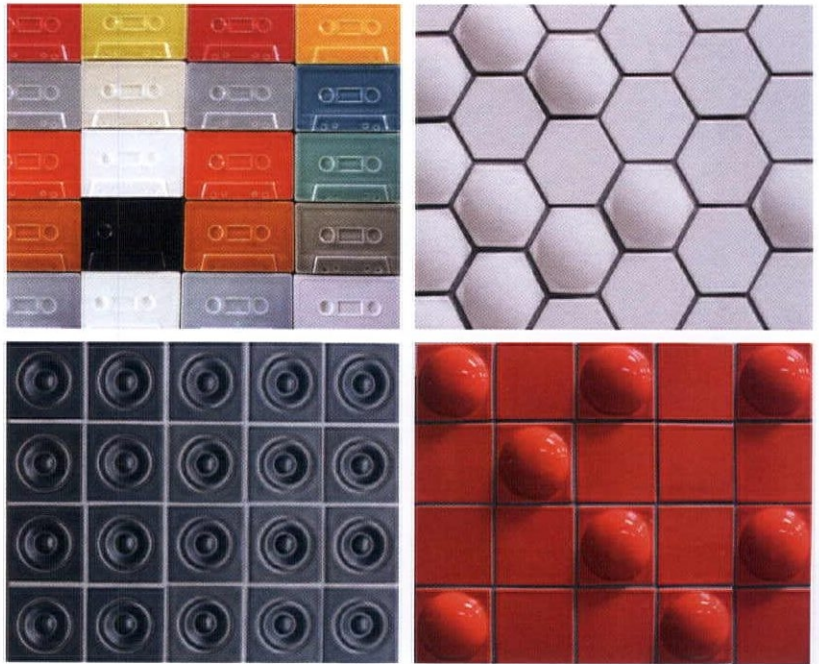
atomic  
FURNISHING & DESIGN

828 406 8588 www.atomicfurnishings.com





 indow<sup>®</sup>



 **clayhaus**  
MODERN TILE

HANDCRAFTED TILE  
AMERICAN MADE  
clayhaustile.com  
503-928-3076



**MODERN COMFORT  
MID CENTURY CHARM**  
WINDOW INSERTS THAT INSTALL  
WITH NO MOUNTING BRACKETS.

*Keep the comfort inside.*

503.676.6296

[indowwindows.com/mid-century](http://indowwindows.com/mid-century)

MODERNHOMES

PHILADELPHIA.COM



ModernHomesPhiladelphia.com  
Craig Wakefield  
Philadelphia's Mid-Century Specialist  
Cell (preferred): 267-973-9567  
Office: 610-527-0900  
CraigWakefield@mac.com



**BERKSHIRE  
HATHAWAY**  
HomeServices  
Fox & Roach, REALTORS<sup>®</sup>





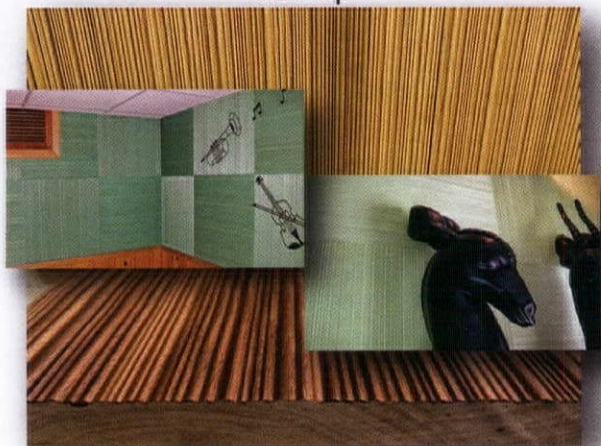
# Vintage Plywood Millworks

A Division of Eichler Siding

*The Cool Combed Panel Back From  
the Mid-Century-Weldtex*

Accent Walls-Siding-Wainscot-Ceiling Tiles

We Ship



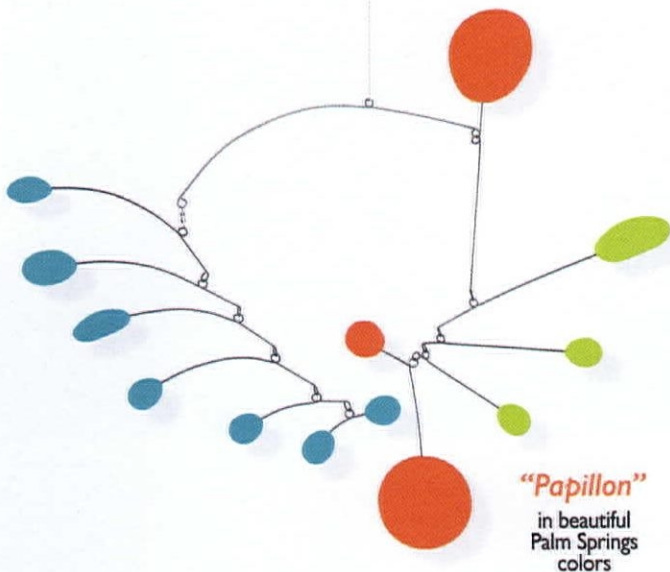
vintageplywood.com 415.883.5300 info@vintageplywood.com



See our other modern products and shop  
online at: [WWW.FOS-DESIGN.COM](http://WWW.FOS-DESIGN.COM)

888.591.0751

# AtomicMobiles.com



custom handmade  
mid century inspired mobiles

AtomicMobiles.com

atomicmobiles@gmail.com | 323.640.0003

20% off code:  
ATOMICRANCH

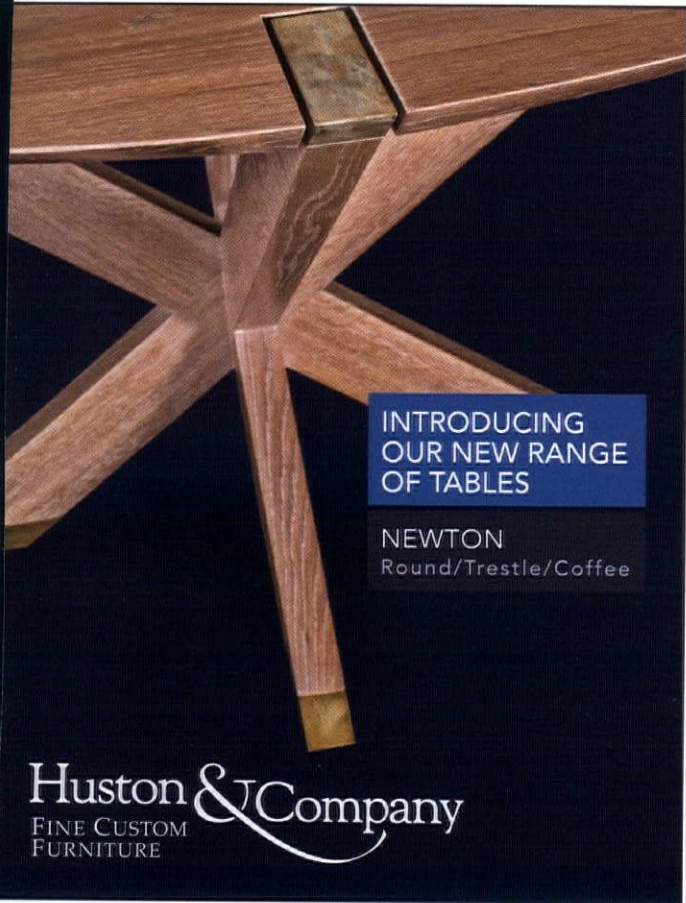
# Hip Haven

RETROMODERN LIGHTING + ACCESSORIES



[WWW.HIPHAVEN.COM](http://WWW.HIPHAVEN.COM) | 512-462-4755





INTRODUCING  
OUR NEW RANGE  
OF TABLES

NEWTON  
Round/Trestle/Coffee

Huston & Company  
FINE CUSTOM  
FURNITURE

[hustonandcompany.com](http://hustonandcompany.com) (888) 869-6370

# MODERN MATCHMAKER

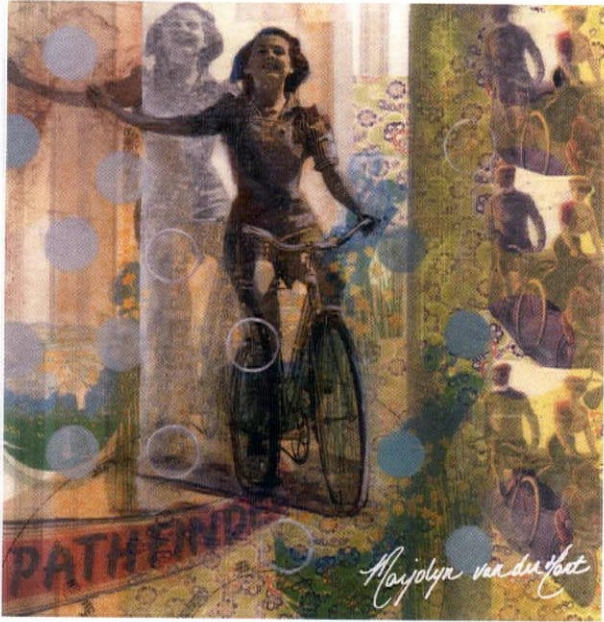
Does Mid-Century Design make you sit up and take notice?  
**Call me** and I will help you find a house for  
this chair where you will both feel at home.



**ED MURCHISON**

[midcenturymoderndallashomes.com](http://midcenturymoderndallashomes.com)

214.395.7151 | [emurchison@virginiacook.com](mailto:emurchison@virginiacook.com)



ART THAT BRINGS THE MID-CENTURY  
INTO YOUR HOME.



[www.marjolyne.com](http://www.marjolyne.com)

For originals and reproductions see [www.memoryartgirl.com](http://www.memoryartgirl.com)



# Modtraveler.net

An Enthusiast's Guide to Modernism



retro  
midcentury  
modern  
mailboxes



modboxUSA

Design inspired by mailboxes from the 50s and 60s  
that complements your home's midcentury aesthetic.

[modboxusa.com](http://modboxusa.com)

919.781.8403



Because at some point, 1960 wants its kitchen back.

[modcabs.co](http://modcabs.co)  
modern. modular. cabinets.

(888) 663-2227

[contact@modcabs.co](mailto:contact@modcabs.co)



Make it Modern with ModCraft Tile



[www.mod-craft.com](http://www.mod-craft.com)



MODERN-FABRICS.COM

DISCOUNTED UPHOLSTERY TEXTILES

30% OFF

CODE : ATOMIC30

Mid-Century  
Commercial  
Residential  
Leather  
Wool / Felt  
Knoll Textiles  
Kvadrat  
Maharam +++





Your Chicago-Area  
Mid-Century,  
Modern & Ranch  
Homes Specialist

# MODERN ILLINOIS

modernil.com

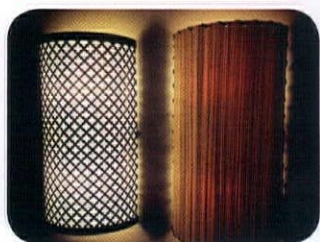
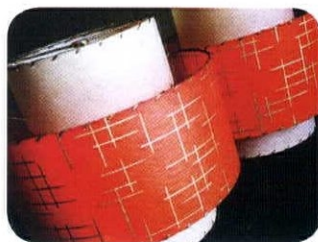
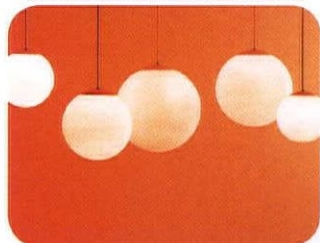
**Lou Zucaro**  
lou@modernil.com  
Broker, Baird & Warner  
**312.907.4085**  
754 W. Northwest Hwy.  
Barrington, IL 60010



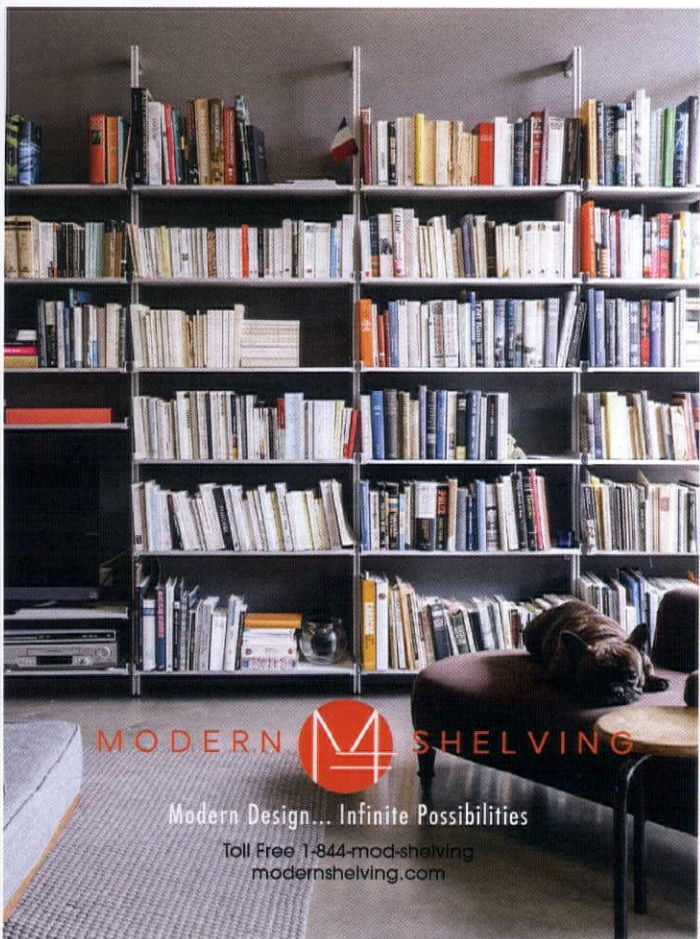
## Custom Lampshades and Lighting

Indoor/Outdoor • Sconces • Large Scale Lighting • Globe Pendants

Made to your specifications with limitless options



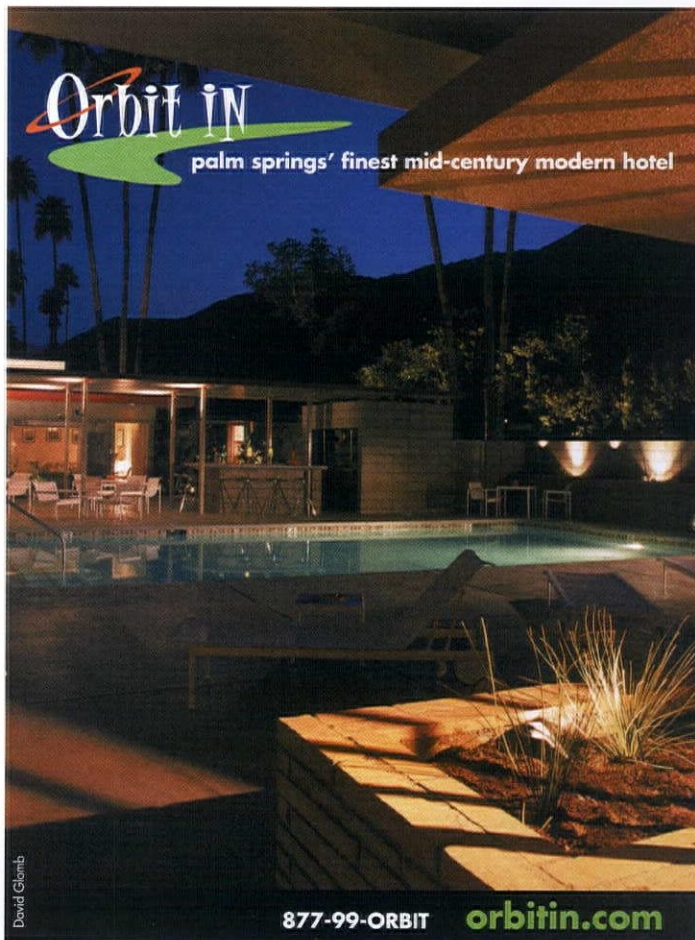
moonshineshades.com • 830.935.2350



MODERN  SHELIVING

Modern Design... Infinite Possibilities

Toll Free 1-844-mod-shelving  
modernshelving.com



**Orbit IN**

palm springs' finest mid-century modern hotel

David Glantz

877-99-ORBIT

orbitin.com



# resources

## Eichler Artistry, p. 26

**Contractor:** Darryl Paris, parisconstructionsservice.com.  
**Tile work:** Tile Unlimited, (707) 364-7514.  
**Cabinets:** Ikea, ikea.com.  
**Flatsawn Walnut Semihandmade Doors:** semihandmadedoors.com  
**Pendants:** Tom Dixon Beat Lights, YLighting, ylighting.com.  
**Tile:** Fireclay Tile, fireclaytile.com.  
**Faucet:** Kraus, kraususa.com.  
**Undermount Single Basin Sink:** Empire Industries, Inc., empireindustries.com.

## Meiselman, p. 30

**Exterior: Front door paint:** Benjamin Moore Poolside Blue, benjaminmoore.com.  
**Address Numbers:** Best Signs, bestsignsinc.com.  
**Score lights:** Vintage Oasis, vintageoasis.com.  
**Mailbox/planter box brick paint:** Benjamin Moore Pear Green, benjaminmoore.com.  
**Madison Planter by Crescent Gardens:** Lumens, or lumens.com.  
**Dining Room: Reproduction Saarinen Executive Arm Chair:** Design Within Reach (DWR), or dwr.com.  
**Chandelier:** Vintage Oasis, vintageoasis.com.  
**Charley Harper Silk Screen Collection:** Mostly purchased from Circle City Frames Indiana, circlecityframes.com.  
**Living Room: Eames fiberglass Case Study arm shell rocker:** Modernica, modernica.net.  
**Side tables:** Palm Springs Vintage Market, palmspringsvintagemarket.com.  
**Entryway: Painting:** Commission from Lisa Kowalski, lisakowalski.com.  
**Macramé owls:** Etsy, etsy.com.  
**Hanging light fixture:** Vintage Oasis, vintageoasis.com.  
**Kitchen: Eames Case Study wire stool reproduction:** Modernica, modernica.net.  
**Clocks:** Etsy, etsy.com.  
**Quartz counter:** Bedrosians, bedrosians.com.  
**'Whale Tail' drawer handles:** Rejuvenation Hardware, rejuvenation.com.  
**Front Guest Bedroom: Large bolster pillow:** Custom sewn by Creative Concepts creativeconceptspalmdesert.com.  
**Eddie McKee Harper vintage print:** Charley Harper Art Studio, charleyharperstudio.com.  
**Front Guest Bathroom: Tile:** Mod Walls Tile, modwalls.com.  
**Light fixture:** Rejuvenation Hardware, rejuvenation.com.  
**Hall Bathroom: Shower Tile:** Porcelanosa, porcelanosa-usa.com.

**'Marce' drawer pulls:** Du Verre Hardware, duverre.com.  
**Framed prints:** Vintage Chicago architecture by Mark Coomer.  
**Fish and soap dish:** Jonathan Adler, jonathanadler.com.  
**Kitchenette Tile:** Heath Ceramics, heathceramics.com.  
**Guest House: Small mosaic coffee table:** Modernism Yard Sale, modernismweek.com/event/mys.  
**Rug:** West Elm, westelm.com.  
**Curtains:** Fabric from Spoonflower, spoonflower.com.  
**Backyard: Outdoor shower tiles:** Clayhaus, clayhaustile.com.  
**Reproduction breeze blocks:** Orco, orco.com.  
**Vintage Acapulco rocking chairs:** Modernism Week Yard Sale, modernismweek.com/event/mys.

## Desert Serenity, p. 42

**Front Living Room: Carpet:** Bently Mills, bentlymills.com.  
**Accent wall paint color:** Benjamin Moore Berkshire Beige, benjaminmoore.com.  
**Sofa:** Design Within Reach, dwr.com.  
**Chairs:** Steelcase, steelcase.com.  
**Sprz Ny (Eames) Fleece Blanket:** Uniqlo, uniqlo.com.  
**Suliyat Buamar Dog Painting:** Hedge Vintage, hedgepalmsprings.com.  
Fredrick Wienber vintage bronze patina horse sculpture.  
**Dining Room:** Paul McCobb shelving  
**Dinnerware and ashtrays:** Heath Ceramics, heathceramics.com.  
Martz ceramic lamp.  
**Family Room:** Vincent Jackson Portraits of Dean and Daryle, Creativity Explored SF, creativityexplored.org.  
**Two-Tiered Accent Table:** Hedge Vintage, hedgepalmsprings.com.  
**Side tables:** West Elm, westelm.com.

## Rental Renovation, p. 52

**Living Room: Hughes sofa, Soto armchair in white leather, Unson media consol, Savannah table lamp, and coffee table in walnut:** Joybird, joybird.com.  
**Custom painted bar case:** Ikea VALJE shelf unit, ikea.com.  
**Bar mirror:** HomeGoods, homegoods.com.  
**Tyley side chair in yellow:** World Market, worldmarket.com.

**Front door paint color:** Valspar Peach Punch, valsparpaint.com.  
**Project 62 Three-Tiered Marble Accent Table and Span 3-Head Metal Globe Floor Lamp:** Target, target.com.  
**Carpet Tiles:** FLOR, flor.com.  
**Dining Area: Docksta tulip dining table:** Ikea, ikea.com.  
**No. 3 Sputnik chandelier:** Lucent Lightshop, lucentlightshop.com.  
**Kino Crystal Rug:** RugsUSA, rugsusa.com.  
**Kitchen: Lemon Wallpaper:** Wallflora, wallflora.com.  
**Home Office: Custom Karlstad sofa and custom Vittsö nesting table:** Ikea, ikea.com.  
**Walnut veneer desk:** Joybird, joybird.com.  
**Project 62 Mid Century Metal Wall Décor in gold:** Target, target.com.  
**Bedroom: Hughes bed in Key Largo Kelly Green:** Joybird, joybird.com.  
**Bathroom: Flamingo shower curtain:** Target, target.com.  
**Tropical Jungle Green wallpaper:** Tempaper, tempaperdesigns.com.

## Sunny in Palm Springs, p. 64

**Car:** 1965 Buick Riviera.  
**Dining Room:** Hans Wegner dining room set Bernhard Pedersen & Son #156 sideboard.  
**Glass Mobile:** Higgins Glass Studio, higginsglass.com.  
**Living Room: Eames Wire Base Elliptical (surfboard) coffee table in black:** Herman Miller, store.hermanmiller.com.  
George Nelson planter and lamp table.  
**Eero Saarinen Tulip Stool in blue:** Knoll, knoll.com.  
**Eames Wire Base Low Table:** Herman Miller, hermanmiller.com.  
**Saarinen Executive Armchair in red:** Knoll, knoll.com.  
**Florence Knoll Replica Sofa:** Knoll, knoll.com.  
**Blue sofa:** Overman, overmaninternational.com.  
**'Look Down the Valley' area Rug:** Regal Rug, regalrug.net.  
**Eames La Fonda chair in blue:** Herman Miller, hermanmiller.com.  
**Bar Area: Bertioia bar stools:** Knoll, knoll.com.  
**Pool:** Architectural Pottery Malcolm Leland Chalice Planter in black.  
**Bedroom: Eames Shell Chair in yellow:** Herman Miller, hermanmiller.com.

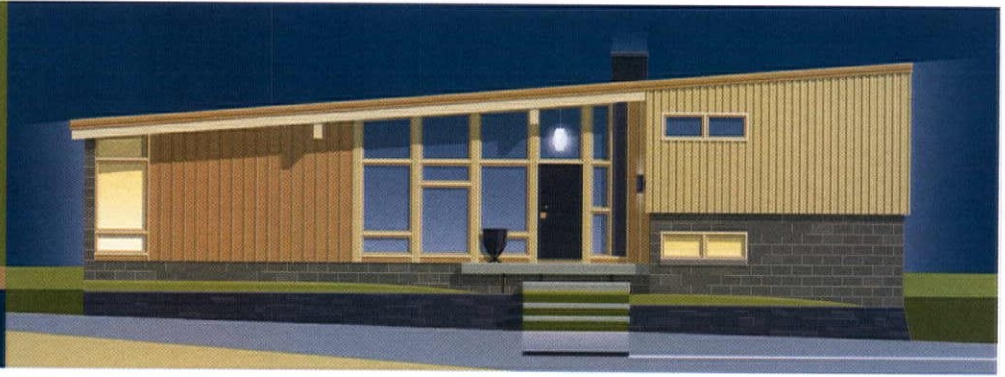


Home Portraits

CHRISTIAN MUSSELMAN

Illustration

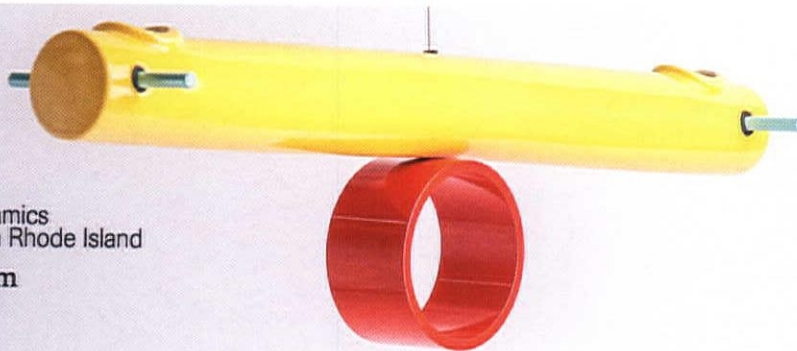
christianmusselman.com



ARCHITECTURAL WOODWORK  
CABINETS  
FURNITURE

HAHASOSO.COM  
323.385.4543

Calif. Lic. No. 795372



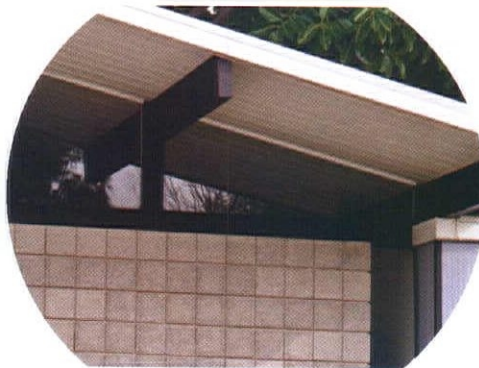
**J SCHATZ** Modern Ceramics  
Handmade in Rhode Island

866-344-5267 JSchatz.com

Use code "atomicranch" and save 15%

deasy/penner&partners

deasypenner.com



MODERN REAL ESTATE  
IN THE SAN FERNANDO  
VALLEY AND BEYOND

**craig terrien**

818.312.3930  
bre.01378174  
craigterrien.com



**The Purple Moon**

Vintage Style for Modern Living

906 Quarrier Street  
Charleston, WV 25301  
304-345-0123

Furnishings - Accessories - Art

www.thepurplemoon.com



# atomicadvertisers

## ACCESSORIES & ARTWORK

**Atomic Mobiles** 74  
323.640.0003  
atomicmobiles.com

**Christian Musselman** 79  
Illustration  
773.209.8506  
christianmusselman.com

**J Schatz** 79  
866.344.5267  
jschatz.com

**Marjoly van der Hart** 75  
416.999.7252  
marjoly.com

**modbox USA, Inc.** 76  
919.781.8403  
modboxusa.com

**Modern Light Switch** 71  
877.253.9073  
modern-lightswitch.com

**Modern Mailbox** 71  
877.253.9073  
modern-mailbox.com

**Modern Retrograde** 72  
modernretrograde.com

**Shag** 14  
wh: 323.424.3005  
ps: 760.322.3400  
shagstore.com

## ACCOMMODATIONS & MC LIFESTYLE

**Modernism Week** 10  
modernismweek.com

**Mod Traveler** 75  
modtraveler.net

**Orbit In** 77  
760.323.3585  
orbitin.com

**Palm Springs  
Modernism Show & Sale** 18  
palm Springsmodernism.com

**Palm Springs  
Modern Design Expo** 69  
psmodern design.com

## DESIGN RESOURCES

**H3K Design** 11  
760.325.5400  
h3kdesign.com

**Kerf Design** 9  
**206.954.8677**  
kerfdesign.com

**Modernous** 72  
206.399.1419  
modernous.com

**Nevada Preservation** 22  
nevadapreservation.org/hhlv

**Shields Residential** 13  
760.531.4252  
shieldsresidential.com

## LIGHTING

**Capital Lighting** 21  
capitallightingfixture.com

**Hip Haven** 74  
512.462.4755  
hiphaven.com

**Moon Shine Lamp  
and Shade** 77  
830.935.2350  
moonshinesthades.com

**Remcraft** 81  
800.327.6585  
remcraft.com

**YLighting.com** 84  
866.428.9289

## MIDCENTURY REALTORS

**Alyssa Starrelli** 81  
503.888.1362  
aly-star.com

**Craig Terrien/  
Deasy Penner & Partners** 79  
828.312.3930  
craigterrien.com

**Ed Murchison,  
Dallas Realtor** 75  
214.395.7151  
midcenturymoderndallashomes.com

**Fresno Modern** 81  
559.960.3229  
fresnomodern.com

**HOM Sotheby  
International Realty** 17  
760.883.8613  
ronparksteam.com

**Mid-Century Homes** 70  
208.996.5759  
mid-centuryhomes.com

**Modern Homes Philadelphia** 73  
267.973.9567  
modernhomesphiladelphia.com

**Modern Illinois— Lou Zucaro  
Baird & Warner** 77  
312.907.4085  
modernil.com

## MODERN FURNISHINGS

**Atomic Furnishings** 72  
828.406.8588  
atomicfurnishings.com

**Copeland Furniture** 2-3  
802.222.9282  
copelandfurniture.com

**HahaSoso** 79  
323.385.4543  
hahasoso.com

**Huston & Company** 75  
888.869.6370  
hustonandcompany.com

**Joybird** 4-5  
joybird.com

**Kardiel** 25  
kardiel.com

**Modcabs LLC** 76  
modcabs.co

**Modern Shelving** 77  
877.477.5487  
modernshelving.com

**Souluxe** 81  
425.744.1167  
souluxe.com

**The Sofa Company** 63  
888.267.1110  
thesofaco.com/atomic

## OTHER HOUSE STUFF

**Clayhaus** 73  
503.928.3076  
clayhaustile.com

**Destination PSP** 70  
760.354.9154  
destinationpsp.com

**FOS Design** 74  
888.591.0751  
fos-design.com

**Indow** 73  
503.284.2260  
indowwindow.com

**Jetset Retro Design** 81  
jetsetretrodesign.com

**ModCraft** 76  
718.541.1160  
mod-craft.com

**Modern Fan** 83  
modernfan.com

**Woodwaves** 29  
888.850.3348  
woodwaves.com

## VINTAGE SHOPS & FURNITURE REHAB

**Evans Co** 81  
858.461.8069  
fagasstraps.com

**Hairpinlegs.com** 81  
hairpinlegs.com@gmail.com

**Modern Fabric** 76  
modern-fabrics.com

**The Purple Moon** 79  
304.345.0123  
thepurplemoon.com

**Vintage Plywood Millworks** 74  
415.883.5300  
vintageplywood.com



Alyssa Starelli  
REAL ESTATE BROKER



Licensed  
in Oregon

Call me to find your period-perfect home!

503.888.1362 · alyssa@livingroomre.com · aly-star.com

Replace  
Broken or Stretched  
Fagas Straps!

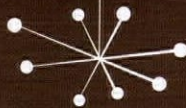
Official US distributor  
Since 1945

[www.fagasstraps.com](http://www.fagasstraps.com)



[www.fagasstraps.com](http://www.fagasstraps.com) info@fagasstraps.com 858.461.8069

[fresnomodern.com](http://fresnomodern.com)



Eldon Daetweiler

[eldon@fresnomodern.com](mailto:eldon@fresnomodern.com) 559.960.3229

Now Featuring Mid Century Hardware

MADE IN THE U.S.A.



hairpinlegs.com

bruce  
yager

mcm  
paintings  
sculptures  
objects



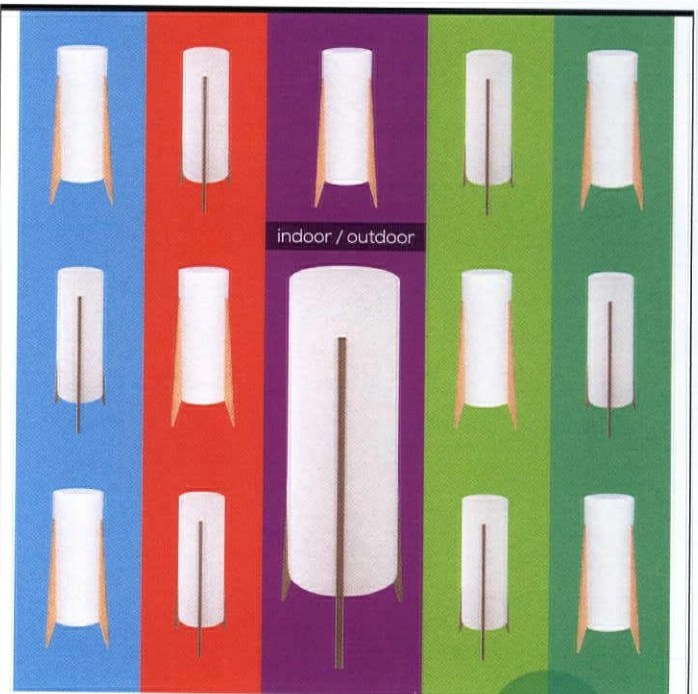
[www.etsy.com/shop/jetsetretrodesign](http://www.etsy.com/shop/jetsetretrodesign)  
[www.jetsetretrodesign.com](http://www.jetsetretrodesign.com)

SWEDISH MODERN  
Setting the standard...again.



RETRO  
BY REMCRAFT

REMCRAFT LIGHTING PRODUCTS • MIAMI, FL  
(800) 327-6585 • [www.atomicremcraft.com](http://www.atomicremcraft.com)



indoor / outdoor

ROCKET LAMP™

+ Solar, White LED, and RGB options  
+ Rotomolded plastic, with Teak accents

featuring  
PLANET LOVE™  
100% recyclable  
materials

SOULUXE

Simple. Fun. Beautiful. | 425-744-1167

Order at [www.souluxe.com](http://www.souluxe.com)



## Getting Personal

Merging Midcentury Modern apropos with custom flair.

BRIMMING WITH ORIGINAL FEATURES, this 1965 Palm Springs home, by architect Donald Wexler and the Alexander Company, is a modernist's dream come true.

For homeowners Dean Williams and Daryle Morgan, their love of the home's many windows, rock walls and sweeping clean lines has informed their personalization of the space. Together the couple has collected many of their vintage finds through garage and estate sales, the Alameda and Pasadena Flea Markets and HEDGE, a vintage furnishings shop in Cathedral City.

While impeccable vintage treasures dot the house—like furniture from Paul McCobb and George Nelson, and a Blenko Sun Face decanter and owls—the home is anything but untouchable. These cherished pieces are meant to be enjoyed and create an artful setting for a relaxed lifestyle.

To see the rest of Dean and Daryle's home, turn to page 42!

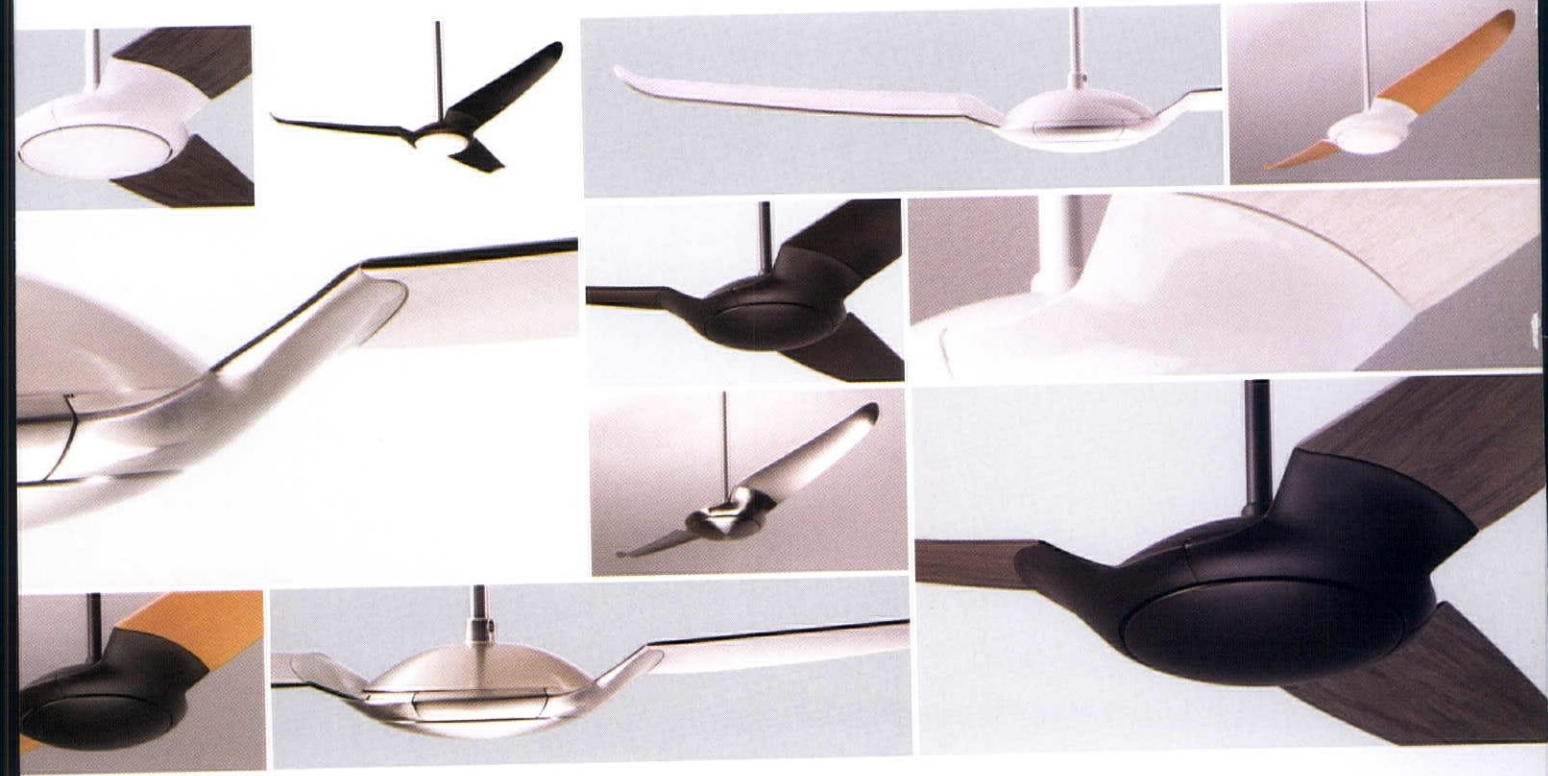


**THE  
MOD-  
ERN**  
A Collection of  
Ceiling Fans  
**FAN  
CO**  
Designed by  
Ron Rezek



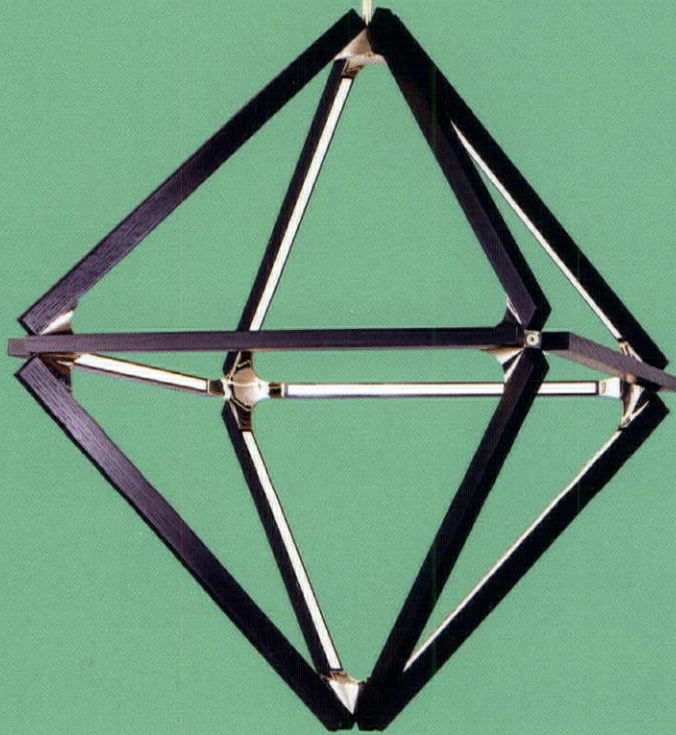
# IC/Air3

: designed by Guto Indio da Costa  
[modernfan.com](http://modernfan.com)



Ultra-efficient DC Motor | 2 or 3 Blades | Nickel, White or Dark Finish | Solid Color, Wood Grain or Clear Blades | Optional LED Lighting





BULBS BURN OUT.



THE BEST IN LED LIGHTING

Diamond LED Chandelier by Stickbulb. Shop [YLighting.com](http://YLighting.com) or Call 866 428 9289.