



# atomic

MIDCENTURY MARVELS

# ranch

**Boise, Idaho's Efforts to Preserve + Honor Midcentury Roots**

---

**Herman Miller: An In-Depth Look at the Maker of Icons**

---

**Modernism Thrives with a New Generation of Purists**

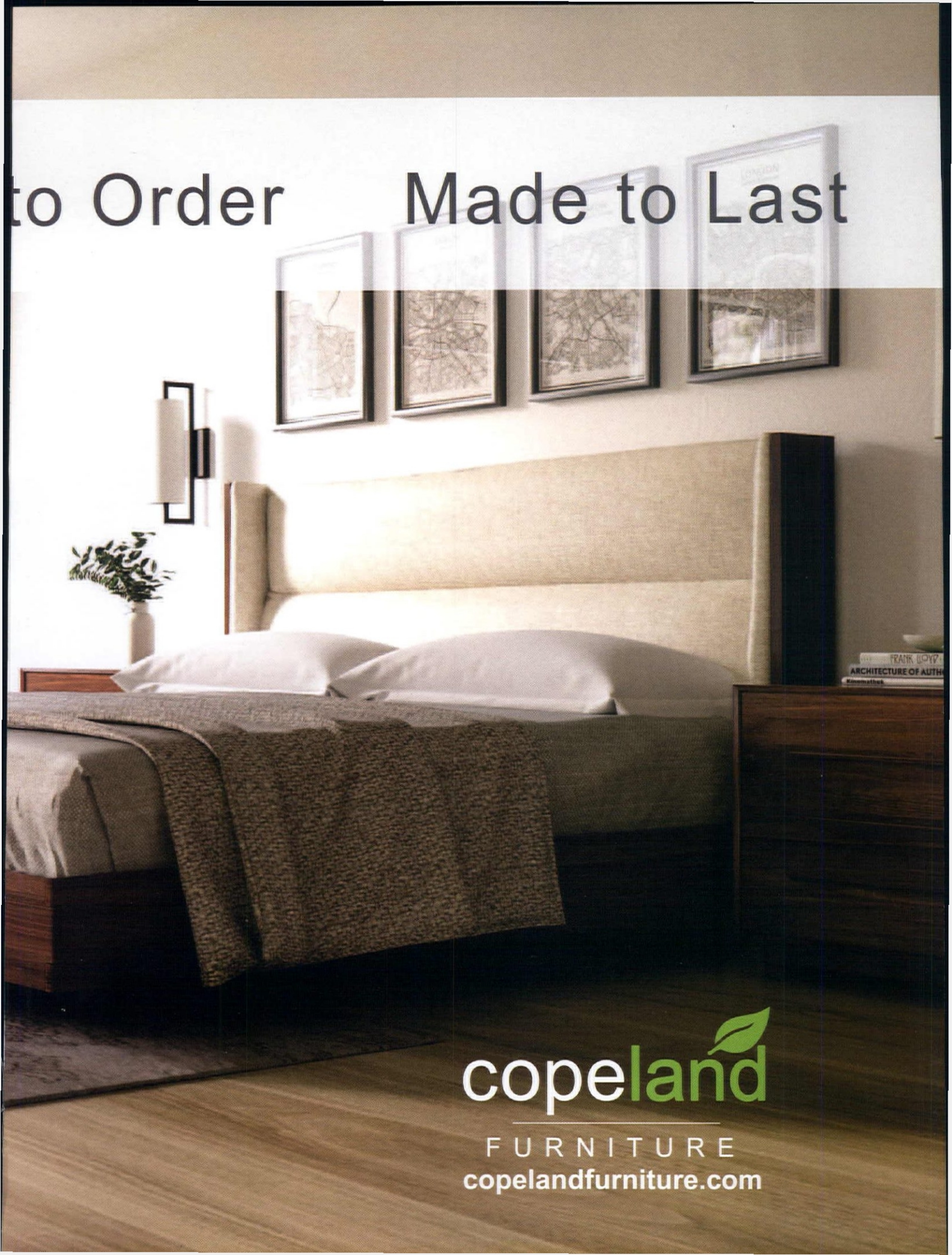


Made in America      Made

Sloane Bedroom



to Order      Made to Last



copeland 

FURNITURE  
[copelandfurniture.com](http://copelandfurniture.com)



# HANDCRAFTED FURNITURE, MADE TO ORDER

Handcrafted and customizable in hundreds of fabric & wood combinations, our furniture is built to exceed your home-design dreams.

Step into a mid-century marvel designed by Carter Sparks.  
Take the tour and read more at [Joybird.com/mcmblog](https://Joybird.com/mcmblog)

 [JOYBIRD.com](https://Joybird.com)

HYLAND SOFA in Klein Wheatgrass | \$1,749 WELLES OTTOMAN in Cordova Picante | \$849





SOTO CHAIR | \$899  
in Taylor Tonic



SOTO OTTOMAN | \$549  
in Merit Dove



COLLINS CHAIR | \$949  
in Key Largo Grass



HUGHES SWIVEL CHAIR | \$1,049  
in Lucky Divine



HUGHES BED | \$1,699  
in Vibe Sunkist



AUBREY SOFA | \$1,799  
in Cordova Amber



SIMIC MEDIA CONSOLE | \$2,249  
in Walnut



TOSCANO DINING SET | \$2,349  
in Lucky Turquoise



HUGHES REVERSIBLE SECTIONAL | \$2,349  
in Bennet Moon



XAVIER DESK | \$2,349  
in Walnut

**20% OFF\*** use promo code  
**ATOM18**  
until: 05.31.2018

**365-DAY TRIAL | LIFETIME WARRANTY | FREE RETURNS**

**DON'T WANT TO WAIT?**

Shop our Quick Ship furniture. It's ready to ship within 3-5 business days.

[Joybird.com/instock](http://Joybird.com/instock)

\*The 20% discount is a limited time offer valid until 05.31.2018 and it cannot be combined with other offers, discounts, or prior purchases. Returns within 14 days of delivery are free for all orders shipped to the contiguous United States. Return undamaged furniture within 365 days of receiving it for a full refund. Financing options as low as 0% APR available to qualified applicants.

[Joybird.com](http://Joybird.com) | 855.855.9784



# editor's letter



## Summertime Lovin'

**W**HAT WAS THE FIRST PIECE OF MIDCENTURY FURNITURE YOU PURCHASED? For me, it was my turquoise vinyl-upholstered footstool with tapered legs. While wandering a thrift shop looking for a vintage end table I spotted its bright upholstery—it was just barely peeking out from beneath a pile of boxes. The little tear where the piping had pulled away didn't bother me because I was so entranced by the looping design imprinted on its top.

Despite not being what I had set out for, at just \$12 I knew it needed to come home with me. Since that day, it's bounced all over my house. For a while it sat in front of my arm chair and made for an idyllic reading corner—but I can't seem to let it stay in one place too long. Its bright hue and perfectly retro silhouette brings me so much joy that I want to feature it in every room. It's sat beside the sofa, at the foot of the bed, hosted a split-leaf monstera, been pulled out for game nights around the coffee table and became a favorite napping place for an otherwise mischievous puppy.

The stories in this issue of *Atomic Ranch* are similar—they celebrate the love of mid mod furniture. You'll meet homeowners who have curated an amazing collection of midcentury furnishings—and went so far as to make their own mailbox (page 30). Then you'll step into a home where midcentury style meets comfort and function for a busy family of four (page 42). If you're looking for a restoration with amazing woodgrain and dreamy vintage finds, turn to page 58. Last but not least—does Herman Miller ring a bell? Dive into the history and learn why the designs this company produced endure the test of time (page 54).

What's not to love about a great piece of midcentury furniture?

Sarah Jane Stone

### Get connected!

Email: [editor@atomic-ranch.com](mailto:editor@atomic-ranch.com) • Online: [atomic-ranch.com](http://atomic-ranch.com) • [@theatomicranch](https://www.instagram.com/theatomicranch)

P.S. We're also celebrating Boise, Idaho, where midcentury preservation is on the rise thanks to locals who are falling in love with mid mod architecture and design all over again. The house on our cover is in Boise and was designed by Art Troutner. For more on Boise's resurgence, look to pages 30 and 66.

## atomic ranch

### EDITORIAL

Brand Leader/Editor: Sarah Jane Stone  
Managing Editor: Kris Christensen  
Contributing Editor: Victoria Van Vlear  
Editorial Intern: Jessie Yount

### DESIGN

Design Director: Gabby Oh

### CONTRIBUTORS

George Smart, Leslie Thompson, Lindsay Jarvis,  
Sarah Selby-Furguson, Jessica Luque,  
Shelby Deering, Tiffany Mueller

### CONTRIBUTING PHOTOGRAPHERS

Allison Corona, Julia Auerbach, Julie Tindall,  
Cy Gilbert, Mariko Reed

### ADVERTISING

Terry Rollman - Group Publisher • (714) 200-1917  
Sherie Norris - Account Executive • (704) 421-1517  
Julie Hale - Account Executive • (770) 377-0072

### MARKETING

Sabra Morris: Director of Content Marketing  
Brooke Sanders: Content Marketing Specialist

### OPERATIONS

Robert Short: IT Manager  
Devender Hasija: Newsstand and Circulation Analyst  
Shailesh Khandelwal: Subscriptions Manager  
Alex Mendoza: Administrative Assistant

### EDITORIAL, PRODUCTION & SALES OFFICE

17890 Sky Park Circle #250, Irvine, CA 92614  
[www.atomic-ranch.com](http://www.atomic-ranch.com)  
(714) 939-9991, Fax (800) 249-7761

**ATOMIC RANCH** (ISSN 1547-3902) issue 58, Summer 2018 is published quarterly, Spring, Summer, Fall and Winter, by Engaged Media Inc., LLC, 17890 Sky Park Circle #250, Irvine, CA 92614. Periodical postage paid at Irvine, CA, and additional mailing offices. **POSTMASTER:** send address changes to Atomic Ranch c/o VSI, Inc. 905 Kent Street, Liberty, MO 64068. © 2018 by Engaged Media, Inc. All rights reserved. Reproduction of any material from this issue in whole or in part is strictly prohibited. GST #R55050365RT001 Canada Post: Publications Mail Agreement #40612608. Return undeliverable Canadian addresses to: PITNEY BOWES, INC., P.O. Box 25542, London, ON N6C 6B2.

### CUSTOMER SERVICE

ENGAGED MEDIA, INC.  
17890 Sky Park Circle #250  
Irvine, CA 92614

SUBSCRIPTIONS, ADDRESS CHANGES,  
RENEWALS, MISSING OR DAMAGED COPIES  
(800) 764-6278  
(239) 653-0225 Foreign Inquiries  
[subscriptions@engagedmediainc.com](mailto:subscriptions@engagedmediainc.com)  
[customerservice@engagedmediainc.com](mailto:customerservice@engagedmediainc.com)

### BACK ISSUES

[www.engagedlifestyle.com](http://www.engagedlifestyle.com)

BOOKS, MERCHANDISE, REPRINTS  
(800) 764-6278, Foreign (239) 653-0225

LETTERS TO THE EDITOR, NEW PRODUCTS OR TO  
CONTRIBUTE A STORY OR PHOTO  
[editor@atomic-ranch.com](mailto:editor@atomic-ranch.com)

### SUBSCRIPTION RATES

\$19.95/1 year, \$36.95/2 years. Foreign, \$34.95 per year, \$66.95 per 2 years payable in US funds. Single copy price is \$7.99. Please allow 6 to 8 weeks for new subscriptions to begin.

**ENGAGED**  
MEDIA, INC.

### ENGAGED MEDIA, INC.

Scott Hall: CEO  
Pinaki Bhattacharya: COO  
Philip Trinkle: Newsstand Sales Director  
Jickie Torres: Editorial Director

This magazine is purchased by the buyer with the understanding that information presented is from various sources from which there can be no warranty or responsibility by Engaged Media as to the legality, completeness or technical accuracy.

GST #R55050365RT001  
Canada Post: Publications Mail Agreement #40612608  
Return undeliverable Canadian addresses to:  
PITNEY BOWES, INC.  
P.O. Box 25542  
London, ON N6C 6B2





Visit our new  
Palm Springs Location.  
It's three times as large as our old space!

**PALM SPRINGS**

745 N. Palm Canyon, Palm Springs, CA  
760.322.3400 • shagstore.com

**WEST HOLLYWOOD**

8443 Melrose Ave, West Hollywood, CA  
shagstore.com • 323.424.3005





dahlia  
*collection*

IN SILVER & BRONZE

**CAPITAL**

LIGHTING FIXTURE COMPANY™

Find your local showroom at  
[www.capitalightingfixture.com](http://www.capitalightingfixture.com)

#loveatfirstLIGHT  @capitaltg



designed by  
Vladimir Kagan



**BarlowTyrie**

Est 1920

exceptional outdoor furniture

Crafting exceptional outdoor furniture since 1920. Premium collections in enviro-friendly teak wood, brushed stainless steel, powder-coated aluminum, and hand-woven synthetic fiber. Recipient of nineteen international design excellence awards.



Tel: **800 451 7467** Email: **USsales@teak.com** Visit: **www.barlowtyrie.com**



Dune  
collection



# Contents summer 2018



## FEATURES

- 30 Curating Midcentury**  
Thanks to the passion of an enthusiastic couple, midcentury treasures are found in every corner of this 1953 Boise, Idaho home.
- 42 Rambler Revival**  
First-time homeowners combine patience and planning to renovate their midcentury rambler.
- 54 Enduring Style**  
Responsible for some of the most iconic designs of the 20th century, Herman Miller has a fascinating history and an inspiring future.

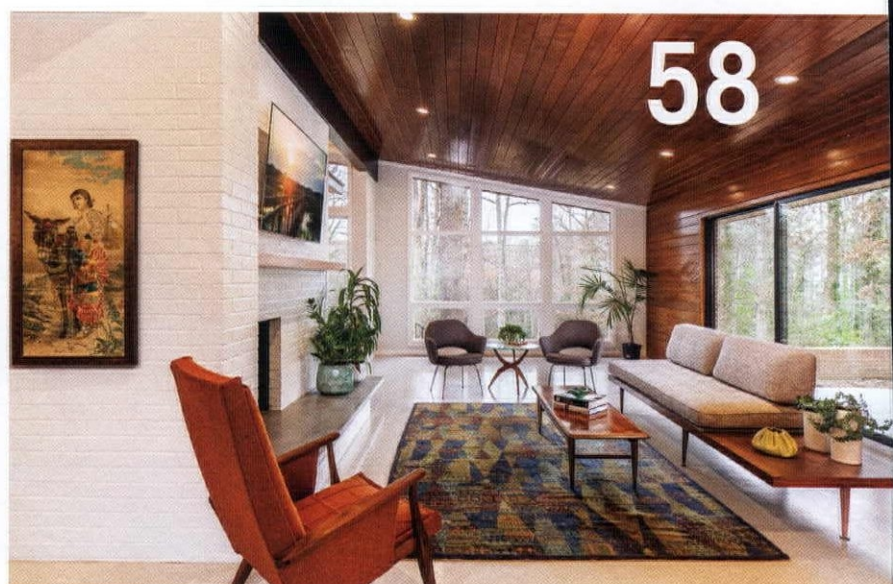
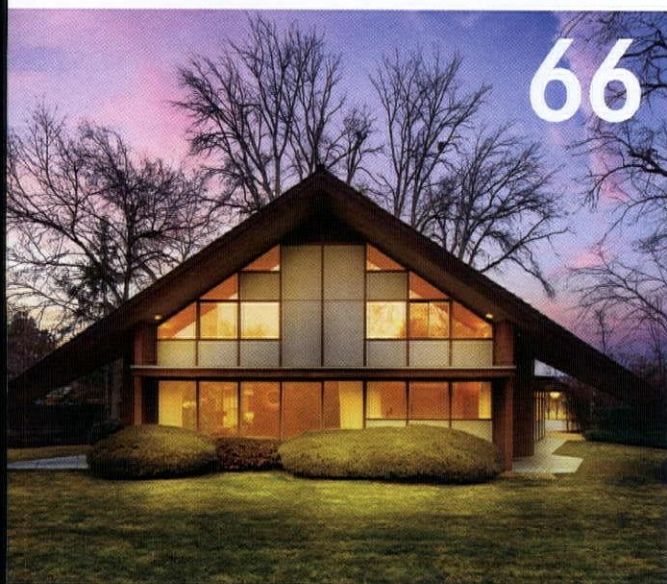
- 58 Mid Mod Mix**  
Quintessential midcentury principles are interpreted for a fresh take on modern living.
- 66 Boise's Historical Movement**  
Businesses are taking a unique approach to promote and preserve a town's midcentury charm.

## cover

Cover photography Cy Gilbert  
Cover design by Gabby Oh

## DEPARTMENTS

- 6 Editor's Letter**
- 12 Web News**
- 15 Cool Stuff**
- 19 Period Picks**
- 23 Accidental Archivist**
- 26 Atomic Kitchens**
- 78 Resources**
- 80 Advertisers**
- 82 Last Look**



ATOMIC RANCH (ISSN 1547-3092) Issue 58, SUMMER 2018 is published quarterly, Spring, Summer, Fall and Winter, by Engaged Media Inc., LLC, 17890 Sky Park Circle, #250, Irvine, CA 92614. Periodical postage paid at Irvine, CA, and additional mailing offices. **POSTMASTER:** send address changes to Atomic Ranch c/o VSI, Inc. 905 Kent Street, Liberty, MO 64068. © 2018 by Engaged Media, Inc. All rights reserved. Reproduction of any material from this issue in whole or in part is strictly prohibited. GST #R55050365R1001 Canada Post: Publications Mail Agreement #40612608. Return undeliverable Canadian addresses to: PITNEY BOWES, INC., P.O. Box 25542, London, ON N6C 6B2.





**KERF**  
plywood cabinets  
for the modern home  
[kerfdesign.com](http://kerfdesign.com)



# webnews

## Keep tabs on us

Get a sneak peek into what's coming online at [atomic-ranch.com](http://atomic-ranch.com).

### Inside Scoop!

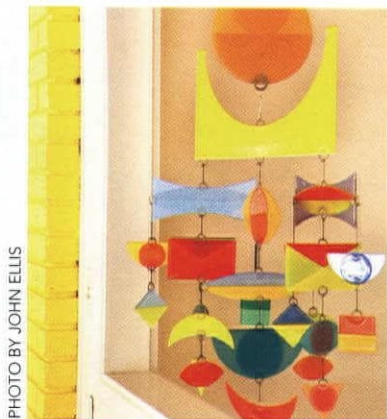


PHOTO BY JOHN ELLIS

#### Higgins Glass Studio

Make way for your new favorite collectible! These colorful glass creations have a vibrant history—and future.

PHOTO COURTESY OF GROSSMAN ARCHIVES, R AND COMPANY



#### Greta Grossman

Groundbreaking interior designer, industrial designer and architect Greta Grossman was born and raised in Sweden, eventually bringing her delicate yet functional Swedish Modern style to Los Angeles.

PHOTO COURTESY OF SWITCHEROO



#### Celebrating the Makers

Meet the creatives who are handcrafting their way into our hearts—like the sunny creations of Michelle Valigura and Amanda Visell of Switcheroo.



#### Case Study 101

Our series continues, as contributing writer Lindsay Jarvis digs into the history of Midcentury Modern's greatest experiment.

### Cool Stuff



Midcentury Modern duvet, \$185 for king. Visit [etsy.com/hangtightstudio88](http://etsy.com/hangtightstudio88).



Braxton chair in Key Largo Grass, \$1249. Visit [joybird.com](http://joybird.com).



"The Royal We" unframed 41" x 17" serigraph print, \$549. Visit [shag.com](http://shag.com).



Simple small table lamp, \$73.50. Visit [ylighting.com](http://ylighting.com)





ARCHIBALD FLOOR LAMP  
REFURBISHED, \$435



SHOJI TRIPOD  
NEW, \$395



S. B. JAMES FLOOR LAMP  
REFURBISHED, \$425



SUN KING FLOOR LAMP,  
REFURBISHED, \$650



HOT TAMALES TABLE LAMP  
REFURBISHED, \$265



MAPLE NUT TABLE LAMP  
REFURBISHED, \$235



LILA TABLE LAMP  
NEW, \$275



TOUNDSWOOD TABLE LAMP  
NEW, \$265



PROBLEM CHILD TABLE LAMP  
REFURBISHED, \$415



BIG WHISKEY TABLE LAMP  
REFURBISHED, \$420



P. K. TABLE LAMP  
REFURBISHED, \$215



TOTAL TUFO TABLE LAMP  
REFURBISHED, \$255

FROM THE PAST  
OR  
MADE FROM SCRATCH




**15% OFF\***  
All Shade Orders

with promo code  
**ATOMAD**

RETRO LIGHTING RESTORATION  
MADE TO ORDER ONE-OFFS

\*15% discount ends 05.31.18 and not valid with any other offers.





FEATURED SPEAKER OF  
"ATOMIC RANCH LIVE" SERIES AT  
**2018 MODERNISM WEEK**

FEATURED ON NETFLIX ORIGINAL  
"MAKE MY STAY"

EXCLUSIVE BUILDER OF  
**THE DESERT EICHLER HOMES**

760.531.4252

[SHIELDSRESIDENTIAL.COM](http://SHIELDSRESIDENTIAL.COM)

PALM SPRINGS, CA



**SHIELDS RESIDENTIAL**  
CONSTRUCTION + REMODELING



# coolstuff

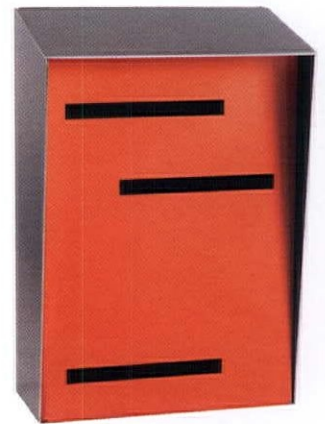
By Jessie Yount

## Bright + Bold

Refresh your porch, patio or interior with these colorful finds and playful lines, perfectly suitable for summertime.



**Sunday lounge side chair**, with optional outdoor upholstered cushion. For pricing, visit [revolutiondesignhouse.com](http://revolutiondesignhouse.com).



**Mid Century Modern mailbox**, vertical, \$275. (208) 340-7597 or [modern-mailbox.com](http://modern-mailbox.com).

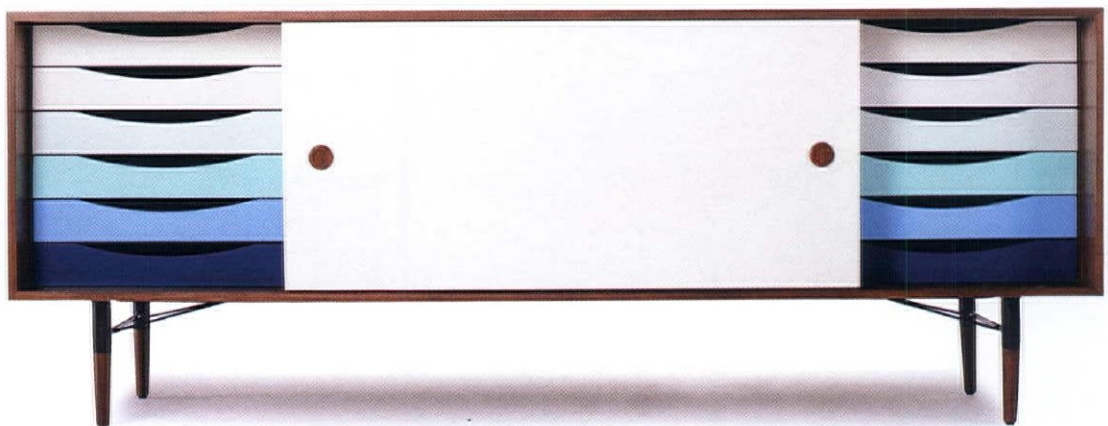


**Modernica Case Study planter with wood stand**, \$160-195. (800) 462-7638 or [yliving.com](http://yliving.com).



**Pivot round coffee table**. For pricing, visit [copelandfurniture.com](http://copelandfurniture.com).

**Unson media console**, \$2149. (888) 282-0842 or [joybird.com](http://joybird.com).





# coolstuff



**Brando sofa**, \$1,345.  
(888) 778-7632 or [thesofaco.com](http://thesofaco.com).



**Boxcar planter set in walnut**, \$85.  
Visit [revolutiondesignhouse.com](http://revolutiondesignhouse.com).



**Iris planter and chevron stand- triple**, \$129. (888) 922-4119 or [westelm.com](http://westelm.com).



**Olivia end table**, \$279. (888) 282-0842 or [joybird.com](http://joybird.com).



**Jayden pillow**, \$30-50.  
(888) 282-0842 or [joybird.com](http://joybird.com).



**Acapulco chairs and table outdoor set**, \$1,100.  
(887) 844-4988 or [kardiel.com](http://kardiel.com).





Complete Home Furnishings.

**H3K** HOME

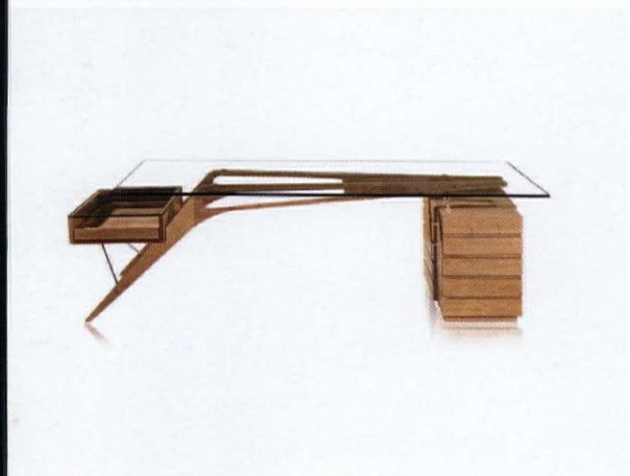
[www.h3khome.com](http://www.h3khome.com)



Kevin Kemper & Howard Hawkes

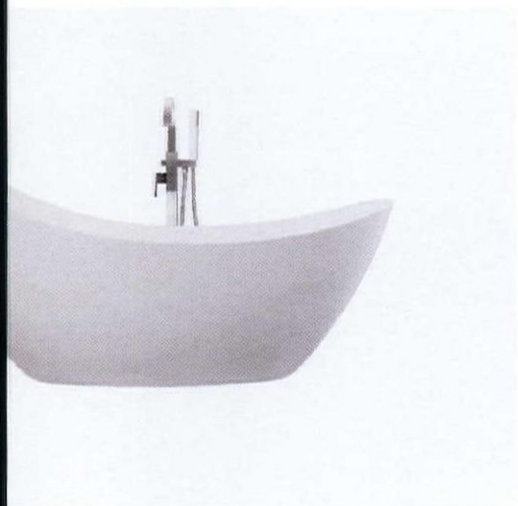
501 South Palm Canyon Drive | Palm Springs, California | 760.325.5420





**MODERNISM ICONS**

Kardiel builds inspired reinterpretations of the best designs of Modernism using the finest ingredients well above its price point.



**10% OFF\*** with promo code **MODSUMMER18**

FREE SHIPPING\*\* | NO SALES TAX\*\*\* | [WWW.KARDIEL.COM](http://WWW.KARDIEL.COM)

FREE FABRIC AND LEATHER SWATCHES.  
DESIGNER ACCOUNTS AVAILABLE.

Located in Seattle, Professional Delivery to your home anywhere in the contingent U.S is free.\*\*  
Most items are in stock and arrive to your home in 7-10 days. Compare our quality.

\*The 10% discount is a limited time offer valid for your first order until 10/31/18 and can not be combined with other offers.  
\*\*Orders over \$750.00 Curbside Delivery. \*\*\*Outside Washington State





# periodpicks



## Mix + Match

Add retro flair to your home with these marvelously modern arm chair and end table combos.

By Jessie Yount



1. Jackie armchair, \$1,195. (887) 844-4988 or [kardiel.com](http://kardiel.com).
2. Converge round end table. To find a local retailer, visit [copelandfurniture.com](http://copelandfurniture.com).
3. Peoria wood arm chair, \$169.99. (800) 440-0680 or [target.com](http://target.com).
4. Round Midcentury Modern retro wood end table with brass gold legs, \$195. (888) 850-3348 or [woodwaves.com](http://woodwaves.com).
5. Eames molded plywood lounge chair with wood legs, starting at \$930. (800) 462-7638 or [yliving.com](http://yliving.com).



# periodpicks



**6. Retro tripod nesting tables, \$249.** (888) 922-4119 or westelm.com.

**7. Vintage Danish midcentury teal lounge chair** by Rastad & Relling, \$1,450. (760) 509-5974 or aymerickmodern.com.

**8. Scando side table in walnut, \$499.** (887) 844-4988 or kardiel.com.



**9. Louie chair, \$1,199.** (888) 282-0842 or joybird.com.

**10. Parker slipper chair, \$399.** (888) 922-4119 or westelm.com.

**11. Bliss end table, \$145.** (800) 462-7638 or yliving.com.







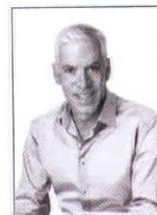
# LIVE THE LIFE

We would love to be your guide in finding the perfect place to call home in Palm Springs and the Coachella Valley. Whether it is a luxury estate, a mid-century modern home or a chic condominium, we have the experience and knowledge to make it happen.

Whether a buyer or seller; we will be there for you every step of the way advising and advocating on your behalf.

**Put us to work for you.**

Contact Ron **760.883.8613**  
[ronparks@homgroup.com](mailto:ronparks@homgroup.com)



**RON  
PARKS  
TEAM**

Real estate acquisitions and marketing  
Who you work with matters!

[ronparksteam.com](http://ronparksteam.com)

CalBRE #01351164



**N P F** NEVADA PRESERVATION  
FOUNDATION

# A CELEBRATION OF VEGAS COOL



HOME + HISTORY  
LAS VEGAS

**APRIL 27-29, 2018**

VINTAGE HOME TOURS + NEIGHBORHOOD WALKING TOURS  
BIKE TOURS + PHOTO EXHIBITS + ARCHITECTURAL BUS TOURS  
SPEAKERS + DOCUMENTARIES + COCKTAIL PARTIES



[NEVADAPRESERVATION.ORG/HHLV](http://NEVADAPRESERVATION.ORG/HHLV)

**LAS**  
Vegas



# accidentalarchivist

---

## It's Up to You

Learn how to become a modernist sleuth—unearthing your hometown's history and preserving the stories behind its mid mod marvels.

By George Smart

**M**ODERNIST HOUSES FROM THE 1950s AND '60s ARE IN NEARLY EVERY CITY WITH A POPULATION OVER 200,000. We hear the most about larger Modernist communities like Los Angeles and Palm Springs, but there are many more scattered across the United States.

ONE OF MILTON SMALL'S DESIGNS





# accidentalarchivist

In your own town, there's possibly a dozen modernist houses, and if you are a true fan, you've likely heard or inquired about the architects. "Surely," you think, "the local preservation society has researched these houses and their creators." You call—and typically you find the society prefers cottages, mill and Victorian houses, and old churches, among other structures that wouldn't host butterfly chairs. "Modernist houses still look ahead of their time," the society says, "so how could they be considered historical or worth preserving?" Maybe it's time to talk to the architects directly.

When I started documenting Midcentury Modernist houses in North Carolina in 2007, 90% of the architects were still alive. In 2018, it's down to about 20%. These men, and a few women, were born in the 1920s and '30s. For famous architects like Richard Neutra or Charles Gwathmey, no problem, their legacy is secured. For Brian Shawcroft, Jim Fox, Milton Small or Richard Spencer, or any of the hundreds of unsung architects across America, their legacies die when they do. The families throw the storage boxes and plans

away after a few years, and that's that. Maybe it's time for a few good men and women to step forward—that's where you come in.

## Step 1: Pick your favorite local midcentury architect.

If they're still alive, call and plan a visit. If they're not alive, you may be hesitant to contact their family,

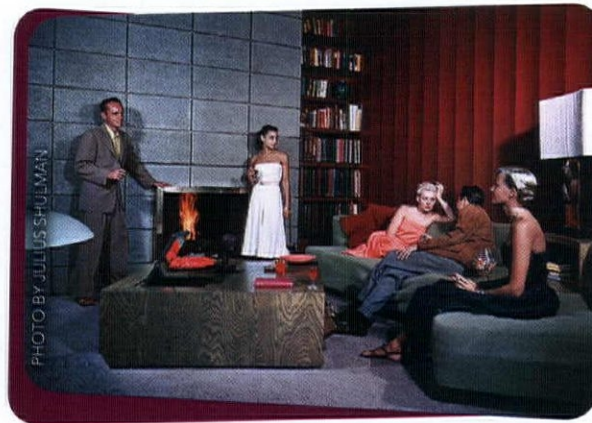
I connected many families to the archivists of NC State University's Special Collections. They are the Warehouse 13 of the state's design heritage. You likely have a similar group at the nearest large university offering architecture degrees.

## Step 2: Ask for a project list.

If you are lucky, that list will also have addresses, but most lists don't. Architects and their families have bits of information you'll assemble like a puzzle to find these houses, if they are still standing. From here, you're going to have the time of your life driving around town looking for buildings, searching on the internet, asking friends what and who they know in connection to these houses.

## Step 3: Create a platform to share your discoveries.

I'm talking about starting a website where you share your town's trove of modernist houses, the architect's bio and ask for the community's help finding missing houses. If you can write a letter in Microsoft Word, you can create a website. Don't worry about it looking sleek or pretty—it's all about the information. For years our website had all the aesthetic beauty of Craigslist, yet pulled in 40,000 to 60,000 page views a month. Lots of people are that passionate about modernism, just like you. ☯



RICHARD SPENCER AND WIFE JOSEPHINE CARUSO ARE PICTURED STANDING BY THE FIREPLACE IN THE SANTA MONICA HOME HE DESIGNED. NOTE THE TABLE WITH A TELEVISION BUILT IN, SPENCER MADE THAT TABLE HIMSELF.

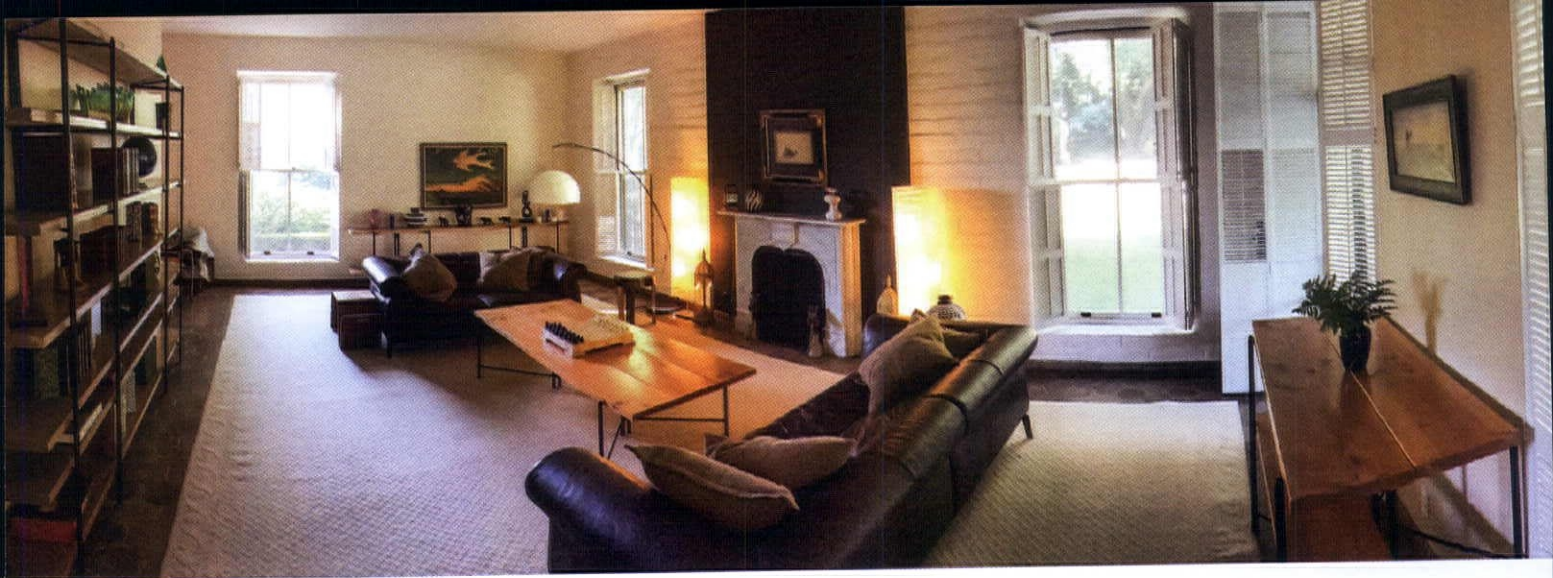
a concern which is understandable, but generally unwarranted. I've found that families love their parent's modernist work and are thrilled you want to celebrate it. If you are lucky, that call will be the same week they're considering throwing everything away. In hundreds of calls throughout North Carolina, I have had about a dozen of these magic timing moments, and

PHOTOGRAPHY COURTESY OF GEORGE SMART



George Smart founded NC Modernist Houses and USModernist Houses, together the largest open digital archives for residential Modernist architecture. He is host of the podcast USModernist Radio, which posts every other Monday on iTunes. [www.usmodernist.org](http://www.usmodernist.org).





modernmandesign.com



This flexible furniture system is taken from an original Mid Century design by California designers VanKeppel & Green. Hand crafted this timeless furniture consists of precision welded hinged steel gate legs that support solid Douglas Fir planks intergrated with a Walnut strip, adding natural wood warmth to any interior. These versatile easily assembled and highly portable collectors pieces convert from beautiful tables to shelving in minutes.

For details, sizes and pricing see our web site [modernmandesign.com](http://modernmandesign.com) or contact:  
**Kellee Benedict @ [modernmandesignllc@gmail.com](mailto:modernmandesignllc@gmail.com) • 916-923-5355**



# atomickitchens

VIBRANT HUES MAKE FOR A CHEERFUL, MIDCENTURY KITCHEN. JOHN KLOPF, PRINCIPAL ARCHITECT AT KLOPF ARCHITECTURE SAYS, "ONE ELEMENT OF MIDCENTURY MODERN HOMES IS THE PLAYFUL USE OF COLOR. MANY EICHLERS HAD COLORFUL CABINETS, OFTEN IN PRIMARY COLORS REMINISCENT OF A MONDRIAN PAINTING. THE COLORFUL PANELS IN THE KERF CABINETS WERE MEANT TO EVOKE THAT PLAYFULNESS."



## *design* MUST-HAVES:

- Warm walnut cabinetry
- Open concept
- Playful layout and colors



By Shelby Deering • Photography by Mariko Reed

# Remaking History

An effervescent, midcentury kitchen steals the show in this Eichler stunner.

AT ITS HEIGHT, MIDCENTURY STYLE CAPTIVATED AMERICANS AS THE PREVAILING CHOICE FOR DESIGN-FORWARD HOMES.

The mid mod look is once again sought after and appreciated by a new generation of enthusiasts who pay careful attention to period details and authentic elements.

Some, such as the owners of this 1961 Joseph Eichler-built home, feel drawn to an honest representation of the style not just for aesthetic reasons, but also because of a personal connection. The mother of one of the homeowners grew up in an Eichler house, and they wanted to bring that nostalgia into their own home.

Located in Sunnyvale, California, the home was artfully refreshed to be authentically Midcentury

Modern throughout—with special care paid to the kitchen, thanks to John Klopf and Geoff Campen of Kloft Architecture.

## OPEN & INVITING

At over fifty years old, the house required some remodeling to suit the current homeowner's lifestyle. John Klopf explains how they created the open kitchen.

"The clients were not fans of the separated living areas in the house. Before the addition, upon entering the house, one turned left down a hallway into a galley kitchen that was closed off from other spaces. There was a dining room that was separate from the kitchen and living room. We combined the multiple small spaces into one large great room with the open kitchen."

## /REAL HOME 101/

**TYPE OF HOME:** 1961 ranch

**BUILDER:** Joseph Eichler

**BACKGROUND:** Walls between the original entry hallway, galley kitchen and dining room were removed, combining multiple small spaces into one large great room with kitchen.

**INNOVATIVE IDEA:** Incorporating a large, low bench "plinth" with storage below it into the kitchen is a way to transition from the entry to the kitchen without walls.







“What makes this kitchen different from other Midcentury Modern remodels is the playful cabinetry layout and colors against the warm walnut background.”

## WHAT MAKES IT MCM?

- Post-and-beam construction
- Tongue-in-groove ceiling decking
- Terrazzo-inspired concrete tile


THE KITCHEN ECHOES THE DECOR IN THE REST OF THE HOME THROUGH FLOW AND A CONTINUITY OF MATERIALS THAT CREATE A UNIFORM EXPERIENCE FROM ROOM TO ROOM. THE CONCRETE TILES RUN THROUGHOUT THE HOME, ALONG WITH THE WHITE-WASHED CEILING DECKING AND POST-AND-BEAM STRUCTURE.

## DISTINCTLY MIDCENTURY

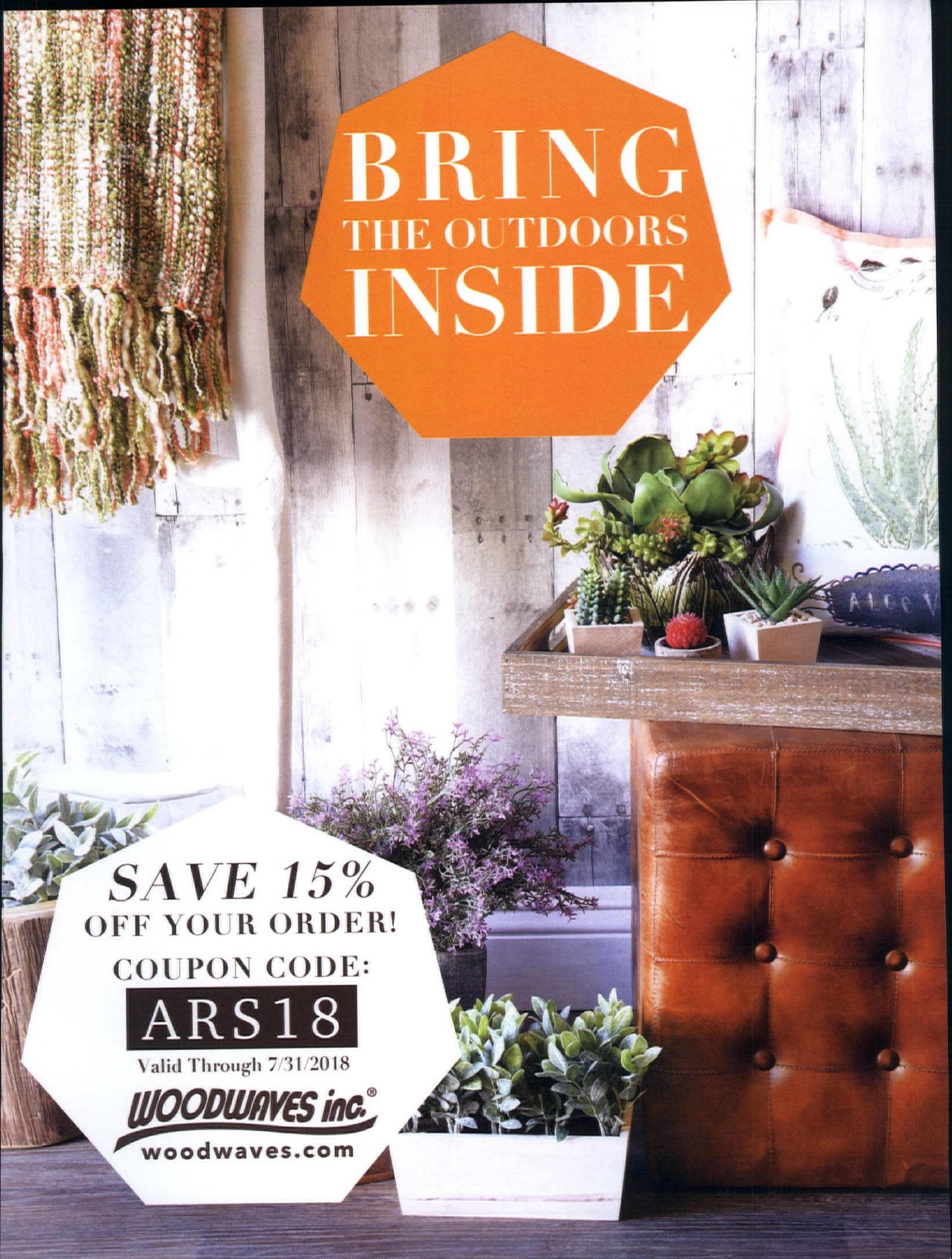
To preserve the midcentury look, John and Geoff highlighted the original post-and-beam construction. By opening up the great room, outdoor views can now be enjoyed through the “wall of glass,” a common feature of Eichler homes.

“We updated the glass itself, including replacing smaller sliding glass doors with 4-panel sliding glass doors that allow more direct connection between indoors and outdoors than in the original design,” John says.

Other midcentury touches were added through walnut-toned custom cabinetry by Kerf and a Caesarstone countertop, an upgrade that is still visually reminiscent of the original Formica. Eames Molded Plastic Stools add punchy hues to the space, also seen in the open shelving and accents, creating a fun and vibrant setting.

John shares, “The owners love living in this house.” 





**BRING  
THE OUTDOORS  
INSIDE**

**SAVE 15%  
OFF YOUR ORDER!**

**COUPON CODE:**

**ARS18**

Valid Through 7/31/2018

**WOODWAVES inc.®**

**woodwaves.com**





A BRIGHT RED GEORGE NELSON MARSHMALLOW SOFA IS UNDOUBTEDLY THE STAR OF THE SHOW—PERFECTLY ACCENTED BY THE VINTAGE SIDE TABLE THAT DOES TRIPLE DUTY AS A MAGAZINE RACK AND LAMP.



# Curating Midcentury

THE FLOATING EDGE  
FIREPLACE DESIGN WAS  
PERHAPS INFLUENCED  
BY RICHARD NEUTRA,  
ARCHITECT OF THE  
NEARBY MOUNTAIN  
HOME AIR FORCE BASE.  
WHILE THE FIREPLACE IS  
AN ORIGINAL FEATURE,  
THE BRICK WAS PAINTED  
BY A PREVIOUS OWNER.



Thanks to the passion of an enthusiastic couple, midcentury treasures are found in every corner of this 1953 Boise, Idaho home.

By **Lindsay Jarvis**  
Photography by **Allison Corona**  
Styling by **Jessica Lunque**







A GEORGE NELSON BENCH AND CURTIS JERE BIRD SCULPTURE GIVE GUESTS A MIDCENTURY GREETING AT THE ENTRYWAY OF THE HOUSE.



TOP RIGHT: THE REC ROOM, ADDED IN THE 1950S, ORIGINALLY HAD TWO FRENCH DOORS WHERE THERE ARE NOW THREE LARGE WINDOWS. A CEDAR TONGUE AND GROOVE CEILING WAS ADDED TO MIMIC THE ENTRYWAY AND DINING AREA.



LEFT: A GEORGE NELSON SAUCER BUBBLE LAMP HANGS ABOVE AN ICONIC SAARINEN WOMB CHAIR AND BROYHILL BRASILIA HUTCH, CREATING A WELCOMING CORNER IN THE MASTER BEDROOM.





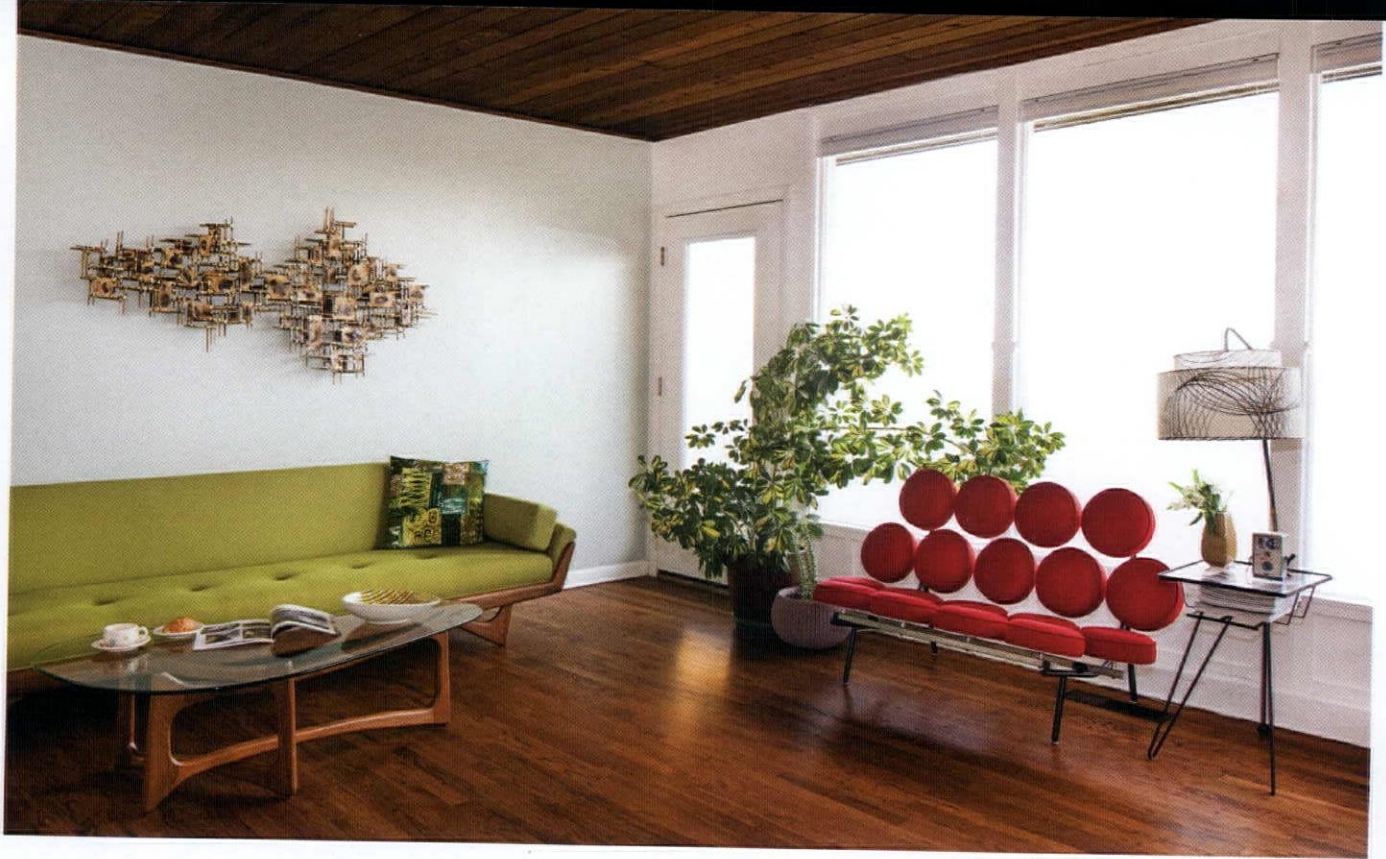
## Tucked safely in a cardboard box and wrapped in newspaper pages from the 1950s,

a piece of Franciscan Ware donning the now iconic "Sputnik" pattern kicked off a deep-seeded love of all things Midcentury Modern. Rob Baker opened that box from his grandparents' house and made his fateful discovery in elementary school. Now the owner of a midcentury home and the creator behind Modern Mailbox, his passion for the design movement has yet to wane.

### SEARCHING FOR MODERN

Fast-forward to 2013, and the midcentury style Rob and his wife, Carrie Quinney, love so much just wasn't shining through in their traditional 1950's brick home in Boise,





ABOVE: THE CAREFULLY CURATED LIVING ROOM FEATURES A DREAMY COLLECTION OF FURNISHINGS FROM ADRIAN PEARSALL AND GEORGE NELSON, ALL ACCENTED BY A MARK WEINSTEIN METAL SCULPTURE. THE ORIGINAL OAK FLOORS WERE STAINED IN A DARK WALNUT TONE TO MIMIC THE CEILING.

BELOW: REFERRED TO AS "T.P.T.B" (THE PLACE TO BE) BY ROB AND CARRIE, A GEORGE NELSON COCONUT CHAIR AND AN EAMES LOUNGE CHAIR SIT IN FRONT OF A MURAL ROB PAINTED, WHICH WAS INSPIRED BY THE WORK OF ARTIST SHAG.







A WITCO PAINTING HANGS ABOVE CARVED TIKIS FOR A WHIMSICAL ADDITION TO ROB'S HOME OFFICE.

Idaho—despite their best efforts. With a baby on the way, the couple also wanted more space for their growing family. “We really tried to make that [the previous house] into something it wasn’t,” Rob explains. Wanting a truly modern home, the couple searched and searched only to end up in multiple unsuccessful bidding wars.

While searching online, Rob and Carrie stumbled upon a 1953 home with plenty of promise. In what proved to be a whirlwind process, the couple somehow managed to tour the house within an hour, fell in love with the property and made an offer after only a few minutes—an offer which was accepted later that day.

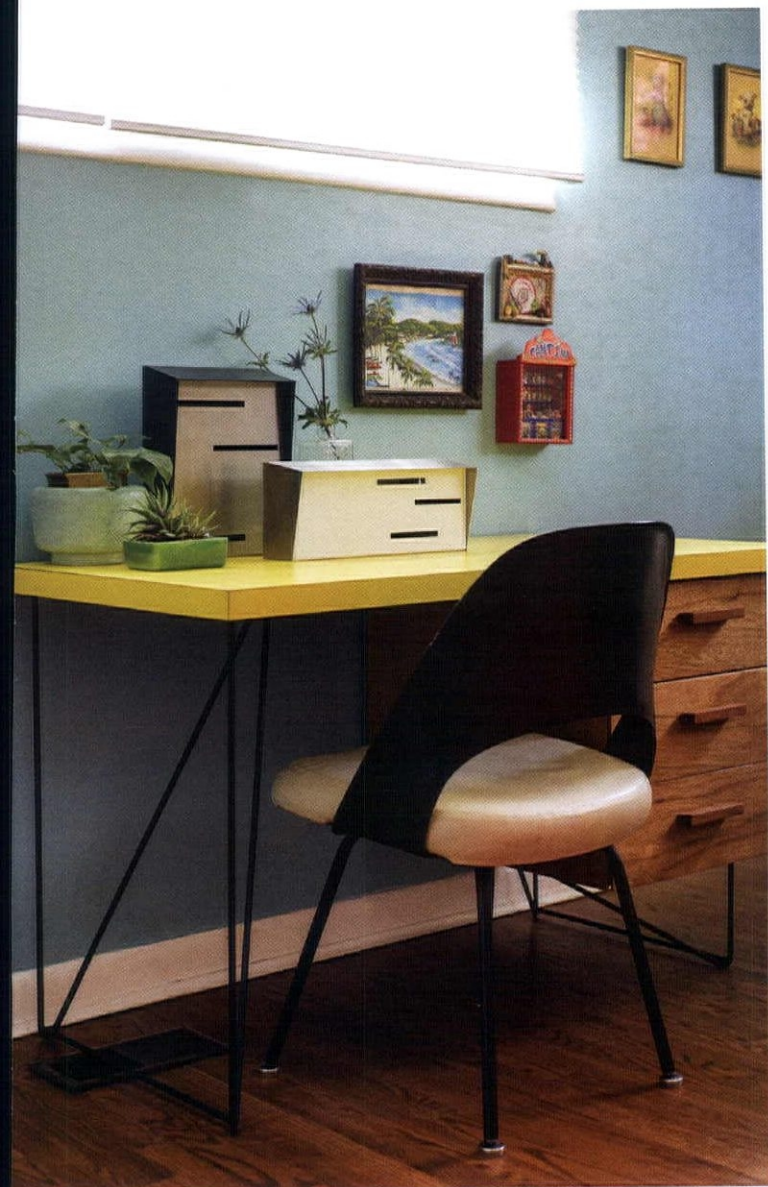




"We totally decked this house out and every inch was Midcentury Modern except for the eyesore that I walked by every day," says Rob. That eye sore was the mailbox.

**After searching for just the right design with no luck,  
Rob set out to create his own.**





**ABOVE:** MODERN MAILBOX PROTOTYPES LOOK RIGHT AT HOME SITTING ON TOP OF THIS LUTHER CONOVER DESK.

**RIGHT:** FINDING HIS FIRST ORIGINAL PHILCO PREDICTA TELEVISION AT A LOCAL ANTIQUES SHOP LEAD TO ROB FINDING TWO MORE FROM ANOTHER LOCATION LATER THAT AFTERNOON— INCREASING HIS PHILCO COLLECTION FROM 0 TO 3 OF THESE RETRO BEAUTIES IN A SINGLE DAY.

**OPPOSITE:** TIKI MUGS COLLECTED FROM ALL OVER SIT WITH VINTAGE RADIOS—ROB'S FAVORITE BEING A BLACK MUG FROM FRANKIE'S TIKI ROOM IN LAS VEGAS.







## UNEXPECTED FIXES

"When we had our inspection done prior to purchasing, the AC unit was on its last leg," says Rob. While they thought it might last at least a few months longer, the AC unit died three days later. Having already set their sights on refinishing the original oak floors with a dark walnut stain to match the ceilings, Rob and Carrie completed both tasks within the first week. "A pretty big expense before even moving in," Rob admits.

## AESTHETIC CONTINUITY

While the architect of the house is unknown, Rob and Carrie have come to find that the rec room addition from

the 1950s was completed by Bob Vincent, a local general contractor whose wife lives down the street. The addition wasn't his only work on the house, as he also converted the home's original carport into a garage. "[It's a] single car garage and ties in so beautifully," says Rob.

About six months after moving in, the two French doors on the rec room were changed to a three-window wall. "We ripped the wall apart and reframed it to look period-correct," Rob explains. The frequently used front room now has double-paned windows, but the original single-pane windows remain throughout the rest of the house.

Another phase of renovation meant it was time for what Rob and Carrie called their "Tuscan nightmare" bathroom





**OPPOSITE:** INSTEAD OF A COMPLETE OVERHAUL, THE KITCHEN REMODEL WAS BASED ON EMPHASIZING WHAT WAS ALREADY THERE. “WE SIMPLY SWAPPED OUT THE HARDWARE, ADDED NEW COUNTERTOPS, APPLIANCES AND A BACKSPLASH. ADDING THE TIKIS AND NELSON BUBBLE LAMP TIED IT ALL TOGETHER,” ROB EXPLAINS.

**ABOVE LEFT:** UNLIKE THE REST OF THE HOME, THE KITCHEN FEATURES A MARMOLEUM FLOOR.

**ABOVE RIGHT:** WITH ITS ICONIC FRAMING, THIS CARLO OF HOLLYWOOD WATERCOLOR ACTS AS THE CONVERSATION PIECE FOR THOSE GATHERED AROUND THE RICHARD SCHULTZ PETAL TABLE.

**The Sputnik Franciscan Ware**  
**that initially sparked Rob’s**  
**midcentury passion** was  
 eventually given to him by his parents  
 as a housewarming present, and is  
 now displayed in his dining area.





TOP LEFT: ADDING A TOUCH OF KITCH TO THE MASTER BEDROOM, A VINTAGE POODLE LAMP HAS PRIDE OF PLACE ON A VINTAGE PAUL MCCOBB SIDE TABLE.

ABOVE RIGHT: WITH THE LIGHTER PINK COLOR ALREADY ON THE WALL, ROB CREATED A MOD LOOK IN HIS DAUGHTER'S BEDROOM BY PAINTING GEOMETRIC PATTERNS IN A DARKER SHADE. A SAARINEN GRASSHOPPER CHAIR ENSURES THE ROOM IS READY FOR BEDTIME READING.



VINYL COMPOSITE TILE (VCT), WHICH WERE EXTRAS SAVED FROM A PROJECT AT ROB AND CARRIE'S PREVIOUS HOME, COMBINE WITH A VINTAGE MEDICINE CABINET FOR A PERFECTLY RETRO BATHROOM.

to be ripped out and re-imagined to complement the house's retro roots. Leftover vinyl composite tile from the couple's previous house brought a piece of their past, and a funky pop of green, into their new space. Rob replaced the clear sliding doors of a vintage medicine cabinet with solid laminate for a vintage touch.

### BIRTH OF MODERN MAILBOX


About two and a half years after moving, the Rob and Carrie felt that something was missing. "We totally decked this house out and every inch was Midcentury Modern except for the eyesore that I walked by every day," says Rob. That eye sore was the mailbox. After searching for just the right design with no luck, Rob set out to create his own, starting with a cardboard prototype. It took multiple visits to different metal fabrication specialists before finally finding one that understood his vision—and so began his company, Modern Mailbox.

The first run of ten units sold on Etsy within a few weeks and Rob knew there was more to this idea than originally predicted. Thousands of units later, his sleek mailboxes can be seen everywhere from hardcore midcentury enthusiast homes to bungalows and Victorian houses. Most recently, Rob began producing subtly boomerang shaped wooden light switch and outlet plates for an extra touch of kitsch.

Now with a perfectly mod mailbox and retro light switch plates accenting their carefully curated furniture collection, every detail of the Rob and Carrie's home reflects their deeply held passion for midcentury design. ☼





A bright, modern living room with large windows. In the foreground, a brown leather armchair with a blue cushion sits on a white shag rug. To its right is a grey sofa and a two-tiered woven ottoman. The room is filled with natural light from the windows, which offer a view of trees. The ceiling has a white, ribbed texture.

Tackling renovations  
room by room allows for  
planning and budgeting,  
note Tiffany and Nate  
Mueller, who say  
**the house will  
continue to  
evolve over time.**



# Rambler

By Leslie J. Thompson  
Photography by Julia Auerbach  
Styling by Tiffany Mueller

# Revival

First-time homeowners combine patience and planning to renovate their midcentury rambler.











## Finding the perfect midcentury home is always a challenge.

---

**ABOVE:** A MIDCENTURY WALL UNIT IN THE HOME OFFICE IS PERFECT FOR STORING A TURNTABLE AND VINYL COLLECTION.

**OPPOSITE:** A LEATHER ARMCHAIR FROM WEST ELM AND STACKED BANANA FIBER STOOLS FROM IKEA PROVIDE A COZY SPOT TO READ AND RELAX.

Finding one while long-distance house hunting for Minneapolis from Seattle takes both dogged determination and a measure of luck. Homeowners Tiffany and Nate Mueller know this from experience and have documented the process in their blog, Hello Refuge.

"We wanted something that had some remnant of character that we could build off, then this one popped up," says Tiffany, referring to her family's sixties-era rambler in the southwest suburb of Edina. An interior stylist and co-owner of Hello Goodbye Studio with her husband, Tiffany ventured to the Twin Cities alone to tour the house after the seller accepted their offer.

"When I saw it in person, it was a little scary," she says of the sadly neglected ranch. Built in 1964, the house had majestic windows and great bones, but the grimy kitchen cabinets and bathroom mold raised concerns. Undeterred, the Muellers relocated with their two young daughters in July 2016 with plans to give the house new life.



## The Muellers' 1964 rambler was built by **one of the developers of Southdale Center**, the first shopping mall in the United States.

"We moved in and thought we were going to update bathrooms and kitchen, all the fun stuff you see on HGTV," recalls Nate. Instead, the couple spent several months correcting drainage issues in the backyard and replacing weatherworn siding, soffits, and fascia. Although far from glamorous, the projects afforded them the opportunity to put their personal stamp on the property. They painted the exterior black, and dressed up the front entrance with modern house numbers originally designed by architect Richard Neutra, a custom mailbox, and midcentury-style lighting sconces.

### DRAMATIC ELEMENTS

Inside, the pair gutted both upstairs bathrooms to eradicate the mold and update the harvest gold color scheme. A reproduction midcentury media console was modified with a white quartz countertop and vessel sink to create the vanity in the main bath, illuminated by a globe chandelier overhead. Brilliant white subway tile, chrome fixtures and Mutina Tex-Black floor tiles in both bathrooms add dramatic flair to otherwise utilitarian spaces. Although pricey at \$28/square foot, the flooring was worth the investment, says Nate, noting that the smaller footprint of the bathroom made the expense manageable. "You mix in cost-savings in other places, so you can splurge on wow factor pieces like that."







HOMEOWNERS TIFFANY AND NATE HAVE LEFT MANY OF THE HOME'S ORIGINAL DECORATIVE ELEMENTS UNTOUCHED, INCLUDING THE GEOMETRIC IRON RAILING AND TWO-STORY BRICK FIREPLACE.



"We moved in and thought we were going to update bathrooms and kitchens, **all the fun stuff you see on HGTV.**"



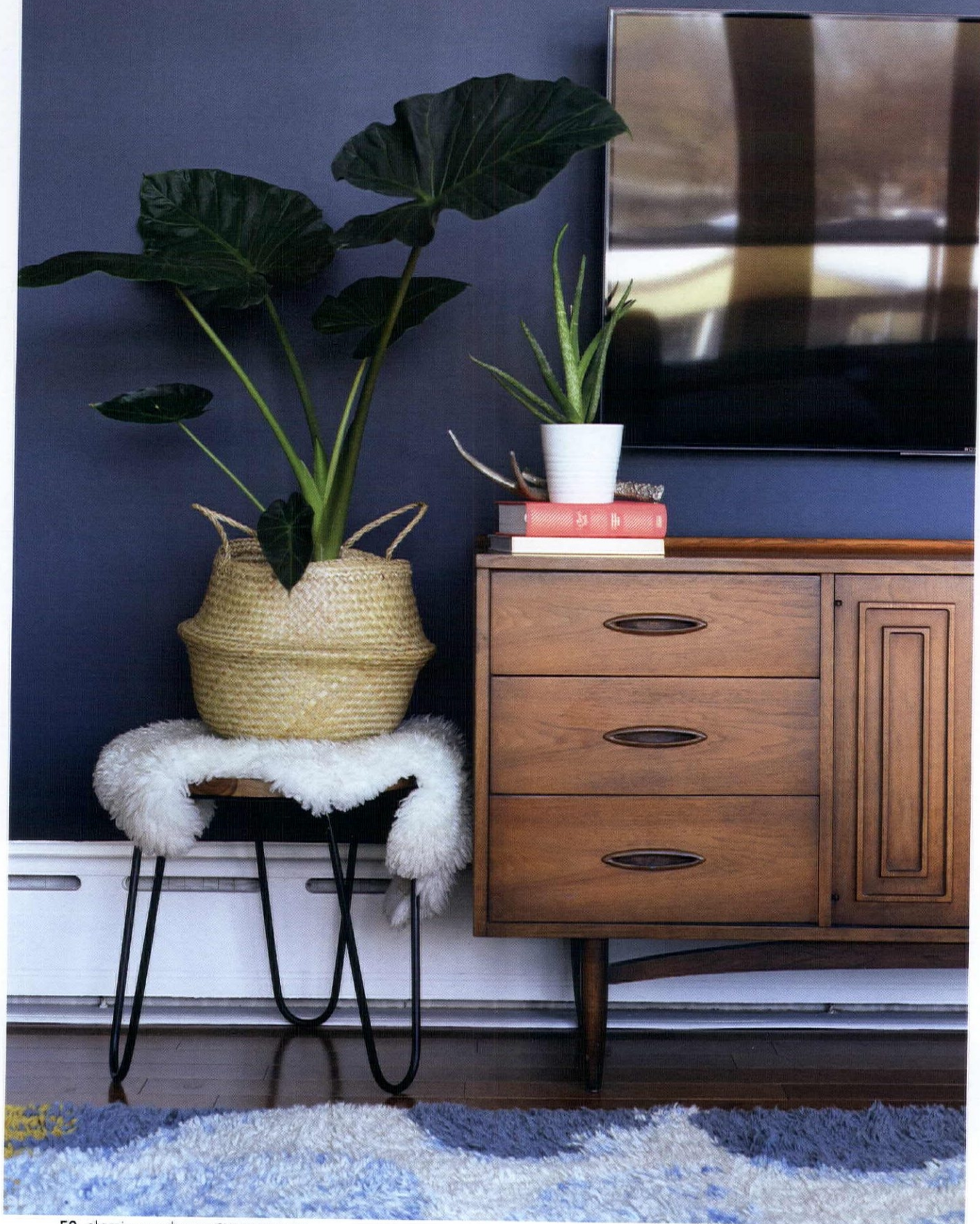




To stay on budget, the creative duo focused on simple strategies to spruce up the main living areas, including fresh paint and artfully staged home furnishings. "We wanted a place where as a family we could cuddle up together," says Tiffany, referring to the modern sectional sofa placed opposite the two-story fireplace in the family room. Nate adds, "We rearranged the furniture three or four times, until we finally found that sweet spot for how the room is supposed to be laid out."

Floor-to-ceiling windows flood the space with natural light, prompting Tiffany to paint the walls midnight black. A plush shag area rug and macramé wall art add a bohemian flair that is a striking contrast to the original midcentury credenza, leather wing chairs and modern wall-mounted bookshelves. "Keeping those sleek lines but adding those textures makes it very livable," says Tiffany.









**ABOVE LEFT:** A MIDCENTURY-STYLE MEDIA CONSOLE FROM WEST ELM WAS ADAPTED INTO A SLEEK VANITY IN THE MAIN BATHROOM.


**ABOVE RIGHT:** LESS IS MORE, BUT SOMETIMES LESS COUNTERSPACE IN THE BATHROOM MEANS CREATING MORE VIA A VANITY AREA IN THE BEDROOM. A DECORATIVE MIRROR FROM TARGET'S PROJECT 62 LINE AND A SOFA TABLE CREATE AMPLE SPACE FOR BOTH TIFFANY AND NATE'S MORNING ROUTINES.

**BOTTOM RIGHT:** BRUSHED BRASS KNOBS GIVE THE MASTER BEDROOM'S BUILT-IN DRESSER AN ADDED FLAIR OF MIDCENTURY STYLE.

**OPPOSITE:** TIFFANY FINDS MANY OF HER BOHEMIAN HOME ACCESSORIES AT IKEA, INCLUDING THIS SEAGRASS BASKET AND SHEEPSKIN THROW. THE VINTAGE CREDENZA, HOWEVER, WAS A SERENDIPITOUS CRAIGSLIST FIND.







**"YOU MIX IN  
COST-SAVINGS  
in other places,  
so you can splurge on  
wow factor pieces."**

## REPRODUCTION FINDS

In the dining area, reproduction Eiffel chairs surround a stately wood table purchased at Crate and Barrel. "I think that was the first piece of adult furniture we bought," Nate remembers. A saucer pendant light and replica starburst wall clock complete the setting.

The vintage vibe also extends to both bedrooms, where retro-inspired furnishings and DIY hacks are the order of the day. In the master suite, a wall mirror from Target's Project 62 line paired with a modern white sofa table serve together as a vanity, while a midcentury dresser and platform bed carry the low-profile motif

throughout the space. In the girls' room, Tiffany painted an IKEA dresser pastel pink and added brushed brass cabinet knobs for retro flair.

The couple plan to continue renovations later this year, including a full kitchen remodel that combines midcentury style with modern conveniences. In the meantime, they invite friends to enjoy the work in progress. "This is our first adventure in being homeowners, and we know we're going to be here 30-plus years," says Nate. "We have time to plan stuff out and evolve the space as we grow with it." 🌀



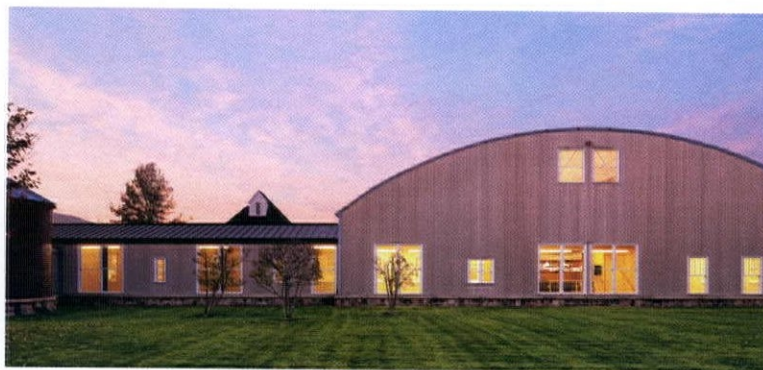


**ABOVE RIGHT:** THANKS TO A VINTAGE CHAIR PERFECT FOR STORY TIME, RETRO FLARE WORKS ITS WAY INTO THE BEDROOM OF TIFFANY AND NATE'S DAUGHTERS.

**RIGHT:** IN THE OFFICE, A MODERN DAYBED MAKES THE SPACE COZY AND INVITING FOR THE ENTIRE FAMILY.







# Enduring

# Style



Responsible for some of the most iconic designs of the 20th century, Herman Miller has a fascinating history.

By Victoria Van Vlear and Sarah Jane Stone  
Photography courtesy of Herman Miller

TOP LEFT: HERMAN MILLER'S BRAND OFFICE'S, KNOWN AS THE "DESIGN YARD."

TOP RIGHT: CHARLES AND RAY EAMES WORKING ON THE EAMES ALUMINUM GROUP LOUNGE CHAIR.

ABOVE RIGHT: RAY, PLAYING WITH "THE TOY" AT THE EAMES' HOME.

LEFT: MARSHMALLOW SOFA, GEORGE NELSON, 1956



“People are the **heart** and **spirit** of all that counts.”

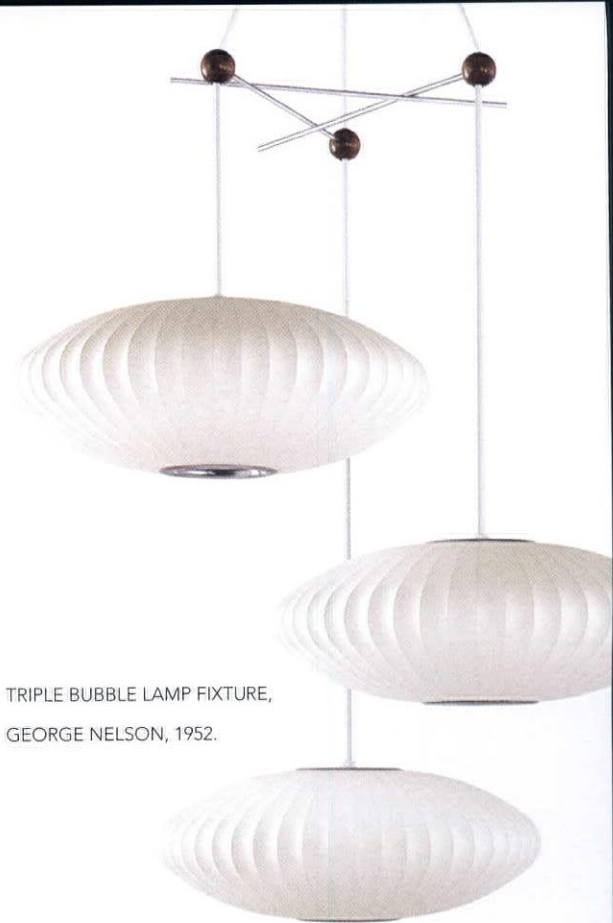
— Max De Pree, former Herman Miller CEO

If you thought Herman Miller was a man who designed midcentury furniture, think again.

The name we speak with so much reverence refers to the company Herman Miller, Inc., which actually started as the Star Furniture Company in 1905. At its inception, the company specialized in traditional wood furniture, a far cry from the iconic midcentury pieces we know and love.

### HUMBLE BEGINNINGS

The Star Furniture Company began its journey to greatness in 1909, when a recent high school graduate named Dirk Jan (D.J.) De Pree was hired as a clerk for the company. A hard worker, he climbed the ranks to become the company's president by 1919. In 1923, with the help of his business-savvy father-in-law, Herman Miller, he purchased 51% of the company's stock. To express his gratitude, De Pree renamed the company the Herman Miller Furniture Company.



TRIPLE BUBBLE LAMP FIXTURE,  
GEORGE NELSON, 1952.



LEFT: MOLDED PLASTIC WIRE-BASE ARMCHAIR, CHARLES AND RAY EAMES, 1945 .



RIGHT: MOLDED FIBERGLASS UPHOLSTERED DOWEL-LEG SIDE CHAIR, CHARLES AND RAY EAMES, 1950S.





“It’s exciting to see that in recent years people are again caring more and more about sustainable consumption and buying quality goods **that can be cherished for generations**—not sent to a landfill.”

— Adam Call, Vice President of Herman Miller Collection



DAYBED WITH BACK BOLSTERS,  
GEORGE NELSON, 1950.






Herman Miller continued producing furnishings in traditional styles until the Great Depression. However, with the struggling economy of the 1930s, De Pree had to get creative to bring in profits. In a risky bid, the company hired Gilbert Rohde, who specialized in modernist furniture, to take a new direction. At the Chicago Century of Progress exhibition in 1933, Herman Miller introduced a new line of modern furniture, which launched the company into its 20th-century glory.

## THE GOLDEN AGE

In 1944, Gilbert Rohde died, and De Pree began the search for a new design director. Architect George Nelson's book *Tomorrow's Home* came out in 1945, and De Pree was impressed with its innovative ideas. He offered Nelson the job, even though Nelson had never designed furniture.

It was a wise decision. Nelson had a growing network of modernist designers in his address book, and over the next few decades, he helped bring in some of the greatest names in midcentury design to work on pieces for Herman Miller. Designers such as Isamu Noguchi, Charles and Ray Eames and Alexander Girard put their names under the Herman Miller label, to great success.

Herman Miller's prowess did not wane when modernist style dwindled in the 1980s. Instead, the company has continued to be a furniture giant into the 21st century, not only in its commitment to quality and innovation in design, but as a corporation as well. Herman Miller repeatedly wins awards for eco-friendly practices, sustainability and its work environment (Fortune's "Best Places to Work" award). 



ALEXANDER GIRARD, 1961

## Q & A with Adam Call, Vice President of Herman Miller Collection

### Why do the pieces produced by Herman Miller endure?

I believe they endure because they are truly original designs, not derived from market trends. Herman Miller's early designers, like Charles and Ray Eames, George Nelson, and many others, focused their designs on solving everyday problems they observed in homes and offices.

This resulted in sleek and sophisticated products that were both playful and functional. When you focus on solving the problem not fitting into a trend, the design should stand the test of time because fundamental human needs don't really change that quickly.

### What do these iconic pieces say about the midcentury?

These pieces speak to the overall optimism of the time. There was a sense that new processes, materials, and opportunities were possible, and many designers responded to these innovations with designs that took advantage of that spirit.

During this time, there was a big emphasis on buying products that would distinctly differentiate people from the previous generation. People sought modern products that could be purchased at a fair price, and live within the family for generations. As a culture, we transitioned from that mentality to more "disposable goods" in the late 60s and 70s. It's exciting to see that in recent years people are again caring more and more about sustainable consumption and buying quality goods that can be cherished for generations—not sent to a landfill.

### What drew you to work with Herman Miller?

It sounds hokey, but I really feel like great furniture can improve the way people work and live in their daily lives. When I was looking around early in my career it felt like Herman Miller was still willing to take risks to introduce truly breakthrough designs, and I have enjoyed being a very small part of all the work we've done over the last 15 years.

### What is your favorite piece?

The piece that has been with me the longest (through many moves and different apartments) is an Eames Aluminum Group Lounge chair. It is comfortable, very light weight, durable, and has a beautiful silhouette that I just never get sick of looking at and using daily.

TUXEDO TABLE, BASSAMFELLOWS, 2014.



WALNUT STOOL,  
CHARLES AND  
RAY EAMES, 1959.





# Mid Mod Mix

Quintessential midcentury principles are interpreted for fresh take on modern living.

By Sarah Reidy-Ferguson  
Photography by Julie Tindall

Keen on living within a quintessential Midcentury Modern style home,

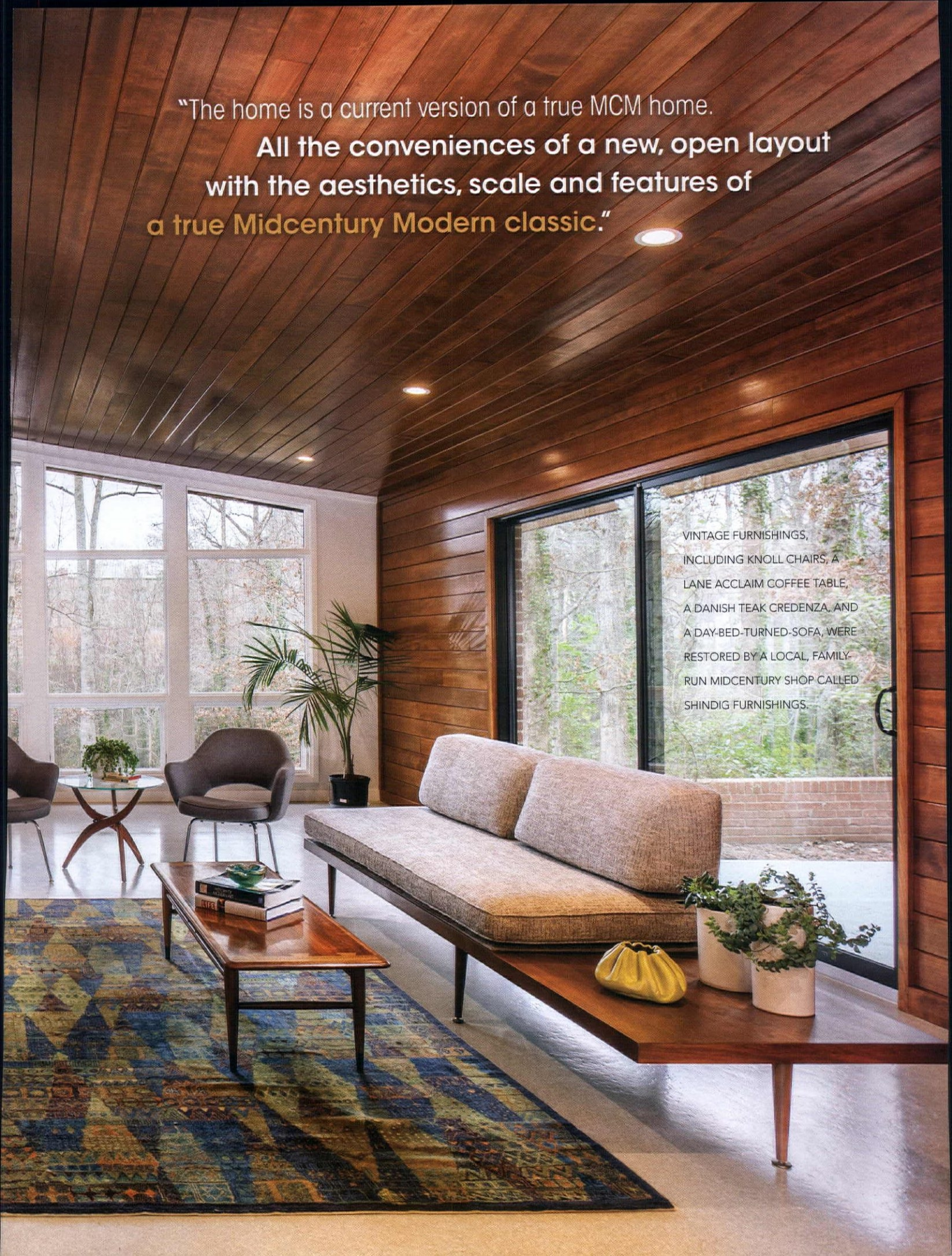
a young couple tasked architecture firm Tindall Architecture Workshop, LLC with a modern yet mindful makeover of their recently acquired period property. Located in Stone Lake, a downtown neighborhood of Greenville, South Carolina, the split-level structure's original footprint made for a perfect match with the homeowners' needs and required no additions or adjustments to square footage.





"The home is a current version of a true MCM home.  
All the conveniences of a new, open layout  
with the aesthetics, scale and features of  
a true Midcentury Modern classic."

VINTAGE FURNISHINGS,  
INCLUDING KNOLL CHAIRS, A  
LANE ACCLAIM COFFEE TABLE,  
A DANISH TEAK CREDENZA, AND  
A DAY-BED-TURNED-SOFA, WERE  
RESTORED BY A LOCAL, FAMILY-  
RUN MIDCENTURY SHOP CALLED  
SHINDIG FURNISHINGS.





**“Keep the fixed elements SIMPLE and NEUTRAL.**

Let the color and accentuation in a room come from the furnishings and accessories.”



THE ORIGINAL FIREPLACE RETAINS ITS RIGHTFUL PLACE AS THE LIVING ROOM'S FOCAL POINT. WHILE PAINTING BRICK CAN BE CONTROVERSIAL—THE BRIGHT WHITE COLOR CONCEALS A PATCHWORK OF CUTOUTS FROM PREVIOUS RENOVATIONS, WHILE BALANCING THE RICH WOOD OF THE TONGUE AND GROOVE CEILING AND VINTAGE FURNISHINGS.

## RESTORING FUNCTION

Revitalizing the building's ramshackle condition quickly became the restoration focus. "The original home had structural failures that needed to be addressed," says the architect, before continuing with the long list of necessary repairs, including "cracked foundation wall and basement slab, the leaky roof led to damage of the original wood ceiling. Window seals were compromised and in need of replacement, water intrusion into lower level walls and rooms and general settling that had caused interior finish cracks and damage over time."

During the yearlong process, the homeowners worked closely with the team at Tindall Architecture Workshop, as well as the interior design firm ID Studio Interiors, who collectively determined to retain the original character that defined the midcentury home while adapting design updates fit for 21st century living.



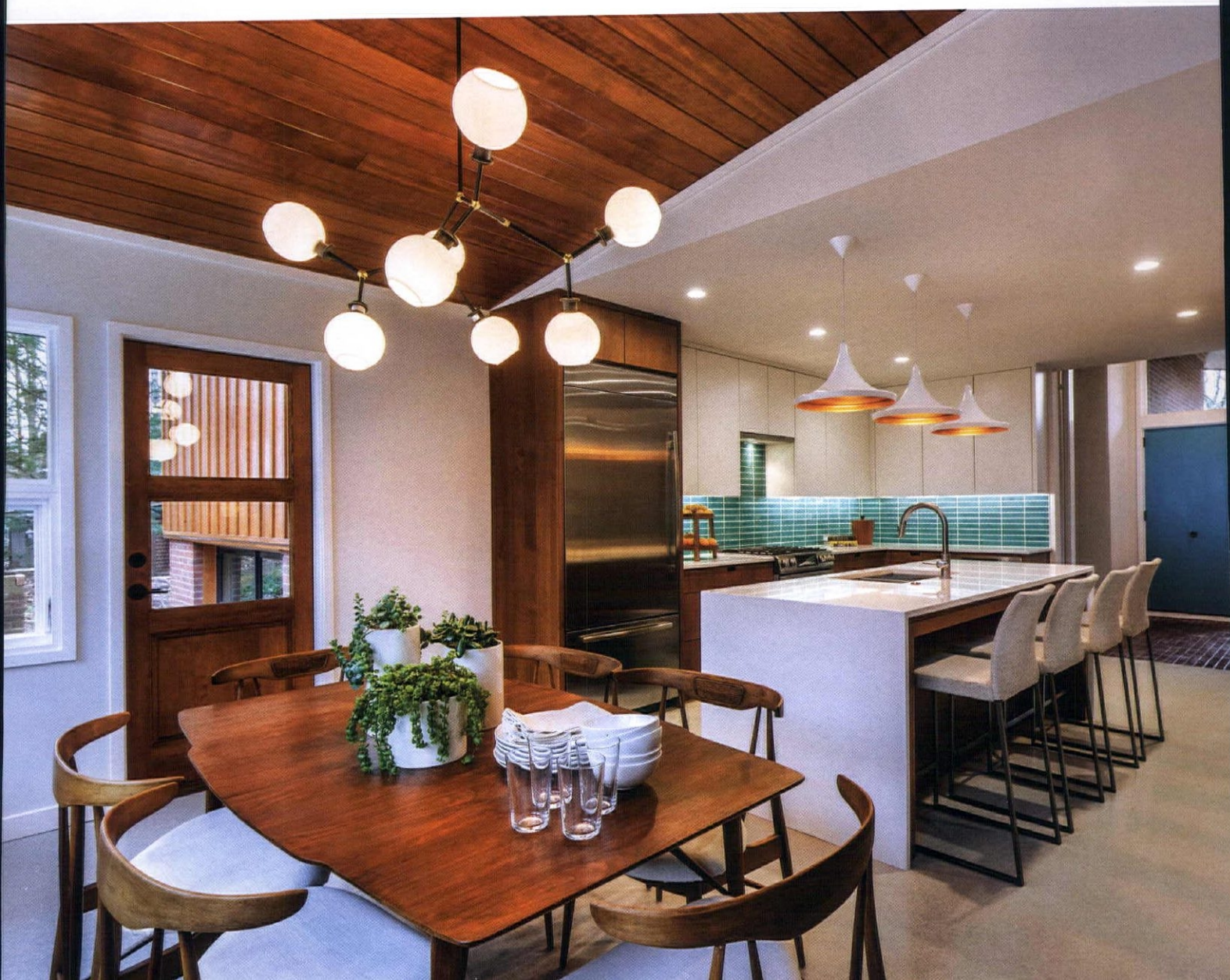
A CONTRASTING LIGHT AND DARK COLOR PALETTE INFUSES THE OPEN CONCEPT DINING ROOM AND KITCHEN. THE QUINTESSENTIALLY MID MOD STYLE DINING TABLE AND CHAIRS WERE SOURCED FROM SHINDIG FURNISHINGS. THE RICH STAIN COMPLEMENTS THE ORIGINAL TONGUE AND GROOVE WOOD CEILING, LOWER CABINETRY AND BACK DOOR. CLEAN SHADES OF WHITE, APPLIED TO UPHOLSTERY, COUNTERTOPS, UPPER CABINETRY, WALLS AND TRIM, BALANCE THE ROOM'S OVERALL AESTHETIC. THE CHANDELIER IS FROM NUEVO LIGHTING, ADDING THE RIGHT MIX OF MID MOD AND MODERN.

## REVIVING FORM

Preservation was approached from the outside, in. Existing exterior elements were restored or, if beyond repair, meticulously matched with new materials. "All the original exterior wood siding was replaced with new siding of the same wood species and profile," says the architect.

Stepping inside, a few architectural modifications were made, with the purpose of creating a more open, fluid layout suited to the homeowners and their active family. The lower level was outfitted to accommodate a master suite, laundry room and home office. Each of the third level's three bedrooms and two baths also underwent modern upgrades.

The main floor's open concept dictated design direction. The architect explains, "Because you experience multiple rooms from any space on the main level, there needed to be a constant thread of style, color and texture throughout the home. Materials are repeated throughout the main level to help convey a sense of one large space tied together by multiple rooms." Two elements that enforce these design principles and are carried throughout the connecting rooms are the terrazzo-style floors, crafted from a custom blend epoxy for durability and the restored tongue and groove vaulted wood ceilings.







## Design Essentials

- **SIMPLE AND NEUTRAL.** A neutral base of wood tones and white shades create overall cohesion between the home's connected spaces, with color provided by the accessories. Vintage furnishings and new pieces are assembled in a harmonious collection that conveys the homeowner's personal taste and appreciation for midcentury design.
- **EYE-CATCHING AND ORIGINAL.** Careful restoration of the richly colored tongue and groove ceiling and sloping roofline serve to highlight the home's expression of midcentury lines.
- **INDOOR/OUTDOOR LIFESTYLE.** Groupings of large windows throughout the house offer unobstructed views to the tranquil tree-lined landscape, while easily accessible sliding doors create an inviting flow between the interior and great outdoors.

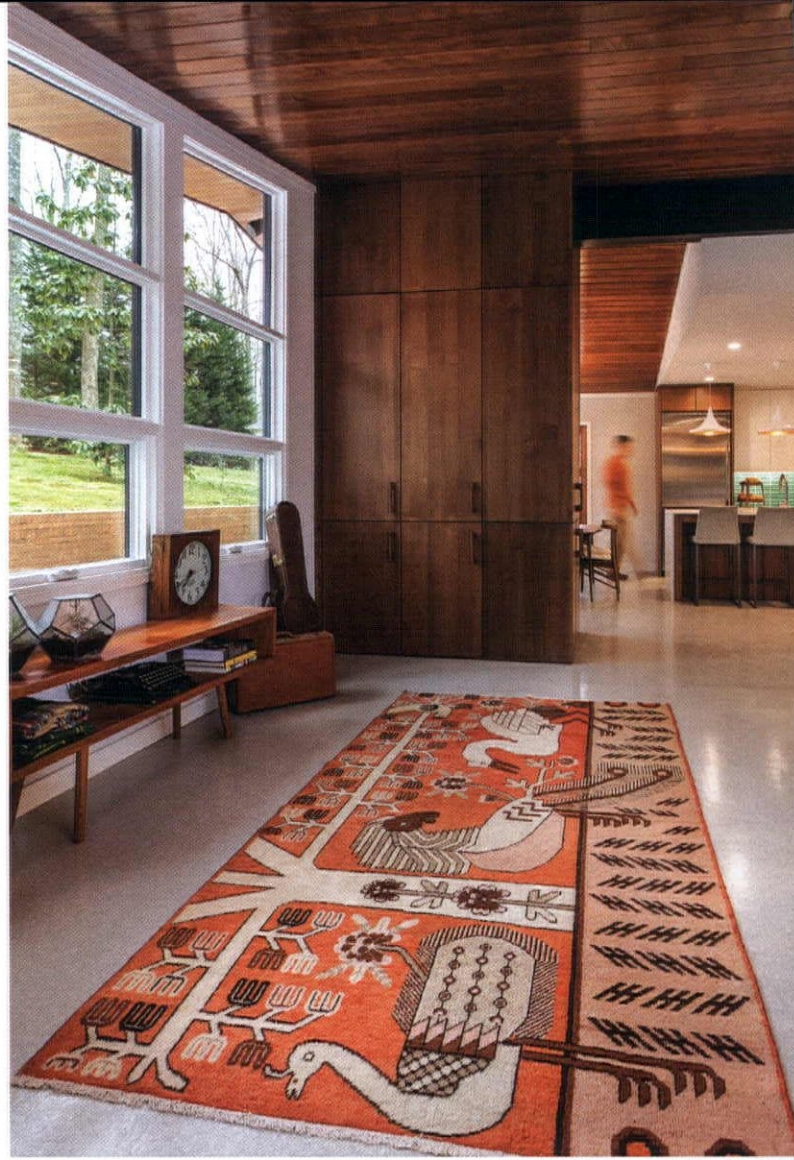
**ABOVE:** THE KITCHEN'S LOCATION REMAINS TRUE TO THE FOOTPRINT, BUT IT RECEIVED A NECESSARY DOSE OF DESIGN UPDATES. AS A PERSONAL TOUCH, BRIGHT TILE FROM CLAYHAUS TILE, LOCATED IN PORTLAND, OREGON TURNS THE BACKLASH INTO A STATEMENT. THE INTERIOR DESIGNER NOTES, "THE HOMEOWNERS USED TO LIVE IN PORTLAND AND WERE FAMILIAR WITH THE COMPANY. THEY ACTUALLY BROUGHT THIS TILE TO OUR FIRST DESIGN MEETING."

**OPPOSITE BOTTOM :** FOR THE MASTER BEDROOM, A BRIGHT GRAPHIC WALLPAPER MAKES FOR A BOLD CHOICE TO ACCENT ONE WALL OF THE ROOM. THE HOMEOWNERS FOUND THE PATTERN ONLINE, DRAWN TO ITS WHIMSICAL STYLE AS IT REMINDED THEM OF ARTWORK BY MARY BLAIR, THE CONCEPT ARTIST BEHIND MANY OF DISNEY'S MOST ICONIC AND COLORFUL DESIGNS.





**ABOVE LEFT:** ALTHOUGH THE DARK BLUE SIDE-BY-SIDE VANITIES OF THE SHARED BATH ARE UPDATED, THEIR POSITION IS ORIGINAL TO THE ROOM'S LAYOUT—AS IS THE CHARMING RIBBED GLASS WINDOW DIVIDING THE SPACE.



**ABOVE RIGHT:** AN ORNATE RUG FROM TURKEY, ADDS AN ARTISTIC ELEMENT AND WELCOMES THE HOMEOWNERS AS THEY ENTER FROM THE CARPORT. THE CABINETRY HOUSES A WET BAR COMPLETE WITH THE ORIGINAL NUTONE BUILT-IN BLENDER, AND SERVES TO DEFINE THE TWO SPACES WITHOUT THE ADDITION OF WALLS. THE OPEN, LOW CREDENZA NESTLED UNDER THE WINDOW WAS BUILT BY THE ARCHITECT GIFTED TO THE HOMEOWNERS.





To enhance form and function, the interior design team repurposed decorative accents. "We replicated a slatted wall from the original master bedroom in the new mudroom/entry off the carport to create a partition. This allowed light to filter into the living room while defining the two spaces," the designer says.

## DESIGNING PERSONALITY

Fabrics selected for furnishings draw inspiration from the lighter shade of the terrazzo style floors and balance the richer tones of the vaulted wood ceilings. ID Studio Interiors skillfully complements the earthy color palette through the introduction of pops of color and pattern, including a bright backsplash tile in the kitchen and a graphic rug in the family room.

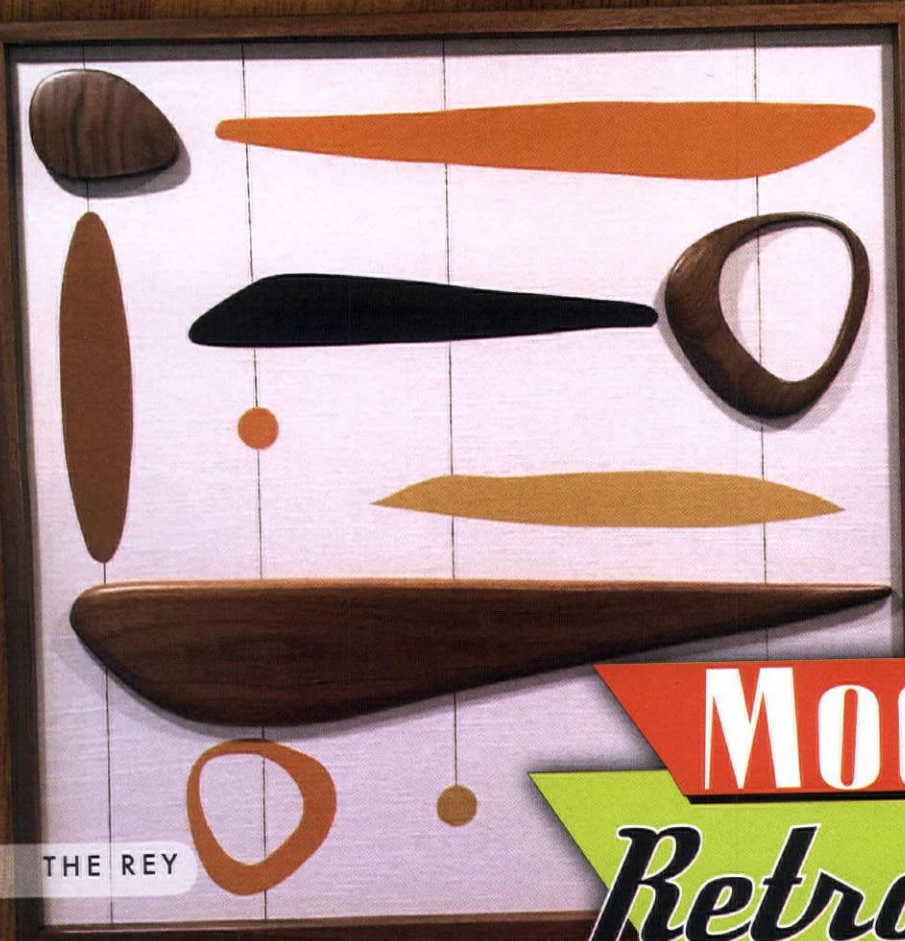
Ultimately, the intricate attention paid to repair, restore and repurpose defining Midcentury Modern characteristics, paired with a refreshed point of view, delivered design success. "The home is a current version of a true MCM home," says the architect, "All the conveniences of a new, open layout with the aesthetics, scale and features of a Midcentury Modern classic." 🌀

PAINSTAKING ATTENTION WAS PAID TO RETAIN ORIGINAL EXTERIOR ELEMENTS OF THE HOME. THE ARCHITECT NOTES, "WE ACTUALLY HAD TO ACQUIRE SPECIAL PERMISSION FROM THE LOCAL AUTHORITIES TO MAINTAIN THE EXISTING WINDOW SIZES AND LOCATIONS WITHIN ALL OF THE BEDROOMS. TECHNICALLY, THEY DO NOT MEET CURRENT CODE REQUIREMENTS, BUT MEETING THOSE REQUIREMENTS WOULD HAVE SUBSTANTIALLY ALTERED THE STYLE AND LOOK OF THE HOME." ADDITIONAL EXTERIOR REMEDIES INCLUDE RESTORATION OF THE ORIGINAL BRICK, REPLACEMENT OF DETERIORATED VERTICAL WOOD SIDING AND APPLYING A STANDING SEAM METAL ROOF. THE HOME'S HILLTOP POSITION OFFERS DRAMATIC VIEWS OF THE TREE-FILLED LANDSCAPE.





MID CENTURY MODERN STYLED ART



THE REY



Modern

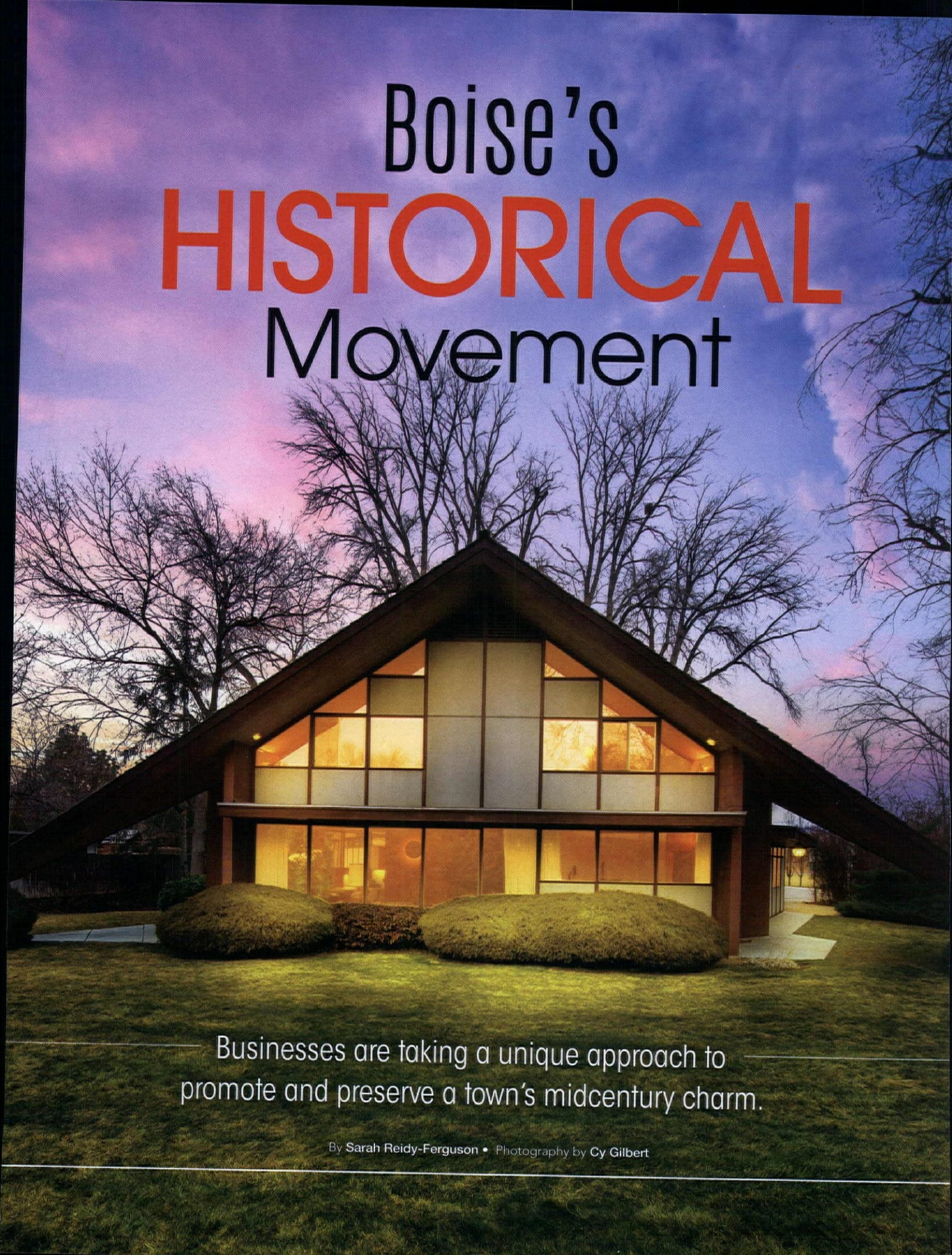
Retrograde

LLC.



THE ANTHONY





# Boise's HISTORICAL Movement

Businesses are taking a unique approach to promote and preserve a town's midcentury charm.

By Sarah Reidy-Ferguson • Photography by Cy Gilbert



**Early in 2016, Boise, Idaho** based real estate agent TJ Pierce connected his passion for Midcentury Modern history and architecture to an otherwise neglected niche within the city's residential market.

Sticking to a successful strategy focused on identifying Boise's period properties, TJ has helped to return these architectural jewels and their noted creators to the spotlight.

### REDISCOVERING HISTORY

"Art Troutner is our most admired architect and his homes seem to be the most interesting and most desired by those that call themselves midcentury enthusiasts in Boise," says TJ. "We also had architects like Nat Adams, Joe LeMarche, Victor Hosford, Charles Hummell and even some national players like Frank Lloyd Wright, Richard Neutra and Cliff May—who have all

influenced our midcentury market with their direct work."

The quintessential appeal of midcentury architecture lies in the livability of spaces, particularly an emphasis on indoor/outdoor experiences. TJ suggests Boise's easy access to outdoor recreation enjoyed throughout the four seasons and its picturesque landscape perhaps inspired the city's original desire to build mid mod style homes. "We are surrounded by streams, rivers, lakes, hills and mountains. This way of living has impacted architectural elements that have come to define Midcentury Modern characteristics."

**"Keep inspiring each other to hold true to what makes this era's design unique and special. We need more examples of how to bring updates to a home that are timeless and appropriate. The world is watching!"**







“Midcentury Modern enthusiasts want functionally, simplicity, something aesthetically pleasing, and spaces that invite interaction with each other—both inside their homes and within the context of their neighborhoods.”

Homeowners are drawn to open living areas, vaulted ceilings and large windows to embrace the views, coupled with a design dose of original materials—brick, wood and stone—applied throughout the interior and exterior.

#### HISTORY OF DESIGN

Boise resident Zach Fronk, the market president of Henriksen Butler in Idaho, a specialized commercial interior design firm, notes that the firm’s current projects are influenced by classic midcentury style. Drawing from the open floorplans, clients are requesting that the living room be brought into the work environment. Zach and his team create office spaces with similarities to their retro residential counterparts by including simple materials like glass, wood and stone, and finishing with décor rooted in Midcentury Modern design.

TJ finds the enduring attraction to mid mod homes lies within the context of interaction. “The aspect of these homes I find that most people gravitate toward is the fact that they are unique and have great character. They live differently. Inviting interaction between the inhabitants and the visually inspiring architecture.”







## / Impacting a Community /

How selling mid mod houses goes hand-in-hand with promoting preservation and awareness.

The ripple effect of TJ Pierce's actions and the distinctive real estate approach of his firm, Mid-Century Homes, encouraged passionate members of the Boise community to further preserve and promote MCM design principles.

"We founded Mid-Century Homes out of the desire to provide comprehensive services to those that loved midcentury architecture. We knew the majority of the time that would mean helping people buy and sell these fantastic properties, but sometimes that means lobbying for preservation, showing a documentary to help educate people, conducting public tours of period properties, or hosting classes to help folks better understand what Boise midcentury landscaping should look like," says TJ. "It means so much more than buying and selling these homes and that is what we love about it."

"I believe there has always been a faithful following of enthusiasts in our market. I would say the last 10 years have seen a resurgence from the work of organizations like Preservation Idaho and Idaho Modern, who have also been influencing that scene."

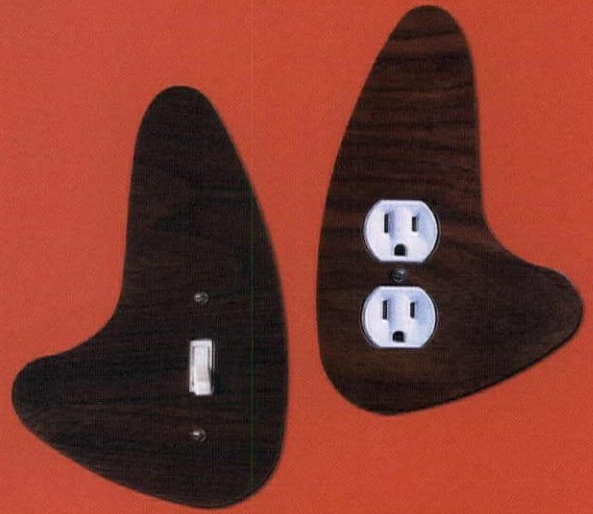
Other local businesses are pouring into Boise's midcentury resurgence, including Boise Vintage and Beatnik, which TJ describes as local vintage resale and midcentury furniture shops that have played major roles. "These groups have served our faithful following and regularly provide inspiration."



**MODERN**  
*Mailbox*



modern-mailbox.com | Handmade in the USA



**MODERN**  
*Light Switch*

modern-lightswitch.com | 208-340-7597



**IMPACT**  
FIRE TABLES

made in  
the USA!

stainless steel,  
propane or natural gas

impactfiretables.com

impactimportsusa.com

jumbo  
wood slabs

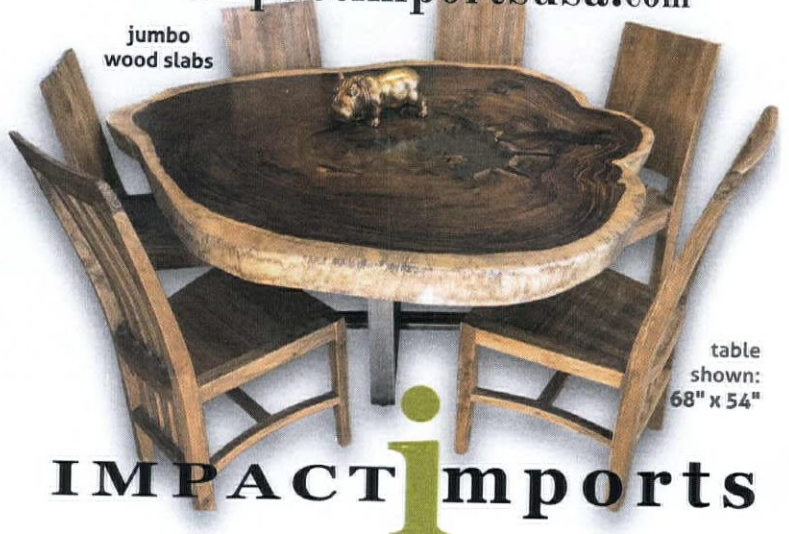
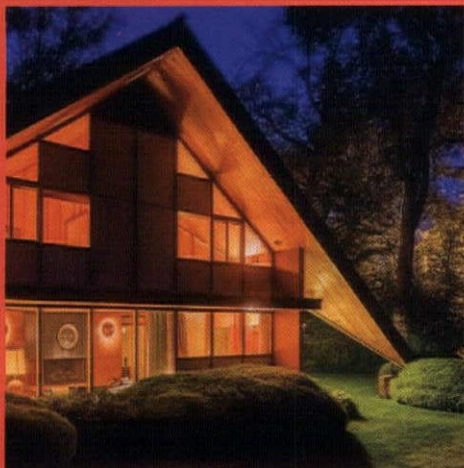
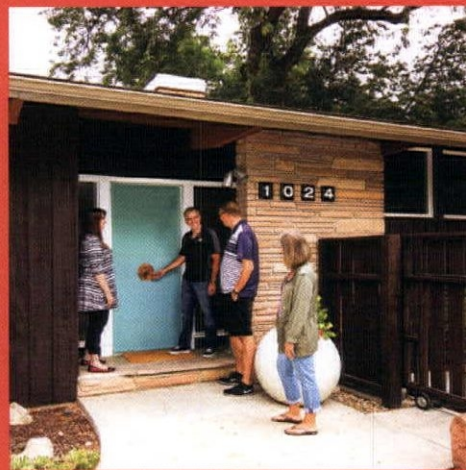


table  
shown:  
68" x 54"

**IMPACT**i**imports**



LIFE IS  
BETTER  
IN BOISE.



In one of the most livable cities in America, we make mid-century dreams come true: big skies, rolling foothills, miles of river greenbelt, a thriving downtown, award-winning schools, and mid-century homes at attainable prices. Your mid-century dreams are possible in Boise: let our experts show you how.

TOUR THESE HOMES AND OTHER BOISE GEMS AT

**MID-CENTURYHOMES.COM**



mid+century  
homes

By Moniker Real Estate





1415 W. Idaho St., Boise, ID 83702  
 1-208-336-9726  
[www.simplygroveshop.com](http://www.simplygroveshop.com)

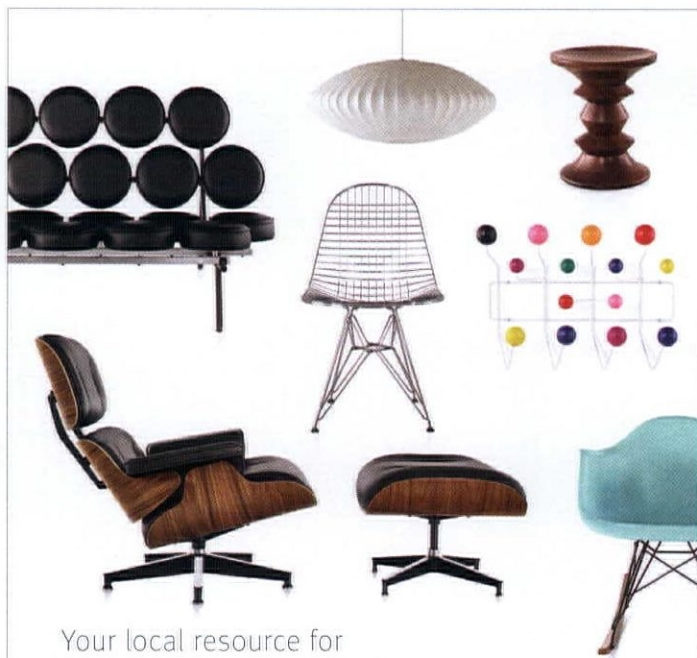


The duvet cover redesigned...  
 with two zipped side openings.  
 So easy and so modern!



Peruvian pima cotton percale  
 Set of shams included  
 Free US shipping

■ [duvation.com](http://duvation.com)



Your local resource for  
 mid-century modern furniture.

**HB** HENRIKSEN  
 BUTLER

 Herman Miller Certified Dealer

401 WEST IDAHO STREET  
 BOISE, ID 83702  
 208.343.5257

[WWW.HENRIKSENBUTLER.COM](http://WWW.HENRIKSENBUTLER.COM)



# HANDCRAFTED FURNITURE

*Built in Detroit.*



Quality, Defined.

[huntandnoyer.com](http://huntandnoyer.com) | 313.731.2485 | @huntandnoyer

VILLAGE

Presented by  
**AUSTIN'S MID-CENTURY  
MODERN SPECIALISTS**



- MCM PAVILION & POOL
- NATURE TRAIL
- PRIVATE DOG PARK



THE COCOA BEACH - 1,530 SF / \$419,900

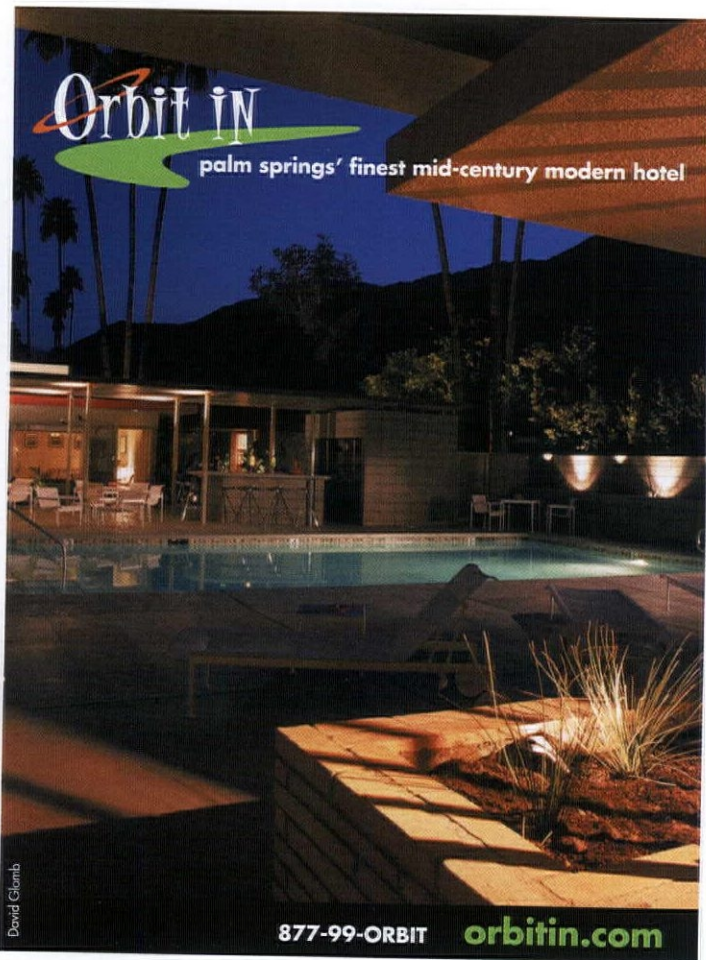


The Marye Company is proud to represent Greater Austin's only Mid-Century Modern inspired new home community. Starlight Village consists of 29 detached homes ranging from 1,300 to 3,000 square feet in 8 authentic styles. Priced from the low \$300ks.

**DREW MARYE • REAL ESTATE BROKER • 512-444-7171 • THEMARYECOMPANY.COM**

[STARLIGHTVILLAGEHOMES.COM](http://STARLIGHTVILLAGEHOMES.COM)





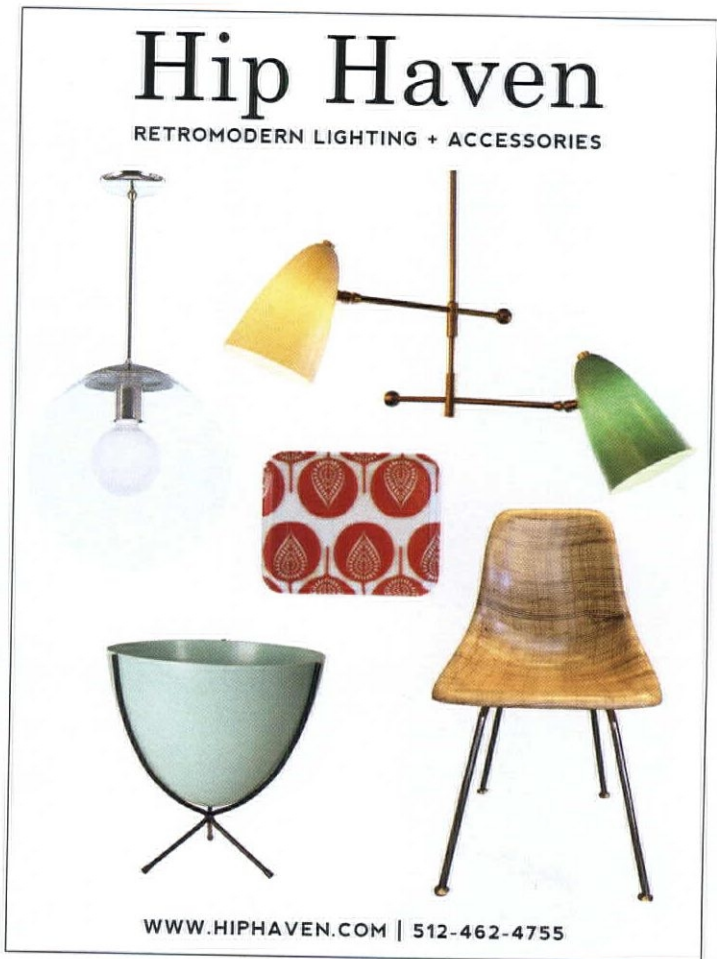
Orbit In  
palm springs' finest mid-century modern hotel

David Glomb

877-99-ORBIT orbitin.com

# Hip Haven

RETROMODERN LIGHTING + ACCESSORIES



WWW.HIPHAVEN.COM | 512-462-4755

...BY  
DESIGN  
MØDERN  
scandinavian  
mid-century modern



bydesignmodern.com  
Vancouver, Canada • 604.876.5215

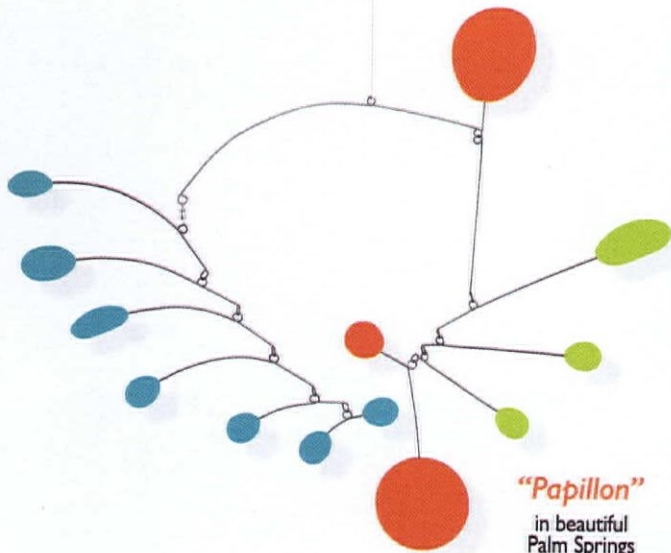








# AtomicMobiles.com

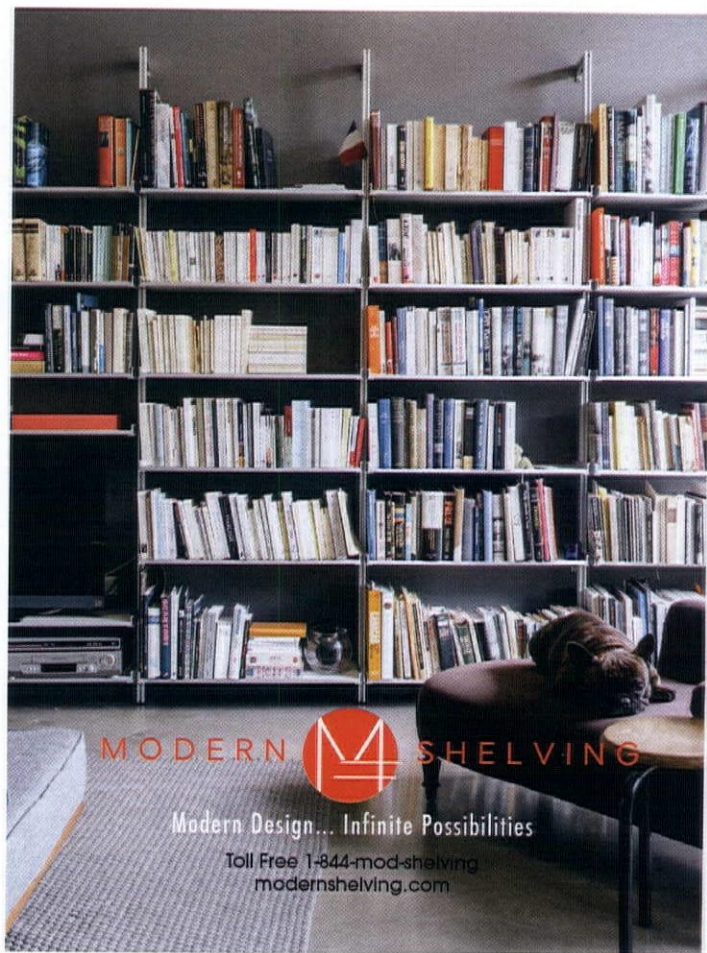


**"Papillon"**  
in beautiful  
Palm Springs  
colors

custom handmade  
mid century inspired mobiles

**AtomicMobiles.com**  
atomicmobiles@gmail.com | 323.640.0003

20% off code:  
ATOMICRANCH



MODERN  SHELIVING

Modern Design... Infinite Possibilities

Toll Free 1-844-mod-shelving  
modernshelving.com



Your Chicago-Area  
Mid-Century,  
Modern & Ranch  
Homes Specialist

# MODERN ILLINOIS

modernil.com

**Lou Zucaro**  
lou@modernil.com  
Broker, Baird & Warner  
**312.907.4085**  
754 W. Northwest Hwy.  
Barrington, IL 60010

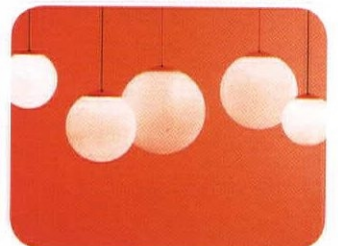


## Custom Lampshades and Lighting

Indoor/Outdoor • Sconces • Large Scale Lighting • Globe Pendants  
Made to your specifications with limitless options



  
**Moon Shine**  
LAMP AND SHADE



moonshineshades.com • 830.935.2350



# Vintage Plywood Millworks

A Division of Eichler Siding

The Cool Combed Panel Back From  
the Mid-Century-Weldtex

Accent Walls-Siding-Wainscot-Ceiling Tiles

We Ship



vintageplywood.com 415.883.5300 info@vintageplywood.com



## MID-CENTURY MODERNIZED

Introducing **NEW!** high-output, line-voltage, dimmable LED fixtures!

You already know Retro by Remcraft for unmatched mid-century style and quality. Today, we are pleased to announce new line of fixtures you're going to love! Updated versions of our familiar Retro by Remcraft styles — now with a built-in LED light source!



More than just an LED bulb, this cutting-edge, user-replaceable LED Light Engine offers energy efficiency, long life and — perhaps most important — an eye-pleasing 3000K color temperature that closely mimics the warm white light of traditional incandescents. And it's dimmable — no special dimmer required!



See the full line of Retro by Remcraft LED fixtures on our web site!

(800) 327-6585

www.atomicremcraft.com

MODERN DESIGN SHOULDN'T STOP  
AT THE BEDROOM DOOR.  
SLEEP ON LUXURY LINENS THAT  
MATCH YOUR MIDCENTURY STYLE.



WWW.SININLINEN.COM

Find a cool Mid-Century.  
Sell your Contemporary home.



MODERN HOMES PORTLAND

Marisa Swenson  
MODERN HOME EXPERT

971-285-7955

Marisa@ModernHomesPortland.com  
ModernHomesPortland.com



LIVING ROOM REALTY

Licensed OR & WA Broker





# resources

## Remaking History, p. 26

Klopf Architecture, (415) 691-7227 or [klopfarchitecture.com](http://klopfarchitecture.com)  
Kerf, [kerfdesign.com](http://kerfdesign.com)

## Curating Midcentury, p. 30

Modern Mailbox, [modern-mailbox.com](http://modern-mailbox.com)

### MASTER BEDROOM:

**Bedframe:** Allmodern.com, [allmodern.com](http://allmodern.com).

**Saارين Womb Chair:** Tomorrow's House, (208) 861-5672 or [tomorrowshouse.info](http://tomorrowshouse.info).

**Vintage Broyhill Brasilia hutch:** Tomorrow's House, (208) 861-5672 or [tomorrowshouse.info](http://tomorrowshouse.info).

**George Nelson Bubble Lamp:** Boise Vintage, (208) 949-9034 or [boisevintage.com](http://boisevintage.com).

### Daughter's Bedroom:

**Bedframe:** [allmodern.com](http://allmodern.com).

**Framed painting:** Boise Vintage, (208) 949-9034 or [boisevintage.com](http://boisevintage.com).

### Office:

**Luther Conover desk:** Tomorrow's House, (208) 861-5672 or [tomorrowshouse.info](http://tomorrowshouse.info).

**Knoll side table:** Beatnik Vintage Décor, (208) 867-5654 or [beatnikvintagedecor.com](http://beatnikvintagedecor.com).

**Witco painting:** Boise Vintage, (208) 949-9034 or [boisevintage.com](http://boisevintage.com).

### BATHROOM:

**Shower curtain:** Target, [target.com](http://target.com).

### LIVING ROOM:

**Magazine Rack:** eBay, [ebay.com](http://ebay.com).

**Bullet Planters:** Hip Haven, (512) 462-4755 or [hiphaven.com](http://hiphaven.com).

**Adrian Pearsall couch and coffee table:** Boise Vintage, (208) 949-9034 or [boisevintage.com](http://boisevintage.com).

**George Nelson Bubble Lamp:** Boise Vintage, (208) 949-9034 or [boisevintage.com](http://boisevintage.com).

**Buffet:** Sevoy, (208) 884-4599 or [sevoy.com](http://sevoy.com).

### George Nelson Marshmallow Sofa:

Tomorrow's House, (208) 861-5672 or [tomorrowshouse.info](http://tomorrowshouse.info).

**Combination lamp/side table/magazine rack:** Boise Vintage, (208) 949-9034 or [boisevintage.com](http://boisevintage.com).

### Mark Weinstein "Brilliant Bouyance"

**metal sculpture:** Vintage from Craigslist, [craigslist.org](http://craigslist.org).

### DINING ROOM:

**Sputnik hanging light:** Practical Props, (818) 980-3198 or [practicalprops.com](http://practicalprops.com).

**Richard Schultz Petal Table:** Vintage from Craigslist, locally restored.

**Eero Saarinen Chairs:** Boise Vintage, (208) 949-9034 or [boisevintage.com](http://boisevintage.com).

### Carlo of Hollywood vintage watercolor:

Antiques/estate sale store in Gooding, Idaho.

### KITCHEN:

**Subway backsplash tiles:** Daltile purchased from a local dealer.

**Oven hood and range:** Lowe's, [lowes.com](http://lowes.com).

### DINING AREA:

#### Midcentury Modern outlet cover:

Modern Mailbox, (208) 340-7597 or [modern-mailbox.com](http://modern-mailbox.com).

**Burke tulip table:** Craigslist, [craigslist.org](http://craigslist.org).

**George Nelson Bubble Lamp:** eBay, [ebay.com](http://ebay.com).

**Eames Bikini Chairs:** eBay, [ebay.com](http://ebay.com).

**Eames Shell Chairs:** Tomorrow's House, (208) 861-5672 or [tomorrowshouse.info](http://tomorrowshouse.info).

**Vintage Hutch:** Renewal, (208) 338-5444 or [renewalhome.com](http://renewalhome.com).

**Hanging wall tikis:** Boise Vintage, (208) 949-9034 or [boisevintage.com](http://boisevintage.com).

**Wall color:** Martha Stewart Chartreuse from Lowe's, [lowes.com](http://lowes.com).

### REC ROOM:

#### Midcentury Modern light switch cover:

Modern Mailbox, (208) 340-7597 or [modern-mailbox.com](http://modern-mailbox.com).

**George Nelson Modular Sofa:** Tomorrow's House, (208) 861-5672 or [tomorrowshouse.info](http://tomorrowshouse.info).

**Bar stools:** Green Ant, (801) 595-1818 or [thegreenant.com](http://thegreenant.com).

**Home bar:** Boise Vintage, (208) 949-9034 or [boisevintage.com](http://boisevintage.com).

#### Bertoia Bird Lounge Chair:

Tomorrow's House, (208) 861-5672 or [tomorrowshouse.info](http://tomorrowshouse.info).

#### George Nelson Coconut Chair:

Tomorrow's House, (208) 861-5672 or [tomorrowshouse.info](http://tomorrowshouse.info).

**Eames Lounge Chair:** Tomorrow's House, (208) 861-5672 or [tomorrowshouse.info](http://tomorrowshouse.info).

Display shelving: Target, [target.com](http://target.com).

## Rambler Revival, p. 42

### EXTERIOR:

**Exterior color:** Benjamin Moore Wrought Iron, [benjaminmoore.com](http://benjaminmoore.com).

**Bel Air Outdoor wall lantern:** Target, [target.com](http://target.com).

### DINING ROOM:

**Rectangular wood dining table:** Crate & Barrel, [crateandbarrel.com](http://crateandbarrel.com).

**George Nelson Bubble Lamp:** Room & Board, [roomandboard.com](http://roomandboard.com).

**Midcentury Eiffel dining chairs:** Overstock, [overstock.com](http://overstock.com).

### FAMILY ROOM:

**Wall color:** Benjamin Moore Midnight Oil, [benjaminmoore.com](http://benjaminmoore.com).

**Modern sectional sofa:** Room and Board, [roomandboard.com](http://roomandboard.com).

**Erik leather wing chairs:** West Elm, [westelm.com](http://westelm.com).

**Pebbled Pond rug:** Anthropologie, [anthropologie.com](http://anthropologie.com).

### MASTER BEDROOM:

**Wall color:** Benjamin Moore White Dove, [benjaminmoore.com](http://benjaminmoore.com).

**Antique gold scoop desk lamp:** World Market, [worldmarket.com](http://worldmarket.com).

**FLÅDIS seagrass basket:** IKEA, [ikea.com](http://ikea.com).

**eHemco Euro Console Sofa Table and diamond-pattern area rug:** Amazon, [amazon.com](http://amazon.com).

**Round Decorative Mirror:** Target, [target.com](http://target.com).

**Sheepskin throw:** IKEA, [ikea.com](http://ikea.com).

### MAIN BATH:

**Midcentury Media Console in Acorn finish:** West Elm, [westelm.com](http://westelm.com).

**Kohler square vessel sink / Delta chrome wall-mount faucet and shower/tub faucet fixtures:** Amazon, [amazon.com](http://amazon.com).

**Mutina Tex-Black floor tiles:** Mission Stone & Tile, [missionstonetile.com](http://missionstonetile.com).

**Horizontal Deko Chandelier:** Dutton Brown, [duttonbrown.com](http://duttonbrown.com).

## Mid Mod Mix, p. 58

**Architect:** Tindall Architecture Workshop, LLC [tindallarch.com](http://tindallarch.com).

**Interior Design:** ID Studio Interiors [idstudiointeriors.com](http://idstudiointeriors.com).

**Builder:** Carson Speer [carsonspeerbuilders.com](http://carsonspeerbuilders.com).

**Wall Color:** Sherwin Williams Eider White, [sherwin-williams.com](http://sherwin-williams.com).

**Trim and ceiling color:** Sherwin Williams Snowbound, [sherwin-williams.com](http://sherwin-williams.com).

### KITCHEN:

**Euclid pendant lights:** Neuvo, 800-894-2226 or [neuvoliving.com](http://neuvoliving.com).

**Backsplash tile:** Clayhaus, [clayhaustile.com](http://clayhaustile.com).

### LIVING ROOM:

**Vintage furnishings and rug:** Shindig Furnishings, (864) 915-9705.

## Boise's Historical Movement, p. 66

TJ Pierce, Mid-Century Homes by Moniker Real Estate: [mid-centuryhomes.com](http://mid-centuryhomes.com).

Zach Fronk, Henriksen Bulter: [hbdg.com](http://hbdg.com).



**J SCHATZ** Modern Ceramics  
Handmade in Rhode Island  
866-344-5267 JSchatz.com  
Use code "atomicranch" and save 15%



*Home Portraits*

CHRISTIAN MUSSELMAN  
Illustration

christianmusselman.com



ARCHITECTURAL WOODWORK  
CABINERY  
FURNITURE

HAHASOSO.COM  
323.385.4543

Calif. Lic. No. 795372



**The Purple Moon**  
Vintage Style for Modern Living

906 Quarrier Street  
Charleston, WV 25301  
304-345-0123

Furnishings - Accessories - Art  
www.thepurplemoon.com





# atomicadvertisers

## ACCESSORIES & ARTWORK

<b>Atomic Mobiles</b> 323.640.0003 atomicmobiles.com	76
<b>Christian Musselman</b> Illustration 773.209.8506 christianmusselman.com	79
<b>J Schatz</b> 866.344.5267 jschatz.com	79
<b>Marjolyn van der Hart</b> 416.999.7252 marjolyn.com	75
<b>modbox USA, Inc.</b> 919.781.8403 modboxusa.com	75
<b>Modern Mailbox</b> 208.340.7597 modern-mailbox.com	70
<b>Modern Light Switch</b> 208.340.7597 modern-lightswitch.com	70
<b>Modern Retrograde</b> modernretrograde.com	65
<b>Shag</b> wh: 323.424.3005 ps: 760.322.3400 shagstore.com	7

## ACCOMMODATIONS & MC LIFESTYLE

<b>Orbit In</b> 760.323.3585 orbitin.com	74
--	----

## DESIGN RESOURCES

<b>H3K Design</b> 760.325.5400 h3kdesign.com	17
<b>Henriksen Butler Design Group</b> hbdg.com	72

<b>Kerf Design</b> 206.954.8677 kerfdesign.com	76
<b>Nevada Preservation</b> nevadapreservation.org	79
<b>Shields Residential</b> 760.531.4252 shieldsresidential.com	79

## LIGHTING

<b>Capital Lighting</b> capitallightingfixture.com	79
---	----

<b>Hip Haven</b> 512.462.4755 hiphaven.com	75
--	----

<b>Modilumi</b> 651.408.3018 modilumi.com	75
---	----

<b>Moon Shine Lamp and Shade</b> 830.935.2350 moonshinesthades.com	70
--	----

<b>Remcraft</b> 800.327.6585 remcraft.com	65
---	----

## MIDCENTURY REALTORS

<b>Alyssa Starrelli</b> 503.888.1362 aly-star.com	7
<b>Ed Murchison, Dallas Realtor</b> 214.395.7151 midcenturymoderndallashomes.com	74
<b>Fresno Modern</b> 559.960.3229 fresnomodern.com	81
<b>The Marye Company</b> 512.444.7171 themaryecompany.com	73
<b>Mid-Century Homes</b> 208.996.5759 mid-centuryhomes.com	71

<b>Modern Homes Portland</b> 917.285.7955 modernhomesportland.com	11
---	----

<b>Modern Illinois— Lou Zucaro Baird &amp; Warner</b> 312.907.4085 modernil.com	22
---	----

<b>Ron Parks Team HOM Sotheby International Realty</b> 760.883.8613 ronparksteam.com	14
--	----

## MODERN FURNISHINGS

<b>Barlow Tyrrie</b> 856.273.7878 teak.com	8
--	---

<b>Copeland Furniture</b> 802.222.9282 copelandfurniture.com	74
--	----

<b>HahaSoso</b> 323.385.4543 hahasoso.com	13
---	----

<b>Hunt &amp; Noyer</b> 313.731.2485 huntandnoyer.com	76
---	----

<b>Impact Imports / Impact Fire Tables</b> 208.368.0300 impactimports.com	77
---	----

<b>Joybird</b> joybird.com	81
-------------------------------	----

<b>Kardiel</b> kardiel.com	70
-------------------------------	----

<b>Modern Man Design</b> modernmandesign.com	75
---	----

<b>Modern Shelving</b> 877.477.5487 modernshelving.com	77
--	----

<b>YLiving</b> yliving.com 866.428.9289	73
---	----

## OTHER HOUSE STUFF

<b>Asheford Institute of Antiques</b> 877.444.4508 Asheford.com	77
---	----

<b>Clayhaus</b> 503.928.3076 clayhaustile.com	81
---	----

<b>Duvation</b> duvation.com	76
---------------------------------	----

<b>Eichler Siding</b> 415.883.5300 eichlersiding.com	21
--	----

<b>Jetset Retro Design</b> jetsetretrodesign.com	77
---	----

<b>ModCraft</b> 718.541.1160 mod-craft.com	81
--	----

<b>Modern Fan</b> modernfan.com	75
------------------------------------	----

<b>Sin in Linen</b> sininlinen.com	83
---------------------------------------	----

<b>Simply Grove Shop</b> simplygroveshop.com	77
---	----

<b>Woodwaves</b> 888.850.3348 woodwaves.com	72
---	----

## VINTAGE SHOPS & FURNITURE REHAB

<b>By Design Modern</b> 604.876.5215 bydesignmodern.com	29
---	----

<b>Evans Co</b> 858.461.8069 fagasstraps.com	70
--	----

<b>The Purple Moon</b> 304.345.0123 thepurplemoon.com	4-5
---	-----





**Replace  
Broken or Stretched  
Fagas Straps!**

Official US distributor  
Since 1945

[www.fagasstraps.com](http://www.fagasstraps.com)

[www.fagasstraps.com](http://www.fagasstraps.com) [info@fagasstraps.com](mailto:info@fagasstraps.com) 858.461.8069

fresnomodern.com

Eldon Daetweiler  
eldon@fresnomodern.com 559.960.3229

bruce  
yager

mcm  
paintings  
sculptures  
objects

[etsy.com/shop/jetsetretrodesign](https://etsy.com/shop/jetsetretrodesign) [facebook.com/jetsetretrodesign](https://facebook.com/jetsetretrodesign)  
- the art of bruce yager

Alyssa Starelli  
REAL ESTATE BROKER

Licensed in Oregon

Call me to find your period-perfect home!

503.888.1362 • [alyssa@livingroomre.com](mailto:alyssa@livingroomre.com) • [aly-star.com](http://aly-star.com)

**Would You Like To Be  
A Mid-Century Modern  
Antiques Dealer?**

You Can:

- \*Start your own Mid-Century Modern Antiques Business
- \*Choose the hours you wish to work
- \* Become a "Certified" Decorative Arts Appraiser
- \*Complete an internationally recognized 12 Volume Course with Diploma & Appraisal Certification (PACC & USPAP)



For A FREE Course Prospectus  
Booklet:

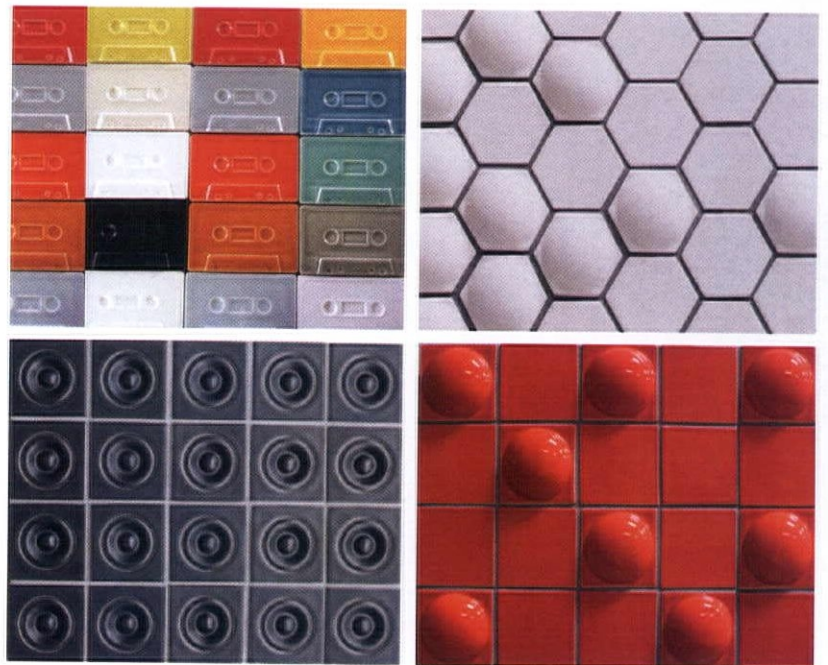
[www.asheford.com](http://www.asheford.com)

Email: [asheford@mail.com](mailto:asheford@mail.com)

Toll free: 877-444-4508

Or write to:

Asheford Institute: 981 Harbor Blvd.  
Ste. 3, Dept. 275ATR1 Destin, FL 32541



HANDCRAFTED TILE  
AMERICAN MADE  
[clayhaustile.com](http://clayhaustile.com)  
503-928-3076



## Bright & Early

This 1953 Boise, Idaho ranch home is brimming with midcentury appeal—especially in this cheerful corner of their carefully reimagined kitchen.

HOMEOWNER ROB BAKER, OF MODERN MAILBOX, AND HIS WIFE, CARRIE QUINNEY, transformed their ranch into a cheerful, vibrant display of midcentury treasures.

While refreshing the kitchen, the couple focused on emphasizing what was already there—adding a green backsplash from Heath Ceramics, and installing new hardware and countertops. However, the real star of the space is the breakfast nook. “Adding the tikis and Nelson Saucer Bubble Pendant tied it all together,” says Rob.

A boomerang-inspired outlet cover, designed by Rob, is a hallmark of their attention to detail while the space as a whole is a fun and funky representation of the couple’s joyful approach to midcentury design.

To see the rest of their home, turn to page 30!

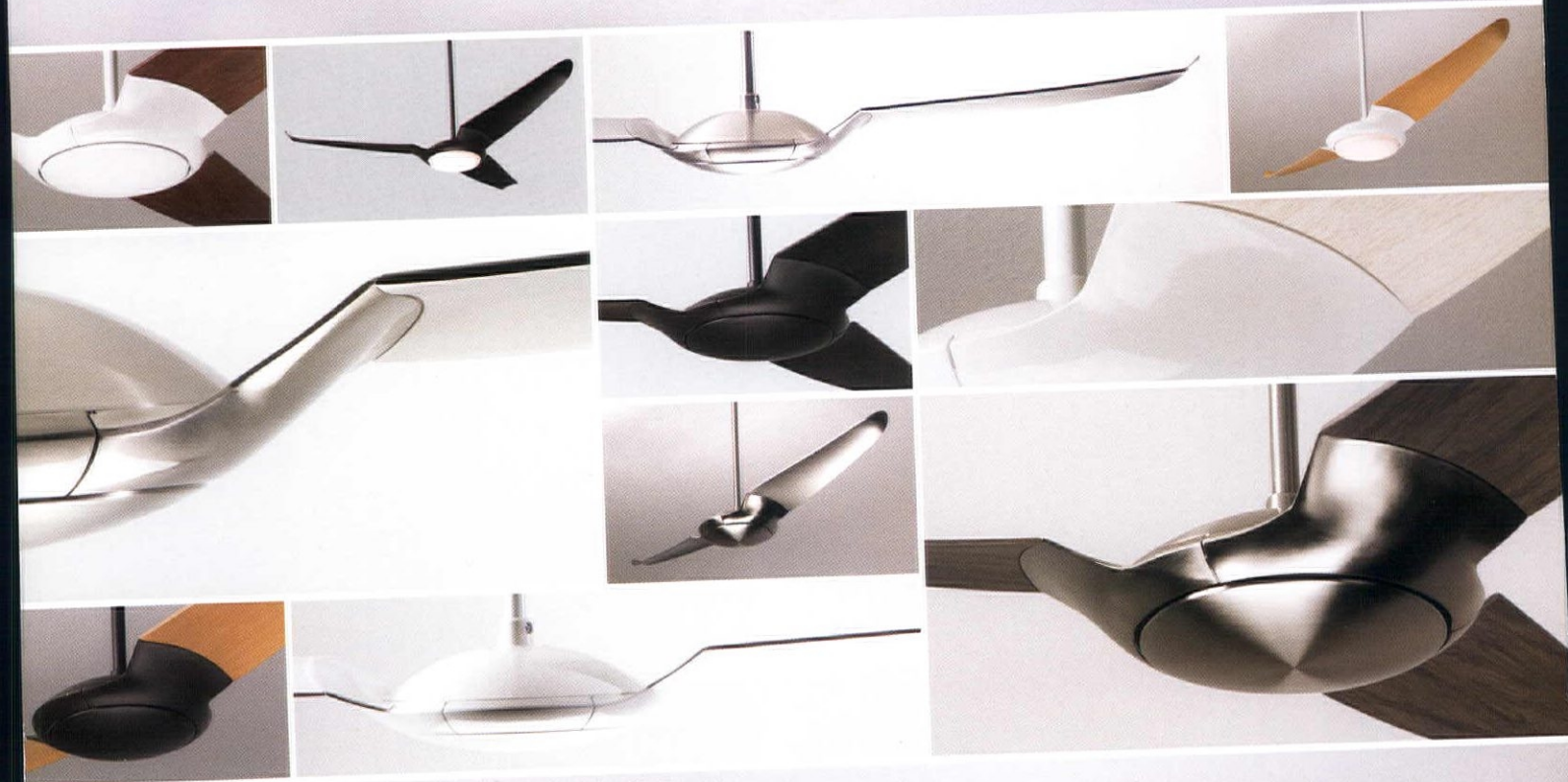
UNLIKE THE REST OF THE HOME, WHICH FEATURES ORIGINAL HARDWOOD FLOORS, THE KITCHEN BOASTS BLACK MARMOLEUM FLOORING, WHICH BEAUTIFULLY CONTRASTS THE BURKE TULIP TABLE. EAMES WIRE CHAIRS WITH BIKINI PADS AND MOLDED PLASTIC ARMCHAIRS SURROUND.



**THE  
MOD-  
ERN**  
A Collection of  
Ceiling Fans  
**FAN  
CO**  
Designed by  
Ron Rezek

IC/Air<sup>2</sup>

: designed by Guto Indio da Costa  
modernfan.com



Ultra-efficient DC Motor | 2 or 3 Blades | Nickel, White or Dark Finish | Solid Color, Wood Grain or Clear Blades | Optional LED Lighting





PEOPLE NEED SUNLIGHT.



Breeze Lounge Chair by Cane-line. Shop [YLiving.com](http://YLiving.com) or Call 800 236 9100.