

atomic MIDCENTURY MARVELS ranch



A-Frame Getaways

Midcentury Furniture Fundamentals

A Modernist Mecca in Review

made in america

made



Astrid Bedroom

to order

made to last



copeland 

FURNITURE
copelandfurniture.com



Handcrafted Furniture, Made to Order

Handcrafted and customizable in hundreds of fabric & wood combinations,
our furniture is built to exceed your home-design dreams.





Soto Chair | \$949
in Key Largo Grass



Hazel Bookcase | \$1,049
in Walnut



Toscana Dining Chair | \$399
in Key Largo Coral



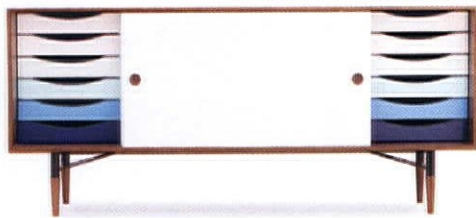
Hughes Swivel Chair | \$1,149
in Lucky Turquoise



Hughes Bed | \$1,749
in Impact Mist



Eliot Leather Sofa | \$2,649
in Santiago Camel



Unson Media Console | \$2,249
in Walnut



Toscana Dining Set | \$2,599
in Lucky Turquoise



Hughes Reversible Sectional | \$2,899
in Cody Sandstone



Xavier Desk | \$2,399
in Walnut

25% OFF*

Use Promo Code
WINTER25
Until: 12.31.2019

365-Day Home Trial | Lifetime Warranty | Free Returns

Don't want to wait?

Shop our Quick Ship furniture. It's ready
to ship within 3-5 business days.

Joybird.com/instock

*The 25% discount is a limited time offer valid until 12.31.2019 and it cannot be combined with other offers, discounts, or prior purchases. Returns within 14 days of delivery are free for all orders shipped to the contiguous United States. Return undamaged furniture within 365 days of receiving it for a full refund. Financing options as low as 0% APR available to qualified applicants. Quick Ship items typically ships within 3-5 business days of order. Date of delivery will vary depending on your location.

Joybird.com | 855.855.9784

Palm Springs

MODERNISM
SHOW & SALE
FALL EDITION

October 18-20, 2019
Palm Springs Convention Center



40 Premier national and international decorative and fine arts dealers presenting all design movements of the 20th century

October 18 • 6–8pm • Preview Party

October 19-20 • Show & Sale

Benefiting Modernism Week
\$65 advance • \$75 at the door
Tickets at modernismweek.com

Saturday 10 am–6 pm • Sunday 10 am–4 pm
\$15 weekend admission
Tickets at palmspringsmodernism.com or at the door

Mark your calendar for our 20th Anniversary Show & Sale in 2020
February 14 • Preview Gala February 15-17 • Show & Sale

palmspringsmodernism.com

sponsors



Antiques & Fine Art



CALIFORNIA HOMES

modern

PALM SPRINGS LIFE

santa fean

Dolphin Promotions

Chicago 708.366.2710

Florida 954.202.1955

info@dolphinairs.com



modernism week[®]
CELEBRATING 15 YEARS

The Largest Celebration of Midcentury and Modern Architecture, Design and Culture



February 13-23, 2020 | Tickets on sale November 1 at modernismweek.com

Major

Grand

Premier

Civic Presenting

Media Sponsor



editor's letter



PHOTO BY MARK MENDEZ

A MODERN WINNER

WHEN YOU'VE DONE IT RIGHT, HOME FEELS LIKE A GETAWAY. For many of us who dream—nay, covet—a midcentury gem of our own and work hard to find ourselves calling one home, it sure feels like winning.

After the summer vacations are over, or I come back home from a night out on the town, coming home always feels like the bigger coup. Don't get me wrong, my little rancher is far from perfect, and the work we've done to spruce it up and bring it back has been hard fought. But no matter, I still feel like the luckiest gal in the world.

The homes we tour in this issue are all about homeowners—and midcentury houses—that are winning. They are folks who've managed to settle into their own special gems, worked hard to restore, preserve and outfit their rooms with dreamy coveted things and have come out on top. We also celebrate this season of staying home. There's a focus on comfortable stylish furniture and winter's best friend: the fireplace. And if you're still in the mood to leave the nest and travel, we've got amazing A-frame cabins to keep your holiday destinations delightfully midcentury.



Jackie Torres

Get connected!

Email: editor@atomic-ranch.com • Online: atomic-ranch.com • [@theatomicranch](https://www.instagram.com/theatomicranch)

atomic ranch

EDITORIAL

Brand Leader: Jackie Torres
Senior Editor: Lindsay Jarvis
Managing Editor: Anne Brink
Digital Brand Manager: Kris Christensen
Content Manager: Brooke Sanders

DESIGN

Design Director: Gabby Oh

CONTRIBUTORS

Bob Bogard, Dani Grace, Devlin Smith, Sarah Jane Stone,
Kathryn Drury Wagner

CONTRIBUTING PHOTOGRAPHERS

Kaf Alves, Daniel Blue Architectural Photography, Heidi's Bridge,
Jim Brown, JC Buck, Ren Dodge, CJ South, Marisa Vitale

ADVERTISING

Sherie Norris - snorris@engagedmediainc.com
Julie Hale - jhalo@engagedmediainc.com
Michelle Dyson - mdyson@engagedmediainc.com
Eric Gomez - Advertising Traffic Coordinator

OPERATIONS

Manish Kumar Mishra: Operations Specialist
Surajpal Singh Bish: Prepress Manager
Chandan Pandey: Production & Newsstand Circulation Analyst
Shalish Khandelwal: Vertical Head - Subscriptions
Alex Mendoza: Administrative Assistant
Victoria Van Vlear: Intern Program Manager

EDITORIAL, PRODUCTION & SALES OFFICE

17900 Sky Park Circle #220, Irvine, CA 92614
www.atomic-ranch.com
(714) 939-9991, Fax (800) 249-7761

ATOMIC RANCH (ISSN 1547-3902) Issue 64, Winter 2019. *Atomic Ranch* is published 6 times per year (Spring, Summer, Renovation Guide, Fall, Winter, Design Issue) by Engaged Media LLC, 17900 Sky Park Circle #220, Irvine, CA 92614. Periodical postage paid at Irvine, CA, and additional mailing offices. **POSTMASTER:** send address changes to Atomic Ranch c/o Engaged Media LLC, Cenvco, 101 Workman Ct, Eureka, MO 63025. © 2019 by Engaged Media LLC. All rights reserved. Reproduction of any material from this issue in whole or in part is strictly prohibited. GST #R55050365RT001 Canada Post: Publications Mail Agreement #40612608. Return undeliverable Canadian addresses to: PITNEY BOWES, INC., P.O. Box 25542, London, ON N6C 6B2.

CUSTOMER SERVICE

ENGAGED MEDIA LLC
17900 Sky Park Circle #220
Irvine, CA 92614

SUBSCRIPTIONS, ADDRESS CHANGES,
RENEWALS, MISSING OR DAMAGED COPIES
(800) 764-6278
(239) 653-0225 Foreign Inquiries
subscriptions@engagedmediainc.com
customerservice@engagedmediainc.com

BACK ISSUES

www.engagedlifestyle.com

BOOKS, MERCHANDISE, REPRINTS
(800) 764-6278, Foreign (239) 653-0225

LETTERS TO THE EDITOR, NEW PRODUCTS OR TO
CONTRIBUTE A STORY OR PHOTO
editor@atomic-ranch.com

SUBSCRIPTION RATES

\$29.95/1 year, \$52.95/2 years. Foreign, \$51.95 per year, \$96.95 per 2 years payable in US funds. Single copy price is \$7.99. Please allow 6 to 8 weeks for new subscriptions to begin.

ENGAGED[®] MEDIA LLC

ENGAGED MEDIA LLC

Scott Hall: CEO

Pinaki Bhattacharya: Managing Director
William Ammerman: Executive Vice President Digital
John Goodpasture: Vice President Sales
Erin Masercola: Director of Content Operations
Carrie Rubalcaba: HR Generalist
Jackie Torres: Director of Content

This magazine is purchased by the buyer with the understanding that information presented is from various sources from which there can be no warranty or responsibility by Engaged Media as to the legality, completeness or technical accuracy.

GST #R55050365RT001
Canada Post: Publications Mail Agreement #40612608
Return undeliverable Canadian addresses to:
PITNEY BOWES, INC.
P.O. Box 25542
London, ON N6C 6B2



WOODROW CHAISE SECTIONAL | ELEANOR ARMCHAIR | SLAT BENCH



10% OFF * with promo code
MIDMOD2020
 FREE SHIPPING**

 **KARDIEL**

Located in Seattle, Professional Delivery to your home anywhere in the contiguous U.S. is free.** Most items are in stock and arrive to your home in 7-10 days. Compare our quality.

FREE FABRIC AND LEATHER SWATCHES
 DESIGNER ACCOUNTS AVAILABLE
WWW.KARDIEL.COM

*The 10% discount is a limited offer valid for your first order until 1/31/20 and can not be combined with other offers. **Orders over \$995. Curb-side Delivery

Contents winter 2019



FEATURES

24 We Wish You a Modern Christmas

Discover how a family legacy inspired the creation of sleek holiday trees.

32 In Good Hands

The homeowners of this 1955 Eichler have embraced its prior upgrades and lovingly preserved original spaces.

44 Into the Woods

Tucked into its rustic surroundings, this flat-roof 1960 home was furnished with lush décor to complement the original wood paneling and exposed beams.

54 15 Years of Modernism Week

This annual Palm Springs event allows the general public a rare look into iconic and architecturally significant private residences.

62 A-Frame Escape

With an impressive collection of mod décor, this cozy Lake Tahoe cabin blends thoughtful updates with a largely unchanged exterior.

68 By the Fireside

Tour the hearths of these homes to inspire a warm, inviting space for any mid mod abode.

74 Fine Dining

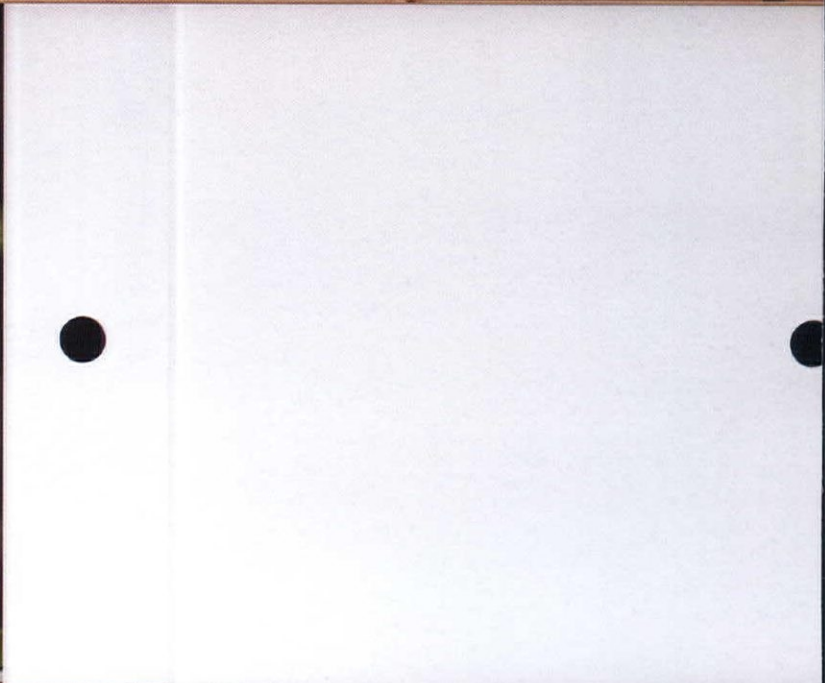
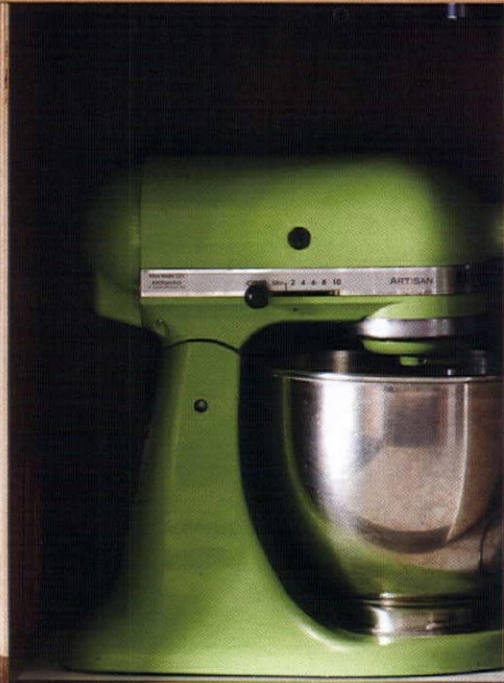
Make the most of your dining room during the hosting season with these style and function insights.

20



KERF

Plywood cabinets and furniture
for the modern home
kerfdesign.com



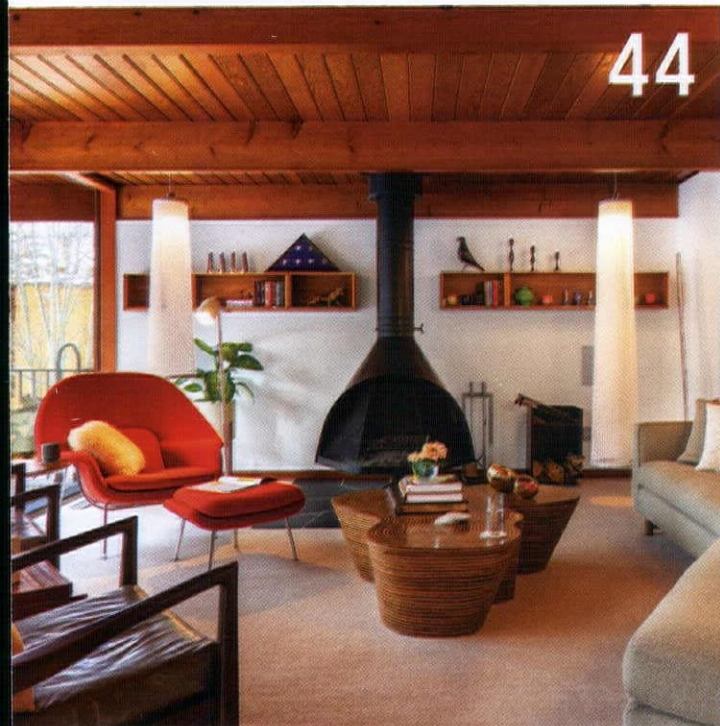
DEPARTMENTS

- 8 Editor's Letter
- 14 Web News
- 16 Cool Stuff
- 20 Period Picks
- 26 Atomic Kitchens
- 78 Resources
- 80 Atomic Advertisers
- 82 Last Look



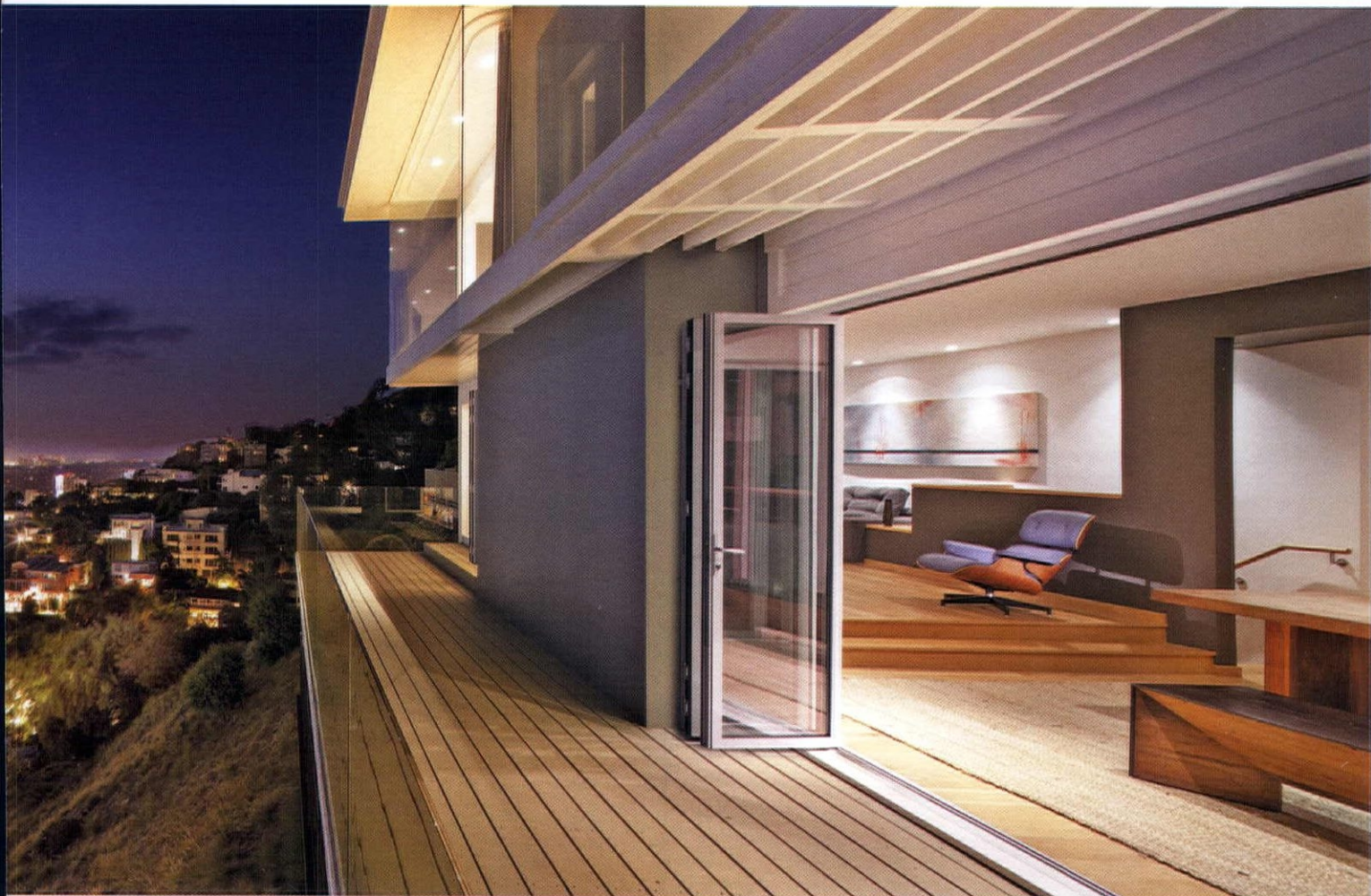
cover

Cover Photography by CJ South
Cover Design by Gabby Oh



ATOMIC RANCH (ISSN 1547-3092) Issue 64, Winter 2019. *Atomic Ranch* is published 6 times per year (Spring, Summer, Renovation Guide, Fall, Winter, Design Issue) by Engaged Media LLC, 17900 Sky Park Circle, #220, Irvine, CA 92614. Periodical postage paid at Irvine, CA, and additional mailing offices. **POSTMASTER:** send address changes to Atomic Ranch c/o Cenveo, 101 Workman Ct., Eureka, MO 63025. © 2019 by Engaged Media LLC. All rights reserved. Reproduction of any material from this issue in whole or in part is strictly prohibited. GST #R55050365RT001 Canada Post: Publications Mail Agreement #40612608. Return undeliverable Canadian addresses to: PITNEY BOWES, INC., PO. Box 25542, London, ON N6C 6B2.

Question Conventional Boundaries



Sunset Strip Residence, Los Angeles CA • NanaWall SL45 Folding Glass Wall • Architect: Atelier Vianney Boutry

NanaWall Opening Glass Walls

Transform traditional walls into flexible openings that invite the outside in.

 Wind & Water Resistant

 Energy Efficient

 Highly Secure

 Easy Operation & Durable

Explore our opening glass wall product families:



Folding



Sliding



Frameless

Showrooms Nationwide
Visit NanaWall.com
800 873 5673
inquiries@nanawall.com

NanaWall
Engineering the Exceptional

Keep tabs on us

Get a sneak peek into what's coming online at atomic-ranch.com.

Inside Scoop!



PHOTO BY BRET GUM

Curate Your Walls with MCM Art

From old favorites to new discoveries, these artists always inspire.

Gift Ideas for Lovers of Mid Mod

Perfect picks for everybody on your list, including yourself!



PHOTO BY DEBROCKE/CLASSICSTOCK/GETTY IMAGES



PHOTO BY BRET GUM

All About Aluminum Christmas Trees

For an atomic holiday, ditch the Douglas Fir and spruce up your décor with an iconic aluminum Christmas tree.



PHOTO BY BRET GUM

Everything You Need to Know About Breeze Blocks

From coast to coast, breeze blocks have graced the facades of iconic buildings and residential homes alike.



PHOTOS BY PETER TRAN

Getaway

Love A-Frame cabins? Tour this retro retreat and learn how the renovation blended sleek and modern style with the charm of a cabin to create a superb Midcentury Modern getaway destination.



atomic
ranch

ALL MOD, ALL YEAR.

Everything you love about Modernism, delivered right to your mailbox.

Subscribe to the trusted resource for mid mod design, today!



Get your midcentury architecture and design fix year round with a subscription to Atomic Ranch!

Subscribe today and get 1 year (6 issues) for just \$29.95,
or get the current issue instantly by signing up for a digital subscription.

Visit atomic-ranch.com to keep the Midcentury Modern design coming all year long.

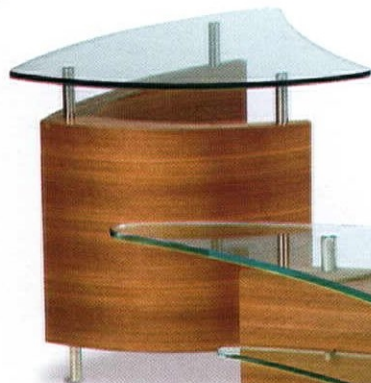
coolstuff

Furniture By Lindsay Jarvis Fundamentals

Essential midcentury furniture for the home pairs with perfect accent pieces to create a welcoming winter haven in cool tones and warm woods.



2070 Series two-light classic parabolic bullet fixture; for pricing, (800) 327-6585 or atomicremcraft.com.



BDI fin coffee table 1106, \$999. Visit ambientefurniture.com.



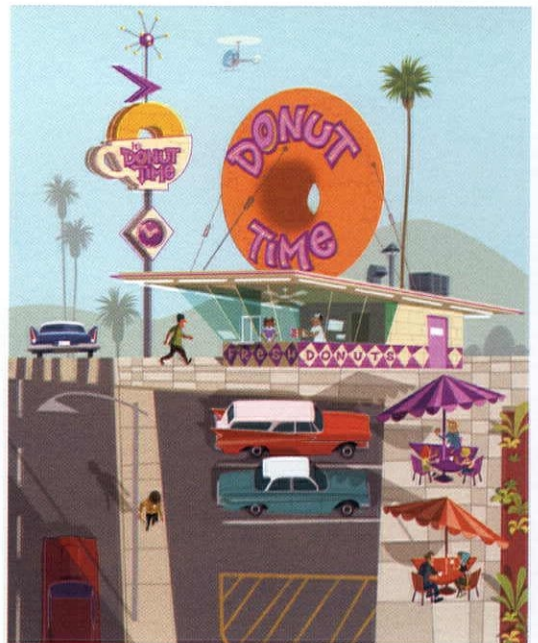
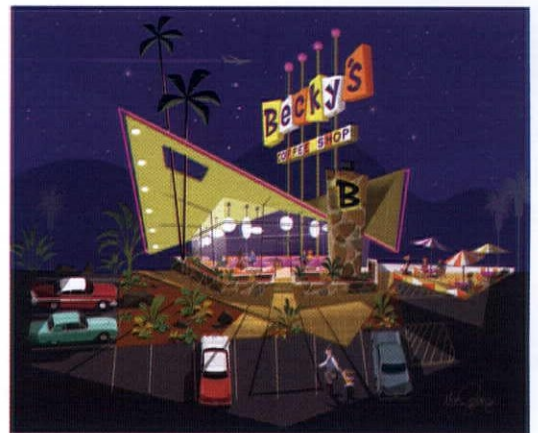
DCF02WHUS drip coffee machine; for pricing and availability, (212) 265-5378 or smegusa.com.



Boomerang bar, from \$1795. (562) 481-4036 or atomicpad.net.



Astrid bed with 1 adjustable headboard panel; to find a retailer, (802) 222-9282 or copelandfurniture.com.



MAC GEORGE ART PRINTS

About the Artist

Mac George has received credits that include *The Little Mermaid*, *Beauty and the Beast*, *Aladdin*, *The Lion King*, *Chicken Little*, *Tangled* and *Wreck It Ralph*. He designed the stained glass prologue for *Beauty and the Beast*, has been nominated for two Annie awards and in 2010 won a prime time Emmy award for his work on *Prep and Landing*.

macartprints.com

coolstuff



**Turquoise-and-gold 1959
Bulova model 100 AM
antique clock radio, \$249.**
Visit retroradiofarm.com.



Azara dining table, \$947.50.
(631) 270-4560 or franceandson.com.



**Signal Collection
dimensional geometric
tile; for pricing and
availability, (503) 928-3076
or clayhaustile.com.**

**Woodrow box chair; for
pricing, (877) 844-4988 or
kardiel.com.**



**Eames molded
plywood chair;
for pricing,
(888) 443-4357 or
hermanmiller.com.**



**Chelsea daybed
in Royal Peacock,
\$2099. (855) 855-9784
or joybird.com.**



we make mid-century dreams come true.



Every day
at [Mid-Century Homes](#),
Jessica, Vance, TJ, Mark and Katie
obsess about finding the coolest mid-century
homes in the nation's most livable city. Scenic [Boise, Idaho](#)
is home to over 11,000 mid-century gems at attainable
prices. With top-shelf customer service and a
deep expertise, this Dream Team is ready
to show off the best of Boise:

MID-CENTURYHOMES.COM



mid-century
homes

By Moniker Real Estate

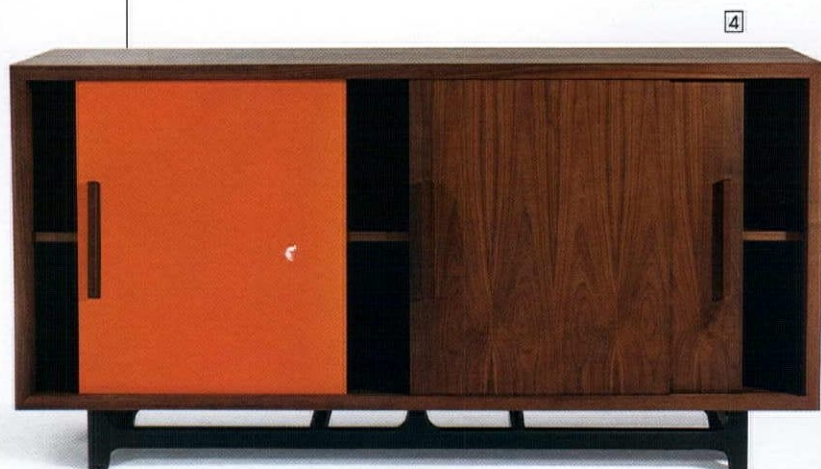
periodpicks



By Lindsay Jarvis Double Duty

Drawers, shelves, cabinets and sliders provide multiple ways to organize in this essential small-space storage furniture roundup.

1. **Solomon side table**, \$950. (313) 731-2485 or huntandhoyer.com.
2. **Audrey buffet—2 doors and 3 drawers**; for pricing, (877) 634-1018 or lumens.com.
3. **Nelson Thin Edge Cabinet with doors by George Nelson from Herman Miller**; for pricing, (800) 462-7638 or yliving.com.
4. **Sean Dix prima cabinet**, \$1295. (973) 276-0444 or inmod.com.





www.huntandnoyer.com | 313.731.2485 | @huntandnoyer

MID-CENTURY MODERN DESIGN SERIES

SAVE THE DATE | PORTLAND, OREGON

MAY 8 & 9, 2020

Pietro Belluschi, John Storrs, Van Evera Bailey, and more!

Experience our "Showcase of Pacific Northwest Modernism" in all its beauty and uniqueness! Over two days, attend a lecture presentation, a Mid-Century Modern Preservation Pop-up, and a self-driving home tour of homes showcasing the work of architects and design professionals who shaped this style we all love today. Tickets on sale January 2020 at restoreoregon.org

RESTORE
OREGON

periodpicks



- 5. Soho nightstand; to find a retailer, visit copelandfurniture.com.
- 6. Record/entryway console, \$425. (949) 274-9023 or thomasstudioslaguna.com/mcm.
- 7. AK2405 nightstand, \$1,353. (800) 688-0974 or danishdesignstore.com.

Mod Pets

Your pets want a swanky home too! These stylish dog and cat beds can double as mod décor or even a side table.



- A. Fullertone original retro luxe pet den, from \$1575. (949) 584-5854 or retropetdens.com.
- B. Dog Tower 9, \$2150. Visit pdworkshop.com.
- C. Midcentury Modern Wexler cat bed, from \$349. Visit etsy.com/shop/cairudesign.



DOORS **4** HOME

Proud Authorized Internet Retailer
and Distributor of ESCON DOORS

www.doors4home.com • www.doors4home.com/m-12-escon-doors.aspx

USE CODE **ATOMIC** FOR **\$50 OFF**

Modilumi

www.MODILUMI.com

Exceptional Midcentury Modern Tile
Live Your Colors!

NEW Create Your Own Custom Blend With
BRIO GLASS MOSAIC TILE

modwalls[®]

modwalls.com / 877 439 9734

We Wish You a MODERN CHRISTMAS



Preserving a family legacy through modern Christmas trees

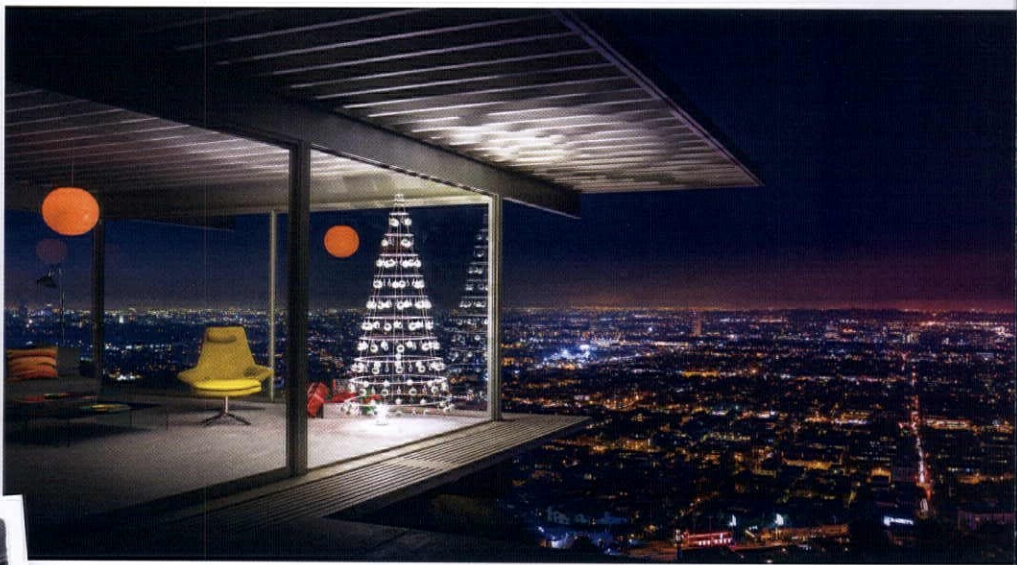
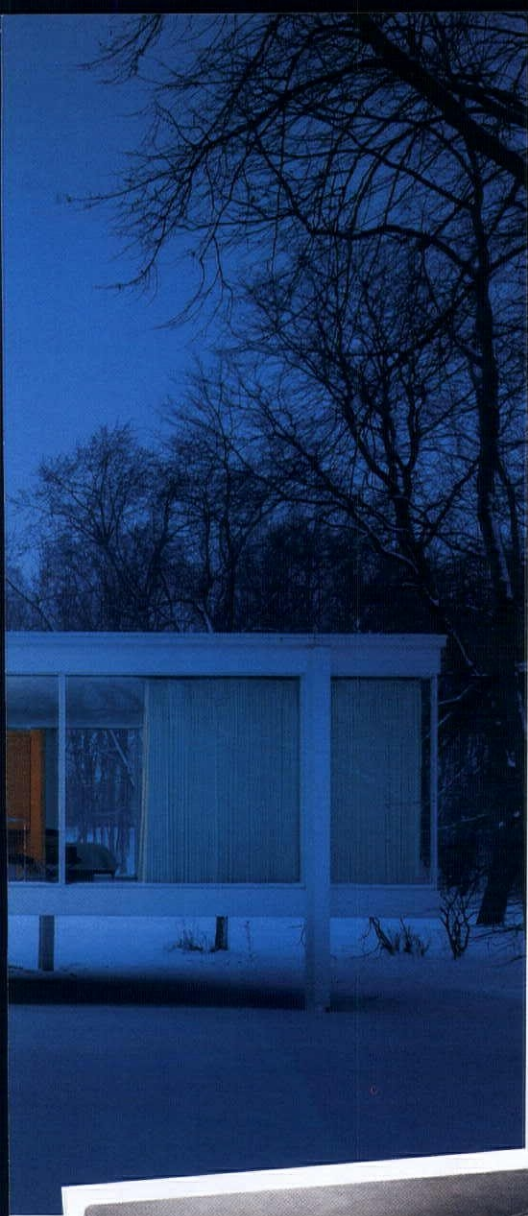
By Dani Grace | Photography by JC Buck

The holiday season often engenders beautiful memories that will last a lifetime.

But how do you pay homage to those sparkling times as an adult? When Matthew Bliss' grandfather passed away after battling Alzheimer's, Matt wanted to commemorate all the Christmas Eve memories they had created together. His grandfather, Lawrence "Bud" Stoecker, spent years working in aerospace and construction, but his hobby was creating modern Christmas trees. Bud decorated his family's modern structure with a different ornament theme each year.

"My brothers and I would put our heads underneath the tree and look up, and my grandfather would slowly rotate the tree," remembers Matt. "It looked like the most amazing kaleidoscope you've ever seen. I take great pride in knowing that I'm offering that unique experience to families all over the world."

TOP: A SPARKLING MODERN CHRISTMAS TREE ON DISPLAY AT THE HISTORIC FARNSWORTH HOUSE—DESIGNED AND BUILT BY LUDWIG MIES VAN DER ROHE IN 1949.



BOTTOM RIGHT: LOCATED IN LOS ANGELES AND CONSTRUCTED IN 1959, THE ICONIC STAHL HOUSE IS ILLUMINATED WITH A HANGING MODERN CHRISTMAS TREE.

LEFT: BUD WORKED ON PROJECTS FOR NASA, BUILT A-FRAME CABINS IN THE ROCKY MOUNTAINS AND CRAFTED MODERN CHRISTMAS TREES IN HIS SPARE TIME. AFTER SPENDING SO MANY SPECIAL CHRISTMASSES WITH HIS GRANDFATHER, MATT IS PROUD TO HONOR HIS LEGACY THROUGH MODERN CHRISTMAS TREES.

In memory of his grandfather, Matt started The Modern Christmas Tree®, a company that sells trees constructed from acrylic, crystal, glass and plexiglass components. "My grandfather was such an important person to me, and he wasn't living the final years of his life with the dignity I thought he deserved," Matt says. "It was time for me to pay tribute to him and his ingenuity and designs."

The modern trees are found in Midcentury Modern homes, hotels and even at Disneyland during the holiday season. The company's most popular designs are the pearl-white and

crystal-clear colors. "The white tree is kind of a blank canvas, so you can use [it] to pull off any look you want, simply by changing the color of the ornaments," he explains.

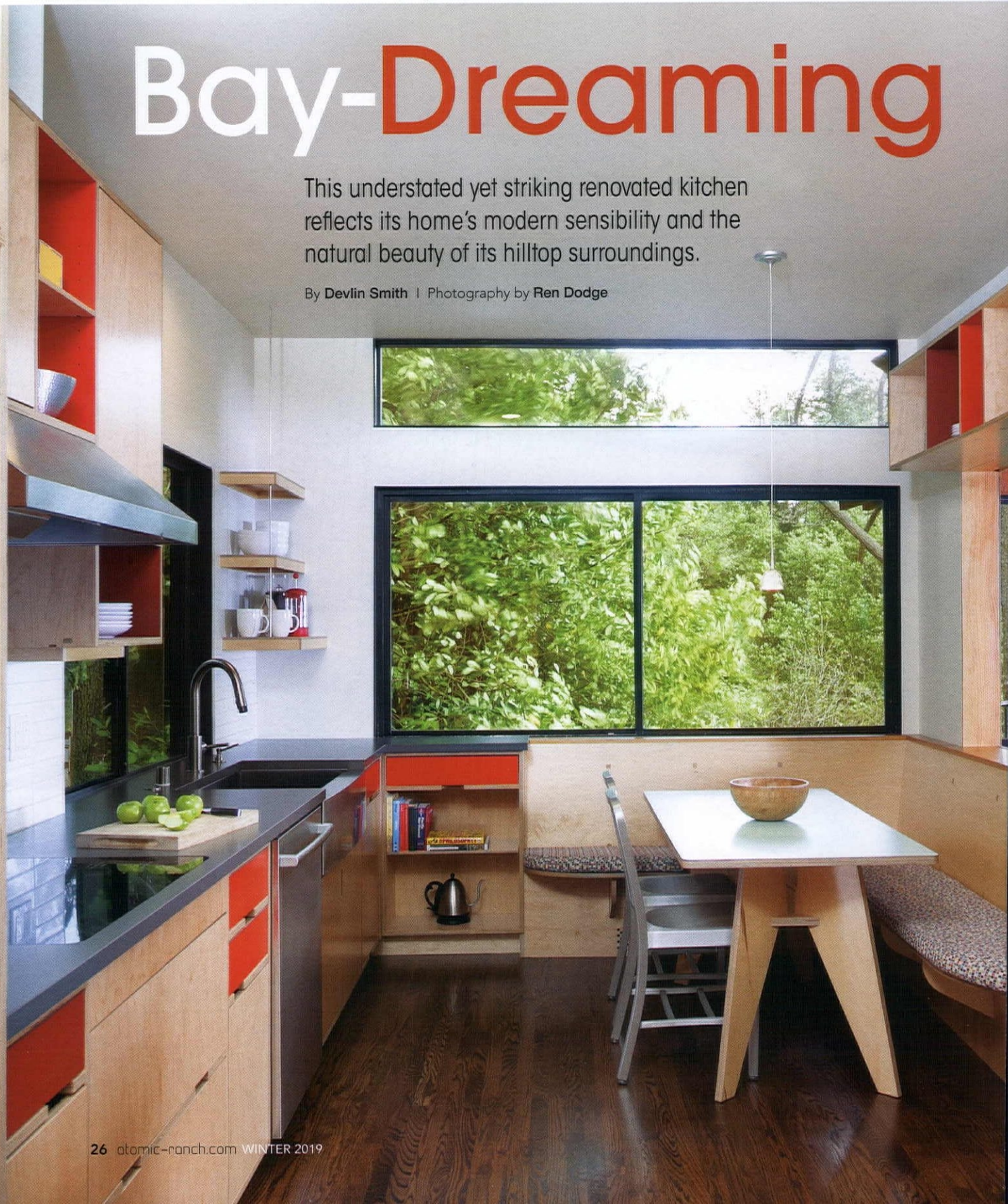
Customers who put up their own artificial trees will often use the small or wall trees as additional home décor. Matt receives Christmas cards from customers across the globe, from Hong Kong to Europe to Australia. "It's really cool to have that direct connection with the consumer," he says. "You lose that when you start producing tens of thousands of trees." ❁

atomickitchens

Bay-Dreaming

This understated yet striking renovated kitchen reflects its home's modern sensibility and the natural beauty of its hilltop surroundings.

By Devlin Smith | Photography by Ren Dodge





MULTIPLE LEVELS OF WINDOWS AND A SKYLIGHT BRING THE BEAUTIFUL OUTDOORS IN. THE BREATHTAKING TREES AND SKY ARE COMPLEMENTED BY THE KITCHEN'S PALE WOOD CABINETRY AND FURNISHINGS, AND DARK WOOD FLOORS.

When this home was built in the early 1960s,

the original homeowners decreed that no trees be removed from the property during construction. Architect Joseph Esherick complied and created a three-story wood, steel, concrete and glass modern marvel that, nearly six decades after its construction, remains nestled in trees.

SWEEPING VIEWS

Located high above Oakland, California, much of the hill-set home offers its current homeowners views across the city to the San Francisco Bay and its iconic bridges, in addition to trees in all directions, thanks to the multiple layers, shapes and sizes of windows. A recent renovation added the kitchen to the list of rooms providing sweeping views of the hills behind and the bay beyond.

The kitchen is located on the upper level of the home (the level the homeowners and their guests enter), sharing space with the living room, dining room, a bedroom and a bathroom. When architect Andrew Lee was tasked with completing a renovation, the kitchen had already been through a 1980s makeover that was functional but did not fit with the modernist sensibilities of the home nor the natural beauty of its surroundings.

/REAL HOME 101/

TYPE OF HOME: 1963 three-level wood-framed home

ARCHITECT: Joseph Esherick

BACKGROUND: Nestled in the Montclair Hills above Oakland, the home offers sweeping views of the East Bay. The design was cited in Charles Jencks' 1972 book *Adhocism: The Case for Improvisation*. The kitchen renovation garnered Andrew Lee Architecture an AIA East Bay 2014 Design Award Citation Award.

COLOR SCHEME: Warm and cool wood tones with sienna accents

INNOVATIVE IDEA: Custom cabinetry with shutters that can open up or close off the kitchen at the homeowners' discretion



Located high above Oakland, California, much of the hill-set home offers its current homeowners views across the city to San Francisco Bay and its iconic bridges.

TOP: THE 1963 JOSEPH ESHERICK-DESIGNED HOME SITS HIGH IN THE HILLS ABOVE OAKLAND, CALIFORNIA. WITH ITS GRACEFUL MIX OF WOOD, STEEL, CONCRETE AND GLASS, THE HOME BLENDS EASILY INTO ITS NATURAL SURROUNDINGS.

WHAT MAKES IT MCM?

The space is a wood-lover's dream, from the warm tones in the custom cabinetry and cool tones in the flooring to the skyscraping trees that surround the home. Multiple layers, sizes and shapes of windows harmoniously connect inside and out.

THOUGHTFUL DESIGN

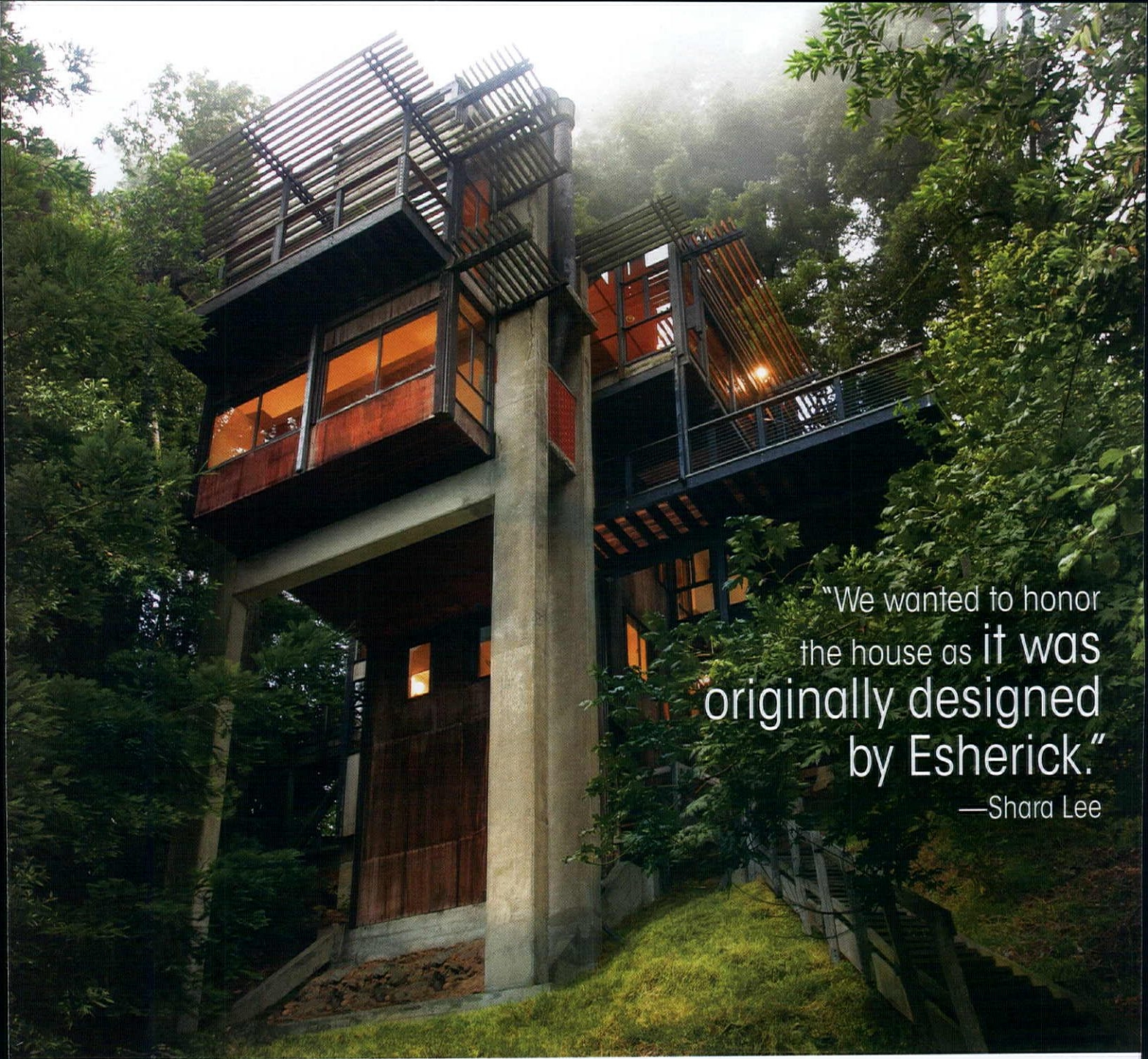
The renovated kitchen had just a small countertop-height opening and doorway uniting it with the dining and living rooms, so one goal of the update was to further open the space. The homeowners didn't want to change the footprint, though. Andrew Lee met the challenge with the assistance of Shara Lee (no relation) and her team at Kerf Design.

"The first step of the design process was to test various floor plans: arrangements of counters, cooking, refrigeration, sink, dining nook and access points to adjacent spaces," Andrew says. "In parallel, we studied various configurations of openings into the dining/living room, both doors and above-counter openings." The chosen concept for the new design was folding shutters and doors in the walls that separate the kitchen from the living and dining rooms, giving the homeowners the ability to easily close off or open up the space.



MIDDLE RIGHT: SHUTTERS DRAMATICALLY OPEN THE KITCHEN ONTO THE LIVING ROOM AND, WHEN PULLED BACK, PROVIDE MULTIPLE VANTAGE POINTS FOR THE HOME'S STUNNING EAST BAY VIEWS.

BOTTOM RIGHT: WOOD IS THE STAR IN THIS INTERIOR, AN IDEAL PICK FOR A HOME NESTLED AMONG THE TREES. A CLOUD-LIKE GEORGE NELSON LIGHT FIXTURE IS A SERENE ACCENT IN SWEEPING SPACE.



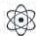
“We wanted to honor the house as it was originally designed by Esherick.”

—Shara Lee

“I’m especially proud of the oversized shutters that separate the kitchen from the living/dining room,” states Andrew. “These were the result of testing different ideas for how to provide a way to close off the kitchen when desired: sliding panels, louvered shutters, etc. ... In the end, I felt that the house wanted something very simple—something that would almost disappear—and the final design basically mimics the original pass-through shutters (which were simply functional, to allow food to be passed from the kitchen to the living area), only greatly enlarged.”

FORM AND FUNCTION

“We wanted to honor the house as it was originally designed by Esherick,” explains Shara. “Form follows function. Instead of adding handle hardware, we cut notches into the cabinetry for handles because it’s the most efficient and straightforward way to open a door or drawer.”

The remaining finishes are equally restrained, with just a slight pop coming from the sienna color used on a selection of drawer fronts and the insides of selected cabinets. Just as in the home’s original design, the kitchen renovation recognizes what the true draw is at this home, the great outdoors. 



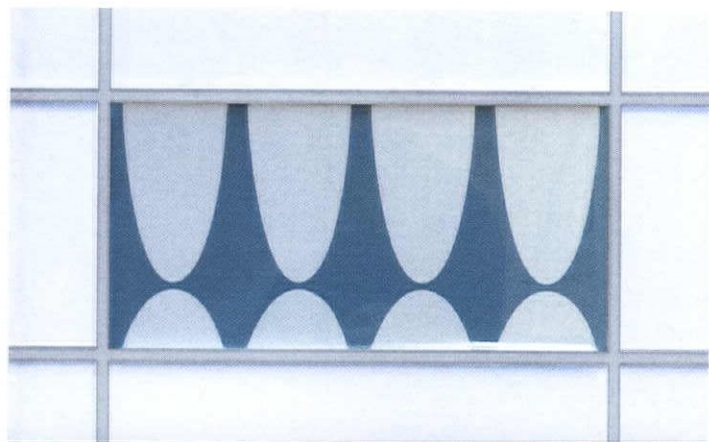
design

MUST-HAVES:

- Clean and minimalistic cabinetry with notches for pulls instead of hardware.
- Oversized plywood shutters that give the homeowners the option to open up or close off their kitchen.
- Carefully plotted pops of a deep sienna bring more warmth to the space.

TOP LEFT: ARCHITECT ANDREW LEE PLOTTED THE LAYOUT OF THE KITCHEN CABINETS TO ECHO THE HOME'S ORIGINAL MIDCENTURY DESIGN WHILE BOTH PROVIDING THE HOMEOWNERS WITH ADDITIONAL STORAGE AND OPENING THE KITCHEN UP TO THE REST OF THE HOME.

TOP RIGHT: ENVISIONED BY ARCHITECT ANDREW LEE AND EXECUTED BY THE TEAM AT KERF DESIGN, THE CLEAN, MINIMAL PLYWOOD CABINETS FEATURES NOTCHES INSTEAD OF HANDLES AS A NOD TO THE UNDERSTATED AESTHETIC OF JOSEPH ESHERICK'S ORIGINAL DESIGN.

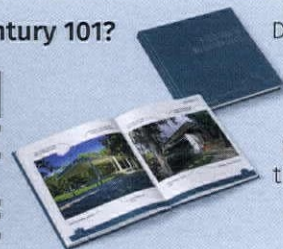


Brazil

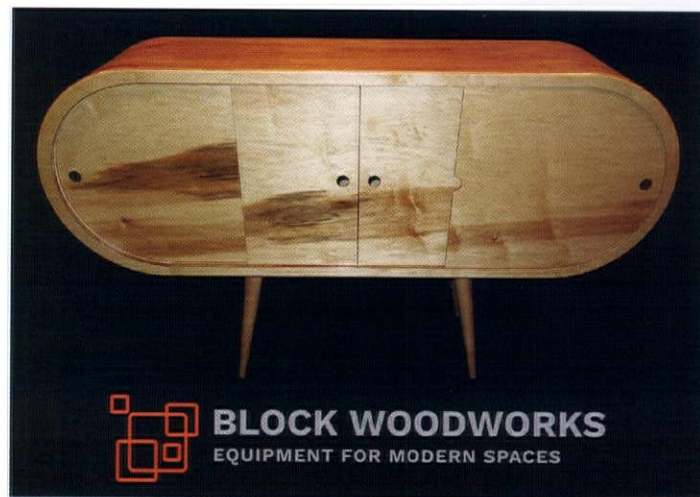
One of our new line of ceramic wall tiles for kitchen and bath. Find the complete line on our website.

makeitmidcentury.com

Enjoy Mid-Century 101?



Download our book ***A Field Guide to Mid-Century Houses*** for free - just scan the QR code on the left with your phone camera.

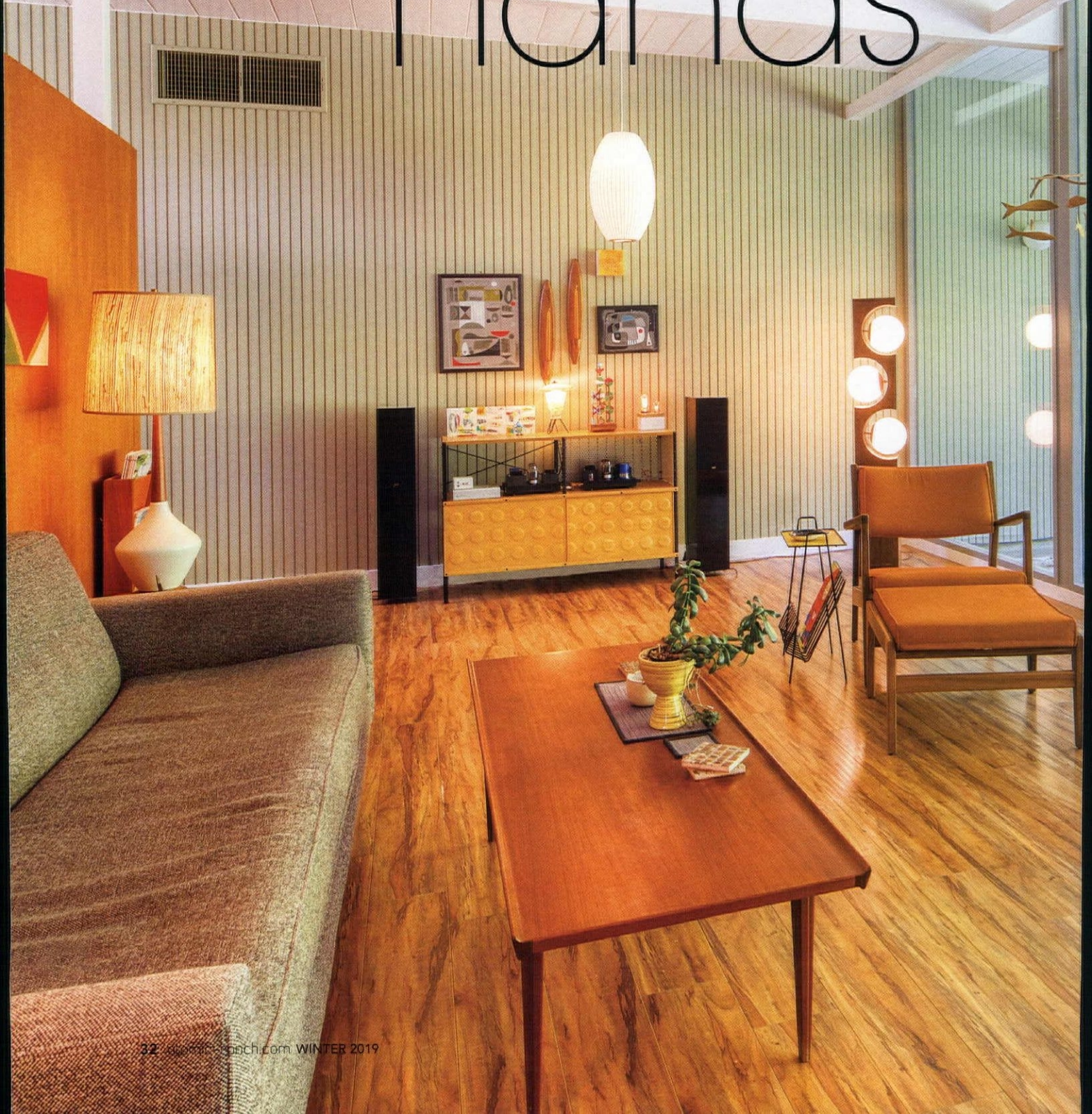


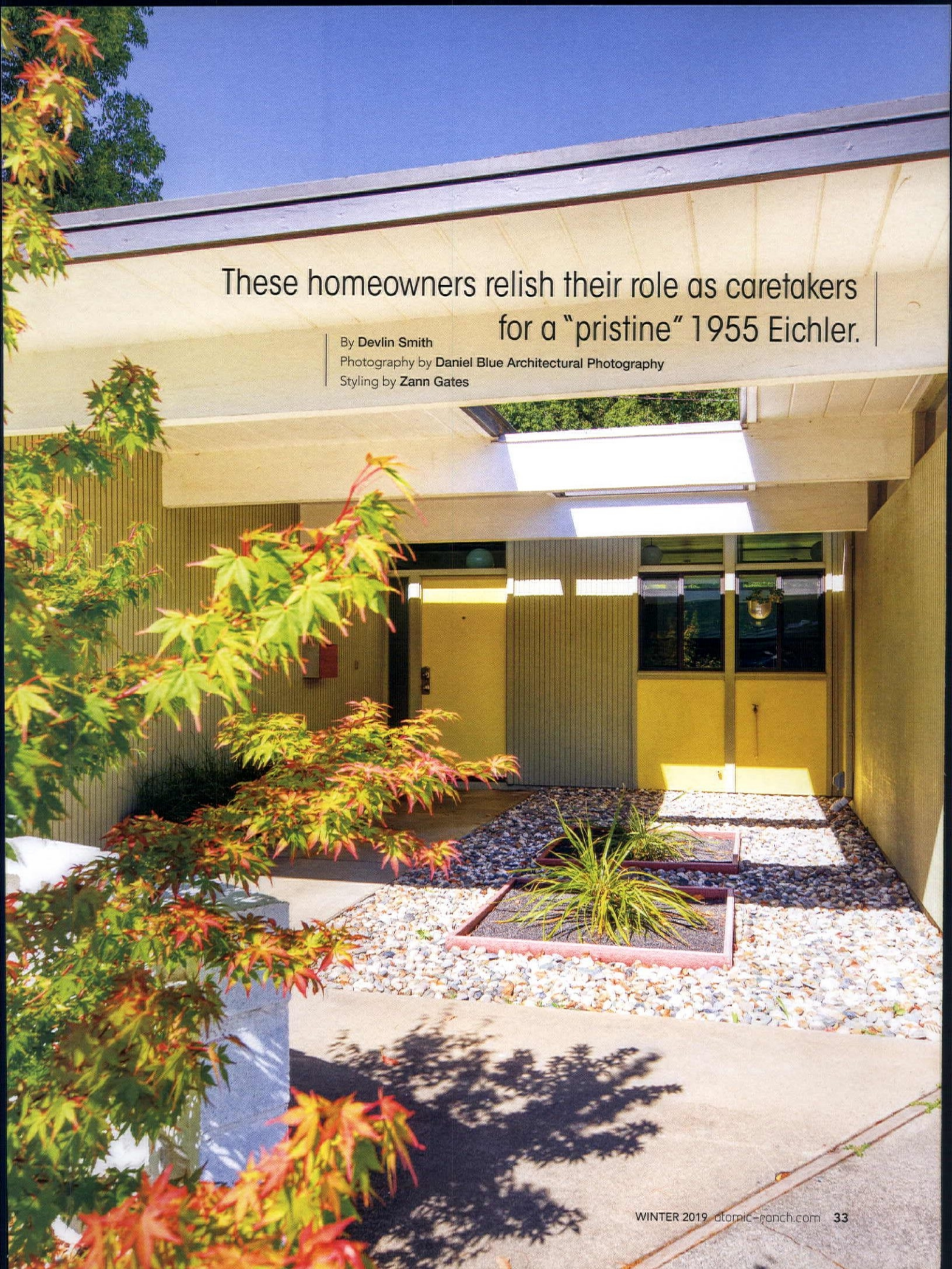
BLOCK WOODWORKS
EQUIPMENT FOR MODERN SPACES



EMAIL: INFO@BLOCKWOODWORKS.COM
WWW.BLOCKWOODWORKS.COM

IN GOOD Hands





These homeowners relish their role as caretakers
for a “pristine” 1955 Eichler.

By Devlin Smith

Photography by Daniel Blue Architectural Photography

Styling by Zann Gates



The roofline was what did it.

Or maybe it was the banks of windows. Or perhaps the original kitchen, open floor plan and fireplace. Something about this 1955 Eichler home designed by Jones & Emmons told Zann Gates and Jeff Roush that it was meant to be theirs, so they purchased it off-market and left their 1920 stucco cottage in Davis, California, for this flat-roofed ranch in nearby Sacramento.

"[It was] pristine—the inspector couldn't find anything wrong with it structurally, all we had to do was a toilet reset," Zann says of the state of the home when purchased. "The previous owners spent the three years of their ownership replacing the roof, the exterior siding; insulating throughout; caulking in between all

the ceiling boards; new flooring; new hot water heater and double-pane windows throughout the home. It felt like a new house."

PAST AND PRESENT UPGRADES

Doorways were moved to create an en-suite guest bath, and an extra glass panel was added to the master bedroom, which Zann shares is the best upgrade the prior homeowners made. She doesn't agree with all their choices for the four-bedroom, two-bathroom home, like removing most of the original mahogany-paneled walls. So Zann and Jeff have made modifications that are both 21st-century eco-conscious and fitting to the MCM period.

TOP: THIS 1955 FLAT-ROOFED HOME WAS DESIGNED BY A. QUINCY JONES AND FREDERICK E. EMMONS FOR EICHLER HOMES AND IS PART OF AN INTACT EICHLER TRACT IN SACRAMENTO, CALIFORNIA. THE HOMEOWNERS SELECTED A VIBRANT YELLOW FOR THE FRONT DOOR AFTER VISITING A FRIEND'S HOME IN PALM SPRINGS.



TOP RIGHT: ZANN AND JEFF WORKED WITH A LOCAL LANDSCAPE DESIGN FIRM ON THEIR OUTDOOR SPACES, WHICH FEATURE NATIVE PLANTS SELECTED TO ATTRACT BEES AND BUTTERFLIES.

BOTTOM RIGHT: ALL BUT ONE OF THE HOME'S ORIGINAL MAHOGANY PANEL ACCENT WALLS WERE REMOVED BY PREVIOUS OWNERS. "WE'RE GRATEFUL FOR THAT ONE REMAINING WALL," ZANN SAYS.



"We redid the closet doors back to their original look—painted the frames and rebuilt the grasscloth panels with new grasscloth and plywood," Zann says. "We added grasscloth to a wall in the master bedroom and a wall in the office to warm up the look." Walls will eventually be repainted, and the basic laminate floor installed by the previous owners will be replaced at some point.

"My dream is cork, and when I say cork, I mean 12" x 12" glue-down cork like in the actual midcentury," Zann says. "We have a neighbor that put it in; it makes me cry when I go over there. It's lovely and patinated like an old ball glove or a grade school in the 1950s that's seen too many little feet."

TOBY, THE HOMEOWNERS' STANDARD POODLE, MAKES HIMSELF COMFORTABLE IN THE LIVING ROOM. THE BRIGHT, AIRY SPACE OFFERS VIEWS OF THE BACKYARD AND A CITY PARK WITH TREES ABOUT THE SAME AGE AS THE HOME.



ORIGINAL SPACES

One space that hasn't needed a refresh is the kitchen, which maintains its original black-and-white color scheme and features the original cabinetry and Thermador oven and cooktop. The stove-side countertop is still covered in the original Formica. The kitchen layout is untouched. "[A] galley kitchen with a proper work triangle is a joy forever," Zann says. "Jones & Emmons knew what they were doing."



The kitchen is one piece of a large open-concept living/eating space, with delineations provided by the surviving three-quarter panel wall and the white brick wall/fireplace. There's easy flow in this area of the home, and plenty of light is able to stream into the kitchen and dining room from the floor-to-ceiling glass panels and sliders in the living room.

CLEAN VIEWS

The living room offers an uninterrupted view of the backyard, which was designed by a local landscaping firm. Zann and Jeff requested pollinator-friendly native plants be used in the yard, so bees and butterflies are now frequent guests. The hardscaping is original to the house.





BELOW: THIS THREE-QUARTER WALL IS ONE OF ZANN'S FAVORITE ARCHITECTURAL ELEMENTS, PROVIDING SEPARATION BETWEEN THE EATING AND LIVING SPACES BUT ALSO LETTING LIGHT FLOOD IN THROUGHOUT.

BOTTOM: MOST OF THE KITCHEN WAS INTACT WHEN ZANN AND JEFF MOVED IN. IT FEATURES THE ORIGINAL CABINETRY AND THERMADOR OVEN AND COOKTOP. THE STOVE-SIDE COUNTERTOP RETAINS ITS ORIGINAL FORMICA COUNTERTOP.





ABOVE RIGHT: THE PANEL ACCENT WALL WAS PAINTED KELLY-MOORE "HEAD FOR THE BEACH" BY THE PREVIOUS OWNERS. BEIGE ON THE PAINT CHIP, BATHED IN NATURAL LIGHT THAT COMES IN THROUGH THE HOME'S WALL OF WINDOWS, THE PAINT COLOR READS PALE SAGE ON THE WALL.

BOTTOM LEFT: THE FIREPLACE IS ORIGINAL TO THE HOUSE. IT BOASTS ROOM FOR SEATING AND SERVES AS A DIVIDER IN THE OPEN LIVING/EATING SPACE.

OPPOSITE: ZANN AND JEFF USE THE SPACE ON THE OTHER SIDE OF THE FIREPLACE WALL AS A DINING ROOM. IT SHOWCASES SOME OF THE VINTAGE FINDS THE COUPLE HAS COLLECTED OVER THE YEARS FROM ESTATE SALES AND GIFTED BY FAMILY AND FRIENDS.

"[A] galley kitchen with a proper work triangle is a joy forever. Jones & Emmons knew what they were doing."





“We redid the closet doors back to their original look—painted the frames and rebuilt the grasscloth panels with new grasscloth and plywood.”






OPPOSITE: FORMER OWNERS MADE UPDATES TO THE HOME THAT RETAINED THE MCM FEEL, INCLUDING THE ADDITION OF AN EXTRA GLASS PANEL IN THE MASTER BEDROOM. "THAT IS ONE OF THE BEST THINGS THEY DID," ZANN SAYS OF THE UPDATE.

A panel wall is carried through from the entryway into the living room and out into the backyard. It was painted Kelly-Moore's "Head for the Beach" by the former homeowners. Beige on the paint chip, it can read as sage green on the walls, depending on the light. This chameleon quality has made Zann a fan of the color.

A LOOK TOWARDS THE FUTURE

Though just the fourth owners in the home's nearly 65-year history, Zann and Jeff know they will one day protectively pass this Eichler gem along and are grateful for their place in its ongoing story. "It's a dream home for us; we feel lucky to be its caretakers for now," Zann says. "And I hope to God no one ever tears out the three-quarter wall between the kitchen and living room in a misguided attempt to 'open up' the space." 

Into the WOODS



Glass and wood do the heavy lifting in a home whose design transports you to a seemingly magical midcentury woodland.

By Sarah Jane Stone | Photography by CJ South | Styling by Elin Walters



ELIN HAD PLENTY TO WORK WITH IN THE LIVING ROOM. THE COUCH, WOMB CHAIR, DANISH MODERN LEATHER CHAIRS AND HANGING LIGHTS BESIDE THE FIREPLACE WERE ALREADY IN THE HOMEOWNER'S REPERTOIRE. ELIN GROUNDED THE ROOM WITH A FREEFORM COFFEE TABLE AND ADDED PERSONALITY THROUGH ACCENTS AND REPURPOSING ART FROM ANOTHER PART OF THE HOUSE.



Nestled in the woods sits a quietly breathtaking masterpiece.

Boxy and clean-lined, this midcentury home simultaneously stands out and fits perfectly among the flora and fauna of its surroundings. Inside, original details have been painstakingly preserved—from the floorplan all the way to the wood paneling. With homeowners keen to cultivate a period-perfect aesthetic with few restrictions and a generous budget, this particular home is a designer's dream. Enter Elin Walters of Exactly Designs.

STARTING WITH GOOD BONES

Not on the market for a number of years, this flat-roof 1960 home by local legend Ted Smith was already a masterpiece before Elin brought her magic touch to its interiors. With windows and decks that run the length of the house and beams that reach through the glass panels, bringing the outdoors in has never felt more natural. "It's classically midcentury in a very simple way. There are no crazy rooflines. It's one with the property, with the light and the way it sits on the land," says Elin. Despite sitting on less than an acre, the home feels miles away from the bustling world outside.

Creating a consistent theme throughout the house while simultaneously breaking up hard lines, Elin worked in a freeform coffee table to both the living room and master bedroom.



(RIGHT) LOCATED OUTSIDE THE MASTER BEDROOM, THIS SPOT WOULD QUICKLY ACCUMULATE COATS AND SHOES BUT WASN'T ORGANIZED. ELIN TURNED IT INTO A PINT-SIZED LANDING AREA FOR THE HOMEOWNERS' LITTLE ONES—GIVING TINY OUTERWEAR AND BACKPACKS A STYLISH HOME.



"THEY'RE NOT VERY COMFORTABLE, BUT WE LOVE THEM," WAS THE HOMEOWNER'S STATEMENT REGARDING THE GREEN STEEL CASE CHAIRS IN HER OFFICE. MADE IN GRAND RAPIDS, THE CHAIRS IMMEDIATELY CATCH YOUR EYE AND BRING A JOLT OF COLOR AND PERSONALITY TO THE ROOM.

"The homeowners very much loved the house with its wood paneling and exposed beams. They absolutely didn't want to touch the house itself; they just wanted help making it look how it was supposed to look."

REIMAGINING SPACES

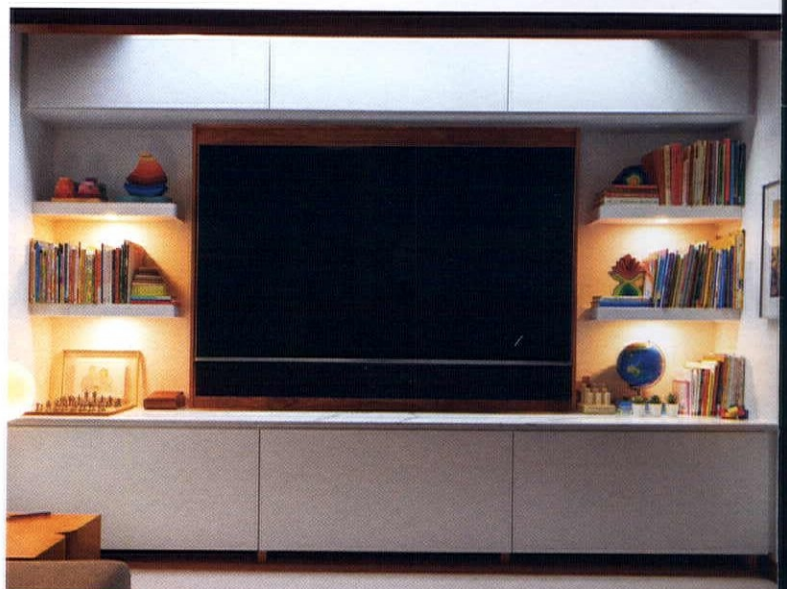
Prior to Elin's arrival, the home was functional but was missing that special something to bring it all together. While many great pieces were in place and the home itself boasts effortless charm, some things weren't quite living up to their full potential. For each room, Elin worked with the homeowners to clearly define its purpose and use. From there, she rearranged furniture and brought in complementary pieces to ensure each space would be equal parts functional and stylish.

"The homeowners pretty much gave me free rein," says Elin. "She has really good taste, so she was really fun to work with because I felt like I could present pieces to her that maybe your average person wouldn't embrace, and she loved them."

One example of this can be found in the master bedroom, where Elin paired a periwinkle Roche Bobois bubble sofa and ottoman with the homeowners' existing marshmallow couch. The luxurious and boundary-pushing piece was instrumental in anchoring the room without taking away from its counterpart's iconic design.

PUZZLE PIECES

It was during this process that something about the wall unit, besides its midcentury charm, stood out to Elin. It just didn't feel like it was in the right place. When she first visited the house, it was in the family room, with the top portion somewhat blocked by the exposed beams. As Elin began to work on the master bedroom, the unit felt like a natural fit for the wall across from the bed, so she trusted her gut and relocated the unit. It fit perfectly and suited her plans for a seating area. Later, Elin saw older listing photos of the home, and the mysterious unit had indeed been in the master bedroom to begin with.



(TOP) BY DIVIDING THE MASTER BEDROOM INTO LOUNGING AND SLEEPING QUARTERS, ELIN WAS ABLE TO RECAPTURE PREVIOUSLY UNDERUTILIZED SPACE AND BRING IN ICONIC MIDCENTURY FURNISHINGS.

(ABOVE LEFT) AN ACRYLIC END TABLE WITH A WOODGRAIN PATTERN PULLS TOGETHER THE NURSERY'S NATURAL ELEMENTS WITHOUT TAKING UP VISUAL SPACE. THE ROOM NEEDED TO HAVE A DAYBED FOR THE NANNY, SO THE END TABLE OFFERS FUNCTION WITHOUT ADDING VISUAL CLUTTER.

(ABOVE RIGHT) "THOSE CABINETS ARE ACTUALLY 24 INCHES DEEP AND LIFT FROM THE BOTTOM UP SO HER DAUGHTER HAS EASY ACCESS," SAYS ELIN. THIS PROVIDES AMPLE STORAGE FOR MORE THAN JUST TOYS, WHILE OPEN SHELVES AROUND THE TV KEEP BOOKS AND FAMILY FAVORITES WITHIN EASY REACH. WOOD PANELING TIES THE UNIT INTO THE REST OF THE HOME'S DESIGN.

BEDROOM TURNED OASIS

"The building block for the bedroom, I have to say, was the marshmallow couch." Upon her arrival, the room felt cavernous with only the couch and the bed. With the end goal in mind of creating a cozy but mod space, Elin got to work dividing the expansive room into lounging and sleeping quarters by creating a welcoming lounge space ideal for winding down at the end of a long day. With the wall unit in place, the couches were given the necessary context and now could provide the perfect spot for taking in views of the trees just outside the original sliding glass door. Since the couple has a baby, a nursing space was necessary, which Elin created beside the bed. With artwork and neutral bedding layered in, the room now exudes warmth and character.

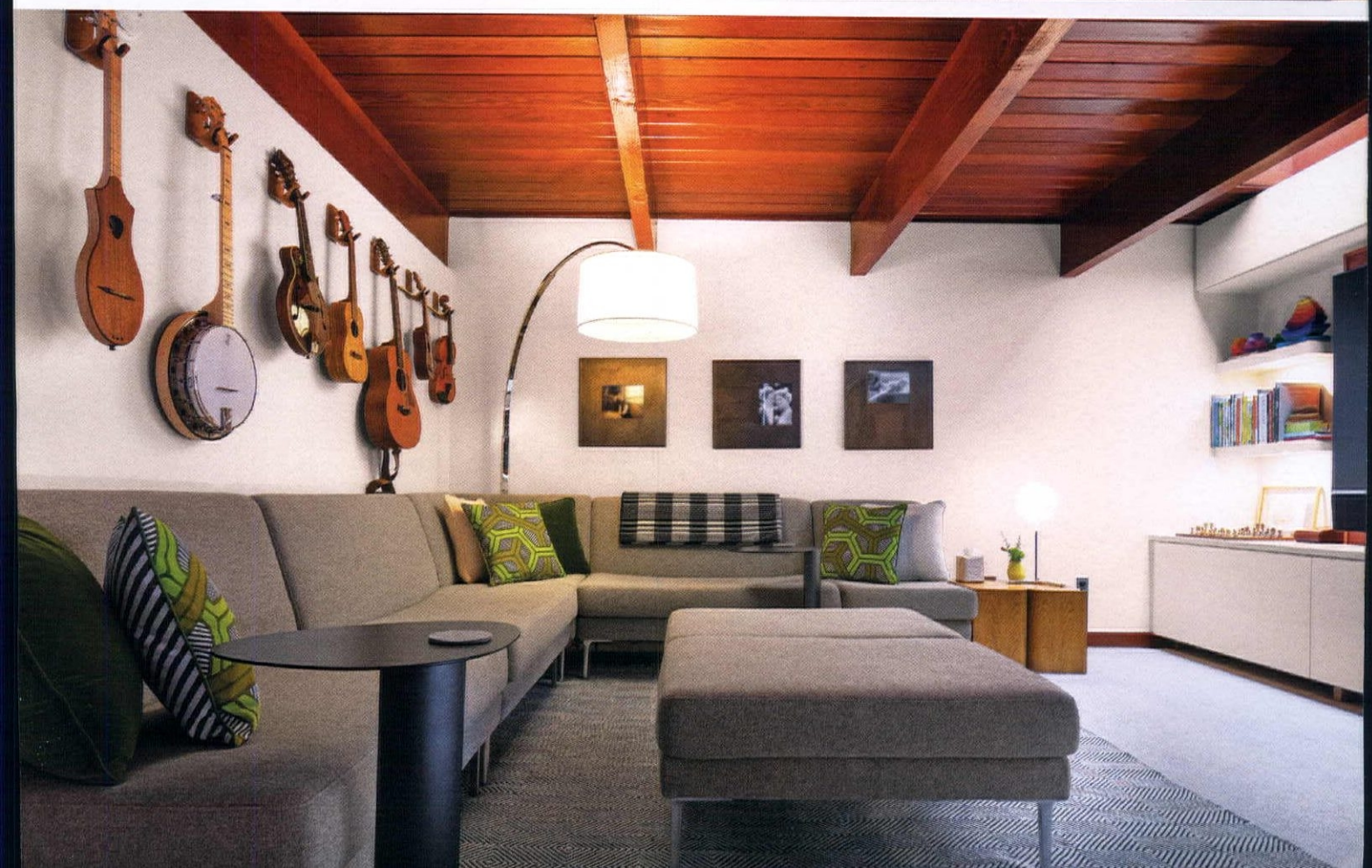
(OPPOSITE TOP)

THE BOOK-HOLDING TREE AND SWEET PLUSH TOYS ADD WHIMSY TO THE NURSERY, WHILE THE COCOON-SHAPED CRIB PROVIDES A NOD TO MOD.

(OPPOSITE BOTTOM)

THE HOMEOWNERS NEEDED A SPACE TO PLAY MUSIC AND WATCH TV AND THEY WANTED A KIDS' PLAY AREA WHERE THE TOYS COULD BE EASILY PUT AWAY, SO ELIN HAD TO FIT A LOT OF FUNCTION INTO THE DEN. CONTRARY TO POPULAR BELIEF, A LARGE SECTIONAL WAS THE PERFECT FIT. WITH THE INSTRUMENTS ON THE WALL AS FUNCTIONAL ART, A CUSTOM-BUILT CABINET TOOK CARE OF THE REST.








(BOTTOM) CAN YOU SPOT THE HIDDEN DOOR? THAT TINY DOOR OPENS TO REVEAL A PROJECTOR.



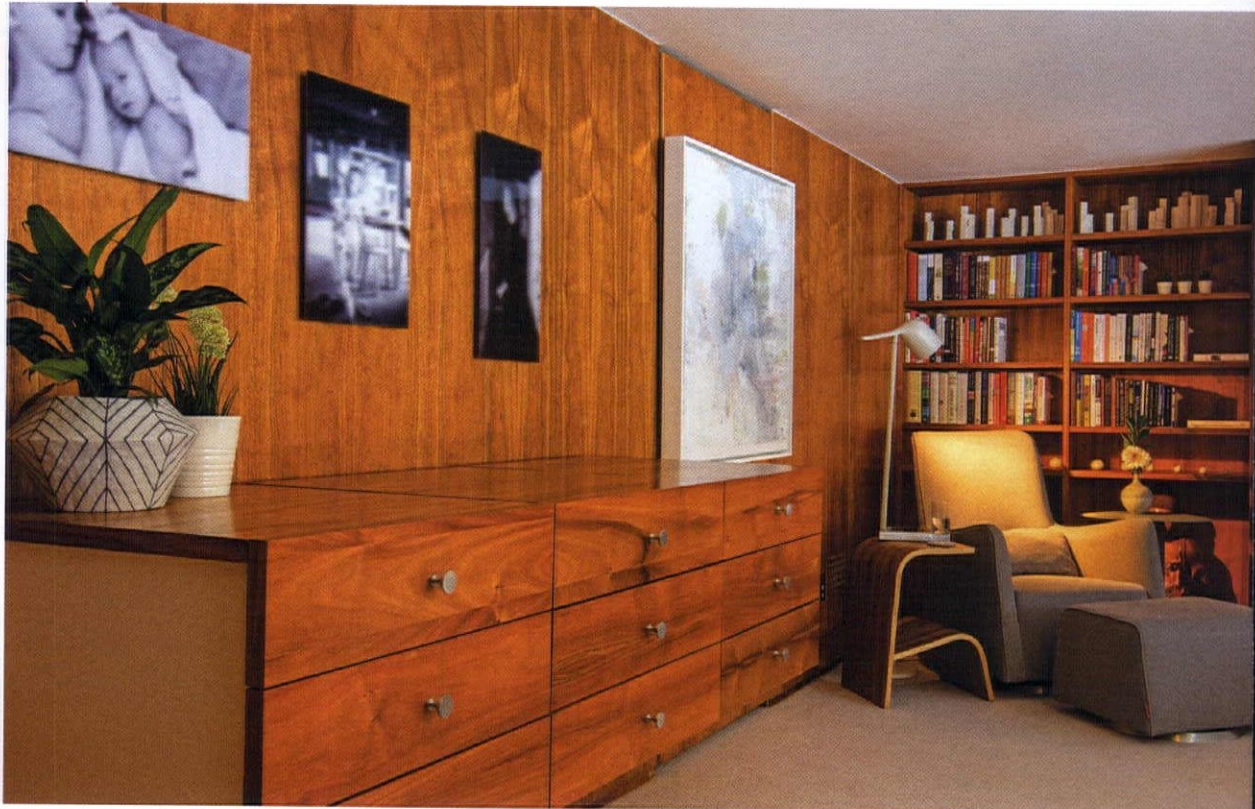
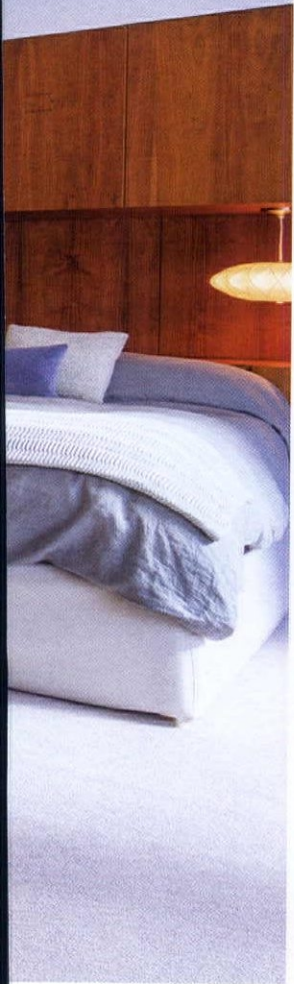
NURSERY GONE MOD

Designing children's spaces to be anything but childish is no small task. To accomplish this, Elin turned to quality furnishings that offer all the necessary functionality with clean-lined designs. Case in point: the rocker. A nursery necessity, this design by Modern Nursery nods to mod and features a built-in bassinet, which can also be used for keeping baby basics in easy reach.

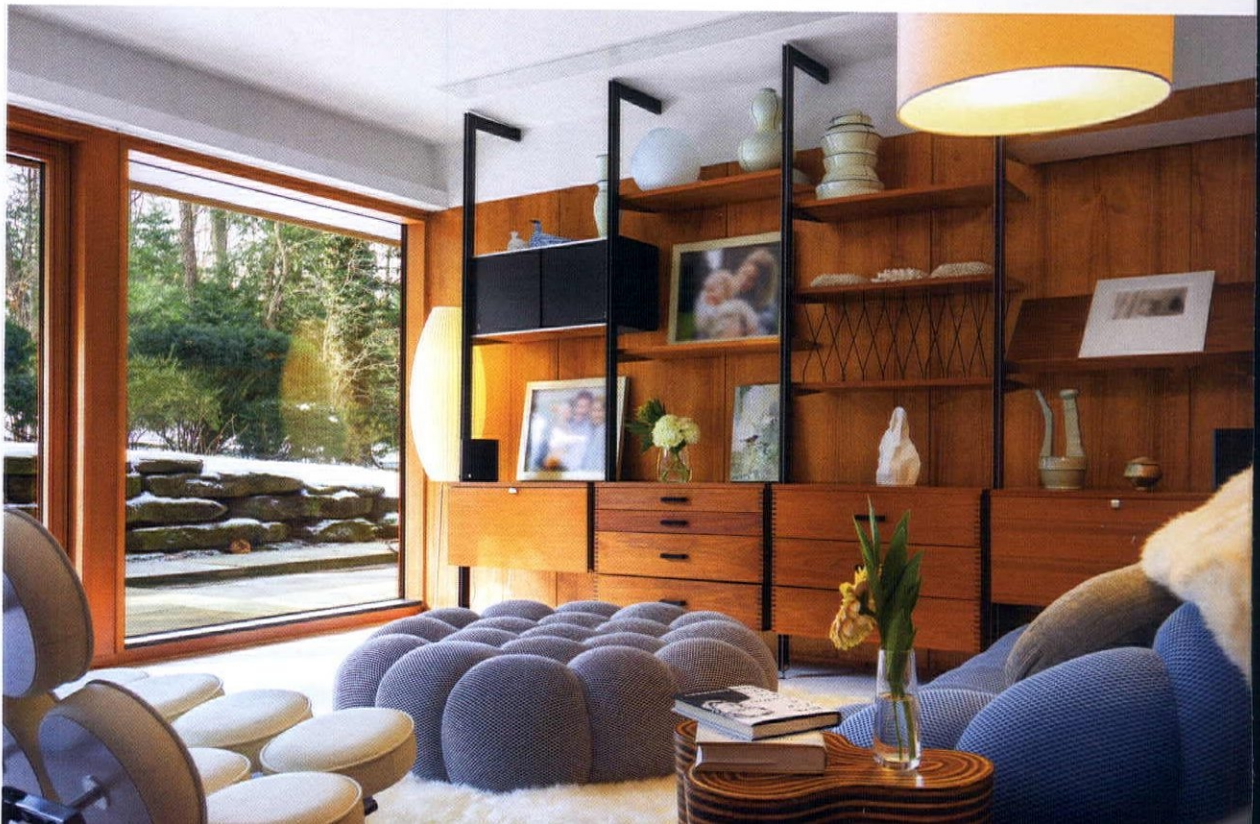
"I tried to choose elements that felt a little bit playful, but still simple," she says. Just as in the rest of the house, art plays a big role in the room's design. From the playful book-holding tree to the pieces pulled from the homeowner's collection, art rounds out the room's warm design.

"Projects like this come along once in a lifetime," says Elin. "I certainly hope I get to work on another house like this, but to get to work on a property with this much detail and to be given so much trust—it was pretty incredible." 

"They very much loved the house with its wood paneling and exposed beams. They absolutely didn't want to touch the house itself; they just wanted help making it look how it was supposed to look."



(ABOVE RIGHT)
NIGHTCAP, ANYONE?
THIS BUILT-IN BAR
FEATURES STORAGE
AND EVERYTHING
NECESSARY FOR
WINDING DOWN AT
THE END OF THE DAY
IN TRUE DON DRAPER
STYLE. THE ARTWORK
CONCEALS THE
ENTRANCE TO THE
WALK-IN CLOSET.



15

Years of

This annual Palm Springs event gives visitors a rare peek into iconic Midcentury Modern homes.

By Bob Bogard

Photography Courtesy of Modernism Week

One of the most beloved events offered during Modernism Week is the opportunity to view significant residences that are rarely available to the general public. As Modernism Week enters its 15th year, we look back on some of the most amazing private residences that have been open during the event.

Modernism Week



**James Logan Abernathy
Residence** (1962, William Cody)
611 N Phillips Road, Palm Springs

BUILT IN 1962, The Abernathy Residence is one of the best examples of renowned midcentury architect William Cody's work in the Coachella Valley. Its remarkable 4,800-square-foot single-story floorplan joins the public and private spaces together under three pavilion-hipped roofs. Located in the Movie Colony neighborhood of Palm Springs, it recently underwent a major renovation that preserved Cody's look and design and showcased the original details of the house, while updating it with modern comfort and a sophisticated style. The redesign kept the floorplan mostly intact, but interiors were redefined and a new pool was added. The garden was also reconfigured, resulting in a series of new welcoming outside spaces.



PHOTO BY JAKE HOLT



William Edris Residence (1954, E. Stewart Williams)

1030 W. Cielo Drive, Palm Springs

IN 1954, E. STEWART WILLIAMS designed the iconic Edris House for William and Marjorie Edris, and today it stands exactly as it did then. Positioned on a rocky ridge that overlooks Palm Springs, the home is approximately 2,800 square feet and is situated on a half-acre parcel. Williams chose to build the pool first, and the home itself was built around large boulders on the site, which they chose to keep mostly in place. The home maintains the designer's original intentions: be a home first, and second incorporate organic materials, such as knotless Douglas fir, local stone and the indigenous landscape. Steel columns support the entire roof system separately from the walls in order to seamlessly slide the frameless windows into the ceiling. It recently underwent a one-year restoration project in which Williams was on hand and approved the few changes that occurred during the refurbishment. It holds a Class 1 historic designation and was listed on the National Register of Historic Places in 2016.



Frank Sinatra Residence

(1947, E. Stewart Williams)

1145 E. Via Colusa, Palm Springs

KNOWN AS "TWIN PALMS," this low-slung, glass-walled home built for Frank Sinatra is typically not open to the public, except for tours during Fall Preview and Modernism Week. E. Stewart Williams famously talked Sinatra out of building a Georgian-style house and instead designed a futuristic Midcentury Modern redwood-clad masterpiece. The legendary residence is known for its canopy skylight entryway and piano-shaped swimming pool. The home has been completely restored with vintage designer furnishings and includes Sinatra's original sound and recording system installed by Valentino Electronics in Hollywood. This was the first home designed by Stewart Williams and also the first home purchased by Frank Sinatra.



PHOTO BY DAVID A. LEE

Albert Frey Residence II

(1963, Albert Frey)

686 Palisades Drive, Palm Springs

THE FREY HOUSE II, the final residence of iconic Midcentury Modern architect Albert Frey sits atop a hill overlooking downtown Palm Springs. Frey spent five years hunting for the perfect site and a year measuring the movement of the sun using a 10-foot pole. At only 800 square feet, the house is small but very functional. The design included a flat corrugated-aluminum roof, overhangs to block the summer sun and sliding-glass doors that open the interior to the exterior. Its ample walls of glass showcase the astounding views. The swimming pool and small deck function as the roof of the carport. One of the most famous elements of the property is the incorporation of a large boulder into the design, acknowledging our connection with nature. The boulder protrudes into the house and acts as a divider between the bedroom and living room.

NOTE: *Frey House II is open for tours every year during Modernism Week, but this is the only time the general public can tour this iconic heritage structure.*

Steel Development Houses

(1962, Wexler & Harrison)

North Palm Springs

ARCHITECTS DONALD WEXLER AND RICHARD HARRISON designed the innovative and affordable all-steel prefabricated houses with the harsh desert elements of Palm Springs in mind. A tract of 38 all-steel homes was planned in 1961; however, only seven homes were ultimately built. Due to the rising cost of steel, the development was never finished, and the original seven homes were mostly forgotten. Thankfully, these groundbreaking prefabricated steel and glass homes were rediscovered in the 1990s. The majority of the homes have been carefully restored to their original appearance. No public tours of the interiors are available, but many of the homes have been featured on Modernism Week tours.



Mr. and Mrs. Maurice (Dinah Shore) Residence (1964, Donald Wexler)

432 West Hermosa Place, Palm Springs

THIS MIDCENTURY MODERN RANCH-STYLE ESTATE, designed by renowned architect Donald Wexler, was built in 1964 for actress and singer Dinah Shore in the Old Las Palmas neighborhood of Palm Springs. Past Wexler's signature dramatic steel post-and-beam walkway lies a bright interior encased in glass walls. The single-story 6-bedroom home includes a sunken living room with a fireplace, grand piano and cocktail bar; a formal dining room; a kitchen with a breakfast bar; and an office/media room. The master suite has a sitting room and a spa-like bath boasting two saunas. Set on 1.3 lush acres, the house has multiple terraces for dining and entertaining, all easily accessible from the main living areas. A guesthouse overlooking a pool, a tennis court and a tennis pavilion complete this ultimate desert oasis.



Robert and Helene Alexander Residence AKA "The House of Tomorrow" (1960, Palmer & Krisel)

1350 Via Ladera, Palm Springs

KNOWN AS THE "HOUSE OF TOMORROW," this modernist icon was built by prolific Palm Springs developer Robert Alexander for his family. This estate consists of three stories in four concentric circles, and there is not a square room in the home. In September 1966, Elvis Presley, seeking refuge from the bright lights and pressures of Hollywood, leased the estate for one year. On May 1, 1967 Elvis and Priscilla Presley began their honeymoon at this outstanding midcentury gem, and Lisa Marie was born exactly nine months later. The building is also called the Elvis Honeymoon Hideaway.

PHOTO BY DAVID A. LEE

Modernism Week by *the Numbers*

Over the last 15 years, Modernism Week has achieved some significant milestones and has helped celebrate and promote Midcentury Modern architecture and design on an international scale. Check out these stats.

Attendance

152,000 Number of attendees of Modernism Week 2019 events

10,000 Number of attendees of Fall Preview 2018

25 Number of countries represented by Modernism Week attendees

52 Number of U.S. states, districts, and territories represented by Modernism Week attendees

Impact

\$57 million Economic impact of Modernism Week 2019

29 Number of neighborhoods that produced Modernism Week tours in 2019



Desert Hot Springs Hotel

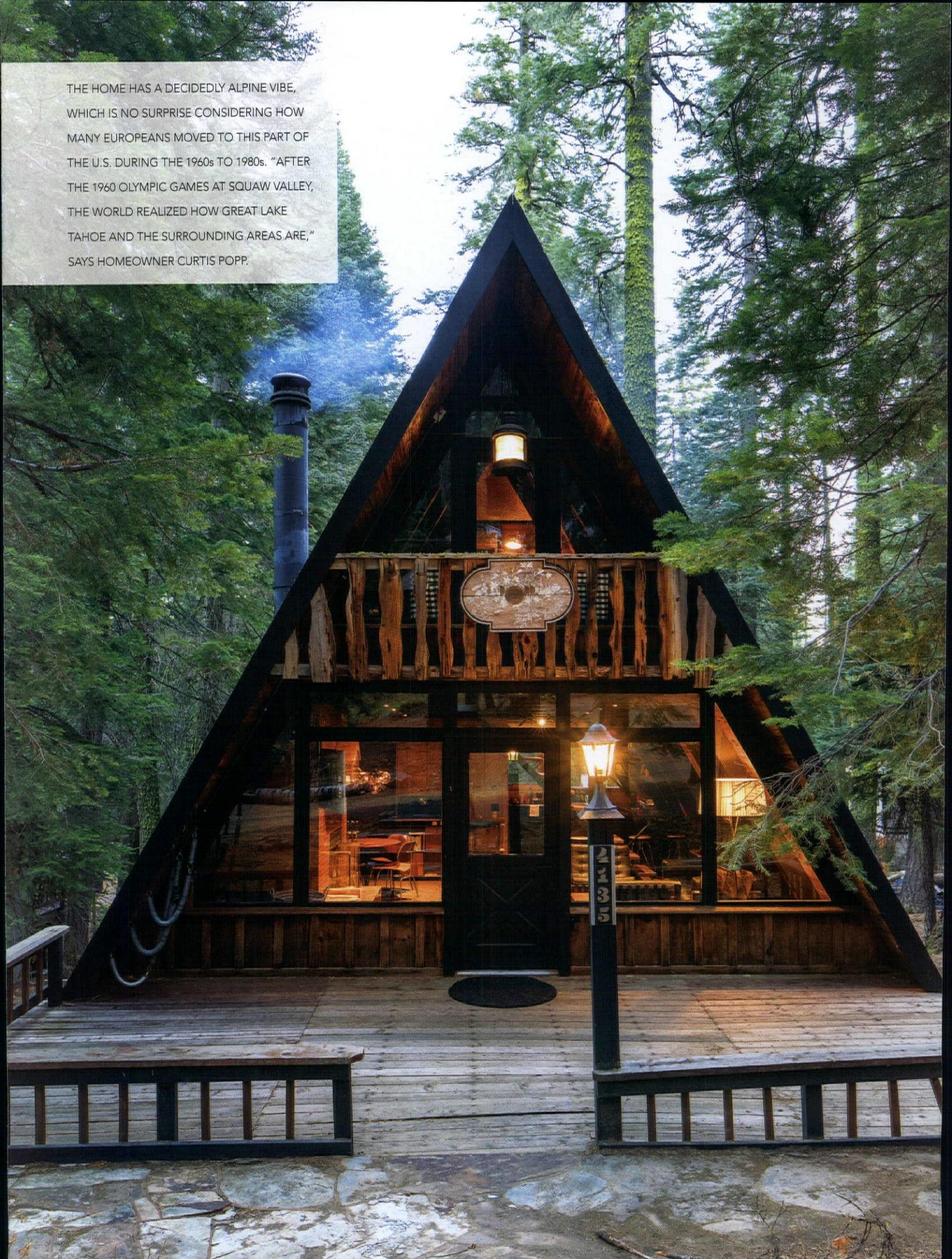
(1947, John Lautner)

67710 San Antonio St, Desert Hot Springs

JOHN LAUTNER, one of America's most legendary architects, designed this iconic desert hideaway in the 1940s as a prototype for a master planned community in the desert that was never built. The four-unit structure is an example of one of Lautner's earliest works. Originally called Desert Hot Springs Motel, it has been reimagined today as Hotel Lautner, an award-winning, stunning modern-day oasis in the desert. During the restoration, the designers paid homage to the four primary elements used in the original construction of the property—concrete, steel, redwood and glass—and meticulously restored and replaced damaged materials. Hotel Lautner is one of the few, if only, Lautner designs open for public experience today, and it is frequently open for public tours and other special events during Modernism Week.



THE HOME HAS A DECIDEDLY ALPINE VIBE, WHICH IS NO SURPRISE CONSIDERING HOW MANY EUROPEANS MOVED TO THIS PART OF THE U.S. DURING THE 1960s TO 1980s. "AFTER THE 1960 OLYMPIC GAMES AT SQUAW VALLEY, THE WORLD REALIZED HOW GREAT LAKE TAHOE AND THE SURROUNDING AREAS ARE," SAYS HOMEOWNER CURTIS POPP.

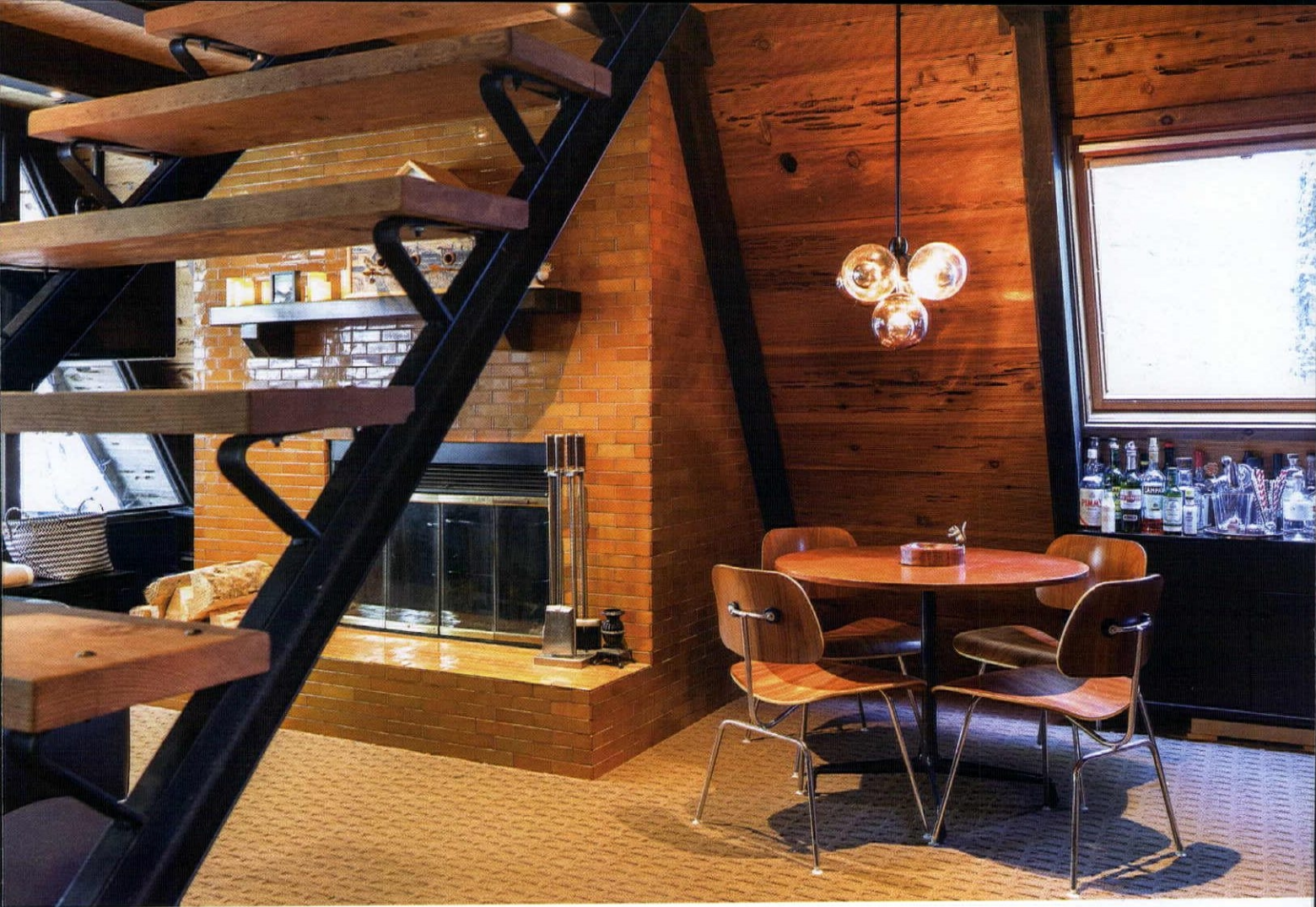


A-Frame

Escape

One of Sacramento's most sought-after visual thinkers, Curtis Popp expresses his design prowess in his Lake Tahoe A-frame retreat.

By Kathryn Drury Wagner
Photography by Kat Alves



From the time he was a small boy up to his late 20s,

Curtis Popp's family had enjoyed a lakefront cabin in Homewood, on the west shore of Lake Tahoe. He dreamed of buying a home himself in that idyllic area of California, but the push to finally act was bittersweet. In 2011, his mother was terminally ill, and she directed Curtis to buy a cabin after she passed, ensuring her grandchildren would share in the lakeside experience. Five months after her death, Curtis owned a 1969-built A-frame in Homewood.

It was in fine condition but a bit tired. "The kitchen, window coverings and cabinetry were all very Holly Hobby," explains Curtis, who lives in Sacramento with his wife, Susan, and their two teenage children. A third-generation Sacramentan, Curtis is the head of full-service design firm CPOPP Workshop and a well-established creative who works in a variety of fields. He transformed the once fussy A-frame into a minimalist, yet still cozy, retreat filled with an enviable collection of Modernist furniture.

GOOD THINGS IN SMALL PACKAGES

After the major redesign, the cabin's exterior remains largely unchanged, but the interior has been refreshed entirely, creating a welcoming space for the family on the weekends. The flooring was updated, and the kitchen and both bathrooms were completely redone. The kitchen has new appliances that are compact but still befit a 1,100-square-foot vacation home; the refrigerator is a fully integrated 24 inches, the range is 24 inches and the dishwasher is 18 inches.

A DISTILLATION

Curtis used the dark umber of the beams and the caramel of the cedar walls and carried the colors throughout the home. "Distilling a space, especially a small one, down to a few elements is critical," he says. His style gravitates toward minimal and early 20th-century European Modernism, so he turned to black leather furniture by Mies van der Rohe and Le Corbusier to offset the warmth of the rustic wood. His favorite room? "The living room, where all the jokes and stories are told."



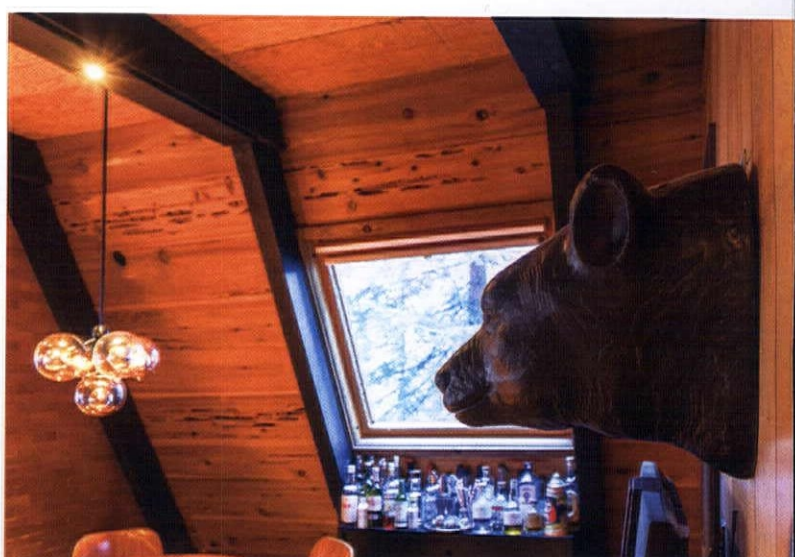
TOP LEFT: IN THE LIVING ROOM, FURNITURE FROM CURTIS' LATE FATHER IS LOVINGLY EMPLOYED. IT INCLUDES TWO LE CORBUSIER LC2 CHAIRS BY CASSINA, A LE CORBUSIER LC2 SOFA BY CASSINA, AND TWO LUDWIG MIES VAN DER ROHE BARCELONA CHAIRS.


TOP RIGHT: THE FIREPLACE WAS REBUILT AND COVERED IN HEATH CERAMICS TILE.



OPPOSITE TOP: THE STAIRCASE IS ORIGINAL, BUT CURTIS STRIPPED OFF OLD SHAG CARPET, PLANED AND SEALED THE WOOD, AND REPAINTED THE STRINGERS BLACK.

BOTTOM RIGHT: CURTIS' WIFE FOUND THE CARVED BEAR, WHICH IS FITTING FOR THE CABIN'S LOCATION. (A GRIZZLY BEAR IS THE OFFICIAL STATE ANIMAL OF CALIFORNIA.)





He transformed the once fussy
A-frame into a minimalist, yet
still cozy, retreat, filled with
an enviable collection of
Modernist furniture.

THIS DINING AREA BECKONS WITH A TABLE FROM HERMAN MILLER BY
CHARLES AND RAY EAMES AND A LIGHTING FIXTURE FROM ROLL & HILL.



TOP LEFT: THE COVEY MODEL SIX STOOLS WERE DESIGNED BY SAN FRANCISCO DESIGNER JEFF COVEY FOR HERMAN MILLER IN THE LATE 1990s.

TOP RIGHT: LOOK CLOSELY: THE BAGELS ARE ARTWORK BY THE LATE CERAMIC ARTIST DAVID GILHOOLY.

BOTTOM RIGHT: POPP USED SMALL EUROPEAN-STYLE APPLIANCES TO KEEP THE SCALE IN THE KITCHEN APPROPRIATE.



CLASSIC SIMPLICITY

For Curtis, an A-frame is architecturally significant. "It represents for me utter simplicity of form; I don't think architecture can be pared down more than an A-frame. Our house was actually a kit house, which says a lot about how lo-fi they actually are, but I don't think the simplicity takes away from its elegance." If you have a vintage A-frame you are remodeling, Curtis advises, "Embrace the existing architecture and keep editing. The beauty of the vernacular is its simplicity." ❧

Cozy yet sleek fireplace inspiration for any mod home.

By Jackie Torres and Lindsay Jarvis | Photography by Jim Brown

By the Fireside

A great fireplace can transform any room into the ultimate relaxation or conversation spot! Glean some inspiration from these hearthside favorites.

1. THE FIREPLACE IN RICHARD NEUTRA'S 1958 HASSRICK HOUSE is pulled forward from the wall, and its contrasting bright tone creates a pop against the darker surroundings. Cedar tongue-and-groove ceilings bring warmth to the room, while an expansive glass wall connects to the exterior. Split Rail lounge chairs provide a stylish spot for fireside relaxing.



2. BUILT IN 1958 BY CARTER SPARKS, THIS WAS THE FIRST OF A SMALL SET OF 55 CUSTOM HOMES IN SACRAMENTO, separate from the tracts he worked on with the Streng Brothers. Next to the impressive fireplace is original built-in cantilevered seating against brick walls, painted taupe by the homeowners. A frosted clerestory between the living room and bedroom brings warmth to the space, while a narrow window next to the hearth seating adds additional light.



3. A CRACKLING FIRE IS THE CENTERPIECE OF A COZY CONVERSATION AREA IN THIS 1958 HOME IN WALLINGFORD, Pennsylvania, by Architect Irwin Stein. A built-in sofa near the hearth was reupholstered in Maharam wool, and a metal wall sculpture adds dimension to the room. Acrylic shutters on the second-floor master bedroom allow a connection between the two floors. The sunken dining room to the right of the fireplace adds another place to entertain in this two-bedroom, split-level home.



4. INNOVATIVE AND FUNCTIONAL, THE FIREPLACE IN THIS 1957 A. QUINCY JONES HOME RUNS from the interior out, with the exterior portion doubling as a planter. Inside the fireplace, Geo Shapes gas logs from Real Fyre add a unique mod twist on traditional logs. Part of a Mutual Housing Association in Brentwood, California, this 2,000-square-foot model was built with post-and-steel-beam construction on a multilevel hillside lot.

Portable Fireplace

Don't have a stunning built-in fireplace in your home? Bring warmth and style into any space with these compact options.

1. COCOON AERIS MODERN HANGING FIREPLACE IN BLACK, \$2450. (800) 368-4268 OR HOZZ.COM.
2. COCOON AERIS MODERN HANGING FIREPLACE IN STAINLESS STEEL, \$3420. (800) 368-4268 OR HOZZ.COM.



New and Vintage



Vintage and retro-inspired indoor and outdoor fireplaces, all in one spot: Warshaw's Provisions. For availability and location, visit warshawsprovisions.com.

1. ModFire
2. TikiFire by ModFire
3. An assortment of ever-changing vintage fireplaces.

Would You Like To Be A Mid-Century Modern Antiques Dealer?

You Can:

*Start your own Mid-Century Modern Antiques Business

*Choose the hours you wish to work

*Become a "Certified" Decorative Arts Appraiser

*Complete an internationally recognized 12 Volume Course with Diploma & Appraisal Certification (PACC & USPAP)



www.asheford.com



For A FREE Course Prospectus Booklet:

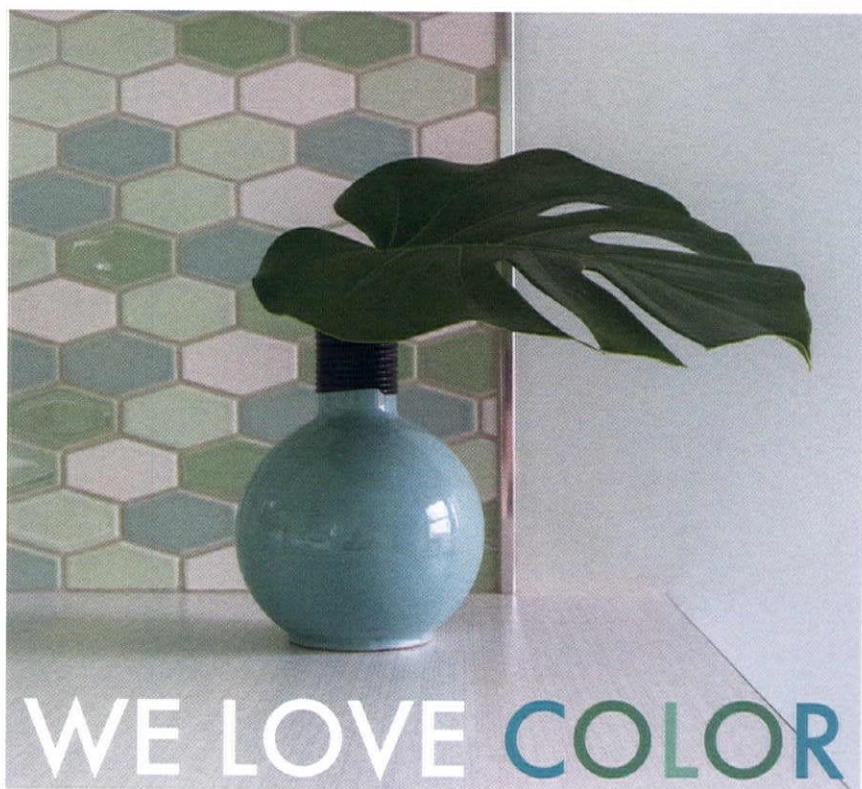
www.asheford.com

Email: asheford@mail.com

Toll free: 877-444-4508

Or write to:

Asheford Institute: 981 Harbor Blvd.
Ste. 3, Dept. 275ATR7 Destin, FL 32541



WE LOVE COLOR



HANDCRAFTED TILE MADE IN PORTLAND, OR
www.clayhaustile.com | order direct at 503.928.3076



Jillian Rene Decor™

layered. linen. luxury.

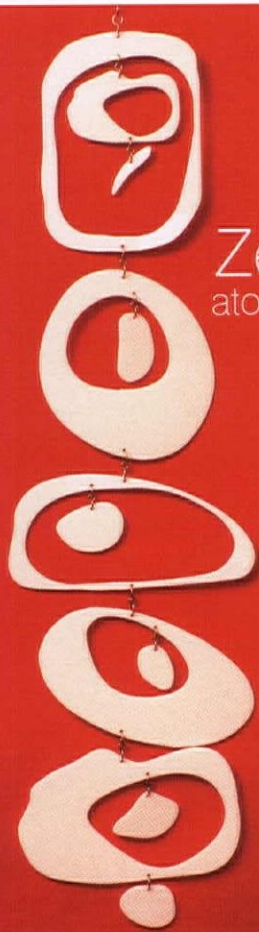
www.JillianReneDecor.com



Modern &
Midcentury Interior
Design Specialists


modernous

Seattle & Palm Springs | modernous.com




Zen Mobile
atomicmobiles.com


Your Chicago-Area
Mid-Century Modern &
Ranch Homes Specialist



MODERN
modernil.com



Lou Zucaro
lou@modernil.com • 312.907.4085
Baird & Warner, 754 W. Northwest Highway -
Barrington, IL 60010

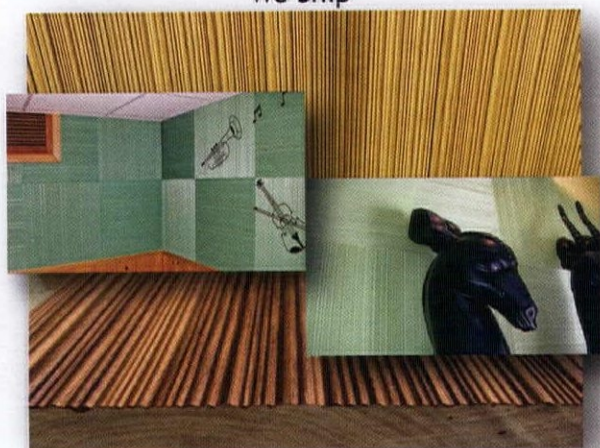


A Division of Eichler Siding

**The Cool Combed Panel Back From
the Mid-Century-Weldtex**

Accent Walls-Siding-Wainscot-Ceiling Tiles

We Ship



vintageplywood.com 415.883.5300 info@vintageplywood.com

Harmony
by Heather Cuell



Cast Glass Mosaic Series
Custom Designs Available
World-wide Shipping

effusion
art gallery + cast glass studio

effusionartgallery.com | 250-341-6877



modboxUSA

Mid-Century Modern Mailbox

modboxusa.com | 919.781.8403



10% off with
code AR10

ETERNITY
MODERN

eternitymodern.com



Modtraveler.net

AN ENTHUSIAST'S GUIDE TO MODERNISM



Hip Haven

RETROMODERN LIGHTING + ACCESSORIES



HIPHAVEN.COM | 512-462-4755

Fine Dining

This mid mod gathering space serves up style and functionality.

By Jackie Torres | Photography by Marisa Vitale

DIMENSIONAL TILE FROM HEATH CERAMICS AND A BUILT-IN SIDEBOARD CUSTOM FIT TO THE NICHE BESIDE THE FIREPLACE ARE MIDCENTURY MODERN ELEMENTS THAT INFUSE THIS SPACE WITH EXTRA MID MOD CHARACTER.




During this season of turning our attention to hosting and entertaining, the dining room naturally comes back into focus. This bright and expansive dining room designed by Natalie Myers, owner and principal of Veneer Designs in Los Angeles, sets a great standard for any updated midcentury dining room. The 1963-built ranch in Mandeville Canyon had great bones, and a few smart additions and a carefully curated selection of furnishings give the open-plan space a heart-of-the-home appeal.

STYLE BOOSTERS

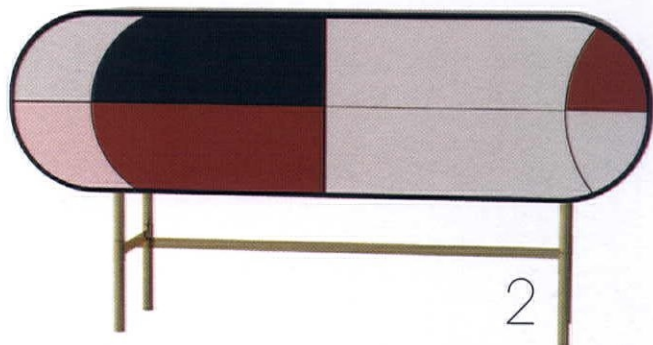
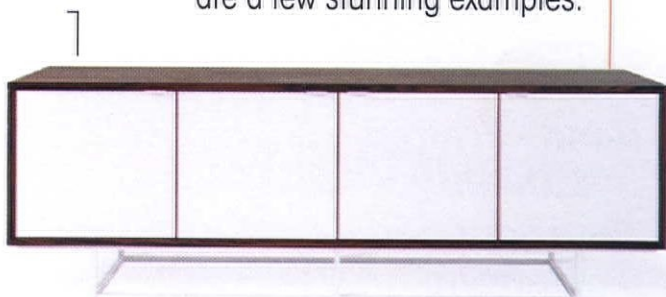
While this home certainly has its share of show-stopping architectural elements, Natalie shares how any homeowner can boost the architectural feel of a less flashy mid mod space. "Monochromatic is a great way to play with midcentury patterns and shapes without being too loud. Stick to the black/white/gray/wood color tones and get a little crazy with layering patterns."

FUNCTION MATTERS

A recess beside the fireplace was the perfect spot for Natalie to add a custom built-in sideboard. Its simple design focuses on a beautiful wood finish, which gleams in the mostly white room and complements rather than detracts from the striking brick and tile. 

Store More

A sideboard is the entertainer's best friend, concealing much-needed hosting tools behind stylish closed doors. Looking to add more style and function to your dining room? Here are a few stunning examples.

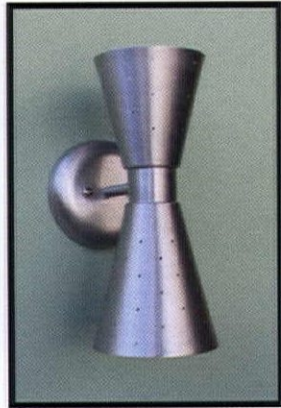
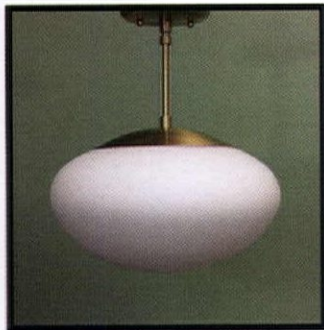


1. Emerson Credenza, \$1,865. (619) 487-1025 or d3home.com.

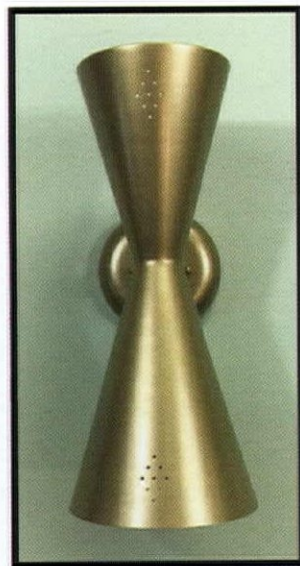
2. Retro Moryson sideboard, \$9,350. Visit mezzocollection.com.

3. Pablo 3-door sideboard, \$1,699. (973) 276-0444 or inmod.com.

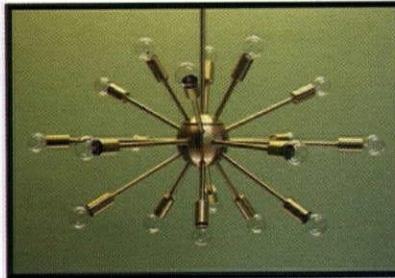
Practical P R O P S



**Hand - Crafted
& Quality
Reproduction
Lighting**



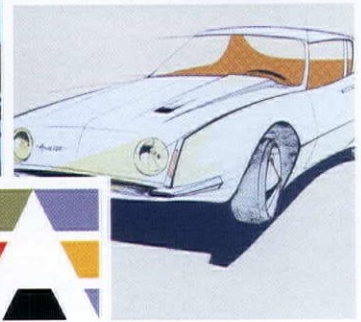
**Family-Owned
Since 1991**



**Visit our showroom in Los Angeles,
or shop online!**

shop.PracticalProps.com

Original 20th Century Art for your home



FORM FUNCTION ART®

formfunctionart.com

(256) 430-5780



AYMERICK MODERN
VINTAGE FURNITURE



AYMERICKMODERN.COM
SAN DIEGO, CALIFORNIA

MID-CENTURY MODERNIZED

NEW! LED LIGHT ENGINE TECHNOLOGY

Now nearly every Retro by Remcraft fixture is available with a new energy-efficient LED Light Engine!



You already know Retro by Remcraft for mid-century style and quality. Now, we're energy-efficient, too! Nearly all of our fixtures are available with a built-in, energy-efficient LED Light Engine!

More than just an LED bulb, this user-replaceable LED Light Engine is ENERGY STAR rated (great for green building and sustainable renovations), offers long life and — perhaps most important — its 3000K color temperature closely mimics the warm white light of traditional incandescents. And it's dimmable — no special dimmer required!



See the full line of Retro by Remcraft fixtures on our new web site!

(800) 327-6585

www.atomicremcraft.com



SpaceNeedle Table Lamp

The SpaceNeedle is a Mid-Century modern inspired table lamp and is available in two anodized finishes that will make a statement to any decore. Made in the USA.

tedstuff modern. elegant. fun.
tedstuff.net



Replace Broken or Stretched Fagas Straps!

Official US distributor
Since 1945

www.fagasstraps.com

www.fagasstraps.com info@fagasstraps.com 858.461.8069

*THE STARBURST



Be informed, be inspired, be the first to know what's going on in the world of MCM!

Are you getting **The Starburst**?
Your weekly guide to all things Mid Mod!

Sign up for the newsletter at atomic-ranch.com.

DALLAS DALLAS DALLAS

MODERN MATCHMAKER

Does Mid-Century Design make you sit up and take notice?
Call me and I will help you find a house for this chair where you will both feel at home.



ED MURCHISON

midcenturymoderndallashomes.com

214.395.7151
ed.murchison@cbdfw.com



GLOBAL
LUXURY

COLDWELL BANKER RESIDENTIAL BROKERAGE

resources

We Wish You a Modern Christmas, page 24

The Modern Christmas Tree®, (720) 638-9511 or modernchristmastrees.com.

Bay-Dreaming, page 26

Architect: Andrew Lee Architecture, (510) 428-4042 or alee-arch.com.

Interior design: Shara Lee of Kerf Design, (206) 954-8677 or kerfdesign.com.

Contractor: Cameron C. Habel Construction, Inc., (510) 531-4090 or habelconstruction.com.

Plywood banquette, bench and cabinetry: Custom.

In Good Hands, page 32

Vintage-style furnishings: Design Within Reach, dwr.com.

Vintage-style furnishings: West Elm, westelm.com.

Lamps: Modernica, (323) 933-0383 or modernica.net.

Bed: Ikea, ikea.com.

Antique trestle table, Craftsman-style dresser and vintage Cherner pretzel chair: Homeowner's collection.

Finn Juhl coffee table: Estate sale find.

Color-block magazine rack: Peter Pepper Products, peterpepper.com.

Panel wall paint color: "Head for the Beach" by Kelly-Moore, kellymoore.com.

Thermador oven and cooktop: Original to the home.

Into the Woods, page 44

KIDS' LANDING STRIP

Eames® Hang-It-All®: Design Within Reach, dwr.com.

Alma pouf ottoman: InMod, (877) 22-INMOD or inmod.com.

Shoe rack: OneFortyThree, (702) 566-8298 or onefortythree.com.

Baltwood rug: AllModern, allmodern.com.

DEN

IC T1 high table lamp by FLOS Lighting,

Bink mobile media table by BDI,

Flat woven Ago MTSF01A rug and Archer floor lamp by Robert Abbey: YLighting (866) 842-6209 or ylighting.com.

Guitar hook: OneFortyThree, (702) 566-8298 or onefortythree.com.

LIBRARY

Risom amoeba-shaped coffee table by

Knoll: YLighting, (866) 842-6209 or ylighting.com.

Glo-Ball F1 floor lamp: Design Within Reach, dwr.com.

Koncept Z-Bar LED floor lamp and Blu Dot Swole small table: 2Modern, 2modern.com.

LIVING ROOM

Danish modern midcentury wooden bird

flock of three: Etsy, visit etsy.com/shop/TNTDesignsStudio.

Brian Dubois end table: Next Space Detroit, (586) 601-6595 or nextspacedetroit.com.

Vintage Aaron Klic ceramic sculpture: Etsy, visit etsy.com/shop/TheHappyCollective.

IC floor lamp by FLOS Lighting, 6 foot torch floor lamp by Stickbulb and

Showtime Orgo cocktail table by Oggetti: YLighting, (866) 842-6209 or ylighting.com.

Maharam pillow in pebble wool: Design Within Reach, dwr.com.

Cambridgeshire log holder firewood rack log basket: Etsy, visit

etsy.com/shop/anvilforgeart.

NURSERY

Playground sofa by Eilersen: Trade Source, (510) 244-0112 or tradesourcefurniture.com.

Ubabub pod 2-in-1 convertible crib: Modern Nursery, modernnursery.com.

Alvord 55.5" floor lamp: AllModern, allmodern.com.

Cosmos floor lamp: Land of Nod, landofnod.com.

Balloon dog night light: Bitten, bitten-design.com.

Tree bookcase and Ami bassinet rocker: Nursery Works, (323) 688-3678 or nurseryworks.net.

MASTER BEDROOM

Showtime Orgo occasional table by

Oggetti: Lumens, (877) 634-1018 or lumens.com.

Alden end table: Ciseal, ciseal.com.

Pair of decorative round pillows: Joybird, (855) 855-9784 or joybird.com.

Vondom Bubbles lamp: 2Modern, 2modern.com.

Magazine rack: Ciseal, ciseal.com.

Belgian flax linen melange duvet cover and shams: West Elm, westelm.com.

Bubble sofa and ottoman: Roche Bobois, roche-bobois.com.

Nelson Saucer crisscross bubble pendant by Nelson Bubble Lamps (in headboard): Lumens, (877) 634-1018 or lumens.com.

15 Years of Modernism Week, page 54

Modernism Week, visit modernismweek.com.

A-Frame Escape, page 62

KITCHEN

Dishwasher: Bosch, bosch-home.com.

Refrigerator: Liebherr, liebherr.com.

Range: Bertazzoni, us.bertazzoni.com.

Pitcher and cups: Heath Ceramics, (415) 361-5552 ext.12 or heathceramics.com.

Tray and fondue set: Flea-market finds.

DINING AREA

Table: Herman Miller by Charles and Ray Eames, (888) 443-4357 or hermanmiller.com.

Lighting: Roll & Hill, rollandhill.com.

LIVING ROOM

Coffee table: Bensen, (604) 684-4919 or bensen.com.

CARPET

Atlas Carpet Mills, (800) 367-8188 or atlascarpetmills.com.

Fine Dining, page 74

Interior designer: Natalie Myers, Veneer Designs, (310) 995-8108 or veneerdesigns.com.

Sidewinder woodblock print: Block Shop, blockshoptextiles.com.

Slice wallpaper: Hygge & West, (855) 982-9280 or hyggeandwest.com.

Rug: West Elm, westelm.com.

Eames® molded plastic wire-base side chair and Nelson® triple bubble fixture kit: Design Within Reach, dwr.com.

Dining table: Croft House, (323) 886-0423 or crofthouse.com.

Dimensional tile: Heath Ceramics, (415) 361-5552 ext. 12 or heathceramics.com.

A-Plus A-Frame, page 82

A-frame cabin: Lokal Hotel, (267) 702-4345 or staylokal.com.

SMASHFIRE DESIGNS
JEWELRY • METAL ARTS

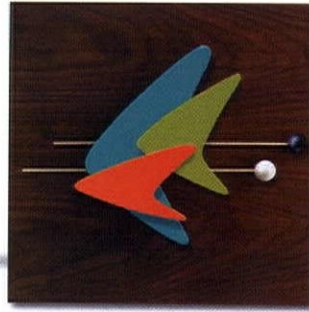
Handmade
Mid-Century Modern
and Tiki Inspired Jewelry

ATOMIC10 for 10% OFF

smashfiredesigns.com



ATOMIC PAD
Home bars & decor



etsy.com/shop/atomicpad

atomicpad.net

Made to order - handcrafted in California

Home Portraits

CHRISTIAN MUSSELMAN

Illustration

christianmusselman.com



Modern
Retrograde
LLC

MID CENTURY
MODERN STYLED ART

[ETSY.COM/SHOP/MODERNRETROGRADE](https://etsy.com/shop/modernretrograde)

INTERNATIONAL SHIPPING • CUSTOM DESIGNS • 100% HANDMADE



THE HARPER

atomicadvertisers

ACCESSORIES & ARTWORK

Atomic Mobiles 72
323.640.0003
atomicmobiles.com

Cardboard Safari 81
877.895.9453
cardboardsafari.com

Christian Musselman 79
christianmusselman.com

Effusion Art Gallery & Glass Studio 72
250.341.6877
effusionartgallery.com

Form Function Art 76
256.874.3535
formfunctionart.com

Hip Haven 73
512.462.4755
hiphaven.com

Mac George 17
macartprints.com

Modern Retrograde 79
modernretrograde.com

Piazza Design 81
retropetdens.com

Shag 83
wh: 323.424.3005
ps: 760.322.3400
shagstore.com

TedStuff 77
tedstuff.net

ACCOMMODATIONS & MCM LIFESTYLE

Modernism Week 7
modernismweek.com

ModTraveler 73
modtraveler.net

Palm Springs Modernism Week Show & Sale 6
palmspringsmodernism.com

DESIGN RESOURCES

Asheford Institute of Antiques 71
877.444.4508
asheford.com

Eichler Siding 72
415.883.5300
eichlersiding.com

Escon MasterGrain 23
www.doors4home.com
www.doors4home.com/m-12-escon-doors.aspx

Kerf Design 11
206.954.8677
kerfdesign.com

Modernous 71
206.399.1419
modernous.com

NanaWall 13
800.573.5673
nanawall.com

LIGHTING

Modilumi 23
651.600.3470
modilumi.com

Practical Props 76
818.980.3198
practicalprops.com

Remcraft 77
800.327.6585
atomicremcraft.com

YLighting.com 84
855.451.6758

MIDCENTURY REAL ESTATE

Mid-Century Homes 19
208.996.5759
mid-centuryhomes.com

Midcentury Modern Dallas Homes 77
214.395.7151
midcenturymoderndallashomes.com

Modern Homes Portland 81
971.285.7955
modernhomesportland.com

Modern Illinois—Lou Zucaro Baird & Warner 72
312.907.4085
modernil.com

Restore Oregon 21
restoreoregon.org
503.243.1923

MODERN FURNISHINGS

Atomic Pad 79
562.481.4036
atomicpad.net

Aymerick Modern 76
760.509.5974
aymerickmodern.com

Block Woodworks 31
blockwoodworks.com

Copeland Furniture 2-3
802.222.9282
copelandfurniture.com

Eternity Modern 73
1.800.993.0903
eternitymodern.com

Hunt & Noyer 21
313.731.2485
huntandnoyer.com

Jillian Rene Decor 71
jillianrenedecor.com

Joybird 4-5
joybird.com

Kardiel 9
kardiel.com

OTHER HOUSE STUFF

Clayhaus 71
503.928.3076
clayhaustile.com

modbox USA, Inc. 73
919.781.8403
modboxusa.com

ModCraft 81
718.541.1160
mod-craft.com

Modwalls 23
877.439.9734
modwalls.com

Smashfire Designs 79
914.200.3356
smashfiredesigns.com

VINTAGE SHOPS & FURNITURE REHAB

Evans Co 77
858.461.8069
fagasstraps.com

Make It Midcentury 31
844.696.6462
makeitmidcentury.com

ModCraft
Modern Handmade Tile



718-541-1160

www.mod-craft.com

Shouldn't his house
be as stylish as yours?



Quality Custom Furniture for Pets ...and Humans



piazza design
creative woodwork

www.RetroPetDens.com

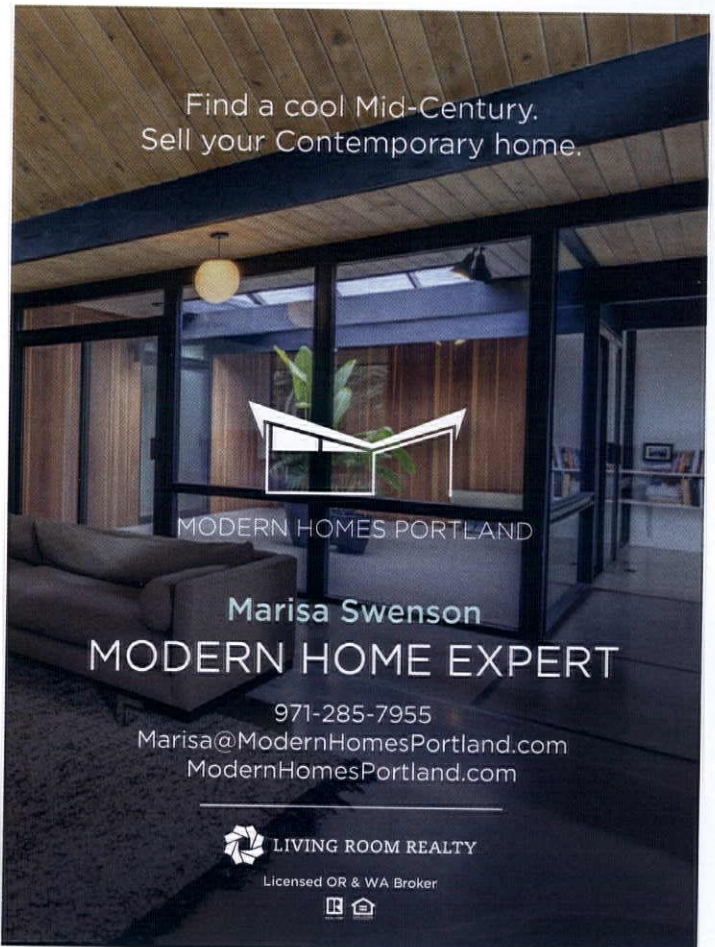
MODERN HOLIDAY TREE

CB SAFARI introduces our modern, birch, holiday tree, "Bracht". Perfect for apartments, dorm rooms and other small spaces. Bracht, features a parametric design that is easily customized for size, color, and leaf shape. The tree can be internally illuminated with LED lights. Packs flat for easy shipping or storage. Available in 1, 4, and 6 foot versions of birch plywood or cardboard. See our web site for the full range of product options.

www.cbsafari.com

877-895-9453 • info@cbsafari.com

Find a cool Mid-Century.
Sell your Contemporary home.



MODERN HOMES PORTLAND

Marisa Swenson

MODERN HOME EXPERT

971-285-7955

Marisa@ModernHomesPortland.com

ModernHomesPortland.com



LIVING ROOM REALTY

Licensed OR & WA Broker



last look

FOR ANOTHER COZY
A-FRAME CABIN, SEE
PAGE 62.

Now a rentable, peaceful escape, this 1960s cabin was purchased by Lokal Hotel from the home's original family.

A-Plus **A-Frame**

Photography by Heidi's Bridge, courtesy of Lokal Hotel

THE STEEPLY ANGLED ROOFLINE OF AN A-FRAME COMBINES Midcentury Modern sleek design with rustic simplicity and a touch of whimsy. Add in some snow and you've got an idyllic winter escape. Located in Dorchester, New Jersey, this cozy A-frame cabin was built in the 1960s from California redwood. Now a Lokal Hotel boutique vacation home with a Scandinavian Modern interior, this wilderness retreat is situated on 2.5 acres of serene wooded land and fronts the Maurice River. About 50 minutes outside of Philadelphia, the cabin boasts three bedrooms and two baths, for the perfect getaway.



TWIST • WATUSI • HULLY GULLY • COOL JERK



Dance Party three-speed portable record player with built in stereo speakers, RCA output and headphone jack. Limited edition of 200.



Palm Springs • West Hollywood • shagstore.com • 760.322.3400

YLIGHTING
The Best in Modern Lighting



Shop YLighting.com or Call 855-451-6758. IC S Pendant Light From Flos