

# atomic

MID CENTURY MARVELS

# ranch

Rooted in Retro:  
Period renovation &  
design ideas for every room

Smart kitchen and office solutions



Made in America Made



Sloane Bedroom



to Order      Made to Last



copeland

FURNITURE  
copelandfurniture.com



# editor's letter



PHOTO BY MARK MENDEZ

## THE RETRO ROOST

The image of sleek low-slung mid mod homes tends to be synonymous with summer: palm trees, tiki drinks and pool parties just go hand-in-hand with bold rooflines and sprawling floor plans. But to me, Mid Century Modern homes just glow in the fall. There's a romance to the idea of floor-to-ceiling windows framing the amber light glimmering around the silhouettes of a home's inhabitants as they settle in for a cool evening.

Give me all the wooded landscapes enshrouding fab A-frame cabins in the mountains and towering pines hugging the post-and-beam glass houses in the Pacific Northwest. Nothing looks better on my Eames Hang-It-All than a chunky scarf and vintage cardigan. Can you tell that fall is my favorite season?

In the fall, we at *Atomic Ranch* tend to focus on the cozy side of mid century living. There's a renewed interest in interiors as we focus inward for the rest of the year. And while yes, we've all been home lately more than ever before, this is still the season of hosting, nesting and roosting, and we turn our attention to the things that inspire comfort and rest.

This issue is full of homes with unique personalities. They've done the work of restoring and renovating the bones, but also tended to the furniture, collections and décor that make a house a home. And as you'll see with each page of ideas and recommendations, this is the time to focus on not only what you need, but what makes you happy.

Jackie Torres

Get connected!

Email: [editor@atomic-ranch.com](mailto:editor@atomic-ranch.com) • Online: [atomic-ranch.com](http://atomic-ranch.com) • [@theatomicranch](https://www.instagram.com/theatomicranch)

**atomic  
ranch**

### EDITORIAL

Brand Leader: Jackie Torres  
Senior Editor: Lindsay Jarvis  
Managing Editor: Victoria Van Vlear  
Digital Brand Manager: Kris Christensen

### DESIGN

Design Director: Gabby Oh

### CONTRIBUTORS

Shelby Deering, Autumn Krause, Laura Shimko, Devlin Smith

### CONTRIBUTING PHOTOGRAPHERS

Cy Gilbert, Clay Grier, Bret Gum, Chad Mellon, Ryan Schude, CJ South

### ADVERTISING

Sherrie Norris - [snorris@engaged.media](mailto:snorris@engaged.media)  
Julie Hale - [jhale@engaged.media](mailto:jhale@engaged.media)  
Sebastian Tirkey - Advertising Traffic Coordinator

### OPERATIONS

Manish Kumar Mishra: Operations Specialist  
Surajpal Singh Bisht: Prepress Manager  
Chandan Pandey: Production & Newsstand Circulation Analyst  
Alex Mendoza: Administrative Assistant

### EDITORIAL, PRODUCTION & SALES OFFICE

17900 Sky Park Circle #220, Irvine, CA 92614  
[www.atomic-ranch.com](http://www.atomic-ranch.com)  
(714) 939-9991, Fax (800) 249-7761

**ATOMIC RANCH** (ISSN 1547-3902) Issue 67, Fall 2020. *Atomic Ranch* is published 6 times per year (Spring, Summer, Renovation Guide, Fall, Winter, Design Issue) by Engaged Media LLC, 17900 Sky Park Circle #220, Irvine, CA 92614. Periodical postage paid at Irvine, CA, and additional mailing offices. **POSTMASTER:** send address changes to Atomic Ranch c/o Engaged Media LLC, Cenveo, 101 Workman Ct., Eureka, MO 63025. © 2020 by Engaged Media LLC. All rights reserved. Reproduction of any material from this issue in whole or in part is strictly prohibited. GST #855050365RT001 Canada Post: Publications Mail Agreement #40612608. Return undeliverable Canadian addresses to: PITNEY BOWES, INC., P.O. Box 25542, London, ON N6C 6B2.

### CUSTOMER SERVICE

ENGAGED MEDIA LLC  
17900 Sky Park Circle #220  
Irvine, CA 92614

SUBSCRIPTIONS, ADDRESS CHANGES,  
RENEWALS, MISSING OR DAMAGED COPIES  
(800) 764-6278  
(239) 653-0225 Foreign Inquiries  
[subscriptions@engagedmediainc.com](mailto:subscriptions@engagedmediainc.com)  
[customerservice@engagedmediainc.com](mailto:customerservice@engagedmediainc.com)

### BACK ISSUES

[www.engagedlifestyle.com](http://www.engagedlifestyle.com)

BOOKS, MERCHANDISE, REPRINTS  
(800) 764-6278, Foreign (239) 653-0225

LETTERS TO THE EDITOR, NEW PRODUCTS OR TO  
CONTRIBUTE A STORY OR PHOTO  
[editor@atomic-ranch.com](mailto:editor@atomic-ranch.com)

### SUBSCRIPTION RATES

\$29.95/1 year, \$52.95/2 years. Foreign, \$51.95 per year, \$96.95 per 2 years payable in US funds. Single copy price is \$7.99. Please allow 6 to 8 weeks for new subscriptions to begin.

**ENGAGED<sup>®</sup>**  
**MEDIA LLC**

ENGAGED MEDIA LLC

Scott Hall: CEO  
Pinaki Bhattacharya: Managing Director & COO  
John Goodpasture: Vice President Sales  
Erin Masercola: Director of Content Operations  
Carrie Rubalcaba: HR Generalist  
Jackie Torres: Director of Content

This magazine is purchased by the buyer with the understanding that information presented is from various sources from which there can be no warranty or responsibility by Engaged Media as to the legality, completeness or technical accuracy.

GST #855050365RT001  
Canada Post: Publications Mail Agreement #40612608  
Return undeliverable Canadian addresses to:  
PITNEY BOWES, INC.  
P.O. Box 25542  
London, ON N6C 6B2



## A Passion For Good Design - The Kardiel Difference



**12% OFF**

with promo code  
**SHOPMOD12**  
FREE SHIPPING ON \$995+

FREE FABRIC AND LEATHER SWATCHES  
7 - 10 DAY DELIVERY FOR IN-STOCK ITEMS  
365 IN-HOME TRIAL | [WWW.KARDIEL.COM](http://WWW.KARDIEL.COM)



# JOYBIRD

Create a space that brings you joy

No need to blend in. With 37,000+ ways to customize your furniture, we're ready to help bring your dream room to life.







Soto Chair | \$1,399  
in Key Largo Grass



Gert Coffee Table | \$636  
in Walnut



Collins Chair | \$1,279  
in Taylor Golden



Hughes Swivel Chair | \$1,339  
in Lucky Turquoise



Hughes Bed | \$2,616  
in Impact Mist



Adina Sofa | \$2,373  
in Sorrento Marigold



Florence Media Console | \$1,564  
in Mango Wood



Toscana Dining Set | \$2,850  
in Taylor Felt Grey



Eliot Leather Sectional with Bumper | \$5,850  
in Santiago Camel



Eliot Bench | \$1,827  
in Royale Forrest

**25% OFF\***

Use Promo Code  
**RANCH25**  
Until: 10.18.2020

Limited Lifetime Warranty | 90-Day Returns | Buy Now, Decide Later

**Don't want to wait?**

Shop our Quick Ship furniture. It's ready  
to ship within 3-5 business days!

[Joybird.com/instock](http://Joybird.com/instock)

\*The 25% discount is a limited time offer valid until 10.18.2020 and it cannot be combined with other offers, discounts, or prior purchases. For additional details on Returns and Exchanges please visit [joybird.com/returns-and-exchanges/](http://joybird.com/returns-and-exchanges/). For additional details on shipping visit [joybird.com/shipping-and-delivery/](http://joybird.com/shipping-and-delivery/). For additional details on buy now, decide later visit [joybird.com/decide-later/](http://joybird.com/decide-later/). Products shown above does not necessarily reflect current on-site inventory. Quick Ship items typically ships within 3-5 business days of order. Date of delivery will vary depending on your location. Limited availability.

[Joybird.com](http://Joybird.com) | 888.282.0842



# Contents **fall 2020**

26



## FEATURES

### 26 The Perfect Note

Classic mid century décor combines with interior design ingenuity to create a modernist home in this 1950 rental house.

### 38 Preserved and Refined

In this custom-built 1965 home, much thought was put into what to keep, what to enhance and what to replace during an era-appropriate update.

### 50 Vibrant Refresh

Vivid colors and bold patterns mix beautifully in this much-needed renovation, taking the home from disarray to retro-gorgeous.

### 60 An A-Frame in the Woods

A long-neglected A-frame cabin is transformed into an idyllic getaway, thanks to creative and passionate homeowners.

### 70 Working Smarter

Need to create a home office in a small space? This resourceful homeowner did just that and shares her tips and tricks.



## DEPARTMENTS

- 4 Editor's Letter
- 10 Web News
- 12 Cool Stuff
- 16 Period Picks
- 20 Atomic Kitchens
- 78 Atomic Advertisers
- 80 Resources
- 82 Last Look



### cover

Cover Photography by Bret Gum  
Cover Design by Gabby Oh





# webnews

## Keep tabs on us

Read More at [Atomic-Ranch.com](http://Atomic-Ranch.com).

### Inside Scoop!



PHOTO BY JIM BROWN

#### Bedroom Decorating Ideas

Get inspired by this gallery of beautiful Mid Century Modern bedrooms and glean some ideas for how to arrange and decorate yours.



PHOTO BY JICKIE TORRES

#### Shop Black-Owned MCM Businesses

We've rounded up some of our favorite sellers, makers and dealers in the Mid Century Modern market so you can help support and spotlight Black-owned businesses with us.



PHOTO BY JIM BROWN

#### Wonderful Wood

If you're in the market for something other than an all-white kitchen, take a look at these gorgeous kitchens where wood is the star.



PHOTO BY JIM BROWN

#### Dinnertime Design

Hoping to host this holiday season? We've rounded up everything you need to set a beautiful mid mod Thanksgiving table.



Follow us online on Facebook, Pinterest and Instagram daily!

LOOK FOR THIS THROUGHOUT THE ISSUE TO SEE WHAT EXTRA CONTENT YOU'LL FIND ONLINE.



PHOTO COURTESY OF BRAABU

#### Light My Fire

Nothing beats enjoying a cool fall evening by an outdoor fire pit. So break out the s'mores and hot chocolate and check out these stylish picks.



# Palm Springs

## MODERNISM

### SHOW & SALE

FALL EDITION

October 16-18, 2020  
Palm Springs Convention Center



45 Premier national and international decorative and fine arts dealers presenting vintage 20th century furniture, decorative and fine art, as well as contemporary design inspired by it

October 16 • 6–8pm • Preview Party

Benefiting Modernism Week

\$75 advance • \$85 at the door

Tickets available September 1 at [modernismweek.com](http://modernismweek.com)

October 17–18 • Show & Sale

Saturday 10 am–6 pm • Sunday 10 am–4 pm

\$15 weekend admission

Tickets at [palmspringsmodernism.com](http://palmspringsmodernism.com) or at the door

[palmspringsmodernism.com](http://palmspringsmodernism.com)

Sponsors

BIDSQUARE

 modernism week  
Official Modernism Week Event

 Antiques & Fine Art

ANTIQUES

atomic  
ranch



CALIFORNIA  
HOMES

PALMSPRINGS LIFE

santa fean

Dolphin Promotions

Chicago 708.366.2710

Florida 954.202.1955

[info@dolphinfairs.com](mailto:info@dolphinfairs.com)



# coolstuff

By Lindsay Jarvis

## Out of This World

Bring space-age splendor into your home with these atomic furnishings and décor pieces!



**Broomfield 6-light sputnik sphere chandelier**, \$597. (844) 860-1608 or [allmodern.com](http://allmodern.com).



**Silver-finish riveted aluminum console airplane spacecraft-style TV stand**, \$995. (888) 850-3348 or [woodwaves.com](http://woodwaves.com).

**Cosmo table lamp #1990**, \$385. (651) 600-3470 or [modilumi.com](http://modilumi.com).



**Ball fabric chair**, \$1,500. (877) 844-4988 or [kardiel.com](http://kardiel.com).



**Space Age UFO silver-plated sugar bowl, 1960s**; \$312. Visit [pamono.com](http://pamono.com).



**Cats & Iconic Chairs** combo set of 4 Earthware drink coasters, \$55. Visit [shagstore.bigcartel.com](http://shagstore.bigcartel.com).

IMAGE COURTESY OF PAMONO & TRESOR PIOTR TUMIDAJEWICZ



we make mid-century dreams come true.



Every day  
at Mid-Century Homes,  
Jessica, Vance, TJ, Mark and Katie  
obsess about finding the coolest mid-century  
homes in the nation's most livable city. Scenic Boise, Idaho  
is home to over 11,000 mid-century gems at attainable  
prices. With top-shelf customer service and a  
deep expertise, this Dream Team is ready  
to show off the best of Boise:

[MID-CENTURYHOMES.COM](http://MID-CENTURYHOMES.COM)



mid-century  
homes

By Anthology



# coolstuff



Vintage Danish modern teak biomorphic side table, \$1,250. Visit [midcenturymobler.com](http://midcenturymobler.com).



Handmade Mid Century Modern clock, starting at \$259. Visit [etsy.com/shop/BlackwellWoodworks](http://etsy.com/shop/BlackwellWoodworks).



Little sliders wall cabinet with 2 sliding doors, \$395-\$540. (206) 954-8677 or [kerfdesign.com](http://kerfdesign.com).



Aubrey sofa, \$2,316. (855) 855-9784 or [joybird.com](http://joybird.com).

Mid Century Modern light switch plate cover, starting at \$11.50. Visit [etsy.com/shop/SpringRiverStudio](http://etsy.com/shop/SpringRiverStudio).

Mid Century Modern graphic cloth napkin, \$11.99. Visit [retrolifestylecompany.com](http://retrolifestylecompany.com).



Boomerang drawer pull in brushed chrome, \$10. (888) 401-1900 or [rejuvenation.com](http://rejuvenation.com).



# KERF

plywood cabinets for the modern home

[kerfdesign.com](http://kerfdesign.com)





# periodpicks



## Dining Delights

Make your meals at home a special treat with this tableware and these modern linens.

By Lindsay Jarvis

1. Ovals napkins in green, set of 2, \$26. Visit [heathceramics.com](http://heathceramics.com).
2. Puolikas rectangular stoneware plate, \$25. (888) 308-9817 or [marimekko.com](http://marimekko.com).
3. BOEIEN salt and pepper shaker by PUIK, \$35. (617) 203-2038 or [uniekliving.com](http://uniekliving.com).
4. Mix & match small rectangular tray in gray, handmade from a combination of copper-plated aluminum and ceramic, \$400. (866) 842-6209 or [yliving.com](http://yliving.com).
5. Ingrid side chair with wood seat. For pricing, (802) 222-9282 or [copelandfurniture.com](http://copelandfurniture.com).
6. Audrey extension table with easy stow extension and leaf storage. For pricing, (802) 222-9282 or [copelandfurniture.com](http://copelandfurniture.com).





# Question Conventional Boundaries



Silicon Valley Eichler • NanaWall SL60 Folding Glass Wall • Architect: Blaine Architects • Photo: Konstrukt Photo

## NanaWall Opening Glass Walls

Transform traditional walls into flexible openings that invite the outside in.

-  Wind & Water Resistant
-  Energy Efficient
-  Highly Secure
-  Easy Operation & Durable

Explore our opening glass wall product families:

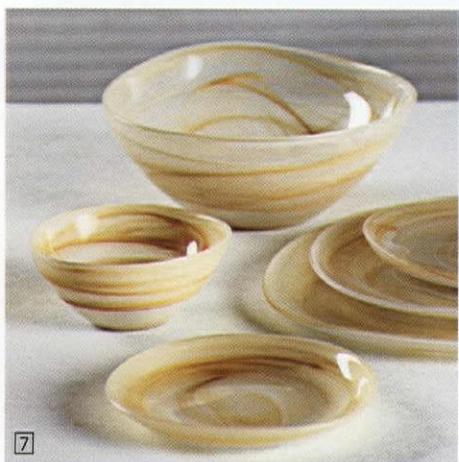


Showrooms Nationwide  
Visit [NanaWall.com](http://NanaWall.com)  
800 873 5673  
[inquiries@nanawall.com](mailto:inquiries@nanawall.com)

**NanaWall**<sup>®</sup>  
Engineering the Exceptional



# periodpicks



7



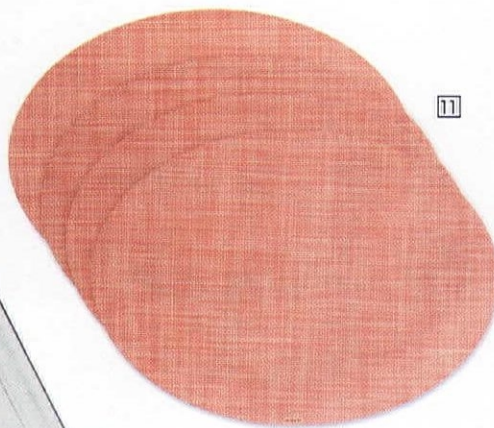
8



9



10



11



12

- 7. Mallorca free flow alabaster tableware, \$13-\$33. Visit [carlyleavenue.com](http://carlyleavenue.com).
- 8. Hand block printed K'un linen tablecloth, \$150. Visit [food52.com](http://food52.com).
- 9. Oval tapas tray, walnut. For pricing and availability, (443) 997-9364 or [dpattersondesignstudio.com](http://dpattersondesignstudio.com).
- 10. 24" x 24" x 30" dining/restaurant table, solid cherry with clear powder coated base. For pricing, (775) 622-3346 or [anthonylamorte.com](http://anthonylamorte.com).
- 11. Chilewich mini basketweave oval placemats, set of 4, \$68. (800) 944-2233 or [dwr.com](http://dwr.com).
- 12. 5-piece place setting, \$34.99. Visit [fiestafactorydirect.com](http://fiestafactorydirect.com).
- 13. Classic Fjord II 5-piece place setting, \$40. Visit [dansk.com](http://dansk.com).



13



# B&W Tile

The Original source for  
Mid-Century, Retro  
& Vintage, Tile since 1949



*Colors We Have Those!!*

Come visit us [www.bwtile.com](http://www.bwtile.com) • Call us 310-538-9579 • Email us [info@bwtile.com](mailto:info@bwtile.com)



**case.study.house.26**

San Rafael, California

The vacation rental for  
your trip to San Francisco,  
the Napa/Sonoma Wine  
Region or the Pacific Coast.  
Perfect for a secluded weekend.

[casestudyhouse.com/rental](http://casestudyhouse.com/rental)

[casestudyhouse26](https://www.instagram.com/casestudyhouse26)

[hello@casestudyhouse.com](mailto:hello@casestudyhouse.com)



# atomickitchens

## FRESH & MODERN

An Austin, Texas, kitchen and accompanying living spaces make for a mid mod design that's equal parts classic and contemporary.

By Shelby Deering | Photography by Clay Grier

### *design* MUST-HAVES:

- Natural light
- Durability
- Open flow



ONCE IN DISREPAIR, THE KITCHEN WAS REDESIGNED WITH TERRAZZO FLOORING, CUSTOM CABINETRY, A TILE BACKSPLASH AND AN EXPANSIVE WINDOW THAT NOW BRINGS LIGHT INTO THE ROOM.





THE MID CENTURY, YET DISTINCTLY CURRENT, KITCHEN IS A STUDY  
IN STRIKING MATERIALS. WITH A MOSAIC TILE BACKSPASH FROM  
BEDROSIANS TILE & STONE, AND A FIRE-BRUSHED ABSOLUTE BLACK  
GRANITE COUNTERTOP, THE HUES WORK TOGETHER SEAMLESSLY.







## Some mid century homes

have hardly changed at all since they were first constructed over six decades ago. Lovingly cared for throughout the years, new homeowners find themselves needing to make barely any renovations at all.

Then there are those mid mod homes that can use a little more TLC. Located in Austin, Texas, just a few miles from the state capitol building, this 1955 home was not carefully maintained over time. As a result, the homeowners opted for a "complete gut," which is how Christina Simon, senior designer at Mark Ashby Design, describes the original condition of the home.

### COOL & CURRENT KITCHEN

The kitchen, one of the centerpieces of this reimagined home, is stunningly on trend and yet pays homage to mid century design in several ways, from the linear, mosaic tile backsplash to the terrazzo flooring. "The kitchen was completely redesigned to open the space and to let more light in," Christina says. "We selected all-new appliances, installed a new oversized window above the sink and added a new sliding door with access to an outside patio."

**TOP:** BETWEEN THE KITCHEN AND DINING AREA, CUSTOM WOOD PANELING CREATES AN EYE-CATCHING FEATURE FOR THE HOMEOWNERS AND GUESTS TO ENJOY AS THEY WALK INTO THE HOUSE. THE STAIRS TO THE LEFT LEAD TO A CHIC SUNKEN DEN THAT WAS ONCE A GARAGE. CHRISTINA SAYS, "THE ARCHITECTS WERE ABLE TO REMOVE THE HEAVY FEEL OF THE BRICK WALL THAT SEPARATED THE [CONVERTED] GARAGE FROM THE REST OF THE HOUSE AND BETTER INTEGRATE THE SUNKEN DEN."

## / REAL HOME 101 /

**TYPE OF HOME:** 1955 ranch

**ARCHITECT:** Unknown

**BACKGROUND:** The entire home was gutted, since it had fallen into disrepair. The kitchen received a modern makeover with brand-new appliances, custom cabinetry, flooring, countertops and more.

**COLOR SCHEME:** Natural oak finishes paired with airy whites, mossy greens and anchoring touches of black.

**INNOVATIVE IDEA:** Using simple, integrated hardware in the kitchen. "The house is filled with this same oak, and we wanted it to be the star, not the 'jewelry'," Christina explains.





**ABOVE:** THE KITCHEN HAS BEEN UPDATED FOR THE 21ST CENTURY WITH ITS CUSTOM CABINETRY, THERMADOR GAS RANGE AND KITCHENAID WALL VENT HOOD.

**OPPOSITE, TOP:** THE CENTERPIECE OF THE DINING ROOM IS A CLASSIC ISAMU NOGUCHI LIGHT FIXTURE. CHRISTINA SHARES, "WE LOVE THE SIMPLICITY OF HIS LIGHTING SCULPTURES AND WE ALSO WANTED TO PAY HOMAGE TO THE MID CENTURY MASTERS."

**OPPOSITE, BOTTOM:** OPEN FLOW WAS A TOP GOAL FOR THE HOMEOWNERS DURING THIS PROJECT. IT CAN BE WITNESSED IN THIS OPEN FLOOR PLAN SHOWCASING A DINING AREA THAT EFFORTLESSLY LEADS TO A SUNKEN DEN AND BUILT-IN SITTING AREA.

## WHAT MAKES IT MCM?


- Built-ins
- Surprise see-through spaces
- Organic textures

While Christina helmed the interior design, architects Rick and Cindy Black dreamed up the kitchen, resulting in a classic U-shaped mid century kitchen layout. "I came in and chose the finishes, tile and counters, and finally, we made a bold move to integrate the hardware and overaccentuate the oak by showcasing it throughout all of the built-ins," Christina explains.

With its spacious bar and room to move, it's no wonder that this kitchen makes for a perfect gathering space in the home. "The goal of the renovation was to create greater openness, comfort and daylight for the interior," architects Rick and Cindy Black share. "We all agreed that the home should be a warm and inspiring place for friends and family."

### LIT-UP LIVING SPACES


Alongside the kitchen, you'll find copious living spaces in this home, ideal for pre-dinner lounging and cocktail hours. A dining area, reading nook and sunken den reside comfortably next to the kitchen in this open floor plan, all illuminated with the natural light that now flows in through the windows.

Displaying a style that Christina calls "organic modernism," she reflects on the home's design, saying, "The word 'modern' can often be used to describe some of the more cold, contemporary designs. But if you take it back to its truest form, it describes a sense of cleanliness and materiality that was first embraced during the mid century era." 









# The **Perfect** Note

Design savvy meets classic mid century décor to create the ideal modernist home for improvisational performer and musician, Reggie Watts.

By Lindsay Jarvis

Photography by Ryan Schude



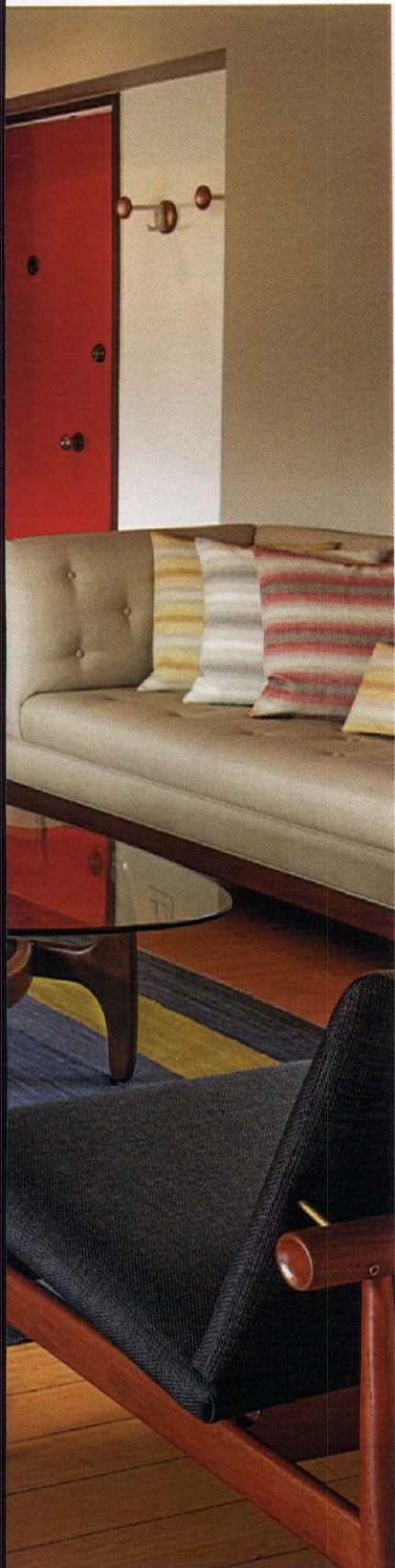
A CUSTOMIZED THOMAS HAYES SOFA Pairs WITH VINTAGE ADRIAN PEARSALL TABLES AND FINN JUHL JAPAN LOUNGE CHAIRS AND SOFA, ALL TOPPED WITH CUSTOM PILLOWS. TO CREATE A COHESIVE ROOM, THE DOOR AND WINDOWS WERE STRIPPED AND STAINED TO MATCH THE RICH WOOD HUES OF THE FURNITURE.











**ABOVE:** THICK VELVET CURTAINS WERE ADDED TO COMPLEMENT THE PRE-EXISTING SHAG CARPET IN REGGIE'S DEDICATED MEDIA/GAME ROOM. "THE PANELING WAS ORIGINAL, BUT IT WASN'T ON EVERY WALL, SO I ADDED MORE SO THAT IT TOTALLY WRAPS AROUND THE ROOM AND GIVES IT THAT RETRO DEN KIND OF FEEL," SAYS JARED.

**LEFT:** THE CUSTOMIZED CREAM THOMAS HAYES SOFA IS ONE OF REGGIE'S FAVORITE PIECES IN THE HOME. WITH AN UNBROKEN CUSHION AND A LENGTH OF ABOUT SIX FEET, IT CAN DOUBLE AS A GUEST BED. JARED ADDED AN AKSEL KJERSGAARD ROUND MIRROR—WHICH MIMICS THE DOOR FRAMES AND WOOD FURNITURE—AS WELL AS TWO ABSTRACT WOODEN SCULPTURES ON THE PRE-EXISTING FIREPLACE.

## How can you make a house a home when you're renting the space?

Improvisational performer and musician Reggie Watts moved to Los Angeles in 2014 for his job on *The Late Late Show with James Corden*. He knew what he was looking for—a one-level, three-bedroom flat with a game room, plus a two-car garage and driveway—and discovered it with the help of a realtor found through a mutual friend. "I immediately liked it because it was brown with a fluorescent green trim around the windows. It was exactly what I was looking for," remembers Reggie.

The home, built in 1950 by Denver Markwith Jr., was perfect; however, the owner abruptly decided against renting the space. Disappointed, Reggie viewed several more homes, but none were up to par. Miraculously, the homeowners changed their minds about a week later and Reggie got the rental.



**"I like (Mid Century Modern) because it's a cool design aesthetic. It's simplicity. It's simple, elegant, but it definitely reflects a zeitgeist of that time, in the '50s, where there was kind of a laid back, functional leisurely quality to it."** - Homeowner Reggie Watts





WANT TO  
LEARN ABOUT  
HEALTHY LIVING IN A  
MID CENTURY HOME?  
CHECK OUT  
ATOMIC-RANCH.COM.



**ABOVE:** IN THE GUEST ROOM, MORE PANELING WAS ADDED TO WHAT WAS PRE-EXISTING. THE ZIGZAG PATTERN ON A FLEA MARKET VINTAGE AFGHAN THROW ECHOES THE CUSTOM PILLOWS IN THE LIVING ROOM AND THE MISSONI BATHROOM TOWELS.

**LEFT:** AS IN OTHER ROOMS, THE KITCHEN WINDOW AND DOOR FRAMES WERE STRIPPED AND STAINED—IN THIS SPACE, TO MATCH THE HOWARD MILLER WALL CLOCK. “THE CHERRY RED CABINETRY AND SLATE BLUE WALLS WERE PRE-EXISTING AND INSPIRED THE COLORS I ENDED UP USING IN THE LIVING ROOM,” JARED EXPLAINS.

## COHESIVE SPACE

With the framework of a mid century gem, the next challenge was creating an interior to complement the aesthetic. “For me, I like to make sure the environment is matched, that the spirit of the architecture is matched with the period of the furniture, or the furniture reflects the architecture,” Reggie explains. With the help of interior designer Jared Frank of Topsy Design, the team wanted to “create a cohesive space that met all of Reggie’s needs without performing a renovation,” says Jared.

“Normally, my first step would have been to move a few walls, repaint the exterior, update or even move doors and windows, etc. ... but because Reggie’s a renter I had to work inside the box I was given,” explains Jared. Instead, he creatively drew inspiration from elements he couldn’t change, such as bringing exterior colors inside as accents and adding an additional wall of wood paneling in the guest room.





When it came to décor, Jared and Reggie looked through design books and perused vintage stores. Reggie quickly fell in love with the durable-yet-streamlined mid century Scandinavian furniture. "It's so thin, but it's so incredibly strong and it's an aesthetic that I appreciate, and I look for in anything that I design or make for myself," says Reggie. Jared furnished the home with a mix of vintage, custom and new pieces to create a consistent look throughout each space. Reggie's favorite pieces include a vintage Sergio Rodrigues rosewood bedframe and the Thomas Hayes customized sofa in the living room. For Jared, the Finn Juhl Japan chairs have the greatest impact, and his personal favorite is the guest room pillow, "which I made from a Frank Lloyd Wright textile found at the Downtown Modernism flea for a song," Jared says.

## CUSTOM UPDATES

One area that allowed more freedom was the backyard patio, which Jared designed, creating a great relaxation spot with tremendous views. The deck's custom built-in bench features two side tables that reveal charging stations when the tops are removed. With the push of a button, a large awning (made in the same oversized houndstooth fabric as the bench cushion below) extends for added shade and privacy. For Jared, an understated element stands out most. "It's a subtle effect, but I'm actually most proud of the copper-wire railing cable, which has aged brown/green and really disappears as opposed to what folks usually use—steel—which stays a shiny silver forever and feels way too contemporary for this house," he says.





TOP: A FAVORITE OF REGGIE'S, THE ROSEWOOD SERGIO RODRIGUES BEDFRAME MAKES AN IMPRESSIVE FOCAL POINT TO THE BEDROOM. IN TRUE MODERNIST FASHION, THE SHADES ARE AUTOMATED. "REGGIE IS A MUSICIAN WHO WORKS AND WAKES LATE, SO ALL THE BLACKOUT SHADES IN HIS BEDROOM ARE HOOKED UP TO HIS IPHONE VIA MYLINK AND HE SETS THEM TO OPEN LIKE ALARMS," EXPLAINS JARED.

RIGHT: A TEAK MIRROR AND '70S ERA DEAD-STOCK HARDWARE ADD SOME WARMTH TO THE BATHROOM.

OPPOSITE: THROUGHOUT THE HOME, JARED PAINTED THE WALLS AND CEILINGS THE SAME COLOR, BUT CREATED A DISTINCTION BY USING A GLOSSY REFLECTIVE FINISH ON THE CEILING AND SUBDUED FLAT PAINT ON THE WALLS. "WITH GLOSS PAINT, YOU CAN USE A MUTED COLOR, EVEN THE SAME COLOR AS THE WALLS, BUT INJECT DYNAMISM AND LIGHT INTO THE ROOM," HE EXPLAINS.








“Normally my first step would have been to move a few walls, repaint the exterior, update or even move doors and windows, etc. ... **but because Reggie’s a renter I had to work inside the box I was given.**” – Designer Jared Frank

THOUGH THE RENTAL HAD MANY RESTRICTIONS WHEN IT CAME TO UPDATES, THE PATIO IS NEW AND DESIGNED BY JARED. A BUILT-IN BENCH WITH SIDE TABLES CONCEALS CHARGING STATIONS AND AN AWNING CAN EXTEND WITH THE PUSH OF A BUTTON. COPPER-WIRE RAILING CABLE BLENDS SEAMLESSLY INTO THE BACKGROUND AND STRUNG YELLOW LIGHTS ADD A BIT OF CHARM TO THE WELL-PLANNED SPACE.


As a true Modernist, Reggie looks toward his future plans for maximum efficiency in the house. “I would say that a future project for this home, or any home really, is that I want to be able to control the environment 100%, or as much as possible,” he says. Wanting to keep the cleanest air possible in his home, Reggie runs six hospital-grade air filters, which require laborious upkeep and filter changes. “I like being able to control light, humidity, temperature and air quality at the same time. And then also excellent acoustics, acoustic baffles,” shares the late-night performer and musician.

Thrilled with the final result and Jared’s design choices, Reggie describes his home as “cozy, private and woodsy” while Jared calls it “a jazzy atomic ranch for a master improviser.” 









WORKING WITHIN THE PARAMETERS OF A RENTED HOME,  
THE EXTERIOR PAINT COLORS COULD NOT BE ALTERED.  
"I TOOK THE CHARTREUSE ACCENTS ON THE WINDOWS,  
AND THE CRIMSON DOOR, AND BROUGHT THOSE COLORS  
INSIDE, USING THEM THROUGHOUT," SAYS INTERIOR  
DESIGNER JARED FRANK OF TOPSY DESIGN.







# Past Perfected

This well-preserved 1965 home gets an era-appropriate refresh combining restoration and thoughtful replacements.

By **Devlin Smith**  
Photography by **Cy Gilbert**  
Styling by **Jessica Luque**

THIS BOISE HOME WAS CUSTOM BUILT IN 1965. AFTER PURCHASING THE HOME FROM THE FAMILY OF ITS ORIGINAL OWNERS, HOMEOWNERS MARCIA AND STEVE WELKER FRESHENED UP THE EXTERIOR WITH NEW PAINT, LANDSCAPING, LIGHTING AND A MAILBOX.







**T**

he online listing for the 1965 custom-built home overlooking Boise, Idaho, hadn't sold Marcia Welker. She thought the home, still in its original condition and still owned by the original family, was a bit too original. Seeing the home in person, though, was a whole different experience. "Several weeks later when we had moved to Boise, Steve convinced me to just look at it," Marcia recalls. "I wasn't that impressed with the outside, but when we opened the original double doors, wow, I couldn't believe what we had just walked into."

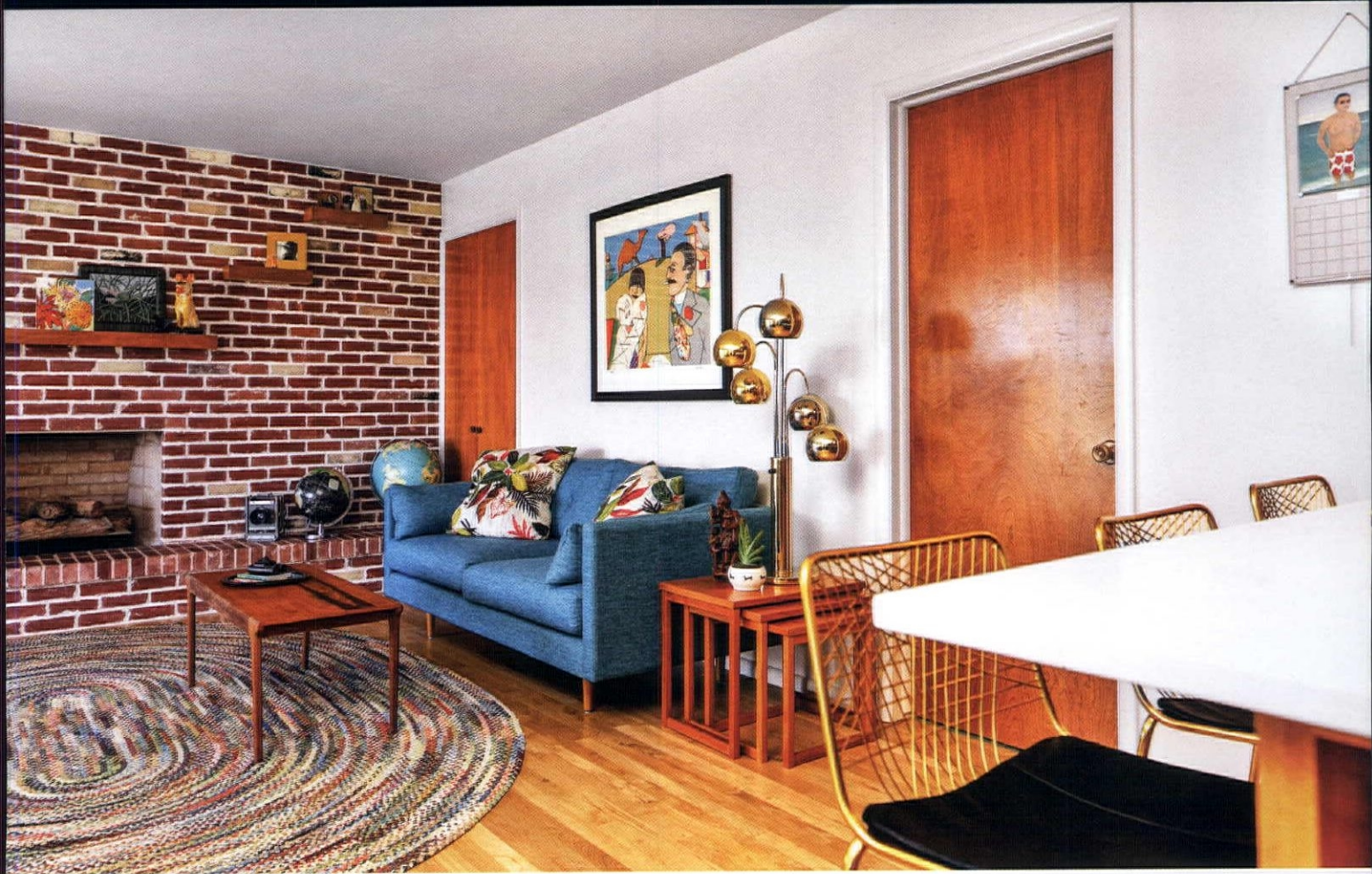
**TOP:** DESIGNER JESSICA LUQUE PRESERVED THE GOLD WALLPAPER, FLAGSTONE FLOORING AND IRONWORK STAIR RAILINGS IN THIS OPULENT ENTRYWAY. THE ORIGINAL LACY LIGHT FIXTURE WAS REPLACED WITH SOMETHING SLEEKER IN KEEPING WITH THE HOMEOWNERS' VISION FOR THE HOME UPDATE.

**ABOVE:** THIS ENTIRE WALL WAS ONCE COVERED IN MIRRORS. THEY BROUGHT IN THE LIGHT AND THE VIEWS BUT, ACCORDING TO DESIGNER JESSICA LUQUE, FELT A BIT COLD. THE SPACE HAS BEEN WARMED UP IN A VERY MID CENTURY MODERN WAY, WITH THE ADDITION OF WOOD PANELING AND CUSTOM SHELIVING.









ABOVE AND BELOW: THE FAMILY ROOM AND KITCHEN ARE OPEN TO EACH OTHER. THE ORIGINAL FIREPLACE ONCE HAD WEEPING MORTAR THAT WAS SCRAPED OFF IN THE UPDATE PROJECT. THE BRICK CAME FROM ST. TERESA'S ACADEMY, ALMA MATER OF ONE OF THE ORIGINAL HOMEOWNERS.





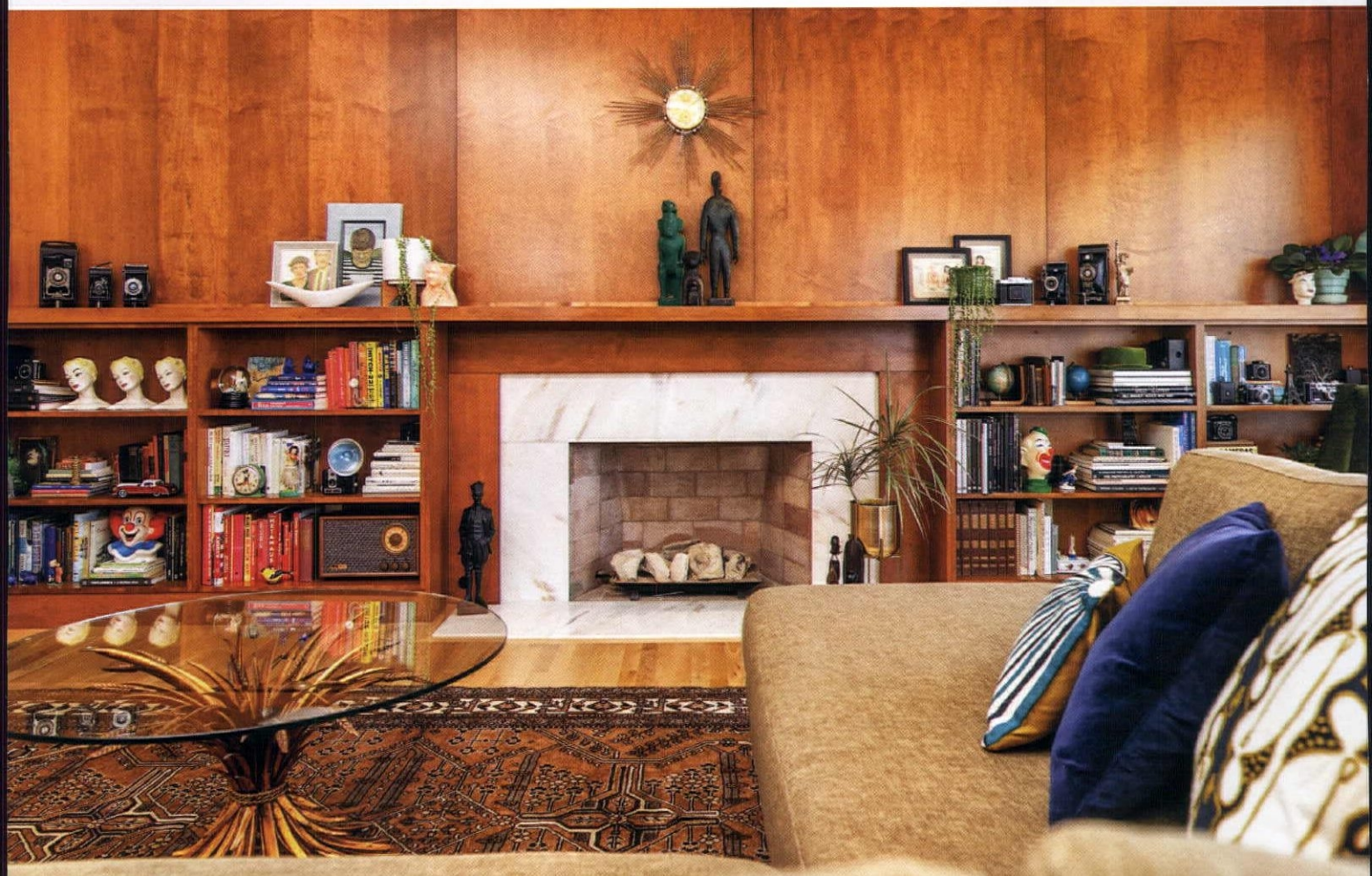


Steve and Marcia Welker walked into a 4,000-square-foot, two-story home built by Ralph E. Sherman that offered four bedrooms, four bathrooms, views of Boise and wall-to-wall original details in near-pristine condition.

**ABOVE:** THE DINING ROOM IS SEPARATED FROM THE KITCHEN AND FAMILY ROOM BY A DOOR. THE FAMILY ROOM FEATURES A SLIDING DOOR THAT OPENS ONTO THE PATIO AREA AND PROVIDES MORE VIEWS OF BOISE.

**OPPOSITE TOP:** BECAUSE THE HOME IS BUILT INTO THE SIDE OF A HILL, IT OFFERS EXPANSIVE VIEWS OF BOISE AND THE SURROUNDING FOOTHILLS AND MOUNTAINS. THE LIVING ROOM IS JUST ONE SPOT WHERE HOMEOWNERS MARCIA AND STEVE WELKER CAN ENJOY THE VISTAS.









## ORIGINAL CHARACTER

"Nearly everything was original to 1965, including many of the furniture pieces," Marcia says. "There were a few '70s décor changes, but nothing structural. The quality of workmanship, cabinets, built-ins and how consistent it was throughout the house was crazy for being 60 years old. Everything was so beautifully preserved, it was as though no one lived here. After the walkthrough, we kept thinking about all the things we could do to 'trick-out' the house."

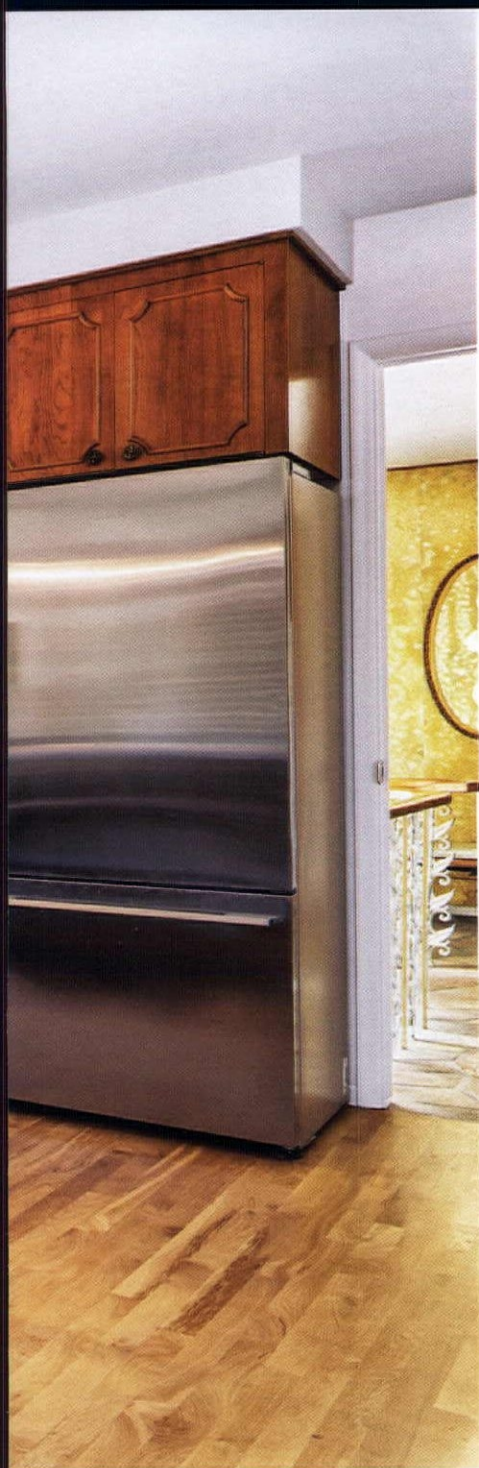
Marcia and Steve were sold, and soon the house was theirs. Not only did they purchase the home, they also

purchased a number of furniture pieces from the original homeowners. Designer Jessica Luque of Stussi Luque Design was brought on board to lead the year-long update project.

## WHERE TO UPDATE

"In the words of Steve, they wanted to take the home from 'Rat Pack Hollywood regal' to reflect more of a Mid Century Modern feel," Jessica shares. "They wanted to make clean updates that didn't take away from or feel like they were too modernized to fit with the original home."





DESIGNER JESSICA LUQUE WORKED WITH A LOCAL CABINET MAKER TO CREATE NEW PIECES THAT WOULD MATCH THE ORIGINALS IN THE KITCHEN. OTHER NEW ADDITIONS INCLUDE APPLIANCES AND CAESAR STONE COUNTERTOPS.





**ABOVE:** DESCEND THE SPIRAL STAIRCASE FROM THE MAIN LEVEL OF THE HOME AND YOU ARRIVE AT THIS BAR AREA, WHICH FEATURES THE ORIGINAL BUILT-INS AND WHITE NAUGAHYDE BAR. THE WELKERS PURCHASED THE BARSTOOLS WITH THE HOUSE FROM THE ORIGINAL OWNERS.

**BELOW:** HOMEOWNERS MARCIA AND STEVE ARE LONG-TIME VINTAGE COLLECTORS, AND THIS HOME IS A SHOWCASE FOR THEIR INCREDIBLE FINDS. THE CREDENZA DISPLAYS A COLLECTION OF VINTAGE COLORED-GLASS BOTTLES.



From outside-in, the couple made choices on what to keep, what to enhance and what to replace. The changes in some spaces were minor, like in the showstopping entryway. It retained its original gold wallpaper, flagstone flooring and ironwork stair railing, but gained a new light fixture.

The living room had a much more dramatic update—once covered in mirrors, the space now features wood paneling. “I think there is no better way to add warmth than to add wood paneling,” designer Jessica shares. “The entryway has such a warm, inviting feel to it and I wanted to carry that throughout the rest of the living areas.”

The kitchen maintained its original footprint and many original cabinets. Jessica took out the upper cabinets that once divided the kitchen from the family room to lighten the space and make room for a new gas stove and cooktop. New cabinets accommodate new appliances, custom built to match the look of the originals.

“We expected to do a full kitchen remodel, but the custom-built, on-site cabinetry is in excellent shape,” Marcia says. “Shayne Thueson from Nystrom, in Boise, suggest that we keep them. All of the woodwork in the home, and there is a lot, was meticulously maintained for 60 years.”





THE COUPLE REPLACED THE ORIGINAL CARPETING IN MUCH OF THE HOUSE, EXCEPT FOR THIS SPARE-BEDROOM-TURNED-OFFICE. HOMEOWNER STEVE WELKER REQUESTED THAT HIS WORKSPACE MAINTAIN THE ORIGINAL GREEN WOOL CARPETING AND POPCORN CEILINGS.

## RESTORATION MEETS RENOVATION

In the bathrooms, the couple kept the cabinetry, counters and sinks, and upgraded the fixtures. Carpeting was removed in most of the home. Walls were repainted. They repurposed original mirrors and light fixtures, finding new uses in different parts of the home. The popcorn ceilings were scraped in most of the home, with one notable exception.

"The one room that Steve wanted to keep completely original was his office," Jessica says. "The original carpet in the office was in great shape, it was a green wool carpet. We kept the popcorn ceiling and repainted the walls the exact shade of green they originally were."

With the home projects mostly complete (the couple has more landscaping planned and is hoping to find someone in the Boise area who can fix the Nutone intercom radio combo system), the Welkers are enjoying all their beautiful home has to offer.







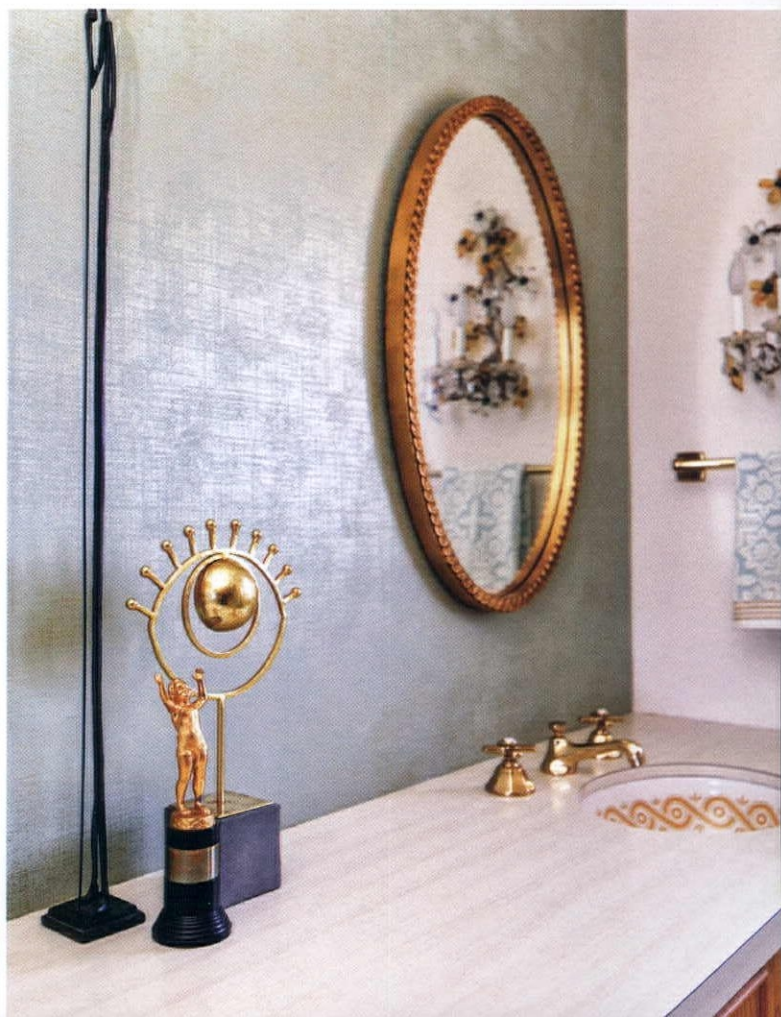


“We have 4,000 square feet of mid century yumminess,” Marcia says. “My husband has claimed the lower level family room with the bar and pool table for his area. It has a large sliding glass door to the backyard with a patio. My favorite spaces are the office with the cool boomerang desk and the large main patio area with large sliding glass door access from the family room and living room areas and original mid century outdoor furniture we purchased from the estate. It has the original gas torches and barbeque, all still working. I also love the living room and entryway. I love the entire house.” 🌀

**RIGHT AND ABOVE:** THIS BATHROOM ONCE FEATURED A FULL WALL OF ARCHED MIRRORS. THOSE MIRRORS WERE REMOVED, THE WALL COVERED IN WALLPAPER AND MIRRORS ONCE FOUND IN THE MAIN BATH WERE HUNG HERE.

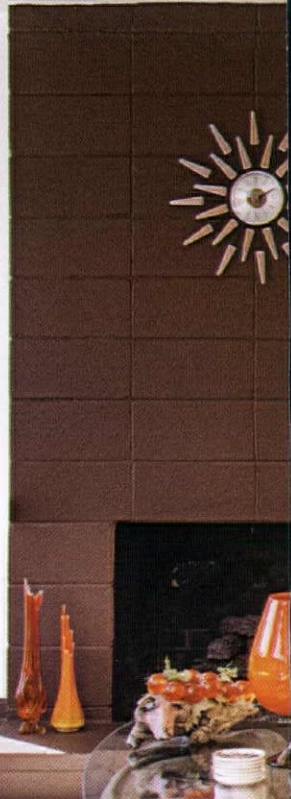
**OPPOSITE TOP:** THE MAIN BEDROOM ONCE HAD A MIRRORED HEADBOARD THAT COVERED A MURAL. WHEN THE MIRROR WAS REMOVED, THE MURAL WAS BEYOND REPAIR, BUT DID INSPIRE JESSICA'S SELECTION OF THE CURTAINS.

**OPPOSITE BOTTOM:** JESSICA REUSED OR REPURPOSED ORIGINAL ITEMS IN THE HOME. THE CURTAINS IN MARCIA'S OFFICE WERE ONCE IN THE MAIN BEDROOM, AND SHE REFIT THEM FOR THE SMALLER SPACE.





# Vibrant Refresh



THE GAS LINE FOR THE FIREPLACE HAD TO BE ENTIRELY REDONE, BUT THE REST OF THIS LIVING ROOM SIMPLY NEEDED A RETRO FACELIFT. TRACY'S DESIGN BRINGS OUT THE CLEAN, MODERN LINES OF THE ORIGINAL ARCHITECTURE AND OPEN LAYOUT, PERFECT FOR HOSTING AND ENJOYING THE ABUNDANCE OF NATURAL LIGHTING.

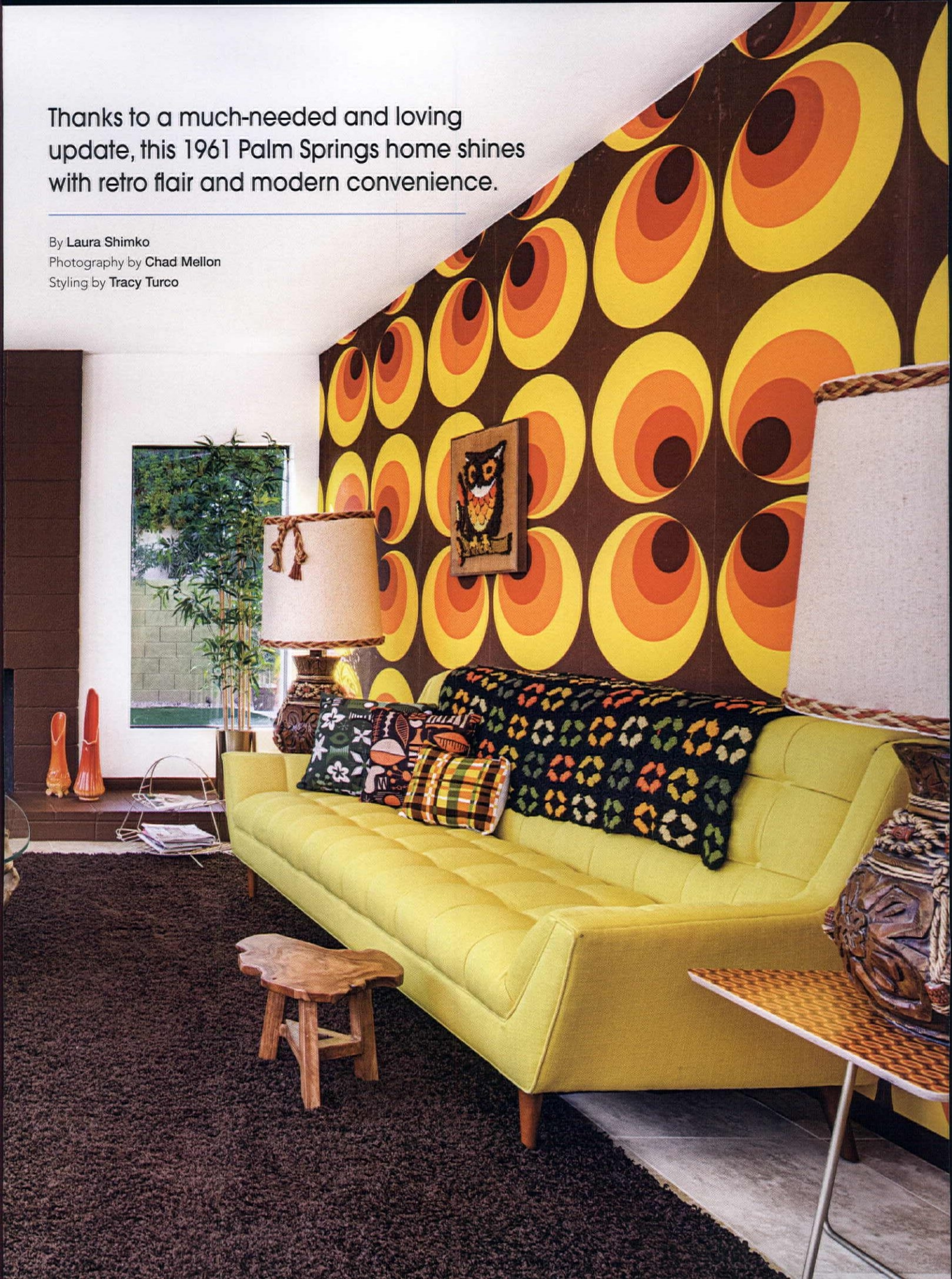


Thanks to a much-needed and loving update, this 1961 Palm Springs home shines with retro flair and modern convenience.

By **Laura Shimko**

Photography by **Chad Mellon**

Styling by **Tracy Turco**







**TOP:** TRACY REVAMPED THE FRONT OF THE HOUSE AND CARPORT BY REMOVING THE OLD, CLUNKY GATES AND INSTALLING DOUBLE DOORS IN THEIR PLACE, AND REPAINTING THE EXTERIOR. "IT IS AMAZING WHAT A BIT OF PAINT CAN DO," SHE SAYS.

**BOTTOM LEFT:** AFTER BEING TOLD IT COULDN'T BE DONE, TRACY DESIGNED AND INSTALLED THE DOORKNOBS IN THE CENTER OF THESE DOUBLE DOORS HERSELF. "I DON'T BELIEVE IT WHEN PEOPLE TELL ME I CAN'T DO SOMETHING—I ALWAYS FIND A WAY," SHE SAYS.

**BOTTOM MIDDLE:** TRACY'S CURRENT PROJECTS INCLUDE OPENING A TIKI-THEMED TEA ROOM, HOTEL AND SHOP IN PALM SPRINGS. THIS IS HER TREASURED 1966 CANARY YELLOW T-BIRD SHE RESTORED.

**BOTTOM RIGHT:** THIS SCULPTURE IS A REPRODUCTION OF A TIKI CREATED BY ED THE "TIKI BROKER" FROM AN ORIGINAL MOLD MADE BY LOU WEBB, A MASTER MOLD MAKER FOR DISNEY IN THE '60S. THE ORIGINAL VERSION SAT IN THE JUNGLE CRUISE RIDE, LOCATED NEAR THE HIPPO ANIMATRONICS IN THE '60S AND EARLY '70S.







**T**here truly is never a dull moment for designer Tracy Turco. A true artist and Renaissance woman, Tracy's interests include crafting her own teas, designing fabrics and clothing, authoring several books, developing and managing real estate with her husband Jerry and collecting retro pieces. "I can't sit still—I have to create," she says. An owner of several boutique hotels, Tracy has a passion for restoration. Recently, her creative energies found an outlet in the renovation of her 1961 three-bedroom, three-bathroom home in Palm Springs, California.



## GETTING STARTED

After honeymooning in Palm Springs, Tracy and Jerry fell in love with the desert city renowned for its Mid Century Modern architecture. They found a house that had been on the market for some time and purchased it. "It was in such a state of disarray—there were even skunks living in it," Tracy recalls. While she and her husband had always done projects together, this time Tracy had the exciting opportunity to work on renovating the property as her own pet project. "It needed so much love and I knew I could do it," she says.

**TOP:** A FRESH COAT OF ORANGE PAINT WAS JUST THE THING TO SPRUCE UP THIS PATIO SPACE. "THE PREVIOUS OWNER HAD ATTACHED A LANAI FROM THE CASITA CARPORT TO THE HOUSE," TRACY EXPLAINS.





PREVIOUSLY, THE WALL WAS ALL OAK CABINETS, BUT TRACY DECIDED TO CUT OUT TWO THIRDS OF THEM TO CREATE SPACE FOR A BAR AND SERVING AREA. SHE HAND-PAINTED THE GLOSSY ORANGE LACQUER DETAIL AND BRASS KNOBS WERE CUSTOM MADE FOR AN ATOMIC CABINET PULL.

**OPPOSITE, BOTTOM LEFT:** "THERE ARE SO MANY COMBOS OF COLOR AND PATTERN, IT CREATES AN EXPLOSION, BUT IT ALL FLOWS TOGETHER," TRACY SAYS.





With a timeline of three months before moving in, Tracy got to work right away. "I did things the old-fashioned way," she says. Tracy rode her bicycle around Palm Springs, getting business cards from local vendors. For much of the renovation, Tracy was her own contractor, frequently opting for DIY projects for expediency. "It was my first time ever landscaping," she says, "but I researched and did it myself." Instead of waiting for furniture and pieces to be delivered to her home, she found local shops and made several trips to Home Depot to complete her renovation. "I'm very fast when I'm working and I hate waiting," she says.

**TOP:** TRACY'S COLLECTION OF ART AND LOCAL VINTAGE FLEA MARKET FINDS CREATE A FUNKY, FUN VIBE. "I BUY VINTAGE PHONES AND CAMERAS WHENEVER I SEE THEM," SHE SAYS. "I HAVE LOTS OF BOXES FILLED WITH FUN ITEMS I LOVE."









"THE KITCHEN'S FOOTPRINT IS ORIGINAL, I JUST REDESIGNED THE COUNTERS AND COUNTERTOPS AND ACCESSORIZED WITH NEW HANDLES AND [A] MOD STAINLESS OVER-THE-STOVE VENT," EXPLAINS TRACY. THE BROWN TILE BACKSPLASH BEHIND THE STOVE IS HANDMADE BY SINA, WHAT TRACY DESCRIBES AS A "TOUCH OF EXTRAVAGANCE" THAT ADDS A CLASSY AND TIMELESS FEEL TO THE SPACE.



RIGHT: THE DINING CHAIRS WERE VINTAGE FINDS THAT TRACY REUPHOLSTERED HERSELF. "I JUST POPPED THE CUSHIONS OUT AND STAPLE-GUNNED FUN FABRICS," SHE EXPLAINS. "NOW THEY ARE SO UNIQUE!"

## SOMETHING OLD, SOMETHING NEW

Inside the house, the makeover was mostly cosmetic. Tracy's first step was to create opportunities for natural light to spill into the home. "I had to eliminate all the things that caused darkness," she explains. This involved uncovering long boarded-up windows and looking for ways to maximize the open layout. She decided to keep the existing flooring and brought in new wallpaper to brighten up each room.

Reflecting the eclectic feel of her style, Tracy's collection of décor includes vintage artwork from the likes of Salvador Dali, Peter Max and pop artist Olan. Most of her retro items are from the vintage flea markets in Palm Springs, perfect for the mid mod enthusiast. "My husband laughs at how I seem to pull endless finds out of nowhere," Tracy admits.

## PLAYING WITH PATTERNS

Perhaps the most unique aspect of Tracy's design is her intuitive use of color and patterns to establish a bright and fun retro vibe. As the self-labeled "queen of pattern play," Tracy continues her theme of juxtaposition to bring together colors and patterns that others would shy away from. "I do a lot of mismatched patterns and integrate a spectrum of color," she explains. You'll also see tropical style mixed into the home, from vintage tiki mugs sprinkled throughout the kitchen to a bamboo valance in the guest bedroom.

With her mix of old and new elements, bold use of color and pattern, and décor derived from her vintage flea market collection, Tracy's design is not only a fun, colorful take on mod style, but also a vibrant representation of her active and creative mind. The result is a fun, relaxing, retro-inspired space well suited for her love of hosting parties on warm, desert nights. ☼





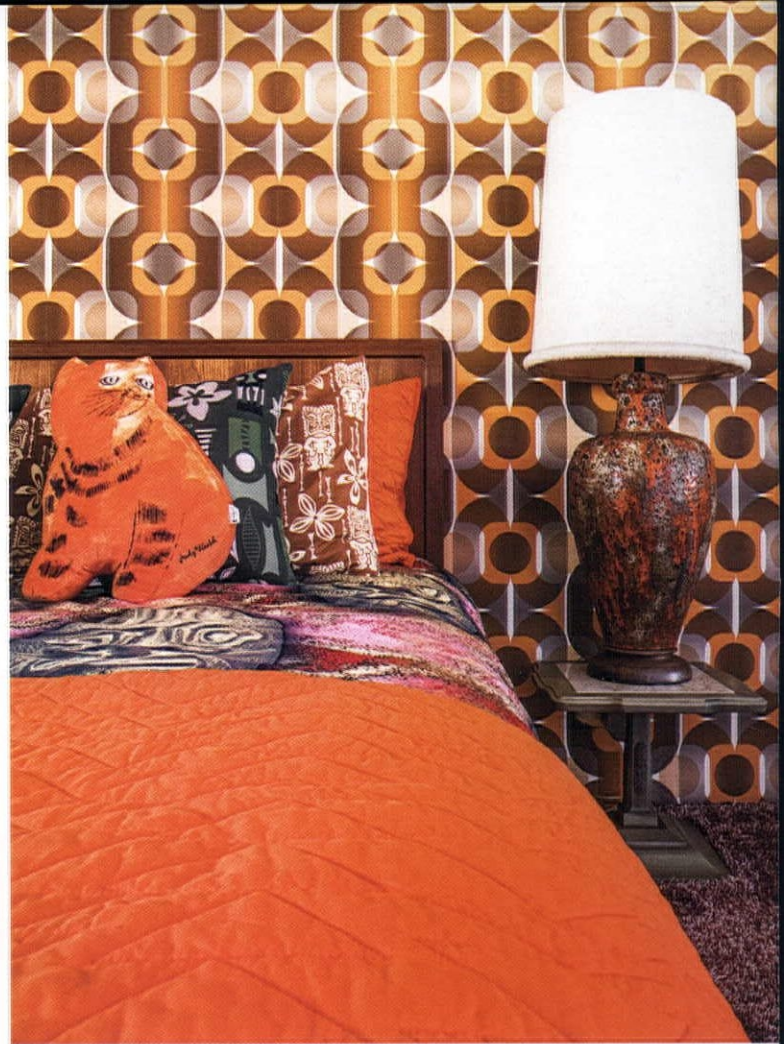


ABOVE: TRACY'S USE OF ORANGE TIES TOGETHER HER MIXTURE OF PATTERNS AND TEXTURES IN THIS MAIN BEDROOM.

BOTTOM, LEFT: IN THIS TWIN GUEST BEDROOM, TRACY DIYED THE VALANCES WITH BAMBOO FROM HOME DEPOT FOR A FUN ACCENT PIECE. THE FABRICS, AS WELL AS THE SKATEBOARD SHELVES ABOVE THE BED, ARE ALSO DESIGNED BY TRACY.







**ABOVE LEFT:** 1970S WALLPAPER AND A HARVEST GOLD SINK WITH MATCHING TOILET WERE USED IN THE HALL BATHROOM TO CREATE A STRIKING RETRO LOOK. THE FLOORING IS A MATTE FINISHED CUSTOM TILE BY FINA IN PALM SPRINGS.

**ABOVE RIGHT:** MORE PATTERN PLAY IN THE GUEST BEDROOM CREATES A MOD VIBE WITH WALLPAPER, ACCENT PILLOWS AND A FUNKY LAMP.

**BOTTOM RIGHT:** IT WAS IMPORTANT TO TRACY THAT HER DESIGN WAS ENVIRONMENTALLY CONSCIOUS AS WELL AS VINTAGE FABULOUS. THE ASTROTURF AND ROCK GARDENS IN HER BACKYARD REQUIRE LOW WATER USAGE, PERFECT FOR THEIR ARID ENVIRONMENT WHERE WATER IS PRECIOUS.





WHEN HOMEOWNERS JASON AND LAURA ODELL FIRST TOURED THE A-FRAME NESTLED ON A WOODSY PLOT OF LAND IN BIG BEAR, IT WAS CLEAR THAT IT HAD BEEN LONG NEGLECTED—WHICH WAS JUST THE INSPIRATION THEY NEEDED. JASON SAYS, “OUR FIRST IMPRESSION WAS THAT IT WAS A PERFECT BLANK CANVAS THAT NEEDED TO BE COMPLETELY REDONE. I ALWAYS GET REALLY EXCITED WHEN I FIND A HOUSE THAT NO ONE HAS TOUCHED FOR MANY YEARS.”





# An A-Frame in the Woods

Two creative visionaries transform an A-frame into a sleek and airy four-seasons escape.

By Autumn Krause | Photography by Bret Gum



It was the winter of 2015 and Jason and Laura ODell, owners of the clothing brand called The ODells and a retail store called The ODells Shop, had brought their kids to Big Bear, California, for a sledding trip. While they were there, Jason casually browsed listings for homes in the area when he stumbled upon one for a lakefront A-frame built in 1963. “We drove over to it and called the real estate agent,” Jason says. “Within an hour, she was giving us a tour.” Despite the fact that the interior was covered in mouse droppings—the couple recall carrying their children the entire time so they wouldn’t touch the dirty carpet—and that it seemed as though no one had been inside it for ten years, Jason and Laura knew it was perfect.

**ABOVE LEFT:** BOTH SIDES OF THE HOUSE FEATURE IPE WOOD DECKS, ALONG WITH WIDE STAIRS LEADING TO AND FROM THE ENTRYWAYS. “THE STAIRS AND DECK ARE MIDWAY THROUGH THE PATINA STAGE,” JASON SAYS. “EVENTUALLY, THEY WILL ALL BE SILVER, WHICH WILL LOOK AMAZING WITH THE BLACK HOUSE.”

**ABOVE RIGHT:** FOR THIS CIRCLLET OF CHAIRS ON THE DECK, JASON SAYS, “WE WANTED A LITTLE SITTING AREA WHERE WE COULD WATCH OUR KIDS PLAY IN THE BACKYARD.” THERE ARE ALSO A COUPLE ASPEN TREES THEY LOVE TO WATCH FLITTER IN THE BREEZE.



LOOKING FOR YOUR OWN RUSTIC GETAWAY? CHECK OUT OUR ROUND-UP OF A-FRAME CABIN RENTALS ON [ATOMIC-RANCH.COM](http://atomic-ranch.com).

OPENING UP THE INTERIOR AREA AROUND THE A-FRAME WAS THE MAIN PRIORITY FOR THE COUPLE, AND THEY HAD TO REMOVE AN OLD FIREPLACE, STAIRCASE AND SECOND STORY TO DO SO. AN INTRICATE NETWORK OF WOOD BEAMS INTERPLAY BEAUTIFULLY WITH GLASS TRIANGLE WINDOWS THAT HAD TO BE CUT ON SITE. "THIS AREA IS ALL ABOUT HANGING OUT TOGETHER," JASON SAYS. "IT'S REALLY NICE TO OPEN UP THE BI-FOLDING DOORS AND SPILL OUT ONTO THE DECK. WE CAN BE COOKING IN THE KITCHEN, HAVE FRIENDS SIPPING WINE ON THE STOOLS, AND SEE KIDS PLAYING ON THE DECK AND IN THE BACKYARD."







**ABOVE:** BIG BEAR IS A SOUTHERN CALIFORNIA VACATION DESTINATION DURING ALL FOUR SEASONS, SO A COZY FIREPLACE WAS ESSENTIAL FOR CUDDLING UP AND GAZING AT THE SNOW FALLING OUTSIDE. "THE HOUSE HAD A WOOD-BURNING FIREPLACE BUT UNFORTUNATELY IT WAS UNSALVAGEABLE," JASON SAYS. "WE WENT FOR A MALM FIREPLACE AND THE INSTALLATION WAS VERY EASY."

**BELOW RIGHT:** FOR THEIR KIDS' ROOM, FOUR BUNK BEDS ("EVERY LAKE HOUSE NEEDS A BUNK BED," JASON SAYS) WERE BUILT DIRECTLY INTO THE FRAMING OF THE HOUSE AND IKEA BED SLATS HOLD THE MATTRESSES. "OUR BIGGER KIDS ALWAYS FIGHT FOR THE TOP BUNKS, SO LUCKILY THERE ARE TWO," JASON ADDS.

After all, the creative couple are natural visionaries who see potential where others might just see dilapidation. Jason grew up around his parents who remodeled every house they lived in. Laura is a designer who breathes print and color as naturally as air. "Laura and I remodeled our first home in Los Feliz, sold that house and moved to Silver Lake, where we remodeled again and did an addition," Jason says. "We get a lot of joy bringing a house back from the dead." Soon, the couple turned the neglected A-frame into an architectural feat that celebrates the Mid Century Modern concepts of minimalism and natural light.

## ONE WITH NATURE

When it came to the exterior of the home, everything was transformed, but the couple made certain to keep the original design in mind, particularly the distinctive A-frame profile. "There's something about the shape of the A that is Mid Century Modern," Jason says. "Not in a traditional way, because you can take an A-frame and make it really woodsy—but in going modern, we embraced the original intent of its design."







**ABOVE:** SINCE JASON AND LAURA SPLURGED BIG ON THE COUNTERS, THEY WENT FOR A BUDGET-FRIENDLY OPTION FOR THEIR KITCHEN CABINETS. IKEA ONLY OFFERED THESE CABINETS FOR A SHORT TIME AND THE COUPLE, LOVING THE FINISH, SNAPPED THEM UP.

**BELOW:** UNCONVENTIONALLY, THERE IS NO TRUE MAIN BEDROOM IN THE A-FRAME. "WE HAD LIMITED SPACE TO FIT THREE BEDROOMS AND TWO BATHROOMS ON OUR LOT FOOTPRINT, SO WE DON'T HAVE A TRADITIONAL MAIN BEDROOM, AND THE TWO BATHROOMS ARE RIGHT NEXT TO EACH OTHER," JASON EXPLAINS. "IT'S VERY UNORTHODOX, BUT I STUDIED A LOT OF EUROPEAN FOREST HOUSES WHEN I WAS DESIGNING THE FLOOR PLAN."




They hung a huge I-beam along the back of the house to get a wall of windows facing the lake. Then they added 'wings' on both sides of the A-frame, along with Ipe wood decks in both the front and back of the house. In addition, it was important to Jason and Laura to integrate the home's exterior into its natural surroundings, and they artfully worked to blend the two. Now, the A-frame profile reflects the linearity of the trees while floor-to-ceiling windows become mirrors for the forest setting.

Black paint was chosen to help the home meld into the trees and the Ipe wood decks epitomize organic beauty. The craftsmanship also extends to the union between the home's inhabitants and landscape—Jason intentionally made both sides of the house have decks so "there is always a place to sit and take in nature."

## A GREAT ROOM

The great room, which is the heart of the A-frame, is breathtaking to behold. The anatomy of the house is on full display with myriad beams rising to form the A. In order to figure out the best architectural steps for the home, Jason sat for four hours in a lawn chair during construction, considering the various options. "I wanted to make sure that the sofa had a nice view of the fireplace as well as the lake and was having a hard time trying to place the TV," he explains. In the end, he decided to eliminate the TV in favor of a retractable movie screen, which allows anyone lounging in the seating area to easily see out to the waterfront view.



A photograph of a dining room interior. In the foreground, a round, light-colored wooden table is surrounded by four black wire mesh chairs with light-colored wooden legs. A small white vase with greenery sits on the table. The room features large black-framed windows and doors that offer a view of a lake, trees, and other houses. A prominent white diagonal beam of the A-frame structure is visible on the right side of the image. The floor is made of light-colored wood planks.

ADDITIONAL WINGS ADDED ONTO THE A-FRAME PUSH THE HOUSE OUT FURTHER TOWARD THE LAKE AND GIVE THE DINING ROOM A BREATHTAKING VIEW OF THE WATER. HERE, BLACK TRIM CONTRASTS THE LIGHT FLOORS AND WALLS BUT EVERYTHING IS KEPT NEUTRAL—JASON SAYS, "I WANTED TO CREATE A BLANK PALETTE SO LAURA COULD BRING IN POPS OF COLOR WITH THE DÉCOR."





**ABOVE LEFT:** THE ENTRYWAY IS ONE OF THE NEW "WINGS" THAT JASON AND LAURA ADDED ONTO THE A-FRAME. LAURA DESIGNED THE STRIKING WALLPAPER AND, BECAUSE OF THE COPIOUS GLASS, THE WALLPAPER IS VISIBLE FROM THE EXTERIOR OF THE HOME. "WE WANTED SOMETHING THAT WOULD REALLY POP FROM THE OUTSIDE," JASON SAYS. "SINCE THE WINDOWS ARE FLOOR-TO-CEILING, THE WALLPAPER REALLY SHINES WHEN YOU WALK UP TO THE HOUSE." THE DESIGN IS CALLED PAEONIA BLACK, AND THE COUPLE OFFERS IT ONLINE AND IN THEIR BRICK-AND-MORTAR BOUTIQUE, THE ODELLS SHOP.

**BELOW:** TEXTURE AND SMOOTHNESS MEET IN THE BATHROOM. "I WANTED A WALL WITH DEPTH AND THEN TO CONTRAST IT WITH THE SMOOTH DESIGN OF A BATHTUB," JASON SAYS. DISCOVERING THAT 2" X 8" BLACK CEMENT TILE IS MUCH MORE EXPENSIVE THAN AN 8" X 8" SIZE OF THE SAME KIND, THE COUPLE GOT TO WORK CUTTING 8" X 8" TILE INTO 2" X 8" PIECES—"IT ONLY TOOK ONE DAY OF CUTTING!" JASON SAYS. WITH THEIR NEWLY-RESIZED TILES, THEY COVERED THE WHOLE WALL IN A HERRINGBONE PATTERN. A FREESTANDING WHITE TUB PROVIDES DISTINCTION FROM THE WALL IN BOTH COLOR AND TEXTURE.



. A blue sofa and ornate Turkish rug anchor the airy great room and add pops of color against the white oak floors. "We love vintage Turkish rugs," Jason says. "This one was purchased on a whim while Laura and I were on a date night in Los Angeles, while the sofa is from our friends at Artless. I love the walnut framing and shelf on the back." These intentional design decisions allow the great room to be a wondrous experience that both draws the eye skyward through the rafters and outward to the beauty of the lake.

Originally, Jason and Laura considered using the little A-frame in the woods as a vacation spot and renting it out when they weren't there. Very quickly, they had a change of heart. "We love it so much, we decided against renting it," Jason says. "Now our family spends time there almost every weekend making memories together." 🌿




Mac George

## MAC GEORGE ART PRINTS



### ABOUT THE ARTIST

Mac George has received credits that include *The Little Mermaid*, *Beauty and the Beast*, *Aladdin*, *The Lion King*, *Chicken Little*, *Tangled* and *Wreck It Ralph*. He designed the stained glass prologue for *Beauty and the Beast*, has been nominated for two Annie awards and in 2010 won a prime time Emmy award for his work on *Prep and Landing*.

 [macartprints.com](http://macartprints.com)

## SparkleLam™.

Kitchens, bath or even your travel trailer.



"Cotton Candy" restoration by Mark Hall

[www.makeitmidcentury.com](http://www.makeitmidcentury.com)

Make it  MID-CENTURY



# TIME TO TAKE IT OUTSIDE!

Introducing Atomic Ranch's new  
**Exterior & Landscape special**

132 pages of Mid Century Modern ideas for your outdoor areas

EXPERT TIPS FOR YOUR OUTDOOR SPACES

**atomic**  
MIDCENTURY MARVELS  
**ranch**

EXTERIOR &  
LANDSCAPE  
SPECIAL

**YOUR GUIDE TO  
THE MODERN GARDEN**

From Desert Designs to Lush Landscapes

PATIO  
PRODUCT PICKS  
SEATING,  
PLANTERS,  
LIGHTING AND  
MORE!

**Curb Appeal Secrets**  
FOR MID MOD HOMES

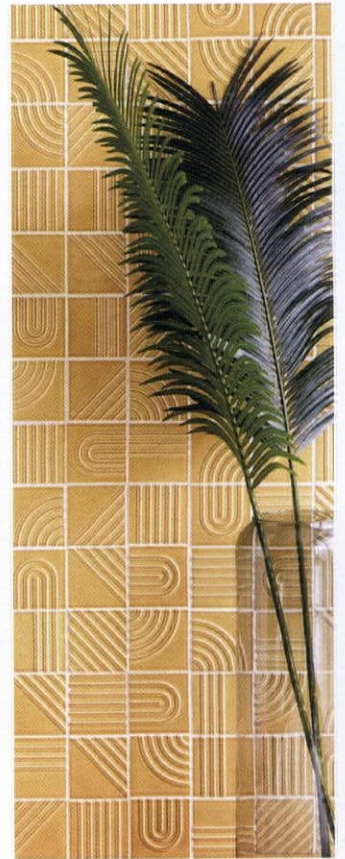
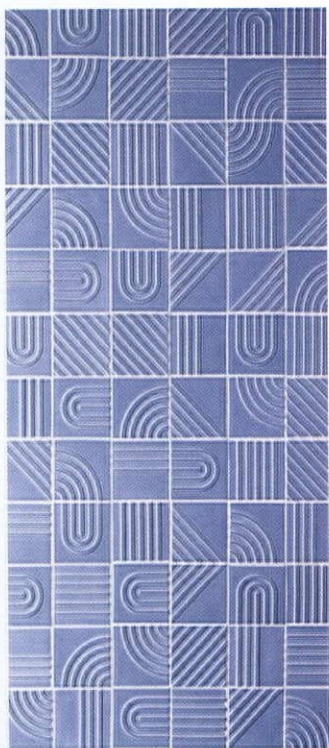
**Find the  
Right Plants**  
FOR YOUR ZONE

On sale 8/25  
but available  
for **pre-order**  
**now!**

Scan  
here!







HANDCRAFTED TILE MADE IN PORTLAND, OR  
[www.clayhaustile.com](http://www.clayhaustile.com) | order direct at 503.928.3076

## Custom HOME PORTRAITS



We all love the places we call home. We choose the colors, the furnishings, and the artwork that make our homes unique expressions of ourselves.

Let's work together to create a one-of-a-kind illustration highlighting what you love about your home!

*Get to know your home in a whole new way.*



Check out how I worked with the homeowners to transform their 1950's ranch - at [visibleolutionsbychris.com](http://visibleolutionsbychris.com)

**CHRISTIAN MUSSELMAN**

Illustration

[christianmusselman.com](http://christianmusselman.com)



HOMEOWNER AND INTERIOR DESIGNER ELIN WALTERS TRANSFORMED A BEDROOM CLOSET INTO AN OFFICE SPACE FOR HER INTERIOR DESIGN FIRM. EVERYTHING FITS NEATLY BEHIND THE CLOSED DOORS, EVEN THE DESK CHAIR.



LOOKING FOR MID MOD OFFICE SUPPLIES? CHECK OUT OUR FAVORITES ON [ATOMIC-RANCH.COM](http://ATOMIC-RANCH.COM).



# Working Smarter

By Devlin Smith  
Photography by CJ South  
Styling by Elin Walters

This 1958 tri-level home didn't have space for a full office, so homeowner and designer Elin Walters needed to get creative. She required a workspace where she could unroll architectural drawings, use her computer and store documents from her interior design clients. The solution came in the form of a clothes closet.

"As a designer, I'm constantly helping clients reimagine spaces," says Elin, owner and principal designer with Exactly Designs in Ann Arbor, Michigan. "Critically thinking about the best way to use space, rather than 'how it's always been done,' is a valuable approach to designing and living in a house. In this situation, the space was not being utilized to its capacity. This closet housed some clothing, but we quickly realized that there were other places to store clothing, but no other places to have a desk."

It took two weeks to transform the 6-foot-wide by 2.5-foot-deep by 8-foot-high closet into a functional and stylish office space. The hanging rod was removed, walls were painted, a custom floating birch desk was installed and shelves were hung. Elin's stepfather handmade the desk, which ties in with other wood accents throughout the home.

## COMPACT YET COHESIVE

"It is important to me that materials are repeated in our house," Elin says. "You will find birch plywood is a theme found in each level of our tri-level house. Birch was used for our kitchen cabinet doors, as a way to wrap the ugly heat ducts and built-in cabinets in our lower level, and also in the construction of our media stand in our living room. Building the desk in birch was a way to bring that material to the upper level."



TOP: THE FLOATING DESK IS LONG ENOUGH FOR ELIN TO UNROLL ARCHITECTURAL DRAWINGS AND SET UP HER COMPUTER. EVEN THE OFFICE SUPPLIES ARE STYLISH.

ABOVE: THE CLOSET WAS DESIGNED TO FIT IN WITH THE MID CENTURY STYLING OF THE 1958 HOME. ELIN SELECTED BIRCH FOR THE CUSTOM-BUILT DESK TO TIE IN WITH THE BIRCH USED ON THE CABINERY IN THE REST OF THE HOME.





In the reconstruction of the closet, Elin chose to keep the doors so the workspace could be closed off when not in use. **Careful measurements and design were key to making that possible.**

## Storage Solutions

- **Think Differently.** If space is an issue, reimagine how you're currently using storage spaces, and don't overlook traditional spaces like hallways and niches.
- **Measure Twice.** By carefully sizing the desk, filing cabinet and chair, homeowner Elin Walters was able to conceal her office space behind closed doors when not using it.
- **Find Multi-Purposes.** Maximize your small space by getting the most out of the pieces you have. The desk chair in this office is also an extra dining chair.
- **Do It with Style.** Storage doesn't need to be dull to be functional. These floating shelves, used to house resource books, were hung in a random fashion for visual interest.

**ABOVE:** A HOME DOESN'T NEED A SPARE ROOM TO HAVE SPACE FOR AN OFFICE, AS HOMEOWNER AND INTERIOR DESIGNER ELIN WALTERS PROVED BY REPURPOSING A CLOTHES CLOSET IN HER HOME INTO A WORKSPACE.

In the reconstruction of the closet, Elin chose to keep the doors so the workspace could be closed off when not in use. Careful measurements and design were key to making that possible.

"The design of the space is about precision," she says. "Maximizing the depth of the custom-made counter, while having enough room to tuck in the chair and still be able to close the doors was the challenge. I'm happy to say it just fits."

The space fit for Elin's design work when she first added it to the home, and now fits her son's schoolwork too. "Recently, I have outgrown the desk and am in the finishing stages of a whole-room studio, but my son has adopted this closet desk and is thrilled that he inherited it," she says. 🌿





**Modtraveler**.net

AN ENTHUSIAST'S GUIDE TO MODERNISM



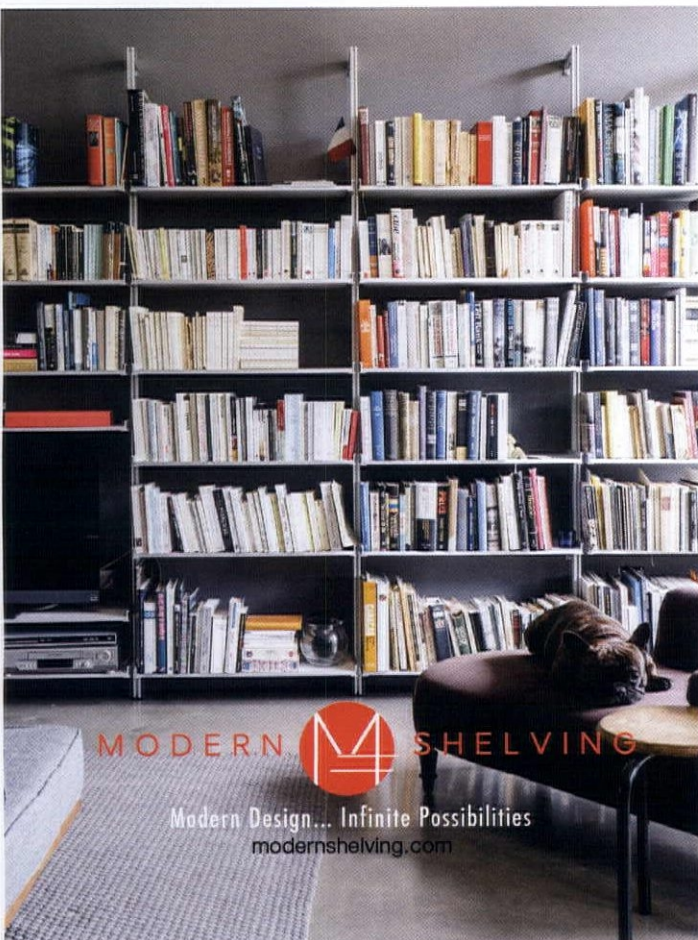
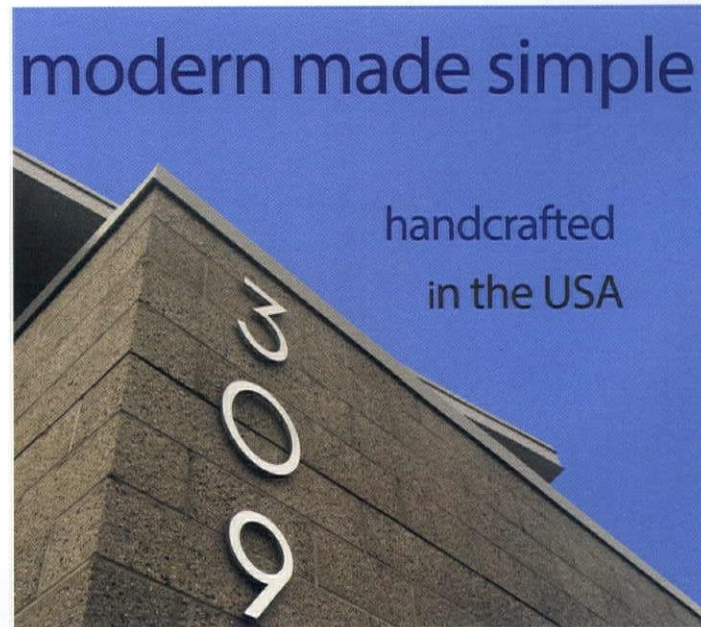
curb appeal at it's best!



**housenumbers.com**

modern made simple

handcrafted  
in the USA



MODERN  SHELIVING

Modern Design... Infinite Possibilities  
modernshelving.com





[www.huntandnoyer.com](http://www.huntandnoyer.com) | 313.731.2485 | @huntandnoyer

 ANTHONY LAMORTE  
FURNITURE




Thoughtful, creative design.

Creating custom furniture and artwork for over 50 years.

Made in Reno, NV  
[Anthonylamorte.com](http://Anthonylamorte.com)  
 775-622-3346

**theatomicmobile**  
[atomicmobiles.com](http://atomicmobiles.com)



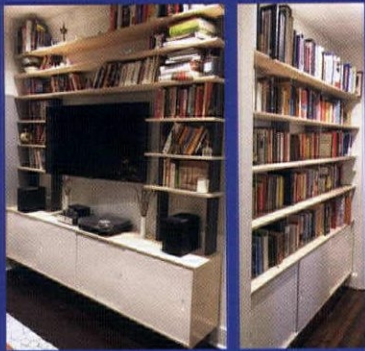
**NEW  
 DIY Kits!**  
 Shop now

ask for a **FREE**  
 Art Catalog





maxmin.design



## Transform your room with the SARA Wall System!

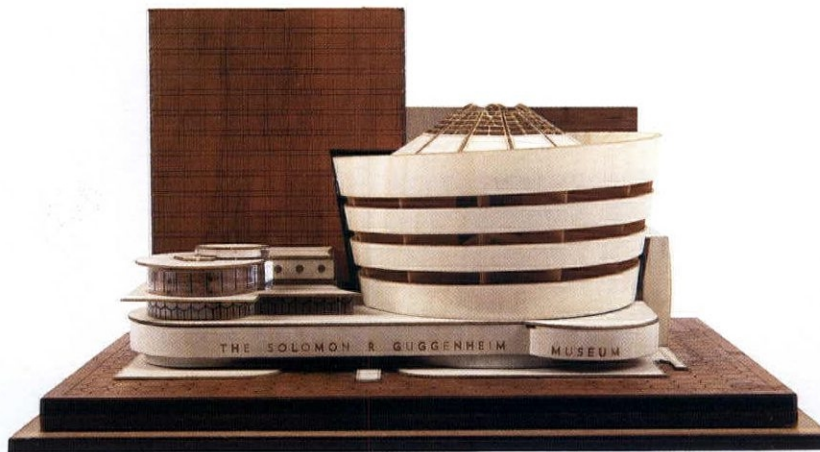
A brand new take on a Mid-Century classic – each delivery of this flexible system is tailored to your needs, with a free design consultation and presentation before you order. TV and media management, books and art, even desks and printer cabinets can all be accommodated. The shelves and uprights come flat-packed and simply slide together; cabinets come ready assembled.

You will need to secure the top shelf and some lower fittings to the wall, but full instructions and a video are included.

See more at <http://maxmin.design/sarawallsystem> or call us at (202) 459-8118. Hand crafted in Maryland, shipped worldwide.

Copyright MaxMinDesign, Inc. 2020

## BRING MID-CENTURY MODERN MASTERPIECES HOME



EASY TO BUILD. BEAUTIFULLY ACCURATE SCALE MODELS. EXQUISITE WOOD CONSTRUCTION.

25% OFF & FREE SHIPPING

Guggenheim Museum 1959 – 6"×4.5"×3.5"  
Mies van der Rohe's 1951 glass house – 10"×6"×4"

Use Discount Code AR72



ModelLandmarks.com



THE  
WAITING  
IS  
THE HARDEST  
PART

Lamp shade emergency?  
Don't settle for anything less than  
the perfect match for your vintage  
lamp. All of our shades are built  
from scratch in hundreds of shape,  
size and pattern options. Made to  
order, made to last, and definitely  
worth the wait.

www.Modilumi.com

@ModilumiLighting



SEVIA TABLE LAMP \$395



modboxUSA

Mid-Century Modern Mailbox

modboxusa.com | 919.781.8403

MODERN  
WELCOME



Opening doors all over the Dallas/Fort Worth area.  
Can I open the door to your modern dream home for you?

ED MURCHISON | 214.395.7151 | ed.murchison@cbdfw.com

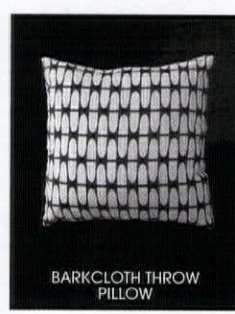


GLOBAL LUXURY

COLDWELL BANKER RESIDENTIAL BROKERAGE

Hip Haven

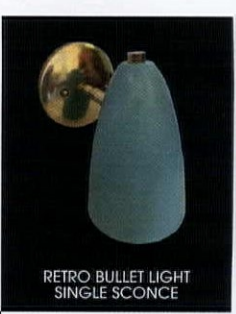
RETROMODERN LIGHTING + ACCESSORIES



BARKCLOTH THROW PILLOW



DELUXE SPUN METAL FOUR-ARM CHANDELIER



RETRO BULLET LIGHT SINGLE SCONCE



GLOBE PENDANT



SPUTNIK GIFT TIN



RETRO BULLET PLANTER

WWW.HIPHAVEN.COM | 512-462-4755

Real estate agents affiliated with Coldwell Banker Residential Brokerage are independent contractor sales associates, not employees. ©2019 Coldwell Banker Residential Brokerage. All Rights Reserved. Coldwell Banker Residential Brokerage fully supports the principles of the Fair Housing Act and the Equal Opportunity Act. Owned by a subsidiary of NRT LLC. Coldwell Banker, the Coldwell Banker logo, Coldwell Banker Global Luxury and the Coldwell Banker Global Luxury logo are registered service marks owned by Coldwell Banker Real Estate LLC. 19K7U5\_DFW\_8/19



# MODCRAFT

MODERN HANDMADE TILE



[www.mod-craft.com](http://www.mod-craft.com) 718-541-1160

10% off  
your first  
order with code  
Atomic Ranch



hide+  
seek  
SUPPLY CO.

Discover our uniquely  
modern products at:

[hideandseeksupplyco.com](http://hideandseeksupplyco.com)

Home Base:  
Sunny Palm Springs, CA

# LUCY TUPU

Lucy Tupu Studio

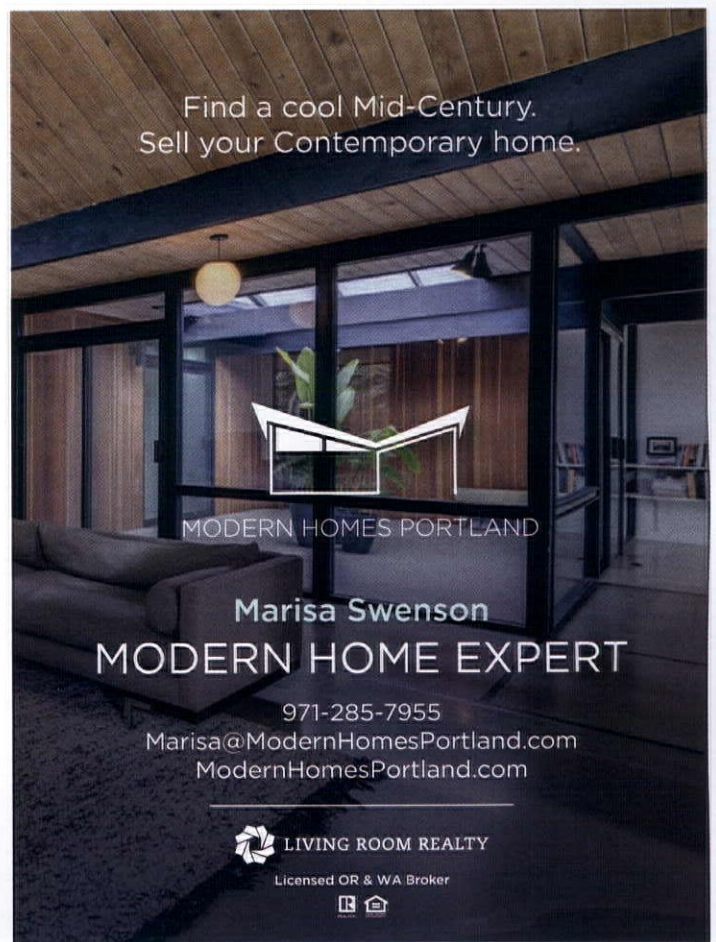
## Meet Our Very Customizable Flax Cube

Choose your own  
fabric, color, *whatever*  
for your next project



[LUCYTUPU.COM](http://LUCYTUPU.COM)

Find a cool Mid-Century.  
Sell your Contemporary home.



MODERN HOMES PORTLAND

Marisa Swenson  
MODERN HOME EXPERT

971-285-7955

[Marisa@ModernHomesPortland.com](mailto:Marisa@ModernHomesPortland.com)  
[ModernHomesPortland.com](http://ModernHomesPortland.com)



LIVING ROOM REALTY

Licensed OR & WA Broker





# atomicadvertisers

## ACCESSORIES & ARTWORK

**Atomic Mobiles** 74  
Atomicmobiles.com

**Blackwell Woodworks** 79  
blackwellwoodworks.com

**Christian Musselman  
Illustration** 69  
773.209.8506  
Christianmusselman.com

**Hide and Seek Supply Co.** 77  
217.416.1068  
hideandseeksupplyco.com

**Hip Haven** 76  
512.462.4755 hiphaven.com

**Mac George Art Prints** 67  
macartprints.com

**Model Landmarks LLC** 75  
ModelLandmarks.com

**Modern Retrograde** 81  
etsy.com/Shop/ModernRetrograde

**Modilumi** 76  
Modilumi.com

**The Shag Store** 83  
760.322.3400  
Shagstore.com

## ACCOMMODATIONS & MCM LIFESTYLE

**Case Study House #26** 19  
casestudyhouse.com

**Dolphin Promotions** 11  
708.366.2710/954.202.1955  
dolphinsairs.com

**Mod Traveler** 73  
modtraveler.net

## DESIGN RESOURCES & BOOKS

**Asheford Institute of  
Antiques** 80  
877.444.4508 asheford.com

**Infinite Storage  
Solutions Inc.** 73  
877.477.5487 modernshelving.com

**MaxMin Design** 75  
202.459.8118 maxmindesign.com

## LIGHTING

**Remcraft** 79  
800.327.6585 atomicremcraft.com

**YLighting | YLiving** 84  
888.441.2781 Ylighting.com

## MID CENTURY REALTORS

**Jim Throgmorton/DBA:  
Throgart** 79  
760.895.1518 throgart.com

**Mid Century Homes** 13  
mid-centuryhomes.com

**Midcentury Modern Dallas  
Homes** 76  
214.395.7151  
midcenturymoderndallashomes.com

**Modern Homes Portland** 77  
971.285.7955  
ModernHomesPortland.com

## MODERN FURNISHINGS

**Anthony LaMorte Furniture** 74  
775.622.3346  
anthonylamorte.com

**Copeland Furniture** 2-3  
Copelandfurniture.com

**Hunt & Noyer Woodworks** 74  
313.731.2485  
huntandnoyer.com

**Joybird Furniture** 6-7  
joybird.com

**Kardiel** 5  
kardiel.com

**Kerf Design** 15  
206.954.8677  
kerfdesign.com

**Lucy Tupu Studio** 77  
lucytupu.com

## OTHER HOUSE STUFF

**American Tile Makers/B&W  
Tile** 19  
310.538.9579 bwtile.com

**Clayhaus** 69  
503.928.3076  
clayhaustile.com

**House Numbers** 73  
575.201.3737  
housenumbers.com

**Make It Midcentury** 67  
makeitmidcentury.com

**Modbox USA, Inc.** 76  
modboxusa.com

**Modcraft** 77  
718.541.1160  
mod-craft.com

**Nana Wall System Inc** 17  
800.873.5673  
nanawall.com

**TedStuff** 79  
561.272.0770  
tedstuff.net

## VINTAGE STORES & FURNITURE REHAB

**Atomic Pad** 81  
Atomicpad.net

**Evans Family Company - Fagas  
Straps** 81  
858.461.8069  
fagasstraps.com

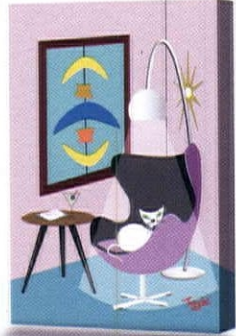


Retro-midcentury-modern-atomic-pop artwork  
for your home and office...

30" X 96"



36" X 24"



throgart.com  
Palm Desert, CA  
760-895-1518  
Giclee prints on canvas or art paper



36" X 72"

*"ThrogArt"*

**SHOW US YOUR REMCRAFT!**  
Have a great installation of a Remcraft fixture on your midcentury home? Seen a great Remcraft in the wild? Share your snapshot with us at [snaps@remcraft.com](mailto:snaps@remcraft.com)

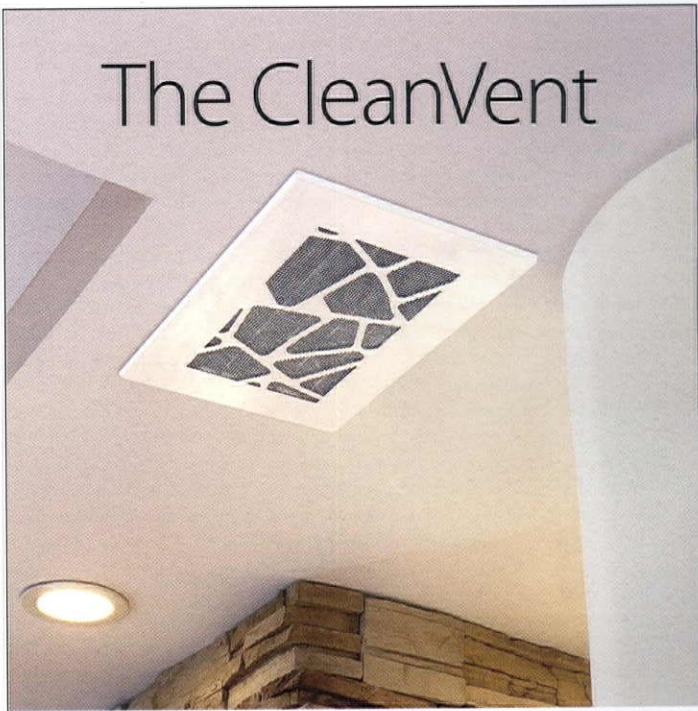


(800) 327-6585 [www.atomicremcraft.com](http://www.atomicremcraft.com)

BLACKWELL  WOODWORKS



HANDMADE CLOCKS AND DECOR MADE ENTIRELY FROM UP-CYCLED GUITAR SCRAPS!  
[BLACKWELLWOODWORKS.COM](http://BLACKWELLWOODWORKS.COM)



The CleanVent

The CleanVent is a magnetic, screwless, retrofit vent cover. Featuring hidden air flow tabs, easily repositioned when installed. Available in standard and custom sizes and patterns.

Discover more at [tedstuff.net](http://tedstuff.net)



# resources

## Fresh & Modern, page 20

**Architects:** Rick + Cindy Black Architects, (512) 402-3152 or rickandcindy.net.

**Interior design:** Mark Ashby Design (Christina Simon assisted by Cori Pfaff), (512) 524-1220 or markashbydesign.com.

**Cabinetry:** A.R. Lucas Construction Company, (512) 801-7221 or arlucasconstruction.com.

**Counters:** Architectural Tile & Stone, (512) 420-9989 or architecturaltilestone.com.

**DINING ROOM; Pendant light:** Noguchi Akari 15A Ceiling Light from Noguchi Shop, shop.noguchi.org. **Table:** Lekker Home, lekkerhome.com. **KITCHEN; Backsplash:** Bedrosians Tile & Stone, bedrosians.com. **Pendant lights:** Shades of Light, shadesoflight.com. **Wall sconces:** Cedar & Moss, cedarandmoss.com.

## The Perfect Note, page 26

**Interior designer:** Jared Frank, topsydesign.com. **FRONT EXTERIOR; Chilewich shag doormat:** Design Within Reach, dwr.com.

**Ipe chaise lounges with custom upholstery:** Masaya & Co., masayacompany.com.

**Sgraffito planter pot by Gaaney Ceramics:** Vintage find. **LIVING ROOM; Abstract biomorphic wooden sculptures:** Etsy and eBay, visit etsy.com and ebay.com.

**Adrian Pearsall tables:** Vintage finds from Vintage Supply LA, vintagesupplystore.com. **Aksel Kjersgaard round mirror:** Etsy, etsy.com/shop/refugegallery. **Bostlund Lotte lamp with custom jute shade, snake plant in teak stand, and floor lamp with jute shade:** Etsy, etsy.com.

**Customized "Hanna" cream sofa:** Thomas Hayes Studio, thomashayesstudio.com.

**Finn Juhl Japan lounge chairs and sofa:** Denmark 50, denmark50.com. **Painting:** Nouel Riel, nouelrieli.com. **Slate and chartreuse rug:** Fat Chance Modern, 1stdibs.com/dealers/fat-chance. **Tall dresser:** The Window, 1stdibs.com/dealers/the-window.

**Vintage German coat hooks:** Etsy, etsy.com/shop/LeKosmosBerlin. **Vintage Italian pottery:** Etsy, etsy.com/shop/retrosymphony.

**MASTER BEDROOM; Belgian linens:** Libeco, libecohomestores.com. **Bostlund Lotte lamp:** eBay, ebay.com. **Rosewood nightstand:** Vintage find from Vintage Supply LA, vintagesupplystore.com. **Sergio Rodriguez rosewood bed:** Vintage find, Thomas Hayes Studio, thomashayesstudio.com. **Vintage Swedish flat-weave rug:** From Jared's personal collection. **MEDIA ROOM; Maurice Bailey low credenza:** Vintage Supply LA, vintagesupplystore.com. **Mid century chair reupholstered in vintage fabric:** Chair was a vintage find, fabric from Jared's personal collection. **GUEST BEDROOM; Gaaney pot:** eBay, ebay.com. **Merton Bench:** De JONG & Co., dejongandco.com. **Pillow:** Made from

vintage Frank Lloyd Wright textile. **Organic linen curtains and bedsheets:** Libeco, libecohomestores.com. **Vintage afghan:** Flea market find. **KITCHEN; Fog & Mørup jute pendant:** eBay, ebay.com. **Howard Miller wall clock:** Etsy, etsy.com. **Vintage vase:** Shop NFS, shopnfs.com. **BATHROOM; Missoni shower curtain and towels:** Amara, amara.com. **Teak mirror:** Flea market find.

## Preserved & Refined, page 38

**Designer:** Jessica Luque of Stussi Luque Design, follow her on Instagram @stussiluquedesign. **EXTERIOR; House numbers:** Design Within Reach, dwr.com. **Lamppost:** Wayfair, Wayfair.com.

**Landscaping:** Little Job Landscaping in Boise, (208) 384-0888. **Mailbox:** Modern Mailbox, (208) 340-7597 or modern-mailbox.com.

**Wall sconce:** LightingDirect.com, lightingdirect.com. **ENTRY; Bench:** Vintage find. **Curtains:** Idaho Design Center, idahodesigncenter.com. **Flooring:** Original Oakley flagstone. **Handrailing and wallpaper:** Original to the home. **Light fixture:** Rejuvenation, rejuvenation.com.

**Plant stands:** West Elm, westelm.com. **LIVING ROOM; Coffee table:** Purchased with the home. **Curtains:** Idaho Design Center, idahodesigncenter.com. **Flooring:** 3 1/2" white oak by Idaho Floor Supply, idahofloorsupply.com. **Peacock side table:** Anthropologie, anthropologie.com. **Rugs:** Vintage find from Rarity Rugs in Boise, rarityrugs.com. **Sectional, green side chair and planters:** West Elm, westelm.com. **Side chairs and lamps:** Vintage finds. **Wall paneling and bookcases:** Nystrom Goods, nystromgoods.com. **FAMILY ROOM; Blue sofa:** Article, article.com. **Built-in wall unit:** Nystrom Goods, nystromgoods.com. **Curtains:** Idaho Design Center, idahodesigncenter.com. **Flooring:** 3 1/2" white oak by Idaho Floor Supply, idahofloorsupply.com. **Green chair:** Furniture Outfitters in Boise, furnitureoutfitter.com. **Rug:** Vintage find. **KITCHEN; Backsplash:** Raised Oval in Rectangle by Daltile, daltile.com. **Breakfast bar chairs:** CB2, cb2.com. **Cabinets:** Nystrom Goods, nystromgoods.com. **Counter:** Caesar stone. **Wall sconce:** LightingDirect.com, lightingdirect.com.

**DINING ROOM; Bench and planter:** Vintage finds. **Table, chairs, console and chandelier:** Vintage finds from Boise Vintage, boisevintage.com. **MARCIA'S OFFICE; Boomerang desk and bookshelf:** Vintage by Boise Vintage, boisevintage.com. **Office chair:** Wayfair, wayfair.com. **Pink side chair:** Vintage from Beatnik Vintage in Boise, beatnikvintagedecor.com. **Rug:** Vintage from Rarity Rugs, rarityrugs.com. **MASTER BED Bed:** Anthropologie, anthropologie.com.

**Curtains:** Idaho Design Center, idahodesigncenter.com. **Lamps:** Vintage find from Boise Vintage, boisevintage.com.

**Side tables:** Purchased with the home. **HALL BATH; Accent tile and sinks with yellow details:** Original to the home. **Flooring:** Marmoleum from Idaho Floor Supply, idahofloorsupply.com. **Rugs:** Anthropologie, anthropologie.com. **Wallpaper:** Thibaut, thibautdesign.com. **DOWNSTAIRS LIVING AREA; Barstools, sofa and side chair:** Purchased with the home. **Floor lamp:** Beatnik Vintage in Boise, beatnikvintagedecor.com. **Flooring:** Mohawk Carpet, mohawkflooring.com. **GUEST BEDROOM; Flooring:** Mohawk Carpet, mohawkflooring.com. **Side chair and side tables:** Purchased with the home. **STEVE'S OFFICE; Bookshelf:** Wayfair, wayfair.com. **Carpet:** Original to the home.

## Vibrant Refresh, page 50

**EXTERIOR; Backyard sculptures:** Tiki Broker, tikibroker.com. **Orange patio chairs:** H3K Design, (760) 325-5420 or h3kdesign.com.

**Paint:** Instant Orange by Dunn & Edwards, (888) 337-2468 or dunnedwards.com.

## Would You Like To Be A Mid-Century Modern Antiques Dealer?

### You Can:

\*Start your own Mid-Century Modern Antiques Business

\*Choose the hours you wish to work

\*Become a "Certified" Decorative Arts Appraiser

\*Complete an internationally recognized 12 Volume Course with Diploma & Appraisal Certification (PACC & USPAP)



For A FREE Course Prospectus Booklet:

[www.asheford.com](http://www.asheford.com)

Email: [asheford@mail.com](mailto:asheford@mail.com)

Toll free: 877-444-4508

Or write to:

Asheford Institute: 981 Harbor Blvd.  
Ste. 3, Dept. 275ATR12 Destin, FL 32541



**LIVING ROOM; Lighting:** The Galleria, (760) 323-4576 or [uriel-ortega-l7pz.squarespace.com](http://uriel-ortega-l7pz.squarespace.com). **Pillows:** Tracy Turco on Society6, [society6.com/tracyturco](http://society6.com/tracyturco). **Tulip lamps:** Haus of Rex, (760) 656-0543 or [rex.haus](http://rex.haus). **Wallpaper:** Wallpaper from the 70s, [wallpaperfromthe70s.com](http://wallpaperfromthe70s.com). **KITCHEN/DINING ROOM; Appliances:** Home Depot, (800) 466-3337 or [homedepot.com](http://homedepot.com). **Chairs:** Palm Springs Vintage Market, [palmspringsvintagemarket.com](http://palmspringsvintagemarket.com). **Cushions:** Tracy Turco on Society6, [society6.com/tracyturco](http://society6.com/tracyturco). **Range Hood:** Home Depot, (800) 466-3337 or [homedepot.com](http://homedepot.com). **Table:** Haus of Rex, (760) 656-0543 or [rex.haus](http://rex.haus). **Tile backsplash:** Tile Designs by Fina, (760) 636-1744 or [tiledesignsbyfina.com](http://tiledesignsbyfina.com). **TWIN BEDROOM; Lamp:** Palm Springs Vintage Market, [palmspringsvintagemarket.com](http://palmspringsvintagemarket.com). **Lighting:** Haus of Rex, (760) 656-0543 or [rex.haus](http://rex.haus). **Pillows:** Tracy Turco on Society6, [society6.com/tracyturco](http://society6.com/tracyturco). **Wallpaper:** Wallpaper from the 70s, [wallpaperfromthe70s.com](http://wallpaperfromthe70s.com).

**An A-Frame in the Woods, page 60**  
**EXTERIOR; Butterfly chairs:** Circa50, (877) 247-2250 or [circa50.com](http://circa50.com). **Ixtapa Chairs:** CB2, visit [cb2.com](http://cb2.com). **Table:** Vintage find from the Rose Bowl flea market. **ENTRYWAY; Paeonia black wallpaper:** The Odells, (323) 284-8658 or [theodellsshop.com](http://theodellsshop.com). **Wood mirror/shelf:** Etsy, visit [etsy.com](http://etsy.com). **BATHROOM; 14 Pacific Black 8" x 8" tile:** Cement Tile Shop, (800) 704-2701 or [cementtileshop.com](http://cementtileshop.com). **71" blu-stone freestanding bathtub:** Blu Bathworks, (604) 299-0122 or [blubathworks.com](http://blubathworks.com). **Novogratz Goldie ram:** CB2, visit [cb2.com](http://cb2.com). **LARGE BEDROOM; Macramé:** Custom by Emily Katz, visit [emilykatz.com](http://emilykatz.com). **Alchemy Bed:** CB2, visit [cb2.com](http://cb2.com). **Nightstands:** Vintage finds. **LIVING ROOM; Akari Light Sculptures hanging light:** Noguchi Shop, (718) 721-2308 or [shop.noguchi.org](http://shop.noguchi.org). **Eames lounge chair and ottoman:** DWR, [dwr.com](http://dwr.com). **Malm Zircon fireplace:** Malm Fireplaces, visit [malmfireplaces.com](http://malmfireplaces.com). **Sofa with walnut base and coffee table:** Artless, visit

[artlesscorporation.com](http://artlesscorporation.com). **Rug:** Vintage find. **KITCHEN; Corsana culinary pull-out kitchen faucet:** California Faucets, [calfaucets.com](http://calfaucets.com). **Kitchen cabinets:** IKEA, visit [ikea.com](http://ikea.com). **Lewis Dolin pulls:** MyKnobs.com, visit [myknobs.com](http://myknobs.com). **Range and hood:** Miele, visit [mieleusa.com](http://mieleusa.com). **Vega Pendant lights:** CB2, visit [cb2.com](http://cb2.com). **X2 stools:** Artless, visit [artlesscorporation.com](http://artlesscorporation.com). **CHILDRENS ROOM; Bunk beds and ladder:** Custom made. **Toy storage:** CB2, visit [cb2.com](http://cb2.com). **BEDROOM; Drommen Acacia wood bed:** CB2, visit [cb2.com](http://cb2.com). **Pillows:** Made by homeowners. **Rug:** Vintage find. **DINING AREA; Table:** Custom built. **Sidera chairs:** CB2, visit [cb2.com](http://cb2.com).

### Working Smarter, page 70

**Desk:** Custom. **Floating shelves:** IKEA, [ikea.com](http://ikea.com). **Poppin filing cabinet:** The Container Store, [containerstore.com](http://containerstore.com).



**Modern Retrograde** LLC

MID CENTURY MODERN STYLED ART

- CUSTOM DESIGNS
- 100% HANDMADE
- FREE DOMESTIC SHIPPING
- MADE IN THE USA

[etsy.com/shop/modernretrograde](http://etsy.com/shop/modernretrograde)



Replace broken or stretched Fagas Straps!

[www.fagasstraps.com](http://www.fagasstraps.com)  
[info@fagasstraps.com](mailto:info@fagasstraps.com) 858.461.8069

 **ATOMIC PAD.net**  
 Home bars & decor / custom designs



[atomicpad.net](http://atomicpad.net)

also on [etsy.com/shop/atomicpad](http://etsy.com/shop/atomicpad)

Made to order - handcrafted in California



# last look



## Game Night for the Champ

By Lindsay Jarvis | Photography by Genevieve Naylor/Corbis via Getty Images

**Jackie Robinson with his wife Rachel and their children at their Stamford, Connecticut home**, where Scrabble makes the centerpiece for family time. We all know Jackie led the way as the first Black player in the Major Leagues in the 20th century, but he also dealt with racial discrimination off the baseball field. Around 1953, Rachel wanted to leave St. Albans in search of a larger home with more privacy, better public schools and the fresh air of Connecticut. Looking for houses in West Chester county and the suburbs, Rachel was met with resistance. After hearing of Rachel's difficulties, a reporter contacted her and a story was released, prompting the town of Stamford to help. A small group met at the home of Andrea Simon (wife of Richard Simon from Simon & Schuster Publishing), and Rachel and Andrea became quick friends determined to find a dream home for Rachel.

After viewing a few homes, Rachel ultimately fell in love with a five-acre plot and the beginnings of a new house already built. The current owner and builder, Ben Gunnar, sold the property to the Robinsons and worked with them on a stunning split-level contemporary home that featured an impressive stone fireplace, a custom showcase area for Jackie's trophies and even a large game room with a full-sized soda fountain.

**There's so much more to the story! For more information on Jackie's life, read *Jackie Robinson, A Biography* by Arnold Rampersad**





© & ™ Lucasfilm Ltd.

"The Ceaseless Sweep," a 16 color silk screen print, limited to 200 copies

"Dilemma on Dagobah," a 15 color silk screen print, limited to 200 copies



© & ™ Lucasfilm Ltd.

**STAR  
WARS**

Officially licensed Star Wars  
print series available  
exclusively from the Shag Store



The Shag Store ■ 745 N. Palm Canyon Drive, Palm Springs, California ■ shagstore.com ■ 760.322.3400



**Y**LIGHTING  
The Best in Modern Lighting



Shop [YLighting.com](http://YLighting.com) or Call (888) 441-2781.  
Exclusive Gravity Chandelier from Forestier and Hartau Table Lamps from D'Armes.