

atomic

MID CENTURY MARVELS

ranch

Restored & Remastered
Boulder, Portland, Santa Fe

The Legacy of Paul R. Williams

Material World:
Innovative Tile and
Cabinetry Ideas

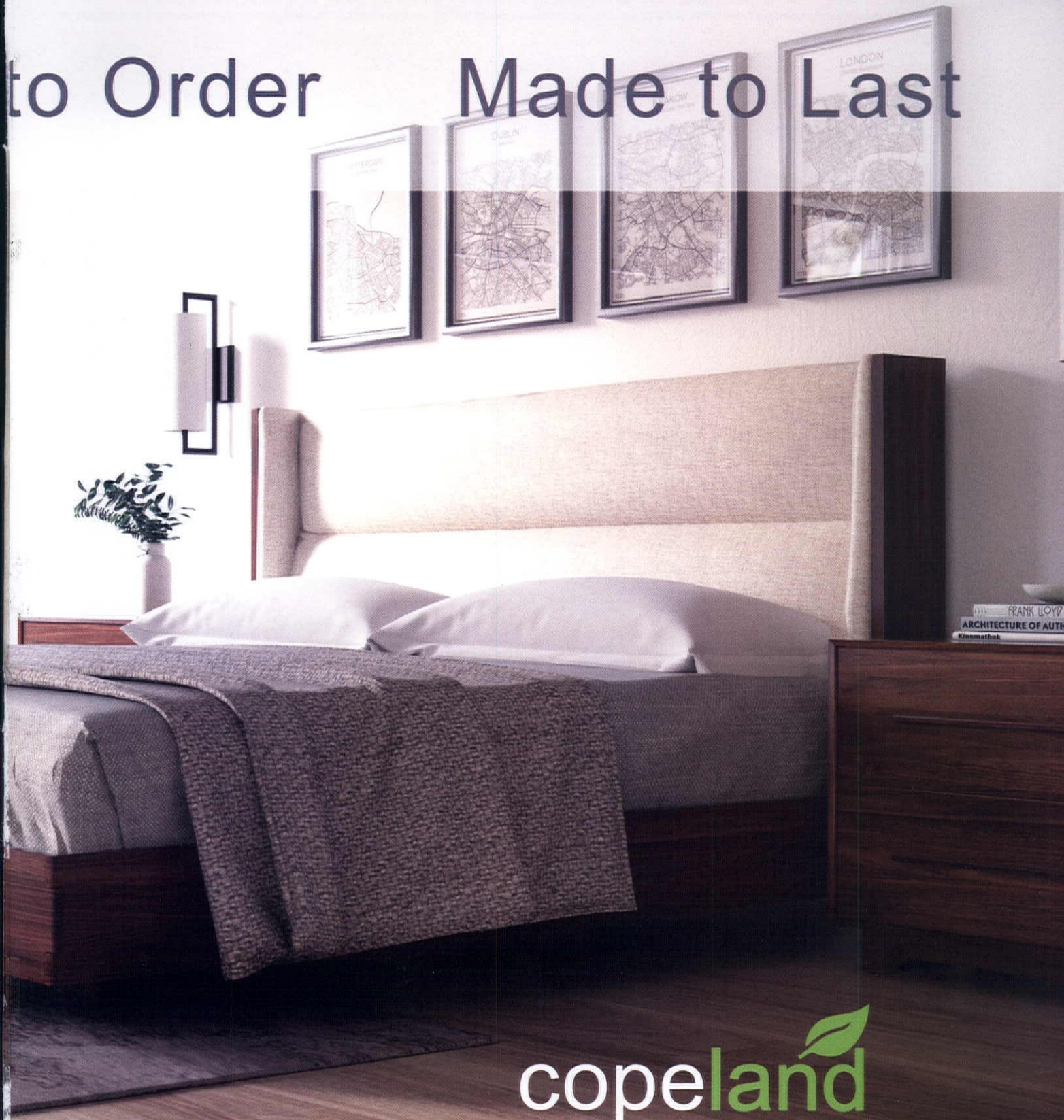


Made in America Made



Sloane Bedroom

to Order Made to Last



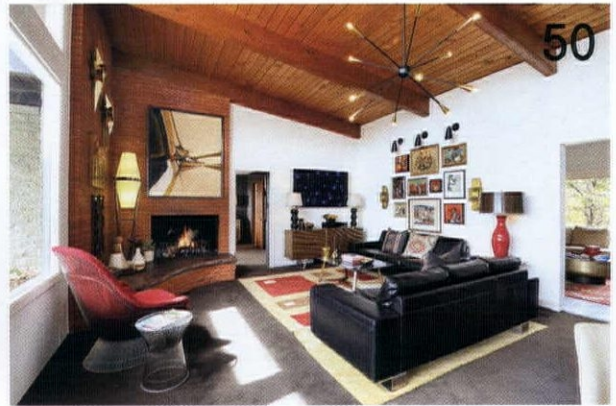
copeland 

FURNITURE
copelandfurniture.com

Contents winter 2020



30



50

FEATURES

30 Rising from the Ashes

A truly stunning Colorado mountaintop retreat by Charles Haertling is revived after years of neglect. The original exterior was restored, while thoughtful interior updates highlight the architecture.

40 Cleared Vision

A prior remodel left this 1962 Portland home in a state that no longer reflected the original architect's vision. The designer blended restoration with necessary updates, and the house now shines once again.

50 Vista with a View

Personal touches add warmth and style to this 1958 Santa Fe home with unique original features and a striking exterior profile.

60 Building a Home Paul R. Williams Style

Architect Paul Revere Williams is perhaps best known for his glamorous designs in hotels and custom celebrity homes, but he also worked hard to bring affordable housing to the masses. Explore some of Williams' residential plans, and learn about his efforts in designing for people of all economic backgrounds.

68 California Cool

After following their dream of owning a mid century house, these homeowners worked with a design team to create more usable spaces for living and entertaining while maintaining an aesthetic with a nod to the home's past.

DEPARTMENTS

8 Editor's Letter

10 Web News

14 Cool Stuff

18 Period Picks

22 Atomic Kitchens

78 Atomic Advertisers

80 Resources

82 Last Look

COVER

Cover Photography by Atom Stevens

Cover Design by Gabby Oh



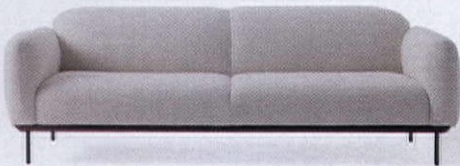
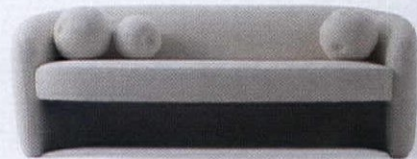
68



40

KARDIEL

Bringing the 70's Vibe with our Bouclé



10% OFF

with promo code
WINTER21
FREE SHIPPING ON \$995+

FREE FABRIC AND LEATHER SWATCHES
7 - 10 DAY DELIVERY FOR IN-STOCK ITEMS
365 IN-HOME TRIAL | WWW.KARDIEL.COM

JOYBIRD

Create a space that brings you joy

No need to blend in. With 37,000+ ways to customize your furniture, we're ready to help bring your dream room to life.





Soto Chair | \$1,339
in Key Largo Grass



Gert Coffee Table | \$636
in Walnut



Collins Chair | \$1,279
in Taylor Golden



Hughes Swivel Chair | \$1,481
in Lucky Turquoise



Hughes Bed | \$2,616
in Plush Mist



Adina Sofa | \$2,316
in Sorrento Marigold



Florence Media Console | \$1,564
in Mango Wood



Toscana Dining Set | \$2,850
in Taylor Felt Grey



Eliot Leather Sectional with Bumper | \$5,850
in Santiago Camel



Eliot Bench | \$1,827
in Royale Forrest

25% OFF*

Use Promo Code
WEST25
Until: 12.01.2020

Limited Lifetime Warranty | 90-Day Returns | Buy Now, Decide Later

Don't want to wait?

Shop our Quick Ship furniture. It's ready to ship within 3-5 business days.*

[Joybird.com/instock](https://www.joybird.com/instock)

*The 25% discount is a limited time offer valid until 12.01.2020 and it cannot be combined with other offers, discounts, or prior purchases. For additional details on Returns and Exchanges please visit [joybird.com/returns-and-exchanges/](https://www.joybird.com/returns-and-exchanges/). For additional details on shipping visit [joybird.com/shipping-and-delivery/](https://www.joybird.com/shipping-and-delivery/). For additional details on buy now, decide later visit [joybird.com/decide-later/](https://www.joybird.com/decide-later/). Products shown above does not necessarily reflect current on-site inventory. Quick Ship items typically ships within 3-5 business days of order. Date of delivery will vary depending on your location. Limited availability.

Joybird.com | 888.282.0842

editor's letter



PHOTO BY MARK MENDEZ

MODERN COMFORTS

A fire flickering in a Malm fireplace. A hot toddy while you kick back in an Eames lounge chair. The crackle and pop of an old record playing while you wrap presents on your Hey Wake dining table. The best thing about winter is being stuck inside and staring at all your mod treasures. Ok, sure, we've been home a lot more these days. But for me, the spirit of winter is one of slowing down, stopping for a bit and soaking up the feeling of appreciation. It's gratitude for what we have and how far we've come and a savoring of all the hard work and tenacity we've shown throughout the year, which has brought us to this final season.

This issue is a celebration of the hard work of several homeowners, designers, makers and builders. It's filled with homes where months of blood, sweat, tears and choices have produced lovingly restored and revived mid century gems. It's filled with art and creations of craftsmen dedicated to producing beautiful objects that might become the collectibles of tomorrow.

I myself will be slowing down a bit too. By the time this issue goes to print, I'll probably be doing my own savoring and appreciating of the new little life I've been working hard to produce all year. I'll be spending this winter at home with her and leaving this magazine in the lovely expert hands of my trusted companion and joy of a person, Lindsay Jarvis, who'll man the ship for a few issues while I'm gone.

So cheers to a hard-fought year and cheers to the continued strength to keep fighting into the next. I hope these pages inspire you to celebrate and appreciate what you've created in 2020: Maybe it's an updated room or two, maybe it's a new home altogether or maybe it's a vision of what you'll manifest for next year.

Jackie Torres

Get connected!

Email: editor@atomic-ranch.com • Online: atomic-ranch.com • [@theatomicranch](https://www.instagram.com/theatomicranch)

atomic ranch

EDITORIAL

Brand Leader: Jackie Torres
Senior Editor: Lindsay Jarvis
Managing Editor: Anne Brink
Digital Brand Manager: Kris Christensen

DESIGN

Design Director: Gabby Oh

CONTRIBUTORS

Shelby Deering, Kristin Dowling, Anna Marcum, Devlin Smith,
Kathryn Drury Wagner

CONTRIBUTING PHOTOGRAPHERS

Rickie Agapito, Stephen Busken, Daniel Nadelbach, © David
Papazian: David Papazian Photography, Atom Stevens

ADVERTISING

Sherrie Norris - snorris@engaged.media
Julie Hale - jhale@engaged.media
Sebastian Tirkey - Advertising Traffic Coordinator

OPERATIONS

Manish Kumar Mishra: Operations Specialist
Surajpal Singh Bisht: Prepress Manager
Chandan Pandey: Production & Newsstand Circulation Analyst
Alex Mendoza: Administrative Assistant

EDITORIAL, PRODUCTION & SALES OFFICE

17900 Sky Park Circle #220, Irvine, CA 92614
www.atomic-ranch.com
(714) 939-9991, Fax (800) 249-7761

ATOMIC RANCH (ISSN 1547-3902) Issue 68, Winter 2020. *Atomic Ranch* is published 6 times per year (Spring, Summer, Renovation Guide, Fall, Winter, Design Issue) by Engaged Media LLC, 17900 Sky Park Circle #220, Irvine, CA 92614. Periodical postage paid at Irvine, CA, and additional mailing offices. **POSTMASTER:** send address changes to Atomic Ranch c/o Engaged Media LLC, Cenveo, 101 Workman Ct., Eureka, MO 63025. © 2020 by Engaged Media LLC. All rights reserved. Reproduction of any material from this issue in whole or in part is strictly prohibited. GST #855050365RT001 Canada Post: Publications Mail Agreement #40612608. Return undeliverable Canadian addresses to: PITNEY BOWES, INC., P.O. Box 25542, London, ON N6C 6B2.

CUSTOMER SERVICE

ENGAGED MEDIA LLC
17900 Sky Park Circle #220
Irvine, CA 92614

SUBSCRIPTIONS, ADDRESS CHANGES,
RENEWALS, MISSING OR DAMAGED COPIES
(800) 764-6278
(239) 653-0225 Foreign Inquiries
subscriptions@engagedmediainc.com
customerservice@engagedmediainc.com

BACK ISSUES

www.engagedlifestyle.com

BOOKS, MERCHANDISE, REPRINTS
(800) 764-6278, Foreign (239) 653-0225

LETTERS TO THE EDITOR, NEW PRODUCTS OR TO
CONTRIBUTE A STORY OR PHOTO
editor@atomic-ranch.com

SUBSCRIPTION RATES

\$29.95/1 year, \$52.95/2 years. Foreign, \$51.95 per year, \$96.95
per 2 years payable in US funds.
Atomic Ranch single copy price is \$7.99;
Renovation Guide and Design Issue price is \$9.99.
Please allow 6 to 8 weeks for new subscriptions to begin.

ENGAGED[®] MEDIA LLC

ENGAGED MEDIA LLC

Scott Hall: CEO

Pinaki Bhattacharya: Managing Director & COO
John Goodpasture: Vice President Sales
Erin Masercola: Director of Content Operations
Terry Rollman: Audience Development Director
Carrie Rubalcaba: HR Generalist
Jackie Torres: Director of Content

This magazine is purchased by the buyer with the understanding that information presented is from various sources from which there can be no warranty or responsibility by Engaged Media as to the legality, completeness or technical accuracy.

GST #855050365RT001

Canada Post: Publications Mail Agreement #40612608
Return undeliverable Canadian addresses to:
PITNEY BOWES, INC.
P.O. Box 25542
London, ON N6C 6B2

NATURALLY MODERN

SOLID WALNUT HAND CRAFTED UNIQUE DESIGNS



View our entire collection in the way that works for you:
In Person | Online | Zoom Meeting

Ginkgo has been furnishing the Bay Area since 2007.
Now shipping nationwide. Time to take a look.

www.gingkofurniture.com | 650-396-7455



GINGKO
FURNITURE

webnews

Keep tabs on us

Find more on how to cozy up for winter at atomic-ranch.com.

Inside Scoop!



PHOTO BY JIM BROWN

Get the Look

Transform your wall space into an art museum. We'll show you where to look to create your own gallery wall.



PHOTO BY LANDON WIGGS

Sweater Weather

Get ready for the colder months with cozy textiles from shag rugs to Southwestern blankets that make your Eames recliner even more inviting.



PHOTO BY LANDON WIGGS

Sweet Dreams

Layer up your bedroom with warm wood furniture, neutral bedding, and storage to keep clutter out of view. Find more inspiration for serene, modern bedroom retreats.



PHOTO BY BRET GUM

Elementary

You can't make your kids love to do their homework, but you can help them (and you) love where they study. Keep your kids organized the mid mod way.



Follow us online on
**Facebook, Pinterest and
Instagram** daily!

LOOK FOR THIS
THROUGHOUT THE
ISSUE TO SEE WHAT
EXTRA CONTENT
YOU'LL FIND
ONLINE.

Correction: In our *Exterior & Landscape* special issue, there was an error in the article "The Ease of Hardscaping." The image on page 116/117 does not correspond with the home featured and was printed in error. We regret the error and sincerely apologize to the parties involved and for any confusion.

KERF

plywood cabinets for the modern home

kerfdesign.com



B&W Tile

The Original source for
Mid-Century, Retro
& Vintage, Tile since 1949



Colors We Have Those!!

Come visit us www.bwtile.com • Call us 310-538-9579 • Email us info@bwtile.com

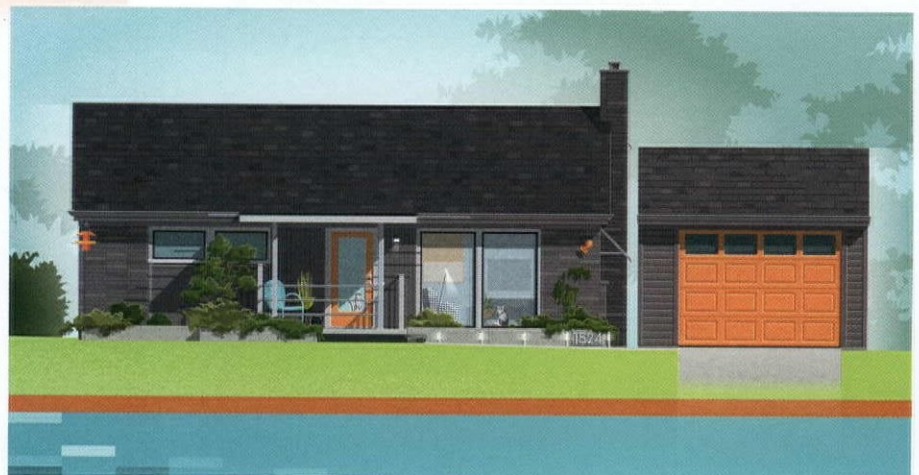
Custom HOME PORTRAITS



We all love the places we call home. We choose the colors, the furnishings, and the artwork that make our homes unique expressions of ourselves.

Let's work together to create a one-of-a-kind illustration highlighting what you love about your home!

*Get to know your home
in a whole new way*



CHRISTIAN MUSSELMAN

Illustration

christianmusselman.com

Matthew Pierce

matthewpiercefineart.com



Eyephone, Oil 15" x 30" • Instagram: @pierceposse4

M.P.

coolstuff

By Lindsay Jarvis

Shine On

Celebrate this season with home accents, festive gifts and entertaining essentials in shining metallics and warm woods.



Otrio® Inventor's Edition game, \$100. Visit otrio.com.

Plated stainless-steel tray, \$20. Visit dwr.com.



Gold velvet pillows, \$198 for the pair. Visit dressingroomsinteriorsstudio.com.



Jean lounge chair, \$695. (800) 382-9303 or industrywest.com.



Fritz 55" fabric bench, \$940. Visit kardiel.com.

Gold and matte pink luxury
4-piece flatware set, \$32.88.
Visit theblackhome.com.



Tree skirt with retro
ornaments, \$59.99. Visit
retrolifestylecompany.com.



Tank low-ball glass by Tom Dixon, set of 2,
\$100. (877) 445-4486 or lumens.com.



Mid Century Modern ornament, \$15.
Visit etsy.com/shop/fredarndartworks.

Farnsworth House Mid Century Modern masterpiece kit
or finished model. For pricing and more information,
(440) 367-8866 or modellandmarks.com.

Eclipse triple mirror, \$1,520. Visit
marieburgosdesignthystore.com.



Modern Hill Furniture



MidCenturyWarehouse.com

"The Easiest Way To Buy and Sell Authentic Mid Century Modern Furniture"

Nationwide Shipping- Second Piece Ships Free

Interior Designer Trade Program | Free Restoration on all purchases



Franco Ablini Italian Rattan and Glass Side Table \$595 | Poul Jensen Z Lounge Chair for Selig \$1495

Paul Mayen Style White and Smoked Glass Floor Lamp \$395 | Curtis Jere Brutalist Metal Pom Pom Wall Art Sculpture \$995 | Bronze Cat Sculpture \$1995

Lane Brutalist Walnut 2 Piece Walnut Armoire Dresser \$1795 | Frank Reenskaug For Bramin Mobler \$1195



Dyrlund Hidden
Leaf Teak Dining Table
\$1,695



Adrian Pearsall Jacks
Modern End Tables
\$995



George Nelson for Herman Miller
Walnut 3 Drawer Dresser Chest - Pair
\$3,895



Bernhardt Pederson Teak Tambour
Door Sideboard Credenza with Hutch
\$3,495



Plycraft Restored Walnut
and Leather Chair and Ottoman
\$1,495



Broyhill Brasilia
Lowboy Dresser
\$1,695



Selig Imperial
Chrome Base Sofa
\$1,495



Milo Baughman for Thayer Coggin Brass and
Velvet Thinline Dining Chairs - Set of 6
\$4,295



Mainline by Hooker Single Sided Walnut
and Rattan Floating Desk with Display Shelf
\$1295

SAVE 10%
Code **Atomic10**

Zoom Video Warehouse Tours

Buy-Sell-Trade

www.MidCenturyWarehouse.com

708-497-9111

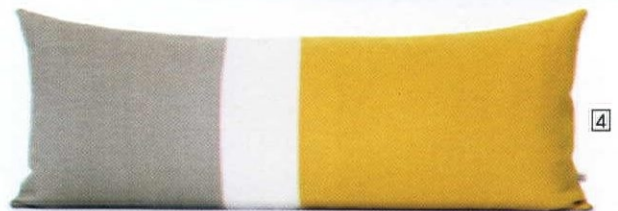
periodpicks



Fanciful Fabrics

These pillows, linens, blankets and placemats are the perfect accents for your home, adding a splash of color and warmth to any space.

By Lindsay Jarvis



1. **Eames wool blanket**, \$555. (877) 445-4486 or lumens.com.
2. **Chalet cable pillow**, knit by hand, \$495. (973) 866-5522 or johannahoward.com.
3. **Maptone placemats by Chilewich**, set of 4, \$80. Visit food52.com.
4. **Squash yellow color-block pillow**. For pricing and more options, visit jillianrenedecor.com.
5. **Ceres reversible duvet cover set**. For pricing and more options, visit allmodern.com.
6. **Jackie pillow**, \$58. Visit karenjaihome.com.
7. **Alem cotton napkin**, set of 4, \$75. (908) 718-7860 or 54kibo.com.



we make mid-century dreams come true.



Every day
at Mid-Century Homes,
Jessica, Vance, TJ, Mark and Katie
obsess about finding the coolest mid-century
homes in the nation's most livable city. Scenic Boise, Idaho
is home to over 11,000 mid-century gems at attainable
prices. With top-shelf customer service and a
deep expertise, this Dream Team is ready
to show off the best of Boise:

MID-CENTURYHOMES.COM



mid-century
homes

By Anthology



DECK YOUR HALLS



These Shag-designed hand-blown glass ornaments are produced in Europe using traditional glassmaking techniques which date back to the middle ages.

shagstore.com ■ 745 N. Palm Canyon Dr., Palm Springs ■ 760.322.3400

Question Conventional Boundaries



Mill Valley Residence • NanaWall Folding Glass Wall • Architect: Diego Pacheco Design • Photography: Paul Dyer

NanaWall Opening Glass Walls

Transform traditional walls into flexible openings that invite the outside in.

 Wind & Water Resistant

 Energy Efficient

 Highly Secure

 Easy Operation & Durable

Explore our opening glass wall product families:



Folding



Sliding



Frameless



Minimal

Showrooms Nationwide
Visit NanaWall.com
800 873 5673
inquiries@nanawall.com

NanaWall
Boundaries **Unbound**[®]

atomickitchens

EVEN
MORE



A growing family gets designer help to give their 1965 kitchen contemporary function and vintage style.

By Devlin Smith
Photography by Rickie Agapito



design
MUST-HAVES:

- Color-blocked cabinetry
- Cement tile and brass liner custom backsplash
- Furniture-style island with seating for two



EARLY ON IN THE DESIGN, BROOKE KNEW SHE WANTED TO INCORPORATE BOLD LIGHTING IN THE UPDATED KITCHEN. SHE SELECTED THREE MISMATCHED YET COMPLEMENTARY PENDANT LIGHTS OVER THE ISLAND.



LOOKING TO ADD SOME DYNAMIC LIGHTING FIXTURES TO YOUR HOME? CHECK OUT [ATOMIC-RANCH.COM](http://atomic-ranch.com) TO SEE OUR FAVORITE LIGHTING PICKS!

Mid Century Modern kitchens

offer so many of the amenities 21st-century homeowners crave, including open floor plans and stylish storage solutions. But even for homeowners who adore their vintage homes, their kitchens may still be lacking some much-needed features, like abundant counterspace and upgraded appliances, and a thoughtful remodel becomes a must-do.

That was the case for the kitchen in this 1965 St. Petersburg, Florida, ranch. Marked by a few upgrades in its 50-plus-year history, the kitchen wasn't fully meeting the needs of its current homeowners. Brooke Eversoll of Bee Studios was brought in to lead the update for clients with a specific wish list.

EXPANSIVE LAYOUT

"The clients' main desires were a more functional kitchen overall, which included a dishwasher (the current kitchen didn't have one), a more expansive layout, more counterspace and seating for two," Brooke says. "They also wished to remove the floating laminate floor and restore the original terrazzo surface. They were expecting their first child, so they turned to me as their kitchen designer and a recent mom for all the tips and tricks for a functional space with a newborn."

THE OWNERS OF THIS 1965 FLORIDA RANCH HAD SPECIFIC AIMS FOR THEIR KITCHEN REMODEL. IT NEEDED TO BE FUNCTIONAL FOR THEIR GROWING FAMILY, WITH ADDITIONAL COUNTERSPACE, SEATING FOR TWO AND A DISHWASHER. BROOKE EVERSOLL OF BEE STUDIOS WAS SELECTED TO UPDATE THE KITCHEN TO MEET THESE GOALS WHILE REFLECTING THE HOME'S MID CENTURY ROOTS.

/REAL HOME 101/

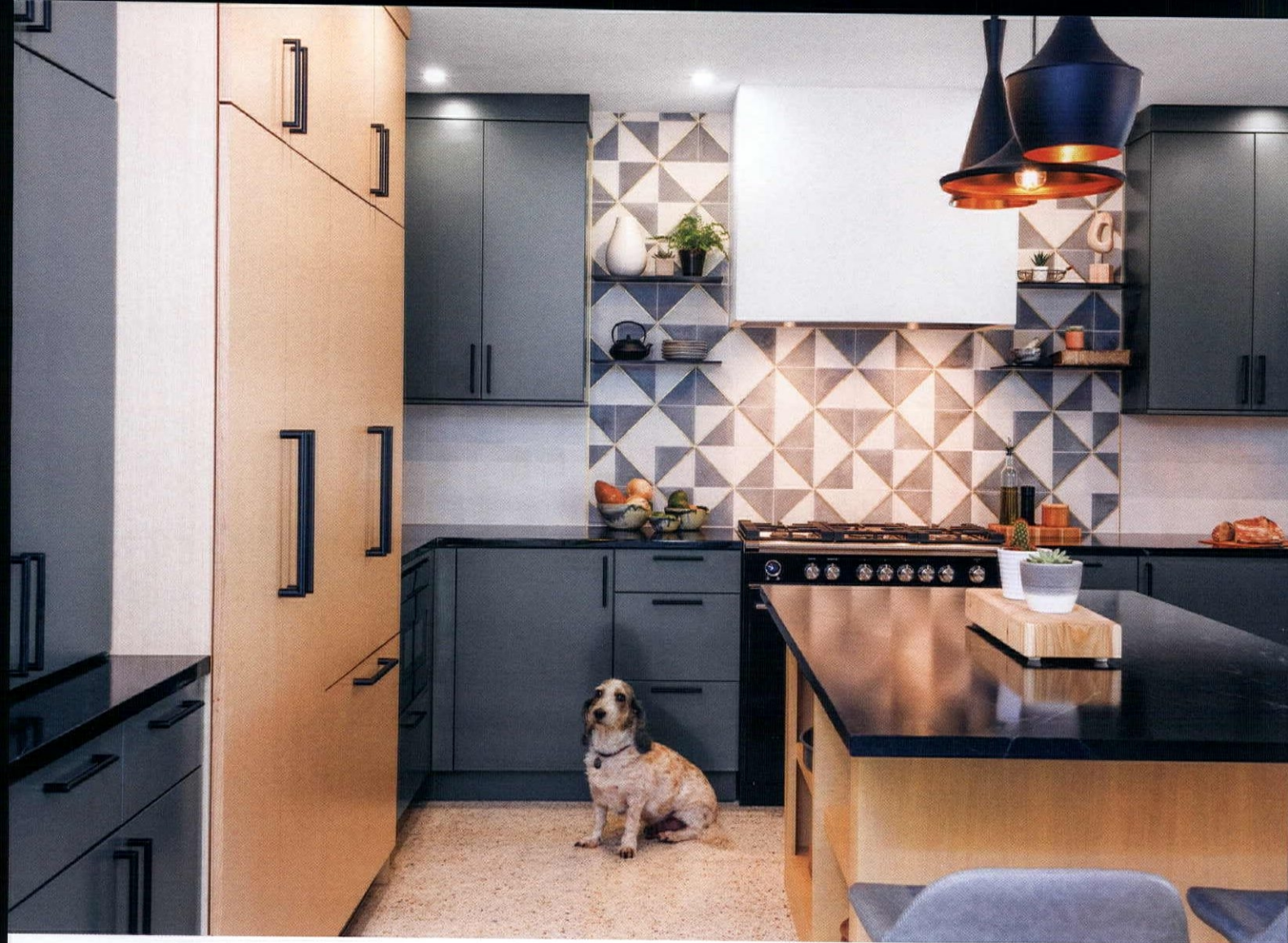
TYPE OF HOME: 1965 Florida Ranch

ARCHITECT: Unknown

BACKGROUND: This original kitchen had seen only small updates since its 1965 construction, so it wasn't entirely functional for the homeowners, a couple with a new baby on the way. Brooke Eversoll of Bee Studios was brought in to rethink the layout and usability while still respecting the kitchen's mid century roots.

COLOR SCHEME: Earthy natural tones of green, brown, cream and gray

INNOVATIVE IDEA: Brooke opted to hang mismatched yet complementary light fixtures in the kitchen as opposed to hanging a matched set.



ABOVE: ONE OF THE HOMEOWNERS' TWO DOGS, GRYFF, LOOKS RIGHT AT HOME ON THE NEWLY RESTORED TERRAZZO FLOOR. BROOKE WORKED CLOSELY WITH THE TILE LAYER TO COME UP WITH A RANDOMIZED LAYOUT FOR THE CUSTOM BACKSPLASH. CEMENT TILES ARE ACCENTED WITH BRASS LINERS TO CREATE A TRANSITION BETWEEN THE PATTERNED AND SOLID-COLORED SECTIONS.

WHAT MAKES IT MCM?

- Restored original terrazzo floors
- Natural wood finishes
- Vintage-style light fixtures

Brooke reconfigured the layout by shifting walls, and she opened up the space by removing soffits. The gas range became a focal point with the addition of a custom tile backsplash. The refrigerator, concealed with custom cabinetry, was placed next to the pantry and microwave drawer for easy food prep. A furniture-style island with abundant workspace and seating for two was installed, as were double dishwasher drawers. "This house waited 55 years for a proper dishwasher—no handwashing bottles in this kitchen," Brooke says.

CREATING YOUR STYLE

The designer found inspiration in the 1950s and '60s for the kitchen's finishes and styling. Earthy shades of brown, green, cream and gray were used throughout. Mismatched matte-finished pendant lighting was installed over the island. The custom cabinetry was color-blocked in a nod to modern art and design. "Color blocking is one of my favorite design elements; I use it a lot when I want to create visual interest and repetition," Brooke says.

With its mix of contemporary functionality and vintage sensibilities, the six-month project was completed just weeks before the homeowners' son was born. "The clients desired a fashion forward and truly one-of-a-kind kitchen for their young, growing family," Brooke says. "A space that balanced their style and brought in the perfect shades of earthy naturals—greens, caramels, tans, creams and grays. They were not afraid to take risks, and it paid off!"



(ABOVE, RIGHT) BROOKE OPTED TO INSTALL COLOR-BLOCKED CUSTOM CABINETRY IN THE KITCHEN. MOST OF THE CABINETS ARE FINISHED IN SHERWIN-WILLIAMS PEWTER GREEN, WITH WHITE OAK VENEER ADORNING ONE SET OF CABINETS AND THE BASE OF THE ISLAND. "THIS SECONDARY FINISH DID TWO IMPORTANT THINGS: IT LIGHTENED THE OVERALL SPACE AND ALLOWED THE EYE A PLACE TO REST AND TO MOVE THROUGH THE SPACE," BROOKE SAYS.

(BOTTOM, LEFT) IN A NOD TO THE HOME'S MID CENTURY ROOTS, THE HOMEOWNER INCORPORATED A MAPLE SLAT WALL INTO THE DESIGN TO COMPLEMENT THE KITCHEN. THIS ACCENT WALL FACES THE FRONT DOOR.



Upholstery. Curtains. Accents.

We've got you covered.

Introducing our new fabric collection.
Nine patterns with 151 total colorways.

makeitmidcentury.com



I specialize in midcentury
modern and ranch homes in
the Memphis, Tennessee area.

I will make your home search
or selling experience a pleasure!

MM

MARGARET MIKKELSEN
modern memphis homes



CRYE-LEIKE[®], REALTORS[®]
www.modernmemphishomes.com

Mobile: 646-898-6901
Office: 901-766-9004

PL8 House

www.PL8.shop



Finally. A house for your pet that matches your modern aesthetic.



maxmin.design



Transform your room with the SARA Wall System!

A brand new take on a Mid-Century classic – each delivery of this flexible system is tailored to your needs, with a free design consultation and presentation before you order. TV and media management, books and art, even desks and printer cabinets can all be accommodated. The shelves and uprights come flat-packed and simply slide together; cabinets come ready assembled.

You will need to secure the top shelf and some lower fittings to the wall, but full instructions and a video are included.


See more at <http://maxmin.design/sarawallsystem> or call us at (202) 459-8118. Hand crafted in Maryland, shipped worldwide.

Rising from the **Ashes**

Designed by a renowned Colorado architect and originally commissioned by an esteemed Mid Century Modern artist, this mountaintop home went through a rough patch before being restored to its full glory.

By Kathryn Drury Wagner | Photography by Atom Stevens





"I believe strongly in the law of attraction. Whatever I'm looking for is looking for me," says Max Tucci. In

2013, he and his partner, Keith Backer, were in the market to buy a home in Boulder, Colorado. Keith's daughter was living there and found an odd listing for them to consider—a modernist home nestled at 7,000 feet elevation. There were few details available, but it was clearly an incredible design. The home was in foreclosure; the couple made a winning bid with the bank, and that's when the adventure really began.

"We arrived on the mountain at 1 a.m. to see the house, and it looked like Noah's Ark had just landed on the mountain," Max recalls. "It's a massive wood structure. We thought, 'What did we do?!' We explored inside the house using our cellphones as flashlights and there was missing sheet rock and flooring, wires dangling, and the kitchen had obviously had a fire because there was soot on the walls. It had a pedigree though; you could feel it."

UP TO THE CHALLENGE

Keith and Max are seasoned homeowners with exquisite taste and several other homes. Keith is a lawyer with a practice in Boca Raton; Max is a TV and radio personality with a long-running award-winning show, *Max & Friends*. He spent a great deal of time in Italy as a child, raised in a family that celebrated art, entertaining and food. In fact, his grandfather, Oscar Tucci, owned famed New York City restaurant Delmonico's from 1926 until the late 1980s. One of the reasons Max wanted a home in Boulder was to have a writer's retreat: He's coming out with a cookbook/entertainment book based on the family restaurant in the fall of 2022, published by Rizzoli.





ABOVE: THE UNUSUAL CAST-IRON FIREPLACE IS ORIGINAL TO THE HOME. THE TILES THAT SURROUND IT ARE ALSO ORIGINAL AND WERE RESTORED BY MAX AND KEITH.

OPPOSITE: THE EXTERIOR OF THE HOME IS ORIGINAL, MADE WITH CENTER-CUT REDWOOD. BECAUSE OF ITS DRY AND BRITTLE NATURE, MAX AND KEITH HAD TO CONDITION THE WOOD BY USING A SPECIALIZED OIL ON THE HOUSE. "THE WOOD SOAKS UP THE OIL," MAX EXPLAINS. "WE HAD TO HAVE THREE APPLICATIONS OF CONDITIONING OIL. WE WILL HAVE TO DO IT AGAIN THIS YEAR." TO MAINTAIN THE EXTERIOR, THEY PLAN TO REPEAT THE PROCESS EVERY THREE TO FIVE YEARS.



"I ALWAYS WANTED A *BRADY BUNCH* KITCHEN," SAYS MAX, WHO WENT WITH A GROOVY AVOCADO AND ORANGE THEME. AND AT HOME DEPOT, THE SALES REPRESENTATIVE WHO HELPED HIM? SHE WAS A DEAD RINGER FOR ANOTHER 1970s ICON, CAROL BURNETT. "I SWEAR, THE ENERGY OF THIS HOUSE," MAX LAUGHS.

THE CREATIVE BIRTH

At first, the homeowners knew nothing about the visionaries behind their unique purchase, but as they did their detective work, they were delighted to discover the architect was Charles Haertling, a mid century master of organic designs hailed for his work in Denver and Boulder. Although he died in 1984 at age 55, he left a legacy of more than 40 buildings, including spectacular private residences and churches.



ABOVE: THE LIVING ROOM SOFA IS AN ADRIAN PEARSALL WITH ITS ORIGINAL FABRIC INTACT. ABOVE THE SOFA, THE COLORFUL ARTWORK IS BY CONTEMPORARY ARTIST G.M. KARAS; HIS WORK CAN BE SEEN THROUGHOUT THE HOME.

BELOW: ORIGINAL PLATNER CHAIRS FOUND AT DENVER MODERNISM WEEK AND A LOUIS VUITTON TRUNK THAT BELONGED TO MAX'S GRANDMOTHER, SESTA, CREATE A COMFY READING SPACE IN THE LOFT LIBRARY. MAX LOVES TO COLLECT BOOKS; SOME FROM HIS FATHER'S COLLECTION DATE BACK TO THE 1800s. THE PHOTO TO THE LEFT IS OF DELMONICO'S IN NEW YORK, A FAMOUS RESTAURANT PREVIOUSLY OWNED BY MAX'S GRANDFATHER AND FATHER FOR ROUGHLY 60 YEARS!





The home was commissioned in 1969 by Clotilde Barrett, a renowned artist who has authored many books on weaving. "I got acquainted with Charles Haertling in Boulder, back when it was wilder, and wanted a house by him," recalls Clotilde, now living in Torrey, Utah, where she still creates art. "His houses were out of my price range. He was so nice, and said, 'Well, it is going to be difficult to design a house in this budget, but we'll give it a try.' We did run out of money. The basement wasn't finished at all." She lived there with her family from 1971 until 1981, when her husband's health forced them to relocate.

RISING FROM THE ASHES

By the time Max and Keith bought the Barrett House, it had been through two subsequent owners, one of whom had "updated" it with incongruous features like a colonial staircase. Then the structure sat abandoned for about three years, attracting squatters and marijuana growers. But, says Max, "On the bright side, the hell the house had gone through created a blank canvas for us."

ABOVE: A PREVIOUS OWNER HAD CHANGED THE ORIGINAL KITCHEN FOOTPRINT AND REMOVED THE ORIGINAL BACKSPLASH AND CABINETS. MAX REPLACED THE OAK CABINETS WITH INNERMOST THERMOFOIL CABINETS IN "AGAVE" AND USED PORCELANOSA TILE TO UPDATE THE BACKSPLASH.

OPPOSITE TOP: IN SEARCH OF ECOFRIENDLY FLOORING, THE COUPLE CHOSE CORK. CORK IS MID CENTURY APPROPRIATE AND DOES NOT TRANSFER COLD FROM A SUBFLOOR. THE PREVIOUS OWNER HAD INSTALLED A COLONIAL STAIRCASE, WHICH WAS REPLACED. THE BRUTALIST STAIR RAILING WAS DESIGNED BY THE HOMEOWNERS AND CREATED BY A LOCAL METALWORKER, ALEX SCHULDIT.



BOTTOM LEFT: ECOFRIENDLY SHAG CARPETING MADE FROM ALL RECYCLED PLASTIC WAS USED IN THE TV LOFT, AN AREA CONNECTED TO THE LOWER-LEVEL DINING AND KITCHEN AREA BY TWO STEPS OFF TO THE RIGHT.

BOTTOM RIGHT: "THE OPEN DESIGN UPSTAIRS WOULDN'T PLEASE EVERYONE, BUT IT'S BECAUSE CHARLES HAERTLING INVOLVED THE WHOLE FAMILY IN THE DESIGN," EXPLAINS ORIGINAL HOMEOWNER CLOTILDE BARRETT. "I HAD A BOY IN ELEMENTARY SCHOOL AND GIRL IN JUNIOR HIGH AT THE TIME, AND THEY WANTED TO BE PART OF FAMILY LIFE EVEN AT NIGHT. MY CHILDREN LOVED THAT THEY COULD EAVESDROP ON US!"



Over several years, the couple lovingly restored the 3,000-square-foot, three-bedroom, three-bathroom home, overseeing most of the work remotely. In pursuit of an authentic vision for the home, Max and Keith chose museum-quality pieces for the furnishings. Max's advice? "Don't rush things. Really take your time and source it." The house is back in its artsy groove, frequented by the couple and also available as a chic rental. Now, Max says, "when you turn the key, it's like an instant flashback to 1971." ❁



THIS SHOWSTOPPING BRUTALIST SOFA WAS DESIGNED BY ADRIAN PEARSALL AND WAS REUPHOLSTERED IN RARE, VINTAGE JACK LENOR LARSEN FABRIC SOURCED FROM A PRIVATE COLLECTOR.



“The engineering is incredible,” observes Max. “It’s cantilevered. If you did this house today, it would be a fortune.”


TOP: WINDOWS THROUGHOUT THE HOME ARE ALL ORIGINAL SINGLE PANE, BUT A TINT CALLED “PANORAMA STERLING” WAS INSTALLED BY SUN-EASE WINDOW TINTING BOULDER. “IT KEEPS THE HEAT IN IN THE WINTER AND KEEPS THE HEAT OUT IN THE SUMMER,” SAYS MAX. “[THE TINT IS] ALMOST UNDETECTABLE IN APPEARANCE YET PROVIDES EXTRAORDINARY SOLAR HEAT REDUCTION AND ULTRAVIOLET PROTECTION.”

BOTTOM LEFT: SUGAR PINE AND PONDEROSA BECKON FROM ACROSS THE STUNNING ROOSEVELT NATIONAL FOREST.

BOTTOM RIGHT: THESE VINTAGE DOOR HANDLES ARE UPCYCLED FROM A PORTUGUESE BANK.



By stripping back a variety of misguided add-ons and upgrades, a Pacific Northwest home revitalization honors architect John Storrs' original intent.



THROUGHOUT THE LIVING AND DINING AREAS, ORIGINAL OAK FLOORING REMAINS. A LOCALLY MADE CUSTOM SINGLE-SHELF SLIDING-GLASS-DOOR CABINET WAS INSTALLED TO WRAP AROUND THE DINING ROOM FOR A FUN DISPLAY. HOMEOWNERS ABBY LANDON AND RICK STARK COVETED A RESTORED ADRIAN PEARSALL SOFA IN NORWAY, BUT THE UPHOLSTERY WAS ALL WRONG FOR THEIR SPACE. WHEN A SIMILAR PEARSALL MODEL APPEARED LOCALLY, DESIGNER VICKI SIMON SNAPPED IT UP AND WORKED WITH AREA ARTISANS TO REBUILD THE COUCH AND ATTACHED END TABLES.

By Devlin Smith
Photography © 2019 David Papazian:
David Papazian Photography

Cleared VISION



N

early 60 years ago, Donald H. Holden, a doctor, and his wife, Vivian, a swim cap designer for Jantzen, commissioned John Storrs to design a home for their family just outside of Portland. The Holdens lived in the home for 40 years before selling to a developer who originally intended to raze the home but instead decided to upgrade it to meet the tastes of early 2000s homebuyers. The improvements included tearing out the original custom cabinetry in the kitchen and replacing it with Craftsman-style cherry wood cabinetry.

DESIGNER VICKI SIMON KNEW THE ORIGINAL FIREPLACE WAS THE STAR ATTRACTION IN THE LIVING ROOM SO SHE ARRANGED THE FURNISHINGS TO FACE IT.







Current owners Abby Landon and Rick Stark purchased the 1962 home from the developers in 2003. "The state of the home when we took possession was freshly updated in the kitchen, new paint inside and out, and beautiful floors and surfaces," the homeowners say.

MAKING IT YOUR OWN

Though it boasted so many new features and fit Abby and Rick's needs, the home no longer reflected its era or the original vision of its architect. The couple began thinking about making some changes to the home. A chance

meeting in 2018 connected them with the person who would lead that project, designer Vicki Simon.

"I happened to sit down next to Abby at a dinner in 2018 and we struck up a conversation leading to what I did for a living and what a vintage house enthusiast I was," Vicki says. "Then, when I mentioned the upcoming Restore Oregon tour and that the work of John Storrs was going to be the focus of the tour, she excitedly exclaimed that she lived in a Storrs house. She told me that they were thinking of doing some upgrades down the road. I expressed my sincere interest in being considered for consulting on those upgrades."



ABOVE: THE ORIGINAL 1960s KITCHEN CABINETRY WAS LOST WHEN THIS HOME WAS PREVIOUSLY UPDATED NEARLY 20 YEARS AGO. VICKI WORKED WITH LOCAL ARTISANS TO MODIFY THE SHAKER-STYLE CABINETS TO GIVE THEM A CLEAN, MODERN FEEL.

RIGHT: THE KITCHEN UPDATES INCLUDE THE ADDITION OF A CUSTOM CONCRETE TABLE THAT WAS POURED WITH BITS OF SMASHED CAR GLASS AND SEASHELLS TO MIMIC TERRAZZO.







Her interest in John Storrs sparked by the tour, and with the prospect of working on Abby and Rick's home, Vicki began researching the architect. That knowledge, and the home itself, informed the design choices she made on this project.

RESTORATION AND UPDATES

"Restoring a vintage home to honor the original architect's intent is always a joy for me," Vicki says. "I relish the restoration process, while solving design problems for modern living, but it's always respect the architecture first. Paying attention to which things get expressed and left alone is part of my deliberate intentionality when I design. The cues were all there; it just took an astute attention and drive, and a client willing to go the distance."

THE BREAKFAST NOOK WAS GIVEN MODERN FLAIR WITH THE INSTALLATION OF A GEORGE NELSON BUBBLE LAMP AND THE ADDITION OF ARNE JACOBSEN SERIES 7 CHAIRS FOR FRITZ HANSEN.

THE DINING ROOM WAS OUTFITTED WITH A CHERRY WOOD BUFFET AND CROWN MOLDING IN THE EARLY 2000s. DESIGNER VICKI SIMON STRIPPED THAT BACK AND HAD A MID CENTURY-STYLE CABINET INSTALLED TO HOLD THE HOMEOWNERS' CHINA AND COLLECTIBLES.

OPPOSITE TOP LEFT: THE ORIGINAL, CUSTOM DOORS WERE FOUND IN THE BASEMENT AND RESTORED DURING THIS PROJECT.

OPPOSITE TOP RIGHT: LIGHTING WAS REPLACED INSIDE AND OUTSIDE THE HOME TO BETTER REFLECT ITS EARLY 1960s HERITAGE. GONE ARE RECESSED, CANNED LIGHTS; IN THEIR PLACE ARE SLEEK, GEOMETRIC FIXTURES.





The homeowners originally intended to do a few updates—new carpeting on the stairs, new appliances, new furniture—but Vicki convinced them of what was possible if they returned the home to its original glory. The early 2000s kitchen was a great place to start.

“I felt that we could do some modifications, taking out the most objectionable offenses, and, with master carpentry and paint, we could do wonders in this kitchen and be intentionally period-appropriate with those design decisions,” Vicki says. “So, for example, instead of replacing the Shaker-style cabinet doors, we filled them in, making them flat panel. Luckily, the hinges were already exposed. We changed out the knobs. We stripped off the ugly curved trim atop all the cabinets and therefore exposed the paneled walls and ceiling.”

LOOKING AHEAD

The kitchen, living and dining areas were successfully rehabbed over the course of eight months. The revitalization of this Mid Century Modern home is still a work in progress, according to Abby and Rick. The homeowners have a wish list they will be working with Vicki to complete.

“Knowledge of MCM is addictive/expensive,” the homeowners say. “We would love to correct all the Craftsman bits added to the exterior and continue the MCM backdates to the main bedroom and bath.” 🌀

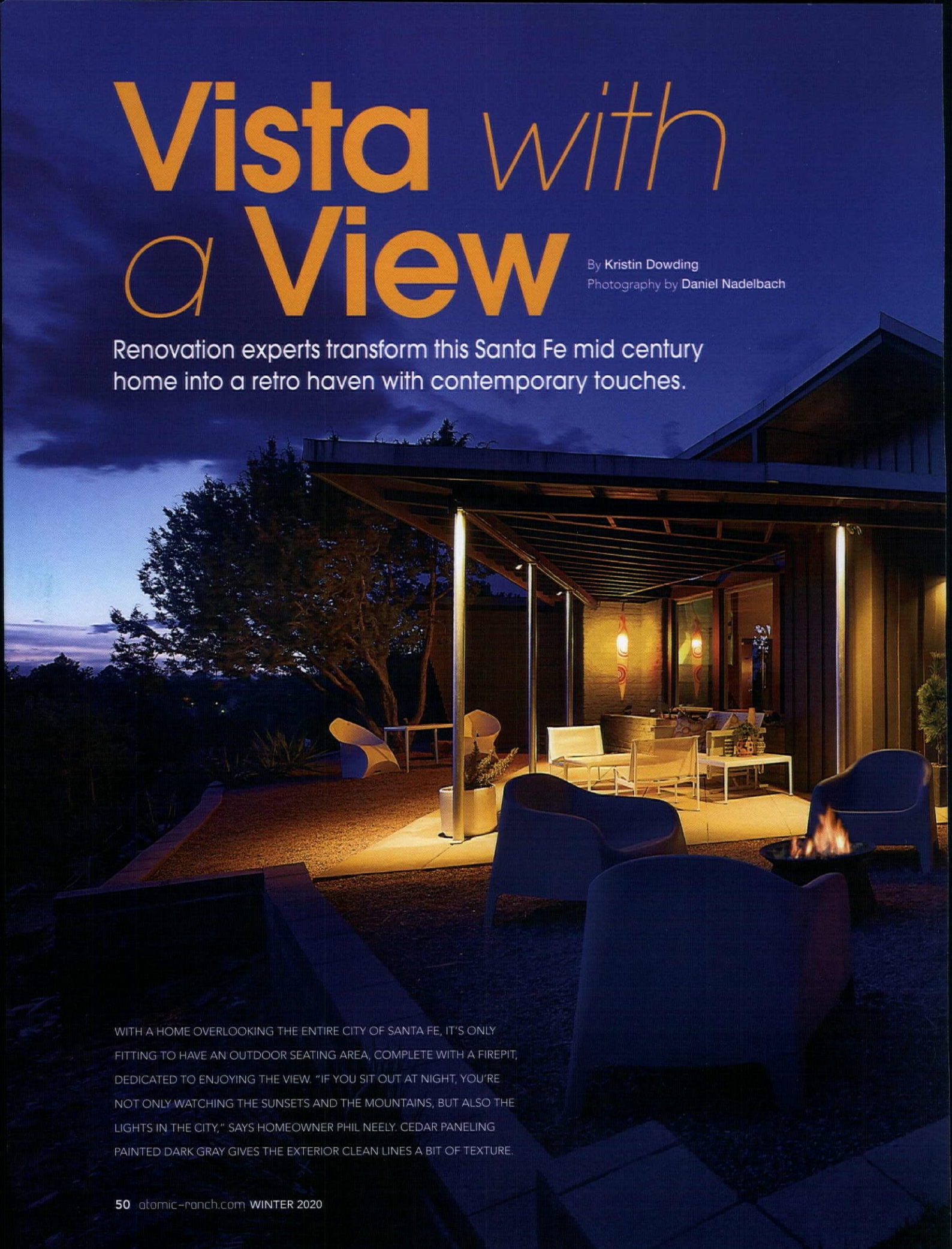


Vista *with* a View

By Kristin Dowling

Photography by Daniel Nadelbach

Renovation experts transform this Santa Fe mid century home into a retro haven with contemporary touches.



WITH A HOME OVERLOOKING THE ENTIRE CITY OF SANTA FE, IT'S ONLY FITTING TO HAVE AN OUTDOOR SEATING AREA, COMPLETE WITH A FIREPIT, DEDICATED TO ENJOYING THE VIEW. "IF YOU SIT OUT AT NIGHT, YOU'RE NOT ONLY WATCHING THE SUNSETS AND THE MOUNTAINS, BUT ALSO THE LIGHTS IN THE CITY," SAYS HOMEOWNER PHIL NEELY. CEDAR PANELING PAINTED DARK GRAY GIVES THE EXTERIOR CLEAN LINES A BIT OF TEXTURE.



S

ome people are born with the renovation bug and can't resist a project when it comes their way. When homeowners Phil Neely and his partner, Richard Babb, had a chance to snag a home near Santa Fe, New Mexico, they took it as a sign that their next endeavor had begun. Built in 1958, this 2,300-square-foot home has a sleek Mid Century Modern structure but has undergone its fair share of renovations since its inception to bring it to its current state. The couple worked to acknowledge the home's roots while bringing their own personalities into the mix, and the result is a mid century home fit for modern living.

THE ORIGINAL FIREPLACE AND CEILING REMAIN PART OF THE LIVING ROOM, AS THE ONLY MAJOR UPDATE WAS REMOVING THE OLD CARPET. PHIL AND RICHARD, ALONG WITH THEIR FRIENDS AND CO-OWNERS OF THE HOME JORGE MARTINEZ AND DAVID GLOVER, CONTRIBUTED CONTEMPORARY AND MID CENTURY MODERN FURNITURE PIECES TO UPDATE THE LOOK OF THE SPACE.



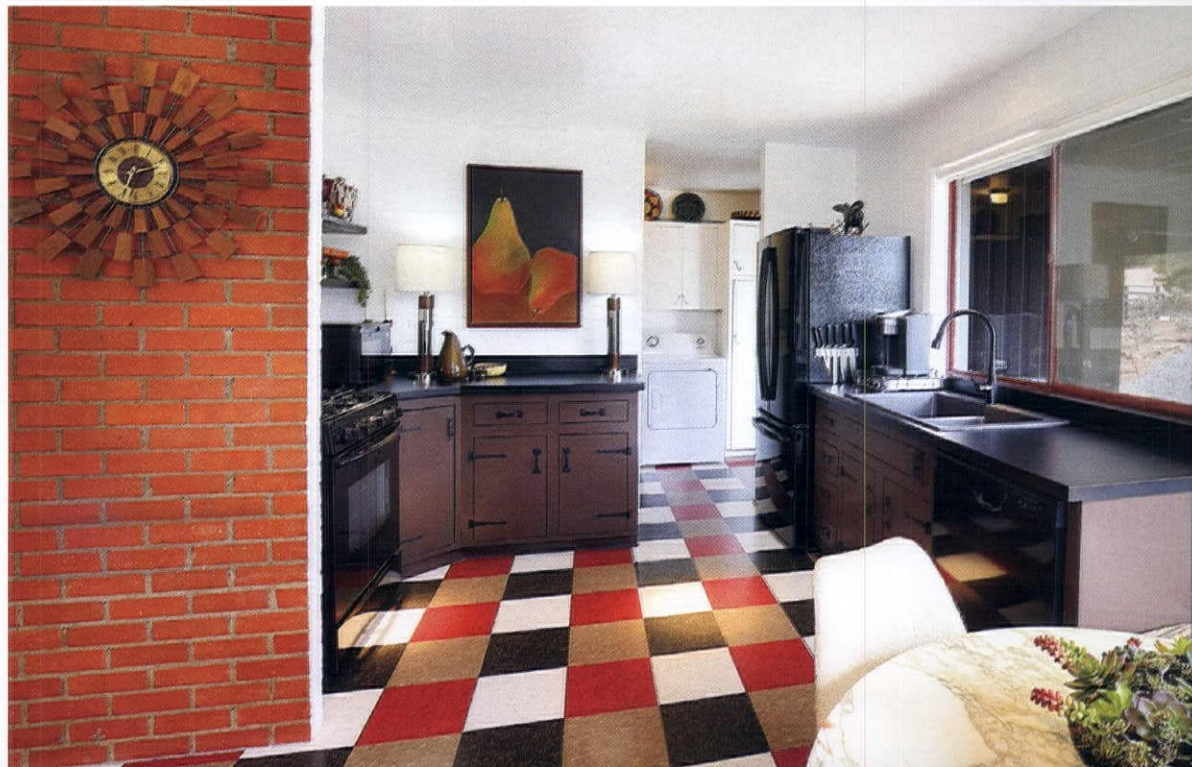
VACATION-WORTHY

Though it took some work to get the home in the condition they wanted, Phil and Richard were no strangers to the art of renovating. "In the last 20 years, we've owned 22 houses," says Phil. Most of those homes were located in Dallas, Cedar Creek Lake and Palm Springs, but when they finally decided to settle down with something more permanent, they turned to the stunning views of Santa Fe. "It's very unusual to have a house of this design in Santa Fe," he says. "The homes are usually very traditional with stucco-style fireplaces."



BELOW: THE BREAKFAST NOOK DIDN'T HAVE ENOUGH SPACE FOR A FULL TABLE, SO THEY RELOCATED IT DOWN TO THE NEXT LEVEL NEAR THE LIVING ROOM AND USE THE SPACE AS A CONVERSATION AREA COMPLETE WITH PHILIPPE STARCK COSTES ARMCHAIRS. THE PREVIOUS OWNER LINED THE WINDOW WITH BRICK-RED TRIM, AND PHIL AND RICHARD HAD A NEW IRON RAILING INSTALLED TO KEEP THE SPACE SAFE.

BOTTOM: NEW PATTERNED LINOLEUM FLOORING TAKES THE PLACE OF CARPET AND GIVES THE KITCHEN A FUN AND FRESH LOOK. THE CLOCK ON THE ORIGINAL BRICK WALL BELONGED TO THE MOTHER OF DAVID GLOVER (ONE OF THE CURRENT HOMEOWNERS) AND REMAINS A CHERISHED HEIRLOOM THAT COMPLEMENTS THE MODERN FEEL.







OPPOSITE TOP: VINTAGE PANELING PRODUCED IN THE 1950s LINES THE WALLS OF THE MAIN BEDROOM FOR A SOPHISTICATED RETRO TOUCH. "THE CHEST TO THE RIGHT OF THE BED IS FROM A MID CENTURY MODERN SHOP AND HAS A WIRELESS PRINTER IN IT," SAYS PHIL. OTHER PIECES INCLUDE A LEATHER HEADBOARD, A ROSE-GOLD BED FRAME, HORSE ARTWORK AND DRIFTWOOD LAMPS THAT CAME WITH THE HOUSE.

OPPOSITE BOTTOM: THE ORIGINAL FIREPLACE IN THE MAIN BEDROOM WAS CONVERTED TO A GAS LOG FIREPLACE. ABOVE IT, THE STRIKING ARTWORK IS A GLENN COMTOIS PIECE. THE ADDITION OF NEW CARPET AND PAINT COMPLETELY TRANSFORMED THE BEDROOM FROM OUTDATED TO POLISHED.

TOP LEFT: THE KITCHEN BANQUETTE FEATURES A MIX OF MODERN AND ECLECTIC TOUCHES. "WE'VE ALWAYS BEEN CONTEMPORARY, BUT NOT NECESSARILY MID CENTURY MODERN," SAYS PHIL.

TOP RIGHT: PART OF THE SECOND MAIN BEDROOM, THIS BATHROOM CONTAINS MANY OF ITS ORIGINAL FEATURES, INCLUDING THE YELLOW SINK, BATHTUB AND KOHLER FAUCETS. THEY ADDED THE MIRROR AND THE GLASS DOOR TO THE SHOWER FOR MODERN CONVENIENCE.

It is rumored that Alexander Girard was the home's architect, as he previously lived in Santa Fe in that time period, but sadly there isn't proof. "It's the big missing piece," says Phil. "I've called the Santa Fe building commission, but they have no records at all in the file."

Despite the mystery, Phil and Richard fell in love with the property and purchased the home in December 2019 along with Jorge Martinez and David Glover, another couple from Dallas that also loves a good home project. Each couple takes their turn staying in the home, or they rent it out. Together, they were able to make the necessary upgrades this treasure required.

FIXER UPPER

Most of the work they did was cosmetic—aside from installing air conditioning—but that was because the previous homeowner had already done so much in the way of upgrades. "When the house was built, a woman lived there for many years, and it was pretty run down by the time she sold it," says Phil. It had old, stained carpets throughout and heavy drapes; it was all a traditional style that wasn't in keeping with the MCM character of the house.

2012

ATOMIC VISTAS



TOP RIGHT: PHIL AND RICHARD CHOSE THE NAME "ATOMIC VISTAS" FOR THEIR HOME.


ABOVE RIGHT: THE SIDE OF THE HOUSE THAT OVERLOOKS THE CITY IS ALMOST ENTIRELY MADE OF GLASS TO OPTIMIZE THE VIEW.



However, the next homeowner stepped in and saved it from its dilapidated state. "A lot of the home's transformation started when [the previous owner] bought the house," says Phil. "He worked on the bones of the house." The previous owner was responsible for replacing the kitchen carpet with linoleum flooring, installing new carpet throughout the house, adding trim to the windows and updating the exterior. By the time the home was sold to Phil, Richard and their friends, it was well on its way to becoming their dream vacation home.

FEATURED FURNITURE

After repainting the interior, remodeling the main bath and converting the old dining room into the second main bedroom, the only thing left to do was switch out some of the furniture with contributions from both couples, but they lucked out with another unexpected contributor. "We got most of the furniture that [the previous owner] owned because he didn't need it anymore," says Phil. This included a Knoll dining room table, a Warren Platner chair and Phillippe Starck armchairs. "We have lots of good period pieces that lend themselves to a contemporary nature," he says.

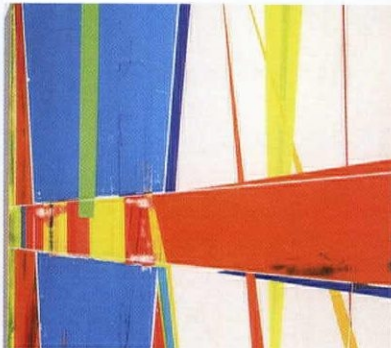
Though they kept to the Mid Century Modern bones of the house, the couple included some of their contemporary and eclectic pieces from their old homes to infuse this new home with their own personal style. Now it's open and bright and greets its guests with views overlooking the city—the perfect vacation getaway. 

PALM SPRINGS MODERN DESIGN EXPO

From the Producers of the Palm Springs Modernism Show & Sale
Presenting the Fourth Annual

February 12-15, 2021
Palm Springs Convention Center

45 exhibitors showcasing cutting-edge modern design and technology



psmoderndesign.com

February 12 | Preview Party

Friday 6-9 pm
Benefiting Modernism Week

\$110 in advance | \$125 at the door
Tickets at modernismweek.com

February 13-15 | Show & Sale

Saturday 10 am-6 pm
Sunday 10 am-5 pm
Monday 10 am-4 pm

\$25 online in advance | \$30 at the door
Tickets at palmspringsmodernism.com
Includes admission to the Modernism Show & Sale

2020 Sponsors



2020 Media Sponsors



Dolphin Promotions

Chicago 708.366.2710

Florida 954.202.1955

info@dolphinairs.com

Palm Springs

MODERNISM

SHOW & SALE

February 12-15, 2021
 Palm Springs Convention Center

85 Premier national and international decorative and fine arts dealers
 presenting all design movements of the 20th century



palm Springs modernism.com

February 12 | Preview Party

Friday 6-9 pm
 Benefiting Modernism Week

\$110 in advance | \$125 at the door
 Tickets at modernismweek.com

February 13-15 | Show & Sale

Saturday 10 am-6 pm
 Sunday 10 am-5 pm
 Monday 10 am-4 pm

\$25 online in advance | \$30 at the door
 Tickets at palm Springs modernism.com
 Includes admission to the Modern Design Expo

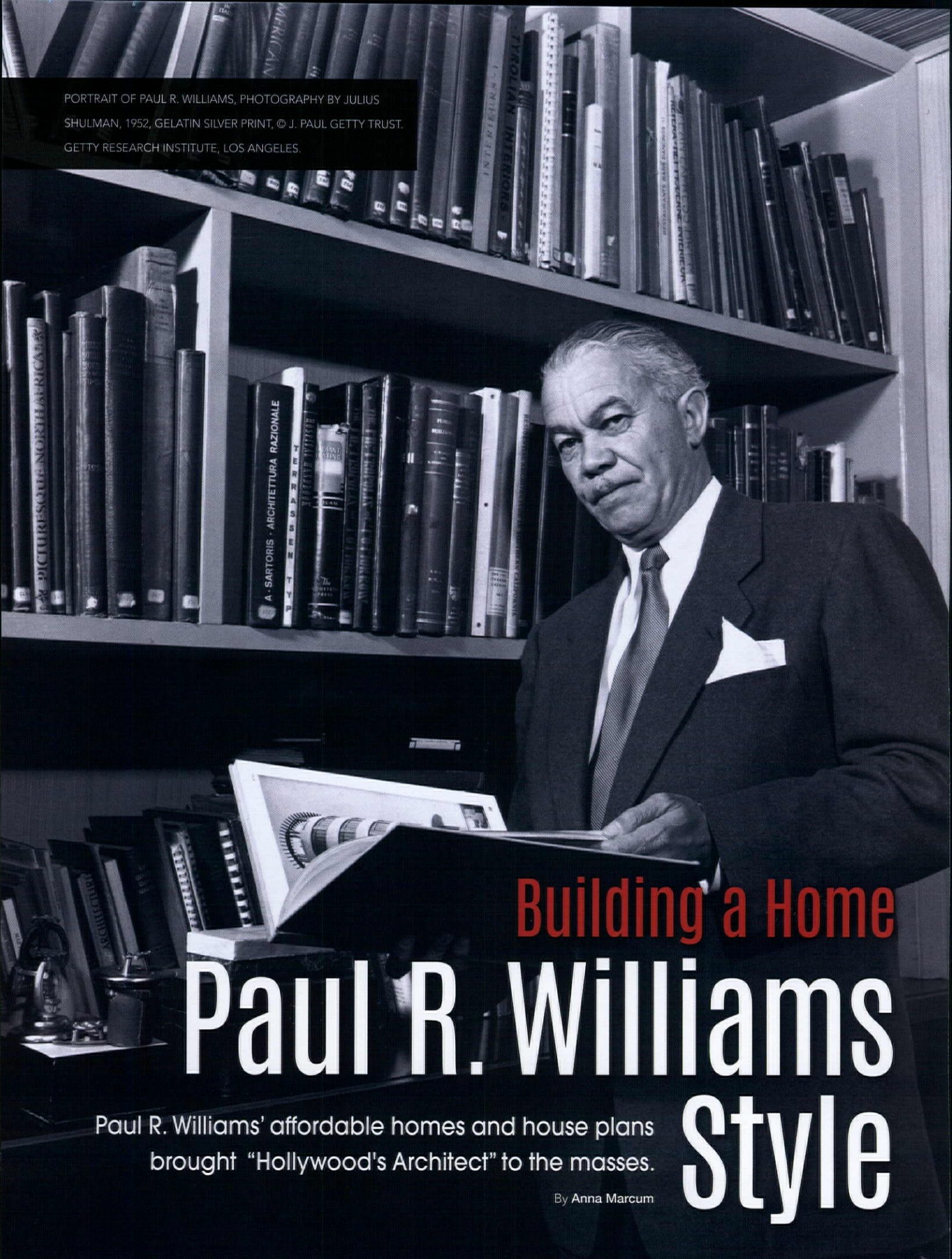
2020 Sponsors



2020 Media Sponsors



Dolphin Promotions Chicago 708.366.2710 Florida 954.202.1955 info@dolphinfairs.com

A black and white photograph of Paul R. Williams, an older man with a mustache, wearing a dark suit, white shirt, and patterned tie. He is standing in a library or study, surrounded by tall bookshelves filled with books. He is looking down at an open book or portfolio he is holding in his hands. The lighting is dramatic, with strong highlights and deep shadows. The background shows rows of books on shelves, some with titles like 'INTERIORS', 'TROPICAL INTERIORS', and 'A - SARTORIS - ARCHITETTURA RAZIONALE'.

PORTRAIT OF PAUL R. WILLIAMS, PHOTOGRAPHY BY JULIUS
SHULMAN, 1952, GELATIN SILVER PRINT, © J. PAUL GETTY TRUST.
GETTY RESEARCH INSTITUTE, LOS ANGELES.

Building a Home Paul R. Williams Style

Paul R. Williams' affordable homes and house plans brought "Hollywood's Architect" to the masses.

By Anna Marcum

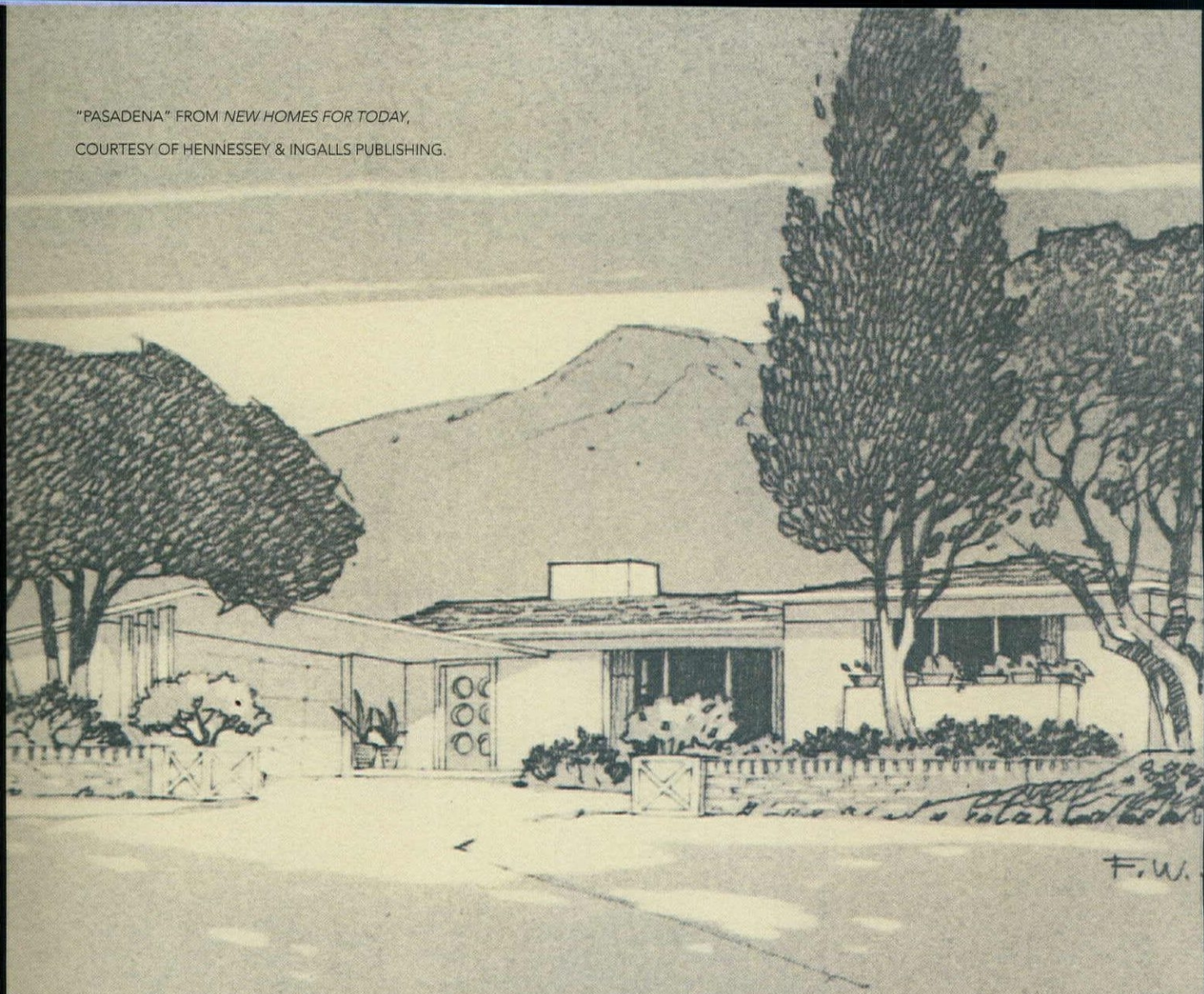
While Paul Revere Williams is known as “Hollywood’s Architect” for his work on the Beverly Hills Hotel and the Saks Fifth Avenue store in Beverly Hills, among other swanky Los Angeles projects, residential architecture was the bread and butter of his practice. By 1945, Williams had designed over 2,000 homes in Southern California and in various regions of the United States, Mexico and South America. Renewed interest in Williams’ career is often focused on the palatial estates he built for celebrities or his glamorous hotels, but he dedicated much of his practice to designing for the Black community.

Williams was devoted to building affordable housing for people of all economic backgrounds—from public housing to fairly priced suburban homes. He published two widely available books of house plans: *The Small Home of Tomorrow* (1945) and *New Homes for Today* (1946), with the goal of providing quality architectural plans “not only for young families, particularly those of war veterans, but for anyone who wanted to build a home.” The homes featured in both collections bridged the gap between traditional homes and modern styles evocative of what is now known and loved as the Mid Century Modern ranch.



BEVERLY HILLS HOTEL ADDITION, BEVERLY HILLS.
PAUL R. WILLIAMS ARCHITECT, BUILT 1949-56.
PHOTOGRAPHY BY JULIUS SHULMAN, 1950, GELATIN
SILVER PRINT, © J. PAUL GETTY TRUST. GETTY
RESEARCH INSTITUTE, LOS ANGELES.

"PASADENA" FROM *NEW HOMES FOR TODAY*,
COURTESY OF HENNESSEY & INGALLS PUBLISHING.



" P A S A D E N A "

The basic theory of modern design is to create a pleasant but simple background for a plan built around today's activities in a home. This arrangement permits the owner to drive into the garage and enter either the front door or kitchen door under the protection of overhanging roofs. The various rooms are accessible from the entry hall. This home could be built close to the street to allow a larger area for outdoor enjoyment, especially since the main rooms are planned with the window wall facing the garden.

The exterior expresses simplicity rather than ostentation and with a well studied color scheme this home should appeal to the conservative admirer of the "Modern".

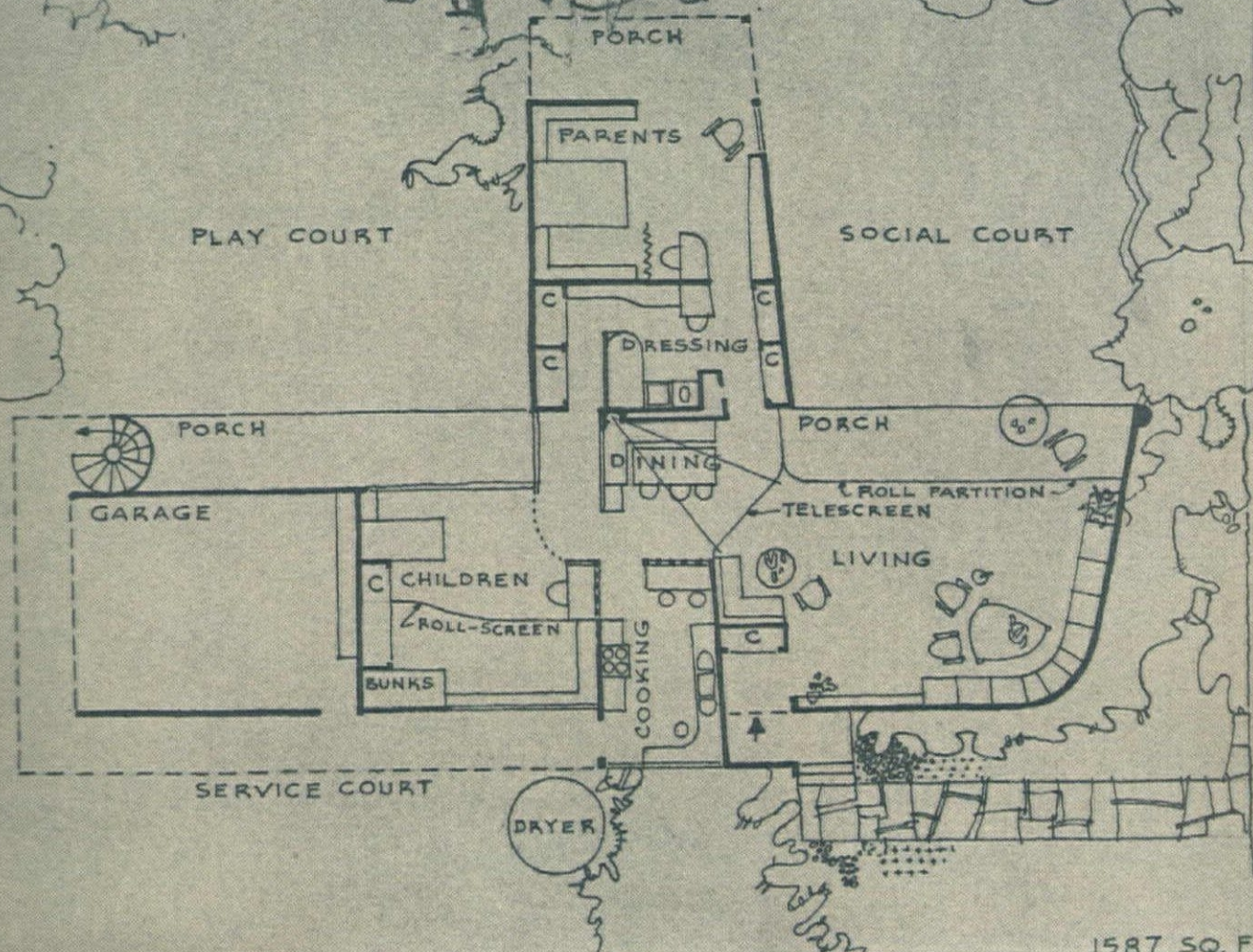
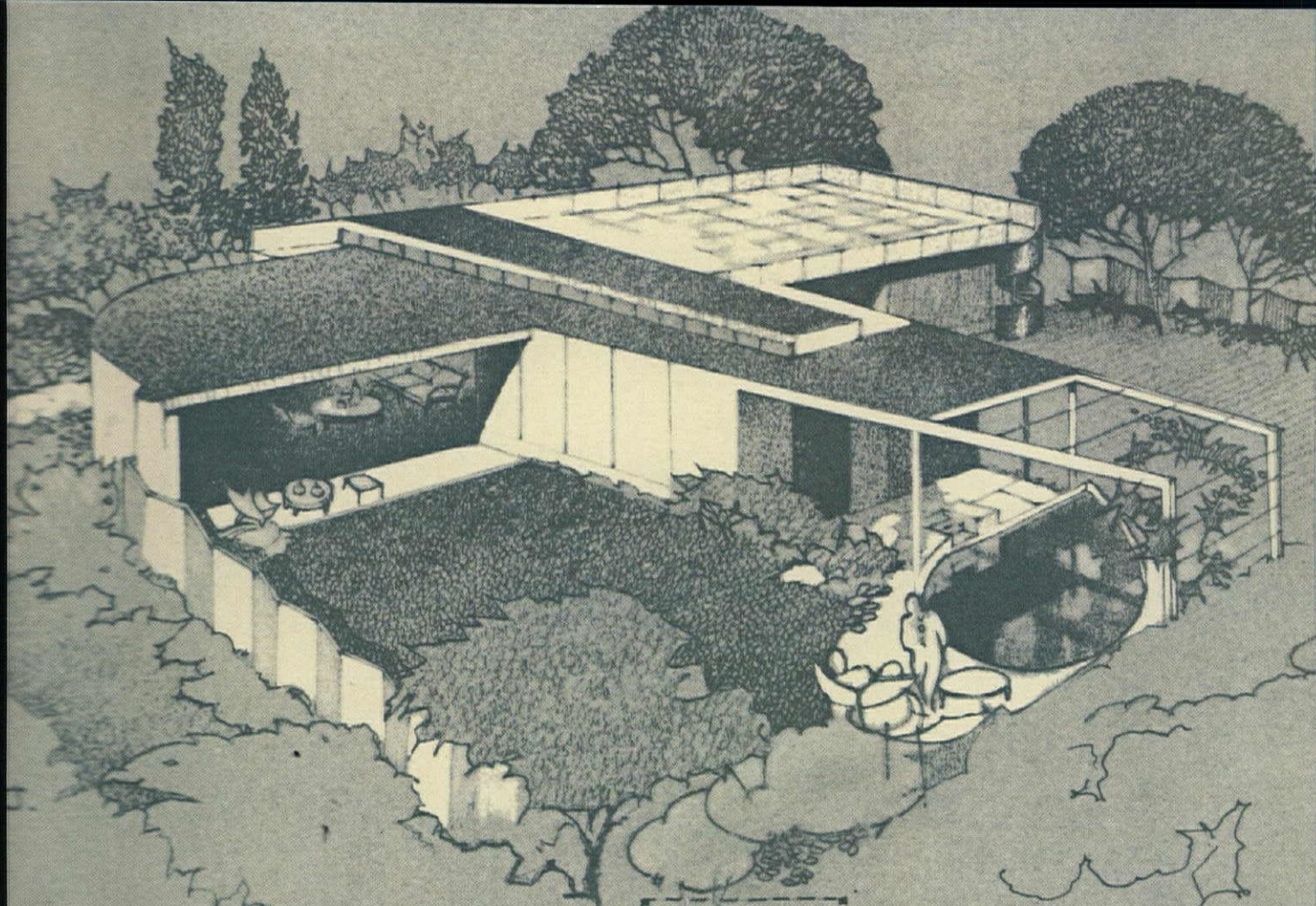


PORTRAIT OF PAUL R. WILLIAMS,
PHOTOGRAPHY BY JULIUS
SHULMAN 1952, GELATIN SILVER
PRINT, © J. PAUL GETTY TRUST.
GETTY RESEARCH INSTITUTE,
LOS ANGELES.

CARVER MANOR

Paul R. Williams' charming and inexpensive small homes materialized en masse through his collaboration with Velma Grant, a Black real estate developer, on the Carver Manor subdivision in Willowbrook, Los Angeles. With the influx of Veterans Administration insured mortgage programs, middle-class Black veterans intended to buy homes at greater rates than ever before, but were barred by racial covenants from purchasing in many new tract home developments. Carver Manor, with its 250 affordable, single-family homes open to all, filled the void for high-quality, affordable homes available to the Black community. In 1946, the first phase of single-family homes at Carver Manor listed on the market at \$11,400. People lined up around the block to view the model homes, and over 110 homes in Carver Manor were immediately put under contract.

The Carver Manor homes were by no means cookie-cutter tract houses. With offset faces and broken rooflines, the homes created a cohesive neighborhood while still retaining individual flair. Each home had a single car garage and a landscaped front lawn. This design resembled many of the house plans featured in *The Small Home of Tomorrow* and *New Homes for Today*. Williams further democratized design when he worked with *EBONY* to assemble the guide "Paul Williams Tells: How to Build a Home for \$5,000." For the article, Williams designed two model homes exclusively for *EBONY* readers using the idea of a basic small home designed to be expanded as the homeowner's budget increased and needs evolved. Williams was a "common-sense, down-to-earth architect" who expertly infused cutting-edge modernism and open plans into warm, friendly homes for only \$5,000.



1587 SQ. FT.

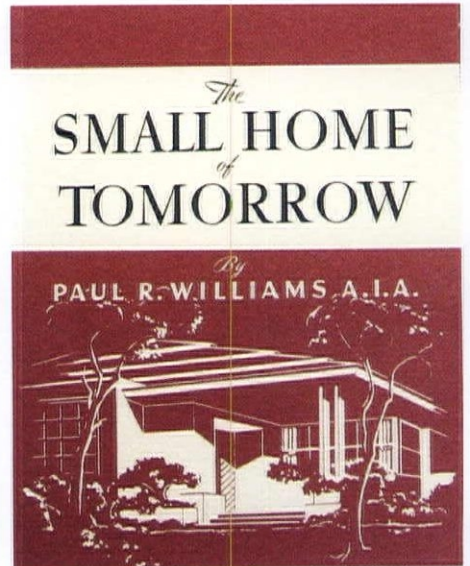
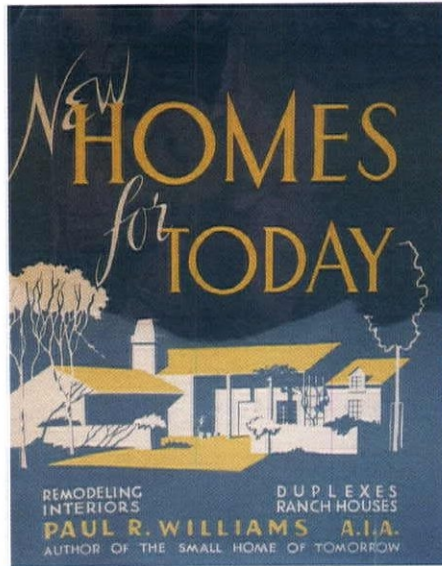


RIGHT: *NEW HOMES FOR TODAY* BY PAUL R. WILLIAMS, PUBLISHED BY HENNESSEY & INGALLS, © 2006. ORIGINALLY PUBLISHED BY MURRAY & GEE, 1946.

FAR RIGHT: *THE SMALL HOME OF TOMORROW* BY PAUL R. WILLIAMS, PUBLISHED BY HENNESSEY & INGALLS, © 2006. ORIGINALLY PUBLISHED BY MURRAY & GEE, 1945.

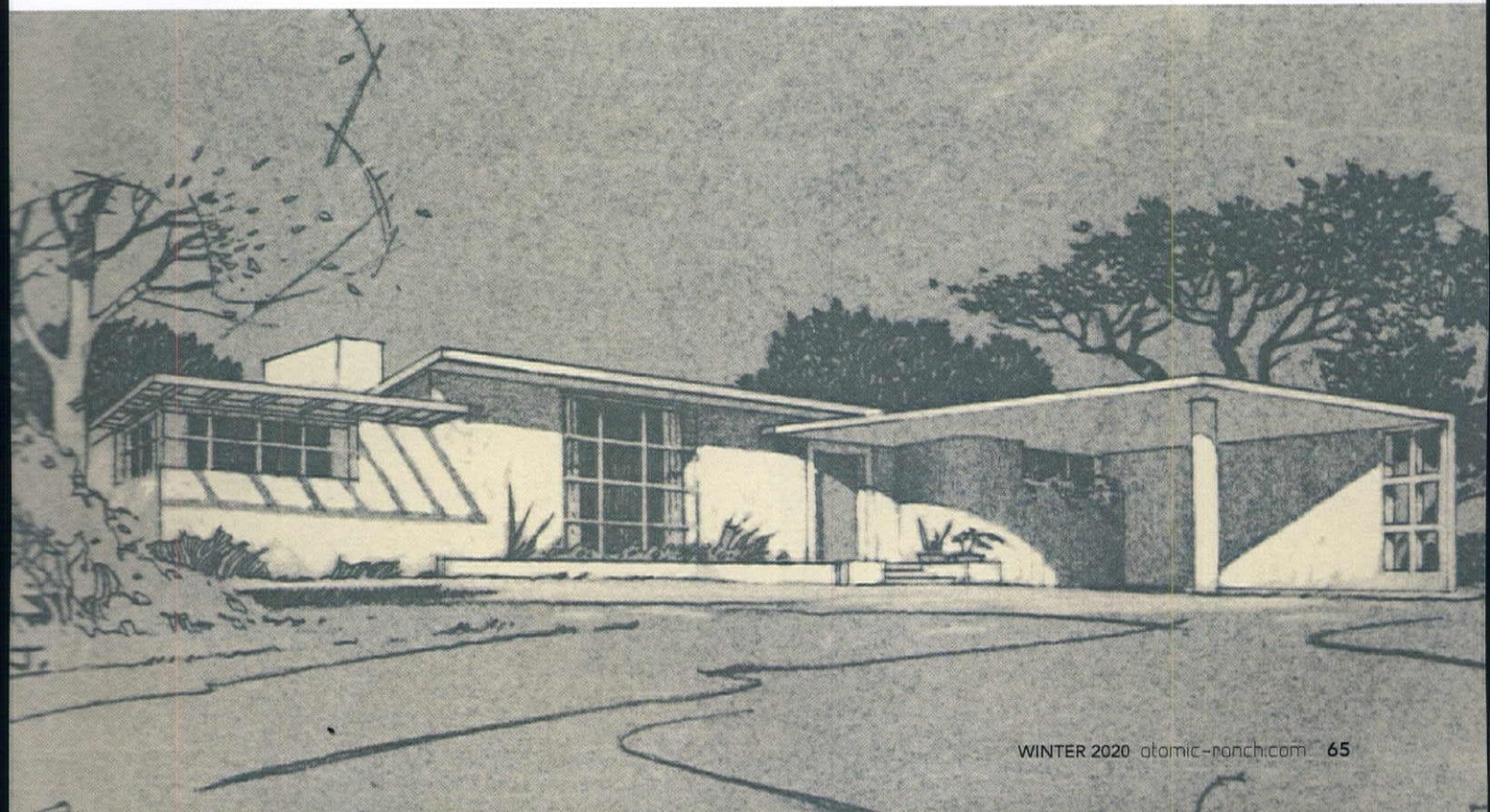
BELOW: "SUNSHINE MANOR" FROM *THE SMALL HOME OF TOMORROW*, COURTESY OF HENNESSEY & INGALLS PUBLISHING.

OPPOSITE: "NEUTRA HOUSE" FROM *THE SMALL HOME OF TOMORROW*, COURTESY OF HENNESSEY & INGALLS PUBLISHING.



Paul R. Williams designed thousands of homes at all price points throughout his career. While the celebrity houses he designed are well known, many of his affordable projects were thought to be lost to history. However, Paul R. Williams' thought-to-be destroyed archive of work was found in June 2020 and acquired by the Getty Research Institute and University of Southern California. It included approximately 35,000 architectural plans, 10,000 original drawings, blueprints, hand-colored renderings, vintage photographs and correspondence. This new wealth of information will allow more study of Williams' work and his investment in design for all. 🌱

Our series on Paul R. Williams continues in the upcoming Design Issue.



4074

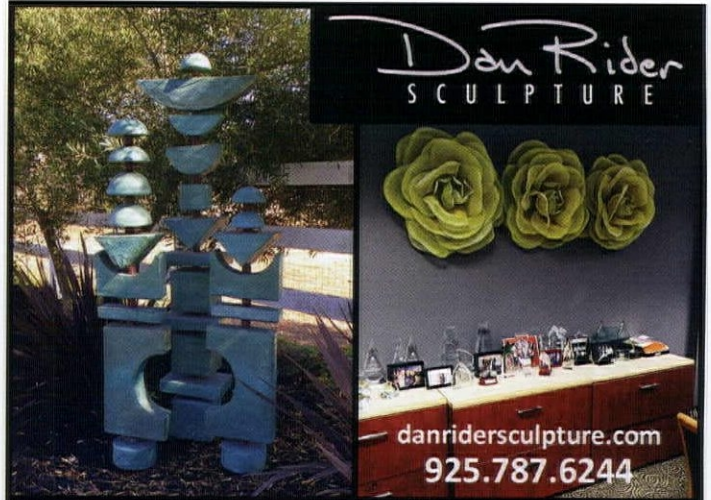
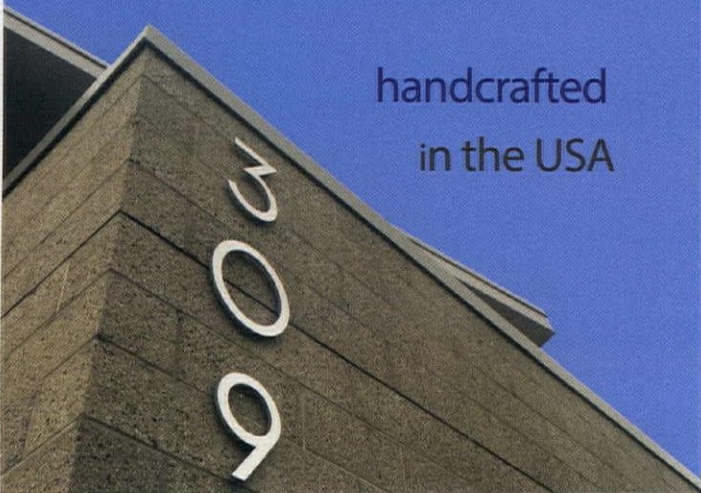
curb appeal at it's best!



housenumbers.com

modern made simple

handcrafted
in the USA

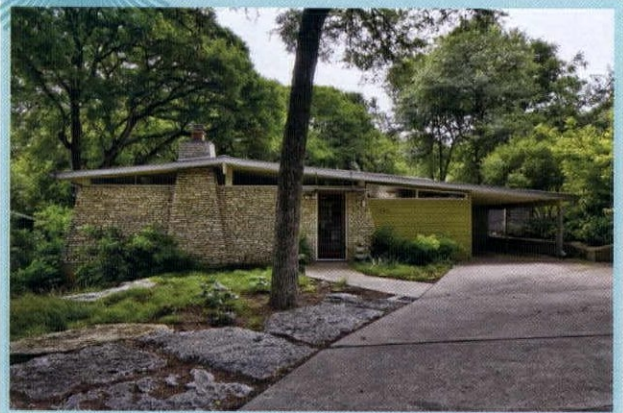


danridersculpture.com
925.787.6244



contemporary
wall sculpture
+ outdoor sculpture

A.D. Stenger in Zilker Park!

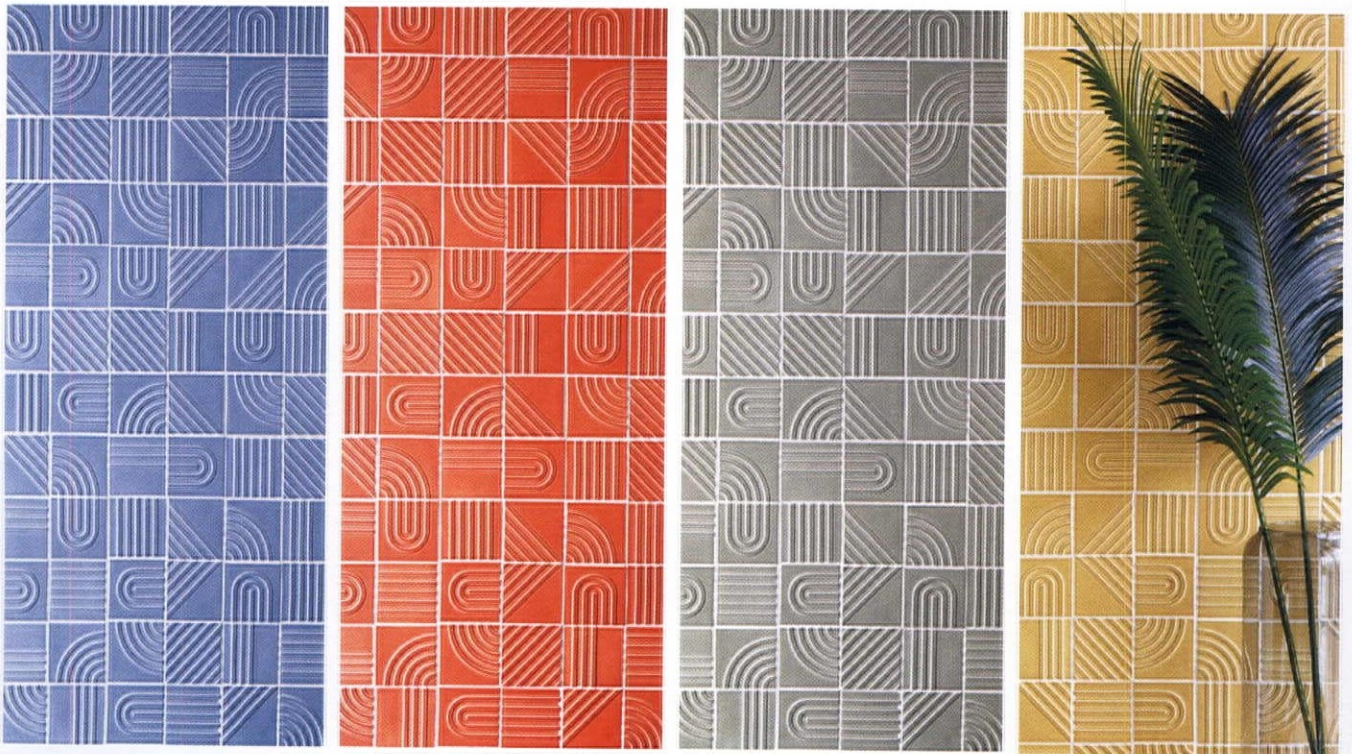


1105 AZIE MORTON

DREW MARYE • 512-964-8944
Real Estate Broker



WWW.THEMARYECOMPANY.COM



HANDCRAFTED TILE MADE IN PORTLAND, OR
www.clayhaustile.com | order direct at 503.928.3076



**Midcentury Style &
Turn of the Century Craftsmanship**

www.huntandnoyer.com | 313.731.2485 | @huntandnoyer

With effervescent tiles, distinctive lighting and current-meets-retro touches, this 70-year-old mid century beauty was made to be admired.

By Shelby Deering
Photography by Stephen Busken



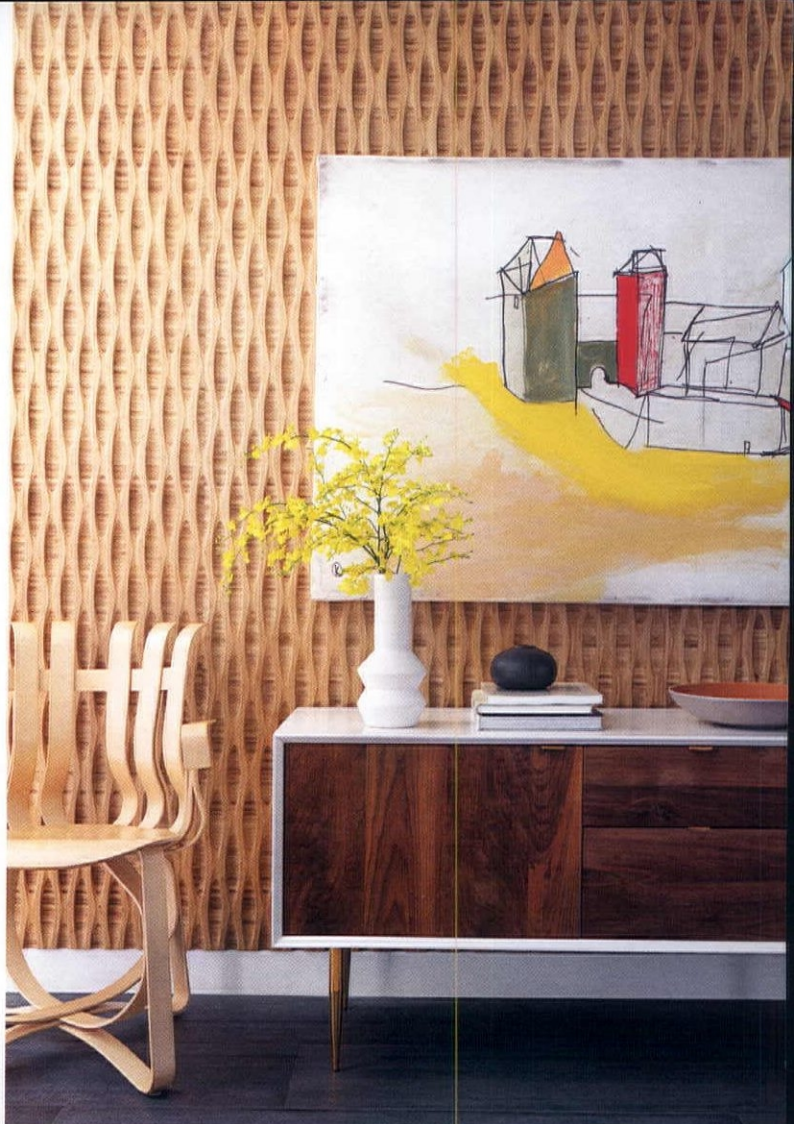
California COOL



THE ADDITION OF AN IPE WOOD DECK AND FIREPIT EXTEND THE LIVING AND ENTERTAINING SPACE TO THE OUTDOORS. IDEAL FOR FRIENDS AND FAMILY, THE BARBECUE AREA ALSO DOUBLES AS A HANGOUT FOR THE COUPLE'S PETS—"TWO RESCUE DOGS AND AN OVERWEIGHT CAT." ROCKERS FROM LOLL DESIGNS ADD A LAYER OF PLAYFULNESS.

"THE BEAULIEAU GLASS MOSAIC KITCHEN BACKSPLASH IN 'DAWN' AND THE VINTAGE-INSPIRED AGA RANGE ANCHOR THE KITCHEN WITH A WARMTH THAT DRAWS YOU INTO THE SPACE ANY TIME OF DAY," EXPLAINS INTERIOR DESIGNER ERIC LEHWALD.





TOP LEFT: FEATURING A SUBTLY COLORFUL AREA RUG ATOP THE FLOORING THAT RUNS THROUGHOUT THE HOME—CERAMIC PLANK TILES WITH AN ORGANIC GRAIN PATTERN BY BEDROSIANS TILE & STONE—THE DINING ROOM LOOKS PERFECTLY MID CENTURY WITH CLASSIC EAMES SHELL CHAIRS AND AN ODIN ROUND EXTENSION TABLE.

TOP RIGHT: THIS TEXTURED NOOK SHOWS OFF THE COUPLE'S AFFINITY FOR ART AND LOVE OF CREATIVITY. "WE HELPED QUIET THE SPACE BY INSTALLING A WALL OF PLYBOO ACOUSTICAL WOOD PANELS IN THE DINING AREA," ERIC SAYS. THE FRANK GEHRY HAT TRICK CHAIR AND ARTWORK BY MICHAEL COSTUROS INJECT INGENUITY INTO THE SPACE.

It's never too late to chase your mid century vision.

With their two boys grown up, Matt and Susie Bailey felt it was time to make their dream of owning a mid century house a reality. Susie, a retired aesthetician, and Matt, an investor and Adjunct Professor of Business at the University of California, Irvine, had long admired mid century homes, especially a friend's Eichler abode.

Matt and Susie explored Santa Ana's Floral Park, one of Orange County's oldest neighborhoods. After sifting through century-old homes, they spotted it—a 2,100-square-foot stunner built in 1950 and brimming with possibilities. The couple says, "It had great curb appeal, charming details and a lot of potential."

Although the original architect couldn't be identified, Matt and Susie appreciated the home for its "unique character." To better suit their needs, the two chose to make some updates with the help of Eric Lehwald, an interior designer with DTLA Design.

A NEW LOOK

Starting with the kitchen, then the bathrooms and finishing with the yard, the couple began making the spaces their own. "Susie and Matt are creative, warm, approachable, highly sophisticated and hip," Eric says. "Our goal was to incorporate these qualities into a design language that runs throughout their home. We aimed to make each space more usable, interesting and familiar and to create a feeling that's very today with a nod to the past."



The couple desired a kitchen where friends and family could gather freely. Initially the kitchen was an enclosed room accessed through a small doorway in the dining room. "It lacked fluidity and a sense of connection to the rest of the house," Eric explains. So the space was renovated by removing the wall that separated the kitchen and dining room. A new peninsula created "some nice choreography between the two spaces," Eric says.

Eric notes that they wanted the main bathroom to feel "intimate, relaxed and spa-like, while keeping with the mid century vibe." The space was reconfigured top to bottom. The picture window above the bathtub didn't provide much privacy, so clerestory windows were installed instead. The shower was extended under the windows to create the experience of a private garden shower.

The backyard was transformed into a chic, yet welcoming, barbecue space. "Another gathering place for friends and family, this space we wanted to be an extension of

the interior typical of mid century design, with an eclectic variety of textures and shapes," Eric says. An Ipe wood deck was placed outside the living room, along with a firepit, basalt water feature and custom-made screens.

ONE-OF-A-KIND STYLE

Matt and Susie brought plenty of personality into this home while honoring mid century design. They say, "Mid century design brings an interesting mix of nostalgia, in the absolute coolest sense of the word, with highly functional design, and an aesthetic that instantly appeals to us. The mix of materials and colors, while maintaining a clean, minimalist ethos, is a great baseline for us when considering the vibe for a new room. That said, we have deviated from a strict adherence to the mid century style and mixed in a healthy dose of eclectic patterns, textures and shapes to bring a bit of unexpected lushness and mystery." 🌿

OPPOSITE: ORIGINALLY A GALLEY KITCHEN "THAT WAS FAR TOO SMALL FOR OUR NEEDS," AS HOMEOWNERS MATT AND SUSIE BAILEY PUT IT, THE AREA WAS RENOVATED INTO AN EYE-PLEASING, USABLE SPACE BY KNOCKING DOWN A WALL AND OPENING IT UP TO THE DINING ROOM. THE COUPLE ENJOYS THEIR KERF CUSTOM CABINETS—THEY FIRST DISCOVERED KERF CABINETRY THROUGH AN *ATOMIC RANCH* ARTICLE.

RIGHT: "WE COMPLETELY REPOSITIONED ALL OF THE PLUMBING, FLIPPED THE BATHROOM FOR BETTER LIGHTING, ADDED CLERESTORY WINDOWS FOR PRIVACY AND EXTENDED THE CEILING OUTDOORS UNDER THE EAVES IN CLASSIC TYPICAL MID CENTURY FASHION," ERIC SAYS OF THE MAIN BATHROOM. KERF CABINETRY MIMICS THE KITCHEN AND WAS ALSO USED IN THE SECOND BATHROOM.

BOTTOM: SERVING AS AN OUTDOOR KITCHEN, THE GRILL AREA FEATURES CUSTOM CONCRETE AND SPANISH TILES. HARDSCAPING MINGLES WITH LANDSCAPING, WHICH MATT AND SUSIE SAY IS ONE OF THEIR FAVORITE ELEMENTS OF THE HOUSE.



"We aimed to make each space more usable, interesting and familiar and to create a feeling **that's very today with a nod to the past.**"



BLACKWELL  **WOODWORKS**



HANDMADE CLOCKS AND DECOR MADE ENTIRELY FROM UP-CYCLED GUITAR SCRAPS!

BLACKWELLWOODWORKS.COM

 **ANTHONY LAMORTE**
FURNITURE



Thoughtful, creative design.

Creating custom furniture and artwork for over 50 years.

Made in Reno, NV
Anthonylamorte.com
775-622-3346



The vacation rental for your trip to San Francisco, the Napa/Sonoma Wine Region or the Pacific Coast. Perfect for a secluded weekend.

case.study.house.26

San Rafael, California

casestudyhouse.com/rental

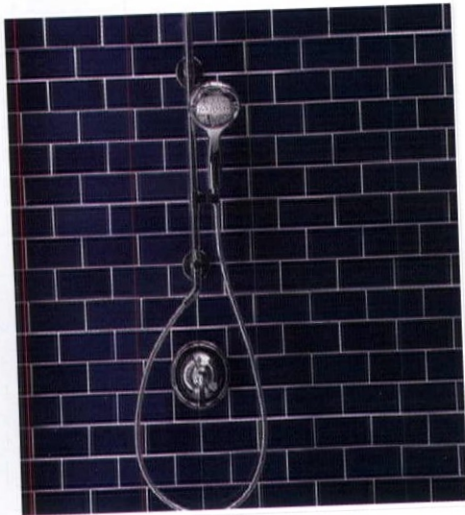
theatomicmobile
atomicmobiles.com

NEW
DIY Kits!
Shop now

ask for a **FREE**
Art Catalog



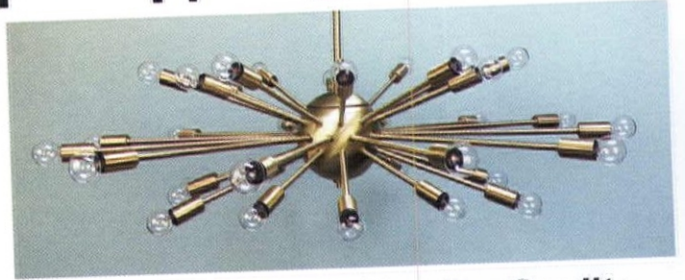
LIVE YOUR COLORS
Let Modwalls bring your
mid-mod dreams to life!



 **modwalls®**

modwalls.com / 877 439 9734

Practical P R O P S



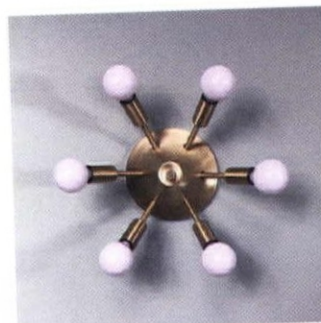
*Specializing in Authentic, Quality
Midcentury Reproduction Lighting*



*Pendants - Sputniks - Flush Mounts
Interior & Exterior Sconces
Bath Lighting - Floor & Arc Lamps
Desk, Table & Bedside Lamps
Restored Vintage Lighting*



Family-Owned & Operated since 1991



shop.PracticalProps.com



Modtraveler.net

AN ENTHUSIAST'S GUIDE TO MODERNISM



modboxUSA
Mid-Century Modern Mailbox

modboxusa.com | 919.781.8403

Your Chicago-Area
Mid-Century Modern &
Ranch Homes Specialist

MODERN
modernil.com

Lou Zucaro
lou@modernil.com • 312.907.4085

Baird & Warner
754 W. Northwest Highway, Barrington, IL 60010

Hip Haven

RETROMODERN LIGHTING + ACCESSORIES

BARKCLOTH THROW PILLOW

DELUXE SPUN METAL FOUR-ARM CHANDELIER

RETRO BULLET LIGHT SINGLE SCONCE

GLOBE PENDANT

SPUTNIK GIFT TIN

RETRO BULLET PLANTER

WWW.HIPHAVEN.COM | 512-462-4755

MODCRAFT

MODERN DIMENSIONAL TILE

www.mod-craft.com 718-541-1160

7" Laser Cut Metal Breeze Block Wall Tiles available in 6 colors

Discover our uniquely modern products at:
hideandseeksupplyco.com
 Home Base:
 Sunny Palm Springs, CA

hide+
 seek
 SUPPLY CO.

MODERN WELCOME

DALLAS

Opening doors all over the Dallas/Fort Worth area.
 Can I open the door to your modern dream home for you?
 ED MURCHISON | 214.395.7151 | ed.murchison@cbdfw.com

ED MURCHISON
 midcenturymodernandluxury.com

COLDWELL BANKER

GLOBAL LUXURY

COLDWELL BANKER RESIDENTIAL BROKERAGE

REMOCRAFT UP-DOWN LIGHTS

INDOORS OR OUT — setting the standard...again.

310 Series

720 Series

other RETRO styles

GU-UDR

GU-UDS

Optional rain shields available for exposed areas!

MADE IN THE USA.
 Thank you for supporting American Small Businesses!

RETRO

(800) 327-6585

www.atomicremcraft.com

Real estate agents affiliated with Coldwell Banker Residential Brokerage are independent contractor sales associates, not employees. ©2019 Coldwell Banker Residential Brokerage. All Rights Reserved. Coldwell Banker Residential Brokerage fully supports the principles of the Fair Housing Act and the Equal Opportunity Act. Owned by a subsidiary of NRT LLC. Coldwell Banker, the Coldwell Banker logo, Coldwell Banker Global Luxury and the Coldwell Banker Global Luxury logo are registered service marks owned by Coldwell Banker Real Estate LLC. 19K7U5_DFW_8/19

atomicadvertisers

ACCESSORIES & ARTWORK

Atomic Mobiles 74
atomicmobiles.com

Blackwell Woodworks 74
blackwellwoodworks.com

Christian Musselman Illustration 12
773.209.8506
christianmusselman.com

Dan Rider Sculpture 66
925.787.6244
danridersculpture.com

Fred Arndt 81
fredarndtartworks.etsy.com

Hide and Seek Supply Co. 77
217.416.1068
hideandseeksupplyco.com

Hip Haven 76
512.462.4755
hiphaven.com

Mac George Art Prints 83
macartprints.com

Matthew Pierce 13
matthewpiercefineart.com

Modern Retrograde 81
etsy.com/shop/modernretrograde

The Shag Store 20
760.322.3400
shagstore.com

ACCOMMODATIONS & MCM LIFESTYLE

Case Study House #26 74
casestudyhouse.com

Dolphin Promotions 58-59
Chicago: 708.366.2710
Florida: 954.202.1955
dolphinsairs.com

Mod Traveler 76
modtraveler.net

DESIGN RESOURCES

Asheford Institute of Antiques 79
877.444.4508
asheford.com

LIGHTING

Practical Props 75
818.980.3198
shop.practicalprops.com

Remcraft 77
800.327.6585
atomicremcraft.com

YLighting | YLiving 84
888.441.2781
ylighting.com

MID CENTURY REALTORS

Baird & Warner 76
312.907.4085
modernil.com

Margaret Mikkelsen 28
modernmemphishomes.com

Mid Century Homes 19
mid-centuryhomes.com

Midcentury Modern Dallas Homes 77
214.395.7151
midcenturymoderndallashomes.com

Modern Homes Portland 79
971.285.7955
modernhomesportland.com

The Marye Company 66
512.964.8944
themaryecompany.com

MODERN FURNISHINGS

Anthony LaMorte Furniture 74
775.622.3346
anthonylamorte.com

Copeland Furniture 2-3
copelandfurniture.com

Gingko Furniture 9
650.396.7455
gingkofurniture.com

Hunt & Noyer Woodworks 67
313.731.2485
huntandnoyer.com

Joybird Furniture 6-7
joybird.com

Kardiel 5
kardiel.com

Kerf Design 11
206.954.8677
kerfdesign.com

MaxMin Design 29
202.459.8118
maxmindesign.com

Modern Hill Furniture 16-17
708.497.9111
midcenturywarehouse.com

OTHER HOUSE STUFF

American Tile Makers/ B&W Tile 12
310.538.9579
bwtile.com

BLAINE Architects 29
blaineartists.com

Clayhaus 67
503.928.3076
clayhaustile.com

House Numbers 66
575.201.3737
housenumbers.com

Make It Midcentury 28
makeitmidcentury.com

Modbox USA, Inc. 76
modboxusa.com

Modcraft 77
718.541.1160
mod-craft.com

Modwalls 75
877.439.9734
modwalls.com

Motawi Tileworks 79
734.213.0017
motawi.com

Nana Wall System Inc 21
800.873.5673
nanawall.com

TedStuff 79
561.272.0770
tedstuff.net




VINTAGE STORES & FURNITURE REHAB

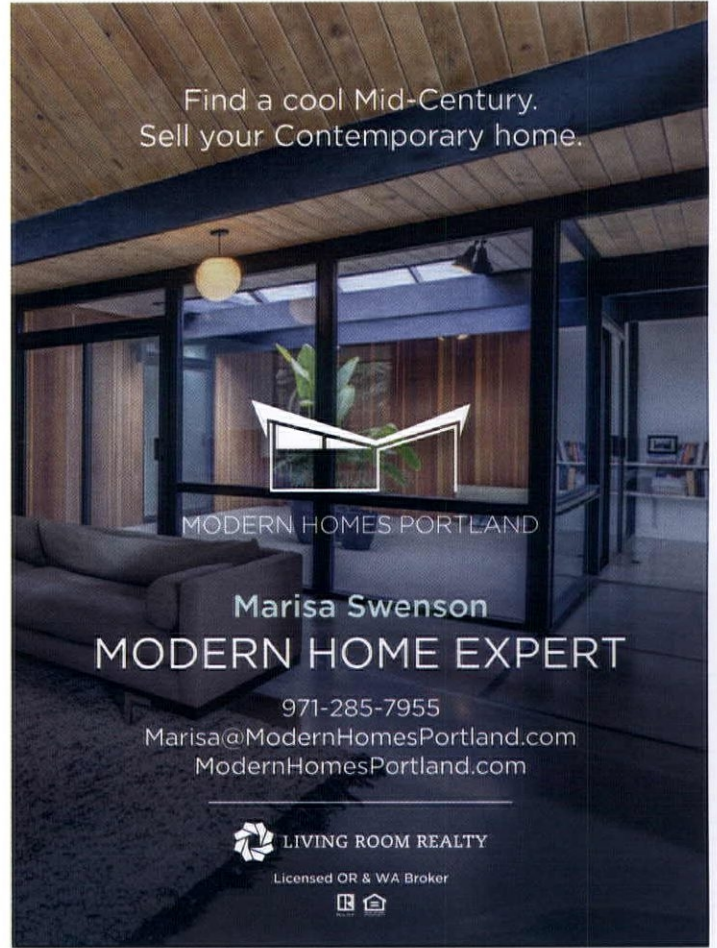
Atomic Pad 81
atomicpad.net

Evans Family Company - Fagas Straps 81
858.461.8069
fagasstraps.com



**MOTAWI
TILEWORKS**

DISTINCTIVE AMERICAN ART TILE
FOR HOMES AND PUBLIC PLACES
734.213.0017 | motawi.com |   



Find a cool Mid-Century.
Sell your Contemporary home.



MODERN HOMES PORTLAND

Marisa Swenson
MODERN HOME EXPERT

971-285-7955

Marisa@ModernHomesPortland.com

ModernHomesPortland.com



LIVING ROOM REALTY

Licensed OR & WA Broker



Would You Like To Be A Mid-Century Modern Antiques Dealer?

You Can:

- *Start your own Mid-Century Modern Antiques Business
- *Choose the hours you wish to work
- *Become a "Certified" Decorative Arts Appraiser
- *Complete an internationally recognized 12 Volume Course with Diploma & Appraisal Certification (PACC & USPAP)



www.asheford.com

For A FREE Course Prospectus
Booklet:

www.asheford.com

Email: asheford@mail.com

Toll free: 877-444-4508

Or write to:

Asheford Institute: 981 Harbor Blvd.
Ste. 3, Dept. 275ATR13 Destin, FL 32541

The **RetroBox** Wall Mounted Mailbox
is a Mid-Century inspired locking mailbox.
Available in black or white, with stainless steel
numbers and 12 door colors. Made in the USA.



tedstuff modern. elegant. fun.
tedstuff.net

resources

Even More, page 22

Interior designer: Brooke Eversoll of Bee Studios, (727) 800-9672 or beestudios.design.

Cabinetry: Holiday Kitchens, holidaykitchens.com.

Refrigerator, dishwasher and range: Fisher & Paykel, fisherpaykel.com/us.

Microwave: Sharp, sharpusa.com.

Sink: Prolific by Kohler, us.kohler.com/us.

Faucet: Delta Trinsic Pro, touch faucet, in black stainless by Delta Faucets, deltafaucet.com.

Drawer and cabinet pulls: Top Knobs, topknobs.com.

Tile backsplash: Tabarka Studio, (480) 968-3999 or tabarkastudio.com.

Soapstone countertops: Mont Krest, (800) 678-0111 or montkrest.com.

Hood finish: Roman Clay, color "Brooks" by Portola Paints, portolapaints.com.

Floating shelves: Tromso by Shelfology, shelfology.com.

Island: Custom design by Bee Studios, Built by Artisan Restoration; (727) 642-7056 or artisanrestorationinc.com.

Island legs: Naked Metal Studio, nakedmetalstudio.com.

Cabinet paint: Pewter Green by Sherwin-Williams, sherwin-williams.com.

Rising from the Ashes, page 30

Follow along on Instagram @barretthouseboulder and linktr.ee/barretthouse. To learn more, visit evolvevacationrental.com.

Interior paint throughout the home: Toasted Marshmallow by Behr, behr.com.

Cork flooring: LL Flooring, (844) 4-LLFLOOR or lumberliquidators.com.

All carpeting: Go Green Flooring, (303) 440-4442 or gogreenflooring.com.

Vintage brutalist door handles: Olde Good Things, ogstore.com.

Staircase railing: Custom made by Alex Schuldt of Metalworks by Schuldt in Boulder, (720) 822-3864.

KITCHEN

Cabinets: Home Depot, (800) 466-3337 or homedepot.com.

Cabinet pulls: Schaub & Company cabinet hardware, schaubandcompany.com.

Backsplash: Porcelanosa, porcelanosa-usa.com.

TV LOFT

Fiber wall art: Erik Speer, esspeer.com.

Adrian Pearsall sofa: Vintage find, reupholstered with vintage Jack Lenor Larsen fabric.

LIVING ROOM

Rockers: Renato Zevi with Jack Lenor Larsen textile, found at Mid-Mod Mall in Denver; midmodandmore.com.

Adrian Pearsall sofa: Craigslist, craigslist.org.

Painting above the sofa: G.M. Karas, gmkaras.com.

LOFT LIBRARY

Original Platner chairs: Denver Modernism Week, denvermodernismweek.com.

Wall unit: Joybird, (888) 282-0842 or joybird.com.

Vintage Louis Vuitton trunk: From Max's grandmother.

Cleared Vision, page 40

Interior design: Vicki Simon, Vicki Simon Interior Design, vickisimoninteriordesign.com.

Master carpenter: Michael Kecskemethy, Go Man Go Enterprises, gomangoenterprises.com.

EXTERIOR

Sconces: Hubbarton Forge, hubbardtonforge.com.

Front doors restoration: Doorworks, Go Man Go Enterprises and Cady & Associates.

LIVING ROOM

HiFi: Custom design by Alex Newman of Best Yr, Portland.

Rug: Kush Rugs, kushrugs.com.

Furniture: Vintage finds from Hawthorne Vintage, 20th Century Interiors and 1st Dibs.

Sofa rebuild and reupholstery: Acanthus, acanthusgreen.com.

Sofa side boxes rebuild: 1908 Design, nineteen08design.com.

Wood refinishing: Robin Cady & Associates, (503) 628-6370.

Fabrics: Zimmer + Rohde, zimmer-rohde.com.

Fabrics: Stroheim, fabricut.com/stroheim.

Fabrics: Larsen, larsenfabrics.com.

Brass urn vessels: Courtesy of Legacy Modern, legacymodern.com.

Artwork: Ship painting by Rick Stark.

Other prints and accessories: Collection of the homeowners and courtesy of Vicki Simon and Herzog Modern, herzogmodern.com.

Planter: Pomarius Nursery, pomariusnursery.com.

Bench under window: Vintage from homeowner's collection.

DINING ROOM

Rug: Kush Rugs, kushrugs.com.

Wall cabinet: Designed by Vicki Simon and made by 1908 Design, nineteen08design.com.

Dining room chandelier: Hudson Valley Lighting, hudsonvalleylighting.hvlgroup.com.

Dining room table and chairs: Vintage from homeowner's collection.

Dining room chairs: Reupholstered in Larsen fabric by Acanthus, Portland; acanthusgreen.com.

Artwork and accessories: Vicki Simon's own collection and Herzog Modern, herzogmodern.com.

KITCHEN

Stainless steel backsplash: Custom-fabricated by Pacific Stainless Steel, pacificstainless.com.

Tables: Custom-designed by Vicki Simon and made by Coulee Concrete, couleecconcrete.com.

Base on small triangular corner table: MC Lemay, mclemay.com.

Chairs: Arne Jacobsen Series 7 for Fritz Hansen sold by DWR, dwr.com.

Kitchen pendant: George Nelson bubble lamp sold by DWR, dwr.com.

Artwork and accessories: Courtesy of Vicki Simon's collection.

Range and hood: Miele, mieleusa.com.

Downlight over sink: WAC Lighting, waclighting.com.

Faucets: California Faucets, calfaucets.com.

KITCHEN OFFICE

Wall system: Vintage Poul Cadovius Royal sold by Look Modern, Portland; lookmodern.com.

Artwork and accessories: Collection of homeowner, and courtesy of Herzog Modern, Palo Alto and Vicki Simon's own collection, including paintings by Gracie Ellison, Tate Cohrs, and AS Matyas, Paris.

Built-in storage: 1908 Design, nineteen08design.com.

Wall sconces: Lawson-Fenning, Los Angeles; lawsonfenning.com.

HALLWAY

Pendants: Vitreluxe, vitrelux.com.

Vista with a View, page 50

Front door: Home Depot, (800) 466-3337 or homedepot.com.

Main bathroom vinyl flooring: Spicher and Company, (877) 466-1148 or spicherandco.com.

Main bedroom headboard: AllModern, (844) 867-6866 or allmodern.com.

Outdoor chairs: IKEA, (888) 434-4532 or ikea.com.

Red address sign: Amazon, amazon.com.

Building a Home Paul R. Williams Style, page 60

Hennessey + Ingalls Publications, (213) 437-2130 or hennesseyingalls.com.

Getty Research Institute, visit getty.edu.

California Cool, page 68

Interior design: Eric Lehwald of DTLA Design, (213) 986-9800 or dtladesign.com.

General contractor: Zach T. Curtis of Classic Construction Services, (714) 356-6986 or classicconstructionservices.com.

Landscape designer: Jason Wan, designsbyjasonwan@gmail.com.

KITCHEN

Tile backsplash: Beaulieu Glass Mosaic in "Dawn" by Ann Sacks, annsacks.com.

Glass pendant lights: Jeremy Pyles for Niche Modern Lighting and Contemporary Chandeliers, nichemodern.com.

Cabinetry: Kerf, kerfdesign.com.

Window treatments: Custom fabric by Brentano Fabrics from The Shade Store, theshadestore.com.

Flooring: Bedrosians Tile & Stone, bedrosians.com.

Oven/stove: AGA Legacy 36", aga-ranges.com.

DINING ROOM

Eames Shell Chairs: Modernica, modernica.net.

Odin round extension table: Design Within Reach, dwr.com.

Pendant light: Scraplights Disc Pendant by Graypants, graypants.com.

MAIN BATH

Mirrors: Blu Dot, bludot.com.

Wall shower tile: Heath Ceramics, heathceramics.com.

Ceiling tile: Porcelanosa "Liston Oxford Cognac," porcelanosa-usa.com.

Cabinetry: Kerf, kerfdesign.com.

Lighting: Cerno, cernogroup.com.

Faucets: Aquabrax, aquabrax.com.

OUTDOOR BBQ SPACE

Outdoor fireplace: Hart Concrete Design, hartconcretedesign.com.

Sectional: Gloster, gloster.com.

Rockers: Lolli Designs, lolldesigns.com.

Privacy screens: artisanpanels.com.

Last Look, page 82

Motown Museum, (313) 875-2264 or motownmuseum.org.



Sculptures

FREDERICK ARNDT ARTWORKS

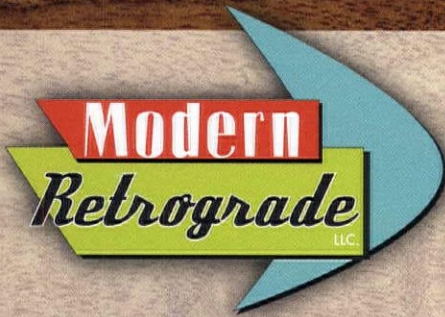
Mid Century Inspired Designs



Hundreds of Ornament Designs to Choose From
www.fredarndtartworks.etsy.com



**Wood & Metal
Wall Art**



MID CENTURY MODERN
STYLED ART

- CUSTOM DESIGNS
- 100% HANDMADE
- FREE DOMESTIC SHIPPING
- MADE IN THE USA

ETSY.COM/SHOP/MODERNRETROGRADE

THE PERRY II



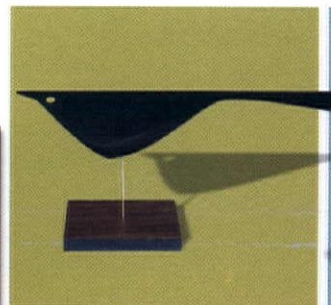
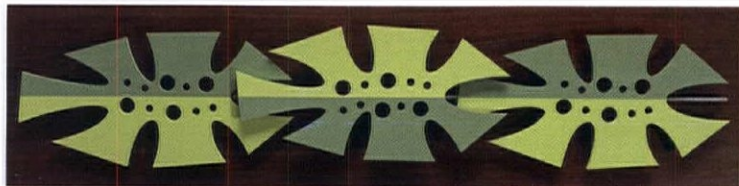
Official US distributor
since 1945

Replace broken or stretched Fagas Straps!

www.fagasstraps.com
info@fagasstraps.com 858.461.8069



ATOMIC PAD.net
Home bars & decor



atomicpad.net

also on etsy.com/shop/atomicpad

Made to order - handcrafted in California

last look



Golden Record

By **Lindsay Jarvis** | Photography by **Wilson Lindsay/Michael Ochs Archives/Getty Images**

In 1959, songwriter **Berry Gordy Jr.** purchased a two-family house on West Grand Boulevard in Detroit, Michigan. Gordy lived in the upper portion with his wife and son, while the lower section was used to start his record label, Motown Record Corporation, originally called Tamla Records. Gordy converted the garage into a recording studio, soon to be known as Hitsville U.S.A.'s Studio A. His knack as a producer and pioneering entrepreneur paved the way for a new wave of music that would soon sweep the nation. The Miracles were the first artists to sign, and their lead singer, Smokey Robinson (seen here), went on to write and produce numerous hits for other Motown groups. Robinson eventually became the Vice President of Motown Records and is even credited with urging Gordy to establish the label.

Motown's first gold record was "Shop Around" by the Miracles, followed by more chart toppers from the band including "You Really Got a Hold on Me" and "The Tracks of My Tears" that cemented the group's integral part in putting Motown on the map. Meanwhile in 1961, the catchy "Please Mr. Postman" by the Marvelettes was the label's

first pop chart #1 hit. With the signing of the Temptations and the Supremes, Motown was a true hit factory, and the "Motown Sound" was making its way to all parts of America. It was music for everyone. Throughout the next decade, legendary artists such as Marvin Gaye, Stevie Wonder and the Jackson 5 rose to great success in the industry out of Hitsville U.S.A.

Without a doubt, Motown Records introduced a new sound and style that not only impacted music but had a profound influence on culture during a time of racial division and segregation in America and throughout the world. From 1959 to 1972, hit after hit was created in the Detroit flat. When the offices moved to Los Angeles in 1972, Esther Gordy Edwards—Berry Gordy's sister and former Motown Records Senior Vice President—kept an office at Hitsville, U.S.A. She founded the Motown Museum at the site in 1985, still open today with the mission to "preserve, protect and present the Motown story through authentic, inspirational and educational experiences."

To learn more, visit motownmuseum.org.



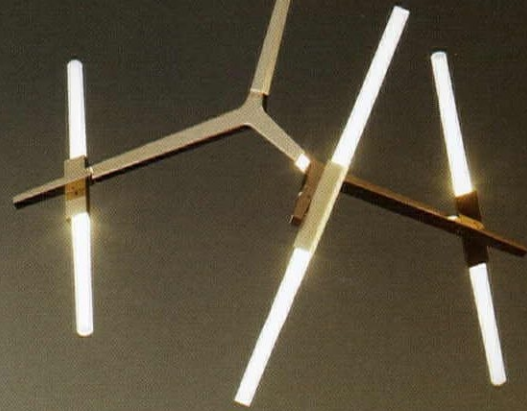
MAC GEORGE ART PRINTS

ABOUT THE ARTIST

Mac George has received credits that include *The Little Mermaid*, *Beauty and the Beast*, *Aladdin*, *The Lion King*, *Chicken Little*, *Tangled* and *Wreck It Ralph*. He designed the stained glass prologue for *Beauty and the Beast*, has been nominated for two Annie awards and in 2010 won a prime time Emmy award for his work on *Prep and Landing*.

macartprints.com

Y LIGHTING
The Best in Modern Living



Exclusive to YLighting: Agnes Chandelier from Roll & Hill

Shop YLighting.com or Call (888) 441-2781